

# MOUNTAINSIDE Echo

## Wilson Will Continue Fight For Expanded Use Of Property Along Route 22

ROCKETS START AT 9 P.M.

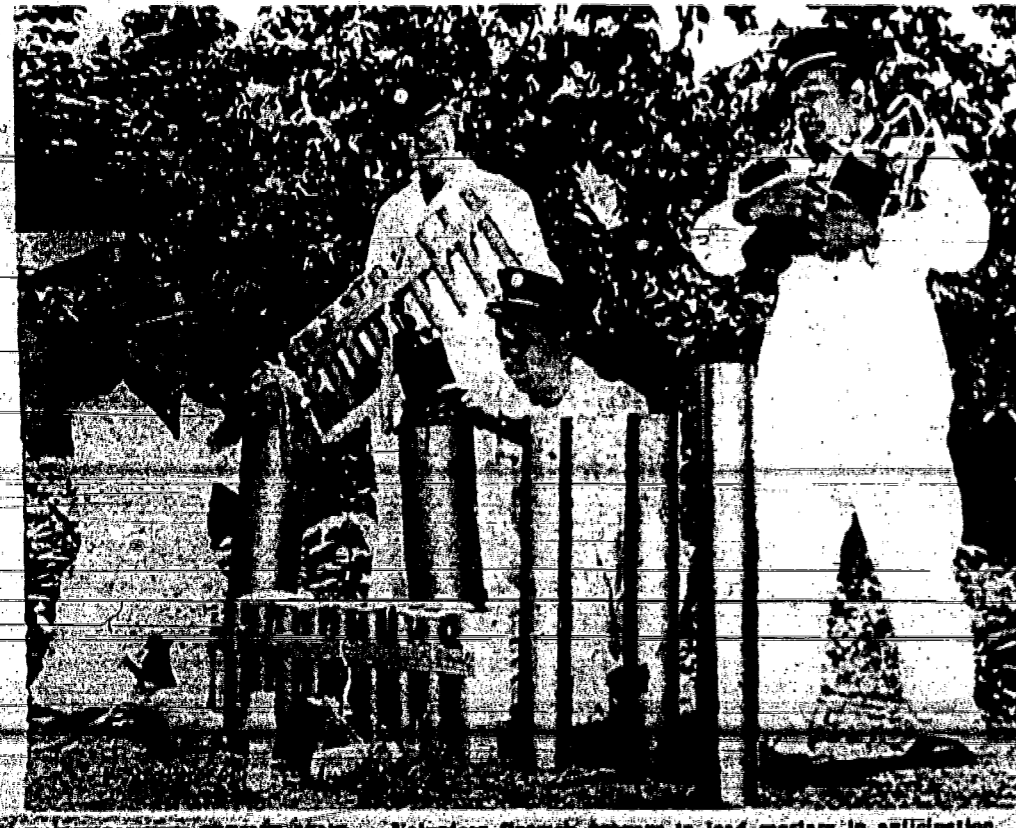
### July 4th Fireworks 'Biggest Yet'

Mountainside residents will tote blankets and small TVs to the field between Deerfield School and Our Lady of Lourdes Church to watch the massive display of fireworks planned for 9 p.m. July 4 by the Volunteer Fire Department.

Residents who don't like to jostle crowds can watch the fireworks from their front porches. Lt. Ernest Kuffer, who is in charge of the annual project, said that ground displays have not been purchased in order to concentrate on an aerial spectacular that will be visible throughout the Borough.

Kuffer will be assisted in manning the mortar which will shoot the rockets into the air by Capt. Al Klimas and two other members of the 10-man volunteer squad.

Other firemen will be stationed at strategic locations to oversee the safety of the crowd as they watch the fireworks.



READY ON THE FIRING LINE — Volunteer firemen prepare to load mortars in anticipation of the July 4 fireworks display planned by them for the borough. Readying the rockets are (left to right) Lt. Lucian Klemis, Ronnie Ruth, Lt. Ernie Kuffer and Assistant Chief Henry Porter. (Photo by Don Smith)

### Council To Meet Again July 9 On Selecting Mayor

The Borough Council will meet Tuesday evening at 7:30 p.m. in the Council Chamber to select a mayor and to appoint a Council member as the mayor and replace him from outside the group, or appoint a mayor from outside the Council.

Johnson announced his resignation at the last regular Council session, citing personal reasons for the action. He was appointed to the mayor's post in January, 1963, to replace Eugene Rau who resigned, and ran for election the following November. He is vice-president in charge of manufacturing at Bristol-Myers in Allendale.

Johnson was previously a member of the Board of Education for six years. During that time, the Beechwood School and the Deerfield School additions were built.



STEADY HAND — Recycled Judy Puhawell demonstrates that girls, as well as boys, can wield a saw, as she dexterously handles the tool in summer class at the Deerfield School. Judy is the only girl in two industrial arts classes of youngsters in grades four through seven, taught by Fred Stoeber. A description of Mountainside's unique summer school program, launched by Dr. Levin B. Hangan, superintendent of schools, and headed this year by Herbert Brown, principal of the summer school at Deerfield, will be a feature in next week's Echo. (Photo by Don Smith)

### 2nd Cour. Appeal For A Variance Awaits Decision

Seeking Reversal Or Zoning Denial On Apartment, Store

The Supreme Court will await decision of a similar suit filed by the Borough of Mountainside against the New Jersey State Board of Zoning Ordinance. The board's decision to grant a variance for a two-story apartment building and a store on Route 22 is being appealed.

### Not For Sale

There was not to be single-family homes on the site until the Borough of Mountainside had the final say on the matter.

## She's A Designing Woman Housewife Sketches Bard Costumes

Related Story on Page 1

By BARBARA GIBBONS

A pretty Mountainside housewife was thoughtfully squeezing a handful of shredded foam rubber in an upholstery store when a helpful salesman asked what she intended to make.

Arlene Nash, the sponge-squeezing, mumbled an inaudible reply and left.

After all, how could she tell him that she wanted to make a pot belly?

Chief costume designer for the Union County Park Commission's "Shakespeare Festival," Mrs. Nash needed an upholstered tummy for bulging, beer-loving Sir Toby Belch, a Falstaffian character in "Twelfth Night." The play will be offered next Friday and Saturday (July 10 and 11) in Cedar Brook Park, Plainfield.

"We've tried everything," explained the pert suburban mother as she launched a discussion of Toby's false front. "Molded polybrethan wasn't realistic enough. Shredded foam was fine, except when a seam gave, and Toby left a trail of sponge. Feathers were too hot under the lights. Pillow-balling was too heavy. We even thought of a half-deflated air pillow, but discarded that as too unstable.

Toby's tummy, however, is one of the less glamorous aspects of Mrs. Nash's volunteer post as costume designer. It's far more fun and just as challenging to create opulent Elizabethan costumes out of bargain basement remnants.

From the audience's point of view, she explained, corduroy looks just as plush as velvet, chintz is as lustrous as satin and cottonback drapery fabric takes on the rich texture of heavy brocade. A few scraps of lace, a remnant or two of gold lame, a judiciously applied frosting of beads can add just the right touch of luxury to a gown of 30-cent-a-yard patterned percale. "We call it 'eking out a costume,'" explained Mrs. Nash.

Color is far more important than the cost or texture. "Our acts are very limited because the plays take place out-of-doors. We can't depend on brightly-painted props or brilliantly-lit curtains to add

(Continued on Page 1)



ELIZABETHIAN FINERY is fitted on dress form by Arlene Nash of Mountainside, costume designer for the County Park Commission's "Shakespearean Festival." The gown shown will be worn by leading lady in "Twelfth Night" to be staged next Friday and Saturday evenings in Cedar Brook Park, Plainfield. (Photo by Don Smith)

## Await Final Plans Borough Hall Survey Before Starting Up For Vote July 21

The Borough Council is waiting for final plans of a new Borough Hall before launching a referendum on the subject.

The plan is expected to be ready some time this summer.

DRAINAGE

The Borough Council will hold final hearing July 21 on an ordinance that would appropriate \$1,000 from its capital account for an arch-drainage survey of borough facilities.

Borough officials agree that a plan for expansion should be prepared before the referendum is held.

The plan is expected to be ready some time this summer.

DRAINAGE

## An Introduction

It is customary, and fitting, for new ownership of a newspaper to introduce itself by stating its purpose and policies. Briefly here is our introduction piece:

Purpose: To provide Mountainside with a news and advertising medium staffed by competent newspaper people with the aim of serving the community.

News policy: The Mountainside Echo will be published as a politically independent newspaper. Its news columns are open to all to have their say responsibly on matters of public interest to Mountainside. Judgment of what is news and of what is of public interest is in the hands of experienced, competent editorial staff members carefully chosen for their ability to think as well as write. Every effort will be made to present the news accurately, clearly, concisely and complete in all essential details. Local community happenings are regarded as important news. School news, religious activities, police news and human interest stories about area residents are regarded and treated as important news. Reports in detail will be made about actions of the governing body of Mountainside and of county, state and national actions when they affect Mountainside.

Editorial policy: This, too, follows the politically independent status of our news department. Just as important, we intend to write editorials only about things we know. The chief purpose of our editorials will be to help people recognize issues and make decisions. It is not our purpose to write provocative editorials to create excitement or obtain peace-

tion as to how the wind is blowing. When we do feel strongly on an issue we will take a strong stand but only after full investigation and careful thought is devoted to the matter.

Letters to the editor: We will accept letters to the editor no later than Monday on matters of interest to Mountainside. They must be signed. They normally should not be longer than 250 words. We will reserve the right to edit or reject letters to meet requirements of space, good taste, relevancy and accuracy.

Our other newspapers: The Mountainside Echo now is affiliated with seven other weekly community newspapers. They are the Union Leader, Suburban Leader of Kenilworth, The Spectator of the Roselles, Irvington Herald, Vailsburg Leader, Springfield Leader and the Linden Leader. This last newspaper also is weekly published.

Personnel: Les Madamut is director of news and editorial content. Sam Howard is publisher, Milton Mintz business manager and Robert H. Brummel advertising manager.

Our staff of reporters, photographers and advertising men is experienced, well-trained and supervised by experts. They are backed up by a reservoir of capable people through the Echo's affiliation with the seven other newspapers.

Members of the Echo staff have helped their sister newspapers win recognition in the form of many awards in

(Continued on Page 7)

## Echo Publishes First Issue Under New Ownership

The Mountainside Echo makes its first appearance today under new ownership. Since the paper's first publication on June 10, 1958, it has been published by Joseph Fishberg and his wife, Mrs. Joseph Fishberg.

It was one of nine publications of the Metropolitan Office Publishers, Inc., headquartered at their offices, 200 Morris Ave., Springfield, N.J. Six of them were bid for successfully by the new operators of the Echo, they are the Union Star, Roselle-Roselle Park Leader, Springfield Sun, Linden Leader and the Echo, all weekly newspapers, and the Homesteaders Digest, a shopping publication.

The other newspapers were the Garden State News of Clark and the Berkeley Heights Beacon, successfully bid for by Alexander Wright of Linden, and the Scotch Plains Times, required by Mrs. Louis Washaw of Springfield.

Springfield Sun will be merged with the Linden Leader and the Homesteaders Digest.

The offices of the Echo will continue to be maintained at a New Providence road.

It is anticipated that the Springfield Leader, the new owners operate the Union Leader, Spectator of the Roselles, Suburban Leader of Kenilworth, the Irvington Herald and the Vailsburg Leader.

### Copy Deadline

All organizational and social items, photographs and stories other than those of a spot news nature must be in our office by Friday to insure publication in the next issue. Please use our columns to tell your story.

# Dr. Hanigan To Conduct Class For Nova Scotia School Heads

Dr. Levin B. Hanigan, superintendent of schools, will leave today for six weeks at Dalhousie University in Halifax, Nova Scotia, where he will conduct a prearranged for school supervisors, principals and superintendents. The 28-member group will come from Nova Scotia, Prince Edward Island and New Brunswick.

The course will culminate in a symposium of in-service training by the educators. Dr. Hanigan says and will be conducted without formal as a discussion session.

The invitation to lead the prearranged course from Dr. Harold Nason, minister of education, whom Dr. Hanigan met as a member of the International Reading Association, which meets to pool ideas of teaching reading from a lawyer the world.

Dr. Hanigan is often involved in special projects, as his experiences on different

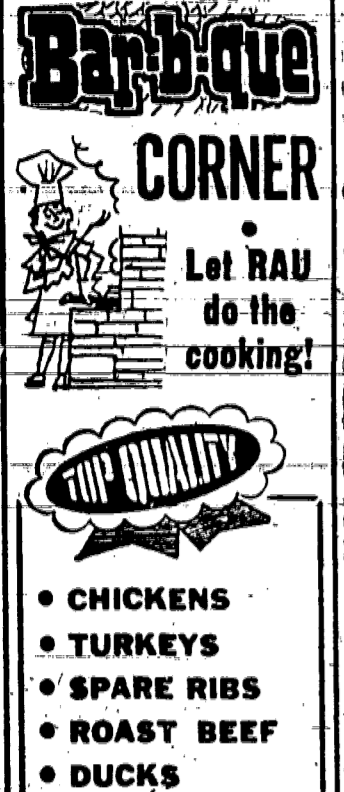
levels of education, the high demand as an educational administrator. He is called upon as a trouble-shooter by various school systems to solve specific problems.

A native of Chester, Pa., Dr. Hanigan won a B.S. degree in mathematics and a Ph.D. in education from West Chester State Teachers College in Pennsylvania in 1934, an M.A. degree in elementary education from the University of Pittsburgh in 1940, and a doctorate in administration and supervisory from the University of Pennsylvania in 1950.

Before coming to Mountainside four years ago, he served 10 years in the public schools of Allegheny County, Pa., and 20,000 pupils during the past 20 years of his career.

He was there during an upheaval in the school system that resulted in the merger of the Allegheny County and West Chester schools. He was also a member of the Pennsylvania State Board of Education and the National Education Association.

Dr. Hanigan and his wife, Patricia, live at 223 W. 4th St. and have three children, Jay, 9, Patricia, 7, and Keith, 6.



DR. LEVIN HANIGAN

## Barbique CORNER

Let RAU do the cooking!

- CHICKENS
- TURKEYS
- SPARE RIBS
- ROAST BEEF
- DUCKS

Sit back and relax! We'll do the cooking and if you like we'll also deliver right to your table.

## RAU

QUALITY MEATS & PRODUCE

763 Mountain Ave. Springfield DR 6-5505 FREE DELIVERY

## RAU

QUALITY MEATS & PRODUCE

763 Mountain Ave. Springfield DR 6-5505 FREE DELIVERY

## Mountainside Echo

2 New Providence Road, Mountainside, N. J.

Published Each Thursday by Trumer Publishing Corp. Second Class Postage Paid at Mountainside, N. J.

Ten Cents Per Copy Mailed Subscription Rate \$3 per year Phone: 686-7700



**CHAMPS** - The Mountaineers sponsored by the Mountainside Inn captured the local Little League pennant left to right first row Stan Jucker, Dan Schuffman, Ken Kukul, Dan Kelly, Jim Rommer, Lee Chrysan and Tom Farrell. Back row second row, Oke Kelly, assistant manager, Lou Straits, (co-captain), Dave Benzing, John Wroblecki, Ruth Benzing (scorekeeper), Steve Benzing (co-captain), Doug Rau, (co-captain), Gary Farrell (co-captain), Gary Sauerborn and Ron Farrell (manager). Players not present when the picture was taken were Dave Daniels and Steve Isaac. Dan Seaman, equipment manager, was also missing. (Photo by J. Robert Billert)

# Little League Pennant Taken By Mountaineers

A new champion was crowned in the Mountainside Little League when the Mountaineers defeated the Bulldogs through the culminating game with a 3-1 victory.

The championship event took place at the Mountainside Inn. The Mountaineers were led by co-captain Doug Rau and co-captain Gary Farrell. The Bulldogs were led by manager Stan Jucker.

The Mountaineers' victory was a hard-fought one, with both teams showing excellent defensive play. The Mountaineers' offense was led by Gary Farrell, who hit a home run in the seventh inning to give them the lead. Doug Rau also contributed with a home run in the eighth.

The Bulldogs' manager, Stan Jucker, praised his team's effort but acknowledged the Mountaineers' superior play. He said, "The Mountaineers were a very balanced team and they played very well today."

The Little League season is now over, and the Mountaineers will be crowned champions of the local league. The team will be represented at the regional tournament in August.

## 4TH OF JULY TREATS

Garden State Farms DAIRY STORES

## NEW!

Look Pretty As Cloth, Work Better Than Ordinary Plastic.

## 37c

FRUIT DRINKS

ORANGE • GRAPE • FRUIT PUNCH • BLACK CHERRY

Half Gal. 29c Reg. 33c  
Gal. 53c Reg. 63c

## Special BOSTON COOLER

Buy a Half Gallon of Vanilla Ice Cream at Regular Price... Get a LARGE BOTTLE OF GARDEN STATE FARMS ROOT BEER

## Free

SPECIALS ON SALE JULY 2 THRU 5 ONLY!

<h3>NORDICA COTTAGE CHEESE</h3> <p>Reg. 44c, 43c Reg. 74c, 19c Reg. 19c, 19c</p>	<h3>Van Houten's BREAD</h3> <p>16-oz. Loaf 19c King Size 24c Home Style 28c</p>	<h3>N.B.C. VERITHIN PRETZELS</h3> <p>29c 8 oz. Reg. 33c</p> <p>VERITHIN STICKS 25c 1 1/2 oz. Reg. 30c</p>
--	---	---

## NEW!

Apple Danish 69c Reg. 79c

JUG MILK 80c  
HALF GAL 43c

# SAVE BIG

On MEAT • PRODUCE • GROCERIES during our "bang-up" 4th sale! We're exploding with savings all over the store in each and every department.

**1st CUT RIB ROAST 69c/lb**

**Boneless CLUB STEAKS \$1.59/lb**

**RAU'S Famous RANCH STEAKS 99c/lb**

**FREE! HAMBURGER ROLLS** (Pkg. of 8)

**FREE! 1-lb. pkg. of SAUERKRAUT** (With purchase of 1 lb. pkg. RATH'S All Meat FRANKFURTERS 59c/lb)

**HEN TURKEYS 39c/lb** (Aver. 10 to 12 lbs.)

## GARDEN FRESH!!!

Large Iceberg LETTUCE 2 lbs. 19c

Florida LIMES 3 for 10c

Tuna Fish 3 cans 89c

Made Fresh Potato Salad 29c

Cole Slaw 29c

Macaroni Salad 29c

**RAU** QUALITY MEATS AND PRODUCE

763 Mountain Avenue Springfield DR 6-5505

FREE DELIVERY of course!

UNION - 550 North Avenue

SPRINGFIELD - 762 Mountain Avenue

MILK • BUTTER • EGGS • ICE CREAM • COTTAGE CHEESE • BAKED GOODS

OPEN SEVEN DAYS A WEEK 10 A.M. TO 10 P.M.

## Garden State Farms DAIRY STORES

Copyright by Garden State Farms, Inc. And All Rights Reserved

# County Parks' Production Of 'Twelfth Night' Just A Fortnight Away!

The lush green trees and rolling lawn of the county park system will form the setting for the production of "Twelfth Night," one of Shakespeare's best-known comedies. The Friday and Saturday night productions will be staged in Cedar Brook Park, Plainfield, on July 10 and 11 and in Warinanco Park, at the Elizabeth-Roselle border, on July 17 and 18. "Curtain" is promptly at 8:15. All county residents are in-

cluded to attend the free outdoor productions, which are co-sponsored by the Union County Park Commission and the R. J. Goerke Co. of Elizabeth. Bleacher seating for approximately 600 is offered on a first-come, first-served basis. There is room for another 800 to sit or stand on the grass and still have an adequate view of the play.

This is the fourth summer that the Shakespearean troupe will visit county parklands. The summer festival was inaugurated in 1961 with "As You Like It." In 1962 outdoor productions of "A Midsummer Night's Dream" and "Romeo and Juliet" were offered. Last summer's event was "The Taming of the Shrew."

The spectacular productions have grown more popular each summer and Parks Department officials urge prospective spectators to arrive early for the best seats. Although the troupe is strictly amateur, there is nothing amateur about its productions. Most of the players

have had an extensive theatrical background, including professional appearances in summer stock. Ann Holtzman, cast as "Maria," appeared in the film "The Miracle Worker," and played with Molly Picon and Margaret Truman in two productions in the Paramus house. Cathy Clarke, who plays the lead, has appeared professionally in summer stock productions of "Brigadoon," "Kismet," "Snowboat," and "Finian's Rainbow," and has been a member of the Robert Shaw Chorus. Shirley Riley, cast as "Olivia," also has appeared professionally and is

a part-time drama coach. Workers behind-the-scenes are equally competent and include a contingent of former or near-professionals in the field of costume design, staging, sets, lighting and sound. A specially-rigged trailer contains all the lighting and sound equipment and serves as a portable dressing room, make-up department, prop room and storage quarters.

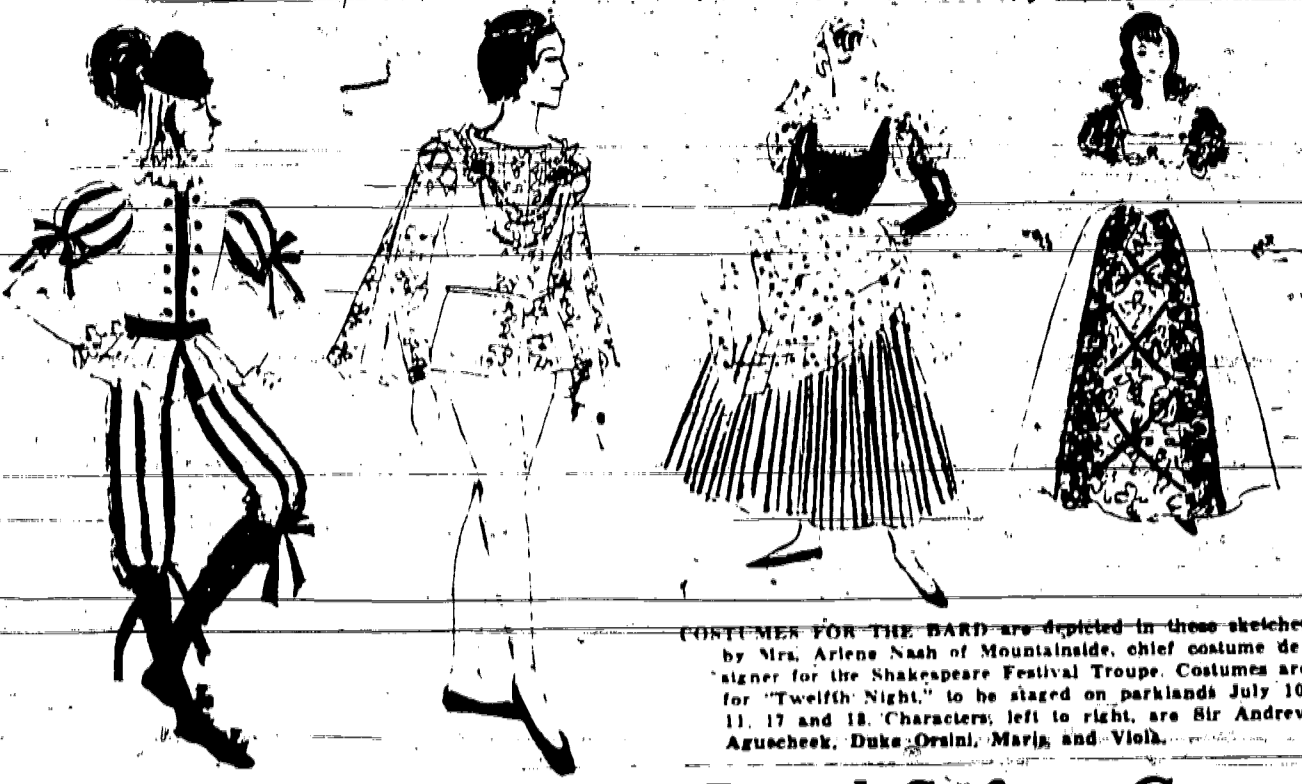
A second festival production is on the county parks playbill in August. The date has not yet been decided. The troupe will mark the Herd's 400th anniversary with a production titled "Brush Up Your Shakespeare." This will include selected scenes from Shakespeare's best-known works. It will be staged in the Shakespeare Garden section of Cedar Brook Park, a botanical feature of the County park system which includes all the herbs common in formal gardens of the Elizabeth area.

## One Third Of Goal Reached In Drive

Approximately 33 percent of the \$1.5 million goal of the Elizabeth General Hospital Development Fund has been attained. Charles T. Davis, campaign chairman, reported this week. Davis announced the standing of the fund at a meeting of the memorial subscription committee at the Hotel Winfield Scott, pointing out that "to-date, we have received 771 pledges for a grand total of \$522,960. He lauded efforts of the seven advance subscription committees, which raised this amount. Davis noted that "many pledge cards are still out, and, when the various companies and individuals who hold them decide what they will subscribe to in the development fund, our present total will be significantly increased."

## Advanced Band Plans Concert Next Week

The Advanced Band of the Abraham Clark High School will give a concert next Wednesday night at the Warinanco Park Stadium in Roselle-Elizabeth commemorating New Jersey's Tercentenary. The band, which gave its first season concert last night at the Abraham Clark High School in Roselle, recently began its 32nd season at Roselle's Locust School in connection with the Union County Band and Orchestra Summer School, which was reported to have an enrollment of more than 600 students.



COSTUMES FOR THE BARD are depicted in these sketches by Mrs. Arlene Nash of Mountside, chief costume designer for the Shakespeare Festival Troupe. Costumes are for "Twelfth Night," to be staged on parklands July 10, 11, 17 and 18. Characters, left to right, are Sir Andrew Aguecheek, Duke Orsino, Maria, and Viola.

**UNION TYPEWRITER CO.**  
Sales - Rentals - Repairs  
Olympia Portables  
Typewriters  
Adding Machines  
Used Portables  
1921 MORRIS AVE.  
UNION, N. J. - MU 8-7898

Day: 925-2444      Nite: 925-7771  
**DON'S AUTO REPAIRS**  
Automatic Transmission Specialists  
Body & Fender      Tune-Ups  
Auto Painting      Brakes  
Insurance Estimates      Shock Absorbers  
**24 HOUR TOWING**  
All Work Guaranteed  
800 E. Elizabeth Avenue      Linden, N. J.

## Investors Savings Joins In Celebration

The Investors Savings and Loan Association is taking part in the national celebration of the Federal Savings and Loan Insurance Corporation. With offices in Newark, Elizabeth, and Roselle, the association is one of more than 4,000 insured associations for amounts up to \$10,000.

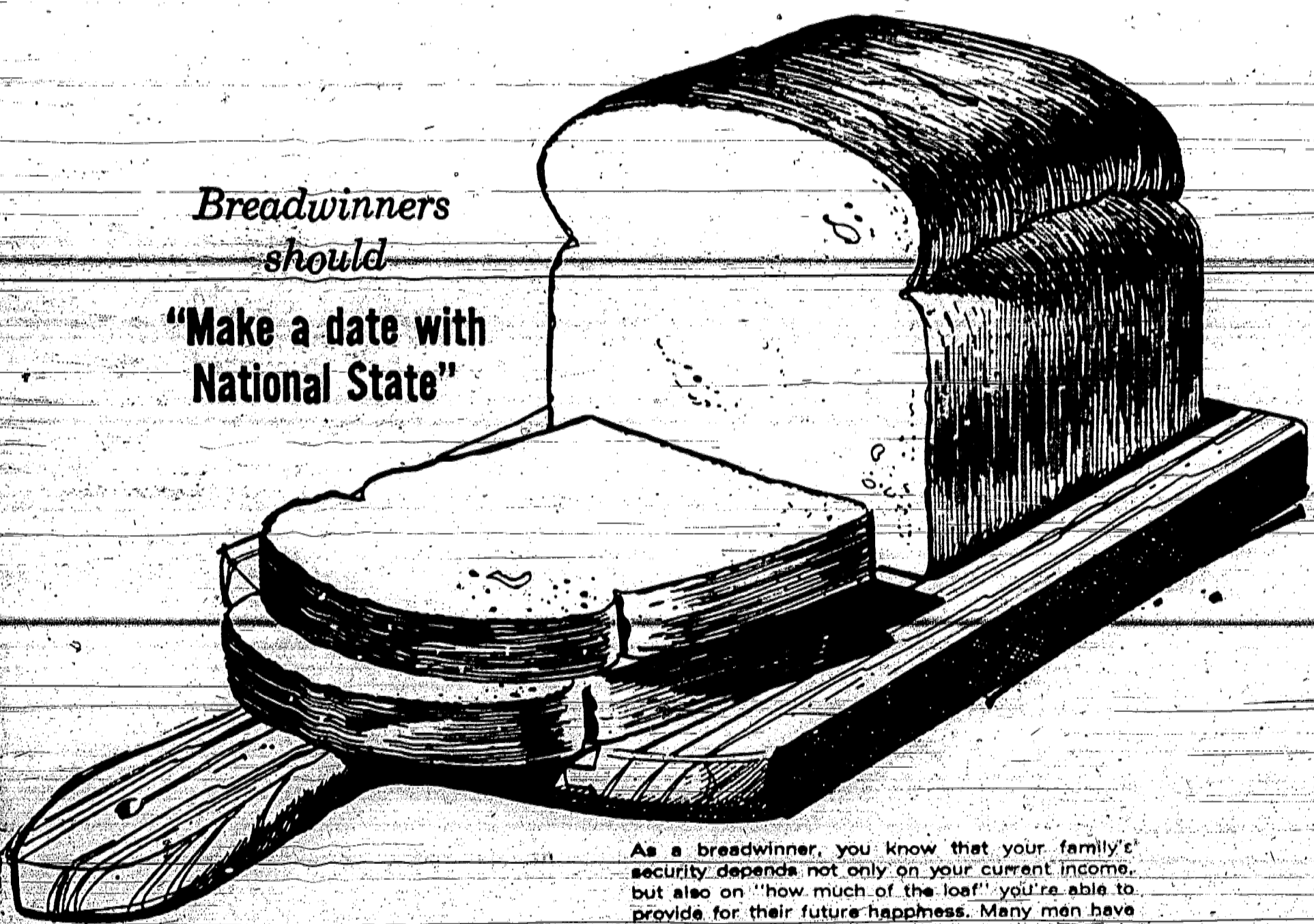
## Road Safety Group Reports Progress

A considerable amount of engineering report submitted to the State Highway Department has been accepted, and recommendations made that action will soon be taken to correct the problem at the approach to the Pulaski Skyway. The report was formulated by William Sohler, professional engineer from Union, and Newark Police Inspector Kenneth Melchior, he said. Springfield Mayor Robert Hardgrove, law enforcement committee chairman and a member of the safety council's board of directors, reported that strong action is being continued by the State police "task force." He said that an improvement in driving habits by motorists and truckers is being observed as a result of a two-month action by the State police.

## Learn-To-Swim Classes To Begin At County Pools

The 1964 season of Learn-to-Swim classes, one of the activities of the Union County Park Commission's annual aquatic program, will begin on Monday, July 13, at the John Russell Wheeler Park Pool, Linden, and the Rahway River Park Pool, Rahway. George T. Cron, the park commission's superintendent of recreation, said that the instruction program will consist of six sessions given from 9 to 9:45 a.m. and is offered to boys and girls eight to 14 years of age. The classes will be limited to eight children and it is expected that several classes will be held at the same time. The instruction program will be conducted by qualified staff instructors. A fee of \$9 will be charged for the six sessions. Classes will begin every two weeks. Applications are now available at both pools. Cron has suggested that all interested people should register early for the swim classes as the length of the program will depend upon the number of participants. For further information contact the recreation department of the Union County Park Commission, a spokesman said.

Breadwinners should "Make a date with National State"



As a breadwinner, you know that your family's security depends not only on your current income, but also on "how much of the loaf" you're able to provide for their future happiness. Many men have met this responsibility by using National State's Trust services, with a plan expertly fitted to their requirements. Why not visit us soon with your attorney and discuss your trust needs?

# THE NATIONAL STATE BANK



ELIZABETH HILLSIDE KENILWORTH RAHWAY  
ROSELLE PARK SPRINGFIELD SUMMIT WESTFIELD  
MEMBER FEDERAL DEPOSIT INSURANCE CORPORATION

Union County's Leading Full Service Bank

TO PLACE YOUR  
WANT  
AD  
PHONE  
371-3000

**DACRON and COTTON SLACKS**  
With The Crease That Stays In...  
• Lee Leisure  
• Sweet-Orr Meadowfield  
**5.95 pr.**  
**NEIL'S Army-Navy Store**  
1040 STUYVESANT AVE.  
UNION CENTER  
Open Friday and Monday  
Eves to 9 p.m.  
Free Alterations

## Help Given To Persons Suffering Nerve Deafness

CHICAGO, Ill. July 2—Until today, little has been written about nerve deafness, the nation's No. 1 cause of hearing distress. Now, however, an amazing booklet about this condition is being offered to the public free. Bellone Hearing Service at 8 So. Broad St., Elizabeth, has a supply of these books on hand and is making them available free of charge to anyone wishing a copy. Simply write to Bellone or telephone EL 3-7686. The booklet explains the facts about nerve deafness—the painless, invisible condition that handicaps and isolates millions of persons of all ages. How does nerve deafness interfere with hearing? What symptoms first warn you of this condition? Will surgery help? Will a hearing aid help? Will anything help? The booklet offered now to the public free of charge by Bellone Hearing Service explains why persons may hear and yet don't understand. Can this condition be corrected? Is there any help to this hearing distress—nerve deafness? "The Inside Story of Nerve Deafness," Bellone's remarkable free booklet, tells you what you can do to combat nerve deafness. If you are in the neighborhood of 8 So. Broad St., Elizabeth, come in for your free copy. Or write to Bellone Hearing Service. Phone EL 3-7686.

All families served at the Schmidt Funeral Home receive interested personal attention  
**AUG. F. SCHMIDT**  
Funeral Home  
E. O. Schmidt-Anderson, Mgr.  
119 WATFIELD AVE., ELIZABETH • EL 3-1884

# Dr. Hanigan To Conduct Class For Nova Scotia School Heads

Dr. Levin B. Hanigan, superintendent of school, will leave today for six weeks at Dalhousie University in Halifax, Nova Scotia, where he will conduct a practicum for school supervisors, principals and superintendents. The 28-men-

ber group will come from Nova Scotia, Prince Edward Island and New Brunswick. The course will culminate in a series of papers prepared by the educators, Dr. Hanigan said, and will be conducted without formal or a discussion session.

The invitation to read the practicum papers from Dr. Hanigan, minister of education, when Dr. Hanigan met with a group of the International Reading Association, which meets to pool ideas on teaching reading from all over the world.

Dr. Hanigan's present involvement in special projects, as his experiences on different



DR. LEVIN HANIGAN

## Mountainside-Echo

1 New Providence Road, Mountainside, N. J.

Published Each Thursday by Truener Publishing Corp. Second Class Postage Paid at Mountainside, N. J.

Two Cents Per Copy Mailed Subscription Rate \$2 per year Phone: 686-7700

Dr. Hanigan was a P.S. degree in mathematics and was a member of the Pennsylvania State Teachers Association in 1924, an M.A. degree in education from the University of Pittsburgh in 1940, and a doctorate in administration and supervision from the University of Pennsylvania in 1940.

Before coming to Mountainside four years ago he served 10 years as the principal of Avondale County, Virginia as a member of the National Education Association and as a member of the National Teachers Association.

He was in charge of the "Head Start" program in the Mountainside area for the past five years. He is also in charge of the "Head Start" program in the Mountainside area for the past five years.

He was in charge of the "Head Start" program in the Mountainside area for the past five years. He is also in charge of the "Head Start" program in the Mountainside area for the past five years.



CHAMPS - The Mountaineers, sponsored by the Mountainside Inn, captured the local Little League pennant. Left to right: first row - Stan Jucker, Dan Schuffman, Ken Kakol, Dan Kelly, Jim Rummel, Lee Chivran, and Tom Farrell; that boy - second row - George Kelly, assistant manager; Gus Straits, team captain; Dave Benzling, John Wroblewski, Ruth Benzling (scorekeeper), Steve Benzling (co-captain), Doug Rau (co-captain), Gary Farrell (co-captain), Gary Sauerborn and Ron Farrell (manager). Players not present when the picture was taken were Dave Daniels and Steve Lygar. Dan Seaman, equipment manager, was also missing. (Photo by J. Robert Butler)

# Little League Pennant Taken By Mountaineers:

A pennant was won by the Mountainside Little League team, the Mountaineers, in a series of victories over the other teams in the league. The team, coached by Gary Sauerborn and Ron Farrell, captured the pennant in a three-game series against the other teams. The team's success was due to their strong pitching and batting. The team's manager, Gary Sauerborn, and assistant manager, Ron Farrell, were instrumental in the team's success. The team's success was a great achievement for the community.

**Bar-b-que CORNER**

Let RAU do the cooking!

**RAU**

QUALITY MEATS & PRODUCE

763 Mountain Ave. Springfield

DR. 6-5505

FREE DELIVERY

- CHICKENS
- TURKEYS
- SPARE RIBS
- ROAST BEEF
- DUCKS

Sit back and relax! We'll do the cooking and if you'd like we'll also deliver right to your table.

\*\*\*\*\*

Garden State Farms **4TH OF JULY TREATS**

\*\*\*\*\*

**SAVE BIG**

On MEAT • PRODUCE • GROCERIES during our "bang-up" 4th sale! We're exploding with savings all over the store in each and every department.

**1st CUT RIB ROAST** 69¢/lb

**Boneless CLUB STEAKS** \$1.59/lb

**RAU'S Famous RANCH STEAKS** 99¢/lb

**FREE! HAMBURGER ROLLS**

With purchase of 3 lbs. **GROUND CHUCK** 79¢/lb

**FREE! 1-lb. pkg. of SAUERKRAUT**

With purchase of 1 lb. pkg. **RATH'S All Meat FRANKFURTERS** 59¢/lb

**WEN TURKEYS** 39¢/lb

**GARDEN FRESH!!**

Large iceberg **LETTUCE** 2 19¢

Florida **LIMES** 3 10¢

**White-Rose Chunk Tuna Fish** 3 89¢

Made Fresh **Potato Salad** 29¢/lb

**Cole-Slaw** 29¢/lb

**Macaroni Salad** 29¢/lb

**RAU** QUALITY MEATS AND PRODUCE

763 Mountain Avenue Springfield

DRexel 6-5505

FREE DELIVERY of course!

**NEW!**

**Scott FAMILY PLACEMATS**

Look Pretty As Cloth: Work Better Than Ordinary Plastic.

**37¢**

**Special BOSTON COOLER**

Buy a Half Gallon of Vanilla Ice Cream at Regular Price... Get a **LARGE BOTTLE OF GARDEN STATE FARMS ROOT BEER**

**Free**

SPECIALS ON SALE JULY 2 THRU 5 ONLY!

**OPEN JULY 4th 10 AM TO 10 PM**

**NEW!**

**SARA LEE APPLE DANISH** 69¢/box

Try It Alo Model

**FRUIT DRINKS**

ORANGE • GRAPE • FRUIT PUNCH • BLACK CHERRY

Half Gal. **29¢**

Reg. 33¢

Gal. **53¢**

Reg. 63¢

**NORDICA COTTAGE CHEESE**

Reg. 1 lb. can **43¢**

Reg. 11-oz. can **19¢**

9 Fruit SALAD **19¢**

17-oz. tin Reg. 33¢

**Van Houten's BREAD**

16-oz. loaf **19¢**

King Size **24¢**

Home Style **28¢**

**N.B.C. VERITHIN PRETZELS** 29¢

1 lb. Reg. 33¢

**VERITHIN STICKS** 25¢

1 1/2 lb. Reg. 39¢

**GARDEN STATE FARMS JUG MILK**

**MILK VITAMIN-D HOMOGENIZED PASTEURIZED**

GAL. JUG **80¢**

HALF GAL. **43¢**

**UNION - 550 North Avenue**

**SPRINGFIELD - 762 Mountain Avenue**

**Garden State Farms DAIRY STORES**

OPEN SEVEN DAYS A WEEK 10 A.M. TO 10 P.M.

Copyright By Garden State Farms, Inc. And All Rights Reserved

BUSINESS DIRECTORY Know Your Government

A LOOK AT THE UN with Trudina Howard

Arrange Cyprus Force Cost-Sharing

Tile Work & Repairing... SPECIALIZING in Ceramic tile kitchen & bathrooms...

AUTOMOTIVE... Autos For Sale... CHEVROLET...

ELECTRONIC GOVERNMENT... The magic of the computer...

From N. J. Taxpayers Association... The majority of the tax...

Arrange Cyprus Force Cost-Sharing... Planned U.S. force...

Planned U.S. force... extended by a second three-month period...

extended by a second three-month period... based on a plan...

based on a plan... approximately its present size and composition...

Tile of completely modern... colors in ceramic tile...

MERCURY CONVERTIBLE 1964... 400 cc. V-6 engine...

Automobiles for Sale... BUICK 1964...

Milk Prices Rise Throughout N. J.; Farmers Benefit... Milk prices rose...

Today's Crossword Puzzle... Answer to today's puzzle will appear in next week's paper.

TODAY'S CROSSWORD PUZZLE... ACROSS: 1 Grades...

ANSWER TO PUZZLE NO. 792... 1 David...

Secretary-General... He was also designated a new...

Remedial Reading Teacher... SUMMER TUTORING PROGRAM...

Auto Services... COLLISION & MECHANICAL REPAIRS...

Automotive Wanted... ALL JUNK CARS WANTED...

Legal Notices... NOTICE OF APPLICATION...

Legal Notices... NOTICE OF SETTLEMENT...

Legal Notices... NOTICE OF SETTLEMENT...

Legal Notices... NOTICE OF SETTLEMENT...

Bible Quiz... By MILT HAMMER... The just on the left you find...

French Tutoring... FRENCH & SPANISH TUTORING...

Waterproofing... WATERPROOFING... steam cleaning...

Waterproofing... WATERPROOFING... steam cleaning...

Waterproofing... WATERPROOFING... steam cleaning...

Waterproofing... WATERPROOFING... steam cleaning...

Waterproofing... WATERPROOFING... steam cleaning...

Waterproofing... WATERPROOFING... steam cleaning...

Waterproofing... WATERPROOFING... steam cleaning...

Waterproofing... WATERPROOFING... steam cleaning...

Waterproofing... WATERPROOFING... steam cleaning...

Waterproofing... WATERPROOFING... steam cleaning...

Waterproofing... WATERPROOFING... steam cleaning...

Waterproofing... WATERPROOFING... steam cleaning...

Waterproofing... WATERPROOFING... steam cleaning...

Waterproofing... WATERPROOFING... steam cleaning...

Waterproofing... WATERPROOFING... steam cleaning...

Waterproofing... WATERPROOFING... steam cleaning...

Waterproofing... WATERPROOFING... steam cleaning...

Waterproofing... WATERPROOFING... steam cleaning...

Waterproofing... WATERPROOFING... steam cleaning...

Waterproofing... WATERPROOFING... steam cleaning...

Waterproofing... WATERPROOFING... steam cleaning...

Waterproofing... WATERPROOFING... steam cleaning...

Waterproofing... WATERPROOFING... steam cleaning...

Waterproofing... WATERPROOFING... steam cleaning...

Waterproofing... WATERPROOFING... steam cleaning...

Waterproofing... WATERPROOFING... steam cleaning...

Waterproofing... WATERPROOFING... steam cleaning...

Waterproofing... WATERPROOFING... steam cleaning...

Waterproofing... WATERPROOFING... steam cleaning...

Waterproofing... WATERPROOFING... steam cleaning...

Waterproofing... WATERPROOFING... steam cleaning...

Waterproofing... WATERPROOFING... steam cleaning...

Waterproofing... WATERPROOFING... steam cleaning...

Waterproofing... WATERPROOFING... steam cleaning...

Waterproofing... WATERPROOFING... steam cleaning...

Waterproofing... WATERPROOFING... steam cleaning...

Waterproofing... WATERPROOFING... steam cleaning...

Waterproofing... WATERPROOFING... steam cleaning...

Waterproofing... WATERPROOFING... steam cleaning...

Waterproofing... WATERPROOFING... steam cleaning...

Waterproofing... WATERPROOFING... steam cleaning...

Waterproofing... WATERPROOFING... steam cleaning...

Waterproofing... WATERPROOFING... steam cleaning...

Waterproofing... WATERPROOFING... steam cleaning...

Waterproofing... WATERPROOFING... steam cleaning...

Waterproofing... WATERPROOFING... steam cleaning...

Waterproofing... WATERPROOFING... steam cleaning...

Waterproofing... WATERPROOFING... steam cleaning...

Waterproofing... WATERPROOFING... steam cleaning...

Waterproofing... WATERPROOFING... steam cleaning...

Waterproofing... WATERPROOFING... steam cleaning...

Waterproofing... WATERPROOFING... steam cleaning...

Waterproofing... WATERPROOFING... steam cleaning...

Waterproofing... WATERPROOFING... steam cleaning...

Waterproofing... WATERPROOFING... steam cleaning...

Waterproofing... WATERPROOFING... steam cleaning...

Waterproofing... WATERPROOFING... steam cleaning...

Waterproofing... WATERPROOFING... steam cleaning...

Waterproofing... WATERPROOFING... steam cleaning...

Waterproofing... WATERPROOFING... steam cleaning...

Waterproofing... WATERPROOFING... steam cleaning...

Waterproofing... WATERPROOFING... steam cleaning...

Waterproofing... WATERPROOFING... steam cleaning...

Waterproofing... WATERPROOFING... steam cleaning...

Waterproofing... WATERPROOFING... steam cleaning...

Waterproofing... WATERPROOFING... steam cleaning...

Waterproofing... WATERPROOFING... steam cleaning...

Waterproofing... WATERPROOFING... steam cleaning...

Waterproofing... WATERPROOFING... steam cleaning...

Waterproofing... WATERPROOFING... steam cleaning...

Waterproofing... WATERPROOFING... steam cleaning...

Waterproofing... WATERPROOFING... steam cleaning...

Waterproofing... WATERPROOFING... steam cleaning...

Waterproofing... WATERPROOFING... steam cleaning...

Waterproofing... WATERPROOFING... steam cleaning...

Waterproofing... WATERPROOFING... steam cleaning...

Waterproofing... WATERPROOFING... steam cleaning...

Waterproofing... WATERPROOFING... steam cleaning...

Waterproofing... WATERPROOFING... steam cleaning...

Waterproofing... WATERPROOFING... steam cleaning...

Waterproofing... WATERPROOFING... steam cleaning...

Waterproofing... WATERPROOFING... steam cleaning...

Waterproofing... WATERPROOFING... steam cleaning...

Waterproofing... WATERPROOFING... steam cleaning...

Waterproofing... WATERPROOFING... steam cleaning...

Waterproofing... WATERPROOFING... steam cleaning...

Waterproofing... WATERPROOFING... steam cleaning...

Waterproofing... WATERPROOFING... steam cleaning...

Waterproofing... WATERPROOFING... steam cleaning...

Waterproofing... WATERPROOFING... steam cleaning...

Waterproofing... WATERPROOFING... steam cleaning...

Waterproofing... WATERPROOFING... steam cleaning...

Waterproofing... WATERPROOFING... steam cleaning...

Waterproofing... WATERPROOFING... steam cleaning...

Waterproofing... WATERPROOFING... steam cleaning...

Waterproofing... WATERPROOFING... steam cleaning...

Waterproofing... WATERPROOFING... steam cleaning...

Waterproofing... WATERPROOFING... steam cleaning...

Waterproofing... WATERPROOFING... steam cleaning...

Waterproofing... WATERPROOFING... steam cleaning...

Waterproofing... WATERPROOFING... steam cleaning...

Waterproofing... WATERPROOFING... steam cleaning...

Waterproofing... WATERPROOFING... steam cleaning...

Waterproofing... WATERPROOFING... steam cleaning...

Waterproofing... WATERPROOFING... steam cleaning...

Waterproofing... WATERPROOFING... steam cleaning...

Waterproofing... WATERPROOFING... steam cleaning...

Waterproofing... WATERPROOFING... steam cleaning...

Waterproofing... WATERPROOFING... steam cleaning...

Waterproofing... WATERPROOFING... steam cleaning...

Waterproofing... WATERPROOFING... steam cleaning...

# Slipcovers

ALL LATEST 1964 PATTERNS  
 Reg. \$125 - \$150 Value **\$59.95**  
 With overlapped seams and zippers. Guaranteed fabrics and workmanship

Living-room Suite Reupholstered as low as **\$98.95**  
 GUARANTEED WORKMANSHIP

VISIT OUR NEW BROADLOOM CARPETING DEPT  
**C & V Interior Decorators**  
 1162 CLINTON AVENUE  
 Cor. New St., Irvington ES 5-7929 Est. 1929  
 CLOSED SATS DURING JULY & AUGUST

## 21st BIRTHDAY

Miss Barbara Watson celebrated her 21st birthday at a party given for her by her family at the home of Mrs. M. J. Watson, 1162 Clinton Ave., Irvington, N. J. The party was given by her family and friends. She is a member of the Irvington High School. Her father is Mr. J. Watson and her mother is Mrs. M. J. Watson.

## FROZEN MELON

When season is here, sliced melon, the "frozen" variety, is a popular treat. It is a refreshing and healthful snack. It is available in many grocery stores. It is a good source of vitamins and minerals. It is a low-calorie food. It is a good choice for a healthy diet.

## PRICES SLASHED

FUEL OIL

1¢ per gal.

COAL KOPPERS COKE

\$2 per ton

FRESH MINED LENGTH PREMIUM HARD COAL

NUT OR STOVE 21.95

PLA 19.95

BUCK & BICK 18.95

BUY WITH CONFIDENCE - OVER 34 YEARS IN ESSER & UNION COUNTIES

FUEL OIL BUYER SALES & SERVICE • EASY BUDGET PLAN • PERSONALIZED SERVICE

CAPITOL FUEL CO. - WA 3-1938

## Tips for

# TODAY'S HOMEMAKER

From MARY ARMSTRONG, County Home Agent

### PICKLES PERK UP MEALS

There's nothing more appetizing than a well-prepared pickle. Pickles are a healthy and delicious addition to any meal. They are low in calories and high in fiber. They are also a good source of vitamins and minerals. They are a great way to add flavor to your food.

Watermelon Pickles  
 Yield 4 to 5 pints  
 1 quart water  
 1/2 cup vinegar  
 1/2 cup sugar  
 1/2 cup salt  
 1/2 cup onion  
 1/2 cup celery  
 1/2 cup carrot  
 1/2 cup cucumber  
 1/2 cup radish  
 1/2 cup turnip  
 1/2 cup rutabaga  
 1/2 cup cauliflower  
 1/2 cup broccoli  
 1/2 cup cauliflower  
 1/2 cup broccoli



The watermelon in sirup to keep a good week until water-...  
 Pickled hot pickles...  
 Pickles are a healthy and delicious addition to any meal. They are low in calories and high in fiber. They are also a good source of vitamins and minerals. They are a great way to add flavor to your food.

YOUR FAVORITE PLACES FOR...

# DINING

**BAVARIAN VILLAGE**  
 Restaurant & Bar  
 456 Springfield Ave.  
 Cor. 17th St.  
 Newark NJ 07102  
 Lunch 12-2 p.m. Dinner served daily  
 3-9 Sun 12-9 Sauerbraten our specialty  
 Bar, drink Bavarian style.

**KINGSTON RESTAURANT**  
 1181 Morris Ave. Union  
 MU 6-2537  
 Have your next Dinner Party at THE KINGSTON RESTAURANT  
 Luncheon, Cocktail, Dinner, Supper  
 We cater to Weddings and Banquets  
 ORGAN MUSIC  
 Wed. Thurs. Fri. Sat. & Sun.  
 11:30 - 10:30

**BLUE SHUTTER INN**  
 2640 Morris Ave. Union  
 MU 6-6150  
 Cocktail Lounge - Open Daily  
 CATERING  
 One of N. J.'s largest and finest facilities for Banquets, Weddings, etc.  
 Dinner, Cocktail Parties  
 13 Rooms Available  
 6-7-30

**LUIGI'S RESTAURANT & COCKTAIL LOUNGE**  
 666 Forest St. Orange  
 OR 3-3241  
 FINEST ITALIAN AMERICAN CUISINE  
 FULL COURSE DINNERS & A LA CARTE  
 OPEN EVERY EVENING AT 4:30  
 ITALIAN SMOKEHOUSE EVERY NIGHT  
 SUNDAYS 1 P.M.

**BRASS HORN**  
 Restaurant & Cocktail Lounge  
 Cor. Cherry & W. Grand Sts. EEs  
 Ample Parking on Premises  
 Elizabeth 4-8747  
 LUNCHEON & DINNER DAILY  
 Expertly prepared from the finest foods  
 deftly served in a gracious atmosphere  
 from 11:30 a.m. to 1:15 a.m. Sun. thru  
 Thurs. - Fri. & Sat. to 2:15 a.m. MUSIC  
 at the Hammond Organ NIGHTLY.  
 Banquet Rooms Available for all Occasions

**MARIO'S**  
 401 Chancellor Ave. Newark  
 926-5472  
 WHY EAT AT HOME? STOP AT MARIO'S  
 Save money, enjoy famous Italian Cooking  
 Lunches & Dinners  
 Spaghetti 50¢ with meatballs & lasagna  
 90¢ many other specials  
 TUES THURS SPECIAL \$1 PIZZA

**THE CAMPTOWN**  
 At Elmwood & Springfield Aves.  
 In Eng Orange It's  
 THE GASLIGHT  
 Open 24 Hours Every Day of the Week  
 Ample Parking Facilities

**OLD EVERGREEN LODGE**  
 Evergreen Ave. Springfield  
 DE 4-0489 DE 5-1830  
 James Brescia, Manager  
 PICNIC GROVE  
 HALL-RENTALS - DINNER PARTIES  
 BARN DANCING  
 EVERY SATURDAY NIGHT

**CHANCELLOR DELICATESSEN**  
 AND RESTAURANT  
 375 Chancellor Ave., Newark  
 WA 9-9872 - Open 'til 1 a.m.  
 RESTAURANT CATERING  
 Specializing in Continental and Cold Cut Parties  
 Sluggo, Joe Sandwiches for all Occasions  
 Hot and Cold Hors D'Oeuvres  
 Wines, Liquors and Beer  
 6-7-30

**OLDE COLONIAL INN**  
 1074 Broad St.  
 Newark, N. J.  
 MA 2-2074  
 V 9-724  
 ITALIAN CUISINE  
 The Finest Food Obtainable Anywhere  
 Exclusive Restaurant  
 At Regular Prices  
 Specializing in serving large groups  
 Full Course Dinners, Buffets  
 Complete Party Planning Service

**CHUCK WAGON LUNCHEON CLUB**  
 West Chestnut at Route 22  
 Union, N. J.  
 Members and their guests  
 Monday thru Friday  
 12:00 - 2:00 p.m.  
 Golden Branch Room at  
 Four Seasons T/F

**OLYMPIC RESTAURANT**  
 877 Springfield Ave. Irvington  
 ES 2-7647 - ES 6-7699  
 CATERING T/F  
 DANCING  
 Friday, Saturday and Sunday Evenings  
 9:00 p.m. on  
 Luncheon and Dinner Served Daily  
 Sunday Dinners Served 12-9:30  
 Banquet facilities for any Occasion  
 Accommodations to 800

**CLIFTON CASINO**  
 Broad & Grove St.  
 Clifton, N. J.  
 473-7675  
 SUNDAY DINNERS SERVED 12:30-3:30 P.M.  
 Businessmen's Luncheon Served Daily  
 Dinner A-La Carte  
 Private room for meetings & banquets  
 100-1500-4500  
 COME IN AND TRY OUR FAMOUS STEAKS  
 V 7-730

**SWISS YODEL RESTAURANT**  
 & COCKTAIL LOUNGE  
 1049 Clinton Ave. Irvington  
 11-block-from-Parkway  
 V 7-730  
 Supremely prepared, moderate prices, noon-10 p.m.  
 Swiss specialties, music in our newly modernized dining room & cocktail lounge.  
 Catering facilities for parties.  
 Our newly decorated "BLUES BOOM" lounge  
 is for banquets.  
 Your Hosts SOPHIE & BRUNO RATSCH  
 Ample parking in rear - ES 2-9808 - 1-7

**ALEX ENG ORIENTAL RESTAURANT**  
 Academy & Irvington Aves.  
 86 Orange - SO 2-5126  
 "ULTIMATE IN CHINESE CUISINE"  
 We serve Luncheon and Dinner  
 Catering in your home or on our premises  
 for every occasion  
 Member-Diners Club L/T/F

**TONDIA LOUNGE**  
 448-14th Ave. Newark  
 Adjacent to Garden State Parkway  
 ES 2-9218  
 TONDIA LOUNGE ANNOUNCES  
 The Opening of Italian-American Restaurant  
 featuring PIZZA, RIES, VEAL & PEPPERS,  
 TRIPE, SUFFRITO, finest of SEA FOODS  
 Many Other Selections. Orders To Take Out  
 Ample Parking L 7-30

**GARDEN STATE COCKTAIL LOUNGE**  
 at Garden State Bowl  
 Inv. Union-Hillside Line  
 MU 8-2232  
 COLOR TV  
 Cocktails - Reasonable Prices  
 Waitress Service  
 Rubs Bandits, Prop.  
 V 11-24

**TRETOLA'S**  
 At Five Points, Union, N. J.  
 MU 7-0707  
 Closed June 28 - July 14  
 FOR OVER 30 YEARS  
 A family-owned, traditional and  
 American food  
 A LA CARTE MENU:  
 Entrees including potato and vegetables  
 \$1.30-1.75 - Also children's menu  
 Bar, Lounge, Private Parties, Open  
 11-10:30 p.m. - Sat. 'til 11 Midnight

**CHRISTINE LEE'S GAS LIGHT**  
 64 Cherry St.  
 Elizabeth  
 For Reservations and Information  
 call CHRISTINE at 351-1822  
 Featuring Fine Chinese Cuisine  
 Featuring Emerson and Krystal Klear  
 New Duo Station  
 Intimate Party Room Available on Premises  
 W 12-10

**THE VOLPONE'S**  
 441, 1956 Family Restaurant  
 211 "Stuyvesant" Ave., Newark  
 ES 2-9159  
 The Finest Home-Cooked  
 ITALIAN CUISINE and PIZZA  
 Lunches and Dinners  
 Take-out Orders  
 COCKTAIL LOUNGE  
 Open Daily from Noon to Midnight  
 Friday and Saturday: 'til 1 a.m.

**GONDOLIERE RESTAURANT**  
 464 Central Ave.  
 Orange, N. J.  
 877-1856  
 LUNCHEONS & DINNERS DAILY  
 Featuring Italian-American Foods  
 Also Cocktail Lounge Italian Cuisine  
 Sunday Dinners served 1 p.m. to 10 p.m.  
 Member of Diners Club &  
 American Express 8-9-77

**COUNTRY DINING**  
 STEAKS - CHOPS - SEAFOODS  
 LUNCHEONS  
 COCKTAILS - DINNERS  
 Closed Sunday

**HARRY'S**  
 223 Fabray Place  
 Newark, N. J.  
 WA 9-9688  
 Air-Conditioned  
 Ample Parking  
 DO YOU LIKE SEAFOOD?  
 We serve Steamed Clams & Clams on the  
 Shell, Almond Crab Claw, Lobster,  
 Tails, Brailed Maine Lobster, Viandas,  
 Sauerbraten and many other Continental  
 Dishes.  
 Special Business Man's Lunch Served Daily  
 Also Children's Plates  
 7-30

**COLONIAL INN**  
 34 Main St.  
 Madison, N. J.  
 FR 7-8328  
 Parking in Rear  
 STEAKS - CHOPS - SEAFOODS  
 LUNCHEONS  
 COCKTAILS - DINNERS  
 Closed Sunday

**HENRY'S TAVERN**  
 AND RESTAURANT  
 913 Stuyvesant  
 Irvington, N. J. (Chancellor)  
 Tel: ES 2-9797  
 W 10-29  
 Breakfast from 7 a.m.  
 Luncheon served 11:30 a.m. - 3 p.m.  
 Dinner until Midnight with  
 PRIME RIBS (Especial)  
 SMOGASARD  
 Fri. & Sat. 6 p.m. - 10 p.m.  
 Sundays 1 p.m. - 9 p.m.  
 Banquet Facilities Available  
 C 6-7

**PED-E-FLOUS**  
 1000 Mountain Blvd., Watchung, N. J.  
 PL 5-0111  
 Spts: 1888  
 L 7-13  
 Country Dining  
 Steaks, Chops, Seafoods  
 Luncheons  
 Cocktails, Dinners  
 Closed Sunday

**HOLIDAY INN KENILWORTH**  
 138 Garden St. Plwy.  
 Ample Parking  
 Breakfast from 7 a.m.  
 Luncheon served 11:30 a.m. - 3 p.m.  
 Dinner until Midnight with  
 PRIME RIBS (Especial)  
 SMOGASARD  
 Fri. & Sat. 6 p.m. - 10 p.m.  
 Sundays 1 p.m. - 9 p.m.  
 Banquet Facilities Available  
 C 6-7

Dine Graciously At Any Of The  
 Fine Eating Places Listed Here

**Summer Surprises at david burr**  
 during our Annual Summer Sale  
 1059 Springfield Ave.  
 Irvington Center  
 Open Mon & Fri Evenings

**CLINTON TIRE**  
 has the Famous

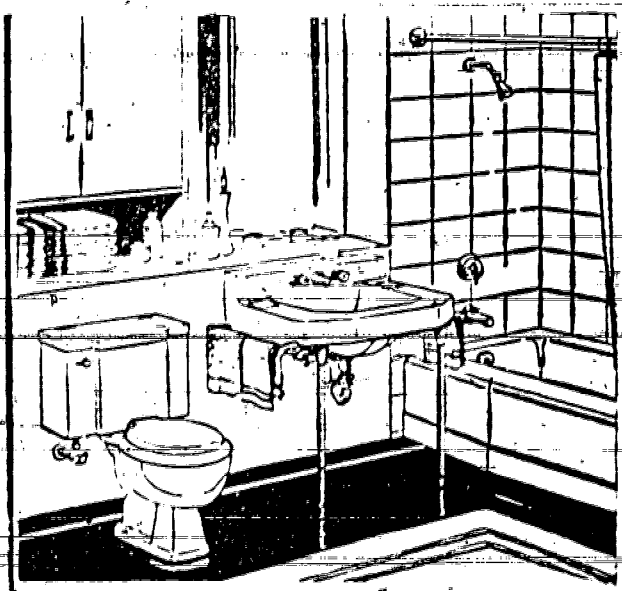
**FISK**

**TIRE**

For Safety  
 For Mileage  
 For Comfort  
**L-O-W DISCOUNT PRICES**

**CLINTON TIRE COMPANY**  
 1292 CLINTON AVENUE  
 (Cor. Stuyvesant Ave.)  
 IRVINGTON • ES 4-0718

**MODERNIZE YOUR BATHROOM WITH QUALITY KOHLER PLUMBING FIXTURES**



3 piece fixture replacement Kohler bathtub, basin & water closet. In your choice of colors. Completely installed for **\$3. A WEEK**

**Overhead**  
 By EPIE  
 An elderly woman was complaining about not being able to remember where she put things. Her friend said, "Who has those keys about them?" to which the first woman replied, "Huh, what good would that do? I wouldn't remember where I put the keys."

**Bornstein Sons**  
 Plumbing Heating Air Conditioning  
 SHOWROOM  
 487 HAWTHORNE AVE.  
 NEWARK, N. J.  
 ES 4-6500

**New Space Saver 26 cu. ft. HOTPOINT Refrigerator-Freezer**  
 Just 48" wide, 65" tall, 27" deep!

**HOTPOINT NO-FROST 13 CU. FT. FREEZER** | **HOTPOINT NO-FROST 13 CU. FT. REFRIGERATOR**

**Hotpoint SUPREME FURNITURE & APPLIANCES**  
 1035 SOUTH ORANGE AVE., NEWARK ES 3-9140

# An Introduction

(Continued from Page 1)  
 newspaper competition. These awards have included first prizes for general excellence, service to a community, news and editorial content and advertising presentations in both state and national competition.  
 However, the efforts of the Echo staff shall not be to win newspaper prizes. It's goal will be much more important: providing Mountainside with a good newspaper each week. Faced with the many problems of getting together a newspaper on short notice, we do not regard the news content of today's issue as typical of the newspaper to come.

In the six and a half year history of the Echo we have become the fourth (or fifth) owner. We hope to enjoy a long and sincere relationship with this community. Our sister newspapers have been under the same ownership and management for differing periods of time. These range from the longest, the Irvington Herald since 1939, and the shortest, the Springfield Leader since June, 1963.  
 Our reception in preparing this short notice issue has been a warm and friendly one. We are grateful. How can we help you?



ANNE DEEGAN  
 Award Degree To Miss Deegan

## Hearings Slated On Purchase Of Road Equipment

## Route 22

(Continued from Page 1)  
 variances and denied six before 1955.  
 The court charged that in early years the Borough Council operated under a 1933 zoning ordinance, granted variances indiscriminately for non-residential uses.

When the zoning ordinance was amended in 1955, the court found that the ordinance was "facially unconstitutional" and that the municipality refrains from "wielding its police power" by reverting to its pre-1955 ordinance.  
 The court also found that the ordinance was "facially unconstitutional" and that the municipality refrains from "wielding its police power" by reverting to its pre-1955 ordinance.

Without Merit  
 It ruled, however, that there is not sufficient evidence to support the plaintiff's claim of "unconstitutional variance" since that time of the former practice of indiscriminate variance allowance in sections of the highway where the property

EARLY COPY  
 Publicity chairman and individuals are urged to observe the Friday deadline of this newspaper for other than spot news Thursday is even better. Include your name, address and phone number.

## Two Local Girls Win Grants For College



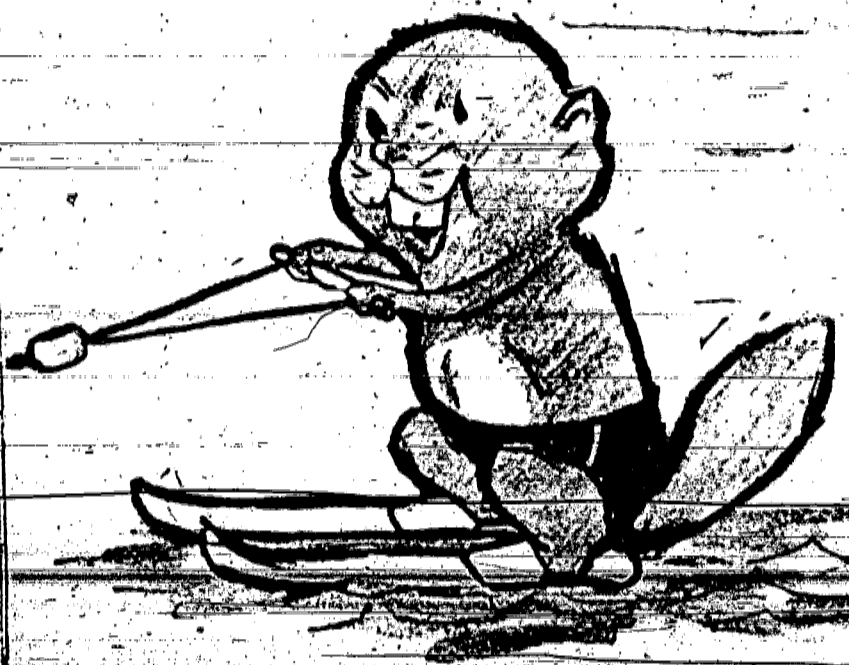
KATHLEEN BARRY  
 LINDA BAUER

Mountainside Boys Named To Honor Roll

Speth Attending College Program

Ends Swim Course

## EAGER FOR SUMMER FUN?



You'll Enjoy The Summer More... In A New Boat Financed By The National Bank of Westfield

Fishing, water skiing, skin diving or just plain relaxing sailing, no matter what your idea of summer fun, you'll enjoy it more in the luxury of a new boat. The National Bank of Westfield is ready to help you own the boat of your dreams. Stop in and talk over your financing needs today.

SERVING WESTFIELD AND MOUNTAINSIDE



"A Community Bank dedicated to Community Service"

Member of Federal Reserve System  
 Member Federal Deposit Insurance Corporation

## OPEN SATURDAY JULY 4th TIL 10 P.M.

**Two Guys** **HOLIDAY FOOD BUYS** **GOOD THRU SATURDAY JULY 4** **WE CARRY ONLY U.S.D.A. CHOICE BEEF**

**CANNED HAM** **3 lb. can** **1<sup>99</sup>**  
 ARMOUR'S STAR or HORMEL

<b>CORNED BEEF</b> BONELESS-BRISKET FIRST CUTS <b>59¢</b> THICK CUT <b>39¢</b>	<b>ITALIAN SAUSAGE</b> HOT or SWEET <b>59¢</b> SHORT CUT <b>RIB STEAKS</b> CALF, STYLE CHOICE <b>69¢</b> <b>POT ROAST</b> TWO GUYS OF LITTLE HILL <b>59¢</b> <b>SLICED BACON</b> COUNTRY STYLE <b>39¢</b> <b>SPARERIBS</b> (LGS. & BREASTS) <b>49¢</b> <b>CHICKEN QUARTERS</b> BONE IN, READY TO COOK <b>39¢</b> <b>ROASTERS</b> 3 to 3 1/2 lbs. <b>39¢</b> <b>SHOULDER STEAK</b> BONELESS <b>99¢</b> CENTER CUT OF SHOULDER <b>LONDON BROIL</b> <b>99¢</b> TENDER ANCT <b>CUBE STEAKS</b> <b>99¢</b>	<b>RIBS OF BEEF</b> REGULAR STYLE <b>49¢</b> OVEN READY <b>59¢</b>
---	---	---

**GROUND CHUCK** **49¢**  
FRESH & LEAN

**VEAL STEAKS** **79¢**

**COFFEE** **1.28**  
TWO GUYS NEW BLEND 2 lb. canister

**SUGAR** **55¢**  
NATIONALLY ADV. BRANDS 5 lb. bag

**ARMOUR'S STAR FRANKS** **49¢**  
SKINLESS

**NAPKINS** **4.99**  
HUDSON FAMILY 100

<b>CHAM &amp; LAMBORN COFFEE</b> <b>78¢</b> NESTLE TOKATO <b>KETCHUP</b> <b>19¢</b> TWO GUYS <b>LIQUID TEA</b> <b>89¢</b> TWO GUYS <b>POTATO CHIPS</b> <b>59¢</b> HEALTH FOOD or VEGETARIAN <b>BEANS</b> <b>99¢</b> PUNCH (GRAPE OR ORANGE) <b>DRINKS</b> TWO GUYS <b>99¢</b> COTT CONCENTRATED <b>DRINKS</b> TWO GUYS <b>79¢</b> <b>PICKLES</b> KOSHER <b>49¢</b>	<b>PICKLE RELISHES</b> HEINZ <b>4.99</b>	<b>PRODUCE DEPT. SAVINGS</b> <b>WATERMELON</b> FIERY RED RIPE WHOLE ONLY <b>4<sup>99</sup></b> FRESH TENDER, SWEET <b>CORN</b> <b>4.29</b> <b>CANTALOUPE</b> MELONS, VINE RIPE, PINE MEAT <b>25</b> FIRST OF THE SEASON <b>GRAPES</b> SEEDLESS <b>39</b> CALIF. FULL OF JUICE <b>LEMONS</b> <b>10 for 29</b> <b>RADISHES, SCALLIONS or CUCUMBERS</b> <b>3 for 23</b> FRESH
---	---	--

<b>DAIRY DEPT. SAVINGS</b> <b>ORANGE JUICE</b> BLUEBIRD FRESH <b>33</b> <b>SWISS CHEESE</b> WISCONSIN SLICED ROYAL DAIRY <b>58</b> FRESH FRUIT <b>SALAD</b> PURE MAID <b>58</b>	<b>APPETIZING DEPT. SAVINGS</b> <b>CHEESE</b> <b>49</b> LAND O' LAKE AMERICAN WHITE or YELLOW <b>PASTRAMI</b> LEAN CHUNK <b>49</b> <b>SALADS</b> FRESH MADE YOUR CHOICE—POTATO, COLE SLAW, MACARONI <b>22</b> IMPORTED <b>CHOPPED HAM</b> 1 lb. <b>49</b>	<b>FROZEN FOOD DEPT. SAVINGS</b> <b>LEMONADE</b> PINK & WHITE & FRUIT DRINKS ALL FLAVORS TIP TOP or LIBBY'S <b>12.99</b> <b>POTATOES</b> REG. & CRINKLE CUT PACKER'S LABEL 2 lb. poly bag <b>29</b> <b>BEEF STEAKS</b> <b>59</b>
---	---	---

**WEEKLY BONUS SPECIAL**  
**BEVERAGE GLASSES** 11 1/2 oz. DECORATED **1.29**  
**12 FOR 77**  
 WITH A FOOD PURCHASE OF \$2.00 OR MORE

**21 JEWEL UNICHRON WATCHES** FOR MEN & WOMEN **7.95**  
 One Day Low Discount Price **14.95** PLUS TAX & CHARGES TWO GUYS TRADING STAMP BOOK

**Two Guys** **ROUTE 22, UNION, N.J.**

We reserve the right to limit quantities. Not responsible for typographical errors. Prices effective thru Sat. July 4.

Holleran Receives Dean's List Honors
Bernard R. Holleran of 1352 Woodvalley rd., Mountainide, was named to the Dean's Honor List for the past semester at Union Junior College, Cranford.

A student must achieve a 3.0 average or better to qualify
Holleran, a business administration major in the evening session, is a graduate of Morrell High School, Irvington. He is the son of Mrs. Michael Holleran and the late Mr. Holleran.

Attends Summer Term
John M. Popp will attend the summer term of Franklin Pierce College at Rindge, N. H. The son of Mr. and Mrs. John Popp, 1130 Wyoming dr., Mountainide, is a graduate of Gov. Livingston Regional High School.

School Board Taking Bids on Painting Work
This fall painting work in the 1956 addition to Deerfield School will be submitted to the Board of Education at its next regular meeting, July 14, at that school, according to John M. Donough, secretary-treasurer of the Board.

Planners Asking Change in Name for Local Street
An application by Clearview Estates in Mountainide for a new subdivision of one lot into two lots, 5000 sq. ft. each, was approved by the Planning Board Monday and the secretary was authorized to send a letter to the Planning Board Planning Board asking a change in the street's name.

She's A Designing Woman
Housewife Sketches Bard Costumes
Mrs. Nash, who has created costumes for the Circle Players in Woodbridge, is now sketching costumes for the Shakespearean group. She has a number of sketches for the Bard's costumes, including the famous 'Hamlet' costume.

Kahn & Company
Montclair
Newark
Westfield
will be closed Saturday
July 4th -
all stores will be open
Friday until 5:30

Newcomers Club To Hold Meeting At Home Picnic
The July meeting of the Mountainide Newcomers Club will be held during a picnic next Wednesday at the home of Mrs. Malcolm Graham of 222 Apple Tree lane.

The regular meeting of the executive board was held Wednesday at the home of Mrs. Rose Mather, 1087 Sunny View rd. Mrs. R. Bear Sparo served as co-hostess.

Tickets for a Theatre party to the Broadway hit 'Fanny Hill' were reserved for Wednesday, Oct. 22 instead of the originally scheduled date of Oct. 14. Some tickets are still available.

Mrs. John Baker was appointed to replace Mrs. Harry Deas as head of the child care department. Mrs. Deas is moving to Cleveland, Ohio.

Club Holds Outing At Summer Home
Mrs. Ralph Ulrich of 166 Locust dr., Mountainide, recently entertained the American Home Department of the Mountainide Women's Club at her Bear Pond summer home.

Drainage
The Council is studying the drainage problem in the area before the project would be financed by an advance on general taxation. The Council has determined that a certain percentage would be allocated to benefiting property owners.

Two Areas To Be Treated
The Council is studying the drainage problem in the area before the project would be financed by an advance on general taxation. The Council has determined that a certain percentage would be allocated to benefiting property owners.

Two Are Appointed To Drainage Group
William Crowl and Floyd Frankel were appointed to the surface drainage committee at the last meeting of the Mountainide Borough Council.

Merck Chemist To Be Sentenced For Conspiracy
A Merck chemist was sentenced to 18 months in prison for conspiracy to defraud the government. The chemist was found guilty of conspiring with others to defraud the government of \$100,000.

Ex-Miss Jersey To Study Russian
Beverly Domareki of Mountainide, Miss New Jersey of 1959, is among 47 college students with special grants for Indiana University's summer Russian Language study tour.

Pony Track Owner Fined For Cruelty
A pony track owner was fined for cruelty to animals. The owner was found guilty of mistreating the ponies on the track.

Circle Players
The Circle Players in Woodbridge are preparing for their next production. They have a number of talented actors and actresses.

Circle Players
The Circle Players in Woodbridge are preparing for their next production. They have a number of talented actors and actresses.

Circle Players
The Circle Players in Woodbridge are preparing for their next production. They have a number of talented actors and actresses.

Circle Players
The Circle Players in Woodbridge are preparing for their next production. They have a number of talented actors and actresses.

Circle Players
The Circle Players in Woodbridge are preparing for their next production. They have a number of talented actors and actresses.

Circle Players
The Circle Players in Woodbridge are preparing for their next production. They have a number of talented actors and actresses.

Circle Players
The Circle Players in Woodbridge are preparing for their next production. They have a number of talented actors and actresses.

Circle Players
The Circle Players in Woodbridge are preparing for their next production. They have a number of talented actors and actresses.

Circle Players
The Circle Players in Woodbridge are preparing for their next production. They have a number of talented actors and actresses.

What's In His Future
Do your thoughts often wander to what the future will hold for your child? Maybe he'll be a doctor, a lawyer or engineer. Whatever profession he might choose, a college education is almost a must by today's standards.
Start saving today in a First State Bank savings account... make regular deposits from every pay check. You owe it to your child to prepare him for the future.
The First State Bank of Union
UNION NEW JERSEY
MAIN OFFICE: Morris Ave. at Burke Parkway
HIGHWAY BRANCH: Route 22 at Monroe Street
MURDOCK 6-4800
Townley Branch - Morris Ave. at Potter Ave.
MEMBER FEDERAL DEPOSIT INSURANCE CORPORATION

received from developers in the area. Hergott did not state the total cost of the improvements. Plans include laying pipe where it is not provided by the present drainage setup, laying parallel pipe where present piping is insufficient and paving the mountainside from which channels.

According to an analysis of Mountainide drainage problems, prepared by Hergott in 1962 when the Killam firm was retained, storm water runoff the borough gets its name is accelerated by construction of homes and reduction of wooded areas which had served as a natural watershed to retain the flow.

The northern portion of the borough in the Watchung Mountain range and the reservation is hilly. Land falls sharply in a southerly direction until it reaches a broad, flat plain bordering Rt. 22. Rainfall from the slope is eventually discharged into the Keho Lake Brook. Culverts and bridges have been inadequate for some 30 to 40 years, the report states.

A preliminary feasibility study and report by Killam recommended that the Borough apply for a \$22,300 interest free loan from the Community Facilities Administration to be used for the preparation of plans and specifications. This was done last July. The Mayor and Council also appropriated \$20,000 for improvement to storm sewer facilities in July, 1962. This was used to clean out existing piping which had become clogged with debris and stone carried down through the channels over the years.

LEARN TO COOK FREE
Register now for our Teen-Age Cooking Classes
4 lessons - 10:15-11:30 A.M.
EVERY WEDNESDAY MORNING, STARTING JULY 8 in Elizabeth-Union, Rahway and Westfield.
EVERY THURSDAY MORNING, STARTING JULY 9 in Elizabeth-Union, Metuchen, Westfield and Perth Amboy.
Free instruction, Free Gifts for All, Free Recipes to take home!

Elizabethtown Gas
All Compliments of the
Elizabethtown Gas Company
800 N. Broad Street, Elizabeth, N.J.
HURRY! REGISTRATION LIMITED!

Cadets Training At Gap In Penn.
INDIANTOWN GAP MILITARY RESERVATION, Pa. Two Army ROTC CADETS from Mountainide, George F. Dreyer and Jerome T. Ingate, began six weeks of intensive military training here recently.

During the training Cadets participate in field problems and receive instruction in the newest weapons and equipment in order to get a realistic picture of the duties of a U.S. Army Officer.

Sermon Topic Set At Area Church
'Kill or Be Killed' will be the sermon topic of the Rev. R. John Perring at both the 8:30 and 11 a.m. services Sunday in Redeemer Lutheran Church, Westfield.

DO IT TODAY
Don't put off till tomorrow what you should do today. It could mean a delay in your next social security check. Notify the social security people and your post office immediately when you are about to change your address.

NEED A JOB? Read the Help Wanted section of the Classified Pages. You can usually find an employer who can use your services. If not, list your qualifications in an employment wanted ad. Just call 371-1000 and ask for Ad-Taker.



BAN-ROLL ON  
DEODORANT

Reg. 51 Size  
SAVE 59¢ Plus Tax  
44c

EXCEDRIN  
TABLETS

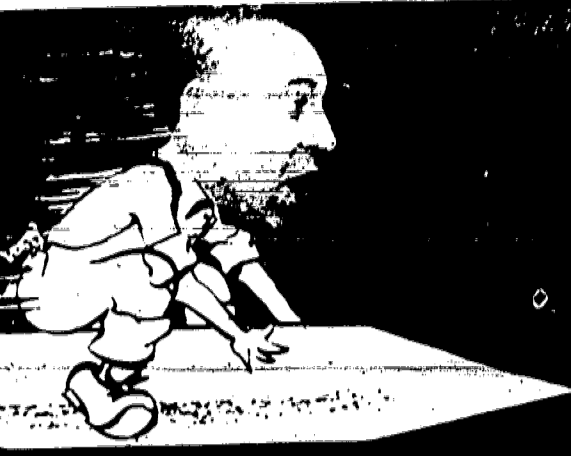
bot. Plus  
of 36 43¢ Tax

COPPERTONE  
SUNTAN  
CREAM

SAVE  
56¢

89¢  
plus tax

ZOOM TO



GOOD DEAL

FOR OUT OF THIS WORLD JULY 4th SPECIALS

Save 3¢ on an ear of tender sweet

CORN

Save 3¢ on a cool green

CUKE

Save 7¢ on a bunch of rosey red

RADISHES

Save 4¢ on a bunch of tasty green

SCALLIONS

Save 4¢ on juicy tart

2 LIMES

ONLY

6¢  
ea.

GOOD DEAL ENRICHED - SLICED

WHITE BREAD

SAVE  
25¢

2 1 lb. loaves 29¢

LIBBY'S, REALEMON or BIRDS EYE

LEMONADE

Frozen  
Pink or  
Yellow

SAVE  
1¢

6 oz.  
can

9¢

IN 2 LB. BAGS

HYGRADE FRANKS

SAVE  
21¢

lb.

39¢

BLUE BIRD

PAPER NAPKINS

SAVE  
3¢

pkg.  
of 70

7¢

STAFF

PORK & BEANS

SAVE  
5¢

1 lb.  
can

8¢

CHOCOLATE CREAM

OREO COOKIES

SAVE  
47¢

1 lb.  
pkgs.

\$1

GRAND PRIZE REGULAR CUT

RIB ROAST

SAVE  
50¢

lb.

49¢

GRAND PRIZE

RIB STEAK HEARTS

SAVE  
30¢

lb.

65¢

THICK CUT BRISKET

CORNER BEEF

SAVE  
1.00

lb.

35¢

REDEEM THIS WEEK'S COUPON  
FROM YOUR GOOD DEAL FOLDER!

FREE!  
CHEF'S  
FORK

with purchase of  
\$5 or more  
and coupon

without  
coupon

59¢

OPEN SAT., JULY 4th

Thursday, July 2, 1964 \* MOUNTAINSIDE ECHO, Mountainside, N. J.

Ad. as of July 2, 1964. Not responsible for typographical errors. We reserve the right to limit quantities. Entire contents copyrighted. Good Deal 1964

# Staff FOODS STOCK-UP SALE

OUR FINEST QUALITY... YOUR BEST BUY!

Staff Foods are our own exclusive brand... made to our exacting specifications... priced lower because we save on in-between costs and pass the savings on to you!

Come see how much you save with Staff Foods over brands of comparable quality:



STAFF ITEMS	STAFF PRICE	Stamp Store Price	YOU SAVE	STAFF ITEMS	STAFF PRICE	Stamp Store Price	YOU SAVE	STAFF ITEMS	STAFF PRICE	Stamp Store Price	YOU SAVE
Dry Detergent	53¢	73¢	20¢	Corn	3	25¢	39¢	Evap. Milk	8	1 <sup>00</sup>	1 <sup>18</sup>
Detergent	59¢	87¢	28¢	Peas	5	89¢	1 <sup>24</sup>	Chic. Noodle	2	31¢	35¢
Fabric Softener	25¢	37¢	12¢	Potatoes		11¢	43¢	Coffee		69¢	79¢
Small Sponge	4	25¢	35¢	Sauerkraut	2	31¢	41¢	Instant Coffee		73¢	1 <sup>50</sup>
Paper Towels	2	33¢	42¢	Tomato Puree	4	1 <sup>00</sup>	1 <sup>24</sup>	Tea Bags		39¢	65¢
Bags		29¢	39¢	Tomato Sauce	10	85¢	1 <sup>25</sup>	Spaghetti	2	39¢	47¢
Toilet Tissue	4	39¢	49¢	Apple Sauce	2	33¢	43¢	Corn Beef Hash	3	1 <sup>00</sup>	1 <sup>17</sup>
Apple Juice	4	1 <sup>00</sup>	1 <sup>24</sup>	Apple Sauce	3	1 <sup>00</sup>	1 <sup>29</sup>	Beef Stew		45¢	53¢
Prune Juice		39¢	55¢	Fruit Cocktail		37¢	47¢	Luncheon Meat		39¢	47¢
Tom. Juice	4	1 <sup>00</sup>	1 <sup>32</sup>	Peaches	2	41¢	51¢	Tuna	4	97¢	1 <sup>35</sup>
Asparagus		39¢	43¢	Peaches		39¢	41¢	Mayonnaise		39¢	59¢
Green Beans	6	1 <sup>00</sup>	1 <sup>35</sup>	Flour		43¢	61¢	Salad Dressing		45¢	59¢
Green Beans	5	1 <sup>00</sup>	1 <sup>25</sup>	Salad Oil		39¢	49¢	Cider Vinegar		23¢	33¢
Cut Beets	8	1 <sup>00</sup>	1 <sup>16</sup>	Shortening		28¢	33¢	Mustard		10¢	16¢
Cream Corn	8	1 <sup>00</sup>	1 <sup>40</sup>	Black Pepper		29¢	45¢	Peanut Butter		49¢	63¢

Staff Liquid  
**BLEACH**  
39¢  
gal. Save 10¢

Staff  
**SODA**  
6 28-oz. \$1  
bottles. Save 20¢

Staff Tomato  
**SOUP**  
9 10 1/2 oz. 99¢  
cans

Staff Aluminum  
**FOIL**  
25¢  
25 ft. roll. Save 4¢

Sturdy, King Sized  
METAL  
**TRAY TABLES**  
each only **59¢** with each 3.50 of your purchase

Super Deluxe, Sturdy, Durable Dennis Mitchell Tables... your perfect picnic, barbecue, camping or poolside companion. Giant size - 18" x 22" - heat, stain and alcohol resistant... brass finish frames won't tarnish, chip or peel. Easy to fold for car or storage. Regularly \$1.29... you SAVE 80¢! Get yours today!

FANTASTIC SAVINGS WITH **GOOD DEAL SUPER-DISCOUNTS!**  
"Pantry Queen" - Nationally Known For Quality - At Ridiculously Low Prices!

<p>4 PC. STACKABLE <b>CANNISTER SET</b></p> <p>Holds 7 lbs. Sugar, 5 lbs. Flour, 1 1/2 lbs. Coffee, 1 1/2 lbs. Tea. New decorator white enamel. Regular Retail \$5.99</p> <p><b>\$3.88</b> SAVE \$2.10</p>	<p><b>BREAD BOX</b> WITH SLICING BOARD</p> <p>Large capacity with hard wood slicing board built into door. Removable inner shelf. Ventilated. 10 1/2" H x 12" W x 12 1/4" D. Regular Retail \$5.98</p> <p><b>\$3.88</b> SAVE \$2.10</p>	<p>3 WAY <b>PAPER DISPENSER</b></p> <p>Holds Aluminum Foil, Waxed Paper and Paper Towels. serrated tearing edges, hangs from wall on stands. 9 1/4" H x 12 1/4" W x 12 1/4" D. Regular Retail \$5.98</p> <p><b>\$3.88</b> SAVE \$2.10</p>	<p>14 QT. CAPACITY <b>STEP-ON CAN</b></p> <p>Sturdy, unbreakable, sanitary, easy-to-clean poly inner pan. 15" H x 10" Dia. Regular Retail \$5.98</p> <p><b>\$3.88</b> SAVE \$2.10</p>
--	---	---	---

**GOOD DEAL SUPER DISCOUNTS**

THE FAMOUS **FALCO METAL FOLDING TABLE**  
24" x 60" x 30". Folds to 24" x 30" x 3". For Guests and Banquets, outdoor picnics. Stores easily in car trunks.

TERRIFICALLY LOW-PRICED AT  
**\$5.88**  
REG. RETAIL \$9.95  
SAVE \$4.07

Lowest Prices Anywhere For This Fine Quality!

## LAWN FURNITURE

FOLDING CHAIR • KING SIZED CHAIR

**\$5.99**      **\$3.99**

Double Tubular Arms... Sturdy Weather Resistant Wide Woven Vinyl Webbing. Folds flat for easy storage. 1" Rust Resistant Tubing. Superior Quality Jumbo Size. Built to last for years!

5 position Over 6 foot long 23 1/2 x 74" 7 x 5 x 9 Webbing

Sturdy Jumbo size 24" x 33" 6 x 4 x 4 Webbing

Also see our Flat Arm Rocker, Economy Flat Arm Chair, Matching Kiddie Furniture and accessories... all at terrific savings!

**OPEN SATURDAY, JULY 4th**

★ NEWARK 75 First Street CHATHAM 393 Main St.	★ IRVINGTON 10 Mill Road WEST ORANGE Essex Green Plaza	★ EAST ORANGE 500 Central Ave.	★ PASSAIC 78 Main Ave	★ NEWARK 543 Springfield Ave.	★ MILLBURN 220 Main St.	★ MAPLEWOOD 719 Irvington Ave.	★ ELIZABETH 697 Newark Ave.	★ CLIFTON 1578 Main Ave.	★ SADDLE BROOK 444 Market St.
--	---	-----------------------------------	--------------------------	----------------------------------	----------------------------	-----------------------------------	--------------------------------	-----------------------------	----------------------------------

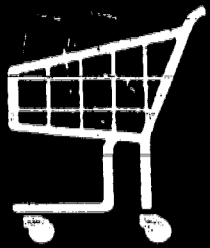
Daily 9:00 A.M.-9:00 P.M. • Fri. 8:30 A.M.-10 P.M. • Sat. 8:30 A.M.-9:00 P.M. • Sun. 8:30 A.M.-6:00 P.M.

**GOOD DEAL**

# DON'T PAY MORE!

## GOOD DEAL

Supermarkets



# SELLS FOR LESS!

Thursday, July 2, 1964 • MOUNTAINSIDE FCHO, Mountainside, N. J.

PRICE BUSTING SPECIAL!  
STAFF PORK and

# BEANS



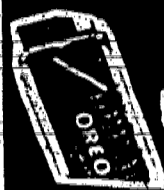
1 lb. can

# 8¢

SAVE 5¢

PRICE BUSTING SPECIAL!  
Oreo Choc. Cream

# COOKIES



1 lb. pkgs.

# \$1.33

SAVE 47¢

PRICE BUSTING SPECIAL!  
BLUE RIBBON

# NAPKINS



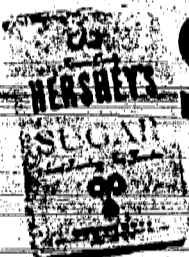
pkg. of 70

# 7¢

SAVE 3¢

SPECIAL SUPER DISCOUNT!

HERSHEY GRANULATED



# SUGAR

5 lb. bag

# 49¢

SAVE 10¢

SPECIAL SUPER DISCOUNT!

GENUINE HARDWOOD

# Briquets

20 lb. bag

# 99¢

SAVE 30¢

SPECIAL SUPER DISCOUNT!

WILRICK ORANGE, GRAPE, PUNCH

# DRINK

# 5 quarts \$1

SAVE 25¢

SPECIAL SUPER DISCOUNT!

OIL

# CRISCO

Crisco gal.

# \$1.49

SAVE 50¢

"Compare!"

Stamp Chain "A"	GOOD DEAL'S PRICE	YOU SAVE	TOTAL savings count!	Stamp Chain "A"	GOOD DEAL'S PRICE	YOU SAVE	Lowest EVERYDAY prices in town!	Stamp Chain "A"	GOOD DEAL'S PRICE	YOU SAVE	"Compare!"	Stamp Chain "A"	GOOD DEAL'S PRICE	YOU SAVE	
Salad Dressing	45¢	39¢	6¢	Ammonia	49¢	47¢	2¢	Comet Cleanser	29¢	27¢	2¢	Wisk	73¢	67¢	6¢
Soups	37¢	35¢	2¢	Dazzle Bleach	23¢	21¢	2¢	Spic & Span	95¢	89¢	6¢	All Detergent	27¢	21¢	10¢
Alpo	55¢	49¢	6¢	Borateom	149¢	139¢	10¢	Drano	45¢	43¢	2¢	Dash Detergent	77¢	73¢	4¢
Ken-L-Ration	49¢	47¢	2¢	Calgonite	43¢	39¢	4¢	Copper Cleaner	39¢	37¢	2¢	Draft Detergent	83¢	79¢	4¢
Yummies	35¢	33¢	2¢	Ajax Liquid	69¢	65¢	4¢	Mr. Clean	99¢	89¢	10¢	Dux Detergent	81¢	79¢	2¢

Everyday Super Discount!

# STAFF POTATO CHIPS

STAFF  
SAVE 10¢

# 1 lb. bag 49¢

Everyday Super Discount!

# PRUNE JUICE

DEL MONTE  
SAVE 10¢

# 40 oz. bot. 39¢

At Good Deal you save real CASH!

Stamp Chain "A"	GOOD DEAL'S PRICE	YOU SAVE	"Compare!"	Stamp Chain "A"	GOOD DEAL'S PRICE	YOU SAVE	"Compare!"	Stamp Chain "A"	GOOD DEAL'S PRICE	YOU SAVE	Good Deal's savings ADD-UP!	Stamp Chain "A"	GOOD DEAL'S PRICE	YOU SAVE	
Fab Detergent	75¢	73¢	2¢	Ivory Liquid	87¢	85¢	2¢	SOS Soap Pads	41¢	37¢	4¢	Simoniz	89¢	83¢	6¢
All Fluffy	77¢	75¢	2¢	Joy Liquid	35¢	34¢	1¢	Zest Soap	29¢	27¢	2¢	Freezer Paper	45¢	39¢	6¢
Ivory Snow	81¢	77¢	4¢	Lux Liquid	62¢	59¢	3¢	Easy-On	45¢	41¢	4¢	Garbage Bags	23¢	19¢	4¢
Rinso Blue	67¢	65¢	2¢	Niagara Starch	23¢	20¢	3¢	Royox	29¢	27¢	2¢	Lunch Bags	41¢	37¢	4¢
Tide Detergent	32¢	28¢	4¢	Glamorene	79¢	69¢	10¢	Beacon Wax	53¢	49¢	4¢	Hudson Napkins	27¢	25¢	2¢

Everyday Super Discount!

# LEMON JUICE

REALEMON  
SAVE 8¢

# quart 59¢

Everyday Super Discount!

# HEINZ KETCHUP

SAVE 6¢

# 14 oz. bot. 19¢

"Compare!"

Stamp Chain "A"	GOOD DEAL'S PRICE	YOU SAVE	You can bank on Good Deal's savings!	Stamp Chain "A"	GOOD DEAL'S PRICE	YOU SAVE	Good Deal ALWAYS sells for less!	Stamp Chain "A"	GOOD DEAL'S PRICE	YOU SAVE	"Compare!"	Stamp Chain "A"	GOOD DEAL'S PRICE	YOU SAVE	
Dinner Napkins	25¢	23¢	2¢	Cranberry Juice	49¢	47¢	2¢	Drink	35¢	33¢	2¢	Catsup	100¢	100¢	0¢
Sandwich Bags	29¢	27¢	2¢	Del Monte	41¢	39¢	2¢	Apricot	33¢	29¢	4¢	Tomato Juice	105¢	89¢	16¢
Toilet Tissue	33¢	31¢	2¢	Prune Fig Juice	35¢	29¢	6¢	Apricot Nectar	43¢	37¢	6¢	Asparagus	53¢	49¢	4¢
Mott Apple Juice	41¢	39¢	2¢	Fiesta Punch	105¢	97¢	8¢	Pineapple Juice	41¢	37¢	4¢	Whole Beets	22¢	19¢	3¢
Apple Juice	93¢	85¢	8¢	Soups	29¢	27¢	2¢	Pineapple	41¢	33¢	8¢	Red Cabbage	100¢	100¢	0¢

Greenleaf Hand-Cleaner	1-lb. 19¢	Heinz Delight-Lightning Peaches	12-oz. 29¢	Kitty Salmon	Cal Food	2 6-oz. 25¢	Beef Stew for Dogs	2 15-oz. 47¢	Ilon	Snap Off Bags	20's 39¢	Colmann	Red Cabbage	5 16-oz. \$1.00	Mancini	Roasted Peppers	2 7 1/2-oz. 41¢	Chun-King-LAKE	Chicken Chow Mein	Divider Pac 99¢
------------------------	-----------	---------------------------------	------------	--------------	----------	-------------	--------------------	--------------	------	---------------	----------	---------	-------------	-----------------	---------	-----------------	-----------------	----------------	-------------------	-----------------

# ZOOM TO GOOD DEAL

FOR OUT OF THIS WORLD JULY 4th SPECIALS

## OPEN Independence Day-JULY 4th!

<b>SHORT CUT RIB ROAST</b>	Grand Prize Beef! Save 50c	lb. <b>59<sup>c</sup></b>
<b>FIRST CUT RIB ROAST</b>	Grand Prize Beef! Save 40c	lb. <b>79<sup>c</sup></b>
<b>CLUB ROAST</b>	Heart of the Grand Prize Rib! Save 40c	lb. <b>89<sup>c</sup></b>
<b>POT ROAST</b>	Boneless—Top of the Grand Prize Rib! Save 60c	lb. <b>79<sup>c</sup></b>
<b>SHORT RIBS OF BEEF</b>	Grand Prize Beef! Save 10c	lb. <b>39<sup>c</sup></b>
<b>SKINLESS BEEF LIVER</b>	Save 10c	lb. <b>59<sup>c</sup></b>
<b>GROUND ROUND</b>	Freshly Chopped—Extra Lean Save 20c	lb. <b>79<sup>c</sup></b>
<b>DELMONICO STEAK</b>	Grand Prize Beef! Save 30c	lb. <b>99<sup>c</sup></b>
<b>CHARCOAL STEAK</b>	Grand Prize Beef! Save 20c	lb. <b>89<sup>c</sup></b>
<b>FILLET MIGNON</b>	Grand Prize Beef! Save 20c	lb. <b>51<sup>59</sup></b>

TENDER JUICY, GRAND PRIZE

# RIB ROAST

REGULAR CUT **49<sup>c</sup>** lb.




Country Boy Sam's Exclusive Center Cut

# RIBSTEAK HEARTS 65<sup>c</sup> lb.

Hygrade or H & H

# FRANKS

in 2 lb. pkgs. **39<sup>c</sup>** lb.

**FREE POTATO SALAD!**

Get 1/2 lb. of delicious, kitchen fresh potato salad (made with REAL mayonnaise). FREE with your purchase of 1/2 lb. of our mouth-watering, fully cooked, freshly sliced

**CORNER BEEF**

1/2 lb. **98<sup>c</sup>**

FRESHLY SLICED

**COLD CUTS**

Choose from Bologna, Liverwurst, Spiced Ham, Olive Loaf, Pickle and Pimento Loaf, and Pepper Loaf (M) and match!

lb. **59<sup>c</sup>** SAVE 10<sup>c</sup>

**SALAD and GRAVY FREE!**

Good Deal DIVES you the fixin's! Get 1/2 lb. of kitchen fresh Potato Salad and a container of gravy, FREE with your purchase of 1/2 lb. of delicious, home-style

**ROAST BEEF**

1/2 lb. **98<sup>c</sup>**

CENTER CUT

# PORK CHOPS

SAVE 10<sup>c</sup>

**69<sup>c</sup>** lb.

EXTRA TENDER & DELICIOUS, MILD CURED

**CORNER BEEF THICK CUT**

# BEEF BRISKET

THIN CUT

lb. **55<sup>c</sup>**

# 35<sup>c</sup>

lb.

**BARBECUED CHICKEN** Hot From Our Rotisserie! **67<sup>c</sup>** lb.

Treat your family to Chicken — the "fun food" for outdoor eating! At Good Deal you'll find just the size and type of chicken to suit every taste!

Save 60c—Try this cut up on your grill! **LARGE CAPONS** Fresh, Ready to roast lb. **49<sup>c</sup>**

Save 30c—All Dark Meat! Fresh, Grade A **CHICKEN** Barbecue Leg Quarters lb. **37<sup>c</sup>**

Save 30c—All White Meat! Fresh, Grade A **CHICKEN** Barbecue Breast Quarters lb. **37<sup>c</sup>**

**GENOA SALAMI** Save 37c—Any Size Piece lb. **\$1.09**

**FRANKS** Save 10c—Good Deal or H&H All Beef or All Meat lb. **49<sup>c</sup>**

**LIVERWURST CHUNKS** Save 10c lb. **49<sup>c</sup>**

**BOLOGNA CHUNKS** Save 10c lb. **49<sup>c</sup>**

**KING SIZED FRANKS** Save 10c—Best lb. **59<sup>c</sup>**

**STAFF BACON** Save 4c lb. **55<sup>c</sup>**

**KNOCKWURST** Save 10c—H&H Vacuum Packed lb. **69<sup>c</sup>**

**KIELBASSIE** Save 10c—H&H Vacuum Packed lb. **79<sup>c</sup>**

**SEA SCALLOPS** Save 20c—Snow White lb. **69<sup>c</sup>**

**FRESH WHITING** Save 10c lb. **19<sup>c</sup>**

Genoa White Meat Topp. 1 lb. 49 <sup>c</sup>	Hachman Pretzels Cello 1 lb. 29 <sup>c</sup>	Bon Ami Cleanser 2 14-oz. 29 <sup>c</sup>	Alpo Beef Chunk Dog Food 2 14 1/2-oz. 49 <sup>c</sup>	Bennett's Fix A Drink Syrup 12-oz. 29 <sup>c</sup>	Buitoni Spaghetti 5 8-oz. \$1.00	Maple Syrup 8-oz. 59 <sup>c</sup>	Calo Cal Food 2 15 1/2-oz. 29 <sup>c</sup>
Mushroom Chocolate Chip Cookies 2 1/2-oz. 29 <sup>c</sup>	Hondu-Tank Fat, Cuts 6 oz. 29 <sup>c</sup>	Carbol Cleaning Fluid 4 29 <sup>c</sup>					
Harry Dutch Almond Crunch Cookies 1 lb. 49 <sup>c</sup>	Cream of Rice 18-oz. 42 <sup>c</sup>						