

MOUNTAINSIDE Echo

Dedicated To Reporting
Mountainside News
In An Unbiased Manner

School Is Out —
Please Drive —
With Extra Care

VOL. 6—No. 32

MOUNTAINSIDE, N. J., THURSDAY, JULY 10, 1964

10 CENTS Per Copy



LIKE BEING A DETECTIVE — Cherry Tom helps with reference work at the Mountainside Public Library, where she and Judith Mele are employed for the summer. The girls both college coeds, like working at the library because of the contact with people and books. Cherry likes to ferret out hard-to-find information for library patrons.

IT'S MUTUAL

2 Summer Staffers Enjoy Library Work



JUDITH MELE

When residents borrow a book at the Mountainside Public Library this summer, they can make their selection with help from two attractive college coeds.

Judith Dorothy Mele of 226 Pembroke rd., and Cherry Tom of 961 Mountain ave. are spending the summer helping at the charge desk. And card, catalog, forming and shelving books, keeping records and performing the myriad other chores involved in library routine.

Mrs. Emily Hoffarth, librarian, cannot say enough in praise of the two girls. They are both honor students, she points out, and their work here is outstanding.

Cherry is the daughter of Mr. and Mrs. Ping Tom, her grandfather was the first proprietor of the Uni-Am Cafeteria, and her father now owns and operates the operation.

Pembroke To Mail Flyer Opposing Apartment Units

The Pembroke Civic Association will mail "information sheets" next week to residents of Mountainside supporting its opposition to construction of a garden for high rise apartments in the borough.

Harry Swenson, president of the group, told the Echo.

The group will also increase the number of people generating requests for the Mayor and Council to support the petition to be filed at a referendum to be held at the Nov. 8 election from 15 to about 100, Swenson said.

He has said that the group prefers that Mountainside remain a community of one-family dwellings, and estimated that 99 percent of the residents favor private dwellings for the borough.

The association decided to send update letters at a meeting last week at the home of William Morrison Evergreen at 274 Morris Ave.



RAYMOND HERRIOTT

contrasted by the holder of the Springmount development make this area a logical starting point, Herriott said.

Start-In About 30 Days

Agreement between the Borough and the developer, which provides for a garden program, was to be a pre-condition to the approval of the plan, Herriott said.

The agreement contemplates a year's effort to obtain the government loan after an attempt to acquire financing funds through the Accelerated Public Works Program was unsuccessful. The borough did not qualify for matching funds because its ratio of unemployment is not high enough, Herriott said.

Engineering advice and consultants will be provided by the developer.

The sixth and final report, which will contain recommendations, is not in about two weeks, according to Albert Hartung, chairman of the Planning Board. Included in five reports already completed, are statistics prepared by the Smith firm that project a profit in tax income from multiple-unit dwellings.

(Continued on Page 3)

thing as lofty in its conception as a library.

To this she has added the warmth of her own personality, the very best advice she could obtain on library procedure and book selection, her own love of books, a cooperative staff, and a determination to do the very best she could for Mountainside with what was given to her.

These she has turned into a library, which is, after all, an institution of its tangible values. (A feature on library activities will follow in a future issue of the Echo.)

MRS. HOFFARTH and her husband, Elmer, who are Mountainside's borough clerk, live at 217 Evergreen ct. They moved here 24 years ago, when the borough was a community of 1,000 people.

(Continued on Page 3)

Board Rejects Bid For Borough Use Of School, But Is Willing To Negotiate



SUMMER SCHOOL IS FUN — Edward Collins's puppet is using his hands, all four of them, to act out a story learned in Mrs. Eliza Robinson's summer reading class. Deborah Marchell has made two stick puppets in a project that makes the stories in their reading books come to life. A second picture is shown on Page three.

AM I AN ANT? YES OR NO

Programmed Reading Books Provide Summer Experiment

BY MARIAN BROWN

Seven youngsters in Mrs. Eliza Robinson's summer reading class at the Mountainside Public Library are part of an experiment that has begun throughout the nation.

The experiment is a method of teaching reading that has been developed by Mrs. Robinson and is called "Am I an Ant? Yes or No?"

The program is designed to help children learn to read by using a series of books that are written in a simple, repetitive style. The books are designed to be read aloud by the teacher and the children.

The program is being used in the Mountainside Public Library during the summer months.

Programmed reading books are a new type of book that are designed to be read aloud by the teacher and the children. The books are written in a simple, repetitive style that makes them easy for children to read.

The program is being used in the Mountainside Public Library during the summer months.

See Regional Board Acquiring Nike Site

The Regional Board of Education is expected to meet next week to discuss the acquisition of a Nike missile site for use as a school building.

The site is located in the town of Mountainside and is currently owned by the federal government. The board is considering the purchase of the site for use as a school building for the town.

The acquisition of the site would provide a new school building for the town and would also provide a new site for the Nike missile site.

The Regional Board of Education is expected to meet next week to discuss the acquisition of a Nike missile site for use as a school building.

The site is located in the town of Mountainside and is currently owned by the federal government. The board is considering the purchase of the site for use as a school building for the town.

The acquisition of the site would provide a new school building for the town and would also provide a new site for the Nike missile site.

Traffic Council Intends To Urge Truck Legislation

Henry P. Wester, Mountainside police commissioner and chairman of the Essex-Union-Somerset Traffic Council, said this week that the traffic council will recommend to the state Coordinating Council on Traffic Safety that a trucks-keep-right policy on Rt. 22 be made state law.

The recommendation will be made at a meeting that will be held in a week or so upon invitation from Attorney General Arthur Sils in response to resolutions proposing the trucks-keep-right policy and a plan to divert World's Fair traffic from the highway that were sent to Gov. Hughes.

Accompanying Wester will be Henry S. Papp, police commissioner of North Plainfield; George G. Johnston, public safety commissioner of Scotch Plains; and C. Bruce de Gant, police commissioner of Plainfield. They were appointed by Wester at a special meeting of the safety council last night.

Wester said he has received some 70 letters from citizens in the last two months urging adoption of a trucks-keep-right policy on the highway.

The plan for diverting World's Fair traffic from the highway includes erecting road markers in Pennsylvania traffic that would urge the use of the Garden State Parkway and New Jersey Turnpike instead of the double benefit of relieving additional congestion on 22 and providing additional revenue from the state.

(Continued on Page 3)

Cherry was graduated from Governor Livingston Regional High School.

This June and will study chemistry in the fall at Jackson College of Tufts University in Medford, Mass., where she was awarded a scholarship.

She was among the top 10 percent of her high school graduating class and was awarded a medal for excellence in French. She is a member of the National Honor Society and the French National Honor Society. Last year she was a delegate to Girls Citizenship Institute at Douglas.

(Continued on Page 2)

Just as a French housewife is able to take a handful of inexpensive ingredients and prepare from them the cuisine for which she is world-famous, Mrs. Emily Hoffarth, Mountainside librarian, has the ability to take whatever ingredients life gives her and turn them into a recipe for success.

Take her work with the library, for example. When she accepted the post of librarian in 1946, the facility had 4,200 books, 228 members and an annual circulation of 5,886. By last year the number of books had reached 14,000, membership 2,093, and the annual circulation figure had soared to 80,958.

She has taken three basement rooms in the Echobrook school—a former classroom, a shop, and a lunchroom, considered by the state substandard for use by children, meagre ingredients indeed for any

ECHO PROFILE — Mrs. Emily Hoffarth

MRS. EMILY HOFFARTH

Just as a French housewife is able to take a handful of inexpensive ingredients and prepare from them the cuisine for which she is world-famous, Mrs. Emily Hoffarth, Mountainside librarian, has the ability to take whatever ingredients life gives her and turn them into a recipe for success.

Take her work with the library, for example. When she accepted the post of librarian in 1946, the facility had 4,200 books, 228 members and an annual circulation of 5,886. By last year the number of books had reached 14,000, membership 2,093, and the annual circulation figure had soared to 80,958.

She has taken three basement rooms in the Echobrook school—a former classroom, a shop, and a lunchroom, considered by the state substandard for use by children, meagre ingredients indeed for any



MRS. EMILY HOFFARTH

Letter Will Cite Continued Need For Echobrook

Would Like Library Moved Out To Free Rooms Now Used

The Board of Education will send a letter to the Borough Council this week, pointing out the continued need for the Echobrook school building for municipal purposes, said that if the Council would like to have the building moved out to free the rooms now used for municipal purposes, the Board would like to have the building moved out.

The Board of Education will send a letter to the Borough Council this week, pointing out the continued need for the Echobrook school building for municipal purposes, said that if the Council would like to have the building moved out to free the rooms now used for municipal purposes, the Board would like to have the building moved out.

The Board of Education will send a letter to the Borough Council this week, pointing out the continued need for the Echobrook school building for municipal purposes, said that if the Council would like to have the building moved out to free the rooms now used for municipal purposes, the Board would like to have the building moved out.

The Board of Education will send a letter to the Borough Council this week, pointing out the continued need for the Echobrook school building for municipal purposes, said that if the Council would like to have the building moved out to free the rooms now used for municipal purposes, the Board would like to have the building moved out.

The Board of Education will send a letter to the Borough Council this week, pointing out the continued need for the Echobrook school building for municipal purposes, said that if the Council would like to have the building moved out to free the rooms now used for municipal purposes, the Board would like to have the building moved out.

The Board of Education will send a letter to the Borough Council this week, pointing out the continued need for the Echobrook school building for municipal purposes, said that if the Council would like to have the building moved out to free the rooms now used for municipal purposes, the Board would like to have the building moved out.

Borough Remains Without A Mayor

The Borough of Mountainside remains without a mayor after a meeting between the Borough Council and the Regional Board of Education failed to reach an agreement on the acquisition of a Nike missile site for use as a school building.

The meeting was held on July 7 and was attended by Mayor-elect Walter Duda, GOP, and Raymond Herriott, Borough Council president. The meeting was held to discuss the acquisition of the Nike missile site for use as a school building.

The meeting was held on July 7 and was attended by Mayor-elect Walter Duda, GOP, and Raymond Herriott, Borough Council president. The meeting was held to discuss the acquisition of the Nike missile site for use as a school building.

Mountainside Echo Subscription Form

To: Mountainside Echo
2 New Providence rd., Mountainside, N. J.

Enter a one-year subscription to the Mountainside Echo at the rate of \$3.00 for the year 1964.

Name _____ (Print)
Address _____ (Print)

Subscription will take effect one week after receipt of this form and continue for 52 weeks.

Check and mail _____
() Enclosed find \$3. (Check or money order)

Area Mosquito Index No Slapdash Affair

If the mosquitoes seem a bit pesky this summer, that's their good reason for it. The "Mosquito Index" indicates that the buzzing bugs are more plentiful this season in some locations.

The "Mosquito Index" (M.I.) is the County Mosquito Commission's method of measuring the pest population throughout Union County. Traps are placed in centralized locations in each municipality. Once a week they are emptied and counted. The average number of bugs caught per night per trap is calculated, and that number serves as the index for the week.

For example, an average of two mosquitoes was caught nightly in Union — and so the M.I. is 2.

The Mosquito Commission figures that an index of 6 or lower is "light," from 7 to 10 "medium," and over 10 "heavy."

The index in Union, Roselle, Roselle Park and Springfield is 2 — light — but heavier than it was during a corresponding week last summer when the M.I. was 12.

Linden's 10.2 is medium, but twice as heavy as it was last summer when the M.I. was 6.

Kenilworth and Mountainside share an M.I. of 21 — the same as last summer.

Commissioner Robert W.

Judges Named For Art Show In September At Reservation

The names of the judges for the art show to be held at the Reservation in September have been announced. The show will be held at the Reservation in September.

The judges for the show are: [Names listed]

The show will feature works by local artists and will be held at the Reservation in September.

Board Approves Four Variances For Construction

The Board of Planning and Zoning has approved four variances for construction projects in the area.

The projects include: [Details of projects]

The board's decision was based on the following factors: [Reasons for approval]

Senator Williams Reports

By Sen. Harrison A. Williams



HALF-PAST TEEN



Report From Trenton

by State Senator Nelson F. Stamler (R-Union)

The report from Trenton discusses various legislative matters and the state's economic situation.

Key points include: [Summary of report content]

Award Contracts For Painting Two School Interiors

The Board of Education has awarded contracts for the painting of two school interiors.

The projects are: [Details of painting projects]

The estimated cost for these projects is: [Cost information]

Drainage

The drainage system in the area is being reviewed for improvements.

The review will focus on: [Details of drainage review]

Attends Confab

A representative from the area attended a conference in another location.

The conference discussed: [Details of conference]

Named To Dean's List

A student from the area has been named to the Dean's List for academic excellence.

The student is: [Name of student]

Mountainside

Local news and events from the town of Mountainside.

Recent events include: [Details of local news]

14 From Mountainside Participate In UJC's Annual Summer Session

Fourteen students from Mountainside participated in the annual summer session of the Union Junior College.

The session included: [Details of summer session]

Mountainside Echo

Information about the local newspaper, the Mountainside Echo.

Subscription rates: [Details of subscription rates]

2 Staffers

Two new staff members have been hired for the organization.

The staff members are: [Names of staff members]

Designer Board Elects Local Man

The Designer Board has elected a local resident as its new member.

The elected member is: [Name of elected member]

Sermon Topic Stated At Lutheran Church

The topic for the upcoming sermon at the Lutheran Church has been announced.

The topic is: [Details of sermon topic]

Name John McCarthy To Union K O C Post

John McCarthy has been named as the representative for the Union K O C Post.

Details: [Details of nomination]

EAGER FOR SUMMER FUN?



You'll Enjoy The Summer More... In A New Boat Financed By The National Bank of Westfield

Fishing, water skiing, skin diving or just plain relaxing sailing, no matter what your idea of summer fun, you'll enjoy it more in the luxury of a new boat. The National Bank of Westfield is ready to help you own the boat of your dreams. Stop in and talk over your financing today.

SERVING WESTFIELD AND MOUNTAINSIDE

The NATIONAL BANK OF WESTFIELD

WESTFIELD, N. J.

WESTFIELD

"A Community Bank dedicated to Community Service"

Member of Federal Reserve System
Member Federal Deposit Insurance Corporation

(Continued from Page 1) They have two daughters, Mrs. Barbara Dittmer of Glen Rock and Mrs. Janet Schuman of Glen Rock. Mrs. Dittmer has three children ranging in ages from eight years to six months and another grandchild on the way.

Mrs. Hoffarth was born in Yonkers, New York, in 1906, the oldest of three children. At Yonkers High School a strong ability in athletics came to the front, and she became active in tennis and track events. Her abilities developed rapidly, so that shortly after graduation from high school she had become a champion tennis player.

After graduation from high school she abandoned hopes for a college education and went to work in Yonkers to help her mother, because her father had died. She later assumed the care of her brother, Mr. and Mrs. J. J. Hoffarth, who had been performing a wide variety of chores. "I was a slave," she said smiling. "I know like out of Dickens." She later had a job with Paramount Movie Corporation in New York City in which she compared popularity ratings of stars and films. It was very interesting, she said.

Mr. and Mrs. Hoffarth both grew up in Yonkers, and they continued to live there after their marriage in 1928. When they moved to Mountainide, Hoffarth worked for General Motors in Linden before being named borough clerk close to the half century mark.

IN MOUNTAINIDE Mrs. Hoffarth quickly became active in community activities. With two daughters and a natural zest for activity, Girl Scouting was inevitable, and she served as a leader for seven years, taking the hardest age-group of all—the eighth-graders. Asked if she taught them to play tennis, she said she worked mostly with handicrafts and taught this subject to other Girl Scout leaders in what was then the Westfield Council.

"I liked outdoor activities," she said, explaining that her troop met at the Echobrook School and hiked to a cabin at Lake Surprise. They earned all kinds of outdoor skills, even to turning a tin can into an outdoor burner for cooking. Mrs. Hoffarth also worked at a Girl Scout day camp, which was held for two weeks each summer. With children in school the PTA was another inevitable, and she served as secretary and treasurer of this organization.



DR. EDWARD J. NOLAN

Dr. Nolan Named Control Director At Merck Plant

Dr. Edward J. Nolan, president of the Merck & Co. Inc. in Rahway, has been named as the new control director of the Merck plant in Mountainide. Dr. Nolan, who has been in the Merck plant since 1958, will be responsible for the day-to-day operations of the plant. He will be reporting to the Merck plant manager, Dr. J. H. Brown.

Local Girl Scout To Attend Confab

Susan Matko, daughter of Mr. and Mrs. C. George Matko, 1103 Saw Mill Pt., Mountainide, has been selected to attend the Senior Girl Scout conference in New York City. The conference will be held from July 19-21 at the Waldorf-Astoria Hotel. Susan is a member of the Mountainide Girl Scout Troop.

Bowen Appointed Division Manager

The appointment of David J. Bowen, 223 Partridge Rd., Mountainide, to the office of division manager of the Western Electric Co. has been announced. Bowen has been in the company since 1958 and has held several positions of increasing responsibility. He will be responsible for the day-to-day operations of the company's Mountainide division.

Rescue Squad Needs More Day Workers

Prospective members of the Mountainide Rescue Squad are urged by Ronnie Mays, president, to attend one of its meetings. The meetings are held on Wednesdays at 8 p.m. at the Rescue Squad building on Route 22. The squad is currently in need of more day workers to help with the various rescue operations.

Programmed Reading Books Provide Summer Experiment

The Mountainide Public Library is conducting a summer experiment with programmed reading books. The books are designed to help children improve their reading skills and are available for loan from the library. The experiment is being conducted in cooperation with the local schools.

Traffic Council

(Continued from Page 1) The traffic council is working on a feasibility study for enlarging Rt. 22 to an eight to 10 lane highway. The council is currently reviewing the study and will be making recommendations to the borough council. The council is also planning to hold a public hearing on the study.

Mountainside Student Cited By Princeton

George J. Rupp, a student at Princeton University, has been cited for his outstanding performance in the field of mathematics. Rupp is a member of the Princeton University mathematics team and has won several awards for his work. He is currently a member of the Princeton University honor society.

New Leader Elected At Temple Emanu-El

Rabbi Bernard M. Honan, a graduate of Hebrew Union College, Jewish Institute of Religion, has been elected spiritual leader of Temple Emanu-El in Westfield. The announcement was made by the temple's board of trustees this week. He will be residing in Mountainide. Rabbi Honan was born in Brooklyn, N.Y., and graduated from City College of New York. He received the degree of Master of Hebrew Letters and was ordained in 1951.

Pembroke

(Continued from Page 1) The Pembroke borough council is currently reviewing a plan to improve the borough's infrastructure. The plan includes the construction of a new road and the improvement of the borough's water supply system. The council is also planning to hold a public hearing on the plan.

AM I AN ANT? YES NO

The Mountainide Public Library is conducting a summer experiment with programmed reading books. The books are designed to help children improve their reading skills and are available for loan from the library. The experiment is being conducted in cooperation with the local schools.

Members Sought By Choral Group

An invitation has been extended to persons in the area interested in singing to affiliate with the Suburban Symphony Chorus, which will resume rehearsals in September. The chorus is currently in need of new members and is looking for people who are interested in singing and performing.

Members Sought By Choral Group

An invitation has been extended to persons in the area interested in singing to affiliate with the Suburban Symphony Chorus, which will resume rehearsals in September. The chorus is currently in need of new members and is looking for people who are interested in singing and performing.

Members Sought By Choral Group

An invitation has been extended to persons in the area interested in singing to affiliate with the Suburban Symphony Chorus, which will resume rehearsals in September. The chorus is currently in need of new members and is looking for people who are interested in singing and performing.

Members Sought By Choral Group

An invitation has been extended to persons in the area interested in singing to affiliate with the Suburban Symphony Chorus, which will resume rehearsals in September. The chorus is currently in need of new members and is looking for people who are interested in singing and performing.

Members Sought By Choral Group

An invitation has been extended to persons in the area interested in singing to affiliate with the Suburban Symphony Chorus, which will resume rehearsals in September. The chorus is currently in need of new members and is looking for people who are interested in singing and performing.

Truckers Fined \$205 For Driving On Revoked List

Two tractor-trailer drivers were fined \$205 each by Mountainide Magistrate James R. Bauer last week for driving on a revoked list. The drivers were Robert F. Teatara, 28 of J. Thorpe, Pa., and Paul A. Dickerson, 52, of Baltimore, Md. They were arrested on Rt. 22 in state trooper.

Promotions Told At Muirhead Firm

The appointment of James W. Grace as controller of Muirhead Instruments Inc. has been announced by the company. He will be responsible for all accounting and financial aspects of the Mountainide company's activities. Grace joined the company as an accountant in May of 1962 when the company moved to its new office and plant facility in Mountainide. He is a graduate of Syracuse University's School of Business Administration and was formerly with the public accounting firm of Price Waterhouse & Co.

Members Sought By Choral Group

An invitation has been extended to persons in the area interested in singing to affiliate with the Suburban Symphony Chorus, which will resume rehearsals in September. The chorus is currently in need of new members and is looking for people who are interested in singing and performing.

Members Sought By Choral Group

An invitation has been extended to persons in the area interested in singing to affiliate with the Suburban Symphony Chorus, which will resume rehearsals in September. The chorus is currently in need of new members and is looking for people who are interested in singing and performing.

Members Sought By Choral Group

An invitation has been extended to persons in the area interested in singing to affiliate with the Suburban Symphony Chorus, which will resume rehearsals in September. The chorus is currently in need of new members and is looking for people who are interested in singing and performing.

Members Sought By Choral Group

An invitation has been extended to persons in the area interested in singing to affiliate with the Suburban Symphony Chorus, which will resume rehearsals in September. The chorus is currently in need of new members and is looking for people who are interested in singing and performing.

Members Sought By Choral Group

An invitation has been extended to persons in the area interested in singing to affiliate with the Suburban Symphony Chorus, which will resume rehearsals in September. The chorus is currently in need of new members and is looking for people who are interested in singing and performing.

Members Sought By Choral Group

An invitation has been extended to persons in the area interested in singing to affiliate with the Suburban Symphony Chorus, which will resume rehearsals in September. The chorus is currently in need of new members and is looking for people who are interested in singing and performing.

Truckers Fined \$205 For Driving On Revoked List

Two tractor-trailer drivers were fined \$205 each by Mountainide Magistrate James R. Bauer last week for driving on a revoked list. The drivers were Robert F. Teatara, 28 of J. Thorpe, Pa., and Paul A. Dickerson, 52, of Baltimore, Md. They were arrested on Rt. 22 in state trooper.

Promotions Told At Muirhead Firm

The appointment of James W. Grace as controller of Muirhead Instruments Inc. has been announced by the company. He will be responsible for all accounting and financial aspects of the Mountainide company's activities. Grace joined the company as an accountant in May of 1962 when the company moved to its new office and plant facility in Mountainide. He is a graduate of Syracuse University's School of Business Administration and was formerly with the public accounting firm of Price Waterhouse & Co.

Members Sought By Choral Group

An invitation has been extended to persons in the area interested in singing to affiliate with the Suburban Symphony Chorus, which will resume rehearsals in September. The chorus is currently in need of new members and is looking for people who are interested in singing and performing.

Members Sought By Choral Group

An invitation has been extended to persons in the area interested in singing to affiliate with the Suburban Symphony Chorus, which will resume rehearsals in September. The chorus is currently in need of new members and is looking for people who are interested in singing and performing.

Members Sought By Choral Group

An invitation has been extended to persons in the area interested in singing to affiliate with the Suburban Symphony Chorus, which will resume rehearsals in September. The chorus is currently in need of new members and is looking for people who are interested in singing and performing.

Members Sought By Choral Group

An invitation has been extended to persons in the area interested in singing to affiliate with the Suburban Symphony Chorus, which will resume rehearsals in September. The chorus is currently in need of new members and is looking for people who are interested in singing and performing.

Members Sought By Choral Group

An invitation has been extended to persons in the area interested in singing to affiliate with the Suburban Symphony Chorus, which will resume rehearsals in September. The chorus is currently in need of new members and is looking for people who are interested in singing and performing.

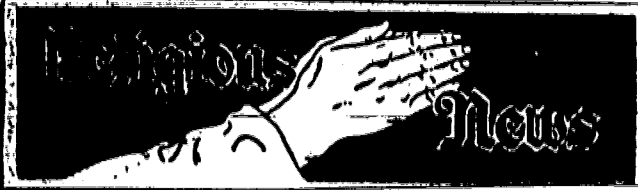
Members Sought By Choral Group

An invitation has been extended to persons in the area interested in singing to affiliate with the Suburban Symphony Chorus, which will resume rehearsals in September. The chorus is currently in need of new members and is looking for people who are interested in singing and performing.

Advertisement for Elizabethtown Gas featuring a large '\$39.95' price tag and the slogan 'Act now for Gaslight beauty, illumination and protection—at this limited-offer low price!'. The ad includes details about the gas service area and contact information for various locations.

Advertisement for Temple Emanu-El featuring a portrait of Rabbi Bernard M. Honan and text about the new spiritual leader. The ad mentions the temple's location in Westfield and its commitment to the community.

Advertisement for the Suburban Symphony Chorus featuring a large 'NEWCOMERS PLAN AUTUMN DANCE' headline and details about the chorus's activities and upcoming events. The ad includes information about rehearsals and membership.



St. James
45-South Springfield ave.
Springfield
Rev. Francis X. Coyle, pastor
Rev. Edward A. Oshling
Rev. Richard M. Nardone
assistant pastors

Saturday — Confession from 4 p.m. to 8:30 p.m. and from 7:30 p.m. to 9 p.m.
Sunday — Masses at 7, 8, 9, 10 and 11 a.m. and 12 noon.
Daily Masses at 7 a.m. and 8 a.m.
Devotions — Novena in honor of Miraculous Medal every Monday at 8 p.m.
Baptisms — Every Sunday at 8 p.m. sharp. Arrangements must be made in advance with one of the priests.

St. John's Lutheran
587-Springfield-ave.-
Summit
Rev. Richard L. Peterman
Vice-Pastor
Tomorrow — 10 a.m. Altar Guild.
Sunday — 9:30 a.m. Church School: Worship Service. Sermon Theme, "Harjans."

Reformed Church Chapel
342 Shunpike rd.,
Above Baltusrol Way
Rev. George T. Robertson,
Rev. William T. Iverson
Services every Sunday at 10

Temple Sharey Shalom
5, Springfield ave. and
Shunpike rd., Springfield
Rabbi Israel S. Dresner
Cantor: Mark J. Biddelman
Tomorrow — 8 p.m. Sabbath
evening services conducted by Sidney Greenwald.
Daily services will be held at 7:45 p.m. Monday through Thursday and at 9:15 a.m. and 7:30 p.m. on Sunday.

Saint Stephen's Episcopal Church
Main st. opposite Taylor rd.
Millburn, N.J.
Rev. James E. Lindsay, Rector.
Sundays — 8, Holy Communion, and 10, Morning Prayer (Family Service). (Holy Communion first Sundays).
Tuesdays — 9:30, Holy Communion.
Holy Days — As announced

Springfield Emanuel Methodist
Main street at Academy green
Springfield
Rev. James Dewart
Pastor

We welcome all persons in the name of Christ to share in our fellowship, including the German language service and organization. Though concentrated in Springfield, our membership extends over a wide radius into surrounding communities.

Sunday — 9 to 9:45, and German language service, Emanuel Schwing, local preacher 10 a.m. summer union service in cooperation with the Springfield Presbyterian Church. Pastor Dewart will create his sermon "The Gift of Joy"; text, Philippians 4:1-13.
A nursery is provided during the service for young children so that their parents may attend church.

First Church Of Christ Scientist
292 Springfield ave.
Summit

"I shall not die, but live, and declare the works of the Lord" — this verse from Psalms is part of the Golden Text that will introduce the Bible Lesson to be heard at Christian Science churches this Sunday. The subject is "Life" and begins a series on names which belong to God.

Readings will include the following from the Christian Science textbook "Blessed Life is God: Life must be eternal, self-existent, life is the ever-lasting I AM, the Being who was and is and shall be, whom nothing can erase" (Science and Health with Key to the Scriptures, by Mary Baker Eddy, pp. 280, 260).

Sunday's Schedule At Lutheran Church

Holy Communion will be celebrated at 8:30 a.m. worship service Sunday at Redeemer Lutheran Church, Clark at and Cowperthwaite pl., Westfield. Services will be held at 8:30 and 11 a.m. throughout the summer. "What Jesus Means to Me" will be sermon topic for Rev. Arthur

Temple Beth Ahm

An Affiliate Of The United Synagogue of America
Rabbi Reuben R. Levine
Cantor Israel Weisman
60 Baltusrol way
Rabbi Reuben R. Levine will conduct Friday night services assisted by Cantor Israel Weisman beginning at 8:45 p.m. each Friday night.
Saturday services will begin at 9 a.m.
Daily Minyan services are held each morning at 8 a.m. and each evening at 8:15 p.m.

Clinton Hill Baptist

2815 Morris Ave., Union
Rev. John D. Flisel, Pastor
Sundays 9:45 a.m. Sunday School. Classes for all ages, 11 a.m. nursery class, children's church 11 a.m. morning worship. Guest speaker, Rev. Alex Leonovich, pastor of Emanuel Baptist Church, Manville, N.J. and missionary leader 3:45 p.m. youthtime Children's Story Hour (Pre-school-2nd Grade) Teachers (3rd-6th grades) Parish Bearers (7th-9th grades) 8 p.m. Adult Bible-Prayer Fellowship 7 p.m. Evening Gospel Service Rev. Alex Leonovich, 8:15 a.m. College and Career, Timothy Fellowship
Wednesday — 8 p.m. Prayer - Praise Hour 8 p.m. Children's Bible Story - Prayer Time Nursery open during all services

First Presbyterian Church

Morris Avenue at Main Street
Springfield, New Jersey
Ministers: Bruce W. Evans
Donald C. Weber

A cordial welcome is extended to all who worship in this historic church. Representing over 200 years of faith and service in this community, it invites you to worship and work with those in its fellowship.
Sunday — 10 a.m., Church Worship Services
Union Summer Services in conjunction with the Springfield Emanuel Methodist Church will be held in the Methodist Church during the month of July and on Aug. 2nd, with the Rev. James Dewart preaching.

Davis Receives Training In Navy

Leslie Carl Davis, son of Mr. and Mrs. Harold Davis of 41 Dwyer st., Springfield, enlisted in the Navy through the Navy Recruiting Station, Union County Court House, Elizabeth, on June 20.

Seaman Davis enlisted under the Navy's high school graduate training program and was sent to the Naval Training Station, Great Lakes, Ill., to undergo nine weeks of recruit training. Upon completion of recruit training, Seaman Davis will return home for a short leave period. Before enlisting in the U. S. Navy, Seaman Davis was graduated from Jonathan Dayton Regional High School, Springfield.

Matten Is Graduated From Highway School

Abel Matten of Springfield was among 131 members of the Right-of-Way Division of the State Highway Department to be graduated Saturday from the Department School of Advanced Studies.

The course closely follows a curriculum recommended by the American Association of State Highway Officials and the Federal Bureau of Public Roads.

Church Chuckles by CARTWRIGHT



"All right, I'll meet you half way. If tomorrow is nice, we go fishing; if it rains, we go to church!"

Shafarman Attends Insurance Meeting

General Agent Donald Shafarman of 275 Morris ave., Springfield, attended a 1964 regional meeting of the Columbus Mutual Life Insurance Company held this week at the Columbus Plaza Hotel, Columbus, Ohio.

Shafarman was among 155 company representatives from all over the country who qualified to attend two-day meetings for their region. Qualification is

Copy Deadline

All organizational and social items, photographs and stories other than those of a spot news nature must be in our office by Friday to insure publication in the next issue. Please use our columns to tell your story.

Temples To Hold Holy Day Service

Springfield's two Temples, Beth Ahm and Sharey Shalom, will hold a joint Tisha B'Av service Saturday evening at 8:30 at Beth Ahm.

Rabbi Israel Dresner of Sharey Shalom and Rabbi Reuben R. Levine of Beth Ahm will conduct the service, assisted by Cantor Israel Weisman of Beth Ahm.

Tisha B'Av commemorates the destruction of the temple in Jerusalem by the Roman conquerors and the end of any form of Jewish government in Palestine. In recent times, however, the observance also takes note of the establishment of the modern state of Israel.

Karp Takes Courses At Army Staff College

Major Martin Karp of 10 New York ave., Springfield, is attending a course of the Army Staff College and General Staff College being conducted at Fort Dix. Maj. Karp has been a member of the Army Reserve for almost 22 years.

He served for more than three years during World War II, including duty for more than two years in India. Out of uniform, Karp is a certified public accountant, with offices in Newark.



Been busy gardening?

Take a break — eat dinner at Sip & Sup
Quick, convenient, relaxing... and easy on the budget

Roast Beef \$1.50
Chicken \$1.25
Breaded Veal \$1.35

Prime western beef, barbecue sauce, sliced tomatoes, french fried potatoes, broiled corn.
1/2 golden fried chicken, french fried potatoes, broiled corn, baked potato, buttered roll.
Special tomato sauce, french fries, baked potato, buttered roll.

Serving AIDENY products exclusively

Sip & Sup RESTAURANT
Springfield, 8, Morris Avenue, Springfield, N.J.
Corner of Routes 10 and 802, Morris Plains, N.J.

Rent-A-Maid
Complete Home Cleaning Service

- ★ Maid Service
- ★ Domestic Chores - Laundry
- ★ Dinner Party Aides
- ★ FLOOR WAXING

In Summit CR 3-3839

Serving Summit • Short Hills • Millburn and Springfield Areas
The personal concept in home cleaning by fully insured employees

— BRANCH OFFICES —
Ashley Park • Long Branch • Red Bank • Scotch • Marlboro
Beverly • Elizabeth • Westfield

THE FLOOR SHOP
EST. 1934

"QUALITY AT A COMPETITIVE PRICE... TRY US"

EMBOSSED REMNANTS, ARMSTRONG \$2 sq. yd.

\$3.75 Val. • Some Room Size

540 North Ave., Near Morris
• CARPET • LINOLEUM • TILE •
Open Mon., Wed., Thurs. to 9 • EL 2-7400
Park in Lot Adjacent to our Building

RENAULT

Have \$361. Over Lowest Priced Domestic Automatics Just Like Getting A

FREE AUTOMATIC TRANSMISSION

\$95 DOWN IMMEDIATE DELIVERY FROM \$1078 WEEKLY

New 1964 1/2 Renaults From \$1515

BETZ UNION MOTORS

Authorized Renault • Peugeot Dealer
1604 Stuyvesant Ave. Union MU 6-4114

FIRST IN UNION WITH... NO SERVICE CHARGE ON PERSONAL REGULAR CHECKING ACCOUNTS FOR DEPOSITORS WHO MAINTAIN BALANCES OF \$400. OR MORE.

EFFECTIVE AUGUST 1, 1964, CHARGES ON PERSONAL REGULAR CHECKING ACCOUNTS WILL BE:

BALANCE	MONTHLY CHARGE	COST PER CHECK
\$400.00 or more	None	None
\$300.00 to \$399.00	None	10c
\$100.00 to \$299.00	50c	10c
\$ 99.00 or less	\$1.00	10c

THESE CHARGES APPLY TO PERSONAL REGULAR CHECKING ACCOUNTS ONLY... AND DO NOT AFFECT CONVENIENCE ACCOUNTS

ACT TODAY! DO NOT WASTE ANOTHER DIME, OPEN YOUR NO SERVICE CHARGE CHECKING ACCOUNT... NOW!

The FIRST STATE BANK OF UNION

MAIN OFFICE — Morris Avenue at Berke Parkway
TOWNLEY BRANCH — Morris Avenue at Posters Avenue
HIGHWAY BRANCH — Route 22 at Monroe Street

Member Federal Deposit Insurance Corporation
Phone MURdock 6-1800

Mall-The Coupon Below

The First State Bank of Union
1826 Morris Avenue
Union, New Jersey 07083

Gentlemen:
I am interested in your No-Service Charge checking service. Please send signature card.

Name _____
Address _____
City _____ State _____ Zip Code _____

SMART BUGS IN YOUR HOME ???

Ask about our WORM SERVICE that keeps your home "Spring Clean" all year long. For a free home inspection, call today!

WESTERN EXTERMINATING COMPANY
1048 Route 22
MOUNTAINSIDE
AD 3-4100

DAIRYLAND

New Jersey's Finest and Most Complete DINING AND FAMILY SERVICE UNDER ONE ROOF

- Restaurant
- Ice Cream Parlor
- See Our New Dairy Dept.
- Take-out Service

OPEN MON. JULY 20

BRING THE FAMILY! TO DAIRYLAND

ICE CREAM WONDERLAND • 32 DELICIOUS FLAVORS
59 MAIN ST., MILLBURN
Mon., Tues., Wed., Thurs., 8:30-12:00 p.m.
Fri., Sat., 8:30-2:00 a.m. — Sun., 11:00-12:00 p.m.

Shakespeare In The County Parks A Delight To Youngsters, Adults Alike

By BEA SMITH
Some are born great, some acquire greatness. And some have greatness thrust upon them. It is the latter group that the R. J. Gork Company of Elizabeth and Plainfield this past weekend in an

appreciative audience of the... Cedar Brook Park, Park... Union County residents... more than a quarter of the... composed of persons... were escorted to the... part of the... of W... and... Park... presented by the New Jersey Shakespeare Festival... with the Union County Park Commission... will be presented... of Washington... Park... and Saturday... at 8:30.

Both Friday and Saturday night audiences... hard... staff... park... and other... presented... as... John... and... man and Jim... Under a... the... the... the...

UNION TYPEWRITER CO.
Sales - Rentals - Repairs
Olympia Portables
Typewriters
Adding Machines
Used Portables
1921 MORRIS AVE.
UNION, N. J. - MU 8-7096

STATEMENT of Condition

June 30, 1964

Colonial Savings and Loan Association
Roselle Park, N.J.

Main Office: 1 W. Westfield Ave., Roselle Park, N. J.
Branch Office: 29 Broad St., Elizabeth, N. J.

ASSETS	
First Mortgage Loans	\$18,301,365.27
Passbook Loans	92,530.11
Stock in Federal Home Loan Bank	371,216.13
U.S. Government Obligations	872,972.64
Cash on Hand and in Banks	1,342,065.76
Office Building: Less Depreciation	249,625.46
Furniture & Fixtures: Less Depreciation	39,358.04
Leaschold Improvements: Less Amortization	10,878.42
Other Assets	9,162.35
TOTAL ASSETS	\$21,292,204.48
LIABILITIES	
Member Savings	\$19,486,874.11
Loans in Process	85,500.00
Other Liabilities	10,300.00
Reserves and Undivided Profits	1,679,526.44
TOTAL LIABILITIES AND RESERVES	\$21,292,204.48

- Insured Savings
- Direct Reduction Mortgages
- Christmas Club
- Vacation Club
- Money Orders
- Travelers Checks

Savings Insured Up to \$10,000 By The Federal Savings and Loan Insurance Corporation

DIRECTORS	OFFICERS
Richard V. Stein - Chairman	James J. Miller - President
Salvatore C. Conflio	Joseph Ostender - Vice-President
Peter L. Hughes, Jr.	Erwin H. Warsinski - Exc. Vice-President
James J. Miller	Joseph M. Benintente - Secretary
Edwin F. Morsbach	Mildred D. Phillips - Ass't. Secretary
Joseph Ostender	Edwin F. Morsbach - Ass't. Secretary
James C. Tomasulo	Mildred E. Hansen - Ass't. Secretary
Erwin H. Warsinski	James C. Tomasulo - Treasurer
	Lillian R. Valdes - Ass't. Treasurer
	Alice S. Sorigie - Ass't. Treasurer
	Frank Szabo - Ass't. Treasurer
COUNSEL	Edward L. Altire III - Ass't. Treasurer
Stein, Stein and Hughes	

MEMBERS
Federal Home Loan Bank System
Federal Savings & Loan Insurance Corp.
United States Savings & Loan League
New Jersey Savings & Loan League
Union County Savings & Loan League

DID YOU KNOW - ?
THAT AN ENEMY MAY LOOK TO GET AN ACT OF TERRORISM WOULD NOT DESTROY THE CITIES BUT KILL TENS OF MILLIONS OF PEOPLE WITH RADIOACTIVE FALLOUT!
... THAT AS OF FEBRUARY 1964 THERE ARE 23,000 RADIOLOGICAL MONITORING STATIONS TO SHELTER & MONITORING STATIONS THROUGHOUT THE U.S.A.

SPECIAL!
Translucent FIBERGLAS PANELS
19¢ Sq. Foot
While They Last!
JAEGER
Lumber & Supply Co.
2322 Morris Ave., Union
MURdock 6-0070
Open Daily 7:30 a.m. to 8 p.m.
Saturday 7:30 a.m. to 12 noon

All families served at the Schmidt Funeral Home receive interested personal attention.

AUG. F. SCHMIDT
Funeral Home
125 Westfield Ave., Elizabeth, N.J.

GRAND UNION CORRAL OF VALUES

THE BEST OF THE WEST IN OUR BIG **all BEEF SALE**

Every Cut of Beef reduced... not just a few...

THE FOLLOWING STORES ARE OPEN SUNDAY
SPRINGFIELD - Morris & Flomer Ave.
UNION - Chestnut St.

SAVE MORE WHEN YOU BUY GRAND UNION'S OWN BRANDS

GRAND UNION GRAPE DRINK 4 for 99¢

GRAND UNION TROPICAL PUNCH 4 for \$1.00

GRAND UNION SECTION 1
GRAPEFRUIT 4 for 99¢
FIGS IN SYRUP 4 for 99¢
PINK SALMON 3 for \$1
COFFEE INSTANT 79¢
PEANUT BUTTER 3 for \$1
DOG FOOD 9 for 99¢
DOG FOOD 12 for 99¢
DOG FOOD 2 for 99¢

TASTY SIRLOIN STEAK	79¢	PORTERHOUSE STEAK	89¢
BONELESS TOP SIRLOIN STEAK	99¢	BONELESS TOP ROUND ROAST	95¢
LEAN PLATE MEAT	19¢	TASTY RIB ROAST	59¢
SHORT CUT RIB STEAKS	69¢	TENDER RIB ROAST	79¢
BONELESS LONDON BROIL	99¢	BONELESS TOP SIRLOIN ROAST	95¢
LEAN GROUND CHUCK	59¢	LEAN RIB ROAST	69¢
BONELESS SHOULDER STEAK	99¢	LEAN CHUCK ROAST	45¢
LEAN GROUND BEEF	2.89	FOR BRAISING FLANKEN RIBS	55¢
BONELESS CHUCK FILLET	79¢	BONELESS CROSSRIB ROAST	89¢
LEAN & TENDER CUBE STEAK	99¢	BONELESS BRISKET	95¢
BONELESS RUMP ROAST	95¢	BONELESS BRISKET	79¢
DELICIOUS STEAK PORTERHOUSE	95¢	LEAN ROUND GROUND	89¢
CLUB STEAK	\$1.59	ROUND ROAST	89¢
LEAN FLANK STEAK	99¢	BONELESS CHUCK ROAST	69¢
LEAN STEWING BEEF	69¢	NEWPORT ROAST	99¢
BONELESS TOP ROUND STEAK	99¢	CHUCK CALIFORNIA ROAST	55¢
CHUCK CALIFORNIA STEAK	65¢	SHORT RIBS	45¢
BOILED HAM	59¢	FRESH SWORDFISH STEAKS	49¢
GRAND UNION FROZEN STEAKS	89¢	STADIUM FRANKS	65¢
HAYDU FRANKS	49¢	SLICED BACON	59¢

GRAND UNION - FANCY APPLESAUCE 3 1-lb. cans 49¢

GRAND UNION CREAM CORN 6 1-lb. cans 79¢

GRAND UNION SWEET PEAS 6 1-lb. cans 79¢

GRAND UNION CREAM CHEESE 1-lb. pkg. 7¢

Seedless GRAPES 29¢

LEMONS 10 - 39¢

BOSTON LETTUCE 2 - 19¢

LIMES 6 - 19¢

Save on Beauty Aids
MICRIN 89¢
LUSTRE CREME \$1.09
SHAMBLEAU 79¢
MEDIQUICK \$1.39

Nancy Lynn Baked Goods
CHERRY PIE or CHERRY CRUMBLE PIE 55¢
SANDWICH BREAD 27¢
DANISH HORN 45¢
MAXWELL HOUSE 79¢

LEMONADE 6 6-oz. cans 49¢

GREEN PEAS 6 - 89¢

GRAPE JUICE 3 - 49¢

FRENCH FRIES 10¢

SPINACH 10¢

POT PIES 5 - 89¢

ORANGE SAMOA 2 - 37¢

FAMILY FAVORITES 4 - \$1.00

SAVE CASH & TRIPLE-S BLUE STAMPS AT GRAND UNION

UNION - 5 Points Shopping Center at Chestnut St. - Open late Thurs., Fri., & Sat. till 9 p.m. OPEN SUNDAY 9 A.M. to 2 P.M.
SPRINGFIELD - General Greene Shopping Center, Morris & Mountain Ave. - Open Monday thru Thursday, 9 a.m. to 9 p.m. Friday 9 a.m. to 10 p.m. Saturday, 8 a.m. to 9 p.m. Sunday, 9 a.m. to 6 p.m.
Visit your Triple-S Redemption Center at 269 Morris Avenue, Springfield. Open Friday till 9 p.m. All Redemption Centers are closed Mondays.

Period Fashions In Window Display Bow To Tercentenary

A collection of fashions from the late 19th century, now on display at Habne and Co.

Habne & Co.

Westfield

store hours daily:

9:45 A.M. to 5:30 P.M.

open Wednesday nights 'til 9

**GRAND OPENING
AMERICAN HOST
SWIM CLUB**

- Private Rooms with TV-Showers
- Kiddie Pool
- Lounge Area

Call 379-6880 for Special Daily and Weekly Rates

Open 9 a.m. to 6 p.m. Daily

**ROUTE 22, SPRINGFIELD
(AT SPRINGFIELD AVE OVERPASS)**

Marty Feins

WEDDING PHOTOGRAPHER
100 Main St., Springfield, Mass.

**LIMOUSINE
Rental Service**

Air Conditioned

**H. J. Schroder & Co.
MU 8-5567**

330 Willow Drive, Union



FASHIONS OF YESTERDAY... A window display set up in Habne and Co. Westfield, in honor of the state's Tercentenary year, is admired by Mrs. Elka Gochossman of Roselle Park. The museum wears an outfit worn by Mrs. August Habne, daughter-in-law of the store's founder, back in the 1890's. The period fashions will be on display in the North Ave. window through July.

**ANNOUNCE TROTH
OF MISS STRUNK,
SCHERING MAN**



For FULL BANK SERVICE, "Make a date with National State"

Need a bank service? Any bank service? Pick up the phone and give us a call. Chances are, we can be of immediate service because National State offers complete banking. That's one of the many advantages of choosing a full service bank. There's great convenience, too... doing all your banking in one stop. And there's satisfaction in knowing you can get helpful counsel from officers who are specialists in your specific banking need. Can we be of service? Stop in at our nearest office... or dial EL 4-3400.



**THE
NATIONAL
STATE
BANK**



ELIZABETH HILLSIDE KENILWORTH RAILWAY
ROSELLE PARK SPRINGFIELD SUMMIT WESTFIELD
MEMBER FEDERAL DEPOSIT INSURANCE CORPORATION
Union County's Leading Bank



Nerve Deafness Suffers Now Given Help

MISS ELIZABETH P. STRUNK
Mrs. and Mrs. Franklin Strunk of 341 Newark Ave., Kenilworth, have announced the engagement of their daughter, Elizabeth Pearl, to Joseph Walter Schering, son of Mr. and Mrs. Joseph Schering of Elizabeth.

The booklet explains the facts about nerve deafness — the painless, invisible condition that handicaps and isolates millions of persons of all ages.

How does nerve deafness interfere with hearing? What symptoms first warn you of this condition? Will surgery help? Will hearing aid help? Will...

**Coast Guard Serving
In Search, Rescue**

SEATTLE, Wash. — Coast Guard Lt. J. Benjamin Jackson of 1719 Marine Parkway, Seattle, is returning from a search and rescue mission in the Pacific Northwest and the Alaska Fisheries and Bering Sea Patrol. It is the Coast Guard's responsibility to...



BRECK PROFESSIONAL PERMANENT WAVES
A Breck Professional Permanent Wave fashioned with the skill of your beautician assures personal care and beauty for your hair. Your beautician can select from several different Breck Professional Permanent Waves, one which is exactly suited to your individual hair condition.

B R E C K
Vincent's House of Beauty
2027 MORRIS AVE. UNION CENTER
NO APPOINTMENT NECESSARY
Call for your favorite operator or just walk in — MU 6-3824
Open Every Day Monday thru Saturday

THIS IS IT...

**BELL APPLIANCE
B-U-S-T-S
RCA-WHIRLPOOL
REFRIGERATOR
- FREEZER**

PRICES W-I-D-E
OPEN!
... GIVES YOU
\$20.00 WORTH OF FROZEN
FOOD FREE
(THROUGH THE COOPERATION
OF PUBLIC SERVICE)

... AND ...
Puts A
Supermarket
in Your Kitchen!
Look!

FREE

**\$20.00 WORTH OF
FROZEN FOOD**

If your new RCA-Whirlpool refrigerator-freezer will be connected to Public Service electric lines, you get a certificate redeemable at your favorite food store for \$20.00 worth of frozen food!

• LIMITED TIME OFFER ... HURRY! •

**BRAND NEW 1964
RCA WHIRLPOOL
ALL-REFRIGERATOR &
Matching 537-lb. CAPACITY
UPRIGHT FREEZER**

*For the First Time -
PRICED AS LOW AS MOST
ORDINARY REFRIGERATORS!*

\$268⁸⁸

**30.7 CU.
FT.**

**RCA WHIRLPOOL
2-Door REFRIGERATOR-FREEZER**

with Exclusive
**ICE MAGIC[®]
AUTOMATIC
ICE MAKER**



Ice Magic replaces every cube you use - automatically

• Stores 125 cubes at one time

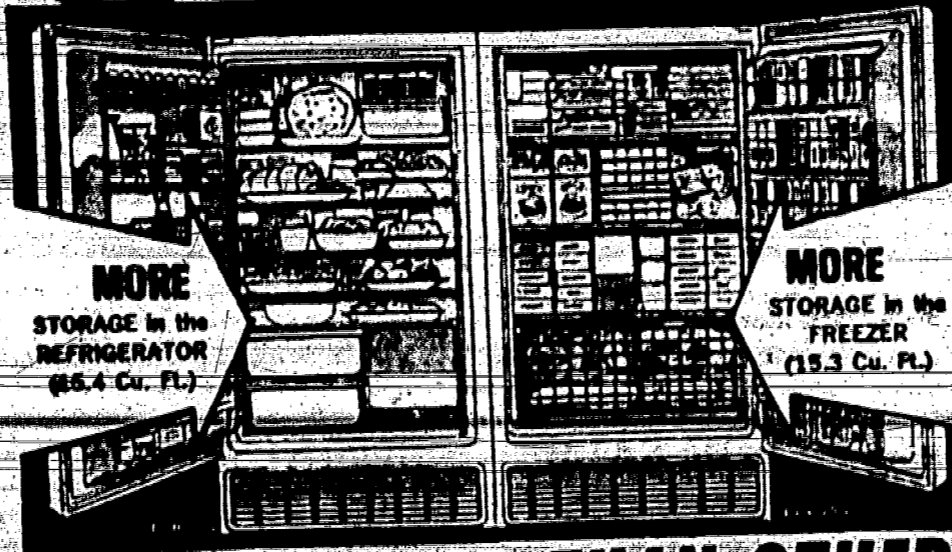
• Refrigerator section never needs defrosting

• "Zero-degree" freezer holds 104 lbs. of frozen food

• Adjustable temperature control

• Super-storage door

FREE! Full Year Service by 8 Convenient RCA Service Co. Branches

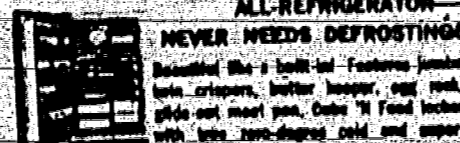


**MORE
STORAGE in the
REFRIGERATOR
(65.4 Cu. Ft.)**

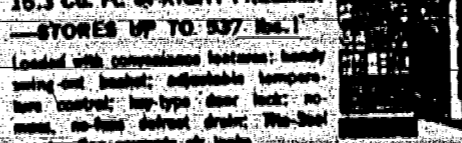
**MORE
STORAGE in the
FREEZER
(15.3 Cu. Ft.)**

**PRICED LOWER THAN OTHER
MAKES WITH LESS CAPACITY!**

RCA WHIRLPOOL HUGE 15.4 Cu. Ft. ALL-REFRIGERATOR - NEVER NEEDS DEFROSTING!



FAST-FREEZING RCA WHIRLPOOL 15.3 Cu. Ft. UPRIGHT FREEZER - STORES UP TO 537 lbs.!



FREE! Full-Year Service by 8 Convenient RCA Service Company Branches!

**SEE THE FULL LINE OF RCA-WHIRLPOOL
REFRIGERATOR-FREEZERS AND GET THE LOWEST
DISCOUNT PRICES AT BELL APPLIANCE**

IMAGINE!

**2-DOOR
RCA WHIRLPOOL
REFRIGERATOR
with 107 lb. FREEZER**

for only **\$218⁸⁸**



**REFRIGERATOR
NEVER NEEDS
DEFROSTING!**

**LOWEST PRICE EVER for this BIG
12.3 cu. ft. Refrigerator-Freezer!**

• Automatic Defrosting Refrigerator • Big Full-Width Cooler
• Two Super Storage Doors • Adjustable Ice Shelf
• Big Full-Width Freezer • Built-In Egg Rack
• Adjustable Temperature Control • Million-Useful Door

**FREE! FULL YEAR SERVICE BY EIGHT
Convenient RCA Service Co. Branches**

**THIS IS IT!
NO
CASH
DOWN
•
UP TO
THREE
YEARS
TO
PAY!**

BELL APPLIANCE & HOME FURNISHINGS CENTER

ROUTE 22, UNION
(Next to Left Candy)

MURDOCK RD. 8-0800
(Plenty of Free Parking)
HOURS: Daily 9 to 9 Saturday 10 to 6

371-3000... For An 'Ad Taker' WANT AD SECTION 371-3000... For An 'Ad Taker' PERSONALS - AUTOMOTIVE - BUSINESS DIRECTORY

PERSONALS

Lost and Found
KITTY-LOST, male, black with white star on chest, wearing tan collar with bell, about 5 months old, answer to name 'KITTY'.

Help Wanted - Women

STOFFER'S RESTAURANT
NOW HIRING
HOSTESSES - AGE 21-40
FULL & PART TIME - 5 DAYS INCLUDING WEEKENDS
NO EXPERIENCE REQUIRED WE WILL TRAIN YOU

Real Estate

Summer Rentals
VACATION AT POINT PLEASANT BEACH
BEACH Club comfortable room in small guest house 2 hours from ocean and pool. Reasonable rates.

For Sale

SHIRT SPECIAL
3 for 59c
Limited Time Only
DRY CLEANING SPECIAL
Suits 99c

BUSINESS DIRECTORY

ALPHABETICALLY LISTED BY CLASSIFICATION

Help Wanted

Help Wanted - Women

CLASSIFIED ADVERTISING

Belonging wanted for long established group of local newspapers. Some telephone experience necessary. Salary plus commission. Many company benefits.

Help Wanted - Men

STOFFER'S RESTAURANT
THE MALL IN SHORT HILLS N.J. MORRIS TURNPIKE AND RIVER ROAD NO. 30-308 LINE.

Apartment

Apartment to Rent
HAVE YOU A FURNISHED ROOM? APARTMENT TO LET? YOU CAN LET MORE THAN 30,000 Families

SHIRT SPECIAL

DRY CLEANING SPECIAL
Suits 99c

Builders

Garage Door Repairs
LOOKING FOR WORK? Light painting & painting of all interior basements, etc. - 40% discount including all odd jobs.

Painting & Decorating

THOMAS F. WRIGHT
Interior & Exterior Painting
The Quality Workmanship

Help Wanted - Men

Blue Seal FIREMAN
Automotive Oil Tuner, Steady Employment

Real Estate

Houses for Sale
CEDAR GROVE Cape Cod 4 room 2 1/2 bath, 2nd floor porch, all improvements. Lot 522249. Detached garage by appointment Mon. Tues. Wed. 4-6-64.

Apartment

Apartment to Rent
HAVE YOU A FURNISHED ROOM? APARTMENT TO LET? YOU CAN LET MORE THAN 30,000 Families

SHIRT SPECIAL

DRY CLEANING SPECIAL
Suits 99c

Alterations & Additions

ALTERATIONS & ADDITIONS
REPAIRS TO ALL TYPES OF CLOTHING. Alterations, alterations, alterations.

HELP - WOMEN

THE FIRM OF AVON COSMETICS and toiletries can also mean an excellent income for you. You have a FULL CREDIT RECORD.

Real Estate

Houses for Sale
CEDAR GROVE Cape Cod 4 room 2 1/2 bath, 2nd floor porch, all improvements. Lot 522249. Detached garage by appointment Mon. Tues. Wed. 4-6-64.

SOMERVILLE

You get MORE for your money at BROOKSIDE GARDENS

SHIRT SPECIAL

DRY CLEANING SPECIAL
Suits 99c

Alterations & Additions

ALTERATIONS & ADDITIONS
REPAIRS TO ALL TYPES OF CLOTHING. Alterations, alterations, alterations.

HELP - WOMEN

THE FIRM OF AVON COSMETICS and toiletries can also mean an excellent income for you. You have a FULL CREDIT RECORD.

Real Estate

Houses for Sale
CEDAR GROVE Cape Cod 4 room 2 1/2 bath, 2nd floor porch, all improvements. Lot 522249. Detached garage by appointment Mon. Tues. Wed. 4-6-64.

SOMERVILLE

You get MORE for your money at BROOKSIDE GARDENS

SHIRT SPECIAL

DRY CLEANING SPECIAL
Suits 99c

Alterations & Additions

ALTERATIONS & ADDITIONS
REPAIRS TO ALL TYPES OF CLOTHING. Alterations, alterations, alterations.

HELP - WOMEN

THE FIRM OF AVON COSMETICS and toiletries can also mean an excellent income for you. You have a FULL CREDIT RECORD.

Real Estate

Houses for Sale
CEDAR GROVE Cape Cod 4 room 2 1/2 bath, 2nd floor porch, all improvements. Lot 522249. Detached garage by appointment Mon. Tues. Wed. 4-6-64.

SOMERVILLE

You get MORE for your money at BROOKSIDE GARDENS

SHIRT SPECIAL

DRY CLEANING SPECIAL
Suits 99c

Alterations & Additions

ALTERATIONS & ADDITIONS
REPAIRS TO ALL TYPES OF CLOTHING. Alterations, alterations, alterations.

HELP - WOMEN

THE FIRM OF AVON COSMETICS and toiletries can also mean an excellent income for you. You have a FULL CREDIT RECORD.

Real Estate

Houses for Sale
CEDAR GROVE Cape Cod 4 room 2 1/2 bath, 2nd floor porch, all improvements. Lot 522249. Detached garage by appointment Mon. Tues. Wed. 4-6-64.

SOMERVILLE

You get MORE for your money at BROOKSIDE GARDENS

SHIRT SPECIAL

DRY CLEANING SPECIAL
Suits 99c

Alterations & Additions

ALTERATIONS & ADDITIONS
REPAIRS TO ALL TYPES OF CLOTHING. Alterations, alterations, alterations.

HELP - WOMEN

THE FIRM OF AVON COSMETICS and toiletries can also mean an excellent income for you. You have a FULL CREDIT RECORD.

Real Estate

Houses for Sale
CEDAR GROVE Cape Cod 4 room 2 1/2 bath, 2nd floor porch, all improvements. Lot 522249. Detached garage by appointment Mon. Tues. Wed. 4-6-64.

SOMERVILLE

You get MORE for your money at BROOKSIDE GARDENS

SHIRT SPECIAL

DRY CLEANING SPECIAL
Suits 99c

Alterations & Additions

ALTERATIONS & ADDITIONS
REPAIRS TO ALL TYPES OF CLOTHING. Alterations, alterations, alterations.

HELP - WOMEN

THE FIRM OF AVON COSMETICS and toiletries can also mean an excellent income for you. You have a FULL CREDIT RECORD.

Real Estate

Houses for Sale
CEDAR GROVE Cape Cod 4 room 2 1/2 bath, 2nd floor porch, all improvements. Lot 522249. Detached garage by appointment Mon. Tues. Wed. 4-6-64.

SOMERVILLE

You get MORE for your money at BROOKSIDE GARDENS

SHIRT SPECIAL

DRY CLEANING SPECIAL
Suits 99c

Alterations & Additions

ALTERATIONS & ADDITIONS
REPAIRS TO ALL TYPES OF CLOTHING. Alterations, alterations, alterations.

HELP - WOMEN

THE FIRM OF AVON COSMETICS and toiletries can also mean an excellent income for you. You have a FULL CREDIT RECORD.

Real Estate

Houses for Sale
CEDAR GROVE Cape Cod 4 room 2 1/2 bath, 2nd floor porch, all improvements. Lot 522249. Detached garage by appointment Mon. Tues. Wed. 4-6-64.

SOMERVILLE

You get MORE for your money at BROOKSIDE GARDENS

SHIRT SPECIAL

DRY CLEANING SPECIAL
Suits 99c

Alterations & Additions

ALTERATIONS & ADDITIONS
REPAIRS TO ALL TYPES OF CLOTHING. Alterations, alterations, alterations.

HELP - WOMEN

THE FIRM OF AVON COSMETICS and toiletries can also mean an excellent income for you. You have a FULL CREDIT RECORD.

Real Estate

Houses for Sale
CEDAR GROVE Cape Cod 4 room 2 1/2 bath, 2nd floor porch, all improvements. Lot 522249. Detached garage by appointment Mon. Tues. Wed. 4-6-64.

SOMERVILLE

You get MORE for your money at BROOKSIDE GARDENS

SHIRT SPECIAL

DRY CLEANING SPECIAL
Suits 99c

Alterations & Additions

ALTERATIONS & ADDITIONS
REPAIRS TO ALL TYPES OF CLOTHING. Alterations, alterations, alterations.

HELP - WOMEN

THE FIRM OF AVON COSMETICS and toiletries can also mean an excellent income for you. You have a FULL CREDIT RECORD.

Real Estate

Houses for Sale
CEDAR GROVE Cape Cod 4 room 2 1/2 bath, 2nd floor porch, all improvements. Lot 522249. Detached garage by appointment Mon. Tues. Wed. 4-6-64.

SOMERVILLE

You get MORE for your money at BROOKSIDE GARDENS

SHIRT SPECIAL

DRY CLEANING SPECIAL
Suits 99c

Alterations & Additions

ALTERATIONS & ADDITIONS
REPAIRS TO ALL TYPES OF CLOTHING. Alterations, alterations, alterations.

HELP - WOMEN

THE FIRM OF AVON COSMETICS and toiletries can also mean an excellent income for you. You have a FULL CREDIT RECORD.

Real Estate

Houses for Sale
CEDAR GROVE Cape Cod 4 room 2 1/2 bath, 2nd floor porch, all improvements. Lot 522249. Detached garage by appointment Mon. Tues. Wed. 4-6-64.

SOMERVILLE

You get MORE for your money at BROOKSIDE GARDENS

SHIRT SPECIAL

DRY CLEANING SPECIAL
Suits 99c

Alterations & Additions

ALTERATIONS & ADDITIONS
REPAIRS TO ALL TYPES OF CLOTHING. Alterations, alterations, alterations.

HELP - WOMEN

THE FIRM OF AVON COSMETICS and toiletries can also mean an excellent income for you. You have a FULL CREDIT RECORD.

Real Estate

Houses for Sale
CEDAR GROVE Cape Cod 4 room 2 1/2 bath, 2nd floor porch, all improvements. Lot 522249. Detached garage by appointment Mon. Tues. Wed. 4-6-64.

SOMERVILLE

You get MORE for your money at BROOKSIDE GARDENS

SHIRT SPECIAL

DRY CLEANING SPECIAL
Suits 99c

Alterations & Additions

ALTERATIONS & ADDITIONS
REPAIRS TO ALL TYPES OF CLOTHING. Alterations, alterations, alterations.

HELP - WOMEN

THE FIRM OF AVON COSMETICS and toiletries can also mean an excellent income for you. You have a FULL CREDIT RECORD.

Real Estate

Houses for Sale
CEDAR GROVE Cape Cod 4 room 2 1/2 bath, 2nd floor porch, all improvements. Lot 522249. Detached garage by appointment Mon. Tues. Wed. 4-6-64.

SOMERVILLE

You get MORE for your money at BROOKSIDE GARDENS

SHIRT SPECIAL

DRY CLEANING SPECIAL
Suits 99c

Alterations & Additions

ALTERATIONS & ADDITIONS
REPAIRS TO ALL TYPES OF CLOTHING. Alterations, alterations, alterations.

HELP - WOMEN

THE FIRM OF AVON COSMETICS and toiletries can also mean an excellent income for you. You have a FULL CREDIT RECORD.

Real Estate

Houses for Sale
CEDAR GROVE Cape Cod 4 room 2 1/2 bath, 2nd floor porch, all improvements. Lot 522249. Detached garage by appointment Mon. Tues. Wed. 4-6-64.

SOMERVILLE

You get MORE for your money at BROOKSIDE GARDENS

SHIRT SPECIAL

DRY CLEANING SPECIAL
Suits 99c

Alterations & Additions

ALTERATIONS & ADDITIONS
REPAIRS TO ALL TYPES OF CLOTHING. Alterations, alterations, alterations.

HELP - WOMEN

THE FIRM OF AVON COSMETICS and toiletries can also mean an excellent income for you. You have a FULL CREDIT RECORD.

Real Estate

Houses for Sale
CEDAR GROVE Cape Cod 4 room 2 1/2 bath, 2nd floor porch, all improvements. Lot 522249. Detached garage by appointment Mon. Tues. Wed. 4-6-64.

SOMERVILLE

You get MORE for your money at BROOKSIDE GARDENS

SHIRT SPECIAL

DRY CLEANING SPECIAL
Suits 99c

Alterations & Additions

ALTERATIONS & ADDITIONS
REPAIRS TO ALL TYPES OF CLOTHING. Alterations, alterations, alterations.

HELP - WOMEN

THE FIRM OF AVON COSMETICS and toiletries can also mean an excellent income for you. You have a FULL CREDIT RECORD.

Real Estate

Houses for Sale
CEDAR GROVE Cape Cod 4 room 2 1/2 bath, 2nd floor porch, all improvements. Lot 522249. Detached garage by appointment Mon. Tues. Wed. 4-6-64.

SOMERVILLE

You get MORE for your money at BROOKSIDE GARDENS

SHIRT SPECIAL

DRY CLEANING SPECIAL
Suits 99c

Alterations & Additions

ALTERATIONS & ADDITIONS
REPAIRS TO ALL TYPES OF CLOTHING. Alterations, alterations, alterations.

HELP - WOMEN

THE FIRM OF AVON COSMETICS and toiletries can also mean an excellent income for you. You have a FULL CREDIT RECORD.

Real Estate

Houses for Sale
CEDAR GROVE Cape Cod 4 room 2 1/2 bath, 2nd floor porch, all improvements. Lot 522249. Detached garage by appointment Mon. Tues. Wed. 4-6-64.

SOMERVILLE

You get MORE for your money at BROOKSIDE GARDENS

SHIRT SPECIAL

DRY CLEANING SPECIAL
Suits 99c

Alterations & Additions

ALTERATIONS & ADDITIONS
REPAIRS TO ALL TYPES OF CLOTHING. Alterations, alterations, alterations.

ALPHABETICALLY LISTED BY CLASSIFICATION

Roofing - Siding AUTOMOTIVE

ALUMINUM SIDING... SURVEYORS... GRASSMANN, KRER & MEYER INC.

Tile Work & Repairing

SPECIALIZING IN Ceramic Tile... THE BATHROOM & BATH SHOWERS

Tutoring

FRENCH & SPANISH TUTORING... TUTORING IN MODERN

Auto Services

COLLISION & MECHANICAL REPAIRS... LAYNE MOTORS

Automotive Wanted

ALL JUNK CARS WANTED... JUNK YOUR CAR ON TRUCK

Legal Notices

REINFORCEMENT... WATERPROOFING

Weather Stripping

ALUMINUM WINDOWS INTERLOCK... PUBLICITY CHAIRMAN AND INDIVIDUALS

Classified Advertising Rates

Table with columns: Single insertion 60c per line, 4 or more consecutive insertions 50c per line, 10 or more consecutive insertions 42c per line. Includes a table of charges for different ad lengths.

All classified advertising appears in six newspapers... Closing Deadline—noon Tuesday

TO PLACE A CLASSIFIED Ad... Call 371-3000

Mail Your CLASSIFIED Now On This

EASY WANT AD FORM

Ad will appear in these 6 newspapers for only 12c Per Word

Union Leader, Irvington Herald, Vailsburg Leader, Springfield Leader, Suburban Leader, The Spectator

Reaching 30,000 Families Each Week in Union, Irvington, Vailsburg, Springfield, Kenilworth, Roselle and Roselle Park

Five (5) Words of Average Length Will Fill One Line For Extra Long Words Allow Two (2) Spaces

Please Print or Write Clearly... Suburban Publishing Corp.

Name, Address, City, Phone

Insert Ad Time(s) @ per insertion - starting Date Amount Enclosed

(1) (2) (3) (4) (5) (6) (7) (8) (9) (10) (11) (12) (13) (14) (15) (16) (17) (18) (19) (20)

Hollywood Florist... 1449 STUYVESANT AVE

Specialize in Funeral Design and Sympathy Arrangements

Union, Irvington, Springfield, Kenilworth, Roselle and Roselle Park

Five (5) Words of Average Length Will Fill One Line For Extra Long Words Allow Two (2) Spaces

Please Print or Write Clearly... Suburban Publishing Corp.

Name, Address, City, Phone

Insert Ad Time(s) @ per insertion - starting Date Amount Enclosed

(1) (2) (3) (4) (5) (6) (7) (8) (9) (10) (11) (12) (13) (14) (15) (16) (17) (18) (19) (20)

Hollywood Florist... 1449 STUYVESANT AVE

Specialize in Funeral Design and Sympathy Arrangements

Legal Notices

REINFORCEMENT... WATERPROOFING

Weather Stripping

ALUMINUM WINDOWS INTERLOCK... PUBLICITY CHAIRMAN AND INDIVIDUALS

Classified Advertising Rates

Table with columns: Single insertion 60c per line, 4 or more consecutive insertions 50c per line, 10 or more consecutive insertions 42c per line. Includes a table of charges for different ad lengths.

All classified advertising appears in six newspapers... Closing Deadline—noon Tuesday

TO PLACE A CLASSIFIED Ad... Call 371-3000

Mail Your CLASSIFIED Now On This

EASY WANT AD FORM

Ad will appear in these 6 newspapers for only 12c Per Word

Union Leader, Irvington Herald, Vailsburg Leader, Springfield Leader, Suburban Leader, The Spectator

Reaching 30,000 Families Each Week in Union, Irvington, Vailsburg, Springfield, Kenilworth, Roselle and Roselle Park

Five (5) Words of Average Length Will Fill One Line For Extra Long Words Allow Two (2) Spaces

Please Print or Write Clearly... Suburban Publishing Corp.

Name, Address, City, Phone

Insert Ad Time(s) @ per insertion - starting Date Amount Enclosed

(1) (2) (3) (4) (5) (6) (7) (8) (9) (10) (11) (12) (13) (14) (15) (16) (17) (18) (19) (20)

Hollywood Florist... 1449 STUYVESANT AVE

Specialize in Funeral Design and Sympathy Arrangements

Union, Irvington, Springfield, Kenilworth, Roselle and Roselle Park

Five (5) Words of Average Length Will Fill One Line For Extra Long Words Allow Two (2) Spaces

Please Print or Write Clearly... Suburban Publishing Corp.

Name, Address, City, Phone

Insert Ad Time(s) @ per insertion - starting Date Amount Enclosed

(1) (2) (3) (4) (5) (6) (7) (8) (9) (10) (11) (12) (13) (14) (15) (16) (17) (18) (19) (20)

Hollywood Florist... 1449 STUYVESANT AVE

Specialize in Funeral Design and Sympathy Arrangements

Union, Irvington, Springfield, Kenilworth, Roselle and Roselle Park

Five (5) Words of Average Length Will Fill One Line For Extra Long Words Allow Two (2) Spaces

Please Print or Write Clearly... Suburban Publishing Corp.

Name, Address, City, Phone

Insert Ad Time(s) @ per insertion - starting Date Amount Enclosed

(1) (2) (3) (4) (5) (6) (7) (8) (9) (10) (11) (12) (13) (14) (15) (16) (17) (18) (19) (20)

Hollywood Florist... 1449 STUYVESANT AVE

Specialize in Funeral Design and Sympathy Arrangements

Union, Irvington, Springfield, Kenilworth, Roselle and Roselle Park

Five (5) Words of Average Length Will Fill One Line For Extra Long Words Allow Two (2) Spaces

Please Print or Write Clearly... Suburban Publishing Corp.

Name, Address, City, Phone

Insert Ad Time(s) @ per insertion - starting Date Amount Enclosed

(1) (2) (3) (4) (5) (6) (7) (8) (9) (10) (11) (12) (13) (14) (15) (16) (17) (18) (19) (20)

Legal Notices

REINFORCEMENT... WATERPROOFING

Weather Stripping

ALUMINUM WINDOWS INTERLOCK... PUBLICITY CHAIRMAN AND INDIVIDUALS

Classified Advertising Rates

Table with columns: Single insertion 60c per line, 4 or more consecutive insertions 50c per line, 10 or more consecutive insertions 42c per line. Includes a table of charges for different ad lengths.

All classified advertising appears in six newspapers... Closing Deadline—noon Tuesday

TO PLACE A CLASSIFIED Ad... Call 371-3000

Mail Your CLASSIFIED Now On This

EASY WANT AD FORM

Ad will appear in these 6 newspapers for only 12c Per Word

Union Leader, Irvington Herald, Vailsburg Leader, Springfield Leader, Suburban Leader, The Spectator

Reaching 30,000 Families Each Week in Union, Irvington, Vailsburg, Springfield, Kenilworth, Roselle and Roselle Park

Five (5) Words of Average Length Will Fill One Line For Extra Long Words Allow Two (2) Spaces

Please Print or Write Clearly... Suburban Publishing Corp.

Name, Address, City, Phone

Insert Ad Time(s) @ per insertion - starting Date Amount Enclosed

(1) (2) (3) (4) (5) (6) (7) (8) (9) (10) (11) (12) (13) (14) (15) (16) (17) (18) (19) (20)

Hollywood Florist... 1449 STUYVESANT AVE

Specialize in Funeral Design and Sympathy Arrangements

Union, Irvington, Springfield, Kenilworth, Roselle and Roselle Park

Five (5) Words of Average Length Will Fill One Line For Extra Long Words Allow Two (2) Spaces

Please Print or Write Clearly... Suburban Publishing Corp.

Name, Address, City, Phone

Insert Ad Time(s) @ per insertion - starting Date Amount Enclosed

(1) (2) (3) (4) (5) (6) (7) (8) (9) (10) (11) (12) (13) (14) (15) (16) (17) (18) (19) (20)

Hollywood Florist... 1449 STUYVESANT AVE

Specialize in Funeral Design and Sympathy Arrangements

Union, Irvington, Springfield, Kenilworth, Roselle and Roselle Park

Five (5) Words of Average Length Will Fill One Line For Extra Long Words Allow Two (2) Spaces

Please Print or Write Clearly... Suburban Publishing Corp.

Name, Address, City, Phone

Insert Ad Time(s) @ per insertion - starting Date Amount Enclosed

(1) (2) (3) (4) (5) (6) (7) (8) (9) (10) (11) (12) (13) (14) (15) (16) (17) (18) (19) (20)

Hollywood Florist... 1449 STUYVESANT AVE

Specialize in Funeral Design and Sympathy Arrangements

Union, Irvington, Springfield, Kenilworth, Roselle and Roselle Park

Five (5) Words of Average Length Will Fill One Line For Extra Long Words Allow Two (2) Spaces

Please Print or Write Clearly... Suburban Publishing Corp.

Name, Address, City, Phone

Insert Ad Time(s) @ per insertion - starting Date Amount Enclosed

(1) (2) (3) (4) (5) (6) (7) (8) (9) (10) (11) (12) (13) (14) (15) (16) (17) (18) (19) (20)

Legal Notices

REINFORCEMENT... WATERPROOFING

Weather Stripping

ALUMINUM WINDOWS INTERLOCK... PUBLICITY CHAIRMAN AND INDIVIDUALS

Classified Advertising Rates

Table with columns: Single insertion 60c per line, 4 or more consecutive insertions 50c per line, 10 or more consecutive insertions 42c per line. Includes a table of charges for different ad lengths.

All classified advertising appears in six newspapers... Closing Deadline—noon Tuesday

TO PLACE A CLASSIFIED Ad... Call 371-3000

Mail Your CLASSIFIED Now On This

EASY WANT AD FORM

Ad will appear in these 6 newspapers for only 12c Per Word

Union Leader, Irvington Herald, Vailsburg Leader, Springfield Leader, Suburban Leader, The Spectator

Reaching 30,000 Families Each Week in Union, Irvington, Vailsburg, Springfield, Kenilworth, Roselle and Roselle Park

Five (5) Words of Average Length Will Fill One Line For Extra Long Words Allow Two (2) Spaces

Please Print or Write Clearly... Suburban Publishing Corp.

Name, Address, City, Phone

Insert Ad Time(s) @ per insertion - starting Date Amount Enclosed

(1) (2) (3) (4) (5) (6) (7) (8) (9) (10) (11) (12) (13) (14) (15) (16) (17) (18) (19) (20)

Hollywood Florist... 1449 STUYVESANT AVE

Specialize in Funeral Design and Sympathy Arrangements

Union, Irvington, Springfield, Kenilworth, Roselle and Roselle Park

Five (5) Words of Average Length Will Fill One Line For Extra Long Words Allow Two (2) Spaces

Please Print or Write Clearly... Suburban Publishing Corp.

Name, Address, City, Phone

Insert Ad Time(s) @ per insertion - starting Date Amount Enclosed

(1) (2) (3) (4) (5) (6) (7) (8) (9) (10) (11) (12) (13) (14) (15) (16) (17) (18) (19) (20)

Hollywood Florist... 1449 STUYVESANT AVE

Specialize in Funeral Design and Sympathy Arrangements

Union, Irvington, Springfield, Kenilworth, Roselle and Roselle Park

Five (5) Words of Average Length Will Fill One Line For Extra Long Words Allow Two (2) Spaces

Please Print or Write Clearly... Suburban Publishing Corp.

Name, Address, City, Phone

Insert Ad Time(s) @ per insertion - starting Date Amount Enclosed

(1) (2) (3) (4) (5) (6) (7) (8) (9) (10) (11) (12) (13) (14) (15) (16) (17) (18) (19) (20)

Hollywood Florist... 1449 STUYVESANT AVE

Specialize in Funeral Design and Sympathy Arrangements

Union, Irvington, Springfield, Kenilworth, Roselle and Roselle Park

Five (5) Words of Average Length Will Fill One Line For Extra Long Words Allow Two (2) Spaces

Please Print or Write Clearly... Suburban Publishing Corp.

Name, Address, City, Phone

Insert Ad Time(s) @ per insertion - starting Date Amount Enclosed

(1) (2) (3) (4) (5) (6) (7) (8) (9) (10) (11) (12) (13) (14) (15) (16) (17) (18) (19) (20)

Legal Notices

REINFORCEMENT... WATERPROOFING

Weather Stripping

ALUMINUM WINDOWS INTERLOCK... PUBLICITY CHAIRMAN AND INDIVIDUALS

Classified Advertising Rates

Table with columns: Single insertion 60c per line, 4 or more consecutive insertions 50c per line, 10 or more consecutive insertions 42c per line. Includes a table of charges for different ad lengths.

All classified advertising appears in six newspapers... Closing Deadline—noon Tuesday

TO PLACE A CLASSIFIED Ad... Call 371-3000

Mail Your CLASSIFIED Now On This

EASY WANT AD FORM

Ad will appear in these 6 newspapers for only 12c Per Word

Union Leader, Irvington Herald, Vailsburg Leader, Springfield Leader, Suburban Leader, The Spectator

Reaching 30,000 Families Each Week in Union, Irvington, Vailsburg, Springfield, Kenilworth, Roselle and Roselle Park

Five (5) Words of Average Length Will Fill One Line For Extra Long Words Allow Two (2) Spaces

Please Print or Write Clearly... Suburban Publishing Corp.

Name, Address, City, Phone

Insert Ad Time(s) @ per insertion - starting Date Amount Enclosed

(1) (2) (3) (4) (5) (6) (7) (8) (9) (10) (11) (12) (13) (14) (15) (16) (17) (18) (19) (20)

Hollywood Florist... 1449 STUYVESANT AVE

Specialize in Funeral Design and Sympathy Arrangements

Union, Irvington, Springfield, Kenilworth, Roselle and Roselle Park

Five (5) Words of Average Length Will Fill One Line For Extra Long Words Allow Two (2) Spaces

Please Print or Write Clearly... Suburban Publishing Corp.

Name, Address, City, Phone

Insert Ad Time(s) @ per insertion - starting Date Amount Enclosed

(1) (2) (3) (4) (5) (6) (7) (8) (9) (10) (11) (12) (13) (14) (15) (16) (17) (18) (19) (20)

Hollywood Florist... 1449 STUYVESANT AVE

Specialize in Funeral Design and Sympathy Arrangements

Union, Irvington, Springfield, Kenilworth, Roselle and Roselle Park

Five (5) Words of Average Length Will Fill One Line For Extra Long Words Allow Two (2) Spaces

Please Print or Write Clearly... Suburban Publishing Corp.

Name, Address, City, Phone

Insert Ad Time(s) @ per insertion - starting Date Amount Enclosed

(1) (2) (3) (4) (5) (6) (7) (8) (9) (10) (11) (12) (13) (14) (15) (16) (17) (18) (19) (20)

Hollywood Florist... 1449 STUYVESANT AVE

Specialize in Funeral Design and Sympathy Arrangements

Union, Irvington, Springfield, Kenilworth, Roselle and Roselle Park

Five (5) Words of Average Length Will Fill One Line For Extra Long Words Allow Two (2) Spaces

Please Print or Write Clearly... Suburban Publishing Corp.

Name, Address, City, Phone

Insert Ad Time(s) @ per insertion - starting Date Amount Enclosed

(1) (2) (3) (4) (5) (6) (7) (8) (9) (10) (11) (12) (13) (14) (15) (16) (17) (18) (19) (20)

THE FEMININE LOOK. Commentary on a recent National Editorial Association Round the World Newspaper Study Mission. By TRUDINA HOWARD.

OVERHEARD. By EFFIE. Next the Living Doctor Service and the School of the Air.

Bible Quiz. By MILT HAMMER. See if you can match the names of the Bible boys on the names of the boys in the Bible.

REPAIRS ON ALL HOUSEHOLD APPLIANCES. Lary Electronics. 642-5739.

A-A AUTO STORES. ELIZABETH NEWARK. 642 Elizabeth Ave. 377 So. Orange Ave.

Sunday Morning with Coupon. Vista Wash & Wax Motor Meds. 99c.

the ONE MUFFLER GUARANTEE that really works! ELIZABETH AVENUE. 967 S. ELMORA AVENUE.

MIDAS MUFFLER SHOPS. UNION 1449 STUYVESANT AVENUE. KINGSTON FUEL CO. FALK FUEL CO.

