

Your Want Ad

Is Easy To Place—

Just Phone 686-7700

VOL. 7—No. 19

Second Class Postage
Paid at Mountainside, N. J.

Subscription Rate
\$3.00 Yearly

MOUNTAINSIDE, N. J., THURSDAY, APRIL 22, 1965

Published Each Thursday by Robinson Publishing Corp.
2 New Providence Road, Mountainside, N. J. 07021

10 Cents Per Copy

G.O.P. To Run Newcomers Brandt, Spain For Council



GO-GO! — A few of the hundreds of children who joined the annual Easter egg hunt, sponsored by the Mountainside Kiwanis Club, are shown taking off from the starting line in the playing field of Echobrook School while their

parents form the rooting section. About 1,200 chocolate eggs were collected by the young searchers. Those who found one of the 40 eggs with the Kiwanis seal were awarded prizes. Theodore Ruberti was hunt chairman.

Opposition Hinted For Primary By Republican Group

Dems Have One Day To Choose Candidate For Mayor's Post

Two newcomers to political circles, Wilfred H. Brandt of 1203 Wyoming dr. and B. Dean Spain of Outlook dr., will file as Republican candidates for seats on Mountainside's Borough Council. Their entrance completes the GOP ticket, since Mayor Frederick Wilhelm Jr. announced last week that he would seek re-election to the top municipal post.

The Democrats, who expected to select a mayoralty candidate by the end of last week, as of Tuesday night had no name to offer for the top spot on their ticket. Jules Rose and Joseph Slypa, the Democratic candidates for Councilmen last fall, announced their entry into the race some weeks back. The Democratic municipal chairman, Chester Allen, as of Tuesday had no comment on whether or not a mayoralty candidate would be included on the primary ticket.

Deadline for filing is today at 4 p.m. If the Republican ticket is unopposed it would mark the

Dems Choose Seeds To Face Wilhelms

William C. Seeds of 333 Short dr., has been picked by Mountainside Democrats as the party's choice for Mayor. It was announced at press time by Chester Allen, municipal chairman.

If Seeds gets through the June 1 primary he will face incumbent Mayor Frederick Wilhelm Jr. Seeds has lived in Mountainside since 1958. Before that he resided in Mt. Arlington where he was a member of the Borough Council for three years.

first time in at least three years that there has been no race for nominations for local office in the GOP primary. Rumors around town indicated that an opposing slate might be entered but no organized opposition was in evidence. A few formerly active Republicans hinted that a surprise move was planned but no one admitted to having part in such a plan.

Former Councilman Raymond Herrgott, who previously had refused to confirm or deny a report that he would enter the Republican primary against Wilhelm, said Tuesday night that he had decided to stay out of the race.

Gene Simpson, president of the (Continued on Page 2) PRIMARY RACE



REUNION AND MEETING — Mrs. Ciszzi Pagola, second from left, was reunited last week with her daughter, Mrs. Rose Weiler, whom she had not seen in over 25 years, and met for the first time her grandsons, Tommy, 14, and Gary, 9. The happy quartet is pictured in the Weiler home at 1379 Wood Valley rd., Mountainside.

Separated 25 Years Mother And Daughter Meet

By RITA ZEISS

A mother and daughter, separated for over 25 years by war and its bitter aftermath, were reunited last week in Mountainside.

It was a "traumatic" experience for both of them, the daughter, Mrs. Rose Weiler of 1379 Wood Valley rd., said last Thursday. "We did not recognize each other," she said half-tearfully, describing the meeting on a New York pier, with her mother, Mrs. Ciszzi Pagola, now a Paris resident.

Mrs. Weiler had not seen her mother since 1939 when she remained in Casa Blanca with relatives while her mother returned to their native Hungary. The mother and daughter had gone to Casa Blanca that year shortly after the death of Mrs. Weiler's father. The climate did not agree with Mrs. Pagola (then Mrs. Ereclyi) and even though war had already broken out in Europe she returned to Budapest. The daughter's decision to stay in Casa Blan-

ca was determined by her desire to continue her study of French, not by fear of the war.

"The war had just started—we didn't dream how long or how awful it would be," Mrs. Weiler points out.

Mrs. Pagola, who speaks Hungarian and French, lived through months of horror, months when she hid in basements while the Germans and Russians carried on bitter and unrelenting house-to-house fighting.

No word passed between the two until 1943 when the news started trickling out to Casa Blanca. It was in that year that Mrs. Weiler, then working for the American armed services, received a telegram from the Red Cross listing the names of surviving relatives. Her mother's name was among them. But it was not until two years later that she received any direct word.

Meanwhile, she had met many American servicemen. The uncle with whom she lived considered every man in American uniform his personal deliverer and had them constantly as dinner guests. One of them was A. G. ("Bill") Weiler of Burwell st., Union, Of Hungarian descent, Bill could speak Hungarian.

By a quirk of fate she left her uncle's home for Algeria, where she was scheduled to catch a plane for America and her wedding to Bill in the fall of 1946, just six months before her mother came seeking her in Casa Blanca.

Stranded in Algeria for a month, while the airplane line was on strike, and again in Ireland for three days, Rose (Continued on Page 2) REUNION HERE

May 5 Kickoff Set On Drive To Build Library Facility

A kick-off meeting aimed at the establishment of a new library in Mountainside has been called for the evening of May 5 by Gene Simpson, chairman of the library's redevelopment committee.

All civic organizations in the borough will be invited to send representatives to the meeting, which will be held in the library in the basement of Echobrook School.

According to Simpson, who was appointed to the library board this year by Mayor Frederick J. Wilhelm Jr., the goals and specific aims of the redevelopment program will be outlined and discussed at the meeting. Although no architect has been hired, Simpson indicated that a goal of \$100,000 has been set by his committee.

Several organizations in the borough have already made donations to the fund. Many of those donations were made as the result of talks given at club meetings of Sidney Mele, president of the Library Trustees, and Harry Devlin, vice-president. Mele and Devlin started the campaign last fall in an attempt to make residents aware of the lack of facilities in the present library.

Simpson stated that as yet no site has been designated for the proposed library. He said he did not know if a library is included in the "municipal facilities" that the Planning Board's recently released master plan recommended should be located on the present site of Echobrook School. Mele and Devlin have stated many times that they feel the library should be kept separate from other municipal facilities. (Continued on Page 2) LIBRARY KICKOFF

Baseball Season Opens Saturday; 500 Join Parade

Close to 500 Mountainside boys and girls will participate Saturday in ceremonies that will mark the official opening of the borough's baseball season. Members of the Little League, the Girls Softball League, the National League, the American League and the Senior League will congregate at the intersection of Wood Valley rd. and Bridge path at 8:30 for the annual parade.

Mayor Frederick Wilhelm Jr. and other borough officials will lead the parade, riding in a convertible. The league managers, Frank Magno, Charles Shomo, Bud Roche and Mel Lemmerhirt will march with their contingents. Marching music will be provided by the band of Governor Livingston Regional High School, Berkeley Heights.

Also in the line of march will be the Rescue Squad ambulance and a police car.

The parade will end at the playing field of Deerfield School where Tom Ricciardi, league president, will give the welcoming address. Other speakers will be Fire Chief Henry Porter, Police Chief Henry Fritz, Jack Hildebrand, president of the Board of Education, and Mayor Wilhelm. The invocation will be offered by a priest from Our Lady of Lourdes and the Boy Scouts will conduct the flag raising ceremony.

Mayor Wilhelm will throw out the first ball. Games are scheduled at 10 a.m., noon and 2 p.m. All the teams in the baseball league will play on opening day, a league spokesman (Continued on Page 3) BASEBALL OPENS

Planners Continuing Hearing After Rezoning Is Protested

Mid-May is the target aimed at by Mountainside's Planning Board for a continuation of last week's public hearing on the master plan. The hearing, held in Deerfield School, drew 150 residents, the great majority of whom seemed to be there to voice their protest over the proposed rezoning of the A. A. Wilson tract on Rt. 22.

The board chairman, Robert

Garrett, said Monday that a definite date will be set as soon as the planners complete their study of the transcript of the hearing and review the questions raised by residents at that time.

Garrett expressed himself as "encouraged" by the hearing, which was attended by approximately 150 residents and "pleased with the interest" evidenced. Many "good points"

were brought up, he said, and he indicated that he felt the request of the representatives of various civic organizations for an extension of the hearing was "legitimate."

The request for an extension was voiced by Jackson A. Lahn, representing the Civic League Association, and Harry Swensen, representing the Pembroke Civic Association, and others.

Main concern of most of those attending seemed to be the proposed changing of the zoning of the tract of land fronting on Rt. 22 and owned by A. A. Wilson for one-family residential to "non-retail, preferred restricted commercial," a new classification recommended in the master plan. The new zone would allow low density occupancy, offices, research laboratories and rest home or similar use in the Wilson tract and other areas in the borough.

Case In Litigation
Wilson has been in litigation with the Borough for the past two years over the use of his tract of land which comprises close to 12 acres. Currently before Superior Court Judge Milton A. Feller is Wilson's attempt to get a reversal on the local Board of Adjustment's denial of his application for a variance to erect a garden apartment with 150 units and a furniture store on the site.

Judge Feller reserved decision when the case came before him last fall. A hearing held March 19 in Judge Feller's chambers was continued pending outcome of discussions between Wilson and representatives of the borough.

At last week's hearing, Mayor Frederick Wilhelm Jr. said he has conferred with Wilson and his lawyer earlier this year and that both parties are now actively seeking compromise measures to settle the dispute.

Wilhelms cautioned that the borough could lose the case (a point he brought out in his campaign last fall) and then the borough would find itself with apartments and/or retail stores, neither of which is recommended in the master plan. He urged residents to give "slow and serious study" to the master plan on the basis of what is good for the borough. (Continued on Page 2) PLAN HEARING

Councilman Daniels Resigns From Post

In a surprise move Councilman Daniels resigned his seat on Mountainside's Borough Council at the close of Tuesday night's meeting. Daniels, whose term would have expired at the end of this year, gave "personal reasons" as the cause of his resignation which became effective immediately. He said he "took the action" with regret.

Mayor Frederick Wilhelm Jr. expressed his regret at the "loss (of Daniels) to the community and the Council." No one was named to fill the vacancy.

The legality of Daniels' sitting on the municipal body was challenged at the March meeting by former Councilman Raymond Herrgott who asked the Council to investigate "rumors" that Daniels was not a resident of Mountainside. Borough Attorney Nicholas St. John LaCorte later advised the Council that Daniels was legally entitled to sit on the official body.

SURPRISE MOVE

Robert Ruggiero of 357 Hedge row was appointed to fill the seat on the Planning Board left vacant by the resignation of veteran member Albert Hartung last February. Ruggiero, whose term will run until the end of 1966, practices law in Jersey City. He is a graduate of Villanova University and Fordham Law School.

Limited Report
Councilman Gilbert Pittenger presented a limited report on the space study of borough facilities recently completed by Kaufmann and McMorris, Elizabeth architects. The plans drawn by the architects were not available at the meeting and Pittenger stated that estimates of costs of carrying out the architects' proposals would not be made public until the Council "had more time to study" them.

The portion of the reports available showed that a two-pronged study had been conducted. One attempted to fit borough facilities, including offices, police department, fire department and library, into the buildings presently in use. (Continued on Page 2) DANIELS RESIGNS

NAMED TO HONOR SOCIETY

Ten Livingston Juniors Inducted

Ten juniors were inducted into the National Honor Society at ceremonies held recently in Governor Livingston Regional High School, Berkeley Heights. New inductees included Faith Allen, Stephanie Doba, Jeanne Reel, John Carver, James Testa, Katherine Lagate, Robert Johnson, Simon Mundy, James Caldwell and Gal Schlegelheim.

Turn Clocks Ahead

The road to summer will pass another milestone when all clocks are turned ahead one hour this Sunday at 2 a.m. with the arrival of Daylight Saving Time. The hour of sleep lost this weekend will be gained back next fall when the area returns to Eastern Standard Time.

State Scholarships Are Awarded To Three Mountainside Students

Three Mountainside students are among the 4,104 New Jersey high school students who will receive state scholarships beginning in the fall of this year. They are Miss Geraldine P. Purchase of 928 Mountain ave., Frank J. Hoisele of 227 Summit rd. and Timothy P. O'Rourke of 1006 Sylvan lane.

Scholarship winners will receive \$500 a year or the amount of tuition in the college they attend, whichever is less. Formerly \$400, this maximum was recently extended by legislative amendment.

According to a release issued by the State Scholarship Commission, the awards were based on the degree of financial need in obtaining a college education and scholastic promise as evidenced by the applicant's high school record and College Entrance Examination Board test scores.



ROBERT RUGGIERO

ECHO PROFILE — Robert Ruggiero

Robert Ruggiero of 357 Hedge row, Mountainside, was appointed to Mountainside's Planning Board Tuesday night. A borough resident for about two-and-a-half years, he has had no previous experience on any borough board.

He isn't quite sure why he was selected. He thinks perhaps it might be because he appeared briefly before the board a few months back requesting a clarification on the status of a 25-foot strip of land which Our Lady of Lourdes Parish had dedicated to the borough a while back when there was a possibility of constructing a road near church property. As secretary of the parish's Holy Name Society and a practicing lawyer, he had been delegated to represent the parish.

His only other appearances at sessions of the Planning Board or any other borough body, he confesses with a sheepish grin, were at public hearings when he was

appearing in protest against some action or other which he felt might adversely affect his neighborhood.

Since he was approached on the possibility of accepting an appointment to the Planning Board, he finds he has revised his thinking.

Holding his big, competent looking hands before him in a cup shape, he says: "You begin to get a new perspective. You find yourself not just thinking about your own immediate area but the community as a whole — you look at problems from a new angle then."

The Ruggieros lived in Cranford before coming to Mountainside with their small sons, Charles, now 4, and Peter, 2.

Their house is furnished in early American. Tables and chairs, a dry sink, all kinds of treasured early Americana which Mrs. Ruggiero ferretted out in innumerable (Continued on Page 3) ECHO PROFILE

New Jersey's FIRST Federal Association



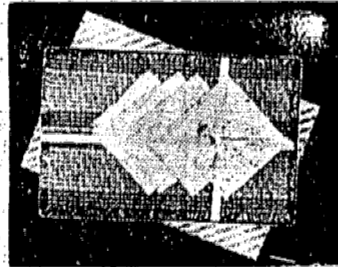
LAST CALL

Celebration ENDS

Tomorrow
APRIL 23rd

Door Prizes and FREE GIFTS FOR ALL

- 1st PRIZE — Your Choice Of
BERMUDA TRIP FOR TWO
or
23" COLOR TV SET
- 2nd PRIZE — Five Winners
(5) \$50 SAVINGS ACCOUNTS
- 3rd PRIZE — Ten Winners
(10) \$25 SAVINGS ACCOUNTS



- ★ COLONIAL HOBNAIL LAMP
 - ★ GOURMET CASSEROLE
 - ★ ALL LINEN PLACE MAT SET
- YOUR CHOICE OF ABOVE GIFTS — READ REQUIREMENTS

Celebrating Our New Office

865 Mountain Avenue, Mountainside

To get your FREE GIFT — simply, open a new savings account with \$25 or more at our new office, 865 Mountain Avenue, Mountainside, New Jersey. You must open your account in person. Gift cannot be mailed. Sorry only one FREE GIFT to a person. Hurry in and select the gift of your choice. Also, FREE DOOR PRIZES and many other FREE GIFTS. Offer ends tomorrow.



FIRST FEDERAL SAVINGS

865 Mountain Ave. Mountainside, New Jersey
150 Elm Street Westfield, New Jersey
Home Office

Reunion Here

(Continued from Page 1)

arrived in this country in December, 1946. Shortly after she and her mother started to communicate and letters and pictures have been exchanged over the years.

Mrs. Pagola remained in 1952 and has lived in Paris since 1959. Her trip across the Atlantic was made on the "France" a one luxury liner. She was scheduled to return May 13 on the same ship.

WHEN THE SHIP docked the Weilers were unable to find Mrs. Pagola in the crowd of about 2,000 passengers who streamed down the gangplank. She finally recognized not her daughter, but her son-in-law from pictures sent to her. She says that she recognized her grandson, too, through a family resemblance.

Still straight and slender at 62, Mrs. Pagola, with her daughter serving as interpreter, said that she is so grateful to Americans, particularly her daughter's parents, for being so kind to her only child.

She regrets that her grandsons cannot speak either Hungarian or French and so cannot communicate directly with her. However, she delights in seeing them and is sure they will break a little of the language barrier before she leaves for home.

She brought her daughter a gift, a link bracelet of 18 karat gold, the only thing she saved from many valuable pieces of jewelry in the family. The bracelet was made from gold melted from the jewelry and refined by a dentist friend who combined it with 18 karat gold to remove the impurities. That and \$20 was all she managed to take from the country when she left Hungary permanently in April 1948.

But she has brought many more things, her daughter said emotionally—news, much of it heartbreaking, of relatives and friends whom they will most probably never see again, memories of a former life that for a time "seemed like a dream" and, most important of all, a second grandmother for the Weiler boys.

The boys brought the ship's passenger list, copies of the ship's menu and all other notable items to school for "show and tell."

"I think they'd bring grandma if they could," Mrs. Weiler said laughingly.

THE WEILERS have several expeditions planned to show Mrs. Pagola the country her daughter now happily and proudly calls her own. A trip to Atlantic City to see the boardwalk, a motor tour of the surrounding area, and, most important of all, a trip to Washington, D. C., to visit the grave of President Kennedy.

Her mother, like most Europeans, felt a "great kinship" with the assassinated president, Mrs. Weiler explained. She herself feels a great kinship with all Americans who are, she says, emotionally, "too good, too kind, much too naive."

As an example of her encounter with the kindness of Americans, Mrs. Weiler remembered her first day in this country. While stranded in Algeria, she had read (in French) "A Tree Grows in Brooklyn." She and her future husband took a cab from the airport. The cabdriver, overhearing her inquiries as to which was the way to Brooklyn, took an uncharged detour to Brooklyn, where he lived, offered them "coffee and" in his home before driving to Bill's home in Union.

"That," Mrs. Weiler says dramatically, is typical of Americans — so good, so kind. And that's why whenever I see the American flag, or hear the national anthem I just could cry. It's such a wonderful, wonderful country."

Library Kickoff

(Continued from Page 1)

received impetus at the February meeting of the board when the library director, Mrs. Emily Hoffarth, asked Mayor Wilhelms if a portion of borough-owned land near the northwest corner of New Providence rd. and Rt. 22 could be committed by the Borough Council for use as a library site. Board members indicated at that meeting that they would petition the Borough Council for such a commitment.

The board also discussed at that meeting the formation of a community-wide group, to be known as Friends of the Library, which would take an active part in raising funds and enlisting community support for the endeavor.

Possible means of raising funds for the library construction — taxes, a bond issue, a fund drive or a combination of all three — were also discussed at that time.

Basing his comments on a report submitted early last summer by Councilman Gilbert Pittenger and former Councilman Raymond Herrgott, Mele estimated that 6,000 square feet would be needed in the proposed library for adequate accommodations. This figure was reached, he said, on the recommendation of three books for each resident and included a projected maximum population in the borough of 9,000.

Rescue Unit Plans Course On First Aid

Mrs. Marguerite Becker, captain of Mountainside's Rescue Squad, will conduct a four-week Red Cross standard American first aid course next month at the Rescue Squad Headquarters on Rt. 22.

The course will open May 4 and continue through consecutive Thursday evenings until 10:30. Registration may be made on opening night. The course is open to all area residents.

Captain Becker, who has acted for over 15 years as a Red Cross instructor, expressed the hope that industrial and commercial establishments in the area could send representatives to the course. Her long experience in Red Cross work and with the Rescue Squad has taught her the importance of having some one versed in first aid available in time of accident, the captain said.

It is particularly important for industry to have at least one or two of their employees trained in first aid so steps can be taken to stop bleeding or to start the victim breathing while waiting for the ambulance to arrive," she emphasized.

Further information about the course may be obtained by contacting the squad president, Mrs. Loyce Meehan, AD 2-6656.

Primary Race

(Continued from Page 1)

Mountainside Republican Club, said Tuesday night that the state was approved by the executive boards of the Mountainside Republican Club and the Regular Republican Clubs.

Mayor Wilhelms praised his running mates as "fine and capable men."

Brandt, who moved to Mountainside in June, 1962 from Baltimore, Md., is manager of marketing analysis for the chemical division of Olin Mathieson Chemical Corp. in the firm's New York City office. A member of Our Lady of Lourdes Church, he has been active in the Holy Name Society and is presently serving as program chairman. He and his wife, Louise, have two children, Patricia, 10, and Susan, 6.

Spain, who also has been a Mountainside resident since 1962, formerly lived in Old Tappan, where he served as Councilman in 1961. Born in Texas, he and his wife, Pauline, moved to New Jersey in 1956. He attended Texas Christian University and is now president of Baker and Taylor Co., Hillside, a book distributing firm which he joined in 1960. He was appointed last January to Mountainside's Recreation Commission.

The Spains have two sons, Jon, 14, and Michael, 13, both students at Deerfield School. Mr. and Mrs. Spain attend Community Presbyterian Church. She has been active in the Newcomers Club and is presently serving as a vice-president of the P.T.A. of Governor Livingston Regional High School.

The Republican municipal committee was short two members as of press time; the Democratic committee lacked only one. Among the vacant posts on the GOP slate group was the District 4 slot formerly held by Mrs. Billie Jean Tulchin who resigned as president of the Republican Woman's Club because of what she termed an "invalid" endorsement of Mayor Wilhelms and Councilmen William McCurley and George Coughlin issued in the club's name before last November's election.

Plan Hearing

(Continued from Page 1)

The entire community. He estimated that the borough has lost \$100,000 in rentals during the course of the litigation plus the cost of the legal expenses incurred over the years.

H. A. Saunders, an architect in the employ of W. J. W. who is now in the employ of the borough, said the matter is not yet settled and that there are "many questions" in the borough's compensation. However, he outlined the difficulties of locating the site when the land is not rezoned to allow such enterprises and when the land is still involved in litigation.

The proposed vacating of Echobrook School and the use of that site as a municipal center, as recommended in the master plan, was questioned by Jules Rose, Democratic candidate for Councilman. Rose wanted to know what substitute facilities would be provided for the school. Mayor Wilhelms said such matters are in the province of the Board of Education.

Albert Hartung, long time member of the Planning Board who resigned two months ago, and former Councilman Raymond Herrgott, raised several questions on the plan's recommendations which drew answers from Mayor Wilhelms.

EARLY COPY
Publicity chairman and individuals are urged to observe the Friday deadline of this newspaper for other than spot news. Thursday is even better. Include your name, address and phone number.

Daniels Resigns

(Continued from Page 1)

only used by Echobrook School. The other advised the erection of completely new facilities on borough-owned property on the northeast corner of Rt. 22 and New Providence rd. The second plan seemed to be favored by the architects who outlined the difficulties of attempting to fit facilities into existing buildings.

Borough facilities are now housed in a total of 7,646 sq. ft., the report showed. A total of 18,000 to 20,000 sq. ft. was the minimum area needed to give adequate space, the report indicated.

Pittenger pointed out that the inclusion of Echobrook School in the study was made because at the time Kaufman and McMurray were authorized to begin the study, "it looked as though Echobrook would be abandoned in the near future." Wilhelms said he "wanted to make one thing clear — the Mayor or the Council is not asking the Board of Education to relinquish Echobrook School."

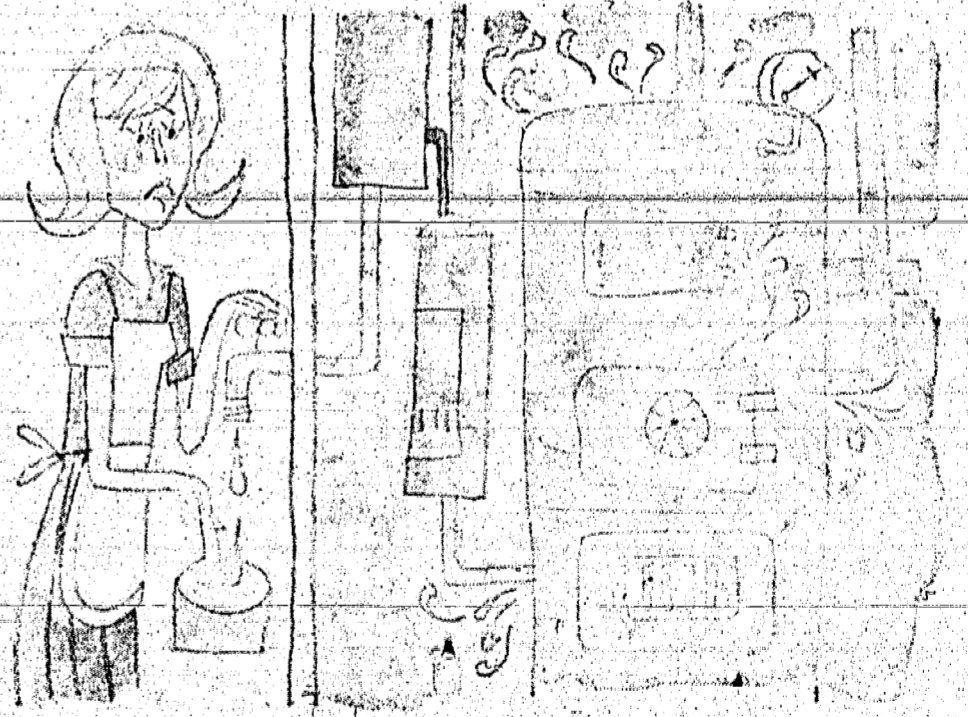
Mountainside Echo

2 New Providence Road, Mountainside, N. J.
Published Each Thursday by Trumer Publishing Corp.
Second Class Postage Paid at Mountainside, N. J.
Ten Cents Per Copy
Mailed Subscription Rate \$3 per year
Phone: 686-7700

Gray Inc.
Funeral Directors
SINCE 1897

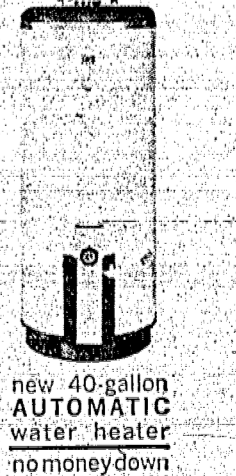
WESTFIELD A. Salberg Mgr. 318 E. Broad St. AD 3-0142	CRANFORD F. H. Gray Jr. Mgr. 12 Springfield Ave. BR 6-0092
----------------------------------------------------------------------	----------------------------------------------------------------------------

Do you run your entire heating system all summer just for hot water...



and still never have enough?

Chances are, your heating system was designed to produce enough hot water only when running full blast. In summer it "idles" along. Water heating is chillingly slow. One shower empties the tank. The water gets lukewarm toward the end of the dishes. You wait between washer loads until the furnace huffs and puffs up some more hot water. Why stand for it? An efficient, properly-sized automatic gas water heater gives you a never-ending torrent of hot water. All year long. Economically. For dishes and showers and laundry. And luxury.



new 40-gallon AUTOMATIC water heater no money down \$5-per-month!

Offer Limited to Area Served by Elizabethtown Gas Co.

Elizabethtown Gas

ELIZABETH 17 W. Jersey St./500 N. Broad St. EL 2-6100	METUCHEN 452 Main Street ME 6-1700	PERTH AMBOY 220 Market Street ME 6-1700	RAHWAY 219 Central Avenue ME 6-1700	WESTFIELD 184 Elm Street AD 3-0040
-------------------------------------------------------------	------------------------------------------	-----------------------------------------------	-------------------------------------------	------------------------------------------

Borough Library Notes Book Week Starting Sunday

ECHO PROFILE

(Continued from Page 1)

able raids on antique shops...

Mrs. Ruggiero, the former Diane Pizzo...

Their oldest son, whom they call "Chuck," is already something of an antique "buff"...

Mrs. Pritchard will teach vocal music in the Scotch Plains-Fanwood elementary schools...

Barrett Addresses Teaneck Realtors

R. R. Barrett Jr., president of Barrett and Crain, Inc., realtors of Westfield and Mountainside...

Marie Keegan Wins Academic Honors

Miss Marie Keegan, daughter of Mr. and Mrs. W. V. Keegan of Force dr., Mountainside...

Democrats To Hear Trustees Of Library

Sidney Cole and Larry Devin, president and vice-president, respectively, of the Mountain-side Library Trustees...

PEACOCKS

Noreen Kelley, Karen Kozowski, Susan Riley, Gail Vollherbst...

ORIOLES

Debbie Kaver, Barbara Lennox, Kathy Weeks, Janice Heimlich...

CARDINALS

Robin Keller, June Leo, Paula Thwing, Joyce Agee, Susan Douglas...

FLAMINGOS

Heidi Alber, Shelley Blaser, Carol Mulreany, Gail Rau...

RED SOX

Gary Caputo, Neil Daehler, Jay Friedman, John Maiorana...

ORIOLES

Dennis Carlson, Bruce French, Thomas Gere, Giv Groves...

TIGERS

Don Bliwise, Jimmy Ditzel, Jeff Harbaugh, Michael Hartnett...

TWINS

Alan Barry, David Brown, Wayne Cantagallo, Garry Farrell...

YANKEES

Dennis Carlson, Bruce French, Thomas Gere, Giv Groves, Wayne Lemmerhirt...

LIFE SAVER

Jackie Vincent of Mountainside has been awarded a Senior Red Cross lifesaving certificate...

They both share an enthusiasm for golf...

She accepts the fact that his new duties on the planning board will probably take him away from home for many hours...

Ruggiero, a graduate of Villanova University...

Swimming and boating and summers at the shore are important parts of the Ruggieros' life...

He was surprised to find that "the little kid who used to play on the beach" was now quite a grown-up lady...

Books WORLD BOOK ENCYCLOPEDIA FOR PRICES & TERMS CALL MARGARET AHLFELD - REG'L MGR.

In celebration of Book Week, which opens Sunday, the Mountainside Public Library will distribute book marks...

Displays created by the students of Echobrook School have been set up in the library...

A book written by the late Winston Churchill, "Painting As A Pastime," was presented to the library...

WINS LETTER AT BROWN - Michael Levy of Mountainside was one of 61 students at Brown University to receive varsity letter awards for winter sports...

Mountain Spring Bake Shop DIETETIC PIES • CAKES COOKIES • ICE CREAM

(Continued from Page 1) said. Games will be held on the five diamonds at Deerfield field, one at Echobrook and one at Beechwood field.

Wolkin, John Faulkner, John Freudenberger, Don Wagner, Warren Banach, Chris Legacki...

MUSTANGS Tom De Conna, David Johnson, Richard Knopf, Jim Wasko...

NATIONAL LEAGUE BRAVES Ted White, Jack Zarra, Richard Belfatto, Frank Petranich...

CARDINALS Albert Broda, Vito Gregorio, Robert McDonald, Charles Negro...

CUBS Ron Bohnerberger, Ken Hoffman, Peter Saloom, David Wagner...

PIONEERS Alan Emslie, Bernie Harlow, Joseph Lorber, Pat Ricciardi...

YANKEES Michael Onufred, Billy Brandstatter, Robert Alken, Tracy Masters...

PIRATES Ronald Criscitello, Robert Townsend, Bruce Ochmanek...

DODGERS John Buschmann, Frank De Rosa, Fred Oberman, Richard Badge...

GIANTS Larry Gaffney, Steven Slaters, Howard Richman, Steven Pruden...

AMERICAN LEAGUE ORIOLES Jeffrey Knoph, James Foster, Thomas Roche, Richard Heller...

WHITE SOX Thomas Smith, John Kuntz, Tom Gonnella, Donald Mackey...

TIGERS Terry Quinn, William Hummel, Richard Flegenhimer, Beau Bossert...

RED SOX Jeff Tomko, Kip Mulligan, Scott Kuffer, Ralph Yeager...

senquest, Terry Baker; Florence Parent, manager and Jean Tonigan, assistant.

CANARIES Virginia Aldrich, Susan Brunfield, Michele Guidotti, Sheila Carlson...

BLUE JAYS Deborah Burley, Adele Kranchich, Leigh Wisniewski, Debra Bassillo...

ORIOLES Pam Britton, Candy Messina, Diane Senna, Susan Entwistle...

EAGLES Kim Daniels, Dorothy Heindrichs, Janis Herrigott, Elizabeth Farrell...

FALCONS Debbie Kaver, Barbara Lennox, Kathy Weeks, Janice Heimlich...

PEACOCKS Noreen Kelley, Karen Kozowski, Susan Riley, Gail Vollherbst...

CARDINALS Robin Keller, June Leo, Paula Thwing, Joyce Agee...

FLAMINGOS Heidi Alber, Shelley Blaser, Carol Mulreany, Gail Rau...

RED SOX Gary Caputo, Neil Daehler, Jay Friedman, John Maiorana...

ORIOLES Dennis Carlson, Bruce French, Thomas Gere, Giv Groves...

TIGERS Don Bliwise, Jimmy Ditzel, Jeff Harbaugh, Michael Hartnett...

TWINS Alan Barry, David Brown, Wayne Cantagallo, Garry Farrell...

YANKEES Dennis Carlson, Bruce French, Thomas Gere, Giv Groves...

LIFE SAVER Jackie Vincent of Mountainside has been awarded a Senior Red Cross lifesaving certificate...



He's going through the Bell System Pavilion again at the World's Fair. For the next fourteen minutes he's going to be captivated by the Ride through the long history of man's efforts to communicate...



USE THIS HANDY CHECK-LIST TO HELP YOU WITH YOUR PLANNING:

Project Est. cost Exterior Painting Interior Painting, Plastering, Papering Landscaping Patio Driveway or Sidewalks Remodeling or Additions New Roof or Repairs Siding, Gutters and Drainspouts Air Conditioning or Heating Storm Windows or Doors New Plumbing or Fixtures Rewiring Electric System Swimming Pool Carpeting Sewerage Installation

The expense of home improvements and repairs never seems to end. But you can do the work now and take years to repay with a low-cost home improvement loan from The National Bank of Westfield and Mountainside. Just list the estimated costs of the projects you're now planning and let us know how we can help. When it comes to money, come to The National Bank.

termite, pests? "WESTERN to the rescue!" No matter how seriously your home may be threatened by termites, don't despair... WESTERN will come to the rescue! WESTERN local Professionals are trained to be courteous... trained to use the most modern methods and materials to solve any termite problem. Call WESTERN today! \$5,000 Future Damage Guarantee for Buildings that Qualify. WESTERN TERMITE CONTROL 1048 Route 22, Mountainside-Phone Adams 3-4100

The NATIONAL BANK WESTFIELD MOUNTAINSIDE "A Community Bank dedicated to Community Service" Member of Federal Reserve System Member Federal Deposit Insurance Corporation

NEWCOMERS SET DANCE; TICKETS STILL AVAILABLE

The Mountainside Newcomers Club will hold a "Moonlight and Roses" dinner-dance May 1 at the Washington House, North Plainfield from 8 p.m. until 1:30 a.m.

Cooktail parties have been arranged for couples to get acquainted before the dance. Tickets for both are available to members and guests.

Reservations can be made by calling Mrs. John McCarthy or Mrs. Charles Irwin, chairman of the dance, or Mrs. Paul Mocko, co-chairman.

The proceeds from this dance and the fashion show held last month will be donated to the fund for the construction of a new library in the Borough.



MOONLIGHT AND ROSES will set the mood for the dinner-dance scheduled May 1 at the Washington House, North Plainfield, by the Mountainside Newcomers Club. Pictured making the giant roses that will help create the romantic atmosphere are, in the usual order, Mrs. Henry Davis, Mrs. Harry Nash and Mrs. Paul Mocko.

WSCS WILL SERVE FISH AND CHIPS AT CHURCH EVENT

The Woman's Society of Christian Service of the Springfield Emanuel Methodist Church will serve a fish and chips dinner Tuesday from 5 to 7 p.m. according to Mrs. Oranda Rose, Society president. Mrs. Nina Hapward, chairman of local church activities, is in charge of the dinner.

Tickets are \$1.75 for adults and \$1 for children under 12 years of age. They may be secured from Mrs. Rose (DR 9-2191) or Mrs. Hapward (DR 6-6015). Reservations must be made no later than Sunday.

Representatives of the Society, headed by Mrs. Rose, are attending the 25th anniversary tea of the Woman's Society of Christian Service today at Morrow Memorial Methodist Church, Maplewood.

DAR GROUP PLANS TO SHOW PICTURE ON NIKE PROJECT

The Church and Cannon Chapter, Daughters of the American Revolution, Springfield, will see the New Jersey Bell Telephone Co.'s film "The Nike" Tuesday evening at the home of Mrs. Milton P. Brown of Meisel ave.

Mrs. Christian Oehler of Westfield, regent, and Mrs. Maurice Green of Crest pl., will report on the 74th Continental Congress of the National Society, DAR, which they are attending this week at Constitutional Hall, Washington, D.C.

Assisting Mrs. Brown as hostess will be Mrs. J. M. Manuel of Country Club lane and Mrs. Green.

Named To Committee At Smith College

Miss Kathleen Middlekauff, daughter of Mr. and Mrs. Robert Jules Middlekauff, 355 Rolling Rock rd., Mountainside, has been elected to the curriculum committee of the Student Government Association at Smith College, Northampton, Mass.

A member of the class of 1966, she is a graduate of Governor Livingston Regional High School.

Curriculum Committee is the official voice of the student body at Smith in matters of educational policy and curriculum, and serves as the major organ of communication between administration, faculty and students on all academic matters.

Miss Middlekauff was named to the dean's list for the academic years 1962-63 and 1963-64.

IN BOROUGH OFFICE

Miss Nancy Girard of Westfield, a senior at Colby Junior College, New London, N. H., is working in the Mountainside office of Barrett and Crain, Realtors, during spring recess. The on-the-job training is part of the program for selected students in the secretarial science program at Colby.

Clubwomen Hold Election; Plan Installation Luncheon

Mrs. Michael Sgarro was elected president of the Mountainside Woman's Club at the April meeting held in the Mountainside Inn. Other officers elected from a slate presented by the nominating committee chairman, Mrs. Donald Hancock.

The new officers will be installed at a luncheon to be held May 19 at Pedefous, Watchung. Mrs. Sgarro and Mrs. Riggio will serve as club delegates at the May convention of the State Federation of Women's Clubs. Mrs. Matthew Vallis and Mrs. Gordon Green, the outgoing president, are alternates.

Mrs. Marie Shepherd presented an Easter program, "The Life of Christ in Art and Song" at the election meeting. Mrs. Ralph Ullrich was in charge of table arrangements.

'OUR FAIR LADIES' MUSICAL COMEDY DONE BY DEBORAH

"Our Fair Ladies," a musical comedy, will be presented at the regular monthly meeting of Suburban Deborah on Tuesday, at 8:30 p.m. at Temple Beth Am in Springfield.

Mrs. Herbert Steier of Kemp dr., Springfield, directed the production. The cast includes: Mrs. Gilbert Wolfe, Mrs. Ronald Citron, Mrs. Jack Newark, Mrs. Alfred Silverstein and Mrs. Stan Shur, all of Springfield.

The program vice-president, Mrs. Ira Rose of Millburn, extends an invitation to all to come and see this "nearly professional" musical comedy. Mrs. Howard Siegel, president, will conduct a short business meeting.

GAUDINEER PTA SLATES CONCERT

A student choir concert entitled "Say It With Music" and an art display will be presented at the year's final meeting of the Florence Gaudineer School PTA at 7:30 p.m. Monday.

Election and installation of officers will be held during the business meeting. A vote will be taken on an amendment to the by-laws to provide for incorporation.

Krates Tighten Hold On Lead in League

Kroyer's Krates tightened its hold last week on the lead in the Mountainside Women's Bowling League. With a standing of 59 victories and 37 losses they are now far ahead of the runner up, Jowitz Motors, which has a standing of 54 victories and 42 losses.

Standings of other teams follow.

Teddy's Seafood	52 1/2	43 1/2
Rau Meats	50	46
Blivise Liquors	44	52
Cross County	43	53
Hartnett & Co.	43	53
Bahr's Landscaping	37 1/2	58 1/2

A BUSINESS OF YOUR OWN... find it through the Want Ad Section... YOUR WANT AD... is easy to place. Phone 686-7700.

Silversmiths Silver Plating & Repairing
Tableware - Flatware & Holloware
Antiques Restored & Refinished
FRESCO Silver Company
ES 1-4600
Now Located At 500 CHANCELLOR AVE. IRVINGTON

ALUMNAE GROUP PLANS LUNCHEON, FASHION SHOWING

Two Springfield residents have been named to serve on a committee to plan the annual scholarship luncheon fashion show of the Union County Chapter of the College of St. Elizabeth Alumnae Association. The affair will be at the Washington House, Plainfield, May 8.

Mary Ann Ulbrich, home economics coordinator for the Regional High Schools, is in charge of program, and Mrs. Robert T. Moore, prizes.

Alumnae will model fashions by Jo-Lynn of Westfield and Suburban Showcases of Clark. Some 75 prizes will include an electric fry pan, theatre tickets, a hair dryer, Lenox china and a certificate for an oil portrait.

Deadline for reservations is May 1. For further information call Mrs. Daniel Malloy of Fanwood, at 889-2275.



MRS. RAYMOND KRAMER

SPEAKS TUESDAY AT UJA LUNCHEON FOR AREA WOMEN

Mrs. Raymond Kramer, a member of the Board of the National Women's Division of the United Jewish Appeal, will be the featured speaker at the UJA "pace setter" luncheon for Westfield and Mountainside women.

The luncheon is scheduled next Tuesday at the home of Mrs. Henry Marzell of 1189 Ridge dr., Mountainside. Mrs. Walter Averick is chairman and Mrs. Howard Diamond, co-chairman.

Mrs. Kramer, who will urge local support of the 1965 UJA campaign to raise \$109,000,000 to aid nearly three-quarters of a million distressed Jews, has visited Israel frequently. On her most recent trip she studied conditions among new arrivals and their absorption patterns.

A graduate of Barnard College, the speaker is a member of the executive committee of the Jewish Council of Paterson, board member of the National Federation of Temple Sisterhoods and is active in the sale of Israel bonds.

ST. JAMES GUILD SLATED TO HEAR LITERARY EXPERT

Mrs. Muriel Geoghan, president of the St. James Mothers' Guild of Springfield, will preside at the regular monthly meeting on Monday evening in the school auditorium, following the novena.

The guest speaker for the evening will be the Rev. Robert Grady, professor of English at Seton Hall Preparatory School, South Orange. His topic for the evening will be "The World's First Love."

The new slate of nominees for office will be presented.

BISHOP TO SPEAK AT ST. STEPHEN'S CHURCH TUESDAY

The Rt. Rev. George E. Rath, Suffragan Bishop of the Episcopal Diocese of Newark, will be speaker at the salad bar, supper of the Women of St. Stephen's Church, Millburn. The affair will be held at 12:30 p.m. Tuesday in the parish hall.

Bishop Rath has chosen as his subject, "New Directions in Diocesan Programs." All women will be welcome. Baby sitters will be provided.

A rummage sale will be held by the Women of St. Stephen's Church from 9 a.m. to 4 p.m. next Thursday, April 29. Mrs. Barbara D'Andrea and Mrs. Anthony Musio, co-chairmen, have announced that articles for the sale may be left at the church at any time prior to the day of the sale.

Garden Club Meets

A talk on "Gardening With Native Plants" was given by Mrs. E. L. Coffee at Tuesday afternoon's meeting of the Mountainside Garden Club. Hostesses were Mrs. H. A. Urrutia, at whose home the meeting was held, Mrs. W. C. Jackson and Mrs. A. J. Saridadi.

Mr. Becker Is Married To Miss Austad Of Maine

Gretchen R. Austad became the bride of Richard W. Becker, son of Mr. and Mrs. Walter Becker of Chatham, formerly of 61 Bryant ave., Springfield, on March 26 at Old South Church, Boston. The Rev. Walter A. Telfer officiated.

The bride is the daughter of Mr. and Mrs. Arthur M. Austad of Cape Elizabeth, Maine. Attending the couple were Mr. and Mrs. Carlton D. House of Foxboro, Mass.

South Portland, Maine. Mr. Becker was employed in the mutual funds department of the New England Merchants National Bank in Boston.

Her husband was graduated from Jonathan Dayton Regional High School, Springfield, and served in the U.S. Army for two years. He is employed by the Jarvis Co. of Newark. Following a honeymoon trip through New England, Mr. and Mrs. Becker are now residing in Cape...

Mrs. Becker is an alumna of Cape Elizabeth High School. She is past worthy advisor of Rainbow Assembly No. Three of...

APARTMENT VACANCY Rent 1-4... with a low-cost classified. Call 686-77... before you forget!

VERY Soft Fifth Avenue

SAKS FIFTH AVENUE'S OWN "EX-TASI" PROCESS FOR PERMANENT HAIR REMOVAL

Let S.F.A.'s exclusive approach to good grooming make you a silken-skinned beauty on the beach this summer — and for the rest of your life. Our expert electrologists will remove unwanted hair safely and permanently with this modern, effective process. Call today for your appointment: Beauty Salon, East Wing, DRexel 6-7000, ext. 256.

Milburn & Short Hills Avenues, Springfield, N. J.

For Drugs in MOUNTAINSIDE It's ROLAND DRUGS

Fast • Dependable Prescription Service
Call 379-2244
777 Mountain Ave., Springfield

We Care FOR YOUR FURS

WITH OUR... **INSURED FUR STORAGE**

Koppel Furs
"Everything in Furs"
974 Stuyvesant Ave. Union Center—MU 6-1775

SEE OUR... Complete Selection Of RELIGIOUS JEWELRY

Wesley Jewelers
108 Mountain Ave., Springfield DR 6-6047

POOL SERVICES CO.

Specialists in service of Concrete and Gunite Pools. Dismantle and Sand and Gravel Filtration. (Spring Special), Summerize Pool and Service.

Plan "A", Empty, acid wash and paint. As low as \$99.50.

Plan "B", Assemble equipment and service of Filters and Pumps. Empty, acid wash, paint and season service.

Call CR 3-2685 or 245-9551

EDMOND COIFFURES

Proudly INTRODUCES **MR. IRA**

Formerly of Chantrey Beauty Salon Morristown, N. J.

Exceptional, Creative Expert Hair Colorist

SPRING SPECIAL
Regular \$20 **FROSTING \$15.00**
Until May 15, 1965

Edmond Coiffures
HAIR STYLIST SINCE 1939
Phone 379-7255
ECHO PLAZA SHOPPING CENTER SPRINGFIELD, N. J.

Any way you figure it... **THE FINEST WELCOME IS WELCOME WAGON**

A visit from our hostess will make you feel at home, with her basket of gifts and answers to questions about the city, its services and facilities. Just call...

Welcome Wagon International

PHONE In Springfield—Mrs. Ruth Woodside—273-6274
In Mountainside—Mrs. Nora McCaffrey—AD 2-5945

WELCOME NEWCOMERS!
Use this coupon to let us know you're here

NAME _____
ADDRESS _____
CITY _____

Please have the Welcome Wagon Hostess call on me
 I would like to subscribe to this newspaper
 I already subscribe to this newspaper
Fill out coupon and mail to Circulation Dept.

EXTRA EXTRA FOOD SAVINGS !! FOR ALL AT RAU'S !!

1st CUT RIB ROASTS 69¢ lb.
Oven Ready Newport Roast lb. 1.09
Boneless Pork Roast lb. 59¢
Ever Delicious Boneless CLUB STEAKS lb. 1.69

Tender Juicy U.S. Prime Flavorful

Giant Size Top Job HOUSEHOLD CLEANER 2 for \$1.00

For Automatic DISHWASHERS 3 boxes GASCADE \$1.00

1-lb. cans White Rose Vegetables 5 cans Mix or Match \$1.00

Save Those White Rose Labels!

CHICKEN NECKS & BACKS 3 lbs. 29¢ | **CHICKEN WINGS lb. 29¢** | **CHICKEN LIVERS lb. 69¢**

FRUITS & VEGETABLES Fresher by Far | **String Beans lb. 29¢** | **Florida Juice Oranges doz. 49¢**

THOUGHT FOR THE WEEK!
Life is like a cafeteria, the food is prepared, but you must help yourself to it.

RAU QUALITY MEATS AND PRODUCE
763 Mountain Avenue DRexel 6-5505 Springfield

FREE DELIVERY... of course!



CASA CRABGRASS—Land Baron Bob Baxter, gets ready to do battle with the turf on his vast one-third acre estate. Bob looks grim but he realizes a lush lawn is a status symbol in our suburban society, much like a new car or membership in a high-priced swim club.

Lawn Seed Ends Birds' Famine

Baxter Family, Spreads Feast Of Blue Grass

By ROBERT T. BAXTER

Every spring, as soon as the last flake of snow has melted and turned my backyard into a sea of yellowish oozing mud, where green grass should be growing, the wife suddenly jumps from her reclining couch and states, "Well it's time."

Then as if by magic all the kids disappear and I try to find a hiding place large enough for me. We all know that this is the season for the annual lawn care and feeding. But try as we may, the wife finds each of us and drags us kicking and screaming into the yard.

And so begins the raking of last fall's collection of oak leaves, and the removing of last winter's sleds, skates and the rusting snow shovels left out for old man winter to turn into iron oxide. And throughout the yard the twitter of birds is heard as they gather in our two trees, knowing that soon the Baxter's will spread before them a feast of mighty expensive blue grass seed.

Out from the cluttered garage come weird tools, like rakes with teeth broken off from retrieving model air-

planes from the limbs of the oak tree, weed diggers bent points, and shovels with the front edge so ragged that they look more like saws. Then each of us is handed a tool and is assigned an area. After what seems like hours of back breaking bending and picking up the wife decides that the area that we have just completed just isn't good enough, so she goes over the same place again, and all the while she is mumbling under her breath something like, "If you want a job done right, do it yourself." And I keep telling her I agree with her and why doesn't she.

RAKING DONE by her to her satisfaction, off she drags us to the hardware store, checkbook in hand. Then its 50 pounds of this, and 20 of that. Grass seed comes in 10 pound cans at about \$10 a can. Crabgrass remover, lime, and of course large bags of 5-10-5—whatever that is. Then not content with already having spent the table money for a month, off she pops and buys garden hose, sprinkler, new rakes for getting model airplanes from the oak tree and dozens of other garden gadgets.

And to distribute the bags of foul smelling chemicals

sagging the car scrapes its bottom as we pull into our driveway. Then the real fun begins; we must spread the hundreds of pounds of lime, and my black pants and black shoes are soon white as I push the spreader, making weird white patterns where our lawn should be. Naturally it's always a windy day so that no matter how you try, the wind always blows the stuff back into your face, and for days after everything you eat tastes like 5-10-5—whatever that is.

The actual putting on of the grass seed is always done by the wife, with loving care and apparent know-how she carefully spreads the seed evenly here and there, and just as carefully the wind redistributes it where it pleases.

So as the last flicker of sunlight dims in the darkening sky, "Operation Backyard" comes to a final halt, and tired weary and back, sore we drag ourselves into the house, too tired to eat. Then it's early to bed, and earlier to rise as dawn brings with it the sounds of hundreds of which fill the trunk of my car, she rents a spreader that won't fit in the trunk of the car and has to be pushed the three blocks to the house by one of the grumbling kids. Axel dragging and car springs

hungry birds, twittering and chirping. Sparrows and jays, robins and starlings and even a cardinal or two thrown in for good measure, are devouring all that lovely, expensive grass seed. The wife shoos them but to no avail, and soon the seed has vanished. And once again the Baxter's raise a lovely crop of wild onion, chick weed and crabgrass.

Although the same thing happens every year, the wife doesn't give up hope, and I'm sure that next spring we will go through the same thing again. Ah, but one of these days I'll win out and soon our backyard will be green, for I have plans to have it covered with cement and paint it green, and end once and for all the Baxter's annual "Operation Backyard."

YWCA Sponsors Tennis Classes

The adult department of the Elizabeth YWCA will sponsor a two-session outdoor tennis class in Warinanco Park beginning Saturday, May 8. The first class will be held at 10:30 a.m., and the second at 11:30 a.m.

Joseph Fearing, 627 Elmwood ter., Linden, will teach both beginners and intermediates. Fearing is tennis coach at Battin High School, Elizabeth.

Advance registration and membership in the YWCA is required for the courses which are open to men, women and teenagers. Students must furnish their own shoes and rackets.

Dance Is Planned

The Catholic Club of Union County will sponsor its monthly "get acquainted dance" on Sunday at 8 p.m. in the Kingston Restaurant, Union.

NEW TV! Sell the old one with a Want Ad. Call 686-7700.

The Old Timer



"Now that man has learned to move faster than sound, women are at a distinct disadvantage."

Rebuilding or Remodeling your Kitchen or Bathroom?

TILE IT YOURSELF

WE'LL HELP YOU START YOUR JOB

Complete refund on all unused materials

"The most helpful store to Do-It-Yourselfers"

WORLD TILE

Tel. 376-7750

Route No. 22, Springfield, N. J.

Four Students Named To Scholastic Society

Four students from this area or formerly residents of this area will be inducted into Iota Xi Chapter of Phi Theta Kappa, national junior college honorary scholastic society, Tuesday at Union Junior College, Cranford.

The students, all sophomores, are Richard G. Saxton, son of Mr. and Mrs. Vincent Saxton of Kenilworth, a graduate of Jonathan Dayton Regional High School, Springfield; Myra S. Levinson, daughter of Mr. and Mrs. Herman Levinson of Linden, a graduate of Linden High; John D. Ligenza, son of Mr. and Mrs. John D. Ligenza of Union, a graduate of Union High; Charles W. VanHise, son of Mr. and Mrs. Charles F. VanHise of Metuchen, also a graduate of Union High.

Elastic Stop Nut Corp. Tells Report For 1965

Elastic-Stop Nut Corporation of America, 2330 Vauxhall rd., Union reported for the three months ended Feb. 28, consolidated earnings of \$821,187 before U. S. and Canadian taxes on income, and net earnings for the same period in 1964 were \$725,933 before taxes and net earnings were \$372,883, equivalent to \$56 per common share. Sales for the three months ended Feb. 28, totaled \$9,452,706 as against \$8,998,803 for the same period in 1964.

Legal Notices

PUBLIC NOTICE
Notice is hereby given that at meeting of the Township Committee of the Township of Union in the County of Union, held on April 13, 1965, the following offer was received for purchase of premises owned by the Township of Union in the County of Union and located in the Township of Union:

An offer from Mrs. Sophie Westlake, of 2241 Morris Avenue, Union, N. J., for purchase for \$1,000.00, the premises described as follows:
BEGINNING at a point being the following two courses from the point of intersection of the Northerly side line of Morris Avenue and the Westerly side line of Jeanette Avenue: (1) North 64°-17' West, along the Northerly side line of Morris Avenue, three hundred ninety-five feet (395.00'); and (2) North 25°-43' East, one hundred twenty-five feet (125.00') to the point of **BEGINNING**; thence running from the above described Beginning Point the following courses: (1) North 64°-17' West, forty feet (40.00') to a point; thence (2) North 25°-43' East, fifty feet (50.00') to a point; thence (3) South 64°-17' East, forty feet (40.00') to a point; thence (4) South 25°-43' West, fifty feet (50.00') to the point and place of **BEGINNING**.

The Purchase Price is to be payable \$100.00 as a deposit and the balance of \$900.00, when and if the sale is finally approved and the deed is delivered in the following manner: \$200.00 to the Township of Union in the County of Union at the closing, and the balance of \$700.00 to be dated the date of the deed, the principal thereof to be payable within two (2) years from the date thereof in twenty-four (24) equal monthly installments with interest at the rate of six per cent (6%) per annum on all unpaid balances. The purchaser also to have the privilege of paying all cash at the time of closing or to make her payments on the mortgage, or to prepay the mortgage at any time. The purchaser is to be held to pay the expenses for its preparation of the Notice of Sale and the Regulation, drawing of the deed and allied papers in connection with the closing of said title, including documentary stamps, and also shall close title within sixty (60) days after the Township Committee of the Township of Union in the County of Union approves the sale by Bargain and Sale Deed and is to contain a provision that no dwelling shall be erected on any building lot unless a separate deed thereon or is constructed separately on the site, and, a further provision that said conveyance is to be made subject to such facts as may be disclosed by an accurate survey, and also subject to the zoning ordinance, rules and regulations of the Township of Union in the County of Union.

No further offer will be accepted by the Township Committee unless the successful purchaser, including the original offeror, deposits in cash a certified check—a sum equivalent to 10% of the amount of said offer. said offer will be considered at a meeting of the Township Committee of the Township of Union in the County of Union, to be held at Municipal Headquarters, Friberger Park, Morris Avenue, Union, Union County, New Jersey, on April 27, 1965, at eight o'clock P. M., or as soon thereafter as the matter may be reached, and said offer may then be finally approved, and the sale confirmed, and ratified upon said terms and conditions or a modification thereof, provided that no higher price, or better terms, shall then be bid for said property by any other person.

MARY E. MILLER
Clerk of the Township of Union
in the County of Union
Union Leader—April 22, 1965. (Fee: \$22.44)

Your Want Ad Is Easy To Place . . . Just Phone 686-7700

ICE SKATE this SUMMER at

REGISTER NOW FOR SUMMER NOW SPRING SEASON OPEN DAILY

CALL 754-3555 FOR INFO

WHEN IT COMES TO FIT . . . INSIST ON PERFECTION



Eduards
Widths B-EEE
Sizes 2-6
5.99



We keep accurate records of all fittings . . . mail reminder cards . . . Provide FREE Size Checkups

We fit with the confidence that comes with expert training and long experience.

CIRCUS SHOE SHOP
Devoted Exclusively to Fitting Children's Shoes

911 Elizabeth Ave. — EL 2-8036

Our Store Huge Public Parking Lot Opposite

THE FLOOR SHOP EST. 1934

"QUALITY AT A COMPETITIVE PRICE . . . TRY US"

Armstrong
Vinyl Inlaid REMNANTS
\$1.50 SQ. YD.
Reg. \$3.29 sq. yd.

- ROOM SIZES
- LIMITED SELECTION

540 North Ave., Union (Near Morris Ave.)
Open Mon., Wed., Thurs. to 9
EL 2-7400
Park in our lot adjacent to building

- Carpets
- Linoleum
- Tile

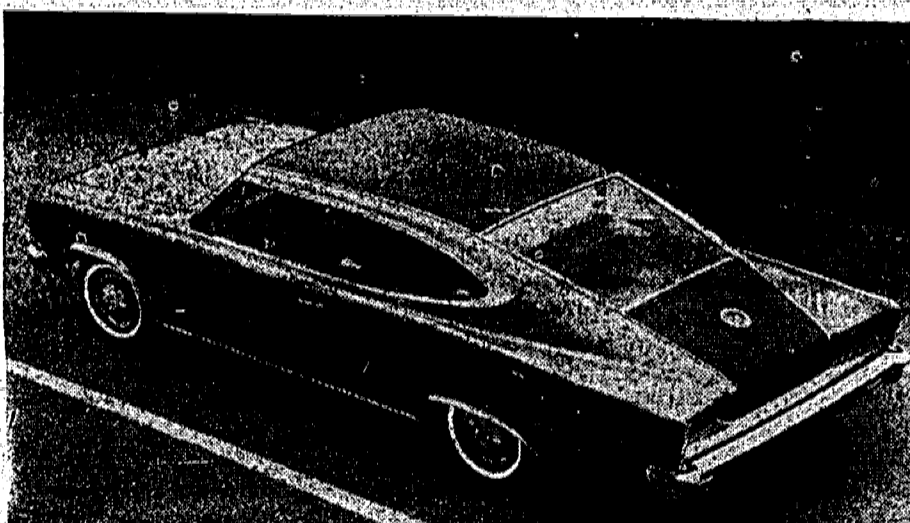
Drive Safely

SPRING FEVER DAZE!

now at RICHARDS RAMBLER!!

START THE SPRING SEASON RIGHT
In the All-New American Motors 6 Passenger **MARLIN** Fast Back

SPECIAL ON '65 RAMBLERS
as low as **\$39⁹⁰** per month*



'61 RAMBLERS Automatics and Standards 4 to choose from From \$895

- | | | | |
|-----------------------------------------------------------------------------------------|--------|--------------------------------------------------|--------|
| '63 RAMBLER Classic 770 R&H, Automatic, Power Steering, Bucket Seats Loaded with Extras | \$1595 | '63 CLASSIC 2-Dr. Sedan R&H, V8 | \$1395 |
| '62 RAMBLER WAGON Custom 4-Dr. | \$1395 | '63 RAMBLER Blue, American 2-Dr., R&H | \$995 |
| R&H, Automatic | | '62 FALCON 4-Dr., R&H, White Standard Drive | \$795 |
| '63 VALIANT Blue, 4-Dr. R&H, Stan. Drive | \$995 | '62 AMERICAN Green, 4-Dr. Standard Drive | \$695 |
| '61 RAMBLER AMERICAN Wagon, 4-Dr. Radio & Heater | \$695 | '61 RAMBLER-AMERICAN Wagon, 4-Dr. Radio & Heater | \$695 |

'64 LEFTOVERS At Below Dealers Cost! 5 To Choose From
EASIEST CREDIT TERMS IMMEDIATE CREDIT APPROVAL

'62 RAMBLERS AUTOMATICS AND OVERDRIVES 5 TO CHOOSE FROM From \$1195

PLUS! MANY, MANY USED CAR SPECIALS NOT LISTED TODAY—Hurry in, take advantage of Bargain Prices NOW!

Ask About Our **AUTO LEASING** ALL MAKES • ALL MODELS CARS and TRUCKS

RICHARDS

595 CHESTNUT St. UNION MU 6-6566

Sales Executive Club To Hold Annual Rally

The Sales Executive Club of Northern New Jersey will hold its annual sales rally May 6 at 7 p.m. at the Hotel Robert Treat, Newark, it was announced by club president Joseph J. Ingolia of Schering Corp., Union.

Gary Garlepy and Charles Cullen will speak on "Learn Effective Communication," and "Over Fear of Failure." Julia Yeomans should be contacted at 623-2021 for information about tickets.

HALF-PAST TEEN



BLOOMFIELD COLLEGE SUMMER SESSION 1965
 First six-week term: June 7 to July 16, 1965
 Second six-week term: July 19 to Aug. 27, 1965
 For Further Information Address:
 Director of the Summer Session
 BLOOMFIELD COLLEGE, BLOOMFIELD, N. J. 07003
 Telephone 748-4100



THE FEMININE LOOK

Commentary on a recent National Editorial Association Study Mission Around South America

By TRUDINA HOWARD

ARGENTINA CONTINUED

Argentina has some of the world's richest farm lands and pasture, some of South America's best fed, best educated, best trained people and one of Latin America's most highly developed industrial structures, yet it has economic problems. Political turbulence and serious economic difficulties have prevented it from realizing its full potential. Juan Peron with his wife, Evita, have the reputation for doing little more than driving the country into economic ruin, and filling their own pockets with graft. The successive governments and successive presidents such as Lonardi, Aramburo, Frondizi and Guido have the reputation of trying, no way or the other, to unravel the mess and straighten out the Peronists—and not quite making it. The current president, Dr. Arturo Illia, has the reputation of being weak and not accomplishing positive corrective measures either. Since Oct. 1963 when Dr. Illia was inaugurated, reports of mounting wages, debts, prices and strikes have appeared in U. S. newspapers.

COMMUNISTIC AND PRO-WESTERN

There should be a better appreciation of this in the United States. Castro is not looked upon favorably by Argentina and there are no diplomatic relations with Cuba or Communist China. The Communist Party as relating to international communism was declared illegal by a decree of May 1963 yet we were informed that there are an estimated 50,000 members of the Communist Party in Argentina with some 100,000 sympathizers! The prime danger of communism in Argentina no matter what it is called, lies in the extent to which active, disciplined communists can infiltrate other political parties, labor unions and active groups, and its very effective propaganda literature. It is celebrating its 48th birthday this year. Most of its leaders are old time Moscow-communists. The government will allow new Peron or Neo-Peron parties but it is Peronism without Peron. About 30 per cent of the people believe in Peron or the Peron myth. He will always be a factor as long as he is alive. He has many "lieutenants" in Argentina but they are not actually his voice.

IT IS SLOW BUT WE KNOW WHERE WE ARE GOING AND I THINK WE ARE PROCEEDING FINE.

Next: Uruguay-Paraguay Up The River Plate

GO GAS HEAT

Replace your bulky old boiler
 Call us. Hundreds of families in town have, and are satisfied that we give them their money's worth in comfort and service. For example we offer you:
 • Reasonable prices
 • Top quality equipment
 • Factory-trained installers
 • Prompt service
 • Free, firm and accurate estimates

SUBURBAN GAS HEATING and COOLING CO.
 596 Chestnut St. Roselle Park
 Over 7000 Gas Installations since 1938

QUALITY CANVAS AWNINGS OF EVERY DESCRIPTION
 Re-hung • Taken Down • Stored
Residential and Commercial FAST, DEPENDABLE SERVICE
 Industrial canvas and Aluminum Canopies Terrace Covers
 NO JOB TOO LARGE — NO JOB TOO SMALL
WINDOW SHADES
 • COMPLETE LINE OF VENETIAN BLINDS
 • WOVEN WOODS AND RELATED PRODUCTS
 • TRAVERSE RODS SOLD AND INSTALLED
 All Work Fully Guaranteed
761-6565 or SO 2-1230
 EST. 1910 **MAPLEWOOD FREE AWNING and SHADE CO.**
 1861 Springfield Avenue • Maplewood

Favorite Places for DINING

BLUE SHUTTER INN
 2560 Morris Ave., Union
 MU 8-8180
 Cocktail Lounge Open Daily
 One of N. J.'s largest and finest facilities for Banquets - Weddings, etc. Dance - Cocktail Parties (3 Rooms Available) 6/4/29

BRASS HORN
 Restaurant & Cocktail Lounge
 Cor. Cherry & W. Grand Sts., Etc.
 Ample Parking on Premises
 Elizabeth 4-5767
LUNCHEON & DINNER DAILY
 Expertly prepared from the finest foods... deftly served in a gracious atmosphere from 11:30 a.m. to 11:15 a.m. Sun. thru Thurs. — Fri. & Sat. to 2:15 a.m. MUSIC at the Hammond Organ NIGHTLY.
 Banquet Rooms Available for all Occasions

THE CAMPTOWN
 At Elmwood & Springfield Ave.
 In East Orange It's
THE GASLIGHT
 Opposite Best & Co. A/T/F

CHANCELLOR DELICATESSEN
 AND RESTAURANT
 378 Chancellor Ave., Newark
 WA 9-9872 — Open 'til 1 a.m.
 RESTAURANT CATERING
 Specializing in Condolence Trays and Cold Cut Platters Sloppy Joe Sandwiches for all Occasions Hot and Cold Hors D'Oeuvres Wines, Liquors and Beer 1/4/29

ALEX ENG
 ORIENTAL RESTAURANT
 Academy & Irvington Ave.
 So. Orange — SO 3-3126
 We Serve Luncheon and Dinner
 Catering in your home or on our premises for every occasion
 Member Diners Club L/T/F

EXECUTIVE LUNCHEON CLUB
 West Chestnut at Route 22
 Union, N. J.
 Members and their guests Monday thru Friday 12:00 - 2:00 p.m.
 Golden Branch Room at Four Seasons T/F

CHRISTINE'S GAS LIGHT
 66 Cherry St. Elizabeth
 Appearing every Friday, Saturday, Monday, Wednesday & Thursday nights
 Intimate Party Room Available on Premises
 For Reservations and Information call CHRISTINE at 381-1822 W 6/10

GEIGER'S COLONIAL RESTAURANT
 Springfield Ave., Westfield (Opposite Echo Lake Park)
 AD 3-2260 M/T/F
 OUR HOMEMADE PIES ARE A DELIGHT TO EAT
 OPEN 7 DAYS
 11:30 A.M. to 9 P.M.
 Parking on Premises

HARRY'S
 225 Fabryon Place, Newark, N. J.
 WA 9-9688
 Air-Conditioned Ample Parking
 DO YOU LIKE SEAFOOD?
 We serve Steamed Clams & Clams on the 1/2 Shell - Alaskan Crab Claw - Lobster Tails - Shelled Maine Lobsters - Steaks - Sauerkraut and many other Continental Dishes.
 Special Business Men's Lunch Served Daily Also Children's Platters B 6/10

HOLIDAY INN KENILWORTH
 241-2880
 Exit 138 Garden St. Pkwy.
 Ample Parking C 6/3
 Dine in Luxury at... Breakfast from 6 a.m. Luncheon Served 11:30 a.m. - 3 p.m. Dinner until Midnight with PRIME RIBS Featured
 Banquet Facilities Available
 OPEN ALL DAY SUNDAY

LUIGI'S
 Famous for our Italian Smorgasbord served nightly 8 to 10 p.m. Sundays 1 to 9 p.m.
 Dinner and Ala Carte 'til Closing
 Open Weekdays at 4:30 p.m. Sundays 1 p.m. B 7/1

OLDE COLONIAL INN
 1074 Broad St., Newark, N. J.
 MA 3-2076
 V 12/1/64
 ITALIAN CUISINE
 The Finest Food Obtainable Anywhere Exclusive Restaurant At Regular Prices
 Specializing in serving large groups Full Course Dinners - Buffets Complete Party Planning Service

OLD EVERGREEN LODGE
 Evergreen Ave., Springfield
 DR 6-0489 DR 9-9830
 James Brestle, Manager L/T/F
 PICNIC GROVE
 HALL RENTALS — DINNER PARTIES
 MODERN & SQUARE DANCING
 EVERY SATURDAY NIGHT

OLYMPIC RESTAURANT
 877 Springfield Ave., Irvington
 ESsex 2-9647 — ESsex 4-7699
 CATERING 6/4/29
 DANCING
 Friday, Saturday and Sunday Evenings 9:00 p.m. on
 Luncheon and Dinner Served Daily
 Sunday Dinners Served 12 - 9:30
 Banquet Facilities for any Occasion Accommodations to 800.

SATELLITE DINER
 Route 22, Eastbound
 Mountaintide
 AD 2-9711 V/T/F
 COMPLETE FAMILY DINNERS SERVED DAILY
 • BREAKFAST - LUNCHEON • DINNERS
 • Open 7 days
 • 24 hours a day

TALLYHO
 COCKTAIL LOUNGE & RESTAURANT
 (Formerly — Coach & Horses)
 943 MAGIE AVE., UNION, N. J.
 Elizabeth 2-6251
 John W. Young G 4/29
 BUSINESS - MENS - LUNCHEONS AND DINNERS SERVED DAILY
 (Facilities for Meetings and Parties)
 ORGAN MUSIC NITELY

TONDIA LOUNGE
 468-14th Ave., Newark
 Adjacent to Garden State Parkway
 ES 3-9216 V 4/29
 Tondia Lounge Presents AL "GROUCHO" COTELL AT THE PIANO
 Man with 1,000 songs
 Pizzic Piaz - All Italian Dishes at reasonable prices. Also American Food.

TOWNLEY'S
 580 North Ave., Union
 EL 2-9092
 Parking on Premises G 4/29
 It's Always Good Taste and Fun To Eat at Townley's
 Prime Ribs of Beef (The Very Best)
 All Baking Done on Premises
 Special Banquet Facilities From 10 to 100 People
 Open Daily 12 Noon to 1 A.M.

TRETOLA'S
 At Five Points, Union, N. J.
 MU 7-0707
 FOR OVER 30 YEARS... A family place for Continental and American food
 A LA CARTE MENU:
 Entrees including pasta and vegetables, \$1.50-\$4.75 — Also children's menu
 Bar, Lounge, Private Parties. Open 12-10:30 p.m. Sat. 'til 12 Midnight.

TOWN & CAMPUS
 1040 Morris Ave., Union
 Reservations: 289-5600 W 7/7
 RESTAURANT - DINER - MOTEL
 COCKTAIL LOUNGE
 PRIVATE PARTY ROOMS
 MEETING ROOMS
 BARBER SHOP
 • Intimate Candlelight Dining •
 Piano & Organ Moods Nightly

Country Dining
 European - American Cuisine
 Lunch 12-3 Dinner 6-10
 Saturday, Dinner only
 Dinner Dancing Fri., Sat. & Sun.
 Music in the Old Miller Style
 Piano Mood Music Nightly
 Banquets, Weddings & Parties G 4/29

PED-E-FLOUS
 Mountain Blvd., Watchung, N. J.
 PL 5-0111
 Since 1888 G 4/29
 European - American Cuisine
 Lunch 12-3 Dinner 6-10
 Saturday, Dinner only
 Dinner Dancing Fri., Sat. & Sun.
 Music in the Old Miller Style
 Piano Mood Music Nightly
 Banquets, Weddings & Parties

Bible Quiz

By MILT HAMMER
 The quotations in the numbered paragraph refer to the Biblical people in the lettered paragraph. Can you pair them.
 1. Mother of all living. 2. Father of many nations. 3. Might-hunter: before the Lord. 4. Father of such as dwell in tents. 5. Mother of nations. 6. Father of all such as handle the harp and organ.
 A. Sarah. B. Jabel. C. Jubal. D. Nimrod E. Abraham. F. Eve.
ANSWERS
 (Gen. 4:2) (12) (12)
 (Gen. 22:1) (1) (1)
 (Gen. 10:1) (3) (3)
 (Gen. 2:2) (2) (2)
 (Gen. 1:2) (1) (1)

Overheard

By EFFIE
 Don't complain if there's a raise in bus rates. Just console yourself by thinking how much less it is to travel by traction than in space. Besides which, one saves the expense of special clothing.
 Larry, aged four, had hold of his smaller brother's hand and was walking down the street just ahead of his mother. He stopped suddenly almost yanking the little youngster off his feet. "Why Larry," exclaimed his mother, "whatever happened? Your little brother almost fell!"
 "Well," explained Larry, "I'm not sure but I think I bumped into God. You said he was everywhere but we couldn't see Him!"
 If you don't enjoy the commercials or are disgusted or bored by them — lay it to old age! Youngsters just love 'em, memorize 'em and often apply them. Heard of a three-year old whose mother asked him if he'd like a Coke. "Sure," he replied, "the pause that refreshes." And a grandmother reports that her two-year old grandson was watching her put away groceries when he recognized a certain can and ejaculated, "Ha, Ajax!"
 "Carol, I want you to go to bed — you're sleepy," said her mother. "No, mother, I'm wide awake! What makes you think I'm sleepy?" "Because you are yawning!" "Oh no," was Carol's retort. "I wasn't yawning — I was just gaping. Yawning is something to keep the sun off!"

AND SO IT SEEMS

that the election of last month in which the Neo-Peronists gained 85 per cent of the popular vote in a congressional election and President Illia's Peoples' Radicals Party only 27 per cent was no great surprise even though it may have caused some dismay. The government actually was in no real jeopardy in Congress either for only about half the seats were up for election. It also seems that even though Argentines yearn for a strong leader, they may have more than they think perhaps. Peron is not likely to return at least. He is under tight restrictions by the Spanish government where he now resides and he is an aging man, 69. The military seems to be against his return also. At best he is "a flaming memory which appeals to the people, while President Illia is a quiet white-haired doctor with seemingly little dramatic flair. We met President Illia at his palace one day and while he may be soft-spoken and gentle looking he seems to be a man with his mind made up. Argentines may be restless with Illia and his government, but according to the President's own words, "Perhaps

Slipcovers
 ALL LATEST 1964 PATTERNS
 Reg. \$128 - \$160 Value **\$59.95**
 With overlapped seams and zippers. Guaranteed fabrics and workmanship
Living-room Suite Reupholstered as low as \$98.95
 GUARANTEED WORKMANSHIP
 VISIT OUR NEW BROADLOOM CARPETING DEPT
 We Now Have A Commercial and Residential **DESIGN DEPARTMENT**
 This department is under the PERSONAL direction of **PHILIP A. COSTELLO**
 Hours by appointment
C & V Interior Decorators
 1122 CLINTON AVENUE
 Cor. New St., Irvington ES 5-7929 Est. 1929
 CLOSED SATS. DURING JULY & AUGUST

Let's make it a little warmer in the living room, cooler in Junior's room, and leave the kitchen just as it is...
 Could you do this in your home? Very unlikely, unless you have modern, delightful Electric Heat with room-by-room temperature control. Electric Heat gives you a thermostat in every room so you can select your own comfort level, exactly, no matter where you are in your home. This kind of on-the-spot control also lets you use heat only when and where you need it. Where rooms are unused the heat can be turned off completely.
 Room-by-room comfort control is only one of a long list of advantages you get with Electric Heat. Its steady, even warmth is clean and quiet. Now, thanks to the special low rate for heating your entire home electrically, Electric Heat is more economical than ever before. Call Public Service right now for full details. We'll also be glad to help you plan your new Electric Heat system, without charge.

ELECTRIC HEAT
 NOW AT A SPECIAL LOW RATE
 PUBLIC SERVICE ELECTRIC AND GAS COMPANY
 TAMPAVING SERVANT OF A GREAT STATE

Mrs. Hughes Heads Mental Health Fund

Mrs. Mildred Barry Hughes, Union County Assemblywoman from Union, will be chairman for the fifth year of the Annual Fund Campaign of the Union County Assn. for Mental Health. It was announced this week by Thomas P. Prout Jr., association president.

There will be independent drives next month in Mountaintop, Kenilworth, Springfield and Union. These communities do not have United Fund Campaigns. Mrs. Hughes set \$58,000 as the year's goal. The funds will be used to support the programs of state and national mental health groups and the Union County Assn. for Mental Health.

Mrs. Hughes said the County association is engaged in several new services for the mentally ill in Union County.

She cited the Willow School for emotionally disturbed children, the Occupational Center of Union County and Bridgeway House, an avenue back to the community for mental patients.

Mrs. Hughes has been the sponsor in the State Legislature of bills to revise and update the care and treatment of the mentally ill.

UJC Graduate Group Will Honor Professor

Prof. Grygotis, Elizabeth, will be honored at a testimonial dinner on May 15, at the Twin Brooks Country Club, Watchung, by the Union Junior College Alumni Association in recognition of 25 years service on the UJC faculty.

Prof. Grygotis, who joined the UJC faculty in September, 1940, teaches mathematics and engineering. This was his first and only job and his only job offer, he recalls.

Tickets for the dinner can be obtained in the Alumni Office at Union Junior College, Cranford, and from all officers and directors of the UJC Alumni Association.

Legal Notices

NOTICE TO CREDITORS
Estate of **RAMMOND L. SULLIVAN**, Deceased.
Pursuant to the order of **MARY C. KANANE**, Surrogate of the County of Union, made on the seventh day of April A. D. 1965, upon the application of the undersigned, as Executrix of the estate of said deceased, notice is hereby given to the creditors of said deceased to exhibit to the subscriber under oath or affirmation their claims and demands against the estate of said deceased within six months from the date of said order, or they will be forever barred from prosecuting or recovering the same against the subscriber.
IRMA B. SULLIVAN, Executrix.
FRANCIS J. SIMONE, Attorney
568 Stuyvesant Ave.,
Union, N. J.
Union Leader—April 15, 22, 29, May 6, 1965. (o a w Fees \$21.12)

NOTICE OF APPLICATION
Take notice that application has been made to the Mayor and Council of Borough of Roselle, New Jersey to transfer to **Leslie N. Hersh**, trading as **Dave's Friendly Bar** for premises situated at 1207 St. George Ave., Roselle, N. J. the plenary retail consumption license CG heretofore issued to **Dave Herahowitz** trading as **Dave's Friendly Bar** situated at 1207 St. George Ave., Roselle, N. J.
Objections, if any, should be made immediately, in writing, to **Jean Krullish**, Borough Clerk, Borough Hall, Roselle, New Jersey.
LESLIE N. HERSH
8 Tudor Terr.,
Livingston, N. J.
The Spectator—Apr. 22, 29, 1965. (Fee: \$8.40)

New Jersey State Department of Civil Service Examinations
Fireman, Roselle 3pro, Salary, \$5575-\$6425 per year.
Open to male citizens, two years resident in Roselle Boro.
Announced closing date for filing applications—May 17, 1965. For applications, duties and minimum qualifications, apply to Department of Civil Service, State House, Trenton, New Jersey, or 80 Mulberry Street, Newark 2, New Jersey.
Candidates who filed applications and are qualified will receive no further notice to appear. Those not qualified will be so notified.
Examinations will be held Saturday, June 5, 1965 at 8:30 a.m. Applicants will report to Passaic Senior High School, Paulison Avenue, Passaic, New Jersey.
The Spectator—April 22, 29, May 6, 1965. (Fee: \$14.40)

NOTICE TO CREDITORS
Estate of **MATHILDA CRESWICK**, also known as **MATHILDA G. CRESWICK**, Deceased.
Pursuant to the order of **MARY C. KANANE**, Surrogate of the County of Union, made on the fifteenth day of April A. D. 1965, upon the application of the undersigned, as Executrix of the estate of said deceased, notice is hereby given to the creditors of said deceased to exhibit to the subscriber under oath or affirmation their claims and demands against the estate of said deceased within six months from the date of said order, or they will be forever barred from prosecuting or recovering the same against the subscriber.
IRVING A. FLETCHER, Executrix.
WILLIAM V. HEIM, Attorney
235 Chestnut Street,
Roselle, N. J.
The Spectator—April 22, 29, May 6, 13, 1965. (o a w Fees \$19.20)

NOTICE TO CREDITORS
Estate of **ANTON S. MUESSEN**, Deceased.
Pursuant to the order of **MARY C. KANANE**, Surrogate of the County of Union, made on the twenty-sixth day of March, A. D. 1965, upon the application of the undersigned, as Executrix of the estate of said deceased, notice is hereby given to the creditors of said deceased to exhibit to the subscriber under oath or affirmation their claims and demands against the estate of said deceased within six months from the date of said order, or they will be forever barred from prosecuting or recovering the same against the subscriber.
BAUER & KERWICK, Attorneys
2 N. Union Ave.,
Cranford, N. J.
The Spectator—April 1, 8, 15, 22, 1965. (o a w Fees: \$19.20)

Legal Notice

BOROUGH OF ROSELLE PARK NOTICE OF REGISTRATION AND PRIMARY ELECTION
NOTICE IS HEREBY GIVEN that the Borough Clerk's office, Borough Hall, Roselle Park, N. J., will be open to receive registrations and transfers of voters every business day between the hours of 8 a.m. and 4 p.m. up to and including April 22, 1965. On April 19, 20, 21 and 22, 1965 inclusive, the Borough Clerk's office will be open continuously from 9 a.m. to 9 p.m. for the registration and transfer of voters. On the date of said order, or a form of application for the registration and transfer of voters for the Primary Election will be closed.
NOTICE TO PERSONS IN MILITARY SERVICE or Patients in Veterans Hospitals and to their Relatives and Friends who are in the military service or a patient in a veterans hospital and wish to vote or if you are a relative or friend of a person who is in a veterans hospital, you believe, will desire to vote in the Primary Election to be held June 1, 1965, write to the County Clerk's office, Elizabeth, N. J., at once, making application for a Military Service ballot to be voted in said election; or a form of application may be obtained from the undersigned. If you are making application for a Veterans Ballot, you must furnish under oath the name of the Veteran, age, serial number, home address and military address. If you are a patient in a veterans hospital, you should furnish the same information.
ABSENTEE BALLOTS (Civilian): Residents of the Borough of Roselle Park who are qualified may make application at the office of the County Clerk, Court House, Elizabeth, N. J., for a Civilian Absentee Ballot if expected to be absent outside the State on June 1, 1965, or who may be within the State on that date but because of illness or physical disability or because of the observance of a religious holiday pursuant to the terms of their religion, or because of resident attendance at a school, college or university, will be unable to cast a ballot at the polling place in their own district; or a form of application may be obtained from the undersigned. Such request must be made no later than May 24, 1965, and must state your home address and the address to which said ballot should be sent, signed with your signature, and state the reason why you will not be able to vote at your usual polling place.

PURSUANT TO TITLE 15, REVISED STATUTES, AND THE AMENDMENTS AND SUPPLEMENTS HERETO, ON TUESDAY, JUNE 1, 1965, BETWEEN THE HOURS OF 7 A.M. AND 8 P.M. D. S. T., A PRIMARY ELECTION WILL BE HELD FOR NOMINATIONS OF CANDIDATES FOR THE FOLLOWING OFFICES, VIZ:
A Governor of the State of New Jersey, 4 year term.
A Sheriff for the County of Union, 2 year term.
3 Members of the Board of Chosen Freeholders, 3 year term.
3 Coroners for the County of Union, 3 year term.
A Councilman for the Third Ward, 3 year term.
A Councilman for the Fourth Ward, 3 year term.
A Tax Collector, 4 year term.
Also at the Primary Election there will be elected:
1 State Committeeman and 1 State Committeewoman for the Republican and Democratic parties.
1 Republican and 1 Democratic Committeeman and 1 Republican and 1 Democratic Committeewoman from each of the 10 Election Districts.

POLLING PLACES
The Polling Places in the Borough of Roselle Park will be located as follows:
1st Ward — 1st Dist. — Lorraine Fire House, 105 Sherman Ave.
1st Ward — 2nd Dist. — Lorraine Fire House, 105 Sherman Ave.
2nd Ward — 1st Dist. — Sherman School, Sherman & Grant Aves.
2nd Ward — 2nd Dist. — Sherman School, Sherman & Grant Aves.
3rd Ward — 1st Dist. — Community Methodist Church, Grant Ave., & Chestnut St.
3rd Ward — 2nd Dist. — Veterans Memorial Library, Clay Ave., & Chestnut St.
4th Ward — 1st Dist. — Robert Gordon School Annex, Locust St. & Clay Ave.
4th Ward — 2nd Dist. — Assumption Hall, 345 West Westfield Ave.
5th Ward — 1st Dist. — Falloute Fire House, Lincoln & Laurel Aves.
5th Ward — 2nd Dist. — Aldene School, Falloute Avenue.
VICTORIA CRANE, Borough Clerk
The Spectator—April 1, 8, 15, 22, 1965. (Fee: \$49.60)



THEATER PARTY PLANNERS — Members who have planned a theater party to be sponsored June 9 at the Paper Mill Playhouse, Millburn, by the Union County Republican Committee are shown left to right: Irving Velinsky, Plainfield; Lillian Kobb, Roselle Park; Virginia Freeman, Union; Amy Bandomer, Springfield; Barbara Claman, Westfield, and Frank Kopecky, Union.

Theater Date Set By Republicans For Annual Party

Plans for the Union County Republican Committee's annual theater party have been completed. It was announced by the project's chairman, Virginia Freeman of Union, following a recent meeting with executive board members at the home of Barbara Claman, 6 Rutgers ct., Westfield.

The theatre party date is June 9 at the Paper Mill Playhouse and the show is "A Funny Thing Happened on the Way to the Forum," featuring George Rose and Jack Gilford. Mrs. Freeman said that though tickets are still available, the present sale rate points to a "sell-out".

In addition to Mrs. Claman, committee members are: co-chairman Irving Velinsky, Plainfield; Amy Bandomer, Springfield; Lillian Kobb, Roselle Park, and Frank Kopecky, Union.

Mend Fund Drive Seeking Support

The Mend Fund Drive for 1965 in Union County is entering its final all-out effort to make this the most successful campaign yet in the fight against crippling nerve and muscle diseases, according to Edwin Aaron, county campaign chairman.

The annual educational and fund raising drive seeks support for the programs of research and local patient services of the National Foundation for Neuro-muscular Diseases, Aaron said.

"If a volunteer calls at your home when you are out," the Mend Fund chairman said, "you can send your contributions to the Mend Fund, c/o The First Bank of Union, Box 1336, Union."

Copy Deadline

All organizational and social items, photographs and stories other than those of a spot news nature must be in our office by Friday to insure publication in the next issue. Please use our columns to tell your story.

YOUR WANT AD
... is easy to place. Phone 686-7700.

Union Bootery

Fine Footwear for the Entire Family and personalized fitting by **MANNY FRIEDMAN & KEN REDVANLEY**

SELVA DANCE FOOTWEAR

For Children:
• BUNTEES • LAZY BONES
• PRO-TEK-TIVE

For Women:
• APEGGIO
• MIRACLE TRED
• CLINIC NURSES OXFORDS

DOCTOR'S PRESCRIPTIONS ACCURATELY FILLED

COMPLETE LINE OF ORTHOPEDIC FOOTWEAR

1030 Stuyvesant Ave.
Union MU 6-5480
Open Mon.-Fri. Eves.

TERMITES ARE SWARMING NOW DON'T DELAY — CALL TODAY FOR FREE INSPECTION

When You Think of **TERMITES** Or Other Insect Problems Think of

KENNETH E. WILLIAMS
formerly of
Termite Control, Inc.

WILLIAMS TERMITE CONTROL, INC.
137 ELMER ST., WESTFIELD, N.J. AD 2-4477

Acting Admissions Director At UJC Tells Of May 1 Application Deadline

Prof. Bruce P. Watson, acting director of admissions, reminded high school seniors this week that May 1 is the deadline to file applications for Union Junior College's Day Session next September.

"Because of the large number of applications on hand, we must set a deadline so we can process all of them. The number of applications is nearly doubled last year's total, but the number of openings to our freshmen class remains at the same level," Prof. Watson said.

A Day Session freshman class of about 450 students is anticipated at the Cranford campus the same number as this year, the acting admissions director said.

"We will be unable to substantially increase our enrollment until additional facilities are provided. We are using our facilities to the maximum at this time," Prof. Watson said.

Final plans for a Science Building are now being prepared which would provide for increasing enrollment by about 50 percent, Prof. Watson said.

Students seeking admission to the Evening Session have until August 15 to submit applications, Prof. Watson said.

YOUR WANT AD
... is easy to place. Phone 686-7700. Ask for Ad Taker, before noon Tuesday. Want Ad. Call 686-7700.

3 DAYS ONLY — THURSDAY, FRIDAY, SATURDAY — ON ROUTE 22 IN SPRINGFIELD — SHOP 10 A.M. TO 9:30 P.M.

Bamburges FURNITURE CLEARANCE STORE
ON ROUTE 22, SPRINGFIELD

MAYTAG COUNTRY STORE SALE

SHOP IN SPECIAL COUNTRY STORE ATMOSPHERE—NOTHING FANCY, NOTHING FORMAL—JUST GOOD-OLD-FASHIONED FUN AND PRICES

Y'all come—WRINGER WASHERS, AUTOMATIC WASHERS, EVEN AUTOMATIC DRYERS REDUCED TO SUCH GOOD-OLD-DAYS LOW PRICES THAT WE CAN'T ADVERTISE THEM.

FREE CHEESE AND CRACKERS right out of our old time cracker barrel

FREE BALLOONS AND FISH KITES to keep the youngsters amused while you shop

Come By Gasoline Buggy, Horse Or Mule For Some Of The Greatest Maytag Bargains Ever Including brand new discontinued models at terrific closeout prices

Our salesmen will be working in their shirt sleeves (and derbies, too) to show you that they mean business. They have just three days to sell all the fantastic Maytag bargains you'll see on our floor—demonstrator models, floor samples and discontinued models—all at drastically reduced prices. We've even added loads of brand-new Maytags from our stores across the state, altogether you'll see the largest assortment of Maytag in the state, and you'll see them at our always-low discount prices. But don't wait — after Saturday they just won't be available anymore. Y'all come.

Buy with no down payment, take up to 18 months to pay
With a Bamburges Homemaker Credit Account (plus service charge).

SHOP THE FURNITURE CLEARANCE STORE ON ROUTE 22 IN SPRINGFIELD 10 A.M. TO 9:30 P.M. ANY DAY EXCEPT SUNDAY — PLENTY OF FREE PARKING

Shoppers Finding Big Food Supply This Month, Notes Home Economist

The biggest and brightest list of food plentiful in recent months is now available. Buying foods in plentiful supply is one way to help keep food costs down. Therefore, the good supply of many popular foods offers menu planners double satisfaction, says Dr. Mary W. Armstrong, senior county home economist.

The harvest of rice is one-third larger than average. Rice teams well with eggs and fish, both popular Lenten foods, as well as appearing in main course or dessert on its own.

Keep canned pink salmon, tart cherries and pears on your pantry shelves. This is a good time to lay in a supply. In March and for Lent—canned pink salmon will be a good consumer buy. With the 1964 Alaskan pack much larger than in 1963, large supplies should continue through Easter. Salmon is a source of high-quality protein—ideal for casseroles, croquettes, sandwiches and salads. Open a can and it's ready to eat or mix with other pre-cooked items, she says.

The canned pear pack was record large, the cherry pack larger than usual. In addition, there are 133 million pounds of frozen cherries on hand.

Shoppers will find lots of good quality apples offered in the fall winter and spring months because a record large number of fresh apples went into controlled atmosphere storage this year. For an interesting and definitely different apple salad, core unpaired apples and slice in thin cross sections. Arrange on salad greens with orange slices and onion rings. Serve with a clear, tart oil dressing.

Cabbage, celery and carrots are other salad foods that can be served separately or in combination. The production of all three was adequate to provide normal winter-market needs, says Dr. Armstrong.

SLEEVES POSE PROBLEMS IN HOME SEWING
Setting in sleeves so there's not a sign of a gather or a pucker is often a bugaboo to the home seamstress. Mrs. Florence G. Manifield, extension clothing specialist, College of Agriculture, Rutgers University, admits there's quite a technique to setting in a plain sleeve, but she offers step-by-step directions for making the job easier.

Be certain the bodice of the dress fits satisfactorily so that the armhole sets well on the figure. Any fitting fault that extends to the armhole becomes more obvious when sleeves is set in.

CURTAIN FABRIC REQUIRES CARE, EXPERT EXPLAINS

Curtain fabric should be given a plan to special effects of soil and sun. Mrs. Manifield, extension home furnishing specialist at the College of Agriculture, Rutgers University, says: "Air, vacuum, or brush your curtains to remove dust and clean them often. Unbleached soil weaken fibers and causes light backgrounding."

For Clear, Healthy Skin Keep Carrots On The Menu

Carrots will not, as the tale says, make your hair curly, but they are extremely high in Vitamin A which is essential for a clear, healthy skin. The sweet, tender, well scrubbed carrots which can be bought in the market all year do not need paring or peeling. Just wash well.

THE PINGRY SCHOOL

A COLLEGE PREPARATORY SCHOOL FOR BOYS

215 North Avenue, Hillside, N. J.

Announces that
ENTRANCE EXAMINATIONS
For admission to Grades 4 through 11
will be given on
SATURDAY, MAY 8, 1965

For Further Information, Write or Call the School
Telephone EL 5-6990
SCHOLARSHIPS AVAILABLE

John & Company

Westfield

store hours daily:
9:45 A.M. to 5:30 P.M.
open Wednesday nights 'til 9

WHITNEY'S AFTER EASTER Clearance Sale

150
Dresses 20% - 40% OFF
By R & K - Syd Brett - Betty Barklay
Other Famous Makes

Coats 20% OFF
Including Every LASSIE JR. & LASSIE MAID

Suits 20% - 40% OFF

ALL Merchandise Is FROM OUR REGULAR STOCK OF FIRST QUALITY.

We Do Not Sell Close-Outs Bankrupt Stock or Imperfect Merchandise

Whitney's FASHIONS

1000 Stuyvesant Ave., cor. Morris Ave.
OPEN EVERY FRI. - MON. 'TIL 9

Legal Notice

BOROUGH OF MOUNTAINSIDE, NEW JERSEY

PROPOSED ORDINANCE NO. 10 AN ORDINANCE TO VACATE, RELEASE AND EXTINGUISH THE PUBLIC RIGHTS IN AND TO CERTAIN LANDS LOCATED IN THE BOROUGH OF MOUNTAINSIDE, UNION COUNTY, NEW JERSEY.

Beginning at a point in the Northwesterly line of Central Avenue as shown on a survey and map entitled "Map of Property of the Estate of Marie Weber, situated in the Borough of Mountain Side, Union County, New Jersey," dated September 10, 1954, made by Casey & Keller, Civil Engineers and Surveyors, Irvington, N. J., and approved for filing by the Planning Board and Borough Council of the Borough of Mountain Side on October 20, 1954; at a point distant 29.7 feet measured Northwesterly from the Northwest corner of the lands of the Board of Education of the Borough of Mountain Side, New Jersey, situated in said Borough of Mountain Side, bearing there 111° on a course of 10.39 degrees East and which course is distant Northwest 25° 55' 30" East 39' 29" degrees West 1009.57 feet to the aforementioned line of Central Avenue; thence 44' along the said line of Central Avenue North 56 degrees 58 minutes 12 seconds West 25.14 feet to the north-south line of the lands of the same premises which provide for portion of property to be dedicated for street purposes conveyed to the Roman Catholic Diocese of Newark, a religious corporation of the State of New Jersey by deed of Frieda Piltzermann and Edward C. Piltzermann, her husband, Henry C. Weber and Emma Weber, his wife, and Elsie Bahr, Widow, dated November 20, 1954 and recorded December 31, 1954 in Deed Book 2164, pages 401 thru 404.

GRAND UNION SUPERMARKETS

SSS

This is the world of Mrs. Dempsey. Grand Union is proud to be part of it!

Repeated by Popular Demand

LOW INTRODUCTORY PRICES ON

Grand Union New

BABY FOOD

10 jars 59¢

6 jars 49¢

SPECIAL INTRODUCTORY PRICES ONLY WITH THIS COUPON

CLIP THIS COUPON

20¢ OFF

REGULAR PRICE WITH THIS COUPON PURCHASE OF 10 JARS STRAINED OR 6 JARS JUNIOR GRAND UNION BABY FOOD

Expires April 26, 1965

COLGATE TOOTH PASTE 59¢

2 1/2 oz. tube 59¢

1 oz. tube 29¢

GRAND UNION - SLICED AMERICAN CHEESE 3 \$1.00

PAST. PROC. 3 6oz. pkgs.

GRUYERE PORTIONS 43¢

8oz. pkgs. 43¢

BLUE CHEESE 29¢

4oz. pkgs. 29¢

FREE Stainless Steel Tableware

7 pieces of beautiful HEAVYWEIGHT

FRESH DRESSED - EASTERN SHORE

CHICKENS

Whole **29¢** Split or Quartered **33¢**

CHUCK CALIF. ROAST 59¢

TOP CHUCK CUBE STEAK 99¢

IMPORTED BOILED HAM 99¢

NO BONELESS SHOULDER STEAK 99¢

EXCELLENCE FROZEN BEEF & GRAVY 1 1/2 lb. 1.69

Buy the Parts You Like Best

CHICKEN PARTS

BREASTS with rib 59¢

LEGS and THIGHS 49¢

FRESH CHICKEN LIVERS 69¢

PORK SHOULDER SMOKED CALAS 39¢

CHOPPED & SHAPED - CUBED VEAL STEAKS 89¢

ANNOUNCED BACON SLICED 65¢

SWISS PREMIUM BEEF LIVER 45¢

FRESH - BONELESS FLOUNDER FILET 69¢

STORE SLICED - FROZEN BEEF SALMON STEAKS 89¢

BONELESS BRISKET 49¢

Corned Beef 69¢

LEAN Ground Chuck 59¢

Freezer Meat Sale - Family Size Packages at Budget Prices!

MORTONS - ALL VARIETIES CREAM PIES 4 \$1.00

1 1/2 doz. pies

BIRDS EYE MIXED VEG. WITH ONION SAUCE 3 8-oz. pkgs. \$1.00

BIRDS EYE FRENCH GREEN BEANS WITH ALMONDS 3 9-oz. pkgs. \$1.00

BIRDS EYE RICE & PEAS WITH MUSHROOMS 3 7-oz. pkgs. \$1.00

BIRDS EYE FRENCH FRIES 7 89¢

3oz. pkgs.

GRAND UNION PEANUT COFFEE CAKE 67¢

13-oz. cake

GRAND UNION FISH DINNERS 49¢

FLOUNDER • HADDOCK • TROUT • SALMON

CAPT. CRUNCH ICE CREAM POPS 6 59¢

1 1/2 doz. pkgs.

GRAND UNION - FROZEN ORANGE JUICE 6 95¢

6oz. cans

HERSHEY CREAMSICLES 59¢

10 in. pkgs.

HOLLAND HALL ICE CREAM 59¢

1 half gallon

BIRDS EYE AWAKE 3 99¢

BEANWY BOTTLE

DEL MONTE FRUIT COCKTAIL 3 \$1.00

1-lb. 14oz. cans

SUGAR 5 49¢

5 lb. bag

AMERICA'S FAVORITE HEINZ KETCHUP 4 89¢

14oz. bottle

LIBBY TOMATO JUICE 3 85¢

1-qt. 14oz. cans

DOG FOOD KEN-L-RATION 6 87¢

1-lb. cans

SUNWEET PRUNE JUICE 39¢

1/2 gal.

DEL MONTE GRAPEFRUIT 3 49¢-95¢

DEL MONTE DRINK 3 49¢-95¢

GRAND UNION ORANGE DRINK 3 49¢-95¢

TROPICAL PUNCH 3 49¢-95¢

CAMPBELL'S PORK & BEANS 4 49¢

1-lb. 3oz. cans

Nancy Lynn Baked Goods

APPLE PIES 49¢

LARGE 8 INCH SIZE

MOTT'S AM OR PM 3 95¢

3-oz. pkgs.

GRAND UNION PEACHES 4 79¢

1-lb. cans

TASTE OF THE SOUTH PURPLE PLUMS 4 99¢

4 2oz. pkgs. \$1.00

VERY FINE APPLESAUCE 3 79¢

2-lb. jars

CHASE & SANBORN BEECHNUT COFFEE 79¢

1-lb. decaf. cans

FRESH FLORIDA SWEET CORN 10 69¢

golden ears

ROMAINE LETTUCE 15¢

GARDEN FRESH

CLOROX 35¢

1/2-gal.

APPLESAUCE 2 55¢

2 25-oz. jars

ARIZONA ORANGES 10 49¢/10 59¢

1st of the season

PEAT HUMUS FERTILIZER 50 98¢

50 lbs. 98¢

ROSE BUSHES 89¢

each

GRASS SEED 5 99¢

each

FLOWERING BULBS 59¢

each

HELLMANN'S MAYONNAISE 39¢

1 pint

CARNATION BORDEN'S PET MILK 42¢

3 1/2 oz. cans

Prices effective thru Saturday, April 24. We reserve the right to limit quantities.

UNION - 5 Points Shopping Center at Chestnut St. - Open late Thurs. - Fri. & Sat. 'til 9 p.m. OPEN SUNDAY 9 A.M. to 2 P.M.

SPRINGFIELD - General Greene Shopping Center, Morris & Mountain Ave. - Open Monday thru Thursday, 9 a.m. to 9 p.m., Friday 9 a.m. to 10 p.m., Saturday, 8 a.m. to 9 p.m., Sunday, 9 a.m. to 6 p.m.

Visit your Triple-S Redemption Center, Madison Shopping Center, Main & Dwyer, Madison. Open Fri. 'til 9 p.m. All Redemption Centers closed Monday



A LITTLE BOY WALKS — Little Glen Smith, son of Mr. and Mrs. George Smith of Elizabeth tells members of the Cerebral Palsy Service Committee of Union County, Mrs. J.F. Balak, left, and Mrs. William Seib of Elizabeth, that he is ready for a stroll at the Cerebral Palsy Center in Cranford. The committee is sponsoring a cocktail dance May 2 to raise funds for therapy equipment for the center.

Union County Cerebral Service Group Plans 'May In Bermuda' Dance Benefit

The Cerebral Service Committee of Union County will hold a "May in Bermuda" cocktail dance at Schackamaxon Country Club, Scotch Plains, May 2 from 6 to 10 p.m., it was announced at a recent meeting at the home of Mrs. Arthur Venneri of Cranford.

Members accepted as their project the purchase of special therapy aids. Mrs. James W. Shirreffs, program director, has requested indoor play equipment, designed to improve muscular coordination and balance as well as materials designed to assist children with learning difficulties. Mrs. Blake Caruthers, occupational therapist at the Center, was guest speaker at the recent meeting.

The theme, "May in Bermuda" was selected because the grand prize of a weekend for two in Bermuda will be awarded to a lucky member at the dance. This marks the fourth benefit held by the committee, and funds have previously been used for a fully equipped play yard, with paved strips for bicycle riding and individual locker units for each child.

The Center, at 216 Holly St., Cranford, established in 1949, operates five days a week during the school year and has a summer program. Children receive diagnosis, therapy, counseling, education, specific therapies including speech, physical, occupational and social.

The Service Committee, which was formed in January, 1962, has 35 members representing Union County, who meet monthly at the Center and at respective members' homes.

Officers for the 1964-65 season are Mrs. Harry Bernstein, president; Mrs. Frank Pizzi, vice-president; Mrs. W. A. Boyle Jr. of Roselle Park, corresponding secretary; Mrs. Frank Hynes, recording secretary; Mrs. Robert Hyatt, treasurer.

Among the committee chairman for the benefit are Mrs. J. F. Balak and Mrs. Helen Imbleau, both of Union.

Miss McCormack's Troth Told To W. James Zeiss

Mrs. Martin L. McCormack of Clifton has announced the engagement of her daughter, Patricia Ann, to W. James Zeiss, Jr., son of Mr. and Mrs. Willard J. Zeiss Sr. of Union. Mrs. Zeiss is a member of the editorial staff of the Suburban Publishing Co. Miss McCormack also is the daughter of the late Mr. Martin L. McCormack.

The announcement was made at a dinner party on Easter Sunday.



MISS PATRICIA MCCORMACK

the Naval Air Reserve and is associated with S.S. Art and Engraving Co., Union.

An August 28 wedding date is planned.

Girl Scouts Plan Armory Exhibit

Girl Scouts from Union County will join an expected 14,000 members of the Washington Rock Girl Scout Council in a festival Saturday, May 8, at the National Guard Armory in West Orange.

Included in "The Village Fair" exhibit will be demonstrations of Girl Scout activities in 114 booths. A village theater will be the scene for vocal music programs and dancing.

On the committee organizing the festival are Mrs. Robert Ziegler of Springfield and Mrs. Harold Pitman of Roselle.

ELECTION SLATED BY PARENTS UNIT MONDAY EVENING

Parents Without Partners, Inc., Essex-Union Chapter of New Jersey, will hold election of officers at its next meeting to be held at the Coronet, 925 Springfield ave., Irvington, Monday at 8:30 p.m.

Plans for the International Conference in New York, June 25-27 will be discussed.

Ray-Malde will report on Fathers-at-Large, the committee responsible for activities for children who do not have or see their father.

Mrs. Anne Sornstein is program chairman

FURS-TO-FASHION RESEARCH UNIT'S MEETING MONDAY

Ruth Estrin Goldberg Memorial for Cancer Research will feature a fur fashion show at its general meeting Monday at 8:30 p.m. at Congregation Beth Shalom, Union. The show will be presented by Friedner and Pyros, New York furriers.

The organization held a fund-raising dance recently at Temple Sharey Shalom, Springfield, which was termed a success by the president, Mrs. Sanford Wellen of Springfield.

Chairmen for the dance were Mrs. Philip Zwalsky of Union and Mrs. Jacobs of Cranford.

BOWLING LEAGUE GIVES TROPHIES

The three members of the "Kingspins," first place team in the Bowling League of the Mountainside Newcomers Club, received trophies at a luncheon held recently in the William Pitt Inn, Chatham. "Kingspins" are Mrs. Robert Lawrie, Mrs. George Schweiker and Mrs. Roland Roedler.

Other awards presented at the luncheon, which climaxed the season for the league, went to Mrs. John Karmazyn for high average; Mrs. Donald Skoog, high game, and Mrs. William Casper, high series.

Mountainside Student To Present Research

Carl E. Bredlau of 213 Evergreen court, Mountainside, a senior at Rutgers University, will present a paper on mathematics Saturday before the Henry Rutgers Conference.

Bredlau was one of 56 scholars selected to do conference research during their senior years.

Publicly chairman and individuals are urged to get their news items to this newspaper on Friday. Also, type them on one side of the paper only, double.

SHOP-RITE BARTLETT
PEARS
1 lb. can **10¢**
WITH THIS COUPON
(COUPON VALUE 10c)

STOKELY
PEACHES
1 lb. can **10¢**
WITH THIS COUPON
(COUPON VALUE 10c)

STOKELY or SHOP-RITE
FRUIT COCKTAIL
1 lb. can **10¢**
WITH THIS COUPON
(COUPON VALUE 10c)

SHOP-RITE
GRAPEFRUIT
1 lb. can **10¢**
WITH THIS COUPON
(COUPON VALUE 10c)



WHY PAY MORE

FRESHNESS MAKES THE DIFFERENCE!

CANTALOUPE

VINE RIPPENED ea. **29¢**

Fresh & Sweet CORN 5 ears **39¢**

Red Western Fancy APPLES Delicious 2 lb. **39¢**

New Texas Mild U.S. #1 ONIONS BAG 3 lbs. **35¢**

Sweet & Juicy Florida ORANGES ea 10 for **39¢**

BANANAS

CHIQUITA'S lb. **10¢**

FROZEN FOOD

SHOP-RITE FROZEN

ORANGE JUICE

6-oz. cans **98¢**

12-oz. cans **95¢**

DAIRY DEPT.

SHOP-RITE
COTTAGE CHEESE
Creamy
2-lb. cont. **39¢**

Sta-Wip, Dessert **TOPPING** 10-oz. **29¢**
Shop-Rite, Chilled Fresh
ORANGE ICE 1-qt. **29¢**

Prices effective through Saturday Night, April 24th, 1965. Not responsible for typographical errors. We reserve the right to limit quantities.

COUPON SAVINGS

SHOP-RITE
BARTLETT PEARS 1 lb. can **10¢**
WITH THIS COUPON
(Coupon Value 10c)

Coupon good at ANY SHOP-RITE SUPER MARKET WHERE ITEM IS AVAILABLE. COUPON LIMIT - ONE PER FAMILY. Coupon expires Saturday, April 24, 1965. Coupon redeemed only on purchase of item listed. SUBURBAN LEADER

COUPON SAVINGS

STOKELY
PEACHES Half or Sliced 1 lb. can **10¢**
WITH THIS COUPON
(Coupon Value 10c)

Coupon good at ANY SHOP-RITE SUPER MARKET WHERE ITEM IS AVAILABLE. COUPON LIMIT - ONE PER FAMILY. Coupon expires Saturday, April 24, 1965. Coupon redeemed only on purchase of item listed. SUBURBAN LEADER

COUPON SAVINGS

STOKELY or SHOP-RITE
FRUIT COCKTAIL 1 lb. can **10¢**
WITH THIS COUPON
(Coupon Value 10c)

Coupon good at ANY SHOP-RITE SUPER MARKET WHERE ITEM IS AVAILABLE. COUPON LIMIT - ONE PER FAMILY. Coupon expires Saturday, April 24, 1965. Coupon redeemed only on purchase of item listed. Suburban Leader

COUPON SAVINGS

SHOP-RITE
GRAPEFRUIT SECTIONS 1 lb. can **10¢**
WITH THIS COUPON
(Coupon Value 10c)

Coupon good at ANY SHOP-RITE SUPER MARKET WHERE ITEM IS AVAILABLE. COUPON LIMIT - ONE PER FAMILY. Coupon expires Saturday, April 24, 1965. Coupon redeemed only on purchase of item listed. Suburban Leader



SHOP-RITE'S GIANT USDA CHOICE BEEF SALE! WHY PAY MORE? WHEN YOU GET THE BEST FOR LESS AT SHOP-RITE! ALL SHOP-RITE BEEF IS GRADED CHOICE AND TRIMMED RIGHT FOR YOUR EATING PLEASURE!



USDA CHOICE BEEF SALE!

STEAK SALE

First Cut CHUCK **39¢** lb. Cut Short RIB **69¢** lb. Usual Fine Trim SIRLOIN **79¢** lb. Trimmed Rite PORTERHOUSE **89¢** lb.

BOTTOM ROUND OR CROSS RIB ROAST **85¢** lb.

Center Cut **CHUCK STEAKS** lb. **49¢** All Meat, No Waste
CUBE STEAKS lb. **99¢** Cut for London Broil
SHOULDER STEAKS lb. **99¢** Fresh
GROUND BEEF lb. **39¢** Fresh and Lean
GROUND CHUCK lb. **59¢** Extra Lean
ROUND GROUND lb. **89¢** California Pot
CHUCK ROAST lb. **59¢** Boneless Chuck
POT ROAST lb. **69¢**

For Oven or Pot Roast
TOP ROUND lb. **99¢** For Oven or Pot Roast
TOP SIRLOIN lb. **99¢** For Oven or Pot Roast
EYE ROUND ROAST lb. **\$1.19** Real Family Treat
NEWPORT ROAST lb. **\$1.09** For Braising, Pot
BEEF SHORT RIBS lb. **49¢** Cut for Stew
BEEF CUBES lb. **69¢** Boneless Butt
PORK ROAST lb. **49¢** First-Cut 79¢-lb.
CORNERED BEEF Thick Cut lb. **59¢**

RIB ROAST **85¢** **65¢** **55¢**

WHY PAY MORE?

COFFEE SALE SHOP-RITE or V-8 **3** 1-qt. **\$1**

VEGETABLE JUICE SHOP-RITE or V-8 **3** 1-qt. **\$1**

DISH DETERGENT SHOP-RITE, LIQUID 1-qt. **59¢**

DEL MONTE DRINK or SHOP-RITE, Pineapple-Grapefruit 4 1-qt. **\$1**

HIG DRINKS GRAPE ORANGE ORANGE-PINEAPPLE OR FLORIDA FRUIT PUNCH **3** **89¢**

ROUTE 22, UNION UNION CENTER
Route 22 and Springfield Road 963 Stuyvesant Ave., Union

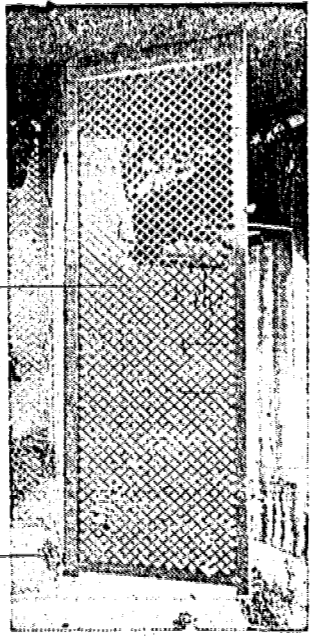
Legal-Notice

Legal-Notice

Legal-Notice

CALENDAR NUMBER	NAME AND ADDRESS OF APPLICANT	PREMISES EFFECTED	VARIANCE REQUESTED	DECISION OF THE BOARD OF ADJUSTMENT
1637	Three Three Valley Street, Inc., 210 Tilton Road, South Orange, N. J.	#33 Valley Street	To erect & maintain a three-story garden apartment building unit to accommodate 24 One bedroom units, with 100% off street parking.	Recommended
1638	Wyn Village, Inc., 1150 West Chestnut Street, Union, N. J.	Index 45 - Block 3, Lot 14, State Highway Route 22 and Springfield Road.	To erect & maintain two gasoline pump island and tanks in conjunction with an allowed gasoline service use.	Recommended

Planning Can Bring Rewards In Remodeling, So Make That Check List Before Work Starts



FILIGREED SCREEN such as this one of hardboard can give privacy to any area and be decorative, too.

Inside, outside and all around the house, from the basement to the roof and from the indoor family room to the outdoor patio and garden, there's something going on in many, many homes these days — a considerable "something" in the way of home improvements. Families intent on making the old new again, on increasing living space and bettering existing space, on boosting the comfort, convenience, beauty and enjoyment of the entire home and adding substantially to property values, too, are going into action now to make sure their own particular improvements get off to a good start and reach a satisfactory conclusion.

Whether the plans involve repairs, remodeling or expansion, or all three, rewarding results do depend greatly on the "good start." Sound basis for home improvements of any kind is to determine first just what the home needs to put it in top shape and assure the successful completion of new projects. A modern, automatic kitchen, for instance, can't be a dream come true if the house wiring isn't up to the added electrical load, and a central heating-cooling system is apt to be a costly disappointment if the conditions of walls, windows and doors causes dissipation of warm or cool air, in season, to the great outdoors. Before beginning home improvements, therefore, a home check-up can be helpful. Most common problems occur in the following areas, according to the New York Chapter, American Institute of Architects.

Wiring
Do fuses blow or circuit breakers trip frequently? Do the lights dim when an appliance goes on? Are long extension cords strung around a room? These are signs of a wiring problem — inadequate wiring, inadequate outlets.

Plumbing
Most common plumbing problem is the loss of water pressure from corrosion in the pipes. To test water pressure, turn on all the faucets in the house and flush the water closet.

If water from the faucets dries to a trickle, it can mean future plumbing troubles. Any lime-like accumulations around valve stems is an indication that the valve is leaking.

Hot Water System
Trouble brewing in a tank hot water system shows up first in rust and leaks around the pilot light and burner.

A family of five persons, which has a washing machine, should have a water heater with a minimum capacity of 40 to 50 gallons.

Insulation
To check for adequate wall insulation, place one hand against the inside surface of an exterior wall on a cold day. If it feels much colder than the surface of an interior wall, too much heat is escaping.

Wood Structure
Most common problem in the wood structure of a house is termites at the inside of a beam, leaving mite damage. Termites eat away no visible signs of their presence.

Use a probing tool such as an ice pick. If the pick sinks into a beam with relative ease, termites may be at work.

Roof and Gutters
Loose shingles should be nailed back in place and broken ones replaced. Check the chimney for bird nests or other obstruction which can create a fire hazard. Also examine gutters and downspouts, clearing out accumulated leaves and other debris.

Basements
Signs of a wet basement are dark stains on the walls and floors, flaky cement on the walls.

and mildew around the wooden beams.

If the home has a crawl space between the first floor and the ground, it is important that it be properly ventilated.

Heating System
A heating plant should be cleaned at least once a year, at the end of the heating season. Inspect the inside of the furnace and boiler for signs of cracking and rust. Check the base for rust and general deterioration.

WHAT TO SPEND ON HOME NEEDS BUYER'S DECISION

When you shop for furnishings for your home, what can you do to be sure of getting what you need at a price you can afford to pay? How can you avoid confusion, disappointment and loss of money when you buy? With the salesman's help, what can you do to buy intelligently?

Even though laws, regulations and standards protect you, it is necessary for you, the consumer, to accept your share of the responsibility when you buy, says Miss Gena Thames, extension home furnishing specialist at the College of Agriculture, Rutgers University.

Shopping for furnishings begins at home, she declares, and continues, "Only you can determine what pieces of furniture you need, how much you can afford to spend and how the furnishings must perform for your purposes."

"You can't expect the government or the manufacturer or the salesman to do this for you! Before you begin to shop, know what you need and plan what you will buy.

"Answer these questions: Must upholstery fabric withstand abuse, constant use and frequent cleaning? Will rug receive constant wear, tracking and heel gouging? Do you want a window treatment to afford privacy, cut out glare, or resist sun damage?"

"The decision is yours. Your responsibility is to be informed, to be a discriminating shopper. You cannot choose wisely from an array of consumer goods unless you have up-to-date knowledge of the different types and qualities available and the performances that you can expect from them.

"It takes time to shop intelligently, but the investment of your time can save you dollars. And it may add years of satisfaction with the furnishings that you purchase," Miss Thames says.

RING WASHERS
Keep washers and tubs neatly organized on an ordinary spring-type shower curtain ring which snaps open or closed like a key ring. Ring can be hung wherever handy.

NEED A JOB? Read the Help Wanted Section of the Classified Pages. You can probably find a job for whom you can use your services. List your qualifications in an employment wanted ad. Just call 686-7700 and ask for Ad-Taker.

TRUCKS
SIDE PANEL • REAR PANEL
1178 Springfield Ave., Irvington

Rent-a-Car
DIAL-A-CAR
371-6262

CLEAN-UP HINTS EASE REMODELING DIRT PROBLEMS

Homemakers thinking of leaving home until after the family room has been paneled or the fixture installed in the bathroom or the wallpaper added in the children's room will find that a few house-keeping precautions make home improvements much simpler.

Proper cleaning measures will preserve a safe, clean home during redecoration, according to professional experts.

Equipment should first be organized into these categories:

1. A variety of clean rags, from chambray to scraps of old bath towels and sheets.
2. Brushes and mops, including a chemically-treated mophead that will pick up gritty soil.
3. A supply of soap, cleaners, polishes and waxes.
4. A first-aid kit of solutions for spot emergencies.

Throw rugs, rubber mats or old pieces of carpet, should be placed, both inside and outside areas where work is in progress.

If heavy construction is scheduled, a coat of finish or "sealer" will help protect tile flooring. The surface of wood floors may be guarded with a special application of wax. Later, the floors should be thoroughly cleaned and re-finished.

Rugs, furniture and walls should be vacuumed frequently to prevent a hard-to-remove film of soil from gathering.

Waste should be thrown out as each job is completed—or at the end of the day, so that it doesn't pile up. If waste material contains plaster or dusty articles, sprinkling with water or wrapping in wet paper will make removal easier and less dusty.

Keeping work areas clear will reduce household hazards, as well as dirt. Steps should also be taken to clear these areas of curious young observers. If children are too small to heed "off-limits" signs or commands, a temporary barrier should be set up.

HOME PROJECTS JUMP \$1 BILLION WITHIN 10 YEARS

Although baseball, bowling, boating and fishing each has a claim to fame as an important national pastime, there's a new challenger coming up fast — home improvement!

Most recent complete figures, from the U. S. Bureau of Census, show that the nation's homeowners spent a big \$11,733,000,000 for home improvement in 1963, points out Executive Director Edgar Hall of the National Improvement Council.

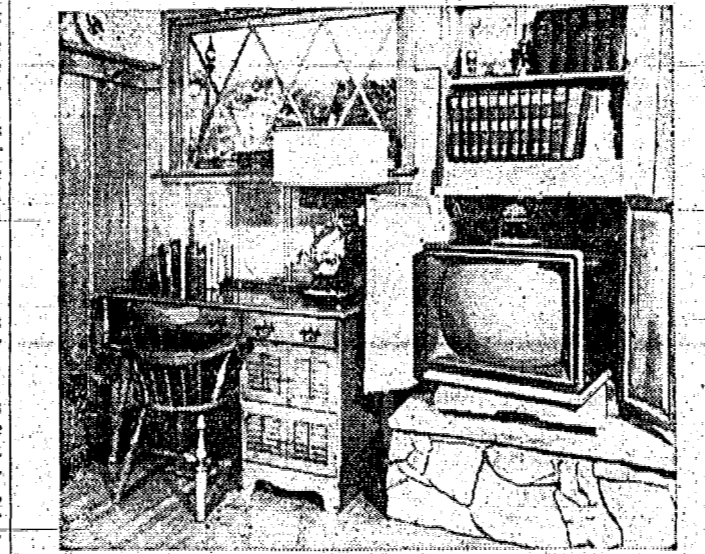
To see just how home improvement activity has grown, look back a decade or so. During the first five months of 1953, three billion dollars was spent on home improvement.

During the corresponding period in 1963, that figure zoomed to four billion, four hundred million!

Projecting the 1953 outlay for five months to an estimated 12 months gives a figure of eight billion dollars, versus 1963's 11 billion, 733 million.

SMALL PARTS

When cleaning a number of small parts in solvent, keep them from getting lost by first pitting them inside a scrap piece of wire or screening bent into a bowl shape which can be lowered into solvent.



ENTERTAINMENT CENTER BUILT IN to the wall of a room provides space for the television set, with storage space above for books, souvenirs and trophies. The TV set can be shut away when not in use, leaving shelves handy to the desk. Knotty grade Ponderosa pine paneling used for walls as well as built-ins helps to unify the room.

An Invitation To Browse Extended By 'Lamp City'

An invitation for the public to browse among one of this area's largest collection of lamp shades, decorator graphic arts and imported oil paintings, was made today by Steve Odinsky, manager of Lamp City, Route 22, Union.

He added that the hundreds of lamps and shades, both foreign and domestic, on display does not end the selection. "Home-makers or decorators interested in custom-made shades may bring their own fabrics to follow certain decor," Odinsky said. "We make available a further selection of hundreds of shade frame styles."

Styles of both ready and custom-made shades range from ultra-modern through provincial, contemporary, Mediterranean and colonial.

Replicas of sculptor-masterpieces features the graphic arts display. The oil paintings are principally European.

Goldfinger's

FURNITURE

OUR 35th YEAR

WE ARE HAVING OUR GREATEST

SALE EVER . . .

AT

128 LYONS AVENUE

(AT PARKVIEW TERR.) NEWARK, N. J.

Open Tues. & Fri. 'Til 9 P. M.

Tel. 923-7642

- Alluminum Siding
- All Types of Roofing
- Dormers
- Gutters & Leaders
- All Types of Carpentry

RALPH'S GENERAL CONTRACTORS
241-0020
544 W. 5th Ave., Roselle

a most FABULOUS Selection of the most wanted styles in shades & lamps

STIFFEL
7305-P
There is a perfect blend of design and material in this gracious lamp finished in antique old brass and antique walnut. Shade is a lovely imported natural open linen weave over translucent Vinyl. 3-way light with E-Z-Lite master control. 31 1/2" in. High.

CUSTOM SHADES MADE TO YOUR SPECIFICATIONS

Interior Fashions by

lamp city

US Highway 22 • Union, N. J. MU 8-8411

HODOR SUGGESTS FOR

MOTHER'S DAY

MAY 9

the Elegante DINETTE

An Easy-to-care-for Beauty you'll be proud to own

Comp. Value \$150 now a fabulous low **99.99**

China Additional

Hodor brings you spectacular value in a Dining Room — quality 5 piece set bonded 100% in glamorous carefree Hodor All-Bonded Plastic — Hodor's luxury laminate that resists burns, stains and wear — wipes clean. Generous family size extension table is self-edges . . . extra sturdy. Elegantly styled chairs with Hodor All-Bonded Plastic backs . . . plumbly upholstered in matching super-tough washable Duran. SEE IT NOW . . . SAVE MORE NOW . . .

The Copenhagen DINETTE

Comp. Val. \$120 now a low **69.99**

Danish inspired beauty in a virtually indestructible dinette. Big family size—12" leaf oval table is topped with fashionable, moisture-Hodor All-Bonded Plastic. Slim silhouette sets off handsome tapered metal legs with no-wear, self-leveling feet. Chair feature me at finished sculptured backs of matching Hodor's . . . thick, comfortable seats in guaranteed super-tough washable Duran. Choice of upholstery colors and Hodor's grain with Black "in Glittering Brass or Precious-Tone" finish.

*HODOR ALL BONDED PLASTIC — Hodor's luxury laminate that wipes clean, resists burns, stains, tears and wear.

CHARGE IT!

America's largest chain of dinette specialists

HODOR

Dinettes

NEWARK 844 McCARTER HIGHWAY Off Raymond Blvd. near Penn Sta. Open Mon., Wed., Fri. 10:30 a.m. - 8:00 p.m. Tues., Thurs., Sat. 10:30 a.m. - 6:00 p.m.	EAST ORANGE 510 CENTRAL AVENUE Cor. Halstead St., Sr. Park, Simon Open Mon., Tues., Thurs. 10:30 a.m. - 8:00 p.m. Wed., Fri., Sat. 10:30 a.m. - 6:00 p.m.
PARAMUS WEST 160, Route 4 Open Mon., Wed., Thurs., Fri. 10:30 a.m. - 8:00 p.m. Tues. and Sat. 10:30 a.m. - 6:00 p.m.	UNION 2234 Morris Ave. 1/2 mile S. of U.S. 91 Open Mon., Tues., Thurs., Fri. 10:30 a.m. - 8:00 p.m. Other days 10:30 a.m. - 6:00 p.m.
JERSEY CITY 840 Bergen Ave. Open Mon., Thurs. & Fri. 10:30 a.m. - 8:00 p.m. Wed. and Sat. 10:30 a.m. - 6:00 p.m.	

Spring

REVUE '65

• HOME • GARDEN • AUTO
• HOME IMPROVEMENTS • FURNITURE • DECORATING

IT'S SPRINGTIME... and SUNCOVER Time

SPECIAL THIS WEEK

SOFA & CHAIR

Your Choice From Our Large Selection of Attractive Fabrics

\$69

Largest selection of fabrics

CUSTOM MADE DRAPERIES
LABOR FREE
PAY FOR FABRIC ONLY

ZARRO and associates
INTERIOR DECORATORS
224 RAHWAY AVE., ELIZABETH
Phone Day or Night EL 4-5454

RAWOOD

UNPAINTED FURNITURE OUTLET

376 ROUTE 22, HILLSIDE
MU 6-0222—MU 6-0229
OPEN DAILY 9 A.M.—9 P.M.—Sat. 'Til 6 P.M.

ALL WOOD KITCHEN CABINETS

COMPLETE WITH SINK AND FORMICA TOP
CLEAN PINE FRONTS

FREE!
21" x 24" SINK & FIXTURES, Includes Sink, Rim Set-in & Coupled. Choice of color of Formica top.

60" WIDE \$149.95 (5-FT.)
72" WIDE \$169.95 (6-FT.)

8-FT. MODERN NATURAL BIRCH or CLEAR PINE KITCHEN

\$199.95

- COMPLETE 8' BASE (INCLUDES BREAD BOX)
- TWO 24" x 34" WALL CABINETS, VALANCE INCLUDED
- 95% GENUINE FORMICA TOP, CHOICE OF COLORS
- SINGLE OR DOUBLE BOWL PORCELAIN STEEL SINK, FAUCET AND STRAINER INCLUDED
- FULLY ASSEMBLED • READY TO FINISH • CHOICE OF HARDWARE

RAWOOD NEAR BRISTOL MYERS
UNPAINTED FURNITURE OUTLET
376 ROUTE 22, HILLSIDE—MU 6-0222—MU 6-0229

PLAN COLOR HARMONY

When color styling two or more rooms the joining rooms, care should be taken to make the transition color of the floor covering of one room to the other a smooth one so that the two do not clash. The National Paint, Varnish and Lacquer Association suggests two methods which help achieve a harmonious look. One method is to paint the same color and to repeat the color of the floor covering of one room on the ceiling of the other. A second idea would be to reverse the wall and ceiling colors of the two. Still another plan might be to take a lighter or darker hue of the colors in the first room and use it in the second.

Prefinished Paneling For Re-Doing Rooms

Whether a dwelling is gen-erally modern, ideas for dis-tinctive interiors are constantly being sought by home decorators. Low budget and light main-tenance, however, often dictate the choice of materials. Many homemakers are not aware that hardwood paneling, once considered a luxury, has moved into the economy range, thanks to the development of

factory methods for applying furniture-like finishes to hard-wood plywood. Vertical groove every few inches on panel faces represent planks of different pieces of wood. One of the largest selections of hard-wood plywood panels are on display at Reisen Lumber & Millwork Co., 1070 Morris Ave., Union.

Maintenance of prefinished paneling is extremely simple. Weldwood panels will remain beautiful indefinitely under normal conditions, requiring only an occasional "dusting" with a damp cloth. Periodic waxing will help to retain the new-yet-mellow look inherent in all woods properly finished at the factory. Weldwood panels are guaranteed for the life of the building in which they are installed.

RENT-A-TOOL CO. GETS ATTENTION ON THE HIGHWAY

Rent-A-Tool Co., Rt. 22, Union, dispenses the belief that a rental store has to be a crowded, messy operation. "This is a business that has efficiency on its mind," Paul Worth, owner of the operation noted recently. Worth said he has worked hard to make his rental business efficient, attractive and businesslike. "Every business on this highway is fighting to get attention," Worth said. "We have managed to get the prospective buyer's eye by our neatly landscaped front, clean building signs and freshly-painted exterior."

"At night," he said, "the unique lighting system used both inside and outside the store, is an attention getter. At night the lighting changes color on the outside of the structure and our inside displays are kept lit until midnight."

"Once we get the customer's attention," Worth emphasized, "we have no trouble keeping it because we run an efficient operation. Our customers keep coming back."

Decorative Shades
All Types & Varieties
WOOD • CLOTH
Venetian Blinds
STEEL • WOOD • ALUMINUM
CUSTOM MADE
Residential - Commercial
Manufacturers of
Custom Made Awnings
Aluminum Windows & Doors
Old Blinds Repaired
UNITED
Awning & Shade
Co., Inc.
373-0844
1340 Springfield Ave., Irvington
Member Chamber of Commerce

WHY PUT UP WITH THIS! **WHEN YOU CAN HAVE THIS!**

GARAGE CONSTRUCTION CO.

★ Recondition Your GARAGE — OR — ★ Completely Build any type GARAGE

... All sizes and styles at savings!

FREE ESTIMATE CALL ANYTIME 688-9389

Convert to **GAS HEAT**

SALE! We Install Anywhere in N.J. **INSTALLED AS LOW AS \$289** NO MONEY DOWN First Payment Oct.

AMERICAN Standard
6 HOUR INSTALLATION ALWAYS AHEAD IN QUALITY!

Call Collect DAY or EVENING **MA 3-8671**
GENERAL HEATING Corp.
1025 Clinton Ave., Irvington, N.J.

Whether evenly- or random-spaced, grooves in Reisen Lumber's prefinished paneling fall 16" on center for nailing or gluing of panels direct to studs. This plank arrangement has established a strong style trend in recent years and offers the homeowner an almost infinite variety of decorating possibilities depending on tone, species of wood chosen and whether panels are used horizontally or vertically.



WOOD AND HARDWOOD PANELING in 43 varieties is on display at Reisen Lumber & Millwork Co., 1070 Morris Ave., Union. Included in the display are sample rooms similar to the one pictured above. Panels are prefinished in tones and colors to accommodate decorating ideas.

Precast Stone Veneers Give 'New Look'

The use of precast stone veneers to reface a home or business building is becoming a popular and practical trend, according to Max Epstein, He is the president of Progress Construction Co. of 2515 Vauxhall rd., Union.

Progress specializes in refacing buildings with Samastone and installing Shawnee precast

steps. The business has been located in Union for 21 years, has been in operation 26 years. Shawnee steps, which come ready made, are "designed for safety, beauty and durability." Epstein also points to an unconditional, 10-year guarantee and one-day installation for most steps. Samastone is used to convert

Good Engineering Saves Fuel, Gives Best Heating

A heating system has to be properly engineered to work at maximum efficiency, according to a spokesman for General

Heating Corp. of 1025 Clinton Ave., Irvington. "Each installation presents an individual problem and requires a heating expert's knowledge and follow through," the spokesman said.

● Lamp Shades
● Recovered
● Lamps Repaired
● Modernized
● Rebuilt
● Lamps made to order

CROWN LAMP & SHADE CO.
265 14th Ave., Newark
MA 3-5932

General Heating has proven that a heating installation properly installed—whether it be gas or oil—can save as much as 50 percent on fuel bills, the spokesman said. He added: "Experts are always available at General Heating to discuss any heating problems free and at no obligation."

PORCHES & DENS ARE OUR BUSINESS

- proper PLANNING
- + original DESIGNS
- + quality MATERIALS
- + real CRAFTSMANSHIP
- + complete INSTALLATION
- + correct PRICING
- + choice of TERMS
- + faithful SERVICE
- entire SATISFACTION

Consult **HART & REED** 25 YEARS EXPERIENCE

Remodeling & Building Specialties
Highway #10 • Whippany, N. J.
TU 7-1122 thru 25 • SO 3-2000

REISEN PANELS



FINISH ATTICS . . . REC ROOMS . . . DENS, OFFICES!

Choice of beautiful woods! Guaranteed for a lifetime!

If you're planning to finish off the attic to gain more living space . . . panel a rec room or a den . . . or an office . . . **WELDWOOD PLYWOOD PANELING** is the perfect wall treatment. These **REAL WOOD** panels create an atmosphere of warmth and beauty that other wall materials cannot give . . . and they adapt perfectly to any decorative ideas you may have, too. Aside from an occasional waxing, **WELDWOOD PANELING** needs no maintenance. You will eliminate periodic wall repairs and expensive redecorating . . . and add real value to your home.

You can use Weldwood Panels for built-ins, partitions, cabinets, too! There are dozens of fine woods available: oak, walnut, birch, Nallora, Samara, and many others. There are textured panels: Sea Swirl, Surfwood, Weldtex.

Come in and see our complete line of Weldwood decorative panels. We'll help you estimate the cost of the entire job . . . you'll be surprised how little it costs.

WELDWOOD'S NO. 1 HEADQUARTERS DEALER

REISEN LUMBER & MILLWORK
1070 Morris Ave., Union
MUrdock 8-7500 ELizabeth 4-1500



DON'T DO IT YOURSELF... LET AN EXPERT DO IT!

WITH A CRESTMONT HOME IMPROVEMENT LOAN

HOME MODERNIZATION LOANS UP TO \$3500 WITH UP TO 5 YEARS TO REPAY

Where Your Dollar Works Harder . . . Grows Bigger

Crestmont Savings AND LOAN ASSOCIATION

SPRINGFIELD OFFICE: 175 Morris Ave. DR 6-5940
MOUNTAINSIDE: Echo Plaza Shopping Center DR 9-6121
Main Office: 1886 Springfield Ave., Maplewood, SO 3-4700

with your panels for an entire room or use same wood specie with prefinished paneling as an accent area.

Wake Up — Don't Wait
Now is the time to get your **POWER MOWER SERVICED** and ready for the coming season

- SHARPENING
- GRINDING
- ALL ENGINE PARTS

TRIANGLE LAWNMOWER SALES and SERVICE
AUTHORIZED SERVICE SALES & SERVICE
628 North Stiles St. Linden 925-8250

TEST IT FREE!

Spring Special

\$1.00 Goes on Faster *EAST AS WALL BRICKING*

Dries Faster *BUG-FREE IN MINUTES*

Off per gal. Cleans Up Faster *WITH WATER*

VI-KO fastest latex house paint we've ever tested!

A latex house paint, guaranteed in writing! Buy 1 gallon or more, get 1 pint of white free. Test the pint—if it isn't the fastest, easiest house paint you've ever used, return the gallon(s) for your money back!

Colorizer Paints
1,322 COLORS FOR INTERIOR AND EXTERIOR PAINTING
© 1965 by Colorizer Associates

MAPLEWOOD HOUSE OF COLOR
1630 Springfield Ave. (At Burnet) SO 3-2954

IRVINGTON COLOR CENTER
1218 Springfield Ave. (Nt. to Kless) ES 3-8691

FREE PARKING — OPEN EVENINGS

Jasco Story: 'Ideas . . . And A Million Tiles'

Why Jasco Tile Co. has become "so important in the decorating plans of countless thousands of families and why the company's three expanding showrooms—in Union, Paramus and Eatontown—continue to attract an ever-enlarging circle of Jasco aficionados," is explained by Abe Mintz and Sam Krienberg, co-owners. Their statement follows: "Ideas—essentially ideas—are Jasco's stock-in-trade. Virtually a limitless world of ideas await the decor-conscious homeowner just inside the doors of the Jasco showroom.

"One million floor and wall tiles, constantly maintained in Jasco's inventory are, in effect,

the instruments by which these ideas spring to life. To the average retailer, the mere notion of stocking a million of anything would have a staggering, nerve-jolting effect. But Jasco's "think big" philosophy and "always think better" policy have made the company the fountainhead of decorating ideas that it is today.

"We once tried to estimate how high our stock of a million floor and wall tiles would go if we ever tried to stack them up. Our best guess was something about the height of Mount Everest.

"Whatever is made in tile, Jasco finds it. And in the displays in a Jasco showroom are found the fruits of that search

a world-wide gathering of decorating ideas. In eye-arresting display after display, the viewer is treated to a delightful rainbow of colors, textures and patterns.

"In size, shape, color, texture, opacity or translucency, Jasco's 'think big' philosophy assumes gigantic proportions. Rubber, cork, vinyl in its many moods and variations, ceramics, mosaics, linoleum tile—every conceivable tile materials, every size and a limitless spectrum of colors—all in sensibly logical displays await your pleasure at Jasco.

"Jasco's list of suppliers reads like a blue-book of top brand

names in the tile business. Kentile, Amtico, Robbins, Goodyear, V.P.I., and Armstrong are among the world's leading manufacturers represented.

"For the rugged individualist who delights in do-it-yourself pursuits, Jasco has an interesting and applicable switch: Tile-It-Yourself. They offer free instructions in the art of Tile-It-Yourself. Prepared and explained by experts, the instructions ease the task for even the most uninitiated self-door.

"Next, Jasco offers the Tile-It-Yourself free loan and use of all necessary tools. A unique and sensible service, too, is its no-risk refund policy. Any un-

used tiles may be returned for a full refund.

"For the not-so-heartily soul or the "all thumbs" customer, Jasco maintains a custom floor tile design center with installations by the company's expert staff of technicians.

"As part of its floor tile center, Jasco offers a free design service. Custom planning and individual designs matched to the homeowners' decor and tastes are features of this no-cost service.

"Jasco recently opened a new carpeting department in their showroom on Route 22. Union. Here again, ideas are the lifeblood of the department—ideas that enable the customer to coordinate her entire floor tiles and carpeting. Among the lead-

ing brands in this department are Alexander Smith and Callaway. And the company offers a free shop-at-home service whereby a customer can select from a wide range of samples and make her selections against the actual background in which they will ultimately appear.

"Jasco's Union showroom is located on Route 22.

Lamp Hatters

SILK SHADES
MADE-TO-ORDER

LAMPS MOUNTED & REPAIRS

IMPORTED PRISMS & FINIALS

172 Maplewood Ave.
Maplewood 762-2733

Spring
REVUE . . . '65

• HOME • GARDEN • AUTO

• HOME IMPROVEMENTS • FURNITURE • DECORATING

NO GROPING
If the light switch in a room is hard to find, install one of the new luminous switchplates that glow in the dark.

NEW ROCKWELL PORTER-CABLE GRASS SHEAR

\$26⁸⁸

Handles a wide variety of grass trimming chores, anywhere in the yard—along walks, flush to walls, around trees, even in tight spots under fences where other tools can't reach. You can even use it to trim and shape shrubs, bushes and hedges. Safe scissors-action blades cut a full 6" in single swath . . . will not bend or jam even when cutting thick foliage.

IT'S SHOCKPROOF
Constructed of a non-conductive material . . . double insulated against electrical shock from product malfunction.

IT'S BREAKPROOF
Housing guaranteed against breakage, for the life of the tool.

IT'S FAILUREPROOF
High-temperature insulated motor—unaffected by frequent prolonged overload for complete protection against burnout.

MODEL 48
2.5 Amp (1/4 HP) Motor
1000 RPM

Force Machinery Co.

Power and Hand Tool Headquarters

2271 Route 22
Union, N. J.

(1/2 mile west of Garden State Parkway — opposite Flagship)

Open 8 a.m. to 6 p.m. Mon. thru Thurs.; Fri. to 9 p.m.; Sat. to 5 p.m.

MU 8-8270

BE WISE - MODERNIZE

ADD - A - ROOM as low as \$2575
An Nationally Advertised by Douglas Fir Plywood Ass'n.

ADD - A - DORMER as low as \$975
Up to 30 ft. setback closed in. Asbestos siding, framed, 2 bedrooms, foyer, bath; 2 closets completely framed

2 CAR GARAGE as low as \$675

CELLAR ROOM as low as \$1475
Finished 12x16 Ceiling - Walls - Floor

HOUSE PAINTED as low as \$375

ASPHALT SHINGLE ROOF as low as \$175

ASBESTOS SIDING as low as \$275

HIDE - A - WAY STAIRWAY as low as \$75

FREE

• PLANS
• ESTIMATES
• INFORMATION

HINTENBERGER & CO.
1059 Prospect St., Hillside — EL 3-6227



LIGHTING MODERNIZATION can bring out beauty throughout the home as well as providing for good seeing. The photo above illustrates how recessed ceiling units and pull-down fixtures decorate and illuminate a basement living area.

Water Softener Service Is Homemaker's Helper

The new automatic water softener is truly one of the best helpers to the homemaker, according to Hubert Nelson, local Culligan man. The softener shows the lady of the house remarkable results in everything she normally washes, Nelson said including cleaner laundry and sparkling dishes.

"Other features of the softener," Nelson emphasized, "proved to the homemaker that her hair and skin respond beautifully to the gentle cleaning action of soft water and simple soap."

"Dramatic savings of soaps and washing compounds result from using soft water and there is also the prevention of costly scale deposits in the hot water heater and piping," Nelson said. "These economies become an impressive return on the investment in the softener and more than justify its nominal cost," he said.

HODOR DINETTES CUSTOM BUILDS FURNITURE SETS

Hodor Dinettes, described by Samuel Potash, general manager, as America's largest chain of dinette stores, has served the New Jersey and Metropolitan New York area for 21 years. "These stores take pride in their merchandise and the prices offered," explains Potash.

"Our slogan, 'Better Buys Because We Build Them,' is more than a slogan. It is a rigid standard which is resolutely applied to each and every set we produce. We custom build to your specifications," he went on to say.

Using various materials such as chrome, wrought iron, "Hodorlite" and Hodor's luxury laminate, "that wipes clean and resists burns and stains," the Hodor chain "unconditionally guarantees" to fill a customer's

DON'T USE A HAND RAKE!

Renew your Lawn with a **POWER RAKE** the easy way!!!

RENT-A TOOL CO.

Rentals • Sales • Service

HIGHWAY 22, UNION, N. J.
(1/2 mile west of the Flagship)

MU 6-6141

Space-Saving Heating Is New Trend, Owners Of Cerv-All Company Point Out

"Whatever the type of heating in the home and whatever the fuel, today's newest trend is certainly towards the compact, space-saving furnace," according to Nick Mosco, and Joe Duddy, owners of Cerv-All Heating & Air Conditioning Co., 444 Bloy St., Hillside.

"Furnaces that will heat an entire home are now so compact that they can be tucked away in a closet. Or, if the furnace is located in the conventional area, the basement, there can still be plenty of room left for a family room or laundry center," Mosco said.

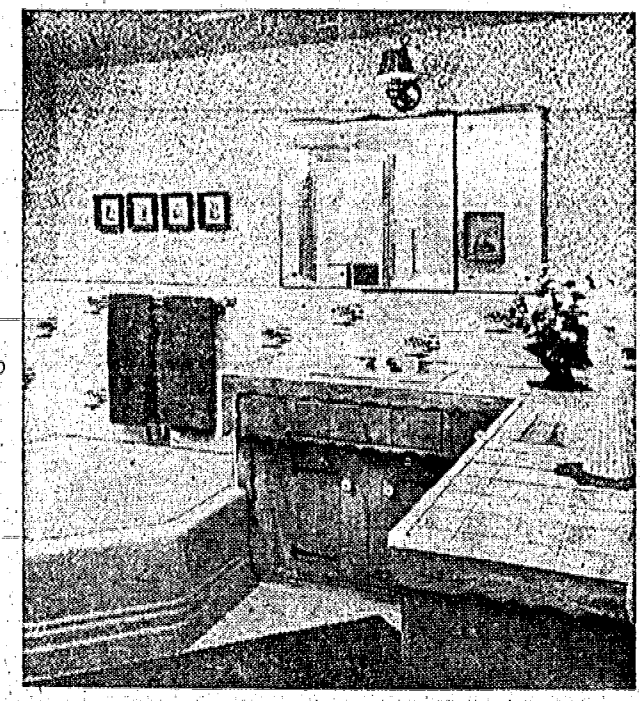
"Still another trend," Duddy pointed out, "is toward the combined heating-cooling system. Homeowners planning to modernize the heating plant might well consider a system that will control the home climate in hot weather too."

When the question of the type of heating comes up, the new developments in hydronic (hot water) heating are worth attention, both men emphasized.

"Oversized and inconvenient radiators can now be eliminated and replaced by wall-hugging, baseboard units which allow much more space and are out of the way," they said.

"If an entire heating system is to be replaced," they noted, "hydronic equipment can frequently be connected to existing piping of an old steam or gravity-type hot water system, reducing material and labor costs. New lines of finger-size tubing are easily installed and normally do not require alterations in home construction."

"Mosco and Duddy said: 'Before installing any heating, it is advisable to get in touch with a heating contractor. We are in a position to help with the choice of the type of fuel to be used and will also make sure that other remodeling projects will not hinder the heating.'



BUILT-IN ENCLOSURES create storage space in the bathroom. Knotty grade Ponderosa Pine paneling adds a note of warmth along with the gay wallpaper in this bathroom.

CLEANING WALLPAPERS
Use a warm iron and clean blotter to remove grease stains from wallpaper. Hold blotter over stain and press in place for several minutes. Heat will soften grease and blotter will remove it.

SOAP AS LUBRICANT
Lubricating the threads of a wood screw with soap, paraffin or a candle stub before trying to drive it home makes the job easier and eliminates danger of breaking screw when driving into hardwood.

YOU LIVE ON EASY ST.

WITH QUALITY AMERICAN-Standard WHOLE-HOUSE AIR CONDITIONING

Here's the very best there is in cooling comfort. AMERICAN-STANDARD. And now you can have it at great new low prices. For example: we can install complete system for as little as—

As Low As **\$3.50** per week

And you never had so many wonderful ways to enjoy all the benefits of quality air conditioning! NOW... AMERICAN-STANDARD offers

3 GREAT NEW SYSTEMS!

There's a system, a model, for every need. Great Pre-Charged Split System—famous Conventional Split Systems, now with increased capacities at no increase in cost—and the brand-new concept in cooling, the HEAT PUMP designed to both heat and cool!

ECONOMY! It's in the AMERICAN-STANDARD tradition! Low first-cost, low operating cost—BIG COMFORT AT BIG SAVINGS!

EFFICIENCY! Years of trouble-free performance with minimum maintenance!

COMFORT! Your home is much more pleasant to live in when air that's perfectly cooled, dehumidified and filtered is circulated to every room.

NOW WE CAN OPEN COOL A WHOLE HOUSE FOR WHAT IT ONCE TOOK TO AIR CONDITION ONLY A ROOM OR TWO!

Call us today for all the facts. No obligation.

CERV-ALL
Heating & Air Conditioning Co.
Sheet Metal Fabricators

SALES • SERVICE
444 Bloy St., Hillside, N. J.
MU 8-5872
Member N. J. Manufacturer's Assn.

HOME OWNERS READ THIS!!

RIGHT NOW . . . your hot water heater, your expensive water appliances, your clothes, your food, your bodies . . . are BEING CLOGGED by HARD WATER

It's costing you \$\$\$ right now!
Let Culligan test your water and show you an **EDUCATIONAL FILM** at no cost or obligation to you.

YOU'LL THANK US FOR IT

FREE To the first 100 responses to this offer a lovely set of **CANNON DISH TOWELS**

THIS OFFER IS FOR NON-USERS OF SOFT WATER

HEY GULLIGAN MAN!

688-1600
2047 U. S. Highway 22, Union

BIGGEST SELECTION & SAVINGS AT JASCO

Tile-it-Yourself & Save!

- JASCO shows you how . . . free instructions
- Free loan of all the tools you need
- No-risk refund on all unused tiles

MOSAIC TILE
3 SHEETS \$1
Reg. 69c Each

Below cost for fabulous Italian imports. First quality, 12" x 12" sheets. Hundreds of pattern and color combinations. Free instructions.

WALL TILE
Brushed Aluminum Or Copper-Plate
7c
4 1/2" x 4 1/2"

First quality. Absolutely carefree and made to last a lifetime. Perfect for kitchen installations, and Jasco will show you how to tile-it-yourself.

CERAMIC WALL TILE
4 7/8c each
4 1/2" x 4 1/2"

Perfect for kitchens & bathrooms. Self-spacing, ready to install. Grand choice of colors. Slight irregularity will not affect appearance of wear.

Vinyl Asbestos Tile By The Case
\$5.98
80-pc. case
9" x 9" Tile

First quality floor tiles in a rainbow of exciting colors. A top name brand known for long, rugged wear.

SOLID VINYL TILES
FOR ANY FLOOR
19c Each
9" x 9"

Lustrous first quality tiles from a nationally famous maker. Durable. Fabulous choice of colors.

SALE! 501 CONTINUOUS FILAMENT NYLON
A CARPET SO GOOD, JASCO GUARANTEES IT IN WRITING FOR:

10 FULL YEARS!

SAVE \$1-A-YARD on superb quality from a famous mill. We can't mention the maker's name at this low price. But you'll recognize the elegant appearance and the top workmanship, 21 decorator colors. Mildew & moth proof.
Reg. \$10.99
\$6.99
Sq. Yd.

JASCO TILE CO. • Rt. 22, Union • Open Daily 11:00 a.m. to 9 p.m. • **MU 8-4900**
PARAMUS • Rt. 17 at Rickel Supermat EATONTOWN • Rt. 35, 1/4-Mile North of Circle (CCP) Carpeting at Union Only. Easy Terms—Up To 3 Years To Pay (Handl-Charge)

Turn Clocks Ahead.

The road to summer will pass another milestone when all clocks are turned ahead one hour this Sunday at 2 a.m. with the arrival of Daylight Saving Time. The hour of sleep lost this weekend will be gained back next fall when the area returns to Eastern Standard Time.

JOSEPH RICCIARDI, Inc.

170 Belmont Ave. Newark, N. J.

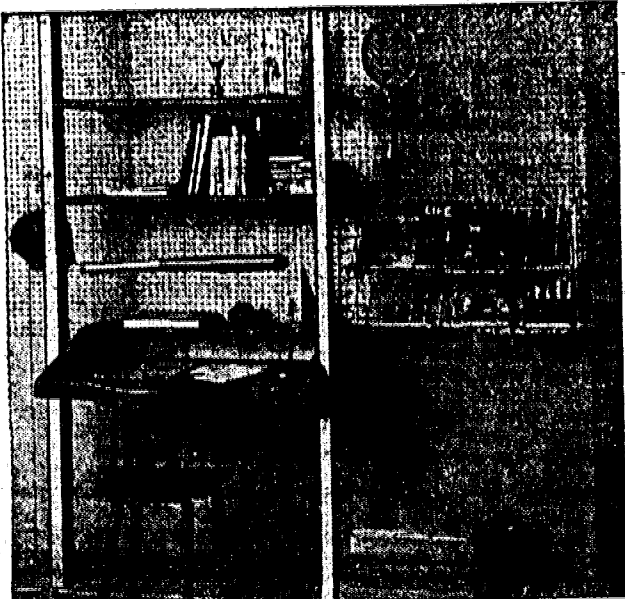
BI 3-6167

- PAINTS
• VARNISHES
• LACQUERS

- HOME • GARDEN • AUTO
• HOME IMPROVEMENTS • FURNITURE • DECORATING



REVUE... '65



PEEK-A-BOO FENCE MAKES an unusual but effective wind breaker. Panels of gally-painted, tempered and perforated hardboard are arranged to let Mom keep a watchful eye on the children's play area.

LANDSCAPING KEY TO EXPANDING FAMILY BENEFITS

Most families take pride in living in beautiful natural surroundings. More and more families are developing the grounds around their homes into inviting, beautiful "outdoor living" rooms.

These "outdoor living" rooms furnish restful retreats for adults, places for teenagers to entertain and for the small children to play safely, and to learn about growing things.

Landscaping can accomplish the beauty; each family member can enjoy it. Seventy-two percent of home owners are critical of neighbors with poorly kept grounds — they think of them as too poor to do anything about beautifying, or lazy and shiftless.

On the other hand, they think of families living more beautifully as good citizens, refined and educated.

For individual members of the family, good landscaping can accomplish a great deal. It is wholesome and educational for children. One industrialist planted a tree for each of his seven children, who watched the trees grow. They experienced the natural flowering and fruiting of the trees.

Loans Are Possible For Lighting, Wiring

Lending institutions recognize that many a house which is structurally sound suffers from obsolete wiring. Therefore, they will usually approve modernization loans for wiring improvements. Often, such financing can be extended to include electrical equipment and new lighting fixtures, too.

Many electrical contractors offer installment financing.

LETTER FROM HOME

No need to write long letters each week to the boy or girl away in service or at college. Phone subscription to this newspaper and we'll mail it each week without additional charge.

AAMCO Transmissions' Life-Time Guarantee

AAMCO Automatic Transmissions is a nationwide chain of automatic transmission shops, with a locally owned and operated unit at 2240 Morris Ave., Union.

An AAMCO spokesman quoted their aim as immediate attention to a customer's automatic transmission difficulties by specialists, no matter what the automobile make or model.

He added, "This specialization on a local level means lower prices — and on a national level means a nationally-known guarantee. New techniques and methods were developed to turn out quality repairs in volume. Each mechanic employed in an AAMCO shop is individually trained in all phases of the repair operation. This mechanical know-how is coupled with the

most up-to-date equipment to insure a job well done. AAMCO Union, like other AAMCO shops has spent close to \$75,000 on new equipment alone.

"Mass-purchasing power plus volume shop sales equals low operating costs. AAMCO's written lifetime guarantee has become nationally famous throughout the United States and Canada. Each AAMCO shop honors this guarantee."

AAMCO offers other services. One-hour to one-day service is offered depending on the job. AAMCO's free transmission check-up offers a prospective customer a clear picture of their specific needs and also the cost involved. National credit outlets facilitate easy credit approval to each customer. Free towing is another service offered.

WORLD'S LARGEST

AUTOMATIC TRANSMISSION SPECIALISTS

COAST-TO-COAST IRONCLAD GUARANTEE ON ALL WORK

AAMCO OVERHAUL

AAMCO TRANSMISSIONS

Only our mass purchasing power and volume sales make possible AAMCO's top quality work at lowest prices.

\$75 Includes OIL & LABOR

FREE TOWING ROADTEST INSPECTION

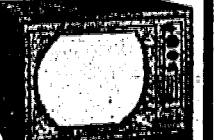
1-Day Service No Money Down E-Z Terms. Diners' Club Cards Honored

Open Daily 7-6 • SAT. 8-3

2240 Morris Ave. • Union • 687-8288

INTRODUCTORY OFFER FROM FULL CIRCLE BUILDERS

FREE! NEW 1965 COLOR TV WITH EACH ORDER!



BEAUTIFY & IMPROVE YOUR HOME WITH EXCLUSIVE

Cape Cod WOODTONE ALUMINUM SIDING

500 FREE S&H GREEN STAMPS WITH EACH FREE ESTIMATE!



Call Full Circle Builders for all your HOME IMPROVEMENTS!

CALL DAY, NIGHT OR SUNDAY CALL COLLECT!

NO MONEY DOWN! UP TO 7 YEARS TO PAY! FREE ESTIMATES!

MA 3-2084

FULL CIRCLE BUILDERS NEWARK, N. J.

R & R PAINT & WALLPAPER

1400 STUYVESANT AVE., UNION MU 8-5555 • Open Mon. & Fri. to 9

SALE

SAPOLIN

LATEX HOUSE PAINT

\$5.98 GAL

LIMITED TIME ONLY Reg. List \$7.95 White and Colors

Goes on just like latex wall paint... faster and easier than you ever thought possible for an outside paint!

SALE! Sapolin One Coat House Paint

\$5.98

GALLON Limited Time Only Reg. List \$7.95

Especially formulated with finest titanium lead and zinc pigments in pure linseed oil.

Special this week at R & R FREE with every 2 gallons of DUTCH MASTERS PAINT A 3-step KITCHEN LADDER • \$1.00 value

MEASURING METHOD

The easiest way to measure the total length of an appliance or power tool V-belt that needs replacing is to use a flexible steel tape. Measure around the outside of the old belt while it is still in place.

Save 50% and more!

SNEAKERS

for Men, Women & Children

\$1.97

Basketball 2.97 Court 'n Deck 3.29 Casuals Men's 1.69 Casuals Women's 2.17

FAMOUS AMERICAN MAKERS ONLY

MACHINE WASHABLE COMING SOON! Shoes at Sneaker City Savings

SNEAKER CITY STORES 720 W. ST. GEORGE'S AVE. (Opp. St. George Diner) LINDEN, N.J. — HU 6-5702

CUSTOM-MADE FORMICA SINK TOPS And COUNTER TOPS PERMICA, INC. 56 Mill Street, Belleville Plymouth 9-1600

BUY NOW! AND SAVE ON Famous SHAWNEE CONCRETE STEPS AS LOW AS \$1.48 WEEKLY DEL. & INSTALLED

YOUR OLD FURNITURE REUPHOLSTERED and RESTYLED CO-OPERATIVE FURNITURE FACTORY 42 ORANGE ST., NEWARK MA 4-4343

Designs Provide Roomier Bathrooms

When it comes to expanding bathroom facilities in the home, family convenience comes first. However, today's designs in bathroom fixtures make it easy to plan for smart, decorative appearance, too.

Whether adding a new bath or modernizing an old one, homeowners will find that modern fixtures are designed to make the most of available space, in "everything" from the

smallest powder room to the most spacious bathroom.

The size of the bathroom determines the size of the plumbing fixtures, but even a five-foot by seven-foot-area can contain a full-size bathtub and twin lavatories, with double bowls for double convenience and new single-control faucets. The emphasis in tubs is on comfort and roominess; for example, a tub five and a half feet long, 32 inches wide and 16 inches high.

With the new, compact lavatories in the market, powder rooms with countertops along two walls are possible in areas as small as four feet by four feet. Wall-hung lavatories are also available in many new, modernistic designs.

Where room does not permit a twin lavatory installation, it's advisable to select a large single fixture, with ample ledgerroom and bowl size.

Water closet styling is streamlined, with emphasis on quality flushing mechanisms. Off-the-

floor models gain popularity, due to greater cleaning ease.

Utilitarian white in plumbing fixtures is giving way to more and more color. Enameled cast iron and china are color matched in brand name fixtures.

Among the most popular fixture colors now are the sandy shades such as Fawn Beige.

HOW TO CHOOSE DUAL WINDOWS

Combination storm and screen windows contribute a lot of living comfort — and they contribute still more if they're carefully chosen for lasting performance.

When buying storms and screens, test the units for ease of operation, making sure they work without frantic tugging. Examine cut-away sections for construction and design. Heavy-gauge extruded aluminum for the frames assures rigidity.

The insect wire screening is an important factor in trouble-free service. Quality windows and doors come equipped with aluminum screening made under a standard issued by the U. S. Department of Commerce, which governs quality of the wire, its tensile strength and mesh size.

Examine the hardware. It should be heavy-gauge aluminum, simply designed but strong.

Beware of skimpy fittings. One indication of quality is the use of substantial gussets (triangular metal reinforcements).

Accounts Show Rise In Savings Banks

Deposits in New Jersey's mutual savings banks have risen more than \$34 million in the past three months, it was reported this week by John S. Freeman, secretary of the Savings Banks' Association of New Jersey. Deposits at the end of last month stood at \$1,911,735,409, he said. Freeman indicated the average account in a New Jersey savings bank is now almost \$3,000, an increase of more than \$1,000 over the average 10 years ago.

Legal Notice

Estate of LENA RABIZER, deceased. Pursuant to the order of JAMES E. ABRAMS, Surrogate of the County of Essex, this day made on the application of the undersigned, Executors of said deceased, notice is hereby given to the creditors of said deceased to exhibit to the subscribers, under oath or affirmation, their claims and demands against the estate of said deceased within six months from this date, or they will be forever barred from prosecuting or recovering the same against the subscribers. Dated: MARCH 25, 1965 HERBERT RABIZER HARRIS RABIZER 1422 Liberty Avenue, Hillside, N. J. Irv Herald—Apr. 1, 6, 15, 22, 29, 1965.

Partition Materials Help Control Noises

When selecting materials for constructing room partitions, attention should be given to both the development of a satisfactory and adequate noise suppression.

Plaster is a popular and effective method for finishing interior walls and ceilings. It is capable of receiving both paint and wallpaper and offers good sound suppression qualities.

Full effectiveness of plaster finish is achieved by using a good foundation. One of the best is expanded metal lath, attached directly to joists and studding. If exterior walls are studding, if exterior walls are 1 1/2-in. thick.

RENT THAT ROOM with a Want Ad. Only 10c per word (min. \$2.40). Call 686-7700.

Telephone: HU 6-0777 W. Bozenski, Prop.

Wal-Bet's Kitchens

Shop and Showroom:

1421 E. Elizabeth Ave., Linden

Home Alterations & Repairs, Cabinets Woodworking Of All Kinds

Charcoal Filter Range Hoods

Built-Ins - Vanities - Radiator Enclosures

Fabric SALE! SINGER

SINGER Casuals—Sew Sporty for Summer!

STRIPES and PLAIDS

Sturdy 100% yarn-dyed cotton for sporty jumpers and skirts. Machine washable. 36" wide. Reg. \$.98 yd. 63c yd.

FASHION PRINTS

100% cotton shantung weave with EVERGLAZE®. For dresses, suits and sportswear. 45" wide. Reg. \$1.69 yd. \$1.23 yd.

ALL SINGER® fabrics are color-coordinated! Zippers, buttons, linings and trimmings—all color-matched!

One stop at SINGER, and you're ready to sew! You'll find patterns, needles, notions, plus expert advice on any sewing project!

What's new for tomorrow is at SINGER today! SINGER SEWING CENTERS

LAWN MOWER SALE

LAWNMOWERS Toro • Lawn Boy • Eclipse Moto-Mower & many others GOOD TRADE-IN on your old machine

Japanese Yews \$1.98 Reg. \$2.95 Bush Form Juniper Hetzi Glauch \$2.25 Reg. \$2.95 Blue Juniper

Korean Boxwood \$2.95 15" to 18" tall Reg. \$4.95 Shade Trees FROM \$7.50 TO \$140. All sizes up to 4" dia.

CARDINAL'S Garden Center, Inc.

272 MILLTOWN ROAD SPRINGFIELD DR 6-0440

Visit Our 19 Turf Plots and Select The Grass of Your Choice • Free Consultation With Our Turf Experts •

Open 7 Days A Week 8 A.M. 'Til 6:30 P.M. Friday Even 'Til 8 P.M.

DRIVE SAFELY

Right Windows Make Big Difference In Your Home Remodeling Projects

The right combination of windows can make a great difference in the pleasure that comes from a home remodeling project.

A first consideration is harmony of style with the original windows, but don't overlook the opportunity for a little note such as a bow window at the front of the house, or a big view window overlooking the backyard or patio.

Special solutions may call for special solutions, such as "rib-

bon" of windows placed high on a bedroom wall for privacy's sake, or opening windows that can be left open when it rains.

There's a great variety of styles, types and sizes of wood windows available from local building supply dealers.

Wood windows come in casement, bay, bow, double-hung and sliding types. There are also window-door combinations and various arrangements of open-view walls of windows which may include vents that open ei-

ther inward or outward, with screen inserts, as needed.

Ponderosa pine, of which most stock wood windows are made, is a natural insulating material, which means heat loss in winter is kept to a minimum and moisture won't condense on the sash. The wood is chemically treated for durability, and the windows are weatherstripped at the factory.

ONE-HANDEDNESS IS A GOOD RULE RE: ELECTRICITY.

The basic rule of putting both hands to work to save time and energy in efficient homemaking does not apply when electricity is used.

When using electrical equipment, never try to do two things at the same time, warns Mrs. Cleo M. Cottrell, extension home management - family economics specialist at the College of Agriculture, Rutgers University.

For safety when handling appliances or when changing a fuse, avoid touching anything else. If the appliance is worn or otherwise defective, it may cause a short circuit and there is the possibility of shock. One-handedness eliminates some of this danger.

Take special care in the bathroom and kitchen because electricity travels through water. When turning on an electric light with one hand, don't touch a damp surface or the metal water faucet with the other hand. Be sure your hands are dry when handling any electrical equipment and that the floor you are standing on is dry, too.

Cement floors often appear dry yet hold enough moisture to be shock hazards. Never touch a radio, portable electric heater or other electrical appliance, or turn on lights when in the bathtub. The same rule applies when washing dishes or doing the laundry.

Another two-handed hazard has to do with the vacuum cleaner, the New Jersey specialist points out. If you use one hand to run the cleaner and the other hand to move a metal lamp out of the way, and either of the appliances happens to have a loose wire or other defect, an electric shock can result.

Today is a good time to check all electrical appliances and connections in the home to make sure that there are no loose wires or other defects that are shock hazards, Mrs. Cottrell suggests.

Niches Provide Charm To Rooms At Low Cost

A wall niche can often add charm and distinction to an otherwise conventional room. Such a feature can be added to the average home at little expense or effort. It is particularly easy to do when a room is to be redecorated.

The space between wall studs will provide for a niche about 13 inches wide and as tall as desired - assuming there are no ducts, pipes or conduit in that part of the wall.

To build the niche, metal lath is bent to the desired shape and is nailed to the studs. The corners are reinforced with metal corner bead and plaster is then applied.

Legal Notice

Estate of IDA WARSHAWSKY, DECEASED. Pursuant to the order of JAMES E. ABRAMS, Surrogate of the County of Essex, this day made on the application of the undersigned, executors of said deceased, notice is hereby given to the creditors of said deceased to exhibit to the subscriber, under oath or affirmation, their claims and demands against the estate of said deceased within six months from this date, or they will be forever barred from prosecuting or recovering the same against the subscriber.

Dated: April 2, 1965.

MARTIN WARSHAWSKY
ALLEN J. DAVIES
EDWARD GOLD
HENRY M. GROEMAN, Attorney
11 Commerce St., 15th Floor
Newark, N. J. 07102
Irv. Herald—Apr. 8, 15, 22, May 6, 1965

Estate of GEORGE H. MORNINGSTERN, DECEASED. Pursuant to the order of JAMES E. ABRAMS, Surrogate of the County of Essex, this day made on the application of the undersigned, Administrator of said deceased, notice is hereby given to the creditors of said deceased to exhibit to the subscriber, under oath or affirmation, their claims and demands against the estate of said deceased within six months from this date, or they will be forever barred from prosecuting or recovering the same against the subscriber.

Dated: April 2, 1965.

HARRY V. MORNINGSTERN, JR.
MATTHEW KRAPEL, Attorney
1000 Springfield Ave.
Irvington, N. J. 07111
Irv. Herald—Apr. 8, 15, 22, 29, May 6, 1965.

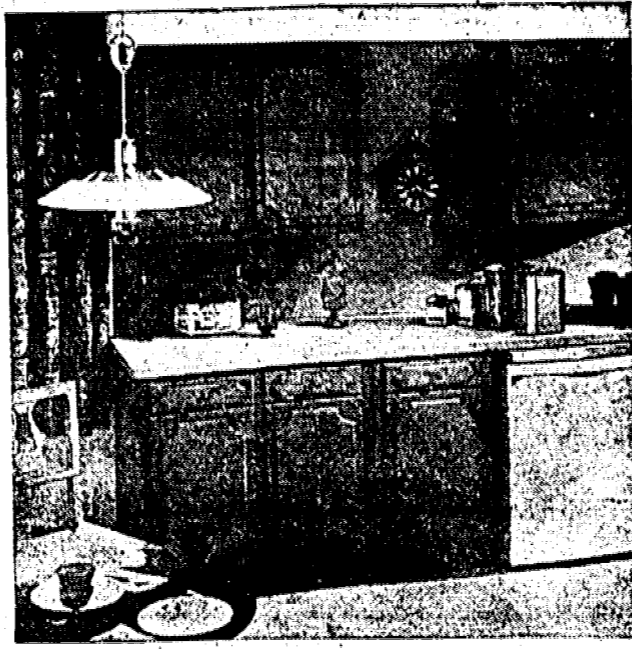
Announcing

The opening of the LOUIS LEE FURNITURE REFINISHING CO.

Louis Lee, formerly of the Imperial Furniture Refinishers for the past 15 years now is ready to serve you with the same quality at the same low prices you have always paid.

PHONE
BI 3-8492

Work Done For The Trade



LIGHT THE WAY TO MEAL PLANNING and preparation in the kitchen, with lighting fixtures in the right places. In the kitchen shown here, general over-all illumination is augmented by a fixture that may be pulled down for scented recipes or a failure to add more light to other areas.

Check The Guarantees When Buying Equipment

By MARY W. ARMSTRONG, Ed.D. Senior Home Economist

A piece of modern home equipment can be a joy to own and to use. It can also be a good investment if its performance measures up to your expectations. You, the purchaser, can know what you have a right to expect as far as service without a high price tag by checking the guarantee and the service available. This should be done before the purchase is made.

Do you have a guarantee from the dealer or manufacturer? Or only a warranty? The first usually promises replacement of defective parts within a given time, including labor costs involved. The second promises only parts replacement, labor costs are not included. Labor costs for expensive repairs may amount to much more than the cost of materials.

Looking into the availability of reliable repair service before you buy is good insurance for both labor saving and economical to operate.

Kitchen and home laundry equipment, for example, is becoming more convenient, more attractive, more wonderful each year. But at times even the most wonderful piece of household equipment will need repair; then the service of a well-trained person, who understands the problem is needed.

The general field of service is expanding in order to insure the homemaker that her appliances will have adequate care. Mrs. Cleo M. Cottrell, home management-family economics specialist on our Rutgers University staff, says, Service guarantees being offered on many major appliances in cooperation with the wholesale distributors and specific manufacturers' service organizations.

Many manufacturers are increasing the number of service outlets for their particular line of merchandise. In some areas they are also increasing the number of designated service organizations or "authorized" repair and parts centers.

There are other signs that the household equipment industry is aware that increasingly mechanized homes will require available, reliable product service.

Such service conveniently available if and when needed will benefit manufacturers and distributors as well as customers.

Best Rule For Home Pool Is Plan Before Plunging

From fabled luxuries to increasingly popular backyard fixtures, swimming pools have become investments that pay off in increased family enjoyment. Home owners who are ready to take the plunge and invest in a home swimming pool have many considerations before the actual construction begins.

Cost, materials, landscape and upkeep are just a few points that require careful planning. Although pool construction costs are lower now, it is best not to skimp on quality work in a long-term investment such as this, as any compromise may end up in costly repairs and increased upkeep.

In choosing the material of which the pool is to be constructed, type of soil and physical layout of the property are important considerations. Often the best way to determine if the pool should be constructed of gunite, (pneumatically applied concrete), vinyl liner, steel or some other material is to see which is the prevailing choice in the area - a good clue as to which is best suited to the region.

Before construction, check the property for underground rocks or man-made hindrances such as septic tanks or cables. The shape of the pool is most-

ly a matter of personal preference, but there are several points to consider in choosing. First, a rectangular pool, though less imaginative in design than the many free-form and kidney shapes, is best when there are children using the pool for races and sports. Also, the pool should have a few hidden corners as possible, to avoid algae forming and eventually clogging the filter, and to facilitate cleaning.

Keeping plants some distance from the pool, to prevent leaves and grass from clogging the skimmers and to discourage insects from pestering swimmers. Fences are required in many communities, and should be built to avoid any accident.

NAILING TIP

Wedge small teeth and short brads between tacks of a comb, which may then be used to hold them in place for nailing without endangering fingers.

SIMPLIFY SANDING

Sand hard-to-reach corners and inside of curved moldings or edges with a sanding stick, made by wrapping sandpaper around a dowel or other stick of appropriate size and shape.

Award Winner

Rugs & upholstery cleaned in your own home.

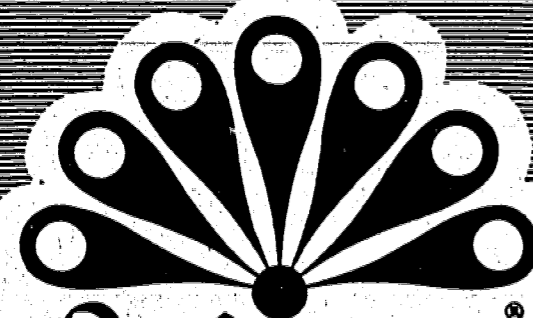
- NO messy soaking!
- NO harsh scrubbing!
- and NO harmful soap!

Award winning Duraclean

REVIVES COLORS!
RESTORES LUSTRE!
RAISES PILE!
EVERYTHING READY TO USE SAME DAY!

for FREE estimate call
BI 3-3228
DURACLEAN
644 Belmont Ave.
Newark, N. J.

PAINT SALE



Satin Tone
...the easy paints

ALL COLORS AT THE PRICE OF WHITE
BRING SPRING INDOORS NOW

A little tired of Winter? Looking forward to Spring, with its fresh, cheerful colors? You can bring the fresh newness of Spring into your home now, the easy way, with Satin Tone Latex Wall Paint and matching Satin Enamel. Hundreds of beautiful colors to choose from, colors to create a mood and make your home, and you, more cheerful.

Satin Tone LATEX WALL PAINT

Once you try it, you will know why this is known as "The Easy Paint". It's easy to choose from our great big color chips. It's easy to use with roller, or brush covers like a blanket without ridges or sag and dries in minutes. Equipment washes up with water.

Most important of all, it's easy to live with. The colors stay bright and fresh, and the finish is completely scrubable. You'll be glad you chose Satin Tone.

REG. \$6.80 GAL. SALE PRICE gal. **\$4.45**

Satin Enamel IN COLORS TO MATCH SATINTONE

For woodwork, cabinets, kitchens and baths, or wherever the glowing sheen and easy wipeability of a finish like baked enamel is needed. Unless you have used our Satin Enamel, you can't realize the difference to quality makes in ease of application and lasting beauty.

REG. \$2.85 QT. SALE PRICE qt. **\$2.30**

LATEX WALL PAINT \$2.98

Latest Decorator Colors — Reg. \$5.25 gal. GAL.

WALLPAPER SALE

— IRVINGTON STORE ONLY —

Values from \$1.50 to \$2.95 per roll while they last... single roll **29c**

FREE 3-piece GARDEN TOOL SET

OR PLASTIC LAWN SPRINKLER

WITH PURCHASE OF ONE GALLON OR MORE OF MASYUR or DAVIS PAINT

Irvington & Roselle Park Stores Only (Limit of one per customer)

Visit your nearest Hockenjoes for LATEST HOCKENJOES KITS

AUTHORIZED DISTRIBUTORS FOR:
• MINWAX • SCOTCH-LADDIE • LUMINAL
• BUSTOLEUM • E-Z PAINT ROLLERS & TRAYS

Hockenjoes

FINE WALLPAPERS & PAINTS • SINCE 1861

IRVINGTON:
1156 Springfield Ave. ES 3-0800
ROSELLE PARK:
324 W. Westfield Ave. CH 5-7831
MILLBURN:
387 Millburn Ave. DR 6-5400
AMPLE PARKING • FREE DELIVERIES

DISCOUNTS!

DID YOU KNOW THAT YOU CAN OWN A PERMANENT BACKYARD

POOL

THOUSANDS ARE ENJOYING CABANA POOLS

SWIM IN SUMMER • SKATE IN WINTER

In The Ground Above Ground

- Concrete
- Vinyl Lined
- Wood Walls
- Steel Walls
- Aluminum Walls (SLIGHTLY CHEAPER)
- Red Wood
- Aluminum
- Steel
- Plywood

AS LITTLE AS 50¢ A DAY

599

UP TO 7 YEARS TO PAY

CABANA POOLS INC.
Rt. 46 Caldwell Township CA 8-0080
CENTRAL JERSEY 469-1598

SHOP AT HOME

CABANA POOLS INC. Rt. 46 Caldwell Township
FREE PHOTOS AND FACTS - NO OBLIGATION!

NAME _____

ADDRESS _____

CITY _____ PHONE _____

NEW JERSEY'S LARGEST POOL DISPLAY

NEW JERSEY'S LARGEST

FACTORY SHOWROOM

Kitchen Cabinets, Bathroom Vanities, Bathtub Enclosures and Shower Doors.

BUILDER'S FAIR INC.
DOLLY MADISON KITCHENS
HOLLYWOOD VANITIES

22 RT. 22, SPRINGFIELD, N. J.
Westbound Lane
379-6070

SAVINGS YOU NEVER THOUGHT POSSIBLE

THE BIG SALE

Friedman Bros. Greatest Sale of Rugs, Carpeting & Linoleum In Years

9x12 ft. COTTON RUGS **14.95**

9x12 ft. FIBRE RUGS **9.50**

9x12 ft. CARPET RUGS **49.95**

NYLON CARPETING **2.95** YD.

RUG PADS 9x12 ft. **5.95**

9x12 ft. LINOLEUM RUGS **3.99**

27x36-in. EXOTIC AREA RUGS **3.50**

STAIR CARPETING **29.95** YD.

9x12 ft. NYLON RUGS **2.49**

INLAID LINOLEUM **1.25** YD.

BEACON WAX full quart **1.98**

ROOM SIZE LINOLEUM REMNANTS **25c** as low as

Friedman Bros

1224 SPRINGFIELD AVE. IRVINGTON
(Phone ES 1-590) (Opposite Lyons Ave. — Open Mon. - Wed. - Fri. 'til 9)

LINOLEUM • RUGS • BROADLOOM • TILES

13. Wanted To Rent
DAIRY...
WANTED...
WANTED TO LEASE...
14 Business Opportunities
TWO ROOMS...
15 Roy Carle...
LUMBER...
24 Miscellaneous For Sale
FREE APPLES
A bushel of small Grimes Golden apples free with purchase of 1 bushel of McIntosh apples at \$1 per bushel, this week only.
AGE MENTICO
MOUNTAIN ORCHARD
1100 E. of Union on Rt. 25 near
Milburn's Cafe Station #72-0547

YOU

CAN REACH 35,000 FAMILIES

Through

CLASSIFIED WANT ADS

in neighboring communities served by our

8 NEWSPAPERS

• UNION LEADER

• IRVINGTON HERALD

• SPRINGFIELD LEADER

• LINDEN LEADER

• VAILSBURG LEADER

• MOUNTAINSIDE ECHO

• THE SPECTATOR
of Roselle - Roselle Park

• SUBURBAN LEADER
of Kenilworth

Only 14¢ per word

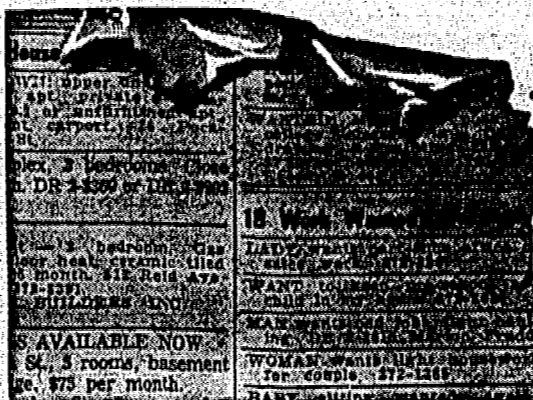
Based on 5 average length words per line
Minimum charge \$2.80 - 4 line ad



USE THIS EASY WANT AD FORM

Five (5) Words Of Average Length Will Fit On One Line. For Extra Long Words Allow Two (2) Spaces. Figure Your Cost By Multiplying The Number Of Words By 14c. Minimum Charge \$2.80 (20 Average Words).

Your ad will reach 35,000 families each week in Union, Irvington, Vailsburg, Springfield, Mountain-side, Linden, Kenilworth, Roselle and Roselle Park.



PLEASE PRINT OR WRITE CLEARLY

SUBURBAN PUBLISHING CORP.
1891 Stuyvesant Ave., Union, N. J.

Please insert the following classified ad:

1	2	3	4	5
6	7	8	9	10
11	12	13	14	15
16	17	18	19	20

(If additional words are required, attach separate sheet of paper)

Name

Address

City

Phone

Insert Ad ... Time(s) ... Per Insertion Starting (Date) ...

Amount Enclosed () Cash () Check () Money Order

BUILDING APARTMENTS REAL ESTATE HOMES FOR SALE HOME IMPROVEMENTS



'BROKER' OF THE WEEK Even Though His Office Is In Elizabeth, His Heart Still Belongs In Kenilworth



RUDOLPH O. CAMMAROTA

Kenilworth was a sleepy little crossroads of 1,500 people when Rudolph O. Cammarota first arrived in town some 35 years ago.

brokerage, he is active in the general insurance field as well. His present staff consists of six real estate associates and eight life insurance salesmen.

A football star at Jonathan Dayton Regional High School and Albright College, Cammarota later played semi-pro football for the Union Blue Comets and the Cranford Clippers.

Today Kenilworth is a busy suburban community with a population of 8,700. Although Cammarota maintains his real estate and insurance office in Elizabeth, his heart still belongs to Kenilworth.

al high school is being built in Kenilworth will make it even more desirable as a community.

BUSINESS DIRECTORY

Painting & Paperhanging PAINTING & DECORATING by THOMAS G. WRIGHT

PAINTING & DECORATING. Excellent work; Free Estimates; Insured. JOS. PISCIOTTA

FRANK DELLER Painting Inside And Out MU 6-774 - Union, N. J.

PAINTING & DECORATING Free Estimates - Insured. J. GIANNINI

PAINTING, PAPERHANGING & all type repairs; also ceramic painting & floor covering.

SAVE MONEY! YOU CAN DO IT! We will paint top half of your house, you paint the bottom.

PAINTING Interior & exterior, insured. A. SCHEUERMANN, ES 4-3964

ERNEST MILLS BR 6-4395 PAINTING & DECORATING

PAINTING & DECORATING Excellent Work and Free Estimates

TONY'S Interior & Exterior Painting

PAINTING-INTERIOR & EXTERIOR, PAPERHANGING, MINOR REPAIRS

Piano Tuning ALL PIANOS TUNED & REPAIRED

PIANO TUNING & REPAIRING J. ZIDONIK

PIANOS TUNED - REPAIRED C. GOSCINSKI

Plumbing - Heating DON'T LIVE WITH THAT DRIP!

LEO KANTROWITZ PLUMBING & HEATING

APARTMENT VACANT Rent 1 FA-5-T

Radio & Television Repair

TV - RADIO - PHONO MOVE-A-STORE AIR CONDITIONERS

Rest Homes CHERRY HILL Rest Home for the Aged

Roofing - Siding - Repairs WILLIAM E. VEIT

Roofing - Gutters - Leaders - Repairs Free Estimates - Insured

ASPHALT ROOFING AND ALUMINUM SIDING: ALL WORK DONE REASONABLE

ALL ROOF REPAIRS ROOFING BY MILO

Roofing, Siding, Sidewalks, Sloops ALBERT B. STORM

CROWN ROOFING CO. Slate, leaders, gutters, hot asphalt

SPECIALIZING IN SEAMLESS GUTTERS

Re-roofing, Siding, Roof Repairs V & B Roofing & Siding Co.

GALVANO REIDY ROOFING Hot asphalt roofing, leaders, gutters

WALTER J. DAVIS Roofing - Leaders - Gutters

Silver Plating EDDIE COOPER

Tutoring TUTORING GRADES 1-6

NATIVE EXCHANGES ITALIAN WITH GERMAN LANGUAGE, PHONIC WEEK-ENDS

Upholstery - Slip Covers FREE ESTIMATES-Slip covers, resp.

Trucking Local Trucking Co. Seeks Extra Work

Waterproofing WANT to get rid of water in cellar?

Water Softener All Soft Water You Need

Weather Stripping ALUMINUM WINDOWS, INTERLOCKING METAL WEATHER STRIPPING

Apartments to Rent HILLSIDE-3 ROOM APT. AND BATH

IRVING, MAPLEWOOD, UNION, 3 room apt.

IRVINGTON - 4 room apt. Supply own coal heat.

HILLSIDE-Large 6 room apartment in prime location.

IRVINGTON MADISON ARMS

IRVINGTON PARK-GROVE APTS.

IRVINGTON BRAND NEW APARTMENTS

IRVINGTON 2 & 3 Rooms

IRVINGTON HAVE YOU A FURNISHED ROOM?

IRVINGTON IRVINGTON

IRVINGTON IRVINGTON

IRVINGTON IRVINGTON

IRVINGTON IRVINGTON

IRVINGTON IRVINGTON

IRVINGTON IRVINGTON

IRVINGTON IRVINGTON

IRVINGTON IRVINGTON

IRVINGTON IRVINGTON

IRVINGTON IRVINGTON

IRVINGTON IRVINGTON

Apartments to Rent SOMERVILLE

BRIDGEWATER TOWNSHIP TWO NEW RANCHES

COLONIA LAKE AVE. AREA

CRANFORD CRANFORD

CRANFORD CRANFORD

CRANFORD CRANFORD

CRANFORD CRANFORD

CRANFORD CRANFORD

CRANFORD CRANFORD

CRANFORD CRANFORD

CRANFORD CRANFORD

CRANFORD CRANFORD

CRANFORD CRANFORD

CRANFORD CRANFORD

CRANFORD CRANFORD

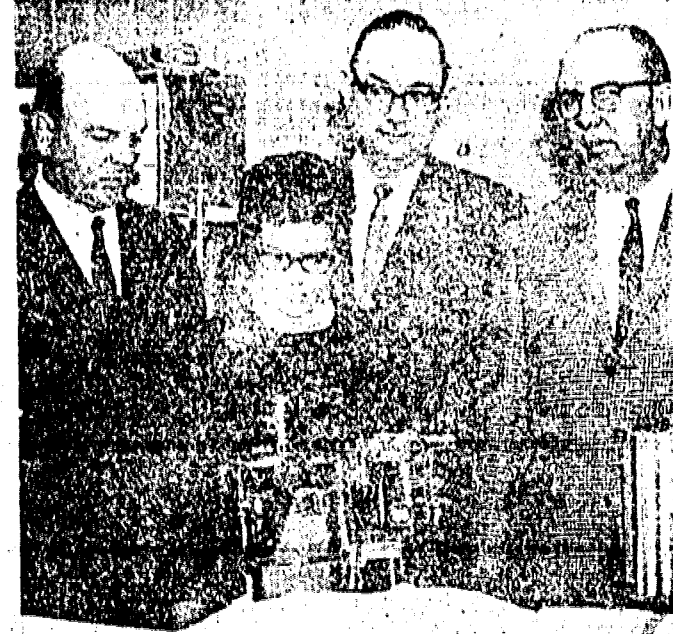
CRANFORD CRANFORD

CRANFORD CRANFORD

CRANFORD CRANFORD

CRANFORD CRANFORD

CRANFORD CRANFORD



REALTORS ON HOSPITAL TOUR - Everson F. Pearsall (left) and Miss Nancy F. Reynolds, both realtors of Westfield, examine anaesthesia device at Muhlenberg Hospital, Plainfield.

REALTORS ON HOSPITAL TOUR - Everson F. Pearsall (left) and Miss Nancy F. Reynolds, both realtors of Westfield, examine anaesthesia device at Muhlenberg Hospital, Plainfield.

Furnished Rooms to Rent UNION - Nice furnished room in private home.

Houses For Sale BASKING RIDGE VICINITY COUNTRY RANCH

BRIDGEWATER TOWNSHIP TWO NEW RANCHES

COLONIA LAKE AVE. AREA

CRANFORD CRANFORD

CRANFORD CRANFORD

CRANFORD CRANFORD

CRANFORD CRANFORD

CRANFORD CRANFORD

CRANFORD CRANFORD

CRANFORD CRANFORD

CRANFORD CRANFORD

CRANFORD CRANFORD

CRANFORD CRANFORD

CRANFORD CRANFORD

CRANFORD CRANFORD

CRANFORD CRANFORD

CRANFORD CRANFORD

CRANFORD CRANFORD

CRANFORD CRANFORD

CRANFORD CRANFORD

CRANFORD CRANFORD

Houses For Sale BUY DIRECT FROM BUILDER!

BRAND NEW 4-BEDROOM COLONIAL This spacious new home in a prime neighborhood is ready for your choice of decoration!

ELIZABETH WING BUILT MODERN, SPOTLESS, IN ELMORAY

FANWOOD FANWOOD

MAPLEWOOD MAPLEWOOD

MOUNTAINSIDE MOUNTAINSIDE

NORTH PLAINFIELD NORTH PLAINFIELD

HACKETTSTOWN HACKETTSTOWN

IRVINGTON IRVINGTON

CRANFORD CRANFORD

CRANFORD CRANFORD

CRANFORD CRANFORD

CRANFORD CRANFORD

CRANFORD CRANFORD

CRANFORD CRANFORD

CRANFORD CRANFORD

CRANFORD CRANFORD

CRANFORD CRANFORD

CRANFORD CRANFORD

CRANFORD CRANFORD

CRANFORD CRANFORD

CRANFORD CRANFORD

WEEDER'S DIGEST

By YOUR RUTGERS GARDEN REPORTER

Required Reading

Many a gardener has discovered that he began to enjoy the sweet blossoms of success the day he put on his reading glasses.

The fine print on a label may not be the most fascinating reading you'll come across on a weekend, but it could easily do you the most good.

You could start with the label on the pesticide you buy. Which insect or weed or plant disease it's meant to do in, how much to use, how to mix it, and above all, how to protect yourself and others from using or storing it improperly.

Heeding such directions could even save your life. Other labels are required reading, too, for different reasons. For example, the label or tag on a package of grass seed.

Now the people who put up grass seed don't hire people like Bret Harte and Mark Twain - to mention a couple of current favorites - to write the table of contents for the package.

The part of the label that describes what's in the package has to tell in specific terms the percentage of Kentucky bluegrass and creeping fescue, for example, along with percentages of weed seeds. Also, the percentage of germination.

You're likely to find this label in especially fine print, so it'll pay you to take along your glasses when you're out to buy lawn makin'.

Altogether, the men around Rutgers who give advice to gardeners heartily agree with the man in the ad who says: "Send me a man who reads."

SPILT LEVEL TWELVE YEARS' YOUNG - 3 bedrooms, large rec. room, den, science kitchen, cyclone fence, awnings, air conditioning, wall to wall carpeting in four rooms, attached garage, central low Linden taxes ask for No. 2511.

JANMAR REALTORS 315 Highway Ave. ELizabeth 1-1300. Open 9-9:30 Sat., Sun. 9-6. B/4/22

MAPLEWOOD Level 3-bedroom, two-story home, formal dining room, modern eat-in kitchen, paneled Sun. Porch. Close to Schools & Transportation. ASKING \$17,900.

THE BURNS AGENCY 986 St. George Ave. RA 381-5500; 381-5500; 381-5500. Eves. RA 381-0908. B/4/22

MOUNTAINSIDE HULLTOP RANCH Level 3-bedroom, 2 1/2 baths, stone & tile fireplace, elevation, EXQUISITE SETTING, 7 LARGE LARGE ROOMS, KITCHEN & DINING AREA, SCREEN & GLASS PORCH, IMMEDIATE POSSESSION.

WALTER KOSTER, INC. 1470 Woodcrest Drive, Mountaineers (turn up New Providence Road) AD 2-0100 AD 2-0100. B/4/22

NORTH PLAINFIELD Exclusive Meadowbrook Section Four bedroom split, 3 1/2 baths, living room, dining room, kitchen and recreation room, two car garage, air conditioning and wall to wall carpeting included.

R. E. PERRY 328 SOMERSET STREET NORTH PLAINFIELD. 756-2035 245-4704 757-2231. B/4/22

MOUNTAINSIDE NEW COLONIAL Shiny new central air, 4 bedroom, 2 1/2 baths, colonial, large kitchen, family room with fireplace. MUST BE SEEN.

Charles A. Remlinger REAL ESTATE DREXEL 6-3319 769 Mountain Ave. Springfield, N. J. B/4/22

BROKERS INVITED... 1,600 sq. ft. PRESTIGE OFFICE SPACE FOR LEASE. 1291 Stuyvesant Ave., Union, N. J. Completely air-conditioned, Partitions to suit need, Recessed fluorescent lighting, Acoustic ceiling, Vinyl tile floor, All utilities supplied, Ample parking, Convenient to transportation, Adjacent to major highways.

1,600 sq. ft. PRESTIGE OFFICE SPACE FOR LEASE. 1291 Stuyvesant Ave., Union, N. J. • Completely air-conditioned • Partitions to suit need • Recessed fluorescent lighting • Acoustic ceiling • Vinyl tile floor • All utilities supplied • Ample parking • Convenient to transportation • Adjacent to major highways

Open All Day Sunday \$16,900 VETS NO DOWN NON VETS \$700 DOWN \$18,500 VETS NO DOWN NON VETS \$800 DOWN \$19,500 \$2,000 DOWN \$20,900 VETS NO DOWN NON VETS \$1,200 DOWN \$22,900 VETS NO DOWN NON VETS \$1,200 DOWN \$24,900

Open All Day Sunday \$16,900 VETS NO DOWN NON VETS \$700 DOWN \$18,500 VETS NO DOWN NON VETS \$800 DOWN \$19,500 \$2,000 DOWN \$20,900 VETS NO DOWN NON VETS \$1,200 DOWN \$22,900 VETS NO DOWN NON VETS \$1,200 DOWN \$24,900

REAL ESTATE

Houses for Sale
PLAINFIELD A Coach and Four
Houses For Sale
SCOTCH PLAINS \$18,900
Houses for Sale
UNION NEW 2-FAMILY HOMES

PLAINFIELD A Coach and Four
Houses For Sale
SCOTCH PLAINS \$18,900
Houses for Sale
UNION NEW 2-FAMILY HOMES

PLAINFIELD A Coach and Four
Houses For Sale
SCOTCH PLAINS \$18,900
Houses for Sale
UNION NEW 2-FAMILY HOMES

PLAINFIELD A Coach and Four
Houses For Sale
SCOTCH PLAINS \$18,900
Houses for Sale
UNION NEW 2-FAMILY HOMES

PLAINFIELD A Coach and Four
Houses For Sale
SCOTCH PLAINS \$18,900
Houses for Sale
UNION NEW 2-FAMILY HOMES

PLAINFIELD A Coach and Four
Houses For Sale
SCOTCH PLAINS \$18,900
Houses for Sale
UNION NEW 2-FAMILY HOMES

PLAINFIELD A Coach and Four
Houses For Sale
SCOTCH PLAINS \$18,900
Houses for Sale
UNION NEW 2-FAMILY HOMES

PLAINFIELD A Coach and Four
Houses For Sale
SCOTCH PLAINS \$18,900
Houses for Sale
UNION NEW 2-FAMILY HOMES

AUTOMOTIVE

Auto Services
EXTERIOR CAR WASH & WAX
COLLECTION & MECHANICAL REPAIRS

Automotive Wanted
ALL JUNK CARS WANTED
TOP DOLLAR CASH PAYING

Automobiles for Sale
1965 BUICKS, 2 door & 4 door hard top

Automobiles for Sale
1965 CHEVROLET 4 door hard top

Automobiles for Sale
1965 FORD convertible, white, with red and white interior

Automobiles for Sale
1965 FORD 4 door hardtop, all white

Automobiles for Sale
1965 FORD 4 door hardtop, all white

Automobiles for Sale
1965 FORD 4 door hardtop, all white

Automobiles for Sale
1965 FORD 4 door hardtop, all white

Automobiles for Sale
1965 FORD 4 door hardtop, all white

Automobiles for Sale
1965 FORD 4 door hardtop, all white

Automobiles for Sale
1965 FORD 4 door hardtop, all white

National And Olympic Athletes To Be Present At Sports Show

The annual "Sports-O-Rama" sponsored by the West Orange Council, Knights of Columbus, will be held from 2 to 3 p.m. Sunday in the West Orange Armory.

On the program will be basketball and tennis. The young people will be present in groups by New York State and New Jersey.

Address all letters to: AMY ADAMS, c/o THIS NEWSPAPER. For a personal reply enclose a stamped, self-addressed envelope.

DEATH NOTICES

ANDERSON on Monday, April 12, 1965, Miss Dorella, at 1371 Vaux Hall Rd., Union, N.J.

ANDERSON on Monday, April 12, 1965, Miss Dorella, at 1371 Vaux Hall Rd., Union, N.J.

ANDERSON on Monday, April 12, 1965, Miss Dorella, at 1371 Vaux Hall Rd., Union, N.J.

ANDERSON on Monday, April 12, 1965, Miss Dorella, at 1371 Vaux Hall Rd., Union, N.J.

ANDERSON on Monday, April 12, 1965, Miss Dorella, at 1371 Vaux Hall Rd., Union, N.J.

ANDERSON on Monday, April 12, 1965, Miss Dorella, at 1371 Vaux Hall Rd., Union, N.J.

ANDERSON on Monday, April 12, 1965, Miss Dorella, at 1371 Vaux Hall Rd., Union, N.J.

Your Want Ad Is Easy To Place... Just Phone 686-7700

CROSSWORD PUZZLE LAST WEEKS ANSWER

CROSSWORD PUZZLE LAST WEEKS ANSWER

Card of Thanks

Card of Thanks

Card of Thanks

Card of Thanks

COAL PER TON \$23.95

EASY WANT AD FORM

EASY WANT AD FORM

VIP HONDA AUTO

VIP HONDA AUTO

VIP HONDA AUTO

VIP HONDA AUTO

Hollywood Florist

Hollywood Florist

Hollywood Florist

Hollywood Florist

Open Sundays & Evenings

Open Sundays & Evenings

Open Sundays & Evenings

Open Sundays & Evenings

FOR THE BEST PRICE ON A NEW OR USED OLDSMOBILE

WHY PAY MORE? AUTOMATIC TRANSMISSIONS

GRATITUDE

GRATITUDE

GRATITUDE

GRATITUDE

BUY-WISE AUTO PARTS

BUY-WISE AUTO PARTS

BUY-WISE AUTO PARTS

BUY-WISE AUTO PARTS

CARTER'S AUTOMOTIVE SERVICE

CARTER'S AUTOMOTIVE SERVICE

CARTER'S AUTOMOTIVE SERVICE

CARTER'S AUTOMOTIVE SERVICE

4 Revokees Answer Charges Next Week

Four men are scheduled to appear next Wednesday night in Mountainside Municipal Court to answer charges of driving while on the revoked list.

The four are among seven truck drivers and one driver of a passenger car apprehended by Mountainside Police within the last 10 days on Rt. 22.

Those scheduled to appear next Wednesday are: Wesley R. Stevenson of Newark, charged April 12 with driving on the revoked list, backing up on the highway and no license in his possession, \$375 bail; Tyrone N. Fussell of Camden, driving on revoked list, obtaining license while on suspension, no registration in possession, \$335 bail; Robert Goodman of Camden, driving while on revoked list, no name and address on truck, \$275 bail; Anibel Rodriguez of 112 Hawthorne ave. driving while on revoked list and driving without a license. Rodriguez was remanded to Union County jail when he was unable to post \$250 bail.

Others scheduled to appear in Municipal Court on similar charges are: Anthony Manzo of Jersey City, \$250 bail, scheduled to appear last night; William J.



PAUL ROMAN

Roman Is Named Committee Head Of Realtor Week

Paul Roman, Springfield realtor, has been named chairman of arrangements for Realtor Week to be celebrated from May 23 to 29, it has been announced by A. Eugene Fiore of Maplewood, president of the Board of Realtors of the Oranges and Maplewood, Livingston, Millburn, Short Hills and Springfield.

Presentation of community service awards will highlight the week, Roman said. The presentations will take place on May 27, and awards will be given to residents of each of the eight communities served by the board. Last year, Roman said, Saul Freeman received the award in Springfield.

In explaining the purpose of the board award, Roman noted: "The Essex County suburbs are considered highly desirable in which to live and operate businesses. We established the awards last year to honor individuals or groups that make this possible."

This year's winners will be presented plaques at a board luncheon in June.

To Talk On Police, Rights Marchers

Dominick A. Spina, Newark police director, will be featured speaker at a breakfast meeting to be held by the Brotherhood of Temple Shalom, Springfield, according to Alan D. Kampf, Brotherhood president.

The meeting will be held this Sunday at 10 a.m. at the temple, 74 S. Springfield. Director Spina will speak on "The Police's Role in Civil Rights Demonstrations."

During the business meeting, officers for the coming year will be elected. Nominations to be presented are: Alan D. Kampf, president; Roger Golden, vice-president; Sol White, secretary; Mike Penick, treasurer, and Jack Paul, custodian.

VEHICLE VIOLATION
Carl Pickett of Newark was fined \$20 Monday night for failing to comply with New Jersey motor vehicle inspection laws. Pickett pleaded guilty before Springfield Magistrate Max Sherman.

CARD PARTY AIDS SPORTS PROGRAM OF BOOSTER CLUB

Proceeds from the card party to be sponsored by the Booster Club of Jonathan Dayton Regional High School, Springfield, Tuesday at 8 p.m. in the school cafeteria, will be used by the club in its program of assistance for the Dayton athletic program.

Tickets are available from Mrs. Jack Brink, chairman for the evening, and they will also be sold at the door. A number of prizes for the card party have been contributed by local merchants, Mrs. Brink stated.

Mrs. Harold Hanson, Mrs. Edwin Erskine and Mrs. Frank Bueel are in charge of refreshments. Mrs. Felix Gold is arranging the table prize, and Mrs. Frank Haydu is publicity chairman.

EXCEEDS SPEED

Robert H. Wardrop, 60, of Bloomfield, pleaded guilty Monday night to driving 47 miles per hour in a 25-mile zone on Shumpike rd. A fine of \$30 was imposed by Springfield Magistrate Max Sherman.

Civil Air Patrol Unit Meets Weekly; Commander Seeks New Members

The Springfield branch of the Civil Air Patrol meets every Wednesday evening at 8 o'clock at the Florence Gaudinier School on S. Springfield ave., under the leadership of Major Paul S. Werlake, squadron commander.

At a recent meeting, Maj. Werlake explained that the country is divided into eight regions by the patrol, with a state or territory called a "wing." The community organization is called a squadron. At least 15 members are required, with a minimum of three senior members.

Springfield Seabee Serves In Okinawa

OKINAWA — Builder Third Class John Buckley, USN, son of Mr. and Mrs. John A. Buckley of 112 S. Maple ave., Springfield, N. J. is serving with Navy Mobile Construction Battalion 10 at Camp Kinser, Okinawa.

The battalion, presently serving as the Pacific Seabee Alert Battalion, flew to Okinawa last month.

MOUNTAINSIDE ECHO, Mountainside, N. J. • Thursday, April 22, 1965 • 20

Waters Sings With College Choir Directed By Stobowski, Ormandy

Stephen Waters, son of Mr. and Mrs. Westminister Symphonie and Mrs. J. H. Waters, will sing with the Westminister Symphonie Chorus in the Mountainside ECHO, Thursday, April 22, 1965, at 8:00 p.m. at the Westminister Synagogue, 1000 N. 2nd St., Mountainside, N. J. The chorus will perform "The Star Spangled Banner" and "The Lord's Prayer" and "The Amen." The chorus is directed by Mr. Stobowski and Mr. Ormandy.

FRIDAY DEADLINE
All items other than spot news, submitted to this newspaper, should be in our office by Friday to insure publication in the next issue.

EL 3-7686

SCHMIDT-FORD

"QUALITY DEALINGS FOR 35 YEARS"

Sales		Service
Mustang Falcon Fairlane		Galaxie Thunderbird Trucks

Auto Rentals — Day - Week - Long Term

290-306 Broad St. 277-1665 Summit

Bellone Hearing Aid Service

A Professional Hearing Aid Service Dedicated To Help The Hard of Hearing. Qualified Audiologists Give Hearing Tests in Our Office or in Your Home With The Latest Electronic Testing Equipment. Always at Your Convenience. Never an Obligation.

8 So. Broad St.
Elizabeth
Opp. Public Library

Myron Calne, Director
Certified Hearing Aid Audiologist

When We Say Saving, We Mean Really BIG SAVINGS

Bonus Buy of the Week!

\$3.99

REG. \$7.98

OVER THREE FEET TALL

HURRY IN... THEY'LL GO FAST AT THIS BEAT-THE-TOWN PRICE!

<p>SPALDING GOLF BALLS</p> <p>The famous Pacesetter ball.</p> <p>3 FOR \$1.49</p>	<p>PARA PARA</p> <p>REG. 33c Moth crystals or nuggets.</p> <p>1 LB. 29c</p>	<p>KITCHEN CHARM 2 for</p> <p>By MARCAL</p> <p>100 FEET WAX PAPER 25c</p>
<p>HEAVY DUTY SPONGE</p> <p>Extra large for all heavy duty cleaning.</p> <p>8" x 5" x 2"</p> <p>66c</p>	<p>IVORY SOAP 5c</p> <p>REG. 8c PERSONAL SIZE BARS</p> <p>LIMIT 4</p>	<p>SACCHARIN 19c</p> <p>REG. 69c BOTTLE OF 1000 1/4 GRAIN TABLETS</p> <p>LIMIT 2</p>
<p>UTILITY & PAINT PAIL</p> <p>5 QT. SIZE</p> <p>Metal handle, choice of colors.</p> <p>19c</p>	<p>RUBBING ALCOHOL 9c</p> <p>REG. 29c 16 OZ. PLASTIC BOTTLE</p> <p>LIMIT 2</p>	<p>DUPONT TEFLON BAKEWARE</p> <p>REG. \$1.59 EACH</p> <p>Double coating of teflon on heavy gauge aluminum for no stick baking, no scour cleaning.</p> <p>CHOOSE FROM:</p> <ul style="list-style-type: none"> • Roasting pan • Pie Pan • Pizza Pan • Round cake pan • Square cake pan <p>\$1.37 EACH</p>
<p>PAINT ROLLER & TRAY SET</p> <p>REG. 66c</p> <p>For fast, efficient painting.</p> <p>57c</p>	<p>DRY CLOTH</p> <p>REG. 29c EACH Big 9" x 12" plastic sheet.</p> <p>2 FOR 27c</p>	<p>FOLDING COT</p> <p>Sturdy tubular aluminum frame, heavy gauge cover. Folds flat, packs light.</p> <p>\$6.99</p>
<p>NYLON BRISTLE PAINT BRUSHES</p> <p>From 1" to 3" wide.</p> <p>CHOICE 29c</p>	<p>SPRAY PAINT</p> <p>Complete choice of colors. 16 oz.</p> <p>99c</p>	<p>50 FOOT GARDEN HOSE</p> <p>Flexible plastic, takes full water force.</p> <p>99c</p>
<p>LONG HANDLED CAR WASH BRUSH</p> <p>Aluminum handle, off-on valve.</p> <p>88c</p>	<p>FULL FRONT AUTO RUG</p> <p>1 piece rubber, fits all standard cars.</p> <p>\$2.99</p>	<p>50 FOOT GARDEN HOSE</p> <p>Flexible plastic, takes full water force.</p> <p>99c</p>
<p>HAIR ROLLERS MAGNETIC 3 SIZES</p> <p>\$1.00 VALUE</p> <p>49c</p>	<p>COMPACT CAR RUG 244</p> <p>99c</p>	<p>PISTOL GRIP HOSE NOZZLE 99c</p>
<p>TEASING COMB</p> <p>59c VALUE</p> <p>SATIN FINISH ALUMINUM</p> <p>33c</p>	<p>CHAIR PAD</p> <p>Foam filled vinyl covered, reversible print.</p> <p>99c</p>	<p>KENTUCKY BLUE GRASS SEED</p> <p>1 LB. BOX</p> <p>Top quality blend perennial grasses.</p> <p>88c</p>
<p>SHOWER CAP TERRY LINED</p> <p>REG. 99c</p> <p>38c</p>	<p>FOAM CHAISE PAD, Matching</p> <p>99c</p>	<p>EVER DRY 2 79c</p> <p>ROLL-ON DEODORANT FOR</p>
<p>NEW DAWN HAIR COLORING</p> <p>\$2.00 VALUE</p> <p>\$1.33</p>	<p>HAIR ROLLERS MAGNETIC 3 SIZES</p> <p>\$1.00 VALUE</p> <p>49c</p>	<p>BRECK SHAMPOO 66c</p>
<p>TONI UNCURLY PERMANENT REFILL</p> <p>\$2.25 VALUE</p> <p>\$1.44</p>	<p>WOODBURY SHAMPOO 10.3 OZS.</p> <p>\$1.00 EACH VALUE</p> <p>2 FOR \$1.00</p>	<p>VO-5 HAIR SPRAY 73c</p>
<p>CONDITION BY CLAIROL 4 OZ. SIZE</p> <p>\$2.50 VALUE</p> <p>\$1.66</p>	<p>TAME CREME RINSE, 8 OZ.</p> <p>\$1.00 VALUE</p> <p>66c</p>	<p>POLIDENT DENTURE CLEANSER 49c</p>
<p>WOODBURY SHAMPOO 10.3 OZS.</p> <p>\$1.00 EACH VALUE</p> <p>2 FOR \$1.00</p>	<p>NOXZEMA MEDICATED CREAM 83c</p>	<p>BROMO SELTZER 79c</p>
<p>WOODBURY SHAMPOO 10.3 OZS.</p> <p>\$1.00 EACH VALUE</p> <p>2 FOR \$1.00</p>	<p>METTRECAL LIQUID \$1.49</p>	<p>MENNEN BABY POWDER 66c</p>

B'nai B'rith Picks Slate Of Officers; Holds Sport Fete

The Springfield B'nai B'rith Men's Lodge meeting at Temple Beth Ahm elected Sidney Piller president last week during a meeting before a sports night program.

Other officers elected were: Arthur Kesselhaut, first vice-president; Louis Spiegel, second vice-president; Norman Salitz, third vice-president; Gerald Haimowitz, financial secretary; Leonard Sherman, recording secretary and Melvin Zeller, treasurer.

New trustees elected were: Lester Elias, Philip Gurian, Arthur Mintman, Saul Ring and Marvin Simson. They joined trustees Rudolph Bamberger, Samuel Pillor, Willard Salesky and Dr. Barney Spielholz.

Some 200 persons attended the program at which Steve Van Buren, ex-National Football League star and now coach of the Newark Bears, spoke.

Otto Granick, retiring lodge president, presented a special award for athletic and academic prowess to Michael D. Adickman, a senior at Jonathan Dayton Regional High School.

Robert LaVanture, high school principal, and Herbert Palmer, school director of athletics, joined in the presentation ceremony. They both stressed the importance of athletics and scholarship to a good citizen.

With Van Buren were Lowell Lander, assistant coach for the Bears, and Sol Rosen, Bears general manager.

Girls & Ladies... we have cotton SHIFTS

7-14 • 10-22 1/2

Ass't Sizes & Colors \$2.98 From

BRETTLE'S DEPT. STORE

242 Morris Ave. DR 6-4108
Springfield, N. J.

Longer Wear! Lower Cost!

True since 1892.

Florsheim Shoes are built better to wear longer—and cost less by the month and by the mile. That's why Florsheim is America's standard of fine shoe value—why more men wear Florsheim Shoes than all other quality makes combined.

FLORSHEIM

FUTTER BROS.

333 MILLBURN AVE. Open Thurs. Eves. MILLBURN