

Elderly Beginning To Apply For Medicare; Deadline Set

If you reach the age of 65 by Jan. 1, 1966, you will be eligible to receive benefits under the new Medicare plan.

But you must apply to the Social Security district office in Elizabeth before next March 31—the deadline—to receive the benefits.

The Medicare program goes into effect July 1, 1966.

The Social Security district office for the Union-Somerset County area is at 203 N. Broad St., Elizabeth.

By now, says district manager Ralph W. Jones, all elderly Social Security or railroad retirement beneficiaries in the area should have received their kits

and the enclosed application for the supplementary medical insurance part of Medicare.

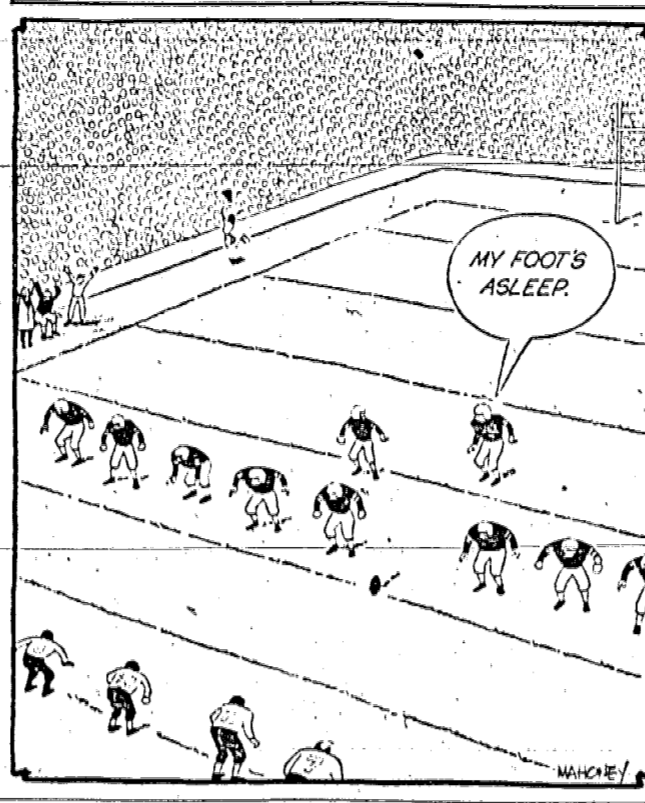
780 Have Applied.

About 780 other elderly persons—those not on the Social Security or railroad retirement benefit rolls—have already been in touch with the Elizabeth office.

But, Jones said, many others still need to take action promptly to protect their Medicare rights.

Working round the clock since Sept. 1, Social Security headquarters in Baltimore has completed the mailing of Medicare information kits to all of the 15 1/2 million persons 65 and over on the Social Security and rail-

HALF-PAST TEEN



The World Of Outer Space

From the Sperry Memorial Observatory Union Junior College, Cranford Amateur Astronomers, Inc.

By ROGER W. TUTHILL AMATEUR ASTRONOMERS, INC.

Can you tell the difference between a planet and a star? You have probably seen a planet with your naked eye many times and never realized it; that is, a planet besides the one that you are standing on, for, in reality, the earth is the most important planet to us.

Planets are different from stars. We say "stars" plural because nearly all of the objects we see in the sky besides the moon are stars, even though we call them stars. A sun, or star, gives off light from its inherent thermonuclear activity. A planet, like earth, is pulseless, cold, inanimate.

Nevertheless, a planet, including our earth, can reflect the light of our sun and that is how we can see them. The light that planets give off is reflected light from our sun, and because they are near to us, some planets are very bright; brighter to us than many stars.

Even though you may never leave our earth, you can actually see the effect of the reflected light from our earth. This light can be seen in the early stages of a new moon when the dark part of the moon, not illuminated by the sun, glows in the sky next to the crescent moon. This part of the moon is illuminated by light from the sun on the earth which is reflected back to the moon. The effect has been known traditionally "as the old moon in the new moon's arms." It is really earthshine. Some day when we get to the moon we will be able to see earthshine first-hand instead of second-hand so to speak.

Saturn, as you may know, is the largest planet in our solar system if its rings are taken into consideration. The rings around this planet are 170,000 miles in diameter, which is about 20 times bigger than our earth. The ball itself is only about 10 times as large as our earth, but the rings stretch out much greater. The rings are considered by many eminent authorities to be only as much as 10 miles thick and consist of objects perhaps as large as ordinary building bricks.

Jupiter is by far the largest single object that we can see with our telescopes besides the sun. This planet is very unusual because while it is 10 times bigger than the earth it rotates much faster so that a day on Jupiter lasts only 10 hours. This causes the planet to bulge at the center from centrifugal force. Quite often during a night's viewing of Jupiter, we can see its tiny moons move across the face of the planet, disappear behind it, or see the shadow of the moon as it crosses the face of this brightly lit object.

Other planets such as Mercury, Venus, Mars, Neptune, Uranus, and Pluto are also visible in telescopes made by amateurs. Venus is a very bright object these evenings just before sundown and can be viewed in the west. This planet is not quite as bright as Jupiter at this time. It is about the same size as the earth. Because its orbit is smaller than earth's orbit, it never gets as high in the sky such as Jupiter or Saturn. While Jupiter and Saturn may be visible all night, Venus and Mercury are usually only visible at dawn or at dusk depending upon their place in orbit. Saturn and Jupiter are both visible in the evening sky these October days.

horizon on the southwest. It requires at least a 3" telescope at about 100 power to see this planet effectively. It is considered by some to be the most beautiful object in the sky.

Jupiter is also visible at this time. It is higher in the sky in the southeast and is very much brighter. It appears to be the brightest star-like object visible. With clear skies and a steady hand it is possible to use 7 x 30 binocular to see this planet and its four moons visible to us shuttling back and forth around the planet.

Why don't you see if you can identify Venus, Jupiter and Saturn on the next clear night.

'Snob Or Slob' Motif Set For MMA Dance

"Snob or Slob" will be the theme of the dance to be held Nov. 3 in the gymnasium of Deerfield School under the sponsorship of the Mountainside Music Association. Members and guests attending are asked to dress either very formally or very casually—not in between.

Tickets for the affair may be obtained from any member of the MMA or purchased at the door. Everyone is welcome.

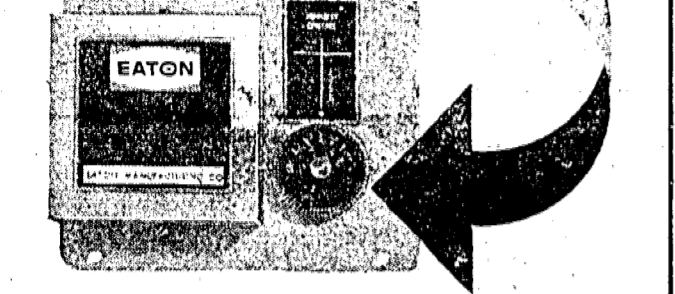
Mrs. Anne Hose and Mrs. Marie Toland are in charge of tickets. Mrs. Peg Olson and Mrs. Lee Fischer are heading the refreshment committee and Mrs. Sally McCurley is handling publicity. Serving on the decoration committee are Mr. and Mrs. Don Goff, Mrs. Nancy Serio and Mrs. Mary Stanke.

The association this week announced that plans for the annual show are now underway.

A tentative date of April 1 has been set for the event. Adam Lewis and Mrs. Fred Wilhelm Jr. will again, as in past years, be in charge of the production. Other plans for the coming year include continuing aid to the music departments in borough schools, musical presentations for the school and the community and a long range program for a music corner in the proposed new public library. A "dessert" meeting will be held Nov. 22 at Mrs. Wilhelm's home, 1301 Fox trail. Prospective members are invited to attend.

A BUSINESS OF YOUR OWN... through the Want Ad Section

SET THE DIAL...



FOR HUMIDIFIED COMFORT IN EVERY ROOM...

Mistic-Air Warm Air Duct Power Furnace Humidifier

You pick your own comfort level... the automatic humidistat senses humidity changes throughout the house—adjusts automatically to deliver exactly the measured amount of moisture needed to turn parched, heated air into ideal environment for comfortable living. It provides up to 20 gallons of comfortable moisture per day. And the MISTIC-AIR WARM AIR DUCT POWER FURNACE HUMIDIFIER cuts down on fuel bills, too. Increases the resale value of your house. Comes complete with parts and fittings.

with **AUTOMATIC HUMIDISTAT** just **\$79.95** plus installation

- Quick, easy installation.
- Attractive modern styling.
- Utilizes existing ductwork.
- Trouble-free operation.
- Full year warranty.

D. J. HARTNETT & CO.
1254 U.S. RT. 22
MOUNTAINSIDE, N. J.

175 Teens Attend Canteen Dance

Approximately 175 teenagers attended the first Canteen Dance of the fall season held last Friday night in Deerfield School under the sponsorship of the Mountainside Recreation Department.

Music for dancing was provided by the "Marauders," a five-man group of high school musicians. The quartet includes Ken Padfield, Bruce French, Robert Arterburn, Henry Fried, and Paul Bodnar, all Mountainside residents and all students at Governor Livingston Regional High School.

ENROLLED AT VINCENNES—Two Mountainside residents, Joseph E. Grabowski and Thomas H. Ayling, are enrolled at Vincennes University, Vincennes, Ind. Grabowski is the son of Joseph Grabowski and Ayling the son of Mr. and Mrs. Thomas Ayling.

OUTSTANDING flemington furs

ADD EXCITEMENT TO YOUR LIFE

And at Flemington you choose from the largest collection of fine quality furs to be found anywhere in the world. Every fashion fur is stocked in depth... sized from the smallest petite to the larger figure. ALL GUARANTEED TO SAVE YOU IMPORTANT DOLLARS.

at our famous low close-to-factory-cost prices from \$110 to \$8950

A HOST OF LUXURY IMPORTED FABRICS FUR-LINED FUR-TRIMMED SUEDES ANTELOPES CASHMERE KNITS AND MANY, MANY MORE from \$49 to \$550

Open daily to 9 p.m. Sat. & Sun. to 6 p.m.

flemington fur company
NO. 8 SPRING STREET, FLEMINGTON, NEW JERSEY
ONE OF THE WORLD'S LARGEST SPECIALISTS IN FINE FURS

Wm. HOWARD Cleaners

Route 22 & Springfield Rd., Union
Next to Shop-Rite • West-bound Lane

NOW OPEN

Take Advantage of our... Get Acquainted Specials!

SHIRTS Beautifully Washed and Finished Reg. 25c 22c	PANTS Cleaned & Pressed Reg. 65c 55c	COIN TYPE DRYCLEANING 4 lbs. 99c (Each additional pound 25c) * Returned on hangers in plastic bags
--	---	---

1 HOUR QUALITY CLEANING
5 HOUR SHIRT SERVICE (Before 12 Noon)
OPEN 7 am Six Days a Week

Wm. HOWARD Cleaners
ROUTE 22 & SPRINGFIELD RD., (West-bound Lane) UNION Next to Shop-Rite

Other stores located in: Dover, Kenvil, Mt. Freedom, Morris Plains, Morristown and Parsippany

FALL HOME IMPROVEMENT REVUE

- Home Improvements
- Furniture
- Decorating

A WOMAN'S DREAM CAN COME TRUE

Guidelines From Experts On Doing That Kitchen Over

Today's do-it-yourselfers think nothing of converting a dark-basement-into-a-cheery living room, completely re-doing a room or erecting a spacious, enclosed patio—but kitchens look much the same as they did on moving-in day. If you want your dream kitchen to become a reality,

the following guidelines offered by Frigidair's kitchen planning experts will help:

Work Triangle: Lines drawn between the range, sink, and refrigerator should form a triangle whose sides total between 14 and 23 feet, with adequate counter space and storage cabinets.

Traffic: The work triangle should be out of the path of family-traffic-from-one-room to another, also from the outside door to other rooms. Doors here should be limited to two.

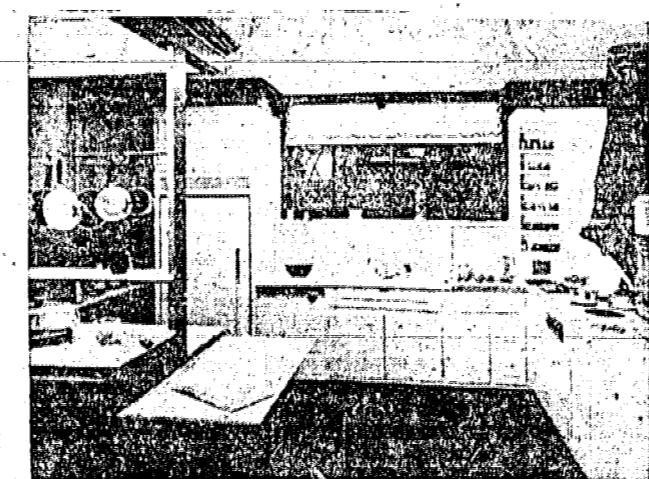
Appliances: These should be new, automatic work-savers. The refrigerator-freezer should be frost-proof to eliminate all defrosting; the automatic dishwasher should eliminate pre-rinsing and wash various types of loads, including pots and pans. The range should have automatic oven controls to take over while you are out. Some new electric ranges include an auto-cook control that cooks food to doneness then holds it at serving temperature for hours. In addition to this meal-minder, some ranges have an exclusive tender-matic roasting control for long, low temperature meat-cooking that tenderizes tough, low-cost meats, keeps all meat juicy, and prevents shrinkage.

Storage: Each work center should have storage space designed for the equipment used there. Small appliances should be kept handy for instant use.

Cleanability: Counter-tops, flooring, wall coverings, curtains—all materials in the kitchen should be dirt-resistant and easy to clean. Look for features such as pull-out ovens, drop-down doors, and especially the new, completely self-cleaning oven just introduced.

Utensils: Choose sturdy, easy-to-clean pots and pans and electric housewares that cook evenly.

Wiring and Lighting: Adequate wiring and lighting are essential to a modern, efficient kitchen. Convenience outlets just above counter height and spaced about two feet apart are recommended. General ceiling lighting should be augmented by glare-free lights over each work area, plus supplementary under-cabinet lights over counters. Most utility companies offer the free services of home lighting experts who will recommend the



THIS KITCHEN ILLUSTRATES the best principles of kitchen planning. Refrigerator, sink and dishwasher, and the electric range are separated by only a few steps, yet there's generous storage and counter space for each basic work area.

adequate wiring and lighting essential to a modern, efficient kitchen.

Work Counters: A final hint about those counter tops. Standard counter height is 36".

If you're tall, you'll want it higher; if you're short, lower; if you're smart, you'll want 3 different levels, since various kitchen jobs take different counter heights, ideally.

Bring home SAPOLIN'S BIG GALLON

Biggest value in wall paints! More quality at up to \$3.00 less than comparable brands!

ONCE-A-YEAR SALE

\$4.98 GALLON

Reg. List \$6.50

GUARANTEE
All Sapolin products are guaranteed to perform as stated on the label or purchase price refunded.

BIG in all the Features you want in wall paint

- Over 1000 fabulous "Fashion Colors" to choose from at this low price!
- Dripless Formula covers with one coat, never streaks.
- 20-minute dry, no unpleasant odor.
- Soap and water cleans brushes and rollers.
- Superior results guaranteed!

R & R PAINT & WALLPAPER
1400 STUYVESANT AVE., UNION • 688-5555

Legal Notice

CITY OF LINDEN
GENERAL ELECTION NOTICE,
CITY CLERK'S OFFICE,
CITY HALL, Linden, N. J.,
October 18th, 1965

NOTICE IS HEREBY GIVEN IN PURSUANCE OF THE PROVISIONS OF AN ACT ENTITLED "AN ACT TO REGULATE ELECTIONS", TITLE 19, REVISED STATUTES, AND THE AMENDMENTS AND SUPPLEMENTS THERETO, FOR THE PURPOSE OF ELECTING CANDIDATES FOR THE FOLLOWING PUBLIC OFFICES IN THE VARIOUS ELECTION DISTRICTS AT THE VARIOUS POLLING PLACES IN THE CITY OF LINDEN:

NOTICE TO PERSONS IN MILITARY SERVICE AND TO THEIR RELATIVES AND FRIENDS: If you are in Military Service or are a patient in a Veterans' Hospital and desire to vote, or if you are a relative or friend of a person who is in Military Service or is a patient in a Veterans' Hospital who, you believe, will desire to vote in the General Election to be held November 2nd, 1965, kindly write to the County Clerk at once making application for a Military Service Ballot to be voted in said election. If you are making application for a serviceman, then you must furnish, under oath, the names of the nearest next of kin, home address and military address. Veterans making application must furnish the same information.

The following is a list of the Public Offices to be voted for at the General Election of Tuesday, November 2nd, 1965:

One Governor of the State of New Jersey for a term of four years.
Two State Senators from the Ninth Senate District, for the County of Union for a term of two years.
Five Members of the Assembly of the State of New Jersey for the County of Union for a term of two years.
One Sheriff for the County of Union for a term of three years.
Three Members of the Board of Chosen Freeholders for the County of Union for a term of three years.
Three Coroners for the County of Union for a term of three years.
One Councilman for the 2nd Ward of the City of Linden for a term of three years.
One Councilman for the 3rd Ward of the City of Linden for a term of three years.
One Councilman for the 5th Ward of the City of Linden for a term of three years.
One Councilman for the 7th Ward of the City of Linden for a term of three years.

Following is a list of the polling places in the various election districts of the City of Linden:

CITY OF LINDEN
POLLING PLACES

- 1 W 1 D Library Building - Ashwell Room, 31 East Henry Street.
- 2 D Senior High School - New Wing Rm., Almsworth Street Entrance.
- 2 W 1 D Methodist Church Social Hall (Downstairs) - Wood Avenue Entrance.
- 2 D School #8 - Room #4, Lafayette Street Entrance.
- 3 W 1 D School #9 - High School - Small Gymnasium, Henry Street Entrance.
- 2 D School #10 - High School - Room #6, Elm Street Entrance.
- 4 W 1 D School #11 - Play Court, Middlesex Street Entrance.
- 2 D School #12 - Play Court, East Curtis Street Entrance.
- 3 D School #13 - Cafeteria, East Curtis Street Entrance.
- 5 W 1 D School #14 - Girl's Club, Passaic Avenue Entrance.
- 2 D Columbian Club - Reception Room, 118 Park Avenue.
- 6 W 1 D School #15 - Play Court, Entrance, Morris Avenue near Wood Avenue.
- 2 D School #16 - Play Court, Entrance, Morris Avenue near Clinton Street.
- 3 D School #17 - Clinic Room, Entrance, Morris Avenue near Clinton Street.
- 7 W 1 D School #18 - Play Court, 18th Street Entrance.
- 2 D School #19 - Play Court, 17th Street Entrance.
- 3 D School #20 - Play Court, Tremley Point Road Entrance.
- 8 W 1 D School #21 - Auditorium, Bachelor Avenue Entrance.
- 2 D School #22 - Training Room, Dennis Place Entrance.
- 9 W 1 D Presbyterian Church - Room #2, Harvard Road Entrance.
- 2 D Library - Sunnyside Branch, Greenberg Room, Edgewood Road Entrance.
- 10 W 1 D School #23 - Front Entrance Corridor, Deerfield Terrace Entrance.
- 3 D McDonalds Jr. High School - #123 Music Room, Main Entrance, Edgewood Rd.
- 3 D Gymnasium, Highland Avenue Entrance.

Following is a description of the various election districts of the City of

Legal Notice

Linden:

FIRST WARD
FIRST DISTRICT: Being bounded by Henry Street, Rahway City Line, Gibbons Street, and Washington Avenue.
SECOND DISTRICT: Being bounded by Gibbons Street, Rahway City Line, St. George's Avenue, and Washington Avenue.

SECOND WARD
FIRST DISTRICT: Being bounded by Pennsylvania Railroad, projected centerline of Spruce Street, Spruce Street, Henry Street, and Wood Avenue.
SECOND DISTRICT: Being bounded by Pennsylvania Railroad, Rahway City Line, projected centerline of Henry Street, Henry Street, Spruce Street, centerline of Spruce Street projected to Pennsylvania Railroad.

THIRD WARD
FIRST DISTRICT: Being bounded by Roselle Street, Henry Street, Wood Avenue, and Bluff Street.
SECOND DISTRICT: Being bounded by Roselle Street, projected line of Roselle Street, Pennsylvania Railroad, Wood Avenue, and Bluff Street.

FOURTH WARD
FIRST DISTRICT: Being bounded by Pennsylvania Railroad, Bower Street, Hussa Street, McCandless Street, Glenwood Ave., Lincoln Street, St. George's Avenue, and Staten Island Rapid Transit Railroad.
SECOND DISTRICT: Being bounded by Pennsylvania Railroad, Roselle Street, projected, Roselle Street, St. George's Avenue, Lincoln Street, Cleveland Avenue, McCandless Street, Hussa Street, Bower Street, and Bower St. projected.

FIFTH DISTRICT: Being bounded by Henry Street, Washington Avenue, St. George's Avenue, and Roselle Street.

SIXTH WARD
FIRST DISTRICT: Being bounded by Wood Avenue, Pennsylvania Railroad, Rahway City Line, and Edgar Road.
SECOND DISTRICT: Being bounded by Wood Avenue, Pennsylvania Railroad, Staten Island Rapid Transit Railroad, and Edgar Road.
THIRD DISTRICT: Being bounded by Edgar Road, West Brook Drive, Twelfth Street, projected, Twelfth Street, and Stiles Street.

SEVENTH WARD
FIRST DISTRICT: Being bounded by West Brook, 16th Street projected, 16th Street, Stiles Street, 16th Street, a line 100 feet northerly and parallel to Lower Road, a line 140 feet southerly and parallel to 21st Street, a line 150 feet easterly and parallel to Clinton Street, a line 130 feet southerly and parallel to 20th Street, a line 275 feet easterly and parallel to Clinton Street.

SECOND DISTRICT: Being bounded by West Brook, Elizabeth City Line, Staten Island Rapid Transit Railroad, Edgar Road, West Brook Drive, 12th Street, projected, 12th Street, Stiles Street, Edgar Road, Rahway City Line, 14th Street, Stiles Street, 16th Street, and 16th Street projected.

THIRD DISTRICT: Being bounded by West Brook, Elizabeth City Line, New York State Line, Middlesex County Line, Rahway City Line, a line 100 feet northerly and parallel to Lower Road, a line 140 feet southerly and parallel to 21st Street, a line 150 feet easterly and parallel to Clinton Street.

EIGHTH WARD
FIRST DISTRICT: Being bounded by Staten Island Rapid Transit Railroad, Dennis Place, and McGilvray Place, Edgar Road, Park Avenue, Pennsylvania Railroad, and Elizabeth City Line.
SECOND DISTRICT: Being bounded by Academy Terrace, Columbia Place, Academy Terrace, and Wood Avenue.
THIRD DISTRICT: Being bounded by Molise Terrace, Dewitt Terrace, Raritan Road, Cranford Township Line, and Wood Avenue.

NINTH WARD
FIRST DISTRICT: Being bounded by St. George's Avenue, Rahway City Line, Valley Road, Stiles Street, Academy Terrace, and Columbia Place.
SECOND DISTRICT: Being bounded by Academy Terrace, Raritan Road, Elmwood Terrace, and Dewitt Terrace.
THIRD DISTRICT: Being bounded by Elmwood Terrace, Stiles Street, Valley Road, Clark Township Line, Wildwood Road, Clark Township Line, Clark Township Line, Stiles Street, Clark Township Line, Raritan Road, and Dewitt Terrace, October 18, 1965.

FRANCIS H. DANN,
City Clerk
Linden Leader—October 28, 1965.
(Fee: \$53.80)

Legal Notice

Following is a list of the polling places in the various election districts of the City of Linden:

CITY OF LINDEN
POLLING PLACES

- 1 W 1 D Library Building - Ashwell Room, 31 East Henry Street.
- 2 D Senior High School - New Wing Rm., Almsworth Street Entrance.
- 2 W 1 D Methodist Church Social Hall (Downstairs) - Wood Avenue Entrance.
- 2 D School #8 - Room #4, Lafayette Street Entrance.
- 3 W 1 D School #9 - High School - Small Gymnasium, Henry Street Entrance.
- 2 D School #10 - High School - Room #6, Elm Street Entrance.
- 4 W 1 D School #11 - Play Court, Middlesex Street Entrance.
- 2 D School #12 - Play Court, East Curtis Street Entrance.
- 3 D School #13 - Cafeteria, East Curtis Street Entrance.
- 5 W 1 D School #14 - Girl's Club, Passaic Avenue Entrance.
- 2 D Columbian Club - Reception Room, 118 Park Avenue.
- 6 W 1 D School #15 - Play Court, Entrance, Morris Avenue near Wood Avenue.
- 2 D School #16 - Play Court, Entrance, Morris Avenue near Clinton Street.
- 3 D School #17 - Clinic Room, Entrance, Morris Avenue near Clinton Street.
- 7 W 1 D School #18 - Play Court, 18th Street Entrance.
- 2 D School #19 - Play Court, 17th Street Entrance.
- 3 D School #20 - Play Court, Tremley Point Road Entrance.
- 8 W 1 D School #21 - Auditorium, Bachelor Avenue Entrance.
- 2 D School #22 - Training Room, Dennis Place Entrance.
- 9 W 1 D Presbyterian Church - Room #2, Harvard Road Entrance.
- 2 D Library - Sunnyside Branch, Greenberg Room, Edgewood Road Entrance.
- 10 W 1 D School #23 - Front Entrance Corridor, Deerfield Terrace Entrance.
- 3 D McDonalds Jr. High School - #123 Music Room, Main Entrance, Edgewood Rd.
- 3 D Gymnasium, Highland Avenue Entrance.

Following is a description of the various election districts of the City of

planning a new kitchen?

All of these questions and many more can be solved right here by experts on kitchen design. There is no additional charge for friendly help based on long experience. We not only make Formica tops to your need, but offer complete one stop kitchen finishing service. Come in and talk it over without obligation.

Custom Kitchens by TANKE'S
Designers and Installers
Custom Built Formica Counter Tops
374-1818
1048 CLINTON AVE., IRVINGTON
Showroom Hours: Daily — 9 to 5; Mon., Wed., Fri. 'til 9 p.m.

new stove... floor composition tile or linoleum... built-in oven... refrigerator... lighting... more electrical outlets... what about walls... most important it must be genuine...

Beauty Bonded FORMICA
Laminated Plastic Pays in Performance
Guaranteed by Good Housekeeping

Following is a description of the various election districts of the City of

NO HAUL, NO HANG

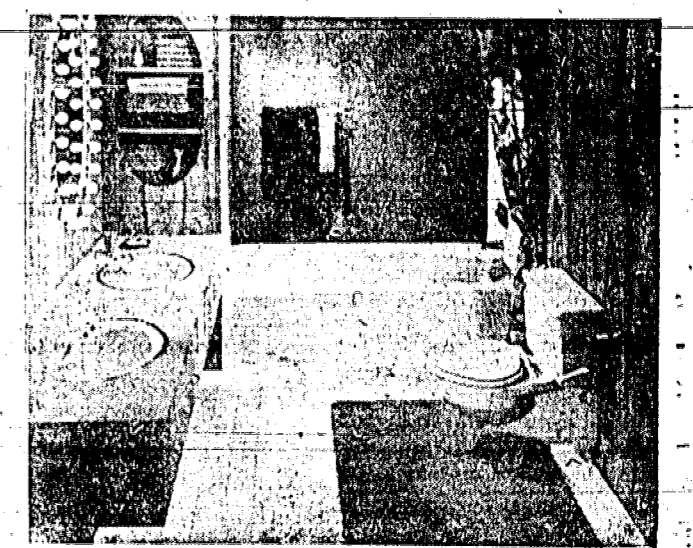
The basement remains the best location for the laundry in many homes. Dryers have made basements much more acceptable for two reasons: carrying heavy baskets of wet clothes to outdoor lines is eliminated as is the messy indoor hanging of clothes in stormy weather.

FRIDAY DEADLINE
All items other than spot news, submitted to this newspaper, should be in our office by Friday to insure publication in the next issue.

Force Company Is Leading Outlet

One of the largest outlets in North Jersey for machine equipment, tools and accessories of every description is the Force Machinery Company, 2271 Route 22, Union.

The company sells equipment for municipalities, industries and do-it-yourself home hobbyists. Force provides instruction and periodic demonstrations in the use of all types and sizes of hand and power tools, woodworking



OFF-THE-FLOOR water closet and twin-sink lavatory illustrate strides made in design of modern bathroom. Fixtures are adaptable for re-doing older bathrooms as well as installation into newly-built homes.

Goldfinger's

INVITES YOU TO SEE **dimension BY LENOX**

Now on display in exciting table settings in our China department... Settings created by the editors of McCall's... to introduce you to this wonderful new shape in fine China from Lenox. The exciting look of Dimension with its gracious flair and emphatic banding meets today's demand for a blend of the finest in traditional with the fresh contemporary design.

WINDSONG—A floral garland in white and sky-blue raised enamel, set off with platinum banding. For creative entertaining in lovely homes. Grace and dignity restated in a bright new way. 5-pc. place setting... \$27.95

128 LYONS AVENUE
(At Parkview Ter.) NEWARK
Open Tues. & Fri. 'til 9 p.m.
Tel. 923-7642

Whitehall
...the Kitchen Cabinets Women Love to Live With?

Personally yours... the kitchen created with you in mind—custom-built to the design, the decor, of your home. Now you can have every time-saving, step-saving convenience, beautifully tailored to your needs. Each Whitehall cabinet is custom-crafted in fine furniture tradition, and richly finished in your choice of 14 natural wood tones, eight in Maple and six in majestic Oak. Call today... Whitehall costs less than you think!

whitehall CUSTOM BUILT KITCHENS
"Builders of America's Most Envid Kitchens"

The Finest in Wood & Formica Custom Kitchens.
Also Complete Bathrooms & Vanities. Come in to our new Showroom.

MURDOCH & LYONS
1161-3 Stuyvesant Ave., Irvington
371-8888 688-7777

Bring These Coupons

To
Atlantic Thrift Center

You'll Save Plenty!

EXTRA SAVINGS COUPON

INFRA RED ELECTRIC
WINDSHIELD DEFROSTER
Reg. \$2.94

\$1.96
WITH COUPON

- Instantly defrost, mist, ice and snow
- Plugs into any auto lighter
- Complete with 12 ft. cable

EXTRA SAVINGS COUPON

LADIES ACETATE
TRICOT PETTIPANTS

59¢
WITH COUPON

No wardrobe is complete without several of these high fashion 3 tiered ruffle lace bottom pants. White, black, pink & black. S, M & L.

EXTRA SAVINGS COUPON

BABIES
BIRDSEYE DIAPERS
Reg. \$1.88

\$1.49
WITH COUPON

- Super absorbent, 100% cotton
- Baby Neptune diapers
- Washable, resists tears
- Size 27" x 27"

EXTRA SAVINGS COUPON

MENS ORLON
AGRYLIC SWEATERS
Reg. \$4.59

\$3.88
WITH COUPON

Smart button front cardigans in multi color cross stripes and fancy patterns. Ass't. colors. Sizes S, M & L.

EXTRA SAVINGS COUPON

GIRLS 2-PC.
CORDUROY SLACK SET
Reg. \$1.69

\$1.29
WITH COUPON

EXTRA SAVINGS COUPON

AQUA VELVA
SHAVE LOTION
Reg. 29¢

9¢
WITH COUPON

EXTRA SAVINGS COUPON

S.T.P.
OIL TREATMENT
Reg. \$1.19

88¢
WITH COUPON

- Add to your oil
- Super concentrated

EXTRA SAVINGS COUPON

LADIES LYCRA LONG LEG
PANTY GIRDLE
Reg. \$1.65

\$1.52
WITH COUPON

Embroidered nylon front panel Satin lastex back panel. Power net sides. White. S, M, L & XL. Blend nylon, acetate lycra, spandex, cotton.

EXTRA SAVINGS COUPON

LADIES or CHILDREN
SLIPPER SOCKS
Reg. 99¢

50¢
WITH COUPON

All sizes - styles.

WHO can compare



BOYS' HOODED, QUILT-LINED CORDUROY SURCOAT
5.99

Winter-warm, 100% midwale cotton corduroy with full quilted lining of 50% reprocessed wool and other fibers for long wear. Zip-off hood, self-collared, 2 flap pockets and concealed zipper. Olive, antelope, burgundy. Sizes 4 to 16.



MEN'S RUGGED QUILT-LINED EXPANDED VINYL JACKET
\$5

Favorite for comfort, strength and long wear. Leather-like, expanded vinyl jackets detailed with panel front and 2 slash pockets. Choice of knit frame or button-down goal collars. Black and olive. Sizes S, M, L, XL.



LADIES' FUR-TRIMMED COAT in Petite Sizes
\$15

Glamorous in 100% acrylic crepe diagonal weave laminated back, dramatically contrasted with bow trimmed, black dyed mouton wedding band collar and cuffs. Detailed with 3-button close, T-flap pockets. Interlined. In royal or red. In sizes 5 to 13.

LOOK! SCOOP PRICES!

GIRLS' NYLON STRETCH TURTLENECK POLOS
99¢

Cold weather favorites! 100% nylon stretch polo shirt with long sleeves and turtleneck. Assorted solids and stripes. Sizes 3 to 14.

GIRLS' STIRRUP-STYLE STRETCH SLACKS
2 for \$3

Near-fitting, 100% cotton stretch laminated slacks with elastic stirrups. In assorted solids & hounds-tooth checks. Sizes 7 to 14.

LADIES' QUILT FRONT LOUNGING PAJAMAS
1.59

Trimly tailored acetate tricot quilted front pajamas. Spiced with braid or lace trim on collar. Solid tricot pants. In pink, blue, and maize. 32 to 40.

LADIES' CORDUROY SLACK SCOOP
\$1

Trim 'n tapered cotton corduroy slacks with regulation, adjustable waistband, side zipper. Black, royal, red, brown, green. 10 to 18.

HALLOWEEN COSTUMES
88¢

Complete outfits with mask and Trick or Treat Bag. Skeleton, Clown, Astronauts, Witches, various other characters.

LADIES' SHEER NYLON SCARVES
21¢

100% sheer nylon squares in the latest assortment of fashion colors. Comp. Val. 39¢

BOYS' CORDUROY SPORT SHIRTS
99¢

Long sleeve, 100% cotton corduroy shirts with spread collar and patch pocket. Assorted colors. Sizes 3 to 8.

GIRLS' CREW SOCKS WITH STRETCH FOOT
3 Pr. \$1

Hi-bulk orlon acrylic crews with nylon stretch foot. Assorted colors. Sizes 9 to 11.

FAMILY SIZE JERGEN'S LOTION
99¢

Big 16 Oz. 1.49 Size. Tremendous value. Buy several at this price!

11 OZ. AERO SHAVE
48¢

Regular or Menthol. Rich cream shave with Lanolin in Aerosol can. 89¢ Size.

LADIES' FLATTERING STRETCH STRAP BRAS
96¢

Total support with adjustable Helanca® stretch straps, lycra spandex elastic sides. Circle stitched, 4 section cup. Cotton in white. Sizes 32 to 40, A, B, C cups.

NEW! RESPOND SPECIAL PROTEIN FORMULA HAIR SPRAY
97¢

plus RE-FILLABLE PURSE SPRAY
Large 7 Oz. can. Choice of Normal or Extra-Hold. 2.50 Value!

2-CELL CHROME MAGNETIC FLASHLIGHT
58¢

FOR EXTRA SAFETY HALLOWEEN
With red lens guard, 3 position switch with flasher button. Ideal for car, home or garage. 95¢ Value

ATLANTIC Thrift Center UNION - Route 22 at Springfield Rd. OPEN DAILY 9:30 A.M. TO 10 P.M.

Watch Out For This Pest!

Carpenter Ants Do Unauthorized Work

One of the nation's most destructive pests — the carpenter ant — has been on the wing during the summer months, boring from within structural America, and now is the time to assess the damage.

According to F.S. Kirkpatrick, manager of the Mountainside branch office of the Western Exterminating Company, homeowners should not panic. The mortgaged home-

OUR PRICES — THE TALK OF UNION!!!
 Value \$7.95
Boys & Girls
 2 PIECE
SNOW SUITS \$3.99
H&M DISCOUNTS
 Money Refunded
 Within 25 Days!
 1020 STUYVESANT AVE.
 UNION CENTER
 Open Mon. & Fri. 'til 9

stead will not collapse overnight, but an army of workers can weaken vital structural timbers, sometimes to the danger point.
 Seven most common species of the carpenter ant virtually blanket the United States. Camponotus pennsylvanicus, known as the black carpenter ant, is the most common in structures in the eastern part of the country. The "red" variety prefers well-rotted wood and lower altitudes. The "New York" and the "northern" types prefer higher elevations. "Modoc" and "giant" ants concentrate on the Pacific Coast and Rocky Mountain states. And the "smaller" can be found anywhere.

In three to six years a colony of carpenter ants may result in a population as high as 3,000 insects. The first generation enlarges the nest for the growing army of workers that follow. Larger members battle intruders and forage for food. Smaller members are the true carpenters, dividing their time between tunneling through timbers, with the effectiveness of a quarter-inch drill, and caring for the young.

Carpenter ants, explains Kirkpatrick, usually work at

night and evidence of their activity is often found as a neat pile of shredded sawdust, a picture window in a log, or by putting your ear to a timber. They are a noisy bunch, making a dry rustling sound.

Because carpenter ants must have moisture to thrive, clearing up their sources of water is an important measure of control, points out Kirkpatrick. He adds that a number of insecticides can effectively control carpenter ants, but the trick is pinpointing the nest and the proper application of the chemical spray or dust.

GOP Cuts Costs Of Government, Rinaldo Asserts

Freeholder Matthew J. Rinaldo of Union, this week cited statistics showing that Union County had the sixth lowest per-capita cost of operations last year.

"The fact that Union County, one of the state's most populous, operates at one of the lowest per-capita costs, considerably below the average for the state, is conclusive proof that the Republican administration has practiced fiscal responsibility," he said.

Rinaldo is seeking to return to the county board along with his GOP running mates, incumbents Raymond Moore and Jay A. Stemmer.

Rinaldo said that the per-capita cost of operating Union county government was \$28.37 — substantially below the statewide average of \$35.69 and within striking distance of the \$21.64 figure for the state's lowest.

"Responsible Republican stewardship has given us this fine record, while not sacrificing the needs of our citizens on the altar of heartless cost-cutting," he also noted that neighboring Essex County is "third from the top with a per-capita figure of \$51.01, while nearby Hudson County has a figure of \$52.23 proving the value of thoughtful Republican administration."

GOP Candidates Attack Caldwell

Republican freeholder candidates Raymond Moore, Matthew Rinaldo and Jay A. Stemmer this week attacked their Democratic opponent, Hugh Caldwell, for what they called his "do-nothing record as a freeholder."

The GOP candidates said that Caldwell "has sponsored no constructive county legislation" in his term in office. They called his "sole apparent function" one of "obstructing the progressive programs advocated by Republicans."

Moore, Rinaldo and Stemmer pointed to their own records as "progress with prudence."

Churches Will Hold Course On Religion

Redeemer Lutheran Church of Westfield will be the site for the School of Religion being sponsored by the seven congregations of the Elizabeth Circuit on Tuesdays in November. Two sessions will be held each evening at 7:50 and 8:50, starting this Tuesday and running Nov. 9, 16, and 23.

A coffee hour at 7:30 p.m. will be served by the Central New Jersey Zone of the Lutheran Laymen's League. Registration for the course will be held at the Redeemer Church office.

Delta Gamma Meets

Delta Gamma Alumnae of this area will meet next Thursday at 8 p.m. at the home of Mrs. Karl Wiepking of Westfield. Guest speaker will be Dr. Joseph H. Kler, president of the New Jersey Commission for the Blind.



NO UNION CARD, EITHER — Despite the fact that the carpenter ant doesn't have the conventional saw, drill, hammer or chisel, he's equipped to achieve serious damage to home and factory.

Halloween Party Set By Deborah

A Halloween party will be held this evening by the West-Mount Chapter of Deborah. Members and their husbands are urged to attend the costume affair which is scheduled to open at 8 o'clock in the Town House on the Green in Scotch Plains.

Many games and surprises will be included in the evening's entertainment, according to Mrs. Michael Hughes, program vice-president.



DINNER FOR FIVE ON \$10?

You can do it!...at Sip & Sup
 QUICK, CONVENIENT, AND EASY ON THE BUDGET

- | | | |
|---|--|--|
| Butterfly Shrimp Basket \$1.65
Jumbo golden brown shrimp, french fried potatoes, tossed buttered roll, sauce, cole slaw. | "Champ" Meal 95¢
Delicious two-patty hamburger with melted cheese and trimmings, french fried potatoes, tossed greens, salad, toasted roll. | Breaded Veal Cutlet \$1.35
Special tomato sauce, mashed or french fried potatoes, tossed greens, salad, toasted roll. |
|---|--|--|

Sip & Sup family RESTAURANTS
 serving ALDERNEY products exclusively
 Springfield & Morris Aves. Springfield, N.J. Corner of Routes 10 & 202 Morris Plains, N.J.
 TABLE SERVICE FOR LEISURE DINING

Shop where Better Meals begin
COMPARE!!

We Trim Our Steaks... Not Our Customers. At Rau you Pay For Meat... At Chain Stores You Pay For Waste. Chain Store Prices May be Advertised Lower, But In The End You Pay For More and All You're Getting is Bone and Fat. Come In To Rau, Today... Let Us Prove It To You!

STEAKS
 U.S. PRIME AND CHOICE

SIRLOIN Aged and Trimmed 1.19	PORTERHOUSE Aged and Trimmed 1.19
---	---

Flat Bone...lb. 1.29 T-bones...lb. 1.29
 Tender Hip Steaks...lb. 1.09

Always Fresh Produce
 Seedless Grapes...lb. 19¢
 Onions...3 lb. bag 19¢
 Apples...3 lb. bag 35¢

RAU QUALITY MEATS AND PRODUCE
 Open Daily to 6 p.m. Friday nites 'til 9
 SPRINGFIELD: 763 Mountain Ave.—DR 6-5505
 UNION: 956 Stuyvesant Ave.—MU 8-8622
FREE DELIVERY... of course!

A GUY WHO CUTS TAXES
 This is a picture of a guy who cuts taxes. His name is Loree 'Rip' Collins. He's earned a reputation for representing "the guy without a pressure group." As a member of the Appropriations Committee 'Rip' withstood the pressure of the special-interest lobbies when he out millions from the inflated state budget.
 'Rip' Collins Fights To Protect You The Guy Who Pays The Bills
 Re-elect **LOREE 'RIP' COLLINS**
 CANDIDATE FOR ASSEMBLY
 NOVEMBER 2
 Paid for by: "Friends of 'Rip' Collins," David Collins, 77 Prospect Street, Summit, N. J.

DRIVE SAFELY

BEWITCHING!
 FLY IN FOR OUR HALLOWEEN VALUES!

We're cutting prices every "witch" way in honor of Halloween. You'll find this the best "haunt" for quality, selection and savings. Also check our every day low prices.

NEW GILLETTE SUPER Stainless Steel BLADES Reg. \$1.45 pkg. of 10 89¢	G.E. AG1 or AG1B Instamatic Camera BULBS Reg. \$1.56 (12) 89¢	NICE 'n EASY Hair Color Reg. \$2.00 \$1.16
1/4 - 1-oz. Neo-Synephrine Reg. 89¢ 49¢	EIGHT HOUR VAPORIZER Reg. \$3.49 \$6.95	Reg. 49¢ Sucrets Lozenges 31¢ Reg. \$1.25 Fostex Soap for (Acne) 72¢ Reg. \$1.50 Propa Ph Skin Cleanser 79¢ Reg. \$1.29 Pertussin Cough Syrup 79¢ Reg. \$1.98 Dermassage with Pump \$1.33 Reg. 69¢ Pro Tooth Brush 29¢ Reg. \$19.95 Cool Steam Vaporizer \$11.95 Reg. \$1.00 Mirror Make-up or Shave on stand 59¢ Reg. 79¢ Heads Up Cream 43¢ Reg. \$3.95 3-Way Elec. Heating Pad \$1.98
Reg. \$2.50 Clairol Condition Hair Cream \$1.39 Reg. 98¢ Polident Tablets w/Denture Cup 66¢ Reg. 79¢ Rise Aerosol Shave 49¢ Reg. 25¢ Clairoxide Bleaching 13¢ Reg. \$2.55 Fostex Cream \$1.53 Reg. 79¢ — Limit 1 Unit Wilkinson Blades 3 for 99¢ Value \$3.15 Alpha Keri Liquid with Sample Spray for Dry Skin \$1.59 Reg. \$1.00 Brylcreem 29¢ Reg. \$1.75 Breck Shampoo 89¢	Reg. \$1.65 — Barnes & Hinds Wetting Solution 89¢ Reg. \$1.39 Caroid & Bile 89¢ Reg. \$1.09 Tums Tablets 59¢ Reg. 10¢ Amuroil Gum (All Flavors) 6 for 35¢ Reg. \$1.50 Castile Shampoo 32-oz. Plus a FREE 25c Card of Bobbie Pins 79¢ Reg. \$2.25 Hidden Magic Hair Spray \$1.19 Reg. \$3.00 Ponds Cold Cream . Pound Jar \$1.19 Reg. \$1.50 Tender Touch Bath Oil 89¢	LADIES or MENS SUPP-HOSE Reg. \$4.95 \$2.89

PARK DRUGS
 225 MORRIS AVE., SPRINGFIELD (General Greene Shopping Center)
 • FAST RADIO DISPATCHED DELIVERY SERVICE •
 Open Daily 9-10; Sundays 9-6 — DR 9-4942

FAMILY LIFE TODAY

By PHYLIS GREER

of Rutgers . . . the State University

Specialist in Human Relations



BABYISH BEHAVIOR
Here comes Susie. Just ignore her, because if she finds out we're going to the movies, she'll want to come along.

Susie cannot bear to be treated so cruelly. She has to assert herself to be important in some way. Susie may try to gain acceptance by aggressive behavior.

Susie's behavior seems to be the result of not being accepted by girls her own age. But why isn't she accepted?

Is that Susie's fault? Most likely Susie is a baby because her parents won't let her grow up. The child's urge to grow is sometimes at war with the parents' urge to keep their child under their thumb.

When parents keep their child from growing up, they make the child emotionally immature. There are few things that interfere with a child's acceptance like immaturity. She is sure to get the cold shoulder from the group or be called a baby or a sissy.

CHRISTMAS GIFTS FOR SERVICEMEN: NOV. 10 DEADLINE

Deadline date for mailing Christmas gift packages by surface transportation to members of the armed forces overseas comes up in less than two weeks. Nov. 10 is the final mailing date for such packages to have delivery guaranteed before the holiday.

Airmail packages to men overseas should be sent between Dec. 1 and Dec. 10. Christmas greeting cards have the same mailing schedule as packages. Domestic rates of postage are applicable to overseas mail to servicemen.

Articles to be mailed should be packed in wood, metal, solid fiberboard or strong double corrugated cardboard. The 1965 Christmas stamp, which pictures an angel with a trumpet, goes on sale next Wednesday for the first time in the Post Office of Silver Bells, Ariz.

Holiday Deadline

Because Veterans' Day falls on Thursday, Nov. 11, it is imperative that our normal holiday deadline for news be strictly adhered to. All items other than spot news should be in our office by Friday, Nov. 5 to insure publication in the next issue.

ASK AMY . . . by Amy Adams

Dear Amy: I took exception to the letter which appeared in your column concerning men wearing shorts in public. To tell the truth, I'm glad my husband does it's easier for me. I am hot and tired of standing at the ironing board pressing wash stacks.

I'm 12 years old. Previous to last February, my mother and I didn't get along together, but there were times, I admit, that I loved her.

In February of this year—she

told me about the facts of life, some of them at least, and gave me my first bra. It had been my older sister's. Twice before I had asked her for one and when she gave it to me, I thought the relationship between us would change.

Well, the bra was too big, and the relationship between us didn't change. I've asked her three times to either take in my bra or get me a smaller one. Each time she said, "Well see."

When she first gave it to me she told me it would fit me by March, or at least April . . . and now it's already August. In March she told me I'd be better off wearing nothing, but now she tells me I have to wear an undershirt. None of my friends do.

Bible Quiz

Where in the Bible would you look to find the following six familiar quotations?
1. "Am I my brother's keeper?"
2. "Let me now put a riddle to you."
3. "The Lord is my shepherd, I shall not want."
4. "I AM WHO I AM."

Travelers!

Make Application Now
For Cruises To
BERMUDA • SO. AMERICA
NASSAU • WEST INDIES
Joseph
Kuhnen Travel
974 Stuyvesant Ave. • Union
Opp. Shop-Rite • MU 7-8220

A FEMININE LOOK

Commentary on a recent National Newspaper Association Study Mission to the British Isles and Scandinavia

By TRUDINA HOWARD



Second in a Series WALL TO WALL ICELAND?

Among the things the prime minister of Iceland said to a group of inquisitive American newspaper people visiting Iceland in September was: Icelanders do not resent the Americans stationed at the North Atlantic Treaty Organization base here.

Articles to be mailed should be packed in wood, metal, solid fiberboard or strong double corrugated cardboard. The 1965 Christmas stamp, which pictures an angel with a trumpet, goes on sale next Wednesday for the first time in the Post Office of Silver Bells, Ariz.

So rules were put into effect. And now, there are restrictions. Which, quite understandably, disturbs some of the current force of only about 2,400 men.

Many of the Navy boys now stationed on the NATO base at Keflavik resent having to be off the streets of Reykjavik, the capital city some 30 miles away, by ten at night.

ICELAND HAS BEEN apprehensive of foreigners in any field. Basically it seems worried over foreign domination; there are, after all, only 190,000 Icelanders.

It is not, for instance, even woo investors, and THAT is entirely unique.

Most of the countries of the world, no matter where you go, eagerly and avidly seek foreign investment, particularly American, British, Swiss, German, and offer fantastic inducements and special privileges.

Holiday Deadline

Because Veterans' Day falls on Thursday, Nov. 11, it is imperative that our normal holiday deadline for news be strictly adhered to. All items other than spot news should be in our office by Friday, Nov. 5 to insure publication in the next issue.

ON THE DAY

We were also invited to leave the much-discussed NATO base at Keflavik. The only jet strip in Iceland is at the International Airport on the base so we had to go there anyway to catch the Pan Am jet to New York.

After the briefings by Naval officers, we went to a lounge area where tables very efficiently had been set up with labels of the various states our group represented.

ICELAND HAS BEEN apprehensive of foreigners in any field. Basically it seems worried over foreign domination; there are, after all, only 190,000 Icelanders.

It is not, for instance, even woo investors, and THAT is entirely unique.

Most of the countries of the world, no matter where you go, eagerly and avidly seek foreign investment, particularly American, British, Swiss, German, and offer fantastic inducements and special privileges.

But not Iceland. One Swiss company is considering a project in Iceland, but with all the restrictions and requirements put-to-it, it is a question whether it will materialize or not.

Yet on the other hand, Iceland is beginning to realize the mutual advantages of "foreigners" and is changing its outlook.

Even though your electric bills may be higher, ELECTRICITY COSTS LESS TODAY THAN IN 1940!

Think of all the appliances you've added since 1940 — appliances that save you countless hours of work and bring a whole world of entertainment and comfort into your home.



PUBLIC SERVICE ELECTRIC AND GAS COMPANY

Advertisement for David Burr, clothing for overmen and boys, 1059 Springfield Ave. Irvington.

Advertisement for Springfield Chapter Hadassah, Special Art Sale, including paintings by Youth Aliyah Artists.

Large advertisement for Playtex Living Bras, guaranteed 6 months, elastic won't stretch out. Includes illustrations of various bra styles.

Advertisement for Bryant Gas Heat, featuring the slogan 'GO GAS HEAT! bryant' and listing services for Suburban Gas Heating & Cooling Co.

Advertisement for Reinhardt's, listing store locations: Irvington Center, Union Center, Summit, East Orange, Linden, Westfield.

Advertisement for Table Pads, one-day service, guaranteed waterproof and heatproof, priced at 895 up.

Advertisement for Brehm's Carpet Cleaning, featuring the slogan 'It's Rug Cleaning Time' and '9x12 RUGS only \$10.75'.

Park-Union Deborah Guild Slates Meeting, Visitation

The Park Union Guild of Deborah will hold a board meeting Monday at 8:30 p.m. at the Town and Campus Motor Lodge, Morris Ave., Union.

Mrs. Jules Levine, president, will represent the group at the National Convention of Deborah Chapters at the Concord Hotel in New York Sunday and Monday.

A visitation day has been planned for people who are interested in visiting Deborah Hospital and speaking to patients who are being cared for there. Transportation will be provided by the chapter Nov. 10 at 9:30 a.m. Buses will leave from the parking lot on Salem rd. and Huguenot ave. in Union.

Additional information may be obtained from Mrs. Alvin Pickover at MU-6-9537. Members and friends of Deborah are invited.

AAUW Art Exhibit Has Local Displays

At the biennial Arts Festival of the New Jersey State Division of the American Association of University Women Saturday, the Elizabeth branch of contributions included oil paintings submitted by Mrs. Walter Fern of Roselle and ceramics by Mrs. E. Hermann Shaw of Roselle Park.

The Elizabeth Branch of AAUW has scheduled a meeting for Wednesday at 8 p.m. at Trinity Episcopal Church, Elizabeth. "Head Start — What Did It Accomplish?" will be discussed by Mrs. Edna D. Salt, chairman of the Early Childhood Education Department of Newark State College.

NEED A JOB? Read the Help Wanted Section of the Classified Pages. You can probably find an employer who can use your services. If not, list your qualifications in an employment wanted ad. Just call 686-7700 and ask for Ad-Taker.

Cancer Research Group Sets Sale

The Ruth Estrin Goldberg Memorial for Cancer Research will hold its annual sale of new and nearly-new merchandise, Monday through Saturday at 467 Central ave., East Orange. The store will be open from 10 a.m. to 5 p.m. daily and until 9 p.m. on Thursday.

All money received from the sale will go directly to cancer research. Chairmen for the project are Mrs. David Brent, Mrs. Abraham Muskat and Mrs. Ruben Shlafmitz, all of Union.

The recent solicitation drive conducted by members of the organization throughout Union and Essex Counties resulted in the collection of approximately \$3,000 it has been announced by Mrs. Leslie Goldstein of Springfield, president.

To Host Movie

Mrs. John C. Krause, chairman of the Movie Council of the Woman's Suburban Club, Union, has announced that the Franklin School will host a matinee Saturday at the Union Theater. Screen fare will be "The Three Stooges in Orbit" and "Muscle Beach Party."

Elected To Council

Miss Robin A. Porter of 2828 Debra way, Union, has been elected secretary of the Day Session student council at Union Junior College, Cranford.

USED CARS DON'T DIE . . . they just trade-away. Sell yours with a low-cost Want Ad. Call 686-7700.

CATHOLIC WOMEN TO MAKE TRIP TO STOCK EXCHANGE

Miss Rose M. Brandt, president of the Catholic Woman's Club of Elizabeth, announced at the October meeting that the club will visit the New York Stock Exchange, Nov. 10 at 11 a.m. and will have lunch at Fanchon's Restaurant. Reservations may be made by contacting Mrs. Thomas C. Mahon, international relations chairman by Wednesday.

At the meeting, Mrs. Eleanor Boylan, puppeteer, staged a performance called "Saints At My Fingertips."

Assemblywoman, Mildred Barry Hughes, candidate for the New Jersey Senate, discussed her bill A-768 on anti-smut, now in committee. The club voted to endorse Mrs. Hughes' bill and to write to the New Jersey senators requesting that the bill be taken up at the Nov. 8 session.

CHURCH TO VIEW 'JOAN' ON STAGE TONIGHT IN UNION

"Joan of Lorraine" Maxwell Anderson's prize-winning play, will be staged by the Chancel Players of Montclair tonight at 8 at the Connecticut Farms Presbyterian Church, Stuyvesant ave. and Chestnut st., Union. The public is invited.

The play, which is sponsored by the Union Township Council of Churches, commemorates the Reformation.

The Chancel Players' group, a non-profit corporation, is sponsored jointly by the First Baptist, St. Luke's Episcopal and the First Methodist churches of Montclair. The group, which is in its sixth acting season, has already performed before 25 churches, temples, schools and civic organizations, and employs a professional director and volunteer actors to produce and perform plays before churches of all denominations.

Desk, Derrick Club To Tour Ship, Nov. 6

The Desk and Derrick Club of Northern New Jersey, whose theme this year is "International Aspect of Oil," will tour one of the Grace Line vessels and view its cargo loading at Port Newark, Nov. 6.

At its regular monthly meeting Monday at the Elizabeth Carteret Hotel, Elizabeth, the club's guest speaker was M. S. Northrup, senior associate engineer of Esso Research and Engineering Co. His topic was, "The Oil Industry In Japan."

Luncheon-Fashions Set By College Club

The Hood College Club of Northern New Jersey will hold its annual fall luncheon-fashion show Nov. 11 at 12:15 at the Chanticleer, Millburn, it was announced by the group's president Mrs. Robert H. Beams. The event will benefit the scholarship fund.

The fashion show will be presented by Bonwit Teller and will feature a variety of casual, afternoon, cocktail and formal evening wear for winter and the holiday season.

Reservations and tickets may be secured by calling Mrs. Richard Cassie on Edgewood dr., Florham Park or Mrs. James Mallett at ME-5-7918.

Holiday Deadline

Because Veterans' Day falls on Thursday, Nov. 11, it is imperative that our normal Friday deadline for news be strictly adhered to. All items other than spot news, should be in our office by Friday, Nov. 5 to insure publication in the next issue.



Permanent Wave SPECIAL

WEEKDAYS ONLY
EXCL. HOLIDAY WEEKS

- Deluxe Shampoo
- Hair Setting
- Hair Shaping

ONLY \$8.95

WIGS CLEANED
AND STYLED

VINCENT'S

HOUSE OF BEAUTY
1027 Morris Ave., Union Center
MU 6-3824

No Appointment Necessary



FASHION STACKS UP

Be bold, be brash, be slap-dash, be gay. . . in softer-than-soft kidskin in the best of fall colors on a raw black stack (barely-over-an-inch and very new.) Gently rounded oval toe.

Union Bootery

Fine footwear for the entire family where you get personalized fitting by . . .

Manny Friedman and Ken Redvanley

1030 Stuyvesant Avenue, Union Center

MURdock-6-5480 • Open Friday & Monday Nights to 9

WE INVITE YOUR CHARGE ACCOUNT

Westfield
Hahne & Company

snowflake time for bunny-cuddlers!

Winter babies coo with delight in a shower of snowflakes . . . in the comfy warmth of tiny-size snowsuits.

Come see how we pamper your little angel with toasty-warm fashions for the snuggling set!

Tidykins quick-apart-pram-bag (left and above) becomes a snowsuit at the flip of a zipper. Nylon-in-white with pink or blue, solid pink, and solid blue. Fits baby from birth to one year 16.00

Tidykins quilted nylon snowsuit with matching hat, in baby blue with a boy's hat, or pink for a girl. Sizes medium to extra-large 18.00

Pindyck's hooded Sno-Bunny with mitten cuffs, of orlon acrylic-and-stretch-nylon. White, pink, blue, or maize in sizes 6 to 12 months and 12 to 18 months. 6.00

Pindyck's Kud-L-Bunny has leg snaps for quick, warm dressing. White, pink, blue, or maize-ornlon acrylic-and-stretch-nylon in sizes 6 to 12 months, 12 to 18 months 5.00

Hahne & Company Westfield

See our Exciting Collection of FALL FASHIONS

R&K
Originals

BUTTE KNITS
SUE BRETT
WHITNEY'S FASHIONS

Union Center • 686-4404

FIRE AUXILIARY'S LADIES ELECTED LAST WEDNESDAY

At a recent meeting of the Ladies' Auxiliary of the Volunteer Fire Department, Co. No. 1 at the Vauxhall Firehouse, officers were elected for the coming year.

They are: Mrs. Joseph Keller, president; Mrs. Carl Strauss, vice-president and financial secretary; Mrs. Edward Cox, secretary; Mrs. Charles Umstadter, treasurer; Mrs. Ernest Scull, sergeant at arms; Mrs. Andrew Gerhart, flag bearer; and Mrs. Gene Richter, sunshine.

The auxiliary meets the third Wednesday of each month at the Vauxhall Firehouse.



TO PARADE FASHIONS — Women, glancing over coat to be used in the 'Parade of Fashions' show, set Nov. 6 at the Washington House, Union, and sponsored by the Woman's Club of Connecticut Farms, are, from left, Miss Margaret George of The Bank Box of Union (who will provide the clothes); and models, Mrs. Frank R. Tell of Union, Seventh-District education chairman; Mrs. F. Butler Hehl of Union, president of the Woman's Club of Connecticut Farms; and Mrs. William J. Witt of Roselle Park.



PALE, PALE COATS FOR ROMANTIC HEROINES

at Morris's
79 to 249

FREE ALTERATIONS Except Budget Merchandise
PETITE SIZES, TOO!
CHARGE IT, OF COURSE

MILLBURN: Millburn Ave. at Essex St.
Open Eves. Thurs. to 9

NEWARK: Springfield Ave. at Bergen St.
Open Eves. Mon., Wed. & Fri. to 9
FREE PARKING AT HOWARD BANK LOT

All Merchandise Available at Both Stores

Connecticut Farms Women Plan 'Parade Of Fashions'

A "Parade of Fashions" will be held at the Washington House, Union, Nov. 6, sponsored by the Woman's Club of Connecticut Farms. Fashions for all ages will be shown by the Band Box of Union.

Members who will serve as models, include Mrs. F. Butler Hehl, president; Mrs. George Jackson Jr., advisor; Mrs. Frank Tell, Seventh District education chairman; all of Union; and Mrs. William Witt of Roselle Park.

The luncheon menu will consist of fruit cup, London broil or ham steak with champagne sauce, baked potato, vegetable, salad, French bread, ice cream cake roll and coffee.

Among the many prizes to be awarded are a milk bon from the Flemington Fur Co., a gift certificate from the Band Box, two table lamps, and a gift from Stang Pottery of Flemington.

Tickets may be obtained by calling Mrs. Walter Hildebrandt at 688-8785.

Mrs. William Scott is general chairman. Mrs. Richard Raus-

Model Plane Club Holds Flight Test

The Union Model Airplane Club held its first indoor Free Flight contest last Thursday night at Burnett Junior High School.

Twenty-five Junior members were entered in the event.

The airplanes used were all Ranger 21s which were built by the juniors. Winner of the contest was Robert Mladinich of 1257 Biscayne Blvd.

Robert, 9, was the youngest junior entered and had a total flight time of 23 seconds.

The club meets at the Recreation Center, 881 Stuyvesant ave. every Thursday evening. Vernon Davies is the director in charge of the club which is made up of mostly fathers, sons and daughters.

STORK CLUB

BOY TO ALBANESE
A son, John Albanese Jr., was born Oct. 17, 1965, at Overlook Hospital, Summit, to Mr. and Mrs. John Albanese of 1137 West Chestnut st., Union. Mrs. Albanese is the former Janet Terzuolo.

A SON TO BAIRS
A seven-pound son, Stephen Joseph Bahr, was born Oct. 14, 1965, at St. Michael's Hospital, Newark, to Mr. and Mrs. Peter F. Bahr of 2220 Berwyn st., Union. He joins a brother, Peter John, 2½. Mrs. Bahr is the former Janet Nadzan, daughter of Mr. and Mrs. Andrew Nadzan of Howard st., Union. Her husband is the son of Mr. and Mrs. George Bahr of Spruce st., Union.

A SON TO SCHILLERS
A six-pound, seven-ounce son, David Michael Schiller, was born Oct. 13, 1965, at Filkin Memorial Hospital, Neptune, to Mr. and Mrs. Leon Schiller of West End. Mrs. Schiller is the former Carole Perlman of Union.

Outing Club Slates 'Fall Brawl', Hike

The Short Hills Outing Club, which meets every Thursday at 8:30 p.m. in Machinist Hall, Union, has scheduled its annual Fall Brawl, Nov. 6 at Graulick's in East Orange.

Members will be hosts to about 50 children from Elizabeth Big Brothers Organization, Nov. 7 at 2 p.m. at Machinist Hall.

A one-day hike is set for Nov. 13 at Breakneck Ridge, followed by dinner at Breakneck Lodge.

Fourth, Fifth Grades Visit Historical Sites

The fifth grade classes of Mrs. Eileen Stark, Mrs. Doris Redding, George Scardena and Mrs. Shirley Feldman of Connecticut Farms School visited Smith's Clove Village, N. Y., last week.

The reconstructed early American village included blacksmith, candlemaker, cobbler, apothecary, weaver, potter, and tinmiths shops. The village schoolhouse was a favorite of some youngsters.

The fourth grade classes of Miss Marilyn Bandara, Miss Margaret Cavanaugh, Mrs. Blanche Kaplan and Mrs. Judith Reskow visited Morristown National Historical Park on Tuesday. The museum features George Washington's winter headquarters during the time of the American Revolution. They also visited Jockey Hollow, where they saw the hospital for American soldiers.

Plans For Halloween Discussed At Meeting

Cub Pack 167, sponsored by Farms School in Union, held its first meeting this week in the school. Plans were discussed for a Halloween party to be held tomorrow. Prizes will be given for costumes.

Names of new den mothers were announced: Mrs. Robert Tetar, Mrs. Matthew Clarke, Mrs. Steve Lowds, Mrs. Joseph Schmidt, Mrs. Dominick Fezzi, Mrs. Vincent Geloso and Mrs. Carl Burkhardt.

Richard Ericson is scoutmaster. Officers are: Mrs. Kenneth Tompkins, secretary; Mrs. Herman Bronner, treasurer, and Joseph Schmidt, chairman.

Cub Scouts Honored As Dad's Night Slated

Larry Levine received a wolf badge and Bradley Crane a gold arrow point at a meeting last week of Cub Scout Pack 65 held in the Franklin School in Union. Martin Rosen, pack leader, made the awards.

The pack will meet next month at the school for Father's Night.

Woman's Club Of Townley To Conduct Its Annual Husbands' Night On Nov. 9

Mrs. Milton Martin, first vice-president of the Woman's Club of Townley, Union, will serve as chairman of the annual "Men's Nite," Nov. 9 at the Chanticleer in Millburn. Purpose of the event is for the husbands of the members to become better acquainted with each other and

with the widespread activities of the club.

Clayton Willis, White House correspondent and world traveler (and a present speaker at the U.N.), will give first-hand impressions of the hotspots of the world at present. He will be seated at the head table with the club president, Mrs. Russell L. Boltz; Mr. and Mrs. Martin; Mrs. Floyd Conklin, recording secretary; Mr. and Mrs. C. W. Smith (she is corresponding secretary); and Dr. and Mrs. William J. Byatt (She is treasurer).

H. L. Livermore, Mrs. H. E. Ludd, Mrs. C. Lavinia Lum, Mrs. C. Clark Lum, Mrs. H. R. Mair, Mrs. Louis B. Martin, Mrs. Milton W. Martin, Mrs. J. F. McGill, Mrs. C. P. Morrison, Mrs. Myles C. Morrison, Mrs. S. J. Nadas-kay, Mrs. C. L. Nicholson, Mrs. J. E. Painter, Mrs. Harold Parker, Mrs. F. M. Perry; Mrs. J. C. Petreins;

Also Mrs. L. W. Randolph, Mrs. W. F. Reinhardt, Mrs. C. H. Schaefer, Mrs. Sebastian, Mrs. Richard Sedgewick, Mrs. G. J. Sherlan, Mrs. C. W. Smith, Mrs. Stevinson, Mrs. B. E. Stewart, Mrs. Venute, Mrs. A. A. Vertelis, Mrs. H. H. Vickers, Mrs. J. W. Wagner, Mrs. E. A. Welhausen, Mrs. R. M. Welsh, Mrs. Thomas Williams, Mrs. Walter B. Wilson, Mrs. Ernst A. Winters, Mrs. R. F. Wittemann and Mrs. Howard Yates.

A FASHION SHOW IS SCHEDULED BY UNION HADASSAH

A paid-up membership party will be held by the Union Chapter of Hadassah, Monday evening at the Town and Campus Restaurant, Green Lane and Morris ave., Union.

A fashion show will be staged by Bertha Goldsmith, Mrs. Harry Stein, Mrs. Albert Schenfeld, Mrs. David Koltenuk, Mrs. Harry Turkin, Mrs. Milton Margulies and Mrs. Samuel Harris will serve as models.

A cosmetic demonstration will be given by Mr. Ira of Country Girl Cosmetic Bar, 1501 Stuyvesant ave., Union.

Prospective members of the Union Chapter of Hadassah will be welcome to attend the party. Mrs. Joseph Brill is chairman.

Mrs. David Koltenuk, good and welfare chairman, has announced that Tag Week will be held Monday through Nov. 6 for the benefit of child welfare. Volunteers may get in touch with Mrs. Koltenuk for further information.

Mrs. Koltenuk also has announced that a rummage sale will be held Dec. 2 at First st. in Elizabeth.

Standing committee chairmen include Mrs. M. R. Stevinson, historian; Mrs. Paul Knoll, hospitality; Mrs. Carl E. Foss, parliamentary; and Mrs. Keller, publicity.

The membership list contains Mrs. H. V. Aspinall, Mrs. J. H. Bailey, Mrs. W. D. Barber, Mrs. G. R. Billeter, Mrs. R. L. Boltz, Mrs. Buttery, Mrs. Byatt, Mrs. Conklin, Mrs. H. E. Cooper, Mrs. Charles Cordier, Mrs. C. M. Cummings, Mrs. John J. Denney, Mrs. William Errera, Mrs. D. E. Ford, Mrs. C. E. Foss, Mrs. F. J. Gaus, Mrs. Gautier, Mrs. John Gaydos, Mrs. Herbert D. Gill Jr., Mrs. J. T. Gordon, Mrs. Joseph Guthrie, Mrs. Hauck, Mrs. Frank C. Hays, Mrs. E. R. Heppa, Mrs. William A. Hopf;

Also Mrs. J. J. Horan, Mrs. Keller, Mrs. Paul Kom, Mrs. Kitzler, Mrs. Ferdinand Klumpp Jr., Mrs. Knoll, Mrs. Labonia, Mrs. J. D. Ledder, Mrs. Thomas P. Leddy, Mrs. John Ledlie, Mrs.

Mrs. Robert Treat of Roselle will serve as hostess during the coffee hour following the Sunday Platform meeting by the Ethical Culture Society of Essex County this week at 11 a.m. at 516 Prospect st., Maplewood.

Guest speaker will be Howard Box, leader of the Brooklyn Society, who will speak on "The Looking Glass War."

Mrs. Treat To Serve As Hostess Sunday

Miss Eve Rommel, daughter of Mr. and Mrs. John Rommel of 824 Madison ave., Union, a 1964 graduate of Union High School, has been elected secretary-treasurer of the German Club at the College of Liberal Arts at Drew University.

Elected Secretary

Publicly chairmen and individuals are urged to observe the Friday deadline of this newspaper for other than spot news. Thursday is even better. Include your name, address and phone number.

ELIZABETH'S DAILY JOURNAL

URGES

The Re-Election of

Senator Nelson F. Stamler



The Journal urges the re-election of Republican Sen. Nelson Stamler.

While a member of the party in legislative power, Mr. Stamler has remained constant in his support of the underdog — taxpayer. He is a staunch advocat of economy in government and as a member of the Legislative Appropriations Committee he frequently has clashed with Republican colleagues on spending matters.

A senator since 1962 after having served in the Assembly, Mr. Stamler has compiled a record of constructive action not only on behalf of his constituents but of the residents of the state at large. His feet are solidly on the ground.

Sen. Stamler's frankness and independence are laudable and refreshing traits.

(Daily Journal Editorial)
October 19, 1965.

VOTE

Tuesday — November 2nd

For

Nelson F. Stamler
State Senator

Huffman & Boyle
Where Home Begins

announces a new

SHOP-AT-HOME SERVICE

a phone call will bring a qualified consultant to your home!

Our famous custom slipcovers, draperies and reupholstery from our own service workshops are available to you for leisurely shopping in your own home . . . along with qualified decorating advice. The H&B consultant will bring magnificent samples, will measure and estimate . . . no obligation, of course.

- Custom Slip Covers
- Custom Draperies
- Custom Reupholstery

call . . .
DRexel 9-4300

Trailside To Present Program About Canal

At 4 p.m. on Monday, Wednesday and Thursday, Dr. Harold N. Moldenke, director of Trailside, will conduct one-half hour nature talks for children.

NO INCOME TAX

ELECT DUMONT GOVERNOR

Tuesday, Nov. 2nd VOTE 1B



Paid for by Union County Dumont For Governor Committee, Harry B. Osborne, 6 Dartmouth Rd., Cranford, N. J.



Senator Case Reports

A most unusual event took place in the Senate last week. In the face of determined opposition to the nomination of Francis X. Morrissey to the Federal District bench, his chief Senatorial sponsor asked that the nomination be referred back to the Senate Judiciary Committee.

The action was a sharp rebuke to the President and his Senatorial advisor. Under the Constitution, the President shall nominate, and by and with the Advice and Consent of the Senate, shall appoint Ambassadors...

Except in rare instances, the Senate respects the President's right to choose his official family, ambassadors, and chief administrative lieutenants. Thus, only eight Cabinet nominees have been rejected in more than 175 years.

Unlike Executive branch appointments, Federal judges, once appointed and confirmed, have life-time tenure. They are not answerable to or subject to the supervision or direction of the President. They can be removed, for cause, only through the impeachment process.

General revision of the New Jersey child labor laws, which he holds are archaic, is a major point in the platform of Assemblyman Peter J. McDonough, Plainfield Republican, a candidate for one of the two state Senate posts allotted to Union County.

The Assemblyman, who is sponsor of the Assembly joint resolution for a study of existing child labor laws, said he plans a campaign to push a general revision through the Legislature. Since the present laws were adopted in 1940, there have been only two legislative amendments enacted.

Legal Notice

BOROUGH OF ROSSELLE PARK Union County, N. J. NOTICE IS HEREBY GIVEN that in accordance with an act entitled, 'An Act to Regulate Elections'...

Legal Notice

WARD ONE DISTRICT TWO Perishing Avenue from Westfield Avenue to Grant Avenue to Bender Avenue to Henry Street to Gallop Hill Road and Borough Line to center line of Central Railroad of New Jersey to point opposite Perishing Avenue to Westfield Avenue.

Legal Notice

New Jersey State Department of Civil Service Examinations Examinations to be held at the following times: November 19, 1965, for applications...

Seeks Revision Of Labor Laws

General revision of the New Jersey child labor laws, which he holds are archaic, is a major point in the platform of Assemblyman Peter J. McDonough...

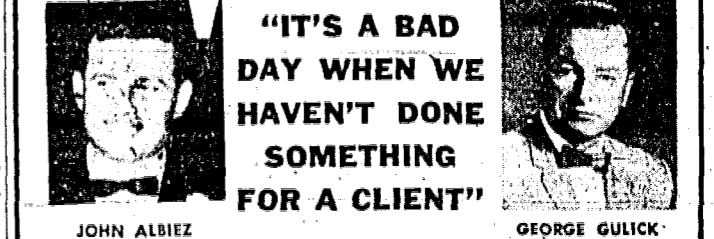
The Assemblyman, who is sponsor of the Assembly joint resolution for a study of existing child labor laws, said he plans a campaign to push a general revision through the Legislature.

WJC Alumni To Hold Fund Raising Social

The annual fund raising social of the Union Junior College Alumni Association is scheduled for Friday, Nov. 19, at 8 p.m. in the cafeteria of Union Junior College's Clump Center.

UJC Show Scheduled In National Art Week

An exhibit of arts and crafts will be on display in the main corridor of Union Junior College's Nomahegan Building from Monday through Sunday in observance of National Art Week.



"IT'S A BAD DAY WHEN WE HAVEN'T DONE SOMETHING FOR A CLIENT" SINGLE MEN AGES 17-29 AUTO LIABILITY INSURANCE

LET'S KEEP TAXES DOWN!

VOTE FOR REPUBLICAN FREEHOLDERS

- ★ MOORE 13-B
★ RINALDO 14-B
★ STEMMER 15-B

FOR CAREFUL CUSTODY OF YOUR COUNTY TAX DOLLARS

HERE IS THE PROOF... STATEWIDE

Average Cost, All 21 Counties \$35.69

PER CAPITA COST OF CURRENT OPERATIONS

Republican Union County \$28.37

NEIGHBORING DEMOCRAT COUNTIES

HUDSON \$52.23

ESSEX \$51.01

MIDDLESEX \$30.98

Vote Republican on Election Day, Nov. 2nd

Figures Obtained From New Jersey Taxpayers Association Financial Statistics of New Jersey Local Government 1965 Edition

Election Notice

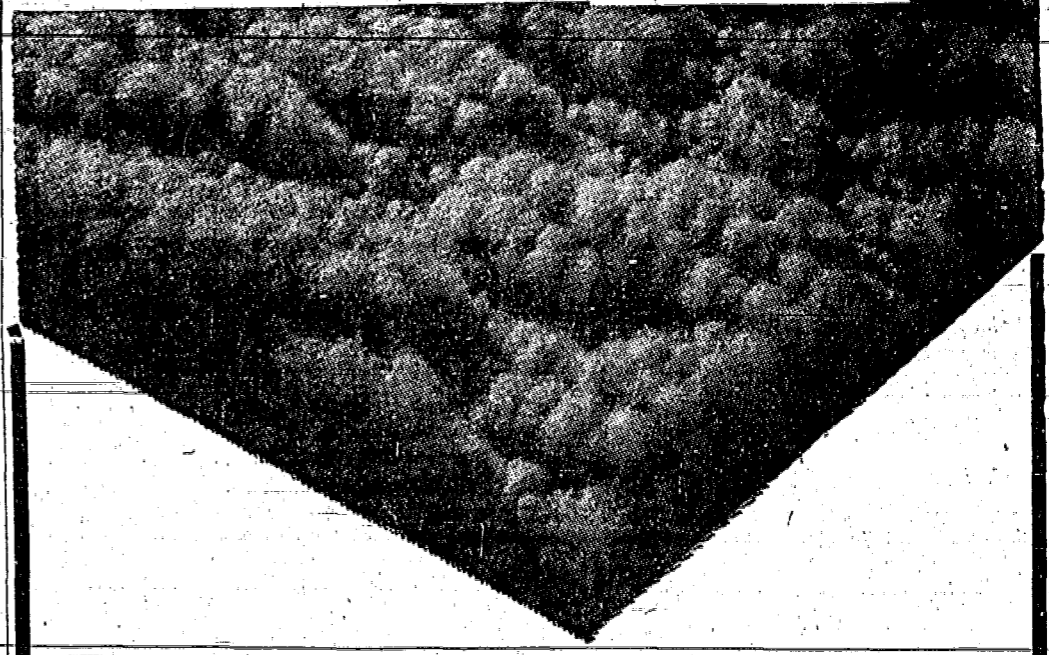
BOROUGH OF ROSSELLE Union County, N. J. NOTICE OF GENERAL ELECTION NOTICE IS HEREBY GIVEN in accordance with 'An Act to Regulate Elections'...

Election Notice

respectively to Sheridan Ave. to First Ave. to Drake Ave. to Fifth Ave. to Harrison Ave. to Mercer Ave. to Poplar St. along Poplar St. and dividing line between 2271 and 2303 First Ave.

A Brehm's EXCLUSIVE!

JUST IN TIME FOR THE HOLIDAYS... DuPont "501N" NYLON PILE TEXTURED BROADLOOM



SALE... \$7.99 sq. yd.

COMPLETELY INSTALLED!

That's right! This sensational, low price includes everything... fine, carefree, luxury broadloom by Coronet Mills...

- Your Choice of 9 Decorator Colors: Avocado, French Martini, Rosewood, Cocoa, Aztec Gold, Robin Red, Parchment, Spanish Gold, Surf Green

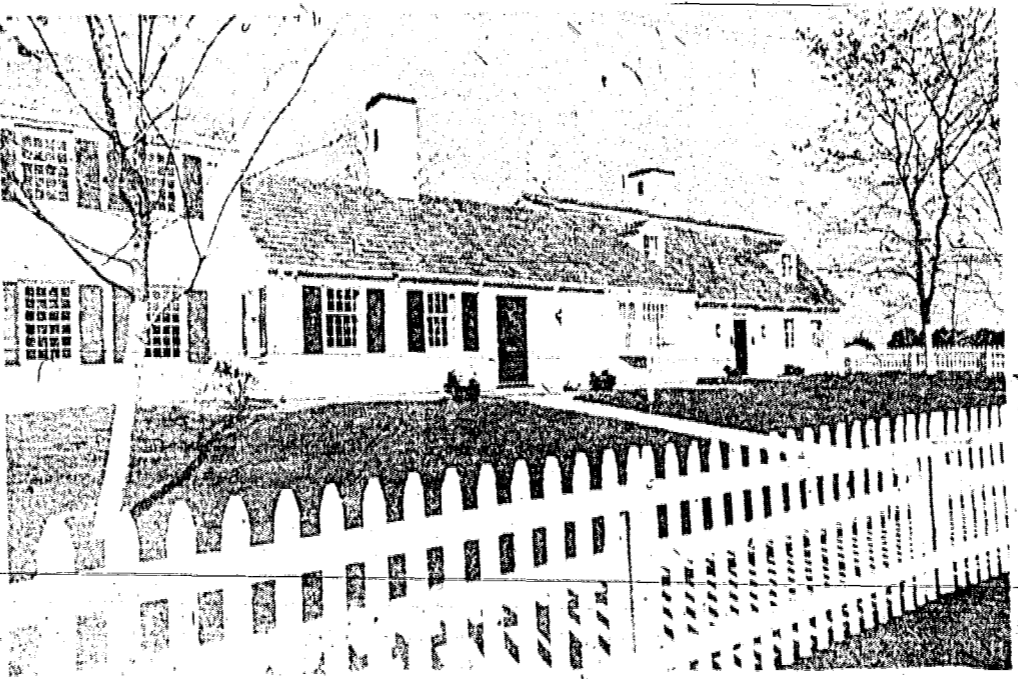
The Price We Say Is All You Pay! SHOP AT HOME • JUST PHONE • 3 YRS. TO PAY

Elizabeth: 333 N. Broad St. 351-1100 Westfield: 234 E. Broad St. 233-8700 MIDDLESEX COUNTY (TOLL FREE) 634-6770

REAL ESTATE HOMES FOR SALE HOME IMPROVEMENTS

City For Older Citizens Opens At Leisure World New Jersey

Rossmore Leisure World New Jersey officially opened last weekend following dedication ceremonies in which Governor Richard J. Hughes participated...



LEISURE WORLD will be comprised of apartments grouped into "manors" as shown above. The authentic Colonial architecture giving the appearance of a New England village.

Real Estate Newsbriefs

Ralph J. Auterino Jr., of Auterino Realty, Union, has received an insurance broker's license, having completed the necessary courses and passed the state examination.

BUSINESS DIRECTORY

Coal & Fuel: 1st Quality Coal \$24.95. GEM COAL CO. Bigelow 4-4309. Dry Cleaning & Tailoring: SUITS - DRESSES \$10.00. Electrical Service & Repair: RESIDENTIAL - COMMERCIAL WEB Electric Service.

Painting & Decorating: PAINTING & DECORATING. Excellent work. Free Estimates. Insured. J. JOE PICCIOTTA. MU 8-2759. J/11/18.

Rest Homes: CRANFORD HALL NURSING HOME. 600 LINCOLN PARK, E. CRANFORD. 376-5100. Moving & Storage: H & B MOVING. 24-hour service. No job too large.

Apartment Rentals: DISCOUNT RENTALS PARK GROVE APTS. 318 Eastern Parkway, Irvington. Efficiency and 1-Bedroom Apts. Why not see what we offer FREE—Don't Delay, Come Out Today.

NOW IS THE BEST TIME TO BUY SHORE PROPERTY. According to real estate experts, the fall season is the best time to buy a vacation homesite. Buy Now - Build Later CHOICE BAYFRONT LAGOON or WOODED LOTS.

Painting & Decorating: PAINTING & DECORATING. Free Estimate - Insured. J. GIANNINI. G/12/2. Piano Tuning: PIANO TUNING - REPAIRED C. GOSCINSKI - ES 5-4816.

REAL ESTATE. Real Estate is the most important investment you will ever make. Consult one of the real estate specialists listed below for the dream house of your choice.

Real Estate Listings: BRICK & STUCCO TWO FAMILY. Presently under construction for 2 SEVEN ROOM APARTMENTS. With 4 bedrooms, bath and laundry.

