

Your Want Ad  
Is Easy To Place--  
Just Phone 686-7700

# MOUNTAINSIDE

An Official Newspaper  
For The Borough Of Mountainside

MICROFILMING CORP  
2 LLEWELLYN AVE  
HAWTHORNE, N.J. 07806  
ME 0183

The Zip Code  
for Mountainside is  
07092

VOL. 11 NO. 5

Second Class Postage  
Paid at Mountainside, N.J.

MOUNTAINSIDE, N.J. THURSDAY, JANUARY 16, 1969

Published Each Thursday by Trumar Publishing Corp.  
2 New Providence Road, Mountainside, N.J. 07092

Subs. 99C 21  
\$5 Yearly

15 Cents Per Copy

## Borough schools move to name heads of departments

### Acting chairman listed for English instruction

By JACK PFANNE

A second step in the establishment of academic departmental heads in the Mountainside school system is under consideration by the borough Board of Education.

The school superintendent, Dr. Levin B. Hanigan, recommended to the board Tuesday night at its regular monthly meeting in Deerfield School that Mrs. Gloria Wachman be named acting head of the Deerfield Middle School English department.

In September, Mrs. Joy McCobb was named chairman of the social studies department of the middle school.

It was indicated that heads of the mathematics and science departments would be installed in September.

Dr. Hanigan said that the post of department chairman would allow the school system to better keep tabs on the pulse of the academic disciplines. He added that the creation of the posts would allow educators to advance in their specialties and "assume greater responsibilities in curriculum development."

The department heads would be directly responsible for the middle school program and would also be chairmen of the various district-wide academic committees.

Dr. Hanigan said the creation of department head posts would "help find the leaders on our staff and recognize them with a greater stipend."

Mrs. Wachman will receive \$100 for the remainder of the school year. Mrs. McCobb is receiving \$200 this year.

Requirements for the departmental head posts would include an MA degree.

Dr. Hanigan indicated that the earnings of the chairmen may be revised upward next year to perhaps \$300 to \$400.

IN OTHER BOARD BUSINESS, the resigna-

tion, effective Feb. 10, of physical education instructor John Longstaff was accepted. Longstaff is leaving to go to Middlesex County College as a coach and physical education instructor.

Lois E. Walter was named to fill the vacated post.

Mrs. Dorothy G. Stoddard was recommended by Dr. Hanigan as a part-time vocal music teacher.

Dr. Hanigan also recommended participation by fifth grade students in a Channel 13 television educational program on a limited basis during the second semester. The cost is 50 cents per child.

It was also reported at the meeting that the borough safety committee would soon be "attacking" the auto and pedestrian traffic in the Deerfield School area.

IN ANSWER TO questioning by the audience, Dr. Hanigan affirmed that ninth grade students would continue attending Jonathan Dayton Regional High School in Springfield and then continue their sophomore, junior and senior years in Gov. Livingston Regional High School in Berkeley Heights.

Dr. Hanigan said the current setup would continue "until additional facilities are provided by a new bond issue" similar to the one defeated last year.

Dr. Hanigan dispelled an alleged petition circulated among borough students asking their preference between the Springfield and Berkeley Heights Regional High Schools as a stunt initiated by a bloc of Mountainside students interested in remaining at Jonathan Dayton High School.

Dr. Hanigan also dispelled a rumor circulating that David Brearley Regional High School was under consideration as a site for Mountainside students.

## Devlin book to become movie; Hermione Gingold in lead

Harry Devlin, of Mountainside, artist, writer and art lecturer at Union College, Cranford, who has had his work exhibited, published and televised, will now add movies to his list of credits.

"Old Black Witch," a children's book, written by Devlin and his wife, Wendie, will be made into a movie by Parent Magazine Films, Inc. Hermione Gingold is slated to play the part of the witch. The 16 m.m. full color film is scheduled to be released in the fall.

"Old Black Witch," published in 1963 is the first of several children's books written and illustrated by the Devlins. It sold some 300,000 copies.

Devlin, a free lance artist, was a political cartoonist for the now defunct "Colliers" magazine and for the "New York Daily News." He formerly drew the nationally syndicated comic strip, "Ragmop." He has also worked for nearly every major advertising agency in the United States.

Devlin made his television debut in March, 1968, when he was invited to appear on Channel 13's "New Jersey Speaks for Itself," to discuss his then recently published book, "To Grandfather's House We Go—a Roadside Tour of American Homes."

Devlin joined the faculty of Union College in

February, 1967, and teaches an art appreciation course.

In collaborating with his wife, Devlin says he does the illustrations, although Mrs. Devlin is also an artist. The text is a His, Hers and Ours operation. Each does a script, with the final version a joint effort.

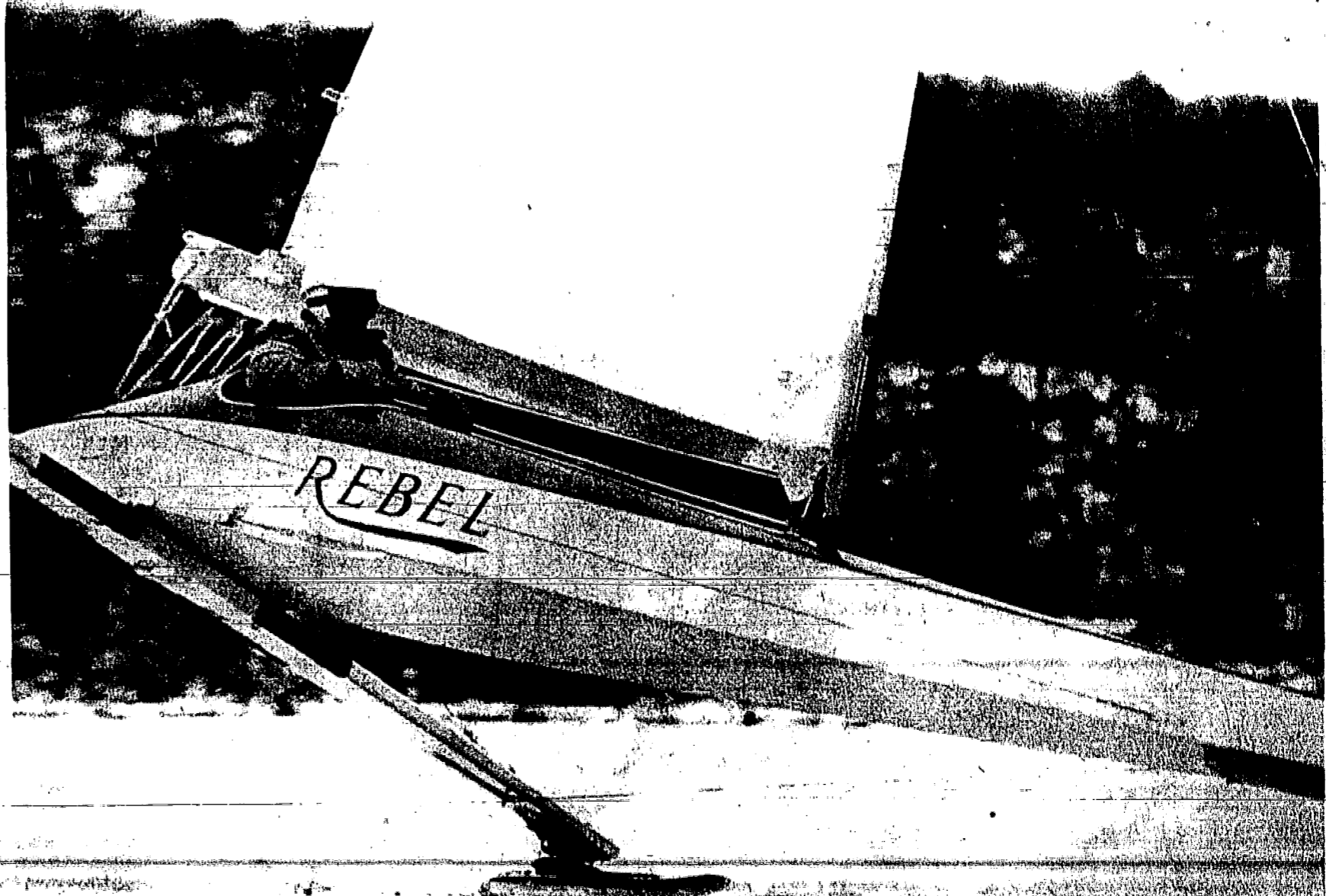
Devlin, a native of Elizabeth, is a graduate of Syracuse University. During World War II, he served as a Navy intelligence artist. He is past president of the National Cartoonist Society, a former member of the board of the Artists and Writers Association, and a member of the Society of Illustrators.

In addition to his children's books and book on architecture, Devlin has illustrated a social studies and economics textbook for elementary school students and a book to help illiterate adults to learn to read. His most recent book was "The Galloping Window Blind," published in October.

Two new books, "How Fletcher Was Hatched" and "What Kind of a House is That?" are slated for publication this year.

Other books written in collaboration with his wife are, "Aunt Agatha, There's a Lion Under the Couch" and "The Knobby Boys to the Rescue."

The Devlins live at 443 Hillside Ave., Mountainside.



Homer Sieder of Mountainside flies with the wind in his prize-winning iceboat, Rebel.

### Music instruments for deprived youth still being sought

Shortly before the holidays, the Mountainside Music Association launched a drive to collect used but useable musical instruments to be donated to an organization co-sponsored by PAL and famed band leader Lionel Hampton.

A spokesman said: "The aim of this organization is to provide instruments and instruction to young people in deprived areas. The MMA felt that in conjunction with its current program of accent on youth, it could render a great service to less privileged young people by acting as a collection agency for instruments that are no longer being used by their present owners. Mr. Hampton has graciously offered to have any needed repairs, if not too extensive, made to the donated instruments."

Mrs. Thomas Hyde, chairman of the collection, reported that a number of instruments have been received from both Westfield and Mountainside residents but that many more are needed.

"We wish to thank those people who have already given to our drive and urge others to join them. With the holiday season past, we hope people will have more time to dig through attics or closets for that long-lost French horn or that seldom played bass," said Mrs. Hyde. "Any type of instrument in reasonably good condition will be gratefully received."

For collection, readers can call Mrs. Robert Hose at 232-8608 or Mrs. Stephen Bumball at 232-4590.

## 'Mr. Iceboater' sets sail for crown Homer Sieder, 62, in big weekend race

They call Homer Sieder "Mr. Iceboater," and this weekend he'll prove once again that, even at 62, he is still king of the chilling deep-winter sport.

Relaxing in his 1600 Deer Path home re-

cently, Sieder, who pioneered iceboating in the '20s, explained that the winner of the annual Greenwood Lake regatta sponsored by the prestigious Eastern Ice Yacht Association Saturday and Sunday is generally considered

the nation's premier skipper and his boat is thought to be the fastest thing on ice. Sieder has won "the big trophy" outright five times, 1952, '54, '56, '57 and '61, in his handcrafted, 21-year-old, baby-blue boat, Rebel.

Rebel, in fact, won the crown last year, but it was driven by another skipper after Sieder suffered a neck injury.

Rebel is 24 feet long and carries a maximum of 75 square feet of sail. The sleek craft, piloted by its rugged owner, has never been beaten in its class—Yankee 'B'—a genre which Sieder himself played a major role in designing.

The real distinction this weekend comes as Sieder and Rebel race against unlimited-design Yankee 'A' class boats—fast one-seaters as compared to Rebel's 'B' class limited-sail two-seat design.

IN A WARMUP two weeks ago for the Eastern Ice Yacht races, Sieder and Rebel, as a matter of routine, captured the International Skater Association championship.

"It keeps me in shape," Sieder said in his spacious cellar workshop where he not only does the woodwork for his boat but also manufactures the razor-sharp steel runners and all the metal fittings. "Winter goes awfully fast, and while some people complain about the cold weather months I can't seem to find enough time."

Sieder has been an officer of all of the major organizations, including the Eastern Ice Yacht Association, the International Skater Association (Skater is the design name of Yankee class boats) and the Yankee Association.

He has long been associated with his home club, the Lake Hopatcong Ice Yacht Club, which is the largest and most active in the East.

"We travel all over the place to find ice and to race," Sieder said, and these wanderings may bring the skipper and Rebel to such other Eastern iceboating "cold beds" as Red Bank, Long Branch, Budd Lake and Greenwood Lake in New Jersey, Westchester, Lake George and the Finger Lakes in New York and Bantam Lake in Connecticut.

The only other area of real iceboating interest is the Midwest, Sieder said.

When Sieder built his home here four years ago, the front of the garage was constructed unusually long and harnesses were hung from the ceiling to accommodate the loading, unloading and storage of Rebel.

REBEL WEIGHS about 460 pounds and, as a Yankee class "front steering" craft, is a second-generation iceboat. "The old boats in the '30s," Sieder said, "were massive things, weighing from a ton to a ton-and-a-half with rear steering. The center of ice boat racing then," he continued, "was in Red Bank and Long Branch, Franklin Delano Roosevelt even used to iceboat on the Hudson River."

It was a lot colder and more dangerous in the old days of iceboating. Original designs put the skipper in an unprotected spot in the

## 'Pathways in Music' concert to feature harpist, ensemble

Kathleen Bride, harpist from Cranford, and the Douglass Chamber Ensemble will be presented by "Pathways in Music" in its Feb. 9 concert. The concert, second in a series of three, will be held at 8 p.m. at the Community Presbyterian Church, Deer Path and Meetinghouse Lane in Mountainside. Tickets may be purchased at the door or may be bought in advance by calling 232-6898. Patron memberships include admission to all concerts.

Miss Bride, who has been studying harp since the age of six, received her BM degree from Marywood College in Scranton, Pennsylvania and will receive her master's degree from Juilliard in May. She has been studying harp under Marcel Grandjany, noted harpist and composer, for 10 years. Currently on the faculty of Mount Saint Mary's Academy

in Plainfield and the Montclair public schools, Miss Bride also teaches privately. In addition she has done church work, given solo recitals, worked with choral groups and orchestras, done radio tapes and has played at Carnegie Hall in New York City.

The Douglass Chamber Ensemble includes Joseph Kovacs, violin; Daniel Schuman, viola; Arnold Kvam, cello; Paul Kueter, harpsichord; James Scott, flute. All are members of the faculty of the music department at Douglass College.

Kovacs is also a member of the faculty of Westminster Choir College. Formerly a member of the Cleveland Orchestra, he received an artist's diploma from the Royal Hungarian Franz Liszt School of Music.

Schuman is concertmaster of the Plainfield

(Continued on page 3)



HEART EXPERTS--Looking over decorations for the 'Heart of My Heart Ball' to be sponsored by the Rosary Altar Society of My Lady of Lourdes Church, Mountainside, Feb. 8 at the church hall are, from left, Mrs. Leslie Cooper, chairman of the evening; Mrs. Herman Schmitz, president, and Mrs. Louis Ahlquist, decorations chairman. Mrs. Helen Humlenny is in charge of refreshments, and Mrs. Andrew Cortina, tickets. A 'King and Queen of Hearts' will be crowned, and music will be by Johnnie Jay and his orchestra.

## Girl Scouts name cookie sale heads for Mountainside

Mountainside chairmen for the annual Washington Rock Girl Scout Council cookie sale scheduled for Feb. 7-22 have been appointed, according to Mrs. E. W. Alessi, chairman of the Mountainside Girl Scout Community Association.

Mrs. Stephen Eskoff of 1186 Blazo ter., has been named community cookie chairman. She will direct the sale, assisted by cupboard chairman Mrs. S. W. Wasko of 1377 Grouse lane, Mrs. T. C. Keis of 1437 Dunn pkwy, and Mrs. B. J. Lauhoff Jr., of 293 Old Tote rd, and by eight troop cookie chairmen.

Receipts of the annual door-to-door sale by Junior, Cadette and Senior Girl Scouts are used for the development and maintenance of Girl Scout camp sites and to supplement council income from the United Fund campaign to provide services to troops. Each troop retains a percentage of the profit to help finance troop projects.

Troop cookie chairmen are: 137, Mrs. J. V. Pettiti; 195, Mrs. S. N. Seager; 492, Mrs. L. A. Glaser; 557, Mrs. D. C. McPhee; 599, Mrs. W. H. Brandt; 424, Mrs. D. L. Crow; 466, Mrs. J. F. Ross and 389, Mrs. R. W. White.

## PROFILE -- Thomas G. Phillips

Night-time ice-skating facilities at Moccasin Pond and more tennis courts in Mountainside will be among the special areas of interest this year for new recreation commissioner Thomas G. Phillips.

He and Harry Nash were appointed to the seven-man board this year and will serve five-year terms.

The post of recreation commissioner is a natural spot for the trim, athletic-minded 277 Old Tote rd. resident. He is president of the Mountainside Swimming Association (formed last fall to maintain a winter-time swimming program in the borough), swimming meet director at the Mountainside Community Pool and an avid pro football fan who roots for the New York Jets.

For his alma mater, Ursinus College of Collegeville, Pa., Phillips is secretary of the Bruins Club, the alumni athletic association; president of the New York area alumni association and a member of the alumni executive committee.

To top it off, Phillips, the family man, and his wife, Kathleen, already run an extensive recreation program of their own as co-directors of an eight-child family.

"The recreation commission has done a superb job in the past," Phillips said, "and I'm proud to be a member, seeking even

(Continued on page 3)



THOMAS G. PHILLIPS

(Continued on page 3)

# Improving Highlanders face Clark, Rahway next

By BILL LOVETT  
The Gov. Livingston Regional High School basketball team, continuing to improve, ran away from Cranford, 81-71, and gave a tough Hillside quintet all it could handle before succumbing, 60-55. Regional, with a 4-5 record,

## First study group to be held Jan. 24 by PTA committee

The parent and family life committee of the Mountainside PTA will present the first in a series of three study groups on Friday, Jan. 24 from 1:30 to 3 p.m. in the all-purpose room at Deerfield School.

The subject will be "School and Study: The Learning Process." Dr. Arlene Sherer, psychiatrist, will address the first study group session. Dr. Sherer will talk about the learning process in the young child. She will cover such subjects as: language and play; concentration and attention span; learning in the home - the parent model; and finally, school phobias.

After the formal presentation, a "buzz session" and small group discussions will be held, followed by a question and answer period. The latter will unite the various factors influencing school performance and good study habits.

All parents (pre-school included) are invited to attend and take part in the discussion.

On Feb. 28 the second study group in the series will feature the subject of "Discipline and Self Discipline-Developing a Healthy Attitude toward Rules and Regulations." On March 21, the final study group will discuss the topic of "Childhood Fears."

## Cleric to address meeting of AAUW

The Mountainside Branch of the American Association of University Women will meet tonight at 8:30 at the home of Mrs. Freeman Miller, The Rev. John Conger of Westfield will be the guest speaker. He will discuss "Testing Values in a Changing Society."

Mr. Conger is an English teacher at the Pingry School. He has also worked with the tutorial program at the Graystone Church in Elizabethtown.

Mrs. Brian Grant announced that the study group will have an international pot luck supper Jan. 28 at the home of Mrs. Freeman Miller. After dinner they will read and discuss Sartre's plays, "No Exit" and "The Flies." Persons interested in attending may contact Mrs. Grant.

travels to Clark tomorrow and is host to Rahway next Tuesday.

In the contest with Cranford, both squads had balanced scoring attacks but superior Regional play kept the Highlanders ahead.

Jeff Burdette and Mike Rugen of Gov. Livingston led all scorers with 19 points each. Rich Weiss (13 points), Eric Wichelhaus (11 points), and John McElgunn (eight points) also contributed heavily to the Highlander offense. Krol, with 15 points; Haddad, with 14, and Smithers, with 14, led Cranford.

Hillside, which had beaten Regional earlier this year, 47-39, was surprised by Coach John Kyreakakis' Highlanders who built up a 21-16 first quarter lead. Hillside evened it at the halfway mark, and was ahead by one point at the start of the fourth period.

Burdette hit on two shots to put Livingston within one point with less than two minutes remaining, but clutch foul shooting by Mike Levinson ruined the Highlanders' bid. He sank two free throws to clinch the victory. Burdette led both teams with 20 points, while Mike Brown paced Hillside with 19.

The main reason that Gov. Livingston has done so well in the past few weeks is the emergence of a solid starting five. In Burdette and sophomore Weiss, the Highlanders have two excellent shooting guards. McElgunn, Wichelhaus and Mike Rugen up front continue to provide excellent rebounding, as well as strong shooting. As this group has improved, so has Regional's record. With the team still improving, a winning record appears likely.



Blitwise Liquors won its 12th straight match in Mountainside Men's at Echo Lanes, with a 214 by Pete Tausig and a 202 by Ernie Schwarte sparking a sweep over Westfield National Bank.

Other sweeps were registered by Drewette's Nursery, Mountainside Dell and Benninger Tansey Agency. Among the top scorers were Dick Huntley, 22; Allen Jacobsen, 214; Dick Compton, 212; Fred Ahlholm, 222; Art Hay, 212; Mike Garzone, 206; Bud Cleverger, 213; Bob Greeley, 211; Art Gigantino, 210; Vic Deonna, 206; Dick Jeske, 204, and Bob Isaac, 201.

Point totals are: Blitwise Liquors, 46.5; Benninger Tansey Agency, 43; Mountainside Luncheonette, 40; Satellite Diner, 38; Mountainside Plumbing and Heating, 37; Drewette's Nursery, 35; Westfield National Bank, 35; Mountainside Dell, 34; Chrono's Tavern, 33.5; Owens Flying A Service, 33; Lynn Insurance Group, 31.5; Air Con Inc., 31; Fugmann Fuel Oil, 30.5; Mountainside Drug, 30; Mountainside PBA, 26; Wilhelms Construction, 20.



FOES FOR FACULTY--Al Baumgarten's Major League All-stars will take on a faculty basketball team Monday at 8 p.m. at Gov. Livingston Regional High School, Berkeley Heights.

The program will be under the joint sponsorship of the junior class and the staff of the Claymore, the Gov. Livingston yearbook.

## College choral unit plans performance at Gov. Livingston

The Macalester College Drama Chorus from St. Paul, Minn. will perform a blend of solo and group reading with music and dance in an assembly program at Gov. Livingston Regional High School in Berkeley Heights today.

The performance will include satirical and serious comment on the contemporary scene and poetry, legends, tales, music and dance. The 56 members will wear the traditional Macalester clan tartan, and accompaniment will be provided by a piper and drummer from the Pipe Band of the St. Paul Liberal Arts College.

The chorus is directed by Pro. Mary Gwen Owen, who originated it in 1931. This performance is part of a three-week group-reading study tour in the Cleveland, Boston and New York areas as part of Macalester's interim term, a month of concentrated study in which each student enrolls in an individual or group project.

The chorus members will analyze their audiences and experiences during the tour and write evaluation papers. Last year they performed for more than 21,000 people on a similar tour.

**EARLY COPY**  
Publicity chairmen are urged to observe the Friday deadline for other than spot news. Include your name, address and phone number

## Major leaguers in basketball game

Art Baumgarten's Major League Baseball Players All-Star Basketball Team will play the Faculty All-Stars at Governor Livingston Regional High School Jan. 20 at 8 p.m. in the

High School gym. Tickets will be available at the door.

The program is sponsored jointly by the Junior Class and the school yearbook (the Clay-

more) staff.

The Major League All-Stars include Al Downing, Bill Robinson, Roy White, Stan Bahnsen, Steve Whitaker and Frank Fernandez of the New York Yankee's; Ed Kranepool, Ron Swoboda, Phil Linz, and Alvin Jackson of the New York Mets; Bill Freehan and Dick McAuliffe of the Detroit Tigers; Jeff Torborg of the Los Angeles Dodgers, and Brooks and Frank Robinson of the Baltimore Orioles.

For the last five years the team has toured the Metropolitan area playing in high school and colleges to help raise money for school projects. "Some of the main reasons for the success of the basketball games are the camera sessions before the games, and autograph sessions at halftime. Any one present who wishes to talk and mingle with the stars can do so," an All-Star spokesman declared.

Any male member of the faculty is eligible to participate.

## LWV unit meetings to discuss program plans on state level

Mrs. John Thatcher, president of the League of Women Voters of Westfield, has announced that the January unit meetings will be devoted to program planning on a state level for 1969-71. Resource committees will present background material on "New Jersey Fiscal Policies," "Legislative Procedures," "Education" (both lower and higher), "Regional Planning" and "Reapportionment," which constitute the present state program. After consideration of which of these areas, if any, merit continuance for 1969-71 there will be opportunity to present other issues to be considered for the program.

Units will be held as follows:  
Monday, Jan. 20, 12:45 p.m., at the home of Mrs. Michael Sweeney, 23 Cornwall dr., Westfield. Mrs. Bernard Brown is discussion leader.

Tuesday, Jan. 21, 12:45 p.m., at the home of Mrs. Brooke Gardner, 1364 Stony Brook Lane, Mountainside. Mrs. Peter Tausig is discussion leader.

Tuesday, Jan. 21, 8:15 p.m., at the home of

Mrs. Dwight Berreman, 549 Edgar rd., Westfield. Mrs. Kenneth D. Smith is discussion leader.

Thursday, Jan. 23, 9:15 a.m., at the home of Mrs. James Trowbridge, 947 Boulevard, Westfield. Mrs. Samuel Milstein is discussion leader. There will be baby-sitting service for members attending this unit at the home of Mrs. Stanley Datch, 28 Manchester dr., Westfield.

Mrs. Carl Addinall, 543 Belvidere ave., Westfield, is chairman of units and will make arrangements for guests who wish to attend any units.

## Named supervisor by Humble Oil Co.

Stephen S. Anderson of 346 Briar Patch, Mountainside, has been named operations supervisor in Humble Oil & Refining Company's Hackensack District, according to an announcement made by Samuel E. Charlton, manager of the company's New Jersey, New York and New England eight-state Esso marketing area, with offices in Peilham, N.Y.

Upon graduation from Cranford High School, Anderson entered Northwestern University, Evanston, Ill., where he received his BS degree prior to earning his MBA degree in 1965. He joined the company that year as a sales trainee in its Linden District and was advanced to a dealer sales representative in 1966. The following year he was named a sales supervisor.

He and his wife, the former April Suarez, are the parents of Jennifer, 2.

## Times editor to speak

The main speaker at the annual Pingry School Fathers' Luncheon, to be held Saturday at the Hillside Institution, will be the education editor of the New York Times, Fred M. Hechinger. His topic is to be "Liberalizing Trends."

**PRENATAL CARE**  
The March of Dimes reports that prenatal care can prevent or control certain diseases which may be transmitted from mother to child before birth.

## Schoenfeld to speak on Mid-East crisis

"The Crisis in the Middle East" will be discussed in a program held by the Westfield-Mountainside B'nai B'rith Sunday at 11 a.m. at Temple Emanu-El, Westfield. Guest speaker will be Moses Schoenfeld, United Nations correspondent, radio commentator and observer of the Middle East. The program will also feature a brunch of lox, bagels, cake and coffee. Non-members may attend.

Schoenfeld has had numerous articles published in leading magazines. A former UN representative for the Zionist Organization of America, he organized the Dominion League for Palestine, and directed the American Section on the Status of Jewish War Orphans in Europe during World War II.

A reservation for non-members to attend may be made by calling Herbert Ross at 232-2867.

The Girl Scout Cookies may be spread with marshmallow, chocolate, or other filling to make sandwich cookies.

**FOR PROFESSIONAL INSURANCE ADVICE ...**

Call Bob Tansey at:  
**BENNINGER, TANSEY & CO.**  
233-5400 • Established 1939  
854 Mountain Ave., Mountainside

**Our labor of love!**

When industry moves into New Jersey, it automatically brings in new job opportunities, "new" money to circulate, and an economic shot in everyone's arm. Which is the number one reason why we've expanded our advertising to attract more industry to the Garden State. Our program is regional, national, international... and ambitious. Since New Jersey has such an important story to tell to America's business leaders, we want to tell it as effectively and imaginatively as we can. A lot of time and money go into our economic development program because we know it can help the people of New Jersey. We do what we can to keep the Garden State growing.

**NIH Research For Health**  
A REPORT FROM THE NATIONAL INSTITUTES OF HEALTH

**Burkitt's Lymphoma**  
A type of cancer common in Africa, called Burkitt's lymphoma, is of great interest to U.S. scientists because it responds well to drug treatment, and is believed to be a virus-caused form of cancer. The disease is under intensive study in the hope that it will provide clues to more effective treatment of patients with related forms of cancer.

Burkitt's lymphoma is a form of cancer affecting the lymphatic system, the part of the circulatory system that plays a major role in a person's ability to fight infection. It is usually confined to one or two regions of the body—particularly the jaw and abdomen. Although a few cases of this disease have been reported in the United States and Europe, it occurs most frequently among African children.

The disease was first identified by Denis Burkitt, a British surgeon who reported his findings in 1958 while at Makerere College Medical School in Kampala, Uganda. In 1960 he pioneered the use of drugs in the treatment of the lymphoma and found that 15 to 20 percent of his patients responded favorably.

Burkitt's lymphoma is usually found in a geographic belt extending across central Africa from east to west. The disease occurs almost exclusively at elevations below 5,000 feet and at temperatures above 60 degrees Fahrenheit, in regions where the annual rainfall is greater than 20 inches. This low, humid area is the habitat of man-biting mosquitoes, among which are known carriers of viral diseases.

So far, two types of virus particles have been identified in specimens from patients with Burkitt's lymphoma. One is a herpes type virus, similar in size and shape to the family of viruses that cause fever sores and shingles. The other is closely related to the so-called reovirus, which is widespread in man but is not known to cause any major diseases. These virus particles are being studied intensively in an attempt to find out whether Burkitt's lymphoma is caused by either of them.

Chemotherapy (the use of drugs) is the preferred treatment for Burkitt's lymphoma. Drugs used include methotrexate, cyclophosphamide, vincristine, cytosin, ortho-merphalan, and melphalan. Of 245 patients treated by various groups of investigators in Kenya, Nigeria, and Uganda, 38 patients survived without further evidence of cancer for one to seven years after the start of therapy. This is one of the best remission rates achieved by drugs in the treatment of human cancer.

Under terms of a research contract signed recently by the National Institutes of Health and African medical authorities, a Lymphoma Treatment Center has been established at Makerere University, Kampala, Uganda. Particular study will be given to patients with Burkitt's lymphoma at the new center.

The responses of African patients treated with drugs and stimulation of their immune systems (the body's defense mechanism against disease) will be measured and compared with responses of American patients with lymphoma and related types of cancer receiving similar treatment at the National Cancer Institute, a component of the National Institute of Health, in Bethesda, Maryland.

Findings will be correlated with an ongoing National Cancer Institute study of environmental and genetic factors that may affect an African's development of lymphoma and his response to treatment.

**Plan course in boating**

A 10-week course in basic seamanship and small boatmanship will be conducted by Flotilla 46 of the U.S. Coast Guard Auxiliary for the Scotch Plains-Fanwood Adult School. Registration may be made by mail or at the first class Feb. 9, at 8 p.m. at Park Junior High School cafeteria, Park Avenue, Scotch Plains.

The course is planned for those who own, plan to own, or expect to operate a powerboat. A certificate of proficiency will be awarded those who complete the course.

For further information regarding the class, readers can phone the course supervisor, D.G. Cottrill 232-8820, evenings after 6 p.m.

**LOOKING FOR A JOB**

These little classified ads in the back of the paper may be your answer. Each week it's different. Make reading the classified a "must" this week and every week.

First in Sales and Quality  
**WORLD BOOK ENCYCLOPEDIA**  
Call MARGARET AHLFELD 232-6841

**START THE NEW YEAR RIGHT**

**OPEN A SAVINGS ACCOUNT TODAY**

**4 1/2% PASS BOOK DIVIDEND PER ANNUM**

**COMPOUNDED QUARTERLY**

**FIRST FEDERAL SAVINGS**

<b>WESTFIELD</b> 150 Elm Street - Main Office	<b>MOUNTAINSIDE</b> 865 Mountain Avenue
<b>WOODBIDGE</b> Our Newest Branch	<b>MENLO PARK</b> Shopping Center Parking Lot (Opposite Cinema)

# Local girl describes experiences in Swiss school

The following article on her experiences as a student in a Swiss school last year was written by Debbie Klingsberg of Mountainside, now back in class at Gov. Livingston Regional High School. Miss Klingsberg, who attended the Ecole de Jeunes Filles in Geneva, wrote the article for her English teacher at Gov. Livingston, Mrs. Lola Romano.

erland, is one of the biggest in Europe. Most of its 6,000 members send their children to the International School, where classes are conducted in French and English, but every year there are a few American students who spill over into the French language Geneva public schools.

I was one of those who spilled over last year. My father's company had granted him a year's

leave of absence to study at its laboratory in Geneva, and my whole family lived there from July, 1967 to August, 1968.

My brother, sister and I all attended Genevese schools. While their school was in the village where we lived, I had to take a bus to the city every morning. School began at 8:10 and the morning consisted of four 45-minute periods, with at least five minutes between classes.

At midmorning, there was a 15-minute break, during which almost all the students in the school went down to the main hall to buy rolls and chocolate bars from the woman who brought them in from a nearby bakery, and hot drinks from the vending machine. Since we were allowed to leave the school during this "recreation," the bakeries and cafe's in the neighborhood could count on good business at that time of day.

At 11:35, we were dismissed for lunch, with afternoon classes beginning at 2:05. Almost everyone went home for lunch as the Europeans eat their big meal at noon. However, the few of us who stayed ate in the small cafeteria that served 30 to 50 students a day. After eating, we would do our homework or go to a department store to listen to records or try on clothes.

In warm weather we would sunbathe by the

Rhone River, and if we were in an ambitious mood, we could pay a visit to the huge indoor swimming pool that we easily reached by tram.

The afternoon, like the morning, was divided into 45-minute periods, but its length varied. On Tuesday, my last class was over at 3:40, but on Wednesday I had to stay until 5:25. The morning "recreation" with rolls and chocolate was repeated after the second afternoon class, the only difference being that it lasted ten minutes instead of 15.

We went to school from Monday to Wednesday and had Thursday off. The week didn't end, however, until Saturday at noon.

THE GENEVESE METHOD of teaching is very simple. It consists of the teacher dictating notes to the class and the students copying them word for word. Before an exam the pupils memorize what the teacher has dictated then repeat it on the test. Class discussion is practically unheard of, and original thinking is almost never encouraged. I had one teacher who even told us what color to underline with.

Only one of the Genevese high schools--the business school--is coed, although the others will be in two years. In the meantime, the schools continue to contribute little or nothing to the students' social life. Extracurricular activities are few and far between. There are enrichment classes, an orchestra, a drama club and scattered athletic opportunities for anyone who wants to seek them out but they are poorly publicized and hard to find.

I belonged to one extracurricular organization, the chorale, which wasn't really extracurricular for me because it was required of all the girls in my class. Anyone could join, but membership was mandatory for certain groups. We rehearsed for an hour and a half every Wednesday afternoon and got together

with the boys' chorale to give concerts. We spent a weekend in September on a workshop retreat in a tiny mountain village with one of the most breathtaking views I have ever seen. We sang, slept and ate in the annex of the only hotel in the village, and spent our free time hiking and admiring the view. The fruits of our musical labor were enjoyed by the Swiss schoolteachers who gathered in Geneva for a convention a month later.

IN DECEMBER, the chorale went on the road again, this time to Neuchatel, where we gave two Christmas concerts. We traveled there by train and gave our first concert in the old cathedral. Afterwards, we helped the Neuchateois high school students sell oranges and Christmas candles to raise money for a scholarship that would enable a Tibetan student to study in Switzerland.

Then each of the chorale's 100 members, as well as the 30 members of the orchestra which had accompanied us, went to the home of a Neuchateois host for supper. There was a dance that evening, sponsored by a fraternity from the boys' school and held in a little cellar in the old city. After the dance, we returned to spend the night in our hosts' homes. The next day, we sang in a junior high school, visited a museum, and went back to Geneva, where we gave another concert a few days later.

Although the chorale spent the rest of the year in Geneva, the school offered another opportunity for travel in March, when my class and seven others went on a week-long ski trip. We stayed in a "vacation village" that the Swiss army had built for school groups like ours. Not yet completed, the complex of modern buildings contained sixteen-bed dormitories, classrooms, hot showers, rooms for storing ski equipment, a snack bar and a huge dining hall.

We had one class every morning, after which we took a cablecar up the ski area. At 3:30 we returned to the village for three more classes and supper. The non-skiers spent the day hiking, and we all spent the evening talking, playing games or guitars, and singing.

I found that there was very little pressure in the schools in Geneva; many students repeat one or more grades without thinking twice about it. There is a lot of work to be done, although it is not as difficult as the work done in comparable American classes.

But students in both countries complain equally often and loudly about school, whatever privileges, advantages, and disadvantages they may have.

## Candy sale planned by high school club

The Medical Careers Club of Governor Livingston Regional High School in Berkeley Heights will conduct a candy sale beginning next Friday to benefit its scholarship fund, according to Selma Kaye, director of health services.

Four varieties of candies will be sold door-to-door by members of the club for \$1 a box, Miss Kaye said.

The money from the sale will be used to offer a \$100 award annually to a senior member who has been accepted into an accredited post-secondary school in the field of health or medicine.

## PROFILE -- Thomas G. Phillips

(Continued from page 1)

more opportunities for recreation in the borough.

His vision for Moccasin Pond not only includes lights for evening use, but the installation of benches.

The community is hard-pressed for more tennis courts, and the new commissioner said this matter would get a good deal of attention.

THE BOARD has already had some negotiations with the Board of Education for the construction of additional tennis courts on Deerfield School property.

Although he is a Jersey shore native who learned to swim in the ocean off Seaside Park, Phillips, real interest in the sport to which he is now so deeply committed started with the opening of the community pool and the subsequent heavy use of the facility by his family.

As is his nature, Phillips dug into the swimming program there as a volunteer.

These activities over the past two years led to his installment as president of the Mountainside Swimming Association.

"We wanted to give the kids a chance to swim in the winter," Phillips said. The club swims in competition against teams from Berkeley Heights (the Garden State Swimming Club which is also the home base of the Mountainside team), the Olympian Swimming Club of Ridgewood and The Fort Monmouth Swim Club, composed of military dependents there.

Six of the Phillips' children are on the team--

Kathy Joan, 14; Tommy, 12; Lisa, 11; Patrick, 9; Brian, 8; and Mike, 6. Kevin, 4, and Jimmy, 3, are not yet old enough to be members, the ages of which run from five to 18.

"Tommy is showing real promise," Phillips said. "His specialty is the free-style and the butterfly, and he has already swum in AAU meets." Brian, too, Phillips said, is also making waves.

THERE ARE 74 children in the association's winter program, Phillips said, indicating that next year's team representing the community pool may be a real powerhouse.

Phillips is a 1949 graduate of Toms River High School and received his diploma from Ursinus four years later.

He married Kathleen, the daughter of Union County Democratic Chairman Jim Kinneally, in October, 1953. "I'm a Republican," Phillips said, "but my father-in-law and I get along very well."

After jockeying through several early-career jobs sandwiched around a stint in the Army, Phillips became director of advertising services for Standard Brands, where he remains, and moved to Mountainside about five years ago.

Among the myriad of products Standard Brands, a merged company, merchandises are Planter's nuts, Fleischmann's butter, Chase & Sanborn coffee, Royal desserts and Bluebonnet margarine.

Last year, Phillips served as local chairman of the Community Fund Drive.

## New cop enrolled at police Academy

Patrolman Frederick W. Ahlholm of the Mountainside Police Department is among 18 new policemen who are enrolled in the 23rd annual session of the Union County Police Training Academy, which opened Monday, Jan. 6, at Union College, Cranford.

The Union County Police Training Academy, which is sponsored by the Union County Police Chiefs Association, provides basic training for new policemen from Union County's 21 municipalities, the Union County Park Police, the Union County prosecutor's office and the Union County sheriff's office. It will continue for nine weeks through March 7 at Union College, Police Chief Matthew T. Haney of Cranford, dean and director, reported.

The Union County Police Training Academy provides instruction in police ethics, police organization, civil government, criminal law, judicial systems, firearms, defensive tactics, laws of evidence, arrest, search and seizure, duties of the FBI, narcotics, handling complaints, gambling, patrol practices, community relations, first aid, criminal investigation, accident investigation, motor vehicle laws, courts, organized crime, and riot control.

## Overlook sponsors session on coronary artery disease

A medical symposium on "Current Management of Coronary Artery Disease" will take place at Overlook Hospital's Medical Education Center next Wednesday, Jan. 22, from 2 to 5 p.m., sponsored by the Academy of Medicine of New Jersey in conjunction with the New Jersey State Department of Health.

Dr. W. Austin Tansey of Short Hills, program chairman for the symposium and chairman of the coronary care unit at Overlook Hospital, announced that noted cardiac specialists from leading cardiac centers will participate in the seminar. Dr. Tansey is past president of the Overlook medical staff, the Academy of Medicine of New Jersey and the Essex County Heart Association.

Overlook Hospital itself has pioneered in this field, establishing the first monitored coronary care unit in New Jersey when there were less than a dozen such units in the country.

Overlook, in affiliation with Rutgers University School of Nursing, is one of 12 federally authorized hospital teaching centers to train nurses in the highly specialized techniques of coronary care.

"WITH CORONARY disease the leading cause of death in the United States, it is imperative that practicing physicians keep abreast of the latest knowledge in this vital field," commented Dr. Tansey.

"Overlook has emphasized coronary care, realizing its broad-scale application. Its highly geared procedures have been featured in national medical magazines as an outstanding example of teamwork and professional skills," Dr. Tansey added, "not as dramatic as heart transplants, perhaps, but the grassroots treatment for thousands of coronary patients."

"There can be no doubt that the monitored coronary unit and modern surgical techniques have saved countless lives," Dr. Tansey stated.

"In about 50 percent of cases of sudden death from heart disease, it is not an inoperable result of extensive heart damage, but rather due to a completely reversible electrical derangement of rhythm. All of these instances can be corrected if the proper

facilities and trained personnel are on hand," the cardiologist pointed out.

Moderator of the symposium will be Dr. Victor Parsonnet of Millburn, director of surgery at Newark Beth Israel Medical Center, clinical professor of surgery at the New Jersey College of Medicine and Dentistry and consultant on the Overlook medical staff. Dr. Parsonnet will also conduct the section on "Surgical Approach to Coronary Artery Disease."

OTHER LEADING specialists in the cardiology field who will participate in the symposium include:

Dr. Lawrence E. Meltzer, director of clinical investigation and director of coronary care unit at Presbyterian University of Pennsylvania Medical Center, will discuss "Other Current Medical Modalities in the Cardiac Monitor Unit."

Dr. Kenneth W. G. Brown, assistant professor, faculty of medicine at the University of Toronto, also Rykert research cardiologist and co-director of the coronary unit at Toronto General Hospital, will speak on "Changing Perspectives in Coronary Units."

Dr. Stephen Ayres, director of the cardiopulmonary laboratory at St. Vincent's Hospital and Medical Center of New York and associate professor of clinical medicine at New York University School of Medicine, also consultant on the medical staff of Overlook Hospital, will discuss "Treatment of Arrhythmias Without Drugs--Role of Hypoxemia and Inappropriate Ventilation."

Approved for four hours of elective credit by the American Academy of General Practice, the seminar is part of the medical education program of Overlook Hospital, directed by Dr. Warren G. Nestler.

## Iceboater

(Continued from page 1)

rear of the boat and, in some cases, he was forced to lie on his stomach.

With the Yankee class, cockpits were built into the boats, and they not only protected the pilot from the icy blasts but also acted as a sort of roll bar. Helmets have been required since the 1950s.

Sieder was the motivating force behind a drive for a braking device on the boats and was successful only after years of campaigning. Prior to Sieder's efforts boats running before the wind were slowed and stopped only by coming about into the wind.

SIEDER'S ENTHUSIASM for sailing doesn't fade in the summer--that's when he takes to his 44-foot sloop, Water Witch, usually anchored around Atlantic Highlands.

Until recently, Sieder used to crew on Bermuda race-type boats during shakedown cruises. Sieder is originally from South Orange and graduated from Columbia High School (which his father August Sieder designed) and Columbia University in 1927.

He is a design engineer himself (what else?) and has been with Beckley Perfomating Co. in Garwood since 1940, between graduating from college and beginning his career at Beckley, Sieder, among other things, was on a one-and-a-half year tour with a short-lived professional polo team, and married his wife, Abby.

This spring, Sieder may retire to Maryland and open a small machine shop manufacturing boat fittings. As for the iceboating, Sieder said, "Well, that will be a little problem down there."

## Livingston student wins national English award

David Daisaku Mukai of Gov. Livingston Regional High School in Berkeley Heights has been cited as one of the outstanding high school students of English in the country, according to word received by Frederick Aho, principal, The

THIS WEEK'S BY AUDREY LANE PATTERNS



The ruffle that softens this dress so prettily runs vertically, to keep the slimming line. No. 3307 comes in sizes 12-1/2 to 22-1/2. In size 14-1/2 (bust 37) the sleeveless basic takes 3 yd. of 44-in. fabric; with long sleeve, 3-3/8 yd. of 44-in. fabric; plus 5/8 yd. 35-in. fabric for ruffle. Free pattern is waiting for you. Send 50 cents for our new Fall-Winter Pattern Book which contains coupon for pattern of your choice.

Crochet a straw hat now to have ready for spring. This one will flatter most anyone. Ask for No. 1182. Send 40¢ for each dress pattern, 30¢ for each needlework pattern (add 5¢ for each pattern for third class mailing) and 18¢ for each pattern for first class mailing) to AUDREY LANE BUREAU, Morris Plains, New Jersey, 07950.

Send 40¢ for each dress pattern, 30¢ for each needlework pattern (add 5¢ for each pattern for third class mailing) and 18¢ for each pattern for first class mailing) to AUDREY LANE BUREAU, Morris Plains, New Jersey, 07950.

### Public Notice

TAKE NOTICE that on the thirteenth day of January the Zoning Board of Adjustment of Mountainside after public hearing took action on the following applications for variance: Humble Oil & Refining Company, 1413 U.S. Route #22, Block 102, Lot 1 - Grandd; Michael & Ethel Romano, 1496 U.S. Route #22, Block 3A, Lot 17 - Grandd. Determination by said Zoning Board of Adjustment has been filed in the office of said Board of the Borough Hall, and is available for inspection. Alyce M. Parnment, Secretary. Mountain Echo-Jan. 16, 1969; (Pac. 12-16)

### FAMILY POT LUCK BY HELEN HALE

You can enjoy fresh cranberries year round by buying berries while the supply is plentiful and putting them into the freezer. When ready to use, just rinse in cold water and chop or grind in frozen state or cook as usual.

For a tasty tidbit, try sardines and cheese. Mash together 1 can (3-3/4 oz.) Norway sardines and 1 cake of cream cheese. Spread on round crackers and top with thin olive slices. Yields 8 to 10 canapes.

Yams, or sweet potatoes, if you prefer, are a popular menu item. You can buy canned Louisiana yams in three styles: whole, cut and mashed. The sirup added consists of pure refined sugar.

An extra special taste is imparted to Caesar Salad when the croutons are browned in melted butter and A.I. Steak Sauce.

A good appetizer uses miniature cream puffs with a filling of creamed oysters.

Seafood Salad (Serves 6)  
2 cups cooked lobster meat  
2 cups cooked crab or shrimp  
1 cup mayonnaise  
1 tsp. A.I. Steak Sauce  
1 tsp. salt  
1/4 tsp. paprika  
Mix all ingredients and serve on crisp lettuce.

## Demonstrations and exhibits at Mall to spotlight National YMCA Week

To spotlight National YMCA Week, the four YMCAs of Summit, Westfield, Madison and Morristown will jointly sponsor exhibits and demonstrations on the Mall at Short Hills this Saturday from 11 a.m. to 3 p.m.

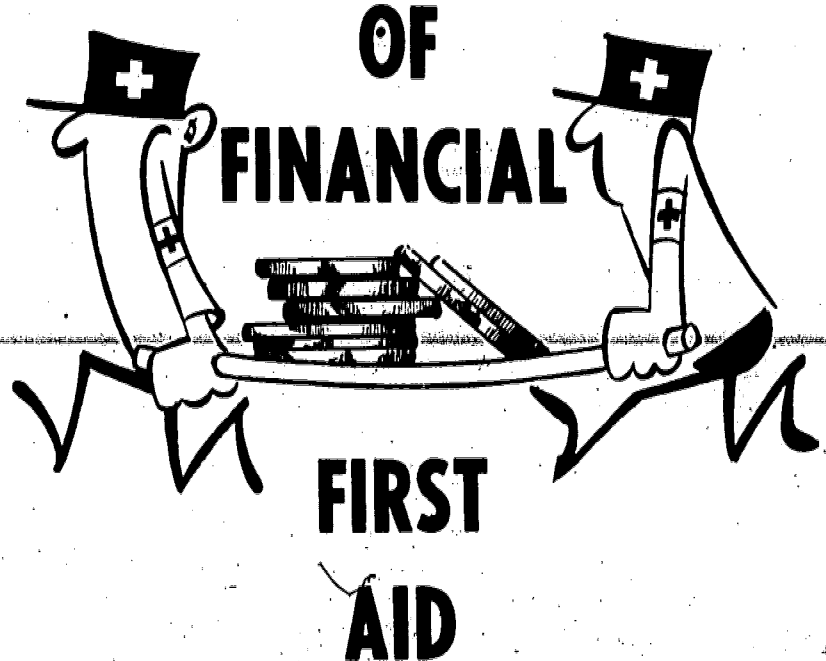
Emphasis will be on "Family Fitness the Y's Way." Joggers will jog a measured mile outdoors at the Mall. A fitness exhibit in the Short Hills Room will feature fitness-testing, and Y physical directors will be on hand to explain fitness and jogging programs for men and women.

Additional exhibits in the Short Hills Room, which is located on the lower level of the Mall next to the Post Office, will feature YMCA Indian Guides, Water-Safety, Area Resi-

dent Camps, and World Service programs which are common to all YMCAs. Each Y will have its own exhibit space, also, in which to illustrate programs unique to its own organization.

There will be 10-minute demonstrations every half hour on the stage. Members of the Madison Y will demonstrate "Kinderdance," its fitness program for tots. The Morristown Y will illustrate its women's fitness and boys' and girls' gymnastics programs. Indian Guides from the Westfield YMCA will do their Indian Dances, while the Summit Y will put on boys' wrestling and adult fencing exhibitions.

## FRIENDLY DISPENSERS OF FINANCIAL



## FIRST AID

When you hit a bump in your budget, you'll find fast, professional emergency service at either office of the National Bank.

Our lending officers are experienced in determining the type of loan and repayment plan to best fit each need. Just stop in for a confidential visit.



## The NATIONAL BANK

WESTFIELD MOUNTAINSIDE

"A Local Bank dedicated to Community Service"

Member of Federal Reserve System • Member Federal Deposit Insurance Corporation

## Mountainside ECHO

Published each Thursday by Truner Publishing Corp.

Sam Howard Publisher - 1938-1967

Trudine Howard, publisher Milton Mintz, executive publisher-business manager

### NEWS DEPARTMENT

Ads Bureau  
Abner Gold, Supervising Editor  
Les Malmsut, Director  
BUSINESS DEPARTMENT  
Robert N. Bumell, Advertising Director  
Asher Mintz, asst. business manager.

Second Class Postage paid pt Mountainside, N.J.

15 cents per copy

Mailed subscription rate \$5 per year 2 New Providence Road, Mountainside, N.J. Phone: 686-7700

## SCHMIDT - FORD

"QUALITY DEALINGS FOR 33 YEARS"



Mustang Falcon Fairlane Thunderbird Galaxie Trucks.

Auto Rentals - Day - Week - Long Term

227-1665

290-306 Broad St. Summit

## Chinese auction planned tomorrow night by club

The Junior Woman's Club of Connecticut Farms, Union, will hold a Chinese Auction tomorrow at the Elizabethtown Gas Co., Elizabethtown Plaza, Elizabeth at 7:30 p.m. Mrs. Ronald Gianettino, chairman, and Mrs.

Anthony Iorio, co-chairman, have announced that the donation will be \$1 and homemade refreshments will be served. Tickets are available at the door. Profits from this event will be donated to various charities supported by the Juniors.

### BIRTHS DECLINE

The number of babies born in New Jersey declined in 1968. A total of 113,372 were born last year compared to 116,091 in 1967.

## Second lecture in series set in Irvington temple

Dr. Hovav Lapman, chairman of adult education in Temple B'nai Israel, 706 Nye ave., Irvington, has announced that the second of a series of lectures, sponsored by the Temple Enrichment Program, will take place

on Monday, Jan. 14, at 8 p.m. The topic of Rabbi Benjamin H. Englander's discourse will be "Trib. Reason or Superstition." The discourse will take place at the Ohav Shabbat, which will follow the regular Sabbath E. The public is invited to attend.

**MOVING?** Find a reputable Mover in the West Ad Section.

## Fourth child to Friscias

A seven-pound, seven-ounce son, Robert Christopher Friscia, was born Dec. 28, 1968 in Memorial General Hospital, Union, to Mr. and Mrs. Robert S. Friscia of 850 Lehigh ave., Union. He joins three sisters, Dona, 6, Sharon, 4 and Kathy, 3. Mrs. Friscia is the former

Thursday January 16, 1969

Maryann P. Blasi of Newark, daughter of Mrs. Virginia Blasi. Her husband is the son of Mr. and Mrs. Sam Friscia.

## They hear without ears

Ants do not have ears. They feel vibrations through the ground.

## Determine quality of coat before on-sale purchasing

With many winter coat sales now going on, says Carolyn F. Yukus, Senior County Home economist, you may be considering the purchase of a

## Workshop series on foods set

How creative are you in using packaged foods?

How much do convenience foods cost in comparison with those you prepare from "scratch?"

How much time can you actually save by using convenience foods?

These and many other questions concerning convenience foods will be answered on Thursdays, Jan. 23 and Jan. 30, at a series of Cooperative Extension meetings to be held from 1:15 to 2:30 p.m. at the Home Economics auditorium, 7 Bridge st., Elizabeth. Pre-registration is requested for the series of meetings which are open to all county residents.

Wise management of money, time and energy will be emphasized.

As an added feature at each meeting, volunteer leaders will demonstrate hostess creativity. On Jan. 23, Mrs. Ernest Gonczlik of Fanwood will demonstrate time and money saving tempting main dishes.

Mrs. Paul Sweeney of Plainfield will show tasty tidbits with biscuits, breads and Danish pastry on Jan. 30.

## Monthly meeting slated by League

The Bayley Seton League of Seton Hall University will hold its monthly meeting tomorrow at 1:30 p.m. in the Galleon Room, Bishop Dougherty Student Center. Presiding will be Mrs. Robert J. O'Connell, president, and the Rev. Daniel A. Murphy, moderator.

Mrs. Angelo Dispenzere, program chairman, has announced that the Very Rev. Monsignor William Noe Field will review a "best seller" book.

Tea and refreshments will be served by the hospitality chairman, Mrs. John Belner and her committee.

Members and their guests are invited to attend.

## Casual party set by Singles group

Single men and single women, ages 21 to 39, are invited to attend a cocktail party and dance Sunday from 7:30 p.m. to 11:30 p.m. at the Villa Roma, 766 Lidgerwood ave., Elizabeth, sponsored by the Singles University Alumni Club. This will be a casual party, and everyone is invited to dress informally. The evening will feature live music for dancing, refreshments and door prizes.

Additional information may be obtained by sending a stamped-self-addressed envelope to the SUA Club, Box 436-C, Newark, N.J.

## Singles sponsor socials in Union

All single, divorced and widowed people are invited to attend socials every Wednesday evening at 8:30 sponsored by the Single Adults Club of Union, at the Encore Restaurant on Route 22.

Cocktails and hors d'oeuvres will be served at a club charge.

Members are planning a vacation for the week or weekend at the Concord Inn in the Catskills. Additional information may be obtained by calling Bob Laskowitz at MU 8-7983.



Mr. Louis Altomonte

you are invited to

**Hahne & Company's**

spring and summer

**Bridal Fashion Show**

in Westfield

**Saturday January 18**

at 11:00 a.m.

Learn the seven warning signals of cancer. You'll be in good company.

1. Unusual bleeding or discharge.
2. A lump or thickening in the breast or elsewhere.
3. A sore that does not heal.
4. Change in bowel or bladder habits.
5. Hoarseness or cough.
6. Indigestion or difficulty in swallowing.
7. Change in a wart or mole.

If a signal lasts longer than two weeks, see your doctor without delay.

It makes sense to know the seven warning signals of cancer.

It makes sense to give to the American Cancer Society.

"one generation tells another about fine furniture at Hahne & Company"

**Hahne & Company**  
WESTFIELD  
*Sale of fine furniture*

**save 20% . . . on custom-upholstered luxury sofas and chairs by 'henredon'**

A special opportunity to make selections from our distinctive Schoonbeck collection by Henredon. . . sofas and chairs to be upholstered in your choice of decorator fabrics. See this fine furniture . . . superbly crafted in contemporary and traditional styles . . . and ask about our Club Plan for convenient payments.

sofas, sale from 419.00 chairs, sale from 179.00

Fine Furniture, Hahne & Company Westfield

# More fallout shelter spaces stocked

## State CD says total now nearly 2 million

State Civil Defense Director Thomas S. Dignan announced last week that 123,000 public fallout shelter spaces have been stocked with emergency survival supplies during the past six months. He said this brings the total stocked spaces in New Jersey to nearly two million.

Federal Office of Civil Defense officials have set a goal of 230,000 spaces to be stocked in New Jersey during fiscal year 1969 which began last July 1.

"At the midway point we have stocked about 8,000 spaces above the goal. I believe we will

not only meet the fiscal year goal, but will wind up the 12-month drive by stocking 250,000 spaces," Dignan said.

Emergency supplies going into the fallout shelters include water, food, radiological monitoring devices, medical and sanitary items. The supplies, paid for by federal funds, are austere and are programmed to allow a person to survive about 14 days in a public fallout shelter.

Dignan stated that there are nearly four million licensed and marked fallout spaces in the state. An additional two million spaces are not licensed.

The Civil Defense official pointed out that shelters would provide protection against the harmful effects of radioactive fallout but are not necessarily "bomb shelters." Spaces are located in public buildings, such as department stores and post offices, that provide a minimum "Protection Factor" of 40. The "PF" simply means that a person in the protected area would receive 40 times less radiation than a person in the open air in a radioactive fallout area.

Shelter capability is determined by the Army Corps of Engineers who survey buildings in the state. Licensed shelters are in buildings where the owners have signed an agreement with Civil Defense that would allow their premises to be used in a nuclear attack situation. Dignan pointed out that the shelters can not be used for drills or any other purpose.

"The thousands of building owners in New Jersey who have allowed their premises to be marked as public fallout shelters and have agreed to store emergency supplies are to be congratulated on their public spirit," Dignan said.

He said that the eventual goal is to have every public shelter in the state stocked with emergency supplies. Local Civil Defense officials are expected to contact owners of buildings where shelter space exists to request that the buildings be licensed and stocked. The agreement is entirely voluntary on the part of the owner.

Dignan said that a determined and sustained stocking drive should be pursued in all municipalities in an effort to prepare for effective use of fallout shelters should they ever be needed. Federal officials have stated that shelters could save millions of American

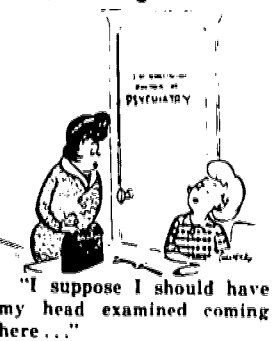
### Employment agency opened in Cranford

A new employment agency has been opened at 108 N. Union ave., Cranford, by Mrs. Mildred Miller of Irvington, who has spent 15 years in the personnel field.

The Mildred Miller Agency handles clerical, commercial, executive, engineering, scientific, professional and technical positions. The agency also will have listings for sales and industrial jobs, both skilled and unskilled.

Mrs. Miller was personnel supervisor for Tenney Engineering, Inc., Union for more than 10 years and was personnel director for Otto B. May Inc., a chemical company in Newark, for two years.

### My Neighbors



Thursday January 16, 1969

CUSTOM MADE

## PLASTIC

SLIP COVERS

### Steve Art Plastics

Call for Free Estimate 382-5311

ACT NOW 1522 IRVING ST. RAHWAY

GOLD CORDED OR CLAIR CORDED SEAMS FREE

IF you desire to give your son a thorough education at a school fully accredited by the State Department of Education and the Middle States Association of Colleges and Secondary Schools.

IF you prefer an all boys' school staffed by 30 (thirty) priests of the Order of St. Benedict.

IF you wish him adequately prepared for college and life by religious educators with a 1,400-year-old tradition.

ENTRANCE REQUIREMENT: THE ARCHDIOCESE ENTRANCE EXAMINATION

For Further Information Write Registrar

## ST. BENEDICT'S

PREPARATORY SCHOOL

520 High St., Newark 2, New Jersey 643-4800

### THE FLOOR SHOP

EST. 1934

Carpets • Linoleum • Tile

QUALITY

"AT A COMPETITIVE PRICE... TRY US!"

540 NORTH AVE., UNION (Near Morris Ave.)

OPEN MON., WED., THURS. 10-9

## 352-7400

Park in our lot adjacent to building

### COAL LEHIGH PREMIUM ANTHRACITE

NUT or STOVE PEAS COAL PREMIUM FUEL OIL

14.7¢ gal.

0.150 Gal. per Del. Del. Del.

## Simone Bros. Coal & Fuel Co.

1405 Harding Ave. HU 6-2726 Linden 0059

Prices subject to change without notice. OIL BURNER INSTALLATIONS • Free Est.

## Labor Department reports prices up

WASHINGTON--Retail and wholesale prices rose in November, the United States Department of Labor's Bureau of Labor Statistics has announced.

The Consumer Price Index went up 0.4 percent, which was less than the October advance of 0.6 percent and in line with the monthly average for the year to date. A significant boost in housing costs was the principal cause. Apparel and many other items also continued to climb. At 123.4 (1957-59 equal 100) The November Consumer Price Index was 4.8 percent above a year ago.

The Wholesale Price Index rose 0.5 percent in November to 109.6 (1957-59 equal 100), 3.2 percent above a year ago. Main reasons were the contra-seasonal advances of 1.9 percent for farm products and 0.3 percent for processed foods and feeds. Industrial commodity prices also advanced, but at a slower pace (0.2 percent) than in October.

Charges for consumer services increased 0.6 percent in November, somewhat more than in recent months, with nearly all services being affected. Costs of owning and maintaining a home climbed 0.8 percent. Rents averaged 0.3 percent higher as widespread--in some cases usually large--increases were posted.

Apparel prices, seasonally adjusted, increased 0.3 percent at retail and 0.2 percent at wholesale in November, continuing their strong upward trend. Retail apparel prices have risen 6-1/2 percent over the past year.

Furniture prices jumped 0.7 percent, reaching a level nearly six percent above a year ago. The November increases were especially large for upholstered furniture, which was in strong demand.

Average selling prices of new cars increased one percent, showing the usual October-to-November upward movement, as '68s were cleared out and mostly '69s were being sold. Gasoline and motor oil prices also increased at retail.

Retail food prices declined seasonally, following their unusual October advance.

About 142,000 workers will receive pay increases as a result of escalation based on the November Consumer Price Index. Over half of the workers

(75,000), in the meat packing industry, will receive eight cents an hour based on the change in the national index over the past six months. For workers in other industries, increases will range from one to eight cents an hour based on quarterly, semi-annual, or annual changes in the national and city indexes.

**AMBITIOUS WOMAN** Needed here. Capable and responsible. To learn and teach professional make-up. Also possible to have sm. business of your own. Write: include phone no. Viviane Wondard Cosmetics Dept. 701-43, 565 5th Ave. N.Y. N.Y. 10017. or Call Collect: (212) 682-4632.

### JANUARY SALE

## METROPOLITAN JEWELRY MFG., CO., INC.

1000 STUYVESANT AVE. cor. Morris Ave. UNION (one flight up) 687-5010

30% OFF ON ALL JEWELRY

Engagement & Wedding Rings. Gents, Ladies, Children's Rings. Diamonds, Star Sapphires, Pearls, Birthstones, Opals, Pearls, Earrings, Cuff Links, Charms, Bracelets, Tie Bars, Tie Tacs.

Special Orders • Repairs

### LIBRARY TECHNICAL ASS'T

## 1-YR. CERTIFICATE PROGRAM

CLASSES START JAN. 28

This tuition course is designed to help you assist librarians in ordering and preparing materials, servicing borrowers, and learning library procedures. Requirements for admission: H.S. Diploma or equivalent, knowledge of typing desired but not required.

For information, write or call The Admissions Office

### UNION COUNTY TECHNICAL INSTITUTE

1776 RARITAN RD., SCOTCH PLAINS, N.J. 08850-2000 (A Public School)

## Phoenix APPLIANCE CENTER

# SAVE \$50

on every set

## COLOR CONSOLES

HURRY IN, SAVE WHILE THEY LAST!

SAVE \$50 on MOTOROLA

Reg. \$548 SAVE \$50 SALE \$498

CL229E

SAVE \$50 on Admiral

Reg. \$578 SAVE \$50 SALE \$528

3301AL

Reg. \$628 SAVE \$50 SALE \$578

CD897E

Reg. \$538 SAVE \$50 SALE \$488

3L321.

Super Scope pre-set fine tuning.

Reg. \$588 SAVE \$50 SALE \$538

3305AL

SAVE \$50 on RCA

Reg. \$628 SAVE \$50 SALE \$578

CS703W

### Phoenix SAVINGS CERTIFICATE

Name.....

Address.....

Manufacturer..... Model..... Serial No.....

This \$50 Savings Certificate is valid for only the sets shown in this newspaper ad. It must be presented at time of purchase to take advantage of this offer.

## \$50

Dealer Signature.....

## \$50

Largest screens you can buy!

Most sets with Automatic Fine Tuning.

G.E. Portable RADIO 3 <sup>99</sup>	PROCTOR 2 Slice TOASTER 5 <sup>99</sup>
ROTOBROIL Electric CAN OPENER 3 <sup>99</sup>	EUREKA Electric SWEEPER 16 <sup>99</sup>
PRESTO Cordless Electric KNIFE 9 <sup>99</sup>	G.E. Mustang PHONO 29 <sup>99</sup>

### Phoenix APPLIANCE CENTER

200 MORRIS AVE. Springfield 376-6380 FREE PARKING

### NCE status is confirmed

A new report by an independent organization this week confirmed Newark College of Engineering's position as the nation's number one producer of chemical engineering B.S. degrees and ranks NCE among the top engineering institutions in turning out graduates in four other engineering fields.

The report from the Engineering Manpower Commission of the Engineers Joint Council covered the 1967-68 year and surveyed by discipline the engineering degrees conferred by 285 institutions (essentially those accredited through the Engineers Council for Professional Development).

The survey showed that NCE granted the largest number of B.S. degrees nationally in chemical engineering and ranked from third to seventh place among accredited schools in the conferring of B.S. degrees in civil, electrical, industrial and mechanical engineering.

TEEN-AGERS find jobs by tuning Wnt Ad. Call 686-7700.

## '69 FIAT

FROM ONLY \$1427

P.O.E.

ALL 850 & 124 MODELS AVAILABLE. STANDARD & AUTO. TRANS.

## DuKAY

IMPORTED CARS

382 MILLBURN AVE. MILLBURN 376-6960 SALES/SERVICE/PARTS

## GREAT EASTERN DISCOUNT CENTER

# ACRES OF FREE PARKING

# JANUARY WHITE SALE

ON SALE THURS, JAN 16 THRU SAT. JAN 18

RT. 24 - UNION SPRINGFIELD AVE. Between Morris Ave. & Vaux Hall Rd.

## FAMOUS MAKE SHEET SALE!

INSTANT CREDIT CHARGE-IT

NO MONEY DOWN TAKE MONTHS TO PAY

DAN RIVER MULTI-COLOR Long Wearing Cotton Muslin Sheets	Cannon Rose Blossom Print Sheets	Solid Color Pacific Sheets	Multi-Stripe Pacific Sheets
1 <sup>99</sup> 72"x108" TWIN FITTED	1 <sup>99</sup> 72"x108" TWIN FITTED	3 <sup>29</sup> 72"x108" TWIN FITTED	1 <sup>99</sup> 72"x108" TWIN FITTED
81"x108" FITTED DOUBLE 2.29	81"x108" OR FULL FITTED 2.29	81"x108" FITTED DOUBLE 3.59	81"x108" OR FULL FITTED 2.29
PILLOWCASES PKG. OF 2 1.59	PILLOWCASES PKG. OF 2 1.59	PILLOWCASES PKG. OF 2 1.99	PILLOWCASES PKG. OF 2 1.59

### Famous Mill BATH TOWELS

BATH SIZE 77¢

HAND SIZE 37¢ WASH CLOTH 27¢

St. Mary's, Cannon, and Cone towels in solids and prints. Hurry in while quantities last.

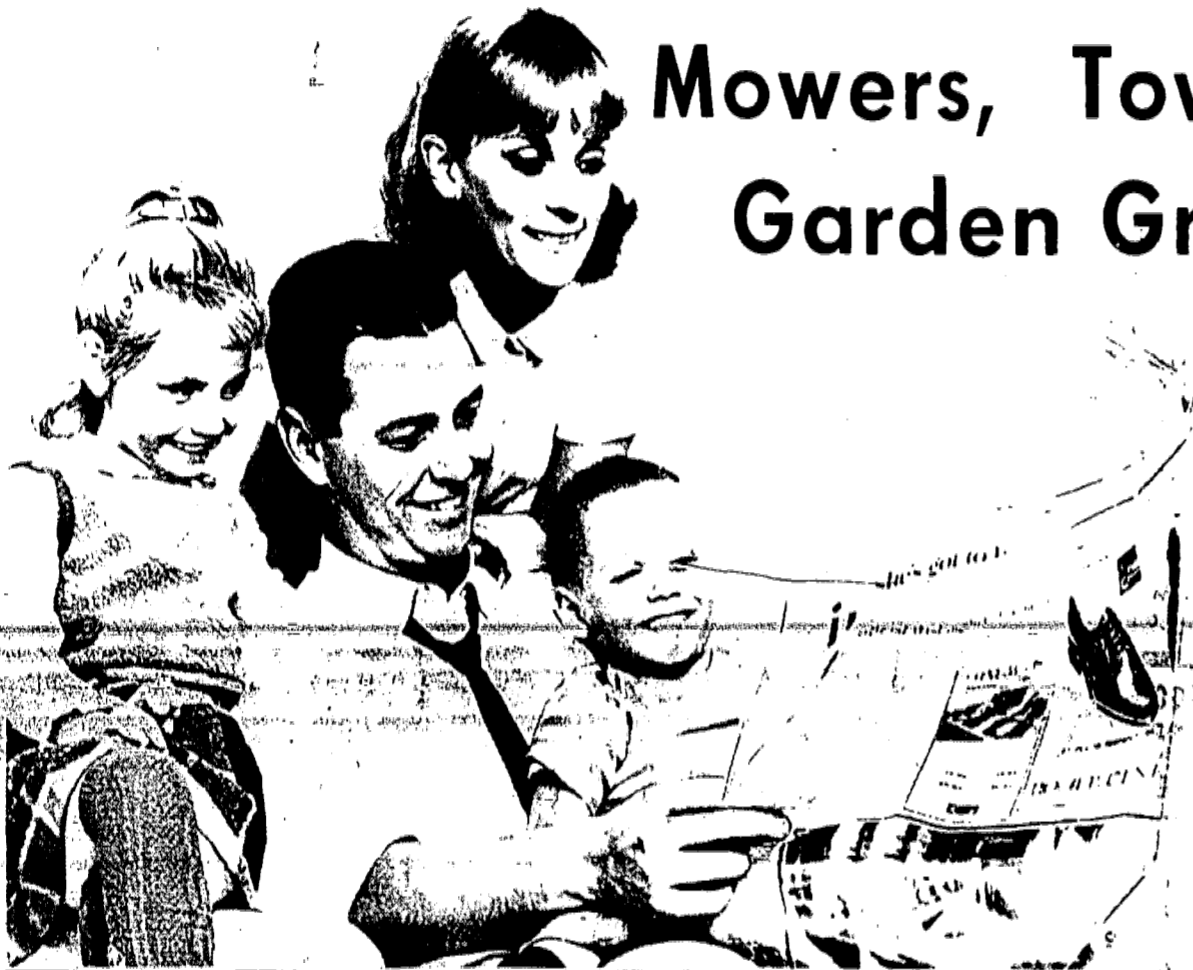
LINEN DEPT.

ITEMS ON SALE WHILE QUANTITIES LAST. WE RESERVE THE RIGHT TO LIMIT QUANTITIES. NOT RESPONSIBLE FOR TYPOGRAPHICAL ERRORS.

OUR NEW STORE HOURS OPEN MON. THRU SAT. 10 A.M. to 10 P.M. - CLOSED ALL DAY SUNDAY EXCEPT FOOD SUPERMARKET

To Buy or Sell - - Or Dig A Well  
 For Personals - - or Personnel —  
 Clean Rugs? Kill Bugs?  
 Find Antique Mugs?

Alter Coats, Renting Boats —  
 Baby Sitters, Puppy Litters —  
 Roofing, Siding,  
 Horseback Riding —  
 Mowers, Towers,  
 Garden Growers —



**FIND IT FAST IN THE  
 WANT ADS**

*the fast place to look for  
everything*

**FOR FAST RESULTS YOUR AD CAN APPEAR IN  
 8 NEWSPAPERS**

• IRVINGTON HERALD • UNION LEADER • SPRINGFIELD LEADER • VAILSBURG LEADER  
 • THE SPECTATOR (Roselle & Roselle Park) • LINDEN LEADER • SUBURBAN LEADER (Kenilworth) • MOUNTAINSIDE ECHO

**USE THIS EASY WANT AD FORM. . . OR CALL US**

Five (5) Words Of Average Length Will Fit On One Line. For Extra Long Words Allow Two (2) Spaces. Figure Your Cost By Multiplying The Number Of Words By 16¢ Minimum Charge \$3.20 (20 Average Words).

SUBURBAN PUBLISHING CORP.  
 1291 Stuyvesant Ave., Union, N.J.

Please insert the following classified ad.

1	2	3	4	5
6	7	8	9	10
11	12	13	14	15
16	17	18	19	20

(If additional words are required, attach separate sheet of paper!)

Name .....

Address .....

City ..... Phone .....

Insert Ad ..... Time(s) ..... Per Insertion/Starting ..... (Date) .....

Amount Enclosed ..... ( ) Cash ( ) Check ( ) Money Order.



**Only 16¢ per word**

Based on 5 average length words per line  
 Minimum charge \$3.20 — 4 line ad

Deadline: Tuesday Noon, for Thursday publication

Public Notice

NOTICE

NOTICE IS HEREBY GIVEN to the legal voters of the Township of Union, in the County of Union, State of New Jersey, that a public hearing will be held on Tuesday, January 28, 1969, at 8 p.m., Eastern Standard Time, in Room 1125 of the Union High School, Morris Avenue, Union, N.J., at which time the tentative budget for the school year 1969-70 will be open for examination and discussion. The tentative budget as adopted is as follows:

SCHOOL DISTRICT BUDGET STATEMENT FOR SCHOOL YEAR 1969-70. Table with columns for 1967-68, 1968-69, and 1969-70. Rows include Board of Education, Enrollments, and Current Expense.

DEBT SERVICE. Table with columns for 1967-68, 1968-69, and 1969-70. Rows include Appropriation Balance, Local Tax Levy, and Miscellaneous Revenue.

TOTAL REVENUE ALL ACCOUNTS. Table with columns for 1967-68, 1968-69, and 1969-70. Rows include Current Expense, Capital Outlay, and Debt Service.

\*Reflects Actual Appropriations Balance July 1, 1967. \*\*In accordance with Chapter 75, Laws of 1967.

APPROPRIATIONS. Table with columns for 1967-68, 1968-69, and 1969-70. Rows include Administration, Instruction, Attendance and Health Services, Transportation, Operation, and Maintenance.

FIXED CHARGES. Table with columns for 1967-68, 1968-69, and 1969-70. Rows include Employee Retirement, Insurance, and Tuition.

SUNDRY ACCOUNTS. Table with columns for 1967-68, 1968-69, and 1969-70. Rows include Food Services, Student Body Activities, Community Services, and Special Projects.

CAPITAL OUTLAY. Table with columns for 1967-68, 1968-69, and 1969-70. Rows include Site, Buildings, and Equipment.

DEBT SERVICE. Table with columns for 1967-68, 1968-69, and 1969-70. Rows include Principal and Interest.

TOTALS. Table with columns for 1967-68, 1968-69, and 1969-70. Rows include Current Operating Appropriation Balances and Total Expenditures.

UNEXPENDED IMPROVEMENT AUTHORIZATIONS. Table with columns for 1967-68, 1968-69, and 1969-70. Rows include Building and Equipment.

UNEXPENDED IMPROVEMENT AUTHORIZATIONS. Table with columns for 1967-68, 1968-69, and 1969-70. Rows include Building and Equipment.

TOTAL EXPENDITURES AND ENDING BALANCE. Table with columns for 1967-68, 1968-69, and 1969-70. Rows include Building and Equipment.

The tentative budget is on file and open to inspection from January 10, 1969 to January 28, 1969, the date of the hearing between the hours of 9 a.m. and 4 p.m. on days when school is in session, in the office of the Secretary at 2369 Morris Avenue, Union, New Jersey.

BY ORDER OF THE BOARD OF EDUCATION OF THE TOWNSHIP OF UNION, COUNTY OF UNION, NEW JERSEY.

DATED: January 10, 1969. R. A. SCHUBER, SECRETARY-SCHOOL BUSINESS ADMINISTRATOR. Union Leader, Jan. 16, 1969. (Fee \$128.64)

UNEXPENDED IMPROVEMENT AUTHORIZATIONS. Table with columns for 1967-68, 1968-69, and 1969-70. Rows include Building and Equipment.

UNEXPENDED IMPROVEMENT AUTHORIZATIONS. Table with columns for 1967-68, 1968-69, and 1969-70. Rows include Building and Equipment.

TOTAL EXPENDITURES AND ENDING BALANCE. Table with columns for 1967-68, 1968-69, and 1969-70. Rows include Building and Equipment.

The tentative budget is on file and open to inspection from January 10, 1969 to January 28, 1969, the date of the hearing between the hours of 9 a.m. and 4 p.m. on days when school is in session, in the office of the Secretary at 2369 Morris Avenue, Union, New Jersey.

BY ORDER OF THE BOARD OF EDUCATION OF THE TOWNSHIP OF UNION, COUNTY OF UNION, NEW JERSEY.

DATED: January 10, 1969. R. A. SCHUBER, SECRETARY-SCHOOL BUSINESS ADMINISTRATOR. Union Leader, Jan. 16, 1969. (Fee \$128.64)

UNEXPENDED IMPROVEMENT AUTHORIZATIONS. Table with columns for 1967-68, 1968-69, and 1969-70. Rows include Building and Equipment.

UNEXPENDED IMPROVEMENT AUTHORIZATIONS. Table with columns for 1967-68, 1968-69, and 1969-70. Rows include Building and Equipment.

TOTAL EXPENDITURES AND ENDING BALANCE. Table with columns for 1967-68, 1968-69, and 1969-70. Rows include Building and Equipment.

The tentative budget is on file and open to inspection from January 10, 1969 to January 28, 1969, the date of the hearing between the hours of 9 a.m. and 4 p.m. on days when school is in session, in the office of the Secretary at 2369 Morris Avenue, Union, New Jersey.

BY ORDER OF THE BOARD OF EDUCATION OF THE TOWNSHIP OF UNION, COUNTY OF UNION, NEW JERSEY.

DATED: January 10, 1969. R. A. SCHUBER, SECRETARY-SCHOOL BUSINESS ADMINISTRATOR. Union Leader, Jan. 16, 1969. (Fee \$128.64)

UNEXPENDED IMPROVEMENT AUTHORIZATIONS. Table with columns for 1967-68, 1968-69, and 1969-70. Rows include Building and Equipment.

Ask Amy

By AMY ADAMS



Dear Amy: What is a woman in her 60's supposed to do with her husband, also in his 60's, who has become overly suspicious in his old age?

Dear B. K.: She is supposed to rejuvenate her "pucker power!"

Dear Amy: Description of a good secretary: Efficient? "Very" Friendly? "Wife's best friend."

Dear Anon: The duties of a secretary are as "demanding" and fulfilling as a secretary wants them to be.

Dear Amy: How sorry I feel for the young couple whose girl's parents are always criticizing her husband. It sounds very much like my daughter's-in-law parents.

Dear Amy: My son and his wife come

I keep my big mouth shut so as not to cause any trouble, I wonder what makes them so smart!

My serious problem is with my little brother. He always comes up with pretty complex problems. Last week he refused to go to school any more because the kids in his 5th grade class call him names like "Fat Head" and "Green Giant Head," etc. You see he does have a rather large head, and although I try to help him, he's just too far gone.

My mother told him his head wasn't really that big, and after she gave him the pep talk, she gave him a list of

usually experience blood shortages at this time of the year, but today's situation has reached almost a crisis proportion."

"In many hospitals," Pepper said, "employees are donating blood to help ease the shortage but more blood, of all types, is needed."

Pepper, in the state-wide appeal, said that, in many cases, hospitals are postponing elective surgery except in emergency cases.

State's hospitals appeal for donations of blood

New Jersey citizens were being urged this week to contact their local hospitals and make an appointment to donate blood. New Jersey hospitals and blood banks report a critical blood shortage, according to James R. Pepper, president of the New Jersey Hospital Association and administrator of the Newcomb Hospital, Vineland.

Public Notice

SEALED PROPOSALS will be received by the Trustees of the Free Public Library of Union Township at the Main Library, Friberger Park, Morris Avenue, Union, New Jersey, for Interior Alterations at the Main Library on February 17, 1969, at 3:30 P.M., prevailing time.

Copies of the plans and specifications may be obtained at the Office of the Architect, A deposit of \$25.00, payable by check to the order of the Architect will be required, full amount of which will be returned to bidders submitting bona fide bids and upon return of specifications in good condition within 10 days after the date of bid opening.

The trustees of the Free Public Library of Union Township reserve the right to reject any or all bids and to award the contract to the bidder whose proposal best serves their interests.

All proposals submitted by the Contractor must be accompanied in writing by a bid bond, amounting to 10% of the bid price, written by a Surety Company authorized to transact business in the State of New Jersey, or a certified check for 10% of the bid, which shall provide requirements as specified in the instructions to bidders.

MRS. LUCILLE CLAUS Secretary Union Leader, Jan. 16, 1969 (Fee \$8.40)

NOTICE OF SETTLEMENT NOTICE IS HEREBY GIVEN, that the first and final account of the estate of WILLY GOLDMANN, Guardian of ELIZABETH HOFFMANN, a mental incompetent, now deceased, will be audited and stated by the Surrogate MARY C. KANARE and reported for settlement to the Union County Court-Probate Division, on Friday, February 28th, 1969, at 9:30 a.m., prevailing time.

Dated: January 16, 1969. William V. Heintz, Willy Goldmann, Attorney 233 Chestnut St., Roselle, N.J. The Spectator, Jan. 16, 23, 30, Feb. 6, 1969. (4 to w \$18.40)

PLEASE TAKE NOTICE, that the Mayor and Council of the Borough of Roselle will consider the following resolution at its regular meeting of January 27, 1969 at 8:00 p.m., or as soon as the matter may be brought up at the Borough Hall, Chestnut Street, Roselle, New Jersey, at which time the public may be heard: BE IT RESOLVED BY THE MAYOR AND COUNCIL OF THE BOROUGH OF ROSELLE:

That conditions and restrictions set forth in a deed from the Borough to the following described premises as modified by resolution of the governing body adopted on July 14, 1963 be further modified at the request of the applicant in the manner hereinafter set forth and all provisions of said deed not so modified are to remain unaffected:

Applicant: Harry J. Hunt, Jr. 151 East Tenth Avenue, Roselle, N.J. Premises: Lot 52 in Block 52 New Conditions: Purchases shall use subject premises for the construction of a one-family dwelling and a garage, attached or detached, sufficient to accommodate at least one automobile. The said dwelling shall have a floor area of living space of at least 1200 square feet excluding garage, attached or detached, and recreation room built on grade level. Purchaser shall complete all of said construction within (18) months from January 27, 1969.

BE IT FURTHER RESOLVED, that the applicant shall pay attorney fees together with costs of advertising in connection with this modification. The Spectator, Jan. 16, 23, 1969. (Fee \$24.38)

TEMPORARY NEED FOR HOME NURSING CARE?

When flu or other illness occurs, temporary home nursing can be a real need. HOMEMAKERS can meet the need for you. Our Home Health Aides are experienced in private care, and in more serious cases, our Registered and Licensed Practical Nurses stand ready to help. Our staff is experienced, bonded and available at short notice. Satisfaction is guaranteed, and you pay only for the hours worked.

HOMEMAKERS, INC. 115 No. Union Ave. Cranford Call (212) 5800

Advertisement for Mrs. Smith's Pies and other food items. Includes: GREAT EASTERN FOOD DEPT, FROZEN FOOD, MRS. SMITH'S PIES (2 for 89¢), SEABROOK CREAMED SPINACH (4 9-oz \$1), G&W JO PACK PIZZA (1 6-oz \$1), ON COR - ALL VARIETIES MEAT SLICES (2-lb \$1.19), BRIDS EYE POTATOES (9-oz \$1), DELI DEPT. EXTRA LEAN BOILED HAM \$1.09, DAIRY DEPT. TROPICANA ORANGE JUICE (quart 33¢), SEALTEST SOUR CREAM (pt 37¢), BREAKSTONE CREAM CHEESE (8-oz 27¢), GOLDEN GLOW SOFT MARGARINE (10 OFF 1-lb \$1), KRAFT PAST PROCESS AMER. SINGLES (12-oz 49¢).

Advertisement for a grocery store. Includes: U.S. CHOICE & PRIME ROAST BEEF (89¢ lb), SIRLOIN LONDON BROIL (89¢ lb), STAHL MEYER BOLOGNA & LIVERWURST (49¢ lb), STAHL MEYER FRANKS (55¢ 1-lb pkg), PARKS - FAMOUS FLAVOR SAUSAGE MEAT (69¢ lb), U.S. CHOICE & PRIME BEEF CUTS: EYE OF FILLET STEAK (1.09 lb), CHUCK STEAK (1.09 lb), SWISS STEAK (1.09 lb), MINUTE STEAK (1.09 lb), SIRLOIN STEAK (1.09 lb), CHUCK DECKLE (79¢ lb), STEWING BEEF (79¢ lb), MIDDLE CHUCK (79¢ lb), FRENCH ROAST (79¢ lb), FLANKEN (69¢ lb), FRUITS & VEGETABLES: LARGE SIZE FROM CALIF. SUNKIST NAVAL ORANGES (10 for 49¢), FLORIDA VINE RIPPED TOMATOES (25¢ lb), LARGE STALKS PASCAL CELERY (23¢ bunch), FIRM CRISP FROM FLORIDA GREEN PEPPERS (23¢ bunch), TENDER YOUNG GREEN SQUASH (23¢ bunch), PRIDE OF COLOMBIA COFFEE (3 \$1.59), CHUNK IN OIL STARKIST WHITE TUNA (3 7-oz 89¢), ORANGE GRAPE PUNCH HI-C DRINKS (4 1-qt 1 \$1), VERY FINE REGULAR or LOW CALORIE APPLE SAUCE (3 2-lb 1 \$1), STOCKTON ALL GREEN ASPARAGUS SPEARS (3 14 1/2-oz 1 \$1), WHITE ROSE PEANUT BUTTER (3 lb 99¢), 5c OFF LABEL AJAX CLEANSER (14-oz 9¢), DELICIOUS PRINCELLA YAMS (3 2-lb 1 \$1), 7c OFF LABEL COLD POWER ALL (3-lb 1-oz 69¢).

These all letters to: AMY ADAMS via THIS NEWSPAPER For a personal reply enclose a stamped, self-addressed envelope.

COME SEE - COME SAVE LOUNGEWEAR ROBES • SLEEPWEAR CULOTTES Samples Closeout & Slight Irreg. Pearl Levitt 410 Ridgewood Rd., Maplewood Phone SO 2-9718; Hours 12 to 4.

Marty Ferns PHOTOGRAPHER DISTINCTIVE PORTRAITURE 252 MOUNTAIN AVE. SPRINGFIELD CLOSED WEDNESDAY'S 379-7666

Advertisement for First State Bank of Union. Includes: bill problem? LET US HELP WITH A CONVENIENT PERSONAL LOAN. FIRST STATE BANK OF UNION 686-4800



Looking for Something? Tell mom that Kempler's is the greatest for Stride Rite Shoes. Nothing like them for comfort, support and protection for growing feet. And no place quite like Kempler's for proper fit by highly trained experts. Doctor's prescriptions filled for corrective footwear. Kempler Shoes 1055 Springfield Ave., Irvington 996 Stuyvesant Ave., Union 570 So. Livingston Ave., Livingston Regular Charge or Uni-Card OPEN FRIDAY AND MONDAY NIGHTS

WINTER WOES

PREVENT THOSE WINTER DRIVING WOES The Safe Winter Driving League presents this tip for safer winter driving from the National Safety Council: "Tests show that reinforced tire chains provide four to seven times as much pulling ability on snow and ice as regular tires without chains. Always carry chains in the trunk of your car to assure your ability to get out of a bad weather."

NOT RESPONSIBLE FOR TYPOGRAPHICAL ERRORS. WE RESERVE THE RIGHT TO LIMIT QUANTITIES.

# College Classification Tests scheduled by Civil Service

Mrs. Thelma Parkinson Sharp, president of the New Jersey Department of Civil Service, this week announced the publication of the annual College Classification Tests examination bulletin.

In order to qualify for entrance into the College Classification Tests - an applicant can take one or more - an individual must have a Bachelor's Degree from an accredited college or will receive a Bachelor's Degree by June, 1969. The only other requirement is United State citizenship. There is no New Jersey residency requirement and applications must be filed by Feb. 1, 1969 for this examination.

Mrs. Sharp said, "The annual College Classification Tests have been one of the prime

sources of bringing new blood into State government in the professional, technical and scientific areas of employment since their inception in 1955. Many of the applicants of previous years now hold positions of high responsibility and trust in the various departments and agencies of State government.

"Employment with the State of New Jersey offers challenge; a chance for service; promotion by merit; an opportunity in a career position in which one can grow, mature, and achieve career goals; annual merit pay raises; and generous employee benefits. State government also offers its employees financial assistance so that they can continue their education and secure advanced degrees.

There are openings in the fields of accounting, social work, personnel, engineering, public health and many other areas of endeavor. There are opportunities to match just about every major course of study. Individuals interested in these tests may receive the informational brochure and application for examination by contacting the New Jersey Department of Civil Service, State House, Trenton, New Jersey or one of its branch offices located at 711 East State st., Trenton; 1100 Raymond Blvd., Newark or City Hall, Camden.

Closing date for filing application is Feb. 1, 1969.

## CLOTHES CARE COMMENTS

by SAM MANN

(Diamond Cleaners)

Many a year seems to have gotten off to the wrong start simply because someone made too many good resolutions--and talked too much about them! That's why I have always felt that the comment in John Selden's "Table Talk" is a particularly good one to remember--namely: "Never tell your resolutions beforehand."

If you use it as a guide in the future, I'm sure you'll find it a wonderful way to save face with both your family and friends. And think how you'll glow if you do manage to keep a particularly difficult resolution such as losing weight or giving up smoking. It's so much more pleasant to receive a compliment than it is to eat crow.

There's one resolution, however, that will help you win compliments all year long--and that is to keep your family's wardrobe immaculate and wrinkle-free.

Of course, that means good home care like hanging up a garment as soon as you take it off, rather than dropping it over a chair. It also means giving every wearable the best professional care, such as you get at Diamond Cleaners as soon as it gets soiled.



Dry Cleaners of Distinction

1350-8 GALLOPING HILL ROAD UNION • 687-3585

## Examinations to fill State Police jobs slated for Tuesday

Written examinations for applicants to fill vacancies in the New Jersey State Police will be held next Tuesday at 7 p.m. at Essex Catholic High School, 300 Broadway, Newark.

Minimum requirements for applicants are: Citizen of the United States; high school diploma or equivalency certificate; between the ages of 21 and 34 (as of July 13, 1969); weight not less than 150 pounds; height not less than 5 feet 8 inches; vision not less than 20/30 in both eyes without glasses or contact lenses; ability to distinguish colors; normal hearing in both ears; good teeth with satisfactory restorations; body free from all physical defects; good reputation and sound moral character; must have a valid driver's license. Married and single men are accepted.

Men meeting these requirements may take the written examination without prior application. Applicants who take the exam will be notified of the results; those who pass will be instructed to report to Division Headquarters, West Trenton, for the medical and physical examination. Results of all examinations are held in the strictest confidence. Col. David B. Kelly, state Police Superintendent, said.

Successful applicants appointed to the State Police Academy for the 14-week training period will receive biweekly salary of \$252 plus meals and quarters. Upon graduation, the annual salary of a trooper is \$6,684 plus \$1,704 maintenance allowance. Yearly increments of \$334 are granted until the maximum of \$8,688 plus \$1,704 (total \$10,392) is attained.

USED CARS DON'T DIE... they just trade away. Sell yours with a low-cost "Wanted" Ad. Call 886-7700.

## Directory published by church

The 1969 edition of the Directory and Almanac of the Archdiocese of Newark was issued this week by The CYO Press. The 192-page guide gives detailed information on Roman Catholic churches, clergymen, schools, institutions, agencies and organizations in Bergen, Essex, Hudson and Union counties.

Established in 1853, the archdiocese currently has a Catholic population of 1,637,634, with 1,390 priests, 3,035 sisters, 273 brothers, and 161 seminarians.

The parish section of the directory and almanac lists 253 churches, gives the name of the pastor and assistants, addresses and telephone numbers of the rectory, school, and convent.

The directory lists 240 parochial schools, 54 high schools, and six institutions of higher learning. There are 29 religious communities for men and 40 for women. The book also lists officials of the archdiocese, including the Senate of Priests and numerous commissions.

Institutions include nine hospitals, eight children's homes, 14 residences for sisters, three homes for the aged, three residences for women, eight day-nurseries, a social service center, and a home for the blind.

Directors and staffs for some 14 agencies of the archdiocese are listed, including a purchasing agency, the Christian Communications Apostolate, and the many departments and centers of the Mount Carmel Guild for the handicapped.

Organizations included in the directory -- along with the names and addresses of directors, regional chairmen, etc. -- are the Family Life Apostolate, Catholic Youth Organizations, Newman Apostolate, etc.

The directory may be obtained by writing to The CYO Press, 101 University Ave., Newark. Revenues derived from publication of the Directory help finance youth activities of the Catholic Archdiocese. The cost is \$3.50.

## Nixon litho now on sale

Berkeley G. Burrell, chairman of "concessions" for the 1969 Inaugural Committee, announced this week that the official lithographed portrait of President-elect Richard M. Nixon is now on sale.

This is the first time that an official lithographed portrait of the incoming President has been offered for sale by the Inaugural Committee. The official Nixon portrait is a lithograph of an original oil by New York portraitist Gloria Schumann. It is printed on 12 by 16 inch art paper and will be sold in a parchment-paper folio. The folio features a reproduction of the 1969 Inaugural seal on the front cover. The back cover contains a biographical sketch of President-elect Nixon.

The folio will be sold at Inaugural Committee headquarters, 440 G Street, N.W., for \$2. Mail orders may be sent to the Inaugural Concessions Committee at the same address.

A smaller edition of the portrait folio, in a five by seven inch size, will also be sold. The smaller folio will sell for 50 cents.

## My Neighbors



"Aw, he seems friendly enough, Mom -- Lookit that big smile!"

**'69 IMMEDIATE DELIVERY**

**TOYOTA**  
COROLLAS  
CORONAS  
CROWNS  
SEDANS and WAGONS  
AUTO. TRANS. AVAILABLE  
From  
Only **\$1666**  
P.O.E.  
Essex County's Exclusive  
Toyota Dealer

**DuKAY**  
IMPORTED CARS  
382 MILLBURN AVE., MILLBURN  
376-6960

**Announcing**

### EDUCATIONAL CENTER

- Humanistic Studies
- Creative Arts Workshop

... for adults, teenagers, and children who wish to grow and develop as sensitive, effective human beings.

... new courses in contemporary problems and academic areas.

Register now • Spring Semester starts February 3rd.  
For descriptive catalog and register-by-mail application:  
Call: SO 3-1905

A non-profit school presented as a community service by the

### ETHICAL CULTURE SOCIETY OF ESSEX COUNTY

516 Prospect Street, Maplewood, New Jersey 07040 SO 3-1905

### BIBLE QUIZ

By MILT HAMMER

Given below are five quotations from the Book of Genesis. Your task is to choose correctly the one who is speaking.

1. "Am I my brother's keeper?" (Abel, Cain, Noah)
2. "Sell me this day thy birthright." (Esau, Abraham, Jacob)
3. "See, I have set thee over all the land of Egypt." (Joseph, Pharaoh, Moses)
4. "Thy name shall be Abraham; for a father of many nations have I made thee." (Adam, Shem, God)

ANSWERS

God (17:5); Cain (4:9); 2. Jacob (25:31); 3. Pharaoh (41:41); 4. Cain (4:9); 2. Jacob (25:31).

## Staff

### GOOD DEAL

**K. 2 R Spray Spot Cleaner** 8-oz. can **\$1.49**

**Staff Colombian Coffee** 1-lb. can **65¢**

**Coffeemate Instant Creamer** 6-oz. jar **47¢**  
18-oz. jar **93¢**

**Adorn Hair Spray** Regular & Hard To Hold 15 1/8-oz. can **\$1.39**

**Ragu Shells in Sauce** 2 15-oz. cans **45¢**

**Friskies Cat Foods All Varieties** 6 6 1/2-oz. cans **95¢**

**Gerber Strained Baby Foods** 8 4 1/2-oz. jars **85¢**

**Gerber Junior Foods** 6 7 1/2-oz. jars **89¢**

**Burpy Pink Punch Cookies** 10-oz. box **39¢**

**Keebler Chocolate Fudge Sandwich** 16-oz. box **43¢**

**Nabisco Ritz Crackers** 12-oz. box **35¢**

**Sunshine Arrowroot Cookies** 7 1/2-oz. box **35¢**

**Lipton Beef Mushroom Soup** 2 pk. **37¢**

**Lipton Chicken Vegetable Soup** 2 pk. **37¢**

**Lipton Chicken Noodle Soup** 4 2 pk. **\$1**

**Lipton Chicken Rice Soup** 2 pk. **37¢**

**Lipton Chicken Noodle Soup w/Meat** 2 pk. **37¢**

**Lipton Tea Bags** 16 ct. box **24¢**  
48 ct. box **59¢**  
100 ct. box **\$1.01**

**Wishbone Italian Dressing** 8-oz. bott. **37¢**

**Wishbone DeLuxe French Dressing** 8-oz. bott. **37¢**

**Wishbone Russian Dressing** 8-oz. bott. **37¢**

**Wishbone Italian Dressing** 16-oz. bott. **67¢**

**Hi Rolls Turtle-neck Dress** Reg. \$6.00 **\$3.00**

**Men's Dress Pants** 1/2 PRICE Reg. \$10, \$12, \$13, \$15

**Men's SPORT SHOES** \$7 Reg. up to \$14

**SWEATERS** Turtlenecks Reg. \$12 **\$6**  
Cardigans Reg. \$12 **\$6**  
V-Necks Reg. \$10 **\$5**

**COATS** Winter • Knack Around Ski Jacket • Suede & Leather values to \$55 **27.50**

**Boy's WINTER JACKETS** 1/2 PRICE values to \$18

**Single & Double Breasted Suits** Reg. \$35 **17.50** now

**Sport Coats** now **12.50** Reg. \$25 1/2 PRICE Reg. \$35 & \$40

**Boy's SPORT COATS** 1/2 PRICE Reg. \$20, \$28, \$25.

**Boy's SWEATERS** Reg. \$9 now **\$4.50**  
Reg. \$8 now **\$4.00**

**RAINCOATS** all styles **\$22.50** Reg. \$45 now

**HEAVY OUTERWEAR** Reg. \$16 & \$20 **\$8 & \$10** now

**Boy's SHIRTS** Turtlenecks Ivy Button Down Hi Rolls **1/2 PRICE**

# HALF PRICE SALE

WE ARE CONTINUING OUR

<b>Men's SHIRTS</b> \$2.50 <small>Ivy button down spread collar long sleeve Reg. to \$5.00</small> <b>Hi Rolls Turtle-neck Dress</b> Reg. \$6.00 <b>\$3.00</b>	<b>SWEATERS</b> Turtlenecks Reg. \$12 <b>\$6</b> Cardigans Reg. \$12 <b>\$6</b> V-Necks Reg. \$10 <b>\$5</b>	<b>Single &amp; Double Breasted Suits</b> Reg. \$35 <b>17.50</b> now <b>Sport Coats</b> now <b>12.50</b> Reg. \$25 1/2 PRICE Reg. \$35 & \$40
<b>Men's Dress Pants</b> 1/2 PRICE Reg. \$10, \$12, \$13, \$15 <b>Men's SPORT SHOES</b> \$7 Reg. up to \$14	<b>COATS</b> Winter • Knack Around Ski Jacket • Suede & Leather values to \$55 <b>27.50</b> <b>Boy's WINTER JACKETS</b> 1/2 PRICE values to \$18	<b>RAINCOATS</b> all styles <b>\$22.50</b> Reg. \$45 now <b>HEAVY OUTERWEAR</b> Reg. \$16 & \$20 <b>\$8 &amp; \$10</b> now <b>Boy's SHIRTS</b> Turtlenecks Ivy Button Down Hi Rolls <b>1/2 PRICE</b>

# MORTON

1016 Stuyvesant Ave.

Union Center 688-6689

## We don't just pass the buck

## We stretch it!

Blue Cross pays the hospital. Blue Shield pays for the doctor. These payments--amounting to hundreds of millions of dollars a year--are made carefully, through unique cost control programs which are the result of long-standing relationships between the Plans and hospitals and doctors. Pre-determined cost formulas worked out by Blue Cross and the hospitals keep costs to the subscribers DOWN. Fee schedules jointly arrived at by Blue Shield and Participating Doctors keep costs to the subscribers DOWN. Programs like Approval-By-Individual Diagnosis (AID) keep costs to the subscribers DOWN by making sure hospital stays don't extend a day longer than necessary. We pay the hospital. We pay for the doctor. AND WE KEEP COSTS DOWN. That's why Blue Cross and Blue Shield can promise New Jerseyans "More Health Care For Your Health Dollar."

And make good on that promise year after year!

MEMBER, TRENTON, CAMDEN, MORRISTOWN



**FIRST PRESBYTERIAN CHURCH**  
MORRIS AVE. AT MAIN ST., SPRINGFIELD  
MINISTERS: REV. DR. BRUCE W. EVANS  
REV. JOSEPH T. HOURLANI  
Today--7:15 p.m., Girls' Choir rehearsal.  
7:30 p.m., court of awards for Boy Scout  
Troop 70, 8 p.m., Senior Choir rehearsal, 8  
p.m., trustees' meeting.  
Friday--8 p.m., fashion show and card  
party sponsored by church's Senior Girl Scout  
troop.  
Sunday--9:30 a.m., Church School. Classes  
for all on a graded basis for children and young  
people between the ages of 3 and 17 are taught  
in the Chapel and Parish House. Kinderkirk  
for toddlers ages 1 and 2 on the second floor  
of the Chapel. 9:30 and 11 a.m., identical  
worship services. The Rev. Dr. Bruce W.  
Evans will preach at both services. Child care  
provided for pre-school children on the second  
floor of the Chapel. 2 p.m., meeting of church  
nominating committee. 7:30 p.m., Westminister  
Fellowship meeting for all high school age  
young people. Guest speaker, Raymond S.  
Grant, associate executive director of the  
Central Atlantic Area of YMCA's.  
Monday--3:15 p.m., Brownies. 7 p.m., Girl  
Scouts.  
Tuesday--8 p.m., primary department  
teachers' preview.  
Wednesday--8 p.m., ecumenical service for  
Christian unity at St. James Roman Catholic  
Church. 8 p.m., junior high department teachers'  
preview.

**SPRINGFIELD EMANUEL METHODIST**  
MAIN STREET AT ACADEMY GREEN  
SPRINGFIELD  
JAMES DEWART, PASTOR  
Today--4 p.m., Wesley Choir. 8 p.m., Chancel  
Choir, Trivett Chapel.  
Friday--7, 9:30 p.m., Church Bowling  
League. 8 p.m., Busy Fingers of Wesleyan  
Service Guild at 47 Clinton ave., Springfield.  
Sunday--9:30 a.m., divine worship, Trivett  
Chapel; sermon: "An Emerging Unity." 9:30  
a.m., German language worship; sermon: "The  
Story of Giants," Emanuel Schwing, local  
preacher. 9:30 a.m., Church School for all  
ages. Nursery through sixth grade in Wesley  
Room. 11 a.m., church nursery. 11 a.m.,  
divine worship, week of Christian unity. Sermon:  
"An Emerging Unity." 7 p.m., Senior  
High Youth Fellowship.  
Tuesday--8 p.m., Wesley Service Guild,  
charter night.  
Wednesday--8 p.m., Christian unity service  
of prayer at St. James Roman Catholic  
Church.

**OUR LADY OF LOURDES**  
300 CENTRAL AVE., MOUNTAINSIDE  
REV. GERALD J. MCGARRY, PASTOR  
REV. RAYMOND D. AUMACH,  
REV. GERARD WHELAN,  
ASSISTANT PASTORS  
Sunday--Masses at 7, 8, 9:15, 10:30 a.m.  
and 12 noon.  
Weekdays--Masses at 6, 7, 8, and 10 a.m.  
Miraculous Medal Novena, Monday at 8  
p.m., Benediction during the school year on  
Fridays at 2:30 p.m., Baptisms on Sunday at  
2 p.m. by appointment.  
Confessions every Saturday from 4 to 5:30  
and from 7:30 to 9 p.m.

**ANTIOCH BAPTIST CHURCH**  
S. SPRINGFIELD AVE., SPRINGFIELD  
REV. CLARENCE ALSTON, PASTOR  
Today--8 a.m., Gospel Chorus rehearsal.  
Saturday--1 p.m., Church School choir  
rehearsal.  
Sunday--9:30 a.m., Sunday School. 11 a.m.,  
worship service. 5:30 p.m., Baptist Youth  
Fellowship. 7 p.m., Church School teachers'  
meeting. 8 p.m., mid-week service.

**Church Chuckles** by CARTWRIGHT



"I done left everythin' in God's hands, like  
th' preacherman told me, and lookit what  
happened."

**MONTAGS**  
10th Annual WRITE SALE  
2 Boxes of Stationery For \$1  
COMING SOON!  
GRUMBACHER'S ART SUPPLIES  
CAROL LANE Gifts & Card Shop  
Echo Plaza Shopping Center  
Springfield • 379-3819

**THAT SPECIAL GIFT SHE'LL ALWAYS REMEMBER**  
ANYTHING FROM A SCARF TO A COAT  
• Full-length Coats  
• Jackets  
• Stoles  
• Three-quarter length Coats  
Specializing in Repairing and Remodeling  
**KOPPEL FURS**  
974 Stuyvesant Avenue  
Union Center 686-1775

**Mountainside Echo**  
Subscription Form  
To: Mountainside Echo  
2 New Providence rd., Mountainside,  
N.J. 07092  
Enclosed find check or money-order for a  
subscription to the Mountainside Echo.  
Please check one:  
Save \$2.80 over single copy price.  
( ) One-year Subscription . . . . \$5  
Save \$6.60 over single copy price.  
( ) Two-year Subscription . . . . \$9  
Name . . . . . (Print)  
Address . . . . . (Print)  
Phone Number . . . . .  
Subscription will take effect one week  
after receipt of this form.  
Please check one:  
( ) New Subscription or ( ) Renewal  
(PLEASE - If this is a renewal subscription,  
kindly enclose the mailing label from your paper.)

**HOLY CROSS LUTHERAN CHURCH**  
(THE CHURCH OF THE RADIO "LUTHERAN  
HOUR" AND TV'S "THIS IS THE LIFE")  
637 MOUNTAIN AVE., SPRINGFIELD  
THE REV. K. J. STUMPF, PASTOR  
Sunday--8 p.m., choir.  
Saturday--5:30 to 7:30 p.m., spaghetti sup-  
per.  
Sunday--8:30 a.m., Lutheran Hour, WNBC-  
600. 8:30 a.m., Holy Communion. 9:30 a.m.,  
Sunday School and Bible classes. 10:45 a.m.,  
worship.  
Monday--4 p.m., Confirmation I. 8 p.m.,  
Voters' Assembly.  
Tuesday--4 p.m., Confirmation II. 7:30 p.m.,  
Sunday School staff and Bible class.  
Wednesday--1:15 p.m., Ladies' Bible

**TEMPLE SHAREY SHALOM**  
AN AFFILIATE OF THE UNION OF  
AMERICAN HEBREW CONGREGATIONS  
50, SPRINGFIELD AVE., SHUNPIKE RD.  
SPRINGFIELD  
RABBI ISRAEL S. DRESNER  
CANTOR IRVING KRAMERMAN  
Walter Winnick, son of Mr. and Mrs. Jerome  
Winnick of Springfield, was called to the Torah  
as the Bar Mitzvah at the Sabbath morning  
service last Saturday.  
Tomorrow--8:30 p.m., Sabbath evening ser-  
vice. Sermon topic: "Some Rabbinic Advice to  
the Incoming American President."  
Saturday--10:30 a.m., Sabbath morning ser-  
vice. A sermon will be preached by Rabbi  
Dresner.  
Tuesday--8 p.m., Joint Adult Education In-  
stitute classes meet at Temple Beth Am

**MOUNTAINSIDE CHAPEL**  
HIGHWAY 22, MOUNTAINSIDE  
REV. ROBERT B. MIGNARD, PASTOR  
Today--8 p.m., choir practice.  
Sunday--9:45 a.m., Sunday School (nursery).  
11 a.m., morning worship. 6 p.m., youth  
groups. 7 p.m., evening worship.  
Monday--1:30 p.m., Cottage Prayer Group.  
7 p.m., Pioneer Girls.  
Tuesday--7 p.m., Hi B-A. 8 p.m., Missionary  
Society.  
Wednesday--8 p.m., prayer and Bible study.

**EVANGEL BAPTIST CHURCH**  
242 SHUNPIKE RD., SPRINGFIELD  
WARREN W. WEST, PASTOR  
Today--7:30 p.m., choir rehearsal.  
Friday--7 p.m., Pioneer Girls. 7:30 p.m.,  
Boy Scouts.  
Sunday--9:45 a.m., Sunday School with  
classes for all ages. 11 a.m., morning wor-  
ship, Pastor West preaching. 11 a.m., Junior  
Church under the leadership of Mrs. Robert  
Douson. 4:30 p.m., Junior Choir rehearsal.  
6 p.m., youth groups under the direction of  
Dick Dugan. 7 p.m., evening Gospel service;  
congregational hymns, special music and a  
message by Pastor West. Nursery care at both  
services.  
Monday--7 p.m., visitation program.  
Tuesday--7:30 p.m., Sunday School staff  
meeting.  
Wednesday--7:45 p.m., prayer meeting.

**ST. JAMES**  
S. SPRINGFIELD AVE., SPRINGFIELD  
MSGR. FRANCIS X. COYLE, PASTOR  
REV. EDWARD OEHLDING AND  
REV. PAUL J. KOCH, ASSISTANT PASTORS  
Saturday--Confessions from 4 to 5:30 and  
from 7:30 to 9 p.m.  
Sunday--Masses at 7, 8:15, 9:30 and 10:45  
a.m., noon and 5 p.m.  
Daily Masses at 7 and 8 a.m.  
Confessions Monday after Novena devotions.  
Baptisms at 2 p.m. Arrangements must  
be made in advance.

**Your Classified Ad**  
as near as your phone  
Call 686-7700

**WELCOME THEM WARMLY**  
A friendly call is always welcomed by new-  
comers to your neighborhood. They'll be happy  
to meet you. Later, they'll want to know you  
better.  
But right now, they need something more -  
directions to the nearest schools and shopping  
facilities and all the other information one  
needs on arriving in a strange city.  
So make your welcome a little warmer with  
the help of a Welcome Wagon hostess. She'll  
provide all this and gifts as well.  
When new neighbors move in, call Welcome  
Wagon.  
You'll be glad you did . . . and they will, too.  
232-5580  
**Welcome Wagon**

**LAFF OF THE WEEK**  
"They're having a after-the-holidays-half-price sale."

# James M. Mullaney and bride will make home in Piscataway



MRS. JAMES MICHAEL MULLANEY

## Two members join Mountainside club

Two new members were received by the Woman's Club of Mountainside at a meeting held yesterday in the Mountainside Inn with Mrs. Lewis Stroyemeyer presiding. The new members were Mrs. Paul Mocco of 1112 Saddlebrook rd. and Mrs. John Taylor of 999 Chimney Ridge dr. Mrs. Donald Hancock, program chairman, introduced Mrs. Cecile Fein of Weight Watchers, speaker at the meeting. Mrs. Fred Young, ways and means chairman, reported on ticket sales for the "Sweet-heart Ball" to be held at the Mountainside Inn Feb. 8, with cocktails from 7 to 8 p.m. and dinner and dancing from 8 p.m. to 1 a.m. It was announced that the club will hold a Chinese auction at its February meeting.

## Program on New Left planned by study group

The study group of the National Council of Jewish Women, Greater Westfield Section, will hold one of two meetings on the New Left on Tuesday at the home of Mrs. Richard Samuel, 534 E. Broad st., Westfield. The discussion will be led by Martin Kanowitz, lecturer in political science at Rutgers University, and will emphasize the history of the New Left as a viable political movement. A suggested reading for the meeting is "A Prophetic Minority," by Jack Newfield.

# FAMILY LIFE TODAY

Mabel G. Stolte, County Home Economist  
Have you and your teenagers kept track of where their money comes from? How much they receive? Or, on what they are spending it?  
Now is the time to put into practice a New Year's resolution to keep a better record of family finances. You may be very surprised to learn how much your teenagers are earning and how much they are spending each year. Remember, too, that by tallying where the money comes from and where it goes, you will also help make your budgeting easier for the coming year.  
The following survey by the Institute of Life Insurance of 1,800 high school juniors and seniors in schools throughout the nation made the following findings: Although these students generally came from middle income families with incomes of \$10,000 or more, 60 percent of the teenagers earned at least a part of their money by holding jobs outside the home. About 70 percent had more than \$5 a week to spend. In fact, one-half the group had more than \$10 a week to spend.  
MOST STUDENTS DID NOT spend all of their earnings. Seven percent had contributed money to their families in the week prior to the survey. Sixty percent had placed money in savings accounts, or special cash funds at home. One half, who reported savings, had saved for specific short or long-term goals.  
About one-third of the students had planned to finance their future schooling and 44 percent reported that they planned to work while pursuing post high school studies.  
Number one on the teenagers current expense list was food and sodas, including school lunches. About \$3 per head was spent on lunches, snacks, sodas and other "treats". Considerable amounts were also going out for amusements, clothing, automobile expenses and gifts.  
Fairly large amounts were spent on cosmetics, personal grooming products, phonograph records, cigarettes, hobbies, transportation and school supplies.  
How do these figures and the items for which money was spent compare with your own family's spending habits?

## 55 years of service

The Federal Government has been looking after the interests of the working man for more than 55 years. The Labor Department became a cabinet-level department on March 4, 1913, when the President William Howard Taft signed the Sulzer Act.

**Charge for pictures**  
There is a charge of \$3, for wedding and engagement pictures. There is no charge for the announcement, whether with or without a picture. Persons submitting wedding or engagement pictures may enclose the \$3 payment or include a note asking that they be billed.

**CRUISES**  
TO ROMANTIC PLACES  
Springfield Travel Service  
NEVER A SERVICE CHARGE  
DR 9-6767  
250 Mountain Ave., Springfield, N.J.

St. James Church, Springfield, was the setting Saturday for the marriage of Miss Linda Williams and James Michael Mullaney. A reception followed at Wielands, Springfield. The bride is the daughter of Mr. and Mrs. Michael Williams of Springfield, Mr. and Mrs. John T. Mullaney of Richelleu terr., Vailsburg, are parents of the bridegroom.  
A graduate of Jonathan Dayton Regional High School, Springfield, the bride is a secretary for Schering Pharmaceutical Co., Union. Her husband, an Essex Catholic High School graduate, is employed by Plumbers Local 24, Newark.  
After a Pocono honeymoon, the couple will live in Piscataway Township.

## Garden club plants Yule gift packages at day care center

Gift packages prepared by the Mountainside Garden Club were presented to children at the Westfield Day Care Center's family Christmas party. The children also received new mittens donated by the Mountainside Brownies. Mrs. William Christoffers of 394 Central ave., Mountainside, chairman of teenage volunteers for the center, reported the care-teens, who come each week to help the teachers after school hours, will be awarded uniforms. Mrs. Christoffers said volunteer seamstresses may obtain patterns and material from her. Mrs. Donald Peterson of 221 Evergreen ct., Mountainside, chairman of the Day Care Center board, says that \$5,000 is still needed to run the center during 1969. In the current fund drive, \$10,127 has been received but the full \$15,000 is needed to operate the center, which serves 3-5 year old children each day from 7:30 a.m. to 5:30 p.m.  
Mrs. Leland Beach of 716 Saunders ave., Westfield, admissions chairman, said she welcomes inquiries from parents who need this service. Visits to the center may be arranged by Mrs. Beach or by calling the center itself. Tuition at the center is arranged on a sliding scale depending upon family circumstances.

## Churchwomen plan second workday

The World Friendship Circle of Holy Cross Lutheran Church, Springfield, will hold a second Monday workday this month on Jan. 27. It will be held in the fellowship hall of the church from 9:15 a.m. to 2:30 p.m. The women bring a sandwich for lunch, scissors and thimble, Dessert and coffee are served. During the past month the group delivered quilts, lap robes, knee warmers, bed socks and various other articles to the Lutheran Welfare Association in New Jersey. This month the workers will concentrate on making quilts for World Relief Missions and Ao Quan (pajama-like garments) for the children of Vietnam.  
At the Ladies' Guild meeting this past week two representatives of the Church Council, John Denman, president, and Henry Freundemberger, elder, spoke to the members and answered questions concerning significant aspects of the congregation's life. Opening devotions were led by Mrs. Walter Gaestel. Hostesses were Mrs. John Haselmann Sr., chairman, Mrs. Gottlob Ralsch and Mrs. Harry Cordes.

## Lecture and slides on Mount Vernon for Garden Club!

The Mountainside Garden Club will start its 1969 season with a presentation of "Mount Vernon Grounds and Gardens," a lecture and slide program by Mrs. Thomas Turner Cooke of Morristown, at the home of Mrs. Eugene C. Hermann, 39 Fair Hill rd, next Tuesday at 1 p.m.  
Mrs. Cooke is the first woman from New Jersey to be selected as first officer and regent of the Mount Vernon Ladies' Association, administrator of George Washington's 50-acre estate for the next five years. The association's purpose is to "restore and maintain the landmark," which is visited by more than 1,250,000 persons annually.  
Mrs. Cooke is also a member and past president of the Daughters of the Cincinnati and curator of the Morristown Chapter, DAR, Schuyler-Hamilton House. She has served as a director of the Morris-Somerset unit, United Nations Association, State Federation of Garden Clubs and the Morris County Anti-Pollution League.  
Assisting Mrs. Hermann as hostesses will be Mrs. Clifford C. Scheer and Mrs. Ferd A. Lalle, and serving at the tea table will be Mrs. Joseph A. McGroarty and Mrs. Don G. Maxwell.



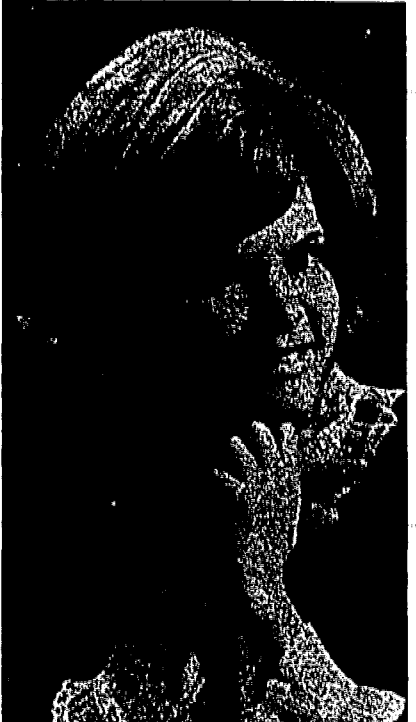
MISS CHERYL FARMEN

## Farmen-Gramm troth is announced

Mr. and Mrs. Myron Farmen of Long Beach, Calif., announce the engagement of their daughter, Cheryl, to Thomas Gramm, son of Mr. and Mrs. Thomas C. Gramm, of Mountainside and Beach Haven Terrace, formerly of Irvington.  
Mr. Gramm, a four-year Navy veteran in the Vietnam conflict, is attending Long Beach City College and is connected with the Laminated Metals of Long Beach.  
Miss Ritz is a graduate of Long Beach City College and is a graduate student there. She is employed as secretary to the president of Purex Products, Long Beach.  
A midsummer wedding is planned.

## Miss Ritz engaged to James J. Menth

Mr. and Mrs. George A. Ritz of Hillside avenue, Newark, have announced the engagement of their daughter, Karen Maria, to James J. Menth, son of Mr. and Mrs. John W. Menth of Bryant avenue, Springfield.  
Miss Ritz is attending Rutgers University at Newark. Her fiance attended Rose Polytechnic Institute, Terre Haute, Ind., and is employed by Western Electric at Kearny in the installation engineering department.



MISS CAROL A. WOLMAN

## Wolman-Anderson engagement is told

Mr. and Mrs. Andrew Wolman of 107 West Curtis st., Linden, have announced the betrothal of their daughter, Carol Ann, to Gary K. Anderson, son of Mr. and Mrs. Walter Anderson of 46 Lyons pl., Springfield, at an engagement party at the Wolman residence.  
Miss Wolman is a graduate of Linden High School and Katharine Gibbs School, Montclair, and is employed as a secretary for the Standard Oil Company (N.J.) in New York City.  
Her fiance, who was graduated from Jonathan Dayton Regional High School, Springfield, is employed by the New Jersey Bell Telephone Co. in Summit. He served two years in the U. S. Army, including a tour of duty in Vietnam in the Army Corps of Engineers.

## Group sponsors dance

The Catholic Club of Union County will hold a dance at the Kingston Restaurant, 1181 Morris ave., Union tomorrow. Music will be by Ray Masters and his orchestra. Single persons over 21 are welcome. The affair will begin at 9 p.m.

**WE REPAIR & REHOUND and RESTYLE JEWELRY**  
Into your own custom design.  
Bring in your dimmed jewelry and we will submit estimates on fresh, new "one-of-a-kind" pieces designed for you alone.  
**GELJACK Jewelers**  
241 Morris Ave., Springfield  
Open daily to 5:30, Fri. to 9 • DR 6-1710

**Let Us Pamper Your Hair ...**  
with that Professional Touch  
Call Us Today!  
**DR 9-6460**  
Micheio's Distinctive Coiffures  
240 Morris Ave., Springfield

## Stork Club

Dr. and Mrs. Martin Siegel of New Providence became the parents of a son, Barney Joseph, on Dec. 24. They have two other sons, Benly and Steven. Mrs. Siegel is the former Ellen Goldberg of Pittsburgh. Dr. Siegel is director of instruction for the Regional High School District.  
Mr. and Mrs. James Funcheon of 83 Hillside ave., Springfield, became the parents of a daughter, Jennifer Anne, Dec. 30 at Overlook Hospital. Mrs. Funcheon was formerly Angela Benigno.

**EARLY COPY**  
Publicity choirmen are urged to observe the Friday deadline for other than spot news. Include your name, address and phone number.

## SUNDAY'S SERMON

**YOUTHS & ADULTS**  
Any consideration of the question "what's wrong with today's youth" must give some thought to the question of what's wrong with today's parents.  
We often hear it said today that youth is setting the pace and that adults are falling in line. It is said that youth sets the fashions, in clothes, in music, in morals.  
This is not quite true. It is more likely that youth today is more outspoken, more aggressive - and too many adults are too busy with too many other things to hold to the check reins and to provide proper guidance and counsel.  
This is not to say that today's youth is all bad. Far from it. Nor does it mean that adults as a group don't give a hoot. Most of them do.  
The problem is that some of the lesser sins are committed in the name of freedom while too many voices remain stilled with apparent apathy.  
What we need is a re-dedication to the principles that made this nation great and, if you choose, a return to the belief that the deep, solid roots of a happy, full-time home life are essential to start young life on the road to true growth.

**Morris's**  
**REDUCES**  
**DESIGNER COATS DRASTICALLY**  
ALL SALES FINAL  
MILLBURN: Millburn Ave. at Essex St.  
Open Even. Mon. & Thurs. to 9

# Engagement is told of Lorraine H. Raff

Mr. and Mrs. Julius Raff of 1080 Mt. Vernon rd., Union, have announced the engagement on Christmas Day of their daughter, Lorraine Harlee, to Thomas Michael Ryan Jr., son of Mr. and Mrs. Thomas Ryan of Rutherford.

Miss Raff, a graduate of Union High School, is a senior at the University of Rhode Island and a member of Delta Zeta sorority.

Her fiance, a graduate of St. Mary's High School in Rutherford, is a senior at Rutgers University in New Brunswick, and is a member of Beta Theta Pi fraternity.

## Machine operations

Machines called Servomechanisms perform operations too delicate for human hands. When a biologist wants to extract the nucleus from a microscopic living cell with a tiny hollow needle, a servo can pick up photoelectrically the magnified image of the tiny nucleus.



MISS LORRAINE H. RAFF

## Baby for Evangelistas

Mr. and Mrs. John Evangelista of 312 Revere ave., Union, are parents of a baby, Noelle, born Dec. 27 at St. Vincent's Hospital, Montclair. Mrs. Evangelista, the former Anne L. Ferlito, and her husband have four other children, Michele, 12; Karen, 10; Gina, 6, and John, 3. Mrs. Francis Ferlito of Shreveport, La., is the maternal grandmother and Mr. and Mrs. Harry Evangelista of East Orange are the paternal grandparents.

## 'Relax' stretch fabrics

When working with stretch fabrics, lay fabric out on a flat surface and let "relax" about 24 hours before cutting.

# Miss Gulvas to wed Edward Swarden

Mr. and Mrs. Michael Gulvas of Kenilworth have announced the engagement of their daughter, Carlotta, to Edward Swarden, son of Mr. and Mrs. Edward Swarden of Newark.

The bride-elect, who was graduated from Jonathan Davton Regional High School, Springfield, is a senior at Newark State College where she is majoring in early childhood education. She is a member of Delta Sigma Pi sorority.

Her fiance, who was graduated from Seton Hall Prep and Seton Hall University, where he received B.S. and M.S. degrees in business administration, is employed as an operations analyst for Shell Oil Co., New York City. He is continuing his graduate work at Stevens Institute of Technology.

A June 28 wedding is planned.



MISS CARLOTTA GULVAS

## INBORN ERRORS

Early detection and improved treatment of many inborn errors of body chemistry now enable thousands of children to lead normal lives, according to the March of Dimes.

## Dance scheduled Sunday by Catholic Alumni Club

The Catholic Alumni Club of North Jersey will hold a cocktail dance Sunday at 7:30 p.m. at the Rounders at 469 Route 17, Paramus. All Catholic men and women who are single and college graduates are invited to attend. Miss Mary Jane Parrish of 945 Savitt pl., Union, is dance co-chairman.

CARPENTERS, ATTENTION! Sell yourself to 30,000 families with a low-cost Want Ad. Call 686-7700.

## Multi-Service director to talk to Ethical Society

The Rev. Elmer Williams, director of the Multi-Service Center, will address the Ethical Society of Essex County, 510 Prospect st., Maplewood, Sunday at 11 a.m. His topic will be "Multi-Service Center."

The center is located in Vauxhall, and is a community service for children, young adults and older people. They offer day care for

Thursday January 16, 1969-

working mothers, play periods for children, activities of interest to teenagers and young adults, and socializing for Senior Citizens. The public is invited to attend.

## Son to Anthony Pezones

A son, Albert William, was born at St. Barnabas Medical Center in Livingston on Dec. 21 to Mr. and Mrs. Anthony Pezone of 2564 Vauxhall rd., Union. Mrs. Pezone is the former Judith L. Roman of Cleveland, Ohio.

**KATHARINE GIBBS**  
PRIVATE BUS SERVICE  
WESTFIELD-CRAMFORD AND VICINITY TO  
**KATHARINE GIBBS**  
IN MONTECLAIR  
One and Two-Year Courses  
SECRETARIAL

Write or telephone for full information  
52 Plymouth St., Montclair, N.J. 07042 201-746-2816  
Also schools in Boston, Providence and 200 Park Ave., New York 10017  
National and State Accreditation  
SRLM

bill problem? LET US HELP WITH A CONVENIENT PERSONAL LOAN

THE PROGRESSIVE BANK FOR ALL YOUR NEEDS

**FIRST STATE BANK OF UNION**  
UNION NEW JERSEY

MEMBER FEDERAL DEPOSIT INSURANCE CORPORATION

686-4800

**UNION BOOTERY**

Footwear for the Entire Family and personalized fitting by **HANNY FRIEDMAN & KEN REDYANLY**

**JANUARY SHOE CLEARANCE SALE Now Going On!**

Save...Save...Save Select from Women's and Children's Shoes from our Regular Stock!

1030 Stuyvesant Ave. Union Open Mon.-Fri. Even. MU 6-4450

**SAVE CASH...GET BLUE STAMPS, TOO!**

**DOLLAR SALE**

<b>MOTT'S APPLESAUCE</b> 1-lb. 9-oz. jars <b>3 for \$1.00</b>	<b>ALL FLAVORS HI-C DRINKS</b> 1-qt. 14-oz. cans <b>4 for \$1.00</b>
---	--

<b>PROGRESSO-CALIF. TOMATOES</b> 3 for \$1.00	<b>TANGY CLAMATO JUICE</b> 4 for \$1.00
<b>DEL. MONTE-WHOLE PECEED APRICOTS</b> 3 for \$1.00	<b>GRAND UNION CAKE MIXES</b> 4 for \$1.00
<b>GRAND UNION PEANUT BUTTER</b> 3 for \$1.00	<b>GRAND UNION FABRIC SOFTENER</b> 4 for \$1.00
<b>SCOTT-DECORATED ASSORTED VIVA TOWELS</b> 3 for \$1.00	<b>PEPPLE GRAPFRUIT DEL MONTE DRINK</b> 4 for \$1.00

<b>SWEET TENDER LIBBY PEAS</b> 1-lb. 1-oz. cans <b>5 for \$1.00</b>	<b>GRAND UNION SPAGHETTI</b> 1-lb. 1-oz. cans <b>6 for \$1.00</b>
---	---

<b>GRAND UNION GRAPE JELLY</b> 5 for \$1.00	<b>GRAND UNION-FRENCH STYLE GREEN BEANS</b> 6 for \$1.00
<b>LEAFY-PEAS CARROTS</b> 5 for \$1.00	<b>TEA POT TEA BAGS</b> 6 for \$1.00
<b>FRANCO AMERICAN GIBLET GRAVY</b> 6 for \$1.00	<b>FRANCO AMERICAN GIBLET GRAVY</b> 6 for \$1.00
<b>GRAND UNION FROZEN SUCCOTASH</b> 5 for \$1.00	<b>FRANCO AMERICAN MARGARINE</b> 6 for \$1.00

<b>MOTT'S-JAR APPLESAUCE</b> 4 for \$1.00	<b>CRANBERRY COCKTAIL OCEAN SPRAY</b> 4 for \$1.00
<b>SHORTENING CRISCO</b> 3 for \$1.00	<b>DOLE SLICED PINEAPPLE</b> 3 for \$1.00
<b>LIBBY TOMATO JUICE</b> 3 for \$1.00	<b>LYSOL SPRAY DISINFECTANT</b> 3 for \$1.00
<b>DEL MONTE SWEET PEAS</b> 2 for \$1.00	<b>ASS'T. &amp; WHITE SCOTT-TOWELS</b> 3 for \$1.00

**GRAND UNION SUPERMARKETS**

**BREAKSTONE COTTAGE CHEESE**  
1-lb. cont. **29¢** TINY SOFT CURDS

<b>FLORA DANICA-IMPORTED DANISH BLUE</b> 4 for \$1.00	<b>33¢</b>
<b>MILK WITH BREAD CRISPER</b> 4 for \$1.00	<b>37¢</b>
<b>CHEDDAR</b> 4 for \$1.00	<b>53¢</b>
<b>BABY EDAM CHEESE</b> 4 for \$1.00	<b>89¢</b>
<b>IMPERIAL-107 SPREAD MARGARINE</b> 2 for \$1.00	<b>69¢</b>
<b>COFFEE MAXWELL HOUSE</b> 4 for \$1.00	<b>37¢</b>
<b>DUTCH MAID-SPECIAL ASSORTMENT</b> 4 for \$1.00	<b>27¢</b>
<b>CRACKERS</b> 4 for \$1.00	<b>55¢</b>
<b>MIRACLE WHIP SALAD DRESSING</b> 4 for \$1.00	<b>3</b>
<b>DEL MONTE-YELLOW CLING PEACHES</b> 3 for \$1.00	<b>53¢</b>
<b>GREEN TEETHING</b> 2 for \$1.00	<b>79¢</b>

**FRANKFURTS** 1-lb. pkg. **59¢**

**COLD CUTS** 2 for \$1.00

**BOLOGNA & SALAMI** 1 for \$1.00

**KNOCKWURST** 1 for \$1.00

**CORNED BEEF** 1 for \$1.00

**SHELL STEAKS** 1 for \$1.00

**SHELLS OF BEEF** 1 for \$1.00

**CHICKEN QUARTERS** LEGS with back **33¢** BREASTS with wing **35¢**

**SMOKED PORK LOINS** Center Cut **99¢** Any Size **89¢**

**LEAN PASTRAMI** 89¢

**LUNCHEON MEAT** 79¢

**PROVOLONE** 1.69

**COLE SLAW** 25¢

**SEMI-BONELESS HAMS** 4-lb. fully cooked **79¢**

**CHUCK FILET** 89¢

**SLICED BACON** 69¢

**SWISS PREMIUM SLICED BACON** 79¢

**GULF SHRIMP** 99¢

**HALIBUT STEAK** 79¢

**GROUND CHUCK** 69¢

**TOOTH PASTE** 2 for \$1.00

**AQUANET** 2 for \$1.00

**BAYER** 2 for \$1.00

**TOOTHBRUSHES** 4 for \$1.00

**MINUTE RICE** 79¢

**MAZOLA OIL** 67¢

**ORANGES** 10 for 49¢

**BROCCOLI** 29¢

**CUCUMBERS** 2 for 29¢

**POTATOES** 20 for 89¢

**VALUABLE COUPONS**

**50 EXTRA BLUE STAMPS** with this coupon and purchase of 1/2 gal. Grapefruit or **ORANGE JUICE** Good Thru Sat., Jan. 18th

**100 EXTRA BLUE STAMPS** with this coupon and purchase of 5 oz. size **DIXIE CUP DISPENSER** Good Thru Sat., Jan. 18th

**100 EXTRA BLUE STAMPS** with this coupon and purchase of four 1 1/2 oz. cans **HORSEMEAT CHUNKS LADDIE BOY** Good Thru Sat., Jan. 18th

**50 EXTRA BLUE STAMPS** with this coupon and purchase of 3 lbs. or more boneless **BEEF ROAST** Good Thru Sat., Jan. 18th

**50 EXTRA BLUE STAMPS** with this coupon and purchase of 13 oz. Cheese or 14 oz. Sausage **MARIO'S PIZZA** Good Thru Sat., Jan. 18th

**50 EXTRA BLUE STAMPS** with this coupon and purchase of pkg. of 180 Grand Union **COTTON SWABS** Good Thru Sat., Jan. 18th

**January Domestic Sale**

**Toss Pillows** 99¢

**Scatter Rugs** 1.99

**Hall Runners** 1.99

**Pot Holders** 4.100

PRICES EFFECTIVE THRU SAT., JAN. 18. WE RESERVE THE RIGHT TO LIMIT QUANTITIES.

**HUMPHREY'S**

Discount Dept. Store

1036 Stuyvesant Ave. Union

**20% OFF** All Spreads Quilts Blankets In Stock Just take 20% Off our low, low priced

**SHEET RIOT** Made in USA... and imports twin-full-fitted-flat First Quality Comp. Val. to 3.99 whites & floral Cannon etc. **\$1.99** ea.

**CANNON PILLOW CASES** also imported prints Reg. 98¢ **2 for \$1.00** First Quality

**TIER CURTAINS** Clean Swept cotton-polyester val. to \$3.99 cones also in group all first quality hundreds to choose from **\$1.00** valance 69¢

**FLANNEL-BACK PLASTIC TABLE CLOTHS** Irregulars • Rounds - 40" x 60" Square - 52" x 52" Oblong - 52" x 70" Beautiful Prints \$2.99 val. **67¢**

**TOPS STRETCH PANTS** Special Group GIRL'S Nylon Stretch Bonded **\$1.39** GIRL'S Cozy GIRL'S FLANNEL PAJAMAS **\$1.99** Reg. \$2.99

**Over-the-Knee HOSE** Girl's - Misses Famous Make Orlon 1.69 Val. **69¢**

**LADIES FLANNEL PAJAMAS** Ladies Flannel first quality 32 to 40 prints solids **\$1.77**

**FLANNEL GOWNS** Ladies Flannel first quality S-M-L Reg. \$1.99 **99¢**

**HALF SLIPS** Ladies Nylon shadow panel X size \$1.19 **99¢**

**SWEATERS** Men's Bulky & Flat Knt wools orlons pullovers & cardigans \$15.99 **\$5.00**

**SPORT SHIRTS** Men's Famous Make val. to \$6.99 **\$2.00**

**BANLON SOX** Men's \$1.00 val. first quality **59¢**

**HUMPHREY'S**

Discount Dept. Store

1036 Stuyvesant Ave. Union 686-5015

Yes... we're the same Humphrey's from Newark!

UNION - 5 Points Shopping Center at Chestnut St. - Open late Thurs.-Fri. & Sat. 'til 9 p.m. OPEN SUNDAY 9 A.M. to 2 P.M.  
SPRINGFIELD - General Green Shopping Center, Morris & Mountain Ave., Open Monday thru Thursday, 9 a.m. to 9 p.m., Friday 9 a.m. to 10 p.m., Saturday, 8 a.m. to 9 p.m., Sunday 9 a.m. to 6 p.m.

Visit Triple-S Redemption Center, Madison Shopping Center, Main & Dwyer, Madison Open Thurs.-'til 9 p.m. All Redemption Centers closed Mondays.



# suburban JOB GUIDE

"Work Near Home"

To Place Your Ad  
Call 686-7700

DEADLINE: TUESDAY NOON  
FOR THURSDAY PUBLICATION

To Place Your Ad  
Call 686-7700

READLINE: TUESDAY NOON  
FOR THURSDAY PUBLICATION



Help Wanted-Women | Help Wanted-Women | Help Wanted-Women | Help Wanted-Women | Help Wanted-Women | Help Wanted-Women | Help Wanted-Men | Help Wanted-Men | Help Wanted-Men

**CLERICAL**  
**A NEW YEAR - A NEW CAREER**  
**THE "GOOD HANDS" PEOPLE WANT YOU**

Young ladies, some of the most attractive clerical positions in New Jersey are open right now at the Allstate Insurance Company.

If you are a High school graduate - No business experience necessary - you're invited to look in to clerical opportunities at Allstate.

**ALLSTATE OFFERS:**

- TOP STARTING SALARY
- PLEASANT WORKING CONDITIONS
- LIBERAL BENEFITS
- SEARS PROFIT SHARING
- PROMOTIONAL OPPORTUNITIES

FOR THE FULL STORY ON CLERICAL OPPORTUNITIES CALL 464-2366 AND ASK FOR MISS BENTSEN.

SATURDAY INTERVIEWS 9 A.M. TO 12 NOON  
EVENING INTERVIEWS BY APPOINTMENT.  
TRANSPORTATION ARRANGED.

WHY NOT CALL RIGHT NOW AND JOIN "THE GOOD HANDS OF ALLSTATE"

**ALLSTATE INSURANCE COMPANIES**  
MOUNTAIN AVE., MURRAY HILL, NEW JERSEY  
An equal opportunity employer

**YOUR NEW YEAR CAN BE BRIGHTER WITH THE RIGHT POSITION.**

St. Barnabas, one of the nation's top medical centers, has the following positions, both full and part time, available immediately.

**ADMITTING CLERKS**-light typing required, ability to deal with people essential.

**ASSISTANT CORRESPONDENCE CLERK** Pleasant telephone personality.

**FINANCE CLERK**- Should have experience with finance; do telephone contact. Part time evening work available.

**TYPISTS**- Accurate typing essential. Medical experience preferred, but not required.

**SWITCHBOARD OPERATOR**- prefer experience on 608 board.

**KEYPUNCH OPERATORS**-Part time work in new computer center using newest and modern equipment.

**LINEN WORKERS**

**MEDICAL TRANSCRIBERS** Prefer experience with medical terminology.

These positions offer top starting salaries, excellent working conditions and benefits program. Apply in person at Personnel Department.

FOR YOUR CONVENIENCE EMPLOYMENT OFFICE WILL BE OPEN JANUARY 21st and 22nd FROM 5 P.M. to 8 P.M.

**ST. BARNABAS MEDICAL CENTER**  
Old Short Hills Road  
Livingston, N.J.  
An Equal Opportunity Employer

**MAIL ROOM CLERK**

Interesting position for responsible person. No typing is required. Company paid benefits include hospital-medical insurance.

Apply to Personnel Dept.

**ROTH-SCHLENGER INC.**  
Rt. 22, Union, N.J. (Opp. Flagship)  
An equal opportunity employer  
G 1/16

**OLSTEN**  
**GIRLS LAUGH ALL THE WAY TO THE BANK**

**WHY?**

Because they earn high pay bonuses and work the days and hours they want, at "OLSTEN"

At Olsten we fit the girl to the job and that's why our girls and clients are happy.

Can you type? Take steno? File? Or use any office machines? If you do--then come in and let us start you on your laughing way.

**OLSTEN SERVICES**

**UNION ELIZABETH**  
1969 Morris 125 Broad St.  
686-3262, 9-5 354-3939, 9-3 NEWARK  
24 Commerce St.  
642-0233, 9-5  
R 1/9

**ORDER CLERK**  
Light typing required, good work environment, all benefits, 37 1/2 hours a week. Call Mrs. Sapota, 233-5930.

**ADDRESSOGRAPH MULTIGRAPH CORP.**  
1130 Route 22 Mountainside  
An Equal Opportunity Employer  
X 1/16

**Savings & Loan TELLERS**

Trained or Experienced  
Salary commensurate with experience. Liberal employee benefits.

**PLEASE APPLY AT PERSONNEL DEPT.**  
Investors Savings & Loan Association  
64 Main St., Millburn 376-5100  
R 2/6

**TYPIST**  
General clerical work with some dictation. Permanent position in small office. Paid benefits. Salary open.

**GRASSMAN-BLAKE INC.**  
44 Brown Ave., Industrial Park, Springfield  
379-6170 R 1/16

**WOMAN WANTED** - Full or part time. Pa-kaging dept. light work, make your own hours.  
Phone 466-1154 K 1/16

**WOMAN WANTED** to take care of infant and for light housekeeping, three days a week. Hours open. References.  
MU 3-0374 R 1/16

**WOMAN**, part time counter and assembly, in modern dry cleaning area. Flexible hours, Union area.  
686-4144 R 1/16

**YOU** are the one who decides **HOW STEADY** you want **TEMPORARY OFFICE WORK** to be

Yes, you can go back to work at your own pace as a Manpower White Glove Girl. You can work as few as two days a week... or full or fulltime, if you prefer... whatever fits your schedule. If you can type, file, run an office machine, you can be sure of interesting assignments at top rates.

**MANPOWER**  
World's Largest Temporary Help Organization  
City Federal Savings Bank  
E. Jersey St. and Jefferson Ave., Elizabeth 351 5550  
20 Prospect St., Westfield 233-4965 R 1/16

**MACHINISTS**

We have  
**1st and 2d SHIFT OPENINGS**  
for qualified:

LATHE SETUP OPERATORS (Toolroom turret lathe)  
VERTICAL MILL SETUP OPERATORS (Bridgeports)

For both positions 1-2 years' trade training and 2-3 years' experience preferred.

Make that change for the better, a change for the best!

**CHECK THIS WINNING COMBINATION:**  
NEW HIGHER RATES +  
**17 1/2% PREMIUM 2D SHIFT**

- Blue Cross/Blue Shield
- Paid sick leave
- Paid life insurance
- Pension Plan
- Low-cost cafeteria
- Tuition refund
- Clean, pleasant surroundings

**COME IN AND TALK TO US TODAY!**

**MICROLAB/FXR**  
10 Microlab Road (Route 10)  
Livingston, N.J.  
An Equal Opportunity Employer R 1/16

**ACCOUNTANT**

**COST ANALYST**

GAF's rapid growth has created a Cost Analyst opening at its chemical plant in Linden, New Jersey. Expansion activities will permit personal and professional recognition.

This staff position can best be filled by a graduate Accountant with 2 to 3 years' plant cost accounting experience. Flexibility also allows us to consider a recent graduate whose accounting interest is in the cost area... or an undergraduate accounting major with good academic work in cost accounting.

Excellent benefits plans include tuition reimbursement and a 3-week vacation policy. Prompt interviews arranged for qualified candidates who send confidential resumes, including salary requirements.

MR. A. P. CORSO

**GAF CORPORATION**  
P.O. BOX 12, LINDEN, NEW JERSEY 07036  
An Equal Opportunity Employer M/F R 1/16

**LAB TECHNICIAN**  
To assist research metallurgist in tungsten carbide powder operations; high school graduate with mechanical aptitude, knowledge of chemistry and metallurgy post high school education desirable but not essential.

**ADAMAS CARBIDE CORP.**  
141 MARKET ST., KENILWORTH, N.J. X 1/16

**LIQUOR STORE** in Irvington, excellent location, good parking facilities, must sell. For details write Box 682, 1391 Shuysant Ave., Union.

**MANAGER WATCH REPAIR**

Full time permanent position available for individual in Jewelry & watch repair in northern New Jersey area.

No experience necessary.

- GOOD STARTING SALARY
- LIBERAL STORE DISCOUNT

Send resume to -  
Box 679, c/o Union Leader  
1291 Shuysant Ave., Union  
or call  
Area Code 212 - WI 7-1546  
G 1/16

**MOLD MAKERS**  
Excellent opportunity for mold makers with experience in machine-ry to join a growing company. Good starting salary (with regular overtime), excellent fringe benefits.

CALL 688-8600 OR APPLY  
**WM. KRATT CO.**  
879 Rohway Ave., Union, N.J.  
R 1/16

**MEDICAL TECHNOLOGISTS**  
Several well paid day and evening career positions available with large modern clinical laboratory in pleasant suburban location with outstanding facilities. Experience in hematology and automated chemistry desirable. Full benefits, incentives and many advancement opportunities. Contact Personnel Dept.

National Clinical Services Labs.  
2115 Millburn Ave.,  
762-0255 R 1/16

**MEN** to operate dishwashing machine at coffee shop in Overlook Hospital, 8 day week 9-4. Ideal working conditions, benefits. Call personnel dept. OVERLOOK HOSPITAL 273-8100 R 1/16

**MAINTENANCE MAN**  
Full or part time for maintenance and cleaning in small plant in Springfield, N.J. MU 6-4182 - K 1/16

**MECHANIC** All Unit SERVICE STATION ATTENDANT, part time wanted. Apply Chestnut East, 707 Chestnut St., Union, X 1/16

**MAINTENANCE MECHANIC**  
All around mechanic with industrial experience in machine-shop, conveyor, furnaces, rotating shafts, etc. benefits some paid by company. 10 paid holidays.

**ALCAN METAL POWERS** UNION  
901 LEHIGH AVE., UNION  
An equal opportunity employer X 1/16

**MAIL & SUPPLY CLERK**  
To handle paper supplies & mail distribution. Excellent working conditions, liberal benefits, good future.

Apply **RETNA INSURANCE CO.**  
161 Millburn Ave. Millburn X 1/16

**MACHINE OPERATOR**  
Days & Night, starting rate to \$3.00 per hour.

**RADIAL DRILL PLANNER**  
BLANCHARD GRINDER  
National Company, liberal employee benefits, steady work with overtime. For personal interview, call 687-3294.

**MEN** wanted for general machine work. Will train. Union area. Call GUYRE FUEL CO., MILLBURN, 376-7048 R 1/16

**MAN** - Trustworthy and reliable. Work inside for delivery concern, 8:30-12:30 Mon. & Thurs. 2 p.m.-11 p.m. Tues, Wed, Fri. 2 p.m.-9 p.m. Sat. Union Short Hills. Call 379-1452, Mr. Lemarie. L 1/16

**MEN** wanted, interesting work, excellent pay and opportunity. Overtime, telephone. Linden area. Telephone 686-6344.

**OFFSET** men to work in camera department, stripping camera or plate-making. Excellent Union area. State experience and salary requirements. All reply confidential. Box 691 c/o Union Leader, 231 Shuysant Ave., Union.

**OIL BURNER SERVICEMAN**  
Qualified man and one apprentice. Top wages and one apprentice. Call Mr. North, 476-1200, MITCHELL SUPREME FUEL CO., Orange, R 1/16

**PROGRAMMERS**  
TO \$12,500  
1-5 YEARS EXPERIENCE  
CODING - 360/24 machine  
training, application. Excellent benefits offered by well known N.J. company.  
Come in, send resume or call 276-6600

**MILDRED-MILLER AGENCY**  
108 No. Union Ave., Cranford R 1/16

**PURCHASING STOCK CLERK**  
Prefer experience, in light inventory handling would be helpful.

Apply in person at Personnel Dept.  
**ST. BARNABAS MEDICAL CENTER**  
Old Short Hills Road  
Livingston, N.J.  
An Equal Opportunity Employer R 1/16

**PARKING ATTENDANT**  
CATERING RESTAURANT  
Must have drivers license  
624 Westfield Ave., Eliz., 112-1654  
G 1/16

**Clericals**

The Hanover Insurance Group is now recruiting for Clericals to fill several interesting & diversified openings in their SUMMIT & MURRAY HILL OFFICES.

Experienced or Trainees - Housewives welcome.

All fringe benefits.

Hours 8:45 A.M. - 4:30 P.M. 35 Hour week

Interviews daily 9 A.M. - 4 P.M. at

**The Hanover Insurance Group**  
12 Bank Street Summit, N.J.  
Phone: 273-6432 R 1/16

**CLERK TYPIST (2)**  
(Beginner acceptable) interesting work in Computer of Sales department, 681 weekly, 37 1/2 hour week. All employee benefits.

**BAXTER WAREHOUSE CORP.**  
621 Railway Ave., Union, N.J.  
687-1500 X 1/16

**CLERK TYPIST**  
Interesting diversified position available for an alert, dependable girl. Small friendly 3 girl office located in Union. Prefer some one with an aptitude for figures.

Call Mr. Friedman, 687-5573 R 1/16

**CLERK-TYPIST**-experienced typist familiar with technical terms to join our Union, N.J. office. Liberal employee benefits program. Salary open. Please call Miss Simer at 686-3700. X 1/16

**CLERKS**  
Trainees or experienced. Clerical work to steppingstones in Berkeley Heights office. Liberal employee benefits, favorable starting salary. Contact personnel dept. Summit & Elizabeth Trust Co. 367 Springfield Ave., Summit, N.J. 277-2600  
An Equal Opportunity Employer K 1/16

**CLERK-TYPIST**  
Installation loan dept., experienced or trainee, full time position, fringe benefits.

**UNION CENTER NATL. BANK**  
3003 Morris Ave., Union  
An Equal Opportunity Employer K 1/16

**CLERK - Accounts Receivable and Billing**, Union-Maplewood area. Air conditioned office. All fringe benefits. Call 687-0700, Mr. Johnson. X 1/16

**CLERK TYPIST**  
INSTALLMENT LOAN CLERK  
Good Fringe Benefits. Good advancement possibilities. Work at our Branch Office at 217 Main St., West Orange, Call Mr. Shumanfield.

**SEXES COUNTY STATE BANK**  
West Orange, N. J. 731-8000 X 1/16

**CLERK-TYPIST**, diversified duties, small office, located in Union. Full time employee benefits including paid hospitalization and profit sharing. Call 352-9410 X 1/16

**CLERK TYPIST**  
Knowledge of bookkeeping helpful. Must have own transportation.

Apply - Rapid Roller Co.  
Fadum Rd., Springfield  
in the Union County industrial park off Route 22 East.  
379-4300 K 1/16

**CLERK TYPISTS**  
(FULL TIME)

SEVERAL OPENINGS EXIST FOR QUALIFIED CLERK TYPISTS; EXCELLENT WORKING CONDITIONS; ALL BENEFITS.

APPLY: Weekdays & Saturdays 9 A.M. to 4 P.M.

**ELASTO STOP NUT DIV. Amerace-Enna Corp.**  
2330 Vauxhall Rd., Union, N.J.  
An Equal Opportunity Employer G 1/16

**CLERK TYPIST**, full time, although required routine office duties including posting of materials and labor costs. Modern office with liberal benefits.

**N. J. RUESECH MFG. CO.**  
Springfield, N.J. 376-8283 K 1/16

**BEAUTICIAN**-full time, must have following: beautiful voice, excellent salary. Apply: Marc Antony Culture, 1416 Morris Ave., Union, 687-3353 L 1/16

**CLERK-TYPIST** general office work. All benefits. **LEIGH INFO CO.**  
725 Leigh Ave., Union, R 1/16

**BOOKKEEPER**  
Experienced in operations of Burlington F. 1350 Benjamin. Handle accounts receivable and payable. Ideal conditions with liberal benefits.

**HEXACON ELECTRIC**  
165 W. CLAY AVE. Roseland R 1/16

**BOOKKEEPER**  
Experienced for small office in tree building on Morris Ave., Union. Write to Box 689, c/o Union Leader, 1391 Shuysant Ave., Union R 1/16

**Bank Proof Machine Operator**  
Will consider experienced bright, alert beginner for position in our proof department located in Berkeley Heights. Many fringe benefits. Excellent working conditions. Favorable starting salary.

Summit & Elizabeth Trust Co.  
367 Springfield Ave., Summit 277-4200  
An Equal Opportunity Employer R 1/16

**FILE & MAIL CLERKS (2) / FULL TIME PART TIME**

General clerical duties - handling mail, numerical filing. New plush office. Hours flexible, excellent starting salary and benefits.

**FISHER SCIENTIFIC**  
52 Faden Rd., Springfield 379-1400  
An Equal Opportunity Employer X 1/16

**FASHION PROCS** - needs women to work in this area 2 or 3 evenings a week. \$20 to \$30 a night, free wardrobe and training. Car necessary. Call 387-1184 X 2/16

**FACTORY - MISCELLANEOUS HELP**  
All union benefits, including paid holidays. Blue Cross, pension, vacation, sick leave. Steady employment plus overtime. Apply 1600 W. Elizabeth Ave., Linden. X 1/16

**FILE CLERK** - diversified duties which include typing as well as filing. Will train as relief operator for switchboard. Union, N.J. office. Liberal employee benefits program. Salary open. Please contact Miss Simer at 686-3700. X 1/16

**GAL FRIDAY**  
Sheridan and typing required 9 to 5 P.M. 3 days a week. Salary commensurate with ability. Paid company benefits, vacation and holidays. Call NATION-WIDE INSURANCE COMPANY 10 to 4 P.M., Monday thru Friday 687-1717  
An Equal Opportunity Employer R 1/16

**GAL FRIDAY**  
To district manager. No stereo, good typing, like figures, rather switchboard. 9-5, local area. FEE PAID. Come in - or call 376-4600

**ADDRES MILLER AGENCY**  
106 No. Union Ave., Cranford R 1/16

**GIRL-FRIDAY** for dental laboratory, part time for mature woman. Typing not necessary. **HAARDE-LANDIS LABORATORY**  
66 So. 21st St. 241-1350 Kenilworth R 1/16

**A GENERAL WORKER** for Columbia R. & Ceteria, 7:30 a.m. - 2 p.m. Substitute workers also needed. Apply COLUMBIA HIGH SCHOOL CAFE 17 Parker Ave., Maplewood X 1/16

**OPERATORS**  
(EXPERIENCED ON SEWING MACHINES)

Apply in person  
Figure Builder Foundations  
1060 Commerce Ave., Union, N.J. G 1/16

**PART-TIME CLERICALS**  
**CLERK TYPISTS**  
**BOOKKEEPERS**

Various schedules, interesting openings in local areas.

Come in, or call 276-6600

**MILDRED MILLER AGENCY**  
108 No. Union Ave., Cranford R 1/16

**PART-TIME**, earn \$10-\$100 per week, showing "Lina's" latest jewelry fashions. Work with full kit and color catalogue. Call 941-0889 or 976-3377. R 2/27

**PUNCH-PRESS OPERATORS**  
Dress assembly, modern plant, liberal benefits, union shop. Start at \$1.50 per hour, 8 increase every 3 months, to \$1.81 per hour. Monday, Wed, or Fri. **DEESSEL MFG. CO.**  
800 Swanton Drive, Kenilworth R 1/16

**PURCHASING CLERK**  
Assist with processing and follow up of orders, typing required, modern suburban office, liberal benefits.

**R. RUESECH MACH. CO.**  
Springfield, N.J. 376-8283 K 1/16

**PART-TIME CASHIERS**  
Apply Union Theater after 11 A.M. 800 Shuysant Ave. K 1/16

**PART TIME**, filing and/or typing for Suburban General Insurance Agency. Suitable hours. Call 688-6262 R 1/16

**SECRETARY**  
Excellent opportunity for experienced secretary. Accurate stenographer & typist; skills required. New company opening in Union in January. Pleasant working conditions. Contact Mr. Cahill 354-8044  
An Equal Opportunity Employer K 1/16

**SECRETARY ORDER CLERK BILLING CLERK**  
Positions now open for people who like diversified jobs. Good working conditions, all benefits, 37 1/2 hour week. Call Miss Sapota: 233-5920

**ADDRESSOGRAPH MULTIGRAPH CORP.**  
1130 Route 22 Mountainside  
An Equal Opportunity Employer R 1/16

**STENO TYPIST**  
Major City Company has need for Steno Typist. Opportunity for advancement. Excellent company benefits. Will be moving on or about Feb. 15 to Union.

**CHEVRON OIL COMPANY**  
137 Evergreen Place East Orange  
An Equal Opportunity Employer X 1/16

**SECRETARY - LEGAL**  
Full time for busy law office, Union Center 686-2322 X 1/16

**SWITCHBOARD OPERATOR**  
8-12 P.M. week nights and weekends 22-23  
Call 379-1519 K 1/16

**TELEPHONE SALES**  
Irvington office, mornings or evenings. No experience necessary. Call 486-0485 X 1/16

**A - 1 PERMANENT**

**ACCOUNTING STAFF MAN**  
General Accounting Experience, Good Future For Man With Right Qualifications, \$12,000

**EXECUTIVE SECRETARY**  
To President Of Sales, Pleasing Surroundings, Benefits, \$125

**SECRETARY**  
For systems Manager Good Skills \$120

**RATER**  
Auto Business, To Know Manuals, Rating And Writing, \$100

**TYPISTS-TYPISTS-TYPISTS**  
For Many Local Companies \$90 To \$100

**FEE-NEGOTIABLE**

1995 MORRIS AVE. UNION  
TEL. 964-1300 G 1/16

**Domestic Help Wanted-Women 2**

**CLEANING WOMAN - MON. & WED.**  
SOUTH ORANGE CENTER  
NEAR BUSES 920-31-52  
763-3177 K 1/16

**CLEANING WOMAN WANTED ONCE EVERY TWO WEEKS, WITH REFERENCE.**  
CALL 686-4269 X 1/16

**Help Wanted-Men 3**

**Accounting Clerk**  
Experience in general accounting, good opportunity for night student. Excellent company benefits.

Apply:  
Weekdays and Saturday 8 A.M. - 4 P.M.

**ELASTO STOP NUT DIV. Amerace-Enna Corp.**  
2330 VAUXHALL RD. UNION, N.J.  
An Equal Opportunity Employer G 1/16

**ASSEMBLY - FACTORY WORKERS:**  
UNION BENEFITS INCLUDING HOOP, CARACO CO., INC., 1540W. BLANCKE ST., LINDEN, 925-6100 X 1/16

**MEN** ADVERTISING SPACE SALESMEN for N.J.'s top weekly newspaper chain, located in Union and Essex counties; salary, commission, expense, bonus, car. Benefits, call R. Brunetti, 686-7700, Brunetti Publishing Corp., 1291 Shuysant Ave., Union, N.J. 07093

**ASSISTANT Circulation Manager** for N.J.'s top weekly newspaper. Good at figures, some typing necessary. Many opportunities. Previous sales or insurance experience helpful but not necessary since complete training is provided.

This is a rewarding program with an abundance of prospects. If you consider yourself to be a high caliber individual, you are wanted to investigate this opportunity. Send resume to:  
P. O. Box 150, Springfield, N.J., or call Mrs. Conroy, 279-1122 X 1/16

**CONSULTANT**  
Herbert F. Chubb Co. announces career opportunities in sales and consulting positions, starting monthly salary up to \$1,000 plus commission; previous sales or insurance experience helpful but not necessary since complete training is provided.

General Factory Workers  
For Day Shift, 8-4:30 p.m.  
**MECHANICAL ASSEMBLERS**  
**POWER SHEAR OPERATORS**  
**SETUP MEN FOR PRESSES - BRAKES**  
**HELPER, PAINT DEPT.**  
**UTILITY MEN**  
Coffee Mat Corporation  
251 S. 31st St., Kenilworth, N.J. 241-8400 X 1/16

**Dishwashers**  
(FULL TIME AND PART TIME)  
For Cafeteria

**SAKS FIFTH AVENUE**  
SPRINGFIELD, N. J.  
Has Openings For Part Time  
And Full Time Dishwashers.  
(No Sundays Or Holidays)  
Liberal Employee Benefits.

Apply Mr. Mack - 376-7000 Ext. 241

**MILLBURN AND SHORT HILLS AVE., SPRINGFIELD, N. J.** G 1/16

**CLERK**-Young or mature man for office work. Must have own transportation. For appt. phone Mr. Wilson 245-3100. K 1/16

**FACTORY - MISCELLANEOUS HELP**  
All union benefits, including paid holidays. Blue Cross, pension, vacation, sick leave. Steady employment plus overtime. Apply 1600 W. Elizabeth Ave., Linden 3 1/16

**FACTORY WORKERS**  
21 yrs. or over, \$2.25 per hr. starting rate, progressive increases. Steady year round employment with advancement opportunities. Rotating shifts. Shift premium, life insurance & pension plan, hospitalization & medical insurance, 10 paid holidays & paid vacations.

**ALCAN METAL POWERS** UNION  
901 LEHIGH AVE., UNION  
An equal opportunity employer X 1/16

**GENERAL MAINTENANCE MAN** - Install electrical appliances, hot water heaters, washers & dryers, electrical outlets, also plumbing, 20 yrs. experience. No job to small. 276-2280, K 1/16

**Inside Sales Account's**

For Inside Sales Office - Some Prior Experience Desired; All Benefits.

APPLY WEEKDAYS AND SAT. 8AM TO 4PM

**ELASTO STOP NUT DIV. Amerace-Enna Corp.**  
2330 VAUXHALL RD. UNION, N.J.  
An Equal Opportunity Employer G 1/16

**ELECTRICAL** distributor has immediate openings for order clerk, inventory clerk, credit collection clerk. Salary \$100 weekly. Contact Mr. Dwyer or Mr. A. Malinka, 245-1600 R 1/16

**ENGINEERING ASSISTANT FULL TIME**  
If applicant does not yet have a degree then an aggressive engineering night school student will be given consideration. Must be personally suited to represent company in sales as well as supervisory work in dealing with the manufacture of electronic instrumentation equipment. Excellent opportunity for advancement in field involving worldwide market. Interesting work.

**ELECTRONIC MONITORING SYSTEMS, INC.**  
32 Commerce St., Springfield  
Call 376-8810 for interview appointment. X 1/16

**General Factory Workers**  
For Day Shift, 8-4:30 p.m.  
**MECHANICAL ASSEMBLERS**  
**POWER SHEAR OPERATORS**  
**SETUP MEN FOR PRESSES - BRAKES**  
**HELPER, PAINT DEPT.**  
**UTILITY MEN**  
Coffee Mat Corporation  
251 S. 31st St., Kenilworth, N.J. 241-8400 X 1/16

**Adv. Agency Clerk-Typist**

Interesting spot in our accounting dept. for good typist with figure aptitude. Will do general clerical work & some elementary bookkeeping. Good opportunity for bright beginner. Excellent benefits, including profit sharing. Call Mr. Spitzer at 376-7300

**KEYES, MARTIN & CO.**  
841 Mountain Ave., Springfield, N.J.  
An Equal Opportunity Employer R 1/16

**ASSEMBLERS**  
Light Assembly Steady Day Work  
Hours 8 A.M. - 4:30 P.M.  
1200 Commerce Ave., Union  
An Equal Opportunity Employer R 1/16

**ASSISTANT BOOKKEEPER**  
For auto, receivable, modern plant, pleasant working conditions, excellent starting salary, all benefits. Schmidt & Son Inc.  
1018 So. Springfield Ave., Mountainside K 1/16

**ASSISTANT BOOKKEEPER**  
Accounts payable with payroll experience and knowledge of typing. Pleasant working conditions, all benefits, hours 9 to 5. Apply Durex Inc., 1409 Chestnut Ave., Hillside, N.J. 928-6450. X 1/16

**CLERK-TYPIST**  
Diversified clerical duties; good typing necessary. New modern office. Good starting salary, excellent benefits and promotional opportunities.

**FISHER SCIENTIFIC**  
52 Faden Rd., Springfield 379-1400  
An Equal Opportunity Employer X 1/16

**CLERKS TYPISTS STENOS**  
High school graduates. No experience necessary.

Good wages, five day week, vacations, paid holidays, liberal company pension plus Social Security. Blue Cross - Blue Shield. Overtime available.

Apply Monday through Friday 9:00 A.M. to 3:00 P.M. Employment Office, 180 Boyden Avenue, Maplewood, New Jersey.

**PUBLIC SERVICE COORDINATED TRANSPORT**  
An Equal Opportunity Employer K 1/16

**CLERK TYPIST**  
Knowledge of bookkeeping helpful. Must have own transportation.

Apply - Rapid Roller Co.  
Fadum Rd., Springfield  
in the Union County industrial park off Route 22 East.  
379-4300 K 1/16

**CLERK TYPIST (FULL TIME)**

SEVERAL OPENINGS EXIST FOR QUALIFIED CLERK TYPISTS; EXCELLENT WORKING CONDITIONS; ALL BENEFITS.

APPLY: Weekdays & Saturdays 9 A.M. to 4 P.M.

**ELASTO STOP NUT DIV. Amerace-Enna Corp.**  
2330 Vauxhall Rd., Union, N.J.  
An Equal Opportunity Employer G 1/16

**CLERK TYPIST**, full time, although required routine office duties including posting of materials and labor costs. Modern office with liberal benefits.

**N. J. RUESECH MFG. CO.**  
Springfield, N.J. 376-8283 K 1/16

**BEAUTICIAN**-full time, must have following: beautiful voice, excellent salary. Apply: Marc Antony Culture, 1416 Morris Ave., Union, 687-3353 L 1/16

**CLERK-TYPIST** general office work. All benefits. **LEIGH INFO CO.**  
725 Leigh Ave., Union, R 1/16

**BOOKKEEPER**  
Experienced in operations of Burlington F. 1350 Benjamin. Handle accounts receivable and payable. Ideal conditions with liberal benefits.

**HEXACON ELECTRIC**  
165 W. CLAY AVE. Roseland R 1/16

**BOOKKEEPER**  
Experienced for small office in tree building on Morris Ave., Union. Write to Box 689, c/o Union Leader, 1391 Shuysant Ave., Union R 1/16

**Bank Proof Machine Operator**  
Will consider experienced bright, alert beginner for position in our proof department located in Berkeley Heights. Many fringe benefits. Excellent working conditions. Favorable starting salary.

Summit & Elizabeth Trust Co.  
367 Springfield Ave., Summit 277-4200  
An Equal Opportunity Employer R 1/16

**CLERKS**  
Trainees or experienced. Clerical work to steppingstones in Berkeley Heights office. Liberal employee benefits, favorable starting salary. Contact personnel dept. Summit & Elizabeth Trust Co. 367 Springfield Ave., Summit, N.J. 277-2600  
An Equal Opportunity Employer K 1/16

**CLERK-TYPIST**  
Installation loan dept., experienced or trainee, full time position, fringe benefits.

**UNION CENTER NATL. BANK**  
3003 Morris Ave., Union  
An Equal Opportunity Employer K 1/16

**CLERK - Accounts Receivable and Billing**, Union-Maplewood area. Air conditioned office. All fringe benefits. Call 687-0700, Mr. Johnson. X 1/16

**CLERK TYPIST**  
INSTALLMENT LOAN CLERK  
Good Fringe Benefits. Good advancement possibilities. Work at our Branch Office at 217 Main St., West Orange, Call Mr. Shumanfield.

**SEXES COUNTY STATE BANK**  
West Orange, N. J. 731-8000 X 1/16

**CLERK-TYPIST**, diversified duties, small office, located in Union. Full time employee benefits including paid hospitalization and profit sharing. Call 352-9410 X 1/16

**CLERK TYPIST**  
Knowledge of bookkeeping helpful. Must have own transportation.

Apply - Rapid Roller Co.  
Fadum Rd., Springfield  
in the Union County industrial park off Route 22 East.  
379-4300 K 1/16

**CLERK TYPISTS**  
(FULL TIME)

SEVERAL OPENINGS EXIST FOR QUALIFIED CLERK TYPISTS; EXCELLENT WORKING CONDITIONS; ALL BENEFITS.

APPLY: Weekdays & Saturdays 9 A.M. to 4 P.M.

**ELASTO STOP NUT DIV. Amerace-Enna Corp.**  
2330 Vauxhall Rd., Union, N.J.  
An Equal Opportunity Employer G 1/16

**CLERK TYPIST**, full time, although required routine office duties including posting of materials and labor costs. Modern office with liberal benefits.

**N. J. RUESECH MFG. CO.**  
Springfield, N.J. 376-8283 K 1/16

**BEAUTICIAN**-full time, must have following: beautiful voice, excellent salary. Apply: Marc Antony Culture, 1416 Morris Ave., Union, 687-3353 L 1/16

**CLERK-TYPIST** general office work. All benefits. **LEIGH INFO CO.**  
725 Leigh Ave., Union, R 1/16

**BOOKKEEPER**  
Experienced in operations of Burlington F. 1350 Benjamin. Handle accounts receivable and payable. Ideal conditions with liberal benefits.

**HEXACON ELECTRIC**  
165 W. CLAY AVE. Roseland R 1/16

**BOOKKEEPER**  
Experienced for small office in tree building on Morris Ave., Union. Write to Box 689, c/o Union Leader, 1391 Shuysant Ave., Union R 1/16

**Bank Proof Machine Operator**  
Will consider experienced bright, alert beginner for position in our proof department located in Berkeley Heights. Many fringe benefits. Excellent working conditions. Favorable starting salary.

Summit & Elizabeth Trust Co.  
367 Springfield Ave., Summit 277-4200  
An Equal Opportunity Employer R 1/16

**HELP WANTED WOMEN**

**Avon Calling**

Want to be successful and earn good money in spare time? Moneyback guarantee makes AVON cosmetics easy to sell. For interview call 731-8100 G 1/16

**HAIRDRESSER**, Springfield area; full or part time. **Even, Call 376-9731**  
Even, Call 376-9731 R 1/16

**JUNIOR UNDERWRITER**  
With general insurance agency for rating and typing. Must reside in vicinity of Springfield. State experience and qualifications.

Write to Box 694  
Suburban Publishing Shop,  
1291 Shuysant Ave., Union, N.J. X 1/16

**KEY PUNCH OPERATORS**  
(Must be experienced)

Excellent working conditions, all company benefits. **APPLY: weekdays & Saturdays 8 A.M. to 4 P.M.**

**ELASTO STOP NUT DIV. Amerace-Enna Corp.**  
2330 Vauxhall Rd., Union, N.J.  
An Equal Opportunity Employer G 1/16

**ELLIOTT CO.**  
Div. of Carrier Corp. has opening for stenographer at Mountainside office, phone 233-5750 and ask for Mr. Baifer or Mr. Liberty  
An Equal Opportunity Employer X 1/16

**TEEN-AGERS**, find jobs by turning Want Ads., Call 686-7700.

**MAIL ROOM CLERK**

Interesting position for responsible person. No typing is required. Company paid benefits include hospital-medical insurance.

Apply to Personnel Dept.

**ROTH-SCHLENGER INC.**  
Rt. 22, Union, N.J. (Opp. Flagship)  
An equal opportunity employer  
G 1/16

**OLSTEN**  
**GIRLS LAUGH ALL THE WAY TO THE BANK**

**WHY?**

Because they earn high pay bonuses and work the days and hours they want, at "OLSTEN"

At Olsten we fit the girl to the job and that's why our girls and clients are happy.

Can you type? Take steno? File? Or use any office machines? If you do--then come in and let us start you on your laughing way.

**OLSTEN SERVICES**

**UNION ELIZABETH</**

Help Wanted-Men 3

BUYER (JUNIOR) Must have knowledge of nuts and bolts. APPLY: weekdays & Saturdays 8 A.M. to 4 P.M. ELASTIC STOP NUT DIV. Amerace-Esna Corp. 2300 VAUXHALL RD. UNION, N.J. An Equal Opportunity Employer G 1/16

CLERK Mature Man For Duties In Supply Room. Must Have Mechanical Aptitude For 1250 MULTILITH PRINTING PRESS. Excellent working conditions. All benefits. Apply weekdays and Sat. 8 A.M. to 4 P.M. ELASTIC STOP NUT DIV. Amerace-Esna Corp. 2300 VAUXHALL RD. UNION, N.J. An Equal Opportunity Employer G 1/16

Pay phone coin box collector - no experience needed - good starting salary - opportunity for advancement - must have N.J. driver's license - liberal benefits, including college tuition aid plan NEW JERSEY BELL An Equal Opportunity Employer For more information call 371-9955 Monday thru Friday 9am to 5pm. R 1/16

REPAIR MEN, leading appliance distributor in new modern buildings in Cranford seeks experienced appliance and/or electrical parts department men. Excellent working conditions, profit sharing, company-paid program of employee benefits. Call Mr. B. Robbins, Appliance Distributing Co., 1201 S. Myrtle Ave., Union, N.J. X 1/16

PART-TIME 6 to 10 P.M. - men needed to deliver our advertising material. Experience necessary, \$3.50 per hour. Car essential. 687-7052 A 1/16

REPORTER for large chain of weekly suburban newspapers. Some experience municipal coverage preferred. Salary of \$10,000 to \$12,000. For application, call Mr. J. J. Williams, 1201 S. Myrtle Ave., Union, N.J. X 1/16

RECEIVING CLERK; required to handle all phases of receiving procedures and should be physically able to unload trucks. BELLOWS - VALVEAR TRUCKS, 1181 W. 8th St., Mountaineers 374-2330 L 1/16

REPAIR TRAINEE Service mechanic; for local factory service branch of nationally known firm. Excellent working conditions. Apply in person or phone. 374-2330 Universal Toroid Coil Winding, Inc. 1180 Grove St. Irvington K 1/16

STOCK CLERK Light work for handy man. Good working conditions. All benefits. 374-2330. ADDRESSOGRAPH MULTIGRAPH CORP. 1130 Route #22 Mountaineers An Equal Opportunity Employer X 1/16

STOCKROOM-CLERK With overall responsibility for receiving, storing and shipping of raw materials. Excellent working conditions. Apply in person or phone. 374-2330 Universal Toroid Coil Winding, Inc. 1180 Grove St. Irvington K 1/16

SHIPPING AND RECEIVING MEN Excellent opportunity for alert individual with a knowledge of routing, packing and inventory control to join a growing firm. Some experience in plastics preferred. Good starting salary and some overtime and liberal fringe benefits. CALL 688-8600 OR APPLY MR. KRATT CO. 879 Highway Ave., Union, N.J. R 1/16

TRINEES MATERIAL HANDLERS - SCREW MACHINE OPERATORS - PUNCH PRESS OPERATORS - PLATING MECHANICAL ASSEMBLY - SHIPING & RECEIVING From \$2.00 per hour up, depending on experience. Clark, Kentworth & Garwood areas. Come in or call 274-6600 MILDRED MILLER AGENCY 108 N. Union Ave., Cranford R 1/16

TECHNICIAN In transformer testing department. Excellent equipment. Must have related experience and be able to set up test procedures. Excellent working conditions. Apply in person or phone. 374-2330 Universal Toroid Coil Winding, Inc. 1180 Grove St. Irvington K 1/16

TRUCK DRIVERS Delivery salesmen, truck driver company attractive salary, benefit plan, paid holidays, etc. An equal opportunity employer. Write C/O Box 585, Union, N.J. 07081. Leader, 1201 S. Myrtle Ave., Union, N.J. R 1/16

TRUCK DRIVERS Delivery salesmen, truck driver company attractive salary, benefit plan, paid holidays, etc. An equal opportunity employer. Write C/O Box 585, Union, N.J. 07081. Leader, 1201 S. Myrtle Ave., Union, N.J. R 1/16

TRUCK DRIVERS Delivery salesmen, truck driver company attractive salary, benefit plan, paid holidays, etc. An equal opportunity employer. Write C/O Box 585, Union, N.J. 07081. Leader, 1201 S. Myrtle Ave., Union, N.J. R 1/16

TRUCK DRIVERS Delivery salesmen, truck driver company attractive salary, benefit plan, paid holidays, etc. An equal opportunity employer. Write C/O Box 585, Union, N.J. 07081. Leader, 1201 S. Myrtle Ave., Union, N.J. R 1/16

TRUCK DRIVERS Delivery salesmen, truck driver company attractive salary, benefit plan, paid holidays, etc. An equal opportunity employer. Write C/O Box 585, Union, N.J. 07081. Leader, 1201 S. Myrtle Ave., Union, N.J. R 1/16

TRUCK DRIVERS Delivery salesmen, truck driver company attractive salary, benefit plan, paid holidays, etc. An equal opportunity employer. Write C/O Box 585, Union, N.J. 07081. Leader, 1201 S. Myrtle Ave., Union, N.J. R 1/16

TRUCK DRIVERS Delivery salesmen, truck driver company attractive salary, benefit plan, paid holidays, etc. An equal opportunity employer. Write C/O Box 585, Union, N.J. 07081. Leader, 1201 S. Myrtle Ave., Union, N.J. R 1/16

TRUCK DRIVERS Delivery salesmen, truck driver company attractive salary, benefit plan, paid holidays, etc. An equal opportunity employer. Write C/O Box 585, Union, N.J. 07081. Leader, 1201 S. Myrtle Ave., Union, N.J. R 1/16

TRUCK DRIVERS Delivery salesmen, truck driver company attractive salary, benefit plan, paid holidays, etc. An equal opportunity employer. Write C/O Box 585, Union, N.J. 07081. Leader, 1201 S. Myrtle Ave., Union, N.J. R 1/16

Help Wanted-Men 3

TRUST AUDIT CLERK Position offered in trust department of the MONTCLAIR NATIONAL BANK & TRUST CO. We have one of the largest trust departments in the state of New Jersey. Trust and/or Auditing Department. Experience in an essential requisite to the performance of that position. Salary commensurate with experience. Liberal fringe benefits and pleasant working conditions. For appointment, call Mr. Laytham. 744-6700 R 1/16

TRUCK MECHANIC Major oil company, attractive salary, benefit plan, paid holidays, etc. An equal opportunity employer. Write C/O Box 585, Union, N.J. 07081. Leader, 1201 S. Myrtle Ave., Union, N.J. R 1/16

UPHOLSTERER EXPERIENCED NEW FURNITURE CALL 746-0258 X 1/16

WAREHOUSEMEN Large steel and aluminum warehouse requires men for night shift; all benefits. Apply in person only to Mr. George Bos, between 9 a.m. - 4 p.m. R 1/16

WAREHOUSEMEN Large steel and aluminum warehouse requires men for night shift; all benefits. Apply in person only to Mr. George Bos, between 9 a.m. - 4 p.m. R 1/16

WAREHOUSEMEN Large steel and aluminum warehouse requires men for night shift; all benefits. Apply in person only to Mr. George Bos, between 9 a.m. - 4 p.m. R 1/16

WAREHOUSEMEN Large steel and aluminum warehouse requires men for night shift; all benefits. Apply in person only to Mr. George Bos, between 9 a.m. - 4 p.m. R 1/16

WAREHOUSEMEN Large steel and aluminum warehouse requires men for night shift; all benefits. Apply in person only to Mr. George Bos, between 9 a.m. - 4 p.m. R 1/16

WAREHOUSEMEN Large steel and aluminum warehouse requires men for night shift; all benefits. Apply in person only to Mr. George Bos, between 9 a.m. - 4 p.m. R 1/16

WAREHOUSEMEN Large steel and aluminum warehouse requires men for night shift; all benefits. Apply in person only to Mr. George Bos, between 9 a.m. - 4 p.m. R 1/16

WAREHOUSEMEN Large steel and aluminum warehouse requires men for night shift; all benefits. Apply in person only to Mr. George Bos, between 9 a.m. - 4 p.m. R 1/16

WAREHOUSEMEN Large steel and aluminum warehouse requires men for night shift; all benefits. Apply in person only to Mr. George Bos, between 9 a.m. - 4 p.m. R 1/16

WAREHOUSEMEN Large steel and aluminum warehouse requires men for night shift; all benefits. Apply in person only to Mr. George Bos, between 9 a.m. - 4 p.m. R 1/16

WAREHOUSEMEN Large steel and aluminum warehouse requires men for night shift; all benefits. Apply in person only to Mr. George Bos, between 9 a.m. - 4 p.m. R 1/16

WAREHOUSEMEN Large steel and aluminum warehouse requires men for night shift; all benefits. Apply in person only to Mr. George Bos, between 9 a.m. - 4 p.m. R 1/16

WAREHOUSEMEN Large steel and aluminum warehouse requires men for night shift; all benefits. Apply in person only to Mr. George Bos, between 9 a.m. - 4 p.m. R 1/16

WAREHOUSEMEN Large steel and aluminum warehouse requires men for night shift; all benefits. Apply in person only to Mr. George Bos, between 9 a.m. - 4 p.m. R 1/16

WAREHOUSEMEN Large steel and aluminum warehouse requires men for night shift; all benefits. Apply in person only to Mr. George Bos, between 9 a.m. - 4 p.m. R 1/16

WAREHOUSEMEN Large steel and aluminum warehouse requires men for night shift; all benefits. Apply in person only to Mr. George Bos, between 9 a.m. - 4 p.m. R 1/16

WAREHOUSEMEN Large steel and aluminum warehouse requires men for night shift; all benefits. Apply in person only to Mr. George Bos, between 9 a.m. - 4 p.m. R 1/16

WAREHOUSEMEN Large steel and aluminum warehouse requires men for night shift; all benefits. Apply in person only to Mr. George Bos, between 9 a.m. - 4 p.m. R 1/16

WAREHOUSEMEN Large steel and aluminum warehouse requires men for night shift; all benefits. Apply in person only to Mr. George Bos, between 9 a.m. - 4 p.m. R 1/16

WAREHOUSEMEN Large steel and aluminum warehouse requires men for night shift; all benefits. Apply in person only to Mr. George Bos, between 9 a.m. - 4 p.m. R 1/16

Help Wanted-Men 3

WAREHOUSEMEN AND ORDER PICKERS Night warehouse work. Must be over 21 years of age. Experience unnecessary. Union wages. Apply in person. ROGERS WAREHOUSE AND TRANSPORTATION CO., 1133 Diemaker St., Millburn, N.J. K 1/16

WAREHOUSEMAN 430 P.M. - 1 A.M. shift. Experienced forklift driver. Company paid fringe benefits, pleasant working conditions. WESTINGHOUSE ELECTRIC CORP. 1451 Chestnut Ave., Union, N.J. K 1/16

WAREHOUSEMAN 430 P.M. - 1 A.M. shift. Experienced forklift driver. Company paid fringe benefits, pleasant working conditions. WESTINGHOUSE ELECTRIC CORP. 1451 Chestnut Ave., Union, N.J. K 1/16

WAREHOUSEMAN 430 P.M. - 1 A.M. shift. Experienced forklift driver. Company paid fringe benefits, pleasant working conditions. WESTINGHOUSE ELECTRIC CORP. 1451 Chestnut Ave., Union, N.J. K 1/16

WAREHOUSEMAN 430 P.M. - 1 A.M. shift. Experienced forklift driver. Company paid fringe benefits, pleasant working conditions. WESTINGHOUSE ELECTRIC CORP. 1451 Chestnut Ave., Union, N.J. K 1/16

WAREHOUSEMAN 430 P.M. - 1 A.M. shift. Experienced forklift driver. Company paid fringe benefits, pleasant working conditions. WESTINGHOUSE ELECTRIC CORP. 1451 Chestnut Ave., Union, N.J. K 1/16

WAREHOUSEMAN 430 P.M. - 1 A.M. shift. Experienced forklift driver. Company paid fringe benefits, pleasant working conditions. WESTINGHOUSE ELECTRIC CORP. 1451 Chestnut Ave., Union, N.J. K 1/16

WAREHOUSEMAN 430 P.M. - 1 A.M. shift. Experienced forklift driver. Company paid fringe benefits, pleasant working conditions. WESTINGHOUSE ELECTRIC CORP. 1451 Chestnut Ave., Union, N.J. K 1/16

WAREHOUSEMAN 430 P.M. - 1 A.M. shift. Experienced forklift driver. Company paid fringe benefits, pleasant working conditions. WESTINGHOUSE ELECTRIC CORP. 1451 Chestnut Ave., Union, N.J. K 1/16

WAREHOUSEMAN 430 P.M. - 1 A.M. shift. Experienced forklift driver. Company paid fringe benefits, pleasant working conditions. WESTINGHOUSE ELECTRIC CORP. 1451 Chestnut Ave., Union, N.J. K 1/16

WAREHOUSEMAN 430 P.M. - 1 A.M. shift. Experienced forklift driver. Company paid fringe benefits, pleasant working conditions. WESTINGHOUSE ELECTRIC CORP. 1451 Chestnut Ave., Union, N.J. K 1/16

WAREHOUSEMAN 430 P.M. - 1 A.M. shift. Experienced forklift driver. Company paid fringe benefits, pleasant working conditions. WESTINGHOUSE ELECTRIC CORP. 1451 Chestnut Ave., Union, N.J. K 1/16

WAREHOUSEMAN 430 P.M. - 1 A.M. shift. Experienced forklift driver. Company paid fringe benefits, pleasant working conditions. WESTINGHOUSE ELECTRIC CORP. 1451 Chestnut Ave., Union, N.J. K 1/16

WAREHOUSEMAN 430 P.M. - 1 A.M. shift. Experienced forklift driver. Company paid fringe benefits, pleasant working conditions. WESTINGHOUSE ELECTRIC CORP. 1451 Chestnut Ave., Union, N.J. K 1/16

WAREHOUSEMAN 430 P.M. - 1 A.M. shift. Experienced forklift driver. Company paid fringe benefits, pleasant working conditions. WESTINGHOUSE ELECTRIC CORP. 1451 Chestnut Ave., Union, N.J. K 1/16

WAREHOUSEMAN 430 P.M. - 1 A.M. shift. Experienced forklift driver. Company paid fringe benefits, pleasant working conditions. WESTINGHOUSE ELECTRIC CORP. 1451 Chestnut Ave., Union, N.J. K 1/16

WAREHOUSEMAN 430 P.M. - 1 A.M. shift. Experienced forklift driver. Company paid fringe benefits, pleasant working conditions. WESTINGHOUSE ELECTRIC CORP. 1451 Chestnut Ave., Union, N.J. K 1/16

WAREHOUSEMAN 430 P.M. - 1 A.M. shift. Experienced forklift driver. Company paid fringe benefits, pleasant working conditions. WESTINGHOUSE ELECTRIC CORP. 1451 Chestnut Ave., Union, N.J. K 1/16

WAREHOUSEMAN 430 P.M. - 1 A.M. shift. Experienced forklift driver. Company paid fringe benefits, pleasant working conditions. WESTINGHOUSE ELECTRIC CORP. 1451 Chestnut Ave., Union, N.J. K 1/16

WAREHOUSEMAN 430 P.M. - 1 A.M. shift. Experienced forklift driver. Company paid fringe benefits, pleasant working conditions. WESTINGHOUSE ELECTRIC CORP. 1451 Chestnut Ave., Union, N.J. K 1/16

WAREHOUSEMAN 430 P.M. - 1 A.M. shift. Experienced forklift driver. Company paid fringe benefits, pleasant working conditions. WESTINGHOUSE ELECTRIC CORP. 1451 Chestnut Ave., Union, N.J. K 1/16

WAREHOUSEMAN 430 P.M. - 1 A.M. shift. Experienced forklift driver. Company paid fringe benefits, pleasant working conditions. WESTINGHOUSE ELECTRIC CORP. 1451 Chestnut Ave., Union, N.J. K 1/16

WAREHOUSEMAN 430 P.M. - 1 A.M. shift. Experienced forklift driver. Company paid fringe benefits, pleasant working conditions. WESTINGHOUSE ELECTRIC CORP. 1451 Chestnut Ave., Union, N.J. K 1/16

Help Wanted-Men & Women 5

Service Sales (EVENINGS) Interesting Work in Telephone Service Sales. No Experience Necessary. If You Have The Ability To Sell We Will Pay You While We Train You. Excellent Company Benefit Program, Good Starting Salary, Discount On Purchases. Paid Vacation And Holidays. SEARS ROEBUCK AND CO. LOUSONS ROAD, UNION, N.J. (An Equal Opportunity Employer) G 1/16

PART TIME COUNTER HELP, day work 11 to 3 p.m. Ideal for housewife or night student. Salary plus uniform plus tips. Experience not necessary. Apply in person. BONNIE ICE CREAM 130 Morris Turnpike Short Hills N.J. 1/16

MUST DEPOSE OF all household items - Breaking up home - beds, tables, stove, etc. 1312 E. Henry St., Linden, N.J. 07036. Tel. 374-1111. Hours: 10:00 A.M. to 10 P.M. Mon. to Fri. 10:30 A.M. to 6:00 Sat. and Sun. T/F

THREE BATHING (White) - American Standard - New - two left, one right, \$25. each. Call after 6:30 P.M. 777-7168. H 7/7

TWO LIVING ROOM CHAIRS - upholstered in grey & beige nylon, good condition. Call 688-3978. Z 1/16

IF IT'S WOODEN IT'S A PERNER'S. For CUSTOM SHOP-AT-HOME-Decorators Service for DRAPES, SLIP-COVERS, UPHOLSTERY, REFRIGERATORS, CURTAINS. A phone call brings our Decorator with Samples, Advice and Quotations. Measure, Measure! Hung on new rods, installed, 130 by 60 inches, 197.50 complete. Similar savings on upholstery and color range. Bark cloth, \$175. Y. ALPHEUS, Route 10 and 402 in Cranford, N.J. 07016. Hours: 10:00 A.M. to 10 P.M. Mon. to Fri. 10:30 A.M. to 6:00 Sat. and Sun. T/F

YARD GOODS - COCKER SPANIELS, For CUSTOM SHOP-AT-HOME-Decorators Service for DRAPES, SLIP-COVERS, UPHOLSTERY, REFRIGERATORS, CURTAINS. A phone call brings our Decorator with Samples, Advice and Quotations. Measure, Measure! Hung on new rods, installed, 130 by 60 inches, 197.50 complete. Similar savings on upholstery and color range. Bark cloth, \$175. Y. ALPHEUS, Route 10 and 402 in Cranford, N.J. 07016. Hours: 10:00 A.M. to 10 P.M. Mon. to Fri. 10:30 A.M. to 6:00 Sat. and Sun. T/F

ADVANCE IN BUSINESS Study at home, 32 proven courses. G. approved. Call 688-8888. 2 3/13/69

SEMI-PRIVATE LESSONS in painting by former student of Cranford Art Center. Offered at home at upstate New York. Call 241-7088. Z 2/6

WANTED - GERMAN CONVERSATION INSTRUCTION, know basic German, need conversation review. Preferably early evening. Reply Box 592, Bantam Publishing Corp., 1201 S. Myrtle Ave., Union, N.J. X 1/16

ELECTRONIC SECRETARY \$9.55 per month lease/purchase plan. Cheaper than answering service. Call 482-3460. Z 2/6

RUSH CANE, EPLINT Chair Seats repaired by skilled craftsman. Mr. F. Mohr 374-2779 Z 1/20

100 REWARD for return of white female, last seen in June. Please call 687-4444 after 9 p.m. and weekends. 2 1/23

AMERICAN SECRETARY \$9.55 per month lease/purchase plan. Cheaper than answering service. Call 482-3460. Z 2/6

AMERICAN SECRETARY \$9.55 per month lease/purchase plan. Cheaper than answering service. Call 482-3460. Z 2/6

AMERICAN SECRETARY \$9.55 per month lease/purchase plan. Cheaper than answering service. Call 482-3460. Z 2/6

AMERICAN SECRETARY \$9.55 per month lease/purchase plan. Cheaper than answering service. Call 482-3460. Z 2/6

AMERICAN SECRETARY \$9.55 per month lease/purchase plan. Cheaper than answering service. Call 482-3460. Z 2/6

AMERICAN SECRETARY \$9.55 per month lease/purchase plan. Cheaper than answering service. Call 482-3460. Z 2/6

AMERICAN SECRETARY \$9.55 per month lease/purchase plan. Cheaper than answering service. Call 482-3460. Z 2/6

AMERICAN SECRETARY \$9.55 per month lease/purchase plan. Cheaper than answering service. Call 482-3460. Z 2/6

AMERICAN SECRETARY \$9.55 per month lease/purchase plan. Cheaper than answering service. Call 482-3460. Z 2/6

AMERICAN SECRETARY \$9.55 per month lease/purchase plan. Cheaper than answering service. Call 482-3460. Z 2/6

Merchandise For Sale 15

ITALIAN PROVINCIAL TABLES 1 1/2" x 30" x 60" Call 688-8390 2 1/16

100 TV SETS, \$14 to \$50, also portable, color TV, \$150, Mobile TV Co., 247 Springfield Ave., Newark and 585 Main St., East Orange. 2 2/6

HEALTH FOODS - We carry a full line of natural foods-NUTS-HONEY-SALT-FREE & SUGARLESS FOODS, IRVING-TON HEALTH FOOD STORE, Orange Ave., Irvington, ES 2-0953. SUMMIT HEALTH FOODSTORE-494 Springfield Ave., Summit, CR 7-2050. T/V

JUNIOR DINING ROOM Set - Corvado Mahogany 1128, Fedders Dehumidifier \$25. 688-7447 before 7 P.M. 2/16

MATTRESSES, factory rejects: from \$8.95. Bedding Manufacturers, 153 N. Park St., East Orange; open 9-9, also 605 West Front St., Plainfield B 7/7

MOVING MUST SELL - new freezer, dish tanks & equipment, extension ladders, baby furniture, refrigerator, occasional chairs, glass top planter table, chests, armoire, 486-0855 or 687-4089. 2 1/16/69

MUST DEPOSE OF all household items - Breaking up home - beds, tables, stove, etc. 1312 E. Henry St., Linden, N.J. 07036. Tel. 374-1111. Hours: 10:00 A.M. to 10 P.M. Mon. to Fri. 10:30 A.M. to 6:00 Sat. and Sun. T/F

THREE BATHING (White) - American Standard - New - two left, one right, \$25. each. Call after 6:30 P.M. 777-7168. H 7/7

TWO LIVING ROOM CHAIRS - upholstered in grey & beige nylon, good condition. Call 688-3978. Z 1/16

IF IT'S WOODEN IT'S A PERNER'S. For CUSTOM SHOP-AT-HOME-Decorators Service for DRAPES, SLIP-COVERS, UPHOLSTERY, REFRIGERATORS, CURTAINS. A phone call brings our Decorator with Samples, Advice and Quotations. Measure, Measure! Hung on new rods, installed, 130 by 60 inches, 197.50 complete. Similar savings on upholstery and color range. Bark cloth, \$175. Y. ALPHEUS, Route 10 and 402 in Cranford, N.J. 07016. Hours: 10:00 A.M. to 10 P.M. Mon. to Fri. 10:30 A.M. to 6:00 Sat. and Sun. T/F

YARD GOODS - COCKER SPANIELS, For CUSTOM SHOP-AT-HOME-Decorators Service for DRAPES, SLIP-COVERS, UPHOLSTERY, REFRIGERATORS, CURTAINS. A phone call brings our Decorator with Samples, Advice and Quotations. Measure, Measure! Hung on new rods, installed, 130 by 60 inches, 197.50 complete. Similar savings on upholstery and color range. Bark cloth, \$175. Y. ALPHEUS, Route 10 and 402 in Cranford, N.J. 07016. Hours: 10:00 A.M. to 10 P.M. Mon. to Fri. 10:30 A.M. to 6:00 Sat. and Sun. T/F

ADVANCE IN BUSINESS Study at home, 32 proven courses. G. approved. Call 688-8888. 2 3/13/69

SEMI-PRIVATE LESSONS in painting by former student of Cranford Art Center. Offered at home at upstate New York. Call 241-7088. Z 2/6

WANTED - GERMAN CONVERSATION INSTRUCTION, know basic German, need conversation review. Preferably early evening. Reply Box 592, Bantam Publishing Corp., 1201 S. Myrtle Ave., Union, N.J. X 1/16

ELECTRONIC SECRETARY \$9.55 per month lease/purchase plan. Cheaper than answering service. Call 482-3460. Z 2/6

RUSH CANE, EPLINT Chair Seats repaired by skilled craftsman. Mr. F. Mohr 374-2779 Z 1/20

100 REWARD for return of white female, last seen in June. Please call 687-4444 after 9 p.m. and weekends. 2 1/23

AMERICAN SECRETARY \$9.55 per month lease/purchase plan. Cheaper than answering service. Call 482-3460. Z 2/6

AMERICAN SECRETARY \$9.55 per month lease/purchase plan. Cheaper than answering service. Call 482-3460. Z 2/6

AMERICAN SECRETARY \$9.55 per month lease/purchase plan. Cheaper than answering service. Call 482-3460. Z 2/6

AMERICAN SECRETARY \$9.55 per month lease/purchase plan. Cheaper than answering service. Call 482-3460. Z 2/6

AMERICAN SECRETARY \$9.55 per month lease/purchase plan. Cheaper than answering service. Call 482-3460. Z 2/6

AMERICAN SECRETARY \$9.55 per month lease/purchase plan. Cheaper than answering service. Call 482-3460. Z 2/6

Carpentry 32

ALTERATIONS REPAIRS FORMICA TOPS CABINET WORK OF ALL KINDS 688-6632e R 7/7

A. BARTL & SON KITCHEN CABINETS, ALUMINUM WINDOWS, TILE BATHROOMS WEATHER STRIPPING, ES 3-5389 G 2/13

CARPET INSTALLING COMPLETE service - measuring and custom installing - old carpet alteration work - restretching, buffing and separating. 782-4518. K 2/13

NEW CEILING OVER YOUR OLD PLASTER, SUSPENDED, BLOCK, OR METAL CALL HARPER 241-3090 EVES. 686-5771 G 2/13

GRAVES (6 BURIALS) ORACELAND CEMETERY, P.O. BOX 100, LACKAWANNA, N.J. 07043. EL 2-3997 - EL 8-6232 EVER. 02/6/69

HOLLYWOOD MEMORIAL PARK, Inc. "The Cemetery Beautiful" 2901 S. Myrtle Ave., Union, MU 4-4300. G 2/20

Dry Cleaning Laundromat (PROFESSIONAL & COIN OP.) WASH 'N WAX CAR WASH 515 Lehigh Avenue, Union, N.J. Murdock 8-9596 G 1/6

BUY SMART - QUALITY HOUSEWARES, Clothing at Merry-Go-Round Center, 1201 S. Myrtle Ave., Union, N.J. 07081. Hours: 10:00 A.M. to 10 P.M. Mon. to Fri. 10:30 A.M. to 6:00 Sat. and Sun. T/F

FRESH MINED COAL None Better of any Price NUT OR STOVE \$27.00 PEA \$25.00 BUCKWHEAT OR RICE \$22.00 GUARANTEE CALL 372-3366 MA 2-7953 MA 2-7600 G 12/12

UNITED COAL CO. (QUALITY AT ITS BEST) NUT OR STOVE \$28.95 PEA \$25.95 BUCK OR RICE \$23.95 CALL 372-3366 G 2/20

STAMFORD LINENS KNITTED SKIRTS, SHIRTNEED CLINTON YARN & GIFTS 1106 CLINTON AVE. IRVINGTON, N.J. EL 5-5558 G 1/16

TOTHPHARMACY 204 CHESTNUT ST., ROSELLE PARK CHESTNUT ST. 1692-FREE DELIVERY OPEN DAILY. 0 2/6

SUITS - DRESSES MARTINIZING 1 HOUR MARTINIZING 500 CHESTNUT ST., UNION, N.J. G 1/6

ELECTRICAL REPAIRS JOHN PULITO Licensed Electrical Contractor, Repairs & maintenance, no job too small, call us for prompt service - EL 2-3445, K 2/12

Miss Katherine - expert permanent hair-removal. Recommended by Doctors. Send for free information booklet 520 Westfield Ave., Eliz., 289-6840. B 7/7

PUPPET SHOWS - original creative programming for school organizations. BIRTHDAY PARTY SPECIAL - after performance, children make puppets and perform. FLORENCE MARRIOTT, 681-1570. CLIP & SAVE 3/4/69





# UC reports increase to 684 in Tuition Aid Plan grants

Five hundred and fourteen Union County residents received grants of \$240 each for the spring semester, and 684 received grants of \$300 each for the fall semester of 1969 at Union College under the Tuition Aid Plan sponsored by Union County Board of Freeholders and Union College.

The statistics are included in an annual report on the Tuition Aid Plan submitted to the Union County Board of Freeholders by Dr. Kenneth W. Iversen, acting president of Union College.

Since the Tuition Aid Plan was inaugurated in the fall of 1965, the number of Union County residents benefiting has increased from 337 to 684, Dr. Iversen said.

"These figures not only reflect a growing enrollment, but also the efforts of the Board of Freeholders to keep the tuition rate for Union County residents stable at \$400 per student annually," Dr. Iversen said.

The acting president of Union College said the 684 students benefiting from the Tuition Aid Plan represents 76 percent of Union College's entire Day Session.

"As this successful program nears an end and as we begin a new era with the formation of the Union County Coordinating Agency for Higher Education, we want to take this opportunity to express our appreciation to all members of the Boards of Freeholders who have served our county since this pioneering effort was launched," Dr. Iversen said.

"Over the years our freeholders in Union County have shown great interest in higher education and an extremely sophisticated understanding of the difficult problems facing higher education. It is our hope that the close cooperation which has existed between our College and the Board of Freeholders will continue in the future as we jointly serve the higher educational needs of the citizens of Union County."

In the spring semester of 1968, 76 tuition aid grants of \$240 each were held by Cranford residents. The totals for other Union County communities were: Westfield, 59; Linden, 54; Union, 49; Elizabeth, 42; Plainfield, 39; Clark, 25; Rahway, 23; Scotch Plains, 19; Roselle Park, 17; Springfield, 15; Fanwood, 13; New Providence, 12; Berkeley Heights and Kenilworth, nine each; Hillside and Mountainside, eight each; Garwood and Summit, seven each, and Winfield, one.

## UC sessions set on aid program

Information of Union College's new Evening Session Educational Opportunity Fund Project may be obtained at the college between 7 and 8:30 p.m. Monday, Tuesday and Wednesday.

Henry T. Pryor of Cranford, director, said students interested in the program for economically and educationally disadvantaged should feel free to visit him or Esau

Brockington of East Orange, assistant director, during those hours.

Under the Educational Opportunity Fund Project, students can qualify for grants covering tuition, fees, books and other expenses.

Pryor urged school officials, civic and service organizations, and individuals to bring to Union College's attention students who they believe are educationally and economically disadvantaged and have a potential to do college work.

## Complete Printing & Offset Service

BOOKLETS • ADV. JOURNALS • BUSINESS FORMS • BROCHURES • CATALOGS • BULLETINS • SNAP-OUT FORMS • INVITATIONS • MENUS • LABELS BOOKS • PROGRAMS • STATIONERY • GOLD PRINTING • ENVELOPES • TICKETS, ETC. • ECONOMICAL • FAST SERVICE • QUALITY WORK

Member of Better Business Bureau - Quality Work Since 1938  
ALL FACILITIES UNDER ONE ROOF MEAN SAVINGS TO YOU!  
On Premises: Linotypes, Photo-offset Camera and Photo-making Equipment, Modern High-speed Presses, Folding & Binding Equipment.

White Printing & Publishing Co.  
492 CHESTNUT ST., UNION, N.J. CALL 688-6626

## BOWCRAFT

SERVING SKIERS SINCE 1940

Quality Equipment Repairs  
Rt. 22 Scotch Plains, N.J. 07076  
233-0675

HEAD - BOGNER - MEGGI - SUN VALLEY  
MOLITOR - CUBCO - KASTINGER - WHITE STAG  
Member Ski Specialists Guild

## Nurses in cancer symposium

Sister Kathryn Mangen, nursing director of Calvary Hospital, Bronx, N.Y., will speak on "Meeting the Nursing Needs of the Patient with Cancer of the Head and Neck" at the first annual Cancer Symposium for Nurses on Wednesday, Jan. 29, from 1:30 to 8:30 p.m. at the Elizabeth Carteret Hotel.

Calvary Hospital handles only terminal cancer cases. Other program participants include

Dr. Warren H. Knauer, executive committee chairman of the Union County Unit of the American Cancer Society, and Miss Virginia Barkley, R.N., nursing consultant to the national office of the American Cancer Society.

Their topics will be "The Medical Care of the Head and Neck Patient" and "Meeting the Psychological needs of the Patient with Cancer," respectively.

# Two Guys

FOOD BUYS... PLUS YOUR MOST VALUABLE TRADING STAMPS FREE!

TRIMMED FIRST CUT

U.S.D.A. CHOICE **CHUCK STEAK** 38¢ lb.

SMOKED HAM READY TO EAT FULL CUT BUTT HALF lb. 59¢ FULL CUT Shank Half lb. 49¢

CITY CUT PORK LOIN SALE! RIB PORTION lb. 38¢ LOIN PORTION lb. 48¢

SMOKED BUTTS BONELESS PLYMOUTH-ROCK ROSTOCK OR SWIFTS lb. 69¢ ROAST BEEF U.S.D.A. CHOICE BONELESS CROSS RIB lb. 88¢

U.S.D.A. CHOICE BONELESS ROAST BEEF TOP ROUND OR END OF STEAK ROAST lb. 98¢ U.S.D.A. CHOICE CALIF. CHUCK FULL CUT POT ROAST lb. 69¢ CITY CUT COUNTRY STYLE SPARERIBS lb. 49¢ SUGAR CURED SMOKED CENTER CUTS HAM STEAK lb. 98¢ STEER SLICED BEEF LIVER lb. 39¢

FRESH ALL BEEF GROUND BEEF lb. 49¢ GROUND CHUCK LEAN lb. 73¢ GROUND ROUND EXTRA LEAN lb. 83¢ GOVT. INSP. 3 1/2-lb. Avg. ROASTING CHICKEN lb. 39¢ GOVT. INSP. CHICKEN LEGS THIGH ON lb. 49¢ GOVT. INSP. CHICKEN BREAST REG. STYLE lb. 59¢

BOLOGNA OR LIVERWURST CHUNK lb. 49¢ SHOULDER LAMB CHOPS lb. 89¢ FRESH HOT OR SWEET ITALIAN SAUSAGE lb. 69¢ TWO GUYS BLUE LABEL SLICED BACON lb. 39¢ SWIFTS BROWN & SERVE SAUSAGE 8-oz. pkg. 59¢

NEW INTENSIFIED TIDE 20c OFF LABEL KING SIZE 5-lb. 4-oz. box 89¢

NEW DASH 12c OFF LABEL GIANT SIZE 3-lb. 2-oz. box 58¢

SHORTENING CRISCO 69¢ 3 lb. can

TWO GUYS CHUNK LIGHT TUNA 6 1/2-oz. cans 99¢

TOMATO CATSUP TWO GUYS FANCY 6 14-oz. btl. 99¢

COUPON ONLY AT TWO GUYS LAYER CAKE MIXES REG. 37c ea. 3 1-lb. boxes 79¢

ELBERTA PEACHES 3 1-lb. 13-oz. cans 99¢

WHOLE KERNEL or CREAM STYLE TWO GUYS CORN 8 1-lb. cans 99¢

STEMS & PIECES TWO GUYS MUSHROOMS 4 4-oz. cans 89¢

IMPORTED PLUM WITH BASIL TWO GUYS TOMATOES 4 8-oz. cans 89¢

KING COLE CUT GREEN BEANS OR SLICED WHITE POTATOES 6 1-lb. 13-oz. cans 99¢

FIORELLA SOYA BEAN OIL gal. can 1 49¢

BUTTER FLAVOR SUNSHINE COOKIES 4 8-oz. cartons 59¢

BURRY'S MR. CHIPS COOKIES 13 1/2-oz. pkg. 53¢

NABISCO SANDWICH COOKIES OREO CREME 16-oz. pkg. 45¢

PEANUTS - RAISINS - PEPPERMINTS POM-POM - STARS WELCH'S CHOCOLATES 4 1-oz. 10-oz. boxes 59¢

DOLE SALE! LO-CAL FRUIT COCKTAIL 1-lb. cans 4 89¢ PINEAPPLE SLICED - CHUNKS 1 1/2-oz. cans 4 89¢ GRAPEFRUIT JUICE PINEAPPLE 3 1-qt. 14-oz. cans 89¢

COUPON ONLY AT TWO GUYS KRAFT KITCHEN FRESH MAYONNAISE 1/16 - UL One coupon per customer. REG. 63c 38¢

FROZEN FOOD DEPT. NON-DAIRY CREAMER COFFEE RICH 7 pts. 99¢ 3 qts. 79¢ SARA LEE COFFEE RINGS, BLUEBERRY, RASPBERRY, MAPLE CRUNCH 10-OZ. 12-oz. pkg. 59¢

BAKERY SPECIALS WHITE BREAD SQUARE SIZE SLICED 4 1-lb. 6-oz. loaves \$1 RAISIN BUNS OR APPEARANCE JUMBO SIZE 4 49¢ PIES ALL VARIETIES large 8 inch 49¢ BOBKA RING OLD FASHION lb. 49¢ PRETZEL RINGS REG. OR NO SALT 11-oz. box 29¢

TWO GUYS TRADING STAMP ONE BOOK SPECIAL YOUR BOOK SAVES \$3.50 TOWARD THE PURCHASE OF MOLDED OR WOOD FRAME MEN'S ATTACHE CASES FOR LONGER WEAR REG. 5.97 YOU PAY 2.47 PLUS ONE FILLED TWO GUYS TRADING STAMP BOOK GIFT DEPT.

PRODUCE DEPT. CALIFORNIA ICEBERG LETTUCE each head 19¢ RED RIPE SLICING TOMATOES cello. ctns. 2 25¢ FRESH WESTERN CARROTS 2 29¢

PERSONAL SIZE IVORY SOAP 3' OFF LABEL PKG. OF 4 BARS 23¢

WEEKLY BONUS SPECIAL "MARY ANN" SPRAY STARCH REG. 37c EA. YOU PAY 2 59¢ 16-OZ. SIZE WITH A FOOD PURCHASE OF \$2.00 OR MORE HOUSEWARES DEPT.

UNION RT. 22 AT MORRIS AVE. OPEN DAILY 9:30 A.M. TIL 10 P.M. SUNDAY 10 A.M. TIL 6 P.M. \*For Sales Allowed By Law

We reserve the right to limit quantities. Not responsible for typographical errors. Prices effective thru Sat., Jan. 18, 1969.

## The Volvo heater.

If it's good enough to keep you warm in Björkliden, it's good enough to keep you warm in - - - - -

Björkliden is a town in Sweden on the Arctic Circle. When temperatures there hit 40° below zero, which they do every winter, schools and businesses operate as usual. So do people who own Volvos.

The Volvo heater is powerful enough to keep the inside warm even when it's 40° below on the outside. In fact, on the milder winter days in Björkliden, which can get as warm as 20° below zero, Volvo owners can keep comfortable without turning their heaters all the way up.

Of course, we wouldn't expect you to buy a Volvo just because it has a good heater. But the next time the weather's as cold and miserable as it is today, bundle up, climb into the icebox you drive, and drive it over here. And warm up while we show you some of the other good things that Volvo has going for it.



**SMYTHE VOLVO INC.**  
326 Morris Ave. Summit 273-4200

## REGIONAL ADULT SCHOOL

at Jonathan Dayton High School in Springfield

Announces Registration on Tuesday, January 21, & Wednesday, January 22 7:30 - 9:00 p.m.

SECURITIES AND INVESTMENTS PRINCIPLES OF DATA PROCESSING AND BASIC COMPUTER SYSTEMS COMPUTER PROGRAMMING (FORTRAN) BOOKKEEPING AND ACCOUNTING I BOOKKEEPING AND ACCOUNTING 2 BEGINNING TYPING TYPING REFRESHER INTERMEDIATE SHORTHAND REFRESHER SHORTHAND SLIM FOREVER BEGINNING SEWING INTERMEDIATE SEWING CREATIVE SEWING FOR INTERIOR DECORATING GOURMET'S KITCHEN UPHOLSTERING SPEED READING BOOK DISCUSSIONS SPANISH 1 (CONVERSATIONAL) SPANISH 2 (CONVERSATIONAL) POLISH (FORMAL READING & WRITING) STAY YOUNG WITH YOGA INTERMEDIATE YOGA	SLIMNASTICS STANDARD FIRST AID GUITAR FOR BEGINNERS INTERMEDIATE GUITAR BEGINNING PIANO PIANO 2 SPRINGFIELD MUSICAL SOCIETY ORCHESTRA OIL PAINTING SCULPTURE LIFE ART CLASS ARTIFICIAL FLOWER ARRANGING PICTURES BEAUTIFUL PHOTOGRAPHY BRIDGE FOR BEGINNERS INTERMEDIATE BRIDGE BEGINNING SOCIAL DANCING ADVANCED SOCIAL DANCING BEGINNING TENNIS INTERMEDIATE TENNIS GOLF CHESS GREEN THUMBERY DRIVER EDUCATION
--	--

For further information or free brochure call H.L. Banfield, Director at 233-1586