









OUT IN FRONT—Winners for the Jonathan Dayton Regional High School track team in Suburban Conference championships Saturday at Millburn included Brian Belliveau in the high hurdles and Bob Roche in the mile. (Photos by Mitchell Krasnof)

## Dayton 'disappointed' in second place finish

By MICHAEL PETRO  
The Jonathan Dayton Regional High School track team came in second in the Suburban Conference Track meet last week. Finishing one-half point behind Summit and Millburn, which tied for first place.  
The loss of the conference title was the most disappointing setback the Dayton Bulldogs have had all season. Highly favored to capture the title, Dayton scored 93 1/2 points. Summit and Millburn each had 94 points.  
Martin Taglienti, head coach, was extremely frustrated with the team's second place showing. The turning point of the meet came when Frank Ruggieri and Steve Pepe were disqualified from the 120-yard high hurdles for false-starting. Even though Brian Belliveau won the event for Dayton in 15:0 seconds the loss of Ruggieri and Pepe proved fatal.  
The Bulldog athletes turned in some fine performances on the day, though, as Bob Roche captured the mile run in

### Chiropractic group selects local doctor

Dr. William T. Eickhoff of 631 Morris ave., Springfield, has been selected for membership in the American Chiropractic Association. The announcement was made at the organization's national headquarters at Des Moines, Iowa.

Dr. Eickhoff is a graduate of Columbia Institute of Chiropractic located in New York City.

4:30.4. Ruggieri took the 330-yard intermediate hurdles in: 40.0 and Brandon Gambec finished first in the shot put with a toss of 54-3/4.

But Coach Taglienti knows his team was disappointed by the final results. "I really feel sorry for the boys since they all know we should have won this meet running away. They deserved the victory."

"But the decision to disqualify our runners when the Verona runner false-started them out of the gate was unheard of in all my 19 years of coaching. It shouldn't have happened," he said.

The Bulldogs defeated Summit in dual meet competition, 74-57, just last week.

The victory gave Dayton its eighth victory against no defeats this season. In the 100-yard dash, Rick Spina finished third, while Harvey Kaish and Mike Carroll came in second and third in the 220 and the 440-yard runs. The mile event saw Greg Rusbarsky, Brad Weiner and Russ Lausten sweep to victories while Bob Roche and Chris Clunie took second and third in the two-mile run.

Ruggieri, Pepe and Belliveau swept the high hurdles. Ruggieri and Pepe finished first and second in the intermediate hurdles. Belliveau, Kevin Doty and Willie Willburn swept the high jump.

Gambec and Andy Herkalo took first and second, respectively, in the shot put. Herkalo finished second in the discus and Bob Conte and Pepe captured first and second in the javelin.

## Bulldogs to take on Millburn

By MICHAEL PETRO  
The Jonathan Dayton Regional High School baseball team dropped three games last week, losing to Summit (4-0), Verona (9-7) and Hillside (6-3). The Dayton Bulldogs, who now have a 3-13 record, will take on Millburn today at home.  
Craig Mardany limited the Bulldogs to four hits as he improved Summit's chances for a Suburban Conference title. Dayton never seriously threatened as Mardany completely controlled the game.

Against Verona the Bulldog bats came alive but Verona capitalized on errors to score four unearned runs. Henry Daas led the Bulldogs with a single, double, two RBI and one run scored. Rick Weber had two hits and scored two runs, John Kronert had a hit and three RBI and Dave Luthoff cracked a double, batted in one run and scored another.

Hillside broke a 3-3 tie with three runs in the sixth inning and the Bulldogs went down to their 13th defeat. Dayton got a run in the first when Kronert led off with a single, moved to second on a passed ball and scored on Ed Johnson's double. In the third Weber singled, moved to second on a walk to Ed McCaine, advanced to third on a force and was brought home by Pete Episcopo's sacrifice fly to center. The final Bulldog run came in the fourth when Kevin Lalor, who had walked, scored on an error after a single by Johnson.

## Golfers defeated

By MIKE MEIXNER  
The Jonathan Dayton Regional High School golf team, although losing, played its finest match of the season against Suburban Conference leaders Madison in a match held last week.

The Bulldogs, bowing to Madison, 260-269, were led by Dave Gechlik, a sophomore, who shot a 39 and earned a Titlist ball—an award given to golfers who break 40. Mike Rosenberg scored a 43, and Skip Liquori shot a 45. Phil Fantozzi, now playing regularly for Dayton, shot a 46. Marty Swanson and Neil Tepper shot 48 apiece.

The Bulldogs, in a non-conference match against Rahway—scored on a points-per-hole system—defeated the Indians, 14 1/2-3 1/2. Rosenberg, who shot a 39, gained his second Titlist ball of the season. Gechlik scored a 42, Liquori shot a 44 and Swanson shot 46. Tepper and Fantozzi also saw action in the Rahway victory which brought the Dayton record to 6-9.

**NEED HELP!**  
An inexpensive HELP WANTED ad in the classified pages of this newspaper will reach over 30,000 nearby reader-families. To place your ad, call 686-7700.

## Girls lose in softball

South Orange defeated Springfield, 3-5, in a Suburban Girls' Softball League game.

Springfield opened up with an early 2-0 lead after two innings of play but could not hold onto it. South Orange battled from behind and won the game.

Linda Graziano pitched well in the first few in-

nings but lost her consistency. She was tagged with the loss.

Jackie Demark led Springfield offensively, going 4 for 4 with 3 singles and a double. Linda Graziano added a double and a single.

Other players to see action included Nancy Kennedy (double), Melissa Monticello (single), Laura Clarke (double), Roseanne Menza, Eileen Haws, Karen Hudgins, Valerie LiCausi (single), Rosemarie Herkalo, Jackie Peccarro and Laura Policastro.

**LOOKING FOR A JOB?**  
These little classified ads in the back of the paper may be your answer. Each week it's different. Make reading the classified a "must" this week and every week.

FEATURING SEIKO WATCHES  
**GINTZ**  
Jewelry bought, Jewelry wrought.  
Appraisals provided, Watches revived.  
Discounts galore, cause we're 2nd floor!  
**MILTON L. OGINTZ, INC.**  
356 Millburn Ave., Millburn 379-4214  
your full service second floor jewelry store... a few steps above the others  
(near the cinema... in the heart of Millburn)  
Monday-Friday 10-5:30—Saturday til 5

N  
W  
E  
**SPRINGFIELD AVE.**  
HEADING WEST? — USE PROSPECT OFFICE  
AT  
**PROSPECT ST.**  
HEADING EAST? — USE HILTON OFFICE  
AT  
**JACOBY ST.**  
FULL SERVICE OFFICES  
ON BOTH SIDES OF  
SPRINGFIELD AVE.  
**The MAPLEWOOD BANK and Trust Company**  
MEMBER OF FEDERAL DEPOSIT INSURANCE CORPORATION

# MANNING'S II ONLY!

AT 358 MILLBURN AVE., MILLBURN - 467-1583

Mon. & Thurs. 10-9  
Tues. Wed. Fri. 10-6  
Sat. 10-5:30



LEVI'S	REGULAR PRICE	MANNING'S DISCOUNT PRICE
505 - DENIM STRAIGHT	16.00	12.75
646 - DENIM FLARE	16.50	12.99
519 - DENIM STRAIGHT	16.50	12.99
519 - PREWASH DENIM	18.50	13.99
646 - PREWASH DENIM	18.50	13.99
CORDUROY FLARES	15.50	11.99
CORDUROY STRAIGHTS	15.50	11.99



Lee	REGULAR PRICE	MANNING'S DISCOUNT PRICE
RIDER - DENIM STRAIGHT	16.00	11.99
RIDER - PREWASH DENIM	18.00	13.99
OVERALL - DENIM	20.00	15.75
OVERALL - PREWASH	21.95	16.99

## BLUE CARPENTERS



## WHITE PAINTERS

	REGULAR PRICE	MANNING'S DISCOUNT PRICE		REGULAR PRICE	MANNING'S DISCOUNT PRICE
LEE REGULAR	14.50	12.49	Lee	LEE SWEET ORR	13.50
LEE PREWASH	15.50	13.99	SWEET-ORR	SMITH	11.50
SWEET ORR	15.00	11.49			14.00
DEECEE	12.00	9.99			
LEVI'S PREWASH	16.95	13.99			

### SWEET-ORR

## OVERALLS

	REGULAR PRICE	MANNING'S DISCOUNT PRICE
LEE - DENIM	20.00	15.75
LEE - PREWASH DENIM	21.95	16.99
SWEET-ORR	16.95	13.99

## SWEET-ORR ARMY FATIGUES



	REGULAR PRICE	MANNING'S DISCOUNT PRICE
NAVY - TAN - GREEN - BLACK - WHITE - POWDER BLUE - BROWN		
ALL COLORS	13.00	9.99 Boys 8.99

## WORK PANTS



	REGULAR PRICE	MANNING'S DISCOUNT PRICE
NAVY - TAN - BROWN		
GREEN - GREY - BLACK	12.00	8.99

## BOYS' LEVI'S

	REGULAR PRICE	MANNING'S DISCOUNT PRICE
717 - DENIM	15.00	11.49
719 - DENIM	15.00	11.49
717 - PREWASH DENIM	16.00	12.99
719 - PREWASH DENIM	16.00	12.99
BOOT CUT CORDUROY	14.00	10.99
BOOT CUT BRUSH	16.00	12.99

## LITTLE BOYS' LEVI'S

	REGULAR PRICE	MANNING'S DISCOUNT PRICE
417 - DENIM	11.50	9.99
417 - PREWASH DENIM	13.50	11.49
BOOT CUT CORDUROY	11.00	8.99
BOOT CUT BRUSH	13.50	9.99



\$2.00 OFF ON ALL PUMAS

## BOYS' WORK CLOTHES



ALL DISCOUNTED  
BLUE CARPENTER, WHITE OVERALLS  
ARMY FATIGUES, WHITE PAINTERS

# Kiwanis beats Rotary, Elks for 8-1 record

Kiwanis Club extended its season record to 8-1 in the Springfield Youth Major League with two victories last week. Kiwanis first defeated Rotary Club, 8-7. Down 5-1 in the fourth, Kiwanis tied the score as Gary Prince walked, Dan Spotts singled, Jon Begleiter reached on an error, Scott Schneiderman reached on a fielder's choice and Andy Rosenthal doubled with the bases loaded. Singles by Tom Ard and Scott Schneiderman added the runs that Kiwanis needed. Other key hits were delivered by Jon Begleiter and Brett Walsh. Brett Walsh got the triumph for Kiwanis in relief of Jon Begleiter. Brett Walsh received last-inning help from Louis Jenkins.

Kiwanis then gained an 11-inning 9-8 victory over Elks. The game began as a pitcher's duel between Kiwanis' Tom Ard and Victor Gutierrez of Elks. Each gave up only one hit. Victor Gutierrez

struck out 11 and Tom Ard struck out 16. Elks' only hit off Tom Ard came in the fourth, a triple to deep left. Tom Ard broke up Victor Gutierrez' bid for a no-hitter in the bottom of the sixth.

Kiwanis tied the score in the home sixth when Brett Walsh walked, stole second and scored on Tom Ard's double. Elks made it 2-1 in the ninth when Kevin Jelinek doubled, and scored on Tony Delia's single. Kiwanis tied the game again in the bottom of the ninth as Steven Stickler singled, stole second, and scored on Scott Schneiderman's single.

Elks took a 6-2 lead in the 10th on a bases-loaded triple by Brian Lerner and an RBI-single by Kevin Jelinek. With one out in the bottom of the tenth, Kiwanis Club's Mike Delia and Dan Spotts walked and Brett Walsh singled. Then, Andy Rosenthal hit a drive to

deep right, but Elks' Paul Clavetti made a great diving catch, holding the runners. Tom Ard followed with a single to load the bases. Steven Stickler then tripled to deep right center to tie the score.

Elks went ahead 8-6 in the 11th as Brian Lerner drove in the go-ahead runs. Kiwanis, though, came through in the 11th with three runs. The key hit was Tom Ard's single.

The Elks Club knocked Kiwanis Club from the unbeaten ranks, 15-9.

Elks scored two runs in the top of the first on two walks and RBI hits by Wesley Peterson and Richard Hinkley. Kiwanis came back with four runs in the first on singles by Andy Rosenthal, Tom Ard, and Gary Prince.

Elks blew the game wide open in the second inning with seven runs. Triples by Victor Gutierrez and Kevin Jelinek, a double by Chuck Bell, and singles by

Brian Lerner, Walter Clarke and Wesley Peterson led the way.

Elks was paced by the pitching of Richard Hinkley and Victor Gutierrez, who combined for nine strikeouts and eight walks. Hitting stars for Elks were: Wesley Peterson (two singles, a double and four RBI), Brian Lerner (two singles and two RBI), Kevin Jelinek, (triple and two RBI) and Richard Hinkley (RBI). Kiwanis was led by Andy Rosenthal with three singles, Tom Ard with two singles and Gary Prince with three RBI. Good defense was supplied by Paul Clavetti of Elks and Andy Rosenthal of Kiwanis and Andy Rosenthal of Kiwanis.

The standings for the Youth Major League this week are as follows: Kiwanis Club, 8-1; PBA, 4-4; Elks, 3-3; Rotary Club, 2-3; Lions Club, 1-3; American Legion, 1-5.



RUNNER IS OUT—In scene from Springfield Youth Major League action, PBA shortstop Ron Fusco tags Mike Lies of American Legion, on throw from catcher Brian Hendrix. Robert Daniel backs up the play. (Photo by Jim Adams)

## Police Reserve beats Bunnell on 3-hitter by Wadle, Graziano

A combined three-hitter by Police Reserve's Randi Wadle and Michael Graziano for their team's second straight victory highlighted the fourth week of play in the Springfield Youth Minor League.

FMBA defeated Bunnell Brothers, 13-11, overcoming a 5-0 third-inning deficit. FMBA picked up two runs in the third as John Rubinstein and Ricky Sabarese singled and Michael Ninner doubled to center. In the fourth inning, FMBA tallied on singles by Michael

Aufiero, Michael Sabarese and Jon Silverman.

FMBA scored three more times in the fifth inning. John Rubinstein and Ricky Sabarese singled and Jonathan Sichel walked and all three scored on infield outs to make the score 7-6.

FMBA broke open the game in the sixth inning with seven runs as Socrates Kyrtsis, Michael Aufiero and David Cole singled, Mike Friedman walked and John Rubinstein hit his third single of the game. Ricky Sabarese then

tripled down the leftfield line, clearing the bases. Chris Cardinale also tripled and scored on Michael Ninner's single. The seven runs tallied in this inning were enough to hold off a sixth-inning, four-run rally by Bunnell Brothers.

The Police Reserve won its second straight game as it defeated Bunnell Michael Ninner pitched the first inning for the victors. Buddy Pinkava pitched the next two innings. He walked five, struck out six and allowed two runs on two hits. Socrates Kyrtsis finished the game and got the win. He walked five, struck out five and allowed four runs on three hits in his three innings pitched.

## Bulldogs drop tennis matches

By MIKE MEIXNER

In its worst week of the season, the Jonathan Dayton Regional High School tennis team was shut out in each of its four conference matches, losing to Verona, who they will play again tomorrow, Millburn, Summit and West Orange.

Against Verona, Danny Schlessinger, Peter Hess and Neil Meisel were swept in their singles matches. Mark Dooley, a freshman, and Mick Gottlieb lost at first doubles, while Rich Simon and Art Salan were defeated in the other doubles match.

Against the Millers, Donna Lies put up a strong fight before bowing to Millburn's star player, Fritz Buehning. Schlessinger and Hess also lost at singles. Meisel, Simon, Gottlieb and Salan were defeated.

Lies, Schlessinger, Meisel, Gottlieb, Simon, Hess and Eric Strulowitz all were defeated by a talented Summit squad.

Playing at West Orange, Dayton again drew blanks. In a lineup shuffle, Hess was moved to first singles, with Schlessinger and Meisel also failing in their singles matches. Gottlieb and Strulowitz lost at first doubles, while Salmon and Simon were swept in the second doubles match.

## Rowdies, Atoms triumph in DIPPER floor league

The Rowdies (3-0-1) stopped the Quicksilvers (3-1-0) by a 4-2 score to take over undisputed possession of first place in the Daily Intramural Program Physical Education Recreation (DIPPER) floor ball league in the Dayton Regional boys' gym last week.

Rich Kaplan and Alan Layton tallied two goals. Fine goalie play by Sid Kaufman plus outstanding defensive play by Stu Manoff, Joel Gelwang, Kevin Lamb, Jim Hancock, Jim Christoudoulou and Bob Conte highlighted the victory.

Bryant Burke and John Irwin were Quicksilvers scorers while Dave Lauff, Tim Harrigan, Frank Coelho, Randy Wissel, Brian Kukon and Warren Bromberg played excellent ball for the Quicksilvers.

The Atoms (3-1-0) stayed in contention for the championship as they exploded with goals by Joe Sangregorio (2) and Mitch Feuer (1) to shut out the Lancers (1-3-0). Steven Shindler, Joe Frieri, Van Vitale and Steve Geltman sparked for the Atoms while Scott Worswick, Randy Bain, Mark Ackerman, Tony Sangregorio, Al Arnold, Jeff Vargas, Neal Tepper and John Haws excelled for the Lancers.

The Cosmos (2-2-0) subdued the

Tornados (0-4) by a 8-2 score while the Aztecs (2-2) quieted the Earthquakes (1-2-1) by a 1-0 margin in other league action last week.

Bruce Davison, Mike Jacobs and Willie Willburn slammed in two goals each while Ron Scopelluto and Bob Schneider scored solo to go lead the Cosmos to their second league win. Jeff Lubash, and Alan Haimowitz played good ball for the Cosmos while Tornados top players included: Tom Ragno (1 goal), Mike Meixner (1 goal), Joe Huber, Dave Weinberg, Tom Huelbig, Gary Nestler and Dave Barnes.

The second round of play in the first annual DIPPER faculty ping pong singles championship tournament saw Tony Falzone out Tom Baker by 21-12 and 21-13. John Kovelisky over Bob Cardwell 21-18 and 21-17. Rollie Marioni over Ray Yanchus 21-19, 13-21, and 21-19. Art Krupp and Rick Lanconni will vie for the fourth playoff spot as soon as possible. Iaconno is awaiting the arrival of his third child and will be given extra time to complete his play.

**BURGLAR DETERRENT TIP:**  
Never leave extra keys in such obvious places as the mailbox or under a flower pot or welcome mat.

## Elks top Shop Rite, 7-6, in men's softball

Last week in the Springfield Men's Softball League the Elks were edged by Shop Rite, 7-6. The Elks, with a 6-3 lead going into the bottom of the seventh inning, allowed Shop Rite to score four runs. Bob Brandt, pitching well for the Elks, had control problems in the bottom of the seventh, walking four batters, allowing a hit by Jim Lies, a triple by Tom Burke and a game winning single by Harold Hansen. Chuck Foley, Bob Brandt, and Dan Faltoute each had two hits for the Elks.

Libco defeated the Springfield Jaycees, 7-1. Libco scored five runs in the first inning on hits by Bob Day, Carl Patetta, Dennis Armento, Ray Reiger and Dom Orlando. Neil Kamler allowed only one run in posting Libco's first triumph. Libco concluded its scoring with two runs in the second inning. Mickey Anderson and Matty Levine each had two hits for the Jaycees. Frank Fulton was the losing pitcher.

PBA posted an 11 to 6 victory over the Knights of Columbus. PBA pounded out 17 hits in winning its second game of the season. Sam Calabrese was the winning pitcher. Rich Wnek had three hits for the Knights and Dom Casternovia took the loss.

Ehrhardt topped the Spirit of 76, 20-1. Bill Osborne, Bill Shally and Gary Osborne led Ehrhardt's TV with three hits each in a 22-hit attack. Bill Ehrhardt had a home run for the winners. John Ehrhardt lost a shutout in the sixth when Mike Frank drilled a lead-off homer for the score. Rich

Reagan and Mike Frank each had two hits for the Spirits.

The Elks blew a 6-3 lead late in the game as they allowed the Yanks to score four runs in the bottom of the sixth for a 7-6 victory. In the sixth, the key hits for the Yanks were by Bob Janukowicz, Bill Shean, Bob Tafel and Nino DelMauro. DelMauro was the winning pitcher.

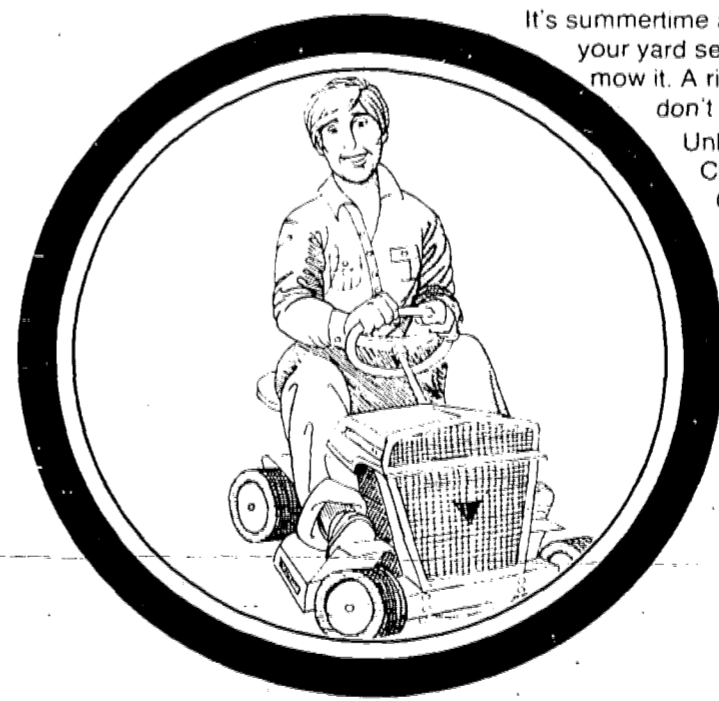
Libco edged Paul's Tire, 8-6. Libco scored two runs in the seventh inning to break a 6-6 tie on hits by Carl Patetta and Jerry Butler for the victory. Neil Kamler was the winning pitcher. Ron Darden and Gary Olson had three hits each for Paul's Tire in a losing effort.

Masco Sports blasted PBA, 16-4. Masco had 20 hits in winning its second game of the season. Mike Pisano led Masco to victory with a single, triple and a two-run homer. Mike had seven runs batted in for the winners. Rich Pieper had three hits and Steve Pepe had two hits and played a fine defensive game for Masco. Ray Schramm was the winning pitcher. Bill Simo had two homers and Praizner collected three hits for PBA.

F and M Millman topped the Yanks, 10-3. Millman pitcher Hesh Cohen scattered seven hits and allowed three runs in leading his team to victory. Millman's offense was led by Eric Wasserman, Dave Epstein and Dave Stromeyer each having two hits. Tony Ciccoli was the losing pitcher. Bob Janukowicz and Al Frikis had two hits each for the Yanks.

BUSINESS DIRECTORY		
RAPID REFERENCE TO RELIABLE BUSINESS HOUSES		
<b>AUTO DEALERS</b> <b>Doran Ford</b> SALES-SERVICE-BODY SHOP RENTALS - LEASING NEW CARS 686-0040 RENTALS 686-0040 USED CARS 686-1373 BODY SHOP 687-2222 -2037 MORRIS AV UNION NEAR UNION CENTER	<b>BANKS</b> <b>THE NATIONAL STATE BANK</b> Member F.D.I.C. OFFICES THROUGHOUT MIDDLESEX COUNTY, HUNTERDON & MERCER COUNTIES 193 SPRINGFIELD 193 MORRIS AVE 376-1442	<b>Savings &amp; Loan</b> <b>CRESTMONT</b> Savings & Loan Assn. INSURED Two Convenient Offices in Springfield to Serve You Mountain Ave. Office 733 Mountain Ave 379-6121 MORRIS AVE OFFICE 175 Morris Ave. 376-5940
<b>AUTO DEALERS</b> MULTIPLY YOUR SAVINGS <b>Multi</b> SALES-SERVICE-PARTS TRUCKS <b>OK</b> USED CARS Dial 686-2800 2277 Morris Ave Union.	<b>FLOOR COVERINGS</b> FLOOR COVERINGS BY... <b>FRIEDMAN BROS.</b> CARPETS LUMBER SPREADS... 1224 Springfield Ave., Irvington Call 371-5900	<b>JUST SAY YOU SAW IT IN THE LEADER!</b>
<b>AUTO DEALERS</b> Union County's Lincoln-Mercury Leader! SALES • SERVICE • PARTS Congenial Salesmen Superb Service Thomas 372-6500 LINCOLN-MERCURY • BRICKLIN 369 SOUTH AVE., E. WESTFIELD	<b>PLUMBERS</b> MAX SW & PAUL <b>SCHOENWALDER</b> Plumbing & Heating Contractors Gas heat Gas Water Heaters Steam & Hot Water Heating Thermostats Circulators Pumps, Humidifiers Repairs & Alterations Electric Sewer Cleaning Dial 686-0749 364 Chestnut St Union	

## Got too much to mow?



It's summertime and the living ain't easy. Not when your yard seems to get bigger every time you mow it. A riding mower would be nice but you don't have enough green.

Unless you have the Big O. Overdraft Checking from United Counties Trust Company. It's a FREE CHECKING account with a line of credit which you can use just by writing a check for more than your balance. Or by filling out a simple transfer form.

All you have to do is cut out for your nearest UCTC office and apply. And before you know it you'll be riding in style.

# Get The Big O

It's practical.

**United Counties Trust Company**

Serving you locally at Echo Plaza & Route 22 & Hillside Av., Springfield

# Community Companions train mental health aides

The Community Companion Program, whose volunteers assist persons recovering from mental disorders, is accepting applications for its first volunteer training program, to be held the first two weeks in June.

Community Companion aides work on a person-to-person basis with in-

dividual clients who are trying to adjust to non-institutional living. "meeting every day needs in such a way as to develop individual confidence, sufficiency, independence and know-how that allows for more effective and functional living."

Volunteers will become involved with all aspects of a client's life, including social and recreational activities, as well as providing clients with information concerning appropriate health services, housing, social, educational and vocational resources within the community.

The Community Companion Program, which operates in Union, Atlantic, Hudson, Morris and Passaic Counties, was developed and is being implemented by the Mental Health Association in New Jersey. Initial funding is from the State Department of Human Services, Office of Community Affairs.

For more information, readers may contact Edmund Murphy or Carol Florek, Union County staff, at 289-0900, or write to Community Companion Program, 615 North Broad St., Elizabeth, 07208.

# Officers picked by United Way trustees board

Edward L. MacGorman of Western Electric Co., Springfield, has been elected president of the board of trustees of the United Way of Eastern Union County. He succeeds Andrew H. Campbell of Hillside.

MacGorman also received an award for his outstanding leadership as campaign chairman in the fund drive among residents, small business and professional groups in the eight communities of Eastern Union County: Elizabeth, Clark, Garwood, Hillside, Linden, Roselle, Roselle Park and Union.

Also elected to the Board were Richard Town, vice-president, campaign; Mrs. William J. Corbet Jr., vice-president, planning and budgeting; John N. Surmay, vice-president, government affairs; Mary Dryer, secretary; and Louis Montsko, treasurer. Other trustees elected: Alfred Fontana, Ann V. Galvin, Carl Herold, Larry Lockhart, Mrs. Abram Londa, John McCarthy, Harvey Schramm, Alan Spaes, William Thomas Jr., and Joseph DeBella. Mrs. Harry Lebau and Anna Gerber were elected honorary members.



EUGENE E. RODGERS

# Officers named by lung group

Mrs. Byron B. Holmes of Ocean Grove has been elected president of the Central New Jersey Lung Association, succeeding George M. Kotuby of Rahway, who served since May 1975. The organization, part of the nation's oldest voluntary health organization, founded in 1904, serves Union, Hudson and Monmouth counties.

Others elected include William B. Gordon of Jersey City, Cora B. Hickson of Neptune and L. Thomas Sneed of Colts Neck, vice presidents; George Blair of Red Bank, treasurer; John A. Busichio of Cranford, assistant treasurer, and Eugene E. Rodgers of Mountainside, secretary. Sneed and Rodgers are executives with the Exxon Co., Linden. Sneed is operations manager of the Marine division; Rodgers is staff employee relations coordinator.

Kotuby announced that the group's budget for the current fiscal year totals \$229,000.

# Therapeutic touch class planned

Alexian Brothers Hospital, Elizabeth, is cooperating in a workshop on "Therapeutic Touch" to be held at the Hospital on Wednesday, from 10 a.m. to 3 p.m.

The workshop is open to interested registered and licensed practical nurses and physical therapists. Additional information may be obtained by calling the Continuing Education Department at Alexian Brothers Hospital, 351-9000, ext. 247. There is a registration fee of \$10.

The focus of the workshop, according to a hospital spokesman, is to "present an intensive orientation and to increase the developing awareness of the potential contribution therapeutic touch might make in nursing practice today."

Gretchen Randolph, R.N.M.S., of New York University, will present a

short review of past and adjacent, not a replacement for the traditional nursing process.

**GARDEN PLANTING TIME IS HERE**

- GERANIUMS
- ANNUALS
- HANGING BASKETS
- VEGETABLE PLANTS
- POTTED TOMATO PLANTS

"Grown in Our Own Greenhouses"

**KENILWORTH**  
Greenhouses & Flower Shop  
22 Cross St., Kenilworth  
276-0263

Open Daily-Sunday 11:00 noon. Plenty of parking spaces

Arthur L. Wells  
Your  
**OPTICIAN**  
In  
**SPRINGFIELD**  
248 MORRIS AVE. • 376-6108  
SPRINGFIELD, N.J. (Closed Wednesdays)

WE HAVE THE NEW DESIGNER FRAMES BY GEOFFREY BEENE

FREE PARKING IN REAR

GO TO THE RACES:  
**MONMOUTH RACE TRACK**

Daily Express Bus Service Via  
Garden State Parkway

For Fares, Schedules and Information:  
**CONSOLIDATED SHORE LINES**

Niesel's Union Center, Union 688-9848  
Jan's Luncheonette 111 Chestnut Street, Roselle Park 245-9633

### Nurses group plans meeting

L.E.A.R.N. (League for the Educational Advancement for Registered Nurses) will hold its monthly meeting on Monday at 7:45 p.m. in All Saints Episcopal Church, Park avenue, Scotch Plains.

RENT THAT ROOM with a Want Ad Only 18¢ per word (Min. \$3.60) Call 686-7700.

# Carnivals used to raise funds

The American Cancer Society is offering youngsters help in conducting backyard carnivals during the summer vacation.

Through the carnivals, which are held as fund-raisers for the society, the children "learn financial responsibility and aid a worthwhile cause," a spokesman for the organization said.

The American Cancer Society provides Sno-Kone and cotton candy machines without charge as well as a carnival idea book. Further information is available from the society's Union County office, 512 Westminster ave., Elizabeth, 07208.

# 3 hikes planned

A ramble, hike and a circular are planned for members of the Union County Hiking Club and their guests this weekend.

The Mills Reservation Ramble, led by Adele Moskovitz, is scheduled for Saturday. Hikers will meet at Mills Road, Upper Montclair at 10 a.m.

Alice Maram will lead Saturday's Pyngyp to Jones Point Hike. Hikers will meet at Jones Point parking area just north of the double anchor monument on Rt. 9W at 9 a.m.

The Tuxedo Circular, led by Nancy Wolff, will be held Sunday. Interested hikers will meet just past the Essex toll barrier of the Garden State Parkway at 8:15 a.m. or at the Tuxedo Railroad Station at 9:30 a.m.

For further information about the Union County Hiking Club, readers may contact the Union County Park Commission's recreation department.

**OUTDOOR COLOR PORTRAITS**  
At Your Home Or Our Locations

**Marty Feins Studio**  
252 MOUNTAIN AVE., SPRINGFIELD • 379-7666

# The wizard robot comes to Federated THIS FRIDAY & SATURDAY.

See him, hear him and question him for one of the most amazing times of your life!

**ZENITH Allegro**

The finest Allegro modular sound system Zenith has ever offered! Shown with Allegro 3000 speakers and the Allegro tuned port for deeper, richer bass. Includes built-in 8-Track Tape Player, 3-Speed Automatic Record Changer and AM/FM/Stereo FM Tuner with HI Filter.

**SALE \$362<sup>00</sup>**  
LIST 529.95

**Panasonic CX-385 SUPER COMPACT 8-TRACK STEREO TAPE PLAYER**  
**SALE \$29<sup>95</sup>**  
REG. 49.95

**Panasonic CQ-969 8-TRACK STEREO TAPE PLAYER WITH AM/FM STEREO RADIO**  
**SALE \$89<sup>95</sup>**  
BELOW ORIG. COST. REG. 159.95

**SALE AUDIOVOX CAS 300 \$89<sup>95</sup> AM/FM CASSETTE**  
LIST 149.95

**FEDERATED ELECTRONICS**  
155 RTE. 22 SPRINGFIELD, N.J. (NEXT TO DODGELAND) 376-8900  
BankAmericard OPEN 12 TO 9 WEEKDAYS, SATURDAY 9:30 TO 6 Mastercharge

# HARMONIA

The Family Savings Bank

"For All Your Family Banking Needs"

Since 1851

- REGULAR SAVINGS ACCOUNT that Pays the Highest Interest Rate **5.47%** EFFECTIVE ANNUAL YIELD
- FREE CHECKING DRIVE-IN and WALK-UP BANKING
- DIRECT DEPOSIT of SOCIAL SECURITY CHECKS
- FREE BANKING BY MAIL Harmonia Pays the Postage Both Ways
- EDUCATIONAL LOANS SAFE DEPOSIT BOXES
- MORTGAGE LOANS HOME IMPROVEMENT LOANS

\*Effective Annual Yield When Principal and Interest remain on Deposit for a Year. Interest is Computed from Day of Deposit to Day of Withdrawal and is Compounded Daily and Credited Monthly. Withdrawals Anytime Without Losing Interest Provided You Maintain a Balance of \$5.00 or More.

# HARMONIA

The Family Savings Bank

In ELIZABETH: 1 UNION SQUARE & 540 MORRIS AVE. — 289-0800  
In SCOTCH PLAINS: NORTH AVE. & CRESTWOOD RD. — 654-4622  
In MIDDLETOWN: 1 HARMONY ROAD — 671-2500  
Member F.D.I.C. — SAVINGS INSURED TO \$40,000

# Religious Notices

**HOLY CROSS LUTHERAN CHURCH**  
(THE CHURCH OF THE HOUR)  
RADIO "LUTHERAN HOUR"  
AND TV'S  
"THIS IS THE LIFE"  
639 MOUNTAIN AVE., SPRINGFIELD  
THE REV. JOEL R. YOSS,  
PASTOR  
TELEPHONE: 379-4525  
Thursday—10 a.m., Bible study. 8 p.m., "Life with God."  
Saturday—9 a.m., HCYF rally-picnic.  
Sunday—8:30 a.m., Communion. 8:30 a.m., Family Growth Hour. 10:45 a.m., worship.

**TEMPLE BETH AHM**  
AN AFFILIATE OF THE  
UNITED SYNAGOGUE OF AMERICA  
BALTUSROL WAY, SPRINGFIELD  
RABBI REUBEN R. LEVINE  
CANTOR ISRAEL BARZAK  
Friday—8:45 p.m., USY creative Sabbath services.  
Saturday—10 a.m., Sabbath services.  
Sunday—9:30 a.m., Men's Club sports breakfast. 8 p.m., Shavuot services.  
Monday—9 a.m. and 8:30 p.m., Shavuot services.  
Tuesday—9 a.m., Shavuot services (Yizkor).

**OUR LADY OF LOURDES**  
300 CENTRAL AVE.,  
MOUNTAINSIDE  
REV. GERARD McGARRY, PASTOR  
REV. CHARLES B. URNIK,  
REV. FRANK D'ELIA,  
ASSISTANT PASTORS  
Sunday—Masses at 7, 8, 9:15, 10:30 a.m. and 12 noon.  
Saturdays—Evening Mass, 7 p.m.; weekday Masses at 7 and 8 a.m. First Friday, 7, 8 and 11:30 a.m.  
Miraculous Medal Novena and Mass—Monday at 8 p.m.  
Benediction during the school year on Friday at 2:45 p.m.  
Baptisms on Sunday at 2 p.m. by appointment.  
Confessions—Every Saturday and eves of Holy Days and First Fridays, from 4 to 5 and 7:45 to 8:30 p.m.

**ANTIOCH BAPTIST CHURCH**  
MECKES ST. AND SOUTH  
SPRINGFIELD AVE., SPRINGFIELD  
REV. CLARENCE ALSTON, PASTOR  
Saturday—3 p.m., Church School choir rehearsal.  
Sunday—9:30 a.m., Sunday School. 11 a.m., worship service. 7 p.m., evening fellowship.  
Wednesday—9 p.m., midweek service.

**ST. STEPHEN'S**  
EPISCOPAL CHURCH  
119 MAIN ST., MILLBURN  
REV. JOSEPH D. HERRING,  
RECTOR  
Sunday—8 a.m., Holy Communion. 10 a.m., Holy Communion and sermon, first Sunday and festival occasions; morning prayer and sermons, second through fifth Sundays, 10 to 11:15 a.m., Church School. 10 a.m., babysitting.

**TEMPLE SHA-AREY SHALOM**  
AN AFFILIATE OF  
THE UNION OF  
AMERICAN HEBREW  
CONGREGATIONS  
S. SPRINGFIELD AVENUE  
AT SHUNPIKE ROAD,  
SPRINGFIELD  
RABBI: HOWARD SHAPIRO  
CANTOR: IRVING KRAMERMAN  
Thursday—8 p.m., duplicate bridge.  
Friday—8 p.m., family Shabbat service.  
Saturday—10:30 a.m., Shabbat morning service. 9 p.m., temple dance.  
Monday—10:30 a.m., 10th grade confirmation. Shavuot.

**MOUNTAINSIDE GOSPEL CHAPEL**  
1180 SPRUCE DR. (ONE BLOCK  
OFF RT. 22 W.), MOUNTAINSIDE  
CHURCH OFFICE: 232-3456  
PARSONAGE: 654-5475  
THE REV. JOHN FASANO, PASTOR  
Sunday—9:45 a.m., Sunday School for all youth and adults (free bus service is available; call for schedule of routes and pickup times). 10:45 a.m., preservice prayer meeting. 11 a.m., morning worship service (nursery care is available). 7 p.m., evening worship service.  
Wednesday—8 p.m., midweek prayer service.

**SPRINGFIELD EMANUEL**  
UNITED METHODIST CHURCH  
40 CHURCH MALL, SPRINGFIELD  
THE REV. GEORGE C.  
SCHLESINGER,  
PASTOR  
Thursday—8 p.m., Chancel Choir.  
Friday—8 p.m., Busy Fingers.  
Saturday—7:10 p.m., Alcoholics Anonymous.  
Sunday—9:30 a.m., Chapel-Church School. 9:30 a.m., German worship; the Rev. Fred Gruber preaching. 10:30 a.m., fellowship. 11 a.m., morning worship. 6 p.m., youth meeting.  
Monday—7:45 p.m., Chapel Bible study and prayer meeting.  
Tuesday—7:45 p.m., Women's Mission Circle.

**FIRST PRESBYTERIAN CHURCH**  
MORRIS AVENUE AND  
CHURCH MALL  
SPRINGFIELD  
THE REV.  
BRUCE WHITEFIELD EVANS, D.D.,  
PASTOR  
MRS. SHEILA KILBOURNE,  
DIRECTOR OF CHRISTIAN  
EDUCATION  
Thursday—7:15 p.m., Webelos. 7:30 p.m., Girls' Choir. 8 p.m., Senior Choir.  
Sunday—9 a.m., Church School. 9 a.m., adult education classes. 10:30 a.m., family worship service; communion and sacrament of baptism, reception of confirmation class. 7 p.m., Westminster Fellowship.  
Monday—9:11:30 a.m., Weekday Nursery School. 3:15 p.m., Brownies. 7 p.m., Girl Scouts.  
Tuesday—9:11:30 a.m., Weekday Nursery School.

**CONGREGATION ISRAEL**  
OF SPRINGFIELD  
339 MOUNTAIN AVE.  
RABBI ISRAEL E. TURNER  
Friday—7:15 a.m., morning minyan service. 7:15 p.m., afternoon service 8 p.m., "welcome to Sabbath service." Oneg Shabbat after services, sponsored by Springfield Lodge of B'nai B'rith, speaker Joel Kaplan, president, refreshments.

Saturday—9:30 a.m., Sabbath morning services; sermon: "Making the Desert Bloom," kiddush after services, hosts, Harry and Anna Dobrin. 6:45 p.m., Talmud class, Tractate Shabbos. 8 p.m., afternoon service, discussion session on "Ethics of the Fathers"; "farewell to Sabbath" services.  
Sunday—8 a.m., morning minyan services. 8 p.m., afternoon service and Shavuot evening service.

Monday—9:30 a.m., Shavuot morning service; sermon: "The Original Confirmation Was Binding for the Ages." Kiddush after service; hosts, Mr. and Mrs. Dov Jacob. 8 p.m., afternoon service, discussion session, "Why Are Dairy Delicacies Eaten on Shavuot?" Shavuot evening service.  
Tuesday—9:30 a.m., Shavuot morning service. 11 a.m., Yizkor memorial service; sermon: "We Never Lost the Roots," kiddush after services; hosts, Mr. and Mrs. Nathan Stern. 8 p.m., afternoon service; discussion session, "Story of Ruth," evening service.  
Wednesday and Thursday—7:15 a.m., morning minyan service. 3:30 p.m., Religious School classes. 8 p.m., afternoon service, advanced study session; evening service.  
Wednesday—8:30 p.m., Sisterhood meeting.

**EVANGEL BAPTIST CHURCH**  
242 SHUNPIKE ROAD  
SPRINGFIELD  
REV. WILLIAM C. SCHMIDT JR.,  
PASTOR  
REV. GARY FINN, ASSISTANT  
Thursday—7:30 p.m., choir rehearsal.  
Sunday—9:45 a.m., Sunday School. 11 a.m., morning worship; pastor Schmidt preaching. 11 a.m., Junior Church. 5:30 p.m., youth groups. 7 p.m., evening service. Pastor Schmidt preaching.  
Wednesday—7:45 p.m., prayer meeting.

**ST. JAMES CHURCH**  
45 S. SPRINGFIELD AVE.  
SPRINGFIELD  
MSGR. FRANCIS X. COYLE, PASTOR  
REV. STEPHEN P. LYNCH,  
REV. EDWARD R. OEHLLING,  
REV. PAUL J. KOCH,  
ASSISTANT PASTORS  
Sunday Masses—7 p.m. Saturday—7, 8:15, 9:30, 10:45 a.m. and noon. Daily—7 and 8 a.m. Holydays—on eves of Holyday, 7 p.m.; on Holydays at 7, 8, 9, 10 a.m. and 7 p.m.  
Confessions—Saturday, 1 and 2 p.m. Monday through Friday, 7:15 and 7:45 p.m. No confessions on Sundays, Holydays and eves of Holydays.

**COMMUNITY PRESBYTERIAN CHURCH**  
MEETING HOUSE LAND  
MOUNTAINSIDE  
MINISTER:  
THE REV.  
ELMER A. TALCOIT  
ORGANIST AND CHOIR  
DIRECTOR:  
JAMES S. LITTLE  
Sunday—9:30 a.m., adult Bible class. 10:30 a.m., morning worship with

# Graduating students will conduct service

Robert Steinhart, religious school board chairman of Temple Beth Ahm of Springfield, this week announced that on Sunday, Shavuot eve, at 8, the Beth class students will mark their completion of the elementary department at special graduation services.

The students will conduct the entire Shavuot maariv service, followed by a presentation of a cantata, "V'Shinantam L'Vanecha," under the direction of Hazzan Israel Barzak.

**TM discussion**  
The board of governors of the North Jersey division of the International Meditation Society will sponsor a discussion on Transcendental Meditation Friday, May 27, at 8 p.m. at the National State Bank, 193 Morris Ave., Springfield. For further information, readers may call 267-8885. The program will include an announcement of local TM courses and reports on research under way at the Maharishi European Research University in Weggis, Switzerland, where students enrolled in advanced TM courses reportedly have begun to demonstrate supernatural abilities.

Mr. Talcoit preaching. 10:30 a.m., Church School for Cradle Roll through eighth grade. 7 p.m., Senior High Fellowship.  
Wednesday—8 p.m., Senior Choir rehearsal.

Steinhart will present graduation certificates to the students. Mrs. Norton Millman, president of the temple, will give each a Bible as a gift from the temple.

Mrs. David Adler, vice-president and liaison to the school board, will distribute certificates of honor to the outstanding students for this year.

Benjamin Margolis, director of education, will present special gifts to 11 students for scholastic achievements during five years in the school.

Rabbi Reuben R. Levine, spiritual leader of the temple, will charge the students and will speak on the importance of continued Jewish education beyond Bar and Bat Mitzvah.

Mrs. Hannah Litowitz and Mrs. Meryl Reichman are the teachers of the graduating class.

The following students are graduating:

David Barison, Wendy Binstock, Susan Carehman, Marc Chasman, Karen Chefet, Joseph Cohen, Leonard Glassman, Eric Gold, Michele Grossman, Nancy Hammel, Jill Jacobs, Lawrence Jacobs, Maury Jayson, Richard Kesselhaut, Michael Lehner, Larry Maier, Craig Moss, Robin Pine, GERALYN POLLACK, Amy Rosenbaum, Benjamin Rubin, Melissa Schatz, Debra Schwalb, Karen Semel, Jonathan Stein, Robert Steir, Jonathan Usdin, Daniel Uslan, Michael Weinstein, Jill Wittenberg, Elliot Wolfson, Melissa Zandell.



**RED CROSS HONORED**—A resolution adopted by the Board of Freeholders to commemorate the founding of the American Red Cross on May 21, 1881, is presented by Freeholder Rose Marie Sinnott to Walter T. Cocker, chairman of the Eastern Union County chapter.

**WHAT CHANNEL'S "SYSTEM CENTER" MEANS TO YOU**

**IT'S THE ONE AND ONLY PLACE IN THE U. S. A. WHERE YOU WILL FIND ALL THE NEWEST SAFETY AND CONVENIENCE SYSTEMS FOR YOUR HOME. YOU WILL ALSO DISCOVER HOW EASY IT IS TO INSTALL THEM YOURSELF!**

Channel has assembled, under one roof, all the fantastic systems you want in your home to make life truly easier and richer for you. And, we'll show you how to do-it-yourself easily, efficiently and economically, saving you most of the cost you'd expect to pay for such conveniences. Come see the exciting "Do-It-Yourself Systems Center" in our Springfield, Totowa, Raritan and Paramus stores only. It's well worth a trip from anywhere! Prices in this ad effective through May 29th.

Need a college loan this Fall?

Don't wait. Apply now.

Now's the time to do something about getting that loan for Fall tuition. In cooperation with the N.J. Dept. of Higher Education and the U.S. Government, Crestmont Savings is offering student loans up to \$10,000 to undergraduates. For undergraduate and graduate work combined, as much as \$15,000. Payments do not start until 9 months after graduation or when you leave school. And, you may have up to ten years to repay. Ask one of the "Good Eggs" for details. Apply now. Apply now. Apply now.

Equal Opportunity Lender

**CRESTMONT SAVINGS**

Maplewood • Morristown • Madison  
Springfield • Netcong • Member FSLIC

**Firemen list calls**

MAY 8  
11:45 p.m.—Report of sparks coming from utility pole at Morris and S. Maple avenues; no fire; called Jersey Central Power & Light Co.

MAY 9  
1:08 p.m.—Report of garage fire on Cypress terrace; found steam coming from roof.  
6:26 p.m.—Called to Bamberger's, Rt. 22. Used rescue equipment to free mechanic who had gotten hand trapped in a wheel.  
11:37 p.m.—Washdown of gasoline after auto accident on Rt. 22.

MAY 13  
7:16 a.m.—Car fire on Colfax road; damage to carburetor.

**BURGLARY, DETERRENT TIP:**  
If you have more than one car in the family, leave one in the driveway when you go out in the other.

**Take stock in America.**  
Join the Payroll Savings Plan.

**SENIOR CITIZENS**  
Days Every Monday, Tuesday & Wednesday

**10% OFF**  
On Any Purchase

• CHEESE • GIFTS • CANDY • DRIED FRUIT  
• COOKIES • NUTS • SPECIALITY FOODS

**GOURMET EMBASSY**

273 MORRIS AVE. (At Caldwell Pl.)  
SPRINGFIELD • 379-4390

Browsing Hours Mon.-Sat. 10-4  
Ample Free Parking At Rear Of Store

**SAVE 20.98**  
\$199  
Reg. 219.98

**PORTA-PAC ELECTRONIC AIR CLEANER**

Fits space occupied by ordinary one-inch filter. No pads, elements or parts to replace during normal operation—just remove collecting cell periodically and wash with detergent and hot water. Operates for less than 1 cent per day! Fits all standard sizes—from 14" x 25" x 1" to 20" x 25" x 1".

TOBACCO SMOKE  
DUST AND DIRT  
BACTERIA  
POLLEN

**INSTALLS IN LESS THAN ONE HOUR!**

**SAVE 138.82**  
\$499  
Reg. 637.82

**McGRAW-EDISON CENTRAL AIR-CONDITIONING**

25,000 BTU. EER rated Z/6.4. For upflow or horizontal air flow. Includes "A" coil, condensing unit and 15' tubing kit. All pre-charged with quick connections. Two ton for 1,000 to 1,200 sq. ft. living space. Reg. 637.82

**SAVE 6.99**  
\$28  
Reg. 34.99

**EICO SMOKE AND FIRE DETECTOR FOR YOUR FAMILY**

24 hour life saving protection detects fire before there is any noticeable smoke, flame, heat or invisible gases of combustion. Complete with battery. Installs in minutes. No wiring. No. SD-75.

master charge  
your AMERICAN CARD welcome  
mcc

**CHANNEL HOME CENTERS**  
"America's NO.1 Do-It-Yourself Stores"

**SPRINGFIELD**  
Route 22 at South Springfield Avenue

**PARAMUS**  
Route 17, between Linwood & Ridgewood Aves. (Closed)

**TOTOWAY/WAYNE**  
Route 44 1/2 miles East of Willowbrook

**RARITAN**  
Routes 202/204, Somerville Circle

SALE ENDS MAY 29, 1977 20-187N

© Copyright, Channel Companies, Inc., 1977. We reserve the right to limit quantities. Not all services and merchandise available at all stores. Not responsible for typographical errors.





## Japanese trade topic of annual N.J. program

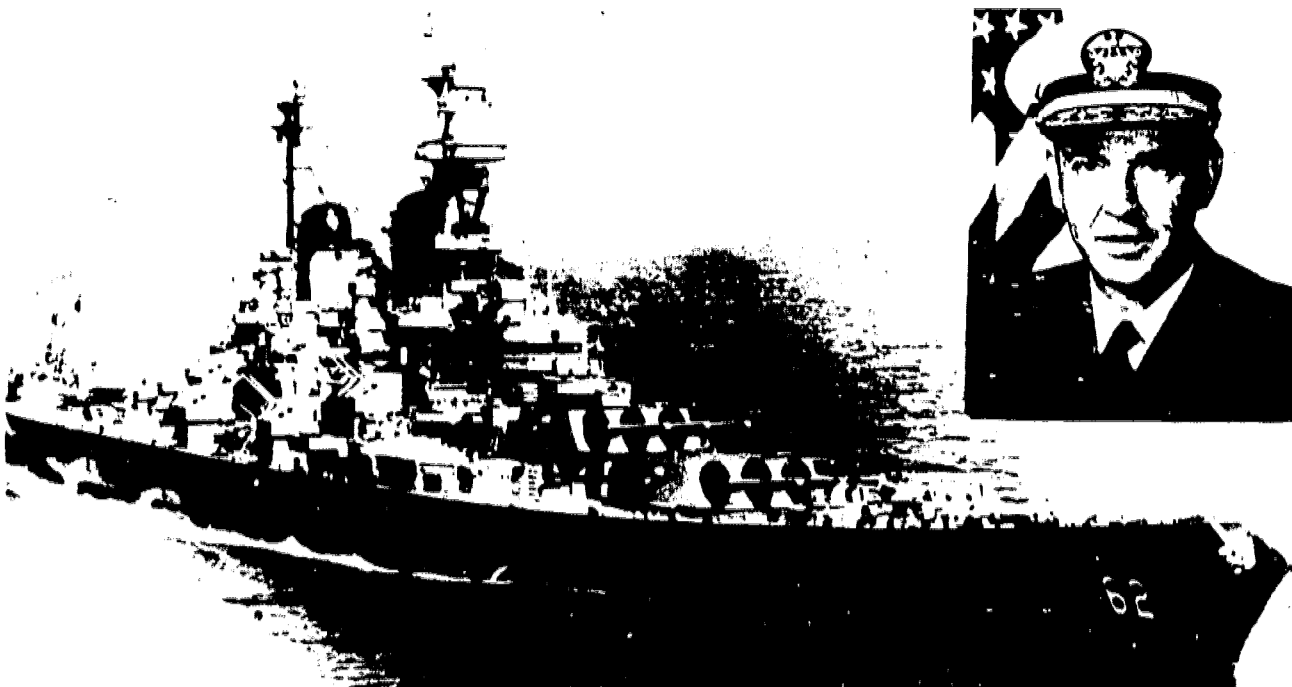
The 10th annual New Jersey World Trade Conference will be held Wednesday at the Manor in West Orange. The subject will be "Trade with Japan."

"Japan was chosen as the conference topic this year because that nation is an important export market for New Jersey products. Japanese government and trade officials wish to encourage and expand export of U.S. products to Japan, and New Jersey wishes to encourage reverse investment in the state by the Japanese," a N.J. Department of Labor and Industry spokesman said.

Japanese Ambassador to the United States, Fumihiko Togo, will be the principal speaker at the luncheon meeting of the conference.

Gov. Brendan Byrne and Labor and Industry Commissioner John Horn also will make presentations to the participants.

The conference will feature Japanese and American experts on exporting, marketing, and financial and legal aspects of trade with Japan. Leading Japanese trading companies will be represented for consultation. There also will be exhibits from government, business, commerce and finance groups with information on international trade.



34th ANNIVERSARY of the commissioning of the U.S.S. New Jersey battleship will be celebrated Monday with a 7 p.m. dinner at Burns Country Inn, Clifton. Guest of honor at the program, sponsored by the Battleship New Jersey Historical Museum Society, will be Rear Admiral J. Edward Snyder Jr., commanding officer of the ship during the Vietnam

conflict. Tickets, at \$8.25 each, must be obtained in advance from the society office, P. O. Box 67, Long Branch 07740; tel. 222-4161. The non-profit organization is working to bring the decommissioned ship to New Jersey, where it would be a museum and memorial.

**YOUNG ADULT DANCE**  
The Jewish Collegiate and Professional Young Adults of New Jersey will hold a "Love in Bloom Dance" at the Holiday Inn of Wayne on the Route 46 Eastbound Service Road in Wayne on Sunday, May 22, at 8 p.m.

## Inspectors will enforce state's Child Labor Law

Enforcement of the State Child Labor Law will be accelerated throughout the summer. John J. Horn, commissioner of the New Jersey Department of Labor and Industry, has announced.

Commissioner Horn said, "Inspectors of the department's Office of Wage and Hour Compliance will make unannounced spot checks of work places in all areas of the state to promote adherence to statutory requirements governing the employment of youngsters."

Commissioner Horn pointed out that state regulations are designed to prevent the exploitation of minors in both professional and general employment.

### Panelists to discuss religion and divorce

A panel discussion, "Religion and Divorce," will be held tonight at Montclair State College. The program will begin at 7:30 p.m. in the Women's Center, Life Hall, and is sponsored by the Organization of Women for Legal Awareness, Inc.

Participants will include Catholic, Presbyterian and Jewish Clergymen and two divorced women, one Jewish, one Catholic. More information may be obtained by calling 893-5106.

Under provisions of the State Child Labor Law, an employment certificate is required for each person hired. The employer must keep accurate records of the hours worked and is charged with the responsibility to provide workers with a meal period.

Specific prohibitions also apply to the type of work assigned and the total number of hours worked per day, per week and at night.

Youngsters under age 16 may not be hired for jobs that require the operation of power tools, such as power driven lawnmowers. They are permitted to use all standard type powered office and domestic machines.

Minors hired for general employment must be at least 14 years of age.

### Skateboard expert demonstrates skills

Professional skateboard star Bryan Beardsley will demonstrate his skills and offer tips to youngsters at two Valley Fair stores next Wednesday.

He will appear at the Irvington store at 4 p.m. and the Union store at 7 p.m. Both programs will be held in the stores' parking lots.

## Polish Festival offers colorful entertainment

A colorful program featuring the music of leading Polish composers will climax the full day of activities scheduled for the sixth annual Polish Festival Sunday, June 5, at the Garden State Arts Center, Holmdel.

The stage program will begin at 7:30 p.m. with the Festival orchestra and chorus, led by Walter Legawiec of Mountainside, a noted violinist, composer and conductor. Interpreting works by Chopin, Elsner and Moniuszko, Legawiec will also perform as violin soloist in his own composition for violin and orchestra, "from Carmel," based on the depth of his impressions while residing in that California community.

The Polish American Folk Dance Company of New York will perform a group of traditional Polish dances, dressed in costumes of many regions. Soprano Sally Mitchell Motyka and tenor Tadeusz Motyka of New York will be heard in music by Chopin and duets by Chechinski. Pianist Alfred Waksmunski of South River will perform a group of Chopin piano works. Soprano Alina Brychowa of Berkeley Heights will offer arias from Moniuszko's opera "Hrabina" (the Countess) Melanie Mierszynska and Tom Barry Kaminski will sing popular songs.

The stage program will include a dream-fantasy of Ignace Paderewski playing his Minuet while the Polish American Dance Company performs in colorful formal costume. Pianist Paul Kuetler of Westfield will portray Paderewski.

"In addition to the fine stage program," said Antoni Kolakowski, religious observance chairman, "we

will join in the Holy Sacrifice of the Mass. The principal celebrant will be John Cardinal Krol, Archbishop of Philadelphia. The Mass will be held on the Arts Center stage at 4:30 p.m. with concelebrating clergy from the Polish priesthood of New Jersey.

Col. Anthony Podbielski, chairman of cultural events, said the Festival will begin at 11 a.m. with a Polish American Art and Cultural exhibit in a large tent on the Arts Center Plaza. At noon, sporting exhibitions ranging from archery to gymnastics will be held on the Arts Center Mall. Young New Jersey Polish American talent will begin a preliminary program on the Plaza at 12:30 with Chet Kayer, disc jockey from WJDM, Elizabeth, as master of ceremonies. There will be dancing by such groups as the Imperial Polka Dancers of Somerset, the High Boot Polka Dancers of Manville, the Polka Dolls of Westfield and the Polka Shamrocks of Bloomfield. Music will be performed by Max Smulewicz' Band from Hamburg.

The Polish Festival will be the third of the 1977 Heritage Festival series to be presented at the Garden State Arts Center this Spring. Profits from the festivals are used by the Arts Center Cultural Fund to help finance free programs for New Jersey's school children and for senior citizens, disabled veterans and the blind. Information on the Polish Festival may be obtained from the ticket chairman, T. Robert Zochowski, by calling 201-254-7282.

**HAWAIIAN FOREST**  
Nearly half of Hawaii's land area is considered to be forested.



### Dear Teddy...

The dearest little teddy bear we've ever seen... in 14K gold with a genuine diamond belly button. If you rub it we bet you'll have good luck. With 14K gold triple rope chain.

Sale price only \$38.70

**KODAK jewelers**  
CORNER MORRIS & STUYVESANT UNION, N.J.

MIDDLESEX MALL MORRIS COUNTY MALL  
LEDGEWOOD MALL WORLD TRADE CENTER  
Diamond Appraisals

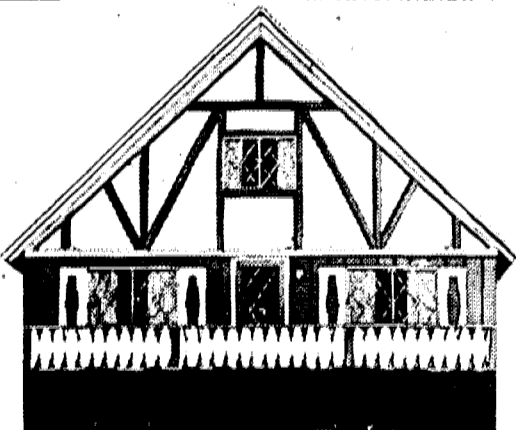
## Termites to be topic

The lament of many homeowners—termites and other insect pests will be discussed on "Jerseyfile" on New Jersey Public Television Monday at 8:30 p.m. when host Ruth Alampi will interview Edward Krupnick of the N.J. Pest Control Association.

A film feature visits New Brunswick-based New Jersey Blood Services to look at the Bloodmobile going to factories, schools and businesses with a "mini-hospital" so employees can donate blood.

The program will be repeated Friday, May 27, at 10:30 p.m. on channels 50 and 58.

**USED CARS DON'T DIE...they just trade away.** Sell yours with a low cost Want Ad. Call 686-7700.



## What's so special about our \$7,995 house? It includes all this:

1. Clearing of lot for your house.
2. Digging and backfilling foundation.
3. Finished grading.
4. Poured concrete footings.
5. Six course block foundations.
6. All construction grade lumber.
7. 3/8" vertical wood siding.
8. Graded driveway to property.
9. Maintenance-free aluminum sliding windows.
10. Wood shutters.
11. Full 6 x 24 outside deck.
12. Your choice of Swiss-chalet or English Tudor style.
13. Custom built. Not a pre-fab or trailer home.
14. House finished in your choice of 20 earth-tone wood stain colors with contrasting trim.

Since this is a custom built house there are no charges for freight, cartage, erection, assembly, or sales tax. Price does not include homesite, kitchen and bathroom fixtures, hot water heater, electrical work, sewerage, water, or landscaping.

But if you're not handy around the house, or don't have the time, All American Realty can furnish

all or any of these additions at a reasonable price.

How can we offer you a custom built house like this for only \$7,995? Experience. And know-how. In the past 14 years, All American Realty has built over 2,000 quality homes on some of the most beautiful vacation homesites in the Poconos. We know what you want. And we know how to build it.

All American Realty Co., Inc.  
45 Essex St., Hackensack, N.J. 07602

I'd like to know more about your \$7,995 house at Marcel Lake.

Name

Phone

Address

City  State  Zip

For more information, call (212) 594-1060 or (201) 488-6565.

## MARCEL LAKE

A statement and offering statement has been filed with the New Jersey Real Estate Commission, Bureau of Subdivided Land Sales Control. The filing does not constitute approval of the sale or lease or offer for sale or lease or in any way pass upon the merits of such offering by the New Jersey Real Estate Commission, Bureau of Subdivided Land Sales Control. A copy of the offering statement is available upon request, from All American Realty, N.J.A. Obtain HUD property report from developer and read it before signing anything. HUD neither approves the merits of the offering nor the value, if any, of the property.

## Kean free to elderly

New Jersey residents aged 62 and over may register for Kean College summer classes tuition free on Friday, June 24 from 1:30 to 3:30 p.m. The registration will be held at the Whiteman Center for Lifelong Learning on the Union campus and may be for credit or non-credit as space is available. Only the service fee of \$1.50 per credit will be charged.

A summer program of special events for older adults will also be offered by the center during the college's summer session. Non-credit workshops in drama and art will meet twice a week and a showcase of special events, including films, lectures, and dramatic programs is scheduled for Tuesday mornings. A travelogue program offered throughout the spring semester will be repeated during the summer on Thursday afternoons. The center's lounge will be open for browsing, studying or socializing from 9:30 a.m. to 3:30 p.m. Monday through Friday from June 6 to Aug. 5.



The Cupola  
for senior citizens invites you to live in the grand manner to which you've been accustomed.

If you're used to the best, you'll want to consider The Cupola the ultimate in senior citizens living. All suites are private (for individuals or couples), each with kitchenette and available unfurnished or furnished to suit your own personal taste. Featured are 3 superb meals a day from a diversified menu, maid service, planned activities, theatre, gift, barber and beauty shops, card & game rooms, libraries, delightful greenhouse, even a fully staffed infirmary—all for one modest monthly fee you never buy a thing! Excellent shopping right nearby.

So, come make your next years the very best years of your life... at The Cupola. ASK FOR OUR BROCHURE—“THE CUPOLA STORY”

The Cupola  
W. 100 Ridgewood Avenue  
Paramus, N.J. 07652  
(201) 444-8200

## TERMITES Swarming—



BE SURE —BLISS has been serving the Home Owner for 95 YEARS. For a complete FREE INSPECTION of your home by a Termite Control Expert, supervised by the finest technical staff, phone our nearest local office:

Summit-Union Spl. Min. 277-0079	Westfield, S. Plains Cranford, Clark 233-4448	<b>EST. 1932</b> <b>BLISS</b>
Irv'n, Vails, Mill'n., Mplwd. 676-8888	Roselle, Linden Kenilworth-Eliz. 353-8752	

**BLISS TERMITE CONTROL**  
Div. Bliss Exterminator Company • EST. 1882  
One of the Oldest & Largest

## Wake Up in Time!



INSTALL **UL LISTED**  
**Lifesaver**  
SMOKE ALARM

- Fires kill over 12,000 persons each year.
- Most deaths in home fires occur during the night time hours.
- Usually smoke, toxic gases, or lack of oxygen kills most people who die in home fires

—not the actual fire  
**BUY ONE AT \$27.95 AND GET THE SECOND ONE FOR \$24.00** Cash & Carry  
List at \$49.95 **24.00** Three or more \$26. ea.

**ALL MAIL ORDERS WILL BE AT \$27.95 ea.**  
This complete offer expires June 1, 1977  
**Put Your Trust In Local Professionals**  
Our Only Business is **FIRE PROTECTION.**  
"CALL US BEFORE THE FIRE"  
—Walter Kidde Sales & Service Co.—  
241-2950 736 Fairfield Ave. 241-2950  
Kenilworth, N.J. 07033

**SAVE TIME AND MONEY**  
THIS COUPON WORTH AN ADDITIONAL **50c**  
ON EACH SMOKE ALARM  
On Office Sales Only! One Coupon Per Customer

NAME  Please Ship My Lifesaver Smoke Detectors By United Parcel

ADDRESS

CITY

STATE  ZIP

Quantity  LIFE SAVER DETECTORS at \$27.95 ea.  
SUBTOTAL

5 N.J. Tax.

TOTAL

My Check Is Enclosed

Mail Check to **Walter Kidde Sales & Service Co.,**  
736 Fairfield Ave., Kenilworth, N.J. 07033

**SUBURBAN REAL ESTATE MART**

• City • Suburbs • Farm Country • Lake • Shore

**Schwartz completes 7 area transactions**

The pace of industrial activity in the Union-Middlesex area is reflected in seven real estate transactions involving more than 250,000 square feet, just completed by the Archie Schwartz Company. East Orange industrial realtors and office space specialists Harold Mogelesky, vice-president, and Denise DiMiceli, assistant vice-president, have announced that area sales representatives Ben Fisher, Mike Silver, Herb Zimmerman, Harold Abrams, Kent Schuyler, Tom Jay and Allan Oglesky handled the transactions on behalf of the Schwartz organization.

Fisher handled leasing arrangements on behalf of Short Delivery Service when it signed to take occupancy in a modern one-story warehousing facility on E. 11th street in Roselle. The new tenant specializes as a delivery service and has taken this space for the purpose of expanding its present operations. William Wyatt, president, represented Short Delivery with Marc Chazin of Trenton handling the legal details. Thelandlord, Heating Distributors, was represented by its president, Fred E. Baylees.

Margrace Corporation signed a long-term lease for space in a single-story building in Middlesex, in the industrial complex owned by Norman Pastor. The tenant specializes in the manufacture of isometric exercise equipment and will utilize this space for expansion purposes. Art Silverstein, vice-president, represented Margrace. The landlord, Norman Pastor, negotiated on his own behalf with Robert Solomon of Newark acting as legal representative.

Silver handled leasing arrangements on behalf of Motion Dynamics Company when it took space in a modern single-story manufacturing building in South Plainfield. The new tenant is engaged in the manufacture of precision dicing saws and has taken this space as part of a continued growth and expansion program. Rich Kroll, president, represented Motion Dynamics. The landlord, Montrose-Kennedy, was represented by its president, Herb Punia.

Another completion listed by Silver came when Comsp Custom Line Corporation signed to take occupancy in a one-story modern industrial facility in Avenel. As specialists in the manufacture of control panels, the tenant will utilize this space to expand its present operations. Representing Comsp Custom was its plant manager, Dick Sylvestro, with Fred Fine

**YOU GET SO MUCH MORE AT easton north** FRANKLIN TOWNSHIP SOMERSET COUNTY

This magnificent garden apartment community in a lovely wooded setting, combines the advantages of country living with the convenience of an in-town location.

**CENTRALLY AIR CONDITIONED 1 & 2 BEDROOM APARTMENTS**

from **\$290** mo.

Rent includes smoke detection and security alarm system in each apartment; heating and cooking gas; 2 acre recreation area with playground and much more!

**SWIMMING POOL WITH CABANA** available for your enjoyment.

**IMMEDIATE OCCUPANCY** Models Open 11 A.M. to 6 P.M.  
PHONE (201) 828-0707 or (201) 46-1323 Weekdays 9 to 5.

**DIRECTIONS:** Garden State Pkwy. to Exit 130 (Rt. 1) South on Rt. 1 to Rt. 287, North on Rt. 287 to Easton Ave. - New Brunswick Exit (Rt. 287), continue on Easton Ave. 2 miles to Easton North on the right.  
OR: N.J. Turnpike to Exit 9. Take Rt. 18 West (over Rt. 1). Continue on Rt. 18 (crossing over Raritan River Bridge), then first left (after bridge) to Landing Lane. Turn left across Landing Lane Bridge to Easton Ave. Turn right on Easton Ave. to Easton North on the left.

**Come ... live and play at Ocean County's finest club community!**

**Anchorage Harbor**

TOWNHOUSES • RANCHHOUSES ON SILVER BAY • TOMS RIVER

• Easy Condominium Living  
• Minutes to Finest Ocean Beaches & Bornegat Bay  
• Modern Clubhouse - Enclosed Pool  
• A Recreational Paradise  
• Year-Round Resort Living  
• Handy to Schools, Transportation, Super Shopping, Churches.

**1-3 BR LUXURY CONDOS \$38,900 to \$52,250**  
A little as \$1,942 plus closing costs MOVES YOU IN Only 8% Down • 30 Yr. Mortgages (to qualified buyers) 1 & 2 Tr. Leases Available


**OUTSTANDING FEATURES:**  
• Modern, exciting design  
• Cathedral ceilings  
• Balconies  
• Sunken living rooms  
• Fireplaces • Garages  
• Electronic security gate

**7 MODELS OPEN DAILY**  
Mon.-Fri. 10 AM-6 PM  
Sat. 10 AM-5 PM  
Sun. 11 AM-6 PM

**201 - 255-1200**  
Exclusive Sales Agent  
Sundays Realty  
Excludes 5% Agent  
Brokers Cooperation Invited

**DIRECTIONS:** From North, Garden State Parkway to Exit 91 - take right hand fork, Follow Rte. 549 South to Brick Shopping Center, Go right on Rte. 549 approx. 4 miles to Sales Office on left.

**WHEN YOU'RE LOOKING FOR A FAMILY HOME, \$36,990 IS A GOOD PLACE TO START**



**7 MODELS FROM \$36,990**

Capes From \$38,990	Bi-levels From \$40,990	Colonials From \$46,490	Split's From \$47,990
---------------------	-------------------------	-------------------------	-----------------------

Start by looking at the very special features you'll find at Barrymor Estates.

**Energy Saving Package**  
Storm windows, screens, double insulated patio doors, full-thick wall insulation and 6 inch ceiling insulation—a \$750 value—are included without charge on selected homes contracted before June 6th.

**Lay-Away Plan**  
Current prices and financing terms can be held, if you wish, until January 1, 1978 on all homes contracted before June 6th.

**Standard Features**  
Every home the Barrymor Family builds includes a beautifully landscaped wooded lot, finished attached garage, paved driveway, all-wood double-hung windows, hardwood floors or carpeting, double floor construction, 150 amp electrical service, solid hardwood kitchen cabinets and many other features.

**Let Our Family Build Your Family's Home**

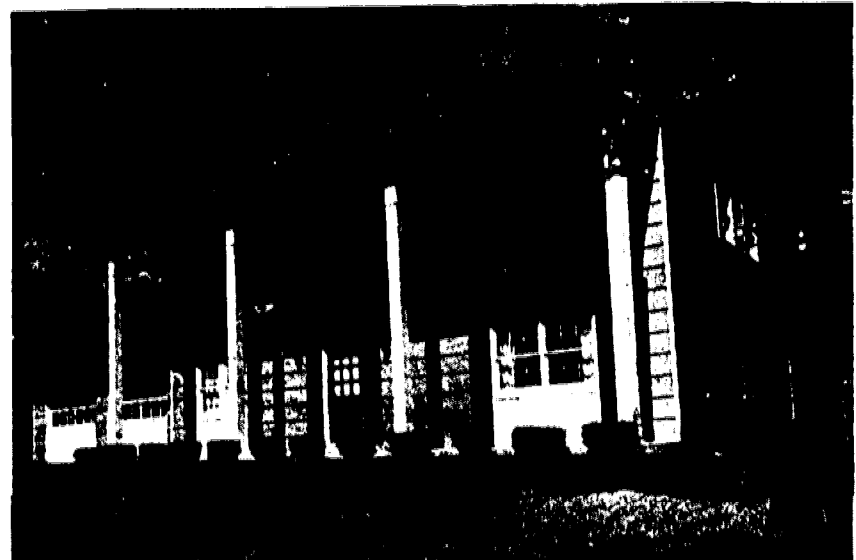
From **5% DOWN\*** From **8% INTEREST\*** Up To **30 YEAR MORTGAGES\***

\* TO QUALIFIED BUYERS

**BARRYMOR ESTATES**  
Northern Ocean County's Finest Housing Value

**DIRECTIONS:** Garden State Parkway exit 91 (Lakewood). Proceed straight 3/4 mile. Bear right onto Route 526 west. (County Line Rd.) Follow to models on right. Or, take Route 9 south to Route 526 east. Make left. Follow to models on left.

**(201)367-2226**



**BRYANT COLONIAL**, one of many single-family homes offered by U.S. Home Corporation of New Jersey at Whittier Oaks. Located off Rt. 9 in Freehold and Marlboro Township, these home designs have everything included for today's lifestyles. Priced at \$57,990, the Bryant Colonial has nine rooms, four bedrooms, 2-1/2 baths, recreation room, full basement and two-car garage. Kitchen has refrigerator-freezer, dishwasher, oven and cook-top range with hood, exhaust fan and back splash. Model homes on display at Whittier Oaks, come complete with landscaped grounds, water, sewers, paved streets, sidewalks, curbs and driveways.

**'Bridge' homes have new 'Hollywood bath'**

"Hollywood bath," for most people, conjures up a vision of a movie star soaking in sud's in a bathroom so large it could only be the product of a film-maker's imagination. In fact, such a bath is available to residents of Covered Bridge, an adult condominium community on Rt. 9 in Manalapan Township, 42 miles from Manhattan.

The Hollywood bath is one of the features of Model 9100 in the recently introduced 9000 Series of homes, priced at \$27,990. Over 200 square feet of space is in the bath and dressing area. The bath area features a linen closet and is separated from the dressing area by a sliding door. The carpeted dressing area, which measures 8 ft. by 15 ft., is equipped with a dressing table, mirrored medicine cabinet, and a second linen closet. It features accessibility from both the master bedroom and the living room.

Model 9100 also features a living room-dining area 25 ft. by 15 ft., a covered patio or balcony, kitchen with laundry area and plenty of closet and storage space. The dining area and kitchen are separated by a breakfast bar.

The Covered Bridge community, created, developed and operated by Hovnanian Enterprises Inc., has been geared to an active recreational and social lifestyle.

The community has its own swimming pool, illuminated shuffleboard courts, tree-lined jogging and cycling paths, and a \$2 million clubhouse with lounge, card and billiard rooms, auditorium and hobby rooms.

Some 60 clubs, from stamp collecting to ballroom dancing, provide day and night activities and the 18-hole Covered Bridge golf course, adjacent to the property, is available to residents at nominal cost.

All the benefits of home ownership — equity, tax

saving and others — are offered without the chores of lawn care, snow removal, outside maintenance, garbage disposal and other services, which are handled by experts. Not the least of the services is 24-hour security, both at the entrance gate and by patrols.

Covered Bridge, which already has attracted more than 1,600 residents, is close to New Jersey's beaches, the Garden State Arts Center, Freehold Raceway, Monmouth Park race track and fishing, boating and hunting areas.

There is frequent express bus service to Manhattan for commuters — a 56-minute ride from the entrance of Covered Bridge to the New York depot at 40th street.


To reach Covered Bridge from northern New Jersey, take either N.J. Turnpike (Exit 11) or Garden State Parkway (Exit 123) to Rt. 9 and continue south, following signs to the site.

**See Community Planning amidst unspoiled woodland by Scarborough**

**Weatherly**

"The Family Place," in Pleasant Plains, Ocean County

THE WESTBROOK FROM UPPER  
one of 5 models... **\$30,000's**



Exclusive Energy Plus Pak available Now Saves 41% on heat.  
Models open Daily and Sunday 10 to 5 PM (except Thurs. and Fri.) Tel. 201-341-4700

**Scarborough '77**  
The year we build your home

**DIRECTIONS:** Garden State Parkway south to Exit 88 to Rt. 70 West. Continue on Rt. 70 approx. 4 miles to junction Rt. 527, Whigsburg Rd. Turn left and travel approx. 7 miles to models, adjacent to Ocean County Agricultural Bldg.  
Via Rt. 9 travel south to junction Rt. 571. Turn right and proceed on Rt. 571 to fork on road. Bear right onto Rt. 527 and proceed approx. 200 feet to models adjacent to Ocean County Agricultural Bldg.

A member of the PEPPER COMPANY

**Energy-saving model planned**

Les Fromkin of the Samuel Fromkin Co., Monmouth County builders and developers for 67 years, reports that 20 percent of the homes purchased in its Monmouth County developments in the last four months have been bought with heat pumps included.

Fromkin added that due to the increasing popularity of the heat pump energy saving device, the firm is proceeding to build a complete new energy saving model called the "Carter," a four-bedroom colonial. This model will be priced within range of most home buyers.

Fromkin stated that since Easter he has noted a continued pickup in traffic and sales at all its Monmouth subdivisions.

Homes are available currently in two Fromkin developments, one at Parkwood Estates where ranches, colonials & bi-levels on half-acre wooded lots are available from \$55,490. Four-bedroom colonials are available at Village Green priced from \$56,990.

**DIRECTIONS to Parkwood Estates:** take the Garden State Parkway south to exit 98, then Rt. 34 south to first light (Allenwood road), left on Allenwood road to 18th avenue, left on 18th avenue and follow Parkwood Estates following models.

**DIRECTIONS to Village Green:** take Garden State Parkway south to exit 106, then east on Rt. 36 to Eatontown Circle (or Rt. 35 to circle) around circle to Wall street, right on Wall approximately 1 mile to Whale Pond road. Turn right to Village Green.

**25 MINUTES TO MORRISTOWN • 50 MINUTES TO NYC.**

**1st SECTION ALMOST SOLD OUT!**

**SECTION 2 WILL PREMIERE SHORTLY!**

**SPARTA BIRCH HILL ESTATES**  
by BROOKSIDE HOMES

models include:  
SPLITs • BI-LEVELS  
COLONIALS • RANCHES

priced from **\$51,950**

**DIRECTIONS:** Rte. 80 Westbound to Rte. 15 North, 9 miles to Sparta Lake. Mohawk exit. West on Woodport Rd. (Rt. 15) 1/4 mile to 2nd street on left.

**ASSOCIATED sales inc.**  
80 So. Jefferson Rd. Whippany, N.J.  
Weekdays - 887-7200 • Weekends - 729-9007

**Lowest Taxes in Hunterdon County!**



Buy a prestige \$62,990 Shadow Oaks home for the same monthly carrying costs as a home priced at \$49,000 elsewhere.

Taxes at Shadow Oaks, Hunterdon County's finest community, range from \$40 to \$50 per month. Our fine ranch and colonial homes range from \$62,990 to \$72,990.

**SHADOW OAKS**

**Garden State Land Co. — Sales Agent**  
Clinton, New Jersey (201) 735-7700

Sales Office open Daily and Weekends: 11 a.m. to 5 p.m.  
(201) 966-2385 or 2181

**DIRECTIONS:** Interstate 78 west to Patterson Exit. Follow signs to Patterson G.O. 4 miles south to model on left.



For people 52 and over.

All photos are of actual Greenbriar residents and their guests.

**Retire to full time living.**

The minute you drive into Greenbriar, you'll see people enjoying life, as it's meant to be lived. And it's easy to see why.


**Your own home, your own lot.**  
The neighbors here are close friends, but they're not crowded. Everyone enjoys their own fully-detached home with GE appliances, air conditioning and private lot. And all exterior maintenance is done by professionals, through the Greenbriar Association.

**Active community, active people.**  
So you'll have plenty of free time to enjoy your friends and family at Greenbriar's magnificent clubhouse. Or try the par 3 golf course. Take a dip in the 2 swimming pools. Row a boat in the beautiful lake. Or just take a relaxing evening stroll through the parklike community.

Come to Greenbriar. Talk to the residents and inspect the 5 fully furnished, fully detached models. Take the Garden State Parkway to Exit 91 and follow the signs to Burnt Tavern Road east for Greenbriar.

**5 beautiful models priced in the mid-\$30's.**

Lifetime membership fee, \$225 Plus a monthly maintenance charge



**greenbriar**

RETURN TO FULL TIME LIVING  
Exit 91, Garden State Parkway, Brick Town, N.J. Call 201-458-9500  
Follow signs to Burnt Tavern Road east

Greenbriar homes are real homes. Separate, private and on your own lot.

**US-HOME** **HOW** **E**

# SUBURBAN REAL ESTATE MART

City • Suburbs • Farm Country • Lake • Shore

## Colonial-style home available at 'Heights'

The Howard Siegel Companies' colonial-style home has been their most popular model over the past two decades. With modifications in design and materials, the Marc Colonial is a split-colonial with a basement, kitchen, family room and formal dining room on one level, large living room on

its own level, and bedrooms and full baths on the third level. It has an attached one-car garage, with two-car garages available as an option. When the company, well-known in Monmouth County, was developing Marc Terrace, its adjacent community in Hazlet, buyers who had lived in earlier Siegel communities or had friends or relatives residing in the firm's colonial home requested this model. A few were built at Marc Terrace. At Marc Heights, however, this is the buyers' first opportunity to consider the model.

Marketing of the final section, known as Act II, at Marc Heights began in February. "In the short time since, home purchase deposits have been received at the same fast pace as had previously been experienced in the first sections," a spokesman said. "The main reason for the success has been yet another one of the builder's roomy models." The Twain Marc IV, priced at \$52,990, features large living and dining room, a 180-square-foot family room with French doors leading to a patio, kitchen, utility room, powder room and garage on the ground floor. The four bedrooms and two full-sized bathrooms are on the second floor. Close to Exit 117 of the Garden State Parkway, Marc Heights is only minutes away from the southern shore resorts, yet within rapid access to New York City by the Parkway, Turnpike and the Hazlet station of the Pennsylvania Railroad. Seashore beaches at Keansburg are only 10 minutes away; the Garden State Arts Center is just one mile down the parkway; state, county and local parks are in the surrounding area.


### 2nd SECTION NOW OPEN!!

**YOUR FAMILY DESERVES AN EXPERTLY CRAFTED HOME ... by Quality Builders**

- CUSTOM HOMES
- FINE SCHOOLS
- BEACHES
- EXCELLENT SHOPPING
- CHARMING, ELEGANT HOMES
- REPUTABLE BUILDER
- CONVENIENT FINANCING
- EXCLUSIVE NEIGHBORHOOD
- UP TO FIVE BEDROOMS
- CITY WATER AND SEWER
- ALL IN N.J.'S FASTEST GROWING COMMUNITY...

TOMS RIVER, N.J.

### NO MONEY DOWN\*



**8 MODELS FROM \$52,900**

### UP TO \*30 YEAR MORTGAGES

\*TO QUALIFIED BUYERS

# Briarwood Estates



OFF BAY AVE. TOMS RIVER, N.J. 201-341-1881 201-341-3441

SALES OFFICE HOURS: Mon-Fri 11:00-5:00 Sat-Sun 11:00-5:00

DIRECTIONS: Parkway exit 82 to Route 37E. Second light turn left to Hooper Ave. (use jughandle). First light turn right onto Bay Ave. to Briarwood sign on left.

Built By Quality Builders, Inc.

**Our final section will exceed even your highest expectations**

Only our final section remains for prospective homebuyers, but fortunately we've saved the best for last. Our largest wooded homesites, most sophisticated models, and, of course, our most attractive prices and financing are all available.

Come see for yourself, the neighborhood, the models, the Toms River community. All the amenities you need for the "good life" are here. Exceed your expectations... at Dover Heights.

Six exceptional models from **\$50,000**

Excellent financing from **8 1/4% interest\***

**10% down\*** to qualified buyers



## Dover Heights

Indian Hill Road at Toms River

Phone: (201) 244-3900 (201) 341-8558

## Easton North rentals running at brisk pace

Rentals have been especially brisk at Easton North, a new garden apartment complex in Franklin Township. In just three weeks since its grand opening, 25 per cent of the total 210 units have been rented.

## 'Countryside' villa designs prove popular

The Countryside series of villa homes at Leisure Village West has been one of the most popular innovations of Leisure Technology Corp.'s recreation-oriented adult community near Lakehurst.

"Most people who purchase our homes are active men and women who have had successful business and professional careers," said Terry Bickel, Leisure Technology Northeast Inc. sales director.

"They seek smaller homes because their children are grown, or they want to escape the disadvantages of apartment-living in urban centers."

"Here at Leisure Village West, they have a wide variety of choices — the Countryside series of homes ranging from \$25,990 to the luxurious Greenery patio homes at up to \$47,490 — homes of just the right size, in a friendly community; secluded, yet near shopping centers; peaceful, but with plenty of recreation available.

"The Countryside villa homes are especially popular not only because they are charmingly designed and well constructed," he added, "but also because persons buying them can maintain the standard of living to which they were accustomed, at unbelievably modest cost."

Leisure Technology Corp., pioneer in the development of adult environments, is especially proud of the Nantucket model of the Countryside series. With two bedrooms and two baths, the Nantucket features a spacious living room, a formal dining room, and a master bedroom with private bath, which includes a frosted safety glass-enclosed shower.

Buyers may choose their own color schemes for wall-to-wall carpeting, which is supplied for all living areas. There are TV outlets in the master bedroom and living room.

The Nantucket is constructed with thermal pane windows and thermal break window frames with screens, color-coordinated aluminum siding and trim, insulated metal clad front and rear doors, and insulated walls and ceilings.

Leisure Village West is a recreation-oriented community which offers a swimming pool, private lake, shuffleboard courts and a nine-hole golf course. There also is a recreation center with lounge, card rooms.

Security prevails throughout the community. One enters Leisure Village West at a manned gatehouse. Guards patrol the area

from dusk to dawn. The community is on Rt. 70 near Lakehurst, six miles from Exit 88 of the Garden State Parkway.

Facing Leisure Village West, across Rt. 70, is Leisure Knoll, another Leisure Technology Corp. environment which features the Summerhill series of detached homes.

Model apartments are set up for prospective residents' viewing. Easton North is made up of one and two-bedroom apartments, each with individually controlled central heating and air conditioning, smoke

detectors and a security alarm system. Rent includes heating and cooking gas.

Each building in the complex houses first and second floor apartments, with front and rear entrances.

Every apartment has been built with a sliding glass door leading out onto a balcony or terrace. Kitchens are equipped with dishwasher, range, oven and refrigerator. Parking facilities are available for all tenants, with additional parking space for guests.

Easton North is only two miles from Rt. 287, with easy access to the New Jersey Turnpike and other major roads. It is within walking distance of shopping facilities.

restaurants of all kinds and a first-run movie theater.

The management of Easton North has developed numerous garden apartment communities. For the many features that Easton North offers to its residents, starting rental of \$290 is a most attractive offer, the management stresses.

NOT a Condominium - NO Maintenance Fees

# \$19,990.

Down Payment \$1040.

BUYS MODEL TOWN HOMES WITH ATTACHED RANCH HOME FOR \$155<sup>83</sup> Per Month

### Barnegat Woods

Call Collect (609) 698-7723



### 52 or older? OPENING NEW SECTION

# \$8.60 per month

ESTIMATED

## pays these costs

real estate taxes, fire insurance, exterior maintenance and repair, courtesy bus service both inside and outside the community—and a dozen other services and facilities—on our Sheffield, 2-bedroom ranch-style home, with garage. Full price \$34,490.

See 6 different model homes, sizes, floorplans—\$29,490 to \$43,490, estimated monthly costs \$75.00 to \$99.56.

For FREE brochure PHONE TOLL FREE: In NJ: 800-822-9711 In NY: 800-631-5509

Or write to Crestwood Village, Dept. W, Box 166, Whiting, NJ 08759

DIRECTIONS: NY and North: Garden St. Pkwy (Exit 80) and NJ #530. Phila: Ben Franklin Bridge, NJ #70 & #530. Trenton: NJ #33, #526 to Allentown, then #539, #530.



# Dogwood ESTATES

Off Eagle Rock Ave. Roseland

### GRAND OPENING

ONLY 9 LUCKY FAMILIES ... will have the opportunity of living in this exclusive private setting.

Dogwood Estates offers both convenience and privacy to a limited number of families. This exclusive development is nestled in a park-like setting with lots of trees and living space. Added to its natural attractiveness is Dogwood Estates' location near major commuter routes as well as its convenience to schools and shopping.

### BI-LEVEL, COLONIAL AND CUSTOM DESIGNS SIX STYLES TO CHOOSE FROM \$73,400

CUSTOM DESIGNED HOMES BY EDGEMOUNT REALTY

MODEL PHONE (201) 276-2768 OFFICE PHONE (201) 376-0770

MODELS OPEN 1-5 P.M. WEEKDAYS -- 12-6 P.M. WEEKENDS

DIRECTIONS: Garden State Parkway to Exit 145 (Route 280). West on Route 280 to exit 5B (Roseland). Make right to light (Eagle Rock Ave.). Turn right on Eagle Rock to 4th street on right. Monroe Ave. 1 turn right to models on left.



## Some people go to great lengths just to buy one of our homes.

It really happened! When we opened new sections at Rossmoor and Clearbrook recently, a lady from northern New Jersey wanted to be sure to get the model of her choice. So she drove over the night before and slept in her car, just to be among the first in line the next morning.

If you think that's extreme, consider the gentleman who flew in from Michigan the night before, arrived at our sales office front door at 3:00 A.M. with a folding chair, and planted himself there so he could be first in line.

When our sales office opened at 8:30 A.M. the next morning, 16 additional people had already queued up so they could be among the first. Faced with the question of who was really first, we finally resorted to handing out numbers!

In that one weekend, over 200 people visited our models. And we sold 31 homes.

Unusual? Not when you see the value in these two prestigious communities. Each offers the most pleasurable recreation facilities you're ever likely to find. Each is a protected community with a 24-hour gateman and a roving security patrol. And each has a variety of homes with layouts most people prefer.

Clearbrook is a community of contemporary homes, priced from \$34,900 to \$55,500.

Rossmoor resembles an exclusive New England village, with homes priced from \$28,500 to \$64,900.

So, come take a pleasant drive to Exit 8A of the New Jersey Turnpike. It's only 45 miles from New York City. See for yourself why people do unusual things just to buy one of our homes. We're open every day, 9 to 6. And we promise you can inspect our homes leisurely. Without sleeping in your car the night before.



# Clearbrook and Rossmoor

## Both at Exit 8A, New Jersey Turnpike

Monroe Township, N.J. Phone: Rossmoor (609) 655-2270 Clearbrook (609) 655-2900

This advertisement is not an offering, which can be made only by formal prospectus. N.Y. 20. S. S. 7.

# Word sounds, madness key to British humor

BY DON FREEMAN

Students of humor for years have attempted to analyze the difference between what makes the English laugh and what wrenches laughter from the rest of us over here in the colonies. Dudley Moore, an English comic, suggests that in England the approach is more verbal and, perhaps more irreverent.

Moore usually works in tandem with his partner, Pete, Cook, and their two-man shows—"Beyond the Fringe," for example—have been successful on both sides of the pond.

The English are, of course, extremely possessive about their brand of humor. About 15 years ago, James Thurber, an American humorist ranked maybe only a notch below Mark Twain, visited

London with a show based on his works, called "The Thurber Carnival." The English loved the show and they loved Thurber, with only one reservation— from some critics there were angry rumblings that Thurber wasn't English, one of their own.

But then, the best of humor is as difficult to pin down as mercury; it is rarefied and intangible, and in addition to Thurber, those words suggest Peter Sellers and Beatrice Lillie and Robert Morley and the comedies of Alec Guinness. No analysis of humor, from Henri Bergson to Max Eastman to Steve Allen, could ever zero in with any accuracy on just why these comedy players from England fill us with laughter

"I suspect our approach to humor is rather a bit freer than the Americans," said Dudley Moore. "We have this preoccupation with the sound of words as a jumping-off point for certain types of — for want of a better word — madness. And the madness, as witness Monty Python, is oftentimes visual."

Although this particular essence has been reflective of English humor for many years, it blossomed — no, exploded — with the arrival of the comedy troupe known as the Goons in the early 1950s. Peter Sellers, for one, came out of the Goon group.

"For a time," says Dudley Moore, "everybody in the United Kingdom was doing Goon imitations, which is to say they were doing mad, visual things.

Curiously enough, the brains behind this whole trend in English humor was an Australian named Spike Mulligan."

Moore paused momentarily. "Humor, you know, is in actuality based on hostility, which means irreverence, doesn't it? In 'Beyond the Fringe,' when we first started out in the '50s, Peter Cook and I poked much fun at sacrosanct things.

Contrarily, as Moore points out, the comedy of jokes, one-liners, is foreign to most of the English funny-men. "The telling of jokes," says Moore, "is not an art we're very good at. And we're not particularly good at the humor of putting down oneself. We loved Jack Benny but we never had anyone who was funny in the Benny style."

# SUBURBAN CALENDAR

## Music, dance

IRVINGTON—Free concert by Irvington Symphony Orchestra James Sadewite conductor. 8 p.m., Irvington High School.

LIVINGSTON—Livingston Symphony Orchestra, opera selections. Scott Coulter, tenor; John Lange, baritone; Micheline Manno, soprano; Adelaide Bulli, mezzo soprano. May 21, 8:30 p.m., Livingston High School, 992-1330.

MILLBURN—The Ginger Rogers Show Through May 29. Performances Tues., Fri., at 8:30 p.m., Wed. and Thurs. at 2 p.m., Sat. at 5 and 9:30 p.m., Sun. at 3 and 7:30 p.m. Paper Mill Playhouse, 376-4343.

MONTCLAIR—Kurt Wellis songs. May 19-21, 26 at 8 p.m. Whisla Theatricals Company, Church and Trinity place, 744-2989.

MORRISTOWN—Abbey Orchestra. Grieg, Copland, Bach. Vaughen-Williams. May 22, 4 p.m., Abbey Church, Deaton campus, Rt. 24, 538-3231.

MORRISTOWN—Masterwork Chorus and Orchestra. David Randolph, director. Berlioz, Thompson. May 21, 8 p.m., Methodist Church on the Square, 538-1860.

MORRISTOWN—Melanie. Split Rock Rhythm Band. May 20 and 21 at 8 p.m., The Morris Stage, 100 South St., 540-9242.

MORRISTOWN—Melanie. Split Rock Rhythm Band. May 20 and 21 at 8 p.m., The Morris Stage, 100 South St., 540-9242.

UNION—The Parallax View. May 22, 7:30 p.m., Wilkins Theatre. "Buck and the Preacher," May 25, 3 and 8 p.m., Little Theatre, Kean College, 527-2044.

MOUNTAINSIDE—Nature Films, Sundays at 2, 3 and 4 p.m. Trailside Nature and Science Center, Watchung Reservation, 232-5930.

## Theater

CEDAR GROVE—Guys and Dolls. May 4-June 5, Meadowbrook Dinner Theatre, 1050 Pompton ave., 256-1455.

CRANFORD—Two Gentle men of Verona. Through May 21. Fridays and Sundays at 8:30 p.m. Saturdays at 7 and 10 p.m. Celebration Playhouse, 118 South ave., 272-5704 or 351-5033.

EAST ORANGE—"Endgame," by Samuel Beckett. May 20. Wednesdays through Thursdays, Fridays and Saturdays at 8:30 p.m. Actor's Cafe Theatre, South Main and Central avenues, 675-1881.

MIDDLESEX—"The Fantas ticks." May 19-June 4. Wednesdays through Saturdays at 8:40 p.m. Foothill Play House, Beechwood ave., 356-0462.

MOUNTAIN LAKES—"Damn Yankees." Through June 5. Friday, Saturday, Sunday, matinees. New York Dinner Theatre, Rt. 46, 334-0058.

NEW BRUNSWICK—"Waiting for Godot," by Samuel Beckett. Thursdays through May 21. Plena Theater, 500 George Street Playhouse, 246-7177.

# Disc & Data

By MILT HAMMER

## Ginger opens in Millburn



I.R.T.

Here's a honey of a record for your collection. United Artists Records (UA-DW970-C) has released a special 12-inch 45 RPM disc-version of the Harry Warren-Al Dubin classic "Lullaby of Broadway" by I.R.T.

The song, which comes from Busby Berkeley's "Goldiggers of 1935," is co-produced by Denny Diante, UA's vice-president of pop a & r, and writer Allen Levy.

The record, a "disco love song" to New York, was put together by several Los Angeles studio musicians, all expatriate

New Yorkers who decided to pay tribute to their native city by recording the tune. The group's name, I.R.T., refers to one of the subway lines in Gotham. The song was arranged by Jimmie Haskell.

The "B" side of the single is the "original version of the tune from the soundtrack, performed by Winifred Shaw. This is the first time a disco version and the original have appeared on the same disc.

Be sure to grab this one on your next record buying tour.

## Role of black church in America told in film

A new documentary film, "This Far By Faith," which highlights the history and cultural contributions of the black church in America, is now available for public showing from New Jersey Bell Telephone Company.

The 58-minute full-color film is narrated by stage and screen star Brock Peters, who also co-produced the film. Costarring with Peters is a cast of black artists including Roscoe Lee Brown, Carmen deLavaydada and Beah Richards. Music is directed by the black composer and conductor Coleridge Taylor.

"This Far By Faith" captures the essence of black heritage in dance, poetry and popular music and illuminates how this heritage, preserved by the church, has become such an integral part of America's contemporary culture.

The story opens with the "griot," the ancient African storyteller, who in America becomes the plantation storyteller, and evolves to the eman-

cipated preacher and today's black minister and leader.

The 16 mm film, divided on two reels, is available free of charge to schools, churches, clubs and civic groups. Anyone interested in borrowing the film should contact their local New Jersey Bell business office.

The Readers Theatre Workshop will give young people experience in dramatizing poetry and short stories, as well as producing and performing.

The class will meet Monday through Thursday each week from June 27 through Aug. 4 from 10:15 a.m. to noon. A theater trip to New York City will be included.

Registration deadline is June 1 and the fee is \$90. Further information may be obtained from Dr. Margaret Dunn, assistant professor, Speech-Theater-Media Studies, at 527-2349.

**Boys chorus plans concert**

The Parents Advisory Council of the Newark Boys Chorus will sponsor a concert of the chorus Sunday at 4 p.m. in St. John's Roman Catholic Church on Mulberry street, Newark. Tickets may be obtained from the Chorus School, 505 Orange st., Newark, from the boys or their parents, or at the door. Mrs. Norma Smith is chairman.

The fund-raising program is a liaison between the Chorus School and the Newark Community School of Arts, it was announced by Stephen Shiman, director of the Community School.

To Publicity Chairmen:

Would you like some help in preparing newspaper releases? Write to this newspaper and ask for our "Tips on Submitting News releases."



**IN COMEDY-MYSTERY** — Ari Carney stars as an over-the-hill private eye in "The Late Show," with Lily Tomlin. Picture is offered at Lost Picture Show, Union, and Five Points Cinema, Union, and on a double bill with "From Noon Till Three" at New Plaza, Linden.

## 'Thieves' in Park

"Thieves," starring Marlo Thomas and Charles Grodin, opened yesterday at the Park Theater, Roselle Park, on a double bill with "If..."

"Thieves" concerns a New York couple who move into an East Side high rise only to find marriage values collapsing. The picture also stars Irwin Corey and was directed by John Berry.

It was photographed in color. "If..." has Malcolm MacDowell, David Wood, Richard Warwick and Christine Noonan in starring roles. The movie shows the cruelties and psychological oppression in a modern British school. Lindsay Anderson directed the movie, which was filmed in color.

## 'Breaker' film

A new motion picture concerning the CB battle cry, "Breaker! Breaker!" starring Chuck Norris, arrived yesterday at the Fox Theater, Route 22, Union, and the Fox Theater in Woodbridge. The film is rated PG.

## TV COMMERCIALS

About 38 percent of television commercials last year involved demonstrations of products, up from the 24 percent in 1975, reports the trade journal Advertising Age.

## CROSSWORD PUZZLE

- |                              |                        |                            |                   |
|------------------------------|------------------------|----------------------------|-------------------|
| 1 Carry                      | 41 One (Ger.)          | 9 Ennoble                  | 26 Snare or bass  |
| 5 Arranged at intervals      | 42 Indicate            | 10 Expunged                | 10 Expunged       |
| 11 Bathtub shape             | 43 Rose essence (var.) | 16 Call reveille           | 28 Textile finish |
| 12 Word of honor             | DOWN                   | 22 Part of a island brogan | 30 Gounod opera   |
| 13 Lounge                    | 1 Rental sign (2 wds.) | 7 Macaw                    | 23 Byre sound     |
| 14 Paint                     | 2 Molding              | 8 Divulge                  | 32 Woody vine     |
| 15 Wapiti                    | 3 Blab (4 wds.)        | 4 Building wing            | 33 Wrath          |
| 16 Goddess (Lat.)            | 4 Building wing        | 5 Oration                  | 38 Early auto     |
| 17 Girl's name               | 6 Philippine island    | 6 Philippine island brogan | 39 Normal rate    |
| 18 Extremely                 | 7 Macaw                | 8 Divulge                  | 25 Normal rate    |
| 19 Gelig                     | 23 Byre sound          | 4 Tongue-lashed            |                   |
| 20 Cereal plant              | 32 Woody vine          | 4 Tongue-lashed            |                   |
| 21 "Beehive State"           | 33 Wrath               | 25 Normal rate             |                   |
| 22 Silent                    | 38 Early auto          |                            |                   |
| 24 Stokowski's status symbol | 39 Normal rate         |                            |                   |
| 26 - on (loved to excess)    |                        |                            |                   |
| 27 Bacchanals' cry           |                        |                            |                   |
| 28 Ship's bow                |                        |                            |                   |
| 29 Ring arbiter (sl.)        |                        |                            |                   |
| 30 Winter complaint          |                        |                            |                   |
| 31 Dock-workers' union       |                        |                            |                   |
| 34 University study          |                        |                            |                   |
| 35 Purpose                   |                        |                            |                   |
| 36 Stannum                   |                        |                            |                   |
| 37 Zodiac sign               |                        |                            |                   |
| 39 1830's dance              |                        |                            |                   |
| 40 Outlet                    |                        |                            |                   |

**TODAY'S ANSWER**

DOWN

10 EXPUNGED  
25 NORMAL RATE

# Movie Times

All times listed are furnished by the theaters.

—0—  
ELMORA (Elizabeth)—PLAZA SUITE, Thur., Fri., Mon., Tues., 7:15; Sat., 1, 7:55; Sun., 3:10, 7:15; THE LAST TYCOON, Thur., Fri., Mon., Tues., 9:16; Sat., 3, 5:40, 9:50; Sun., 1, 5:09, 9:18.

—0—  
FOX-UNION (Rt. 22)—BREAKER, BREAKER, Thur., Mon., Tues., 7:30, 9:15; Fri., 8, 10; Sat., 3, 4:45, 6:30, 8:15, 10; Sun., 3, 4:30, 6:10, 7:45, 9:15; X-rated midnight show, Fri., Sat., 11:30.

—0—  
FIVE POINTS CINEMA (Union)—THE LATE SHOW, Thur., Fri., Mon., Tues., 7:30, 9:15; Sat., 7:30, 9:30; Sun., 4:30, 6:05, 7:35, 9:15.

—0—  
LOST PICTURE SHOW (Union)—THE LATE SHOW, Thur., Mon., Tues., 7:39, 9:20; Fri., 7, 8:30, 10:10; Sat., 6, 8, 10; Sun., 1:30, 3:05, 4:40, 6:15, 7:50, 9:25.

—0—  
MAPLEWOOD—SLAP SHOT, Thur., Fri., Mon., Tues., 7, 9; Sat., 2:15, 4:45, 7:15, 9:45; Sun., 2, 4:30, 7, 9:10.

—0—  
NEW PLAZA (Linden)—THE LATE SHOW, Thur., Fri., Mon., Tues., 7, 10:20; Sat., 7, 10:15; Sun., 6:25, 9:45; FROM NOON TILL THREE, Thur., Fri., Mon., Tues., 8:30; Sat., 5:10, 8:35; Sun., 4:45, 8:05; Sat., Sun. matinees, HEY THERE, IT'S YOGI BEAR, 1:30.

—0—  
OLD RAHWAY (Rahway)—Last times today: LOVE IN 3-D, 7:35, 9:10; THE STEWARDESSES, Fri., 7, 8:35, 10:10; Sat., 6:50, 8:30, 10:15; Sun., 4:40, 6:15, 8, 9:40; Mon., Tues., 7:35, 9:10.

—0—  
PARK (Roselle Park)—IF, Thur., Fri., Mon., Tues., 7:30; Sat., 1, 4:35, 8:15; Sun., 3:50, 7:30; THIEVES, Thur., Fri., Mon., Tues., 9:20; Sat.,

7:30, 9:10.

**NEW PLAZA**  
ADD N.WOOD AVE. LINDEN 925-3787

**THE LATE SHOW**  
FROM NOON TILL THREE (PG)

**OLD RAHWAY**  
1601 IRVING ST. RAHWAY 388-1250

**NEW PLAZA**  
1601 IRVING ST. RAHWAY 388-1250

**THE CB BATTLE CRY**

**PLANNING A PARTY!**

**CATERING**

•Weddings •Bar Mitzvahs  
•Graduations •Confirmations  
•Showers •Communions  
•Office & House Parties  
HOT & COLD HORS D'OEUVRES OUR SPECIALTY  
JULIUS KARTZMAN & SON  
Since 1925  
25 Mill Rd., Irvington • 374-2600



DORIS KRUEGER of Union, abstract impressionist, has one-woman show at Paper Mill Playhouse Art Gallery, Millburn, now through June 6, from 10 a.m. through 10 p.m., Monday through Saturday, and from noon through 9 p.m. Sundays. She also teaches in her studio in Union.

## Larry Stuart prefers entertainment career

Harry Knowles Jr., owner of the Manor in West Orange, has announced that Larry Stuart and his band will appear in the Le Dome, the glass-domed new addition atop the restaurant, through June 11.

The 24-year-old Stuart, who resides in Scotch Plains, is the son of tenor

Enzo Stuart. He recently completed a national tour of restaurants and clubs throughout the country.

Stuart, who was graduated from Cornell University, where he majored in hotel and restaurant management, had spent half of his time on studies and the other half singing with a 50's sounding group.

"I turned to my two grandmothers, who I adore and received the needed encouragement. The half of me that was an entertainer, turned to a rigid schedule of vocal, acting, piano and singing lessons."

He still maintains the agenda.

**5 POINTS CINEMA**  
UNION 964-9633

LILY TOMLIN  
ART CARNEY

**"THE LATE SHOW"**  
(R)

FREE PARKING - \$0 7-3100

**MAPLEWOOD**

**UPROARIOUS... THE FUNNIEST NEW COMEDY OF THE YEAR.**

**PAUL NEWMAN—SLAP SHOT**  
CERTAIN LANGUAGE MAY BE TOO STRONG FOR CHILDREN

**Elmora**  
257-3113

**ALL SEAT'S \$1**

Robert De Niro  
Jack Nicholson

**PLAZA**

**Last Tycoon**

**SUITE**

**\$1 ALL SEAT'S \$1**

**PARK**

WAND CHARLES THOMAS GRANT  
"THIEVES"

**if...**

**CELEBRATION PLAYHOUSE**

Reptory Company  
118 South Ave., Cranford  
272-5704 • 351-5033

Now Thru May 21

**TWO GENTLEMEN OF VERONA**

BEST MUSICAL  
TONY AWARD WINNER  
FRI. & SUN. 8:30  
SAT. at 7 & 10  
Starts Fri., May 27  
"Three Penny Opera"  
FREE PARKING

**Chestnut Tavern & Restaurant**

649 Chestnut St., Union 686-9795  
AMPLE FREE PARKING

Open Daily 11:30 A.M. - Midnight  
Fri. & Sat. Till 1 A.M.  
Closed Tuesday

the finest in  
**ITALIAN AMERICAN CUISINE**  
COCKTAILS-LIQUOR-BUSINESSMAN'S LUNCH

**HEDY'S DINER RESTAURANT**

"Formerly Super Diner"  
NEVER CLOSED - "THE PLACE TO EAT"  
Route 22 & Bio St., Hillside 764-3444

HEDY cordially invites you to try our **DINNER BUFFET**, second to none. **FREE** with any entree from our menu, weekdays 5 to 9, Sundays 1 to 9.

BAKING DONE ON PREMISES SPECIAL CHILDREN'S MENU  
BUSINESSMAN'S LUNCHEON MON-FRI.

**THE Alibi**

LOUNGE

Route 22  
(Westbound Lane)  
Union, N.J.  
688-5550

**BUSINESSMAN'S LUNCH** 11:30 A.M.-3 P.M. DAILY

LIVE ENTERTAINMENT  
& DANCING NIGHTS  
**MIDNIGHT BUFFET**  
Tues., Thurs., & Sun. Evns.

**ENJOY Our Polynesian Menu**

Authentic & Delicious • Deluxe Cocktail Lounge  
Daily Businessman's Luncheons • Private Parties

**THE JADE PAGODA**

FREE PARKING - 985-3351

U.S. HIGHWAY 1 & PLAINFIELD AVE., EDISON

Monday thru Friday Only!

**GOOD MORNING! GOOD PRICES!**

**SERVED TO YOU QUICKLY!**

Juice, Egg, Toast  
and Potatoes... FOR ONLY **99¢**  
(Other breakfast specials for bigger appetites)

WHERE?

There's more cooking than just pancakes under one blue roof

AT **THE HOP OF COURSE!**

CENTER ISLAND RTE. 22, UNION

Retarded to exhibit art work

"A Very Special Arts Show," featuring art exhibits and performances by New Jersey mentally retarded people...

The show, which traditionally has drawn talent from public schools and institutions for the retarded, also will include workshops for recreational professionals...

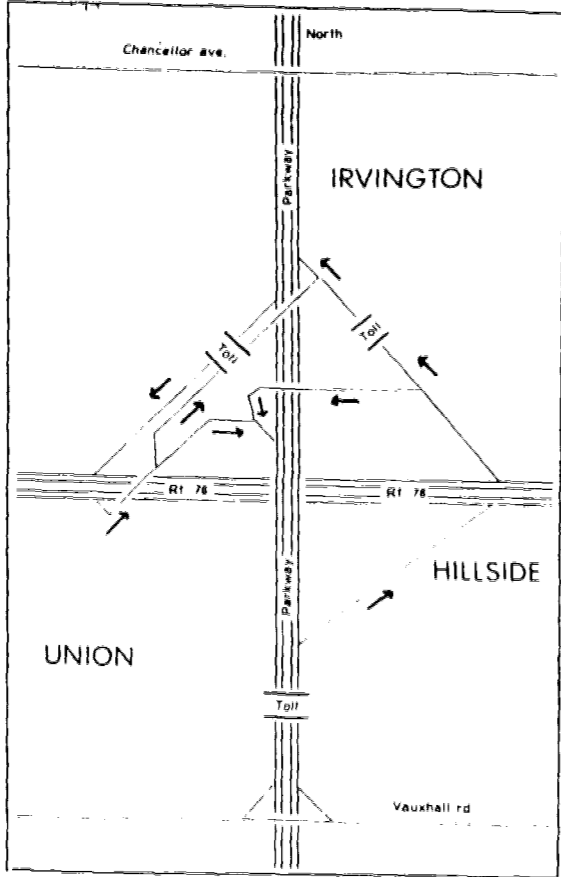
The exhibits and performances will continue from 10 a.m. to 4 p.m. Admission price is 50 cents.

The show is sponsored by the New Jersey Association for Retarded Citizens and the Middlesex County Arts Council...

Special performances have been scheduled for the New Lisbon State School's American Rhythm Band...

Workshops will include: "Music and the Child in the Special Education Classroom," "The Use of Video Taping with the Mentally Retarded..."

The way to go on Route 78



Rt. 78 will be opened for eastbound traffic between the Garden State Parkway in Union and the New Jersey Turnpike near Newark International Airport on Memorial Day, May 30.

The N.J. Department of Transportation reported last week that the interstate highway will be opened around July 1 for westbound traffic between the airport and Parkway.

Following is a list of traffic movements to be permitted when the road is opened for travel west and east.

FROM PARKWAY SOUTHBOUND—Rt. 78 west only through direct access ramp. No access to Rt. 78 east.

FROM PARKWAY NORTHBOUND—Rt. 78 east through direct access ramp. Rt. 78 west may be reached by taking Rt. 78 east to Winans avenue interchange, getting off and returning to Rt. 78 west.

FROM RT. 78 EASTBOUND—Garden State Parkway north and south by direct access ramp.

FROM RT. 78 WESTBOUND—Garden State Parkway north and south by direct access ramp.

Fifth year to be added to training in surgery

Because surgical procedures are growing more and more complex, the New Jersey Medical School of the College of Medicine and Dentistry of New Jersey, Newark, is adding a year to its four-year postgraduate training program in surgery.

The residency in surgery is conducted at C.M.D.N.J.-Martland Medical Center, Newark, and these affiliated hospitals of the medical school: Beth Israel Medical Center and Saint Michael's Medical Center, both in Newark; the Veterans Administration Hospital, East Orange, and Hackensack Hospital, Hackensack.

Dr. Benjamin F. Rush Jr., chairman of the school's department of surgery, said "increasingly complicated surgical procedures" necessitates providing more training experience.

The fifth year will be a year of "senior responsibility," as required by the American Board of Surgery.

A total of 80 physicians will participate in the surgery residency, 23 and 22 in the first and second years, respectively, 12 in the third and fourth years, and 11 in the final year.

Dr. Rush said that about half of the physicians who take the first two years of training are preparing for residencies in specialties such as orthopedic surgery, urology and ophthalmology, and need a year or two of general surgical training.

The expanded program's accreditation came from a review panel composed of members of the American Board of Surgery, the American College of Surgeons and the Council on Medical Education of the American Medical Association.



"When we've used up those millions of barrels of Arab oil what happens to the barrels?"

TV debates set by candidates for governor

The week before New Jersey's June 7 primary election, New Jersey Public Television will present two debates, one between Republican contenders and the other between Democratic contenders for the state's highest office.

The "Republican Governorial Candidates Debate" will be presented live on Wednesday, June 1, at 8 p.m. The "Democratic Governorial Candidates Debate" will be on Thursday June 2, at 8 p.m.

New Jersey Public Television will conclude another voter service, individual appearances by gubernatorial contenders, that same week. All candidates have been offered a half-hour of prime air time for an appearance before New Jersey voters in the format of their choice.

The series, "New Jersey Gubernatorial Candidates," will be seen Monday, May 30, at 8:30 p.m. and 10:30 p.m.; Tuesday, May 31, at 9 p.m. and 10:30 p.m.; Wednesday, June 1, at 10:30 p.m., and Friday, June 3, at 10:30 p.m.

Reserve group plans meeting

The annual state convention of the Department of New Jersey Reserve Officers Association will be held on Saturday at the McGuire Air Force Base Officer's Club starting at 11 a.m.

Charles H. Brauer, president, announced officers for 1977-1978 will be elected in the afternoon session. A cocktail party is set for 5 to 6 p.m.

Delegates to the national ROA Convention July 6-9 in Seattle, Wash., also will be elected.

Membership in the Reserve Officers Association is open to any officer in the Army, Navy, Air Force, Marines, Coast Guard and Public Health Service, active, reserve or retired.

Abzug to speak at health forum

"What's Wrong with health care systems?" is a question which will be addressed on May 19 by Bella S. Abzug, the former Democrat-Liberal Congresswoman representing New York City.

Abzug will address representatives from the health care field attending the annual Middle Atlantic Health Congress in Atlantic City. She will be the featured speaker at the general session on Thursday, May 19, at 10:45 a.m. in Convention Hall.

Pacemakers prolong useful life, study finds

The heart pacemakers that are implanted in the chest work very well in prolonging useful life, according to the findings of a 12-year study reported to the New Jersey Academy of Family Physicians.

A majority of pacemaker patients survive for a number of years with the implantation and death almost always is caused by an ailment not related to pacemaker failure.

Of the 313 patients surveyed, all of whom had received pacemakers between 1961 and 1973, there was a survival rate of 65 percent after five years. Average age at onset of pacing was in the late 60's. Of the 109 individuals in the study who died, only one death could be attributed directly to failure of the implanted device.

Recent technical innovations have improved the effectiveness of the pacemaker, particularly to extend the life of the power source to four or more years.

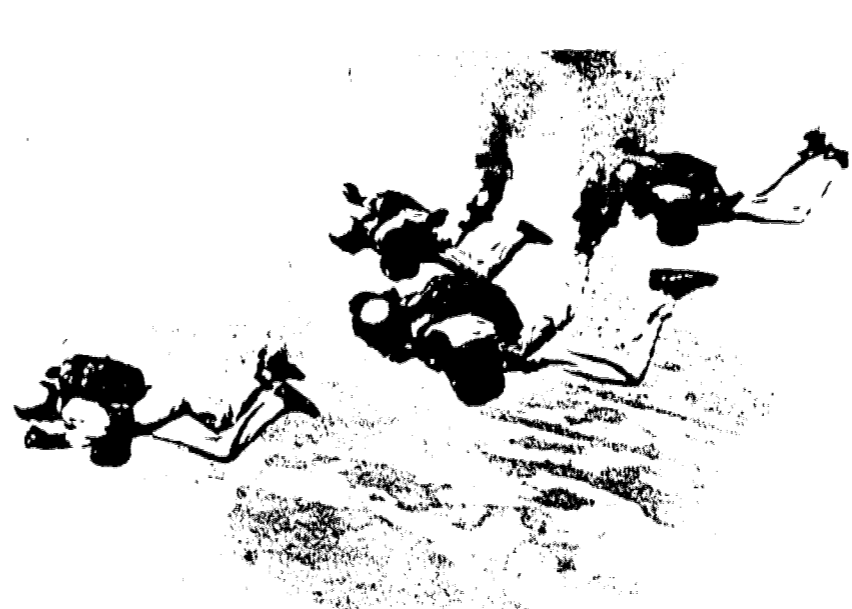
In addition to being unsightly and unsanitary, Black Carpenter Ants excavate extensive galleries in wood to serve as nesting places and may cause extensive damage to your home.

Call BLISS for a Preventive Maintenance program

Summit-Union, Spt. Minn. 277-0079; Westfield, S. Plains, Cal. 233-4448; Irvin, Va. 676-8888; Roswell, Linden, Milw. 353-8752

A BLISS EXTERMINATOR COMPANY

One of the Oldest & Largest



SKYDIVERS—The Golden Knights, the U.S. Army's freefall parachute team, will perform during the Memorial Day air show at New Jersey's McGuire Air Force Base.

Air show at McGuire Memorial Day program

McGuire Air Force Base will hold its annual open house and air show on Memorial Day, May 30, from 10 a.m. to 4 p.m.

The aircraft assembled for the occasion will include the world's largest, the giant C-5 Galaxy, which stretches almost the length of a football field and stands as high as a six-story building— and some of the smallest experimental planes.

Indoor displays will feature space equipment shipped to McGuire for this event by the National Aeronautics Space Administration.

The air show will include a performance by the United States Army's free fall parachute demonstration team, the Golden Knights, and the Air Force's Thunderbirds, precision aerial demonstration team.

McGuire is 17 miles south of Trenton, and can be reached from Exit 7 of the New Jersey Turnpike. There will be food and beverages available at the stands located throughout the open house area.

Ban on benefits noted by Horn

John J. Horn, commissioner of the N.J. Department of Labor and Industry, said federal legislation enacted last October provides that nonprofessional school employees shall not receive supplemental unemployment benefits during a summer recess if there is a reasonable assurance of employment with any educational institution in the succeeding academic year or term.

"The term 'reasonable assurance' means a written, verbal or implied agreement that such individual will return to his job at the conclusion of the summer recess, or in the second of such academic years, or terms," Commissioner Horn said.

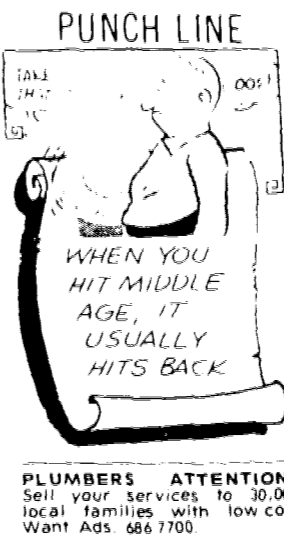
10 percent rise in medical care prices reported

Medical care prices in the New York-Northeastern New Jersey area rose sharply by 10.3 percent between December 1975 and December 1976, according to Herbert Bienstock, regional commissioner, U.S. Department of Labor's Bureau of Labor Statistics.

Increases in medical care, which accounted for only 6.4 percent of the entire market basket of goods and services in the area Consumer Price Index at the end of 1976, represented 14.7 percent of the all items over-the-year index rise.

Bienstock said that among the components of the medical care index, the sharpest increase was for hospital care: semi private room charges rose 18.2 percent over the year. Dentist's fees rose 8.1 percent, physician's fees 7.1 percent and drugs and prescriptions 4.9 percent between December 1975 and December 1976.

In a longer term review of area medical care price trends, Bienstock noted that the sharpest increases were for hospital care, with semi-private room charges up 96.5 percent between December 1970 and December 1976. The rise in hospital charges was more than double the 46.8 percent rise for the overall Consumer Price Index; a 58.1 percent increase was noted for the entire medical care component.



PLUMBERS ATTENTION! Sell your services to 30,000 local families with low cost Want Ads. 666-7700.

READING CLINIC SERVICES KEAN COLLEGE. Of New Jersey, Morris Avenue, Union, New Jersey. DIAGNOSIS OF READING DISABILITIES. THE LABORATORY SCHOOL OF THE READING CLINIC.

PINGRY DAY CAMP THE PINGRY SCHOOL 215 NORTH AVENUE, HILLSIDE, NEW JERSEY. BOYS & GIRLS. 9:50 A.M. - 3:20 P.M. - JUNE 27-AUGUST 5.

FRIDAY DEADLINE

All items other than spot news should be in our office by noon on Friday.

Public Notice

PUBLIC NOTICE SEALED BIDS WILL BE RECEIVED FROM BIDDERS CLASSIFIED UNDER N.J.S.A. 27:27-35.1 et seq., in the Catereria, Transportation Building, 1035 Parkway Avenue, Trenton, New Jersey, until 10:00 a.m., May 26, 1977 and opened and read for:

NEW JERSEY DEPARTMENT OF TRANSPORTATION Bureau of Contract Administration Union Leader, May 5, 12, 19, 1977 (Fee: \$37.44)

The Elizabeth Agency Group INSURANCE CONSULTANTS. 15 PRINCE STREET, ELIZABETH, N. J. 07208. Geico Policyholders!

TYPHOON FENCE CO. FENCING IS OUR BUSINESS. SALE 1 FOOT FREE with every 5 FEET FREE. INCLUDES: Wire, Pipe and Fittings in Color.

BLISS CARPENTER ANTS. This is the season for BLACK CARPENTER ANTS. In addition to being unsightly and unsanitary, Black Ants excavate extensive galleries in wood...

WIN UP TO \$10,000 INSTANTLY. and a chance to win \$1,000 A WEEK FOR LIFE in the PLAY CARDS INSTANT LOTTERY. Tickets available from your local Lottery agent.

BUY SELL TRADE

CALL AN "AD-VISOR" FOR ACTION, TODAY! - 686-7700

CITIZEN

HELP HIRE RENT

DEADLINE IS TUESDAY NOON FOR THURSDAY PUBLICATION

Help Wanted-Men & Women | Help Wanted-Men & Women | Help Wanted-Men & Women | Help Wanted-Men & Women | Help Wanted-Men & Women | Help Wanted-Men & Women | Business Opportunities | Business Opportunities | For Sale

CONAIR CORPORATION

Leading Consumer Products Company has immediate openings for: ASSEMBLERS: light factory work. Experience-non experience, will train.

MATERIAL HANDLERS: work in stockroom, shipping & receiving. Some experience desired but not necessary.

RETURNED GOODS PROCESSORS: no experience necessary but must read & write English.

REPAIRMEN/WOMEN: Repairing small appliances. Some experience desired but not necessary.

Pleasant working conditions, air conditioned factory full company benefits.

ACCOUNTANTS RECEIPTS CLERK: Good at figures, light exp. Mountaineer location.

APPLIANCE REPAIR: Man w. familiar with Air Cond., washers, dryers, etc.

AVON: You've never sold before? Even if you've never sold before, just a few hours a week can bring you excellent earnings.

APPLIANCE SALES: one of the best privately owned appliance stores.

TELLERS: Experienced preferred. Berkeley Heights, Summit and Short Hills branches.

KEYPUNCH OPERATORS: Berkeley Heights 2nd shift. 4:30 P.M. to 12:30 A.M.

BEAUTICIAN: Experienced only, full time. Call 289-9527.

BILLING CLK. TYPIST: Good typing skills & figure aptitude. Previous office exp. preferred.

BOOKKEEPER: Full charge, must be experienced in payroll, payroll reports, general ledger, etc.

MACHINISTS, 1st CLASS N/C PROGRAMMERS N/C OPERATORS TOOL MAKERS TOOL & CUTTER GRINDERS

For advanced technology manufacturer in modern, fully A-C plant. Most modern machine tools and equipment. Top rates, 10 paid holidays, full employee benefits.

FLODYNE CONTROLS, INC. 48 COMMERCE DR., MURRAY HILL, N.J. 07974 464-6200 Equal Opportunity Employer M-F

COLLEGE STUDENTS Whole-Clerical For steady work, register with us for immediate employment.

CONVENIENT downtown agency requires experienced insurance typist, full or part time.

C.J. SIMONS & CO. 50 Broad St., Newark 623-8100

COUPLE WANTED For Commercial office cleaning in Union area, evenings, 3 to 4 hours per week.

OHIO CASUALTY INSURANCE GROUP 2401 Morris Ave. R-52-1

EXECUTIVE DIRECTOR Immediate position for Executive Director of the Township Community Action Organization.

BEAUTICIAN: Experienced only, full time. Call 289-9527.

BILLING CLK. TYPIST: Good typing skills & figure aptitude. Previous office exp. preferred.

BOOKKEEPER: Full charge, must be experienced in payroll, payroll reports, general ledger, etc.

BEAUTICIAN: Experienced only, full time. Call 289-9527.

BILLING CLK. TYPIST: Good typing skills & figure aptitude. Previous office exp. preferred.

BOOKKEEPER: Full charge, must be experienced in payroll, payroll reports, general ledger, etc.

BEAUTICIAN: Experienced only, full time. Call 289-9527.

BILLING CLK. TYPIST: Good typing skills & figure aptitude. Previous office exp. preferred.

BOOKKEEPER: Full charge, must be experienced in payroll, payroll reports, general ledger, etc.

BEAUTICIAN: Experienced only, full time. Call 289-9527.

BILLING CLK. TYPIST: Good typing skills & figure aptitude. Previous office exp. preferred.

BOOKKEEPER: Full charge, must be experienced in payroll, payroll reports, general ledger, etc.

BEAUTICIAN: Experienced only, full time. Call 289-9527.

BILLING CLK. TYPIST: Good typing skills & figure aptitude. Previous office exp. preferred.

POLISHER wanted M-F. No ring work, experience preferred. No calls. Apply in person only.

REAL ESTATE SALES (Women or men) To start on a full or part time basis.

RELIABLE PERSON, over 18 with driver's license for all phases of factory work.

SALES PERSONS Moonlighters Part Time Excellent retail opportunity with fast growing retail chain.

NURSES Interested (quality geriatric nursing)? Orientation for RN's, full or part time.

NURSE-RN EVENING SUPERVISOR Full time, excellent salary, good benefits.

ORTHODONTIC ASSISTANT Child & adult. Write Class. Box 4189 Suburban Publishing.

PACKERS & FOLDERS For T. Shirts, 8:30 to 5 Mon. thru Fri. in air conditioned plant.

PART TIME SALESPERSON For ladies & girls' clothing. Must be friendly, warm & outgoing.

PART TIME, AGENCY commission & clothes. No investment, show, sell ladies sportswear.

PART TIME HELP, steady, full or part time. Call 289-9527.

SECRETARY-PART TIME- Visual equipment of audio visual system, Hillside location.

SECRETARY-LEGAL Westfield law firm. Legal experience preferred.

SECRETARY-LEGAL Westfield law firm. Legal experience preferred.

SECRETARY-LEGAL Westfield law firm. Legal experience preferred.

SECRETARY-LEGAL Westfield law firm. Legal experience preferred.

SECRETARY-LEGAL Westfield law firm. Legal experience preferred.

SECRETARY-LEGAL Westfield law firm. Legal experience preferred.

SECRETARY-LEGAL Westfield law firm. Legal experience preferred.

SECRETARY-LEGAL Westfield law firm. Legal experience preferred.

SECRETARY-LEGAL Westfield law firm. Legal experience preferred.

SECRETARY-LEGAL Westfield law firm. Legal experience preferred.

SECRETARY-LEGAL Westfield law firm. Legal experience preferred.

SECRETARY-LEGAL Westfield law firm. Legal experience preferred.

SECRETARY-LEGAL Westfield law firm. Legal experience preferred.

SECRETARY-LEGAL Westfield law firm. Legal experience preferred.

SECRETARY-LEGAL Westfield law firm. Legal experience preferred.

SECRETARY-LEGAL Westfield law firm. Legal experience preferred.

SECRETARY-LEGAL Westfield law firm. Legal experience preferred.

TEMP PERM HIGH RATES FOR TEMPORARY JOBS "INSTANT WORK"

TEMP PERM HIGH RATES FOR TEMPORARY JOBS "INSTANT WORK"

TEMP PERM HIGH RATES FOR TEMPORARY JOBS "INSTANT WORK"

TEMP PERM HIGH RATES FOR TEMPORARY JOBS "INSTANT WORK"

TEMP PERM HIGH RATES FOR TEMPORARY JOBS "INSTANT WORK"

TEMP PERM HIGH RATES FOR TEMPORARY JOBS "INSTANT WORK"

TEMP PERM HIGH RATES FOR TEMPORARY JOBS "INSTANT WORK"

TEMP PERM HIGH RATES FOR TEMPORARY JOBS "INSTANT WORK"

TEMP PERM HIGH RATES FOR TEMPORARY JOBS "INSTANT WORK"

TEMP PERM HIGH RATES FOR TEMPORARY JOBS "INSTANT WORK"

TEMP PERM HIGH RATES FOR TEMPORARY JOBS "INSTANT WORK"

TEMP PERM HIGH RATES FOR TEMPORARY JOBS "INSTANT WORK"

TEMP PERM HIGH RATES FOR TEMPORARY JOBS "INSTANT WORK"

TEMP PERM HIGH RATES FOR TEMPORARY JOBS "INSTANT WORK"

TEMP PERM HIGH RATES FOR TEMPORARY JOBS "INSTANT WORK"

TEMP PERM HIGH RATES FOR TEMPORARY JOBS "INSTANT WORK"

TEMP PERM HIGH RATES FOR TEMPORARY JOBS "INSTANT WORK"

TEMP PERM HIGH RATES FOR TEMPORARY JOBS "INSTANT WORK"

TEMP PERM HIGH RATES FOR TEMPORARY JOBS "INSTANT WORK"

TEMP PERM HIGH RATES FOR TEMPORARY JOBS "INSTANT WORK"

TEMP PERM HIGH RATES FOR TEMPORARY JOBS "INSTANT WORK"

TEMP PERM HIGH RATES FOR TEMPORARY JOBS "INSTANT WORK"

TEMP PERM HIGH RATES FOR TEMPORARY JOBS "INSTANT WORK"

TEMP PERM HIGH RATES FOR TEMPORARY JOBS "INSTANT WORK"

TEMP PERM HIGH RATES FOR TEMPORARY JOBS "INSTANT WORK"

TEMP PERM HIGH RATES FOR TEMPORARY JOBS "INSTANT WORK"

TEMP PERM HIGH RATES FOR TEMPORARY JOBS "INSTANT WORK"

TEMP PERM HIGH RATES FOR TEMPORARY JOBS "INSTANT WORK"

TEMP PERM HIGH RATES FOR TEMPORARY JOBS "INSTANT WORK"

CEMETERY PLOTS Hollywood Memorial Park

Cemetery Graves: (12) Rosewood Memorial Park.

CHINA CLOSET: carved top, curved glass sides, 67" high.

CLOCK FACTORY: Twice Yearly "CLEAN OUT"

SEASONAL CLOSETOUTS: Regular Stock

EXACTOR CLOCKS: 647 Marshall St., Eliz.

CONTENT'S of 3 homes, Or-519

ESSEX County Section Nat'l Council of Jewish Women

Suburban Thrift House

EVERY THUS. FLEA MKT. 10 A.M. to 5 P.M.

AIR CONDITIONER: 14,000 BTU, 220 volts, hermetically sealed.

AMAZING flea market: 521-PM

BEDROOM SET: silver, complete set of 6 pieces.

FABULOUS FURNITURE: 4 piece, 1960's, with gold trim.

FACTORY Surplus Outlet New Jersey

FLEA MKT.: Sat., June 11 (raindate June 12)

FLEA MKT.: Sat., May 21st, 9 am to 1 pm

FLEA MKT.: Sat., May 21st, 9 am to 1 pm

FLEA MKT.: Sat., May 21st, 9 am to 1 pm

FLEA MKT.: Sat., May 21st, 9 am to 1 pm

FLEA MKT.: Sat., May 21st, 9 am to 1 pm

FLEA MKT.: Sat., May 21st, 9 am to 1 pm

FLEA MKT.: Sat., May 21st, 9 am to 1 pm

FLEA MKT.: Sat., May 21st, 9 am to 1 pm

FLEA MKT.: Sat., May 21st, 9 am to 1 pm

FLEA MKT.: Sat., May 21st, 9 am to 1 pm

FLEA MKT.: Sat., May 21st, 9 am to 1 pm

FLEA MKT.: Sat., May 21st, 9 am to 1 pm

FLEA MKT.: Sat., May 21st, 9 am to 1 pm

BUSINESS and SERVICES DIRECTORY • 686-7700 These Experts Are As Near As Your Telephone • 686-7700

Table of business and service listings including Accounting-Bookkeeping, Electric Repairs, Home Improvements, Landscaping, Moving & Storage, Painting & Paperhanging, Refrigeration, Roofing & Siding, and Suburban Roofing & Siding Co.

CALL THE EXPERTS TO DO THE JOB - RIGHT! Dial 686-7700 to place an ad



COLOSSAL, TERRIFIC, NERVE-TINGLING, PRICE-SMASHING VALUES!

# QUITTING SALE

Retiring From Business

# BUSINESS!

© PAUL BROOKER

Sale starts Today, May 19th  
PROMPTLY 9:00 *am*

<p>Short Sleeve Sport Shirts <b>\$8<sup>88</sup> to \$13<sup>88</sup></b> Val. \$12 to \$19 Arrow • Van Heusen • Jantzen</p>	<p>Leisure Jackets <b>\$12<sup>88</sup></b> Val. to \$55</p>	<p>Group of Slacks <b>\$2<sup>00</sup></b> pr. Not All Sizes</p>	<p>Light Weight Zip Jackets <b>\$17<sup>88</sup> to \$27<sup>88</sup></b> Val. \$28 to \$45</p>	<p>Short Sleeve Dress Shirts <b>\$6<sup>88</sup> to \$10<sup>88</sup></b> Val. \$9 to \$16. Arrow • Van Heusen • Enro</p>
--	--	--	---	---

**SUPER BARGAINS**  
QUANTITY LIMITED  
*Hurry for Yours*

All Palm Beach Botany 500 Suits  
**\$99**  
Reg. \$150

Light weight Sport Coats  
**\$38**  
Val. to \$69<sup>50</sup>  
Stanley Blackert Mavest  
**\$48**  
Val. to \$95

Long Sleeve Dress Shirts  
One Group  
**\$3<sup>88</sup>** Val. to \$14  
One Group  
**\$7<sup>88</sup> to \$9<sup>99</sup>**  
Val. to \$14 and \$18  
Both Groups  
Arrow • Van Heusen • Enro

Golf Shirts  
**\$8<sup>88</sup>** Val. to \$12  
Jantzen • Jockey • Arrow

Pajamas & Robes  
**\$5<sup>88</sup> to \$22<sup>88</sup>**  
Val. \$8<sup>00</sup> to \$37<sup>00</sup>

Open Thur. & Fri. Til 9 P.M.

**SPECIAL**  
London Fog Raincoats  
**\$38**  
Val. to \$65

**SPECIAL**  
Short Sleeve Banlon Shirts  
**\$8<sup>88</sup> to \$13<sup>88</sup>**  
Val. \$12<sup>50</sup> to \$18  
By Puritan

**SPECIAL**  
Hosiery  
Ankle.....99¢  
Orlon Sport & Mid Calf.....\$1<sup>19</sup>  
Over Calf.....\$1<sup>29</sup>  
Val. \$1<sup>50</sup> to \$2<sup>25</sup>  
By Inter Woven

EVERY ITEM IN THE STORE ON SALE

**GOLD GIFT MYSTERY PACKAGES**  
WILL BE SOLD FOR \$2.00 OR GIVEN AWAY WITH PURCHASE DURING THIS SALE.  
DIAMONDS AND WATCHES INCLUDED IN EACH SHIPMENT  
Other Packages Contain Jewelry, Perfume and Other Valuable Gift Items.  
Every Mystery Box Contains Guaranteed Values Well Worth \$2.00 to \$50.00 or More  
Come In Pick A Package  
Only **\$2<sup>00</sup>** Ea.  
10,000 EXTRA VOTES ON EACH PACKAGE

**FREE**  
HERE'S YOUR INVITATION TO WIN A BEAUTIFUL PRIZE  
**WANTED!**  
FIFTY WOMEN TO JOIN GRAND PRIZE CAMPAIGN CREATED BY OUR ADVERTISING AGENCY - JUST TO HELP ADVERTISE THIS SALE.

HERE IS FUN - FASCINATION - EVERY CONTESTANT RECEIVES FULL, FAIR OPPORTUNITY TO WIN  
These Beautiful Prizes awarded  
2 P.M. June 25th.  
1st G.E. 19" Color TV  
2nd Regency 23 Channel C.B.  
3rd Digital Clock AM-FM Radio by Panasonic  
4th 4 Slice Toaster by Proctor  
5th 2 Slice Toaster by Proctor  
6th "Coffee Magic" Coffee Maker  
7th Tool Set Leather Cased  
8th Wallet and Key Case Set  
9th Musical Beer Stein  
10th Hip Pocket Flask

Bring this Coupon to Our Store Today!

Name \_\_\_\_\_  
Address \_\_\_\_\_  
Phone \_\_\_\_\_

**SPECIAL**  
Slacks  
**\$9<sup>88</sup> to \$13<sup>88</sup>**  
Reg. \$14 to \$20  
Farah  
Glen Oaks

**SPECIAL**  
Sansabell Jay Mar Slacks  
**\$15<sup>88</sup> to \$19<sup>88</sup>**  
Reg. \$25 to \$35

**SPECIAL**  
All Jockey & Arrow Underwear  
**25% Off**

EVERY ITEM IN THE STORE SALE PRICED

**SUPER BARGAINS**  
QUANTITY LIMITED  
*Hurry for Yours*

All Hart Schaffner & Marx Hammonton Park Suits  
**\$48**  
Val. to \$200

Reg. Weight Sport Coats  
**\$28**  
Val. to \$69<sup>50</sup>  
Stanley Blackert Mavest  
**\$38**  
Val. to \$95

Long Sleeve Sport Shirts  
**\$8<sup>88</sup>**  
Val. to \$22<sup>50</sup>  
Arrow • Van Heusen • Puritan • Enro

Long Sleeve Knit Shirts  
**\$7<sup>88</sup>** Val. to \$19.  
Turtle Neck • Crew Collar

Bathing Trunks  
by Jantzen  
**\$6<sup>88</sup> - \$7<sup>88</sup>**  
Val. to \$11

Clothing For Men & Young Men  
**Marshall's**  
All Sales Final  
Cash ONLY  
No Alterations  
1024 Stuyvesant Ave., Union