



Your Want Ad
Is Easy To Place
Just Phone 686 7700

MOUNTAINSIDE Echo

An Official Newspaper
For The Borough Of Mountainside

The Zip Code
for Mountainside is
07092



VOL. 20-NO. 9

Second Class Postage
Paid at Mountainside, N.J.

MOUNTAINSIDE, N.J., THURSDAY, FEBRUARY 2, 1978

Published by the Mountainside Echo, Inc.,
1000 Park Avenue, Mountainside, N.J. 07092

Subscription
\$1.00 per copy

45¢ per copy



POINT ME TO THE PARADE — These Mountainside girls learn the ins-and-outs of twirling during practice session with college student Wendy Kostowicz. Classes for advanced, beginners and intermediate twirlers are held Saturdays in the Deerfield School all-purpose room. Shown left to right: Susan Bailey, Christine Reilly, Lisa Mortensen, Laura Bailey, Robin Zirkel and Barbara Herrmann. (Glasser Photo Service)

Borough administrator to get \$25,000 salary

Figure is set by ordinance

Council also votes for sewer project

By PATRICIA GARRISON

Mountainside's new business administrator will be earning \$25,000 a year and homeowners in the area of Mary Ellen lane may soon see improvements in their sanitary sewer system as a result of two ordinances passed unanimously by the Borough Council Tuesday night.

The council also voted to approve an additional \$24,000 in emergency funds for snow removal at a public hearing at which no residents were present.

Lee Voorhees will take over the responsibilities of business administrator from the retiring Helena Dunne and may soon take on an additional position as Mountainside's director of public safety, although council member Abraham Suckno said "it has not yet been decided" if the governing body will fill the safety post.

The passage of the sanitary sewer ordinance is only the first step in plans to rectify drainage problems in the area. Borough attorney John Post said the favorable vote now makes it possible to begin looking into the matter more thoroughly.

"The next step would be to hire, by resolution, an engineer to conduct an engineering study," said Post. He added that a complete sewer plan would then permit council to advertise for construction bids and award the job to the company that offers to do the job at the lowest cost.

Construction would entail the building of new pipes into the sidewalks to which homeowners could then hook up their septic systems.

Post said the residents being affected by the construction would, in effect, pick up the tab.

"The borough will construct the facility," said Mayor Thomas Ricciardi, "but the residents' taxes will be assessed according to the value of the improvements." But Ricciardi and Post both noted that a price exceeding the assessed value would be paid by the borough.

"The borough will attempt to recover as much of the project cost as it can," said Post.

Borough engineer Robert Koser told council the cost for recent snow removal operations totaled \$35,000. He noted that since the 1978 budget only allotted \$22,000, the snow removal line item was now in the red.

"This makes it sound like we weren't adequately prepared," said Councilman Nicholas Bradshaw, "but the problem was that the snow was far in excess of normal."

The council had originally considered \$40,000 in emergency snow funds, but the figure was pared down to \$24,000 after Bradshaw noted the larger

(Continued on page 2)



THESE MOUNTAINSIDE LITTLE LEAGUERS aren't letting the weather stop them from getting in a few innings. Pitcher Anthony Mazzucca accommodates the season, however, by throwing Jack Burrows a snowball instead of a baseball. The catcher is Michael Mazzucca. (Photo-Graphics)

Light turnout expected for regional school vote

Voters in six communities, including Mountainside, go to the polls next Tuesday to decide on the Union County Regional High School District's request for a \$15 million budget in the fiscal year starting July 1.

Three Regional Board of Education incumbents also will be seeking reelection Tuesday. Charles E. Vitale Jr., board president, faces no opposition in Kenilworth. Neither does William Keyes in Berkeley Heights. In Clark, incumbent Stephen Marcinak will be running against two challengers.

Election watchers expected a light turnout, probably not much different from last year when ballots were cast by fewer than 1,800 of almost 43,000 eligible to vote in the region.

Forecasts of a 4 to 5 percent turnout were based on: (1) absence of board contests, except in Clark; (2) voter apathy about a relatively low increase in local tax levies.

John O'Hara, district finance officer, predicted actual reductions of the regional tax levy next year in two communities: Springfield, a drop of about 4.5 percent, and Garwood, 1.7 percent. Elsewhere in the region, increases would range from about 1.4 percent in Kenilworth to about 6.7 percent in Berkeley Heights. The average would be a 2.5 percent increase, lowest in several years.

Dr. Donald Merachnik, the district superintendent, said the budget anticipates an enrollment decline of 145 students, down to 4,731 next year in the regional high schools: Jonathan Dayton in Springfield, David Brearley in Kenilworth, Arthur Johnson in Clark and Gov. Livingston in Berkeley Heights.

Merachnik said eight to 12 teaching jobs will be abolished — if possible, by non-replacement of teachers who quit or retire.

Merachnik said declining enrollment is requiring the district to "weed out" courses that "are no longer appropriate." The total number of courses will be reduced next year, he said.

"This does not mean, however, that there will be no new courses," he pointed out. And there also will be some new activities next year.

Throughout the district, advanced foreign-language courses will be expanded from one to two semesters. Interscholastic bowling teams, abolished in an economy move, will be reestablished at the request of many students. And the district will start providing transportation for the Regional Symphonic Orchestra.

At Dayton, a grant from the National Humanities Foundation will finance an experimental, interdisciplinary course for seniors. And, if enough Dayton students want it, they will get a distributive-education program combining jobs with study.

But Merachnik recommended only a limited summer school program—compensatory education and driver training—at Dayton until 1979-80. It will be Dayton's turn for a full-scale summer school in 1978-79, but Merachnik said this would interfere with construction plans. The budget includes \$105,000 to convert seven Dayton classrooms into central offices

for the district, which has been renting space elsewhere in Springfield.

Instead of banning new offerings, Merachnik said, the district is trying to weigh all courses, actual or proposed, on the same scale of need and performance to priorities. He said effectiveness testing also is being emphasized. The 1978-79 budget includes

funds "for additional achievement testing of students and comprehensive in-service activities with faculty members," he said.

In his 10-page budget message, Merachnik also reported on more than a dozen "very important educational issues" which he said, district officials

(Continued on page 2)



LEE VOORHEES

Pleased with new job Dual role for Voorhees

The day Lee Voorhees was interviewed for his new position as Mountainside business administrator, he and his wife drove through the borough and noticed that local residents smiled and waved as they passed by. Voorhees' wife viewed the congeniality as a good omen and her feelings proved correct. Voorhees is enthusiastic and pleased with his new job.

"I've just started and I'm getting my feet wet," he said. "I've been trying to learn about the history of the town and I've been looking over the ordinances." It probably won't take long for Voorhees to "learn the ropes." He has been employed in similar capacities for other communities since he graduated Glassboro State College in 1971. Prior to accepting the position in Mountainside, Voorhees was business administrator and director of public safety in Delran in Burlington County and he also served as township administrator in Morris County.

"The most interesting thing about the

field is that you can never get bored," said Voorhees. "You never reach a point where you can say 'all the problems are solved.' You have to continually evaluate situations."

Voorhees will settle in Mountainside with his family for both personal and practical reasons. He will also be assuming the position of borough clerk, filling the spot which will be vacated by retiring Helene Dunne, and he said a state law requires clerks to reside in the community they work in.

But Voorhees said he is happy to be moving out of South Jersey.

"I didn't like it there," he said. "It's too flat for me and it's very cold."

FIRST IMPRESSIONS seemed positive for the newcomer who said residents and co-workers have been friendly, and municipal leaders appear "dedicated and have the best interests of the people in mind."

But Voorhees also recognizes the problems facing the borough although he insists the dilemmas are not unlike

(Continued on page 2)

Scouts to collect paper Saturday

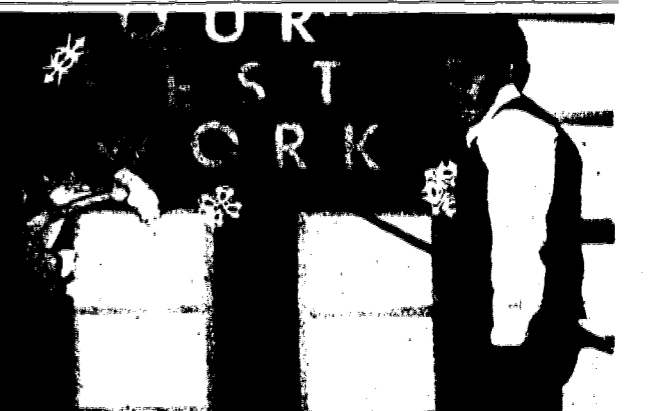
The Local Order of the Arrow Boy Scouts chapter will conduct a paper drive at Deerfield School from 10 a.m. to 4 p.m. Saturday.

Papers should be tied in bundles, and only newspaper will be accepted.

Other drop-off points include the New Providence Community Pool in New Providence and the Kemper Insurance Co. parking lot in Summit.



CATHOLIC SCHOOLS WEEK—First graders Richard Ventura and Mary Capace point to their posters on display at Our Lady of Lourdes School. Poster contest winners will be announced tomorrow at the conclusion of Catholic Schools Week. At right, first grader William Albrecht



makes a point of his own. This afternoon's events at the school will include a luncheon for senior citizens at 12:30 and a basketball game at 5. Registration for the 1978-79 school year will begin next week. Interested parents may call 233-1777 for information.

Six held as suspects in a burglary ring victimizing elderly

Mountainside police and other local departments pooled their efforts this week to track down a Mountainside man and five other persons charged with operating a burglary ring that victimized the elderly.

Vito Gregorio, 51, of New Providence road has been accused of masterminding numerous break and entries in Mountainside and Elizabeth homes that netted thousands of dollars worth of jewelry, cash and antiques.

"He supposedly worked out of his home," said Mountainside Det. Sgt. Walter Betyeman. "He collected stamps, coins and antiques."

According to Union County Assistant Prosecutor Joel Rachmiel, Gregorio promoted his antique assessment service and made appointments with people who answered his advertisements. It is alleged that he then reported to the other ring members and informed them of the location of valuables. The burglars supposedly used Gregorio's information to plan the robberies.

Rachmiel said he did not know exactly how long the six had been performing the robberies. Sgt. Betyeman said local law enforcers suspected that a ring was responsible for the break-ins "but there was not enough evidence to pinpoint" the extent of the operation.

Rachmiel said the pieces began fitting together in September, not long after an elderly Mountainside couple had been robbed Aug. 16.

"The elderly people woke up when the robbers were in their house," said Betyeman. "One individual sprayed mace in the man's face and he was treated at Overlook Hospital. I don't think they did any physical harm to the

woman, but both were scared to death."

Betyeman said the police "didn't know anything about the ring" at the time of the Mountainside break-in, but he said the robbery followed the ring's pattern.

"Gregorio had been to the house before," he said. "I believe to look at some antiques. There was a considerable amount of time between the visit and the robbery. He apparently wrote things down and then set it up at a later date."

The sergeant said departments in Elizabeth, Clark, Fanwood, Morris County and Mountainside had been alerted by the county prosecutor's office that Gregorio might be dealing in

(Continued on page 2)

Marash to talk to women's unit

Television anchorman Dave Marash will be the guest speaker at the monthly meeting of the National Council of Jewish Women at Temple Emanu-El, Westfield, Feb. 14 at 12:15 p.m.

The co-host of WCBS TV's "Eleven O'Clock Report" has received numerous journalistic and media awards since he joined Channel Two as a sports correspondent in 1972.

The Overseas Press Club lauded his coverage of the terrorist invasion at the Munich Olympic games in 1972 and he received the "Realism in Media Award" from the American Jewish Congress in 1975.

The Rutgers University graduate previously served on the staffs of radio stations WCBS, WNEW and WINS and was a reporter for WPIX-TV.

Religious Notices

TEMPLE SHALOM
AN AFFILIATE OF
THE UNION OF
AMERICAN HEBREW
CONGREGATIONS,
50 SPRINGFIELD AVE.
AT SHUNPIKE RD.
SPRINGFIELD.
RABBI: HOWARD SHAPIRO
CANTOR:
IRVING KRANERMAN

Katie Bernstein, daughter of Aaron and Sandra Bernstein of Springfield, was called to the Torah as a Bat Mitzvah on Jan. 28.

Friday—8:45 p.m., erev Shabbat service led by members of the congregation.

Saturday—10:30 a.m., Shabbat service.
Thursday, Feb. 9—8 p.m., duplicate bridge

FIRST PRESBYTERIAN CHURCH
MORRIS AVENUE
AT CHURCH MALL
SPRINGFIELD
THE REV. BRUCE WHITEFIELD
EVANS,
D.D., PASTOR
MRS. SHEILA KILBOURNE,
DIRECTOR OF
CHRISTIAN EDUCATION

Today—5 to 7 p.m. junior high fellowship; 7:15 p.m., Webelos; 7:30 p.m., girls' choir; 8 p.m., senior choir.

Sunday—9 a.m., church school classes; 10:15 a.m., church worship service with installation of officers; 6 p.m., church officers' dinner; 7:30 p.m., Westminster Fellowship.

Monday—9 to 11:15 a.m., kinderkirk nursery; 3:15 p.m., Brownies; 7 p.m., Girl Scouts.

Tuesday—9 to 11:15 a.m. and 12:15 to 2:30 p.m., kinderkirk nursery; 9:30 a.m., kaffeeklatsch.
Wednesday—9 to 11:15 a.m. and 12:15 to 2:30 p.m., kinderkirk nursery; 8 p.m., Ash Wednesday service; 9 p.m., Session.

SPRINGFIELD EMANUEL UNITED METHODIST CHURCH
CHURCH MALL AT
ACADEMY MALL,
SPRINGFIELD
THE REV.
GEORGE C. SCHLESINGER,
PASTOR

Thursday—8 p.m., chancel choir.
Friday—8 p.m., Busy Fingers.
Saturday—7 to 10 p.m., AA, Springfield group.

Sunday—9:30 a.m., German worship service; 9:30 a.m., church school and chapel service; 10:30 a.m., fellowship hour; 11 a.m., morning worship with the pastor preaching on "Spiritual Blackout"; 6 p.m., youth meeting.

Monday—4 p.m., confirmation class.
Tuesday—8 p.m., Council on Ministries.
Wednesday—Ash Wednesday service, "The Lord's Supper."

HOLY CROSS LUTHERAN CHURCH
(THE CHURCH OF THE RADIO)
"LUTHERAN HOUR" AND TV'S
"THIS IS THE LIFE"
639 MOUNTAIN AVENUE,
SPRINGFIELD
THE REV. JOEL R. YOSS, PASTOR
TELEPHONE: 379-4525

Thursday—10 a.m., Bible study.
Sunday—8:30 a.m., individual Communion; 9:30 a.m., family growth hour; 10:45 a.m., worship.

Monday—9 a.m., embroidery guild; 4 p.m., Confirmation I.
Tuesday—4 p.m., Confirmation II; 7:30 p.m., board of education.
Wednesday—4:30 p.m., children's choir; 7:45 p.m., Ash Wednesday service; 8:45 p.m., adult choir.

TEMPLE BETH AHM
AN AFFILIATE OF THE
UNITED SYNAGOGUE OF AMERICA
BALTUSROL WAY, SPRINGFIELD
RABBI: REUBEN R. LEVINE
CANTOR: ISRAEL J. BARZAK

Friday—8:45 p.m., Sabbath services; West Point Choir will perform.
Saturday—10 a.m., Sabbath services; 8:30 p.m., art auction.
Monday—noon, Sisterhood meeting.

ANTIOCH BAPTIST CHURCH
MECKES STREET AND
SO. SPRINGFIELD AVE.,
SPRINGFIELD
REV. CLARENCE ALSTON
PASTOR

Saturday—3 p.m., church school choir rehearsal.
Sunday—9:30 a.m., Sunday School, 11 a.m., worship service; 7 p.m., evening fellowship.
Wednesday—9 p.m., midweek service.

ST. STEPHEN'S EPISCOPAL CHURCH
119 MAIN ST., MILLBURN
REV. JOSEPH D. HERRING,
RECTOR

Sunday—8 a.m., Holy Communion, 10 a.m., Holy Communion and sermon, first Sunday and festival occasions; morning prayer and sermons, second through fifth Sundays, 10 to 11:15 a.m., Church School, 10 a.m., babysitting.

OUR LADY OF LOURDES
300 CENTRAL AVE.,
MOUNTAINSIDE
REV. GERARD MCGARRY, PASTOR
REV. CHARLES B. URNIK,
REV. JOHN J. CASSIDY,
ASSISTANT PASTORS

Sunday—Masses at 7, 8, 9:15, 10:30 a.m. and 12 noon.
Saturdays—Evening Mass, 7 p.m.; weekday Masses at 7 and 8 a.m. First Friday, 7, 8 and 11:30 a.m.

Miraculous Medal Novena and Mass—Monday at 8 p.m.
Benediction during the school year on Friday at 2:45 p.m.
Baptisms on Sunday at 2 p.m. by appointment.

Confessions—Every Saturday and eves of Holy Days and First Fridays, from 4 to 5 and 7:45 to 8:30 p.m.

CONGREGATION ISRAEL OF SPRINGFIELD
MAILING ADDRESS:
339 MOUNTAIN AVE.
ALL SERVICES AND ACTIVITIES:
42 SHUNPIKE ROAD
RABBI: ISRAEL TURNER

Friday—7:15 a.m., morning minyan service; 15 minutes before sunset, afternoon service and "Welcome to Sabbath" service; 8:30 p.m., Talmud study group, Tractate Shabbos, in various members' homes.

Saturday—9:30 a.m., Sabbath morning service followed by Kiddush; 15 minutes before sunset, afternoon service followed by discussion and "Farewell to Sabbath" service.

Sunday—8 a.m., morning minyan service.
Sunday through Thursday—15 minutes before sunset, afternoon service followed by advanced study session and then by evening service.

Monday through Thursday—7:15 a.m., morning minyan service; 3:30 to 5:30 p.m., religious school classes.

ST. JAMES CHURCH
45 S. SPRINGFIELD AVE.
SPRINGFIELD
MSGR. FRANCIS X. COYLE, PASTOR
REV. STEPHEN P. LYNCH,
REV. EDWARD R. OEHLING,
REV. PAUL J. KOCH,
ASSISTANT PASTORS

Sunday Masses—7 p.m., Saturday—7, 8:15, 9:30, 10:45 a.m. and noon. Daily 7 and 8 a.m. Holy days—on eves of holy day, 7 p.m.; on holy days at 7, 8, 9, 10 a.m. and 7 p.m.

Sacrament of Penance (Confessions)—Monday through Friday, 7:15 to 7:45 p.m.; Saturdays, 1 to 2 p.m. No scheduled confessions on Sundays, holy days and eves of holy days.

EVANGEL BAPTIST CHURCH
242 SHUNPIKE ROAD,
SPRINGFIELD
REV. WILLIAM C. SCHMIDT JR.,
PASTOR
REV. GARY FINN,
ASSISTANT

Sunday—9:45 a.m., Sunday School; 11 a.m., morning worship; 7 p.m., evening service.
Wednesday—7:45 p.m., prayer meeting.
Friday—7:30 p.m., senior high youth group.

MOUNTAINSIDE GOSPEL CHAPEL
1180 SPRUCE DR. (ONE BLOCK
OFF RT. 22 W.) MOUNTAINSIDE
CHURCH OFFICE: 232-3456
IF NO ANSWER,
CALL 687-6613

Sunday—9:45 a.m., Sunday School for all youth and adults (free bus service is available; call for schedule of routes and pickup times); 10:45 a.m., preservice prayer meeting; 11 a.m., morning worship service (nursery care is available); 7 p.m., evening worship service.
Wednesday—8 p.m., midweek prayer service.

PRICE OF MEATS TIED TO FEED COST

In the U.S., livestock and meat prices and supplies are directly related to feed grain supplies and prices, according to the National Live Stock and Meat Board.

Bibbling harvests of all grains are expected from this year's growing season. This means lower grain and soybean prices—which, in turn, mean lower feed prices. That lowers costs of production and encourages the feeding of more livestock, providing more meat at lower prices—at least temporarily.

However, there are fewer cattle on farms and ranches to place on feed, with the nation's cattle herd 10 million head smaller than two years ago. With cattle numbers down, beef prices will move up eventually.

TO PUBLICITY CHAIRMAN:
Would you like some help in preparing newspaper releases? Write to this newspaper and ask for our "Tips on Submitting News releases."

TURN ON
THIS IS A VERY POOR REPORT CARD.
YEAH, DAD BUT WE'RE STUDYING ALL NEW STUFF THIS YEAR!

25% OFF ON ALL GRUMBACHER
Stretched Curves
Curves Beard
Brushes
Jan. 29 thru Feb. 11, 1978
POTNUM FRAME SHOP
816 Fairfield Ave.
(Off Market St.)
Kendallville, Pa. 43057
Phone Area 610-334-1004
Box 110 - Clinton West.

SOUPE AUPISTOU
One-third cup dried white beans
Salt

FRIDAY DEADLINE
All items other than spot news should be in our office by noon on Friday.

sculptors 5
GALLERY STUDIO
PRESENTS THE WORK OF
Ruth Bilane
Jane Eccles
Barbara Leyner
STONE SCULPTURE
YOU ARE INVITED TO ATTEND AN
Opening Reception
SUNDAY FEBRUARY 5
THROUGH MARCH 12
GALLERY HOURS: MON.-FRI.
9:30-5:00, SAT. 11-4
Classes in Stone Sculpture

CHINESE AUCTION
The Rosary Altar Society of Our Lady of Lourdes Church, Mountainide, will hold a Chinese auction after its meeting Monday at 8:30 p.m. in the parish auditorium.

PAIR CELEBRATE SILVER JUBILEE
Mr. and Mrs. Jerome Oppenheim celebrated their 25th anniversary at the Manor, West Orange, last Sunday, Jan. 22. The hosts were their daughter and son-in-law, Mr. and Mrs. Alan Bamberger of Clark and their son, David Oppenheim of Springfield.

Thirty guests came from various cities to celebrate the gala occasion. Mr. and Mrs. Oppenheim reside at Surrey Lane in Springfield and were married 25 years ago at the Clinton Manor in Newark.

Also attending were Mrs. Marion Oppenheim, mother of Jerome Oppenheim; Benjamin Beyer, father of Carol Oppenheim, and Dr. and Mrs. Arnold Chait, sister and brother-in-law of the honored couple.

SPRINGFIELD WOMAN'S UNIT POSTS FEBRUARY SCHEDULE

The February schedule for the departments of the Springfield Woman's Club was announced this week.

American home will meet on Tuesday, Feb. 14, at the home of Mrs. Frank Johnson, 147 Pitt rd. Co-hosts will be Mrs. Charles Miller. Members will work on decorating ceramic tiles and are urged to bring scissors.

Creative arts will meet Wednesday, Feb. 8, at the home of Mrs. Lee Andrews Jr., 450 Meisel ave. Tinsel painting will be continued.

International affairs will meet on Thursday, Feb. 16, at the home of Alice Rieg. Co-hostess will be Mildred Levens. Adeline Gebb will give a slide presentation. The literature department has made a change in its meeting place. Members will meet at the home of Muriel Sims. Marge McClatchey will



Miss Koldorf plans fall date

Mr. and Mrs. Arnold Koldorf of Springfield, have announced the engagement of their daughter, Karen Lynn, to Arnold L. Paperno of New York City, son of Mrs. Rae Paperno of Agawam, Mass., and the late Jack Paperno.

Miss Koldorf is employed in the nursing department of Saint Barnabas Medical Center, Livingston.

Mr. Paperno received his bachelor of arts degree from Georgia Tech and his masters degree in accounting from Rutgers University.

He is a Certified Public Accountant with Arthur Young and Co in Manhattan.
A September wedding is planned.

ORT to hold antique market

Antiques for the investor, decorator, and the young collector will be on display on Sunday at Temple Emanuel, El. 756 E. Broad st., Westfield.

Over 40 antique dealers from three states will offer for sale antique jewelry, period and country furniture, fine china, glassware, and silver. Popular collectibles such as political buttons, advertising cards, signs and postcards will also be on display.

The show is open from 11 a.m. to 6 p.m. Admission is \$1.50 for adults. Children under 18 will be admitted free. Refreshments will be available throughout the day.

Guide to herb garden: cuisine key to choice

BY MARJORIE RICE
What herbs should the well-stocked garden grow?

That depends on your brand of cooking. If you stay with fairly standard fare, branching out perhaps into Italian and Mexican foods, the list can be fairly short.

But if Indian or Middle Eastern cuisine is on your menu, the list lengthens.

Here are some basics you can grow, with their common uses:

—Basil. Used in tomato dishes, soups, stews, sauces, salads and on meats, fish and poultry, this is one of the standard herbs of Italian cooking. It's a hardy perennial, too, so a good choice for the herb gardener. It's also supposed to repel flies from the garden.

—Anise. The seeds flavor cakes, candies, breads, soups, stews and fruits. An annual, the seeds are gathered and stored.

—Caraway. An annual, its seeds flavor rye breads and crackers, soups, salads, apple pie and sauerkraut. Use the leaves in vegetable dishes, roast pork and cheese.

—Coriander or cilantro. This is a standard whose leaves are used in Mexican, Indian and Oriental cooking. It's an annual, and the seeds can be ground, to flavor cookies, pastries, salads, ground meats and cooked fruits. Whole seeds are used in pickling.

—Dill. Use the leaves in tuna and chicken salads; the seeds in pies, breads, pickles, soups, and many other dishes. It's an annual.

—Fennel. Like celery, it's cooked as a vegetable, and also is used in salads, and with seafoods. The seeds are used in hot breads, spiced beets and sauerkraut. It's a perennial, and the dried, powdered leaves are said to be a flea repellent.

—Marjoram. This herb flavors all sorts of meats, fish and poultry. It's also good in salads, egg dishes, tomato dishes and other

vegetables. A perennial, it's an excellent garden choice.

—Mint. There are several varieties of mint, some of which can take over the garden, so you may want to put them in pots. They're used in jellies, custards, desserts of all kinds, and with lamb. Most are perennials.

—Oregano. Another favorite herb of Italian and Mexican cooking, this perennial is easy to grow. It flavors meats, fish, game poultry, stews, vegetables (especially tomatoes) and sauces.

—Onion. This whole family is easy to grow and preserve. Chives, garlic, leeks, shallots and scallions are all members of the onion family, and are perennials.

—Parsley. As a garnish or seasoning, this is an attractive, as well as useful, garden plant. Italian parsley has a slightly stronger flavor than others. It's a biennial, growing two years.

—Rosemary. There are many varieties, some growing as tall as five feet. This is a favorite herb in many meat dishes, sauces and stews—particularly used with chicken. It's a perennial, and several varieties have pretty blue flowers.

—Sage. These offer several flower colors, and are easily grown perennials. Sage goes into soups, stews, stuffings, sausage, meats, poultry, pork, beans and many other dishes.

—Tarragon. This perennial is excellent as a flavoring for vinegar. It also is used in fish sauces, salads, beef and poultry dishes.

—Thyme. A popular seasoning for meat, fish, gravies and other dishes, this perennial also is grown in several varieties. Recipes using garden-fresh herbs follow.

Springfield woman's unit posts February schedule

The February schedule for the departments of the Springfield Woman's Club was announced this week.

American home will meet on Tuesday, Feb. 14, at the home of Mrs. Frank Johnson, 147 Pitt rd. Co-hosts will be Mrs. Charles Miller. Members will work on decorating ceramic tiles and are urged to bring scissors.

Creative arts will meet Wednesday, Feb. 8, at the home of Mrs. Lee Andrews Jr., 450 Meisel ave. Tinsel painting will be continued.

International affairs will meet on Thursday, Feb. 16, at the home of Alice Rieg. Co-hostess will be Mildred Levens. Adeline Gebb will give a slide presentation. The literature department has made a change in its meeting place. Members will meet at the home of Muriel Sims. Marge McClatchey will

be co-hostess. Mrs. Sims will give a book review.

Social services will meet at the home of Mrs. Michael Tatusko with co-hostesses Harriet Smith and Florence Gaudineer. Members will work on felt wall hangings.

Plans reported for Israel visit

Mrs. Shirley Lieberman of Springfield reported on plans for a visit to Israel by a delegation from the Metropolitan New Jersey Israel Bonds Women's Division at a meeting of the group's cabinet.

Mrs. Lieberman, past chairwoman of the division, is liaison with the National Women's Division.

She reported that the delegation will leave March 7. Before it returns March 17, it will lunch at the Knesset with women members, visit industrial plants which are run by women, meet women who conduct social welfare programs, tour the Tel Aviv Museum with an Israeli artist and spend an evening at a Druse village.

Women's group slates meeting

The Business and Professional Women's Club of Summit is sponsoring a workshop for career oriented women interested in obtaining scholarships. The meeting will be held Feb. 13 at the Suburban Hotel, Summit.

Applicants do not have to be BPW members. The group began on Embassy Row, in Washington, D.C. and has spread nationwide. The program is planned to increase awareness, potential and visibility of all women. Reservations may be obtained by calling 273-5261.

Baptist Women plan meetings

Circles of the American Baptist Women of the First Baptist Church of Westfield will meet on Thursday, Feb. 9, as follows:

Bible Study, Mrs. Charles H. Sturcke, leader, at 9:30 a.m. at the home of Mrs. James G. Webber, 39 King st., Fanwood.

The Searchers, Mrs. Frederick Schmitt, leader, at 1 p.m. at the home of Grace Thompson, 264 Prospect st.

The Honey Bees, Mrs. Gilbert L. Rust, leader, at 1 p.m. in the Church Lounge.

The Evening Circle, Mrs. Paul L. Stagg, leader, will meet on Monday, Feb. 27, at 5 p.m. Following a supper meeting, the group will visit the Newark Baptist Home.

Choir concert to be given by Jewish cadets

The West Point Jewish Chapel Choir will participate in the Sabbath evening service at Temple Beth Ahm, Springfield, at 8:45 p.m. tomorrow. The West Point Jewish Chapel Choir consists of 24 cadets, 22 men and two women.

These cadets are from all over the United States and have varied backgrounds. The Chapel Choir is voluntary. The cadets participate in all Jewish functions and activities at West Point, such as conducting Shabbat and holiday services and other programs.

They will present a varied program of music. The main theme pertains to West Point and it will be implemented with liturgical and Israeli music. The choir will be conducted by Cadet David Niekerk.

The program is open to the public. A question and answer period will follow at the Oneg Shabbat.

Workshop set by Sisterhood

The Sisterhood of Temple Beth Ahm, will get tips next Monday on how to bake challahs, set a table traditionally and carry on other customs of the Sabbath.

Barbara Steinberg, Martha Lefkowitz and Eleanor Rice will be hostesses for the Sabbath workshop at 8:15 p.m. Monday in the social hall of the temple.

Those who attend the workshop also will discuss plans for the Sisterhood's annual dinner and fashion show. Ruth Davison, 376-6725, is ticket chairman.

Games evening at St. James

A games-night program is planned at the monthly meeting of the St. James Rosary Altar Society at 8:30 p.m. Monday in the school auditorium. Chairwomen will be Mary Riccio and Kitty Salardino.

The society also is planning a fish-and-chips supper on Friday, Feb. 24.

On thawing meat

The best way to thaw meat and poultry is in the refrigerator. But if you must thaw meats outside the refrigerator, put them in a sealed plastic bag under cold running water, or put them in a closed double paper bag without the use of water. This allows the products to get just warm enough to thaw but still cool enough to slow down germ growth—especially on the surface of the meat.

Springfield woman's unit posts February schedule

The February schedule for the departments of the Springfield Woman's Club was announced this week.

American home will meet on Tuesday, Feb. 14, at the home of Mrs. Frank Johnson, 147 Pitt rd. Co-hosts will be Mrs. Charles Miller. Members will work on decorating ceramic tiles and are urged to bring scissors.

Creative arts will meet Wednesday, Feb. 8, at the home of Mrs. Lee Andrews Jr., 450 Meisel ave. Tinsel painting will be continued.

International affairs will meet on Thursday, Feb. 16, at the home of Alice Rieg. Co-hostess will be Mildred Levens. Adeline Gebb will give a slide presentation. The literature department has made a change in its meeting place. Members will meet at the home of Muriel Sims. Marge McClatchey will

be co-hostess. Mrs. Sims will give a book review.

Social services will meet at the home of Mrs. Michael Tatusko with co-hostesses Harriet Smith and Florence Gaudineer. Members will work on felt wall hangings.

Plans reported for Israel visit

Mrs. Shirley Lieberman of Springfield reported on plans for a visit to Israel by a delegation from the Metropolitan New Jersey Israel Bonds Women's Division at a meeting of the group's cabinet.

Mrs. Lieberman, past chairwoman of the division, is liaison with the National Women's Division.

She reported that the delegation will leave March 7. Before it returns March 17, it will lunch at the Knesset with women members, visit industrial plants which are run by women, meet women who conduct social welfare programs, tour the Tel Aviv Museum with an Israeli artist and spend an evening at a Druse village.

Women's group slates meeting

The Business and Professional Women's Club of Summit is sponsoring a workshop for career oriented women interested in obtaining scholarships. The meeting will be held Feb. 13 at the Suburban Hotel, Summit.

Applicants do not have to be BPW members. The group began on Embassy Row, in Washington, D.C. and has spread nationwide. The program is planned to increase awareness, potential and visibility of all women. Reservations may be obtained by calling 273-5261.

Baptist Women plan meetings

Circles of the American Baptist Women of the First Baptist Church of Westfield will meet on Thursday, Feb. 9, as follows:

Bible Study, Mrs. Charles H. Sturcke, leader, at 9:30 a.m. at the home of Mrs. James G. Webber, 39 King st., Fanwood.

The Searchers, Mrs. Frederick Schmitt, leader, at 1 p.m. at the home of Grace Thompson, 264 Prospect st.

The Honey Bees, Mrs. Gilbert L. Rust, leader, at 1 p.m. in the Church Lounge.

The Evening Circle, Mrs. Paul L. Stagg, leader, will meet on Monday, Feb. 27, at 5 p.m. Following a supper meeting, the group will visit the Newark Baptist Home.

Pair celebrate silver jubilee

Mr. and Mrs. Jerome Oppenheim celebrated their 25th anniversary at the Manor, West Orange, last Sunday, Jan. 22. The hosts were their daughter and son-in-law, Mr. and Mrs. Alan Bamberger of Clark and their son, David Oppenheim of Springfield.

Thirty guests came from various cities to celebrate the gala occasion. Mr. and Mrs. Oppenheim reside at Surrey Lane in Springfield and were married 25 years ago at the Clinton Manor in Newark.

Also attending were Mrs. Marion Oppenheim, mother of Jerome Oppenheim; Benjamin Beyer, father of Carol Oppenheim, and Dr. and Mrs. Arnold Chait, sister and brother-in-law of the honored couple.

Choir concert to be given by Jewish cadets

The West Point Jewish Chapel Choir will participate in the Sabbath evening service at Temple Beth Ahm, Springfield, at 8:45 p.m. tomorrow. The West Point Jewish Chapel Choir consists of 24 cadets, 22 men and two women.

These cadets are from all over the United States and have varied backgrounds. The Chapel Choir is voluntary. The cadets participate in all Jewish functions and activities at West Point, such as conducting Shabbat and holiday services and other programs.

They will present a varied program of music. The main theme pertains to West Point and it will be implemented with liturgical and Israeli music. The choir will be conducted by Cadet David Niekerk.

The program is open to the public. A question and answer period will follow at the Oneg Shabbat.

Workshop set by Sisterhood

The Sisterhood of Temple Beth Ahm, will get tips next Monday on how to bake challahs, set a table traditionally and carry on other customs of the Sabbath.

Barbara Steinberg, Martha Lefkowitz and Eleanor Rice will be hostesses for the Sabbath workshop at 8:15 p.m. Monday in the social hall of the temple.

Those who attend the workshop also will discuss plans for the Sisterhood's annual dinner and fashion show. Ruth Davison, 376-6725, is ticket chairman.

Games evening at St. James

A games-night program is planned at the monthly meeting of the St. James Rosary Altar Society at 8:30 p.m. Monday in the school auditorium. Chairwomen will be Mary Riccio and Kitty Salardino.

The society also is planning a fish-and-chips supper on Friday, Feb. 24.

On thawing meat

The best

Groups to help smokers quit

A "Helping Smokers Quit Program" developed by the American Cancer Society will be introduced to Union County residents this month. Groups limited to 20 smokers each will be set up in Cranford, Rahway and Springfield. The Springfield group will meet Wednesdays from 8 to 10 p.m. at the Municipal Building, starting Feb. 22. The program is based on one developed and tested by the society in

San Francisco

Registrations are being taken until Feb. 17 at the Union County Unit of the American Cancer Society, 512 Westminister ave., Elizabeth. There will be a \$25 registration fee, of which \$20 will be refunded if the group member attends at least six of the eight sessions. The remaining money will be used for refreshments and supplies.

Y to sponsor talks on crime

The Elizabeth YWCA, in cooperation with the Elizabeth Police Department, will present a series of talks on "Crime and Crime Prevention" Mondays at 7:30 p.m. at the Y, 1131 E. Jersey St.

Police Officer Marshall Scott will conduct discussions on the following topics: "Rape, a Preventive Inquiry," Feb. 20; "Invitation to Burglary," Feb. 27; "On Guard Bunco," March 6; and "Senior Power," March 13.

Y ceremonies to honor Chvat

Irving Chvat, past board president, businessman and community leader, will receive the Award of the Year at a dinner-dance on Saturday at the Union YM-YWHA, Green Lane, Union, at 8 p.m. Two former Y presidents and award recipients will have major roles.

Attendance is free, but advance registration is required and can be made by calling the Y at 355-1500.

NEED HELP? Find the RIGHT PERSON with a Want Ad. Call 486-7100.

Donald Whitken of Elizabeth will be toastmaster and William B. Rucker of Elizabeth will be the key speaker. Chvat has been active in B'nai B'rith, in the National Hill Commission, the Anti-Defamation League and the Covenant Club Chvat, vice-president of the Phoenix Manufacturing Co., is a member of the board of trustees of Temple B'nai Israel, the board of the Jewish Family Counseling Service, the Mayor's Commission on Human Relations of Elizabeth and the Eastern Union County Jewish Council.

Rape lecture slated at Center Theatre

A seminar on rape prevention will be conducted at Union College today at 12:15 p.m. in the Campus Center Theatre.

Melodie Schwartz, an investigator for the Sex Crime Analysis Unit of the Union County Prosecutor's Office, will speak on rape prevention and facilities available to rape victims.

USED CARS DON'T DIE. They just trade away. Sell yours with a low cost want ad. Call 486-7100.



designer dresses 1999
Selling elsewhere for \$200+ per
New early spring dresses in wool blend knits in sizes 4-14. Two of four styles shown.

Nice Stuff
Where to Afford the Clothes You Can't Afford

CHATHAM 455 Main Street 635-5700
UNION 1714 Stuyvesant Avenue 687-2312
EAST ORANGE 45 Glenwood Place 672-4198

Open Mondays and Thursdays 10 a.m. to 9 p.m. Other days 10 A.M. to 6 P.M.

When in Florida visit our Miami and Ft. Lauderdale stores.
Sears, Roebuck and Montgomery Ward. No. 45 levels of sale or advertised items.
All our merchandise is tagged regular to protect manufacturer.

Sale Ends Saturday

3 outings for hikers

A ramble, a ski trip and a circular are planned for members of the Union County Hiking Club and their guests this weekend.

The six-mile Watchung Ramble is scheduled for Saturday. Hikers will meet at the Trailside Nature and Science Center parking lot at 10 a.m. and bring lunch.

The Mohonk Ski Touring, led by Nancy Wolff, is scheduled for Saturday. Skiers will meet just past the Essex toll Plaza of the Garden State Parkway at 8 a.m. or at the New Paltz, N.Y. bus depot at 10 a.m. There will be a fee for the use of the grounds.

Nat and Betty Levin will lead the Wyanokie Circular on Sunday. Hikers will meet at the Packanack Wayne Mall at 9 a.m. or at Doty Road and Rt. 511, Haskell, at 9:30 a.m. for the nine-mile hike.

Welders win state award

The New Jersey Section of the American Welding Society has presented a plaque to the Union County Vocational Center in recognition of the achievements of its welding students in the annual New Jersey Section Welding Contest.

Welding students at the Vocational Center have taken first place in the contest since the competition was instituted in 1974.

PUNCH LINE



Sears gift to college

A grant of \$1,900 has been awarded to Union College by the Sears-Roebuck Foundation. The unrestricted gift was presented to Dr. Saul Orkin, president of the college, by Charles A. Dvorsak, personnel manager of the Sears branch in Watchung, in ceremonies conducted at the college.

Union College is one of 17 independent colleges and universities in New Jersey to share in Sears grants totalling more than \$36,000. Nationally the Foundation has awarded \$1,500,000 to 1,000 private, accredited two- and four-year institutions for the 1977-78 academic year.

In addition to its unrestricted grant program, the Sears-Roebuck Foundation each year conducts a variety of special-purpose programs in elementary, secondary, higher and continuing education. Altogether, the Foundation had expenditures of over \$2,500,000 in 1977 for its educational activities.

Y to show four films

A series of four provocative films, followed by audience discussion with guest commentators on the social, psychological and philosophical themes of the films, will be held at the Y-M-YWHA of Metropolitan New Jersey on Thursday evenings at 8 beginning tonight.

The first film, "I Never Sang for My Father," will be followed by a discussion led by psychologist Dr. Albert Shire. On Feb. 9, the film will be "Harry and Tonio," with commentator Martin Roth, senior social worker. "The Garden of the Finzi-Continis" will be shown on Feb. 16, with lecturer and teacher Cecile Seiden. On March 2, Dr. Joseph Dollins, psychologist, will be the commentator for the film "Lord of the Flies."

Planetarium looks at moon

"Selene—Goddess of the Night," explaining the moon's special job as well as lunar calendars and their virtues and problems, will be presented each Wednesday at 8 p.m. and Saturday and Sunday at 2 p.m., 3 p.m. and 4 p.m. at the Trailside Planetarium during February.

GOODYEAR

FRAEBEL BROS.
TIRE
Expert Auto
Repairs

●ALIGNMENT
●BRAKES
●SHOCKS
●TUNE-UPS
●TIRES

REMSPECTION STATION
1071 Commerce Ave.
Union - 688-8870
8:30-5 Daily 8:30-1 Sat.
Bank Americard-Master Charge

Meet the Jersey Pros. We've teamed up to give you the best cars for New Jersey.



We know New Jersey like no one else does. So we know the kind of car that can make Point Pleasant more pleasant, and Plainfield seem fancier.

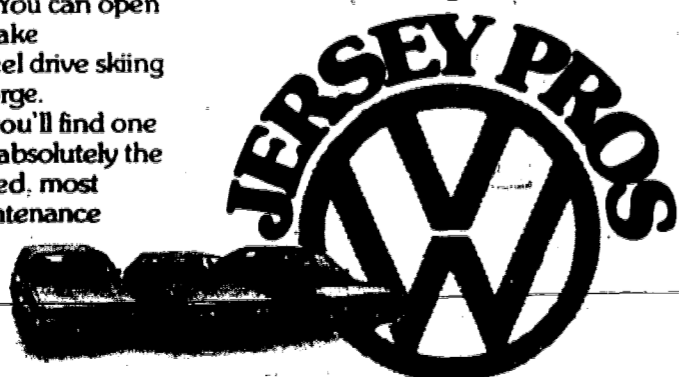
Volkswagen is the car we think is best all around for this great State.

You can park it easily in the tight spaces in Paterson and Bloomfield. You can open it up on Route 80. And you take Volkswagen's great front-wheel drive skiing at Vernon Valley or Great Gorge.

And wherever you go, you'll find one of the Jersey Pro's. We have absolutely the most scientifically sophisticated, most experienced, most loyal maintenance organization in the State.

So meet the New Jersey Pro near you. Let him show you the cars he's picked for New Jersey. Let him show you his service operation. You'll see that he's in a league all his own.

We're the Jersey Pros.
We're in a league all our own.



Douglas Motors Corp.
430 Morris Avenue, Summit (201) 277-3300

SATURDAY BANKING

ALL OFFICES OPEN 9 A.M. TO 12:30 P.M. WALK-UP & DRIVE-IN BANKING

"Son...Piggy Banks Are Good but You Can't Beat a Harmonia Regular Savings Account Passbook"



HARMONIA

REGULAR SAVINGS ACCOUNT

that Earns the Highest Interest Rate Allowed by Law.

5 1/4% = 5.47%

A YEAR A YEAR

*Effective Annual Yield When Principal & Interest Remain on Deposit for a Year. Interest from Day of Deposit to Day of Withdrawal. Compounded Daily—Paid Monthly. Provided a balance of \$5.00 or more is left in the account until the end of the monthly period.

MORTGAGE & HOME IMPROVEMENT LOANS

Harmonia Savings Bank has been assisting New Jersey residents in attaining Home Ownership for over 125 years. Drop in or call the Harmonia office nearest you.

for DEPOSITORS

FREE PERSONAL CHECKING

NO Minimum Balance NO Service Charge

... and Your Checks Are Absolutely FREE

FREE BANKING BY MAIL
Postage Paid With Your Bill

TIME SAVING ACCOUNTS

with Interest Credited and Compounded Quarterly

7% A YEAR TIME ACCOUNTS OF 4 YEARS Minimum Deposit \$1,000	6 3/4% A YEAR TIME ACCOUNTS OF 3 YEARS Minimum Deposit \$500	6 1/2% A YEAR TIME ACCOUNTS OF 2 YEARS Minimum Deposit \$500	6 1/4% A YEAR TIME ACCOUNTS OF 1 YEAR Minimum Deposit \$500
---	---	---	--

Federal law and regulation prohibit the payment of time deposit prior to maturity unless three months of the interest thereon is forfeited and interest on the amount withdrawn is reduced to the regular passbook rate.

HARMONIA

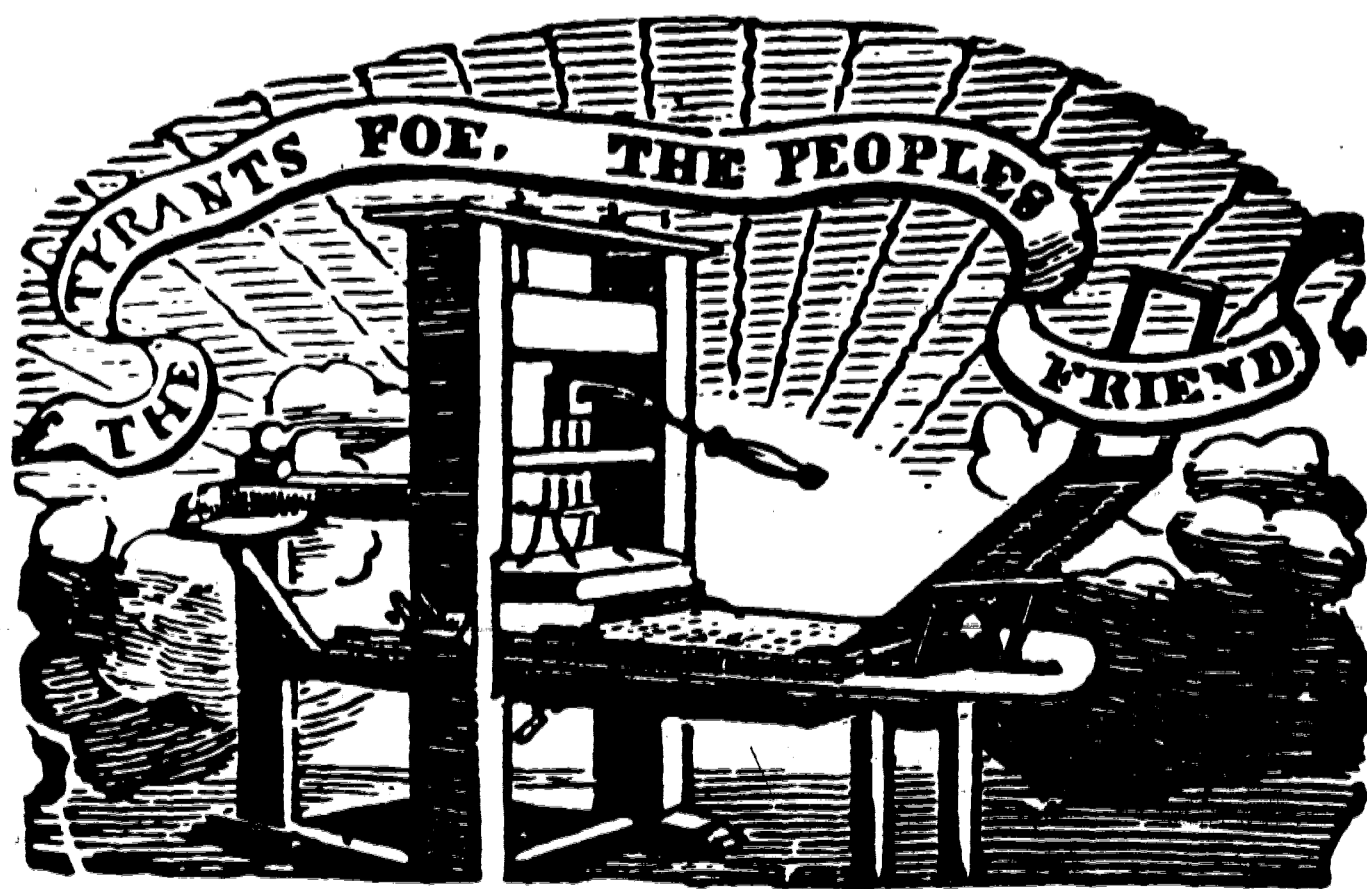
The Family Savings Bank

In ELIZABETH: 1 UNION SQUARE & 540 MORRIS AVE. — 289-0800
In SCOTCH PLAINS: NORTH AVE. & CRESTWOOD RD. — 654-4622
In MIDDLETOWN: 1 HARMONY RD. — 671-2500
In TRENTON: 1700 KUSER RD. — (609) 583-0900
In TOMS RIVER: 993 FISCHER BOULEVARD — 349-2500

Member F.D.I.C. — Savings Insured to \$40,000

"Were it left for me to decide whether we should have a government without newspapers, or newspapers without a government, I should not hesitate a moment to prefer the latter."

Thomas Jefferson



Menza charges state red tape hurts retarded

Alexander J. Menza, candidate for the Democratic nomination for U.S. Senate, this week charged that a bus shortage is causing "drastic" transportation problems for retarded children in the state who are bused to day training centers.

The State Department of Human Services oversees the Bureau of Day Training which currently operates 140 buses throughout the state that carry retarded children and adults to the centers.

"Currently, 140 buses are operated, but the full complement of 180 is vital to the proper organization of transportation services and back-up vehicles," Menza a former State Senator said adding that he became aware of the problem after a visit to a day training center to talk with staff members.

"We are talking about 843 children affected by the shortage of buses, as well as 650 adults," Menza asserted. "They are bused to centers 240 days during the year, which compounds the problem."

Menza, a Hillside resident, said an order was filed for 20 small vans in Jan., 1977 with the State Purchase Bureau and in March with the Division of Purchase and Property. The order was expanded to 30 he said because of "increased need."

The specifications, however, did not comply with new federal regulations. New vehicles were examined and in July Purchase Bureau officials released the requisition, deciding to "lease" and not purchase 30 buses. Unable to find a vendor willing to lease the more expensive buses, bids were advertised in August. Two companies replied but neither was acceptable.

Bureau officials decided to buy the buses and assigned them to the state central motor pool for maintenance. Ten additional vehicles were added to provide back-ups for disabled buses. Menza said the bureau expected the buses to be delivered by February 1977. Recently, the State Division of Purchase and Property indicated they would arrive by next month.

"The money is there—\$179,399—and the long delay is outrageous," Menza said. "There is no reason why these buses were not on the road a year ago. Except for red tape, nothing held up their delivery."

The Revelers open new show

Gregg Weber of Linden heads the cast of "Habeas Corpus," an adult comedy to be staged by the Revelers starting Feb. 17 at the Kings Row Restaurant in Rahway. Weber will star as Arthur Wickstead, while two Union residents, Rene Zuk and Sheryl Hoehn, will be featured as Mrs. Swabb and Felicity Rumpers, respectively.

The show will run four consecutive weekends, Friday and Saturday nights at 8:30. Dinner and/or show reservations may be made by calling 574-1255.

On Feb. 16, there will be a special performance at which senior citizens will be admitted free.

Rotaract born from service

The Rotary Clubs of Union, Elizabeth, Hillside and Kenilworth will co-sponsor a Rotaract Club at Kean College of New Jersey this spring. It will be the first Rotaract Club in Rotary Division 751, which extends from Princeton to Springfield.

The first meeting of the new club will be on March 2 at 9:30 a.m. in the Alumni Lounge of Downs Hall on the Kean campus in Union. Membership will be open to all students at Kean College. College faculty and administrators will be there to answer questions and provide information about Rotaract.

Paper spotlight on county news

The first edition of "New Horizons," a four-page newspaper published by Union County, is now available, free to the public, in local libraries, town halls and banks.

The newspaper will be produced monthly by the Union County Office of Public Information. Articles and feature stories will deal with the functions of county government and how each agency operates on a daily basis.

A regular column called "The County Connection" will feature requests for help and information received by the Office of Public Information.

Each month, the back page of "New Horizons" will be devoted to one particular department or office, outlining its functions and responsibilities.

Letters to the editor will be accepted on any topic of county-wide interest. Letters should include the writer's name and address and be sent to "New Horizons," Office of Public Information, 53 Rahway Avenue, Elizabeth, 07201.

'Coffee house' at Y

The Jewish Singles of the Green Lane YM-YWHA, Union, will hold a "coffee house" Sunday, March 6, at 8 p.m. Admission is 75 cents for members and \$1.00 for non-members. There will be coffee, doughnuts and dancing. Additional information is available at 289-6112.

Park use increases; renovations planned

Last year brought the Union County Park Commission increased demands for the use of recreational facilities, according to Commission President Norman O. Banner of Springfield.

He said approximately 6,230,000 people enjoyed park activities, compared to 5,389,000 in 1976. The total attendance, which includes general activities, supervised activities, hikers and walkers, was approximately 840,000 over the previous year.

In the early part of 1977, approximately 275,000 people took part in outdoor winter sports—a 190,000 jump over the 1976 figure.

Soccer brought 335,000 more players and fans to the parks while an increase was realized in all general activities, including bicycling, fishing, picnicking, playground use, softball and track, Banner said.

Boating at both Echo Lake Park, Westfield and Mountinside, and Warinanco Park, Elizabeth and Roselle, and horseback riding at the Watching Stable brought the largest increase in supervised activities over the 1976 figure, he added.

To meet public demand for more facilities, Echo Lake Park is under study as a potential site for a soccer field, Banner said. Plans for the redevelopment of Mattano Park, Elizabeth, also include soccer, football and baseball fields as well as tennis courts.

Drainage improvement work is complete at the Ash Brook Golf Course, Scotch Plains, and similar work will be

Rinaldo agrees capitol lobbies should tell all

Rep. Matthew J. Rinaldo (R-12) met with Common Cause members last week agreed to cosponsor lobby disclosure legislation Long favored by Common Cause, which would require lobbying organizations to file expenditure reports, with particular attention to "big money activity." It would apply not only to the legislative branch, but also to the executive branch if government contracts worth \$1 million or more are in question.

Rep. Rinaldo reaffirmed his support for the strongest possible code of ethics in government and for public financing of Congressional elections. He cosponsored the Congressional code of ethics supported by Common Cause recently enacted into law, sharply limiting outside income of senators and congressmen and requiring full financial disclosure by senior government officials and members of Congress and their staff.

Modeling club begins Feb. 16

The 4-H Modeling and Personal Development Club is now being formulated for all those interested in learning fashion modeling. Students will visit modeling schools, listen to guest speakers, attend fashion shows and participate in state and local fashion shows.

Workshops will include grooming, make-up, modeling, grace, poise, charm and public speaking.

Any Union County resident between the ages of 13 and 18 (male and female) may join. The first meeting will be Thursday, Feb. 16, at 7:30 p.m. at the 4-H office, 300 North Avenue East in Westfield. Information is available from the 4-H office at 233-9366.

Story appears in publication

Mrs. Andrea Green of Livingston, an instructor in the English Department at Union College, Cranford, has had a short story, "Small Triumphs," accepted for publication in the January issue of "Kiriokos," a magazine published by the Unitarian Universalist Women's Federation.

Mrs. Green, who has developed a "Women in Literature" course at Union College, was graduated cum laude from the University of New Mexico and holds a master of arts degree from Seton Hall University. She has also taken additional graduate courses in psychology at Kean College of New Jersey.

State Y camps program listed

Slide pictures and a presentation describing the facilities and program of the New Jersey Y camps will be presented at the Eastern Union County YM-YWHA, Green Lane, Union, Sunday at 2 p.m.

Joseph Schwartz, associate director of the Y camps, will talk about "Preparing Your Child for the Camping Experience."

A professionally-directed, community-sponsored service to children 7 to 16 and the elderly (65 and over) of the state, the YM-YWHA camps include four sleep-away camps—Nah See Wah, Cedar Lake and Teen at Milford, Pa., and Long Lake at Lake Como—plus a senior adult center and convention center.

completed at the Galloping Hill Golf Course, Kenilworth and Union.

The installation of an underdrain system and the cleaning of the ditch at Ash Brook Golf Course will alleviate drainage problems at Fairways 12, 13, 14 and 16, Banner said. Realignment of 12-inch reinforced concrete pipes and 15-inch reinforced concrete pipes and the installation of underdrain systems have begun at the Galloping Hill Golf Course at Fairways 9, 10, 11 and 12, he reported.

Plans for remodeling Wheeler Park Pool, Linden, originally built in 1931, are underway. The estimated cost of \$750,000 for the renovation of this facility is based on the preliminary plans of Van der Clute and Spies, architects, of Cranford.

Based on this plan, the renovation will include a swimming pool with separate diving area, wading pool, picnic area, new rectory, renovated bath house and new pump house. Completion is scheduled for the 1979 swimming season.

Repair of the Rahway River Park pool, Rahway, is scheduled for the 1978 swimming season. Plans will be drawn during the 1978-79 season for the renovation-replacement of this swimming facility, built in 1929, with completion scheduled in time for the 1980 swimming season.

The development planning of Lenape Park, in Cranford, Springfield, Kenilworth, Union and Westfield is still in progress. Work on this parkland is two-fold: flood control facilities by the county and recreational and park facilities by the Park Commission.

Many of these improvements will continue into 1978, and Banner said, applications for funding new projects such as the redevelopment of Cedar Brook Park, Plainfield, and Warinanco Park will begin during this year.

Aides working to help seniors

Peter M. Shields, director of the Union County Division on Aging, this week reported that the Pharmaceutical Assistance to the Aged training meeting held recently at Union College was well attended despite the snow storm.

Evelyn Frank, president of the Senior Citizens Council of Union County, arranged for her organization's consumer education aides to be present at the meeting.

Representatives from the Union County Pharmaceutical Society and the New Jersey Division of Medical Assistance cooperated in the program which was attended by various social agencies throughout the county.

Mrs. Frank said that her consumer education aides are available for assistance to senior citizen groups and social agencies who need help in the filing of the applications. She may be contacted at 964-7535.

Shields stated that the county division on aging has obtained an additional supply of forms from Trenton. Individuals or organizations needing the forms may call the Division on Aging at 353-5000, Ext. 515.

Patriots will be host to corps competition

The Patriots Drum and Bugle Corps will be host to its "Patriots Preview" Open Invitational Color Guard and Corps ensemble standstill competition Saturday, at Hillside Avenue Middle School, Cranford.

Corps ensemble competition, scheduled for 1 p.m., will feature 10 corps, including Long Island's Blue Max, Oradell Dynamics and St. Peter's Royalaires of Bridgeport, Conn., with exhibitions by other groups including the Patriots.

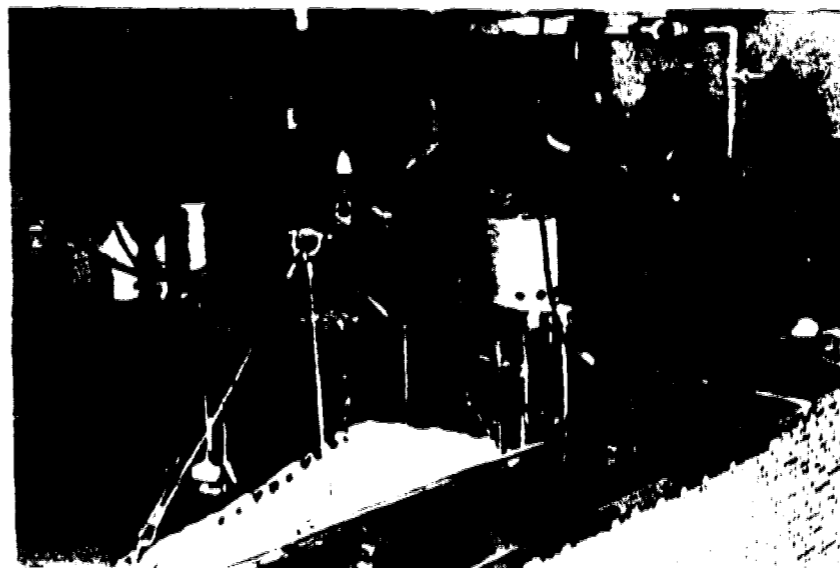
Congressman seeks senior citizen intern

Senior citizens in Union County are being given an opportunity to be considered for a two-week \$600 internship on the Washington staff of Congressman Matthew J. Rinaldo (R-NJ).

Rinaldo said this week that the Washington experience is being offered through a senior citizen intern program in which his office will participate from May 8 to 19. This is the second year that Rinaldo's office has participated in the program. The intern chosen last year was Jack Landau of Kenilworth.

Rinaldo said a committee representing senior citizen organizations in the 12th Congressional District will review applications and select the senior citizen to join the 1978 intern program. The Union County congressman, who is a member of the House Select Committee on Aging, said anyone aged 65 and over who lives in the 12th District may apply.

Applications should be in the form of a one-page letter to the Rinaldo Senior Citizen Intern Program, 1961 Morris Avenue, Union, 07083. The letters should include brief background information about the applicant and give the applicant's main reasons for seeking the internship. Two letters of recommendation from community leaders should accompany each application. The deadline for applying is April 5.



BURN UNIT DONATION—The Elizabeth Fire Department gives a financial boost to the updating of the Alexian Brothers Hospital Burn Unit. The donation of \$2,000 represents proceeds from the Department's 75th anniversary celebration held in 1977. Brother Ronald Ruberg, CFA, chief executive officer at Alexian Brothers, at controls of tank in which burn patients can be immersed, receives check from fireman Ed Dugan, left, ad chairman; fireman Thomas Willard, anniversary chairman, and Father William J. Kelly, assistant pastor of Holy Rosary Church and fire department chaplain.

Hospital to renovate burn treatment unit

Renovations now under way at Alexian Brothers Hospital Elizabeth, will include updating the burn program later this year, it was announced by J. Peter Certo, chief administrative officer.

The burn unit, which has been part of the hospital's long range plan, is being updated while completion nears on a kidney dialysis unit, Certo noted.

In addition, a physicians' office building and employees residence on East Jersey street, opposite the hospital, will be open in the fall.

"It is not necessary for many moderate burn cases, including some chemical or electrical burns, to be in a specialized burn center," said Dr. Samuel Hoch, director of professional care at the hospital, but healing, functional recovery and rehabilitation often depend on the skill and care provided in the hospital unit to which the patient is first taken."

Summit Center plans art show

Juried Show 2: Paper-Clay-Metal-Glass beginning Sunday, Feb. 12 at the Summit Art Center, 68 Elm St., Summit, has received entries from artists in traditional and contemporary media from throughout the country. Prizes for exceptional works will be awarded at the public opening reception between 2 and 5 p.m. The show will continue through March 5.

The entries selected include watercolor, other painting media on paper, molded paper, graphics, photography, pastel, drawing, sculpture, jewelry, constructions, stained glass, ceramics or any other work whose content is at least one-half paper, clay, metal or glass.

Gallery hours are Monday through Friday 10 a.m. to 4 p.m. and weekends from 2 to 4 p.m. Free gallery talks will be given on Feb. 16 at 2 p.m. and Feb. 19 at 4 p.m. Appointments for guided docent tours may be made by calling the Art Center at 273-9121.

Mrs. Hannah Mastrolia of Caldwell Avenue, Union, has served on the Juried Show 2 Committee.

CPR demo slated

The Charity Council for Cerebral Palsy will sponsor a Cardio Pulmonary Resuscitation (CPR) demonstration and lecture Monday at the YMHA, Green Lane, Union. The demonstration and lecture will be given by Essex County Park Deputy Police Chief James D. Nixon and retired Montclair Police Captain Carl M. Justice.

Musical slated for high school by theater unit

"Inner City," a new musical on the lives of city dwellers, will begin its statewide tour at the Abraham Clark High School on Saturday at 8:30 p.m., presented by Union County Community Services—Phoenix Community Theatre.

"Inner City" is a street cantata, using music and dance to present its look at prostitution, drugs, corrupt government officials and problems in overcrowded housing.

The Phoenix Community Theatre is a performing ensemble of creative artists established for the communities of Union County. The group will also expose the community to performances at county schools and theatres, as well as at their permanent space at 1149 St. George Ave., Roselle.

The ensemble of 19 area performers include: Ken Pender, Bob Currie, Beverly Mandin, Larry Mitchell, Elaine Parsons, Roxanne Percell, Marshall Sampson and Arthur Wilson with Beth Jacobs and Mary Prockak. Artists, costumes and choreography is being handled by Glenn Brooks. Musical direction is by Richard Bogner.

Based on Ely Merriam's book, "Inner City Mother Goose," the musical opened on Broadway in 1971. Directed by Tom O'Horgan, the show received mixed reviews, although the critics did applaud the talents of then unknowns Linda Hopkins of "Mo and Bessie" and DeJores Hall of "Your Arms Too Short to Box with God."

Future tentative bookings include Elizabeth High School, Kean College, Highland Park High School and the Strand Theatre in Plainfield. General admission for Abraham Clark High School show is \$2 and will be available at the door.

Bible Quiz

By Mill Hammer

TRUE OR FALSE

1. It was John who said, "God loveth a cheerful giver."
2. The Ten Commandments are found in Exodus 20 and Deuteronomy 5.

ANSWERS

1. False 2. True

Tennis Boutique

of Little Pleasures

401 Cumberland St. & South Ave.
WESTFIELD 233-6577

cardially invites YOU to a preview showing of reversible tennis wrap skirts and coordinating shirts. Also clothing for golf and racquet ball.

SHOW TIME
Fri. & Sat.-Feb. 3 & 4 -10 AM to 4 PM

MAXIMUM INTEREST

allowed by law

under the Money Tree!

4 Year Saving Certificate

7 1/2%

PER YEAR

Compounded and Payable Quarterly.

Minimum Deposit only \$2,000*

30 MONTHS
Minimum Only \$1,000

6 3/4%

PER YEAR

ONE YEAR
Minimum Only \$1,000

6 1/2%

PER YEAR

*INTEREST PAID and COMPOUNDED QUARTERLY

Berkeley Federal reserves the right to limit the number and amount of Time Deposits. Accounts Federal regulations require a substantial interest penalty for early withdrawals from saving certificates. Savings insured to \$40,000 by the F.S.L.I.C.

Regular Savings Accounts

Regular Savings earn from Day of Deposit to Day of Withdrawal.

5 1/4%

There's MAXIMUM INTEREST for you under the Money Tree

Berkeley Federal Savings AND LOAN

UNION: 324 Chestnut Street 687-7930
Hours: Monday-Friday, 9:45 to 1:15
Friday, 9:45 to 11:15
Other branches in: Short Hills, Marlborough, Newark, East Hanover, Livingston, Whippany.

Arthur L. Wells

Your
OPTICIAN
in
SPRINGFIELD

248 MORRIS AVE. • 376-6108
SPRINGFIELD, N.J. (Closed Wednesdays)

ULTRAVUE
PROGRESSIVE POWER LENS
WITH THE INVISIBLE BIFOCAL LENS

FREE PARKING IN REAR

New Marlboro Lights 100's

Lighter in taste. Lower in tar. And still offers up
the same quality that has made Marlboro famous.
Also available in king size.



The spirit of Marlboro in a longer low tar cigarette.

Kings: 12 mg "tar," 0.7 mg nicotine av. per cigarette, FTC Report Aug. '77
100's: 12 mg "tar," 0.8 mg nicotine av. per cigarette by FTC Method.

Warning: The Surgeon General Has Determined
That Cigarette Smoking Is Dangerous to Your Health.

SUBURBAN REAL ESTATE MART

• City • Suburbs • Farm Country • Lake • Shore

Wynnewood-Whiting has 4 choice models

Wynnewood at Whiting, the latest community by Greene Development of Princeton, now offers four model homes which include one-acre lots, full aluminum siding, wall-to-wall carpeting and a host of energy-saving features from \$37,500 to \$42,900. Five percent down payments are available to qualified buyers.

The new community is located in popular Whiting, location of several recently opened housing communities, both for the general market and for retirement. Aside from offering quiet suburban living, close to Route 9 and the Garden State Parkway, the community has a tax rate of \$1.76 per hundred, putting the Wynnewood models in the \$650 to \$750 annual tax range. Homebuyers from Northern New Jersey and New York have found this a highly attractive feature.

Homes are in authentic American Colonial design as interpreted by R. William Miller and Associates, Architects. Energy-conscious features include double-glazed windows, full thick insulation in exterior walls and double-thick in ceilings. Buyers may also opt for the new General Electric Heat Pump, combination central air conditioning and heating, which offers considerable leverage in its heat-vs.-energy ratio.

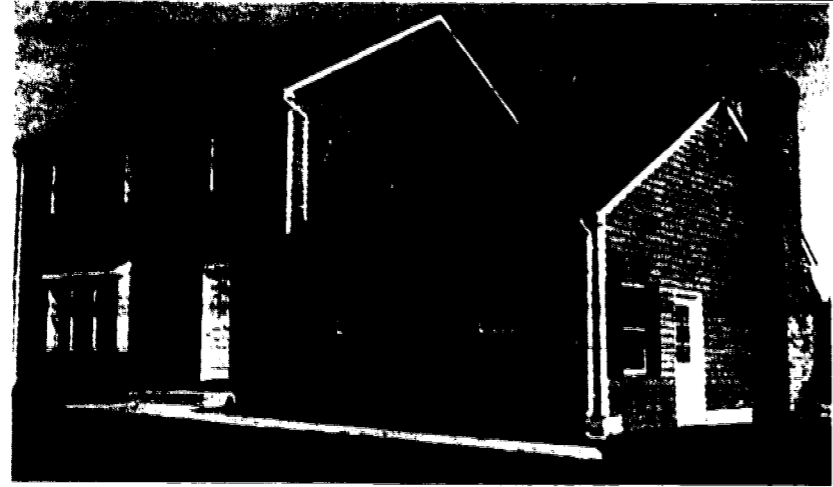
Among the models featured are The Duxbury Ranch which includes two large bedrooms, full bath with ceramic tile, formal dining room, spacious 15-foot living room, equipped kitchen and attached garage on one-acre lot. Price is \$37,500.

The Andover Ranch offers a three-bedroom layout including full bath plus guest lavatory, formal dining room plus unusual "open kitchen-family room," spacious 15-foot living room, separate utility room plus oversized attached garage. Price is \$39,900.

The Concord, a Cape Cod, includes three bedrooms plus den, two full ceramic-tiled baths, laundry room, unique 21-foot "country kitchen," spacious living room, large walk-in closets and attached garage. Price is \$38,900.

The Plymouth, another two-story Colonial model offers either three or four-bedroom floorplans at no additional cost. Included

are 1½ baths, formal dining room, spacious 18-foot living room, dine-in kitchen with built-in dishwasher, separate laundry room-lavatory, oversized 15 foot by 16 foot recreation room and side-facing garage with inside entry. Price is \$42,900. Sales office is located at the site, on Route 539 in Whiting, daily (except Thursday and Friday) from 10 a.m. to 5 p.m. Phone number is 350-6161.



THE PLYMOUTH — Two-story Colonial model at Wynnewood at Whiting offers either three or four-bedroom floorplans at \$42,900. Included are 1½ baths, formal dining room, spacious 18-foot living room, dine-in kitchen with appliances, separate laundry room-lavatory, oversized 15 foot by 16 foot recreation room and side-facing garage with inside entry. Five percent down payments are available to qualified buyers. Builder is Greene Development of Princeton.

2-in-1 apartment

The Laurel Brook community offers homes with separate suites for mother and daughter—two separate apartments, but one central kitchen—for under \$30,000. The arrangement has been put into effect by several new homeowners at the condominium community in Brick Town.

The Washington one-bedroom home, priced at \$28,990, seems most adaptable to this versatile purpose, according to sales manager Judy Fox, who explains that three recent purchasers have converted their homes, two into mother-daughter combinations and one into a father-son combination.

The Laurel Brook condominium includes wide lawns and landscaped shrubbery, tennis, swimming pool and clubhouse social hall which is an informal social center for the all-age community residents. Laurel Brook is located in Northern Ocean County near the ocean and Barnegat Bay, with major bus commuting facilities and exits and entries to the Garden State Parkway both north and south nearby.

The sales and information office, open seven days a week, is located on Route 88, west of Laurelton circle, just within the gateway to the condominium community.

Fast foam insulates

The Energy Conservation Division of Glen Rock Lumber Co. now represents Borden, Inc. throughout northern New Jersey in the sales and application of Insulpray foamed-in-place insulation.

Insulpray, urea-formaldehyde liquid foam, is applied directly from the outside of the home and is

injected into the hollow stud space within the outer walls, flowing throughout to fill every crack and crevice. It usually can be installed in one day, is adaptable to older homes as well as new structures, and significantly reduces heat loss through the house walls, according to a spokesman for Borden, Inc.



THE LEXINGTON luxury home has three bedrooms and three baths. It is open at the Mineral Model Home Center at Oakleaf Village in Tarpon Springs, Fla. In the New York metropolitan area, the Mineral Communities Model Home is at 131 Old Country rd., Hicksville, Long Island, 11801, (516) 681-6460 or (212) 895-0034. Brochures, facts, floor plans and figures are available.

NEW 2 FAMILY HOMES Windmill Estates

TOTOWA BORO N.J.



HIGH & DRY LAND

Lowest Tax Rate In Passaic County

Priced from \$119,000

MODELS OPEN DAILY FROM NOON 'TIL DUSK

DIRECTIONS: From Route 3 and Route 46 West, turn right at Channel Lumber on to Minniskink Road and only 1/2 mile to model homes. From Route 46 and 80 East there is direct access to Minniskink Road.

DI PAOLO REALTY — Sales Agent, Realtor
Office Phone (201) 742-1500
Model Phone (201) 942-0767

G-H sells building

Grand Manor, a 23-unit garden apartment in Elizabeth, has been sold for cash above financing of \$265,000 through Gebroe-Hammer Associates, the Livingston-based investment real estate specialists. The purchaser, Grand Realty, is a partnership investment client of Gebroe-Hammer, according to Martin Ostroff, vice-president of the real estate firm. The sale of the 12-year-old building was handled by Stuart Falkin, area representative, who was able to structure the transaction to obtain advantageous tax considerations for both buyer and seller, Ostroff stated. The two-and-a-half-

Thursday, February 2, 1978
story apartment home is composed of three and four-bedroom suites with central air-conditioning and on-site parking. It is within walking distance of both the Elmora shopping area and the main business district in downtown Elizabeth. Gebroe-Hammer, with offices in the Gebroe-Hammer Building in Roosevelt Plaza, Livingston.

At Panther Valley

the \$42,990 entrance to Panther Valley luxury living

201-850-0300
ROUTE 80 WEST TO EXIT 19 HACKETTSTOWN-ANDOVER TO ROUTE 517

ANNOUNCING OUR SALE OF SELECTED 1978 HOMES AT 1977 PRICES.

These selected homes in our magnificent adult communities are available for **immediate occupancy**.

Prices are guaranteed through 6:01 p.m., February 26, 1978. First come, first served.

LeisureTowne®

Summerhill™

Bradford	59-3	Banbury Lane	\$31,430
Heather	58-4	Stamford Place	43,730
Ardmore	59-5	Banbury Lane	39,180
Bradford	57-35	Banbury Lane	31,180
Bradford	57-32	Banbury Lane	30,680
Heather	57-29	Gramercy Place	44,380
Walden	59-10	Gramercy Place	34,480
Ardmore	59-24	New Castle Drive	39,180
Walden	59-23	New Castle Drive	36,680
Walden	59-20	New Castle Drive	36,180
Heather	59-19	New Castle Drive	39,880
Walden	56-15	New Castle Drive	33,980
Heather	56-16	New Castle Drive	43,680
Walden	56-19	New Castle Drive	37,480
Walden	56-21	New Castle Drive	37,460
Ardmore	56-22	New Castle Drive	35,980
Walden	56-24	New Castle Drive	37,680
Heather	56-18	New Castle Drive	43,180

Leisure Knoll®

Summerhill™

Bradford	8-1	Maidstone Way	\$30,680
Bradford	46-13	Maidstone Way	30,680
Bradford	46-18	Maidstone Way	30,680
Walden	4-32	Buckingham Dr. N.	34,680
Walden	18-35	Westgate Place	34,680
Walden	18-38	Westgate Place	38,180
Ardmore	18-23	Westgate Place	39,680
Ardmore	18-25	Westgate Place	40,680
Danbury	19-3	Westgate Place	44,130
Danbury	21-4	Westgate Place	43,380
Walden	21-7	Westgate Place	38,980
Walden	21-16	Newbury Way	38,680
Danbury	21-18	Newbury Way	43,380
Ardmore	22-1	Reigate Place	42,680
Danbury	22-3	Reigate Place	40,180
Walden	22-4	Reigate Place	40,180
Danbury	22-6	Reigate Place	44,380
Ardmore	22-8	Reigate Place	41,930

Falmouth	440B	Dartmoor Way	\$30,680
Concord	440C	Dartmoor Way	28,680
Concord	440D	Dartmoor Way	28,680
Concord	440G	Dartmoor Way	28,680
Concord	440H	Dartmoor Way	28,680
Concord	442C	Dartmoor Way	29,680
Concord	442D	Dartmoor Way	29,680

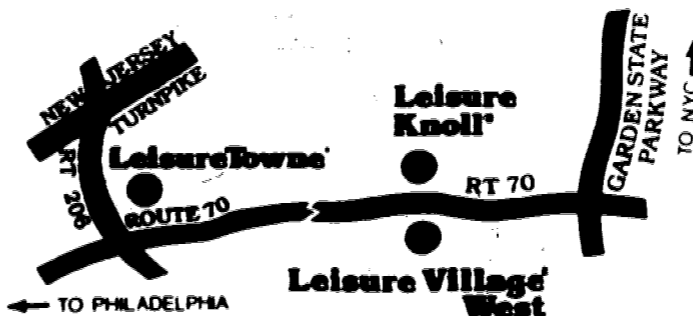
The Greenery™

Oxford	519A	Cheshire Ct.	\$42,490
Stratford	529B	Sheffield Drive	49,990
Oxford	535B	Warwick Ct.	41,990
Stratford	537C	Warwick Ct.	44,990
Stratford	550A	Mayfair Road	52,990
Hastings	550B	Mayfair Road	56,990
Blair	553A	Mayfair Road	54,990
St. Tropez	553C	Mayfair Road	57,490
Blair	554A	Mayfair Road	54,990
Blair	557A	Malvern Ct.	55,490
Hastings	557B	Malvern Ct.	56,990
Hastings	557C	Malvern Ct.	57,490
Stratford	557D	Malvern Ct.	53,490
Blair	559A	Malvern Ct.	55,990
Hastings	559B	Malvern Ct.	58,490
Blair	566B	Mayfair Road	54,990
Stratford	567A	Mayfair Road	54,490
Hastings	567B	Mayfair Road	57,990
Blair	567C	Mayfair Road	56,490
Stratford	565A	Mayfair Road	53,990
St. Tropez	565B	Mayfair Road	58,490
Oxford	563B	Mayfair Road	44,490

Leisure Village®

Countryside™ West

Falmouth	458C	Andover Ct.	\$30,680
Falmouth	462C	Andover Ct.	30,680
Concord	439B	New Castle Ct.	28,680
Concord	439F	Chesterfield Ct.	28,680
Concord	439G	Chesterfield Ct.	28,680



Take the New Jersey Turnpike South to Exit 7. Rt. 206 South to Rt. 70. East for two miles.

Take the Garden State Parkway South to Exit 88, then go right to Rt. 70 for six miles.

It's the time of your life to have the time of your life.

Availability subject to change without notice.

© 1978 Leisure Technology Corp.

Not Hill
in Roseland, N.J.

Finally, a new deluxe garden apt. . . in Suburban Essex, minutes from Rt. 280.

Luxury 1 and 2 bedroom suites, and duplex units with 2½ baths . . . all with individual garages and storage, balconies/patios, plus a pool club and tennis courts.

Rents, including heat and garage, begin at \$430, per month.

Model apartment and on-site rental office open every day 11 thru 4 P.M.
35 Locust Ave., Roseland, N.J.
(201) 228-4993

Directions: Route 280 to exit 44 onto Elizabeth River, south to Eagle Rock Ave. East to Locust Ave. to Not Hill.

Owner/Management: Sagal Development Co. South Orange, N.J.

Consumer prices up by only 0.2 percent

The Consumer Price Index for the New York-Northeastern New Jersey area edged up .2 percent between November and December. It was reported by Herbert Biensack, regional commissioner of the U.S. Department of Labor's Bureau of Labor Statistics.

The December change, under a revised index, is the lowest since August 1977. It is the lowest since August 1977. It is the lowest since August 1977. It is the lowest since August 1977.

Authors to talk on management

Management, Economics and the Law. Dr. Keesing is the author of "Management, Economics and the Law" published by the McGraw-Hill Book Company. He is also the author of "The Economics of Management" published by the McGraw-Hill Book Company.

Dr. Keesing will be joined by other authors for a series of lectures. The lectures will be held at the Kean College campus. The lectures will be held at the Kean College campus.

The lectures will be held at the Kean College campus. The lectures will be held at the Kean College campus. The lectures will be held at the Kean College campus.

Brush-up class offered at Kean

French for Fun to Travel. An informal conversational course for adults. It is designed to brush up their French. It is designed to brush up their French.

Although the 10-week non-credit course is a continuation of one started last fall, anyone with some speaking ability in the French language may enroll.

2 classes of 1938 plan 40th reunion

The 1938 graduates of South Side High School in Newark are planning a 40th reunion and are attempting to locate all members. The graduates are planning a 40th reunion.

Registration set for citizenship

Kean College of New Jersey is offering free registration for citizenship to aliens from 9 a.m. to 5 p.m. this Saturday and next Saturday, Feb. 11 in the Student Center of the Union campus. Meetings will be held in Friday and on Feb. 11.

Hospital class for technicians

Applications for the 1979 Class for the Medical Laboratory Technicians certificate program at St. Barnabas Medical Center, Livingston, are now open. The 10-month course begins Sept. 3, according to Dr. Emile H. Inguscip, director.

Weekend workshop

A series of eight weekend workshops for qualified elementary and secondary school administrators and supervisors will be conducted at Seton Hall University, South Orange, beginning Feb. 24-25 and continuing to April 28-29.

The Dance Club

Social & Show Feb. 3, at 8:30. Featuring Ralph & Lucille Lee. Free gifts to all! American Legion Hall.



LEONARD NIMOY

Nimoy to talk at Kean lecture

Leonard Nimoy, noted for his portrayal of Mr. Spock of the television series "Star Trek," will appear at the lecture series of New Jersey State University. He will appear at the lecture series of New Jersey State University.

Nimoy plans to speak about the career interest in Spock's father and the actual as demonstrated by the recent success of "Star Wars" and "The Godfather Part II".

Kean College exhibition to feature faculty artists

The spring season of art exhibition at Kean College will open tomorrow with the drawings and paintings of faculty artists. The exhibition will feature faculty artists.

Michael Metzger, associate professor of fine arts, was recently awarded a purchase prize in painting at the Somerset Tri-State Exhibition at Somerset Community College. His works have also been exhibited at the Artlight-Knox Gallery in Buffalo, the Detroit Institute of Art and the State Museum in Trenton.

Daniel Kadish, of Livingston, is supervisor of fine arts services at the college. His works were recently exhibited at the Patterson and Guerra Art Gallery and at the Lotus Gallery, both in Soho, New York City.

He has received awards from the Rockland Art Center (1975) and from the Summit Art Exhibition (1977). Kadish was also a featured artist at the Newark Museum's New Jersey Artist Biennial exhibition.

The public is invited to attend the opening reception at the Kean Gallery from 4 to 6 p.m. Friday. Viewing hours through Feb. 11 will be from 10 a.m. to 2 p.m. weekdays and by appointment. Further information may be obtained by calling 525-2347.

NEED HELP FINDING A ROOM? PERSON WITH A VISION. Call 686-7700.

New law helps to stop illegal egg 'poaching'

New Jersey lobster populations will benefit from a new law enforcement technique soon to be used by conservation officers.

The state Division of Fish, Game, and Shellfisheries said its officers now have a reliable method of identifying female lobsters from which eggs have been illegally removed.

Taking egg-bearing lobsters, each of which may carry from 5,000 to 15,000 eggs, could be a contributing factor in the continuing decline in the harvest of lobsters from waters off the Jersey coast.

In the past, enforcement officers had difficulty identifying lobsters from which the eggs were removed. Now they have a positive means of making the determination.

The division explained that the eggs are attached by a cement to hairlike structures on the swimmerets of the lobsters. If the eggs are forcibly removed, some of the cement will remain.

By using a staining technique the conservation officers can detect the cement and thereby have proof of illegal activity. The officers have specially designed field kits for conducting the tests.

The division said that the Rhode Island Department of Natural Resources has been using the technique to obtain evidence for successful prosecution of violations.

1968 class reunion

The class of 1968 Archbishop Walsh High School, Livingston, will hold its 10-year high school reunion May 20 at Hanover Manor, Hanover. All interested graduates are requested to call Nancy Ryan Gaffney at 762-1702 for additional information and for reservations.

Heritage festivals set at State Art Center

The 1978 Series of Heritage Festivals to be presented at the Garden State Arts Center by many of New Jersey's ethnic communities, was announced last week at the Third Heritage Festival Ball at the Seven Arches Restaurant in Perth Amboy.

Chairman William F. Smith of the New Jersey Highway Authority which owns and operates the Arts Center said, "These colorful Festivals have become an increasingly attractive addition to each Arts Center season."

N.J. boat show exhibits models

Model boat buffs are invited to exhibit their prize specialties in the Model Ship Exhibit, scheduled in conjunction with the 25th Jersey Coast Boat Show in Asbury Park's oceanfront Convention Hall Feb. 18 through 26.

Each model submitted will be placed in its division: deep water sailing vessels, ocean tankers and cargo ships, naval vessels, sailing yachts, power yachts, tug boats, rowing boats and miscellaneous.

Special award ribbons will be presented to the owners of models in each division.

Jazz concert set Feb. 13

The Roger Mancuso-Peter Prisco Jazz Quartet will play at the Kean College Little Theatre in Union on Feb. 13 at 8 p.m. The concert is free and open to the public.

The quartet is led by drummer Roger Mancuso who has performed with Lenney, Tristano, Lee Konitz, Sal Mosca and others. Before forming his own group, he recorded extensively with Steeplechase Records, and can be heard on the Ted Brown-Tony Zano album, among others.

TUNE UP Special
(On All 300-M Selectra & Later Models)

REMINGTON
SHIVERS \$5.95 Reg. \$9.95

Install new replacement blades, completely dismantle, clean, lubricate and adjust your shaver.

NEW REMINGTON CHROMIUM EDGE REPLACEMENT BLADES.
A Chromium Edge: Keeps Sharper Longer.

WE ARE DIRECT FACTORY REPRESENTATIVES FOR REMINGTON, FORMERLY IN NEWARK.

SHAVER APPLIANCE CENTER
1921 MORRIS AVE., UNION

Open Mon. thru Fri. 9:30-6:30, Sat. 9-5

Brides for '78

Tabloid Supplement to **SUBURBAN**

Sunday, February 26th

Reaching 61,284 homes in Union and Essex Counties.

Copy deadline: Friday, Feb. 17th

Rates: Full page.....\$425
1/2 page.....\$220
1/4 page.....\$115
1/8 page.....\$60

CALL NOW FOR RESERVATION!
686-7700

Mirons
Route #22 Watchung

CALENDAR OF COMING EVENTS
All Events are Free to the Public

Friday, Feb. 3, 10 A.M., Route No. 22
"STOP THE WORLD, I'M GETTING BACK ON!"
by Mae Hecht
A seminar for the woman ready to return to work or school. Coming back can be pleasantly challenging... or frightening. Where to begin? How to begin? What to do to get started? This program may provide the help necessary towards the first step.

Friday, Feb. 10, 10 A.M., Route No. 22
"GUARANTEED TO KEEP YOU IN STITCHES!"
By Marilyn Tolman
Small quilting and applique will be demonstrated at this seminar. Here is an American folk craft that is old and new quilts and you will know why this craft is growing in popularity.

THE DANCE CLUB
SOCIAL & SHOW
FEB. 3, at 8:30
Featuring: Ralph & Lucille Lee
FREE GIFTS TO ALL!
AMERICAN LEGION HALL
Westfield Ave., Clark
The Coughlin's 525-1829

MIKE TOBIA YOUR ONE GUY in HILLSIDE Says:
BUY FROM US WITH CONFIDENCE. WE WILL MEET OR BEAT OUR COMPETITORS' PRICES. BUY NOW AND SAVE! OUR PRICES ARE SO LOW WE DARE NOT ADVERTISE THEM!

CHROMACOLOR II
The MANET (J1912W) 17" Diagonal Chromacolor II Decorator Compact Table TV. Super Video Range Tuner. A Great Buy!

CHECK OUR LOW PRICES!
OUR TV DEPT. WILL SERVICE ALL CARRY-IN TV SETS!

TOBIA'S
APPLIANCE CENTER
BBD WA 3-7768
686-0344

Amusement News

MOVIES • THEATRE • OTHER ENTERTAINMENT

Disc & Data

By MILT HAMMER

Pick Of The LPs. YOU LIGHT UP MY LIFE: by Debby Boone (WARNER BROS. RECORDS BS-3118.) Selections include: "You Light Up My Life" (Original theme from the film), "A Rock And Roll Song," "Micol's Theme," "It's Just A Matter Of Time," "Hey Everybody," "When I Look At You" (My Love), "From Me To You," "Baby, I'm Yours," "When The Lovelight Starts Shining Through His Eyes," "End Of The World," "Your Love Broke Through" and "Hasta Manana" (backed by sisters Cherry, Lindy and Laurie).

As might be imagined, there's always been a whole lot of singing going on in the Boone family, whether at impromptu home gatherings, at church or on tour. Debby's earliest memories of family sing-alongs center around her dad's career. Driving from gig to gig, their mother, Shirley, would lead the girls in song. Debby's "big break" occurred eight years ago when Pat headlined a bill in Japan with the then-unknown Osmonds. It was decided that if the girls could come up with one song they could sing in the show they could accompany him to Japan. The song they came up with was "What The World Needs Now is Love" and the singing Boones have been a welcome staple on musical circuits throughout the world ever since.

People who debate the importance of heredity versus environment in the parenting of talent will have a difficult time separating the genes from the upbringing in the case of Debby. Daughter of Pat and granddaughter of country-western star Red Foley, one could easily say that Debby was "to-the-manner-born."

The third of four Boone daughters, Debby was born in Hackensack, but relocated with her family to the Los Angeles area when she was four. A graduate of Marymount High School, she attended Bible school for a year-and-a-half but admits she is not the scholar of the family, her interest in music having replaced her interest in books at about age 14.

MAPLEWOOD
A JOXOUS COMEDY
RICHARD DREYFUSS
MARRIAGE MANIA
the GOODBYE GIRL

Amboys
STARSHIP
INVASIONS
PLUS JANE FONDA
BARBARILLA

CASTLE THEATER
IRVINGTON CENTER
372-8324
Richards Pryor
"WHICH WAY IS UP?"
"THE CAR"

TOP TEN SINGLE HITS
WE ARE THE CHAMPIONS
WE WILL ROCK YOU QUEEN
BABY COME BACK
SHORT PEOPLE
RANDY NEWMAN
YOU'RE IN MY HEART
(THE FINAL ACCLAIM)
ROD STEWART
JUST THE WAY YOU ARE
BILLY JOEL
STAYIN' ALIVE BEE GEES
HERE YOU COME AGAIN
DOLLY PARTON
SOMETIMES WHEN WE TOUCH
DAN HILL
TURN TO STONE
SERPENTINE FIRE
EARTH, WIND & FIRE

TOP TEN ALBUMS
SATURDAY NIGHT FEVER
BEE GEES AND VARIOUS ARTISTS
BONNIE'S FLEETWOOD MAC
NEWS OF THE WORLD
QUEEN
FOOT LOOSE & BENDY FREE
ROD STEWART
ALL 'N ALL
EARTH, WIND & FIRE
SIMPLE MINDS
LINDA RONSTADT
MIDNIGHT ON EMBURY
JACKSON BROWNE
DRIVE IN THE LINE
AEROSMITH
SIDE ALIVE II
BURN LIKE SHAMON CASSIDY

ACTORS CAFE THEATRE
BLOOMFIELD COLLEGE
PROBATION & PRESENT STYL. ETC.
NO MANS LAND
BY HAROLD PINTER
FEB. 10 TO 12
8:30 P.M.
FEB. 11, 10:00 P.M.
FEB. 12, 8:30 P.M.
Phone 426-3662, New Play
Phone 426-3662, New Play

THEATRE
78 W. Main St., Camden, N.J.
presents Bill Sienk's
LAST OF THE
RED HOT LOVERS
FEB. 10 TO 12
8:30 P.M.
FEB. 11, 10:00 P.M.
FEB. 12, 8:30 P.M.
Phone 426-3662, New Play
Phone 426-3662, New Play
Tickets \$4 & \$6 Call Box Office
276-7611

Movie Times

All times listed are furnished by the theaters.

CASTLE (Irvington) — Last times today: TELEFON, 7:30; CARRIE, 9:15. WHICH WAY IS UP? Fri., 7:10, 10:10; Sat., 6:45, 10:10, Sun., 3:10, 6:25, 9:45. Mon., Tues., Wed., Thur., 9:10; THE CAR, Fri., 8:35, Sat., 8:20; Sun., 1:30, 4:45, 8:05. Mon., Tues., Wed., Thur., 7:30, Sat., matinee; PLANET OF THE APES, 1:45. BATTLE FOR THE PLANET OF THE APES, 3:45.

ELMORA (Elizabeth) — JEREMY, Thur., Fri., Mon., Tues., 7:30, Sat., 1:30, 8:20, Sun., 4:06, 7:45. HEROES, Thur., Fri., Mon., Tues., 9:06, Sat., 3:05, 6:15, 9:55, Sun., 2, 5:40, 9:20.

FIVE POINTS CINEMA (Union) — OH, GOD!, Thur., Mon., Tues., 7:30, 9:10, Fri., 7:30, 9:15, Sat., 1:30, 7:30, 9:30, Sun., 2, 3:45, 5:30, 7:15, 9.

FOX-UNION (Rt. 22) — TURNING POINT, Thur., Mon., Tues., 7, 9, Fri., 7:15, 9:30, Sat., Sun., 3, 5, 7:15, 9:30.

FOX-WOODBRIDGE — TURNING POINT Call theater at 634-0044 for timeclock.

LOST PICTURE SHOW (Union) — LOOKING FOR MR. GOODBAR, Thur., Fri., Mon., Tues., 7, 9:30, Sat., 5:15, 7:30, 9:55; Sun., 2, 4:30, 7, 9:30.

MAPLEWOOD — THE GOODBYE GIRL, Thur., Fri., Mon., Tues., 7, 9; Sat., 2, 4, 6, 8, 10; Sun., 3, 5, 7, 10, 9:15.

NEW PLAZA (Linden) — THE GOODBYE GIRL, Thur., Mon., Tues., 7:15, 9:10; Fri., 7:30, 9:30; Sat., 2, 4, 5:55, 7:55, 10; Sun., 4:30, 3:30, 5:30, 7:30, 9:30.

OLD RAHWAY (Rahway) — OH, GOD!, Thur., Mon., Tues., 7:15, 9:15; Fri., 7:30, 9:30; Sat., 1:20, 3, 4:45, 6:30, 8:20, 10:05; Sun., 1:45, 3:40, 5:40, 7:30, 9:20.

PARK (Roselle Park) — LIPSTICK, Thur., Fri., Mon., Tues., 7:15; Sat., 3:40, 7:50; Sun., 3:20, 7:15. LOOKING FOR MR. GOODBAR, Thur., Fri., Mon., Tues., 8:45; Sat., 1:30, 5:30, 9:20; Sun., 1, 4:50, 8:45.

SANFORD (Irvington) — SASQUATCH, Thur., Fri., Mon., Tues., 7, 9; Sat., Sun., 1:30, 3:15, 5:10, 7:05, 9.

FRIDAY DEADLINE All items other than spot news should be in our office by noon on Friday.

SETON HALL
4th Annual
Baseball Clinic
Conducted by
MIKE SHIFFRIN, Coach
Seton Hall's N.C.A.A.'s Dist.
Baseball Championship Team

ON 2 WEEKENDS
LITTLE LEAGUERS
(Ages 8-12)
SAT. & SUN.
FEB. 10 & 11
10 a.m. to 4 p.m.

HIGH SCHOOLERS
(Ages 13-17)
SAT., SUN., MON.,
FEB. 18, 19, 20
10 a.m. to 4 p.m.

REGISTRATION
FRI., FEB. 10-7 p.m. on
SAT., FEB. 11-8 a.m. on
In Walsh Gymnasium
FOR INFORMATION
762-8895 | 373-4472

PAINTERS, ATTENTION!
Sell yourself to 30,000 families with a low cost Want Ad. Call 666-7700

Make a date for
ROLLER SKATING
It's Great Fun!
LIVINGSTON ROLLER RINK
615 So. Livingston Ave., Livingston
992-6161
Skating only (except Mon.) 7:30 to 11 P.M.
Madison Sat., Sun. & Holidays 2 to 5 P.M.
Roll. Anal. Mon. for Private Parties



IN NEIL SIMON COMEDY — Quinn Cummings, left, plays precocious daughter of Marsha Mason, right, in "The Goodbye Girl," now being held over for another week at the New Plaza Theater, Linden, and The Maplewood Theater, Maplewood. Richard Dreyfuss also stars.

'Looking for Goodbar' in Park and at Show

Diane Keaton stars in "Looking For Mr. Goodbar," which arrived yesterday at the Lost Picture Show, Union, on a single bill, and at the Park Theater, Roselle Park, on a double bill with "Lipstick."

Miss Keaton, a dramatic actress, a song-stylist and a comedienne, was born in Los Angeles and raised in nearby Santa Ana. She was a drama major at Santa Ana College, where she began her theatrical career by playing a variety of roles in productions ranging from contemporary musicals to Shakespeare.

She spent her summers performing in stock company productions, and upon her graduation, moved to New York City,

'Arsenic' on stage

"Arsenic and Old Lace" by Joseph Kesselring is the latest stage offering by the Meadowbrook Dinner Theater, Cedar Grove. It will run through Feb. 26.

The satirical comedy is about two elderly women in Brooklyn who are homicidal maniacs and do away with 13 men in "bland murder games."

This Monday, for one night only, Woody Herman and his Herd will appear at the Meadowbrook.

On Tuesday, Feb. 14, Stan Kenton and his orchestra will appear.

The long-running Broadway hit musical, "West Side Story" will open Wednesday, March 1.

'Which Way' due at Castle

"Which Way Is Up?" arrives tomorrow at the Castle Theater, Irvington Center, on a double bill with "The Car." The films, "Telefon" and "Carrie," will end their run tonight.

"Which Way Is Up?" a movie comedy, starring Richard Pryor, who plays three roles in a loose adaptation of Lina Wertmuller's "The Seduction of Mimi," concerns a California fruit picker, his outspoken father and a hypocritical preacher. Lonette McKee and Margaret Avery are featured. Michael Schultz directed.

"The Car" stars James Brolin and Kathleen Lloyd and was directed by Elliot Silverstein. Both pictures were photographed in color.

The matinee features at the Castle this Saturday are "The Planet of the Apes" and "Battle for the Planet of the Apes."

Fourth week "Sasquatch," true-life adventure film story, continued its run for a fourth week at the Sanford Theater, Irvington. The picture was produced and photographed in color.

'Angels' has star

Sandy Dennis, who co-stars with Jean Marsh in "Fallen Angels," opening Wednesday at the Paper Mill Playhouse, Millburn, recently starred in Broadway's "Same Time, Next Year." She won two Tony awards, one as best supporting actress in "A Thousand Clowns," and as best actress in "Any Wednesday."

Miss Dennis also received an Oscar for best supporting actress in the film "Who's Afraid of Virginia Woolf?"

Born in Nebraska, Miss Dennis received her first Best Actress award of her career in "The Rainmaker," at the Lincoln (Nebraska) Community Playhouse. She studied at the Nebraska University, then came to New York to study and made her off-Broadway debut in Ibsen's "Lady From the Sea."

On Broadway, she was understudy in "Dark at the Top of the Stairs," then took over the role and played it on tour. She appeared in the film, "Splendor in the Grass," then returned to Broadway in "Face of a Hero." She will be at the Paper Mill through March 5.



PURSUED — Henry Winkler flees the V.A. hospital through the streets of New York in film "Heroes," now at Elmora, Elizabeth, on double bill with 'Jeremy.'

CROSSWORD PUZZLE

ACROSS
1 Napoleon's title
5 Grands up
11 Supermarket section
12 Occident's opposite
13 Foundation
14 Discount
15 — was saying
16 Meadow word
17 No-kline shape
18 Remember state
19 Prefabricated mound
21 Musical syllable
22 Discussion group
23 Gammas for Mrs. Gandhi
25 Love Italian style
26 Obsolete
27 Military VIP abbr.
28 French friend
29 Put the top back on
32 Soap growth
33 Possessive nickname
35 Ennatty
37 Neighbor's kid
38 Printed matter

DOWN
1 Imprison
2 Nublet
3 Recruit's suffix
4 Suffix
5 Hourly
6 Roman numeral
7 Akin
8 Bisulfite
9 Nine-making suffix
10 Urban feature
16 Jaded
19 Rivet
20 Make-up
21 Table
22 Puff, or variable
23 Embarkment
24 New standard
25 Capital
26 Yervan
28 Demolished
29 Invariant
30 Pretend
31 Table
32 Anterior
33 For party
36 New standard
37 Capital
38 Kite

1	2	3	4	5	6	7	8	9	10
11	12	13	14	15	16	17	18	19	20
21	22	23	24	25	26	27	28	29	30
31	32	33	34	35	36	37	38	39	40

SUBURBAN CALENDAR

Music, dance
SOUTH ORANGE—Tony Bennett in concert with the Torre Zito Orchestra, Feb. 4, 8 p.m. Walsh Auditorium, Seton Hall University, 887 1620 or 691-1522.
WEST ORANGE—The Boro 21 Piano Trio including works by Tchaikovsky, Beethoven and Brahms, Feb. 5, 8 p.m. YM YWHA of Metropolitan New Jersey, 760 Northfield ave. 737-3200.
MONTCLAIR—Wedding Bells, exhibit of bridal gowns from the 1840s to 1929, Jan. 31 through March 26, Tuesdays through Saturdays, 10 a.m. to 5 p.m. Sundays, 2 to 5:30 p.m. Montclair Art Museum, 746 5555.
NEW BRUNSWICK—Mary Beth Edelson, concert, March 10, University Art Gallery, Douglass College, 932 7591.
NEW BRUNSWICK—Paintings, watercolors and drawings by Henry Reuter, Jan. 22 through March 10, University Art Gallery, Douglass College, Rutgers University.
SOUTH ORANGE—Herbert Beerman, paintings through Spring semester, March 10, University Art Gallery, Seton Hall University, 762-9000.
SOUTH ORANGE—Collection of letters from 19th and 20th century artists, Jan. 15 through March 15, Mt. Aghlin Library, Seton Hall University, 762-9000.
UNION—Drawings and paintings by Michael Metzger and Daniel Kadish, Feb. 3 through Feb. 16, Vaughn Eames building, Kean College, 527-2347.
CHILDREN
MONTCLAIR—Yass Hakoshima, mime, Feb. 4, 2 p.m. Montclair Art Museum, 35 Mountain ave. 746-5555.
OTHER EVENTS
NEW BRUNSWICK—Jack Gifford's one-man show, Feb. 5, 8 p.m. George Street Playhouse, 414 George St. 246-7717.

HEDY'S DINER RESTAURANT
NEVER CLOSED THE PLACE TO EAT
CLOSETED THE PLACE TO EAT
HEDY'S cordially invites you to try our DINNER BUFFET second to none FREE with any entrée from our menu weekdays 5 to 9 Sundays 1 to 5
BAKING DONE ON PREMISES SPECIAL CHILDREN'S MENU BUSINESSMEN'S LUNCHEON MON-FRI.

Chestnut Tavern & Restaurant
449 Chestnut St., Union
AMPLE FREE PARKING
Open Daily 11:30 A.M. to 11:00 P.M.
the finest in ITALIAN AMERICAN CUISINE
COCKTAILS LIQUOR BUSINESSMAN LUNCHEON
Closed Tuesday

ROSELLE MANOR
DINER RESTAURANT
COCKTAIL LOUNGE
"Open Salad Bar with the Finest Appetizers"
Businessmen's Lunch
Served 11 A.M. to 4 P.M. Daily
Also Children's Menu
Premises 2401 Wood Ave., Roselle
(Off St. George Ave.) 241-3850

BETTY LIND DINER & RESTAURANT
OPEN 7 DAYS-24 HOURS
Open Salad Bar With Luncheon & Dinner
Special Businessmen's Lunch
Plenty of Free Parking
1932 E. St. George Ave.
(Cor. of Park Ave.)
Master Charge LINDEN 925-2777 American Express

EL PESCADOR
"The Paella King"
Restaurant-Lounge-Catering
Portuguese, Spanish & American Cuisine
Special Businessmen's Lunch Daily!
Live Entertainment Weekends
147 W. Westfield Ave., Roselle Park
241-7400 Free Parking

Swiss Chalet
A superb collection of tempting international delights,
Served in our gracious continental atmosphere.
Lunch
Dinner
OPEN 7 DAYS A WEEK SUN. 12 NOON

THE SHACK
Cocktail Lounge & Restaurant
NOW FEATURING
LIVE ENTERTAINMENT
ON FRI. & SAT. EVES.
"MIRAGE"
Now appearing thru the month of Feb.
193 Western Parkway
Irvington - 372-9506

CLEARANCE SALE
SUBURBAN THRIFT HOUSE
960 Springfield Ave., Irvington
372-0604
Largest Selection Of Men's Ladies' Children's Clothing Bric a Brac Hats - Pocket Books
New Merchandise Arrives Daily
Open Mon.-Sat. 9 a.m.-4 p.m.
Essex County Section
National Council of Jewish Women
PROCEEDS OF SALE TO SUPPORT 21 COMMUNITY SERVICES
Visit our other two shops:
55 ACADEMY ST., SOUTH ORANGE 763-8830
163 MAIN ST., ORANGE 673-2541

SWEET MOLLY
FEEDS YOU SENSIBLY!
Broiled or Fried \$3.29
Filet of Flounder
Broiled Lobster Tail \$5.99
London Broil with Mushroom Sauce \$2.99
And Many More A La Carte Dinners
PAY ONLY FOR WHAT YOU EAT!
Enjoy Dinner At
Sweet Molly's
And Dance To The Music Of JOE DI JON
Dottie Gobel sings for you on Fri. & Sat.
Dinner Served Till Midnight
943 MAGIE AVE., UNION — 352-6251
All Major Credit Cards Honored

Kean students learn ad skills the agency way

Professors, administrators and students at Kean College have turned a major problem of decreasing student enrollment, caused by a drop in the birth rate and a change in students' academic priorities, into a marketing course workshop that also will function as an ad agency for the college.



VLADIMIR ASHKENAZY will appear in concert at Kean College on Friday, Feb. 24 at 8 p.m. in the Eugene O. Wilson Theater. The Russian pianist will open his program with Moonlight Sonata of Beethoven and continue with selected works of Chopin and Rachmaninoff. Tickets for the concert are \$6 for orchestra and \$5 for mezzanine. The program is sponsored by the Student Organization and further information may be obtained by calling 627-1106.

History buffs can win grants for their work

Applications are due March 1 for competitive grants to be awarded this year by the New Jersey Historical Commission.

A commission spokesman said the grant programs offer:

— Up to \$700 for original research and writing about New Jersey. Competition is open to both professional and amateur historians.

— Up to \$1,000 for local history projects aimed at public education. Agencies may request funds for presenting history through visual arts or performing arts and for forums, lectures, symposia, exhibitions and other educational projects.

— Up to \$500 for teaching projects in New Jersey history. Competition is open to teachers in elementary schools, secondary schools and colleges.

The commission spokesman said applications are due a month later, April 1, for the Gov. Alfred E. Driscoll Fellowship, offering \$5,000 for research on a doctoral dissertation in New Jersey history.

Applications may be obtained by writing to the commission at 112 W. State St., Trenton or telephoning 609-292-6062. The commission spokesman said applicants should contact Paul A. Steinhilber, research director, about the \$700 grant program and \$3,000 fellowship. Richard Waldron, associate director, is handling applications for the other grants.

Conference to study state as 'crossroads'

New Jersey, "The Crossroads State" will be the subject of the 17th annual professional conference sponsored by the New Jersey Historical Society on Saturday at the society's headquarters, 230 Broadway, Newark.

The all-day affair will begin with a morning program of lectures followed by a luncheon and panel discussion in the afternoon.

Four talks will follow the welcoming remarks of Dr. Clifford I. Lord, the Society's director.

Bertrand P. Boucher, chairman of Montclair State College's department of environmental, urban and geographic studies, will speak on "Geography Shapes History."

"Crossroads of the Revolution" will be the subject of a talk to be given by Dr. Mark E. Lender, assistant history professor at Rutgers University.

Dr. George W. Clark and Dr. Edward H. Foster, two associate professors at Stevens Institute of Technology, will speak on "The Hub of Transportation."

Daniel Prosser, assistant professor at Montclair State College, will dwell on "An Ethnic Crossroads" in New Jersey.

Two discussion groups will deal with the topics "Tracing Ethnic Roots in the Community" and "New Jersey's Natural Phenomenon."

Participants in the first group will include Prof. Walter E. Kops of Mont-

clair State, group leader, and Barbara S. Irwin, the society's reference librarian, and Mary Faas, faculty member of Marlboro Elementary School.

The second group will be made up of Arabelle Pennypacker, supervisor of library services at Lenape Regional High School district, leader, Dr. Alice M. Blunt, curator of earth sciences at the Newark Museum, and Robert Reuzinsky, director of the Media Center at Montclair State.

A summary of discussion groups will follow the presentation, along with a reception honoring the speakers.

Co-sponsors of the conference are the New Jersey Association of Independent Schools, New Jersey Historical Commission, New Jersey Library Association, Educational Media Association, New Jersey Department of Education and the State Library.

Further information about the conference may be obtained by calling the society at 483-3939.

Polonaise Ball to honor head of N.J. Symphony

Teresa Kubiak and Krzysztof Penderecki will be among the special guests attending the New Jersey Symphony Orchestra's Polonaise Ball.

The ball, a major fund-raiser for the JNSO's state-wide league, will be held on Saturday, April 8 at the Governor Morris Inn, Morristown.

Kubiak, a resident of Montclair, is a star of the Metropolitan Opera and has sung with most of the world's leading opera companies, including the New Jersey State Opera. Penderecki is acclaimed as perhaps Poland's greatest living composer. His Second Violin Concerto was recently premiered by Isaac Stern at Carnegie Hall and televised on WETA.

The Polonaise Ball will be honoring Polish-born Thomas Michalak, newly appointed music director of the Orchestra.

Ticket prices per couple have been set at benefactors \$1,000, sponsors \$500, patrons \$200 and friends \$125. A portion of the tickets price is deductible for income tax purposes.

TNJ
Group traveling?
Have fun together
on a
chartered TNJ bus.

Save money, beat traffic, and save gas. For charter information and reservations call:

624-6622

Transport of New Jersey
 1155 Raymond Blvd.
 Newark, NJ 07102

We're going your way!

Channels air college sports

The Rutgers University basketball team will be featured on the Rutgers Sports Channel on Friday, Feb. 3, at 7 p.m. The Rutgers basketball team will play a game against the Princeton Tigers at 7 p.m. on the Rutgers Sports Channel.

The Princeton Tigers basketball team will be featured on the Rutgers Sports Channel on Saturday, Feb. 4, at 7 p.m. The Princeton basketball team will play a game against the Rutgers Knights at 7 p.m. on the Rutgers Sports Channel.

Rally to boost abortion rights

A statewide speaker for Abortion Rights was scheduled to appear at the New Jersey chapter of the National Organization for Women, scheduled for 7 p.m. Sunday at the Rutgers University Center for the Humanities, 100 University Ave., Newark. The speaker will be Dr. George W. Clark, associate professor at Stevens Institute of Technology.

The speaker will be Dr. George W. Clark, associate professor at Stevens Institute of Technology. The speaker will be Dr. George W. Clark, associate professor at Stevens Institute of Technology. The speaker will be Dr. George W. Clark, associate professor at Stevens Institute of Technology.

Antique autos to go on display

The Mercer — Known some 65 years ago as "the most talked of car in America" — will be the subject of a major exhibition at the New Jersey State Museum in Trenton from April 8 through July 2.

Built in Trenton between 1909 and 1925, the Mercer was designed as a moderate-priced, \$2,100 to \$2,400, run vehicle which a private individual may take out on the road and safely and consistently drive at the speed between 70 and 80 miles per hour. In 1914 a Mercer driven by Trenton's Eddie Pullen was the first American car to win the prestigious Santa Monica Grand Prix. Approximately 25,000 Mercers were manufactured, 98 are known to be in existence today. At least four of them, along with a variety of photographs and memorabilia, will be included in the exhibit.

AMERICAN CANCER SOCIETY

Tolstoy epic on state's TV

Tolstoy's masterpiece, "Anna Karenina," will premiere on "Masterpiece Theatre" on Monday, Feb. 6, at 9 p.m. on New Jersey Public Television channels 23, 50, 52 and 58.

The classic, involving the love story of a doomed heroine, will be seen in 10 hour-long segments.

RIFLE ASSOCIATION
 The National Rifle Association was incorporated Nov. 24, 1871.

DR. JACK SOL MERMELSTEIN
OPTOMETRIST
 Successor To Dr. Harry Korman
 Announces
 The Reopening Of His Offices
 At
934 STUYVESANT AVENUE
UNION, N.J.
 Hours By Appointment Only
686-6814

TURN YOUR DIAMONDS OR EMERALDS INTO DOLLARS

Convert your precious jewelry into cash. We buy from private owners, banks, estates and liquidations. We also remodel your old jewelry. Come in and see our consultants today!

WE BUY OLD GOLD!

Authorized Omega, Pulsar, Rolex, Seiko Dealer

w.kodak jewelers
 CORNER MORRIS & STUYVESANT UNION, N.J.

MIDDLESEX MALL, So. Plainfield, N.J.
 LEDGEWOOD MALL, Ledgewood, N.J.
 MORRIS CO. MALL, Morristown, N.J.
 WORLD TRADE CENTER, New York City
DIAMOND APPRAISALS

THE INTERNATIONAL HOUSE OF PANCAKES

20th Anniversary Sale!

This week, why not stop by and help us celebrate our 20th Anniversary with special low prices and chances to win FREE valuable prizes. Plus FREE balloons for the youngsters while they last.

i HOP

good food...served at easy living prices

Rt. 22, Union (center isle)
 Sun.—Thurs. 7 am til 12 pm, Fri.—Sat. 7 am til 2 am

ICBO to hold classes in business education

The Interracial Council for Business Opportunity, ICBO of New Jersey has announced that the fall semester classes that make up the ICBO business education program will be given at Rutgers University's Newark campus starting the week of Feb. 27.

These free courses are directed principally at the minority business owner but are open to others according to available space. Since the courses are always over-subscribed, interested parties should apply at once. Individual courses in record keeping, bookkeeping and business management will be presented one night per week for 10 weeks. Certificates are awarded to those who meet the requirements. Over the past nine years 3,106 certificates have been

earned by graduates. Applicants can enroll by mail or telephone by contacting Bernard H. Saperstein, education director, at the ICBO office, 24 Commerce St., Newark, or by calling 622-4771.

The courses have been acclaimed "the finest in America" by representatives of the Ford and Rockefeller Foundations and the U.S. Government Task Force on Education and Training for Minority Business Enterprise.

MUTUAL FUNDS
 Sales of mutual funds are running at near record levels, according to Investment Company Institute. For 1977 totals were about \$6.4 billion, fifty percent higher than in 1976.

YOU WANT IT IS EASY TO PLACE JUST PHONE 686-7700
 Ask for "Ad Taker" and she will help you with a Result-Getter Want Ad.

HONDA HONDA HONDA HONDA

MPG 47-57 NO MONEY DOWN

NEW SHIPMENTS JUST ARRIVED MANY HONDAS IN STOCK FOR IMMEDIATE DELIVERY

MAXON

Mirons EthanAllen Gallery

Ethan Allen WINTER SALE

SAVE 10% to 20%!

Choose from a wide selection of our most popular living rooms • dining rooms • bedrooms • family rooms • floor covering • draperies • lamps • accessories • sleep sets

Five Bedrooms Now on Sale!

Free decorator service.

MIRONS — Ethan Allen Galleries
ROUTE 22, WATCHUNG • ROUTE 18, EAST BRUNSWICK
 Open Daily to 9:30, Sat. to 6 • Open Sundays 1-5 for Browsing Only
 MasterCard, Visa, American and Extended Charge Plans

Pretty plus soft. Less 10¢.

Kleenex tissue

Delsey

Save 10¢ on TWO four packs of either Delsey or Kleenex Boutique bathroom tissue.

10¢ OFF ON TWO

DEALER: For prompt payment, send this coupon to Kimberly-Clark Corporation, Box 2, Clinton, Iowa 52234. For each coupon you accept at our store, we will pay you face value plus 5¢ handling charge, provided you and your customer have complied with the terms of this coupon. Any other use constitutes fraud. Invoices submitted must be shown upon request. Limit: One coupon per purchase of two four-pack packages of either Kleenex® Boutique® or Delsey® bathroom tissues. Void where prohibited or restricted. Offer good in the 50 United States. Cash value: 1/20th of 1¢. Offer expires December 31, 1978.

Kimberly-Clark Corp. © 1978. NCH-2312