



Your Want Ad  
Is Easy To Place--  
Just Phone 686-7700

# MOUNTAINSIDE Echo

An Official Newspaper  
For The Borough Of Mountainside

The Zip Code  
for Mountainside is  
07092



VOL. 20-NO. 17

Second Class Postage  
Paid at Mountainside, N.J.

MOUNTAINSIDE, N.J., THURSDAY, MARCH 30, 1978

Published Each Thursday by Forum Publishing Corp.  
7 New Providence Road, Mountainside, N.J. 07092

Subscription Rate  
\$9.50 Yearly

25c per copy

## Spina will run this November, Halbsgut won't



THOMAS SPINA



DONALD HALBSGUT

### Tennis badges placed on sale

The 1978 tennis badges are on sale at the Mountainside recreation office, all tennis players aged 13 and above this week were reminded that a badge is required for play.

The two courts at Deerfield School and the four at Echobrook finally are emerging from the snow and ice cover. Recreation director Sue Winans noted that the Echobrook courts were especially icy as late as Friday, because of the absence of direct sunlight on the area.

The badges (\$3 for adults 18 and older, \$1.50 for those 13 to 17) may be purchased at the recreation office weekdays from 9 to 11 a.m. and 2 to 4 p.m. Details on the reservation system as well as all rules and regulations also are available there. For additional information, readers may call 232-0015.

Donald Halbsgut has announced he will not seek a second term on the Mountainside Borough Council, while Councilman Thomas Spina said he will run for one of the two council seats to come before the voters in November.

Halbsgut, who has served on the council since 1975, said his decision was based on family and business reasons.

"I wish I could devote more time to the council," he said, "but my family and business come first." He is Recreation Commissioner and has acted as the council representative to the Rescue Squad and the Shade Tree Commission.

Spina, appointed by Mayor Thomas Ricciardi to fill a vacancy last October, said "my current intentions are to run for the council this year." A former school board member, Spina was appointed civil defense and fire commissioner and is council representative to the borough's water and lights committees.

Halbsgut praised borough officials for their "dedication to doing a job" and said high property values, a lower tax rate than comparable towns and the decision to convert the Echo Brook School into new borough and police department offices point to "a properly run borough."

"I have no problem with this town," he said. "It's been run very, very smartly."

He said leaders in surrounding communities have commended the borough on its decision to convert an unused school to the Municipal Building instead of constructing a new complex.

"They've said that perhaps what we did was the right thing," added Halbsgut—"something they should have done."

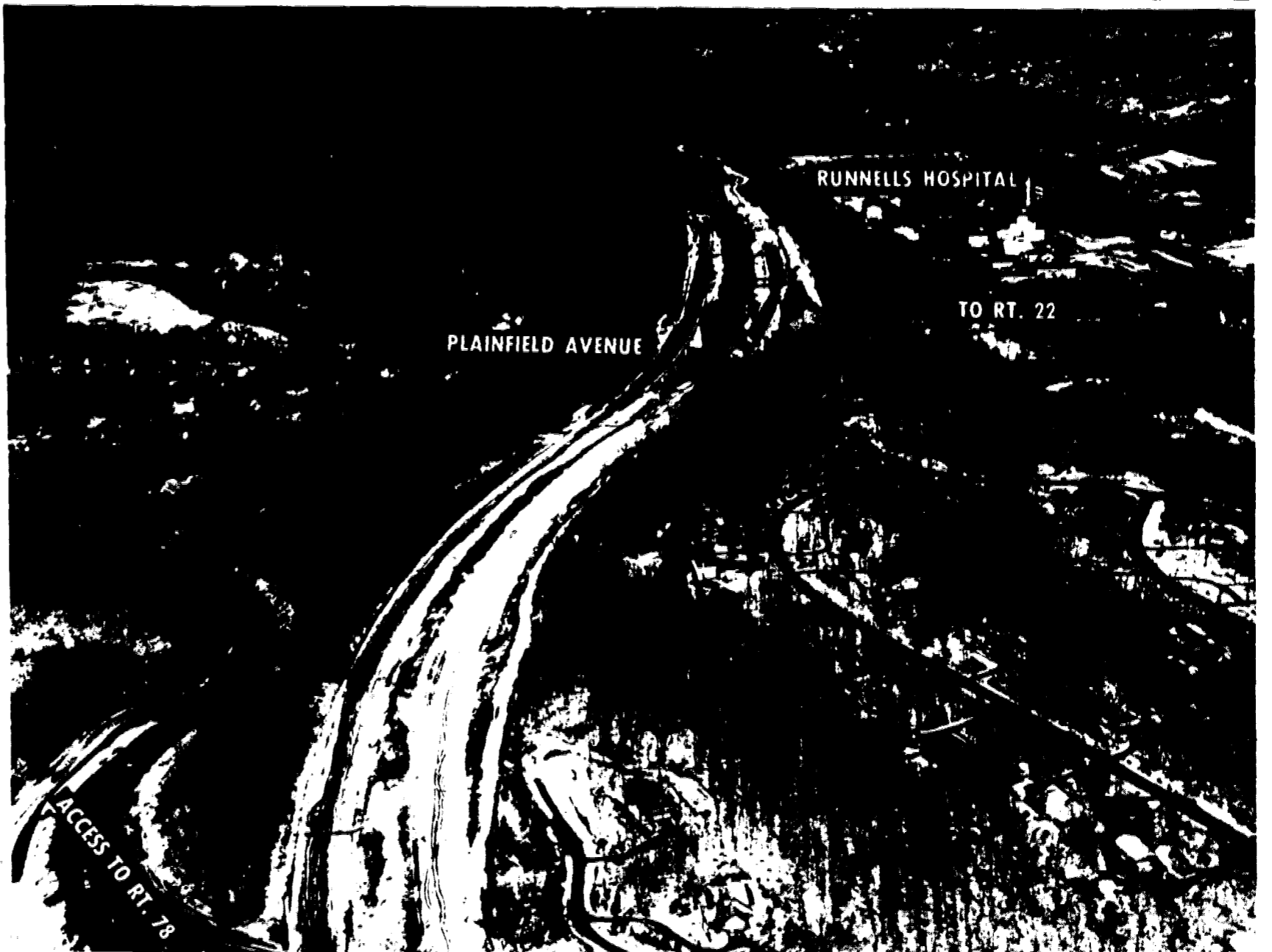
The councilman chided borough residents for harboring one-sided views of the community and not recognizing the "extra work" done by borough officials.

"The job done by these people goes unnoticed by the average citizen," he said. "There are a lot of dedicated people in town."

### Meeting dropped by school board

The Union County Regional High School District board meeting this Tuesday has been cancelled because some of the board members will be attending the national school boards convention.

The next meeting will be held on April 11 at the Jonathan Dayton Regional High School Instructional Media Center, Mountain Avenue, Springfield. All residents of the district have been invited.



DEAD-END—Aerial view shows Rt. 78, coming from Pennsylvania, ending abruptly near Runnells Hospital in Berkeley Heights. Five-mile link through the Watchung Reservation, above the top of this picture, has not yet been started pending settlement of controversy over impact on parkland. The highway continues on the

other side of the Reservation, from Springfield to the N.J. Turnpike at Newark Airport. Traffic on Rt. 78 now ends just below section pictured, where access roads enters highway at lower left. Ungraded portion (here covered with snow) continues to dual bridges over Plainfield Avenue, at center. (AndRich Studios)

### Cougars leap by Holy Trinity for league title

Our Lady of Lourdes of Mountainside captured the Suburban Catholic Grammar School Basketball League championship with a 46-37 victory over Holy Trinity, Westfield.

Pat Pallitta paced the Cougars with 16 points, including four important foul shots in the closing minutes. The Mountainside school controlled the backboards throughout the game, led by Frank Gagliano with 15 points and 20 rebounds and Lenny Caprigione with 10 points and 12 rebounds.

Also contributing to the Cougar cause were John Gardner with three foul shots in the final minute of play and Gary Kane with outstanding defensive work. Our Lady of Lourdes, coached by Wayne Camp and John Gardner, reached the finals by winning the American Division crown.

(Continued on page 2)

## School board reaction is mixed concerning task force proposals

BY PATRICIA GARRISON  
Mountainside Board of Education members this week expressed mixed views on several proposals handed down by a state task force aimed at improving the efficiency of local school districts. The commission, headed by State Sen. Wayne Dumont (R-Warren), called for dropping voter approval on school budgets and eliminating tenure for school administrators in its list of proposals.

Local board members said when questioned that they feared a loss of local control in light of the task force recommendations.

"There's an awful lot of pressure pulling against local control right now," said board member Anthony Mazzucca. "School districts have to be very, very careful."

Members Charles Speth and Patricia Knodel said public budget approval was a key to keeping local school control

intact, but other members, including board president Scott Schmedel, saw the merit of abolishing a budget referendum.

"Voter approval happens to be an inefficient way of determining how much to spend on local schools," said Schmedel. He said it was unfair for a small number of eligible voters who "allow themselves to be ignorant about what they're voting on" to decide the fate of a school budget.

"People have not done a good job of finding out things for themselves," he said. "A high percentage of voters are not taking the responsibility they should in school affairs."

Mazzucca and school superintendent  
(Continued on page 2)

## Logomachy wins out Board is wordlisted

By HELEN REYNOLDS  
Three randomly selected contestants from the Union County Regional High School District Board of Education, which prescribes a vocabulary test for every English class, recently got an unexpected dose of their own lexical medicine.

Board president Charles E. Vitale Jr. easily passed—as did the other two—but was still sputtering a bit after taking the surprise quiz.

"I was robbed," said Vitale. "I deserved a score of 80, or at least 75—not just 70."

Dr. Marilyn Hart and Roland Hecker also got a score of 70 apiece, or seven out of 10 correct, in defining the list of words: labyrinth, lackluster, lagniappe, lappoon, liaison, licentious, liturgy, logomachy, lucubration and lugubrious.

Julia Latzer, a teacher of advanced-placement English at Jonathan Dayton Regional High School, said the board members all performed about as well as the highest scorer on a comparable test administered to her students.

The students take a pre-test—just to judge themselves, not for credit—before they begin the prescribed unit of vocabulary study. (They can later compare their pre-test scores with their graded performance after studying.) The pre-test includes 50 words selected from 300 in the vocabulary booklet used by advanced-placement students. This newspaper chose the 10-word "L" list from the same booklet as a test for board members.

"The highest anybody got was 38 of 50 (or 76 percent)," said Mrs. Latzer about the most recent pre-test she administered to students. "The median was between 21 and 22 (about 43 percent). If the board members got 70 percent, I'd say they did very well."

—O—

A REPORTER from this paper asked Vitale, a retired construction contractor, to lead the board "team" because he is president. Selection of his teammates—Dr. Hart, an associate professor at Kean College, and Hecker, an engineer—was based on their being slower than the other six board members to escape during intermission of a regular meeting. A few of the escapees returned to kibitz.

"Why, everybody knows the meaning of 'lagniappe' and 'lucubration'—or however you pronounce them. I'd tell you, but that would be cheating," joked board member Stephen Marciniak while Vitale was taking the test.

Webster's defines "lagniappe" as "a small gift given a customer by a merchant at the time of purchase; broadly: something given or obtained gratuitously or by way of good measure." The same dictionary describes "lucubration" as "laborious study" or "studied or pretentious expression in speech or writing."

(Continued on page 2)

### Charter dinner slated by Lions

The newly-chartered Lions Club of Mountainside will hold its "charter night" dinner-dance April 7 at the Mountainside Inn, Rt. 22, Mountainside. Richard Benninger, chairman, stated that the ticket drive and advertisement solicitation program were proceeding ahead of schedule.

Information regarding charter membership in the Mountainside Lions Club or purchase of tickets for the dinner dance is available from Benninger at 232-9428 or James Stancati at 654-6563.

## Happy to 'stay after' School project success

Some elementary students in Mountainside public schools have been kept after school once a week for the past month.

And they've loved every minute of it. Citing a lack of organized activities for students in kindergarten through third grade, more than 40 volunteers put together an enrichment program for the younger students in the district.

The program's chairman, Judy Kolton, said, "Children in the upper grades usually have something they can do after school. But there is very little for the kids in the third grade on down to kindergarten."

"What we were looking for was something they could do that was socially and educationally sound."

The result was a weekly program that enticed more than 200 youngsters to stay in school after class.

The volunteers, mostly parents,

people from the community and older students, offered a four-week program with instruction in science, French, Spanish, dance, string art, macrame, sewing and model building.

"We wanted this program to be more than just a baby-sitting service," Mrs. Kolton added. "We wanted to try to teach them a skill."

"The average class size was 12 students, and we had at least one instructor and one aide in every classroom."

The volunteers hope to expand the program to five weeks next year and add some new courses.

"This is an all-volunteer program," Mrs. Kolton explained. "So it will all depend on who wants to do what."

Barbara Hollister, who served as the program's co-chairman, will be the chairman of next year's enrichment program.



SAFETY FEATURES—The Elizabethtown Water Co. tower on the Watchung Reservation has been undergoing major safety renovations since last year, following suicides committed at the site in 1975 and 1976. Michael Serra, chief engineer of the Union County Park Commission said access to the water tower has been sealed off with metal gates and a sealed metal plate. The water company is also installing a security alarm system. Serra said visitors will still have access to the observation deck when the tower reopens. (Andrich Studios)









### Cancer drive seeks to raise all-time record

The American Cancer Society will wind up its annual crusade against cancer during April. Cancer Control Month, it was announced by W. Emlen Roosevelt, county crusade chairman. Union County's goal is a record of \$100,000, some \$25,000 more than the all-time high realized during the 1977 crusade.

More than 10,000 volunteers will answer the society's door-to-door campaign during April while others are busy in raising money through bazaars, individual, special and corporate gifts, and special events.

One of the biggest events in the Union County Unit's history, according to Roosevelt, will occur April 30, at 8 p.m. Westfield. Habine's will feature the re-opening of its Westfield store with a \$100 per person gala. Presidential Crusade Chairman Al Habine of Westfield is heading the city's door-to-door campaign which has a goal of \$110,000.

Local town chairmen include Ann and John Vitale, Kenilworth; Paul and Anne Arcure, Linden; Eve Vitale, Mountainside; Sam and Connie Hunter, Roselle; Robert Morgan, Grey Morgan and Cathy Morgan, Belle Park; Don and Elaine Auer, Springfield; John Zimmerman and James Keebler, Union; and Vickie Hart, Lenoir.

The county will spend more than \$49,000 a year for various forms of cancer treatment for cancer patients.

### Life, death situation: children and poison

Thousands of children are poisoned by hazardous household substances every year according to the Union County Office of Consumer Affairs. Medicines, furniture polishes, lighter fluid and turpentine are some of the potentially dangerous products commonly found in the home, the office said. The packaging is attractive, brightly colored and perhaps looks like

food. If it is within reach it is poison and potentially lethal. The office files include reports of the death of an 18-month-old boy who drank floor cleaner containing petroleum distillates. An 8-year-old drank a bottle of liniment and a 1-year-old girl spent nine days in the hospital after swallowing charcoal lighter fluid from a can left in the yard after a family picnic.

### Chard to retire as bank officer

Roland T. Chard of Roselle, vice-president, cashier and a director of the National State Bank, Elizabeth, will retire tomorrow, after nearly 50 years of service with the bank.

A native of Falmouth, England, Chard has long been active in local affairs. He was president of the Roselle Board of Education from 1959 to 1960, and a member of the board from 1964 to 1965. He also served on the Community Recreation Board of Roselle from 1968 to 1963.

In addition to being a director of the bank, Chard is a director of the National State Corp., the United Armored Carrier, and director, secretary and treasurer of the Central District Holding Co., all in Elizabeth. He was also formerly a director and vice-president of the Rosedale and Linden Cemeteries in Linden.

Ellen Bloom, Consumer Affairs Director, has released these facts provided by the U.S. Consumer Product Safety Commission and suggests a few steps to help poison-proof the home:

—No matter how attractive a hazardous product may be, children usually can't be poisoned by something they can't get their hands on. Therefore, one key to poison prevention in the home is to keep all medicines and other hazardous products locked up when not in use.

—Don't depend on close supervision. It's impossible to watch a child every minute and children can move very quickly.

—Always read the warning labels on hazardous products. These labels will tell you the seriousness of the danger and list all hazardous ingredients. If your child is accidentally poisoned, the first thing a doctor needs to know is the identity of the poison. The label will also tell you what immediate first aid you can give.

—Keep all hazardous products in their original containers. Never store them in cups, soda bottles, or other containers that would normally contain food or drink.

—Avoid taking medicines in a child's presence. Children imitate adults, particularly their parents.

—Call any medicine by its proper name. Never suggest that medicine is "candy."

—When giving medicine to children, give them the proper dosage. Don't think that because a little medicine gives relief, more would do an even better job.

—Promptly dispose of prescription drugs by flushing them down the toilet once the illness for which they were prescribed is cured.

—Do not store any other hazardous products with medicines that are taken internally. There are many look-alike containers on the market. You or your child could make a tragic mistake.



ANITA GILLETTE, starring in Neil Simon's "Chapter Two" on Broadway, will present awards at Union County Unified Way's annual awards luncheon Friday, April 7, at the Town and Campus, Morris Avenue, Union.

### Trailside has your number

"The Golden Numbers," introducing Meton, a Greek mathematician who devised a system of coordinating lunar and solar calendars, will begin this week at the Trailside Planetarium and will be presented each Wednesday at 8 p.m. and Saturday and Sunday at 2, 3 and 4 p.m.

For those having trouble helping their children with their math homework, the Trailside Nature and Science Center has the correct answer: "Math for People Who Don't Like Math," each Wednesday morning at 10. Students can register by calling 232-5930.

"UFO's," a Trailside Nature and Science Center lecture speculating on life in outer space and visitors to the planet Earth, will be presented Sunday, April 16, at 2 p.m. The planetarium has a seating capacity of 35 persons. Admission is 50 cents per person and children under 8 are not admitted.

Trailside facilities, operated by the Union County Park Commission, are located at Coles Avenue and New Providence Road, Mountainside. The Nature and Science Center is open weekdays, excluding Fridays, from 3 to 5 p.m., and Saturdays, Sundays and holidays from 1 to 5 p.m.

### Archery group seeking people to take up sport

The Watchung Bowmen of Linden is in the midst of a membership drive and is hoping to induce more people into taking up the sport of archery.

Its next monthly meeting will be on Monday, April 10, at 8 p.m. at the indoor range at Wood and Linden Avenues. The group maintains an outdoor archery range in Warren.

Vince Spignola of Clark, president of the club, said that archery "is one of the fastest growing participation sports for people of all ages. Since it has become a gold medal Olympic event, people have discovered it and are showing an increasing interest in it."

In addition to demonstration teams that go around the area, said Spignola, the club also holds an open house in Linden on the third Monday of each month at 8 p.m. A Junior Olympics archery development program is conducted each Saturday morning. The open house and Saturday morning program is supervised by Anthony

Murawski, a certified National Archery Association instructor. Further information about the club may be obtained by calling 862-1626.

#### SALESMANSHIP

A successful auto salesman was overheard telling a prospective buyer, "Did you realize that while we're standing here talking, your car is depreciating?"

Arthur L. Wells

Your OPTICIAN

IN A SPRINGFIELD

248 MORRIS AVE. • 376-6108 (SPRINGFIELD, N.J.) (Closed Wednesdays)



ULTRAVUE PROGRESSIVE POWER LENS WITH THE INVISIBLE BIFOCAL LENS. FREE PARKING IN REAR.

### Show set by chorus

The Colonial Chorus, area chapter of SPEBSQSA, the barbershop harmony society, will present its annual swing into spring festival Saturday, April 8, at 8:15 p.m. in Westfield High School.

The performers will include the 100-member, award-winning Island Hills (N.Y.) Chapter of Sweet Adelines; "Talk About Town," a quartet from the Huntington-North Shore, N.Y. chapter, and "Melody's Paint Brush," a quartet made up of members of the Colonial Chorus.

Tickets (\$4) may be obtained from members of the chorus or by calling 264-9356 or 233-6233.

#### TAKES AWHILE

A sequoia tree—among the oldest living things on earth—takes 300 years to fully mature.

London \$256 ROUND TRIP	Phoenix \$210 ROUND TRIP
Rome \$199 ONE WAY	Denver \$89 ONE WAY
Los Angeles \$234 ROUND TRIP	Las Vegas \$317 ROUND TRIP
San Francisco \$244 ROUND TRIP	Paris \$376 ROUND TRIP

**TRAVELAIDE, INC.**

AIRLINE TICKETS  
VACATIONS-CRUISES  
HOTELS-CAR RENTALS  
TOURS-SIGHTSEEING

MILLBURN MALL  
2933 Vauxhall Rd., UNION  
NEAR MILLBURN AVE.  
TELEPHONE (201) 964-5760

**FANTASTIC VALUE!**  
SHOWERS • WEDDINGS • ENGAGEMENTS • ANNIVERSARIES

**12" LIMOGES CAKE PLATE**  
With Handles  
Floral Decorations  
Reg. \$14.95  
Limited Quantities

Expert Repairs of China Figurines

**THE Silver Gallery**  
26 MILL RD., IRVINGTON, N.J.  
(FOODTOWN SHOPPING CENTER)  
30.5.30 MON. thru SAT. FREE PARKING 373-9249

### Prof to exhibit his art works

An exhibit of figurative paintings and drawings by George Hildrew of New York City will open in the Tomasulo Gallery at Union College, Cranford, on Friday, April 7, with an artist's reception at 8 p.m. Hildrew, a member of the Union College Fine Arts Department, has exhibited widely in the United States, Europe and Australia.

**LONGEST CAVE**  
The Flint-Mammoth cave system in Kentucky is the longest cave in the world. It stretches an estimated 144 miles.

### 3 outings for hikers

A ramble, a circular, a hike and a bike ride are scheduled this weekend for members of the Union County Hiking Club and their guests.

The South Mountain Ramble is scheduled for Saturday. The leader will be selected from hikers who will meet at Locust Grove at 10 a.m. for this six-mile trek.

Don McNeil will lead the Arden Circular on Saturday, April 1. Hikers will meet at the Essex Toll Barrier of the Garden State Parkway at 8:15 a.m., consolidate cars and meet the leader at the Arden parking lot at 9:40 a.m.

A 10-mile hike is scheduled for Sunday. The leader will be selected from hikers who will meet at the Packanack Wayne Mall at 9:30 a.m.

Anne and Carol Christian will lead a 25-mile bike ride from Cranbury to Princeton on Sunday. Bikers will meet at the Cranbury Bank parking lot at 10 a.m.

Further information about the hiking club is available from the Union County Park Commission's recreation department.

**SUBARU**  
SEVEN YEARS OF CONTINUOUS SALES & SERVICE  
"WE ARE THE EXPERTS WHEN IT COMES TO SUBARU'S"  
FREE WATCH WITH PURCHASE OF ANY NEW SUBARU  
CHECK OUR PRICES BEFORE YOU BUY  
SOUTH ORANGE IMPORTED CARS  
343 Valley St., 762-9433  
So. Orange

The exhibits will range from primitives and furniture to jewelry, porcelain, glass, china and clocks.

Luncheon and dinner will be served and snacks will be available. Proceeds from this antiques show will be used for the restoration of the 225-year-old Merchants and Drivers Tavern.

**CUT-A-THON**  
Trimmers Vs. Cancer

The staff of Trimmer's Hair-cutting Salon will dedicate SUNDAY APRIL 2nd to sponsor a Cut-a-thon for the RUTH ESTRIN GOLDBERG MEMORIAL FOR CANCER RESEARCH. Trimmers will be cutting hair from 9 a.m. to 5 p.m. Call for your appointment now - or just stop by. Get a great cut for a great cause. DONATION \$7.

114 So. Livingston Ave., Livingston  
**994-3000**

**In New Jersey you can't afford to drive the cheapest cars. Let a Jersey Pro show you why.**

Rabbit, Scirocco, Dasher

When a State is as hard on cars as Jersey is, a Volkswagen is hard to beat. That's why your Jersey Pros chose Volkswagen in the first place. Volkswagen has the features that make it seem like the car was built especially for this State, whether you choose our Rabbit, Dasher, or Scirocco.

Take the N.J. Turnpike and the Garden State Parkway. They're the home of the short stop.

And nothing stops like a Volkswagen. All our cars have dual diagonal brakes for controlled balanced stops... even in panic situations.

Then there are New Jersey's country roads and hills, and our snow and sleet storms. Volkswagen's answer to that is front-wheel drive.

And Jersey isn't an inexpensive place to live. Even parking spaces charge admission. That's why we've made driving as economical as possible. Fuel flow is metered for economy and performance by

**Douglas Motors Corp.**  
430 Morris Avenue, Summit (201) 277-3300

a unique fuel control system. You've got to come and see our cars. And drive them. You'll find out that Volkswagen is truly in a league of its own.

If you want a car that's only cheap, we can't help you. But if you want a car at an excellent price that's a great value, we can help you... and help you... and help you some more. For years to come.

**COME SEE THE JERSEY PROS. WE'RE IN A LEAGUE ALL OUR OWN.**

**JERSEY PROS**

**Free from Berkeley**

Four Fabulous Porcelain "Money Tree" Coffee Mugs!

When you open a \$100 savings account OR add \$100 to your present account. Please note that we can give only four mugs per account.

Your Neighborhood Money Tree  
**Berkeley Federal SAVINGS & LOAN**

UNION: 324 Chestnut Street/687-7030

Hours: Monday thru Friday, 8:45 to 3:30  
Friday Evenings, 6:00 to 8:00/Saturday, 9:30 to 1:00

Other branches in: Short Hills (main office), Newark, East Hanover, Livingston, Whiting



# Two-way TV hook-up aids in college course

Two-way television hook-ups between a college classroom and a television studio are helping students learn more about the world of labor relations.

The University of Connecticut has a two-way television hook-up between its labor relations classroom and a television studio. The hook-up allows students to see and hear the labor relations instructor, Dr. Lawrence J. Lovoy, as he teaches his course. The hook-up also allows students to see and hear the labor relations instructor, Dr. Lawrence J. Lovoy, as he teaches his course.

The hook-up is a two-way television hook-up between a college classroom and a television studio. The hook-up allows students to see and hear the labor relations instructor, Dr. Lawrence J. Lovoy, as he teaches his course. The hook-up also allows students to see and hear the labor relations instructor, Dr. Lawrence J. Lovoy, as he teaches his course.



Two-way television hook-ups between a college classroom and a television studio are helping students learn more about the world of labor relations.

## All-American pageant slated

A new pageant, the All-American Pageant, is being held in New Haven, Conn. The pageant is a two-day event that features a variety of activities, including a beauty pageant, a talent show, and a pageant.

The pageant is a two-day event that features a variety of activities, including a beauty pageant, a talent show, and a pageant. The pageant is a two-day event that features a variety of activities, including a beauty pageant, a talent show, and a pageant.

## Mental Health

FACTS ABOUT SLEEP AND DRUGS. Sleep is a natural process that is essential for good health. However, many people have trouble sleeping, and this can be caused by a variety of factors, including stress, anxiety, and depression.

Sleep is a natural process that is essential for good health. However, many people have trouble sleeping, and this can be caused by a variety of factors, including stress, anxiety, and depression. Sleep is a natural process that is essential for good health. However, many people have trouble sleeping, and this can be caused by a variety of factors, including stress, anxiety, and depression.

# SUBURBAN REAL ESTATE MART

City • Suburbs • Farm Country • Lake • Shore

## Shadow Lake boasts nationally famous pair

When her husband, Dr. Lawrence J. Lovoy, died in 1960, she inherited a large estate in Shadow Lake, Conn. She has since sold the estate and moved to a new home in the same area.

She has since sold the estate and moved to a new home in the same area. She has since sold the estate and moved to a new home in the same area. She has since sold the estate and moved to a new home in the same area.

She has since sold the estate and moved to a new home in the same area. She has since sold the estate and moved to a new home in the same area. She has since sold the estate and moved to a new home in the same area.

**ILMPIC EVENTS**  
BOYS GIRLS  
MEN WOMEN

**GRAND OPENING SPECIAL**  
WEEK OF FREE WORKOUTS  
JUNIOR ENROLLMENT  
FROM APRIL 10 TO APRIL 15, 1978

OR ARJ REGISTRATION  
CALL After P.M. JOHN  
325-2337

122 WESTFIELD AVE., ROSELLE PARK

**DOG OBEDIENCE**

Enroll Now For  
CLASSES IN:

- UNION • WESTFIELD
- SUMMIT • SELIN

Complete Course \$35

**N.J. DOG COLLEGE**  
654-6632



# all stores join in our anniversary celebration

It's been a year since we expanded our UNION store. Now we've expanded our savings on this spring's most wanted items.



New Spring t shirts \$1.99

new spring pants & shirts

YOUR CHOICE

**5.00** EA

THOUSANDS TO CHOOSE FROM!

- many first quality
- casual or dressy
- sizes 6-15
- pants reg. to \$25.
- shirts reg. to \$15.

• 3 days only  
thursday, friday, saturday

**UN diplomat**

to visit Drew

Dr. Lawrence J. Lovoy, a former diplomat, is visiting the University of Connecticut. He has a long and distinguished career in the State Department.

**Nice Stuff**

Where to Afford the Clothes you Can't Afford

<b>CHATHAM</b> 455 Main Street 635-6700	<b>UNION</b> 1714 Stayessant Avenue 687-2232	<b>EAST ORANGE</b> 48 Glenwood Place 692-4198
---	--	---

Open Mondays and Thursdays 10 a.m. to 9 p.m. Other days 10 A.M. to 6 P.M.

When in Florida visit our Miami and Hallandale stores.

Bank Americard and Mastercharge accepted. \*No lay aways on sale or advertised items.

All our merchandise is tagged irregular to protect manufacturers.

**GREEN FIELDS in HAZLET PREVIEW SHOWING**

WALK TO EXPRESS BUSES TO NEW YORK CITY & NEWARK

3-STORY COLONIALS & BI-LEVELS 3 & 4 BEDROOMS

Price From \$53,990

10% DOWN

10700 CHATELAIN

10700 CHATELAIN

10700 CHATELAIN

**Now!**

**The New Jersey Homes for families who can afford to live anywhere**

Single-family homes from \$91,900

Townhomes from \$44,990

**Peahter Valley**

P.O. Box M  
Allamuchy, New Jersey 07820  
(201) 868-2900

Road: 88 West to Exit 19 (Hackensack, Andover) to Route 517



# Panther Valley sales aim toward affluent

Four new models of single family homes at Panther Valley called the New Jersey homes for families who can afford to live anywhere, priced from \$91,900 are now on display.

The four new models are the Brookdale ranch, the Chesapeake I and two, two-story colonial with a finished room over the garage, and the Sherwood split-level. Three of the four have four bedrooms, two-and-a-half baths and two-car garages, and all have expansion space for finishing according to the individual interests of the buying family.

The Chesapeake II, is styled for the hillside settings at Panther Valley Steps lead up from the garage to the family room with approximately 300 square feet of space, where insulated sliding glass doors provide entrance to the patio and where buyers have the option of adding another full bath, wood-burning fireplace or a walk-in closet.

In the slate entry foyer are the base of the center hall staircase, a guest closet and the powder room. Optional doors can lead from the dining room to the family room. To the side of the foyer is the front-facing living room with box window views. Beyond is the den with a place for another optional fireplace. Family meals can be served either in the separate breakfast room or in the formal dining room.

The kitchen has several features, at no extra cost, including a self-cleaning, eye-level range and vented hood, dishwasher, garbage disposal, stainless-steel sink, laminated counter tops and hardwood cabinets. Adjoining the kitchen are a utility room and the pantry.

Upstairs, the master bedroom suite has a walk-in closet and private dressing area, both oversized, and a private full bath. The family bathroom and linen closet are adjacent to the other

three bedrooms. The entire lower level is another ready-made expansion area: for a recreation room, a fifth bedroom, yet another full bath or whatever special hobby plan.

Also included in the price are rich wall-to-wall shag carpeting in all living areas, ceramic tile in all baths and a large storage space in the garage. The entire home is pre-wired with telephone and master antenna TV outlets. To preserve the beauty of Panther Valley, all utilities are underground.

Originally part of a rolling hill estate in the midst of mountain and lake country 55 miles from the George Washington Bridge, Panther Valley offers its residents privacy and recreation. Among the community's features are tennis, platform tennis and swimming, nature trails and the option to join the Panther Valley Golf and Country Club and to play on its championship 18-hole golf course designed



**MODELS OPEN** — The expandable ranch home newly-introduced at Panther Valley, the private 1600-acre residential community off Rt. 80 in Allamuchy is the Brookdale model. The three bedroom, two-bath home with attached two-car garage is priced at \$91,900, and has a family room with cathedral ceiling, kitchen with separate breakfast area, plus a basement for finishing with recreation room, a fourth bedroom, a den or any family purpose. Options include a wood deck, where conditions permit, and wood burning fireplace with wood box.

By Robert Trent Jones. To reach Panther Valley, take the Parkway or Rt. 280 to Rt. 80 west. Proceed west until the Andover-Hackettstown exit just beyond the scenic view area that looks out over Panther Valley and the surrounding, dramatic countryside. Turn left at the end of the exit ramp, and proceed approximately six-tenths mile to the entrance.

# SUBURBAN REAL ESTATE MART

• City • Suburbs • Farm Country • Lake • Golf

## South Wind offering homes at low prices

In an age where builders are cutting down on amenities and the price of houses keeps skyrocketing anyway, there is a ray of hope: the manufactured home.

A person doesn't have to earn "executive wages" to afford a manufactured home. At South Wind, an adult community in Jackson, Ocean County, models begin at \$11,900 and escalate only as high as \$21,900 for a luxury model featuring "everything" Lakewood and most homes in South Wind were purchased there, although the community does accept "move-in" homes that meet their standards for size, construction and condition.

The average home contains two bedrooms, living room, dining room and kitchen with one or two bathrooms. Homes may be purchased completely furnished or un-

turished. In either case wall to wall carpeting, decorator coordinated colors, lighting fixtures, major kitchen appliances and paneling are provided.

In an era where site built houses now average about \$50,000, the mobilehomes in South Wind sell for an average of less than \$18,000. Residents often purchase the home outright from proceeds from the sale of the family homestead. When the home is financed, the monthly cost is just the \$117.00 mortgage which covers all taxes and fees. Additional costs are electricity and fuel. Each homestead is soddied and has a concrete patio.

In South Wind there is a community center that acts as the focal point of community events, social attractions, and educational opportunities. There also is a miniature golf course and picnic grounds.

Up until last year, at least one member of the family moving into South Wind had to be a year or older. Jackson Township residents changed that restriction 30 years ago.

"We are delighted the change," states Kathryn Spokesman, United States National Association of Home Builders. Kathryn stated that more than 25 percent of the families moving into the community have children 19 or under. The community is actively engaged in a program to provide a strong, vibrant community for the future. Kathryn Spokesman is a resident of South Wind. She is also a member of the community center. The South Wind is open for business. A full time staff is available through South Wind.

# McNally gets building group annual award

H. Charles "Bud" McNally, founder and president of the Land Corporation, Clinton Township, has been named 1977 Builder of the Year by the National Association of Homebuilders, Somerset-Morris Chapter.

McNally is known for his innovative and environmentally sensitive approach to multifamily and office building development.

McNally, who founded Land 20 years ago, is one of New Jersey's busiest builders. Land's current multifamily projects in four counties will provide housing for more than 1,100 families. The firm is also developing Lanidex Center in Parsippany, a 50-acre corporate park adjacent to Rts. 80 and 287.

Each project, McNally believes, demonstrates the way in which developers can preserve a natural site, protect the existing character of the area and still earn the highest return on investments.

Land's environmental record convinced the Rutgers University Board of Trustees to select McNally's firm as the developer of a luxury garden apartment complex which will neighbor the University's 300-acre ecological teaching preserve. Land, in conjunction with Richard P. Browne Associates, architectural engineering

firm, will build 352 apartments on a 32-acre site. The Forest Glen Apartments complex will provide income for the university's medical school.

Forest Glen will blend into the natural contours of the site, preserve most of the existing trees and maintain the ecological balance of the area by employing such sophisticated techniques as confining storm drainage on-site through a ground water recharge system. The university believes the Piscataway project will serve as a model for other developments in the state.

"It will be nothing like the usual garden apartment complex with its acres of blacktop and brick barracks," McNally said.

"We're going to build housing with natural wood siding, spacious interiors, recreation areas and access to a beautiful piece of land that will be largely undisturbed," he explained.



**HONORED BY BUILDERS**—H. Charles "Bud" McNally, president of Land Corporation, displays Builder of the Year Award presented by the National Association of Home Builders, Somerset-Morris Chapter.

BUY By the Sea.

SAVE NOW... Before Price Increase

An exquisitely designed townhouse community in Sea Bright, overlooking the Atlantic Ocean and on the Shorewater river side is about to begin. Island View Townhouses from \$63,900.

<p><b>LIVING SPACE:</b></p> <p>Over 1,000 sq. feet per townhouse choice of:</p> <ul style="list-style-type: none"> <li>One bedroom with den and game room</li> <li>Two bedroom with den</li> <li>One and half to three and half baths</li> </ul> <p>Floor plans so flexible, custom design takes on a new meaning.</p> <p><b>RECREATIONAL FACILITIES:</b></p> <p>100 acres of beachfront on the Atlantic Ocean, 100 private swimming pool, tennis court and planned marina (pending state approval)</p>	<p><b>EVERY UNIT INCLUDES:</b></p> <ul style="list-style-type: none"> <li>An individual garage</li> <li>Automatic gas shut-off</li> <li>Built-in and built-out kitchen</li> <li>Central air conditioning</li> <li>Complete landscaping</li> <li>Full kitchen equipment</li> <li>Full bathroom</li> <li>Full laundry room</li> <li>Full size refrigerator</li> <li>Full size stove</li> <li>Full size washer and dryer</li> <li>Full size water heater</li> <li>Full size water filter</li> <li>Full size water softener</li> <li>Full size water softener</li> <li>Full size water softener</li> <li>Full size water softener</li> </ul>
---	--

As low as 5% down with excellent financing available. A \$10,000 investment that can pay for itself. Information center open daily 10:00 am to 6:00 pm. 1500 Ocean Ave., Sea Bright, N.J. 08005. 201-747-7169.

Directions: Garden State Parkway to Exit 117, to Rt. 30, eastbound, over Highland Bridge to Ocean Avenue, south to Sea Bright, then 2 miles west.

# Hawaiian Holiday

Win a Trip for Two to Hawaii!!!

One week hotels and air fare included— April 25 to May 1

Yes, you could be the lucky couple who wins this trip of a lifetime. Imagine basking on the beach, swimming in the warm Pacific waters, walking the warm sand. We would like to send you to Hawaii for one fantastic week.

To be eligible for this drawing just place a deposit (minimum \$1,000, non-refundable) on the Brighton At Barnegat home of your choice and take delivery within four months. All those eligible will receive an equal chance to win! Trip is part of a group travel plan and must be taken April 25 to May 1, 1978.

## Brighton at Barnegat

Better Living for Adults

Route 72, Box 273  
4 miles West of Garden State Parkway  
Barnegat, New Jersey 08005 (609) 597-1109

# TAXES GOING DOWN

Our tax rate has been cut from \$1.76 to \$1.55, effective January 1, 1978. On our average \$34,000 home that's only \$527 per year. (What will YOUR rate be next year?) Request FREE Kit: "How to compare costs in Retirement."

PHONE TOLL FREE:  
800-822-9711 (In New Jersey)  
800-631-5509 (NY, PA, Conn.)

FOUNDED 1964

# Crestwood

COMMUNITIES

Write Dept. W, Box 166, Route 540, Whiting, NJ 08779

New Section Open!
52 or over

**DIRECTIONS:**

From NY & North: Garden State Pkwy (exit 80) & NJ #530

From Phila.: Ben Franklin Bridge, NJ #70 & #530

From Trenton: NJ #33, #526 to Allentown, then #539, #530

This is not an offering, which can be made only by formal prospectus.

Enjoy the privacy of your own home and lot; 11 models, from 2-bedroom detached ranchers to spacious studio homes, from \$18,990 to \$46,990

## OWN THE STANHOPE MOUNTAIN HIGH

Full-sized Townhomes In Ski-slope Country

It's a great feeling coming home to a new, modern, contemporary townhome surrounded by high mountains and clean, fresh air. Affordable, beautiful and just minutes from Interstate Route 80, Highpoint at Stanhope gives you all the tax and equity advantages that renters don't have. It's living at its highest point.

5% Down

6 3/4% Interest

for the first 3 years

8-1/4% interest for the remainder

From

\$31,690

30 Year Mortgages to qualified buyers

## Highpoint AT STANHOPE

Sales Office And Models Open Daily Noon To Dusk, Except Thurs. Call 201-347-6747

**DIRECTIONS:** From Garden State Parkway or Route 280 follow Route 80 to Stanhope/Newton exit. Bear right on exit ramp to Route 183 to Highpoint sign.

Exclusive Agent: BERG AGENCY

## House Hunting For Quality At A Price?

### Barnegat Woods... is the Answer

Buying "direct from builder" enables you to purchase a top quality home at a price that is easily within your budget. Relax, let your equity build while you enjoy efficiency, comfort and economy.

Your hunt is ended with a home at Barnegat Woods.

**Fully Equipped With:**  
Wall to Wall Carpet, Wax Free Vinyl Flooring, Electric Range, Thermo Walls, Screens, Fixtures, Screened Patio Door, Fully Landscaped Lot, Master Antenna System, etc.

\$25,990.

Three Bedroom Attached Colonial  
Not A Condominium

Directions to Barnegat Woods: From Garden State Parkway to Exit 117, to Rt. 30, eastbound, over Highland Bridge to Ocean Avenue, south to Sea Bright, then 2 miles west.

Barnegat Woods

Call Collect 609/698-7723

# Two-way TV hook-up aids in college course

Who says you can't be in two places at once?

With the aid of modern technology Ernest Gross of Rutgers University is able to teach labor relations in more than a dozen places at one time.

To accomplish this seemingly difficult feat, Gross, chairman of the public education department of the state university's Institute of Management and Labor Relations (IMLR), has hooked up with a closed circuit two-way television network that transmits its programs by micro-waves.

Using the Metropolitan Regional Council's system, MRV-TV, Gross and other members of his department can teach from a central location and still see their students in New Jersey, New York and Connecticut.

operated camera.

A student indicates he has a question by pressing a button which activates a light in the central studio. Technicians flip switches and the student then appears on all the monitors while he makes his inquiry.

This two-way capability lends the program a personal touch not found in systems where only the instructor's face can be aired. Observed Gross, a graduate of Rutgers Law School and for years a labor lawyer.

His department supplements the basic information by making advance and follow up materials to participants. The lesson is further enhanced by the appearance of the programs of experts on the various topics covered.

There are two distinct advantages to this method compared to the more traditional classroom approach, said Gross, whose department used a variety of teaching techniques to deliver 173 courses last academic year.

You save a lot of wear and tear by sending the instructor to a central place and then having the students go to their own offices," he explained. "A person who needs an educational opportunity also has work to do so he can't afford much time for travel. There is another advantage. If for some reason the people in the county could not attend one of the sessions, the program, because it was taped, could be rescheduled for them later.

Even more important than reaching large numbers of students, however, is the network's ability to disseminate the public education department's technical training over a broad geographic area, Gross emphasized.

This versatility conforms perfectly to the department's outreach mission as part of the state university's Extension Division UED and IMLR.



**VIDEO VIBRATIONS** Teaching public sector labor relations to numerous classes at once has become a snap for the public education department of Rutgers University's Institute of Management and Labor Relations. To accomplish this feat, the department sends its lessons over an innovative two-way closed circuit television network which broadcasts from the World Trade Center in New York to studios in New Jersey, New York and Connecticut.

## All-American pageant slated

New Jersey's first All-American Girl Pageant will be held in New Brunswick July 14-16. Girls from 3 to 26 may enter one of five categories: All-American Tot, ages 3-6; All-American Little Miss, ages 7-9; All-American Teen, ages 13-17; and All-American Girl, ages 17-26.

Further information is available from All American Girl Pageant, P.O. Drawer 1630, Dothan, Ala.

**NEED HELP? Find the RIGHT PERSON with a WANT AD. Call 654-6632.**

## Mental Health

From HEW

### FACTS ABOUT SLEEP AND DRUGS

Sleep is an interruption of waking consciousness. It may be one of the most essential needs of man. More than one-third of the U.S. population has at some time had a problem sleeping. Following are some often overlooked facts about drugs and sleep, the state in which we try to spend almost one-third of our lives.

— Less sleep is needed as one matures. A 3-year-old will sleep about 10 hours a night; a 25- to 45-year-old seven hours, and a 75-year-old about six hours. People often mistakenly attribute this normal change in sleep patterns to insomnia and seek drugs to induce more sleep.

— Changing sleep habits — too much, too little, or interrupted sleep — can be a sign of depression or anxiety conditions which often require specific treatment.

— Emotional illness is often preceded by troubled sleep.

— Drugs may help on occasion for temporary use, but persistent or continuous use of most sleeping pills may ac-

tually hinder sleep.

— If use of sleeping pills continues beyond a few weeks, more and more pills are required at night to achieve the effects of the original dosage. This is called tolerance.

— Sleeping pills are addictive. Sleep problems are usually more severe for a period of time after withdrawal than they were before drugs were used.

— Sleeping pills can distort the sense of time, leading to the accidental taking of fatal doses of drugs during the night.

— Normal brain activity is altered by sleeping pills, causing natural stages of sleep to be skipped or shortened.

— Many insomniacs, when monitored during the night, are found to get sufficient amounts of sleep. Some researchers believe they may actually dream while they are awake.

— Since sleeping pills may be harmful, here are some commonsense tips on getting a better night's sleep:

— Stop tossing and turning in bed waiting for sleep to come; use the time for constructive activity.

— Make your surroundings conducive to sleep. If the bedroom is too cold or too hot, it will be distracting. If there's too much noise try earplugs.

— Maintain a regular schedule of going to bed and getting up. The time of day or night is not important, but the consistency is.

— Eliminate daytime naps.

— If you are not tired, it will be difficult to sleep.

— Eliminate coffee and other caffeine drinks in the hours before bedtime.

— Although a little bit of alcohol before bedtime may help some people relax, large quantities of alcohol will cause sleeplessness.

### UN diplomat to visit Drew

Lord Caradon, a former representative to the United Nations from Great Britain, will be on the Drew University campus in Madison during the week of April 9 as a Woodrow Wilson Visiting Fellow.

Caradon authored the controversial UN resolution 242, which promises Mideast peace on Israel's withdrawal from territory occupied following the 1976 Six-Day War. Still a special advisor to the UN, the 70-year-old British diplomat recently proposed amendments to the resolution that would guarantee a homeland to the Palestinian Arabs while assuring Israel of "safe" borders.

### GOOD YEAR

**FRAEBEL BROS. TIRE Expert Auto Repairs**

●ALIGNMENT ●BRAKES ●SHOCKS ●TUNE-UPS ●TIRES

**REINSPECTION STATION**

1071 Commerce Ave. Union - 688-8870

8:30-5 Daily 9:30-1 Sat. Bank Americard-Master Charge

**Etc.**

Instruction In All OLYMPIC EVENTS

●BOYS ●GIRLS ●MEN ●WOMEN

**GRAND OPENING SPECIAL**

1 WEEK OF FREE WORKOUTS UPON ENROLLMENT

FROM APRIL 8 to APRIL 15, 1978

● 6 in A Class ● Ability Grouping ● Beginners to Advanced ● Qualified Instructors ● Continuous Enrollment ● Competitive Teams

FOR EARLY REGISTRATION CALL After 2 P.M. Daily **925-2331**

122 E. WESTFIELD AVE., ROSELLE PARK

**DOG OBEDIENCE**

Enroll Now For CLASSES in:

● UNION ● WESTFIELD ● SUMMIT ● ISELIN

ALL BREEDS Complete Course \$35

**N.J. DOG COLLEGE**

654-6632

Mention This Paper & Receive A Free Gift When Enrolling!



# all stores join in our anniversary celebration

its been a year since we expanded our UNION store . . . NOW We've expanded our savings on this spring's most wanted items. . . .

new spring pants & shirts YOUR CHOICE

**5.00 EA.**

THOUSANDS TO CHOOSE FROM!

- many first quality
- casual or dressy
- sizes 5-15
- pants reg. to \$25.
- shirts reg. to \$15.

● 3 days only thursday, friday, saturday

New Spring t shirts **1.99**

# Nice Stuff

Where to Afford the Clothes you Can't Afford

<b>CHATHAM</b> 455 Main Street 635-5700	<b>UNION</b> 1714 Stuyvesant Avenue 687-2312	<b>EAST ORANGE</b> 45 Glenwood Place 672-4198
---	--	---

Open Mondays and Thursdays 10 a.m. to 9 p.m. Other days 10 A.M. to 6 P.M.  
When in Florida visit our Miami and Hallandale stores.

Bank Americard and Mastercharge accepted. \*No lay aways on sale or advertised items. All our merchandise is tagged irregular to protect manufacturer.

# SUBURBAN REAL ESTATE MART

City • Suburbs • Farm Country • Lake • Shore

## Shadow Lake boasts nationally famous pair

When there's call for a book entitled, "So You're Going to Live in an Adult Community," it would most logically be produced by a resident of Shadow Lake Village, the Hovnanian Enterprises, Inc. adult residential recreational environment in Middletown.

Next, he launched a weekly Westchester County, N.Y., newspaper that grew into a chain of three publications.

Her husband's most famous accomplishment, Mrs. Lovejoy said, came after the two of them met. This happened when Columbia University asked Lovejoy to take over the post of Alumni Secretary. Alumni Magazine Editor and fundraiser the future Mrs. Lovejoy, having attended Skidmore College and Columbia, was working as secretary to the alumni secretary when her new boss told her that, based on a philosophy that it was better to start a new job with a new secretary, he had her assigned elsewhere in the office. However, she told herself that Lovejoy would be needing her within a week, as he did. They were married in 1935.

Paris, then wrote a history of the 38th Infantry of the Third Division, the regiment with which he had served. After he left the regular army in 1925, he went on active duty in Washington, D.C., as a Major in the Military Intelligence Reserve. Next, he launched a weekly Westchester County, N.Y., newspaper that grew into a chain of three publications.

Her husband's most famous accomplishment, Mrs. Lovejoy said, came after the two of them met. This happened when Columbia University asked Lovejoy to take over the post of Alumni Secretary. Alumni Magazine Editor and fundraiser the future Mrs. Lovejoy, having attended Skidmore College and Columbia, was working as secretary to the alumni secretary when her new boss told her that, based on a philosophy that it was better to start a new job with a new secretary, he had her assigned elsewhere in the office. However, she told herself that Lovejoy would be needing her within a week, as he did. They were married in 1935.

From his Columbia position, Lovejoy became known as an expert on educational institutions. Parents began to request advice from him. And soon, Simon & Schuster asked him to write a book on colleges, tentatively titled "How to Earn Your Way Through College," which was exactly what Lovejoy, himself, had done to pay for his education, including literally carrying a spear at the Metropolitan Opera, serving as secretary to a Park Avenue matron and reading to a blind graduate student.

Mrs. Lovejoy assisted in the writing of the first book, published in 1940, which had the title "So You're Going to College." They worked on it mostly at night and on weekends in a rented apartment in the same apartment house where they lived on Riverside Drive. It was the catalyst for the success of all involved. Even their messenger-errand boy grew into a rich and important communications person. He was John Kluge, who became the head of MetroMedia Broadcasting and other enterprises.

When World War II erupted, Lovejoy was back in uniform as a Lieutenant Colonel. When he joined then General Dwight Eisenhower's SHAEP as Director of Public Relations, Lovejoy was promoted to full colonel and given responsibility for the entire European Theatre. He later was put in charge of the press at the Nuremberg Trials.

After the war, with his wife as his constant collaborator, Lovejoy returned to his series of "Lovejoy's College Guide," which had become the bible for college-bound students. Eventually, every library in the nation, as well as practically every school, had multiple copies of this reference book, as it is constantly updated.

Each year, the Lovejoys visited and examined at least 100 academic and vocational institutions. Their company produced a welcomed stream of publications including "Lovejoy's Career and Vocational School Guide."

To reach Shadow Lake Village, take the Garden State Parkway south to Exit 114. Turn left on Red Hill Road for 2.0 mile, then right on Dwight road for approximately three miles to the entrance on the right.

**GREEN FIELDS in HAZLET PREVIEW SHOWING**

WALK TO EXPRESS BUSES TO NEW YORK CITY & NEWARK

2-STORY COLONIALS & BI-LEVELS 3 & 4 BEDROOMS

Brick Fronts Wall-to-Wall Carpeting Cathedral Ceilings Wooded Lots Available Near 30 Acre Parkland Near Trains & Shopping

Introductory Price During Preview **\$53,990** 10% DOWN

DIRECTIONS: Bridges & tunnels to Garden State Parkway to Exit 117 (Hackettstown) bear left to Rt. 36 & proceed South 3 traffic lights. Then right at Middle Rd. & 2 miles to market Dr. from NJ Rt. 9 South to Rt. 35 to Rt. 36 & proceed as above.

JOB PHONE: (201) 264-5858 ANOTHER CHANCE CORP. COMMUNITY OFFICE PHONE: (201) 337-4129

**now!**

# THE NEW JERSEY HOMES FOR FAMILIES WHO CAN AFFORD TO LIVE ANYWHERE

Single-family homes from \$91,900  
Townhomes from \$44,990

**Panther Valley**

P.O. Box M Allamuchy, New Jersey 07820 (201) 852-2900

Route 80 west to Exit 19 [Hackettstown-Andover] to Route 517

## Panther Valley sales aim toward affluent

Four new models of single family homes at Panther Valley called the New Jersey homes for families who can afford to live anywhere, priced from \$91,900 are now on display.

The four new models are the Brookdale ranch, the Chesapeake I and two, two-story colonial with a finished room over the garage and the Sherwood split level. Three of the four have four bedrooms, two and a half baths and two-car garages, and all have expansion space for finishing according to the individual interests of the buying family.

The Chesapeake II, is styled for the hillside settings at Panther Valley. Steps lead up from the garage to the family room with approximately 300 square feet of space, where insulated sliding glass doors provide entrance to the patio and where buyers have the option of adding another full bath, wood-burning fireplace or a walk-in closet.

In the slate entry foyer are the base of the center hall staircase, a guest closet and the powder room. Optional doors can lead from the dining room to the family room. To the side of the foyer is the front-facing living room with box window views. Beyond is the den with a place for another optional fireplace. Family meals can be served either in the separate breakfast room or in the formal dining room.

The kitchen has several features, at no extra cost, including a self-cleaning, eye-level range and vented hood, dishwasher, garbage disposal, stainless-steel sink, laminated counter tops and hardwood cabinets. Adjoining the kitchen are a utility room and the pantry.

Upstairs, the master bedroom suite has a walk-in closet and private dressing area, both oversized, and a private full bath. The family bathroom and linen closet are adjacent to the other

three bedrooms. The entire lower level is another ready-made expansion area: for a recreation room, a fifth bedroom, yet another full bath or whatever special hobby plan.

Also included in the price are rich wall-to-wall shag carpeting in all living areas, ceramic tile in all baths and a large storage space in the garage. The entire home is pre-wired with telephone and master antenna TV outlets. To preserve the beauty of Panther Valley, all utilities are underground.

Originally part of a rolling hill estate in the midst of mountain and lake country 55 miles from the George Washington Bridge, Panther Valley offers its residents privacy and recreation. Among the community's features are tennis, platform tennis and swimming, nature trails and the option to join the Panther Valley Golf and Country Club and to play on its championship 18-hole golf course designed



**MODELS OPEN** — The expandable ranch home newly introduced at Panther Valley, the private 1600-acre residential community off Rt. 80 in Allamuchy is the Brookdale model. The three bedroom, two-bath home with attached two-car garage is priced at \$91,900, and has a family room with cathedral ceiling, kitchen with separate breakfast area, plus a basement for finishing with recreation room, a fourth bedroom, a den or any family purpose. Options include a wood deck, where conditions permit, and wood burning fireplace with wood box.

by Robert Trent Jones. The shopping mall is located adjacent to the community entrance, and the area has nearby public and private schools and academies.

To reach Panther Valley, take the Parkway or Rt. 280 to Rt. 80 west. Proceed west until the Andover-Hackettstown exit just beyond the scenic view area that looks out

over Panther Valley and the surrounding, dramatic countryside. Turn left at the end of the exit ramp, and proceed approximately six-tenths mile to the entrance.

## SUBURBAN REAL ESTATE MART

• City • Suburbs • Farm Country • Lake • Sea

### South Wind offering homes at low prices

In an age where builders are cutting down on amenities and the price of houses keeps skyrocketing anyway, there is a ray of hope: the manufactured home.

A person doesn't have to earn "executive wages" to afford a manufactured home. At South Wind, an adult community in Jackson, Ocean County, models begin at \$11,900 and escalate only as high as \$21,900 for a luxury model. Featuring "everything" Lakewood and most homes in South Wind were purchased here, although the community does accept "move-in" homes that meet their standards for size, construction and condition.

The average home contains two bedrooms, living room, dining room and kitchen with one or two bathrooms. Homes may be purchased completely furnished or un-

furnished. In either case wall to wall carpeting, decorator coordinated colors, lighting fixtures, major kitchen appliances and paneling are provided.

In an era where site built houses now average about \$50,000, the mobilehomes in South Wind sell for an average of less than \$10,000. Residents often purchase the home outright, from proceeds from the sale of the family homestead. When the home is not financed, the monthly cost is just the \$115 homestead rent which covers all taxes and fees. Additional costs are electricity and fuel. Each homestead is sited and has a concrete patio.

In South Wind, there is a community center that acts as the focal point of community events, social attractions, and educational opportunities. There also is a miniature golf course and picnic

grove. Up until last year, least one member of the family moving into South Wind had to be 55 years of age or older. Back Township recently changed that restriction to 50 years.

"We are delighted the change is made," said Kahrs, spokesman for United Mobile Home Owners of the community.

Kahrs stated that more than 20 percent of the families now in the community have one or more adults who are actively employed in the community.

There are no restrictions on displaying signs. Visitors are encouraged to join the community. The South Wind is open for business from 10 a.m. to 6 p.m. through Saturday.

## McNally gets building group annual award

H. Charles "Bud" McNally, founder and president of the Land Corporation, Clinton Township, has been named 1977 Builder of the Year by the National Association of Homebuilders, Somerset-Morris Chapter.

McNally is known for his innovative and environmentally sensitive approach to multifamily and office building development.

McNally, who founded Land 20 years ago, is one of New Jersey's busiest builders. Land's current multifamily projects in four counties will provide housing for more than 1,100 families. The firm is also developing Landex Center in Parsippany, a 50-acre corporate park adjacent to Rts. 80 and 287.

Each project, McNally believes, demonstrates the way in which developers can preserve a natural site, protect the existing character of the area and still earn the highest return on investments.

Land's environmental record convinced the Rutgers University Board of Trustees to select McNally's firm as the developer of a luxury garden apartment complex which will neighbor the University's 300-acre ecological teaching preserve. Land, in conjunction with Richard P. Browne Associates, architectural engineering

firm, will build 352 apartments on a 32-acre site. The Forest Glen Apartments complex will provide income for the university's medical school.

Forest Glen will blend into the natural contours of the site, preserve most of the existing trees and maintain the ecological balance of the area by employing such sophisticated techniques as confining storm drainage on-site through a ground water recharge system. The university

### BUY-By the Sea!

**SAVE NOW... Before Price Increase**

An exquisitely designed townhouse community in Sea Bright, overlooking the Atlantic Ocean and on the Shoreline is about to begin. Island View Townhouses from \$63,900.

- |  |   |
|--|---|
| <p><b>LIVING SPACE:</b></p> <p>Over 1700 sq. feet per townhouse choice of:</p> <ul style="list-style-type: none"> <li>One bedroom with den and gameroom</li> <li>Two bedroom with den</li> <li>One and half to three and half baths</li> </ul> <p>Floor plans to meet your design takes on a new meaning.</p> <p><b>RECREATIONAL FACILITIES:</b></p> <p>10 acres of beachfront in the Atlantic Ocean, clubhouse, swimming pool, tennis court and planned marina, pending state approval.</p> | <p><b>EVERY UNIT INCLUDES:</b></p> <ul style="list-style-type: none"> <li>An individual garage</li> <li>Custom fitted kitchen cabinets and built-in breakfast living room</li> <li>Central air conditioning</li> <li>Hardwood floors</li> <li>Wall-to-wall carpeting</li> <li>Stainless steel appliances</li> <li>Full bathroom with separate tub and shower</li> <li>Storage space for your car</li> <li>As per design</li> <li>Security intercom system</li> <li>Attic storage with built-in walk-in</li> <li>Garage</li> </ul> |
|--|---|

*Island View Townhouses* As low as 5% down with excellent financing available. A Real Estate investment that can earn you money. Information forms open daily from 10:00 a.m. to 5:00 p.m. at 1500 Ocean Ave., Sea Bright, N.J. 08001. 201-747-7169.

Directions: Garden State Parkway to Exit 117 to Rt. 28, westward over Highland Bridge to Ocean Avenue, south to Sea Bright, the 2nd left.

# Hawaiian Holiday

**Win a Trip for Two to Hawaii!!!**

**One week hotels and air fare included— April 25 to May 1**

Yes, you could be the lucky couple who wins this trip of a lifetime. Imagine basking on the beach, swimming in the warm Pacific waters, walking the warm sand. We would like to send you to Hawaii for one fantastic week.

To be eligible for this drawing just place a deposit (minimum \$1,000, non-refundable) on the Brighton At Barnegat home of your choice and take delivery within four months. All those eligible will receive an equal chance to win! Trip is part of a group travel plan and must be taken April 25 to May 1, 1978.

## Brighton at Barnegat

Better Living for Adults

Route 72, Box 273  
4 miles West of Garden State Parkway  
Barnegat, New Jersey 08005 609-597-1109

# TAXES GOING DOWN

Our tax rate has been cut from \$1.76 to \$1.55, effective January 1, 1978. On our average \$34,000 home that's only \$527 per year. (What will YOUR rate be next year?) Request FREE Kit: "How to compare costs in Retirement."

**PHONE TOLL FREE:**  
800-822-9711 (In New Jersey)  
800-631-5509  
(NY, PA, Conn.)

FOUNDED 1964

# Crestwood

COMMUNITIES

Write Dept. W, Box 166, Route 530, Whiting, NJ 08753

**New Section Open!** DIRECTIONS: From NY & North: Garden State Pkwy (exit 80) & NJ #530. From Phila.: Ben Franklin Bridge, NJ #70 & #530. From Trenton: NJ #33, #526 to Allentown, then #539, #530. This is not an offering, which can be made only by formal prospectus.

52 or over

*Enjoy the privacy of your own home and lot; 11 models, from 2-bedroom detached ranchers to spacious studio homes, from \$18,990 to \$46,990*

## OWN THE STANHOPE MOUNTAIN HIGH

Full-sized Townhomes

In Ski-slope Country

It's a great feeling coming home to a new, modern, contemporary townhome surrounded by high mountains and clean, fresh air. Affordable, beautiful and just minutes from Interstate Route 80, Highpoint at Stanhope gives you all the tax and equity advantages that renters don't have. It's living at its highest point.

5% Down

**6 3/4%** Interest

for the first 3 years

8-1/4% interest for the remainder

From **\$31,690**

30 Year Mortgages to qualified buyers

Sales Office And Models Open Daily Noon To Dusk Except Thurs. Call 201-347-6747

### Highpoint AT STANHOPE

DIRECTIONS: From Garden State Parkway or Route 280 follow Route 80 to Stanhope, Newton exit. Bear right on exit ramp to Route 183 to Highpoint sign.

Exclusive Agent: BERG AGENCY

## House Hunting For Quality At A Price?

### Barnegat Woods ... is the Answer

Buying "direct from builder" enables you to purchase a top quality home at a price that is easily within your budget. Relax, let your equity build while you enjoy efficiency, comfort and economy.

Your hunt is ended with a home at Barnegat Woods.

**Three Bedroom Attached Colonial**

# \$25,990.

Not A Condominium

**Fully Equipped With:** Wall to Wall Carpet, Wax Free Vinyl Flooring, Electric Range, Thermo Walls, Screens, Fixtures, Screened Patio Door, Fully Landscaped Lot, Master Antenna System, etc.

Directions to Barnegat - Garden State Parkway to Exit 117 to Rt. 28, westward over Highland Bridge to Ocean Avenue, south to Sea Bright, the 2nd left.

## Barnegat Woods

Call Collect 609/698-7723

CALL AN "AD-VISOR" FOR ACTION, TODAY! - 686-7700

BUY SELL TRADE

CLASSIFIED

HELP HIRE RENT

DEADLINES: TUESDAY NOON FOR THURSDAY \* THURSDAY NOON FOR SUNDAY

ACCOUNTS RECEIVABLE CLERK
Entry level position for individual with basic knowledge of bookkeeping and typing ability of 45 WPM. Liberal benefits include Blue Cross-Blue Shield Rider C profit sharing, employee discounts and paid vacation. Starting rate \$1 per hour.
J.L. HAMMETT CO.
376 Vauxhall Rd., Union, N.J. 07083
Call Mr. Mintz 686-7700 for appointment

KEYPUNCH OPERATOR
Must qualify on IBM 4800 or Decision Data No. 9600.
Full-time or part-time position. Starting rate \$1 per hour.
Interviews 9 A.M. - 4 P.M.
J.L. HAMMETT CO.
376 Vauxhall Rd., Union, N.J. 07083

CLERK TYPIST \$145
A modern Springdale office offers a clerical position. Need a typist with a minimum of 45 WPM. Excellent benefits.
Arlene 379-3395
RESUME TO: Mrs. M. J. ...

KEYPUNCH OPERATOR
Must qualify on IBM 4800 or Decision Data No. 9600.
Full-time or part-time position. Starting rate \$1 per hour.
Interviews 9 A.M. - 4 P.M.
J.L. HAMMETT CO.
376 Vauxhall Rd., Union, N.J. 07083

PROGRAMMERS
Our best interest is in your career.
1 ASSEMBLER PROGRAMMER
Background should include IBM 3600, 3605, 3607, 3608, 3609, 3610, 3611, 3612, 3613, 3614, 3615, 3616, 3617, 3618, 3619, 3620, 3621, 3622, 3623, 3624, 3625, 3626, 3627, 3628, 3629, 3630, 3631, 3632, 3633, 3634, 3635, 3636, 3637, 3638, 3639, 3640, 3641, 3642, 3643, 3644, 3645, 3646, 3647, 3648, 3649, 3650, 3651, 3652, 3653, 3654, 3655, 3656, 3657, 3658, 3659, 3660, 3661, 3662, 3663, 3664, 3665, 3666, 3667, 3668, 3669, 3670, 3671, 3672, 3673, 3674, 3675, 3676, 3677, 3678, 3679, 3680, 3681, 3682, 3683, 3684, 3685, 3686, 3687, 3688, 3689, 3690, 3691, 3692, 3693, 3694, 3695, 3696, 3697, 3698, 3699, 3700.

GAL GUY FRIDAY
Interesting diversified work requires typing and sten skills. Knowledge of telephone and shorthand desirable. Work fulltime in comfortable modern office conveniently located in Union. Good salary and benefit program.
Call Mr. Mintz 686-7700 for appointment

MESSANGER OFFICE CLERK
Entry level position combines varied office duties and messenger runs. Ability to drive Standard transmission van and lift 80 lb. mail bag. Applicant must have valid N.J. driver's license.
Liberal benefits include Blue Cross-Blue Shield Rider C profit sharing.
CALL FOR INTERVIEW 686-7700, EXT. 720-820
J.L. HAMMETT CO.
376 Vauxhall Rd., Union, N.J. 07083

CLERK TYPIST
Arlene 379-3395
RESUME TO: Mrs. M. J. ...

KEYPUNCH OPERATOR
Must qualify on IBM 4800 or Decision Data No. 9600.
Full-time or part-time position. Starting rate \$1 per hour.
Interviews 9 A.M. - 4 P.M.
J.L. HAMMETT CO.
376 Vauxhall Rd., Union, N.J. 07083

SECRETARIES
Full Time-Part Time
Move Up...
With the growth of the nation's leading insurance companies, we have immediate openings for Secretaries who are looking for new and exciting career opportunities. These positions require excellent typing and good stenographic skills. We offer good starting salaries and company benefits. If you are interested, call Mrs. Karbach at 379-3395.

CLERICAL OPENINGS
Major Property-Casualty Insurance Company in East Orange has immediate openings in the following areas:
POLICY TYPISTS
Type at least 45 WPM accurately. Experience preferred.
FIGURE CLERKS
Good mathematical ability a necessity. Work with figures to develop rates for commercial risks. Previous business experience preferred.
FILE CLERKS
Work in large filing dept. Previous business experience preferred.
If you have the skills necessary for any of these interesting positions, please call Mr. Jack Blusker at 201-676-0600
ROYAL-GLOBE INSURANCE CO.
10 South Harrison St., East Orange, N.J. 07027

SECRETARY
Good secretarial skills are required for this position. The successful candidate must be willing and able to transcribe dictation from a dictaphone, take stenography and use electric typewriter in addition to regular secretarial skills. Previous experience with company executives could prove helpful. Will report to the Administrative Assistant-Executive office. If you are returning to the job market, looking for a growth position with a local company or desirous of working full time, 37 1/2 hour week, 8:45 to 5 P.M., this could be your opportunity!
This position calls for good salary and fine fully paid company benefits including Blue Cross, Blue Shield Rider J life insurance, long term disability, IRA pension, vacation and 11 holidays.
Please call for an appt. at 925-6900 or come in for an interview between the hours of 9 A.M. - 3:30 P.M.
GENTEX INDUSTRIES INC.
531 No. Stiles St.
Linden, N.J. 07036

COIL WINDERS
TORELCO INC.
376 Vauxhall Rd., Union, N.J. 07083

KEYPUNCH OPERATOR
Must qualify on IBM 4800 or Decision Data No. 9600.
Full-time or part-time position. Starting rate \$1 per hour.
Interviews 9 A.M. - 4 P.M.
J.L. HAMMETT CO.
376 Vauxhall Rd., Union, N.J. 07083

SECRETARIES
Full Time-Part Time
Move Up...
With the growth of the nation's leading insurance companies, we have immediate openings for Secretaries who are looking for new and exciting career opportunities. These positions require excellent typing and good stenographic skills. We offer good starting salaries and company benefits. If you are interested, call Mrs. Karbach at 379-3395.

FACTORY WORKERS
Richard Best Pencil Co.
376 Vauxhall Rd., Union, N.J. 07083

SECRETARY
Good secretarial skills are required for this position. The successful candidate must be willing and able to transcribe dictation from a dictaphone, take stenography and use electric typewriter in addition to regular secretarial skills. Previous experience with company executives could prove helpful. Will report to the Administrative Assistant-Executive office. If you are returning to the job market, looking for a growth position with a local company or desirous of working full time, 37 1/2 hour week, 8:45 to 5 P.M., this could be your opportunity!
This position calls for good salary and fine fully paid company benefits including Blue Cross, Blue Shield Rider J life insurance, long term disability, IRA pension, vacation and 11 holidays.
Please call for an appt. at 925-6900 or come in for an interview between the hours of 9 A.M. - 3:30 P.M.
GENTEX INDUSTRIES INC.
531 No. Stiles St.
Linden, N.J. 07036

CLERK TYPIST
Arlene 379-3395
RESUME TO: Mrs. M. J. ...

KEYPUNCH OPERATOR
Must qualify on IBM 4800 or Decision Data No. 9600.
Full-time or part-time position. Starting rate \$1 per hour.
Interviews 9 A.M. - 4 P.M.
J.L. HAMMETT CO.
376 Vauxhall Rd., Union, N.J. 07083

SECRETARIES
Full Time-Part Time
Move Up...
With the growth of the nation's leading insurance companies, we have immediate openings for Secretaries who are looking for new and exciting career opportunities. These positions require excellent typing and good stenographic skills. We offer good starting salaries and company benefits. If you are interested, call Mrs. Karbach at 379-3395.

ACCOUNTANTS SR
ACCOUNTING CLERK
BANKING
Move up to the SUMMIT
Fred S. James & Co.
530 Morris Ave., Springfield, N.J. 07081

SECRETARY
Good secretarial skills are required for this position. The successful candidate must be willing and able to transcribe dictation from a dictaphone, take stenography and use electric typewriter in addition to regular secretarial skills. Previous experience with company executives could prove helpful. Will report to the Administrative Assistant-Executive office. If you are returning to the job market, looking for a growth position with a local company or desirous of working full time, 37 1/2 hour week, 8:45 to 5 P.M., this could be your opportunity!
This position calls for good salary and fine fully paid company benefits including Blue Cross, Blue Shield Rider J life insurance, long term disability, IRA pension, vacation and 11 holidays.
Please call for an appt. at 925-6900 or come in for an interview between the hours of 9 A.M. - 3:30 P.M.
GENTEX INDUSTRIES INC.
531 No. Stiles St.
Linden, N.J. 07036

CLERK TYPIST
Arlene 379-3395
RESUME TO: Mrs. M. J. ...

KEYPUNCH OPERATOR
Must qualify on IBM 4800 or Decision Data No. 9600.
Full-time or part-time position. Starting rate \$1 per hour.
Interviews 9 A.M. - 4 P.M.
J.L. HAMMETT CO.
376 Vauxhall Rd., Union, N.J. 07083

SECRETARIES
Full Time-Part Time
Move Up...
With the growth of the nation's leading insurance companies, we have immediate openings for Secretaries who are looking for new and exciting career opportunities. These positions require excellent typing and good stenographic skills. We offer good starting salaries and company benefits. If you are interested, call Mrs. Karbach at 379-3395.

ACCOUNTANTS SR
ACCOUNTING CLERK
BANKING
Move up to the SUMMIT
Fred S. James & Co.
530 Morris Ave., Springfield, N.J. 07081

SECRETARY
Good secretarial skills are required for this position. The successful candidate must be willing and able to transcribe dictation from a dictaphone, take stenography and use electric typewriter in addition to regular secretarial skills. Previous experience with company executives could prove helpful. Will report to the Administrative Assistant-Executive office. If you are returning to the job market, looking for a growth position with a local company or desirous of working full time, 37 1/2 hour week, 8:45 to 5 P.M., this could be your opportunity!
This position calls for good salary and fine fully paid company benefits including Blue Cross, Blue Shield Rider J life insurance, long term disability, IRA pension, vacation and 11 holidays.
Please call for an appt. at 925-6900 or come in for an interview between the hours of 9 A.M. - 3:30 P.M.
GENTEX INDUSTRIES INC.
531 No. Stiles St.
Linden, N.J. 07036

CLERK TYPIST
Arlene 379-3395
RESUME TO: Mrs. M. J. ...

KEYPUNCH OPERATOR
Must qualify on IBM 4800 or Decision Data No. 9600.
Full-time or part-time position. Starting rate \$1 per hour.
Interviews 9 A.M. - 4 P.M.
J.L. HAMMETT CO.
376 Vauxhall Rd., Union, N.J. 07083

SECRETARIES
Full Time-Part Time
Move Up...
With the growth of the nation's leading insurance companies, we have immediate openings for Secretaries who are looking for new and exciting career opportunities. These positions require excellent typing and good stenographic skills. We offer good starting salaries and company benefits. If you are interested, call Mrs. Karbach at 379-3395.

ACCOUNTANTS SR
ACCOUNTING CLERK
BANKING
Move up to the SUMMIT
Fred S. James & Co.
530 Morris Ave., Springfield, N.J. 07081

SECRETARY
Good secretarial skills are required for this position. The successful candidate must be willing and able to transcribe dictation from a dictaphone, take stenography and use electric typewriter in addition to regular secretarial skills. Previous experience with company executives could prove helpful. Will report to the Administrative Assistant-Executive office. If you are returning to the job market, looking for a growth position with a local company or desirous of working full time, 37 1/2 hour week, 8:45 to 5 P.M., this could be your opportunity!
This position calls for good salary and fine fully paid company benefits including Blue Cross, Blue Shield Rider J life insurance, long term disability, IRA pension, vacation and 11 holidays.
Please call for an appt. at 925-6900 or come in for an interview between the hours of 9 A.M. - 3:30 P.M.
GENTEX INDUSTRIES INC.
531 No. Stiles St.
Linden, N.J. 07036

CLERK TYPIST
Arlene 379-3395
RESUME TO: Mrs. M. J. ...

KEYPUNCH OPERATOR
Must qualify on IBM 4800 or Decision Data No. 9600.
Full-time or part-time position. Starting rate \$1 per hour.
Interviews 9 A.M. - 4 P.M.
J.L. HAMMETT CO.
376 Vauxhall Rd., Union, N.J. 07083

SECRETARIES
Full Time-Part Time
Move Up...
With the growth of the nation's leading insurance companies, we have immediate openings for Secretaries who are looking for new and exciting career opportunities. These positions require excellent typing and good stenographic skills. We offer good starting salaries and company benefits. If you are interested, call Mrs. Karbach at 379-3395.

ACCOUNTANTS SR
ACCOUNTING CLERK
BANKING
Move up to the SUMMIT
Fred S. James & Co.
530 Morris Ave., Springfield, N.J. 07081

SECRETARY
Good secretarial skills are required for this position. The successful candidate must be willing and able to transcribe dictation from a dictaphone, take stenography and use electric typewriter in addition to regular secretarial skills. Previous experience with company executives could prove helpful. Will report to the Administrative Assistant-Executive office. If you are returning to the job market, looking for a growth position with a local company or desirous of working full time, 37 1/2 hour week, 8:45 to 5 P.M., this could be your opportunity!
This position calls for good salary and fine fully paid company benefits including Blue Cross, Blue Shield Rider J life insurance, long term disability, IRA pension, vacation and 11 holidays.
Please call for an appt. at 925-6900 or come in for an interview between the hours of 9 A.M. - 3:30 P.M.
GENTEX INDUSTRIES INC.
531 No. Stiles St.
Linden, N.J. 07036

CLERK TYPIST
Arlene 379-3395
RESUME TO: Mrs. M. J. ...

KEYPUNCH OPERATOR
Must qualify on IBM 4800 or Decision Data No. 9600.
Full-time or part-time position. Starting rate \$1 per hour.
Interviews 9 A.M. - 4 P.M.
J.L. HAMMETT CO.
376 Vauxhall Rd., Union, N.J. 07083

SECRETARIES
Full Time-Part Time
Move Up...
With the growth of the nation's leading insurance companies, we have immediate openings for Secretaries who are looking for new and exciting career opportunities. These positions require excellent typing and good stenographic skills. We offer good starting salaries and company benefits. If you are interested, call Mrs. Karbach at 379-3395.

ACCOUNTANTS SR
ACCOUNTING CLERK
BANKING
Move up to the SUMMIT
Fred S. James & Co.
530 Morris Ave., Springfield, N.J. 07081

SECRETARY
Good secretarial skills are required for this position. The successful candidate must be willing and able to transcribe dictation from a dictaphone, take stenography and use electric typewriter in addition to regular secretarial skills. Previous experience with company executives could prove helpful. Will report to the Administrative Assistant-Executive office. If you are returning to the job market, looking for a growth position with a local company or desirous of working full time, 37 1/2 hour week, 8:45 to 5 P.M., this could be your opportunity!
This position calls for good salary and fine fully paid company benefits including Blue Cross, Blue Shield Rider J life insurance, long term disability, IRA pension, vacation and 11 holidays.
Please call for an appt. at 925-6900 or come in for an interview between the hours of 9 A.M. - 3:30 P.M.
GENTEX INDUSTRIES INC.
531 No. Stiles St.
Linden, N.J. 07036

CLERK TYPIST
Arlene 379-3395
RESUME TO: Mrs. M. J. ...

KEYPUNCH OPERATOR
Must qualify on IBM 4800 or Decision Data No. 9600.
Full-time or part-time position. Starting rate \$1 per hour.
Interviews 9 A.M. - 4 P.M.
J.L. HAMMETT CO.
376 Vauxhall Rd., Union, N.J. 07083

SECRETARIES
Full Time-Part Time
Move Up...
With the growth of the nation's leading insurance companies, we have immediate openings for Secretaries who are looking for new and exciting career opportunities. These positions require excellent typing and good stenographic skills. We offer good starting salaries and company benefits. If you are interested, call Mrs. Karbach at 379-3395.

BUSINESS AND SERVICES DIRECTORY

- 686-7700 These Experts Are As Near As Your Telephone 686-7700
21-A Electric Repairs
37 HOME IMPROVEMENTS
50 LANDSCAPING
63 BRICK STEPS
68 PAINTING & PAPERHANGING
71 PLUMBING & HEATING
72 NEED A PLUMBER?
73 LAMCO PLUMBING & HEATING CONTRACTOR
74 PLUMBING & HEATING
75 WILLIAM H. VEIT
76 CUSTOM DECORATING SERVICE
77 DRAPES & CURTAINS
78 TREE SERVICE
79 TREE SERVICE
80 MAPLEWOOD TREE EXPERTS
81 SPECIALIZING IN PRUNING
82 JOHN DEMICCO, Tile Contractor
83 TV, Radio & Hi-Fi

Shipping-Receiving Clerk
Excellent opportunity to join growing plant...

STOCK WORK
Diversified, receiving & warehouse duties in T-shirt plant...

TELLERS (EXPERIENCED)
Billion-dollar First National State Bank...

TELLERS
We offer an excellent starting salary and abundant and generous benefits.

TELLERS
Your future adds up!

TELLERS
Selected applicants will be placed in our Teller Training Program...

TELLERS
FOR THE BEST IN TEMPORARY ASSIGNMENTS...

TELLERS
WESTERN
1114 Raritan Rd. Clark, NJ 07033

TELLERS
WESTERN
1114 Raritan Rd. Clark, NJ 07033

TELLERS
WESTERN
1114 Raritan Rd. Clark, NJ 07033

TOOLMAKERS DIE MAKERS REPAIR PERSONS
A challenging job for people with experience...

TIPISTY'S
It's Your Choice
If you like to work, enjoy variety, and have good skills...

KELLY GIRL
A Division of Kelly Services
Equal Opportunity Employer

TIPISTY'S SECRETARIES SWITCHBOARD CLERICAL
Temporary positions available RIGHT NOW!

MANPOWER
Call today for an appointment at your nearest Manpower Office...

MANPOWER
Call today for an appointment at your nearest Manpower Office...

MANPOWER
Call today for an appointment at your nearest Manpower Office...

MANPOWER
Call today for an appointment at your nearest Manpower Office...

MANPOWER
Call today for an appointment at your nearest Manpower Office...

MANPOWER
Call today for an appointment at your nearest Manpower Office...

MANPOWER
Call today for an appointment at your nearest Manpower Office...

MANPOWER
Call today for an appointment at your nearest Manpower Office...

CEMETERY PLOTS
Hollywood Memorial Park
Gethsemane Gardens

DON'T BUY CARPET
UNTIL YOU SEE US
Heavy commercial carpet on foam...

FABULOUS FLEA MARKET
April 21, 10 A.M. - 5 P.M.
Big 785 Union Ave. Irvington

FLEA MARKET
April 22, 9 A.M. - 5 P.M.
James School and for Union Spfld. Ave.

FLEA MARKET
April 23, 9 A.M. - 5 P.M.
Garwood 789-2468

FLEA MARKET
April 24, 9 A.M. - 5 P.M.
Garwood 789-2468

FLEA MARKET
April 25, 9 A.M. - 5 P.M.
Garwood 789-2468

FLEA MARKET
April 26, 9 A.M. - 5 P.M.
Garwood 789-2468

FLEA MARKET
April 27, 9 A.M. - 5 P.M.
Garwood 789-2468

FLEA MARKET
April 28, 9 A.M. - 5 P.M.
Garwood 789-2468

FLEA MARKET
April 29, 9 A.M. - 5 P.M.
Garwood 789-2468

FLEA MARKET
April 30, 9 A.M. - 5 P.M.
Garwood 789-2468

BOAT - 17' H.P. Glasspac
Mercury outboard motor
Call 245-9001

DOG Obedience Course
333 Quality pro training
small groups, specializing in obedience...

ATTENTION DOG OWNERS
Town & Country Dog Training Club...

RED CARPET SHOP
1232 Springfield Ave.
Call 373-8390

WANTED - GOOD HOMES
FOR AN AFFORDABLE PRICE
CALL AFTER 5 P.M. 964-8782

TV SETS WANTED
Portable, Black & White color
Days 351-5255, eves. 464-7496

LIONEL TRAINS
IMMEDIATE DELIVERY
Top prices paid 464-2692

STAMPS
U.S. Plate Stamps - Single accumulations, collectors
Canada. Top prices. 527-8011

TOP CASH PAID
For Old Clocks & Pocket Watches. Also Purses. Call 911-117

MAX WEINSTEIN'S
2426 Morris Ave.
Call 464-8282

CASH FOR SILVER
Consignment, jewelry, pocket watches, DENNIS COINS, 373-5499

SPRING CLEANING?
Start now! Get a head start on your spring cleaning...

IRVINGTON
2 Family custom brick construction 4 Rms on each floor...

HILLSIDE
2 FAMILY young & anxious custom built 4 Rms on each floor...

MAPLEWOOD
2 FAMILY with value & Rms on each floor 1100' Transferred owners on their way...

MAPLEWOOD
2 FAMILY with value & Rms on each floor 1100' Transferred owners on their way...

MAPLEWOOD
2 FAMILY with value & Rms on each floor 1100' Transferred owners on their way...

MAPLEWOOD
2 FAMILY with value & Rms on each floor 1100' Transferred owners on their way...

MAPLEWOOD
2 FAMILY with value & Rms on each floor 1100' Transferred owners on their way...

MAPLEWOOD
2 FAMILY with value & Rms on each floor 1100' Transferred owners on their way...

MAPLEWOOD
2 FAMILY with value & Rms on each floor 1100' Transferred owners on their way...

MAPLEWOOD
2 FAMILY with value & Rms on each floor 1100' Transferred owners on their way...

MAPLEWOOD
2 FAMILY with value & Rms on each floor 1100' Transferred owners on their way...

MAPLEWOOD
2 FAMILY with value & Rms on each floor 1100' Transferred owners on their way...

MAPLEWOOD
MOTHER DTR Only 3 Yrs young custom built 4 Rms complete privacy for related families...

MAPLEWOOD
2 FAMILY with value & Rms on each floor 1100' Transferred owners on their way...

MAPLEWOOD
2 FAMILY with value & Rms on each floor 1100' Transferred owners on their way...

MAPLEWOOD
2 FAMILY with value & Rms on each floor 1100' Transferred owners on their way...

MAPLEWOOD
2 FAMILY with value & Rms on each floor 1100' Transferred owners on their way...

MAPLEWOOD
2 FAMILY with value & Rms on each floor 1100' Transferred owners on their way...

MAPLEWOOD
2 FAMILY with value & Rms on each floor 1100' Transferred owners on their way...

MAPLEWOOD
2 FAMILY with value & Rms on each floor 1100' Transferred owners on their way...

MAPLEWOOD
2 FAMILY with value & Rms on each floor 1100' Transferred owners on their way...

MAPLEWOOD
2 FAMILY with value & Rms on each floor 1100' Transferred owners on their way...

MAPLEWOOD
2 FAMILY with value & Rms on each floor 1100' Transferred owners on their way...

MAPLEWOOD
2 FAMILY with value & Rms on each floor 1100' Transferred owners on their way...

MAPLEWOOD
MOTHER DTR Only 3 Yrs young custom built 4 Rms complete privacy for related families...

MAPLEWOOD
2 FAMILY with value & Rms on each floor 1100' Transferred owners on their way...

MAPLEWOOD
2 FAMILY with value & Rms on each floor 1100' Transferred owners on their way...

MAPLEWOOD
2 FAMILY with value & Rms on each floor 1100' Transferred owners on their way...

MAPLEWOOD
2 FAMILY with value & Rms on each floor 1100' Transferred owners on their way...

MAPLEWOOD
2 FAMILY with value & Rms on each floor 1100' Transferred owners on their way...

MAPLEWOOD
2 FAMILY with value & Rms on each floor 1100' Transferred owners on their way...

MAPLEWOOD
2 FAMILY with value & Rms on each floor 1100' Transferred owners on their way...

MAPLEWOOD
2 FAMILY with value & Rms on each floor 1100' Transferred owners on their way...

MAPLEWOOD
2 FAMILY with value & Rms on each floor 1100' Transferred owners on their way...

MAPLEWOOD
2 FAMILY with value & Rms on each floor 1100' Transferred owners on their way...

MAPLEWOOD
2 FAMILY with value & Rms on each floor 1100' Transferred owners on their way...

MAPLEWOOD
MOTHER DTR Only 3 Yrs young custom built 4 Rms complete privacy for related families...

MAPLEWOOD
2 FAMILY with value & Rms on each floor 1100' Transferred owners on their way...

MAPLEWOOD
2 FAMILY with value & Rms on each floor 1100' Transferred owners on their way...

MAPLEWOOD
2 FAMILY with value & Rms on each floor 1100' Transferred owners on their way...

MAPLEWOOD
2 FAMILY with value & Rms on each floor 1100' Transferred owners on their way...

MAPLEWOOD
2 FAMILY with value & Rms on each floor 1100' Transferred owners on their way...

MAPLEWOOD
2 FAMILY with value & Rms on each floor 1100' Transferred owners on their way...

MAPLEWOOD
2 FAMILY with value & Rms on each floor 1100' Transferred owners on their way...

MAPLEWOOD
2 FAMILY with value & Rms on each floor 1100' Transferred owners on their way...

MAPLEWOOD
2 FAMILY with value & Rms on each floor 1100' Transferred owners on their way...

MAPLEWOOD
2 FAMILY with value & Rms on each floor 1100' Transferred owners on their way...

MAPLEWOOD
2 FAMILY with value & Rms on each floor 1100' Transferred owners on their way...

MAPLEWOOD
MOTHER DTR Only 3 Yrs young custom built 4 Rms complete privacy for related families...

MAPLEWOOD
2 FAMILY with value & Rms on each floor 1100' Transferred owners on their way...

MAPLEWOOD
2 FAMILY with value & Rms on each floor 1100' Transferred owners on their way...

MAPLEWOOD
2 FAMILY with value & Rms on each floor 1100' Transferred owners on their way...

MAPLEWOOD
2 FAMILY with value & Rms on each floor 1100' Transferred owners on their way...

MAPLEWOOD
2 FAMILY with value & Rms on each floor 1100' Transferred owners on their way...

MAPLEWOOD
2 FAMILY with value & Rms on each floor 1100' Transferred owners on their way...

MAPLEWOOD
2 FAMILY with value & Rms on each floor 1100' Transferred owners on their way...

MAPLEWOOD
2 FAMILY with value & Rms on each floor 1100' Transferred owners on their way...

MAPLEWOOD
2 FAMILY with value & Rms on each floor 1100' Transferred owners on their way...

MAPLEWOOD
2 FAMILY with value & Rms on each floor 1100' Transferred owners on their way...

MAPLEWOOD
2 FAMILY with value & Rms on each floor 1100' Transferred owners on their way...

NOTICE TO JOB APPLICANTS
This newspaper does not discriminate in advertising...

SELLING YOUR CAR?
We'll find you the best price in advance at our Union Ave. office...

NEED A CAR?
Or just don't have the time to find one? We can help!

INTERSTATE AUTO SPECIALISTS
Today for an appt 527-0040

ERRORS
Sometimes the paper prints an error. If you have an error...

STAR STRUCK
Gain extra attention for your classified ad by asking your ad to be placed in the STAR STRUCK column...

STAR STRUCK
Gain extra attention for your classified ad by asking your ad to be placed in the STAR STRUCK column...

STAR STRUCK
Gain extra attention for your classified ad by asking your ad to be placed in the STAR STRUCK column...

STAR STRUCK
Gain extra attention for your classified ad by asking your ad to be placed in the STAR STRUCK column...

STAR STRUCK
Gain extra attention for your classified ad by asking your ad to be placed in the STAR STRUCK column...

STAR STRUCK
Gain extra attention for your classified ad by asking your ad to be placed in the STAR STRUCK column...

STAR STRUCK
Gain extra attention for your classified ad by asking your ad to be placed in the STAR STRUCK column...

Write Your Own Classified Ad!
USE THIS EASY WANT AD FORM
★ SELL IT! ★ RENT IT! ★ FIND IT! ★ BUY IT! ★ FIX IT! ★ LEARN IT!
THROUGH THE CLASSIFIED
EASY WANT AD FORM
Ad will appear in these 9 Newspapers
for less than 34¢ Per Word
Union Leader, Irvington Herald, Vailsburg Leader, Springfield Leader, Suburban Leader, The Spectator, Mountinside Echo, Linden Leader, The Suburbanite
Reaching 320,000 Readers Each Week in Union and Essex Counties.
Four (4) Words Of Term Length Will Fit On One Line. For Extra Long Words Allow Two (2) Spaces. (Be Sure To Count Name, Address and Phone Numbers - As You Want Them To Appear In Ad.) Figure Your Cost By Multiplying The Number Of LINES By \$1.35. Minimum Charge \$5.40. (16 Average Words.)
Please Print or Write Clearly
Suburban Publishing Corp., 1291 Stuyvesant Ave., Union, N.J. 07093
Please insert the following Classified Ad as indicated:
(1) (2) (3) (4) (5) (6) (7) (8) (9) (10) (11) (12) (13) (14) (15) (16)
Name \_\_\_\_\_
Address \_\_\_\_\_
City \_\_\_\_\_ Phone \_\_\_\_\_
Insert Ad \_\_\_\_\_ Time(s) at \_\_\_\_\_ per insertion
Amount Enclosed \_\_\_\_\_ ( ) Cash ( ) Check ( ) Money Order

Are you... **Houses** **Functioning?** **4 lines 2 times** **10¢ only \$5.40** **call 686-7700**



**KEAN RECORDS**—The Connecticut Dance Company, directed by Mark Gannon, is performing a series of contemporary American dances in Kean College's main theater for the Performing Arts...

### Klugman to be host

Jack Klugman, television star of "Hill Street Blues," will be the featured speaker at the National Easter Seal and Children's Welfare Campaign...

### Piano soloist

Arthur Schnitzler, a pianist and composer, will be the soloist at the YMYWHA of Saturday...

## Office workers find pay hikes offset by costs

Average straight-time earnings of private sector office clerical and electronic data processing workers employed in the New York metropolitan area rose 5.8 percent between May 1976 and May 1977...

## Rabbinical unit to honor Ford

The Rabbinical College of America, Morristown, will confer its first honorary degree since its founding in 1961 to Gerald R. Ford...

## Program on 'gifted'

A 36-hour master of arts program in the education of the gifted and talented will be made available to teachers...

## Federal jobless figures inaccurate, official says

Figures released recently by the U.S. Bureau of Labor Statistics showing that New Jersey's unemployment rate increased from 6.8 percent in January to 7.4 percent in February are misleading...

## Kean offering assistantships

Kean College is offering a number of graduate assistantships to matriculated students in the graduate school of Applications for the assistantships...

## Workshop planned on environment

NEW BRUNSWICK—The second annual environmental education workshop for elementary and secondary school teachers will be held at Cook College, Rutgers University...

## Unit observes its 73rd year

Mr. Simon L. Sage, of the Independent Order of Odd Fellows will observe its 73rd anniversary with a dinner-dance on Sunday evening April 9...

More than 30 members of the Rutgers and Cook College faculties will assist in the workshop. Members of business, industry and representatives from federal, state and private environmental associations will also participate...

Prepare for Tomorrow's Technology Today! Enroll Now For Courses in AIR CONDITIONING and AUTO MECHANICS. LINCOLN TECHNICAL INSTITUTE. (201) 964-7800

Cards of Thanks. DEBOE KAY & FAMILY. Card of Thanks. RAY, Morton J.

Card of Thanks. RAY, Morton J. DEBOE KAY & FAMILY.

## DEATH NOTICES

ARVEN—Mrs. Jane S. Arven, 63, of 1001 1/2 10th St., Newark, N.J., died at 10:30 p.m. on Monday, March 27, 1978...

Program on 'gifted' methodology of instruction in one content area. The program will also cover how to establish and supervise programs in the education of the gifted...

The Department of Health, Education and Welfare defines "gifted and talented" as youngsters—identified at the preschool, elementary or secondary level—who possess demonstrated or potential intellectual, creative, or specific academic abilities or leadership capability...

CARE FOR CHILDREN: In 1899, the State Board of Children's Guardians was created to find suitable homes for children. Before then, many children had been kept in "almshouses."



WILLIAM FELDMAN, a music professor at Kean College, will be the piano soloist when the Kean Chamber Orchestra offers a free concert April 9 at 6:30 p.m.

NEED HELP? WINTER SERVICE SPECIALS! Windshield Wiper Inserts, Washer Solvent, Service Windshield Washer \$9.95. OIL CHANGE and OIL FILTER \$14.95. DORAN Ford. 2037 MORRIS AVE., UNION, N.J. 686-0040

WIN 3 FREE CARS AT HUDSON COUNTY'S GIGANTIC AUTO SUPERMARKET. DiFeo BUICK • PARK PONTIAC HUDSON TOYOTA. SPECTACULAR SALES EVENT! \$100 REWARD! CALL "HOT LINE" FOR INSTANT DIRECTIONS 451-9550