

VETERAN SALE DAYS IN UNION CENTER

4 BIG DAYS!
 ● Thurs.-Fri.
 ● Sat. & Mon.
NOV. 8-9-10-12

Kaufman's

1037 Stuyvesant Avenue, Union Center

JUST IN TIME FOR WINTER!

LONG
BRUSHED NYLON
GOWNS

\$ 9

Regular price \$14! Sizes S-M-L! Big assortment of styles in a rainbow of colors! Be here early!

WARM BRUSHED NYLON
P.J.'S

\$12⁰⁰

These go back to \$19 each on Tuesday! Sizes 34 to 40 in a great selection of colors and styles. Limited quantities so be here early!

4-DAYS ONLY... THURS.-FRI.-SAT.-MON.

UNION BOOTERY

4 DAYS ONLY! THURS.-FRI.-SAT.-MON.

ALL OUR REG. STOCK!

10 % OFF

SHOES

- Naturalizer • Enna Jettick
- Edwards Children's Shoes
- Men's Jarman Shoes

WOMEN'S BOOTS

- Desco Revelations
- Naturalizer • Andiamo

CHILDREN'S BOOTS

- Waterproof
- Dress Boots

UNION BOOTERY

1030 Stuyvesant Ave.

Union Center • 686-5480

Open Mon. & Fri. Evenings Till 9 • Visa & Master Charge

Curtain Bin and Bath Shop

1036 Stuyvesant Ave., Union • 686-5015

The Best Selling Curtain We Have Ever Had Now Sale Priced

"SMOCKED TOP" SEEDED VOILE CURTAINS BY "CROSSCILL"

100% DACRON POLYESTER NO IRONING EVER... **\$12⁰⁰ pr.**

WHITE...BEIGE...RUST **\$16⁰⁰ pr.**

BEAUTIFUL IN ANY ROOM OF YOUR HOME **\$18⁰⁰ pr.**

"SMOCKED" TIE BACKS, \$6.50 Pr. - VALANCES \$8.00

Guaranteed Christmas Delivery
"CORTLEY"
 Precision Made Special Order
DRAPERIES

Hundreds of patterns to choose from custom pleating made to stand and width and your exact length!

40% OFF

Beat The Cold
FIELDCREST
OR MARTEX
BLANKETS
10% OFF

REG. LOW PRICE

100% DACRON POLYESTER
PANELS
With Attached
VALANCE
\$7.00 Value
\$3⁰⁰ Ea
inc. Valance

Choose from white, beige, green or yellow. All first quality, 84" long! Great buy... 4 days only!

100 PERCENT POLYESTER
COMFORTERS
Reg. \$25
\$19⁹⁹ Each

Twin or full size in a good selection of beautiful decorator patterns.

REIMER'S

4 DAYS ONLY! THURS.-FRI.-SAT.-MON.

ALL BOYS' and GIRLS'
COATS • JACKETS
SNOWSUITS

20 % OFF

SIZES FROM 2 to 14

REIMER'S

CHILDREN'S WORLD

1035 Stuyvesant Ave., Union

Open Friday & Monday Nites Till 9 P.M.



yes

we are having a
4 DAY SALE
 in order to compete with all
 the major stores in our area
 you will save from
20 to 40%
 on much of our fall and
 winter inventory

VETERANS DAY

ARMISTICE DAY

however



There was a time when a holiday was a holiday in the true sense of the word. Where you remembered and respected the occasion you were celebrating.

Today it seems that they are all simply excuses for running a sale, and we have forgotten their real significance. That was so instrumental in providing us with the abundance and way of life we now enjoy and take so much for granted.

Let us not forget the veterans who fought - and some died - for what they believed was right, and let us realize that the enemies of yesterday are today our friends.

Perhaps now that the world is at peace we should do what we are able, to help preserve and extend this peace, so that all of the wars will not have been in vain.

Perhaps in this land of such abundance we should share more on an individual basis of what we have, with the less fortunate throughout the world.

Perhaps we would all feel better if we bought one less skirt or suit, had one less dinner and drink, purchased one less lottery ticket and sent that amount to our favorite charity in memory of all of the veterans world wide.

Let us all work for, pray for, and cherish peace. And be grateful.

Thank you
 Stan

DON'T FORGET VETERANS' DAY

We salute the dedicated men and women of our armed forces. Their courage has served us honorably.



BOOTS

Reg. \$85⁰⁰ ... NOW \$65⁹⁰

Reg. \$77⁰⁰ ... NOW \$60⁹⁰

Reg. \$71⁰⁰ ... NOW \$55⁹⁰

SHOES

Special group of New Fall styles including Mia, Bass, Zodiac with savings up to

25% off



Stan Sommer

985 Stuyvesant • Union • Shop to 9 Mon. & Fri.

Stan Sommer

985 Stuyvesant • Union • open to 9 Mon. & Fri. • to 7 Tues. Wed. Thurs. • Sat. to 4 • 264 E. Broad • Westfield • Thurs. to 9

MOST STORES OPEN LATE FRIDAY AND MONDAY EVENINGS... LOTS & LOTS OF SHOPPER'S PARKING!

charge the all major charges and our own

VETERAN SALE DAYS

4 BIG DAYS! THURS.-FRI.-SAT.-MON.

VETERAN'S DAY SALE
THURS.-FRI.-SAT.-MON.-NOV. 8,9,10, & 12

SAVE BIG ON OUTERWEAR

20% OFF

on BOYS' and GIRLS' WINTER JACKETS and COATS, INFANTS & TODDLERS' WINTER JACKETS & SNO-SUITS! NEWEST COLORS and FABRICS!
Junior and Teen Styles Galore!

SUSAN SHOP "Everything For The Younger Set" 1050 Stuyvesant Ave. UNION CENTER	SUSAN JR. CIRCLE "For Juniors and Teens" 1054 Stuyvesant Ave. UNION CENTER
---	--

save big dollars on Gruber's Veterans Day Sale!

Outerwear event starts TODAY thru Mon., Nov. 12th

save up \$41.
Mens' wool top coats & overcoats. Single & double breasted.
Reg. \$166-195 **\$139.-154.**

save up \$60.
Famous maker leather outerwear, pile lined. Suedes & calfskins, varied lengths.
Reg. \$165-255 **\$129.-195.**

save up \$10.
Boys' down filled winter vests.
Reg. \$22-47.50 **\$16.99-37.50**

save up \$16.
Boys' down filled jackets.
Reg. \$35-70. **\$26.-54.**

save \$36.
Men's 3 pc vested SUITS. Fall into winter weight in wool and wool blends.
Reg. \$165 **\$129.**

save \$35.
Corduroy Suits **\$64.90**
Reg. \$100.

GRUBER'S

IRVINGTON CENTER UNION CENTER Open late Mon. & Fri.
ESSEX GREEN PLAZA WEST ORANGE Open late Mon., Wed., Thurs. & Fri.
Gruber's & Major Credit Charges Accepted

Of course, there is no charge for custom alterations.

TERMINAL MILL ENDS VETERAN'S DAY SALE
THURS. -FRI. -SAT. -MON. -NOV. 8-9-10-12

WE DO REUPHOLSTERY Completely redone including new springs, webbing, cotton and poly cushions. 1 CHAIR \$159.95 and up 1 SOFA \$329.95 and up	LET US MAKE YOUR DRAPES Custom Made \$6.99 Per Panel Plus Fabric POLYFOAM or FOAM RUBBER NIMBUS Purchased In This Store All Sizes & Thicknesses We Have Enlarged Our SHADE DEPARTMENT Stock Shades Cut To Order. Woven Shades, Vertical and Horizontal Blinds. 20% OFF	SLIPCOVER SPECIAL! 2-PC. SET 1-SOFA and 1-CHAIR (Lawson Style) \$169.95 INCLUDING OVERLOCKING AND SELF-WELTING 1 EXTRA CHAIR \$59.95 COMPLETE
---	--	---

WE RECOVER KITCHEN & DINETTE SETS TO LOOK LIKE NEW From **\$749**
Why buy a new kitchen or dinette set when we can recover your old set to look like new!
Sale Does Not Apply To Any Custom Work Done or Special Orders

OPEN DAILY 9:30 to 6 PM
TERMINAL MILL ENDS
962 STUYVESANT AVE., UNION 688-9416
OPEN MON. & FRI. EVES TILL 9 PM
"Where You Don't Say Good-bye... You Say THE BEST BUY"

WALLCOVERINGS DIRECT

GRAND OPENING OF UNION'S NEW LUCITE HEADQUARTERS!

End of Season Clearance **\$8.99** per gal.

LUCITE House Paint
LUCITE Wall Paint
LUCITE Interior Enamel

Forms a tough seal for long-lasting beauty... outside walls resist cracking and peeling... inside walls wash clean easily.
Easy to use Latex formulas
Fast drying
Excellent durability for long-lasting beauty

\$6.99 per gal.
\$9.99 per gal.

SAVE 50% on all Wallcoverings in stock

OVER 1000 PATTERNS TO CHOOSE FROM!

Whether You Are Looking For Mylars, Vinyls, Flocks or Pre-Pasted Papers... WE HAVE THEM! TREMENDOUS BOOK SELECTION!

THE ONE STOP STORE FOR MORE...FOR LESS

UNION 1070 Stuyvesant Avenue 686-1166 Open Mon. & Fri. till 9 Ample Parking	BELLEVILLE 161 Washington Avenue 751-8899 Open Fri. till 9 Ample Parking	POMPTON PLAINS United Discount 500 Route 23 839-7400 Open Mon.-Sat. till 9:30 Ample Parking
--	---	---

Veteran's Sale Days

Visit Our New

DISCOUNT SPORTSWEAR Department

French MILLINERY

1011 STUYVESANT AVENUE, UNION
Open Mon. & Fri. Till 9 • Tues., Wed., Thurs., Sat., Till 6

SCHWARZ PHARMACY MAKES SENSE & SAVES YOU DOLLARS

BIC BUTANE LIGHTER 2 for 88c E.P.T. Early Pregnancy Test 688 IVORY LIQUID 22-oz. size 89c Q-TIPS Box of 300 1.09 DIAL SOAP Bath size, Pack of 4 1.37 BIC SHAVER Pack of 4 47c SWEET 'N LOW Pack of 100 69c DANISH BUTTER COOKIES 1-pound size 1.99 EFFERDENT Box of 96 1.99 TIDE DETERGENT 49-oz. size 1.57 DOW OVEN CLEANER 14-oz. size 99c FANTASTIC 32-oz. size 99c COLGATE TOOTHPASTE 7-oz. size 97c	SCHWARZ SAVINGS SUGGESTIONS: • COMPARE BRAND NAME PRICES with our generics. If you are not certain about generic equivalents please ask us. Generic drugs are not only prescription items...we have lower priced equivalents of many non-prescription vitamins, mouth washes, antacids, analgesics and lots more. PLUS a full line of generic prescription drugs. • SAVE SCHWARZ SUPER SAVE STAMPS! Every full book is worth 50 cents towards merchandise! • SCHWARZ EARLY BIRD PRESCRIPTION SAVINGS...when you don't need your prescription (new or refill) in a hurry. Tell us and we will tell you how to save extra money. • SCHWARZ PRESCRIPTION RECORDING TAPE. When we are closed it works for you. Let your doctor call-in your new prescription or you can order prescription refills. Saves you time and money. • SCHWARZ SENIOR SAVERS PROGRAM. Over 60? Just ask us about your senior savers book of coupons.	ALKA SELTZER Foil Wrapped 36's 1.29 VIT. C CHEWABLE 500 mg., bottle of 100 1.99 MYLANTA 12-oz. liquid or 100 tablets 1.57 POND'S COLD CREAM or DRY SKIN CREAM, 13.4oz. 2.19 DURACELL BATTERIES Size "C" or "D", Pack of 2 99c SUMMER'S EVE Twist Pack 69c TEK TOOTH BRUSHES 5 for 99c CHERACOL D 4-oz. size 1.99 CRACKERJACKS Package of 6 boxes 87c PANTY HOSE One Size Super Stretch 99c CUTEX POLISH REMOVER 4-oz. size 59c STRESSTAB 600 Plain, Zincor Iron, Bottle of 60 5.39 CHARLIE SHAMPOO 8-oz. bottle 1.99 VIDAL SASSOON SHAMPOO 4-oz. size 1.99 HUDSON VITAMIN SPECIALS 25 FREE With 100 On Many Items
--	---	---

Schwarz Pharmaceuticals, Inc.
PHARMACY IS OUR PROFESSION
1020 Stuyvesant Avenue, Union, N.J. 687-1122

GRAND OPENING!

Celentano's

FOOD AND CATERING
THE FINEST IN ITALIAN GOURMET FOOD

• FRESH MOZZERELLA and RICOTTA MADE DAILY •

4-DAY SPECIAL
CELENTANO RAVIOLI 99c Doz.
With \$5 Purchase. Limit 5 Doz. Per Customer While Supply Lasts!

"We Carry The Finest Italian Food Available!"
1275 STUYVESANT AVE.
UNION, N.J. • 964-9008 - 964-9009
Open Mon. thru Sat. 8 to 6; Sunday 8-2
PARKING AT REAR OF STORE

SHOP TIL YOUR HEARTS CONTENT FRIDAY & MONDAY EVENINGS

UNION CENTER

NOV. 8-9-10-12-OPEN LATE MON. & FRI.

MEAT FAVORITES

for the family

BABY BEEF LIVER \$1.09 lb.

Top Sirloin CUBE STEAKS \$2.49 lb.	Eye or Bottom ROUND ROAST \$2.49 lb.	Whole or Half PORK LOINS \$1.49 lb.	Home Made ITALIAN SAUSAGE \$1.99 lb.
TURKEYS 10-22 lb. avg. 98c lb.	Perdue OVEN STUFFERS 79c lb.	Braunschweiger LIVERWURST Sliced or by the Piece \$1.79 lb.	Extra Large Jersey White EGGS 89c dz.

Prices Effective Nov. 8, 9, 10, 12

LUZ'S PORK STORE

1055 Stuyvesant Ave. • Union Center • 688-1373

Not Responsible For Typographical Errors

FOR ALL YOUR PHOTOGRAPHIC NEEDS!

MEET MR. KODAK

FRI. NOV. 9 9-4 to 9 PM
SAT. NOV. 10- 10 to 2 PM

UNION CAMERA exchange

Fun for all KODAK COLORBURST 50 INSTANT CAMERA

It's new! A KODAK Instant Camera you just aim and shoot. Motorized for instant print ejection. Color prints develop in moments. Attractive streamline design. Affordable price. See it soon.

\$29.99

Easy does it

BY KODAK

Just open the box, drop in the film, and aim and shoot. It's that easy to take great color prints or slides when you have a KODAK INSTAMATIC X-15F Camera Outfit. Film and flash are included.

\$13.99

SPECIAL REBATE OFFER

ON KODAK INSTANT CAMERAS & FILM!

\$10 BACK

KODAK 760H SLIDE PROJECTOR

\$179.99

INC. 140 Tray, ELH Lamp, 102mm 2.8 Lens

• Automatic focusing. Focus the first slide, then the projector automatically sharp-focuses all other slides in the same type of mount. • Remote control forward and reverse.

PRO EKTRALITE 10 OUTFIT

The KODAK EKTRALITE 10 Camera Outfit has a great low price. And it comes with built-in electronic flash plus batteries, film, and the simplicity of aim and shoot picture-taking. It's always ready for that great picture indoors or out.

\$34.99

INC. Film, Batteries & Pro Case

UNION CAMERA exchange

2009 MORRIS AVE. (Next To Bank)
UNION CENTER 688-6573

• Open Mon. & Fri. Evenings • Parking in Rear

CALLING ALL MEN FROM THE ALL-AMERICAN CITY!!!

UNION, N.J. All-America City

COME TO THE FINEST MEN'S CLOTHING STORE AND SHOP AT THE LOWEST PRICES EVER!

THE DUGOUT

1015 Stuyvesant Ave., Union Center • 964-9545

See A Crisp New Selection of Suits, Shirts, Sport Jackets, Slacks, Vests, Ties, Sweaters, etc. Walk Tall In Our Beautiful City, And Wear It With The Same Affordability!

TAKE PART IN OUR ALL-AMERICAN SPECIAL FOR VETERAN'S DAYS

BRING-IN THE FOLLOWING ITEMS and RECEIVE IN TRADE-IN

TIES.....75¢	SWEATERS.....2.00
SLACKS.....1.50	SP. JACKETS.....8.00
SHIRTS.....1.50	SUITS.....12.00

ALL CLOTHING COLLECTED WILL BE SORTED AND GIVEN TO THE NEEDY!

Come On Over And Make This A Happy Holiday For All

Open Daily Till 5:30; Monday and Friday Till 9 FREE TAILORING

the health shoppe

Health foods are our only business

DISCOUNT VITAMINS & HEALTH FOODS

SALE STARTS IMMEDIATELY ENDS NOV. 17, 1979

90% PROTEIN POWDER Instant 1 lb. \$4.95	L-TRYPTOPHAN Tablets 500 MG 30 FOR \$5.99	LECITHIN CAPSULES 19 Grain 1200 MG 100- Reg \$3.49 Now \$2.95 200- Reg 6.85 Now \$5.50 300- Reg. \$14.95 Now \$11.95
SELENIUM 50 MCG. With Chromium in a Special Base of Primary Grown Yeast. Sugar and Starch Free. \$3.16 per 100 \$7.16 per 250 \$13.54 per 500	BEE POLLEN 500 MG. (From Southern France) \$3.16 per 100 \$6.25 per 250 \$13.50 per 500	ROSE HIPS-C 500 MG. Sugar and Starch Free \$1.99 per 100 \$4.95 per 250 \$9.95 per 500
LECITHIN GRANULES 1 lb. Reg. \$4.99 Now \$4.99	20% OFF B15 500 MG. 100 tablets reg. \$7.95 Now \$6.36 200 tablets reg. \$14.40 Now \$11.52	NATURAL VITAMIN E 1000 IU "COCOPHEROL" OR MIXED 16- 1.95 Now \$3.94 25- 5.50 Now 7.75 500- Reg. .95 Now \$1.96
BREWERS YEAST TABLETS 7-1/2 GRAIN 500 1000 Tablets only \$3.95 \$2.75	TORULA YEAST POWDER 1 Pound only \$1.99	VITAMIN B6 100 mg 250 100 500 tablets only \$9.95 \$5.54 \$2.50

964-7030 The Health Shoppe
2014 Morris Ave., Union Center

FAMOUS MANUFACTURER

CLOSEOUT!

WITH THIS COUPON

20% OFF

ON ALL ELURA WIGS IN OUR NEW FALL COLLECTION

EXPIRES 11-17-79

100% WASH N' WEAR

WIGS NOW! \$18.90

ASSORTED STYLES Reg. To \$45.00

Gigi OF UNION CENTER

A COMPLETE LINE OF WIGS, WIGLETS & ACCESSORIES

1025 Stuyvesant Ave., Union • 687-9868

Mon. & Fri. Till 8:30
Tues. thru Sat. Till 5:30

KEMPLER SHOES

CHANGE OF FACE SALE CONTINUES WITH EVEN GREATER REDUCTIONS

ALL CHILDREN'S SHOES, SNEAKERS, SLIPPERS, BOOTS **1/2 PRICE**

• STRIDE RITE • FLEET AIR • ZIPS • NIKES • KID POWER

ALL OUR FAMOUS BRANDS OF WOMEN'S SHOES AND BOOTS, INCLUDING SOME NEW ARRIVALS **20% OFF**

KEMPLER SHOES

AT UNION CENTER 966 STUYVESANT AVE., UNION 688-8367

Municipal Parking Lot Off Morris Ave., Behind Our Store Open Mon. & Fri. Until 9 P.M.

MAXINE'S SUPER SALE WEEKEND

COATS Select Groups 20% OFF	JEANS From \$12.99 Vals. to \$25.99	DRESSES From \$9.99 Vals. to \$29.99	SKIRTS From \$7.99 Vals. to \$25.99
MIX 'N MATCH From \$9.99 Vals. to \$27.99	SHIRTS From \$6.99 Vals. to \$19.99	KNIT TOPS From \$6.99 Vals. to \$19.99	SWEATERS From \$7.99 Vals. to \$24.99
PANTS From \$9.99 Vals. to \$19.99	VELOUR TOPS From \$10.99 Vals. to \$24.99	BLOUSES From \$5.99 Vals. to \$19.99	SLEEPWEAR Robes • Gowns • PJs From \$5.99 Vals. to \$29.99
BLAZERS From \$15.99 Vals. to \$59.99	FREE BIKINI PANTIES With the purchase of specially marked BRAS	Holiday SKIRT SUITS ALL 20% OFF	VELOUR GROUPS From \$9.99 Vals. to \$42.99

MAXINE'S

1027 STUYVESANT AVENUE UNION CENTER
Parking In Rear Lot (Off Axton Ave.)

PLENTY OF SHOPPER'S PARKING IN AND AROUND UNION CENTER

Falzarano not wasting any time preparing for job as Dayton AD

Peter A. Falzarano, recently appointed director of health, physical education, driver education and athletics at Jonathan Dayton Regional High School, isn't wasting any time in becoming active in his new position despite the fact that he hasn't been released from his teaching position at Watchung Regional High School in Warren County.

The personable and energetic Falzarano completes his teaching assignment at Watchung at 3 and then reports to his office at Dayton to become acquainted with the staff members and iron out schedule and officiating assignments. He usually leaves the school after several hours of checking records and sports activities in session. He expects to be able to work full time in two or three weeks when his replacement is selected at Watchung.

He is a graduate of Watchung Regional High School where he starred in football and baseball—earning all-county, all-conference and all-area honors as a quarterback and pitcher catcher for the Warriors. At North Carolina State, he helped Coach Earl Edwards' football teams win two Atlantic Coast Conference championships as starting fullback for three years plus a trip to the Liberty Bowl in Philadelphia. He was varsity baseball catcher for one year. He was graduated in 1965 with a B.S. degree in physical education and recreation.

Falzarano, an outstanding basketball prospect in high school, concentrated on football and baseball in college. He started his teaching career at South Plainfield High School (1965-68) as a health, driver and physical education teacher. He served as assistant football coach on teams that captured the state sectional championships in Group 3 for two of those years. He then moved to Scotch Plains for one year before returning to Watchung Hills Regional in 1969.

During his 10 years at Watchung, Falzarano directed the varsity baseball team for five years, compiling a 66-44



LOOKING AHEAD Winter track coach Bill Jones points out some schedule changes needed in the winter track program to newly appointed athletic director, Peter A. Falzarano, who will officially take over Jonathan Dayton Regional High School's programs in health, physical and driver education, and athletics in a few weeks.

record, two Mid State Conference Championships on Somerset County Championship plus Coach of the Year Award in 1975. He was freshmen football coach and defensive coordinator for 10 years. Watchung football teams won the Mid-State Conference championships three of the last four years and participated in the NJSIAA football playoffs.

He obtained his master's degree in administration and supervision in 1973 from Seton Hall and earned additional credits from New York University, Kean College and Monmouth College.

Falzarano, his wife Barbara and their four children—Lorri Ann, 11, Kristen Ann, 9 and twins Sheri Ann and Kimberley Ann, 5—live in Stirling. He

is active in civic affairs in his home town where he has been a member of the Volunteer Fire Company for 15 years serving as its secretary for 10. The Passaic Township Borough Council Committee elected him to its group for one year. Falzarano served as chairman of the Passaic Township Recreation Commission for four years where he organized, directed and supervised an extensive year-round program which included a lake swimming program in town.

Falzarano was active as an NJSIAA and IAABO basketball official for 10 years and served on the executive committee of that group. He is a member of the NJSIAA baseball umpires group.

Bulldogs lose to Verona, 21-0, face New Providence Saturday

The Jonathan Dayton High School football team suffered a crushing defeat by Verona last Saturday, 21-0.

Gerndt second in girls' county tennis tourney

Cathy Gerndt placed second last week as the Jonathan Dayton girls' tennis team competed in the Union County Tournament.

Gerndt defeated challengers from Union Catholic, Scotch Plains and Union before losing in the final round to Kirsten Loft of Westfield, 6-1, 6-2. The match, coach Edward Jasinski said, was much closer than the score indicates. Loft has lost only one match this year.

Other Dayton players were eliminated earlier in the competition, some by eventual tournament champions.

Dayton's final record was 6-11. Jasinski noted that even though Dayton competes in a very tough conference, the girls "played tough" all season and have improved a great deal. Although some of the top players will be graduating, next season's outlook is promising, he added.

Hockey Cobras seek experienced skaters

Skaters with high school or college experience are sought by the Cobras, a semi-pro team which competes in the Med-Eastern Hockey League. Information is available from Mike Herkalo at 862-3334 before 3 p.m. or 862-6819 after 4 p.m., daily.

Athletic director to meet boosters

A meeting of the Jonathan Dayton Booster Club will be held on Wednesday at 8 p.m. in the men teachers' room at the school. The school's new athletic director, Peter Falzarano, will be special guest. Also invited to attend will be all fall sport coaches, including football, soccer, track, girls tennis and gymnastics. Sandy Irene is president of the club.

Gymnasts defeated by Piscataway

The Jonathan Dayton High School gymnastics team traveled to Piscataway Oct. 30. The order of events was rearranged, perhaps in Piscataway's favor. Floor exercise opened the meet and Paige Carter placed first with an exceptional 8.05. Sue Feig tied for third. On the balance beam Carter was first and Vicki Sarracino tied for third. Carter took another first place in vaulting. Sarracino, Feig and Hannah Reimann also performed well. At this point Dayton was winning by a little more than a point. Debbie Olarsch, Jodi Ruff, Reimann and Carter contributed beautiful uneven bar routines, but the Piscataway gymnasts were too powerful and Dayton lost 77.85 points to 83.70.

Friday, Columbia High School was forced to forfeit. Saturday Paige Carter and Hannah Reimann, with coaches Ele Soisson and Gina Kish, will travel to Butler High School in Wayne for the State Sectionals. This competition is a preliminary qualifying meet for the state finals.

Friday, Columbia High School was forced to forfeit. Saturday Paige Carter and Hannah Reimann, with coaches Ele Soisson and Gina Kish, will travel to Butler High School in Wayne for the State Sectionals. This competition is a preliminary qualifying meet for the state finals.

Friday, Columbia High School was forced to forfeit. Saturday Paige Carter and Hannah Reimann, with coaches Ele Soisson and Gina Kish, will travel to Butler High School in Wayne for the State Sectionals. This competition is a preliminary qualifying meet for the state finals.

Harriers finish 2nd, advance to state finals

The Jonathan Dayton cross-country team placed second in the state sectionals to qualify for the state championship meet. It won the Suburban Conference championship for the third time in four years.

Hillside won the sectionals last Saturday with 49 points to the Bulldogs' 55. The Bulldogs' Jeff Knowles finished fifth, Jay Bruder eighth, Steve Wright ninth, Adam Silverstein 14th, and Glen Ertz 18th. Jim Roach and Scott Conoly also ran.

Although the weather was bad Dayton ran a tough race.

Coming off their first loss of the season, coach Martin Taglienti's team had only three days to prepare for the conference meet. "They had to believe they could come back," commented Taglienti, and they did.

Booters tie Summit, finish year at 4-5-7

The Jonathan Dayton soccer team ended its season with a 1-1 tie in Summit for a 4-5-7 record.

Although Dayton was outplayed in the first half, it was able to hold a tough Summit team to a single goal. In the second half the Bulldogs were much more aggressive and controlled the tempo of the game. Dayton's Marty Swanson scored on a blast from 25 yards out into the upper right hand corner. The Bulldog defense in the second half was led by Don Meixner

and Dave Cushman. Yoram Rubanenko also played a fine game.

Coach Joe Cozza, pleased with the effort, said, "The team played well." The Bulldogs are a young and inexperienced team but they are learning.

Dayton's strong points are goalie (Scott Worswick and Andrew Grett) and defense. Cozza looks forward to next year even though he will lose Marty Swanson, Mike King, Dan Demaretski, Scott Worswick, Ron Scitula and Steve Tetenbaum.

Returning players, who will form next year's nucleus, are Henry Largey, Grett Rubanenko, Pete Klaskin, Matt Gallagher, Henry Rueda, Kurk Yoggy, Miron Waskiew, Ed McDonald, Cushman Meixner and Keith Hannigan. Cozza noted that he is "trying to build a soccer team." To do this the players will have to play all year and the town's interest will have to grow.

Cross-country team ends 5-6

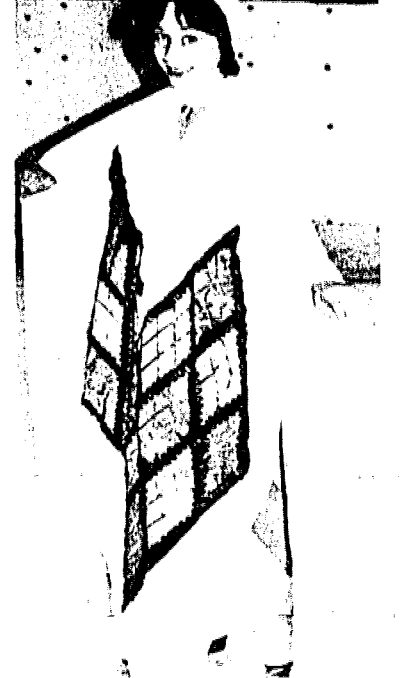
Union College's cross-country team concluded its season Oct. 24 in Toms River with a victory over Salem County College and losses to Burlington and Ocean County Colleges.

The Owls under Coach Tim McCracken compiled a record of five wins and six losses.

Union defeated Salem, 22-33, but lost to Burlington and Ocean by identical scores of 19-36.

THE CHICAGO BEARS NO. 1 DRAFT PICK: DAN HAMPTON
PLAYED 4 YEARS AT U. OF ARKANSAS AND WAS AN ALL-AMERICAN DEFENSIVE TACKLE IN HIS SENIOR YEAR. HE HAD 98 TACKLES AND 18 SACKS. DAN HAD TO BE COINED "GO OUT FOR FOOTBALL" BY HIS HIGH SCHOOL COACH. HE PREFERRED TO CLAY WITH THE SCHOOL'S MARCHING BAND.
WHEN HE GOT EXCITED ABOUT FOOTBALL, HE BUILT HIMSELF UP WITH WEIGHTS. HE'S 6'7" AND WEIGHS 256. DAN WAS RAISED BY HIS MOTHER. HIS DAD DIED AT AN EARLY AGE. HE GOT THE NICKNAME "DANVILLE" BECAUSE HE ACTED A BIT WILD AT TIMES.

FRIDAY DEADLINE
All items other than spot news should be in our office by noon on Friday.



SKATING LADY—Cindy Schneider of Springfield is a junior member of the South Mountain Figure Skating Club, which belongs to the United States Figure Skating Association. The club will present the America on Ice Show III tomorrow and Saturday at the South Mountain Arena, 560 Northfield Ave. in West Orange. Further information can be obtained at 731-1234.

TROJAN® FAMILY PLANNING SPECIAL

TROJAN-ENZ
Lubricated
12's
\$279 Reg. '435

TROJAN RIBBED
12's
\$299 Reg. '535

SPRINGFIELD PHARMACY
242 Mountain Ave. 376-5050
Springfield

Jim Guido promoted

James N. Guido of Springfield has been promoted to senior computer systems analyst in Prudential Insurance Company's computer systems and services office, Roseland.

Guido has been associated with the company for 22 years. Before joining the computer systems and services office in 1973, he had worked in the valuation division.

JAMES N. GUIDO
PLUMBERS ATTENTION! Sell your services to 30,000 local families with low-cost Want Ads. 686-7700.

SPRINGFIELD AVENUE

HEADING WEST—
use Prospect Office at
PROSPECT ST.

HEADING EAST—
use Hilton Office at
JACOBY ST.

FULL SERVICE OFFICES
on both sides of Springfield Ave.

The MAPLEWOOD BANK
and Trust Company
Member F.D.I.C.

LEAF-RELIEF

FOOTBALL SEASON IS NEAR AGAIN. BUT IF YOU DON'T HAVE A SNAPPER, THE RAKING SEASON IS HERE AGAIN.

SNAPPER "High Vacuum" riding mowers not only do a good job of cutting grass, they pick up the cuttings, leaves and litter in a hurry. Depending on the size of your spread, optional catchers are available with six and thirty bushel capacities. That means you may be able to mow and vacuum your entire area without stopping to empty.

If your lawn area doesn't require a riding mower, there's also a SNAPPER walk-behind mower to get fall chores out of the way in a hurry. With an optional Snapperizer attached to the bottom of a SNAPPER mower, you can shred leaves so the bag holds over twice as many and you have to empty it less often.

Ask for a demonstration of a SNAPPER. You'll see why SNAPPER owners are able to enjoy more of the games.

FREE SNAPPER POWER T-SHIRT with the purchase of any SNAPPER Mower, Tiller or Tractor at participating SNAPPER Dealers.

As Advertised on Major TV
KPM DISTRIBUTORS: KENVIL 584-5400

ANDERSON LAWNMOWER & GARDEN SUPPLIES
1719 E. Second Street
Scotch Plains
CARDINAL LAWN & GARDEN CENTER
272 Milltown Road
Springfield
GENERAL MOTOR SERVICE
1086 Globe Avenue
Mountainside
LA GRANDE, INC.
349 South Avenue E.
Westfield

SNAPPER
Mowers - Tillers - Tractors
Any way you cut it...it's a snap with SNAPPER!

SUBURBAN REAL ESTATE MART

• City • Suburbs • Farm Country • Lake • Shore

SELL BABY'S old toys with a Want Ad Call 686-7700 daily 9 to 3:30

Great Waterfront Living!
From \$119,000

Laguna Village

2133 Bridge Ave. by Point Pleasant, N.J. Trend (201) 892-3636 Homes

Ross unit honored

The Consumer Research Bureau has awarded Betsy Ross Agency, Realtors, at 117 Route 35, Keyport, the 1979 Excellence Award for Customer Relations, given annually to business establishments providing the highest levels of consumer satisfaction.

Betsy Ross Agency has merited the 1979 Award, it was stated, because of

continuing efforts to attain and maintain an excellent consumer relationship. A full-service real estate brokerage organization, the agency is a member of the Monmouth County Multiple Listing Service. Organized in 1964 for public service, the bureau is dedicated to monitoring and raising the standards of real estate firms which serve the public.

FRIDAY DEADLINE
All items other than spot news should be in our office by noon on Friday.



Impressive... Elegant... Value-Full

BERNADETTE ESTATES

at Springfield

820-832 Mountain Ave.

• Ranches • Splits • Colonials • BI-Levels
• 4 & 5 Bedrooms • 2 1/2 Baths

Mortgage Financing Available
—10 1/2% To Qualified Buyers!

Here is the location and craftsmanship you've wanted to make your home the epitome of grace and luxury. Choose your style home. Choose your quality features. Choose your floor plan — all from our infinite variety of exterior and interior designs. Priced from \$114,900.

Directions: From Rt. 22 take Sheffield St. exit, proceed 1/4 mile to models on left. From Morris Ave. to Springfield Center, turn left on Mountain Ave. to models on right.

Exclusive Sales Agent
SUBURBAN REALTY

688-6568 (Model 379-4030)

MOBILE HOMES AT SOUTH WIND ARE BUILT FROM THOUSANDS OF PIECES IN A MODERN MANUFACTURING PLANT.

...SITE-BUILT HOMES ARE BUILT FROM THOUSANDS OF PIECES ON AN EMPTY LOT.

CALL (201) 928-0952 (COLLECT) FOR DIRECTIONS OR WRITE FOR BROCHURE TO

South Wind

ROUTE 526 JACKSON N.J. 08527

"FOR PEOPLE WHO WEREN'T BORN YESTERDAY"

Leisure Tech offers 'double mortgages'

The special Leisure Technology Corp. (LTC) limited-time offer of double mortgages—one for the purchase of any LTC adult community home and one for the buyers of residences being sold by the new LTC homeowners was just the kind of extraordinary service and assistance that could only be expected from a company the stature of this builder.

Leisure Technology Corp. as a matter of fact, is the undisputed holder of the title of New Jersey's largest builder. "Professional Builder," the homebuilding industry magazine, recently ranked LTC as the only New Jersey-based builder on its list of the Top 100 "Giants in Housing." It was Leisure Technology Corp. that pioneered the concept of adult residential-recreational communities in the states of New York and New Jersey. Since then, scores of thousands of adults have moved to such planned environments in the Garden State. That includes more than 11,000 residents of LTC's New Jersey adult communities, the original Leisure Village and Leisure Village East, both in Lakewood, as well as the three currently-marketed communities, Leisure Knoll and Leisure

Village West in Manchester Township, and LeisureTowne in Vincentown.

From the LTC headquarters office in Lakewood, Lynn Joseph, vice-president of marketing for the company's New Jersey Division, discussed the importance of the recently-announced mortgage offer.

"The offer eliminates the worry that invariably results from owning two homes at the same time, and keeps open the opportunity for adults to make their move now at Leisure Technology Corp. home," Joseph stated. "But adult homebuyers are urged to take advantage of this offer as quickly as possible. It may be withdrawn at anytime and is available to qualified buyers only."

The financing is available for purchase of the Leisure Village West two-bedroom condominium patio homes, priced from \$54,990 to \$70,990. Located on Route 70 in Manchester Township west of Parkway Exit 88, Leisure Village West also offers an abundance of year-round recreational and social activities. Along with the community's par-three 18 golf holes, the Willow Hall recreation center and Lake Willow for boating and fishing, residents enjoy shuffleboard, horseshoes, swimming and several other planned educational, art and hobby programs. A special feature of the community is the residents' greenhouse.

USED CARS DON'T DIE...they just trade away.
Sell yours with a low cost Want Ad. Call 686-7700.

We feel as safe walking home at midnight after a dinner/dance as we do walking to the bocce court at noon.

For limited time only. And limited only to qualified purchasers.

MORTGAGE MONEY FOR BOTH YOU AND THE BUYER OF YOUR PRESENT HOME.



When you move to Leisure Knoll, you're not retiring from life. You're actually renewing it.

Because here, the anxieties, boredom and chores of a house grown too big (and a neighborhood too old) are replaced by non-stop fun, come-and-go freedom and new friends.

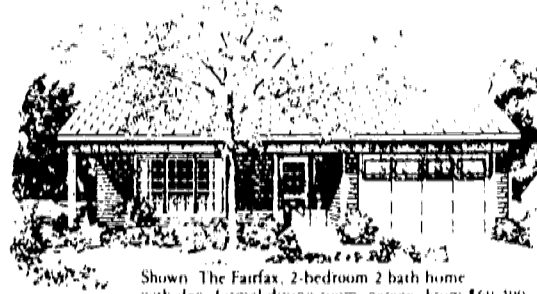
Name your pleasure, you'll find it at home. Lake. Putting green. Fishing pier. Bocce and shuffleboard courts. Swimming pool. Large recreation center with billiard room, game rooms, social lounge. Special interest clubs. We have them all.

And you can walk anywhere day or night without a second thought. Front gate security makes sure of that.

And our 2-bedroom 2 bath homes make sure you enjoy the kind of privacy your present home gives. They're fully detached. And delightfully complete with den, formal dining

room, appliances, cat-in-kitchen, your own land on all 4 sides.

What more could you want? Your friends and family close by, of course. And since we're right here in New Jersey you have that, too. See the model homes today. 5 models, 20 exteriors. \$49,990 to \$72,490.



Shown: The Fairfax, 2 bedroom 2 bath home with den, formal dining room, garage. From \$69,490.

Leisure Knoll

It makes you glad you're 52.

Lakehurst, New Jersey.

Directions: Take the Garden State Parkway south to Exit 88 then go right on Route 70 for 6 miles. Phones: (800) 392-6937.

Out of State Call Toll free (800) 631-2198.

This advertisement is not an offer of an interest in the Home Owners Association, which may be done only by formal prospectus.

©1979 Leisure Technology Corp. Leisure Technology Corp. is a publicly owned company listed on the American Stock Exchange.

New Jersey calls us home.

The best single family home values on the map. Priced in the \$60's, \$70's, \$80's and \$90's. For young couples. Families. And very active adults.

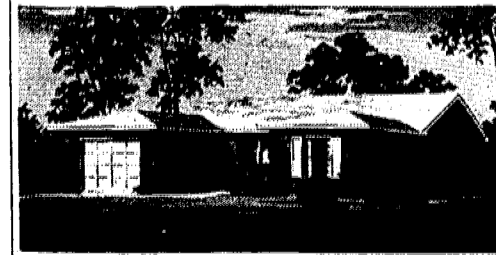
The Princeton Collection
8 models priced from the mid-\$80's.
Route 1 south to Ridge Road, East 1 block to Schaik's Crossing Road, Plainsboro (609) 799-8301



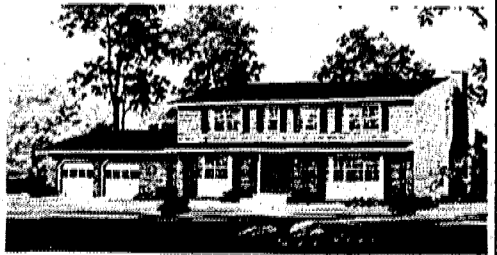
Glen Arden
5 models priced from the mid-\$60's.
On Aldrich Road, off Route 9 1/2-mile south of I-195, Howell (201) 367-7500



Greenbriar II (for adults 48 & over)
3 models priced from the low-\$60's.
Garden State Parkway southbound Exit 91 to Burnt Tavern Road East, Brick Town (201) 458-9500



Whittier Oaks
6 models priced from the low-\$90's.
On Route 9, Marlboro (201) 536-9846



U.S. Home is the leading builder of one-family homes in New Jersey. Planned in excellent locations, our communities are designed to create fine residential neighborhoods. Our homes are quality-built to increase in value as the years pass, and feature carpeting, appliances and all the living space your family needs. All

at a price you can comfortably afford. And all backed by the HOW 10-year protection plan. Visit any or all of the fine communities shown and inspect the furnished models. Once you see us, you'll never want to leave us. Financing available.

Prices, terms, availabilities subject to change without notice.

America calls us home

US·HOME

NEW JERSEY DIVISION
(201) 462-4660



The Georgetown, 4 bedrooms, 2 1/2 baths, 2-car garage and basement.

GRAND OPENING

New Section

Big, beautiful gas-heated homes just 1 block from the Manalapan Mall, just 2 blocks from the N.Y.C. bus. And 10 1/2% mortgages are available.

It sounds too good to be true. But it is true... and there's more. We'll begin with the homes themselves. They are spectacular! Four terrific new split-level and colonial designs with up to 5 bedrooms, 2 1/2 baths. Family rooms. Banquet-sized dining rooms. Country kitchens. Basements. 2-car garages. Economical gas heat. Rolling family-sized lots. And countless included extras.

Next are the prices, which (for the moment) start at just \$92,900. That's right... just \$92,900. And many of the options are already included as standard features. It's no wonder most people are amazed that homes like ours, in a location like this, are so uncommonly affordable.

Efficient, economical gas heat.

It's today's cleanest, least expensive conventional heating system — natural gas. So, naturally, we're offering it with all the homes at Meadow's Edge. Along with full wall and ceiling insulation, sill sealer, double-glass insulated windows and insulated metal front doors.

An energy-saving location.

The Manalapan Mall is 1 block away. Great shopping, including 3 major shopping centers, is within minutes. The N.Y.C. bus is just 2 blocks from your door. And you can be in Manhattan only about an hour after you leave this peaceful town-and-country setting. Neighborhood schools, houses of worship, parks and recreational facilities

are also close-by. And the Atlantic Ocean is just 16 miles away. So if you want a prestigious address that's close to everything, you've got to visit Meadow's Edge today. You'll find out how our great location saves you gas, time and money every day of every year.

No wonder Meadow's Edge is N.J.'s premiere community. Four new 3, 4 and 5-bedroom models. Eight exterior designs. With 2 1/2 baths and 2-car garages.

from \$92,900.

10 1/2% mortgages available to qualified buyers. 40-year mortgages available to a maximum of \$75,000.

Meadow's Edge

Alexandria Drive off Symmes Drive, Manalapan, N.J.

DIRECTIONS: GARDEN STATE PARKWAY to Exit 123. South on Route 9 for about 12 miles to Symmes Road (Steinbach's). Turn right to the Meadow's Edge sales center and furnished models.

Open 10-5 on weekdays; 10-6 on weekends. Sales office phone: (201) 780-4747.



SUBURBAN REAL ESTATE MART

City • Suburbs • Farm Country • Lake • Shore



THE STATELY SQUIRE—This two-story model home at Colonial Acres, the brand new American Planned Communities neighborhood on Pond Road off Route 9 in Freehold, features four bedrooms, 2½ baths, a family room with optional fireplace and optional wet bar, country kitchen and breakfast room, two car garage, master bedroom suite, full basement and double vanities in second floor bathroom, all at no extra cost.

Luxury and economy at Landstar Homes

Landstar Homes in Buena Vista Lakes, Central Florida's most exciting community, already has sold more than 450 homes this year, offering a home on an oversized lot, for less than \$30,000. Landstar was developed to make it possible for families with moderate incomes to come to Florida and enjoy the amenities and lifestyles associated with the very wealthy and they have succeeded.

Right in the Landstar community is Buena Vista Lakes Country Club, which features a challenging golf course, an Olympic swimming pool, lighted hard-surface tennis courts, a fine restaurant and lounge and all clubhouse facilities. Landstar's latest addition, now under construction, is its shopping center. Situated on the premises, the center will include 15,000 square feet of shops, a convenience store and a gas station.

All this and more is within reach of everyone's pocketbook—A lovely, two-bedroom home for less than \$30,000. A four-bedroom home for under \$41,000. Landstar offers its residents up to 95 percent financing. All closing costs and construction interests are paid by the builder. There is a 2 percent discount for a cash purchase.

A free, no-obligation information kit is available to interested persons. Call, write or visit Landstar homes at Buena Vista Lakes, 355 Buena Vista Blvd., Kissimmee, FL 32741. Or call toll-free 800-327-9156.

Newsletter to relate activities of Catholic historical agency

Projects and activities of the New Jersey Catholic Historical Records Commission will be highlighted in a new periodical just published by the commission.

More than 5,000 copies of the first issue of a newsletter are being distributed to all parishes, Catholic schools and colleges, and members of the clergy and religious orders in the state and elsewhere as well as to historical journals and institutions in and outside New Jersey.

The commission, which is based at Seton Hall University and directed by historian Joseph Mahoney of Paramus, professor of history at Seton Hall, was established in 1976 to gather and study material related to the development of Catholicism in New Jersey. It plans eventually to publish a comprehensive, up-to-date history of the church in New Jersey.

The first issue of the newsletter reports on the progress of the commission's parish history project, a major undertaking that involves

collecting historical data on more than 700 parishes in the state. Later issues will focus on other major projects, such as the oral history program to record and preserve recollections and experiences of clergy and lay persons who have figured in the development of New Jersey Catholicism.

Each issue will also contain a description of an acquisition of interest recently added to the commission's archives, now housed at Seton Hall's McLaughlin Library. In the first issue is a detailed account of the 100-year-old photograph album that belonged to Bishop James Roosevelt Bayley during his career as first Bishop of Newark.

Co-editors of the new publication are Dr. Mahoney and Peter Wosh of Perth Amboy, university archivist who also supervises the Archdiocese of Newark archives that are now included in the commission records at the Seton Hall library. A graduate of Rutgers, Peter Wosh also earned a master's degree in

history from New York University with certification in archival management.

Hyland to get ad club award

William F. Hyland, chairman of the New Jersey Sports and Exposition Authority, has been named recipient of the Outstanding Citizen of New Jersey Award by the Advertising Club of New Jersey.

Hyland will be honored at a luncheon at the Robert Treat Hotel, Newark, Nov. 15.

He is a senior partner in the law firm of Riker Danzig, Scherer, Debevoise & Hyland in Newark and Morristown. He assumed chairmanship of the New Jersey Sports and Exposition Authority in 1978 when leaving the office of attorney general of New Jersey. He has served as a member of the Authority since 1974.

Early deadline

Due to the Thanksgiving holiday, all releases and social news must be in our offices no later than noon on Thursday, Nov. 15.

The change is necessitated by special printing schedules.

ERADICATION OF POLIO

The presence of paralytic polio in the United States has just about been eradicated. In 1952 at least 20,000 cases were reported in the United States and now there are less than 20 cases a year.

USED CARS DON'T DIE, they just trade away. Sell yours with a low cost Want Ad Call 686-7700.

Seton Hall aids med students

A better chance of entering medical or dental schools is the aim of a new Seton Hall University undergrad program for selected and highly motivated students needing financial or academic assistance.

The Articulated Baccalaureate Medical-Dental Program for Educationally and Financially Disadvantaged New Jersey Students was established early this year by the New Jersey Department of Higher Education. Only Seton Hall and one other school in the state are authorized to offer it and to receive funding under the department's sponsorship.

James Deas of East Orange, a 1969 Seton Hall graduate and an educator experienced in developing and administering support programs, was recently

appointed director of the program.

Students accepted into Seton Hall's program will receive individual counseling and career guidance, special help with essential studies such as mathematics, sciences, and communications skills, solid pre-professional classroom preparation as well as field experience in hospitals, clinics and health agencies, and possibility of participation in summer enrichment programs and in work-study programs in chosen fields. While direct grants and stipends are not part of the medical-dental school program, financial aid is available through the Educational Opportunity Program.

RECYCLED NEWS: During 1978 at least 123,236 tons of newsprint was recycled in the United States.

Art sale set

An opportunity to purchase original works of art by talented area artists occurs annually at the Holiday Art Sale in the Summit Art Center.

The Center is located at 68 Elm St. in Summit.

one car short?

RENT-A-CAR

AS LOW AS **\$10** PER DAY & 10¢ PER MILE WITH INSURANCE

Special weekly rates for 7 days or more

Special rates for corporate and fleet rentals

24-hour service

ai AMERICAN INTERNATIONAL RENT-A-CAR

475 Rte. 22 East Springfield, N.J. 376-4220

16 W. Elizabeth Ave. Linden, N.J. 925-3080

Home Buyers past 52:

2-bdrm. ranch homes Full price from \$39,990

CLUB COMMUNITY NEAR JERSEY SHORE offers 12 ranch-style homes, including 6 detached models on their own landscaped lots. Prices include Armstrong wall-to-wall carpeting and resilient flooring, plus many other amenities.

Community Service Charge, from \$31.10 per month, includes exterior and roof repairs, community bus service, clubhouse membership, street maintenance and lighting, snow clearing, lawn cutting and more. **And, we can help you sell your present home.**

FREE booklet "Inflation and the Retiree: How to Cope"

PHONE TOLL FREE
In New Jersey: 800-822-9711
NY, Pa, Conn.: 800-631-5509
Elsewhere: 201-350-1000

12 models, from \$20's to low \$60's
Open 9-5, seven days a week

Crestwood COMMUNITIES

Write Dept. W, Box 166, Route 530, Whiting, NJ 08755

DIRECTIONS: From North Garden State Pkwy to Exit 80, then NJ #530 Phila., Ben Franklin Bridge, then NJ #70 and #530 Trenton, NJ #33, #526 to Allentown, then #539, #530. This is not an offering, which can be made only by formal prospectus.

Seton Hall aids med students

A better chance of entering medical or dental schools is the aim of a new Seton Hall University undergrad program for selected and highly motivated students needing financial or academic assistance.

The Articulated Baccalaureate Medical-Dental Program for Educationally and Financially Disadvantaged New Jersey Students was established early this year by the New Jersey Department of Higher Education. Only Seton Hall and one other school in the state are authorized to offer it and to receive funding under the department's sponsorship.

James Deas of East Orange, a 1969 Seton Hall graduate and an educator experienced in developing and administering support programs, was recently appointed director of the program.

Students accepted into Seton Hall's program will receive individual counseling and career guidance, special help with essential studies such as mathematics, sciences, and communications skills, solid pre-professional classroom preparation as well as field experience in hospitals, clinics and health agencies, and possibility of participation in summer enrichment programs and in work-study programs in chosen fields. While direct grants and stipends are not part of the medical-dental school program, financial aid is available through the Educational Opportunity Program.

RECYCLED NEWS: During 1978 at least 123,236 tons of newsprint was recycled in the United States.

Investors' Christmas Club Adds Interest To Holiday Giving!

5.50%

a year on completed clubs

Compounded continuously from day of deposit. The highest Christmas Club savings rate allowed by law.

Invest with the best!

INVESTORS SAVINGS

AND LOAN ASSOCIATION

HOME OFFICE: 249 Milburn Avenue, Milburn, N.J. 07033
EAST ORANGE: 27 Prospect Street, East Orange, N.J. 07033
FREEHOLD: Highway 9 and Adelphi Road, Freehold, N.J. 07938
HILLSIDE: 1128 Liberty Avenue, Hillside, N.J. 07036
IRVINGTON: 34 Union Avenue, Irvington, N.J. 07033
1331 Springfield Avenue, Irvington, N.J. 07033
1065 Stuyvesant Avenue, Irvington, N.J. 07033

NAVESINK: Highway 36 and Valley Drive, Navesink, N.J. 07864
PLAINFIELD: 400 Park Avenue, Plainfield, N.J. 07064
SHORT HILLS: The Mall (Upper Level), Short Hills, N.J. 07078
SPRING LAKE HEIGHTS: Highway 71 and Warren Avenue, Spring Lake Heights, N.J. 07081
UNION: 977-979 Stuyvesant Avenue, Union, N.J. 07081

Win the numbers game:

7 ways to save money plus 10½% mortgages.

- Great prices to begin with: Six 3, 4 & 5-BR, 2½-bath ranch, colonial & split-level models from \$87,990!
- Low property taxes!
- Luxurious extras at no extra cost: basements, attached 2-car garages, breakfast rooms, brick facades, full thick insulation, wall-to-wall carpeting, decorator vanities, ceramic tile baths, ½-acre lots & much, much more!
- All natural gas heating & cooking!
- Maintenance-free exteriors; your choice of aluminum or cedar shakes!
- Walk to buses & shopping!
- Low-cost express mass transit commuting!

Anyway you count them, the numbers add up at Colonial Acres. Near parks, beaches, schools and entertainment. And our new Section II offers thickly-wooded lots on the highest view-filled elevations.

Colonial Acres — "for the best years of your family's history."

10½%, 30-year mortgages to qualified buyers!

Colonial Acres at Freehold

(201)780-0225

Directions: Garden State Parkway to Turnpike to Route 9 south toward Freehold. Proceed to Road Road (off Route 9) to Colonial Acres. Continue to Colonial Acres entrance.

American Planned Communities
P.O. Box 108
Freehold, New Jersey 07728

SHOW US THIS COUPON AFTER YOU GET YOUR PRICE!

\$10.00 OFF

UK Starts 11/18/79 Expires 12/31/79 Limit 1 Coupon Per Customer. Not valid with any other advertising promotion.

Any Complete Pair of Eyeglasses

with this coupon

THE VISIBLE DIFFERENCE!

TEST RITE OPTICAL CO. INC.

Mon, Tue, Fri 9-6
Thurs 9-7:30
Sat 9-2:30
Closed Wed

1219 LIBERTY AVENUE, HILLSIDE, N.J. 07036

354-8300

Your
Local Newspapers
All You Need To Know About:
 ★ **Municipal Government**
 ★ **Social Events**
 ★ **Sports**
 and much more...

Can Be Read Every Week In These

“Local Newspapers”

**For Home Delivery Every Week
 Call 686-7700 or Mail This Coupon**

CLIP COUPON

CHECK BOX FOR 52 WEEKS HOME DELIVERY

UNION LEADER \$12⁰⁰ SPRINGFIELD LEADER \$12⁰⁰

MOUNTAINSIDE ECHO \$10⁰⁰ LINDEN LEADER \$10⁰⁰

ROSELLE-ROSELLE PARK SPECTATOR \$10⁰⁰

NAME.....

ADDRESS.....

PHONE.....

Mail Coupon with Check to: **SUBURBAN PUBLISHING
 1291 STUYVESANT AVE.
 UNION, NEW JERSEY 07083**

Union Leader
 Patricco, Arnold, Fried win board race
 Ethics code rescinded; charges hurled
 Jarman loses 3rd term try
 Budget is passed 2nd year in row
 Floratti's resignation is accepted
 Rinaldo to press for correction of Medicaid eligibility inequities
 A few legislators look ahead to a budget system

Springfield Leader
 Simpson, Heller, Dahmen to join board
 Tax levy approved; vote light
 Regional schools budget, board balloting scheduled for Tuesday
 DOT to report about alignment plan for Rt. 78
 First aid group calls

MOUNTAINSIDE Echo
 School budget is defeated by 2 votes
 Williams faults 2 on board
 Chiefs' group to work with borough police
 Regional schools budget, board balloting scheduled for Tuesday
 Residents, industries clash over dead end
 DOT to report about alignment plan for Rt. 78
 Three selected as nominees for Mount Ararat

Spectator
 RCC gains board control; budget loses
 Study of recycling program approved
 Roselle's tab fails, 372-304
 Incumbents returned in Roselle Park
 BUDGET INTRODUCED
 \$3.05 tax rate seen in Roselle
 Marchese loses bid 2nd time

Linden Leader
 Appointed board bid is rejected
 HUD OKs subsidies for senior apartments
 Spending fails--record turnout
 Woman found hurt; attempted rape cited
 Educators join PTAs to start school project
 Man is mugged in car, robbed

NEW VIRGINIA SLIMS *Lights*



A low tar, slim cigarette
all your own.
Regular or Menthol.



Only 9 mg tar
In the new crush-proof
purse pack.

9 mg "tar," 0.8 mg nicotine av. per cigarette by FTC Method.

Warning: The Surgeon General Has Determined
That Cigarette Smoking Is Dangerous to Your Health.

Get Cash... 2 times... \$3... Example: Four (4) Words of Average Length Will Fit On One Line For Extra Long Words Allow Two Lines...

Use this easy Want Ad form, today! Check off money order must accompany order...

DEATH NOTICES

ANTONAKOS—Mary M. (nee Yarnou) of University Terrace, Linden, on October 30, 1979, beloved wife of Peter Antonakos...

Garage Wanted 107 Union, Millburn or area for Antique Car... 107 Union, Millburn or area for Antique Car...

Automotive 126 Automobiles for Sale 126 '68 VW Bus, Good condition '80 Buick...

White Realty 688-4200 Spacious Apartments in Garden Setting Air Conditioned 3 1/2 Rms. \$333 5 Rms. \$385

White Realty 688-4200 Spacious Apartments in Garden Setting Air Conditioned 3 1/2 Rms. \$333 5 Rms. \$385

White Realty 688-4200 Spacious Apartments in Garden Setting Air Conditioned 3 1/2 Rms. \$333 5 Rms. \$385

Apartment For Rent 97 IRVINGTON-3 & 4 ROOM APARTMENTS 128 40th ST BLDG 2 P.P. WHITE OLYMPIC PARK SUPERINTENDENT IN RESIDENCE

Apartment For Rent 97 IRVINGTON-3 & 4 ROOM APARTMENTS 128 40th ST BLDG 2 P.P. WHITE OLYMPIC PARK SUPERINTENDENT IN RESIDENCE

Apartment For Rent 97 IRVINGTON-3 & 4 ROOM APARTMENTS 128 40th ST BLDG 2 P.P. WHITE OLYMPIC PARK SUPERINTENDENT IN RESIDENCE

Apartment For Rent 97 IRVINGTON-3 & 4 ROOM APARTMENTS 128 40th ST BLDG 2 P.P. WHITE OLYMPIC PARK SUPERINTENDENT IN RESIDENCE

Apartment For Rent 97 IRVINGTON-3 & 4 ROOM APARTMENTS 128 40th ST BLDG 2 P.P. WHITE OLYMPIC PARK SUPERINTENDENT IN RESIDENCE

House & Lot 96 TOWNEYS section chance of a life time, beautiful Ranch Cape, 3 baths, 2 1/2 car garage on first floor, fireplace, extra building lot for \$110,000

House & Lot 96 TOWNEYS section chance of a life time, beautiful Ranch Cape, 3 baths, 2 1/2 car garage on first floor, fireplace, extra building lot for \$110,000

House & Lot 96 TOWNEYS section chance of a life time, beautiful Ranch Cape, 3 baths, 2 1/2 car garage on first floor, fireplace, extra building lot for \$110,000

House & Lot 96 TOWNEYS section chance of a life time, beautiful Ranch Cape, 3 baths, 2 1/2 car garage on first floor, fireplace, extra building lot for \$110,000

House & Lot 96 TOWNEYS section chance of a life time, beautiful Ranch Cape, 3 baths, 2 1/2 car garage on first floor, fireplace, extra building lot for \$110,000

Wanted to Buy 17 CASH for old books, maps, old papers, labels, paintings, post cards, anything old. Free appraisal. 736-0957 any time.

Wanted to Buy 17 CASH for old books, maps, old papers, labels, paintings, post cards, anything old. Free appraisal. 736-0957 any time.

Wanted to Buy 17 CASH for old books, maps, old papers, labels, paintings, post cards, anything old. Free appraisal. 736-0957 any time.

Wanted to Buy 17 CASH for old books, maps, old papers, labels, paintings, post cards, anything old. Free appraisal. 736-0957 any time.

Wanted to Buy 17 CASH for old books, maps, old papers, labels, paintings, post cards, anything old. Free appraisal. 736-0957 any time.

For Sale 16 Furniture, clothes, jewelry, material, 10-4 Sunday, Nov. 11 2452 Steuben St. Union, N.J. R11-11-15

For Sale 16 Furniture, clothes, jewelry, material, 10-4 Sunday, Nov. 11 2452 Steuben St. Union, N.J. R11-11-15

For Sale 16 Furniture, clothes, jewelry, material, 10-4 Sunday, Nov. 11 2452 Steuben St. Union, N.J. R11-11-15

For Sale 16 Furniture, clothes, jewelry, material, 10-4 Sunday, Nov. 11 2452 Steuben St. Union, N.J. R11-11-15

For Sale 16 Furniture, clothes, jewelry, material, 10-4 Sunday, Nov. 11 2452 Steuben St. Union, N.J. R11-11-15

Therapeutic Massage 5 Experienced Massage Therapist, Call For APPT. 474-4141 D.T.F.S.

Therapeutic Massage 5 Experienced Massage Therapist, Call For APPT. 474-4141 D.T.F.S.

Therapeutic Massage 5 Experienced Massage Therapist, Call For APPT. 474-4141 D.T.F.S.

Therapeutic Massage 5 Experienced Massage Therapist, Call For APPT. 474-4141 D.T.F.S.

Therapeutic Massage 5 Experienced Massage Therapist, Call For APPT. 474-4141 D.T.F.S.

Help Wanted Men & Women 1 SUPER INDEPENDENT—family man, work out, 3 room apartment, utilities in well kept 13 family house in Irvington. 375-9359 after 6 p.m.

Help Wanted Men & Women 1 SUPER INDEPENDENT—family man, work out, 3 room apartment, utilities in well kept 13 family house in Irvington. 375-9359 after 6 p.m.

Help Wanted Men & Women 1 SUPER INDEPENDENT—family man, work out, 3 room apartment, utilities in well kept 13 family house in Irvington. 375-9359 after 6 p.m.

Help Wanted Men & Women 1 SUPER INDEPENDENT—family man, work out, 3 room apartment, utilities in well kept 13 family house in Irvington. 375-9359 after 6 p.m.

Help Wanted Men & Women 1 SUPER INDEPENDENT—family man, work out, 3 room apartment, utilities in well kept 13 family house in Irvington. 375-9359 after 6 p.m.

Telephone Sales Some experience required for this full time position in Suburban Union. If you are an accurate typist with good spelling skills you may qualify for this interesting position which pays a combination of salary and commission. Contact Mr. Brummett for an interview appointment. 686-7700 HA 11-11-11

Telephone Sales Some experience required for this full time position in Suburban Union. If you are an accurate typist with good spelling skills you may qualify for this interesting position which pays a combination of salary and commission. Contact Mr. Brummett for an interview appointment. 686-7700 HA 11-11-11

Telephone Sales Some experience required for this full time position in Suburban Union. If you are an accurate typist with good spelling skills you may qualify for this interesting position which pays a combination of salary and commission. Contact Mr. Brummett for an interview appointment. 686-7700 HA 11-11-11

Telephone Sales Some experience required for this full time position in Suburban Union. If you are an accurate typist with good spelling skills you may qualify for this interesting position which pays a combination of salary and commission. Contact Mr. Brummett for an interview appointment. 686-7700 HA 11-11-11

Telephone Sales Some experience required for this full time position in Suburban Union. If you are an accurate typist with good spelling skills you may qualify for this interesting position which pays a combination of salary and commission. Contact Mr. Brummett for an interview appointment. 686-7700 HA 11-11-11

The smartest place to start a diet. For classes in your town call 201-662-0676. \$3.00 when you register or re-register.

Lean Line. Meet your needs... 31-1979

NEW '80 DODGE OMNI AND COLTS. IMMEDIATE DELIVERY. NEW '79 DODGE CHALLENGERS & COLTS IN STOCK!

1830 SPRINGFIELD AVE. MAPLEWOOD 762-8686. 158 E. Westfield Ave., Roselle Park 245-6100. OVER 50 YRS. OF DEPENDABLE SERVICE!

Maplewood Dodge. 1830 SPRINGFIELD AVE. MAPLEWOOD 762-8686. 158 E. Westfield Ave., Roselle Park 245-6100. OVER 50 YRS. OF DEPENDABLE SERVICE!

Maplewood Dodge. 1830 SPRINGFIELD AVE. MAPLEWOOD 762-8686. 158 E. Westfield Ave., Roselle Park 245-6100. OVER 50 YRS. OF DEPENDABLE SERVICE!

Maplewood Dodge. 1830 SPRINGFIELD AVE. MAPLEWOOD 762-8686. 158 E. Westfield Ave., Roselle Park 245-6100. OVER 50 YRS. OF DEPENDABLE SERVICE!

Maplewood Dodge. 1830 SPRINGFIELD AVE. MAPLEWOOD 762-8686. 158 E. Westfield Ave., Roselle Park 245-6100. OVER 50 YRS. OF DEPENDABLE SERVICE!

Maplewood Dodge. 1830 SPRINGFIELD AVE. MAPLEWOOD 762-8686. 158 E. Westfield Ave., Roselle Park 245-6100. OVER 50 YRS. OF DEPENDABLE SERVICE!

Maplewood Dodge. 1830 SPRINGFIELD AVE. MAPLEWOOD 762-8686. 158 E. Westfield Ave., Roselle Park 245-6100. OVER 50 YRS. OF DEPENDABLE SERVICE!

Maplewood Dodge. 1830 SPRINGFIELD AVE. MAPLEWOOD 762-8686. 158 E. Westfield Ave., Roselle Park 245-6100. OVER 50 YRS. OF DEPENDABLE SERVICE!

