

# UNION COUNTY NEWS

THURSDAY, JUNE 22, 1995

SECTION B

## From The Editor's Notebook

By Tom Canavan  
Editor in Chief

I received a call Friday from one of our Maplewood readers who asked if he could write a letter to the editor in response to the column I wrote last week about affirmative action.

"Sure," was my response, wondering why he was calling to ask permission to exercise his right under the First Amendment.

"But it opposes your point of view," he said, wondering if it would be worth his time to write if I wasn't going to consider publishing the letter.

I told the gentleman that letters opposing any point of view I express are better, in my opinion, than letters agreeing with my point of view because opposition generates dialogue, and dialogue generates a wealth of new ideas.

We talked for a little while and I learned that his family was one of the first black families to move into Maplewood — back in the 1960s, and they were greeted with burning crosses on their lawn and racial slurs. The point he brought to my attention was that if it hadn't been for affirmative action, his father would not have gotten a break and would not have been able to raise the kind of family that his family had become.

We also talked about his profession and his belief that his line of work could use some affirmative action programs because there are few blacks in that business.

While he presented his side of the argument, he did not convince me that affirmative action programs benefit anyone.

But I digressed from the subject I wanted to address, that being letters to the editor.

I often wonder if people do not write letters to the editor when they oppose the stand taken in an editorial or by a columnist, whether or not the columnist is a staff member or resident of the community, because they think the letter will not be published.

Perhaps I could use this space as a forum to remind readers of our letters policy.

Our policy is to publish all legitimate, verifiable letters that serve a purpose or provoke thought. The Opinion page of our newspaper is for you, the reader, to present ideas, disagree with your government leaders, to thank local groups for helping during a community event, or to vent your anger in a positive way.

We're listening. So are many of your neighbors who want to hear what you have to say.

\*\*\*

This week in a special section, we've published our annual Whiz Kids feature, the tribute we pay to our schools' top students.

Working on the Whiz Kids feature is an enjoyable task, even if it means spending more time at work than elsewhere.

It's enjoyable because it's one of our ways to accentuate the positive side of our school districts, after hearing a great deal of grief throughout the year about how newspapers always focus on the negative aspects.



Freholder Linda-Lee Kelly, left, liaison to the Commission on the Status of Women in Union County, meets with members of the commission and the Central New Jersey Chapter of the Older Women's League. From left are Commission member Angela Harrington of Springfield; OWL President Miriam Dickman and Margaret Ault, a member of the commission and OWL.

## Reversal of fortune sought by women

Women in Union County are hoping to reverse the trend noted in a report which shows that women are more likely than men to be poor during their retirement years.

The Commission on the Status of Women in Union County and the Central New Jersey Chapter of the Older Women's League recently met with Union County Freholder Linda-Lee Kelly, liaison to the commission to announce the release of a report by the national OWL chapter titled "The

Path to Poverty: An Analysis of Women's Retirement Income."

The Commission on the Status of Women in Union County, together with OWL, want to reverse the trend noted in this report which indicates that women are more likely than men to be financially insecure during retirement years.

Only two years ago, women age 65 and older had an average income that was only 57 percent of the average annual income of older men. Fifteen

percent of older women as opposed to eight percent of older men were living in poverty at this time.

Older African-American and Hispanic women are especially susceptible to living in poverty. During 1993, 31 percent of African-American and 25 percent of Hispanic women age 65 and older were impoverished. The Older Women's League report sales that by the year 2020, 1/5 of women age 65 and older will belong to racial

See WOMEN, Page B3

## Boosting downtown to be talk's focus

Leaders in downtown revitalization throughout New Jersey will meet Friday in what has become a semi-annual tradition for anyone seeking to take the plunge of the growing movement in downtown revitalization.

The annual spring conference, sponsored by *Downtown New Jersey*, is scheduled this year at the Grand Summit Hotel in Summit. The conference will bring together — if past attendance is any indicator — more than 150 professional and lay leaders working to revitalize New Jersey's downtown areas for workshops and speakers to bring the conference attendees up-to-date information on the latest strategies being used throughout the state's 125 downtown projects.

"The conference speakers will offer the latest insights," stated Marta Person, president of DNJ and executive director of Red Bank's River Center, "on legal issues facing downtown special improvement districts and commercial vending, commercial and retail leasing strategies at work today in communities like Summit and Red Bank, the varied strategies used for revitalizing New Jersey's downtown's and how to keep and attract downtown retail anchors."

The conference also will showcase downtown Summit. Joe Steiner, presi-

dent of the Summit and Suburban Chambers of Commerce, along with Mayor Janet L. Whitman, and local business leaders will review that city's successful efforts to keep Summit's downtown competitive.

Attendees will hear about the success of Madison's Farmer's Market from local resident and volunteer Barbara Stevenson, Montclair's Ed Ferdon, president of the New Jersey Farmer's Market Council and Morristown landscape architect Randy Brockway, who serves as an advisor to community farmer's markets throughout the state as the USDA's representative in New Jersey.

A retail leasing panel discussing downtown leasing strategies for the mid '90's will include Bruce Morningstar of Starbucks Coffee Company of Mountain Lakes and Debbie Davis of 2001 Real Estate of Fort Lee. A discussion on attracting downtown "anchors" will be led by Kathleen Shaw of Keyport and director of the Highlands, New Jersey Neighborhood Preservation Program, and include Joe Steiner of Summit and Larry Robert, second vice president of Merrill Lynch of Red Bank.

With the increasing use of special improvement district legislation as a mechanism to manage and finance

See CONFERENCE, Page B3

## Dump betters look by becoming park

Just a few feet from the noise and traffic of Routes 1 and 9, area residents can now view wildlife while sitting on the banks of the Rahway River.

On June 11, the Union County Utilities Authority hosted a dedication ceremony opening Riverfront Park to the public. The park incorporates land on the north side of the Rahway River from the Lawrence Street Bridge to the Rahway Yacht Club.

The riverbank was cleaned of debris, marsh grasses were planted, and a boardwalk, made from recycled plastic, was constructed. The park is open down to dusk, seven days a week. The park entrance and a parking lot are located on Lawrence Street.

In attendance were UCUA Chair-

woman Blanche Benasiak, authority commissioners, Freholders Frank Lehr, Henry Kurz and Daniel Sullivan, Rahway Mayor James Kennedy and Councilmembers Nancy Sanga and James Falgout.

"This park illustrates the UCUA's commitment to improving the environment in Union County. We have taken an abandoned, polluted stretch of land on the banks of the Rahway River and turned it into a beautiful park that county residents can enjoy. Innovative projects like this demonstrate our desire to be a good neighbor," said Benasiak.

The site of the Union County Resource Recovery Facility and Riverfront Park previously owned by

See PARK, Page B3

## Workers succeed in advanced studies

Nine Union County government employees were honored for having completed the Certificate in Public Management Program offered at Kean College in cooperation with Union County government during a recent freholders meeting.

This program, part of Kean's masters in public administration program, consists of 12 graduate level credits from the MPA curriculum and is tailored to the individual needs of each Union County government employee. This professional level program is

for Union County employees in managerial, supervisory, or professional positions. Its objective is to improve the capacity of county government's managers to respond effectively to the challenges and constraints that are confronting government. The program emphasizes the development of useful, practical skills and techniques that can be applied directly to job-related situations.

Certificate award winners are as follows: Daniel Jacobs of Elizabeth,

Election Board; Joan Wheeler of Fairwood, Rumlens Specialized Hospital; Gregory Hardoby of Rahway, Department of Administrative Services; Janice Lee of Linden, Department of Finance; Shelley Morgan of Plainfield, Department of Human Services; Manuel Cortes of Roselle Park, Department of Public Safety; Rosanna Schifano of Garwood, Department of Finance; and Karen Dinamore of Westfield, and Thomas Eayden of Elizabeth, both of the Department of Human Services.

## Mancuso lauded for service to county's vo-tech

The Union County School Boards Association honored Charles S. Mancuso, president of the Union County Vocational-Technical Schools Board of Education, during its annual Spring Dinner held recently at L'Affaire Restaurant in Mountainside.

Mancuso was lauded for his more than 30 years of service to boards of education. This includes eight years on the Hillside Board of Education and 25 years of service to the Vocational-Technical School District. He is in the midst of his seventh term as president of the Union County Vocational-Technical Schools Board of Education.

Mancuso, a retired executive with First Fidelity Bank, is now executive director of the Linden Economic Development Corporation. The former mayor and lifelong resident of Hillside has many years of diversified

experience in the banking and management professions. He currently acts as consultant to professional groups regarding financial management and planning as well as educational policies and procedures.

Included among the organizations with which Mancuso has been involved are the New Union County College Steering Committee, Union County Coordinating Agency for Higher Education and the New Jersey Bankers Association. He also was appointed a trustee for the School for Handicapped of New Jersey as well as the Linden Downtown Management Corporation. Other memberships include Merck & Co. Community Advisory Panel and the Advisory Board of the Valley National Bank. He also is a member of the Linden Industrial Association and co-chairs its Membership Committee.

Mancuso is active in the Father Canty Council-Knights of Columbus, the Veterans of Foreign Wars and the Hillside Elks. Among his community interests have been years of involvement with the Hillside Little League, Pop Warner Football and Hillside Babe Ruth Baseball.

The recipient of a bachelor of science degree in management from Seton Hall University, Mancuso earned his MBA from Rutgers-the State University. He is also a graduate of the Business Development Institute in Chicago. Mancuso and his wife, Rose Ann, are the parents of two children, a daughter, Roxann, and son, Charles, Jr.

The Board of Education of the Vocational Schools in Union County governs the operations of the Union County Vocational-Technical Schools, Scotch Plains.



Charles S. Mancuso, president of the Union County Vocational-Technical Schools Board of Education, looks over papers on his desk.

# UNION COUNTY

New Jersey's Oldest Authorized Mercedes-Benz Dealer

Since 1930

A Tradition In New Jersey With Mercedes-Benz Buyers

NOW

**"Taking You Into The 21st Century"**

With The Lowest Possible Price In The Marketplace

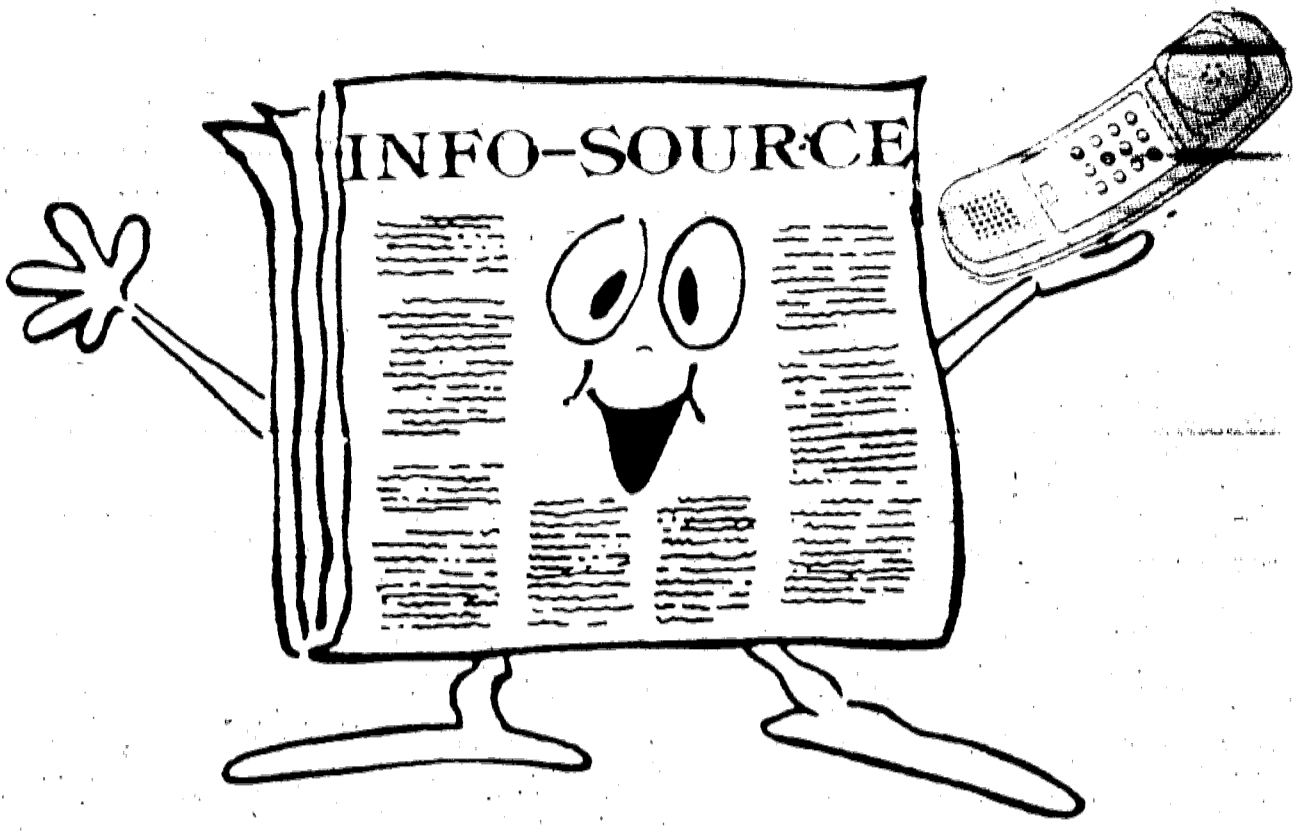
**OVER 130**

91-1000 91-1000 SE 96-300 91-1000

2.6 Liter 12V White/C

95-560 SEL 94-1000

# Your Community's Best INFOSOURCE



# FREE

INFORMATION BY TELEPHONE  
24 HOURS A DAY

CALL **686-9898**

Infosource Is A 24 Hour Voice Information Service Where Callers Get Information on Anything from Local Weather, Lottery Results and Soap Operas to Local and National Sports Scores and Schedules.

For More Information On How To Become An Infosource Advertiser Call 686-9898 Ext. 8025 Or Contact *Theresa Petrucci* At 686-7700 Ext. 311

**It's Fast! It's Easy! It's Fun! It's Free! 24 Hours A Day**

**A LIBRARY OF INFORMATION AT YOUR FINGERTIPS • WATCH FOR MORE ADDITIONS SOON**

<b>ACCOUNTING</b> 1475 Tax Preparation 1476 Business/Mgmt. Consulting 1477 Tax Planning/Financial Svcs. 1478 Wholesale Distributors 1479 Family Owned Businesses	<b>HEALTH - INSURANCE</b> 5160 Basic Health Coverage 5161 Major Medical Plans 5162 Dental Insurance 5163 Disability Insurance 5164 HMO's	<b>LOTTERY - DAILY RESULTS</b> 1900 New Jersey Lottery 1901 New York Lottery 1902 Connecticut 1903 Pennsylvania	<b>REAL ESTATE - SELLING THE HOME</b> 1300 Attracting A Buyer 1301 Determining A Selling Price 1302 The Open House 1303 Cleaning For The Sale 1304 First Impressions	<b>SOAPS - NIGHT TIME</b> 3260 Models, Inc. 3261 ER 3262 Picket Fences 3263 NYPD Blue 3264 Northern Exposure 3265 Sisters 3266 Bev Hills 90210 3267 Melrose Place	<b>TELEVISION - CABLE TONIGHT</b> 3232 Best Bets for Kids 3233 TV Sports Highlights 3234 PBS Tonight 3235 Stations A - L 3236 Stations M - Z 3239 I Wonder Why
<b>BANKING</b> 1625 Home Equity 1626 Checking Accounts 1627 Savings Accounts 1628 Financing A Car 1629 Business Banking	<b>HEALTH - PODIATRY</b> 5110 Diabetes 5111 Ingrown Toenails 5112 Warts 5113 Bunions 5114 Hammer Toes	<b>MORTGAGE SERVICES</b> 1275 How To Choose A Lender 1276 What is a Mortgage? 1277 Fixed Rate Mortgages 1278 Adjustable Rate Mortgages 1279 Refinancing	<b>RECYCLING PROCEDURES</b> 5200 Reduce & Reuse 5201 Buying Recycled Products 5202 Community Involvement 5203 At School 5204 At Work	<b>SPORTS - NATIONAL SCORES</b> 3100 NBA Scores 3102 NHL Scores 3104 NL Baseball Scores 3105 AL Baseball Scores	<b>ENTERTAINMENT</b> 3199 Entertainment News
<b>BOOK REVIEWS</b> 3301 Hardcover 3302 Paperback 3215 Kids Video Review	<b>HEALTH - RADIOLOGY</b> 5140 Cat Scan 5141 M.R.I. 5142 Cat Scan en Espanol 5143 M.R.I. en Espanol 5144 How To Prepare For Tests	<b>MOVIE THEATRES</b> 3175 Showtimes	<b>RENTAL SERVICES</b> 2100 Party Rentals 2101 Party Tents 2102 Lawn Care Equip. 2103 Contracting Equip. 2104 Do It Yourself	<b>SPORTS - SCHEDULES/LINES</b> 3120 NBA 3121 NHL 3122 NL Baseball 3123 AL Baseball	<b>TIME &amp; TEMPERATURE</b> 1000 Current Time & Temperature
<b>FINANCIAL SERVICES</b> 1700 Estate Planning 1701 Retirement Planning 1702 College Funding 1703 Low Cost Insurance 1704 Long Term Care	<b>HEALTH - X-RAYS/ DIAGNOSTIC SERVICES</b> 5130 X-Rays/ Radiology 5131 Ultrasound 5132 Mammography 5133 Nuclear Medicine 5134 Mammography/Ultrasound en Espanol	<b>NATIONAL NEWS - DAILY</b> 1600 Story Menu	<b>SENIORS</b> 4100 Senior Organizations 4101 Stress of Getting Older 4102 Social Security 4104 Your Retirement Budget	<b>TRAVEL</b> 2200 Cruises 2201 Airfares 2202 Florida/Disneyworld 2203 Special Packages 2204 Europe	<b>WEATHER</b> 1800 Atlantic City 1801 Boston 1802 New York City 1803 Philadelphia
<b>GLAMOUR</b> 5150 What to do about Blemishes? 5151 De-Aging with makeup 5152 Young Skin 5153 Medication and your Skin 5154 Suntanning	<b>HOROSCOPES</b> 3600 Aquarius 3601 Aries 3602 Taurus 3603 Gemini 3604 Cancer 3605 Leo 3606 Virgo 3607 Libra 3608 Scorpio 3609 Sagittarius 3610 Capricorn 3611 Pisces	<b>NEGOTIATING THE JOB OFFER</b> 1410 Salary 1411 Perks & Benefits 1412 Rejection, you can learn from it 1413 References 1414 Giving Your Employer Notice	<b>SHOPPING FOR A CAR</b> 1200 Fuel Efficiency 1201 How Much To Spend 1202 Insurance Tips 1203 Getting Started 1204 Sticker Prices 1205 Sales Agreement 1206 Ordering A New Car 1217 Rebates 1208 Warranties 1209 Financing 1210 Owner Satisfaction	<b>STOCKS, BONDS &amp; INVESTMENTS</b> 1250 Money Market Funds 1251 Stocks 1252 Playing the Market 1253 Purpose of Investments 1254 Choosing a Stockbroker	<b>WHERE TO LOOK FOR A JOB</b> 1400 Classifieds 1401 Classifieds Plus 1402 Situation Wanted Ads 1403 Placement Services 1404 Non-Traditional Searches
<b>HEALTH - CHIROPRACTIC</b> 5100 Trigger Point Therapy 5101 Why Should I Go? 5102 How Often Will I Go? 5103 Stress Management 5104 Pain Relief	<b>HEALTH - DENTAL</b> 5120 Painless Dentistry 5121 Dental Implants 5122 Cosmetic Dentistry 5123 Family Dentistry 5124 Prevention	<b>PRE-PLANNING FUNERALS</b> 5900 Reasons to Pre-Arrange 5901 Financial Advantages 5902 Prefinancing a Funeral 5903 Cost 5904 The Funeral Director	<b>SOAPS - DAY TIME</b> 3250 All My Children 3251 Loving 3252 Days of Our Lives 3253 Young & Restless 3254 Bold & Beautiful 3255 World Turns 3256 Another World 3257 Life to Live 3258 General Hospital 3259 Guiding Light	<b>TELEVISION TONIGHT</b> 3226 ABC 3227 CBS 3228 FOX 3229 NBC 3230 Tonight's Movies 3231 TV Talk Show Preview	<b>NEW</b>



1. CALL 686-9898 From Any Touch Tone Phone.
2. Press The 4 Digit Code For The Information You Want To Hear.

3. Enter Your Next Selection. Up To Five Choices With Each Call

**CALLS ARE FREE** If Within Your Local Calling Area. Out Of Area Calls Will Be Billed As Long Distance By Your Telephone Company. A Service Of Worrall Community Newspapers, Inc.

# Park gives new look to UCUA burner

(Continued from Page B1)  
an abandoned garbage dump. Since construction began on the facility in 1992, the authority has committed resources to improving the site.

On June 10, the authority's staff volunteered their time to clean the park of any last-minute debris. They were joined by members of the JFK Center, the Rahway Yacht Club and Ogden Martin, the builder and operator of the resource recovery power plant.

There is a variety of wildlife in the park. Muskrats, raccoons, and rabbits live there, and 18 different types of birds, including Canadian Geese and great blue herons frequent the area. Five different types of fish, including American eels and white perch, have been spotted in the Rahway River.

"As chairman, I am determined to create a cooperative relationship with the local community and this is one more example of our commitment. In addition, we are currently working with the City of Rahway in a cooperative effort to improve drainage and eliminate flooding in the Montgomery and Totten Street areas. We also have plans to upgrade Patterson Street. And, we will continue to work with county residents, elected officials, and waste haulers on issues of mutual concern," Banasiak concluded.

Your abilities can earn extra income. Advertise them with a classified ad by calling 1-800-564-8911.



Deputy Union County Manager/Director of Public Safety Harold Gibson, second from left, holds up a map showing the location and responsible party for major underground pipelines as Union County Fire Chiefs Association President Ron Kanterman, left, County Manager Ann Baran and Union County Office of Emergency Management Director Ben Laganga look on.

# Maps designate where pipelines go

Union County government recently prepared county maps showing the location and responsible party for the major underground pipelines spanning the county and presented them to all of the county's municipal fire departments.

According to Deputy County Manager and Director of Public Safety Harold Gibson, "the incident in Edison last year made us all acutely aware of the potential problems asso-

ciated with the existence of such facilities." It was County Manager Ann Baran who suggested maps be prepared and supplied to municipal fire officials.

"The county's Office of Emergency Management and the Division of Engineering gathered the pertinent information and prepared these maps," said Gibson in presenting one of the maps to Ron Kanterman, presi-

dent of the Union County Fire Chiefs Association.

"This is one of the many things the Union County Office of Emergency Management does in order to be prepared to safeguard the health and safety of our residents in all types of hazards," said Ben Laganga, OEM director. "While we certainly hope we never need to use them, our duty and goal is to be prepared for all possibilities."

# Women hope for change

(Continued from Page B1)  
minorities. If there is not an extraordinary improvement in the economic status of minority women ... they will face the same hardships in the future as today's older minority women.

The report states that for many women, the path to poverty in old age begins the first day of work in jobs with low pay and without benefits. Perhaps that's conservative, perhaps it begins before that. Perhaps it begins when we plan our field of study in college or business school or our "lack of planning." The feeble economic position of older women is partly a reflection of more and accurately a result of their past, their employment and wage history and marital status — separated and divorced, older women are considerably poorer than widows and unmarried women, ... but all are poorer than wives. The report reveals that the economic status of older women reflects the biases and inadequacies of the nation's retirement income systems. These biases include not giving credit for time spent as a homemaker or time devoted to being a caregiver for parents, a spouse or children. Inadequacies include lack of portability for pensions and the fact that individuals in low-paying jobs may have the pensions.

Young women's periods of paid employment tend to be broken up by time out of work force to raise families and/or care for older family members. These patterns keep them in the same low-paying jobs without benefits that their mothers held. Also, the

current retirement system doesn't support these women, it punishes them. Social Security and pensions weren't designed to adapt to the way many women must work. Time away from a job and low wages add up to mean lower Social Security and pension payments. Social Security benefits by themselves aren't enough to get above the poverty line and yet for one-in-five elderly women this is the only source of income. Pensions should provide a third of an individual's retirement income and yet women who work part time don't receive a pension. Those who take time out to care for family members are hurt by traditional pension qualifying rules. Twenty-two percent of women age 65 and older receive either public or private pensions. Most women are more likely to get pension benefits as wives, divorcees or widows than on their own.

"In a day and age when many women remain single it's important for them to plan carefully for their future," Kelly said. "Young women don't think about pensions and benefits," she added. "Women must be educated to think that finance is important. They must not rely on someone else."

A marriage may end due to divorce or death. A husband's company pension plan may be lost due to bad investments or a company going under. A man who has been with a company for several years may be let go before he's vested in the pension plan.

# Conference bringing together downtown business boosters

(Continued from Page B1)  
downtown revitalization as in Morris-town and Cranford and the consideration by the State of New Jersey of new financial tools to aid downtown economic investment, attorney Anne Babineau of Wilentz, Goldman and Spitzer and a resident of Cranford, will lead a panel on recent legal and financial issues affecting downtown revitalization. Panelists include Warren residents Michael Francois of the New Jersey Economic Development Authority and Westfield resident Stephen Barcan, an attorney with Wilentz Goldman and Spitzer.

Peter Beronio, Englewood resident and executive director of the Englewood Economic Development Corporation, will lead a panel of staff members of the New Jersey Department of Community Affairs on the range of strategies used throughout New Jersey to foster downtown revitalization.

Featured keynote speakers will be Merritt Sher, chief executive officer and president of Terranomics of San Francisco, one of the nation's leaders

in the retail development industry, and state Sen. Dick LaRossa, R-Mercer, chairman of the Senate's Urban Policy and Planning Committee and recent sponsor of the Urban Redevelopment Act, S-1655, which would create a one-stop shopping approach to urban revitalization techniques, financing and planning.

Downtown New Jersey was founded in 1988 by lay and professional leaders advocating reinvestment in New Jersey's downtowns. DNJ is a statewide non-profit organization working to foster economically sound, socially stable and physically attractive central business districts, regardless of size, in all New Jersey's

communities fortunate enough to have a downtown.

Registration and sign-up will be at 8:30 a.m. At 9 a.m., Marta C. Person, president of DNJ, and Summit's may or will welcome attendees.

**NEW JERSEY MIRROR & GLASS INC.**

**CUSTOMED MIRRORRED WALLS & CEILINGS**

- Custom Washroom Doors
- Standard Tub & Shower Enclosures
- Custom Frameless Shower Doors
- Window & Door Glass Replacement
- Custom Table Tops
- Sandblasting and Etching Glass

**SUMMER SPECIAL**

**8' High \$499**

**X 8' WIDE INSTALLED**

FREE ESTIMATES FULLY INSURED SHOP AT HOME

**1-800-735-1482 • 908-687-0096**

786 B Ramsey Ave., Hillside, NJ

**35 MM Film Sale**

*Wholesale prices Excellent Quality Color prints DX Coded No Fancy Boxes*

ASA	Par Roll	
100 135 -12	.....	\$1.30
100 135 -15	.....	1.85
100 135 -24	.....	1.95
100 135 -36	.....	2.25
200 135 -15	.....	1.95
200 135 -24+3	.....	2.55
400 135 -15	.....	2.10

**15 Roll Minimum County Film**

**(908) 964-5858**

**Call For Help DEPRESSION**

One of the most dangerous symptoms of depression is thinking it's not treatable.

Check the symptoms that describe you or someone that you care about:

- Noticeable change in eating habits
- Sleep too much or can't sleep at night.
- Loss of interest in things once enjoyed.
- Loss of energy, fatigue.
- Feelings of worthlessness; guilt.
- Using alcohol or drugs to feel better.
- Recurring thoughts of death or suicide; wishing to die
- Overwhelming feeling of sadness or hopelessness.

If you check two or more of these symptoms, there is something you should do. Call for a free confidential assessment.

**1-800-CHARTER or 908-522-7000**

*If you don't get help at Charter, please get help somewhere.*

**Charter Behavioral Health System Of New Jersey**

19 Prospect Street, Summit, NJ 07902-0100

Charter Behavioral Health System of New Jersey accepts most Major Medical insurances, Managed Care Health Plans, HMO's, PPO's, Medicare and Medicaid

**VITAMIN FACTORY**

201 Rt. 22, Hillside, NJ 07205 - (201)926-2946

15% Off  
CanoCare  
Products

<b>Fat Free Mini Rice Cakes</b> TREE OF LIFE 3.5 OZ.	<b>129</b>
(Asst'd Flavors) Reg. \$1.79	
<b>Licorice or Raspberry Chews</b> PANDA 7 OZ.	<b>185</b>
Reg. \$2.49	
<b>Strawberry Cereal Bar</b> NATURE'S CHOICE 7.8 OZ.	<b>199</b>
(Asst'd Flavors) Reg. \$2.79	

---

<b>VITAMIN FACTORY</b>	
<b>Vitamin C 500 mg w/Rth</b> 100s	<b>199</b>
Reg. \$2.99	
<b>B-Complex "100" T.R.</b> 100s	<b>749</b>
Reg. \$8.99	
<b>Vitamin B-6 100 mg</b> 100s	<b>189</b>
Reg. \$2.99	
<b>Oyster Calcium 1000 mg</b> 100s	<b>169</b>
Reg. \$2.29	
<b>Coenzyme Q-10 10mg</b> 60s	<b>699</b>
Reg. \$8.99	
<b>Selenium 100 mcgs</b> 100s	<b>229</b>
Reg. \$2.99	
<b>Odorless Garlic</b> 100s	<b>499</b>
Reg. \$8.99	
<b>Celebrity Tablets</b>	<b>2999</b>
HOW TO START: Reg. \$29.99	
<b>Women's Chances</b> 140s	<b>549</b>
HERSHEL'S FORMULA Reg. \$4.99	
<b>Shark Cartilage 500 mg</b> 100s	<b>1499</b>
Reg. \$17.99	

**Super Fat Loss Tabs** CYBERGENICS 144s

Reg. \$29.95 **2249**

**Garlic with Lecithin** KYOLIC 200 CAPS

(or Garlic Yeast Free) Reg. \$19.95 **1399**

**Chewable Ester C 250 mg** NATROL 125s

Reg. \$13.99 **899**

**Silica Gel or Silica w/Calcium Caps**

HERSHEL'S 7 OZ. or 30 CAPS Reg. \$18.95 **999**

15% Off  
Traditional  
Medicinal  
Teas

<b>Original Slim Tea</b> HOBE 24 BAGS	<b>529</b>
Reg. \$7.99	
<b>Boronia Power</b> NATURE'S HERBS 30s	<b>959</b>
Reg. \$14.99	
<b>Cayenne Pepper</b> NATURE'S WAY 100s	<b>489</b>
Reg. \$7.99	
<b>Ginkgo Smart or Ginkza Plus</b>	<b>1449</b>
NWBI NATURALS Reg. \$19.99	
<b>Sea Cucumber</b> FUTUREBIOTICS 50s	<b>2099</b>
Reg. \$29.95	
<b>Evening Primrose Oil</b> EFABOL 50s	<b>899</b>
Reg. \$14.95	

STORE HOURS: Sun. & Thurs. 10-6; Tues., Wed., & Fri. 10-4

MEDBRIDGE

MEDICAL AND PHYSICAL REHABILITATION

1180 ROUTE 22 WEST • MOUNTAINSIDE, NEW JERSEY

CORDIALLY INVITES YOU TO ATTEND OUR  
FREE CAREER BREAKFAST SEMINAR  
BARELY BEYOND DEATH  
JUNE 29, 1995, 9:00 A.M.  
PRESENTED BY MARY BERMAN, MSW  
PRIVATE GERIATRIC CASE MANAGER

HOW TO CHOOSE A NURSING FACILITY

JULY, 1995

PRESENTED BY NEW JERSEY DEPARTMENT OF  
HEALTH SERVICE OF THE ONE  
LIVING WILL'S, ADVANCE DIRECTIVES, DURABLE  
POWER OF ATTORNEY AND GUARDIANSHIP  
JULY 1995, 10:00 A.M.

REGISTRATION IS REQUIRED. PLEASE CALL (908) 687-0000  
FOR FURTHER INFORMATION AND TO REGISTER

ARTS & ENTERTAINMENT

# Pinter play is an unwelcome guest

By Lisa Ann Battito  
Arts and Entertainment Editor

In a sharp departure from previous seasons, the New Jersey Shakespeare Festival is relying less this year on the plays of the Bard and is offering more work from other playwrights. But after sitting through its resurrection of Harold Pinter's "The Homecoming," one can't help but wish for another staging of "Hamlet."

"The Homecoming" won a Tony Award for Best Play in 1967 and if the publicity surrounding this production is to be believed, it raised quite a few eyebrows with its disturbing portrayal of a working class British family. However, what was shocking in the '60s won't even cause a shrug in the '90s, so a play has to contain more than a few bawdy lines and scenes to succeed. This piece has no depth below its dark surface.

"The Homecoming" tells the story of Ted (Patrick Stretch), an American university professor married to Ruth (Laila Robins), who is supposed to be a sexy woman with a scandalous past. Six years after they are wed, Ted takes his wife back home to England to meet his inept, dysfunctional family — father, uncle and two brothers. At first the family treats Ruth as though she is some sort of alien being who is beneath them socially, but by the end of the play they are all smitten with her and devise a scheme to keep her from returning

## theater review

to America with her husband and raising their children. Without giving the ending away, the plan, which seems to be for the sole benefit of the brothers and father, permits Ruth to be herself — i.e. not a passionless mother of three who is married to an uptight teacher. All this takes an excruciating two hours and 45 minutes to come to its sexist, outdated fruition. The play is an attempted mix of a black comedy and a drama but winds up being neither.

Misogyny aside, "The Homecoming" fails because the audience neither becomes enamored by Ruth nor cares much about the other characters, who have seemingly walked in off the street from different sitcoms and decided to live together. None of them are delightfully zany, interestingly sinister or particularly sympathetic, although the author tries every trick in the book to make the audience feel something for his cut-out creations.

In the storyline, Ruth was once a nude model whose fire has gone out and now she merely reacts in a flat, motionless way to what goes on around her. There is no hint that a volcano is buried under her weird, icy exterior so it is quite unbelieve-

able that this family of misfits is able to tap into her true self. The men are also one-dimensional, but more cartoonish, thanks to the verbal zingers the script allows them. There isn't any connection between the characters as they all seem to exist in a vacuum, and there isn't one shred of on-screen chemistry between anyone, not a positive quality from a play that wants to rivet the audience with its no-holds-barred sexuality and abandonment.

The play is saved from complete doom thanks to the high-calibre of people involved with the NJSP. It may not seem like much of a compliment to say everyone in the cast has flawless British accents but this isn't something that can be expected nowadays. Some of the lines are downright silly and would be pretty hard to take if the actors flubbed them. A special mention has to go then to voice and speech consultant Ralph Zito.

The actors in "The Homecoming" carry on the NJSP tradition of being some of the most talented people that can be found on a New Jersey stage. Unfortunately, only one of them manages to completely transcend his role and add a small spark to the dour proceedings.

Festival favorite Paul Mullins fleshes out brother, Lenny, a character who tells long, tedious stories with no point and who obsesses about things such as whether household objects come alive with

sound in the evening. Looking like a cross between a lounge lizard and a young Hugh Hefner — right down to the gaily patterned — Mullins makes up for the weakness in the dialogue by injecting it with his own brand of physical comedy. Mullins is a delight to watch and one hopes he has parts in other festival offerings.

Credit also must be given to Shelley Barclay, who designed the stark set, which reminds one of the old living room on "All in the Family," and Hugh Hanson who is in charge of the costumes.

The NJSP is an important fixture in the professional theater world because it exposes people to the classic and groundbreaking material in a viewer-friendly and usually entertaining way. Much work goes into every performance, which makes it even more frustrating when the end result is less than satisfying. The next offering on its plate is "Julius Caesar." Let's hope this one does the festival justice.

"The Homecoming" runs through July 1 at the Bowne Theatre on the campus of Drew University in Madison. Performances are Tuesday through Saturday at 8 p.m., Sunday at 7 p.m. and Wednesday, Saturday and Sunday at 2 p.m. Group sales are available and student rush tickets may be purchased 15 minutes to curtain time for all performances for \$7. For tickets and information, call (201) 408-5600.



Patrick Stretch observes Paul Mullin and Laila Robins in the New Jersey Shakespeare Festival Production of Harold Pinter's "The Homecoming." Winner of the 1967 Tony Award for Best Play, "The Homecoming" runs through July 1 at the Bowne Theatre on the campus of Drew University in Madison. For tickets and information, call (201) 408-5600.

# Christian guitarist closes out coffeehouse's season

Even the most discriminating guitar aficionado will be moved as The Times coffeehouse of Scotch Plains presents an outdoor cafe with Christian singer/songwriter/guitarist Wayne Scott Farley on Saturday.

Though still in his 30s, Farley has been a professional musician for more than 20 years, primarily with nationally-known contemporary Christian groups. Coming to personal faith in God at age 15, he had already begun his professional musical journey, appearing with Eugene Ormandy and the Philadelphia Symphony three years earlier. At age 18, Farley joined the Christian group Found Free, writing and recording two albums with them on Benson Records. Next was a stint with the CCM mainstay Glad, playing and singing on their second album, "Beyond A Star," and contributing one song to the project. National touring as bassist with James Ward and performing with a variety of local groups in Philadelphia occupied the early 1980s. Farley rejoined Found Free in 1984, with the group soon becoming

Bash 'n the Code. He recorded one album with the new group and then joined Carman as lead guitarist for the "Comin' on Strong" tour and video. In 1986, Farley joined David Meece as guitarist and music director, touring extensively throughout the U.S.A. and Canada, and participating in three Australian tours. Farley still plays occasionally with Meece and even contributed a guitar solo to "When I Was Seventeen," the opening cut in Meece's "Learning To Trust" album.

After six years in Nashville, Farley moved to New Jersey and founded the North Jersey Christian Musician's Network in 1992, working with local Christian artists and forming his own band, Force For Good. Recording two albums and performing regularly, "The Force" became a popular group known for tight musicianship, well-crafted pop-rock music and honest sharing of the love of Christ. Performing original acoustic songs on the 12-string guitar,

Farley shares what God has taught him through his study of scripture and subsequent life experience. What emerges are songs of hope and encouragement, which lift the Christian, while still challenging him to new depths of faith: Non-believers are usually drawn by Farley's talent on the guitar, but come away with a real sense of what it means to be a Christian in today's world. The musical styles range from folk to pop to rock to country to styles that haven't even been named yet, but the message is always the same: trusting God and seeing his faithfulness which never fails.

In existence since September 1992, The Times is a coffeehouse in the New York metropolitan area, with top bands, an elaborate stage set and a light dinner menu. An alternative to the typical club experience, The Times draws a large crowd who come for the music, encouragement or just to spend time with old friends and make new ones. The

program is geared toward those in their 20s and 30s, but all ages, single and married, are welcome. Stage, chairs and tables will be set on the Evangel Church lawn for this special outdoor cafe, which will be the last program the Times presents this season. The new season begins on Oct. 7 with a third anniversary celebration featuring the band Force For Good.

Doors open at 6:30 p.m., with the program starting at 7. Admission is \$7 at the door. Snacks and beverages are included in the cost of admission, and dinner entrees are also available. Each person attending will have a chance to win one of several door prizes, courtesy of Joshua, the Brooklyn-based Christian jazz group, and Jesus Book and Gift of Green Brook and Iselin. The Times is located at Evangel Church, 1251 Terrill Road, Scotch Plains, accessible from Routes 22, 78 and 287, and the Garden State Parkway. For more information, call (908) 322-9300.

# Patriotic tunes to fill the air at Ciba summer concert

The sounds of patriotic music will fill the air on June 30 at 8:30 p.m. at Memorial Field, Summit, when Ciba Pharmaceuticals presents a concert by the Greater Pittsburgh's River City Brass Band, featuring soloist Irene Stephens-Griffin. This is the 22nd summer concert Ciba has sponsored and this year's will have a special focus in addition to the entertainment. The concert is being dedicated to Deane Hogan, Ciba's assistant director of public relations for nearly 30 years, who is now retired. She began the concert series and has been responsible for the program since its inception.

The River City Brass Band will begin by performing a salute to the Fourth of July, entitled "Star Spangled Brass." The entertainment for the second portion of the program will switch tempo and invite listeners to sit back and reminisce about the "Golden Age of Broadway," as tunes by popular composers like Irving Berlin, Richard Rodgers, George Gershwin and Cole Porter are played.

In the event of inclement weather, the concert will be at Summit High School on Kent Place Boulevard. Except for a few rare occasions, the weather has cooperated for past concerts and residents are encouraged to bring beach chairs and blankets and enjoy the concert under the stars.



Soloist Irene Stephens-Griffin will join The River City Brass Band to entertain at Ciba's annual summer concert

# Banjo band will play in Union festival

Union County's weekly Summer Arts Festival will continue on Wednesday featuring the Banjo Ragtimers, Dixieland jazz band.

"This energetic six piece band specializes in performing the nostalgic music from the turn of the century through the 1930s," said Freeholder Chairwoman Linda DiGiovanni. "Their repertoire includes a mixture of Dixieland jazz and nostalgic old-time songs that people of all ages have been enjoying and singing for generations."

The Banjo Ragtimers consist of band leader Ken Salvo on plectrum banjo and vocals, Vinny Borselli on coronet, Mike Christianson on trombone, Ernie Lumer on clarinet, Bob Sacchi on tuba and Fred Stoll on

drums. Among the sampling of tunes that will be performed are: "I've Found a New Baby," "Way Down Yonder in New Orleans," "Original Dixieland One-Step" and "Oh Baby!"

"We would like to commend Schering-Plough Corporation of Kenilworth for their continual support as a sponsor for the Summer Arts Festival," said County Manager Ann M. Baran. "We owe them a heartfelt thank you for their assistance and long-time commitment to the Union County community."

The public is cordially invited to all the Summer Arts Festival concerts which are in Echo Lake Park, located off Route 22 East in Mountainside. All performances are free of charge and begin at 7:30 p.m. Patrons should

bring lawn chairs or blankets. The rain site is Cranford High School, West End Place, Cranford.

An evening of "happy" music featuring the Ocean County String Band will be the next concert in this series. For concert and general program information, call the Union County Division of Parks and Recreation at (908) 527-4900 during business hours, or their 24-hour hotline, (908) 352-8410.

The Union County Summer Arts Festival is presented by the Union County Board of Chosen Freeholders, and the Division of Parks and Recreation in cooperation with many community-minded businesses and organizations such as Schering-Plough Corporation.

**Grand Opening**

# Jay Bo

Chinese Restaurant

Pat in or Carry Out

LUNCH SPECIALS \$4.25	Dinner Specials Nitely
NOW FEATURING OUR NEW CHIEF FROM HONG KONG	DIET SPECIAL Recommended Our New Low Calorie. Diet Food (All Steamed) All Served with Brown Rice or White Rice

Feel Free to Bring Your Own Wine & Spirits

Open 7 Days A Week  
Mon. To Sat: 11:00 am - 10:30 pm  
Sunday 12 noon - 10:00 pm

Tel.: (908) 965-0338  
Tel.: (908) 965-1937  
Fax: (908) 965-0346

Free Delivery

**BELLA ROSA**

## RISTORANTE ITALIANO

HAVING A BIRTHDAY, ANNIVERSARY, SHOWER, OR REUNION??

LET US DO THE WORK

We offer

### FULL-DINNER PACKAGES

STARTING AT \$12.95

Soup  
Salad  
Pasta  
Chicken Francaise  
Potato & Veg  
Ice Cream & Coffee

per person tax & gratuity

up to 60 people or small as 15 people

Buffet Starting at \$9.95

482 Boulevard • Kenilworth • New Jersey  
(908) 271-1192

SPECIALS SERVED SEVEN DAYS A WEEK  
3 PM til 10 PM  
BRING THE WHOLE FAMILY ALWAYS OPEN

## THE BROADWAY DINER

COMPLETE DINNER

- SOUP & SALAD • ROLLS & VEGETABLES
- CHOICE POTATO • ENTREE
- COFFEE OR TEA
- DESSERT

BROADWAY DINERS FROM **\$7.95** ONLY

FREE WINE WITH DINNER

WHOLE ROTISSERIE **\$7.95** CHICKEN

THE WORLD'S BEST PANCAKES

THE BROADWAY DINER  
55 RIVER ROAD • SUMMIT  
CALL 278-4353 ALWAYS OPEN

**SUMMER AND THE EATIN' IS EASY!**

ARTS & ENTERTAINMENT

Arts Calendar

Friday-Sunday

♦ **"FIVE ON THE BLACK HAND SIDE,"** a play written by Charles L. Russell and directed by Marsha Trice, will open on Friday at 8 p.m. in Newark Symphony Hall's Second Floor Theater, 1020 Broad St., Newark. There will be performances on Saturday at 3 and 8 p.m., and Sunday at 3:30 p.m. Tickets are \$15.

"Five on the Black Hand Side" is a family comedy that illustrates a father who is having problems with one of his two sons. He is also a possessive husband to his wife, who learns how to resolve her unhappy home environment.

For further information or reservations, call the Symphony Hall Box Office at (201) 643-8009.

Tuesday

♦ The Paper Mill Playhouse presents **Perula Clark** as the Summer Concert Series opener. Clark, a recent Broadway success in her role as Mrs. Johnstone in the musical "Blood Brothers," will share her vocal talents in performances of songs she's made popular since the 1960s. Her current act features her previous chart toppers as well as a flavor of her 1990s material and includes "Downtown," "A Sign of the Times," "My Love" and "Don't Sleep in the Subway."

The Summer Concert Series continues on July 11 with the return of the Glenn Miller Orchestra, directed by trombonist Larry O'Brien. The orchestra will perform the swing tunes of "Pennsylvania 6-5000," "In the Mood," "Moonlight Serenade" and many others.

On July 18, the Paper Mill presents Roberta Flack, a rhythm and blues vocalist. Flack, whose performance with reggae star Maxi Priest, and R & B singers Peabo Bryson and the late Donny Hathaway, have helped create her stardom, is also celebrated for her gold chart-toppers "Feel Like Makin' Love" and "The Closer I get to You." She will perform her popular favorites "Killing Me Softly With His Song," "The First Time Ever I Saw Your Face" and "Set the Night to Music."

On July 25, the Preservation Hall Jazz Band of New Orleans returns to the Paper Mill stage performing its jazz combination of blues, quadrilles, spirituals and ragtime.

All shows in the concert series are on Tuesdays at 8 p.m. Tickets are \$30 for orchestra seats and \$25 for mezzanine. Visa and MasterCard are accepted. The box office is (201) 376-4343. The Paper Mill Playhouse is wheelchair accessible and infrared listening devices are available for individuals with hearing impairments.

Upcoming events

♦ Dancer **Tjaarda Jones** gives a lecture/demonstration "From Fencing to Fandango: Dance in Imperial Spain" on July 1 at 6 p.m. in Hickman Hall, George Street at Route 18, New Brunswick. Admission is free and the public is welcome. For more information, call the Rutgers Arts Center at (908) 932-7511.



Angelo Del Rossi, executive producer of the Paper Mill Playhouse.

McFerrin will perform in benefit

On Saturday at 7 p.m. at Newark Symphony Hall, Newark Festival of People will participate in a unique collaborative event presented by the New Jersey Symphony Orchestra and AT&T to benefit the Newark community. The Newark Community Partners Concert will have jazz singer/conductor Bobby McFerrin featured in a program of light classics and popular favorites with the NJSO including Mendelssohn's "Scherzo" from "Midsummer Night's Dream," Vivaldi's "Andante from Concerto in G Major for Two Mandolins," Faure's "Pavane" and Mozart's "Overture to the Marriage of Figaro." Ticket prices are \$45, \$35, \$25 and \$15. For tickets, call (800) ALLEGRO.

McFerrin has maintained a successful career while continuing to explore a broad range of musical styles and forms. He has won recognition for his solo vocal appearances and best-selling recordings, as well as for his many collaborations with today's leading jazz artists. He is an active part of the artistic leadership at the Saint Paul Chamber Orchestra where he conducts, subscription, education,

outreach, tours and other special concerts. He has led more than 40 major symphonic ensembles, including the Boston Pops, the Los Angeles Philharmonic, the National Symphony and the orchestras of Atlanta, Buffalo, Dallas, Detroit, Pittsburgh, St. Louis and Seattle and made his season debut with the Chicago Symphony, the Cleveland Orchestra, the Philadelphia Orchestra and the Israel Philharmonic Orchestra.

Newark Festival of People has been given 120 tickets from which all proceeds from ticket sales will be used to produce the free, day-long Newark Festival of People event. With a potential to raise more than \$3,000, Newark Festival of People is also offering a VIP reception. The VIP reception, hosted by the NJSO and AT&T, will include desserts, coffee and wine and will offer the opportunity to meet the guest artists. To order tickets to the reception, call the festival hotline at (201) 824-FEST — (201) 824-3478.

Playhouse exec honored

The New Jersey Center for Visual Arts presented Angelo Del Rossi, executive producer of the Paper Mill Playhouse, with the Ann G. Stein Memorial Award. The award is given each year to a person who, in the previous year or series of years, has done the most to further the role of the arts locally, regionally and in the state. The recipient is selected by a committee representing the leadership from local business, arts, government, education and philanthropic communities.

Del Rossi joined the Paper Mill Playhouse in 1963. He has served as executive producer since 1975 and spearheaded the rebuilding campaign after the theater was destroyed by fire in 1980. Under his direction, the Paper Mill Playhouse has earned national recognition as one of the country's most prestigious regional theaters.

Del Rossi is a founding member of the Alliance for Musical Theater, serves on the board of New Jersey Theater Group and just completed his term as president of ArtPride of New Jersey. He has also served on the panels of the Opera-Musical Theater Program of the National Endowment for the Arts and on its policy and planning committee.

Ann G. Stein was a volunteer for many years at the Summit Art Center. She served originally as a docent, and over the years, became involved in all aspects of the art center's activities. She served on the gallery committee and chaired the center's outdoor art show and sale. From 1982 through 1985, she was president of the art center. She was the guiding force for the change in name to New Jersey Center for Visual Arts. The Ann G. Stein Memorial Award was established through the generosity of her family and friends to carry on her legacy of volunteerism and support for the arts.

**DOUBLE DRAGON RESTAURANT**  
CATERING FOR ALL OCCASIONS  
LUNCH BUFFET \$4.95 DAILY  
10% OFF Orders Over \$10 With Ad.  
1230 HURDIS AVE. UNION NJ  
TEL: (908) 688-5770 OR 688-5900

**GRAND OPENING OF On The Corner**  
WE SPECIALIZE IN POLISH & AMERICAN FOOD  
• BREAKFAST & LUNCH SPECIALS  
• CHARBROILED BURGERS  
• HOMEMADE SOUPS  
• INTERNATIONAL FOODS  
• FAMOUS CAFFEE MOZZART CAKES  
• ITALIAN ICES - ICE CREAM  
• VIGGIE BURGERS  
• NATURAL & ORGANIC FOOD  
• LOW FAT COOKING AVAILABLE  
• CATERING & TAKE OUT SERVICE  
KENILWORTH 24 HOURS

Soap star heads cast

Doris Belack, known for her role as Anna Craig on the television soap opera "One Life to Live," will star in the TheatreFest production of Neil Simon's Tony Award-winning "Lost in Yonkers" through Sunday at Montclair State University campus in Montclair.

Playing the role of Grandma Kurnitz, Belack, a veteran of the Broadway stage, has appeared in numerous plays including "The Cemetery Club," "Social Security," "The Trip Back Down," "Bad Habits" and "Last of the Red Hot Lovers." She has had guest appearances on numerous television shows including "Picket Fences," "The Cosby Show," "Sisters," "Chicago Hope" and "The Golden Girls," and has played a recurring judge on "Law and Order." In addition to playing the television producer in the hit movie "Tootsie," Belack has appeared in "What About Bob?," "Opportunity Knocks," "Naked Gun 33 1/3," "Batteries Not Included" and "She-Devil."

"Lost in Yonkers" is the season opener for TheatreFest, which is celebrating 10 years of professional equity theater at Montclair State University. Performance times are 8 p.m., with a 3 p.m. matinee Sunday. Performances will be in the air-conditioned Memorial Auditorium.

Other productions this season include "On Golden Pond," Wednesday to July 9; "A Chorus Line," July 12-30, and three children's performances by the Verona-based Pushcart Players — "Once Upon a Time," June 29; "Chasing Rainbows," July 6; and "Sugar Soup and Other Stories," July 13.

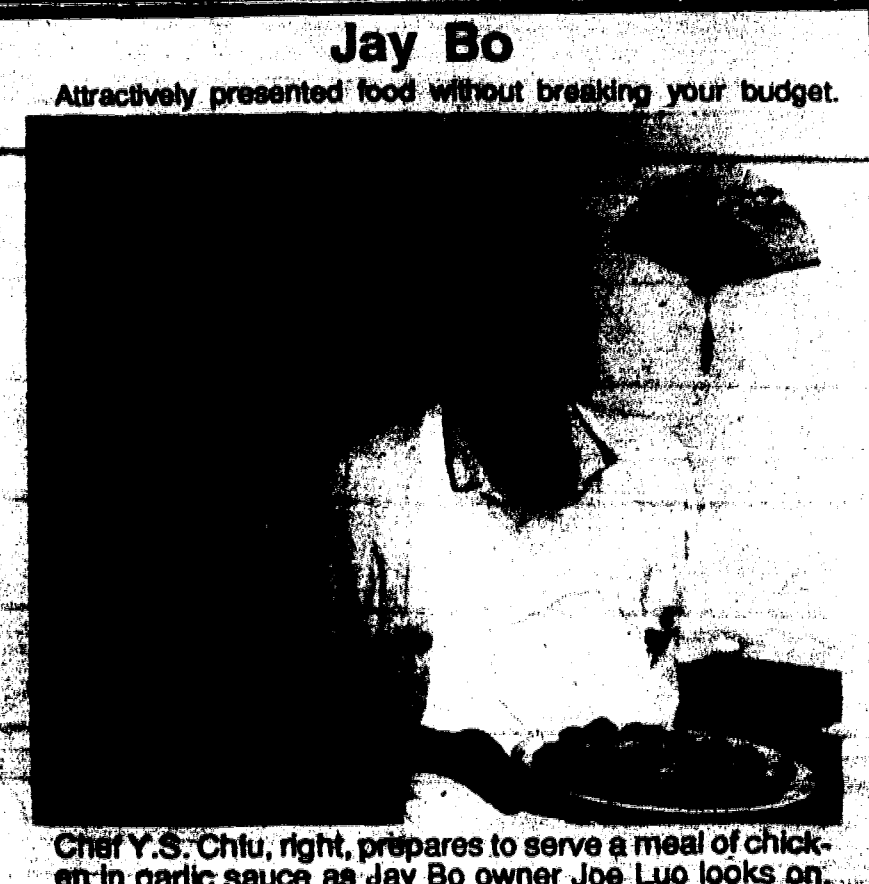
For tickets and information, call the Montclair State University Box Office at (201) 655-5112.

**WORRAL COMMUNITY NEWSPAPERS DINING OUT**  
A Weekly Feature Appearing In 12 Newspapers:  
Union Leader, Springfield Leader, Mountanside Echo, Kenilworth Leader, Roselle Park Leader, Linden Leader, Roselle Spectator, Rahway Progress, Clark Eagle, Hillside Leader, Elizabeth Gazette, Summit Observer.  
Call for details (908) 686-7700  
Become a regular advertiser and be spotlighted in a review

WORRAL COMMUNITY NEWSPAPERS

Union Leader, Kenilworth Leader, Roselle Park Leader, Summit Observer, Springfield Leader, Mountanside Echo, Elizabeth Gazette, Roselle Spectator, Rahway Progress, Clark Eagle, Hillside Leader, Linden Leader.

**Jay Bo**  
Attractively presented food without breaking your budget.  
There is a new restaurant along Routes 1 and 9 in Elizabeth that will satisfy any dine-a-holic's need for inexpensive Chinese cuisine. Located on the Northbound side near Elizabeth Avenue, Jay Bo is the type of restaurant that offers large portions of spicy, attractively presented food without breaking your budget.  
The third installment of a growing chain, the Elizabeth branch of Jay Bo recently brought on a new chef from Hong Kong who does wonders with the standards, such as moo shu pork and Hunan Chicken, and is willing to tackle menu challenges as well.  
The building itself is simple: a rectangular dining area with a gold fish tank in the front, with plenty of tables surrounded by beautifully crafted wooden chairs, pink table cloths, and pleasant music playing softly in the background. The atmosphere will make ones feasting urges kick in before the menu has even been opened.  
We started with the soup. My dining companion, a fussy eater if ever there was one, had the wonton, while I feasted on the egg drop. While both were delicious, I preferred the wonton. It was very strong, as I like it, and very tasty. The wonton's themselves were soft and fresh — I was able to dissect them with my spoon — and they contained just the right balance between the pasta and the meat.  
The egg drop, make no mistake, was also very good. It was thick, as nature intended, and had a nice blend of spices that was nearly overwhelming.  
The best judge of a Chinese restaurant, naturally is the dumplings. We had ours fried, although health-conscious diners should consider them steamed. The wontons were served with another strong sauce, and were not



Cher Y.S. Chiu, right, prepares to serve a meal of chicken in garlic sauce as Jay Bo owner Joe Luo looks on.

and fluffy on the tops, and a little crispy on the bottom. But the sauce brought out the flavor of the meat wonderfully.  
While I enjoyed my dumplings, my companion was knee deep in the spare-ribs. After two, he had managed to cover both of his cheeks with the barbecue sauce, and by the time he was finished, his napkin was in tatters. Can there be any higher endorsement for a rack of ribs? Not in this lifetime.  
On to the entrees ... We shared the moo shu pork — which comes in a generous portion with four pancakes — the Hunan chicken, and the pepper steak. The moo shu, often my favorite dish of the genre, was overshadowed by both the steak and the chicken.  
Both the chicken and the steak come with a lot of vegetables and are garnished in brown sauce. I preferred

the steak; my friend enjoyed the chicken. Both came elaborately presented on large platters, surrounded by sliced fruit and a carrot sliced and molded into the shape of a flower.

The pepper steak, as mentioned before, was among the best I had ever tasted. The meat was well glazed, was tender without being mushy, and the vegetables tasted garden fresh. In all, while not being overly spicy, the steak proved to be the highlight of the dinner.

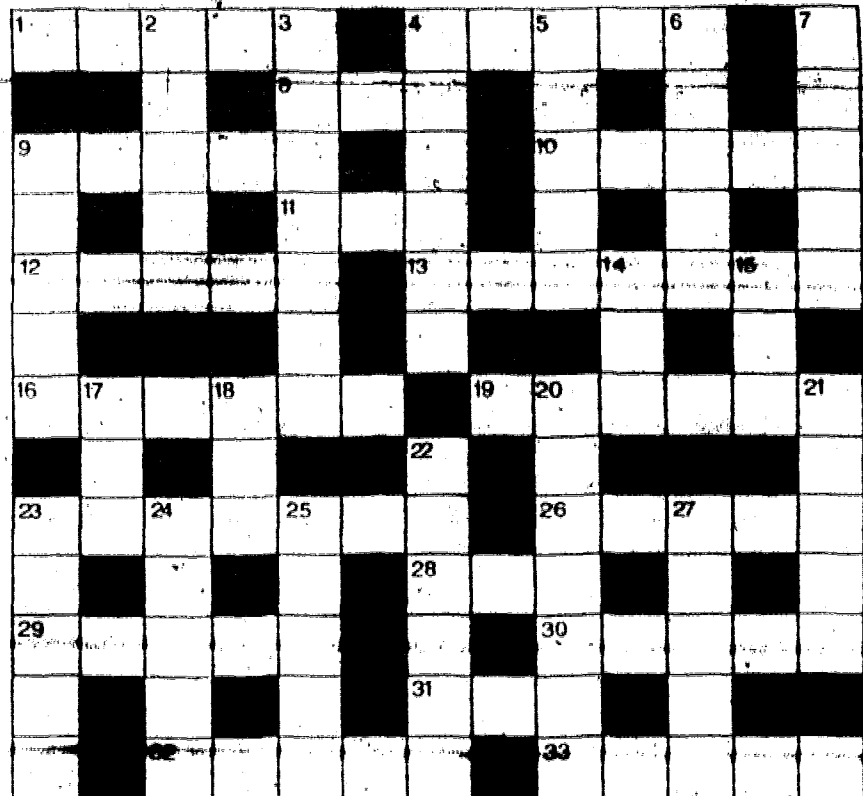
Jay Bo is open Monday through Saturday from 11 a.m. to 10:30 p.m., and Sundays from noon to 10 p.m.

This column is intended to inform our readers about dining options in brown sauce. I preferred

**CHESTNUT TAKE OUT SERVICE**  
46 YEARS IN UNION  
649 CHESTNUT STREET, UNION • 908-686-9875 • 964-8696  
NEW MENU  
Specializing In Italian American Cuisine  
Chicken • Veal • Pasta • Seafood  
Chops • Pizza  
Weekend, Luncheon & Dinner Specials  
Thurs. - June 22nd The Fabulous "JULIAN"  
Fri. - June 23rd The Sensational "ANTHONY TABISH"  
Thurs. - June 22nd The Fabulous "JIMMY THOMAS"  
Party Room Available

SUMMER AND THE EATIN' IS EARLY!

### CROSSWORD PUZZLE



**CLUES ACROSS**

- 1. Deduce
- 4. Examine accounts
- 8. Tot up
- 9. Acquire knowledge
- 10. Concise
- 11. Master
- 12. Artery
- 13. Utmost
- 16. Intricate
- 19. Appear
- 23. First course
- 26. Seat
- 28. Writing fluid
- 29. Entice
- 30. Outcome
- 31. Male offspring
- 32. Rendezvous
- 33. Style of dress

**CLUES DOWN**

- 2. Natural aptitude
- 3. Plunder
- 4. Worshipped
- 5. First appearance
- 6. Hackneyed
- 7. Firearm
- 9. Smallest
- 14. Whiskey
- 15. Drinking vessel
- 17. Decay
- 18. An expression of surprise
- 20. Taunting
- 21. Weird
- 22. Clergyman
- 23. Glossy fabric
- 24. Confess
- 25. Untidy
- 27. Valued possession

**ACROSS ANSWER TO PREVIOUS PUZZLE:**

1. Extinct 5. Kitty 7. Certain 8. Exact 10. Loft 11. Personal  
 13. Buying 14. Skewer 17. Inciting 19. Want 21. Yearn  
 22. Taunted 23. Inlet 24. Delayed
- DOWN**  
 2. Thrifty 3. Near 4. Tunnel 5. Keepsake 6. Train 7. Celebrity  
 9. Tolerated 12. Instruct 15. Wealthy 16. United 18. Crawl  
 20. Full

## ARTS & ENTERTAINMENT

# NJPA's first season will feature Portuguese fest

The government of Portugal and the New Jersey Performing Arts Center announced the center's 1997 opening season will include a major Portuguese performing arts festival.

Luis Sousa de Macedo, secretary of state for Portuguese communities, made the announcement during his visit to Newark to attend this past weekend's Portugal Day Festival. Macedo said the performing arts festival, which is being planned by a cultural commission in Portugal working in close liaison with the arts center, "will confirm our country's close ties with the Portuguese people in the United States and will reinforce the importance of the Portuguese community in this country."

"We can think of no better vehicle to further link our people than by sharing with you in the celebration and joy of your new world class performing arts center," Macedo said. "New Jersey has a significant Portuguese community; one which is steeped in our culture and possesses a deep love for the arts."

Noting that Lisbon was honored to be selected as the cultural capital of Europe last year, Macedo said a commission including several of the dignitaries responsible for coordinating the celebration in Europe has been appointed by the government and will be responsible for developing the cultural program and recommending the artists to be featured on the NJPAC stage in 1997.

The commission will consider including music, dance, theater and film in the festival at NJPAC and will also

coordinate a concurrent exhibition of Portuguese art with the Newark Museum. In addition, the commission will determine how Portugal might participate in the building of NJPAC with an architectural contribution.

"We are honored and excited by this offer from the government and people of Portugal," said Lawrence P. Goldman, NJPAC president and CEO. "The Portuguese community in New Jersey is an important spoke in the multicultural wheel which makes this state special. The Portuguese government's decision supports so perfectly one of NJPAC's goals — to utilize its world class stages to connect the diverse peoples of New Jersey."

"We look forward with great anticipation to planning and ultimately presenting events which will focus America's attention on Portugal's important contributions to world culture," Goldman said.

Mary Sue Sweeney Price, director of the Newark Museum, said: "The museum has long desired to host an exhibition of Portuguese art and culture. We are delighted that the Portuguese government is planning to bring such an important festival to New Jersey."

Construction of Phase One of the \$165 million arts center is moving ahead on schedule with more than 90 percent of the structural steel in place. NJPAC Phase One includes a 2,750-seat Great Hall, the 500-seat Victoria Theater, two restaurants, banquet facilities, a gift shop and Theater Square, a public plaza adjacent to the center.

### FLEA MARKET

**SATURDAY**  
**JUNE 24, 1995**  
 EVENT: Summer Blastathon Fundraising Flea Market.  
 PLACE: 399 Heywood Avenue, Orange, NJ.  
 TIME: Fun/ Sales begin at 9AM.  
 PRICE: Free Admission. Purchase space at \$10.00 per space or donate your items to us. All contributions tax deductible. Call 201-673-4562 or 201-672-0288  
 ORGANIZATION: Cross Counter Inc.

### CRAFT

**MONDAY**  
**JUNE 26, 1995**  
 EVENT: Craft Show Jurying for October 14, 1995 Craft Show.  
 PLACE: Morrow Memorial United Methodist Church, 600 Ridgewood Road, Maplewood.  
 TIME: 7:30 PM.  
 PRICE: To register call 762-1897  
 ORGANIZATION: United Methodist Women.

What's Going On is a paid directory of events for non-profit organizations. It is pre-paid and costs just \$20.00 (for 2 weeks) for Essex County or Union County and just \$30.00 for both. Your notice must be in our Maplewood office (463 Valley Street) by 4:30 P.M. on Monday for publication the following Thursday. Advertisements may also be placed at 170 Scotland Road, Union, NJ. For more information call 763-9411.

## Chamber series kicks off Wednesday

A variety of chamber music, including works by Brahms, Debussy, Henri Dutilleux, Faure, Stephen Foster, Mozart and many others, can be heard throughout Rutgers SummerFest at 8 p.m. in Nicholas Music Center, George Street at Route 18 in New Brunswick. Tickets are \$16. For information or to charge tickets by telephone, call the Rutgers Art Center at (908) 932-7511.

Programs include Piano Preludes by Debussy, performed by Ivo Kalitchev on Wednesday; works by Beethoven and Dohnanyi are performed by the SummerFest Chamber on June 29; music by Stephen Foster and other American composers is performed by Frederick Urrey, tenor, Wanda Maximilien, piano, and others on June 30; the Newstead Trio performs music by Brahms and Arensky on July 5; music by Faure is performed by Samuel Dilworth-Leslie, piano, Judith Nicosia Civitano, soprano and DanWen Jiang, violin, on July 6; works by Dutilleux, Xenakis, Dodgson and other 20th century composers is performed by William Moersch, marimba, Charlotte Mattax, keyboard, and Marsha Heller, oboe, on July 11; music of Campos-Parsi and Astor Piazzolla is performed on July 18; works by Czerny and Clementi are performed by SummerFest Chamber Players on July 25; and, music by Mozart, Mendelssohn and Messiaen are performed by the SummerFest Chamber Players on July 26.



Frederick Urrey

Your business can grow with more customers. Reach the potential customers in your newspaper with an ad by calling 1-800-564-8911.

### PUBLIC NOTICE

**PUBLIC NOTICE**  
 THE BELOW MENTIONED VESSEL HAS BEEN ABANDONED AT THE ADDRESS GIVEN. IF THE VESSEL IS NOT CLAIMED AND REMOVED FROM THE PROPERTY WITHIN 30 DAYS AFTER THIS PUBLICATION THE APPLICANT WILL APPLY FOR TITLE TO THE VESSEL IN THE APPLICANT'S NAME IN ACCORDANCE WITH THE PROVISIONS OF THE ABANDONED VESSELS DISPOSITION LAW, N.J.S.A. 12:7C-7 et seq. IF YOU HAVE AN INTEREST IN THIS VESSEL PLEASE CONTACT OUR OFFICE IMMEDIATELY AT (305) 947-7922.  
 LOT 008 1979 Searay Hull ID#: SE88W090778 fiberglass, inboard, pleasure, gas, white L 24 ft. Liens: Econo Auto Glass, 422 Trinity Place, Elizabeth, NJ 07208. Worrall Community Newspapers, June 22, 1995 (Fee: \$12.25)

### HOROSCOPES DAILY UPDATES CALL 686-9898

SELECTIONS	
3600 Aquarius	3606 Virgo
3601 Aries	3607 Libra
3602 Taurus	3608 Scorpio
3603 Gemini	3609 Sagittarius
3604 Cancer	3610 Capricorn
3605 Leo	3611 Pisces

**Lisa Batitto, Editor**  
 ©Worrall Community Newspapers Inc. 1995 All Rights Reserved  
 Organizations submitting releases to the entertainment section can mail copy to 1291 Stuyvesant Ave., P.O. Box 3109, Union, New Jersey, 07083.

### 11-MONTH INVESTMENT CERTIFICATE

**7.00%\***  
 EFFECTIVE INTEREST RATE

**6.79%\***  
 SIMPLE INTEREST RATE

To get the numbers above, call the number below.

**(908) 627-9002**  
**American Express Financial Advisors Inc.**  
**CONTACT: RICHARD O'TOOLE**

\*Rates for an IDS Flexible Savings Certificate in effect on 6/1/95 for purchases under \$100,000. Rates are compounded monthly. Purchases must be new to IDS companies. Transfers and renewals are not eligible for this offer. Rates for future dates may change without notice. For more complete information, including a prospectus, on the IDS Flexible Savings Certificate and other investment certificates issued by IDS Certificate Company, call the number above. Please read the prospectus carefully before investing or sending money. Certificates are issued by the IDS Certificate Company and distributed by American Express Financial Advisors.  
 © 1995 American Express Financial Corporation

**PUBLIC NOTICE**  
 NOTICE OF PUBLIC AUCTION PURSUANT TO RS 39 10A-1  
 United American Lien & Recovery Corp will sell the following autos to highest bidder subject to any liens: 15% BUYER PREM Cash or Cashier Check; any persons interested ph (305) 947-7922.  
 SALE DATE July 14, 1995 at 2:00 p.m., 1421 Oak Tree Rd., Iselin, NJ 08830  
 LOT1004 1986 Mercedes 4 dr. vin #: WDBCA35D7GA237367  
 Lienor: Quality Auto Body, 811 New Brunswick Ave., Rahway, NJ  
 LOT1005 1986 Mercedes 4 dr. vin #: WDBCA35D3GA234157  
 Lienor: Quality Auto Body, 811 New Brunswick Ave., Rahway, NJ  
 LOT1006 1976 Kawasaki mc vin #: KZ790A003732  
 Lienor: Shims Auto Repair, 1005 E. Elizabeth Ave., Linden, NJ  
 LOT1007 1979 Ford 2 dr. vin #: U15HLED1085  
 Lienor: Abate's Svc Station, 511 Grand Ave., Rahway, NJ  
 LOT1008 1992 Mercury 2 dr. vin #: GMPCTO124M8604197  
 Lienor: A Plus Auto, 201 Columbus Ave., Roselle, NJ  
 SALE DATE JULY 21, 1995 at 2:00 p.m., 1421 Oak Tree Rd., Iselin, NJ 08830  
 LOT1012 1989 Toyota 2 dr. vin #: JT2EL31D8K0375257  
 Lienor: S & B Auto, 800 E. Elizabeth Ave., Linden, NJ  
 LICENSED & BONDED AUCTIONEERS APPRAISERS  
 UY573 Worrall Community Newspapers, June 22, 29, 1995 (Fee: \$41.30)

**Call the editors**  
 Ever want to talk about something you think should be in the paper? Know something that might make a good story? Do you know someone who might be the subject of an interesting feature? Do you know of a sports story we don't?  
 If the answer to any or all of the above is yes, call the editors at 686-7700.  
 General or spot news: Chris Gatto, regional editor.  
 Entertainment news: Lisa Ann Batitto, arts and entertainment editor.  
 Sports news: Jim Parachini, sports editor.  
 Problems: Tom Canavan, editor in chief.

**NEWSPAPER**  
 \$4.00 PER HUNDRED LBS.  
 DELIVERED TO OUR YARD

**Paper Drives Arranged**  
**Boy Scouts • Church**  
**Schools**  
 ALL ORGANIZATIONS ARE WELCOMED  
 Trailers are available 40', 45' no charge  
 Call for more information & directions  
**800-355-2468**  
**John Rocco Scrap Material, Inc.**  
 100 Valley Road, W. of Rt. 1 & 95  
 Hours:  
 to Fri.

**Tired of making special arrangements to pay your long distance bills?**

**"SEE YA NEXT MONTH, PAL."**

Cut Your Residential Long Distance Telephone Bills In Half With

## Truth In Long Distance

**12.9¢** per minute, out-of-state long distance

- ✓ All day, all night, 7 days a week
- ✓ Available in all 48 contiguous states
- ✓ NO MONTHLY MINIMUMS, NO RESTRICTIONS on who you call; no confusing discounts
- ✓ Convenient billing on your local phone bill

**Call Today...Save Forever!**  
**1-800-214-4752**  
 (24 hours a day/7 days a week)

Have a copy of your local phone bill ready for reference. Subject to equal access areas.

Monthly service charge of only \$3.00.  
 Other carriers charge up to \$7.00

**UniDial**

All-New Voice Meeting Place

# Life's A Gamble!

At least Connections takes the guesswork out of meeting someone new.

You'll get a **FREE** 30-word print ad, **FREE** voice greeting, and **FREE** message retrieval one time per week. That makes it really easy for you to make Connections.

- It's all automated and simple. You don't have to speak to anyone. One phone call will set up your FREE voice greeting and FREE printed ad, which will run for 4 weeks in the paper.
- Be ready to write down your mailbox number and access code when you call in.
- Retrieve your messages FREE once a week at 1-800-382-1746, or listen to them more often by calling 1-900-786-2400 for \$1.99 per minute.

Place your FREE Connections ad right now by calling:  
**1-800-382-1746**  
 24 hours a day

## Connections

What A Way To Meet!

Connections is accessible 24 hours a day and is available to TouchTone and rotary dial callers. You must be 18 or older to call.

# horoscope

## June 25-July 1

**ARIES** — March 21/April 20  
Extra effort will be needed to make an important project run smoothly. You'll probably have to give up free time but it will be well worth it in the end. You may have to lend a sympathetic ear to a troubled friend. Try not to be judgmental of others' faults and problems.

**TAURUS** — April 21/May 21  
Expect unexpected visitors this week. In fact, expect a lot more activity than usual. A simple misunderstanding with a loved one could escalate into a full-blown fight if you're not careful. Be patient and diplomatic when dealing with temperamental family members.

**GEMINI** — May 22/June 21  
Your charm and sense of humor will help you influence the right people this week. Just be yourself and you're sure to be a success. Traveling this week? If so, double check all necessary documents or something could be left out. A financial windfall is likely.

**CANCER** — June 22/July 22  
Don't take frustrations out on loved ones. Control your temper and avoid lashing out. You could end up saying something you'll later regret. It's probably best to spend some time alone if you're not feeling like yourself. Be extra careful when handling delicate items.

**LEO** — July 23/August 23  
Show your appreciation to someone who has supported you. This is especially true if you are the boss at work. A family member will bring home good news and there will be reason to celebrate. If you are a parent, this will be an especially rewarding week.

**VIRO** — Aug 24/Sept 22  
If you're involved in a new romance, you may find out something you don't like about your new partner. But before you end the romance, perhaps you should realize that nobody's perfect — even you. Weigh the pros and cons before doing anything drastic.

**LIBRA** — Sept 23/Oct 23  
Your talents will be put to the test and you'll pass with flying colors! Not only will you impress others, but you'll impress yourself, too. Once the job at hand is complete, you'll have plenty of free time to do what you want. Perhaps it's time to enroll in that class you've been considering.

**SCORPIO** — Oct 24/Nov 22  
Don't give up at the tail end of a project. Even if it seems as though it is dragging along, it won't be long until you see the light at the end of the tunnel. Suck it out. A loved one's bad habits may rub off on you if you're not careful. Keep a close watch on spending.

**SAGITTARIUS** — Nov 23/Dec 21  
Important meetings and/or interviews will go smoothly. You'll be at your best when presenting your ideas and articulating your opinions. Keep track of valuable items or something could be lost. A package you've been waiting for finally comes by mail.

**CAPRICORN** — Dec 22/Jan 20  
Before jumping into a new romantic relationship, you may want to consider your circumstances. Make sure you are being fair to yourself — and to your new love interest. A dishonest solution to a work-related problem could backfire. You're better off playing by the rules.

**AQUARIUS** — Jan 21/Feb 18  
Your domestic side will take over and you may find yourself embarking on some major household projects. Whether you decide to refurbish or refurnish, you're sure to be a hit. Money invested in your home will be money well spent. Weekend plans are likely to be cancelled.

**PISCES** — Feb 19/March 20  
Your moody behavior is quite puzzling to a friend who doesn't know you too well. Although there's nothing you're going to do to change, it's important to understand how others see you. A miscommunication at work could lead to a costly error. Double and triple check everything.

**YOUR BIRTHDAY THIS WEEK**  
The next 12 months: The reality of a new situation will hit you early in the year. You'll realize that your tendency to over-romanticize leads to a harsh reality. Although you may not be too happy the first few months of this year, you'll muddle your way through. Take heart. There's a lot to look forward to later on. If you're a career-oriented Cancerian, you'll find a great deal of satisfaction in your work. You'll notice your skills strengthen throughout the year. Single? If so, you probably won't be by this time next year. You could fall in love when you least expect it! November is an especially lucky month.

# ARTS & ENTERTAINMENT

## Group gives theater patrons sample of summer offerings

Just like summer, the New Jersey Theater Group's Theater Season Calendar is free and easy to follow to more than 40 musicals, comedies and dramas presented across New Jersey by the state's professional theaters now through the end of 1995.

The newly published 1995 summer Theater Season Calendar from NJTG, the statewide association of New Jersey's professional theaters, features such summer fare as Paper Mill Playhouse's musical finale, "The Secret Garden," in Millburn, five summer seasons just getting under way and a sneak preview of the coming fall theater season.

Those five summer theaters offer a refreshing variety of plays between June and September. TheaterFest in Upper Montclair presents a mix of comedy, poignancy and music with three Broadway hits — Neil Simon's "Lost in Yonkers," "On Golden Pond" and "A Chorus Line." The New Jersey Shakespeare Festival in Madison spans the centuries from Shakespeare's "Julius Caesar" to Harold Pinter's "The Homecoming" followed by the English Restoration comedy "The Country Wife" and the 19th-century masterwork of Russian realism "Artists and Admirers." The calendar boasts three summer

theaters in southern New Jersey with entertainment for all ages. Cape May Stage's historical drama "Cape May On Fire" opens the season followed by Neil Simon's early comedy hit "Last of the Red Hot Lovers" and "Educating Rita" from the home of Shirley Valentine." The East Lyme Company, also in Cape May, takes audiences back to Victorian days with a trio of short plays under the title "The Woman Question," the graceful romance of "A Counterfeit Presentment," and the Shakespeare-inspired romance "Tortosa, The Usurer." In Pemberton, Foundation Theater will alternate entertainment for adults and youngsters with a schedule that includes the comedy "Nunsense," "Nunsense" and the hit whodunit "Sleuth" interspersed with "Cinderella" and a musical adaptation of "Little Red Riding Hood."

Looking ahead to the fall, this calendar announces American Stage Company's revival of the Neil Simon/Cy Coleman musical "Little Me" in Teaneck, Centenary Stage's production of George Bernard Shaw's "Pygmalion" in Hackettstown and Wendy Wasserstein's Tony Award-winning "The Sisters Rosensweig" at Fortum Theater Group in Metuchen. There are more British classics coming with

Agatha Christie's "The Mousetrap" and Shaw's "Arms and the Man" at George Street Playhouse in New Brunswick and Noel Coward's "Private Lives" at McCarter Theater in Princeton. McCarter will also present the American premiere of Athol Fugard's new play, "Valley Song." Paper Mill Playhouse will start next season with two multi-Tony Award-winners, "Nine" and "Dreamgirls."

Trenton's Passage Theater Company will present the musical "Avenue X" featuring a cappella harmonies and both Playwrights Theater of New Jersey in Madison and Stageworks/Summit in Summit will offer premieres.

The New Jersey Theater Group's calendar offers two ways to purchase

tickets to all of these plays. Theatergoers may use the box office telephone numbers listed with each theater to order individual tickets directly from each box office. But to make the same personal play selection while also saving up to 50 percent off the box office ticket price, NJTG's calendar offers the Theater Sampler Series.

The New Jersey Theater Group is able to provide the free Theater Season Calendar because it is funded in part by the New Jersey State Council on the Arts/ Department of State. To receive a copy of the free calendar and more information on the Theater Sampler Series, call the New Jersey Theater Group at (201) 593-0189 or write to P.O. Box 21, Florham Park 07932.

**New Jersey BALLET School**  
Register NOW for Summer Classes!!  
Six weeks - July 10 - Aug. 19  
SOMERVILLE PARSIPPANY  
MADISON WEST ORANGE  
• Ballet • Jazz • Tap  
908-526-2334 or 201-736-5940



**AIR CONDITIONING PRE-SEASON SPRING CHECK UP!**  
THRU THE WALL SPECIALISTS • Folding Slides for most A.C. makes in stock!  
**J & J T.V. SERVICE**  
REFRIGERATION & AIR CONDITIONING & VCR  
Let Us Repair Your VCR, Out The Video Store Middleman And Save Money.  
REPAIRS • TUNING • CLEAN • COPIERS • TUBS • BATH • FOOD  
Work Done by E.P.A. Certified Technicians Authorized Factory Service  
T.V. and Air Conditioning Sales & Service All Makes & Models  
58 NORTH AVE • GARWOOD • 232-3336/276-1160

50-75% OFF OFFICE FURNITURE  
CONFERENCE TABLES, DESKS, CHAIRS,  
WORKSTATIONS, BOOK CASES  
Open Mon.-Fri. 9 to 4:30  
Sat. 9-3  
•50,000 Sq. Ft. of New, Used  
Factory Closeouts  
Next Day Delivery  
**MDC** 201-926-9394  
400 Winans Ave., Hillside  
Directly across from Exit 54, Route 78 East

## Hillside artists work on display

Doris W. Lenz, of Hillside, will be exhibiting at the Thompson Park Visitor Center in Lincroft through Sunday. She will be displaying her abstract works on paper in mixed media.

Lenz is a graduate of the New York School of Interior Design and has studied with Peter Homitsky, Philip Sherrod and Pat San Soucie, all prominent artists. She is a member of Garden State Watercolor Society and the New Jersey School of Visual Arts.

"For me, creativity is the discovery of putting things together in a way that has never been done before. I believe the creative individual is able to see the 'whole picture', and does not get involved in details," Lenz said, "Good painting can tell who the artist is, and can put us in a place or create a mood."

The Thompson Park Visitor Center is located at 805 Newman Spring Road, Lincroft, and is open to the public free of charge. The gallery is open Monday to Friday, 10 a.m.-4 p.m., and Saturday and Sunday from 10 a.m.-2 p.m.

# Congratulations! Graduates!

<p><b>AL-NISA</b> Orange High School I remember when you were an itty little person. You have really made me so proud of you. Your Mom.</p>	<p><b>JONYCE HOLLINS</b> Clark School Gama's Girl, continue to work hard towards obtaining all the knowledge you can. I'm proud of you, 1st grader. MaMa.</p>	<p><b>MAX LOPEZ</b> Beth El Nursery We're very proud of your great work. Love, Mom, Dad and Alex.</p>	<p><b>JAMES LOPEZ</b> Union High School We are very proud of all your scholastic achievements, and prouder of the young man you are! Mom and Dad.</p>

<p><b>TATIANA MARTYNETZ</b> St. John's Ukrainian Catholic School Congratulations to Tatiana and all of her classmates! We love you! Tatu, Mama, Daniel, Markian &amp; Alexander.</p>	<p><b>NICHOLAS</b> Kindergarten Graduate School is done. Now have some fun! You're #1! Love, Hugs &amp; Kisses, XOX Mom &amp; Dad XOX</p>	<p><b>ERIC L. PIZA</b> Bloomfield Middle School Congratulations! We wish you health &amp; happiness, &amp; success! We're very proud of you. Thanks for being a great son &amp; brother! Love Dad, Mom &amp; Leah.</p>	<p><b>NARSHONNA TOWNES</b> Frank H. Morrell High Congratulations to our rising star. Love, D.J. and The Millers' at '38".</p>

<p><b>KAREN LARELEE WILSON</b> Orange High School Blessings be with you always, with love, Mommy, Daddy, Kinsha, Cedric, Christian and Shamica. We love you. "Happy Days Ahead"</p>	<p><b>JENNIFER WOLLENBERG</b> Johnson Regional High School You're special! Go for your dreams! We're proud of you. Love, Mom, Dad &amp; Jason.</p>	<p><b>NICOLE</b> Orange High School Big N! You made it! We're very proud of you. God Blesses You! Love, Mom, Dad, Grandparents, Aunts, Uncles &amp; Cousins</p>

## CEMENT

**\$100 OFF**  
Custom Drapery or Bedding Order  
(C.O.M. not included. Min. purchase \$500.)  
**\$50 OFF**  
• Vertical Blinds • Mini-Blinds  
• Pleated Shades • Duette Shades  
(Excludes Arch Top, Angle Top, & Unusual Shaped Blinds)  
**LAURA'S**  
INTERIOR DESIGNS  
330-A Springfield Ave.  
Summit • 908-377-3331  
CALL FOR FREE CONSULTATION

**Interstate Hardwood Lumber Company**  
For All Your Decking Needs  
Five Factors to influence Your choice of picking lumber:  
• Availability  
• Durability  
• Appearance  
• Cost  
• Structural requirements  
**INTERSTATE HARDWOOD LUMBER COMPANY**  
850 Flora Street Elizabeth, NJ 07201  
908 353-5661





# WORRALL Classified

## 1-800-564-8911

## INDEX

- 1-HELP WANTED
- 2-ANNOUNCEMENTS
- 8-MISCELLANEOUS
- 4-PETS
- 5-INSTRUCTIONS
- 6-SERVICES OFFERED
- 7-BUSINESS OPPORTUNITIES
- 8-RENTAL
- 9-REAL ESTATE
- 10-AUTOMOTIVE

### UNION COUNTY

- Union Leader • Springfield Leader  
 Clark Eagle • Kenilworth Leader  
 Mountainside Echo • Roselle Spectator  
 Hillside Leader • Roselle Park Leader  
 Linden Leader • Rahway Progress  
 Summit Observer • Elizabeth Gazette

### CLASSIFIED RATES

20 words or less.....\$14.00 per insertion  
 Additional 10 words or less .....\$4.00 per insertion  
 Display Rates.....\$22.00 per column inch  
 Contract Rates Available  
 Blind Box Number .....\$12.00 per insertion

### ESSEX COUNTY

- News-Record of Maplewood & South Orange  
 West Orange Chronicle • East Orange Record  
 Orange Transcript • The Glen Ridge Paper  
 Nutley Journal • Belleville Post  
 Irvington Herald • Vailsburg Leader  
 The Independent Press of Bloomfield

### CLASSIFIED RATES

20 words or less.....\$14.00 per insertion  
 Additional 10 words or less .....\$4.00 per insertion  
 Display Rates.....\$27.00 per column inch  
 Contract Rates Available  
 Blind Box Number .....\$12.00 per insertion

### BEST BUY

**CLASSIFIED COMBINATION RATES**  
 Ad appears in all 22 newspapers  
 20 words or less.....\$20.00 per insertion  
 Additional 10 words or less.....\$6.00 per insertion  
 Display Rates.....\$42.00 per column inch  
 Contract Rates Available

### DEADLINES

Business Directory 4 p.m. Thursday  
 Display-Space reservation 5 p.m. Friday  
 Ad copy 12 Noon Monday  
 In Column 3 p.m. Tuesday

### CLASSIFIED ADVERTISING DEPARTMENT HOURS

Monday through Friday 9:00 A.M. - 5:00 P.M.  
 Additional Phone Hours  
 Monday 8 a.m. - 6 p.m. • Tuesday 8 a.m. - 5 p.m.

## CALL

# 1 - 800 - 564-8911

### CLASSIFIED POLICIES

All classified advertising is payable in advance.  
 We accept Visa and MasterCard. You may also mail  
 your ad with payment (check or money order) to us,  
 or come into one of our offices to place your ad.

Offices where ads can be placed in person:

**Union County**  
 1291 Stuyvesant Avenue  
 Union, N.J.

**Essex County**  
 463 Valley Street  
 Maplewood, N.J.

170 Scotland Road  
 Orange, N.J.

266 Liberty Street  
 Bloomfield, N.J.

Advertisements: We make every effort to avoid mistakes in your classified advertising. Please check your ad each time it appears. If any error occurs, please notify the classified department within 7 days of publication. Worrall Community Newspapers, Inc. shall not be liable for errors or omissions in any advertisement for which it may be responsible, beyond the cost of actual space occupied by the ad, or omissions or errors occurred. We can not be held liable for failure, for any cause, to insert an ad. Worrall Community Newspapers, Inc. reserves the right to modify or reclassify any advertisement at any time.

## HELP WANTED

### Accounts Payable Clerk

Overlook Health System offers a congenial and professional environment. It's the kind of work atmosphere where you can do your best and we do our best to make your contribution count.

Qualified candidates will have CBI, general office and accounts payable experience. Working full time, 8am-4pm in the Accounts Payable Department, we offer an exceptional growth opportunity and a full range of benefits. For immediate consideration, please call 1-800-U-PERFORM, or send resume to: Human Resources Dept., Overlook Health System, 99 Beauvoir Avenue, Box 220, Summit, NJ 07902-0220. EOE/AA.

### OVERLOOK HEALTH SYSTEM

*Explore Every Possibility*

ADDRESS ENVELOPES: Part time at home, \$200/day. Enclose self addressed stamped envelope. Department 49, P.O. 7158 Richmond, Virginia, 23221.

ADVERTISING - our very busy classified advertising department is looking for an energetic, highly motivated telephone salesperson. Accurate typing, good communication skills, excellent spelling and a good command of the English language is essential. Responsibilities will include taking classified ads over the phone, selling and servicing advertisers and handling a variety of clerical functions. We offer salary plus commissions, benefits, holidays and a friendly working environment. Please call our Classified Advertising Manager at 201-763-0700 between 10am and 3pm Monday through Friday.

### ADVERTISING

#### ACCOUNT COORDINATOR/ TRAFFIC

Rapidly growing Central NJ Advertising Agency has full-time position available. Must have 3-5 years agency experience, great phone manner, detail oriented in both retail and automotive and computer experience a must. Salary + benefits. For confidential interview call 908-686-9678.

#### APPOINTMENT SETTERS WANTED

Union Area, Monday thru Thursday, 9am-1pm or 4pm-8:30pm, Call Angie or Mary, Monday thru Thursday, 1pm-5pm.  
 908-851-9640

**ASSEMBLE ARTS:** crafts, toys, jewelry, wood, painting, sewing, computer work, work home in your spare time. Great pay. Free, details call 1-800-632-9007, 24 hours.

**ASSISTANT CUSTOMER SERVICE** Representative position in busy Springfield Insurance Agency, 3 days or 21 hours per week. Licensed or experienced necessary, also typing, computer, telephone skills. Salary negotiable. Call 201-379-7270.

**ATTENTION DRIVER** teams, \$15,000 in bonus paid monthly, quantity and yearly plus top mileage pay, 401(K) plan, \$500 sign on bonus, other paid benefits- vacation, health and life, head head, motel layover, loading and unloading, Covenant Transport solos and teams call 1-800-441-4364, students and driving school grads call 1-800-338-6426.

**AVON - A BEAUTIFUL Job:** Earn Extra \$\$\$! Work your own hours for Fun and Profit. To see in any area, Call Toll Free 1-800-982-2262.

## STAND OUT

Does your ad need a little more attention? You can create Ad-impact by using larger type. This Type size is...

12 Point

14 Point

18 Point

24 Point

Add impact by using larger type - ask our Classified Representative for the type you would like for your ad.

For low cost people-to-people advertising get into the Classified Pages. Call 1-800-564-8911.

**BABYSITTER/HOUSEKEEPER** needed full-time for two boys in Springfield. Must have car. Call 201-379-7270.

**BARPERSON:** Full-time for steady employment. References required. Must have experience in bartending. Call 908-686-0005.

**RETAIL, BLOOMFIELD Sports Card and Comic Store** looking for full-time male/female. For appointment call Michael, 201- 693-0100 weekdays, 12:00-7:00pm.

### WHEN REPLYING TO A UNION COUNTY CLASSIFIED BOX NUMBER

please address envelope to:

BOX NUMBER \_\_\_\_\_  
 Worrall Newspapers  
 P.O. Box 159  
 Maplewood, NJ 07040

**BUS DRIVERS:** Full or part time, 5 days per week. Start September 1995. Springfield Public Schools. Call 201-378-1025. ADA Compliant/ Affirmative Action/ EOE.

**CARPET AND Upholstery cleaner:** Experienced. Must have valid drivers license. Full time/ part time. Call 908-272-9395.

**CHILD CARE:** Family moving to Maplewood, seeks full time in home child care for 3 children. Must speak English and drive. Position starts June 30th. Call Olga, 212-624-5807 or evenings, 718-575-6572.

### CLERICAL

Come work with an investment banking firm located in Millburn, as an Assistant to the Trader. Strong figure aptitude a must. Pleasant telephone manner and good organizational skills essential. Salary commensurate with experience. Full benefits.  
 Call 201-762-0800

### HELP WANTED

**CLERICAL-PART TIME:** Take and fill orders for Dental (Orthodontic) supply company. Pleasant voice, computer knowledge. Experienced. Call 201-736-4644.

### COLLEGE STUDENTS

National Corporation has 12 key positions. \$11.25/hr start. Scholarships awarded.  
 908-232-8877

### COUNSELORS- SUMMER DAY CAMP

Located in Lake Hopatcong area. General, counselors, certified swim instructors. Maintenance person needed. Excellent salary.  
 Daytime: 201-947-8387 P.M.: 201-398-5371

### CUSTOMER SERVICE ASSISTANT Part time

Flexible hours. Diversified duties for positive, energetic person with strong telephone and organizational skills.  
 Patel Printing Plus  
 908-964-6422

### DATA ENTRY

N.J. brokerage firm has position available for individual with 2-4 years experience on an IBM system: AS 400. Some overtime required. Salary commensurate with experience. Please send resume to: P.O. Box 599, Springfield, NJ 07081.

**DELI HELP** for breakfast and lunch. Part time. Must have car. Call Jeff before 11am, 908-241-5005.

**DENTAL ASSISTANT:** Friendly, busy general practice needs second full time, X-Ray licensed Dental Assistant beginning September. Call 201-376-5781.

**DENTAL ASSISTANT:** Willing to train motivated person to join our friendly office staff. Convenient Millburn location. Call 201-378-5577.

**DENTAL ASSISTANT/ Receptionist:** I need you to run my quality office near 5 points in Union. If you have personality, enthusiasm and intelligence, I will train you for a career position. Good salary and benefits, 4% days per week. 908-682-8727.

**DIET 1/30/30 MAGIC!** lost 20 pounds in 30 days. 1-800-25-DIET-M.

**DO YOU** have an opening in your quality home day care, full or part-time for one or more children. Call Parent Line for free referrals, 908-277-CARE.

**DRIVERS, EXCELLENT** starting pay, weekly, and excellent benefits. Permanently assigned equipment from your first day. Weekly bonus, paid weekly. Must be 23 with 2 years OTR and 2 years CDL. 908-507-0707, ext. 100-100.

**DRIVERS. GET the most out of your OTR** refer, average pay \$800+ week, 2500 miles/week, regular home time, new equipment and top 100% benefits. Burlington Motor Carriers 1-800-JOIN-BMC, EOE.

**DRIVERS. LOOKING** for a change? If a new career is what you're looking for, you can stop your search. J.B. Hunt is looking for drivers with either verifiable over the road experience or someone who just wants to learn to drive a truck. If you are inexperienced, J.B. Hunt will help you get the training you need to be on your way. J.B. Hunt drivers can earn an average of over \$2,000 per month their first year, along with comprehensive benefits. Why wait? Call 1-800-E.B.HUNT. Experienced driver applications are accepted by calling 1-800-368-8538. EOE. Subject to drug screen.

### DRIVERS

Moving and storage company needs local and short haul drivers. Call 10am-3pm, 908-352-5300, ext. 232.

**DRIVERS. TOP** starting pay, pay for experience, bonuses and benefits package. Assigned, late model equipment you take home every 10-14 days. Driving school grade welcome. There's much more. Call 1-800-833-0550, ext. BK-5.

### DRIVER(S)

With full size van, for overnight newspaper deliveries once a week to local post offices and stores.  
 NO COLLECTIONS, NO SUNDAY PAPERS.

Call Mark Cornell

908-686-7700, ext. 305.

**EARN MONEY** Reading books! \$30,000/year income potential. Details 1-805-962-8000, ext. Y-2301.

**YOUR AD** could appear here for as little as \$14.00 per week. Call for more details. Our friendly classified department would be happy to help you. Call 1-800-564-8911.

**FIRE FIGHTER Jobs.** Entry level, Male/Female positions. \$11.58-\$14.20 per hour. Paid training and benefits. Applicants call 1-219-736-4741 extension A2648, 9am-9pm, 7 days.

**FRIENDLY TOYS** and gifts has openings for demonstrators in your area. Part-time hours, full-time pay, over 800 items. Celebrating our 40th anniversary. Call 1-800-498-4875.

**HARDRESSER and MANICURIST:** For Millburn salon located on Millburn Avenue. Call 201-379-9300 or 908-851-9882.

**HAROLD IVES** Trucking hiring drivers. Free driver training if you qualify. Students welcome. Experience pay up to 28 cents per mile. Excellent benefits. 1-800-842-6853.

**HOME TYPISTS** needed. Also PC/word processor used. \$46,000/year income potential. Toll free 1-800-698-8778, ext. T-5130 for details.

**INSURANCE AGENCY** looking for part-time person experienced in either personal or commercial lines. Must be able to rate and write. Good typist. Hours, 9am-4pm. Call 763-8734.

**LEGAL BOOKKEEPER/Billing Person:** Law firm seeks responsible person to handle accounts receivable, accounts payable, maintenance of general ledger and coordinate with CPA. Legal experience with Timeslips 3 billing software, Windows Outlook and 1-Write plus required. Flexible hours available. Send resume with salary requirements to T.A. Tallipolans, PC, 1800 Rte. 22 West, Mountainside, N.J. 07093. Attention: J. Amato; or fax to: 908-789-0889.

**LEGAL SECRETARY:** Small Union law firm seeks secretary. Legal experience helpful. Must have knowledge of word processing. Call between 9am-5pm. 908-864-1398.

### HELP WANTED

#### MAILROOM CLERK

Manufacturer is seeking individual with clerical and mailroom experience. Please send resume with salary history to:  
 Charles Beasler Company  
 1800 Lower Rd.  
 Linden, NJ 07036  
 Attention: Director of Human Resources  
 EOE

**MEDICAL ASSISTANT/ Receptionist** needed for busy pediatric office. Part time, flexible hours, Saturdays included. Call 201-762-3835 between 9am-10:30pm.

**MEDICAL ASSISTANT:** Livingston doctor's office. Experienced preferred or will train. Part time, Monday 1:45pm-9pm, Tuesday and Thursday, 8:15am-6pm. Possible opportunity for additional hours. Please call 201-994-3550 between 9am-5pm.

### MEDICAL SECRETARY

Part time, Bi-lingual. Experience and knowledge of medical billing a must.  
 Fax Resume to 201-375-6837

**MEDICAL TRANSCRIBER-** Part Time in our office. Hours flexible, 80 words per minute. Word processing skills required. Experienced preferred. 201-622-2020.

**PART TIME Receptionist/Clerical** position available in a busy Union Township newspaper office. Good phone skills, data entry, general office duties. Hours 9am to 2pm, Monday, Tuesday, Thursday, and Friday. Please call 908-7700 to arrange an interview.

### PART TIME Car Wash Attendant

At automatic car wash. Morning, afternoon and evening hours available. Steady work. Call Mr. Rooney for interview appointment.  
 201-967-8838

### PART TIME TELEPHONE SOLICITOR

With experience to work day or evening hours in Springfield office. Good salary plus bonus.  
 Contact Mr. Ross  
 201-564-6565

Part-time: Landscapers helper needed, Mondays-Fridays, 4pm-6:30pm and Saturday, 12:30-4pm. Experience preferred but will train. Please call 908-686-0188.

### PHLEBOTOMISTS-Part Time

Renowned teaching hospital has the following:  
 Local Union County area (knowledge of area is required). Phlebotomy to be performed on-site at doctor's offices and other institutions.

**\*3:30PM-6:00PM:** Monday-Friday (flexibility required). Phlebotomy skills highly desirable. Must have valid NJ license to drive hospital car; medical benefits are included with this position.

**\*6:30AM-9:30AM or 7:00AM-10:00AM:** Monday-Friday. (flexibility required). Own car necessary. MUST have pediatric phlebotomy experience.

Please call 1-800-U-PERFORM or send resume (indicating position of interest) to: Human Resources Dept., Overlook Health System, 99 Beauvoir Avenue, Box 220, Summit, NJ 07902-0220. EOE/AA.

### OVERLOOK HEALTH SYSTEM

*Explore Every Possibility*

**POSTAL JOBS:** Start \$72.08/week. For exam and application information call 219-799-8301 ext. N517, 9AM-6PM, Sunday-Friday.

**PRESSER, EXPERIENCED** for Medison Dry Cleaners (88 Main Street), Full-time, permanent position. Call now, 201-377-5333.

**QUALITY DAY camp** in Morris County seeking qualified staff in the following areas: Male junior counselors, sports, swim, music, dance, teen counselors (must be 21). Please call 201-966-3200.

**RECEPTIONIST/ CLERICAL/ Counter Sales:** Cheerful, enthusiastic, willing to do a variety of jobs. Full time. Benefits, Union. The Signory: 908-687-8555.

**RECEPTIONIST- CHIROPRACTIC OFFICE** seeks bright, enthusiastic front desk person. Will train in all aspects. Hours are, Tuesday 2:30-7:30pm, Wednesday and Friday 9:30am-1pm and 2:30pm-7:30pm, Saturday 9am-11am. Please call only Tuesday Wednesday or Friday afternoons. 908-686-4884.

### HELP WANTED

**RESEARCH- MAKE A Difference.** Major Uninted Way seeking a Research Director to be responsible for establishing and maintaining an information resource center complete with relevant information pertaining to human needs, community problems, perceptions and service data. Responsible for conducting and presenting research findings to key audiences. Requirement includes strong writing skills, ability to develop study and questionnaire designs and analyze data. Technical skills in the following areas a plus: Spreadsheets, statistical analysis, computer graphics and data transfer. Collaborate with staff and volunteers in teamwork relationship. Send resume to: Inez Cohen: United Way of Essex and West Hudson, 303 Washington Street, Newark, NJ 07102. Call 201-824-8300. Fax: 201-242-6728. EOE/AAE.

**SALES:** ARE you earning what your worth? Earn \$500-\$1,500 part time, \$2,000-\$8,000 full time. Full training provided. Bilingual a+ 908-935-3486.

**STOCK PERSON, reliable.** Full time permanent position for Millburn shoe boutique. Car, valid drivers license and references required. 201-379-2085, Chen

**STUFF ENVELOPES:** \$120 weekly/ stuffing envelopes at home. Send SASE to P.O. Box 1213, Bloomfield, N.J. 07003.

**TRACTOR- TRAILER drivers** and owner operators. Runs east of Mississippi. Home weekends. Good benefits. 98% no-touch freight. E & M Express. 800-982-6684.

### TRACTOR TRAILER DRIVERS

Full time. Class A CDL required. Local work. Dispatched from Raritan Center. Clean licenses. Minimum 2 years experience in Metro area. Call 225-5466.

**YOUR AD** could appear here for as little as \$14.00 per week. Call for more details. Our friendly Classified Department would be happy to help you. Call 1-800-564-8911.

**WAITRESS/ WAITER:** For new Italian restaurant in Kenilworth. Weekends only. Call 908-272-1192.

\$1,000 WEEKLY stuffing envelopes your location. Easy work, excellent pay. Part time/ full time. Workers needed now. Free details send SASE: P.O. Box 500-KT, Lima, PA 19037.

**WILDLIFE CONSERVATION Jobs:** Game wardens, security, maintenance, etc. No experience necessary. Now hiring. For information call 219-794-0010 ext. 7946, 9am-11pm, 7 days.

**YARD WORK,** part-time in Roselle. Maintenance, handyman helper, clean-up, odd jobs. No experience needed. opportunity to learn. Call 201-331-8098.

**\$35,000 YEAR INCOME** potential. Reading books. Toll free 1-800-698-8778, ext. R5139 for details.

### EMPLOYMENT WANTED

**CERTIFIED NARRATIVE** position with experience and excellent references seeks position days or evenings caring for elderly. Call 201-484-9883 after 4p.m.

**DETAIL ORIENTED individual** with 10 years experience, excellent references, looking for house and office cleaning jobs. Call Bev at 201-678-5749.

**EUROPEAN WOMAN** to clean your home spacious. Experienced. Fluently with references. Own transportation. Call 201-997-2585.

**HOUSE CLEANING** Polish woman. Experienced. References. Call for information. Call Olga, 201-875-4714.

**POLISH AGENCY Inc.** seeks the elderly and disabled to clean, organize and housecleaners. Live in out. Excellent references and cleanliness. 908-850-2300

**PERSONAL CARE** Services. Polish ladies looking for care of elderly or ill. Experienced, with references. Live in or out. 908-850-2830.

**RESPONSIBLE WOMAN** looking for offices and houses to clean. Call now. 201-374-2905.

**YOUR AD** could appear here for as little as \$14.00 per week. Call for more details. Our friendly classified department would be happy to help you. Call 1-800-564-8911.

### CHILD CARE

**CHILDREN:** After school child care change. Legal, experienced European speaker. Bilingual live-in childcare, government approved, local coordinators. Call 218-485-1891, 516-665-6178 or 800-4-AUPAIR.

**CHILD CARE:** Loving, experienced, affordable nannies from Utah. Video taped interviews. Call L. Farin, 201-378-5807.

## Circulation Assistant

Part-time 20 hours per week, flexible,  
Thursday mornings a must. Car necessary  
for delivery and collection. Some lifting  
required. Please call to arrange an interview.

**WORRALL COMMUNITY  
NEWSPAPERS**  
 1291 Stuyvesant Ave., Union, N.J.  
 908-686-7700

</

# ANNOUNCEMENTS

BECOME A host family! Scandinavian, European, South American, Asian, Russian High School exchange students arriving August. American Intercultural Student Exchange, Call Kathleen 908-389-3946 or 1-800-SIBLING.

## PERSONALS

ADOPTION: YOU matter too! Parents of adopted toddler hope to complete family. Architect and teacher, email collect call. Susan and Dennis, 215-736-8492.

## DAILY HOROSCOPE

### UP-TO-DATE SOAP RESULTS CALL NOW!!!

1-900-267-7700 Ext. 7652 \$2.99 per min. Must be 18 yrs. Procall Co. (602)954-7420 3104 E. Camel Back Road Suite 526 Phoenix, Arizona 85016.

## DIAL-A-BIBLE

908-964-6356 AVAILABLE FREE OF CHARGE Bible Correspondence Course Home Bible Study

### Tracts on Various Bible Topics Bible Classes for All Ages

A 5-Lesson Video Series (view in your home) Provides an overview of the Bible and Church History

HOLY ST. Jude, Apostle and Martyr, great in virtue and rich in miracles, near kinsman of Jesus Christ, faithful intercessor of all who invoke your special patronage in time of need. To you I have recourse from the depth of my heart and humbly beg to whom God has given great power to come to my assistance. Help me in my present urgent petition. In return, I promise to make your name known and call you to be invoked. St. Jude pray for us all who invoke your aid. Amen. Say 3 Our Fathers, 3 Hail Marys, 3 Glorias. Say 9 consecutive days. Publication must be promised. GL.

LET YOUR past experience come back to life. Let us help you find that lost person! 24 hour service. 201-313-5400, fax 201-313-5402.

ST. JUDE Novena. May the Sacred Heart of Jesus be adored, glorified, loved and preserved throughout the world now and forever. St. Theresa of the Child Jesus pray for us. Sacred Heart of Jesus pray for us. St. Jude worker of miracles pray for us. St. Jude healer of the sick pray for us. Say this 9 times a day. By the 8th day prayer will be answered. Thank you St. Jude and St. Theresa. GL.

## LOST & FOUND

LOST DOG vicinity of Broad Street, Hillside. Black female Pomoranian, 9 month old. Call 355-0519.

LOST FROM Clark vicinity, medium mixed breed male dog, black and white. Reward. Call Maria, 908-381-6660.

LOST HUSKY. Black and white adult female, blue eyes vicinity of Magnolia Place, Union, NJ. Please call if found. 908-964-1554.

## MISCELLANEOUS

### FLEA MARKET

CRANFORD. BENEFITS Rescued Pets. Presbyterian Church (Springfield North Union). Saturday, June 24th, 9:30am-2:30pm. Great variety of prices. New, used. Information: 908-854-6651.

LYME ROCK County Store. Unique gifts, custom framing, US #1 Flea Market, New Brunswick. Left rear wheel. Come on buy.

### MISCELLANEOUS FOR SALE

ANTIQUE DINING Room table and five chairs, plus beautiful china cabinet. All solid Mahogany, professionally refinished. Excellent condition. Take all for \$1,500. Can be separated if necessary. Call 201-763-9991.

BEDS: NEW mattresses, headboards, daybeds and frames. Below wholesale. Call Margareta, 201-450-3299.

BOW HUNTING equipment. Bow hunters discount warehouse. America's largest archery supplier stocks over 5,000 bow hunting items at 20-40% off retail. Call 1-800-735-2667 for free 160 page catalog.

BRASS BED, queen. Complete with orthopedic mattress set. Unused in box. Coat \$1000, sell \$325 cash. 201-779-8795.

CEDAR PRIVACY hedge (Arbutus) Liquidation. 4' tree, regular \$29.95 now only \$9.95. Also lilac, white birch. All in 1 gallon pots. Free delivery. 12 tree minimum. Discount Tree Farm 800-889-8238.

BEDROOM SET. CHILD'S 3-piece. Captain's bed, book case headboard, dresser/removable changing table. Oak formica, excellent condition. \$400/ negotiable. 908-687-1952.

CRYSTAL CHANDELIER. \$280. Three drawer dresser, oak. \$50. Lighted Curio cabinet with glass shelves. \$115. Call anytime. 908-686-9011.

DESK EXECUTIVE. Formica wood grain, \$250 or best offer. Two steel desks. \$75 each. 672-6889 after 5pm weekdays, anytime weekends.

DIABETICS! FREE supplies! Or little to no cost to those who qualify. Medicare/ insurance billed direct for test strips, insulin, glucometers and more! Satisfaction guaranteed. Liberty Medical Supply. 1-800-782-8028. Mention #2001.

DINING ROOM set, magnificent complete old-fashioned solid mahogany, asking \$900, blonde mahogany cedar chest, \$200. Excellent condition. 908-351-4321, evenings.

DINING ROOM set. Spanish custom made, black rough wood finish, 8 high back chairs, large chandelier. Call after 6p.m. 201-992-3230.

## MISCELLANEOUS FOR SALE

EXERCISE EQUIPMENT. Cross Country skier and stepper. Call 201-761-8857 for details.

EXPAND YOUR market by doing business overseas! Ghana Export & Import Agency can sell your products in Ghana. 201-574-0626, 201-371-4518. Rev. Herbert H. Graves, Director.

FIBER GLASS Cloth, 20 rolls, 3-4 feet wide, will sell cheap. Call 201-751-2220 or leave message.

FREEZER UPRIGHT, Norge, white, 29 cubic feet, excellent condition. \$300 firm. Also two color TVs, reasonable. Call 908-541-8052.

GOOD CONDITION. Dark pine triple dresser with mirror, twin head foot boards, night stand. Best offer. Call after 7p.m., 908-862-8466.

LEATHER CRAFT tools, stamps, paints and materials. Asking \$300 or best offer. Call 908-388-4224.

LOWREY ORGAN, double keyboard, roll top. Good condition. Asking \$2000. Call 908-388-4224.

MATTRESS AND Boxspring, orthopedic. Never used. Still in package. Coat \$400. Sell \$95. Cash. 201-812-8349.

MICROWAVE EMERSON, 0.52 cubic feet, with turntable, like new, brown, \$85. Carseat, \$17. Call 908-984-3904.

MOVING. LOW Prices. New gas dryer, Fedders 5,000-BTU air conditioner, heavy duty washer, all with free factory record. New washing machine. Large china cabinet, sailing ship oil painting from Mystic Connecticut. Call 908-687-9959.

MOVING MUST Sell. Three piece sectional, gold, \$25. 5 piece oak youth bedroom, \$90, two chairs, ottoman, green, \$25, one floor lamp, \$5, double bed and nightstand, walnut, \$30. Two end tables, one cocktail table, \$20, kitchen table and 4 chairs, chrome, \$15.

113 NEWSPAPERS REACHING over 1.8 million readers! Your classified ad can be included in SCAN - New Jersey's Statewide Classified Ad Network. All it takes is \$279 and one easy phone call. Phone Worsall Community Newspapers, Inc., classifieds at 201-783-9411 for all the details.

PRESSURE CLEANERS. PSI electric 1780-\$199.00, gas 2000-\$399.00, 3000-\$699.00, complete with tool kit, factory record. New warranty. Full line catalog \$24 free. WASH America since 1972. 1-800-454-WASH (6274).

RATTAN COUCH with 2 chairs, glass top coffee table and 2 end tables, plus miscellaneous items. 908-686-7279, Sunday after 3pm.

STORAGE SHED kit. Beautiful/ strong design. 8'x12'. Quick/easy assembly. 20 year warranty. 1 year free trial. \$995 plus \$60 delivery. Free brochure. Call 1-717-656-1653.

SUBSCRIBE TO Canada's largest lottery - Lotto 6/49. Jackpots as high as \$19,000,000 tax free, lump sum. Call toll free 1-800-780-4649.

SUNQUEST WOLFF tanning beds. New, commercial/home units from \$199. Buy factory direct and save. Call today. Free new color catalog. 1-800-462-9197.

THOMASVILLE DINING Room set, bedroom set, living room tables, lamp, picture. 908-687-9824. Must sell quickly, moving in week. Make offers.

WATERBEDS WHOLESALE. Queen softside waterbeds \$299.00. Waveless mattresses from \$44.95. Lowest prices in America. Free color catalog. Call toll free 1-800-494-7533.

## GARAGE SALE

Doubletake is NJ's premier consignment boutique and features the highest quality lady's clothing and accessories from the world's most exclusive designers. All Doubletake items are at least 70% off the original retail price. Two convenient locations: in West Caldwell at 555 Pacific Avenue, 201-908-6666; and in Short Hills at 782 Morris Turnpike, 201-584-6464. Save additional 10% with this ad Offer expires June 30, 1995

CLARK- 80 DAWN Drive. Friday, June 23rd and Saturday, June 24th, 9am-4pm. Household furniture, computer desks, weight lifting exercise equipment, two lawnmowers, one ten horse power tractor, linens, clothing, books.

HILLSIDE. MOVING. Giant Sale! 110 and 111 Virginia Street (off Salem Avenue), Saturday, June 24th, 9am-5pm. Various household items, desks, file cabinets, attic fan, bed spreads, bro-er-brac, plus much more.

HILLSIDE. 215 HOLLYWOOD Avenue. Saturday, Sunday, June 24-25, 10a.m.-3p.m. Three family garage sale... not garage. Baby dress and furniture, something for everyone. No early birds.

HILLSIDE. 115 FAIRBANKS Street. Saturday, June 24th and Sunday June 25th, 9am-4pm. Household items, furniture and toys. No early birds. Something for everyone.

HILLSIDE. TWO Families. 340 Hollywood Avenue, Saturday and Sunday, June 17th and 18th, 8:30am-3pm. Something for everyone.

LINDEN. 525 GARFIELD Street (near Village Bakery). June 24th, 25th, 9am-4pm. Record albums, clothing, household items, woman's bike, etc.

MAPLEWOOD. 50 TUSCAN Street. Saturday, Sunday, June 24-25, 9a.m.-4p.m. Heavy duty power sewing machine, light chandelier, dishes, lots of stuff.

ROSELLE. 195 EAST 8th Avenue. Saturday, June 24th, 9am-2pm. Household, toys and clothing. John's Dell.

ROSELLE. 900 HARRISON Avenue. Saturday, June 24th and Sunday, June 25th, 9am-5pm. Wicker, bicycles, household items, basket, kitchen items, clothes, plus more.

SPRINGFIELD. HUGE multi-family. You name it. Little Tikes, household items, clothes, mazzy toys, strollers, Barbies, etc. 4 Jade Meadow Drive (off Springfield Avenue). Sunday, June 25th, 10am-4pm. No early birds.

UNION. 1347 STUYVESANT Avenue. Saturday, June 24th, 9am-2pm. Moving Sale. Multi-Family. Household goods, furniture, books, clothes, miscellaneous. No early birds please.

UNION. 1758 COLUMBIA Terrace (off Oakland Avenue). Saturday only, 9am-4pm. 2-family sale. Lots of stuff: toys, games, books, kitchenware, golf balls, new novelty gift items, etc.

UNION. 2948 ABERDEEN Road, 8am-5pm. Saturday June 24th. Union's largest and finest. Antiques, furniture, clothing, curtains, etc. All good clean quality merchandise.

## GARAGE SALE

UNION. MOVING Sale. 317 St. John's Place (near Washington School, off Spring Street). Saturday, June 24th, 9a.m.-4p.m. Don't miss it!

UNION. 2251 BALMORAL Avenue. Saturday, June 24th, 9a.m.-3p.m. C.D.P., flowers, china, lots more.

UNION. 777 DYKES Terrace (off Spruce Street). June 24th, 9am-4pm. Kitchen - eat, furniture, motorcycle, baby goods, household items, etc.

UNION. AN Estate Sale. 2451 Brentwood Road. Friday only. 10am-3:30pm. Morris Avenue to Apper Court to Stouven in Center to Brentwood. Dining room, kitchen and breakfast sets, sectional sofa, recliners, coffee and occasional tables, kitchen stuff, dishes and miscellaneous. Wendy Sands.

UNION. MOVING Sale. Toys, bikes, Christmas items, household items, tools, dolls, plants. 328 New Jersey Avenue (off 5 Points). Friday, June 23rd 9am-4pm, Saturday, June 24th 9am-1pm.

YOUR AD could appear here for as little as \$14.00 per week. Call for more details. Our friendly classified department would be happy to help you. Call 1-800-564-8911.

## YARD SALE

HILLSIDE. 1221 SALEM Avenue. Saturday, June 24th, 10a.m.-4p.m. Muff family sale! Toys, clothing, housewares. Rain date: July 8th.

KENILWORTH. GIGANTIC Yard Sale! 719 Woodland Avenue. Saturday, 10a.m.-4p.m. Sunday, 10a.m.-12:30p.m. Estate - dream house and furniture, Matchboxes, Star Wars figures, dolls galore, many home items. Cash only.

ROSELLE- 222 WEST 1st Avenue, (corner of Locust and West First). Multi-Family. Saturday, June 24th, 9am-4:30pm. Baby items, clothing, costume jewelry, some old things, some furniture. Rain date July 1st.

## WANTED TO BUY

### AALTEN'S ANTIQUES Established 1914

WANTED Antiques: new, used furniture, jewelry, bric-a-brac, collectibles, household items. Complete or partial liquidation of estates. Complete broom sweeps done. Call Jan anytime, 7 days/evenings: 201-992-7053.

### ALL ANTIQUES WANTED Classic Antiques 908-272-7216

ANY LIONEL, American Flyer, Ives and other trains. Collector pays highest cash prices. 1-800-464-4671, 201-635-2058.

BICYCLES WANTED: Schwinn's and other stingers, bananas seats, fastbacks and crates from 1960's and 70's, any condition. Evenings, 201-736-5856.

BICYCLES WANTED: Schwinn's fastbacks, krates and stingers, from 1960's and 70's, check your garage, any condition. Evenings, 201-736-5856.

CAMCORDER WANTED, or person who can take home movies for me. Will pay for your time and expense. 908-688-1144, evenings.

CAMERAS WANTED. Collector pays highest cash prices for selected used cameras. No Polaroid or movie camera wanted. Call 908-964-7661.

CASH FOR your records. LP's or 45's, used CD's. 908-245-4428.

### MAX WEINSTEIN SONS, INC. HONEST WEIGHTS - BEST PRICES. Always Buying Scrap Metals 2426 Morris Ave. (near Burnet) Union 8:5-5:30 Saturday, 8-12 908-686-8236 Since 1919

## PETS

KITTENS for adoption. Loving and adorable. 11 weeks old - 2 boys and 2 girls. Rescue donation. Call 908-354-1541.

PLEASE HELP! Need to find loving home for 8 year old, mixed part golden retriever, 40 lbs, love people, well trained, loving and capable to take dog. Call 908-686-4070.

## PET/CAT SITTING

4 PAWS PET Sitting and Dog Walking. On the go, no time to walk Dog. Care for your pets while your away in your home. Bonded and Insured. 908-232-5239.

## INSTRUCTIONS

GUITAR AND Bass lessons. Blue's guitar & Music Shop. 2235 Morris Avenue., Union (Across from AAMCO transmission). 908-687-1325. See Business and Service Directory.

GUITAR INSTRUCTION. Rock. Blues. Pop. Country. Fingerstyle. \$24 per 1 hour session. Teacher with 20 plus years experience. Now accepting students. First lesson free. 908-755-4383.

PIANO, ORGAN, accordion lessons in your home by Vic Zigmant, M.A. 39 years experience. 908-682-6878.

### Use Your Card



Quick And Convenient!



The map at left shows the county distribution of dailies and weeklies in the NJPA SCAN program

Then we send it to 88 participating dailies and weeklies from Sussex to Cape May and Salem to Bergen. Bingo! You just discovered a whole new market.

1-800-564-8911

## SERVICES OFFERED

### AIR CONDITIONING

IS YOUR Air Conditioner Working? If not call Fred's A/C And Heating at 201-736-1450 or 201-690-0207 (dialer). Same day service on all brands.

J.D.S. HEATING & Cooling. Gas/Oil. Service and Installation. 24 Hour Emergency Service. Fully Certified. Air Conditioning Technician. 908-926-2964. Free Estimates. Fully Insured.

### APPLIANCE REPAIR

ABBY APPLIANCE Service and Repair. Washers, Dryers, Dishwashers, Refrigerators, Ranges, Ovens, Air-Conditioners. We also buy and sell rebuilt washers and dryers. 908-545-7225 or 1-800-201-2243.

### BUILDING SUPPLIES

STEEL BUILDINGS, some finished panels. 1-40'x20'x12 was \$5,360, will sell for \$1,960. Also, 1-40'x57-\$4,785. Open ends, guaranteed complete parts. 1-800-292-0111.

### CARPENTRY

### CAPRI CONSTRUCTION General Contractor

\*FRAMING \*ROOFING \*ADDITIONS \*KITCHENS \*BATHS \*Specializing in Siding & Decks

### FREE ESTIMATES FULLY INSURED

201-676-2966

We Now Accept All Major Credit Cards. DIEDRICH STRELEC. Additions. Repairs. Renovations. Kitchens. Windows. Basements. Family rooms. Roofs. No Job Too Small. Fully Insured. 908-273-7368.

### JOE DOMAN 908-686-3824

### DECKS ALTERATIONS/REPAIRS

\*KITCHENS \*BASEMENTS \*BATHROOMS \*BASEMENTS REMODELED No job too small or too large.

KAMA CONSTRUCTION. General Repairs. Siding. Sheetrock. Roofing. Spackling. Painting. Decks. Additions and Alterations. 201-998-4883.

### ZALEWSKI CONSTRUCTION

Doors - Windows - Hardwood Floors - Ceramic Tile - Painting - High Quality and Good Prices. FREE ESTIMATES

### 908-688-5026

### CARPETING

Don Antonelli ROYAL LINOLEUM & RUG CO.

Famous Brand Carpets Armstrong - Mohawk - Amtico Mannington - Congoleum - Tarkett FREE INSTALLATION \* Have Floor Sizes Ready For FREE ESTIMATES. Shop at home.

### VISA 908-964-4127 MC

### CARPET CLEANING

RICHARD G. MCGEGHAN Residential & Commercial Carpets & Floors

\*Cleaned \*Stained \*Stripped \*Buff \*Wax 908-688-7151 "For that personal touch"

### CLEANING SERVICE

CLEANING SERVICE- Reasonable rates. Daily, weekly, bi-weekly, monthly. Call 908-388-7479.

D.J. MAINTENANCE - Residential and office cleaning, window cleaning, floor washing, pool insured. References provided. Free estimates. Call 908-964-8139.

HOME AND Office cleaning service. Reasonable rates. Reliable. Daily, weekly, bi-weekly, monthly. Call 908-388-7479.

RELIABLE CLEANING Service whether you need for home or business, very affordable and dependable. References available. Free estimates guaranteed. 908-965-2056.

### COMPUTER SERVICES

COMPUTER PROBLEMS? Hardware/Software Configuration/ Design/ Installation/ Networking/ Programming/ E-Mail/ Training/ 24 Hour Service

### AKC CONSULTING, INC. 1-800-298-9000

### CONTRACTOR

MELO CONTRACTORS "The Homeowners Contractor" Additions & Alterations New Construction Fire Restorations Repairs Replacement Windows Decks & Pavers Kitchen & Baths Affordability & Dependability 908-245-5280

### DECKS

CUSTOM BUILT Decks. Cedar or pressure treated. Fast, reliable construction. Over 20 years experience. JSK Contracting. 908-272-3696. Complete Customer Satisfaction.

### DECKS..DECKS..DECKS

We Are The Deck-Experts Our Only Business For Over 15 Years Free Estimate and 19 Page Brochure 908-549-6396

### DECKS UNLIMITED 10% SPECIAL SPRING DISCOUNT #1 Treated Lumber and Cedar Decks 10 Year Guarantee, Fully Insured. 908-276-8377

\*IMPROVE YOUR Home with GI! Decks. Bathrooms. We will beat any legitimate competitor's price. 908-964-8364.

### DRIVEWAYS

B. BIRTH Paving- Residential, Commercial. Asphalt Work. Concrete Walks, Driveways. Paving Asph. Sealing, Resurfacing, Curbing, Dump Trucks, Paving Machine Rentals. Free Estimates. Insured. 687-0114, 789-9506.

DRIVEWAYS. SEAL Coat Today. Avoid the high cost of repairing your driveway. Free Estimates. Call Tom, 908-647-1299.

## PAVING/PAVING

DRIVEWAYS - PAVING - Lots of work - Call Tom 908-647-1299. All Type Drivings Paving Drivings

### FREE ESTIMATES FULLY INSURED 908-245-6162 908-241-3827

### DRIVING SERVICE

Handy Helpers Service. If you can't do it, maybe we can. Doctors, vets, airports. Drop-off, pick-up. Minor household chores, deliver packages. Locally Owned. Call 908-355-3208.

### ELECTRICIANS

ABLE ELECTRIC If it's electric we do it! New installations or repairs. Reasonable prices. Recommendations available. License #11500 Fully Insured Call Frank at 908-276-8692

### DEE-EN ELECTRIC License #13303. Residential/Commercial. Violation Removals. 908-488-3510. Evenings, 718-984-8164. Wiring for light, heat and power.

HIS & HER ELECTRIC COMPANY Unbeatable Rate Policy Residential Industrial 201-535-9069

RICH BLINDT JR. Electrical Contractor Lic. No. 9006

\*RESIDENTIAL \*COMMERCIAL \*INDUSTRIAL NO JOB TOO SMALL

### Prices That Won't Shock You!

908-688-1853 Fully Insured

### SPUR ELECTRIC New and Alteration Work

Specializing in recessed lighting and service changing, smoke detectors, yard and security lighting, alterations, and new developments. License Number 7288. Fully Insured. No Job Too Small.

908-563-0398 1-800-870-0398

WE DO IT all - no job too small! Residential and commercial. Evening hours. Free estimates. License #7417. Call Frank at 908-354-4169.

### FENCING

COMMUNITY FENCE "WHOLESALE PRICES INSTALLED" Wood, Chain Link, Dog Runs. Repairs, Clearing, Removal. Sales, Installation. Service 908-925-2801

### TOM'S FENCING ALL TYPES NEW AND REPAIR NO JOB TOO SMALL FREE ESTIMATES CALL: 201-761-5427

HOME IMPROVEMENTS
'For the best in Home Improvement'
P. Papp Construction, Inc.
Additional Services:
• Bathrooms
• Decks/Patios
• Drywall
• Siding
For a Free Estimate Call Pete
908-688-8131 or 908-864-4974
Serving Union County for 25 Years

GENERAL REPAIRS, carpentry, painting, wall-papering, plastering, leaders, gutters, windows, doors, roofing. All expertly done. No job too small. Free estimates. Fully insured. Please call 908-864-5870.

HANDYMAN, POWERWASHING by John. Removal of dirt/mildew. Homes, decks, sidewalks. Also, light carpentry, ceilings, floors, doors, windows, sheetrock. Reasonably cheap. Small jobs welcomed. John: 484-4724.

HE'S BACK! All Around Handyman. Catering to the Physically Challenged or Elderly. Call 908-964-3402.

HICKMAN BUILDING and Remodeling. Additions, Kitchens, Baths, Decks, Windows, Tiling Roofing, Siding Custom Carpentry. All Home Improvement Services. Free Estimates. Fully Insured. 908-865-2828.

J&J CONTRACTING
• Additions • Bathrooms • Kitchens
• Basements • Boilers • Decks
• All Remodeling
Free Estimates Fully Insured

908-233-1088

JOE'S HOME Improvements. All types of remodeling, windows, siding, painting. Reliable. Very affordable prices. Free estimates guaranteed. 908-965-2058. Beeper, 908-698-8718.

MIKE D'ANDREA. All Home Improvements. 30 Years Experience. Carpentry Work-Tile Work. Large or Small Jobs. All Work Guaranteed. 908-241-3913. Kenilworth. Free Estimates.

QUALITY FLOORS & HOME IMPROVEMENTS
We install ceramic tiles, carpet and vinyl. Indoor and outdoor painting. Drop ceilings, bathroom and basement remodeling.

FREE ESTIMATES FULLY INSURED

201-761-0102

WALTER THE Expert. Interior/Exterior. Doors. Windows. Small Carpentry. Custom Painting. Powerwashing. Installation of Linoleum Tiles. Call 5pm-10pm. 908-688-8010.

LANDSCAPING
10% OFF. New Customers. Complete Landscaping and Design. Call for Free Estimates Anytime. 908-868-1843.

ANTONE LANDSCAPING. Residential and Commercial. Monthly maintenance. New Lawns. Seed or Sod. New Plantings. Shrubs/Trees. Certified Pesticide Applicator. Professional Service. Free Estimates. Insured. 201-467-0127.

EASTERN LANDSCAPING and Design. Complete Landscaping Services. Monthly Maintenance. Landscape Design. Seasonal Clean Ups. Sod, Reseeding, Thatching. Free Estimates. Reasonable Rates. 908-987-9045.

GRASSHOPPERS LANDSCAPING. Residential. Commercial. Complete Lawn Care. Clean-ups. Lawn, Shrubs and more. Fully Insured. Free Estimates. 908-968-0583.

HOLLYWOOD LANDSCAPING ARTISTIC LANDSCAPING DESIGN EXOTIC GARDENS & POND INSTALLATION TREE REMOVAL FREE ESTIMATES 908-686-1838

JEFF'S LAWN Service. Lawn cutting. Landscaping. Driveway sealing. Quality Workmanship. 908-241-7862. Free Estimates. Fully Insured.

LINDEN LANDSCAPING Inc. Seasonal Clean Ups. Residential, Commercial. Lawn Maintenance. Landscape Design. Turf Program. Aerialing & Power Seeding. Sod. Seed. 908-862-5835. Free Estimates. Fully Insured.

POTTER LANDSCAPING. Spring Clean-Ups. Seed and Sod Lawns. Monthly Maintenance. Special Landscaping Projects. Free Estimates. Fully Insured. 908-687-8982. Residential. Commercial.

SHIELDS LANDSCAPE Contracting. Custom Designing. Fence Installation. Interlock Pavers. Quality Maintenance. 908-709-1250.

'SPECIAL'
Any size yard weekly grass cutting \$20.00
Clippings removed. Patio cleaned, Driveway, Sidewalks, stamped.
Spring Clean-Up
Fertilizer and Lime available
908-665-2765

VICTOR LANDSCAPING. We do Garden Clean-ups, Trimming, Grass Cutting and All Concrete Work. Call Victor, 908-355-1485 or beeper: 908-965-8400.

LAWN CARE
LAWNCUTTING- RELIABLE. Reasonable. Free Estimates. Senior Discounts. 908-969-9087. Nick.

MASONRY
C&M CONCRETE. Specializing in: Patios, Driveways, Sidewalks, Broken Concrete removed, all types of Clean-ups. Free Estimates. Call and compare! 20 years experience. John, 908-486-0094; Mike, 908-574-8937.

COVINO CONSTRUCTION. Specializing in All Types of Masonry. Steps, driveways, sidewalks, pavers, patios, fireplaces, belgium block. Free estimates. Fully insured. 908-280-2887.

RICCIARDI & SON GENERAL CONTRACTING Residential Commercial
FULLY INSURED
Concrete Asphalt
Lot Clearing - Pavers - Decorative Dry Walls
RR Tie Walls Belgium Block

Ray Ricciardi
201-372-5984

MASON CONTRACTOR. Brickwork, Fireplaces, Chimneys, Siding, Curbs, Foundations, Basement waterproofing, Roofing, Siding, Scaffolding, painting, Ceramic tile, 300 sq. ft. Fully Insured. Free Estimates.

R. L. Leland Masonry
Drywall Service
Siding • Sump • Curbs • Patios
Decks • Gutters • Ceramic Tile
Painting • Carpentry • Renovations
Clean-Ups & Removals • Small Demolition
Belgium • Area • Yards
908-488-0230
Free Estimates Fully Insured

TRIPLE V CONTRACTING. Mason Contracting. Tile Work. Brick Work. Concrete Work. 908-964-8816.

MOVING/STORAGE
ATLAS VAN LINES. Local/worldwide moves. FLORIDA specialists. Agent UNIVERSITY Van Lines. 908-278-2070. 3401A Traylay Point Road, Linden, NC 0102.

DON'S ECONOMY MOVING AND STORAGE
The Recommended Mover. Our 30th Year. PC 00019. 751 Lehigh Avenue, Union.
908-687-0035 908-688-MOVE

MOVING/LIGHT TRUCKING
We'll move Furniture, Appliances, Household items in carpeted van or truck. Courteous and careful. Reasonable rates and fully insured. CALL ROB 201-467-6598 Lic. # P.M.00530

PAUL'S M & M MOVERS
Formerly Of Yale Ave.
Wholesale - 908-991-7777
Local & Long Distance Moving
CALL 908-688-7768

SCHAEFER MOVING- Reliable. Very low rates. Same rates 7 days. 2 hour minimum. Insured. Free Estimates. License PM00581. Anytime. 908-964-1216.

PAINTING
AL GARFIELD. Residential Painting. "I do my own work and guarantee it." 908-541-4419. Free Estimates. Insured.

BORIS RASKIN. Painting. Exterior/Interior. Power washing. Handyman service. Reasonable Rates. Best References. Fully insured. Free estimates. 201-564-8283.

Ferdinand Family Painting. Exterior/Interior. Gutters. Roofing. Leaders. "Over 20 years Serving Union County." 908-964-7359. Reasonable rates. Free Estimates.

GREGORY ZALTSSTEIN Painter. Exterior/Interior. Plaster and sheetrocking. Fully insured, references. All jobs guaranteed. Free estimate. 201-373-9438.

HOUSE PAINTING INTERIOR AND EXTERIOR Fully Insured Free Estimates STEVE ROZANSKI 908-686-6455

INTERIOR/EXTERIOR Painting. Fully insured. Reasonable rates. Free estimates. Dependable. Quality work. Call 908-1079.

PAINTING
KETIS PAINTING CO Since 1966 201-372-5343
Exterior/Interior Fully Insured
Quality Work Free Estimates
Power Washing
Any size deck only \$249.00
Bring your deck back to life (Maximum size 300 sq ft)

OV PAINTING. Interior/Exterior. Power Wash. Gutters. Handyman Service. Reasonable Rates. Call 201-923-1982. Beep. 908-891-8887. Fully Insured. Free Estimates.

PAINTING & PLASTERING 25 YEARS EXPERIENCE FREE ESTIMATES CALL: LENNY TUFANO 908-273-6025

PAPER HANGING EXPERT PAPERHANGING & PAINTING (INTERIOR/EXTERIOR) by MIKE TUFANO FREE ESTIMATES and MEASURING References Available 908-522-1829

PLUMBING BLEIWEIS PLUMBING & HEATING
All types heating systems, installed and serviced.
Gas hot water heater
Bathroom & kitchen remodeling
REASONABLE RATES Fully Insured and Bonded
Plumbing License #7773
Visa/Mastercards accepted
908-586-7415

FOTI'S PLUMBING and Heating. Master Plumber. Residential. Commercial. Jobbing. Alterations. "No job too small." Plumbing license #8887. Call 908-488-3431.

JOSEPH MCGADEY PLUMBER
No job too small! SEWER CLEANING SERVICE License No. 8013 908-354-8470

LOUIS CHIRICOLA. Plumbing/Heating. All Minor and Major Repairs. Water Heaters. Faucets. Boilers. Drains Cleaned. Bathroom and Kitchen Modernization. Tile Work. 201-823-4823. Plumbing License #9463.

MAX SR. & PAUL SCHOENWALDER CELEBRATING OUR 83rd YEAR INSTALLATION & SERVICE
Lawn Faucets-Sump Pumps
Toilets-Water Heaters
Alterations-Gas Heat
Faucet Repairs
Electric Drain & Sewer Cleaning
Serving the Home Owner Business & Industry
908-686-0749
464 Chestnut Street, Union, NJ
Master Plumber's License #4182-#8645
SENIOR CITIZEN DISCOUNT

PRINTING
For A Bid On All Your Printing Needs
Publication printing a specialty
Maple Composition
463 Valley Street
Maplewood
Rear of News-Record Bldg.
Mon., Tues., Wed. & Fri. 9AM-5PM
Thursday and other times by appointment
762-0303

RESUMES
Resumes
Fast professional typesetting services
Interested in starting a new career? Want to change jobs? See us for typesetting your resume.

Maple Composition
463 Valley Street
Maplewood
Rear of News-Record Bldg.
Mon., Tues., Wed. & Fri. 9AM-5PM
Thursday and other times by appointment
762-0303

DEADLINE WORRIES? (Stop). Call D.M. Yelverton's Typing Service. Whatever you need, my service is guaranteed. Resumes, Desktop Publishing, etc. 908-964-3531.

ROOFING EVERLAST ROOFING CO. RESIDENTIAL AND COMMERCIAL
Specializing in shingle, tear offs and 1 ply rubber gutter carpentry, slate shingle flat. Scaffolding included.
FREE ESTIMATES FULLY INSURED
All workmanship guaranteed.
References available. Owner operated.
908-964-6081

J.D. ROOFING CONTRACTOR
Certified in 1 ply rubber roofing
Flat roofing-repairs
Shingles, re-roof-tearoff
Roof Inspections & maintenance.
All work guaranteed
Fully Insured Free Estimates
908-322-4637

MARK MEISE ROOFING
Repairs • Replacements
Shingles • Tile
Slate • Flat
Free Estimates • Insured
Quality Work at a Reasonable Price
228-4965

WE STOP LEAKS!
CLARK BUILDERS, INC.
Roof Stripping & Repairs
Flat Roofing & Slate
Gutters & Leaders
Serving Union & Middlesex Counties
For 28 Years
Fully Insured - Free Estimates
N.J. Lic. No. 010780

908-381-9090 1-800-794-LEAK (5325)

RUDDISH REMOVAL MIKE PRENDELVE DISPOSAL
201-635-8815
ATTIC-BASEMENT GARAGE CLEARED
CONSTRUCTION DEBRIS REMOVED
MINI ROLL OFF DUMPSTERS
FAST-FAIR-RELIABLE
PROPERLY LICENSED

CERAMIC TILE Installer. New tile, repairs, regrouting, remodeling, cleaning. No job too big or small. 150 sq. ft. floor crack cards accepted. Joe Magra, 1-800-768-8822.

DENICOLA TILE CONTRACTORS
Established 1938
Kitchens, Bathrooms, Repairs, Gouging, Tile Floors, Tub Enclosures, Showerstalls
Free Estimates Fully Insured
No job-too small or too large
908-686-5550

P.O. BOX 3695, Union, NJ
SARINO TAMPANO, Kitchens, Bathrooms, Foyers, Fireplaces. Remodeling and Repairs. Free Estimates. 908-353-0326.

BOYLE TREE SURGERY CO. ESTABLISHED 1922 TREE & STUMP REMOVAL PRUNING TREE SURGERY IN ALL ITS BRANCHES
Union
908-964-9356

WOOD STACK TREE SERVICE
LOCAL TREE COMPANY
ALL TYPES TREE WORK
FREE ESTIMATES
SENIOR CITIZEN DISCOUNT
IMMEDIATE SERVICE
INSURED FREE WOOD CHIPS
908-276-5752

TYPESETTING COMPUTERIZED TYPSETTING Camera Work Veloxes Negatives
Maple Composition
463 Valley St.
Maplewood
Rear of News-Record Bldg.
Mon., Tues., Wed. & Fri. 9AM-5PM
Thursday and other times by appointment
762-0303

BASEMENT WATERPROOFING AND Masonry
guaranteed Dry Basement
All types of brick, block and concrete work. Senior Discounts.
1-800-334-1822

# Real Estate

## Woodward Properties result of joint venture

Norman Lubeck of Summit has joined forces with Gloria Woodward, owner and broker of Woodward Realty Group of Rumson and Middletown. The result is the recent inception of Woodward Properties. A full service residential and commercial real estate firm, the company's newly renovated office is located at 92 Summit Ave. in downtown Summit. Woodward Properties also offers relocation counseling and related services.

Together with son Robert, Norman Lubeck heads Woodward Properties. An area resident since 1959, Lubeck has been a major force in Summit-area real estate since obtaining his real estate license more than 20 years ago. He is renowned for his industry contributions and accomplishments — locally, nationally and internationally. He was designated a certified residential broker manager in 1986 by the National Association of Realtors. Active in the relocation field as a member of the Relocation Directors Council, he has also served on the Employees Relocation Council membership committee. He is a past president of the New York Council of the International Real Estate Federation and a founder of the Association of Global Real Estate Executives. Currently he is an active member of FIABCI International United Kingdom Council. Lubeck has been invited to speak at many real estate seminars worldwide, and at conventions on current national real estate trends.

"We intend to build upon the excellent reputation Woodward has established for itself over many years as a first-rate organization," Lubeck said. "This is a unique industry in which independent agencies will always carve a niche for themselves among those who appreciate the value of personal service and attention."

The opening of this, Woodward's third office, marks the group's first venture in to Union, Essex and Morris counties. According to Woodward, "The Summit area is a logical extension of our own market. Our Rumson and Middletown offices serve communities similar to Summit, New Providence, Berkeley Heights, Long Hill Township, the Chatham, Madison, Millburn/Short Hills and surrounding areas."

Woodward Properties specializes in the sale and marketing of Summit-area real estate, as well as in meeting the needs of those relocating into and out of the area — from or to anywhere across the country and worldwide. The company offers a new approach to real estate, with the just right combination of experience, innovation and skill.

NEW PROVIDENCE
CURRENT TIME & TEMPERATURE Selection 1000

NEW PROVIDENCE
SPACIOUS SPLIT!... SPLENDID LOCATION!!!
This is a home in New Providence the whole family will enjoy. LR: DR, Eat-In-Kitchen; 5 BR; 2 Full baths; Family Rm; Central Air; beautiful property on quiet street.
\$259,900.
Mountain Agency
85 Summit Avenue
Summit, New Jersey 07901
908-273-2212
A TRADITION OF EXCELLENCE AND PERSONAL SERVICE FOR OVER 70 YEARS

Degnan Boyle
The Prudential
UNION SPARKLE & SHINE
This freshly painted 4 bedroom, 2 bath Connecticut Farms expanded cape offers large rooms, first floor knotty pine den and lots of storage. \$149,000. Call 253-4200.
Prudential Real Estate Services, Inc.
Union/Elizabeth Office
240 North Avenue

ROSE & VOLTURO REALTORS
BUYING OR SELLING IN HILLSIDE? CALL ROSE & VOLTURO YOUR HILLSIDE REAL ESTATE EXPERTS
HILLSIDE BACK ON THE MARKET
A. P. Morris School section-newer colonial offers 3 BR, 2 1/2 BTHs, newly finished basement, large rear EAT-IN-KIT; formal DR w/patio doors to deck, pool & large fenced yard. 1 car garage. New updates: windows, gas heat, central air. Going. Great Call before it's too late! \$159,900.
HILLSIDE NEW LISTING - 4 FAMILY!
Great investment property! Live in spacious 4 room Apt. while collecting up to \$2,000 in rent from 3 other 4 room Apts! Maintenance-free brok & alum. separate utility. 3 car garage! Worth every penny! \$229,900.
1158 LIBERTY AVE. HILLSIDE
(908) 351-7000

LONG BEACH ISLAND SUMMER RENTALS
OCEANSIDE DUPLEX, SLEEPS 6, JULY 15th \$725/WEEK
3 BEDROOM, OCEANSIDE, SLEEPS 8 JULY 8th \$1,175/WEEK
3 BEDROOM OCEANFRONT CONDO, JULY 1st \$1,380/WEEK
4 BEDROOM, 2.5 BATH, OCEANVIEWS \$3,100/WEEK
MANY OTHER RENTAL PROPERTIES AVAILABLE
CALL PRUDENTIAL ZACK REALTORS
2900 LONG BEACH BOULEVARD, BEACH HAVEN, N.J.
1-800-633-1146

# Real Estate

## Real estate firm nabs office space for area businesses

Jacobson, Goldfarb & Tanzman Associates, L.L.C., a commercial real estate firm with offices in Woodbridge and Elmwood Park, negotiated six industrial/flex transactions in Middlesex and Union counties. The announcement was made by JGT Senior Vice President Dan Frankel, who said, "Where the asking price of property is at market value, industrial and flex properties in Middlesex and Union County continue to be absorbed."

Negotiated by JGT brokers, the transactions include: the sale of the F. Bruno Faceting Building, located at 725 Lehigh Ave. in Union, to Kim Associates; the sale of the Alzo building, located on Federal Road in Monroe to Nulab Furniture; the sale of the facility located at 3461 South Clinton Ave. in South Plainfield to C and M Tool Manufacturing, Inc.; the lease to Modern Fabrications for space at the 24 Distribution Boulevard building in Edison; the lease to Seacoast Laboratories, Inc. for space at the industrial facility located at 4260 U.S. Route 1 in Monmouth Junction; and the lease to Bell Atlantic Network Integration, Inc. for industrial and office space at 400 Raritan Center Parkway in Edison.

In Union County, Associate Vice President Ian Grusd and Vice President Jack Sievers arranged for Kim Associates, a full-service restoration and construction company, to purchase the 15,500 square foot F. Bruno Faceting building. Located directly off Route 22, with access to the Garden State Parkway, the F. Bruno Faceting building is a single-story industrial facility with extra land for storage.

According to Grusd, "Kim Associates chose the F. Bruno Faceting building on Lehigh Avenue because of the extra land and the ability to subdivide the building to accommodate additional tenants."

"The newly purchased, free-standing building will be used by Kim Associates for its offices, equipment storage and as a warehouse," added Sievers.

JGT represented the tenant, Kim Associates, while Mangels Realty represented the seller, Fred and Ed Bruno, in the recent transaction.

In Middlesex County, Vice President David Saltzman arranged for Nulab Furniture, a manufacturer of counter tops for kids, to purchase the Alzo building located on Federal Road in Monroe. A JGT exclusive, the Alzo facility is a single-story industrial building situated on 7.8 acres, just minutes from Exit 8 and 8A of the New Jersey Turnpike.

"The Alzo building, with its convenient location and excellent move-in condition, was ideal for Nulab Furniture's expansion," Saltzman said. "The facility also offered other attractive features, including tailboard and drive-in loading, 17 foot ceilings and a fenced parking area."

JGT represented Alzo, the building owner, and the purchaser in the negotiations.

Also in Middlesex County, Grusd and Vice President Doug Bansbach arranged for C and M Tool Manufacturing, Inc. to purchase the 25,000 square foot industrial facility located at 3461 South Clinton Ave. in South Plainfield. Built in 1964, the block and steel frame building is situated on two acres directly off Route 287, with access to major roadways, including the Garden State Parkway.

According to Grusd, "C and M Tool and Manufacturing, Inc. which specializes in light manufacturing, specifically metal stamping and precision machining, chose the facility because of its prime location, quality image and existing power distribution."

"The site also offers one of the few opportunities in the area to purchase a free-standing building with extra land,"

Bansbach added. "The facility will house C and M Tool and Manufacturing's executive offices, light manufacturing, warehouse and distribution facilities."

Grusd and Bansbach represented C and M Tool and Manufacturing, while Bussel Realty represented the seller, Mario and Leon Caruso, in the recent transaction.

In Middlesex County, Saltzman arranged for Modern Fabrications to lease space at the industrial facility located at 24 Distribution Boulevard in Edison. The well-located building will house a warehouse and distribution center for Modern Fabrications.

"Modern Fabrications, a supplier of wet suits, fins, masks and other scuba gear, selected the facility because of its quality and accessibility via the New Jersey Turnpike, routes 287 and 440," Saltzman said.

JGT represented the lessor, Ike Heller, and the tenant in the recent transaction.

In Middlesex County, Bansbach negotiated a lease with Seacoast Laboratories for 16,100 square feet of the 56,550 square foot building located at 4260 U.S. Route 1 in Monmouth Junction.

"Seacoast Laboratories, Inc. is a distributor of pre-packaged lawn and garden supplies, including grass seed, lawn fertilizer and hand tools. Selling primarily wholesale to gardens, golf courses, wholesalers and landscapers, Seacoast Laboratories will be distributing approximately 10 percent of sales via an on-site retail shop," Bansbach said. "They selected the Route 1 site because of the capability to sell retail in a highly visible location."

Also, in Middlesex County, the JGT team of Assistant Vice President Michael Gavlick, Senior Vice President Paul Giannone and Bansbach arranged for Bell Atlantic Integration, Inc. to lease space at the 80,000 square foot

flex building located at 400 Raritan Center Parkway in Edison. A JGT exclusive, 400 Raritan Center Parkway is an attractive, single-story high tech building situated in a park-like setting. The building's Raritan Center location provides many extra amenities including: two hotels, conference centers, restaurants, banking facilities, a post office, retail, daycare and public transportation.

"With immediate access to the Garden State Parkway, the New Jersey Turnpike, routes 1, 9, 287, and 440, 400 Raritan Center Parkway provides the prime location that Bell Atlantic Network Integration, Inc. was seeking," Gavlick said.

"Bell Atlantic leased both office and warehouse space in the 80,000 square foot flex building," added Giannone. "In addition to providing an excellent location, 400 Raritan Center Parkway also offers such building extras as tailboard loading, 19 foot ceilings, 40 by 40 column spacing, heavy power and ample parking."

JGT represented the building owner, the Principal Financial Group, Joseph Hilton represented Bell Atlantic Properties.

With continuous activity from its industrial Department, JGT maintains its position as a major real estate force in the Northern and Central New Jersey industrial market. Jacobson, Goldfarb & Tanzman Associates, L.L.C. is recognized as a leader in the area of sales and leasing of office, commercial and industrial properties, land development, asset management, appraisal, and consulting. JGT is a member of the Society of Industrial and Office Realtors and is the New Jersey member firm for the International Corporate Realty Services. Now in its 75th year, JGT is headquartered in Woodbridge.

## Century 21 introduces MarketPower '95 to increase sales

Since the start of 1995, Century 21 offices in the Central/Southern New Jersey area have been gearing up for the rush of home sales. Century 21 offices throughout the entire northeast are participating in an innovative marketing campaign, called MarketPower '95, which integrates homebuyer and homebuyer events, sales agent training, advertising, direct mail and promotions to sell more homes in 1995 than ever before.

As warm weather approaches, real estate professionals and homeowners alike will be preparing for showings and open houses. Century 21 real estate professionals offer some advice on the best ways to prepare your home for sale at the best price in the least amount of time.

Joseph Mancuso, regional director for Century 21 of the Northeast Inc. in Central/Southern New Jersey, advises sellers to take the first step toward a successful sale by looking at their home with a critical eye and then determining where their home's package needs improvement. "You don't need a lot of money or expensive items to dress your home for sales success," Mancuso said.

"You can borrow or buy inexpensive extras such as house plants, new lawn furniture or fresh cut flowers. If you don't have enough time to do any major house cleaning yourself, consider hiring a professional."

Carolyn Weber, vice president of marketing, Century 21 of the Northeast Inc., also recommends that you consult a real estate professional to

survey your home and conduct a comprehensive market analysis. "A real estate professional can provide a thorough market analysis of your home as well as offer another set of critical eyes when it comes to assessing your home's overall appearance," she said. Weber also reminds the seller not to forget the exterior of the house. "Believe it or not, a great percentage of homes are sold before the buyers even get out of the car. Your home's 'curb appeal' is just as important as the interior."

For the highest possible selling price in the shortest amount of time, Graham Dickson, an award winning sales associate with Century 21 Red Coach in Pittsford, N.Y., presents homeowners with 21 questions they should ask themselves when preparing to sell:

- ◆ Is there any part of my house that needs repainting — inside or out?
- ◆ Should I reseed the lawn and get my landscaping in top shape?
- ◆ Are there any holes/cracks in my screens or windows, and do the windows work well or do they need to be repaired?
- ◆ Does the carpet need cleaning or replacing?
- ◆ Are pets under control at all times?
- ◆ Are all appliances in good working order?
- ◆ Should I stay out of a prospective buyer's way?
- ◆ What will be the buyer's first impression of the exterior of our

house? What can I do to improve it?

◆ What will be buyer's first impression as they step inside my house? What can I do to improve it?

◆ Since the buyer will be looking in the closets, should I take some of the clothes out to make them look roomier?

◆ Can I take items from kitchen cabinets to make them more spacious?

◆ Is there any furniture I could store or dispose of to make rooms appear larger?

◆ Do any cabinets need to be touched up or refinished?

◆ Should I give my real estate agent a list of things my family likes about the house and the neighborhood?

◆ What about door mats? Should I replace them with new ones that are neutral and omit our family's name?

◆ Should I remove an ornate item that a buyer may want as part of the house — such as a special chandelier or wall system?

◆ Should I ask my real estate agent to provide a list of recommendations to help me market my house?

◆ Will the price and terms offered appeal to most of the buying public in my price range?

◆ Do I need to be aware of similar houses also being offered for sale in my neighborhood?

◆ Are the garage and storage areas as clean and neat as they could be?

◆ Before spending needless time and money, should I consult with a real estate professional?

"Preparing your home for sale is a major project and can keep you busy, but it is well worth the effort," Dickson said. "While the appeal of a home can be very subjective, it never hurts to enhance the home's overall impression. The extra time you put into your home's package now could

be the deciding factor when a potential buyer has narrowed down his choices between your home and another."

For more information about selling your home or a consultation with a sales agent, contact the Century 21 office nearest you.

## Prudential offers advice for selling homes

As part of the Prudential Degan Boyle Realtors long standing policy to keep their customers well-informed and current on all matters pertaining to the real estate buying and selling processes, the company will present timely articles, whose topics will include issues that the average consumer would have questions or concerns about.

**Question:** Should you appraise your home before putting it on the market?

**Answer:** It isn't necessary, because rarely does an appraisal have anything to do with the price the seller will actually get for their property. Here's why:

First, to determine the asking price,

a seller's agent will look at the "comps" — the price for which comparable homes in the area have recently been sold. Based upon these prices, the seller should adjust what they are asking. For example, if similar properties in the area are selling for \$210,000, then trying to get \$250,000 usually does not make sense. Thus, before putting the house on the market, a seller should review the "comps," which can be obtained from your local Prudential Degan Boyle Realtors agent.

The appraisal process used by a licensed appraiser is more theoretical than a "comp," and doesn't predict what a buyer will be willing to pay. Why would anyone ever get an

appraisal then? Although rarely needed, appraisals are normally required by lenders who are considering making a loan to a customer.

However, sellers of expensive, custom homes may get appraisals, because there may not be any homes in the area that compare. Buyers of these one-of-a-kind homes will also have more confidence in an asking price that is supported by an appraisal.

Before determining an asking price, sellers should give their Prudential Degan Boyle Realtors agent a list of major improvements done to the home, such as a new roof or upgraded heating system. This will help the agent consider all the factors when recommending a price.

**CALL CLASSIFIED**  
**MONDAYS & TUESDAYS**  
 Phones Open At  
**8 A.M.**  
 And on **MONDAYS** stay  
 open  
 until **6 P.M.**  
**1-800-564-8911**

**ATTENTION HOMESSELLERS**  
**Free Report Shows How To Avoid Mistakes That Can Cost You Thousands.**  
 Union County Residents, a free report has just been released that shows Homesellers how to avoid costly financial mistakes when selling your home. **Call 1-800-648-7480 (24 hours) for a FREE recorded message and a copy of this FREE report.** Call NOW and find out how to avoid these mistakes before putting your house

*Nobody Knows the Summit*  
 New Providence  
 Berkeley Heights Area  
 Like The Timony Realtors  
 With 15 years experience we've gained the expansive knowledge required to make your next move a smart one.  
**TIMONY**  
 R•E•A•L•T•O•R•S  
 1258 Springfield Ave.  
 New Providence  
 (908) 464-2800

**Just moved in?**  
**I can help you out!**  
 Don't worry and wonder about learning your way around town. Or what to see and do. Or who to ask. As your **WELCOME WAGON** Hostess, I can simplify the business of getting settled. Help you begin to enjoy your new town... good shopping, local attractions, community opportunity.  
 And my basket is full of useful gifts to please your family.  
 Take a break from unpacking and call me.  
*Welcome Wagon*  
 Residents of Union & Springfield only  
**UNION..... 964-3891**  
**SPRINGFIELD..... 467-0132**

**Weichert**

 Buy For \$1090 Mo. <b>UNION</b> PEARLE BEACH MODEL Move Right In! Complete w/central air, car & Lot-2 BR's, 2 Full Baths \$128,000 (U4540) CALL 908-687-4800.	 Buy For \$956 Mo. <b>UNION</b> IMMACULATE COLONIAL Desirable Schl area, LR, Fin. Rm, DR, Kit w/Bkfst Nook, Fin Bsm, MBR w/Shingl Rm, Walk-up Attic \$192,500 (U4526) CALL 908-687-4800.	 Buy For \$956 Mo. <b>UNION</b> COMFY COLONIAL Great Starter in Schl area, Nice Size Rm's, 3 BR, Full Bath, 2 Car Gar, Deck & Beautiful Yd. \$168,000 (U4533) CALL 908-687-4800.
 Buy For \$928 Mo. <b>UNION</b> FABULOUS NEW LISTING Split Level, 3 BR, Fin Bsm, Built In Gar, Great Loc, Seller including Many Appliances & some Furniture \$163,900 (U4534) CALL 908-687-4800.	 Buy For \$894 Mo. <b>UNION</b> ALL BRICK! Maint Free! Thrust Windows, 3/4 BR Exp. Cape, 2 Full Baths, New Gas Furn & HWY \$137,647 (U4535) CALL 908-687-4800.	 Buy For \$1014 Mo. <b>UNION</b> LARCHMONT ESTATES Great Colonial for Growing Family, 3 BR, 1.5 Bath, Att Garage, Won't Last! \$179,000 (U4499) CALL 908-687-4800.
 Buy For \$945 Mo. <b>UNION</b> MAGNIFICENT SPLIT Executive Fin Rm w/High Pplc, Slidr to Patio, New Furn, 3 BR, 1.5 Bath, CAC & Much More! \$200,000 (U4503) CALL 908-687-4800.	 Buy For \$945 Mo. <b>UNION</b> WELL-MAINTAINED Exp'd Cape-Maint Free Ext, Wash. Schl Sec, 5 BR, 2 Full Baths, New Gas Furn! Won't Last! \$166,900 (U4498) CALL 908-687-4800.	All Offices as well as Union Open Until 9 PM

**Union Office 908-687-4800**  
**Weichert Realtors**  
 Because We Do More

# Real Estate

## Association expects home sales boom

Despite 28,200 existing single-family homes sales in New Jersey during January, February and March, the total reflects a 13 percent decrease from last year's first quarter of 32,400 resales, the New Jersey Association of Realtors reported. The seasonally-adjusted resale rate for first quarter 1993, 133,600, while lower than 1994's first quarter - 153,500 - was higher than that recorded in 1992 - 131,700 - and 1991 - 129,500.

"We expected first quarter sales this year to be lower than '94 because last year's resales were at the second-highest quarterly level for that time period of all time," said Carl DeMusz, NJAR president. "With the weather warming up and interest rates at attractive levels, we expect this year's second quarter to bounce back and reach 40,000 unit sales."

"The Fed's raising of interest rates seven times last year may have had a negative impact on consumer confidence as well as some big employer layoffs. The good news is unemployment is low, people are working, median family incomes are rising and affordability conditions are better," said DeMusz, broker owner of DeMusz Real Estate in Cape May. "If these conditions remain positive, we are calling for 140,000 home sales in 1995."

The NJAR composite Housing Affordability Index, which measures affordability factors for all home buyers, was 123.2 in the first quarter of 1995, compared to 121.4 in 1994's fourth quarter. However, the housing affordability index did show a quarter-to-quarter decrease mainly due to a lower interest rate of 7.12 compared with 8.70 in the first quarter of 1995. The affordability index for first quarter 1994 was 140.

When the Housing Affordability Index measures 100 - the housing affordability index is based on a current median incomes, median housing prices and average mortgage interest rates, a family earning the median income has exactly the amount needed to purchase a median-priced resale home using conventional financing and a 20 percent down payment. Since the median is the midpoint, the index shows half the families in New Jersey had at least 123.2 percent of the income needed to qualify for a home purchase with the median price of \$145,000.

Median family incomes in New Jersey stood at \$54,075, a gain of \$425 over the fourth quarter of 1994 - \$53,650 - and \$1,500 higher than 1994's first quarter - \$52,825. Using those guidelines, a New Jersey family earning the state's median income of \$54,075 actually earned \$10,200 more than the amount required to purchase a median priced home of \$145,900 with 20 percent down and a 30-year mortgage at 8.70 percent.

The New Jersey Association of Realtors is a non-profit organization serving the professional needs of more than 38,000 real estate agents in the state. NJAR, and its 28 member boards and associations of realtors, are part of the National Association of Realtors, the largest trade association in the United States with more than 750,000 members.

## Weichert earns accolades

Larry Mueller, regional vice president, has announced that the office of Weichert Realtors has won several recent regional sales awards.

In December, January and February, the Union office led the region in resale marketed listings. In January, Union also led the 12-office region in resale listings.

The Union office was also a leader in insurance and mortgage sales categories, winning the region's top honors for 1994.

According to a national report, Weichert Realtors is the largest inde-

pendent real estate company in the country, with 7,000 sales associates in 200 offices from Connecticut through Virginia. Weichert's services include residential and commercial real estate, mortgages, insurance, rentals, relocation, new homes and land, estate marketing, property management and moving services.

A subscription to your newspaper keeps your college student close to hometown activities. Call 908-686-7753 for a special college rate.

## BUSINESS OPPORTUNITIES

**AMCALL**. GET in on the information superhighway. A national telephone company is wanting to put you into business. High lifetime royalties. Please call 800-583-0604.

**ART GALLERY & Custom Framing**. Established 17 years in excellent area. Turn-key money maker. Long lease available. Call 908-469-8282.

**HOME IMPROVEMENT specialists**. Profit from area crime with great new door security product. Easily installed while selling your regular product/service. Not a franchise. Initial inventory only \$900.00. 1-800-521-8711.

**IF YOU never want to worry about money every again**. Not MLM. Call 1-800-796-8773, ext. 881.

**OWN YOUR OWN APPAREL OR SHOE STORE**. CHOOSE: JEAN/SPORTSWEAR, BRIDAL, LINGERIE, WESTERNWEAR, LADIES, MEN'S, LARGE SIZES, INFANT/PRETEEN, PETITE, DANCEWEAR/AEROBIC, MATERNITY, OR ACCESSORIES STORE. \$25,900 TO \$37,900. INVENTORY, TRAINING, FIXTURES, GRAND OPENING, ETC. CAN OPEN IN DAYS. MR. LOUGHLIN 812-888-8855.

## RENTAL

"All real estate advertised herein is subject to the Federal Fair Housing Act, which makes it illegal to advertise any preference, limitation, or discrimination based on race, color, religion, sex, handicap, familial status, or national origin, or intention to make any such preference, limitation, or discrimination." We will not knowingly accept any advertising for real estate which is in violation of the law. All persons are hereby informed that all dwellings advertised are available on an equal opportunity basis.

## APARTMENT TO RENT

**BLOOMFIELD**. 5 LARGE rooms, with 2 bedrooms, 2nd floor, eat-in kitchen, laundry hook-up, newly decorated rooms. Many extras. \$795 monthly plus utilities. Available immediately. Call Gerry 5am-5pm weekdays, 201-429-8100. East Orange 56 South Munn Avenue

- BEAUTIFUL MODERN HIGH RISE
- FIRST MONTH'S RENT FREE
- Large 2 Bedrooms Available with 1 1/2 Bath and Eat-In Kitchen
- Close to shopping
- Some with balconies
- Well Maintained
- Elevator Building
- Limited Free Parking
- Central Air Conditioning
- Limited Access Entry

(201) 675-2351 LISMARC REALTY

**ELIZABETH**. ONE bedroom apartment, excellent condition, convenient location, off street parking, \$650 per month. Heat/hot water included. Call 201-235-1241 or 908-558-1194, leave message.

## APARTMENT TO RENT

**HILLSIDE, WESTMINSTER**. 3 bedrooms, 2 baths. Dead end. Modern two family. Air. No pets. Parking. \$895. plus utilities. Security. 908-353-0447.

**IRVINGTON** ONE bedroom, quiet, convenient first floor, carpeted. \$450 plus utilities. 1/2 month security. References. Available now. Call 201-783-6593.

**MILLBURN**. ONE bedroom, \$800 plus security. Available now. Convenient location. Air-conditioning, heat, hot water, parking, laundry facilities. 908-273-2870 after 7pm.

**RAHWAY**. 2 BEDROOMS, 2nd floor, 2 family. Excellent location. Use of washer, dryer. No pets. \$800 plus utilities. Available July. 908-382-5086.

**RAHWAY**. ATTRACTIVE 1-bedroom apartment. Security locked building, near train station. Washers, dryers on premises. \$625 plus utilities. Call 908-353-3650.

**ROSELLE PARK**. 1 bedroom apartment. Near train. Off-street parking. \$675 monthly includes heat. Available August 1st. Call 908-866-4059.

**SOUTH ORANGE**. 3-4 bedroom duplex in private home. 1 1/2 baths, laundry facilities. \$1100 month, plus utilities. 201-378-3797.

**SPRINGFIELD**. LARGE 1-bedroom apartment. Near shopping. \$650, heat included. Write, include phone number. Mitchell, 40 Center Street, Springfield, NJ 07081.

**UNION**. 6 ROOMS (3 bedrooms), 2nd floor, 1 1/2 baths, hardwood floors, newly painted. No pets. \$950. Call after 6:30p.m. 908-851-2116.

**UNION**. SECOND floor apartment, one bedroom, living room, kitchen, bath, off street parking. \$700 per month. 908-686-3050.

**YOUR AD** could appear here for as little as \$14.00 per week. Call for more details. Our friendly classified department would be happy to help you. Call 1-800-564-8911.

## FURNISHED ROOMS FOR RENT

**ROSELLE PARK**. Furnished 2 room Studio. Private bath, entrance. Non-smoker. Lease security. Verifiable income. 908-241-2471.

## GARAGE FOR RENT

**HILLSIDE**. SECURE garage and space for car storage on corner of Hollywood and South Long Avenues. Call 908-354-7548.

## SPACE FOR RENT

**ORANGE**. DESIRABLE location for rent. 8000 square feet for light manufacturing/wholesale. Parking for trucks. Near major highways. 201-678-0788/201-783-5222.

## VACATION RENTALS

**MYRTLE BEACH** oceanfront/oceanview luxury condominiums from \$450.00 per week. Entertainment packages, oceanfront pools, full-size kitchens, beach. Close to everything. See Breeze. Realty 1-800-446-4010.

**STRATTON**. VACATION home on beautiful 3rd bath condo. Fully furnished; tennis, pool included. Available August, September, October. \$1,200 monthly. 201-731-6841.

## Sell Your Home

IN UNION COUNTY CLASSIFIEDS  
**CALL 1-800-564-8911**  
TO PLACE YOUR CLASSIFIED AD

## WANTED TO RENT

**ENGINEER** SEEKS 3 bedroom or large 2 bedroom house/apartment. Union County. Large closets, modern kitchen/bath desirable. Vladimir, 908-298-9238.

## REAL ESTATE

"All real estate advertised herein is subject to the Federal Fair Housing Act, which makes it illegal to advertise any preference, limitation, or discrimination based on race, color, religion, sex, handicap, familial status, or national origin, or intention to make any such preference, limitation, or discrimination." We will not knowingly accept any advertising for real estate which is in violation of the law. All persons are hereby informed that all dwellings advertised are available on an equal opportunity basis.

## BUSINESS FOR SALE

**TAILOR SHOP** with drop dry cleaning, Belleville, on a main street in high traffic area. Available immediately. Asking \$21,900. Any reasonable offer considered. Call 201-751-5336 days or 201-751-4947 after 6p.m.

## CEMETERY PLOTS

**CEMETERY PLOTS**  
**HOLLYWOOD**  
**MEMORIAL PARK**

Gethsemane Gardens, Mausoleums. Office: 1500 Stuyvesant Ave., Union. 908-688-4300

**FIVE CRYPTS**, bottom row, Garden of Prayer, Rosedale Cemetery, Linden. \$2,000 each. Will not divide. Call 908-721-3306.

**HOLLYWOOD PARK**. Union. Double crypt in mausoleum. Also 2 double plots. Call 908-867-7146, days. 908-786-4562, evenings.

**HOLLYWOOD MEMORIAL**. Park. 4 plots in section 29 to be sold together. Reasonably priced. Call 908-369-4838.

## COMMERCIAL PROPERTY

**ELIZABETH**. 8,000 square foot building. Buy corner. All utilities. AAA tenant will vacate for immediate occupancy. Cutler Agency, Inc. 908-667-6060

**MILLBURN**. FOR SALE BY OWNER. Location, location. Brick building next to Millburn Train Station, completely renovated with marble floors, ideal for showroom with parache or possible chic offices, zoned for retail, approximately 1200 square feet on two floors with landscaped garden. Superb buy at \$185,000. 201-378-2929

## CONDOMINIUM

**SOUTH ORANGE**. Brand new townhouse condo. 2-bedrooms (only one left). Loaded! Near train station, shopping, etc. Finished basement. \$115,000 (good finance terms). Call 201-782-4012 or 1-800-206-9677.

**UNION**. THE POINTE Best buy is this desirable 2 bedroom, 2 bath St. Cloud unit with eat-in kitchen. \$100,000. Evenings: Shirley Straus, 201-376-5858.

**SPRINGFIELD**. TROY VILLAGE Best buy is this 2 bedroom, 2 bath unit. Transferred owner. \$131,500. Evenings: Shirley Straus, 201-376-5858.

## REAL ESTATE FOR SALE

**BRIDGEWATER** OPEN HOUSE Saturday and Sunday. 5 bedrooms, 2 1/2 baths, large kitchen, living room with fireplace, dining room, family room, finished basement, central air, spa, on 1 1/2 beautiful mountain acres. \$335,000. 908-469-8282 and 908-685-9410.

**GOVERNMENT FORECLOSED** homes for pennies on \$1. Delinquent tax, repossessions, REOs, FDCI, RTC, IRS. Your area. Toll free 1-800-698-9778 ext. H-5139 for current listings.

**MAPLEWOOD**. 3-BEDROOM Colonial. 1 1/2 baths, living room, formal dining room, eat-in kitchen. Large fenced yard, 2-car garage. \$139,500. Call 201-378-6234.

**OPEN HOUSE NEW LISTING**  
1-4PM, Sunday 274,500

27 Virginia Road (off Ridgewood Road, opposite School) Dutch Colonial in desirable location, immaculate condition, 3 1/2 bedrooms, 2 1/2 baths with master suite, central air-conditioning, large yard with gardens and deck, living room, dining room, den and finished basement, 1 car garage, walk to town/train, third floor expansion possible. Come see. 201-378-5039. (Principles only please)

**MOUNTAINSIDE**. BY OWNER. Charming three/ four bedroom, spacious 90's family room with fireplace, 26x14 with Mahogany wet bar and french doors leading to beautiful large flat yard, 100x200. Move in condition. \$314,000. Call 908-233-9017.

**YOUR AD** could appear here for as little as \$14.00 per week. Call for more details. Our friendly classified department would be happy to help you. Call 1-800-564-8911.

**ROSELLE PARK**. Seven rooms, 2 baths, fenced in yard, 1 1/2 garage, porch off east in kitchen, new furnace. \$185,000. 908-245-5748 or 908-233-1157.

## SPRINGFIELD

**YOU WON'T BELIEVE IT!**  
Walk into this house and be dazzled! 5 bedroom Dutch Colonial with a touch of tradition mixed with numerous modern additions. You'll love it! \$299,000. Evenings: Myra Leader, 201-467-3166.

## ALTMAN

**UNION**. BY OWNER. Two family, three up, five down, good location, low taxes. Excellent rental income. Asking \$184,500. Call 908-984-0019

## SHORE PROPERTY

**LONG BEACH** island. Uncrowded beautiful congenial people. Own a paradise within a 3-hour drive. For friendly professional service, call hch, inc., Realtors, 800-494-2516.

## OUT-OF-STATE FLORIDA

**INVEST IN FLORIDA**  
Federal Government has 100's of 2, 3, and 4 bedroom single family homes. Investors can purchase these properties as well as first time home buyers for as little as \$600 down. For details call Eric or Bernard 201-762-7500. Century 21 Emma Realtors

**UPPER BUCKS** County, Pennsylvania. Vacation weekend cabin. Quiet, peaceful setting, secured w/ fenced community. Fishing, boating, hiking. Furnished. 1 master bedroom, 2 loft bedrooms, 1 1/2 baths, kitchen, dining, family room, stone fireplace, screened porch. \$45,000. Call 215-636-0592.

## NEW JERSEY MORTGAGE RATES

Lender, City, Phone	APP FEE	30 YR FIXED		15 YR FIXED		OTHER	
		RATE	PTS APR	RATE	PTS APR	RATE	PTS APR
Ambros Mortgage Corp, Union	800-303-2307	0	7.75 0.00	7.75	7.25 0.00	7.25	4.75 3.00
American Fed Mtg, Bound Brook	800-787-2681	100	7.25 3.00	7.58	6.88 3.00	7.35	4.50 3.00
American Savings Bk, Bloomfld	201-748-3600	350	7.50 2.50	8.01	7.00 2.50	7.41	4.88 3.00
Bankers Savings, Perth Amboy	908-442-4100	350	7.75 2.75	8.04	7.13 2.75	7.58	4.63 3.00
Capital Funding, Parsippany	800-682-6760	0	7.63 1.00	7.71	7.13 1.00	7.21	5.88 1.00
C. Brooke Mortgage, Freehold	800-783-2265	0	6.88 3.00	7.18	6.50 3.00	6.99	6.00 3.00
Columbia Savings Bk SLA, Lindn	800-962-4988	285	7.38 3.00	7.72	6.63 3.00	7.16	7.25 1.00
Concorde Mortgage Co.	201-992-2070	0	7.13 3.00	7.43	6.75 3.00	7.22	4.63 3.00
Corestates Mortgage Services	800-999-3885	250	7.13 3.00	7.50	6.50 3.00	7.08	7.50 3.00
First DeWitt Savings, W Caldwell	800-537-0079	425	7.88 0.00	7.88	7.50 0.00	7.55	5.75 0.00
First Fidelity Bank	800-435-7332	375	7.13 3.00	7.46	6.68 3.00	7.14	6.25 3.00
First Savings Bank SLA, Edison	908-225-4480	350	7.88 0.00	7.88	7.38 0.00	7.38	7.00 0.00
Gentry Mortgage, Inc	800-287-9934	350	7.63 1.00	7.73	7.00 1.00	7.18	6.75 0.00
Lehigh Savings Bank SLA, Union	908-686-0003	350	7.25 3.00	7.62	7.00 3.00	7.59	6.88 3.00
Manor Mortgage	201-884-0040	150	7.68 0.00	7.88	7.38 0.00	7.38	8.00 0.00
Midlantic Bank, N.A.	800-274-0703	N/P	7.25 3.00	7.57	6.50 3.00	7.00	4.50 3.00
Morgan Carlon Finl, Ridgewood	800-682-8719	0	6.88 2.88	7.12	6.50 2.88	6.71	5.80 2.88
Northwest Home Mortgage	800-438-6761	375	7.13 3.00	7.43	6.75 3.00	7.28	5.13 2.50
New Century Mtge, E. Brunswick	908-390-4800	370	7.88 0.00	7.92	7.38 0.00	7.52	6.00 0.00
Premier Mortgage, Union	908-687-2000	375	7.63 3.00	N/P	7.25 3.00	N/P	5.88 0.00
Provident Savings Bank	800-448-7788	350	7.25 3.00	7.58	7.00 3.00	7.49	6.25 3.00
Pulse Savings Bank, Cranbury	609-395-0088	350	7.25 3.00	7.58	6.75 2.50	7.18	5.88 1.00
Rahway Savings Institution	908-385-1800	325	7.88 0.00	7.88	7.38 0.00	7.38	7.63 0.00
Sterling National Mtge, Clark	800-562-8725	195	7.75 0.00	7.78	7.25 0.00	7.28	7.88 0.00
United Jersey Bk, Ridgefield Pk	800-682-0811	325	7.25 3.00	N/P	6.75 3.00	N/P	6.38 3.00
Valley National Bank, Wayne	800-622-4100	450	N/P	N/P	7.38 0.00	7.47	7.88 0.00
West Essex Bank, FSB	201-875-7080	375	7.50 0.50	7.55	7.98 0.50	7.96	7.00 0.50
W.F.S. Mortgage, Warren	908-534-1904	0	7.75 0.00	7.75	7.38 0.00	7.38	7.88 0.00

(A) 1 Yr Arm (B) 30 Yr Jumbo (C) 5 1/2 Yr (D) 15 Yr Bi-weekly (E) 10 Yr Fixed (F) COFI Arm (G) 7 1/2 Yr Arm (H) 10 1/2 Yr (I) 10 1/2 30 Arm (J) 5 Yr Arm Jumbo (K) 9 1/2 Yr Arm (L) 8 Yr Balloon (M) 3 1/2 Yr Arm (N) 20 Yr Fixed (O) 1 Yr Jumbo (P) 30 Yr FHA (Q) 7 1/2 (R) 1 1/2 (S) Const. Loan (T) 30 Yr Fixed

a - 90 day late lock b - \$500 app fee for 30 yr fixed c - pts ref at closing d - 75 day rate lock

### MINIMUM 45-60 DAY RATE LOCK

APP FEE - single family homes

A.P.R. - Contact lender for outstanding Annual Percentage Rates

Rates are supplied by the lenders and are provided without guarantee. Rates and terms are subject to change. Lenders interested in displaying information should contact Cooperative Business Information (CBI) 792-9419. For more information, borrowers should call the lenders. Contact lender for information on other mortgage products and services. Cooperative Business Information assumes no liability for misrepresented data or omissions. Rates listed were supplied by the lenders on 6/14/94. All rates are subject to change. Copyright 1994 Cooperative Mortgage Information. All Rights Reserved.

CALL

MANGELS

& CO. REALTORS

**367 Chestnut St. Union (908) 688-3000**

AGENT OF THE MONTH

Our Agent of the month for May is Joe Signorella. Joe is the first agent to win this honor three consecutive months, announced company president, Jim Schoening. Joe has sales of over \$2,500,000 for the five months of 1995. In the real estate business for just 2 1/2 years, Joe has proven to be a real leader in the industry. Born and raised in Roselle Park, Joe now resides in Clark with his wife, Susan and children, Joseph & Nicole. If you are either buying or selling a home and want results, call Joe Signorella at (908) 688-3000.

**ROSELLE**  
**FOR YOUR FAMILY** A 4 BR home in one of the finest areas. Enjoy 3 full baths (one w/jacuzzi). Pristine condition CAC, timberline roof. 3 zone heat, finished basement, fenced in yard, 2 car garage. Offered at \$189,900.

**CRANFORD**  
**IMMACULATE ENGLISH COLONIAL** REDUCED TO \$399,

# Automotive

## Sport utility vehicles have features for work and play

Today's hottest-selling vehicles, sport utility trucks, bear little resemblance to the trucks a decade ago. Gone are the vinyl seats with no pleats, painted doors, "three on the tree" shifter and rubber floor mats.

"There's no question that today's trucks are getting softer — both inside and outside," said Cheryl Lystad, senior layout designer for General Motors Design Center. "A decade ago, the market was dominated by men who used trucks to make a living in construction or farming or other occupations that required light hauling. Today, a whole new vehicle segment has exploded and nearly half the buyers are women."

Lystad, who specializes in seat development and is responsible for many of the improvements in the award-winning Chevrolet Blazer, said the shift in buying habits has led vehicle manufacturers to pay more and more attention to the finer details to enhance comfort that today's customers want from a sport utility vehicle.

Today's sport utility vehicle has all the durability of a truck, including ruggedness, power and four-wheel drive. At the same time, customer expectations include greater comfort, a quiet cabin and all the other car-like amenities that most have become accustomed to in a passenger car.

On the exterior of the vehicle, the harsh, square sides and brick-like front end is more rounded and sculptured to improve aerodynamic drag and reduce the interior noise level. "Reducing wind noise was a critical area for improvement that was mentioned in all our customer clinics," said Lystad. "We've added flush-mounted glass all the way around to reduce wind noise and resistance, the doors of the Blazer are insulated to keep highway noise at a minimum and we've incorporated dual door seals that virtually eliminate the air entering the vehicle."

More important, however, is the

level of refinement of the vehicle. "To make a truck feel more car-like, you have to start from where the person enters the vehicle, and that's the door," Lystad said. Previously, trucks were rarely designed with women in mind.

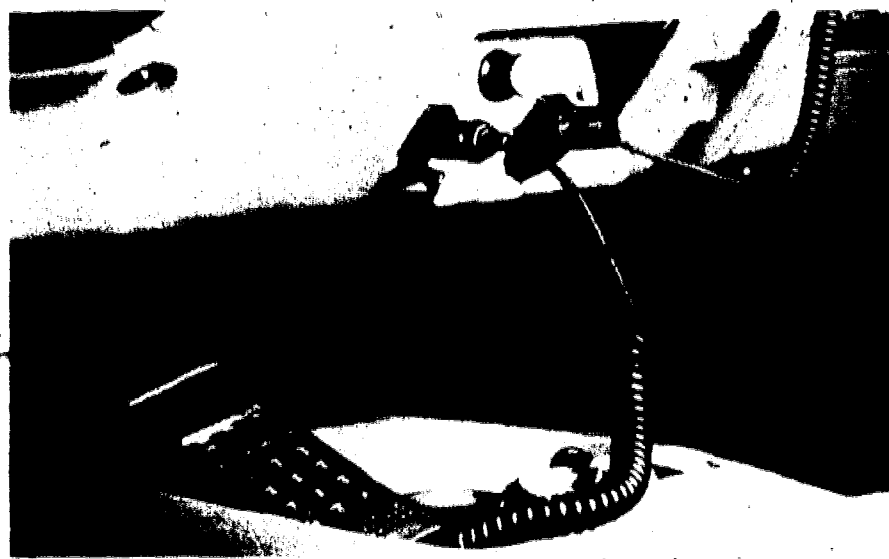
Lystad, who is 5 feet 1 inch tall, was able to provide valuable assistance to ensure certain ergonomic priorities were met, including entering and exiting the vehicle. Among the refinements to the new Blazer is a rocker panel that is lower than competitive sport utilities, coupled with a lower interior seat cushion height. "It's essential that a woman wearing a skirt be able to maneuver herself in and out of a vehicle with an element of grace," she said.

Despite her short stature, Lystad said the field of vision in the new Blazer is excellent due to large areas of glass, narrow pillars, a headliner that has been moved rearward and low-gloss materials which reduce glare, that are used throughout the cabin. "Time and again, women have told us the primary reason they like this type of vehicle is visibility. It's very important for them to see the road," she said.

Unlike interiors on older model trucks, the doors as well as all interior panels are covered with carpet and fabric. This contributes to the overall richness, comfort and interior quietness of the vehicle. Like a luxury car, no painted surfaces are visible within the interior.

"Today's sport utility driver demands all the comforts of a high-end car. In many instances, they've traded their cars for a sport utility vehicle," Lystad said. Amenities including power steering, anti-lock brakes and power windows and locks are expected.

Providing utilitarian use for both male and female drivers was a major objective in the interior design. "With the market virtually 50 percent male



Unlike interiors on older model trucks, the doors as well as all interior panels are covered with carpet and fabric. This contributes to the overall richness, comfort and interior quietness of the vehicle. The added luxury of two powerpoints for items such as cellular phones, fax machines and portable computers makes life easier for both drivers and passengers.

and 50 percent female, a sport utility truck has to have dual functions," Lystad said. "It's a primary work vehicle and a people mover. We've designed the Blazer for the ruggedness of a construction worker as well as incorporated the softer cues for a parent transporting children to and from school. For the parent transporting the Girl Scout troop or hockey team, we've added child door security locks."

Larger knobs for interior accessories were developed to ensure a worker wearing gloves or a woman with long fingernails could activate the radio, heater and headlight controls. While cupholders are standard on nearly every vehicle for the driver and front passenger, the new Blazer has cupholders located on the rear doors for children. Unlike most, however, the new cupholders are round with a square end. "Many smaller children drink out of juice boxes so we've made the rear door cupholders dual

purpose," Lystad said. "These cupholders can easily hold a bag of french fries."

Knowing that children eat and drink in a vehicle, seat cover design also is a priority. "We deliberately kept the seat seams very shallow so crumbs wouldn't collect in the grooves," Lystad said. Also, all seats are treated with Scotchguard brand fabric protector at the factory.

Beyond cupholders, the new Blazer also incorporated features designed for both work and play. The ashtray, which has a cigarette lighter, also includes two powerpoints. "We found that people use the cigarette lighter as a powerpoint for many things, including cellular telephones, portable computers and a fax machine," Lystad said. "We've added two more powerpoints so they now have three areas to power their accessories."

On the weekends or for vacation travel, the powerpoints can serve to provide voltage for children's portable stereos or refrigerated coolers.

## Fette Ford/Imports has students make the grade

Fette Ford/Imports invites students to bring their most recent report cards to "Make the Grade" when they purchase a vehicle. Fette will take \$100 off the purchase price of any new vehicle for every "A" grade, up to five, in the most recent marking period on the report card. An excellent student could earn as much as a \$500 discount. "Make the Grade" is the most recent of Fette's programs to encourage students in educational achievement. It is a modification of the Graduate Program, introduced last spring, which awarded a \$500 U.S. Savings Bond to any recent graduate with the purchase of a new vehicle from Fette.

In explaining the new program, Larry Fette commented, "We understand that students with good grades are generally safer drivers. Insurance companies often give premium discounts for good grades. We also want to encourage the development of smart buyers who recognize value when they see it."

In addition, Fette has just announced the winner of its first annual Automotive Technology Scholarship competition. The contest was open to high school or

vocational/technical seniors in Bergen, Essex and Passaic counties pursuing and further education in automotive technology. The winner will receive \$1,000 to be applied to tuition, tools or transportation costs associated with the further education.

As Fette sees it, "This scholarship is a way for us to identify the finest candidates for entry positions in our increasingly technical Service Department so we can assure our customers a high quality of service. We see all these programs as a meaningful way to give something back to the communities whose business has helped to build this dealership through three generations."

Fette Ford/Imports has been recognized by the Ford Motor Company with a 1994 Distinguished Achievement Award for Quality. With over 600 Ford, Isuzu, Subaru and Select Pre-Owned vehicles in inventory, Fette is conveniently located on Route 46 near Routes 3 and 80 and the Garden State Parkway. Fette serves Bergen, Essex, Hudson, Morris and Passaic counties and beyond. For more information call Jim Russomano at 779-7000 ext. 267.

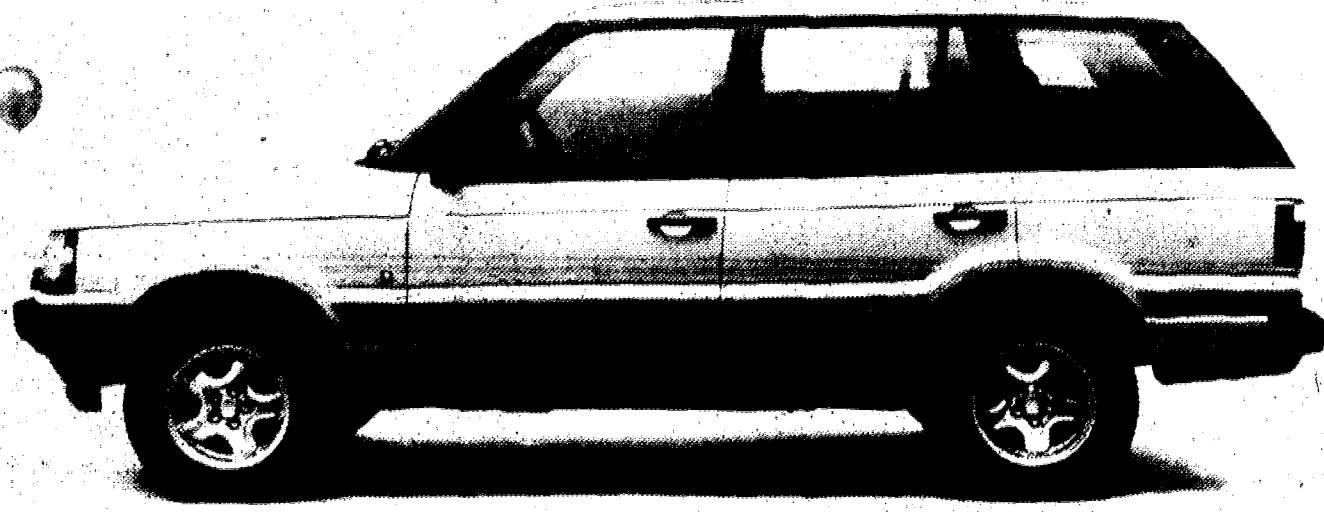
## WINDSHIELD CRACKED?



Save hundreds of dollars by NOT replacing it. Long cracks and stone chips repaired with a new patented procedure accepted by NJ-MV Dept. Stop the cracks before they spread. Ecologically better, windshield glass can not be recycled. Repairs made at your location by appointment. (No work under hood)

Phone/Fax 201-692-0955

# When was the last time the British were this excited about anything?



**RANGE ROVER**

New Jersey's First Exclusive Land Rover Dealer.



**LAND ROVER WOODBRIDGE**  
885 ROUTE 1, WOODBRIDGE • 908 634-8200

— COME VISIT OUR CHEVROLET OPEN HOUSE! —



**SUPER SPECIAL DISCOUNTS FOR AARP MEMBERS\***

<p><b>LEASE FOR LESS!</b> NEW 1995 CHEVY <b>CORVETTE COUPE</b></p> <p>Sid. equip. incl. 2.8L V-6, auto. trans., pwr. windows, locks, mirrors, air, cruise, 16" alloy wheels, 100% rust proofing, 7 spoke wheels, 7 passenger seat, 2.8L V-6, auto. trans., pwr. windows, locks, mirrors, air, cruise, 16" alloy wheels, 100% rust proofing, 7 spoke wheels, 7 passenger seat, 2.8L V-6, auto. trans., pwr. windows, locks, mirrors, air, cruise, 16" alloy wheels, 100% rust proofing, 7 spoke wheels, 7 passenger seat.</p> <p><b>\$392.12</b> PER MO. 24 MO.</p>	<p><b>LEASE FOR LESS!</b> NEW 1995 CHEVY <b>LUMINA 7 PASS. MINIVAN</b></p> <p>Sid. equip. incl. 2.8L V-6, auto. trans., pwr. windows, locks, mirrors, air, cruise, 16" alloy wheels, 100% rust proofing, 7 spoke wheels, 7 passenger seat, 2.8L V-6, auto. trans., pwr. windows, locks, mirrors, air, cruise, 16" alloy wheels, 100% rust proofing, 7 spoke wheels, 7 passenger seat.</p> <p><b>\$227.47</b> PER MO. 24 MO.</p>	<p><b>LEASE FOR LESS!</b> NEW 1995 CHEVY <b>CAMARO COUPE</b></p> <p>Sid. equip. incl. 2.8L V-6, auto. trans., pwr. windows, locks, mirrors, air, cruise, 16" alloy wheels, 100% rust proofing, 7 spoke wheels, 7 passenger seat, 2.8L V-6, auto. trans., pwr. windows, locks, mirrors, air, cruise, 16" alloy wheels, 100% rust proofing, 7 spoke wheels, 7 passenger seat.</p> <p><b>\$237.74</b> PER MO. 24 MO.</p>	<p><b>SAVE \$1427</b> ON A NEW 1995 GEO <b>METRO 2 DR. LSI</b></p> <p>Sid. equip. incl. 2.8L V-6, auto. trans., pwr. windows, locks, mirrors, air, cruise, 16" alloy wheels, 100% rust proofing, 7 spoke wheels, 7 passenger seat, 2.8L V-6, auto. trans., pwr. windows, locks, mirrors, air, cruise, 16" alloy wheels, 100% rust proofing, 7 spoke wheels, 7 passenger seat.</p> <p><b>\$9699</b></p>
<p><b>SAVE \$3232</b> ON A NEW 1995 CHEVY <b>ASTRO CS 8 PASS. VAN</b></p> <p>Sid. equip. incl. 4.3L V-6, auto. trans., pwr. windows, locks, mirrors, air, cruise, 16" alloy wheels, 100% rust proofing, 7 spoke wheels, 7 passenger seat, 4.3L V-6, auto. trans., pwr. windows, locks, mirrors, air, cruise, 16" alloy wheels, 100% rust proofing, 7 spoke wheels, 7 passenger seat.</p> <p><b>\$18,537</b></p>	<p><b>SAVE \$1803</b> ON A NEW 1995 CHEVY <b>CORSICA 4 DOOR</b></p> <p>Sid. equip. incl. pwr. atm/ABS brakes, drivers airbag, lights, sp. mirrors, full wheel covers, cloth int. AIR, Opt. incl. 2.1 liter V-6, auto. trans. w/OD, r/del. case, int. wip. cargo net, 2 tone stripe &amp; dr. edge guards, SIK. #2389B, VIN #S3Y185146, MSRP \$14,595. Incl. \$500 factory &amp; \$500 first time buyer rebate.</p> <p><b>\$12,792</b></p>	<p><b>SAVE \$2332</b> ON A NEW 1995 GEO <b>TRACKER 4X4</b></p> <p>HARDTOP, Sid. equip. incl. 1.6L 4 cyl., 5 spd. man. trans., pwr. windows, locks, mirrors, air, cruise, 16" alloy wheels, 100% rust proofing, 7 spoke wheels, 7 passenger seat, 1.6L 4 cyl., 5 spd. man. trans., pwr. windows, locks, mirrors, air, cruise, 16" alloy wheels, 100% rust proofing, 7 spoke wheels, 7 passenger seat.</p> <p><b>\$12,598</b></p>	<p><b>SAVE \$1733</b> ON A NEW 1995 CHEVY <b>BERETTA SPORT COUPE</b></p> <p>Sid. equip. incl. pwr. atm/ABS brakes, sport mirrors, 16" alloy wheels, cloth bucket seats, console, driver air bag, pwr. locks, Opt. incl. 3.1 V-6 eng., auto. trans. w/OD, case, int. meta. roof, int. wipers, cargo net, cruise, SIK. #2389B, VIN #S3Y218181, MSRP \$14,320. Incl. \$500 factory rebate and \$600 1st time buyer rebate if qual.</p> <p><b>\$12,587</b></p>

**SUPER SPECIAL DISCOUNTS FOR AAA MEMBERS\***

<p>'87 TEMPO GL</p> <p>Four 4 dr., 4 cyl., auto. trans., pwr. atm/ABS brakes, lights, air, cruise, 16" alloy wheels, 100% rust proofing, 7 spoke wheels, 7 passenger seat.</p> <p><b>\$3395</b></p>	<p>'86 PONTIAC 6000</p> <p>4 dr., 4 cyl., auto. trans., pwr. atm/ABS brakes, lights, air, cruise, 16" alloy wheels, 100% rust proofing, 7 spoke wheels, 7 passenger seat.</p> <p><b>\$2495</b></p>	<p>'93 CHEVROLET S-10</p> <p>LONG BED PICK UP, V-6, auto. trans., pwr. windows, locks, mirrors, air, cruise, 16" alloy wheels, 100% rust proofing, 7 spoke wheels, 7 passenger seat.</p> <p><b>\$9995</b></p>	<p>'86 ASTRO CL VAN</p> <p>Chevy 7 passenger, V-6, auto. trans., pwr. windows, locks, mirrors, air, cruise, 16" alloy wheels, 100% rust proofing, 7 spoke wheels, 7 passenger seat.</p> <p><b>\$4995</b></p>	<p>'93 CAPRICE CL ESTATE</p> <p>Chevy 2 door wagon, V-6, auto. trans., pwr. windows, locks, mirrors, air, cruise, 16" alloy wheels, 100% rust proofing, 7 spoke wheels, 7 passenger seat.</p> <p><b>\$15,295</b></p>	<p>'91 EXT. RS ASTRO MINIVAN</p> <p>Chevy 7 passenger, V-6, auto. trans., pwr. windows, locks, mirrors, air, cruise, 16" alloy wheels, 100% rust proofing, 7 spoke wheels, 7 passenger seat.</p> <p><b>\$13,295</b></p>
<p>'86 CAPRICE CL BROUGHAM</p> <p>4 dr., 4 cyl., auto. trans., pwr. atm/ABS brakes, lights, air, cruise, 16" alloy wheels, 100% rust proofing, 7 spoke wheels, 7 passenger seat.</p> <p><b>\$4295</b></p>	<p>'91 LESABRE LIMITED</p> <p>4 dr., 4 cyl., auto. trans., pwr. atm/ABS brakes, lights, air, cruise, 16" alloy wheels, 100% rust proofing, 7 spoke wheels, 7 passenger seat.</p> <p><b>\$11,695</b></p>	<p>'92 OLDS CUTLASS SUPREME SL</p> <p>4 dr., 4 cyl., auto. trans., pwr. atm/ABS brakes, lights, air, cruise, 16" alloy wheels, 100% rust proofing, 7 spoke wheels, 7 passenger seat.</p> <p><b>\$10,995</b></p>	<p>'86 MERCURY COLONY PARK</p> <p>ESTATE WAGON, V-6, auto. trans., pwr. windows, locks, mirrors, air, cruise, 16" alloy wheels, 100% rust proofing, 7 spoke wheels, 7 passenger seat.</p> <p><b>\$3795</b></p>	<p>'92 GEO PRIZM</p> <p>4 dr., 4 cyl., auto. trans., pwr. atm/ABS brakes, lights, air, cruise, 16" alloy wheels, 100% rust proofing, 7 spoke wheels, 7 passenger seat.</p> <p><b>\$8795</b></p>	<p>'90 CAPRICE CL BROUGHAM</p> <p>Chevy 4 dr., V-6, auto. trans., pwr. atm/ABS brakes, lights, air, cruise, 16" alloy wheels, 100% rust proofing, 7 spoke wheels, 7 passenger seat.</p> <p><b>\$7295</b></p>

\*Price includes all costs to be paid by the consumer except for licensing, registration & taxes. Not responsible for typographical errors. Not applicable to all vehicles.

**BARNES** CHEVROLET GEO

38 RIVER ROAD, SUMMIT, NJ

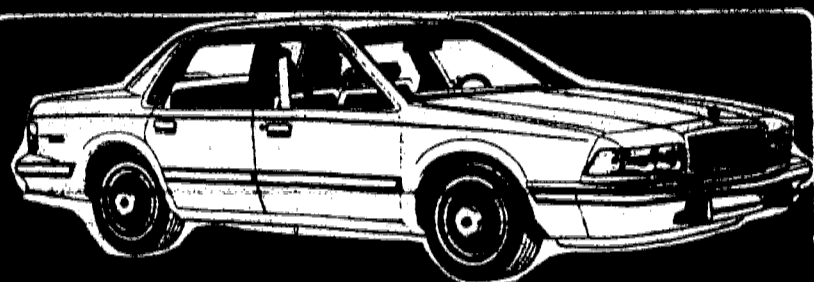
(908) 273-7800

**MAXON EXCLUSIVE**

# 95% OFF MARKUP

**ON EVERY SINGLE VEHICLE IN  
MAXON'S 2500 CAR INVENTORY**

AS THE OTHER DEALER'S WILL START THEIR SUMMER CLOSEOUT SALES... ONLY MAXON WILL BUST THE MARKET WIDE OPEN BY BLOWING OUT THEIR AVAILABLE INVENTORY OF NEW VEHICLES BY CHOPPING A STARTLING 95% OFF THE MARKUP OF EVERY VEHICLE. ONLY MAXON WILL BE READY TO ACCEPT DEALS ON A 5% MARKUP BASIS IN ORDER TO MOVE OUT THEIR INVENTORY FAST! THIS IS A LIMITED TIME OFFER!



**NEW '95 CENTURY 4DR**

## \$12699



**NEW '95 REGAL 4DR**

## \$13699

**YOU SAVE \$3309**



**BRAND NEW '95  
SKYLARK 4DR**

## \$17699

**YOU SAVE \$1212**



**NEW '95 LE SABRE 4DR**

**YOU SAVE \$2366**



**NEW '95 ROADMASTER 4DR**

## \$19699

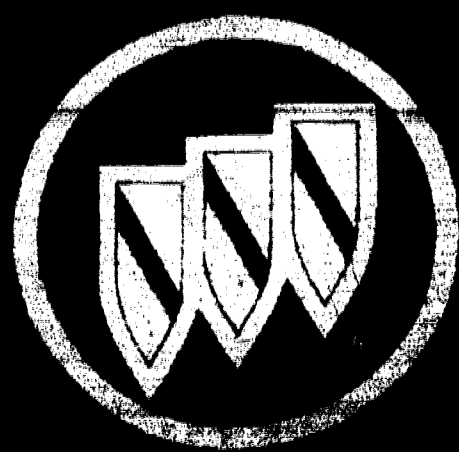
**YOU SAVE \$3737**

**90 BUICKS IN  
STOCK AND  
READY TO GO**

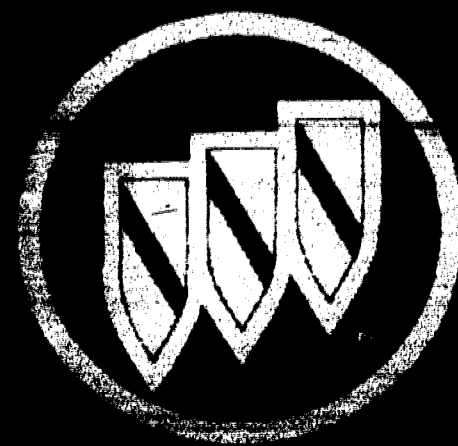
## \$22699

**YOU SAVE \$2646**

# I-800-YES MAXON



# MAXON BUICK

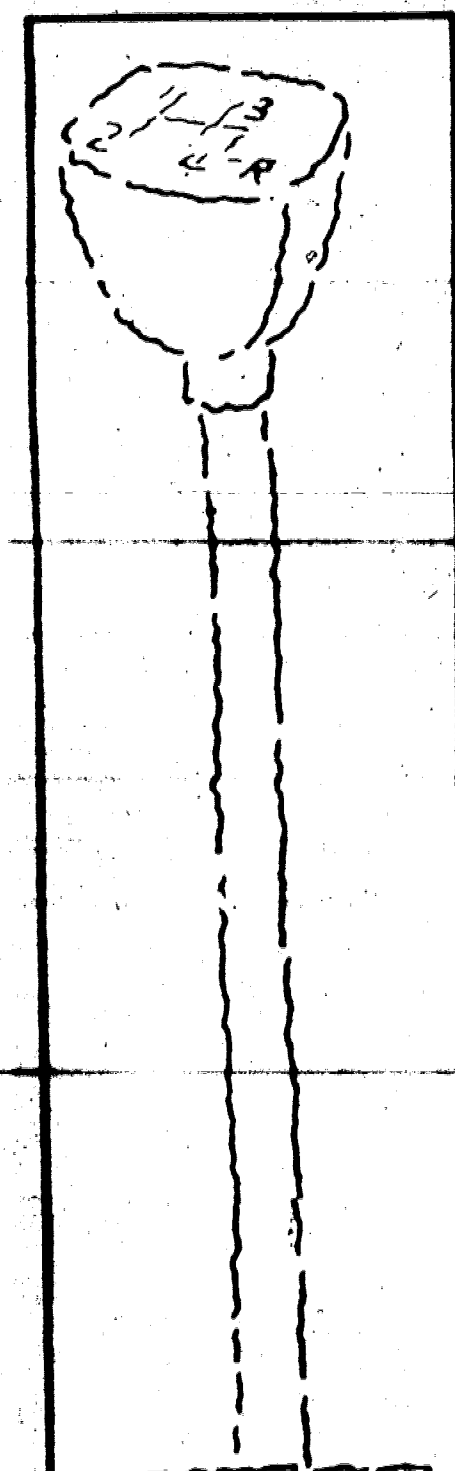


**ROUTE 22 WEST • UNION, NEW JERSEY**

**AUTOMOTIVE**  
**AUTO DEALERS**  
SMYTHE VOLVO EXCLUSIVE VOLVO DEALER  
328 Morris Avenue Summit (908) 273-4200  
AUTHORIZED FACTORY SERVICE LONG TERM LEASING

**AUTO FOR SALE**  
AUTOSPECIAL - \$22.00 for 10 weeks prepaid. Call Classified for details. 800-564-8911.  
1975 BUICK LESABRE. many new parts. \$650 or best offer. Call 908-687-5729 after 5pm.  
1989 BUICK SKYLARK-CUSTOM. Outstanding car! 81,000 miles, loaded. First \$3,900 takes it. Call 908-688-4754.  
1972 BUICK SKYLARK. Classic, automatic, green, 80,000 miles, one owner, new transmission/brakes. Runs great. \$2,000 negotiable. Call 908-791-8888.  
1980 CADILLAC ELDORADO 6.0, full power, white/blue interior, blue top, 80,000 miles. \$1100 firm. 201-667-9130, 201-923-9100, 1800.

1980 CHEVROLET CAVALIER Z24 V-6, automatic, all power, AM/FM stereo cassette, cruise, alarm, 60,000 miles, mint condition. \$7,000 firm. 201-998-3299.  
1987 CHEVROLET CORVETTE. Only 25,000 miles. Automatic, fully loaded, CD player. Like new. Asking \$14,900. Call 201-338-1327, leave message.  
1984 CHEVROLET CAMARO. Turquoise, 2 door, automatic. Sunroof, AM/FM cassette, hi-performance tires. Low mileage, garaged. \$2,000/ best offer. Great car! 908-245-5267.  
1971 CHEVY CAPRICE. 2 door, green, automatic, full power, runs good, air, stereo, \$450. Call 908-688-4721.  
1989 CHEVY PICKUP. 1/2 ton C-10. 6 cylinder, 3 speed, 4 side tool boxes, \$1,100. 201-429-3419.  
1988 CHEVY SPECTRUM. 4-door. Excellent condition. 55,000 miles, original owner. Automatic, air conditioning, am/fm. Asking \$3000. Call 908-687-4139.  
1987 CHEVY CAMARO. Iroc Z28, t-top, black, 5 speed, loaded, new tires, lowered rear window. Must sell. 908-233-9491 or 908-233-0529.



Get it in gear with the Auto Special 10 weeks - 20 weeks only \$22.00 prepaid. One vehicle per ad. No abbreviations. No refunds. Private party advertisers only. Price of vehicle is only copy change allowed. Just jot down your ad and mail it in with your payment. Worral Newspapers Classified Advertising Dept. P.O. Box 158 Maplewood, N.J. 07040

**AUTO FOR SALE**  
1980 CHEVY CORVETTE. Stereo, cassette, air conditioning, sunroof. \$2000. 201-678-5210, 201-378-7069.  
1984 CHRYSLER LH6 EMERALD green. 821,500, air, power, leather, 5 door, 6 cylinder, 9,503 miles, 16 pack cd. 201-680-7811.  
1981 CHRYSLER LEBARON. convertible, black, gray roof, am/fm cassette stereo, fully loaded, mint condition. 47,000 miles. Asking \$8000. Call 201-984-9202.  
1987 COUGAR 20th ANNIVERSARY Edition. Tinted windows, power everything, alpine stereo, V8. Runs good, well maintained. \$2,500, negotiable. 908-684-8776.  
1987 DODGE CHARGER. Cassette, 5 speed, new tires, new exhaust, battery, clutch, brakes, will pass inspection. \$1,100. Evenings, 908-925-8510.  
1988 DODGE COLT. 4-door hatchback. Red, automatic, air conditioned. Original owner, good condition. Priced to sell. Call 908-388-6609.  
1992 DODGE DYNASTY. 8 cylinder, 4 door, automatic, all power, air, rear defroster, cruise, tilt, 41,000 miles, mint. \$7,250. 201-731-3243.  
1987 DODGE OMNI. 4-door, 5-speed shift, power steering and brakes, air, stereo, new tires, clean. \$2,000 miles. \$1,950. Call 908-354-5455.  
DREAM MACHINES - look for our "Reserved Parking" ad or call Classified at 800-564-8911.

1989 FORD AEROSTAR NEWARR. Seats seven, two removable benches, air, 5 speed, am/fm, \$4,200. Jeff, 908-486-7520. Monday thru Friday, 9am-5pm.  
1988 FORD BRONCO XLT. Full sized, fully loaded, 4X4, automatic, air conditioned 66,000 miles. Asking \$7,300 or \$2,000 down, \$160 monthly. 201-926-1700.  
1991 FORD EXPLORER. Eddie Bauer. Black, fully loaded, alarm, sunroof, running boards, 58K miles, excellent condition. \$15,750. Call 201-669-0472.  
1983 FORD FALCON and 1985 Ford Mustang. \$3,000 or best offer for each. 908-686-2233 ask for Ralph, or 289-7268.

**AUTO FOR SALE**  
1988 FORD MUSTANG GT 5.0. White, alarm, new tires, 84,000 miles. \$8,999. 201-467-6099, leave message.  
1989 FORD PROBE. Automatic, air conditioned, power steering, power brakes. 88,000 miles. Asking \$4,200 or \$700 down and \$160 monthly. 201-926-1700.  
1990 FORD TAURUS GL Wagon. Nine passenger, gray, excellent condition. 53,000 miles, air, all power, original owner. \$7,800. 201-467-2668.  
1977 FORD T-BIRD. Hardtop, automatic, V6, 351 Cleveland engine, air conditioning, power steering, brakes, windows, doors, locks, trunk, seats. Racing oversized bucket seats. AM/FM Quadraphonic sound stereo, rear defogger, aluminum rims, white with blue trim. 58,900 miles. Call 201-762-6405.  
1992 GEO-Storm GSI. Automatic, air conditioned, power steering/brakes. AM/FM Stereo cassette, alarm. Low mileage. Original owner, good condition. 908-964-9267.  
1992 HONDA ACCORD. Excellent condition. Burgundy, garaged, automatic, air conditioner. 72,000 miles. Original owner. \$9,000. Call 201-736-6480, leave message.  
1991 HONDA CRX. Automatic, air conditioned, power steering. 60,000 miles. Asking \$4,900 or \$1,000 down and \$150 monthly. Call 201-926-1700.  
1980 JEEP EAgle. 6-cylinder. Excellent condition. No body rust. Leather interior, white, 4-door, completely loaded. Asking \$3,000. Call 201-239-9036.  
1988 JEEP GRAND WAGONER. Excellent condition inside and outside. 90,000 high mileage. New carburetor, brakes and muffler. \$6000 negotiable. 201-763-8938.  
1987 JEEP CHEROKEE. Gray/black interior, automatic, 4 door, AM/FM cassette, new tires, exhaust, 90K miles. \$5,000. Call 201-378-9450.  
1984 LINCOLN CONTINENTAL. Fully equipped, automatic, 87K, cloth interior, all power. \$800. Call 908-233-9653, after 4pm.

1990 MAZDA PROTEGE. 4-door sedan, automatic, AM/FM cassette, air conditioning. Original owner. 68K, 25,000 mi. or best offer. Call 201-467-9485.  
1987 MERCEDES 300E. Black/grey interior, sunroof, 63 miles, 40,000 miles. Must see or appreciate. \$16,900. Call 201-669-0568 leave message.  
1987 MITSUBISHI GALANT. Automatic, air conditioned, power sunroof, steering, brakes. 70,000 miles. Asking \$2,999 or \$600 down and \$140 monthly. 201-926-1700.  
1988 NISSAN 200 XE. Automatic, air conditioned, power steering, power brakes. 72,000 miles. Asking \$3,900 or \$800 down and \$150 monthly. 201-926-1700.  
1988 NISSAN 300 ZX. 2+2, 70,000 miles. 5 speed, air conditioned, T-tops. Runs well. Asking \$3,900 or \$800 down and \$150 monthly. 201-926-1700.  
1985 NISSAN PICK-UP. King Cab, original owner, runs great. \$1,780. Call 201-372-6192, mornings before 11 a.m.  
1984 NISSAN 300 GX. 5 speed, air conditioned, N-T tops, Good miles. 2+2, runs well. First \$1500 cash takes it. 201-926-1700.  
1988 OLDSMOBILE FIRENZA. 4-door, yellow, 4-cylinder, automatic, power steering/brakes, air conditioning. 65K, 1 owner. \$800/ best offer. 201-761-7000, after 5pm.  
1990 PLYMOUTH GRAND VOYAGER SE Van. 53,000 miles, 1 owner, clean. Private use only. \$6200. Call 201-338-3613.  
1974 PLYMOUTH VALIANT. 2-door, 4-cylinder, runs well. Power steering, low mileage. 2nd owner. \$800 or best offer. 201-378-8593.  
1986 PONTIAC PARISENE BROUGHAM. 4-door, excellent condition. All power accessories, midnight blue, 62,000 miles. \$3,950. Call 908-688-7922.  
1989 PONTIAC SUNBIRD GT. Automatic, power steering/brakes, air, AM/FM cassette, new tires. 51,000 miles. Excellent condition. \$3,750/ negotiable. 908-925-5404.  
1987 PONTIAC FIREBIRD 305. 6-cylinder, automatic, 107K, air conditioning, all power, runs good, mag, alarm. \$1800/ negotiable. Must sell. 908-687-6153.

**AUTO FOR SALE**  
1987 PORSCHE 924. 5 speed, air, sunroof, AM/FM stereo cassette, low mileage. Excellent condition. Asking \$8500. Call 201-261-1202 after 6pm.  
SEIZED CARS from \$175. Porsche, Cadillac, Chevy, BMW's, Corvettes, also Jeeps. 4 wheel drives. Your area. Toll free 1-800-898-9778 Ext. A-5139 for current listings.  
1992 TOYOTA CELICA-GT. 5 speed, power package, sunroof, AM/FM cassette. Well maintained. 59K miles. Asking \$11,000/ make offer. Call 908-245-1220.  
1989 TOYOTA MR2. Original owner, red, automatic, power steering/brakes, air conditioning. AM/FM cassette, sunroof, new transmission. \$4500. best offer. 201-669-3937.  
1991 TOYOTA CELICA GT. red, automatic transmission, CD, alarm, and theft, alloy wheels, airbag, 25,000 miles. Perfect condition. Moving! 908-233-2993.  
1985 TOYOTA CELICA GT. Hatchback, automatic, air, fully equipped. 86,000 miles, excellent condition. Must sell. \$3,600. 201-379-2825.

**AUTO PARTS/REPAIR**  
AIR CONDITIONING Special. refill Freon (up to 2 pounds), evaluate, check for leaks, only \$65.00! Quality work. Call 908-353-2348.  
RICHIE'S AUTO Parts, Hillside. Open 7 days. Auto parts, auto body, auto repair. If we don't have it, we'll get it! Call 908-686-2322.

**AUTO WANTED**  
ABLE PAYS TOP \$\$\$ IN CASH  
For All 4 Wheel Drives  
CARS, TRUCKS and VANS  
FREE PICK UP 7 DAYS  
1-800-953-9328  
908-688-2044  
**WE BUY CARS**  
Any model, Any year  
For Top \$\$\$  
201-926-1700

\$\$\$WE PAY TOP DOLLAR\$\$\$  
For Your Junk Car  
24 Hour Service. Call:  
908-688-7420

**OLDSMOBILE**  
**WANT TO LEASE IT!**  
BRAND NEW '95 OLDSMOBILE CIERA  
BUY FOR \$16,595/\$280/mo. LEASE 31 MOS.  
4 Door, 6 cyl., auto OD trans., per single-lock disc brks, AIR, alpine, AM/FM stereo cassette, power windows, 3.4L DOHC V6 engine, 152hp, dual remote mtrs., int. wip. delay w/tilt covers, SK, ABS, VIN #58032280, MSRP \$16,595. Payments based on 36 month closed end lease with 25 equal pmts of \$280.05 incl. tax. \$2000 down plus 1st pmt of \$300.00. Sec. dep. due at inception. 15,000 mi. yr. 100mi. thereafter. Purchase option at lease end - \$9299.79. Total pmt. \$10,081.80. Lessee responsible for excess wear & tear.

BRAND NEW '95 OLDSMOBILE 88 ROYALE  
BUY FOR \$20,995/\$344/mo. LEASE 31 MOS.  
4 Dr. 6 cyl., auto OD trans., per single-lock disc brks, AIR, alpine, per windshield antennas, AM/FM cassette, 3.4L DOHC V6 engine, 152hp, dual remote mtrs., sport stripes, vinyl mtr, tilted disk safety key, w/ wip. alum. whls, cloth int. SK #802. VIN #54047676. MSRP \$20,995. Payments based on 36 month closed end lease with 25 equal pmts of \$344.84 incl. tax. \$1000 down plus 1st pmt of \$350.00. Sec. dep. due at inception. 12,000 mi. yr. 150mi. thereafter. Purchase option at lease end - \$11,547.25. Total pmts. \$12,414.26. Lessee responsible for excess wear & tear.

**94 LEFT OVER CLEARANCE!**  
BRAND NEW '94 OLDSMOBILE CUTLASS SUPREME CONVERTIBLE  
SAVE \$23,000  
Oldsmobile, lt. wnl drive, 3.4L DOHC V6 eng., auto OD trans., per single-lock disc brks, AIR, per windshield antennas, AM/FM cassette with clock, tilt, cruise, r/dof, uphrs, hrs mtdge, dual remote mtrs., keyless entry, air bag, int. wip., alum. whls, graphite thr bkcts, console. 3,500 demo miles. SK #915. VIN #R9D396251. MSRP \$26,087. Inc. \$4582 dr. disc. and \$500 Ciera Loyalty Certificate if qual. See dealer for details.

**WITH THIS COUPON | SERVICE SPECIALS | WITH THIS COUPON**

Lube, Oil & Filter up to 5 Qts. of Motor Oil \$1995 PLUS TAX. GM MODELS ONLY. Expires 6/30/95.

FREE BRAKE INSPECTION. Remove and replace wheels for inspection, check brake pads, linings, and complete brake system. GM MODELS ONLY. Expires 6/30/95.

**Reilly Oldsmobile**  
560 North Avenue  
WESTFIELD, NEW JERSEY  
908-232-765

**SUPERIOR OLDSMOBILE**  
91 DODGE CARAVAN LE. Auto Trans 6 Cyl. Air Cond. P/S, P/B, Tilt. P/Mirrors. P/Windows. P/Locks. Rear Def. Tint Glass. Sport White. AM/FM. Stereo. Cassette. Miles 69,619. VIN LR770777. \$6995.  
91 CHEVY CAPRICE. Auto Trans 8 cyl. Air Cond. P/S, P/B, Tilt. P/Mirrors. P/Windows. P/Locks. P/Antenna. Cruise. Rear Def. Tint Glass. AM/FM. Stereo. Miles 49,888. VIN MW138140. \$7495.  
85 PONTIAC PARISENE WGN. Auto Trans. 8 Cyl. Air Cond. P/S, P/B, Tilt. P/Mirrors. P/Windows. P/Locks. P/Antenna. Cruise. Rear Def. Tint Glass. AM/FM. Stereo. Leather. Miles 64,894. VIN F9220296. \$4995.  
88 OLDS CIERA XC. Auto Trans. 6 cyl. Air Cond. P/S, P/B, Tilt. P/Mirrors. P/Windows. P/Locks. P/Antenna. P/Trunk Ref. Cruise. Rear Def. Tint Glass. Sport White. Sunroof. AM/FM. Stereo. Cassette. Miles 73,914. VIN J2337539. \$4595.  
88 VW JETTA. Auto Trans. 4 Cyl. Air Cond. P/S, Rear Def. Tint Glass. Sport White. AM/FM. Stereo. Cassette. Miles 88154. VIN JW270754. \$4495.  
88 ISUZU I MARK. Auto Trans. Air Cond. P/S, P/B, Rear Def. Tint Glass. Sport White. AM/FM. Stereo. Cassette. Miles 76421. VIN J7404241. \$3595.  
86 CADDTY SEDAN DEVILLE. Auto Trans. 6 Cyl. Air Cond. P/S, P/B, Tilt. P/Mirrors. P/Windows. P/Seats. P/Locks. P/Antenna. P/Trunk Ref. Cruise. Rear Def. Tint Glass. AM/FM. Stereo. Cassette. Miles 66,307. VIN J9367332. \$8995.  
93 FORD TEMPO G.I. Auto Trans. 4 Cyl. Air Cond. P/S, P/B, Tilt. P/Mirrors. P/Windows. P/Locks. Cruise. Rear Def. Tint Glass. Sport White. AM/FM. Stereo. Cassette. Miles 34,726. VIN R9277017. \$6995.  
91 OLDS CUTLASS SUPREME. Auto Trans. 6 Cyl. Air Cond. P/S, P/B, Tilt. P/Mirrors. P/Windows. P/Locks. P/Antenna. P/Trunk Ref. Cruise. Tint Glass. Sport White. AM/FM. Stereo. Cassette. Miles 46,925. VIN M0342179. \$8995.  
88 BRONCO II XLT. Auto Trans. 6 Cyl. Air Cond. P/S, P/B, Tilt. P/Mirrors. P/Seats. P/Locks. Cruise. Rear Def. Tint Glass. AM/FM. Stereo. Cassette. Miles 72,631. VIN 84333677. \$8995.

**DOUGLAS PRE-OWNED CLEARANCE**  
84 BUICK REGAL GS. V6 - Auto P/S, P/B, Air Cond. Full power int., Gorgione, Heat, Leather Int., Alloy Rims, Like New Cond., Only 12,949 miles. VIN#R1421904. Sale Price \$17,485.  
83 VW PASSAT GLX SDN. V6, Auto, Air Cond, P/S, P/B, Full Power Int., P. Sunroof, Black Pear White Tan Leather, Alloy Rims, only 24,108 miles. VIN# PE134158. Sale Price \$16,465.  
83 FORD TAURUS GL SDN. V6, AUTO, AIR COND, P/S, P/B, Full Power Equipment, Blue w/Velour int., only 32,747 miles. VIN# PD278X4. Sale Price \$12,495 - 3 others to choose from.  
83 TEMPO GL SDN. 4 Cyl, Auto, Air Cond., P/S, P/B. Full Power Int., Tint Glass, w/Conv. cloth int., only 32,967 miles. VIN# PB160781. Sale Price \$8,995.  
91 VW JETTA GL. 4 cyl, 5 SP, Air Cond., PS, PB, D Silver and velour int., 40,550 miles, VIN#MM014294, Sale Price \$8995.  
84 VW JETTA III GLS. 4 cyl, Auto, Air Cond., PS, PB, Sunroof, Full power int., Blk w/Plasimig velour int., Only 15,299 miles. VIN#R90086. Sale Price \$14995.  
82 BUICK REGAL ROADSTER SDN. V6, Auto, Air Cond., P/S, P/B, Full power int., P.Sunroof, White w/Blk int., Roadster Roof w/Red wheels, only 38,191 miles. VIN# N1477151. SALE PRICE \$11,995.  
91 NISSAN 300 ZX TWIN TURBO. 6 Cyl., Twin Turbo, 5 Sp. Air Cond., P/S, P/B, Full power int., T-Tops, Hot Red w/Black leather int., Alloys, ONLY 11,823 miles. VIN# MX502988. Sale Price \$20,995 - This Car Must Be Seen!  
83 BRONCO EDDIE BAEUR. V8, Auto, Air Cond, P/S, PB, 4X4, Full Power Int., Chestnut w/Tan Leather, Ngr's Demo. Only 30,960 miles. Vin #PLA73607. Sale Price \$19,800.  
90 VW CORRADO G60. 4 cyl Supercharger, 5 SP, Air Cond., Power Sunroof, ABS Full Power, Black w/grey velour interior, alloys. Only 65,513 miles. VIN#R1K00892. Sale Price only \$10995.

**USED CARS**  
No one can offer better value in used cars than your local new car dealer who has the facilities, certified technicians, and equipment to provide competent reconditioning and warranty service.

**88 OLDSMOBILE**  
Auto Trans 6 Cyl. Air Cond. P/S, P/B, Tilt. P/Mirrors. P/Windows. P/Locks. Rear Def. Tint Glass. Sport White. AM/FM. Stereo. Cassette. Miles 69,619. VIN LR770777. \$6995.  
91 CHEVY CAPRICE. Auto Trans 8 cyl. Air Cond. P/S, P/B, Tilt. P/Mirrors. P/Windows. P/Locks. P/Antenna. Cruise. Rear Def. Tint Glass. AM/FM. Stereo. Miles 49,888. VIN MW138140. \$7495.  
85 PONTIAC PARISENE WGN. Auto Trans. 8 Cyl. Air Cond. P/S, P/B, Tilt. P/Mirrors. P/Windows. P/Locks. P/Antenna. Cruise. Rear Def. Tint Glass. AM/FM. Stereo. Leather. Miles 64,894. VIN F9220296. \$4995.  
88 OLDS CIERA XC. Auto Trans. 6 cyl. Air Cond. P/S, P/B, Tilt. P/Mirrors. P/Windows. P/Locks. P/Antenna. P/Trunk Ref. Cruise. Rear Def. Tint Glass. Sport White. Sunroof. AM/FM. Stereo. Cassette. Miles 73,914. VIN J2337539. \$4595.  
88 VW JETTA. Auto Trans. 4 Cyl. Air Cond. P/S, Rear Def. Tint Glass. Sport White. AM/FM. Stereo. Cassette. Miles 88154. VIN JW270754. \$4495.  
88 ISUZU I MARK. Auto Trans. Air Cond. P/S, P/B, Rear Def. Tint Glass. Sport White. AM/FM. Stereo. Cassette. Miles 76421. VIN J7404241. \$3595.  
86 CADDTY SEDAN DEVILLE. Auto Trans. 6 Cyl. Air Cond. P/S, P/B, Tilt. P/Mirrors. P/Windows. P/Seats. P/Locks. P/Antenna. P/Trunk Ref. Cruise. Rear Def. Tint Glass. AM/FM. Stereo. Cassette. Miles 66,307. VIN J9367332. \$8995.  
93 FORD TEMPO G.I. Auto Trans. 4 Cyl. Air Cond. P/S, P/B, Tilt. P/Mirrors. P/Windows. P/Locks. Cruise. Rear Def. Tint Glass. Sport White. AM/FM. Stereo. Cassette. Miles 34,726. VIN R9277017. \$6995.  
91 OLDS CUTLASS SUPREME. Auto Trans. 6 Cyl. Air Cond. P/S, P/B, Tilt. P/Mirrors. P/Windows. P/Locks. P/Antenna. P/Trunk Ref. Cruise. Tint Glass. Sport White. AM/FM. Stereo. Cassette. Miles 46,925. VIN M0342179. \$8995.  
88 BRONCO II XLT. Auto Trans. 6 Cyl. Air Cond. P/S, P/B, Tilt. P/Mirrors. P/Seats. P/Locks. Cruise. Rear Def. Tint Glass. AM/FM. Stereo. Cassette. Miles 72,631. VIN 84333677. \$8995.

**TOWNE Chrysler-Jeep**  
A Family In Business Since 1935  
**DONALD R. PLOETNER**  
Invites You To Come In Today For A Special Lease Or Buy Price On Chryslers, Plymouths, Jeeps & Eagles.

633 Springfield Ave. Maplewood  
CALL 616-6026

**NEW 1995 JEEP GRAND CHEROKEE LTD. ORVIS EDITION**  
LEASE FOR \$399 PER MO. 0-DOWN 24 MOS.

**NEW 1995 PLYMOUTH 7 PASSENGER VOYAGER MINIVAN**  
LEASE FOR \$199 PER MO. 0-DOWN 24 MOS.

**BRAND NEW 1995 EAGLE TALON**  
Auto trans, 2.0L 4 cyl. eng. 140 h.p., pwr., keyless entry security, pwr. sunroof, air cond, loaded, SK #95-38, VIN #SE191369. MSRP \$18,200. Price includes all costs to be paid by a consumer except for license, registration and taxes.