

UNION COUNTY NEWS

WORRALL COMMUNITY NEWSPAPERS

THURSDAY, JULY 11, 1996

SECTION B

From The Editor's Notebook
By Tom Canavan
Editor in Chief



County releases report on deer hunt

Deer Management Subcommittee says continue the five-year plan

By Jay Hochberg
Regional Editor

In its latest report on the effort to control the size of the deer population in the Watchung Reservation, the county's Deer Management Subcommittee has recommended the freeholders continue the existing five-year plan.

In its 66-page study released Friday, the group did suggest modifications "that are operational in nature," including:

- The county should survey the sharpshooters used in the 1996 hunt, to facilitate the return of those volunteers for the 1997 hunt.

- To build a crew of 30 sharpshooters for the '96 hunt, the Division of Parks and Recreation accepted applications from licensed hunters and law enforcement officers in Union County who were able to demonstrate marksmanship. The shooters were under the supervision of the Division of Parks and Recreation and the state Division of Fish, Game and Wildlife.

- No action by the freeholders is required. The Division of Parks and Recreation will begin to solicit volunteer licensed hunters in September.

- The county should post larger signs informing the public in advance that the hunt will occur.

- Residents of Mountainside, Summit and Scotch Plains — some of whom have criticized the hunt — have requested such signs, citing safety concerns.

- The county should provide a more defined schedule of the hours the program will be held.

- Due to the snowfall this past winter, the hunt had to be discontinued for days at a time, leading to confusion

among area residents regarding the presence of the sharpshooters. In addition, local officials had voiced objections during past hunts to the county's failure to notify the public of the times hunters were deployed.

- The county should "make greater use of tree stands, as they seem to greatly increase the productivity of agents in most areas, while also increasing the safety of the program."

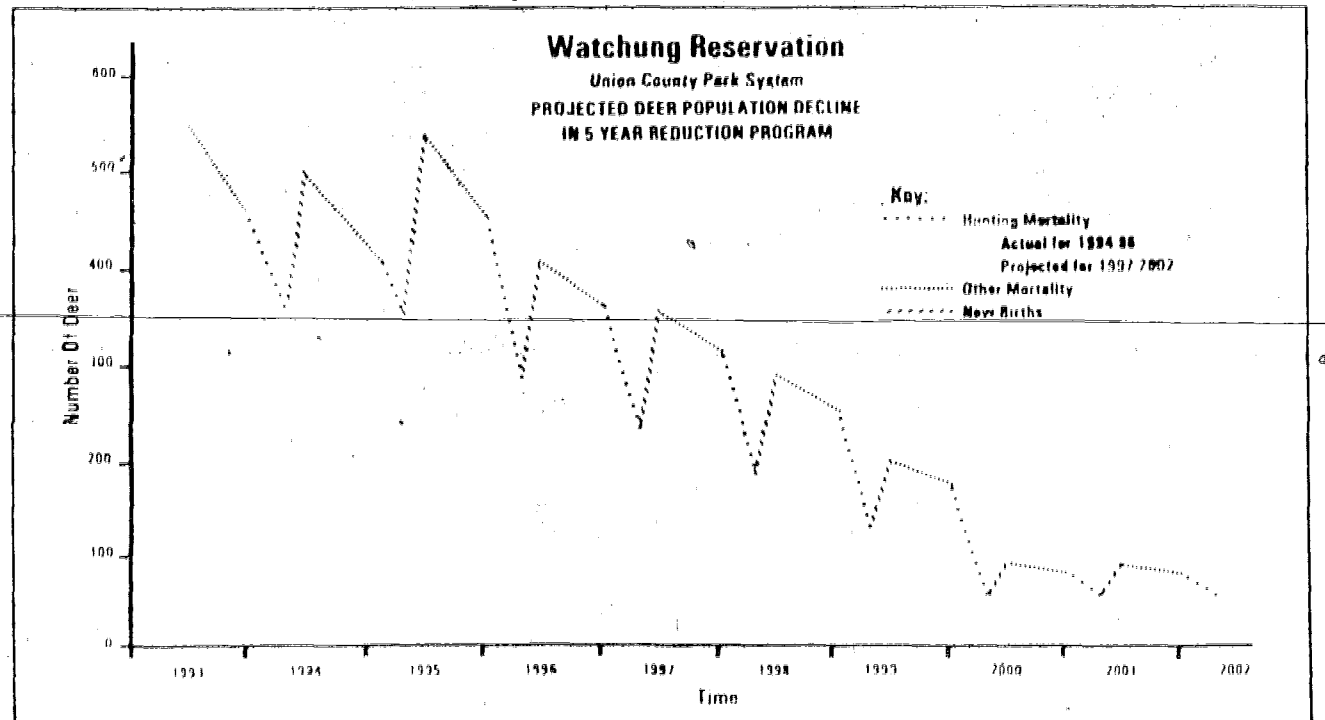
The tree stands, which allow hunters to conceal themselves above the line-of-sight of deer, have been a debating point for those who oppose the hunts. While they are known to afford increased visibility to the hunters, protestors have said the stands give those hunters an unfair advantage, likening the hunts to slaughters.

Projected population
In 30 days this past winter, 167 deer were killed by 30 sharpshooters.

The county's five-year plan, approved by the Division of Fish, Game and Wildlife through its Community-based Deer Management Plan, calls for "harvesting" between 120-189 deer per year within five years to reach a population of 60 deer — or 20 per square mile.

After the goal is reached, the county will try to maintain the size of the population either through a smaller shooting program or through the use of an immunocontraception of birth control vaccine. That vaccine is in the developmental stage, and any the county is awaiting Food and Drug Administration approval.

A computer-generated simulation of the reservation and its deer population is being used to monitor the five-year plan's progress. The model is programmed with data from aerial infrared surveys, spotlight counts,



motor vehicle accident reports, and scientific evidence gathered during previous hunts.

The model shows the county has made progress toward reducing the density of deer:

- The shooting program and motor vehicle accidents reduced the herd from approximately 542 deer last July to about 291 deer this spring.

- With the arrival of an estimated 122 new births in May and June, the population probably includes about 412 deer, according to the report.

In addition to the hunt and vaccine, the county's plan includes conducting public education and sampling public opinion; removing invasive exotic plants and reintroducing native vegetation; conducting traffic engineering studies; prosecuting poachers; and conducting an annual review of the program to gauge which efforts need to be continued.

Poaching problem
When the county first began planning for deer hunts, officials said the awareness of gunfire in the park could provide cover for poachers. Evidence of illegal hunting had been discovered during past hunts; earlier this year, county officials found weapons and other hunting equipment hidden in the reservation.

"Most disturbing," the report states,

"was the partially decayed carcass of a nine-point buck found with a perfect hole through one of the rib bones." The animal had been shot with a .22 caliber rifle; the county's sharpshooters used shotguns.

Subcommittee's cause
The Watchung Reservation Deer Management Subcommittee is composed of residents of surrounding communities, local and state park and wildlife officials, representatives of hunting and animal welfare special interest groups, and technical experts in wildlife and forest ecology.

The subcommittee was formed to develop a management plan in response to destruction of the Watchung Reservation's forest understorey caused by deer; complaints by area homeowners claiming damage to landscapes; and hundreds of deer-related motor vehicle accidents.

As a result of the '96 hunt, more than 5,500 pounds of venison was butchered and donated to homeless and needy families via the Community FoodBank of New Jersey, located in Hillside. It was estimated that the meat provided 22,000 meals.

Costs of control
According to the new county report, the cost of conducting the 1996 hunt totaled \$14,580.

Butchering fees accounted for more

than half of the cost, totaling more than \$7,600.

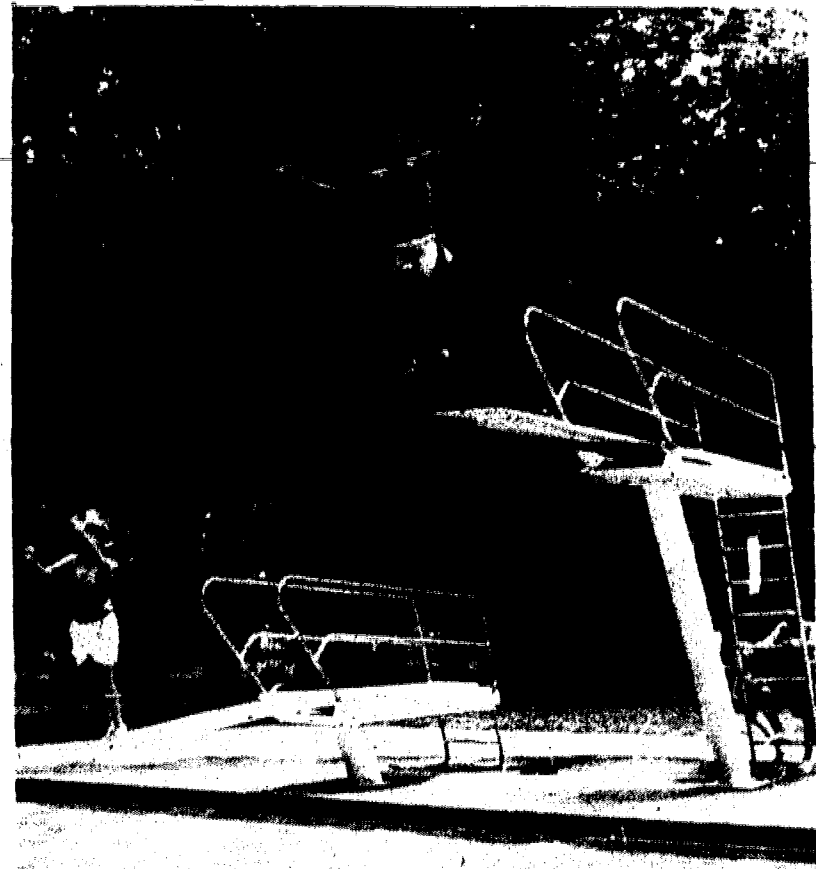
Personnel pay, including overtime for police and public works employees, totaled more than \$4,700.

The remaining fees included supplies and equipment.

Public notification
Copies of the Deer Management Subcommittee's report are available for public reading at:

- Union County Division of Parks and Recreation office, in the county Administration Building at Elizabeth-town Plaza in Elizabeth.
 - Trailside Nature and Science Center, 452 New Providence Road in Mountainside.
 - Mountainside Free Public Library, on Constitution Plaza in Mountainside.
 - Summit Free Public Library, 75 Maple Ave. in Summit.
 - Springfield Free Public Library, 66 Mountain Ave. in Springfield.
 - Berkeley Heights Free Public Library, 290 Plainfield Ave. in Berkeley Heights.
 - Scotch Plains Free Public Library, 1927 Bartle Ave. in Scotch Plains.
- The Watchung Reservation, the county's largest park, spans Mountainside, Summit, Berkeley Heights, Scotch Plains, and Springfield.

Taking the plunge



Linden residents Tim Richardson and Chris Miller spring into action off of the diving board at Wheeler Park Pool. Union County operates several swimming pools in Linden and the Clark-Rahway area.

Property tax deduction returned to homeowners

Legislation that will restore the right to deduct local property tax payments from state income tax returns — for a taxpayer's annual \$150 a year savings — was signed into law by Gov. Christie Whitman at a Fourth of July bill-signing ceremony attended by Senate President Donald T. DiFrancesco, sponsor of the new law.

"The measure will restore a tax relief provision eliminated by former Gov. Jim Florio in 1990," said DiFrancesco, who represents the 22nd Legislative District, which includes Mountainside and Clark.

The program will be restored during three years, beginning with the filing returns for calendar year 1996.

"It's only fair that New Jerseyans be afforded the same benefit on their state income tax payments as they have on their federal income tax payments," he also said. "It's not fair to

require local property taxpayers to pay taxes on income that has been used to pay local taxes. It's double taxation."

The legislation phases in the tax deduction and filers will be able to deduct 50 percent of the first \$5,000 of their 1996 payments and 75 percent of the first \$7,500 of their 1997 payments.

Then, property taxpayers will be able to deduct 100 percent of the property tax payments up to \$10,000.

The bill also calls for a \$50, phased-in tax benefit for senior citizens who do not pay income tax because their incomes are too low, he added.

"This is a burden that homeowners should not have to shoulder, particularly our senior citizens who are on fixed incomes and, in some cases, are

in jeopardy of losing their homes because they can't make ends meet," he continued. "This deduction, with the existing Homestead Rebate, could mean the difference between keeping one's home or losing it."

Additionally, renters will be able to deduct 18 percent of their rent as property taxes, according to the same three-year timetable.

DiFrancesco said the tax deduction is the next appropriate step in turning back New Jersey's tax tables in favor of hard-working middle class New Jerseyans.

"Now that this deduction has been enacted, we have come full circle from the tax frenzy of 1990, when the Democrats and Gov. Jim Florio eliminated the property tax deduction and raised \$2.8 billion in taxes," DiFrancesco said.

CUMMING

Pre-Owned MERCEDES-BENZ

<p>• '91 Mercedes-Benz C280</p> <p>• '91 Mercedes-Benz E240</p> <p>• '93 Mercedes-Benz 300E 3.2L</p>	<p>• Mercedes-Benz 500 SEC</p> <p>• '91 Mercedes-Benz 300 SE</p> <p>• '92 Mercedes-Benz 500 SEL</p>	<p>• '92 Mercedes-Benz 500 SL</p> <p>• '92 Mercedes-Benz 300 D</p> <p>• '81 Mercedes-Benz 300 SD</p>
---	--	---

**state of the art
BODY SHOP**
(on premises)
REPAIRING ALL MAKES AND MODELS
• Mercedes-Benz Experts • FREE Estimates
**DUE TO INCREASED BUSINESS
BODY SHOP MEN NEEDED. CALL JIMMY**

PRICED TO SELL

**SERVICE AND PARTS
DEPARTMENT**
Saturday Hours: 8am-4pm
Award winning service on all makes, models and years.
Fully certified Mercedes-Benz mechanics
**3% sales tax and delivery available from our fully stocked
Mercedes-Benz parts department**

416 Morris Ave. Elizabeth, NJ • CUMMING Mercedes-Benz • (908) 351-3131

An ounce of prevention is worth \$100 billion

The cost of drug abuse to American business is \$100 billion annually, according to the National Institute on Drug Abuse. The drug-using youth of past decades are now America's workforce, and substance abuse problems have followed them.

Making A Difference

By Rick Kennedy

held at Kean College in Union. Through workshops, panels and exhibits, the program will assist businesses in linking with resources that they need to implement or improve a drug-free workplace program. For more information or to receive a brochure, call Diane Litterer at 686-6644.

Prevention of Substance Abuse links the Union County Municipal Alliances for the Prevention of Substance Abuse and other prevention agencies.

The coalition seeks to enhance the prevention programs being provided throughout the county. The coalition and its membership will strive to assess the needs of Union County, coordinate its members' activities, share resources, decrease duplication of programming and enhance the cultural competency of its members.

By increasing participation and creating a more inclusive process, the coalition will provide more effective prevention activities. The driving

force of the coalition will be, the action-oriented task forces and committees.

The coalition is a three-year project funded by the Center for Substance Abuse Prevention with the Institute for Prevention of the Saint Barnabas Behavioral Health Network as the lead agency.

"Making a Difference," a monthly column, is submitted by the Union County Coalition for the Prevention of Substance Abuse. Rick Kennedy is a training and development specialist at the Institute for Prevention of Saint Barnabas Behavioral Health Network.

Local sheriff offers college internships

Sheriff Ralph Froehlich's office again will offer students a Law Enforcement College Intern Program.

The program is open only to college juniors and seniors who've maintained a grade point average of 3.0. A letter of recommendation from a faculty advisor will be requested, with a resume and copy of all college transcripts.

Prospective interns should be interested in law enforcement as a career, but the sheriff's office will consider other applicants with varying majors. This is a three-credit field practicum and students must be at this field site for one full day during a semester.

Anyone interested in obtaining an Intern Handbook with an application should call 527-4957, Mondays through Fridays from 8:30 a.m. to 4 p.m.

A Public Service Of WORRALL COMMUNITY NEWSPAPERS

Infosource

24 HOUR VOICE INFORMATION SERVICE

BOOK REVIEWS

- 3301 Hardcover
- 3302 Paperback
- 3303 This Week's Best Sellers

BUSINESS

SMALL & GROWING BUSINESSES

- 4200 Finding A Business Location
- 4201 Government Contract Opportunities
- 4202 Low Interest & Start-Up Loans

CHILD CARE

- 6301 Parent Line Info/Events

COMMUNITY EVENTS LINE

- 1664 Midtown Elizabeth Events
- 1808 Union Township Events

COMPUTERS & THE INTERNET

- 3237 What's Online Today?
- 3240 Weekly Web News
- 3241 On The 'Net

ELECTION '96

- 4270 On The Campaign Trail

ENTERTAINMENT

- 3196 Today's People
- 3197 What's Hot, What's Not
- 3199 Entertainment News
- 3216 Tube Talk (Intro)
- 3217 Tube Talk (Update)
- 3218 Joke Of The Day
- 3221 Thought For The Day

MUSIC CHARTS

- 3560 POP SINGLES
- 3565 COUNTRY SINGLES
- 3570 ADULT CONTEMPORARY
- 3575 RHYTHM & BLUES
- 3580 JAZZ
- 3585 CLASSICAL
- 3590 Music World
- 3591 Country Music Report
- 3592 Today In Music

HEALTH

- 5100 The Art Of Chiropractic
- 5101 What Is An Adjustment?
- 5102 Muscle Pains & Spasms
- 5103 What Causes Back Pain?
- 5104 Headaches

OPHTHALMOLOGY

- 5240 Glaucoma-What Can Be Done?
- 5241 Cataract Surgery - When Is It Time?
- 5242 Diabetes - How It Affects Your Eyes
- 5243 Vision Correction - Is It For You?
- 5244 Droopy Eyelids or Bags Under Eyes

OPTOMETRY

- 5250 Eye Exam More Than Glasses!
- 5251 Red Eye - it Could Be Serious
- 5252 Contact Lenses Are They For Me?

PLASTIC SURGERY

- 5260 Hair Transplantation
- 5261 Eye Lid Surgery
- 5262 Liposuction
- 5263 Rhinoplasty
- 5264 Laser Skin Resurfacing

PODIATRY

- 5110 Diabetes
- 5111 Ingrown Toenails
- 5112 Warts
- 5113 Bunions
- 5114 Hammer Toes

LOTTERY

DAILY RESULTS

- 1900 New Jersey Lottery
- 1901 New York Lottery
- 1902 Connecticut
- 1903 Pennsylvania

MOVIE REVIEWS

- 3200 Menu of Movies
- 3222 Movie Charts
- 3223 Video Charts
- 3224 Video Reviews
- 3215 Kid's Video Review

Moviesource

Featuring Movie Times At These Local Movie Theatres:

- 3171 Cineplex Odeon Cranford
- 3173 Linden Fiveplex Cinemas
- 3175 New Park Cinema
- 3177 Cineplex Odeon Union
- 3179 Lost Picture Show
- 3181 General Cinema Blue Star
- 3183 Rialto Theatre

NATIONAL NEWS

- 1600 Current Events Menu

NEGOTIATING THE JOB OFFER

- 1410 Salary
- 1411 Perks & Benefits
- 1412 Rejection, you can learn from it
- 1413 References
- 1414 Giving Your Employer Notice

PREPLANNING FUNERALS

- 5900 Reasons to Prearrange
- 5901 Preplanning & Your Family
- 5902 Pre-financing a Funeral
- 5903 Dealing With Grief
- 5904 The Funeral Director

RELIGION

- 3220 Bible Verse For The Day

SENIOR CITIZENS

- 4000 Senior Citizens Information Line
- 4001 Senior Events Travel
- 4002 Senior Citizens Travel
- 4003 Senior Medical Courtesies And Dental Programs
- 4004 Senior Citizens Current Issues

CHOOSING A NURSING HOME

- 4123 Touring A Prospective Nursing Home
- 4124 Physical Conditions
- 4129 Nursing Services
- 4131 Residential Activities
- 4132 Admission Practices

SOAP OPERAS

DAYTIME

- 3280 All My Children
- 3281 The City
- 3282 Days of Our Lives
- 3283 The Young & The Restless
- 3284 The Bold & The Beautiful
- 3285 As The World Turns
- 3286 Another World
- 3287 One Life To Live
- 3288 General Hospital
- 3289 Guiding Light
- 3292 WEEKLY SOAP GOSSIP
- 3248 WEEKLY SOAP SUMMARIES

EVENING

- 3260 The X-Files
- 3261 ER
- 3262 Picket Fences
- 3263 NYPD Blue
- 3265 Sisters
- 3266 Beverly Hills 90210
- 3267 Melrose Place

SPORTS

NATIONAL SCORES

- 3104 NL Baseball Scores
- 3105 AL Baseball Scores

SCHEDULES/LINES

- 3122 NL Baseball
- 3123 AL Baseball

DAILY UPDATES

- 3130 NBA Update
- 3131 NHL Update
- 3132 NL Baseball Update
- 3133 AL Baseball Update
- 3134 NFL Update
- 3137 Olympic Preview
- 3106 Golf Update
- 3107 Tennis Update
- 3103 Auto Racing Update
- 3108 Pro Wrestling
- 3109 Boxing Reports
- 3090 Sports Commentary
- 3094 College Football Report
- 3095 College Basketball Report

TELEVISION

NETWORK TV TONIGHT

- 3226 ABC
- 3227 CBS
- 3228 FOX
- 3229 NBC
- 3230 Tonight's Movies
- 3231 TV Talk Show Preview

CABLE TONIGHT

- 3232 Best Bets for Kids
- 3233 TV Sports Highlights
- 3234 PBS Tonight
- 3235 Stations A - L
- 3236 Stations M - Z
- 3238 TV News Maker Preview

TIME & TEMPERATURE

- 1000 Current Time & Temp

WEDDING PLANNING

- 2001 Small Budget Weddings
- 2005 The Engagement Party
- 2007 Who Pays For What? (Traditional)
- 2008 Who Pays For What? (Modern)
- 2009 Parent's Involvements
- 2015 What Is A Wedding Announcement?
- 2020 The Rehearsal Dinner
- 2021 Kinds Of Registries
- 2038 Divorced Parents
- 2044 Traditional Bridal Rituals
- 2049 The Wedding Toast
- 2051 Selecting The Perfect Site

HONEYMOON PLANNING

- 2030 Honeymoon Saving Tips
- 2031 Adventurous Honeymoons
- 2032 Island Honeymoons
- 2033 Domestic Honeymoons

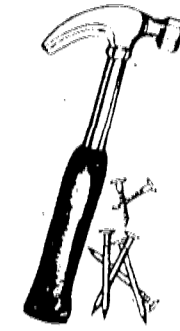
TIPS FOR A BEAUTIFUL BRIDE

- 2060 Beauty Tips
- 2061 Make-Up Applications
- 2062 Skin Care & Facials
- 2063 Hair Styling
- 2064 Nails

WHERE TO LOOK FOR A JOB

- 1400 Classifieds
- 1401 Classifieds Plus
- 1402 Situation Wanted Ads
- 1403 Placement Services
- 1404 Non-Traditional Searches

HOME IMPROVEMENT

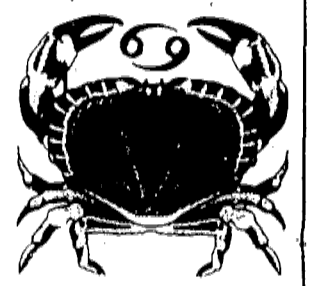


- HEATING & AIR COND.
- 2130 Air Conditioning
- 2131 Furnace Check List
- 2132 Is My Thermostat Working Properly?
- 2133 When Do I Need A Humidifier?
- 2134 Choosing A Service Company

HOROSCOPES

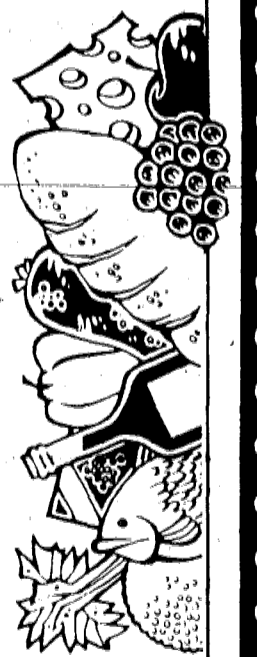
- 3219 It's Your Birthday
- 3600 Aquarius
- 3601 Aries
- 3602 Taurus
- 3603 Gemini
- 3604 Cancer
- 3605 Leo
- 3606 Virgo
- 3607 Libra
- 3608 Scorpio
- 3609 Sagittarius
- 3610 Capricorn
- 3611 Pisces

Updated Daily!



RECIPES

- Appetizers**
- 5300 Ingredients
- 5301 Method
- Desserts**
- 5302 Ingredients
- 5303 Method
- Microwave**
- 5304 Ingredients
- 5305 Method
- Quick Meals**
- 5306 Ingredients
- 5307 Methods
- Side Dish**
- 5308 Ingredients
- 5309 Method
- Low Calorie**
- 5310 Ingredients
- 5311 Method



WEATHER



- 1800 Atlantic City
- 1801 Boston
- 1802 New York City
- 1803 Philadelphia

We want your news

Your organization should be getting the publicity it deserves and we would like to help. We have a publicity handbook which explains how to tell your story. We would like to publicize your club, church, sports, school news, etc. If you have an idea for a picture or story, call the managing editor at 686-7700 weekdays before 5 p.m.

PUBLIC NOTICE

NOTICE TO ABSENT DEFENDANTS (L.S.) STATE OF NEW JERSEY TO: JOHN BASKERVILLE YOU ARE HEREBY SUMMONED AND REQUIRED TO serve upon DAVID B. WARD, P.C., plaintiff, whose address is 3648 Valley Road, Liberty Corner, New Jersey 07938-0227, telephone number (908) 903-0222, an Answer to the Complaint and Amendments to the Complaint, if any, filed in a civil action, in which Beneficial New Jersey, Inc. d/b/a Beneficial Mortgage Co., is Plaintiff and John Baskerville are defendants, pending in the Superior Court of New Jersey, Chancery Division, Union County, and bearing Docket No. F-1992-95 within thirty-five (35) days after July 11, 1996 exclusive of such date. If you fail to do so, judgment by default may be rendered against you in the relief demanded in the Complaint. You shall file your answer and proof of service in duplicate with the Clerk of the Superior Court, Hughes Justice Complex, CN-971, Trenton, New Jersey 08625, in accordance with the Rules of Civil Practice and Procedure.

This action has been instituted for the purpose of (1) foreclosing a mortgage dated May 28, 1992 made by John Baskerville and Mary Baskerville as mortgagor(s) to Beneficial New Jersey, Inc. d/b/a Beneficial Mortgage Co., recorded on 05/29/92, in Book 4519 of Mortgage for Union County, Page 72, et seq., and (2) to recover possession of, and concerns premises commonly known as 1446 Montgomery Street, Rahway, New Jersey. If you cannot afford an attorney, you may communicate with the Legal Services Office in the County of Union, Page 72, et seq., 908-527-4769 or the Legal Services Office of the County of your residence if you reside in New Jersey. If you are unable to obtain an attorney, you may call or communicate with the Lawyer Referral Service of the County of venue at 908-353-4715, or at the Lawyer Referral Service of the County of your residence if you reside in New Jersey. If there is none, contact the Lawyer Referral Service of an adjacent county.

YOU, JOHN BASKERVILLE, are made party defendant to this foreclosure action because you are the record owner of the aforesaid property and you executed the Mortgage and Promissory Note and for any right, title and interest you may have in, to, or against the premises being foreclosed upon herein.

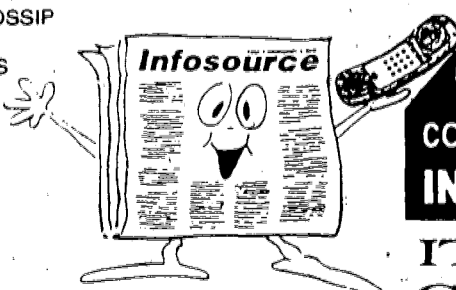
Its As Easy As

CALL **908-686-9898** from any phone

Press the **2 4 DIGIT CODE** for the information you want to hear...

3 ENTER ANOTHER SELECTION (Up to 5 choices per call)

For Your Free Information
CALL 908-686-9898
INFORMATION BY TELEPHONE



Questions or comments about **INFOSOURCE?**

We would like to hear from you!

ENTER SELECTION #8025

IT'S EASY & INFORMATIVE! CALL EVERYDAY! IT'S FREE



Infosource is a 24 hour voice information service where callers get free information from the selection above by calling (908) 686-9898 and entering a 4 digit code for the selection they want to hear (up to 5 choices per call). Calls are FREE if within your local calling area. Out of area calls will be billed as long distance by your telephone company. Infosource is a public service of Worrall Community Newspapers, Inc.

For Information on advertising and sponsorship call Erik Kent at (908) 686-7700 ext. 311 or Dan Hill ext. 367.

DINING/ENTERTAINMENT

Rahway resident tap dances into his '90s

By Bea Smith
Staff Writer

The reason 91-year-old Joseph Harko of Rahway is so cheerful and personable, especially when he is tap dancing, is because he loves people as much as they love him.

Recently, during a social event at Cornell Hall Convalescent Center in Union, Harko, who appears 30 years younger than his real age, and his companions from the Carteret Sere-naders, entertained by dancing and singing and being comical. Harko began preliminary steps that gradually grew into some fancy and difficult dancing, and he brought the house down. He has so much personality and a wonderful outlook on life itself that the audience, as many other audi-ences, became enamored of him.

"I used to dance professionally," Harko said during a visit to this office. His memory was sharp and clear — enough to put other senior citizens to shame.

"I began entertaining when I was a boy, and then I got a partner and used to tap dance professionally in hotel night clubs and in theaters. But then I went to work in numerous engineer-ing plants to help support my family, and began tap dancing as a hobby — volunteering in nursing homes, senior citizen centers and other places. It wasn't until I retired from my job as an engineer that I began dancing as a sideline and worked with an orchestra as a sideline."

Harko explained that after he lost his wife in 1988, he joined the Retirement Club in Rahway. "I used to go on the monthly trips to Atlantic City with the club, and I would lead the singing coming and going. I joined the Old Guard of Westfield, a club of retired business and professional men. They have a group called the Merry-men with about 14 to 20 people and meet at the Westfield Y. I also entertain with the Carteret Sere-naders, with about eight people and dance stu-dents, and we do the same thing. It's all voluntary."

The dancer mentioned that he also takes his drums along, "and then I get up and do my tap dance." Among his hobbies, he said "are line dancing — I go to two line dance classes every week — Brewer School in Clark in the morning and Evergreen School in Colonia in the afternoon. I also belong to the Widows and Widowers and we have social and ballroom dancing every Friday and two Sunday even-ings. I have a full program," he grinned.

Born in Poland in March 1905, Harko emigrated to America and settled in Carteret in 1906. He moved to Rahway in 1934 and attended high school there, later attending Penn State College for mechanical engineer-ing. "Even back then, I loved to dance."

Harko joined the Harmony Social Club in Carteret in 1922 and per-formed in minstrel shows. After tak-ing tap dance lessons in New York, he and partner Jerry Bartok started a vaudeville team called Hark and Bark. "From then on, we got expanded book-ings, and our booking agents got us jobs in theaters in and around New York. We were doing very well pro-fessionally, but we soon realized that vaudeville was beginning to decline."

"So, I got myself a job drafting in Singers Sewing Machines Co., at Steel Equipment Corp., Griscum Rus-sell in New York, and all that time I was entertaining as a sideline and teaching tap dancing to youngsters. You see, it was during the Depression, and I lost my job, so for five years, I just taught tap dancing and worked in a band. I was able to support my fam-ily at that time between 1933 and 1938."

Harko and his first wife, Helen, had a daughter, Barbara. After his wife died, he married her sister, Elizabeth, and they had a daughter, Lynn. "El-izabeth died in 1988. Lynn, by the way, is a school teacher in Clark. She's been teaching for 26 years and sings with the Sweet Adelines Chorus in Ramapo Chorus in Mahwah."

His next job was at Davis Engineer-ing in Elizabeth, and then A.G. McKee Engineering in Union from 1946 to 1970. "And even during that time," he reminded, "I still continued with my tap dancing and teaching."

Harko was 65 years old when he retired, "and ever since," he said enthusiastically, "I've been entertain-ing. Actually, I had a brief period from 1970 to 1988 when I just stopped everything. But after 1988, I became active again, and I've been doing this ever since. You know, I was 91 years old on March 18."

He admitted that "my ambition is in one finger. I really do exactly the same as anyone else. I have a good

appetite. I got my blessings because my health is good."

"I'll tell you," he confided, "what keeps me going through the years is my association with people in very happy occasions. I enjoy that. You feel vibrant when you greet the people in the senior clubs. I go about my bus-iness every day, and people will say to me, 'Hello, Joe. How are you?' Even though I may not recognize the per-son, it makes me feel so good, just to know that people take the time to talk to you. That's the reason I feel so good."

And to what does he attribute his longevity? "I attribute my longevity to being happy and having no ene-mies," he smiled. "Being happy and being with people and being quite active. You know, I recently entertain-ed at the Landmark in Wood bridge for the Rahway Auxiliary Workers. And strangers come up to

meet me. I meet all kinds of people I didn't know before. That's the reason for carrying on, and I thank God for all his blessings."

Harko said entertaining at Cornell Hall was a first for him. "I count my blessings because so many things can happen to all of us. I have a friend, a resident at Cornell Hall, whose name is Ansley Bryer. He had a stroke. He had been such a strong man, and when I entertained there, I brought him in his wheelchair to watch me tap dance."

Harko said he is a communicant of St. Mary's Church in Rahway. "I love to go to meetings, and share refresh-ments and listen to Father Meyers tell stories — and socialize."

Harko says he likes to take trips on buses, the most recent to Kutcher's in the Catskills. "Sometimes, I get up on the bus and sing and entertain."

"I thrive on it," he laughed.



Joseph Harko, 91, of Rahway, does his tap dance at a nursing home. The former professional dancer has been dancing since he was a youngster.

OUR SECTION
WATCH FOR
ADULT LIVING
July 25, 1996

Alexis
Steakhouse & Tavern

24 Oz. N.Y. Sirloin Steak
24 Oz. Delmonico Steak
\$10.95

Fresh Swordfish & Lobster
Casual Attire • No reservations
Major Credit Cards Accepted
PARTY ROOM AVAILABLE

OUTRAGEOUS STEAKS • GREAT BURGERS
OVERSTUFFED SANDWICHES • COLD BEER

1230 ROUTE 22W MOUNTAINSIDE 908-233-5300
955 VALLEY RD. CLIFTON 201-746-6600

DOUBLE DRAGON RESTAURANT
CATERING FOR ALL OCCASIONS
Chinese Food Orders To Take Out Eat In

BUSINESS MENS LUNCH SPECIALS DAILY
LUNCH BUFFET DAILY \$4.95
DINNER BUFFET \$6.95

10% OFF
Orders Over \$10
With Ad

FREE PARKING ON RIGHT SIDE OF THE RESTAURANT
PLACE YOUR ORDER BY PHONE
IT WILL BE READY WHEN YOU ARRIVE

1230 MORRIS AVE., UNION
(NEXT TO KINNEY SHOES STORE)

TEL: (908) 688-5770 OR 688-5980

Authentic Russian Cooking by
MARGIE'S RESTAURANT

Hours: Tues. - Sun. 8:00 a.m. - 8 p.m.

Hungarian Goulash
Stuffed Cabbage
Chicken Kiev
Potato Pancakes
Meat Dumplings
Potato Pierogies
Beef Stroganoff

Zrazi
Beef Brisket
Wiener Schnitzel
Chicken Milanese
Swedish Meatballs
Meatloaf
Fried Filet of Flounder

5.95 to 6.95

29 Union Ave. North • Cranford • (908) 272-6336

Festival schedule set

The 1996 New Jersey Shakespeare Festival continues:

Through July 27 "Richard III," by William Shakespeare; directed by Daniel Fish.

July 31-Aug. 17 "The Winter's Tale," By William Shakespeare; directed by Scott Wentworth.

Aug. 21-Sept. 7 "Leocadia," by Jean Anouil; translated by Timberlake Wertenbaker; directed by Bonnie J. Monte.

Performance times: Tuesdays-Saturdays at 8 p.m.; Sundays at 7 p.m. and Wednesday, Saturday and Sunday matinees at 2 p.m.

FREE Information!

CALL (908) **686-9898**

and enter a four digit selection number below!

RECIPES

APPETIZERS

5300 Ingredients
5301 Method

DESSERTS

5302 Ingredients
5303 Method

MICROWAVE IDEAS

5304 Ingredients
5305 Method

QUICK MEALS

5306 Ingredients
5307 Method

SIDE DISHES

5308 Ingredients
5309 Method

LOW CAL

5310 Ingredients
5311 Method

Call Today!

Your Community's Best
Infosource
24 HOUR VOICE INFORMATION SERVICE

A Public Service of
WORRALL COMMUNITY NEWSPAPERS

WORRALL COMMUNITY NEWSPAPERS

Union Leader, Kenilworth Leader, Roselle Park Leader, Summit Observer, Springfield Leader, Mountainside Echo, Elizabeth Gazette, Roselle Spectator, Rahway Progress, Clark Eagle, Hillside Leader, Linden Leader

DINING REVIEW
July 11, 1996

Margie's Place
Margie's offers the best of both worlds.

New Jerseyans who have grown tired of having to endure bleak winters these past few years can take heart; help is available. All they need to do is look to the east — Eastern Europe, that is.

Eastern Europeans, it seems, know a thing or two about cold weather and the ways to survive it. They can't make the wind stop blowing or the snow stop falling, but at least they know that, when the temperature drops, nothing can warm you faster than a hot bowl of borscht with sour cream or some potato pierogies fried with onions.

That unique taste of Eastern European cooking can be found tucked amid the charming brick-lined sidewalks and red spire pear trees of the Cranford business district at Margie's Place, 27 North Union Ave. In a rare blend of "old country" cooking and "new world" convenience, Margie's somehow manages to offer the best of both worlds.

The atmosphere is rather unassuming; it is neat and comfortable, with none of the attention-grabbing mirrors or eye-popping decorations that seem to bog down so many modern restaurants in a mire of glitz and pretention. The people at Margie's definitely show a belief in function over flash, making up in the quality and affordability of the food and service whatever pomp and circumstance they may lack in appearance.

For first-time samplers of Polish, Russian or Ukrainian cuisine, it should be noted that Eastern European food is not for wimps. There's no vegetarian rabbit food here. This is for real "meat and potatoes" people.

Some of the tastiest of these "meat and potatoes" dishes include Beef Stroganoff, thin strips of

boneless steak cooked with onions and mushrooms in a sour cream sauce. The slightly more adventurous soul might want to try Zrazi, a ground chicken and beef concoction that is sauteed with onions, sandwiched between mashed potatoes, and served with a creamy mushroom sauce on top.

On my last trip to the restaurant, I enjoyed the Hungarian Goulash — big, tender chunks of beef doused in a thick, rich gravy and served over noodles — and the "vareniki kartofelem," or potato pierogies. Pierogies are the Ukrainian version of meat dumplings, with potatoes deep-fried inside of a fresh, homemade dough, and these particular pierogies — thick and moist, with loads of sauteed onions and fresh sour cream — were among the best I'd ever tasted.

For those whose tastes run to more standard American cuisine, Margie's also offers roasted turkey, meatloaf and flounder dinners and even a spectacular Chicken Milanese for those with a taste for Italian.

Most attractive of all about Margie's is their prices. No dish is priced at more than \$6.95, and most include a choice of rice, noodles or potatoes and any one of a number of delicious soups like vegetable cabbage, borscht, and beef lentil.

All in all, Margie's offers a unique, inexpensive break from the American norm of fried chicken and hamburgers. Glasnost has come to Union County, and it is delicious.

This column is intended to inform our readers about dining opportunities in the area

Photo By Milton Mills

Margie's Place, 27 North Union Ave., Cranford.

WORRALL COMMUNITY NEWSPAPERS

Dining Out

A Weekly Feature
Appearing
in 12 Newspapers

Call
Laura Beck at
(908) 686-7700 x349
for details

NUNO'S PAVILION
Restaurant & Banquet Rooms

Portuguese
American/Italian

Friday, July 12th
at
9:00 PM

#1 ELVIS IN NJ
JIM BARONE
and the
BUTTERFLY PIRATES
present
One Night with ELVIS

300 Roselle St. • Linden
(908) 925-2544

SUMMERTIME... AND THE EATIN' IS EASY!

ARTS & ENTERTAINMENT

Paper Mill's summer festival features celebration of Earth

By Bea Smith
Staff Writer

The Summer Festival at the Paper Mill Playhouse, which began in June, is featuring folk, pop, jazz and Big Band music, innovative American dance, children's classics and Tom Jones.

There will be a unique contribution to this summer's series with "Life on Earth: A Gala Family Concert of 100 Voices" July 23. Artistic Director Robert Johanson and some of Paper Mill's favorite stars, will celebrate planet Earth in a concert presentation featuring stories, songs and dance. The performance will highlight a wide variety of material, covering the

spectrum of song from Disney standards to diverse musical offerings from around the world.

Johanson, star of "Jesus Christ Superstar," "The Secret Garden" and "Peter Pan," has created a showcase of music, dance and theater. On stage, he will be accompanied by "Evita" star Judy McLane, the young actor from "Comfortable Shoes," Scott Irby-Ranniar, and "Dreamgirls" star Sharon Wilkins.

"Life on Earth" will explore the wonders of the planet and its inhabitants in a format of music and dance from around the world and an array of vignettes on environmental themes. Musically, the event will feature

songs for the entire family ranging from brand-new compositions created especially for this concert to familiar pop, gospel and musical theater standards.

The local adult cast for "Life on Earth" includes Kim Barron, Kathi Iannacone of West Orange, Bill and Helen Webb of West Orange; Casey Leites of Hillside, Nancy Marino of Belleville, Don Means and Gwen Spencer of South Orange, Jackie Pedro of Linden, Joe Regan of Elizabeth, Anne Staunton and Mary Kate Wilkins of Summit and Nathalie Yafet of Hillside.

The local children's cast for the show includes Meridoc Burkhardt, Melissa Castro, Diane Foster, Karen Kentrus, Doug Kruger, Brian Madrigal, Tami Maurer and Katie Spadora, all of Union; Kasandra Ciasulli of Mountainside, Rebecca Dolan and See PAPER, Page B6

Travolta gets film bug in comedy 'Get Shorty'

In "Get Shorty," Chilli Palmer, played by John Travolta, works for a loan shark, collecting money from the back of a barber shop in Miami. In addition to convincing people to make good on their debts, he must deal with Ray "Bones," played by the always effective Dennis Farina, who feels an intense hatred for Palmer.

A problem arises when Palmer's boss, Jimmy Capp, dies from a heart attack at his 65th birthday party. Bones suddenly is Palmer's boss and feels he is responsible for the \$15,000 debt of Leo — a dry cleaner who'd died in a plane crash. Bones tells Palmer that he better get the money from the deceased's wife, from himself, from anywhere, but to just get it.

Travolta's Palmer, a calm and confident man, brushes Ray off, and goes to have a talk with the dry cleaner's wife. He quickly learns the plane crash death was a scam, that the airline paid her \$300,000 and that her husband is in Vegas.

Palmer heads to the gamblers' paradise and is told by a friend who runs a casino that Leo was there but he's left for Los Angeles. Since Palmer's headed there anyway, the friend asks if he can shake down a B-movie director who owes the casino \$150,000.

Palmer breaks into the director's home around midnight and politely, yet firmly, lays down the deal. The director, Harry Zimm, played by Gene Hackman, assures Palmer he'll get him the cash. The meeting then takes an odd turn as Palmer realizes his true calling: movie mogul.

His confident manner works well as he sets up power lunches and schmoozes major stars. Meanwhile, back in Miami, Ray-Bones is getting a little impatient. When an unlikely informer tips him off about Palmer's whereabouts, Ray is on the first plane out.

But Palmer's got the film bug and he's not about to let some gangster get in the way of the next Academy Award winner. The entire picture is done with an irresistible style and

The Video Detective

By Jim Riffel

Hackman's performance is hilarious. There's also cameos from Bette Midler, Harvey Keitel and Penny Marshall.

John Travolta Facts: Travolta was born Feb. 18, 1954 in Englewood.

He quit school at 16, studied acting, and landed a few commercials and off-Broadway plays. Before his 20th birthday he landed a lead in the Broadway production of "Grease" and at the age of 21 became Vinny Barbarino on ABC-TV's "Welcome Back Kotter."

In 1977, "Saturday Night Fever" made him a star and earned him his first Oscar nomination for Best Actor. He followed that with the film version of "Grease" in 1978 — in which he did all his own singing.

His film career slowed in the '80s, not picking up until "Look Who's Talking" in 1989. His comeback shifted into high gear with "Pulp Fiction" in 1994 for which he received his second Oscar nomination.

Travolta has stated that his success is rooted in his practice of Scientology.

Video Detective Trivia: What successful talk show host was nominated for an Oscar in 1985?

Answer: Oprah Winfrey was nominated for Best Supporting Actress for "The Color Purple."

A resident of Mountainside, Jim Riffel is the author of "The Video Detective's Guide to the Top 100 Films of All Time."

Making good neighbors



Delta Fence Co., located at 541 Spring St. in Elizabeth, aids and advises do-it-yourself customers uncertain of a style, material and know-how regarding fence installation. Just as homeowners cite a variety of reasons for putting up a fence, there are many styles and materials from which to choose. Picket fences, post and rail, stockade-style, chain-link and split-rail are among the styles. In addition to metal and wood, fences today are made of polyvinyl chloride — a kind of plastic that does not rust, fade or splinter.

50-75% OFF OFFICE FURNITURE
CONFERENCE TABLES, DESKS, CHAIRS,
WORKSTATIONS, BOOK CASES

OPEN MON.-FRI. 9 - 4:30
Sat. 9-3

• 50,000 Sq. Ft. of New, Used
Factory Closeouts
Next Day Delivery
MDC 201-926-9394
400 Winans Ave., Hillside
Directly across from Exit 54, Route 78 East

IS YOUR BATHTUB UGLY?

We Put A New Bathtub Over

EASY TO CLEAN AND MAINTAIN

Your Old One!

Call (908) 241-2027
For A FREE Estimate

More Permanent Than Reglazing
More Economical Than Replacement

Authorized Re-Bath® Dealer

TEMPLE ISRAEL OF UNION

HEBREW SCHOOL REGISTRATION NOW TAKING PLACE

Primer (Gr. 1 & 2) - Third through Seventh Grades: Curriculum emphasizes prayer, Hebrew language, Jewish history, traditional holidays, and customs. Trips, plays, and art projects enhance learning process. Classes taught by dynamic, certified, experienced teachers in long established Hebrew school.

PRIMER CLASS PARENTS DO NOT HAVE TO BE MEMBERS OF TEMPLE ISRAEL

Jeanette Braunstein
HEBREW SCHOOL CHAIRPERSON
FOR FURTHER INFORMATION CALL:
TEMPLE ISRAEL OF UNION
908-687-2120
HADASSAH GOLDFISCHER
PRINCIPAL

**2372 MORRIS AVE • UNION
908-687-2120**

DESIGNER BATHROOMS & KITCHENS II, INC. • DESIGNER

Kitchens & Baths SALE

GUARANTEED LOWEST PRICES!

CALL DESIGNER TODAY...
FOR COMPLETE CUSTOMIZED RE-MODELING

1-800-922-8919

WE DO IT ALL
•ELECTRICAL •PLUMBING
•CARPENTRY •TILE, ETC.
7 Day 24 Hr. Service
Fully Insured
Deal Direct • No Salesman
State N.J. Lic. #126662
31 Years Experience
Credit Terms Available

DESIGNER BATHROOMS & KITCHENS II, INC.
SHOWROOM: 1016 Stuyvesant Ave., Union • 908-688-6500

NEWSPAPERS DELIVERED TO OUR YARD CALL FOR CURRENT PRICE

Paper Drives Arranged
Boy Scouts • Church Schools

ALL ORGANIZATIONS ARE WELCOMED

Trailers are available 40', 45' no charge

Call for more information & directions

908-355-2468

John Rocco Scrap Material, Inc.
912 Van Buren Ave., Eliz. N.J.
(Off North Ave. One Block W. of Rt. 1 & 9S)
Business Hours: 8 am - 5 pm Mon. to Fri.

FREE DELIVERY \$100 minimum

FENCE FACTORY OUTLET

FREE ESTIMATES

CUSTOM WOOD, CHAIN LINK & VINYL FENCES • SALES • INSTALLATIONS • REPAIRS

BUY DIRECT FROM THE MANUFACTURER

DELTA FENCE CO. HABLAMOS ESPANOL

541 Spring Street, Elizabeth
(Rte. 1 & 9 Northbound, 1 Mi. South Of Newark Airport)
(908) 355-9066 NO JOB TOO BIG OR TOO SMALL!

STOCKADE	CUSTOM WOOD	CEDAR	CHAIN LINK	3x5x8' TREATED OVAL POST
6x8' 3/4" \$14.99	6x8' 1 1/4" Boards \$31.99	6x8' 1 1/4" Boards \$42.99	VINYL COATED WIRE 2"X4"X8' 4 COOKIES \$49.99	\$499
6x8' 3/4" \$19.99	6 STYLES TO CHOOSE FROM WHITE PINE (SPRUCE)	SUPER SPECIALS	PVT FENCE INSERTS FOR PRIVACY 6" High, covers 10 linear feet 4 COOKIES \$24.99	
6x8' 3/4" #1 \$22.99				Each

With Coupon Only • While Stock Lasts Expires 8/31/96

SIMMONS MATTRESS FACTORY OUTLET

Cancelled Orders
Blemished
Returns
Mismatched Sets
Discontinued Covers
Same Day Carry-Out
Delivery Available

Huge Selection

Beautiful
The Do Not Disturb Mattress

Store Hours:

Granite Plaza
947 Route 1&9, Rahway, NJ
908-499-4466
Simmons Co. Owned & Operated

FREE Clock Thermostat With Any Boiler Or Air Conditioning Installation

PROVIDING DEPENDABLE WARMTH and COMFORT FOR 50 YEARS!

• Same Family • Same Location
• Service Better Than Ever

AIR CONDITIONING
Hot Water Heaters • Furnaces & Boilers
INSTALLATION OF BOILERS
BURNERS • BASEBOARD • WATER HEATERS

SALES • FUEL OIL • SERVICE
351-0313

TOMASEO BROS
Oil and DIESEL FUEL

612 E. Jersey St., Elizabeth

ANDERSEN DIDN'T BECOME AMERICA'S FAVORITE PATIO DOOR WITHOUT FREEDOM OF CHOICE.

At your Andersen Window Center® retailer we know one good reason why Andersen® Patio Doors are America's most popular. Every one is built with the quality Andersen products are famous for.

We know another good reason is that you can get that quality in your choice of 258 sizes, shapes, and styles.

So, whatever style of home you plan on building or remodeling, you'll have enough freedom of choice to find an Andersen Patio Door that will give your home the grandest entrance of all.

If only the best patio door will do for your home, come open our door first.

ANDERSEN WINDOW CENTER

WELL DONE BUILDING PRODUCTS

CALL (908) 241-4338
100 PATIQUITE AVE. ROSELLE PARK, NJ
MON - FRI 7:30 AM - 6:00 PM
THURSDAY 7:30 AM - 9:00 PM
SATURDAY 8:00 AM - 3:00 PM

SUPPLIERS OF QUALITY BUILDING MATERIALS

Restaurant serves up hot jazz in Hillside

By Rande Bayer-Spittel
Staff Writer

Paula Walden can be found six days a week, 10 hours a day at Chenille's, the new seafood and steak house in the shopping plaza on Liberty Avenue across from the high school.

But more than just a restaurant, Walden, who has run a catering business for eight years, is looking to bring something unique to Hillside.

She and her husband, Albert, are looking to bring Creole food and quality jazz to town.

Paula said she has had a long-time love of jazz and her trips to New Orleans brought about a love for Creole and Cajun food, which she now hopes to turn into a successful business here.

Paula and Albert have made this venture into a new business despite the fact that they have three young children at home and Albert works his own full-time job for a pharmaceutical company.

The restaurant is named after Paula's oldest daughter, 15-year-old Chenille, she helps Paula take care of her younger siblings, Eva Marie, 4, Chanel, 3, and Miles, 17 months.

Paula admitted that it is hectic nurturing a new business and four children, but she takes it one day at a time.

"I set aside Monday for my children," she said. "For the rest, I take it one day at a time, between Chenille and my mother we work it out."

The restaurant is closed on Mondays, but on Friday nights it is a supper club featuring jazz acts.

Paula and Albert are hoping they can capture some of the audience that used to go to Trumpets, a jazz club in Montclair that shut down recently.

"A lot of people think you have to go to Manhattan to hear good jazz," she said. "But we can bring those performers here."

Paula said she does not hire a performer before checking their resumes and tapes to be sure she is getting the best music around.

"A lot of these musicians have played the Newark Jazz Festival," she said. "I want to be sure that they have experience, and I want their tapes to show hard work."

She prefers a more traditional style of jazz, like Count Basie or Duke Ellington, to reinforce the New Orleans feel of the restaurant.

On Friday, Chenille's featured the Tomoko Ohno Quintet, a group that has played high profile New York outlets, like the Blue Note.

Tonight Betty DuChantier will perform. This singer is sure to be a draw from surrounding communities and jazz lovers who don't want to travel to New York City in the heat of July.

"It's a tough nut to crack," she said. "I have had a lot of my friends saying that this is New Jersey and everyone who wants to hear jazz goes to New York."

HOROSCOPE

For The Week Of July 14-20

ARIES
March 21-April 20

Use all the tools at your disposal to accomplish an important goal. After all, you can't dig a garden with a toothpick. Rather than flying off the handle immediately, try to find out if a misunderstanding is at the heart of a conflict. If you can clear that up, the rest should be easy.

TAURUS
April 21-May 21

Take a side trip this week. The break in the routine will give your creative juices a boost. Rely on your better judgment to know when enough is enough in a social situation. Don't follow others down the road to excess.

GEMINI
May 22-June 21

Fickle your sweetheart's fancy with something whimsical, like a moonlight picnic or a afternoon rowboat ride. Demonstrate your commitment instead of just talking about it, and you'll win the respect of someone influential.

CANCER
June 22-July 22

A small token of affection could go a long way toward building a relationship. Don't worry so much about perfection this week. Instead, focus on just getting the job done well. Allow extra time for travel.

LEO
July 23-August 23

Although you might feel like you have become trapped in a sea of rules and

regulations, do your best to untangle them. With a little detachment, you may be able to see an underlying pattern. Then, just put this insight to work, and you'll be able to move mountains.

VIRGO
August 24-September 22

Focus on clearing up an old debt before undertaking something new. You'll free your mind as well as your conscience. Your presence of mind will serve you well in an emergency this week. Take credit when credit is due—you've earned it.

LIBRA
September 23-October 23

To navigate your way through some tense moments, you'd be wise to keep quiet. The less you say, the less likely you'll be to misstep. On the plus side, your home life is wonderful. Enjoy the company of a loved one to help you through this rough patch.

SCORPIO
October 24-November 22

Although patience isn't your strong suit, this is a good time to cultivate your skills. Rely on your sense of humor to help smooth out a difficult situation. A friend calls you with an idea that sounds like great fun. Take them up on it if you can.

SAGITTARIUS
November 23-December 21

To get a clearer idea of how to get where you want to be, take a personal inventory of your ambitions and goals. Then make your plans, but be sure not to sell yourself short.

CAPRICORN
December 22-January 20

If you're feeling strapped for cash, see if you can turn a hobby into a career move. Doing what you love could make all the difference in the world. Don't cling too tightly to plans you've made. Flexibility will be the key this week.

AQUARIUS
January 21-February 18

Bask in the glory of a recent personal

achievement. Now is not the time to be modest. Then, go ahead and share your wonderful mood with members of the family. You could provide just the lift someone needs to snap out of a bad mood.

PISCES
February 19-March 20

Focus on helping someone who needs it. Even if you can't solve all their problems, your aid will be a real morale booster at a key time. Don't let administrative details slip

FREE PARKING AIR CONDITIONING

SETON HALL UNIVERSITY THEATRE-IN-THE-ROUND

The Reluctant Debutante Romantic Comedy
July 12, 13, 14*
July 19, 20, 21

Catch Me If You Can Murderous Melodrama
July 26, 27, 28*
August 2, 3, 4*

Performances At 8pm (*2pm)
Performances At 8pm (*2pm)

Tickets \$10, Seniors \$8, Children & Staff \$5
Call Box Office for Reservations: (201) 761-9098

HARAMBEE GALLERY

AFRICAN-AMERICAN PRINTS AT DISCOUNT PRICES

- LIMITED EDITIONS
- SIGNED & NUMBERED
- AUTHENTIC AFRICAN WOOD CARVINGS
- SLAVERY DOCUMENTS & MEMORABILIA

Tues-Wed: 11am-6pm, Thurs-Sat: 11am-7pm, Sun: 2pm-5pm
4 Midland Ave. • Montclair 201-744-9033

Blue Ribbon Pools, Inc.

Complete Swimming Pool Service and Supplies

U.S. Highway 1, Clinton St., Linden
Ph. No. 862-4482 • Fax No. 862-9142
33 Years of Friendly & Reliable Service at the Same Location

FANTASTIC SAVINGS

on above-ground pools • Filter systems

AUTHORIZED HAYWARD SERVICE AND PARTS WARRANTY WORK

Specializing in • Opening/Closing • Liner Work
• FREE Professional Water Analysis • Full Heater & Filter Installation • Weekly Maintenance
• Complete Pool Supplies

10 - 50% OFF ALL POOL TOYS IN STOCK

Because Of All The Rain This Season Have Your Water Tested FREE!

WE FEATURE... BUSTER CRABBE ABOVE-GROUND POOLS! AND CORNELIUS POOLS.
DON'T WASTE YOUR TIME - COME TALK TO THE EXPERTS!

WE ACCEPT!

Going To The Movies?

Call 686-9898

and enter a four digit selection number below to hear the movie times at these theatres!

- 3171 CINEPLEX ODEON CRANFORD
25 North Avenue • CRANFORD
- 3173 LINDEN FIVEPLEX CINEMAS
400 North Wood Avenue • LINDEN
- 3175 NEW PARK CINEMA
23 West Westfield Avenue • ROSELLE PARK
- 3177 CINEPLEX ODEON UNION THEATRE
990 Stuyvesant Avenue • UNION
- 3179 LOST PICTURE SHOW
2395 Springfield Avenue • UNION
- 3181 GENERAL CINEMA BLUE STAR
1701-65 Route 22 West • WATCHUNG
- 3183 RIALTO THEATRE
250 East Broad Street • WESTFIELD
- 3200 Current Movie Reviews

Up To Five Selections Per Call! **FREE!** No Busy Signals!

Moviesource

A Special Feature Of **Infosource**

CALLS ARE FREE if within your local calling area. Out of area calls will be billed as long distance by your telephone company. **Infosource** is a service of Worrall Community Newspapers, Inc.

SOME THINGS ARE BETTER WHEN SHARED

Find That Special Someone!

Call Connections
1-800-382-1746
24 hours a day, 7 days a week

You'll Get:

- FREE 30-word personal print ad
- FREE voice greeting
- FREE message retrieval (once per week)

...or looks in the Classified Section and call the ads that interest you.

Designed for both Rotary and Touch Tone Phones



Salute to Local Business & Industry



Specializing in quality work:
RESIDENTIAL COMMERCIAL INDUSTRIAL

puerari electric, Inc.
908-276-3687

JOSEPH PUERARI President
Fully Insured • License #7837-A

- additions & new constructions
- general wiring & lighting
- small & large repairs
- new & old work
- update services
- recessed lighting
- 110 v smoke detectors

Puerari is tops in electrical business

Joseph Puerari, owner and proprietor of Puerari Electric, operates one of the area's most successful electrical contracting businesses out of his home, located at 315 Boulevard in Kenilworth.

Keeping his overhead low and customer satisfaction high, he says, are the keys to his success.

An experienced and licensed electrician for the state of New Jersey, Puerari has had his own contracting business for over four years, and services Union, Essex and Middlesex counties.

Prior to owning his own business, Puerari worked for other contractors, where he gained the experience needed to establish a successful business of his own.

His training also includes schooling at the Lyons Institute in Newark and Union County College.

Puerari Electric contracts for all types of commercial, residential and light industrial construction. Most of his clients are so satisfied with his services that they often recommend Puerari Electric to others.

Puerari Electric offers competitive prices for a variety of electrical items, including smoke detectors, track lighting, recessed lighting, and is a fully guaranteed and insured contracting company.

Puerari is serviced by at least half a dozen different electrical supply houses throughout the county, putting parts and supplies within its reach at all times.

For quality workmanship at a price you can afford, call Puerari Electric at 276-3687.

COME THIS WAY FOR A REALLY GOOD CAR WASH!!!

OPEN
MON-FRI 8 AM-8PM
SAT 8 AM- 7PM
SUN 8 AM- 6PM

SPEEDY CAR WASH
Personalized Hand Detailing
On Every Car Washed

100% BRUSHLESS (Soft-Cloth System)
Gentle Touch
No Scratches or Swirls
Gleaming Whitewalls,
515 Lehigh Ave.,
Union



Are your **Kitchen Cabinets** Dull, Worn Out or Tired Looking?

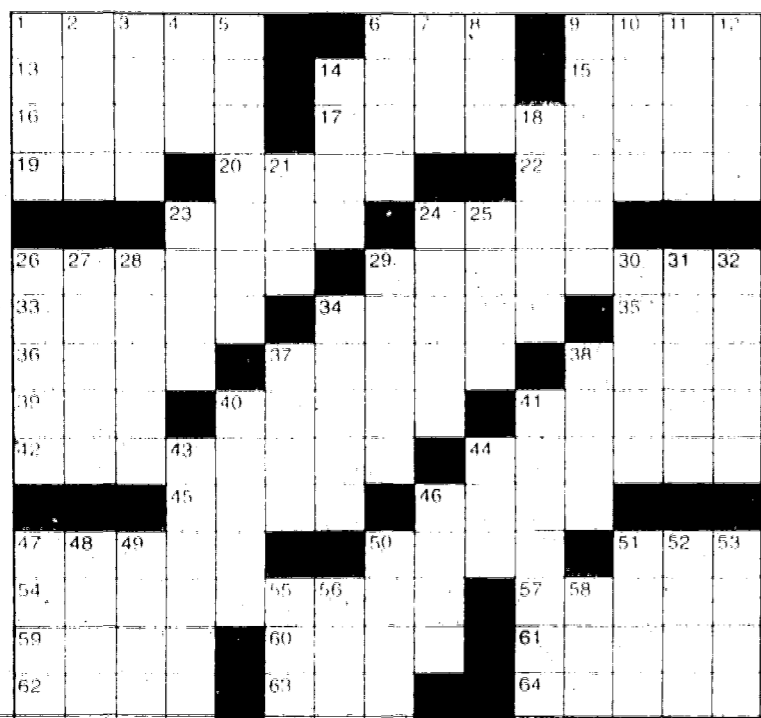
WE RENEW KITCHEN-CABINETS FOR **UNDER \$650.00***

Let Kitchen Tune-Up cover those nick & scratches and put the luster back into your cabinets, furniture, or any wood surface.

Kitchen Tune-Up
The Wood Care Specialists

201-379-5764
Call Today for a FREE No obligation demonstration

CROSSWORD



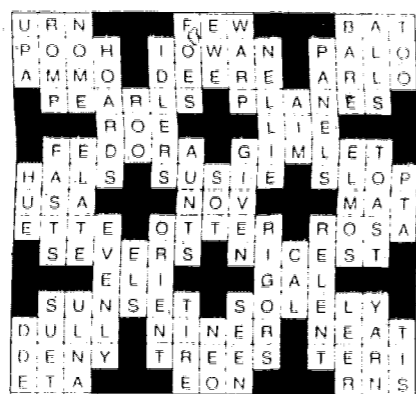
ACROSS

- 1. With it
- 6. Jobs (slippery)
- 9. Tube
- 13. Helper
- 14. It may be solid white
- 15. Bogey burn
- 16. Four and seven years ago
- 17. Team stats
- 19. Possessive word
- 20. Road guides
- 22. Oranges
- 23. Haunches
- 24. Parbon
- 26. Pluckiest
- 29. Resolute
- 33. One Day at (2 words)
- 34. Become aware of
- 35. Between Sun and Tues
- 36. Ceremony
- 37. In the future
- 38. Electrical unit
- 39. Hydrocarbon suffix
- 40. Averse
- 41. Dhole's prey
- 42. Answers
- 44. Tear
- 45. Lyric poems
- 46. Tracy nee Trueheart
- 47. Teen talk
- 50. Breather
- 51. Guacamole, for example

DOWN

- 1. Flour
- 2. Chinese staple
- 3. The kitchen sink
- 4. the land of the tree
- 5. Assumption
- 6. Inning's six
- 7. Watson and Crick's shtick
- 8. Newsmen Rather
- 9. Distorts
- 10. Takes the laurels
- 11. Bus Stop playwright
- 12. Hat-in-the-ring action
- 14. Recipe arms
- 18. "Beyond the Sea" singer Bobby
- 21. Very likely
- 23. Rope fiber
- 24. Yogurt flavor
- 25. Israeli city
- 26. One with a dropped jaw

ANSWER TO PREVIOUS PUZZLE:



Paper Mill's summer fest has Tom Jones

(Continued from Page B4)

Vardit Haimi-Cohen, both of Springfield, Terrie James of Irvington, Ryan Nealy and Ashley Alexis Price, both of Nutley, and Danielle Robinson and Brandon Uranowitz of West Orange.

A favorite among summer series patrons returns when "The Preservation Hall Jazz Band" appears on July 29. This gathering of musicians from New Orleans' famed Bourbon Street district, will bring their mix of jazz, blues and Louisiana tradition.

From his 1965 Grammy Award for Best New Artist to his 1994 album, "The Lead and How to Swing It," Tom Jones has remained an entertaining star throughout the years. Known as "Jones, the Voice" in his native Wales, the singer's talents will be displayed in a concert on July 30.

The music that set a million hearts to jitterbugging will again be featured at the Paper Mill when The Glenn Miller Orchestra returns, concluding the season, on Aug. 1. Such hits as "Little Brown Jug," "Moonlight Serenade," "Pennsylvania 6-5000" and more will be performed by the 19-member orchestra in the original arrangements that made Glenn Miller one of the most successful band leaders of the swing era.

In addition to the mainstage series of concert events, the Paper Mill will feature two summer productions for children.

Gingerbread Players & Jack will present the classic fairy tale, "Snow White," tomorrow at 10 a.m. The performers have been bringing productions to young audiences for more than 30 years.

"The Magic Garden," with Carole and Paula, remembered from the successful television program of the 1970s, will make a return visit to the Paper Mill for two shows, on July 19 at 10 a.m. and July 20 at 11 a.m. Featured will be songs, stories and puppets on stage.

All mainstage performances will begin at 8 p.m. Additional information can be obtained by calling (201) 379-3636, Ext. 2438.

Volunteers needed

The Westfield Symphony Orchestra has opportunities for volunteers to assist with a wide variety of activities.

Hours are flexible and the office is centrally located. For information, call the symphony office at 232-9400.

FLEA MARKET

FRIDAY
JULY 12, 1996
EVENT: Flea Market-Big Clearance Sale
PLACE: Redeemer Lutheran Church, 134 Prospect Avenue, Irvington, NJ
TIME: 10am-1pm
PRICE: No admission charge.
ORGANIZATION: Redeemer Lutheran Church

SATURDAY
JULY 13, 1996
EVENT: Outdoor Flea Market
PLACE: Immaculate Conception School, 417 Union Avenue, Elizabeth, NJ
TIME: 8am-4pm
PRICE: \$10 per space; \$15 with table
ORGANIZATION: Immaculate Conception School HSA

SATURDAY
JULY 20, 1996
EVENT: Flea Market, Big Clearance Sale
PLACE: Redeemer Lutheran Church, 134 Prospect Avenue, Irvington
TIME: 9am-12pm
PRICE: Don't miss our terrific bargains!
ORGANIZATION: Redeemer Lutheran Church

RUMMAGE SALE

THURSDAY AND FRIDAY
JULY 11, 12, 1996
EVENT: Semi Annual Rummage Sale.
PLACE: Beth Shalom, 2035 Vauxhall Road (Vauxhall Road and Plane Street), Union, NJ
TIME: Thursday, 12noon to 8pm; Friday, 9am to 1pm.
PRICE: Free Admission. Excellent buys in clothing and houseware items for the entire family!
ORGANIZATION: Sisterhood Congregation, Beth Shalom and AABI.

THURSDAY MORNINGS, TUESDAY EVENINGS MONTH OF JULY

EVENT: 63rd Annual Turnover Sale
PLACE: Morrow Memorial Church, 600 Ridgewood Road, Maplewood
TIME: Thursdays (except July 4), 9:30am-12:30pm; Tuesdays, 7pm-9pm
PRICE: Free Admission. Bargains in clothing, linens, housewares, luggage, books, jewelry, toys, etc. For information call 201-763-7676.
ORGANIZATION: United Methodist Women

What's Going On is a paid directory of events for non-profit organizations. It is prepaid and costs just \$20.00 (for 2 weeks) for Essex County or Union County and just \$30.00 for both. Your notice must be in our Maplewood office (463 Valley Street) by 4:30 P.M. on Monday for publication the following Thursday. Advertisement may also be placed at 170 Scotland Road, Orange, 266 Liberty St., Bloomfield or 1291 Stuyvesant Ave., Union. For more information call 763-9411.

Antique photos wanted

The Union County Arts Center is seeking old photos of the theater from 1928 to the '50s.

If anyone has historic photos or other materials, the Arts Center would borrow them to have reproductions made.

The number to call at the Arts Center is 499-0441 on weekdays between 9 a.m. and 5 p.m.



Judy McLane, who plays the title role in 'Evita,' at the Paper Mill Playhouse, is shown greeting her public with Raymond McLeod as Argentina's ruler, Juan Peron. The show will run through July 21.

Local hospital exhibits three artists' works

A display of landscape and nature photography by Richard A. Nelridge is on display at Children's Specialized Hospital throughout the months of July and August.

Nelridge's primary photographic subjects include nature, landscapes, wildlife, cityscapes, abstractions and fireworks. His works in these areas can be seen viewed in text books, at photographic trade shows and in "The Microsoft Encarta" computer encyclopedia.

Nelridge's most recent exhibits include the New Jersey Center for Visual Arts Members Gallery and the Reception Area Gallery.

In addition, Nelridge's works have been displayed in juried exhibitions throughout the state.

He is a member and past president of the Millburn Camera Club and has been affiliated with the New Jersey Center for Visual Arts since 1985.

A display of photography, titled "Blessings: Children of the World," by Pam Quayle Hasegawa is on display also through July and August.

Hasegawa's photographs represent 20 years of observations and relationships beginning with the birth of her own children in the early 1970s.

It is through her association with the Asian Rural Institute in Japan and her world travels that she has been able to meet and photograph many children of all ages.

A display of artwork by Elaine "Koo" Burgess too is on display at Children's Specialized Hospital throughout July and August.

Burgess began her art career study-

ing under her mother Rosemary Mannino, an accomplished artist and china painter. She was educated at the Laboratory Institute of Merchandising in New York City where she developed a special interest in commercial art.

Since 1968, Burgess has been designing company and organizational logos including the "Heart Saver" logo used by the Westfield Rescue Squad.

Her works have been displayed by the Cranston Historical Society in Cranston, Rhode Island and in the Framing Center and Fine Art Gallery in Cranford.

Individuals or groups wishing to visit the display, which is open to the public daily from 8:30 a.m. to 8:30 p.m., may enter the hospital's East Wing. For more information about the display, call the hospital's community resource coordinator, Susan Baxter at 233-3720, ext. 379.

The artist's works are for sale, with a portion benefitting Children's Specialized Hospital.

Children's Specialized Hospital, New Jersey's only comprehensive pediatric rehabilitation hospital, is located on New Providence Road in Mountainside.

SUMMER CAMP & DAY CARE DIRECTORY

Quality Child Care

Ages: Infants to 5 years
 Hours: 7 am - 6:30 pm
201-669-2875
 West Orange, NJ

Advertise in Our Camp Day Care Directory

201-763-9411

NOW OPEN

SONY THEATRES MOUNTAINSIDE

Today's Hottest Movies

Free Drink Refills

Next In Line Customer Service

10 Big Screens

Oversized Rocking Chair Seats

Spectacular Sound And Projection

NOW OPEN SONY THEATRES Rt. 22 East MOUNTAINSIDE, NJ 908-232-8338

NOW PLAYING

INDEPENDENCE DAY

THE CITY PROFESSOR

PHENOMENON

THE ROCK

ERASER

FOR ADDITIONAL FEATURES AND SHOWTIMES CALL 908-232-8338

WOMEN SEEKING MEN

Call 1-900-786-2400 \$1.99 per min.

PARTY GIRL

5' and 125lbs, 22 year old female with long brown hair. I love to party and if you like to also, leave your name and number. I'm looking for a white male, 22 and older. BOX 39390

LIGHT GREEN EYES

18 year old, 5'8" and weigh 160 pounds. Seeking a single, 18 to 21 year old male. Into art, music, and polyester. Please be clean and in Essex county area. BOX 11959

LET'S RELAX TOGETHER

57" african american female. Like renting movies, talking, having fun. Seeking a tall, dark, and handsome male, with hopefully similar interests. BOX 12022

DOUBLE DATING

2 females looking for 2 single guys for double dating. I'm 31, 5'2", light brown hair and green eyes. My friend is 5'4", age 30, with brown hair and eyes. Various interests from champagne to beer, movies, dinner, the beach, Broadway shows, etc. BOX 15933

ROCK ON

19 year old female. Into long hawks, on the beach, body piercing, and yellow american cheese. Robert Smith's fans are an A plus, and Essex county area. BOX 16193

IS THIS YOU?

46 year old black female, 5'8", 130 pounds. Seeking a single black male, over 5'11", weighing no more than 190 pounds, for friendship that could lead into long term relationship. Only serious minded males need apply. BOX 15248

NO MORE BROKEN HEART

Single black full figured female. Seeking a single black male, 19 to 24. Looking for someone to share and have good times together. Like parks, clubs, see the world and everything. BOX 39476

SEEK A COMMITMENT

32 year old black female, 5'7" and 280 pounds. Enjoy movies, the outdoors and more. Looking for a tall black male, over 6', 210 pounds and a solid build for a lifetime relationship. Someone who is honest with good family values. BOX 13484



A SIGNIFICANT OTHER

Single Jewish professional female, non smoker, 38. Considered a Lori Anderson look alike. Educated, childless, financially secure. Seeking a tall, single white male, 40 to 55, non smoker, for a long term relationship. I live in Essex county. BOX 10705

HONEST LADY

5'5", 120 pounds, white, attractive, interesting female. Enjoy the theater, reading, animals, walking and talking. Seeking a white non smoking and non drinking male age 55 to 65. If you do not like animals, and are looking for a beauty, please do not call. BOX 10861

LONG BROWN HAIR

Petite, 22 year old female. Looking for a nice, sweet, fun-loving, and intelligent man, 22 to 30, who knows how to treat a lady. BOX 37394

PROFESSIONAL FEMALE

Professional 28 year old single, white, full figured female, 5'4" with brown hair and eyes. Enjoy movies, travel, dining out, Atlantic City, comedy clubs and professional hockey games. Looking for a Catholic, professional, single white male, 27 to 35, 5'9" or taller, and over 200 plus. Must be drug free and clean cut. BOX 37848

ARE YOU THE ONE?

Single black female, age 33. I am attractive, 5'9" and do not have children. Looking for a single, medium build, intelligent, romantic, open minded, spontaneous, and an all-around gentleman who believes in monogamy. Age unimportant, maturity is... BOX 13308

LIKES AND INTERESTS?

Single white female, 49. Looking for a male, non smoker, 40 or older. Seeking a long term relationship. BOX 10572

LET'S MEET

20 year old, 5'4 1/2", heavy set, professional female, looking for a male, 20 to 30, with a medium build and is financially secure. Please be outgoing but kind of laid back. BOX 10620

PRETTY

Single white female, 31, 5'7". Seeking single professional white male, 25 to 39, with a thin to medium build. Please be caring, sweet, and knows how to treat a lady. Enjoy the beach, music, and Atlantic City. BOX 10868

KEEP IT REAL

Single attractive black female, 5'2" and 135lbs, with a great sense of humor. I love to dance, sing, play, and amusement parks. Seeking a man, financially and emotionally stable who enjoys kids, music, etc. Must be drug free! BOX 12719

TALK TO ME

Single black female, 19, 5'8" with a slim build. Seeking a single black male, 20 to 25, faithful, medium build, professionally secure. Like movies, parties, talking on the phone and just having fun. BOX 37707

LET'S HAVE SOME FUN!

21 year old female who loves to have fun. If you love to have fun... Please let me know! BOX 39201

OUTGOING...ARE YOU?

34 year old white female, 5' and 110 pounds, fun, down to earth, and a little crazy sometimes. Seeking a tall, attractive male, who like children, that's a plus. Like movies, dinner, hanging out at home, whatever. BOX 36462

SOUND GOOD TO YOU?

36 year old female looking for a 36 to 45 year old black male. Love outdoor activities, the shore, movies, etc. Must be a non smoker and non drinker. BOX 10963

Connections

WHAT A WAY TO MEET!

Call 1-900-786-2400 (\$1.99/min.) to respond to these ads.
Touch-tone or rotary phones. You must be 18 or older.

15 New Ads

MEN SEEKING WOMEN

Call 1-900-786-2400 \$1.99 per min.

CALL ME

White widowed, semi-retired male. Seeking a single or widowed woman, reasonably shapely and pretty, 65 and under, non smoker; to enjoy friendship and a possible relationship. Preter local area; Essex county or near by. I enjoy an occasional drink, dinner, dancing, and movies, some sports (the races). BOX 11879

STEP RIGHT UP

Tall, handsome, single white male, 33, 5'10". Like dinner and dancing, movies, swimming and quiet romantic times. Seeking a single white female, ages 25 to 37, with similar interests. Non smokers, social drinkers, okay. New Jersey residents only! BOX 12008

TREAT ME RIGHT...

20 year old Chino-Americano, 5'9 1/2" and weigh 175 pounds, muscular build. Hopefully honest, semi open minded but with a sarcastic sense of humor. Looking for a slightly jealous, an possessive girl, beautiful eyes, a cute smile, and a nice body. Also, someone who will not take me for granted. BOX 12011

LONG HAired GUY

Very attractive, fit, sexy, affectionate, single white male, young 38. Seeking a sexy, attractive, cuddly female, for fun and romance. Age and race is open. BOX 14757

LET'S TALK

37 year old, single white professional male. Easy going, fun loving, romantic at heart, and family oriented. Looking for a single white female, 27 to 37, no game players. Enjoy movies, pool, candlelight dinners, shore weather, etc. BOX 37680

GOOD LOVER

Emotionally secure and mature gentleman. Seeking a sensitive, professional lady, 29 to 49, for a possible relationship. Race and religion, and weight is insignificant. BOX 39127

DISCREET FRIENDSHIP

19 year old, 5'4" brown skinned male. Looking for a 20 to 25 year old black female who cares, like me, for friendship and fun. Must be discreet and drug free. If you're interested, please leave your phone number and I will call you back! BOX 38949

LET'S HANG OUT

Single white male, 35, non smoker. Attractive and outgoing. Varied interests include: travel, hiking, outdoor activities, parties, and quiet times at home. Seeking a single or divorced white female around my age, attractive, happy, and down to earth. If you are in the retail field that would be a plus. BOX 12103

SAME INTERESTS...

22 year old single white male looking for a single white female who likes walks on the beach, dining out for two, bowling, etc. If you are interested in talking to me, call BOX 13270

LET'S TALK

Good looking, single professional male, 57" and in good shape, very intense, romantic, and fun to be with. Looking for someone who takes care of herself and who can really make me spin. BOX 14860

GOOD TIMES

34 year old single white male. Into Harley's, rock and country music, the shore, outdoors, etc. Seeking a woman who is open and honest. BOX 14940

CAN YOU HANDLE THIS?

Looking for a possible friend or long term relationship. Enjoy walks, the shore, dining out, and movies. Be attractive physically as well as mentally. I have dark hair and eyes, a fit body and mind, and playful spirit. BOX 15011

SEEKING FUN PERSON...

Male, 5'8", 24 years old, brown hair and eyes; enjoy the outdoors. Seeking an intelligent, outgoing female who can communicate. BOX 10976

DOWN TO EARTH GUY

68 year old Jewish professional male, 6' tall, 220 pound, widowed. Enjoy music, the theatre, movies and scrabble. Looking for Jewish female between the ages 55 and 60, who enjoys the same type of interests as I do. BOX 14326

SEEKING UNIQUE LADY

Single white employed male, 30 years old, 6'1", 250 pounds, dark brown hair and eyes. Enjoy music, dancing, all kind of movies. Seeking a woman 20 to 50 years old who is down to earth, honest, understanding and have the same interests I have to share fun times and romance. BOX 14369

FUNNY LADY.....

25 year old single white male. Seeking single white female, 21 to 25 years old, who is sincere, caring, funny and has a great sense of humor. BOX 14483

DON'T BE SHY, CALL...

40 year old divorced male, 6'2", 190 pounds, brown hair and blue eyes. Seeking a special single or divorced white female, 28 to 40, who is attractive, fit, supportive, responsible and has common sense. Enjoy the New York "Yankees", reading, movies, quiet times, culture, fun and adventure. BOX 14501

ACTIVE MALE

Italian, professional male. Looking for an attractive woman who is fit and active. BOX 10792

SEEKING OLDER WOMEN

Male in 40's. Seeking women in 50's and 60's for friendship and hopefully for love later. Give me a call and we can talk! BOX 13657

SOMETHING DIFFERENT

Inter-racial relationship sought by single black professional male, age 30 with a sense of humor and likes to have fun. Enjoy bike riding, pool, movies, long walks and talks, amusement parks, etc. Seeking someone clean and attractive and drug-free, who works hard and plays hard, and has similar interests. BOX 38497

SEMI-RETIRED MAN

Widowed white professional male, 55", 150 pounds, over 50, intelligent and understanding. Seeking an attractive, healthy, single or widowed female under 55", under 130 pounds, for friendship, long term relationship. BOX 13278

ARE YOU OUT-THERE?

Single black male. Seeking a single black female, intelligent and mature; willing to face the challenges of life. I'm now a news reporter, formerly a police officer. Like relaxing on the beach or dinner for two. BOX 13281

ROMANTIC MALE

White male in my late 30's, 5'8" with a solid build, drug-free. I'm easy going, considerate and outgoing. Enjoy movies, the outdoors, dining out, sports, parks, malls, flea markets, museums and historic places. Looking for female companionship, 28 to 45, for friendship and hopefully a long term relationship. BOX 14289

FIRST TIME AD

Young 58 year old white widowed male, 6' and 175 pounds. Enjoy the shore, the beach, walking, movies, talking and playing games. If you're interested, please leave a message. BOX 37057

NATIVE AMERICAN

5'10", 50 year old male. Looking for a Native American woman or a woman interested in Native American culture. Enjoy museums, dining out, horse racing, long walks and more. If you're interested, please give me a call. BOX 38795

PARTY ANIMAL

Single white male, 19. Enjoy partying, clubbing and hanging out. Looking for a single white female, 18 to 25, who has similar interests. BOX 39030

ARE WE COMPATIBLE???

21 year old male, 5'6", 135 pounds with blonde hair and blue eyes. Looking for a nice, sweet, fun loving, intelligent female for friendship and possibly more. BOX 39048

LOOKING FOR LOVE

White male, 38, 5'9", 185 pounds with a solid, husky build. I'm outgoing, easy to get along with and considerate of others. Enjoy sports, dining out, movies, music, talking, the outdoors, parks, malls, museums and historic places. Looking for friendship and hopefully something that will develop into a permanent relationship. BOX 37022

ENTERPRISING GENT.

52 year old semi retired medical doctor (Gen. Pract.) from Essex County. Considered warm, compassionate, kind, very bright, attractive person by friends and colleagues. 5'11 1/2", 195 pounds, medium build, grayish brown hair. Seeking 5'5", not over weight, 32 to 46, non smoking and non drinker, with a possible medical background. If interested call me, sincere calls only. BOX 38871

NEED A SWEETHEART

Professional, single white male. Looking for a single white female, 25 to 35, and not a game player. Enjoy movies, traveling, dining in and out, Atlantic City and theme parks. If you're interested and you would like to talk, please leave a message. BOX 14533

NEED A COMPANION

Male, 5'8", 24 years old, brown hair and eyes; enjoy the outdoors. Seeking an intelligent, outgoing female who can communicate. BOX 10976

CAN I MAKE YOU LAUGH

Divorced white male in my mid 40's. Looking for a white female, mid 30's to mid 40's, for friendship and possibly more. Enjoy movies, walking in the park and more. I have a funny and corny sense of humor and I'm seeking a woman who likes that type of humor. BOX 37012

PHOTO EXCHANGE

6', 67 year old male. Enjoy Jewish music, walks and talks, and game of all kinds. Looking for a tall, nice, intelligent woman, 55 to 62, with a nice figure. Union county preferred. BOX 38555

A SUMMER ROMANCE

Marriage minded, single white professional male, 37. Looking for a single white female, 25 to 35, who is easy going, fun loving and a romantic at heart. Enjoy the beach, the boardwalk, Atlantic City and more. BOX 10462

NO PLAYERS

Single black male, 5'7" and 170 pounds. Looking for a black female, 18 to 26, who is honest, loving, respectable, easy going and hard working. No female players. BOX 12955

INTELLECTUAL MALE

Multi lingual, single black male. Looking for an intelligent, mature black female. I'm ambitious, down to earth, intelligent and mature. BOX 13276

ARE YOU OUT-THERE???

46 year old, professional, single gay white male, 5'8" and weigh about 150 pounds. Have brown hair and blue eyes. HIV negative and healthy. Looking for a sincere, discreet, gay white male age 40 to 55, who has the same qualities. Want a caring friendship, leading to a possible long term relationship. BOX 14283

SINCERE AND CARING

43 year old, single gay white professional male, 5'9", 160 pounds, brown hair, blue eyes, healthy, good looking and trim. Seeking a sincere, caring friendship, leading to a possible long term relationship. Want someone age 40 to 55. BOX 15469

SEEKING SAME

Mid 30's male, attractive, straight acting. Seeking some gay men, 25 to 35, looking for some fun and friendship. Like animal rescue operations, running, reading, etc. Must be discreet. Non smoker and only light drinkers preferred. BOX 15632

UNION COUNTY MAN

43 year old, bi white professional, 5'10" and weigh 165 pounds. I am healthy, a non smoker and moderate drinker. Looking for a discreet friendship with a bi or gay white male, age 40 to 55. Want someone who is sincere, honest and not confused! BOX 15783

ARE YOU CURIOUS TOO?

White male who's curious. Age 39, 5'8", 185lbs, and clean cut. Non smoker or living in Union county. Seeking a male, any race or age. BOX 37927

PLEASE RESPOND!

38 year old, 5'10", 140 pound white male. Looking for a strong male who is overweight, clean and healthy. BOX 14165

MAGIC MALE

38 year old, 5'11", 200 pound bi white male. Looking for an strong, clean and discreet, bi or gay white male, over 38, for regular get togethers. BOX 14540

IS THIS YOU?

40 something white bi would like a fantasy relationship with a slim and pretty tv. I am attractive, athletic, masculine and healthy. Looking for feminine, adventurous, drug and disease free. Enjoy creative phone talk, videos, and dancing. If you think this is you, leave your phone number. BOX 38438

YOU ARE...

...youthful, good looking, fit, a non smoker and non drug user. I am a 52 year old, masculine, bi white male, 5'9" with blue eyes. Want someone for encounters. BOX 38756

HELP ME OUT HERE...

White male, age 45, 5'9" and weigh 185 pounds. Enjoy hiking, racquetball, wrestling and more. Looking to learn proper order of courtesy and respect. BOX 38965

CALL ME BACK

24 year old Jewish gay male, 5'4". Like movies, home life, soft and hard rock, etc. Seeking a Jewish male, 25 to 35, with similar interests and is caring and understanding. BOX 11054

SEEKING YOUTH

50 year old male, 5'10", smoker. Seeking a younger gay male, who is feminine and enjoys cross-dressing, no macho types, please. Enjoy dining out, long walks and having fun in general. If interested, call! BOX 36436

HELP!

19 year old black male, 5'8", 145 pounds. Seeking a gay black male, 20 to 25, cute and passionate. Straight acting a must! BOX 11538

ALL CALLS ANSWERED

Gay white male, 28, 5'11" with a thin build. Fun to be with and I'll do anything. Seeking a gay white male, 18 to 60. BOX 39529

SOUND LIKE YOU?

28 year old white male, TV and cross dresser, 5'5" and weigh 115 pounds. Looking for a gay male, 20 to 35, who is tender and passionate. Enjoy swimming, the shore, biking, tennis, picnics, NYC, dining out, movies, and much more! BOX 12711

NEW AT THIS

33 year old single white male. Looking for a single transsexual male. Into outdoors, biking, and that sort of thing. BOX 16301

LOOKING TO PLEASE

Gay white male looking for other gay males. BOX 39395

FRIENDS FIRST

19 year old gay white male, 6'1", 240 pounds, and a smoker. Seeking a gay male, 18 to 25, for dating, movies, NYC outings, etc. Must be honest, open and funny. Essex county and hairy a plus. BOX 12957

MAN OF MY DREAMS

Very feminine, 28 year old Gay white male cross dresser, 5'5" and 120 pounds. Enjoy dancing, dining out, swimming, picnics, the beach, NYC, the ballet and opera and more. Looking for a man who will treat me right, who will cuddle and caress me for a long term relationship. BOX 14423

ENJOY MUSIC & SPORTS

Gay white Italian male, age 31, 5'3" and weigh 150 pounds. Looking for a Gay white male age 30 and up, for friendship and good times. BOX 11048

SEE WHAT'S UP!

30 year old, 6'1" male. Enjoy movies, basketball, hanging out, etc. Looking for someone who enjoys the same. BOX 11049

HAVING FUN...

I am a 5'9", 195 pound male. If you like having fun, please give me a call! BOX 11122

WOMEN-ALTERNATIVE

Call 1-900-786-2400 \$1.99 per min.

DISCREET TIMES

Attractive bi black female (model type), 26 years old, 5'7", 120 pounds. Seeking a bi white for a discreet relationship. If this is you, call me. BOX 14468

CARIBBEAN BEAUTY

Bi black female seeking a bisexual or bi curious Caribbean female who is pretty, drug free, smoke free, and not overweight. You must be willing and discreet. BOX 14480

CALL ME SOON...

22 year old female, 5'5" and 135 pounds. Very sweet, kind, trusting woman. Looking for the same in return. Seeking an hispanic or white female, 22 to 25, for friendship first. BOX 37364

PRETTY

27 year old, gay white female, pretty and feminine, about 5'4" and 125lbs. Enjoy all movies, music, dancing, the ocean and quiet times. Seeking a pretty gay white female, 18 plus, with similar interests. No drugs! BOX 36673

SEEKING SAME

Attractive, feminine, gay white female, 23, 5'4" and weigh 115 pounds. Seeking a feminine gay white female, for friendship, fun, and possible relationship. BOX 36694

FRIENDSHIP AS WELL

20 year old black female. Seeking a black or hispanic female, 20 to 30. For fun times and talks. Please be discreet, bi curious. BOX 10524

SINGLE FEMALE WANTED

32 year old attractive, single black female. Enjoy long conversations and more. Looking for a health conscious, attractive, open minded, self confident, and discreet female. If you feel that you fit this description, please leave me a message. BOX 15218

GIVE ME A CALL

33 year old female who enjoys music, movies, etc. White female, attractive with a pretty good body. Seeking a gay white female, 30 to 35, who also enjoys music and just having fun. BOX 15793

SEEK HONEST WOMAN

Open minded, 20 year old, Bi curious, full figured female. Looking for another Bi curious or Gay female who is down to earth, caring, independent and mature for friendship, possibly more. BOX 38683

IS THIS YOU?

26 year old bi black female. Seeking a very attractive, feminine bi black female, 5'7" or taller. No overweight people, for discreet and erotic encounters. BOX 39153

DON'T BE SHY

HEALTH/FITNESS & MEDICINE

Researchers to look for gene that causes cancer in women

The first genetic screening program in the state for women who have a family history of early onset breast-ovarian cancer has opened on the Newark campus of the University of Medicine and Dentistry of New Jersey.

The program, targeting Jewish women of eastern European heritage, is offered by the Center for Human and Molecular Genetics at UMDNJ. The center tests for recently identified gene mutations that predict breast cancer.

Dr. Marvin Schwab, director of the center, said Jewish women with Ashkenazi heritage were selected as the initial testing group because it is the only population for which almost all of the mutations have been identified.

"Although all women who have a mutation in one of the two genes identified with breast cancer, called BRCA1 and BRCA2, are at high risk of this cancer by age 70, so many different mutations have been identified in the population at large that conducting an accurate, affordable, screening program for all women is impossible right now," Schwab added.

"In the Ashkenazi Jewish population, however, because only a limited number of specific mutations have been identified in more than one quarter of the women who develop breast or ovarian cancer before the age of 50, a screening program with definitive results is possible."

A two-part approach

The screening has two components, the genetic analysis of a blood sample and pre-and post-test counseling to help patients understand the implications of the test results for themselves and other family members.

"Counseling is a mandatory element of all of our genetic screening programs at the center," said Monica Magee, the genetic counselor handling the breast cancer testing program. "It's critical that individuals and their families understand the medical and psychological implications of the test results."

"If a BRCA mutation is identified in any member of the family, we will

recommend that other family members also be screened, including male members because they can be carriers of a mutation," Schwab also said.

"If a BRCA mutation has been identified in the family, but the individual tested does not have a mutation, her risk of developing breast or ovarian cancer is no greater than that of the general population. If an individual has a family history of breast cancer, but no BRCA mutation is identified, there may be an as yet unidentified genetic gene cause for this pattern."

Help with research asked

Women seeking to be screened will be asked to participate in a research study to assess the psychological implications of predictive testing for hereditary breast cancer. Women who volunteer for the study will not be

Participants in the research study will fill out a written questionnaire prior to counseling to assess their levels of optimism, anxiety and vulnerability; feelings about control; health behaviors; personal support network; beliefs about cancer and genetics and quality of life; and a personal health assessment. Each will be interviewed by telephone within 48 hours of the pre-test counseling session and a week after receiving the test results. A follow-up written questionnaire will be mailed eight months later.

Patients will be referred

Patients who are identified as at risk of developing cancer will be referred to physicians at the Cancer Institute of New Jersey for further medical consultation. "We will counsel patients regarding our assess-

'So many different mutations have been identified that conducting an accurate screening program for all women is impossible right now.'

— Dr. Marvin Schwab

Center for Human and Molecular Genetics

charged a fee for the screening program. The fee for non-study participants will be \$500. The study is a joint effort of UMDNJ and Rutgers University.

Dr. Howard Leventhal, board of governors professor of psychology at Rutgers, said the purpose of the study is to evaluate what factors influence an individual's decision to be tested or not and what factors determine how an individual who learns she is at risk of developing cancer reacts to this information.

"For example, will a patient decide not to be screened because she is concerned about losing health insurance if the result is positive?" Leventhal said. "Will the patient who learns she is at risk become despondent or decide to pursue an aggressive screening program for early detection? We need to understand which personal and social factors influence these reactions."

ment of their cancer-risk based on their family history and the results of their test," said Dr. Deobrah Topmeyer, assistant professor of medicine at UMDNJ-Robert Wood Johnson Medical School and the Cancer Institute of New Jersey. "We will also discuss potential interventions with a focus on what we feel will be the most appropriate surveillance vehicle based on their risk."

"We feel patients considering the test should be seen in an academic setting where patients will have a comprehensive evaluation, including, most importantly, pre-testing counseling so they will have a well-informed understanding of the test and the potential implications of a positive or negative result."

The Center for Human and Molecular Genetics is the most comprehensive genetics program in the state.



Penny Barth, Carol Walsh and Gala Mailing Chairperson Ann Marie Sniffen of Summit examine gala invitations, while Barbara Lozner looks on.

Overlook plans for gala

Invitations to the Overlook Hospital 90th anniversary gala receive personal attention as volunteers and members of the Gala Committee join to hand-address the 5,000 envelopes.

The gala, "The Wonderful World of Medicine and Magic," will be held at the Liberty Science Center Sept. 28 at 7:30 p.m. All funds raised from the gala will benefit the John E. Reeves Same Day Surgery Center at Overlook, which will occupy the sixth floor of the Center for Community Health.

The evening will feature the presentation of the Overlook Hospital Lifetime Achievement Awards, with Edward T. Kenyon receiving the Community Award;

William H. Longfield and C.R. Bard, Inc. receiving the Corporate Award; Cassandra Romas, outgoing president of the Overlook Auxiliary receiving the Auxiliary Award; and Henry R. Liss, Overlook's vice president for Medical Services and Education receiving the Medical Award.

The Overlook Philanthropic Leadership Award, to be presented for the first time this year, will be presented to Nancy Deane Kreitler.

Tickets for the event are \$250 per person. For more information and reservations, contact the Overlook Hospital Foundation at 522-2840.

Allergens can be reduced in home

Red, puffy, itchy skin and eyes, runny nose, coughing, sneezing, difficulty breathing and phlegm build-up can be symptoms caused by your home's indoor air.

Ever since the energy crisis of the '70s, homes have been built virtually airtight, trapping allergy-triggering contaminants in the home.

These contaminants — dust-mite feces, pollens, animal dander, molds, mildew and cockroach debris are known as allergens. These allergens are hard to reduce and almost impossible to eradicate. In fact, animal dander and dust-mites are the most difficult to reduce.

Animal dander is sticky and clings to everything from fabric, furniture

and carpet to ceilings and walls. It stays around in a home for months, sometimes even years after the pet is gone. Dust mites are tiny microscopic creatures which feed on skin scales and dander shed by humans.

It is the dust-mite feces which trigger allergic reactions. Unfortunately, dust-mites are practically everywhere; they thrive and reproduce in bedding, carpeting, stuffed toys, furniture and closets. A pinch of dust contains hundreds of dust-mites.

When you spend 90 percent of your time indoors, these allergens are a concern, especially for the 50 million Americans suffering from allergies and allergy-related asthma.

According to the Asthma and Allergy Foundation of America, allergies are the most common cause of asthma; 90 percent of children, 70 percent of young adults and 50 percent of older adults who have asthma are allergic.

Although you can't eliminate allergens in your home, you can reduce your exposure to them with regular housecleaning and preventative maintenance techniques. Frequent vacuuming, regularly changing or cleaning the filter in the furnace and air conditioner, grooming pets outdoors, washing bedding, cleaning air ducts, vacuuming mattresses or using a waterbed all aid in the reduction of allergens.



Osteoporosis can rob you of your independence

A bone density test can provide essential information on bone health in five minutes or less

Osteoporosis and associated fractures can rob you of mobility and your independence. Approximately 50% of women over the age of 50 have osteoporosis and are at risk of an osteoporosis related fracture. A woman's risk of hip fracture alone is equal to the combined risk of developing breast, uterine and ovarian cancer.

A bone density test is safe, fast, non-invasive, and painless and it will provide essential information to help your doctor assess the health of your bones.

We are pleased to announce that we now offer the latest state-of-the-art equipment specifically geared to

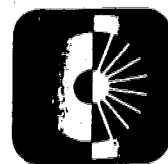
measuring Bone Density and demonstrating the presence of UNDETECTED OSTEOPOROSIS.

Our recently expanded high-tech imaging facility also offers MRI, MRA, CAT-SCAN, DIAGNOSTIC X-RAYS, ULTRASOUND, and ACR CERTIFIED MAMMOGRAPHY. Our dedicated staff performs quality imaging with a minimum of waiting. The images are interpreted by board certified radiologists and the results are available to your private physician immediately.

We are conveniently located with free on-site parking.

Ask your doctor about bone density testing or any of the other procedures which we offer.

For further information call (908) 351-7600



Diagnostic Imaging OF ELIZABETH

415 MORRIS AVENUE ELIZABETH, NJ 07208

VITAMIN FACTORY

201 Rt. 22, Hillside, NJ 07205 - (201)926-2946

10% Off All EAS Products

FF Garlic & Herb Crackers TREE OF LIFE (Asst'd Flavors - 6 oz.) Reg. \$1.79	.99
Tongol Tuna TREE OF LIFE 6 oz. Reg. \$1.99	1.29
Apple Cider Vinegar Bragg 16 oz. Reg. \$2.89	1.99

VITAMIN FACTORY

Vitamin C 500 mg 100s Reg. \$1.99	1.39	Hair Vite 50s Reg. \$2.99	2.09
Folic Acid 400 mcg 100s Reg. \$1.19	.69	Celebrity Tabs 60s Compare to Star Caps Reg. \$35.99	2.99
Selenium 50 mcg 100s Reg. \$1.99	1.29	Red Clover 430 mg 100s Reg. \$5.99	4.79
Iron (Ferrous Sulfate 325 mg) 100s Reg. \$1.39	.99	Valerian Root 400 mg 100s Reg. \$5.29	4.29
CoEnzyme Q-10 10 mg 60s Reg. \$8.99	6.99	Mega #6 Platinum 100s Compare To Centrum Silver Reg. \$4.99	3.79

DHEA 50 mg BODY AMMO 60s Reg. \$39.99	27.99
Diet Fuel Caps TWINLAB 60s Reg. \$14.99	9.59
Evening Primrose Oil NATURE'S WAY 90s Reg. \$17.99	13.95
Green Tea w/Kombucha & Ginseng YOGI 16s Reg. \$4.09	2.99

\$29.99 Designer Protein
Choc. or Van.
32 oz. Reg. \$39.95

Cinnamon Toothpaste TOM'S 6 oz Reg. \$4.85	3.89	Carnitine 250 mg TWINLAB 60s Reg. \$26.95	17.49
Slim Tea - Original HOBE 24s Reg. \$19.99	12.99	Ginkgo Biloba 60 mg NATROL 60s Reg. \$24.99	14.95
Cat's Claw NATURE'S HERBS 50s Reg. \$6.39	3.99	CitrIMax PLUS NATROL 60s Reg. \$19.95	12.95

Everyday is sale day at the Vitamin Factory... Everything priced just a cut above wholesale!

Visa, Mastercard & MAC Accepted

Sale Prices Good From 7/8/96 - 8/5/96

STORE HOURS: Mon. & Thurs. 10-6; Tues., Wed., & Fri. 10-4

HEALTH/FITNESS & MEDICINE



Cindy Barowitz, Mike Sullivan, Valerie Center Director Steve Halpern and Emy Hyans display the check representing the \$19,600 raised for the Valerie Center for Children's Cancer and Blood Disorders at Overlook Hospital. Barowitz's daughter Emily, who died in 1992, inspired a series of fundraisers.

Cancer treatment center gets donation in child's memory

The Valerie Center for Children's Cancer and Blood Disorders of Overlook Hospital has received a \$19,600 donation from the Emily Barowitz Invitational Golf Tournament Committee.

The gift was in memory of a patient of the Valerie Center who passed away in 1992.

The gift represents the proceeds from the second annual Emily Barowitz Invitational Golf Outing, held in May at the Raritan Valley Country Club.

The donation will be used to provide the services of a child-life worker, as well as a computer to help track children on the center's follow-up programs.

The golf outing, chaired by Michael Sullivan with Tom and Cindy Barowitz as the trustees, and organized by a group from the Long Valley Presbyterian Church, has raised almost \$30,000 for the center in two years.

The outing was supported by major corporate sponsors.

"I have been extremely blessed in my life, and I wanted to return some of those blessings to the children

in the Valerie Center," Sullivan said. "Emily's spirit embraced the whole church and will continue to live in the memory of those who attended this golf outing."

More than 100 golfers participated in the event, which included a reception and awards dinner. Last year, proceeds from the golf outing were used to equip a treatment room for children receiving chemotherapy.

The Overlook Hospital Valerie Fund Children's Center for Cancer and Blood Disorders provides specialized treatment and planning for children with cancer.

The center, under the medical direction of Dr. Steven Halpern, sees between 20 and 30 new patients every year, with another 75-100 on active treatment.

The center acts as the contact point, with patients coming for evaluation, treatment planning and oversight, and referrals.

The center coordinates all care for the children admitted to its program.

For more information about the Valerie Center for Children's Cancer and Blood Disorders call 522-2353.

Bone density testing available

Diagnostic group can identify osteoporosis by measuring bone mass

Osteoporosis, a disease that causes bones to become brittle and prone to fractures, can rob a patient of mobility and independence.

Approximately 50 percent of women over age 50 have osteoporosis and are at risk of an osteoporosis-related fracture. A woman's risk of hip fracture is equal to the combined risk of developing breast, uterine and ovarian cancers — and up to 20 percent of victims who suffer hip fractures die within one year of the injury.

Today there are ways to address osteoporosis. Early detection, using a bone density test, is the best way to

identify risk for its debilitating effects.

Diagnostic Imaging of Elizabeth offers bone density testing to provide physicians with accurate assessments of bone health.

"The dual X-ray absorptiometry bone densitometer provides very accurate measurements of the density of the spine, hip and other bones that are the most frequent fracture-sites," said Dr. Jerome Molitor, the center's medical director.

"Evaluating bone density using conventional X-ray techniques won't reveal a problem until a person has lost at least 30 percent of bone mass

— and that's just too late. Now, in a matter of minutes, we can get an accurate picture of a person's bone density early enough in the disease to better enable us to make a real difference in the outcome."

Molitor also suggested those at risk contact their physician for more information about osteoporosis and bone density testing, or call Diagnostic Imaging of Elizabeth at 351-7600 to learn more.

FREE Information!

CALL (908) **686-9898**

and enter a four digit selection number below!

HEALTH

CHIROPRACTIC

- 5100 The Art Of Chiropractic
- 5101 What Is An Adjustment?
- 5102 Muscle Pains & Spasms
- 5103 What Causes Back Pain?
- 5104 Headaches

OPHTHALMOLOGY

- 5240 Glaucoma-What Can Be Done?
- 5241 Cataract Surgery - When Is It Time?
- 5242 Diabetes - How It Affects Your Eyes
- 5243 Vision Correction - Is It For You?
- 5244 Droopy Eyelids or Bags Under Eyes

OPTOMETRY

- 5250 Eye Exam More Than Glasses!
- 5251 Red Eye - it Could Be Serious
- 5252 Contact Lenses Are They For Me?

PLASIC SURGERY

- 5260 Hair Transplantation
- 5261 Eye Lid Surgery
- 5262 Liposuction
- 5263 Rhinoplasty
- 5264 Laser Skin Resurfacing

PODIATRY

- 5110 Diabetes
- 5111 Ingrown Toenails
- 5112 Warts
- 5113 Bunions
- 5114 Hammer Toes

Infosource

Your Community's Best
24 HOUR VOICE INFORMATION SERVICE
A Public Service of
WORRALL COMMUNITY NEWSPAPERS

With help, children can handle anxiety

Whether tragic events touch your family personally or are brought into your home via newspapers and television, you can help children cope with the anxiety that violence, death and disasters can cause.

Listening and talking to children about their concerns can reassure them that they will be safe. Start by encouraging them to discuss how they have been affected by what is happening around them.

Even young children may have specific questions about tragedies. Children react to stress at their own developmental level.

The Federal Center for Mental Health Services offers these additional pointers for parents and other caregivers:

- **Encourage children to ask questions.** Listen to what they say. Provide comfort and assurance that address their specific fears. It's okay to admit you can't answer all of their questions.
 - **Talk on their level.** Communicate with your children in a way they can understand. Don't get too technical or complicated.
 - **Be honest.** Tell them exactly what has happened. For example, don't say that someone who has died has "gone to sleep;" children may become afraid of going to bed.
 - **Find out what else frightens them.** Encourage your children to talk about other fears they may have. They may worry that someone will harm them at school or that someone will try to hurt you.
 - **Focus on the positive.** Reinforce the fact that most people are kind and caring. Remind your child of the heroic actions taken by ordinary people to help victims of tragedy.
 - **Pay attention.** Your children's play and drawings may give you a glimpse into their questions or concerns. Ask them to tell you what is going on in the game or the picture. It is an opportunity to clarify any misconceptions, answer questions and give reassurance.
 - **Develop a plan.** Establish a family emergency plan for the future, such as a meeting place where everyone should gather if something unexpected happens in your family or neighborhood. It can help you and your child feel safer.
- If you are concerned about your child's reaction to stress or trauma, call your physician or a community mental-health center.
- For more information on children's mental health, call the Center for Mental Health Services at (800) 789-2647.

With summer sunbathing, comes skin cancer risk

After a brutal winter, the warmth of the summer sun is a welcome relief; however, soaking up too much sun may lead to skin cancer.

This year, physicians will diagnose 1,200 New Jerseyans with skin melanoma and 230 will die of the condition, according to estimates from the American Cancer Society.

"If you are spending long periods in the sun, you should watch for some very specific skin cancer warning signs," said Dr. William N. Hiat, director of the Cancer Institute of New Jersey.

These signs include any change on the skin, especially a change in the size of color of a mole or other darkly pigmented growth or spot. Other warning signs include scalliness, oozing, bleeding, or the change in the appearance of a bump or nodule, the spread of pigment beyond its border, a change in sensation, itchiness, tenderness, or pain.

"Protecting young skin from ultraviolet rays is particularly important," Hiat said. "Researchers have found a link between severe sunburn in child-

ren and skin cancer later in life."

Hiat offered the following advice to reduce the risk of skin cancer:

- Limit sun exposure to a few hours a day, and rest in the shade periodically.
- Before going in the sun, apply sunscreen with a sun protection factor of at least 15 and reapply it throughout the day. If you will be swimming, be sure to reapply waterproof sunscreen every few hours.
- Wear a hat to protect areas that burn easily because of constant sun exposure, such as the face, ears and back.
- Like many forms of cancer, early detection of skin cancer is crucial. Experts advise that adults examine themselves once a month and consult a physician if any suspicious skin activity appears. Skin cancer treatment includes surgery; radiation therapy; electrodesiccation, which destroys the cancerous tissue by heat; cryosurgery, which freezes the cancerous tissue; and laser therapy. The institute's Skin and Soft Tissue

Tumor Study Group, under the direction of Joseph F. Germino and James S. Goydos, offers new and innovative treatment for skin cancer through its many clinical trials. Among these new therapies is the "Kirkwood Protocol," which includes high dosages of interferon to treat patients whose melanoma has spread to the lymph nodes.

"Patients may experience extended periods without a relapse and prolong their overall survival through this treatment," Germino said.

The study group is working on new techniques to assess the diseases and identify those who are most likely to benefit from therapy. Future plans include developing gene therapies and vaccines for treating melanoma and other malignancies.

Individuals interested in obtaining more information about these clinical trials may call CINJ at 235-6777.

Nutrition hotline

Questions about nutrition and foods can be answered by the American Institute for Cancer Research, which has established a toll-free hotline.

Calls to the AICR Nutrition Hotline are returned within 48 hours by a registered dietitian who can provide personalized answers to questions related to diet and health, but not medical advice.

The toll-free hotline numbers is (800) 843-8114. The hotline is open from 9 a.m. to 5 p.m., Mondays through Fridays.

A subscription to your newspaper keeps your college student close to hometown activities. Call 908-686-7753 for a special college rate.

Pollen counts available

For a daily pollen count, call UMDNJ's 24-hour pollen hotline at (201) 982-6518. The count is available in English and Spanish at (201) 982-6518.

Once diabetes could have cost Alice her leg.



If you have a wound or sore that won't heal - due to diabetes or poor circulation, you need the special treatment offered by the Wound Care Center®.

At the Wound Care Center®, specially trained physicians, nurses, and technicians use the latest therapeutic procedures to help heal wounds that have resisted other forms of treatment. Our comprehensive program has already helped heal thousands of people across the United States.

This comprehensive approach to the treatment of chronic wounds and sores is available now. So don't resign yourself to a life of suffering - we can help you.

The Wound Care Center — hope for wounds that won't heal

Wound Care Center®
CLARA MAASS HEALTH SYSTEM, INC.

36 Newark Ave., Belleville, NJ 07109
(G.S. Pkwy., Exit 48, S149)
201-450-0066
138 West 56 St., Bayonne, NJ 07002
201-339-4046

CHIROPRACTIC FOR BETTER HEALTH

DR. DONALD ANTONELLI
CHIROPRACTOR

STRESS ON SPINAL DISCS

Without spinal discs, your spinal column would be a solid mass of bone. These are the cartilage pads that separate the 24 vertebrae in your spine. In some ways they can be said to operate like an automobile's hydraulic system. They give your spine flexibility in movement and provide a much needed cushioning effect. Spinal discs account for about one-fourth of the length of your spine and play an important part in every movement of your body. They are constantly exposed to compression, torque, twisting, and injury, and this can bring stress to the disc mechanism. When misalignments in your spinal column occur, this can interfere with the normal functioning of your nervous system. The brain sends nerve impulses through the spinal column to all the organs and cells in your body. Every part of your body needs an adequate supply of nerve impulses to function in good health. If you are feeling any pain or discomfort in your neck or back or in other parts of your body, you may be able to benefit from a spinal examination and treatment.

In the interest of better health from the office of
Dr. Donald Antonelli
Chiropractor
Antonelli Family Chiropractic Center
2575 Morris Ave., Union
908-688-7373

WHY SUFFER?

Dr. Anthony Iuzzolino
Chiropractor

Quality Care For:

- Automobile Injuries
- Work Injuries
- Headache
- Sport Injuries
- Neck and Back Pain
- Immediate Appointments

Most Insurance Accepted

FREE EXAM & CONSULTATION
(Value to \$75⁰⁰) With This Ad
(Does Not Include X-Rays or Treatment)

Se Habla Espanol

1390 Stuyvesant Ave. • Union
(opposite Lee Myles)

CALL NOW: (908) 964-8555

Richard H. Bodner, M.D., F.A.C.O.G.
Diplomate
American Board of Obstetrics and Gynecology

is pleased to announce that he is now participating in the following managed Health Care plans and HMO's.

- U.S. Healthcare
- Cigna
- Co Med
- GHI
- Blue Select
- Blue Shield Pace
- BMA
- Central States Health and Welfare Fund
- CoreSource
- CUNA Mutual Insurance Group
- Employer's Health Insurance
- Fortis Benefits and Time Insurance Company
- General American Life Insurance Company
- Great-West Life & Annuity Insurance Company
- Empire Blue Shield PPO only
- The Guardian Life Insurance Company
- Jefferson-Pilot Life Insurance
- John Alden Life Insurance Company
- Motorola
- National Elevator Industry Insurance Company
- The New England Mutual Life Insurance Company
- New York Life Insurance Company
- Northwestern National Life Insurance Company
- Pacific Mutual Group Life Insurance Company
- Phoenix Home Life
- Provident Life and Casualty Insurance
- State Mutual Life Assurance Company of America
- Trustmark Insurance Company

1379 Morris Avenue
Union, New Jersey 07083
908-687-0102

WORRALL Classified



1-800-564-8911



INDEX

- 1-HELP WANTED
- 2-ANNOUNCEMENTS
- 3-MISCELLANEOUS
- 4-PETS
- 5-INSTRUCTIONS
- 6-SERVICES OFFERED
- 7-BUSINESS OPPORTUNITIES
- 8-RENTAL
- 9-REAL ESTATE
- 10-AUTOMOTIVE

UNION COUNTY

Union Leader • Springfield Leader
Clark Eagle • Kenilworth Leader
Mountainside Echo • Roselle Spectator
Hillside Leader • Roselle Park Leader
Linden Leader • Rahway Progress
Summit Observer • Elizabeth Gazette

CLASSIFIED RATES

20 words or less.....\$14.00 per insertion
Additional 10 words or less\$4.00 per insertion
Display Rates.....\$24.00 per column inch
Contract Rates Available
Blind Box Number\$12.00 per insertion

ESSEX COUNTY

News-Record of Maplewood & South Orange
West Orange Chronicle • East Orange Record
Orange Transcript • The Glen Ridge Paper
Nutley Journal • Belleville Post
Irvington Herald • Vailsburg Leader
The Independent Press of Bloomfield

CLASSIFIED RATES

20 words or less.....\$14.00 per insertion
Additional 10 words or less\$4.00 per insertion
Display Rates.....\$29.00 per column inch
Contract Rates Available
Blind Box Number\$12.00 per insertion

BEST BUY

CLASSIFIED COMBINATION RATES

Ad appears in all 22 newspapers
20 words or less.....\$20.00 per insertion
Additional 10 words or less.....\$6.00 per insertion
Display Rates.....\$45.00 per column inch
Contract Rates Available

DEADLINES

Business Directory 4 p.m. Thursday
Display - Space reservation 5 p.m. Friday
Ad copy 12 Noon Monday
In Column 3 p.m. Tuesday

CLASSIFIED ADVERTISING DEPARTMENT HOURS

Monday through Friday 9:00 A.M. - 5:00 P.M.

CALL

1 - 800 - 564-8911

CLASSIFIED POLICIES

All classified advertising is payable in advance. We accept Visa and MasterCard. You may also mail your ad with payment (check or money order) to us, or come into one of our offices to place your ad.

Offices where ads can be placed in person:

- Union County**
1291 Stuyvesant Avenue
Union, N.J.
- Essex County**
463 Valley Street
Maplewood, N.J.
- 170 Scotland Road
Orange, N.J.
- 266 Liberty Street
Bloomfield, N.J.

Adjustments: We make every effort to avoid mistakes in your classified advertisement. Please check your ad each time it appears, should an error occur please notify the classified department within seven days of publication. Worrall Community Newspapers, Inc. shall not be liable for errors or omissions in any advertisement for which it may be responsible, beyond the cost of actual space occupied by item in which error or omissions occurred. We can not be held liable for failure, for any cause, to insert an ad. Worrall Community Newspapers, Inc. reserves the right to reject, revise or reclassify any advertisement at any time.

HELP WANTED

\$1000'S POSSIBLE. Typing. Part time. At home. Toll free 1-800-898-9778 extension T-5139 for listings.

\$1000'S POSSIBLE. Reading books. Part time. At Home. Toll free 1-800-898-9778 extension T-5139 for listings.

\$1000 WEEKLY STUFFING envelopes your location. Easy work, excellent pay. Part time/full time. **Workers needed now!** Free details send SASE: P.O. Box 500-KT, Lima, PA 19037.

ADDRESS ENVELOPES part time at home. \$200.00/day. Enclose S.A.S.E.: Department 43, P.O. Box 6589, Richmond VA, 23230.

ASSEMBLE ARTS, crafts, toys, jewelry, wood items, typing, sewing, computer work from home in your spare time. Great pay. Free details call 1-800-632-8007, 24 hours. (fee)

AUTO SERVICE AND LIGHT REPAIRS
Some experience required. Wage depends on background. Excellent benefits.
201-377-1915

AVON - A BEAUTIFUL Job. Earn Extra \$\$\$ Work your own hours for Fun and Profit. To sell in any area. Call Toll Free 1-800-662-2292.

BAGEL DELI: Counter help needed, early morning hours, full time Monday thru Friday. Grill experience helpful, but not necessary. 908-245-3838.

CARPET INSTALLERS

Year Round Work. Paid Top Prices Work close to home Van, Tools and Helper a Must Start Immediately.
201-742-5755 or 609-267-4422

CASHIER/ STOCK/ 1 hour photo clerk. Full time, part time, evening help. Will train, Contact Mr. Patel or apply. 908-687-4330.

CHILD CARE, part time. Reliable person to care for 5 and 9 year old in Springfield home school days 7-9 and/or 3-4. Non smoker. References and driver's license. 908-686-9802.

CIRCULATION ASSISTANT, part time, 25 hours per week, flexible. Thursday mornings a must. Car necessary for delivery and collection. Some lifting required. Call Worrall Newspapers at 908-686-7700 to arrange an interview.

CLERK/ TYPIST, Full Time. Bright motivated individual, computer experience a must (Microsoft Word, Access), good office skills. General duties include, phone coverage, mail distribution, preparation of reports, correspondence, etc. References required. Call 201-564-7598, 10am-4pm.

Customer Service Representative Squire Corrugated Container of Linden, NJ is looking for a customer service representative. Experience in the corrugated box industry is a definite plus, as is strong math skills. Responsibilities entail heavy customer telephone correspondence, job estimating, work with computerized order entry and tracking, proof reading, materials requisitioning. Generous benefits, 401(k) plan.

Contact James Benoroff Squire Corrugated Container 1500 Lower Road Linden, NJ 07036 Voice: 908-862-9111 x526 Fax: 908-862-6815

DENTAL ASSISTANT, 30-40 hours per week, \$11 per hour. Experience required. Small friendly, young office. Call 908-686-3197.

DIET 130 POUNDS like magic! 30 day programs start at \$30.00. For more information call 1-800-25-DIET-M.

DRIVERS, OTR tractor/ trailer drivers. Company and lease purchase opportunities for those who qualify. Company drivers up to 28 cents per mile. Lease purchase zero down. Late model walk-ins. Call Artic Express 800-927-0431.

DRIVERS- REGIONAL and OTR positions available now! Call Ark International offers great pay, benefits and the change to get home more often! Must be 22 with CDL and HazMat endorsement. 800-950-8326.

DRIVERS, SOLOS, teams, grads. Industry's top pay to start loaded/ empty. Three raises first year. Benefits, 401K. Assigned equipment. 22, CDL 'A'. 1-800-633-0550, extension EA-13.

DRIVERS, SOLO/ teams. Teams- \$100K+ Trainers- \$70K+ \$2K sign-on (teams) Drive conventionals coast-to-coast! Bonuses, benefits, 401K, Covenant Transport (experienced) 1-800-441-4394 extension SV-21. (Graduates) 1-800-338-6428 extension SV-21. Weekend recruiters.

DRIVERS

Suburban Taxi company is looking for 1 Full and 1 Part Time Driver. Good equipment/ Good pay.
201-763-0008

EARN UP TO \$700/week at home. Government fee. No experience. Process refunds. 1-800-338-5697, extension 1039.

EQUIPMENT OPERATOR/ Truck Driver. Experienced operator/ driver 65,000 pound capacity tractor trailer, backhoe and excavator. CDL Class "A" license required. Career position with public utility. Excellent salary, benefits. Equal Opportunity Employer. Respond: Personnel, 1 F.A. Orechio Drive, Wanaque, NJ, 07465.

"HAWKERS"

GREAT WAY TO EARN BIG \$\$\$!

The Star-Ledger is looking for responsible, enthusiastic people to sell newspapers at intersections, railroad stations, etc. in Central & North New Jersey.

Hours: 6AM-9AM, Mon-Fri. Better than average earnings. Must be 18 years of age or older. For more information call:

1-800-654-0936

Equal Opportunity Employer

HELP WANTED

ESSEX COUNTY Country Club is accepting applications for two summer grounds staff positions. These positions are available immediately and run through the end of August. Experience preferred but not mandatory. Interested individuals should contact: Ed Walsh, Essex County Country Club at 201-731-1403.

FRIENDLY TOYS and Gifts has openings for dealers. No cash investment! Fantastic toys. Exclusive gifts, home decor, Christmas items. Call for catalog and information 1-800-488-4875.

GIRL/ GUY Friday, full time. Knowledge of computers. Will train for in store sales. Salary negotiable. Start immediately. Call 908-686-9400.

HOMEWORKERS WANTED! 1000 envelopes- \$5,000. Receive \$5 for every envelope you stuff with my sales materials. For free info call 24 hour recording (310) 514-4257.

INFANT CARE-GIVER at child care facility. Full time, experience necessary. Benefits. Call for complete information, 201-535-3336.

INSTALLERS AND helpers wanted for duct work. Must have tools and drivers license. Need experienced take charge person to run jobs. Commercial and Residential. Benefits. Call for appointment 908-486-9800.

LEGAL SECRETARY, West Orange Defense firm seeks Secretary with 2 years litigation experience. Word perfect 5.1 a must. Fax resume and salary requirements 201-731-3467.

LIBRARY PAGE for shelving, magazines, filing, etc 20 hours, \$5.25/hr. High School diploma required. Springfield Library, 66 Mountain Avenue, 201-376-4930.

LIFEGUARD FOR private swim club in Springfield. Seasonal position. Must be fully certified. Call 201-467-0015.

MANAGER- FULL time. For well established fine jewelry store in Union County. Excellent salary. Send resume to: Box #403, Worrall Community Newspapers, P.O. Box 158, Maplewood, NJ 07040.

MEDICAL ASSISTANT needed for pediatric office. Experience preferred. Part time including every other Saturday. Call 201-762-3835 between 9am-3pm.

112 NEWSPAPERS REACHING over 1.8 million readers! Your classified ad can be included in SCAN- New Jersey's Statewide Classified Ad Network. All it takes is \$279 and one easy phone call. Phone Worrall Community Newspapers, Inc., classifieds at 201-763-9411 for all the details.

OFFICE ASSISTANT- Summit Law Firm seeks responsible person with reliable car for full-time permanent employment. Entry level position performing various duties such as copying, faxing, coffee room clean-up, errands, processing mail, some heavy lifting required. Call Judy or Gail at 908-277-2200 or fax resume to 908-277-6808.

OPHTHALMIC ASSISTANT, part time. Immediate opening in busy West Orange eye practice to do patient exam screening. Experience a must. Call Nancy at 201-984-5005 or fax 201-984-5554.

PART TIME - 5 points office. Excellent Salary. Order Department. Days 9:30-12:30, Evenings 6:30-9:30. Students welcome. No Typing. 908-686-5818.

PART TIME Horticulturist. Must be experienced in the care of flowers, trees and shrubs. Responsibilities include planting, pruning, fertilizing and selection of materials and direction of staff. Position is for three days per week and runs through late fall. Salary commensurate with experience. Interested individuals should contact Ed Walsh, Essex County Country Club at 201-731-1403.

PART TIME/PERMANENT SALES ASSISTANT

National Manufacturer's Rep in booming WIRELESS COMMUNICATIONS industry looking for part time responsible person for small busy office. Hours flexible. Please call (201) 762-2030 or Fax (201) 762-2051.

POSTAL JOBS. Start \$12.08/hr. For exam and application information call (219) 769-8301, extension NJ 517, 9am - 9pm, Sunday - Friday.

PROGRESSIVE DENTAL office seeks experienced Inside Sales Professional for director of patient relations. Call 201-991-0868 or fax resume to: 201-991-2699.

REAL ESTATE AGENT

Will sponsor and train/ Full Time. Must be willing to work hard. Call Susan today!

CENTURY 21

Piccullo
1-800-974-0021

FREE Information!

CALL (908) 686-9898

and enter a four digit selection number below!

WHERE TO LOOK FOR A JOB

- 1400 Classifieds
- 1401 Classifieds Plus
- 1402 Situation Wanted Ads
- 1403 Placement Services
- 1404 Non-Traditional Searches

NEGOTIATING THE JOB OFFER

- 1410 Salary
- 1411 Perks & Benefits
- 1412 Rejection, you can learn from it
- 1413 References
- 1414 Giving Your Employer Notice

Your Community's Best
Infosource
24 HOUR VOICE INFORMATION SERVICE

A Public Service of WORRALL COMMUNITY NEWSPAPERS

HELP WANTED

RETAIL SALES and Stock. Monday through Friday. Pleasant working conditions in long established party store. For more information call The Paper Pedlar at 201-376-3385.

SECRETARY- PART time. Small CPA office in Hillside needs someone with good secretarial skills, computer knowledge necessary, strong plus, 9am-1pm. Monday- Friday, permanent position. Call 908-289-8821.

SECRETARY, PART time in Livingston. Good hours. Must be good typist, have knowledge of computers, excellent clerical skills. Call 201-533-1650, extension 120, ask for Mr. Scheps. Evening number, 201-731-3304.

SERVICE MANAGER Assistant needed for local service company with small fleet of vehicles. Need to know New Jersey area as well as having good phone skills, ability to maintain parts room inventory and assisting in light office functions. Please call Mr. D. for interview appointment. 908-687-5005.

TELECOMMUNICATION TECHNICIANS/ Installation Repair Technicians, Splicers, and Linemen, Customer Service Representatives needed immediately in New York Metro area. Truck and tools supplied. Up to \$941 per week based on experience, plus overtime and city allowance. Call CSP Consultants, Inc. at 1-800-444-1400 or New York Office 914-232-6610/ Fax resumes at 1-800-677-6078, E.O.E.

TELEMARKETERS, FULL time/ part time, flexible hours, working for established mortgage company in Kenilworth. Call 908-298-1515, ask for Charles Melton.

TERMINIX

CAREER OPPORTUNITIES
This is your chance to join the nation's best pest control team. Management, sales, and service positions are available. Call today to find out how we can help you!

751-7650

Equal Opportunity Employer

TYPIST - GENERAL Clerical duties. Well organized take charge person. Small office. Hours to suit. Lehigh Avenue, Union. 908-810-1212.

WHEN REPLYING TO A UNION COUNTY CLASSIFIED BOX NUMBER

please address envelope to:

BOX NUMBER ---
Worrall Newspapers
P.O. Box 158
Maplewood, NJ 07040

WORK AT home. Part time \$500 to \$1,500 per month. Full time \$2,000 to \$8,000 per month. Training provided. 908-935-3486.

EMPLOYMENT WANTED

AFFORDABLE LIVE-in Nanny/ Au Pair. Legal for 12 months. Average cost \$200 per week. Call 272-7873.

CERTIFIED HOME health aide seeks position caring for the elderly/ sick. Days or nights, own transportation, excellent references. 201-763-2624.

CERTIFIED AIDE seeks full time, part time, weekends, nights caring for the sick or elderly. Good references. Own transportation. 201-763-1438.

CHILD CARE: AUPAIRCARE cultural exchange. Legal, trained, experienced English-speaking au pairs. Affordable live-in childcare, local coordinator. Call 610-623-3860 or 201-327-1386 or 800-4-AUPAIR.

EXPERIENCED LADY seeks position- live-in or out, as companion to elderly or babysitting. Excellent references. Call anytime, 908-560-7583, Messages, 908-769-5611.

HOUSECLEANING DONE by experienced mature woman. Excellent references, 12 years experience. Call 908-687-3654 after 5pm.

MATURE WOMAN will babysit, clean or be companion to the elderly. Very reasonable. 674-4926.

PERSONAL CARE Service. Polish agency. Experienced with care of elderly or ill. Live in or out. 908-969-2530.

CHILD CARE

EXPERIENCED LOVING care for your little one in my very "child friendly" home near park. State registered, inspected, CPR. 992-4855.

ANNOUNCEMENTS

AUDITIONS- GOSPEL Stage Play. Is Jesus Here Yet?? Saturday, July 13th, 2pm-7pm, 23 Prospect Street, East Orange, NJ, 201-378-4940. Male, Female, African American 18 and over requires strong singing voice and stage projection, be prepared to sing upbeat contemporary gospel song. Can send head shot/ resume. Pay/ non-union.

BECOME A host family- Scandinavian, European, South American, Asian, Russian high school exchange students arriving August. American Intercultural Student Exchange. Call 1-800-SIBLING.

ENTERTAINMENT

NUNO'S PAVILLION has the number #1 Elvis in NJ. Jim Barone and "The Butterfly Pirates" presents: "One Night With Elvis", Friday, July 12th, 9pm, 300 Roselle Street, Linden, NJ. 908-925-2544.

WHAT TIME does the movie start? Call 908-686-9898 ext. 3175. Infosource is a 24 hour a day voice information service. Calls are free if within your local calling area.

PERSONALS

ADOPTION: DO you need to know that your baby will be cherished and provided for? Close family. Great schools, pets, music, laughter, much more love. Judy/ Jay 1-800-860-6196.

ADOPTION: SARA wants to be a sister. We offer hugs, love, laughter, security and wonderful extended family. Please call Lisa and Steve 1-800-713-9536.

ADOPTION AGENCY, non-profit has helped 4,000 birthparents and families. Birthparents can adopt anytime. Adopting families can adopt healthy US and Chinese infants. Short wait. No restrictions. 1-800-943-0400.

BEAUTIFUL NUDIST swim club right in your backyard. Heated pool, hot tub, sun deck, social activities, family atmosphere. Call now membership is limited 908-647-2310.

DIAL A BIBLE MESSAGE

908-964-6356

We offer Basic Bible Studies of the Profound Truth Free for the asking

ERICA KANE what are you up to? Find out! Call 908-686-9898, ext. 3250. Infosource is a 24 hour a day telephone information service. Calls are free within your local calling area.

WORLD'S TOP psychics live. Horoscope, Astrology, Tarot, Numerology. #1 psychic line in the country. 1-900-329-4400 extension 065. IBS, 21425 W. 83rd Street, Lenexa, KS. \$3.95 minute 18+.

YOUR AD could appear here for as little as \$14.00 per week. Call for more details. Our friendly classified department would be happy to help you. Call 1-800-564-8911.

LOST & FOUND

CAT, LARGE gray lost in Townley section, Monday, June 24th. Very friendly, named Smokey. Reward for return. Please call 908-686-1682.

Use Your Card...



Quick And Convenient!

THE WAY TO A RICHER LIFE

DREAM ANALYSIS "NEW"

Unlock the MYSTERIES of your dreams! Let our Dream Counselors PERSONALLY guide you in exploring your SUBCONSCIOUS.

18+ 1-900-988-2266 \$3.99/min

PSYCHIC FORECASTS

Malibu Psychic Star Network - the industry leader.

Take control of your FUTURE!
PLUS - Receive your FREE Natal Chart!!
18+ 1-900-370-0002 \$3.99/min

WHAT DRIVES THE FORTUNE 500?

WE DO. BOSTONCOACH? A FIDELITY INVESTMENTS COMPANY, IS THE COUNTRY'S PREMIERE EXECUTIVE GROUND TRANSPORTATION SERVICE. OUR

EXECUTIVE SEDAN DRIVERS

ARE PART OF AN ELITE TEAM WHO TYPICALLY PROVIDE TRANSPORTATION SERVICES FOR BUSY EXECUTIVES FROM THE FORTUNE 500 COMPANIES. SO, THE PASSENGERS ARE INTERESTING, THE WORK ENVIRONMENT IS HIGH CLASS, THERE'S A REAL SENSE OF INDEPENDENCE. THE PAY IS GOOD. WE CURRENTLY HAVE PART-TIME MORNING AND AFTERNOON SHIFTS AVAILABLE. THE HOURS CAN BE FLEXIBLE; IDEAL FOR RETIREES AND COLLEGE STUDENTS. OUR DRIVERS TYPICALLY WORK A STEADY, OPEN-ENDED SCHEDULE AND ARE NOT REQUIRED TO BE AVAILABLE ON AN "ON CALL" BASIS. BOSTONCOACH USER BRAND NEW CHRYSLER LHS SEDANS WHICH ARE SPOTLESS AND WELL-MAINTAINED.

TO BE CONSIDERED, ALL YOU NEED IS A GOOD DRIVING RECORD, A PASSION FOR SAFE DRIVING, AND A STRONG CUSTOMER-SERVICE ORIENTATION. SO IF HAVING AN ELITE JOB WITH A PRESTIGIOUS COMPANY SOUNDS RIGHT FOR YOU, CREATE YOUR OWN GOOD FORTUNE.

PLEASE STOP BY DURING REGULAR BUSINESS HOURS.

780 DOWD AVE.
ELIZABETH, NJ

(Take Rt. 1 & 9 to N. Avenue to Dowd Avenue
Exit 13A - off NJ Turnpike)

BOSTONCOACH

A FIDELITY INVESTMENTS COMPANY

If you applied in the last 6 months, no need to apply again!

BOSTONCOACH IS AN EQUAL OPPORTUNITY EMPLOYER
A FIDELITY INVESTMENTS COMPANY

Real Estate

TRANSACTIONS

Real estate transactions are recorded in the office of the county clerk. Worrall Newspapers publishes an abbreviated version of all transactions recorded in the 12 Union County municipalities the newspapers cover. The information is provided by TRW Property Data, a Fort Lauderdale, Fla., information service, and is published approximately six weeks after it is filed in the county clerk's office.

Clark
Albert and Marilyn A. Guskind sold property at 110 John St., to Arnold Young for \$260,000 on April 16.

Elizabeth
Pedro and Idalina DaFonseca sold property at 408 John St., to Jose C. Braga for \$194,000 on April 2.

Hillside
Federal Housing Commissioner sold property at 179 Silver Ave., to Jorge M. Pimenta for \$75,000 April 11.

Kenilworth
Larry and June Barr sold property at 99 Pembroke Drive to William O'Malley for \$225,000 on April 10.

Linden
Julia S. Strazdas sold property at 511 Woodlawn Ave., to Ramon E. Strazdas for \$120,000 on April 11.

Roselle Park
Daniel R. and Ann P. Wiesbrock sold property at 520 E. Grant Ave., to Christopher L. Miller for \$160,000 on April 4.

Springfield
Philip D. and Janice K. Dumont sold property at 12 Remer Ave., to Matthew T. Loesberg for \$165,000 on April 9.

Summit
Joseph H. and Janice H. Kozloff sold property at 15 Edgewood Drive to Paul Zazzera for \$1,015,000 on April 8.

Union
Bruce and Gina M. Bussell sold property at 720 Pallsade Road to Patricia J. Junio for \$166,500 on April 1.
Karen D. Colletti sold property at 2031 Tyler St., to Rafael Gatchalian for \$129,900 on April 1.

BUSINESS OPPORTUNITIES

\$1000'S POSSIBLE reading books. Part time. At home. Toll free 1-800-898-9778 extension R-7019 for listings.

\$1000'S POSSIBLE typing. Part time. At home. Toll free 1-800-898-9778 extension 1-7019 for listings.

LOOKING FOR something different! Start your own business with unique health products. Work from home, full or part time. Send long S.A.S.E. for information to Merchandise Specials, P.O. Box 261, Hillside, NJ, 07205.

OWN YOUR OWN APPAREL OR SHOE STORE. Choose Jean/Sportswear, Bridal, Lingerie, Westernwear, Ladies, Men's, Large Sizes, Infant/Protein, Petite, Dancewear/Aerobic, Maternity, or Accessories Store. Over 2000 name brands. \$26,900 to \$38,900. Inventory, training, fixtures, grand opening, etc. Can open 15 days. Mr. Loughlin, 612-888-6555.

OWN YOUR OWN BUSINESS for less than \$2500. Complete modern beauty shop shampoo bowls, mirrors, customer chairs included. Call 731-8199.

PANTYHOSE M.L.M. - Guaranteed not to run. Ground floor, eight colors, 4 sizes. Tremendous income potential. Call free sign-up 201-436-7874/ 201-422-1064.

WATKINS GOURMET Foods Home remedies, etc. Since 1868. Start your own home based business for under \$40. Best opportunity available. Free information, 201-777-8780.

RENTAL

"All real estate advertised herein is subject to the Federal Fair Housing Act, which makes it illegal to advertise any preference, limitation, or discrimination based on race, color, religion, sex, handicap, familial status, or national origin, or

intention to make any such preference, limitation, or discrimination.

"We will not knowingly accept any advertising for real estate which is in violation of the law. All persons are hereby informed that all dwellings advertised are available on an equal opportunity basis."

APARTMENT TO RENT

BLOOMFIELD. 2 1/2, 3 and 4 large rooms, parking, \$600.00 up. Owner pays utilities. Near NY bus. No Fees. Owner managed. 201-429-8444.

BLOOMFIELD 2 BEDROOM. 1st floor apartment. \$725.00 monthly plus utilities. 1 1/2 months security. No pets. Available August 1st. Call 201-743-2712.

EAST ORANGE. One bedroom, living room, dining room, den, near transportation. Available August 1st. Call 201-762-9553 leave message.

EAST ORANGE. Four rooms, first floor, parking, 1 month security. \$550 monthly. Available immediately. Call 673-3797 or 672-5777.

EAST ORANGE. newly renovated spacious 3 and 4 bedroom apartments. Wall-to-wall carpeting. Section 8 welcome. Near transportation. 201-762-0010, broker, Daniel.

ELIZABETH
UNUSUAL AVAILABILITY
1 BEDROOM EFFIC. FROM \$575
Heat/Hot Water Included
Refinished Hardwood Floors
554 Westminster Avenue
Call For Appointment
908-955-3913

YOUR AD could appear here for as little as \$14.00 per week. Call for more details. Our friendly classified department would be happy to help you. Call 1-800-564-8911.

ELIZABETH. 2 - ONE bedroom apartments. Available August 1st. No pets. Call 201-817-8901.

HILLSIDE. SMALL cottage for rent. Furnished \$350 plus utilities. References plus security required. Call 908-686-0898.

LINDEN. 2 bedrooms \$695 per month, plus utilities, 1 1/2 month security, no pets. Conveniently located. Available August 1st. 925-2731.

APARTMENT TO RENT

LINDEN. FINISHED basement, washer/dryer, 1 1/2 baths, wall-to-wall carpet. Full use of yard and driveway. Quiet residential area. Close to transportation. \$875.00 monthly, 1 1/2 months security. Available August 1st. Call Ana or Cino, days, 201-378-5924; evenings, 908-283-1459.

LINDEN. FURNISHED apartment. Lovely one bedroom, wall-to-wall carpeting, utilities included, \$595. monthly, one months security. Ideal for mature professional. 908-486-3201.

MAPLEWOOD. 3 ROOMS, heat/ hot water, refrigerator, garage. 2 family, second floor. Ideal for one person. \$750. 201-762-7317 after 5pm.

MAPLEWOOD (2 APARTMENTS): 1 bedroom, 500.00 monthly; 2 bedrooms, \$565.00 monthly. One month security for both. Call 201-289-0235.

MAPLEWOOD, MODERN 3 room apartment, 1 bedroom, in excellent area. Union border. \$650 plus utilities. Must pass credit check. No pets. Includes storage, laundry room and parking. 201-471-8717.

APARTMENT TO RENT

ORANGE. 466 Highland Avenue, studio, \$450 month, 1 bedroom, \$625 month, hardwood floors, tile baths, heat/hot water included. See Superintendent, apartment 109 or call 908-580-1124.

ROSELLE. 4 lovely rooms, first floor, parking, 11 unit garden apartment building, no pets, heat/hot water, laundry room on-site. Available August 1st 1996, \$642. Call 908-245-1961 or 201-736-0990.

ROSELLE PARK. Two bedrooms including heat and off-street parking, new kitchen and bath, \$800 monthly. Available August 1st. 908-972-4128.

SOUTH ORANGE. Studio apartment in private home. Furnished or unfurnished. Private entrance, parking, walk to train and bus \$550. 201-762-3619.

UNION. EXECUTIVE Suite; 5 rooms + den, fireplace, washer/dryer, dishwasher, refrigerator, 2 decks, 1 1/2 baths. Immediate. Also: 6 rooms with 2 baths, \$1100/month + utilities or 6 rooms + utilities; \$900/month. Broker, 908-688-1680.

APARTMENT TO RENT

UNION 2 FAMILY second floor, 6 room apartment, 3 bedrooms, 1 1/2 baths, \$1,050, plus utilities. Available August 1st. 908-494-3842.

UNION. 3 ROOMS. Available August 1st, \$575 monthly. All utilities paid. Non-smoker, no pets, 1 month security. 908-687-1796.

UNION. AVAILABLE now, 1 bedroom, eat-in kitchen, near Center. \$650.00, security and references. No fee Realtor, 908-687-5220.

UNION. ONE room efficiency, available immediately. Call Joe at 908-755-4816 or 908-753-5727.

UNION. WE offer a lovely 5 room apartment with central air, second floor, 875.00 plus utilities, we also have a 6 room apartment, second floor, \$875.00 plus utilities. No pets. Fee after rental. For particulars call Mr. Capp, United Realty, Co. 908-964-3143.

WOODBIDGE. Commuters dream, 2 bedrooms, living room, dining room, air conditioning, pets, yard. Walk/train plus town \$680 plus electric only. 908-499-9761 Leased.

Just moved in?
I can help you out!

Don't worry and wonder about learning your way, around town. Or what to see and do. Or who to ask.

As your **WELCOME WAGON** Hostess, I can simplify the business of getting settled. Help you begin to enjoy your new town, good shopping, local attractions, community opportunity.

And my basket is full of useful gifts to please your family.

Take a break from unpacking and call me.

Welcome Wagon

Residents of Union & Springfield only
UNION..... 964-3891
SPRINGFIELD..... 467-0132

The Prudential
New Jersey Realty
Dwight Boylston Division
An Independently Owned and Operated Member of the Prudential Real Estate Affiliates, Inc.

UNION PARKLIKE SETTING
Enjoy easy living & privacy in this Washington School, 3 bdrm, 3 bath expanded Cape on 101 x 101 wooded lot. Lge. lam. rm off eat-in-kit is perfect for entertaining & family fun \$160,000.

Is a REAL ESTATE CAREER for you?
Call today for FREE information and self grading evaluation test for new or experienced people. Ask for ROSE 908-353-4200

WOODWARD Properties REALTORS

NESTLED IN THE SOMERSET HILLS!

This charming home nestled amidst towering trees in the heart of Warren, approx. 10 miles west of Summit. It's one of a nine home private community complete with huge inground stone pool and tennis court. The home itself features 3 bedrooms, 2 full baths, living room with stone fireplace, dining room, kitchen which opens to a family room with vaulted ceiling, wonderfully wooded views and a lovely '94 acre homestead. One look and you'll fall in love with this one-of-a-kind offering!

908-598-0155
Internet address: HTTP://Yourtown.com
92 Summit Avenue • Summit, New Jersey • 07901
EQUAL HOUSING OPPORTUNITY

FREE Information!
CALL (908) 686-9898
and enter a four digit selection number below!

REAL ESTATE

BUYING A HOME
1700 Before You Buy
1701 The Real Estate Agent
1702 The Neighborhood
1703 Buying An Older Home
1704 Adv. of Home Ownership

SELLING THE HOME
1300 Attracting A Buyer
1301 Determining A Selling Price
1302 The Open House
1303 Cleaning For The Sale
1304 First Impressions

Call Today!

Infosource
Your Community's Best
24 HOUR VOICE INFORMATION SERVICE
A Public Service of WORRALL COMMUNITY NEWSPAPERS

Prudential Referral Services, Inc. Union/Elizabeth Office
INTERNATIONAL NETWORK 540 North Avenue
353-4200

ROSE & VOLTURO
★★★★ REALTORS ★★★★★

BUYING OR SELLING IN HILLSIDE?
CALL ROSE & VOLTURO
YOUR HILLSIDE REAL ESTATE EXPERTS

Hillside
UNIQUE MOTHER DAUGHTER
Vinyl/stone home offers separate living quarters - 2BRs downstairs, 1BR upstairs - located on large lot - possibility of expansion or variance for two family. Offered @ \$114,900.

1155 LIBERTY AVE. HILLSIDE
(908) 351-7000 Habla Espanol
Palamos Portugueses

NEW JERSEY MORTGAGE RATES

Lender, City, Phone	APP FEE	30 YR FIXED		15 YR FIXED		OTHER						
		RATE	PTS	RATE	PTS	RATE	PTS					
American Savings Bk, Bloomfld	201-748-3600	350	8.00	2.50	8.27	7.50	2.50	7.91	8.20	0.00	8.20	N
Axia Federal Savings	908-499-7200	350	8.00	3.00	8.32	7.38	3.00	7.87	7.75	0.00	8.18	C
Banco Popular FSB	800-491-2265	100	8.25	0.00	8.29	7.75	0.00	7.79	6.50	0.00	8.42	A
Capital Fin'l Corp, Bernardsville	800-224-4545	295	7.63	3.00	7.94	7.13	3.00	7.62	6.13	0.00	8.43	I
Columbia Savings Bk SLA, Lindn	800-962-4989	285	7.88	3.00	8.22	7.13	3.00	7.66	7.50	1.00	8.14	F
Corestates Mortgage Services	800-999-3885	325	7.75	3.00	8.16	7.38	3.00	8.01	7.00	3.00	8.66	C
First Savings Bank SLA, Edison	908-225-4450	350	7.88	3.00	8.25	7.88	0.00	7.88	7.38	0.00	8.10	C
First Union Mortgage Corp.	800-332-6830	375	8.00	2.25	8.27	7.63	1.88	7.99	N/P	N/P	N/P	
Freedom Mortgage Corp	800-220-8700	350	7.50	3.00	8.82	6.88	3.00	8.45	8.38	2.00	9.24	B
GPF Mortgage, Summit	800-924-9091	0	7.63	3.00	7.98	7.88	0.00	7.88	5.50	0.00	8.80	I
Hudson City Savings Bank	908-549-4949	375	8.63	0.00	8.66	7.88	0.00	7.92	7.88	0.00	8.10	H
Ivy Mortgage Corp.	800-489-5363	325	7.75	3.00	8.31	7.38	3.00	7.92	4.75	3.00	8.57	A
Kastle Mortgage	908-845-5444	300	8.50	0.00	8.53	8.13	0.00	8.15	6.75	1.50	6.76	E
Kentwood Financial Services	800-353-6886	150	8.13	0.00	8.25	7.63	0.00	7.75	7.13	3.00	7.60	F
Lehigh Savings Bank SLA, Union	908-686-0003	350	7.88	2.00	8.16	7.25	2.00	7.68	5.00	2.00	N/P	A
National Future Mortgage	800-291-7900	N/P	7.50	3.00	8.88	7.00	3.00	8.38	5.13	0.00	6.38	A
New Century Mtge, E Brunswick	908-390-4800	370	8.00	1.50	8.16	7.63	1.50	7.88	5.50	1.50	5.64	A
Premier Mortgage, Union	908-687-2000	375	7.88	3.00	N/P	7.25	3.00	N/P	4.50	3.00	N/P	A
Provident Savings Bank	800-448-7768	350	8.50	0.00	8.50	8.25	0.00	8.25	7.50	0.00	8.13	C
Pulse Savings Bank, South River	908-257-2400	350	8.38	0.00	8.38	7.88	0.00	7.88	6.00	0.00	8.20	A
Source One Mtge Svcs, Cmfrd	800-870-4657	99	7.75	3.00	8.12	7.25	3.00	7.83	6.88	3.00	8.38	K
Sovereign Bank - New Jersey	908-810-9749	300g	8.12	2.00	8.37	7.37	3.00	7.72	7.37	1.00	7.51	C
Summit Bank	800-932-0811	350	8.00	3.00	8.32	7.50	3.00	8.00	6.13	0.00	8.32	A
Union Center Nat'l Bank, Union	908-688-9500	350	8.25	3.03	8.58	7.75	3.00	8.25	7.63	0.00	7.63	J
Valley National Bank, Wayne	800-522-4100	450	8.50	0.00	8.57	7.95	0.00	8.05	8.50	0.00	8.59	D
West Essex Bank, FSB	201-575-7080	350c	8.38	0.50	8.38	8.00	0.50	8.00	7.75	0.50	8.09	F
World Savings Bank	908-302-9780	175	7.80	0.00	8.55	N/P	N/P	N/P	3.50	1.50	7.41	G

(A) 1 Yr Arm (B) 30 Yr Jum (C) 5/1 Arm (D) 30 Yr Biweekly (E) 30 Yr, Inc & Location req (F) 7/1 Arm (G) COFI Arm (H) 10/1 Arm (I) 1 Yr Jum (J) 30 Yr home prog (K) 5/25 (L) 5 Yr Bal (M) 3/1 Arm (N) Eq Line (O) 3/3 Arm (P) 1% Fixed Rate
(Q) 15 Yr Fixed (R) 15 Yr Jumbo (a) includes appraisal & credit rep (b) 150 app fee/5 yr Bal (c) pts ref at closing (d) 75 day lock (e) free float down (f) app fee ref at closing (g) \$175 credit at closing (h) 30 day commitment

A.P.R. - Contact lenders for calculated Annual Percentage Rates APP FEE - single family homes Minimum 45-60 day rate lock
Rates are supplied by the lenders and are presented without guarantee. Rates and terms are subject to change. Lenders interested in displaying information should contact Cooperative Mortgage Information @ (201) 762-6313. For more information, borrowers should call the lenders. Contact lenders for information on other mortgage products and services. Cooperative Mortgage Information assumes no liability for typographical errors or omissions. Contact institutions for additional fees which may apply. Rates listed were supplied by the lenders on July 2-5, 1996. N/P - Not provided by institution.

Copyright, 1996 Cooperative Mortgage Information - All Rights Reserved.

MANGELS & CO. Realtors

367 Chestnut St. Union, N.J. 688-3000
Selling Homes In Union County Since 1929

UNION NEIGHBORHOOD PRIDE
Is reflected in the well kept homes of your future Battle Hill neighborhood. Newly listed 3 BR cape w/ oak kit, main fl. free vinyl siding, 1 car alt garage & large fenced yard. A must to see at \$144,900.

ROSELLE PARK ESTATE SALE
A little TLC can make this 4 BR, 1 1/2 bath, cape your dream home. 1 Car, garage, fenced yard, gas heat. Asking \$139,000. Come see make offer.

ROSELLE PARK COMMUTER BLUES?
Find the cure in this charming 4 BR, 1 1/2 bath colonial on a shady tree lined street just steps to N.Y. bus stop. Natural wood trim & numerous light catching windows add a delicate touch. All this & main. free exterior for just \$129,900.

UNION PLENTY OF TLC
Is reflected in this gorgeous 3 BR, 2 bath col. You'll love its new kit, LR w/FP, FDR, Fin Bsm, screened porch overlooking park-like yard. Ready to move in price of \$169,900.

Real Estate

APARTMENT TO SHARE

PROFESSIONAL NON smoker for large room closets with individual bath at "The Point" in Union with 24 hour security and pool \$650 per month, and half utilities. Available immediately 908-964-7505.

PROFESSIONAL FEMALE looking for same to share spacious 2 bedroom apartment in a nice safe area. \$365 per month. Utilities included, except electric. 908-353-4547.

CONDOS TO RENT

EAST ORANGE/ Bloomfield line. Rent, new condo with option to buy 2 bedrooms, 2 baths, garaged parking, 1 year lease, 6 month rent toward purchase price. \$1300 monthly plus utilities. 908-322-8748.

WEST ORANGE. New townhouse near St. Barnabas. Furnished 1 bedroom, Den, deck, pool, gym. August 1st. \$1,500 plus utilities. 201-731-2293.

FURNISHED ROOMS FOR RENT

LINDEN EXECUTIVE Efficiency Studio in private home with private bath. Includes all utilities, cable, wall-to-wall. Excellent area. \$400 monthly. 908-486-3201.

SOUTH ORANGE. Beautiful home. Large, bright room, private bathroom, driveway parking. No smoking. Male preferred. \$375.00, utilities included. Call 201-762-1834.

WEST ORANGE. Convenient to transportation. Newly decorated, T.V. and refrigerator. \$100 per week. Call 201-731-8845.

HOUSE TO RENT

MOUNTAINSIDE. LOVELY 3 bedroom ranch, 2 baths, brand new kitchen, 2 fireplaces, skylight, beautiful hardwood floors, full basement, two car garage. Available August 1st. \$1,800. 1/2 months security. Call 908-654-1578.

OFFICE TO LET

SPRINGFIELD. 2 ROOM office suite available immediately on Millburn Avenue. Call 201-376-5886.

TRENTON STATE. House location, offering 4692 +/- SF with 2500 +/- on the first two floors for lease. Ideal for the lobbyist, lawyer, professional with immediate State House access. Call for additional information. Richardson Commercial 609-586-1000.

SPACE FOR RENT

KENILWORTH - BOULEVARD Professional office space available. Approximately 1,200 square feet, can divide. Ideal for accountant, attorney or therapist. Call for appointment 908-241-3181.

VACATION RENTALS

ADIRONDACK MOUNTAIN properties. Huge selection. Lakelake, nverfront homes and lots. Log cabins, farmhouses, hunting camps, acreage. Call for free 40 page brochure. Friedman Realty 1-518-494-2409.

REAL ESTATE

"All real estate advertised herein is subject to the Federal Fair Housing Act, which makes it illegal to advertise any preference, limitation, or discrimination based on race, color, religion, sex, handicap, familial status, or national origin, or intention to make any such preference, limitation, or discrimination. "We will not knowingly accept any advertising for real estate which is in violation of the law. All persons are hereby informed that all dwellings advertised are available on an equal opportunity basis."

CEMETERY PLOTS

Getsemane Gardens, Mausoleums. Office: 1500 Stuyvesant Ave., Union. 908-688-4300

MAUSOLEUM AND two plots for sale. Hollywood Memorial Park. All for \$8,000 or best offer. Days 908-687-7146 Evenings 908-780-4562.

TRUE COMPANION MAUSOLEUM. Getsemane Gardens. Hollywood Memorial Park. Originally priced at \$7,000. Now asking \$4,500. Call 717-226-9884 ask for Vic.

REAL ESTATE FOR SALE

BARGAINS ON government foreclosed homes. Save up to 50% or more. Minimum or no down payment. Repossessed properties sold daily. Listings available now! 1-800-338-0020 extension 199.

BELLEVILLE. COLONIAL. 4 bedrooms, living room, dining room, kitchen, den, finished basement, 1 car garage. Move-in condition. Great neighborhood. \$169,000. By Owner. 201-751-2393.

BLOOMFIELD

TREE LINED STREET

Colonial 2-3 bedrooms, sun porch, hardwood floors, natural woodwork, new (Fall 1995) roof, chimney, gas, hot water heater, exterior paint, never modern eat-in kitchen, partially finished basement—Walk to transportation, shopping, schools, houses of worship. Taxes under \$5,000. Only \$129,000. Realtor, Schweppe & Co. 201-744-4701.

BLOOMFIELD - BY OWNER. 3 bedrooms, 1 1/2 baths, living room, dining room, modern eat-in-kitchen, full basement, fireplace, new 16' x 20' deck, new driveway. Sale price \$123,900. 201-680-9137. Must see.

GOVERNMENT FORECLOSED homes for pennies on \$1.00. Delinquent tax. Repo's REO's. Your area. Toll free 1-800-898-9778 ext. H-5139 for current listings.

GOVERNMENT FORECLOSED homes for pennies on \$1. Delinquent tax, repo's REO's. Your area. Toll free 1-800-898-9778 extension H-7019 for current listings.

MAPLEWOOD OPEN House 59 Van Ness Terrace (Off Boyden Ave.) Sunday 1-4 pm. Near school and park. Charming 2 bedroom, eat-in-kitchen, living room, dining room, sun room, screened porch, 2 car garage, central air. Asking \$117,000 by owners.

UNION. 15 year young custom built 2 family home, 3 bedrooms, 2 full baths, fireplace, central vacuum, alarm, finished basement, central air, 2 car garage, covered patio, in-ground sprinkler, much more. Good income property. Owner occupied. \$269,900. 908-687-5099.

MOUNTAINSIDE. COLONIAL. 4 bedrooms, 2 1/2 baths, living room, dining room, family room, eat-in kitchen, deck, treed, new vinyl siding, furnace. \$349,000. S3538. Weichert Realtors. 908-277-1200.

REAL ESTATE FOR SALE

MOUNTAINSIDE. OPEN House. Sunday, July 14th, 1pm-5pm. Custom built, near Mid-Town. Direct train, with over 4,000 square feet, views of NYC. 5 Bedrooms, 2 Full and 2 Half Baths. Family Room with Fireplace, Great Room, Central Air-conditioning, 2-Car Garage. Finished Basement with Outside Entrance for Au-pair or In-laws. Directions: Summit Road to Heckel Drive #1115. \$429,900. S3413. Weichert Realtors. 908-277-1200.

Your business can grow with more customers. Reach the potential customers in your newspaper with an ad by calling 1-800-564-8911.

REAL ESTATE FOR SALE

WEST ORANGE. St. Cloud area. A 25'x25' basketball court, goes with this designer's raised ranch in a cul-de-sac. Three bedrooms, living room, dining room, 2 1/2 bathrooms and modernized eat-in kitchen. Family room with cedar planking, fireplace, and kitchenette. Many built-ins. Outdoor patio, large deck with gas grill, oversized two car garage, central air conditioning. Asking \$219,000. Call for appointment 201-731-2962.

SHORE PROPERTY

LBI OCEANSIDE. 10 week/year time share. 3 bedrooms, 1 1/2 baths, \$47,000. 6 E. Mercer, Harvey Cedars. 2 units for \$92,000. Call Nancy at HCH Real Estate 1-800-494-3310.

LONG BEACH Island for only \$75,000! Well maintained condo with air conditioning in the heart of Beach Haven. Consistent Renter. Call Realtor, Stevens Real Estate 1-800-494-5315.

ADVERTISE!



OPEN HOUSE
SATURDAY/SUNDAY, JULY 13/14 1PM-4PM
715 W. INMAN AVE. RAHWAY
\$124,900 - Inman Heights. Completely renovated. LR with fireplace, D.R. 2 bedrooms, full heated bsmt. Never used kit & bath. New wall-to-wall carpeting, attached garage. 908-925-5480.

Open Houses
Appearing every Thursday
Call Classified for
More Information
800-564-8911

Automotive

Fette rolls out Fords, awards employee

In the automotive equivalent of a fashion preview, Fette Ford/Imports has begun to roll out the 1997 Ford F-Series trucks.

Ford's F-Series has been the best selling vehicle, car or truck, in the United States for 14 consecutive years and the best selling truck in America for 19 straight years. With this new family of vehicles, Ford has not only redesigned the truck from the ground up, but has included such innovations as an industry-first standard third door on the SuperCab model to allow easier access to the rear seat.

The F-150 is the first among Ford's new fleet of F-Series trucks to debut. This new line of trucks represents one of the most comprehensive launches in Ford's history. Four assembly plants in the United States and Canada are phasing in production of the series to assure quality control and the ability to meet customer demand.

"There's a high degree of interest in this truck and people seem to like what they see," Joe Nigro, Fette sales manager, said. "The model has already been selling well."

The new F-150 is available in Styleside and Flareside models in both Regular Cab and SuperCab, in short and long wheelbase versions, and in 4x2 and 4x4 drivetrain options. Each model has its own distinctive features to match an owner's desire for a work or recreation vehicle, or one that can accommodate a combination of activities.

According to Nigro, truck customers should discuss with their salesperson just how the truck will be used. "Price is an important part of the decision-making process, but the starting point should be a determina-

tion of just what the actual driving need are," he said. "It's essential to have a payload that is matched to the truck's work requirements and to select options that are key to the buyer. It's vital that the transmission and engine be equal to the strain. Then it's appropriate to discuss pricing in relation to the vehicle's value."

The 1997 F-150 is the first full-size pickup to offer standard dual airbags with a passenger-side airbag deactivation system. Captain's chairs, power seats, leather upholstery, a six-disk CD changer and anti-theft systems are among the personal use options available.

Among other changes from previous models, the 1997 F-150 is bigger inside and out, delivers the highest available V-8 payload capability and boasts improved performance and handling.

Fette Ford/Imports has developed a reputation for the depth of the dealership's truck inventory and recently became one of the first dealers in the country to earn the Ford Motor Company's North American Customer Excellence Award based on customer satisfaction.

Sales society

Geovanni Collazos has just been welcomed into the Isuzu Sales Society in recognition of his five years of excellence in customer satisfaction and product knowledge, as well as his sales volume.

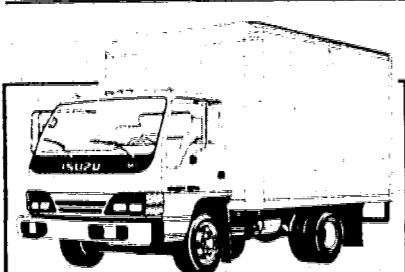
"Geovanni is one of only two sales representatives recognized in this zone which stretches from Maine to New Jersey," Walter J. Yawit, American Isuzu Motors' Zone Sales Manager for the Northeast Region, said. "This in an area that includes over 300 sales representatives in 14 dealerships. We'd like another 150 like Geo."

Collazos has been selling Isuzus since 1989. Fette promoted him to assistant sales manager a year ago, making him responsible for not only his own direct sales, but also closing deals with other representatives. He observed that about 25-30 percent of his sales are repeated business, reinforcing his commitment to developing satisfactory relationships with customers.

"I enjoy working with people, helping them to make the selection they want and to work out a deal they can handle," he said, adding about 90 percent of his deals are leases.

In recognizing outstanding sales representatives like Collazos, Isuzu is not only supporting dealerships in boosting sales, but is trying to improve retention of an effective sales force within the dealership and within the franchise.

"We're very proud of Geo," Larry Fette said.



ISUZU TRUCKS
MANY MODELS TO CHOOSE FROM FOR IMMEDIATE DELIVERY

Hall & Fuhs, Inc.
1463 Rt. 22 East • Mountainside
908-232-4600
Call Jeff Veil Ext. 107 Sales Dept.

FREE Information!
CALL 686-9898 (908)
and enter a four digit selection number below!

- SHOPPING FOR A CAR**
- 1200 Fuel Efficiency
 - 1201 How Much To Spend
 - 1202 Insurance Tips
 - 1203 Getting Started
 - 1204 Sticker Prices
 - 1205 Sales Agreement
 - 1206 Ordering A New Car
 - 1207 Rebates
 - 1208 Warranties
 - 1209 Financing
 - 1210 Owner Satisfaction

Your Community's Best
Infosource
24 HOUR VOICE INFORMATION SERVICE
A Public Service of WORRALL COMMUNITY NEWSPAPERS

THOMAS LINCOLN-MERCURY

USED CAR CLEARANCE!

'90 MERCURY TOPAZ
4 dr. auto trans w/OD, 4 cyl, pwr strng/brks, AM/FM stereo, pwr windows, AIR, U/glass, r/del, cruise, cloth int, ram mirr. 67,184 miles. STK#588A. VIN#LB640146.
\$4,995

'93 MERCURY COUGAR
2 dr. auto trans w/OD, V6, pwr strng/brks, AM/FM stereo, pwr windows, AIR, U/glass, r/del, tilt, cruise, leather int, ram mirr, alum whls, 1/2 rd. trunk rack, w/tp kgage. 23,476 miles. STK#K15A. VIN#P1H03307.
\$12,995

'96 MERCURY SABLE
4 dr. auto trans w/OD, V6, pwr strng/anti lock brks, AM/FM stereo, pwr windows, AIR, U/glass, r/del, tilt, cruise, cloth int, ram mirr, alum whls, 4718 miles. STK#6R9. VIN#T614768.
\$16,995

'96 MERCURY SABLE GS WAGON
5 dr hatch, 3rd seat, auto trans w/OD, V6, pwr strng/anti lock brks, AM/FM stereo, pwr windows, AIR, U/glass, r/del, tilt, cruise, cloth int, ram mirr, alum whls, 4718 miles. STK#6R9. VIN#T614768.
\$17,995

'94 LINCOLN TOWN CAR EXECUTIVE
4 dr. auto trans w/OD V 8, pwr strng/brks, AM/FM stereo, pwr windows, AIR, U/glass, r/del, tilt, cruise, leather int, ram mirr, alum whls, 30,531 miles. STK#6P2. VIN#R670103.
\$22,995

'94 LINCOLN MARK VIII
2 dr. auto trans w/OD, V8, pwr strng/brks, AM/FM stereo, pwr windows, AIR, U/glass, r/del, tilt, cruise, leather int, ram mirr, chrome whls, 28,083 miles. STK#6P4. VIN#R709647.
\$23,995

12 MONTH/12,000 MI. POWERTRAIN WARRANTY!

REMAINDER OF...
FACTORY WARRANTY!
ON MANY VEHICLES

EXTENDED WARRANTIES UP TO 3 YEARS!
(AVAILABLE ON MOST VEHICLES)

'94 MERCURY TRACER
4 dr. auto trans w/OD, 4 cyl, pwr strng/brks, AM/FM stereo, AIR, U/glass, r/del, cruise, cloth int, ram mirr. 2,673 miles. VIN#RR610898.
\$8,995

'94 MERCURY GRAND MARQUIS
4 dr. auto trans w/OD, V8, pwr strng/brks, AM/FM stereo, pwr windows, AIR, U/glass, r/del, tilt, cruise, cloth int, ram mirr. 36,939 miles. STK#6P2. VIN#T6606375.
\$15,495

'93 LINCOLN CONTINENTAL
4 dr. auto trans w/OD, V6, pwr strng/brks, AM/FM stereo, pwr windows, AIR, U/glass, r/del, tilt, cruise, leather int, ram mirr, alum whls, 34,373 miles. STK#6P8. VIN#P654642.
\$16,995

'93 LINCOLN MARK VIII
2 dr. auto trans w/OD, V8, pwr strng/brks, AM/FM stereo, pwr windows, AIR, U/glass, r/del, tilt, cruise, leather int, ram mirr, moon roof, alum whls, 35,234 miles. STK#6P7. VIN#P666181.
\$19,995

'94 LINCOLN TOWN CAR
"SIGNATURE SERIES" 4 dr. auto trans w/OD V 8, pwr strng/brks, AM/FM stereo, pwr windows, AIR, U/glass, r/del, tilt, cruise, leather int, ram mirr, alum whls, 30,701 miles. STK#6P3. VIN#R67921.
\$23,995

'95 LINCOLN CONTINENTAL
4 dr. auto trans w/OD, V8, pwr strng/brks, AM/FM stereo, pwr windows, AIR, U/glass, r/del, tilt, cruise, leather int, ram mirr, alum whls, 18,385 miles. STK#6P4. VIN#S712349.
\$27,995

THOMAS LINCOLN-MERCURY
"It's More Than A Promise... At Thomas"
369 SOUTH AVE. EAST • WESTFIELD • (908) 232-6500
Prices include all costs to be paid by a consumer except for licensing, registration & taxes.

FOREIGN CARS WANTED!
AUDI, VW, SAAB, VOLVO, JAGUAR
TOP \$\$\$ PAID
Call Hassan Nahai
800-662-9050
Consignments Welcome
AUTOHAUS
908-355-0099
SALES SERVICE PARTS AUTOBODY
417 RAHWAY AVE. ELIZABETH, N.J.

Chevy 'Ventures' into auto market

Chevrolet challenged minivan manufacturers back in spring at the New York International Automobile Show by introducing Venture, a minivan that gives customers unique features — while retaining the minivan qualities they love.

Chevrolet Venture offers exclusive features in several key areas — seating, space/storage, power and "creature comforts" — all housed in a minivan that customers in research clinics describe as "classy" and "upscale."

Chevrolet Venture features include:

- Dual mode sound system. Front seat passengers can listen to the radio while rear seat riders listen to tapes or CDs (or vice versa).
- Pollen/dust filter. The driver and passengers can enjoy breathing cleaner air due to this standard feature.
- Power sliding passenger-side door. Providing a larger opening than the Chrysler minivans, this optional passenger-side door can be operated from a keyless remote, the overhead console or the "B" pillar located behind the front passenger seat.
- More storage areas. Venture has more storage areas (26) — including a netted storage area between the front seats — than any other minivan.
- Convenient seats. The seatbacks fold forward and the entire seat folds and slides forward, easily adapting to several people — cargo arrangements.

"Many of Venture's exclusive features make for happier families," said John G. Middlebrook, who succeeded the retiring Jim Perkins as Chevrolet General Manager, May 1. "The dual-mode sound system is my favorite. The adults can listen to Bob Seger, while the kids are in the back listening to Hootie and the Blowfish."

Music can be enjoyed in one of three seating configurations — bucket, bench and splitbench — all of which seat seven persons — and all of which are lightweight and create "space on demand." Venture's driver's seat can be lowered or raised with a manual seat adjuster — the only one in the industry. Seatbacks can be folded down and used as tables. Single or dual child safety seats are optional. Convenience is also enhanced by ordering Venture's optional fourth door, a left side sliding

door with a protective child lockout feature.

Loading cargo is easy: To stow as many as 14 grocery bags, removing seats is unnecessary — just slide the third seats forward. Remove seats for even more cargo space is easy too because they're the lightest in the industry. Venture can accommodate 4' x 8' sheets of plywood with the seats in (folded flat), with the seats out (in between the wheel wells) and with the liftgate closed (extended wheel-base). Not so for the Ford Windstar!

And travel is always easier if you have a place for your stuff. The Chevrolet Venture has 26 storage areas, more than any other minivan: built-in storage pockets in all doors — even the sliding doors, a convenience net between the front seats and cargo nets along the side rear trim panels. The driver's seat even folds forward so packages can be stowed behind it and coat hooks can be used easily.

Available in regular and extended lengths, Venture features a comprehensive standard safety package that includes dual air bags, a four-wheel anti-lock brake system, a rigid steel safety cage surrounding the entire passenger compartment and automatic Daytime Running Lamps. Traction control is optional.

Attention to detail is evident throughout Venture. A Sungate windshield keeps Venture's interior 20 degrees cooler on a hot, sunny day compared to uncoated glass, and also functions in the antenna. Venture's optional load-leveling suspension has an air pump that can also be used to inflate tires; balls and other toys.

Like Goldilocks searching for the perfect bowl of porridge, it's hard to find one van that's "just right" for everybody. Understanding this, Chevrolet today unveiled its "Family of Vans" — a vehicle lineup that offers variety to the growing and diverse van market.

"As vans go, one size does not fit all," said Middlebrook. "Customers need choices, and Chevrolet provides more choices than any automaker to satisfy van buyers — whatever their needs."

Call that "junk" with a classified ad. Call 1-800-564-8911.

AUTOMOTIVE

AUTO DEALERS

SMYTHE VOLVO EXCLUSIVE VOLVO DEALER
326 Morris Avenue Summit
(908) 273-4200
AUTHORIZED FACTORY SERVICE LONG TERM LEASING

AUTO FOR SALE

1993 LEXUS G.S. Mint condition, 21,000 miles, leather, moon roof, gold package, always garaged, 1 owner, \$28,500. 201-887-1620.

AUTO SPECIAL - \$24.00 for 10 weeks prepaid. Call Classified for details. 800-564-8911.

1994 BUICK CENTURY. 12,500 miles, metallic gold beige stripes. Loaded, with AM/FM cassette. Mint condition. \$12,000 or best offer. 908-687-4331.

1980 CADILLAC ELDOBORO. New transmission. Good running condition, reliable car. \$1,000 or best offer. Call 201-731-4213.

1972 CADILLAC ELDOBORO CONVERTIBLE. Newly painted (Burgundy), new black top, new tires. Looks runs great! \$2500, must sell. Call 201-325-0154.

1976 CADILLAC ELDOBORO. 60,000 miles. Mint condition, like new. \$1700 or best offer. Must sell. Call 908-352-4523, leave message.

CARS UNDER \$150. All models. Seized and auctioned by DEA, FBI, IRS, trucks, boats, computers, furniture and more. Available your area. Call now! 1-800-451-0050 extension C199.

1986 JEEP CHEROKEE V6 4X4, 4 door, automatic, loaded, rebuilt engine with warranty, very good condition. \$5,300 or best offer. 201-761-6164.

1982 CHEVY CAMARO Berlinetta. T-roof, new engine, 40,000 miles, fancy tires \$1500 negotiable. Call Phil, 908-231-0847.

1987 CHEVY NOVA. Grey, 4 door, under 30,000 miles, new tires. Asking \$3500. Excellent condition. Call 10am-4pm, 908-353-1420.

1989 CHRYSLER New Yorker, loaded, power locks, seats, mirrors, cruise, tilt, velour interior, abs, am fm stereo, silver. \$4,500, negotiable. 908-862-5686.



There's a lifetime of Values Everyday in the Classifieds!

1-800-564-8911

AUTO FOR SALE

1985 CUTLASS SUPREME V-8 automatic, air, am/fm cassette, chrome wheels, two door, brown, running excellent condition. Asking \$2,500. Call 908-486-5974.

DREAMMACHINES - get a picture of your car? Run it for 4 weeks, only \$40. Call Classified at 800-564-8911 for details.

1981 FORD TAURUS Wagon, Air, AM/FM, 4 door, champagne color, new tires, mint condition, \$6,200. Call 908-688-2054.

1993 FORD TAURUS Wagon, all power options, 3rd seat, 62,000 miles, no repairs needed, new condition, \$8350 best offer. 201-762-7251.

1986 FORD THUNDERBIRD Coupe, blue, 5.0 liter, fuel injected V-8, automatic, air, am fm cassette. Asking \$2,000. 908-277-2760.

1985 FORD THUNDERBIRD 2 door, fully equipped, power, air conditioning, cassette. Partially customized. Excellent condition. \$1995 or best offer. 201-376-6710. 201-379-7089.

GOVERNMENT SEIZED cars for pennies on the \$! Jaguar, Corvette, Mercedes, BMW, Porsche, Honda, 4x4's, trucks and more. Local sales. Toll free 1-800-669-2992 extension A-4000.

1992 HONDA ACCORD EX. 5 speed, dark green with tan interior, new tires, 59,000 miles, \$11,000. Must sell. 201-379-0756.

1987 HONDA ACCORD LXI, loaded, automatic, 4 door, sunroof, 84,000 miles, 26 mpg. Excellent condition. \$4,700 or best offer. 201-535-9722, 201-535-3624.

1986 HONDA CIVIC, \$3,000. Tan color with gold tint. Tinted windows. Good radio system. Call 908-862-3799.

1995 JEEP WRANGLER, Rio Grande, moss, 4 months new, 3,000 miles, automatic transmission, air, AM/FM stereo cassette with sound bar, soft and hard top, log lights, mats. Best offer. 201-376-0567.

1995 MAXIMA SE, dark green, 5 speed, alloy wheels, power package, original owner, excellent condition. 39,000 highway miles, Viper 300, powerful engine, \$15,000. 201-761-1756.

1991 MAZDA MX6-LX. Automatic, red, AM/FM stereo cassette, moon roof, air conditioning, 74K miles, excellent condition. Asking \$7,900. Call 201-243-1082.

1991 MERCURY COUGAR LS. Mint condition. Dark blue with grey interior, fully loaded, 35,000 miles. Asking \$7,000. Drew, 201-890-7889, days.

1988 MERCURY COLONY Park I.S. Ten passenger, leather interior, all power, loaded, 80,000 miles, \$4,500 or best offer. Call 201-762-0178.

1989 MERCURY GRAND Marquis, power windows, power locks, cruise control, silver gray, real nice. 89,000 miles, \$5000. Call 201-762-0178.

1991 MERCURY SABLE GS, extra clean, all power, white with blue interior, 91,000 lady driven miles. Only \$4100. Call 201-762-0178.

1992 MITSUBISHI Eclipse GS. Automatic, full power, sun-roof, AM/FM cassette, 50K miles. Good condition. \$8,000. Call Amy, 908-369-8609.

1996 MITSUBISHI ECLIPSE GS. White, automatic, 6K, alarm, cruise control, AM/FM cassette, CD, air-conditioner, power, sunroof. \$21,000 negotiable. 201-376-7163.

1991 MUSTANG GT Convertible. Mint condition, 26,000 miles. Automatic, Lo-Jack system, loaded. Asking \$11,700. Call evenings after 6pm, weekends, 201-762-2578.

1994 MUSTANG GT convertible, teal with black top, custom, fully loaded, 19,750 miles. Excellent condition. \$19,000 or best offer. 201-792-8864.

AUTO FOR SALE

1988 OLDSMOBILE 98 REGENCY BROUGHAM Fully loaded, excellent condition, 89,000 miles. Must sell. Best reasonable offer. Call 201-403-1207.

1994 SATURN SL1. Equipped with air, clear coat, security system, 7500 miles, \$10,500. Call 908-862-6303.

SEIZED CARS from \$175. Porsches, Cadillacs, Chevs, BMW's, Corvettes, also Jeeps, 4 wheel drives. Your area. Toll free 1-800-898-9778 Ext. A-5199 for current listings.

SEIZED CARS from \$175. Porsches, Cadillacs, Chevs, BMW's, Corvettes, Jeeps, 4WD's. Your area. Toll free 1-800-898-9778 extension A-7019 for current listings.

1993 TOYOTA CAMRY LE, 46K miles, auto, air, all power. Beautiful condition. Quick sale \$11,000 firm (save \$2,000). 201-378-8844.

1988 TOYOTA PICKUP V-6, air, extra cab, new bed, sunroof, bed liner, 61K, original owner, best offer over \$10,000. 908-925-8125.

1986 1/2 TOYOTA SUPRA, automatic, 6 cylinder, all power, cd player, 84,000 miles. Perfect condition. Days 201-762-3867; Evenings 201-625-3929.

1991 VOLVO 940 GLE. Redwood color, 81,000 miles, power sunroof, anti-braking system, heated leather seats \$13,950. Call 201-487-2484.

AUTO WANTED

ABLE PAYS TOP \$\$\$ IN CASH

For All 4 Wheel Drives

CARS, TRUCKS and VANS

FREE PICK UP 7 DAYS

1-800-953-9328

908-688-2044

\$\$\$WE PAY TOP DOLLAR\$\$\$

For Your Junk Car 24 Hour Service. Call:

908-688-7420

MOTORCYCLES FOR SALE

1984 HONDA MAGNA, 700 cc, 9,000 miles. Like new \$2,400. Call 908-527-8253. Ask for Ken, after 5pm.

TRUCKS FOR SALE

1977 CHEVROLET PICKUP, 8' body, automatic transmission. Great work horse, low mileage. Full Cap. \$575. Call 201-376-6710.

USED CAR Sale

<p>1985 CHEVROLET CELEBRITY 2 DR 6 cyl eng, auto trans, pwr/stbr/brks, air cond, am/fm stereo, tint glass, cloth int. 66,049 mi. VIN#1132057.</p> <p>\$2795</p>	<p>1992 HYUNDAI SCOUPE 2 DR 4 cyl eng, auto trans, pwr/stbr/brks, air cond, am/fm stereo, tint glass, cloth int. VIN#NDJ68088.</p> <p>\$5995</p>	<p>1988 ISUZU TROOPER II 4 cyl eng, 5 spd man trans, pwr/stbr/brks, rd air cond, rd def cass, tint glass, roof rack, cloth int. 62,222 mi. VIN#N7812563.</p> <p>\$5995</p>
<p>1992 PONTIAC GRAND AM SE 2 DR 6 cyl eng, auto trans, pwr/stbr/brks/windlocks, air cond, cruise, tilt, cruise, 59,217 mi. VIN#NMG07072.</p> <p>\$7995</p>	<p>1992 BUICK CENTURY CUSTOM WAGON 6 cyl eng, auto trans, pwr/stbr/brks/windlocks, air cond, rd def cass, tint glass, interior vinyl, roof rack, cloth int, w/whis. 43,992 mi. VIN#N6431500.</p> <p>\$9995</p>	<p>1993 CHEVROLET CAVALIER RS CONVERTIBLE 6 cyl eng, auto trans, pwr/stbr/brks/windlocks, air cond, rd def cass, tint glass, cruise, 39,899 mi. VIN#F7272353.</p> <p>\$10,995</p>
<p>1991 DODGE GRAND CARAVAN LE 6 cyl eng, auto trans, pwr/stbr/brks/windlocks, air cond, cruise, wood paneling, 40,588 mi. VIN#MX589553.</p> <p>\$10,995</p>	<p>1993 OLDSMOBILE 88 ROYALE 6 cyl eng, auto trans, pwr/stbr/brks/windlocks, air cond, driver's air bag, cassette, 35,299 mi. VIN#PH340766.</p> <p>\$11,995</p>	<p>1994 OLDSMOBILE 88 ROYALE 6 cyl eng, auto trans, pwr/stbr/brks/windlocks, air cond, driver's air bag, cruise, wood paneling, 35,000 mi. VIN#PH332852.</p> <p>\$13,495</p>

SUPERIOR
Oldsmobile AURORA
296 Broad Street, Summit, NJ
SALES 908-598-9000 · SERVICE 908-273-3780
Prices include all costs to be paid by a consumer except for licensing, registration and taxes.

Crown Cadillac Oldsmobile

Special Purchase

BRAND NEW 1996 Sedan Devilles

All Colors All Options
56 To Choose From

Leather, North Star System V8, Full Power, Sea Mist Green, Am/Fm Cassette, Cruise Control & Tilt! Stk#355, VIN#1G6KB52Y8TU300897. List Price \$37,950

\$31,497*

*Prices include all costs to be paid by consumer except for licensing, reg. & taxes. Exp. 3 days from pub. Previous Cadillac lease customers \$1500 Incentive money has been applied to advertised price.

CADILLAC CREATING A HIGHER STANDARD

Crown Cadillac Oldsmobile
1584 ROUTE 22 (East) WATCHUNG (908) 561-2900

— COME VISIT OUR CHEVROLET OPEN HOUSE! —

SAVE

Consumers Choice NETWORK GEO

SUPER SPECIAL DISCOUNTS FOR AARP MEMBERS*

<p>SAVE \$7815 ON A NEW 1996 CHEVY CORVETTE</p> <p>\$32,659</p>	<p>SAVE \$1639 ON A NEW 1996 CHEVY BERETTA COUPE</p> <p>\$12,759</p>	<p>SAVE \$1682 ON A NEW 1996 CHEVY CORSICA 4 DOOR</p> <p>\$13,313</p>	<p>SAVE \$1955 ON A NEW 1996 GEO PRIZM 4 DOOR</p> <p>\$12,887</p>
<p>SAVE \$2821 ON A NEW 1996 GEO TRACKER CONVERTIBLE 4X4</p> <p>\$12,689</p>	<p>SAVE \$2628 ON A NEW 1996 GEO TRACKER 4 DR. 4X4</p> <p>\$15,648</p>	<p>SAVE \$2998 ON A NEW 1996 CHEVY G-30 EXTENDED CARGO VAN</p> <p>\$18,189</p>	<p>SAVE \$2651 ON A NEW 1996 CHEVY 2500 FULL SIZE PICK-UP</p> <p>\$17,933</p>

SUPER SPECIAL DISCOUNTS FOR AAA MEMBERS*

<p>'93 SUZUKI SIDEROCK ALX 4X4 4 dr, 4 cyl, auto trans, w/OD, pwr, string/brks, air, glass, lock/wind/mir, tilt, glass, air, roof, cassette, chrome whis, all tires, w/wper, 31,635 miles. VIN#P411102.</p> <p>\$11,995</p>	<p>'90 GEO PRIZM 4 DR HATCHBACK 4 cyl, auto trans, pwr, string/brks, air, glass, stereo, rd def, l/w/cvs, split rr seat, 44,876 miles. VIN#L2178218.</p> <p>\$6,495</p>	<p>'93 CHEVY CAVALIER COUPE 4 cyl, auto trans, pwr, string/brks/locks, air, glass, cassette, rd def, sp, mirs, 38,307 miles. VIN#P7272076.</p> <p>\$8,995</p>	<p>'92 CHEVY CAPRICE 3 seat wagon, V-8, auto trans, w/OD, pwr string/brks/windlocks, stereo, air, rd def, cruise, roof rack, cassette, VW, wire wh/cvs, rd def, 28,908 miles. VIN#NW126378.</p> <p>\$13,595</p>	<p>'90 CHEVY CORSICA 4 DR V-6, auto trans, pwr, string/brks, glass, air, rd def, cruise, 48,117 miles. VIN#L104687.</p> <p>\$5,795</p>
<p>'94 CHEVY SUBURBAN 4X4 V-8, auto trans, w/OD, pwr, string/brks/windlocks/mir, stereo, rd def, air, rd def, cruise, 30,026 miles. VIN#F213000.</p> <p>\$25,995</p>	<p>'94 CHEVY CAVALIER WAGON 4 cyl, auto trans, pwr/string/brks/locks, glass, air, tilt, stereo, rd def, l/w/cvs, sp, mirs, split rr seat, w/wper, 38,309 miles. VIN#F724022.</p> <p>\$8,995</p>	<p>'92 CHEVY CORSICA LT 4 DR V-6, auto trans, AIR, stereo, pwr string/brks/locks, tilt, styled whis, sp, mirs, rd def, 44,420 miles. VIN # NY221967.</p> <p>\$7,595</p>	<p>'93 CHEVY G-30 CONVERSION VAN 350 V-8, auto trans, w/OD, pwr string/brks/windlocks/mir, rd def, cruise, dual AIR, cassette, 4 captain chairs, pwr sofa beds, full spare, running birds. W/warehouse conversion, 36,091 miles. VIN#P212065.</p> <p>\$14,995</p>	<p>'92 CHEVY CAVALIER COUPE 4 cyl, auto trans, pwr string/brks/locks, air, glass, rd def, cruise, 47,175 miles. VIN#N718724.</p> <p>\$7,295</p>

Prices include all costs to be paid by the consumer except for licensing, reg. & taxes. *Not responsible for typographical errors.

PEAK OF VALUE
1/4 MILE FROM THE SHORT HILLS MALL

BARNES

38 RIVER ROAD, SUMMIT, NJ

CHEVROLET GEO

(908) 273-7800