

Union County

- News
- Arts
- Entertainment
- Classified
- Real Estate
- Automotive

WORRALL COMMUNITY NEWSPAPERS

THURSDAY, NOVEMBER 29, 2001 SECTION B

http://www.localsource.com

Legacy revision

The calls I got last week from a couple of political reporters asked about local insight or interesting stories I had about deceased former senator and Union County resident Harrison "Pete" Williams. My personal recollections into that complicated man were actually very limited.

In 1975, as a young operative type, I watched him act rudely to some naive autograph seekers at a political dinner. The senator later admitted an alcohol problem. I also recalled a long-winded almost incoherent defense by him of his legal problems at a political breakfast at the old Town and Campus restaurant in Union in 1980.

Left Out

By Frank Capoco

It was after all, the Abram scandal which ensnared Williams, saw him resign from the U.S. Senate in 1982, and two years later, after a ferocious legal battle serve two years in federal prison. The crime was bribery and conspiracy for helping to arrange a \$100-million loan and becoming a secret investor in a mythical sheik's titanium mine.

To the end, Williams' defense included that he was innocent, a victim of an overzealous prosecutor who engaged in entrapment, and that his support for U.S. Sen. Edward Kennedy to topple sitting President Jimmy Carter did not sit well with the powers that were. All of that may have been true, or maybe it wasn't.

It is clear that Williams, a Plainfield native, who lived in Westfield during most of his political career, will go down in history as a U.S. senator who resigned in disgrace. At the beginning, he was a congressman who represented western Union County in the U.S. Congress in the early '50s, and starting in 1958 won a staggering four terms to the U.S. Senate.

Williams' supporters and friends, of which there are many, point to his landmark legislation achievements including the Occupational Safety and Health Act, the Coal Mine and Health Safety Act, and the Williams Securities Amendment, all of which helped to make life better for the average guy.

Last week also would have been the 76th birthday for Robert Kennedy. The Bush administration renamed the Justice Department in his honor. It struck me odd that current U.S. Attorney General John Ashcroft would join in such a celebration. But Kennedy's writings on Martin Luther King, his obsession with crime in unions do all point to the needs of the state over the freedom of the individual. As one editorial, noting the irony, wrote "legacies can be complicated and memories can be selective."

It is that legacy complication which makes so valuable the new book by Michael Beschloss. His second work on Lyndon Johnson See NOT, Page B2

Celebrating 25 years of child care

By Ahmed Soliman Staff Writer

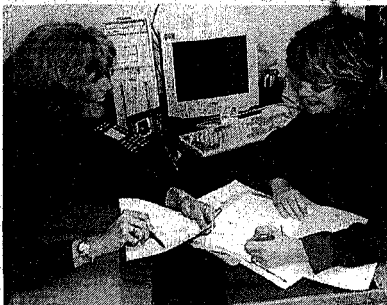
Since the 1970s, more and more women in America have been going to work and earning a pay check for their families, thus creating a need for more quality child care services. The Community Coordinated Child Care of Union County celebrates its 25th year helping child care organizations achieve the quality service that is so much in demand.

In the early 1970s, the United Way started a program called "Resources and Referral" which parents would call to start finding out where to put their children while they worked all day. In 1976, the program became so large that it was finally incorporated into being private and non-profit.

Today, the organization is still funded by the United Way, but as a separate agency. Most of the funding comes from the federal government through the state. The main objective of Community Coordinated Child Care is to show teachers how to teach early childhood education as well as provide other incentives and services for people wishing to enter the child care field.

"The professional development role of the agency has grown tremendously," said Dottie Driscoll, public relations director for Community Coordinated Child Care. "We now do a number of work with public school teachers throughout Union County and throughout the region, such as Essex and Middlesex counties. We also award scholarships to individuals trying to obtain a college degree or certification."

Every child care worker is required to take a certain amount of hours in



Linda Gillespie and Pat Mennuti, executive director of Community Coordinated Child Care of Union County, look over some paperwork at the organizations Hillside headquarters.

training, and although CCCC is not a child care organization, they do provide the required training of child care workers.

According to Executive Director Pat Mennuti, Community Coordinated Child Care has accomplished a lot over the last 25 years, but their work is still cut out for them.

"I think we have made a significant impact. It makes me feel great, but we have a lot more to do. Every year is a new family that needs child care and changing issues within our community. We have to keep up to date," said Mennuti.

On Friday, Community Coordinated Child Care of Union County will host a statewide symposium titled "Quality Child Care: A Funders Perspective" which will discuss how foundations and other government-based organizations are funding child care programs and requiring they meet certain criteria.

"The symposium will discuss things like should funders decide

what's good and what's bad? Are they working with the early child care community to determine how to measure quality and what quality is? And how can we work together to improve what's out there and get funding," said Driscoll.

The keynote speaker will be Maurice Sykes, professor at the University of Washington, D.C., and nationally-known urban educator for preschoolers. Attending the symposium will be professionals in the field, practitioners and members of foundations who fund programs. The symposium is not meant for parents. It will be from 8:30 a.m. to 2:30 p.m. at the Crowne Plaza in Clark. Any child care professional wishing to attend the symposium can call 973-923-1433.

In planning for the future of Community Coordinated Child Care is creating a demonstration classroom in which to demonstrate appropriate child care for students of the field, as well as continuing the study programs for people wishing to subside early childhood care in college.

Women raising as much money as men Anchor-encouraged by elections

By Nate Eaton Associate Editor

The Union County Women's Political Caucus hosted NJN News anchor Kent Manahan on Monday night at the Summit City Hall. Manahan was invited to discuss the status of women running for public office in New Jersey and help answer the question "The election of 2001: Did women win in New Jersey?"

Manahan said women in the state have gained politically for a number of reasons. "Women candidates held on," she said. "In fact, 100 percent of incumbent women running in the state were re-elected." She also pointed to research that shows women are now raising money for local, county and statewide offices that is equal to their male counterparts, and said this was not the case five years ago.

In the new legislative session starting in January, the number of women serving in the state Senate will be five, which is up from the current three. However, the number of women in the Assembly will drop from 15 to 14.

Not all the women see the current statistics as positive for female politicians in New Jersey. Candace Straight, president of the WISH list, a political action committee that supports pro-choice Republican women for higher office, questions whether women have made any gains at all. She cited statistics from the recent election that, of the 39 women who ran for Assembly, 12 were incumbents, six were running for open seats and 21 were challengers of unwinnable seats. "Republicans could not win these seats and Democrats could not win them. Until the parties get more women running for open seats

and support these women, then you can't honestly say either the Democratic or Republican Party are very women-friendly in this state."

Straight said the key is to make a woman "viable in a safe Republican district in a Republican primary and state in a Democratic district in a Democratic primary."

Statistics from Rutgers' Center for American Women in Politics show that New Jersey ranks 43rd in the proportion of women in the state legislature. New Jersey's legislatures are 15.8 percent women, while Washington, at 39.5 percent, is highest.

Manahan said one should look beyond the surface of the statistics to see the good news and that some national trends were promising. The latest numbers from Rutgers' Eagleton Institute, she said, show that there is now a record number of women mayors around the country. She also said there has been an increase in women in the House of Representatives while the number of women in the U.S. Senate has remained the same.

Manahan stressed that women running for office in New Jersey can raise money in parity with men, but they need to hold more party chairmanships in order to reach out and attract more viable female candidates "On the whole, New Jersey women can raise the kind of money to run a very legitimate campaign and win," she said. "but in order for women to reach out and attract women candidates for office, more women have to be appointed to state chairmanships and local county party chairs. That's what the experts say has to be done."

Manager appointed to transition team

By Mark Hrywna Regional Editor

At least three officials with ties to Union County were named to Gov.-elect James McGreevey's transition team last week. County Manager Michael Lapolla will serve on the Authorities Committee and former Union County Freeholder Mario Paparozzi will be a member of the Corrections Committee.

Congressman Robert Menendez, D-13, whose district includes parts of Elizabeth, will be chairman of the transition team. Menendez had been feuding this month with the governor-elect over his selection of the next Assembly speaker. Lapolla will sit on the Authorities Committee with Raymond Pocio, vice president of Eastern Region Manager of the Laborers International Union of North America, Gloucester County Freeholder Dr. Warren Wallace and Joseph Ferrero, a partner with Wolff & Samson.

Paparozzi, who served as a freeholder when he lived in Cranford, was appointed chairman of the State Parole Board last year. Joining him on the Corrections Committee will be Maggie Aguerro, director of the state Department of Corrections; Gary Hilton, director of Corrections and Youth Service for Monmouth County, and the Rev. Henry P. Davis of the Coalition of Religious Ministers and president of the Statewide Prison Ministers.

Lapolla said his committee will do an overall review of each authority and make recommendations to the new governor. There are some 50 authorities within state government, such as the Economic Development Authority, which is funding the school facilities construction; the New Jersey Sports & Exposition Authority, which operates the Meadowlands Sports Complex; the Port Authority of New York and New Jersey, and the Garden State Parkway and New Jersey Turnpike authorities.

Local Democrats expect Lapolla to at least get an offer to join the McGreevey administration on a permanent basis in some capacity. Although his name has been mentioned for positions, including Department of Transportation commissioner in at least one published report.

Lapolla declined to speculate on any offers. Asked Monday if he had any interest in a position in the McGreevey administration, Lapolla replied, "I'm happy where I am."

Breaking new ground



The Boys & Girls Club of Union County broke ground last week on a new facility at 530 W. 7th St., Plainfield, with, from left, the Rev. Howard Brian, Chief Operating Officer Sal Dovi, Mayor Al McWilliams, club member Jamielle Franklin, Plainfield Acting Director of Administration and Finance Tracy Bennett, City Administrator Tom Morrison, Board of Directors President Robert Poles and Rick Wagner of the Board of Directors. The 12,000-square-foot facility is the fourth in Union County, joining others in Union, Elizabeth and Roselle. Expected to open by March, the club will accept up to 500 members.



M & R AUTO SALES INC.

QUALITY USED CARS & TRUCKS

"Plainfield's Best Kept Secret"

Buy Here • Pay Here • Bank Financing Available

HOURS: Monday thru Saturday 9 AM - 6 PM

★ 4 Locations ★

Over 300 Cars!!

- '98 MAZDA 626 LX GREEN 78k \$8,995
- '96 PONTIAC BONNEVILLE GREEN 116k \$5995
- '93 CADILLAC SDV WHITE 79k \$5995
- '93 HONDA ACCORD SE 77k \$7995
- '95 MITSUBISHI ECLIPSE GSX WHITE 99k \$6995
- '96 MITSUBISHI ECLIPSE GST SPIDER 65k \$11,995
- '93 CADILLAC SDV. 68k \$ 5995

SATISFACTION GUARANTEED

- '96 FORD PROBE RED 68k \$5995
- '99 KIA SEPHIA WHITE 22k \$5495
- '94 MAZDA MPV AWD GREEN 88k \$6995
- '96 DODGE NEON RED 62k \$4495
- '98 FORD E150 GREEN 102k \$6,995
- '93 CADILLAC SEVILLE STS BLACK 82k \$7995
- '94 CADILLAC ELDRADO WHITE 90k \$8995

No Reasonable Offer Refused

1826 Front St., Plainfield 908-222-7364

ANTHONY MASI
 506 PARK AVE., PLAINFIELD 908-769-7722
 MICHAEL ANTHONY AUTO SALES INC.
 306 RICHMOND ST., PLAINFIELD 908-753-0994

Extended Warranties
 Courteous Services
 110-116 Fifth St., Plainfield 908-769-5666
 Fax: 908-755-5944



COUNTY NEWS

Operation Breadbasket

Sheriff Ralph Proehlitch has announced that his office will once again conduct "Operation Breadbasket." The sheriff has provided this program every holiday season since 1990. "Operation Breadbasket" is an opportunity for the more fortunate to share their good fortune with families who have fallen on hard times.

The program is coordinated by Sheriff's Detective Pete Campanelli. Local merchants, companies and private citizens are solicited for donations. The proceeds are used to make up food baskets consisting of turkeys, dairy products, breads, canned goods and other staples for needy families. Perennial participants Tuscan Dairies, Wakefern Food Corporation, the Atlas Paddock Lodge, Elizabethtown Gas and the International Long Shoreman's Association Local 135 are among some of the corporate sponsors contributing to this year's effort.

Proehlitch said the goal is to provide 400 baskets to the needy this season. "Corporate sponsors are invaluable but individual contributions from private citizens are also needed. We cannot make this program a success without help."

Individuals wishing to contribute should send checks to "Operation Breadbasket," c/o Union County Sheriff's Office, 10 Elizabethtown Plaza, Elizabeth, 07207. Attention Detective Campanelli.

Requests for baskets should be made the Sheriff's Office at 908-527-4491 or 527-4494 between 10 a.m. and 2 p.m. Wednesday to Dec. 12. Baskets will be distributed during the week of Dec. 17.

Craft, floral extravaganza

The Volunteer Guild of Rumlens Specialized Hospital of Union County sponsors a country craft and floral extravaganza today from 8:30 a.m. to 4 p.m. in the multipurpose room of the facility, 40 Watchung Way, Berkeley Heights.

The sale by Lane's Crafts and Gifts will feature country and Victorian crafts, silk and dried floral arrangements, wreaths, swags, candles and decorative items.

The public is invited to attend the vendor sale free thanks to the efforts of the Volunteer Guild. A part of every sale goes back to the Volunteer Guild to improve the quality of life of the residents and patients, such as prizes for the bingo games and funding performances by a variety of musicians, singers and artists at the hospital. The guild also sponsors a Christmas picnic every year in cooperation with the Berkeley Heights Lions Club.

The Volunteer Guild and the Office of Volunteer Services of Rumlens Specialized Hospital of Union County are interested in recruiting volunteers. Flexible hours and a variety of opportunities exist with resident contact, as well as performing other tasks. For information, call the Office of Volunteer Services at 908-771-5847.

To schedule a tour of the facility or to file an application, call the hospital's Admissions Office at 908-771-5901. There are no residency requirements for admission.

Rumlens Specialized Hospital of Union County accepts Medicare and Medicaid.

Rumlens Hospital now offers Respite Care, a way for caregivers to take that postponed vacation, attend that wedding, or just spend a weekend relaxing. Physicians and registered nurses are on duty 24 hours a day, seven days a week. Meals, snacks, activities and basic cable TV are included. The minimum stay offered is three nights, and there is no maximum stay.

Call the Admissions Office at 908-771-5901.

Annual cookie exchange

Tired of baking the same holiday cookie recipe year after year? The Union County Chapter of Mothers & More will host its annual cookie exchange at 7:30 p.m. on Wednesday

at Hanson House, 38 Springfield Ave., Cranford.

This is a popular group event where current and potential new members can exchange recipes and cookie samples, plus socialize with mothers who have chosen to alter their career paths to remain at home and care for their children. Participants are asked to bring two to three dozen of their favorite cookies along with 15 copies of their recipe.

Over 60 members strong, the Union County Chapter of Mothers & More welcomes all mothers regardless of career status, to attend meetings on the first and third Wednesday of each month at the Hanson House. The group provides many social opportunities for mothers and their children including weekly playgroups, mom and tot outings, mom's night out and a variety of special interest clubs.

Interested mothers with questions can call Heidi at 908-810-7165 or Jan at 732-381-3199 for more information on the organization.

DARE/DeVils night

The Union County DARE Officers Association will be hosting its annual DARE/DeVils Hockey Night Dec. 14 at the Continental Airlines Arena.

Tickets are specially priced for this evening at \$30 — box office price is \$52 — and are second level at the arena. Game time is 7:35 p.m. for the game against the Florida Panthers, and all fans receive a Devils souvenir. Anyone interested to call Detective Keith Dunn of the Clark Police Department at 732-388-3434. Ext. 259.

The Arc open house

The Arc of Union County is sponsoring an open house for the Vocational Services Department and the Plainfield Opportunities Program on Friday from 10 a.m. and 2 p.m. Light refreshments will be served.

The open house is an opportunity for area businesses to tour the vocational programs of The Arc, meet with the program directors and staff, and have an overall view of the services offered by the Vocational Services Department. The Vocational Services Department of The Arc can provide on or off-site production for labor intensive tasks or fill a position with direct hiring and placement by well-trained workers. References are available.

To RSVP or for more information regarding the open house, call The Arc of Union County Vocational Services Office at 908-754-2303 by Friday. For more information about the spectrum of vocational services offered by The Arc, you may contact the Vocational Services Department Director, Laurie Salka, at the same number or by e-mail, contact: lsalka@arcunion.org.

For more information about this event and other county-wide events,

visit the web site at www.arcunion.org.

The Arc of Union County, is a non-profit association that provides programs and services to over 700 individuals and families with developmental disabilities and their families in Union County. The Arc of Union County's programs and services have maintained accreditation from the Rehabilitation Accreditation Commission, a nationally-recognized authority. This recognition indicates The Arc of Union County's high standards of performance and commitment to enhance the quality of life for individuals with disabilities. The Arc of Union County maintains 22 residential home programs; five vocational and employment centers; five special needs day programs, which includes an Adult Medical Day Care; two child development centers; a summer camp program, and a private school.

Women of Excellence nominations sought

Applicants are being sought for the 10th Annual Women of Excellence awards program sponsored by the Union County Commission on the Status of Women. The commission is looking for outstanding women nominees of Union County who have distinguished themselves in one or more of the following categories: Arts and Humanities; Business/Entrepreneur; Community Service; Education; Government; Law; Law Enforcement; Medicine/Health Care, and/or Women's Advocacy. The woman selected from the nominees will be honored at The Westwind in Garwood on March 22.

A resume or biography with a cover letter highlighting the accomplishments and outstanding achievements of the nominee should be submitted to Joan Abitante, 322 Dietz St., Roselle, 07203.

Nomination submissions must be postmarked by Dec. 1. For more information, call Abitante at 908-241-4899.

Entertainment books on sale as fund-raiser

The 2002 Entertainment Books, with hundreds of discount coupons for restaurants, travel and sports events in the Union County area, are being sold by Union County Vocational-Technical School students to raise funds for their annual awards night.

The discount coupon books are available for all areas of New Jersey and can be ordered for all areas of the county. Each book provides discounts of as much as 50 percent on fine and casual dining, movie admissions, concerts, sports events, family activities, airfares, hotels, rental cars, merchandise and local services.

Heinz Ricken, coordinator of student activities, said the money raised

through the sale of the books will be used to help fund the awards given to graduating seniors at the annual awards night in June.

The North Jersey edition of the book costs \$20 and includes businesses and events in Union, Essex and Hudson counties. The Central Jersey edition, which includes Middlesex, Somerset, Hunterdon and southern Union counties, costs \$30. Other editions available for purchase in the Bergen/Passaic/Northwest Jersey edition; the Monmouth, Ocean and Mercer counties; South Jersey, and New York City.

To purchase a book or to obtain more information on the 2002 Entertainment Book, call Ricken, at 908-889-8288, Ext. 311, or purchase one at the main office of Union County Vocational-Technical High School, West Hall, 1776 Raritan Road.

We Care fund-raiser

The Union County School Counselors are selling Entertainment 2002 books as a fund-raiser for the We Care awards. The awards are given to deserving Union County high school students at the end of each school year in recognition of their good deeds, volunteerism, and assistance to others.

For those not familiar with the Entertainment book, it contains discounts for fine dining, family dining, sports events/activities, special attractions and hotels. The 2002 book also contains instant movie discount tickets, cruise discounts, florist discounts, USA Today discount, half-price dry cleaning and car wash discount, Union County Arts Center discount, retail discounts, as well as airline tickets. Books are available for gift giving or for one's own use at \$20 and \$30. Call Carmine at 732-396-1077 during the day or 908-233-1086 in the evening to purchase a book.

Editorial deadlines

Following are deadlines for news: Church, club and social - Thursday noon. Entertainment - Friday noon. Sports - Monday noon. Letters to the Editor - Monday 9 a.m. General - Monday 5 p.m.

Tree lighting Dec. 7

The Board of Chosen Freeholders will sponsor the county's 12th annual holiday tree lighting ceremony and charity drive on Dec. 7 from 6:30 to 9:30 p.m. at the Watchung Stable, 1160 Summit Lane, Mountaintop.

"There is a lot planned for this festive evening," said Freeholder Chairman Alexander Mirabella. "In addition to illuminating the lights on a beautiful 30-foot tall tree, there will be a holiday sing-along, a petting zoo, demonstrations by the K-9 unit of the Union County Sheriff's Office, a mounted drill team presentation by the Watchung Stable, a visit from Santa Claus, and refreshments. Those planning to attend this event are encouraged to bring cameras for taking pictures with Santa."

"We are asking members of the public who attend to bring along an item of dry or canned food, or a new, unwrapped toy in lieu of an admission fee," added Freeholder Daniel Sullivan. "It is important for each of us to remember those who are less fortunate all year-round, but especially in the holiday season."

All the items collected will be distributed to Union County charities. For more information on the Union County tree lighting ceremony, call the Department of Parks and Recreation at 908-527-4900. In the event of rain, the program will be presented on Dec. 8 at same time and place.

Culinary program at Vo-Tech

The award-winning culinary arts program at Union County Vocational-Technical Schools can improve your skills in the kitchen or prepare you for a new career as a chef.

Registration is open now to all Union County residents for the Culinary Arts program scheduled to begin Jan. 31 at the school's campus in Scotch Plains.

The culinary arts class will meet five days a week, Monday through Friday, from 2 to 8 p.m. Union County residents age 18 and over can complete the course and receive a degree in one year.

The culinary arts program offers premiere food service education, introducing students to a variety of

food preparation techniques from cooking principles to gourmet foods. Students learn in a state-of-the-art commercial kitchen under the guidance of a professional chef and instructor.

The course includes instruction in the preparation of stocks, soups, sauces, salads, meats, fish, shellfish, poultry and vegetables. The curriculum also teaches portion control, food presentation, garnishing and dessert preparation.

Financial aid is available to eligible students and job placement services are offered to all graduates. For more information or to register for the program, call the admissions office at 908-889-8288, Ext. 340 or Ext. 341.

Not subject to revision

(Continued from Page B1)

includes excerpts of tapes of conversations with historic figures made by the president. Entitled "Reaching for Glory," the audio-tape with narratives by Beschloss provide context and an eavesdrop into history. Listening to Johnson strong arm Adam Clayton Powell, who was holding hostage a Johnson initiative on education, or the discussions on the war in Vietnam between Johnson, Defense Secretary Robert McNamara and Georgin Sen. Richard Russell are compelling. Even though Johnson knows the tape is running, to hear Ken-

nedly ask Johnson to campaign for him in 1964 or J. Edgar Hoover's advice on how to spot a gay man is intriguing.

But in the end, I doubt whether the naming of a building will really impact on history's view of Kennedy. The Beschloss tapes also won't break the chain between Johnson and Vietnam. At the time of Williams' conviction, he was quoted, "Time and history will vindicate me." While subject to review, legacies are not necessarily subject to revision.

A resident of Cranford, Frank Capece is an attorney.

CHRISTMAS TREES, Wreaths, Grave Covers, Holly, at... JUZEFYK'S

CHRISTMAS TREE STAND

Purchasing a tree should not be a chore, it should be an experience enjoyed by the whole family. Let us help deliver an experience you and yours will cherish this holiday.

\$5 off Any fresh X-mas tree

Min. \$45. Present this ad prior to purchase. May not be combined with any other offer. Offer valid Monday thru Thursday Only

\$2 off

Any wreath or Medium or Large Grave Cover

Present this ad prior to purchase. May not be combined with any other offer. Offer valid Monday thru Thursday Only

2 LOCATIONS

ROSELLE

On St. Georges Ave.

between Burger King & Carwash

CRANFORD

On North Avenue and Lincoln Avenue

Complimentary wrapping & delivery to car

OPEN TILL 11 PM

OPEN TILL 10 PM

Tricky Tray Auction

Thursday, December 6th

Knights of Columbus North Park Ave., Linden

Doors Open for Ticket Purchase at 6:30 PM

Purchase Tickets in Advance 908-925-1878

AUCTION BEGINS AT 8:00 PM

GIFTS GALORE HANDCRAFTS HOLIDAY

50/50 RAFFLE

ALL HOMEMADE GOODIES BAKE SALE

FUN FOR EVERYONE...BRING YOUR FRIENDS

Tickets \$5.00

Coffee, Tea, Desserts Served to Everyone

You won't believe the prizes we have...19" Color Television, Bally's 1 Year Membership, Pioneer Car Stereo w/CD Player, Gorgeous Handmade Quilts, Waterford Crystal, Mikasa, Kids Toys, Gift Certificates for Everything from your Nails to Dining Out, Hand Crafted Holiday Decorations, Silk Florals, a Fabulous assortment of Gift Baskets for everything from Babies to your Gar, over 100 of the most WONDERFUL BRAND NEW ITEMS TO WIN!!!!!!! Promises to be one of the best Tricky Tray Auctions Ever!

Proceeding the Vincent Vito Benefit Fund

SCOTCH PLAINS TAXI INTRODUCING LOCAL TAXI SERVICE

SCOTCH PLAINS TAXI advertisement with pricing: \$10.00 OFF ANY FARE \$80.00 & UP or \$5.00 OFF ANY FARE \$35.00 & UP or \$1.00 OFF ANY FARE. Includes phone number 800 783-5025 and 908 889-8010.

ARTS & ENTERTAINMENT

Cultural summit addresses quality of life, artists' needs

By Steven Reilly
Staff Writer

The Union County Division of Cultural and Heritage Affairs held a cultural summit Nov. 17 on the campus of Kean University. Representatives from the artistic community — which includes painters, writers, and sculptors — were joined by theater groups, musicians, and local business owners and administrators.

The purpose of the summit is to create a written plan for the promotion and development of art and culture all across Union County. The summit was the first step to identifying the obstacles that artists and organizations face in Union County.

Kathlene Cavanaugh, a consultant

to the county, said that a good solid plan will help the artist and organizations reach out to the young families and children that are new to the area.

"Art and culture will build a healthy community and bring neighbors together through a sensitive dialogue," Cavanaugh said. "Children who are exposed to art typically have more success in the future. They learn to think creatively and to have excellent problem-solving skills."

Cavanaugh said that the summit will identify the problems that artists in the county face in their efforts to reach out to local audiences. With the problems identified, future summits will have the necessary information to

create a strategy to overcome them. Organizers hope to have a complete cultural strategy plan in about one year.

According to all of the different groups participating in the summit, the events of Sept. 11 have had a noticeable effect on the artistic community in Union County.

One of the most immediate and recognizable effects of the events of Sept. 11 is the loss of funding to cultural groups. As a result of the tragedy, donations that would have been made to local cultural groups are now being directed to the relief effort in New York City.

This drop in private contributions is

partnered with the elimination of corporate and private foundations that have historically financed cultural projects. As a result of the current economic environment, these organizations have postponed or cancelled their cultural funding programs.

Ironically, the artists groups have noticed an increase in residents looking for local shows as a result of Sept. 11. People have more of a desire to stay close to their home and to participate in community events. This provides the local artistic groups a unique opportunity to share their works with local residents.

According to the artists and organizations participating in the summit, the No. 1 obstacle they faced was funding. Many times, participants said, projects and shows have a difficult time raising enough money to survive.

The artists felt that a central board is needed in the county that will help

centralize all of the area shows and organizations, and will help groups publicize their events. The artists also said that the lack of facilities throughout the county hurs their efforts to share their work. Artists proposed using public spaces to display works from local artists as one possibility.

Community agencies said that a relationship between cultural organizations and the local business community would benefit both groups. Artists and merchants can create a win-win partnership with the promotion of the business and the advertising of the cultural event.

Other obstacles raised by the community organizations was the lack of cooperation from the press regarding promotion of the events. The lack of available facilities and the high cost of insurance are also a big concern for the community agencies.

Susan Coen, the director of the Union County Division of Cultural

and Heritage Affairs, was very pleased at the response from the cultural community to the first summit of this kind in Union County.

"The largest group to respond to the summit were the artists, they make up over 30 percent of the groups here today, which really shows how much they care about this," Coen said. "This is the first step to an articulate and creative strategy that would not be possible without the support of the Board of Chosen Freeholders and the other local politicians."

Coen said that the development of a cultural strategy for Union County will raise the quality of life for all of the diverse cultural groups throughout the county.

"Cultural programs can help our communities heal after the attacks and can help local economies," Coen said. "These programs build strong communities that all residents can share in."

'Nostalgic' composition pays tribute

By Bill VanSant
Associate Editor

Webster's defines nostalgia as "a sentimental yearning for the happiness of a former place or time."

Last summer, when Mario Lombardo of Cranford sat down to compose his most recent work, "Near Nostalgia," he had no idea how fitting the piece would soon become.

"Near Nostalgia," which will receive its premiere Sunday with the New Jersey Intergenerational Orchestra, has been dedicated to the victims of the attacks of Sept. 11 and their families. The orchestra, under the direction of founder Lorraine Marks of Warren, will present Lombardo's composition during its winter concert at Cranford High School.

"Actually, I got a grant from the Union County Board of Chosen Freeholders in the spring of this year to write a piece and I decided to do a piece for violin and strings," Lombardo said. "As it happened, the piece was very reflective and contemplative, in the style of George Gershwin, which I pretty much finished by the end of summer. And then I was proofreading the parts in September, getting ready to play it for Lorraine when the tragedy happened Sept. 11. It was at that time, considering the nature of the piece, I decided to dedicate the work to the memory of the victims and their families."

While Lombardo was spared the full cataclysm of the attacks, his is one of the families affected — his daughter and son-in-law, Karen and Adam Hoppe of Hoboken, are employees of the Port Authority of New York and New Jersey. Both survived the tragedy.

"My son-in-law was on the 74th floor of the first tower," Lombardo shared about the fatal day. "She was on her way in with the PATH train and it was the last PATH train, and they diverted the train to Jersey City."

"My daughter had to walk home from Jersey City Exchange Place and she called us; it must have been over an hour after the plane crashed into the building," he continued. "My son-in-law, we didn't know what happened to him because he'd been at work since 8 o'clock in the morning. We finally heard from him an hour and a half later; it took him over an hour to walk down. He was finally able to reach us in Cranford and we informed my daughter that he was OK. It took him several hours to get across the river and he had to walk home from Weehawken."

Adam Hoppe, a native of Australia, was subsequently interviewed for that country's version of "60 Minutes," recounting his experiences at Ground Zero.

Lombardo felt the evocative tone and nature of the piece made it an appropriate memorial to the victims and tribute to their families. Marks readily concurs.

"It's a very emotional, moving piece," she said, "and I think that the music that Mario writes is sort of Gershwin-like — very emotional, rhapsodic kind of music. It has some jazz elements in it also."

"George Gershwin made use of blues in jazz, and American heritage in his works," Lombardo added. "That's why his works sound so American and not European." He describes "Near Nostalgia" as being more reminiscent of Gershwin's slower works "which utilize the blues as themes. And that's what I've used in this piece."

"I have many, many works — songs and musicals — dedicated to different individuals, but this is the first time I've dedicated a work like this."

Marks sees "Near Nostalgia" not only as a memorial,

but as a tool for recovering from the emotional and physical devastation.

"My background is in music therapy," she commented. "One of the first things that we saw happen after this tragedy was all of the musicians and the artists in the entertainment field come together to begin healing through music. I think that music is very healing and I think that was in Mario's music — the emotions are expressed."

Lombardo's history with the NJIO dates back to before its inception in the mid-1990s, as do his compositions for the orchestra and grants from the county.

"I've known Lorraine for a number of years, because she was a violin teacher in Cranford," he said. "I met her through my wife, who's a school nurse in Cranford." Lombardo knew Marks before she founded the NJIO, "when she started the orchestra, I composed a few pieces." He received county grants to do so.

"This is the fourth or fifth Composers Grant I got from the Union County Board of Chosen Freeholders to compose a work for her orchestra," he said. All his grant-commissioned works have been published by Warner Bros., with which he has been signed "for many, many years — they publish all my works."

"One of the first works was called 'Gavotte for Oboe and Strings,' a very, very charming little piece," Lombardo said. "Gavotte is an old dance form. It was very very popular in the Baroque age. But this is more a modern-sounding gavotte." He also composed "Elegy for Viola and Strings," which was given its premiere at NJIO's 1999 winter concert. "Last year, I wrote the theme selection for the orchestra called 'Music in Our Lives.'"

"I'm having three piano volumes published shortly," he continued. Lombardo has seen his various compositions premiered by the New Jersey Symphony Orchestra and the Cincinnati Symphony Orchestra, as well as performances by the Chicago Symphony, the Boston Symphony, the Central Jersey Symphony with Roger Briscoe as conductor, and the Philharmonic Orchestra of New Jersey with George Marinier Maull conducting. Also, the New Jersey Youth Symphony recorded his symphonic fairy tale called "Drake's Tail." There have also been hundreds of performances all over the United States and in Europe.

With Lombardo at the piano at Sunday's performance, the violin solo will be played by Joseph Gluck of the New Jersey Symphony Orchestra.

With "Near Nostalgia," Lombardo hopes audiences will "capture the beauty of the piece and the meditative quality of the piece, and to listen to it and try to remember the victims of the tragic events of Sept. 11."

Following Sunday's concert, is there a future for "Near Nostalgia" in other venues?

"Oh, there certainly is!" Lombardo exclaimed. "Warner Bros. is wonderful! I did an arrangement for violin and piano which they'll publish and print, and it will be sold all over America and Canada, just like all the others that were printed."

"This will certainly continue and live on."

For information on the NJIO concert, at which a toy drive for the children of the victims of Sept. 11 will be conducted, see the "Concerts" listing in the Stepping Out calendar on Page B9.

A 'natural' gift idea



The Veltzhoef children of Roselle Park — from left, Rebecca, Sarah and Jacob — join their father, John, and Dan Bernier of the Union County Department of Parks and Recreation at the Holiday Nature Craft Show at Trailside Nature and Science Center in Mountainside. The 18th annual Holiday Nature Craft Show will take place Sunday from 11 a.m. to 4 p.m. at Trailside. For information, see the 'Crafts' listing in the Stepping Out calendar on Page B9.

All aboard for annual model train event

The Model Railroad Club Inc., an activity of the Union County Park System, announced the dates for the 2001 annual open house and sound-and-light show. The show will be held this Friday to Sunday, and Dec. 7 to 9 at the club building, located at 295 Jefferson Ave. in Union, off U.S. Route 22 east, behind the Home Depot.

Hours for the annual show are Fridays, 7 to 10 p.m.; Saturdays, noon to 9 p.m.; and Sundays, noon to 6 p.m. Free parking is available on site.

Advance-sale, discounted tickets are being offered. Tickets are on sale at the club Saturdays, between 1 and 4 p.m., or available by mail by sending a check or money order payable to The Model Railroad Club Inc., P.O. Box 1146, Union, 07083-1146. Ticket prices are \$4 for adults \$1.50 for children 12 years old and younger, and \$2.50 for senior citizens 60 years old and older.

This year, the 60-by-80-foot addition to the club's building will be open to the public for the first time. This addition features a handicap ramp, wheelchair-accessible restrooms and an expanded balcony area. Visitors will be able to view a plan of the expanded HO scale model railroad which is expected to take approximately 30 years to complete.

The sound-and-light show has been a favorite with children and adults alike for more than 10 years. It showcases the club's 40-foot-square HO scale layout. A 30-by-27-foot N scale layout is also featured. It is the organization's major fund-raising event for the year, and proceeds from admission fees and purchases made at the club's gift shop will help fund the club's activities.

The Model Railroad Club Inc. was founded in 1949 in the basement of Paul Malley, a professor of the hobby of model railroading. The club occupies a building on Union County park land designed, built and maintained entirely by the members, under a unique arrangement with the Union County Park System.

For more information regarding the show, or about The Model Railroad Club, Inc., contact the club at 908-964-9724 on Saturdays between 1 and 5 p.m., or 908-964-8888 for a recorded message, or by visiting the club's Web site at www.mtrci.com.

INFOSOURCE

FREE INFORMATION BY TELEPHONE • 24 HOURS A DAY

908-686-9898

IT'S AS EASY AS...

- 1 Call 908-686-9898 from your touch tone phone...
- 2 Press the 4 digit code for the information you want to hear...
- 3 Hear Unlimited Selections Per Call

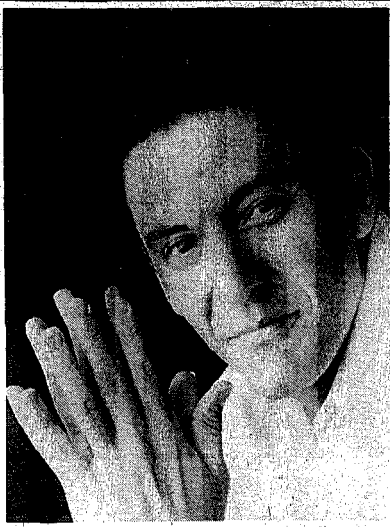
Infosource is a 24-hour voice information service where callers get free information from the selections shown by calling (908) 686-9898. Calls are FREE if within your local calling area. Out of area calls will be billed as long distance by your telephone company. Infosource is a public service of Worrall Community Newspapers.

Questions or comments about Infosource? ENTER SELECTION #8025

FOR INFORMATION ON ADVERTISING AND SPONSORSHIP OPPORTUNITIES CALL 908-686-7700

BOOK REVIEWS EXTENSION 3305	LOTTERY EXTENSION 1890 <small>Sponsored by The Vitamin Factory</small>	RELIGION EXTENSION 3180
ENTERTAINMENT EXTENSION 3190	MOVIE REVIEWS EXTENSION 3200	SOAPS/TV DRAMS EXTENSION 3270
FINANCIAL HOTLINE EXTENSION 1250	MUSIC CHARTS EXTENSION 3550	SPORTS EXTENSION 3000
HOROSCOPES EXTENSION 3620	NEWS HEADLINES EXTENSION 1600	TELEVISION EXTENSION 3300
THE INTERNET EXTENSION 6200	NUTRITION EXTENSION 5165	TIME & TEMP EXTENSION 1000
KIDS STUFF EXTENSION 3350	RECIPES EXTENSION 5290	WEATHER EXTENSION 1790

JAZZIN' UP THE HOLIDAYS — The Paper Mill Playhouse in Millburn will present two holiday concerts featuring renowned jazz artists in the coming weeks. The John Pizzarelli Trio, featuring New Jersey native Pizzarelli, right, will appear Dec. 7, while New Orleans' Preservation Hall Jazz Band, below, chimes in Dec. 10. For information, see the "Concerts" listing in the Stepping Out calendar on Page B9.



UCAC to host Vienna Boys Choir

The Union County Arts Center will present the Vienna Choir Boys, one of the world's best-loved musical organizations, Saturday at 8 p.m. for a special holiday concert. Back by popular demand, the Vienna Choir Boys last appeared at the Union County Arts Center in 1999 before an enthusiastic, near-sellout audience. The Vienna Choir Boys, established in 1498 by Imperial decree of Hapsburg Emperor Maximilian I, was founded to sing sacred music for the monarchy at the Imperial Chapel in Vienna. To this day, the choir still sings the Sunday Mass at the Imperial Chapel. The choir began with 12 members, who were provided with lodging and schooling and were considered part of the broader Imperial Music

Chapel — Hofmusikappelle — the official group of singers and instrumentalists which regularly performed in the court. Today, the Vienna Choir Boys consists of four separate groups of 24 members each, ranging in age from 10 to 24, which tour extensively to five continents. They have visited the United States more than 60 times since their first tour here in 1932. The Vienna Choir Boys Holiday Concert is at the Union County Arts Center Saturday at 8 p.m. Tickets are \$26 and \$20. Senior citizen and student discounts are also available. For more information, call Ticket Central, Union County Arts Center's box office, at 732-499-8226 or visit www.ucac.org.

Summit Chorale celebrates English holiday

Come hear England's rich heritage of church and folk music resonate in the 20th century when Summit Chorale presents "An English Holiday." The concert will be performed Saturday at 4 p.m. at Our Lady of Peace R.C. Church, 99 South St., New Providence. Tickets are \$16, \$11 for senior citizens and students in advance; \$18 and \$13, respectively, at the door. Call 973-762-8486 or visit the Web at www.summitchorale.org for more information.

They will hear a cappella Mass in G minor for double chorus and soloists by Vaughan Williams which, though written in the 20th century, captures the power and drama of 16th-century church music. Also on the program are Britten's "Festival Te Deum" and "Hymn to the Virgin." Garyth Nair's own deeply expressive setting of "Nachon Ibi Elohim" from Psalm 57, and more. Then make your spirit bright by joining in the audience sing of favorite carols.

Now in its 92nd season, Summit Chorale is New Jersey's oldest active choral group. It is conducted by Garyth Nair, now in his 32nd season as music director. Nair is also associated professor of music at Drew University, where he is director of vocal studies and conductor of the Drew Chorale and Orchestra. Among numerous conducting assignments, he has served as assistant conductor of the New Jersey Symphony Orchestra. So mark your calendar and experience the healing power of music in this especially poignant holiday season. Funding for Summit Chorale has been made possible in part by the New Jersey State Council of the Arts through a grant administered by the Union County Division of Cultural and Heritage Affairs.

CDC to offer kids 'Sleeping Beauty'

This year's Children's Theater production, the classic "Sleeping Beauty" written by Charles Perrault is co-directed by Hope Weinstein of Springfield and F.J. DeRobertis of South Plainfield, with musical director Shayne Austin Miller of South Plainfield and choreographer Jennifer Sara Eisenberg of Cranford.

Co-producers are Liz Howard of Cranford and Arlene Wachstein of Mountainside, with Stacy Grohlo of Garwood as stage manager, assisted by Janet Murphy of Kenilworth, set design and decoration; Terry Schultz of Roselle Park, set construction; Art Kusiv of Cranford, set painting; Mary McGhee of Cranford, makeup; Howard and Wachstein, props; Cathy Cohane of Cranford and Madge Wittel of Westfield, costumes; Ed Wittel of Westfield and John Merkel of Cranford, sound design; Alex Garten of Springfield, lighting design; and John Duryee and Kevin Kessler, both of Cranford, lighting.

The cast includes Matt Nazzaro of Cranford as the Blue Fairy, who is half mortal and half faun throughout much of the play; Carolyn Pender of Cranford as the graceful Princess Melisande, who becomes "Sleeping Beauty"; Kevin Glackin of Roselle Park as the elegant Royal Herald; Rick Brown of Verona as The King; Cassandra Ciafuffi of Westfield as The Queen; Ed Wittel as The Royal Jester; Molly Friet of Cranford as Phoebe, the leader of Good Fairies; Becky Randazzo of Cranford as the ethereal, giddy Fairy Sybil; Mary Webb of Cranford as the comedic Fairy Muerva; Naomi Yablonsky of Springfield as villainous Trollarina, the Bad Fairy; and Samantha Dango of Cranford as Lady-in-Waiting.

CDC has selected the Prince Street Playhouse Ltd. version with 15 rich musical numbers in this enduring musical fantasy about life in a mythical kingdom. The adaptation, book and lyrics are by Jim Eller, and music is by Jim and Jeanne Bargy.

Performances of "Sleeping Beauty" Children's Theater will be Dec. 7 at 7:30 p.m., Dec. 8 at 10:30 a.m., 1 and 3:30 p.m., and Dec. 9 at 1 and 3:30 p.m. The theater is located at 78 Winans Ave. in Cranford off Centennial Avenue and just minutes from Exit 136 of the Garden State Parkway. For information, call 908-276-7611.

YM-YWHA OF UNION COUNTY
501 Green Lane, Union
Invites you to a
Chanukah 2001 Celebration

SUNDAY DEC. 2nd 12-4pm

NO ADMISSION FEE

GREEN LANE SHOPPING MALL
POTATO PANCAKE WORKSHOPS
CERAMIC HOLIDAY CRAFTS'
BOOK & GIFT FAIR (thru 12/10)
1PM - MAGIC SHOW
2PM - BARBARA KRASNER-KHAIT
"DISCOVER YOUR JEWISH ANCESTORS"
REFRESHMENTS ---- VIDEOS
nominal fees for crafts, show and workshop.

Call 908-289-8112 For More Info

SUMMER CAMP 2002 Registration begins!

Holiday Sights & Sounds

Experience the Hope and Joy
Celebrate Christmas With Us
2 celebrations for YOU

REALLY Great Music • Uplifting REAL-life messages • REAL People like you

Get Ready for Christmas... Sunday • December 9 • 10am
Intergenerational presentation of **"THIS is Christmas!"**
Featuring: Naïma Imani Lett
Childcare provided

Christmas Eve Celebration Monday • December 24 • 5pm
WORSHIP With Holy Communion
One glorious service for unity, strength, and spirit
Childcare provided

While we are building on our site, all Sunday services are at 10am at Jonathan Dayton High School Auditorium, 101 Mountain Ave., Springfield

Holy Cross Lutheran Church • 639 Mountain Ave., Springfield
973-379-4525 • www.holycrossnj.org

NEW JERSEY'S OLDEST COMMUNITY THEATER

Cranford Dramatic Club
PRESENTS

Sleeping Beauty

A Musical for the Young at Heart

Based on a Fairy Tale by Charles Perrault, Adaptation, Book, and Lyrics by Jim Eller
Music by Jim Eller and Jeanne Bargy

Directed by Hope Weinstein and F.J. DeRobertis,
Musical Director Shayne Austin Miller, and
Choreographer Jennifer Sara Eisenberg

Performances at Friday, Dec. 7 - 7:30 PM
Saturday, Dec. 8 - 10:30 AM, 1 PM & 3:30 PM
Sunday, Dec. 9 - 1 PM & 3:30 PM
\$7.00/Adults/ \$5.00 children under 13 & Senior Citizens

Call Now 908-276-7611

CDC THEATRE
78 Winans Avenue, Cranford, N.J.

Celebrate the Joy of Christmas

The Orchestra and Choral of St. Peter by the Sea

Conducted by the Rev. Alphonse Stephenson
Former Conductor of Broadway's "A Chorus Line"
Founder and Music Director of The Festival of the Atlantic, Point Pleasant

December 12, 2001, 7:30 p.m. • St. Theresa's Church, Kenilworth

Hear the majesty of a Full symphony orchestral Bask in the generous voices of the St. Peter by the Sea Chorale.
All in the lush acoustics and beautiful setting of St. Theresa's Church.

See and hear the Orchestra that has filled the church at St. Theresa's in previous years!

Call 908-272-4444 for ticket reservations

Tickets: \$10, \$15, \$25, \$50, \$100. All Seats are reserved for your convenience.

Art in bloom



'Potpourri,' a watercolor by Martha Suhr Rolland, is among the artist's works on exhibit in 'Flower Comfort' at the Reeves-Reed Arboretum in Summit through Jan. 14. For information, see the 'Art Shows' listing in the Stepping Out calendar on Page B9.

REUNIONS

• Railway High School Class of 1977 is searching for classmates in preparation for the 25th reunion. Members of this class are asked to contact Charlene Rankins-Jackson at 908-490-1543 or Bob Brandner at 732-821-5774.

• Saint Mary's High School, Elizabeth, Class of 1951 is in the process of forming plans for a 50th reunion in

2001. For information, call Jim Powers at 908-272-8049.

• St. Mary High School, Jersey City. Classes of 1960, '61, '62 and '63 are planning a reunion. For information, call Ken Giordano at 732-549-6600 or 732-946-7075.

• Union High School classes will conduct their annual Florida Reunion Luncheon Feb. 2 in Kissimmee, Fla.

For information, call Tom Ryan at 561-483-7494 or send e-mail to UHSFL2002@aol.com.

• Summit High School Class of 1982 will conduct its 20th reunion in 2002. For information, call Reunions Unlimited Inc. at 732-617-1000.

To place a classified ad call 1-800-564-8911 by 3 p.m. Tuesday.

Teen's voice takes her to Rome

By Bea Smith
Staff Writer

The excitement of performing in the 30th annual Rome Festival was not lost on the lovely, talented, modest 14-year-old Freddi Mack of Mountainside.

Just the fact that she won a national competition, sponsored by the Rome Festival Orchestra Ltd., an equal opportunity American Education Charity, and was one of 100 artists who came from all over the country, was a special treat in itself. But young Mack, a sincere smile on her face, took it all in her stride.

During a visit to this office last week, accompanied by her father, Richard, the teenager described her "very first" visit to Rome, Italy, the culture she absorbed, and the unforgettable experiences of taking part in and watching so much talent presenting orchestra concerts, opera productions, classical ballets, oratorios and musical recitals, and the friends she made.

It all came about when Mack's vocal coach, Jeanette Farrell, arranged for her to compete in a national event. And when she won, "I went to sing in the festival. My music coach recommended that I go to sing there, and so I did. It was a great experience," she said. "I enjoyed it very much."

Apparently, so did Maestro Fritz Maruff, musical director of the Rome Festival Orchestra and Opera. He commented that "Miss Mack upheld the high standard of performing that Italian music lovers, tourists and critics have come to expect from the Rome Festival."

Mack, who studied with master artist-teachers that are part of the Young Artists in Rome Program, has

'I've been singing since I was 3 years old. And I love to perform — opera, Broadway and pop.'

— Freddi Mack

studied voice for more than three years, most recently with Jeannette Maruff, and acting with Molly Barber of American Performance Studios. "I've been singing since I was 3 years old," said Mack. "And I love to perform — opera, Broadway and pop." She has won local awards in school, but this is the first time she was given an international award.

Her whole family had accompanied the teenager to Rome, where they stayed for two and a half "magical weeks." In addition to Mack's father, her mother, Caryn, and her twin brother, Bobby, went abroad. "My brother loves music, too. I sing opera, and he sings in a punk band. But he thought the trip was nice because he got to go, too," she smiled.

Both twins graduated from Deerfield School. Freddi attends Gov. Livingston High School in Berkeley Heights, and Bobby attends Union County Magnet School for Science and Technology in Scotch Plains.

The visit to Rome "was fantastic. We had practice during the day, and usually before or after practice, we took a trip to different landmarks. The whole family traveled across Rome. I met people from Pennsylvania and Texas and elsewhere. I made lots of friends, and I'll keep in touch with them. It was a great environment."

There were three performances in Rome. "I performed in Humperdinck's masterpiece opera, 'Hansel and Gretel' and in a recital. In 'Hansel

and Gretel,' I was part of the children's chorus, where the witch had turned 20 of us into cookies, and Hansel and Gretel turned us back into children," she recalled. "That was fun! And we danced in an internal recital — a celebration dance. The cast put on performances for each other. I sang 'Far from the Home I Love' from 'Fiddler on the Roof.' The people in the chorus really got to show their true talents. They really were extraordinary."

Mack explained that her musical classes and performances have not interfered with her school work as a freshman in high school. "I've been doing pretty good," she said, revealing her wonderful smile. "I manage to find time to do my homework."

"I think I'm just going to keep on singing," she said. "I like pop music best, but classical music is a lot more challenging. It lets me expand my ability. I really like going to Broadway shows. There are so many good shows out there — and just to be in one of them would be a real honor for me."

"I want to go back to Rome some day. And even if I don't sing there, I just want to visit that cultural city. It's the greatest experience in the world."

Getting Ready for Christmas?

Come Celebrate the Reason for the Season
Every Sunday in December at
The United Methodist Church of Summit
Corner of Kent Place and DeForest Ave.
277-1700
Church School 9:15 am • Worship 10:30 am

Holiday Sights & Sounds

COUNTRY FOLK ART CRAFT SHOW

DEC 7-8-9
SOMERSET Garden State Convention Center
Phone: (201) 469-4000 for directions: 1287, Elm #10 - Rt. 527 to 1st light, left on Davidson Ave 1/2 mile.

More show info & directions at: www.CountryFolkArt.com

Country Folk Art® Shows, Inc.
15045 Dixie Hwy, Holly, MI 48442
Ph: (248) 634-4151, Fx: 634-3718
em: info@countryfolkart.com

OVER 450 CRAFTERS FROM ACROSS THE COUNTRY! ALL HOLIDAY DECORATING & GIFT THEMES FOR SALE!

SHOW HOURS: Fri. 6 pm to 9 pm
Sat. 10 am to 5 pm Sun. 10 am to 4 pm • Adm. \$6
Children Under 10 • Adm. \$2 • FREE PARKING!
YOUR ADMISSION RE-ADMITS YOU ALL 3 DAYS!

Kenilworth Community United Methodist Church
455 Boulevard
908-276-1956

Join us for our second Annual celebration concert in The Sanctuary!

Several choirs and gifted artists will offer their talents to usher our Lord and Savior into the world.
Sunday December 16, 2001 3:00 PM

Free Will Offering to support "United Methodist Scholarships" and "Hope for the Children Fund"

THE KING IS COMING!

Come Home to Summit...

We're better than ever, all dressed up for the season, and ready with Holiday Fun!

Santa Parade
Friday, December 7, 6:30 PM, through downtown Summit streets. After the parade, children greet Santa on the stage in front of the Summit Train Station. Refreshments, balloons, music, floats, fun! Free; bring a can or box of food or diapers for the FoodBank.

Horse & Carriage Rides
Sundays, December 2, 9, 16, noon - 3:00 PM
Rides begin on Beechwood Rd. by Fleet Bank parking lot; ride through downtown Summit streets. Free; bring a can or box of food or diapers for the FoodBank.

Puppet Shows
Sunday, December 9, 12:30 & 2:00 PM, at The Square Yard, 343 Springfield Ave. Tickets can be purchased at several downtown stores \$2.50 ticket.

Holiday Movies
Saturday, December 8, 10:30 & 11:15 AM, at Beacon Hill 5 Cinema, Springfield Ave. Free; bring a can or box of food or diapers for the FoodBank.

Breakfasts with Santa
Saturdays, December 1, 8, 15, 22; Sundays, December 2, 9, 16, 23, 9:00 AM at Broadway Grill, Springfield Ave.; Call 908-277-6222
Saturday, December 15, 9:00 AM at The Office Restaurant, Union Pl.; Call 908-522-0550

Lunch with Santa
Saturday, December 15, Noon at Fiorino's Ristorante, Maple St.; Call 908-277-1900

First Night® Summit 2002
Monday, December 31, 3:30 PM - Midnight
Ring in the New Year with several thousand of your friends and neighbors at this ninth annual Community Celebration of the Arts. Admission badges on sale after December 1: \$10 person. Call 908-522-1722

And don't forget... We have 5 Lots of FREE SHOPPER PARKING!

Call Summit Downtown Inc. at 908-522-1700 for more information.

Crossroads Christian Fellowship presents...
The Christmas Story Outdoors

Friday, December 7th at 8:00pm - Saturday & Sunday, December 8th & 9th at 6:30 & 8:00 pm

Tickets are not needed. FREE ADMISSION!

THE CHRISTMAS STORY INCLUDES 10 SCENES THAT REENACT THE EVENTS SURROUNDING THE BIRTH OF JESUS CHRIST. THIS PRODUCTION INCLUDES A 10-FOOT MULTI-MEDIA SCREEN AND IS PERFORMED WITH OVER 85 ACTORS AND ACTRESSES FROM UNION AND SURROUNDING COMMUNITIES. THE USE OF SPECIAL EFFECTS AND LIVE ANIMALS BRING A NEW DIMENSION TO A TIMELESS STORY.

Crossroads Christian Fellowship
2815 Morris Avenue, Union, N.J.

For further info, call (908) 687-9440 or visit us at: www.cdou.org
Dress appropriately for outdoor performance



'Blue Angels,' a cut-paper collage by Kat Block of Springfield, is among the works of 27 artists on exhibit in 'Christmas Miniatures' at the Swain Galleries beginning this weekend.

Gallery 'minimizes' Christmas

A multi-media showcase of "Christmas Miniatures," small-scale art by 20 New Jersey and two former New Jersey artists, along with five from New York, will be exhibited from Saturday through Dec. 29 at Swain Galleries in Plainfield.

The annual show will include the debut at Swain's of three artists: Jerry Cable of Flemington, Lee Kimer of North Plainfield and Mildred Lubas of Cranford.

Participating well-known gallery artists are Alonzo Adams of Plainfield, Douglas Allen of Neshaun Station, Peter Ambush of Piscataway, Kat Block of Springfield, Nancy Brancaccio of Basking Ridge, Patricia Brentano of Westfield, Mark deMoss of Morristown, former New Jersey resident Andrew Engel, Al Gratke of Dunellen, Timothy John of Piscataway, Sal Kadouch of Monroe Township, Louis Lanzafusa of Toms River, Nat Lew of Caldwell, Paul McCormack and Karen McCormack of New York

state, Michael McGinley of Flemington, Cheryl O'Halloran McLeod of New York state, former New Jersey resident Ken Mitchell, Richard Nagrodsky and Dean Osrum of New York City, S. Allyn Schaeffer of Plainfield, Stephanie Sideris of Flemington and Frank Zuccarelli of Somerset.

On view will be land- and seascapes, still lifes, animals and wildfowl, florals and figurative works in oils, watercolors, gouaches, pastels, cut-paper collage, pen-and-ink, colored pencil, acrylics, calligraphy and others.

A reception for the 27 artists is scheduled for Saturday from 5 to 7 p.m., followed by gallery viewing Tuesdays to Fridays, 9:30 a.m. to 5:30 p.m., Saturdays, 9:30 a.m. to 4 p.m. and Sundays, 12 noon to 4 p.m. Swain Galleries is located at 703 Watching Ave., Plainfield. For information, call 908-756-1701.

Paper Mill seeks Asian kids for 'King & I'

Paper Mill: The State Theater of New Jersey will conduct open-calls for Asian children 12 years old and younger only for its upcoming production of Rodgers and Hammerstein's musical masterpiece, "The King and I."

Auditions will be held Dec. 8 at 9 a.m. and Dec. 12 at 3:30 p.m. in the Paper Mill lobby. Paper Mill is located on Brookside Drive in Millburn.

For more information, call 973-379-3636, Ext. 2278.

"The King and I" will be directed by Paper-Mill-Associate-Director Mark S. Hoebbe of Maplewood, and will feature the famous Jerome Robbins' choreography, supervised by Susan Kikuchi, with musical direction by Tom Helm.

The song "Getting to Know You" from "The King and I" by Richard Rodgers and Oscar Hammerstein II will be taught at the audition, as well as a short dance combination.

Rehearsals for "The King and I" begin March 14; the production runs

from April 3 to May 19. Performers can mail pictures and resumes to: Paper Mill, Attn: Casting Dept., Brookside Drive, Millburn, 07041, Rodgers and Hammerstein's "The King and I," April 3-May 19, 50th Anniversary Celebration.

As grand as an opera and as intimate as the most tender play, "The King and I" brings to life the compelling saga of the proud yet "barbaric" king and the independent British schoolteacher who tames him. *The New York Times* called "The King and

I" "a beautiful excursion into the rich splendors of the Far East." The songs tumble forth like "precious jewels including 'Shall We Dance?,' 'Hello, Young Lovers,' 'We Kiss in a Shadow,' 'Getting to Know You,' 'I Whistle a Happy Tune' and 'I Have Dreamed.'"

"The King and I" is produced in association with Gene R. Korf and has been made possible by a grant from the Blanche and Irving Laurie Foundation.

CDC prepares for 'I Hate Hamlet' auditions

Director Maurice J. Moran Jr. and the casting committee at Cranford Dramatic Club have announced auditions for the production of the Broadway hit comedy "I Hate Hamlet" by Paul Radnick this winter. Peggy Seymour is assistant director. Auditions will be held Dec. 10 and 11 at 7:30 p.m.

"I Hate Hamlet" is a comedy about a young Hollywood actor stretching his acting abilities to play Hamlet for the Central Park production. Unfortunately, he hates "Hamlet." Fortunately, he moves into an apartment inhabited by the ghost of John Barrymore, one of the 20th century's greatest Hamlets.

The cast includes:
 • Andrew Rally — the TV actor, late 20s or early 30s, handsome, charming.
 • John Barrymore — the famous Shakespearean actor, "phenomenally sexual and dashing."
 • Deidre McDavey — Andrew's girlfriend, 29, but appears younger; the

"breathless soul of romantic enthusiasm."

• Lillian Troy — Andrew's agent, a striking, silver-haired woman in her 70s; speaks with a regal German accent; a no-nonsense woman.
 • Felicia Dantine — the real estate agent "with an almost carnal passion for Manhattan apartments." She needs to speak with a hoarse, vibrant voice, "a jubilant 'Noo Yawk' honk."

• Gary Peter Lefkowitz — a Hollywood agent in his 30s; "an extremely happy, overgrown child. Really is of very little consequence to him."

Rehearsals will be held Mondays, Wednesdays and Fridays through January and February, and the production dates are Feb. 8 through 24. The theater is located at 78 Winans Ave. in Cranford off Central Avenue and just minutes from Exit 136 off the Garden State Parkway. For further information, call 908-276-7611.

Miller-Cory gives a Celtic touch to the holidays

On Sunday, Irish Christmas and Scottish New Year customs will be featured from 2 to 5 p.m. at the Miller-Cory House Museum. The museum is located at 624 Mountain Ave. in Westfield.

A presentation by Christine Glazer of Cranford will cover both the traditional Irish and Scottish holiday customs of the early colonial settlers. The best-known Irish

Christmas custom is that of putting a candle in the window, often decorated with greenery, on Christmas Eve. The idea is to help light the way for the Holy Family or any other travelers.

The Scots celebrate Christmas rather soberly. Merriment is reserved for New Year's Eve — called "Hagmanay." The word "Hagmanay" comes from a kind of

oat cake traditionally given to children on New Year's Eve.

Arlene Kendall of Plainfield and Sherry Lange of Cranford will prepare authentic Irish and Scottish recipes over an open-hearth fireplace. Tasty treats can be enjoyed by visitors. Tours of the historic-rich farmhouse will be available by cosumed docents. The last tour will be scheduled for 4 p.m.

The museum's gift shop has a wide variety of colonial reproductions, crafts, cookbooks and educational materials. Many of these items make wonderful holiday gifts.

For more information about the museum's upcoming winter events or volunteer opportunities, call 908-232-1776.

A subscription to your newspaper keeps your college student close to hometown activities. Call 908-686-7753 for a special college rate.

Bill Van Sant, Editor
 ©Worrall Community Newspapers Inc. 2001 All Rights Reserved
 Organizations submitting releases to the entertainment section can mail copy to: 1291 Stuyvesant Ave., P.O. Box 3109, Union, New Jersey, 07083.

Dr. Daniel S. Brandwein, D.P.M., F.A.C.P.S.
SPECIALIZING IN DIABETIC FOOT CARE
 HEEL SPURS & ARCH PAIN • BUNIONS & HAMMER TOES • SPORTS MEDICINE • ORTHODICS
 DIPLOMATE, AMERICAN BOARD OF FOOT & ANKLE SURGERY, BOARD CERTIFIED IN FOOT SURGERY
 FELLOW AMERICAN COLLEGE OF FOOT AND ANKLE SURGEONS
WALK-INS WELCOME
HOUSE CALLS AVAILABLE
EVENING HOURS
FREE EXAM AND CONSULTATION
 (X-RAYS NOT INCLUDED)
FREE \$125 VALUE
 OFFICE VISITS ONLY • FIRST-TIME PATIENTS ONLY • WITH COUPON • EXP. 12/31/01
CALL NOW FOR AN APPOINTMENT
 20 NORTH 20th ST. • KENILWORTH
 908-276-6624

ANTIQUE CORNER

Raritan Antique Village DISCOVER
 Outstanding Selections of Fine Furniture
 Pottery, Mirrors, Toys, Phonographs,
 Jewelry, Silver, Art Glass, Sappho, Clocks,
 Figurines, Fine Decorative Home Furnishings,
 Sculptures, Oriental, Glass, Clocks
OVER 50 EXCITING DEALERS & 2 FLOORS
 Open 7 days
 44 W. Somerset St., Raritan,
 1/2 mile off the Somerset Circle
 908-526-7920

MAIN STREET ANTIQUE CENTER
Over 8,500 sq. ft. on 3 Floors
156 MAIN STREET, FLEMINGTON
 110 Quality Dealers With Small to Furniture Collectibles Too!
 10-5pm Everyday • (908) 788-6767.
 Visit our New Website
<http://antique.com/mainstreetac>

The Antique Center of Red Bank
150 Dealers
 In Three Buildings
All Specialties
 Open Daily 11-5pm, 12-2
 West Front St. & Bridge Ave.,
 Red Bank, NJ 07071
 (732) 843-4336
 Exit 109 off the
 Garden State Parkway

Time & Again Antiques & Auction Gallery
 Fine Furniture, Art, Porcelains, Pottery, Silver, Lighting, Jewelry & more
1080 Edward St., Linden
(800) 290-5401
www.timeandagainantiques.com
We Buy & Sell
 Quality Consignments Accepted
18,000 sq. ft. warehouse
 open M-F 10-6, Sat. 9-5



Bottles, bottles and more bottles from days gone by abound at the Main Street Antique Center in Flemington.

Main Street Antique Center

This spring, enjoy an afternoon in historic downtown Flemington, complete with a visit to Main Street Antique Center. The center, located at 156 Main St., boasts 110 dealers on three floors laden with a plethora of collectibles and antiques.

Although there is a variety of wares available here, it is a treasure trove for fans of toys. Whether your focus is on nostalgia, Beanie Babies, or antique toys, you'll find something to fit the bill. There are Fisher Price and Tonka toys, Matchbox cars, dolls — including Shirley Temple and Little Orphan Annie — and a marble collection. A personal favorite, Plasticville, abounds here, with several pieces in their original packaging.

The main floor consists mostly of enclosed glass cases filled with small pieces, while the upper two floors have traditional dealer booths and a small section of furniture.

Take plenty of time to explore the first floor of the center — there are many items in the glass cases and you'll want to see all of them. From jewelry to housewares; tools to toy trains; it's all there.

A narrow hall leading to the staircase is fully lined on both sides with framed artwork. The pieces cover many styles and periods. At the bottom end of the hallway, there is an intriguing display of glass pieces.

Of note upstairs is a booth containing an attractively arranged display of auto garage memorabilia. This dealer also includes a nice sampling of toy cars and model kits.

Many of the dealers are offering discounts on selected items right now, so hurry in before spring becomes summer!

As always with antique hunting, be sure to go armed with the knowledge necessary to make intelligent purchases. A successful trip to any antique market requires that the consumer knows their prices.

Main Street Antique Center is open 10 a.m. to 5 p.m. daily, and can be reached by telephone at (908) 788-6767 or online at www.antique.com/mainstreetac.

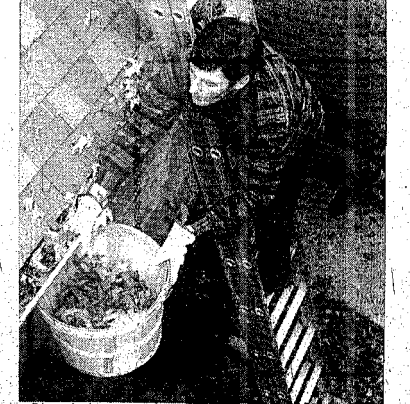
100 DEALERS
 "NJ's Leading Center For High Quality, High End Antiques"
 (Star Leader '97)
The Best Gift Shop In Town
Morristown Antique Center
 45 Market St. (Rt. 202N)
 Morristown
 Open 7 Days 973-734-0900

TO BE PART OF THIS
ANTIQUE CORNER
AND TO PUT YOUR ANTIQUE BUSINESS IN THE SPOTLIGHT CALL
908-686-7700

Summit Antiques Center
Now Over 50 Dealers
2 Floors Of Antiques & Collectibles
Open 7 Days • 11-5
511 Morris Avenue, Summit
908-273-8373

NOW NEW JERSEY'S LARGEST! Somerville Center Antiques
220 dealers • 28,000 sq. feet • 4 buildings
"Uptown's" Great Decorative Arts, Furniture, Crystal, Porcelain & More.
"Modern Design" Featuring Deco, Art, Decorative Accessories & More.
"The Outlet Center" Bargain! A Hunter's Paradise.
"Linen Boutique" Vintage Textiles, Lacework, Tablecloths & More.
34W. Main Street & 9-17 Division Street (Somerville) • 908-998-1254
 Open 7 Days 10-6
 Free Home Appraisals

Never Clean Your Gutters Again!



Superior Protection For Your Home... GUARANTEED!
 Gutter Helmet, the original gutter protection system, keeps debris from clogging in gutters, eliminating the hassles, the damage and the dangers caused by guttering gutters.

- The #1 Gutter Protection System in the World
- Rain goes in, leaves stay out
- Four season, all-weather protection
- Installs over existing gutters
- Prevents ice and water damage caused by clogged gutters
- Ends costly and dangerous gutter cleaning forever

Call your GutterHelmet dealer today for a free demonstration and estimate.
GutterHelmet
 GUTTER PROTECTION SYSTEMS
skydell
CONTRACTING, INC.
 ESSEX (973) 509-0600
 UNION (908) 598-1199
 Visit our web site www.skydell.com

Leisure Lifestyles **The Cook's Nook**

Hanukkah recipes combine history, heritage and fun

Fill minds with history this Hanukkah and make treats that echo teachings central to the Jewish faith. Wilton's delicious jelly doughnuts — soogfaniots — and cheesecakes will fill stomachs with delectable foods while telling the tales of Hanukkah.

"Serving meals that retell the meaning of Hanukkah is invaluable for children," states Nancy Siler, the consumer affairs director of Wilton Enterprises. "The whole family can recall the importance of the holiday, while enjoying these delectable treats."

Symbolic delights

Like commonly served potato pancakes, or latkes, jelly doughnuts, or soogfaniots, are traditional, fried Hanukkah delicacies. Symbolic of the time Jewish miraculously lit the eternal light — N'er Tamid — for eight days with only one tiny jug of oil, foods fried in oil are an essential part of Hanukkah. Served for breakfast or as a dessert, soogfaniots are delectable.

Present a variety of jelly doughnuts to family and friends by using different fillings in the doughnut centers. Raspberry, apricot and grape are just a few of the options.

Soogfaniots are prepared simply by cutting refrigerated buttermilk biscuit dough into star shapes — to resemble the Star of David — with Wilton's 6-Point Star Perimeter Cutter, then frying them in three inches of vegetable oil. When it's time to fill the buttery pastry with jam, do so with Wilton's Disposable Decorating Bag and Decorating Tip No. 230. Sprinkle cinnamon and sugar on the cooled doughnuts. Or for an extra treat, pour heated Ready-To-Use Decorator Icing on top.

Dairy, dairy good!

Celebrate a recent tradition this Hanukkah and bake mouth-watering Mini Cheesecakes. Dairy is a mainstay of the Hanukkah menu in honor of Judith — Yehudit — when she saved her village from the Syrian governor by serving wine and "cheesecakes." Start your own Hanukkah family tradition by coordinating an assortment of toppings for the cheesecakes, such as caramel, strawberries or whipped cream. Kids will love demonstrating their creativity when decorating their own Mini Cheesecakes.

To make the delectable Mini Cheesecakes, simply pour a mixture of cream cheese, sugar, vanilla and eggs into a baking cup lined with a vanilla wafer. Bake, chill and enjoy! Jazz up the cheesecakes with Wilton's Blue/Yellow Sparkles and Hanukkah Icing Decorations.

Wilton Enterprises, headquartered in Woodridge, Ill., is the leading designer of home celebration products, bakeware and cake decorating tools. From the hottest licensed characters to specially shaped holiday products, Wilton offers cake pans, cookie cutters, baking cups and traditional pastry decorating tools. For the latest information of Wilton products and

ideas for all occasions, visit the Wilton Internet page at www.wilton.com. To locate the closest Wilton Method Cake Decorating Classes, call 800-942-8891.

Hanukkah Doughnuts (Soogfaniot)

Makes 3 to 12 stars

1 can (16.3 ounces) large refrigerated buttermilk biscuit dough
 1 tablespoon sugar
 ½ teaspoon cinnamon
 ½ cup, approximately, strawberry or raspberry pastry filling or jam
 Vegetable oil for frying

Heat about 3 inches of oil in heavy pot between 360 and 370 degree F. Combine sugar and cinnamon; set aside. Separate biscuits and roll each approximately ¼ inch thick. Cut biscuit dough with Wilton's 6-Point Star Perimeter Cutter.

Fry 2 to 3 doughnuts at a time, until the undersides of the doughnuts are golden brown. Gently turn doughnuts over once and finish frying the other

side. Lift doughnuts out of the oil using a slotted spoon and drain on paper towels. Repeat with remaining dough. With a Wilton Disposable Decorating Bag and Decorating Tip No. 230, fill with jam.

To serve:

Heat Wilton's Ready-To-Use Decorator Icing, thinned slightly with water for 45 seconds to one minute on high or until soft enough to pour. Place cooling grid over waxed or parchment paper; pour icing over doughnuts and spread with spatula or fork. Decorate with Wilton's Blue and Yellow Sparkles or sprinkle plain doughnuts with cinnamon/sugar.

Remaining dough may be re-rolled and cut-out.

Hanukkah Mini Cheesecakes

Makes 12 mini cheesecakes

12 vanilla wafers
 2 packages (8 ounces each) cream cheese, softened

1 cup sugar
 1 teaspoon Wilton's Pure Vanilla
 2 large eggs
 ½ cup mini colored baking chips

Preheat oven to 325 degree F. Line Wilton's Standard Muffin Pan (12 cavity) with Wilton Hanukkah baking cup liners.

Place one vanilla wafer in each liner. Mix cream cheese, vanilla and sugar on medium speed until well blended. Add eggs and mix well. Stir in mini baking chips. Pour over wafers, filling ¾ full. Bake for 25 minutes.

Remove from pan when cool. Refrigerate. Before serving, top with Wilton's Blue Sparkler Candles, Sprinkles and Hanukkah Icing Decorations.

Alternate flavor:

Use ½ cup semisweet mini baking chips and substitute ½ teaspoon Wilton's Raspberry Flavoring for Pure Vanilla.

Musical launches new Kean school

In celebration of Kean University's new School of Visual and Performing Arts, Kean's Theater Series presents a collaborative production of the musical comedy, "Me and My Girl," opening Friday at 8 p.m. in the Wilkins Theater, 1000 Morris Ave., Union.

The show will continue Saturday, and Dec. 5, 6, 7 and 8 at 8 p.m., and Sunday and Dec. 9 at 2 p.m.

The production's cast, orchestra and crew include nearly 100 students, alumni, faculty, staff and administrators, as well as guest artists. The show's producer, Holly Logue of Westfield, is a professor of theater and is chairperson of the Theater Department at Kean. "I went into the first rehearsal and looked around at the 90 or so faces. It was thrilling to get the sense of their commitment and excitement. For a teacher and director, that's extremely rewarding," Logue said.

"Me and My Girl" will showcase the new School of Visual and Performing Arts, which now houses the departments of Design, Fine Arts, Music and Theater. The school's mission is to establish Kean as a regional cultural center, a place that produces quality arts programs and reaches out to the metropolitan community at an affordable price. "Many people have apprehensions about traveling to New York City for pleasure or to get an education. For those people, productions like 'Me and My Girl,' and the programs offered in our new School of Visual and Performing Arts, will bring New York City to them," Logue said.

In addition, the collaboration fulfills a community-wide desire for an all-university production. Since Kean's last campus-wide production of "South Pacific" in 1993, many people have expressed the desire to perform another musical, Logue said. "Me and My Girl" is

a light and spirited comedy that premiered in the West End of 1937.

Gail Fraser, vice president for institutional advancement, and Catherine Jolly, director of alumni affairs, have been instrumental in soliciting alumni to participate in the effort. A Kean Theater Series alumni reunion will be held Sunday in the Vaughn Earnes lobby and theaters at 5 p.m. following the matinee performance.

Logue is joined by choreographer Michele Mossay Cuevas of Cranford, who is a Kean alumna and adjunct professor. Musical director Jim Sobo of Metuchen is a guest artist, and conductor Tom Connors of Clinton is a past member of the Department of Music. Costume designer Karen Hart of Keilworth and Set and Lighting Designer Nadine Charlson of Brooklyn, teach in the Department of Theater. Stage manager Amanda Davis of Hillside is a Kean student, and technical director Jeff Bercome of Elizabeth is a member of Kean's staff.

The cast and ensemble include Kean administrators Jose Adams of Bridgewater and Carole Shaffer-Koros of Westfield, who play Pearly King and Pearly Queen; Adams and Shaffer-Koros serve as dean and associate dean of the College of Arts, Humanities and Social Sciences, respectively. Bill Shilston and Sally Smith are played by guest artist Ed Carlo of New York City, and Kean student Kristen Bussiere of Edison. Kean alumni Ana Maria Llanos of Elizabeth and Lou Ricco of East Rutherford perform the roles of Lady Battersey and Helteraset, respectively.

Admission is \$8 for students; \$10 for faculty, staff, alumni and senior citizens, and \$12 for the general public. For tickets and information, call the Performing Arts Office at 908-527-2337.

Author takes historic look at art

Alejandro Anreus of Roselle Park recently published two art history books: "Orozco in Gringoland" (University of New Mexico Press, 2001) and "Ben Shahn and the Passion of Sacco and Vanzetti" (Jersey City Museum and Rutgers University Press, 2001).

The first is a monographic study of the Mexican muralist Jose Clemente Orozco and the years he spent in self-imposed exile in New York City from 1927 to 1934. The second accompanies the exhibition of the same title, which opened at the Jersey City Museum Sept. 12. The publication "Ben Shahn and the Passion of Sacco and Vanzetti" was edited by Anreus and it contains essays by himself, three other art historians and a general historian, dealing with New Jersey artist Ben Shahn, 1898-1969, and his famous series of paintings and graphic work dealing with the trial and execution of Nicola Sacco and Bartolomeo Vanzetti, 1920-27.

Anreus, a native of Havana, Cuba,

who grew up in Elizabeth, was also recently appointed associate professor of art history at William Paterson University in Wayne, where he will teach

modern and contemporary art, as well as Latin American studies. Prior to this, Anreus was curator at the Jersey City Museum from 1993 to 2001.

PRE-HOLIDAY SALE
1001 Uses!
 Family Recreation Room • Hot Tub
 Enclosure • Dining/Living Room
 Home Gym or Home Office
 Smoking/Cigar Room

Great Remodeling Ideas!

- Expand an Existing Room
- Enclose a Deck or Patio
- Add-on a New Room

Save Up to 35%
 by Receiving MC Glass as FREE Upgrade
sees not include
 LIMIT TIME OFFER

SOLAR SUN INC.
 Fully Insured
 34 Brook Plaza, Pt. 22,
 Greenvale, N.J.
 1-800-477-7852
 2187 Sycamore Street, Ewing
 1-888-216-7789

©1998 For Sunroom Solar Products Co.
 Sunrooms are independently owned & operated

FOUR SEASONS
 SUN ROOMS
 Outdoor Living...Indoors

NEWARK SCHOOL OF THE ARTS

Our Faculty Makes all the Difference

Newark School of the Arts has been serving the Greater Newark area including 65 communities since 1968. Performances at New Jersey Performing Arts Center and Essex County College. Your chance for the finest arts education at affordable cost. Our international faculty with degrees and advanced degrees from leading conservatories provide instruction for pre-schoolers to adult in:

- Musical Instruments • Voice • Ballet
- Tap • Jazz • Drama • Visual Arts

Classes offered after-school and Saturdays.

Registration is on-going
Open House December 15 from 9:00 am - 5:00 pm
Call For Information
 89 Lincoln Park • Newark (Main building/Registration)
 186 Clinton Avenue • Newark (Dance Studio)
 973-642-0133 Fax 973-622-2664

Website: ncsanj.org

NEW JERSEY STATE COUNCIL ON THE ARTS
 NATIONAL ENDOWMENT FOR THE ARTS

NSA programs are supported in part by funds from the New Jersey State Council on the Arts Department of State and funds from the National Endowment for the Arts.

A Special Gift For The Holidays 8 Week Special

A different & unique treat for family and friends.

8 Week Holiday Pass \$60
 On Sale Beginning Nov. 5th

*Passes valid Nov. 16-Jan. 13
 Pool cannot be used between 6:00 pm and 7:30 pm and during special events
 On sale at Pool Complex

For more information, call 908-709-7260
CRANFORD INDOOR POOL & FITNESS CENTER
 401 CENTENNIAL AVE. • CRANFORD

CHRISTMAS TREE DIRECTORY

KATTERMANN FARMS
 Abounding with beautiful Douglas Fir and Blue spruce just waiting to be cut by you - Savings Will be Provided.

Open 7 Days A Week Starting 11/23/01 9 a.m. to 4 p.m.
 Hayrides to the fields weekends only!

Route 80 to Route 15 North to Route 565 North. 4.5 mi. on 565 go left onto Beecher Church Road at 2nd cross roads to right onto Haggerty Rd. 0.6 mi. make first left onto Decker Rd. 1/2 mi. to tree farm on the left.

KATTERMANN FARMS 152 DECKER ROAD, SUSSEX, NJ
 For further information call: 973-875-5684

To Advertise In Our CHRISTMAS TREE DIRECTORY Please Call 973-763-9411

Stepping Out is a weekly calendar designed to guide our readers to the many arts and entertainment events in the Union County area. The calendar is open to all groups and organizations in the Union County area. To place your free listing, send information to Arts and Entertainment Editor Bill VanSant, Worrall Community Newspapers, P.O. Box 3109, Union, 07083.

Stepping Out

ARTS SHOWS

OUR VIEW: A UNIQUE PERSPECTIVE on Life in Union County, a traveling exhibit sponsored by Community Access Unlimited, features the work of 10 artists with developmental disabilities. The exhibit will tour the County area. For information, call 908-364-3040, Ext. 304.

SUMMIT FRAME AND ART will exhibit fine art photography by John and Frank Buesche through Dec. 30. Gallery hours are Mondays to Saturdays, 9:30 a.m. to 5:30 p.m.; Thursdays until 7 p.m. Summit Frame and Art is located at 465 Springfield Ave., Summit. For information, call 908-273-8685.

ARTIST RON HEDRICK will have his work on exhibit at Evelyn Dunn's Gallery, 549 South Ave., Westfield. Gallery hours are Tuesdays through Saturdays from 10 a.m. to 5 p.m. and by appointment. For information, call 908-232-0412.

A STUDENT'S JOURNEY, works by Janet L. Whiman, will be on exhibit in the Members Gallery of the New Jersey Center for Visual Arts in Summit through today.

Gallery hours are Mondays to Fridays from noon to 4 p.m., and Saturdays and Sundays from 2 to 4 p.m. NJCVA is located at 68 Elm St., Summit. For information, call 908-273-9121.

INTERPRETATIONS: "Recent Artworks Inspired by People, Places and Things in Union County by the New Art Group" will be on exhibit at the Gallery at the Arts Guild of Rahway through Dec. 14.

Gallery hours are Wednesdays, Fridays and Saturdays from 1 to 4 p.m.; Thursdays from 1 to 3 p.m. and 5 to 7 p.m., and by appointment. The Arts Guild of Rahway is located at 1870 Irving St., Rahway. For information, call 732-381-7511.

CHILDREN'S SPECIALIZED HOSPITAL in Mountaintop will exhibit the works of Jane H. Adams, Andrew Schmitt and Eleanor Morehouse during the month of November. CHS is located at 153 New Providence Road, Mountaintop. For information, call 908-789-2075.

STILL LIVES: "Black and White Photographs by Howard Nathanson" will be on exhibit in the Donald B. Palmer Museum in the Springfield Public Library through Dec. 13.

Gallery hours are regular library hours. The Springfield Public Library is located at 66 Mountain Ave., Springfield. For information, call 973-376-4930.

OBJECTS OF DEVOTION, works by Jamie Greenfield, will be on exhibit at the Kent Place Gallery in the Kent Place School in Summit through Dec. 21. A reception will take place Friday from 6 to 8 p.m.

Gallery hours are Mondays to Fridays, 9 a.m. to 4 p.m., or by appointment. The Kent Place School is located at 42 Norwood Ave., Summit. For information, call 908-273-0900, Ext. 332.

THE SKULSK ART GALLERY at Clark's Polish Cultural Foundation will exhibit tapestries by Polish artist Nina Kedzierska through Dec. 23.

Gallery hours are Tuesdays through Fridays from 5 to 9 p.m. and Saturdays from 10 a.m. to 2 p.m. The Polish Cultural Foundation is located at 177 Broadway, Clark. For information, call at 732-392-7197.

CHRISTMAS MINIATURES, a multimedia showcase of small-scale art, will be on exhibit at the Svaen Galleries in Plainfield Saturday through Dec. 29. An opening reception with the 27 exhibiting artists will take place Saturday from 5 to 7 p.m.

Gallery hours are Tuesdays to Fridays from 9:30 a.m. to 5:30 p.m., Saturdays from 9:30 a.m. to 4 p.m., and Sundays from noon to 4 p.m. Svaen Galleries is located at 703 Watchung Ave., Plainfield. For information, call 908-759-1707.

PORTALS OF TIME, photography by Kazim R. Kaplowitz, will be on exhibit at Galeria West in Westfield Sunday through Dec. 29. An opening reception will take place Sunday from 1 to 4 p.m. Galeria West is located at 121 Central Ave., Westfield. For information, including gallery hours, call 908-301-9217 or send e-mail to galeriawest@msn.com.

THE TOWN BOOK STORE in Westfield will exhibit the works of members of the Westfield Art Association through the end of December. The Town Book Store is located at 255 E. Broad St., Westfield. For information, call 908-233-3535.

MAKING A MARK — the work of New Jersey artists Gary Biechle, Caroline Burton, Eric McLandon, Gloria Rodriguez and Barbara Stark — will be on exhibit through Jan. 6, 2002 at the New Jersey Center for Visual Arts in Summit.

Gallery hours are Mondays to Fridays from noon to 4 p.m., and Satur-

days and Sundays from 2 to 4 p.m. NJCVA is located at 68 Elm St., Summit. For information, call 908-273-9121.

JOURNEYS: "Black and White Photographs by Howard Nathanson" will be on exhibit at the New Jersey Center for Visual Arts in Summit Friday through Dec. 19. A reception will take place Dec. 18 from 2 to 5 p.m.

Gallery hours are Mondays to Fridays from noon to 4 p.m., and Saturdays and Sundays from 2 to 4 p.m. NJCVA is located at 68 Elm St., Summit. For information, call 908-273-9121.

FLOWER COMFORT, the works of Martha Shur Roland, will be on exhibit in the Wahnor House Gallery at the Reeves-Reed Arboretum in Summit through Jan. 14.

Gallery hours are 9 a.m. to 3 p.m. Reeves-Reed Arboretum is located at 1605 Hobart Ave., Summit. For information, call 908-273-8787.

CHILDREN'S SPECIALIZED HOSPITAL in Mountaintop will exhibit the New Jersey Photography Forum seventh annual Joint Show and the waverunners VI. Shipley during the months of December and January. CHS is located at 153 New Providence Road, Mountaintop. For information, call 908-789-2075.

AUDITIONS

STONY HILL PLAYERS of Summit will conduct auditions for "The Dining Room" by A.R. Gurney Wednesday and Dec. 6 at 7:30 p.m. at the Community Congregational Church, 200 Hartwood Drive, Short Hills. Singing sought are six men and six women. The show runs March 2 to 17 in Summit. For information, call 970-894-9148.

PAPER MILL PLAYHOUSE: The State Theater of New Jersey will conduct auditions for Asian children, 12 years old and younger, for "The King and I" Dec. 8 at 9 a.m. and Dec. 12 at 3:30 p.m. Auditions will take place in the theater lobby, Brookside Drive, Millburn. The show runs April 3 to May 9. Headshots and resumes may be sent to Paper Mill, Attn: Casting Dept., Brookside Drive, Millburn, 07041. "The King and I" For information, call 973-379-9638, Ext. 2278.

CRANFORD DRAMATIC CLUB will conduct auditions for "Hate Hamlet" by Paul Ruchick Dec. 10 and 11 at 7:30 p.m. at the CDC Theater, 78 W. 9th Ave., Cranford. Being sought are three men, 20s to 40s, and three women, late 20s to 70s. The show runs Feb. 8 to 24. For information, call 908-276-7141.

METRO RHYTHM CHORUS of Sweet Aesthetics International is seeking female singers. The group performs every Wednesday from 8 to 10 p.m. in the Cranford area. For information, call Janet Manfredonia at 908-654-8541 or send e-mail to manfredonia@postbox.csiu.edu, or call Judy McCord at 973-895-9989.

WESTFIELD GLEE CLUB is seeking male and female adult singers to participate in the club's 77th season. Rehearsals are held Monday evenings, 8 to 10 p.m., in the Westfield Presbyterian Church choir room. For information, call Date Juntilla at 908-232-0673.

BOOKS

AUTHOR LEE HARRIS will appear at the Town Book Store of Westfield Saturday from 11 a.m. to 1 p.m. to sign copies of her book, "The April Fool's Day Murder." The Town Book Store is located at 255 E. Broad St., Westfield. For information, call 908-233-3535.

AUTHOR HELEN-CHANTAL PIKE will appear at the Town Book Store of Westfield Saturday from 2 to 4 p.m. to sign copies of her book, "Gaselles of New Jersey: A Postcard Tour of the Garden State." The Town Book Store is located at 255 E. Broad St., Westfield. For information, call 908-233-3535.

BOOKS BY WOMEN, ABOUT WOMEN meets the first Wednesday of the month at Barnes and Noble in Springfield. Barnes and Noble is located at 240 Route 22 West, Springfield. For information, call 973-376-8544.

THE LORD OF THE RINGS' READING GROUP will meet the first Wednesday of the month at Barnes and Noble in Clark. Barnes and Noble in Clark is located at 1180 Raritan Road, Clark. For information, call 732-574-1818.

EDISON ARTS SOCIETY WRITER'S CIRCLE, led by Cheryl Ravanelli, meets at Barnes and Noble in Clark the second and fourth Monday of each month. Barnes and Noble in Clark is located at 1180 Raritan Road, Clark. For information, call 732-574-1818.

AFRICAN-AMERICAN INTERESTS meets the second Thursday of the month at Barnes and Noble in Springfield. Barnes and Noble is located at 240 Route 22 West, Springfield. For information, call 973-376-8544.

MYSTERY READING GROUP will meet at Barnes and Noble in Clark the second Thursday of each month at 7:30 p.m. Barnes and Noble is located at 1180 Raritan Road, Clark. For information, call 732-574-1818.

JEWISH BOOK LOVERS meets at 7:15 p.m. at Barnes and Noble, 240 Route 22 West, Springfield, the third Monday of each month. For information, call 973-376-8544.

SHAKESPEARE OUT LOUD Reading Group will meet at Barnes and Noble, 1180 Raritan Road, Clark, at 7:30 p.m. the third Friday of each month to read a Shakespeare play out loud. The group is led by Kevin Muller. For information, call 732-574-1818.

WOMEN'S READING GROUP will meet at Barnes and Noble in Clark the last Wednesday of each month. Barnes and Noble in Clark is located at 1180 Raritan Road, Clark. For information, call 732-574-1818.

English Holiday" Sunday at 6 p.m. at Our Lady of Peace RC Church, 99 South St., New Providence. Advance tickets are \$16 for adults, and \$11 for students and senior citizens; at the door, tickets are \$18 and \$13, respectively. For information, call 973-762-8486 or visit www.summittheatre.org.

NEW JERSEY INTERGENERATIONAL ORCHESTRA-Nouveau Orchestra will appear in concert in the sale at Barnes and Noble, 1180 Raritan Road in Clark, Dec. 8 at 4:30 p.m. For information, call 732-574-1818.

THE ORCHESTRA OF ST. PETER BY-THE-SEA will appear in concert Dec. 8 at 8 p.m. at the Union County

BARNES AND NOBLE, 240 Route 22 West, Springfield, will present musical performances throughout the autumn. All concerts are from 8 to 10 p.m. in the cafe section.

For information, call 973-376-8544.

BARNES AND NOBLE, 1180 Raritan Road, Clark, will present musical performances throughout the autumn. All concerts begin at 7:30 p.m. in the cafe section.

For information, including a concert schedule, call 732-574-1818.

CRAFTS

WESTFIELD WINTER ART-CRAFT MARKET will take place Friday through Sunday in the Westfield Armory, 500 Rahway Ave., Westfield. Hours are 5 to 9 p.m. Friday, 10 a.m. to 6 p.m. Saturday, and 10 a.m. to 5 p.m. Sunday. A weekend pass is \$8; children younger than 10 are admitted free. For information, call 800-834-9437.

TRAILSIDE NATURE AND SCIENCE CENTER in Mountaintop will sponsor the 16th annual Holiday Nature Craft Show Sunday from 11 a.m. to 4 p.m. Handmade nature crafts will be featured and available for purchase. Admission is free. Trailside is located at 452 New Providence Road, Mountaintop. For information, call 908-789-3670.

THE HARVEST QUILTERS of Central New Jersey meet the first Monday of each month at 7 p.m. at Cozy Corner Creations Quilt Shop, Park Avenue in South Plainfield.

For information, call 908-755-7653.

DANCE

SUMMIT FOLK DANCERS continues its 2001-02 season with Friday gatherings at 8 p.m. — beginners are asked to arrive at 7:30 p.m. — at The Connection, Morris Avenue and Maple Street, Summit. Gatherings are scheduled for Friday, and Dec. 14 and 28 which is the holiday party. Admission is \$2, special workshops are \$4. For information, call 973-457-8278.

DISCUSSION

HISTORIAN IAN KERSHAW will present the lecture and forum "Hills of the Anatomy of a Disaster" Monday at 7 p.m. in Wilkins Theater at Keen University, 1000 Morris Ave., Union. For information, call 908-527-3049 or 908-527-2337.

WRITER'S WORKSHOP will meet Monday at Barnes and Noble in Springfield, 240 Route 22 West. The group meets every other Monday. For information, call 973-376-8544.

HOBBIES

THE MODEL RAILROAD CLUB in Union will sponsor its annual open house and sound-and-light show this Friday to Sunday and Dec. 7 to 9 at the clubhouse, 255 Jefferson Ave., Union, off Route 22 eastbound. Hours are Fridays, 7 to 10 p.m.; Saturdays, noon to 9 p.m., and Sundays, noon to 6 p.m. Advance-sale tickets are \$4 for adults, \$2.50 for senior citizens 60 years old and older, and \$1.50 for children 12 years old and younger, at the door, tickets are \$5, \$3 and \$2, respectively. For information, call 908-964-9724 or visit www.tmrcl.com.

THE PRESERVATION HALL JAZZ BAND will appear in the concert "A Creole Christmas," Dec. 10 at 8 p.m. at the Paper Mill Playhouse: The State Theater of New Jersey, Brookside Drive, Millburn. Tickets are \$35, \$38 and \$50. For information, call 973-376-4343.

CELEBRATION SINGERS will present their Holiday Concert Dec. 14 and 15 at 8 p.m. at the Cranford United Methodist Church, Walnut and Lincoln avenues. For information, call 908-241-9200.

THE CHORAL ART SOCIETY of New Jersey will present its annual Handel's "Messiah" Community Sing Dec. 14 at 8 p.m. at the First Baptist Church, 170 Elm St., Westfield. Admission is \$10. For information, call 908-654-3260.

CONCORD SINGERS will appear in concert with the Newark Boys School Apprehension Chorus, Dec. 15 at 7 p.m. at Calvary Episcopal Church, Woodland Avenue, Summit. Donation is \$10 at the door, \$8 in advance; children younger than 14 years old are admitted free. For information, call 908-286-0783.

RICKY SKAGGS and Kentucky Thunder will appear in concert at the Union County Arts Center in Rahway Dec. 15 at 8 p.m. Tickets are \$25, \$30 and \$35. UAC is located at 1601 Irving St., Rahway. For information, call 732-499-9228 or visit www.uacnj.org.

THE PIPES OF CHRISTMAS will be presented by the Clan Cairns Society Dec. 15 at 8 and 7:30 p.m. at the Central Presbyterian Church, 70 Maple St., Summit. Tickets — advance sale only — are \$20. For information, call 908-273-3509, or send e-mail clancuirn@aol.com.

SUMMIT CHORALE will present its annual "Messiah" Sing Dec. 18 at 8 p.m. at Central Presbyterian Church, 70 Maple St., Summit. Admission is free. Scores can be borrowed with a \$2 deposit. For information, call 973-376-8495.

JAZZ

VINCE DIMIRIA and The George Street Theater will appear in the Roy Smith Jazz at Union County College Theater at Union County College, 1000 Morris Ave., Union. UCC is located at 1000 Springfield Ave., Cranford. For information, call 908-769-7503.

KIDS

UNION COUNTY ARTS CENTER in Rahway will present the Paper Bag Playoffs in "Knock Knock Knock, Anybody Home?" Dec. 6 at 10:30 a.m. and 12:30 p.m., and Dec. 7 at 10:30 a.m. UAC is located at 1601 Irving St., Rahway. For information, including tickets prices, call 908-527-3537 or visit www.uacnj.org.

THE THEATER PROJECT at Union County College will present "Storytime" Dec. 7 at 7 p.m. in the Elyck Memorial Children's Library in the Kenneth Mackay Library, Cranford campus, 1033 Springfield Ave., Cranford. Admission is free. For information, call 908-995-5189.

CRANFORD DRAMATIC CLUB will present "Sleeping Beauty" Dec. 7 to 9 at the CDC Theater, 77 Winans Ave., Cranford. Shows are at 7:30 p.m. Dec. 7, and 1 and 3:30 p.m. Dec. 8 and 9. For information, including ticket prices, call 908-276-7611.

PAPER MILL PLAYHOUSE The State Theater of New Jersey will present "Tanglewood Family Entertainment in 'Franklin's Big Adventure' starring Franklin the Turtle Dec. 8 and 9 at 2 and 5 p.m. Tickets are \$12, \$20 and \$30 for Golden Circle. Paper Mill is located on Brookside Drive in Millburn. For information, call 973-376-4343.

KEAN UNIVERSITY'S CHILDREN'S HOUR will present the "Seasons Greetings Holiday Magic Show" Dec. 18 at 2 p.m. in Wilkins Theater. Tickets are \$5. Kean is located at 1000 Morris Ave., Union. For information, call 908-527-2337.

THEATER

PAPER MILL PLAYHOUSE in Millburn will present "Cats Purrday: Rock, Hit and Blue" through Sunday. Evening performances are Wednesdays through Sat. days at 8 p.m., and Sundays at 7:30 p.m., matinees are Thursdays and Sundays at 2 p.m., and Saturdays at 2:30 p.m. There will be no Sunday performance Sunday. Tickets are \$29 to \$59.

Special performances are the Cranford Series, Thursdays at 7 p.m., through today, and a sign-interpreted performance Friday at 8 p.m., each with a sensory seminar 90 minutes prior to curtain.

Paper Mill Playhouse is located on Brookside Drive in Millburn. For information, call 973-376-4343 or visit the Web site at www.papermill.org.

KEAN UNIVERSITY in Union will present the musical, "My Wife and My Girl," Friday through Dec. 5 in Wilkins Theater, 1000 Morris Ave., Union. Shows are at 8 p.m. Fridays and Saturdays, 2 p.m. Sundays. Tickets are \$8 for students \$10 for faculty, staff, alumni and senior citizens, and \$12 for the general public. For information, call 908-527-2337.

ELIZABETH PLAYHOUSE will present "Sylvia" by A.R. Gurney through Dec. 18. Shows are at 7:30 p.m. Fridays and Saturdays, 2 p.m. Sundays. Tickets are \$8 for general admission, \$6 for senior citizens and students. The Elizabeth Playhouse is located at 1100 E. Jersey St., Elizabeth. For information, call 908-355-0077.

NEW JERSEY SHAKESPEARE FESTIVAL will present "The Fantasticks" by Tom Jones and Harvey Schmidt Tuesday through Dec. 30 at the F.M. Kirby Shakespeare Theater on the campus of Drew University, 36 Madison Ave., Madison. Tickets range from \$30 to \$48; opening night tickets are \$55 to \$85. For information, including show times, call 973-408-5600 or visit www.njshakespeare.org.

VARIETY

THE BACK PORCH in Rahway will present Open Mike Night every Tuesday at 8 p.m. and karaoke every Tuesday night.

The Back Porch is located at 1505 Main St. in Rahway. For information, call 732-381-8455.

CASUAL THIES in Clark will present entertainment in the coming weeks. Thursdays are Ladies Nights, and Sundays feature NFL games and \$2 drafts.

Dec. 14 Dinner-theater, "The Hungry Movers," \$45, includes four-course dinner, cash bar available.

Dec. 22 The Bobby Byrnes Christmas Show, \$40, includes four-course, cash bar available.

Casual Times is located at 1035 Central Ave., Clark. For information, call 732-388-6511.

CROSSROADS, 78 North Ave., Garwood presents a series of jazz, blues and comedy concerts, as well as football-themed nights.

Every Sunday, Sunday Football, noon to closing, see all the games with \$2 domestic plans and wing subs. Every Monday, Monday Night Football. Every Tuesday, Jazz Jam, all pints are \$2. Every Wednesday, Domestic draft beer for \$2.

Friday, Hudson River Rats. Saturdays, Union Sarmy. For information, call 908-232-5666.

EAT TO THE BEAT Coffeehouse in Rahway will feature appearances by musical artists. Eat to the Beat Coffeehouse is located at 1465 Irving St. in Rahway at the corner of East Cherry Street. For information, or to sign up for Open Mike Night, call 732-381-8505.

FLYNN'S IRISH PUB and Steakhouse in Rahway will present entertainment at various times. Flynn's Irish Pub is located at 1482 Main St. in Rahway. For information, call 732-381-4700.



SOPRANO FRANCESCA ANGIUOLI will be featured in a classical concert titled "AngeliKa's Muse" Friday at 7:30 p.m. at the First Congregational Church of Westfield. For information, see the "Concerts" listing on this page.

CONCERTS

THE CENTRAL PRESBYTERIAN CHURCH FREE CONCERT SERIES will begin Friday at 12:15 p.m. and continue through Dec. 21. Audience members are encouraged to bring a brown-bag lunch.

Friday: The Hilltop String Quartet Dec. 7: Tenor Kevin Moulton Dec. 14: Violinist Della Davies Dec. 21: Organist Marie Marcier. The Central Presbyterian Church is located at 70 Maple St., Summit. For information, call 908-273-0411.

"FRANGLIKA'S MUSE", a classical vocal recital featuring soprano Francesca Angiuoli, will be presented Friday at 7:30 p.m. at the First Congregational Church, 125 Elm St., Westfield. Tickets are \$10. For information, call 908-233-2494.

RAHWAY VALLEY JERSEYAIRES will appear in concert Saturday at 1:30 and 8 p.m. in the auditorium of Rahway High School, Madison Avenue in Rahway. Tickets are \$18 for reserved seats and \$12 for general admission at both shows; at the 1:30 p.m. show, senior citizen tickets are \$10 and children's tickets are \$5. For information, call 732-494-3580 or 908-265-2628, or visit www.geocities.com/njerseyaires/.

THE VIENNA BOYS CHOIR will appear in concert Saturday at 8 p.m. at the Union County Arts Center in Rahway. Tickets are \$20 and \$28. UAC is located at 1601 Irving St., Rahway. For information, call 732-499-9228 or visit www.uacnj.org.

MUSIC ON FIFTH AVENUE CONCERT SERIES, sponsored by the First Presbyterian Church of Roselle, will present mezzo-soprano Barbara Brauner in concert Sunday at 3 p.m. A free-will offering will be taken. A reception will follow the concert. The church is located at the corner of West Fifth Avenue and Chestnut Street in Roselle.

NEW JERSEY INTERGENERATIONAL ORCHESTRA will appear in concert Sunday at 3 p.m. at Cranford High School, West End Place in Cranford, and Wednesday at 7:30 p.m. at New Providence High School, 35 Pioneer Drive in New Providence. Tickets are \$5 in advance, \$8 at the door. For information, call 908-709-0084, visit www.bobdevlin.com/njio/htm, or send e-mail to NJIOch@aol.com.

KEAN UNIVERSITY CHOIR and CHAMBER ORCHESTRA will be presented in concert Sunday at 7:30 p.m. at the First Presbyterian Church of Connecticut Farms in Union, 888 Snyvesant Ave. at Chestnut Street. A reception will follow the concert. For information, call 908-688-3164.

SUMMIT CHORALE will present "An

Arts Center in Rahway. Tickets are \$15, \$20 and \$25. UAC is located at 1601 Irving St., Rahway. For information, call 732-499-9228 or visit www.uacnj.org.

THE JOHN PIZZARELLI TRIO will appear in the concert, "A Big Band Christmas Celebration," Dec. 7 at 8 p.m. at the Paper Mill Playhouse: The State Theater of New Jersey, Brookside Drive, Millburn. Tickets are \$35, \$45 and \$60. For information, call 973-376-4343.

THE MADRIGAL SINGERS will present the concert, "Tidings of Comfort and Joy," Dec. 9 at 3 p.m. at the First United Methodist Church, 1 E. Broad St., Westfield. Admission is a donation at the door. For information, call 908-233-1570.

THE PRESERVATION HALL JAZZ BAND will appear in the concert "A Creole Christmas," Dec. 10 at 8 p.m. at the Paper Mill Playhouse: The State Theater of New Jersey, Brookside Drive, Millburn. Tickets are \$35, \$38 and \$50. For information, call 973-376-4343.

CELEBRATION SINGERS will present their Holiday Concert Dec. 14 and 15 at 8 p.m. at the Cranford United Methodist Church, Walnut and Lincoln avenues. For information, call 908-241-9200.

THE CHORAL ART SOCIETY of New Jersey will present its annual Handel's "Messiah" Community Sing Dec. 14 at 8 p.m. at the First Baptist Church, 170 Elm St., Westfield. Admission is \$10. For information, call 908-654-3260.

CONCORD SINGERS will appear in concert with the Newark Boys School Apprehension Chorus, Dec. 15 at 7 p.m. at Calvary Episcopal Church, Woodland Avenue, Summit. Donation is \$10 at the door, \$8 in advance; children younger than 14 years old are admitted free. For information, call 908-286-0783.

RICKY SKAGGS and Kentucky Thunder will appear in concert at the Union County Arts Center in Rahway Dec. 15 at 8 p.m. Tickets are \$25, \$30 and \$35. UAC is located at 1601 Irving St., Rahway. For information, call 732-499-9228 or visit www.uacnj.org.

THE PIPES OF CHRISTMAS will be presented by the Clan Cairns Society Dec. 15 at 8 and 7:30 p.m. at the Central Presbyterian Church, 70 Maple St., Summit. Tickets — advance sale only — are \$20. For information, call 908-273-3509, or send e-mail clancuirn@aol.com.

SUMMIT CHORALE will present its annual "Messiah" Sing Dec. 18 at 8 p.m. at Central Presbyterian Church, 70 Maple St., Summit. Admission is free. Scores can be borrowed with a \$2 deposit. For information, call 973-376-8495.

Community Classified

1-800-564-8911

Search your local classifieds on the internet
<http://www.localsource.com/>

SALES HOURS

Monday through Friday
9:00 AM - 5 PM
After Hours Call
908-686-9898
Selection # 8100

ADDRESS

Classified Advertising
Worral Newspapers
P.O. Box 158
Maplewood, NJ 07040

Phone 1-800-564-8911 Fax 973-763-2557

Offices where ads can be placed in person.
ESSEX COUNTY
461 Valley Street, Maplewood
170 Scollard Road, Orange
266 Liberty Street, Bloomfield

UNION COUNTY
1291 Suyvesant Ave., Union

RATES

CLASSIFIED RATES
20 words or less.....\$16.00 per insertion
Additional 10 words.....\$4.00 per insertion
Display Rates.....\$25.50 per column inch
Contract Rates Available
Blind Box Number.....\$12.00 per insertion

BEST BUY

CLASSIFIED COMBINATION RATES
Ad appears in all 18 newspapers
20 words or less.....\$22.00 per insertion
Additional 10 words.....\$6.00 per insertion
Display Rates.....\$47.50 per column inch
Contract Rates Available

CHARGE IT

All classified ads require prepayment.
Please have your card and expiration date.

NEWSPAPERS

UNION COUNTY
Union Leader • Echo Leader
The Eagle (Cranford/Clerk) • The Leader
Spectator Leader-Gazette Leader
Railway Progress • Summit Observer

ESSEX COUNTY
News-Record of Maplewood & South Orange
West Orange Chronicle • East Orange Record
Orange Transcriber • The Glen Ridge Paper
Nutley Journal • Belleville Post
Irvington Herald • Valleyburg Leader
The Independent Press of Bloomfield

DEADLINES

Business Directory 4 PM Thursday
Display - Space reservation 5 PM Friday
Ad Copy 12 noon Monday
In-column 3 PM Tuesday

ADJUSTMENTS

Adjustments: We make every effort to avoid mistakes in your classified advertisement. Please check your ad the first day it runs! We cannot be responsible beyond the first insertion. Should an error occur please notify the classified department. Worrall Community Newspapers, Inc. shall not be liable for errors or omissions in cost of actual space occupied by item in which error or omissions occurred. We can not be held liable for failure, for any cause, to insert an ad. Worrall Community Newspapers, Inc. reserves the right to reject, revise or refuse any advertisement at any time.

CLASSIFIED SPECIALS

GARAGE SALES

25 words \$21.00 or \$28.00 combo
Garage Sale signs, price stickers, balloons, helpful hints, inventory sheet and Rain Insurance.

ECONOMY CLASS

20 words \$7.00 or \$11.00 combo items for sale under \$100.00 One item per ad price must appear.

AUTOS FOR SALE

20 words - 10 weeks \$31.00 or \$44.00 combo no copy changes

DREAM MACHINES

Photo of your car plus 20 words
4 weeks - \$40.00
Call now 1-800-564-8911

EMPLOYMENT

HELP WANTED

ADMINISTRATIVE ASSISTANT

The Women's Board of the New Jersey Performing Arts Center is seeking a Full-time administrative assistant position for this highly motivated organization provides a great programmatic and administrative support to the theater and its community. Duties include preparation and distribution of written materials, taking meeting minutes, scheduling meetings, assisting with event coordination and having correspondence. Must have superior interpersonal and organizational skills, knowledge of Microsoft Office (Word and Excel), knowledge of Rapson's Edge a plus. Refer to page A40B when responding. Fax resume to: 973-335-4332 or e-mail: hr@njpac.org New Jersey Performing Arts Center, One Center St., Newark, NJ 07102. No phone calls please. Only candidates who are selected for an interview will receive a written response. EOE M/F

HELP WANTED

ADMINISTRATIVE ASSISTANT

2- PEOPLE WANTED on part to take up to 30 minutes in the next 30 days. Natural guaranteed RR 215-7306

\$3.20 WEEKLY MAILING 80's brochures! Guaranteed free supplies postage! Mail USA: Century Mailers 973-721-1820. Road mode Vm #2133-C6. Redwood WA fax 973-721-1820. www.centurymailers.com

\$4.00 WEEKLY SALARY making our sales brochures from home. No experience necessary full time part time. Opportunity Free supplies Call 1-708-212-5400 (24 hours)

ADMINISTRATIVE ASSISTANT

The Livingston Mail Management Office, seeks a hard working individual for a full time administrative position. Duties include: computer literate. We working with people and have the ability to handle multi tasks and meet deadlines. Fax resume to Kelly Holmes 973-594-7212. 1820 Roadmode Vm #2133-C6. Redwood WA fax 973-721-1820. www.airforce.com AIR FORCE

ASSISTANT to eye doctor.

Full part time General office duties. Comfortable with people and telephone. Call Dr. Hersh, 973-763-2020.

ATTENTION: WORK FROM HOME.

Our children come to the office every day. Earn an extra \$500-\$1500 monthly part time. \$2,000-\$7,000 full time. Free Booklet! www.spinnuream.com 888-885-8041.

ATTENTION: WORK FROM HOME!

Order Business. Need Help Immediately. \$522/Week Part Time. \$1000-\$4000/Week Full Time. www.freedommode.com (888)515-9550.

BAKERY COUNTER help.

Morning hours. \$7.00 per hour. Apply in person or call Vaccaro's Bakery of Clark. 732-351-8564.

HELP WANTED

BARTENDERS MAKE \$100-\$250/night

Part time Full time No experience needed Call now! 1-888-806-5298 Ext. 3002

BARTENDERS WANTED

earn up to \$250 per shift Make \$\$\$ get trained Fun exciting environment. Call 800-806-0085 ext. 201

CAREER OPPORTUNITY!

Join excellent income processing medical claims for local doctors Full training and support provided Home computer required Call Physician and Healthcare Development toll free 1-800-772-5333 extension 2072

CAREGIVERS NEEDED

part time mornings/afternoons, or full time for the elderly frail/terminals. Non medical companionship, home care, and elderly related services. No certification required Free training provided. Driver's license and car required. Home instead Senior Care, 908-711-9660

CERICAL

Join a winning team at our new Roselle Park location Quick Books and Microsoft office required Part/full time 908-236-2290

COMPUTE

to your Don't be independent, stay home and work for yourself. Be Free set your own hours. Earn excellent income Get the facts. BeInfoSoft.com

COMPUTER INTERNET

people wanted to work online. Potential \$125-\$175 an hour. Full training. Vacations, bonuses and incentives. Bi-linguals also needed. 49 countries. Free E-Book: www.ProInfo.net.

CUSTOMER SERVICE

And Dispatch. Local Tax Company is looking for help in dispatch office. Morning, evening and weekend hours. Ideal for students, moms, and physically challenged. Call 973-762-1358 for information!

CUSTOMER SERVICE

busy office seeks motivated individuals for general office help. Part time/full time. Ideal for local college students. Contact 800-411-2777. Will train. 973-618

CUSTOMER SERVICE

part time The Women's Board Association of The New Jersey Performing Arts Center seeks a great opportunity for individuals with good interpersonal skills. Friday evenings and weekends (days or even) available up to 20 hours per week for several Ticket Services Representative positions. Duties include: call center (inbound) customer service, sales and box office customer service sales. Respond to code CSR when responding. Fax resume to: 973-348-8724 or e-mail: hr@njpac.org New Jersey Performing Arts Center, One Center St., Newark, NJ 07102. No phone calls please. Only candidates who are selected for an interview will receive a written response. EOE M/F

DENTAL OFFICE Manager.

Friendly, quality minded practice office. Scheduling and insurance experience required. Maplewood. Please call 973-763-1737.

DRIVER FOR Livingston Taxi.

Full/Part time. Good driving record required. Will train. 973-618

DRIVER: AIRFREIGHT.

dedicated...lots of 3 immediate OTR openings. Company drivers or contractors. Class-A CDL and 1 year OTR. 800-788-7357 Apply online at www.landsat.com

DRIVERS-

Suburban cab company is looking for both full and part time drivers. Evening and weekend hours available. High average hourly production, nice equipment, long established company. Call 973-762-5700 for information.

HELP WANTED

HEAD TEACHER

30-40 hours, Maplewood, 4 year olds. Must have BS in child development plus 2 years experience or other degree plus 9 credits in child development plus 3 years experience. Salary competitive. Please fax resume to 973-761-9900

HOLIDAY CASH

\$40k to \$70k year potential Data Entry, Process medical claims. No experience needed. Full training. Computer required. Call today! 1-888-314-1033 Dept. 353

HOMEWORKERS

Needed \$635 weekly processing mail. Easy! No experience needed Call 1-888-220-0260 extension 3020 24 hours

IMMEDIATE OPENING

earning \$600-\$800 per week plus bonus. Fast growing cellular business in Essex County. Seeking aggressive sales professional for cellular sales. Will train. Call Lewis 973-763-9900 or fax resume to Mars Cellular: 973-763-9926

LIVE-IN!

All fourth housekeeper/childcare for 2 children ages 5 and 2. English speaking a must. References required. Call 908-228-9395.

MANAGER.

Full time for jewelry store. Knowledge of jewelry and sales experience preferred. Immediate opening. 908-276-8513 or apply in person 486 Boulevard, Kenilworth.

HELP WANTED

OFFICE ASSISTANT

Great Opportunity. Great Hours. Great Location! The New Jersey Performing Arts Center is seeking an office assistant to provide lunch/break coverage for the main reception function. Position also orders supplies and equipment for the office and is contact person for copier and fax problems. Qualifications: Ability to handle busy reception function; good and courteous phone manner; legible handwriting and organizational skills. Knowledge of Word a plus. Hours are daily from 11am-5pm. Refer to code: CA when responding. Fax resume to: (973)353-8242 or e-mail: bmurphy@njpac.org New Jersey Performing Arts Center, One Center St., Newark, NJ 07102. No phone calls please. Only candidates who are selected for an interview will receive a written response. EOE M/F

ORTHODONTIC RECEPTIONIST/Assistant.

Monday, Thursday and 1 Saturday a month. Experience desirable but not necessary. 973-378-4471, 201-625-8550.

PART TIME Administrative Assistant/ Fundraising.

Attractive opportunity to help Fundraising from the ground up. Buy three-person department office of highly regarded independent day school looking for a detail-oriented person with ability in computers, word processing, database entry and retrieval. Experience with Raisers' Edge (Blackbaud) or other relational database preferred. Flexibility and sense of humor a must! 12 month position. EEOC Send fax or e-mail cover letter and resume to: Development Office, Far Brook School, 52 Great Hills Road, Short Hills, NJ 07078. Fax: 973-978-8740. E-mail: CSargent@farbrook.org

PART TIME Bookkeeper.

Springfield Insurance Agency. The right person needs to be satisfied with good bookkeeping and computer skills. Fax resume to: 973-378-4559 or call 973-467-8850.

PART TIME Manager.

Saturday and Sunday only. Lackland Seal Storage, Mount-Union. Must have neat appearance and pleasant personality. Relaxed welcome. Call Monday thru Friday, 8am-5pm. 908-928-1400.

PART TIME Legal Secretary.

Self-starter. Good phone skills, will train. MS Word, PC Law. 20-25 hours. Call 973-921-1331.

HELP WANTED

POSTAL JOBS.

Up to \$18.35/hour. Hiring for 2001/2002, paid training, Full benefits. No experience. Toll free 7:30am-11:00pm CST 1-888-728-6083 X4700.

PRIVATE PRE-SCHOOL

located in South Orange. Has an opening for a part time Teacher. Call Mrs. Barr @ 973-763-2318.

PRIVATE PRE-SCHOOL

located in South Orange. Has an opening for Teachers and Teachers assistants. Call Mrs. Barr @ 973-763-2318.

RECEPTIONIST

Immediate opening. Essex county. Professional office looking for full time Receptionist to work 40 hours week. Requirements include: computer knowledge, ability to handle heavy phone and client contact. Position involves dictation correspondence and filing. 3 years experience required. Fax cover letter and resume to: 732-852-1553

RECEPTIONIST: EXPERIENCED

for Dental Office, Tuesdays and Thursdays 8:30am-5:00pm. Call 973-761-6464.

SALES PROFESSIONALS:

Career minded professionals for staffing, growing, retail sales force. We are the leading Oak Stores Inc. franchise. Homebased sales plus commission. 40% paid vacation, incentive and training. Must have transportation. Fax resume to 908-888-6802.

SECRETARY/ ADMINISTRATIVE Assistant.

Does this describe you? Very well organized, comfortable with details, resourceful, articulate, assertive, and experienced. If so, we need you to manage the president's time, provide support for a small marketing staff and perform office manager duties. Word and Excel competent. Pleasant business casual Chatham Office. Fax resume with salary requirements to Colleen at 973-853-8556.

TANNING SALON.

Part-time receptionist needed. Sunday 10am-8pm. \$om plus 1 evening. Call 908-922-3295.

TEACHER ASSISTANT- SPECIAL EDUCATION

Private school for elementary age, learning disabled students seeks applicants for the position of Teacher Assistant. Hours 8:30am-3:15pm. Experience a plus. Send resume to Diane Aron, Director, Doron School of NJ, Inc., 320 Second Avenue, Garwood, NJ 07027 or FAX to 908-301-0266. EOE

ADVERTISING SALES

Worrall Community Newspapers is looking for experienced and aggressive salespeople for outside and inside sales. Earning potential commensurate with experience.

Call for appointment (908) 686-7700

CHRISTMAS IN FLORIDA

Is an easy DRIVE away!

Just down 1-75 or 1-95 is a gem of a vacation spot - PORT CHARLOTTE! Rent a luxurious 2 or 3 bedroom home complete with it's very own private pool. Enjoy Christmas on the lanai!!! Special \$100.00 off already low weekly rates.

1-800-263-9111
(northcharlotteflorida.com)

Very very own... Private Pool and Lanai PORT CHARLOTTE FLORIDA HOMEBUILDERS

ARE YOU? Or someone you Know diabetic?

Get now ARM TESTING METHERS at no, or low cost. Delivered to your door free. No limits to fill. No Upfront Costs!

CALL 1 (800) 894 4997 now!

All American Diabetes Supply, Inc. www.allamerican-diabetes.com

A free press is the strength behind democracy.

At Worrall Community Newspapers, reporters learn what it takes to become good reporters. Why? Because reporting for one of our weekly newspapers means becoming involved in the communities we serve. From news stories to features, from council coverage to the Board of Education, reporters at the eyes and ears of all of our readers.

Worrall Newspapers, which publishes 18 newspapers serving 26 towns, has openings for reporters in its Essex and Union County regions. If you think you have what it takes to be a reporter, send resume and clips to Tom Canavan, P.O. Box 3109, Union, N.J.; 07083, or fax to (908) 686-4169.

Be a part of a company whose mission is to preserve democracy. Worrall Newspapers is an equal opportunity employer.

HEAD OF SCHOOL

Effective July 1, 2002

Montclair Cooperative School, a private independent day school, serving 150 children nursery through sixth grade, is seeking a dynamic and creative leader. Position requires thorough understanding & demonstrated experience in progressive elementary education. Successful candidate brings strong interpersonal skills and a commitment to working collaboratively with faculty, staff & parents. School administrative operations & supervisory experience required.

Send resume and cover letter to fax: 973-783-9378 or www.eltronsini@home.com

ADVERTISING SALES

Worrall Community Newspapers is looking for experienced and aggressive salespeople for outside and inside sales. Earning potential commensurate with experience.

Call for appointment (908) 686-7700

CHRISTMAS IN FLORIDA

Is an easy DRIVE away!

Just down 1-75 or 1-95 is a gem of a vacation spot - PORT CHARLOTTE! Rent a luxurious 2 or 3 bedroom home complete with it's very own private pool. Enjoy Christmas on the lanai!!! Special \$100.00 off already low weekly rates.

1-800-263-9111
(northcharlotteflorida.com)

Very very own... Private Pool and Lanai PORT CHARLOTTE FLORIDA HOMEBUILDERS

ARE YOU? Or someone you Know diabetic?

Get now ARM TESTING METHERS at no, or low cost. Delivered to your door free. No limits to fill. No Upfront Costs!

CALL 1 (800) 894 4997 now!

All American Diabetes Supply, Inc. www.allamerican-diabetes.com

A free press is the strength behind democracy.

At Worrall Community Newspapers, reporters learn what it takes to become good reporters. Why? Because reporting for one of our weekly newspapers means becoming involved in the communities we serve. From news stories to features, from council coverage to the Board of Education, reporters at the eyes and ears of all of our readers.

Worrall Newspapers, which publishes 18 newspapers serving 26 towns, has openings for reporters in its Essex and Union County regions. If you think you have what it takes to be a reporter, send resume and clips to Tom Canavan, P.O. Box 3109, Union, N.J.; 07083, or fax to (908) 686-4169.

Be a part of a company whose mission is to preserve democracy. Worrall Newspapers is an equal opportunity employer.

HELP WANTED

U.S. POSTAL JOBS: Up to \$18.59 hour... U.S. POSTAL JOBS: Up to \$18.59 hour... U.S. POSTAL JOBS: Up to \$18.59 hour...

EMPLOYMENT WANTED

BRAZILIAN HOUSECLEANER, experienced... CERTIFIED NURSE'S Aide seeks work... CLEANING LADY with experience...

CHILD CARE

EXPERIENCED MOM will care for your child... LICENSED CHILD CARE Provider will take care...

ANNOUNCEMENTS

BUY NEW Jersey for \$349! The New Jersey... REACH OVER 14 million households!

PERSONALS

ADOPTION: ARE you pregnant? Don't... DIAL A BIBLE MESSAGE

MISCELLANEOUS

ANTIQUE LAPAYETTE MILL Antiques Center... MISCELLANEOUS

ANTQUES

LAPAYETTE MILL Antiques Center... MISCELLANEOUS

MISCELLANEOUS

RED. NAME brand, mattress and box set... BEDROOM SET Cherrywood/Lauren Colton

MISCELLANEOUS

RED. NAME brand, mattress and box set... BEDROOM SET Cherrywood/Lauren Colton

MISCELLANEOUS

RED. NAME brand, mattress and box set... BEDROOM SET Cherrywood/Lauren Colton

MISCELLANEOUS

RED. NAME brand, mattress and box set... BEDROOM SET Cherrywood/Lauren Colton

MISCELLANEOUS

RED. NAME brand, mattress and box set... BEDROOM SET Cherrywood/Lauren Colton

MISCELLANEOUS

RED. NAME brand, mattress and box set... BEDROOM SET Cherrywood/Lauren Colton

MISCELLANEOUS

RED. NAME brand, mattress and box set... BEDROOM SET Cherrywood/Lauren Colton

MISCELLANEOUS

RED. NAME brand, mattress and box set... BEDROOM SET Cherrywood/Lauren Colton

MISCELLANEOUS

RED. NAME brand, mattress and box set... BEDROOM SET Cherrywood/Lauren Colton

MISCELLANEOUS

RED. NAME brand, mattress and box set... BEDROOM SET Cherrywood/Lauren Colton

MISCELLANEOUS

RED. NAME brand, mattress and box set... BEDROOM SET Cherrywood/Lauren Colton

MISCELLANEOUS

RED. NAME brand, mattress and box set... BEDROOM SET Cherrywood/Lauren Colton

MISCELLANEOUS FOR SALE

CASKETS, URNS, MARKERS AND MORE! BUY DIRECT & SAVE UP TO 50% OFF... NEW MILLENNIUM BURIAL SOLUTIONS, INC.

MISCELLANEOUS FOR SALE

DAYBED: WHITE/ton: Pop-up trundle, 2 in... DINING ROOM set - Cherrywood/Double

MISCELLANEOUS FOR SALE

DINING ROOM table and chairs, single bed... HARRY POTTER Figures complete set

MISCELLANEOUS FOR SALE

ORIENTAL RUG (Chinese) 10x14, 100% wool... WEDDING GOWN, Wholesale price

MISCELLANEOUS FOR SALE

SOUTH RANGE, 49 Spair Drive, Conant... GARAGE/YARD SALES

MISCELLANEOUS FOR SALE

AAAA LIONEL, American Flyer, Ives and... ANTIQUE & OLDER FURNITURE

MISCELLANEOUS FOR SALE

GOT A Campground membership or Timeshare?... ZAVOCKI PAVING CO., INC.

MISCELLANEOUS FOR SALE

ABLE ELECTRIC "If it's electric, we do it... KREDER ELECTRIC, INC.

MISCELLANEOUS FOR SALE

ADOPT LOVE! Adopt-A-Stray Dogs, cats, puppies... PATERNO PAVING

MISCELLANEOUS FOR SALE

GET THE latest technology in dewormers for dogs... PATERNO PAVING

MISCELLANEOUS FOR SALE

ABLE ELECTRIC "If it's electric, we do it... PATERNO PAVING

MISCELLANEOUS FOR SALE

ABLE ELECTRIC "If it's electric, we do it... PATERNO PAVING

MISCELLANEOUS FOR SALE

ABLE ELECTRIC "If it's electric, we do it... PATERNO PAVING

MISCELLANEOUS FOR SALE

ABLE ELECTRIC "If it's electric, we do it... PATERNO PAVING

MISCELLANEOUS FOR SALE

ABLE ELECTRIC "If it's electric, we do it... PATERNO PAVING

MISCELLANEOUS FOR SALE

ABLE ELECTRIC "If it's electric, we do it... PATERNO PAVING

MISCELLANEOUS FOR SALE

ABLE ELECTRIC "If it's electric, we do it... PATERNO PAVING

MISCELLANEOUS FOR SALE

ABLE ELECTRIC "If it's electric, we do it... PATERNO PAVING

MISCELLANEOUS FOR SALE

ABLE ELECTRIC "If it's electric, we do it... PATERNO PAVING

CLEANING SERVICE

POLISH CLEANING SERVICE Houses, Apartments, Offices... CLEANER/RUBBISH REMOVAL

CLEANING SERVICE

10-30 Yard Containers Commercial, Industrial, Residential... CABELING

CLEANING SERVICE

NEED A computer but no cash? You're approved Financing Guaranteed! No cash needed!

CLEANING SERVICE

COMPUTER PROBLEMS? We provide home, small office/home office help...

CLEANING SERVICE

NEED COMPUTER HELP? GIVE US A CALL... MEL CONTRACTORS, INC.

CLEANING SERVICE

NEW! WEPAIRS/ Upgrades/ Instructions. We come to your business/home...

CLEANING SERVICE

ABLE ELECTRIC "If it's electric, we do it... MEL CONTRACTORS, INC.

CLEANING SERVICE

ABLE ELECTRIC "If it's electric, we do it... MEL CONTRACTORS, INC.

CLEANING SERVICE

ABLE ELECTRIC "If it's electric, we do it... MEL CONTRACTORS, INC.

CLEANING SERVICE

ABLE ELECTRIC "If it's electric, we do it... MEL CONTRACTORS, INC.

CLEANING SERVICE

ABLE ELECTRIC "If it's electric, we do it... MEL CONTRACTORS, INC.

CLEANING SERVICE

ABLE ELECTRIC "If it's electric, we do it... MEL CONTRACTORS, INC.

CLEANING SERVICE

ABLE ELECTRIC "If it's electric, we do it... MEL CONTRACTORS, INC.

CLEANING SERVICE

ABLE ELECTRIC "If it's electric, we do it... MEL CONTRACTORS, INC.

CLEANING SERVICE

ABLE ELECTRIC "If it's electric, we do it... MEL CONTRACTORS, INC.

CLEANING SERVICE

ABLE ELECTRIC "If it's electric, we do it... MEL CONTRACTORS, INC.

CLEANING SERVICE

ABLE ELECTRIC "If it's electric, we do it... MEL CONTRACTORS, INC.

CLEANING SERVICE

ABLE ELECTRIC "If it's electric, we do it... MEL CONTRACTORS, INC.

CLEANING SERVICE

ABLE ELECTRIC "If it's electric, we do it... MEL CONTRACTORS, INC.

GUTTERS/LEADERS

NED STEVENS GUTTER CLEANING & INSTALLATION... HANDYMAN

GUTTERS/LEADERS

NEED A NICE HANDYMAN? CALL GARY... HEALTH & FITNESS

GUTTERS/LEADERS

ABSOLUTELY NO cost to you! Independence - just a call away...

GUTTERS/LEADERS

QUALITY/AIR Conditioning & Heating, Inc. Gas, steam, hot water and hot air heat...

GUTTERS/LEADERS

10% DISCOUNT with this ad. Siding, Roofing, Windows, Doors, Room Additions...

GUTTERS/LEADERS

SMG PAINTING Interior/Exterior Painting... HOME IMPROVEMENTS

GUTTERS/LEADERS

ABLE ELECTRIC "If it's electric, we do it... HOME IMPROVEMENTS

GUTTERS/LEADERS

ABLE ELECTRIC "If it's electric, we do it... HOME IMPROVEMENTS

GUTTERS/LEADERS

ABLE ELECTRIC "If it's electric, we do it... HOME IMPROVEMENTS

GUTTERS/LEADERS

ABLE ELECTRIC "If it's electric, we do it... HOME IMPROVEMENTS

GUTTERS/LEADERS

ABLE ELECTRIC "If it's electric, we do it... HOME IMPROVEMENTS

GUTTERS/LEADERS

ABLE ELECTRIC "If it's electric, we do it... HOME IMPROVEMENTS

GUTTERS/LEADERS

ABLE ELECTRIC "If it's electric, we do it... HOME IMPROVEMENTS

GUTTERS/LEADERS

ABLE ELECTRIC "If it's electric, we do it... HOME IMPROVEMENTS

GUTTERS/LEADERS

ABLE ELECTRIC "If it's electric, we do it... HOME IMPROVEMENTS

GUTTERS/LEADERS

ABLE ELECTRIC "If it's electric, we do it... HOME IMPROVEMENTS

GUTTERS/LEADERS

ABLE ELECTRIC "If it's electric, we do it... HOME IMPROVEMENTS

GUTTERS/LEADERS

ABLE ELECTRIC "If it's electric, we do it... HOME IMPROVEMENTS

GUTTERS/LEADERS

ABLE ELECTRIC "If it's electric, we do it... HOME IMPROVEMENTS

MOVING/STORAGE

SCHAEFER MOVING Reliable, Very low rates, 2 Hour Minimum, Same Days 7 Days, Inmate, Free Estimates...

MOVING/STORAGE

G.H.I. PAINTING & DRYWALL Specializing in Drywall... HOUSE PAINTING

MOVING/STORAGE

Interior/Exterior Fully Insured Free Estimates... INTERIOR PAINTING

MOVING/STORAGE

Deck, Powerwashing, Water, Roofing, Staining, Minor Repairs... JANN'S PAINTING

MOVING/STORAGE

Interior/Exterior Fully Insured Free Estimates... MARCKETTA PAINTING

MOVING/STORAGE

Interior, Exterior, Sheetrock, Carpentry... MATTHEWS PAINTING

MOVING/STORAGE

PAINTING & PLASTERING 25 YEARS EXPERIENCE... SMG PAINTING

MOVING/STORAGE

BLENDISS PLUMBING & HEATING All types heating systems, installed and serviced...

MOVING/STORAGE

MAX SR. & PAUL SCHOENWALDER Established 1912... PLUMBING

MOVING/STORAGE

Suburban Plumbing & Heating... RECYCLING

MOVING/STORAGE

Industrial Accounts Served... GLENN ROOFING COMPANY

MOVING/STORAGE

Phone (973) 372-1200 Fax (973) 372-1900... J.B. ROOFING & CONTRACTING, LLC

MOVING/STORAGE

Phone (973) 372-1200 Fax (973) 372-1900... J.B. ROOFING & CONTRACTING, LLC

MOVING/STORAGE

Phone (973) 372-1200 Fax (973) 372-1900... J.B. ROOFING & CONTRACTING, LLC

MOVING/STORAGE

Phone (973) 372-1200 Fax (973) 372-1900... J.B. ROOFING & CONTRACTING, LLC

MOVING/STORAGE

Phone (973) 372-1200 Fax (973) 372-1900... J.B. ROOFING & CONTRACTING, LLC

MOVING/STORAGE

Phone (973) 372-1200 Fax (973) 372-1900... J.B. ROOFING & CONTRACTING, LLC

MOVING/STORAGE

Phone (973) 372-1200 Fax (973) 372-1900... J.B. ROOFING & CONTRACTING, LLC

MOVING/STORAGE

Phone (973) 372-1200 Fax (973) 372-1900... J.B. ROOFING & CONTRACTING, LLC

ROOFING

WE STOP LEAKS! CLARK BUILDERS, INC. Roof Siding & Repairs... SPECIAL SERVICES

ROOFING

ATTENTION INVENTORS: Don't be out smarted! Protect and build your idea into a product... INVENTORS - PRODUCT IDEAS wanted

ROOFING

MIKE MUSSO CERAMIC TILE INSTALLATION... TREE EXPERTS

ROOFING

WOODSTOCK Tree Service local tree company... BOYLE TREE SURGERY CO.

ROOFING

WOODSTOCK Tree Service local tree company... BOYLE TREE SURGERY CO.

ROOFING

WOODSTOCK Tree Service local tree company... BOYLE TREE SURGERY CO.

ROOFING

WOODSTOCK Tree Service local tree company... BOYLE TREE SURGERY CO.

ROOFING

WOODSTOCK Tree Service local tree company... BOYLE TREE SURGERY CO.

ROOFING

WOODSTOCK Tree Service local tree company... BOYLE TREE SURGERY CO.

ROOFING

WOODSTOCK Tree Service local tree company... BOYLE TREE SURGERY CO.

ROOFING

WOODSTOCK Tree Service local tree company... BOYLE TREE SURGERY CO.

ROOFING

WOODSTOCK Tree Service local tree company... BOYLE TREE SURGERY CO.

ROOFING

WOODSTOCK Tree Service local tree company... BOYLE TREE SURGERY CO.

ROOFING

WOODSTOCK Tree Service local tree company... BOYLE TREE SURGERY CO.

ROOFING

WOODSTOCK Tree Service local tree company... BOYLE TREE SURGERY CO.

ROOFING

WOODSTOCK Tree Service local tree company... BOYLE TREE SURGERY CO.

ROOFING

WOODSTOCK Tree Service local tree company... BOYLE TREE SURGERY CO.

ROOFING

WOODSTOCK Tree Service local tree company... BOYLE TREE SURGERY CO.

ROOFING

WOODSTOCK Tree Service local tree company... BOYLE TREE SURGERY CO.

REAL ESTATE

Coldwell Banker wonders if now is best time to refinance homes

With recent events and certain unstable elements of the economy, real estate remains a strong investment. As President Bush attempts to boost the country's financial situation, it is time to re-evaluate your mortgage rate and strongly consider, "Should I refinance my home?"

If you currently carry a mortgage with an interest rate of 8.0 or higher, the recent rate decreases will "hit home" — offering benefits that directly impact your wallet. Here's how the experts at Coldwell Banker New Jersey/Rockland County, New York determine when it makes sense for you.

According to Jeff Fellers, manager of Coldwell Banker Short Hills Office, the price of the money you borrowed to buy your home is the interest you pay through installments every month. Because interest rates are inherently tied to fluctuations in the economy, you would assume when news outlets report declining interest rates, the value of money is also declining. What does this mean to you, assuming you already have a mortgage and are already making

monthly payments on your home? If means refinancing may allow you to reduce your monthly mortgage payments. With a mortgage refinance, you are actually re-paying your existing home loan and borrowing new money to pay for your house at a lower price.

"Although refinancing involves closing cost, often it can make financial sense if you obtain a rate that is at least 1 percent to 1.5 percent lower than the current interest rate of your loan. Also consider this option if you are planning to stay in your home for a minimum of three or more years," Fellers said.

How can you determine if refinancing produces justifiable savings? Let's assume your \$100,000 mortgage has an interest rate of 8 percent. You are currently paying \$734 in monthly principal and interest. Based on an interest rate of 6.5 percent, refinancing a \$100,000 loan would result in a reduced monthly payment of \$632, or monthly savings of \$102. Now assume the closing costs to secure the new loan are \$1,500 to \$2,000. Is it worth refinancing? Yes, because

the monthly savings of \$102 becomes \$3,672 over three years, which exceeds the \$2,000 in up-front closing costs. Over the life of a 30-year loan, the refinance will save a whopping \$36,720.

For those who are candidates for refinancing, Coldwell Banker Mortgage provides the guaranteed services of the industry's premier home financing leader. They also offer pre-approval.

Pre-approval is simply an estimate of what a homebuyer can afford — not the granting of the actual mortgage. Instead, it estimates the monthly payment a buyer can afford based on a variety of factors.

"A Coldwell Banker Mortgage means more because a full credit analysis is completed on the customer so that a true loan decision can be made the same day a customer applies," Fellers said.

To apply this example to your specific mortgage values and see if it makes sense for you, call 1-888-317-5417. For your real estate needs, contact Short Hills Coldwell Banker at 973-467-3222.

APARTMENT TO RENT

NEWARK-WEEQUAHIC AREA STUDIO 1 AND 2 BEDROOMS
Very spacious, nice quiet building and neighborhood. Near transportation. Superior service Program
ON SITE SECURITY
SECURE UNDERGROUND PARKING
Call Ms. D. for appointment
973-705-8488

ROSELLE PARK, 1 bedroom and 2 bedroom modern garden apartments. Parking, utilities included. \$775, \$875. No Pets Available Immediately. 973-979-9884.

ROSELLE PARK, 2 bedroom apartment, near train station, 1 month security, \$950 per month, heat hot water included. Call 908-245-8079.

UNION 2 BEDROOMS, apt-in kitchen, 2nd floor, heat and hot water included, \$1,000 monthly, 1-1/2 month security. 908-964-8972, or 973-449-6450.

FURNISHED ROOMS FOR RENT

WEST ORANGE, Llewellyn Hotel. 1000 views to transportation. Rates from \$100 weekly. Call 973-731-8845 or 973-736-1838.

ROOMS TO RENT
EAST ORANGE, share kitchen and bath, 1 week rent and 1 week security. Please call Mr. or Mrs. Hill 973-673-3371.

HOUSE TO RENT

EAST ORANGE on beautiful tree lined street, 4 bedroom, 2 bath, formal dining room, living room, den, fireplace, eating-kitchen, finished basement, laundry room, detached garage, appliances \$1600 + 2 month security. Pay own utilities. Available December 15th. Call 973-675-1276 for appointment.

ORANGE/WEST ORANGE border, 2-1/2 bedrooms, 1-1/2 baths, living room and dining room, full basement on church property \$1600 per month. Available immediately. 973-324-0055.

HOUSE TO SHARE
MAPLEWOOD, NON-SMOKER responsible adult, must like animals, close to transportation, \$750 per month utilities included. Call 973-761-7071.

OFFICE TO LET

OFFICE/STORE Quaint building in Maplewood Village, near municipal parking, approximately 500 square feet, heat hot water included. 973-728-1066.

SPRINGFIELD - INDIVIDUALLY furnished 3 bedroom 2 1/2 bathroom support services. Call 973-921-3000.

PARKING SPACE FOR RENT

SECURE 1 CAR garage for rent - East Orange Bloomfield border, \$110 per month. Call 201-436-9038.

VACATION RENTALS

CHRISTMAS IN NEW ENGLAND
Former Cranford residence wishes to offer 2 bedroom resort suite (step 5) in Lincoln New Hampshire with gas fireplace, fully equipped kitchen, 2 1/2 baths and VCR, 1 mile from Loon Mountain Skiing. December 23rd-30th \$1,178.00. Call 603-444-0880.

MIAMI BEACH - Reserve Now! \$550 week was \$850. New 1 bedroom condo across from ocean with private beach access. Suites of Dorchester 800-351-1303.

WANTED TO RENT

GARAGE WANTED. Either Union or Essex County. Entrance must be 8 feet tall. Call 973-449-4789

REAL ESTATE

"All real estate advertised herein is subject to the Federal Fair Housing Act, which makes it illegal to advertise any preference, limitation, or discrimination based on race, color, religion, sex, handicap, familial status, or national origin, or intention to make any such preference, limitation, or discrimination." "We will not knowingly accept any advertising for real estate which is in violation of this law. All persons are hereby informed that all dwellings advertised are available on an equal opportunity basis."

LAND FOR SALE

CHESAPEAKE BAY Area Eagle Cove/ "Sole Haven" Waterfront Closed, Save thousands from \$49,900. Great retirement area. Buy now. Build later. E-Z terms. Owner Broker - 1-866-240-5000 ext 5000. 973-994-2885.

Sell Your Home ESSEX CLASSIFIEDS CALL 763-9411 TO PLACE YOUR CLASSIFIED AD
Search your local classifieds on the internet www.localsource.com

MOBILE HOMES

UNION MOBILE HOME, 1 bedroom in adult park, immediately available. Rent only, \$280/month after purchase (\$7,000). Lomakin Realty, 908-688-8367.

REAL ESTATE WANTED

WE SELL HOUSES ANY AREA - ANY CONDITION
We Will Buy, Lease or Take Over the Payment On Your Home
201-776-1132
201-358-8788

REAL ESTATE FOR SALE

ADULT COMMUNITIES Whiting, New Jersey 1 and 2 bedroom units starting at \$25,000 single homes start \$50,000. For free information and appointment call 1-800-631-8500 Heartland Realty.

BLOOMFIELD, 165 Bay Avenue, 7 rooms, 2 bedroom Colonial, 1 1/2 baths, central air, full basement, \$256,000. Taxes \$5,500. 908-994-2885.

KNOXHOLM TOWNSHIP/Warren County, 2 bedrooms, 500 sq. ft., Cape Cod, 2 1/2 baths and 2nd floor Master Bedroom suite, 2 full baths, 2 car garage with lift, basement, minutes from Route 60. Call 908-496-4888.

NEW CONSTRUCTION

ROSELLE PARK Available Dec. 1, 2001
\$279,000
908-241-8198



Joanne Tedesco-Klout, vice president of the Summit and New Providence offices of Burgdorff ERA, stands at the microphone of the grand auction to benefit CASA and Make-a-Wish Foundation.

Burgdorff holds auction

The Burgdorff ERA Summit and New Providence offices hosted a grand auction recently to benefit the Make-A-Wish Foundation and CASA, the Court-Appointed Special Advocates of New Jersey, at the dining hall of Oak Knoll School in Summit.

Approximately 80 people attended with many local retailers, restaurants, hair salons, food markets, sales associates and staff of Burgdorff donating items ranging from gift certificates and jewelry to Broadway show tickets, hotel stays and a sailing trip. There was a silent auction and a live auction, with bids handled by auctioneer Andy Lark of Summit.

Proceeds from the grand auction benefit Make-A-Wish and CASA. Make-A-Wish grants wishes to children younger than the age of 18 who are living with a life-threatening illness. CASA is a non-profit corporation dedicated to ensuring that abused and neglected children achieve permanency in a safe, nurturing environment.

Burgdorff has a long established tradition of giving back to the communities it serves. Founded in 1958, Burgdorff ERA is located on Springfield Avenue in Summit and New Providence. Burgdorff ERA will soon hold its grand opening in a new office located in the historic Roots building at 401 Springfield Avenue.

Office space is available

Ian M. Grusd, principal of RE/MAX Commercial Real Estate, has announced the availability of 54,000 square feet of Class A office space at 570 South Ave., Cranford.

The space can accommodate a single user who needs 3,000 square feet of contiguous space in a single-story building or can be subdivided for small to mid size companies. The property offers abundant on-site parking as well as a flexible layout that can be built to suit.

"This building offers one of the few alternatives to lease based, new office space at a very competitive rental rate. In addition, it is located in one of the most desirable areas of Union County directly off the Garden State Parkway Exit 137," Grusd said.

The location offers easy access to all major roadways and is in proximity to restaurants, shopping and hotels. "The building is ideal for any type of professional organization including law firms, insurance companies, computer-related business and health care organizations," said Principal Richard Falkin.

RE/MAX Commercial continues its rapid expansion and currently has offices strategically located throughout major markets including Boston, Washington D.C., Atlanta, Charlotte, Indianapolis, Denver, Los Angeles and Montreal. RE/MAX of New Jersey is one of the state's leading real estate organizations. This privately held wholly owned corporation based in Moorestown oversees 125 offices

with more than 1,600 real estate professionals. Grusd can be reached at 908-769-8200, Ext. 241.

RENTAL

"All real estate advertised herein is subject to the Federal Fair Housing Act, which makes it illegal to advertise any preference, limitation, or discrimination based on race, color, religion, sex, handicap, familial status, or national origin, or intention to make any such preference, limitation, or discrimination." "We will not knowingly accept any advertising for real estate which is in violation of this law. All persons are hereby informed that all dwellings advertised are available on an equal opportunity basis."

APARTMENT TO RENT

BLOOMFIELD, 2 BEDROOM apartment on 1st floor in 2 family house. Clean, quiet, close to NYC transportation, no smoking. Available December 1st. \$1175 heat included. 1-1-2 month security. 973-429-3624

APARTMENT TO RENT

BLOOMFIELD, LARGE 1 bedroom. All utilities paid. No fee. NY bus at door. \$850. call Susan 973-429-6414

EAST ORANGE, small apartment with 2 bedrooms, bath, kitchen, living room on Terrace. No on sight parking. 1-1-2 security. \$850 month. 973-275-0882 or 973-275-0910 evenings. 908-685-0050. extension 5521 daytime.

YOUR AD could appear here for as little as \$10.00 per call. For more details, Our money classified department would be happy to help you. Call 1-800-564-8911.

SPRINGFIELD

FOR SALE 4200 SQ. FT. OFFICE BUILDING

Opportunity for User or Investor

Space Available. Present owner to remain as tenant. Excellent condition. Many recent improvements. For more information and inspection call: **William McDermott (878) 692-6363.**

LIVINGSTON/WEST ORANGE REGIONAL OFFICE
(973) 992-6363

Prudential
New Jersey Properties

NEW JERSEY MORTGAGE RATES									
FOR UPDATED RATES CALL INFOSOURCE 908-686-9898 AND DIAL THE LENDER CODE									
LOOK FOR THESE LENDERS ON THE INTERNET @ WWW.CMI-MORTGAGE.COM									
PRODUCT	RATE	PTS	APR	PRODUCT	RATE	PTS	APR	PRODUCT	RATE
Columbia Savings BK	6.00	0.00	6.00	Kidwood Financial	6.00	0.00	6.00		
30 YR FIXED	7.31	0.00	7.15	APP 30 YEAR FIXED	6.50	0.00	6.75	APP	
15 YR FIXED	6.38	0.00	6.41	FEI 15 YEAR FIXED	6.50	0.00	6.41	FEI	
1 YR ARM	5.25	0.00	4.35	NP 30 YR JUMBO	7.25	0.00	7.35		
Call for jumbo mortgage rates. Call us! We'll do the loan shopping for you!									
Commonwealth Bank	6.00	0.00	6.00	Loan Search	8.00	0.00	8.00	1/57	
30 YEAR FIXED	7.00	0.00	7.05	APP 30 YR FIXED	6.88	0.00	6.90	APP	
15 YEAR FIXED	6.38	0.00	6.38	FEI 15 YR FIXED	6.38	0.00	6.41	FEI	
30 YR JUMBO	7.13	0.00	7.13	D 30 YR JUMBO	7.00	0.00	7.04		3/35
Close at home! No App Fee! Free Bi-weekly Avail. www.loansearch.com									
First Savings Bank	7.37	0.50	6.80	1/51	National Future Mktg	8.00	0.00	7.50	
30 YR FIXED	6.25	0.00	6.54	APP 30 YEAR FIXED	6.63	0.00	6.78	APP	
15 YR FIXED	6.25	0.00	6.25	FEI 15 YEAR FIXED	6.25	0.00	6.37	FEI	
31-30 YR	6.75	0.00	6.37	1 YR ADJ.	4.00	2.00	5.63		3/75
15 year fixed is lowest! Call, Purchase or Compare. Free Approval									
Citibank Consumer BK/BSA	6.75	0.25	6.75	Springfield Fedl Savings	6.88	0.00	6.88		
30 YEAR FIXED	7.53	0.00	7.89	APP 30 YR FIXED	6.50	0.00	6.55	APP	
15 YEAR FIXED	6.38	0.00	6.46	FEI 15 YR FIXED	6.38	0.00	6.40	FEI	
1 YR ARM	6.00	0.00	6.05	NP 10Y-30 YR	6.00	0.00	6.11		1/25
Other products available please contact us for more details @ www.citibank.com									
Investors Savings BK	6.00	0.00	6.00	1st Choice National Bank	8.00	0.00	8.00		
30 YEAR FIXED	6.88	0.00	6.96	APP 30 YR FIXED	7.13	0.00	7.13	APP	
15 YEAR FIXED	6.38	0.00	6.56	FEI 15 YR FIXED	6.50	0.00	6.50	FEI	
21-30 YR	6.00	0.00	5.30	1 YR ADJ.	6.00	0.00	7.19		3/35
Loans to \$1 million dollars. Pre-approval down values on 3rd. www.1stchoice.com									
Rates compiled on November 29, 2001. NP = Not provided by institution.									
Contact lenders concerning additional fees which may apply. CMI, and The National Newspaper assume no liability for typographical errors or omissions. To display information, lenders only should contact CMI at 908-686-9898. Rates are approved by the lenders, are created without guarantee, and are subject to change. Copyright 2001, Cooperative Mortgage Information. All Rights Reserved.									

Worrall Community Newspapers

Will Make Your GARAGE or YARD SALE A Success!

RECEIVE A FREE GARAGE SALE KIT
when you place your ad in your hometown newspaper

YOUR AD PLUS THIS KIT MAKES HAVING A GARAGE SALE EASY!

UNION COUNTY or ESSEX COUNTY
1 Week \$21.00 / 25 Words
BOTH COUNTIES 1 Week \$28.00 / 25 Words
Ask about our rate date

Union County
Union, Kenilworth, Roselle Park, Summit, Mountainside, Springfield, Linden, Rahway, Clark, Cranford, Elizabeth

Essex County
Maplewood, South Orange, West Orange, East Orange, Orange, Bloomfield, Glen Ridge, Nutley, Bellevue, Irvington, Vailsburg

KIT INCLUDES

- 3 Garage/Yard Sale signs, 12 x 24 inches
- 3 states
- 215 Peel-Off Pricing Labels
- 6 Balloons
- 1 Seven-Step Instruction Sheet
- 1 Marker For Signs
- 1 Secrets Of Money-Making Garage/Yard Sales
- 1 Inventory Sheet
- 4 Mini - Signs For Bulletin Boards

TO PLACE YOUR GARAGE or YARD SALE AD
Call - 1-800-564-8911

www.localsource.com

Internet Directory

Agape Family Worship Center.....<http://www.agapecenter.org>

American Savings Bank.....<http://www.americansavings.org>

Big Planet 1 Phone.....<http://dnp.bigplanet.com/membership>

Bloomfield Chamber of Commerce.....<http://www.communite.com/boc>

Broad National Bank.....<http://www.broad-national.com>

Crossroads Christian Fellowship.....<http://www.ccdou.org>

Eye Care Center of NJ.....<http://www.eyecarenj.com>

First Night of Maplewood/So. Orange.....<http://www.communitynj.com/firstnight-soma>

Forest Hill Properties Apartments.....<http://www.springstreet.com/prop3/269126>

Grand Sanitation.....<http://www.grandsanitation.com>

Holy Cross Church.....<http://www.holycrossnj.com>

Hospital Center at Orange.....<http://www.cah/healthcare.org>

LaSalle Travel Service.....<http://www.lasalletravel.com>

Mountainside Hospital.....<http://www.mountainsidehospital.com>

NJ Avenue.....<http://www.njavenue.com>

Nutley Pet Center.....<http://www.nutley.pet.com>

Rails Institute.....<http://www.rails-institute.com>

South Mountain Pgs.....<http://www.pgsouthmountain.com>

South Orange Chiropractic.....<http://www.southorangechiro.com>

Sovereign Bank.....<http://www.sovereignbank.com>

Summit Area Jaycees.....<http://www.summitjaycees.com>

Summit Volunteer Fire Aid Squad.....<http://www.summitfire.org>

Synergy Federal Savings Bank.....<http://www.synrgy.com>

Trinitas Hospital.....<http://www.trinitashospital.com>

Turning Point.....<http://www.turningpointnj.com>

Union Catholic National Bank.....<http://www.unioncatholic.com>

Union Catholic High School.....<http://www.unioncatholic.org>

United Universalist Church.....<http://www.universalist.com/~unichd>

United Way of Bloomfield.....<http://www.unitedway.org>

White Realty Co.....<http://www.whiterealty.com>

To be listed call
908-686-7700 X312

AUTOMOTIVE

Infiniti's new 2002 Q45 is a car loaded for luxury

By Mark Maynard
Copley News Service

Infiniti is out to reclaim its lost grill of "performance luxury" with a high-horsepower and high-style redesign of the Q45.

As the third generation of this big sedan, it is more than a car to the company.

"The Q is our catalyst for change," says general manager Mark McNabb. "This is our view of where Infiniti is going from here."

And with a 340-hp V-8, the Q is going there fast.

Infiniti enhanced the Q45 to stand as an equal competitor in size and prestige with the Lexus LS 430, Mercedes E430, Jaguar XJ8 and BMW 540 and 740 sedans. Each of these cars has its specialties, but the Q45 stands out for its artful interior and righteous acceleration with enough techy tidbits to keep it contemporary for a few years.

This is the third generation of Infiniti's largest sedan and it is about an inch wider, rides on a longer wheelbase but has the same 16.6-foot length. It's also a little smoother in the wind with a more aerodynamic shape. Each of these dimensions contributes to a better ride or quieter cabin.

Along with the ride, the redesign gathered 100 new patents and added such features as:

- Titanium valves in the 340-horsepower aluminum V-8, power-reclining back seats;

- An adaptive suspension for free-way comfort or enthusiastic twisty-road driving;

- Voice-recognition command center for audio settings, air conditioning or heat and the optional DVD-based navigation system;

- An optional rear bumper-mounted camera that puts the big picture on a 7-inch video screen, shared with the navigation system.

- Coming later this year — or next — will be options for run-flat tires and adaptive cruise control, which uses laser sensors to maintain a set distance between the Q and a vehicle in front of the car.

While the rear camera is unique, most of these features are available and expected on the competing luxury marques. It's the Infiniti package that is different. Even its technical sophistication is fairly intuitive to operate, though it doubts my mother would fuss with the navigation or rear camera gadgetry.

It's the styling that will connect for most people.

Facing the new Q head-on, the first

thing to grab attention are the Gatling gun headlights. The seven segment lenses fire high-intensity beams that have a broad sweep but divided paths that are designed not to shine into other drivers' eyes. The angle of the blue lighters of the high-intensity Xenon bulbs is adjustable depending on your need for city or country illumination. It is so effective, Infiniti says, that fog lights are unnecessary.

The exterior styling was supposed to represent an animal in motion — a graceful, distinctive and powerful animal. To get that posture, the grille is lower than the headlamps — like the head of a predatory big cat. From the side, the styling has clean European lines that are almost Audi-like.

The interior is a mix of Scandia, Italy and industrial-steel. The cabin is open and light, which contributes to the spacious feeling. There are tasteful, brushed-aluminum trim accents, bird's-eye maple and that classy, round Infiniti clock. Even the air vents close flat for a lowered accent right out of a design-college sketchbook.

Interior dimensions will satisfy some members of the big-and-tall club. There are 44 inches of front leg room, 58.2 inches for shoulders and 38.6 inches of head room, which is somewhat diminished by the standard-feature sunroof. The driver's views are open and there's no glare or reflection from the front glass.

There aren't many cars in which I'm a willing passenger, but the Q is a theater with all good seats and an 8-speaker, 300-watt Bose audio system with 6-disc CD changer. The leather seats are lushly supportive and 10-way power adjustable for the driver and 8-way power adjustable for the passenger.

The well-arranged instrument panel is accessible to the front passenger — and an involving pastime. Check the fuel mileage, page through the directory to change air flow direction or temperature. The driver has control through steering wheel controls, but it would be useful to have an alternate button for the passenger to play with, er, adjust the voice-activated features.

See INTERIOR, Page B14

2002 Infiniti Q45

Body style: Midsize 5-passenger sedan
Drive system: Rear-wheel drive
Engine: All-aluminum 4.5-liter DOHC 32-valve V-8
Horsepower: 340 at 6,400 rpm
Torque: 333 at 4,000 rpm
Transmission: 5-speed automatic with a manual shift mode

Acceleration: 0-60 mph, 5.9 seconds
EPA estimated fuel mileage: 17 mpg city, 25 highway

Fuel tank: 21.4 gallons; premium unleaded recommended

Features

Standard: Remote locking; power sliding glass sunroof with one-touch auto-open/close and rear tilt; leather-trimmed seats; 8-speaker, 300-watt Bose audio with AM-FM-cassette and 6-disc CD changer; 10-way driver's and 8-way front passenger's seat with memory; power tilt and telescopic steering column with memory; dual-zone automatic temperature control; rear window defroster with timer; power outside mirrors with anti-glare coating, heated with timer and automatic day/night mirrors; dual front and rear cup holders; HomeLink garage and gate opener.

Safety: Front air bags with dual-stage inflators; side-impact air bags; side curtain air bag; active front seat head restraints; 3-point belts with height adjustment; front belt pretensioners and force limiters; Electronic Brake Distribution, LATCH rigid bar child seat anchorage system; Infiniti Vehicle Immobilizer System.

Dimensions
Wheelbase: 113 inches
Length: 199.6 inches

Front head/leg/shoulder room: 38.6/44/58.2 inches
Rear head/leg/shoulder room: 38.1/37.3/57.2 inches
Curb weight: 3,801 pounds
Trunk capacity: 13.7 cubic feet

Chassis
Suspension: 4-wheel independent, front, struts-with stabilizer bar and strut tower bar; rear multilink with stabilizer bar and coil springs.

Steering: Vehicle-speed-sensitive, power-assisted rack-and-pinion.

Brakes: 4-wheel vented discs with 4-wheel, 4-sensor ABS (11.4-inch discs front, 11.5-inch rear).

Tires and wheels: P225/55R 17-inch V-rated all-season Michelin MXV4 on alloy wheels; temporary spare (full-size is optional).

Pricing

Base: \$51,045, including \$545 destination fee.

Options

- Premium Package, \$8,000: rearview mirror, front seatback grip, power reclining rear seat, rear AC controls, rear B-pillar vents, Navigation System; Sunshade Package, heated front and rear seats, sport suspension, 18-inch V-rated tires and 8-spoke wheels with "Champagne" finish.

- Sport Package, \$1,500: sport suspension, 18-inch V-rated tires and 8-spoke wheels with "Champagne" finish, blue-tone headlight trim, blue-tone back-up light bulbs, graphite-tone wood trim.

- Sunshade Package, \$500: power rear window sunshade with rear control switch, manual rear door window sunshades.

- Navigation Package, \$2,100: 7.0-inch LCD screen and Birdview 3-D 3D navigation system and trunk-mounted 6-disc CD changer.

- Full-size spare tire with alloy wheel, \$180.
- Heated driver's and front passenger's seats, \$450.
- Splash guards, \$120.

Pluses: Grace, style and speed with user-friendly controls.

Minuses: Suspension that wants to get up and go instead of hunkering down to hug the pavement.



The 2002 Q45 is a showcase of Infiniti art and science. The redesigned sedan packs the prestige of a 340-horsepower V-8 and futurama electronics.

KEEP AMERICA ROLLING!

EXTENDED!! HURRY IN EARLY!

0% APR FINANCING AVAILABLE ON ALL NEW 2001 & 2002 SATURNS

AS LOW AS

FINANCE SAVINGS OF...
\$2626
IN FINANCE PAYMENTS!

Based on financing \$16,999 at 7.9% APR for 36 months vs 2.9% APR for 36 months on a 2002 L200



The Brand New 2002 Saturn SL-1

\$199

4 dr, 4 cyl, auto trans, power steering, power brakes, AIR, AM/FM stereo CD, r/del, dual air bags, all season tires, MSRP \$14,290, VIN #2Z110496. \$199 1st month payment & \$796 customer cash = \$995 due at lease signing. Total Payments \$7761. Total Cost \$8557. Purchase option at lease end \$7687.90.

Lease Per Mo. 39 Mos.*

(Tax, title, license and registration are extra)

38 MPG HIGHWAY



SATURN OF UNION
2675 ROUTE 22 WEST, UNION 1-908-686-2810

SATURN OF GREEN BROOK
270 ROUTE 22 WEST, GREEN BROOK 1-732-752-8383

A DIFFERENT KIND OF COMPANY. A DIFFERENT KIND OF CAR.

*Prices include all costs to be paid by consumer except tax, reg. & taxes. Not valid for 72 hrs. of publication. Lease and financing programs must be approved by primary lending source. Lessee responsible for excess wear and tear. *30 mo closed end lease with 12¢/mi. per year/20¢/mile. 110¢/mi. to 36 mos. on all new 2002 models & up to 60¢/mi. on all new 2001 models to spin buyers - call for details.

KEEP AMERICA ROLLING!

0% FINANCING IS EXTENDED!!

OVER 300 VEHICLES IN STOCK!

Brand New 2002 Chevrolet
VALANCHE
MIDGATE 4X4

3 cyl, auto trans w/OD, perf struts/windlocks/susp, AIR, AM/FM stereo cassette w/CD, air, cruise, 17" alloy wheels, low back movie, 16 mos. used leveling shocks, locking diff, steel wheels, STK #A5472, VIN #G3170081 MSRP \$24,865. 36 mo closed end lease w/12,000 mi/yr. 12¢/mile. \$1041 Cust. Cash & \$455 1st mo pymt = \$1499 due at signing. TI pymts \$16,489. TI cost \$17,529. Purch. opt. at lease end \$20,971.

\$458 Lease Per Mo. 36 Mos. **\$30,997** Buy For

Brand New 2002 Chevrolet
PRIZM
SEDAN

1.8L DOHC 4 cyl, 3 spd auto trans, power windows, AIR, AM/FM stereo CD, dual block wheels, STK #A2096, VIN #2Z09961, MSRP \$11,999. 36 mo closed end lease w/12,000 mi/yr. 12¢/mile. \$1041 Cust. Cash & \$455 1st mo pymt = \$1499 due at signing. TI pymts \$18,564. TI cost \$19,723. Purch. opt. at lease end \$24,924. Lease price incl. \$1540 GM lease rebate. Buy price incl. \$2000 GM retail rebate.

\$199 Lease Per Mo. 36 Mos. **\$13,246** Buy For

Brand New 2002 Chevrolet
Impala
SEDAN

4 dr, 3.0 V6, auto trans w/OD, perf struts/windlocks/susp, AIR, AM/FM stereo cassette, air, tilt, remote trunk, interior w/lock, lighting, parking lock detent, remote, 60/40 cloth seat, cup holder, elec mirrors, day lights, STK #A5256, VIN #2315074, MSRP \$20,570. 36 mo closed end lease w/12,000 mi/yr. 20¢ thereafter. \$1522 Cust. Cash & \$477 1st mo pymt = \$1899 due at signing. TI pymts \$17,172. TI cost \$18,694. Purch. opt. at lease end \$20,564.

\$18,373 Buy For

Brand New 2002 Chevrolet
SUBURBAN
4X2 1500

V8, 4 spd auto trans, perf struts/windlocks/susp, AIR, AM/FM stereo cassette, cruise, r/del, low back movie, level assist, lock diff, low tires, 16" alloy, STK #5445, VIN #23110804, MSRP \$38,723. 36 mo closed end lease w/12,000 mi/yr. 20¢ thereafter. \$1522 Cust. Cash & \$477 1st mo pymt = \$1899 due at signing. TI pymts \$17,172. TI cost \$18,694. Purch. opt. at lease end \$20,564.

\$33,155 Buy For

Now Shop Us On The Web www.multichevrolet.com 24 Hours A Day!

multi **SPECIAL SAVINGS FOR AAA MEMBERS & COLLEGE GRADS**

2675 ROUTE 22 WEST • UNION • 908-686-2800

Prices incl. all costs to be paid by the consumer except tax, reg. & taxes. Finance valid from 72 hrs. of publication. GM & Lease programs subject to change without notice. All payments based on primary lender approval. *up to 60 mos. on select models. See dealer for details. Credits may impact terms, down payment or monthly payment. See dealer for complete details. Lessee responsible for maintenance, repair & excess wear.

Interior features shine

(Continued from Page B13)
The voice-recognition system takes some practice to master. Speaking in well-modulated and deliberate tones, the computerization responds well enough, but for the non-orators in the driver seat the result can be frustrating. My commands frequently ended in "you stupid computer," to which it had no snappy comeback. But give it time, every iteration of this voice-recognition science from every manufacturer gets more clever and easier to use. Eventually, these systems will become a real driver aid and not just entertainment.

For executive-class perks, the Premium Package — \$8,000 — includes power rear seats with adjustable backrest angle, an oversize center console with audio and climate controls and power rear sunshade with manual rear door window sunshades.

Standard safety features include dual front air bags with dual-stage inflators that sense collision levels and react accordingly; front side impact air bags and front seat active head restraints, which protect against excessive backward head movement. And new for the Q are side curtain air bags that inflate from the roof, protecting the muggins of front and rear passengers.

As attractive as the interior is, the engine can upstage the show. The 4.5-liter V-8 has 74 more horsepower than last year's 4.1-liter and it can throw your head back with "Ohhh, baby," acceleration. It's engineered with sophisticated stuff like titanium valves, modular cylinder head, light-weight pistons, super-quiet single-stage cam drive chain and a hydraulically driven cooling fan — all intended to boost performance while canceling noise.

The 5-speed automatic transmission has a manual shift mode, but the shift points on the early production cars I drove were a little sluggish when asking for a quick double downshift. Fine-tuning of the shift maps was supposed to go through

more stages of refinement for the cars now in dealerships. If they are going to give us more horsepower, then give us the correct whipl to go with it.

This may have been part of the issue with the company's claim of 0-60 mph in 5.9 seconds. It came into notice when some testing agencies couldn't duplicate that speed. Infiniti pointed to an electronic throttle that may be the culprit, but stands by its tests. Even if the result were a full second slower — which it probably isn't — the engineering would still be gratifying to most users. Even so, fuel mileage is an acceptable 17 mpg around town and 25 on the highway, using premium unleaded.

On the road, the well-soundproofed cabin and Michelin MXV4 tires do their jobs to maintain a luxury-class environment and cruising comfort. The suspension is sufficiently taut for good control but the car seems to ride high at speed, rather than tuck in and lug the pavement, as do the comparable Mercedes or BMW. Consequently, there's more body lean than I expected.

Like its competitors, the Q comes with Electronic Brake Distribution, which controls front and rear brake distribution. Brake Assist, which reduces pedal effort in hard or panic braking situations, and Vehicle Dynamic Control, which controls brake pressure and engine power in understeer, oversteer or slippery road situations.

Fortunately for the techno-tinted, the starting price of just less than \$60,000 comes without the high-voltage futurama exhibition. Or, check the box for the \$8,000 premium package and you can own the fullest expression of Infiniti's art and science.

Mark Maynard is driving in cyberspace at mark.maynard@uniontrib.com.

AUTO FOR SALE

BUICK CENTURY 1992, 4 door, 85K miles, AC, power local doors, very good condition, asking \$3900, or best offer. 973-812-8476.

CHEVY CAVALIER 1989 2 door, good running condition. Low mileage, AC, cruise, \$750, or best offer. 973-243-7294.

CHRYSLER SEBRING, 1995, 86,000 miles. Very Good Condition. Asking \$6,500. Call 908-910-8870, after 8pm.

DODGE AVENGER, 1995, one owner, 52,000 miles, 5 speed, am/fm, cd dual air bags, full power, garage kept. \$5,900. 973-325-9247.

DODGE CARAVAN LE, 1992, V-6, air conditioning, automatic, am/fm cassette, 7 persons, power para, 160K miles, great condition. Bluebook \$3,100, best offer. 973-762-8920.

DODGE CARAVAN Mini Van, 1988, 120,000 miles, very good condition. Asking \$7,000. Call 908-910-8870, after 8pm.

DODGE RAM 2500, 1994, 4x4, all power, mint condition. 105K miles, great for plowing or landscaping \$9,000/ best offer. 973-736-2562.

FORD BRONCO Eddie Bauer 1988, Excellent condition, good body, 75K miles, power package, hands free phone, \$3200/ best offer. 908-353-4658.

FORD ESCORT LX Wagon, 1994, Excellent condition, 82K miles, original owner, \$5000. Call 908-964-8859 or 908-310-4111.

FORD TAURUS, 1995, green, 56,000 miles, 4 door, air conditioning, power windows, \$6,500 or best offer. 908-984-8922.

FORD TAURUS SE 1998, 80K miles/ good condition. Hunter Green, new brakes, blue book \$6,395. Asking \$5,020. Call 908-206-1072.

HONDA ACCORD EX-1992, 5 speed, 95K miles, am-fm radio cassette, air, sunroof, 1 owner \$8775. Call 973-699-0878.

JAGUAR XJ6 - 1996, Excellent condition. All power, air conditioning, 139,000 miles. \$3,000. 973-378-1072.

JEEP CHEROKEE Sport 1997, 6 cylinders, 4 wheel drive, power locks, power windows. Dark blue, gray leather, Kenwood am/fm CD with 2 Kenwood 12 inch subwoofers, 54K miles, freshly painted. Brand new, 4 tires and battery, excellent condition. \$10,750. 973-668-0980 or 973-992-0239 evenings.

JEEP GRANDE Cherokee, 1997, 89K, fully loaded, sleek with leather, excellent condition with warranty. Moving, must sell! \$12,500 or best offer. Call 908-244-4333.

MERCURY TOPAZ 1991, Excellent condition, 50,000 miles, all power, air conditioning, 4 cylinder, 4 door. \$2,500. 973-378-1072.

VW JETTA, 1999, 5 speed, air bags, air CD many extras \$8,800. 908-996-0740.

AUTO WANTED

ABLE PAYS TOP \$\$\$ IN CASH Cars, Trucks and Vans, also Wrecks and Junkies running or not. Free pick up 7 Days 1-800-353-9328 908-688-2929

Editorial deadlines

Following are deadlines for news, Church, club and social - Thursday noon
Entertainment - Friday noon
Sports - Monday noon
Letters to the Editor - Monday 9 a.m.
General - Monday 5 p.m.

AUTOMOTIVE

AUTO FOR SALE

ACURA LEGEND coupe LS 1990, excellent condition, 125K miles, meticulously maintained, a beauty, \$5000. 973-714-2094.

BUICK LeSABRE 1993 Gray, 1 owner well kept. All automatic, 88,000K. Maplewood 973-762-6697.

ISUZU

Go farther.

Brand New 2002 ISUZU Axiom 4X4

- 3.5 Liter 230 HP V6 Engine
- Power ABS Brakes
- Multi-Information Display
- Trip Computer
- 6 Disc CD Changer
- 17" Alloy Wheels
- Security System
- Keyless Entry



Plus: 4 Door, Automatic Transmission, Power Windows/Locks, Air, Dual Air Bags, Trip Computer, 6 Disc CD Changer, 17" Alloy Wheels, 6 Disc CD Changer, 17" Alloy Wheels, Security System, Keyless Entry, 6 Disc CD Changer, 17" Alloy Wheels, Security System, Keyless Entry.

Buy **\$25,999** Financing At **0% APR**

SAVE \$3011 OFF MSRP Plus Financing At 0% APR

Brand New 2001 ISUZU RODEO 4X4

4 Door, Automatic Transmission, Aluminum Wheels, 6 Disc CD Changer, 17" Alloy Wheels, 6 Disc CD Changer, 17" Alloy Wheels, Security System, Keyless Entry, 6 Disc CD Changer, 17" Alloy Wheels, Security System, Keyless Entry.

Buy **\$23,999** SAVE \$5910 OFF MSRP Financing Available!

On All Isuzus Enjoy A Warranty Program Second To None!

- 10 YEARS 120,000 MILES POWERTRAIN LIMITED WARRANTY
- 6 YEARS 100,000 MILES CORROSION PROTECTION
- 5 YEARS 60,000 MILES BUBBLE BUMPER TO BUMPER WARRANTY PLUS 24 HOUR ROADSIDE ASSISTANCE!

HILLSIDE 22 FAST AUTOMALL

2 MINUTES FROM NJ TURNPIKE & NEWARK AIRPORT

call 973-923-4100 hillsideautomall.com

Prices Include All Costs To Be Paid By Consumer Except For Lic., Reg., & Taxes. All Cars Sold Cosmetically "As Is". This Ad Supersedes All Other Previous Ads. All Advertised Specials In Lieu Of Incentive. Subject To Credit Approval Through Primary Lender. Rodeo Financing For 60 Mos. In Lieu Of Prebid. Not Responsible For Typographical Errors. See Dealer For Details.

HOURS: MON-THURS 9:00PM, FRI-9:00PM SAT 9:00PM

\$0 DOWN!

BRAND NEW 2002 VOLVO

\$60 2.4 ASR \$409

PER MO. 48 MOS.

VIN #2209378, 5 cyl, auto, 2.4 liter, a/c, p/e/b/driver seat, traction control, cabs, dual air bags, cold weather package, leather interior, automatic sun roof, heated seats, remote locking, MBRP-\$31,500

HUNDREDS OF VEHICLES AVAILABLE!

- Aggressive Lease Programs
- Knowledgeable, Courteous Sales & Service Staff
- Roadside Assistance Program
- Free Service Loaner Cars
- Free Car Wash With Every Service

WWW.MONTCLAIRAUTO.COM

Montclair Volvo

654 Bloomfield Ave. at Valley Road, Montclair 973-746-4500

DCH Auto Group "Your satisfaction is our mission"

www.DCHAUTONJ.com

SHOWROOM HOURS: Mon-Fri 9am-9pm, Sat 10am-5pm
PARTS & SERVICE: Mon-Fri 8am-5:30pm, Sat 9am-5pm

"An Outstanding Sales Experience"

Losses include all costs to be paid by a consumer except for taxes, title & reg. 48 month closed-end lease includes 12,000 mi/yr. @ .20 per mile thereafter. Only MV Fee & taxes due at lease signing. Total pymts/est/purch opt: \$19,632/\$19,632/16,065. Subject to primary lender approval. Lessee responsible for maint, excess wear & tear. Program subject to change without notice.