

Springfield Leader

The New Newspaper
To Serve
Springfield-Bellevue

VOL. 1 No. 10 Published Every Thursday by Suburban Pub. Corp. SPRINGFIELD, N. J. THURSDAY, AUGUST 22, 1963

Gaudineer School Addition Goes To Voters Oct. 10

Plan Conference On Meisel Field

Plans for a meeting of the Regional School Board and members of the Springfield Township...

Recreation Head Urges Decision On Meisel Field

The Tuesday meeting of the Union County Park Commission, although having established nothing definite, leaves a problem in the lap of the Springfield Recreation Department...

The immediate problem is a sort of "where do we go from here" jumble, said the recreation director. "With no decision being made as to the status of the Meisel ave. field, we must go on the assumption that the recreation department will not have access to the area for our football clinic or any other activities..."

shlp Committee with the Union County Park Commission were expected to be instituted yesterday, by Rudolph Krestan, general superintendent and secretary for the commission.

The meeting will be scheduled to discuss the details of a tentative agreement for improvements to Meisel Field, according to a spokesman for the commission.

At a Park Commission meeting Tuesday, the members agreed to meet with the interested parties. A letter from the Regional Board which asked a conference date to iron out details of the seeding, fertilizing and general maintenance of the field "through the years," prompted Tuesday's meeting.

Also asked in the letter was an agreement on scheduling improvements and renovation of the field house and a full discussion of matters of interest to all concerned.

Both the Regional Board and the Township Committee are interested in the future of the field. Meisel Field has been used for 28 years by Jonathan Dayton Regional High School as a football field and for physical education classes.

Mayor Arthur M. Falkein has also pointed up the township's interest in the field as it has been used by the recreation department for the annual football clinic and occasionally for a baseball game.

Rudolph Krestan, general superintendent and secretary of the Union County Park Commission, is arranging for a meeting of the commission with the Springfield Regional Board and the Township Committee, but even if these groups meet finally to agree on a proposal to improve the field which Jonathan Dayton has been using for their physical education classes and football practices, it is not likely a problem, Ruby explained.

The problem is space. The recreation department needs another five football fields to conduct its fall football games. The Tuesday meeting of the Regional Board and the Township Committee is to discuss the details of a tentative agreement for improvements to Meisel Field, according to a spokesman for the commission.

Dr. Warren M. Davis, school superintendent for the Regional District, said that the field was originally built on a dump and lined with metal drums which have begun to rot, causing depressions in the area.

The field needs a new cover of fill and recodding, he said, and explained that the Regional Board had indicated \$7,500 in the budget for the project.

The Park Commission agreed to it. "The agreement for the Park Commission explained that the land-use study for Meisel Ave. Field, prepared for the commission by the United Association of Nucleolite, Mass., and presented to the Regional Board last October, recommended that the high school secure its own football field in the town in front of the high school for that purpose.

The Parks has been reported by saying that it is impossible to secure another field in Dayton as the land would have to be extended by bonded indebtedness.

The director said that Grantmeier field, by simple measurement should be able to be split into three playing fields, but lines have been drawn and fields mapped out for boys and girls soccer teams, thus creating the problem of how to coordinate the activities and space.

State Starts Condemnation Suit For Five Homes On Skylark Road

The State Highway Department has instituted a suit in Superior Court filed in the Union County Clerk's office for the appointment of three condemnation commissioners to fix the value of five homes along the right of way of Rt. 78 in Springfield.

The houses on Skylark rd. four of which are completed and one partially built, are reported as being valued at \$200,000 by its owners.

Although the state's plan at the moment does not include Skylark rd. the right of way for Rt. 78 will take the five homes. The property represents approximately 800 feet of frontage on Skylark rd.

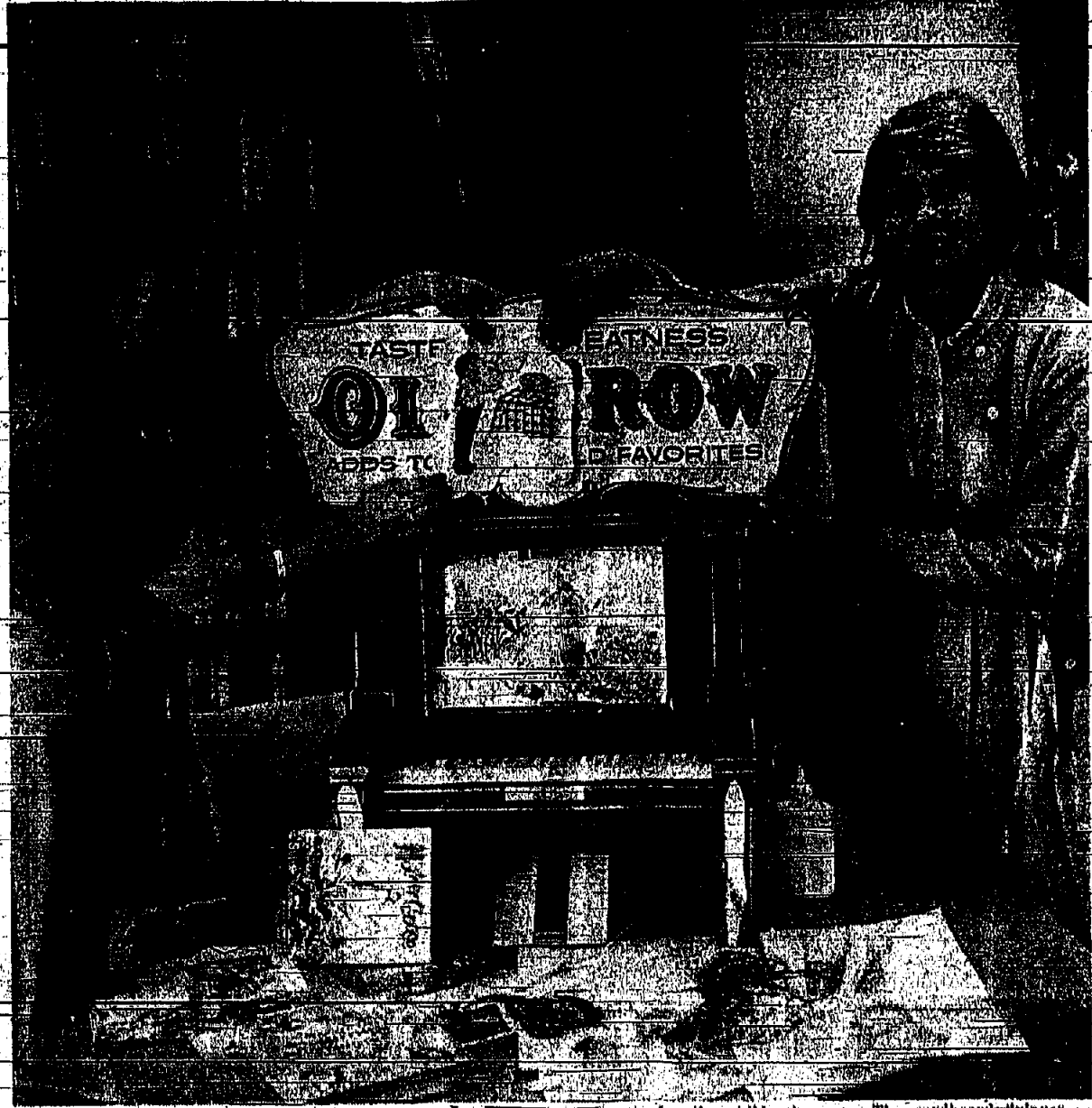
The spokesman for the Park Commission said that the letter forwarded to them last week by the Regional Board from the Regional Board was forward to the township in October.

The said the meeting was designed in an attempt to be fair to all parties.

Others listed as defendants are the Ninth Federal Savings and Loan Association of New York City, holder of a mortgage on the property, and the Bellwood Co., which sold the land.

An attempt has been made this year in the "Around the World with Books" program. Mrs. Keller said to place emphasis on books of literary merit and to stress more interest in travel, science and biography.

Books in these classifications have been doubled in circulation and the anticipated good results have been produced, Mrs. Keller said.



SPIRITED DISPLAY gets some creative editing from Springfield library workers. Allen Horowitz, left, and Lois Mahlenfeld. The girls are demonstrating their skill at turning scotch tape (like the liquor store display) into charming scenes for the children's room. The cardboard "player piano" will be mounted on the library's phonograph when the girls are through pasting Mother Goose characters over "Old Crow." The revolving music sheet will also depict fairy tale favorites. (Photo by Barbara Mitchell)

Committee To Sift Proposed Period Of 'Meditation'

The School Government Committee of the Springfield Board of Education will investigate the possibility of having a moment of meditation in between the play period and the beginning of "serious school work."

The committee will also consider the possibility of having a moment of meditation in between the play period and the beginning of "serious school work."

Rev. Messerschmidt To Remain; Will Not Accept Call From Albany

The departing pastor of the new Holy Cross Lutheran Church will not accept a call from Albany, N.Y.

The Rev. Messerschmidt, pastor of the church at his home in Springfield, N.J., announced this week that he will not accept a call from Albany, N.Y.

Sandmeier School Traffic Problem Solution Pending

The special committee of the Board of Education investigating the traffic problem at Sandmeier School, is still waiting for word from the Township Committee before proceeding to revamp the driveway at the school.

A meeting between school board members Joseph Bender and Mrs. Senya Barsky and Committee member Robert Horowitz was held to discuss the traffic problem at Sandmeier School.



REV. MESSERSCHMIDT

which our new facilities will present for the first time.

Thieves Snatch \$50

Ava Turner, reported to police Monday, her purse containing \$50 was stolen from her car on the highway.

The thief was seen by Mrs. Turner and she immediately reported the theft to the police.

Bus Route Schedule Is Announced For Springfield Exchange Students

This routes have been established for Springfield residents who have been designated as exchange students to either the Arthur L. Johnson Regional High School in Clark or the Governor Livingston Regional High School in Berkeley Heights.

The 1963-64 schedule which was announced by the Regional Board of Education, pointed out that Springfield youngsters will be picked up and transported to a central point in Mountaintop where they will switch buses to their respective schools.

The bus run begins at 7:35 a.m. at Milltown rd. and So. Springfield ave. runs along Milltown rd. to Meisel Ave., and along Meisel to Webera ave. It travels by way of Webera, Trent and Caldwell over to Morris and over Morris to Profit and Breyel aves. to Tonker ave. It proceeds along Tonker ave. to Mountain ave. and over Mountain to Charles A. Moughlin. It will then stop for the pupils in New Providence and Mountainview. It then returns to a central point in Mountaintop.

Youngsters Show Wide Choice In Summer Books

An infinite variety of books has been selected by youngsters this summer from the Springfield Public Library, according to Mrs. Helen Keller, children's librarian.

In the science and nature field books about forests, the sea, animals, insects, birds and flowers have been borrowed in great numbers. One's which left the library in quantity were in the science field. They included books on jets, rockets, scientific experiments, space travel, and weapons for defense. Even the second graders, Mrs. Keller noted, were interested in books about the army, space men, rocks, minerals, machines and dinosaurs.

Youngsters from the fourth through seventh grades have left the library with a wide variety of selections. Mrs. Keller pointed out "They ranged from Daniel Boone, Anne-Catley, George Carver, Clara Barton and Eleanor Roosevelt to Mickey Mouse." Mrs. Keller said that there is no intention to underestimate the value of fiction stories in the reading of children. "A liking for them is not so 'far out' as some may think, she noted.

See Page 20

Ask Army	20
Comments Page	4
Crossword Puzzle	23
Leader Profile	
Sonya Dotsey	
Religious News	8
Sports News	18
State Senator Stambler	4
Tercentenary Tales	4

Youngsters from the fourth through seventh grades have left the library with a wide variety of selections. Mrs. Keller pointed out "They ranged from Daniel Boone, Anne-Catley, George Carver, Clara Barton and Eleanor Roosevelt to Mickey Mouse." Mrs. Keller said that there is no intention to underestimate the value of fiction stories in the reading of children. "A liking for them is not so 'far out' as some may think, she noted.

Charlotte Webb and Kenneth Graham's "Wind in the Willows" and Alice in Wonderland will have loan favor, Mrs. Keller emphasized.

Unlike their older sisters and brothers they have a more closely knit band of interest. They are all well acquainted with Curious George, Verlie the Turtle, Cowboy Sam, the Elephant Madeline, Whitey the Poop, Snail Jack, Don Plover and all the Syd Hoff characters, such as Julius, Sammy, the Seal, and Danny the Dinosaur.

Books in these classifications have been doubled in circulation and the anticipated good results have been produced, Mrs. Keller said.

NEED A JOB? Read the Help Wanted Section of the Classified Pages. You can probably find an employer who can use your services. If not, list your qualifications in an employment wanted ad. See ad 671-6000 and visit the Ad-Taker.

DISORDERLY PERSON
A disorderly person charge for illegal use of an automobile has been filed in Springfield against Bennett Shaw, 14, of 45 Colonial ter., Springfield, police reported.

Judge Dismisses Neglect Charge Against Clerk

Charges of neglect of duty against Springfield Township Clerk Mrs. Elanore Worthington were dismissed by Union County Judge Carroll W. Hopkins in Elizabeth last week. The charge was dismissed on motion of defense attorney William A. Ancier, Assistant Prosecutor.

Mrs. Worthington was indicted by the Grand Jury on Dec. 22, 1961, and accused of failing to certify two appointments to department workers to the State Public Employees Retirement System. Both men died and their survivors were denied benefits by the state system.

Ancier in asking for the dismissal argued that state law makes the "chief fiscal officer" responsible for certification in such cases. The attorney argued that Mrs. Worthington is not the chief fiscal officer for the township.

FRIDAY DEADLINE
All items other than spot news, submitted to this newspaper, should be in our office by Friday to insure publication in the next issue.

NEW RESIDENTS MUST SIGN UP AT SCHOOLS TODAY

Registration of all elementary school children who have moved into Springfield during the summer has been set from 8 a. m. to 12 noon today, according to Benjamin F. Nauwanger, school superintendent.

Registrars are to report at the following schools: St. Ann's Catholic, Holy Mount Catholic, Thomas L. Sandmeier, Edward V. Walton and Florence M. Gaudinier. The registration date has been set in advance of opening day of schools which begins Wednesday, Sept. 3, to enable the work of the schools to begin promptly and efficiently. Nauwanger said that all students will be required for registration on opening day.

Vacation School Closing Program

Closing program and parents' night of the Holy Cross Lutheran Church summer vacation Bible school will be held at 7:30 p. m. tomorrow in the church fellowship hall, Pastor Lester Messerschmidt, director of the school announced.

Songs, recitations, flannelgraph and dramatic presentations will be featured on the program. Correlated handicraft and all objects made by the children will also be on display. Refreshments will be served by the Ladies' Guild of the church.

Staff members of the summer educational agency included Mrs. Fred Hintzmann, Mrs. Lester Messerschmidt, Mrs. Henry Freudenberger, Mrs. Erwin Schwarts, Mrs. Ivan Eckardt, Mrs. Clifford Raybould, Mrs. Charles Willner and Pastor Messerschmidt.

Teachers' assistants and helpers were Mrs. Doris Oels, Miss Lois Zachau, Miss Barbara Crum, Henry Freudenberger, Jr., Cheryl Gagnon, Paul Bernefeld, and Vernon Rouden. In charge of refreshments for the daily snack times were Mrs. Erwin Crump and Mrs. Herman Zachau.

Over 70 youngsters from age 18 to 3 through the seventh grade were enrolled in the two-week educational program which had as its theme, "Walking with God."

4 Gals And A Lad Use Fun For Fund

Grab bags, games of skill and even a "fortune teller" all for fun and for the benefit of the Muscular Dystrophy Fund, were part of a carnival presented by Andrea Pankin and Joan Givah recently at the Givah home, 20 Archdale ave., Springfield. The girls recruited four other girls to help in the project along with Jayson Pankin, 10-year-old brother of Andrea.

Result of the fund-raiser carnival was \$27 to be donated to the fund to assist Muscular Dystrophy patients.

Chairing the evening was a "game" called "The Fun of Donating." Shoppers' Supermarkets, Rt. 22 Union, and prizes were donated by Roland Briggs, Mountain ave., Springfield. Other girls participating in the effort were Nancy Hager, Fran Ames, Bryna Stone and Gail Rosenberg.

Woman, 43, Injured In Two-Car Collision

A Morris Plains woman was injured in a two-car accident Saturday at South Springfield and Hilde, aves. in Burlington. Police reported.

Taken in Overlook Hospital, Summit, was Mrs. Bethel Pacey, 43, who was a passenger in a car driven by her husband, John, 43. Their car was in collision with one driven by Nicholas Dipace, 19, of 883 Fairfield ave., Kenilworth, according to police. Police said the Dipace car was traveling east on Hilde ave. while the Pacey car was traveling north of South Springfield ave. Both cars had to be towed from the scene, they said.

State Parking Facilities For Legion-Town

Buildings were at work this week leveling the land adjacent to the American Legion Hall and across to the Springfield Municipal Building for the creation of a new parking lot. The lot, 130 by 150, expected to be completed by the beginning of next week, will be used for the Legion and the township, according to a spokesman for the Engineering Department.

It was pointed out that the major portion of the land is owned by the Legion and it has been long agreed by both the Legion and the township committee that the lot should be used for the joint parking dual purpose.

According to the spokesman the lot will not be open to the public and will be exclusively for the use of the Legion and township officials' vehicles.

SOMEONE WANTS your old stove, refrigerator, washer and dry-cleaning Mail form on Classified Page at Phone 371-3000.

Bit by bit... every litter bit hurts! KEEP AMERICA BEAUTIFUL!

Brand New Factory Fresh '63 FORDS - BIGGEST SAVINGS DURING OUR

Year-End Clearance Sale

Falcons Galaxies Thunderbirds Trucks SCHMIDT - FORD Quality Dealings Since 1933 290-306 BROAD ST. SUMMIT CR 7-1665

RAU Quality Meats & Produce
763 Mountain Ave. Springfield Phone: DR 6-3505

FRESH, LEAN SPARE RIBS 59¢ lb.

DELIGHTFULLY AIR-CONDITIONED FOR YOUR CONVENIENCE EXTRA EXTRA EXTRA BIG MEAT SAVINGS

OUR FAMOUS RANCH STEAKS 99¢ lb.

SWIET'S PREMIUM BACON 1-lb. pkg. 59¢

FRESH CHICKEN LIVERS 69¢ lb.

THOUGHT FOR THE WEEK "When you point your index finger at someone else - your other fingers point at you!"

DREXEL Quality CLEANERS
Because customers have confidence in the high quality of our work, our business is constantly increasing.
• Every Garment Treated with Aia-Nu (Exclusive with us in Springfield)
• Free 1 Hour Service
• Free Plastic Bags
FREE PARKING 210 Mountain Ave. Springfield Superior Cleaning, Dyeing, Pressing, Laundering, Blueing, Repairing

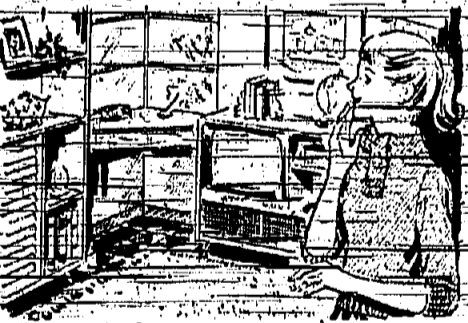


FROM THE ROOF TO THE BASEMENT

WHATEVER YOUR PLANS FOR HOME IMPROVEMENT - BE SURE TO INCLUDE CRESTMONT

Your plans to improve your home can begin so much sooner with the help of Crestmont Savings and Loan. Stop in today and see about that low-cost Home Improvement Loan that will start you on the way.

You will find our service is quick and confidential. Repayment will be arranged to fit easily into your budget.



CHECK ANY OF OUR THREE OFFICES.

Crestmont Savings AND LOAN ASSOCIATION

1040 CHANCELLOR AVE. Maplewood, N. J. (BUSCAN OFFICE) PO 1-4300

1886 SPRINGFIELD AVE. (Corner of Prospect St.) Maplewood, N. J. SO 3-4700

175 MORRIS AVE. Springfield, N. J. (SPRINGFIELD OFFICE) DR 6-5940

GALL Drexel 6-4300 For Expert Oil Burner Service



Schaible Oil Co. 192 Mountain Ave. SPRINGFIELD coal - FUEL OIL - coke Metered Deliveries Budget Plans Member of Springfield Chamber of Commerce

Lowest Prices in Town

SAV-ON DRUG STORES We Give S & H Stamps
20 ECHO PLAZA ROUTE 22 - SPRINGFIELD
Open Daily 9-10, Sat. 9-9 & Sun. 9-6
Quantity Rights Reserved ADD FEDERAL TAX WHERE APPLICABLE

83¢ VALUE, FAMILY SIZE CREST TOOTH PASTE 57¢
\$2.25 Value - AYER HAIR SPRAY 79¢
35¢ Value 25-ft. roll MIRRO ALUMINUM FOIL 19¢
REG. 39¢ BOX OF 100 ENVELOPES 29¢
HOME and OFFICE SIZE

500 Count 1000 pages BELL RINGERS FILLER PAPER 66¢
Barbie ASTRONAUT LUNCH KITS \$1.97
3-RING BINDER \$3.33
BRIGHT PLAID SCHOOL BAG \$1.77

1.75 VALUE, 10 TABLETS TONETTE CHILDREN'S PERMANENT \$1.39
\$1.00 VALUE Woodbury Lotion Shampoo 29¢
98¢ VALUE Acne Blemish Care 79¢
98¢ VALUE MICRIN ANTYSEPTIC 79¢
1.50 VALUE WOOLITE COLD WATER WASH \$1.79
76¢ VALUE 100 TABLETS Vitamin C 49¢
80¢ VALUE, REG. DR. MENTHOL AERO SHAVE 73¢
98¢ VALUE, ECONOMY SIZE BROMO-SELTZER 78¢
\$1.35 VALUE 10 TABLETS Noxzema Skin Cream 88¢
1.50 VALUE, 10 TABLETS CLAIOXIDE 17¢
\$1.69 VALUE - HOUSEHOLD Brush Assortment 88¢
BOWL, PASTRY, HAND, NAIL, BATH, VEG.
BABY PANTS 6 for \$1.00

Walnut Finish Student Desk \$8.88
SYLVANIA LIGHT BULBS 100w, 75w, 60w, 25c Value 233¢
EVER-POPULAR GOOSENECK STYLE STUDENTS' DESK LAMP \$1.77

Sure-fire Hardwood Charcoal Briquets 20 lbs. 99¢
Nashtone WALLETS 99¢
Ronaware Soft Plastic MIXED Bowl Set 78¢
ASSORTED COVER DESIGN PLAYING CARDS 2.88¢
Savarin Ice Cream 1/2 Gallon 49¢

Playground Season Ends With 'Splash Party'

A "Splash Party" held at the Springfield Municipal Pool for youngsters of the eight playgrounds, concluded the current season for the playgrounds here. Following the swimming period, the annual PBA Achievement Awards were presented to those named "outstanding," according to Sheila Donington, assistant recreation director.

Winners of this year's awards at the playgrounds they represent are: Gall Wilson and David Bakanowski, Woodside; Janice Hardgrove and Robert Ryder, Caldwell; Mavis Wade and Dale Lee, Hobshaw; Kathy Cull and Donald Eckman, Riverside; Robin Gelzer and Howard Sheehan, Regional; Arlene "Missy" Sheehan and Mike Choliner, Irwin; Thelma Johnson and Michael Kelly, Sandimer; and John Haskins and Timmy Haskins, Deatham.

The PBA Achievement Award is in the form of a victory trophy. It is awarded on the basis of merit and is presented to one boy and one girl on each of the playgrounds who has shown the highest traits of citizenship, participation, sportsmanship, attendance and helpfulness on the playground.

Trophies were presented this year by P. A. Robert Roessner, vice president of the PBA.

While Springfield did not win the Union County Playground championships held in Wainman Park last week, Mary Flanklin of Sandimer Playground captured a gold medal in the Girls' Horseshoe throwing event. Last year Mary took a gold medal in the Girls' Foul Shooting competition.

Many other boys and girls presented a good picture in competition. Donington said, with Douglas Giese of Riverside Playground taking a silver medal in the boys tether-ball event. Douglas has been Springfield champion for three years and in county competition has previously placed third and fourth.

Janice Hardgrove of Caldwell playground, the 1962 Union County Horseshoe Champion, took third place this season in the same event, and took home a bronze medal.

Another bronze medal winner was Mary Garner of Sandimer Playground. Mary participated in the jacks competition for girls. She has been Springfield champion for three consecutive years.

Patty Howarth of Irwin playground was also the winner of a bronze medal for her third place finish in girls' ring tennis. Patty who was playing the game for the first time this season, looks like champion material for future events, Donington said.



PLAYGROUND TROPHY WINNERS surround Springfield PBA's Office Robert Roessner, PBA vice president, who made the presentations Friday at the Community Swim Pool. Perched on the diving board are Robin Gelzer (top), David Bakanowski and Gall Wilson; Don Eckman (extreme left); standing at right are: Julie Haberberg (extreme

right); Mike Choliner, Thelma Johnson, and Timmy Wilson. Standing at left are Robert Ryder, Kathy Cull and Howard Sheehan (extreme left). In the foreground are: Arlene "Missy" Sheehan (with the pigtail), Michael Davis, Janice Hardgrove, Mavis Wade and Scott Gordon. Trophies were given by the Police Benevolent Association.

Although medals were not awarded for fourth place, a joint trophy was awarded to the fourth place finishers among the Springfield competitors were: Gene Zorn, boys' paddle tennis; and Larry Budish, boys' chess.

Sandimer Picnic

Activities at Sandimer playground ended last week with a luncheon and picnic for all the boys and girls who attended the playground throughout the season. Forty-five children brought their lunches to the playground. They were given cake and soda for dessert. The cakes were baked by Mrs. Mary Garner, Miss Anna Bullock and Mrs. S. Neuman.

During the day the children participated in an art unit. The girls were supplied and led by Mrs. Neuman, Mrs. M. McCall, Mrs. Davis and Mrs. Smith. The children enjoyed painting as they worked in the Dell and Landon building.

Participating were: Anna and Antoinette Lopez, Lynn and Lisa Blum, Elaine and Ruby Williams.

Story time, always popular on the playground, was enjoyed last week by the following children: Roy and Lori Nelson, Kevin Stewart, Jana Smith, Renee Nevius, Gregory McClain, Denis and Willie Wilbur, Beverly Wilson, Danette Runnells, and Sheridan Thomas.

The story teller for this story time was Andrea Jones. Andrea has proven to be quite a help with the smaller children on the playground and is an excellent storyteller. On the day of the picnic an exciting game of kickball was played by tennis champion of George Franklin, Milton Jones, Jerry O'Neil, David Mitchell, Evelyn McCall, Bruce Smith, and Vincent Davis.

The final event of the picnic was a basketball shooting contest. Linda Clark was the winner of this contest, over Michael Franklin. She placed second. Other winners were: Willie Hill, John McCall, Dexter Smith, George Garner, and Edward Hill.

Rights Marchers 'Fiorello' Auditions Will Be Joined At Temple Beth Ahm

The dramatic group of Temple Beth Ahm, Springfield, announced that it is accepting auditions and casting for the musical comedy show "Fiorello" to be presented in November at the Temple's auditorium.

Any person who has dancing, singing, acting, scenic designing, painting or carpentry talents are urged to attend initial meetings at the Temple Sunday, Sept. 8 at 8 p.m., and Tuesday, Sept. 10, at 8 p.m.

"Fiorello" was one of Broadway's greatest hits and the show has enjoyed tremendous popularity on the stage as having been one of those with the longest runs.

Everyone who remembers the dramatic group's successful production of "Lovers and Dolls" and "The Merry Widow" will be happy to learn of this new undertaking, notes the Temple.

Some 137 major organizations are sponsoring the march including leading church groups such as the National Council of Churches of Christ and the National Catholic Conference for Interracial Justice.

Representatives of each of the major faiths will address the rally to be held at the Lincoln Memorial. Speakers will be the Rev. Dr. Eugene Carson Blake, chief executive officer of the Presbyterian Church and Rabbi Joachim Prinz of Temple B'nai Abraham, Newark.

Rabbi Dresner will fly in from his vacation in Mexico to participate in the effort.

Those who wish to participate and have made no arrangements may contact: marzen.

PAMPER YOUR PET WITH COMPLETE SELECTION OF AQUARIUMS

• Toys • Cages • Beds

Shorthand & Typing
INSTRUCTION

Leitchwood SECRETARIAL SCHOOL
2668 MORRIS AVE., UNION N.J. MU 6-6000

Fail Term
Starts Sept. 9th
ENROLL NOW

GUARANTEED SINGING CANARIES • PARAKEETS

Large Selection of Tropical Fish Plants & Accessories - Live & Frozen Foods - Bring your pet problems to us

FIN IN FEATHER

239 MORRIS AVE. DR 6-5644
SPRINGFIELD, N.J.
Hours: Mon., Tues., Thurs. & Fri. 10 A.M. to 5 P.M.
Wed. & Sat., 10 A.M. to 6 P.M.

FOR AN ANSWER

TO SOUND INVESTMENT PLANNING

CALL **DONAN & Co., Inc.**

802 North Ave. Springfield DR 8-2000

IRVING EVENING

Leader John Swedberg

The Irving Evening session will continue through the month of Aug. Edward Ruby, recreation director, announced this week.

Irving will be open from 6 until 8 p.m. each weekday and from 8 a.m. until 5 p.m. on Saturdays. This is the only playground that is now available for

HEADS UP WHEN YOU BACK UP!

PROCEED CAUTIOUSLY. LOOK LEFT AND RIGHT AND BEHIND. ALWAYS BE SURE YOUR HWY IS CLEAR!

'Meditation'

(Continued from Page 1)

made the suggestion for the period of "meditation."

Mrs. Dorsey then asked if the meditative moment was designed to replace the school prayer. Swedberg said it was for the use of the student as each student saw fit.

Haydu said he thought that sometimes in an effort to protect the rights of the minority, the rights of the majority were taken.

The school board last month accepted the decision of the Supreme Court after it had communicated with the State Commissioner of Education, Frederick Raubinger, regarding the position the State Board of Education was taking on the matter.

In a letter from State Attorney General Arthur Silas, forwarded to the local board by Raubinger, the attorney general made it clear that the decision of the Supreme Court banning recitation in public schools of the Lord's Prayer and five verses of the Old Testament had been accepted by the State of New Jersey.

Springfield Leader

For Subscription Form good until September 1, 1963

To: Springfield Leader
P. O. Box 69, Springfield, N. J.

Enter a one-year subscription to the Springfield Leader at the Charter Subscription rate of \$2 for one year for:

Name _____
(Print)

Address _____
(Print)

Subscription will take effect upon date to be announced by the Leader and continue for 53 weeks thereafter.

Check one and mail:

() Enclosed find \$2 (Check or money-order)

() Bill me upon effective date

Phone 686-7700 to place order

LES AND JIM'S BEST FOOD BUYS OF THE WEEK!

SPECIAL

MAXWELL HOUSE INSTANT COFFEE large jar **89c**

FRESH MILK 1 gal. **89c** 1/2 gal. **46c**

SPRING LEG OF LAMB 1 lb. **59c**

FRESH PICKED CUCUMBERS 3 **14c**

JUMBO SHRIMP 1 lb. **1.29**

FOODCRAFT ORANGE DRINK 2 oz. **25c**

FRESH FRYERS OR ROASTING CHICKENS 1 lb. **39c**

FRESH PICKED PEPPERS 2 lb. **25c**

SPRINGFIELD MARKET, Inc.

272 MORRIS AVENUE SPRINGFIELD

Free Delivery - DR 6-0431 • Free Telephone Service - DR 6-0668

SPRINGFIELD'S FINEST AND OLDEST INDEPENDENT SUPER MARKET

WHOLE QUALITY COMES FIRST - NO FUDGE

*Prices effective Mon., Aug. 19th thru Sat., Aug. 24th

Spring Garden

is now accepting a limited number of reservations for the 1964 season.

FREE GUEST BOOK OFFER FOR EARLYBIRD REGISTRATIONS (Offer Valid Until Sept. 15)

Free Day Camp and Teen-age Program, featuring fishing and boating on our private lake.

SPRING GARDEN COUNTRY CLUB

East Madison Ave. Florham Park

PR 7-4300 WY 7-4337

Garden State Farms DAIRY STORES

7 Lucky BUYS

GOAT MILK 59c qt. FRESH DAILY

VAN HOUTEN BREAD BUY A KING-SIZE LOAF AT THE REGULAR PRICE OF 24c. Get a Regular Size Loaf for Only 10c. SPECIALS ON SALE AUG. 22 THRU 25 ONLY!

CHEESE SLICES 2 8-oz. pkgs. 49c. REG. 35c EACH. Deluxe American Swiss-American

Buttermilk FRESH CHURNED 47c Half Gal. 22c qt.

Van Houten HOLLAND COOKIES 10c Off Reg. Price. Assort. Butter Cookies, Sprinkles, Knekkel, Dutch Tallhouse.

SPECIAL VAN HOUTEN Hamburger and Hot Dog BUNS BUY ONE PACKAGE AT REGULAR PRICE 25c. GET ANOTHER FOR ONLY 1/2 Price.

JUG MILK 89c Gal. Jug. 46c Half Gal. Vitamin-D Enriched, Pasteurized, Homogenized.

GRAPE FRUIT DRINK SALE 29c Reg. 33c Half Gal. 55c Reg. 63c Full Gal.

MILK • BUTTER • EGGS • ICE CREAM • COTTAGE CHEESE • BAKED GOODS

OPEN 10 A. M. TO 10 P. M. SEVEN DAYS A WEEK

Garden State Farms DAIRY STORES

Copyright 1963 Garden State Farms. All Rights Reserved.

Back Home In Old 'Sagorigiviyogstha'

New Jersey was called "Sagorigiviyogstha" (which means "the door of justice") by the Delaware Indians last week for the first time in more than 200 years.

Members of the Delaware Tribal Council gave the 18th-century Indian title back to New Jersey at Anadarko, Oklahoma, after receiving a message from Governor Richard J. Hughes inviting them to participate in the State's 300th birthday celebration next year.

Accepting the Tercentenary Invitation, Arthur L. Thomas, president of the Council, said: "My Indian people are deeply grateful to Sagorigiviyogstha the State of New Jersey, to Governor Hughes and to all Jerseymen for inviting us to celebrate in 1977 Tercentenary celebration of New Jersey's 300th birthday in remembering her Original People, New Jersey has provided us with the opportunity of focusing attention upon our Tribe's proud history and upon our 15th-century ancestors. Only a handful of Delawareans have remained here; about 540 of us are scattered throughout the Indian Territory. We will prepare for our return to New Jersey by calling together the members of our Tribe and we will use the Tercentenary invitation as a reason for re-awakening interest in our heritage." Thomas met with Gov. Hughes in Trenton Tuesday.

The Tercentenary invitation signed by Gov. Hughes was carried to the home of the Delaware at Anadarko, Oklahoma, by David S. Davies, executive director, New Jersey Tercentenary Commission. He was met at Oklahoma City Airport last week by Thomas, Judy Wackymony, 14-year-old sister in Anadarko High School who is the 1002 Delaware Tribal Princess.

Redecoration Day

AUGUST 26, 1963
7:30 P.M. TO 10 P.M.

WE INVITE OUR CLIENTS AND FRIENDS TO VISIT OUR NEWLY REFURBISHED OFFICES

THE
Percy A. Miller Jr.
INSURANCE AGENCY

Serving New Jersey In Insurance Since 1939

ES 2-0200 ES 3-2500

4236 SPRINGFIELD AVE.,
IRVINGTON, N. J.

**BACK TO SCHOOL
BUT FIRST TO
HAHNE & COMPANY**

MONTCLAIR • NEWARK • WESTFIELD

Know Your Government

From N. J. Taxpayers Association

DEBT SERVICE EXPENSES ARE SHOWN FOR COUNTY

Debt service payments cost New Jersey's 21 counties nearly \$18 1/2 million last year, an increase of nearly \$4 million in five years.

The cost of interest and principal payments on bonds and notes long and short term debt of all counties totaled \$16,452,832 in 1962 as compared with \$12,653,955 in 1958 — an increase of \$8,808,877, or 31%.

Fourteen counties reported debt service payments for the 1958-62 period while four had reductions. Four counties reported no debt service in 1962. They were: Gloucester, Hudson, Sussex and Salem. (Salem in 1958 had \$4,500 debt cost).

Largest dollar increase in debt service costs was shown in Bergen County where the cost went from \$1,403,736 to \$2,859,403 during the five-year period. Essex, the State's largest county, had the largest debt service total, although it reported a reduction to \$2,381,359 last year from \$2,807,501 in 1958 a drop of \$25,851. Other counties paying more than \$1 million each in 1962 were: Camden, Hudson, Mercer, Middlesex, and Morris. In Union County, debt service was paid to those exchanging their insurance policies.

The VA explained that the veterans who exchange their "RS" insurance policies for policies bearing the letter "W" will receive dividends averaging \$100. This is a special one-time dividend and applies only to Korea Conflict veterans whose insurance policy number is preceded by the letters "RS". No other government life insurance policyholders are eligible.

To get his dividend, the "RS" policyholder must either exchange his "RS" term policy for a "W" term policy or, generally, only one-third of the cost he is now paying, or convert his "RS" policy to a low-cost "W" permanent plan insurance policy now.

If the "RS" policyholder takes either of these steps on or before Sept. 13, 1963, he will receive his special dividend.

"RS" insurance was issued as five-year term policies to Korea veterans discharged between April 25, 1951 and December 31, 1956. This insurance could not be converted to permanent insurance and was not eligible for dividends.

A new law, which became effective Jan. 1, 1959 established a new type called "W" insurance which made the "RS" insurance eligible for conversion or exchange on a permanent plan at established rates or a new five-year term plan at lower premium rates.

The average age of Korea GI insurance policyholders is 39. If this average 39-year-old veteran has \$10,000 worth of "RS" term insurance, his annual premium now is \$30. At age 40, his premium rate will be \$40. If he retains his "RS" insurance, at age 50, \$144.00; at age 55, \$270. If he converts to ordinary life his premium will go to \$136.50 per year, but that rate will never change. The permanent plan policy would have a cash surrender value and he could borrow on it after it had been in effect for a sufficient length of time.

In selecting a permanent plan policy, he would have a choice of six plans to choose from either ordinary life, 20-pay life, 30-pay life, 20-year endowment, endowment at age 60, and endowment at age 65.

If he makes the exchange to the newer term policy, his premium will drop to \$100 per year and though he cannot renew his policy after age 50, there is never a question of losing any protection so long as he converts to one of the permanent plans at any time up to that 50th birthday, or within the last renewal which includes his 50th birthday.

With respect to the September 13, 1963 deadline, a veteran who has lost his right to convert or exchange if he does not act by that date, he can convert or exchange his "RS" insurance at any time, but will not be eligible for collecting the dividend if he fails to act prior to the deadline.

Complete information and rates may be obtained at the Veterans Administration Regional Office, 29 Washington pl., Newark 2, N. J.

1962 compared with \$176,800 in 1958, an increase of \$238,800. Debt service costs are one of the three major divisions making up total expenditures in the accounting systems of the counties. The other two operating costs and expenditures for capital improvements have been reported previously in the newspaper series issued as an information service, and based upon official reports by the New Jersey Taxpayers Association. Total county expenditures and other phases of the county's fiscal picture will be reported for the information of the general public in succeeding weeks.

BLOOMFIELD COLLEGE EVENING SESSION 1963-1964

Majors available in Accounting, Biology, Business Administration, Chemistry, English, History, Psychology, Religion and Sociology.

CLASSES BEGIN SEPTEMBER 16th

Convenient location, adequate parking, moderate costs. For information, address: Director of Evening Session, BLOOMFIELD COLLEGE, BLOOMFIELD, N. J. Or Phone PT 8-4100

APPLY NOW for

The Fall Semester in the

CO-EDUCATIONAL EVENING DIVISION of SAINT PETER'S COLLEGE

- Degree Programs in Liberal Arts and Business Administration
- Part-Time Programs for Non-Degree Students
- Education Courses for Teacher Certification

Write for Brochure or Inquire at McDermott Hall Monday through Thursday 4:00 P.M. - 8:30 P.M.

Jersey City 6, N. J.
DELaware 3-4100

C.M. WHITNEY

America's Greatest Brands of Colonial Furniture

Ethan Allen Sale!



NUTMEG MAPLE BEDROOM
\$299 value \$380.50

Generous size, spacious Ethan Allen maple bedroom furniture! Note the lovely bed with full upholstered headboard as well as spindle headboard!

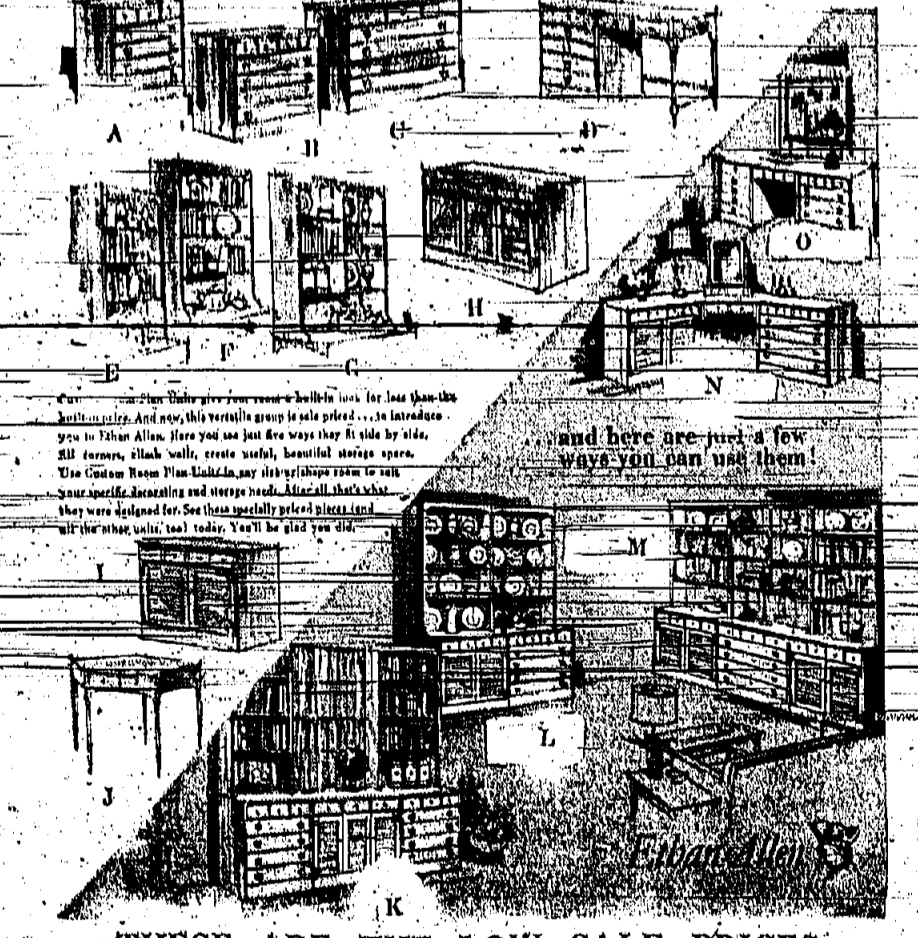


SOLID CHERRY BEDROOM
\$499 value \$617.50

It's Ethan Allen Solid Cherry and includes a master-size 56" triple dresser, big chest, chest, framed mirror and unusual twin or full size bed!

Choose your Ethan Allen furniture from the largest display in the East! Enjoy brilliantly decorated room settings! Let our decorator salesmen help you—without fee—rival these settings in your own home! Enjoy lowest sale prices on every type of Ethan Allen furniture: Nutmeg Maple, Solid Cherry, Knotty Pine, Solid Mahogany, Upholstered furniture and Custom Room Plan units! Shop in air-conditioned comfort! Immediate delivery on most Ethan Allen pieces!

THESE ARE THE FAMOUS "CUSTOM ROOM PLAN" FUNCTIONAL UNITS



THESE ARE THE LOW SALE PRICES:

A. 24" Chest, Value \$75.00	\$59.75	G. 40" Bookcase Top, Value \$65.00	\$54.75
B. 30" Chest, Value \$79.50	\$67.50	H. Louver Dr. 40" Cabl. Value \$105.00	89.75
C. 40" Chest, Value \$89.00	84.75	I. 30" Louver Dr. Cabl. Value \$79.50	67.50
D. 40" Desk, Value \$95.00	79.75	J. 34" Corner Desk, Value \$64.00	54.75
E. 24" Bookcase Top, Value \$43.00	34.75	K. 88" 6 Pc. Window Wall, Value \$341.00	269.00
F. 30" Bookcase Top, Value \$47.50	37.75	L. 60" 4 Pc. Linen & China Storage and Display, Value \$254.00	209.00
M. 100" 6 Pc. Library Bookcase & Storage, Value \$418.00	349.00	N. 3 Pc. Corner Dressing Area, Value \$299.00	189.00
O. 2 Pc. 64" Study Area, Value \$170.00	139.00		

FREE! "Ethan Allen Treasury" Catalog, usually \$1.00—Yours for the Asking!

NUTMEG MAPLE DINING ROOM
Table & 4 Chairs value \$190.00 \$159.50
Hutch Cabinet value \$152.00 \$120.50
The big rectangular table extends to 36" x 84"!
Authentic Duxbury chairs!

Use the C.M. WHITNEY convenient payment plan. All merchandise subject to prior sale. OPEN DAILY 9:30 A.M. TO 9:30 P.M.—SATURDAY TO 6 P.M.

ROUTE 22, UNION OPPPOSITE FLAGSHIP MU 7-0022 ★ 777 ROUTE 17, PARAMUS JUST NORTH OF RIDGEWOOD AVE., OL 2-6444

SALE

CHAIN LINK FENCING

ON GALVANIZED WIRE

100 FT. COMPLETELY INSTALLED \$69

INCLUDES WIRE, POSTS & FITTINGS

No Money Down • From \$5 per Month • 1st Payment Feb. '64

CALL LI 9-6763 MA 4-0406

Simon Sez Stores Showroom open Mon, Wed, Fri. 9-9; Tues, Thurs, Sat. 9-6
487 Lincoln Hwy. (Rt. 27) Iselin

FUEL OIL

• Burner Sales & Service •

Don't buy any heating oil until you get the facts on cleaner, hotter burning

GULF SOLAR HEAT (R)

world's finest heating oil

Gulf's exclusive "Gulfining" process cleans and cleans Gulf Solar Heat(R) with hydrogen to make it burn more completely — to give you more usable heat in your home. Ask us how clean burning Gulf Solar Heat — plus our new "Housewarming" Plan — will assure you of economical, peace-of-mind heating comfort all winter long.

Always Dependable Metered Delivery

KINGSTON COMPANY

2304 Vauxhall Rd., Union, N.J.
Office MU 6-6207 Service MU 4-5555

monthly payments without service charge
BURNER SERVICE — Expert, essential maintenance of your heating equipment
PRE-SEASON TUNE-UP plus 24-HOUR EMERGENCY SERVICE

St. John's Lutheran
 Springfield ave., Summit
 Rev. W. E. Hinman, pastor
 Sunday - 9:30 a.m. Church School: 9:30 a.m. The Service: 10:30 a.m. Sermon: Basic Christianity. Nursery provided.

HOLY CROSS CHRISTIAN NURSERY SCHOOL
 639 MOUNTAIN AVENUE, SPRINGFIELD, N. J.
 A weekday nursery school for pre-kindergarten children of all faiths (2 to 5 years old) Mon., Wed. & Fri. 9:30 A.M. - 11:30 A.M.
 City and State approved. Transportation available.
BROCHURE SENT ON REQUEST
REGISTRATIONS NOW BEING RECEIVED
 Call
DR 9-4525 or DR 7-6958



Kingdom Hall Of Jehovah's Witnesses
 501 South Springfield ave., Springfield, N. J.
 Sunday - 10 a.m. Bible lecture: "What Hope for Lasting Peace?" 4:15 p.m. Watchtower Bible Study "Giving Encouragement to Others."
 Tuesday - 8 p.m. Service Center Bible study
 Thursday - 7:30 p.m. Ministry School: 8:25 p.m. Service meeting

Clinton Hill Baptist
 2815 Morris ave., Union
 Rev. John D. Flaar, pastor
 Sunday - 8:45 a.m. Bible School. Classes for all ages; 11 a.m. Nursery class - Children's Church: 11 a.m. Morning Worship.
 Guest speaker: Dr. John F. Walvoord, president of Dallas Theological Seminary, Dallas, Tex. His message will be: "The Divine Remedy For Anxiety." 5:45 p.m. Christian training hour, groups for all ages. 5:45 p.m. Youthline: 5:45 p.m. Adult Bible-Prayer Fellowship: 8:30 p.m. College and career group: 7 p.m. Evening Gospel Service.
 Dr. Walvoord will give the message: "The Dynamic of 'Divine Life.'" Nursery provided for children.

First Baptist
 Colonial ave. at Thoreau Ter., Union
 Rev. K. G. Orville, pastor
 Sunday - 9:30 a.m. Bible study is provided for all ages. 11 a.m. Morning Worship Service. Sermon: "Crosspatch." The women's chorus will provide special music.

First Presbyterian
 Morris ave. at Main St., Union
 Rev. Bruce W. Evans and Rev. Donald C. Weber, ministers
 A cordial welcome is extended to all who worship in this historic church. Representing over 200 years of faith and service to this community, it invites you to worship and work with those in its fellowship.
 Sunday - 10 a.m. Church Worship Service.
 Union Summer Services in conjunction with the Methodist Church will be held in the Presbyterian Church during the month of August and on Sept. 1st with Rev. Weber preaching.

Holy Cross Lutheran
 (The Church of the Radio "Lutheran Hour" and TV's "This is The Life")
 639-641 Mountain ave.
 Rev. Lester P. Messerschmidt, Pastor
 Sunday - 9 a.m. Sunday School film: "God's Wonders in a Country Pond"; 10 a.m. Divine Worship. Sermon: "The Gift of the Holy Spirit."



CUTTING THE RIBBON at opening of Garden State Farms store at 792 Mountain ave., Springfield, last week is: Tax Assessor Wilbert J. Laying who represented Mayor AFIRI Fikili at the opening. Pictured are, front row from left: Fred Croesner, manufacturer's representative; Pete Sandfort, Garden State Farms president; Al Grassi, owner.

operator of stores; Laying: George Van Houten, Peter Sandfort and Charles Deibert, Garden State Farms executives; Herb Pillsbury, manufacturer's representative; and William Spindick, advertising agency account executive. Back row, from left: Cliff Merrill and Fred Van Der Muelten, officials of Garden State Farms.

NOTE: To the Good-Used-Car Buyer

This ad has no give-aways, supposed bargains, steals or slashes. This is not a summer, winter, fall or spring sale... just good solid automobiles for what we feel are very, very fair prices. **THANK YOU.**

1962 IMPERIAL CROWN 4 DR. H. T.	\$3495	1959 FORD CONVERTIBLE	\$1195
1962 COMET CUSTOM	1695	1959 TAUNUS	495
4 DR. WAGON	1595	1959 STATION WAGON	495
1962 MERCURY COMMUTER WAGON	1595	1959 OPEL	495
1961 MERCURY 4 DR. SEDAN	1595	1958 RENAULT DAUPHINE	395
1961 VALIANT 4 DR.	1195	1958 BUICK 2 DR. HARD TOP	895
1961 TRIUMPH 4 DR. HARD TOP	695	1958 OLDSMOBILE 88 4 DR. HARD TOP	795
1960 PONTIAC 4 DR. HARD TOP	1595	1958 FORD STATION WAGON	795
1960 FORD SEDAN	895	1957 MERCURY 2-DR. HARD TOP	495
1960 FORD FALCON DELUXE 4 DR.	895	1956 CADILLAC CONVERTIBLE	995

All cars have been processed by our factory trained mechanics and are guaranteed.

FLETCHER LINCOLN MERCURY CORP.
 MORRIS - ESSEX TURNPIKE, SUMMIT
 (Opposite Short Hill Golf Driving Range) (Straight Up Morris From Center)
 CRestview 7-3554
 Open Evenings to 9 p.m. Wed. and Sat. to 6 p.m.

Deborah Tag Campaign Scheduled Next Month

The Deborah Tag Campaign will hold its annual tag drive in Springfield Sept. 6-13. Mrs. Morton Parish, chairman, announced.

Proceeds will be turned over to the Deborah Hospital in Browns Mills for free open-heart surgery, which has become a frequent necessity for children. The money also will be used for facilities for patients suffering from lung cancer, rheumatic fever and tuberculosis.

St. James
 45 South Springfield ave.
 Rev. Francis X. Coyle, pastor
 Rev. Edward A. Oehling, assistant pastor
 Masses: Sunday - 7, 8, 9, 10, 11 a.m. and 12 noon. Holydays: 6, 7, 8, 9, 10 a.m. and 7 p.m.
 Weekdays: 7 and 8 a.m.
 Confessions: Saturdays, even on Holydays and Thursdays before the First Friday, 4-5:30; 7:30-8 p.m.
 Baptisms: Every Sunday at 2 p.m., sharp. Arrangements must be made in advance with the pastor.

Battle Hill
 777 Liberty ave., Union
 Rev. D. F. Atchison, Pastor
 Today - The Christian Education Council.
 Sunday - 8 a.m. Church School for all ages. 10 a.m. Eleventh Sunday in Trinity. Worship Service Brother R. B. Baird of British Guiana will bring the message. Brother Baird is a teacher and represents the work of the Moravian Church in the country. He is visiting Moravian Churches in this country. Elder Mary Leschinsky will be in charge of the Worship. Letters for the Service will be: Eugene Doman and Charles Ditt. Nursery care will be provided by Mrs. Fred Gutler.

FRIDAY DEADLINE
 All items other than spot news, submitted to this newspaper should be in our office by Friday to insure publication in the next issue.

Seminary President Guest At Clinton Hill

Dr. John F. Walvoord, president of Dallas Theological Seminary, will be guest preacher this Sunday at the morning and evening services at Clinton Hill Baptist Church, 2815 Morris ave., Union.

A graduate of Wheaton (Ill.) College, Dr. Walvoord received his M.S.M.A. from Texas Christian University, his Th.D. and Ph.D. degrees from Dallas Theological Seminary and his D.D. from Wheaton College. Author of many books on spiritual subjects, he is a regular contributor to "Bibliotheca Sacra" and writes in an extensive ministry of Bible teaching in churches and summer conference grounds.

Listed in Who's Who in America, Who's Who in American Education, Who's Who in the Southwest, Who's Who in Texas and the Directory of American Scholars, Dr. Walvoord is generally recognized as one of the leading conservative evangelical leaders in America.



DR. JOHN F. WALVOORD

In The Social Spotlight

Mr. and Mrs. Caroline Morlock, of 10 Nelson St., Springfield, have the proud privilege of a son born Aug. 10, at Overlook Hospital. The eight pound-two ounce boy, their first born, has been named after his daddy. Mommy is the former Helen Nelson.

Joseph Michael is the name of Daniel J. Czuzos, of 313 1/2 Ave. Hutton, whose parents are the proud parents of a son born Aug. 10, at Overlook Hospital. The eight pound-two ounce boy, their first born, has been named after his daddy. Mommy is the former Helen Nelson.

Miss Mary Martin, daughter of Mr. and Mrs. Joseph Martin, of 301-303 Union, vacationed recently at the Silver Beach Hotel, Miami Beach, Fla.

Miss Martin, who is employed as a secretary in Victory Heights, came to Springfield, spent two weeks at the southern resort.

WEDDING INVITATIONS
 Our Speciality Social Printing

BEACON HILL CO.
 276 MORRIS AVENUE, SPRINGFIELD
 DR 6-1956 - MU 6-8882

PROVIDE HOME COMFORT

Whether you wish to add a dormer to expand your living space, install a new heating system, or do any of the jobs which will really provide more home "comfort", simply get an estimate from your contractor on the cost of the job - then come to First State. Let us help you arrange the financing.

"Bill" One of "The Fastest Growing Banks in the United States"

The FIRST STATE BANK OF UNION

UNION NEW JERSEY

MAIN OFFICE: Morris Avenue at Burke Parkway
 Highway Branch: Route 22 at Monroe St.
 MURdock 6-4800

Townley Branch - Morris Ave. at Potter Ave.
 MEMBER FEDERAL DEPOSIT INSURANCE CORPORATION

Kempler shoes

BACK-TO-SCHOOL BUT FIRST TO KEMPLER'S for... LAZY BONES

Whether he's going on to high school or just starting, long-wearing Lazy Bones are artfully styled to please young fashionables. Offer you youngsters from our fine Fall selections.

5.98 to 9.98
 According to size

You're Invited to Open a Charge Account

KEMPLER SHOES
 1055 Springfield Ave., Irvington
 The Family Shoe Center Where Fit Comes First
 OPEN DAILY TO 8 P.M. MON. TO 9 (RS 2-8367)

GEORGIA McMULLEN
 Real Estate Insurance
 (Serving Springfield and Short Hill)

Whether You Are Buying or Selling, Our Experienced Staff Can Help You

Georgia McMullen
 Eugene F. Donnelly
 Irene Root
 Verma Anderson

Call Us At
DR 6-0290
 41 Mountain Ave. Springfield

Lady! Go to the Kitchen!

PLEASE now...

Sam Aidckman* (Good Deal's Country Boy) Says:
 "Go to the kitchen and open your pantry doors. Take out all the cans and packages you have there. Then, take out a sheet of paper and write the name of the item and the price that is stamped on it. When you've done this, take the list to Good Deal. Compare the prices you have been paying with the prices at Good Deal. After that, you'll never, never, NEVER shop anywhere but at Good Deal!"

*Sam Aidckman is Good Deal's president and the best friend a housewife ever had!

THAT'S THE WAY TO SEE HOW YOU SAVE \$2 TO \$10 EVERY TIME YOU SHOP WITH

GOOD DEAL'S **SUPER** DISCOUNTS

on over **2,000** Nationally Advertised Items!

BONE-LESS

ROUND ROAST

SAVE 23¢ POUND
 U.S. CHOICE IOWA BEEF
 TENDER JUICY FLAVORFUL
 NO FAT ADDED

66¢
 lb.

SAVE 6¢
 SOAP PADS

BRILLO

10 pk.
 box

21¢

SAVE 6¢
 LARGE BOX

TIDE

20 oz.
 box

27¢

SAVE 2¢
 CAMPBELL'S VEGETABLE

SOUP

2 10½ oz.
 cans

25¢

SAVE 2¢
 LA ROSA

SPAGHETTI

2 1 lb.
 pkgs.

41¢

DOUBLE SAVINGS!

Save CASH with
 Good Deals Super Discounts . . .

SAVE 90¢

EXTRA CASH
 with these
 valuable coupons

THIS
 COUPON
 WORTH
20¢

Toward the Purchase of
 Any half gallon package Staff deluxe

ICE CREAM

Valid thru Aug. 24th, 1963

Coupon Limit 1 Per Family

GOOD
 DEAL

THIS
 COUPON
 WORTH
20¢

Toward the Purchase of
 Any Allen's pie or whole

LAYER CAKE

Valid thru Aug. 24th, 1963

Coupon Limit 1 Per Family

GOOD
 DEAL

THIS
 COUPON
 WORTH
15¢

Toward the Purchase of
 Any 10 lb. Bag

POTATOES

Valid thru Aug. 24th, 1963

Coupon Limit 1 Per Family

GOOD
 DEAL

THIS
 COUPON
 WORTH
15¢

Toward the Purchase of
 Any Economical

STAFF PRODUCT

Valid thru Aug. 24th, 1963

Coupon Limit 1 Per Family

GOOD
 DEAL

THIS
 COUPON
 WORTH
10¢

Toward the Purchase of
 Any 5 lb. Bag

SUGAR

Valid thru Aug. 24th, 1963

Coupon Limit 1 Per Family

GOOD
 DEAL

THIS
 COUPON
 WORTH
10¢

Toward the Purchase of
 Any pkg. of

ONE DOZEN EGGS

Valid thru Aug. 24th, 1963

Coupon Limit 1 Per Family

GOOD
 DEAL

We reserve the right to limit quantities. Not responsible for typographical errors. Entire contents copyrighted. Good Deal 1963.

220 MAIN ST. MILLBURN

STORE HOURS:

MON thru THURS,

9:00 am — 9:00 pm

FRIDAY

8:30 am — 10:00 pm

SATURDAY

8:30 am — 9:00 pm

SUNDAY

STARRED STORES

8:30 am — 6:00 pm

GOOD DEAL
Supermarkets



What are you paying for Mayonnaise and Coffee?
For Peanut Butter and Fruit Juices ...
For Jams and Jellies and
Pork & Beans ...?



Here's How

GOOD DEAL'S OWN STAFF AND MINUET BRANDS HELP YOU PAMPER YOUR FAMILY YET KEEP FOOD COSTS WAY DOWN:

Does your family go for luscious, pure fruit preserves? Do they like the wonderful flavor of old-fashioned pork 'n' beans? Do you appreciate saving a fat 40c on coffee (even more on the economy size) or 20c on mayonnaise? Then Good Deal's own Staff and Minuet Brands are for you. They're exclusive with Good Deal. Nobody—but no other store—has them. Good Deal has these splendid foods and household aids made up to its own rigid specifications. And because we go to the source for the finest ingredients they're tops in quality. Because of the economies we effect, prices are way lower—and we pass the savings on to you. Smart shoppers prefer Staff and Minuet Brands to all others—for quality as well as savings. So will you once you've tried them.

CHECK! COMPARE! SAVE!

See how much less you pay for Good Deal's Quality Staff Brand Foods than for brands of comparable quality!



SEE HOW MUCH YOU SAVE	STAFF PRICE	STAMP STORE NATIONAL BRAND PRICE	SAVE!
CLEANSER 14 oz. can	10¢	16¢	6¢
DRY DETERGENT 19 oz. box	4/89¢	4/174¢	35¢
FACIAL TISSUES 400 box	25¢	33¢	8¢
ALUMINUM FOIL 36" x 44" roll	5/89¢	5/174¢	36¢
PRUNE JUICE 32 oz. bottle	3/89¢	171¢	34¢
APPLE JUICE 32 oz. bottle	4/89¢	4/174¢	35¢
FRENCH GREEN BEANS 16 oz. can	6/100¢	6/123¢	23¢
SAUERKRAUT 29 oz. can	2/29¢	2/41¢	12¢
APPLE SAUCE 15 oz. jar	2/31¢	2/41¢	10¢
FLOUR 5 lb. bag	45¢	59¢	14¢
VANILLA EXTRACT 4 oz. bot.	59¢	89¢	30¢
GROUND PEPPER 4 oz. box	29¢	43¢	14¢
CORNED BEEF HASH 16 oz. can	3/100¢	3/117¢	17¢
TUNA Solid White Meat 7 oz. can	3/89¢	3/106¢	19¢
MAYONNAISE 8 oz. jar	25¢	39¢	14¢
VINEGAR CIDER quart bot.	23¢	29¢	6¢
MUSTARD 8 oz. bot.	10¢	16¢	6¢
PEANUT BUTTER 18 oz. jar	53¢	63¢	10¢
SODA No Deposit—No Return Bottles 28 oz. bot.	6/100¢	6/120¢	20¢
BLEACH gal.	45¢	63¢	18¢
WHITE POTATOES 16 oz. can	10¢	13¢	3¢
PORK & BEANS 16 oz. can	10¢	2/27¢	4¢
AMMONIA Clear or Sudsy quart	15¢	25¢	10¢
CATSUP 14 oz. bot.	17¢	20¢	3¢
LIQUID DETERGENT Pink 32 oz. can	65¢	87¢	22¢
SWEET PEAS No. 303 can	6/100¢	6/120¢	20¢
ELBOW MACARONI lb. pkg.	2/37¢	2/47¢	10¢
TOMATO SOUP 10 1/2 oz. can	4/37¢	4/45¢	8¢
CHICKEN NOODLE SOUP 10 1/2 oz. can	2/29¢	2/35¢	6¢
SPONGES 4 pk.	25¢	39¢	14¢

GRAPE JELLY 12 oz. jar **19¢**

MILK EVAP. 6 tall cans **69¢**

SODA 6 VARIETIES CANNED 12 12 oz. cans **89¢**

SALAD OIL quart bottle **39¢**

LIQUID BLEACH gal. **45¢**

You Save MORE Everyday at Money-Saving Good Deal!

PROOF GOOD DEALS

STORE-WIDE, EVERYDAY, LOW SUPER-DISCOUNT PRICES WILL SAVE YOU \$2 TO \$10 EVERYTIME YOU SHOP!

All Name Brands!				Everyday Low Prices!				See How Much You Save!				Super-Discount Savings!			
Stamp Chain "A"	GOOD DEAL LOW PRICE	SAVE		Stamp Chain "A"	GOOD DEAL LOW PRICE	SAVE		Stamp Chain "A"	GOOD DEAL LOW PRICE	SAVE		Stamp Chain "A"	GOOD DEAL LOW PRICE	SAVE	
Lanolin Ammonia	27¢	33¢	6¢	Reynolds Wrap	33¢	29¢	4¢	Apple Juice	58¢	49¢	9¢	Stewed Prunes	29¢	27¢	2¢
Parsons Ammonia	49¢	45¢	4¢	Hudson Hankies	12¢	10¢	2¢	Heart Delight	11¢	10¢	1¢	Peaches	29¢	27¢	2¢
Clorox Bleach	23¢	19¢	4¢	KVP	49¢	39¢	10¢	Drink	41¢	39¢	2¢	Sunmaid Raisins	29¢	25¢	4¢
Borateem	79¢	69¢	10¢	Freezer Paper	45¢	39¢	6¢	Fig Juice	35¢	29¢	6¢	Cake Mix	121¢	100¢	21¢
Calgon	33¢	29¢	4¢	Garbage Bags	55¢	45¢	10¢	Grape Juice	39¢	35¢	4¢	Flour	29¢	25¢	4¢
Gresolvent	21¢	19¢	2¢	Sandwich Bags	21¢	19¢	2¢	Grape Juice	99¢	89¢	10¢	Balbo Oil	199¢	179¢	20¢
Ajax	39¢	35¢	4¢	Hudson Napkins	35¢	29¢	6¢	Hi-C Drink	33¢	29¢	4¢	Kraft Oil	29¢	25¢	4¢
Spic & Span	31¢	25¢	6¢	Dinner Napkins	49¢	43¢	6¢	Realemon	23¢	21¢	2¢	Pancake Mix	39¢	35¢	4¢
Draino	43¢	39¢	4¢	Saran Wrap	31¢	27¢	4¢	Apricot Nectar	31¢	29¢	2¢	Salt	12¢	10¢	2¢
Copper Cleaner	39¢	35¢	4¢	Toilet Tissue	49¢	44¢	5¢	Tomato Juice	31¢	27¢	4¢	CRISCO	85¢	69¢	16¢
You save 36¢ on these items! 3 ³⁸ 3 ³⁶				You save 55¢ on these items! 3 ³⁹ 3 ³⁴ 55¢				You save 54¢ on these items! 5 ⁰¹ 4 ⁴⁷ 54¢				You save 81¢ on these items! 6 ⁰³ 5 ²² 81¢			

Everyday Low Price!				WHAT DO YOU PAY?
Stamp Chain "A"	GOOD DEAL LOW PRICE	SAVE		
Mr. Clean	37¢	35¢	2¢	
Wisk	139¢	129¢	10¢	
All	39¢	35¢	4¢	
Cheer	31¢	29¢	2¢	
Salvo Tablets	73¢	69¢	4¢	
Duz	57¢	53¢	4¢	
Fab Large	31¢	29¢	2¢	
All Fluffy	77¢	73¢	4¢	
Ivory Flakes	35¢	31¢	4¢	
Rinso Blue	27¢	24¢	3¢	
Silver Dust Blue	81¢	75¢	6¢	
Tide Giant	75¢	69¢	6¢	
Ivory Liquid	61¢	57¢	4¢	
Thrill	62¢	59¢	3¢	
Joy Liquid	61¢	57¢	4¢	
Lux Liquid	87¢	83¢	4¢	
Downy	45¢	37¢	8¢	
Sta Flo	23¢	19¢	4¢	
Spray Starch	89¢	69¢	20¢	
Chore Girl	25¢	23¢	2¢	
Camay Soap	31¢	29¢	2¢	
Ivory Soap	29¢	27¢	2¢	
Lux Bath	31¢	29¢	2¢	
Palmolive Soap	31¢	29¢	2¢	
Matey Liquid	63¢	59¢	4¢	
Soaky	69¢	59¢	10¢	
Glass Wax	53¢	45¢	8¢	
Windex Sprayers	17¢	13¢	4¢	
Aero Wax	73¢	59¢	14¢	
Beacon Wax	29¢	29¢	0¢	
Floor Wax	89¢	79¢	10¢	
Saran Warp	59¢	49¢	10¢	
Wax Paper	53¢	47¢	6¢	
Apple Juice	49¢	49¢	0¢	
Nectar	39¢	35¢	4¢	
Prune Juice	51¢	49¢	2¢	
Green Beans	41¢	39¢	2¢	
Sliced Beets	23¢	19¢	4¢	
Red Cabbage	43¢	39¢	4¢	
Corn	133¢	100¢	33¢	
Peas	39¢	35¢	4¢	
Peas	45¢	37¢	8¢	
Instant Mashed	33¢	27¢	6¢	
Potato Pancakes	37¢	29¢	8¢	
Potatoes	25¢	21¢	4¢	
Sauerkraut	41¢	35¢	6¢	
Spinach	20¢	17¢	3¢	
Tomatoes	27¢	25¢	2¢	
Tomatoes	49¢	43¢	6¢	
Tom. Paste	27¢	23¢	4¢	
Tomato Puree	33¢	31¢	2¢	

CHECK! COMPARE! SAVE!

SAVE 14¢
EVERYDAY DISCOUNT PRICE!
No Polishing Job!
AERO WAX
59¢

SAVE 4¢
EVERYDAY DISCOUNT PRICE!
Handy
SCOTT TOWELS
17¢

SAVE 19¢
"EVERYDAY DISCOUNT PRICE"
CIRCUS PINEAPPLE
DRINK
4 46-oz. cans **97¢**

SAVE 8¢
EVERYDAY DISCOUNT PRICE!
Campbell's
TOMATO SOUP
4 10 1/2 oz. cans **39¢**

SAVE 7¢
"EVERYDAY DISCOUNT PRICE"
GREEN GIANT WHOLE KERNEL
NIBBLETS
2 12 oz. cuts **33¢**

SAVE 4¢
"EVERYDAY DISCOUNT PRICE"
KELLOGG'S
CORN FLAKES
12 oz. pkg **25¢**

SAVE 18¢
"EVERYDAY DISCOUNT PRICE"
DEL MONTE
TOMATO SAUCE
10 8 oz. cans **89¢**

SAVE 21¢
EVERYDAY DISCOUNT PRICE!
Refreshing
HAWAIIAN Punch
3 46 oz. cans **\$1.00**

SAVE 10¢
EVERYDAY DISCOUNT PRICE!
SUGAR
5 lb. bag **57¢**

SAVE 6¢
EVERYDAY DISCOUNT PRICE!
Campbell's
CHICKEN SOUP
2 10 1/2 oz. cans **31¢**

SAVE 6¢
"EVERYDAY DISCOUNT PRICE"
DEL MONTE
PRUNE JUICE
39¢

SAVE 5¢
EVERYDAY DISCOUNT PRICE!
Sop Pads
BRILLO
16 oz. can **33¢**

SAVE 2¢
EVERYDAY DISCOUNT PRICE!
Campbell's
PORK & BEANS
2 16 oz. cans **25¢**

SAVE 6¢
EVERYDAY DISCOUNT PRICE!
Lipton
TEA BAGS
pkg. of 48 **57¢**

See How Much You Save!				WHAT DO YOU PAY?
Stamp Chain "A"	GOOD DEAL LOW PRICE	SAVE		
Planters Oil	279¢	259¢	20¢	
Wesson Oil	179¢	159¢	20¢	
Peanut Butter	43¢	39¢	4¢	
Log Cabin Syrup	65¢	53¢	12¢	
Vermont Maid	35¢	29¢	6¢	
Cocoa Puffs	37¢	31¢	6¢	
Kix	33¢	29¢	4¢	
Wheaties	30¢	27¢	3¢	
KRECHMER	55¢	49¢	6¢	
All Brand	25¢	21¢	4¢	
Corn Flakes	36¢	33¢	3¢	
Rice Krispies	31¢	29¢	2¢	
Variety Pack	43¢	41¢	2¢	
Rice-Chex	43¢	39¢	4¢	
Borden's Milk	88¢	79¢	9¢	
Pet Milk	88¢	79¢	9¢	
Soup	37¢	31¢	6¢	
Soup	37¢	31¢	6¢	
Soup	00¢	25¢	0¢	
Noodle Soup	37¢	31¢	6¢	
Beef Soup	35¢	31¢	4¢	
Cocoa Marsh	35¢	31¢	4¢	
Hershey Syrup	21¢	19¢	2¢	
Coffee	67¢	59¢	8¢	
Coffee	67¢	59¢	8¢	
Coffee	65¢	59¢	6¢	
Instant Coffee	99¢	93¢	6¢	
Instant Coffee	45¢	42¢	3¢	
Instant Coffee	89¢	83¢	6¢	
Instant Coffee	150¢	139¢	11¢	
Tea Bags	25¢	21¢	4¢	
Tea Bags	105¢	105¢	0¢	
Macaroni	43¢	41¢	2¢	
Spaghetti	47¢	41¢	6¢	
Noodles	37¢	33¢	4¢	
Split Peas	13¢	10¢	3¢	
Carrollan Rice	39¢	35¢	4¢	
Minute Rice	19¢	16¢	3¢	
Uncle Ben's Rice	49¢	45¢	4¢	
Sauce	100¢	100¢	0¢	
Beef Gravy	37¢	33¢	4¢	
Hormel Spam	47¢	41¢	6¢	
B&M Beans	27¢	23¢	4¢	
Beans & Franks	37¢	33¢	4¢	
Pork & Beans	19¢	17¢	2¢	
Beans	27¢	25¢	2¢	
Tuna	39¢	35¢	4¢	
Mayonnaise	45¢	39¢	6¢	
Salad Dressing	59¢	53¢	6¢	
Vinegar	33¢	31¢	2¢	
Chili Sauce	27¢	23¢	4¢	

You Save MORE Everyday at Money-Saving Good Deal!



At this price, put away a couple of dozen as Christmas gifts!

REGULARLY \$1.39 EACH

GOOD DEAL

LOSES MONEY ON EVERY ONE YOU BUY

(But call it an investment. It's our way of getting you to Good Deal and acquainting you with our every-day Super-Discount prices!)

SUPER DELUXE, STURDY, DURABLE, FAMOUS DENNIS MITCHELL

KING-SIZE METAL TRAY TABLES

59¢

each with each \$2.50 of your Good Deal purchase

Giant Oval Trays (16"x22")! Colorful Floral Bouquet on White Background! Heat, Stain & Alcohol-Resistant! Gleaming 5/8" Brass Finish Frames Will Not Tarnish, Chip or Peel! Tables Plastic Tipped for No-Mar Floors! Use for Indoor and Outdoor Entertaining! As Serving Tables, Snack Trays, for TV, Den, Bedside, Bar-B-Q!

BUY 1 TABLE WITH A \$2.50 PURCHASE, 2 TABLES WITH A \$5 PURCHASE, 3 TABLES WITH A \$7.50 PURCHASE, etc.

BONELESS
U.S. CHOICE IOWA BEEF
TENDER JUICY FLAVORFUL
SAVE 23¢ POUND

ROUND ROAST

NO FAT ADDED

66¢

lb.

- BONELESS TOP SIRLOIN ROAST** lb. 88¢
- BONELESS RUMP ROAST** lb. 92¢
- BONELESS EYE ROUND ROAST** lb. \$1.12
- BONELESS ROYAL ROAST** lb. \$1.08
- LONDON BROIL LEAN & TENDER** lb. 99¢

CHOOSE THE KIND OF MEAT YOU LIKE BEST

BAR-B-Q CHICKEN PARTS

LEG OR BREAST QUARTER Save pkg. 29¢ **36¢** lb.

FULL OF GOODNESS... FULL FLAVORED U.S. CHOICE IOWA BEEF STEAKS

Your Choice

BONELESS Top Round STEAK

BONELESS Top Sirloin STEAK

BONELESS CUBE STEAK each

99¢

lb.

FRESH, MILK FED

VEAL

- SHOULDER VEAL CHOPS lb. 69¢
- RIB VEAL CHOPS lb. 79¢
- BREAST OF VEAL lb. 29¢
- NECK OF VEAL lb. 29¢

FRESH ITALIAN

SAUSAGE

68¢ lb.

HOT OR SWEET

COOKING-OUTDOORS? YOU'LL WANT

HAMBURGERS

- PURE LEAN CHOPPED BEEF lb. 39¢ SAVE 10¢ LB.
- DELICIOUS FRESH CHOPPED CHUCK lb. 59¢ SAVE 10¢ LB.
- OUR FINEST GROUND ROUND lb. 88¢ SAVE 11¢ LB.

GENUINE SPRING

LAMB

- SHOULDER LAMB CHOPS lb. 76¢
- LAMB FOR STEW lb. 23¢
- LAMB SHANKS lb. 29¢

Delicate Flavored

VEAL CUBE STEAK

SAVE 21¢

78¢

lb.

FLAVORED JUST RIGHT!

KITCHEN FRESH COLE SLAW

22¢

Save 7¢ lb.

DELICIOUS JUICY ITALIAN

SAVE 13¢ lb.

PRUNE PLUMS 16¢

lb.

TENDER AND TEMPTING!

SMALL FANCY SHRIMP **49¢** lb.

LARGE FANCY SHRIMP lb. 89¢ 5 lb. box 4.22

- STAFF GREEN BEANS** French or Cut 6 10 oz. \$1
- ORANGE DELIGHT** Minute Maid 6 6 oz. 11¢
- GREEN GIANT—PEAS OR NIBLETS IN BUTTER SAUCE** 10 oz. 29¢
- PURE FRUIT DRINKS** 6 oz. 10¢
- STAFF SPINACH** Leaf or Chopped 8 10 oz. \$1
- FRESH CRISP STRINGLESS GREEN BEANS** Save 4¢ lb. 16¢
- COOL GREEN CUCUMBERS** Save 3¢ each 6¢
- THICK MEATED DELICIOUS GREEN PEPPERS** Save 6¢ each 6¢
- HYGRADE FRANKS** Save 10¢ 2 lb. pkg. 89¢
- SPICED LUNCHEON MEAT** Save 30¢ 3 lb. can 99¢
- DELICIOUS RIPP EGG TOMATOES** WELL FILLED EARS lb. 13¢
- CORN** 6 23¢
- TANGY JUICY CALIFORNIA LEMONS** Save 20¢ 10 for 29¢
- TAYLOR PORK ROLL** Thick or Thin Slices 3 6 oz. \$1
- AMERICAN CHEESE** Good Deal—Sliced lb. 63¢
- FILLET OF HADDOCK** Fresh, Skinless, Boneless lb. 49¢
- IMPERIAL MARGARINE** 3c off label lb. 34¢
- ORANGE JUICE** Pure Maid quart 39¢
- GOOD LUCK MARGARINE** 2c off label lb. 23¢
- FRESH KOSHER PICKLES** Safemix quart 39¢

<p>★ NEWARK 75 First Street CHATHAM 393 Main St.</p>	<p>★ IRVINGTON 10 Mill Road WEST ORANGE Essex Green Plaza</p>	<p>★ EAST ORANGE 500 Central Ave. PASSAIC 78 Main Ave</p>	<p>★ NEWARK 843 Springfield Ave. MILLBURN 220 Main St.</p>	<p>★ MAPLEWOOD 719 Irvington Ave. ELIZABETH 697 Newark Ave.</p>	<p>★ CLIFTON 1578 Main Ave. SADDLE BROOK 444 Market St.</p>
---	--	--	---	--	--

MON. thru THURS. 9:00 A.M.—9:00 P.M. FRIDAY 8:30 A.M.—10:00 P.M. SATURDAY 8:30 A.M.—9:00 P.M. OPEN SUNDAY 8:30 A.M.—6:00 P.M.



Blame Ragweed For Hay Fever

Dr. Milligan Calls It 'Greatest Sinner'

"Hay fever is neither caused by hay nor is it associated with it," says Dr. Robert S. Milligan, health officer of the Springfield Department of Health. But the 10,000,000 Americans who suffer from it know the misery of stuffed, running noses, watery, itchy eyes, sneezing, wheezing and general discomfort. Although the large percentage of the cases are mild, many suffer intensely with considerable loss of time from work or school and often almost complete inactivity. Dr. Milligan reports that about one-third of those allergic to ragweed develop asthma.

"Hay fever can be caused by trees, grasses, molds, weeds and even disintegrated insect bodies, among other offenders," Dr. Milligan said. "But the greatest sinner is the ragweed plant. In only five hours a ragweed plant can produce eight billion pollen grains that can be airborne over a distance of 15 miles and cause only a little of the pollen to trigger an attack in a sensitive person," Dr. Milligan revealed.

Of the four species of ragweed, three grow knee high, but the fourth—giant ragweed—reaches head high. For some unknown reason, the giant ragweed's scientific name is "Ambrosia trifida." Ambrosia, of course, means "pleasing to taste or smell." Any hay fever sufferer would violently disagree with the taste.

The doctor reported that it may seem strange, but the ragweed pollination season begins earlier in the north than in the south. In parts of Canada, ragweed starts pollinating in the latter part of July, whereas in Southern Texas it begins about the middle of September. This is because pollination occurs as the amount of sunlight becomes less. Thus, the farther south the plants are, the later their pollination starts.

Why some of us become allergic to hay pollen, others to ragweed, peanuts, molds, or insects remains a mystery. But it is known that the allergic tendency is inherited in a majority of cases.

Mild seasonal attacks can usually be treated effectively with simple medications prescribed by your doctor. More severe or persistent cases may require skin tests and desensitization.

expensive, can provide gratifying relief. If this is not practical, a window unit in the bedroom can help toward a good night's sleep and leave one better able to withstand the onsets of the next day. Obviously, a sensitive person should not take walks through fields or woodland.

The sensitive person can plan his vacation for the period during which he is usually afflicted. A trip of only a hundred miles away to a place free from the specific pollen that affects you can help you breathe freely again, he said.

There are also a number of personal measures one can take to avoid or ease the distressing symptoms, the doctor reported. "Try to keep doors and windows closed as much as possible during the susceptible period. Central air conditioning with filtration, although

expensive, can provide gratifying relief. If this is not practical, a window unit in the bedroom can help toward a good night's sleep and leave one better able to withstand the onsets of the next day. Obviously, a sensitive person should not take walks through fields or woodland.

The sensitive person can plan his vacation for the period during which he is usually afflicted. A trip of only a hundred miles away to a place free from the specific pollen that affects you can help you breathe freely again, he said.

There are also a number of personal measures one can take to avoid or ease the distressing symptoms, the doctor reported. "Try to keep doors and windows closed as much as possible during the susceptible period. Central air conditioning with filtration, although

Quality Natural Color
Home Portraits
COOL ELECTRONIC LIGHTING
IN THE COMFORT OF YOUR LIVING ROOM

Curtis Hoelle
Our Aim is to Please YOU
MAY WE?

Technifinish Studio
953 Potter Avenue
Union, New Jersey
MU 7 1525

Seton Hall U. Names
Three To Dean's List
Three Union students at Seton Hall University were named to the Dean's List for the spring semester.

They are Charles Yablonsky of 828 Sheridan St., Philip A. Massimo of 920 Dunbarton and Eugene Gray of 1700 17th St.

KENT PLACE SCHOOL FOR GIRLS

Limited Places in Some Grades
For Qualified Candidates Entering
ELEMENTARY AND JUNIOR HIGH
Transportation - Cafeteria
Also Kindergarten for Boys & Girls
Write or Telephone for Further Information
Miss Florence Wolfe, Headmistress
42 Norwood Avenue, Summit
Telephone: CRestview 3-0800

Frosh Orientation Sept. 4 At Dayton

Some 428 freshman students will take part in Freshman Orientation Day scheduled for Wednesday, Sept. 4 at Jonathan Dayton Regional High School, according to Robert LaVanture, school principal.

Object of the program, LaVanture said, is to acquaint students some of whom have come from smaller schools, with the more complex system of their new high school.

On Sept. 4 all freshmen will report to their home rooms by 8:30 a.m. which time they will receive a copy of their schedules. This will be followed by a short assembly and then a luncheon period. The program will be over by 11:30 and buses will leave at 12:04 noon.

1,675 STUDENTS HEAD FOR DAYTON OPENING SEPT. 5

Jonathan Dayton Regional High School will open with a total of 1,675 students on Thursday, Sept. 5. This is 125 over the number enrolled for this opening last year, according to Robert LaVanture, principal.

LaVanture reported that 428 freshman students were entering Dayton Regional High School. Students are registered in Regional District 1, which serves students from six communities.

REGISTRATION SET FOR NEW PUPILS AT DAYTON HIGH

New pupils registering at Jonathan Dayton Regional High School are expected to do so from 8:30 a.m. to 4 p.m. Monday through Friday in the guidance office in the school, according to Principal Robert LaVanture.

New registrants are those who are transferring from other high schools, or pupils who have recently moved into the township, LaVanture said.

Youngsters reporting for registration are expected to bring their report cards or transcripts of their records.

Saturday Service For R. C. Williams

Funeral services were held Saturday for Richard C. Williams, 55, of Troy Village, who died Friday of a brief illness. A mass of requiem was held in St. Rose of Lima Church, Short Hills.

Born in Evansville, Ill., Mr. Williams had lived in Summit for 18 years before moving to Springfield a few years ago. He was executive secretary of the Handover Fire Insurance Co., New York for 17 years.

Mr. Williams' widow, Mrs. Madge D. Williams, and a daughter, Miss Ann D. of Arcadia, Calif.

WILDEROTTER'S IN UNION GIGANTIC HALF-YEARLY CLEARANCE SALE SAVE FROM 10% TO 50%

THIS IS THE FINAL WEEK OF OUR GREATEST HALF-YEARLY SALE EVER! BELOW IS A PARTIAL LIST OF SALE ITEMS. BUT... DO SHOP EARLY FOR THE BEST SELECTIONS AND SAVE AS THOUSANDS DO AT WILDEROTTER'S IN UNION!

BAUMRITTER ROOMATES - Five piece correlated grouping, ideal for bedroom or den. (Can not be broken.)	was 339.75	195.00		GENERAL ELECTRIC TELEVISION - Terrific 42-in. 11-inch personal portable.	99.00
BUFFETS - Walnut and Light Oak - were 129.95		43.00		GENERAL ELECTRIC FILTER FLO - Completely automatic washer.	178.00
ODD-NITE TABLES		10.00		GENERAL ELECTRIC DISHWASHER - Rolls on wheels, no installation necessary.	128.00
LAMPS - Every One Reduced		15% to 45%		GENERAL ELECTRIC TWO-DOOR REF. - 11.2 cubic feet with automatic defrost and 84-pound zero degree freezer.	229.95
TEA CARTS - Smart looking in heavy brass and plate glass	was 39.95	19.00		MAGNAVOX STEREO T.V. COMBINATION - A beautiful instrument complete with famous Magnavox quality stereo, Hi-Fi, and AM-FM radio and television.	379.50
PROVINCIAL BED ROOM - Complete five piece set with 72-inch door frame dresser and chest on chest, chair-back bed with two commodes.	was 649.95	412.00		ADMIRAL COLOR TELEVISION - Never before have we been able to offer a set of this high quality at such a low price.	398.00
DANISH LIVING ROOM SET - Complete three piece, wood grain sofa and your choice of rocker and high-back chair.	was 219.95	157.00		MODERN SECTIONAL BY ROWE - 5 SEATS 3 PC. CONSTRUCTION - Elastic Rayon quality construction, foam cushions, in various decorator fabrics.	219.00
KENT COFFEY BEDROOM - Includes triple dresser, mirror, chest on chest, slatted panel bed with two side tables.	was 439.95	287.00		LANE CEDAR CHESTS - Choice from the largest selection in this area. All finishes available.	37.00
PROVINCIAL OAK GROUPING - 6 pc. correlated group complete with corner desk, an ideal bedroom for your daughter.	was 379.95	255.00		5 PC. ROCK MAPLE DINETTE - Includes 40-inch round formica top table with leaf and 4 rugged-mat's chairs.	88.80
KROEHLER LIVING ROOM - Beautiful three piece set with 88-inch sofa.	was 379.95	205.00		COLONIAL WING-BACK SOFA - With luxurious leather cushions and back. Tweed or prints. Matching chair 47.00.	97.00
DEN-SET COMPLETE - Comes with love seat and two arm chairs.	was 39.95	27.00		ROWE SLEEP BED - Exclusive mechanism (Nylon & Foam).	175.00
LIVING ROOM TABLES - Consists of two top tables and a cocktail table in solid core formica.	was 59.95	29.00		AMERICAN OF MARTINSVILLE 8 PC. TRANSITIONAL DINING ROOM - Features 66-inch two-piece breakfast china with oval extension table opens to 101. In rich painted walnut woods with rosewood inlays. Six sculptured high back cane chairs.	495.00
KNEE HOLE 5 DRAWER DESK - These are adult sized desks, formica tops.	was 39.95	37.00		MAN SIZE CLUB CHAIRS - With foam rubber cushions and arms. Your choice of colors.	37.00
ROWE ODD-LIVING ROOM CLUB CHAIRS - In 100% Nylon and Foam	was 79.95 and 89.95	35.00		2 (two) Complete HOLLYWOOD BED OUTFITS - Two for 100.00. Features pre-built mattress. Your choice of colonial, modern or provincial headboards.	100.00
SACROPEdic EXTRA FIRM BEDDING - Perfect for those who need firm back support. 10 year guarantee.	was 59.95	37.00		STRATOLOUNGER RECLINERS - We have just five of these in durable boltflex in beige, brown and natural.	57.00
COCKTAIL TABLES - Walnut or Maple - were 39.95		5.00		MAYTAG FULLY AUTOMATIC WASHER	188.00
DANISH DINING ROOM - Eight pieces including 66-inch breakfast in beautiful walnut.	was 499.95	377.00		SPECIAL 100% DUPONT NYLON CARPETING - Complete with rubberized padding and the finest tackless installation. Select now and install anything with next three months, but you must select now.	8.88 Per Yd. Installed
SOLID ROCK MAPLE BEDROOM - Your choice, dresser base, chest, panel bed and night table or desk.		59.00			
ROWE 2 PC. CONTEMPORARY MODERN SOFA AND MATCHING CHAIR IN NYLON AND FOAM	was 239.95	155.00			
100% NYLON 9 x 12 RUGS - These are continuous filament sturdy heavy pile rubber back rugs and we have them in nine different colors.	was 79.95	58.88			

Wilderrotter's IN UNION

890 STUYVESANT AVE.

- USE WILDEROTTER'S OWN CHARGE PLAN
- OPEN EVERY EVENING TILL 9 P.M.
- PLENTY OF FREE PARKING IN REAR OF STORE
- PHONE: MURdock 8-8070

Traffic Education Should Begin Before School

Well in advance of the first ringing of the school bell, parents whose children will walk to and from school should teach them how to make the "round" trip properly and safely. This is especially important with respect to children who are just starting to school this year. Just leaving the house for a few hours each day is a new experience to them, and just surely they lack the good pedestrian habits that some only with repeated experience.

First thing to make sure about is to make sure that these "first-timers" know the "best" (which means the safest) way to school. Once this point has been determined, it is a good idea to walk it with them. All children should be taught to recognize traffic signals and how important it is to obey them.

If the school has student parking at street intersections, children should be made to understand that these parents are there to help them, and should be instructed to follow their directions faithfully. With respect to crossing streets, the following points should be stressed in a child's traffic safety education:

The street is no place for loitering or visiting with friends.

BACK TO SCHOOL FASHION NEWS



Clothes Choice 'Mature' For High School Youth

No longer can high school boys be accused of taking good clothes and turning them into caricatures. The outfits of yesterday are fast being discarded in favor of more conventional wrappings. Like his older college brother today's high schooler shows a distinct preference for classic, traditional styling with a minimum of fads and fancies. True, the high school lad is conservative, but conservative does not mean conservative. He doesn't sling so unquestioningly and uncompromisingly to strictly classic standards. He still insists on expressing his individuality and inventiveness in his wardrobe, but today he is doing so with an increasingly mature sense of fitness and good taste in which the bizarre or anemic is definitely "out."

The newest and biggest trend among these clothes-minded youngsters is into what is called the "rugged" look that is rough, rugged and distinctly masculine. Literally, this means suede elbow patches on sport coats and on brushed, bulky sweaters. Figuratively, the "elbow patch" era finds expression in a strong trend to shaggy, tweed, rough-textured tweed and corduroy sport coats. In outerwear, the new rugged masculine look is reflected in heavy wool, knitted collars, pile and plaid linings, camel hair and camel sploring. It pops up again in the very popular "waxed" jeans, in napsack and denim sport shirts.

Another important idea for this fall among the high school crowd is the "it is but it isn't" feeling in some areas. Such as "blue jeans" that aren't jeans at all, but natural-color or olive or black corduroy slacks in the jeans design. Such as shirts that are sport shirts in styling but dress shirts in fabric, with convertible collars that can be worn with or without.

More and more high school lads are wearing ties on more



Smart and rugged, easy to pack and easy to carry — these are the qualities students want in the luggage they carry to college. Modern luggage meets the test with a variety of light-weight, sturdy cases in distinctive styles and materials. In addition to the basic pullmans and weekenders, consider accessory pieces such as large shoulder bags, attache cases.

Before crossing, look left and right for oncoming cars and check cross streets for turning traffic. Don't cross until the way is clear. Then cross without hesitation. However, do not contest the right of way with a motorist, even if he is wrong! Walk rapidly (but don't run) across the street. Go directly to the opposite side.

JOSEPH LENIART FOR CADILLAC

USED CARS

1 Greenwood Ave. Montclair
PI 4-0700 MU 8-3614



UPPER TEXTURED wool worsted double knit makes up this new Kay Windsor two-piece dress ensemble. The overblouse features all pocket detail. It is available in charcoal and down grey, espresso-brown and white or cranberry and victrol beige at Stan Sommer, Union Center.



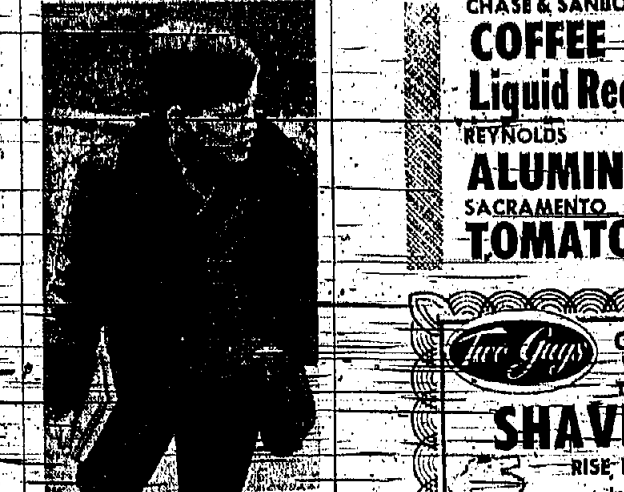
OVERBLOUSE, QUEUED LONG SLEEVES and TURTLE NECK closing highlights this new season creation at Stan Sommer, Union Center. It is Kay Windsor's new worsted double knit series. The skirt narrows. Colors are olive green, malva-black or michelle teal.

BOOTS ON MARCH AROUND CAMPUS

It's boots, boots, boots, marching up to the blackboard and down to the mall shop. It's boots in dashing, brushed leathers, boots in silken, glossy smooth leathers, polished patents, and boots in distinctive grained leathers.

Smart leather boots have been promoted to head-of-the-fashion class on campuses across the country. The major trend apparent has been a move to a new line, higher and narrower than those of the past. Fur collars, braided laces or buckles decorate the tops of the new boots.

To put inside on a colorful feeling are leather slippers such as Julien, moccasin, and loaf and moccasin.



SCHOOL-BOUND boy takes cold weather in stride in his tweed coat, warmly lined with a pile of Eastman Yvel modacryl and acrylic.

FINAL SALE! BROWN FORD TAKES THE SHOPPING OUT OF BUYING A...

1963-1963 1/2 FORD!

ALL OUR CARS ARE CLEARLY MARKED!

ONE PRICE FOR ONE AND ALL!

Your Dependable Ford Dealer
BROWN FORD
2037 MORRIS AVE. UNION
NEW CARS - MU 6-0040 • USED CARS - MU 6-1373

GOING SPORTIVELY back to campus, leather aryon wraps jersey shirt, worn with ribbed seamless nylon stockings.

Two Guys **BIG CASH SAVINGS!**

PLUS... YOUR MOST VALUABLE TRADING STAMP

Your filled Two Guys Stamp Book can be spent like \$2.25 IN CASH in any department including food. Choose from over 100,000 gifts, AND our One Book Specials often more than triple the value of your book.

CHUCK STEAKS Well Trimmed lb. **45¢**

CROSS RIB ROAST Boneless PCT Quality lb. **79¢**

VEAL STEAKS PCT Quality Best All Beef Skinless FRANKS lb. **69¢** **49¢**

SMOKED HAMS Full Cut Shank Half lb. **39¢** Full Cut Butt Half lb. **45¢**

RIB STEAKS PCT Quality Short Cut lb. **69¢**

CUBED STEAKS Boneless lb. **89¢**

LEGS OR BREASTS Taylor's Thick or Thin 6-oz. **49¢**

PORK ROLL 6-oz. pkg. **35¢**

CANNED SODA TWO GUYS 12-oz. cans **79¢**

WHITE TUNA 3 1/2-oz. cans **88¢**

MAZOLA OIL 4 1/2-oz. btl. **68¢**

PANCAKE MIX 3 1/2-oz. cans **99¢**

COOKIES Bury Chocolate Chip 3 1/2-oz. pkg. **99¢**

BISCUITS Nabisco Social Two 11-oz. pkg. **33¢**

SALAD DRESSING MIRACLE WHIP 32-oz. jar **48¢**

COFFEE CHASE & SANBORN OR BEECH-NUT lb. can **58¢**

Liquid Redi Tea White Rose 32-oz. btl. **51¢**

ALUMINUM FOIL REYNOLDS 2 25-ft. rolls **49¢**

TOMATO SAUCE SACRAMENTO 10 8-oz. cans **79¢**

SUGAR GRANULATED 5 lb. bag **58¢**

TOMATO JUICE SAVOY 4 36-oz. cans **88¢**

PUNCH POLYNESIAN ORANGE OR GRAPE DRINKS 4 46-oz. cans **99¢**

LEMON JUICE REALEMON 32-oz. btl. **58¢**

COUPON WORTH 27¢

SHAVE BOMB RISE INSTANT LATHER In Reg. or Menthol Value 98¢ Our Reg. Low Disc. Price 79¢ **52¢**

WITH THIS COUPON

One coupon per customer. Good thru Aug. 24th

TOILETRIES DEPT.

WEEKLY BONUS SPECIAL

900-CALORIE WAFERS

60 chocolate wafers. Each delicious wafer supplies only 18 calories. Use for breakfast, light or dinner.

Comp. Not Brand at 59¢ **39¢**

with a food purchase of \$2.00 or more

FREE

100 ADDITIONAL TWO GUYS TRADING STAMPS

With a \$5.00 or more Food Purchase With This Coupon. One coupon per customer. Good thru Aug. 24

FOOD DEPT.

PRODUCE DEPT. SAVINGS

WATERMELON FIERY RED, SUGAR SWEET WHOLE or CUT lb. **4¢**

TOMATOES Home Grown 2 lb. **35¢**

SEEDLESS GRAPES Calif. lb. **23¢**

LETTUCE Western Krisp Iceberg lb. head **19¢**

DAIRY DEPT. SAVINGS

MARGARINE Royal Dairy Corn Oil 1 lb. pkg. **25¢**

SWISS SLICES Austrian Alps Imported Gruyere 6-oz. pkg. **35¢**

CREAM CHEESE Royal Dairy 8-oz. pkg. **25¢**

APPETIZING DEPT. SAVINGS

SALAMI or Chunks 1 lb. **89¢**

HAM CAPICOLA Sliced to Order 1/2 lb. **59¢**

PROVOLONE Sandwich Size Slices 1 lb. **69¢**

FROZEN FOOD DEPT. SAVINGS

MIX or MATCH 99¢ SALE

MINUTE MAID ORANGE DELIGHT 6-oz. can. **99¢**

TIP TOP LEMONADE 6-oz. can. **99¢**

POTATOES FRENCH CUT **99¢**

MAVFLOWER WAFFLES 3-oz. pkg. **99¢**

FRESH-FROZEN 10 for 99¢

BIRDSEY POT PIES Beef, Chicken, Turkey. 8-oz. **15¢**

MILADY BLINTZES 3 1/2-oz. **99¢** ALL VARIETIES

Two Guys **ROUTE 22, UNION** | **OPEN MON. THRU SAT. 'TIL 10 P.M. SUNDAY 'TIL 8 P.M.**

We reserve the right to limit quantities. Not responsible for typographical errors. Prices effective through August 24th.

New (And Old) Ideas For Little School Girls

New ways to learn new things to learn, new horizons to explore greet the grade-school girl going back to class. She'll be challenged by the "new math," foreign languages, basic science. New teaching methods and goals will help her on her way. On the other hand, she'll find a few emphases on some old familiar subjects, such as learning to read and write.



The same blending of the old and the new makes the fashion she'll be wearing. For little girls, though, they are certainly more sophisticated, as still little girls. Skinny shapes and A-line flares, Chanel looks and sporty separates are some of the current fashions that make themselves very much at home in the grade school girl's wardrobe.

Colors go subtle and sophisticated in muted shades of brown and green, in cranberry, reds and blueberry blues.

While borrowing the best from adult fashion, little girls insist on being their delight.

Leather and leather copies, including cotton suede, grace the sportive styles in the post-brown-up-nights, subtle hints show up in the details.

Whatever the silhouette, styles for girls have evolved far beyond the realm of playful whimsy, now being emphasized as strongly in schools.

From young tomboys of white, pinstriped and other rounded collars and puffed sleeves, little or long, all over action prints of every high to low neckline.

From classic double-breasted styles to shirred all-weather, simple, wide, and play(ing) such as border or all-over action prints of every high to low neckline.

From classic double-breasted styles to shirred all-weather, simple, wide, and play(ing) such as border or all-over action prints of every high to low neckline.

FOR STUDY HALL or soda shop is smart Swedish argyle cardigan—Inset pockets provide a handsome finishing touch.

HIGH SCHOOL AND COLLEGE FASHIONS FOR BACK TO SCHOOL AT MR. "D"



Fashions By Mr. "D" 1992 Morris Avenue Union • 687-2772

SCHOOL-STAPLE SWEATERS show up in fashion-new as well as classic versions—example, this leaf-patterned for blend all-over, with mock turtle-neck. In the picture, too, is camera she used on field trips, in lab experiments.

NEED A JOB? Read the Help Wanted Section of the Classified Pages. You can probably find an employer who can use your services. If not, list your qualifications in an employment wanted ad. Just call 371-5000 and ask for Ad-Talk.

HAIR STYLES... for lasses going to classes

Bring the back to school hell for head of the class hair styles. We will style your hair in a fashion that is sure to make returning to your books a pleasure. Come into NIKI'S and let us arrange a permanent that will suit your personality to a "T".



NIKI'S Beauty Salon

880 STUYVESANT AVE., UNION

HOURS: 9-6 Mon. - Tues. - Wed. - Sat. 9-8 Thurs. - Fri.

Phone 687-6878



MEETS FASHION (and gives warm comfort, does this girl's coat in American wool, with neat neckline.

THE MODERN FAMILY'S BUYING GUIDE, tell it from the Classifieds. Call 371-3000; v. 12, 4:30 daily.

HERE THEY ARE...! MISS SLENDERIZE and MRS. SLENDERIZE

PLUS THE FIRST RUNNER-UP IN EACH GROUP



Mrs. Slenderize: Mrs. Nancy Stoph, 505 Beechwood Ave., Roselle Park; Runner-up: Mrs. Barbara Mattis, 755 Harrison Ave., Roselle. Miss Slenderize: Miss Ann Bush, 37 Maple Ave., Springfield; Runner-up: Miss Susan McHugh, 2574 Balfroy Drive, Toms River.

Complete Figure Fashion

Slenderize inc.

2659 Morris Avenue (In the Adco Shopping Center) MU 7-7274 Union

4% why wait?
ON ALL SAVINGS
PAID 4 TIMES A YEAR
Elmora Savings
AND LOAN ASSOCIATION
8 JERSEY ST., at Broad St., Elizabeth, N. J. EL 5-2111
Daily, 9 to 4; Mon. & Thurs. 6 to 8

ANNOUNCING FALL REGISTRATION
Tuesday Thru Saturday
September 3, 4, 5 & 6

Classes in: Tap • Modern
Modern Jazz • Ballet • Toe
Adagio • Exhibition Ballroom • Drums

Ballroom Dancing: Fox Trot
Waltz • Lindy • Rumba • Tango
Samba • Mambo • Cha-Cha
Bosanova

Bill Reddy's Dance Studio
9 Broad Street
Elizabeth 289-6770

SHOP-RITE'S CUT-RITE CARLOAD BEEF SALE!

ALL BEEF IS CUT-RITE AT SHOP-RITE!

Tasty & Lean CHUCK	Cut Short for Barbecue RIB STEAK	Deliciously Flavorful SIRLOIN	Deliciously Flavorful Porterhouse
45¢	69¢	79¢	89¢
lb.	lb.	lb.	lb.

No. Waste Cube Steaks	99¢	Extra Lean for Outdoor Patties Round Ground	89¢
Freshly Ground		25-30 Count Jumbo	
Fresh Ground Beef	45¢	Shrimp	99¢

Shop-Rite or Libby FROZEN WHITE or PINK LEMONADE	10¢	Shop-Rite Frozen CHOPPED or LEAF SPINACH	10¢
6-oz. cans		10-oz. pkg.	

Shop-Rite or Libby FROZEN RIB STEAKS	5¢	Shop-Rite or Libby FROZEN CHICKEN	29¢
1 lb. pkg.		1 lb. pkg.	

2¢ Off Good Luck MARGARINE	4¢	Shop-Rite CANNED TUNA	5¢
1 lb. plus		1 lb. plus	

All Meat or All Beef HATED FRANKS	2.89¢	Shop-Rite BOLOGNA	55¢
1 lb. plus		1 lb. plus	

Kitchen Fresh ROAST BEEF	99¢	Imported Swiss SWISS CHEESE	79¢
1 lb.		1 lb. plus	

WATERMELON WHOLE RED RIPE **59¢**

California Sweet Seedless GRAPES	25¢	Eggplant or Extra-Fancy PEPPERS	10¢	Sweet Juicy California ORANGES	10.39¢
Golden Yellow CORN	10.29¢	Italian PRUNES	19¢	Extra Fancy CUCUMBERS	3.19¢

WESSON OIL CONVENIENT **\$1.59**

COFFEE SHOP-RITE 100% PURE COLOMBIAN ALL PURPOSE GRIND **59¢**

SUGAR SHOP-RITE GRANULATED **5.59¢**

Kraft Miracle Whip	2.91	Orange, Grape, Pineapple Grapefruit Circus Drinks	4.91
Chicken of the Sea (3c Off) Solid Pack White Tuna	3.89¢	Libby Tomato Juice	4.91
Pride of the Farm Tomatoes	9.91	Shop-Rite Juice Pineapple	3.85¢

CORN NIBLETS GREEN GIANT **2.29¢**

SAVARIN COFFEE RICH FLAVOR **65¢**

ALKA SELTZER REGULAR 59¢ SIZE **47¢**

ICE CREAM HOLLAND DUTCH TREAT **59¢**

Prices effective through Saturday Night, Aug. 24th, 1963. Not responsible for typographical errors. We reserve the right to limit quantities.

UNION CENTER 963 Stuyvesant Ave., Union	ROUTE 22, UNION Route 22 & Springfield Rd. Next to the National Family Discount Center • OPEN SUNDAY •	ROSELLE PARK SHOP-RITE 219 Lincoln Ave. • WHY PAY MORE •
LYONS SHOP-RITE 327 Lyons Ave., Newark • OPEN SUNDAY •	RAHWAY SHOP-RITE 1064 St. Georges Ave. • OPEN SUNDAY •	LINDEN SHOP-RITE 22 St. Georges & Wood Aves. • OPEN SUNDAY •

CRAFORD SHOP-RITE — South Ave. & Union Ave.

Three AWOL Marines Surrender To Police

Three members of the U.S. Marine Corps from Camp Lejeune, N.C., surrendered to Union police Monday stating they had been absent without leave since Aug. 9 from the Marine camp.

Released to Armed Forces Police in New York City were Lance Cpls. Herman R. Bidger, staff, 19, Ronald F. Dicus, 21, and Pfc. Richard E. Rose, 10.

High School Girl Looks Neat, Fashion Conscious

Important in the planning of today's high school girl is her attitude toward fashion. She knows proper dressing is a part of adult poise, and her wardrobe planning helps her in "rehearsing" for the future as well as in looking neat, well-groomed and attractive in the present.

Since she is interested both in current fashion trends and in styles that are particularly appropriate for her as she prepares for college and career, the high school girl will welcome the current opportunity of the "sportive" look in fashion.

Lines of adult citizenship. This outlook is reflected in her attitude toward fashion. She knows proper dressing is a part of adult poise, and her wardrobe planning helps her in "rehearsing" for the future as well as in looking neat, well-groomed and attractive in the present.

Since she is interested both in current fashion trends and in styles that are particularly appropriate for her as she prepares for college and career, the high school girl will welcome the current opportunity of the "sportive" look in fashion.

crisply casual look have long been favorites in the high school wardrobe. Sweaters and shirts, jackets and skirts, jumpers to wear with blouses or alone for dressier occasions appear in new and classic versions to mix, rather than match, for a smart and sportive air.

The classic blazer and the boy coat are joined by jackets and coats with scarf or cowl necklines, and the cape or cape effect makes a strong impression. Plenty of pockets, always favored by high schoolers, garnish the coats.

Change-of-look separates and suits blend perfectly with the sportive mood of fashion, and braid, another Chanelism, wins honors.

The easy skimmer dress is becoming as basic as separates. Both dresses and skirts generally trend to a more relaxed look.

Knits and leathers take a top position in the high school fashion curriculum. Other fabric news varies from crisp men's wear finishes to richly textured tweeds, molasses, chinchillas.

In colors, the word is, as with separates, "mix." Sportive outfits often combine at least three colors in a single costume. Cranberry reds show up important in the school spectrum, as well as a range of beiges such as perennially-popular camel.



WINNERS IN BEAUTY CONTEST: Mrs. Nancy Hopkin, of Roselle Park, front row left, and Miss Anne Charlene Bush, of Springfield, also front row, were the winners in the Mrs. Slenderize and the Miss Slenderize contest held last Thursday evening at the Slenderize Health Studio on Morris ave. Union. Also pictured are the first runners-up in the 1500 contest, Mrs. Barbara Matthei, of Roselle, left rear, and Miss Susan Mollugh, of Tom's River.

More Orderly, Neater Look Shown In Male Collegians' Fall Wardrobes

In this fall's strong swing to a neater, more orderly, more business-like look, sectional fads and follies will play a relatively minor role in the college man's wardrobe, regardless of where he will participate.

The classic, authentic, natural shoulder trend has now swept

the college campuses of the country, from coast to coast. Such wardrobe variations as will be seen, derive primarily from sectional, climatic differences, such as overcoats and heavier outerwear in the northern areas, more walking shorts in southern regions, etc.

When it comes to the basics of the college wardrobe, the following aspects of this fall's neater and more classic look will apply practically everywhere.

SLACKS—Worked flannels in gray or olive, plenty of chinos, corduroys, whipcords.

TOPCOAT—Natural shoulder model in dark gray or olive herringbone favored on most campuses.

SWEATERS—Shetlands and crew-necks top the list.

DRESS SHIRTS—Button-downs and tab collar, oxford in white (top choice), followed by blue. Thin stripes are No. 1 pattern.

NECKTIES—Regimental striped reps, the universal favorite. Next: foulards, then challis. Include one black knit.

SPORT SHIRTS—Button-downs in solid colors, checks, stripes, plaids (in about this order).

OUTERWEAR—Pompadour jackets will be seen everywhere, cap-trimmed, buttoned, in the most popular colors. Jackets will appear in weights and linings, according to climate.

UJC College Council Adds Two Members

Dr. Kenneth G. Mackey, president of Union Junior College in Cranford this week announced the appointments of Wallace F. Gleason, principal of Plainfield High School, and Walter H. McCarthy, principal of New Providence High School, in the college's Council of Educational Advisors.

Serving on the council with Gleason and McCarthy are Dr. Randolph T. Jacobsen, assistant superintendent of schools of the Union County Regional High School District No. 1, Albany St. Peeling, principal of Abraham Clark High School, Roselle, and four others.



JUST FULL of college fashion is a plaid cape coat with important pockets. It reverses to solid-color camel in American wool.



INTENT ON PROBLEM, this collegian wears a classic V-neck cardigan in a knit blend of Eastman-Kodol polyester and wool.

BACK TO SCHOOL FASHION NEWS

Drive Safely



BRECK PROFESSIONAL PERMANENT WAVES
A Breck Professional Permanent Wave fashioned with the skill of your beautician ensures permanent care and beauty for your hair. Your beautician can select from several different Breck Professional Permanent Waves, one which is exactly suited to your individual hair condition.

Beautiful Hair

B R E C K

Vincent's

House of Beauty

2027 MORRIS AVE. UNION CENTER
NO-APPOINTMENT NECESSARY
Call for your favorite operator — or just walk in — MU 4-3824

Open Every Day Monday thru Saturday!

LADIES!

Our car hire service is especially desirable to the shore. Doctors, appointments, shopping, messenger service, etc. Special group rates. Experienced lady driver. Insured.

EL 5-3090
EL 5-6428

FASTEST, THRIFFIEST WAY TO CLEAN SCHOOL CLOTHES!

Getting the family's wardrobe set for school is easy the ABC when everything's dry-cleaned or washed the speedy KOMFORT KLEEN way in our automatic machines. We offer do-it-yourself prices without the do-it-yourself worries. Just try our efficient (we mean clean) means of cleaning all your clothes and you will appreciate the service and the money you will save.

Dry Cleaning	Washing & Drying
4 lbs. \$1.00	12 lb. Wash 25c
6 lbs. \$1.50	20 lb. Wash 35c
8 lbs. \$2.00	30 lbs. Dry 10c

KOMFORT KLEEN CENTER
515 Lehigh Avenue, Union, N. J.
NEAR GALLOPING HILL ROAD
MURDOCK 7-5095

WE ARE IN THE REAR • COME IN

Buster Brown goes back to school again.

HOBO
8 1/2 to 11 6.99
12 to 14 7.99

BUTCH
8 1/2 to 12 8.50
12 1/2 to 3 8.99

Why not bring your child in for a look at our Buster Browns. Let us check their shoe size with Buster Brown's patented 4-Point Fitting Program. It takes the guesswork out of shoe fitting, and assures your child of a perfect fit every time.

KEY SCHOOL FASHIONS

Awards to the bright fashions awaiting you in our campus collections! They vary the classics, are definitely new and important. From shirts to suits, all this semester's wardrobe needs are here.

AUGUST Lay-Away Coat Sale

Now Going On!
SAVE \$10⁰⁰ or \$20⁰⁰

(Not a Gift Certificate but Cash)
NEW Coat Sale in August?

The reason is simple... August is the slowest month of the year... so in order to induce you to shop early, while we can take the best care of you and can offer the best selections, we have this sale.

A Small Deposit Will...
Hold Your Selection.

so little time to save!

BERKSHIRE stockings

SALE ENDS SATURDAY

Hurry, or you'll miss this wonderful opportunity to stock up on famous Berkshire Stockings. Remember, these are the stockings with the Nyloc® Run-Barrier. They're actually guaranteed not to run from top or toe into the sheer leg area - or you get a new pair free.

Check these fabulous savings!
Regular Price - Sole Price - 3 Pairs
\$1.35, \$1.09, \$3.19

Open THURS., Fri., Mon. 'Til 9 P.M.

UNION'S LEADING FAMILY SHOE STORE

WEARITE SHOES

Authorized Dealer for AIR-STEP, LIFE-STRIDE, KORSHEIM, KOBLE, BUSTER BROWN SHOES

1024 STUYVESANT AVE. UNION CENTER
OPEN FRIDAY & MONDAY EVENINGS 'TIL 9



YOUNG SCHOLAR proudly wears his handsome cap and gown of American wool plus a red-black-grey basket cloth has quilted lining.

Helping 'Junior' With Homework Sadly Out-Dated

The cartoon of Dad doing Junior's homework is sadly out-dated. These days parents will probably understand less about his assignments and worry more, anxious for his success.

While parents fester about unfamiliar educational methods, P.T.A. Magazine's Eda Leshan has a timely reminder that the only key parent factor is attitude.

Even if you don't understand "never mind" or speak French, your feelings about homework affect your child's success a lot, she says. Here are some Leshan tips to guide parents:

Don't expect methods you didn't like yourself. Her survey reported parents remembering drillwork at home as hated and useless, but now as adults they say "rightly": "Kids need it."

Try to keep an open mind. If you say "I was never good at math," or "I never defeated me," your children will copy you. And otherwise it might be something they'd like.

Be realistic. Some frantic parents demand heavy loads for first-graders, forgetting the short attention span and energy limits of that age.

Listen to the opinion of people who work with children.

The MODERN FAMILY'S BUYING GUIDE sell it thru the Classifieds. Call 371-3000, 9 to 4:30 daily.

LIBERTY AIR-CONDITIONED DRIVE-IN THEATRE
 Starts Wed. Aug. 21 to Aug. 27
WALTY DISNEY
 Presents
"Summer Magic"
 with HEVLY HILL
 Also: "The Dancin' Machine"
 "Dancing Wally"
 "ALQ"
 "YELLOWSTONE CUBS"

UNION AIR-CONDITIONED DRIVE-IN THEATRE
 Starts Wed. Aug. 21 to Aug. 27
WALTY DISNEY
 Presents
"Summer Magic"
 with HEVLY HILL
 Also: "The Dancin' Machine"
 "Dancing Wally"
 "ALQ"
 "YELLOWSTONE CUBS"

UNION DRIVE-IN THEATRE ROUTE 22
 Now thru Sat.
JERRY LEWIS
"THE NUZZLE COFFERIN"
 plus "The Nuzzles in the Nuzzles"
 "The Nuzzles"
 In Feature—The Vira-Tosses
 Saturday Nite
 Advance Showings of
"GATHERING OF Eagles"
 Sun. Mon. Tues.
"GATHERING OF Eagles"
 Round and Round
 "The Nuzzles"

AMBOYS DRIVE-IN THEATRE PARKWAY 13400
 Now thru Tuesday
Big Color Hit!
JACK LEMMON Shirley MacLAIN
"Irm La Douce"
 and **FRANK SINATRA**
"A Hole in the Head"
 Midnight Bonus: Pat. & Sall
"BLUEBEARDS TO HONEYMOONS"
 ENTERTAINMENT TO HAVE & ENJOY
 YOU'LL BE REFUNDED OR GATED REFUND



semi-annual furniture sale

save 10% to 50%

Hahn & Company

WESTFIELD



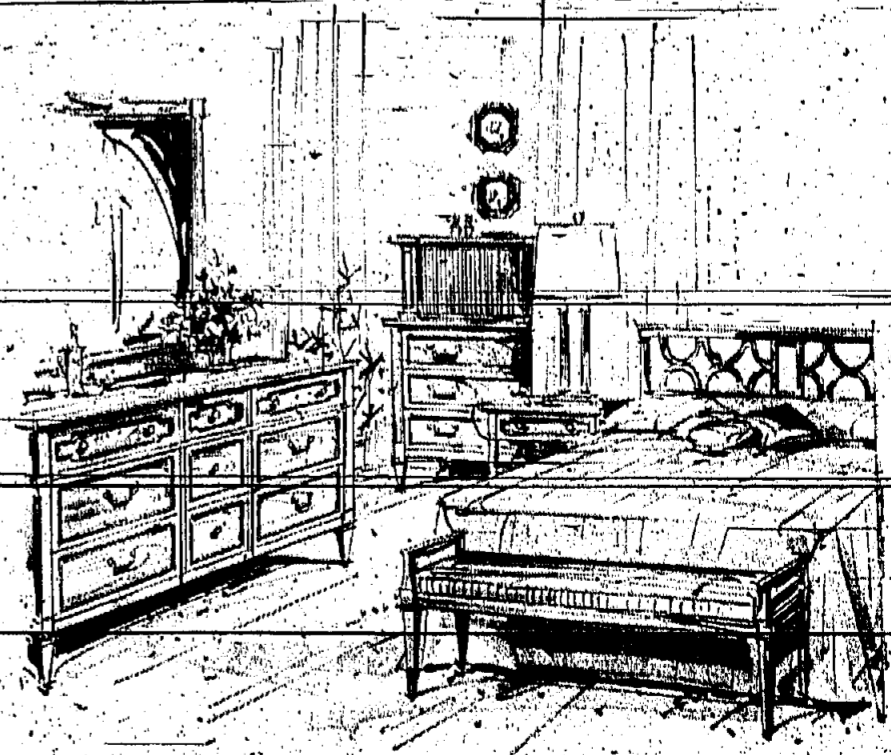
for gracious living...

Triune by Drexel... simplicity with elegance

now at thrilling savings...

magnificent Italian Provincial, lightly scaled and delightfully proportioned in sable mahogany. Richly antiqued with overlays of walnut burl and striped veneers. Bring new depth and meaning to your home with an accent piece or an entire new setting of this beautiful furniture.

Dining room pieces		high back chair	sale 205.00
server	sale 152.00	end table (round)	sale 49.00
occasional chair	sale 89.00	desk	sale 175.00
china cabinet	sale 337.00	chair	sale 38.00
oval extension table	sale 207.00	marble top chest	sale 161.00
arm chair	sale 66.00	Bedroom pieces	
side chair	sale 53.00	triple dresser	sale 197.00
Living room pieces		mirror	sale 59.00
sofa	sale 370.00	chest	sale 206.00
cocktail tables	sale ea. 42.00	bed	sale 65.00
armoir	sale 215.00	night table	sale 59.00



**SORRY LEE!
CAN'T TALK LONG—
HAVE AN APPOINTMENT
AT CAPRICE
FOR MY BACK-TO-
SCHOOL PERMANENT!**



**BACK-TO-SCHOOL
PERMANENT**

\$8.50 Reg. \$12.50

BRECK - CARYL RICHARDS - BONAT

COLOR APPLICATION

from **\$6.50**

ONE APPLICATION



BOTH SPECIALS GOOD ON MON. - TUES. - WED.

CAPRICE HAIR FASHIONS

1350-4 GALLOPING HILL ROAD

AT 5 POINTS IN THE GALLOPING HILL SHOPPING CENTER

UNION **MU 7-3262 or MU 7-3277**

Hours Mon. - Thurs. 9 to 6 - Fri. 9 to 9 - Sat. 8 to 5

No Appointment Necessary



COOLIE TO ALAMO in a way are this fall's natural enemies and dress billions.



SUEDE SWINGS back to school in toxa-like overblouse.

Bavarian Festival

Thousands of Americans of Bavarian extraction, naturalized and native descendants, will gather at North Bergen on Sunday to mark the 90th anniversary of the founding of the New York Bavarian Festival Society. The event will be held at Schuelzen Park, 32nd st. and Hudson Blvd. in cooperation with two more Long Island, Manhattan and New Jersey Bavarian-American societies.

EARLY COPY

Publicity chairman and individuals are urged to observe the Friday deadline of this newspaper for other than spot news. Thursday is even better. Include your name, address and phone number.



HOW TO STUDY SCIENCE AT SCHOOL is demonstrated by experienced grade schooler for benefit of her younger sister. Both demonstrate a neat and pretty look in matching cotton and plaid dresses.



"ALAMO" by Stride-Rite is a supple slip-on for boys. It is of sleek-black leather with a smooth, high-rise sole—emphasized by a low slung vamp treatment. Exposed stitching adds dignified dash. Stride-Rite shoes are carried locally by The Shoe Box, Union Center.



STUDY IN SMARTNESS is this front-laced navy and white dress. In easy-care cotton poplin.

Be A Safe Driver... Give The Pedestrian A Break

"PING PONG" by Stride-Rite features touches of color to brighten the school shoe scene this fall. These light, flexible oxfords boast red piping for a flash of color which goes with everything a girl wears. They are available in black, nylon velvety, black smooth leather and peat, a nice neutral, with extra black piping. They are carried by The Shoe Box, Union Center.

UJC Appoints Three To Part-Time Staff

The appointment of three part-time instructors to Union Junior College's full-time faculty was announced this week by Dr. Kenneth C. Mackay, president. They are Mrs. Helen T. Farlow and Miss Mary Ann Bader, both of Westfield, and Harvey D. Jones of Clifton. Mrs. Farlow and Mrs. Bader will be English instructors, while Jones will teach economics.

JERRI'S
(An Auctioneers Retail Store)
LADIES' BETTER WOOL SLACKS and SKIRTS
In studio showroom of
1227 MORRIS AVE. UNION • 687-6267
(Corner Morris Ave. & Salem St.)
(Opposite Kinsey Shoes)
OPEN: FRI. 10-9, SAT. 10-3

YOU'LL BE SURPRISED AT THE FAST RESULTS WITH CLASSIFIED ADS
Phone **371-3000**
Ask For Ad Taker

SELL-SWAP-BUY thru Classified Ads. Get your FREE FORM—classified ads. FASTER—call 371-3000. OUR DEADLINE: Friday for organizations, club, social, church groups.

AUGUST COAT SALE

FREE!!

\$10.00 GIFT CERTIFICATE WITH ANY COAT UP TO \$100.00

FREE!!

\$20.00 GIFT CERTIFICATE WITH ANY COAT ABOVE \$100.00

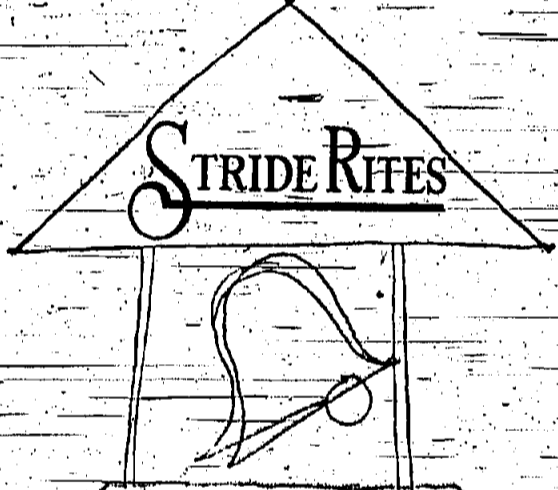
10% OFF ON ANY CAR COAT & SKI JACKET

USE OUR LAY-AWAY PLAN OR CHARGE IT AT NO EXTRA COST!

This Offer Good Only Until August 31st

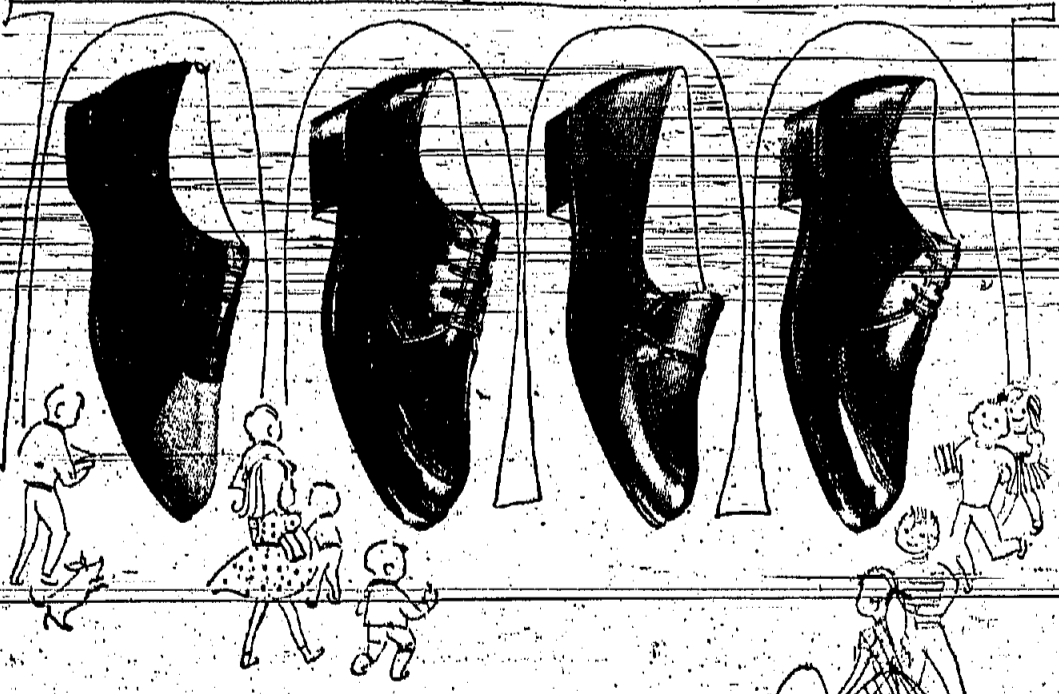
WHITNEY'S
1000 STUYVESANT AVENUE UNION CENTER

Open Friday and Monday Even. 7:11 P.M.



ANSWER THE BELL... AND THE NEED FOR GOOD FIT FOR SCHOOL-GOING FEET...

Generations of children have gone back to school in Stride Rites. Bring your scholars in, and we'll see their shoes are fitted exactly for today's wear and tomorrow's growth.



Sizes: 12 1/2 to 3 \$9.98

Sizes: 4 to 9 10.98

The SHOE BOX
1047 STUYVESANT AVE. UNION CENTER
OPEN: FRI. & MON. EVES. TO 9 P.M.

FREE PARKING REAR OF STORE
Charge Accounts, C.C.P., Unj-Card, Handi-Charge

HEY KIDS! JUST IN TIME FOR BACK TO SCHOOL!

Grown-ups tool

GUESS HOW MANY SHEAFFER INK CARTRIDGES ARE IN THE PLASTIC BALL IN OUR WINDOW

- Nothing to buy!
- You need not be present to win!
- Just clip the coupon below and deposit it in our store!

OFFICIAL ENTRY BLANK
The number of Sheaffer cartridges in the Sheaffer PRIZE PARTY Cartridge Contest is

Name

Address

Phone

- PRIZES**
- 1st Prize: \$4.95 SHEAFFER Pen with Point Pen
 - 2nd Prize: \$2.99 SHEAFFER Ball Point Pen & Point Pen
 - 3rd Prize: \$1.95 SHEAFFER Ball Point Pen

We Carry a Complete Line of Back-to-School Supplies

- PAPER • BINDERS • PENCILS • PENS
- ART SUPPLIES • DESK SETS
- BRIEF CASES • ATTACHE CASES

UNION STATIONERS, Inc.
GREETING CARDS — OFFICE SUPPLIES — SOCIAL STATIONERY
1026 STUYVESANT AVENUE UNION CENTER MU 8-3113

Trautside To Feature Film On Washington

Washington and its Natural Resources, a color, sound film, will be shown to visitors to the Union County Park Commission's "Trautside" Nature and Science Center in the Washington Reservation Sunday at 3 p.m. "Sevens State" in "One," the film calls the state of Washington as it respects the Olympic Peninsula, Willapa Hills, Puget Sound Basin, Cascade Mountain Range, Okanogan Highlands, Blue Mountain Region and the Columbia River Basin area.

Your Guide To 'Class' In Footwear

Bright, shiny faces will be reflected in bright, shining shoes as boys and girls step back into classrooms. Every youngster, from the excited tot entering kindergarten to the sophisticated high school senior, is eager to start off on the right foot with a handsome new pair of shoes. Here are some suggestions assembled by Shoe Fashion Service of Leather Industries of America, to assist parents and offspring in filling footwear requirements.

GRADE SCHOOL GAL — is an imp in denim one minute, an angel in organza the next. To satisfy this dual personality, the range of leather shoes this season meets every need. Her school wardrobe — blouses, blouses, sweaters and skirts — is perfectly coordinated with moosehair in a new waxy leather finish. Always a put in the sporty oxford with brightly colored saddle. Side "patches" in contrasting colors or leather textures add a gay accent. Party shoes for Miss Preppy include patent leather pumps, slippers and moccasins in bright shades such as fire-engine red, as well as brands.

Well-dressed 1968's can jump into the social swim in good-looking, three-eyelet, pump-style shoes. In simplicity or gained leather textures or combinations of both, Mary Jane for dress is the monk-strap slip-on in polished smooth leather. High school male — reflects a new interest in girls with a new interest in his own appearance. (Tug-of-war or team boots for school, in suede, grained or glove-soft leathers, have details such as dipping laces, strap-and-buckle effects and Western-type ornamentation.) As a second school shoe, the casual slip-on — moccasin or new strange style — offers a change of pace, in brushed or waxed leather textures, in epper, charcoal tan, mustard or brown.

Short Hills Outing Club Schedules Tennis Tourney, Dinner, Trips

Members of the Short Hills Outing Club whose president is William V. Kraft of Union will take part in a mixed doubles and singles tennis tournament Tuesday on the tennis courts of Mrs. William Hendy of 102 Morris Ave., Springfield.

CAST IRON BOILERS
for Long Life... Economical Service

TENSHUN!
MEN'S SUITS • SLACKS • TIES • SHIRTS • HATS
SEEING IS BELIEVING!
2 for the Price of 1
BACK TO SCHOOL SPECIALS
Regent Factory Outlet
118 Locust St. CH
RUSSIE 1-2132



GRADE SCHOOL GAL — is an imp in denim one minute, an angel in organza the next. To satisfy this dual personality, the range of leather shoes this season meets every need. Her school wardrobe — blouses, blouses, sweaters and skirts — is perfectly coordinated with moosehair in a new waxy leather finish. Always a put in the sporty oxford with brightly colored saddle. Side "patches" in contrasting colors or leather textures add a gay accent. Party shoes for Miss Preppy include patent leather pumps, slippers and moccasins in bright shades such as fire-engine red, as well as brands.

Union Revelers Now Rehearsing

The Teenagers, Junior members of the Revelers amateur theatrical group of Union, are currently rehearsing a collection of nine original musical acts and two comedy skits. The show, as yet untitled, centers around a "Roaring Twenties" theme and features popular songs and styles of that era.

DAIRYLAND'S COFFEE SHOP
DAIRYLAND
Ice Cream Wonderland
1509 Morris Ave., Union
Corner Soya-Road — Free Parking

UNION TYPEWRITER CO.
Sales • Rentals • Repairs
Office Machines
1281 MORRIS AVE.
UNION, N. J. MU 8-7090

BEN-MOL JEWELERS
500 BOULEVARD
KENILWORTH NJ 6-3616
Open Daily 9-6 & Thurs. & Fri. 11-9 p.m.
HANDI-CHARGE C.C.P.

GOOD SAMARITAN ACT — Gov. Richard J. Hughes signed the "Good Samaritan Act" last week in Trenton. The law provides that licensed practitioners in the health arts in New Jersey shall not be liable for civil damages as a result of any acts or omissions by such persons in rendering emergency care. Signed next to Gov. Hughes is Assemblywoman Mildred Barry Hughes of Union sponsor of the bill. Standing, from left, are Sondra Boher and Virginia Barna of Rahway, who sponsored the former runner of the bill at last year's YMOA Youth Legislature. Sondra is a sophomore at Newark State College, Union, Virginia is a sophomore at Douglass College.

WIDE MOTHERS KNOW that a second pair of shoes for school and play will give his first pair proper rest and airing.

AUG. F. SCHMIDT
Funeral Home
EL 2-2288
E. G. Schmidt-Anderson, Mgr.
125 WESTFIELD AVE., ELIZABETH

DAIRYLAND'S COFFEE SHOP
DAIRYLAND
Ice Cream Wonderland
1509 Morris Ave., Union
Corner Soya-Road — Free Parking

MONARCH FUEL OIL CO.
38 Elizabeth Ave.
Elizabeth
EL 3-1600

Grand Union Meats are Better!

Butterball TURKEYS 39¢
The Best Loved Bird in the U.S.A.

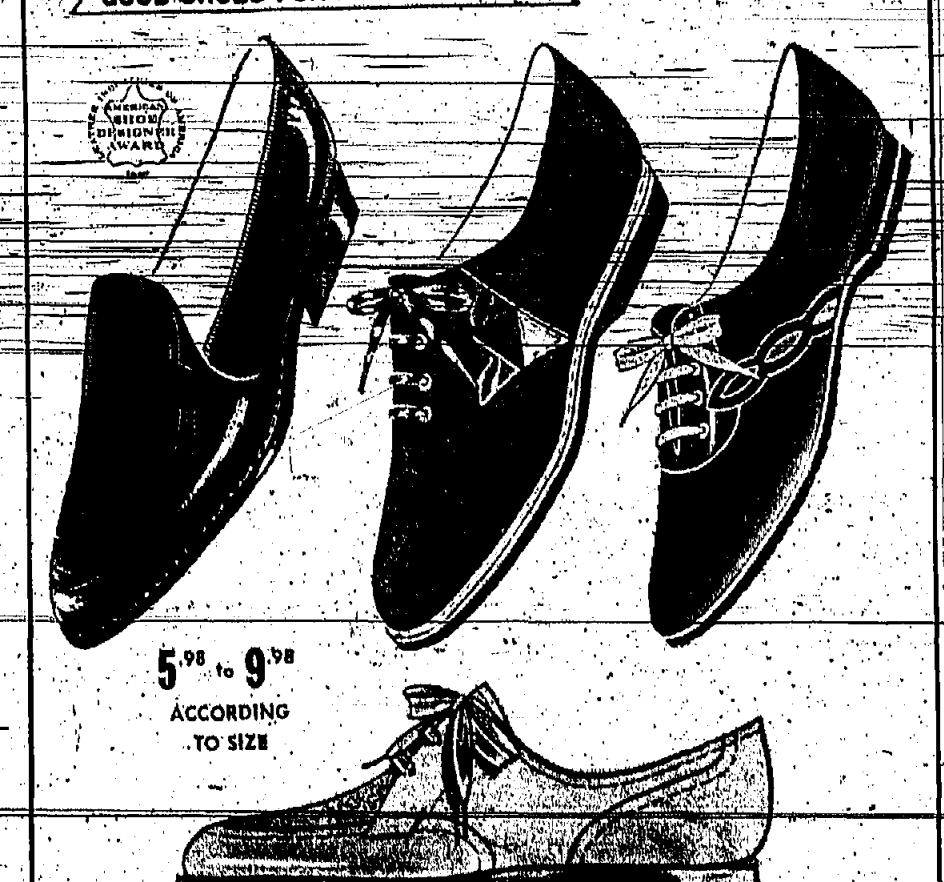
ARMOUR STAR HAM "What Am I?"	WHOLE HAM 8.99¢	99¢
SKINLESS FRANKS	49¢	
COLD CUTS	4 for \$1.00	
EXTRA LEAN GROUND CHUCK	59¢	
BAR-B-QUE CHICKENS	59¢	
CUBE BEEF STEAKS	79¢	
BONELESS TURKEY	\$2.49	
WHITE SHRIMP	79¢	

SAVE CASH... GET TRIPLE-S BLUE STAMPS, TOO!

This is the Way we go Back To School

LAZY BONES
GOOD SHOES FOR BOYS AND GIRLS

Bright and gay and proud as punch in shiny new Lazy-Bones. Outfit your youngsters in Lazy-Bones from our fine Fall selection.



Union Bootery
FINE FOOTWEAR FOR THE ENTIRE FAMILY
974 STUYVESANT AVENUE, UNION CENTER
MURDOCK 6-5480 • Open Friday & Monday Nights to 9

HEINZ KETCHUP 5 for \$1.00

VEGETARIAN BEANS 5 for \$1.00
CIDER VINEGAR 5 for \$1.00

CHILI SAUCE 3 for \$1.00
CRINKLE CHIPS 3 for \$1.00
SWEET GERKINS 3 for \$1.00
DILL PICKLES 3 for \$1.00

DAIRY DEPT. FEATURES!

QUALITY MAID - NATURAL SWISS SLICES 35¢
CHEESE LOAF 69¢
Biscuits 3 for 25¢
GENERAL ELECTRIC PORTABLE AIR PURIFIER \$19.95

FRUIT DRINKS 39¢

DILL PICKLES 25¢
SWANEE TOWELS 29¢
VIENNA FINGERS 25¢
KEEBLER SANDWICH 3 for \$1.00
GEORGE INN COOKIES 3 for \$1.00
BEETS 6 for \$1.00

FREE 100 BLUE STAMPS
with this coupon and purchase of TWO 8-oz. or ONE 16-oz. ITALIAN KITCHEN GARDENS FRENCH or ITALIAN SALAD DRESSING

CANTALOUPE 2 for 35¢

LEMONS 10 for 39¢
NECTARINES 19¢
CELERY 2 for 29¢

Prices effective thru Sat. Aug. 24th. We reserve the right to limit quantities.
UNION — 5-Points Shopping Center at Gheduff St. — Open late Thurs. - Fri. & Sat. 11 p.m. OPEN SUNDAY 9 A.M. to 2 P.M.
SPRINGFIELD — General Greens Shopping Center, Morris & Mountain Ave. Open late Thursday & Friday 11 p.m.
Visit your Triple-S Redemption Center at 269 Morris Avenue, Springfield. Open Friday 11 p.m. All Redemption Centers are closed Mondays.

SOFTBALL PLAYOFFS

Wesley Takes First Round Of Tourney Play

Wesley Jewellers, scoring seven runs in the first two innings, took the first round of the post-season double elimination softball tournament.

Hesch Cohen with two hits apiece, hit the home run for Wesley. The Jaysco offense was led by the Monticelli brothers, Tony and Frank, each contributing some timely hitting.

Standing out for the Jaysco squad were Ralph Drew and Dick Baker. Drew picked up three hits while playing bravely at third base.

Bill Savarin went the pitching route to gain the victory for Wesley. He pitched a complete game, allowing only one run.

The Jaysco team will play the winner of the Wesley-Katz game on Tuesday. The Jaysco team will play the winner of the Jaysco-Katz game on Thursday.

ATTENTION BOWLING LEAGUES

As September draws near, attention of America's bowlers is being attracted to the bowling leagues that are being formed.

"As the Pins Drop" will contain listings of all Area Leagues that desire publicity. A second column, "Bowling Highlights," will contain top individual scores of the week's action.

Leader Sports

Recreation Dept. To Sponsor Football Clinic For Youngsters

The fourth annual football clinic sponsored by the Springfield Recreation Department will be held on Saturday, Sept. 7, at the Meisel ave. field.

The clinic is being held in conjunction with the registration blank. It is an attempt to bring to the attention of youngsters the benefits of football.

Registration form for the football clinic. Includes fields for Name, Date of Birth, Age, Weight, and Address. Also includes a section for parental consent.

Hawks Take Lead As Archery Club Begins Matches

The Hawks playground archery club last week completed its first week of competition. The club, which has been organized since the middle of July, was divided into four teams.

Afternoon Of Races At Springfield Pool

An afternoon of races is scheduled for the Springfield Municipal Swimming Pool, Friday, Aug. 23, beginning at 3 p. m.

DAYTON SLATES SPORT PHYSICALS FOR NEXT WEEK

Physical examinations will be conducted for varsity and junior varsity football and soccer candidates at the Jonathan Dayton Regional High School health office next Wednesday, Thursday and Friday.

Newark Grid Bears To Kick Off Saturday

Professional football returns to Newark after an absence of 20 years when the Newark Bears begin the defense of their Atlantic Coast Football League championship against the Springfield, Mass. Aeros at Schuylkill Stadium, Saturday night.

Net Tourney Set For Senior Men

The Union County Senior Men's Tennis Tournament, sponsored by the Union County Park Commission, will be played at the Warminster Park Tennis Center, Elizabeth, and Roselle beginning Saturday, Sept. 7, at 10 a. m.

Sports Corner



RAY HERBERT, a major factor in the White Sox' fast start this season... HE LIVED UP TO HIS REPUTATION AS A PITCHER IN 1962 POSTING A 10-2 RECORD...

Advertisement for J. Norwood Van Ness, an optician. Text includes 'Prescriptions Filled', 'Eyeglasses Repaired', and 'Prompt Service'. Address: 248 Morris Avenue, Springfield, N. J.

Large advertisement for Chevrolet cars. Text includes 'ALL OUR CARS ARE PRICED TO MOVE FAST!', 'NOW... HERE'S YOUR CHANCE TO SAVE BIG MONEY ON A 1963 CHEVROLET', and 'SALE STILL IN PROGRESS ON ALL OK! USED CARS'. Features the Chevrolet logo and 'L & S CHEVROLET' branding.

Advertisement for Gaylin Buick's Ladies' Days. Text includes 'WOMEN! DRIVERS!', 'Does hubby claim you don't take care of the family car?', and 'GAYLIN BUICK'S LADIES' DAYS Monday Thru Friday, 1 P.M. to 4 P.M.'. Lists services like 'Minor TUNE-UP' and 'LUBRICATION' for \$9.95.

Advertisement for David Burr's 'Annual Winter Jacket Lay-Away Sale'. Text includes '10% OFF' and '1555 Springfield Ave., Irvington Center'.

Advertisement for 'Sale On Clubs & Bags' and 'GOLF LESSONS BY TERRY LOGAN'. Text includes 'SHORT HILLS GOLF RANGE' and 'Morris Tpk. • DR 8-2515 • Short Hills'.

**Placement Tests
Are Scheduled
By Peace Corps**

A new round of one-hour placement tests for persons interested in becoming members of the Peace Corps will be held at the following locations on Saturday at 10:30 a.m.:

The tests will be given at the Federal Building (Room 11-20) in Newark and at the Public Post Office in Plainfield. The test fee is \$1.00, which is non-refundable.

The test, which is non-competitive, is open to persons aged 18 and above. There is no maximum age limit.

Persons who are interested in the tests should apply in person at the above locations. There is no maximum age limit.

The organization reports it has requests for persons with skills in agriculture, public health, forestry, carpentry, and other building skills, for social work and education of all types, and at all levels.

**PWP: Variety Show
To Rehearse Tonight**

Dress rehearsal for the second variety show of the year sponsored by the Union-Peace Chapter of Parents Without Partners (PWP) is scheduled for a p.m. today at the Coronet in Irvington.

The show, entitled "PWP Follies," will feature some 40 members of the organization. The dress rehearsal is preparatory to the official show, which takes place Monday at 8:30 p.m. at the Coronet.

The Union-Peace chapter of PWP is comprised of 260 members.

Bible Quiz

By MILT HAMMER

Add the letters to the capitalized word to the single capitalized letter. Then rearrange the letter so as to spell the name of a Bible man or woman. (EXAMPLE: SEA with U is ESAU). Now you try solving the ones listed below.

1. DRAWN with F is
2. STREAM with A is
3. HARM with T is
4. QUART with A is
5. RAISE with S is

ANSWERS

1. DRAWN with F is FROWN
2. STREAM with A is STRAIGHT
3. HARM with T is THAMAR
4. QUART with A is QUARTAN
5. RAISE with S is SARAI

EARLY COPY
Publicity chairman and individuals are urged to observe the Friday deadline of this newspaper for other than spot news. Thursday is even better. Include your name, address and phone number.

BRAKES

RE-LINED
BONDED BRAKE LINING
99¢
POWER BRAKE UNITS
SHOCK ABSORBERS
WHEEL ALIGNMENT
WHEEL BALANCING
MUFFLERS INSTALLED FREE
U.S. Royal
50¢
YANKEE BRAKE SHOP
1415 STEWART AVE. UNION
MURDOCK 2-9444

Your heating dollar goes further!

Switch to

HEATING OIL

JOE NITTI & SON
404 Coit St., Irvington
ES 3-0110
HEATING and COOLING SPECIALISTS

BE SURE OF QUALITY SAVINGS & FINE GIFTS FREE FOR PLAID STAMPS!

NO QUESTION ABOUT A&P'S FINE QUALITY!

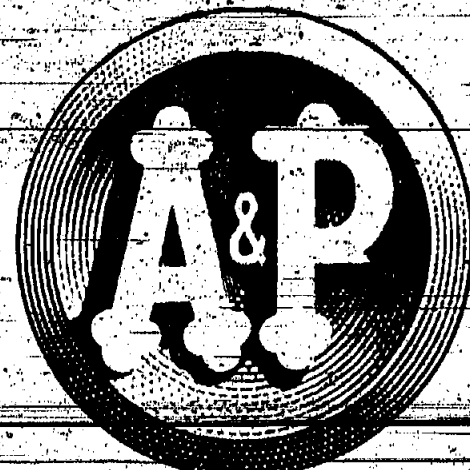
Choose A&P VALUES TO BE SURE!

"Super-Right" Quality NATURALLY-AGED - SHORT CUT

RIBS OF BEEF

63¢ lb. (Oven-Ready) **53¢ lb.** (Regular Style)

*Better Value Because All A&P Ribs Are Short Cut!



You sure do get plenty of values for your food dollars at A&P! There are stacks of exceptional values throughout the store every day... all at low, low prices that make things extra thrifty. Besides, there are those gift-giving Plaid Stamps... save them for awhile and see how rewarding it is! No two ways about it - choose A&P values!

Italian Freestone-PURPLE PLUMS
2 lb. **25¢**
NONE PRICED HIGHER

GRAPES SEEDLESS
Sweet, Ripe 2 lb. **39¢**
NONE PRICED HIGHER

NECTARINES
Sweet and Juicy LARGE SIZE 2 lb. **35¢**
NONE PRICED HIGHER

WATERMELON
Red, Ripe whole melon **49¢**
NONE PRICED HIGHER

CELERY
PASCAL large stalk **10¢**
NONE PRICED HIGHER

LETTUCE
ICEBERG large head **19¢**
NONE PRICED HIGHER

RIB STEAKS SHORT CUT "Super-Right" Quality **69¢ lb.**

CHUCK STEAK Full Cut "Super-Right" Quality **45¢ lb.**

POT ROAST Boneless Chuck—No Fat Added **69¢ lb.**

FRESH FOWL Whole or Cut-Up For Fricassee and Salads **33¢ lb.**

Pork Chops Hip and Shoulder 39¢ Center Cuts **79¢ lb.**

Chuck Filler "Super-Right" None Priced Higher **69¢ lb.**

Stewing Beef Boneless Chuck **69¢ lb.**

Shrimp COCKTAIL 3 4-oz. cans **89¢**

Ground Beef Freshly Ground **45¢ lb.**

Spare Ribs COUNTRY STYLE None Priced Higher **39¢ lb.**

Fancy Whiting 5 lb. box **99¢**

Chicken Wings **29¢ lb.**

Swift's Frankfurters
Premium Brand 1 lb. **65¢**
All Meat

California Roast
Beef Chuck—Bone-In None Priced Higher **59¢ lb.**

EVAPORATED MILK

WHITE HOUSE BRAND 3 12 1/2 oz. cans **41¢**

HANDY 6 13 oz. cans **79¢**

SLICED PINEAPPLE A&P 1 lb. 4 1/2 oz. can **33¢**

SUNSWEEP PRUNE JUICE quart bottle **37¢**

KELLOGG'S CORN FLAKES 2 12 oz. pkgs. **49¢**

A & P TUNA FISH Solid Fancy Light 4 7-oz. cans **99¢**

A&P's Here-Size Values For August Sandwich Time!

Cracked Wheat 1 lb. **25¢**

Rolls HAMBURGER or FRANKFURTER 8 for **28¢**

Pure Grape Jelly Ann Page 12 oz. **25¢**

Peanut Butter Ann Page 12 oz. **37¢**

Margarine Creamy or Krinkly 3 1 lb. pkgs. **49¢**

Cream Cheese Victory 2 4-oz. pkgs. **21¢**

Sliced American Milk Made in U.S. 1 lb. **59¢**

Natural Swiss Cheese Sliced 1 lb. **69¢**

Pacific Pearl Crabmeat 4 1/2 oz. cans **83¢**

Norway Sardines Blue Peter 2 1 1/2 oz. cans **31¢**

Luncheon Meat Super-Right Brand 1 lb. **43¢**

Sandwich Spread Ann Page 12 oz. **23¢**

Stuffed Olives Sultana 10 1/2 oz. cans **59¢**

Thrifty Dairy Needs!

Wildomar's Brand Large Eggs Select Quality 1 doz. **53¢**

Mel-o-bit Slices Mild Amer. Swiss or Pimento 4 oz. **49¢**

Sharp American Cheese Spread Mild Mel-o-Bit Pasteurized Process 2 lb. **69¢**

Cream Cheese Pasturized Process 1 lb. **89¢**

CRISCO SHORTENING With 40 off label 1 lb. **81¢**

Thrifty Frozen Foods!

GREEN PEAS A&P 6 10 oz. pkgs. **95¢**

Mildy's Apple Blintzes 8 oz. **35¢**

Broccoli Spears Green Giant 10 oz. **35¢**

Baby Lima Beans In Butter Sauce Green Giant 10 oz. **35¢**

Italian Green Beans In Butter Sauce Green Giant 10 oz. **35¢**

Hawaiian Punch Royal Red 2 6 oz. cans **37¢**

Beef Cube Steaks Concentrated 1 lb. **83¢**

Fried Clams Howard Johnson 7-oz. **65¢**

Shrimp Dinner Cap'n John's 8 oz. **59¢**

Flounder Fillet or GRAY SOLE 2 1 lb. pkgs. **99¢**

A & P COFFEE

VACUUM PACKED
Choice of Grinds

1 lb. can **59¢** 2 lb. can **\$1.13**

LIBBY'S BRAND LEMONADE

Regular or Pink

10 6 oz. cans **99¢**

GREEN GIANT NIBLETS

Whole Kernel Corn

2 12 oz. cans **29¢**

KRAFT'S MIRACLE WHIP

Salad Dressing

2 quart jars **99¢**

MUELLER'S Elbow MACARONI

or Regular or Thin Spaghetti

5 1 lb. pkgs. **99¢**

WESSON OIL

For Frying, Baking, Salads

gallon can **\$1.59**

Jane Parker Baked Foods!

PEACH PIE 59¢

Blueberry CHEESE PIE 59¢

Danish Ring Fruit and Nut each **49¢**

Chocolate Square Cake 49¢

Cookies Coconut Macaroon 1 lb. 4 oz. **39¢**

Ice Cream MARVEL 1/2 gal. Choice of 8 Flavors **59¢**

BEECH-NUT Fruit Juices 6 12 oz. cans **67¢**

Downy Fabric Softener 1 lb. 14 oz. can **45¢**

Mr. Clean All purpose liquid cleanser 16 oz. bottle **37¢**

Ivory Liquid Detergent 12 8 oz. plastic **35¢**

Salvo Low Suds Detergent Tablets 2 lb. 14 oz. pkg. **79¢**

Rinso Blue For the family wash 10 oz. off label **67¢**

Vim Detergent In Tablets—For automatic washers 1 lb. 8 oz. **43¢** 2 lb. 6 oz. **71¢**

Duz Detergent Premium Pack 1 lb. 7 oz. **57¢** 2 lb. 10 oz. **1.03**

AP Super Markets

THE GREAT ATLANTIC & PACIFIC TEA COMPANY, INC.

Prices effective thru Sat. Aug. 24 in Super Markets and Self-Service stores in New Jersey and Staten Island stores only.

All Tobacco Products, Fresh Milk and Alcohol Beverages exempt from Plaid Stamp offers.

Prices effective through Saturday, August 24th in Super Markets and Self-Service stores in New Jersey and Staten Island only.

N. J. BOYSTOWN
RUMMAGE SALE
 A mammoth rummage sale, featuring such items as TV's, refrigerators and home furnishings will be held at New Jersey's Boystown, 499 Blightove

The Ladies Guild of Boystown, with Mrs. Elizabeth Ryan of Wallburg, as president, will be on hand to assist at the sale. Rev. Robert P. Ryan is Boystown's director.
 Among the items, Mrs. Ryan points out in addition to the TV's and refrigerators, are furniture, dishes, a complete set of bakery shelves, equipment and show cases and many other useful items. Hours of the sale are 10 a.m. to 5 p.m. and

Let Experts Handle The Details of TRAVEL

CRUISE HEADQUARTERS
 For All Cruises This Fall and Winter
 Call or Write for Information, International Cruise Lines, etc.
FISCHER BROS. TRAVEL BUREAU
 749 Springfield Ave., Irvington
ESSEX 5-9600

Ask Amy

BY AMY ADAMS
 Dear Amy: I read with interest a recent column of yours in which a mother signed herself 'Angry'. She was angry because, supposedly, other classmates graded her son's papers incorrectly. I am a 4th grade teacher and I had a mother call me at school only the other day. She was in

an accusing and hysterical mood for 15 minutes because her son's paper was graded "incorrectly" according to her. In my class, I grade each other's papers, too, and I recheck all poor papers personally. I had rechecked this irate mother's son's paper and it was graded correctly.
 We made an appointment for the next morning. I went over the entire paper with the mother, but even then she didn't believe me until I showed her the teacher's answer book with the answers in red. I explained the 4th grade grammar rules. The mother couldn't understand why

Sometimes it pays to point out a mistake. I will not learn from trawling down to the principal's office and making a complete fool of myself there. If this teacher had dealt with the mother who signed herself 'Angry', perhaps she had a good reason.
 Dear, But-Not-A-Stone-Dead Teacher:
 Dear Amy: I'm a male teacher of 27. I've been teaching for three years and I don't see what all the static is about having students mark each other's papers. The correct answers are posted on the blackboard and I personally check the marked papers.
 You wouldn't believe the insults you get from parents each and every week. Most of my students are good kids, but there are always a few brats in every basket.
 Frankly, I'm thoroughly disgusted. The heck with it all. I'm going to join the Peace Corps, because . . . I've Had It!

Dear Amy: Please tell a "Mixed-Up Kid" to keep the baby when it comes and don't give it away. If she decides it best to give it away then give her my address. I would love to have a baby. I am 25 and single but the only thing is I am a MAN.
 Bob

Dear Bob: You're an angel. But the laws of the state do not permit a single man to adopt a child. How about finding a wife and having one of your own?

Dear Amy: For the past six years my boss and I have been quite intimate, even though he is married. All of a sudden he has acquired a feeling of guilt and has decided he wants to break off with me secretly, that is, he would like me to continue on as his secretary because he says I'm a good worker and that I understand his business thoroughly. It would be very difficult for me to end this relationship. You see, Amy, I really love him. Is there any hope for me or am I only kidding myself?
 Heartbreak

Dear Heartbreak: You have wasted six years of your life in an occupation that could never have given you any real satisfaction. Your boss wants you around now only to irritate his eyes. Make a clean break now and for all, you'll wake up one day to find yourself in an agency, still kidding yourself and the best years of your life over.

Dear Amy: What would it be to go through high school and get a diploma? I graduated from high school and so far I'm not working. The kids who dropped out of school got jobs. I got the kind high school graduate can't get. I just want to know if they found some type of work.

The funny part of looking for a job is that I am expected to have experience. How can employers expect experience when I have been working towards my graduation and diploma. The only way that could have been achieved would have been for me to go to school in the morning, study in the evening and work during the night. So when would I sleep?

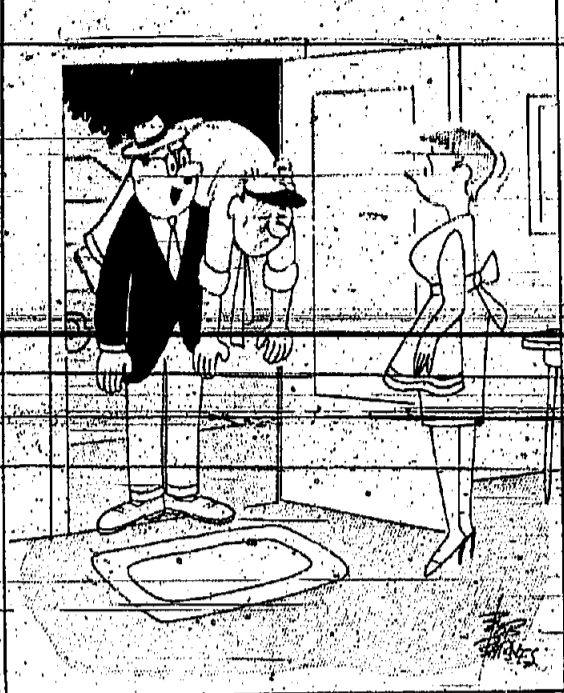
Another way of getting a job is through someone you know. But if you don't know the right people, no one will hire you. Write your experience out. So tell me, Amy, do you think it's fair to graduate from school and be told you can't get a job here because you don't have work experience?
 High School Grad

Dear Grad: An employer who wants to hire a recent high school grad knows he doesn't have experience. The employer who uses this excuse wouldn't hire you anyway. But there are thousands of firms that will hire graduates without experience. Of course, if all depends on your approach. You've sold me—now start banging on the right doors and sell yourself!

Dear Amy: What do you think of a person who calls on the phone and asks, "What are you doing today?" I said, "Nothing special." She said, "It would be nice to have a cocktail." I said, "What sounds like fun." She said, "Good. We'll be right over." "Said they were. I'm Not Joking.

Dear Joking: I think she has contacted a medium who can obtain a free meal.
 For a personal reply enclose a stamped, self-addressed envelope. Please address all letters for c/o THIS NEWSPAPER.

Cliff Of The Week



"He'll be all right . . . The first few days on a new job are always rough."

Internal Revenue Service Test Set
 A special enrollment examination for persons other than accountants who wish to represent clients in certain proceedings before the Internal Revenue Service will be held in Newark on Sept. 26 and 27.
 A spokesman for the IRS said that individuals who pass the exam and receive cards certifying them as accredited representatives may act in behalf of their clients in certain IRS hearings and conferences, but not in Tax Court.
 Applications for the examination forms are now available at the Newark District Office, 300 Broad Street, Newark. Further information may be obtained by calling NY-674-8010.
 The completed application form must be mailed to the Director of Practice, Internal Revenue Service, Department of the Treasury, D. C. before Sept. 1. A check or money order for \$25 payable

Register Now! Pickwick Nursery School
 76 Warrington Place, East Orange.
 "Stimulating surroundings for the Small Set"
 SANDRA ZEITLIN-TASSZSCH, Director
 Home phone: 674-8010

NEWARK COLLEGE OF ENGINEERING
 Day and Evening Program leading to the degree of Master of Science
 Doctor of Engineering Science (Chemical and Civil Engineering only)
 High school students planning to enter the Day Freshman Class must apply before December 2, 1963, for February, 1964, admission; April 1, 1964, for Sept., 1964, admission.
 For information, address: THE DEAN OF ADMISSIONS, NEWARK COLLEGE OF ENGINEERING, 322 High St., Newark, N.J. 07102, Area Code 201, 624-2424, Ext. 237

TRANSPORTATION SPECIALS!

- Here is a tremendous opportunity for you to cash in on these end-of-season specials! Don't delay! Come on in today and take your pick! The best ones will go fast!
- '67 PLYMOUTH Sedan, 2-dr. hardtop . . . 176.
 - '67 CHRYSLER 4-dr. sedan . . . 175.
 - '65 BUICK Roadmaster, 4-dr. auto, P.S., P. Wind. . . 125.
 - '55 DESOTO Sportsman, 2 door hard top . . . 100.
 - '6 PLYMOUTH Deluxe, Station Wagon . . . 100.
 - '4 CHEVROLET 210 . . . 75.
 - '5 PONTIAC Six Chief, Hardtop . . . 175.

B-E-T-Z
UNION MOTORS — DODGE DEALER
 1604 Stuyvesant Ave., Union MU 6-4114

VALLEY FAIR BARBER SHOP

SPECIAL: MONDAYS, TUESDAYS, THURSDAYS

HAIR CUTS FOR BOYS 99c UNDER 12

MEN \$1.25

6 BARBERS

The quality of our work has gained a respected reputation from our many customers. If you find us to be busy, we ask your patience — and assure you that with 6 BARBERS our service will be prompt and efficient. We also give you a 100% guarantee of satisfaction on our work.
 OPEN DAILY 9-6:30 • CLOSED WEDNESDAYS
 IN VALLEY FAIR SHOPPING CENTER
 CHANCELLOR AVE. & FABYAN PL., IRVINGTON
 NEAR TOY DEPT.
 CHANCELLOR AVE. SIDE OF BUILDING

ACME MARKETS PRICES ARE . . .

Acme's Lower Price Policy plus S & H Green Stamps

	NEW PRICE	OLD PRICE
Bols Sliced Pineapple	20-oz. can 39c	35c
Realemon Juice	32-oz. bottle 69c	63c
Chef Boy-Ar-Dee Spaghetti	40-oz. can 39c	29c
Del Monte Sliced Beets	16-oz. can 21c	23c
Spaghetti Sauce	16-oz. can 24c	24c
Contadina Tomato Paste	16-oz. can 67c	44c
Del Monte Peaches	36-oz. can 35c	37c
Ideal Peaches	36-oz. can 29c	37c
Sliced Apple Rings	16-oz. can 25c	25c
Broil-A-Foil Trays	16-oz. can 59c	49c
Glads with Flowers	7-oz. can 59c	55c
Reynolds Aluminum Foil	16-oz. roll 63c	58c
Floriant Air Deodorant	16-oz. can 69c	69c
Easy-Off Window Cleaner	16-oz. can 59c	49c
Windex Window Cleaner	16-oz. can 59c	49c
Purina Dog Chow	16-oz. can 1.29	1.23
Chicken-A-La-King	16-oz. can 55c	51c
Wishbone French Dressing	16-oz. bottle 35c	33c
Rival Dog Food	16-oz. can 68c	34c
Kraft Strawberry Jelly	16-oz. jar 39c	31c
Del Monte Prunes	16-oz. can 39c	37c
Cheddar Cheese	4-oz. pkg. 41c	37c
Metal Sponge	16-oz. can 23c	24c
Cashmere Bouquet	16-oz. can 23c	22c
Mevloner Cheese	16-oz. can 37c	33c
Muenster Cheese	16-oz. can 39c	35c
Modess	16-oz. can 27c	26c
Fems	16-oz. can 1.19	1.13
B.C. Frosting	16-oz. can 37c	35c
R&R Chicken Friasson	16-oz. can 49c	47c
Ideal Sandwich Spread	16-oz. can 35c	29c
Bonnie Lanolin Ammonia	32-oz. bottle 29c	27c
Boratone	16-oz. can 1.55	1.49
Weich Grape Jelly	16-oz. jar 39c	35c
Planters Mixed Nuts	16-oz. can 89c	79c
Sunsweet Large Prunes	16-oz. can 39c	35c
Puss-N-Boots Cat Food	16-oz. can 68c	68c
Hormel Chili Con Carne	16-oz. can 37c	33c
Ken-L-Ration Dog Food	16-oz. can 41.00	24c
Ideal Cider Vinegar	16-oz. can 75c	69c
Ideal White Vinegar	16-oz. can 59c	49c
Johnson Klear Floor Wax	16-oz. can 95c	89c
Dove Toilet Soap	16-oz. can 23c	23c
Dove Toilet Soap	16-oz. can 24c	24c
Herb-Ox	16-oz. can 23c	23c
Burnott's Vanilla	16-oz. can 89c	79c
Kleener White Towels	16-oz. can 41c	39c
Paper Towels	16-oz. can 39c	33c
Modess	16-oz. can 27c	26c
Modess V-Form	16-oz. can 1.09	97c
Sea Mist Ammonia	16-oz. can 27c	24c
Lustare Bleach	16-oz. can 49c	45c
Fabric Softener	16-oz. can 27c	46c
Dash Dog Food	16-oz. can 34c	68c
Kraft Grape Jelly	16-oz. jar 39c	35c
Planters Salted Peanuts	16-oz. can 39c	33c

Prices effective thru Saturday, August 24th. We reserve the right to limit quantities. Not responsible for typographical errors.
 880 Springfield Ave., Irvington Open Mon. thru Thurs. & Sat. 11:30 a.m. to 10 p.m.
 910-18th Ave., Newark Open Tues. thru Fri. 11:30 a.m. to 9 p.m.

IT'S GETTING TO BE A HABIT

Union Wins 19th County Playground Title

For the 19th year and seventh year in a row — Union Township last week won the 19th County Playground Championships at Waukegan Park Playground II.

The boys and girls of the township's playgrounds scored 54 points. Their closest rivals were Linden and Clark, with 50 points each, who tied for second place. Hillside was next, with 28 points. Union County parks records: 17, Springfield, 14 and Roselle Park, eight. Kentworth also participated, but did not score any points.

On youngsters' tools, first place in eight events. They were: Boy's (left), girl's checkers; Boy's (left), girl's checkers; Boy's (left), girl's checkers; Boy's (left), girl's checkers; Boy's (left), girl's checkers; Boy's (left), girl's checkers; Boy's (left), girl's checkers; Boy's (left), girl's checkers.

Springfield's Mary Franklin won the girl's horseshoe event. Other Springfield winners were: runners up were Gene Zorn, in boy's paddle tennis; Janice Hardgrove, girl's horseshoe; Mary Garner, girl's jacks; Pat Douglas, girl's ring tennis; Douglas Gele, boy's tetherball and Larry Budish, boy's chess.

Unfortunates who were among three runners up in various events were: Karen Dietmeyer,

CANDY by Tom Dorr



four shooting Linda Wynn, girl's horseshoe; Wynn Dixon, girl's horseshoe and Jack Goldberg, boy's tetherball.

Four Roselle Park residents were among other runners up. They were Pete Pomato, boy's four shooting; Bill Hinkle, boy's ring tennis; Dolores Pagan, girl's paddle tennis and Blaine Crouse, girl's ring tennis.

Mrs. Bettye Wilson of Union County was the event's judge. Other judges from that township were Howard Wilson, boy's paddle tennis; Irene Hooper, girl's chess; and Michael Bury, boy's ring tennis. June Della Salla of Kentworth was co-judge of the shooting event.

They're Complaining Against Each Other

A salesman from Millburn and a waitress from Irvington have signed counter-complaints against each other in Springfield for disorderly conduct as a result of a tiff in the Springfield Diner on Morris Ave. last week.

They are Ronald A. Donnez, 25, of Millburn and Jenn Janusz, 51, of 9 Chapman Pl., Irvington.

Donnez, who was arrested by Millburn police and brought to the Springfield police headquarters last week on warrant, was released in \$25 bail for a hearing in Municipal Court Sept. 9.



THE FRUIT OF THEIR LABOR will help those in need. That is why Joan Gwinn and Anderla Pankin smile proudly as they hold check for \$27 collected at a carnival for the benefit of the Muscular Dystrophy Fund. Balance of the committee, from left, are: Marcy Hager, Fran Ames, Joan and Anderla, Paul Rosenberg and Jayson Pankin.

STILL GOING DOWN

ACME Slashes Over 1000 Prices

LANCASTER BRAND

STEAKS

RIB SIRLOIN PORTERHOUSE

68¢ 78¢ 88¢

lb. lb. lb.

LANCASTER BRAND CLUB STEAK — ALL MEAT — 1.49

PLAY ACME'S HIT 100

PLAY "HIT 100" WIN \$100 WIN \$1000

LAST WEEK'S \$1000 WINNER: Mr. Frank Vozzo, 56 Pleasant Way, Mantoloking

Acme's Weekly \$1000 Drawing

To Enter The Drawing...

Just send this coupon to Acme Markets, Inc., Box 99, Newark, N.J., postmarked on or before midnight, Aug. 24, 1963, or deposit it at your local Acme Market.

Small entries in addition to entering the drawing will send you a card entitling you to play "HIT 100". Additional "HIT 100" cards can be obtained at your local Acme Market.

No purchase necessary. No visit to the store is necessary. You need not be present in store.

A FEW OF THE MANY \$100 WINNERS:

Mr. A. Capone, Staten Island, N.Y.C.	Mrs. J. Van Schoonhoven, Dunellen, N.J.
Mr. J. J. DeLoach, Perth Amboy, N.J.	Mr. E. J. Van Dine, Wharton, N.J.
Mrs. Barbara Greenwald, East Orange, N.J.	Mrs. Evelyn C. McCline, Plainfield, N.J.
Lillian Davis, Springfield, N.J.	Josephine Ferrante, Parsippany, N.J.
Mrs. Helen Schwartz, Mahwah, N.J.	O. Harold Liggett, Westfield, N.J.
Allen Hanks, Somerset, N.J.	Samuel J. Smergel, N.J.
Eleanor Yates, Clark, N.J.	Alma G. Giddie, Allentown, N.J.

"YOU NEVER HAD IT SO FRESH"

CANTALOUPE

LARGE-COIT BRAND CALIFORNIA

2 for 35¢

SWEET CORN

HOME GROWN

12 ears 35¢

PASCAL CELERY CRISP

2 large stalks 25¢

LARGE GREEN PEPPERS

lb. 10¢

WATERMELONS

RED RIPE WHOLE

59¢

1108 Liberty Ave., Hillside Open Wed. thru Fri. 11 to 10

Route 22 & Mountain Ave., Springfield

LEADER PROFILE

(Continued from Page 4)

to the rising school population is not new buildings but larger classes.

"So, you realize, she said, "what a teacher not only has to maintain discipline and teach, but to establish what the students have learned."

"Some classes are running up to 35 pupils. Twenty-five is a good number. I would like to see some of the people who advocate teaching large numbers of pupils have those same children in their classrooms for one afternoon to see if they could manage such a situation."

The Dorskys have two sons, Steven, a student at Gausman School and Robert, a pupil at Sandover. They say they settled in Springfield because once they saw the town they knew they didn't want to live anywhere else.

In summing up her convictions, Mrs. Dorsky said, "I am convinced in my mind that Springfield can have the finest schools in America. It takes work and time and interest and money, but if you can't believe this is true then you have nothing to work for."

MR. SWAN-BUY New Classified Ads. Get your FREE FORM on Classified pages. PASTER — call 371-3000.

Services Today For Mrs. Fay

Mrs. Mary Brady Fay, 85, of 381 Meisel Ave., Springfield, died Monday in St. Mary's Hospital, Orange, after a short illness. She was the widow of Mr. Edward Fay.

Born in Montclair, Mrs. Fay had lived in Bloomfield before moving to Springfield six years ago. She was a member of St. James Church.

Funeral services will be held today with a 9 a. m. mass of requiem in St. James Church. Mrs. Fay leaves a son, Herbert Fay, with whom she lived; two grandchildren and five great grandchildren.

Mr. Blake, Bell Official Dies

Homer A. Blake, 69, of 66 Troy dr., Springfield, manager of patent relations and services for Bell Telephone Labs, died of an apparent heart attack in his office on Aug. 14.

Born in Naples, N. Y., he was graduated from the University of Delaware with a degree in electrical engineering. He joined Bell Labs in 1927 and for 20 years has specialized in commercial relations and joined the patent department in 1947.

He leaves his widow, Mrs. Jeanette M. Blake, two sons, William and Alton, both of Cranford, N. Y.; three grandchildren; a brother and two sisters.

YOUR WANT AD... is easy to place. Phone 371-3000

Nerve Deafness Finally Explained

CHICAGO, Aug. 22 — For the first time anywhere, a booklet about the nation's No. 1 cause of hearing distress—nerve deafness—is being offered to the public free.

Until today little has been written about this painless, invisible condition which handicaps and isolates millions of persons of all ages. In a free booklet offered today by Bellone Hearing Service of 8 So. Broad St., Elizabeth, the facts about the cause of nerve deafness are explained.

How does nerve deafness interfere with hearing? What symptoms first warn you of this condition? Will surgery help, will a hearing aid help? Will anything help?

The booklet offered now to the public free of charge by Bellone Hearing Service explains why persons may hear and get don't understand. Can this condition be corrected? Is there any help to this hearing distress—nerve deafness?

"The Inside Story of Nerve Deafness," Bellone's remarkable free booklet, tells you what you can do to end this embarrassing ordeal.

If you are in the neighborhood of 8 So. Broad St., Elizabeth, come in for your free copy or write to Bellone Hearing Service, Phone 31-2400.

Mohair

Mohair Makes Fashion Cents!

Handmade V-neck, ribbed or heavy ribbed cardigan in luscious colors. Sizes 34 to 40.

Regularly Priced at \$19.98

\$9

Mohair

The Sport Shoppe

1026 Springfield Ave. Irvington Center

Open Monday & Friday 11 to 8 p.m.

1319 Maple Ave., Union Open Tues., Wed., Thurs. 11 to 9 P.M. 11 to 10

2661 Morris Ave., Union Open Tues. & Thurs. 11 to 9 p.m. Fri. 11 to 10 p.m.

