

Springfield Leader

The New Newspaper
To Serve
Springfield Better



VOL. 1 — No. 10

Published Every Thursday by BETHUNE P. COPE
1204 NORTH AVE., UNION, N. J. M-F 6-7100

SPRINGFIELD, N. J., THURSDAY, OCTOBER 24, 1963

Subscription Rate
\$4.00 Yearly

10¢ per copy

Propose New County Park--One-Third In Springfield

A 157.0-acre tract in the southern end of Springfield will be developed as part of the newest addition to the Union County Park System, it was announced this week.

The Springfield land will comprise the major portion of the northwest section of a 400-acre tract of land which has been earmarked for development by the Union County Park Commission, re-

ported by Gilbert G. Roessner, president. The Springfield section will be the largest tract in any one municipality and represents 36.3 per cent of the overall project. The acreage that makes up the remainder of the proposed new park unit is located in Cranford, 107.1 acres; Union, 54.2 acres; Westfield, 45.7 acres; and Kenilworth, 41.5 acres.

The area, currently known as the Echo Lake-Nonahagan Connection, is within 25 minutes by car from any point in Union County, Roessner said. The lands were acquired, for the most part, between 1928 and 1931, with the last parcel of approximately 10 acres purchased in 1947.

"It is through the foresight of the early members of the Union County Park Commission that this land is now available to the people of Union County," commented. The Park Commission, in its early days of existence, realized that in the years to come lands in Union County would be difficult to acquire because of industrial and real estate developments and because of increased costs for land as land values were and are steadily

increasing. The early Park Commission looked toward the future and anticipated the population increase and the recreational demands of the people today and acquired these lands for later park development.

The present members of the Union County Park Commission, the president said, have now determined that the time has come for consideration to be given to the development of these lands as a unit of the present park system and a \$50,000 (ten was included in the 1963 capital budget as a small start in the development of this area.

In the fall of 1962, the Union County Park Commission also visited the proposed park site several times and covered the entire area by foot, at different seasons of the year, to study particular

land features. The Park Commission received the preliminary development plan for the Echo Lake - Nonahagan Connection on July 15. The Olmsted firm, Park Commission landscape architect, has been engaged to design many of the proposed park units throughout the park system. It also designed County Park.



LINK FOR A CHANGE: Four-year-old Sally Gielges marks the end of Daylight Saving Time by turning back the hands of the clock at the Springfield Public Library. Sally, who lives at 45 Clinton Ave., is a member of the library's "Story Hour Club." Don't forget to fix your clocks Saturday night, Sally says. Standard Time takes effect at 2 a.m. Sunday. (Photo by Barbara Gibbons)

Special Town Meeting Called To Discuss Moving Of Homes

Mayor James Walden Wednesday announced that a special meeting of the Township Committee will be held next Tuesday night to consider rules and regulations concerning the moving of homes. His action came in the wake of Tuesday's meeting of the governing body in which residents of Bryant Ave. requested the moving of a home on their street.

★ INSIDE YOUR SPRINGFIELD LEADER

Ask Amy	25
Bible Quiz	21
Death Notices	21
Family Life	21
by Phyllis Greer	23
Leader Profile	23
Leonard E. Best	4
Religious News	14
Social News	14
Sports News	24
Tercentenary Tales	4
by John T. Cunningham	4
Waltz Ads	21-22

Town Youth To Sit With Committee As Part Of Optimists' Celebration

The township's youth will sit as members of the Township Committee for a day as part of the Optimists Club sponsored "Youth Appreciation Week" to begin on Nov. 11.

District To Meet With U.S. Agency On Nike Proposal

Dr. Warren M. Davis, superintendent of the Regional High School District, will meet early next week with a member of the U.S. Department of Health, Education and Welfare, to present the district's case for acquisition of the former Nike base in the Weehawken Reservation for use as an educational television transmission point.

Dr. Davis said he would travel in New York with the representative of the federal agency prior to submission of a formal application for the land. Formal application must be submitted by Nov. 1.

When the County Board of Freeholders voted last Thursday to abandon plans for the 6.30-acre tract, Dr. Davis said, the Regional Board became the only agency interested in the land.

The Freeholders voted to drop consideration of the tract as a facility for retained children in recommendation of Freeholder Mary Kinnic, chairman of the county health, education and welfare committee, because costs of converting the buildings into a hospital, county jail or school would be "astronomical."

Mayors Discuss Road Problems

The mayors of four communities met last night in Springfield Town Hall to discuss road problems, growing from the construction of Interstate highways 78 and 278. The meeting was called by Springfield's Mayor Arthur M. Falkin.

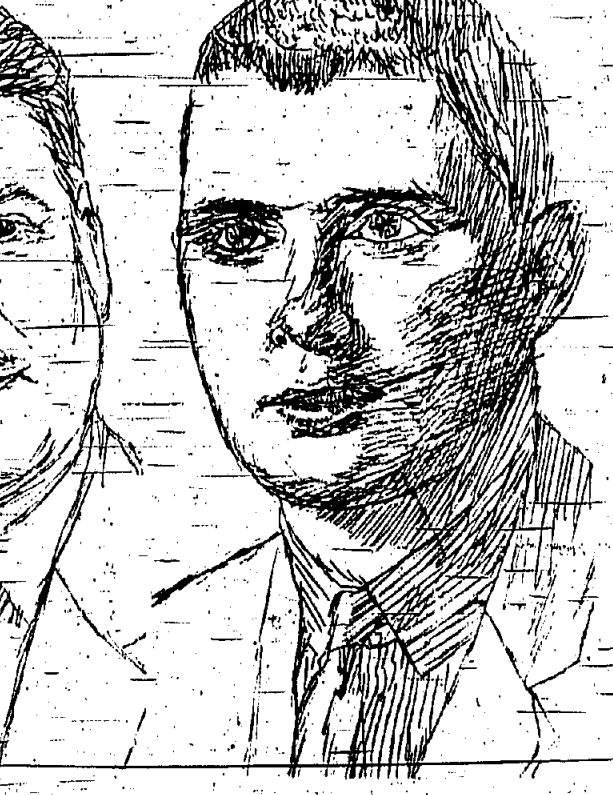
Expect Decision By Zoning Board On Bid For Motel

A decision on the application of Lawrence Construction Co. to build a 100-room motel on Rte. 22 is expected to be handed down by the Board of Adjustment at a special meeting Tuesday.

Township Committee Race Political Profiles



Alex Blackman



William F. Koonz

Viewing himself as potential "loyal opposition" on the Township Committee, Democratic candidate Alex Blackman has stressed what he terms the importance of "open door" government throughout his campaign.

Blackman has said that if he is elected to the Township Committee he will propose the "positive actions" of the committee simply because he will be a member. He maintains he will, however, act as a watchdog to see that important issues are brought to the floor of the meetings.

"As a representative of the minority party on the committee," he said, "I would be in an excellent position to serve all the citizens of the township. My election by the citizens would be a mandate to this committee to give heed to this voice."

In his platform, Blackman has offered the possibility of a government agency "study in depth" of taxes, the development of already existing recreation lands and assistance to merchants to keep Springfield a dynamic community.

A seven-point program, which he believes he can foster because of his business training and experience, has been proposed by William F. Koonz, Republican candidate for the single vacancy on the Township Committee.

Koonz, known locally as "The Iron Phenomenon" seldom seen in current urban politics, is a "policy man" in a township. He has been recently attributed to him, to "expectation."

Keenly aware of his youth (he is 31), Koonz, however, comes into the local political arena with training and background in business and has pointed to the "overwhelming consideration of a modern suburban community" as being the relationship between the tax dollar and the value received by the taxpayer.

He therefore emphasizes that he believes that a candidate's qualifications should be in the area of his business ability and his training in business endeavors.

Town Returning Report On Costs To Sewer Group

Ask Further Study Because Of More Evidence Received.

The report of the Assessment Commission in regard to the South Side Sanitary Sewer assessment has been returned back to that commission for further study in the light of new evidence, an action Tuesday night.

Township Committee voted to return the report to the commission Tuesday afternoon, pending further study by the township attorneys in Weehawken, former township committee member Russell W. Strick and verbal comment from Daniel M. Lutz, former township committee member and Committeeman Vincent J. Bonadies.

Burning Ban Issued Until Rams Descend

No permits to burn leaves will be issued until the township committee has received a report from the Board of Adjustment.

Governing Body Adopts Measure Prohibiting Abandonment Of Cars

The abandonment of motor vehicles or motor driven vehicles ordinance was passed by the Township Committee Tuesday night, and another ordinance upping certain license fees was introduced.

Would Urge Immediate Action On Ballot

An immediate move to urge a referendum on the ballot to do away with partisan politics in Springfield by change in the municipality's form of government was proposed this week by Alex Blackman, Democratic candidate for Township Committee.

Blackman, who will represent the township in the November election, is attempting to gain the support of the Township Committee members Vincent Bonadies, who is not running for

College President Guest Speaker At Housing Meeting

The Rev. Dr. Theodore Rath, president of Bloomsfield College, will be guest speaker at tonight's meeting of the Springfield Housing Committee.

The meeting will be held at 8:15 in Clatsop School.

Dr. Rath is former president of the New Jersey Council of Churches and is currently president of the New Jersey Committee Against Discrimination in Housing.

Bonadies Accepts Challenge; But Asks Apology By Collins

Vincent Bonadies, Democratic candidate for State Assembly in a letter this week to Loree Collins, D.P., Assembly assistant, has accepted Collins' challenge to debate the merits of Gov. Hughes' bond issue.

Bonadies stated however that before any debate takes place, Collins must make public relations and apology to every Democrat in Union County for the manner in which Bonadies says, Collins characterized Democrats in a talk before the Scotch Pine-Fanswood Twp. Assn. on Oct. 2.

Court Fines Man On Speed Count; Revoke License

Edward J. Bullock, 37, of 215 N. 23rd St., Springfield, was fined \$25 and his license was suspended for 30 days for speeding on Monday night for speeding 60 miles per hour in a 35 mph zone, and his license was revoked for 30 days.

In other motor vehicle matters before the court, Eugene J. Tuzig, 17, of 130 Hawthorne ave., Springfield, was fined \$10 for obstructing traffic. He was out of gasoline and left his car standing at Mountain Ave. and Shampine Turnpike during a morning rush hour.

Alonso Butler, 34, of Newark was fined \$25 on a careless driving charge filed by state police, who said he ran down road flares at a high rate of speed.

Awarded Trophy As Poultry Judge

Revelly Johnson, a 1963 graduate of Jonathan Dayton High School, won a trophy this month for top honors at a poultry judging contest held at Harrisburg.

She and two Dayton Regional students, Carl Swanson, a senior, and Wayne Pinder, a junior, formed a judging team which represented New Jersey at the Northeastern Poultry Producers Council. An annual event attended by representatives from 14 states. They were accompanied by Peter W. Dandilo, agriculture instructor.

The team was selected for this honor because it placed second in a state judging contest last May at Rutgers University.

The judging involved inspecting live market fowl, broilers and meat birds, and carrying eggs.

Rabbi Dresner Slates 'Whistle Stop' Tour

Rabbi Israel S. Dresner, of Temple Shalom, will be "whistle stopping" through the state of Indiana next week at the behest of the Jewish Community Council of Indiana.

Rabbi Dresner will begin by delivering the main address at the annual state-wide dinner at the annual date of the Jewish Community Councils in South Bend, Saturday night. He will speak on "Judaism and the Negro Freedom Struggle."

The Springfield rabbi will deliver eleven speeches in four days in seven cities to synagogues, church and university groups in the state on the subject of civil rights. He will be the featured speaker at Purdue University on Tuesday, and will appear on three radio and two television programs while in the state.

Proposed Measure Asks Hikes In Fees

An ordinance raising the amount of local fees and licenses collected by the Board of Health was introduced by that body last week.

The measure is necessary because services and inspections have increased, according to Mrs. Eleanor Worthington, township clerk. Some of the fees, she said, are: \$100 per dog, \$100 for final hearing will be Nov. 11.

The measure will be effective Jan. 1. Fees for restaurants, lunch-ettes and other eating establishments would be raised from a flat \$5 a year to \$20 for up to 25 seats, \$30 for 26 to 50 seats, \$50 for 51 to 100 seats, and \$75 for a seating capacity of over 100.

Other fee raises: retail food stores, raised from \$5 to \$20; milk, from \$2 to \$5; soft drinks, \$2, unchanged; slaughtering, from \$10 to \$20; scavenger service, from \$10 to \$25; ice from \$2 to \$5.


The amount of a license for operating a nursery school would be raised from \$5 to \$10 a year; a handcart, from \$1 to \$3 per machine with a \$25 minimum; dog kennel, \$10 for 10 dogs or less, \$25 more than

Whistle Stop Tour

Rabbi Israel S. Dresner, of Temple Shalom, will be "whistle stopping" through the state of Indiana next week at the behest of the Jewish Community Council of Indiana.

Rabbi Dresner will begin by delivering the main address at the annual date of the Jewish Community Councils in South Bend, Saturday night. He will speak on "Judaism and the Negro Freedom Struggle."

The Springfield rabbi will deliver eleven speeches in four days in seven cities to synagogues, church and university groups in the state on the subject of civil rights. He will be the featured speaker at Purdue University on Tuesday, and will appear on three radio and two television programs while in the state.



open a Check-Credit Account at First State Bank. Check-Credit is the modern way to borrow, for you borrow just what you need just when you need it.

You simply decide how much you can repay per month, and then apply for credit up to 24 times that amount (to \$2500 under N. J. law). When your application for Check-Credit has been approved, you receive a supply of checks. Then, as you need the money, you simply write checks. Until you use your Check-Credit, there is no charge.

Stop in or send the coupon below for complete information.

Mail this coupon to:
FIRST STATE BANK, 1930 Morris Ave., Union, N. J.
 Please send information on First State's Check-Credit Plan.

NAME _____
 STREET _____
 CITY _____ ZONE _____ STATE _____

"Still One of the Fastest Growing Banks in the United States"

The FIRST STATE BANK OF UNION

UNION NEW JERSEY

MAIN OFFICE HIGHWAY BRANCH

Morris Avenue at Burke Parkway Route 22 at Monroe St.

MURdock 6-4800

Townley Branch — Morris Ave. at Potter Ave.
 MEMBER FEDERAL DEPOSIT INSURANCE CORPORATION

For Responsible Representation

Vote For This Team


... On Line C, Nov. 5th

FOR SENATE

NELSON F. STAMLER

FOR ASSEMBLY

(VOTE FOR ALL FIVE)




Frank X. McDermott



Nicholas S. J. LaCorte



Loree COLLINS



Peter J. McDONOUGH



Henry P. WEBSTER

A QUALIFIED, ABLE, DEDICATED REPUBLICAN TEAM



HALLOWEEN SPECIALS

DUTCH APPLE

ICE CREAM SALE

Master of the Month!

Save 20c per qt.

HALF GAL. 79c



FRUIT SHERBERT

REG. 80c

HALF GAL. 69c

FRUIT DRINKS

ORANGE GRAPE

HALF GAL. 29c



WHIPPED BUTTER

39c

Sweet or Lightly Salted



APPLE CIDER

GALLON JUG 69c

HALF GAL. JUG 39c

PLUS DEPOSIT

SAVE 19c

PER GALLON ON JUG MILK!



GAL. 89c



HALF GAL. 46c

SKIM MILK Half Gal. 37c

Specials on Sale October 24 thru 27!

Visit our newest store at 782 Mountain Ave., Springfield

MILK • BUTTER • EGGS • ICE CREAM • COTTAGE CHEESE • BAKED GOODS

OPEN 10 A. M. TO 10 P. M. SEVEN DAYS A WEEK

Garden State Farms

DAIRY STORES

COPYRIGHT 1963 GARDEN STATE FARMS INC. ALL RIGHTS RESERVED

Propose New Park; Part In Springfield

(Continued from Page 1)

ral Park in New York City. Free-Play Recreation. The landscape architects determined that the proposed Echo Lake-Normahagan Connection offers more potential for free-play recreation areas than sports and organized group participation programs, the commission reported. The recommendations indicate that the proposed park should be used for picnicking, adult and children's fishing, boating and canoeing, hiking, nature study, various argentea, informal-play areas and for winter sports.

Because of the existing streams and within the proposed park area, it was determined that the waterways would be the dominant feature of the Echo Lake-Normahagan Connection, Hoessner said. The Rahway River, Normahagan Brook, and Black Brook meander through the 406.4-acre tract, and because most of the land is subjected to periodic flooding, it should remain as a watershed area, according to the report. With this in mind the Park Commission plans to utilize the area both for recreation as well as for conservation, the president explained.

Oral Arguments Slated In Court On Dresner Case

Oral arguments in the case of Donald V. Tallahassee planned for hearing last Tuesday by the United States Supreme Court were scheduled to be heard yesterday after a postponement by the high court.

Abraham D. Dresner of Temple Square Station 101 for the District of Columbia yesterday morning in time for the 10 a.m. court session.

The case involves a conviction of Rabbi Dresner, another rabbi and eight protestant ministers by a Tallahassee court on a charge of "unlawful assembly" involving a "freedom ride" from Washington, D.C. to Tallahassee in June 1961. The group, which included three Negro clergymen, was traveling south by bus in an integration move, Rabbi Dresner said.

One of the group, Rev. Robert McAfee Brown, a full professor of theology at Union Theological Seminary at the time of his arrest, is expected to fly to Tallahassee from Rome, where he is serving as the Presbyterian Church's observer at the Ecumenical Council, to participate in the hearing.

The clergymen are free in \$1,000 bail each after conviction by the Tallahassee court. The conviction was upheld by Florida state courts.

Rabbi Dresner testified before a Newark court Tuesday in behalf of demonstrators arrested while protesting alleged discrimination against Negroes in hiring construction workers for a Barling High School construction project last spring. Rabbi Dresner participated in the demonstration but was not arrested.

Plan To Instruct In Library Skills

Freshmen at Jonathan Dayton will be instructed in the use of library skills through a course of study drawn up by Miss Barbara J. Dimmick, librarian.

Dr. Warren M. Davis, district superintendent of schools, told the Regional Board of Education this month that the course will be taught in the library by freshman English teachers. The card catalog will be explained by Miss Dimmick, and use of the Readers' Guide, by members of the social studies department.

Miss Dimmick reported that the results of a library test administered to all freshmen last month revealed a need for instruction in the use of the card catalog, Dewey decimal classification system, reference books, Readers' Guide, and general information.

Attendance reached 591 during the first month of school, Miss Dimmick said. A total of 817 books were circulated and 93 new books processed.

Residents Ready To Begin March

Springfield residents who wish to join the March on Trenton for Jobs and Freedom have been asked to contact Mrs. Philip Lewis of 408 Milltown rd. for arrangements. The March will begin at 4:30 p.m. Saturday.

Leading spokesmen of the Catholic, Jewish and Protestant faiths will join civil rights leaders, A. Phillip Randolph, James Farmer and Bayard Rustin in the mass rally at the War Memorial in Trenton. The rally is scheduled to end at 9:30 p.m.

Gov. Hughes will meet with the march leaders, and U.S. Senator Clifford Case and Harrison A. Williams Jr. will be present.

Driver Another \$10 For Little Words Cost

A Newark youth was fined \$10 for an impertinent license plate in Springfield Municipal Court Monday night and another \$10 for contempt of court.

Having ignored a summons and a warning notice, the youth, Joseph J. Starr, 16, appeared in court on a warrant. At first he was fined \$10 for the parking violation and \$10 for contempt.

After paying the violations, the youth turned to Magistrate Thomas A. Aronoff and said "Hoff hi."

"Those two words will cost you another \$10, young man," the magistrate said.

Sewers

(Continued from Page 1)

agreement, they said, they signed a permission to have the sewer line through their property and were paid \$1.

Kempier said he had advised the owners through written notices that the sewer line would be installed through their property. He said that the program would be partially financed by a general assessment. He said that he was told by Weinberg to make the statements.

Weinberg said that Kempier was a law clerk in his office at the time of the acquisition and that his authority was "expressly limited." He was instructed that "he could not make representations that there would be no assessment since this matter was beyond his control and was subject to a policy decision to be made by the Township Committee."

"Mr. Kempier was aware of the course that there was a possibility that there would be no assessment but he had no authority or right to make any statements concerning this possibility unless it were very carefully qualified," Weinberg said.

Weinberg said that he had been the intention of the former Township Committee to establish whether there would be a change from a local assessment ordinance to a general assessment ordinance depending on the final cost of construction "which was unascertained when your administration took over."

Final Cost

He said that there was a general discussion about changing the ordinance, and the thinking at that time was that the final cost was between \$30,000 and \$20,000 over and above all moneys collected by grant and contribution, a general assessment might be favorably considered.

Lucy told the committee that he did not know why there was any trouble about the assessments. He said that while he was a member of the township committee, the plan had been to finance the sewer project on the basis of local assessments.

"The ordinance was drawn by the township attorney and published and the ordinance was passed," he said, "and it was stipulated that financing would be local and not general."

"This was to be a special assessment charged against those who benefited by it," Lucy said. "As far as my explanation," he told the committee, "it sounds as if there was going to be a change in the assessment."

Bonadies said that Lucy may not have recalled any discussions about changing the ordinance to a general assessment if the costs warranted the change, because all executive sessions are not attended by all members. He emphasized, however, that any discussion of a general assessment was just that, and not a commitment.

"No such commitments were made and no one was instructed to make them," Bonadies said. "Kempier was a law clerk at the time," he said, "and I do not consider him a representative of the town."

"The people who granted rights of way did not merely give them for \$1. There was money expended in the town for the laying of rights of way and I can't recall only one or two instances where the problem of assessment was discussed," Weinberg said.

Weinberg said that he did discuss the right of way for the Prince property with H. J. Huff, the Prince attorney. He said he indicated to Huff that there would be a local assessment and that the township would pay the balance in keeping with the plan



MARY C. KANANE

GOP Club To Hear County Candidate

Mary C. Kaneane, candidate for Surrogate in Union County will be guest speaker at the regular monthly meeting of the Springfield Republican Club to be held Monday at 8 a.m. at the American Legion Home on Trivet St., next to the Municipal Building.

John A. Grifo, club president said Miss Kaneane will speak on important issues of the campaign. There will be a question and answer session at the close of the meeting, he said.

Three NCE Freshmen

Three young people from Springfield are enrolled as freshmen at Newark College of Engineering—the institution reports.

They are Thomas J. Patton, 12 Christie St.; Thomas R. Spoke, 262 Mountain ave.; and Freddie T. Terry, 105 New England ave.

CANDIDATES MEETING League Expects 12 Speakers

Ten candidates for the offices of N. J. State Senator and Assemblymen have accepted the invitation of the Union County Council of the League of Women Voters to appear at a Candidates Meeting, Tuesday, at the Walton School on Mountain Ave.

The meeting will begin at 8:45 a.m. The two local Republican candidates will be heard from 8 to 8:45. The County Council is comprised of 11 leagues in Union County.

Mrs. Vincent Mastrocola, voters service chairman of the N. J. League of Women Voters, will be moderator. Mrs. Stephen Benn, president of the Springfield League, will preside.

The candidates who have accepted: Mrs. Norman Standler, Republican; and James McGowan, Democrat, candidates for Senator; Frances X. McDerinott, Nicholas St. John LaCorte, Loyee Collins, Peir J. McDonough, Henry P. Woster, Republicans; and Jerome Krueger, Mildred Barry Hughes, Vincent J. Bonadies, Democrats, candidates for Assemblyman.

Local candidates who will be at the meeting are Desmond Alex. Higgins and Republican William Kaneane, candidates to the Township Committee.

Each candidate has been asked to speak for five minutes on the issues he or she feels are most important in this campaign. Questions from the floor will follow, a league spokesman said.

Mrs. Mastrocola, the moderator, is a resident of Newark and lives in the city.

Mrs. Richard Moore, county council chairman, and Mrs. Leonard Krigbaum, voters service chairman of the Springfield League, arranged the meeting. Voters service chairmen of the 10 other cooperating leagues are: Mrs. Darryl Freeman, Berkeley Heights; Mrs. Alfred Miller, Cranford; Mrs. Barbara Cohen, Elizabeth; Mrs. Joseph Leboff, Linden; Mrs. J. T. Scott, New Providence; Mrs. Robert Loney, Plainfield; Mrs. Robert McFarlane, Roselle; Mrs. Howard Manning, Summit; Mrs. J. Senbaum, Union; and Mrs. J. Frowling, Westfield.

We now carry... **JARMAN** Shoes for Men & Boys. The shoe that's wear.

COLANTONE SHOE SHOP
245 MORRIS AVE.
Free Parking in Rear
SPRINGFIELD DR 6-2682
Hours: Mon. thru Wed. 9:30-6:30
Thurs. & Fri. 9:30-6:30
Sat. 10-6 p.m.

Postage Stamp Hails Red Cross

The U.S. Post Office Department will issue a five-cent postage stamp in commemoration of the 100th anniversary of worldwide Red-Cross movement on Oct. 29 and the stamps will be available at the Springfield post office next Tuesday, John C. Geos said National Red Cross said this week.

The Springfield Red Cross Chapter, he said, will purchase a supply of the new stamps to be used on Chapter mail as a reminder of "100 years of service to humanity by the international movement."

Geos said National Red Cross Headquarters is arranging for a "limited printing of souvenir 'First Day of Issue' covers. He said the local chapter will receive one of these. Other first day covers can be purchased by stamp clubs or individual collectors through regular philatelic supply sources, he said.

WE ARE AS NEAR TO YOU AS YOUR PHONE!

For Free Telephone Delivery of All Your Food Needs...

CALL DR 6-0431

SPRINGFIELD MARKET INC.
272 Morris Ave. Springfield

Because customers have confidence in the high quality of our work, our business is constantly increasing.

• Every Garment Treated with Sta-Nu (Koholite with no Bleach in Springfield)

• Free 1 Hour Service

• Free Plastic Bags

DREXEL
Quality Cleaners

FREE PARKING
230 Mountain Ave.
Springfield
Supplies
Cleaning,
Bairi
Laundrying,
Shoe
Repairing

HEAR JOHN MARTINO
"I Was Castro's Prisoner"

the incredible experience of an American businessman who spent 3 1/2 years in Castro's prisons.

AND SEE THE FILM
CASTRO, CUBA, AND COMMUNISM

8 p.m., OCT. 30, 1963 AT
LINCOLN SCHOOL, Woodland Ave., Summit, N. J.
Donation \$1.50 at door

Presented by The American Opinion Forum

LOOK HOW MEAT savings ADD UP!

OUR OWN
ROCK CORNISH HENS 55¢ lb.

FRESH GROUND CHUCK 69¢ lb.

CORNED BEEF 59¢ lb.
THIN CUT SLIGHTLY HIGHER

FRESH CHICKEN LIVERS 79¢ lb.

RAU 763 MOUNTAIN AVE. SPRINGFIELD
Phons: DRexel 6-5505

Quality Meats & Produce

NEW! ICE O DERM
MEDICATED ASTRINGENT

100 per cent

Clear Oil-Clogged Pores. Get Close-up Skin Beauty

• Helps dissolve blackheads, lighten enlarged pores, control skin "flame-ups" and embarrassing pimples.

• Cleans oil-clogged pores, holds in natural moisture, keeps dirt out. Perfect make-up base... doesn't show.

• Invisible medication protects and cleans as no soap or ordinary cleansing cream can.

SAV-ON
DRUG STORES

We Give S & H Stamps

20 Echo Plaza LOWER PRICES
Route 22 SELF SERVICE
Springfield DR 6-4134

Open Daily 9-10, Sat. 9-9 & Sun. 9-6

DON'T BE A PUZZLED SANTA!

JOIN OUR 1964 CHRISTMAS CLUB

If you're like most Santas, your biggest puzzle is where to find the money to buy the gifts that everyone wants most! Best and surest place to find it is in a Crestmont Christmas Club check for "what it takes" for really generous gift shopping.

FILL IT UP EASY...

Join our CHRISTMAS CLUB

Next year's Christmas happiness for the whole family will come "paid in advance" if you join our 1964 Christmas Club now. You will enjoy gift shopping that's free from all stress and strain on your budget.

You will like doing business with CRESTMONT.

And — a CRESTMONT Christmas Club pays dividends too!

CHECK ANY OF OUR FOUR OFFICES

Crestmont Savings
AND LOAN ASSOCIATION

MOUNTAINSIDE OFFICE: Echo Plaza Shopping Center, DR 9-6121
SPRINGFIELD OFFICE: 175 Morris Ave., DR 6-5490
MAIN OFFICE: 1886 Springfield Ave., Maplewood, SO 3-4700
TUSCAN OFFICE: 1040 Chancellor Ave., Maplewood, PO 1-4300

LEADER PROFILE

LEONARD E. BEST

Springfield industrialist Leonard E. Best is known in school circles as "Mr. Best" or "Mr. Best School Support" and "Mr. Best Fund."

These three have named the tenets of his philosophy since he began a series of improved educational conditions by campaigning for higher pay for Summit teachers and found himself a member of the Board of Education there in 1948.

He has since lived through the ranks of Board of Education circles to become one of the state's foremost lay leaders in education and Gov. Hughes' number one adversary in the upcoming bond issue.

Best explains that he is still for increased state school aid but feels the present bond proposal is not the best. He is also chairman of the Citizens Committee for School Support to aid to municipalities and he was chairman of the Citizens Committee for School Support in 1961.

Best is not the only state aid promoter who has defected from the ranks over the bond proposal. "The issue has raked the solidarity of the educational organization," he said, "and I'll never understand why Gov. Hughes suggested it."

Best is not the only state aid promoter who has defected from the ranks over the bond proposal. "The issue has raked the solidarity of the educational organization," he said, "and I'll never understand why Gov. Hughes suggested it."

Best is not the only state aid promoter who has defected from the ranks over the bond proposal. "The issue has raked the solidarity of the educational organization," he said, "and I'll never understand why Gov. Hughes suggested it."

Best is not the only state aid promoter who has defected from the ranks over the bond proposal. "The issue has raked the solidarity of the educational organization," he said, "and I'll never understand why Gov. Hughes suggested it."

Best is not the only state aid promoter who has defected from the ranks over the bond proposal. "The issue has raked the solidarity of the educational organization," he said, "and I'll never understand why Gov. Hughes suggested it."

Best is not the only state aid promoter who has defected from the ranks over the bond proposal. "The issue has raked the solidarity of the educational organization," he said, "and I'll never understand why Gov. Hughes suggested it."

Best is not the only state aid promoter who has defected from the ranks over the bond proposal. "The issue has raked the solidarity of the educational organization," he said, "and I'll never understand why Gov. Hughes suggested it."

Best is not the only state aid promoter who has defected from the ranks over the bond proposal. "The issue has raked the solidarity of the educational organization," he said, "and I'll never understand why Gov. Hughes suggested it."

Best is not the only state aid promoter who has defected from the ranks over the bond proposal. "The issue has raked the solidarity of the educational organization," he said, "and I'll never understand why Gov. Hughes suggested it."

Best is not the only state aid promoter who has defected from the ranks over the bond proposal. "The issue has raked the solidarity of the educational organization," he said, "and I'll never understand why Gov. Hughes suggested it."

TERCENTENARY Tales by John T. Cunninghamham

Hessians Suffer 350 Casualties In 40 Minutes At Red Bank Battle

Count Reinhold Riedesel, who led the Hessians in the battle at Red Bank, Pa., on September 26, 1777, was a man of many talents. He was a soldier, a statesman, a diplomat, and a writer.

Forum On The Bond Issue

A series on the \$750,000,000 bond issue, to appear on the pages of the "Herald-Examiner" today.

From The Office Of The Governor

It is gratifying to me that so many of our citizens are so interested in the subject of the proposed bond issue.

ITEM PRESS PRINTING

20 Main St., Millburn Phone DIXEAL 6-1000 From Business Cards

Blackman

(Continued from Page 1) Him to examine the municipal budget with a view to its being cut for office if successful.

Letters To The Editor

SCARF TO HATTER. Spelling of scarf is scarf, not scarf. The latter is a brand name.

Prescriptions Filled

J. NORWOOD VAN NESS, 248 MORRIS AVENUE, SPRINGFIELD, N. J. Drexel 6-6108

SAVE MORE

Save more during our 104th Anniversary Celebration. Buy one, get one free. Buy two, get one free. Buy three, get one free.

DURING OUR GREAT ENCORE!

Extra Thrifty Plaid Stamps. Buy one, get one free. Buy two, get one free. Buy three, get one free.

Our Own Tea Bags

- Marvel Ice Cream 125-99¢
Yukon Club Canned Beverages 3 1/2 25¢
Super Goola 3 1/2 29¢
Canned Soda 3 1/2 29¢
Diet Delight 3 1/2 29¢
Peaches 2 1/2 37¢
Sprey 3 1/2 78¢
B&M 2 1/2 25¢
Ajax Gleaner 2 1/2 25¢
Ajax Liquid Bleach 2 1/2 33¢
Olgate's Fab 2 1/2 27¢
Olgate's Ad 2 1/2 61¢
Sweethair Soap 2 1/2 29¢
Trend Liquid Detergent 2 1/2 50¢
Pink Vol Liquid Detergent 2 1/2 54¢
Alpo Dog Food 2 1/2 55¢
Laddie Boy Dog Food 2 1/2 47¢
A&P's Own PET FOODS 2 1/2 29¢
Daily Dog 3 1/2 29¢
Daily Cat 3 1/2 29¢

A&P's Famous "Super-Right" Quality

- 7-RIB END PIECE 29¢
LOIN END PIECE 39¢
RIB HALF-Full-Cut NO CHOPS-Removed 45¢
LOIN HALF-Full-Cut NO CHOPS-Removed 55¢
Pork Butts 59¢
Sausage Meat 45¢
Stewing Beef 69¢
Chuck Fillet 69¢
Soup Beef 43¢
Meat Loaf 69¢

"Super-Right" Quality Beef

- California Cut 59¢
Boneless Chuck 69¢
Chuck Bone In 59¢
Thrifty Frozen Foods! Tree Tavern Pizza 55¢
Broccoli Spears 50¢
A&P Cauliflower 50¢
A&P Potatoes 59¢
Asparagus Spears 41¢
Lima Beans 41¢
Redd Beefsteaks 41¢
Butter L Sealops 51¢
Flounder Dinner 49¢
Shrimp 89¢



"SUPER-RIGHT" QUALITY VEAL SALE!

- Legs or Rumps 59¢
Loin Chops 89¢
Rib Veal Chops 79¢
Shoulder Chops 69¢
Shoulder Roast 69¢
Veal Cubed Steaks 99¢
Breast of Veal 35¢
Stewing Veal 65¢

SUNSWET PRUNE JUICE

- MOTT'S A.M. or P.M. Fruit-Drink 3 95¢
DEL MONTE TOMATOES 2 49¢
FRUIT DRINK PINEAPPLE-GRAPFRUIT 4 99¢
TOMATO SAUCE 10 79¢
A&P POTATOES SLICED or WHOLE 6 59¢
Apricots 29¢
Kellogg's RICE 2 39¢
Kellogg's RICE KRISPIES 2 29¢
Kellogg's CORN FLAKES 2 33¢
VARIETY PACK 4 41¢
Ready-to-Eat 10 27¢
Ready-to-Eat 12 29¢
TABLE NAPKINS 2 49¢

FRESH EGGS

- SUNNYBROOK GRADE-A WHITE EXTRA LARGE 59¢
LARGE 55¢
MEDIUM-SIZE 2 for 87¢

MORE GROCERY VALUES!

- Tomato Ketchup 2 45¢
Bury Cookies 2 39¢
B in B-Sliced Mushrooms 2 33¢
Chicken Sea Tun 3 41¢
Red Cabbage 2 49¢
Broadway Corn Hash 2 39¢
Marcel Pastel Napkins 2 19¢
Marcel Toilet Tissue 2 19¢
Home Malt Barbecue Bags 2 55¢
Brock Shampoo 2 100¢
Princess Dial Soap 2 33¢
Fels Granules 2 39¢
Kitty Salmon Cat Food 2 27¢
Window Gleaner 2 15¢
Bright Sail Ammonia 2 39¢
Plastic Scrub Brushes 2 39¢
Liquid Floor Wax 2 39¢
Sail Detergent 2 27¢
Windex 2 29¢
ON-Plus 2 27¢
Laundry Bleach 2 49¢
G.E. Light Bulbs 2 49¢

APPLES

- Delicious 2 lb. 29¢
Grapefruit 5 lb. 47¢
POTATOES SWEET 3 lbs. 23¢
Sweet Corn 3 ears 25¢
Spinach 10-oz. 19¢
Mushrooms Snow 1 lb. 49¢
Celery 2 large 23¢
Onions U.S. No. 1 Grade 3 lbs. 22¢
Cucumbers 3 19¢
Radishes 3 15¢

ONE OF THE GREATEST COLLECTIONS EVER!

- 100 CHRISTMAS GIFTS TO MAKE FOR SEWING FOR YOUR HOME

THE GREAT ATLANTIC & PACIFIC TEA COMPANY, INC. AP Super Markets. America's Dependable Food Merchant Since 1859. Regular 12 1/2 oz. with 100 Tablets. Price effective thru Saturday Oct. 26th in Super Markets and 50¢ Store.

FRIDAY DEADLINE
All items other than local news should be filed in this newspaper, should be filed in our office by Friday to insure publication in the next issue.

Simmons Gers Role In Parish Show
Charles Simmons has been named to play the role of Sander in the book in the St. Michael's Parish Players production of "Hells Are Ringing." Simmons, who lives at 1939 Morris ave., Union, has played the

comedy parts in several past St. Michael's productions. Other members announced this week by director John Whelan are: Mat Shewley of 53 Ellen st. and Mrs. Ann Kling. The local amateur theatre group will present two performances of the musical at Union High School the evenings of Nov. 21 and 22.

Scout Council Heads At Miami Convention

Seventeen members of the Washington Rock Girl Scout Council are attending the 38th Convention of the Girl Scouts of the U. S. A. this week in Miami Beach, Fla.

The group is composed of 14 delegates of the Council selected from the membership throughout the Council area by the board of directors of the council, and three members attending as visitors.

Officers in the delegation are Mrs. John W. Foster, council president; Myra K. Pike, executive director; Mrs. Lee Arrowood, troop leader; Mrs. Wm. Ham Darrow of Union, troop leader; Mrs. Harry M. Gardner, also of Union, district chairman; Mrs. James Hale Jr., district chairman; Mrs. Englehardt Heirlikson, secretary to the council board; Mrs. E. H. Koenig, neighborhood chairman; Eleanor Lulligson, Senior Girl Scout troop leader; Mrs. A. C. Patterson, program department chairman; Mrs. Frederick Parham, district chairman; Francis K. Sylvester, council staff member; Mrs. D. Ross Tyce, troop consultant and Mrs. J. G. Van Nest, nominating committee member.

In addition, the three council staff members attending are Mrs. Glen Coven, Martha Bonn and Judy Goodrich.

County Lawyers Form Local Units To Help Stamer

Local subcommittees of the lawyers for Stamer Committee are being formed in Union County towns, according to general chairman Jacob Triarsi. The attorneys are working for the re-election of GOJ State Senator Nelson P. Stamer.

Triarsi said that the groups will help apply local speakers and aid in voter turnout. In addition they will form squads to follow Stamer's opposition "in order to correct any misrepresentation or misstatements during the campaign. On election day the squads will investigate operations throughout the county to check on conformity to election laws.

Gustave Klein and George J. Lombardi have been named to represent Union township; James M. Cavley will represent Springfield, and Joseph Lettieri, Roselle and Roselle Park.



The Old Timer

"A pretty policeman could induce some men to take the law into their own hands."

Seek Volunteers To Assist With Christmas Seals

Volunteers are being sought by the Union County Tuberculosis and Health League to assist with the preparation and mailing of the 1963 Christmas Seals to be held in the League's office at 7 Bridge st., Elizabeth, on Friday, Nov. 1 and Tuesday, Nov. 5. It was announced this week.

Miss Katharine D. Cass of Union, Chairman of the 1963 Christmas Seal Committee, of the League, hopes that 500 or more people will volunteer to help during the morning, afternoon, or evening of Nov. 1 or 5. The letter stuffing parties will begin at 9 a.m. on both days and will continue to approximately 11 p.m. at which time the chairman hopes that the entire mailing to more than 100,000 homes in Union County will be completely assembled, Miss Cass said. All individuals and organizations who can help the League, at either of the two "letter stuffing parties" or at other times should notify the League office at EL 2-2482, she added.

County Register Lauded In Article

Union County Register James M. Doloney has been lauded for the high quality and accuracy of his work in the processing of public documents, an article in the October issue of the County Officer Magazine, the official publication of the National Association of Counties.

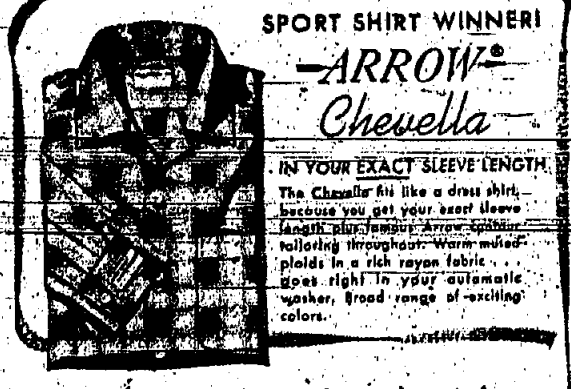
The article says Doloney was one of the first in the nation to attach microfilm heads to the photostat machine which allowed for the microfilming and photostating simultaneously at the push of a button.

The editorial comment on Doloney's achievement was in part as follows: "We feel that only through constant reports and the widest possible exchange of ideas between the 'Freeholders' and the county officers can there be efficient government."

NO GIMMICKS WALLPAPER HUNG

ABSOLUTELY FREE
Watch These Figures Grow!
To Date **2,333**
Satisfied Customers
Have taken advantage of our seasonal offer for a total of **51,515** rolls
YOUR ONLY COST IS THE PRICE OF THE PAPER
(22 per roll and up)
• Expert Mechanics
• All Work Guaranteed
• Birge-Lloyd & Other Famous Brands
• 76 ROOMS TO CHOOSE FROM
We Watch Paint to Paper in All Finishes

Elizabeth PRINT SERVICE INC.
EL 3-8479
1040 ELIZABETH AVE. ELIZABETH
Open Thursday 'til 9



SPORT SHIRT WINNER! - ARROW - Chevella

IN YOUR EXACT SLEEVE LENGTH. The Chevella fits like a dress shirt, because you get your exact sleeve length throughout. Warm, milled pleads in a rich rayon fabric... goes right to your automatic washer, broad range of exciting colors.

COLLAR SIZE	14-14 1/2	15-15 1/2	16	16-16 1/2	17-17 1/2
SLEEVE LENGTH	32-34	32-36	32-36	32-36	33-36

MARSHALL'S
1024 Stuyvesant Ave., Union
Of course... You may charge it!

Woman Hospitalized

Mrs. Elizabeth Godfrey, 85, of 820 Townley ave., Union, was taken to Elizabeth General Hospital at 8:43 a. m. Sunday with a possible hip fracture. The hospital reported her condition as satisfactory Monday.

CHURCH-TO HOLD COSTUME PARTY FOR UNICEF FUND

A Halloween costume party will be held at the Battle Hill Moravian Church on Liberty ave., Union, next Thursday at 7 p.m.

There will be games and refreshments, and any child with his or her UNICEF bunk will be welcomed.

Jerry Callaghan and Eugene Doman will be in charge of refreshments, and Rev. Donald Acheson will supervise games.

A UNICEF Danny Kaye film will be shown at the Sunday School hour Sunday.

Synopsis Of Freeholders Minutes

SYNOPSIS OF MEETING OF THE UNION COUNTY BOARD OF CHIEF FREEHOLDERS HELD ON SEPTEMBER 19, 1963

Regular meeting of the Union County Board of Chief Freeholders was held at the Court House, Elizabeth, N. J., on Thursday, September 19, 1963 at 11 A.M. Roll call checked the following members present: Honorable, Frederick D. Dunn, Chairman; Honorable, Moore G. Morris, Treasurer; Honorable, Robert A. Anderson, Secretary; Honorable, Joseph A. Lipp, Clerk; Honorable, James J. Lipp, Jr., Clerk; Honorable, Joseph A. Lipp, Jr., Clerk; Honorable, Joseph A. Lipp, Jr., Clerk.

HILLSIDE SHOPPING CENTER

Liberty Avenue near Hillside High School. Plenty of Free Parking.

VIOLA'S Beauty Salon 1104 LIBERTY AVENUE Fall Special PERMANENTS Reg. \$10.00 NOW ONLY \$8.50 M. 2-0644 EL 3-9309	PHIL'S Barber Shop 1127 LIBERTY AVENUE (Across from ACMG) HAIRCUTS Boys' \$1.00 (incl. \$1.25) Men \$1.25 (incl. \$1.25) HOURS: Mon-Fri, 9-7; Sat., 9-4 CLOSURE WEDNESDAYS	HILLSIDE SEA FOOD HOUSE 1114 LIBERTY AVENUE TABLE SERVICE DAILY FRESH FISH & SEA FOOD FRESH WINGS MADE Monthly Clean Chowder New England Fish & Clam Chowder FRESH BIRM & MEATERS TO TAKE OUT Open Tues., Wed., Sat., 4-8 Phone: 351-9344 EL 2-5234
--	---	--

PEAT MOSS SALE!

Wrappers slightly damaged, but bales are full and intact. The supply is limited. Deliveries on two bales or more.

	Reg.	Sale
Canadian Peat		
3.5 cu. ft. Jumbo Bag	\$2.98	\$2.55
4.0 cu. ft. Paper Bale	3.75	2.98
6.0 cu. ft. Paper Bale	4.75	3.75
7.5 cu. ft. Burlap Bale	5.50	4.98
German Peat		
6.0 cu. ft. Burlap Bale	3.75	3.08

CARDINAL'S Garden Center
272 Milltown Road
Springfield, N. J. DR 6-0440

DID YOU KNOW?

Under 10 years of Democratic rule the State budget more than doubled, an increase of 141 per cent, despite a population rise of only 25 per cent. Democrats this year asked for \$15,000 to refrigerate garbage for pigs. Senator Stamer demands wiser spending, not increased taxes.



Support Effective Men In Government
SUPPORT SENATOR STAMLER
Vote Line 0, Tuesday, Nov. 5

Filed for by Stamer for Senate Committee, Charles S. Tracy, Chairman, 200 Ogden Way, Hillside, N. J.

NOW AT GAYLIN '64 BUICKS

ONE OF N. J.'S LARGEST DISPLAYS
ALL COLORS - ALL MODELS
IMMEDIATE DELIVERY ON MANY MODELS

BEFORE YOU BUY ANY CAR... CHECK WITH GAYLIN BUICK... ONE OF AMERICA'S LARGEST BUICK DEALERS

NOW... BIG DISCOUNTS ON 1963 BUICK LEFTOVERS CLEARANCE ON ALL USED CARS

Gaylin Buick
2140 MORRIS AVE. • UNION

OPEN 9 a.m. to 9 p.m. WED. & SAT. 'till 6 p.m. CLOSED SUNDAYS - PHONE MU 8-9100

New Jobs Group Aids Election Bid Of Sen. Stamler

The statewide organization New Jobs (New Jersey) Organization for a Better State has endorsed Gov. Burtus Senator Nelson F. Stamler's bid for re-election. The group also made a \$1,000 contribution to Stamler's campaign fund.

Ten Republicans and six Democrats won endorsement by the bi-partisan New Jobs group which handed out \$15,000 worth of campaign donations.

In announcing the endorsements, New Jobs president George F. Smith said: "There are some good men and women now in public office who, when running for re-election, lack campaign funds without strings attached to them. To remedy this situation, financial aid from New Jobs is given without strings and without exacting any commitments from the recipient."

Suburban Chorus To Sing At UJC

The Suburban Symphony Chorus, under the direction of Mrs. Evelyn Bleeke of Westfield, will perform at dedication ceremonies Nov. 10 for Union Junior College's new Campus Center building, Cranford.

The chorus made its debut last spring at a convocation being held in the building.

Mrs. Bleeke said the mixed chorus will perform Palestrina's "Gloria Patri," "Soft Sings," "Ave Verum," "James' 'Almighty God of Our Fathers," and "Thompson's 'Alleluia.' The dedication ceremonies will be conducted in the theatre of the Campus Center.

Dr. Frederick M. Raubinger, state education commissioner, will be the principal speaker at the program.



99¢ MIX OF MATCH SALE

Choose Your Favorite

FULLY COOKED SMOKED HAM

SHANK END **29¢** lb.
 BUTT END **39¢** lb.

WHOLE OR EITHER HALF **45¢** lb.
 CENTER CUT HAM STEAKS **89¢** lb.

6 for 99¢

- APPLESAUCE MOTT'S
- WAX PAPER GRAND
- CORN FRESHLIKE CREAM STYLE
- CORN FRESHLIKE WHOLE KERNEL
- BEETS FRESHLIKE CRINKLE CUT
- CARROTS FRESHLIKE SLICED
- LARSEN VEG ALL

5 for 99¢

- MUSHROOMS GRAND UNION STEMS, PIECES
- MACARONI RONZONA #8, 9, 35
- DOG FOOD LADDIE BOY

OCOMA - BONELESS TURKEY ROAST Avg. Wgt. 4-6 lbs. **89¢** lb.

ROCK **CORNISH HENS** 1/2 lb. **45¢** lb.
 EXCELSIOR **BEEF STEAKS** **79¢** lb.
 PARTS **CHICKEN** Breasts **49¢** Legs **45¢** lb.

ARMOUR STAR-BAR-B-QUED **SPARE RIBS** 2 1/2 lb. can **\$2.49**
 SWIFT'S PREMIUM **FRANKS** ALL MEAT ALL BEEF **59¢** lb.
 SWIFT'S PREMIUM **SAUSAGE** BROWN 'N SERVE **49¢** 1/2 lb. pkgs.

4 for 99¢

- RINSO BLUE
- PARSONS AMMONIA
- TOMATO JUICE LIBBY
- PINEAPPLE FRESHPAK SLICED

Pick of the Crop Produce!

SWEET - CALIFORNIA **EMPEROR GRAPES** **2.29** 2 lbs.
 FIRM - CRISP **SNOW APPLES** **5.39** 5 lb. bag

PACK **PUMPKINS** **59¢**
 FRESH **SPINACH** **19¢**
 SWEET **POTATOES** **4.29**
 FRESH - SWEET **APPLE CIDER** **69¢**

3 for 99¢

- HEINZ KETCHUP
- PORK 'N BEANS GRAND UNION
- FRUIT COCKTAIL DEL MONTE
- SAUCES ENRICO SPAGHETTI

2 for 99¢

- DETERGENT GRAND LIQUID
- SPRAY STARCH NIAGRA

Dairy Values!

PILLSBURY or HALLARD **BISCUITS** **3.25** 3 8-oz. pkgs.
CHEESE LOAF **2.69** 2 lb. loaf
CRACKER BARREL **39¢** 3 8-oz. Wedge pkgs.

QUALITY MAID - FAST PROC. **AMERICAN SLICES** **39¢** 12-oz. pkg.
 QUALITY MAID - FAST PROC. **CHEESE LOAF** **2.69** 2 lb. loaf
 MEAT **CRACKER BARREL** **39¢** 3 8-oz. Wedge pkgs.

HABISCO **PECAN COOKIES** **39¢** 14-oz. pkg.
 BERRY - CHOCOLATE **GRAHAMS** **25¢** 3 1/2-oz. pkgs.

Nancy-Lynn Baked Goods!

BLUEBERRY CRUMB **PIE** **59¢** 9" dia. *Save 10¢ This Week*

FRESHPAK 12-oz. loaf **PULLMAN BREAD** **39¢**
 CINNAMON **RAISIN BUNS** **34¢** 12-oz. pkg.
 COCONUT **LAYER CAKE** **69¢** 9" dia.

AUNT JEMIMA **PANCAKE FLOUR** **37¢** 2-lb. pkg.
 AUNT JEMIMA **CORN BREAD MIX** **37¢** 10-oz. pkg.

GRAND UNION FROZEN POT PIES **7.99** 8-oz. pkgs.

PINEAPPLE - PINK ORG. - FINE GRAPES **DOLE JUICE** **5.99** 5 6-oz. cans
 SWEET - TENDER **PEAS - BIRDS EYE** **6.99** 6 10-oz. pkgs.
 BIRDS EYE **SPINACH** **6.99** 6 10-oz. pkgs.
 KITCHEN GARDEN **CUT CORN** **7.99** 7 10-oz. pkgs.
 KITCHEN GARDEN **WAX BEANS** **5.99** 5 10-oz. pkgs.

Everyday Low Prices!

- SNOWY **DRY BLEACH** **47¢** 1-lb. pkg.
- RONNIE **FLUFFY RINSE** **63¢** 1/2 gal.
- DOWDY **FABRIC SOFTENER** **41¢** 17-oz. bot.
- CAMPBELL'S **VEGETABLE SOUP** **2.27** 10 1/2-oz. cans
- CAMPBELL'S **TOMATO SOUP** **4.43** 4 10 1/2-oz. cans
- FRESHPAK **CHICKEN SOUP** **6.99** 6 10 1/2-oz. cans
- FRESHPAK **TOMATO SOUP** **10.99** 10 10 1/2-oz. cans
- PROGRESSO **MINISTRONE SOUP** **2.31** 10 1/2-oz. cans
- COLLEGE INN **CHICKEN BROTH** **2.37** 2 14 1/2-oz. cans
- LIBBY'S **PEAS & CARROTS** **2.39** 2 1-oz. cans
- GREEN GIANT **PEAS** **5.97** 5 1-lb. cans
- FRESHPAK **SUCCOTASH** **2.39** 2 1-lb. cans
- DEL MONTE **TOMATOES STEWED** **2.45** 2 1-lb. cans
- DEL MONTE **WHOLE TOMATOES** **2.49** 2 1-lb. cans
- RIALTO **TOMATOES** **2.27** 2 1-lb. cans
- FRESHPAK **TOMATO SAUCE** **10.89** 10 8-oz. cans

Save More with these everyday Low Prices - Check and Compare

WITH CHLORINGOL AJAX CLEANSER 2.28 14-oz. cont.	GRAND UNION PORK & BEANS 2.39 1-lb. cans	MOTT'S APPLE JUICE 4.99 4 quart bot.
BOWLONE BOWL CLEANER 19¢ 4-oz. can	GRAND UNION BEETS SLICED 8.100 8 1-lb. cans	FRESHPAK GRAPE JUICE 3.100 3 1 1/2-pi. bott.
FOR STAINS COMET CLEANSER 2.21 1-lb. 3-oz. can	FRESHPAK DICED CARROTS 2.25 2 1-lb. cans	REALLEMON LEMON JUICE 3.33 pint bot.
BRILLO SOAP PADS 2.49 2 pkgs. of 10.	DEL MONTE CORN CREAM STYLE 6.100 6 1-lb. cans	HEARTS DELIGHT APRICOT NECTOR 45¢ 14-oz. can
GRAND SOAP PADS 2.29 pkgs. of 15.	GREEN GIANT NIBBLETS CORN 6.100 6 12-oz. cans	DEL MONTE PINEAPPLE JUICE 3.100 3 1-qt. 14-oz. cans
EASY OFF WINDOW SPRAY 45¢ 16-oz. can	GRAND UNION CORN WHOLE KERNEL 6.89 6 12-oz. cans	GOLD MEDAL FLOUR 1.107 10-lb. bag

LIBERTY ELIZABETH 4-3234

Wed., Thurs., Fri., Sat., Oct. 23, 24, 25, 26

CLAUDE RAINE IN

"Battle of the Worlds" PLUS "THE ATOM AGE VAMPIRE"

8:00 Mon. - Tues. Oct. 27, 28, 29

Jerry Lewis in "ROCK A BYE BABY" Jerry Lewis lit "BONY LIVE UP THE SHIP"

UNION

Held Over This Saturday

Jack Lemmon
Doris Merande

"Irma La Douce"

Children show the first "SANDY & MICKLES" "HIS SHIP ON VENUS"

8:00 Mon. - Tues. Oct. 27, 28, 29

Wes. For 1 Day Only "THE GERMAN PRINCE"

UNION

Drive in - Room 22

8:00 Mon. - Tues. Oct. 27, 28, 29

ROBERT CUMMINGS - Dorothy Malone

"BEACH PARTY"

Action on the "Circusway" "YOU'RE HAZARD" "WIVES & LOVERS"

8:00 Mon. - Tues. Oct. 27, 28, 29

Daniel Lath - Van Johnson

"WIVES & LOVERS"

Wm. Holden "PHONY AMERICAN"

AMBOYS DRIVE-IN THEATRE PARKWAY 15400

Now thru Tuesday!

KILL! KILL! KILL! Harry Ellsabah, Silver Montgomery

"Johnny Cool"

PLUS - CHARLTON MITCHELL

"Inside the MAJIA"

Midnight Bonus Pk. & Full "THE DEVIL'S PARTNER"

UNION - 5 Points Shopping Center at Chestnut St. - Open late Thurs., Fri. & Sat. 'til 9 p.m. OPEN SUNDAY 9 A.M. to 2 P.M.
 SPRINGFIELD - General Greene Shopping Center, Morris & Mountain Ave. Open late Thursday & Friday 'til 9 p.m.
 Visit your Triple-E Redemption Center at 249 Morris Avenue, Springfield. Open Friday 'til 9 p.m. All Redemption Centers are closed Mondays.

Save Time, Traveling & Money — Shop at the Only Religious Articles Store in Linden Protestant, Catholic and Jewish

BLAKE ROSARIES

ALL TYPES OF RELIGIOUS ARTICLES FOREIGN PRAYER BOOKS COMMUNION BREAKFAST MEMENTOS — CIGARETTES 400 N. WOOD AVE., LINDEN

All families served at the Schmidt Funeral Home receive interested personal attention

AUG. F. SCHMIDT

Funeral Home 100 WESTFIELD AVE., ELIZABETH

Announce Eight-Point Platform By GOP Assembly Candidates

The five Republican State Assembly candidates have pledged "immediate action" on an eight-point platform if elected by Union County voters on Nov. 5.

The platform includes support of State Sen. Nelson F. Stamler's call for a tax reform convention in conjunction with a study of state administrative and governmental operations with an eye toward effecting vitally-needed economies.

The five candidates are Frank X. McDermott, Nicholas St. John LaCorte, Loree Collins, Peter J. McDonough and Henry P. Wester.

The platform:

1. We oppose the bond issue as an ill-considered and hastily-conceived proposal to meet the state's needs. Instead, we would strongly support Sen. Stamler's call for a tax convention in conjunction with the establishment of a Little Hoover Commission to study methods of streamlining procedures, eliminating overlapping of functions and effecting economies.
2. We stand vigorously behind major revision of the State's child labor laws. Revision is badly needed. If we are to encourage initiative in the young man who would work for an education, as well as for the high school dropout who must find work, both to earn a living and to stay out of trouble.
3. We advocate stronger enforcement and tightening of narcotics statutes. The Lindbergh Law, with its tough penalties, has all but eliminated kidnapping and a strong narcotics law would have the same effect on the drug peddler.
4. We support action in the field of education, since we feel that no young man or woman should be deprived of the opportunity for higher education.
5. We will take the initiative to improve computer transportation facilities. We clearly recognize the fact that New Jersey's economic well-being depends largely on its railroads and highways.
6. We will seek constantly to foster greater economic development of new business and industry. We will help us find the 40,000 new jobs the state needs each year, and will help pay for the ever-increasing needs of the state's residents.
7. We support tougher "consumer fraud" legislation. We believe, for instance, that an escape clause in home improvement and magazine subscription contracts would protect the homeowner and housewife from the fast-talking, sign-here salesman.
8. We strongly believe in banning county prosecutors from engaging in political activity.

"Above all, we believe that prayer has a place in the moral, social, civic and educational life of our communities, our counties and our state."

Speakers Named For Rutgers-UJC Science Seminar

Eight scientists and mathematicians will be lecturers for the Rutgers University-Union Junior College Science Seminar for academically talented high school students to be continued this fall and winter under a grant from the National Science Foundation.

Dr. Kenneth W. Iverson, UJC dean and seminar director, said the speakers will include Dr. Ishlaq Rasool of the Institute for Space Studies, Dr. Manuel Velkovsky of Princeton, and Dr. Earl L. Green, director of the Laboratory, Bal Harbor, Maine.

Other speakers are: Paul Biel, Dr. John H. Koenig, Dr. Albert E. Meder, Jr., and Dr. Paul G. Pearson, all of Rutgers University; and Arthur Beard of the electronics data processing division of RCA, Camden.

The topics will range from the philosophy of science by Dr. Velkovsky to ceramics by Dr. Koenig of Rutgers' School of Ceramics.

Topics of other speakers are: Dr. Rasool, astronomy; Biel, meteorology; Dr. Meder, mathematics; Dr. Green, genetics; Beard, computers, and Dr. Pearson, zoology.

Dr. Rasool will be the first speaker Oct. 31 in the theatre of Union Junior College's new Campus Center building in Cranford.

Education Program Launched By Legion

A Veterans' Educational Program affecting some 657,000 New Jersey veterans and their families is being launched by the N. J. Department of the American Legion this month.

Post-service officers and commanders from 24 Legion posts in Union County will meet at 6:30 p.m. Monday at the home of Martin Wallberg, 1003 North ave., Westfield, for instructions in assisting veterans in obtaining and maintaining their rights and privileges in accordance with laws enacted by the U.S. Congress. These include disability benefits, treatment, hospitalization, and other services.

In this connection, Department Commander Franklin R. Sickle pointed out, the fundamental basis for the existence of the Legion is to aid in every possible way the veterans and their families in obtaining benefits provided by law.

At the conference in Westfield will be Bertram Stewart of Union county service officer.

WILDERROTTERS IN UNION

Child-Proof Carpet!

Wall-to-Wall, too! Lees "Three Cheers" has Carpet Pile made with Acrilan Acrylic Fibre

Price Includes:

- 30 Sq. Yds. of Lees Long-Wearing "Three Cheers"
- Over Thick, Springy Rubberized Waffle Cushion
- Deluxe Tackless Installation by Trained Experts

Open Nightly to 9 Saturdays to 6

Candidates Vow GOP 'Open Door'

The Republican Assembly candidates say that if elected Nov. 5, they will be available each Saturday while the State Legislature is in session to answer questions and discuss problems of Union County residents.

In a joint statement this week, the candidates said at least one of them would be in Union County GOP Headquarters in Westfield from 9 a. m. to 12 noon, and "we will welcome any resident of the county."

They note that the Republican Assembly candidates have pledged to follow the example of Congresswoman Florence P. Dwyer and State Sen. Nelson F. Stamler, who have always held their doors open to their constituents.

The five GOP Assembly candidates are Frank X. McDermott, Nicholas St. John LaCorte, Loree Collins, Peter J. McDonough and Henry P. Wester.

Theatre Party Set For Mrs. Hughes

A theatre party in honor of Assemblywoman Mildred Barry Hughes of Union is scheduled to be held Tuesday at the Union Theatre. The feature film will be "A Gathering of Eagles."

Tickets can be obtained at the box office prior to the 11 and 11:15 showings, or through Miss Frances Donovan of Elizabeth, EL 3-6102, a member of the committee.

Sheriff Ralph Oriscello is chairman, assisted by H. Roy Wheeler of Linden. Other members are Samuel Aboff, Mrs. John Long and Mrs. Oriscello of Elizabeth, and Miss Genevieve Pascale of Union.

Kenilworth Youth Held Without Bail

James Nesbitt, 10, of 209 S. Michigan ave., Kenilworth, was held for a Union County grand jury without bail at a special Union Municipal Court session last Thursday on breaking, entering and larceny charges.

He was accused before Magistrate Daniel G. Covine of stealing \$20 in a burglary at Haines Farms.

In other matters at the special session, Mrs. Alice LaPoint, 55, of 887 Ray ave., Union, was fined \$60 for shoplifting ham and a steak worth \$1.99 at Barry's Farms store at 2825 Morris ave., Union.

Arthur Moss, 27, of Elizabeth was held for action of a grand jury on a charge of contributing to the delinquency of a minor.

Only **\$3.75** From Your Weekly Budget for 24 Months Pays 30 Sq. Yds. Fully Installed

ACRYLIC FIBRE CHEMSTRAND

8 STUNNING NEW FALL COLORS TO SELECT FROM!

Prosecutor Issues Warning On Signs

The Union County Prosecutor this week warned all concerned that it is a violation to place campaign material on public property and private property without permission.

He said a tally made by the state's Higher Education Assistance Authority showed that 2,500 applications for college loans were filed last summer. In contrast, only 929 applications were filed in the same period in 1962, he said.

Of the summer applications, 1,772 were rejected by banks and guaranteed by the authority, Krueger said. The number for the same three months — July, August and September — in 1962 was 1,029. As of September, 1963, outstanding loans amounted to \$1,200,000, he said.

Since the state program started in 1960, there has been only one instance when the state was called upon to pay off to a bank, the Assemblyman said.

MONROE TAVERN

Under New Management

Palay Caputo and Sam Artie

Hot Sandwiches served. Glad & Philly Games on Sundays.

252 MONROE AVE., KENILWORTH BR 6-9770

Only Ten Weeks 'Til Christmas!

- Come In & See Our New Gift Dept.
- Make Your Selections NOW!!!
- Use Our Layaway Plan

BEN-MOL JEWELERS

500 BOULEVARD KENILWORTH BR 6-5116

Open Daily 9:30 to 7:30

HAND-CHARGE C.C.P. USE YOUR PERSONAL CHARGE

MEN'S NEW FALL HATS \$6.95

Regularly \$10.00

Blouses \$1.47

Ladies Winter House Coats \$3.97 & \$4.97

KAPLAN'S

121 CHESTNUT ST. ROSELLE PARK

WE GIVE AND REDEEM S&H GREEN STAMPS

Give your home fresh new beauty, with Lees "Three Cheers" broadloom loomed of iron-tough, long-wearing Acrilan Acrylic yarns! Acrilan sheds stains, spots, as if by magic. AND you get deep-pile luxury as well, with "Three Cheers" smartly-textured look. But the best news is this: you get handsome savings at THIS Wilderrotter price for broadloom so beautifully styled, so durable, and easy to care for. See "Three Cheers" and other fine Lees carpets at Wilderrotter's in Union today!

SHOP IN THE CONVENIENCE OF YOUR OWN HOME!

A Wilderrotter Carpet Consultant will be Pleased to Call at your Home with Samples.

Wilderrotter's

2 Fully Decorated Floors of Fine Home Furnishings

IN UNION

280 Stuyvesant Avenue, Union. MURdock 8-8070

DID YOU KNOW?

The Democrat Administration in Trenton is committed to a billion-dollar spending spree that will force New Jersey to adopt BOTH a massive sales and personal income tax. Only a Republican Legislature can check the Democrat's spending plans.

Senator Stamler's drive for a true Little Hoover Commission to stop waste spending in Trenton has been stymied by the Assembly. Democrat majority. Voters all over New Jersey alarmed by spiraling State costs will elect a Republican Assembly on November 5. Union County can do its share by electing all 5 Republican Assembly candidates to aid Senator Stamler as an effective watchdog of tax dollars.

Support A Responsible Legislature RE-ELECT SENATOR STAMLER SUPPORT YOUR REPUBLICAN ASSEMBLY CANDIDATES VOTELINE C — TUESDAY, NOV. 5

Frank X. McDermott, Nicholas S. J. LaCorte, Loren "H" Collins, Peter J. McDonough, Henry P. Wester

Whose Prices are REALLY Lowest?

\$ 000.416r
\$ 000.416r
\$ 000.496r
\$ 000.236r
\$ 001.236r
\$ 000.336r
\$ 000.656r
\$ 000.476r

SS 016.107L

YOU PAY
\$16.10
AT LEADING
CHAIN "A"
STAMP

\$ 000.396r
\$ 000.396r
\$ 000.456r
\$ 000.216r
\$ 001.176r
\$ 000.216r
\$ 000.696r
\$ 000.316r
\$ 000.336r
\$ 000.656r
\$ 000.456r

SS 015.427L

YOU PAY
\$15.42
AT LEADING
NON-STAMP
CHAIN "S"

\$ 000.376r
\$ 000.376r
\$ 000.196r
\$ 001.016r
\$ 000.016r
\$ 000.316r
\$ 000.576r
\$ 000.416r

SS 013.987L

YOU PAY
\$13.98
AT
GOOD DEAL

Don't take anybody's word for it.. The Tapes Tell the Truth!

YOU SAVE ON YOUR TOTAL FOOD COSTS EVERY TIME YOU SHOP

GOOD DEAL'S SUPER DISCOUNTS

ON OVER 2,000 NATIONALLY ADVERTISED ITEMS... EVERY DAY... 365 DAYS A YEAR!

And everywhere you look... You see a storeful of freshness!

Tender, Juicy, Full Flavored

ROUND ROAST SAVE 80¢ **79¢** lb.

For an Excellent London Broil

FLANK STEAK SAVE 30¢ **79¢** lb.

Banquet—Chicken, Beef, Turkey

POT PIES SAVE 3¢ **15¢** 8-oz. pkg.

Good Deal Enriched

WHITE BREAD SAVE 6¢ **2** 1 lb. loaves **29¢**

Staff

PEACHES SAVE 32¢ **4** 29 oz. cans **\$1.00**

CHECK & COMPARE					
This Typical Grocery Order*					
		Leading Chain "A"	Good Deal's Low Price		
Ammonia	Bonnie Lenox	quart	27¢	27¢	23¢
Clorox Bleach		gallon	57¢	63¢	53¢
Borateem		giant size	75¢	79¢	69¢
Calgon		1 lb. pkg.	32¢	33¢	29¢
Ajax Liquid		16 oz. bot.	37¢	39¢	35¢
Tide Detergent		20 oz. pkg.	28¢	31¢	27¢
Joy Liquid		22 oz. bot.	61¢	61¢	57¢
S.O.S. Pads		pkg. of 18	39¢	39¢	33¢
Ivory Soap	Medium	3 bars	27¢	27¢	25¢
Soaky Fun Bath		10 oz. toy	63¢	69¢	59¢
Reynold's Wrap		roll	31¢	33¢	29¢
Scotties Tissues		pkg. of 400	25¢	25¢	23¢
Scott Towels		roll	20¢	21¢	18¢
KVP Freezer Paper		roll	49¢	49¢	39¢
Napkins	Hudson Family	pkg. of 200	33¢	35¢	29¢
Noodles	Pennsylvania Dutch	1 lb. pkg.	37¢	37¢	33¢
Carolina Rice		2 lb. pkg.	39¢	39¢	35¢
Hormel Spam		12 oz. can	45¢	47¢	41¢
Green Split Peas		1 lb. can	13¢	14¢	10¢
Welch Grape Juice		24 oz. can	39¢	39¢	37¢
Lemon Juice	Real Lemon	quart	63¢	63¢	59¢
Asparagus	Ritter Green	1 1/2 doz. can	53¢	55¢	49¢
Red Cabbage	Lohmann	24 oz. jar	29¢	31¢	27¢
Niblets	Green Giant	2 7 oz. cans	25¢	27¢	23¢
Del Monte Peas		2 14 oz. cans	39¢	40¢	35¢
Potatoes	French Instant	7 oz. pkg.	31¢	33¢	27¢
Jello Dessert	Mashed	4 3 oz. pkg.	39¢	41¢	37¢
Fruit Cocktail	Del Monte	29 oz. can	39¢	41¢	37¢
Cranberry Sauce	Del Monte	15 oz. can	45¢	49¢	41¢
Sunmaid Raisins		6 pack	21¢	23¢	19¢
Cake Mix	Betty Crocker	19 oz. pkg.	17¢	17¢	10¢
Pancake Mix	Aunt Jemima	14 oz. pkg.	21¢	23¢	19¢
Syrup	Mrs. Butterworth's	34 oz. var.	69¢	73¢	63¢
Frosty O's	Betty Crocker	10 1/2 oz. pkg.	31¢	34¢	29¢
Soup	Campbell's	10 1/2 oz. cans	33¢	35¢	31¢
Lipton's Tea Bags		1 lb. pkg. of 40	65¢	65¢	57¢
Macaroni	La Rosa	2 1 lb. pkg.	45¢	47¢	41¢
		Total	15.42	16.10	13.98

For the Same 37 Items You Pay **\$1.44 MORE** at Non-Stamp Chain "S"

For the Same 37 Items You Pay **\$2.12 MORE** at Stamp Chain "A"

PROOF POSITIVE

That Your Total Food Bill is ALWAYS Less at Good Deal!
*This identical list of 37 items was purchased at all 3 stores in September.

TAKE ADVANTAGE SAVE CASH WITH GOOD DEAL'S SUPER DISCOUNTS SAVE 65¢ EXTRA CASH WITH THESE VALUABLE COUPONS

<p>GOOD DEAL</p> <p>COUPON WORTH 25¢</p> <p>TOWARD PURCHASE OF any 10 lb. bag of POTATOES</p> <p>Valid from Wed. to Sat., Oct. 23rd to 26th Coupon Limit 1 per Family</p> <p>GOOD DEAL</p>	<p>GOOD DEAL</p> <p>COUPON WORTH 20¢</p> <p>TOWARD PURCHASE OF any Allen's large Pie or 89¢ LAYER CAKE</p> <p>Valid from Wed. to Sat., Oct. 23rd to 26th Coupon Limit 1 per Family</p> <p>GOOD DEAL</p>	<p>GOOD DEAL</p> <p>COUPON WORTH 20¢</p> <p>TOWARD PURCHASE OF any 1/2 gal. Staff or your favorite ICE CREAM</p> <p>Valid from Wed. to Sat., Oct. 23rd to 26th Coupon Limit 1 per Family</p> <p>GOOD DEAL</p>
--	---	---

Adv. of Thurs., Oct. 24th. We reserve the right to limit quantities. Not responsible for typographical errors. Entire contents copyrighted Good Deal - 1983

220 MAIN ST. MILLBURN

STORE HOURS:

MON thru THURS. 9:00 am — 9:00 pm	FRIDAY 8:30 am — 10:00 pm
SATURDAY 8:30 am — 9:00 pm	SUNDAY 8:30 am — 6:00 pm

Staff FOODS STOCK-UP SALE



Staff Foods are our own exclusive brand... made to our exacting specifications... priced lower because we save on in between costs and pass the savings on to you!

Come see how much you save with Staff Foods over brands of comparable quality:

SAVE 18!
Minuet
BLEACH
45¢ National Brand Stamp Store Price... 63¢

Here's why Staff Quality Foods Cost You Less Than Brands of Comparable Quality



Staff Food Kitchens are located in the leading food-growing and production sections. Because of these strategic locations transportation costs are materially reduced!



Staff Foods Outsell All Other Brands... and because we have them made for us direct, in such huge quantities, many in-between-savings are made. These savings are shared with you.



Rigid Laboratory Control... only the finest ingredients go into Staff Foods. What's more, they're checked at every stage of preparation to safeguard flavor, purity and keeping qualities.



You Save Money and Your Family Enjoys the Best... Your budget benefits by thrifty, sensible buying. That's what we mean when we say, "Staff Foods are your best buy!"

Staff OUR FINEST BRAND IS YOUR BEST BUY!

STAFF ITEMS	STAFF PRICE	Stamp Store National Brand Price	YOU SAVE
Ammonia	Minuet—Clear	15¢	25¢ 10¢
Staff Dry Detergent	4 19 oz.	89¢	124 35¢
Staff Dry Detergent	47 oz.	53¢	75¢ 22¢
Staff Liquid	Pink Detergent 32 oz.	65¢	87¢ 22¢
Staff Sponges	4 doz.	25¢	39¢ 14¢
Staff Aluminum Foil	75 ft.	67¢	73¢ 6¢
Staff Facial Tissues	5 400 ct.	89¢	125 36¢
Staff Towels	2 pk.	33¢	42¢ 9¢
Staff Toilet Tissue	Pink—4 pk.	39¢	49¢ 10¢
Staff Prune Juice	3 32 oz.	89¢	133 34¢
Staff Asparagus	Sliced 7 lb. oz.	39¢	45¢ 6¢
Staff Beans	Green French 6 303 cans	1 00	123 23¢
Staff Wax Beans	Cut 6 303 cans	1 00	123 23¢
Staff Cream Corn	7 303 cans	1 00	123 23¢
Staff Corn	Whole Kernel 2 303 cans	29¢	39¢ 10¢
Staff Lima Beans	Green 2 303 cans	31¢	50¢ 19¢
Staff Sweet Peas	6 303 cans	1 00	120 20¢
Staff Tomato Puree	4 1 1/2 cans	1 00	114 16¢
Staff Applesauce	Glass 2 15 oz.	31¢	41¢ 10¢
Staff Cranberry Sauce	2 16 oz. cn.	39¢	47¢ 8¢
Staff Fruit Cocktail	2 303 cans	41¢	45¢ 4¢
Staff Fruit Cocktail	3 2 1/2 cans	1 00	108 8¢
Staff Peaches	Halvas 3 29 oz.	85¢	89¢ 4¢
Staff Pears	Halvas 303 oz.	23¢	29¢ 6¢
Staff Pears	Halvas 2 1/2 oz.	37¢	47¢ 10¢
Staff Flour	2 lb.	21¢	29¢ 8¢
Staff Plain Salt	2 26 oz.	19¢	24¢ 5¢
Staff Shortening	10s off 3 lb.	59¢	79¢ 20¢
Staff Syrup	Cane & Maple 24 oz.	49¢	65¢ 16¢
Staff Vanilla Extract	4 oz.	59¢	79¢ 20¢
Staff Evaporated Milk	8 fl.	1 00	118 18¢
Staff Instant Coffee	2 oz.	29¢	42¢ 13¢
Staff Spaghetti	2 1 lb.	37¢	47¢ 10¢
Staff Lunch Meat	12 oz.	39¢	47¢ 8¢
Staff Pork & Beans	16 oz.	10¢	14¢ 4¢
Staff White Tuna	Solid 3 7 oz.	89¢	105 16¢
Staff Mayonnaise	16 oz.	33¢	39¢ 6¢
Staff Mayonnaise	32 oz.	49¢	75¢ 26¢
Staff Salad Dressing	32 oz.	45¢	59¢ 14¢
Staff Cider Vinegar	qt.	23¢	33¢ 10¢
Staff Catsup	16 oz.	17¢	28¢ 3¢
Staff Mustard	8 oz.	10¢	16¢ 6¢
Staff Peanut Butter	16 oz.	49¢	63¢ 14¢
Staff Soda	6 28 oz.	1 00	120 20¢

SAVE 14¢ Staff FLOUR 5-lb. bag 45¢ Stamp Store National Brand Price... 59¢
SAVE 4¢ Staff CRANBERRY SAUCE 2 16 oz. cans 39¢ Stamp Store National Brand Price... 43¢
SAVE 10¢ Staff ALUMINUM FOIL 25-ft. roll 25¢ Stamp Store National Brand Price... 35¢
SAVE 8¢ Staff TOMATO SOUP 4 10 1/2 oz. cans 37¢ Stamp Store National Brand Price... 45¢
SAVE 4¢ Staff PORK & BEANS 16 oz. can 10¢ Stamp Store National Brand Price... 14¢
SAVE 14¢ Staff SAUERKRAUT 2 29 oz. cans 29¢ Stamp Store National Brand Price... 43¢

NO NEED TO GUESS ABOUT THE QUALITY OF THE MEAT YOU BUY!



YOU CAN ALWAYS COUNT ON GOOD DEAL FOR THE BEST MEAT AT THE BEST PRICES AVAILABLE FOR TOP QUALITY MEATS.

Beef — Ham — Veal — Pork — Chicken . . . Whichever you prefer you can serve it for less when you shop at Good Deal, for this week, ALL of these high quality meats are so economically priced!

And Everywhere You Look . . . You See a Storeful of Freshness!!

LEAN, TENDER
LONDON BROIL
\$1.09
lb.

For the ultimate in sliced steak— you'll find it tender, fine flavored, good eating through & through!

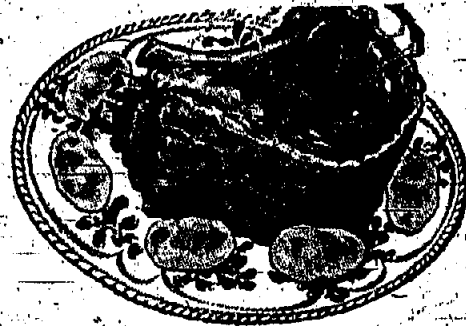
LEAN, TASTY, FRESHLY
GROUND ROUND
89¢
lb.

Save 10¢ — Ground fresh every 30 minutes to come to you at the peak of perfection!

A Roast That's Always Flavorful, Tender and Delicious

SAVE 80¢ PKG.

ROUND ROAST



79¢
lb.

Cut from Specially Selected Good Deal Iowa Beef!

Save 80¢ TOP SIRLOIN ROAST lb. 89¢	Save 80¢ EYE ROUND ROAST lb. \$1.09	Save 30¢ TOP SIRLOIN STEAK lb. 99¢
Save 80¢ RUMP ROAST lb. 89¢	Save 30¢ TOP ROUND STEAK lb. 99¢	Save 10¢ CUBE STEAK lb. 99¢

Delicious—Dew Fresh
FRUITS
and
VEGETABLES!
SAVE 10¢
INDIAN RIVER PINK SEEDLESS GRAPEFRUIT
4 for 29¢
SAVE 4¢
COOL GREEN CUCUMBERS
6¢ each

For an excellent London Broil
FLANK STEAK
Broil and Slice for a real treat!
79¢ SAVE 30¢
lb.

Fresh, New Jersey
PORK BUTTS
Well trimmed for true value!
39¢ SAVE 80¢
lb.

Save 60¢—Fully Cooked, Canadian
BONELESS HAM
99¢ lb.

For Stew, Soup, Fricassee . . .
STEWING CHICKENS
Fresh, Ready-to-Cook!
25¢ SAVE 56¢
lb.

Use the same as Italian Veal Cutlet!
CUBED VEAL STEAK
Delicious and delicate flavored!
78¢ SAVE 21¢
lb.

Save 3¢—Banquet Frozen
POT PIES
Chicken, Beef, Turkey
8 oz. pkg. **15¢**

Fresh
PULLET EGGS
3 lb. pkg. **99¢** SAVE 10¢

Staff or Birds Eye
PEAS & CARROTS
7 10 oz. pkgs. **\$1** SAVE 37¢

It's GOOD DEAL for HALLOWEEN TREATS!

Sold only in units of 6
LUDEN'S MINTS ea. **3¢**

Hershey Kisses	11 oz. pkg.	49¢
Hershey Miniatures	11 oz. pkg.	49¢
Milky Way Juniors	11 oz. pkg.	59¢
Hollywood Milkshakes	11 oz. pkg.	19¢
Cracker Jacks	11 oz. pkg.	25¢
Baby Ruth Juniors	11 oz. pkg.	39¢
Butterfingers Juniors	11 oz. pkg.	39¢
Baby Ruth Juniors	11 oz. pkg.	59¢
Bazooka Bubble Gum	11 oz. pkg.	69¢
Life Savers	11 oz. pkg.	39¢
Hershey Kisses	11 oz. pkg.	69¢
Kraft Bag O Treats	11 oz. pkg.	29¢
Crystal Pure Pops	11 oz. pkg.	59¢
Crystal Pure Pops	11 oz. pkg.	59¢
Kraft Carmels	11 oz. pkg.	39¢
Tootsie Midgets	11 oz. pkg.	39¢
Tootsie Pops	11 oz. pkg.	39¢
Hershey Milk Choc. Bars	11 oz. pkg.	95¢
Hershey Almond Bars	11 oz. pkg.	95¢
Baby Ruth Bars	11 oz. pkg.	95¢
Terry Candy Corn	11 oz. pkg.	29¢

And don't forget . . .
STAFF CIDER gal. **69¢**

All directions in insert.
100 GIFTS TO MAKE FOR CHRISTMAS
Special 8-Page Section:
SEWING for your HOME
by Mary Johnson.
PLUS SO MUCH MORE IN NOVEMBER WOMAN'S DAY 15¢

SAVE 10¢ FANCY SHRIMP Medium lb. 69¢	SAVE 4¢—STAFF CHOPPED FROZEN BROCCOLI 7 10 oz. pkgs. \$1	SAVE 2¢—ROYAL DAIRY CREAM CHEESE 3 oz. pkg. 10¢
SAVE 30¢ FRESH WHITING 4 lb. \$1	SAVE PLENTY! STAFF LEAF OR CHOPPED FROZEN SPINACH 8 10 oz. pkgs. \$1	SAVE 4¢—ROYAL DAIRY SWISS AMERICAN CHEESE lb. 49¢
SAVE 10¢—GOOD DEAL FRANKS All Meat lb. 49¢ All Beef lb. 53¢	SAVE PLENTY! STAFF CUT OR FRENCH FROZEN GREEN BEANS 6 10 oz. pkgs. \$1	SAVE 8¢—GOOD DEAL COTTAGE CHEESE lb. 24¢
SAVE 30¢—HORMEL CANNED HAM 3 lb. 2.39	SAVE PLENTY! STAFF FROZEN LIMA BEANS 5 10 oz. pkgs. \$1	SAVE 3¢—BREAKSTONE'S PLAIN OR VANILLA YOGURT 2 8 oz. pkgs. 29¢
SAVE 10¢—EXTRA LEAN & FLAVORFUL IMPORTED CHOPPED HAM lb. 99¢	SAVE 4¢—GOOD DEAL MARGARINE 2 lb. 29¢	SAVE 2¢—BREAKSTONE'S STRAWBERRY, PINEAPPLE, PRUNE OR APRICOT YOGURT 2 8 oz. 39¢
SAVE 10¢—Both Blackhawk BACON lb. 69¢	SAVE 3¢—PARKAY MARGARINE lb. 22¢	SAVE 4¢—ROYAL DAIRY SOUR CREAM pint 35¢
SAVE 10¢—WENKAY KIELBASI lb. 79¢	FLEISHMAN'S MARGARINE lb. 39¢	SAVE 3¢—BORDEN'S OR PILLSBURY BISCUITS 3 8 oz. 27¢
SAVE 10¢—ALLEN'S PEACH PIE each 59¢	SAVE 10¢—BREAKSTONE'S WHIPPED BUTTER 1/2 lb. 43¢	SAVE 2¢ PRINT LARD 2 1 lb. 29¢
SAVE 10¢—ALLEN'S APPLE STOLLEN each 49¢	SAVE 10¢—PURE MAID FRESH FRUIT SALAD qt. 69¢	SAVE PLENTY—ALLEN'S DATE & NUT-LOAF each 49¢

County Regional School District -- A Complex Educational Network

(Part of a series on the Union County Regional High School District)

By MARIAN BROWN
Jim is a senior at Jonathan Dayton Regional High School. He plans to enter college next fall and how his sights set on one of the Ivy League schools. His goal is to major in philosophy and comparative religions. Meanwhile he is studying "Development of Western Thought," a Jonathan Dayton philosophy course, and is enrolled in an accelerated English class which will read Shakespeare's "Crime and Punishment" this year.

David is a solitary worker. He is busy enough to play football, but he has no yen for competition. He knows, though, what makes the image appear on his television screen, and he has constructed his own hi-fi set. He takes courses in electronics at the Governor Livingston High School in Berkeley Heights, although he lives in Springfield. Then there is the Mount Airie girl who studies beauty culture in Clark and the Clark boy who studies agriculture in Springfield. The Kenilworth boy learning mechanics in shop skills at Clark and the manager hand-draped through a brain injury at birth who is learning limited vocational skills in a special Springfield class.

high schools from six reading districts (a fourth in Kenilworth is on the drawing board) and 271 teachers and administrators. The 55-year-old superintendent is a pale man with reddish hair and an unexpressed boyish face, a kindly sense of humor and a razor sharp mind honed to cut through masses of educational theory and grasp realities of planning. (He notes that he is able to talk to a point without taking refuge in a smokescreen of educational jargon. Apparently he doesn't need it.)

Three buses pick up students from the six reading districts and exchange passengers at a point in "Mainstreaming," he said, explaining the mechanics of the student shuffle. "Then each bus proceeds to one of the three high schools." About 88 pupils are involved in the exchange, he said.

Total enrollment in the regional district is 4,350 students. Of these, 1,448 from Springfield and Kenilworth attend Jonathan Dayton, 1,510 from Garwood and Clark attend Arthur L. Johnson High School in Clark, and 1,392 from Mount Airie and Berkeley Heights go to the Governor Livingston school in Berkeley Heights.

Sixty-two per cent of last year's graduates have gone on to higher education, Dr. Davis said. This is up from 48 per cent seven years ago, he added, explaining that the rising per cent of college-bound is a national trend.

Those who do not go on to higher education are called terminal students. Vocational training outside the reach of the average high school pupil is available to them because facilities set up in one of the regional schools need not be duplicated in another. All three schools have college preparatory and business education courses. Jonathan Dayton, however, is the only one of them to offer courses in agriculture, printing and drafting. Arthur L. Johnson is the only school to teach beauty culture, auto mechanics and data processing; and Governor Livingston, electronics. Distributive education (retailing, wholesaling and related areas) is taught in both the Dayton and Johnson schools.



STEERING THE SHIP — Dr. Warren M. Davis, district superintendent of schools, refers to a county map in programming the educational complex known as the Union County Regional High School District No. 1. A student exchange program within the three-school system makes the facilities of the entire district available to students in any of its six towns.

"The students are encouraged to form a commitment and set themselves a goal. The goal may be to go on to college or to enter any of the vocational areas taught in our schools. The undirected or uncommitted youngsters are in failures in life."

He warned of dangers of a fluxy "have new world," by adding that the program is not inflexible and the student does not reach a "point of no return." Nine per cent of the

students who do not think they will go on to college actually do go on to some kind of higher education, he said.

A pupil studying distributive education courses, for example, may go to study business administration or advanced retailing in college. A commitment may change, he said, "but it is better to have a commitment and change it than not to have a commitment at all."

By encouraging our students to find themselves a goal," he said, "we avoid drop-outs." (Students who are present in body only.) And our rate of physical drop-outs is less than one per cent — one of the lowest in the area.

Identifying the aptitudes and preferences of the students falls within the province of Dr. Donald Merachuk, psychologist and director of special services. He is responsible for administering the testing program. Test results are used by the guidance department for curriculum and vocational counseling. Dr. Merachuk is also in charge of the school nurses, dentists and psychologists. He supervises classes for slow learners, mentally retarded, remedial and accelerated reading groups and for socially and emotionally maladjusted youngsters.

At Jonathan Dayton two teachers lead reading classes for 330 students. Of these 158 are freshmen and 104 are upperclassmen seeking to increase their reading speed.

DR. DAVIS ADMINISTERED the regional district through a council of principals and subject coordinators. The principals set policy at Wednesday morning meetings with Dr. Randall Jackson, assistant superintendent of schools, chairman of this group.

Subject coordinators supervise curriculum and instruction in the three schools, prepare budgets, order equipment and interview personnel. "One person," Dr. Davis said, "wisely Business" it is to operate a system-wide department, is better than a part-time department head in each school. And with our exchange program it's imperative.

"A coordinator retains a picture of the whole district, cutting down rivalry between schools and competition for better teachers. Without this system the regional program would fall of its own weight."

Dr. Davis began life as a boy wonder, skipping the first and eighth grades. (Now let the social adjustment worriers stew over that one. Perhaps the loss of his peer group at an early age left him with the ability to function at the level of number one administrator where there obviously can be no peers within the system.)

He began his professional life at the age of 18 after two years at Muskingum College, New Concord, Ohio, as a teacher in a one-room village school. "It was a soft coal area," he said, "and the year was 1928 — the year of the big coal strike when youngsters came to school funny."

Asked how one teaches eighth grades at one time, he said, "You put a bright eighth grader in charge of helping a first grader while you teach the sixth grade." He added that two grades can work together on an alternating schedule.

For instance fifth and sixth grades can study American history together one year and European history the next. Perhaps it was this experience which sparked Dr. Davis' interest in the records dated 1830 of a school in Wayne Township, Ohio, which were found in a toolshed on a nearby farm. He used these records to write a magazine article for "The American School Board Journal" in 1941, which he called "Seventeen School Board Practices." The piece describes an era in American education when instructors taught from McGuffey readers for a monthly salary of \$12.50 and "boarded round" — the established custom. It includes observations such as: "The good old

days of one-room schools were not so far over to the past as you might think. I've created the method of coping with the dull child in the old days. I've taught classes. Yes, I've let them take alphabet until they got too old to count in school."

IN 1933 DR. DAVIS won his B. A. degree from Ohio University where he majored in physical science. He majored in science education for his M. A. degree and in secondary science education for his second degree. He received his Ph.D. from Ohio State College. He took additional credits at the University of Michigan, Purdue University, Rutgers, Bowdoin and MIT.

His science background landed him a spot in the electronics division of the U. S. Naval Reserve, where he held the rank of lieutenant junior grade. He has held positions as science and mathematics teacher, junior high school principal, science department head, high school principal and assistant superintendent in Ohio schools. In 1946, he was named principal at North Plainfield High School. He accepted his present position in 1958.

Other magazine articles written by Dr. Davis — most of them about science education — have appeared in Ohio Schools, The Maine Teacher, N. J. E. Review, N. A. S. S. F. Bulletin, Science Education, and School Science and Mathematics. He has been named in "Who's Who in American Education."

Can a sense of humor survive beneath the weight of all this scholarship and administrative responsibility? You can, my line's been busy. "I was heard to ask into the telephone on his office desk one day last week: Mrs. Jessie Longfield, who stood beside him, he added, "My secretary's an awful gossip."

He has been named in "Who's Who in American Education."

Can a sense of humor survive beneath the weight of all this scholarship and administrative responsibility? You can, my line's been busy. "I was heard to ask into the telephone on his office desk one day last week: Mrs. Jessie Longfield, who stood beside him, he added, "My secretary's an awful gossip."

NOTICE!

NO MATTER WHERE YOU WANT TO GO... NOW IS THE TIME TO MAKE THAT RESERVATION!

LLOYD EXCHANGE, Inc.

"A Reputation Built On Efficiency & Courtesy"

1988 Morris Ave., Union, N. J.

MURdock 6-4600

For your convenience we will be open on Saturdays from 9-7 p.m.

At Bus Stop for Nos. 8 - 94 - T41 - T48

Convenient Parking (At Union Center)

ANNOUNCING

THE BEAUTIFUL, EXCITING ALL NEW...

CHEVROLET

FOR '64

L & S CHEVROLET

Showroom Located at MORRIS & COMMERCE AVENUES UNION MU 6-2800

Come See The...

- Chevrolet
- The New Chevelle
- The Chevy II
- The Corvair
- The Exciting New Corvette

Showroom Open Evenings

Regional High Senior Participated In Chemical Caravan At Princeton

Joel D. Granich, son of Mr. and Mrs. Otto Granich, 38 Homer Ave., Springfield, was the 1963 Chemical Caravan representative of Jonathan Dayton Regional High School. He is a member of the senior class. The Caravan sponsored for the forty-fifth anniversary of the Chemical Industry Council of New Jersey, brought more than 150 talented high school science students from all over the state to Princeton on Tuesday for a varied round of activities, including laboratory observations by leading industry researchers, field trips, and a dinner at the Princeton Club. Granich was placed as major in other chemistry or biochemistry when he enters college next fall. He was a delegate to the 1963 Student Science Symposium at Rutgers University in 1962. He was an award winner this year in the Union County Science Fair and the Creative Chemistry Awards Contest. He is a member of his high school's Biology Club, Advanced Math Club and wrestling team.

Dinner Rally Set At Gospel Chapel

More than 400 guests are expected to attend a dinner rally on Saturday evening at Kenilworth Gospel Chapel. The occasion is the annual gathering of Christian Assembly groups in this area. The dinner speaker for the evening will be August Van der Meer, Ph.D., Christian author and Bible teacher. The committee in charge of the affair is made up of representatives of Christian Assemblies. The local members of the committee are Fred G. MacKenzie, Benjamin Hubinger, Frank MacMillan, George Sharp, and T. Sydney Runkel.

Dayton Teacher Studies Calculus At Drew Institute

Mrs. Edith Stender, a teacher in the Jonathan Dayton Regional High School in Springfield, will be one of 22 teachers from 17 high schools in New York and New Jersey participating in the Drew University Institute for secondary school mathematics or science teachers. The institute in Madison includes 30 class sessions, which are taking place each Saturday morning until May 23, 1964. The Calculus in the single course with which the group is dealing.

Square Dance Set By Republicans

The Kenilworth Republican Club this week announced it would hold a Halloween square dance on Saturday, Oct. 26, at the Evergreen Lodge in Springfield. A Candidates Night will be held Wednesday, Oct. 30 at the Ranch House. A spokesman for the club said Union County GOP aspirants will appear. At the club's last meeting minority candidate William C. Smith selected as the favorable candidates which the Republican candidates have been receiving from the various segments of the town's population.

HAVE YOU SEEN...



THE NEW LOOK AT JAEGER

Lumber and Supply Co.

After our devastating fire... we have just completed one of the most modern one-stop building supply centers in the area!

All lumber, plywood, paneling and moulding are displayed and stocked for fast service in our new building. Offer you the finest in home-improvement materials. We also have a complete stock of Mason materials for your winter patch-up jobs.

JAEGER

LUMBER & SUPPLY CO.

"Buy Better — Build Better"

2322 Morris Ave., Union

MURdock 6-0070

Open Daily 7:30 a.m. to 8 p.m. Saturday 7:30 a.m. to 12 noon

BRANCH YARD: Selling Lumber, Shingles, N. J. Millington 7-1239

HOME IMPROVEMENT SERVICE

Hadassah Dinner Tonight For Paid-Up-Membership

The Springfield Chapter of Hadassah will have their annual paid-up membership dinner tonight at 7 p.m. at Temple Shalom, South Springfield, Ave. and Shuppke rd.

The hostess, Mrs. Leon Greenstein, and the committee composed of Mrs. Sam Derman, Mrs. Max Derman, Mrs. Herbert Blank, Mrs. Sam Miller, Mrs. Herman Cohn, Mrs. Albert Warhoff and Mrs. Muriel...

SLATE PREVIEWS OF 'FIORELLO' FOR OPEN HOUSE

Producers of the Temple Beth Ahm musical, "Fiorello," will be shown at the Temple's annual open house and dance Saturday, Nov. 9 at 9 p.m. in the Temple auditorium.



MRS. THEODORE A. SCHUSS

Theodore Schuss And Bride Will Reside In Garwood

Theodore A. Schuss and his bride, the former Miss Margaret Reynolds of North Olmsted, O., have returned from their honeymoon in the Bahamas and are now residing in Garwood.

Mr. Schuss, the son of Mr. and Mrs. Theodore A. Schuss, of 19 Profit Ave., Springfield, and the former Miss Reynolds were married at a double ring ceremony held Oct. 5 in St. Richard's Catholic Church, North Olmsted. A reception was held at the Columbus Garwood Motel.

Miss Dolores Kirlepatrick served as maid of honor. Mrs. Rosemary Ankis and Mrs. Georgeanne Reynolds, both sisters of the bride, and Miss Karen De Frow were bridesmaids.

Best man was Walter Coleman, of Springfield; Gerald Harvey, of Springfield; and Edward Zabel, of South Plainfield. Both brothers-in-law of the bride.

Cocktails will be served from 8 to 9 p.m. with dancing to follow. Prices will be awarded for the best costumes, the announcement said. Further information can be obtained from Harry Handy at DR-4-8052 or Stu Douglas at DR 2-2180.

DEBORAH CHAPTER PLANS ANNUAL ITALIAN DINNER

The Deborah Chapter of Temple Beth Ahm will hold their annual Italian Dinner at the Temple on Nov. 20 at 7:30 p.m. Mrs. Leonard Karp, chairman, announced this week.

Also announced were plans for a kiddie movie to be held on Nov. 29 at 1:30 p.m. at the Florence Gaudineer Auditorium.

GROUPS PLANNING JOINT SERVICE AT LOCAL TEMPLE

The B'nai B'rith Men and Women of Springfield will hold their first joint Open Shabbat service at Temple Beth Ahm on Rutherford rd., on Friday evening, Nov. 1.

Guest speaker will be Philip Lax, president of the Northern New Jersey Region of B'nai B'rith. Lax is also a member of the Executive Committee of the Anti-Defamation League and Executive Vice President of the Rutgers-Douglas Hill Building Fund Corporation.

SUMMIT Y PLANS SIX CLASSES ON GOURMET COOKING

A six-session course in gourmet cooking will begin at the Summit YWCA next Thursday from 10 to 11 a.m. Mrs. John H. Hammel, who has taught at the YWCA for five years, is the instructor.

Favorite recipes from leading cooking schools, casual buffet ideas, dishes from Norway, Sweden and Denmark and menus for special occasions will be among the features of the series.

Baby-sitting for children 18 months and over will be available to mothers attending the class. The group is limited in size. For further information, telephone Miss Brenda Carmer, young adult program director, CR 3-4242.

ORT Chapter Delegates Attend Annual Convention

Mrs. H. Gelfand and Mrs. Nathan Cooperman were delegates from the Springfield Chapter of Women's American ORT at the organization's 14th Biennial National Convention held last week in New York City.

Others praising the work of ORT were Senator Paul Douglas of Illinois and New York's Mayor Robert F. Wagner.

The goals of Women's American ORT as set down by the convention, Mrs. Gelfand and Mrs. Cooperman said, are:

One hundred per cent enrollment; an increase of 20,000 members within the next 30 years; a hike of 100 new chapters throughout the country; and a net income of \$2 million within the next two years.

ETHICAL SOCIETY MEETS ON SUNDAY

Dr. Hahad Bokhari of Lahore of Pakistan will be the guest speaker at the Essex County Ethical Culture Society on Sunday at 11 a.m. The Society is located at 516 Prospect st., Maplewood. Dr. Bokhari's topic is "United Nations Efforts for the Betterment of the Human Race."

At present, Dr. Bokhari serves as a Liaison Officer of the U.N. Technical Assistance Board.

Mrs. Evelyn Weinstein of Maplewood will conduct the program. A coffee hour will follow Dr. Bokhari's talk and the public is invited to attend.

ROSAHY SOCIETY PLANNING EVENTS

The Rosary Alter Society of St. James Church, Springfield, will hold their monthly meeting on Monday, Nov. 4 at 8:30 p.m. The program for the evening will be the Westfield Colonial Chorus. The Society will hold their Annual Dessert Bridge and Fashion Show on Nov. 11 at 8 p.m. at Staufer's in Short Hills. It was announced this week.

A spokesman said tickets can be obtained by calling Mrs. Mary Farah at MU 6-1823 or Mrs. Agnes Laffitte at DR 6-0158.

FISHER
The World's Finest Stereophonic High Fidelity - Radio - Phonographs



THE FISHER DIPLOMAT II, Modern

Exclusively in Elizabeth

Select any of Forty-three Beautiful Models. Sold with complete one-year parts & service warranty

LONG'S ELECTRONIC CENTER
"Service You Can Trust Since 1932"

EL 3-0383 - 265 WESTFIELD AVE. - EL 3-1854
OPEN 9-6 DAILY - ELIZABETH - OPEN 9-8 THURSDAYS



BRECK PROFESSIONAL PERMANENT WAVES

A Breck Professional Permanent Wave fashioned with the skill of your beautician assures personal care and beauty for your hair. Your beautician can select from several different Breck Professional Permanent Waves, one which is exactly suited to your individual hair condition.

BRECK

Beautiful Hair

Vincent's House of Beauty

2027 MORRIS AVE. UNION CENTER
NO APPOINTMENT NECESSARY. Call for your favorite operator - or just walk in - MU 6-3828

Open Every Day Monday thru Saturday

LOCAL PRESIDENT TO CONVENTION

Mrs. David Schwartz, president of the Springfield Chapter of Hadassah, the Women's Zionist Organization of America, will represent the local group at the 48th national convention at the Sheraton Park Hotel in Washington, D.C. to be held Sunday through next Wednesday.

The four day convention will be attended by more than 2,000 Hadassah delegates, representing the organization's more than 310,000 members in 1,350 chapters and groups throughout the United States and Puerto Rico.

The largest Zionist organization in the world today, Hadassah spends more than \$9 million annually on its undertakings, Mrs. Schwartz said.

B'NAI B'RITH HAS FASHION SHOW

Approximately 340 women attended the Fall Fashion Show and supper of Springfield B'nai B'rith Women Oct. 16 at Temple Beth Ahm.

Elegant fashions were featured by "Ewan-About," Westfield, and the latest hair styles and were created by "La-Pier" in South Orange were shown.

Mrs. Lee Lichter was in charge of the supper. In charge of the show were Jeanne Heeger and Flora Schiller.

MACDONALD SON JOINS 2 SISTERS

A son, Edward Allen, was born to Mr. and Mrs. Thayer Macdonald, 66 West 2nd Ave., Springfield, Oct. 20 at Overlook Hospital.

The baby weighed 11 1/2 lbs. He joins two sisters, Beverly, 27, and Helen.

Mrs. Macdonald is the former Miss Mueller, daughter of Mr. and Mrs. Edward Mueller of Springfield. The child's paternal grandparents are Mr. and Mrs. David Macdonald of Cambridge, who was the father's father, a battery engineer with the Springfield Post Office.

Hawaiian Fair Today, Tomorrow

An "Hawaiian" fair will be held today and tomorrow at the Methodist Church, Main st. and Academy Green, Springfield. The fair is scheduled to open both days at 10 a.m.

A snack bar will be open both days at noon and a coffee shop will be open from 10 a.m. to 10 p.m. Many and varied articles will be offered for sale. The public is invited.

Assisting Miss Lillian Lindeman with decorations were Mrs. Pat Kotzer, Mrs. Ha Andrews, Mrs. Sue Hakenburg, Miss Phyllis Andrews and Miss Gertrude Sala.

SCHOOL LUNCHEES AT GAUDINEER

The following menu will be served next week at the Florence Gaudineer School in Springfield:

Monday - French fried, baked beans, macaroni, relish, roll, butter, milk

Tuesday - Roast turkey, beef, cranberry sauce, fresh peas, mashed potatoes, roll, butter, milk

Wednesday - Veal cutlet, buttered peas, buttered toast, chine of fish, bread, butter, milk

Thursday - Roast beef, macaroni, baked apples, milk

Friday - Turkey, roll, bread, butter, milk

French fries, rice, stew, potato, bread, butter, milk

Help Given To Persons Suffering Nerve Deafness

CHICAGO, Oct. 24 - Until today, little has been written about nerve deafness, the nation's No. 1 cause of hearing distress. Now, however, an amazing booklet about this condition is being offered to the public free.

Beltone Hearing Service at 8 St. Broad St., Elizabeth, has a supply of these books on hand and is making them available free of charge to anyone wishing a copy. Simply write to Beltone or telephone 673-3400.

The booklet explains the facts about nerve deafness - the painless, invisible condition that handicaps and isolates millions of persons of all ages.

How does nerve deafness interfere with hearing? What symptoms first warn you of this condition? Will surgery help, will a hearing aid help? Will anything help?

The booklet offered now to the public free of charge by Beltone Hearing Service explains why persons may hear and yet don't understand. Can this condition be corrected? Is there any help in this hearing distress - nerve deafness?

"The Inside Story of Nerve Deafness," Beltone's remarkable free booklet, tells you what you can do to end this embarrassing ordeal.

If you are in the neighborhood of 8 St. Broad St., Elizabeth, come in for your free copy. Or write to Beltone Hearing Service, Phone EL 3-7666.



STAN SOMMER

OPEN HOUSE
THU. MON. EVE.

Simply styled... yet simply beautiful! Nothing but the finest materials of fabric you've come to expect of R&K. Originals. Evident here in a gentle sheath - "Wicker," textured 100% wool, framed in satin piping.

did you ever see an R&K that wasn't You?

As Advertised in Good House-keeping

\$24.98

MAM'SELL COIFFURES

UNDER NEW MANAGEMENT!

Tuesday and Wednesday For a Limited Time Only!

SHAMPOO & SET	reg. 3.50	NOW 2.75
HAIRCUT	reg. 2.00	NOW 1.50
HAIRCUT, SHAMPOO & SET	reg. 5.50	NOW 4.50
PERMANENT	reg. 20.00	NOW 12.50
ONE PROCESS TOUCH-UP	reg. 6.50	NOW 7.00
FIVE WEEK RINSE	reg. 3.50	NOW 2.50
OIL TREATMENT	reg. 3.00	NOW 2.00
MANICURE		NOW 1.00

MAM'SELL COIFFURES

2822 Morris Ave., MU 6-9771 Union



STAN SOMMER

Parkinson in rear of store

Patle Jr. is featured in Seventeen magazine. Comes with luxurious black fox collar that may be removed. In beautiful 100% wool plaid, yours for only...

\$49.98

Perfect for Dress or Sportswear

HOLIDAY SPECIAL!

- ONE 8" x 10" HAND COLORED PORTRAIT (Of One Person) NOW ONLY 19.95
- TWO 5" x 7" BLACK & WHITE PORTRAITS Reg. 29.35
- SIX WALLET-SIZE PORTRAITS

Portraits made by Nov. 15th guaranteed to be ready by Christmas

ROBERT'S Studio of PHOTOGRAPHY

2724 Morris Avenue Union 687-6474
Phone now for Appointment

Pro-Arte String Quartet Will Play Monday In Little Theatre At NSC

The Pro-Arte String Quartet will perform in the Little Theatre, Newark State College, Union, Monday at 8 p.m. Sponsored by the College Center Board, the performance is open to the public. No admission will be charged. The quartet is composed of Norman Goldblatt, Marvin Ochs, Gerhard Glaubitz and Mary Gill. They have presented concerts at the Newark Museum, the Newark Y.M.H.A., the Maplewood Public Library, in private subscription series, and schools and churches. All have been members of local orchestras.

BOOK FAIR IS SET BY TEMPLE PTA

A book fair will be held at the first regular meeting of Suburban PTA Temple B'nai B'rith of Essex County, 321 Wyoming ave., South Orange, Monday at 8 p.m. Abraham Spack, education director, will discuss the year's work, and Mrs. Sheldon Denburg of West Orange will give a book review. A social hour will follow, and refreshments will be served. Mrs. Harold Goldstein and Mrs. Sanford Goldie, both of Maplewood, are hospitality chairmen. Mrs. Harris Samelson of South Orange will conduct the business meeting; Mrs. Arnold Kusler, also of South Orange, is program chairman.

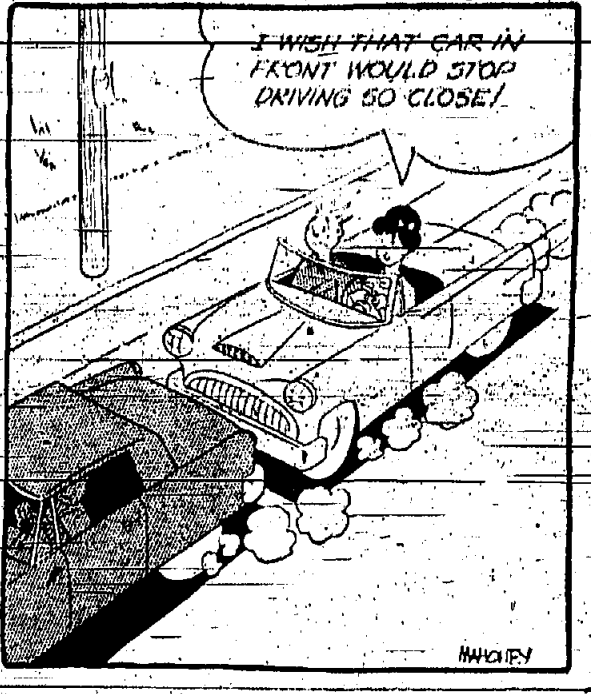
McGowan Aide Urges Break Of GOP Senate Hold

Members of the Republican campaign manager for Assemblyman James M. McGowan, said this week that McGowan's election as state senator would break a 73-year-old Republican "stranglehold" of Union County's seat in the State Senate. The election of James McGowan as Union County's senator, McGowan said, "will not only be a victory for greater progress in the Legislature and greater legislative accomplishment, it will end a one-party domination that has lasted in this county since 1890."

McDonough Survey On Current Issues

Questions on the State Road issue, government primary services to youth and the Supreme Court prayer decision were put to County residents recently by Peter McDonough of Plainfield, GOP candidate for the State Assembly. Questionnaires were mailed to 5,000 residents, McDonough said. About 800 replied. A slight majority—58.5 per cent—said that they are not in favor of the \$750-million bond issue. A larger proportion, 79 per cent, feel that the issue has not been adequately explained to the voters. Of the respondents, 79.1 per cent indicated they don't feel that the finances of our state government are being run in the most responsible way possible. Also, 88.7 per cent don't think that proper attention is being given to Union County. State and local laws controlling narcotic distribution are not effective enough and aren't being adequately enforced, indicated 78.8 per cent. Sixty-three per cent feel that a moment of silence at the beginning of a school day would be a reasonable substitute for the prayers banned by the Supreme Court decision. The survey also disclosed that 64.8 per cent of the respondents are U.S. parents.

HALF-PAST TEEN



DID YOU KNOW?

Senior citizens and veterans will get fair tax exemptions if voters approve two public questions on the ballot November 5. Both measures were sponsored by Senate Republicans. Senator Stamler urges public support of these two questions on Election Day, November 5th.



Support Effective Men In Government
SUPPORT SENATOR STAMLER
Vote Line C, Tuesday, Nov. 5
Vote for by Stamler for Senate Committee, Charles S. Tracy, Chairman, 249 Ogden Way, Hillside, N. J.

"A somewhat similar situation used to exist in the Assembly," said Jim McGowan, "but a breakthrough in 1937, that ended more than 40 years of Republican one-party rule in Union County. And Democrats have been returned by this county every election since—proof that they have done a good job. For 73 years Union County has had a succession of Republican state senators in Trenton. Such domination, by either party, is not good for the democratic system, and in Jim McGowan the voters have a splendid candidate to end this one-sided record."

Members Sought
The Esquire Republican Club 58, Union, has launched a membership drive. Keith Holloway of 212 Phillips ter., Union, is chairman. Interested teenagers have been advised to attend a 7:30 p.m. meeting Saturday at 464 Whitewood rd., Union. Nancy Araneo has been elected recording secretary and Kenneth Zehnder treasurer.

NSC Unit Formed For Mary Kanane

A "College Students for Mary C. Kanane Committee" has been formed at Newark State College. The group is headed by James Fulcomer, a sophomore, of 1119 Maple ave., Union. Fulcomer said: "Our members feel that Miss Kanane has the experience, ability and the desire to serve that Union County needs. Since many of us can not support her by voting because of our ages, we have decided to assist her by working in her behalf." Plans call for the distribution of campaign literature in Elizabeth and Irvington districts in which the college is located. Literature also will be placed in the mail boxes of all college students who are old enough to vote. The college committee also will work for Miss Kanane on election day. Edward Dojowski of 1228 Victor ave., Union, is also on the committee.

Case Offers County GOP Leaders Aid At Sunday Breakfast In Union

U. S. Senator Clifford P. Case the importance of getting out the vote. Others attending included State Assembly candidates Frank X. McDermott, Nicholas St. J. LaCasse, Lorne Collins, Peter J. McDonough and Henry P. West. Case told the group that he was honored to be a member of the "young team," and said that his time and energy were at their disposal as long as he was in the county. Congresswoman Florence P. Dwyer said "new faces, new ideas, new techniques and a new approach spell victory for the Republican Party in Union County." Webster Todd, Republican state chairman, predicted a complete victory in the county, if the Republican voters get to the polls. He called for a repeat of the team effort of last fall. State Senator Nelson F. Simmer, incumbent, also emphasized the importance of getting out the vote.

Club Schedules Week-End Hikes

An "active week end" is planned for the members of the Union County Hiking Club on Saturday and Sunday, with four hikes scheduled, the club announced this week. On Saturday the hiking club will go on an eight-mile hike through the lands of the Union County Park Commission. The group will be under the leadership of George Sedmont of Cranford. Also on Saturday, Mrs. Trudy Zapp of East Orange will lead a 10-mile hike along the Appalachian Trail in the Wawayandaw in northern Jersey. The third hike on Saturday will be a five-mile afternoon ramble in the South Mountain Reservation under the leadership of Miss Irma Hoyer, Elizabeth. The group will meet at the public area near Turtel back Zoo at 1 p.m. On Sunday, Fred Douthy of Union, will lead an eight-mile hike on Long Mountain in northern Jersey. The hike, known as the Torrey Memorial hike, is the property of Raymond H. Barry, a hiker, biologist, and former editor of the Walk Book.

School Papers Invited To Enter TB Press Project

School newspapers in the county have been invited by the Union County Tuberculosis and Health League to participate in the 27th annual school press project sponsored by the National Tuberculosis Association and the Columbia Scholastic Press Association. It was announced this week by George Schott of Rahway, chairman of the Public Relations committee of the League's Board of Directors. To enter the prospective participants, the League has scheduled a school press conference today at 4 p.m. at the Winfield Hotel, Elizabeth. Student journalists and faculty advisors attending the conference will be taken on a tour of the health center. The League's clinic medical director, will present information on the three types for 1963: tuberculosis, other respiratory diseases, and health careers. Participation in the school press project consists of writing a news article, feature, editorial or series, or drawing cartoons. All school newspapers in Union County from public, private and parochial schools, are eligible. The papers may be printed or mimeographed. After publication in the school paper, the entry is submitted for judging. The outstanding entries receive awards on the state and national level.

HALL AGENCY

Readers
All Phases of Insurance
Ready to Sell?
List with Us
HANNAH M. HALL
Realtor
251 N. Broad St.
Elizabeth
EL. 3-3054
Kov's 141 8-0493



TO PAY BILLS THE EASY WAY...
"Make a date with National State"

THE NATIONAL STATE BANK

ELIZABETH HILLSIDE KENILWORTH RAHWAY
ROSELLE PARK SPRINGFIELD SUMMIT WESTFIELD

MEMBER FEDERAL DEPOSIT INSURANCE CORPORATION

Could you use a checking account? If you spend money... and pay bills... you certainly can. Start enjoying the convenience of paying all bills the easy way... by check and by mail.

You'll find that your National State checking account also helps you to plan future spending... and cancelled checks are legal receipts. If you aren't enjoying all the advantages of paying by check, now is the time to "Make a date with National State"... to open your checking account.

UNIQUE INVESTMENT OPPORTUNITY

Unique Growth Potential
Major Newspaper Syndicator
Guarantees Sales of Proven Product

Margie Holt, creator of the Hood as You Listen record series, announces the opportunity to invest in a new company which is now manufacturing and selling our Children's Heritage records. Investors may purchase Limited Partnership Units in our Children's Heritage Records, the new company, for as little as \$100 each. Opinion of tax experts indicates that approximately 75% of each distribution to limited partners will be classified as a return of capital and not taxable as income. In addition, the appreciation of a limited partner's return on net investment will increase as his capital is repaid. Our Children's Heritage record series is now being promoted and sold to the public through 25 newspapers with over 1,000,000 circulation in 31 states by contractual arrangements with a major newspaper syndicator. If you are interested in investing in and becoming a part of a company with an attractive proven product at a time when it has the greatest growth potential, send the attached coupon to our Children's Heritage Records, Dept. 233 Fairfield Avenue, Kenilworth, N. J., or phone 911-1344. (This is not an offer to sell. The offering is made only by the offering circular and to qualified residents of New Jersey only.)



Old Children's Heritage Records, 233 Fairfield Ave., Kenilworth, N. J. Phone 911-1344. 81-10/63
I am interested in receiving the offering circular for our Children's Heritage Records. I understand that I am under no obligation.
Name _____
Address _____
City _____
State _____ Tel. No. _____

"Make a date with National State... Union County's Leading Bank"

FREE

HALF GALLON

HOLLAND DUTCH TREAT

ICE CREAM!

WITH THE PURCHASE OF SIX ELECTRIC LIGHT BULBS



ROAST OF PORK

BONELESS - NO WASTE

49¢ LB.



LEGS OF LAMB

REGULAR STYLE

47¢ LB.



OVEN-READY
WHOLE or EITHER HALF
lb. 55¢

FRESH HAM

SHANK HALF

39¢ LB.



BUTT HALF
lb. 49¢

Fresh & Lean
 Lamb Patties lb. 29c
 All Beef Fresh
 Ground Beef 3lb. 39c
 Young Tender Steak
 Beef Liver 3lb. 39c
 Cut for Outside Broil - Shoulder
 Steak 99c
 No Waste
 Cube Steaks 99c
 Sliced Bacon lb. 59c
 Tasty
 Sea Scallops lb. 68c

LAMB CHOPS

SHOULDER	RIB	LOIN
Tasty	Cut Short	For Broiling
67¢ lb.	77¢ lb.	97¢ lb.



CHICKEN PARTS

LEGS	BREASTS	LIVER
Tempting	Tasty	Fresh
45¢ lb.	55¢ lb.	69¢ lb.

For Broiling or Potting
 Lamb Shanks lb. 29c
 Per Stew
 Lamb Necks lb. 25c
 Perfect for Stuffing & Stew
 Lamb Breast lb. 10c
 Cut Short
 Tasty & Flavorful
 Chuck Steaks lb. 47c
 Rib Steaks lb. 69c
 Sweet or Hot
 Ital. Sausage lb. 69c
 Fresh Caught Selected
 Flounders lb. 29c

TASTY SHRIMP
 40-70 COUNT
 lb. 59c 5-lb. box 2.59
 24-30 COUNT
 lb. 99c 5-lb. box 4.59

LOBSTER TAILS
 Large 4-6 oz. \$1.49 lb.

STEP INTO SHOP-RITE'S GARDEN ROOM!



APPLES	Delicious Red Crisp	2 lbs.	29¢
CUCUMBERS	Fresh Crisp	3 for	19¢
CABBAGE	Fresh Green	lb.	4¢
CARROTS	Fresh Tender	lb. cello	9¢
CAULIFLOWER	Snow White	1 lb. head	19¢
SPINACH	Fresh Garden	10-oz. cello	19¢
PEARS	Sweet Juicy Anjou	2 lbs.	39¢

BIRDS EYE FROZEN

POTATO PUFFS

6 8-oz. pkgs.
\$1.00

TAYLOR'S MIDGET PORK ROLL
 1 1/2-lb. 99¢

SHOP-RITE ALL BEEF FRANKS
 lb. 49¢

KITCHEN FRESH VIRGINIA HAM
 BAKED 1/2-lb. 65¢

DELICIOUS HEALTH SALAD
 In Appl. Dept. where available lb. 29¢

KRAFT PARKAY 3c OFF
MARGARINE
 5 lb. boxes \$1

PURE MAID FRUIT SALAD
 FRESH CHILLED quart jar 69¢

SHOP-RITE CREAM CHEESE
 8-oz. pkg. 25¢

RATH BLACKHAWK BACON
 lb. 59¢

UNION CENTER
 963 Stuyvesant Ave.
 Union

LINDEN SHOP-RITE
 22 St. Georges & Wood Aves.
 OPEN SUNDAY

ROUTE 22, UNION
 Route 22 & Springfield Road
 Next to Nat'l Family Discount Center
 OPEN SUNDAY

CRANFORD SHOP-RITE
 South & Union Aves.
 Cranford, N. J.

LYONS SHOP-RITE
 327 Lyons Ave.
 Newark
 OPEN SUNDAY

WATCHUNG SHOP-RITE
 Route 22
 Watchung, N. J.
 OPEN SUNDAY

RAHWAY SHOP-RITE
 1064 St. Georges Av.
 OPEN SUNDAY

CLARK SHOP-RITE
 Raritan Rd. & Walnut Ave.
 Cranford, N. J.
 OPEN SUNDAY

Thursday, October 24, 1963

WHY PAY MORE?



COFFEE SALE!

• BEECH-NUT NEW KEYLESS CAN lb. can
• CHASE & SANBORN 4c OFF

59¢

SHOP-RITE PURPLE PLUMS

29-oz. cans

3 85

WHY PAY MORE?

OLIVE OIL - PROGRESSO gallon can **\$3.99**

PROGRESSO ESCAROLE, PASTA E FAGIOLI OR GREEN

SPLIT PEA SOUP 5 20-oz. cans **\$1**

8c OFF!

OXYDOL SOAP POWDER giant box **69¢**

4c OFF!

IVORY SOAP PERSONAL SIZE pkg. of 4 **17¢**

OLD YORK

GREEN SPLIT PEAS 1-lb. box **11¢**

As Advertised Over WHN

Ronzoni Spaghetti #8 or #9 **5 1-lb. boxes \$1**

Shop-Rite Evap. Milk **8 14-oz. cans \$1**

Ronzoni Ziti Cui #2 or #3 **2 1-lb. boxes 45¢**

As Advertised Over WHN

Mueller Thin Spaghetti or Elbow **3 1-lb. boxes 39¢**

Delicious Macaroni **3 1-lb. boxes 39¢**

Apple Cider **69¢**

8c Off Salvo Detergent **61¢**

Shop-Rite Liquid Dish Detergent **49¢**

Shop-Rite Permanent Type Anti-Freeze **1.39**

Shop-Rite or Stokely Yellow Cling Halves or Sliced

Peaches 4 20-oz. cans **\$1**

Very Fine Applesauce **3 35-oz. cans 85¢**

Elliers, Maxwell House or Savarin Coffee **1-lb. can 65¢**

Check full O' Nuts Coffee **1-lb. can 69¢**

Betty Crocker 4c Off Chocolate Malt, Milk Chocolate, French Vanilla, Devil Food, Dark Chocolate, Marble, Yellow, White, Lemon Velvet **19-oz. boxes**

Layer Cake Mixes **3 for \$1**

Gold Medal, Hacker or Pillsbury 4c Off Flour **5 5-lb. bags 49¢**

Shop-Rite Applesauce **6 30-oz. jars 89¢**

Handy Johnson Pledge **14-oz. can \$1.17**

SHOP-RITE DETERGENT

RED BOX

47-oz. box **39¢**

SHOP-RITE SOUP

CREAM OF MUSHROOM OR CHICKEN RICE

10 1/2-oz. cans **2 29¢**

ALCOA WRAP OR REYNOLDS WRAP

25-FOOT ROLLS

4 for **\$1**

CALO CAT FOOD

• CHICKEN PARTS
• LIVER & CHICKEN
• KIDNEY & CHICKEN

6-oz. cans **8 \$1**

Mince Clams 2 8-oz. cans **49¢**

Shop-Rite Plaques **White Tuna** 5 1/2-lb. cans **\$1**

Shop-Rite In Oil **White Tuna** 3 7-oz. cans **89¢**

Stokely **Fruit Cocktail** 4 30-oz. cans **89¢**

Del Monte Yellow Cling Halves or Sliced **Peaches** 3 2 1/2-lb. cans **87¢**

Protons or Zorex Anti-Freeze **1-lb. can \$1.67**

Shop-Rite **Motor Oil** 2 gal. can **\$1.19**

8c-Off Alax **Wall Cleaner** 5 1-lb. boxes **\$1**

Shop-Rite **Fluffy** half gal. **49¢**

Barbecued **Tomato Juice** 8 10-oz. cans **\$1**

Spitfish, Chicken, Beef, Chives **Rice-A-Roni** 29¢

Shop-Rite **Instant Milk** 14-oz. cans **83¢**

Shop-Rite **Dinner Napkins** pkg. of 76 **39¢**

Rival Medium Rare Beef Chunk **Dog Food** 2 15-oz. cans **49¢**

vet **Dog Food** 12 1-lb. cans **\$1**

Big Size Mazzeoni Chunk **Dog Food** 6 15-oz. cans **\$1**

Lodde Boy Chicken **Dog Food** 5 15-oz. cans **\$1**

Binky Moore **Beef Stew** 24-oz. can **47¢**

Polaner (Where Available) **Grape Jelly** 3 20-oz. jars **\$1**

Green Giant French Beans or Cut **Green Beans** 5 16-oz. cans **\$1**

As Off 1-lb. can of 13 **Modess 'V' Form** 2 **57¢**

30c Off 1-lb. box of 11 **Modess 'V' Form** **77¢**

Royal Prince **Yams** 4 10-oz. cans **\$1**

Contadina Plum **Tomatoes** 4 2 1/2-lb. cans **\$1**

Lord Mohl **Wild Rice** 14-oz. can **53¢**

Easy Off 15-oz. size **Window Cleaner** **39¢**

Linton **Tea Bags** box of 48 **59¢**

Shop-Rite **Quick Oats** 42-oz. box **39¢**

Hygrade **Corned Beef** 12-oz. can **39¢**

Pillsbury **Brownie Mix** 3 76-oz. boxes **\$1**

Wooden (where available) **Folding Chairs** **\$1.99**

Progresso **Zucchini** 5 16-oz. cans **\$1**

Heinz **Ketchup** 3 30-oz. bottles **\$1**

Shop-Rite Large Size or **Select Olives** 4 4-oz. cans **\$1**

1 1/2-lb. box **Chocolates** 4 boxes **\$1**

Shop-Rite Oatmeal or Instant **Dog Food** 25 1-lb. bags **\$1.99**

Shop-Rite **Saltines** 1-lb. box **19¢**

Home Assorted **Party Cookies** 14-oz. box **29¢**

Shop-Rite **Interior Paint** gal. **\$2.99**

Tasty 7 1/2-oz. jar **Marshmallow Fluff** **19¢**

Shop-Rite 4-oz. pkgs. **Nestle's Morsels** 2 **39¢**

Handy **Bisquick Mix** 48-oz. box **43¢**

5c Off **Nestle's Morsels** 16-oz. pkg. **38¢**

Py-O-My 10 1/4-oz. pkgs. **Brownie Mix** **4 \$1**

PROGRESSO OLIVE OIL

gallon can **\$3.99**

PRIDE OF THE FARM CATSUP

14-oz. BOTTLES

2 for **29¢**

SHOP-RITE PRESERVES

APRICOT, ORANGE, PEACH or PINEAPPLE OR GRAPE JELLY OR GRAPE JAM

5 12-oz. jars **\$1**

SHOP-RITE PINEAPPLE JUICE

46-oz. cans **3 89¢**

UNION CENTER 963 Stuyvesant Ave. Union

ROUTE 22, UNION Route 22 & Springfield Road Next to Nat'l Family Discount Center • OPEN SUNDAY

LYONS SHOP-RITE 327 Lyons Ave. Newark • OPEN SUNDAY

RAHWAY SHOP-RITE 1064 St. Georges Av. • OPEN SUNDAY

LINDEN SHOP-RITE 22 St. Georges & Wood Aves. • OPEN SUNDAY

CRANFORD SHOP-RITE South & Union Aves. Cranford, N. J.

WATCHUNG SHOP-RITE Route 22 Watchung, N. J. • OPEN SUNDAY

CLARK SHOP-RITE Raritan Rd. & Walnut Ave. Cranford, N. J. • OPEN SUNDAY

WHY PAY MORE?

SHOP-RITE TEA BAGS



box of
100

59¢



- Handy Crisco Oil 24-oz. jar 36¢
- Convenient Wesson Oil gal. can \$1.59
- 5c Off Spray Shortening 3 lb. can 64¢
- Shop-Rite Sugar Granulated 5 lb. bag 59¢
- Yuban Instant Coffee 8-oz. jar 77¢
- C. S. & Sanborn Instant Coffee 12-oz. jar \$1.17
- Sanka Instant Coffee 8-oz. jar \$1.25
- Del Monte or Star Kist Solid Pack White Tuna 3 1/2-oz. cans \$1

- STOKELY WHOLE KERNEL - IN VEIN OF CREAM CORN 2 303 cans 29¢
- CLARIDGE CORNED BEEF HASH 4 15 1/2-oz. cans \$1
- BEEF, HORSEMEAT or CHICKEN DOG FOOD LADDIE BOY 4 15-oz. cans 99¢
- WHY PAY MORE? HANDY BORATEEM 55-oz. box 59¢
- HANDY SNOWY BLEACH 24-oz. box 59¢

SHOP-RITE DETERGENT
RED BOX
5 19-oz. boxes \$1

3c OFF - HEART'S DELIGHT
APRICOT NECTAR
3 46-oz. cans \$1

12c OFF
LIQUID WISK
half gallon 99¢

DEL MONTE
CREAM CORN
2 303 cans 29¢

- 7c Off Niagara Spray Starch 15-oz. can 49¢
- Shop-Rite Bleach Plastic half gal. 31¢
- 3c Off Action Bleach 3 reg. boxes \$1
- Bowl Cleaner 35-oz. box 29¢
- 5c Off Blue Detergent Rinso 4 19-oz. boxes \$1
- 7c Off Dish All 3 20-oz. boxes \$1
- 8c Off Fab Detergent giant box 67¢
- 15c Off Ad Detergent giant box 59¢
- Green Giant Whole Kernel or Cream-Corn 6 303 cans \$1

BEEF, LIVER OR CHICKEN DOG FOOD
MY FAVORITE 14 1-lb. cans \$1

- DELICIOUS HERSHEY SYRUP 5 16-oz. cans \$1
- SHOP-RITE CALIFORNIA TOMATO PASTE 10 6-oz. cans \$1
- BUTONI OR DEL MONTE IMPORTED ITALIAN TOMATOES 3 33-oz. cans \$1
- SHOP-RITE MAYONNAISE quart jar 49¢
- SHOP-RITE MEAT RAVIOLI 2 11-oz. cans 45¢

Stokely Specials!

- Stokely Sliced Beets 8 16-oz. cans \$1
- Stokely Vac. Pack Corn 6 15-oz. cans \$1
- Stokely Sweet Peas 2 16-oz. cans 39¢
- Stokely Green Beans 2 16-oz. cans 39¢
- Stokely Cherkins 3 15-oz. jars \$1

100% BEST QUALITY MESH
SEAMLESS NYLONS
IN SINGLE BOX ONLY 3 pair \$1

Shop-Rite 19113 Utility Cloth 22¢

MOTT'S - ASSORTED FLAVORS
CHUNKY APPLESAUCE
4 20-oz. jars \$1

MAXWELL HOUSE COFFEE
2 lb. can \$1.19

LIPTON CHICKEN NOODLE SOUP MIX
4 pkgs. of 2 \$1

PROGRESSO OLIVE OIL
quart can \$1.25

- Westfield Assorted Drinks 5 for \$1
- Tasty Apple Cider half gal. 45¢
- Shop-Rite Pineapple-Orange Drink 3 46-oz. cans 85¢
- Hawaiian Yellow Punch 3 46-oz. cans 89¢
- Shop-Rite Apricot, Orange-Apricot or Pineapple-Orange Drink 3 46-oz. cans \$1
- Shop-Rite or Stokely Tomato Juice 4 46-oz. cans \$1
- Nonant Rigatoni #46 or Mastaccioli 4 1-lb. boxes \$1

- Convenient Coffee Mate 11-oz. jar 79¢
- Shop-Rite White, Pink, Yellow or Orchid boxes of 400
- Facial Tissues 6 100-pkg. of 100
- Dixie Refills 59¢
- Shop-Rite White or Assorted poly bag - pkgs. of 250
- 7c Off Swanee Paper Napkins 4 for \$1
- Paper Towels 2 27-rolls \$1
- Puss in Boots Cat Food 8 18-oz. cans \$1
- Ken-L Ration Dog Food, 14-oz. or Liver 18-oz. Dog Food 6 cans 87¢

- Shop-Rite Pork & Beans 4 40-oz. cans \$1
- Shop-Rite Meat Balls & Spaghetti 5 18-oz. cans \$1
- Chat. Box Ar. Dee Meat Ball Stew 2 for \$1
- Mancini or Progresso Roasted Peppers 5 7 1/2-oz. cans \$1
- Shop-Rite New Pack Tomato Soup 10 10-oz. cans \$1
- Green Giant or Del Monte Sweet Peas 5 303 cans 97¢
- Larkin Veg-All 6 17-oz. cans \$1

- Shop-Rite Sweet Garden Peas 2 303 cans 29¢
- Libby Pumpkin 2 29-oz. cans 39¢
- Del Monte Spinach 6 16-oz. cans \$1
- Considine California or Hunt Tomato Paste 9 8-oz. cans \$1
- Del Monte or Hunt Tomato Sauce 10 9-oz. cans 95¢
- Shop-Rite or Progresso Tomato Sauce 10 8-oz. cans 89¢
- 5c Off Minute Rice 34-oz. box 67¢
- Ronzoni #1, #9, #35 Spaghetti, Elbow Macaroni or Shop-Rite 15x17 Spaghettini 5 1-lb. boxes \$1
- Wash Cloths 2 for 31¢

DEL MONTE PEACHES
YELLOW CLING
SLICED OR HALVES
5 303 cans \$1

DOG FOOD
RED HEART
16-oz. CANS
8 for \$1

UNION CENTER 963 Stuyvesant Ave. Union	ROUTE 22, UNION Route 22 & Springfield Road Next to Nat'l Family Discount Center OPEN SUNDAY	LYONS SHOP-RITE 327 Lyons Ave. Newark OPEN SUNDAY	RAHWAY SHOP-RITE 1064 St. Georges Av. OPEN SUNDAY	LINDEN SHOP-RITE 22 St. Georges & Wood Aves. OPEN SUNDAY	CRANFORD SHOP-RITE South & Union Aves. Cranford, N. J.	WATCHUNG SHOP-RITE Route 22 Watchung, N. J. OPEN SUNDAY	CLARK SHOP-RITE Raritan Rd. & Walnut Ave. Cranford, N. J. OPEN SUNDAY
--	---	--	---	--	--	--	--



ALCOHOLIC BEVERAGES
ARE NOT SALE PRICED
THESE ARE OUR
EVERYDAY PRICES

SHOP-RITE ROUTE
ROUTE 22 & SPRINGFIELD ROAD
UNION, N.J.

SHOP-RITE IMPORTED SCOTCH
SPECIAL RESERVE



LIGHT AND MELLOW
80 PROOF

FIFTH **\$3.99**
QUART **\$4.95**
1/2-GALLON **\$9.79**

SHOP-RITE LONDON DRY GIN

SHOP-RITE GIN IS PERFECT FOR MARTINI,
TOM COLLINS & GIN WITH TONIC!

\$1.99
PINT SIZE

FIFTH **\$3.09** QUART BOTTLE **\$3.83** HALF GALLON **\$7.39**



SHOP-RITE BOURBON
STRAIGHT KENTUCKY BOURBON
ONE OF THE FINEST BOURBONS FROM KENTUCKY



PINT SIZE **\$2.39** FIFTH **\$3.79**

QUART **\$4.69** HALF GAL. **\$9.29**

SHOP-RITE BLENDED WHISKEY

SHOP-RITE WHISKEY IS
A BLEND OF 30% - 4 YEARS
OR MORE OLD WHISKEY

\$1.99
PINT SIZE

FIFTH **\$3.09** QUART BOTTLE **\$3.83** HALF GALLON **\$7.59**



SHOP-RITE FRUIT WINES
IMPORTED FROM DENMARK



- CHERRY
- RASPBERRY
- BLACKBERRY
- STRAWBERRY

\$1.39
24-OZ.


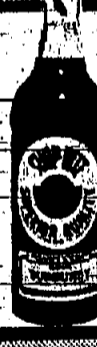
CASE OF 12 **\$15.02**

SHOP-RITE... OUTSTANDING QUALITY

AMERICAN **CHAMPAGNE** **\$1.99**
OR SPARKLING

YOUR CHOICE

4/5 QUART **\$22.69**
CASE OF 12

SHOP-RITE ALL PREPARED
READY TO SERVE

COCKTAILS **\$2.25**
MANHATTAN or MARTINI

4/5 QUART

SHOP-RITE KOSHER WINES
FULL QUART



- CHERRY
- MALAGA
- BLACKBERRY
- CONCORD GRAPE

85¢

Half Gal. **\$1.59** Full Gal. **\$2.89** CASE OF 12 **\$9.69**

SHOP-RITE FULL 80 PROOF
AN OUTSTANDING PRODUCT

VODKA **\$1.89**
PINT SIZE

FIFTH **\$2.99** QUART **\$3.69** 1/2-GAL. **\$7.19**

Thursday, October 24, 1963

TIMELY CHANGES DUE TO END D.S.T.
This weekend will afford our annual opportunity to hold back the sands of time

— if only for an hour. It's end at 2 a.m. Sunday — so change your clocks Saturday night before turning the lights off. Last Spring to Daylight Savings Time. D.S.T. comes to an official end.

9 Area Motorists Lose Licenses For Points, Speed

Nine motorists in this area have forfeited their licenses for varying periods under the N.J. Point System and 40/70 Excessive Speed Program, the Division of Motor Vehicles reported this week.

Robert L. Kramer, 33, of 1099 Woolley ave., Union, and James W. Smith, 27, of 270 Passaic pkwy., Irvington, have lost their licenses for 30 days in each case under the Excessive Speed Program. Their effective dates were listed as Sept. 26 and 9 respectively.

The Point System losses were:

DEATH NOTICES

ALBANI — On Tuesday, Oct. 16, 1963, Mrs. Catherine Albani, 74 years of age, of 141 Highland st., Newark, passed away at the Jersey City Hospital.

ALBANI — On Tuesday, Oct. 16, 1963, Mrs. Josephine Albani, 72 years of age, of 141 Highland st., Newark, passed away at the Jersey City Hospital.

ALBANI — On Tuesday, Oct. 16, 1963, Mrs. Josephine Albani, 72 years of age, of 141 Highland st., Newark, passed away at the Jersey City Hospital.

ALBANI — On Tuesday, Oct. 16, 1963, Mrs. Josephine Albani, 72 years of age, of 141 Highland st., Newark, passed away at the Jersey City Hospital.

ALBANI — On Tuesday, Oct. 16, 1963, Mrs. Josephine Albani, 72 years of age, of 141 Highland st., Newark, passed away at the Jersey City Hospital.

ALBANI — On Tuesday, Oct. 16, 1963, Mrs. Josephine Albani, 72 years of age, of 141 Highland st., Newark, passed away at the Jersey City Hospital.

ALBANI — On Tuesday, Oct. 16, 1963, Mrs. Josephine Albani, 72 years of age, of 141 Highland st., Newark, passed away at the Jersey City Hospital.

ALBANI — On Tuesday, Oct. 16, 1963, Mrs. Josephine Albani, 72 years of age, of 141 Highland st., Newark, passed away at the Jersey City Hospital.

ALBANI — On Tuesday, Oct. 16, 1963, Mrs. Josephine Albani, 72 years of age, of 141 Highland st., Newark, passed away at the Jersey City Hospital.

Peper Bros. PAINTS-WALLPAPER-BLINDS-SHADES

SALE

Plus Hundreds of Additional Items at Peper's LOW PRICES!

1 GAL. SEALING PRESERVATIVE	79¢	1 GAL. PURE WHITE SHELLAC	79¢
1 GAL. SEALING PRESERVATIVE	49¢	1 GAL. STEEL WOOL (100)	25¢
1 GAL. SEALING PRESERVATIVE	1.25	1 GAL. PAINT REMOVER	1.00
1 GAL. SEALING PRESERVATIVE	2.15	1 GAL. BRUSH	25¢

WHITE STEEL FLAT or GLOSS 1.99

SHINGLE SHAKE Linseed Oil Paint 2.95

FAMOUS "MONA-LISA" CEILING PAINT 2.35

VENETIAN BLINDS 2.59

WALLPAPER 1.19-2.99

STUCCO PAINT 3.75

OUTSIDE WHITE 3.25

CHROME WALLPAPER 1.99

BLACK TOP DRIVEWAY Sealer & Primer 3.95

IRVINGTON 1098 Clinton Ave. MU 3-6880

Newark 101 BROADWAY MU 2-4589

Paterson 372 MAIN ST. SH 2-8053

Jersey City 161 JACKSON AVE. DE 3-5669

Plainfield 405 PARK AVE. PL 7-8344

Four months — Peter C. Campanella, 49, of Sandford ave., Irvington, Sept. 20.

Two months — Donald K. McDougall, 18, 14 Marshall st., Irvington, Oct. 6; David B. Schneider, 20, 832 Dewey st., Union, Oct. 11; and William Berk, 22, 51 Elmwood ave., Irvington, Oct. 6.

One month — Don A. Mohrholz, 21, 20 Carolina ave., Valhalla, Oct. 12; and William Berk, 22, 51 Elmwood ave., Irvington, Oct. 6.

Fifteen days — Carl J. Volodon, Jr., 22, 522 Spruce st., Roselle Park, Oct. 9.

Clara Maass Guild Sets Member Social

A membership social will be held for all new members and prospective members of the Clara Maass Memorial Hospital Guild by the Guild on Monday night in the auditorium of the School of Nursing.

Membership chairman is Mrs. William Park, Guild president, Mrs. Peter A. Frivollo of Newark.

YOUR WANT AD

It's gonna BLAW! It's gonna SNOW! It's gonna DRIZZLE!

So purchase your young man's outfit now! A suit that holds your affection 'til you need it.

DAVID BURR

1059 Springfield Ave. Irvington Center Open Mon. & Fri. Evenings

FUEL OIL

24 HOUR OIL BURNER SERVICE

Call the man with the Gulf housewarming plan

A, B, & C FURNACE & BURNER PLANS AVAILABLE

- Expert heating equipment service
- Clean-burning Gulf Solar Heat
- Automatic delivery
- Budget Plan, equal monthly payments!

Phone us today!

Always Dependable Metered Delivery

KINGSTON COMPANY

2304 Vauxhall Rd., Union
Office MU 6-6670 Service MU 6-3558

GULF SOLAR HEAT

NOWHERE ON EARTH CAN YOU FIND THE SAVINGS YOU'LL FIND AT MOON ON CHRYSLER PLYMOUTH LEFTOVERS

63 CHRYSLER

1963 PAGE SEVEN CONVERTIBLE. 147 cubic inch engine. Automatic. Power steering. Radio. Heater. Dual exhaust. 120 mph. 100,000 miles. With 30,000 miles. 1963. \$4605.40. ONLY \$3595. 5-Yr. 50,000-Mile Warranty.

MOON MOTORS

1433 NO. BROAD ST. HILLSIDE WA 3-1800

DAVID BURR

It's gonna BLAW! It's gonna SNOW! It's gonna DRIZZLE!

So purchase your young man's outfit now! A suit that holds your affection 'til you need it.

DAVID BURR

1059 Springfield Ave. Irvington Center Open Mon. & Fri. Evenings

M. Neuss & Sons presents the carpet value of the year

BARWICK CARPET

made with Acrilan® acrylic fiber in the pile

the carpet your family deserves

KIDS LOVE IT 'cause Mama doesn't fuss at the mess if her carpet is Barwick Carpet made with Acrilan. Stains and spills wash away in a jiffy. And this carpet can stand the heavy traffic of neighborhood romps. Barwick Carpet is made with children in mind.

MOTHER PRIDES IT Easy care makes it a housekeeping asset. No problems with moths or mildew. Colors stay bright through repeated cleanings. Barwick is made of Acrilan — the fiber that stays new-looking longer. Barwick Carpet is made with easy-care in mind.

DAD VALUES IT With Barwick Carpet made of Acrilan he knows he's getting the most carpet for the dollar. Here's a budget-minded investment that gives years of satisfactory service and beauty. Barwick Carpet is made with true value in mind.

Come in and select your Barwick carpet today.

Available in luscious decorator colors that keep their brilliant color longer.

13 and 15 foot widths — Dual Loo Bac for stability.

Two Fine Qualities.

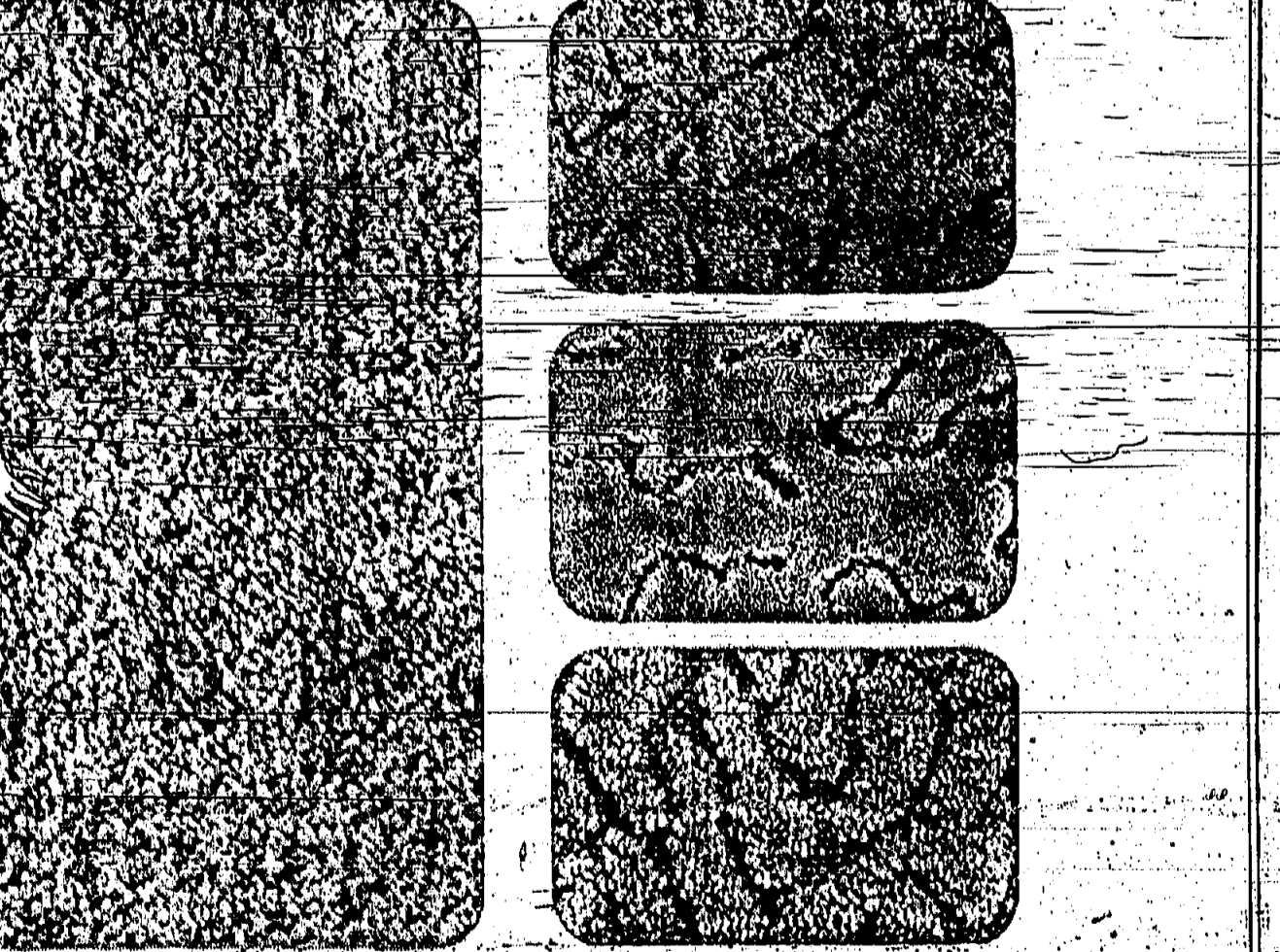
MILLBURN Smooth Velvet

SHORT HILLS 3 Dimensional Texture

This Low, Low Price includes Heavy waffle cushion and Our Own Living Care. Tackless Installation. Save!

\$10.99 Sq. Yd.

A CHEMSTRAND



1200 STUYVESANT AVENUE UNION MU 6-3030

OPEN MONDAY & FRIDAY 'TIL 9:00

Use our convenient Budget Payments. Ask about our free decorator service. Shop at the store that gives you more-service, value-everytime.

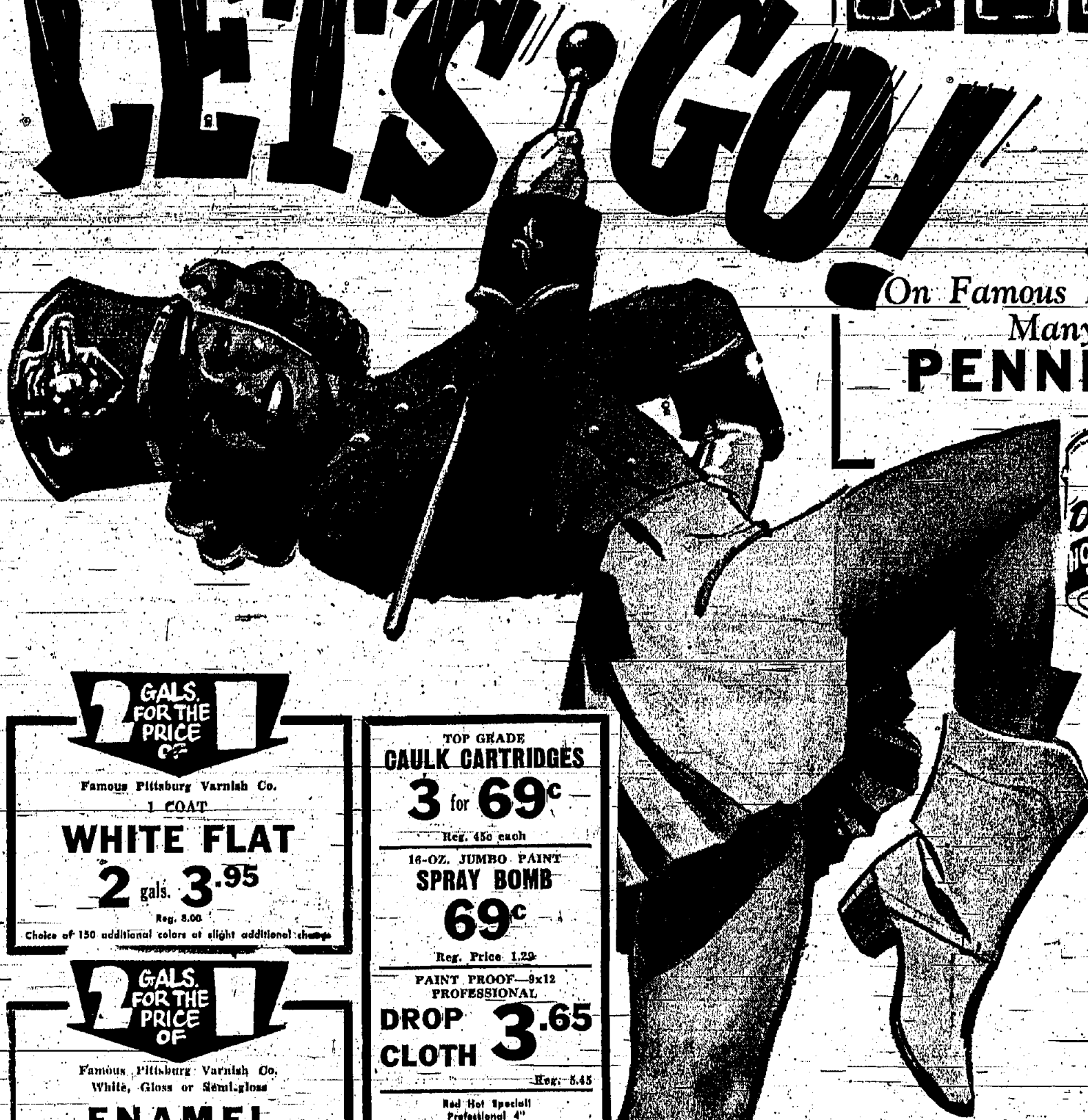
LET'S GO! RED STAR

Paint & Wallpaper
Discount Center

BIGGEST
Discounts

On Famous Brands of PAINT & WALLPAPER
Many Items Slashed To Fantastic
PENNIES ABOVE COST!

4 BIG SALE DAYS
THURS., FRI., SAT. & MON



2 FOR THE PRICE OF 1

Famous Pittsburg Varnish Co.
1 COAT

WHITE FLAT
2 gals. **3.95**
Reg. 8.00
Choice of 150 additional colors at slight additional charge.

TOP GRADE
CAULK CARTRIDGES
3 for 69c
Reg. 45c each

16-OZ. JUMBO PAINT
SPRAY BOMB
69c
Reg. Price 1.29

GIANT 5 Cell - 1500 Ft. Range Jumbo
FLASHLIGHT
with 8 batteries
99c
Polished chrome head and body, complete with Red Safety film that glows red when lit.
Reg. \$3.99

2 FOR THE PRICE OF 1

Famous Pittsburg Varnish Co.
White, Gloss or Semi-gloss

ENAMEL
2 gals. **5.95**
Reg. 12.00
Choice of 150 additional colors at slight additional charge.

PAINT PROOF - 9x12
PROFESSIONAL

DROP CLOTH **3.65**
Reg. 5.45

Red Hot Special
Professional 4"

DUPONT NYLON BRUSH **3.85**
Reg. 8.00

SPECIAL PURCHASE! 16,500 ROLLS WALLPAPER

We purchased a manufacturer's entire over-stock and we are passing the savings along to you. Huge selections for each room. All pre-trimmed and washable. First Come-First Served!

39c • 49c • 59c
NONE HIGHER - MADE TO SELL FROM 1.45 TO 3.50

2 FOR THE PRICE OF 1

Miracle Vinyl Wallpaper

LATEX FLAT
2 gal. **6.88**
Reg. 13.76

ALL COLORS • NO PAINT SMELL • DRIES IN 30 MINUTES • 1-COAT FINISHABLE • Most Superior Paint Offer Ever Made

HAND LANTERN
GIANT 3,000 FT. BEAM

With Red Signal Flasher

Comp. with No. 731 Rechargeable Battery

Reg. 9.95 **3.95**

We Have

LUCITE WALL PAINT

PLASTIC - PORCELAIN
Whiter-than-White - Non-Yellowing

ENAMEL

Choice of High or Semi-Gloss **5.95** gal. Net. Adv. At 9.99 gal. **1.95** qt.

Gov't Spec. Some pigments as used by the Navy-on-ships

PORCH & FLOOR DECK PAINT

Use indoors or outdoors on wood, concrete or metal.

3.85 gal. reg. 6.75

2 FOR THE PRICE OF 1

Famous Pittsburg Varnish Co. Exterior White

HOUSE PAINT
2 gals. **7.95**
Reg. 15.90
Choice of Primer or Finish

Bad weather splits and pits your driveway! Add years of life to yours with genuine **Black Top**

Driveway Sealer

Reg. 14.50 **8.95** For 5-gals.
Not just a cheap black wash coat! OURS WATERPROOFS AS IT BEAUTIFIES!

3 YEAR UNCONDITIONAL WRITTEN GUARANTEE!

5.95 Reg. Price 8.25

Wonderful... new exterior latex vinyl goes on quickly, smoothly and so professionally. Marvellously durable, oblivious to weather, and strikes an smooth and firm of top finish. Can't ever blister or peel because this vinyl formula is so solid. Dries in one hour, won't fade and brushes wash in water.

OPEN MON. & FRI. TO 9 P.M.
FREE PROMPT DELIVERY
LOCATED OPPOSITE ART THEATRE AND NEXT TO NEW POST OFFICE

World Famous Super
KEM-TONE
Reg. Price 6.69 **4.49** gal.

Genuine Your Car
PURE SUB TURPS TURPS
Reg. 1.39 **79c 21c** gal.

SLASHED TO THE BONE! I I

ALCOA ALUMINUM EXTENSION LADDERS

20 Foot	27.88	32 Foot	39.88
24 Foot	31.88	36 Foot	46.88

ALSO: 4 foot 8.88, 5 foot 10.88, 6 foot 12.88

RED STAR PAINTS WALLPAPER DISCOUNT CENTER

1080 Springfield Ave., Irvington Center, ESsex 4-1300

SAVE MONEY! Get our Fall and Winter SERVICE Now!

For the last consecutive year we have been named as the best service for the winter months.

14.95 - 18.95

Parts & Mer. Extra
Ed Loux - Hibbard

Automotive Service, Inc.

Quality Auto Repairing since 1915
215 Coll St.
Irvington, N. J.
Open 7-4 Daily - Sat. 11-1
ES 3-4664 ES 3-8032

SWB

So sturdy it has a **24,000-MILE 24-MONTH WARRANTY**

\$1895.00 includes

WINDSHIELD WASHER & WIPER
WILLHARDT'S
1849 MORRIS AVENUE

FAMILY LIFE TODAY
By PHYLLIS GREER

of Rutgers... the State University
Specialist in Human Relations

Puppy Love

"We never see Jack at home anymore," complains Mother. "He has a girl now and spends all his time with her. Isn't that silly, at his age? He's just a baby, and that girl has him wrapped around her little finger. We try to take him out of it, but it doesn't work."

Judging from this conversation, Jack has some good reasons for his behavior. He is a young man, and he is in love. He is a young man, and he is in love. He is a young man, and he is in love.

marriage and continuing school and being self-supporting.

Even though young people are marrying early these days, puppy love usually doesn't lead directly to marriage. Young people tend to fall in and out of love to their detriment.

Parents can help their young people through puppy love when they realize it is a stage of development that should happen to everybody. Their understanding, sympathy and guidance will help the teenager to weather the storm.

Boy-Girl Relationships will be discussed in the series of programs for parents of "Adolescents" scheduled to start in Scotch Plains on Thursday, November 7. The topic of the first meeting is "Understanding the Teenager's Mind."

Parents get upset when their boy begins to go with girls, but become more alarmed when the puppy love stage sets in. Then they wonder, "What is he doing?"

Parents who are interested in wanting to register or to secure further information, should contact their County Home Agent.

Newspapermen Elect Mintz

Milton Mintz has been elected secretary-treasurer of the Accredited Home Newspapers of America. The action took place Friday at a meeting of the organization's board of trustees in New York City.

The new office-holder has been on the board of trustees for the past four years. Mintz is business manager of the newspapers published by the Suburban Publishing Co. They are: The Union Leader, Irvington Herald, Springfield Leader, Valleyburg Leader, The Spectator of the Roselles and the Sun.

Ray Kelly of the North End Reporter of Chicago was elected president. Frank Wick of the South Side Journal of St. Louis was voted to the vice-presidency. The AHNA is a nation-wide organization representing over 500 newspapers.

Earlier in the year Mintz was named recipient of the AHNA's annual Sam B. Anson Award. He became the first non-publisher in the organization's history to receive the honor as the member who did most for the AHNA and the newspaper industry.

Mr. and Mrs. Mintz reside at 307 Alden rd., Springfield.

YOU WANT
SEE 'EM...
LOW PRICES!
'64 PONTIACS & TEMPESTS
IMMEDIATE DELIVERY
KOPLIN PONTIAC

BRICK CHURCH APPLIANCE

8 front stores

NEW JERSEY'S MOST RESPECTED APPLIANCE CHAIN

GRAND OPENING AT TOM'S

LADIES HAIRCUTTING SALON
EXPERT BEAUTICIANS ON JOB

TOM, formerly with "MISS HAIRCUT"
STYLISH HAIRCUT - \$1.50 - CHILDREN ONLY \$1.00
NO APPOINTMENT NEEDED
79 Halsey Street, Newark Phone: 642-4854
HALF BLOCK FROM S. KLEIN'S

Wolsten's PROJECTOR HOUSE

Will Your Photo Equipment Work This Holiday Season? We'll check it for you FREE!

1060 SPRINGFIELD AVE. IRVINGTON CENTER ES 3-1829

'PSYCHOSOMATIC MEDICINE' TOPIC

"How Your Mind Affects Your Body" will be discussed by Arthur Stillman, M.D., New York City physician, at a meeting of Essex-Union Chapter of Parents Without Partners, Inc. Monday evening at the Coronet, Irvington, 8:30 p.m.

Auto Needs? Don't Worry... See Murray!

Permanent-Type ANTI-FREEZE

PRESTONE • ZÉREX • TELAR

QUART **66¢** GALLON **1.79**

QUANTITIES ARE NEVER LIMITED AT A-A AUTO STORES

A-A AUTO STORES

ELIZABETH
643 Elizabeth Ave.
Tel. 3-7146 or 3-4133
Daily 8 to 8 - Sat. 8 to 6 - Sun. 9 a.m. to 12:30 p.m.

NEWARK
877 So. Orange Ave.
(Corr. Greer St.)
ES 2-4188 or ES 4-2327
Daily 8 to 9 - Sat. 8 to 6 - Sun. 9 a.m. to 12:30 p.m.

FASHIONS IN WIGS

The Ruth Estlin Goldberg Memorial for Cancer Research will meet Monday 8:30 p.m. at Temple Beth Shalom, Union. A fashion show of Lady Windsor Wigs will be presented by Robert Sample.

BRICK CHURCH APPLIANCE

8 front stores

NEW JERSEY'S MOST RESPECTED APPLIANCE CHAIN

STUFF STORES

ALL 8 STORES OPEN
9:30 A.M. TO 9:00 P.M.

Service

Fast, Reliable Service by Factory Authorized, and Trained Personnel.

Credit

NO DOWN PAYMENT
36 MONTHS TO PAY

Our 29th Year of Service to the Residents of Northern New Jersey

VALUES! VALUES! VALUES!
YOU CAN'T BEAT THESE

WHIRLPOOL DISHWASHER

\$108.

Top loading, fully automatic, portable. Washes 10 place settings, no costly installation needed, cutlery.

Premium Features at a Value Price

\$199⁸⁸

This set is packed with features you'd expect to pay more to get. Hand-wired chassis, precision crafted with modern hand and dip soldering for circuit connections of high reliability. All tubes are Premium Rated... built and tested to Motorola's own rigid specifications. Filtered filter tubes help reduce annoying reflections, especially when you turn this set to practically any angle.

Come in and see our complete assortment of 1964 Motorola models and styles.

MOTOROLA TV
Full Year Guarantee

Manufactured one-year guarantee covers free exchange or repair of any component proven defective in normal use. Arranged through selling dealer. Labor extra.

MAGIC CHEF 30" GAS RANGE

\$138.

Full width oven. Oven window and lighted broil panel, clock and timer. All porcelain cabinet.

FAMOUS 10 FOOT REFRIGERATOR

\$118.

Full width cross-top freezer. Chiller tray, 3 slide-out shelves, extra-large door shelves with egg rack. Only 24" wide.

MOTOROLA TV
Full Year Guarantee

Manufactured one-year guarantee covers free exchange or repair of any component proven defective in normal use. Arranged through selling dealer. Labor extra.

KELVINATOR GAS DRYER

\$118.

Fully automatic. Easy reach lint trap. Full 20-lb. capacity. Dries in heat or air, safety door. 0390

WHIRLPOOL 2-SPEED WASHER

\$163.

2 speeds, 2 cycles for all fabrics. 3 wash-water temperature controls, water level control, 12-lb. capacity. Lint filter.

Fine-furniture styling

Model 23N47
Model 23N48
Model 23N49

Hand-wired Chassis

Model 19P38
Ideal second set
Motorola's popular Tartan 19 (overall diag. tube meas. 17 1/2" sq. in. picture viewing area) has pop-up handle... and MacLevy-Martin Aerial System.

\$139⁸⁸

HOTPOINT 2-DOOR REFRIGERATOR

\$199.

Automatic defrost. Big 85-lb. separate freezer. Slide-out shelves, porcelain crisper, egg rack, butter bin.

SUNBEAM SHAVEMASTER

\$16.88

Hand electric model. Shaves' footed, smoothest of all.

BISSELL SWEEPMASTER

\$19.88

Lightweight, vacuum cleaner for rugs, bare floors, even stairs! 7-lb.

CASCO STEAM AND DRY IRON

\$8.99

Multi-cycle. Wash-and-iron setting. Irons, steams or dry, thermostat.

GEN'L ELECTRIC PERCOLATOR

\$9.88

Brews 3.9 cups of perfect coffee every time, keeps coffee hot.

UNIVERSAL HAIR DRYER

\$9.88

Hot Air carry coil. Multi-heat control, dries, nails, feet.

Robert Hall

Exceptional value for boys!

RUGGED CORDUROY TOUCHDOWN COAT
extra warm plaid lining from neck to hem!

A winner every time in thickset cotton corduroy... perfect outdoor styling with button-down convertible Hebrides knit collar and toasty-warm lining. Set-in sleeve model in the newest fall tones.

In sizes 10 to 20.

13⁹⁹

YOU'D EXPECT TO PAY \$18

BRICK CHURCH APPLIANCE

8 front stores

NEW JERSEY'S MOST RESPECTED APPLIANCE CHAIN

UNION
2714 MORRIS AVE.
687-2288

RAHWAY
1736 ST. GEORGES AVE.
382-0889

Robert Hall

OPEN EVERY NIGHT 7:30-9:30

HERE'S WHY YOU SAVE AT ROBERT HALL

- We sell for cash only!
- There are no credit charges!
- We have no credit losses!
- You save because we save!

UNION - ROUTE 22
West of Garden State Parkway
NORTH ELIZABETH - 1040 Sherman Ave.
EAST ORANGE - 426 Central Ave. (corner Sumner St.)

IRVINGTON - NEW ST.
Off Springfield Ave. at Inv. Cen.
NORTH ELIZABETH - 1040 Sherman Ave.
BLOOMFIELD - 346 Bloomfield Ave. (at Garden State Parkway)

LINDEN - 415 W. St. Georges Ave.
(2 blocks south of High School)
Next to Twin-City Motor Shop (Next to Berry Market Co.)

PLenty of FREE PARKING

'We Just Did Not Get The Breaks,' Says Bulldog Coach

Springfield Ties Roselle Eleven

Leader Sports

Booters Lose 2, Face Westfield

Members of the Springfield Regional High School soccer team will be striving to find the winning formula when they play Westfield tomorrow. Coach John Palfi's athletes were whipped by Watchung Hills on Tuesday, 3-0. They were also shut out by top-ranking Irvington, 3-0, last Friday.

The Bulldog booters were trailing, 1-0, at the end of the first quarter against Watchung Hills, when Palfi took drastic action.

He benched his entire starting team, except for goalie Keith Neigel, and kept his reserves in for the rest of the game. Watchung kept up the pressure on the less-experienced Springfield players, building the score up steadily to the final 3-0.

Last week the men from Dayton lost a tough one to Irvington, 3-0. But the score does not tell the entire story. The Bulldogs played Irvington to a 0-0 standstill until late in the third period, indicating the ability to stay with a good team is there.

The Dayton team made a few mistakes, but according to coach Palfi, they might just be registered as good plays by the Irvington team, rather than mistakes.

It was simply a matter of being out of position, the coach

continued. "And one of the goals, about a 28-yarder, was a beautiful shot, unexpected, and very hard to stop.

The play of Keith Neigel at the goal spot gave Palfi some opportunity for praise. "Neigel played his best game of the year, without a doubt."

Palfi has kept the boys moving through drills daily. We have the opportunity in these drills to work on offense and defense simultaneously.

The team has improved by leaps and bounds, according to the coach. He contends that the second half of the season will tell another tale.

"We have had some sparkling play by individuals and the team; the only thing we have to do now is put four good quarters together."

"Our main trouble at this point is getting the ball up to the other half of the field, but we are working on it and I expect to see some definite improvement."

I am using as many of the boys as possible, and lately Bob Marinas, who has not played that much as yet, has really impressed me with his spirited play. The whole team, for that matter, has picked up their spirits; since they found out that they actually can play this game of soccer."

I've put those four good periods together. I do not think there will be too many teams around that could take us, the coach said.

Scott Hammen Wins

Scott Hammen of Springfield took first place among advanced intermediate troopers aged 13 at the recent 30th Annual Autumn Watchung Troop Horse Show.

More than 625 youngsters took part in the show at the Watchung State, the Union County Park Commission's riding center in Summit.

Pin-Breakers, 4-0, Top Girls' League

The Pin-Breakers, with the help of Diana Hinton, swept the game. They moved into a second place in the Girls' League.

The four starters also went, consisting in the undefeated category after the first two weeks of play. Sharon Gagnon, Virginia Vogt, Libby Chapman and Nancy Morrino make up the four girl squad.

Marlene McElroy and Ellen Prandi were placed on the roster of the Lucky Stars, rounding out the league membership at 17.

Shari Goldman remains in the top spot for individual averages. She is moving along at a 97 clip. She is followed by Alyse Cooper, 87; Gall Pozanski, 87; Diane Slater, 85; Virginia Vogt, 84; Sharon Gagnon, 82; Diane LaMorgese, 73; Sharon Nisman, 73; Nancy Morrino, 71; and Claudia Norwalk, 71.

Spectators are invited to watch the Tuesday afternoon action at the Springfield Bowl.



TAKE OFF — Frank Monticello, Springfield's linback, picks up momentum as he lugs the ball around right end Saturday at Roselle. Roselle defenders are Ed Massey (89) and Jack Goyette (68). George Bowles of Springfield attempts to break the Bulldog runner loose. (Photo by Bob Baxter)

Grid Bears Hope For Title Clincher In Game Saturday

The "IF" season begins this week for the Newark Bears. If they win Saturday night and Jersey City, 7-2 losses, Newark will clinch first place and become the representatives of the Southern Division against the winner of the Northern group in the play-off game of the Atlantic Coast Football League.

To accomplish the coveted position, the Bears will have to topple a fast charging Harrisburg team in the Bears' final home game of the season at Schools Stadium, Roseville and Bloomfield aces, Saturday night.

Harrisburg has been stepping in high gear in recent weeks and now has a 6-2-1 mark. A Harrisburg triumph, incidentally, coupled with a Jersey City loss, will move the Capitals into second place. Defenses Newark is enjoying a spectacular season, riding the crest of a 12-game streak that includes three exhibition victories.

Two weeks ago Newark defeated the arch-enemy, Jersey City 16-14, this week the Bears posted a 40-10 triumph over Atlantic City. Rutgers Saturday night. It was a new high winning score in the two-year history of the ACFL. The 70-point total also was a record for a single game.

EVERY MINUTE IN COURT must be used in maximum efficiency by the attorneys for jury-avoiding in the Book of Knowledge.

WHOOOO... DOESN'T NEED FINANCIAL ADVICE? Expert counsel in investments is something that practically everyone can use at any time or another. We'll help you find the best way that concerns handling your investments.

DONAN & Co., Inc. STOCKS & BONDS & MUTUAL FUNDS 263 Morris Ave., Springfield DR 9-3666



SHARDON STAYED — Mickey Bradford, Roselle's triple threat linbacker, was held to a standstill by Springfield tackle Paris Boyd. Running over on the play is Roselle's Steve Pink. Stratford ran for one touchdown and passed for another at the Roselle field, Dayton, 12-13. (Photo by Bob Baxter)

Hold Newark Man For Jury Action

William P. Hayes of Newark, who was an employee of the Bellview Golf Club, was held for a Union County Grand Jury in \$2,500 bail in Springfield Municipal Court Monday night on a grand larceny charge.

Hayes, about 40, allegedly stole two rings with a total value of \$4,300, from an overnight guest at the club. He waived a preliminary hearing before Magistrate Thomas A. Argyris.

Mrs. Miriam Struck, 53, of Millburn waived a preliminary hearing on four bad check complaints and was held for grand jury action. She was released in the custody of her attorney.

Three complaints were signed by the G. & E. Deleatessen on Dec. 22 and were by Saks Fifth Ave., both Springfield. Edward G. Cardinal, 20, of Milltown rd., Springfield, was fined \$20 on a loitering charge.

Off-Style Bowling

By AL SAVAR Brunswick Advisory Staff If I were a clerk, they'd probably call me Big Bend. I don't believe any clerk ever had quite the pendulum swing that I find best suits me. To get just the results I want, I take my stance with the ball directly in front of me. I bend until the ball is very close to the floor.

Most bowlers start their pushaway with the ball about waist-high and the tendency today is to begin operations from the right side rather than the center of the body. My position naturally shortens the pushaway, but it results in a pendulum swing that works.

As a member of the Brunswick Advisory Staff, I recommend it for some bowling students to whom it seems well fitted.

Sometimes my ball isn't more than a fraction of an inch from the floor at the bottom of the swing. My starting position, and the resultant swing, enable me to reach way over the foul line before releasing the ball. Sometimes I let go as far as two and a half feet beyond the line.

BOWL Special Family Bowling Day Every Saturday Afternoon Until 6 p.m. 40¢ A Game SPRINGFIELD BOWLING 24 Center St. DR 4-1496 Open Fri. & Sat. 11 a.m.

By LEW FISHMAN A "luckless" Dayton High School football team will take several minutes of the latter home grounds.

It is another Watching conference contest, and Springfield's coach is getting a bit wary of these games. Dayton is 4-2-1 in the conference, losing to Hillsdale and Clark while "pulling out" a 13-13 tie against Roselle Saturday.

In the last two games, against Hillsdale and Roselle, the Bulldogs have outrushed, outpassed and outgained the opposition. They have picked up more first downs than either of their two opponents, and they have dominated play from the beginning

to the end of each game, yet they did not win. What is the explanation? It is the breaks. We beat them every other way except by crossing the goal line.

Springfield's loss to Hillsdale came in the first few minutes of play. In Saturday's game it was the Bulldogs that had to come back in order to tie a team that has now not won a ballgame in their last 17 outings.

Herb Palmer believes that he has his best team on the field. He also believes that with just a glance, not even a smile from Ledy Luck, Dayton would have two more wins added to their record.

Cole Bowls Best In Temple Action At Hy-Way Bowl

Bernie Cole, with 245-575, had the high game of the year to date in Temple Beth Ahm Bowling League Sunday at Hy-Way Bowl. Other top scorers were Abby Weinberg, 204-584; Jules Wasserman, 212-500-580.

Also, Lenny Seroff, 218; Bernie Sanders, 212; Mairy Shindler, 213; Barney Gerstein and Manny Meyers, 214; Harold Blank, 214; Ed Silverstein, 207; Sid Dorfman and Frank Robinson, 200.

So Herb Palmer enters the Scotch Plains tilt with a balanced attack that has been able to move the ball against every team they have played. But the coach is not satisfied with a menacing attack; he wants just a little bit of luck.

Bob Rice, Rich Blitt, Drew Wuestmann and Tom Baker really stood out for the Bulldogs Saturday. Carl Yaras continued his fine playing, and the pass defense which was a little off against Hillsdale looked good, the coach continued.

Palmer said he liked the way the boys came back. "They did not just lay down when they were behind. They fought back, playing hard clean football."

As for the fact that they are young and inexperienced, was the key. But I cannot be dissatisfied with the showing the boys put on against Roselle."

Springfield scores first. The Bulldogs scored late in the first period on a 40-yard sustained drive. Wuestmann and Monticello picked up ground and Rola completed a 26-yard pass play to Rich Blitt. Rola was picked up for the score, but Monticello's attempted PAT was blocked by Doug Savinakis.

In the second quarter, the Bulldogs continued to pile up yardage, but they failed to score. Springfield took the ball on their own 10 with only a few minutes remaining in the half. A fumble and eight plays later Roselle had a touchdown.

The Springfield line held Roselle to three yards on the first three downs, but Mickey Stratford connected with Les Randolph on an option play, and the score was tied. Bruce Nelson converted the extra point and Roselle was in the lead.

The Rams scored again in the third period when they took the ball over on downs and marched 77 yards for a touchdown. The march was highlighted by the fine broken field running of Roselle's Mickey Stratford, who alternated between the halfback and quarterback positions. Stratford picked up the final nine yards on an option play. This time booting the ball at the right end, Jay Figuero blocked the attempted PAT.

But the Springfield boys were far from defeated. Midway in the final session, Baker intercepted a Stratford aerial on the Roselle 35. He carried the ball down to the 24, and eight plays later Wuestmann smashed over from the zone. Frank Monticello booted the PAT, and the scoring was over.

Game Statistics Springfield Roselle

First Downs	11	8
Yards Rushing	114	111
Yards Passing	81	10
Passes	6-15	3-10
Penalties	88 yds.	80 yds.
Interceptions	by 3	0
Fumbles	3	0

Three-Way Tie In Sports League

Springfield scores first. The Bulldogs scored late in the first period on a 40-yard sustained drive. Wuestmann and Monticello picked up ground and Rola completed a 26-yard pass play to Rich Blitt. Rola was picked up for the score, but Monticello's attempted PAT was blocked by Doug Savinakis.

OALL Drexel 8-4300 For Expert Oil Burner Service. Schaeble Oil Co. 192 Mountain Ave. SPRINGFIELD. coal - FUEL OIL - coke Metered Deliveries Budget Plan Member of Springfield Chamber of Commerce

1963 CONTINENTALS NEW - USED - DEMOS As Low As \$4895 ALSO NOW AVAILABLE LOW MILEAGE 1961 and 1962 CONTINENTALS. NOW ON DISPLAY 1964 CONTINENTALS. Fletcher Lincoln Mercury Corp. 80 Franklin Place, Summit CR 7-0942. Open Evenings to 9 p.m. — Wed. and Sat. to 6 p.m.

See Mr. "D" for your full wardrobe spree! HIGH-STYLE MEN'S WEAR in the latest fabrics and styles. Complete line of Continental, Ivy League and Conservative Clothing. Ask about our lay-a-way plan. Fashions By... Mr. "D" 1992 Morris Avenue Union • 687-2772 Open Fri. & Sat. 11 a.m.

BRAKES BONDED BRAKE LINING 9.95 EXPERT TRANSMISSION SERVICE U. S. ROYAL. YANKEE BRAKE SHOP 1410 STUYVESANT AVE., UNION

Your heating dollar goes further! Switch to JOY NITTI & SON 404 Coll St. Irvington ES 3-0110 HEATING and COOLING SPECIALISTS. Headquarters For Varsity School SWEATERS. Headquarters for SOCCER SHOES AND EQUIPMENT. MIELE'S 1850 Springfield Ave. ES 1-3333 Irvington Center

PERSONALS

HELP WANTED - Women
DON'T WAIT - PHONE NOW
3 openings for women to call 810

HELP WANTED

HELP WANTED - Women
CHRISTMAS CASH I I
LADIES - EARN OVER \$100 WEEK

CASHIERS

PART TIME OVER 21 CONVENIENCE STORE
LUMBER CO.
ROUTE 18 SPRINGFIELD

OPERATORS

INJECTION MOLDING MACHINES
WILFRED
BEAUTY SCHOOL

WILFRED

BEAUTY SCHOOL
BANKERS BALANCE
MANAGER

CALLING ALL HOUSEWIVES

APPLY NOW FOR PART TIME POSITIONS MORNINGS OR AFTERNOONS

LIFE MAGAZINE

HELP - WOMEN TRICK OR TREAT
Are you trying to trick your neighbor?

Help Wanted - Women

DOMESTIC HELP WID - Female
RELIABLE - CAPABLE - HOUSEWORKER

HELP WANTED - Women

CHRISTMAS CASH I I
LADIES - EARN OVER \$100 WEEK

CASHIERS

PART TIME OVER 21 CONVENIENCE STORE
LUMBER CO.

OPERATORS

INJECTION MOLDING MACHINES
WILFRED

WILFRED

BEAUTY SCHOOL
BANKERS BALANCE
MANAGER

CALLING ALL HOUSEWIVES

APPLY NOW FOR PART TIME POSITIONS MORNINGS OR AFTERNOONS

LIFE MAGAZINE

HELP - WOMEN TRICK OR TREAT
Are you trying to trick your neighbor?

AUTOMOTIVE

Mercedes-Benz 300-D
We have to offer one of the best

HELP WANTED - Women

CHRISTMAS CASH I I
LADIES - EARN OVER \$100 WEEK

CASHIERS

PART TIME OVER 21 CONVENIENCE STORE
LUMBER CO.

OPERATORS

INJECTION MOLDING MACHINES
WILFRED

WILFRED

BEAUTY SCHOOL
BANKERS BALANCE
MANAGER

CALLING ALL HOUSEWIVES

APPLY NOW FOR PART TIME POSITIONS MORNINGS OR AFTERNOONS

LIFE MAGAZINE

HELP - WOMEN TRICK OR TREAT
Are you trying to trick your neighbor?

FOR SALE

LADIES' FALL COATS, SUITS, CAR COATS, RAIN COATS, ALL SIZES INCLUDING LARGE SIZES, ALSO JUNIOR COATS AND SUITS, SIZES TO 15, PETITE AND CHILDREN'S COATS.

HELP WANTED - Women

CHRISTMAS CASH I I
LADIES - EARN OVER \$100 WEEK

CASHIERS

PART TIME OVER 21 CONVENIENCE STORE
LUMBER CO.

OPERATORS

INJECTION MOLDING MACHINES
WILFRED

WILFRED

BEAUTY SCHOOL
BANKERS BALANCE
MANAGER

CALLING ALL HOUSEWIVES

APPLY NOW FOR PART TIME POSITIONS MORNINGS OR AFTERNOONS

LIFE MAGAZINE

HELP - WOMEN TRICK OR TREAT
Are you trying to trick your neighbor?

FOR SALE

Mercedes-Benz 300-D
We have to offer one of the best

HELP WANTED - Women

CHRISTMAS CASH I I
LADIES - EARN OVER \$100 WEEK

CASHIERS

PART TIME OVER 21 CONVENIENCE STORE
LUMBER CO.

OPERATORS

INJECTION MOLDING MACHINES
WILFRED

WILFRED

BEAUTY SCHOOL
BANKERS BALANCE
MANAGER

CALLING ALL HOUSEWIVES

APPLY NOW FOR PART TIME POSITIONS MORNINGS OR AFTERNOONS

LIFE MAGAZINE

HELP - WOMEN TRICK OR TREAT
Are you trying to trick your neighbor?

BUSINESS DIRECTORY

ALPHABETICALLY LISTED BY CLASSIFICATION
Carpentry
Garage Door Repairs
Moving & Storage
Robbins & Allison Inc.
Home Improvements
Check Cashing Service
Christmas Gift Suggestions
Hand Made Novelties
Cleaning
Attention Restaurants Owners
Public Buildings Contractors
Clothing - Household Gifts
Coal & Fuel
Nut or Stove \$22.95
GEM COAL CO.
Dog Grooming
Dressmaking
Dry Cleaning & Tailoring
Electric Repairs
Entertainment
Fences
Floor Waxing
Floor Sanding - Waxing
Furniture Repair

BUSINESS DIRECTORY
Plumbing & Heating
Radio & Television Repair

Real Estate
Houses For Sale
MIDLAND COUNTY REALTY

Real Estate
Wanted To Rent
FLAT ONE FAMILY HOME

Real Estate
Apts. for Rent
VALLEYVIEW AREA 4 BDRM.

Real Estate
Apartments to Rent
SOMERVILLE
You get MORE for your money at BROOKSIDE GARDENS

Real Estate
Apt. Wanted to Rent
Apt. Wanted to Rent

Real Estate
Furnished Rooms to Rent
FURNISHED ROOMS TO RENT

Real Estate
Harry A. Schuman - Realtor
1202 SPRINGFIELD AVE., IRVINGTON, N. J.

Roofing - Siding
30-2-1616 N. BARDON 371-4219

Country Properties For Sale
Whitehouse Realty

Election Notice
TOWNSHIP OF UNION
NOTICE OF GENERAL ELECTION

Election Notice
DISTRICT NO. 6
BEGINNING AT A POINT IN THE CENTER

Election Notice
DISTRICT NO. 7
BEGINNING AT A POINT IN THE CENTER

Election Notice
DISTRICT NO. 8
BEGINNING AT A POINT IN THE CENTER

Election Notice
DISTRICT NO. 9
BEGINNING AT A POINT IN THE CENTER

Election Notice
DISTRICT NO. 10
BEGINNING AT A POINT IN THE CENTER

Rug Cleaning
RUGS & UPHOLSTERY
CLEANED IN HOME OR OFFICE

Elderly Persons Board
HIGHLAND MANOR
FOR THOSE WHO

Election Notice
DISTRICT NO. 11
BEGINNING AT A POINT IN THE CENTER

Election Notice
DISTRICT NO. 12
BEGINNING AT A POINT IN THE CENTER

Election Notice
DISTRICT NO. 13
BEGINNING AT A POINT IN THE CENTER

Election Notice
DISTRICT NO. 14
BEGINNING AT A POINT IN THE CENTER

Election Notice
DISTRICT NO. 15
BEGINNING AT A POINT IN THE CENTER

Election Notice
DISTRICT NO. 16
BEGINNING AT A POINT IN THE CENTER

Singer Sewing Center
1044 Springfield Ave., Irvington

Garage Wanted
GARAGE WANTED
1000 Morris Ave., Union

Election Notice
DISTRICT NO. 17
BEGINNING AT A POINT IN THE CENTER

Election Notice
DISTRICT NO. 18
BEGINNING AT A POINT IN THE CENTER

Election Notice
DISTRICT NO. 19
BEGINNING AT A POINT IN THE CENTER

Election Notice
DISTRICT NO. 20
BEGINNING AT A POINT IN THE CENTER

Election Notice
DISTRICT NO. 21
BEGINNING AT A POINT IN THE CENTER

Election Notice
DISTRICT NO. 22
BEGINNING AT A POINT IN THE CENTER

Tree Repair
IRVINGTON TREE SERVICE
Removal & Pruning

REAL ESTATE
Real Estate in the most important investment you will ever make

Election Notice
DISTRICT NO. 23
BEGINNING AT A POINT IN THE CENTER

Election Notice
DISTRICT NO. 24
BEGINNING AT A POINT IN THE CENTER

Election Notice
DISTRICT NO. 25
BEGINNING AT A POINT IN THE CENTER

Election Notice
DISTRICT NO. 26
BEGINNING AT A POINT IN THE CENTER

Election Notice
DISTRICT NO. 27
BEGINNING AT A POINT IN THE CENTER

Election Notice
DISTRICT NO. 28
BEGINNING AT A POINT IN THE CENTER

Warehouse-Building Suits
WAREHOUSE-BUILDING SUITS
FOR RENT

Cross County Realty
201 Mountain Ave., Union

Election Notice
DISTRICT NO. 29
BEGINNING AT A POINT IN THE CENTER

Election Notice
DISTRICT NO. 30
BEGINNING AT A POINT IN THE CENTER

Election Notice
DISTRICT NO. 31
BEGINNING AT A POINT IN THE CENTER

Election Notice
DISTRICT NO. 32
BEGINNING AT A POINT IN THE CENTER

Election Notice
DISTRICT NO. 33
BEGINNING AT A POINT IN THE CENTER

Election Notice
DISTRICT NO. 34
BEGINNING AT A POINT IN THE CENTER

Weather Stripping
ALUMINUM WINDOWS-INTERLOCK
METAL WEATHER STRIPPING

DeCamp & Gunning, Inc.
1254 Springfield Ave., Irvington

Election Notice
DISTRICT NO. 35
BEGINNING AT A POINT IN THE CENTER

Election Notice
DISTRICT NO. 36
BEGINNING AT A POINT IN THE CENTER

Election Notice
DISTRICT NO. 37
BEGINNING AT A POINT IN THE CENTER

Election Notice
DISTRICT NO. 38
BEGINNING AT A POINT IN THE CENTER

Election Notice
DISTRICT NO. 39
BEGINNING AT A POINT IN THE CENTER

Election Notice
DISTRICT NO. 40
BEGINNING AT A POINT IN THE CENTER

Window Washing
LET THE SUNSHINE IN
PAUL & CAROL'S WINDOW CLEANING SERVICE

Real Estate
Houses for Sale
COTTAGE - 3 BDRM and bath

Election Notice
DISTRICT NO. 41
BEGINNING AT A POINT IN THE CENTER

Election Notice
DISTRICT NO. 42
BEGINNING AT A POINT IN THE CENTER

Election Notice
DISTRICT NO. 43
BEGINNING AT A POINT IN THE CENTER

Election Notice
DISTRICT NO. 44
BEGINNING AT A POINT IN THE CENTER

Election Notice
DISTRICT NO. 45
BEGINNING AT A POINT IN THE CENTER

Election Notice
DISTRICT NO. 46
BEGINNING AT A POINT IN THE CENTER

