

Study throws light on stormy weather

Correlation with solar activity confirmed

A Stanford University team has reported finding a definite correlation between solar activity and the low pressure "troughs" which bring stormy weather to the continental United States.

The scientists said their work confirms speculation of more than 100 years that solar activity affects the earth's weather patterns. Their findings show that magnetic structure of the sun is clearly related to changes in the earth's atmosphere.

The scientists' findings were reported by Dr. John M. Wilcox, solar physicist and leader of the Stanford group, at a recent symposium on the influence of solar activity on the weather held at the Goddard Space Flight Center in Greenbelt, Maryland. Dr. Wilcox's research is funded by the National Science Foundation (NSF), the National Aeronautics and Space Administration, and the Office of Naval Research.

Scientists have found that around its equator, the sun is divided normally into four magnetic sectors. From two sectors on opposite sides of the sun, lines of force of the magnetic field are polarized outward from the sun. In the other two sectors, the lines of force are polarized toward the sun.

These lines are blown far out in the solar system by a stream of charged particles, called the solar wind, flowing from the sun, much as a long string would be blown out in front of a fan. Thus, imbedded in the solar wind is the sun's normal magnetic pattern of four sectors, with alternate sectors identified by field lines polarized away from or toward the sun. A clear boundary separates the sectors. As the sun rotates, the long magnetic field lines sweep through the solar system in curved lines.

These lines are made from the water of a garden hose if the nozzle is moved fairly rapidly in a circle.

A few days before the boundary of a magnetic sector passes the earth there is a decrease in the strength of the solar magnetic field and in the velocity of the solar wind. Dr. Wilcox said. After the boundary sweeps by the earth a few minutes, an upward surge in the strength of the now reversed magnetic field and in the velocity of the solar wind begins and continues through a period of several days.

Material scientifically equivalent to a stranger from a strange land has been identified in meteorite fragments by scientists at the University of Chicago, Robert Clayton, Lawrence Grossman and Toshiko K. Mayeda announced the findings in a paper published in the journal "Science" last week.

"This meteorite stuff, mixed in as a small amount of dust grains, is an isotopic oxygen, oxygen-18, in almost pure form. Ordinary oxygen is mostly oxygen-16, with a small amount of oxygen-17, all stable isotopes."

"The isotopic in the meteorite is almost pure oxygen-18," the first oxygen you'd find in a primitive star," Clayton goes on to explain that our sun is not a primitive star. It is a third of four generations old.

Clayton is a professor in the Enrico Fermi Institute, and the Department of Geophysical Sciences at the University of Chicago. He is also a professor in the Department of Geophysical Sciences, and Mayeda is a chemist in the Fermi Institute.

"Since this isotopic doesn't occur in the solar system in such a primitive state, Clayton and his colleagues conclude that it must have been brought to earth by meteorites, and may be a fragment of an interstellar disk with its own nuclear history."

Using a mass spectrometer to analyze and register the material in fragments of the meteorite, which fell in Mexico in 1962, Clayton said.

"The aluminum nucleus in the meteorite is altered because of carbonaceous elements formed in the early days of the solar nebula, that highly altered mass of gas and dust that later accreted to form the sun and planets. The primitive matter has subsequently been found in meteorites, and in the meteorite fragments we registered the material in fragments of the meteorite, which fell in Mexico in 1962."

Aluminum is a common element in the solar system, and is a common element in the earth's crust. It is a common element in the earth's crust.

Pachman gets Cancer Society National award

Dr. Elliott Pachman of the American Cancer Society has been awarded the society's highest national award for service to a state.

A senior member of Elliott Pachman and Co., a certified public accountant with offices in Union and New York City, Pachman has been an outstanding ACS volunteer for the last 15 years. He has served as Chairman of the ACS, a member of the ACS, and a member of the ACS.

Dr. Pachman is a member of the ACS, a member of the ACS, and a member of the ACS. He has served as Chairman of the ACS, a member of the ACS, and a member of the ACS.

Dr. Pachman is a member of the ACS, a member of the ACS, and a member of the ACS. He has served as Chairman of the ACS, a member of the ACS, and a member of the ACS.

Recycling blood studied

May help a patient in surgery

Recycling a patient's own blood during surgery may be an answer to recurring blood shortages according to Bruce J. Brenner, M.D., an attending surgeon at Newark Beth Israel Medical Center. The procedure is known as autotransfusion.

"In many elective surgery cases," Dr. Brenner explained, "this procedure can be an enormous help by providing a supply of blood for the patient, even if he has a rare blood type. It also eliminates the danger of contracting hepatitis from donor blood."

The procedure is relatively simple. Blood which is normally suctioned away from the surgical field and discarded is drawn instead into a plastic reservoir. Here it is filtered, deoxygenated and treated with anti-clotting agents before reinfusion in the patient. The blood re-enters the patient through a catheter in a peripheral vein in the arm.

The advantages of a readily available supply of blood can not be underestimated, especially in view of recurring shortages at blood banks across the country. "These shortages," Dr. Brenner pointed out, "are due largely to the increased demand for donor blood than to a decrease in the number of donors. In addition to scheduled surgical cases there are emergency operations and severe injuries which further strain the existing blood supplies. It's only natural to think about recycling a patient's blood."

In a case of rapid blood loss, such as an injury to an artery, autotransfusion can quickly replace transfused blood lost by the patient without the delays associated with typing the blood and locating matching donor blood. In most cases, the age or condition of the patient does not prohibit him from receiving his own blood through autotransfusion.

Autotransfusion is not a new procedure. Its first practical use occurred in England in 1918, but development of the idea was hindered by a lack of technical knowledge and professional interest. "Now we have the proper equipment and know-how to autotransfuse safely and effectively," claimed Dr. Brenner, "and considering the current emphasis on recycling, the reintroduction of autotransfusion to the surgical profession is rather timely."

Plans for donor blood fund raising drive, to be held from May 1 through May 16, are being formulated.

The Juvenile Diabetes Foundation is a non-profit organization dedicated to support and enlarge education and research in juvenile diabetes.

Additional information on the Juvenile Diabetes Foundation may be obtained by writing to it at 20 Columbus Woods Dr., West Orange, or calling 736-6426, or Mrs. Donald Perlmutter, 379-9154.

EARTHBOUND

By JOSEPH TOBIN

Director, Ecology and Conservation, Wovo Hill Center for Environmental Studies, New York, N.Y.

Maple sugaring is one of the traditional activities of this season—a season marked by weather conditions which are often adverse. The temperature not being able to make up its mind and chill winds sometimes blowing up to 75 P.M. Many have always been known for its unpredictable winds.

Maple sugaring has been traditionally well known for the seasonal business of maple sugaring. John Hurlbut, the naturalist, stated specifically some time ago that "A sap run in the woods is a sign of spring and after some warm sunny March days the sap begins to flow through the branches and the sugar maple becomes alive."

Maple sugaring, as an industry, is a North American one. It was first introduced to the Indians before the white man arrived. The Indians had learned to tap a maple tree and collect the sap in a cup and stored the syrup to flavor their food. It was not until the 19th century that the sap was used for its sweetener.

The technique of removal of the syrup from the tree begins with a vertical cut in the bark and made a row of funnel shaped incisions, directing the sap into a hanging bucket.

"Sugaring" is the process of tapping the tree and collecting the sap in a cup and stored the syrup to flavor their food. It was not until the 19th century that the sap was used for its sweetener.

Princeton theater slates 'Limelight'

Charles Chaplin's last American-made film, "Limelight," will be shown Sunday at 7:30 p.m. as part of the Chaplin Film Series at the McCarter Theater, Princeton.

"Limelight," the story of aging vaudeville performers who meet in London, is a masterpiece of film-making. It was released in 1936, just as anti-Chaplin feeling was at its height in the United States, and the film received very few showings in New York, where it was first shown in the country for the European premier of "Limelight." The government revoked his entry permit but had "Limelight" shown in the United States in New York, New York, and in other cities.

The film was withdrawn and not seen again until recently.

Chaplin was on sale at the local office beginning on Saturday.

Diabetes chapter will hold meeting

The Northern New Jersey Chapter of the Juvenile Diabetes Foundation will hold a meeting on Tuesday at 8 p.m. at St. Barnabas Medical Center, Livingston.

Mrs. Marian Pettibone, coordinator for Montclair schools' volunteer tutoring program will discuss "What is the Juvenile Diabetes Club?" and "What is the Juvenile Diabetes Club?"

The meeting is free and open to all. It will be held from May 1 through May 16, are being formulated.

NCE musical comedy based on Bogart films

An original musical comedy, "The Garfield Nite," based on Humphrey Bogart detective movies of the 30s and 40s will be presented next month at Newark College of Engineering's campus theater, 232 High St., Newark.

The show is scheduled April 19, 20, 21, 22 and 23 at 8 p.m., and April 24 at 2:30 p.m. and 8 p.m. Tickets are \$2.00 and \$1.50. Reservations may be made by calling 655-5555.

Income tax assistance for Spanish-speaking

Spanish speaking tax assistants will be on duty in the Internal Revenue Service office at 970 Broadway, Newark, every Thursday through April 11.

Special training bilingual employees will assist taxpayers in Spanish and help Spanish-speaking taxpayers prepare their tax returns from 9 a.m. until 4:30 p.m. on the designated Thursdays.

'Lighting Division' seeking members

New Jersey's 7th Division (Lighting) is seeking members for its "Lighting Division" which fights in the world wars, will embark on its 20th anniversary celebration during the month of April when the U.S. Army Army celebrates its 40th anniversary.

The 7th Division (Lighting) is seeking members for its "Lighting Division" which fights in the world wars, will embark on its 20th anniversary celebration during the month of April when the U.S. Army Army celebrates its 40th anniversary.

3 A.M. DELICATESSEN RESTAURANT

IS NOW #2!

Putna the coffee 2 A.M. Saturday night and you're starved, not much on this time of night. Maybe one other place, right? Wrap up THE FAMOUS in open oven Friday and Saturday night until...

WHEREVER YOU ARE, YOU'RE CLOSE TO THE FAMOUS DELICATESSEN RESTAURANT

113 South Orange Avenue, South Orange, N.J. 07073

Mon-Thur, 7:30 AM-12 Mid. Friday 10:30 AM-12 Mid. Saturday 7 AM-12 Mid.

Van Hise is elected

Dr. Morgan Van Hise, state health officer, has been elected president of the National Association of State-City Health Officers.

Dr. Van Hise, who is also director of the State Office of Petroleum Allocation, has been with the NCAHCO since 1952.

8 films booked at state museum

Four foreign-film versions of Shakespeare classics and two American films are booked for the New Jersey State Museum for the month of April.

The films are: "The Merchant of Venice," "A Midsummer Night's Dream," "The Taming of the Shrew," and "The Merry Wives of Windsor."

NEW, NEW! THE OMEGA DIGITAL!

A watch that can do anything you can think of. It's the most advanced watch ever made. It's the most accurate watch ever made. It's the most beautiful watch ever made.

Price: \$495

AIRCooled

Because there's nobody else exactly like you.

2155 MILLIKEN BLVD. MILWAUKEE 4 763-4547

Springfield Leader

The Zip Code for Springfield is 07081

Published Every Thursday by Times Publishing Corp. 41 Mountain Ave., Springfield, N.J. 07081 • 686-7700

Subscription Rate: \$8.50 Yearly. Second Class Postage Paid at Springfield, N.J. 20 Cents Per Copy

SPRINGFIELD, N.J., THURSDAY-APRIL 4, 1974

Public hearing set April 16 on Army flood control plan

The Army Corps of Engineers will hold a public hearing at Jonathan Dayton Regional High School in Springfield at 8 p.m. April 16 on a proposed \$7 million flood control project for the Highway River in Union and Springfield and Van Winkle Brook in Springfield.

The hearing will be followed by issuance of a report containing the Corps' recommendations by June 30.

In a summary released last week, the Corps of Engineers said:

"The plan would provide flood protection for the residential area between the Highway River and Van Winkle Brook against a 200-year design flood, and would reduce flood damages that would occur as a result of floods occurring greater than the design flood. In addition, the plan would reduce flood damages along the Highway River in Union Township, a residential reach between the confluence with Van Winkle Brook and Rt. 22, and in the industrial park located downstream of Rt. 22."

At the hearing, oral statements will be permitted. But Col. Harry W. Lombard, district engineer, urged that "for accuracy of record, important facts and statements should be submitted in writing and in duplicate."

Written statements may be handed to the presiding officer at the hearing or mailed in advance to Col. Lombard at the Office of the District Engineer, U.S. Army Engineer District, New York, Corps of Engineers, 26 Federal Plaza, New York, N.Y. All statements written and oral, will become part of the official public record.

The Corps of Engineers official called on "interested parties" to attend the hearing, including representatives of federal, state, county and municipal agencies, those of commercial, industrial, agricultural, civic, highway, railroad, flood control and other property owners and any other individuals concerned.

The estimated cost of the plan under consideration is \$7,011,000, based on March 1973 price levels. Of this amount, \$5,220,000 would be federal funds, which would have to be authorized by Congress. The remaining \$1,791,000 would be non-federal funds, probably coming from the state, Union County and the two townships, to be used for land acquisition; trackage at utilities and bridges (except for New Jersey); and other miscellaneous items.

Among the work involved in the project would be replacement by the State Department of Transportation of the Morris avenue bridge, which Union officials have frequently described as the bottleneck responsible for a large part of the township's flood problems. "The summary of the proposal being considered by the Army Engineers reports that there would be 14,800 linear feet of channel excavation with an 8-foot bottom width along the Highway River which forms the boundary between Union and Springfield, from the point of confluence with the Morris avenue bridge, which Union officials have frequently described as the bottleneck responsible for a large part of the township's flood problems. "The summary of the proposal being considered by the Army Engineers reports that there would be 14,800 linear feet of channel excavation with an 8-foot bottom width along the Highway River which forms the boundary between Union and Springfield, from the point of confluence with the Morris avenue bridge, which Union officials have frequently described as the bottleneck responsible for a large part of the township's flood problems. "The summary of the proposal being considered by the Army Engineers reports that there would be 14,800 linear feet of channel excavation with an 8-foot bottom width along the Highway River which forms the boundary between Union and Springfield, from the point of confluence with the Morris avenue bridge, which Union officials have frequently described as the bottleneck responsible for a large part of the township's flood problems. "The summary of the proposal being considered by the Army Engineers reports that there would be 14,800 linear feet of channel excavation with an 8-foot bottom width along the Highway River which forms the boundary between Union and Springfield, from the point of confluence with the Morris avenue bridge, which Union officials have frequently described as the bottleneck responsible for a large part of the township's flood problems. "The summary of the proposal being considered by the Army Engineers reports that there would be 14,800 linear feet of channel excavation with an 8-foot bottom width along the Highway River which forms the boundary between Union and Springfield, from the point of confluence with the Morris avenue bridge, which Union officials have frequently described as the bottleneck responsible for a large part of the township's flood problems. "The summary of the proposal being considered by the Army Engineers reports that there would be 14,800 linear feet of channel excavation with an 8-foot bottom width along the Highway River which forms the boundary between Union and Springfield, from the point of confluence with the Morris avenue bridge, which Union officials have frequently described as the bottleneck responsible for a large part of the township's flood problems. "The summary of the proposal being considered by the Army Engineers reports that there would be 14,800 linear feet of channel excavation with an 8-foot bottom width along the Highway River which forms the boundary between Union and Springfield, from the point of confluence with the Morris avenue bridge, which Union officials have frequently described as the bottleneck responsible for a large part of the township's flood problems. "The summary of the proposal being considered by the Army Engineers reports that there would be 14,800 linear feet of channel excavation with an 8-foot bottom width along the Highway River which forms the boundary between Union and Springfield, from the point of confluence with the Morris avenue bridge, which Union officials have frequently described as the bottleneck responsible for a large part of the township's flood problems. "The summary of the proposal being considered by the Army Engineers reports that there would be 14,800 linear feet of channel excavation with an 8-foot bottom width along the Highway River which forms the boundary between Union and Springfield, from the point of confluence with the Morris avenue bridge, which Union officials have frequently described as the bottleneck responsible for a large part of the township's flood problems. "The summary of the proposal being considered by the Army Engineers reports that there would be 14,800 linear feet of channel excavation with an 8-foot bottom width along the Highway River which forms the boundary between Union and Springfield, from the point of confluence with the Morris avenue bridge, which Union officials have frequently described as the bottleneck responsible for a large part of the township's flood problems. "The summary of the proposal being considered by the Army Engineers reports that there would be 14,800 linear feet of channel excavation with an 8-foot bottom width along the Highway River which forms the boundary between Union and Springfield, from the point of confluence with the Morris avenue bridge, which Union officials have frequently described as the bottleneck responsible for a large part of the township's flood problems. "The summary of the proposal being considered by the Army Engineers reports that there would be 14,800 linear feet of channel excavation with an 8-foot bottom width along the Highway River which forms the boundary between Union and Springfield, from the point of confluence with the Morris avenue bridge, which Union officials have frequently described as the bottleneck responsible for a large part of the township's flood problems. "The summary of the proposal being considered by the Army Engineers reports that there would be 14,800 linear feet of channel excavation with an 8-foot bottom width along the Highway River which forms the boundary between Union and Springfield, from the point of confluence with the Morris avenue bridge, which Union officials have frequently described as the bottleneck responsible for a large part of the township's flood problems. "The summary of the proposal being considered by the Army Engineers reports that there would be 14,800 linear feet of channel excavation with an 8-foot bottom width along the Highway River which forms the boundary between Union and Springfield, from the point of confluence with the Morris avenue bridge, which Union officials have frequently described as the bottleneck responsible for a large part of the township's flood problems. "The summary of the proposal being considered by the Army Engineers reports that there would be 14,800 linear feet of channel excavation with an 8-foot bottom width along the Highway River which forms the boundary between Union and Springfield, from the point of confluence with the Morris avenue bridge, which Union officials have frequently described as the bottleneck responsible for a large part of the township's flood problems. "The summary of the proposal being considered by the Army Engineers reports that there would be 14,800 linear feet of channel excavation with an 8-foot bottom width along the Highway River which forms the boundary between Union and Springfield, from the point of confluence with the Morris avenue bridge, which Union officials have frequently described as the bottleneck responsible for a large part of the township's flood problems. "The summary of the proposal being considered by the Army Engineers reports that there would be 14,800 linear feet of channel excavation with an 8-foot bottom width along the Highway River which forms the boundary between Union and Springfield, from the point of confluence with the Morris avenue bridge, which Union officials have frequently described as the bottleneck responsible for a large part of the township's flood problems. "The summary of the proposal being considered by the Army Engineers reports that there would be 14,800 linear feet of channel excavation with an 8-foot bottom width along the Highway River which forms the boundary between Union and Springfield, from the point of confluence with the Morris avenue bridge, which Union officials have frequently described as the bottleneck responsible for a large part of the township's flood problems. "The summary of the proposal being considered by the Army Engineers reports that there would be 14,800 linear feet of channel excavation with an 8-foot bottom width along the Highway River which forms the boundary between Union and Springfield, from the point of confluence with the Morris avenue bridge, which Union officials have frequently described as the bottleneck responsible for a large part of the township's flood problems. "The summary of the proposal being considered by the Army Engineers reports that there would be 14,800 linear feet of channel excavation with an 8-foot bottom width along the Highway River which forms the boundary between Union and Springfield, from the point of confluence with the Morris avenue bridge, which Union officials have frequently described as the bottleneck responsible for a large part of the township's flood problems. "The summary of the proposal being considered by the Army Engineers reports that there would be 14,800 linear feet of channel excavation with an 8-foot bottom width along the Highway River which forms the boundary between Union and Springfield, from the point of confluence with the Morris avenue bridge, which Union officials have frequently described as the bottleneck responsible for a large part of the township's flood problems. "The summary of the proposal being considered by the Army Engineers reports that there would be 14,800 linear feet of channel excavation with an 8-foot bottom width along the Highway River which forms the boundary between Union and Springfield, from the point of confluence with the Morris avenue bridge, which Union officials have frequently described as the bottleneck responsible for a large part of the township's flood problems. "The summary of the proposal being considered by the Army Engineers reports that there would be 14,800 linear feet of channel excavation with an 8-foot bottom width along the Highway River which forms the boundary between Union and Springfield, from the point of confluence with the Morris avenue bridge, which Union officials have frequently described as the bottleneck responsible for a large part of the township's flood problems. "The summary of the proposal being considered by the Army Engineers reports that there would be 14,800 linear feet of channel excavation with an 8-foot bottom width along the Highway River which forms the boundary between Union and Springfield, from the point of confluence with the Morris avenue bridge, which Union officials have frequently described as the bottleneck responsible for a large part of the township's flood problems. "The summary of the proposal being considered by the Army Engineers reports that there would be 14,800 linear feet of channel excavation with an 8-foot bottom width along the Highway River which forms the boundary between Union and Springfield, from the point of confluence with the Morris avenue bridge, which Union officials have frequently described as the bottleneck responsible for a large part of the township's flood problems. "The summary of the proposal being considered by the Army Engineers reports that there would be 14,800 linear feet of channel excavation with an 8-foot bottom width along the Highway River which forms the boundary between Union and Springfield, from the point of confluence with the Morris avenue bridge, which Union officials have frequently described as the bottleneck responsible for a large part of the township's flood problems. "The summary of the proposal being considered by the Army Engineers reports that there would be 14,800 linear feet of channel excavation with an 8-foot bottom width along the Highway River which forms the boundary between Union and Springfield, from the point of confluence with the Morris avenue bridge, which Union officials have frequently described as the bottleneck responsible for a large part of the township's flood problems. "The summary of the proposal being considered by the Army Engineers reports that there would be 14,800 linear feet of channel excavation with an 8-foot bottom width along the Highway River which forms the boundary between Union and Springfield, from the point of confluence with the Morris avenue bridge, which Union officials have frequently described as the bottleneck responsible for a large part of the township's flood problems. "The summary of the proposal being considered by the Army Engineers reports that there would be 14,800 linear feet of channel excavation with an 8-foot bottom width along the Highway River which forms the boundary between Union and Springfield, from the point of confluence with the Morris avenue bridge, which Union officials have frequently described as the bottleneck responsible for a large part of the township's flood problems. "The summary of the proposal being considered by the Army Engineers reports that there would be 14,800 linear feet of channel excavation with an 8-foot bottom width along the Highway River which forms the boundary between Union and Springfield, from the point of confluence with the Morris avenue bridge, which Union officials have frequently described as the bottleneck responsible for a large part of the township's flood problems. "The summary of the proposal being considered by the Army Engineers reports that there would be 14,800 linear feet of channel excavation with an 8-foot bottom width along the Highway River which forms the boundary between Union and Springfield, from the point of confluence with the Morris avenue bridge, which Union officials have frequently described as the bottleneck responsible for a large part of the township's flood problems. "The summary of the proposal being considered by the Army Engineers reports that there would be 14,800 linear feet of channel excavation with an 8-foot bottom width along the Highway River which forms the boundary between Union and Springfield, from the point of confluence with the Morris avenue bridge, which Union officials have frequently described as the bottleneck responsible for a large part of the township's flood problems. "The summary of the proposal being considered by the Army Engineers reports that there would be 14,800 linear feet of channel excavation with an 8-foot bottom width along the Highway River which forms the boundary between Union and Springfield, from the point of confluence with the Morris avenue bridge, which Union officials have frequently described as the bottleneck responsible for a large part of the township's flood problems. "The summary of the proposal being considered by the Army Engineers reports that there would be 14,800 linear feet of channel excavation with an 8-foot bottom width along the Highway River which forms the boundary between Union and Springfield, from the point of confluence with the Morris avenue bridge, which Union officials have frequently described as the bottleneck responsible for a large part of the township's flood problems. "The summary of the proposal being considered by the Army Engineers reports that there would be 14,800 linear feet of channel excavation with an 8-foot bottom width along the Highway River which forms the boundary between Union and Springfield, from the point of confluence with the Morris avenue bridge, which Union officials have frequently described as the bottleneck responsible for a large part of the township's flood problems. "The summary of the proposal being considered by the Army Engineers reports that there would be 14,800 linear feet of channel excavation with an 8-foot bottom width along the Highway River which forms the boundary between Union and Springfield, from the point of confluence with the Morris avenue bridge, which Union officials have frequently described as the bottleneck responsible for a large part of the township's flood problems. "The summary of the proposal being considered by the Army Engineers reports that there would be 14,800 linear feet of channel excavation with an 8-foot bottom width along the Highway River which forms the boundary between Union and Springfield, from the point of confluence with the Morris avenue bridge, which Union officials have frequently described as the bottleneck responsible for a large part of the township's flood problems. "The summary of the proposal being considered by the Army Engineers reports that there would be 14,800 linear feet of channel excavation with an 8-foot bottom width along the Highway River which forms the boundary between Union and Springfield, from the point of confluence with the Morris avenue bridge, which Union officials have frequently described as the bottleneck responsible for a large part of the township's flood problems. "The summary of the proposal being considered by the Army Engineers reports that there would be 14,800 linear feet of channel excavation with an 8-foot bottom width along the Highway River which forms the boundary between Union and Springfield, from the point of confluence with the Morris avenue bridge, which Union officials have frequently described as the bottleneck responsible for a large part of the township's flood problems. "The summary of the proposal being considered by the Army Engineers reports that there would be 14,800 linear feet of channel excavation with an 8-foot bottom width along the Highway River which forms the boundary between Union and Springfield, from the point of confluence with the Morris avenue bridge, which Union officials have frequently described as the bottleneck responsible for a large part of the township's flood problems. "The summary of the proposal being considered by the Army Engineers reports that there would be 14,800 linear feet of channel excavation with an 8-foot bottom width along the Highway River which forms the boundary between Union and Springfield, from the point of confluence with the Morris avenue bridge, which Union officials have frequently described as the bottleneck responsible for a large part of the township's flood problems. "The summary of the proposal being considered by the Army Engineers reports that there would be 14,800 linear feet of channel excavation with an 8-foot bottom width along the Highway River which forms the boundary between Union and Springfield, from the point of confluence with the Morris avenue bridge, which Union officials have frequently described as the bottleneck responsible for a large part of the township's flood problems. "The summary of the proposal being considered by the Army Engineers reports that there would be 14,800 linear feet of channel excavation with an 8-foot bottom width along the Highway River which forms the boundary between Union and Springfield, from the point of confluence with the Morris avenue bridge, which Union officials have frequently described as the bottleneck responsible for a large part of the township's flood problems. "The summary of the proposal being considered by the Army Engineers reports that there would be 14,800 linear feet of channel excavation with an 8-foot bottom width along the Highway River which forms the boundary between Union and Springfield, from the point of confluence with the Morris avenue bridge, which Union officials have frequently described as the bottleneck responsible for a large part of the township's flood problems. "The summary of the proposal being considered by the Army Engineers reports that there would be 14,800 linear feet of channel excavation with an 8-foot bottom width along the Highway River which forms the boundary between Union and Springfield, from the point of confluence with the Morris avenue bridge, which Union officials have frequently described as the bottleneck responsible for a large part of the township's flood problems. "The summary of the proposal being considered by the Army Engineers reports that there would be 14,800 linear feet of channel excavation with an 8-foot bottom width along the Highway River which forms the boundary between Union and Springfield, from the point of confluence with the Morris avenue bridge, which Union officials have frequently described as the bottleneck responsible for a large part of the township's flood problems. "The summary of the proposal being considered by the Army Engineers reports that there would be 14,800 linear feet of channel excavation with an 8-foot bottom width along the Highway River which forms the boundary between Union and Springfield, from the point of confluence with the Morris avenue bridge, which Union officials have frequently described as the bottleneck responsible for a large part of the township's flood problems. "The summary of the proposal being considered by the Army Engineers reports that there would be 14,800 linear feet of channel excavation with an 8-foot bottom width along the Highway River which forms the boundary between Union and Springfield, from the point of confluence with the Morris avenue bridge, which Union officials have frequently described as the bottleneck responsible for a large part of the township's flood problems. "The summary of the proposal being considered by the Army Engineers reports that there would be 14,800 linear feet of channel excavation with an 8-foot bottom width along the Highway River which forms the boundary between Union and Springfield, from the point of confluence with the Morris avenue bridge, which Union officials have frequently described as the bottleneck responsible for a large part of the township's flood problems. "The summary of the proposal being considered by the Army Engineers reports that there would be 14,800 linear feet of channel excavation with an 8-foot bottom width along the Highway River which forms the boundary between Union and Springfield, from the point of confluence with the Morris avenue bridge, which Union officials have frequently described as the bottleneck responsible for a large part of the township's flood problems. "The summary of the proposal being considered by the Army Engineers reports that there would be 14,800 linear feet of channel excavation with an 8-foot bottom width along the Highway River which forms the boundary between Union and Springfield, from the point of confluence with the Morris avenue bridge, which Union officials have frequently described as the bottleneck responsible for a large part of the township's flood problems. "The summary of the proposal being considered by the Army Engineers reports that there would be 14,800 linear feet of channel excavation with an 8-foot bottom width along the Highway River which forms the boundary between Union and Springfield, from the point of confluence with the Morris avenue bridge, which Union officials have frequently described as the bottleneck responsible for a large part of the township's flood problems. "The summary of the proposal being considered by the Army Engineers reports that there would be 14,800 linear feet of channel excavation with an 8-foot bottom width along the Highway River which forms the boundary between Union and Springfield, from the point of confluence with the Morris avenue bridge, which Union officials have frequently described as the bottleneck responsible for a large part of the township's flood problems. "The summary of the proposal being considered by the Army Engineers reports that there would be 14,800 linear feet of channel excavation with an 8-foot bottom width along the Highway River which forms the boundary between Union and Springfield, from the point of confluence with the Morris avenue bridge, which Union officials have frequently described as the bottleneck responsible for a large part of the township's flood problems. "The summary of the proposal being considered by the Army Engineers reports that there would be 14,800 linear feet of channel excavation with an 8-foot bottom width along the Highway River which forms the boundary between Union and Springfield, from the point of confluence with the Morris avenue bridge, which Union officials have frequently described as the bottleneck responsible for a large part of the township's flood problems. "The summary of the proposal being considered by the Army Engineers reports that there would be 14,800 linear feet of channel excavation with an 8-foot bottom width along the Highway River which forms the boundary between Union and Springfield, from the point of confluence with the Morris avenue bridge, which Union officials have frequently described as the bottleneck responsible for a large part of the township's flood problems. "The summary of the proposal being considered by the Army Engineers reports that there would be 14,800 linear feet of channel excavation with an 8-foot bottom width along the Highway River which forms the boundary between Union and Springfield, from the point of confluence with the Morris avenue bridge, which Union officials have frequently described as the bottleneck responsible for a large part of the township's flood problems. "The summary of the proposal being considered by the Army Engineers reports that there would be 14,800 linear feet of channel excavation with an 8-foot bottom width along the Highway River which forms the boundary between Union and Springfield, from the point of confluence with the Morris avenue bridge, which Union officials have frequently described as the bottleneck responsible for a large part of the township's flood problems. "The summary of the proposal being considered by the Army Engineers reports that there would be 14,800 linear feet of channel excavation with an 8-foot bottom width along the Highway River which forms the boundary between Union and Springfield, from the point of confluence with the Morris avenue bridge, which Union officials have frequently described as the bottleneck responsible for a large part of the township's flood problems. "The summary of the proposal being considered by the Army Engineers reports that there would be 14,800 linear feet of channel excavation with an 8-foot bottom width along the Highway River which forms the boundary between Union and Springfield, from the point of confluence with the Morris avenue bridge, which Union officials have frequently described as the bottleneck responsible for a large part of the township's flood problems. "The summary of the proposal being considered by the Army Engineers reports that there would be 14,800 linear feet of channel excavation with an 8-foot bottom width along the Highway River which forms the boundary between Union and Springfield, from the point of confluence with the Morris avenue bridge, which Union officials have frequently described as the bottleneck responsible for a large part of the township's flood problems. "The summary of the proposal being considered by the Army Engineers reports that there would be 14,800 linear feet of channel excavation with an 8-foot bottom width along the Highway River which forms the boundary between Union and Springfield, from the point of confluence with the Morris avenue bridge, which Union officials have frequently described as the bottleneck responsible for a large part of the township's flood problems. "The summary of the proposal being considered by the Army Engineers reports that there would be 14,800 linear feet of channel excavation with an 8-foot bottom width along the Highway River which forms the boundary between Union and Springfield, from the point of confluence with the Morris avenue bridge, which Union officials have frequently described as the bottleneck responsible for a large part of the township's flood problems. "The summary of the proposal being considered by the Army Engineers reports that there would be 14,800 linear feet of channel excavation with an 8-foot bottom width along the Highway River which forms the boundary between Union and Springfield, from the point of confluence with the Morris avenue bridge, which Union officials have frequently described as the bottleneck responsible for a large part of the township's flood problems. "The summary of the proposal being considered by the Army Engineers reports that there would be 14,800 linear feet of channel excavation with an 8-foot bottom width along the Highway River which forms the boundary between Union and Springfield, from the point of confluence with the Morris avenue bridge, which Union officials have frequently described as the bottleneck responsible for a large part of the township's flood problems. "The summary of the proposal being considered by the Army Engineers reports that there would be 14,800 linear feet of channel excavation with an 8-foot bottom width along the Highway River which forms the boundary between Union and Springfield, from the point of confluence with the Morris avenue bridge, which Union officials have frequently described as the bottleneck responsible for a large part of the township's flood problems. "The summary of the proposal being considered by the Army Engineers reports that there would be 14,800 linear feet of channel excavation with an 8-foot bottom width along the Highway River which forms the boundary between Union and Springfield, from the point of confluence with the Morris avenue bridge, which Union officials have frequently described as the bottleneck responsible for a large part of the township's flood problems. "The summary of the proposal being considered by the Army Engineers reports that there would be 14,800 linear feet of channel excavation with an 8-foot bottom width along the Highway River which forms the boundary between Union and Springfield, from the point of confluence with the Morris avenue bridge, which Union officials have frequently described as the bottleneck responsible for a large part of the township's flood problems. "The summary of the proposal being considered by the Army Engineers reports that there would be 14,800 linear feet of channel excavation with an 8-foot bottom width along the Highway River which forms the boundary between Union and Springfield, from the point of confluence with the Morris avenue bridge, which Union officials have frequently described as the bottleneck responsible for a large part of the township's flood problems. "The summary of the proposal being considered by the Army Engineers reports that there would be 14,800 linear feet of channel excavation with an 8-foot bottom width along the Highway River which forms the boundary between Union and Springfield, from the point of confluence with the Morris avenue bridge, which Union officials have frequently described as the bottleneck responsible for a large part of the township's flood problems. "The summary of the proposal being considered by the Army Engineers reports that there would be 14,800 linear feet of channel excavation with an 8-foot bottom width along the Highway River which forms the boundary between Union and Springfield, from the point of confluence with the Morris avenue bridge, which Union officials have frequently described as the bottleneck responsible for a large part of the township's flood problems. "The summary of the proposal being considered by the Army Engineers reports that there would be 14,800 linear feet of channel excavation with an 8-foot bottom width along the Highway River which forms the boundary between Union and Springfield, from the point of confluence with the Morris avenue bridge, which Union officials have frequently described as the bottleneck responsible for a large part of the township's flood problems. "The summary of the proposal being considered by the Army Engineers reports that there would be 14,800 linear feet of channel excavation with an 8-foot bottom width along the Highway River which forms the boundary between Union and Springfield, from the point of confluence with the Morris avenue bridge, which Union officials have frequently described as the bottleneck responsible for a large part of the township's flood problems. "The summary of the proposal being considered by the Army Engineers reports that there would be 14,800 linear feet of channel excavation with an 8-foot bottom width along the Highway River which forms the boundary between Union and Springfield, from the point of confluence with the Morris avenue bridge, which Union officials have frequently described as the bottleneck responsible for a large part of the township's flood problems. "The summary of the proposal being considered by the Army Engineers reports that there would be 14,800 linear feet of channel excavation with an 8-foot bottom width along the Highway River which forms the boundary between Union and Springfield, from the point of confluence with the Morris avenue bridge, which Union officials have frequently described as the bottleneck responsible for a large part of the township's flood problems. "The summary of the proposal being considered by the Army Engineers reports that there would be 14,800 linear feet of channel excavation with an 8-foot bottom width along the Highway River which forms the boundary between Union and Springfield, from the point of confluence with the Morris avenue bridge, which Union officials have frequently described as the bottleneck responsible for a large part of the township's flood problems. "The summary of the proposal being considered by the Army Engineers reports that there would be 14,800 linear feet of channel excavation with an 8-foot bottom width along the Highway River which forms the boundary between Union and Springfield, from the point of confluence with the Morris avenue bridge, which Union officials have frequently described as the bottleneck responsible for a large part of the township's flood problems. "The summary of the proposal being considered by the Army Engineers reports that there would be 14,800 linear feet of channel excavation with an 8-foot bottom width along the Highway River which forms the boundary between Union and Springfield, from the point of confluence with the Morris avenue bridge, which Union officials have frequently described as the bottleneck responsible for a large part of the township's flood problems. "The summary of the proposal being considered by the Army Engineers reports that there would be 14,800 linear feet of channel excavation with an 8-foot bottom width along the Highway River which forms the boundary between Union and Springfield, from the point of confluence with the Morris avenue bridge, which Union officials have frequently described as the bottleneck responsible for a large part of the township's flood problems. "The summary of the proposal being considered by the Army Engineers reports that there would be 14,800 linear feet of channel excavation with an 8-foot bottom width along the Highway River which forms the boundary between Union and Springfield, from the point of confluence with the Morris avenue bridge, which Union officials have frequently described as the bottleneck responsible for a large part of the township's flood problems. "The summary of the proposal being considered by the Army Engineers reports that there would be 14,800 linear feet of channel excavation with an 8-foot bottom width along the Highway River which forms the boundary between Union and Springfield, from the point of confluence with the Morris avenue bridge, which Union officials have frequently described as the bottleneck responsible for a large part of the township's flood problems. "The summary of the proposal being considered by the Army Engineers reports that there would be 14,800 linear feet of channel excavation with an 8-foot bottom width along the Highway River which forms the boundary between Union and Springfield, from the point of confluence with the Morris avenue bridge, which Union officials have frequently described as the bottleneck responsible for a large part of the township's flood problems. "The summary of the proposal being considered by the Army Engineers reports that there would be 14,800 linear feet of channel excavation with an 8-foot bottom width along the Highway River which forms the boundary between Union and Springfield, from the point of confluence with the Morris avenue bridge, which Union officials have frequently described as the bottleneck responsible for a large part of the township's flood problems. "The summary of the proposal being considered by the Army Engineers reports that there would be 14,800 linear feet of channel excavation with an 8-foot bottom width along the Highway River which forms the boundary between Union and Springfield, from the point of confluence with the Morris avenue bridge, which Union officials have frequently described as the bottleneck responsible for a large part of the township's flood problems. "The summary of the proposal being considered by the Army Engineers reports that there would be 14,800 linear feet of channel excavation with an 8-foot bottom width along the Highway River which forms the boundary between Union and Springfield, from the point of confluence with the Morris avenue bridge, which Union officials have frequently described as the bottleneck responsible for a large part of the township's flood problems. "The summary of the proposal being considered by the Army Engineers reports that there would be 14,800 linear feet of channel excavation with an 8-foot bottom width along the Highway River which forms the boundary between Union and Springfield, from the point of confluence with the Morris avenue bridge, which Union officials have frequently described as the bottleneck responsible for a large part of the township's flood problems. "The summary of the proposal being considered by the Army Engineers reports that there would be 14,800 linear feet of channel excavation with an 8-foot bottom width along the Highway River which forms the boundary between Union and Springfield, from the point of confluence with the Morris avenue bridge, which Union officials have frequently described as the bottleneck responsible for a large part of the township's flood problems. "The summary of the proposal being considered by the Army Engineers reports that there would be 14,800 linear feet of channel excavation with an 8-foot bottom width along the Highway River which forms the boundary between Union and Springfield, from the point of confluence with the Morris avenue bridge, which Union officials have frequently described as the bottleneck responsible for a large part of the township's flood problems. "The summary of the proposal being considered by the Army Engineers reports that there would be 14,800 linear feet of channel excavation with an 8-foot bottom width along the Highway River which forms the boundary between Union and Springfield, from the point of confluence with the Morris avenue bridge, which Union officials have frequently described as the bottleneck responsible for a large part of the township's flood problems. "The summary of the proposal being considered by the Army Engineers reports that there would be 14,800 linear feet of channel excavation with an 8-foot bottom width along the Highway River which forms the boundary between Union and Springfield, from the point of confluence with the Morris avenue bridge, which Union officials have frequently described as the bottleneck responsible for a large part of the township's flood problems. "The summary of the proposal being considered by the Army Engineers reports that there would be 14,800 linear feet of channel excavation with an 8-foot bottom width along the Highway River which forms the boundary between Union and Springfield, from the point of confluence with the Morris avenue bridge, which Union officials have frequently described as the bottleneck responsible for a large part of the township's flood problems. "The summary of the proposal being considered by the Army Engineers reports that there would be 14,800 linear feet of channel excavation with an 8-foot bottom width along the Highway River which forms the boundary between Union and Springfield, from the point of confluence with the Morris avenue bridge, which Union officials have frequently described as the bottleneck responsible for a large part of the township's flood problems. "The summary of the proposal being considered by the Army Engineers reports that there would



MOBILE OFFICE PREVIEWED — Congressman Matthew J. Rinaldi (R-12) welcomes Springfield Mayor Edward N. Sita Jr. (center) and Mountainide Mayor Thomas Riccardi at a preview showing of his new mobile office. Rinaldi will be at the Echo Plaza Shopping Center on Rt. 22, Springfield, Saturday. Consultants can visit the mobile office to discuss national issues with the legislator and local issues with the two mayors.

Methodist choir to sing at service for Palm Sunday

The Wesley and Chancel choirs of Springfield Episcopal Methodist Church, Church Hall at Academy Green, will join in a Palm procession at the opening of the 11 a.m. church worship service on Palm Sunday. Both choirs will sing anthems for the festival service commemorating Christ's Entry into Jerusalem.

"The Lord Needs You" will be the title of the Rev. James Dewar's sermon both at the 11 a.m. and at the 5:30 a.m. Trivett Chapel worship service. It will be based on the account of Palm Sunday in Luke 22:1-9. Following the service, palms will be distributed to worshippers.

Therese Behringer, lay speaker, will conduct the 9:30 a.m. German language worship service. At the same hour, Church Youth will meet in Wesley House. Nursery through sixth grades, with junior and seniors, will be in the church building. High School Youth will hold their fellowship meeting at 5 p.m. and Senior High at 6 p.m.

Methodist Easter plans may be ordered from Juanita Mason, 376-1822, no later than Sunday. They will be placed in the Chapel and Sanctuary on Easter Sunday. Donors should indicate whether or not the plants are available for distribution to the sick and shut-ins.

UNITED METHODIST MEN of Springfield Episcopal Methodist Church, Church Hall at Academy Green, will consider "Ecological Issues" at their monthly meeting on Monday at 8 p.m. in Fellowship Hall. Speaker: Canon, group president, announced that Pastor Dewar will lead the discussion.

The meeting will open with devotions and singing led by William Rosenthal, followed by the business session. The discussion of ecological problems will involve a sharing of news articles clipped by the leader and members from current issues of area papers. The men and their guests are also encouraged to bring a copy of the "Ecological Issues" book "The Closing Circle" by Barry Commoner, or some other book of the subject.

The evening will conclude with fellowship and refreshments.

Fire plan suggested

Apprentice fireman, Arnold D'Ambrasio, this week called for a comprehensive fire prevention and control program to reduce the number of fatalities, injuries and property losses resulting from fires.

D'Ambrasio stated, "More attention needs to be given by fire services at the local level to fire prevention, public education, and fire safety education, rather than fire suppression. In addition, the National Commission on Fire Prevention and Control has recommended that fundamental research into the physical and chemical phenomena of fire be undertaken."

D'Ambrasio has introduced legislation to provide a ten-member commission to study the causes of fires, investigate causes, and assist state agencies and local governments. The statewide fire prevention and control programs would include a fire data system, research and development functions, and assistance in implementing model programs in fire prevention and control.

Your Want Ad Is Easy To Place

Just Phone 686-7700

Ask for 'Ad Take' and we will help you with a Result-Getter's Want Ad.



TOWNSHIP GOURMET — Robert Wemtschler of Springfield food finishing touches on a baked duck; one of the many recipes in the gourmet cook's repertoire. Wemtschler, who has taught cooking and baking in local adult schools, will present "An Epicure's Journey" Wednesday 6 p.m. in the meeting room of the Springfield Public Library.

Gourmet cook to be speaker at April 10 library program

Robert Wemtschler, gourmet cook and instructor, will be the speaker at the third lecture in the 1974-75 series sponsored by the Friends of the Springfield Public Library, next Wednesday at 6 p.m. in the meeting room of the library. His topic will be "An Epicure's Journey."

Wemtschler, resident of the town of Springfield, has been a chef for 15 years. He has worked in a number of restaurants, including the Waldorf Astoria, the Ritz-Carlton, and the Waldorf Astoria. He has also written several books on cooking, including "The Art of the Chef" and "The Art of the Pastry Cook."

Wemtschler has been a chef for 15 years. He has worked in a number of restaurants, including the Waldorf Astoria, the Ritz-Carlton, and the Waldorf Astoria. He has also written several books on cooking, including "The Art of the Chef" and "The Art of the Pastry Cook."

Lutheran Church starts Holy Week

Holy Cross Lutheran Church, Mountainide, Springfield, will observe Palm Sunday this weekend as the traditional beginning of the Christian Holy Week. Holy Cross will be distributed at the close of both the 8:30 and 10:45 a.m. worship services.

The Rev. Joel Vos, pastor of Holy Cross, will present a message entitled "Once Upon a Time." The choir will sing "Hills in Majesty" by W. Glen Edwards. Nursery and day care services are provided during the 10:45 worship service. Family growth hour classes will meet at 8:30 a.m.

FRIDAY DEADLINE — All items, other than spot news should be in our office by noon on Friday.

Roux gets Reed honor

The Summit Area YMCA presented its 24th annual Mount Hood Memorial Award to John W. Roux of Summit at its annual dinner held Tuesday evening at the Sulphur Springs Inn, Berkeley Heights. The Reed Award is the YMCA's highest recognition to a local citizen for distinguished service to youth.

Roux, a resident of Summit for eight years and formerly a New Providence resident, has been a director of the Summit YM since 1966 and is a vice president of the organization. He was previously active in the Mountain Guide and Indian Princess programs and is a representative on the Board of Trustees of the Summit Valley YMCA.

Mrs. Vasselli new scout head

Washington Girl Scout Council has named Josephine Vasselli as the new head of the Springfield Girl Scout community chairman to replace Mrs. Henry Hume. Mrs. Vasselli has two girls in scouting. She was troop chairman for two years and a district leader for three years and is an assistant leader of Junior Troop 250. She was previously active in the Girl Scouts for 15 years. She is a member of the Springfield Community Players.

Children's films planned at library

The children's department of the Springfield Public Library is planning two special programs for spring vacation week. Cynthia A. Landauer, children's librarian, has announced.

On Tuesday, April 16, at 10 a.m. and 2 p.m., a film program will be shown in the meeting room of the library. Three movies will be shown: "Wall Street," "Peter and the Wolf," and "A World is Born." From the film "Fantasia," and "The Golden Fish," by the makers of the classic "Red Balloon." These films are appropriate for children aged 7 and older.

On Thursday, April 18, at 10 a.m. and 2 p.m., the children's department will present a film program for children aged 4 to 7. The movies will be "The Ugly Duckling," "Curious George," and "The Sandlot."

SY ROSENBLUM Yugoslavias last note of its old-style charm and interest for the traveler.

Yugoslavia has lost none of its old-style charm and interest for the traveler. In its ancient country you can see mountains and sea. You can climb a mountain or scuba-dive in the Adriatic. Belgrade, the capital and host of all Yugoslavians, is found on the banks of the Danube ready to welcome all visitors. You will first see the towering Kalemegdan Fortress high above the city. From here you can get one of the most beautiful panoramas in all of Europe.

It is a beautiful country to visit. Make your reservations now. SY ROSENBLUM TRAVEL SERVICE 230 Montross Avenue, Springfield, N.J. 07081. Phone 376-4747. Open daily 10:30 Wednesday evenings 10:30 Saturdays 11.

HELPFUL HINT: For special tips on vacationing with your children, our travel agent can be most helpful.

MORRIS SPORTSWEAR. THE WAY YOU'VE ALWAYS WANTED TO LOOK... FREE ALTERATIONS. Custom Dyeing & Machine.

Light, lively sandals. Fashion plus in genuine patent leather.

for glove-like fit that lasts! FLOPSHEM. We have many styles to size 12.

FUTTER'S SHOES. 335 MILLBURN AVE., MILLBURN. OPEN THURS. EVES. PARKING ACROSS THE STREET.

FUTTER'S SHOES. 335 MILLBURN AVE., MILLBURN. OPEN THURS. EVES. PARKING ACROSS THE STREET.

HOLIDAY PARADE OF FASHION FOR FATHER & SON

Dad enjoys the easy comfort of a textured polyester sport duo featuring just a touch of pocket trim to match his permanent press checked slacks. Available in a variety of colors. Jacket and Slacks Duo \$90.

Our young man happily sports a handstitched coat of 100% polyesters for year-round wear. By Chlo's 7 Twigs Jr. sizes 28-36. Co-ordinating perma press slacks from \$7.00.

What better way to say "I love you" than with a Marsh diamond. Marsh has the singular distinction of being one of the few diamond merchants in this country where the finest quality is absolutely guaranteed.

WALTERS. 41 Maple Street, Summit, New Jersey. Mon. & Thurs. 10:30 a.m. - 7:30 p.m. 277-2112.



VARIETY SHOW — Springfield's Florence M. Gaudinier School held its first student talent show March 15 with Mitchell Slater, Jr. (right) as acting master of ceremonies. Among the performers were (from left) Faith Best, seventh grade, comedy singer; Gary Southward, eighth grade, and Scott Edelman, sixth grade, rock singer and guitarist; Ernie Ford, eighth grade, singer; and Delores Scoppetulo, sixth grade, singer.

Talented pupils share spotlight in school show

Students at the Florence Gaudinier School, Springfield, shared the spotlight March 15 when the school presented its first talent show. Mitchell Slater, Jr., an eighth grader, acted as master of ceremonies for the production and also presented a vocal number.

Among the performers from the sixth grade were Scott Edelman, guitarist; Peter Giese, pianist; Jeff Knowles, pianist; Dolores Scoppetulo, singer; Kevin Dreger, Joe. Trips and Joe Rex, rock combo; Ellen Goldstein, clarinetist; and Clara Hurelek, pianist. Seventh graders who took part were: Marie Benz and Nadia Laves, song and dance team; Pam Wright and the Seventh Grade Pianists; Faith Best, comedy singer; Cindy Cohen, pianist and vocalist, who presented an original song; Cary Cardinale, unaccompanied; Marek Permuter, Lori Bergel and Robin Slavak, guitar and singer; Sari Albaum and Nancy Grossman, piano and flute; Meg Day, singer; Ben Morrison, singer; Debbie Wirtlich, Antoinette James, Linda Smith, Iida Howell, and Donna Symeon, dancers; Ernie Ford and the Eighth Grade Friends, singers; Jeff Soumer, Jeff Price, Gary Southward and sixth grader, Scott Edelman, rock combo.

Mrs. M. Strubbe; succumbs at 95

Funeral services were held March 27 in St. John's Lutheran Church, Summit, for Mrs. M. Strubbe, 95, died March 25 at her home.

Born in Germany, Mrs. Strubbe had been a Springfield resident since 1956. She was a member of St. John's Lutheran Church and a 50-year member of Mapewood Chapter 156, Order of Eastern Star.

Mrs. Strubbe was the widow of Frederick H. Strubbe Jr. of Springfield and Ernest W. Strubbe of Maplewood; a daughter, Maria B. E. Strubbe of Springfield; six grandchildren and seven great-grandchildren.

Funeral arrangements were completed by Smith and Smith Suburban, Funeral Home, Springfield.

Andrew Kovacs, Optician. 337 Millburn Ave., Millburn. Opposite Theatre. 376-4510.

Andrew Kovacs, Optician. 337 Millburn Ave., Millburn. Opposite Theatre. 376-4510.



Faith Best, seventh grade, comedy singer; Gary Southward, eighth grade, and Scott Edelman, sixth grade, rock singer and guitarist; Ernie Ford, eighth grade, singer; and Delores Scoppetulo, sixth grade, singer.

Land use to be subject on Wednesday for LWV unit; fund drive is continuing

The Springfield League of Women Voters will hold a unit and concurrent meeting on the subject of "Land Use" on Wednesday, March 28, at 7:30 p.m. at the home of Carol Szymanski, 41 Sherman St., beginning at 7 p.m. or an evening meeting at the home of Sandy Mares, 71 Owl Oval, beginning at 8 p.m.

Committee chairman Louise Levine stated, "Through a series of meetings, League members have attempted to study and evaluate the plans and policies which affect the use of land and their relationship to environmental quality, social and economic needs. Emphasis has been on identifying land use problems, how decisions are made on the subject and the effect of these decisions on people; what legislation exists and what planning has been done."

Active wishing further information may contact Mrs. Levine at 223-7527.

Friday snow took traffic toll: 7 crashes in as many hours

The Springfield League of Women Voters will hold a unit and concurrent meeting on the subject of "Land Use" on Wednesday, March 28, at 7:30 p.m. at the home of Carol Szymanski, 41 Sherman St., beginning at 7 p.m. or an evening meeting at the home of Sandy Mares, 71 Owl Oval, beginning at 8 p.m.

Committee chairman Louise Levine stated, "Through a series of meetings, League members have attempted to study and evaluate the plans and policies which affect the use of land and their relationship to environmental quality, social and economic needs. Emphasis has been on identifying land use problems, how decisions are made on the subject and the effect of these decisions on people; what legislation exists and what planning has been done."

Active wishing further information may contact Mrs. Levine at 223-7527.

Awards presented to cubs at annual Blue-Gold dinner

Cub Scout Pack 70 of Springfield held its annual blue and gold dinner at Wally's on the Hill, Wednesday, March 28. The dinner was opened with the pledge of allegiance led by Cubmaster Leon Amer, who then introduced the guests, Mr. and Mrs. Marie Hurelek and the Rev. Bruce Evans, who said grace.

The cubs presented orations and button ribbons to the following club leaders: Iga Bantel, Maxine Devost, Helen Christodoulou, Bonnie Kyrstis, Hanna Jaffe, Joan Melkowitz, Irene Kirschner, Don Hendrix, Louis Melkowitz and Mrs. Marie Hurelek. The following Cub Scout committee members: Samuel Furze, Margie Furze and assistant Cubmaster Ken Hendrix.

Following dinner, Awards Chairman Sam Furze presented achievement awards to the following Cub Scouts and Webelos: Arthur Mellichamp, Kyle Hudgins, wolf badge and gold arrow; Joseph Furze, bear badge, gold and silver arrow; William Kirschner, wolf badge; James Fazio, wolf badge; Elliot Wolfman, bear badge; David Corey, bear badge; Larry Zavadsky, bear badge, gold and silver arrow; William Kirschner, wolf badge; James Fazio, wolf badge; Elliot Wolfman, bear badge; David Corey, bear badge; Joel Jaffe, bear badge and silver arrow; William Kirschner, bear badge and gold arrow; Richard Kerschbaum, bear badge and silver arrow; Andy Dewey, silver arrow; William Amer, aquanaut, naturalist, traveler, sportsman; John Jelliff, aquanaut, sportsman; Phillip Walker, aquanaut, geologist, naturalist, traveler, sportsman; Ted Brown, geologist, traveler, sportsman, naturalist, sportsman; Bill O'Neil, sportsman; and Todd Vogt, sportsman.

Trophies were presented by Leon Amer in the Pinewood Derby winners: Joe Cohen, Andy White, Joel Jaffe, James Johnson, Grand Winner, Jim Melkowitz, Brian Hendrix and Bill Amer.



Juilliard student is violin soloist in cantata for Easter

The choral choir of Episcopal Church, 225 Mountainide, Springfield, will present "The Resurrection," a cantata for Easter by Charles Manning, on Easter Sunday, April 14, at 7 p.m. This cantata is a dramatic presentation of the resurrection.

Guest artist for the program will be violinist William Hayden, a junior student at the Juilliard School of Music and winner of many awards. The public has been invited to attend.

The Taylor University Choral of England, Ltd., will present a concert of sacred music Wednesday at 7:30 p.m. at Episcopal Church, Pastor William Schmitt has announced. The 40-voice group will present a program of sacred classics and spirituals.

Director of the choir is Dr. Philip K. Kretzer, professor of music and acting head of the music department. He received his B.M. and M.M. degrees from Westminster Choir College in Princeton and Ph.D. degree from Indiana University in Bloomington. He has sung with the Westminster Symphonic Choir under the direction of J. F. Williamson, Leonard Bernstein, I. John Burnhill, Bruno Walter and Herbert von Karajan.

Taylor is a 120-year-old accredited liberal arts college with an enrollment of 1,650 students.

Man, 23, is arrested on marijuana charge

Springfield police reported the arrest Saturday of Daniel C. Barozzi, 23, of Phillipsburg for alleged possession of less than 25 grams of marijuana.

Barozzi, who had been arrested by P.I. Richard Bromberg Jr. at 11 a.m. on Feb. 22 reportedly for operating a vehicle with expired license plates, was held at 5200 toll, pending a court appearance April 15.

DOM'S TRANSIT AUTO SERVICE

WE TAKE YOU TO YOUR PLACE OF BUSINESS. WE TAKE YOU TO THE CONCRETE SERVICE. WE TAKE YOU TO THE PAINT SERVICE. WE TAKE YOU TO THE WAX SERVICE. WE TAKE YOU TO THE CAR WASH SERVICE. WE TAKE YOU TO THE CAR DETAILING SERVICE. WE TAKE YOU TO THE CAR INSPECTION SERVICE. WE TAKE YOU TO THE CAR REPAIR SERVICE. WE TAKE YOU TO THE CAR MAINTENANCE SERVICE. WE TAKE YOU TO THE CAR TUNING SERVICE. WE TAKE YOU TO THE CAR ACCESSORIES SERVICE. WE TAKE YOU TO THE CAR UPHOLSTERY SERVICE. WE TAKE YOU TO THE CAR RESTORATION SERVICE. WE TAKE YOU TO THE CAR STORAGE SERVICE. WE TAKE YOU TO THE CAR RENTAL SERVICE. WE TAKE YOU TO THE CAR LEASING SERVICE. WE TAKE YOU TO THE CAR FINANCING SERVICE. WE TAKE YOU TO THE CAR SALES SERVICE. WE TAKE YOU TO THE CAR SERVICE.

TAKE YOUR PICK FROM THE LOAN TREE

In spring, most folks' thoughts lightly turn to more pleasant improvements in the old neighborhood. For sending the youngsters off to college next fall, that vacation you've always dreamed about, the car you've always wanted.

Springfield State Bank. 379-6500.

6-Thursday, April 4, 1974-SPRINGFIELD(N.J.) LEADER

Cathedral to hold tours and recital during Holy Week

Additional opportunities to tour the landmark Cathedral of the Sacred Heart in Newark and a special "Open House" will be part of the Holy Week observance at the cathedral April 4-11. Guided tours of the large French Gothic church near Newark's Branch Brook Park will be offered this Saturday between noon and 6 p.m., on Palm Sunday between 3 and 5 p.m., on Wednesday, April 10, and 7 p.m., and on Holy Saturday, April 13, between noon and 6 p.m. Those wishing to tour should enter the cathedral through the office door at 99 Hildebrand St. There is no charge for the tours.

On Tuesday at 8:30 p.m., a special guest organ recital will be given by Nicholas Kynnaston of England, formerly organist at Sacred Heart's sister cathedral in London. West minister cathedral. There is no admission charge.

Kynnaston, currently organist in a concert team of the United States and Canada, will also perform special organ works at the 10 a.m. Pontifical High Mass of Easter morning. Presiding will be the Most Rev. Thomas A. Boland, Archbishop of Newark, assisted by the cathedral choir of men and boys directed by John Rose.

Further information on tours of the cathedral may be obtained from the cathedral's convents and music program is available at 1901 62d St.



IN OLDEN DAYS — Photographs of the Hopalong 'Navy' and on deck of the USS 'Albatross' are among several thousand photographs from Rutgers University Alexander Library in New Brunswick by William Augustine, a retired newspaper photographer and long-time New Jersey history buff.

Rutgers got the 'picture' Sorting Augustine collection

The Special Collections staff at the Rutgers University Alexander Library in New Brunswick is busy these days arranging a newly acquired major collection of historical and early printing photographs. This collection, which was donated to Rutgers by William Augustine, a retired newspaper photographer and long-time New Jersey history buff, contains over 2,000 photographs of historical events, people, and places in New Jersey and the surrounding area.

Augustine, who was born in New Jersey and spent much of his life in the state, was a prominent newspaper photographer. His collection includes many rare and valuable images, including portraits of historical figures and scenes from the American Revolutionary War.

The Rutgers staff is currently working to identify and catalog the photographs, which will be made available to researchers and the public. The collection is a significant addition to the library's historical holdings.

William Augustine, who died in 1968, was a well-known figure in New Jersey history. His work as a photographer captured many important moments in the state's past.

The Rutgers University Alexander Library is pleased to have received this collection. It provides a unique window into the history of New Jersey and the early printing industry.

The collection is being housed in the Rutgers University Alexander Library in New Brunswick. It is available for viewing and research by appointment.

For more information about the collection, contact the Rutgers University Alexander Library at 100 University Avenue, New Brunswick, N.J. 08902.

The Rutgers University Alexander Library is a leading center for historical research and scholarship. This collection further enhances its reputation as a premier institution for the study of New Jersey history.

The Rutgers University Alexander Library is committed to providing access to its collections for the benefit of the community and the world.

The Rutgers University Alexander Library is a treasure trove of historical information. This collection is a testament to the rich heritage of New Jersey.

The Rutgers University Alexander Library is a vital resource for students, scholars, and the public. This collection is a key part of its mission to preserve and share the state's history.

The Rutgers University Alexander Library is a center of excellence in historical research. This collection is a significant contribution to the field of New Jersey history.

Exhibition set on egg decorating

Egg decorating as a folk art will be highlighted in an exhibition and demonstrations at the New Jersey State Museum during the Easter season. The exhibition will be given in the "Lower Level" cafeteria area at 2:30 p.m. this Sunday and again on Sunday, April 21.

Particularly popular in the Ukraine, the techniques of egg decorating have been developed over a period of many years as a method of story telling. Each line, symbol or color transferred to the egg expresses a meaning that has been established through long folklore usage.

The two Sunday afternoon demonstrations will interest experienced egg decorators and those with minimal knowledge of art. Participants are invited to bring examples of their own work. For full benefit they should also bring undecorated eggs, a pencil with an eraser tip, a white candle and a candle holder. Eggs may be either raw or cooked, but as a matter of precaution boiling is recommended—particularly for young people.

World rulers. Cats once ruled the world, according to a Chinese legend. But one day a council of the deities and wisest cats concluded the world wasn't worth their effort. The fable relates that they turned the task over to the next highest form of animal life, man, and cats have been ruled ever since.

World rulers. Cats once ruled the world, according to a Chinese legend. But one day a council of the deities and wisest cats concluded the world wasn't worth their effort. The fable relates that they turned the task over to the next highest form of animal life, man, and cats have been ruled ever since.

World rulers. Cats once ruled the world, according to a Chinese legend. But one day a council of the deities and wisest cats concluded the world wasn't worth their effort. The fable relates that they turned the task over to the next highest form of animal life, man, and cats have been ruled ever since.

World rulers. Cats once ruled the world, according to a Chinese legend. But one day a council of the deities and wisest cats concluded the world wasn't worth their effort. The fable relates that they turned the task over to the next highest form of animal life, man, and cats have been ruled ever since.

World rulers. Cats once ruled the world, according to a Chinese legend. But one day a council of the deities and wisest cats concluded the world wasn't worth their effort. The fable relates that they turned the task over to the next highest form of animal life, man, and cats have been ruled ever since.

World rulers. Cats once ruled the world, according to a Chinese legend. But one day a council of the deities and wisest cats concluded the world wasn't worth their effort. The fable relates that they turned the task over to the next highest form of animal life, man, and cats have been ruled ever since.

World rulers. Cats once ruled the world, according to a Chinese legend. But one day a council of the deities and wisest cats concluded the world wasn't worth their effort. The fable relates that they turned the task over to the next highest form of animal life, man, and cats have been ruled ever since.

World rulers. Cats once ruled the world, according to a Chinese legend. But one day a council of the deities and wisest cats concluded the world wasn't worth their effort. The fable relates that they turned the task over to the next highest form of animal life, man, and cats have been ruled ever since.

World rulers. Cats once ruled the world, according to a Chinese legend. But one day a council of the deities and wisest cats concluded the world wasn't worth their effort. The fable relates that they turned the task over to the next highest form of animal life, man, and cats have been ruled ever since.

World rulers. Cats once ruled the world, according to a Chinese legend. But one day a council of the deities and wisest cats concluded the world wasn't worth their effort. The fable relates that they turned the task over to the next highest form of animal life, man, and cats have been ruled ever since.

World rulers. Cats once ruled the world, according to a Chinese legend. But one day a council of the deities and wisest cats concluded the world wasn't worth their effort. The fable relates that they turned the task over to the next highest form of animal life, man, and cats have been ruled ever since.

World rulers. Cats once ruled the world, according to a Chinese legend. But one day a council of the deities and wisest cats concluded the world wasn't worth their effort. The fable relates that they turned the task over to the next highest form of animal life, man, and cats have been ruled ever since.

Seven from town sign up for town semester at UC

Seven Springfield residents were among 423 persons who launched their college careers this spring as part-time students at Union College's campuses in Cranford, Elizabeth and Plainfield. The students, who are attending the semester at Union College, are: David R. Goldstein, 27 Temple St.; Milton Rubenstein, 223 Lehigh Ave.; Alan Seiza, 290 Hill Ave.; and Frances A. Frank, 41 Maple Ave. The students are attending the semester at Union College, which is a non-degree student at Union College's Cranford campus.

Art exhibit deadline set

New Jersey artists have formation. Others interested until April 26 to enter their work in the 1974 annual art show from New Art at 1001 23rd St. or write to the New Jersey State Museum, 266 W. State St., Trenton, N.J. 08646.

Art exhibit deadline set. New Jersey artists have formation. Others interested until April 26 to enter their work in the 1974 annual art show from New Art at 1001 23rd St. or write to the New Jersey State Museum, 266 W. State St., Trenton, N.J. 08646.

Art exhibit deadline set. New Jersey artists have formation. Others interested until April 26 to enter their work in the 1974 annual art show from New Art at 1001 23rd St. or write to the New Jersey State Museum, 266 W. State St., Trenton, N.J. 08646.

Art exhibit deadline set. New Jersey artists have formation. Others interested until April 26 to enter their work in the 1974 annual art show from New Art at 1001 23rd St. or write to the New Jersey State Museum, 266 W. State St., Trenton, N.J. 08646.

Art exhibit deadline set. New Jersey artists have formation. Others interested until April 26 to enter their work in the 1974 annual art show from New Art at 1001 23rd St. or write to the New Jersey State Museum, 266 W. State St., Trenton, N.J. 08646.

Art exhibit deadline set. New Jersey artists have formation. Others interested until April 26 to enter their work in the 1974 annual art show from New Art at 1001 23rd St. or write to the New Jersey State Museum, 266 W. State St., Trenton, N.J. 08646.

Art exhibit deadline set. New Jersey artists have formation. Others interested until April 26 to enter their work in the 1974 annual art show from New Art at 1001 23rd St. or write to the New Jersey State Museum, 266 W. State St., Trenton, N.J. 08646.

Art exhibit deadline set. New Jersey artists have formation. Others interested until April 26 to enter their work in the 1974 annual art show from New Art at 1001 23rd St. or write to the New Jersey State Museum, 266 W. State St., Trenton, N.J. 08646.

Art exhibit deadline set. New Jersey artists have formation. Others interested until April 26 to enter their work in the 1974 annual art show from New Art at 1001 23rd St. or write to the New Jersey State Museum, 266 W. State St., Trenton, N.J. 08646.

Art exhibit deadline set. New Jersey artists have formation. Others interested until April 26 to enter their work in the 1974 annual art show from New Art at 1001 23rd St. or write to the New Jersey State Museum, 266 W. State St., Trenton, N.J. 08646.

Art exhibit deadline set. New Jersey artists have formation. Others interested until April 26 to enter their work in the 1974 annual art show from New Art at 1001 23rd St. or write to the New Jersey State Museum, 266 W. State St., Trenton, N.J. 08646.

Art exhibit deadline set. New Jersey artists have formation. Others interested until April 26 to enter their work in the 1974 annual art show from New Art at 1001 23rd St. or write to the New Jersey State Museum, 266 W. State St., Trenton, N.J. 08646.

Art exhibit deadline set. New Jersey artists have formation. Others interested until April 26 to enter their work in the 1974 annual art show from New Art at 1001 23rd St. or write to the New Jersey State Museum, 266 W. State St., Trenton, N.J. 08646.

Township's Cub Pack 172 holds annual awards dinner

Springfield Cub Pack 172 held its blue and gold dinner at the Mountaineer Inn on March 17. Harvey Schramm, master of ceremonies, presented the following speakers and guests: The Rev. Edward O'Connell, St. James Church, Springfield, who offered the invocation; George McCullough, scout executive of Union County; Dan Hilly (and Mrs. Hilly); Troop 172 scoutmaster; Murry Hurwitz (and Mrs. Hurwitz); district commissioner of scouting, Mr. and Mrs. George Pittenger, Webelos Leader, and Harvey Weiss, Webelos Leader.

Bank states its dividend

W. Erskine Hunte, chairman of the board of the Maplewood Bank and Trust Company, has announced that the board of directors of the bank has declared a quarterly dividend of 20 cents per share. The dividend is payable on April 15 to stockholders of record as of April 10 and will be paid in the form of a check. The bank's earnings for the quarter ended March 31 of this year were \$1,200,000. The board meeting was preceded by the annual stockholders' meeting at which the following 12 directors were re-elected: Frank H. Allen Jr., Sam J. Gans, William J. Grady, Clark H. Hammond, Robert H. Krumm, Stephen Y. Homie, James C. Edwards, C. S. Singerland, George M. Wallhauser, Frederick J. Wollinger III, Norman W. Woolley and Otto H. York.

Public Notice

TOWNSHIP OF SPRINGFIELD, N.J. NOTICE TO CREDITORS. The undersigned, Arthur H. Blumhiser, Attorney at Law, 209 1/2 North 10th Street, Springfield, N.J. 07081, is the duly appointed and qualified executor of the last will and testament of the late Mrs. Mary Elizabeth Blumhiser, nee Blumhiser, who died on March 28, 1974. The undersigned is authorized to receive and collect all claims and debts due to the estate of the late Mrs. Blumhiser, and to distribute the assets of the estate to the beneficiaries named in her will. Any claims and debts due to the estate of the late Mrs. Blumhiser must be presented to the undersigned in writing within the time specified in the notice to creditors. The undersigned is also authorized to execute and deliver all necessary documents in connection with the administration of the estate of the late Mrs. Blumhiser.

DAYTON DISPATCH

By Margo Krasnoff. The tape, dictating an oral and having practical content, spoke of Gargantuan and variations of the story. He introduced himself as a native accent from a real Frenchman. He was wearing a real Frenchman's hat. He was wearing a real Frenchman's hat. He was wearing a real Frenchman's hat.

April month for diamond

April diamond age supposed to bring May flowers, but diamonds reign for these here in this month, according to Richard S. Paul, president of Wicks Jewelers. The diamond, the birthstone for those born in April, also is the symbol of the pledge of betrothal. The custom of wearing a specific ring for each month, of the year stems from the 12 jewels in the circlet of Aaron. The high price, the Moses miracle rates for the making of the vestment of Aaron. The "Rock of Ages" judgment was to be with 12 stones, each engraved with the name of one of the 12 tribes of Israel. Later in history, the signs of the zodiac were often engraved in the gems, linking rock to a time of year.

LOOK AHEAD!

HELP SAVE THE LIFE OF A FRIEND OR NEAREST. JOIN TOBACCO ACTION FOR YOUR CIVIC CLUB, SOCIAL GROUP OR RELIGIOUS ORGANIZATION that says "NO TO TOBACCO". The American Cancer Society will provide a free program, designed to give the needs of your organization. For additional information contact the AMERICAN CANCER SOCIETY, 215 Westchester Avenue, Elmsford, New York, N.Y. 10523.

Try Our Daily Specials

DELICIOUS SANDWICHES, DELICIOUS COCKTAILS, NOSTALGIC ATMOSPHERE. 376-9199. JERRY'S INDIAN TRADING POST. 4 ESSEX ST. MILLBURN, N.J.

AMERICAN CANCER SOCIETY

AMERICAN CANCER SOCIETY. 215 Westchester Avenue, Elmsford, New York, N.Y. 10523.

Bank states its dividend

W. Erskine Hunte, chairman of the board of the Maplewood Bank and Trust Company, has announced that the board of directors of the bank has declared a quarterly dividend of 20 cents per share. The dividend is payable on April 15 to stockholders of record as of April 10 and will be paid in the form of a check. The bank's earnings for the quarter ended March 31 of this year were \$1,200,000. The board meeting was preceded by the annual stockholders' meeting at which the following 12 directors were re-elected: Frank H. Allen Jr., Sam J. Gans, William J. Grady, Clark H. Hammond, Robert H. Krumm, Stephen Y. Homie, James C. Edwards, C. S. Singerland, George M. Wallhauser, Frederick J. Wollinger III, Norman W. Woolley and Otto H. York.

Public Notice

TOWNSHIP OF SPRINGFIELD, N.J. NOTICE TO CREDITORS. The undersigned, Arthur H. Blumhiser, Attorney at Law, 209 1/2 North 10th Street, Springfield, N.J. 07081, is the duly appointed and qualified executor of the last will and testament of the late Mrs. Mary Elizabeth Blumhiser, nee Blumhiser, who died on March 28, 1974. The undersigned is authorized to receive and collect all claims and debts due to the estate of the late Mrs. Blumhiser, and to distribute the assets of the estate to the beneficiaries named in her will. Any claims and debts due to the estate of the late Mrs. Blumhiser must be presented to the undersigned in writing within the time specified in the notice to creditors. The undersigned is also authorized to execute and deliver all necessary documents in connection with the administration of the estate of the late Mrs. Blumhiser.

DAYTON DISPATCH

By Margo Krasnoff. The tape, dictating an oral and having practical content, spoke of Gargantuan and variations of the story. He introduced himself as a native accent from a real Frenchman. He was wearing a real Frenchman's hat. He was wearing a real Frenchman's hat. He was wearing a real Frenchman's hat.

April month for diamond

April diamond age supposed to bring May flowers, but diamonds reign for these here in this month, according to Richard S. Paul, president of Wicks Jewelers. The diamond, the birthstone for those born in April, also is the symbol of the pledge of betrothal. The custom of wearing a specific ring for each month, of the year stems from the 12 jewels in the circlet of Aaron. The high price, the Moses miracle rates for the making of the vestment of Aaron. The "Rock of Ages" judgment was to be with 12 stones, each engraved with the name of one of the 12 tribes of Israel. Later in history, the signs of the zodiac were often engraved in the gems, linking rock to a time of year.

LOOK AHEAD!

HELP SAVE THE LIFE OF A FRIEND OR NEAREST. JOIN TOBACCO ACTION FOR YOUR CIVIC CLUB, SOCIAL GROUP OR RELIGIOUS ORGANIZATION that says "NO TO TOBACCO". The American Cancer Society will provide a free program, designed to give the needs of your organization. For additional information contact the AMERICAN CANCER SOCIETY, 215 Westchester Avenue, Elmsford, New York, N.Y. 10523.

Try Our Daily Specials

DELICIOUS SANDWICHES, DELICIOUS COCKTAILS, NOSTALGIC ATMOSPHERE. 376-9199. JERRY'S INDIAN TRADING POST. 4 ESSEX ST. MILLBURN, N.J.

AMERICAN CANCER SOCIETY

AMERICAN CANCER SOCIETY. 215 Westchester Avenue, Elmsford, New York, N.Y. 10523.

SAV-ON

6-PACK PEPSI COLA 83¢. DEODORANT SURE SPRAY 129. CREST TOOTHPASTE 51¢. BREYER'S NATURAL ICE CREAM 139. 40-COUNT MOODS SANITARY NAPKINS 129.

AM/FM Portable Radio 12.88. Ginger Jar Lamp STANDS 30" HIGH 8.88. CHAISE LOUNGE 7.95. 72 qt. Ice Chest 12.97.

EASTER DISCOUNTS. Solid Chocolate Rabbit 99¢. Hollow Chocolate Bunny 49¢. Pure Food Easter Egg Food Kit 39¢. Easter Grass 33¢.

Paddle Ball 49¢. Inflatable Easter Bunny 99¢. Living Bible 7.77. The Way Bible 5.95.

Polaird Square Shooter 2 19.99. Magnetic Photo Album 1.77. Bouquet Solid Air Freshener 59¢. Garden Seed House 3 1.67.

Kodacolor 110-Film 89¢. BRACH'S ORANGE SLICES 53¢. Gillette Stainless Steel Blades 1.49. AMPHORA TOBACCO 29¢.

SAV-ON PHOTO SPECIAL. Kodacolor 110-Film 20 Exposure Developed. No Foreign Film. 3.49. BRACH'S ORANGE SLICES 53¢. Gillette Stainless Steel Blades 1.49. AMPHORA TOBACCO 29¢.

SAV-ON DRUGS. ECHO PLAZA SHOPPING CENTER MOUNTAIN AVE. & RT. 22 SPRINGFIELD DR 6-4134.

Earnings stated on PSE&G stock

Earnings available for common stock of Public Service Electric and Gas Co. for the 12-months ending Feb. 28, were \$104,200,000 or \$2.23 an average share. This compares with the restated earnings of \$107,300,000 or \$2.30 a share for the 12 months ending Feb. 28, 1973 excluding a non-recurring credit of \$16,500,000 or 44 cents a share.

Earnings for the month of February 1974 were \$11,200,000 or an average share of 24 cents compared with \$10,100,000 and also 24 cents a share for February 1973 or 15 percent lower share.

The results for 1974 have been restated to give effect to the recording of estimated unutilized reserves and the change of electric fuel cost increases in the month in which they are recovered under the energy adjustment clause in the company's rates.

Masterwork School lists photography class

Registration is now open in a six-week photography course to be held at Masterwork School of the Arts beginning April 25. The course will be taught by Peter Jones, a professional photographer. The course will cover the basics of photography, including camera operation, lighting, and composition. The course is open to students of all ages and backgrounds.

WHOLESALE TUNE-UP NOW!!

ALL YOUR AUTOMOTIVE NEEDS. We have to check The Complete Line of Services. We are Union's Distributor of CONSTANT VELOCITY DRIVE SHAFTS. We have Union's Largest, Most Complete Inventory of Auto Parts.

LAWN MOWER TUNE-UP KITS

OPEN 7 DAYS. 2091 SPRINGFIELD AVE. VAUXHALL (UNION).

AUTO PARTS

2091 SPRINGFIELD AVE. VAUXHALL (UNION).

Rutgers got the 'picture' Sorting Augustine collection

The Special Collections staff at the Rutgers University Alexander Library in New Brunswick is busy these days arranging a newly acquired major collection of historical and early printing photographs. This collection, which was donated to Rutgers by William Augustine, a retired newspaper photographer and long-time New Jersey history buff, contains over 2,000 photographs of historical events, people, and places in New Jersey and the surrounding area.

Augustine, who was born in New Jersey and spent much of his life in the state, was a prominent newspaper photographer. His collection includes many rare and valuable images, including portraits of historical figures and scenes from the American Revolutionary War.

The Rutgers staff is currently working to identify and catalog the photographs, which will be made available to researchers and the public. The collection is a significant addition to the library's historical holdings.

William Augustine, who died in 1968, was a well-known figure in New Jersey history. His work as a photographer captured many important moments in the state's past.

The Rutgers University Alexander Library is pleased to have received this collection. It provides a unique window into the history of New Jersey and the early printing industry.

The collection is being housed in the Rutgers University Alexander Library in New Brunswick. It is available for viewing and research by appointment.

For more information about the collection, contact the Rutgers University Alexander Library at 100 University Avenue, New Brunswick, N.J. 08902.

The Rutgers University Alexander Library is a leading center for historical research and scholarship. This collection further enhances its reputation as a premier institution for the study of New Jersey history.

The Rutgers University Alexander Library is committed to providing access to its collections for the benefit of the community and the world.

The Rutgers University Alexander Library is a treasure trove of historical information. This collection is a testament to the rich heritage of New Jersey.

The Rutgers University Alexander Library is a vital resource for students, scholars, and the public. This collection is a key part of its mission to preserve and share the state's history.

The Rutgers University Alexander Library is a center of excellence in historical research. This collection is a significant contribution to the field of New Jersey history.

New officers selected by Elin-Unger, J.W.V.

John Thayer Post, 223 Jewish War Veterans of the United States, recently selected the following officers: Commander, Norman Sperber of Hillside; senior vice-commander, Anna Strickus of Hillside; junior vice-commander, Martin Goldberg of Newark; three-year trustee, Jack Schechter of Hillside. Schechter is outgoing post commander. A joint installation of officers for the post and its ladies auxiliary 273 will be held at 8 p.m. Wednesday, May 1, at the Crestmont Savings Bank, Springfield Avenue, Maplewood.

To Publicity Chairmen

Would you like some help in preparing newspaper releases? Write to this newspaper and ask for our "Tips on Submitting News Releases."

DOG OBEDIENCE CLASSES \$25

UNION SUMMIT WESTFIELD ISELIN ENROLL NOW! N.J. Dog College 687-2393.

Make a date ROLLER SKATING

613 So. Livingston Ave. Livingston 972-6163. Rink Skates & Accessories. Rink Skates on Sale.

THE Silver Gallery

Is Now Located At 26 MILL ROAD IRVINGTON, N.J. IT'S BIGGER, BRIGHTER and BETTER WITH LARGER and MORE VARIED SELECTIONS OF FINE GIFTSWARE.

There's something special about our Regular Savings Account

Interest compounded and payable monthly, at the Highest Regular Savings Account Rate in the United States. Day of deposit to day of withdrawal. \$50 minimum balance requirement.

There are many ways to invest your money, but a Regular Savings Account is a basic necessity for everyone. so why not pick the best. Savings certificates also available.

APRECIATION — New Jersey Bell Telephone Company president Robert W. Kleinert (left) accepts plaque presented by Dennis Brito, 17, of Newark, representing the Robert Treat Council, Boy Scouts of America; Looking on is Joseph L. Merton, Council executive. The plaque was given to New Jersey Bell by the Robert Treat Council in appreciation of the company's support to the youth of America.

New Jersey artists have formation. Others interested until April 26 to enter their work in the 1974 annual art show from New Art at 1001 23rd St. or write to the New Jersey State Museum, 266 W. State St., Trenton, N.J. 08646.

Art exhibit deadline set. New Jersey artists have formation. Others interested until April 26 to enter their work in the 1974 annual art show from New Art at 1001 23rd St. or write to the New Jersey State Museum, 266 W. State St., Trenton, N.J. 08646.

Art exhibit deadline set. New Jersey artists have formation. Others interested until April 26 to enter their work in the 1974 annual art show from New Art at 1001 23rd St. or write to the New Jersey State Museum, 266 W. State St., Trenton, N.J. 08646.

Art exhibit deadline set. New Jersey artists have formation. Others interested until April 26 to enter their work in the 1974 annual art show from New Art at 1001 23rd St. or write to the New Jersey State Museum, 266 W. State St., Trenton, N.J. 08646.

Art exhibit deadline set. New Jersey artists have formation. Others interested until April 26 to enter their work in the 1974 annual art show from New Art at 1001 23rd St. or write to the New Jersey State Museum, 266 W. State St., Trenton, N.J. 08646.

Art exhibit deadline set. New Jersey artists have formation. Others interested until April 26 to enter their work in the 1974 annual art show from New Art at 1001 23rd St. or write to the New Jersey State Museum, 266 W. State St., Trenton, N.J. 08646.

Art exhibit deadline set. New Jersey artists have formation. Others interested until April 26 to enter their work in the 1974 annual art show from New Art at 1001 23rd St. or write to the New Jersey State Museum, 266 W. State St., Trenton, N.J. 08646.

Art exhibit deadline set. New Jersey artists have formation. Others interested until April 26 to enter their work in the 1974 annual art show from New Art at 1001 23rd St. or write to the New Jersey State Museum, 266 W. State St., Trenton, N.J. 08646.

Art exhibit deadline set. New Jersey artists have formation. Others interested until April 26 to enter their work in the 1974 annual art show from New Art at 1001 23rd St. or write to the New Jersey State Museum, 266 W. State St., Trenton, N.J. 08646.

Art exhibit deadline set. New Jersey artists have formation. Others interested until April 26 to enter their work in the 1974 annual art show from New Art at 1001 23rd St. or write to the New Jersey State Museum, 266 W. State St., Trenton, N.J. 08646.

Art exhibit deadline set. New Jersey artists have formation. Others interested until April 26 to enter their work in the 1974 annual art show from New Art at 1001 23rd St. or write to the New Jersey State Museum, 266 W. State St., Trenton, N.J. 08646.

Art exhibit deadline set. New Jersey artists have formation. Others interested until April 26 to enter their work in the 1974 annual art show from New Art at 1001 23rd

126 from county study prevention, control of fires

One hundred fifty-one students are enrolled in the new fire science technology program offered jointly by Union County Technical Institute and Union College.

The students include 126 residents of Union County and 25 students from Middlesex, Essex, Somerset, Hudson and Ocean Counties.



REHEARSAL—Scott Adelman (left) of Springfield has the title role in the Springfield Community Players Workshop production of 'Oliver'.

Rinaldo sponsors bill to ban loans to Soviet projects

WASHINGTON, D.C., Rep. Matthew J. Rinaldo (R-Ill.) is expressing "grave concern that the recent U.S. credits to Russia by the administration's Export-Import Bank...

Rinaldo said the measure, which he co-sponsored with Rep. John H. Dent (D-Pa.), chairman of the House General Labor Subcommittee, is designed specifically to prevent the Export-Import Bank from proceeding with a pending \$95 million loan application for natural gas exploration in the Yakutsk field in Eastern Siberia...

Kean public service interns to discuss on-job experience

The first group of Kean College of Education students serving in local government agencies and offices in a pilot program of public administration internships will report on their assignments...

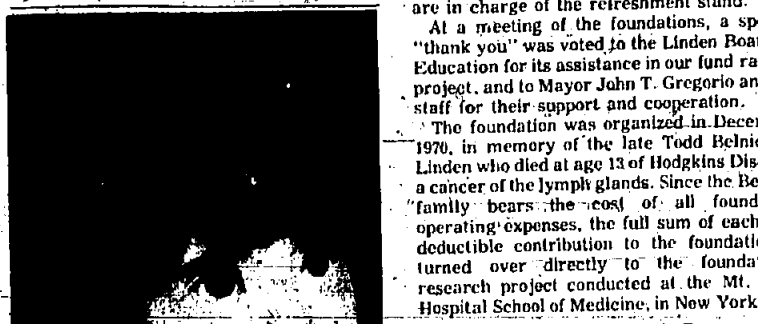


"Four thousand two hundred and three, four thousand two hundred and four..."

CYCLES - by George, Inc. SERVICE THAT MATTERS! SCHWINN PEUGEOT LEJEUNE BICYCLES IN STOCK One Year Free Service

May 5 flea market in Linden to benefit Belnick foundation

The Todd Belnick Hodgkins Disease Foundation will hold its third annual Flea Market on Sunday, May 5, at the playground of Irving L. Wood Avenue, Linden, from 10 a.m. to 3 p.m.



MONITORING EQUIPMENT - Dr. Ralph Leary (right) and Bob Barrum (second from right), Esso Research and Engineering employees in Linden, explain how gas chromatograph works to Arthur Green (left), president of the New Jersey chapter of the Epilepsy Foundation...

Renovations to begin shortly at Warinanco Park ice rink

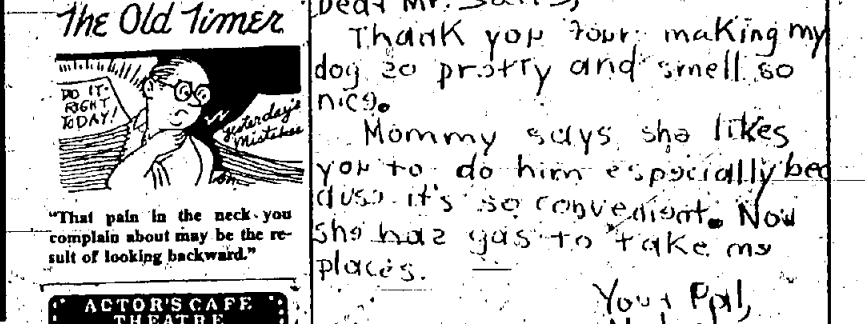
A somewhat expanded ice skating program, as well as the beginnings of more varied types of activities, are expected to result from renovation of the Warinanco Park Ice Skating Center, Hazlet.



ACTORS CAFE - The Actors Cafe is a new eatery located at the intersection of Main and 10th Streets in Cranford. It is owned and operated by the Cranford Actors Guild.

Boy Scout show scheduled in May by Union Council

More than 20 action-type displays - showing what Boy Scouting is all about today - will be on exhibit in the Union Council, Boy Scouts of America, 1000 Main St., Cranford, May 12-19.



Las Vegas trip slated - The YM-YWHA of Eastern Union County will sponsor a trip to Las Vegas, Nev., on Thursday, Oct. 10, through Sunday, Oct. 14, 1974.

The chef is the only one to get heartburn at the ARCH...

MONDAY Prime Sirloin Steak Special ONLY \$5.50... THURSDAY Prime Sirloin Steak Special ONLY \$5.95... FRIDAY Fisherman's Delight Special ONLY \$6.95

Home costs scrutinized

Questions on expenditures for the upkeep and maintenance of residential properties are being asked of a sample of homeowners in this area by the Census Bureau...

Center One lists 2 guest speakers - The Rev. Estelle Percy, founder of the Methodist Higher New Thought Center, Union, will be the guest speaker at Center One, 625 Morris Ave., Springfield, tomorrow at 8:30 p.m.

June meet slated by Fire Museum

An Antique Fire Apparatus Meet is being planned on Sunday, June 2, to celebrate the seventh anniversary of the Newark Fire Museum. Members of the Newark Fire Department Historical Association have indicated interest in the meet.

Exams for intelligence biased against old age - The belief that intellectual performance declines with age may be a myth, according to a new study by researchers at the University of California, San Diego.

Hikes, bike rides listed on weekend

Three activities are listed for members and guests of the Union Hiking Club this weekend.

Fiddler on Roof to open tomorrow

"Fiddler on the Roof" will be presented this weekend by students at Union High School District.

Places available in Eastern Union County

The YMCA of Eastern Union County new series of spring classes still has several openings in the Tiny Tot swim classes.

Eskimo film scheduled at Trailside on Sunday

"Nanook of the North," a color film showing the life of Eskimos in the Hudson Bay Territory, is scheduled at the Trailside Nature and Science Center.

Quebec TV lists N.J. programs

Nadio Quebec, the French language television service in the Canadian province will televise several New Jersey Public Broadcasting programs.

CP legal director to speak on taxes

Lee Del Vecchio, the National United Central Party Association's legal department director, will speak at a monthly meeting of the Union County Central Party Center's adult parents group.

Consortium helps students at UC to live at Kean College

The Consortium of East Jersey's policy of cooperation among academic institutions has made it possible for a group of Union College students to live in the Kean College campus in Union.

Louis Treppunt; retired as barber

Funeral services were held Tuesday for Louis Treppunt, 76, of 883 Colonial Ave., Union, who died Thursday at home.

5 ways to get the most for your money from Berkeley Federal.

Good financial programming means regular attention to your savings. That's why it pays to save at Berkeley Federal, where we'll help you get the most for your money.

PBA annual dinner set

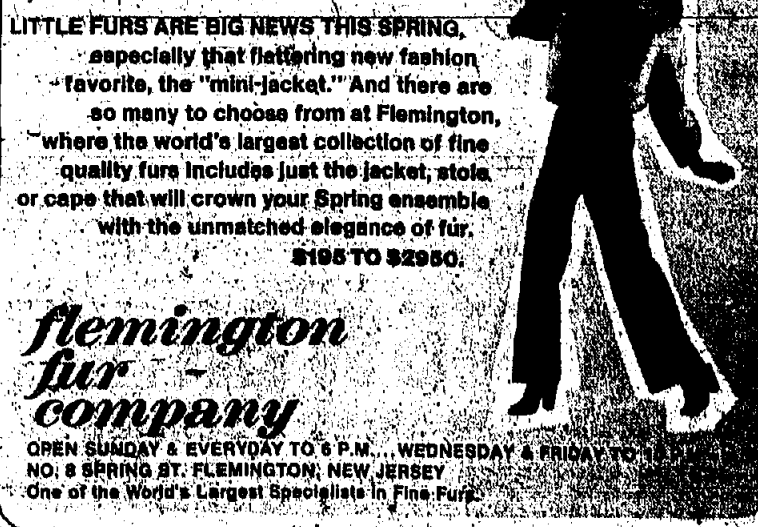
The Union County Park Police PBA's 44th annual dinner will be held at the PBA's sick annual spaghetti dinner and April benefits.

Newberrys OF SPRINGFIELD

Baby Portrait Special! FRIDAY and SATURDAY April 5 and 6 8" x 10" Living Color Portrait of your Child only \$8.88

flemington furs

SPRING IS HERE in all its splendor! And splendid is the word for Flemington's outstanding Spring collection of Town & Country coats.



LITTLE FURS ARE BIG NEWS THIS SPRING, especially that featuring new fashion favorites, the "mini-jacket." And there are so many to choose from at Flemington, where the world's largest collection of fine quality furs includes just the jacket, stole, or cape that will crown your Spring ensemble.

flemington fur company OPEN SUNDAY & EVERYDAY TO 6 P.M., WEDNESDAY & THURSDAY TO 5 P.M., FRIDAY TO 7:30 P.M., SATURDAY TO 8:30 P.M.

Quebec TV lists N.J. programs

Nadio Quebec, the French language television service in the Canadian province will televise several New Jersey Public Broadcasting programs.

CP legal director to speak on taxes

Lee Del Vecchio, the National United Central Party Association's legal department director, will speak at a monthly meeting of the Union County Central Party Center's adult parents group.

Consortium helps students at UC to live at Kean College

The Consortium of East Jersey's policy of cooperation among academic institutions has made it possible for a group of Union College students to live in the Kean College campus in Union.

Louis Treppunt; retired as barber

Funeral services were held Tuesday for Louis Treppunt, 76, of 883 Colonial Ave., Union, who died Thursday at home.

Quebec TV lists N.J. programs

Nadio Quebec, the French language television service in the Canadian province will televise several New Jersey Public Broadcasting programs.

CP legal director to speak on taxes

Lee Del Vecchio, the National United Central Party Association's legal department director, will speak at a monthly meeting of the Union County Central Party Center's adult parents group.

Consortium helps students at UC to live at Kean College

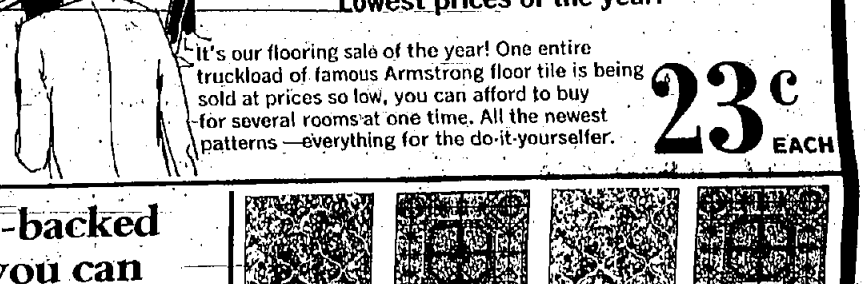
The Consortium of East Jersey's policy of cooperation among academic institutions has made it possible for a group of Union College students to live in the Kean College campus in Union.

Louis Treppunt; retired as barber

Funeral services were held Tuesday for Louis Treppunt, 76, of 883 Colonial Ave., Union, who died Thursday at home.

easy does it LINOLEUM & CARPET

We bought the whole thing! A TRUCKLOAD OF ARMSTRONG TILE FLOORS AT SUPER-LOW PRICES. Huge selection. 12' x 12' sizes. Do it yourself and save. Lowest prices of the year.



Cushion-backed carpet you can install yourself.

Armstrong makes it easy. We make it inexpensive. 3.99 SQ. YD. 12' WIDE

A no-wax floor you can install yourself.

Sundial cushioned no-wax floors. 12'-wide floors that shine far longer than ordinary vinyl floors. 7.99 PER SQUARE YARD

Solarian Place 'n Press' Tile

The First Do-It-Yourself Floor Tile That Shines Without Waxing! 99c EACH

Rich, lush carpet tiles. In self-adhesive squares so you can do it yourself.

39c 12" x 12"

ARMSTRONG place 'n press' EXCELON TILE

It's so easy to install Place 'n Press tile yourself. You don't have to buy cement, or special tools. Just peel off the paper, backing and press it down to stay. Place 'n Press is a sturdy vinyl asbestos tile that can really take it.

33c 12" x 12"

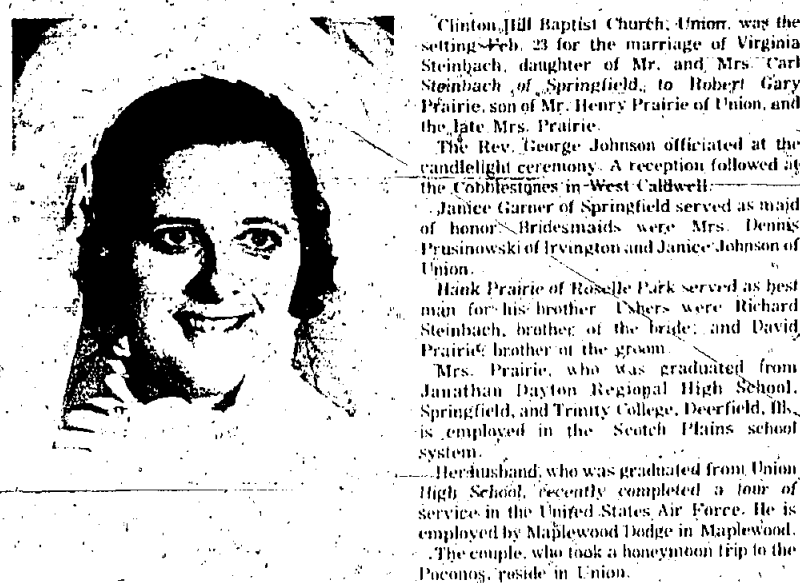
NEWARK 81 CLAY ST. 483-0600

SPRINGFIELD ROUTE 22 376-3220

LEO LINOLEUM & CARPET

ASSURBY PARK 1400 ASSURBY AVE. 774-3817 DENVERVILLE ROUTE 4 432-8222 YONGE RIVER ROUTE 3 341-2332

Virginia Steinbach marries Robert G. Prairie Feb. 23



Clinton Hill Baptist Church, Union, was the setting Feb. 23 for the marriage of Virginia Steinbach, daughter of Mr. and Mrs. Carl Steinbach of Springfield, to Robert Gary Prairie, son of Mr. Henry Prairie of Union, and the late Mrs. Virginia.

The Rev. George Johnson officiated at the candlelight ceremony. A reception followed at the Collinsbridge in Cliffside Park.

Janice Garner of Springfield served as maid of honor. Bridesmaids were Mrs. Dennis Prussanowski of Livingston and Mrs. Johnson of Union.

Mr. Prairie, who was graduated from Union High School, recently completed a tour of service in the United States Air Force. He is employed by Maplewood Lodge in Maplewood. The couple also took a honeymoon trip to the Bahamas, reside in Union.

Her husband, who was graduated from Union High School, recently completed a tour of service in the United States Air Force. He is employed by Maplewood Lodge in Maplewood. The couple also took a honeymoon trip to the Bahamas, reside in Union.

Her husband, who was graduated from Union High School, recently completed a tour of service in the United States Air Force. He is employed by Maplewood Lodge in Maplewood. The couple also took a honeymoon trip to the Bahamas, reside in Union.

Her husband, who was graduated from Union High School, recently completed a tour of service in the United States Air Force. He is employed by Maplewood Lodge in Maplewood. The couple also took a honeymoon trip to the Bahamas, reside in Union.

Her husband, who was graduated from Union High School, recently completed a tour of service in the United States Air Force. He is employed by Maplewood Lodge in Maplewood. The couple also took a honeymoon trip to the Bahamas, reside in Union.

Her husband, who was graduated from Union High School, recently completed a tour of service in the United States Air Force. He is employed by Maplewood Lodge in Maplewood. The couple also took a honeymoon trip to the Bahamas, reside in Union.

Her husband, who was graduated from Union High School, recently completed a tour of service in the United States Air Force. He is employed by Maplewood Lodge in Maplewood. The couple also took a honeymoon trip to the Bahamas, reside in Union.

Her husband, who was graduated from Union High School, recently completed a tour of service in the United States Air Force. He is employed by Maplewood Lodge in Maplewood. The couple also took a honeymoon trip to the Bahamas, reside in Union.

Her husband, who was graduated from Union High School, recently completed a tour of service in the United States Air Force. He is employed by Maplewood Lodge in Maplewood. The couple also took a honeymoon trip to the Bahamas, reside in Union.

Her husband, who was graduated from Union High School, recently completed a tour of service in the United States Air Force. He is employed by Maplewood Lodge in Maplewood. The couple also took a honeymoon trip to the Bahamas, reside in Union.

Her husband, who was graduated from Union High School, recently completed a tour of service in the United States Air Force. He is employed by Maplewood Lodge in Maplewood. The couple also took a honeymoon trip to the Bahamas, reside in Union.

Her husband, who was graduated from Union High School, recently completed a tour of service in the United States Air Force. He is employed by Maplewood Lodge in Maplewood. The couple also took a honeymoon trip to the Bahamas, reside in Union.

Her husband, who was graduated from Union High School, recently completed a tour of service in the United States Air Force. He is employed by Maplewood Lodge in Maplewood. The couple also took a honeymoon trip to the Bahamas, reside in Union.

Volunteer Guild Peddler's Fair scheduled May 11

The sixth annual Peddler's Fair, sponsored by the Memorial General Hospital Volunteer Guild will be held May 11, according to Mrs. William Roberts, guild president.

The fund-raising event, which will run from 10 a.m. to 5 p.m., will be held in the parking lot adjacent to Memorial General Hospital, 100 Gallopung rd. and will feature wares exhibited by local craftsmen, housewives, service groups, women's clubs, church organizations, societies and dealers.

Antiques, books, boutiques, bric-a-brac, cutlery, and other treasures, china, crockery, jewelry and a variety of crafts will be sold. The fair will feature gifts, housewares, refreshments, games for children and novelties.

Mrs. Roberts has announced that reservations are available for booths: "Booths measure 10 by 10 feet and run for \$20," she says. "All proceeds over the \$20 reservation fee are kept by the exhibitor."

Reservations may be made by calling 667-2627 or 666-2629. In the event of rain, the fair will be held May 18.

Mrs. Ravioli is employed as a secretary at Memorial General Hospital, Union.

Her husband is a radiological technology student at Memorial General Hospital, Union. Following a honeymoon trip to St. Thomas, the couple will reside in Roselle Park.

Mrs. Ravioli is employed as a secretary at Memorial General Hospital, Union.

Her husband is a radiological technology student at Memorial General Hospital, Union. Following a honeymoon trip to St. Thomas, the couple will reside in Roselle Park.

Mrs. Ravioli is employed as a secretary at Memorial General Hospital, Union.

Her husband is a radiological technology student at Memorial General Hospital, Union. Following a honeymoon trip to St. Thomas, the couple will reside in Roselle Park.

Mrs. Ravioli is employed as a secretary at Memorial General Hospital, Union.

Her husband is a radiological technology student at Memorial General Hospital, Union. Following a honeymoon trip to St. Thomas, the couple will reside in Roselle Park.

Mrs. Ravioli is employed as a secretary at Memorial General Hospital, Union.

Her husband is a radiological technology student at Memorial General Hospital, Union. Following a honeymoon trip to St. Thomas, the couple will reside in Roselle Park.

Mrs. Ravioli is employed as a secretary at Memorial General Hospital, Union.

Her husband is a radiological technology student at Memorial General Hospital, Union. Following a honeymoon trip to St. Thomas, the couple will reside in Roselle Park.

Mrs. Ravioli is employed as a secretary at Memorial General Hospital, Union.

Her husband is a radiological technology student at Memorial General Hospital, Union. Following a honeymoon trip to St. Thomas, the couple will reside in Roselle Park.

Marilyn Brain becomes bride of William F. Ravioli Jr.

Marilyn Brain, daughter of Mr. and Mrs. David G. Brain of 213 Linden rd., Roselle, was married Saturday afternoon to William F. Ravioli Jr., son of Mr. and Mrs. William F. Ravioli of 121 W. Roselle ave., Roselle Park.

The Rev. Albert Sacchi officiated at the ceremony in St. Thomas, St. Thomas, St. Thomas. A reception followed at Roland's Caterers.

The bride was escorted by her father, Mr. David G. Brain of Roselle Park served as best man for his brother. Others were Wayne Ravioli of Roselle Park, brother of the groom; Tony Brain of Linden, cousin of the groom.

Mrs. Ravioli is employed as a secretary at Memorial General Hospital, Union.

Her husband is a radiological technology student at Memorial General Hospital, Union. Following a honeymoon trip to St. Thomas, the couple will reside in Roselle Park.

Mrs. Ravioli is employed as a secretary at Memorial General Hospital, Union.

Her husband is a radiological technology student at Memorial General Hospital, Union. Following a honeymoon trip to St. Thomas, the couple will reside in Roselle Park.

Mrs. Ravioli is employed as a secretary at Memorial General Hospital, Union.

Her husband is a radiological technology student at Memorial General Hospital, Union. Following a honeymoon trip to St. Thomas, the couple will reside in Roselle Park.

Mrs. Ravioli is employed as a secretary at Memorial General Hospital, Union.

Her husband is a radiological technology student at Memorial General Hospital, Union. Following a honeymoon trip to St. Thomas, the couple will reside in Roselle Park.

Mrs. Ravioli is employed as a secretary at Memorial General Hospital, Union.

Her husband is a radiological technology student at Memorial General Hospital, Union. Following a honeymoon trip to St. Thomas, the couple will reside in Roselle Park.

Mrs. Ravioli is employed as a secretary at Memorial General Hospital, Union.

Her husband is a radiological technology student at Memorial General Hospital, Union. Following a honeymoon trip to St. Thomas, the couple will reside in Roselle Park.

Mrs. Ravioli is employed as a secretary at Memorial General Hospital, Union.

Her husband is a radiological technology student at Memorial General Hospital, Union. Following a honeymoon trip to St. Thomas, the couple will reside in Roselle Park.

Mrs. Ravioli is employed as a secretary at Memorial General Hospital, Union.

Her husband is a radiological technology student at Memorial General Hospital, Union. Following a honeymoon trip to St. Thomas, the couple will reside in Roselle Park.

Mrs. Ravioli is employed as a secretary at Memorial General Hospital, Union.

Her husband is a radiological technology student at Memorial General Hospital, Union. Following a honeymoon trip to St. Thomas, the couple will reside in Roselle Park.

Mrs. Ravioli is employed as a secretary at Memorial General Hospital, Union.

Hadassah chapters to attend 47th annual donor program

Twenty-two chapters of Northern New Jersey Region of Hadassah will participate in the 47th annual donor program, scheduled at the Tamarec Country Club in Alpine, Tuesday, April 16 and Wednesday, April 17 at 11 a.m.

The program will be held at the Tamarec Country Club in Alpine, Tuesday, April 16 and Wednesday, April 17 at 11 a.m.

The program will be held at the Tamarec Country Club in Alpine, Tuesday, April 16 and Wednesday, April 17 at 11 a.m.

The program will be held at the Tamarec Country Club in Alpine, Tuesday, April 16 and Wednesday, April 17 at 11 a.m.

The program will be held at the Tamarec Country Club in Alpine, Tuesday, April 16 and Wednesday, April 17 at 11 a.m.

The program will be held at the Tamarec Country Club in Alpine, Tuesday, April 16 and Wednesday, April 17 at 11 a.m.

The program will be held at the Tamarec Country Club in Alpine, Tuesday, April 16 and Wednesday, April 17 at 11 a.m.

The program will be held at the Tamarec Country Club in Alpine, Tuesday, April 16 and Wednesday, April 17 at 11 a.m.

The program will be held at the Tamarec Country Club in Alpine, Tuesday, April 16 and Wednesday, April 17 at 11 a.m.

The program will be held at the Tamarec Country Club in Alpine, Tuesday, April 16 and Wednesday, April 17 at 11 a.m.

The program will be held at the Tamarec Country Club in Alpine, Tuesday, April 16 and Wednesday, April 17 at 11 a.m.

The program will be held at the Tamarec Country Club in Alpine, Tuesday, April 16 and Wednesday, April 17 at 11 a.m.

The program will be held at the Tamarec Country Club in Alpine, Tuesday, April 16 and Wednesday, April 17 at 11 a.m.

The program will be held at the Tamarec Country Club in Alpine, Tuesday, April 16 and Wednesday, April 17 at 11 a.m.

The program will be held at the Tamarec Country Club in Alpine, Tuesday, April 16 and Wednesday, April 17 at 11 a.m.

The program will be held at the Tamarec Country Club in Alpine, Tuesday, April 16 and Wednesday, April 17 at 11 a.m.

The program will be held at the Tamarec Country Club in Alpine, Tuesday, April 16 and Wednesday, April 17 at 11 a.m.

The program will be held at the Tamarec Country Club in Alpine, Tuesday, April 16 and Wednesday, April 17 at 11 a.m.

The program will be held at the Tamarec Country Club in Alpine, Tuesday, April 16 and Wednesday, April 17 at 11 a.m.

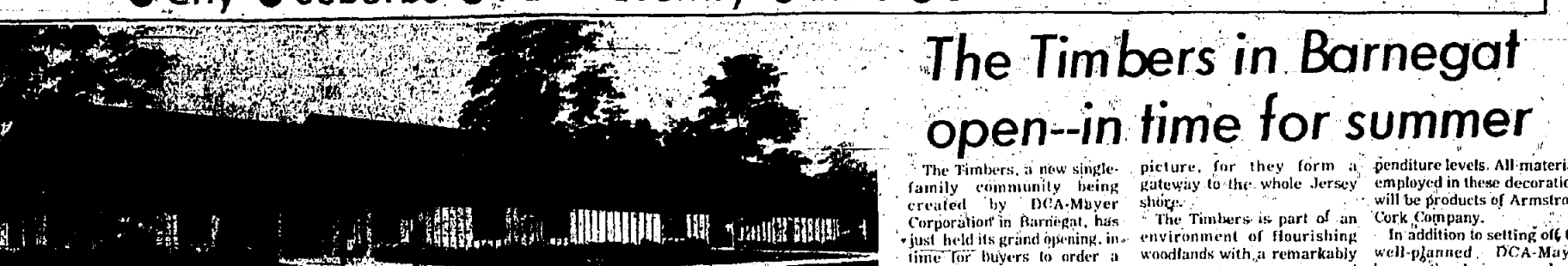
The program will be held at the Tamarec Country Club in Alpine, Tuesday, April 16 and Wednesday, April 17 at 11 a.m.

The program will be held at the Tamarec Country Club in Alpine, Tuesday, April 16 and Wednesday, April 17 at 11 a.m.

The program will be held at the Tamarec Country Club in Alpine, Tuesday, April 16 and Wednesday, April 17 at 11 a.m.

Your Guide To Better Living in the SUBURBAN REAL ESTATE MART

City • Suburbs • Farm Country • Lake • Shore



UNDER CONSTRUCTION - When completed, the new \$300,000 clubhouse for Crestwood Village IV residents will look like this. Mike Kokes, president of the retirement community on Rt. 506, Whiting, presided at ground-breaking ceremonies for the structure to house recreational and social activities for the fourth section of Crestwood Village now under development.

Crestwood plans fourth clubhouse

Ground was broken recently for the fourth residential clubhouse at Crestwood Village, according to Jan Kokes, vice-president of the Ocean County retirement community on Rt. 506 in Whiting.

When completed, the \$300,000 air-conditioned structure will serve the needs of Crestwood Village IV residents who live in the newest Crestwood section now under development, and will be ready when the new residents begin to move in later this year, Kokes said.

"In planning our three previous clubhouses, it has been our policy to build them at the same time as the homes of each section they will serve, so that Village residents will not have to wait for the clubhouse when they move in," declared Kokes.

The design of the new clubhouse will follow closely that of the previous three, with 1,000 square feet of space for all activities. A fully-equipped auditorium-hallway and stage, with professional lighting and public address system will occupy the central area of the building. Other facilities include a banquet room, club and meeting rooms, a professionally equipped lounge-billiard room, card and game rooms, a pool and library. Outdoor facilities include picnic grove, barbecue pits and shuffleboard courts.

An annual feature of our recreation and social program is the "Senior Olympics" which is held annually in the clubhouse. The program is designed to provide a time when an increasing number of people are attracted to living in a retirement community being opened a year-round home for the summer season. It is located conveniently on Rt. 506 and Rt. 507 of the Garden State Parkway. The Timbers offer seven different home designs in bungalow, two-story and ranch models, priced from \$24,990 to \$35,990. The Timbers is a community being opened a year-round home for the summer season. It is located conveniently on Rt. 506 and Rt. 507 of the Garden State Parkway.

The Timbers is a community being opened a year-round home for the summer season. It is located conveniently on Rt. 506 and Rt. 507 of the Garden State Parkway.

The Timbers is a community being opened a year-round home for the summer season. It is located conveniently on Rt. 506 and Rt. 507 of the Garden State Parkway.

The Timbers is a community being opened a year-round home for the summer season. It is located conveniently on Rt. 506 and Rt. 507 of the Garden State Parkway.

The Timbers is a community being opened a year-round home for the summer season. It is located conveniently on Rt. 506 and Rt. 507 of the Garden State Parkway.

The Timbers is a community being opened a year-round home for the summer season. It is located conveniently on Rt. 506 and Rt. 507 of the Garden State Parkway.

The Timbers is a community being opened a year-round home for the summer season. It is located conveniently on Rt. 506 and Rt. 507 of the Garden State Parkway.

The Timbers is a community being opened a year-round home for the summer season. It is located conveniently on Rt. 506 and Rt. 507 of the Garden State Parkway.

The Timbers is a community being opened a year-round home for the summer season. It is located conveniently on Rt. 506 and Rt. 507 of the Garden State Parkway.

The Timbers is a community being opened a year-round home for the summer season. It is located conveniently on Rt. 506 and Rt. 507 of the Garden State Parkway.

The Timbers is a community being opened a year-round home for the summer season. It is located conveniently on Rt. 506 and Rt. 507 of the Garden State Parkway.

The Timbers is a community being opened a year-round home for the summer season. It is located conveniently on Rt. 506 and Rt. 507 of the Garden State Parkway.

The Timbers is a community being opened a year-round home for the summer season. It is located conveniently on Rt. 506 and Rt. 507 of the Garden State Parkway.

The Timbers is a community being opened a year-round home for the summer season. It is located conveniently on Rt. 506 and Rt. 507 of the Garden State Parkway.

Marines Da Silva becomes bride of Jose F. Cunha

Marie Julie Da Silva, daughter of Mr. and Mrs. Jose Da Silva of 1749 Kenilworth Ave., Union, was married Feb. 16 to Jose Formigosa Cunha of 16 1st st., Irvington, son of Mr. and Mrs. Manuel Cunha of Atlantic, Virginia.

The Rev. Manuel Vasquez officiated at the ceremony in the Lady of Fatima, Newark. A reception followed at the Branch Brook Manor Hotel.

The bride was escorted by her father, Joseph Da Silva of Union, who was graduated from Union High School, recently completed a tour of service in the United States Air Force. He is employed by Maplewood Lodge in Maplewood. The couple also took a honeymoon trip to the Bahamas, reside in Union.

The bride was escorted by her father, Joseph Da Silva of Union, who was graduated from Union High School, recently completed a tour of service in the United States Air Force. He is employed by Maplewood Lodge in Maplewood. The couple also took a honeymoon trip to the Bahamas, reside in Union.

The bride was escorted by her father, Joseph Da Silva of Union, who was graduated from Union High School, recently completed a tour of service in the United States Air Force. He is employed by Maplewood Lodge in Maplewood. The couple also took a honeymoon trip to the Bahamas, reside in Union.

The bride was escorted by her father, Joseph Da Silva of Union, who was graduated from Union High School, recently completed a tour of service in the United States Air Force. He is employed by Maplewood Lodge in Maplewood. The couple also took a honeymoon trip to the Bahamas, reside in Union.

The bride was escorted by her father, Joseph Da Silva of Union, who was graduated from Union High School, recently completed a tour of service in the United States Air Force. He is employed by Maplewood Lodge in Maplewood. The couple also took a honeymoon trip to the Bahamas, reside in Union.

The bride was escorted by her father, Joseph Da Silva of Union, who was graduated from Union High School, recently completed a tour of service in the United States Air Force. He is employed by Maplewood Lodge in Maplewood. The couple also took a honeymoon trip to the Bahamas, reside in Union.

The bride was escorted by her father, Joseph Da Silva of Union, who was graduated from Union High School, recently completed a tour of service in the United States Air Force. He is employed by Maplewood Lodge in Maplewood. The couple also took a honeymoon trip to the Bahamas, reside in Union.

The bride was escorted by her father, Joseph Da Silva of Union, who was graduated from Union High School, recently completed a tour of service in the United States Air Force. He is employed by Maplewood Lodge in Maplewood. The couple also took a honeymoon trip to the Bahamas, reside in Union.

The bride was escorted by her father, Joseph Da Silva of Union, who was graduated from Union High School, recently completed a tour of service in the United States Air Force. He is employed by Maplewood Lodge in Maplewood. The couple also took a honeymoon trip to the Bahamas, reside in Union.

The bride was escorted by her father, Joseph Da Silva of Union, who was graduated from Union High School, recently completed a tour of service in the United States Air Force. He is employed by Maplewood Lodge in Maplewood. The couple also took a honeymoon trip to the Bahamas, reside in Union.

The bride was escorted by her father, Joseph Da Silva of Union, who was graduated from Union High School, recently completed a tour of service in the United States Air Force. He is employed by Maplewood Lodge in Maplewood. The couple also took a honeymoon trip to the Bahamas, reside in Union.

The bride was escorted by her father, Joseph Da Silva of Union, who was graduated from Union High School, recently completed a tour of service in the United States Air Force. He is employed by Maplewood Lodge in Maplewood. The couple also took a honeymoon trip to the Bahamas, reside in Union.

The bride was escorted by her father, Joseph Da Silva of Union, who was graduated from Union High School, recently completed a tour of service in the United States Air Force. He is employed by Maplewood Lodge in Maplewood. The couple also took a honeymoon trip to the Bahamas, reside in Union.

The bride was escorted by her father, Joseph Da Silva of Union, who was graduated from Union High School, recently completed a tour of service in the United States Air Force. He is employed by Maplewood Lodge in Maplewood. The couple also took a honeymoon trip to the Bahamas, reside in Union.

The bride was escorted by her father, Joseph Da Silva of Union, who was graduated from Union High School, recently completed a tour of service in the United States Air Force. He is employed by Maplewood Lodge in Maplewood. The couple also took a honeymoon trip to the Bahamas, reside in Union.

The bride was escorted by her father, Joseph Da Silva of Union, who was graduated from Union High School, recently completed a tour of service in the United States Air Force. He is employed by Maplewood Lodge in Maplewood. The couple also took a honeymoon trip to the Bahamas, reside in Union.

Showcase planned in Martine House

The Junior League of Plainfield will present a showcase, November 24 through May 18 at the restored and renovated Martine House, 11 Brook Lane, Plainfield. The showcase will feature a variety of handcrafted items, including pottery, sculpture and handicrafts. The group will hold a "Woman of the Year" event during the showcase. Mrs. Norma Hash will serve as chairman for the showcase.

The showcase will be held at the Martine House, 11 Brook Lane, Plainfield. The showcase will feature a variety of handcrafted items, including pottery, sculpture and handicrafts. The group will hold a "Woman of the Year" event during the showcase. Mrs. Norma Hash will serve as chairman for the showcase.

The showcase will be held at the Martine House, 11 Brook Lane, Plainfield. The showcase will feature a variety of handcrafted items, including pottery, sculpture and handicrafts. The group will hold a "Woman of the Year" event during the showcase. Mrs. Norma Hash will serve as chairman for the showcase.

The showcase will be held at the Martine House, 11 Brook Lane, Plainfield. The showcase will feature a variety of handcrafted items, including pottery, sculpture and handicrafts. The group will hold a "Woman of the Year" event during the showcase. Mrs. Norma Hash will serve as chairman for the showcase.

The showcase will be held at the Martine House, 11 Brook Lane, Plainfield. The showcase will feature a variety of handcrafted items, including pottery, sculpture and handicrafts. The group will hold a "Woman of the Year" event during the showcase. Mrs. Norma Hash will serve as chairman for the showcase.

The showcase will be held at the Martine House, 11 Brook Lane, Plainfield. The showcase will feature a variety of handcrafted items, including pottery, sculpture and handicrafts. The group will hold a "Woman of the Year" event during the showcase. Mrs. Norma Hash will serve as chairman for the showcase.

The showcase will be held at the Martine House, 11 Brook Lane, Plainfield. The showcase will feature a variety of handcrafted items, including pottery, sculpture and handicrafts. The group will hold a "Woman of the Year" event during the showcase. Mrs. Norma Hash will serve as chairman for the showcase.

The showcase will be held at the Martine House, 11 Brook Lane, Plainfield. The showcase will feature a variety of handcrafted items, including pottery, sculpture and handicrafts. The group will hold a "Woman of the Year" event during the showcase. Mrs. Norma Hash will serve as chairman for the showcase.

The showcase will be held at the Martine House, 11 Brook Lane, Plainfield. The showcase will feature a variety of handcrafted items, including pottery, sculpture and handicrafts. The group will hold a "Woman of the Year" event during the showcase. Mrs. Norma Hash will serve as chairman for the showcase.

The showcase will be held at the Martine House, 11 Brook Lane, Plainfield. The showcase will feature a variety of handcrafted items, including pottery, sculpture and handicrafts. The group will hold a "Woman of the Year" event during the showcase. Mrs. Norma Hash will serve as chairman for the showcase.

The showcase will be held at the Martine House, 11 Brook Lane, Plainfield. The showcase will feature a variety of handcrafted items, including pottery, sculpture and handicrafts. The group will hold a "Woman of the Year" event during the showcase. Mrs. Norma Hash will serve as chairman for the showcase.

The showcase will be held at the Martine House, 11 Brook Lane, Plainfield. The showcase will feature a variety of handcrafted items, including pottery, sculpture and handicrafts. The group will hold a "Woman of the Year" event during the showcase. Mrs. Norma Hash will serve as chairman for the showcase.

The showcase will be held at the Martine House, 11 Brook Lane, Plainfield. The showcase will feature a variety of handcrafted items, including pottery, sculpture and handicrafts. The group will hold a "Woman of the Year" event during the showcase. Mrs. Norma Hash will serve as chairman for the showcase.

The showcase will be held at the Martine House, 11 Brook Lane, Plainfield. The showcase will feature a variety of handcrafted items, including pottery, sculpture and handicrafts. The group will hold a "Woman of the Year" event during the showcase. Mrs. Norma Hash will serve as chairman for the showcase.

The showcase will be held at the Martine House, 11 Brook Lane, Plainfield. The showcase will feature a variety of handcrafted items, including pottery, sculpture and handicrafts. The group will hold a "Woman of the Year" event during the showcase. Mrs. Norma Hash will serve as chairman for the showcase.

The showcase will be held at the Martine House, 11 Brook Lane, Plainfield. The showcase will feature a variety of handcrafted items, including pottery, sculpture and handicrafts. The group will hold a "Woman of the Year" event during the showcase. Mrs. Norma Hash will serve as chairman for the showcase.

Engagement told of Rose Piccione

Mr. and Mrs. Joseph Piccione of 1067 Morrison Ave., Union, have announced the engagement of their daughter, Rose Helene, to John Anthony Massa, son of Mr. and Mrs. Edward Massa of Hollywood, Fla. The announcement was made in December at a party given by the prospective bride's parents at the Town and Campus, Union.

The bride-elect, who was graduated from Union High School, is employed as an assistant to the vice-president at Merit Alliance Corp., Industrial Ave. in Trenton. She is also an advertising artist for Pond Paper Inc., Linden, N.J. Her fiance, who is currently in the production department of Raymond Advertising Co., Springfield, N.J. A July wedding is planned in St. Michael's Church, with a reception at the Maplewood Manor.

The bride-elect, who was graduated from Union High School, is employed as an assistant to the vice-president at Merit Alliance Corp., Industrial Ave. in Trenton. She is also an advertising artist for Pond Paper Inc., Linden, N.J. Her fiance, who is currently in the production department of Raymond Advertising Co., Springfield, N.J. A July wedding is planned in St. Michael's Church, with a reception at the Maplewood Manor.

The bride-elect, who was graduated from Union High School, is employed as an assistant to the vice-president at Merit Alliance Corp., Industrial Ave. in Trenton. She is also an advertising artist for Pond Paper Inc., Linden, N.J. Her fiance, who is currently in the production department of Raymond Advertising Co., Springfield, N.J. A July wedding is planned in St. Michael's Church, with a reception at the Maplewood Manor.

The bride-elect, who was graduated from Union High School, is employed as an assistant to the vice-president at Merit Alliance Corp., Industrial Ave. in Trenton. She is also an advertising artist for Pond Paper Inc., Linden, N.J. Her fiance, who is currently in the production department of Raymond Advertising Co., Springfield, N.J. A July wedding is planned in St. Michael's Church, with a reception at the Maplewood Manor.

The bride-elect, who was graduated from Union High School, is employed as an assistant to the vice-president at Merit Alliance Corp., Industrial Ave. in Trenton. She is also an advertising artist for Pond Paper Inc., Linden, N.J. Her fiance, who is currently in the production department of Raymond Advertising Co., Springfield, N.J. A July wedding is planned in St. Michael's Church, with a reception at the Maplewood Manor.

The bride-elect, who was graduated from Union High School, is employed as an assistant to the vice-president at Merit Alliance Corp., Industrial Ave. in Trenton. She is also an advertising artist for Pond Paper Inc., Linden, N.J. Her fiance, who is currently in the production department of Raymond Advertising Co., Springfield, N.J. A July wedding is planned in St. Michael's Church, with a reception at the Maplewood Manor.

The bride-elect, who was graduated from Union High School, is employed as an assistant to the vice-president at Merit Alliance Corp., Industrial Ave. in Trenton. She is also an advertising artist for Pond Paper Inc., Linden, N.J. Her fiance, who is currently in the production department of Raymond Advertising Co., Springfield, N.J. A July wedding is planned in St. Michael's Church, with a reception at the Maplewood Manor.

The bride-elect, who was graduated from Union High School, is employed as an assistant to the vice-president at Merit Alliance Corp., Industrial Ave. in Trenton. She is also an advertising artist for Pond Paper Inc., Linden, N.J. Her fiance, who is currently in the production department of Raymond Advertising Co., Springfield, N.J. A July wedding is planned in St. Michael's Church, with a reception at the Maplewood Manor.

The bride-elect, who was graduated from Union High School, is employed as an assistant to the vice-president at Merit Alliance Corp., Industrial Ave. in Trenton. She is also an advertising artist for Pond Paper Inc., Linden, N.J. Her fiance, who is currently in the production department of Raymond Advertising Co., Springfield, N.J. A July wedding is planned in St. Michael's Church, with a reception at the Maplewood Manor.

The bride-elect, who was graduated from Union High School, is employed as an assistant to the vice-president at Merit Alliance Corp., Industrial Ave. in Trenton. She is also an advertising artist for Pond Paper Inc., Linden, N.J. Her fiance, who is currently in the production department of Raymond Advertising Co., Springfield, N.J. A July wedding is planned in St. Michael's Church, with a reception at the Maplewood Manor.

The bride-elect, who was graduated from Union High School, is employed as an assistant to the vice-president at Merit Alliance Corp., Industrial Ave. in Trenton. She is also an advertising artist for Pond Paper Inc., Linden, N.J. Her fiance, who is currently in the production department of Raymond Advertising Co., Springfield, N.J. A July wedding is planned in St. Michael's Church, with a reception at the Maplewood Manor.

The bride-elect, who was graduated from Union High School, is employed as an assistant to the vice-president at Merit Alliance Corp., Industrial Ave. in Trenton. She is also an advertising artist for Pond Paper Inc., Linden, N.J. Her fiance

Amusement News

FLORIDA... THE TALL BLOND MAN WITH ONE BLACK SHOE... MAPLEWOOD... PAPPILLON... NIPSEY RUSSELL... JACKIE VERNON... DANA VALERY... LEE CASTLE... BOB JIMMY DORSEY EBERLY... CHUBBY CHECKER... GUY LOMBARDO

Theater Time Clock

FLORIDA... THE TALL BLOND MAN WITH ONE BLACK SHOE... MAPLEWOOD... PAPPILLON... NIPSEY RUSSELL... JACKIE VERNON... DANA VALERY... LEE CASTLE... BOB JIMMY DORSEY EBERLY... CHUBBY CHECKER... GUY LOMBARDO



ANN MILLER... Veteran actress is star of Cole Porter's 'Anything Goes'...

DISC 'N DATA

PICK OF THE WEEKS LP'S... 'Come Live With Me' by Ray Charles... 'What I Say' by The O'Jays... 'You Don't Know Me' by The O'Jays...

Steinbeck drama to open April 12

'Of Mice and Men' stage drama based on John Steinbeck's novel... will open a five-week engagement at the Actors Cafe Theater...

Turnpike officials adopt anti-noise regulations

The New Jersey Turnpike is on the road to becoming the quietest superhighway on the East Coast... officials have adopted noise regulations...

State authorizes Blue Cross cash to help hospitals

State Insurance Commissioner James J. Sheeran and Acting Health Commissioner William J. Dougherty have announced their approval of a proposal by Blue Cross of New Jersey to make cash advances to hospitals...

Serious crime up five percent, Saxbe reports

Serious crime in the United States rose again in 1973 after registering its first decrease in 12 years in 1972... Attorney General William French Saxbe announced this week...

Complaints inspired first phone booth

The first was made with a barrel hoop draped with blankets forming a tunnel to an instrument called a telephone... complaints inspired the first phone booth...

Blankets, barrel hoops led to modern devices

The first was made with a barrel hoop draped with blankets forming a tunnel to an instrument called a telephone... blankets and barrel hoops led to modern devices...



COIN TELEPHONES, THEN AND NOW... Wood-paneled booth of '60's, upper left, a stand-by in hotels, boosted silk curtains and writing desk as well as a telephone...

Tall Blond Man booked at Elmora

The Tall Blond Man With One Black Shoe... French comic about a budding, unemployed musician who becomes a fall guy in a French secret service spy-movie involving tanks and atomic doomsday... booked at Elmora...

Fiddler to play at Meadowbrook

'Fiddler on the Roof', prize-winning Broadway stage musical, will open May 22 at the Meadowbrook Theater Restaurant... Fiddler to play at Meadowbrook...

Rare instruments to used in Alsop-Bernstein concert

When the Alsop-Bernstein Trio appears at Union High School, Saturday evening, April 20 for its final concert... Rare instruments to be used in Alsop-Bernstein concert...

Simon comedy to open tomorrow in Summit

'The Last of the Hot Hot Lovers', Neil Simon's stage comedy, will open tomorrow at the Grand Theater in Summit... Simon comedy to open tomorrow in Summit...

Host clubs sought for patient parties

The Great Park Association has issued a call for host clubs willing to host in the hospital... Host clubs sought for patient parties...

Marx Brothers

Two Marx Brothers classics arrived on screens yesterday at the Park Theater... Marx Brothers...

Recycling forum topic

Paper recycling will be the environmental chairman at 'Cook College'... Recycling forum topic...

Art seminar scheduled at Fairleigh Dickinson

The third annual art seminar of the Fairleigh Dickinson Association of Artists... Art seminar scheduled at Fairleigh Dickinson...

Show at Princeton

'A Tale That Through the Audience', the Princeton University Triangle Club's annual spring production... Show at Princeton...

Three Musketeers, new attraction at Fox

An all-star cast is highlighted in 'The Three Musketeers', which opened yesterday at the Fox Theater... Three Musketeers, new attraction at Fox...

Cinema to screen two Disney films

Wall Disney's 'Supercad' and 'Flubber' open tomorrow at a double bill at the Jerry Lewis Cinema... Cinema to screen two Disney films...

CROSSWORD PUZZLE

ACROSS: 1. Word with cup... 2. Name of a flower... 3. Name of a city... DOWN: 1. Name of a city... 2. Name of a city...

IN CLOSE CIRCLES

RATNA ASSAN portrays the young Indian girl who nourishes Steve McQueen back to health after his escape from the French Guiana prison... IN CLOSE CIRCLES...

DINING GUIDE

HEDY'S DINER RESTAURANT... Tretola's... Chestnut Tavern... IRVINGTON POLISH HOME RESTAURANT... CLARE & COBY'S... RYLAND INN... OLDE UNION HOUSE... KINGSTON RESTAURANT... ROSELLE MANOR... COMPLETE EASTER MENU... GALAXY DINER... ASST. WRITING PAPER & GREETING CARDS... SPORTY OXFORDS FOR THE WHOLE FAMILY... MCCROYS H.L. GREEN NEWBERRY

My daddy sells Fine Furniture

and he saves you money... My daddy sells Fine Furniture...

POSTAL DEVICES WENT UP MARCH 1st

SAVE MONEY MAIL PARCELS OVERNITE SERVICE SERVING ALL NEW JERSEY... POSTAL DEVICES WENT UP MARCH 1st...

ALL-STATE ROOFING CO.

SEAMLESS GUTTERS & LEADERS SHINGLE ROOFS & RIP-OFF ROOFS... ALL-STATE ROOFING CO....

The Meadowbrook Theatre/Restaurant

APRIL 5-6 (Friday & Saturday) NIPSEY RUSSELL... APRIL 12-20 (Friday & Saturday) JACKIE VERNON... APRIL 26-27 (Friday & Saturday) LEE CASTLE... MAY 3-4 (Friday & Saturday) CHUBBY CHECKER... MAY 15-17-18 (Wednesday, Thursday & Friday) GUY LOMBARDO

Jerry Lewis Cinema

WALT DISNEY'S 'SUPERDAD' plus 'FLUBBER'... Jerry Lewis Cinema...

MAPLEWOOD PAPPILLON

STAND BY FOR THE BOLD... MAPLEWOOD PAPPILLON...

Buffet Elegance

at Almack's Lodge... Buffet Elegance...

Nicolas STEAK & LOBSTER HOUSE

610 W. ST. GEORGE AVE. (at Market & Park)... Nicolas STEAK & LOBSTER HOUSE...

CLARE & COBY'S RESTAURANT

Madison Township... CLARE & COBY'S RESTAURANT...

OLDE UNION HOUSE

1181 Morris Avenue, Union... OLDE UNION HOUSE...

KINGSTON RESTAURANT

1181 Morris Avenue, Union... KINGSTON RESTAURANT...

ROSELLE MANOR

2401 Wood Ave., Roselle, N.J. (at 2nd & 3rd St.)... ROSELLE MANOR...

COMPLETE EASTER MENU

At Reasonable Prices... COMPLETE EASTER MENU...

ASST. WRITING PAPER & GREETING CARDS

2 for 88¢... ASST. WRITING PAPER & GREETING CARDS...

SPORTY OXFORDS FOR THE WHOLE FAMILY

17% OFF... SPORTY OXFORDS FOR THE WHOLE FAMILY...

NCE plans program for N.J. authors

Newark College of Engineering has announced an April 1974 annual tax alert program which recognizes current contributions of New Jersey authors and provides a forum for their opinions.

The program will be held at NCE's College Center on Saturday, April 27, with arrangements handled by the NCE Division of Continuing Studies.

Featured will be the 11th annual New Jersey Author's Citation Luncheon and the seventh all-day New Jersey Writer's Conference. About 500 are expected to attend the related programs.

The luncheon program brings state-wide attention to local writers who have contributed to the state's literature.

Manuscripts of the writers honored at the New Jersey Author's Citation Luncheon will participate in the workshop programs NCE holds on the same date.

The writers conference offers a variety of workshops for participants, as they bring to the attention of writers and teachers of writing in contact with those wishing to improve communication skills.

Starting from 9 a.m. through 4 p.m., the workshops are all of a practical nature and given in very basic forms. Included are sessions devoted to fiction, non-fiction, and writing for specialized audiences. About 30 regional writers take part in the workshops.

Employment dips in state by 7,400 during February

Joseph A. Holman, Commissioner of the N.J. Department of Labor and Industry announced last week that nonfarm wage and salary employment in New Jersey dipped a little less than seasonal 7,400 in February.

The February total was estimated at 2,280,200 compared with 2,287,600 in January and 2,282,700 a year ago, according to the Department's Division of Planning and Research.

Director Arthur J. O'Neal of the Division of Planning and Research pointed out that the estimate has been revised from 1970 to date on the basis of new 1973 benchmark data, as they are periodically and routinely. The revision has resulted generally in higher monthly totals than estimated.

Manufacturing employment was nearly unchanged in February as a monthly drop of 4,500 among durable goods industries was largely offset by an increase of 3,800 among nondurable.

The largest over-the-month change was a seasonal increase of 8,800 in apparel industry and a reduction of 3,800 in transportation equipment as the fuel pinch adversely affected the demand for automobiles. Employment levels in other major manufacturing lines remained fairly stable between January and February.

Employment nonmanufacturing industries was reduced by 6,800 in February. Gasoline shortages have shifted the mobility of the modern shopper and this contributed in part of the cutback of 6,800 in trade. There was a seasonal decline of 4,000 in construction. The only monthly increases in non-manufacturing were 2,700 in government and 2,500 in services.

Compared with a year ago nonfarm employment in February was up by 46,400. All of the gains in nonmanufacturing which registered an over-the-year increase of 53,200. Manufacturing employment was 12,800 below a year ago.

The weekly warnings of factory production workers in February rose by \$2.85 to an average of \$10.81. The rise was attributable to a 36-minute lengthening of the workweek.

Parkway to open picnic sites; facilities at two are improved

The Authority's roadside picnic sites provide picnic tables, drinking water, sanitary facilities, litter baskets and public telephones.

Three of the Telegraph Hill Park picnic sites have been improved and two Monmouth County picnic sites have been improved.

Chairman George M. Wallhauser said that large signs with brown basket symbols will appear on the roadside sites where they may stop to picnic or relax.

The chairman said the improved, expanded facilities will be at the Herkertsville picnic area, located at southbound milepost 94.6, and at the Crooked Pike grove, one of two picnic spots scattered along Telegraph Hill Parkway Exit 116.

In addition to the Telegraph Hill and Herkertsville picnic sites, the seasonal picnic areas to be opened on April 12 include: the Crooked Pike grove, located between January and February milepost 82.3; Oyster Creek, milepost 71.3, and Stafford Forge, milepost 61.2, in Ocean County. The seasonal sites will remain open until late October.

The Authority's southernmost picnic area, Shenemar Holly, milepost 22.7 in Cape May County, is open year-round. An attraction there is the State's oldest holly tree—more than 300 years old.

The State Department of Transportation has three picnic rest areas in the 13-mile Parkway section in Monmouth County.

United Way annual meeting offers tribute to Mr. Lebau

A posthumous award for Harry Lebau, a long-time leader of the Elizabeth Jewish Community, was presented by his wife and children at the annual breakfast meeting of the Eastern Union County United Way last week at the Community Service Center, Bayway, Elizabeth.

Gloria Hertz, Union president of the United Way, presented the posthumous award to Mrs. Mary Lebau of Elizabeth, Mrs. Ruth Brewster of Hillside and Dr. Gerald Lebau of Scotch Plains.

Mr. Lebau, said Herold, served as the pioneer of the United Way movement in Union County. He first conceived the idea for a Welfare Federation in 1936. His vision crystallized with the founding of a Community Chest in 1937.

"Recognized as necessary for a central funding and allocating source to serve community social service needs," said Herold.

"In the words of Mr. Lebau's foresight," said Herold, "his innovative ideas have become reality. First, his suggestions of program budgeting and union accounting procedures have been implemented by United Way agencies. This has permitted them to carry out their programs more efficiently. Second, Mr. Lebau addressed the need for private public cooperation in providing human services. He encouraged the development of the United Way Grants-in-Aid Program, which in 1974 will generate more than \$62,000 in federal funds for 14 member agencies. Third, Mr. Lebau secured local residents that their tax dollars will return to their own community and be put to work for a better life."

Herold observed that "Harry Lebau's goals remain far goals, and the United Way of Union County will be faithful to his vision."

Herold said the annual breakfast meeting offered the opportunity to recognize the devoted efforts of concerned community members. These United Way volunteers have made the Jewish Family Services of Central Jersey member agencies have sufficient funds to carry out vitally needed human services.

United Way of Eastern Union County serves the residents of Elizabeth, Linden, Roselle, Roselle Park, Hillside and Cliff.

At the meeting other people in attendance who were recognized for fostering Mr. Lebau's goals were: Mrs. Samuel Teresceba, who served as a board member of the Jewish Family Services of Central Jersey; Dr. Ralph Garber, who is the Executive Director of the School of Social Work, Rutgers University, Newark, N.J.; and Dr. William H. Miller, who is the Executive Director of the Jewish Family Services of Central Jersey.

Charter unit told of potential saving by use of hospital

The use of Rumlens Hospital, for partial hospitalization of persons needing psychiatric care, could result in a long-run savings, the Union County Charter Study Commission, was told last week.

Thomas Ludlow, administrator of the Union County Mental Health Board, said the proposed plan envisions the use of 30 beds in Rumlens Hospital for patients in need of partial care but who are able to function in the community the remainder of the time.

Ludlow said such a plan would cut down the number of admissions to state institutions and save money in the long run. In 1973 the county spent \$2,500,000 to maintain residents in state institutions for the treatment of mental disease and mental retardation, the commission was told.

Ludlow, who declined to speculate on how much money might be saved by having a partial hospitalization program, cited the loss of pay offered by those currently committed to complete hospitalization in a state institution and welfare payments to the patient's family.

Michael Galuppo, deputy director of the Union County Welfare Fund, defended the board's value, saying it played an active role in making policy, case review and public relations. He admitted, however, that only one percent of the welfare cases is subject to case review by a lay committee of the board.



METER MAID — Dorothy Ayres of Elizabeth reads meter at the home of an Elizabeth Home Gas Co. customer. She was recently hired as the company's first female meter reader. A spokesman for Elizabeth Home commented that she is being very well received by the public and that the firm plans to hire other women for the position.

Cancer unit cites added popularity of memorial gifts

The use of memorial gifts to support the American Cancer Society's program of research, education and service to patients is becoming more popular, it was noted this week by the society's Union County Unit.

"Many individuals, organizations, firms and other groups practice memorial giving regularly," a society spokesman said. "Every contribution is acknowledged with a receipt from the donor and is deductible for tax purposes. A memorial card is sent to the family, telling the name of the person honored and the name and address of the person to whom the receipt is to be sent."

"The necessary information for processing a memorial includes: the name of the deceased, name and address of the person to whom the acknowledgment is to be sent and the name and address of the person to whom the receipt is to be sent."

"Some large corporations," the spokesman said, "will match the contribution of an employee. The Schering Corporation, located in Union County, is one example. At Schering, an employee makes a contribution to a charitable organization of his or her choice through the corporation personnel department. The corporation, in turn, makes a matching donation and then forwards both contributions to their final destination."

Arrangements for the memorials may be made by contacting the Union County Unit of the American Cancer Society at 512 Westminister Ave., Elizabeth, or by calling 254-7271.

Bridge openings limited to speed vehicular traffic

Motorists are moving fewer delays in crossing the state's movable bridges and up to \$100,000 a year may be saved by the state as a result of a Department of Transportation policy to limit bridge openings where feasible.

The department's new policy, which is being limited to 11 of the 38 movable spans on the State Highway System and consideration is being given to other movable spans.

The department estimates a saving of up to \$100,000 annually in operating costs may result.

Instead of the normal practice of opening a bridge when a vessel signals that it wants to pass through the channel, the Department has sought to keep highway traffic moving with fewer interruptions by scheduling in advance the times that a bridge will be opened.

Based on periodic checks of the volumes of marine and vehicular traffic at various bridges throughout the state, the department may consider a bridge for either "restricted" operation or "advance notice" operation.

The "restricted" operation is used to approve the change in operation.

A bridge is considered for the "restricted" status when a high volume of marine and highway traffic occurs at certain hours of the day during a particular time of the year. Although a "restricted" bridge is opened 24 hours a day, it opens for marine traffic only at certain hours of the day during specified months.

"Advance notice" bridges are not manned on a regular basis. Therefore, the department must receive advance notice from mariners requesting the bridge to be opened so that an operator can be available to open the bridge. Consideration is given to "advance notice" operations when marine traffic becomes so light that the need to have the bridge manned is not warranted for economic reasons.

Colonial life is explained through household items

A colonial sausage maker that looks like a giant whipped cream sifter, a cotton candy maker and a mangle are among the puzzling objects inviting schoolchildren to visit the museum of the New Jersey Historical Society in Newark.

The museum, closed since late 1972 for extensive renovation, has recently opened its doors to school groups for "please home" visits. Sometimes the evolution is clear, but sometimes the object is obsolete and the function is hard to guess.

The museum group was enthusiastic about the visit, and teachers and parents found the objects to be a real eye opener. From a Victorian to the behind-the-scenes peek at a film director, the children wondered about practical concerns such as "Did they have electricity?" and "What did they do with the garbage?"

The museum will be open to school visits on May 20. Visits are being arranged on Tuesdays, Thursdays, and some Wednesdays as more docent volunteers become available and complete their training programs. Presently interested either in arranging a school visit or working as a docent volunteer may call Miss Hull at society headquarters.

Public's aid urged in recycling paper

A critical shortage of waste paper is being reported by the New Jersey Solid Waste Advisory Council. The council is urging the public to help by recycling waste paper.

Harry F. Besley, chairman of the council, said the help of the public is needed to generate as much used paper as possible in the coming weeks. He said that the recycling of waste paper is a key to solving the waste problem.

"Unneeded waste paper can be recycled," Besley said. "Prices are being paid for newspapers, magazines, and other printed matter. The State Bureau of Solid Waste Management, Trenton, can provide the name of the nearest waste paper dealer or recycling center."

The council is sponsoring an all-day public policy forum on paper recycling this Tuesday at Cook College, Rutgers University, New Brunswick. The forum will be held in the Food Science Building from 9 a.m. to 12 p.m. Speakers and panel members from leading environmental groups will examine the problem in depth, according to a forum spokesman.

Besley, a professor at Cook College, urged the public to support local programs for municipal collection of newspapers and other printed matter. He also urged the public to encourage recycling centers in their efforts to ease the paper shortage.

According to Besley, statistics show about half of the average town's solid waste is paper.

Oratory to start a Junior School

The Oratory School of Summit will establish a Junior School for boys on its campus beginning in the fall 1974 semester. In announcing the new program, the Rev. Richard J. Fitzpatrick, headmaster, noted that the Junior School would enroll boys for seventh and eighth grades to begin this September.

Father Fitzpatrick indicated that the Junior School is being established in response to the request of many parents for private Catholic day school at the Junior High School level. Enrollment is open to present sixth graders in Union, Essex, Somerset and Morris counties. Direct bus service is provided to some communities.

The Oratory Junior School will utilize the ten-acre campus and the modern academic and sports facilities of the Senior School at Morris Avenue in Summit.

Dr. Handler is named

Dr. Robert Handler, chairman of the Early Childhood Department at the University of New Jersey, Newark, has been named to the position of director of the division of the state task forces for teacher certification and day care center licensing, effective May 1.

A degree from Pennsylvania State University, Harrisburg, Pa., in 1954, and a Ph.D. degree from Teachers College, Columbia University, in 1958.

A specialist in human relations, Dr. Handler will participate in a session on "Childhood and Education" at the April 27 meeting of the New Jersey Association for the Education of Young Children.

Harpisichord program

Anthony Newman, harpichordist, will be featured at the Fairleigh Dickinson University concert series Sunday at 4:30 p.m. The concert will be presented at Wilson Anderson KPM School of Hospitality, 110 Fuller pl., Hackensack.

CATCH ONE TERMITE TO GET RID OF ALL YOUR TERMITES.

If you think you've got termites, catch one and mail it to us.

Termites look a lot like harmless flying ants, but they aren't harmless—they can do plenty of damage. Make sure the insect you catch is "dead" with a little arsenic, and mail it to us at the address below.

Within 24 hours, our experts will tell you what kind of bug it is.

The important thing is that we at ARAX can get rid of termites or any other pest.

And guarantee our results in writing.

To fully protect you against the expensive and extensive damage termites can cause in your building, just send us one little bug and we'll do the rest. No charge, no obligation.

ARAX
EXTERMINATING CO.
1787 SPRINGFIELD AVENUE
HARRISON, N.J. 07040
761-7300

Gas usage grows—but at slower pace

Total gasoline consumption last year for highway and non-highway uses in New Jersey amounted to 7,246,476.00 gallons, according to the New Jersey Petroleum Council.

Leonard H. Kupper, executive director, noted that the figure represented only a 3.4 percent increase over 1972 consumption with an 8.8 percent growth in gasoline consumption for 1973 over 1972.

Kupper said that the last several years gasoline consumption in New Jersey has been rising at a rate faster than the national average (approximately 6 percent). If it had not been for the fact that in the last two months of 1973 gasoline usage fell 10.2 percent, New Jersey would have again surpassed the national rate.

The petroleum industry spokesman warned that that must continue to be conserved even though the Arab embargo has been lifted.

FRIDAY DEADLINE
All items other than spot news should be in our office by noon on Friday.

FEDDER'S Pre-Season Air Conditioning SALE

FREE ESTIMATES
CHECK OUR PRICES!
\$ SAVE NOW \$
by calling

BEDFORD SERVICE, INC.
708 FAIRFIELD AVE.
KENILWORTH 241-8050

TERMITES Swarming — call BLISS

BE SURE BLISS has been serving the Home Owner for 22 YEARS. For a complete description of your home by a Termites Control Technician by the finest technical staff, please, call your local office:

GR 7-0079 OR 6-8088
EL 3-8762 PL 6-6666

BLISS TERMITE CONTROL CORP.
DIV. OF BLISS EXTERMINATOR CO., INC. — EST. 1952
One of the Oldest & Largest

KEEP YOUR HOME YOUR CASTLE. REPAIR, REPLACE TODAY!

CALL ONE OF THE EXPERT CRAFTSMEN ADVERTISING ON THIS PAGE TODAY!!

Jewish history topic of lectures

"Recent Jewish History" and "Anti-Semitism in Modern Times" will be the titles of two separate lecture series to be sponsored by the Plainfield Jewish Community Center in cooperation with Union College.

"Recent Jewish History" will be the subject of a six-lecture series which will conclude on consecutive Mondays beginning April 22. "Anti-Semitism in Modern Times" will be explored on six consecutive Tuesday evenings beginning April 23 at the Plainfield Jewish Community Center. All lectures are free of charge for each series is \$30 for members of the Community Center and \$35 for non-members.

Those interested in enrolling in either lecture series may obtain application by contacting Miss Maurine Dooler, coordinator of community services, Union College, 275-2600, or Mrs. Roberta Salkin, Plainfield Jewish Community Center, 4755-8221.

Afro-American GOP will aid victims of fire

The Union County Afro-American Republicans will hold a "Coffee, Cake and Bring Along a Gift Night" at 8 p.m. tomorrow at the home of Helen Walter, 1205 Morris St., Roselle.

Mrs. Walter and her family lost all of their household possessions in a fire at their home last year. Robert W. Lee, newly-elected president of the group, said Stewart Pollock of Roselle has coordinated tomorrow night's program.

SMOKING PROBLEM

Enough drugs entered the United States in 1973 to make nearly 20 million cigarettes and every man, woman and child in the country, according to the Senate-Internal Security Subcommittee.

PAVING

Commercial, Residential, Industrial, Municipal, Parking Areas

Call: DURA-BILT PAVING CO., INC.
376-5853 376-6140
531 Mountain Ave. Springfield

PRODUCE SPECIALS

| | |
|--------------------------------|----------------------------|
| GOLDEN BANANAS 10¢ lb. | YELLOW ONIONS 10¢ lb. |
| FRESH, CRISP, STALK CELERY 25¢ | FLORIDA GRAPEFRUIT 10¢ ea. |
| LARGE GRADE A EGGS 69¢ Doz. | CELLO GARROTS 10¢ pkg. |

975 LENOX AVE. UNION • 687-0770
1401 OAK AVE. • 687-0770
2330 SPRINGFIELD AVE. VANDERHILL 687-3642
(Opposite Post Office) Open 7 A.M. to 7 P.M. Daily

TAURUS Says: "NO BULL"

It pays to deal with a licensed local contractor with 25 years experience. Reasonable Prices!

- GENERAL REMODELING
- KITCHENS • BATHROOMS
- BASEMENTS • SIDING • ROOFING
- GUTTERS • Visit Our Showroom

TAURUS CONSTRUCTION COMPANY
1414 Burnet Ave. 688-3300
141 Westfield Hill Union

NOW OPEN the NEW

SCOTCH PLAINS OFFICE

HARMONIA Savings Bank

2253 NORTH AVENUE (Corner CRESTWOOD ROAD) SCOTCH PLAINS

Offering the HIGHEST RATE on REGULAR SAVINGS ACCOUNTS

You Can Deposit or Withdraw Anytime

5.47%*

IS THE EFFECTIVE ANNUAL YIELD ON

5 1/4%*

Withdrawals any time without losing interest provided you maintain a balance of \$5.00 or more.

*Effective Annual Yield Applies When Principal and Interest Remain on Deposit for a Year.

HARMONIA
The Family Savings Bank

1 ELIZABETH: IN UNION SQUARE & 540 MORRIS AVE. — 289-0800
In SCOTCH PLAINS: 2253 NORTH AVE. (Cor. Crestwood Rd.) — 654-4622

WIN A 1974 FORD PINTO SQUIRE STATIONWAGON

In celebration of our new Scotch Plains office, we are giving away a 1974 Ford Pinto Squire, a fully equipped and loaded all-conditions, radio, luggage rack and radial tires.

Just fill out an entry blank at any Harmonia Savings Bank office. The drawing will be held on Friday, May 31st, 1974, 2:30 P.M. at the Scotch Plains Office. You need not be present to win.

CALL CLASSIFIED 686-7700

MAIN OFFICE — UNION SQUARE, ELIZ.
Lobby: Daily 9 A.M. to 3 P.M.; Thurs. 9 P.M. to 8 P.M.
Debitable: Daily 9 A.M. to 6 P.M.; Thurs. 9 A.M. to 6 P.M.
Walk-Up: Daily 9 A.M. to 9 P.M.; 2 P.M. to 4 P.M.

MORRIS AVE., ELIZ. & SCOTCH PLAINS
Lobby: Daily 9 A.M. to 3 P.M.; Thurs. 9 P.M. to 8 P.M.
Debitable: Daily 9 A.M. to 6 P.M.; Thurs. 9 A.M. to 6 P.M.
Walk-Up: Daily 9 A.M. to 9 P.M.; 2 P.M. to 4 P.M.

SOCCER SCENE

Driver receives 2 summonses as car breaks down

A 59-year-old Newark man was charged by Springfield police with driving while under the influence of alcohol and having the care of an accident Monday night, after his smashed his auto into a cement pillar on S. Springfield avenue near Rt. 22.

The motorist, Hayward Maxwell, was apprehended on Rt. 22 after his car broke down because of engine trouble. The car was towed to a garage and Maxwell was not hurt.

Police said Maxwell first pulled into the Exxon station at S. Springfield and Chandler road at 9:45 p.m., where he knuckled over several jacks and ran. He reportedly wanted to buy cigarettes, and when told by the station driver across the avenue, hit the pillar, and then drove into the eastbound lanes of the highway, police said.

Earlier in the day, a two-car collision at the intersection of S. Maple avenue and Con Street left a Springfield woman injured, police reported.

Scout Troop 172 to hold car wash

A car wash will be held Saturday from 9 a.m. until 1 p.m. at the Scheidt Oil Company, 172 Mountain ave., by Boy Scout Troop 172 of Springfield. It will be under the supervision of Scoutmaster Dan Duffy, and Assistant Scoutmaster George Pflieger. The rain date is April 12.

This money-raising activity is the first of two activities planned by the newly organized adult committee for Troop 172, sponsored by the Lions Club of Springfield.

A recent meeting of the adult committee, Bill Halpin was named chairman, H. J. Calabrese was appointed institutional representative with Howard Ansin as unit commissioner. Men serving on the adult committee include Ray Lebarth, Bill Munkley, Harvey Weiss and Frank Lete.

Troop 70 scouts camp in Watchung

Boy Scout Troop 70, sponsored by the First Presbyterian Church, Springfield, had an overnight sleepover at Watchung Lake, Watchung Reservation, last weekend. Knife and axe work and camping skills awards were presented as follows: Troopship Robert Phillips, Merit badge and Joseph C. Hill, camping skill. Tom Majewski, Craig Chackerson, Mark Neudler, George Jankoff, James Christopoulos and Mike Reel.

Mrs. Buckalew services are held

Services were held Thursday at Smith and South-Sullivan Funeral Home, Springfield, for Mrs. Helen M. Buckalew of 36 DeWitt rd., Springfield, formerly of Union.

Glover joins fraternity

Steven Glover, son of Mr. and Mrs. Arthur Glover of Springfield was pledged and accepted by Alpha Kappa Psi, a national fraternity at the University of Dayton, Dayton, Ohio, where he is finishing his sophomore year. Glover was also voted best pledge of 1973.

At Lincoln Tech

A Springfield resident, Kenneth White of 57 Highland ave., has been accepted by Lincoln Technical Institute, Union, as a 1973 graduate of Jonathan Dayton Regional High School. White has enrolled in Lincoln's course in automotive technology. He is employed by Lincoln Bus Co., Newark.

Kaufman attains list

Nathaniel Kaufman, of Mr. and Mrs. Everett S. Kaufman of Springfield, has been named to the dean's list for the winter quarter at Emory University, Atlanta, Ga.



SMALL-FRY LEAGUE LEADERS—Titleholders in the Small-Fry basketball division of the Springfield Recreation Department are the Jets, including (from left) Steve Wright, Alan Berliner, Jamy Brunney, Russ Waldman and Steve Kalsh; (second row, from left) Mike Kyrtalis, Brian Mahoney, Billy Koppel and Tony Della. Coaches (at rear, from left) are Dr. Harvey Waldman and Paul Berliner. (Photo by Jim Adams)

Induction planned by B'nai B'rith

Dr. Alex Goldman, president of the Springfield B'nai B'rith Lodge has announced that the organization's next meeting, Monday, April 15, at 8:30 p.m., all new members of the 1974 membership drive are to be inducted.

8 persons fined, one loses license at court session

A Union man, charged with driving while his license was suspended, was among eight persons receiving penalties at Monday night's session of Springfield Municipal Court, presided by Judge Joseph A. Herwitz presiding.

Architects' group names Keselica

Architect Michael Keselica Jr. of Springfield has been elected to membership in the New Jersey Society of Architects, AIA, according to Donald J. Galzar, president.

WOMEN!

The College Advisory Service does not only advise young people in their choice of college and career. We also have extensive information for the adult who wishes to further her education.

COLLEGE ADVISORY SERVICE
65-D E. Northfield Rd., Livingston, N.J.
994-3870

Scholarship Information
2 and 4 year colleges
Graduate schools

Preparatory schools
Summer programs
Transfer

"A personal service"

Yes
New Jersey Bell

Jets foil Raiders for Small-Fry title

The Jets emerged as champions of the Springfield Small-Fry League last Thursday, defeating the Raiders 92-18 in a basketball game composed of two completely different halves.

Generator, clocks reported missing

The theft of a generator from Alt. 70 construction site and of 1,000 worth of antique clocks from the home of a local resident were reported by Springfield police Monday.

WINE FOR HOLIDAYS
• MANISCHKE (Large Selection)
• CARMEL (Great Value)
• VINO SANGRIA (Kosher for Passover)
FREE DELIVERY
(11 P.M. to 10 P.M.)
376-5336
SPRINGFIELD WINES & LIQUORS
276 MORRIS AVE. SPRINGFIELD
OPEN DAILY 9 A.M. TO 10 P.M.



AN ENTHUSIASTIC GROUP—These fifth-grade girls, supervised by JoAnn Mihol (rear), cheered the Walton faculty team in its clash with the student All-Stars. The girls, who were directed by physical education teacher, Donald Wilderater, practiced for the big game during their lunch hour. Pictured are (front, from left) Lisa Wolchek and Pam White; (second row, from left) Sari Begleiter, Ellen Baumal, Abby Davidson, and Rose Schenberg; (third row, from left) Karen Andrus, Despina Kyrtalis, Chris Riger and Donna Wolf.

Walton students trim faculty in annual basketball contest

In the annual student-faculty basketball game, held last Friday in the school gym, the Walton School All-Stars, composed entirely of fifth graders, eked out a 30-24 victory over the faculty squad.



FEARLESS FACULTY—Despite flashy footwork by the fifth-grade All-Stars, members of the Walton faculty were not deterred in their defensive efforts during the annual student-teacher basketball game last week. Their fall, however, was not fruitful, and the youngsters managed to squeak by with a 36-34 victory.

Mrs. LeMoine; services are held

Funeral services were held Friday for Mrs. Ethel A. LeMoine, 73, of Springfield, who died March 25 in Overlook Hospital, Summit.

TURN ON
Garden State Farms
DAIRY STORES
THE BEST WHITE SALE BUYS IN TOWN

Three motorists hurt last week in separate mishaps

Three persons were reported injured in separate traffic accidents in the township last week, Springfield police reported.

PRE-SEASON SALE

central air conditioning
by Fodders
LIMITED TIME ONLY
24,000 BTU-HR COMPLETELY INSTALLED
Price includes condensing unit, coil, 15 ft. pre-charged tubing, combination lead and gas coil, thermostat, normal installation including electrical panel, furnace motor, pleasure chamber and duct work provided properly sized.
CALL 688-2566
STRATTON AIR CONDITIONING
A Division of Stratton Electric
1523 MORRIS AVE., UNION, N.J.

Good News from the "Good Eggs"

To holders of maturing Certificates of Deposit.

Should your Certificates of Deposit mature shortly, you can re-invest your money and interest in Crestmont's new higher rate certificates.

IMPORTANT: Matured certificates will not automatically earn higher rates. Maturing certificates will continue to earn at their existing interest rates unless presented for transfer to new rate and term certificates.

So—bring or mail your certificates to Crestmont Savings and choose the new higher certificate rate and the term you desire. If you wish, you may deposit additional amounts into your maturing certificates.

But, federal regulations require that the maturity date of your certificates must be extended. We shall be glad to explain further should you have questions.

Increase your earnings now on long and short term certificates.

| | | |
|---|---|---|
| 7 1/2% per year \$5,000 minimum 48 to 84 months *limited issue | 6 3/4% per year \$1,000 minimum 30 months | 6 1/2% per year \$500 minimum 12 months |
|---|---|---|

Interest paid from day of deposit to day of withdrawal, compounded quarterly and payable quarterly. Federal regulations require that there be a substantial interest penalty for early withdrawals.

90 day notice passbook account. Interest paid and compounded quarterly. \$50.00 minimum.

ACCOUNTS INSURED TO \$20,000. MEMBER F.S.I.C.

CRESTMONT SAVINGS

MADISON • MAPLEWOOD • MORRISTOWN • SPRINGFIELD • NETCONG

16 Waverly Place, 175 Morris Ave., On The Green, 733 Mountain Ave., 40 Main St.
977-0310 763-4700 257-6900 376-5940 347-1443
1040 Chestnut Ave., 781-9300

Check Our Window Signs for these White Sale Specials...April 5 thru 7

- VANILLA ICE CREAM
- NORDICA COTTAGE CHEESE
- VAN HOUTEN BREAD KING-SIZE
- SUGAR DONUTS OUR OWN BOX OF EIGHT

distinctively different

Garden State Farms

DAIRY STORES

OPEN 7 DAYS A WEEK 10 A.M. TO 10 P.M. COPYRIGHT BY GARDEN STATE FARMS INC. ALL RIGHTS RESERVED.

GF5-274-103

