

MGH board selects 4 industrialists

Four area industrialists... according to Victor J. Freese, president of the Memorial Hospital... The four—Daniel Bass, sonnel, nursing, finance... The new board members have been named.

Heart unit will meet

"Heart to Heart: Sexuality and the Cardiac Patient," will be the topic at the American Heart Association... The meetings, which try to meet the emotional, social and educational needs of heart patients and their families, are supported by contributions to the Heart Fund.

Glen Ridge reunion set

The Glen Ridge High School Class of 1941 will hold its first reunion... Information is available from Jeanne-Renee, 372 Forest Ave., Glen Ridge, N.J. 07038.

LHS grads list 40th reunion

The Linden High School Class of 1941 will hold a reunion Friday, Oct. 23, at 7 p.m. at the Town and Campus Union.

FALL SPECIAL OIL BURNER CLEANOUT \$25

WE DELIVER 50 Gals. 75 Gals. 100 Gals. OIL DELIVERIES 7 DAYS A WEEK! Discount Fuel 750 Caltion St. Eliz. 353-1444

FRESH PICKED SWEET CORN

APPLES PUMPKINS FRESH PEACHES... NIGHTMAN FARMS RT. 202, MORRISTOWN, N.J. 07952

WANTED! FREE LANCE PHOTOGRAPHER

Professional of Prof. of Assignments Day and Night Call: Paul Canino, Executive Editor 686-7700 Ext. 54

RICHARD SHEINBLATT, D.D.S., P.A.

•General Dentistry •Orthodontics •Periodontics •Endodontics •Reconstructive Dentistry •Inhalation Sedation (Nitrous Oxide) •Intravenous Analgesia Hours by Appointment Richard Sheinblatt, D.D.S., P.A. 221 Chestnut Street Roselle, New Jersey 07068 245-1615

CLINTON FACTORY OUTLET

DOWN FILLED COATS • JACKETS • VESTS First Quality Ladies' • Mens • Children's Many Styles & Colors SUPERSPECIAL \$29.95 LADIES' FULL LENGTH DOWN FILLED COATS AT FACTORY PRICES 201-762-2800 75 MILLBURN AVENUE NEW BURNING, N.J. 07033 HOURS: MON-SAT 9-5:30 SUNDAY 10-5:00

ALL OUR STORES JOIN TO CELEBRATE OUR...



Sale

Free Drawing Come in and Register at Any One of Our Four Locations. Come into any one of our four stores and simply fill out a registration form and deposit into our contest box. No purchase necessary. Adults only. You need not be present to win. \$1000 WORTH OF FURNITURE OF YOUR OWN CHOICE. PLUS MANY OTHER PRIZES...

LUXURIOUS 5-PIECE DINETTE \$299 Terms Arranged

Luxurious is the word for this fantastic dining group, includes oval shaped table with rear-resistant top and four carefree vinyl chairs on casters.

SOLID PINE \$2488 Cash & Carry

HERCULON AND VINYL FABRICS \$499

ALL 6-PIECES INCLUDES: • Massive Sofa • Matching Chair • Compadre Recliner • Cocktail Table • 2-End Tables

ALL WOOD \$499

ALL 4-PIECES INCLUDES: • Triple Dresser • Matching Chair • 3-Drawer Chest • Pector Headboard

Bookcase-Etagere At last... a bookcase-etagere designed with you and your storage needs in mind. Use it for a wall unit, room divider, bookcase or etagere. Buy two or three units for larger spaces and use your imagination to design your own grouping. It's so inexpensive because you take it home and assemble it yourself.

SHOP UNION, NJ STORE THIS SUNDAY 10 AM 'til 5 PM

NEW JERSEY'S FASTEST GROWING INDEPENDENT FURNITURE CHAIN...

The Furniture King

MEMORIAL SUPERSTORE Phone 822-8235

WINDY WAREHOUSE Phone 822-8235

ELIZABETH SUPERSTORE Phone 822-8235

CLEARANCE CENTER Phone 822-8235

DEAL DIRECT WITH US! PAY FRIGIDLY CREDIT!

Credits Fast & Accurate

You May Qualify For \$1000 WORTH OF CASH! UP TO \$2000 CASH! For Selected Items

BIG VALUES... AND NO CREDIT REFUSED!

This year heart disease and stroke will kill another 200,000 Americans before age 65.

Casting date set for 'Sweet Charity'page 2

Book discussions begin Tuesdaypage 3

Bulldogs host 1-1 Metuchenpage 11

Springfield Leader

"Your Community Leader" (USPS 512-720) 30 Cents Per Copy

VOL. 93 NO. 2 SPRINGFIELD, N.J., THURSDAY, October 8, 1981 Published by Trumar Publishing Corp., 37 Mountain Ave., Springfield, N.J. 07081 Second Class Postage Paid at Springfield, N.J.



BALL CONTROL—Dayton's Monica Preiss uses her dribbling talents—and her right arm—to protect the ball in a recent girls' soccer game in Springfield. For more information on the girls' and boys' soccer programs at Dayton, see the story on 11.

Walton parents discuss ways to prevent closing

A mob of vocal residents gathered in Edward V. Walton School gymnasium Monday night to try to formulate plans of action which would stop the Board of Education from closing the school in 1982.

Risotto, the consultant, presented to the board during a meeting in June. "The board has said a school is going to close," she said. "He [Risotto] wants to close Walton, move the fourth and fifth grades to Sandmeier, repair Caldwell at any cost and put a parking lot where a house now stands next door."

class. Dr. Risotto's report states 25 in a classroom. Our classes will not be any larger than 24," Zamarrá said. "We still will have art and music rooms, a library, gym and comp ed (compensatory education) in both schools. Unfortunately there will be about 10 teachers who will lose their jobs. More than likely these positions will be non-tenured personnel. At \$20,000 each a year, that's \$200,000 saved, not to mention secretarial and janitorial personnel."

Tax reduction eyed by regional board

By SHARI BROWN The Troy Village Tenants Association charges that its landlord, David Margolis, is "a master at subtle harassment."

But the landlord said there is a "township rent leveling ordinance which says that apartments are to be painted every three years where necessary."

those matters since they are in litigation. Siefelman and Taxon also charged that Margolis has not yet paid the August tax allotment in full on the complex, although the money has been collected from the tenants.

New home owners file suit over workmanship

By SHARI BROWN "We've been forced to sue Racioppi, the builder, to get this house done. Eight months and all waiting," a sign read on weekends in front of 587 Ashwood Road, Springfield.

"From day one we had a very good working relationship with them. Both Frank and Ronnie were real gentlemen in deal with. They cooperated with me fully. Problems that I did have were rectified within a reasonable amount of time."

"We've been forced to sue RACIOPPI The Builder to get this house done (8 MONTHS) LARRY MASLER, 114 Ashwood Rd. Springfield, N.J. 07081

THEIR DISPLEASURE IS NO SECRET—Randee and Howard Masler (holding sign) of the Golf Edge development pose with one of two signs announcing the couple's dissatisfaction with their new home. Both of the signs were stolen last weekend from in front of the Masler home. Also pictured from left are Rox and Marie Greenblatt, neighbors from across the street. (Photo by Marc Dubinsky)

Business news



quarters, north of the arch on Broad Street and Westfield Avenue, Elizabeth. The three-story building will be the first major commercial facility to be built in the city since the 1960s.



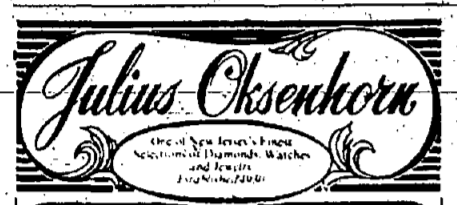
ROBERT S. SCHIFFMAN of Tenney Engineering, Union, has been elected a member of the Young Presidents' Organization, a worldwide educational association of more than 3,900 successful young chief executives who have become presidents of sizable companies before the age of 40.

RUSSELL W. COYETTE of Linden joined The Paddington Corporation as brand-director of four of the company's leading brands.

JOHN P. SMIGELSKY, whose mother, Mrs. Theresa Smigelsky, lives in Linden, has joined the investment banking firm BANK/Central as broken ground for its new head-

HARRY R. EDWARDS of Union, a transmission testman for New Jersey Bell in Union, has completed 35 years' service with the company.

JOHN J. O'CONNELL, district manager of the Robert B. O'Brien Jr. was elected chairman. Gloeckner has served on board for 25 years, as chairman since 1979.



Julius Oksenhorn BUYS YOUR DIAMONDS Precious Stones Old Gold-Silver ESTATE SALES and now and then he sells Highest Prices Paid Immediate Payment bank references wholesale-retail appraisals We do in-home appraisals for your convenience and safety. Call for an appointment. 300 Millburn Avenue, Millburn, N.J. (201) 379-1595 Open Daily & Sat. 10AM to 5:30PM. Mon & Thurs 10-8:30



MURRAY CONSTRUCTION CO., INC. of Springfield has announced that construction has begun on a new two-story office building at 228 Old New Brunswick Road, Piscataway. The architect is Rotwein and Blake of Union.

ROBERT W. HOWARD has been appointed executive vice president of Reisen Lumber Industries, Union.

CHERIE BLIWISE of Mountaineer was promoted to senior vice president and director of personnel and labor relations, according to Board Chairman Robert Friedman.

KNOW YOUR "LATS" In body builders' vernacular, "lats" are the latissimus dorsi muscles, which extend from behind the armpits down to the center of the back. "Abs" are the abdominal muscles, which can be developed into distinctive block patterns.

something for everyone in the want ads

Open house is set by Kean

JOHN P. GLOECKNER of Union has been elected honorary chairman of the board of Carteret Savings and Loan Association, chairman since 1979.

High school students interested in attending the speech/theater/media department will be invited to attend the day-long program which begins at 9:15 a.m.

Registration will be conducted in the D'Angola gymnasium, the administration building, college center, Hutchison Hall, Vaughn-Eames Fine Arts Building and Downs Hall.

Activities include: a team will go against the Jersey City at 3 p.m. A homecoming queen contest will be crowned as part of the halftime activities. Demonstrations in the Vaughn-Eames Fine Arts Building, a speech-hearing test demonstration in the recreation department will give life saving demonstrations in the township Hall-115. A and physics in Bruce Hall facing Caroline Jolly or a planetarium show in Sandra Harris at 527-2155.

Crusade Kits can be returned to the Unit Office at 512 Westminister Ave., Elizabeth. For information call 354-7275 or 232-6461.



ROSELLE CATHOLIC HIGH SCHOOL Open House October 15, 1981 & November 8, 1981 7:30 P.M. For 7th & 8th Grades and their Parents R.C. in All Day College Preparatory High School R.C. - A Positive Alternative in Education R.C. - Academics, Athletics, Activities FOR FURTHER INFO: David E. Benoit Director of Public Relations 201-245-2359

RICHARD SHEINBLATT, D.D.S., P.A. •General Dentistry •Orthodontics •Periodontics •Endodontics •Reconstructive Dentistry •Inhalation Sedation (Nitrous Oxide) •Intravenous Analgesia Hours By Appointment Richard Sheinblatt, D.D.S., P.A. 221 Chestnut Street Roselle, New Jersey 07203 245-1615

Crusade goal exceeded by Cancer Society's unit

The American Cancer Society's 1980-81 Crusade Against Cancer in Union County ended Aug. 31 with over \$200,000 raised for cancer research, service and education. This marks the first time that the unit has topped the \$100,000 figure in its 35 years. The unit's 1980-81 goal was \$72,000.

Mini Show set in Morristown

The sixth annual Morris Mini Show, Creators from New York, Connecticut, Pennsylvania, Virginia and Massachusetts are expected to participate, along with many dealers and picture postcard artists. The show will be held in the grand ballroom of the Governor Morris Inn, Morristown, on Sunday, Oct. 11.

LOOKING FOR A DOLLHOUSE?

See ours first and compare quality, price, room scale TOP QUALITY assembled houses for less than you'd expect to pay for a kit! OPEN 7 DAYS We offer a large selection in: KITS, ASSEMBLED, FINISHED EXTERIOR, FINISHED INTERIOR, ELECTRIFIED We have in stock completely assembled dollhouses from quality 5/16 plywood with hinged roof, stairs, excellent window panes—in 3 sizes: Small (3 rooms) \$46.95 Med. (5 rooms 12" deep) \$61.95 Large (5 rooms 18" deep) \$79.95 These prices are incredible! LAST SALE BEFORE HOLIDAYS on dollhouse furniture and accessories. 2 weeks only—now through Oct. 22. Hurry! Hurry! Hurry! Carriage World 1701 E. 2nd St., Scotch Plains, 322-2077 10:00 to 6:00 Mon. through Sat., Thurs. to 9 p.m., Sun. 1 to 6 p.m.

Easy Money Old postcard's value not just sentimental

By CHARLES WEBB If your friends or relatives took a vacation this year, you probably received some postcards commemorating the event. Like most people, after looking at scenes of Yellowstone, National Park, Paris, the Egyptian pyramids or downtown Milwaukee, you put the cards away in a box or drawer full of messages from past trips.

There is some debate as to when the first picture postcards came out. Some claim 1870, while others say 1868. Perhaps the "gramophone" series, which featured a record attached to a card, are popular. Such cards are now worth around \$10 to \$15.

Postcards feature a wide range of subjects, from U.S. presidents to those in support of women's suffrage. Some people specialize in postcards by a certain artist, or on specific subjects. Automobile postcards have a growing following. Most of these were distributed free by auto dealers to promote their new models. Those made in the 1950s and 1960s are most sought after, particularly if they are in color. The make, model, series and body type of the car pictured has a big effect on the card's value.

For example, a postcard of a 1955 Chevrolet 1500 series four-door sedan would probably only bring \$1 to \$3. One featuring a 1955 Chevrolet Bel Air convertible may be worth \$10 or more.

During wars, propaganda cards flourish. Adolf Hitler was a great believer in the postcard as a way of indoctrinating people. He was the only one to send out Hitler propaganda cards are in demand. Most are worth \$5 to \$25, depending on the card and its condition. Condition is very important. Even a stamp may be more valuable than the card. Some one-cent stamps are worth up to \$600 or more.

For a list of firms in the postcard area, write to: Phil Hiller, 1001 W. 11th St., Minneapolis, Minn. 55401. Send a self-addressed, stamped envelope and \$1 to: sure to mention you want Copley News Service, in Please allow four to five days for delivery.

Carteret Announces The Investor's Package!

A choice of five high-yield plans to meet the specific needs of every saver.

Choose from a new array of quality gifts or \$200 in cash when you deposit \$5,000 or more in an All-Savers Certificate or 30-Month Certificate or \$10,000 or more in a 6-Month Certificate.

Single Yearly	Yearly	Yearly	Yearly
\$23,001-\$24,000	3%	12.14%	19.9%
\$24,001-\$24,500	4%	12.14%	21.8%
\$24,501-\$25,000	5%	11.512%	23.6%

PLAN 1: Effective October 1. For those in a 30% or more tax bracket. Earn up to \$2,000 in Tax-Free Interest if you file a joint return or up to \$1,000 if filed individually on a One Year maturity. By FDIC. (This chart illustrates what this certificate can mean to your tax bracket.)

PLAN 2: 30-Month Certificate. Low minimum, long term, high interest. 17.847% 16.20%

PLAN 3: 6-Month Money Market Certificate. Short term, high yield. 15.210% 14.468%

PLAN 4: 63-Day Repurchase Plan. Short term. 14.25%

PLAN 5: 63-Day Repurchase Plan. Short term. 14.50%

CARTERET SAVINGS AND LOAN ASSOCIATION For more information or the office nearest you call (201) 622-8010

BUY RITE LIQUOR STORE

BLEND WHISKEY SEAGRAM'S 7 750 ml 5.37	WINES MATEUS ROSE 750 ml 2.83	BOURBON JIM BEAM 1 1/2 liter 6.66
CANADIAN WHISKEY CANADIAN COMPANY 1 liter 7.06	SCOTCH BALLANTINE 1.5 liter 14.91	GIN TANQUERAY 750 ml 7.81
CANADIAN WHISKEY 750 ml 16.19	PIPER-HEIDSIECK Non-vintage Extra Dry Champagne 750 ml 13.00	TRIPLE MOUNT GAY ECLIPSE 750 ml 6.73
VODKA BIANZI 80 proof 750 ml 6.72	CANADIAN CLUB 750 ml 16.19	BRANDY BISQUIT VS COGNAC 750 ml 10.99
GILBEY'S BEER 80 proof 1.75 liter 8.33	FONTANA CANDIDA FRASCATI 750 ml 2.98	CORDON ROUGE 750 ml 13.01
BRANDY 750 ml 11.59	CONDELLO CHARLIS 3 liter 4.49	DUPREY'S COGNAC 750 ml 6.35
BRANDY 750 ml 11.93	CARMEL CONCORD 750 ml 2.31	SAMBUCA BACCA 750 ml 4.95
SCHLITZ 12 oz 6.99	HACKBARTH OAKTOBERFEST 12 oz 1/2 liter 6.99	

SPRING LIQUORS INC. ECHO PLAZA SHOPPING CENTER Route 22 & Mountain Ave Springfield, N.J. 07081

CUT FUEL COSTS! Reduce expensive heat loss with a Carrier "Energy Saver" gas furnace. Design-certified by A.G.A. Bonus Thermostat! Carrier "Energy-Saver" Night Set-Back Thermostat FREE WITH PURCHASE OF... Carrier "Energy-Saver" Gas Furnace NOW \$799

MEYER & DEPEW COMPANY CONDITIONED AIR SYSTEMS CALL 686-6660 2550 Route 22 East Union, N.J. Number 1 Air Conditioning Dealer

Castro Convertibles Bellgan Corporation authorized dealer

GOING OUT OF BUSINESS! The Springfield Store Will Close Forever

SELLING OUT EVERYTHING! IN THE SPRINGFIELD STORE Prices slashed on famous brands you know and trust! URGENT! We must sacrifice profits completely to speed up sale. Time is running out...merchandise must be moved fast, regardless of cost or loss. Absolutely nothing will remain in the Springfield store. Come save as never before on famous name brand furniture - quality furniture that must be sold to the bare walls.

EVERYTHING MUST BE SOLD UP TO 70% OFF ORIGINAL PRICES AND MORE! LIMITED QUANTITIES First Come, First Served.

COSTO OTTOMANS 1/2 OFF	ALL BEDDING 1/2 PRICE	RECLINERS \$99 AND UP
SLEEP SOFAS FROM \$279	3 PC. SOFA BED LIVING RM. \$488	3 PC. LIVING RM. MODERN \$599
GRANDFATHER CLOCKS 1/2 OFF	ALL LAMPS 1/2 OFF	REPLACEMENT MATTRESSES FOR CASTRO'S 1/2 PRICE
TWIN SET BEDDING \$99	CURIO CABINETS 1/2 PRICE	ARC LAMPS 1/2 PRICE

IF EVER IN YOUR LIFE YOU HAVE WANTED A REAL BARGAIN - "That opportunity has finally arrived" - IT'S THE GREATEST SALE YOU EVER SAW! HURRY IN! DON'T DARE DELAY! A SALE... YOU'LL REMEMBER!! A SALE... WORTH COMING 100 MILES TO ATTEND - YOU'LL BUY ON SIGHT WHEN YOU SEE OUR FANTASTIC SALE PRICES.

ALL DINING ROOMS & BEDROOMS 1/2 OFF!

Castro Convertibles Bellgan Corporation authorized dealer ROUTE 22, SPRINGFIELD • CENTER ISLE • 467-3393 OPEN: MON-FRI 10-9 • SAT 10-6 • SUN 12-5

Cooking corner

Honey foods not for dieters

By MARJORIE RICE
New things in the realm of nature are as prized as honey. Industrialists bees produce a delicious, beautiful substance here just for the taking.

Honey flavor is determined by the flowers the bees visit. That explains the names of various honeys: clover, citrus, buckwheat, lavender, heather—their distinctive fragrance comes through in the finished product.

It's important to remember that honey is a concentrated form of sugar. While there are some minute amounts of minerals, essentially honey should be thought of as pure sugar by persons who are dieting.

Honey can be substituted for sugar in some recipes, but care must be taken since the honey has more sweetening power than sugar, and has extra moisture. It is a better idea to use a recipe originally devised for honey than to substitute, unless you're the experimental type.

MUSTARD-HONEY SALAD

3 to 4 tbsps. honey
1 cup soft-boiled eggs
1/4 cup red wine vinegar
3 tbsps. Dijon mustard
2 tbsps. honey

FIG-STUFFED PORK ROAST

1 cup chopped celery
1/2 cup chopped onion
2 tbsps. butter
1 cup soft bread crumbs
1/2 cup chopped walnuts
1/2 cup dried figs

DATE AND PECAN HONEY BREAD

1 1/2 cups whole-wheat flour
1 1/2 cups flour
1 tsp. salt
1/2 tsp. baking soda
1 tsp. baking powder

1 egg
1/2 cup butter, melted and cooled
1/2 cup chopped dates
1/2 cup chopped pecans

1 1/2 lbs. loin of pork, with deep pockets cut between the chops (about 10)

1 cup butter
1 cup plus 1 tbsps. molasses
1 cup plus 1 tbsps. honey

1 tsp. salt
1 tsp. cinnamon
Handful of raisins (optional)

Scald 3/4 cups of the milk. Blend the cornmeal into the remaining one cup milk and slowly stir the mixture into the scalded milk. Cook the mixture for 20 minutes over boiling water, stirring it often.

Stir in the remaining ingredients and pour the pudding into a buttered baking dish. Bake it for 1 1/2 hours at 325 degrees.

The pudding will not set, but will be the texture of hot cereal. It is good served with vanilla ice cream.

201-762-2800
78 MILLBURN AVENUE
MILLBURN, NEW JERSEY
HOURS: MON.-SAT. 9-5:30
MASTERCARD • VISA
CLOSED THURS. OCT. 8th

MANUFACTURERS BUYERS MEN'S WEAR

UNION RICKEL PLAZA
ROUTE 32 WEST
UNION, N.J. 07983
PHONE: 201-427-4228

COLUMBUS WEEK OCT. 9-19 SALE

DISCOVER A WORLD OF BRANDS AT DISCOUNT PRICES

Famous Maker 3-Pc. SUITS \$88. Save to 68% and More! MEN'S BRANDED ALL WOOL SLACKS \$29. Including Adolpho, Bergs and Others. From \$9 up

ODDS & ENDS Well Known ZIP-LINED RAINWEAR \$990 from \$49. to \$99. Including London Fog

FAMOUS NAME DESIGNER MENSWEAR AND SPORTSWEAR. LONDON FOG, JOHN ASHTON, OSCAR DE LA RENTA, ARROW, HIMALAYA, JOHN HENRY, HARBOR PARK, CHRISTIAN DIOR, CALVIN KLEIN, HUGO BOSS, MANHATTAN

HOURS: Daily 9:30 to 9:30, Sat. 9:30 to 6, Sun. 11 to 5. CHARGE IT with Master Card/Visa. AND MANY MORE too famous to mention COME IN AND CHECK OUR LABELS. UNION RICKEL PLAZA ROUTE 32 WEST UNION, N.J. 07983 PHONE: 201-427-4228

social / entertainment / sports / classified this week

MR. AND MRS. SCUTARI
Joann Giaccio is married to Gene Scutari
Gene Scutari, daughter of Mr. and Mrs. Joseph Giaccio of Staten Island, N.Y., was married Aug. 30 to Gene Scutari, son of Mr. and Mrs. Russell Scutari of Springfield.

MRS. ROBERT G. KURZ
Judith L. Beyer becomes bride of Robert Kurz
Judith Lynn Beyer, daughter of Mr. and Mrs. Herbert K. Beyer of Royersford, Pa., was married Saturday morning to Robert G. Kurz, son of Mr. and Mrs. Adolph G. Kurz of High Point Drive, Mountainside.

Beth Ahm lists season events
Temple Beth Ahm, Springfield, has announced special events for the festival season. Eleanor Rice, chairman, and the religious affairs committee, will coordinate the activities.

Party given for Fuchses
A surprise 50th wedding anniversary dinner was held Sept. 20 at the Summit Suburban Hotel honoring Mr. and Mrs. Albert Fuchs of Kay Avenue, Union.

Just moved in? I can help you out.
Don't worry and wonder about learning your way around town. Or what to see and do. Or whom to ask. At your WELCOME WAGON home, I can simplify the business of getting settled. Help you begin to enjoy your new town...

On Armstrong FFC Solarian Floors!
Save \$2 sq. yd. Choose from 14 colors and patterns!
Now, these beautiful no-wax floors are an even better value because they're really on sale.

SUBURBAN DEBORAH LEAGUE OF SPRINGFIELD present a FALL FANTASY FASHION SHOW
by Dolores Robinson and Las Elegantes and LUNCHEON HOLIDAY INN
ROUTE 10, LIVINGSTON
SATURDAY, OCTOBER 17
12 NOON
Grand Raffle Prize
Donated by Julius Oxenhorn Jewelers, Millburn
Donation \$15 or \$25 in raffle tickets
\$1000
Call 376-3566



LYNN KNOELLER MICHAEL COREY
Lynn Kneller is betrothed
Mrs. Elaine Kneller of Spruce Street, Union, has announced the engagement of her daughter, Linda Susan, to Shraga Zabludovsky, son of Mr. and Mrs. Yosef Zabludovsky of Shikun Dan, Tel Aviv, Israel.

Bible seminar slated Oct. 17
Evangelist Baptist Church, 242 Shunpike Rd., Springfield, will sponsor a "Walk Through the Bible" seminar Saturday, Oct. 17, from 9 a.m. to 5 p.m. Registration will begin at 8 a.m.

Her officer in the Israeli Armed Forces, received a degree in industrial engineering from Ben Gurion University in August. He plans a career in production management and industrial consulting.

FRESH JERSEY CORN AND TOMATOES
CORN STALKS
Dairy Products
Lettuce • String Beans
• Soyless Chard
• Radishes • Cabbage
FROM OUR OWN FARM.
SPRING'S FARM.
647 So. Springfield Ave.
MON.-SAT. 9-5
376-1360

Just moved in? I can help you out.
Welcome Wagon
467-0132

SUBURBAN DEBORAH LEAGUE OF SPRINGFIELD present a FALL FANTASY FASHION SHOW
by Dolores Robinson and Las Elegantes and LUNCHEON HOLIDAY INN
ROUTE 10, LIVINGSTON
SATURDAY, OCTOBER 17
12 NOON
Grand Raffle Prize
Donated by Julius Oxenhorn Jewelers, Millburn
Donation \$15 or \$25 in raffle tickets
\$1000
Call 376-3566

Religious Notices

HOLY CROSS LUTHERAN CHURCH
17th Church on the Radio "Lutheran Hour" and TV's "The Lutheran Hour"
439 Mountain Ave., Springfield
Telephone: 376-5415
THURSDAY: 8 a.m., Bible class; 11:30 a.m., Prayers; 7 p.m., Holy Cross youth fellowship; 8 p.m., Holy Cross youth fellowship; 9 p.m., Holy Cross youth fellowship; 10 p.m., Holy Cross youth fellowship.

TEMPLE BETH AHM
TEMPLE BETH AHM, 242 SHUNPIKE ROAD, SPRINGFIELD
Rabbi Reuben R. Levine
THURSDAY: 8 a.m., Sabbath service; 10 a.m., Sabbath service; 7 p.m., Sabbath service; 9 p.m., Sabbath service.

CONGREGATION ISRAEL OF SPRINGFIELD
239 MOUNTAIN AVENUE CORNER SHUNPIKE ROAD, SPRINGFIELD
Rabbi Reuben R. Levine
THURSDAY: 8 a.m., Sabbath service; 10 a.m., Sabbath service; 7 p.m., Sabbath service; 9 p.m., Sabbath service.

THE FIRST PRESBYTERIAN CHURCH
MORRIS AVENUE AT CHURCH LANE, SPRINGFIELD
Rev. Bruce Whitfield Evans, D.D., Pastor
THURSDAY: 8 a.m., Church School; 9:30 a.m., Morning Prayer; 10:30 a.m., Holy Communion; 11:30 a.m., Bible Class; 7 p.m., Evening Prayer; 8 p.m., Men's Bible Class; 9 p.m., Women's Bible Class; 10 p.m., Youth Bible Class.

ST. STEPHEN'S EPISCOPAL CHURCH
191 MARY ST., MILLBURN
Rev. Joseph D. Hering, Rector
SUNDAY: 8 a.m., Holy Communion; 10 a.m., Family worship service and sermon; Church School and

ANTHONY BAPTIST CHURCH
215 SPRINGFIELD AVE., SPRINGFIELD
Rev. Ronald J. Perry, Pastor
SUNDAY: 9:30 a.m., Sunday school; 11 a.m., worship service; 7 p.m., evening prayer; 8 p.m., men's Bible class; 9 p.m., women's Bible class; 10 p.m., youth Bible class.

UNTRIMMED COATS
Quality Wools of Fortmann-Worumbo and others
89.95 to 149.95
Regular Retail \$120. to \$190.
PANT COATS
Wools-Quilts-Downs-Pile lined
49.95 to 99.95
Regular Retail \$65. to \$125.
STORM COATS
Pile Lined-Quilts-Downs
69.95 to 126.95
Regular Retail \$85. to \$155.

WE CARRY A COMPLETE SELECTION OF PETITE SIZES
290 MILLBURN AVE. MILLBURN, N.J. (ADJ TO POST OFFICE) PHONE 376-8630
OPEN 10 AM TO 5:30 PM THURS TO 9 PM FREE PARKING.

Cambridge Cigarettes advertisement. Features a pack of Cambridge Ultra Low Tar cigarettes and a lit cigarette. Text: 'THE LOWEST TAR OF ALL. Of all brands sold, no other cigarette is lower in tar. Cambridge Cigarettes. Ultra Low Tar. Less than 0.1 mg tar. Box. Warning: The Surgeon General Has Determined That Cigarette Smoking Is Dangerous to Your Health.'

Advertisement for 'Just moved in? I can help you out.' featuring 'WELCOME WAGON' and contact information: 467-0132.

Advertisement for 'On Armstrong FFC Solarian Floors!' featuring 'Save \$2 sq. yd. Choose from 14 colors and patterns!' and contact information: 467-0132.

Advertisement for 'DON'T TURN YOUR BACK ON OUR COLUMBUS DAY COAT SALE!' featuring 'UNTRIMMED COATS', 'PANT COATS', 'STORM COATS', and 'ZIP OUT COATS' with prices and contact information: 376-8630.



DRIVING FOR BASSANO—Republican Assemblyman Louis Bassano, left, joins former Freeholder Tom Dillon of Elizabeth, center, and former Councilman Richard McCormack of Kenilworth as they drive to a... (caption continues)

Assemblyman urges stiffer murder terms

Assemblyman C. Louis Bassano... urged stiffer murder terms... (text continues)

Russo reports plans for interstate parley

The first meeting of a coalition of northeastern state legislators seeking a uniform drinking age of 21 will be held Oct. 23 in Elmhurst, N.Y....

Russo said that, in addition to legislators from the various states, representatives of organizations concerned with alcoholism, automobile safety and substance abuse among the young are expected to be on hand at the Westchester conference.

Gill sees crime as a top issue

Rep. Gill... crime as a top issue... (text continues)

CHUCK HARDWICK has asked to make the State keep its promise to provide certain revenue funds for senior citizens and the disabled. Thank Chuck by voting to return him to the Assembly.

AARP group sets meeting... The American Association of Retired Persons AARP will meet Tuesday...

Give till it helps... Whether you have Farrow & Bauer, Inc. 1572 Shuysant Ave. 487-9278 to do a large or small job for you we want you to know that it will be completed to your satisfaction...

LLOYD EXCHANGE TRAVEL... 1988 Morris Ave., Union ATLANTIC CITY Effective Oct. 7 BUS TO HARRAH'S \$14.90 RESERVE \$1.00 IN QUARTERS AND \$1.00 FOOD CREDIT

Ricciardi Bros. The Latest in Elegant Home Decor... Wallcoverings, Fabrics, Window Treatments... 1925 Springfield Avenue, Maplewood, N.J. (201) 762-5111

Tax-Free Interest at the Money Tree

Get the double benefit of a guaranteed high interest rate plus up to \$2,000 tax-free interest for joint federal returns and up to \$1,000 on single returns, plus \$20 cash or a free gift for deposits of \$5,000 or more with... The Berkeley Tax-Saver Certificate

Hot Line: 800-672-1934 Where the smart money GROWS Berkeley Federal Savings and Loan... SHORT HILLS 565 Madison Ave. # 487220 Hours: Monday thru Friday, 9:00 to 5:30

DON'T BE FROZEN OUT! If you suffered last winter with poor service for your heating unit and unreliable deliveries of fuel oil, let us show you what real prompt service is... WOOLLEY FUEL CO. 12 Burnell Ave. at Springfield Ave. Maplewood 762-7400

Football Follies! Minutemen running back Robert Fusco (in white) gets a block from a teammate... Dayton fullback Ron Marlingetti bulls his way through six Brearley defenders.

Winners and losers in local football matchups

Squads romp in Pop Warner football action... Bulldog mark drops to 0-2 with 17-7 loss... Springfield's 2-0 Minutemen 'B' football team and the Springfield Minutemen 'B' team recorded impressive early season victories last week.

Bulldog mark drops to 0-2 with 17-7 loss... Springfield's 2-0 Minutemen 'B' football team and the Springfield Minutemen 'B' team recorded impressive early season victories last week.

Soccer teams post big victories

By ROBERT A. BRUCKNER These are busy days for Dayton's girls' and boys' soccer teams. The girls picked up victory No. 2 of the season by stopping Rutgers Prep, 4-2...

Hockey listed by Summit Y

Registration is now being accepted for the Summit Y.M.C.A.'s 10th season of street hockey. Boys and girls ranging ages six through 15 as of Jan. 1, 1982 are eligible and will be divided into age groups.

Sports shorts: Fun runs, boxing and banquets

Three benefit runs are scheduled Sunday, Oct. 18, in Tamaquee Park, Westfield, by the Hadassah Meira Chapter... The show, which begins at 7:30 p.m., and is sponsored by Hillside's B'nai B'rith Lodge No. 1514 and will begin the day of the Young Men's Hebrew Club of Irvington, which will feature eight state-sanctioned Golden Gloves bouts.

GRAYS THE RIB PLACE Famous BAR-B-Q BABY BACK RIBS... Front End Alignment Front Wheel Balance \$23.95... SAVE YOUR TIRES \$19.95... ALX DIAGNOSTIC & REPAIR CENTER



Author slated for symposium

Author journalist Doug McClelland of Bradley Beach, formerly of Newark, will be guest speaker Thursday, Nov. 19 at 8 p.m. at the James H. Quinn Memorial Film Symposium, 74 Charles St., New York, N.Y.

McClelland will discuss his new book, "The Golden Age of B Movies," published by Octagon Publishers of Baltimore. It will be on sale for his autograph on that evening.

McClelland is a former editorial staff member of the Newark Evening News and former editor of Record World, New York City. Among his published books are "Susan Hayward, The Divine Bitch," "The Unkindest Cut" and "Down the Yellow Brick Road."

Fall plays set on Drew stage

The New Jersey Shakespeare Festival at Drew University, Madison, has announced the remainder of its fall lineup of plays.

"The Elizabethans" ends its run Sunday. "Da" opens Tuesday and will run through Nov. 15, and "Vambes" will be staged Nov. 17 through Dec. 13.

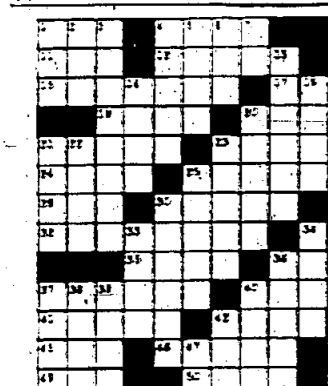
Other features scheduled for November include lectures with guest speakers and members of the festival acting company. "Da: Just Soap Opera" is planned for Nov. 8 and "Vambes: Growing Up Female in America," Dec. 6. The lectures will be held at Great Hall on the campus at 2 p.m.

Additional information can be obtained by calling 377-4487.

MERYL STREEP—Actress, portrays Sarah Woodruff, a lonely housewife who falls for a young man in the new play "The French Lieutenant's Woman," which continues at the Bellevue Theater, Upper Merion.

Ayckburn comedy

A two-act comedy by Alan Ayckburn, "Just Between Ourselves," opened the five-play 1981-82 dramatic season at McCarter Theater, Princeton, last Thursday. The play by the author of the TV trilogy, "The Sherman Connection," will run through Oct. 18.



ACROSS
1. New Orleans
2. French
3. Island
4. Land
5. French
6. French
7. French
8. French
9. French
10. French
11. French
12. French
13. French
14. French
15. French
16. French
17. French
18. French
19. French
20. French
21. French
22. French
23. French
24. French
25. French
26. French
27. French
28. French
29. French
30. French
31. French
32. French
33. French
34. French
35. French
36. French
37. French
38. French
39. French
40. French
41. French
42. French
43. French
44. French
45. French
46. French
47. French
48. French
49. French
50. French
51. French
52. French
53. French
54. French
55. French
56. French
57. French
58. French
59. French
60. French
61. French
62. French
63. French
64. French
65. French
66. French
67. French
68. French
69. French
70. French
71. French
72. French
73. French
74. French
75. French
76. French
77. French
78. French
79. French
80. French
81. French
82. French
83. French
84. French
85. French
86. French
87. French
88. French
89. French
90. French
91. French
92. French
93. French
94. French
95. French
96. French
97. French
98. French
99. French
100. French



ALL THE MARBLES—Peter Falk poses with his tag team partners, the California Dells, Vicki Frederick, left, and Lawrence London in comedy which opens Friday, Oct. 14, at the Linden Twin One Theater.

Movie Times

BELLEVEUE (Municipal)—FRENCH BREAKER MORANT, 7:15, 9:15; RICH AND FAMOUS, Fri., 7:30, 9:40; Sat., 5:30, 7:30, 9:40; Sun., 1:30, 3:30, 5:30, 7:30, 9:40. **FIVE POINTS CINEMA** (Union)—Last times today: ARTHUR, 7:30, 9:45; PRINCE OF THE CITY, Fri., 7:15, 10:05; Sat., 1:30, 7:15, 10:15; Sun., 1, 4, 7, 10; Mon., Tues., Wed., Thurs., 7:15, 10. **LINDEN TWIN ONE**—GRIM REAPER, call theatre for times, midnight Fri., Sat., ROCKY HORROR PICTURE SHOW. **LINDEN TWIN TWO**—call theatre for programs and times, midnight Fri., Sat., FLESH GORDON. **LOST PICTURE SHOW** (Union)—Last times today: BREAKER MORANT, 7:15, 9:15; RICH AND FAMOUS, Fri., 7:30, 9:40; Sat., 5:30, 7:30, 9:40; Sun., 1:30, 3:30, 5:30, 7:30, 9:40. **OLD RAHWAY** (Rahway)—SEXUAL HATES, Fri., 7:30, 10 and UNTAMED, 8:50; Sat., SEXUAL HATES, 2:15, 4:50, 7:30 and UNTAMED, 3:40, 6:15, 8:50; Sun., SEXUAL HATES, 2:45, 5:30 and UNTAMED, 3:25, 6:40; Mon., Tues., Wed., Thurs., SEXUAL HATES, 7:30 and UNTAMED, 8:30. **STRAND SUMMIT**—MOSCOW DOES NOT BELIEVE IN TEARS, Fri., 7:40; Sat., Sun., 4:15, 7:40; Mon., Tues., Wed., Thurs., 8.

'Betrayal' staged at George Street

Hirshfeld Pinter's "Betrayal" opened the eighth season at the George Street Playhouse, New Brunswick, last Friday and is being staged Tuesdays, Wednesdays and Thursdays at 8 p.m., Fridays and Saturdays at 8:30 p.m., and Sundays at 7:30 p.m. Matinees are scheduled for Sundays at 3 p.m. and alternating Wednesdays at noon and Saturdays at 4 p.m. Paul Astin serves as director. Additional information can be obtained by calling 246-7717 Tuesdays through Sundays from 1000 to 8 p.m.

MUSIC LESSONS BY JUILLIARD GRADS (M.M.)

New York Professional Free Lance Artists Have Opened A New Studio in Springfield. Lessons on Clarinet, Saxophone, Trumpet, Violin, All levels & All Ages. CALL: 376-2555

Town & Campus RESTAURANT
PRIME RIB SPECIAL
Includes: Baked Ing. Salad, Vegetable & Potatoes
6.95
Wednesday thru Sunday
1040 MORRIS AVE., UNION 289-5600

Entertainment this week

Boys' Chorus goes to Japan

The Newark Boys' Chorus will leave for a three-week tour of Japan Nov. 8. It was announced by Dr. Gaylord W. French, music executive of the Newark Boys' Chorus School. The youngsters will return Dec. 2.

The tour was contracted through Tomoyasu Ito, president of the Ito Music Office in Tokyo. Performances will include spirituals, Christmas and American folk songs, and joint performances with Japanese boys' choruses.

Casting for 'Joseph' scheduled Sunday

A casting call for "Joseph and the Amazing Technicolor Dreamcoat" will be held Sunday at 3 p.m. at the Roosevelt Park Amphitheater, Rt. 1, South, Edison.

Ernest Albrecht, producer-director, and Janette Garoff, musical director, have announced that 30 to 35 children are needed for the show's cast which begins rehearsals Nov. 8 at 1 p.m.

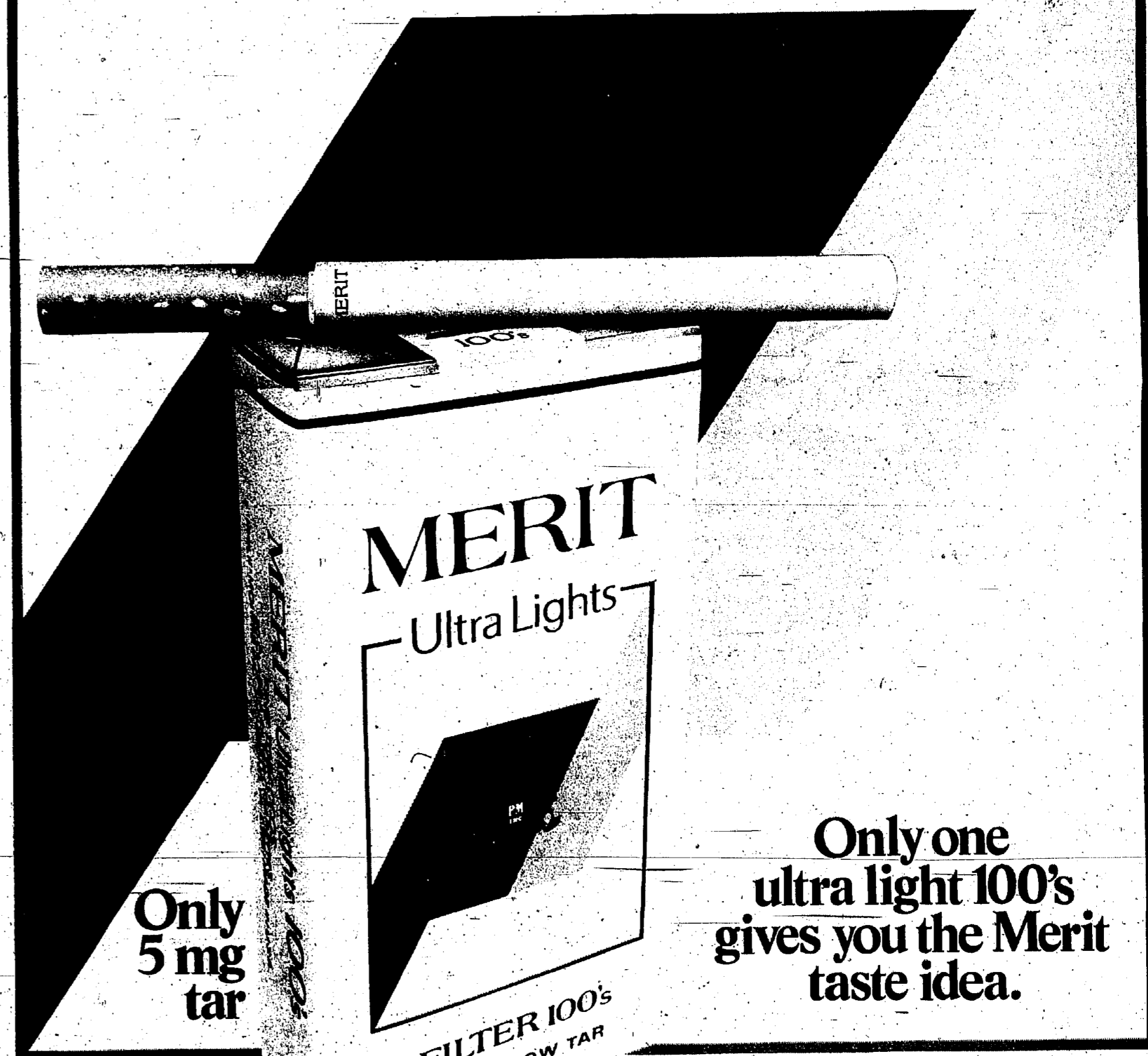
Auditions for adults will be held Nov. 1 and Nov. 8 at 1 p.m. Rehearsals are held Friday evenings and Saturday and Sunday afternoons beginning Nov. 13.

FORGE II—CRYSTAL ROOM JUST FOR THE GIRLS GO-GO BOYS!
Tummy Tug and His 88 Male Bunch
Every Wed. - 8 pm to 12 Midnight - Adn. \$3.
Rt. 22, East, Springfield - 437-0108

DINING GUIDE
A handy reference of some of the finest restaurants & cafines in New Jersey.

ANGE & MARY'S ITALIAN RESTAURANT, 140 Backlund, Southfield, Parkway East 100, 341-8811. **BOSS WIELD**, 429 W. St. George Ave., Linden 102-1436. **CAFE MODART**, 194 Morris Ave., Union. **CHESTNUT TRAVEN RESTAURANT**, 449 Chestnut St., Union. **CLARE & COY'S**, Junction Route 100 & 101, Scotch Plains. **THE GRAN HOUSE**, 248 Morris Avenue. **DROP ZONE**, 171 E. 2nd Ave. **EDDY GREEN DINER**, 1000 Morris Ave. **THE GALLERY**, Rt. 1, Westfield. **HOLIDAY INN**, Springfield "Ruby". **GOOD TIME CHARLEY'S SALOON**, 228 W. 10th St., Linden. **TRETTA'S**, 1000 Morris Ave. **WESTWOOD**, 438 North Ave., Newark.

Ultra Lights New 100's!



Warning: The Surgeon General Has Determined That Cigarette Smoking Is Dangerous to Your Health.

© Philip Morris Inc. 1981
5 mg "tar", 0.5 mg nicotine av. per cigarette by FTC method.

Only one ultra light 100's gives you the Merit taste idea.

MERIT Ultra Lights

Regular & Menthol

Wendy's
AIN'T NO REASON TO GO ANYPLACE ELSE
\$1.00 OFF
The Purchase Of A Chicken Sandwich Or All-You-Can-Eat Salad And Any Size Beverage.
Offer expires Oct. 13, 1981.
Good only at Wendy's, South Avenue & Terrell Road, Plainfield Route 22 (Center Island), Union.

RITZ LIVE ON STAGE
1148 E. JERSEY ST. ELIZABETH, N.J.
201-352-SHOW
COMING SOON...

THE ROY CLARK SHOW
OCT. 17 AT 4 & 8PM TICKETS \$12 \$14 \$16
Attended Municipal Parking Garage Adjacent To Theatre

* POLKA KING JIMMY STURR with his orchestra and dancers Oct. 23 at 8PM \$6 \$8 \$10	* BLUEGRASS FESTIVAL starring BUCK WHITE Nov. 7 at 7PM \$5.50 \$9.50 \$10.50
* "A MASKED BALL" An opera performed by the Jersey Lyric Opera Co. Nov. 21 at 8PM \$6 \$8 \$10	JERRY LEE LEWIS Nov. 20 at 8 P.M. \$5.50 \$9.50 \$10.50

Full Service Bar
Tickets also available through Ticketron; Bambergers Ticket Service in Newark; Places-Capricorn, Cranford; Record Wagon, Linden

Errors often delay payments

Medicare patients should use care in claiming Medicare medical insurance payments because an error in completing the form can delay payment, warns John H. McCutcheon, Social Security district manager in Elizabeth. If the patient's doctor or supplier assigns assignment, he or she sends in the claim. Otherwise the patient must complete and mail the "Patient's Request for Medicare Payment" form. One of the major causes of payment delay is the lack of proper itemized bills, McCutcheon said.

An acceptable itemized bill must show all of the following information:

- A complete description of each service or supply received.
- The date each service or supply was received.
- The place each service or supply was received.
- The charge for each service or supply.
- The name of the doctor or supplier who provided each service or supply.
- The patient's name and complete health insurance claim number exactly as shown on the person's Medicare card.
- The diagnosis, if available.
- More than one itemized bill can be sent with each request for payment form. And the bills can be sent before or after they are paid.

More information about Medicare claims and a free copy of the leaflet, "How to Complete the Patient's Request for Medicare Payment," is available at 342 Westminster Ave., Elizabeth, or by calling 800-363-1111.

"Afri" troupe will perform

The "Afri" song and dance troupe will perform at Union College on Oct. 5 at 8 p.m.

The event, cosponsored by the Student Government Association, the Black Organization of Students and the Humanities Community Education project, will be the "Harlem Rhapsody," a collection of songs written by blacks during the Harlem Renaissance of the 1920's.

Afri Productions is being brought to the campus through a college alumna, Jesse Devore, a 1953 graduate who is production manager of the troupe. Prior to the show a workshop will be conducted by the troupe for students enrolled in the college's dance courses. Additional information may be obtained by writing Terry Benjamin, 796-3699, ext. 302.

Animal league sets fund-raiser date

The Animal Alliance Welfare League of New Jersey, Inc., a non-profit organization, will hold a supperware party tomorrow, 8 p.m., at the First National Bank of Central Jersey, 4th Avenue and Chestnut Street, Roselle. All proceeds from the demonstration will benefit stray and abandoned animals.

Trailside to offer visitors 'autumn ramble' Sunday

The Trailside Nature and Science Center will offer a special nature walk, highlighting the beauty of fall colors in the Woodland Reservation, Sunday at 2 p.m. at the visitor's center, Coles Avenue and New Providence Road, Mountainside.

The guided "autumn ramble" for late bloomers, leaves turning colors and migrating birds and animals. "Goats" - reds, asters, purple gerards, witch hazel, mushrooms and birds flying in formation are among the seasonal signs they may find.

While they sample the sights, sounds and smells of autumn, participants will learn how to identify trees by the colors the leaves turn.

The Trailside Planetarium, part of this Union County Department of Parks and Recreation complex, offer live planetarium programs on Saturdays and Sundays at 2 p.m. for children, who are at least four and their parents, and at 3:30 p.m. for the general public.

This week's children's show "The First Man on the Moon," will be presented Monday, Tuesday and Wednesday at 3:30 p.m. also October's regular planetarium show, "Saturn: Riddle of the Rings," discusses the recent voyages to Saturn and the information they gained.

Details concerning "autumn ramble" and the planetarium program can be obtained by calling Trailside at 232-5500.

Florio bid endorsed by state firefighters

U.S. Rep. James J. Florio, Democratic candidate for governor, was endorsed by the 6,500-member New Jersey State Firemen's Mutual Benevolent Association at the FMB's annual convention in Atlantic City, N.J., Monday.

FMB President William J. Kosakowski said:

"The congressman also spoke in favor of improving our firemen's pension and health benefits, particularly those regarding service-related heart and lung disease." Kosakowski said.

Florio said he was "pleased with the FMB endorsement and grateful" for the help of the firefighters who pledged to give his campaign.

Jewish unit to hear talk on volunteering

Next Thursday's members of the Greater Elizabeth Section may attend the meeting of the National Council of Jewish Women (NCJW) will hear Barbara Lindeman, director of Education, Vacation, Employment (EVE) at Kean College speak on "Volunteering with a Purpose" at 8 p.m. in the YM-YWHA of Eastern Union, 1000 County, Green Lane, 0127.

Lineman, DON'T MISS A WEEK OF LOCAL NEWS, will describe how to use volunteer skills and service as a foundation for paid employment.

Kean headquarters picks county aides

The campaign headquarters of Roselle Park quarters of Republican and Union County Superintendent candidate Walter Ulrich of Thomas H. Kean has announced the appointment of Springfield Municipal Chairman Diane Romano and former Hillsdale State Senator Donald Municipal Chairman DeFrancisco of Scotch Loretta Andriole have been appointed Union County Board of Supervisors. Romano and Andriole are also Kean County co-coordinators.

Audition date listed

The Junior Musical Club of Westfield will hold auditions Wednesday, Nov. 4, at 7:30 p.m. in Westfield. Applications will be accepted from students in ninth through 12th grades currently studying with a teacher. At the audition, each applicant must play a piece from memory one number from the classical period or modern period.

The Junior Musical Club, hoping to increase membership for next year, urges private teachers of piano, voice, and other instruments to encourage talented students to join.

Phobia group lists meeting

The Phobia Release Education Program, sponsored by the Mental Health Association of Union County, will begin its daytime session on Oct. 16 in Linden.

The program will be held weekly for persons with diagnosed phobias. Prior registration is required. For information, call 289-9500.

Obey School Crossing Guards, Safety Patrols

Schools have reopened so motorists have to readjust their driving habits. Look out for and obey school crossing guards and safety patrols - they're protecting our children.

SAVE EVEN MORE WITH COUPONS!

PLenty of FREE PARKING ON FRIDAYS

FACTORY OUTLET
MEASUREMENT CONTRACTORS

730 PINEBROOK AVENUE, PINEBROOK, NEW JERSEY
MONDAY 9-12, 1-4 SAT. 9-3 SUNDAY 12-3 BY ONE HOUR

FORGE II CRYSTAL ROOM JUST FOR THE GIRLS GO-GO BOYS!!

Tommy Page and His All Male Band

Every Wed. - 8 pm to 12 Midnight - Adm. \$3.

Wed., Oct. 22, Springfield - 447-0100

If you're interested in earning tax-free interest... INVESTORS' ALL-SAVERS CERTIFICATE

Investors Savings now offers the one-year certificate that gives you up to \$1,000 interest free from Federal income tax if you file an individual return, and \$2,000 tax free if you file a joint return. In most cases, this will give you a higher yield than you could earn after taxes on many investments including 6-month certificates or money market funds.

All-Savers Certificate 12-14%

Minimum \$500 • Term One Year • Insured to \$100,000 by the FDIC

Federal regulations require substantial penalties for early withdrawal. You'll earn the highest rate allowed by law on this type of account. Rate established every four weeks; however, the rate in effect when you purchase your certificate is guaranteed until maturity.

Tax Bracket	Taxable Equivalent Yield
37%	19.27%
43%	21.30%
49%	23.80%
54%	26.39%

\$20 Cash or a gift for opening or renewing a 6-Month Savings Certificate or depositing \$10,000 or more in any account

Call Collect: Paul V. Chabot, Jr., R.N., Financial Consultant, (201) 527-5329.

6-Month Savings Certificate 15.210% - 14.468%

Rate available October 6 - October 8

You'll earn the highest rate allowed by law on this short-term certificate. Minimum \$10,000. 6-month term. These savings certificate rates vary from week to week; however, the rate in effect when you purchase your certificate is guaranteed until maturity. Withdrawals prior to maturity are not permitted. Federal regulations prohibit compounding of interest on 6-month certificates.

INVESTORS SAVINGS

1400 EAST DRIVE 2400 BROADWAY, MILLBURN
FREEHOLD 1120 LIBERTY AVENUE
SPRINGFIELD 173 MOUNTAIN AVENUE
SPRING LAKE HEIGHTS 173 MOUNTAIN AVENUE
SPRING LAKE HEIGHTS 173 MOUNTAIN AVENUE
UNION 277 978 STATE STREET AVENUE

Classified 686-7700

Wendy's

AIN'T NO REASON TO WORK ANYPLACE ELSE!

At Wendy's, America's fastest growing restaurant chain, there are many exciting jobs available. Excellent opportunity for homebased or part-time students to earn top hourly wages in a convenient location. Many different job positions available.

- Pleasant conditions.
- No experience necessary.
- Uniforms furnished.
- Good opportunity for advancement.
- To apply for positions, see Manager, 4-5151 M.C., 2000 W. 22nd Street, Springfield, NJ.

CELANESE

Summit Technical Center
An Equal Opportunity Employer, M/F

TECHNICIANS

R&D LAB TECHNICIANS

A.A. degree or 2 years experience

Celanece Corporation, a leading manufacturer of chemical fibers, plastics and polymer specialty products has several technical openings at the Summit Technical Center.

Backgrounds should include 2-year degree in mechanical or chemical technology or experience in any of the following areas:

- Chemical Synthesis
- Fibers Processing
- Plastics Extrusion & Injection
- Physical Testing/Quality Control (second shift, 2:00 PM-10:00 PM)

We offer competitive starting salaries, a highly professional environment, and a wide range of benefits that include dental insurance and tuition refund.

For prompt consideration, send your resume and salary history to: Employee Relations Dept., Celanece Research Company, P.O. Box 1000, Summit, New Jersey 07901.

MUSIC LESSONS BY JULIARD GRADS (M.M.)

New York Professional Music Academy Affiliated With Juilliard School
New York State Licensed, Licensed as Clarinet, Saxophone, Trumpet, Violin, All Other Instruments

CALL: 376-2555

RECEPTIONIST

Full or Part Time

Receptionist position available in a busy office. Must have excellent communication skills and be able to handle multiple tasks. Call for details.

SECRETARY

Full or Part Time

Secretary position available in a busy office. Must have excellent communication skills and be able to handle multiple tasks. Call for details.

NURSES, RN'S, LPN'S

It's 10 PM. Do You Know What Your Salary Count is?

Part time position open in editorial dept. for person who can work: MONDAY, THURSDAY & FRIDAY, between 9 and 1:00 p.m. Must be accurate with 48 wpm. STOP IN FILL OUT APPLICATION.

Suburban Publishing Corporation

Join the "Community Leader"

TYPIST VDT/CRT

Part time position open in editorial dept. for person who can work: MONDAY, THURSDAY & FRIDAY, between 9 and 1:00 p.m. Must be accurate with 48 wpm. STOP IN FILL OUT APPLICATION.

TELLERS

Full or Part Time

Teller position available in a busy office. Must have excellent communication skills and be able to handle multiple tasks. Call for details.

SECRETARY

Full or Part Time

Secretary position available in a busy office. Must have excellent communication skills and be able to handle multiple tasks. Call for details.

WORK CLOSE TO HOME IN SUBURBAN SHORT HILLS!

Why drive endless miles when you can get the convenience of working in the suburbs? We have a variety of job openings in the Short Hills area. Call for details.

Red Dawn

1291 Stuyvesant Avenue, Union, N.J. 07083

686-7700

Business and Service Directory

25 Electrical Repairs, 42 Masonry, 63 Odd Jobs, 72 Plumbing & Heating, 77

Obey School Crossing Guards, Safety Patrols

Schools have reopened so motorists have to readjust their driving habits. Look out for and obey school crossing guards and safety patrols - they're protecting our children.

SAVE EVEN MORE WITH COUPONS!

PLenty of FREE PARKING ON FRIDAYS

FACTORY OUTLET
MEASUREMENT CONTRACTORS

730 PINEBROOK AVENUE, PINEBROOK, NEW JERSEY
MONDAY 9-12, 1-4 SAT. 9-3 SUNDAY 12-3 BY ONE HOUR

ST. ELIZABETH HOSPITAL

325 Williamson St., Elizabeth, N.J. 07201

NEED CHRISTMAS CASH?

IRVINGTON AREA

Full or Part Time
SALARY & COMMISSION

Pick Your Own Shift
Telephone Sales
CALL 371-2470

AVON MONEY MONEY

FOR THE HOLIDAYS

Call for details.

ACCOUNTS PAYABLE CLEVER

Call for details.

CLERK/TYPIST

Call for details.

FILE CLERK

Call for details.

PROGRAMMER/ANALYST

Call for details.

BOOKKEEPER/F/C

Call for details.

CLERK/TYPIST

Call for details.

FILE CLERK

Call for details.

Obey School Crossing Guards, Safety Patrols

Schools have reopened so motorists have to readjust their driving habits. Look out for and obey school crossing guards and safety patrols - they're protecting our children.

SAVE EVEN MORE WITH COUPONS!

PLenty of FREE PARKING ON FRIDAYS

FACTORY OUTLET
MEASUREMENT CONTRACTORS

730 PINEBROOK AVENUE, PINEBROOK, NEW JERSEY
MONDAY 9-12, 1-4 SAT. 9-3 SUNDAY 12-3 BY ONE HOUR

Obey School Crossing Guards, Safety Patrols

Schools have reopened so motorists have to readjust their driving habits. Look out for and obey school crossing guards and safety patrols - they're protecting our children.



FORD SELL-A-BRATION—Bob Doran Ford, located at the corner of Morris Avenue and Pine Avenue, Union, has launched a "Double Sell-a-Bration" in honor of both his 14th year as a Ford dealer and also to introduce the new line of brand new 1982 Ford cars, trucks and vans, featuring the four-door Escort, two-seated front-wheel drive EXP, and the new Granada wagon, according to Bob Doran, dealership president.

Doran Ford sets Sell-a-bration

Doran Ford's consistent record of sales, leasing and rental performance has culminated in their receiving the coveted Ford Gold Medalion, indicative of Doran Ford's high level of sales and performance. Only 30 out of 285 Ford dealers in the Newark zone have received this distinguished award.

Bob DeLorenzo, sales manager, stated "Volume of projects alone does not account for all of our car sales. Giving our customers a better price and placing them in the car they really want is what does the trick."

Chuck Whiteford, service coordinator, is also a Ford Gold Medalion award winner for excellence in service, performance and customer satisfaction. Michael Chomka, parts department manager, stated that Doran Ford has one of the largest inventories of genuine Ford parts and accessories in the east.

Bob Doran attributes the success of his Ford dealership to three special ingredients—honesty, integrity and square dealing—which do not add to the cost of the customer purchase, but insure complete customer satisfaction. He also extended a personal invitation to the public to visit their showrooms to see the complete line of brand new 1982 Ford cars, trucks and vans.

Learning method is topic of confab

A conference entitled "Learning Disabilities: progress, teaching strategies, that work" arithmetic to exceptional children; growing up with disabilities and becoming a successful adult; and Perceptions Inc. and the other areas of concern.

Cooperating agencies will consist of morning and afternoon group of workshops conducted by professionals in the field of Disabilities. Children with Learning Disabilities, New Jersey Division of Vocational Rehabilitation, Drop-out business of raising and Project, and the North-Central learning disabilities. The agenda includes helping a child to improve reading, writing and language skills; helping pre-

IRS seeks volunteers

The Internal Revenue Service is looking for organizations interested in providing volunteer income tax assistance to taxpayers during the filing season.

The Volunteer Income Tax Assistance (VITA) program includes training of volunteers by the IRS. The volunteers then provide assistance to individuals in need. Training is conducted before the start of the filing season, and during the season the IRS will provide VITA volunteers with necessary forms and technical assistance. The basic 1099A and 1040 with itemized deductions represents the scope of the training course and assistance to be rendered. Organizations interested in sponsoring a VITA assistance program in their community should write to: IRS Taxpayer Education Branch, P.O. Box 478, Newark, N.J. 07101.

Environmental unit to hear Dr. Selikoff

Dr. Irving J. Selikoff, Director of the Environmental Sciences Laboratory at Mt. Sinai School of Medicine in New York, will address the eight annual New Jersey Environmental Congress Saturday, Oct. 24, at the Summit Suburban Hotel.

Dr. Selikoff is noted for his nearly 30 years of critical research on the incidence of respiratory disease among workers at a Manville asbestos factory. He will present new research on several chemicals that have been linked to cancer and will discuss the complex issues of responsibility for environmentally caused diseases.

Jim Florio and Tom Kean, (gubernatorial candidate) will discuss their programs for the state's environment. Both candidates have distinguished legislative records in the area of environmental protection. Congressman Florio was the principal sponsor of a federal "superfund" for the cleanup of toxic chemical spills. He was a sponsor of the Pinelands Protection Act and, as chairman of the

Commerce, Transportation and Tourism Sub-committee, is a leading proponent of improved mass transit facilities. Florio was also author of amendments to the Resource Conservation and Recovery Act.

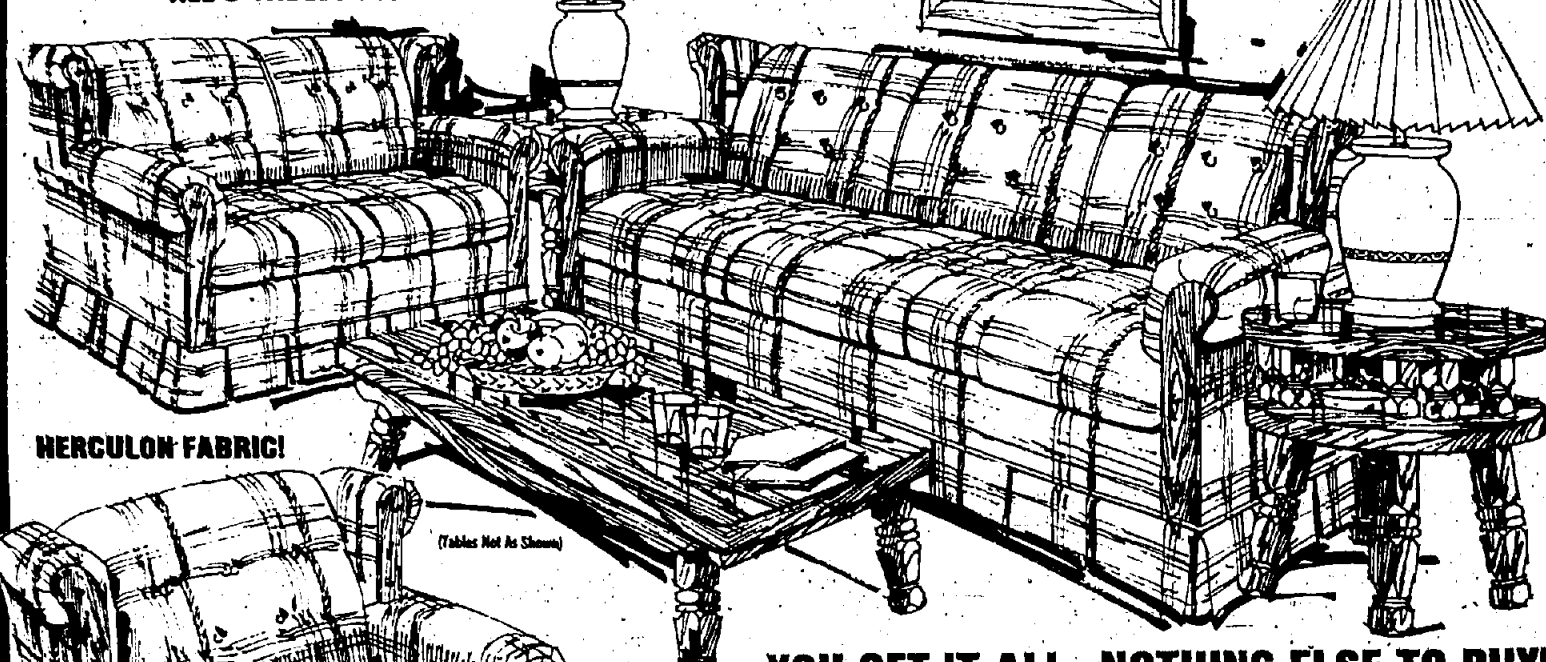
As a member of the New Jersey State Assembly (1968-77), Kean sponsored several bills which are keystones of the state's environmental programs. These include the Green Acres Act, the Coastal Area Facilities Review Act, and the bill which created the State Department of Environmental Protection. Kean was also a leading opponent of the Tocks Island Dam.

Sponsored by the Association of New Jersey Environmental Commissioners (ANJEC), the congress is an annual meeting at which citizens discuss the state of the state's environment. During the morning, concurrent seminars will be devoted to specific environmental problems in the state. Following a buffet lunch, Dr. Selikoff will address the congress at 1 p.m. The gubernatorial candidates are scheduled to appear beginning at 2:30 p.m. The all-day event will also include a film, and exhibits by environmental, educational, and commercial organizations. Advance registration is \$20 with lunch, \$15 without. For more information, contact ANJEC, Box 157, Mendham, N.J. 07846, or call 539-7547. All-the-door registration (\$15, lunch not available), will take place from 8:30 to 9:30 a.m. and from noon to 1 p.m. for those who do not wish to attend the morning session.

372-9525 **COLUMBUS WEEK SPECIAL**
FABULOUS BRIDAL SALE
La Louise
1187 Springfield Ave., Irvington
10% to 50% OFF
ALL GOWNS IN STOCK
* Special Group of Cash-Carry - As Is - \$75.00-\$125.00 *
Present this coupon to receive **10% Discount**
ONLY ONE SPECIAL COUPON PER GOWN
THE BUDGET BRIDES BEST FRIEND

The King Furniture * UNION and ELIZABETH OPEN SUNDAY 12 to 5 PM

GRAND OPENING SALE



ALL 3 TABLES INCLUDED!

HERCULON FABRIC!

YOU GET IT ALL...NOTHING ELSE TO BUY!

ALL 6 PIECES \$399

- Massive Sofa
- Companion Loveseat
- Matching Chair
- Cocktail Table
- 2 Matching End Tables

Year Credit is OK!

Here's a low price you thought you'd never see again for such a charming complete roomful. Sofa, Loveseat and Chair has handsome wood trim and full pleated skirt and tailored in long-wearing HERCULON. Quality features you normally find on suites costing hundreds of dollars more. Now add the huge cocktail and two, not one, but two end tables that perfectly coordinate with the suite and you have a super value. Come in now for this spectacular furniture bargain.

ALL SOLID WOOD BUNK BED!

\$99

Terms Arranged!

W. Kodak Jewelers

W. Kodak Jewelers, "The Place To Buy Diamonds"

WE BUY OLD GOLD & JEWELRY

W. Kodak Jewelers

DELUXE 5-PC. PEDESTAL DINETTE!

Has pedestal table with mar-resistant top and four high back vinyl upholstered chairs. Come in today and see this fantastic super buy!

\$119

Fast Friendly Credit

The King Furniture

NEW JERSEY'S FASTEST GROWING INDEPENDENT FURNITURE CHAIN...

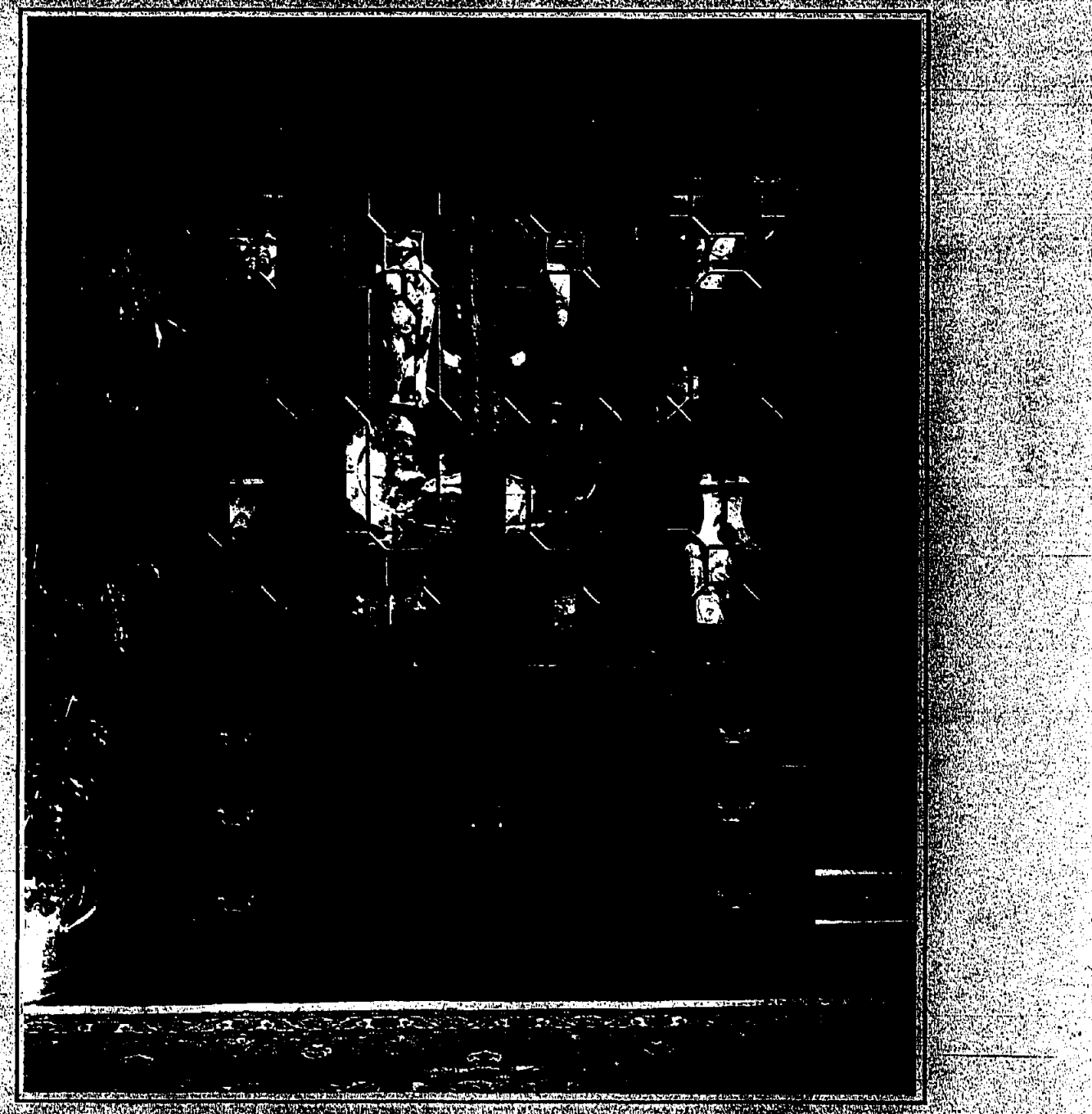
UNION WAREHOUSE SHOWROOM 2825 MORRIS AVE. Phone 699-0320 Monday thru Friday 9:30-6:00 Saturday 9:30-5, Sunday 12-5	NEWARK SHOWROOM ON MARKET ST. Phone 622-9226 Mon. - Wed. 9 P.M. 9:30-6:00 Thurs. - Sat. 9:30-6:00	ELIZABETH SHOWROOM 118 BROAD ST. Phone 259-5100 Mon. - Fri. 9:30-6:00, Tues. - Thurs. 9:30-6:00 Open Sunday 12-5	CLEARANCE CENTER-NEWARK 128 MARKET ST. Phone 624-2900 Mon. - Fri. 9:30-6:00, Tues. - Thurs. 9:30-6:00
--	---	--	--

BIG VALUES...AND NO CREDIT REFUSED!

NO BANKS NO FINANCE COMPANIES DEAL DIRECT WITH US! FAST FRIENDLY CREDIT! Credit Facility Available!

UP TO \$5000 CREDIT!

Presenting **The Return to Elegance:** new designs in cherry from Pennsylvania House



Introductory Savings of 20%... **ANDREA'S**

The ultimate in traditional and 18th century designs.
In native American cherry. Timeless. Rich. Beautiful.

All new from

Pennsylvania House. 20% off.

mfrs. sugg. retail prices



The Return to Elegance. Authentic 18th century and traditional designs that are beautifully scaled, elegant, exquisitely detailed. With shell carvings, inlaid moldings on chamfered edges, newly designed hardware, broken pediments. Just beautiful. Crafted by Pennsylvania House in the finest solid American cherry with select cherry and olive ash burl veneers. And with a stunning new finish that displays a clarity, depth and richness never before achieved. These are designs you'll want to own...to live with. True classics. **On sale now at introductory savings of 20% off.**

Authentic Detailing: Inlaid olive ash burl veneer on the table surface frames and complements the rich look of cherry. The fine shell carving on the leg below enhances the feeling of authenticity and richness.

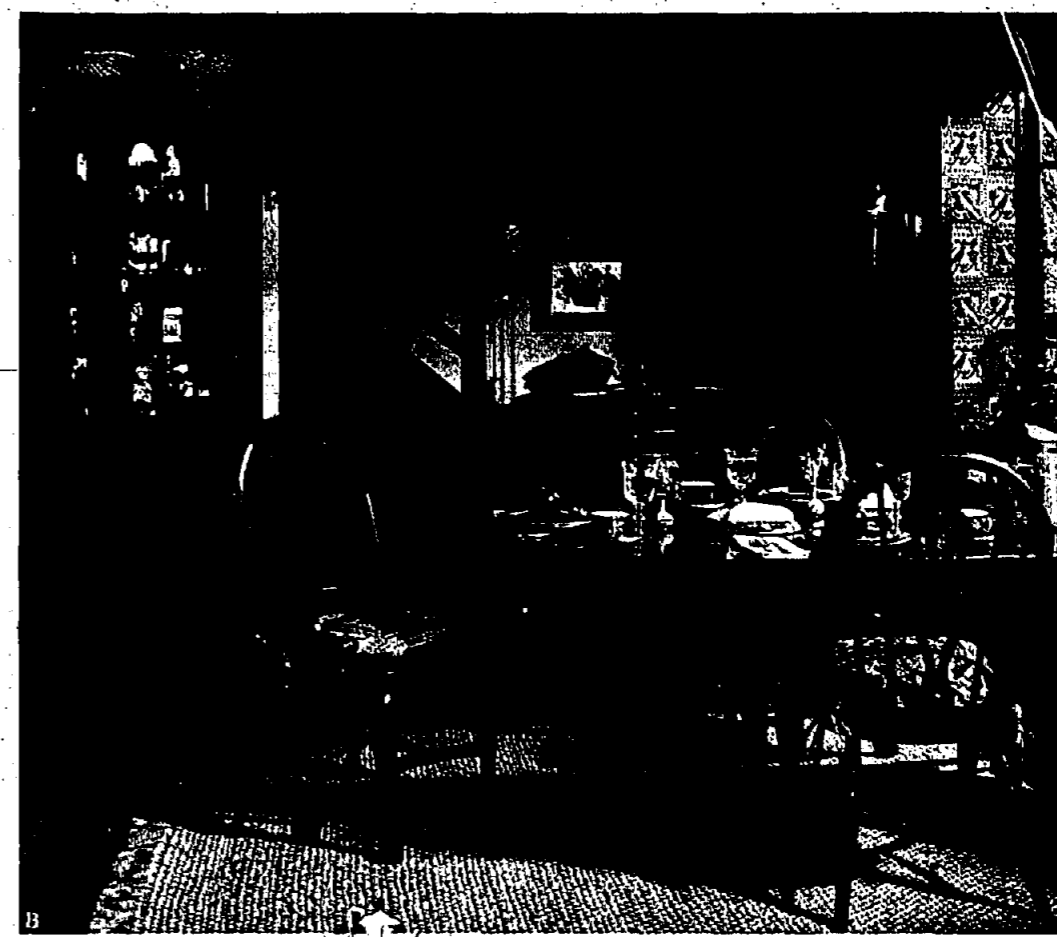
Mfrs. Sugg. Retail Prices, optional with retailers.

A. 18th Century dining elegance: Exquisitely crafted cherry designs.

Only \$4429. for complete 7-piece group.*
Save \$1115. on mfrs. sugg. retail

	<small>Mfrs. Sugg. Retail</small>	SALE
Dining table 64 1/2" x 42", ext. to 104 1/2"	\$1249	\$ 999
Queen Anne arm chair	\$ 309	\$ 245
Queen Anne side chair	\$ 349	\$ 279
64" China top (with pediment)	\$1650	\$1320
64" China top (without pediment)	\$1600	\$1280
<small>(shown without pediment on front cover)</small>		
64" Breakfront base	\$1249	\$ 999

*Group includes table, 4 side chairs, china top with pediment and breakfront base.

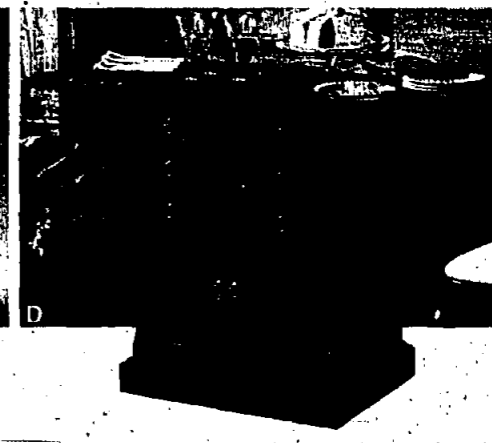


B. Simplified Queen Anne: A unique country cherry dining room.

Only \$2629. for complete 6-piece group.*
Save \$685. on mfrs. sugg. retail

	<small>Mfrs. Sugg. Retail</small>	SALE
Gateleg dining table 72" x 42", ext. to 90"	\$ 799	\$ 639
Queen Anne Windsor arm chair	\$ 309	\$ 245
Queen Anne Windsor side chair	\$ 279	\$ 219
Corner china	\$1399	\$1119

*Group includes table, 4 side chairs, and corner china.



C. Our Queen Anne server/sideboard is a lovely way to multiply serving space.

In solid cherry. With two fitted and lined silver drawers and two liquor storage compartments with locks. Flip open top, 40 x 18" top opens to 56".
Reg. \$799 SALE \$619

D. Our compact, traditional server/silver chest rolls on casters. Functional and beautiful. With three fitted silver drawers with locks. Ample storage below. Solid cherry. 26 x 18" top opens to 48".
Reg. \$899 SALE \$719

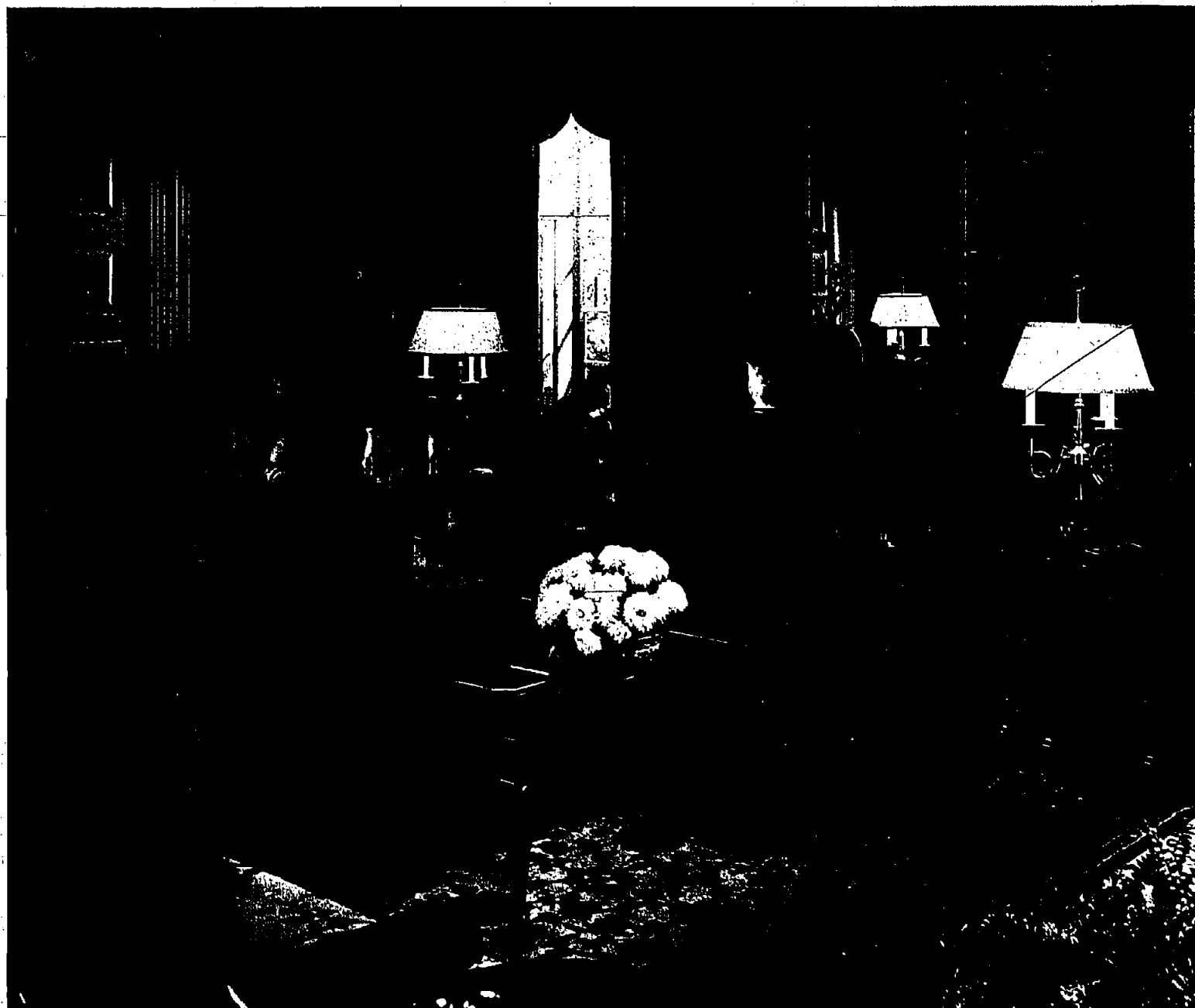


Pennsylvania House Custom-Fitted Table Pads
Ask us about table pads, especially designed to fit Pennsylvania House dining tables. They're double thickness with convenient clips that lock adjoining pads for proper fit.

Here's authentic detailing, superb craftsmanship in cherry and luxurious upholstery. With the infinite decorating flexibility only classic designs can give.

All new from Pennsylvania House. 20% off.

mfrs. sugg. retail prices



A. Shell carvings, cabriole legs in cherry. Formal upholstery. This is classic living.

Mfrs. Sugg. Retail	SALE
80" Ashland sofa, as shown	\$1449 \$1159
In other fabrics, from	\$1049 \$839
Wing chair, as shown	\$755 \$599
In other fabrics, from	\$555 \$439
Queen Anne drawer end table	\$399 \$319
Serpentine front chest	\$499 \$399
Square tray-top cocktail table	\$459 \$365

Upholstery prices may be slightly higher in California.
Mfrs. Sugg. Retail Prices, optional with retailers.

B. Straight legs, inlaid moldings on chamfered edges. In the finest cherry. With lovely sofa and chairs. Timeless.

Mfrs. Sugg. Retail	SALE
84" Caldwell sofa, as shown	\$1449 \$1159
In other fabrics, from	\$1049 \$839
Lounge chair, as shown	\$809 \$645
In other fabrics, from	\$609 \$485
Wing chair, as shown with quilting	\$815 \$649
As shown, but without quilting	\$709 \$565
In other fabrics, from	\$569 \$455
End table	\$349 \$279
Lamp table	\$349 \$279
Cabinet end table	\$449 \$359
Cocktail table	\$429 \$339
Etiquette	\$899 \$719

C. A light, graceful airy and unique living room. In beautiful cherry.

Mfrs. Sugg. Retail	SALE
82" Sofa, as shown	\$1365 \$1089
In other fabrics, from	\$1115 \$889
Loveseat, as shown	\$1110 \$885
In other fabrics, from	\$910 \$735
Lounge chair, as shown	\$655 \$539
In other fabrics, from	\$555 \$439
Drawer end table	\$309 \$239
Oval dropleaf end table	\$299 \$239
Square serpentine lamp table	\$399 \$319
Round serpentine cocktail table	\$549 \$439
Glass cabinet	\$1599 \$1279

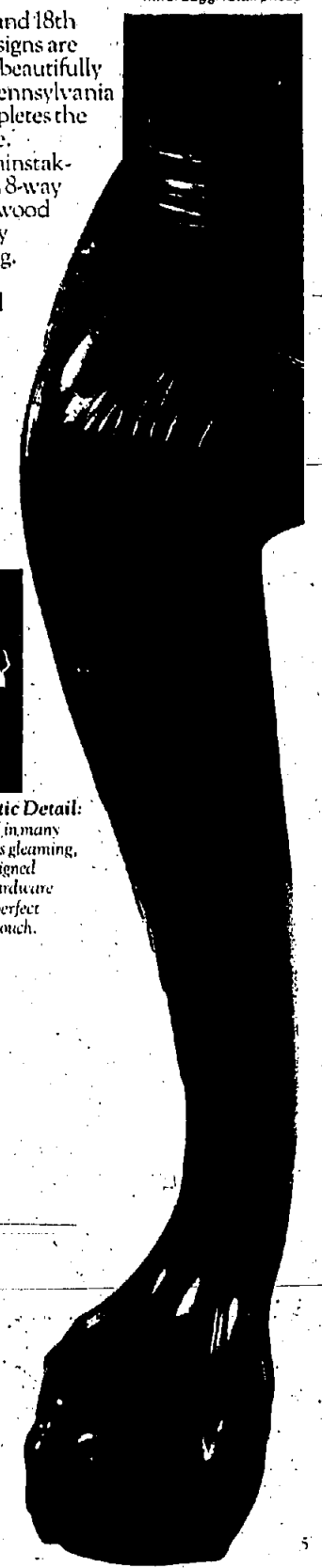
While there have been made to meet capacity reasonable demand, we cannot assure you every item in this catalog is in stock and due table for immediate delivery. If an item is not in stock, we will contact you during the sale.



These new traditional and 18th century living room designs are beautifully crafted and beautifully finished, as well. And Pennsylvania House upholstery completes the look of quality and style. It's all finely tailored, painstakingly constructed: with 8-way hand-tying, solid hardwood frames and wonderfully comfortable cushioning. Pennsylvania House: true lasting value. And for a limited time at 20% off.

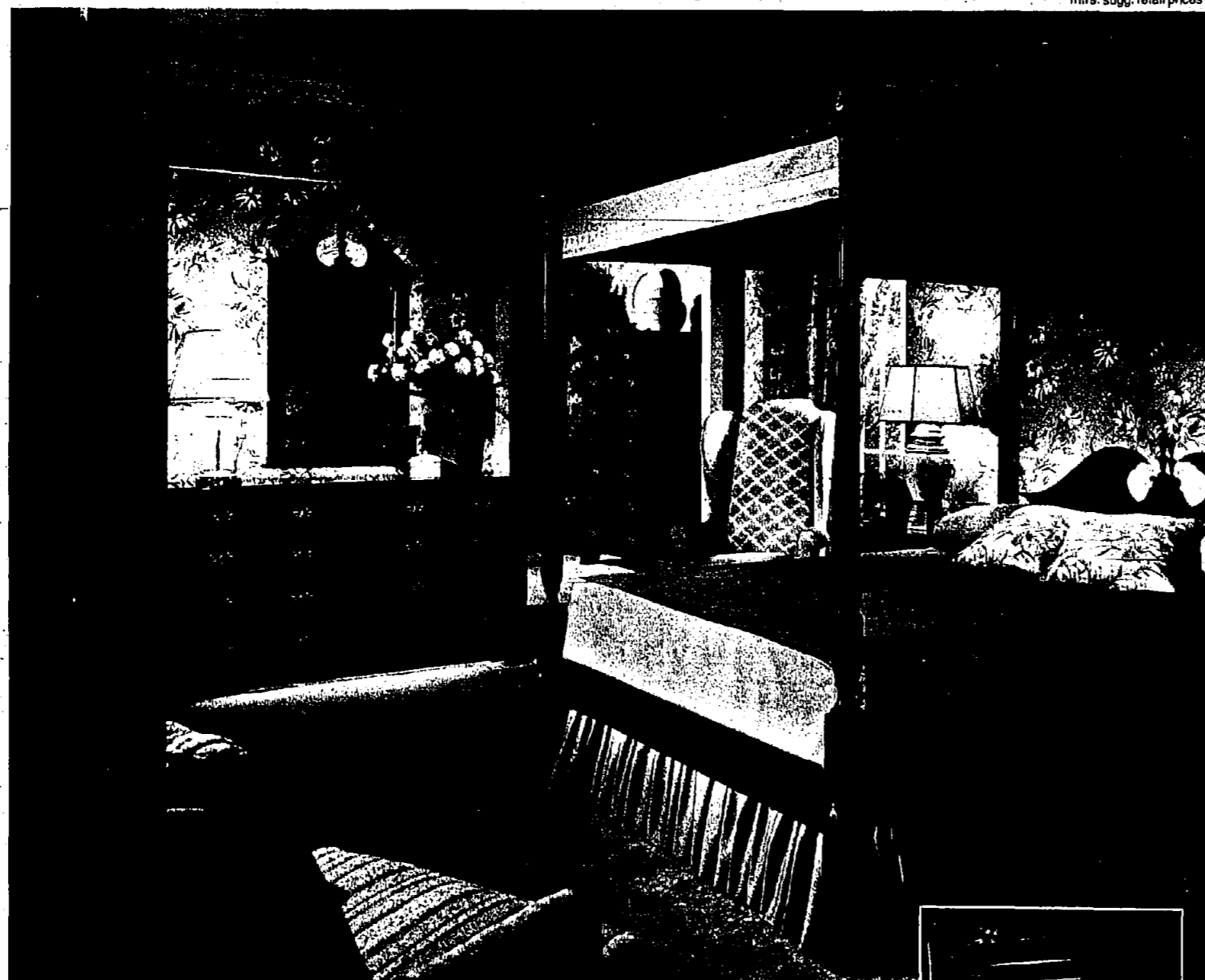


Authentic Detail: Here, and in many pieces, this gleaming, newly designed, pierced hardware adds the perfect finishing touch.



New elegance from Pennsylvania House. 20% off.

mins. sugg. retail prices



A most dramatic, formal bedroom. Fluted posts, inlaid moldings, double-mitred ogee bases. In solid cherry.

Only \$3425. for complete 5-piece group.*
Save \$860. on mfrs. sugg. retail

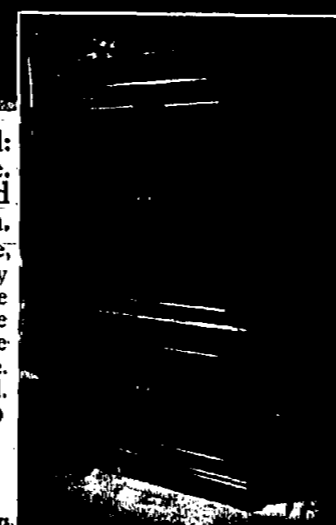
	<small>Mfrs. Sugg. Retail</small>	SALE
Canopy bed, queen size shown	\$ 999	\$ 799
<small>Also available as poster bed and in full or king size as canopy or poster bed, at 20% off.</small>		
66" dresser	\$1299	\$1039
Chest-on-chest	\$1249	\$ 999
Nightstand	\$ 439	\$ 349
Pediment mirror	\$ 299	\$ 239
Landscape mirror (also available, not shown)		

*Group includes queen size canopy bed, 66" dresser, chest-on-chest, nightstand and pediment mirror.

Spacious and beautiful! A glorious cherry armoire. For bedroom and living room.

With a classic plinth base, inlaid moldings and beautifully functional, too. Two adjustable shelves and several adjustable dividers in the top, three large pullout trays in the base. 45" w x 76" h x 21" d.
Reg. \$1599 SALE \$1279

Mfrs. Sugg. Retail Prices, optional with retailer.

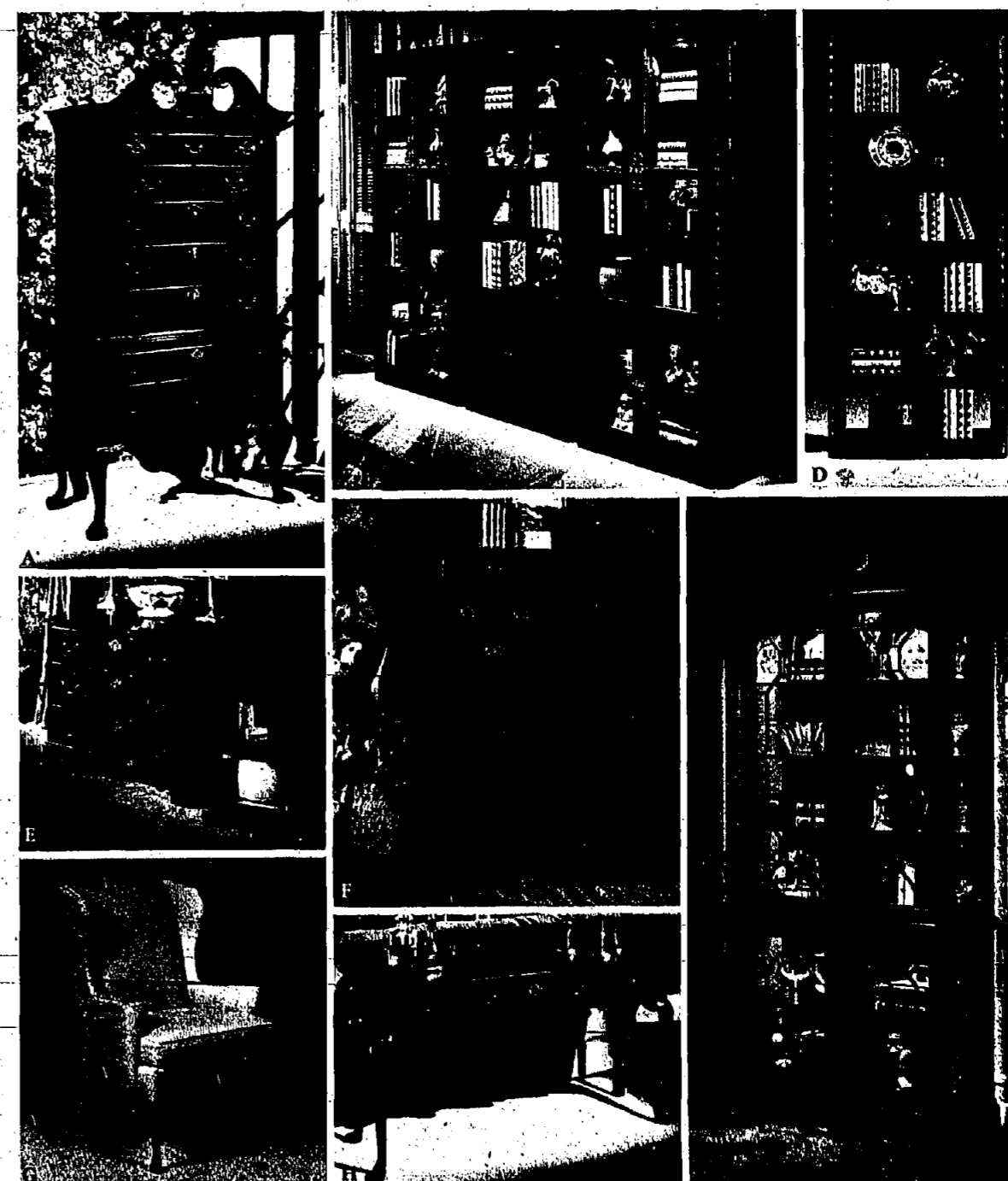


Sale. Individual, unique and authentic new designs.

You don't have to redecorate an entire room to enjoy the beauty of new 18th century and traditional Pennsylvania House cherry designs. You can start with one beautiful accent piece. These handsome, classic designs lend a warmth and grace to any room they enter. And each was created to function in today's world: A graceful semanier has a concealed mirrored lid:



Interior lighting in cabinets shows off your special treasures. A lovely chest opens to become a TV cabinet. And the beauty outside is matched by meticulous workmanship inside. Because each piece shares in the Pennsylvania House tradition of quality craftsmanship. Start today collecting tomorrow's treasured heirlooms. And save 20%.



A. Magnificent, authentically designed Philadelphia highboy with broken pediment and carved cabriole legs, fluted columns, shell carving. Solid cherry. 41" x 21" x 81". Reg. \$1999 **SALE \$1599**. Philadelphia lowboy also available, not shown. Reg. \$849 **SALE \$679**.

B. Add our glass-door cabinet, with bevelled glass, for protected display. Canister lights, glass shelves. Solid cherry and select veneers. 35" x 18" x 80" high. Reg. \$1399 **SALE \$1119**.

C. Stylish bookcase with doors below, with distinctive inlaid moldings on chamfered edges. Glass shelves. Canister lights. Solid cherry and select veneers. 35" x 18" x 80" high. Reg. \$1099 **SALE \$879**.

D. Matching glass-shelf etagere, with six shelves of open display space. Solid cherry and select veneers. 35" x 18" x 80" high. Reg. \$899 **SALE \$719**.

E. Blockfront TV cabinet. Beautifully styled front lifts and slides under top to reveal space for TV. Solid cherry. 30" x 21" x 26 1/2" high. Reg. \$599 **SALE \$479**.

F. Graceful semanier with secret lid. Top drawer opens down, lid lifts to reveal hidden storage and mirror. Spacious. Lovely. Solid cherry. 21 1/2" x 15" x 53 1/2" high. Reg. \$849 **SALE \$679**.

G. A lovely, very comfortable wing chair with gently curved Queen Anne legs. In a range of fabrics. 28 1/2" x 31" x 42" high. Reg. \$695 **SALE \$535**. In other fabrics. Reg. \$555 **SALE \$439**.

H. Simply elegant Queen Anne sofa table with pierced hardware, shell carving, graceful cabriole legs. Solid cherry. 16" x 52" x 27" high. Reg. \$599 **SALE \$479**.

I. The perfect compact china display cabinet. Authentic broken pediment. Fine fretwork on four doors. Glass sides. Canister lights. Glass shelves. Solid cherry and select veneers. 37" x 15" x 84" high. Reg. \$1599 **SALE \$1279**.