



A committed but complicated poet

Smith, Zirkel win contest... MOUNTAINSIDE—In the eighth-grade writing...

Library to exhibit paintings

SPRINGFIELD—The Friends of the Public Library will sponsor an exhibit in March of watercolors by Arthur W. Schwartz.

Lourdes plans art auction

An art auction sponsored by Our Lady of Lourdes Home and School Association will take place on Saturday, March 27, at 7 p.m.

Loon Lake to be topic... SPRINGFIELD—E.L. DeCocor's latest novel, "Loon Lake," will be the topic of the Tuesday meeting at 8 p.m. of the Public Library book discussion group.

Secretarial Service... The Quality Makes The Difference. 964-7766. Ask for Dick Sundel.

Senator Donald T. DiFrancesco

New Jersey's outmoded juvenile justice system is headed for a long-needed overhaul... The Assembly already has approved a series of reform measures...



CHANNEL-13 ART ENTRANTS—These first-through-fifth graders from the Caldwell School have entered some of their paintings on wall, in the Channel 13 Art Festival.

Springfield Public Notice

NOTICE TO MILITARY SERVICE VOTERS AND TO THEIR RELATIVES AND FRIENDS... If you are in the military service or the spouse of a dependent...

Cutoff nears for voters

Residents must be registered by March 8 to be eligible to vote in April 1 school board elections. Arthur Wendlandt, county clerk, said residents can register by going to the Municipal Clerk's office...

Construction continues on office building

Construction of a three-story office building is continuing on the corner Morris and Springfield avenues and is expected to be completed by this summer. Murray Construction Co., Inc., Springfield, is building the structure for L. G. Realty, a subsidiary of Lerman & Greenberg, CPAs, Springfield, who have been located in the township for 23 years.

Regional hearing is set for Tuesday

A hearing of the tentative budget for Union County Regional High School District will be held 8:30 a.m. Tuesday at Gov. Livingston's Regional High School on Watchung Boulevard in Berkeley Heights.

Obituaries

FISHER—Lee, of Mountainside, on Feb. 16. MAY—Elsie, of Springfield, on Feb. 18. MCKEON—Mary A., of Hampton Township, formerly of Springfield, on Feb. 18.

Views On Dental Health

WHY A SPACE MAINTAINER? A primary tooth (sometimes called a "baby" tooth) normally stays in place until the permanent tooth is ready to replace it.

Oratory cites seven

MOUNTAINSIDE—Seven borough residents have been named to the first semester honor's list at The Oratory School in Summit, according to the Rev. Floyd Rotundo, headmaster.

REGISTER NOW for OUR LADY OF LOURDES SCHOOL ALL DAY KINDERGARTEN

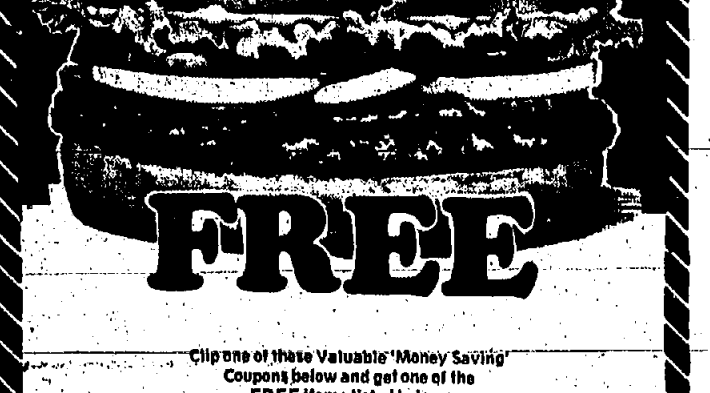
EXPANDED ACADEMICS, SOCIAL & CULTURAL OPPORTUNITIES... Small Classes - Average Size 15... Individualized Programs... Quality Education - Strong Academic Curriculum...

Automated Tellers Introduced

The Summit and Elizabeth Trust Co. has introduced automatic teller service with the installation of 10 "transacting teller machines." They give customers access to bank accounts 24 hours per day, seven days a week, at nearly 40 locations throughout the state.

Nice Stuff SPRING... Colorful vinyl slickers \$5.99... Spring is arriving every day at Nice Stuff... Prices You Won't Believe.

Burger King Arent You Hungry?



Burger King Buy one WHOPPER sandwich, get another WHOPPER free.

Burger King Buy one DOUBLE CHEESEBURGER get another DOUBLE CHEESEBURGER free.

Burger King Buy one WHOPPER sandwich, get 2 BURGERS free.

Burger King Buy one WHOPPER sandwich, get another WHOPPER free.

Burger King Buy one WHOPPER sandwich, get another WHOPPER free.

Burger King Buy one WHOPPER sandwich, get another WHOPPER free.

Burger King Buy one WHOPPER sandwich, get another WHOPPER free.

Burger King Buy one WHOPPER sandwich, get another WHOPPER free.

Burger King Buy one WHOPPER sandwich, get another WHOPPER free.

Prime Time

Making a bad situation worse

By JY BRICKFIELD
Have you heard the one about the old man who lived in a nursing home...
The proposed changes are...
Unless the proposed changes are reversed by the court...

By JY BRICKFIELD
The best a financial institution has to offer...
The highest rates allowed by law on savings accounts and certificates...

By JY BRICKFIELD
The school situation in Springfield has become a major war...
The school situation in Springfield has become a major war...

By JY BRICKFIELD
The school situation in Springfield has become a major war...
The school situation in Springfield has become a major war...

By JY BRICKFIELD
The school situation in Springfield has become a major war...
The school situation in Springfield has become a major war...

By JY BRICKFIELD
The school situation in Springfield has become a major war...
The school situation in Springfield has become a major war...

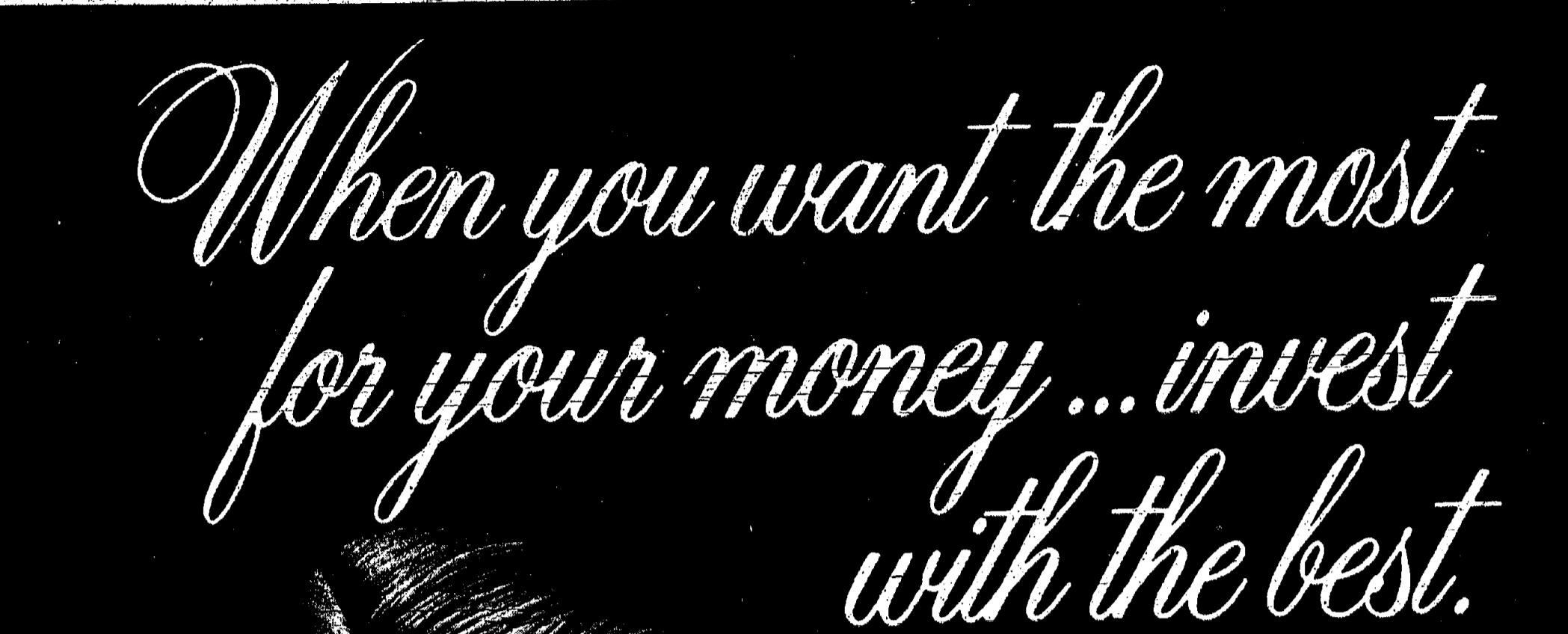
By JY BRICKFIELD
The school situation in Springfield has become a major war...
The school situation in Springfield has become a major war...

By JY BRICKFIELD
The school situation in Springfield has become a major war...
The school situation in Springfield has become a major war...

Springfield Public Notice

NOTICE TO THE HOLDERS OF BONDS OF THE COUNTY OF UNION...
NOTICE TO THE HOLDERS OF BONDS OF THE COUNTY OF UNION...

NOTICE TO THE HOLDERS OF BONDS OF THE COUNTY OF UNION...
NOTICE TO THE HOLDERS OF BONDS OF THE COUNTY OF UNION...



When you want the most for your money... invest with the best.
The best a financial institution has to offer... the highest rates allowed by law on savings accounts and certificates...

INVESTORS SAVINGS AND LOAN ASSOCIATION
Invest with the best!
HOME OFFICE: 249 Milburn Avenue, Milburn
EAST ORANGE: 27 Prospect Street
FREEHOLD: Highway 9 and Adelphi Road
HILLSIDE: 1129 Liberty Avenue
IRWINGTON: 34 Union Avenue

Springfield Leader
Published each Thursday by Tribune Publishing Co., 175 Broadview Ave., Union, N.J. 07080.

Springfield Leader
Published each Thursday by Tribune Publishing Co., 175 Broadview Ave., Union, N.J. 07080.

Springfield Leader
Published each Thursday by Tribune Publishing Co., 175 Broadview Ave., Union, N.J. 07080.







Classified 686-7700

Marat/Sade A concert is slated to perform Jewish festival slated June 20

Marat/Sade... A concert is slated to perform... Jewish festival slated June 20... The 10th annual Jewish festival... The concert is slated for June 20 at the Kennedy Center...

Wilder play set at Keon

Wilder play set at Keon... The play 'The Skin' by Thornton Wilder... The play is being produced by the Keon Theater series...

Movie Times Play by Kanin due March 4

Movie Times... Play by Kanin due March 4... The play 'Born Yesterday' by Thornton Wilder... The play is being produced by the Keon Theater series...

Keon College events listed

Keon College events listed... Various events including plays, movies, and musicals... The events are being held at the Keon Theater series...

SPRING MUST BE HERE BECAUSE

SPRING MUST BE HERE BECAUSE... THE GALLOPING HILL INN... AT 3 POINTS... OPENS WED., MARCH 3rd!

Classified 686-7700

Suburban Publishing Corporation Join the 'Community Leader'

Suburban Publishing Corporation... Join the 'Community Leader'... Career opportunity for aggressive male/female to join our display advertising staff...

Suburban Publishing Corp., P.O. Box 3109, Union, N.J. 07083... Call Asher Mintz at 686-7700... 1291 Shuysenant Avenue, Union, N.J. 07083

Bank Tellers... Get in At One of New Jersey's Most Prestigious Savings & Loan Associations... Carteret Savings & Loan Association

Carteret Savings & Loan Association... Medical Records Transcriptionist... Medical Assistant... Medical Records Transcriptionist

Clerk/Billing... Mandy's... Mechanical Ability?... Scientific Models... Bookkeeper/Clerk

AVON... ESSEX COUNTY... ADVERTISING... Check Casher... Instant Typing

Bookkeeper... Instant Typing... Stand By Personnel... Bookkeeper

Bookkeeper... Instant Typing... Stand By Personnel... Bookkeeper

686-7700

HELP WANTED... MEDICAL TECHNOLOGIST... RECORDS SUPERVISOR... LIBRARIAN CHILDREN... MAINTENANCE PERSON

HELP WANTED... MEDICAL ASSISTANT... MEDICAL RECORDS TRANSCRIPTIONIST... CLERK... SECRETARY

HELP WANTED... ORDER TAKEN... MOVING... WILLIAM E. BAUER

HELP WANTED... Typist... Warehouse Personnel... Child Care... Child Care

HELP WANTED... Cleaning Service... Electrician... Home Improvements... Home Repairs

HELP WANTED... Painting & Paperhanging... Plumber & Heating... Plumber & Heating... Plumber & Heating

HELP WANTED... Quality Printing... Business Cards... Stationery... Stationery

HELP WANTED... Child Care... Child Care... Child Care... Child Care

686-7700

HELP WANTED... PERMANENT PART-TIME CABINET... PERMANENT PART-TIME CABINET... PERMANENT PART-TIME CABINET

HELP WANTED... REAL ESTATE SALES... REAL ESTATE SALES... REAL ESTATE SALES

HELP WANTED... SALES P/T... SALES P/T... SALES P/T

HELP WANTED... SECRETARY... SECRETARY... SECRETARY

HELP WANTED... Typist... Typist... Typist

HELP WANTED... Warehouse Personnel... Warehouse Personnel... Warehouse Personnel

HELP WANTED... Child Care... Child Care... Child Care

HELP WANTED... Child Care... Child Care... Child Care

686-7700

EXECUTIVE OFFICE SPACE... IDEAL LOCATION... IDEAL LOCATION... IDEAL LOCATION

Apartment for Rent... Spacious Apartments in Garden... Spacious Apartments in Garden... Spacious Apartments in Garden

Apartment for Rent... Spacious Apartments in Garden... Spacious Apartments in Garden... Spacious Apartments in Garden

Apartment for Rent... Spacious Apartments in Garden... Spacious Apartments in Garden... Spacious Apartments in Garden

Apartment for Rent... Spacious Apartments in Garden... Spacious Apartments in Garden... Spacious Apartments in Garden

Apartment for Rent... Spacious Apartments in Garden... Spacious Apartments in Garden... Spacious Apartments in Garden

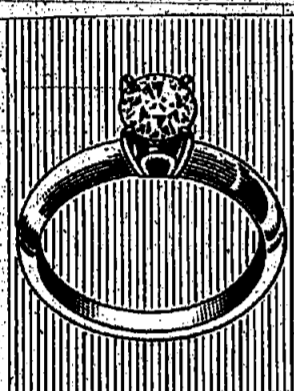
Apartment for Rent... Spacious Apartments in Garden... Spacious Apartments in Garden... Spacious Apartments in Garden

Apartment for Rent... Spacious Apartments in Garden... Spacious Apartments in Garden... Spacious Apartments in Garden





*Diamonds as an investment symbolized through the ages in*  
**ENDURING LOVE & VALUE**



**ECHO JEWELERS**  
1571 Morris Avenue  
UNION 686-0322  
Bank America's  
Richard Jados Mark LaMotta

## Union office opened by personnel agency

Alberta Smyth Personnel Agency, believed to be the nation's oldest personnel placement firm, has started a new base of operations in Union. The new office is under the direction of Gabe De Rogatis, a native New Jersey and resident of Randolph. Known as Alberta Smyth Personnel Agency of New Jersey, the firm now in its 76th year of continuous operations built its national reputation in the credit and collection field.

"Our new office," De Rogatis explained, "will continue in that specialty to bring our service closer to our New Jersey clientele, and we will also be breaking ground in new employment disciplines, principally sales marketing."

Other specialties include accounting and the office services of clerical fields. The new firm, which officially opened its doors Feb. 8, began with a staff of five trained specialists, and is planning a rapid expansion, according to De Rogatis.

The parent organization, based in New York, is under the direction of E. John Broderick, certified personnel consultant, and A. Robert Welt, Broderick is the third generation of the family to manage the 76-year-old firm. He is a native of New Jersey, having been raised in Union and now residing in Elizabeth.

"We selected Union as our base in New Jersey because it affords us ready access to all parts of the state. It will also be the headquarters for future offices in the state as soon as this one is firmly established," De Rogatis concluded.



**GABE DE ROGATIS**  
A former Sales Manager for Wells Fargo Protection and a District Credit Manager for Westinghouse, De Rogatis studied Business and Management at Fairleigh Dickinson University, Madison. He has been a member of the New York staff for nearly two years, studied Personnel Placement at Manhattan Community College and is in training for certification (CPC), the highest achievement of professionalism in the personnel placement industry. De Rogatis and his wife, Regina, have a daughter, Jessica, 9.

## Deutsch & Co. offers service to community

Philip Deutsch & Co., established in 1925, opened its first offices in Newark, moved into Irvington 45 years ago and has become an integral part of the Irvington business community ever since. The firm handles only insurance and, as its slogan states, "Every Form of Insurance." Philip Deutsch & Co. acts as advisers and brokers for the town of Irvington and many other governmental entities as well as numerous local, state national and international commercial enterprises.

In addition, separate underwriting facilities are maintained to handle the personal insurance needs of every individual. Philip Deutsch & Co.'s Department of Life, Health and Accident Insurance specialize in individual and group plans. The firm is a member of the Professional Insurance Agents of New Jersey and America, Independent Insurance Agents of New Jersey and America and Chamber of Commerce. Philip Deutsch is a member of the chamber's board of trustees.

Deutsch, president of Philip Deutsch & Co., is chairman of the Irvington Economic Development Committee and a member of the Orange Economic Development Committee.

The firm has been a sponsor of the C.O.E. program in conjunction with the Irvington Board of Education for many years.

## Progress a tradition at Irvington General

Irvington General Hospital is the only acute care municipal hospital in New Jersey and the only one that functions on a totally self-supporting basis.

The town's involvement in hospital affairs began during the influenza epidemic of 1918 when surrounding hospitals were full and Irvington residents were refused care. An emergency hospital was established to meet the crisis and when it was over, the town commissioners pursued a permanent city-owned hospital. By 1924, the hospital was relocated to its present site and rebuilt.

Now licensed for 155 beds, it provided 4,500 patients with nearly 50,000 days of care last year. A staff of more than 100 physicians provided medical care and more than 500 professional and auxiliary support personnel and volunteers provided all other services. The hospital has had an average occupancy of 93 percent over the last five years, which makes it the most intensely utilized hospital in Essex County and one of the busiest hospitals in the state.

More than 60 percent of the total days of care at the hospital were reimbursed by Medicare for patients 65 or older. These older patients accounted for slightly more than half of all admissions in 1980, compared to about one-third in 1975. It is this historical experience, as well as the anticipation of an elderly and the very young, on which Irvington General bases its commitment to expand its role as an important community resource.

Such a commitment is evidenced by the 1980 opening of an ultra-modern 11-bed Intensive and Cardiac Care Unit (ICU/CCU), the establishment of a rare and sophisticated diabetic care program, the most modern ultrasound department and the soon-to-be-opened six-bed Short-Stay Unit. Each of these accomplishments has served to reduce the impact of severe illness, particularly for the elderly. Irvington General is in the process of intensifying its pediatric resources in response to an increasing demand for services for our younger population.

Perhaps the greatest step to be taken in the recent past to promote even greater levels of quality care is Irvington General's reorganization of the Nursing Service. A plan has been developed to provide professional nurses with an optimum environment in which to practice their specialties.

The plan operates on the premise that patients benefit much more from a collaborative nurse-physician administration relationship than with a separated "niche" style relationship, which exists in many hospitals. Concurrent with this plan for reorganization, the hospital is studying several problem areas it believes have been literally chasing nurses away from the profession. The plan's impact already has been felt in that nurse recruitment problems have almost vanished.

Irvington General's future is bright even though the odds for a viable hospital system in this country have been decreasing due to fiscal constraints in federal and state funding.

## Irvington's location ideal for business and industry

By HENRY F. BLANK  
*Community Development and Planning*  
The town of Irvington is a microcosm of urban life in New Jersey. Our community has an industrial park, a downtown shopping area, secondary shopping areas, business and professional offices, various supermarkets and retail stores.

We are endowed with an excellent location for business and industry, being located at exit 143 of the Garden State Parkway, adjacent to Route 78, seven minutes from Newark Airport and convenient to the N.J. Turnpike, accessible via routes 78 or 22. The town also possesses a centrally located bus terminal.

The Olympic Industrial Park has three tenants—Perri Roofing, Pipeco Chemical and Schering Plough. Others will move in during 1982. Other buildings are available for 1982. Major industries, such as Silsonex Metal Refiners and Arnold Action Furniture Inc., also occupy industrial properties.

located there. Urban loan programs are available and the Irvington Office of Community Development stands ready to assist the large and small business with arranging financial packaging to meet all needs.

A small business management course is given free, funded by the office of Community Development, at the Irvington Adult School to potential and current businessmen. Professional instructors and experts in various business fields teach the 10-week course, which resembles a seminar. A free textbook comes with the course.

Through the Irvington Chamber of Commerce, monthly sales programs are successfully completed through the advertising tabloid of the Irvington Herald. The Economic Development Committee, chaired by Philip Deutsch, meets monthly. This committee, appointed by the mayor, consists of 21 businessmen from various industrial, retail and professional services in the community.

## Realtors group sees turnabout

New Jersey residents can look forward to a turnabout in the state's economic climate during the next four years, according to William J. Lauten, president of the 15,000 New Jersey Association of Realtors.

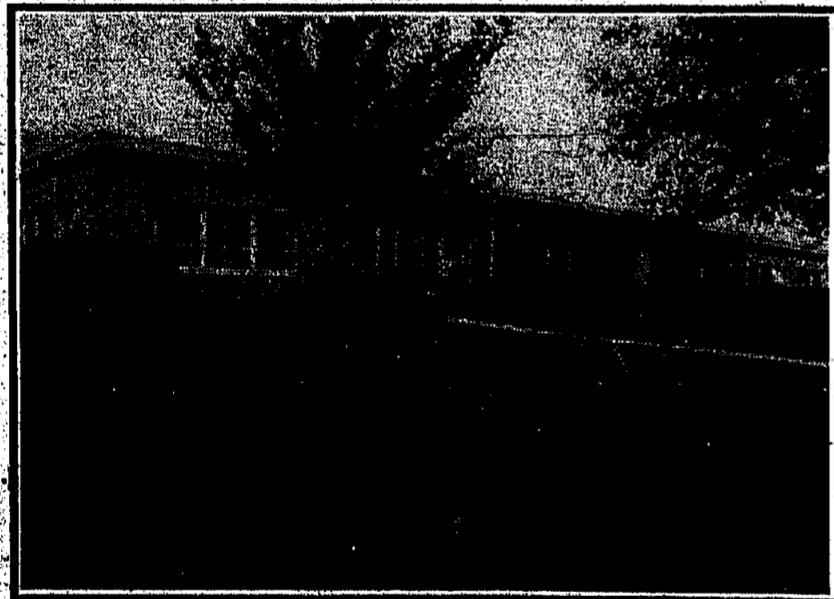
With Tom Kean's term as governor officially under way, realtors are cautiously optimistic about what they feel will be an imminent turnabout in the economy.

"We're confident in the Kean Administration's commitment to giving prompt attention to the problems confronting the economy here in New Jersey," said Lauten. "In our estimation, concentrating on the economy and the myriad of problems it has generated (unemployment, businesses relocating out-of-state, etc.) is something which is long overdue."

## BELTING INDUSTRIES CO., INC.



Quality Belting For Trouble-Free Performance...



CELEBRATING  
OUR  
**25**  
YEAR  
In Business

20 Boright Avenue  
Kenilworth, N.J. 07033  
(201) 272-8591

## THE UNION CENTER NATIONAL BANK

Condensed Statement of Condition  
**THE UNION CENTER NATIONAL BANK**  
"UNION'S ONLY HOMETOWN BANK"  
UNION, NEW JERSEY  
DECEMBER 31, 1981

ASSETS	
Cash and Due from Banks	\$ 6,576,733
Federal Funds Sold	2,600,000
Investment Securities	18,843,171
Loans (Net of Reserve for Possible Loan Loss & Unearned Discount)	42,006,018
Bank Premises & Equipment	1,406,362
Other Assets	751,771
<b>TOTAL</b>	<b>\$72,204,055</b>
- LIABILITIES AND SHAREHOLDERS' EQUITY	
Deposits	\$60,449,226
Federal Funds Purchased and Securities Sold Under Repurchase Agreements	2,516,433
Other Liabilities	650,772
<b>Total Liabilities</b>	<b>63,616,431</b>
Common Stock (\$5.00 Par)	2,000,000
Surplus	3,497,120
Undivided Profits	3,090,504
<b>Total Shareholders' Equity</b>	<b>8,587,624</b>
<b>TOTAL</b>	<b>\$72,204,055</b>

### BOARD OF DIRECTORS

HUGO BARTH III  
FRANCIS E. CARDINAL  
PAUL LOMAKIN, JR.  
ROBERT C. MILLER  
RUDI O. WADLE

WALLACE J. BUTLER  
DONALD G. KEIN  
JACK McDONNELL  
STANLEY R. SOMMER  
CHARLES P. WOODWARD

### HONORARY DIRECTORS

JOHN A. DEITRICH  
ADOLPH W. JAEGER  
MAURICE A. SCOTCH

### OFFICERS

JACK McDONNELL  
President & Chairman of the Board  
HELEN MAKO  
Cashier

JOHN HEATHCOTE  
Assistant Vice President

ELEANOR S. MUNKO  
Assistant Cashier

RONA O'SHEA  
Assistant Cashier

JOHN J. DAVIS  
Executive Vice President & Chief Administrative Officer  
FRANK J. GERECITANO  
Vice President

EILEEN J. TORBICK  
Assistant Vice President

THOMAS S. NICHOLS  
Assistant Cashier

MAXINE P. WIEGAND  
Auditor

### TELEPHONE 688-9500

**MAIN OFFICE:** 2022 Morris Ave., Union  
Mon. thru Fri. 9 A.M. to 5:30 P.M. — Fri. Eve. 4 P.M. to 8 P.M.  
**MAIN OFFICE LOBBY WINDOWS:**  
Mon. — 11:30 P.M. to 9 P.M. — Tues. thru Fri. 11:30 P.M. to 6:30 P.M.  
**DRIVE-IN:** 2022 Stone St., Union  
Mon. thru Thurs. 8 A.M. to 4:30 P.M. — Fri. 8 A.M. to 6 P.M.  
Sat. 9 A.M. to 1 P.M.  
**BRANCHES IN UNION:**  
225 Chestnut St. — 2405 Morris Ave., 1725 Stuyvesant Ave.  
Mon. thru Thurs. 9 A.M. to 5:30 P.M.  
Fri. 9 A.M. to 2:30 P.M. and 4 P.M. to 8 P.M.  
**DRIVE-THRU:** 202 Chestnut St., Union  
Mon. thru Thurs. 8 A.M. to 4 P.M. and 5:30 P.M. to 8 P.M.  
Mon. thru Thurs. 8 A.M. to 4 P.M. — Fri. 8 A.M. to 6 P.M.  
**WALK-UP:** 202 Chestnut St., Union  
Mon. thru Thurs. 8 A.M. to 4 P.M. and 5:30 P.M. to 8 P.M.  
Fri. 8 A.M. to 4 P.M. and 5:30 P.M. to 8 P.M.  
**SPRINGFIELD OFFICE:** 713 Mountain Ave., Springfield  
Mon. thru Fri. 8 A.M. to 4 P.M.  
Sat. 9 A.M. to 1 P.M.

Member Federal Deposit Insurance Corp.

PROGRESS—BLUEPRINT FOR TOMORROW: February 24-25, 1982

**Alberta Smyth**

Alberta Smyth Personnel Agency, Inc., has been a leader in the employment placement field since 1964. We offer employer clients a professional service, resulting in long, successful employment relationships. Alberta Smyth's management expertise combines three generations of family involvement with top level industry management experience. Alberta Smyth is the oldest employment agency in the United States involved with management and administrative type placements. The primary specialties of Alberta Smyth are Sales, Marketing, Credit Collections, Data Processing, Accounting, and Secretarial. We pride ourselves on establishing long term relationships with our employer clients.

**Recruitment Specialists in**

- SALES
- MARKETING
- CREDIT COLLECTIONS
- DATA PROCESSING
- ACCOUNTING
- SECRETARIAL
- OFFICE PERSONNEL

Alberta Smyth Personnel Agency Of New Jersey, Inc.  
ESTABLISHED 1964  
2444 MORRIS AVENUE  
UNION, NEW JERSEY 07003  
Tel.: (201) 686-6410

## National starts new growth era

The name of National Tool & Manufacturing Co. can hardly be expected to ring bells of recognition among great numbers of the citizenry of Essex and Union counties. Yet, what National produces plays a very direct part in providing products that have become part of our daily lives.

National, with its headquarters plant in Kenilworth and a component parts plant in Mountainside, is a major producer of mold sets used as a basis for the production of hundreds of plastic products. From dish racks to telephone sets—the list is endless—all are initially produced from plastics molds and mold sets of the type that National Tool has supplied the plastics and metal molding industries for nearly 50 years.

In terms of sales volume, National is the second largest fabricator of mold sets in the nation and has branch facilities in Illinois, Ohio, California and Missouri.

National has acquired a reputation in the plastics industry for the precision and the consistently high quality of its mold sets and components.

National was among the first industrial firms in New Jersey, if not in the nation, to harness the computer for greater administrative and production efficiencies. Today, National has a whole arsenal of CNC (computer numerically controlled) machine tools that can perform all sorts of difficult machining jobs with a remarkably high degree of efficiency.

Recently, National, which employs some 300 people, has undergone a change of management. William Zeus Sr., who founded the company in 1933 and built it to its present high stature in the industry, is now chairman of the board. Replacing him as president is his son, William Zeus Jr.



**STACKED STEEL**—Mounds of steel plate used in the fabrication of mold sets stand ready for machining at National Tool's headquarters in Kenilworth. Component parts, foreground, are being checked for dimensional accuracy.

Bill Zeus Jr. knows National's operations thoroughly, having worked in virtually every department of the firm since his graduation from Lehigh University in 1970. While Bill Zeus Sr. will continue to play an important role in both the production and policy-making affairs of the company, Bill Jr.'s accession to the presidency marks a general revitalization in the company's administrative structure and the inception of a new era of growth for the Kenilworth company.

One main objective in the new president's long-range plans is to make National the number one company in the mold set industry. He aims to accomplish this by broadening the base of production efficiencies, keeping the quality of the company's products at ultra-high levels and seeing to it that service to customers becomes better than ever.

At a time a number of plants throughout the state are faced with the need to lay off production and other personnel, National is actually looking for people to handle expansion in the demand for its mold sets. Specifically needed are machinists with at least a good knowledge of the metal working trade and/or machine tool operation.

## St. Elizabeth begins expansion campaign

St. Elizabeth Hospital has embarked on an expansion campaign for 1982 with plans for a \$8.5 million addition to the hospital. The two-story addition will contain an expanded and modernized intensive care unit, a pharmacy, office space for ancillary services and a new elevator system.

Through modernization of the intensive care areas, the hospital will improve the present physical environment and provide an atmosphere conducive to the well being of critically ill patients.

The professionals at St. Elizabeth's who are responsible for health care today—doctors, nurses, technicians, and all others who practice the healing art—have resources that would have astounded the physician of the 19th century. Scores of diseases that surely would have meant death then are now routinely cured or prevented. We can look inside the body without cutting it, measure its functions precisely rather than guess, repair ailing limbs, replace failed organs and perform hundreds of other feats of diagnosis and treatment made possible by advances in science and technology.

One way of comprehending this remarkable progress is to review some of the medical specialties that have developed through the years and which are available for the patient at St. Elizabeth.

St. Elizabeth Hospital offers full radiology services, including the Computerized Axial Tomographic (CAT) scanner, a comprehensive cardiology laboratory and complete oncology resources. The Obstetrics/Gynecology Unit offers the prospective mother the

PHILIP  
**DEUTSCH**  
& CO., INC.  
EST. 1925

**INSURANCE**

Surveys - Analysis - Risk Management

Philip Deutsch - President	Edward E. Hasenfus - Vice President
M.K. Deutsch - Secretary/Treasurer	Kathy Neri - Secretary of Claims
Frank Pecora - Underwriter	Helen Zera - Chief Bookkeeper
Joannie Steale - Secretary/Underwriter	Irene Lawrence - Bookkeeper
Howard T. Hasenfus - Underwriter	Donna Du Bois - Records/Receptionist
Isabelle Fernandez - Life/Health Account Executive	

over 50 years of service

640 Stuyvesant Ave. Irvington, N.J.  
375-0500 - 01-07

AS—PROGRESS—BLUEPRINT FOR TOMORROW - February 24-25, 1982

**IMPORTANT NOTICE**

**WE'VE MOVED!**  
**OUR NEW LOCATIONS ARE**

**HILLSIDE:** 1278 Liberty Avenue  
923-2122 corner Princeton Ave.

**SOUTH ORANGE:** 22 South Orange Avenue  
763-3182 corner Valley Street

9-5 Mon. thru Fri., 9-3 Sat. & Sun. Appointments Available

**OUR NEW FACILITIES PROVIDE MORE PRIVACY, MORE PERSONNEL TO SERVE YOU AND ADDITIONAL PARKING AREAS.**

**H&R BLOCK®**

**THE INCOME TAX PEOPLE**

**FREE GIFTS TO OUR NEW CLIENTS!**

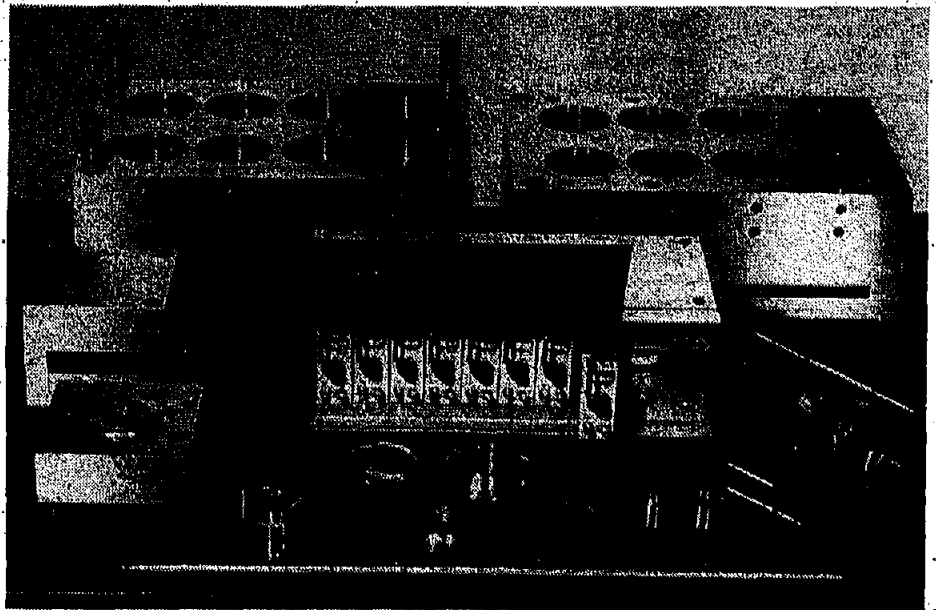
**NATURAL GAS...**

The clean, non-polluting American energy for today and the future

**USE IT WISELY**

**Elizabethtown Gas**  
A National Utilities & Industries Co.  
Serving the Community Since 1855

## The NEW NATIONAL Needs Experienced Machinists



Mold set and components, typical of those produced by National for hundreds of plastic products manufacturers throughout the USA.

National Tool & Manufacturing Co., one of this country's major producers of mold sets and mold components—equipment that is of vital importance in the production of most plastics products—can use the services of a number of seasoned machinists. Solid experience (or we'll even train qualified applicants) and a desire to move ahead with a company that is determined to become the leader in its field, are all that's needed to qualify. Salary is tops. Fringes are excellent. And working conditions and environment unbeatable.

What do we mean by the new National? Just this: We have a brand new, young and vigorous management team and exciting new plans for growth and expansion as we head into our second half century of service to industry. If you'd like to be part of the new National team and if you have the qualifications we're looking for, contact Bill Zeus, Jr., president, National Tool & Manufacturing Co., 100-124 North 12th St., Kenilworth, NJ 07033. Or phone him at 201-276-1600.

**NATIONAL**  
Come grow with us

# BUY WISE

## AUTO PARTS

N.J.'s Largest Auto Parts Distributor  
**THE SAMUELS FAMILY**  
 (Vauxhall Section) UNION  
 1932 - 1982



The Samuels Family started in business in 1932 when Jacob Samuels opened a used car lot at 2901 Springfield Ave. in the Vauxhall section of Union.

As his 3 sons grew older they joined the family business and helped it grow to be one of N.J.'s largest. All went well until World War II when business conditions forced them to close. At this point "Pop" Samuels retired.

The 3 boys reopened the business in 1946 and in 1951 added a new car showroom and automotive service facility. As the business kept growing an auto body and painting facility (the largest in Union) was added in 1952. The Samuels boys became the largest Studabaker-Packard Sales & Service showroom on the Eastern seaboard. When Studabaker ceased production in 1964 the boys continued their service and body shop business.

In 1965 a complete turn-around was accomplished when, in addition to their service and body shop business, they converted their auto showroom into the present "Buy Wise Auto Parts."

Marlin and Ervin Samuels recently completed the construction of thousands of additional square feet which will make Samuels, Inc. Auto Parts Warehouse the largest in the state.

The firm is presently being run by Ervin Samuels with the able affiliation of Robert Samuels, Matt Plano and Larry Ringler who have matured with the constant growth of the firm and are part of the great future that has made Buy Wise "Auto Parts known by the phrase "If it's automotive...most likely we have it!"  
 Five acres of facilities to serve you.

# Buy-Wise AUTO PARTS

2091 SPRINGFIELD AVE.  
 VAUXHALL (UNION) 688-5848

OPEN 7 DAYS • Sun. 8 AM to 2 PM • Sat. 7:30 AM to 5:45 PM • Weekdays 7:30 AM to 7 PM • Closed Wed. at 5:45 PM

## Berkeley confident of profitability in '82

Berkeley Federal Savings and Loan Association has reported record growth in assets and deposits in 1981.

Richard K. Gartenberg, president, said the association's assets grew 17 percent to \$509,363,174 at Dec. 31, from \$329,458,424 a year earlier. The president noted that the net savings growth of \$53.6 million places Berkeley Federal among the fastest-growing savings associations in the country.

For the year, Berkeley reported negative earnings of \$2,517,506 compared to net earnings in 1980 of \$736,592. "Despite our extraordinary growth, Berkeley was not immune from the severe earnings pressures experienced by thrift associations nationwide," Gartenberg said. Thrifts were hard hit in 1981 by a rapid rise in interest rates on savings certificates which outstripped long-term yields on residential mortgages.

But Gartenberg said, "The prospect of moderating interest rates, coupled with a strategic repositioning of our loan portfolio and significant bottom-line contributions by our building subsidiary, Berkeley Financial Corp., make us confident of a return to profitability in 1982."

Berkeley Federal was very active in 1981 in the expansion of its facilities network and line of services.

During the year, Berkeley opened its new administration center at 21 Bleeker St., Millburn, and opened two new branches. The Brick office is the association's fourth in Ocean County and the Monroe branch represents Berkeley's initial entry into Middlesex County. A minimum of three additional

branches is planned for 1982, Gartenberg said.

Berkeley also established Consumer Services and Trust Departments in 1981. The Consumer Services Department is responsible for a full range of installment loan offerings, including personal, auto homeowner, marine and vacation time-sharing loans.

Following Federal Home Loan Bank Board approval last September, Berkeley became one of only several savings and loan associations in the nation to offer personal trust and estate planning services. The association's Trust Department was established at its Manchester/Lakehurst office to serve the Ocean and Middlesex County areas. "We are extremely pleased with the level of public reception our trust operations have received," Gartenberg said.

The president also indicated that Berkeley Financial Corporation made significant strides in 1981 in its real estate joint ventures. Liberty Greens, the 170-unit luxury townhouse association project in Convent Station, Morris County, is 75 percent sold and 50 percent occupied. Another Berkeley project, Timber Ridge, 30 units of prestige single-family homes in Freehold, is 90 percent sold and 75 percent occupied.

Berkeley Federal, Gartenberg said, will advance its goals in 1982 of becoming a one-stop family financial center and of achieving a statewide banking presence. "There will be no easy roads for the savings and loan industry in 1982. We will work harder and smarter for the successes we achieve. And we are ready for the challenge."

### WILL THE FUTURE BE HEALTHY?

The demand for quality health care will only accelerate in the future. New technology and new priorities within the health care delivery system call for inventive approaches.

### ST. ELIZABETH HOSPITAL MEETS THOSE CHALLENGES OF THE FUTURE.

The first hospital in the State of New Jersey to have an Intensive Care Unit, St. Elizabeth Hospital now plans the construction of a two story addition which will include an expanded and modernized intensive care unit and a new pharmacy. In keeping with its tradition of providing the best of today's medical technology, the addition will use the best of modern health systems to ensure even better patient care.

Responding to the changing needs of our marketplace is the way St. Elizabeth Hospital is growing.

WE BELIEVE WE WILL BE AN IMPORTANT PART OF A HEALTHIER FUTURE. EDR US ALL.  
**ST. ELIZABETH HOSPITAL**  
 225 Williamson Street, Elizabeth, N.J. 07207  
 527-5000

AT NEWARK INTERNATIONAL AIRPORT

### Holiday Inn - NORTH

A LUXURIOUS SETTING FOR ALL OCCASIONS. NEED COST NO MORE.  
 Custom Catering tailored to suit your every need—  
 We'll make your next event special with our personalized attention—  
 from the planning stage until the last guest has departed.

- WEDDINGS • REUNIONS • BAR MITZVAHS
- PRIVATE PARTIES • CONFERENCES • SEMINARS

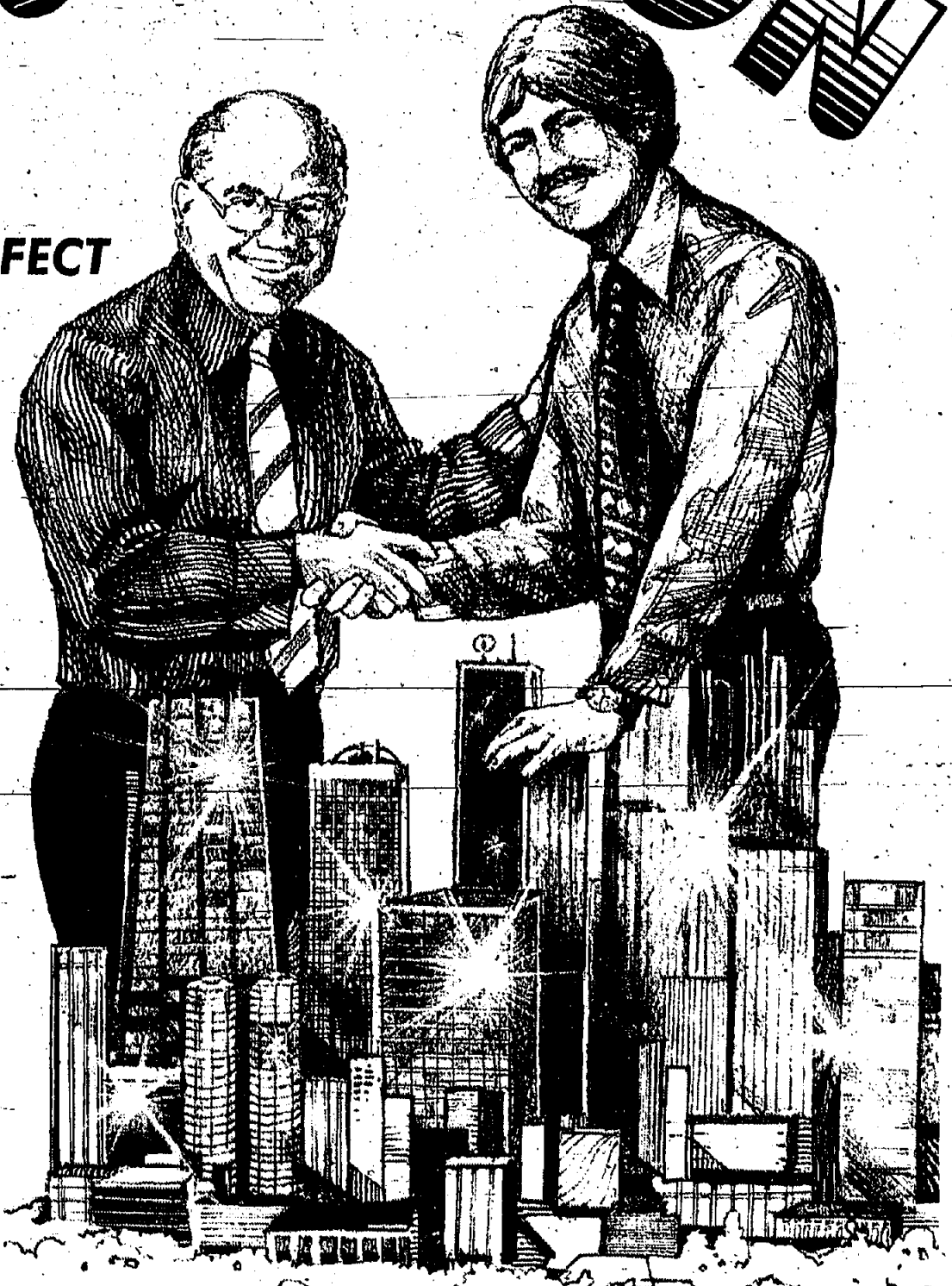
FACILITIES FOR 20 TO 400 GUESTS • TOTAL MEETING FACILITIES FOR UP TO 1400  
 FREE PARKING FOR OVER 800 CARS • LARGE BALL ROOM  
 CALL OUR DIRECTOR OF CATERING  
**344-4700 or 589-1000**  
 completely redecorated facilities  
 160 HOLIDAY PLAZA, NEWARK  
 FOLLOW SERVICE RD SIGNS (EXIT 88B) FROM AIRPORT

# IRVINGTON

## PROGRESS MAKES PERFECT

A FINE PLACE TO LIVE AND WORK

At the gateway to the suburbs, Irvington offers direct bus service to New York City and other communities. It's just seven minutes from Newark International Airport and offers business and industry abundant skilled labor. It has easy access to the Garden State Parkway as well as the Turnpike and routes 78, 22 and 280. An established growth community in a prime location, prime sites are now available in Olympic Industrial Park. Financial assistance is available for the business community. If you're looking to relocate or expand your present facilities, look to Irvington in the "Heart Of The World's Richest Market!"



Robert H. Miller  
 Mayor

A PRACTICAL & PROFITABLE LOCATION FOR YOUR BUSINESS & INDUSTRY  
 For Information Call Or Write:  
 Henry F. Blank, Director  
 Office of Community Development And Planning  
 Town Hall, Civic Square  
 Irvington, N.J. 07111  
 (201) 372-2100

### TOWN COUNCIL MEMBERS

ANTHONY T. BLASI  
 Council President - At Large

ESTHER D. SCHWARZ  
 Councilman South Ward

ARNOLD STEINHAUS  
 Councilman West Ward

J. WALTER JONKOSKI  
 Councilman At Large

ALAN SIEGEL  
 Councilman At Large

C. DONALD GOTTWERTH  
 Councilman North Ward

FRED BOST  
 Councilman East Ward





### Cleveland Plaza In Cranford, soon to be completed, will offer convenience to its tenants. **Complex nearing completion**

Cleveland Plaza will soon be ready for tenant occupancy according to Paul Plinzotto, marketing representative of Cleveland Plaza Associates. A former school building, of approximately 25,000 square feet, is being renovated and combined with a new building of approximately 10,000 square feet, will form a quality office and retail complex in Cranford. In the heart of the business district, the complex, accessible from three streets, offers all urban conveniences with a suburban location. "It is unique to have public transportation, shopping and restaurants all within walking distance and still have on-site parking available to office and retail tenants as well as their visitors and customers," stated Plinzotto. The former school building has three floors of modern space. Twin lobbies lead to a retail mall area, while the upper two floors consist of offices which can be rented separately or in combination, as required by tenants. The new building offers attractive and desirable ground-floor retail space fronting on North Union Avenue. The complex is 2 minutes from the

Garden State Parkway (Exit 137), making connections easy to the Turnpike, routes 287, 80, 24, 280, and 78. In addition to convenience for car transportation, the complex is a short walk from the commuter Raritan Valley lines of Conrail. Cleveland Plaza Associates is a partnership comprising the Principals of Vizzoni Bros. Construction Company and S. Seltzer Construction Corp., both of Kenilworth. All the partners have long been active in development and general contracting work throughout New Jersey for residential, industrial

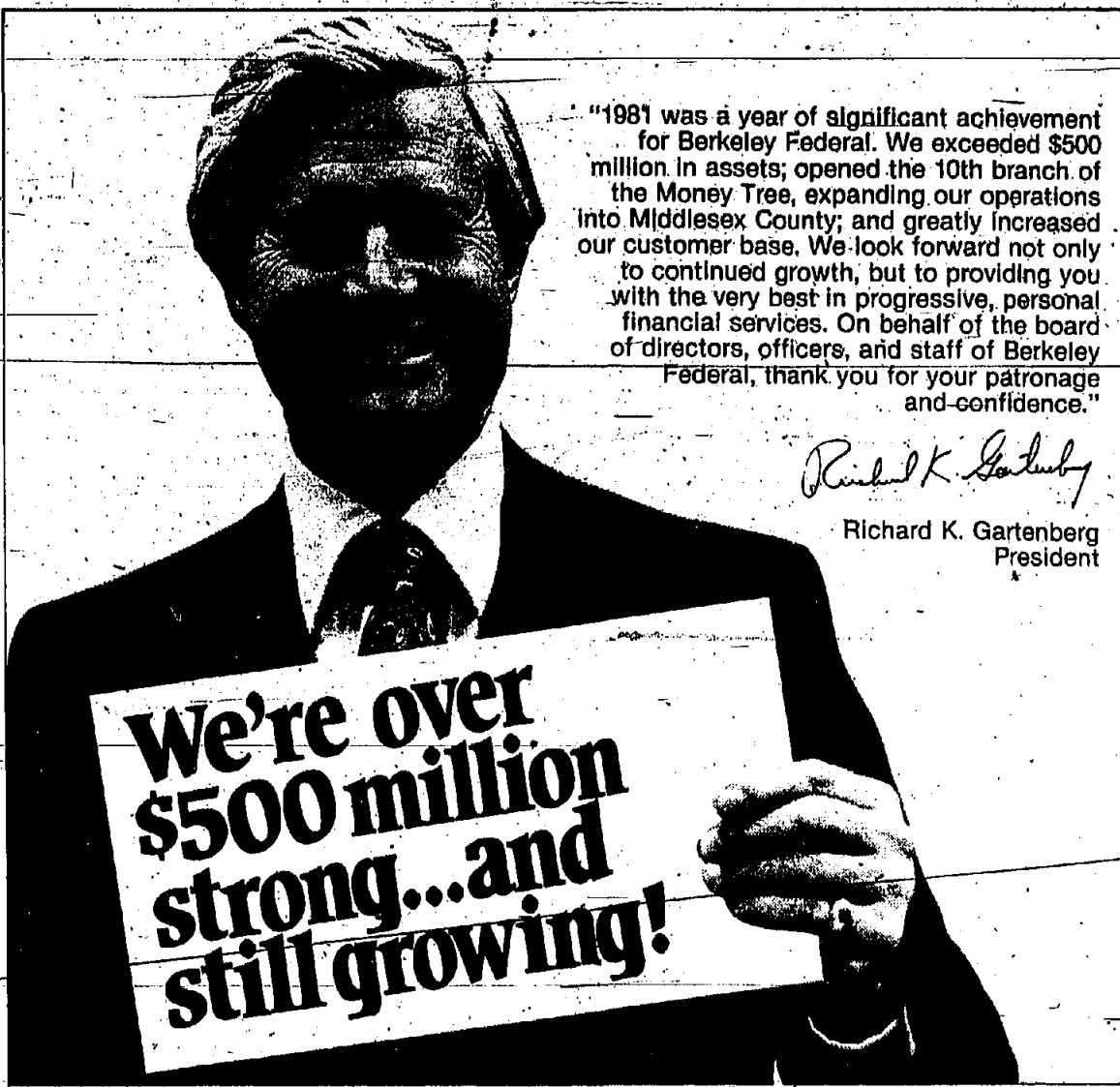
and commercial properties. Further information on Cleveland Plaza can be obtained by contacting Paul Plinzotto of Vizzoni Bros. Construction Company in Kenilworth at 241-4343. The total number of women workers increased by 1.5 million from 1980 to 1981, while the amount of working men declined from 76.9 percent to 76.4 percent. Among married couples with children, nearly 60 percent of the families had both spouses as wage earners.

### Mothers join labor force

A recently released report from the Bureau of Labor Statistics indicated that the number of working mothers in America has increased significantly since 1980. The fact that more than half of the nation's children (31.8 million) under the age of 18 had mothers who were employed outside the home indicated that women contribute significantly to the American labor force, according to the report.

### Belting enjoying success

Belting Industries of Kenilworth has had the kind of success that many people dream about when they start a business. The company started 25 years ago in a small private home. Today, Belting has four locations across the nation and employs more than 100 persons. Success has resulted from a combination of several key factors, according to a company spokesman. These factors are quality people, the sale of a specialty item that is almost universally used by industry, timing and hard work. Back in 1957 a veteran of industrial belting with a New England company, Webb Cooper, started Belting Industries. Cooper is now chairman of the board. He says of those early days: "It was really a matter of long hours and keeping your promise to a customer." As the company grew, it moved into larger plants. First located in Irvington, then Union, Belting moved to its current headquarters and chief manufacturing site at 20 Boright Ave., Kenilworth, in 1972. Today, 65 people work out of Kenilworth—many of them longtime employees. "Good people have made this an enjoyable business. We have the best," says Cooper. Local demand created early growth for Belting's products, but as word spread that Belting Industries offered a broad line of belts and demonstrated a willingness to develop new belt types for industry, the company expanded nationally. Branches are now located in Georgia, Colorado, and California, with a subsidiary in upstate New York. The company's future leadership will be provided by Scott Cooper, son of the founder, appointed president in 1978. The Kenilworth location is guided by Robert McCormack, plant manager. Industrial belts are generally thought of as vee belts, the type we use in our car for fan belts or large conveyor belts used to carry goods along assembly and production lines. Actually, industrial belt designs and types are limitless. Belting Industries has been receptive to the demands of the market for whatever type of belt is required. A large part of this market demand in the last decade has been in office business machines, copiers and computer peripherals (floppy discs). Manufacturers in these fields are major users of specialty flat and toothed belts.



"1981 was a year of significant achievement for Berkeley Federal. We exceeded \$500 million in assets; opened the 10th branch of the Money Tree, expanding our operations into Middlesex County; and greatly increased our customer base. We look forward not only to continued growth, but to providing you with the very best in progressive, personal financial services. On behalf of the board of directors, officers, and staff of Berkeley Federal, thank you for your patronage and confidence."

*Richard K. Gartenberg*  
Richard K. Gartenberg  
President

**Irvington General Hospital**

A COMMUNITY HEALTH SERVICE

JOINING WITH NEW JERSEY HOSPITALS - IN SUPPORT OF YOUR RIGHT TO QUALITY MEDICAL CARE SERVICE

832 CHANCELLOR AVENUE  
IRVINGTON, NEW JERSEY 07111

399-6000

**Farming boosted**  
The seeds of optimism were planted throughout the New Jersey agriculture industry in 1981, as voters approved a \$50 million Farmland Preservation Bond Act designed to retain the Garden State's prime agricultural land. The bond vote, coupled with a lull in the development of farmland for non-agricultural purposes, helped invigorate a major state industry that had sustained a significant loss in acreage during the 1960s and early 1970s.

**CRANFORD (UNION COUNTY)**

Now Leasing for Spring 1982 Occupancy!

*Cleveland Plaza*

A New Office/Retail Complex in the Cranford Business District

- 17,000 sq. ft. retail space.
- 16,000 sq. ft. office space.
- Close to Garden State Parkway exit 137, Rts. 22, 24, etc.
- One block from commuter R.R. and buses.
- Ample on-site parking.
- Attractive lease terms.

For information and brochures, CALL PAUL PLINZOTTO, CLEVELAND PLAZA ASSOCIATES (201) 241-4343

*Holiday Inn*

A GREAT LOCATION FOR SUCCESSFUL MEETINGS

TAKE YOUR BUSINESS WITH YOU IN GREAT OFFICE SUITES FROM AIRPORT BUS STOPS FROM NEWARK INT'L AIRPORT. SUITE

LOCATION MATCHED BY LUXURY FACILITIES, MODERN FULL SERVICE MEETING ACCOMMODATIONS FOR UP TO 1,000 INCLUDING 15 CONFERENCE ROOMS, V.I.P. SUITES AND EXCELLENT CATERING. COUSINE AT OUR MID OAKS RESTAURANT. EXPOSE YOUR BUSINESS MEETING TO THE BEST SERVICE AND FACILITIES IN THE EASTERN CORRIDOR.

**589-1000**

140 HOLIDAY PLAZA • NEWARK, N.J. 07114

*At Last, The Briefcase For the Future*

*At a Price For Today!*

**SAVE 55% THE LAJAC Professionals**  
For Businessmen & Women

- 100% Leather
- Custom Velvet Lined
- Meticulously Crafted to Last On The Way To The Top
- Made in U.S.A.

Lawyers Sales Business Insurance

Handsomely Tailored for today's business world.

**Executive \$65.00 Reg. \$145.00**

**Your Choice \$47.25 Reg. \$105.00**  
Colors - Wine - Black - Brown - Tan

Immediate Delivery - Order By Phone (201) 375-9016 Or Mail Coupon Below

Mail To: Laser Distributing 1899 Springfield Ave., Irvington, N.J. 07111. Because of our special low price, we require check, money order or C.O.D. Add applicable area sales tax and \$3.50 shipping charge.

Name \_\_\_\_\_ Color \_\_\_\_\_  
Street \_\_\_\_\_ Selection \_\_\_\_\_  
City \_\_\_\_\_ Zip \_\_\_\_\_

30 day Money Back Guarantee

**COMPARATIVE STATEMENT OF CONDITION**

ASSETS	DECEMBER 31,	
	1981	1980
Conventional Mortgage Loans	\$209,931,108	\$240,515,831
Insured & Guaranteed	51,941,902	59,747,682
Guaranteed Mortgage Backed Securities	95,935,738	85,419,355
<b>Total Mortgage Loans</b>	<b>457,808,748</b>	<b>385,683,448</b>
Loans on Savings Accounts	1,069,227	895,210
Consumer and Other Loans	33,462,555	6,786,085
Cash on Hand & In Banks	1,879,439	2,307,094
Liquid Investment Securities	16,085,957	16,979,216
Other Investment Securities	2,814,540	7,081,174
Investment in Subsidiary Corp.	5,157,692	6,059,009
Federal Home Loan Bank Stock	3,689,000	2,835,300
Office Building & Equipment, Less Depreciation	2,999,176	1,781,150
Deferred Charges & Other Assets	10,445,842	4,796,518
<b>Total</b>	<b>\$509,363,174</b>	<b>\$435,193,802</b>
<b>LIABILITIES &amp; RESERVES</b>		
Savings Accounts	\$388,084,547	\$329,458,424
Advance Payments By Borrowers for Taxes & Insurance	2,331,466	1,839,719
Advances from Federal Home Loan Bank	41,859,333	44,596,967
Advances from N.J. Mortgage Finance Agency	489,890	715,854
Other Borrowed Money	41,754,000	27,062,597
Loans in Process	417,201	4,148,728
Deferred Income	12,375,124	4,961,355
Other Liabilities	8,427,313	6,298,654
Reserves and Undivided Profits	13,625,300	16,142,800
<b>Total</b>	<b>\$509,363,174</b>	<b>\$435,193,802</b>

- DIRECTORS**
- Gilbert Rafi, Chairman  
President/Intelfield, Adams & Co.
  - Benjamin L. Bendit  
Attorney
  - Martin S. Fox  
Attorney
  - Richard K. Gartenberg  
President/Berkeley Federal
  - Alan G. Gordon  
Executive Vice President  
Berkeley Federal
  - Sheldon A. Gross  
President/Sheldon Gross Realty
  - Benjamin I. Kreitzberg  
Attorney
  - Mia Parsonnet  
Medical Doctor
  - Harold G. Sterling  
Chairman  
Sutton Construction Co.
  - Abraham L. Welton  
Certified Public Accountant
- ATTORNEYS FOR BERKELEY FEDERAL**
- Nathan L. Jacobson  
Fast & Fast
  - Fox & Fox
- PRESIDENT EMERITUS**
- Moe Rubinfield

**Berkeley Federal Savings and Loan**

Corporate Headquarters:  
21 Bleeker Street, Millburn, N.J. 07041 • (201) 487-2800

Branches in Short Hills, East Hanover, Livingston, Union, Newark, Monroe Township, Whitting, Manchester/Lakewood, Lakewood, Brick

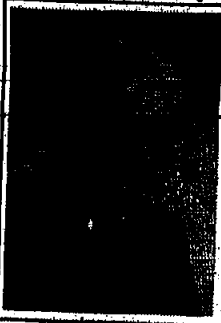
Member F.S.L.I.C.

AN EQUAL OPPORTUNITY EMPLOYER

# NEW Worlds of Progress

## MAYOR'S MESSAGE

The Township of Union was settled in 1647 as Connecticut Farms and incorporated as a municipality in 1808. Our community has a proud history which dates back to pre-Revolutionary War days. Union was the site of several ferocious pitched battles and troop maneuvers as the British and Hessian forces moved back and forth from New York to Staten Island, through what was then called Elizabethtown, and westward toward Morristown. Now, present-day Union Township ranks 20th in population among the 547 municipalities of the State of New Jersey. Our community is composed of fine residential areas combined with a good balance of industrial and commercial sections.

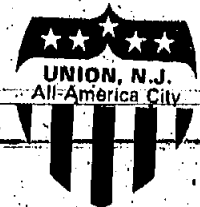


Keeping a community efficient, clean, attractive and with high property values based on a fair and affordable tax base does not come easy. These goals demand constant attention and vigilance to avoid blight, decay and deterioration. This administration has set our standards high to achieve these goals.

James C. Conlon  
Mayor



## TOWNSHIP COMMITTEEMEN



E. James Roberts  
Michael T. Bono  
Peter J. Genova  
Peter A. Leonardis

## WORKING TOGETHER TO MAKE UNION BETTER!

As Mayor Jim Conlon so aptly put it when appearing before the National Municipal League to win the All-America City designation, "Union, New Jersey, is people."

Union is a community of 50,000 residents, located at the hub of commerce and transportation just 14 miles

from New York City, and was settled 34 years ago and incorporated in 1808.

Union has successfully brought a community of diverse backgrounds and interests together through the efforts of its people... people who cared enough to get out and push for the community they believed in. They pushed for a workable

community action program, an exceptional senior citizen's program, a recreation program that is second to none and a mixture of business and industry that is compatible to suburban living.

In looking to the future it is the goal of the present administration to maintain

a fair and affordable tax base for the residents and members of the business community; keep the community clean and attractive and avoid blight and deterioration.

These goals can be accomplished because, Union, like America, is people working with people for other people.

