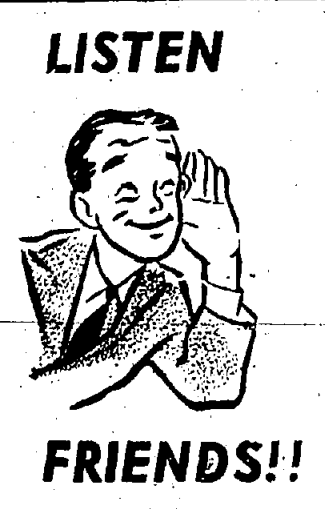


COMPLETE
Coverage in News and
Circulation - - Read
It in the Sun

The Springfield Sun

VOL. XXIV—No. 13 OFFICIAL NEWSPAPER BOROUGHS OF MOUNTAINSIDE SPRINGFIELD, N. J., THURSDAY, JANUARY 20, 1949 OFFICIAL NEWSPAPER TOWNSHIP OF SPRINGFIELD 10¢ A COPY, \$3.50 BY THE YEAR



Regular writer of this column has been on a three-week fishing expedition to Florida, Cuba and Puerto Rico and he realizes now more than ever that it will take at least another week or two in home territory before he brushes up on the latest happenings, sits down to his trusty typewriter and once again spills the beans in customary style...

Short of amazing, to say the least, was the jumbled political maneuver which resulted in the naming of Henry McMullen as police court judge... At Bider, the infant Republican committee man, scored an unexpected knockout with that one!

Learned about Spinning's misfortune down in Key West, Fla., where it cost 50 cents for the Sunday issue of a metropolitan newspaper.

Charles Runcie's recommendation Tuesday night that the presidency of the Board of Education be rotated in order to stimulate more interest among members has provoked several persons...

All we've been hearing the past three days is that Bob Marshall is doing a remarkable job.

Frank Keane, it is understood, has had a change of heart in connection with his refusal to serve on any working committees of the township's municipal government...

TOWNSHIP WOMAN PROMOTED BY BAMS Promotion of Mrs. Rosemary Metz of 34 Morris avenue from assistant to acting manager of the comparison office of L. Bamberger & Co., Newark, has been announced by Thomas V. Barber, executive vice-president of the store.

Mrs. Metz attended Ursuline Academy in Pittsburgh and was graduated from Chevy Chase, Maryland. She was affiliated with the office of the director of the Pittsburgh Symphony and later with the office of the publicity director of a New York department store before coming to Bamberger's in 1947.

Board Orders Investigation Of Local Dairy

Moschutz Permit Renewal Halted By Health Body

Acting on recommendation of Dr. H. F. Dengler, health officer, the Board of Health in regular meeting last night withheld action on granting renewal of a license to the Moschutz Dairy in Summit Road pending a thorough inspection of the premises by local and state authorities.

Dengler said the Moschutz buildings were in "tumble down" condition, "huge cobwebs" laced through the establishment and the situation generally, in his opinion, was "very bad" and not conducive to good health.

A petition, bearing the signature of 20 residents, objected to the use of an establishment at 201 South Springfield avenue as a commercial chicken coop and poultry slaughter-house.

Large Attendance At PTA Card Party

More than 450 local residents attended the annual card party of the Springfield Parent-Teachers Association Monday night at Ballymore Golf Club.

The committee working on the affair were commended for their help in making it a success.

Assisting Mrs. Hayward Mann, chairman, on the ticket committee were Mrs. Richard Thompson, Mrs. John Haselman and all-class mothers.

Assisting Mr. and Mrs. John Struthers on hospitality were Mr. and Mrs. Fred Allen, Mr. and Mrs. George D. Harrison, Jr., Mrs. Leonard Howarth, Mrs. Eric Dalrymple and Mrs. Dennis McInerney.

Mr. and Mrs. Mann on the donation committee were assisted by Mr. and Mrs. Thomas Doherty, Mr. and Mrs. Harold Hunsen, Mrs. William Melick, Mrs. Earl Murdoch and Mrs. Frank Beebe.

Special thanks went to Miss Muriel Chisholm, school secretary, and Mr. Beckman, assistant manager of Ballymore Golf Club, for their kindness in cooperating with the several committees, and to other individuals who helped.

RED CROSS OBTAINS NURSING INSTRUCTOR

Mrs. Ralph Titley of 28 Bryant avenue, chairman of the Red Cross Committee on Home Nursing, has announced an instructor has been obtained for the classes planned to begin February 1 for ten weeks.

Settle Death Suit For \$10,000 Sum

Suit for \$45,000 brought by Mrs. Marie Templeman of Cleveland, formerly of 12 Tower drive, Springfield, against Mr. and Mrs. August May, 253 Lincoln avenue, Elizabethtown, for the death of 3-year-old Patricia Templeman February 20, 1947, has been settled out of court for \$10,000, according to information which reached The Sun this week.

Regional Student Makes Semi-finals

Ingeborg Williams of 10 Tanglewood-lane, Mountainside, a student at Regional High School, was the winner Monday night of the first semi-final broadcast of Kresge-Newark's Junior Town Meeting.

The topic which Ingeborg discussed was "Should we extend government health services?"

HOOT STOVE LEAGUE DINNER IS SLATED

Baseball's first pitch of the season will be at the Thicket's Annual Hoot Stove League dinner scheduled for Monday, February 7, at 6:45 p. m. at the Elizabeth-Elks Club, Elizabeth.

Board Adopts School Budget After Hearing

\$20,635 Taxation Increase Draws No Objections

A hearing Tuesday night on the Board of Education's 1949-50 school budget, calling for an increase of \$20,635 in the amount to be raised by taxation, drew no objections.

The new budget, which reflects a tax rate hike of .27 points, lists 1949-50 total operations at \$225,534 and the amount to be raised by taxation at \$183,725, compared with \$190,580 and \$163,090 in the current year's budget.

Increases are attributed to teachers' salary adjustments, cost of subsidizing the lunch room and anticipated rental costs for three class rooms to accommodate an expected overflow of students.

The budget will be submitted to voters February 8 for final approval, at which time three Board of Education members will be elected.

SPRINGFIELD YOUTH PLAYS IN CONCERT

Seymour R. Bass, son of Mrs. and the late Iddor Bass of 143 Ballymore-way, took part in a concert of the Oberlin College Symphony Bands Sunday evening in Elmey Memorial Chapel.

To Open for Public Inspection

Contrasted to the countrified site which it has transformed into a modern corner at Morris and Proffit, avenues is the newly erected Smith and Smith Funeral Home.

New Suburban Funeral Home of Smith & Smith Will Be Open for Public Inspection on Monday

The additional suburban funeral home of Smith and Smith located at 415 Morris avenue at Proffit avenue, will be opened for public inspection on Sunday from 2 until 9 p. m. and on Monday, from 12 noon until 9 p. m. It will be open to serve the public January 28. Its completion comes just seven months after ground was broken and there is a marked change in the appearance of the corner, which was formerly occupied by a dilapidated old house, very much of an eyesore to the neighborhood.

RISE IN RATABLES HITS PEAK FIGURE

With all tax books in, except those for three Elizabeth wards properly taxable by Union County this year will be about \$560,000,000, an increase of \$23,000,000 over last year, it was announced by the Union County Tax Board today.

Reckless Driver's License Suspended

The driver's license of Archibald C. Forman, Jr., 21, of 227 Walnut street, Roselle, was revoked for six months by Magistrate Henry C. McMullen in Municipal Court Monday night after he pleaded guilty to a reckless driving charge.

Roger W. Drabik, of 1853 Bennett street, Rahway, was fined \$18.00 for speeding. Another speeder who paid a similar fine was Patrick R. Duffy, of 1041 Snyder avenue, Union.

Other fines imposed included: David Guzik, East Stroudsburg, Pa., speeding, \$18.00; Thomas J. Simpson, 837 West Sixth street, Plainfield, improper parking, \$3.50 and Ailis Snyder, 112 Parkside road, Plainfield, improper parking, \$5.

Runcie Criticizes Board Procedure

Charles Runcie, making his farewell appearance as a member of the Board of Education which he served for the past six years, Tuesday night criticized board procedure, directing his fire at the practice of keeping one person in the presidency over a period of years and the board's tendency to extend meetings into the early hours of the morning.

Pointing out that the presidency over a period of years has been held by one or two men, Runcie urged a rotation policy, whereby each board member would have an opportunity to serve as its head.

Rename Dr. Morris As Board Chairman

Dr. Watson B. Morris, of 193 Morris avenue, Springfield, was re-elected president of the Board of Managers of Bonnie Burn Sanitarium, Scotch Plains, at the January meeting last week.

POSTMASTER NAMED TO DAHLIA GROUP

Postmaster Otto Heinz was named to the executive board of the Dahlia Society of New Jersey at its annual meeting in Paterson recently.

Petitions Filed by Four For School Board Posts; Election Slated Feb. 8th

Only One Candidate Seeks Reelection to Local Body

Four township residents have filed petitions for three places on the Board of Education, according to an announcement today by District Clerk A. B. Anderson. Election is February 8.

Township Awards Sewer Contract

The Township Committee in special session last night awarded a contract for installation of a sanitary sewer in Route 29 to Canning & Costello of New Wood, the lowest of fifteen bidders, at \$7,062. The highest bid approximated \$24,000.

Top Scout Official Is County Speaker

Dr. Ray O. Wyland, director of relationships of the Boy Scouts of America, will speak to the assembled Institutional, Heads and Institutional Representatives of Union Council, Boy Scouts of America, Monday night at the Elizabeth Carter Hotel at 6:30 at a dinner meeting.

Springfield Cubs TOUR HUGE PLANT

Cub Scouts of Den 8, Pack 178-Springfield, were taken on a conducted tour of the Bristol Meyers Co., in Hillside, last week. The trip was arranged through Edward Wronsky of Crest Place.

OUR POLICE CHIEF Says

"No skidding" should be a serious promise yours!

Many cars were observed skidding or stalled during the recent snow storm, and this could have been prevented if drivers had slowed down. Most of us have experienced that sickening sensation of a skid on snow or ice.

The following officers were also elected: Frederick E. Dixon of Plumekin, president; John Kemp of Little Silver, first vice-president; John Metzger of Irvington, second vice-president; Harry Frank of Fur Hills, third vice-president; Frank Marker, Jr., of Upper Montclair, fourth vice-president; W. J. Ehrington of Hillside, fifth vice-president; Dowsy Mohr of Rockville Center, sixth vice-president; Mrs. H. D. Thomas of Paterson, secretary; and Herbert B. DeCamp of Upper Montclair, treasurer.

WANTED TO BUY

GOLD leaf frame about 30x40 in good condition. Also essential bread...

PRIVATE collector of biological specimens. Old paper currency...

SPINNET or spinnet type mangle. Also reasonable. Call 53-6226-M.

ANTIQUES-Furniture, china, glass, lamps, copper, silver, etc. Call 53-6226-M.

WE PAY CASH for your used furniture, antiques, silver, books, etc.

BEAT PRICES PAID for China, silver, figurines, jewelry, etc.

STANDARD garage floor, automatic washers, built-in kitchen equipment.

WE PAY highest cash price for anything antique, silver, jewelry, etc.

OHAIN drive, bicycle, good condition. Call Chatham 4-3749.

WANTED-Used upright or spinnet piano. Good condition and reasonable price.

WANTED TO BUY, Diamonds, Colored Stones, Gold Jewelry and Watches.

MAPLE double decker, bed, narrow studio couch, etc. good condition. Call 53-6226-M.

REAL ESTATE WANTED - In the Orange, Maplewood, Short Hills, Summit, etc.

WE HAVE BUYERS for your used furniture, antiques, silver, books, etc.

FURNISHED ROOMS - Comfortable single bedroom for gentleman. 7 furnished. Call 53-6226-M.

MOUNTAINSIDE

Talk on Health Heard by Parents

MOUNTAINSIDE - Miss E. Cella Kernan, state chairman of mental hygiene, addressed the PTA last week on the subject, "Emotional Development."

\$600 Check Given Boro Rescue Unit

MOUNTAINSIDE - The Community Association last week turned over to the Mountain Side Rescue Squad a check for \$600 for the benefit of its ambulance fund.

Boro Reappoints Health Bd. Staff

MOUNTAINSIDE - Officers of the Mountain Side Board of Health were re-elected last week in Borough Hall.

Mountain Side Union Chapel

Rev. M. P. Achey Highway 29, Mountain Side, N. J. Sunday, January 24 9:45 Bible School.

Garden Club Talk on Flowers

MOUNTAINSIDE - Mrs. Meta Shireff, chairman of the Shade Tree Commission of Union County, and president of the Elizabeth Garden Club, addressed the Blue Star Garden Club of Mountain Side last week on "Flowers and the Garden."

Senior Girls Hear Guidance Talk

Miss Edythe W. Chlovarou, guidance counselor of the Berkeley School of Secretarial Training, East Orange, addressed the senior girls of Regional High School recently.

Name Attorney For Mountain Side

MOUNTAINSIDE - Charles E. Jerome of Partridge Run was appointed attorney for the Borough of Mountain Side last week at the meeting of the Borough Council.

Membership in Girl Scouts Increased by 10 Per Cent

An increase in Girl Scout membership of more than ten per cent during 1948 was reported at the annual meeting of the Springfield Girl Scout Association Friday evening at the Presbyterian Church.

PLAN STATE PALSY COUNCIL

Plans to form a State-wide Cerebral Palsy Council under the auspices of the New Jersey Chapter of the National Society for Crippled Children and Adults were announced today by Edward A. Stiles of Newark.

LEGAL ADVERTISEMENTS

NOTICE OF THE ANNUAL SCHOOL DISTRICT MEETING OF THE UNION COUNTY REGIONAL HIGH SCHOOL DISTRICT NO. 1, COUNTY OF UNION STATE OF NEW JERSEY ON FEBRUARY 1, 1949.

Senior Girls Hear Guidance Talk

Miss Edythe W. Chlovarou, guidance counselor of the Berkeley School of Secretarial Training, East Orange, addressed the senior girls of Regional High School recently.

Senior Girls Hear Guidance Talk

Miss Edythe W. Chlovarou, guidance counselor of the Berkeley School of Secretarial Training, East Orange, addressed the senior girls of Regional High School recently.

Name Attorney For Mountain Side

MOUNTAINSIDE - Charles E. Jerome of Partridge Run was appointed attorney for the Borough of Mountain Side last week at the meeting of the Borough Council.

Membership in Girl Scouts Increased by 10 Per Cent

An increase in Girl Scout membership of more than ten per cent during 1948 was reported at the annual meeting of the Springfield Girl Scout Association Friday evening at the Presbyterian Church.

PLAN STATE PALSY COUNCIL

Plans to form a State-wide Cerebral Palsy Council under the auspices of the New Jersey Chapter of the National Society for Crippled Children and Adults were announced today by Edward A. Stiles of Newark.

LEGAL ADVERTISEMENTS

NOTICE OF THE ANNUAL SCHOOL DISTRICT MEETING OF THE UNION COUNTY REGIONAL HIGH SCHOOL DISTRICT NO. 1, COUNTY OF UNION STATE OF NEW JERSEY ON FEBRUARY 1, 1949.

Senior Girls Hear Guidance Talk

Miss Edythe W. Chlovarou, guidance counselor of the Berkeley School of Secretarial Training, East Orange, addressed the senior girls of Regional High School recently.

Senior Girls Hear Guidance Talk

Miss Edythe W. Chlovarou, guidance counselor of the Berkeley School of Secretarial Training, East Orange, addressed the senior girls of Regional High School recently.

Name Attorney For Mountain Side

MOUNTAINSIDE - Charles E. Jerome of Partridge Run was appointed attorney for the Borough of Mountain Side last week at the meeting of the Borough Council.

Membership in Girl Scouts Increased by 10 Per Cent

An increase in Girl Scout membership of more than ten per cent during 1948 was reported at the annual meeting of the Springfield Girl Scout Association Friday evening at the Presbyterian Church.

PLAN STATE PALSY COUNCIL

Plans to form a State-wide Cerebral Palsy Council under the auspices of the New Jersey Chapter of the National Society for Crippled Children and Adults were announced today by Edward A. Stiles of Newark.

LEGAL ADVERTISEMENTS

NOTICE OF THE ANNUAL SCHOOL DISTRICT MEETING OF THE UNION COUNTY REGIONAL HIGH SCHOOL DISTRICT NO. 1, COUNTY OF UNION STATE OF NEW JERSEY ON FEBRUARY 1, 1949.

Senior Girls Hear Guidance Talk

Miss Edythe W. Chlovarou, guidance counselor of the Berkeley School of Secretarial Training, East Orange, addressed the senior girls of Regional High School recently.

Senior Girls Hear Guidance Talk

Miss Edythe W. Chlovarou, guidance counselor of the Berkeley School of Secretarial Training, East Orange, addressed the senior girls of Regional High School recently.

Build Your Record Library Now! SAVE 20% ON ALL RECORDS AT WELCOME HOUSE, MADISON RADIO & SOUND INC.

MARKETING with Marjorie

MARKETING with Marjorie

MARKETING with Marjorie

MARKETING with Marjorie

Shimmering New Threads In Knitwear

By BETTY ANN BROWN

The new knit fashions are strikingly good-looking this year, and as you know knits worth mentioning, let alone wearing, behave as smoothly and enduringly as the best woven fabrics.



THREE PIECES FOR this knit suit . . . slim heavy skirt, bitter-sweet short jacket, gill-striped white bodice which fits snugly, clings below waist.

Too the knitted fabrics have talents which you won't find in other materials. For instance, knit fashions can be packed without creating permanent wrinkles. They wear the same way without unslightly creases to undo their massing grooming. Knits are year around buys and besides being good travelers, look tight in practically any climate.

Pennsylvania Dutch Cooking Sheer Simplicity

Every section of the country and every nationality group has its own food favorites. But nowhere do we find such distinctively different dishes as in the Pennsylvania Dutch area, says the Union County Home Agent.

Recipes for these foods did not come from the pages of cook books, almost without exception they have been passed on by word of mouth from one generation to another.

Good Look Slogan Is to Shiver a Bit for Beauty

Silver a bit for beauty's sake. There's a good look slogan for you, say beauty experts. That woman can't like cold winter applied externally is demonstrated by the protesting howls one hears in beauty shops when they are undergoing the mild agony of an ice treatment. You'd think the cash customers would be being murdered.

Another designer, wise in the ways of water babies, has created a series of swimunits on the gold standard: some multi-striped in color and gold metallic thread, others with solid gold bandings on bra tops and gold cord tie belts; some simple-tube-as-the-entirety-of-gold or silver.

To make the dish, you start with a smoked ham butt and cook it until almost done. Then add the apples and the water in which they lie to be soaked overnight. Also add two tablespoons of brown sugar and continue cooking until sugar is gone.

Spotlight Focused on Knitted Suits



GOLD THAT glimmers in the sunshine at the smart winter resorts . . . a stripe of gold non-tarnishable metallic thread alternates with a marine blue stripe on white wool for the jacket of this suit. Skirt is slim and the blue of the stripe.

January White Sales Display Plentiful Stocks, Says Expert

Have you checked your linen supply recently? Now is the time to do it—since January is white sales month. Indications are that prices will still be high, but the supply is more plentiful than it has been for several years, says Grace Tavarozzi, Associate Home Agent, Union County Extension Service.

It's best to take an inventory of what you have on hand before you buy. Very often large worn sheets can be cut down for the smaller beds. Perhaps some mending will give additional wear to some household linens. Use your sewing machine. It's quicker and the machine stitching holds up better than hand mending.

Vitamin D Is Essential to Baby's Growth

Rickets is a condition due to lack of vitamin D, sometimes known as the "sunshine" vitamin. Formed by the body itself in the presence of sunshine, it is essential to strong bones and good general health. Without it, neither calcium nor phosphorus can be used by the body.



TWO-PIECER, THIS, combining tangerine color skirt and cape with white line crossbars and an attached white bodice, with gilt button fastenings.

Well Groomed Nails Reflect Good Taste

Ever since women started to put the rosy glow on the shell-like sheaths of their finger tips, nails have been the focal point of the hands. They reflect health, care, grooming and good taste. Polish is decorative but it does not always hide the fact that talons have been neglected.

The cuticle surrounding the nails may be ragged, or clinging to the nails. There is no excuse for that. Anointing with a cuticle cream at night, massaging briskly for a few minutes, lifting the flesh with an orange wood stick form an insurance against shags and hangnails. This duty should be performed not merely for the sake of appearance, but for the sake of health and comfort.

Be sure that your shoe fits that are adequate in size. Short shoes are pulled more often and will soon wear out. Pillow cases, too, should not be tight; rather have them slip easily over the pillow.

You may have an opportunity to buy seconds in household linens at reduced prices. The wise homemaker will examine these linens closely before she buys. They may not always be a bargain. Some defects in no way hamper wear. Defective weaves which leave weak spots in the fabric are not good buys.

For the use of this preventive measure is on the eighth day after birth. At first, 25,000 units of the vitamin D were employed; later on, this was reduced to one-fourth of this amount. However, in order to be more certain that the rickets will be prevented, it is recommended that 12,500 units be given to protect the infant against rickets, especially when it is living in a region where, during the fall and winter months, sunshine is greatly reduced. The smaller dose may be used in climates where exposure to sunshine during the fall and winter months can be more liberal.

Frankfurt infants are given the full dose of 12,500 units during the winter period and the same dose during the summer period. There would seem to be no objection to repeating the injections of vitamin D each year during the latter part of September or the early part of October.

It would appear from the studies already made that such a method of preventing rickets is quite satisfactory and should be used if additional studies confirm the studies already reported.

NOTED RACE COURSE Among America's most famous race courses is Churchill Downs, at Louisville, Ky.

BEN-Hairdresser Stylists to Fashionable Women Who Seek Distinctive Coiffures Custom Permanent Waves For Appointment Call ORANGE 5-0706 23 Prospect St., East Orange, N. J.

Hot, Hearty Soups for Wintery Days

A hot, hearty soup for dinner's first course or luncheon's main dish is not only an excellent "warmer-upper" on a cold day, but it's nutrition-wise as well, when the meal is a little scant of meat.

Crackers, of course, go with soup as naturally as syrup with pancakes or cranberry with turkey. But don't be habit-bound in this respect, serving the same kind every night.

If you serve round, scalloped crackers with tonight's soup, for instance, use the square white craggy variety tomorrow, or small craggy wheat toast wedges. Little round oyster crackers go well with many different soups, and are a nice change now and then, while a tasty substitute for croutons are the inch-square cheese crackers.

Even the best cracker is just a bit more tempting when it comes crisp and hot to the table. So just slip your crackers in a slow oven for about 10 minutes before using. Here are three excellent soups to warm up the cold days that are still ahead:

Splly Soup Surprise Combine a can of tomato soup and one of oxtail soup. Heat to boiling, but do not boil; just before serving, add 2 tsp. sweet pickle relish straight from the jar.

Sauerkraut Borscht Put 1 lb. lean beef, cubed, one soup-bone, 3 carrots, diced, 3 small onions, sliced, and 3 stalks celery, sliced, into a kettle with 3 qt. water. Bring to a boil and skim. Tie 1/4 tsp. pepper-corn, 1/2 bay leaf, and 1 spray thyme in a small cloth bag and add, together with one sprig parsley. Simmer, covered, for 1 1/2 hrs. Remove soup bone and strain. Add 2 uncooked beets, sliced, 2 potatoes, sliced, and simmer for 30 min. longer. Add 1 1/2 c. sauerkraut and simmer 15 min. Serve topped with sour cream. Yield: about 2 1/2 qt.

Cream of Potato Soup Cook 2 c. diced potatoes, 2 medium onions, sliced, and 2 stalks celery with leaves, sliced, in 2 1/2 c. boiling water until very tender. Meanwhile melt 3 tsp. shortening over low heat. Stir in 3/4 tsp. flour, 1/4 tsp. salt and 1/2 tsp. pepper. Remove from heat and gradually add 2 c. milk. Return to heat and cook, stirring constantly, until thick and smooth. Rub the potato mixture, liquid and all through a sieve (you should have 3 c. puree); add to cream sauce together with 1 tsp. chopped chives and heat. Just before serving sprinkle each portion with paprika. Yield: 1 cup with ample dainty cheese crackers. Serves 6.

TR AMONG YOUNG MEN AND WOMEN Although tuberculosis has fallen from top billing to a shaky second in the list of deadly killers, the fact remains that it is still the leading cause of death among those of college age.

Bernardsville Inn U.S. ROUTE 202, BERNARDSVILLE, N. J.



QUICK AS A WINK YOU'LL turn out a Splly Soup Surprise. Mix a can each of tomato and oxtail soup. Add 3 tsp. pickle relish before serving.

SEMI-ANNUAL SALE of FINE FOOTWEAR



Including Suedes, Patents, Calf Skins, Reptilian Leathers in Black, Brown, Red, Green and Balenciaga . . . Also 1,200 pair CLEARANCE 8.95 CLEARANCE—Evening Slippers 3.95 HARRISON BROTHERS East Orange 551 Main St. Montclair 540 Bloomfield Ave. 10% DISCOUNT CHILDREN'S SHOES

All Eyes are on FLEMINGTON FUR CO.'s

JANUARY FUR CLEARANCE!

Remember November's and December's hot spell? Well, you can thank that hot spell for this wonderful fur sale. Skin dealers were left with some of this season's best pelts on their hands. Flemington's canny buyer heard about it . . . scooped up as many as he could find at unbelievably low prices. Now, with three months of bitter cold ahead, take advantage of Flemington's FUR PRICE SCOOPI!

SPECIAL! HARD-TO-FIND SIZES 38 TO 46 IN ALL FURS DURING THIS SALE

Flemington Fur Company 8 SPRING ST. FLEMINGTON, N. J. Open Daily to 9 P.M. Saturdays and Sundays to 5 P.M.

DRIVE A LITTLE SAVE A LOT!

A Complete Decorating Service

WALLPAPER Representing all New York and Newark Showrooms. **INTERIOR FURNISHINGS** Fabrics - Furniture - Floor Coverings - Accessories. **THE L. H. NOLTE CO.** Member American Institute of Decorators 311 Springfield Avenue Summit 6-2668

The hot bath produces dilation of the vessels of the skin, contraction of the vessels of the brain; the respiratory glands become more active and wash out the pores. Often too the hot bath has a depressing effect on the bathers, because loss of perspiratory fluids has a depressing effect.

Water Shortage Becoming Acute The average European uses about 35 gallons of water a day. An American, with his higher living standard, needs more than 100 gallons for his drinking, plumbing, food growing and utilities, says Pathfinder.

Table Topics Did you know that candles are strictly taboo on the luncheon table? . . . That table silver should be arranged in the order of use, from the outside in? . . . That silver used with the left hand (the cutting left fork except the water fork) goes to the left of the plate? . . . However, if no knives are necessary, as often happens at a luncheon, the forks go to the right of the plate in place of knives, in order of use from outside in. . . . Cutting edges of knives should be turned toward the plate, and ends of the silver should be one inch from the edge of the table.

THEATER-RECREATION

The "Pleasure Bound" Page

News and Views on Places to Go and Things to Do

DINING-NITE SPOTS

Playing the Cards

By ALEXANDER SPENCER Here's another little quiz to help tune up your game...

hand found that out the hard way. S. J. 10 3 H. A. J. D. K. Q. J. 8 7 6 C. 7 2 3

WEST NORTH EAST SOUTH 1 club spade pass 7 What call do you make? 3. You are South and hold: S. Q. 8 7 H. 8 3 D. A. 8 7 6 3 C. 6 2

With nobody vulnerable the bidding went: North East South West 1 diamond 2 clubs 2 no trump pass 2 diamonds pass 3 no trump pass pass

Outdoor Girl



RELAXATION IS the order of the day for lovely Francis Gifford. The beautiful actress recently finished work in the Technicolor musical, "Luxury Igniter" which is playing the circuit of suburban theaters.

Weird Tale Told In "Night Has A Thousand Eyes"

The story of a man with a power to foresee tragedy and how this gift — or curse — eventually destroys him is told in the mystery drama "Night Has A Thousand Eyes," which is playing at local theaters.

Family Picture Of the Month

A Connecticut Yankee in King Arthur's Court, Paramount's technicolor production starring Bing Crosby, Rhonda Fleming, William Bendix and Sir Cedric Hardwicke, has been selected by Parents Magazine as the outstanding family audience picture for the month of March.

They Decided to Freeze Them



WHEN PATRONS OF Twin Cedars, a West Orange cocktail lounge, chatted enthusiastically concerning the hors d'oeuvres, co-owners Fred and William Carmino, hit upon a new idea...

"Harvey" to Open At Montclair Theater Feb. 7

Brock Pemberton will bring "Harvey," Mary Chase's Pulitzer Prize play, to the Montclair Theater Monday, February 7, for a one-week engagement...

Performances will be given every evening Monday through Saturday and matinees on Wednesday and Saturday.

Weekly Crossword Puzzle

Crossword puzzle grid with horizontal and vertical clues. Includes Joe E. Brown photo and name.

THE MOUNTAINSIDE INN on Route 29, Mountainside near Echo Lake Park. Luncheon 12 to 3-7:30 up. Dinner 6 to 9-11:25 up. Sunday 12 to 9.

DONOHUE'S "A Fine New Jersey Eating Place" MOUNTAINVIEW, N. J. On the Newark - Pompton Turnpike (Route 23). Presents BILL SAYRE'S ORCHESTRA. FRI. - SAT. - SUN. Luncheon - Dinner A La Carte. MOUNTAINVIEW 8-0032.

BLUE SHUTTER INN 2660 Morris Ave., Union. Unvl. 2-5919. Saturday Nite Dancing to the music of Johnny Kae Trio. ENTERTAINMENT AT THE BAR with Hoagy Camp Sagamore. Continuous Entertainment - Choice Mixed Drinks ALWAYS A VARIETY OF SANDWICHES. Our Specialty Hot Corned Beef and Hot Sausage Sandwiches.

RICHIE WALTER'S CLUB MAYFAIR 1664 Stuyvesant Avenue Union. PRESENTS SUNDAY COCKTAIL HOURS 4 to 8. Special Prices - Expertly Mixed Drinks JOHNNY LACK at the PIANO and SOLOVOX. AND STILL THE TALK OF THE TOWN MEL and His Hawaiian Serenaders Entertaining Nightly.

The CLARK GABLE Presents BUDDY ROCCO TRIO Jan. 21 - 22 - 23. And—for your SATURDAY NIGHT DANCING PLEASURE THE FIVE SQUIRES. Route 29. Dimellen, N. J.

Diana Lynn CO-STAR WITH Cary Grant in the new comedy, "Every Girl Should Be Married," playing at the Community Theater, Morris-Town, for one week starting January 20.

Box of Wrapping Paper Handy in the Home. A box that's always handy to have around the house is a pack of assorted gift wrapping papers, matching and contrasting ribbon and suitable gift enclosure cards for every occasion. Also included are gummed labels which keep the ends of the package securely sealed. Comes in a pretty flowered box and makes a lovely little hostess present.

Beautiful TOWNLEY'S Restaurant Opens at 11:30 A. M. Every Day to Serve You. DINNER - DINNER AFTER THEATRE SNACKS Private Rooms for Banquets-Parties 530 NORTH AVE. (Near Morris Ave.) UNION.

Re-opening of Parsippany's HOWARD JOHNSON'S Route 10 Wednesday - Jan. 26th with a NEW LOOK.

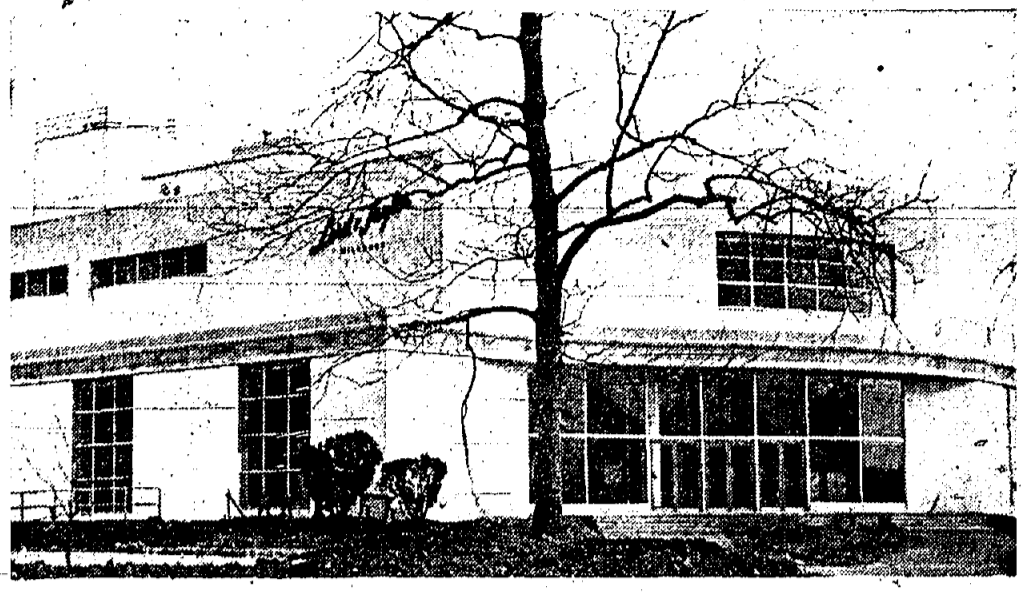
HITCHIN' POST INN Route 29, Union. UNVL. 2-3170. The Magic Fingers of LILLIAN BROWN at the Hammond Organ in the COCKTAIL LOUNGE. No Cover - DANCING NIGHTLY - No Minimum Manhattan Serenaders Fri.-Sat.-Sun. Specializing in Weddings - Banquets - Parties.

Cellist Noted For His Flair In Spanish Music. Maurice Eisenberg, Millburn, the noted concert cellist, who lived in Paris and Spain for many years before the war, developed a special flair for the colorful Spanish music. He was noted for this in all parts of Europe, and is nearly always urged to give Spanish numbers at his recitals in this country.

DELICIOUS MEALS IN HOME-LIKE ATMOSPHERE AT YE OLDE VILLAGE INN Luncheon 12 to 2 - Dinner 5:30 to 8 Sunday Dinner 12 to 8 139 So. Orange Ave. South Orange Phone SO 2-9768 (Near the Center)

2 LARGE DINING ROOMS SPAGHETTI • RAVIOLI HOT SAUSAGE CHICKEN CACCIATORE LASAGNA Specializing in Family-Style DINNERS LA PIZZA Catering to Private Parties, Weddings, Special Occasions. LA STELLA ITALIAN-AMERICAN Restaurant 1901 Morris Ave., UNION, N. J. Even. to 1 A.M. - Week-ends to 2 P.M.

Lord & Taylor, Following Suburban Trend, Opens Millburn Store Next Month



PICTURED ABOVE — Lord & Taylor, Millburn, which will open to the public next month, the 123rd anniversary of the firm. The third suburban Lord & Taylor store since 1911, it denotes the trend of markets and population away from large cities to the suburbs.

By DICK MORGAN
There is a story that Samuel Lord, one of the founders of Lord & Taylor, made surveys of new sites for his store by standing on busy corners, counting the numbers of passers-by until he determined the most advantageous site.

After months of counting facial appendages upon one occasion he decided, "business is going to Broadway, we will get there before it." Thus Lord & Taylor became the first major retail store to move to Broadway, the coming shopping section of the city.

Next month, their 123rd anniversary, the Lord & Taylor firm will open a third suburban store in Millburn, at Wyoming and Millburn avenues, marking yet another step in the current exodus of population and markets from metropolitan to suburban areas. As Samuel Lord determined by counting noses, that business was moving to Broadway, experts from Lord & Taylor have followed the pattern of shifting population trends to suburban towns.

Recent Moves
In 1941, Lord & Taylor made their first move to attract suburban shoppers, erecting a store at Manhasset, Long Island, a second move was made last February, to Scarsdale, New York, the third, and most recent, to Millburn. The Millburn site, says the firm, offers a number of advantages. The location, they say, is placed in the heart of a prosperous area, populated by persons already familiar with Lord & Taylor. The firm has made possible the construction of a 500-car parking lot, adjacent to the store. A boon to shoppers faced with the aggravated parking condition.

In 1872, the Lord & Taylor store

WHEN YOU CAN DRIVE THE SNOW OUT OF YOUR DRIVEWAY WITH A MAXIM SNOW PLOW
● IDEAL for driveway, yard or road. Designed for passenger cars or light trucks.
● Attached by simple bumper clamps — on or off in a jiffy.
● Saves your back — saves your head — saves your time.

FOR CARS
● Attached by simple bumper clamps — on or off in a jiffy.
● Saves your back — saves your head — saves your time.

FOR TRUCKS
Many types of the smaller size cameras are equipped with two lenses, one for the reflected vision on the screen or ground.

GIFFORD EQUIPMENT CO.
ROUTE 10 WHIPPANY
Phone WH 8-0907
MAXIM SNOW PLOWS



DEPARTMENT STORE INVADES FIFTH AVENUE, were the headlines when Lord & Taylor built this shopping center in New York in 1903.

erected at Broadway and Twelfth street, New York, was the architectural wonder of its day. It was the first iron frame building in New York, had one of the first steam elevators and soon became known as the "Fashion Emporium" of the city.

But the difference, inside and out, between the 1872 metropolitan Lord & Taylor's and the suburban store opening next month is the difference between an old-fashioned side-wheeler steamboat and a modern ocean going luxury liner.

As Lambert McClure, newly appointed managing director of the Millburn store points out, "the whole atmosphere of a suburban store is different."
Suited to Area
Architecturally the contemporary style of the low, rambling two-story suburban Lord & Taylor, has been designed to fit neatly and attractively into suburban living. Large expanses of glass look out upon lawns and gardens, lending a pleasant, relatively atmosphere. Inside wandering aisles throughout a spacious 80,000 square feet of floor space, facilitate shopping. Too, McClure said, service cannot help but be more personalized since members of the staff are to be residents of the Millburn area. "Designed for function and beau-

Looking Through the Lens
By EDWARD K. ALENUS, F.R.P.S., F.P.S.A., F.W.P.S.
Sales Judge and Instructor of Photography
Basking Ridge

For the beginner in photography it is often hard to decide what kind of camera to buy. Previously, in past issues we have spoken of box, folding and plate cameras. We now shall speak of the reflex which is fast becoming a favorite with amateurs.

Education Group Issues Statement
Less than one-quarter of the funds being raised by the state cigarette tax are being used to defray the expenses of the public school system asserted the New Jersey Education Association in a statement issued recently by Charles L. Steel Jr., president of the association.

The entire proceeds of the tax which was suggested by the State School Aid Commission, the state must further declared, should be appropriated for state school aid. This would enable the state to distribute up to twenty-five dollars additional per pupil under the Armstrong Act of last year.

THE TEEN-AGER LOOKS AROUND

By BOB AGMAN
During the past couple of weeks I have visited the campuses of several of the East's top colleges, and my most recent observations tie in very well with what I have previously seen, heard, and learned about college life. No matter where the student attends college, there are certain fundamental adjustments that he or she will have to make.

Labor Department Asks Physicians For Information

"Please tell us, doctor," was the appeal of the Employment Security Division, Department of Labor and Industry, in asking physicians throughout the state to get detailed information on their certificates under the Temporary Disability Benefits Law.

The Disability Benefits Service has started processing first claims for disability filed by claimants throughout the State and with few exceptions most physicians are stating in the section set aside for the prognosis, or forecast of probable duration of the claimant's disability, statements such as "undetermined," "indefinite," "can't say" and "don't know."

By SAMUEL COOPER
Standard size paper seems to put some photographers in strait jackets.

Coal Mining Machine May Change Industry
John L. Lewis is said to have foreseen that such a device might create unemployment for his followers and hence stressed their welfare and pension needs. For mine owners, the mole creates a different kind of problem; it turns out coal faster than mine elevators can carry it to the surface—1,000 tons a shift.

Unusual Weather

short papers sometimes alter the sense so as to give the wrong impression," Gemmill said.
"Lots of people call asking for weather reports. But we don't have any cranks. Rather we have what might be called 'persistent pests'."

SINUS TROUBLES
QUICKLY RELIEVED
COMESOL
"A Doctor's Prescription"

Housing Problem No Nearer Solution Than It Was a Year Ago, Public Feels

By KENNETH FINK
Director, The New Jersey Poll
Because on two surveys conducted at six months intervals during the past year, three out of every ten New Jersey residents named housing the state's biggest problem, the New Jersey Poll periodically asks the state's citizens for a report on their housing accommodations.

Imposing Array of Digits Shows VA Service in 1948

An imposing array of statistics was released last week by the New Jersey Veterans Administration designed to show the scope of its services during 1948.

Paper Size Puts Some Amateurs in Strait Jackets

Because a piece of enlarging paper is 5x7 inches, or 8x10 inches, many a camera seems to think his pictures must be those sizes. He tries to jam the composition into that shape, whether it fits or not.

LINDEN LUMBER CO.
NEW JERSEY'S FASTEST GROWING
'SUPER MARKET'
For Building Materials offers quality materials manufactured by the country's largest and most reliable producers . . .

AT AMAZINGLY LOW PRICES!!

- WEYERHAEUSER No. 1 Fir Dimension YELLOW PINE 4" sub-flooring, \$65 Lumber. \$99.50 M Sq. Ft.
- YELLOW PINE roofers and sheathing. T. & G. Kiln-dried 6" and 8". \$83.50 M sq. ft.
- JOHNS-MANVILLE Combination sheathing board and insulation. 25/32 thick. 9 1/4 Sq. Ft.
- BARCLAY Plastic finish tileboard for bathroom and kitchen modernizing. 25¢ Sq. Ft.
- U.S. PLYWOOD 5/16" plywood sheathing, 10 1/2¢ sq. ft. 1/4" plywood, 12 1/2¢ sq. ft. 1/2" mahogany plywood 20¢ sq. ft.
- WEYERHAEUSER 3/4"x10" clear cedar beveled siding (clapboard) 27 1/2¢ sq. ft.
- JOHNS-MANVILLE ceiling tile, 3 1/2¢ sq. ft.
- U.S. GYPSUM 3/8" Sheetrock, 4 1/2¢ sq. ft. 1/2" sheetrock 5¢ sq. ft. Mahogany grainboard 7¢ sq. ft.
- GOLD BOND rock wool insulation, 5 1/2¢ sq. ft.
- WEYERHAEUSER — 18" red cedar shingles clear, \$9.75. 1/2"x8 clear beveled siding (clapboard) 16¢ sq. ft.
- YELLOW PINE flooring 13 1/2¢ sq. ft. "A" Grade Interior Doors \$8.75. Colonial 1 1/4" Entrance Doors \$18.00.

WE INVITE YOUR INSPECTION
of many other items too numerous to list . . . All at "Super-Low" Prices. Our fleet of 8 trucks gives "Super-Service." Free Delivery.

SEE THE "1949 AMERICAN HOME"
A "Build-Yourself" Pre-cut and partially assembled Cape Cod type Colonial—Manufactured by Weyerhaeuser Timber Co.—One of the World's Largest and most reputable Lumber Producers.

Top grade Kiln-dried material in a full size engineered home (Formerly \$1,840) NOW \$1,775. Can't Believe It??—See It Yourself! . . . Full size model house at

LINDEN LUMBER CO.
1403 East St. George Avenue, Linden
Linden 2-3383 - 2-2891
Open Daily 7 A. M. to 6 P. M. — Sunday 8 A. M. to Noon
70 Shopping Hours for Your Convenience
Remember "L.L.M.L.P." — Linden Lumber Means Lower Prices

FLASH BULBS

Size	Carton	Price	Case	Price
5	10	\$1.15	120	\$13.00
25	10	1.45	120	18.00
SM	8	1.25	120	15.00
0	10	1.40	140	17.00
0	10	1.40	140	17.00
11 1/2	8	1.25	120	17.00
50	8	1.35	120	17.00
22	6	1.10	100	15.00
11	6	1.10	100	15.00
11	6	1.55	60	14.00

KODAK SUPER XX FILM
(Minimum 3 Rolls)
35mm x 30 exposure, \$1.10; 30 exp. 80c.
127 3/8; 120 & 620 43¢; 116 & 616 53¢.
All prices include Tax.
Postage Prepaid.
Supplies shipped same day order is received. Send check, money order or cash to:

PIONEER CAMERA EXCHANGE
Flash Headquarters
443 Broad Street Newark 2, N. J.

MY SAVINGS 2 1/2% Earn 2 1/2% NOW
... and are INSURED!

These who guide this \$60,000,000 institution
DIRECTORS
John L. Becker
Frank Briscoe
James M. Cavanaugh
David Cronheim
William E. Hocker
Dr. Henry G. Heller
James V. Igoe
Frank C. McManus
James K. Meldrum

OFFICERS
Ernest A. Miller, President
Leonard B. Zusi, Vice-Pres.
Arthur T. Scates, Treasurer
George W. Conner, Secy.
Vincent H. Bille, Asst. Treas.
Gerard E. Duffy, Asst. Secy.
William Mattes, Comptroller

Small sums, set aside each week, or larger amounts up to \$5,000, will give you such earnings in New Jersey's largest, insured Savings and Loan.

A Carteret account is the financial standby of 40,000 thrifty families.

New accounts invited by mail or in person.

Carteret SAVINGS AND LOAN ASSOCIATION
866 BROAD STREET
NEWARK 2, N. J.