

Field Library  
Main St  
Springfield, N. J.  
Copy #2

**COMPLETE**  
Coverage in News and  
Circulation - Read  
It in the Sun

# The Springfield Sun

**OVER 5,000**  
People in Springfield  
Read the Sun Each Week

VOL. XXVI—No. '24 OFFICIAL NEWSPAPER SPRINGFIELD, N. J., THURSDAY, APRIL 5, 1951 TOWNSHIP OF SPRINGFIELD 10c A COPY, \$3.50 BY THE YEAR



**LISTEN FRIENDS!!**  
Lee Rigby's ebbing battle for re-nomination to the Board of Freeholders has cut a sharp slice in local Republican ranks, according to information reaching this newspaper office in the past few days. . . .

Back in the days of Springfield's famous tie-dye, politics locally were in a turmoil and county GOP authorities were said to have called upon Rigby to see what he could do to straighten conditions and keep people happy. . . .

The Methodist Church deserves everyone's thanks for the splendid display signs it financed and installed at various entrances to Springfield welcoming the public. . . .

With Jim Funchion as its new president the Chamber of Commerce once again will renew its battle with local and state authorities to lift the Morris avenue rush-hour traffic ban, particularly in view of the Township Committee's reported plans to install parking meters. . . .

Many months ago this column said former Township Commissioner . . .

From all indications Springfield voters will be called upon to go to the polls in another special school election around the first of May to again approve or reject the latest plan for school expansion. . . .

## Highest Tax Rate Listed For Township

### Home Owners Will Pay 7.27 Per 100 in '51

Springfield with a tax increase of eighty-seven cents now has a tax rate of \$7.27 per \$100 valuation. The figure is the highest in Union County. It is the only tax rate topping the \$7 figure, the next highest being \$6.73 of New Providence Borough. . . .

Springfield's increase, however, it has been pointed out, is only a forerunner of events to come. Few question the fact that at least one, and probably two, schools will be built here within the next few years. This will probably result in a \$10 tax rate. . . .

## Lloyd Advocates Vice Commission

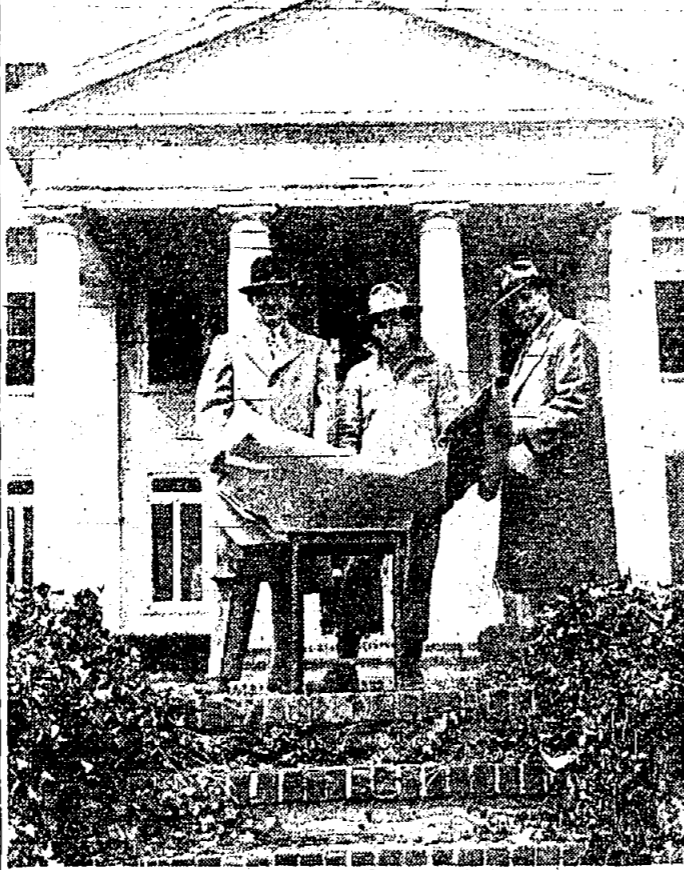
Authorization by the legislature for gubernatorial appointment of a special crime and vice investigation committee was advocated today by Health Commissioner Arthur E. Lloyd, Jr. . . .

The State Senate has made a good start in that direction," Commissioning Lloyd said, "but it obviously is restricted both as to time and scope. I believe a group of representative citizens selected by Governor Driscoll could dig deep into New Jersey records and undoubtedly come up with recommendations for measures which conceivably could lead to eradication of most of the crime in the state. . . .

## Residents Launch Cancer Fund Drive

Edward Wronsky, chairman of the Cancer Fund Campaign drive in Springfield, has announced that the response to the call for volunteer workers has been more than gratifying. . . .

## Short Hills Village Under Way



The first section of Springfield's new multi-million dollar Short Hills Village is under construction. Ground for the fashionable apartment development, financed by the Franklin Mortgage & Title Insurance Company of Newark, was broken on Monday. . . .

## Voters Will Ballot In 6 Districts On Primary Day

Township residents will ballot in six election districts, not four on Primary Election day. This was decided by Superior Court Judge Frank L. Cleary in Elizabeth Friday when representatives of the township and the Union County Board of Elections appeared before the judge in the final episode of the Primary Elections. . . .

## Hill City Leader Backs Carr Slate

SUMMIT—Ernest Hickok, President of Summit's City Council, today issued a statement of support of Nelson L. Carr of Elizabeth, and Mrs. Elsie L. Scheideler of Roselle candidates for the G. O. P. nomination for freeholder at the April 17th primary election. . . .

"In my judgment, this means that Nelson Carr and Mrs. Scheideler will receive heavy support from the Board of Freeholders. Their records of public service plus their years of active leadership in the Party meet the requirements for which we are looking. No longer can we afford to continue to support in office, officials who have lost touch with Republican objectives and whose chief interest is perpetuation in their jobs. . . .

## Local Club Women Plan Card Party

Plans are well under way for Show, sponsored by the Springfield Women's Club, to be held the Card Party and Fashion April 17 at 12:30 p.m. at the Chamber. . . .

# School Expansion Referendum Plans Being Rushed By Board; 18-Room Jr. High Considered

## Tax Collections Reach New Peak

Tax collections for 1951 at the end of March were more than \$11,000 higher than the figure for the same period last year. Tax Collector Charles H. Huff reported today. . . .

## Britain Discussed By Rotary Speaker

Dr. Kenneth C. Mackay, dean of Union Junior College of Clifton, was guest speaker at the weekly luncheon meeting of the Springfield Rotary Club Tuesday at Balmoral Golf Club. . . .

## Primary In Back Stretch With Rigby On Defensive

With the primary election campaign now in the back stretch, Freeholder Lee S. Rigby and his running mate, R. Story Rowland, of Plainfield, today were being rated by political circles as no better than an even bet to triumph in their bid for re-nomination. . . .

## Saving Bond Drive Opens in County

W. Emory Roosevelt was appointed today by Treasury Secretary John W. Snyder to serve as chairman for the Union County Savings Bond Committee. . . .

## Children's Theater Will Offer Play

This year the rustic of Springfield has been accompanied by a rustic of excitement among local children. The Salome Gaylor Theatre for Children will present the third of its series of children's plays on Saturday, April 14, at 3:00 p.m. . . .

## CHURCH SPEAKER



Dr. Lester H. Cleo, prominent New Jersey clergyman and state official, will speak at Springfield Presbyterian Church on Wednesday, April 11, at 7:45 p.m. . . .

## Meeting Between Township Committee and Board Set

A referendum on the school expansion project is expected to be presented by the Board of Education late next month or early in June, it was learned today. . . .

## Advancement Hike Held by Troop 66

Several members of Troop 66 advanced on an advancement hike last Sunday. The boys passed tests from nine in the morning until the Troop returned at dusk. . . .

## TENNIS COURTS WILL OPEN SAT.

Warinanco Park's ten Ruben surfaces clay tennis courts will open for the 1951 season on Saturday, April 7, weather permitting. . . .

## Local DAR Chapter Selects Name

The organizing members of the Springfield Chapter of the Daughters of the American Revolution selected "Church and Cannon" as the name for the local chapter. . . .

## SPONSOR CARD PARTY

A card party will be sponsored by Pride of Battle Hill Council, Daughters of America, Springfield, tomorrow, Friday, at 8 p.m. at the American Legion Hall. . . .

## ANTIQUE SHOW

Members of the Ladies' Benevolent Society of the First Presbyterian Church are making extensive preparations for the Ninth Annual Antique Show and Sale to be held in the Sunday School rooms on April 17, 18 and 19, from 11 a.m. to 10 p.m. . . .

## TRAINING AT DIX



William R. Salander, son of Sgt. and Mrs. William C. Salander, of 102 Tooker Avenue has enlisted in the Army. He is now at Fort Dix in Company B, 8th Field Artillery Battalion. . . .

# Springfield Merchants Open Friday Evenings 'til 9



### CHURCH SERVICES

**Springfield Presbyterian Church**  
Morris Avenue at Main Street  
Bruce W. Evans, Minister

A warm welcome awaits all those who worship in this historic church. Representing over 200 years of faith and service in the community, it cordially invites you to unite with those who work and worship in its fellowship.

9:30 and 11 a.m. Church School Hours. Classes for Juniors and Seniors meet at the early hour while classes for the Beginners and Primary students (ages 3-8) meet at the later hour coinciding with the Church Worship Service thus enabling parents of such children to attend Church Services. Classes are available for all ages under experienced leadership.

11 a.m. Church Leadership Service with sermon by the minister.

7:30 p.m. Christian Endeavor meeting in the chapel.

Tuesday at 8 p.m. the Session

will hold its monthly meeting Wednesday at 7:30 in the Fellowship Room. (See announcement elsewhere in this paper.)

Thursday Boy Scout Troop No. 76 meets in the James Caldwell School under the direction of Scoutmaster Robert E. Lee.

Friday at 8 p.m. Choir Rehearsal under the direction of Charles H. Sills, choir master.

The Annual Antiquarian Show and Sale will be held in the chapel of the church on April 17, 18 and 19.

**Springfield Methodist Church**  
Rev. Clifford Hewitt  
9:30 a.m. Church School  
Classes for all ages from nursery through senior high school. Departments meet separately under capable supervision and with qualified teachers. A warm welcome awaits you.

9:30 a.m. Conducted concurrently with the Church School session. Parents may attend this service while the children attend in their classes. Special music by the junior choir.

Late Service of Worship 11 a.m. Solo and special music by the

Senior choir. Services are identical except for the special music. Sermon topic for the day: "Believing is Seeing."

Orientation Meeting 7 p.m.

New members will be introduced to the program and ministry of the church by the ministers and leaders of various church organizations.

Next Week

Monday - The Althea Bible Class meets weekly in the church at 8 o'clock. The Pora Club, at their regular meeting beginning at 8 p.m., will present a representative of the FBI as speaker. An invitation is extended to all to hear him.

Tuesday - The substituted ministers will be held in the church at 10 a.m. Members of the local W.S.C.S. will provide luncheon. The W.S.C.S. will not meet on this regular date, but will unite with the Wesleyan Service Guild for a joint meeting on April 17.

Wednesday - Local chapter of D.A.W. will meet in the chapel of the church at 8 p.m.

Thursday - Members of the Althea Bible Class will serve a cafeteria luncheon in the Mundy Room from 12 noon until 2 p.m. Business people, as well as others, are invited to enjoy a hearty luncheon of home cooked foods. Junior choir rehearsal, 6:30 p.m.; senior choir rehearsal, 7:30 p.m.; Troop 6, Boy Scouts of America, meets weekly at 7:30 p.m. in the Raymond Chisholm School. At 8 p.m., the Official Board will meet in the church.

Friday - Final meeting of the Men's Club Bowling League for the regular season. The annual tournament is scheduled for Friday, April 20.

**St. Stephen's Episcopal Church**  
Main Street, Millburn  
Rev. Hugh W. Dickinson, Rector  
8 a.m.—Holy Communion.  
9:45 a.m.—Church School and Bible Class.  
11 a.m.—Morning Prayer and Sermon.  
11 a.m.—Nursery in Parish House for children 2 to 8, whose parents wish to attend the 11 o'clock service.

**First Baptist Church**  
Millburn  
Rev. Romulus F. Bateman  
Sermon tones for Sunday, April 8-11 a.m. "The Old Paths," 7:45 p.m. "Who Is the Woman in Scarlet?"

Sunday School 9:45. Free bus service for Sunday School students every Sunday morning. Phone or write for time and route schedule.

**St. John's Lutheran Church**  
Summit  
Rev. W. S. Himm, Ph.D.  
Sunday—9:30 a.m. Bible School. 10:45 a.m. Worship. Sermon: "The Shepherd."

Saturday, April 7—10 a.m. Jr. Choir Rehearsal.  
11 a.m. Sr. Catechetical Class.  
Monday, April 8, 8:15 p.m.—Teacher Training Class at the home of Walter Grote.

**First Church of Christ, Scientist**  
292 Springfield Avenue  
Summit, N. J.

The inextinguishable, spiritual nature of good will be brought out in Christian Science services next Sunday. Title of the Lesson-Sermon is "Unreality."

**St. James' Church**  
Springfield  
Sunday Masses:  
7 a.m.  
8 a.m.  
9 a.m.  
10 a.m.  
11 a.m.  
12 Noon

Instruction Classes for grade

**Lunch Room Menu**

The menu next week at the Raymond Chisholm, luncheon room will be:

Monday  
Spaghetti with meat sauce, carrot sticks, apple, peanut butter sandwich and milk.

Tuesday  
Orange juice, chow mein, rice, Chinese noodles, bread, butter and milk.

Wednesday  
Chicken noodle soup, baked and pickle sandwich, hamed apples and milk.

Thursday  
Beef and pork pattie, cranberry sauce, mashed potatoes, gravy, buttered green beans, bread, butter and milk.

Friday  
Hard boiled egg, lettuce salad, baked potato, apple, bread, butter and milk.

### County Launches Safety Campaign

A four point program will highlight the Union County Safety Committee's Spring drive, against home accidents, which begins next Monday and continues to April 20.

The program will be carried on by the Committee's Women's Division which is under the chairmanship of Mrs. Edith S. Pascoe, 1328 North Avenue, Elizabeth. Representatives of 16 women's organizations from throughout the county will assist in the drive.

The drive will be directed against the dangers of accidents associated with the outdoor tasks usually taken care of in the spring.

With the slogan "Make Spring Clean-up Home Accident-Check-up" the Women's Committee urges that householders check outside steps and walks because winter's freezing and thawing may have caused raised flagstones, cracks in cement, broken steps, loosened porch railings and handrails. These hazards, the committee points out, are big factors in home accidents at this time of year.

While tidying up the garden, the committee calls attention to tripping hazards such as branches, cans, holes which and may be hidden by grass, and cutting hazards such as broken glass and boards with nails in them.

Use a ladder, not a makeshift, to remove storm windows and to put on screens or to wash windows. The committee reminds. Make sure the ladder is on a firm and level base.

Remove old paper and other rubbish from the house and grounds. These are double fire hazards, the committee reminds householders.

### County Launches Safety Campaign

The final month's program of events for the Chickadee Adult Nature Group of the Union County Park System.

On April 8, at 9:30 a.m. the Chickadee Group will leave Trallice Museum to visit Audubon House, Millford, N. J. The group will next meet at 9:30 a.m. April 12, at the Trallice Museum and visit selected locations in the Watching Reservation. April 19, has been designated by the Chickadee Group as the date of their visit to South Jersey Audubon Center, Cape May Court House. The group will leave at 9:30 a.m. from the Trallice Museum. The last outing of the season for the Chickadee Group will find them meeting at the Trallice Museum 9:30 a.m., for a visit to New Jersey shore points in search of duck, gulls, and the arrival of osprey.

### Nature Group To Visit Museum

All nature enthusiasts are invited to participate in these last four outings of the season.

The pony express took ten-and-one-half days to carry mail from St. Joseph, Mo., to San Francisco in the pre-railroad days.

New Zealand is the source of most of the grass seed sown in England.

### Power Co. Report Shows Area Growth

The rapid pace of research and industrial growth in the Summit-Springfield-Chatham area was measured yesterday by power consumption figures showing for 1950 increases of 20 per cent over 1949 and 190 per cent since 1948.

"With nine newcomers last year, there are now 133 enterprises in Summit, New Providence, Springfield, Chatham and Millburn classified as industrial power users," according to E. L. Huse, division power engineer for Jersey Central Power & Light Co. "Last year these local plants and laboratories used 31 million kilowatt hours of electric energy, nearly triple those used by the 90 industry enterprises in this 18-square-mile region in 1948. Average use per customer has gone up from 118 to 232 thousand kilowatt hours in '49."

"Thus, between wars, nearby plants that create products and employ local people increased by one half, while their total use of electricity nearly tripled and, on the average, the activity of each plant or laboratory has doubled," Mr. Huse explained.

"Not only that, but today JCP&L is scheduling large-scale power service to nine additional customers in this immediate area within the next 18 months. This added power load alone is expected to total at least 3100 kilowatts, a capacity large enough to serve all 5,600 of Summit's dwellings. Unlabeled apartments and homes of the projected industrial load the major portion is to come from customers newly located here."

"Thus, as measured by power use, this region's recent industrial expansion—taken with what seems just ahead—is way and above that of any comparable area in JCP&L's North Jersey electric territory—although in electric, Morristown area industrial plants are multiplying faster."

Mr. Huse described JCP&L's entire service area, comprising one-quarter of the State, as "homeing ground for scores of light industries, old and new, as these scatter out from crowded city streets to nestle down upon suburban roadways." He said that the company's North Jersey service area—from Springfield to Pompton Lakes—experienced an overall 19 per cent growth in sales of electricity to industrial customers, 1950 over 1949.

"To keep well ahead of this kind of growth, JCP&L has spent \$25 million in the past five years "between wars"—and expects to use another \$25 million in the next three years—for additions and improvements to service facilities for all classifications of customers," the electrical engineer stated.

Principal classifications of industrial users of power in the greater Summit area, according to Mr. Huse, are: manufacturers of or research in electrical and communication equipment and supplies—which accounted for 42 per cent of last year's 31 million KWHR; producer of or research with chemicals, drugs and allied products, 24

### Watching Riders

The Watching Adult Troop, sponsored by the Union County Park Commission, at its Watching Stables, Summit, N. J., is now organizing for the spring season. This group will ride eight times, starting April 15.

In addition to the instruction given by a staff of competent instructors, on well-mannered horses, the members also enjoy rides over the bridle trails of the Reservation, picnic trails, moonlight rides, etc. The troop is divided into two sections; one for novices learning to ride, the other for experienced riders desiring to improve their horsemanship.

Since membership is necessarily limited to the number of horses available for troop use, applications will be accepted in the order received.

For application blanks and additional information, write or call T. N. Tully, director of Troops, Watching Stables, Summit 6-3169.

### DISORDERLY PERSON PAYS \$18 PENALTY

John H. Booker, of Morris Avenue, was fined \$18 by Municipal Court Monday night when he was found guilty of being drunk and disorderly near his home.

Richard Anderson, of 237 Muhlenberg Place, Plainfield, was found guilty of operating a car without a driver's license. He was fined \$5 and assessed \$3 costs.

Henry J. Geiger, of 43 South Twenty-second street, Kenilworth, paid \$6 for speeding.

### SORORITY TO MEET

The monthly meeting of the New Jersey Suburban Alumnae Chapter of Sigma Kappa Sorority will be held next Tuesday evening at the home of Mrs. Clifford A. Oulley, 58 High Street, Summit. The program will include a performance by the Kappa Kappa Sorority, Mrs. J. W. Kurtil of Chatham. She will present a group of selections from her recent concert before the Music Guild of the Oranges in Maplewood.

### SLATE MEETING

The Music Department of the Springfield Woman's Club will hold its regular monthly meeting at the home of Mrs. Amy Bandemer, 541 South Springfield Avenue, next Thursday evening. Co-hostesses will be Mrs. Robert Tiffany and Mrs. Louis Schneider.

### JURY DUTY

John J. Niesz, Jr. of 92 South Maple Avenue, received instructions, along with 125 Union County residents, to report for duty on a petit jury in the county next Monday until April 21. Names for the panel were drawn by Jury Commissioner J. Carroll Dolan and Sheriff Alex C. Campbell before County Judge Edward A. McGrath. Benjamin Korb, clerk to the jury commission, assisted.



### Fix Up Your Lawn Now

Begin early to benefit by the warm April showers.

- Elite Lawn Seed**  
Purity 98%; germination 88%  
5 lbs. \$8.75; 10 lbs. \$13.  
25 lbs. \$31.75; 100 lbs. \$125.
- The "Forbes" Lawn Seed**  
Purity 96%; germination 88%  
5 lbs. \$8.75; 10 lbs. \$13.00  
25 lbs. \$32.25; 100 lbs. \$125.
- Branch Brook Lawn Seed**  
Purity 95%; germination 88%  
5 lbs. \$8.75; 10 lbs. \$13.00  
25 lbs. \$32.25; 100 lbs. \$125.
- Shady Side Lawn Seed**  
Purity 91%; germination 88%  
5 lbs. \$6.75; 10 lbs. \$11.50  
25 lbs. \$28.25; 100 lbs. \$110.
- Agro Lax Lawn Fertilizer**  
(Analysis, 6-10-4)  
25 lbs. \$1.60; 50 lbs. \$2.85  
100 lbs. \$4.75; 500 lbs. \$21.50
- Lawn-Spur (6-6-2)**  
50 lbs. \$2.25; 100 lbs. \$3.50  
250 lbs. \$8.50; 500 lbs. \$26.
- Streamed Bone Meal**  
25 lbs. \$2.15; 50 lbs. \$3.65  
100 lbs. \$6.95; 500 lbs. \$29.
- Granulated Peat Moss**  
Large bale (30x20x18 in.)  
\$1.95 each; 6 for \$24
- Pulverized Limestone**  
80 lbs. \$5.65; 400 lbs. \$1.50  
800 lbs. \$8.50; ton \$20.
- Drive Over Your Garden Needs**
- ## FORBES SALES GARDEN
- Route 10, Hanover, N. J.  
Ten Min. Drive from Chatham Mile West of Livingston Cl.  
WEEKDAYS and SUNDAYS  
8:30 A. M. to 5:30 P. M.  
Phone WHIPPANY 8-0375

### ENTERTAINING?

A Dinner Party... An Afternoon of Bridge... A Family Party? Call Ritter's for Delicious Baked Treats.

- TINY FANCY COOKIES
- DECORATED LAYER CAKES
- FRENCH PASTRIES
- DINNER ROLLS

## RITTER'S BAKERY

Serving the Short Hills-Millburn area with the best in baked goods for over twenty years

57 Main St. MI. 6-0414

## A Seed Planted Yesterday Here Is What It Grew Up to Be!

The seed was a small initial deposit in a savings account, nurtured weekly with regular deposits. Now John and Mary are the proud owners of their own home, enjoying the fruit of their wise savings habits.

You can make your dreams come true this easy way. Open your savings account today, and with each pay check make a regular deposit. It's an investment in your future.

Before you know it your account has reached an amazing size, earning interest as it grows. Why don't you start your garden of savings today! A bonus harvest will be yours tomorrow.

## THE FIRST NATIONAL BANK OF SPRINGFIELD

Member Federal Reserve System

Member Federal Deposit Insurance Corporation

### Ferber Announces Rules for Contest

Conformity to safety regulations will be an important consideration by the judges in the fifth annual highway beautification contest, sponsored by the Garden Club of New Jersey, April 16 to 30, Motor Vehicle Director Martin J. Ferber, said today. Three phases of safety regulations that will be considered are driveway location, parking facilities and lighting.

Commercial and industrial establishments, (including motor courts), along state highways, with the most attractive grounds will be judged in the contest. Director Ferber said that driveway locations should be established to permit the least amount of vehicle and pedestrian conflict; whether they permit no obstruction to sight distance and as far away as possible from the point of intersecting highways.

As for flood-lighting and colored lights, Mr. Ferber said that these should be located and adjusted so that they are not in direct line of vision of motorists on the highway. He added that colored lights should be located to not confuse or destroy the ability of traffic controlled signals. Another consideration by the judges will be adequate off-street parking facilities that will permit patrons and employees to park their vehicles off the highways.

Mount Rainier, third largest mountain in continental United States, was named after Peter Rainier, a British admiral.

### no detail too small . . .

Smith and Smith's service is recognized as one of traditional dignity because no detail is too small to be overlooked by a thoughtful, experienced staff.

**SMITH AND SMITH**  
FUNERAL DIRECTORS

An Outstanding Service "Within the Means of All"

415 Morris Ave., Springfield, N. J. 140 Clinton Ave., Newark 5, N. J.  
(Near Short Hills Ave.) Millburn 6-4282 Bligow 3-2123  
(Ample parking on premises)

## ON TOP OF THE WORLD!

Astonishing, the way a man looks and feels in clothes expertly pressed and cleaned by HAPPY HOLIDAY.

Drive-In For Our 3-HOUR SERVICE

SHIRTS Beautifully Laundered 18c 6 for \$1

# HAPPY HOLIDAY

3 Hr. Quality Dry Cleaning Service

929 STUYVESANT AVE. UNION

Open 7:30 A. M. to 6 P. M., Monday 'til 8 P. M.

PEOPLE WE KNOW

By KITTY OEHLER  
Phone Millburn 6-1276

Mrs. Richard J. Steig of 45 Evergreen avenue, will entertain tomorrow, Friday, at a cocktail party in her home. Guests will include the Misses Claire Kelly, Polly Keith, Charlotte Singer, Helen McKay, Alice Lyman, Eleanor Murphy and Carol Craft.

Mr. and Mrs. John J. Jennings, Jr., of 21 Lewis drive, entertained last weekend in honor of the sixth birthday of their daughter, Mary Elizabeth Hill Jennings. Jill's uncle and aunt, Dr. and Mrs. Robert E. Jennings, and their children, Elizabeth, Robbie and the twins, Jane and Anne, Mr. and Mrs. Patrick J. Gahan, Anne Jennings and Sally Jean Moore were guests at a birthday party on Saturday. Sunday the Jennings entertained 24 members of their family at dinner in their home.

The Secret Pal Club met for lunch at the Mansard Inn, Plainfield last Wednesday. The members returned to the home of Mrs. Florence Post, of 228 South Springfield avenue, for an afternoon of cards.

Mr. and Mrs. W. A. Worthmann and daughter, Anne, Nancy and Jung, of 463 Mountain avenue, returned Sunday from a two-week trip South. They visited Mrs. Worthmann's mother, Mrs. L. E. Barton in Charleston, S. C. and Mr. Worthmann's mother, Mrs. W. A. Worthmann of Baltimore.

Mr. and Mrs. Morton Williams, of 222 South Springfield avenue, celebrated their fourth wedding anniversary last Thursday. The couple dined at Rod's and then went to the Paper Mill Playhouse to see "Annie Get Your Gun."

Mrs. Cecil Jones of 206 Morris

avenue entertained at tea last Thursday afternoon.

Mr. and Mrs. Robert G. Smith and Sons, Bob, Roger and Barry, of 14 Henshaw avenue, have returned home after a two-week motor trip to New Orleans, La.

The Colonial Gardens Social Club met last Tuesday at the home of Mrs. A. C. Dauser, 245 Bultus-rol avenue. The following women were present: Mrs. Watts D. Chapin, Mrs. James Nicholas, Mrs. Fred Buerklin, Mrs. Sigurd Coors, Mrs. Al Binder, Mrs. Frederick Sylvester, and Mrs. Philip Rappaport. Refreshments were served.

The Camasta Club met at the home of Mrs. Rose Walpole, 112 Little Hill avenue, last Wednesday. Those present were: Mrs. Thomas Mulvey, Mrs. William Corby, Mrs. Edward Kaye, Mrs. Charles Jordan, Mrs. Robert Phillips, Mrs. Walter Mullins and Mrs. Daniel Ozvatic.

Mary Jo Chapin, daughter of Mr. and Mrs. Watts D. Chapin of 212 Bultusrol avenue, celebrated her ninth birthday at a party given last Saturday in her home. Decorations were in green and yellow. Party games were played and birthday refreshments served. Mary Jo's guests were: Jerry Smith, Virginia Dames, Joan Sacko and Kathleen Kennedy of Short Hills, Emmie Giffonelli of Millburn, and Dale Dauser, Diane Willie and Anamarie Howe of Springfield.

Music Theme For Woman's Meet

Samuel Aptek, Conductor of the New Jersey Symphony Orchestra, will be guest speaker at the spring meeting of the Music Department of the Millburn Woman's Club, Wednesday at 2 p.m. in the Wyoming Church parlors. His topic will be "Behind Scenes with Famous Conductors." Philip J. Cortwehl, bass-baritone and soloist with the Morrow Memorial Church Choir, Maywood, will sing two groups of songs.

Aptek has been guest conductor of many orchestras, both on the air and on concert tours throughout the country. He is on the staff of N.B.C. and has been first violinist with the N.B.C. Symphony Orchestra for many years. Cortwehl was soloist with the Honolulu Symphony Orchestra and Hawaiian Oratorio Society. Mrs. Kensil M. Brown, chairman, will provide at the business meeting and tea will be served following the program.

Becomes Fiancee Of W. Ziegenfuss



Joan Marie Wernert

Mr. and Mrs. Joseph Wernert of South street, New Providence, have announced the engagement of their daughter, Joan Marie, to Mrs. Peter Ziegenfuss, son of Mr. and Mrs. Peter Ziegenfuss of 387 Morris avenue.

Mrs. Wernert is a graduate of Summit High School and is employed by Martindale-Hubbell, Inc. Mr. Ziegenfuss, a graduate of Regional High School, was a teller at the First National Bank of Springfield until he was inducted into the Army on February 25. He is stationed at Fort Dix.

Alice DiFazio Engaged to Wed

Announcement has been made by Mr. and Mrs. Frank DiFazio, of 20 South Eighteen street, Kenilworth, of the engagement of their daughter, Alice, to Robert A. Grander, son of Mr. and Mrs. Charles Grander of 619 Carlyle place, Union.

HAPPY BIRTHDAY

A Happy Birthday is extended this week to the following residents of Springfield:

- 1—Mrs. Sigurd Coors
- 2—William Wagner
- 3—Joan Mueller
- 4—Cynthia Lee Brande
- 5—Martina Podinoff
- 6—Mrs. Arthur Bjorstad
- 7—Mrs. William Clark
- 8—Mrs. Louis Huntington
- 9—Roland Smith
- 10—Mrs. Walter Sommer
- 11—Joseph Grate, Sr.
- 12—Mrs. Walter Smith
- 13—Mrs. Willard D. Watkins
- 14—Lynn Marie Amabile
- 15—Leonard De Freytag
- 16—Mrs. Anna Smith
- 17—Mrs. Arthur Lamb
- 18—Mrs. Henry Young
- 19—Mrs. Edward Francis
- 20—Mrs. William P. Wiederspahn
- 21—Paul W. Chapin
- 22—Joseph V. Betz, Jr.
- 23—Donald Gullans
- 24—George F. Davis
- 25—Barbara Julia Dowd
- 26—Mrs. Henry Brucker
- 27—Mrs. Frederick Reibert
- 28—Ebb Haynes
- 29—LeRoy T. Anderson
- 30—Albert Flemer
- 31—Andrew Shrivy
- 32—Peter John Becker
- 33—Clifford Zimmer, Jr.
- 34—Richard J. Betz
- 35—Gory Evan Blex
- 36—Sandra Tetusko
- 37—Nancy Smith
- 38—Mrs. Rosevelt Gibbons
- 39—Steve Schmidt, Jr.
- 40—Charlyn H. Richards
- 41—Frank Heller
- 42—Miss Dorothy Neesman
- 43—Mrs. Eva Scriba
- 44—Camille Ladner
- 45—Mrs. Murray Koonin
- 46—John D'Andrea
- 47—Mrs. William Thompson, Jr.
- 48—Sherry Lou Dytke

Plainfield Bride for W. R. McDowell

The wedding of Miss Margaret Boettcher, daughter of Mr. and Mrs. Hermann A. Boettcher of 1350 Bollevick avenue, Plainfield, and W. Richard McDowell, Regional High School graduate and son of Mr. and Mrs. Fay Bert McDowell of Mountalnside, took place Saturday in the Grove Street Chapel. The Rev. Herman Amerding performed the ceremony. A reception was held at the Park Hotel.

A satin gown with illusion neckline trimmed with seed pearls was worn by the bride. Her finger-ring veil was held by a matching headpiece. She carried a bouquet of Eucharis lilies.

Mrs. William Smith was matron of honor and bridesmaids were Miss Vera Donnelly and Mrs. William Bailie, sister of the bridegroom. Miss Carol Boettcher, niece of the bride, was junior bridesmaid. Howard McDowell was his brother's best man. William Bailie and Hermann Boettcher, brother of the bride, ushered.

The bride is a graduate of Plainfield High School. The bridegroom is in business with his father in Westfield. After a trip the couple will live in Westfield.

TO HOLD MEETING

The regular monthly meeting of the American Home Department of the Springfield Woman's Club will be held at the home of Mrs. Henry George, 181 Milltown road on Wednesday evening. Articles and garments will be made for display at the general open house meeting in June.

Dorothy E. Wayte Wed at Mass



Mrs. John R. McCarthy

At a nuptial mass Saturday in St. James' Church here, Miss Dorothy E. Wayte, daughter of Mrs. William Nabb of 771 Mountain avenue, and the late Edward Wayte, became the bride of Cpl. John R. McCarthy, son of Mr. and Mrs. Richard Parr of 148 Virginia avenue, Jersey City. The Rev. John Mahon celebrated the mass and performed the ceremony. A reception followed at the Orchard Inn.

Miss Mary C. Hertzman was maid of honor. Bridesmaids were the Misses Virginia Woods and Bar-

bara Wayte, sister of the bride. Charles McCarthy served as best man for his brother. Another brother, William McCarthy, and Thomas Magee, cousin of the bride, were ushers.

The bride wore a white satin gown with an overskirt and train of chantilly lace. Her finger-ring veil fell from a crown of chantilly lace edged with flowers. She carried an orchid and white carnations. The attendants were gowned in pastel nylon net and lace. They wore flower headpieces and carried bouquets of carnations.

The couple are spending a week

in the Poconos and will reside in Springfield. The bride is a graduate of Kearny High School and is a member of the Carroll Club in New York. Cpl. McCarthy was graduated from Snyder High School and is stationed at McGuire Air Field.

**TO HOLD LUNCHEON**  
A Cafeteria Luncheon will be served at the Springfield Methodist Church, Thursday, April 12, from 12 noon to 2 p.m. The luncheon is sponsored by the Althea Bible Class.

**SANALAC**  
CUTS MILK BILL IN HALF  
DELICIOUS NON-FAT SWEET MILK TO DRINK

**Brownfield's Inc.**

**WEEK-END FEATURES**

APPLE SAUCE  
CAKE . . . . . **49c**  
Assorted DANISH  
STOLLENS . . . . . **54c**

ASK FOR OUR DAILY FEATURE  
It's Smart Shopping To Get  
The Most For Your Money

**Suburban  
Dessert Shoppe**  
288 Millburn Ave. Millburn 6-4393

**QUICKEST CASH LOANS IN THE WORLD**

It takes only 20 minutes to borrow \$5 to \$5000 on your diamond, silverware or other personal valuables. Pay \$1000 for 6 months if you wish, then only low interest charge. Bank type vault on premises.

**WM. S. RICH & SONS** Since 1890  
201 SPRINGFIELD AVE.  
(near Belmont Ave.) NEWARK 3

**HOUSE UPKEEP SAVES YOU MANY A DIME, IF YOU MAKE SMALL REPAIRS IN TIME**

**BILL DING**

**COLUMBIA Lumber & Millwork Co.**  
SASH • DOORS • TRIM • LUMBER • PAINTS • HARDWARE  
MAPLE • SPRINGFIELD Avenue • SPRINGFIELD, N. J. • MIL. 6-1242

**WOMEN'S AND DEBS' STREET-DRESS and SPORT SHOES**

NATIONALLY ADVERTISED FOOTWEAR  
CANCELLATIONS - FACTORY STOCK SHOES  
SAMPLES - SURPLUS SIZES OF FAMOUS BRANDS  
Sold at 1/3 to 1/2 Below Manufacturers' Fixed Price

OUR PRICE **\$5.90 to \$10.90** VALUES \$9.95 to \$22.95  
Sizes 4 to 10—Widths AAAA to C  
Specializing In The Hard-To-Fit Foot

Due to factory restrictions we are not permitted to advertise the names of these manufacturers, but you will find the firm name stamped in every pair.

**FOOTWEAR, inc.**  
354 Springfield Ave., Summit, Opposite The Now Kress Store  
Store Hours: 9 A. M. to 6 P. M. — Open Friday to 9 P. M.

**17th ANNIVERSARY SALE**

Extra Savings During The Entire Month Of April

**ONE DOLLAR IN MERCHANDISE FREE**  
WITH EVERY TEN DOLLARS IN PURCHASES

Regardless of price reductions in the various departments every sales slip is redeemable

**Root's of summit**

FOR THE NATION'S MOST FAMOUS BRANDS

Member of the Summit Area Chamber of Commerce  
Store Hours: Daily 9 A. M. to 5:30 P. M., Friday 9 A. M. to 9 P. M.



**the SPRINGFIELD SUN**

ESTABLISHED SEPTEMBER 2, 1870  
 Published every Thursday at  
 206 Morris Avenue, Springfield, N. J.  
 by the SPRINGFIELD PUBLISHING COMPANY  
**RAYMOND BELL, Publisher**  
 TELEPHONE: 6-1278  
 MILLBURN 6-1278 — UNIONVILLE 2-2200

Official newspaper of the Township of Springfield. Subscription rates by mail postpaid: One year, \$3.50, six months, \$1.75, payable in advance. Single copies ten cents. Entered as second class matter October 3, 1931, at the Post Office, Springfield, N. J. under an Act of March 3, 1937.

THURSDAY, APRIL 5, 1951

**GIRL SCOUT CORNER**  
 By M. E. PENARD

Troop 1. Mrs. Frank Kerr gave us the test for our Home Safety badges. If this weather continues, we will soon be going on our long-awaited spaghetti cook-out.

Troop 13-Brownies. We held our meeting Friday even though it was a holiday. Despite the down-pour we visited the Miniature Village. Mrs. Franklin Neple, Mrs. Karl Rosger and Mrs. William Ehrlich were our volunteer drivers and Mrs. Werner Downing was our leader's assistant. The Village is like a fairland and we all exclaimed over the details. Mr. Speicher told us about the many miniature objects he has collected from all over the world. We are awaiting very eagerly the completion of the miniature circus which will be finished and open for public viewing in April.

Troop 8-Intermediates. We attended the Paper-Mill Playhouse presentation of "Annie Get Your Gun." Mrs. Paul Pathe and Mrs. William Merkel were our guests. Notes for Leaders and Mothers.

Tuesday, April 10, a film will be shown at the Methodist Church at 7:30 p.m. for those attending the Training course. The women attending last Tuesday's meeting of the Training course were: Mrs. A. C. Ross, Mrs. Van C. Lambert, Mrs. Joseph Petrocy, Mrs. Alfred Zupowski, Mrs. Clarence Wyckoff, Mrs. Ward Humphrey, Mrs. Harold O'Neal, Mrs. Henry Bolchard, Adeline Gleb, Jane Matara and Margaret Paulson.

Board Meeting will be held next Thursday, April 12, at 8 p.m. at the library.

Strawberry Festival Strawberry Festival time is draw-

ing closer. Please, please, now during your housecleaning time save strings for our white elephant table. Things valuable to you may interest someone else. Pick out some little home-crafts for the novelty table. Save them. If you can't keep them because of lack of space, let the scouts know and someone will pick them up, before they are tossed out.

**Looking Into Yesteryear**  
 \*\*\*  
 From Files OF THE SUN

Ten Years Ago  
 Mrs. William Brodhead of Springfield was elected worthy matron of the Continental Chapter, Eastern Star. Other officers elected were: Mrs. Hazel Hull, associate matron; Mrs. Grace Friberger, secretary; Phoebe Briggs, treasurer; Mrs. Helen Huff, conductress; and Mrs. Marie Patche, associate conductress.

Mr. and Mrs. Walter S. Smith of 109 Battle Hill avenue, announced the engagement of their daughter, Miss Ida M. Smith, to George R. Boyton, son of Mr. and Mrs. William Boyton of Mountahside.

Gregg L. Frost, who resigned from the Springfield-Union Selective Service Board, was requested by Governor Edison, to carry on in that capacity. Frost, who had served since the draft board's inception, was secretary of the district board. William Chism of Springfield was chief clerk.

**\$50 Savings Bond To Be Top Prize At Legion's Show**

Can you sing, dance, or act? Here's your chance to win a valuable prize and at the same time help a worthy cause.

Entertainers from 7 to 70 are invited to enter the Connecticut Farms Post, American Legion, annual contest which will be held on Friday night, May 11, at the Connecticut Farms School auditorium in Union. All proceeds are to be presented to the Auxiliary of the Post which will use the money for the purchase of pen and pencil sets given to all Union draftees at the Elizabeth Army.

There will be 35 acts in the show plus appearances by the winners of last year's talent test. As in previous years, the competition will be divided into three classes, 7 to 12 years, 13 to 15, and 17 and over.

The prizes in the youngest class will be a \$25 savings bond for the winner, \$10 cash for the runner-up and \$5 cash for third. In the two older divisions the prizes will be a \$50 savings bond for first, a \$25 bond for second and \$10 cash for third.

Since a limit has been placed on the number of acts, persons interested should write immediately to Emil Donofri, chairman of the Legion's show committee, at his home, 914 Ray av., Union, or call UNIV 2-2714.

**Jersey Central Earnings Are Up**

Jersey Central Power & Light in its 1950 Annual Report just released to stockholders, reported total revenues of almost \$20 million—9.5 per cent more than was reported in 1949.

"Despite the record earnings, net income was only 4.7 per cent higher than in 1949," E. H. Werner, president of JCP&L said in his message.

He explained that the relatively small increase in net income was due principally to increases in maintenance and operating expenses. These increases were attributable to higher wages, increased taxes, cost of additional fuel to supply the demand and extraordinary maintenance of approximately \$475,000 caused by the severe wind and rain storm on November 25.

"The federal income tax provision amounted to \$1,651,700 and was 52 per cent above the previous year. This increase was due largely to higher tax rates in effect. Total federal, state and local taxes paid or provided for by the company in 1950 amounted to \$1,735,463—21.7 per cent more than the previous year. The company's total tax bill last year was equivalent to almost \$13,000 a day and equal to approximately 15 cents of each revenue dollar," the report disclosed.

Electric Use Up  
 Figures quoted in the report by Mr. Werner showed that home use of electricity during 1950 continued upward. The average customer served used 3,770 kilowatt hours in 1950 as compared with

**MISS SIMS CAST IN COLLEGE PLAY**

STATE COLLEGE, N. Mex. (Katherine Sims) daughter of Mr. and Mrs. A. C. Munn of Springfield, will be a member of the cast of Jack and the Beanstalk, now under production by the Coronado Playmakers at New Mexico A. & M. College. Jack and the Beanstalk is a delightful children's play and will be given before various grade school audiences.

This is a new type drama for the Playmakers who usually present professional productions.

Miss Sims is a freshman English major at the college.

**FOOD SALE**

Springfield Methodist Church School will sponsor a Food Sale at Pinkney's Garage on Saturday between 9 a.m. and 12 noon. Mrs. Ralph Tidy of 31 Bryant avenue, is chairman of the sale.

After attending the Union Service at Chatham-Unionville in 1862, the Confederate general, "Stonewall" Jackson, was accidentally shot by his own men.

**LOOK! LOOK! LOOK!**

**The Millburn Mounted Troopers Will Ride Again**

STARTING APRIL 9  
 And Continuing For 10 Weeks  
 From 4 to 5 P. M.

**ENROLL YOUR CHILD NOW!**

At The  
**MILLBURN RIDING SCHOOL**

236 Main St. — Mi. 6-2144 Millburn

Students of the agriculture course at Regional High School were engaged in the project of pruning trees in the vicinity of the school grounds. To acquaint the students on how to prune trees scientifically, Wilhelm N. Pelzelbeck, agriculture instructor, obtained the services of two experienced pruners from the Union County Park Commission.

Mr. and Mrs. Glen D. Smith of Alton, Ohio, formerly of Garwood, announced the engagement of their daughter, Marion, to Arthur Blawie, son of Mr. and Mrs. Harry Blawie of 17 Springfield road.

The Stockton & Darlington Railway, in England, was the first public railway in the world. It opened September 27, 1825.

**Highest Tax**  
 (Continued from Page 1)

The municipality will derive revenue from several garden apartment projects here. However, heavy industry, which keeps down the tax rate of many municipalities, still has not been welcomed by the township. Other municipalities which had sizable rate increases were Mountahside with 79 cents and Kenilworth with 68 cents.

Linden, with many industries, still has the lowest county rate of \$4.80 but that city also had a boost of 16 cents.

The county tax is based on the total net valuation taxable for county purposes—\$607,793,907, this year, a gain of more than \$24,000,000 over 1950's \$583,625,713. This figure includes several class railroad taxes certified to the board by the State.

This sum is applied against the county's 1951 budget, which calls for \$1,828,088 to be raised by taxation. From these two figures a county tax rate is struck.

**Voters Will**  
 (Continued from Page 1)

sumption of the tax or notifying township residents of the new voting district arrangement, ruling that the township has the right to set up new voting districts without the consent of the elections board.

Edward L. Whelan Jr., Elizabeth attorney and a son of the Democratic county chairman, appeared on behalf of Democratic Commissioners McBride and Davis, explaining his clients did not want to be accused of malfeasance because they failed to answer a court summons.

Election board workers had begun the task of changing registration forms of township voters from the former four-district arrangement to the new six-district setup. But they had stopped when the board rejected the plan. The notification now are being completed.

Township officials have pointed out that the new voting alignment will provide voting facilities for new residents. There will be no need for new districts for a long period, it has been indicated.

Judge Clery's ruling means Union County will have 205 voting districts at the April 17 primary. Now there will be twelve county committee members chosen. Prior to the decision there was confusion as to whether there would be twelve or eight.

**"SPEEDY" by Adams Sun Service**

OH, LUCKY ME! ON MY HONEYMOON, AND MARRIED TO A HANDSOME MAN WITH A BRILLIANT AND SHINY NEW CAR.

MY SWEET, I HAVE A CONFESSION TO MAKE. THE CAR ISN'T NEW. IT JUST LOOKS AND ACTS NEW—THANKS TO THE WONDERFUL SERVICE JOBS OF ADAMS SUN SERVICE.

WHAT A DARING SIDE ROAD LET'S EXPLORE IT!

THAT'S SYCIC (Y) A BRIDE PATH, PET—WE CAN'T DO THAT.

WELL, I DON'T SEE WHY NOT—I'M STILL A BRIDE, I HOPE!

**ADAMS SUN SERVICE**  
 569 MORRIS AVENUE ••• SPRINGFIELD  
 AT MILLBURN AVENUE

**Sensational Offer!**

**NEW FRIGIDAIRE Automatic Washer**

WITH A TRADE-IN ALLOWANCE OF UP TO

**\$50.00 FOR YOUR OLD WASHER**

3 Days Only—Thurs., Fri., Sat.

Trade It In. Terms To Suit

WASHER DRYER

**COMPLETELY AUTOMATIC**

- Loads from full-width top.
- Needs no hilling down—set it anywhere
- Add or remove clothes at any time
- Has Underwater Suds Distributor
- Has Clog-Proof Water Pump
- Water Temperature Control guards finer things

**School Expansion**  
 (Continued from page 1)

governing board has indicated it will cooperate with the board and that new school construction will have priority over any other type of municipal project.

In the meantime corridors in the Raymond Chisholm and James Caldwell Schools are crowded. Sunday School room facilities are being utilized in both the Methodist and Presbyterian Churches. The only classrooms left are the main auditoriums of the churches and the American Legion Home.

Township voters last year rejected two referenda which would have brought a new school to the municipality. Since these defeats, building needs have been immediately indicated that the original delays will cost the taxpayers thousands of dollars.

**SUCCESSFUL GARDENING MADE EASY!**

**GROUN-TONE**  
 the only 5 way action soil conditioner

- Limes • Aerates
- Binds • Granulates
- Increases Soil Fertility

Use in association with Terre Fertilizer.

For Lawns Economy Priced  
 Gardens & Shrubs 80 lbs. \$2.40

SEE YOUR LOCAL DEALER  
 If your local dealer cannot supply you, call THE TERRE CO.  
 Totowa, N. J. Little Falls 4-1500

**NOW You Can Enjoy Thick, Velvety Green Lawns In ANY Type Soil!**

LAWNSPUR TERRE SURE GROW TWINS PENNYPACK GRASS SEED

Lawnsput fertilizer perfect seed bed it ensures your magnificent, thick growth, brilliant green velvety grass even in poor soil. Lawnsput, a scientifically balanced nutrient, 40% Organic and rich in dried blood, feeds your lawn all season. 80 lbs. enough for 8000 sq. ft. ONLY \$5.50.

BUY NOW AT YOUR TERRE DEALER...  
 If your local dealer cannot supply you, call THE TERRE CO.  
 Totowa, N. J. Little Falls 4-1500

FOR THOUSANDS OF G. I.'S EVERY DAY

**Long Distance is the short way home**

FROM CAMP KILMER

Have you ever known a Service man or woman who didn't want to talk to the "home folks" by Long Distance? One of New Jersey Bell's most urgent jobs is to provide facilities for making these morale-building calls. This requires manpower and equipment. For instance, the Telephone Center at Camp Kilmer alone has as many switchboard positions as would be needed to serve a housing development of 1500 homes.

Hundreds of Defense plants also require additional Telephone service. New Jersey Bell is glad to report that the construction program started in 1945 makes it possible to meet these emergency needs promptly, while continuing to give you good service. Much more, of course, remains to be done to serve those waiting for service and the thousands who apply each month. It is being done as fast as scarce materials are available.

TO HELP SPEED YOUR LONG DISTANCE CALLS—and those of service men—please give the operator the out-of-town number.

**NEW JERSEY BELL TELEPHONE COMPANY**

**RADIO SALES corp.**

325-327 Millburn Ave. Millburn, N. J. Millburn 6-4200

"See The Marks Bros." Television Headquarters Established 1922

**MARKS BROS. SERVICE**

OPEN EVERY EVENING UNTIL 9 Terms Arranged

We Install, Service & Guarantee TV So You Can Enjoy It Worry-Free

Every detail of our service is personalized to meet the needs of the individual family. We are qualified to render friendly, sympathetic help and counsel.

**Young's Service Home**  
 ESTABLISHED 1908

ALFRED L. YOUNG, Funeral Director  
 15-19 MAIN STREET, MILLBURN  
 Millburn 6-0000



### Building Progress Listed by Firm

At a recent press luncheon, officials of Chubb & Son, Underwriters, reported on the progress being made in connection with their new office building. The building

is now in course of construction on a site located just north of Route 24 in Millburn Township and adjoining the Passaic River. The construction is being handled by Walter K. O'Neil, Constructors of New York City, and Calvin McCormick, architect in charge, feels that the building will be completed and

ready for occupancy during the month of October. The architectural and engineering work has been completed and large quantities of materials are already arriving on the site. Eventually, the building will be capable of housing in the neighborhood of 800 employees, and the ground floor of one wing will be devoted to a cafeteria to be operated for the convenience of the staff.

The firm of Chubb & Son is a partnership organized in 1882 and engaged in the management of various insurance companies. The firm currently manages eight companies, among which are the Federal Insurance Company of New Jersey and the United States Guaranty Company of New York. It handles all forms of insurance except life and health and accident and has a large marine department writing insurance on cargo and ships on a world-wide basis. It also does a large volume of automobile and fire insurance, also having facilities for insuring currency and securities as well as all forms of fidelity, bonding and aviation.

The initial move to the Millburn building will involve approximately 400 employees as the firm's plans involve the movement of a large percentage of their accounting and statistical staff, as well as a portion of the automobile, liability and fire underwriting and loss sections.

## SPRINGFIELD Savings & Loan Association

Organized 1929

275 Morris Ave.

Mi. 6-0969

### OPEN A SAVINGS ACCOUNT NOW!

Add To Or Withdraw From It

Any Time

ANY AMOUNT — \$1 to \$2,500

### MORTGAGE MONEY AVAILABLE

Perfectly Fitted GOOD-LOOKING GLASSES ASK YOUR EYE PHYSICIAN

# H. C. Deuchler

GUILD OPTICIAN

344 Springfield Ave. Summit, N. J. SU. 6-3848

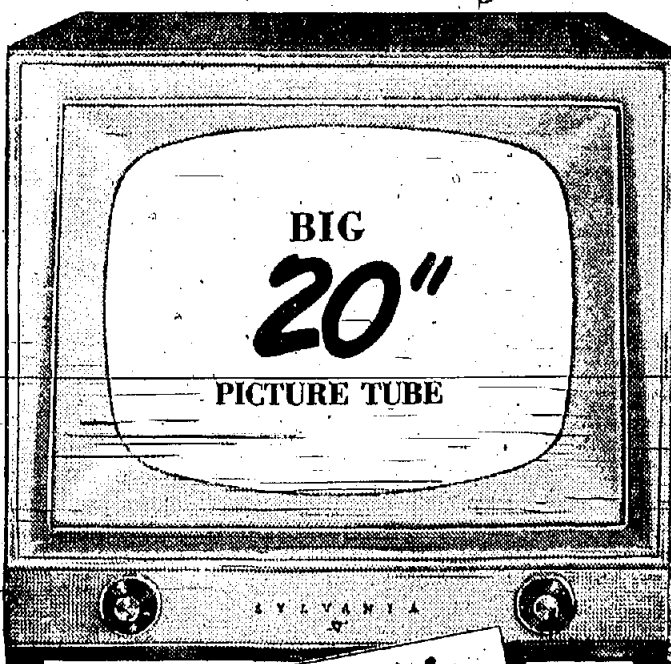
541 Main Street East Orange, N. J. OR. 3-1008

## RADIO SALES CORP.

Presents

# SYLVANIA

## 50th Anniversary Set



BIG 20" PICTURE TUBE

Biggest News in Television SEE IT TODAY!

ONLY \$399.95

HERE'S TELEVISION AT ITS BEST! 20" screen! Lustrous mahogany cabinet! Sylvania engineering means day-in-day-out dependable performance—Movie-Clear, Rock-Steady picture!

Be first to own the newest in television... Sylvania's 50th Anniversary Set.

SEE! HEAR! COMPARE!

\*Sylvania Trademark

## RADIO SALES CORP.

"See the Marks Bros."

325-327 Millburn Ave.

Millburn

ESTABLISHED 1922

OPEN EVERY EVENING UNTIL 9

## Regional Baseball Outlook Bright; 9 Regulars Back; Brownmen to Open April 11

By DONALD KROSSELET For the first time since baseball was inaugurated on the regional athletic scene, Coach Bill Brown can look forward without too much optimism to a successful campaign at the helm of the local nine. If the club, which thumped Hillside, Scotch Plains, Jefferson, Summit, and Union at the end of last year to finish with an 8-7 record, the worst since the sport was inaugurated in 1947, picks up where it left off last year it will be a strong contender in the Union County Conference race.

The usual pitching problem, customary to most high school mentors, the outfield and hitting boom as the greatest obstacles for Brown to overcome. Bill Peterson, who shared the chucking chores with Joe Wanko last year is the only hurler with varsity experience. Bob Thwaites, Joe Canopic, and Art Larson will back up Peterson on the hill. Thwaites, a fastballer, will also see considerable outfield service and Larson, who patrolled the outer pastures last season, has moved into the third base slot.

Charley Schaffernoth, junior receiver, rates with the best of the County's catchers. Schaffernoth wields a big bat and has a good arm. Sophomore Ed Robe and Frank Festa can fill in behind the plate. Henry Pasquale has moved from a utility role last year to the regular guardian of the initial sack. In Richie Tomasetti and Al Zimmer, Brown has the best keystone combination in the Conference. With Larson at third and Pasquale at first, the infield is sound defensively. Joe Pape and Lou

Bob are spare infielders. Fleet McCarver will perform in center field and Festa is scheduled for right. The other garden berth will be occupied by one of the pitchers or follower Bob Rogers.

Brown has lost five from last year's nine. Two left via graduation, two have dropped out, and one is average. The hardest shocs to fill are those of Frank Vicendese and Wanko. Vicendese, who is apparently headed for a professional baseball career with the New York Yankees after a four-year stay at the University of Miami, provided the club with long ball hitting and a good centerfielder. Wanko, who incidentally plied the Bulldogs to those late season wins, took his hitting and superb hurling with his diploma. The other three missing men are Sandy Gonzalez, Jack Murray, who left to take an afternoon job, and Bill Koono, who is to play with the Seton Hall freshman nine.

The attack this year will be built around Schaffernoth, a 410-lb. hitter last year, who has a round-tripper in the Westfield contest last season to his credit, and Festa, who hit 500 in two trips to the plate last year.

The schedule: April 11—Summit, home; 13—Newark Central, home; 17—Edison, home; 20—Westfield, home; 24—Rahway, away; 27—St. Mary's, home. May 1—Scotch Plains, away; 4—Linden, away; 8—Plainfield, away; 15—Roselle, home; 18—Newark Arts, home; 22—Hillside, home; 25—Summit, away. June 1—Union, away.

### Aids Organization Of County Group

Adam La Sota, vocational agricultural teacher at Regional High School, and a Springfield resident, will participate in organization of a county agricultural mobilization committee. The date and place of the session is scheduled to be announced this week.

Organization of the group has been suggested by Secretary of Agriculture Charles Brannan, Edward C. Schaffernoth, Scotch Plains farmer, who is chairman of the Union County Production and Marketing Administration committee, will serve as chairman of the mobilization committee. La Sota also will be a member together with other farm leaders.

### Your Library

Hours: Daily 10:30 a.m. to 5 p.m. Mon. and Fri. Even. 7:30 to 9 p.m. Nature gives to every season some beauties of its own.—Dickens.

Spring is the season of promise and release as well as beauty. Longfellow wisely wrote that if spring came only once in one hundred years, we would then take the time to watch and appreciate its miraculous change. The almost overnight response of bud and leaf to shower and sunshine merits our closest attention but, for most of us the busy days slip away and the miracle is taken for granted.

The gardener however, that born green-thumber, watches every sign and promise, ready with tools and seeds, for the first opportunity day. Your library offers all kinds of gardening helps, from simple leaflets given out by the College of Agriculture at New Brunswick, to a complete garden encyclopedia; whether it is flowers, vegetable or food laws you are interested in, the information is here.

New books this week include—"The Hand of the Hunter" by Jerome Weidman—"The Conqueror" by John Tebbel—"The Grand Portage" by Walter O'Meara—"Laird's Choice" by Rosamond Marshall—"The People's General" by David Loth. New titles in the Men of American Letters series are "Herman Melville" by Newton Arvin—"Theodore Dreiser" by F. O. Matthiessen and "Henry James" by F. W. Dupee.

### G. F. Rothweilers On Wedding Trip

George Frederick Rothweiler, III, and his bride, the former Corlaine-Meredith Knight, daughter of Mr. and Mrs. Carleton S. Knight of 430 Harrison street, Rahway, are on a two-week honeymoon trip to Miami, Fla. on their return they will reside in Garwood. The bridegroom is the son of Mr. and Mrs. George F. Rothweiler, Jr. of 340 Westfield avenue, Clark Township.

The couple were married last Saturday at the First Presbyterian Church, Rahway. The Rev. Chester M. Davis, D.D., pastor, and the Rev. Albert Allinger, of Cranford Methodist Church, officiated at a double ring ceremony. A reception for 175 guests was held at the Colonia Country Club.

Maid of honor was Miss Judith Walte and bridesmaids were the Misses Alice Smith, Alice Connors, Patricia O'Grady, cousins of the bride, and Nancy Rothweiler, sister-of-the-bridegroom. Miss Kathleen Burke, cousin of the bride, was flower girl. Paul Rothweiler was best man for his brother whose ushers were Edward Connors, cousin of the bride, John Peterson, Chester Yasinsky and George Conklin.

Given in marriage by her father, the bride was attired in a portrait gown of ivory satin, with a fitted bodice, sleeves and front panel of imported hand-clipped chantilly lace. The voluminous skirt fell from a close waist forming a full fan train. Her veil of imported illusion was draped from a crown of orange blossoms and she carried a white orchid on a prayer book.

The bride is a graduate of St. Patrick's Academy, Sewton, N. Y., and is employed by Girl Scout National Headquarters, N. Y. Her husband, a Regional High School graduate, served with the army during World War II, and attended Prior College, Trenton. He is employed as an auditor with Singer Sewing Machine Co., Plainfield.

### Kenyon Is Named Head of Hospital

Theodore S. Kenyon of Summit was elected president of the Overlook Hospital board of trustees at the annual meeting of the Overlook Hospital Association held at the nurses' residence. He succeeds John R. Montgomery of Short Hills who has served since April 17, 1947.

Mr. Kenyon joined the hospital board in November, 1947, when he was appointed to fill a vacancy. He is the senior member of the New York City law firm of Kenyon and Kenyon.

Other officers elected were Mrs. J. Ross Tuttle of Summit, vice-president; Clinton Van Cise of Summit, vice-president; Herbert Osborne of Summit, treasurer; Russell Hotchkiss of Short Hills, assistant treasurer and Arthur W. Smith, director, secretary to the board.

Mr. Montgomery will continue as a member of the board of trustees. George B. Webber, formerly of Plainfield but now residing at Blue Cross plans, "Presiding must be applied on these plans" so that suitable payment is received for services given to Blue Cross members. He added that hospital rates must be adjusted upward as often as necessary to balance income and expense.

The treasurer also called for a greater willingness on the part of municipalities in paying bills for persons who are unable financially to do so, regardless of whether

Hospital Lost \$18,246 The hospital completed the year with a loss of \$18,246, Mr. Webber revealed in his annual report. However, during the last year rates were increased for the first time since 1947 and are expected to produce an estimated \$30,000 in increased revenue each year. The full effect of the rate increase was not evident last year but in each month since September income has exceeded expense.

In looking to the future, Mr. Webber stated that since 40 per cent of the hospital's income is from Blue Cross plans, "Presiding must be applied on these plans" so that suitable payment is received for services given to Blue Cross members. He added that hospital rates must be adjusted upward as often as necessary to balance income and expense.

The treasurer also called for a greater willingness on the part of municipalities in paying bills for persons who are unable financially to do so, regardless of whether

## Compare These Prices!

<b>RUG CLEANING SALE</b>	<b>Economy BUDGET SERVICE</b>
<b>20% DISCOUNT</b>	<b>10 lbs. \$1.99</b>
Good Until April 14th	<b>4 SHIRTS FINISHED FREE</b>
	10¢ each add'l shirt
	10¢ each add'l pound

Enjoy These Savings !!

## CORBY'S Enterprise Laundry, Inc.

Su. 6-1000

**1951 KAISER and HENRY J. Immediate Delivery**

NO DOWN PAYMENT 36 MONTHS TO PAY FOR QUALIFIED VETS "World's Top Trader"

**LARSEN KAISER-FRAZER**

Open Evenings 455 Valley St. Maplewood On The Maplewood-South Orange Line

they are "classified as a 'town indigent.'" Now Without Mortgage The financial report also disclosed the fact that Overlook is now without a mortgage and that the Board is determined to keep it that way and to spend only funds on hand for any new construction, if possible.

Mr. Montgomery, in his report, paid tribute to Ridley W. Watts of Short Hills and his workers on the building fund campaign and to Auxiliary officials for the success of the annual "Follies."

Special mention was made by the retiring president of the director, Arthur W. Smith. Mr. Montgomery referred to Mr. Smith as "the man who has done more than anyone else to bring about the progress made during the last 3 1/2 years."

In summarizing recent accomplishments, Mr. Montgomery said: "Today we see our old plant rehabilitated to a point which we would have never believed possible; rooms redecorated; fine modern equipment throughout; financial solvent; an efficient organization; very complete records and files; in other words, a situation so improved as to make possible and practical a successful fund raising campaign for the kind of hospital that the community has so badly needed for such a long time. I congratulate him (Mr. Smith) most heartily for what he has done for us."

Mr. Smith's report was made around the theme, "The Good Things About Overlook Hospital." He reviewed the history of the institution from its beginning to the present.

Mr. Smith's report included mention of the school of nursing, nursing service, civil defense work, coats, equipment and improvements. He also cited the work of the Auxiliary and in particular its new project of organizing Twig units in the Overlook area.

TO APPEAR ON TV Murray Balsam, Springfield school dentist, will appear on a discussion panel, sponsored by the Dental Society of Essex County, on WAAT at 9:05 a.m. and on WATV, Channel 33 at 11:30 a.m., on Friday, April 13.

**SCREENS, All sizes in stock**

**COMBINATION DOORS KNOTTY PINE PANELING INSULATION BOARD**

Plywood, Cedar, Pickets, Ceiling, Tile, Masonite, Mouldings, Corner, Windows, Doors, Insulation, Hardware.

**HILTON SCREEN & LUMBER CO.**

2170 Springfield Ave. Vaux Hall UN 2-7108 Open Sun. A.M.

## LETTERS from Our Readers

### THANKS WOMEN

The Civilian Defense Council desires to express its appreciation to all members of the Springfield Women's Club and other women in the community who so ably assisted in distributing the "Kitchen cards" containing defense regulations to every household in town.

A. B. ANDERSON, Administrative Director, Civilian Defense.

### OPEN APPEAL

April is our month, by Act of Congress, to seek financial support for our year round crusade against cancer.

Springfield's quota is \$2,000 and we respectfully ask your help so that the thousands of volunteers of The American Cancer Society can continue to fight for the control of cancer and to discover the cause and cure of this savage killer.

Please mail your checks to Carl H. Richards, Local Treasurer, c/o First National Bank, Springfield.

Sincerely yours, EDWARD Z. WRONSKY, Chairman.

### PTA CARD PARTY SET FOR MONDAY

A few tickets are still available for the Annual Card Party, sponsored by the Springfield PTA, to be held Monday at the Balthasar Golf Club at 8:15 p.m. Mrs. Thomas Doherty, president, announced today. Tickets may be obtained by calling Mrs. Alfred Bowman, Millburn 6-2622. Members of the executive board are in charge of arrangements. Those planning to attend have been asked to bring cards.

**Carteret**

SUPERIOR COLLEGE PREPARATION

Accredited, All grades to college. Separate Junior School. Small classes. Personal supervision. Part-time students. Large extra. Scholastic. 400 acres along Orange Mt. Phone: Orange 1-2300 CARTERET SCHOOL, West Orange, N. J.

DR. WM. F. DECTER OPTOMETRIST

Eyes Examined 344 Millburn Ave.

Millburn Center MI. 6-0912

## NOW IS THE TIME TO SELL THAT HOUSE OR LOT

OUR MEN WILL APPRAISE YOUR PROPERTY FOR YOU WITHOUT COST OR OBLIGATION ON YOUR PART

**BAKER & McMAHON**

Real Estate and Insurance

206 MORRIS AVENUE SPRINGFIELD MI 6-4450

Open 9 a.m. to 9 p.m. — Also Sundays

# SPRING

## CONDITIONING SPECIAL

These are the important protective service operations your car must have.

<b>COOLING SYSTEM</b>	<b>MOTOR TUNE-UP</b>
<input type="checkbox"/> Flush cooling system	<input type="checkbox"/> Clean and adjust spark plugs
<input type="checkbox"/> Tighten hose connections	<input type="checkbox"/> Clean, adjust distributor points
<input type="checkbox"/> Replace necessary hose	<input type="checkbox"/> Set ignition timing
<input type="checkbox"/> Check for water leaks	<input type="checkbox"/> Tighten down cylinder head
<input type="checkbox"/> Check water pump	<input type="checkbox"/> Tighten electrical connections
<input type="checkbox"/> Adjust fan belt	<input type="checkbox"/> Clean gas lines
<input type="checkbox"/> Check and examine for proper thermostat	<input type="checkbox"/> Clean air filter
<b>\$2.45 Labor only</b>	<input type="checkbox"/> Adjust fan belt
<b>SAFETY CHECK</b>	<input type="checkbox"/> Check generator charging
<input type="checkbox"/> Clean and examine front wheel bearings	<input type="checkbox"/> Road test car
<input type="checkbox"/> Repack front wheels	<b>\$5.75 Labor only, parts extra</b>
<input type="checkbox"/> Examine brake lining and report	<b>LUBRICATION</b>
<input type="checkbox"/> Adjust brakes	<input type="checkbox"/> Lubricate car
<input type="checkbox"/> Adjust hand brake	<input type="checkbox"/> Repack rear springs
<input type="checkbox"/> Adjust steering gear	<input type="checkbox"/> Test battery
<input type="checkbox"/> Check lights	<input type="checkbox"/> Clean battery terminals
<input type="checkbox"/> Check wipers	<input type="checkbox"/> Flush transmission
<input type="checkbox"/> Check horn	<input type="checkbox"/> Flush differential
<b>\$4.95 Labor only</b>	<input type="checkbox"/> Refill with proper lubricants
	<b>\$5.95 Labor only</b>

ABOVE FOUR COMBINED INTO ONE For Only **\$16.95**

**Major Spring Conditioning Special**

**MORRIS AVE. MOTOR CAR CO., INC.**

155 MORRIS AVENUE MILLBURN 6-4210 SPRINGFIELD, N. J.



CLASSIFIED ADVERTISING

(6-IN-1) CLASSIFIED COMBINATION
Identified Advertising will be inserted in all three of the newspapers listed below for only seven cents per word.

MINIMUM CHARGE 10 WORDS - 70 CENTS - CASH WITH ORDER
MILLBURN-SHORT HILLS ITEM
MILLBURN 4-1200

Notice of error in copy must be given after first insertion. Typographical errors not the fault of the advertiser, will be adjusted by one free insertion. ALL COPY MUST BE IN BY 5 P.M. TUESDAY

NOTICE TO JOB APPLICANTS
This newspaper does not accept advertisements from employers offering less than the minimum wage. Firms engaged in interstate commerce or in the production of goods for commerce must pay at least one-half an hour and time and one-half for overtime under the Federal Wage and Hour Law. Advertisers covered by this law who offer lower rates to job seekers should be reported to the Department of Labor, 32 Clinton Street, Newark, or phone Mitchell 2-2392.

HELP WANTED FEMALE

Engineering Aides
Mathematical Aides
Research Aides
Young woman, college-trained, but has no practical experience, is offered as Technical Aides to engineers, mathematicians, physicists and chemists in the Bell Telephone System research and development unit.

Some of the available assignments are in experimental laboratory work and some are in technical work at desk or drawing board. All can be performed by individuals of exceptional ability. Most of them offer considerable latitude for the use of initiative and experience if there is any.

These positions are open now but about one third of them can be held only by summer graduates for prospective 1951 graduates who are very near future.

For this work college graduates who have had a major sequence in physics and mathematics are preferred. However, graduates having somewhat less science background and majors who were unable to attend the full four years will be given serious consideration if they have applicable experience.

Whatever the circumstances, the combined word of applicable training and any applicable experience will be given consideration in the awarding of an offer is made.

A few of many kinds of experience considered applicable are: paid laboratory assisting in a college laboratory, technical computing, teaching in field of major study, technical writing or editing and, or, technical aids experience obtained elsewhere in industry.

Our Personnel Office is open from 9:00 a.m. to 5:00 p.m. daily and, for your convenience, also on Saturdays. Interviewing hours are 2 P.M. to 3 P.M. You may apply in person or mail a resume if you prefer. An application blank will be sent upon request.

BELL TELEPHONE LABORATORIES, Inc.
Mountain Ave.
MURRAY HILL, N. J.
SUMMIT 6-6000, EXT. 3383

The company's Murray Hill Laboratory, where the majority of these positions are located, is in the Providence Township, accessible from Summit and the Lackawanna Railroad by bus service, or by car or course from much of the Metropolitan New Jersey commuting area by automobile.

DIRT for dry cleaning plant, 40 hour week, steady work, on condition. Y. Schlosser, 24 Walnut Street, Summit.

STENOGRAPHERS: secretaries, stenographers, bookkeepers, typists, clerks, etc. experienced, beginners. DOMESTICS - help, cooks, etc. experienced, beginners. Also general help. New Jersey Agency, 24 Park Place, Morristown 4-3609.

HELP WANTED
HELP WANTED
HELP WANTED
HELP WANTED
HELP WANTED
HELP WANTED
HELP WANTED
HELP WANTED
HELP WANTED
HELP WANTED

AN ATTRACTIVE OPPORTUNITY FOR OFFICE WORKERS
Commuting to Downtown New York who would prefer employment NEARER HOME
A LONG ESTABLISHED AND PROGRESSIVE INSURANCE FIRM WILL OPEN A LARGE OFFICE IN THE MILLBURN AREA NEAR SUMMIT THIS FALL
IMMEDIATELY AVAILABLE
In the New York office of this organization are positions listed below as well as other types of positions which will be moved this autumn to their attractive new office. Now is the time to apply.

Stenographers
Dictaphone Operators
Comptometer Operators
Key Punch Operators
Typists
Bookkeepers
Adding Machine Operators
Statistical Clerks
File Clerks
Write Box 274, Summit Herald

HELP WANTED—Male
AUTOMOBILE mechanic who knows Dodge and Plymouth cars. 5 day week, 2 weeks paid vacation, hospitalization and life insurance. Good pay to a good mechanic. Apply Dodge and Plymouth Dealer, 306 Broad Street, Summit, or phone Summit 6-1200 for appointment.

SALESMAN Wanted—If you are young, 20 to 35 years of age and have encountered difficulty getting employment, why not go into business for yourself selling Washburn Products? Good opportunity to develop permanent and profitable business. Write Washburn, Dept. NJ 27-813-111, Chester, Pa.

WASHMAN for laundry, experience desired but not required; vacations and holidays, good pay. Corby's Enterprise Laundry, 27 Summit Ave., Summit.

HELP WANTED—Female
The Summit Trust Co. wishes to receive applications from young women desirous of working in a bank day week, excellent working conditions. Phone Miss Corson, Summit 6-0062.

YOUNG woman, married or single, for full or part time work in home specialty shop. Interview, call Chatham 4-7830.

COUNTER girl for dry cleaning store, 40 hour week, steady work. Apply B. B. Blosser, 2 Walnut Street, Summit.

SALESWOMAN for pleasant sales work in Summit. Must have a knowledge of sewing. Five day week, opportunity for advancement in position and salary. Apply in person, at the Slings Sewing Center, 387 Springfield Avenue, Summit.

COMPETENT typist for general office work; also young lady trained or experienced in bookkeeping. Five day week, good salary, pleasant working conditions. Apply in person at First National Bank & Trust Co., Summit.

FULL time sales girl for shoe store. Experience desired. Apply in person at Grayson Shoe Store, 413 Springfield Avenue, Summit.

RADIO-TELEVISION PARTS MFG. Co. seeks experienced and expert assemblers, solderers, testers, etc. Apply to Q. L. C. CORP., 10 Liberty Street, Summit, N.J. Summit 6-0288

MIDDLE-AGED lady to share home with recently bereaved young widow. Home for 4 year old son. Four room garden apartment. Write Box 276, c/o Summit Herald, Summit, N.J. Summit 6-1565.

SALESWOMAN, Charities, 417 Springfield Avenue, Summit, N.J. Summit 6-0288

SWITCHBOARD repairmen, good opportunity for high type person. 315 Springfield Ave. Summit 6-0500.

GIRL to answer phone and office work. High school graduate. Write Box 276, c/o Summit Herald, Summit, N.J. Summit 6-0500.

DRAFTSWOMAN, mechanical, for detail and assembly drawing of small instruments. Phone Summit 6-0000.

REFINED, General house work, cooking, fond of children. Sleep in attractive room. Thursday and every other Sunday off. References and health card \$35 per week. Call Summit 6-7244.

FULL time maid in Mountalnside. Excellent home made plus and cakes, wanted for restaurant. Call Summit 6-5685.

SALESWOMAN, Charities, 417 Springfield Avenue, Summit, N.J. Summit 6-0288

FOR SALE
GLENWOOD range, 6 burners, 2 ovens, broiler, warming oven; suitable for tea room—good condition, \$40. Summit 6-0220-M.

SALESMAN Wanted—If you are young, 20 to 35 years of age and have encountered difficulty getting employment, why not go into business for yourself selling Washburn Products? Good opportunity to develop permanent and profitable business. Write Washburn, Dept. NJ 27-813-111, Chester, Pa.

WASHMAN for laundry, experience desired but not required; vacations and holidays, good pay. Corby's Enterprise Laundry, 27 Summit Ave., Summit.

HELP WANTED—Female
The Summit Trust Co. wishes to receive applications from young women desirous of working in a bank day week, excellent working conditions. Phone Miss Corson, Summit 6-0062.

YOUNG woman, married or single, for full or part time work in home specialty shop. Interview, call Chatham 4-7830.

COUNTER girl for dry cleaning store, 40 hour week, steady work. Apply B. B. Blosser, 2 Walnut Street, Summit.

SALESWOMAN for pleasant sales work in Summit. Must have a knowledge of sewing. Five day week, opportunity for advancement in position and salary. Apply in person, at the Slings Sewing Center, 387 Springfield Avenue, Summit.

COMPETENT typist for general office work; also young lady trained or experienced in bookkeeping. Five day week, good salary, pleasant working conditions. Apply in person at First National Bank & Trust Co., Summit.

FULL time sales girl for shoe store. Experience desired. Apply in person at Grayson Shoe Store, 413 Springfield Avenue, Summit.

RADIO-TELEVISION PARTS MFG. Co. seeks experienced and expert assemblers, solderers, testers, etc. Apply to Q. L. C. CORP., 10 Liberty Street, Summit, N.J. Summit 6-0288

MIDDLE-AGED lady to share home with recently bereaved young widow. Home for 4 year old son. Four room garden apartment. Write Box 276, c/o Summit Herald, Summit, N.J. Summit 6-1565.

SALESWOMAN, Charities, 417 Springfield Avenue, Summit, N.J. Summit 6-0288

SWITCHBOARD repairmen, good opportunity for high type person. 315 Springfield Ave. Summit 6-0500.

GIRL to answer phone and office work. High school graduate. Write Box 276, c/o Summit Herald, Summit, N.J. Summit 6-0500.

DRAFTSWOMAN, mechanical, for detail and assembly drawing of small instruments. Phone Summit 6-0000.

REFINED, General house work, cooking, fond of children. Sleep in attractive room. Thursday and every other Sunday off. References and health card \$35 per week. Call Summit 6-7244.

FULL time maid in Mountalnside. Excellent home made plus and cakes, wanted for restaurant. Call Summit 6-5685.

SALESWOMAN, Charities, 417 Springfield Avenue, Summit, N.J. Summit 6-0288

SERVICES OFFERED
32—PAINTING & DECORATING
JACOB C. COLLINS
Painting—Paperhanging—Decorating
9 McKee Street Springfield
Millburn 6-2169-W

PAINTING—PLASTERING
PAPERHANGING
INTERIOR—EXTERIOR
Best Materials—Work Guaranteed
A BOB FABRICATOR
2182 Morris Avenue Union, N. J.
Call Unionville 2-3888

WANTED House to paint G. B. White Jr. & Co. Painter and Decorator, 18 Edgar Street, Summit, N.J. Summit 6-1123-P. Free estimates.

PAINTER and paperhanger, work interior and exterior work. Outside painting and tarring. Workmanship guaranteed. Reasonable. Fred Pieper, J. Springfield Avenue, Springfield, N. J. Millburn 6-0843-J.

A COMPLETE piano restoration service. Tuning, repairing, rebuilding. Harold Heiser, 1000 Oliveville 2, 8431 or Unionville 2-4680.

33A—PLUMBING
RUDOLPH A. DILL
Plumbing & Heating Contractor
Jobbing Promptly Attended to
322 Ashland Road Summit 6-0411-M

39—UPHOLSTERING
SLIP covers, general repair. Sofa bottoms reupholstered. 8750 O. M. Thorpe, Livingston 6-2500

41—CESSPOOL CLEANING
EXPERT
SANITARY CESSPOOL SERVICE
CESSPOOLS and SEPTIC TANKS
CLEANED, BUILT, REPAIRED

CARL GULICK
Box 838
MORRISTOWN
MORRISTOWN 4-2082
BERNARDSVILLE 8-2082

INSTRUCTIONS
AUTO DRIVING
Learn To Drive
CERTIFIED AAA Instruction, Morris County Auto Driving School
Dual controls. Phone Morrisville 4-2622
Box 24, Bernardsville, N. J.

PERSONALS
ARRANGING a social gathering at my beautiful home to meet before a month or two. For men and women. References exchanged. Music, television and entertaining. Write to current events. Write to Box 829, Summit Herald.

DIAMOND APPRAISERS
OFFICIAL Diamond Appraisers, Sidney T. Holt, Est. 1922. MA 3-2739
Broad Street (Market); take car to sixth floor.

SCRAP METAL
WE BUY scrap iron and metal—Top prices paid. Millburn 6-4281-R

WANTED TO BUY
WE PAY CASH for your used furniture, appliances, silver, books, bric-a-brac, paintings, etc. Write to Box 829, Summit Herald.

HELP WANTED—Male
AUTOMOBILE mechanic who knows Dodge and Plymouth cars. 5 day week, 2 weeks paid vacation, hospitalization and life insurance. Good pay to a good mechanic. Apply Dodge and Plymouth Dealer, 306 Broad Street, Summit, or phone Summit 6-1200 for appointment.

SALESMAN Wanted—If you are young, 20 to 35 years of age and have encountered difficulty getting employment, why not go into business for yourself selling Washburn Products? Good opportunity to develop permanent and profitable business. Write Washburn, Dept. NJ 27-813-111, Chester, Pa.

WASHMAN for laundry, experience desired but not required; vacations and holidays, good pay. Corby's Enterprise Laundry, 27 Summit Ave., Summit.

HELP WANTED—Female
The Summit Trust Co. wishes to receive applications from young women desirous of working in a bank day week, excellent working conditions. Phone Miss Corson, Summit 6-0062.

YOUNG woman, married or single, for full or part time work in home specialty shop. Interview, call Chatham 4-7830.

COUNTER girl for dry cleaning store, 40 hour week, steady work. Apply B. B. Blosser, 2 Walnut Street, Summit.

SALESWOMAN for pleasant sales work in Summit. Must have a knowledge of sewing. Five day week, opportunity for advancement in position and salary. Apply in person, at the Slings Sewing Center, 387 Springfield Avenue, Summit.

COMPETENT typist for general office work; also young lady trained or experienced in bookkeeping. Five day week, good salary, pleasant working conditions. Apply in person at First National Bank & Trust Co., Summit.

FULL time sales girl for shoe store. Experience desired. Apply in person at Grayson Shoe Store, 413 Springfield Avenue, Summit.

RADIO-TELEVISION PARTS MFG. Co. seeks experienced and expert assemblers, solderers, testers, etc. Apply to Q. L. C. CORP., 10 Liberty Street, Summit, N.J. Summit 6-0288

MIDDLE-AGED lady to share home with recently bereaved young widow. Home for 4 year old son. Four room garden apartment. Write Box 276, c/o Summit Herald, Summit, N.J. Summit 6-1565.

SALESWOMAN, Charities, 417 Springfield Avenue, Summit, N.J. Summit 6-0288

SWITCHBOARD repairmen, good opportunity for high type person. 315 Springfield Ave. Summit 6-0500.

GIRL to answer phone and office work. High school graduate. Write Box 276, c/o Summit Herald, Summit, N.J. Summit 6-0500.

DRAFTSWOMAN, mechanical, for detail and assembly drawing of small instruments. Phone Summit 6-0000.

REFINED, General house work, cooking, fond of children. Sleep in attractive room. Thursday and every other Sunday off. References and health card \$35 per week. Call Summit 6-7244.

FULL time maid in Mountalnside. Excellent home made plus and cakes, wanted for restaurant. Call Summit 6-5685.

SALESWOMAN, Charities, 417 Springfield Avenue, Summit, N.J. Summit 6-0288

FOR SALE
GLENWOOD range, 6 burners, 2 ovens, broiler, warming oven; suitable for tea room—good condition, \$40. Summit 6-0220-M.

SALESMAN Wanted—If you are young, 20 to 35 years of age and have encountered difficulty getting employment, why not go into business for yourself selling Washburn Products? Good opportunity to develop permanent and profitable business. Write Washburn, Dept. NJ 27-813-111, Chester, Pa.

WASHMAN for laundry, experience desired but not required; vacations and holidays, good pay. Corby's Enterprise Laundry, 27 Summit Ave., Summit.

HELP WANTED—Female
The Summit Trust Co. wishes to receive applications from young women desirous of working in a bank day week, excellent working conditions. Phone Miss Corson, Summit 6-0062.

YOUNG woman, married or single, for full or part time work in home specialty shop. Interview, call Chatham 4-7830.

COUNTER girl for dry cleaning store, 40 hour week, steady work. Apply B. B. Blosser, 2 Walnut Street, Summit.

SALESWOMAN for pleasant sales work in Summit. Must have a knowledge of sewing. Five day week, opportunity for advancement in position and salary. Apply in person, at the Slings Sewing Center, 387 Springfield Avenue, Summit.

COMPETENT typist for general office work; also young lady trained or experienced in bookkeeping. Five day week, good salary, pleasant working conditions. Apply in person at First National Bank & Trust Co., Summit.

FULL time sales girl for shoe store. Experience desired. Apply in person at Grayson Shoe Store, 413 Springfield Avenue, Summit.

RADIO-TELEVISION PARTS MFG. Co. seeks experienced and expert assemblers, solderers, testers, etc. Apply to Q. L. C. CORP., 10 Liberty Street, Summit, N.J. Summit 6-0288

MIDDLE-AGED lady to share home with recently bereaved young widow. Home for 4 year old son. Four room garden apartment. Write Box 276, c/o Summit Herald, Summit, N.J. Summit 6-1565.

SALESWOMAN, Charities, 417 Springfield Avenue, Summit, N.J. Summit 6-0288

SWITCHBOARD repairmen, good opportunity for high type person. 315 Springfield Ave. Summit 6-0500.

GIRL to answer phone and office work. High school graduate. Write Box 276, c/o Summit Herald, Summit, N.J. Summit 6-0500.

DRAFTSWOMAN, mechanical, for detail and assembly drawing of small instruments. Phone Summit 6-0000.

REFINED, General house work, cooking, fond of children. Sleep in attractive room. Thursday and every other Sunday off. References and health card \$35 per week. Call Summit 6-7244.

FULL time maid in Mountalnside. Excellent home made plus and cakes, wanted for restaurant. Call Summit 6-5685.

SALESWOMAN, Charities, 417 Springfield Avenue, Summit, N.J. Summit 6-0288

SERVICES OFFERED
32—PAINTING & DECORATING
JACOB C. COLLINS
Painting—Paperhanging—Decorating
9 McKee Street Springfield
Millburn 6-2169-W

PAINTING—PLASTERING
PAPERHANGING
INTERIOR—EXTERIOR
Best Materials—Work Guaranteed
A BOB FABRICATOR
2182 Morris Avenue Union, N. J.
Call Unionville 2-3888

WANTED House to paint G. B. White Jr. & Co. Painter and Decorator, 18 Edgar Street, Summit, N.J. Summit 6-1123-P. Free estimates.

PAINTER and paperhanger, work interior and exterior work. Outside painting and tarring. Workmanship guaranteed. Reasonable. Fred Pieper, J. Springfield Avenue, Springfield, N. J. Millburn 6-0843-J.

A COMPLETE piano restoration service. Tuning, repairing, rebuilding. Harold Heiser, 1000 Oliveville 2, 8431 or Unionville 2-4680.

33A—PLUMBING
RUDOLPH A. DILL
Plumbing & Heating Contractor
Jobbing Promptly Attended to
322 Ashland Road Summit 6-0411-M

39—UPHOLSTERING
SLIP covers, general repair. Sofa bottoms reupholstered. 8750 O. M. Thorpe, Livingston 6-2500

41—CESSPOOL CLEANING
EXPERT
SANITARY CESSPOOL SERVICE
CESSPOOLS and SEPTIC TANKS
CLEANED, BUILT, REPAIRED

CARL GULICK
Box 838
MORRISTOWN
MORRISTOWN 4-2082
BERNARDSVILLE 8-2082

INSTRUCTIONS
AUTO DRIVING
Learn To Drive
CERTIFIED AAA Instruction, Morris County Auto Driving School
Dual controls. Phone Morrisville 4-2622
Box 24, Bernardsville, N. J.

PERSONALS
ARRANGING a social gathering at my beautiful home to meet before a month or two. For men and women. References exchanged. Music, television and entertaining. Write to current events. Write to Box 829, Summit Herald.

DIAMOND APPRAISERS
OFFICIAL Diamond Appraisers, Sidney T. Holt, Est. 1922. MA 3-2739
Broad Street (Market); take car to sixth floor.

SCRAP METAL
WE BUY scrap iron and metal—Top prices paid. Millburn 6-4281-R

WANTED TO BUY
WE PAY CASH for your used furniture, appliances, silver, books, bric-a-brac, paintings, etc. Write to Box 829, Summit Herald.

HELP WANTED—Male
AUTOMOBILE mechanic who knows Dodge and Plymouth cars. 5 day week, 2 weeks paid vacation, hospitalization and life insurance. Good pay to a good mechanic. Apply Dodge and Plymouth Dealer, 306 Broad Street, Summit, or phone Summit 6-1200 for appointment.

SALESMAN Wanted—If you are young, 20 to 35 years of age and have encountered difficulty getting employment, why not go into business for yourself selling Washburn Products? Good opportunity to develop permanent and profitable business. Write Washburn, Dept. NJ 27-813-111, Chester, Pa.

WASHMAN for laundry, experience desired but not required; vacations and holidays, good pay. Corby's Enterprise Laundry, 27 Summit Ave., Summit.

HELP WANTED—Female
The Summit Trust Co. wishes to receive applications from young women desirous of working in a bank day week, excellent working conditions. Phone Miss Corson, Summit 6-0062.

YOUNG woman, married or single, for full or part time work in home specialty shop. Interview, call Chatham 4-7830.

COUNTER girl for dry cleaning store, 40 hour week, steady work. Apply B. B. Blosser, 2 Walnut Street, Summit.

SALESWOMAN for pleasant sales work in Summit. Must have a knowledge of sewing. Five day week, opportunity for advancement in position and salary. Apply in person, at the Slings Sewing Center, 387 Springfield Avenue, Summit.

COMPETENT typist for general office work; also young lady trained or experienced in bookkeeping. Five day week, good salary, pleasant working conditions. Apply in person at First National Bank & Trust Co., Summit.

FULL time sales girl for shoe store. Experience desired. Apply in person at Grayson Shoe Store, 413 Springfield Avenue, Summit.

RADIO-TELEVISION PARTS MFG. Co. seeks experienced and expert assemblers, solderers, testers, etc. Apply to Q. L. C. CORP., 10 Liberty Street, Summit, N.J. Summit 6-0288

MIDDLE-AGED lady to share home with recently bereaved young widow. Home for 4 year old son. Four room garden apartment. Write Box 276, c/o Summit Herald, Summit, N.J. Summit 6-1565.

SALESWOMAN, Charities, 417 Springfield Avenue, Summit, N.J. Summit 6-0288

SWITCHBOARD repairmen, good opportunity for high type person. 315 Springfield Ave. Summit 6-0500.

GIRL to answer phone and office work. High school graduate. Write Box 276, c/o Summit Herald, Summit, N.J. Summit 6-0500.

DRAFTSWOMAN, mechanical, for detail and assembly drawing of small instruments. Phone Summit 6-0000.

REFINED, General house work, cooking, fond of children. Sleep in attractive room. Thursday and every other Sunday off. References and health card \$35 per week. Call Summit 6-7244.

FULL time maid in Mountalnside. Excellent home made plus and cakes, wanted for restaurant. Call Summit 6-5685.

SALESWOMAN, Charities, 417 Springfield Avenue, Summit, N.J. Summit 6-0288

FOR SALE
GLENWOOD range, 6 burners, 2 ovens, broiler, warming oven; suitable for tea room—good condition, \$40. Summit 6-0220-M.

SALESMAN Wanted—If you are young, 20 to 35 years of age and have encountered difficulty getting employment, why not go into business for yourself selling Washburn Products? Good opportunity to develop permanent and profitable business. Write Washburn, Dept. NJ 27-813-111, Chester, Pa.

WASHMAN for laundry, experience desired but not required; vacations and holidays, good pay. Corby's Enterprise Laundry, 27 Summit Ave., Summit.

HELP WANTED—Female
The Summit Trust Co. wishes to receive applications from young women desirous of working in a bank day week, excellent working conditions. Phone Miss Corson, Summit 6-0062.

YOUNG woman, married or single, for full or part time work in home specialty shop. Interview, call Chatham 4-7830.

COUNTER girl for dry cleaning store, 40 hour week, steady work. Apply B. B. Blosser, 2 Walnut Street, Summit.

SALESWOMAN for pleasant sales work in Summit. Must have a knowledge of sewing. Five day week, opportunity for advancement in position and salary. Apply in person, at the Slings Sewing Center, 387 Springfield Avenue, Summit.

COMPETENT typist for general office work; also young lady trained or experienced in bookkeeping. Five day week, good salary, pleasant working conditions. Apply in person at First National Bank & Trust Co., Summit.

FULL time sales girl for shoe store. Experience desired. Apply in person at Grayson Shoe Store, 413 Springfield Avenue, Summit.

RADIO-TELEVISION PARTS MFG. Co. seeks experienced and expert assemblers, solderers, testers, etc. Apply to Q. L. C. CORP., 10 Liberty Street, Summit, N.J. Summit 6-0288

MIDDLE-AGED lady to share home with recently bereaved young widow. Home for 4 year old son. Four room garden apartment. Write Box 276, c/o Summit Herald, Summit, N.J. Summit 6-1565.

SALESWOMAN, Charities, 417 Springfield Avenue, Summit, N.J. Summit 6-0288

SWITCHBOARD repairmen, good opportunity for high type person. 315 Springfield Ave. Summit 6-0500.

GIRL to answer phone and office work. High school graduate. Write Box 276, c/o Summit Herald, Summit, N.J. Summit 6-0500.

DRAFTSWOMAN, mechanical, for detail and assembly drawing of small instruments. Phone Summit 6-0000.

REFINED, General house work, cooking, fond of children. Sleep in attractive room. Thursday and every other Sunday off. References and health card \$35 per week. Call Summit 6-7244.

FULL time maid in Mountalnside. Excellent home made plus and cakes, wanted for restaurant. Call Summit 6-5685.

SALESWOMAN, Charities, 417 Springfield Avenue, Summit, N.J. Summit 6-0288

SERVICES OFFERED
32—PAINTING & DECORATING
JACOB C. COLLINS
Painting—Paperhanging—Decorating
9 McKee Street Springfield
Millburn 6-2169-W

PAINTING—PLASTERING
PAPERHANGING
INTERIOR—EXTERIOR
Best Materials—Work Guaranteed
A BOB FABRICATOR
2182 Morris Avenue Union, N. J.
Call Unionville 2-3888

WANTED House to paint G. B. White Jr. & Co. Painter and Decorator, 18 Edgar Street, Summit, N.J. Summit 6-1123-P. Free estimates.

PAINTER and paperhanger, work interior and exterior work. Outside painting and t







### Market Bowlers In First Place

Springfield Market won two out of three games from the Senators Monday night at the local bowling alleys and is now in first place. Nelson Texaco, which won two from Geljack's Jewelry Shop in second spot. Ben Five lost all three to Keller's Five and is tied with the Senators for third position. Seven Bridge Tavern took two games from the American Legion and is in fourth place, only four games behind the leading Market bowlers. Bunnell-Bros. won three from Hershey Ice Cream and Battle Hill took two from Russell's Men's Shop.

Don Piersan's 225 was high game for the night. Bobby Anderson

Standings

Springfield Market	51	32
Nelson's Texaco	50	34
Senators	49	35
Ben Five	49	35
7 Bridge Tavern	47	37
American Legion	44	40
Bunnell Bros.	42	41
Russel's Men's Shop	41	42
Hershey Ice Cream	35	49
Keller's Five	34	50
Battle Hill	31	52
Geljack's Jewelry Shop	30	54

SPRINGFIELD BOWLING LEAGUE  
April 2, 1951

Ben Five	150	142	150
E. Rad	163	162	162
Wintzsch	145	157	159
G. Rau	145	157	159
E. Rau	150	155	164
B. Sank	104	176	176
B. Sank	34	31	31
Handicap	805	861	852
Totals	805	861	852

Keller Five

C. Walker	142	148	171
D. Zell	159	159	147
G. Keller	152	170	170
W. Keller	165	177	151
B. Walker	147	190	212
Handicap	99	99	99
Totals	874	887	889

Russel's Men's Shop

Kugelman	166	148	146
Rossner	158	176	173
Hembuck	141	138	135
Smith	168	153	153
G. Graziano	196	161	162
Handicap	82	82	82
Totals	913	820	791

Battle Hill

Wellhausen	153	158	132
Steyer	136	161	150
Brombosky	132	164	161
Hansen	158	149	176
Volz	144	138	203
Handicap	82	82	82
Totals	798	855	957

Bunnell Bros., Inc.

Walton	205	207	150
Swisher	114	170	138
B. Bunnell	108	136	915
D. Bunnell	157	169	145
Burdick	285	192	168
Handicap	54	54	54
Totals	883	888	853

Hershey Ice Cream

Schmidt	130	135	169
W. Schramm	157	140	175
Schniger	103	121	138
Kessler	120	164	154
Davis	109	204	142
Handicap	62	62	62
Totals	830	857	845

Nelson's Texaco

A. Dandrea	138	145	168
Servino	162	165	159
Marcketta	172	153	139
M. Dandrea	204	203	161
Giulietti	157	162	162
Handicap	44	44	44
Totals	893	867	885

Geljack's Jewelry Shop

T. Graziano	189	199	153
Doyle	104	116	135
J. Jones	109	116	95
Pleper	159	202	196
Parver	122	162	162
Handicap	62	62	62
Totals	923	818	803

American Legion

Brenschler	148	158	135
Van Hoesen	148	168	152
Schoel	145	135	130
R. Schramm	172	179	167
Argest	175	154	135
Handicap	58	58	58
Totals	922	781	737

Seven Bridge

Morrison	156	145	171
D. Widmer	200	187	193
H. Widmer	191	192	157
Bill	177	178	146
Handicap	26	26	26
Totals	862	908	950

Springfield Market

Anderson	220	172	161
Larsen	97	101	101
Funcheson	104	177	165
Mutschler	103	161	151
Piersan	170	215	173
Handicap	40	40	40
Totals	974	965	951

Senators

Kaspar	189	130	182
R. Forse	128	176	138
Glencore	116	169	177
J. Forse	149	159	170
Grecco	175	159	158
Handicap	58	58	58
Totals	813	837	885

**Unionville 2-4700**

**CAREFUL Personal SERVICE**

We strive to merit your highest esteem by trustworthiness. Untiring service and duties conscientiously performed will always guide our efforts.

**Mc CRACKEN FUNERAL HOME**  
WM. F. Mc CRACKEN  
1514 MORRIS AVE. UNION, N.J.

**FOR YOUR GARDEN**

- Finest Evergreens
- Shade, Ornamental, Fruit Trees
- Flowering Shrubs
- Perennials
- Seeds, Fertilizers, Humus, Peat Moss

**QUALITY NURSERY STOCK**

NEW JERSEY GROWN ROSE BUSHES in varieties which have proven successful in this soil and climate. They are better and cost less. Also J. & P. Patent Roses.

**PRICES THAT ARE REASONABLE**

**SOUTH MOUNTAIN NURSERIES**  
LANDSCAPE CONTRACTORS  
Millburn Ave. & Vaux Hall Rd., Millburn N.J. 6-1330  
OPEN SUNDAYS

PRE-PRIMARY TEA

A Pro-Primary Tea, sponsored by the Union County Federation of Republican Women, Inc., will be held Monday at 2 p.m. at the YMCA, Elizabeth. The public has been invited to attend. Candidates for office will be presented to the group and will speak briefly.

Capt. William Kidd, famed pirate, was a well-known citizen of New York and lived at Pearl and Hanover streets when not at sea.

# IT'S MAGIC...

## 284 WAYS TO EASIER SPRING CLEANING AT GRAND UNION

There's magic in the wide variety of spring cleaning needs at Grand Union. You'll find 284 magic products to make spring cleaning easier on your time, easier on your effort, easier on your pocketbook.

**JOIN THE GRAND PARADE OF "SPRING CLEANERS" TO GRAND UNION**

<b>Rinso</b> Contains Solum	Giant Package 61¢	2 large pkgs.	59¢
<b>Clorox</b> Make Clothes CLOROX Clean		2 quart	31¢
<b>Brillo</b> Soap Pads or Cleanser		large pkg.	19¢
<b>Morgan</b> Dish Cloths		pkg. of 3	25¢
<b>Scrub</b> Brushes		2 for	29¢
<b>Ace</b> Parlor Brooms		each	69¢
<b>Vanish</b> Bowl Cleaner		21 oz. can	19¢
<b>Vel</b> MarVELous for Dishes		75¢ pkg.	32¢
<b>Ivory Soap</b> "For That Ivory Look"		2 medium cakes	19¢
<b>Dreft</b> DREFT for Dishes		8oz. pkg. large pkg.	32¢
<b>Swan Soap</b> Creamier Lather		2 large cakes	31¢
<b>Tide</b> "Tide's In - Dirt's Out"		large pkg.	32¢
<b>Palmolive</b> For a Lovely Complexion		2 bath cakes	25¢
		reg. size	9¢

**COMBINATION SALE**  
One Plastic Apron only 15¢  
With Every Purchase Of One Plastic Table Cloth at 98¢  
Both For 1.13

**COMBINATION SALE**  
One Package Clothes Pins for 1¢  
With Every Purchase Of One 50-Foot Clothes Line at 65¢  
Both For 66¢

**WILBERT PRODUCTS**  
No-Rub For Glass 45¢  
No-Rub Floor Wax 59¢  
Furniture Polish 25¢  
Auto Plate 75¢

**EXHIBIT "A" AGAINST PICKPOCKET FURNACE**

Why spend winter after winter keeping a Pickpocket Furnace that eats up fuel and money? No matter what kind of furnace you use, your heating system may need to be replaced to give you low fuel bills.

**Question: Is your furnace or boiler "made" for one type of fuel, changed over to another?**  
**Question: Do you struggle with a shovel... and ash cans?**  
**Question: Are your fuel bills ruining your budget?**  
**Answer: If "yes" to any of these, let us show you how we can help you...**

**SAVE FUEL—SAVE MONEY!**

**GE oil boiler**

Think of it! Fuel savings up to 50%. Completely automatic, quiet, clean heat. Instantaneous hot water the year 'round. Plus all these G-E features that mean greater comfort and lower fuel bills:

- Famous G-E "Turn-back Flame"
- "Atom-G-E" low-pressure burner nozzle
- Heat Trap design
- Decorative styling
- Super-sensitive controls and safety features
- A product of G-E "Climate Engineering"

**GENERAL ELECTRIC**

Call us today for a free survey of your heating needs!

**Home Fuel Oil Co.**  
144 Midland Avenue, East Orange, N. J.  
Telephone OR 5-8000

**FUEL OIL COMPANY**

**GRAND UNION "BACKED BY BOND" QUALITY MEATS**

**SEA FOOD** Center Cuts  
Quick-Frozen Fish  
Cod Fillets, Teddy's lb. 37¢  
Perch Fillets, Teddy's lb. 43¢  
Available in Self-Service Departments

**CHICKENS** Roasting  
Ready-to-Cook 5 1/2 lbs. lb. 66¢  
Regular Dressed Up to 4 1/2 lbs. lb. 49¢

**SMOKED PORK BUTTS** lb. 79¢  
Two Meats in One  
Lamb Fore Chops or Stew lb. 59¢

**SHORT RIBS OF BEEF** lb. 59¢  
Economic and Flavorful

**SLICED BACON** 1 lb. pkg. 59¢  
Kroy's "Hostess"

**CANADIAN STYLE BACON** 1/2 lb. pkg. 59¢  
Fancy Sliced  
Pork Liver lb. 43¢  
Oscar Mayer  
Liverwurst or Sandwich Spread 8 oz. jar 35¢  
Short Cut  
Smoked Tongues lb. 59¢

**FRESH FRUITS AND VEGETABLES**

**Tender Broccoli** California—Tender—Compact bunch 23¢

**Seedless Grapefruit** Large—Fresh Juicy 3 for 29¢

**Fancy Tomatoes** Firm—Red—Ripe cello. cin. 19¢

**Pineapples** Ripe—Fragrant—Golden each 25¢

**Green Peppers** For Stuffing or Salads 2 lbs. 29¢

**Hothouse Rhubarb** Tender lb. 23¢

**Cole Slaw** Fresh Made cello. pkg. 15¢

**Radishes** Crisp—Tender—Red bunch 5¢

**DAIRY FOODS "BACKED BY BOND"**

Borden Grated American 2oz. 15¢  
Borden Brie Cheese 4oz. 37¢  
Military Camembert 3oz. pkg. 37¢  
Danish Blue Cheese 1oz. 59¢

Domestic Swiss Cheese lb. 70¢  
Mild Cheddar Cheese lb. 59¢  
Muenster Cheese lb. 55¢  
Loaf American Cheese lb. 57¢

**FROZEN FOODS**

Green Peas Birds-eye Snow Crop 12 oz. pkg. 23¢  
Snow Crop Spinach Chopped or Leaf 14oz. pkg. 23¢  
Snow Crop Green Beans Cut or French 10oz. pkg. 23¢

**Chun King Chow Mein Noodles** A large can of Chun King Chow Mein Noodles For Only 1¢ With Each Purchase of Chun King Chicken Submarine Chow Mein Both for 49¢  
Chun King Meatless Chow Mein Both for 43¢

**Chun King Chop Suey Rice** For Only 1¢ With Each Purchase of Chun King Beef Chop Suey both for 49¢

**Gerber's Baby Foods** Strained 10 jars 97¢  
Chopped 6 jars 85¢

**GRAND UNION**

These Prices Effective Only in Grand Union Super Markets in This Area.

**AMERICAN INTERNATIONAL ENCYCLOPEDIA** only 79¢  
in 16 Fine Volumes  
With a Volume a Week  
WITH PURCHASE OF ANY AMOUNT

**Chun King Chinese Dinner** 47¢  
Hot Sauce  
Ritz Crackers 1lb. pkg. 33¢  
Lipton Dog Food 2 cans 27¢

**All Grand Union Super Markets Remain Open Friday Nights Until Nine**

STORE HOURS: Weekdays and Saturdays 8:30 A. M. to 6:00 P. M.  
Summit and Union stores open Thur. & Fri. evenings until 9:00 P. M.  
Millburn, 319 Millburn Ave. — Union, 3046 Stuyvesant Ave. — Summit, 94 DeForest Ave.