

COMPLETE
Coverage in News and
Circulation - - - Read
It in the Sun

The Springfield Sun

OVER 5,000
People in Springfield
Read the Sun Each Week

VOL. XXVII—No. 2 OFFICIAL NEWSPAPER SPRINGFIELD, N. J., THURSDAY, NOVEMBER 1, 1951 OWNERSHIP OF SPRINGFIELD 10c A COPY, \$3.50 BY THE YEAR



FRIENDS!!

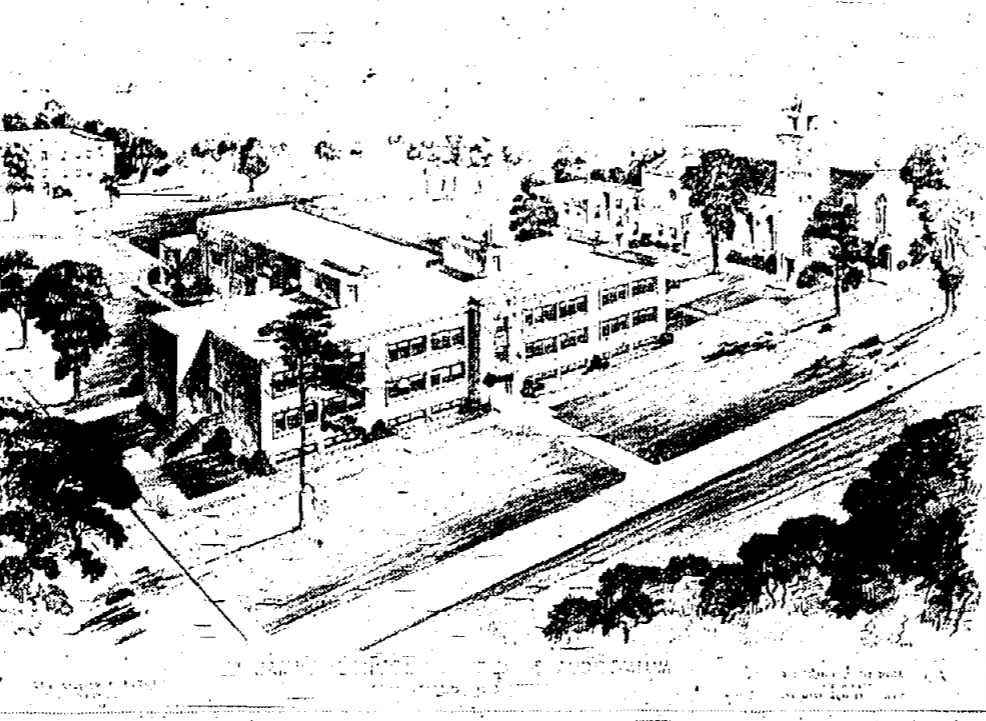
Next week this time it will be all over... results of the election will have been accepted by many with satisfaction and by others with concern... the most important thing to remember now is that you will have no right in the world to intermeddle if you don't exercise your privilege of voting... Tuesday should be a very important day on your calendar because it will mean you helped to decide three mighty important local matters, namely, the selection of a member of the Township Committee, the election of a Township Clerk and whether or not Springfield shall have a new centralized firehouse at an estimated cost of \$125,000... from this vantage point it looks like Fred Brown will be re-elected without difficulty and that it will be a loss up between Wilbur M. Selander and Eleanor Worthington for town clerk... what will happen on the firehouse question is anyone's guess?

Fire Dept. Makes Plea For Hdqts.

Baldwin Asserts Township Needs \$125,000 Unit

Open house session will be held tomorrow and Friday evenings at the Firehouse to answer questions relative to the proposed centralized firehouse, it was announced this week. Township voters will ballot on a proposal for construction of the \$125,000 project on Tuesday.

St. James' School-Church Project



Architect's sketch of the church and school and future buildings which will be constructed by St. James R. C. Church. Cost of the current project which includes the school and church is \$700,000 of which \$125,000 is expected to be raised within the next two weeks commencing Sunday. The church will seat 800 and the school will have eleven classrooms.

Catholics Launch Campaign For New Parochial School

A drive to raise a minimum of \$125,000 for construction of the \$700,000 combination church and school building of St. James R. C. Church on South Springfield avenue near Mountain avenue, will be launched Sunday. The campaign will end November 18. Each adult of the parish who is working has been asked to contribute a minimum of \$200 payable over a period of two years. It has been pointed out that this represents a payment of approximately \$8.33 a month, less than \$2 a week, or cents a day.

Turk Makes Plea For Early Mailing

Acting Postmaster George M. Turk today urged township residents to mail their Christmas packages and messages early and issued a list of dates together with a reminder of postal regulations governing holiday mailing.

Rotarians Told of Plight in Germany

An account of a recent trip through the English, American and French occupation zones of Germany, was related to the Springfield Rotary Club Tuesday noon by Rudolph Mangels of Union, realtor, who described conditions of the country.

Plan Blood Bank Visit Dec. 13

Howard Casselman, chairman of the local Red Cross Chapter, reports that the Mobile Blood Bank Unit will visit Springfield on December 13. Packages are being made for its accommodation at the Legion Hall.

FORLENS HEADS SCOUT FUND DRIVE

Pelle Forlenza, local attorney, has been named general chairman of the annual Boy Scout Finance Campaign in Springfield. It was announced today by Jack Dalton of 54 Springfield road, vice-chairman of the Northern District Union Council Boy Scouts of America, and Harold Bunting, chairman of the finance committee.

Battling Factions Wind Up Local Election Campaign; Await Tuesday's Results

Contracts Awarded For New School

Contracts totaling \$674,063 for construction of the proposed upper grades elementary school in South Springfield avenue were awarded Tuesday night by the Board of Education. The five firms which submitted the lowest bids to the board on September 23 received the contracts.

Struggle for Clerk's Post Seen Strictly As Toss-Up

Torchlight parades, doorbell-ringing and last minute campaigning are expected to feature the climax of the election here as hundreds of township residents go to the polls Tuesday to elect a municipal clerk, a Township committee member, and decide whether Springfield is to construct a \$125,000 centralized fire headquarters building.

Thieves Take \$50 From Rt. 29 Store

Thieves broke into Toyland, Route 29, near the Howard Johnson Restaurant, taking \$50 from a cash register and carrying away an undetermined number of army and navy surplus clothes. The break was discovered by Patrolman Ivo Bebbel. Evidence was gained by breaking the glass in the front door, C. J. Forte, of 17 Algonquin drive, Cranford, is the store owner.

Regional Residents Blast School Addition Project

Protests by several residents of the Regional School District who complained that the Board of Education should immediately commence construction of a new school in Mountainside instead of the proposed addition to the present school featured the public meeting at the school last night. The session was called by board members to explain the board's \$1,465,000.

Halloween Window Winners Announced

Winners of the annual Halloween window painting contest sponsored by the art departments of the local grade schools, Regional High School and Rotary Club were announced this week following judging of the entries on Sunday.

Flyer Honored By Air Force

Captain Vincent H. McGovern, left, son of Mrs. Colla McGovern, of 21 Edgewood avenue, is decorated by Col. Richard T. Kight, commanding officer of Air Rescue Service. He received the Distinguished Flying Cross for remarkable accomplishments in Korea.

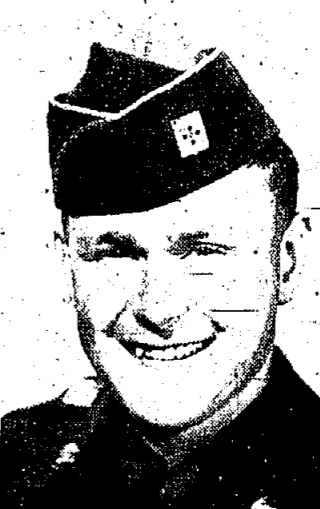
Springfield Pilot Awarded Distinguished Flying Cross

Captain Vincent H. McGovern, converted bomber with the Third Air Rescue Squadron and volunteered for the dangerous mission. His citation read in part "Captain McGovern demonstrated exceptional professional skill in locating the objectives while flying at minimum altitudes over mountainous terrain where enemy positions were probable and expected. His superior performance and determination in accomplishing this unusual assignment contributed materially to the success of the United Nations Mission.

Township Family Files Suit

Four members of a township family have instituted a County Court suit against the Township of Cranford for \$5,200, claiming negligence by the municipality was responsible for collapse of a decaying tree on their automobile. The plaintiffs are Mr. and Mrs. James J. Jensen, their children, James Jr., 35, and Jean, 11 months, of 45-A Wabeno avenue.

Policeman's Son Off to War Zone



Pfc. Nelson F. Stiles, son of Police Sgt. and Mrs. A. Nelson Stiles, of 519 Mountain avenue, had completed a furlough spent with his parents and now is en route to Fort Lawton, Wash., from where he will be transferred to the Far East Command as a replacement.

Schedule Hearing For Wabeno Ban

The Township Committee has scheduled a hearing on Wednesday night, November 14, on an ordinance which would ban parking on both sides of Wabeno avenue. The measure was introduced last week. The street, now in the final stages of development, will extend between Pleasant and Melba avenues, through the General Green Village Garden Apartment development. A hearing on an ordinance which prohibits west-bound traffic in Wabeno avenue also has been postponed until November 14.

FORLENS HEADS SCOUT FUND DRIVE

Pelle Forlenza, local attorney, has been named general chairman of the annual Boy Scout Finance Campaign in Springfield. It was announced today by Jack Dalton of 54 Springfield road, vice-chairman of the Northern District Union Council Boy Scouts of America, and Harold Bunting, chairman of the finance committee.

State Meeting

Final arrangements for the hearing to be held November 9 will be discussed at a meeting of the Young Men's Christian Association of St. Stephen's Church Tuesday at 8 p.m. in the Parish House. The Rev. Benjamin Axlerod will give a talk and show slides on Brazil. Refreshments will be served.

Schedule Hearing For Wabeno Ban

The Township Committee has scheduled a hearing on Wednesday night, November 14, on an ordinance which would ban parking on both sides of Wabeno avenue. The measure was introduced last week. The street, now in the final stages of development, will extend between Pleasant and Melba avenues, through the General Green Village Garden Apartment development. A hearing on an ordinance which prohibits west-bound traffic in Wabeno avenue also has been postponed until November 14.

With two local contests, a local referendum, a county proposition, and a state referendum in addition to election of a state senator, four assemblymen and three freeholders a good turnout for an "off" year is anticipated. Balloting will be in the six election districts from 7 a.m. to 8 p.m.

Democrats in their last-minute bid questioned the spending of the Republican administration urging minority representation to stop what they claimed was the draining of "our very economic life blood at an increasing tempo by their untimely proposals." The Democrats, who control approximately 400 of 2,400 votes in a normal election are conceded a chance with the split in the fight for clerk.

Considerable conjecture centered on the importance of feminine votes here. Reports are to the effect that they are solidly missed behind Mrs. Worthington but indications are that there are plenty of feminine supporters on the Selander bandwagon. Actually, few observers will make any prediction on the contest.

In event of a tie the township committee would name an acting clerk for another year.

Charles A. Eaton of Watchung, Somerset County, Texas L. Hess U. S. House of Representatives of Somerville, is the county's State member for the Fifth Congressional District, which includes Preakin, is the Assemblyman.

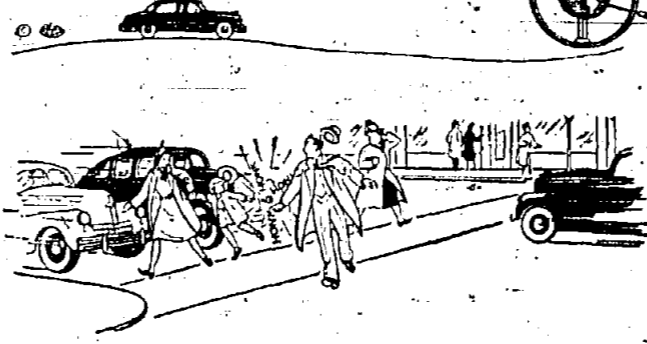
CIVIL DEFENSE TESTS SUNDAY

Civil defense drills in Union County will take place in local air raid tests Sunday afternoon at an unannounced time, State Civil Defense Director Leonard Dreyfuss said this week.

MADISON DRIVER FINED AS TIPSY

Clifford C. Missall, 32 years old, of 2 Elmer avenue, Madison, was fined \$200, assessed \$23 costs and his license was revoked for two years by Magistrate Henry C. McMullen in Municipal Court Monday night when he pleaded guilty to a charge of drunken driving.

Sportsmanlike DRIVING



WAIT FOR WALKERS

Pretty soft stuff! That's what pedestrians are made of. So it's a lot better not to push them around with that big motorized mass of steel and chromium—your car.

Questions & Answers on Civil Defense

By LEONARD DREYFUSS State Civil Defense Director (No. 9 in a Series)

Q—Will food be safe to eat after a ground burst? What about water? A—If notified your area is contaminated, you must be especially careful about foodstuffs and water.

Q—What about evacuation? Has New Jersey planned for this? A—There will be no mass evacuation of American cities in case of attack.

STAY on the "B" LINE with Worthington

SINGER SEWING CENTER. Here you will find practically everything for the woman who sews. Includes sewing machines, accessories, and expert repairs.

"SPEEDY" by Adams Sun Service. Advertisement for a service that provides quick and reliable car services.

ADAMS SUN SERVICE. 569 MORRIS AVENUE ••• SPRINGFIELD. AT MILLBURN AVENUE.

WE NEED MINORITY REPRESENTATION! GIVE DEMOCRACY A CHANCE TO WORK IN SPRINGFIELD. VOTE FOR GLENN and BRYSON FOR Township Committee and Township Clerk.

Q—If a person has reason to believe he has radioactive particles on him, what should he do? A—If there is reason to believe your clothes have been contaminated, discard them as soon as you can.

Q—How can I tell the difference between an air, water or surface burst? A—By the cloud it creates. The air burst produces the characteristic mushroom cloud.

STAY on the "B" LINE with Worthington

STAY on the "B" LINE with Worthington

STAY on the "B" LINE with Worthington

STAY on the "B" LINE with Worthington

STAY on the "B" LINE with Worthington

STAY on the "B" LINE with Worthington

STAY on the "B" LINE with Worthington

STAY on the "B" LINE with Worthington

STAY on the "B" LINE with Worthington

STAY on the "B" LINE with Worthington

STAY on the "B" LINE with Worthington

STAY on the "B" LINE with Worthington

STAY on the "B" LINE with Worthington

STAY on the "B" LINE with Worthington

STAY on the "B" LINE with Worthington

STAY on the "B" LINE with Worthington

STAY on the "B" LINE with Worthington

STAY on the "B" LINE with Worthington

STAY on the "B" LINE with Worthington

STAY on the "B" LINE with Worthington

STAY on the "B" LINE with Worthington

ions can be governed accordingly. If an air burst, then you can leave shelter almost immediately and will be able to assist in firefighting, rescue and generally help ground or water burst means help in need of assistance. A STAY UNDER COVER.

Q—Wouldn't an atomic bomb be dropped in a reservoir by the enemy? A—Only if he was pretty much of a fool, and for several good reasons. It just wouldn't be worth it, for one.

Q—What if an enemy plane is shot down before it drops its atomic bomb? Won't it explode when it crashes? A—Not necessarily. That question is difficult to answer because so many factors influence the explosion.

Q—Weren't most people within a mile of ground zero in Japan killed? A—No. The bombing surveys of the atomic bombing of Hiroshima and Nagasaki state that 80 out of every 100 people within one mile of ground zero lived in Hiroshima, and the ratio was 80 out of every 100 at Nagasaki.

Q—If a person has reason to believe he has radioactive particles on him, what should he do? A—If there is reason to believe your clothes have been contaminated, discard them as soon as you can.

Q—How can I tell the difference between an air, water or surface burst? A—By the cloud it creates. The air burst produces the characteristic mushroom cloud.

Q—Why is it important to distinguish between these types of explosions? A—So that your subsequent actions can be governed accordingly.

Q—If a person has reason to believe he has radioactive particles on him, what should he do? A—If there is reason to believe your clothes have been contaminated, discard them as soon as you can.

Q—How can I tell the difference between an air, water or surface burst? A—By the cloud it creates. The air burst produces the characteristic mushroom cloud.

Q—Why is it important to distinguish between these types of explosions? A—So that your subsequent actions can be governed accordingly.

Q—If a person has reason to believe he has radioactive particles on him, what should he do? A—If there is reason to believe your clothes have been contaminated, discard them as soon as you can.

Q—How can I tell the difference between an air, water or surface burst? A—By the cloud it creates. The air burst produces the characteristic mushroom cloud.

Q—Why is it important to distinguish between these types of explosions? A—So that your subsequent actions can be governed accordingly.

Q—If a person has reason to believe he has radioactive particles on him, what should he do? A—If there is reason to believe your clothes have been contaminated, discard them as soon as you can.

Q—How can I tell the difference between an air, water or surface burst? A—By the cloud it creates. The air burst produces the characteristic mushroom cloud.

Q—Why is it important to distinguish between these types of explosions? A—So that your subsequent actions can be governed accordingly.

Q—If a person has reason to believe he has radioactive particles on him, what should he do? A—If there is reason to believe your clothes have been contaminated, discard them as soon as you can.

Q—How can I tell the difference between an air, water or surface burst? A—By the cloud it creates. The air burst produces the characteristic mushroom cloud.

Q—Why is it important to distinguish between these types of explosions? A—So that your subsequent actions can be governed accordingly.

Q—If a person has reason to believe he has radioactive particles on him, what should he do? A—If there is reason to believe your clothes have been contaminated, discard them as soon as you can.

disseminated? By aircraft? Consider the distances between here and the Soviet Union, and then determine the flight path of the bomber over our cities while he's to down it. The project becomes so unfeasible that its use as a weapon against our cities becomes something not to be concerned with.

Q—Wouldn't an atomic bomb be dropped in a reservoir by the enemy? A—Only if he was pretty much of a fool, and for several good reasons. It just wouldn't be worth it, for one.

Q—What if an enemy plane is shot down before it drops its atomic bomb? Won't it explode when it crashes? A—Not necessarily. That question is difficult to answer because so many factors influence the explosion.

Q—Weren't most people within a mile of ground zero in Japan killed? A—No. The bombing surveys of the atomic bombing of Hiroshima and Nagasaki state that 80 out of every 100 people within one mile of ground zero lived in Hiroshima, and the ratio was 80 out of every 100 at Nagasaki.

Q—If a person has reason to believe he has radioactive particles on him, what should he do? A—If there is reason to believe your clothes have been contaminated, discard them as soon as you can.

Q—How can I tell the difference between an air, water or surface burst? A—By the cloud it creates. The air burst produces the characteristic mushroom cloud.

Q—Why is it important to distinguish between these types of explosions? A—So that your subsequent actions can be governed accordingly.

Q—If a person has reason to believe he has radioactive particles on him, what should he do? A—If there is reason to believe your clothes have been contaminated, discard them as soon as you can.

Q—How can I tell the difference between an air, water or surface burst? A—By the cloud it creates. The air burst produces the characteristic mushroom cloud.

Q—Why is it important to distinguish between these types of explosions? A—So that your subsequent actions can be governed accordingly.

Q—If a person has reason to believe he has radioactive particles on him, what should he do? A—If there is reason to believe your clothes have been contaminated, discard them as soon as you can.

Q—How can I tell the difference between an air, water or surface burst? A—By the cloud it creates. The air burst produces the characteristic mushroom cloud.

Q—Why is it important to distinguish between these types of explosions? A—So that your subsequent actions can be governed accordingly.

Q—If a person has reason to believe he has radioactive particles on him, what should he do? A—If there is reason to believe your clothes have been contaminated, discard them as soon as you can.

Q—How can I tell the difference between an air, water or surface burst? A—By the cloud it creates. The air burst produces the characteristic mushroom cloud.

Q—Why is it important to distinguish between these types of explosions? A—So that your subsequent actions can be governed accordingly.

Q—If a person has reason to believe he has radioactive particles on him, what should he do? A—If there is reason to believe your clothes have been contaminated, discard them as soon as you can.

Q—How can I tell the difference between an air, water or surface burst? A—By the cloud it creates. The air burst produces the characteristic mushroom cloud.

Q—Why is it important to distinguish between these types of explosions? A—So that your subsequent actions can be governed accordingly.

Q—If a person has reason to believe he has radioactive particles on him, what should he do? A—If there is reason to believe your clothes have been contaminated, discard them as soon as you can.

What is a bargain? Footwear Inc., at 354 Springfield Avenue, Summit, New Jersey believes that you are the best judge of a bargain.

FOOTWEAR knows it's no bargain unless it's something really worth having, priced far below what you'd expect to pay.

FOOTWEAR can do it—thanks to our high-speed turnover and our unique selling methods. FOOTWEAR knows that their Women's and Deb's nationally advertised, cancellations, factory stock shoes...

FOOTWEAR, because of factory restrictions are not permitted to advertise the names of these manufacturers, but you will find the firm name stamped in every pair. Come to FOOTWEAR. You'll get a big thrill when you look at those low FOOTWEAR price tags.

FOOTWEAR, because of factory restrictions are not permitted to advertise the names of these manufacturers, but you will find the firm name stamped in every pair. Come to FOOTWEAR. You'll get a big thrill when you look at those low FOOTWEAR price tags.

FOOTWEAR, because of factory restrictions are not permitted to advertise the names of these manufacturers, but you will find the firm name stamped in every pair. Come to FOOTWEAR. You'll get a big thrill when you look at those low FOOTWEAR price tags.

FOOTWEAR, because of factory restrictions are not permitted to advertise the names of these manufacturers, but you will find the firm name stamped in every pair. Come to FOOTWEAR. You'll get a big thrill when you look at those low FOOTWEAR price tags.

FOOTWEAR, because of factory restrictions are not permitted to advertise the names of these manufacturers, but you will find the firm name stamped in every pair. Come to FOOTWEAR. You'll get a big thrill when you look at those low FOOTWEAR price tags.

FOOTWEAR, because of factory restrictions are not permitted to advertise the names of these manufacturers, but you will find the firm name stamped in every pair. Come to FOOTWEAR. You'll get a big thrill when you look at those low FOOTWEAR price tags.

FOOTWEAR, because of factory restrictions are not permitted to advertise the names of these manufacturers, but you will find the firm name stamped in every pair. Come to FOOTWEAR. You'll get a big thrill when you look at those low FOOTWEAR price tags.

FOOTWEAR, because of factory restrictions are not permitted to advertise the names of these manufacturers, but you will find the firm name stamped in every pair. Come to FOOTWEAR. You'll get a big thrill when you look at those low FOOTWEAR price tags.

FOOTWEAR, because of factory restrictions are not permitted to advertise the names of these manufacturers, but you will find the firm name stamped in every pair. Come to FOOTWEAR. You'll get a big thrill when you look at those low FOOTWEAR price tags.

FOOTWEAR, because of factory restrictions are not permitted to advertise the names of these manufacturers, but you will find the firm name stamped in every pair. Come to FOOTWEAR. You'll get a big thrill when you look at those low FOOTWEAR price tags.

FOOTWEAR, because of factory restrictions are not permitted to advertise the names of these manufacturers, but you will find the firm name stamped in every pair. Come to FOOTWEAR. You'll get a big thrill when you look at those low FOOTWEAR price tags.

FOOTWEAR, because of factory restrictions are not permitted to advertise the names of these manufacturers, but you will find the firm name stamped in every pair. Come to FOOTWEAR. You'll get a big thrill when you look at those low FOOTWEAR price tags.

FOOTWEAR, because of factory restrictions are not permitted to advertise the names of these manufacturers, but you will find the firm name stamped in every pair. Come to FOOTWEAR. You'll get a big thrill when you look at those low FOOTWEAR price tags.

FOOTWEAR, because of factory restrictions are not permitted to advertise the names of these manufacturers, but you will find the firm name stamped in every pair. Come to FOOTWEAR. You'll get a big thrill when you look at those low FOOTWEAR price tags.

FOOTWEAR, because of factory restrictions are not permitted to advertise the names of these manufacturers, but you will find the firm name stamped in every pair. Come to FOOTWEAR. You'll get a big thrill when you look at those low FOOTWEAR price tags.

FOOTWEAR, because of factory restrictions are not permitted to advertise the names of these manufacturers, but you will find the firm name stamped in every pair. Come to FOOTWEAR. You'll get a big thrill when you look at those low FOOTWEAR price tags.

FOOTWEAR, because of factory restrictions are not permitted to advertise the names of these manufacturers, but you will find the firm name stamped in every pair. Come to FOOTWEAR. You'll get a big thrill when you look at those low FOOTWEAR price tags.

Uncle Sam Says



The harvest season's about over, but how about sowing a new crop, one that will reap some extra dollars in seasons to come? Just plant part of your earnings regularly in U.S. Defense Bonds, and watch those earnings grow!

STAY on the "B" LINE with Worthington. Paid for by Republican Campaign Committee.

STAY on the "B" LINE with Worthington. Paid for by Republican Campaign Committee.

STAY on the "B" LINE with Worthington. Paid for by Republican Campaign Committee.

STAY on the "B" LINE with Worthington. Paid for by Republican Campaign Committee.

STAY on the "B" LINE with Worthington. Paid for by Republican Campaign Committee.

STAY on the "B" LINE with Worthington. Paid for by Republican Campaign Committee.

STAY on the "B" LINE with Worthington. Paid for by Republican Campaign Committee.

STAY on the "B" LINE with Worthington. Paid for by Republican Campaign Committee.

STAY on the "B" LINE with Worthington. Paid for by Republican Campaign Committee.

STAY on the "B" LINE with Worthington. Paid for by Republican Campaign Committee.

STAY on the "B" LINE with Worthington. Paid for by Republican Campaign Committee.

STAY on the "B" LINE with Worthington. Paid for by Republican Campaign Committee.

STAY on the "B" LINE with Worthington. Paid for by Republican Campaign Committee.

STAY on the "B" LINE with Worthington. Paid for by Republican Campaign Committee.

STAY on the "B" LINE with Worthington. Paid for by Republican Campaign Committee.

STAY on the "B" LINE with Worthington. Paid for by Republican Campaign Committee.

STAY on the "B" LINE with Worthington. Paid for by Republican Campaign Committee.

STAY on the "B" LINE with Worthington. Paid for by Republican Campaign Committee.

STAY on the "B" LINE with Worthington. Paid for by Republican Campaign Committee.

STAY on the "B" LINE with Worthington. Paid for by Republican Campaign Committee.

STAY on the "B" LINE with Worthington. Paid for by Republican Campaign Committee.

STAY on the "B" LINE with Worthington. Paid for by Republican Campaign Committee.

STAY on the "B" LINE with Worthington. Paid for by Republican Campaign Committee.

STAY on the "B" LINE with Worthington. Paid for by Republican Campaign Committee.

STAY on the "B" LINE with Worthington. Paid for by Republican Campaign Committee.

STAY on the "B" LINE with Worthington. Paid for by Republican Campaign Committee.

STAY on the "B" LINE with Worthington. Paid for by Republican Campaign Committee.

STAY on the "B" LINE with Worthington. Paid for by Republican Campaign Committee.

STAY on the "B" LINE with Worthington. Paid for by Republican Campaign Committee.

STAY on the "B" LINE with Worthington. Paid for by Republican Campaign Committee.

Perfectly Fitted GOOD-LOOKING GLASSES ASK YOUR EYE PHYSICIAN H. C. Deuchler. 344 Springfield Ave. Summit, N. J. SU. 6-3848. 541 Main Street East Orange, N. J. DR. 3-1008.

If MEN did the dishes your home would have a Hotpoint Automatic Dishwasher. Washes, Rinses and Dries All The Dishes, Electrically! BUDGET TERMS ARRANGED—LOWEST IN NEW JERSEY! Remember, You Can Always S-T-R-E-T-C-H a Dollar at RADIO SALES corp. 325-327 Millburn Ave. Millburn, N. J. Millburn 6-4200. "SEE THE MARKS BROS." Established 1922. Television Headquarters. OPEN EVERY EVENING UNTIL 9. Terms Arranged.

WATER CONDITIONING SPECIALISTS

Industrial Domestic WATER SOFTENERS

Repairs Maintenance

CULLIHAN soft water SERVICE

SPECIAL SOAPS FOR USE IN SOFT WATER

• WE own the equipment
• WE take care of it.
• YOU pay only a few cents a day!

NELSON, PHILLIPS & CO.
Phones SO 3-0071, MI 6-1321 12 Holmes St., Millburn

GIRL SCOUT Corner

Dear Friends:

We have two big headlines for you this week. First, we have reached our goal in the Cookie Sale, and second, a senior group is in the "making."

Isn't it wonderful about the cookie news! Thanks to your ready response, we Scouts and Brownies have sold 6,000 boxes. That's a lot of cookies! We're happy to know that people in Springfield have such good cookie appetites. It was easy, though, to eat a lot of them—they were delicious and so fresh.

Last Friday evening, nine of the older Scouts met at the home of our president, Miss Margaret Paulson, to organize a senior group. Mrs. Annabella Lippencott, a senior consultant from Westfield, and Mrs. Frank Jahn, the council's program chairman, advised the girls.

These girls, four of whom are first class Scouts with curved bar honors, elected Anita Doherty, president; Carole Hartlaub, secretary; and Harriet Morlon, treasurer. Meetings will be held every second Friday evening from 7:30 to 8:30.

One of the advantages of forming this senior patrol at this time is that two of the girls are now eligible to attend a Girl Scout conference planning board this Sunday at 2:30 p.m. at the Cranford Girl Scout House. Harriet Morlon and Judy Widmer will represent Springfield. The rest of the Scouts are wishing this senior group the very best success.

Till we tell you that Springfield was represented at the Girl Scout National Convention held in Boston last week-end? We are proud that Mrs. Lee Andrews, Jr., one of our leaders, could attend. She was the local council's delegate. Last Sunday was Girl Scout

Sunday. Dressed in our uniforms, we attended our own churches. We appreciated the messages the clergymen gave. Catholic Scouts received Holy Communion in a body and then went to the rectory for a Communion Breakfast. Forty-four Scouts and Brownies and 20 mothers and leaders attended.

We have been busy in our troops.

Brownie Troop 16 had a Halloween party last Tuesday at Mrs. Thompson's home. Next week their meeting day falls on Election Day, so it has been cancelled.

Intermediate Troop 12 has changed its meeting day from Friday to Monday afternoon at 4 at the James Caldwell School. A hike to Riverside Park and an outdoor lunch is planned for this Saturday. Of course they held a Halloween party. Scouts never miss up an excuse for a party!

Intermediate Troop 1 elected

Lyons place, attended the Princeton-Cornell football game last Saturday afternoon.

Several local girls are attending the Berkeley School of Secretarial Training in East Orange. They are Miss Marilyn Binder, daughter of Mr. and Mrs. A. G. Binder of 37 Tower drive; Miss Nancy Cook, daughter of Mr. and Mrs. E. M. Cook of 50 Warner avenue; and Miss Marlene Detrick, daughter of William Detrick of 32 Center street. The girls are enrolled in the Intensive Secretarial Course, which they expect to complete in June.

A silver tea was held at the home of Mrs. Irvin Baker of 30 Henshaw avenue last Wednesday for the benefit of the Springfield PTA. The honored guest was Mrs. Dorothy Chandler, kindergarten teacher.

Other guests included: Mrs. Eugene Boehm, Mrs. Helen Bucci, Mrs. S. V. Hans, Mrs. John Grocke, Mrs. William Golts, Mrs. L. J. LaBrie, Mrs. Donald McAleese, Mrs. George Miller, and Mrs. Karl Roetiged. Mrs. McAleese poured.

Mr. and Mrs. Michael Tutusko of from a tonsillectomy performed 36 Lyons place, is recuperating in Orange Memorial Hospital.

Miss Ruth Pleimas of Berkeley Heights, a June graduate of the Central High School, was one of the models at the fall fashion show conducted for the students, parents, and friends of the Washington-School for Secretaries, Newark, last Wednesday at the Hotel Robert Trent. The show was sponsored by the Botany Mills Corp. Miss Pleimas has been a student at the school since July.

Bruce Allston, son of Mr. and Mrs. Norris Allston of 41 Lyons place, has joined the Cub Scouts.

Mrs. H. J. Levin of 28 Sherwood road entertained at luncheon last Friday. Her guests were Mrs. Frederic Sylvester, Mrs. Harry Spiecher and Mrs. Kenneth Bandemer. The women played Canasta during the afternoon.

Sandra Tutusko, daughter of

First Church of Christ, Scientist

292 Springfield Avenue, Summit, N. J.

A branch of THE MOTHER CHURCH, THE FIRST CHURCH OF CHRIST, SCIENTIST in Boston, Mass.

Sunday Service 11:00 A. M. Sunday School 11:00 A. M.

Wednesday Meeting, 8:15 P. M.

Reading Room, 140 Springfield Ave. Open daily 10 to 4:30 except Sundays and holidays; also Friday evenings 7:30 to 9:30 and after the Wednesday meeting

Buying or Selling

WE'RE THE PEOPLE TO SEE

BAKER & McMAHON

Real Estate and Insurance

206 MORRIS AVENUE SPRINGFIELD

MI 6-4450

Open 9 a.m. to 9 p.m. — Also Sundays

PEOPLE WE KNOW

By KITTY OEHLER

Phone Millburn 6-1276

Mrs. R. C. Eckman, of 67 Washington avenue, entertained at tea last Wednesday afternoon in honor of Mrs. Mary Snider, first grade teacher in the local school system. Mrs. L. M. Schneider and Miss Lorraine Anderson paired.

Those who attended the affair were: Mrs. J. E. Bell, Mrs. R. M. Briggs, Mrs. Norman Hillman, Mrs. B. F. Linck, Mrs. Thomas Macaluso and Mrs. Frederick Sylvester.

Mrs. W. C. Jensen of 124 Meigs avenue, is expected home today, Thursday, from Columbus, Ohio, where she has been spending the week with her parents, Mr. and Mrs. Fred Pegelow. The Pegelows are enroute from their home in Irving, N. Y., to Texas and California.

Mr. and Mrs. John Kennedy and Mr. and Mrs. W. W. Penard, both of Lyons place, went to see South Pacific last Wednesday evening.

Richard P. Sherry, son of Mr. and Mrs. Richard Sherry of 227 Morris avenue, has been pledged to Delta Phi fraternity at Williams College, Williamstown, Mass.

Mr. and Mrs. C. H. Wolf of 220 Bakersway avenue, celebrated their twelfth wedding anniversary Saturday. They dined in New York City and then went to see "A Tree Grows in Brooklyn."

Mrs. Henry Bullman, Jr. of town, has been named recording secretary of the Skidmore College Club of Central New Jersey.

Guest of honor last Thursday afternoon at a tea given by Mrs. Leo Divkind of 69 Kew drive, was Mrs. Mae Busch, first grade teacher at Raymond Clissholm School. Mrs. Sidney Altin poured.

Women who attended the tea were: Mrs. J. L. Appar, Mrs. Louis W. James, Mrs. Harry E. Monroe, Mrs. A. F. Graziano, Mrs. S. R. Huntoon, Mrs. Paul G. Logan, Mrs. R. C. Morse, Mrs. R. A. Watkins, Mrs. G. F. Willey and Mrs. Rebecca Cohn.

Mr. and Mrs. Lemuel S. Stevens, of 718 Mountain avenue, were dinner guests last Saturday of Dr. and Mrs. Henry R. Sims at the Men's Faculty Club, Columbia University. Dr. Sims is president of Winthrop College, the South Carolina College for Women, of which Mrs. Stevens is an honor graduate.

Mr. and Mrs. Joseph Polizzotto and son, Jack, of 457 Melrose avenue, plan to move tomorrow, Friday, to 1445 Alden road, Whitehaven, Tenn.

Mr. and Mrs. Robert Bersler of 24 Moller avenue, have announced the birth of a daughter, Sheri Lynn, October 20 at Overlook Hospital, Summit. The baby, who was born on her mother's birthday, is the couple's first child.

Mrs. Bersler is the former Nancy Compton, daughter of Mr. and Mrs. Fred Compton of the Moller avenue address. The baby's paternal grandparents are Mr. and Mrs. Luman Bersler of Salter street.

Mr. and Mrs. H. J. Levin of 28 Sherwood road, had as guests last Saturday, Mrs. Levin's mother, Mrs. B. C. Myers, and her brother and sister-in-law, Mr. and Mrs. Bud Myers, and their daughter, Kim, all of Bogotlyn.

Entertaining at tea last Wednesday afternoon in honor of Mrs. Florence Towner, kindergarten teacher in the local school system, was Mrs. E. F. Reichold of 36 South Maple avenue. Mrs. Alice Wedgbury poured.

Other guests included: Mrs. George I. Bowles, Jr., Mrs. E. Heller, Mrs. William Schaefer, Mrs. Joseph Antonietti, Mrs. John P. Feller, Mrs. Frederick Hock and Mrs. Louis Pfaffer.

Leslie Woodruff Lavin, son of Mr. and Mrs. Leslie Lavin of 3 Rose avenue, celebrated his thirteenth birthday last Thursday with a dinner party at the Millburn Inn, Millburn.

Mr. and Mrs. Robert Saxon of

HAPPY BIRTHDAY

A Happy Birthday is extended this week to the following residents of Springfield:

NOVEMBER

1—Mrs. William E. Ude
Robert C. Schoch, Sr.
Robert H. Kern
Mary Anna Campbell
Carl Saeco

2—Mrs. Frances Robertson
Harvey A. Schriener
Kristin Margaret Helmers
Patricia Shuse
Robert Marshall, Jr.
Mrs. Malcolm Leonard
Francis Wiederspahn
Miriam G. Eva

3—William A. McCarthy
Arthur Stachic, Jr.
Charles H. Plant
Mrs. H. C. Brewster
Carol Dreher
John Weber
Mrs. Paul Voelker
Mrs. Anthony Monaco
F. Emil Dietzold

4—Mrs. Wilfred Weber
Anna Dotry
Mrs. Lester Nagel
Mrs. John Wartz
Robert Bersler
Ormond Roy Meister
George S. Champlin
Mrs. Thomas J. Howe, Jr.

5—Lillian Young
Richard Schroeder
Ann Russell
Cecilia Russell
Mrs. Martha Ledig
Alfred Van Ripper, III
Arthur C. Ackerman

6—Mrs. William Broadhead
Barbara Decher
Eric Dalrymple, Jr.
James Campbell
John S. Garling
Charles K. Schmitt
Margaret Richardson
Dorothy G. Zellers
Charles H. Mayer

7—Peter Daw
Helen Cosgrove
Ruth M. Hansen
Richard Bumann
Mrs. Harry Burt
Richard Eugene Baker
Barbara Roemer

STAY on the "B" LINE with WORTHINGTON & BROWN

Paid for by Republican Campaign Committee

STAY on the "B" LINE with WORTHINGTON

Paid for by Republican Campaign Committee

HOLLAND FURNACE CO.

CLEANING AND REPAIRING SERVICE

ON ALL MAKES OF FURNACES

COAL - OIL - GAS

HEATING EQUIPMENT

SPECIAL LOW POST-SEASON RATES—NOW

Direct Factory Branch

54 MAIN ST. EAST ORANGE

OR. 2-9600

Have You Visited Springfield's Newest Ultra Modern Shell Service Station???

We carry a complete line of Shell quality products plus a complete assortment of Goodyear quality tires, tubes, batteries and accessories for your convenience and satisfaction.

DROP IN FOR THE BEST IN SERVICE

Baldwin's Shell Service

Mountain and South Springfield Aves.

Springfield . . . Millburn 6-9609

STAY on the "B" LINE with BROWN

Paid for by Republican Campaign Committee

STAY on the "B" LINE with WORTHINGTON & BROWN

Paid for by Republican Campaign Committee

STAY on the "B" LINE with WORTHINGTON & BROWN

Paid for by Republican Campaign Committee

A LAUNDRY SERVICE TO FIT EVERY NEED!

I like the way Corby's does my laundry!

HOME FINISH
Shirts beautifully finished. Flatwork sparkling clean and completely ironed. Wearing apparel air fluff dried and neatly folded.

HOMESTIC ALL FINISH
Shirts and flatwork as in home finish service. Hand finished apparel. Wearing apparel at small additional cost. Buttons replaced and minor repairs made.

Ave. Bundle \$2.35

Ave. Bundle \$3.40

CORBY'S ENTERPRISE LAUNDRY, INC.

SUMMIT 6-1800

INSPECT YOUR ROOMS WITH LITMOS CARE.

PROTECT YOUR DOMICILE, REPAIR!

BILL DING

COLUMBIA Lumber & Millwork Co.

SASH • DOORS • TRIM • LUMBER • PAINTS • HARDWARE

MAPLE & SPRINGFIELD Avenues • SPRINGFIELD, N. J. • MI. 6-1242

STAY on the "B" LINE with BROWN

Paid for by Republican Campaign Committee

STAY on the "B" LINE with WORTHINGTON & BROWN

Paid for by Republican Campaign Committee

WORTHINGTON and BROWN

In UNITY there is STRENGTH

Through STRENGTH the REPUBLICAN Party will win now and in '52

NOW is the time to ACT

VOTE the STRAIGHT REPUBLICAN Ticket for VICTORY NOW—and in '52

Vote for

ELEONORE WORTHINGTON—Township Clerk

FRED BROWN—Township Committee

Loyal—Qualified—Experienced—Responsible

Paid for by Republican Campaign Committee

Young's Service Home

Dignified Funeral Service for All

Kindly Personal Interest

We provide a modern, efficient service, kindly personal interest, relieving the family of all details, and at prices to meet the most modest circumstances.

Established 1908 ALFRED L. YOUNG, Funeral Director Millburn 6-0406

145-149 MAIN STREET, MILLBURN, N. J.

STAY on the "B" LINE with WORTHINGTON

Paid for by Republican Campaign Committee



ESTABLISHED SEPTEMBER 27, 1929
Published every Thursday at
332 Morris Avenue, Springfield, N. J.
by the SPRINGFIELD PUBLISHING COMPANY

THURSDAY, NOVEMBER 1, 1951

STAY on the "B" LINE
with
WORTHINGTON
&
BROWN
Paid for by Republican
Campaign Committee

LETTERS
from
Our Readers
Backs Worthington

STAY on the "B" LINE
with **BROWN**
Paid for by Republican
Campaign Committee

Distinctive Hairdresser

- Permanent Waving
- Hair Tinting
- Styling

Hours: 9 to 6 — Fridays, 9 to 9

MARILOU BEAUTY SALON

261 Morris Ave. Opposite A&P

PARKING IN REAR

For Appointment... Call Millburn 6-4679

Here's WHY It Pays
You to Deal With a
REALTOR

He knows market values—and his title
Realtor was conferred upon him by the
National Association, and the Board of
Realtors of the Orange and Maplewood
after his standard of professional ability
was proved—after his standard of conduct
was carefully checked—and after he had
pledged himself to abide by a strictly en-
forced Code of Ethics.

All Real Estate Brokers are not Realtors, so it's best
to ask to see their credentials!

For SAFETY • SECURITY • SATISFACTION
Deal with Your REALTOR

The BOARD OF REALTORS
of the
ORANGES and MAPLEWOOD

Including: LIVINGSTON
MILLBURN SHORT HILLS
and SPRINGFIELD

FOR INFORMATION CALL
ORange 3-0430

Attention! HOME OWNERS

WINTERIZE YOUR HOME NOW!

STORM WINDOWS
and
COMBINATION DOORS

Save With Our
Low - Low Prices
SOLONDZ for
QUALITY

SOLONDZ BROS.
LUMBER COMPANY

471-481 LYONS AVE. IRVINGTON, N. J.
PHONE Waverly 3-4000

more than ever that I have no
apologies to offer in asking for
your support. She merits your
vote on November 6th on her quali-
fications alone. Nothing in the
records of the other candidates
for this office renders them as
qualified or as able to fulfill this
important office. The Township
Clerk serves in an administrative
capacity only and does not make
policy. For many years Eleonore
Worthington has done just the type
of work that is required in the
Township Clerk's office. No one
of the other candidates for this
position can match Eleonore
Worthington's background in office
management, ability to record
township meetings, secretarial
knowledge and legal training. Be-
cause of her expert knowledge of
shorthand Eleonore Worthington
is the only candidate who can
record word for word the minutes
of the Township Committee meet-
ings. Thus, there is no possibility
of misinterpretation of the mean-
ing or intent of actions taken by
our official governing body. We
cannot run the risk of the Town-
ship Committee passing any ordi-
nances, only to have the effect of
these ordinances destroyed by an
improper or inaccurate recording.
With Mrs. Worthington in the of-
fice of Township Clerk we can be
assured that the ordinances and
actions taken by the Township
Committee will be exactly as passed
and not someone's general idea of
what took place.

The Township Clerk's office is
one where a general knowledge of
the law is most essential. Every-
day problems in connection with
the filing and servicing of papers
and legal procedures in dealing
with the township can more effi-
ciently be administered by a Town-
ship Clerk with a legal back-
ground.

The impression that people ac-
quire as to our town is often based
upon the reputation they receive
in the office of Township Clerk.
Eleonore Worthington's years of
meeting the public in her busi-
ness dealings as well as her many
and varied civic activities in the
community, make her exceptionally
well qualified to receive people in
a courteous and competent man-
ner.

I have known Mrs. Worthington
for the fifteen years that she has
been a resident of Springfield and
I am proud to be associated with
her in this campaign for the office
of Township Clerk. I request that
all citizens of Springfield inter-
ested in good government and
efficient service vote for Eleonore
Worthington on November 6th.

CHARLES D. RUNCIE,
GOP Campaign Chairman.

STAY on the "B" LINE
with
WORTHINGTON
&
BROWN
Paid for by Republican
Campaign Committee

STAY on the "B" LINE
with **Worthington**
Paid for by Republican
Campaign Committee

STAY on the "B" LINE
with
WORTHINGTON
&
BROWN
Paid for by Republican
Campaign Committee

STAY on the "B" LINE
with **Worthington**
Paid for by Republican
Campaign Committee

An Open Letter
Editor, SUN:
From the Newark News of Oc-
tober 25th: "Choosing Borough
voters yesterday approved a max-
imum \$198,000 expenditure... to
erect a 12-classroom one-level
grade school and add four rooms
to Milton Avenue School \$398,000
for the new building which is to
include \$32,500 for drainage." This
figures out to \$33,000 per room
against Springfield's new school
cost of \$57,000 per room. Why?
When I was a young squirt, I
attended school in Bloomfield,
N. J. We had kindergarten to sixth
grade, 30 to 40 in each room, a
total of 400 to 600 students. One
principal administered it. From
the PTA folder, I note that for
two Springfield grade schools we
have one supervising principal,
one principal, one assistant to the
supervising principal and four
semit (one-four) office secre-
taries. Roads like Washington at
its worst. Why?

QUESTIONS.

Beardsley's Statement
Editor, SUN:
I have refrained until now from
writing this letter, but when I
read Mr. Frost Brown's letter in
last week's SUN, I decided that
it was overdue.

I have always had the highest
respect for Wilbur Selander, but
when I would like to know is this
W.S., after receiving the support
of his loyal friends and workers
of the Republican party for years,
has he repudiated and is opposing
his party, his friends and workers?
Why was he urged to run for
township clerk when he failed to
receive the support of the elected
representatives of the Republic-
an party? Why does a township official
say "his woman cannot be
township clerk?"

It is no more. Worthington was
nominated for township clerk be-
cause, after serious consideration
of all the candidates, she was
deemed to have the best quali-
fications.

The County Committee does not
believe that township officers
should be treated as political
wards.

Good government is the only
aim of the Republican party in
Springfield.

Yours truly,
CHARLES BEARDSLEY

Urges Support
Editor, SUN:
As the Township Committee
assigned the Fire Department as
one of my duties, I have a definite
and sworn responsibility to the
community at large to provide
for the public safety in our town-
ship by regard to adequate fire
protection for the people of Spring-
field. Therefore, I recommend and
strongly urge that the public give
serious thought to the proposed
Centralized Firehouse and give it
every support at the polls in order
that we may continue to live and
work safely.

WALTER W. BALDWIN
Commissioner Fire Department

Vote Tuesday
Editor, SUN:
People all over the United States
should be particularly proud this
week for this is the week we have
all received our SAMPLE BAL-
LOT. We are granted by our
American Way of Life the oppor-
tunity to study this ballot ahead
of the time we go to vote.

This wonderful privilege too
many of us do not avail ourselves
of. We should turn out in full
force to exercise this right to ex-
press ourselves and have a definite
part in our government whether
it be for the Municipality in which
we live, the State or Federal system.

What makes this important is
the fact that there are many
choices for us to select from. And
what is doubly important is the

STAY on the "B" LINE
with
WORTHINGTON
&
BROWN
Paid for by Republican
Campaign Committee

STAY on the "B" LINE
with **Worthington**
Paid for by Republican
Campaign Committee

Comfort Air Vent
VENTILATED
ALUMINUM AWNINGS

For Your Windows, Doors
and Patios
Wide Range of 15 Colors—
Custom Made.

The aluminum is specially etched
and finished with a coat of baked
enamel for your protection.

Made by
FRED LANGBEIN & CO.
GALLOPING HILL ROAD
Kenilworth, N. J.
Roselle 4-1886-J

RENT
a typewriter
and keep up
with your work

Beacon Hill Company
226 Morris Ave. MI. 6-1256
Local Agency For
Sifer Typewriter Co.

STAY on the "B" LINE
with **BROWN**
Paid for by Republican
Campaign Committee

Regional
(Continued from Page 1)

to that. Future conditions
conceivably could affect census
figures, he pointed out.

Dr. Arthur L. Johnson, county
superintendent of schools, said the
question of location and conveni-
ence was not as important a con-
sideration as that of education.
He warned against breaking the
Regional district into several
schools, citing the advantages of
education at a centralized point.

The school expansion program
was outlined at the beginning of
the meeting by Commissioner Rich-
ard N. Southgate, chairman of the
building and grounds committee.

In a statement issued recently
Bertolamy said that the previous
offer of a free site in Kenilworth
had not been accepted because the
locale was too close to an elemen-
tary school, was too small and
because it bordered a busy thor-
oughfare. A Kenilworth council-
man had expressed belief the Re-
gional board should accept the
offer instead of paying \$85,000 for
a site in Mountaineer.

Catholics Launch
(Continued from Page 1)

bers of St. James Builders' So-
ciety. Membership in the society
will entitle the member to have
his name placed in a special re-
ceptacle below the main altar—thus
assuring himself of being remem-
bered in every mass, celebrated there.

Parishioners have already in-
dicated interest in the project which
church leaders believe will assure
the campaign of success.

fact that we may draw a curtain
behind the when we enter the vot-
ing booth before we make that
choice.

Regardless of the means of the
selection of candidates before
election, it remains with each of us
as good citizens, to make use of
that FREEDOM OF CHOICE that
will give our community the best
of individuals for the particular
public post waiting to be filled.

The voter on Election Day is
the most important person in the
entire country—if he will get out
and vote.

In the window of the First Na-
tional Bank of Springfield there
is a sign which reads: EVERYBODY
COME OUT AND VOTE TUES.
NOV 6

This is good advice.
BILL JENSEN

STAY on the "B" LINE
with **BROWN**
Paid for by Republican
Campaign Committee

Plant Now
before ground freezes

FORBES
TULIP
BULBS

all of extra-fine size and
quality for extra-fine bloom
in your garden next spring.

ALSO DAFFODILS,
LILIES, HYACINTHS,
CROCUS, ETC.

FOR INDOORS

African Violets in many
colors, from \$4 to \$5.

House Plants of several
different kinds—300-up-
raper White Narcissus,
\$1.75 doz.; \$12 per 100.

Plant-Bulb Containers in
brass, copper, wood ve-
neur, glass, plastic, in-
cluding Wil-fed.

Drive Over
For Your
Garden Needs

FORBES
SALES
GARDEN

Route 10, Hanover, N. J.

Just One Mile West of
Livingston Traffic Circle

TEN MINUTES DRIVE
FROM CHATHAM CENTER

Phone, WHippany 8-0375
WEEKDAYS and SUNDAYS
8:30 to 5:30

STAY on the "B" LINE
with **BROWN**
Paid for by Republican
Campaign Committee

STAY on the "B" LINE
with **BROWN**
Paid for by Republican
Campaign Committee

Regional
(Continued from Page 1)

to that. Future conditions
conceivably could affect census
figures, he pointed out.

Dr. Arthur L. Johnson, county
superintendent of schools, said the
question of location and conveni-
ence was not as important a con-
sideration as that of education.
He warned against breaking the
Regional district into several
schools, citing the advantages of
education at a centralized point.

The school expansion program
was outlined at the beginning of
the meeting by Commissioner Rich-
ard N. Southgate, chairman of the
building and grounds committee.

In a statement issued recently
Bertolamy said that the previous
offer of a free site in Kenilworth
had not been accepted because the
locale was too close to an elemen-
tary school, was too small and
because it bordered a busy thor-
oughfare. A Kenilworth council-
man had expressed belief the Re-
gional board should accept the
offer instead of paying \$85,000 for
a site in Mountaineer.

Catholics Launch
(Continued from Page 1)

bers of St. James Builders' So-
ciety. Membership in the society
will entitle the member to have
his name placed in a special re-
ceptacle below the main altar—thus
assuring himself of being remem-
bered in every mass, celebrated there.

Parishioners have already in-
dicated interest in the project which
church leaders believe will assure
the campaign of success.

fact that we may draw a curtain
behind the when we enter the vot-
ing booth before we make that
choice.

Regardless of the means of the
selection of candidates before
election, it remains with each of us
as good citizens, to make use of
that FREEDOM OF CHOICE that
will give our community the best
of individuals for the particular
public post waiting to be filled.

The voter on Election Day is
the most important person in the
entire country—if he will get out
and vote.

In the window of the First Na-
tional Bank of Springfield there
is a sign which reads: EVERYBODY
COME OUT AND VOTE TUES.
NOV 6

This is good advice.
BILL JENSEN

STAY on the "B" LINE
with **BROWN**
Paid for by Republican
Campaign Committee

Plant Now
before ground freezes

FORBES
TULIP
BULBS

all of extra-fine size and
quality for extra-fine bloom
in your garden next spring.

ALSO DAFFODILS,
LILIES, HYACINTHS,
CROCUS, ETC.

FOR INDOORS

African Violets in many
colors, from \$4 to \$5.

House Plants of several
different kinds—300-up-
raper White Narcissus,
\$1.75 doz.; \$12 per 100.

Plant-Bulb Containers in
brass, copper, wood ve-
neur, glass, plastic, in-
cluding Wil-fed.

Drive Over
For Your
Garden Needs

FORBES
SALES
GARDEN

Route 10, Hanover, N. J.

Just One Mile West of
Livingston Traffic Circle

TEN MINUTES DRIVE
FROM CHATHAM CENTER

Phone, WHippany 8-0375
WEEKDAYS and SUNDAYS
8:30 to 5:30

STAY on the "B" LINE
with **BROWN**
Paid for by Republican
Campaign Committee

STAY on the "B" LINE
with **BROWN**
Paid for by Republican
Campaign Committee

They charge the tree struck their
car April 15 while it was on the
Cranford municipal parking lot
in South Union avenue.

The parents represented by
George S. Sauer, seek \$1,200 for
car damage, \$500 each for their
own injuries and \$1,500 each for
the two children, who also were
injured.

STAY on the "B" LINE
with
WORTHINGTON
&
BROWN
Paid for by Republican
Campaign Committee

no detail
too small

Smith and Smith's service
is recognized as one of na-
tional dignity because no
detail is too small to be
overlooked by a thoughtful,
experienced staff.

SMITH AND SMITH
FUNERAL DIRECTORS

An Outstanding Service "Within the Means of All"

415 Morris Ave., Springfield, N. J. 160 Clinton Ave.
(Near Short Hills Ave.) Newark, N. J.
Millburn 6-4282 Newark 3-1123
Blighton 3-2123

(Ample parking on premises)

SEWING MACHINE REPAIRS?
Call **SINGER!**

Then you can be sure of

- famous SINGER service
- expert, SINGER repairs
- warranted SINGER parts
- we repair other makes, too!

Reasonable charges based on written estimate furnished
in advance for your approval

61-A Main St., Millburn
Phone: MI-6-4117
Open Friday 10 P. M.

SINGER
SEWING CENTER

FALL IS THE TIME FOR
PLANTING

- SHADE, ORNAMENTAL, AND FRUIT TREES
- LARGEST VARIETY OF EVERGREENS
- AZALEAS • BULBS • PEAT MOSS
- HYDRANGEAS • FERTILIZERS • HUMUS

Highest Quality • Lowest Prices

South Mountain Nurseries
LANDSCAPE CONTRACTORS
Millburn Ave. & Van Hall Rd.,
Millburn
Open Sundays MI. 6-1330

JUNK or Precious Metal?

Junk like this is mighty
precious these days, both
to the national defense
effort and to good tele-
phone service. These tiny
bits of wire, twisted scraps
of metal, odds and ends of
all kinds will be melted
down and become usable
materials again. This
planned salvage, long a
part of telephone opera-
tion, means telephone
economy. But in these
days of metals shortages,
such savings also mean
more telephone service for
more people.

SINCE JANUARY 1, 1951,
our construction program
for New Jersey has gone
ahead of the rate of a
million dollars a week.

H. J. Krassman, who joined New
Jersey Bell 31 years ago, is a show-
man in East Orange.

NEW JERSEY BELL
TELEPHONE COMPANY.

SCHOOL NEWS

James Caldwell School

Kindergarten Mrs. Janet Wronsky... The children of the kindergarten made pumpkins of clay...

Grade One Mrs. Mary Edna Salder... The children of the first grade are sharing their books to school...

Grade Two Mrs. Martha Swartz... We are very busy this week with our writing...

Grade Three Mrs. Barbara Cross... Our class has been having fun in our new books...

Grade Four Mrs. Ruth Ames... Our class has been busy with our writing...

Grade Five Mrs. Virginia Reynolds... We have started a little house...

Grade Six Mrs. Helen Ryder... This week brought two wonderful things to make glad...

Grade Seven Mrs. Margaret Mettrah... The fifth grade classes had their multiplication problems...

Grade Eight Mrs. Elizabeth Butler... The eighth grade classes had their multiplication problems...

Grade Nine Mrs. Elizabeth Butler... The ninth grade classes had their multiplication problems...

Grade Ten Mrs. Elizabeth Butler... The tenth grade classes had their multiplication problems...

Grade Eleven Mrs. Elizabeth Butler... The eleventh grade classes had their multiplication problems...

Grade Twelve Mrs. Elizabeth Butler... The twelfth grade classes had their multiplication problems...

Grade Thirteen Mrs. Elizabeth Butler... The thirteenth grade classes had their multiplication problems...

Grade Fourteen Mrs. Elizabeth Butler... The fourteenth grade classes had their multiplication problems...

Grade Fifteen Mrs. Elizabeth Butler... The fifteenth grade classes had their multiplication problems...

Grade Sixteen Mrs. Elizabeth Butler... The sixteenth grade classes had their multiplication problems...

Grade Seventeen Mrs. Elizabeth Butler... The seventeenth grade classes had their multiplication problems...

Grade Eighteen Mrs. Elizabeth Butler... The eighteenth grade classes had their multiplication problems...

Grade Nineteen Mrs. Elizabeth Butler... The nineteenth grade classes had their multiplication problems...

Grade Twenty Mrs. Elizabeth Butler... The twentieth grade classes had their multiplication problems...

Grade Twenty-One Mrs. Elizabeth Butler... The twenty-first grade classes had their multiplication problems...

Grade Twenty-Two Mrs. Elizabeth Butler... The twenty-second grade classes had their multiplication problems...

Grade Twenty-Three Mrs. Elizabeth Butler... The twenty-third grade classes had their multiplication problems...

Grade Twenty-Four Mrs. Elizabeth Butler... The twenty-fourth grade classes had their multiplication problems...

Grade Twenty-Five Mrs. Elizabeth Butler... The twenty-fifth grade classes had their multiplication problems...

Grade Twenty-Six Mrs. Elizabeth Butler... The twenty-sixth grade classes had their multiplication problems...

Grade Twenty-Seven Mrs. Elizabeth Butler... The twenty-seventh grade classes had their multiplication problems...

Grade Twenty-Eight Mrs. Elizabeth Butler... The twenty-eighth grade classes had their multiplication problems...

Grade Twenty-Nine Mrs. Elizabeth Butler... The twenty-ninth grade classes had their multiplication problems...

Grade Thirty Mrs. Elizabeth Butler... The thirtieth grade classes had their multiplication problems...

Grade Thirty-One Mrs. Elizabeth Butler... The thirty-first grade classes had their multiplication problems...

Grade Thirty-Two Mrs. Elizabeth Butler... The thirty-second grade classes had their multiplication problems...

Grade Thirty-Three Mrs. Elizabeth Butler... The thirty-third grade classes had their multiplication problems...

Grade Thirty-Four Mrs. Elizabeth Butler... The thirty-fourth grade classes had their multiplication problems...

Grade Thirty-Five Mrs. Elizabeth Butler... The thirty-fifth grade classes had their multiplication problems...

Grade Thirty-Six Mrs. Elizabeth Butler... The thirty-sixth grade classes had their multiplication problems...

Grade Thirty-Seven Mrs. Elizabeth Butler... The thirty-seventh grade classes had their multiplication problems...

Grade Thirty-Eight Mrs. Elizabeth Butler... The thirty-eighth grade classes had their multiplication problems...

Grade Thirty-Nine Mrs. Elizabeth Butler... The thirty-ninth grade classes had their multiplication problems...

Grade Forty Mrs. Elizabeth Butler... The fortieth grade classes had their multiplication problems...

Grade Forty-One Mrs. Elizabeth Butler... The forty-first grade classes had their multiplication problems...

Grade Forty-Two Mrs. Elizabeth Butler... The forty-second grade classes had their multiplication problems...

Grade Forty-Three Mrs. Elizabeth Butler... The forty-third grade classes had their multiplication problems...

Grade Forty-Four Mrs. Elizabeth Butler... The forty-fourth grade classes had their multiplication problems...

Grade Forty-Five Mrs. Elizabeth Butler... The forty-fifth grade classes had their multiplication problems...

Grade Forty-Six Mrs. Elizabeth Butler... The forty-sixth grade classes had their multiplication problems...

Grade Forty-Seven Mrs. Elizabeth Butler... The forty-seventh grade classes had their multiplication problems...

Grade Forty-Eight Mrs. Elizabeth Butler... The forty-eighth grade classes had their multiplication problems...

Grade Forty-Nine Mrs. Elizabeth Butler... The forty-ninth grade classes had their multiplication problems...

Grade Fifty Mrs. Elizabeth Butler... The fiftieth grade classes had their multiplication problems...

Grade Fifty-One Mrs. Elizabeth Butler... The fifty-first grade classes had their multiplication problems...

once a week. During this period the boys are building... Mrs. John Huppert...

Mrs. John Huppert... Mrs. John Huppert... Mrs. John Huppert...

Mrs. John Huppert... Mrs. John Huppert... Mrs. John Huppert...

Mrs. John Huppert... Mrs. John Huppert... Mrs. John Huppert...

Mrs. John Huppert... Mrs. John Huppert... Mrs. John Huppert...

Mrs. John Huppert... Mrs. John Huppert... Mrs. John Huppert...

Mrs. John Huppert... Mrs. John Huppert... Mrs. John Huppert...

Mrs. John Huppert... Mrs. John Huppert... Mrs. John Huppert...

Mrs. John Huppert... Mrs. John Huppert... Mrs. John Huppert...

Mrs. John Huppert... Mrs. John Huppert... Mrs. John Huppert...

Mrs. John Huppert... Mrs. John Huppert... Mrs. John Huppert...

Mrs. John Huppert... Mrs. John Huppert... Mrs. John Huppert...

Mrs. John Huppert... Mrs. John Huppert... Mrs. John Huppert...

Mrs. John Huppert... Mrs. John Huppert... Mrs. John Huppert...

Mrs. John Huppert... Mrs. John Huppert... Mrs. John Huppert...

Mrs. John Huppert... Mrs. John Huppert... Mrs. John Huppert...

Mrs. John Huppert... Mrs. John Huppert... Mrs. John Huppert...

Mrs. John Huppert... Mrs. John Huppert... Mrs. John Huppert...

Mrs. John Huppert... Mrs. John Huppert... Mrs. John Huppert...

Mrs. John Huppert... Mrs. John Huppert... Mrs. John Huppert...

Mrs. John Huppert... Mrs. John Huppert... Mrs. John Huppert...

Mrs. John Huppert... Mrs. John Huppert... Mrs. John Huppert...

Mrs. John Huppert... Mrs. John Huppert... Mrs. John Huppert...

Mrs. John Huppert... Mrs. John Huppert... Mrs. John Huppert...

Mrs. John Huppert... Mrs. John Huppert... Mrs. John Huppert...

Mrs. John Huppert... Mrs. John Huppert... Mrs. John Huppert...

Mrs. John Huppert... Mrs. John Huppert... Mrs. John Huppert...

Mrs. John Huppert... Mrs. John Huppert... Mrs. John Huppert...

Mrs. John Huppert... Mrs. John Huppert... Mrs. John Huppert...

Mrs. John Huppert... Mrs. John Huppert... Mrs. John Huppert...

Mrs. John Huppert... Mrs. John Huppert... Mrs. John Huppert...

Mrs. John Huppert... Mrs. John Huppert... Mrs. John Huppert...

Mrs. John Huppert... Mrs. John Huppert... Mrs. John Huppert...

Mrs. John Huppert... Mrs. John Huppert... Mrs. John Huppert...

Mrs. John Huppert... Mrs. John Huppert... Mrs. John Huppert...

Mrs. John Huppert... Mrs. John Huppert... Mrs. John Huppert...

Mrs. John Huppert... Mrs. John Huppert... Mrs. John Huppert...

Mrs. John Huppert... Mrs. John Huppert... Mrs. John Huppert...

Mrs. John Huppert... Mrs. John Huppert... Mrs. John Huppert...

Mrs. John Huppert... Mrs. John Huppert... Mrs. John Huppert...

Mrs. John Huppert... Mrs. John Huppert... Mrs. John Huppert...

Mrs. John Huppert... Mrs. John Huppert... Mrs. John Huppert...

Mrs. John Huppert... Mrs. John Huppert... Mrs. John Huppert...

Mrs. John Huppert... Mrs. John Huppert... Mrs. John Huppert...

Mrs. John Huppert... Mrs. John Huppert... Mrs. John Huppert...

Mrs. John Huppert... Mrs. John Huppert... Mrs. John Huppert...

Mrs. John Huppert... Mrs. John Huppert... Mrs. John Huppert...

Mrs. John Huppert... Mrs. John Huppert... Mrs. John Huppert...

Mrs. John Huppert... Mrs. John Huppert... Mrs. John Huppert...

Mrs. John Huppert... Mrs. John Huppert... Mrs. John Huppert...

Mrs. John Huppert... Mrs. John Huppert... Mrs. John Huppert...

Mrs. John Huppert... Mrs. John Huppert... Mrs. John Huppert...

Mrs. John Huppert... Mrs. John Huppert... Mrs. John Huppert...

Mrs. John Huppert... Mrs. John Huppert... Mrs. John Huppert...

Mrs. John Huppert... Mrs. John Huppert... Mrs. John Huppert...

Mrs. John Huppert... Mrs. John Huppert... Mrs. John Huppert...

Dr. Gifford Hale Is PTA Speaker

A large percentage of the four hundred parents who attended the PTA meeting held at the James Caldwell School Monday night were...

Dr. Gifford Hale, local Board of Education member, of the Newark State Teachers' College presided...

Kindergarten of the Presbyterian Church... Mrs. Florence Towner... Mrs. Martha Webster...

We are all very excited about Halloween and are getting ready for our party on Wednesday...

The members of the club are putting interesting winter bouquets... Elizabeth Miller, John Moscardini, Patty Prince...

The seventh grade girls were interested in a Halloween play... Mrs. Gifford Hale...

The members of eighth grade were very proud when they were able to help Mrs. Gifford Hale...

Our girls are very busy with their projects for Halloween... Mrs. Gifford Hale...

Our girls are very busy with their projects for Halloween... Mrs. Gifford Hale...

Our girls are very busy with their projects for Halloween... Mrs. Gifford Hale...

Our girls are very busy with their projects for Halloween... Mrs. Gifford Hale...

Our girls are very busy with their projects for Halloween... Mrs. Gifford Hale...

Our girls are very busy with their projects for Halloween... Mrs. Gifford Hale...

Our girls are very busy with their projects for Halloween... Mrs. Gifford Hale...

Our girls are very busy with their projects for Halloween... Mrs. Gifford Hale...

Our girls are very busy with their projects for Halloween... Mrs. Gifford Hale...

Our girls are very busy with their projects for Halloween... Mrs. Gifford Hale...

Our girls are very busy with their projects for Halloween... Mrs. Gifford Hale...

STAY on the "B" LINE with BROWN

Paid for by Republican Campaign Committee

STAY on the "B" LINE with BROWN

Paid for by Republican Campaign Committee

STAY on the "B" LINE with BROWN

Paid for by Republican Campaign Committee

STAY on the "B" LINE with BROWN

Paid for by Republican Campaign Committee

STAY on the "B" LINE with BROWN

Paid for by Republican Campaign Committee

STAY on the "B" LINE with BROWN

Paid for by Republican Campaign Committee

STAY on the "B" LINE with BROWN

Paid for by Republican Campaign Committee

STAY on the "B" LINE with BROWN

Paid for by Republican Campaign Committee

STAY on the "B" LINE with BROWN

Paid for by Republican Campaign Committee

STAY on the "B" LINE with BROWN

STAY on the "B" LINE with BROWN

Paid for by Republican Campaign Committee

STAY on the "B" LINE with BROWN

Paid for by Republican Campaign Committee

STAY on the "B" LINE with BROWN

Paid for by Republican Campaign Committee

STAY on the "B" LINE with BROWN

Paid for by Republican Campaign Committee

STAY on the "B" LINE with BROWN

Paid for by Republican Campaign Committee

STAY on the "B" LINE with BROWN

Paid for by Republican Campaign Committee

STAY on the "B" LINE with BROWN

Paid for by Republican Campaign Committee

STAY on the "B" LINE with BROWN

Paid for by Republican Campaign Committee

STAY on the "B" LINE with BROWN

Paid for by Republican Campaign Committee

STAY on the "B" LINE with BROWN

STAY on the "B" LINE with BROWN

Paid for by Republican Campaign Committee

STAY on the "B" LINE with BROWN

Paid for by Republican Campaign Committee

STAY on the "B" LINE with BROWN

Paid for by Republican Campaign Committee

STAY on the "B" LINE with BROWN

Paid for by Republican Campaign Committee

STAY on the "B" LINE with BROWN

Paid for by Republican Campaign Committee

STAY on the "B" LINE with BROWN

Paid for by Republican Campaign Committee

STAY on the "B" LINE with BROWN

Paid for by Republican Campaign Committee

STAY on the "B" LINE with BROWN

Paid for by Republican Campaign Committee

STAY on the "B" LINE with BROWN

Paid for by Republican Campaign Committee

STAY on the "B" LINE with BROWN

Cartaret Superior College Preparation Accredited. All grades to college. High scholastic standing. Thorough drill in fundamentals.

STAY on the "B" LINE with BROWN. Paid for by Republican Campaign Committee.

STAY on the "B" LINE with BROWN. Paid for by Republican Campaign Committee.

STAY on the "B" LINE with BROWN. Paid for by Republican Campaign Committee.

STAY on the "B" LINE with BROWN. Paid for by Republican Campaign Committee.

STAY on the "B" LINE with BROWN. Paid for by Republican Campaign Committee.

STAY on the "B" LINE with BROWN. Paid for by Republican Campaign Committee.

STAY on the "B" LINE with BROWN. Paid for by Republican Campaign Committee.

STAY on the "B" LINE with BROWN. Paid for by Republican Campaign Committee.

STAY on the "B" LINE with BROWN. Paid for by Republican Campaign Committee.

STAY on the "B" LINE with BROWN. Paid for by Republican Campaign Committee.

STAY on the "B" LINE with BROWN. Paid for by Republican Campaign Committee.

STAY on the "B" LINE with BROWN. Paid for by Republican Campaign Committee.

STAY on the "B" LINE with BROWN. Paid for by Republican Campaign Committee.

STAY on the "B" LINE with BROWN. Paid for by Republican Campaign Committee.

STAY on the "B" LINE with BROWN. Paid for by Republican Campaign Committee.

STAY on the "B" LINE with BROWN. Paid for by Republican Campaign Committee.

STAY on the "B" LINE with BROWN. Paid for by Republican Campaign Committee.

STAY on the "B" LINE with BROWN. Paid for by Republican Campaign Committee.

STAY on the "B" LINE with BROWN. Paid for by Republican Campaign Committee.

STAY on the "B" LINE with BROWN. Paid for by Republican Campaign Committee.

STAY on the "B" LINE with BROWN. Paid for by Republican Campaign Committee.

STAY on the "B" LINE with BROWN. Paid for by Republican Campaign Committee.

STAY on the "B" LINE with BROWN. Paid for by Republican Campaign Committee.

STAY on the "B" LINE with BROWN. Paid for by Republican Campaign Committee.

STAY on the "B" LINE with BROWN. Paid for by Republican Campaign Committee.

STAY on the "B" LINE with BROWN. Paid for by Republican Campaign Committee.

STAY on the "B" LINE with BROWN. Paid for by Republican Campaign Committee.

STAY on the "B" LINE with BROWN. Paid for by Republican Campaign Committee.

STAY on the "B" LINE with BROWN. Paid for by Republican Campaign Committee.

STAY on the "B" LINE with BROWN. Paid for by Republican Campaign Committee.

STAY on the "B" LINE with BROWN. Paid for by Republican Campaign Committee.

STAY on the "B" LINE with BROWN. Paid for by Republican Campaign Committee.

STAY on the "B" LINE with BROWN. Paid for by Republican Campaign Committee.

STAY on the "B" LINE with BROWN. Paid for by Republican Campaign Committee.

STAY on the "B" LINE with BROWN. Paid for by Republican Campaign Committee.

STAY on the "B" LINE with BROWN. Paid for by Republican Campaign Committee.

STAY on the "B" LINE with BROWN. Paid for by Republican Campaign Committee.

STAY on the "B" LINE with BROWN. Paid for by Republican Campaign Committee.

STAY on the "B" LINE with BROWN. Paid for by Republican Campaign Committee.

STAY on the "B" LINE with BROWN. Paid for by Republican Campaign Committee.

STAY on the "B" LINE with BROWN. Paid for by Republican Campaign Committee.

STAY on the "B" LINE with BROWN. Paid for by Republican Campaign Committee.

STAY on the "B" LINE with BROWN. Paid for by Republican Campaign Committee.

STAY on the "B" LINE with BROWN. Paid for by Republican Campaign Committee.

STAY on the "B" LINE with BROWN. Paid for by Republican Campaign Committee.

STAY on the "B" LINE with BROWN. Paid for by Republican Campaign Committee.

STAY on the "B" LINE with BROWN. Paid for by Republican Campaign Committee.

Study Your Ballot

Table with columns: Democrat, Republican, Independent, A, B, C. Rows: Senate, Assembly, County Clerk, Freeholders, Township Committee, Township Clerk, Vote For One, Vote For Four, Vote For One, Vote For Three, Vote For Fred A. Brown, Vote For Wilbur M. Selander.

VOTE THE 3rd ROW 11 C FIRST WILBUR M. SELANDER - TOWN CLERK

VOTERS OF SPRINGFIELD When you vote ROW C first you not only vote for a staunch Republican - WILBUR M. SELANDER for TOWNSHIP CLERK but you indicate that you like making your own choice. WILBUR M. SELANDER - served 16 years on the Township Committee, and was Mayor for 14 years - Relief Administrator - Member Defense Council - Library Trustee - Police and Firemen Pension Commission - Planning Board - Town Representative to Rahway Valley Sewer Commission - 3 Years Board of Education. In addition to securing experience and efficiency - A vote in the 3rd Row - 11C will make you assured of the continued good service of Mrs. Carolyn Harmon - Now acting as Township Clerk.

Re-elect FRED A. BROWN Because - His unselfish service to Springfield for more than 21 years has endeared him to everyone. We all appreciate his constant and thoughtful service. Fred A. Brown's efforts in behalf of the Citizens of Springfield are so well known - that all deem it a privilege to endorse him. We urge you to recognize service and loyalty by

CLASSIFIED ADVERTISING

(3-Page Classified Combination) At no additional charge your classified ad is inserted in all three of the community newspapers listed below for only 10c a word.

MINIMUM CHARGE 10 WORDS \$1.00 Cash With Order

Summit Herald Millburn-Short Hills Item Springfield Sun

Summit 6-6300 Millburn 6-1200 Springfield Sun 6-1276

Notice of errors in copy must be given after first insertion. Typographical errors not the fault of the advertiser will be adjusted by the free insertion.

All Copy Must Be Submitted by 5 P. M. Tuesday

HELP WANTED-FEMALE

STENOGRAPHERS, clerical typists, bill clerks, bookkeepers, P.C. also assistants. H. K. machines, Burroughs, National, Hamilton, IBM, operators.

CLERK-TYPIST ELECTRONIC WAY TRAVEL TO NEW YORK? Work for a few months in Newark and then as our new Union, N. J. municipal.

BOOKKEEPING machine operators. Apply Eastern Printing Co., 233 Broad Street, Summit 6-6004.

WOMAN to supervise boys. Summit Home for Children, 205 previous experience necessary.

WOMEN opportunity to earn \$1.00 to \$3.00 per hour. Full or part time. Household Work Center, 115 Speedwell Avenue, Morristown.

WOMEN without previous experience are making good money working for home taking orders for Christmas gifts. Write Mrs. J. M. 185 Speedwell Avenue, Morristown.

AVON representative make a good woman. The Christmas Gift selling season is about to start. Do your work for capable women. Act now. Call Morristown 4-7046, mornings between 9 and 11 a.m.

GIRLS

For Light Production Work Salary Plus Bonus Holidays Vacation Steady Employment

CORBY'S ENTERPRISE LAUNDRY, INC. 27 Summit Ave. Summit 6-70 St. 20 St. at Corner

GALELADY, refined, for drug store. 40 hours a week. Salary \$40. Some drug store experience preferred. Box 117, Millburn Item.

CASHIER, experienced. For evenings. Apply Millburn Theatre, Millburn, N. J.

CLERK and General Office worker in suburban financial institution. Must be able to type. Kindly write stating age, experience, references. Box 131, Millburn, N. J.

WOMEN Christmas to earn extra money. \$1.00 no. 100. 200. 300. 400. 500. 600. 700. 800. 900. 1000. 1100. 1200. 1300. 1400. 1500. 1600. 1700. 1800. 1900. 2000. 2100. 2200. 2300. 2400. 2500. 2600. 2700. 2800. 2900. 3000. 3100. 3200. 3300. 3400. 3500. 3600. 3700. 3800. 3900. 4000. 4100. 4200. 4300. 4400. 4500. 4600. 4700. 4800. 4900. 5000. 5100. 5200. 5300. 5400. 5500. 5600. 5700. 5800. 5900. 6000. 6100. 6200. 6300. 6400. 6500. 6600. 6700. 6800. 6900. 7000. 7100. 7200. 7300. 7400. 7500. 7600. 7700. 7800. 7900. 8000. 8100. 8200. 8300. 8400. 8500. 8600. 8700. 8800. 8900. 9000. 9100. 9200. 9300. 9400. 9500. 9600. 9700. 9800. 9900. 10000.

WOMAN to do cleaning one day a week. Friday. 200. 300. 400. 500. 600. 700. 800. 900. 1000. 1100. 1200. 1300. 1400. 1500. 1600. 1700. 1800. 1900. 2000. 2100. 2200. 2300. 2400. 2500. 2600. 2700. 2800. 2900. 3000. 3100. 3200. 3300. 3400. 3500. 3600. 3700. 3800. 3900. 4000. 4100. 4200. 4300. 4400. 4500. 4600. 4700. 4800. 4900. 5000. 5100. 5200. 5300. 5400. 5500. 5600. 5700. 5800. 5900. 6000. 6100. 6200. 6300. 6400. 6500. 6600. 6700. 6800. 6900. 7000. 7100. 7200. 7300. 7400. 7500. 7600. 7700. 7800. 7900. 8000. 8100. 8200. 8300. 8400. 8500. 8600. 8700. 8800. 8900. 9000. 9100. 9200. 9300. 9400. 9500. 9600. 9700. 9800. 9900. 10000.

GIRLS for retail novelty store in Summit. Experienced preferred. Possible part time work. Write, stating experience, references and salary. Box 434, Summit Herald.

ENERGETIC woman as working manager. 40 hours a week. 200. 300. 400. 500. 600. 700. 800. 900. 1000. 1100. 1200. 1300. 1400. 1500. 1600. 1700. 1800. 1900. 2000. 2100. 2200. 2300. 2400. 2500. 2600. 2700. 2800. 2900. 3000. 3100. 3200. 3300. 3400. 3500. 3600. 3700. 3800. 3900. 4000. 4100. 4200. 4300. 4400. 4500. 4600. 4700. 4800. 4900. 5000. 5100. 5200. 5300. 5400. 5500. 5600. 5700. 5800. 5900. 6000. 6100. 6200. 6300. 6400. 6500. 6600. 6700. 6800. 6900. 7000. 7100. 7200. 7300. 7400. 7500. 7600. 7700. 7800. 7900. 8000. 8100. 8200. 8300. 8400. 8500. 8600. 8700. 8800. 8900. 9000. 9100. 9200. 9300. 9400. 9500. 9600. 9700. 9800. 9900. 10000.

CRACKER-JACK typist. 40 hours a week. 200. 300. 400. 500. 600. 700. 800. 900. 1000. 1100. 1200. 1300. 1400. 1500. 1600. 1700. 1800. 1900. 2000. 2100. 2200. 2300. 2400. 2500. 2600. 2700. 2800. 2900. 3000. 3100. 3200. 3300. 3400. 3500. 3600. 3700. 3800. 3900. 4000. 4100. 4200. 4300. 4400. 4500. 4600. 4700. 4800. 4900. 5000. 5100. 5200. 5300. 5400. 5500. 5600. 5700. 5800. 5900. 6000. 6100. 6200. 6300. 6400. 6500. 6600. 6700. 6800. 6900. 7000. 7100. 7200. 7300. 7400. 7500. 7600. 7700. 7800. 7900. 8000. 8100. 8200. 8300. 8400. 8500. 8600. 8700. 8800. 8900. 9000. 9100. 9200. 9300. 9400. 9500. 9600. 9700. 9800. 9900. 10000.

WOMAN for cleaning on Thursday or Friday. Experienced with references. Short Hills. 200. 300. 400. 500. 600. 700. 800. 900. 1000. 1100. 1200. 1300. 1400. 1500. 1600. 1700. 1800. 1900. 2000. 2100. 2200. 2300. 2400. 2500. 2600. 2700. 2800. 2900. 3000. 3100. 3200. 3300. 3400. 3500. 3600. 3700. 3800. 3900. 4000. 4100. 4200. 4300. 4400. 4500. 4600. 4700. 4800. 4900. 5000. 5100. 5200. 5300. 5400. 5500. 5600. 5700. 5800. 5900. 6000. 6100. 6200. 6300. 6400. 6500. 6600. 6700. 6800. 6900. 7000. 7100. 7200. 7300. 7400. 7500. 7600. 7700. 7800. 7900. 8000. 8100. 8200. 8300. 8400. 8500. 8600. 8700. 8800. 8900. 9000. 9100. 9200. 9300. 9400. 9500. 9600. 9700. 9800. 9900. 10000.

SALESWOMAN experienced. For evenings. Apply Millburn Theatre, Millburn, N. J.

CLERK and General Office worker in suburban financial institution. Must be able to type. Kindly write stating age, experience, references. Box 131, Millburn, N. J.

WOMEN Christmas to earn extra money. \$1.00 no. 100. 200. 300. 400. 500. 600. 700. 800. 900. 1000. 1100. 1200. 1300. 1400. 1500. 1600. 1700. 1800. 1900. 2000. 2100. 2200. 2300. 2400. 2500. 2600. 2700. 2800. 2900. 3000. 3100. 3200. 3300. 3400. 3500. 3600. 3700. 3800. 3900. 4000. 4100. 4200. 4300. 4400. 4500. 4600. 4700. 4800. 4900. 5000. 5100. 5200. 5300. 5400. 5500. 5600. 5700. 5800. 5900. 6000. 6100. 6200. 6300. 6400. 6500. 6600. 6700. 6800. 6900. 7000. 7100. 7200. 7300. 7400. 7500. 7600. 7700. 7800. 7900. 8000. 8100. 8200. 8300. 8400. 8500. 8600. 8700. 8800. 8900. 9000. 9100. 9200. 9300. 9400. 9500. 9600. 9700. 9800. 9900. 10000.

WOMAN to do cleaning one day a week. Friday. 200. 300. 400. 500. 600. 700. 800. 900. 1000. 1100. 1200. 1300. 1400. 1500. 1600. 1700. 1800. 1900. 2000. 2100. 2200. 2300. 2400. 2500. 2600. 2700. 2800. 2900. 3000. 3100. 3200. 3300. 3400. 3500. 3600. 3700. 3800. 3900. 4000. 4100. 4200. 4300. 4400. 4500. 4600. 4700. 4800. 4900. 5000. 5100. 5200. 5300. 5400. 5500. 5600. 5700. 5800. 5900. 6000. 6100. 6200. 6300. 6400. 6500. 6600. 6700. 6800. 6900. 7000. 7100. 7200. 7300. 7400. 7500. 7600. 7700. 7800. 7900. 8000. 8100. 8200. 8300. 8400. 8500. 8600. 8700. 8800. 8900. 9000. 9100. 9200. 9300. 9400. 9500. 9600. 9700. 9800. 9900. 10000.

GIRLS for retail novelty store in Summit. Experienced preferred. Possible part time work. Write, stating experience, references and salary. Box 434, Summit Herald.

ENERGETIC woman as working manager. 40 hours a week. 200. 300. 400. 500. 600. 700. 800. 900. 1000. 1100. 1200. 1300. 1400. 1500. 1600. 1700. 1800. 1900. 2000. 2100. 2200. 2300. 2400. 2500. 2600. 2700. 2800. 2900. 3000. 3100. 3200. 3300. 3400. 3500. 3600. 3700. 3800. 3900. 4000. 4100. 4200. 4300. 4400. 4500. 4600. 4700. 4800. 4900. 5000. 5100. 5200. 5300. 5400. 5500. 5600. 5700. 5800. 5900. 6000. 6100. 6200. 6300. 6400. 6500. 6600. 6700. 6800. 6900. 7000. 7100. 7200. 7300. 7400. 7500. 7600. 7700. 7800. 7900. 8000. 8100. 8200. 8300. 8400. 8500. 8600. 8700. 8800. 8900. 9000. 9100. 9200. 9300. 9400. 9500. 9600. 9700. 9800. 9900. 10000.

CRACKER-JACK typist. 40 hours a week. 200. 300. 400. 500. 600. 700. 800. 900. 1000. 1100. 1200. 1300. 1400. 1500. 1600. 1700. 1800. 1900. 2000. 2100. 2200. 2300. 2400. 2500. 2600. 2700. 2800. 2900. 3000. 3100. 3200. 3300. 3400. 3500. 3600. 3700. 3800. 3900. 4000. 4100. 4200. 4300. 4400. 4500. 4600. 4700. 4800. 4900. 5000. 5100. 5200. 5300. 5400. 5500. 5600. 5700. 5800. 5900. 6000. 6100. 6200. 6300. 6400. 6500. 6600. 6700. 6800. 6900. 7000. 7100. 7200. 7300. 7400. 7500. 7600. 7700. 7800. 7900. 8000. 8100. 8200. 8300. 8400. 8500. 8600. 8700. 8800. 8900. 9000. 9100. 9200. 9300. 9400. 9500. 9600. 9700. 9800. 9900. 10000.

WOMAN for cleaning on Thursday or Friday. Experienced with references. Short Hills. 200. 300. 400. 500. 600. 700. 800. 900. 1000. 1100. 1200. 1300. 1400. 1500. 1600. 1700. 1800. 1900. 2000. 2100. 2200. 2300. 2400. 2500. 2600. 2700. 2800. 2900. 3000. 3100. 3200. 3300. 3400. 3500. 3600. 3700. 3800. 3900. 4000. 4100. 4200. 4300. 4400. 4500. 4600. 4700. 4800. 4900. 5000. 5100. 5200. 5300. 5400. 5500. 5600. 5700. 5800. 5900. 6000. 6100. 6200. 6300. 6400. 6500. 6600. 6700. 6800. 6900. 7000. 7100. 7200. 7300. 7400. 7500. 7600. 7700. 7800. 7900. 8000. 8100. 8200. 8300. 8400. 8500. 8600. 8700. 8800. 8900. 9000. 9100. 9200. 9300. 9400. 9500. 9600. 9700. 9800. 9900. 10000.

SALESWOMAN experienced. For evenings. Apply Millburn Theatre, Millburn, N. J.

CLERK and General Office worker in suburban financial institution. Must be able to type. Kindly write stating age, experience, references. Box 131, Millburn, N. J.

WOMEN Christmas to earn extra money. \$1.00 no. 100. 200. 300. 400. 500. 600. 700. 800. 900. 1000. 1100. 1200. 1300. 1400. 1500. 1600. 1700. 1800. 1900. 2000. 2100. 2200. 2300. 2400. 2500. 2600. 2700. 2800. 2900. 3000. 3100. 3200. 3300. 3400. 3500. 3600. 3700. 3800. 3900. 4000. 4100. 4200. 4300. 4400. 4500. 4600. 4700. 4800. 4900. 5000. 5100. 5200. 5300. 5400. 5500. 5600. 5700. 5800. 5900. 6000. 6100. 6200. 6300. 6400. 6500. 6600. 6700. 6800. 6900. 7000. 7100. 7200. 7300. 7400. 7500. 7600. 7700. 7800. 7900. 8000. 8100. 8200. 8300. 8400. 8500. 8600. 8700. 8800. 8900. 9000. 9100. 9200. 9300. 9400. 9500. 9600. 9700. 9800. 9900. 10000.

WOMAN to do cleaning one day a week. Friday. 200. 300. 400. 500. 600. 700. 800. 900. 1000. 1100. 1200. 1300. 1400. 1500. 1600. 1700. 1800. 1900. 2000. 2100. 2200. 2300. 2400. 2500. 2600. 2700. 2800. 2900. 3000. 3100. 3200. 3300. 3400. 3500. 3600. 3700. 3800. 3900. 4000. 4100. 4200. 4300. 4400. 4500. 4600. 4700. 4800. 4900. 5000. 5100. 5200. 5300. 5400. 5500. 5600. 5700. 5800. 5900. 6000. 6100. 6200. 6300. 6400. 6500. 6600. 6700. 6800. 6900. 7000. 7100. 7200. 7300. 7400. 7500. 7600. 7700. 7800. 7900. 8000. 8100. 8200. 8300. 8400. 8500. 8600. 8700. 8800. 8900. 9000. 9100. 9200. 9300. 9400. 9500. 9600. 9700. 9800. 9900. 10000.

GIRLS for retail novelty store in Summit. Experienced preferred. Possible part time work. Write, stating experience, references and salary. Box 434, Summit Herald.

ENERGETIC woman as working manager. 40 hours a week. 200. 300. 400. 500. 600. 700. 800. 900. 1000. 1100. 1200. 1300. 1400. 1500. 1600. 1700. 1800. 1900. 2000. 2100. 2200. 2300. 2400. 2500. 2600. 2700. 2800. 2900. 3000. 3100. 3200. 3300. 3400. 3500. 3600. 3700. 3800. 3900. 4000. 4100. 4200. 4300. 4400. 4500. 4600. 4700. 4800. 4900. 5000. 5100. 5200. 5300. 5400. 5500. 5600. 5700. 5800. 5900. 6000. 6100. 6200. 6300. 6400. 6500. 6600. 6700. 6800. 6900. 7000. 7100. 7200. 7300. 7400. 7500. 7600. 7700. 7800. 7900. 8000. 8100. 8200. 8300. 8400. 8500. 8600. 8700. 8800. 8900. 9000. 9100. 9200. 9300. 9400. 9500. 9600. 9700. 9800. 9900. 10000.

CRACKER-JACK typist. 40 hours a week. 200. 300. 400. 500. 600. 700. 800. 900. 1000. 1100. 1200. 1300. 1400. 1500. 1600. 1700. 1800. 1900. 2000. 2100. 2200. 2300. 2400. 2500. 2600. 2700. 2800. 2900. 3000. 3100. 3200. 3300. 3400. 3500. 3600. 3700. 3800. 3900. 4000. 4100. 4200. 4300. 4400. 4500. 4600. 4700. 4800. 4900. 5000. 5100. 5200. 5300. 5400. 5500. 5600. 5700. 5800. 5900. 6000. 6100. 6200. 6300. 6400. 6500. 6600. 6700. 6800. 6900. 7000. 7100. 7200. 7300. 7400. 7500. 7600. 7700. 7800. 7900. 8000. 8100. 8200. 8300. 8400. 8500. 8600. 8700. 8800. 8900. 9000. 9100. 9200. 9300. 9400. 9500. 9600. 9700. 9800. 9900. 10000.

WOMAN for cleaning on Thursday or Friday. Experienced with references. Short Hills. 200. 300. 400. 500. 600. 700. 800. 900. 1000. 1100. 1200. 1300. 1400. 1500. 1600. 1700. 1800. 1900. 2000. 2100. 2200. 2300. 2400. 2500. 2600. 2700. 2800. 2900. 3000. 3100. 3200. 3300. 3400. 3500. 3600. 3700. 3800. 3900. 4000. 4100. 4200. 4300. 4400. 4500. 4600. 4700. 4800. 4900. 5000. 5100. 5200. 5300. 5400. 5500. 5600. 5700. 5800. 5900. 6000. 6100. 6200. 6300. 6400. 6500. 6600. 6700. 6800. 6900. 7000. 7100. 7200. 7300. 7400. 7500. 7600. 7700. 7800. 7900. 8000. 8100. 8200. 8300. 8400. 8500. 8600. 8700. 8800. 8900. 9000. 9100. 9200. 9300. 9400. 9500. 9600. 9700. 9800. 9900. 10000.

EMPLOYMENT WANTED

WOMAN writes housework in adult family. Well experienced; references and health card. Mrs. Meyer, 293 Walker St., Orange.

DOMESTIC, commercial, hotel-restaurants. 40 hours a week. 200. 300. 400. 500. 600. 700. 800. 900. 1000. 1100. 1200. 1300. 1400. 1500. 1600. 1700. 1800. 1900. 2000. 2100. 2200. 2300. 2400. 2500. 2600. 2700. 2800. 2900. 3000. 3100. 3200. 3300. 3400. 3500. 3600. 3700. 3800. 3900. 4000. 4100. 4200. 4300. 4400. 4500. 4600. 4700. 4800. 4900. 5000. 5100. 5200. 5300. 5400. 5500. 5600. 5700. 5800. 5900. 6000. 6100. 6200. 6300. 6400. 6500. 6600. 6700. 6800. 6900. 7000. 7100. 7200. 7300. 7400. 7500. 7600. 7700. 7800. 7900. 8000. 8100. 8200. 8300. 8400. 8500. 8600. 8700. 8800. 8900. 9000. 9100. 9200. 9300. 9400. 9500. 9600. 9700. 9800. 9900. 10000.

GROVE AGENCY, Placement Specialist. 40 years. Highest qualifications. Positions open. Help available. Call NOW. 1919 Springfield Ave., Maplewood. 2-2929.

SCOTT'S EMPLOYMENT AGENCY. First class domestic help furnished. Good jobs available. 425 Essex St., Millburn. 6-0911.

FOR SALE

BOOKS FOR SALE BY ELLIOTT COPELAND. 1515 Broadway, N.J. MONTECLAIR, N.J.

Good condition. Order by mail. Post paid. Send check with order. Send us a list of books you want or have for sale and price each.

4-4 GARDEN SUPPLIES. TOP soil for sale at \$2.75 per yard. Summit 6-5436-W.

