

# The Springfield Sun

VOL. XXVIII—No. 29

SPRINGFIELD, N. J., THURSDAY, MAY 2, 1957

OFFICIAL NEWSPAPER  
TOWNSHIP OF SPRINGFIELD

10¢ A COPY, \$3.50 BY THE YEAR

## THIS WEEK

### REAL ESTATE AND NEW ROUTE 22

Real estate will be in somewhat of a "deep freeze" wherever the proposed realignment of Route 22 is scheduled to strike. But municipal and county officials, as well as residents, are not so disheartened after Saturday's meeting in Summit.

New Jersey State Highway Department officials told those attending the so-called protest meeting that "none of the maps, none of the descriptions of the relocated route is official. At this moment, no one knows exactly where the freeway will cross Springfield. . . . After the aerial surveys, about September, each affected property owner will be given official notice. He will have 15 to 20 months before any actual construction starts."

That leaves any serious real estate transactions hanging out on a limb. It is very obvious that property owners, licking their chops at the thought of the highway condemnation boys starting their right of way negotiations, will not think of selling off some land that has been a drag on the tax level. Nor will investors and just ordinary property buyers risk making purchases until the actual route of the new highway has been definitely fixed.

This is not intended to point to some skulduggery but the right of way experts from the Highway Department will, no doubt, disregard any of the "wash sales" in real estate closed since the realignment of Route 22 became news.

### EVERYBODY WANTS TO KNOW

The Springfield Sun, as well as all the township officials, have been swamped with telephone calls since the news broke concerning the relocation of the new Federal freeway.

All of the callers "are certain" that the new Route 22 is coming right through their kitchens, according to the published maps—and many of them want more definite information "and what can the Springfield Sun do about it?"

One letter was received from Joseph C. Rile of 30 Tower Drive in which he finds fault with the available information. "I thought a newspaper," writes Mr. Rile, "should present factual information, not fiction. I could draw a better map than the one you presented in your April 25 issue WITH MY EYES SHUT."

We doubt that Mr. Rile could have drawn a better map even with his eyes open since there was very little information available. What Mr. Rile was anxious to learn from any map was whether or not the new highway was going to crash through Tower Drive. We still can't see where our own map was "fiction instead of factual information." Maps in other newspapers gave less information and we wondered if Mr. Rile sent similar letters to them.

### HELP YOUR LOCAL MENTAL HEALTH FUND

During the next few weeks your doorbell will ring and you will be asked to give to your local Mental Health Fund. Just what is all this about Mental Health? How will your money be used? How can your giving possibly benefit you personally or your community?

Well, the problem of mental illness does affect you.

The mentally ill are not always extreme cases needing hospital treatment, though 1500 Union County residents are now in mental hospitals, costing taxpayers in the county (you) \$1,045,000 in 1957.

But there are less severe forms of mental ill health, affecting someone each of us knows—24,000 in Union County alone. Mental and emotional first aid, prompt outpatient treatment without prohibitive cost—clinics, guidance, help for those who need treatment in schools and industry—are needed. In our county, one in every ten school child needs mental guidance now. There is only one school social worker in the entire county.

It was to do something about this situation that the Union County Association for Mental Health was formed by interested citizens six years ago. It is a chapter of the New Jersey Division of the National Association for Mental Health, which is this month helping local chapters such as the Union County one conduct a nationwide drive for funds to improve treatment facilities and to encourage research to cure the mentally ill.

Exactly what is the Union County Association for Mental Health doing?

With your contributions last year, it granted \$10,000 for psychiatric clinic service, helped to plan for county-wide clinic services with the result that in 1957 the Freeholders appropriated \$25,000 for its establishment, secured free hospitalization for 22 mentally ill residents, participated in starting the State's first free outpatient occupational therapy service for the mentally ill—all in Union County.

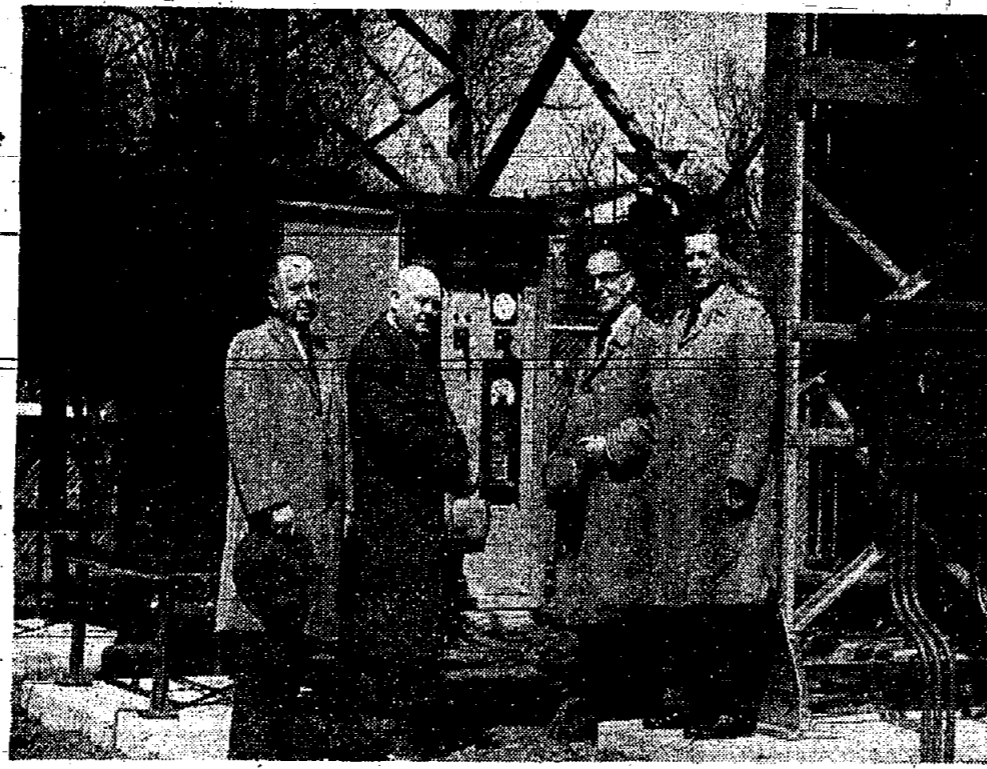
Also, working toward the prevention of mental illness among residents in the county, the Association presented last year 153 programs for organizations, distributed 80,000 leaflets, sent volunteers to mental hospitals in the area and maintained an information service on available treatment facilities—all in Union County.

The Mentally Ill Can Come Back. Twenty-five years ago no one believed this. But the discovery of new drugs, increased research, development of new techniques in treatment, the knowledge that early detection and prompt treatment can prevent the need for hospitalization

(Continued on page 10)



AT ANNUAL DINNER—Pictures at the annual Babe Ruth League dinner held at the Presbyterian Parish House last Thursday night were the following—left to right—Ed Schnell, Eugene F. Donnelly, Rupert Hamer, Dr. Ralph Jacobsen, Mayor Albert G. Binder and George Lord. (Micky Fox Photo.)



NEW POWER SOURCE—Second from right, Albert G. Binder, mayor of Springfield, is being shown the amount of electric load which was recently transferred to Jersey Central Power & Light Company's new Springfield substation on Waverly place. JCP&L representatives inspecting the substation with Mayor Binder are (left to right) Austin C. Fort, Central Division superintendent; Werner Gustafson, general foreman, Summit district; and Herbert Brenne, Summit district superintendent.

## Here Are Some Answers To Questions on Rt. 22

### Best Appoints Mental Health Fund Workers

The 1957 Mental Health Fund slogan—THE MENTALLY ILL CAN COME BACK—was stressed today by Leonard E. Best, president, Richard Best Pencil Co., 211 Mountain avenue, Fund Chairman of 1957 Mental Health Drive in Springfield, when announcing the appointments for the annual drive.

Carlisle H. Richards, of the National State Bank of Elizabeth in Springfield, will act as treasurer. Assisting as district chairman will be Daniel R. Murray, Principal, Edward V. Walton School, Arthur H. Lennox, 178 Morris avenue, Mrs. Russell Hillier, 22 Park Lane, Vice President of the Union County Association for Mental Health, Frank Jakobsen, 262 Mountain avenue and Mrs. David Stelman, 54

(Continued on page 11)

### Phone Company Asks Rate Rise

The New Jersey Bell Telephone Co. has filed with the State Public Utilities Commission new rate schedules designed to increase annual gross operating revenues by five per cent. The new schedules are subject to review by the commission. It is the first basic monthly rate increase by the company since 1949.

The basic monthly rate for residence telephones would be raised an average of 40 cents. Best monthly rates for business telephones would go up an average of \$1.12; residence extension telephones by 15 to 25 cents and business extensions, by five to 25 cents. There also would be adjustments in charges for some supplemental telephone services and non-recurring charges. There would be no increase in the rates for toll calls.

The new rates would produce \$14,148,000 in additional annual gross revenue of which the company would realize less than half, or \$6,512,000 after taxes.

### Chest X-Ray Unit Open Tonight at Gaudineer

The chest x-ray unit at the Florence Gaudineer School will be open tonight from 8:30 to 9:00 to enable men and women who work to check themselves for tuberculosis.

The x-ray unit will be in Springfield today only as part of its 3 month tour of Union County. It is also open from 2:30 to 4:30 this afternoon. Only adults may take advantage of the service. It costs \$1.50 each.

The chest x-rays are sponsored by the Union County Medical Society, the Springfield Board of Health and the Union County Tuberculosis and Health League.

### Township Well Represented at Rt. 22 Meeting

Springfield officials "stole the show" at the protest meeting held in Summit Saturday morning when the State Highway Department Chief Engineer stood up before angry municipalities and residents and answered a barrage of questions on the realignment of the new Route 22.

The New Jersey State Highway Department sent its chief engineer, Otto H. Fritzsche and W. Carman Davis, Director of Public Relations, to "cool off" the objections and their responses to direct questions did a pretty good job. "No one knows any details," Engineer Fritzsche told the many questioners. "The State Highway Department cannot, at this time, pin-point just where the new proposed roadway will be constructed. Aerial surveys will be made in a week or two and then our department will make some attempt to mark the exact location of the roadway. . . . But nothing will be finally done—no legal move will be made in the matter of right of way until we sit down with each municipality, with the officials and at public hearings where the affected residents will have an opportunity to be heard."

Mayor Albert G. Binder, Township Committee member Vincent J. Bonadies, under whose department the annual clean up program is held each year, asks the help of all citizens. "The Township Committee," said Bonadies in a statement, this year has set aside the period of May 13 to May 25 as the Clean Up Week period. We urge that all home owners cooperate to the fullest extent in making this clean up period a success both from the standpoint of observing the rules and doing a thorough cleanup job. "Clean-Up Week should be the time of the year in which we all take another look at our properties and make the necessary plans for landscaping, maintenance and general clean up. The long ignored painting and back yard clean up should be included in our activity. "The success of this program will insure not only a cleaner town but one which will be healthier and safer. A thorough clean-

## Annual Clean-Up Weeks Scheduled May 13 to 25

Springfield's annual clean-up weeks have been set to start on Monday, May 13, and continue to Saturday, May 25.

This program, as a health and safety measure, has been very successful in the past and all citizens are urged to cooperate by cleaning all cellars and attics and following the rules set up by the Township authorities. Township Committee member Vincent J. Bonadies, under whose department the annual clean up program is held each year, asks the help of all citizens.

"All trees, lumber, etc. must be cut to as short a length as possible and neatly bundled and placed at the curb. All other refuse and rubbish must be reduced to as small as is physically possible before placing at the curb. Metal cans must not be weighed beyond the ability of being lifted by two men.

"Residents are urged to place all refuse in metal cans and that all property owners refrain from using cardboard cartons as they become difficult to handle after a rain. All refuse should be placed at the curb the NIGHT BEFORE COLLECTION. This will enable the scavenger to pick up the refuse in the early morning hours and avoid having the refuse clutter up the sidewalks until the next collection."

## National State Is Taking Over Bank In Summit

It was announced today by W. Emlen Roosevelt, President of The National State Bank of Elizabeth with offices in Springfield, and Dean R. Travis, President of The First National Bank & Trust Company of Summit that the Board of Directors had voted to consolidate the two banks.

This action is subject to approval by the stockholders of both banks and the final approval of the Comptroller of the Currency.

Special meetings of the stockholders of both banks will be held May 31, 1957. If approved, consolidation will be effected immediately.

Under the terms of the Agreement to Consolidate, upon which the stockholders will vote, the combined banks will do business under the charter of The National State Bank of Elizabeth and under the name, The National State Bank, Elizabeth.

It is proposed that the combined bank have a capital of 75,000 shares, of which 60,000 will go to present National State stockholders and 15,000 to First National. The latter will also receive \$3. per share equalizing dividend prior to consolidation.

The present capitalization is 40,000 and 12,000 shares respectively.

The National State Bank now operates three offices in Elizabeth and one each in Roselle Park and Springfield. First National recently moved into a modern new building on Maple Street, Summit.

In addition the Summit bank has been authorized to open an office in Kenilworth and this will be speedily developed as the seventh office of the combined bank.

After the consolidation the resulting institution will be the largest bank in the county in all respects. Total assets will be about \$75,000,000. The legal lending limit to any one borrower will be \$387,500.00 and it is contemplated that this will be shortly increased to \$400,000.

Both banks have full trust powers. It is expected that trust work will become an increasingly important activity in the combined bank.

National State Bank was founded in 1812 and First National in 1897. Mr. Roosevelt will continue as President and Mr. Travis will become Vice President in charge of business development.

## Rev MW Green To Leave For Roselle Church



Rev. Marvin W. Green

The Rev. Marvin W. Green, pastor of the Springfield Methodist Church, has been appointed to the Roselle Park Community Methodist Church by Bishop Frederick B. Newell and the Cabinet of the Newark Methodist Annual Conference, to become effective Conference Sunday, May 19.

Dr. Green will preach his first sermon at Roselle Park on May 26 and move on May 30, the date the new pastor for Springfield will move into the Springfield Parsonage, having preached his first sermon in Springfield on May 26.

Robert Marshall, Chairman of the Pastoral Relations Committee, is at present in negotiations with the cabinet and the new pastor for the Springfield Church will be announced in the near future. During Dr. Green's four-year ministry the church has realized a gain of 20% in membership, a gain of 20% in Church School enrollment, a gain of 75% in the church budget, a gain of 30% in the number of church organizations, again of 30% in attendance at Divine Worship, and a gain of 30% in the pastor's salary. An \$80,000 expansion program was brought to a successful completion last year.

Dr. Green was born in Butte, Montana, educated at Marquette and Kentucky Wesleyan College in Winchester, Kentucky, taking his Bachelor of Divinity degree at Center School of Theology, Emory University in 1941, and his Doctor of Philosophy degree at Drew Seminary, Drew University in Madison, New Jersey in 1946. He came to Springfield in 1953 after serving a five-year pastorate at the Orange Methodist.

(Continued on page 10)

## Springfield Girl Scouts Join New County Council

The Springfield Girl Scouts became part of the Washington Rock Girl Scout Council which was granted a formal charter last night at a ceremony in the Westfield High School. The new council has been formed by a merger of eight local community Girl Scout councils with Springfield included.

In announcing the formation of this new council, Mrs. Margaret B. Ledig, treasurer of the Springfield Girl Scout organization, submitted the following statement for publication:

"This past week marked off two important events in the history of the local girl scouting. First, the dream of the Springfield Girl Scout organization to have its own meeting-activity center was met—but a new dream encompassing all the youth of the town was presented to the town fathers

by the way of a \$10,279.70 check—The Girl Scouts saving of many years, second, the merging of the local council with seven other councils in Union County to become one area council, the Washington Rock Girl Scout Council. It was at November's (1956) Girl Scout Council meeting that

(Continued on page 11)



SAFETY PROGRAM IN SCHOOLS—A program of Patrol discussing practices with ladies of the community. (Story on page 8) Pictured are members of the James Caldwell Safety

Photo by Micky Fox.





Publisher - SAM O. SAROKIN
Associate Publisher & Editor - JULIAN SAROKIN
TELEPHONE: 6-7444
Drexel 9-5000

Official newspaper of the Township of Springfield
Subscription rates by mail: One year, \$3.50; six months, \$1.75

2 Boys In Line For Reward For Saving 3-Year-Olds

If two young boys, about ten years old, were around the Rahway Valley railroad last Friday, they are in line for a reward from a very grateful mother.

Springfield Approves New School Funds

Less than 3 per cent of the eligible voters turned out in Springfield Tuesday to approve the spending of \$3,878,000 for expansion of high school facilities in the Union County Regional Board of Education.

Only 159 Springfield residents voted for the expansion and 26 voted against it. Throughout the six communities voting on the proposal, the expansion won by a 6 to 1 margin.

The school board now is authorized to construct a new high school in Berkeley Heights at a cost of \$2,525,000—and a \$1,212,000 addition to its Clark Township High School.

Only 159 Springfield residents voted for the expansion and 26 voted against it.

The school board now is authorized to construct a new high school in Berkeley Heights at a cost of \$2,525,000—and a \$1,212,000 addition to its Clark Township High School.

Quality Cleaners FREE MOTH PROOFING 230 Mountain Ave. Open 7:30 to 6, Monday thru Saturday

Senate Votes Drinking Curb For Teen-Ager

The New Jersey State Senate approved a "teen-age drinking curb bill this week, the wording of which was taken almost verbatim from the ordinance, introduced by Township Committeeman Vincent J. Bonadies and adopted by Springfield's Township Committee.

Assemblyman Carlyle W. Crane, who sponsored the bill in Trenton, had been in close contact with Bonadies during the preparation of the local ordinance. The Senate voted without dissent for the measure. It now goes back to the Assembly for agreement with Senate amendments.

It provides: "Any person under the age of 21 years who knowingly shall possess or consume any intoxicating liquor in any public place or place of public assembly or in any motor vehicle is a disorderly person and shall be punished by a fine of not more than \$100, or be imprisoned in the county jail for not more than 30 days, or both."

Juveniles licensed by the State Alcoholic Beverage Control Board to work in stockrooms or restaurants are exempt from the provisions of the bill while so working.

Under existing New Jersey law, it is forbidden to sell intoxicating liquor to minors. Minors found intoxicated are treated as juvenile delinquents.

The Crane bill would make them subject to a magistrate's action, in the same way juveniles who violate traffic laws are treated.

Sen. Robert C. Crane, who moved the bill to a vote in the Senate, said it was designed to prevent young people from obtaining liquor and becoming involved in drunken driving accidents or similar violations.

There have been many complaints about New Jersey minors obtaining liquor in New York State, where it is legal to sell to persons over 18. The limit in New Jersey is 21.

Young Republicans To Attend Convention

A meeting of the Springfield Young Republican Club was held at the home of Betty Cox on April 22, 1957. The following committees were appointed: Donna Sarokin, program chairman, and Betty Ann Tubach, publicity chairman.

The evening's discussion centered on the forth-coming State Young Republican Convention to be held at Atlantic City May 10 through 12. The chairman and five other members will attend this convention.

Mr. Bill Phelps and Miss June Worthington are chairman of the committee to investigate the various places to hold the forthcoming Springfield Young Republican Cocktail Party.

The next meeting will be held at the home of Fred Schenk of 17 Woodcrest Circle on Monday, May 13. Speakers for the evening will be, County Young Republican Chairman and National Committeeman of New Jersey Young Republicans. All persons interested are welcome to attend this meeting.



Don't plunge into REAL ESTATE deals blindly. Consult CHADWICK AGENCY first.

Annual Dinner Set For St. Stephen's

St. Stephen's Evening Group will hold their annual dinner at the Mansard Inn-Plainfield, on Tuesday, May 7th. Members are requested to assemble at the Parish House, not later than 6:00 o'clock so transportation can be arranged.

The annual meeting will follow the dinner. All chairmen will give their reports and election of officers will be held. The nominating committee with Mrs. Ralph Williams, chairlady, assisted by Mrs. George Trundle and Mrs. James Barnaby will present the slate.

The present officers are Mrs. Philip Fitting, president, Mrs. Robert Esler, vice-president, Mrs. James Barnaby, treasurer, Mrs. Ralph Williams, recording secretary and Mrs. William Peacock, corresponding secretary.

25 Years With PS

James A. Howarth, of 133 Irwin street, completed 25 years with Public Service recently and was presented a gold service emblem in honor of the occasion. Mr. Howarth is an underground foreman in the Essex electric distribution department of Public Service Electric and Gas Company.

ONE MONTH ONLY! TRADE IN YOUR OLD ALBUMS ON NEW RCA VICTOR CLASSICAL HI-FI L.P.s LIKE THESE:

Any old Albums that cost you \$2 or more each... are now worth \$1 toward the purchase of any RCA Victor Classical Long Play Album! Here's your chance of a lifetime to build the Long Play classical record library of your dreams!

SAFEGUARD YOUR FURS AT FLEMINGTON. OUR NEW MODERN FUR STORAGE PLANT ON OUR PREMISES. PROTECTION AGAINST FIRE • THEFT • MOTHS • HEAT 2% OF VALUATION.

HERE'S A POINTER. on where to get ONE HOUR dependable Dry Cleaning DREXEL Quality Cleaners FREE MOTH PROOFING 230 Mountain Ave. Open 7:30 to 6, Monday thru Saturday

Summit Trust Company. Member Federal Reserve System - Federal Deposit. "Maybe next time you'll think to get travelers checks at The Summit Trust Company"

The Springfield Sun Guidebook

This guide has been prepared by the staff of the Springfield SUN after a thorough study of the stores, restaurants, dealers, and firms offering services in the Springfield area. Our reporters have looked into the history, reputation, and quality of each business. Those appearing in this GUIDEBOOK are highly recommended.

SEROFF BROS. KOSHER MEAT MARKETS. Under Strict Orthodox-Rabbinical Supervision. Endorsed by Kosher Products Consumers' League. PRIME BLACK ANGUS RIB ROAST 59c lb, RIB STEAK 67c lb.

AUTO BODY WORK, AUTO REPAIR, BARBER SHOPS, DELICATESSENS, FLORISTS, FOOD MARKETS, HOME IMPROVEMENTS. ELLERY - (135 Morris Ave., rear of Chrysler-Plymouth agency Springfield).

INSURANCE & REAL ESTATE, LAUNDROMAT, LUMBER & SUPPLIES, LIGHT FIXTURES, MUSIC & PHOTO, PETS, POULTRY. ANNE SYLVESTER'S REALTY CORNER - (649 Morris Ave., Springfield, Drexel 6-3200).

RESTAURANTS, SERVICE STATIONS, SPORTS STORE, TV SERVICE, WALLPAPER, PHONE NUMBERS. CHINA SKY - (Springfield Shopping Center) There are two hazards of the mysterious East which you won't have to face at Jack Chin's superb Chinese-American restaurant.



## Hi Neighbor!!

NEWS AND TIDBITS ABOUT YOUR FRIENDS & NEIGHBORS.  
If You Have Any News Call ...

**DREXEL 6-4502**



**LORRIE LEWIS**

Birthday news was made this week by Paul and Nancy Weinberg who were feted at a party on Saturday, April 27. Paul, who was 9 years old, had as his guests Brian Sheehan, Jimmy Bender, Sanford Neubarth, Neil Neubarth, Andrew Wortzel, Larry Budish, Steven Hodes, Kenneth Glass, Kevin Sheehan, Stuart Lichter and Brad Lichter. Nancy was 4 years old and invited Carol Hodas, Joan Scheeter, Susan Scheeter, Arlene Sheehan, Gail Fox, Evelyn Neubarth and Randy Glass.

Attention Springfield graduates of the class of June 1932 of Newark Central High! Your 25th anniversary reunion dinner-dance will be held on Sunday eve, May 19 at the Essex House Hotel. Chairman for this dance are Abe Charnack of Hillside and Elsie Osterweil of West Orange. For reservations phone treasurer, Thomas Slangio of Union at MUdock 6-7880 or Thomas Argiris of Springfield at DR 6-0167. The deadline date for obtaining tickets is May 11.

Envy of all the gals on Garden Oval are Mrs. Doris Logan and Mrs. Ann Olesky. While Doris and Ann weekendend in New York City, their buddies—Eddie Logan and Ed Olesky, proved their versatility by competently managing their houses and kids.

Birthday greetings to Lois Herberg, daughter of Mr. and Mrs. Arthur Herberg of 68 Warwick Circle. Lois celebrated her tenth birthday with her family on April 17.

A son was born to Mr. and Mrs. Joseph Natiello, Jr., of 53 Beverly road. His two sisters are Jo Ann age 7½ years and Paula age 2½ years. Joseph III was born on April 17 at St. Michael's Hospital in Newark. He tipped the scales at 8 lbs. 1.oz. Mrs. Natiello is the former Rita Sally, daughter of Mrs. Anna Sally of Hillside.

DeForest Hillyer, Jr., son of Mr. and Mrs. DeForest Hillyer of 80-A Wabeno avenue, attended the Easter week-end invention of the C.A.R. (Children of the American Revolution) held in Washington, D. C.



### SOMETIMES YOU NEED A CRAFTSMAN

Perhaps you want a painting restorer—or maybe you need a—

- Locksmith
- Piano Tuner
- Machinist
- Cabinet Maker
- Printer

Whatever you want done, you'll find the right man fast—

in the **YELLOW PAGES** of your phone book

NEW JERSEY BELL TELEPHONE COMPANY

### Your Library

Many distinguished guests including local officials and visiting librarians, enjoyed the ceremonies dedicating the new wing of the Free Library of Springfield on Sunday. After the dedication which was held in the auditorium in the basement of the new section, the guests made a trip through the building.

The Museum, which is under the direction of Mr. Donald Palmer, was open for the first time. His fine exhibits, which were featured in the hall of the old library, can now be displayed to advantage in a spacious room. Needless to say, the size of the exhibit has been multiplied at least six times. The Museum Room is worth a visit by anyone and will be especially appealing to people interested in the history of Springfield or in antiquities.

The whole of the Springfield Library, including the Museum will hold open house this month of May. Anyone who wishes to see it all, may ask to be shown around.

Some very welcome gifts were presented to the Springfield Library at the dedication. The Lions Club gave a check to cover the cost of the new flagpole which graces the front of the building. The Rotary Club is presenting a lectern for the new auditorium. The architect, Mr. William Chirgottis, gave a personal check of \$100 for new books and joined the contractors and Mr. Anthony de Venezia, who erected the building, in presenting a plaque commemorating these events. The clock purchased with the money willed the library by the late Mr. Lichtenstein, was memorialized.

Former Newarkers, Mr. and Mrs. Milton Friedman are now residing at 239 Milltown road. Their two sons are Glen age 8½ years and Mark age 12½ years. Mrs. Friedman teaches Economics at the Ridge St. school in Newark. Mr. Friedman is with American Ships in Lodi.

Among our newer residents are Mr. and Mrs. Oliver Deane of 252 Short Hills Ave., formerly of Plainfield. Mr. Deane is a teacher in Mountainside.

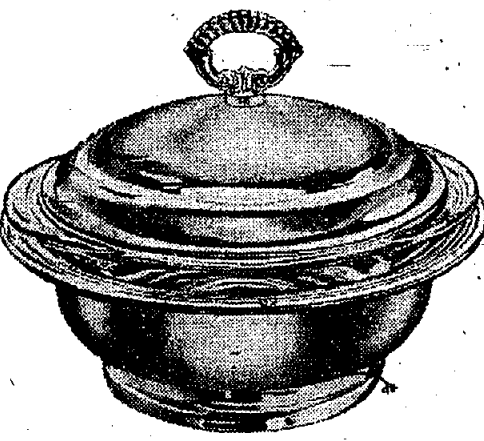
Therefore, it is now time for all books that were being held—for the duration to come back. Fines on them will be charged beginning next Monday, May 6th.

Please stop in to see the library and return books. Regular hours of opening will be observed. Monday through Saturday 10:30 A.M. to 5:00 P.M. Mondays and Fridays 7:30 P.M. to 9:00 P.M.

The wild sheep of Corsica and Sardinia, known as moufflons, imported a year ago and turned loose in North Hesse, have increased to 1,200. An open season is expected to be declared on them soon for hunters.

## BLACK STARR & GORHAM

243 MILLBURN AVE., MILLBURN, NEW JERSEY  
MANHASSET NEW YORK WHITE PLAINS



### FROM OVEN TO TABLE

Our silver plated casserole is equipped with a 1½ quart pyrex liner that whisks from oven to table and keeps your baked specialties piping hot for second servings. The nine-inch bowl is handsomely suited to serve without the liner as a foil for your fruit, dessert, flowers or vegetables. It's a fine Mother's Day choice, too.

\$12.75

From our Starr collection of top value silver plate  
Federal tax included. Add 50¢-beyond delivery area  
Mail and Phone Orders Accepted DR 6-4800



### Brighten your Mother's Day with Roses-in-Snow Cake

Remember Mom on May 12 with the perfect Mother's Day gift... Roses-in-Snow Cake. An appropriate card for you to sign goes with each cake.

Delicious snowy frosting covers two light, white layers—made from as fine ingredients as Mom herself uses. And atop the cake, a delicate, lovely hand-decorated rose.

Order your Roses-in-Snow Cake for Mom now.  
ORDER BOTH CAKE AND CARD AT ...

### THE CAKE COTTAGE

General Greene Shopping Center DREXEL 6-9807

### Newberry's

brings you the famous fit of

## BESTFORM® BRAS

No finer fit at any price!  
Now... for the first time... you'll find Bestform's wonderful bras at Newberry's! You'll find the finer fit, the better quality, the surprisingly low price tags. Come see, you'll agree: Bestform bras are a welcome addition at Newberry's... and in your own wardrobe!

**\$1.50 each**

### BESTFORM'S RING-A-ROUND BRA

A top favorite... this circular-stitched bra in white cotton broadcloth! Sizes 32-36A, 32-40B, 32-42C. Individually packaged. \$1.50

### BESTFORM'S SUNBURST BRA

Circular-stitched bra with extra rays of sunburst stitching that work wonders for you! White cotton broadcloth. 32-36A, 32-38B, 34-38C. Individually packaged. \$1.50

**LITE**

General Greene Shopping Center  
SPRINGFIELD, N. J.

**J.J. Newberry co.**

### Rose Marie Reid

JEWELS OF THE SEA

ESPLANADE sheathes you in a new fashion excitement... shapes you in a Lastex® sheath, skillfully, tautly pleated on the diagonal. 19.95

FOR FINE FEMINE FASHIONS

### Hotchkiss

Corner

239 MORRIS AVENUE  
SPRINGFIELD, N. J.  
DREXEL 9-3315

# "Aye!"

## 'Tis the Savings

### in the long run

# That Count!"

### You'll Save Whenever You Put Up Aluminum Screens, Storm Doors, Windows, Awnings or Jalousies.

**YOU'LL SAVE** on fuel bills, painting costs and yearly change-over costs with Aluminum Combination Windows and Doors.

**YOU'LL SAVE** on Aluminum Awnings by eliminating fading of rugs and draperies. Keeps the house cool too... and so pretty!

**YOU'LL SAVE** on Jalousie Porch Enclosures by protecting furniture from the elements. Provide your family with a new "Room For Living."

# RAJAC

## PRODUCTS

276 Morris Ave., Springfield, N. J. Store Hours: 9-5 Daily 7-9 Friday evening  
DREXEL 6-4649 John G. Groussam, Proprietor

"Shop locally for prompt, dependable service"

Member of Springfield Chamber of Commerce

### Make Mother's Day (Sunday, May 12th)

## a day she'll never forget!

this \$23.45

### WEST BEND Electric Frypan is hers FREE...

What a wonderful way to say "Happy Mother's Day!" With this \$23.45 value deluxe electric frypan she can fry, pan broil, braise, simmer, steam, or grill foods right at the table. It has all the famous West Bend features, including automatic heat control, vented copper-glo aluminum cover and all-around pouring lip. And it's free if you buy a new electric range now!

### when you buy a new FLAMELESS ELECTRIC RANGE

It's a lucky (and happy) lady who gets a new electric range on Mother's Day. She'll enjoy easier, tastier cooking all year 'round. That's because an electric range turns out perfect dishes... automatically. And, since it's flameless, electric cooking is so much cooler and cleaner. So, why not make this Mother's Day her happiest. See your Authorized Reddy Kilowatt Dealer. This offer is good only through May 18th.

**JCP & L**  
Jersey Central Power & Light

### LIVE BETTER...Electrically!

See Your Authorized Reddy Kilowatt Dealer



### Newark Bishop At St. Stephens

On Sunday, May 5 at 10 o'clock the Rt. Rev. Benjamin M. Washburn, Bishop of the Episcopal Diocese of Newark will preach and administer the Apostolic Rite of the Laying on of Hands at the service of Confirmation and Holy Communion at St. Stephen's Episcopal Church, Millburn.

The Rev. Hugh W. Dickinson, Rector, will present the candidates for Confirmation to the Bishop. Included in his last class of candidates to be presented to Bishop Washburn before his retirement in June are Rev. Dickinson's two

oldest grandchildren, Philip Dickinson and Elizabeth Siebert.

**Young Trouper Acts**  
Teddy O'Connell, son of Mr. and Mrs. Theodore M. O'Connell of 132 Pitt road entertained last Friday evening at Orange High School in the Super Shriner Show. Billed as "The Personality Kids," Teddy and his partner entertained the audiences with their song and dance routine; both are members of Lillian Deane's School of Dance.

The show was for the benefit of the Y.M.C.A. of the Oranges and Maplewood.

### W. Jewett Engage To Minnesota Girl



Julia S. McConnell

Mr. and Mrs. George Denison McConnell, 4341 East Lake Harriet Boulevard, Minneapolis, Minnesota, have announced the engagement of their daughter, Julia Sherring, to Mr. William Hugh Jewett, son of Mr. and Mrs. Hugh Jewett, Springfield, New Jersey.

Miss McConnell graduated from Northrop Collegiate School, Minneapolis, and attends Smith College, Northampton, Massachusetts. Her father, George D. McConnell, is President of Munsingwear, Inc.

Mr. Jewett is a graduate of Pingry School, Elizabeth, New Jersey, and attends Amherst College, Amherst, Massachusetts. His father, Hugh Jewett, is Vice-President, Comptroller and Secretary of the Colgate-Palmolive Company.

**Bible Class Sets Mother & Daughter Meal**  
The annual Mother and Daughter Banquet, sponsored by the Alethea Bible Class and the Service Club, both of the Methodist Church, will be held in the Church on May 8 at 6:30 p.m.

The tickets, limited to 150, can be obtained from any member of either society. Entertainment will be supplied by mothers and daughters and will be held in the auditorium following the banquet.



**ACCEPTED TO COLLEGE**—Patricia Jane Carney, former resident, has been accepted to Springfield College, Mass. It was announced today. Pat attended Regional High before she moved last year from 192 Milltown Road. She is the daughter of Mr. and Mrs. Vincent J. Carney. The Carneys now reside in Melrose, Mass.



**CO-CHARMEN**—Mrs. Henry J. Bultman (left) and Mrs. Vincent J. Bonadies (right) will be in charge when the Springfield Woman's Club holds its annual Spring Card Party and Fashion Show at the Hotel Suburban, Summit, on May 3. Fashions will be supplied by Stan Somer, Union; modeled by the Mesdames Beardsley, Darrow, Ganley, Gross, Lueddeke, Reibold, Sikorski and Tatusko.



Marie Basalone, Barbara Heerwagen, Barbara Jacobsen, Robert Keith, Priscilla Pollack, John Saxton, Nancy Walker and Carol Weitzel.

An African elephant, despite its weight, can run as fast as 25 miles per hour. A rhinoceros and giraffe can do about 40m.p.h.

### "Lillom" Opens Tonight

Eight-thirty tonight will be curtain time for the opening of "LILLIOM," the Maplewood Strollers' twenty-fifth anniversary production which will have a three-night run at the Maplewood Woman's Club.

The Ferenc Molnar drama is under the direction of Peggy Stone of Short Hills Village, a talented and versatile member of the group who has many fine roles and plays to her credit. The sets for the seven scenes have been designed by Herb Peirce of Millburn. The cast of twenty-eight includes

Polly Neibling of Short Hills Village, Stroller President, Victor A. Traub of Short Hills Village and Jim Gallagher of Millburn. Tickets may be obtained at the door for any of the play nights, May 2, 3 and 4.

**FOR FITTING and FOR WEAR CHILDREN'S Jumping Jack Sr.**  
Expert Shoe Repair  
**COLANTONE SHOE SHOP**  
245 Morris Avenue  
Springfield  
DRexel 6-2682  
Free Parking in the Rear  
Store Hours: 8 a.m. - 9 p.m.

**Want a Cab in a Hurry?**  
Springfield-Nadel Cab Co.  
DRexel 6-5200

**"WOMEN'S AND GIRLS' NATIONALLY ADVERTISED SHOES AT DISCOUNT PRICES!"**  
Simpler Styles of Leading Manufacturers  
44-45 Women's Size \$4.99 (Reg. \$7.99) Our Price \$4.99  
46-47 Women's Size \$5.99 (Reg. \$8.99) Our Price \$5.99  
48-49 Women's Size \$6.99 (Reg. \$9.99) Our Price \$6.99  
50-51 Women's Size \$7.99 (Reg. \$10.99) Our Price \$7.99  
52-53 Women's Size \$8.99 (Reg. \$11.99) Our Price \$8.99  
54-55 Women's Size \$9.99 (Reg. \$12.99) Our Price \$9.99  
56-57 Women's Size \$10.99 (Reg. \$13.99) Our Price \$10.99  
58-59 Women's Size \$11.99 (Reg. \$14.99) Our Price \$11.99  
60-61 Women's Size \$12.99 (Reg. \$15.99) Our Price \$12.99  
62-63 Women's Size \$13.99 (Reg. \$16.99) Our Price \$13.99  
64-65 Women's Size \$14.99 (Reg. \$17.99) Our Price \$14.99  
66-67 Women's Size \$15.99 (Reg. \$18.99) Our Price \$15.99  
68-69 Women's Size \$16.99 (Reg. \$19.99) Our Price \$16.99  
70-71 Women's Size \$17.99 (Reg. \$20.99) Our Price \$17.99  
72-73 Women's Size \$18.99 (Reg. \$21.99) Our Price \$18.99  
74-75 Women's Size \$19.99 (Reg. \$22.99) Our Price \$19.99  
76-77 Women's Size \$20.99 (Reg. \$23.99) Our Price \$20.99  
78-79 Women's Size \$21.99 (Reg. \$24.99) Our Price \$21.99  
80-81 Women's Size \$22.99 (Reg. \$25.99) Our Price \$22.99  
82-83 Women's Size \$23.99 (Reg. \$26.99) Our Price \$23.99  
84-85 Women's Size \$24.99 (Reg. \$27.99) Our Price \$24.99  
86-87 Women's Size \$25.99 (Reg. \$28.99) Our Price \$25.99  
88-89 Women's Size \$26.99 (Reg. \$29.99) Our Price \$26.99  
90-91 Women's Size \$27.99 (Reg. \$30.99) Our Price \$27.99  
92-93 Women's Size \$28.99 (Reg. \$31.99) Our Price \$28.99  
94-95 Women's Size \$29.99 (Reg. \$32.99) Our Price \$29.99  
96-97 Women's Size \$30.99 (Reg. \$33.99) Our Price \$30.99  
98-99 Women's Size \$31.99 (Reg. \$34.99) Our Price \$31.99  
100-101 Women's Size \$32.99 (Reg. \$35.99) Our Price \$32.99  
102-103 Women's Size \$33.99 (Reg. \$36.99) Our Price \$33.99  
104-105 Women's Size \$34.99 (Reg. \$37.99) Our Price \$34.99  
106-107 Women's Size \$35.99 (Reg. \$38.99) Our Price \$35.99  
108-109 Women's Size \$36.99 (Reg. \$39.99) Our Price \$36.99  
110-111 Women's Size \$37.99 (Reg. \$40.99) Our Price \$37.99  
112-113 Women's Size \$38.99 (Reg. \$41.99) Our Price \$38.99  
114-115 Women's Size \$39.99 (Reg. \$42.99) Our Price \$39.99  
116-117 Women's Size \$40.99 (Reg. \$43.99) Our Price \$40.99  
118-119 Women's Size \$41.99 (Reg. \$44.99) Our Price \$41.99  
120-121 Women's Size \$42.99 (Reg. \$45.99) Our Price \$42.99  
122-123 Women's Size \$43.99 (Reg. \$46.99) Our Price \$43.99  
124-125 Women's Size \$44.99 (Reg. \$47.99) Our Price \$44.99  
126-127 Women's Size \$45.99 (Reg. \$48.99) Our Price \$45.99  
128-129 Women's Size \$46.99 (Reg. \$49.99) Our Price \$46.99  
130-131 Women's Size \$47.99 (Reg. \$50.99) Our Price \$47.99  
132-133 Women's Size \$48.99 (Reg. \$51.99) Our Price \$48.99  
134-135 Women's Size \$49.99 (Reg. \$52.99) Our Price \$49.99  
136-137 Women's Size \$50.99 (Reg. \$53.99) Our Price \$50.99  
138-139 Women's Size \$51.99 (Reg. \$54.99) Our Price \$51.99  
140-141 Women's Size \$52.99 (Reg. \$55.99) Our Price \$52.99  
142-143 Women's Size \$53.99 (Reg. \$56.99) Our Price \$53.99  
144-145 Women's Size \$54.99 (Reg. \$57.99) Our Price \$54.99  
146-147 Women's Size \$55.99 (Reg. \$58.99) Our Price \$55.99  
148-149 Women's Size \$56.99 (Reg. \$59.99) Our Price \$56.99  
150-151 Women's Size \$57.99 (Reg. \$60.99) Our Price \$57.99  
152-153 Women's Size \$58.99 (Reg. \$61.99) Our Price \$58.99  
154-155 Women's Size \$59.99 (Reg. \$62.99) Our Price \$59.99  
156-157 Women's Size \$60.99 (Reg. \$63.99) Our Price \$60.99  
158-159 Women's Size \$61.99 (Reg. \$64.99) Our Price \$61.99  
160-161 Women's Size \$62.99 (Reg. \$65.99) Our Price \$62.99  
162-163 Women's Size \$63.99 (Reg. \$66.99) Our Price \$63.99  
164-165 Women's Size \$64.99 (Reg. \$67.99) Our Price \$64.99  
166-167 Women's Size \$65.99 (Reg. \$68.99) Our Price \$65.99  
168-169 Women's Size \$66.99 (Reg. \$69.99) Our Price \$66.99  
170-171 Women's Size \$67.99 (Reg. \$70.99) Our Price \$67.99  
172-173 Women's Size \$68.99 (Reg. \$71.99) Our Price \$68.99  
174-175 Women's Size \$69.99 (Reg. \$72.99) Our Price \$69.99  
176-177 Women's Size \$70.99 (Reg. \$73.99) Our Price \$70.99  
178-179 Women's Size \$71.99 (Reg. \$74.99) Our Price \$71.99  
180-181 Women's Size \$72.99 (Reg. \$75.99) Our Price \$72.99  
182-183 Women's Size \$73.99 (Reg. \$76.99) Our Price \$73.99  
184-185 Women's Size \$74.99 (Reg. \$77.99) Our Price \$74.99  
186-187 Women's Size \$75.99 (Reg. \$78.99) Our Price \$75.99  
188-189 Women's Size \$76.99 (Reg. \$79.99) Our Price \$76.99  
190-191 Women's Size \$77.99 (Reg. \$80.99) Our Price \$77.99  
192-193 Women's Size \$78.99 (Reg. \$81.99) Our Price \$78.99  
194-195 Women's Size \$79.99 (Reg. \$82.99) Our Price \$79.99  
196-197 Women's Size \$80.99 (Reg. \$83.99) Our Price \$80.99  
198-199 Women's Size \$81.99 (Reg. \$84.99) Our Price \$81.99  
200-201 Women's Size \$82.99 (Reg. \$85.99) Our Price \$82.99  
202-203 Women's Size \$83.99 (Reg. \$86.99) Our Price \$83.99  
204-205 Women's Size \$84.99 (Reg. \$87.99) Our Price \$84.99  
206-207 Women's Size \$85.99 (Reg. \$88.99) Our Price \$85.99  
208-209 Women's Size \$86.99 (Reg. \$89.99) Our Price \$86.99  
210-211 Women's Size \$87.99 (Reg. \$90.99) Our Price \$87.99  
212-213 Women's Size \$88.99 (Reg. \$91.99) Our Price \$88.99  
214-215 Women's Size \$89.99 (Reg. \$92.99) Our Price \$89.99  
216-217 Women's Size \$90.99 (Reg. \$93.99) Our Price \$90.99  
218-219 Women's Size \$91.99 (Reg. \$94.99) Our Price \$91.99  
220-221 Women's Size \$92.99 (Reg. \$95.99) Our Price \$92.99  
222-223 Women's Size \$93.99 (Reg. \$96.99) Our Price \$93.99  
224-225 Women's Size \$94.99 (Reg. \$97.99) Our Price \$94.99  
226-227 Women's Size \$95.99 (Reg. \$98.99) Our Price \$95.99  
228-229 Women's Size \$96.99 (Reg. \$99.99) Our Price \$96.99  
230-231 Women's Size \$97.99 (Reg. \$100.99) Our Price \$97.99  
232-233 Women's Size \$98.99 (Reg. \$101.99) Our Price \$98.99  
234-235 Women's Size \$99.99 (Reg. \$102.99) Our Price \$99.99  
236-237 Women's Size \$100.99 (Reg. \$103.99) Our Price \$100.99  
238-239 Women's Size \$101.99 (Reg. \$104.99) Our Price \$101.99  
240-241 Women's Size \$102.99 (Reg. \$105.99) Our Price \$102.99  
242-243 Women's Size \$103.99 (Reg. \$106.99) Our Price \$103.99  
244-245 Women's Size \$104.99 (Reg. \$107.99) Our Price \$104.99  
246-247 Women's Size \$105.99 (Reg. \$108.99) Our Price \$105.99  
248-249 Women's Size \$106.99 (Reg. \$109.99) Our Price \$106.99  
250-251 Women's Size \$107.99 (Reg. \$110.99) Our Price \$107.99  
252-253 Women's Size \$108.99 (Reg. \$111.99) Our Price \$108.99  
254-255 Women's Size \$109.99 (Reg. \$112.99) Our Price \$109.99  
256-257 Women's Size \$110.99 (Reg. \$113.99) Our Price \$110.99  
258-259 Women's Size \$111.99 (Reg. \$114.99) Our Price \$111.99  
260-261 Women's Size \$112.99 (Reg. \$115.99) Our Price \$112.99  
262-263 Women's Size \$113.99 (Reg. \$116.99) Our Price \$113.99  
264-265 Women's Size \$114.99 (Reg. \$117.99) Our Price \$114.99  
266-267 Women's Size \$115.99 (Reg. \$118.99) Our Price \$115.99  
268-269 Women's Size \$116.99 (Reg. \$119.99) Our Price \$116.99  
270-271 Women's Size \$117.99 (Reg. \$120.99) Our Price \$117.99  
272-273 Women's Size \$118.99 (Reg. \$121.99) Our Price \$118.99  
274-275 Women's Size \$119.99 (Reg. \$122.99) Our Price \$119.99  
276-277 Women's Size \$120.99 (Reg. \$123.99) Our Price \$120.99  
278-279 Women's Size \$121.99 (Reg. \$124.99) Our Price \$121.99  
280-281 Women's Size \$122.99 (Reg. \$125.99) Our Price \$122.99  
282-283 Women's Size \$123.99 (Reg. \$126.99) Our Price \$123.99  
284-285 Women's Size \$124.99 (Reg. \$127.99) Our Price \$124.99  
286-287 Women's Size \$125.99 (Reg. \$128.99) Our Price \$125.99  
288-289 Women's Size \$126.99 (Reg. \$129.99) Our Price \$126.99  
290-291 Women's Size \$127.99 (Reg. \$130.99) Our Price \$127.99  
292-293 Women's Size \$128.99 (Reg. \$131.99) Our Price \$128.99  
294-295 Women's Size \$129.99 (Reg. \$132.99) Our Price \$129.99  
296-297 Women's Size \$130.99 (Reg. \$133.99) Our Price \$130.99  
298-299 Women's Size \$131.99 (Reg. \$134.99) Our Price \$131.99  
300-301 Women's Size \$132.99 (Reg. \$135.99) Our Price \$132.99  
302-303 Women's Size \$133.99 (Reg. \$136.99) Our Price \$133.99  
304-305 Women's Size \$134.99 (Reg. \$137.99) Our Price \$134.99  
306-307 Women's Size \$135.99 (Reg. \$138.99) Our Price \$135.99  
308-309 Women's Size \$136.99 (Reg. \$139.99) Our Price \$136.99  
310-311 Women's Size \$137.99 (Reg. \$140.99) Our Price \$137.99  
312-313 Women's Size \$138.99 (Reg. \$141.99) Our Price \$138.99  
314-315 Women's Size \$139.99 (Reg. \$142.99) Our Price \$139.99  
316-317 Women's Size \$140.99 (Reg. \$143.99) Our Price \$140.99  
318-319 Women's Size \$141.99 (Reg. \$144.99) Our Price \$141.99  
320-321 Women's Size \$142.99 (Reg. \$145.99) Our Price \$142.99  
322-323 Women's Size \$143.99 (Reg. \$146.99) Our Price \$143.99  
324-325 Women's Size \$144.99 (Reg. \$147.99) Our Price \$144.99  
326-327 Women's Size \$145.99 (Reg. \$148.99) Our Price \$145.99  
328-329 Women's Size \$146.99 (Reg. \$149.99) Our Price \$146.99  
330-331 Women's Size \$147.99 (Reg. \$150.99) Our Price \$147.99  
332-333 Women's Size \$148.99 (Reg. \$151.99) Our Price \$148.99  
334-335 Women's Size \$149.99 (Reg. \$152.99) Our Price \$149.99  
336-337 Women's Size \$150.99 (Reg. \$153.99) Our Price \$150.99  
338-339 Women's Size \$151.99 (Reg. \$154.99) Our Price \$151.99  
340-341 Women's Size \$152.99 (Reg. \$155.99) Our Price \$152.99  
342-343 Women's Size \$153.99 (Reg. \$156.99) Our Price \$153.99  
344-345 Women's Size \$154.99 (Reg. \$157.99) Our Price \$154.99  
346-347 Women's Size \$155.99 (Reg. \$158.99) Our Price \$155.99  
348-349 Women's Size \$156.99 (Reg. \$159.99) Our Price \$156.99  
350-351 Women's Size \$157.99 (Reg. \$160.99) Our Price \$157.99  
352-353 Women's Size \$158.99 (Reg. \$161.99) Our Price \$158.99  
354-355 Women's Size \$159.99 (Reg. \$162.99) Our Price \$159.99  
356-357 Women's Size \$160.99 (Reg. \$163.99) Our Price \$160.99  
358-359 Women's Size \$161.99 (Reg. \$164.99) Our Price \$161.99  
360-361 Women's Size \$162.99 (Reg. \$165.99) Our Price \$162.99  
362-363 Women's Size \$163.99 (Reg. \$166.99) Our Price \$163.99  
364-365 Women's Size \$164.99 (Reg. \$167.99) Our Price \$164.99  
366-367 Women's Size \$165.99 (Reg. \$168.99) Our Price \$165.99  
368-369 Women's Size \$166.99 (Reg. \$169.99) Our Price \$166.99  
370-371 Women's Size \$167.99 (Reg. \$170.99) Our Price \$167.99  
372-373 Women's Size \$168.99 (Reg. \$171.99) Our Price \$168.99  
374-375 Women's Size \$169.99 (Reg. \$172.99) Our Price \$169.99  
376-377 Women's Size \$170.99 (Reg. \$173.99) Our Price \$170.99  
378-379 Women's Size \$171.99 (Reg. \$174.99) Our Price \$171.99  
380-381 Women's Size \$172.99 (Reg. \$175.99) Our Price \$172.99  
382-383 Women's Size \$173.99 (Reg. \$176.99) Our Price \$173.99  
384-385 Women's Size \$174.99 (Reg. \$177.99) Our Price \$174.99  
386-387 Women's Size \$175.99 (Reg. \$178.99) Our Price \$175.99  
388-389 Women's Size \$176.99 (Reg. \$179.99) Our Price \$176.99  
390-391 Women's Size \$177.99 (Reg. \$180.99) Our Price \$177.99  
392-393 Women's Size \$178.99 (Reg. \$181.99) Our Price \$178.99  
394-395 Women's Size \$179.99 (Reg. \$182.99) Our Price \$179.99  
396-397 Women's Size \$180.99 (Reg. \$183.99) Our Price \$180.99  
398-399 Women's Size \$181.99 (Reg. \$184.99) Our Price \$181.99  
400-401 Women's Size \$182.99 (Reg. \$185.99) Our Price \$182.99  
402-403 Women's Size \$183.99 (Reg. \$186.99) Our Price \$183.99  
404-405 Women's Size \$184.99 (Reg. \$187.99) Our Price \$184.99  
406-407 Women's Size \$185.99 (Reg. \$188.99) Our Price \$185.99  
408-409 Women's Size \$186.99 (Reg. \$189.99) Our Price \$186.99  
410-411 Women's Size \$187.99 (Reg. \$190.99) Our Price \$187.99  
412-413 Women's Size \$188.99 (Reg. \$191.99) Our Price \$188.99  
414-415 Women's Size \$189.99 (Reg. \$192.99) Our Price \$189.99  
416-417 Women's Size \$190.99 (Reg. \$193.99) Our Price \$190.99  
418-419 Women's Size \$191.99 (Reg. \$194.99) Our Price \$191.99  
420-421 Women's Size \$192.99 (Reg. \$195.99) Our Price \$192.99  
422-423 Women's Size \$193.99 (Reg. \$196.99) Our Price \$193.99  
424-425 Women's Size \$194.99 (Reg. \$197.99) Our Price \$194.99  
426-427 Women's Size \$195.99 (Reg. \$198.99) Our Price \$195.99  
428-429 Women's Size \$196.99 (Reg. \$199.99) Our Price \$196.99  
430-431 Women's Size \$197.99 (Reg. \$200.99) Our Price \$197.99  
432-433 Women's Size \$198.99 (Reg. \$201.99) Our Price \$198.99  
434-435 Women's Size \$199.99 (Reg. \$202.99) Our Price \$199.99  
436-437 Women's Size \$200.99 (Reg. \$203.99) Our Price \$200.99  
438-439 Women's Size \$201.99 (Reg. \$204.99) Our Price \$201.99  
440-441 Women's Size \$202.99 (Reg. \$205.99) Our Price \$202.99  
442-443 Women's Size \$203.99 (Reg. \$206.99) Our Price \$203.99  
444-445 Women's Size \$204.99 (Reg. \$207.99) Our Price \$204.99  
446-447 Women's Size \$205.99 (Reg. \$208.99) Our Price \$205.99  
448-449 Women's Size \$206.99 (Reg. \$209.99) Our Price \$206.99  
450-451 Women's Size \$207.99 (Reg. \$210.99) Our Price \$207.99  
452-453 Women's Size \$208.99 (Reg. \$211.99) Our Price \$208.99  
454-455 Women's Size \$209.99 (Reg. \$212.99) Our Price \$209.99  
456-457 Women's Size \$210.99 (Reg. \$213.99) Our Price \$210.99  
458-459 Women's Size \$211.99 (Reg. \$214.99) Our Price \$211.99  
460-461 Women's Size \$212.99 (Reg. \$215.99) Our Price \$212.99  
462-463 Women's Size \$213.99 (Reg. \$216.99) Our Price \$213.99  
464-465 Women's Size \$214.99 (Reg. \$217.99) Our Price \$214.99  
466-467 Women's Size \$215.99 (Reg. \$218.99) Our Price \$215.99  
468-469 Women's Size \$216.99 (Reg. \$219.99) Our Price \$216.99  
470-471 Women's Size \$217.99 (Reg. \$220.99) Our Price \$217.99  
472-473 Women's Size \$218.99 (Reg. \$221.99) Our Price \$218.99  
474-475 Women's Size \$219.99 (Reg. \$222.99) Our Price \$219.99  
476-477 Women's Size \$220.99 (Reg. \$223.99) Our Price \$220.99  
478-479 Women's Size \$221.99 (Reg. \$224.99) Our Price \$221.99  
480-481 Women's Size \$222.99 (Reg. \$225.99) Our Price \$222.99  
482-483 Women's Size \$223.99 (Reg. \$226.99) Our Price \$223.99  
484-485 Women's Size \$224.99 (Reg. \$227.99) Our Price \$224.99  
486-487 Women's Size \$225.99 (Reg. \$228.99) Our Price \$225.99  
488-489 Women's Size \$226.99 (Reg. \$229.99) Our Price \$226.99  
490-491 Women's Size \$227.99 (Reg. \$230.99) Our Price \$227.99  
492-493 Women's Size \$228.99 (Reg. \$231.99) Our Price \$228.99  
494-495 Women's Size \$229.99 (Reg. \$232.99) Our Price \$229.99  
496-497 Women's Size \$230.99 (Reg. \$233.99) Our Price \$230.99  
498-499 Women's Size \$231.99 (Reg. \$234.99) Our Price \$231.99  
500-501 Women's Size \$232.99 (Reg. \$235.99) Our Price \$232.99  
502-503 Women's Size \$233.99 (Reg. \$236.99) Our Price \$233.99  
504-505 Women's Size \$234.99 (Reg. \$237.99) Our Price \$234.99  
506-507 Women's Size \$235.99 (Reg. \$238.99) Our Price \$235.99  
508-509 Women's Size \$236.99 (Reg. \$239.99) Our Price \$236.99  
510-511 Women's Size \$237.99 (Reg. \$240.99) Our Price \$237.99  
512-513 Women's Size \$238.99 (Reg. \$241.99) Our Price \$238.99  
514-515 Women's Size \$239.99 (Reg. \$242.99) Our Price \$239.99  
516-517 Women's Size \$240.99 (Reg. \$243.99) Our Price \$240.99  
518-519 Women's Size \$241.99 (Reg. \$244.99) Our Price \$241.99  
520-521 Women's Size \$242.99 (Reg. \$245.99) Our Price \$242.99  
522-523 Women's Size \$243.99 (Reg. \$246.99) Our Price \$243.99  
524-525 Women's Size \$244.99 (Reg. \$247.99) Our Price \$244.99  
526-527 Women's Size \$245.99 (Reg. \$248.99) Our Price \$245.99  
528-529 Women's Size \$246.99 (Reg. \$249.99) Our Price \$246.99  
530-531 Women's Size \$247.99 (Reg. \$250.99) Our Price \$247.99  
532-533 Women's Size \$248.99 (Reg. \$251.99) Our Price \$248.99  
534-535 Women's Size \$249.99 (Reg. \$252.99) Our Price \$249.99  
536-537 Women's Size \$250.99 (Reg. \$253.99) Our Price \$250.99  
538-539 Women's Size \$251.99 (Reg. \$254.99) Our Price \$251.99  
540-541 Women's Size \$252.99 (Reg. \$255.99) Our Price \$252.99  
542-543 Women's Size \$253.99 (Reg. \$256.99) Our Price \$253.99  
544-545 Women's Size \$254.99 (Reg. \$257.99) Our Price \$254.99  
546-547 Women's Size \$255.99 (Reg. \$258.99) Our Price \$255.99  
548-549 Women's Size \$256.99 (Reg. \$259.99) Our Price \$256.99  
550-551 Women's Size \$257.99 (Reg. \$260.99) Our Price \$257.99  
552-553 Women's Size \$258.99 (Reg. \$261.99) Our Price \$258.99  
554-555 Women's Size \$259.99 (Reg. \$262.99) Our Price \$259.99  
556-557 Women's Size \$260.99 (Reg. \$263.99) Our Price \$260.99  
558-559 Women's Size \$261.99 (Reg. \$264.99) Our Price \$261.99  
560-561 Women's Size \$262.99 (Reg. \$265.99) Our Price \$262.99  
562-563 Women's Size \$263.99 (Reg. \$266.99) Our Price \$263.99  
564-565 Women's Size \$264.99 (Reg. \$267.99) Our Price \$264.99  
566-567 Women's Size \$265.99 (Reg. \$268.99) Our Price \$265.99  
568-569 Women's Size \$266.99 (Reg. \$269.99) Our Price \$266.99  
570-571 Women's Size \$267.99 (Reg. \$270.99) Our Price \$267.99  
572-573 Women's Size \$268.99 (Reg. \$271.99) Our Price \$268.99  
574-575 Women's Size \$269.99 (Reg. \$272.99) Our Price \$269.99  
576-577 Women's Size \$270.99 (Reg. \$273.99) Our Price \$270.99  
578-579 Women's Size \$271.99 (Reg. \$274.99) Our Price \$271.99  
580-581 Women's Size \$272.99 (Reg. \$275.99) Our Price \$272.99  
582-583 Women's Size \$273.99 (Reg. \$276.99) Our Price \$273.99  
584-585 Women's Size \$274.99 (Reg. \$277.99) Our Price \$274.99  
586-587 Women's Size \$275.99 (Reg. \$278.99) Our Price \$275.99  
588-589 Women's Size \$276.99 (Reg. \$279.99) Our Price \$276.99  
590-591 Women's Size \$277.99 (Reg. \$280.99) Our Price \$277.99  
592-593 Women's Size \$278.99 (Reg. \$281.99) Our Price \$278.99  
594-595 Women's Size \$279.99 (Reg. \$282.99) Our Price \$279.99  
596-597 Women's Size \$280.99 (Reg



### Winners of Last Methodist Amateur Show To Appear



Daisy Wolf  
Patty Lee  
By popular request, two of last year's top winners will be guest stars at the Second Annual Amateur Contest being held May 16, 17 and 18 in the Springfield Regional High School auditorium.

The guest artists are Daisy Wolf, daughter of Mr. and Mrs. T. Wolf, 145 Baltusrol Avenue, and Patty Lee, 218 Brighton Avenue, Kearny.

Daisy Wolf won first place in the competition last year and Patty Lee was voted second place. Since the 1956 contest, Miss Wolf has won a Motet Choir Scholarship and has been active as a soloist. Patty Lee, has been to Hollywood to take part in a Walt Disney movie and is currently starring on the Horn and Hardart television show, "The Children's Hour."

Patty Lee will sing a special request number at the Friday night program, May 17, and Daisy Wolf will sing Saturday evening. Tickets for any of the three nights are available from J. Norwood Van Ness, 14 Alvin Terrace (DR. 6-6108).

One of this year's more popular acts is expected to be a 35-man Barber Shop Chorus from nearby Summit. The Barber Shoppers, who are members of the SPEB-SQSA, will appear Friday night. One of the chorus members is a Springfield resident, George I. Bowles, Jr., of 93 Linden Avenue.

#### Four To Attend Pru Conference

Henry Bedell, manager of the Union, N. J. district of the Prudential Insurance Company, and Walter Becker, George Mihlon, and Robert Modersohn, agents on his staff, all of Springfield, will attend the company's "Leaders Conference" at Palm Beach, Florida from May 7-10.

The meeting will be attended by field representatives from offices throughout Northern New Jersey. Each of the men attending was extended an invitation as the result of his outstanding accomplishments during 1956.

The business sessions will be conducted by company executives from the Home Office in Newark, New Jersey. Headquarters will be at the Palm Beach Biltmore Hotel.

*"A Woman Never Forgets The Man Who Remembers"*  
**MOTHER'S DAY CANDIES**  
**WHITMAN'S SAMPLERS**



... And Many Other Gifts  
**KAY'S STATIONERY**  
Springfield's Hobby & Toy Center  
279 Morris Ave. DRexel 6-9868  
Springfield, N. J.  
FREE GIFT WRAPPING

Chicken or Shrimp Puffs  
**\$2.00** per doz.  
Made from Flakely Puffed Pastry  
DRexel 6-0228  
**MELLIE WEISS**  
24 Taylor St. Millburn



Our low Spring Prices on Famous Reading Anthracite are now in effect. Fill your bin NOW... save the MOST! Remember, there's only one coal trademarked with bright red spots...



Famous-Reading Anthracite. Insist on it. It's the greatest!

**Drake Fuel Sales Co.**  
FUEL OIL—AUTOMATIC HEATING EQUIPMENT  
679 MORRIS AVE.  
SPRINGFIELD, N. J.  
DRexel 6-0880

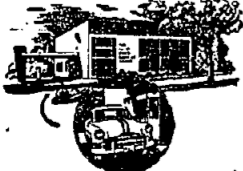
#### JUST A FEW STEPS FOR ANY BANKING SERVICE

At The First State Bank of Union you can take care of all of your financial needs under one roof, and when in a hurry, our two drive-in windows are at your service.

Safe Deposit Boxes Available in All Sizes  
One of the Fastest Growing Banks in the U.S.

The **FIRST STATE BANK OF UNION**

Morris Avenue at Buckle Parkway



Union, New Jersey  
MEMBER FEDERAL RESERVE SYSTEM  
MEMBER FDIC  
Murdock 6-4800

# Route 22 CELEBRATION SALE!

**GREATER DISCOUNTS! ★ GREATER SAVINGS!!**

## DAVEGA DISCOUNT CENTER

On Route 22, SPRINGFIELD, N. J. Between SO. SPRINGFIELD and HILLSIDE AVES.

★ FREE PARKING

**SELF SERVICE SAVINGS**

STORE HOURS

MON. thru SAT. - 10 A. M. to 9 P. M.  
SUNDAYS - 10 A. M. to 6 P. M.

### SAVE up to 57% on CAMERAS



8mm KODAK MOVIE CAMERA  
List 29.95

**18<sup>88</sup>**

FAMOUS MAKE FLASH CAMERA with FLASH GUN  
List 11.90

**2<sup>79</sup>**

500-WATT AUTOMATIC SLIDE PROJECTOR  
List 102.50

**44<sup>49</sup>**

8mm KODACHROME MOVIE FILM  
List 2.40

**1<sup>59</sup>**

LIMIT—3 PER CUSTOMER



### New Cotton DRESSES

Lovely styles in Leno Cottons and Cotton Prints. Many popular Sixty-Shirtwaist types. Ladies! Complete your Spring-through-Summer wardrobe with these cool, flattering and wash-easy fashions! In all lovely Easter colors! Sizes 7-15 & 12-20.

**7<sup>10</sup>**  
Reg. 8.99

### SAVE up to 78% on TV & RADIOS

FAMOUS MAKE PORTABLE TV  
Slashed to **69<sup>44</sup>**

RCA VICTOR 21" DIA. MEAS. CONSOLE TV  
Reg. 249.95

**169<sup>95</sup>**

WESTINGHOUSE 21" DIA. MEAS. CONSOLE TV  
Reg. 249.95

**139<sup>95</sup>**

DELUXE PHILCO 3-WAY PORTABLE RADIO  
List 69.95

**18<sup>44</sup>**

### SAVE up to 47% on REFRIG.

SUPER MODEL 8 CU. FT. FRIGIDAIRE REFRIGERATOR  
5-YEAR WARRANTY  
Orig. List 209.95

**139<sup>88</sup>**

WHIRLPOOL AUTOMATIC WASHER  
Orig. List 249.95

**157<sup>50</sup>**

FAMOUS MAKE 3/4 H.P. AIR CONDITIONER  
Orig. List 299.95

**139<sup>50</sup>**

WASHERS AIR CONDITIONERS



Deep Cut Prices on Carrier, Philco, G-E, Emerson, RCA, Others

### SAVE up to 50% on HI-FI, RECORDS

SAVE \$150 IMPORTED HI-FI FM/AM/SW RADIO-PHONO  
4 SPEAKERS  
Orig. 299.95

**149<sup>95</sup>**

HI-FI FM & AM TABLE RADIO  
10 Tube Performance  
Orig. 69.95

**38<sup>95</sup>**

TOP NAME TAPE RECORDER  
NEVER BEFORE AT THIS PRICE  
Reg. 109.95

**64<sup>95</sup>**

SAVE 2.69 12" HI-FI RECORDS  
Selections from "My Fair Lady", Mozart, "South Pacific", Bizet, etc.

**1<sup>29</sup>**

### SAVE up to 65% on ELECTRICAL APPLIANCES HOUSEWARES • GARDEN AIDS

**SUPER SPECIAL**  
Below Wholesale Cost  
**VOLLRATH POWER MOWER**  
Reg. 79.95  
**39<sup>88</sup>**  
• Deluxe 17-inch Model • 2-Cycle Gasoline Motor • Mulches As It Mows

MONSANTO KRILLIUM PLANT FOOD **68c**  
1-lb. BOX Reg. 1.50  
5 LBS. QUALITY GRASS SEED  
Reg. 3.95  
**1<sup>66</sup>**

Nationally Advertised SOLUBLE PLANT FOOD  
Reg. 1.00  
**24c**

KOPPERS MOTH BALLS or FLAKES  
Reg. 39c  
**22c**

WESTINGHOUSE STEAM & DRY IRON  
Reg. 15.95  
**8<sup>88</sup>**

FINE QUALITY FOAM RUBBER PILLOWS  
Reg. 7.98  
**2<sup>96</sup>**

7-WAY BROILER ROTISSERIE  
Reg. 49.95  
**18<sup>77</sup>**

TOP QUALITY FRYER COOKER  
Reg. 19.95  
**6<sup>88</sup>**

### SAVE up to 58% on SPORTING GOODS

MEN'S GABARDINE REVERSIBLE ZIP JACKETS **3<sup>33</sup>**  
Usually 6.99

MEN'S NEW LIGHTWEIGHT SPORT JACKETS **1<sup>88</sup>**  
Usually 18.95

MEN'S SANFORIZED COTTON SPORT SHIRTS **1<sup>29</sup>**  
Usually 2.95

MEN'S GABARDINE SLACKS **2<sup>99</sup>**  
Usually 5.95

FLOUNDER OUTFIT  
Solid Glass Rod, 150-Yd. Reel.  
Reg. 11.45  
**4<sup>88</sup>**

NATIONALLY ADVERTISED BASEBALLS  
Usually 1.35  
**79c**

RAWLINGS ANDY CAREY PLAYMAKER  
Usually 7.45  
**4<sup>24</sup>**

FLY OUTFIT  
Hollow Glass Rod, Single Action Reel  
Reg. 11.30  
**6<sup>44</sup>**

EXTRA TOUGH RECOVERED GOLF BALLS  
Usually 6.00  
**2<sup>99</sup>**

LIGHTWEIGHT FOLDING GOLF CARTS  
Usually 15.00  
**6<sup>99</sup>**

DELIVERY, INSTALLATION AND SERVICE OPTIONAL ON ALL MAJOR APPLIANCES, HI-F AND TV

**P.T.A. NEWS**

Don't forget to take advantage of the Mobile Chest X-ray Unit which is at the Gaudineer School today (Thursday).

The Spring Meeting of the Union County Council of Parent-Teacher Associations is scheduled to be held on Thursday, May 16 at the Kawameeh Junior High School from 9:30 a.m. to 2:30 p.m. Reservations must be made before May 9th.

Announcement has been made of the Summer Parent-Teacher Workshops which will be conducted during the week of July 8-12 from 9:15 a.m. until noon. The purpose of these workshops is to increase understanding, to stimulate planning and to offer experience in parent-teacher procedures and skills. Plan now to attend. For additional information see next week's column.

A splendid attendance marked the "grand finale" of the Springfield Parent-Teacher Association last Monday evening. A delightful Fashion Show was uniquely presented by Mrs. Mildred Galt's seventh and eighth grade pupils who modeled their own creations ranging from sleep-time attire and dusters to jumpers and street-wear. The Gaudineer School orchestra entertained with several selections under the direction of Mr. John Ault.

Mrs. Ben Paul Yuckman was presented with a Past President's Pin during the brief business session. Attendance awards went to the following classes: Caldwell—Mrs. Perkins, Chisholm—Mrs. Kohn, Gaudineer—Miss Lewis, and Walton—Mrs. McGarrath.

Refreshments were served with the assistance of the seventh grade mothers.

**Jail Term For Banned Driver**

Springfield Magistrate Henry C. McMullen fined a Summit resident \$210 at Monday night's Municipal Court on charges of driving after his license and his registration had been revoked. In default of the fine, the man, James Coleman of 46 Railroad Ave., was sentenced to 60 days in the county jail.

Complainants were Patrolmen Edward Roessner and John Baber. Trinidad, and island off the coast of Venezuela, was first named here, "Land of the Hummingbird." It was discovered by Columbus in 1498.

**TAXI?**  
Springfield-Nadel Cab Co.  
DRexel 6-5200

SAVE... by May 10  
EARN... from the 1st

LATEST DIVIDEND  
**PAID**

**3 1/4%**  
All Accounts Insured  
Up To \$10,000

**HAYES SAVINGS and LOAN ASSOCIATION**  
955 Broad St., Newark 2, N.J.



GREETINGS & GIFTS are brought to you from Friendly Neighbors & Civic & Social Welfare Leaders through

WELCOME WAGON  
On the Occasion Of: Change of Residence Arrivals of Newcomers to City  
Mrs. Josephine Marcy  
South Orange 3-0420  
(No cost or obligation)

# GRAND UNION'S



- PEACHES** Sliced & Halves 2 29 oz. cans 57¢
- FRUIT COCKTAIL** 2 17 oz. cans 43¢
- CORN** Whole Kernel 3 12 oz. cans 40¢
- TOMATO SAUCE** 5 8 oz. cans 39¢
- APRICOTS** Halves Unpeeled 16 oz. can 25¢
- CHILI SAUCE** 2 12 oz. jars 45¢

**MAXWELL HOUSE COFFEE**  
ANY GRIND **93¢**  
lb.

We Reserve The Right To Limit Quantities

**Dairy Food**

Cheese-Spread

**NU-TAST**  
2 lb. leaf 69¢

Finest Aged Cheese

**Sharp Cheddar**  
lb. 67¢

Quality Maid  
Large Brown Grade A  
**EGGS**  
doz. 47¢

- BLUE BONNET MARGARINE** 2 lb. pkgs. 55¢
- "10¢ OFF DEAL" EHLERS INSTANT COFFEE** 5 oz. jar \$1.09
- THRIVO DOG FOOD** 2 15 1/2 oz. cans 21¢
- WESTON FANCY ASSORTED COOKIES** 10 oz. 33¢
- CRACKER BARREL BRAND NATURAL SHARP CHEESE** 8 oz. pkg. 41¢
- McCORMICK CINNAMON SUGAR** 3 oz. jar 17¢
- REFRESHING TETLEY TEABAGS** 48's pkg. 63¢
- FOR ALL YOUR COOKING NEEDS: MAZOLA OIL** gal. \$1.99
- SANITARY NAPKINS, MODESS** 2 12's 85¢ 30's \$1.07
- SWIFT'S BABY MEATS** 2 str. or chop. jars 45¢
- BEECH-NUT BABY FOODS** 10 str. jars 99¢ 6 chop. jars 89¢

- LUCKY LEAF APPLE PIE FILLING** 5¢ DEAL 22 oz. can 27¢
- VENICE MAID RAVIOLI** beef 30 oz. can 45¢ meat balls 30 oz. can 49¢
- SUNSHINE HYDROX COOKIES** 7 oz. pkg. 25¢
- KRAFT MALTED MILK** 1 lb. pkg. 48¢
- McCORMICK SOUR SALT** 1 1/2 oz. jar 24¢
- RE-FRESHING TETLEY TEA** 1/2 lb. pkg. 83¢
- FOR ALL YOUR COOKING NEEDS: MAZOLA OIL** pint bot. 35¢ quart bot. 65¢
- "A TASTY SNACK FOR DOGS" LOLLI PUPS** 2 7 oz. jars 35¢
- R & R BONED CHICKEN** 6 oz. can 69¢
- UNDERWOOD DEVILED HAM** 2 2 1/4 oz. cans 37¢
- CONTADINA TOMATO PASTE** 6 oz. can 10¢
- LA ROSA SPAGHETTI** 2 1 lb. pkgs. 41¢
- MUELLERS EGG NOODLES** 16 oz. pkg. 33¢
- PUSS 'N BOOTS CAT-FOOD** 3 8 oz. cans 25¢

MAY **Family Circle** 7¢ MAGAZINE

**Baked Goods**

- Nancy Lynn Apple Turnovers** 4 for 45¢
- Nancy Lynn Rolls** Hamburger 8 for 22¢, Frankfurter

- Ad** 19 oz. 31¢ 10 lb. \$2.35 16 oz. 32¢ 1 lb. 77¢
- Vel** 5 1/2 oz. 79¢
- Ajax Cleanser** 3 reg. 35¢ 2 qt. cans 33¢
- Florient Aerosol Deodorant** 5 1/2 oz. 79¢

Nancy Lynn Assorted  
**LAYER CAKES**  
Regularly 69¢ **59¢**

**Frozen Food Sale**

- Freshpak Orange Juice** 2 12 oz. cans 53¢
- Seabrook Farms French Green Beans** 2 9 oz. pkgs. 37¢
- Birdseye Cut Corn** 2 10 oz. pkgs. 33¢
- Libby Whole Strawberries** 16 oz. pkg. 39¢
- Birdseye Whipped Potatoes** 2 12 oz. pkgs. 29¢
- Holloway House Stuffed Green Peppers** 12 1/2 oz. pkg. 55¢
- Ice Cream Flavor Of The Month** Nancy Lynn **Raspberry Twirl** pint 33¢ 1/2 gal. \$1.10
- Freshpak Orange Pineapple** 2 pint pkgs. 49¢ 1/2 gal. 89¢

- Burry Oxford Cremes** 11 oz. 33¢
- O'Cedar Dri Glo Furniture Polish** 4 oz. bot. 49¢
- Tuna** Chicken Of The Sea 7 oz. can 35¢ Light Meat Solid Pack
- Broadcast Corned Beef Hash** 16 oz. can 32¢
- Marcal Napkins** 2 pkgs. 23¢
- Marcal Dinner Napkins** pkg. of 60's 15¢
- Marcal Toilet Tissue** 3 rolls 31¢
- Marcal Towels** 2 pkgs. of 150's 33¢
- Vel** Liquid Detergent 12 oz. can 37¢ 22 oz. can 67¢
- Palmolive Soap** 4 1/2 oz. 37¢
- Cashmere Soap** 4 1/2 oz. 37¢
- Dif Waterless Hand Cleaner** 14 oz. 39¢

**plus...THE EXTRAS • FREE GIFTS**

Grand Union Grocery Prices Effec. Thurs., May 2 thru Wed., May 8. Meat, Produce & Dairy Prices Effec. Thurs., May 2 thru Sat., May 4. In All N.Y. & N.J. Stores.

GENERAL GREENE SHOPPING CENTER

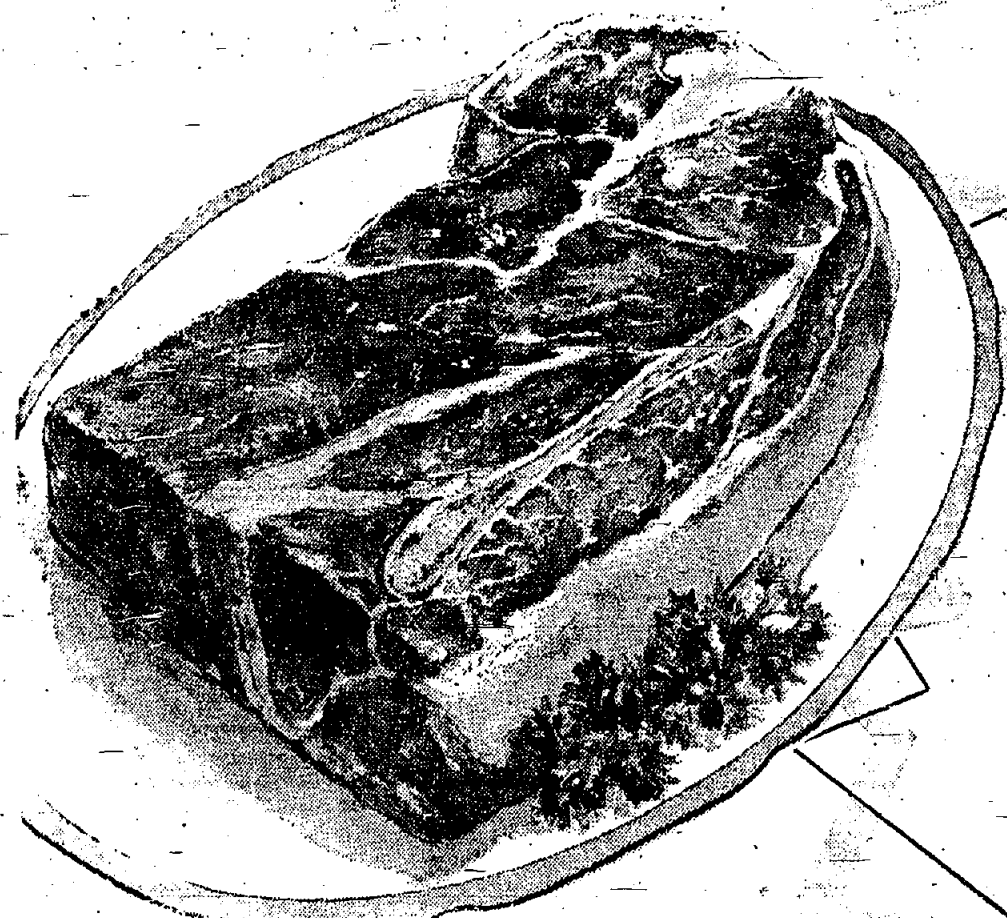
SPRINGFIELD STORE HOURS: MON., WED. & SAT. 8:30 A.M. TO 6 P.M. TUES. & THURS., 8:30 TO 9 P.M. FRIDAY'S 8:30 A.M. TO 10 P.M.

Morris and Fiemer Avenues, SPRINGFIELD



# Miracle OF VALUES!

BRINGS YOU EXTRA SAVINGS DURING MAY



Swift's Premium, Armour Star  
U.S. Choice

## CHUCK ROAST

Choice Center Cuts lb.

# 29¢



Swift's Premium, Armour Star  
U.S. Choice

## BONELESS CROSS RIB ROAST

lb.

# 69¢

Delicious for Pot Roasting

This Low Price PLUS  
TRIPLE-S BLUE STAMPS

Small - Lean - Mild Cure

## SMOKED TONGUES

lb. **39¢**

Short Cut  
Delicious Served Hot or  
Sliced Cold for Sandwiches

Extra Lean - Perfect For Grilling

## Ground Chuck

lb. **59¢**

Darlings - Quick Frozen - Chopped

## Boneless Beefsteaks

11 oz. no waste pkg. **59¢**

Mogen David - Kosher

## Frankfurters

collo pkg. lb. **79¢**

Fresh Caught - Boneless-Skinless

## Flounder FILLETS

lb. **69¢**

Deerfoot Farms - Top Quality - Any Size Piece

## Bologna or Liverwurst

lb. **49¢**

New - Taste-O-Sea - Precooked

## Fish Steaks

Heat & Eat 2 10 oz. pkgs. **77¢**

Sweet, Firm, Bright Red

## STRAWBERRIES

pint basket

# 25¢

A Springtime Delight. Now is the time for Strawberry Shortcake. Make them with Nancy Lynn Shortcake Layers and Top with Reddi Wip - Instant Whip Cream

Fresh Tender Green Spears  
from Jersey Farms

## ASPARAGUS

large bunch

# 39¢

Sweet Florida Valencia

## ORANGES

5 lb. bag **39¢**

Firm Crisp - Large Size

## SCALLIONS

2 bchs. **13¢**

Fresh Florida - Cypress Gardens

## CITRUS SALAD

quart jar **59¢**

## Top Quality ROSE BUSHES

Medium Size **79¢** Jumbo Size **99¢** Bundle of 5 **2.98**

Sensational Offer!

## Imperial Stainless Tableware

5 PIECE PLACE SETTING  
- SERRATED BLADE KNIFE - FORK  
- SOUP SPOON - 2 TEASPOONS

only **1.69**  
usually \$4.95

A complete place setting for any meal!

# WITH TRIPLE-S BLUE STAMPS



Grand Union Grocery Prices Effective Thurs., May 2nd thru Wed., May 8th. Meat, Produce & Dairy Prices Effective Thurs., May 2nd thru Sat., May 4th. In All N.Y. & N.J. Stores.

We Reserve The Right To Limit Quantities.

**Sailor in Maryland**  
PATUXENT RIVER, Md. (FIT NC) — Albert F. Haussmann, aviation electrician's mate third class, ward of Mr. and Mrs. Hermann Haussmann of 135 S. Maple ave., is serving with Airborne Early Warning Squadron 11 at the Naval Air Station, Patuxent River, Md.

The squadron's mission is to provide radar protection to the U. S. by air. Navy pilots and their

crews fly radar patrols over the North Atlantic Ocean scanning thousands of square miles for possible aggressors.

This summer Squadron 11 will be based at Argentinia, Newfoundland, for the radar patrols.

Voting ballots in the French Cameroons, Africa, have both the written names of candidates and the symbols (rooster, spider or half moon) so that ballots can be cast by voters who cannot read.



**NEWS REPORT**

Mrs. E. E. Arnold, camp chairman has announced that Camperships, which entitle those selected to a week of camp at a Girl Scout or Brownie Camp, were awarded Saturday, April 27 at the Presbyterian Parish House.

Mrs. S. B. Lippincott, Mrs. Frank Stevens and Mr. J. Billings were the judges, and the following Girl Scouts and Brownies were chosen:

Carol French, 3rd year Intermediate, Troop 3, Mrs. Lee Andrews, Jr., leader, Nancy Lester, 1st year Intermediate, Troop 16, Mrs. P. Patterson, leader. Their alternates are Marguerite Caffrey, 1st year Intermediate, Troop 8, Mrs. Walter Anderson, leader and Diane Roller, 1st year Intermediate, Troop 2, Mrs. J. Roller, leader. From the Brownie Troops: Carolyn Cowles, 2nd year Brownie Troop 34, Mrs. Arnold Birnbaum, leader, Sharon Remlinger, 1st year Brownie Troop 37, Mrs. Louis Gash, leader, their alternates, Edith Bell, 2nd year Brownie Troop 41, Mrs. Edward Kent, leader, Margot Pehard, 1st year Brownie Troop 35, Mrs. Ed-

ward Smith, leader.

We're all wishing and wishing for—pleasant weather Saturday, May 4 for the Girl Scout Picnic on Hilltop, at Echo Lake, the hours from 1 to 5. Each girl should take her lunch and prepare for a cook-out, the charcoal for the fireplaces, the beverage and ice cream to be provided by the committee. Mrs. Frank Jakobson and Mrs. Louis Soos are co-chairmen for the picnic and Mrs. A. F. Jurawski will assist with the games. It will be a load of fun, and we'll see you there unless it rains in which case the picnic will be cancelled.

We now hear of another interesting and educational trip which took place during Easter vacation. Troops 32, 33, and 40, under the leadership of Mrs. J. Leonardi, Mrs. R. Hattersey, Mrs. P. DeVecchio, Mrs. Anthony Ciccone, and Mrs. W. J. Ehrhardt went by bus on Friday to New York and from there took the boat to the Statue of Liberty. The exciting event of the day was climbing to the Crown, quite often a chore for adults but not for Girl Scouts. Every one took a picnic lunch to eat on the grounds there and made a real day of it.

Troop mothers, Mrs. Fauhold, Mrs. Madura and Mrs. Zigrino went along to help the leaders. It certainly is a trip to remember.

There will be a Girl Scout Communion Breakfast at St. James on Sunday, May 5, directly after the 8 o'clock Mass. All girls and parents are welcome, and the girl scouts are requested to attend in uniform.

At a recent joint Council and Leaders' meeting delegates and alternates were elected to attend meetings for the ensuing year of the Washington Rock Girl Scout Council of which Springfield will become a part at the Charter Meeting on May 1 in Westfield. Springfield will then be called a "Neighborhood", and Mrs. Rupert Humer is the acting Neighborhood chairman; her alternate is Mrs. William Degenhardt. Other delegates and their respective alternates are: Mrs. Thomas Doherty, Mrs. A. C. Roth, Mrs. L. W. Soos, Mrs. George Rau, delegates; Mrs. Lee Andrews, Jr., Mrs. Robert Marino, Mrs. E. E. Arnold and Mrs. R. E. Purkhiser, alternates.

The milk bottle was invented in 1884 by Dr. Hervey D. Thatcher of Potsdam, N. Y.

**Safety Education-Program Of Local School System**

Safety is of great concern to everyone connected with the school system. It is a program of major importance throughout the school year. As part of this program, each school has a group of boys and girls serving on its Safety Patrol.

Safety is a matter of great importance throughout every minute of the school day. Who shares in this safety education? When is safety taught? How? What attitudes, habits and reactions are developed? These are the questions which should be answered in a report on the aims and purposes of the safety program in the Springfield Schools.

Who shares in this Safety Program? Everyone connected with the school system has a part in it. The administrators constantly keep the need for safety uppermost in the minds of all, stimulating thought and discussion, and coordinating the efforts of all of the school staff with the efforts of the police, the fire department and other community agencies. They reach into the homes by their regular bulletins which always include a safety message, and by talking with parents and students about matters concerning the safety of all. The school clerks deliver countless messages which contribute to the safety of individual children. The maintenance department has as its paramount objective a safe environment for the children. The school nurse delivers a child to his home if for any reason he has to leave during the school day and the parent is unable to call for him. The special teachers make distinctive contributions to the safety program. Of prime importance is the proper handling of tools and equipment in shopwork, cooking and sewing; games which follow set rules are not only safer games, but are more fun for all; safety posters bring a visual appeal, and safety songs an auditory one. To the regular classroom teacher falls the heaviest burden or responsibility, not only for constant vigilance but for an enriched and effective safety program. The boys and girls through individual classroom leadership learn by taking responsibility. The entire school program is made possible by the untiring efforts of the Board of Education which makes the

**Town To Receive Refuse Pickups**

Springfield residents will be given monthly refuse pickups beginning in June, in addition to regular garbage collection. Residents will be able to get rid of those items usually saved for disposal during the annual clean-up week.

The Township Committee adopted a resolution at the last meeting paying the way for the extra pickup.

The resolution allows the committee to waive bidding for the service and award a separate contract for the service to the township's present scavenger, Petrosello Co. of East Orange. The service will cost the township \$300 a month, committee-man Vincent J. Bonadies said. The pickup will be during the last week of each month, he said.

**Hadassah Reps Return**

Two members of the Springfield Hadassah, Mrs. Joseph Menkin and Mrs. Nathan Sherman, have just returned from a 3-day conference of the Northern New Jersey Region of Hadassah at the Hotel Breakers, Atlantic City.

**'A Woman Never Forgets The Man Who Remembers' MOTHER'S DAY CANDIES**

WHITMAN'S SAMPLERS



And Many Other Gifts

**KAY'S STATIONERY**

Springfield's Hobby & Toy Center  
278 Morris Ave. DRexel 6-8868  
Springfield, N. J.  
FREE GIFT WRAPPING

**VACATION CLUB OPEN**

**\$1 - \$2 - \$5 CLUBS**

**INVESTORS SAVINGS**

**64 MAIN STREET**  
**MILLBURN, N. J.**

**Choose your colors... SPERCO DOES THE REST**

**CUSTOM AUTO PAINTING**

We'll give your car a lasting lustrous finish that only a NEW car can equal.

**REASONABLE RATES**

- COMPLETE COLLISION REPAIRS
- WRECKER AND ROAD SERVICE

Free Estimates Free Pick-up & Delivery

**FREE** USE ONE OF OUR RECONDITIONED USED CARS WHILE YOUR CAR IS BEING REPAIRED OR PAINTED.

**SPERCO MOTOR CO.**

491 MORRIS AVE. SUMMIT CR. 3-1700

**CALL... DRexel 6-4300**

"We Service Any Oil Burner"

**Schaible Oil Co.**

192 MOUNTAIN AVE. SPRINGFIELD, N. J.  
COAL - FUEL OIL - COKE  
METERED DELIVERIES - BUDGET PLAN

**RAPPAPORT SPRING DRUG**

273 Morris Ave., Springfield  
Free delivery - DRexel 9-2079

Prescriptions, Vitamins, Cosmetics

**Cut-Rate Prices**

**H. C. Deuchler**

**GUILD OPTICIAN**

**GOOD-LOOKING GLASSES**

*perfectly fitted*

613 CENTRAL AVENUE (Near Harrison Street) EAST-ORANGE, N. J.  
344 SPRINGFIELD AVENUE (Corner Summit Avenue) SUMMIT, N. J.

ASK YOUR EYE PHYSICIAN ABOUT OUR SERVICE.



**CARDINAL TOPICS**

by Ed Cardinal

Every week dozens of people ask us about trading in mowers they purchased at so-called bargain houses. Most of these mowers are only a year or so old, and are already fit for the junk heap. Many never operated properly from the day they were purchased, and many are mechanically unsound and dangerous to operate.

You wouldn't think of buying a car, or refrigerator that wasn't a popular, well known make, so why spend good money on an unknown brand of power mower? The mowers listed in our ad are popular brands and all put in running condition before they go out of our shop.

**FERTILIZER SPREADERS**

Buch Spreader (5 left) \$5.95

Scotts Spreader \$12.85

Scotts Junior Spreader \$7.85

21 in. Pennsylvania Deluxe Reg. \$149.50 \$115.00

18 in. Reo Scuffy Reg. \$109.50 \$92.50

18 in. Suburban Reel Reg. \$119.95 \$74.95

18 in. Homko Rotary Reg. \$99.95 \$79.50

18 in. Reo Revo-Jet Rotary Reg. \$99.95 \$89.95

18 in. Jacobsen Rotary With famous rotary cutting discs \$69.50

18 in. Eclipse Rotary Famous make \$69.50

16 in. American made hand mower Reg. \$22.50 \$13.95

Union County's Largest Selection of Hand and Power Lawn Mowers.

**CARDINAL NURSERIES**

272 MILLTOWN ROAD SPRINGFIELD DRexel 6-0440 "SPRINGFIELD'S GARDEN DEPT. STORE"

**CADILLAC**

SPERCO MOTOR CO. CADILLAC Sales-Service Accessories 491 Morris Ave. Summit

"Near Ciba" CRexelview 3-1700

**CHEVROLET**

L & S Chevrolet Co., Inc. E. Arthur Lynch Your Authorized Dealer

Sales - Service Parts - Repairs Complete Body & Pender Work Painting

Cor. Morris & Commerce Ave., Union MURdock 6-2800

**ALUMINUM PRODUCTS**

RAJAC PRODUCTS 276 MORRIS AVE., SPRINGFIELD DRexel 6-4649

- Aluminum Storm Windows
- Aluminum Storm Doors
- Aluminum Awnings
- Aluminum Screens
- Aluminum Jalousies
- Aluminum Awnings
- Aluminum Enclosures

**BAKERY**

HASELMANN'S BAKERY Quality Baked Goods 270 Morris Avenue Springfield DRexel 6-4120

**DRUGS**

**PARK DRUGS** Prescription & Surgical Pharmacy OPEN SUNDAYS 7:15 P.M. General Greene Shopping-Center DRexel 9-4942

**ROLAND DRUGS** 777 Mountain Ave. (Tab's Shopping Center)

PRESCRIPTIONS-COSMETICS BABY NEEDS-VITAMINS

Free Delivery-DRexel 9-2244

9 A.M. - 10 P.M. Including Sundays

**FLOOR COVERING**

**CENTER CARPET** "Floor Coverings Of Every Description"

Rubber Asphalt Cork Rug Cleaning & Storage

31 Summit Av. CRexelview 7-2700

**FUEL OIL - COAL**

**DRAKE FUEL SALES CO.** DELCO OIL BURNERS Installation & Servicing COAL • FUEL OIL • COKE 679 Morris Ave. Springfield DRexel 6-0880

**FLOOR COVERING**

**LINOLEUM & CARPET FACTORY OUTLET**

• Linoleum • Tile • Broadloom From the nation's leading manufacturers at low budget prices ROUTE 22 SPRINGFIELD DRexel 6-5220

**LETTERING**

Harry S. Keene **TRUCKS** Small Signs Delivery Trucks A Specialty KENILWORTH, N. J. BRIDGE 6-2970

**MEATS & FISH**

**CENTER MEAT POULTRY and FISH MARKET** Prime Meats Fresh-killed Poultry Fresh Fish Free Parking in Rear 254 Morris Avenue Springfield Open Daily 8 to 6 p.m. Friday 8 to 9 p.m.

**MILK AND DAIRY PRODUCTS**

**SCHMALZ**

- Milk & Cream
- Buttermilk
- Cottage Cheese
- Butter & Eggs

Delivered Fresh from Our Nearby Farm Call...

**MILLINGTON 7-0025**

**NEWSPAPER DELIVERY**

Your Favorite Paper Delivered To Your Home Mornings - Afternoon - Evening - Sunday

**SPRINGFIELD NEWS DELIVERY** Call DRexel 6-0786

**PLUMBERS**

**ALBERT SCHATZ** Plumbing - Heating Contracting - Alterations Repairing

Hours: Monday thru Saturday 8 a.m. to 5:30 p.m.

197 Hillside Avenue SPRINGFIELD DRexel 6-4276

**SERVICE STATIONS**

**BALDWIN'S SHELL STATION** Gas - Oil - Lubrication Washing & Polishing Call For Delivery Service DRexel 9-9831

Mountain & S. Springfield Ave. SPRINGFIELD

**SIMPSON'S ESSO** 155 Morris Ave. Springfield DRexel 6-4210

- Lubrication
- Repairs
- Accessories
- Washing

**ROOFING-SIDING**

**SPRINGFIELD ROOFING CO.** Remodeling, Attics and Basements Finished Slate, Tile and Siding Gutter and Leader Repair Phone DRexel 9-4207 357 Mountain Ave., Springfield, N. J.

**TAVERNS**

**OLD EVERGREEN LODGE** SINGERS PARK, SPRINGFIELD

Square Dancing Every Saturday Eve. Available for all affairs. DR. 6-0489

**TV SERVICE**

**EHRHARDT ELECTRONICS** 166 Tooker Ave. DRexel 9-3923 If No Answer. Call MURdock 8-1155

**WATERPROOFING**

**CELLARS** Wet leaky cellars made DRY BY 5 YEAR WRITTEN GUARANTEE Small down payment - monthly terms Gregory Waterproofing Co. Elizabeth 2-3992

**Don't NEED IT? SELL IT THRU THE WANT ADS**

**Complete Catering Service** for your Home Weddings, Dinners and Cocktail Parties

Viennese Cuisine From a Tasty Cocktail Sandwich to a Complete Meal DRexel 6-0228

**MELLIE WEISS** 24 Taylor St., Millburn Opposite Washington School

**STOMACH TROUBLE?**

At last stomach sufferers can rejoice! New formula, rushed here to fight hyperacidity, dried stomach ulcers, indigestion, this new formula, PERANOL, has the power to cure excess acidity. Men and women who formerly suffered with symptoms of distress or ulcers, heartburn, gas, and vomiting due to hyperacidity now tell of remarkable relief after using PERANOL. PERANOL must give you the fastest results and the greatest long-lasting improvement you have ever known or it costs not a penny. So no matter what you have tried previously, try PERANOL and prove to yourself what it can do for you. PERANOL costs only \$2.50 and is sold with a money-back guarantee. It is completely satisfied with the results. PERANOL is sold in your city only by The Springfield Pharmacy, 138 Morris Ave. - Mail orders filled.

**United Rent-Alls**

- SANDING & POLISHING MACHINES
- POWER TOOLS
- GARDEN & YARD TOOLS
- PARTY & BANQUET NEEDS
- INVALID NEEDS
- CEMENT MIXERS

Call Us For The Item You Need - We Probably Have It

1610 Springfield Ave. Maplewood SO 2-2981





ANOTHER REALTY CORNER SALE—Home at 212 South Springfield avenue has been sold for Mr. and Mrs. George Hussey to Mr. and Mrs. Arthur Kuten of Newark. Mr. Kuten has his own business, Art's Clothing Store in Newark.

### Family Week Plans Set For Methodists

The Springfield Methodist Church has several plans to observe "Family Week" beginning this Sunday.

On May 5 at 9:15 a. m. "Family" worship service with parents and children joining in the sanctuary for a 20 minute period before the Church School students go to their classes. At 5:30 to 7:30 a Family Night Supper, sponsored by the Commission on Education, Philip O'Neal, Chairman. All families will bring one dish and everyone will take "pot luck." Robert Bevan, Program Chairman reports there will be an informal entertainment in which the children's choirs will sing, the MYF group will participate as well as community singing.

On Wednesday, May 8 the Annual Mother and Daughter Banquet will be held. This is sponsored by the Women's Society of Christian Service and a very interesting entertainment program has been prepared.

On Sunday, May 12, Children's Day will be observed at the 9:15 service. The members of the Church School from two years of age right on up will tell what and

### To Sing In Concert

Mrs. Watts D. Chasin of 212 Ballusrol avenue will sing in a concert this Sunday evening at the annual Spring Concert of the Summit Community Chorus.

Mrs. Chasin is a member of the chorus which will perform at 8:15 in the Calvary Church in Summit. Her duet is part of the "Donna Nobis Pacem" by Ralph Vaughan Williams, a setting of poems by Walt Whitman and of how they are learning. At the 11:00 service recognition will be made of "Mother's Day."

### Lutheran Church Gets New Pastor

It was announced at last Sunday's service at Holy Cross Lutheran Church that the Rev. Lester Messerschmidt has accepted the call to the pastorate of this congregation. Pastor Messerschmidt is a graduate of Concordia Seminary in St. Louis, Mo., and has served in that institution for the past three years. He is expected to assume his new

position in Springfield sometime in July. Holy Cross Lutheran Church has been without a resident pastor since July 1956 when their minister, the Rev. Eric Rieker, accepted a call to serve a mission at Middle Island, New York. Since that time the congregation was served by the Rev. Henry von Spreckelsen of Union, the Rev. A. Robert Sander of East Orange, and the Rev. Frederick Schroeder

(retired) of Newark. In anticipation of the arrival of the pastor, the men and women of the congregation have been busy remodeling and decorating the parsonage under the supervision of Robert H. Wilkins, president. Further information about the Rev. Lester Messerschmidt and his family will be published as it becomes available.

### Woman's Club News

Mrs. Merton Williams, new president, started off her year with a constructive Executive Board Meeting Wednesday, April 24, at the Cannon Ball House. The new chairmen for the coming year presented the names of their co-chairmen. Plans and ideas for the coming year were discussed, indicating an interesting year ahead. Mrs. Stanley Frank and Mrs. Edward Schubert were hostesses.

Members are reminded to take advantage of the X-Ray unit which will take chest X-Rays today at Florence M. Gaudineer School. Time 2:30-4:30 and 6:30-9:00. Fee \$1.50.

Many thanks to the Garden Department for the beautiful table presented to the Springfield Woman's Club to be used at the Cannon Ball House.

Mrs. Edward Schubert House Chairman reported she procured six more teaspoons with the Betty Crocker coupons and a carafe with the blue stamps.

Mrs. Merton Williams, President, represented the Springfield Woman's Club at the Dedication Ceremony of the renovated Springfield Public Library on Sunday afternoon April 28.

Music Department had a Surprise Stork Shower on April 23rd, at the home of Mrs. John E. Billings, 11 Tower Dr. A gift was presented to the guest of honor, Mrs. John S. Trout. Games and laughter were enjoyed by all. The table was beautifully set in pink and blue. Our president, Mrs. Merton Williams was also a guest.

Mrs. Merton Williams attended Federation Guest Days at the following clubs during the month of April, Montclair Woman's Club, Woman's Club of Elizabeth, Roseland Woman's Club and West Essex Woman's Club.

Attention! All women of the Springfield Club! Don't forget to attend the Dessert Card Party and Fashion Show this Friday, May 3rd, 8:00 p.m. at the Suburban Hotel in Summit. This is your chance to show off your Easter finery and also see the new fashions to come.

President Theodore Roosevelt was an ardent advocate of simplified spelling. He ordered the government printer to shorten spelling of more than 300 words in all legislative publications.

### Pulpit Switch For Presbytery Sunday

"Presbytery Sunday" will be observed in the local Presbyterian Church this Sunday morning with a general pulpit exchange among the ministers of Elizabeth Presbytery.

The guest speaker for the local Presbyterian Church will be the Reverend William G. Felmeth of the Presbyterian Church of Basking Ridge. Mr. Felmeth is no

stranger to Springfield for he served as student assistant here for a year and a half while a student at Princeton Seminary. Mr. Felmeth is a graduate of Harvard University and Princeton Seminary. Before assuming the pastorate of the Basking Ridge Church, Mr. Felmeth had served in the Cranberry Presbyterian Church and in the United States Army during World War II.

The Rev. Bruce W. Evans, pastor of the Springfield Presbyterian Church will preach in the Second Presbyterian Church of Union.

### FOR AN EXECUTIVE



- CENTER HALL
- ATTRACTIVE TILED KITCHEN WITH BREAKFAST AREA
- SPACIOUS LIVING ROOM WITH LOVELY FIREPLACE
- FINISHED BASEMENT REC ROOM WITH LAVATORY
- FULL DINING ROOM
- SCREENED AND GLASSED PORCH
- 3 TWIN-SIZE BEDROOMS MASTER ON FIRST FLOOR
- 2-CAR ATTACHED GARAGE
- 2 1/2 BATHS, ONE WITH STALL SHOWER
- HEAVY SLATE ROOF
- PANELLED LIBRARY
- 1/2 ACRE LANDSCAPED PROPERTY

#### PRICED UNDER REPLACEMENT COST

This charming Cape Cod residence is ideally located in a "top" northside Short Hills location.

The house and grounds are spacious and will certainly provide the ultimate in pleasant comfort for a young executive's family.

The floor-plan is ideal, the decor is all in good taste and the condition is excellent.

We are practically certain one look will convince some "Solid Citizen" that it truly is the "Buy of the Year."

Anne Sylvester's Realty Corner, Realtors

649 MORRIS AVENUE

SPRINGFIELD, N. J.

DREXEL 6-2300

### Opening of

New Public Service Coordinated Transport

Office Building in Maplewood creates

### MANY NEW JOB OPPORTUNITIES

### FOR SECRETARIES, TYPISTS AND CLERKS

- 35 Hour Week — 8:45 AM to 4:30 PM
- Full-time — steady employment
- Liberal Vacation and other benefits
- Pleasant surroundings in new modern office building
- Modern cafeteria — reasonably priced meals
- Air conditioned.

Apply in person at Public Service Coordinated Transport, 160 Boyden Avenue, Maplewood, any time during office hours 8:45 AM to 4:30 PM.

FOR THE FINEST IN EYEWEAR

—HOURS: Daily 9 - 5:30 Thurs. 9 - 9

Laboratory on Premises

ANDREW KOVACS

OPTICIAN

357 MILLBURN AVE., MILLBURN Near Theatre DR 9-4155

it costs so little to surprise them

...PHONE WHEELING 80¢

3-minute station rate from Newark after 6 p.m. Tax not included.

LOW-COST MONTHLY PAYMENT

HOME LOANS

to help you buy, repair or refinance a home

Ask about our "tailor-made" home financing plans today

CRESTMONT SAVINGS and Loan Association

1886 Springfield Ave. Maplewood, N. J. 175 Morris Ave. Springfield, N. J.

## Forbes Famous Roses in Pots

Come and see them. The best of the named varieties, each thoroughly rooted in a 7x9-inch pot, fully alive, in leaf and all ready to go. All are 2-year-old No. 1 grade and field grown specially for us by the leading quality rose grower. Shown in color.

All Pot Grown, \$1.95 and up also

- AZALEAS — Winter hardy, well budded for May bloom.
- EVERGREENS — Freshly dug, all balled and burlapped.
- FLOWERING SHRUBS—All pot-grown for safe planting.
- PANSY PLANTS — Swiss Giants in flats, bloom May to fall.
- PERENNIAL PLANTS— Over 335 kinds in pots, large plants to bloom this year.

## FORBES GARDEN CENTERS

On-Route 10, Hanover, N. J.

Mile west of Livingston Circle. Phone TUCKER 7-0375

Morris Turnpike at Millburn Ave., Millburn

Prompt Delivery. Phone DREXEL 9-4430

Both Open

Weekdays 8:30 to 8:30; Sundays 8:30 to 5

1/2 price SALE limited time only



Tussy deodorants

CREAM AND STICK REGULARLY \$1



NOW 50¢ each plus tax

TUSSY

J. Newberry Co.

General Greene Shopping Center SPRINGFIELD, N. J.

You already know us...but WE'VE GOT A BRAND NEW NAME

## HOUDAILLE CONSTRUCTION MATERIALS, INC.

### SUCCESSORS TO:

- North Jersey Quarry Co.
- Portland Sand and Gravel Co.
- Consolidated Stone and Sand Co.
- Commonwealth Concrete Co.
- Saguine-Begart Co.
- Hunterdon County Stone and Sand Co.

WE'RE SURE our customers and other good friends will recognize us, even with our new name. Our plant operating people have the same familiar faces you've known for years. You'll call the same phone numbers for the same efficient service you're accustomed to. The same salesmen will be calling on you. The integration of all our units into one company, with one name, will provide you even greater flexibility in service and delivery...to meet your needs for any material... in any quantity... delivered when and where you want it!

(HOUDAILLE is pronounced Who-Dya)

### YOUR ONE SOURCE

for top-quality construction materials...including

- Crushed Stone
- Gravel
- Rip-Rep
- Ready-Mix Concrete
- Sand
- Jetty Stone
- Bituminous Concrete

MAIN OFFICE: 10 Park Place, Morristown, New Jersey • JEFFERSON 9-1000

## 28 LOCATIONS

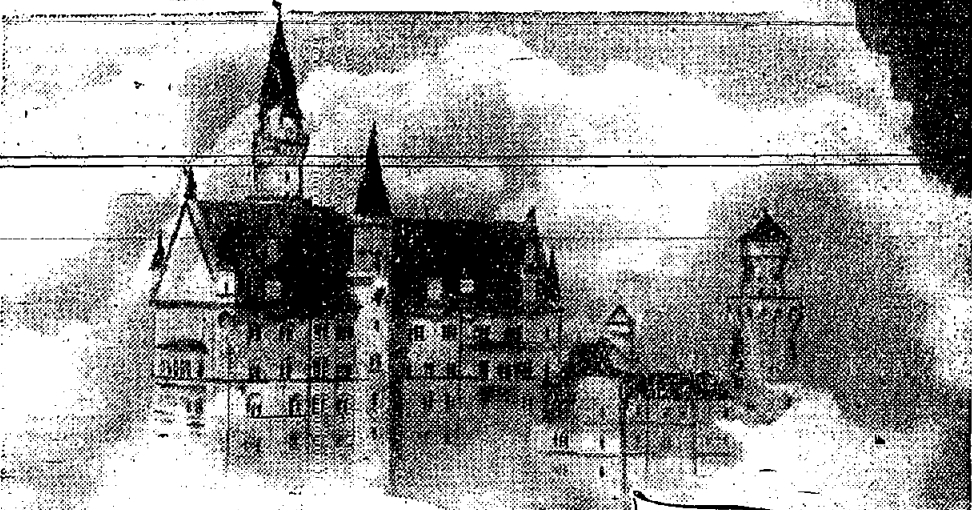
to serve your needs promptly... completely

- Crushed Stone Plants
  - Bound Brook, N. J.
  - Millington, N. J.
  - Montclair Heights, N. J.
  - Oldwick, N. J.
  - Summit, N. J.
- Bituminous Concrete Plants
  - Kenvil, N. J.
  - Montclair Heights, N. J.
  - Summit, N. J.
- Sand and Gravel Plants
  - Riverdale, N. J.
  - Kenvil, N. J.
  - Lakewood, N. J.
  - Carpentersville, N. J.
  - Portland, Penna.
- Ready-Mix Concrete Plants
  - Bound Brook, N. J.
  - Summit, N. J.
  - West Orange, N. J.
  - South Orange, N. J.
  - Morristown, N. J.
  - Kenvil, N. J.
  - Hanover, N. J.
  - Newton, N. J.
  - Sussex, N. J.
  - Orford, N. J.
  - Carpentersville, N. J.
  - Easton, Penna.
  - Stockertown, Penna.
  - Portland, Penna.
  - Stroudsburg, Penna.





## WE ALL HAVE OUR DREAMS



Yes, we all have our dreams. Perhaps sometimes, they are mere projections of our selfishness . . . hopes unfair to others . . . ambitions dangerous to ourselves.

But often, they are healthy, honest aspirations . . . opportunities which zeal deserves . . . victories which justice demands.

Is it wrong to dream such dreams? Does God frown on honest hope and love?

Of course not! Rather, God has given us minds able to dream, and souls courageous enough to seek the difficult—even the impossible.

But the Divine Architect helps man to model his castles in the air, and provides the tools for their building. With faith and the guidance of the Church a man may realize hopes and aims which a cynical world calls futile.

### THE CHURCH FOR ALL . . . ALL FOR THE CHURCH

The Church is the greatest factor on earth for the building of character and good citizenship. It is a storehouse of spiritual values. Without a strong Church, neither democracy nor civilization can survive. There are four sound reasons why every person should attend services regularly and support the Church. They are: (1) For his own sake. (2) For the sake of his community and nation. (3) For the sake of the Church itself, which needs his moral and material support. Plan to go to church regularly and read your Bible daily.

Day	Book	Chapter	Verses
Sunday	Joshua	1	1-11
Monday	Matthew	25	1-30
Tuesday	Matthew	25	31-45
Wednesday	John	18	5-30
Thursday	Galatians	6	1-18
Friday	James	2	1-26
Saturday	John	3	1-24

These Messages are being published each week in the Springfield Sun and are sponsored by the following interested individuals and business establishments:

**NATIONAL STATE BANK OF ELIZABETH**  
Springfield Branch  
Member of Federal Reserve System

**SMITH AND SMITH**  
Funeral Directors  
Springfield—Newark

**RESIDENCE CONSTRUCTION CO.**  
321 Main St., Millburn

**INVESTORS LOAN ASSOCIATION**  
64 Main St., Millburn

**CHANNEL LUMBER CO.**  
Route #22, Springfield

**RICHARD BEST PENCIL COMPANY, INC.**  
Springfield

**H. SCOTT EXCAVATING CO.**  
115 Morris Ave., Springfield

**DAVEGA DISCOUNT CENTER**  
Route #22, Springfield

**CRESTMONT SAVINGS & LOAN ASSOCIATION**  
175 Morris Ave., Springfield

**ELECTRICAL INSTALLATIONS, INC.**  
Commercials and Industrial Contractors,  
48 Brown Ave., Springfield

**ALFRED YOUNG**  
Funeral Director  
145-49 Main Street  
Millburn

**PENTAGON METAL PRODUCTS CORP.**  
58 Brown Avenue, Springfield

**INVESTMENT CASTINGS CO.**  
60 Brown Avenue, Springfield

**WOODSIDE HOMES**  
A Fisher-Robbins Community  
Springfield

**DRAKE FUEL SALES CO.**  
679 Morris Avenue  
Springfield

**PAUL C. STECK, INC.**  
Precision Sheet Metal  
and Experimental Work  
25 Brown Avenue, Springfield

**METALS AND RESIDUES, INC.**  
65 Brown Avenue, Springfield

## THIS WEEK

(Continued from page 1)  
— all have shown striking results in recent years. —  
You do benefit when you give. And your community becomes a safer and happier place in which to live.

### SPRINGFIELD CHARTER CHANGE

Folks in Springfield Township have taken the first long stride toward calling in the Faulkner Law with its modern and attractive array of local governments. Already a citizens' committee is organizing to be followed by screening and selecting candidates for a charter commission proposal which may possibly have a place on the General Election ballot in November.

Steadily the experimenting spreads as the people of more and more communities seek to bring into government the best possible business order. The wonder is not in the new trend, but in the long delay regarding change-over. There isn't an employed person who hasn't witnessed the introduction of new and better methods to meet the high costs of a competing world. By the same token there probably isn't a well-regulated household which hasn't found it necessary to put aside the free and easy abundance of only a few years back.

As has been repeated here so many times, a township, a town, a city is in turn just another business partnership, and even those taxpayers who were slow to catch on are awakening. A city should never be anything more or less than a community of attentive shareholders reaching for the soundest possible basis of operation and the best possible highways to sensible expansion.

Now our neighbor Springfield, not so long ago truly rural and reveling in a Revolutionary atmosphere, is experiencing the growing pains that forecast a big city. The township has had flattering expansion which wise Springfielders have taken as warning to make ready for the future. The charter proposal should not be put aside without the careful thought and study presently absorbing, for instance, various residents of adjoining Union Township with its 9.04 square miles and the third largest population in the county. Is that a city? Elizabeth Journal.

### MENU FOR WEEK OF MAY 6

**GAUDINEER SCHOOL CAFETERIA**  
Monday—Spaghetti with meat sauce, applesauce or peaches, peanutbutter sandwich, milk.  
Tuesday—Hamburger on roll, potatoes, fruit cocktail, milk.  
Wednesday—Frankfurters, baked beans, sauerkraut, roll, butter, milk.  
Thursday—Meat loaf, whipped potatoes, gravy, buttered corn, bread, butter, milk.  
Friday—Egg salad, potato chips, lettuce with french dressing, roll, butter, milk.

## RUMMAGE SALE-PONY RIDES BAZAAR

Sponsored by Women's American O.R.T.  
To Be Held at OLD EVERGREEN LODGE  
SUNDAY, MAY 5, 1957, 1 P.M.  
● CAKE SALE ● CANNED FOODS  
● NEW CLOTHING ● LUNCH AT SNACK BAR  
● Baby Sitters FREE OF CHARGE

**First Church of Christ, Scientist**  
292 Springfield Avenue, Summit, N. J.  
A branch of THE MOTHER CHURCH, THE FIRST CHURCH OF CHRIST SCIENTIST in Boston, Mass.  
Sunday Service at 11:00 A.M. Sunday School 11:00 A.M.  
Wednesday Testimonial Meeting 8:15 P.M.  
Reading Room 300 Springfield Ave. Open daily to 4:30 except Sundays and Holidays; also Friday evenings, 7:30 to 9:30 and after the Wednesday meeting

The cost of Smith and Smith service is determined solely by you. Our complete services are within the range of all — to meet every circumstance, every need.

**SMITH and SMITH**  
FUNERAL DIRECTORS  
An Outstanding Service "Within the Means of All"  
HOME FOR SERVICES 160 Clinton Ave., Newark 5, N. J. BR 3-2123  
SUBURBAN 415 Morris Ave., Springfield, N. J. DR 6-4282

**Assuring Satisfaction**  
Our Funeral Services are arranged to suit every individual wish of the families we serve . . . assuring satisfaction.  
Tel. DR 6-0406

**YOUNG'S SERVICE HOME**  
ESTABLISHED 1908  
ALFRED L. YOUNG, Funeral Director  
145-149 MAIN STREET, MILLBURN

## Library Takes Advantage Of Offer For Free Chairs

The offer by Channel Lumber Company to furnish free chairs to any organization or individual in Springfield, brought quick action a few hours after the Springfield Sun was off the press.

Last Thursday's Sun carried a front page box stating that the Channel organization was offering to furnish FREE OF CHARGE folding chairs for any occasion. Don Lenny, manager of the Route 22 Channel operation, received a response from the new Public Library, asking for the use of the chairs during the formal dedication ceremonies for the new annex.

The Channel Company even had the 97 chairs delivered to the Library on Main street—although this wasn't intended to be part of the free offer.

"We were very happy to furnish these chairs to the local library," said Mr. Lenny, "and we hope other Springfield organizations will call on us. Our offer for these chairs is not confined to organizations or clubs. We will be glad to lend these chairs to private homes, to individuals who are planning parties and need more chairs."

"However," continued Mr. Lenny, "we would like to have the chairs called for at our Route 22 building and returned to us after a few days use."

If any Springfield club, organization, political group or indi-

## Introduce Code For Swim Pools

The Springfield Board of Health introduced an ordinance to regulate swimming pools in town at the last Township Committee meeting.

The ordinance will only affect public pools like the pool of the Short Hills Village Garden Apartments, the Baltusrol Swim Club, set to open in 30 days, and a pool planned for the Troy Village Garden Apartments, now under construction.

The swimming pool code to be set up by the ordinance is based on the swimming pool code of New Jersey as set up by the State Board of Health. A separate ordinance affecting back-yard private pools will be introduced in the near future, according to Arthur Handville, board president.

The code provides for the regulation, supervision and licensing of these pools with regard to health protection. Public hearing is May 15.

## Church Group To See Fashions

The annual Fashion Show sponsored by the Evening Group of the Ladies' Benevolent Society of the First Presbyterian Church in Springfield will be held on Wednesday, May 15 at 8:30 at the Parish House.

Mrs. Glenn Oylar is chairman of this affair which will feature sun and sea costumes from the Babs Shop in Summit, modeled by members of the group. Assisting Mrs. Oylar will be Mrs. John Hoffman and Mrs. Donald Lenny, decorations; Mrs. Irma Scherer, tickets; Mrs. John Moore, publicity; Mrs. Herbert Kern and Mrs. Adolph Sisum, hospitality. Added attractions will be the exciting "Mystery Costume" and door prizes. Refreshments will be served after the show. Get your tickets now from any member of the Evening Group or the church office.

**Want a Cab In a Hurry?**  
Springfield-Nadel Cab Co.  
DR 6-5200

**The BAHAI FAITH Teaches:**  
"If only the laws and the precepts of the Prophets of God had been believed, understood and followed, wars would no longer darken the face of the earth."  
Bahai books available in Public Library or call DR 9-5093 for information.

## Reform Judaism To Drive For Members

On Thursday evening, April 25, an open meeting was held to acquaint all interested in the meaning and practices of Reform Judaism. A group of over one hundred people representing the Springfield, Union, and Millburn area, was addressed by some of the leading figures in the Reform movement.

Philip Gurian, Chairman of the temporary steering committee, opened the meeting and introduced Rabbi Milton Rosenfeld of Temple Emanuel in Livingston who delivered the invocation. A brief talk was then given by Mr. Milton Manshel, President of the New Jersey Council of the Union of American Hebrew Congregations, on the various activities of the council. Rabbi Albert G. Baum, Director of new congregations for the UAHC, followed with an enlightening talk, starting with the very beginning of Reform Judaism through to its present day organization of over five hundred congregations.

Short talks were then given by committee chairman Irma Ames, Sidney Sklar, Bernard Lesser, Harry Katz, and Edward Olesky, presenting the particulars pertinent to the organization of the new congregation. An open discussion followed the closing address which was delivered by Milton Friedman.

The keen interest expressed by the people attending, magnifies the need for a Reform Temple in the Springfield area. The entire committee is confident that they will be ready to hold their first Friday evening service early in September.

All interested parties are requested to contact the membership committee. Mrs. Philip Gurian DR. 9-4975; Mrs. Philip Gurian DR. 9-5288; Mrs. Edward Olesky DR. 6-2491; Mrs. Sidney Sklar DR. 9-4236.

## Rev. M. W. Green

(Continued from Page 1)  
ist Church. Other pastorate in the Newark Conference include Weehawken Park Church and the Methodist Church in Succasunna. Dr. Green's final sermon will be at the 11:00 o'clock service on Mother's Day, May 12, following the 9:15 Children's Day Annual presentation under the supervision of the Commission on Education.

## LOSE UGLY FAT IN TEN DAYS OR MONEY BACK

If you are overweight, here is the first really thrilling news to come along in years. A new & convenient way to get rid of extra pounds easier than ever, so you can be as slim and trim as you want. This new product called DIATRON curbs both hunger & appetite. No drugs, no diet, no exercise. Absolutely harmless. When you take DIATRON, you still enjoy your meals, still eat the foods you like, but you simply don't have the urge for extra portions and automatically your weight must come down, because, as your own doctor will tell you, when you eat less, you weigh less. Excess weight endangers your heart, kidneys. So no matter what you have tried before, get DIATRON and prove to yourself what it can do. DIATRON is sold on this GUARANTEE: You must lose weight with the first package you use or the package costs you nothing. Just return the bottle to your druggist and get your money back. DIATRON costs \$3.00 and is sold with this "irrefutable" money-back guarantee by: Springfield Pharmacy — 238 Morris Ave. — Mail orders filled

## STORE YOUR FURS COATS SUITS

AT  
**Morey LaRue**  
General Greene Shopping Center  
Springfield





LIGHT AND LACE—is this white nylon gown of tiered lace ruffles that Deborah Tegnell of 281 Short Hills Avenue will model when the Kent Place School Alumnae hold their dessert bridge and fashion show on May 7, at Hahne & Company. All fashions from Hahne & Co.

### Best Appoints

(Continued from Page 1)  
Wentz avenue.  
In Union County, it is estimated that there are over 24,000 people suffering from some form of mental illness—the county's greatest health problem. At Marlboro State Hospital there are over 1,300 patients from Union County. Part of the funds raised will go to support state and nationwide programs in research and education. The greatest part, how-

ever, will be used by the Union County Association for Mental Health for serving the citizens of Springfield and the citizens in other communities of Union County. These services by the County Association include: Rehabilitation of former mental patients through occupational therapy, free hospital service to medically indigent patients, grants for psychiatric clinic services; and preventive education through a program service with films, speakers, plays and discussion series.

**FOOD FIT FOR ROYALTY!**  
You'll eat royally, when you partake of our king-sized portions of top quality food.

For your entertainment—PERCY POST or the organ, to play all your favorite songs every Friday, Saturday and Sunday nights.

Dinner Served from 4:30 to 11 P. M.  
For Reservations, Call Drexel 9-9832

**TERRY DEMPSEY'S RESTAURANT & COCKTAIL BAR**  
Morris Ave. & Morris Tpk., Springfield

**The Twigs**  
Luncheon  
Dinner  
Supper

Facilities for Small Weddings and Parties

80 SPRINGFIELD AVE., SPRINGFIELD  
Drexel 6-9885

**DOT'S Restaurant**

South Orange Ave., Florham Park

- LUNCHEON
- DINNER
- COCKTAILS

The Finest Cuisine Served in Our Cypress and Redwood Room

STEAK • CHOPS  
LOBSTER

Banquet Facilities Available for All Occasions

FRontier 7-9895

### Join County Council

(Continued from page 1)  
the adult membership voted to turn their saving over to the Town. The townspeople, through their loyal support, had helped them to accumulate this money for a much needed "Little House." It was a momentous decision. Each adult member at that meeting realized that a small council like Springfield had little to bring to a large area council, and that the sizable savings accumulated could do a lot towards capital improvements within the new area council.

"On the other hand, each adult member knew that the savings had grown only to that amount because the local supporters in Town wanted the Girl Scouts to have a place of their own. Twice the people had put forth their best efforts to bring to completion the Little House plan only to have too many real estate obstacles block them. Still pending was

another opportunity, but not enough time left to work on it. "It was indeed a big decision and the local Scout workers are to be admired for the courage of their convictions—to have such a place in Springfield for which the funds had been earmarked. This time, it would be for all youth not just the Girl Scouts.

"The Township Committee accepted the Girl Scouts generous offer and the resolution adopted at the February 27th meeting of the Township Committee was duly signed this week the check for \$10,279.79 was turned over.

"There are now tentative plans for early action in developing such a 'youth Meeting Place.'"

### Rummage Sale Planned

The Women's Guild of St. Stephen's Church, Millburn, will hold a rummage sale in the Parish House, 119 Main Street, on Thursday, May 9, starting at 10 A.M.

**MILLBURN STORES OPEN FRIDAY NITES**  
Millburn Chamber of Commerce

**NEWARK PARAMOUNT THEATRE**  
Broad St. Market  
Phone No. 3-5936

**TWO SOCK ROCK HUDSON HITS**

*Written on the Wind* AND *Battle Hymn*

ROCK HUDSON • LAUREN BACALL  
ROBERT STACK • DOROTHY MALONE

MARINA MYER • DAN DURYEA  
DON HOFFE • ANNA KARIN • ROCK HAVENY • LAURENCE O'RYAN

**STRAND**  
447 Springfield Ave. CR. 3-3900

NOW PLAYING THRU SATURDAY  
"Highest Rating" NEWS

**THE CAST-IRON LIEUTENANT... THE KILLER-COLD SERGEANT!**

*MEN IN WAR*  
featuring ROBERT RYAN ALDO RAY  
with ROBERT KEITH

SUN.-MON. MAY 5-6  
CLARK GABLE—ELEANOR PARKER  
in  
**"THE KING AND 4 QUEENS"**  
—Plus—  
JOHN PAYNE—Wm. BISHOP  
in  
**"THE BOSS"**

One of the Most Enchanting Motion Pictures ever made  
*it's Magic! it's Musical! it's Romantic!*

**WALT DISNEY'S CINDERELLA**

Academy Award Winner!

THUNDERING UP FROM THE FLOOR OF THE OCEAN PRIMEVAL! "AN HOUR AND TWENTY-SIX MINUTES OF PICTORIAL MARVELS AND THRILLS."

**the silent world**

Winner of This Year's Grand Festival 5th Award, the Golden Palm Film by Jacques-Yves Cousteau and Louis Malle with Frederic Dumay, Albert Falco, the divers and the crew of the Calypso.

TECHNICOLOR • A COLUMBIA PICTURE

Saturday and Sunday (Matinees Only) May 11 and 12  
Walt Disney's "CINDERELLA" color  
Walt Disney's "STORMY" color

—TIME SCHEDULE—  
—Weekdays—  
Matinees Evenings  
Cinderella 2:30 Silent World 8:25  
Cinderella 3:55 Cinderella 7:00 and 9:45

—Saturday and Sunday—  
Matinees Evenings  
Stormy 2:00 and 4:00 Silent World 6:05 and 8:55  
Cinderella 2:45 and 4:50 Cinderella 7:40 and 10:25

### Township Well

(Continued from Page 1)  
ship Committeemen Raymond S. Forbes and Eugene F. Donnelly, Chairman of the Planning Board Henry Garbarz and Chairman of the Board of Adjustment Howard Christensen spoke for Springfield and "pulled no punches" in stating the Township's position on any progress being made without consulting the local officials. Mayor Binder's remarks brought such an loud outburst of applause that Freeholder Director who conducted the meeting, Albert J. Haminger cautioned the crowded chamber against further demonstrations.

Donnelly aimed his ammunition at the economic impact of the new highway in the matter of lost ratables and dislocation of properties now contributing to the cost of local government. It was his contention, reaffirming what Mayor Binder and Christensen had said in their remarks, that Springfield wants to know just

### Here Are Some

(Continued from page 1)  
15 to 20 months for the property owner to make other plans before any official action is taken.

"Q. Will the new highway be elevated, depressed or constructed on the level in going through Springfield?"  
A. We do not know. This information should be available in a few months. The highway department will start aerial surveys over the entire route. No such surveys have been made as yet.

From 1954 Maps  
Q. Various maps have been published in the newspapers regarding the realignment of this new Federal freeway. Where did those maps come from?  
A. A preliminary line of the new route was drawn on a war-department contour map, dated 1954, but no pin-pointing has been done. This proposal and the accompanying preliminary map was necessary to comply with the Federal road assistance legislation.

Q. Isn't a 1954 contour map quite out of date?  
A. Springfield, for instance, has built up considerably since 1954 and what may appear as an excellent route for the new road in the 1954 map would dislocate a great many residents and, perhaps, some public buildings.

Q. After we have made our aerial surveys, we will know. It is the policy of the highway department not to disturb cemeteries, churches, schools and public buildings and, wherever possible, the engineers hope to avoid residential sections.

Q. What about turn-off, en- trances, exits?  
A. The state is planning a beautiful landscaped freeway, with no billboards, no businesses, and, right at the moment, not even gas stations. There will be entrances and exits similar to the Merritt Parkway much like our own Garden State Parkway but just where they will be we do not know at this time.

Q. What is going to happen now?  
A. As soon as the aerial surveys are completed and our engineers work out a more detailed route, meetings will be arranged with town officials and with residents in each community where the new proposed highway is to be constructed. Nothing will be done without giving the municipality and the property owners an opportunity to be heard.

### Wesley Jewelers

173 Mountain Ave.  
DIAMONDS • WATCHES  
JEWELRY  
"Where You Can Afford Fine Quality"  
Budget Terms Arranged  
Drexel 6-6047

send congratulations in person by **PHONE RICHMOND** only 70¢

\*3-minute station rate from Newark after 6 p.m. Tax not included.

... FOR A HAPPY MOTHER'S DAY

ENJOY DINNER AT... **Mario's MILLBURN**

**MOTHER'S FAVORITE**

Chopped Chicken Livers, Bermuda Onion Chilled Tomato Juice  
Fresh Fruit Cup, Minted Sherbet Chilled Cantaloupe Italian Salami  
Little Neck Clams (.35) Marinated Herring, Sour Cream  
Chilled Pineapple Juice Fresh Shrimp Cocktail (.75) Brisling Sardines, Onions

Celery Radishes Olives  
Cream of Chicken Soup, Princesses Chilled Madrilene French Onion Soup, Diablotin

BROILED WHOLE MAINE LOBSTER, Melted Butter... According to size  
BAKED ALASKA KING CRAB, Melted Butter 3.25  
LOBSTER, SCALLOPS AND SHRIMPS a la Newburg en Casserole 3.00  
ROAST YOUNG TOM TURKEY with Old Fashion Giblet Dressing  
Cranberry Sauce 3.00  
ROAST HALF LONG ISLAND DUCKLING, Bigarade 3.25  
ROAST PRIME RIBS OF BEEF au jus 4.25  
ROAST LEG OF SPRING LAMB, Mint Jelly 3.00  
MARIO'S-BREADED YEAL CUTLET a la Parmigiana 3.25  
BAKED SUGAR CURED-HAM, Raisin Sauce 3.00  
SPAGHETTI ITALIANO, MARIO'S SPECIAL MEAT SAUCE 2.75  
ROAST LOIN OF JERSEY PORK, Apple Sauce 3.00  
GRILLED LOIN LAMB CHOPS on Toast 4.00  
BROILED PRIME SIRLOIN STEAK, Hoteliere 4.25

Tossed Mixed Greens Salad

Buttered Garden Green Peas Fresh Candied Sweet Potatoes  
Small Whole White Creamed Onions Chateau Potatoes  
Buttered Cut String Beans Creamy Whipped Potatoes

Chocolate Parfait, Whipped Cream Half Peach Melba Coupe Lime Sherbet  
Home Made Hot Apple or Peach Pies  
Strawberry Parfait, Whipped Cream Raspberry Sherbet Italian Spumoni  
Vanilla, Chocolate, Strawberry, Coffee or Butter Pecan Ice Cream  
Pineapple Cheese Cake Mint Sundae Biscuit Tortoni  
Fresh Coconut Snowball with Chocolate Sauce  
Swiss Gruyere, Danish Bleu, Camembert or Liederkranz Cheese

Coffee Tea Demi-Tasse

**Mario's MILLBURN**

For Reservations  
Phone DRExel 6-1724  
Dinners served continuously from 12 to 9 p.m.  
Children's Menu Served  
Children's Turkey Dinner, Half Price



HELP WANTED FEMALE HELP WANTED FEMALE HELP WANTED FEMALE

HIGH SCHOOL SENIORS Kemper Insurance has a career waiting for you... and you can start right now! Begin training for an interesting, challenging position in the insurance business on a part time basis between now and graduation.

CONSIDERATION: Kemper policy has always been to reward employee performance and ability. Promotion from within, merit salary increases, and time off and cash awards for perfect attendance are all part of this policy.

CONVENIENCE: Working at Kemper means avoiding commutation expense and inconvenience. Convenient to all transportation or, if you drive, ample parking facilities.

COMFORT: Work in an ultra-modern, well lighted, air conditioned building. Five-day, 36 1/4-hour week. Liberal employee benefits.

CO-WORKERS Under the Kemper "sponser" program and through company clubs and activities, you will have plenty of opportunities to meet and enjoy the company of your co-workers.

CAFETERIA: Beautiful new cafeteria serving delicious, inexpensive meals. For immediate Employment Apply LUMBERMENS MUTUAL CASUALTY COMPANY

KEMPER INSURANCE Beekwood Road at DeForest, Summit, N. J. CRestview 3-9000 Daily—8:30 a.m. to 4:30 p.m. Saturday—8:30 a.m. to 12:30

Meet people... do things... enjoy the advantages of a career as a... TELEPHONE OPERATOR

TELEPHONE OPERATOR 2 to 30 experience necessary - learn on the job. Very pleasant atmosphere. Favorable starting salary. Increase program on individual merit. Short working hours. Call Mr. Parke for interview appointment.

NEW JERSEY BELL TELEPHONE COMPANY NEW YORK BELL TELEPHONE COMPANY

HELP WANTED FEMALE HELP WANTED FEMALE

ACCOUNTING CLERKS FILE CLERKS MAIL CLERKS TYPISTS ADDRESSOGRAPH OPERATORS INSURANCE RATERS PART-TIME CLERICAL

Interesting positions open due to continuous expansion program; excellent salary; pleasant working conditions; advancement opportunity; excellent benefits include Sears, Roebuck & Company profit sharing plan.

ALLSTATE INSURANCE CO. Located at intersection of Scotch St. and Summit, 3 miles North of Scotch Plains

CLERKS Women and girls for mail and messenger work. 5 day, 37 1/2 hour week. Excellent working conditions.

WOMAN Capable of taking charge of our claims and adjustment department; courteous customer and make adjustments. Pleasant telephone voice. Person over 30. Steady position, salary, vacation and other benefits. Apply in person.

BELL TELEPHONE LABORATORIES - GIRLS WANTED for 1956 assembly work in modern electronic plant. Excellent working conditions. Opportunity for making more than average pay. Paid holidays. Paid vacation. No experience required.

BELL TELEPHONE LABORATORIES Experienced E. S. graduates or secretarial school graduates, with or without experience for promotion to secretarial positions.

Typists Experienced, rapid and accurate for varied and interesting assignments; opportunity for promotion to higher level work.

Clerks Experienced E. S. graduates, with or without typing, for general clerical work; opportunity for promotion to higher level work.

HELP WANTED FEMALE HELP WANTED FEMALE HELP WANTED FEMALE

SECRETARY Full or part-time, Monday through Friday. Pleasant working conditions in centrally located, air-conditioned office of small concern. Typing and some simple bookkeeping essential. Knowledge of stenography not essential. Call CR 7-2200.

SALES LADY for Candy Shop. Call for interview. DRezel 6-4127. HELEN ELLIOTT, INC. 313 Millburn Ave. Millburn

CLERK-TYPIST Requires typing experience and adaptability to general clerical duties. Pleasant position with good starting salary. All employee benefits. Apply in person or telephone for interview.

KEUFFEL & ESSER COMPANY 31 Willow St. Chatham, N. J. MREcury 3-7500

HELP WANTED MALE DRUG CLERKS Full time. Top salary. Good working conditions. Apply in person.

ORDER FILLING CLERK Young man for order filling department. No experience necessary. Old established firm. Commencing in 1957. 40 hour week; no Saturdays. 10 paid company holidays; free hospitalization and dental insurance. Many other company benefits.

YOUNG MAN To drive delivery truck. If ambitious there is an excellent opportunity for advancement in the career business. Must have excellent credit record. Good education. 413 Springfield Ave., Summit, N. J. CR 7-9550

C. R. BARD, INC. Apply to Manager in Person, 9-5 Monday through Friday. (Other Times By Appointment)

NEW YORK LIFE INSURANCE COMPANY 558 CENTRAL AVENUE NEW PROVIDENCE, N. J.

REAL ESTATE FOR SALE AND WANTED

FOR THE BEST SERVICE Always Consult a Realtor of the SUMMIT REAL ESTATE BOARD covering BERKELEY HEIGHTS NEW PROVIDENCE

BOARD MEMBERS Edward M. O'Grady CR 7-9435, Robert H. Steele CR 7-9577, John P. Taylor CR 7-9770, Whitmore and Johnson CR 3-4204, Alice B. Anderson CR 3-4700, Butler Agency CR 3-1000, Joseph P. Church CR 3-0915, Elizabeth S. Church CR 3-0920, Walter E. Edmondson CR 3-2800, Edna M. Edmondson CR 3-4545, Elmer G. Houston CR 3-1211, J. K. Smith & Sons CR 3-1900, William W. Morris CR 3-2424

Franklin School Lovely English home with slate roof in one of Summit's best locations. 1120 sq. ft. of living space. 2 1/2 baths, 2 car garage. Lot 50x225. Taxes \$200. Only \$18,500.

Brayton School Older colonial home to high school and town. In floor entrance hall, living room, dining room, modern kitchen, pantry, space plan for laundry, 2nd floor 4 bedrooms and bath, 2 1/2 car garage. Near Memorial Field. Only \$28,000.

A Little Gem Lovely brick colonial style home. Only 12 years old. 1st floor living room, dining room, kitchen, telephone room and 1 bath. Small level lot. Garage. Only \$28,000.

ORRG, Realtor 31 Maple St. Summit CR 7-9435

Room for Expansion This 3 year old ranch home located on a large lot is available for immediate occupancy. 1st floor has a large living room, dining room, kitchen, 2 1/2 baths and 2 car garage. The 2nd floor can be expanded into 2 large bedrooms and 2 1/2 baths. Large attractive landscaped lot. Approx. \$24,500. Offers invited, asking \$24,500.

THE SEARCH IS ON! We have a substantial family (making more in a week than we did in a month) and are looking for a home on one of Summit's most beautiful streets. The requirements are not rigid except NOT new. If you are contemplating making a change, would you call us?

WYNNWOOD (Part of Druid Hill) A beautiful residential park area enjoying merited success in fine home sales.

JOAN O. CHRYSTAL, REALTOR 9 De Forest Avenue CR 3-3844

5 BEDROOMS WOODLAND PARK This lovely new colonial style home and frame colonial is for you! Located in a choice and high location (800' elevation) and built for the discriminating buyer; it has many fine features: bright, spacious rooms, winding staircase, sun deck, large living room, mahogany library, dream kitchen and separate entrance to maid's room or office. Price \$89,000.

REMODELED BARN In Summit, set on a tree shaded lot, 175x200, 2 car garage, 2 1/2 baths, 20x22 w/replace, dining room, modern kitchen and laundry, excellent floor, 1 manor and 2 regular sized bedrooms and 2 baths. Oil hot water heat, fully landscaped, low taxes. Come see it today.

HOLMES AGENCY, Realtor 291 Morris Ave., Summit, N. J. CR 3-2400

TO BUY THIS HOME These things must be more important to you than modern architecture and gadgets.

HILLTOP HOME Buy this partner's cottage, barn and garage, all under one roof on 1/2 acre near station. Five rooms and bath, low cost, excellent location. Beautiful large home. Excellent condition, only ten years old. Approx. \$20,000 with liberal financing available.

Stafford Agency REALTORS 18 Bank St. CR 3-1000, 1000. 2A—SHORT HILLS

CHOICE LOCATION A most impressive and distinctive colonial home of 10 rooms in a beautiful setting on an acre of ground available to the discriminating buyer with low cost financing. See photo in this issue. Call Summit's Geyer, home phone DR 3-2623. BUY REAL ESTATE A TANGIBLE INVESTMENT

G. A. Allsopp, Inc. Exclusive Homes' Realtor DR 6-2295 Home evenings DR 6-4410 Old Short Hills Rd. & Essex, Millburn OPEN SUNDAY ALL DAY

BUILDING LOTS Large all improved wooded lots (11, 10x200, on Philmont Ave., Chatham Township, Walter J. Whalen, Broker, WJ 2-2725

CHARMING Cape Cod with 7 rooms, 3 full baths, combination porch and beautifully landscaped grounds. Many extras. Immediate occupancy. Asking upper \$20's. ME 5-8242

IDEAL COUNTRY LIVING On 15 beautiful acres this ultra modern ranch home offers easy upkeep with plenty of leisure for entertaining and outdoor activities. Living room, dining area, and den, science kitchen, 4 bedrooms, 3 baths, 3 fireplaces, many closets, large barn and fenced pastures. Many outstanding features. Offered at \$69,900.

W. A. McNamara Bernardsville Office Bernardsville, N. J. BE 8-1688 MT 7-1030, 1014

ASKING \$22,900 SUMMIT REALTY GROUP CR 7-1869 DR 6-4177

45—STIRLING CIRCUS 1750 Restored Not Vandalized

drum hill of Summit Distinctly Different Homes FRANK H. TAYLOR & SON Suburban DR 8-4452 7 DeForest Ave. CR 3-4700

EXCELLENT Describes the condition of this beautifully maintained brick and frame, year old, built by New Providence. Only a business transfer would make the owner sell this home which is so completely to shipping, transportation and schools. On the 1st level there is a large living room, separate dining room, kitchen, with breakfast area, 2nd level has 3 bedrooms, 2 1/2 baths. Full basement with recreation room and laundry. Ground level entrance to back yard. Large landscaped lot. Call for details. \$23,900.

W. A. McNamara CR 3-3860 CR 3-7666 MT 7-0086-RI 4 YEAR old Cape Cod, lovely neighborhood, Lincoln School area, 7 rooms, 2 baths, 2 car garage. \$34,300. CR 3-5227

Ranch Four bedrooms, country atmosphere, large well-shaded lot, 2 car garage. Vistors?

W. A. McNamara CR 3-3860 CR 3-7666 MT 7-0086-RI 4 YEAR old Cape Cod, lovely neighborhood, Lincoln School area, 7 rooms, 2 baths, 2 car garage. \$34,300. CR 3-5227

PERSONAL BROKER SERVICE All Multiple Listings Summit and Vicinity For Mediculous Broker attention to all your needs in seeking, buying, financing and closing your new home, call JOHN P. TAYLOR, Realtor 441 Springfield Ave., Summit CR 3-7676

Real Estate Wanted 1—SUMMIT DUPLEX HOUSE WANTED Need a two family house or 1 family which can be converted for an immediate purchaser. 1421 with us today.

Micone Agency 360 Springfield Ave. Summit CR 3-8008



HELP WANTED MALE

IF YOU ARE NOT MAKING OVER \$100 PER WEEK WORKING A 3 DAY WEEK GUARANTEED \$75 PER WEEK... DUGAN BROTHERS

SALES CAREER

Starting salary \$400 per month under company training system... J. K. SMIT & SONS INC.

JR. DRAFTSMAN

With some machine experience 3 day week... J. K. SMIT & SONS INC.

REAL ESTATE SALESMAN

Member Summit Real Estate Board and Multiple Listing Service... THE STAFFORD AGENCY

MEN - PART TIME

Pinch table appointments... MEN - PART TIME

OLDER MAN WANTED FOR GARDEN WORK

1 day a week... OLDER MAN WANTED FOR GARDEN WORK

MULTITALE OPERATOR

Specialized knowledge... MULTITALE OPERATOR

AUTO PAINTER AND ASSEMBLER

Year round work... AUTO PAINTER AND ASSEMBLER

MEN FOR GENERAL NURSERY WORK

Experience preferred... MEN FOR GENERAL NURSERY WORK

BOY WANTED AFTER SCHOOL SATURDAYS

and Sundays to help around Greenhouses... BOY WANTED AFTER SCHOOL SATURDAYS

MAN MATURE TO WHOM I CAN TEACH MY SON

30 to 39 years... MAN MATURE TO WHOM I CAN TEACH MY SON

HIGH SCHOOL BOY TO MOW LAWN

Power mower... HIGH SCHOOL BOY TO MOW LAWN

HANDYMAN TO HELP IN GARDEN

Devised 6-470... HANDYMAN TO HELP IN GARDEN

YOUNG MAN TO WORK IN SHOP AND HANDLING

Curriculum... YOUNG MAN TO WORK IN SHOP AND HANDLING

YOUNG MAN FOR CONSTRUCTION WORK

Call after 6 p.m. South Orange 2-7892... YOUNG MAN FOR CONSTRUCTION WORK

Help Wanted - Male & Female

REAL ESTATE

The only member of Summit Real Estate Board with offices in New Providence... JAMES R. MORRIS

REAL ESTATE SALES PERSON

Opportunity knocks for the right person... REAL ESTATE SALES PERSON

EMPLOYMENT WANTED

MAN desires Saturday work... EMPLOYMENT WANTED

GARDENER

Experienced, has one day open weekly... GARDENER

WOMAN desires part time work

Summer... WOMAN desires part time work

CARS

Washed and waxed... CARS

WOMAN wants general cleaning

Two or three days... WOMAN wants general cleaning

INFANTS nurse

Available... INFANTS nurse

HOUSEWORKER by day or week

Call... HOUSEWORKER by day or week

WILL take 25¢ per hour

Call... WILL take 25¢ per hour

HIGH school girl wishes mother's help

for summer months... HIGH school girl wishes mother's help

BABY sitter with transportation

Experienced... BABY sitter with transportation

FOR SALE

1-ANTIQUES

Beautifully refinished... 1-ANTIQUES

SUMMER HOME

Call... SUMMER HOME

PIRE WOOD for sale

Call... PIRE WOOD for sale

SCREENED and unscrubbed nursery

Call... SCREENED and unscrubbed nursery

HOUSE and garden furnishings

Call... HOUSE and garden furnishings

SALE of furniture

Call... SALE of furniture

2-BICYCLES

Call... 2-BICYCLES

TRICYCLE

Call... TRICYCLE

3-CLOTHING

Call... 3-CLOTHING

VISIT Mrs. Go-Round

Call... VISIT Mrs. Go-Round

THE ROBIN HOOD Show

Call... THE ROBIN HOOD Show

2-FURNITURE

Call... 2-FURNITURE

WALNUT French Provincial double bed

Call... WALNUT French Provincial double bed

FOR SALE

9-MISCELLANEOUS

LAWN MOWER 2 1/2 hp... 9-MISCELLANEOUS

28A-LANDSCAPE GARDENING

Ornamental, fruit and shade trees... 28A-LANDSCAPE GARDENING

NEW LAWNS MAINTENANCE LANDSCAPING

Call... NEW LAWNS MAINTENANCE LANDSCAPING

ROTILLING Lawn Clean-Up

Call... ROTILLING Lawn Clean-Up

L. & C. LANDSCAPE CONTRACTORS

Call... L. & C. LANDSCAPE CONTRACTORS

MARMO DOCCIO-LANDSCAPE, MASONRY

Call... MARMO DOCCIO-LANDSCAPE, MASONRY

SHORT HILL CONTRACTORS

Call... SHORT HILL CONTRACTORS

ESTIMATES, DESIGNING AND PLANNING

Call... ESTIMATES, DESIGNING AND PLANNING

EXPERT lawn care and gardening

Call... EXPERT lawn care and gardening

BALTIMORE Construction Co.

Call... BALTIMORE Construction Co.

PLASTERING and patching

Call... PLASTERING and patching

D & D Contractors Co.

Call... D & D Contractors Co.

CARPENTRY-TILING-PAINTING

Call... CARPENTRY-TILING-PAINTING

HOUSES OF EXPERTS

Call... HOUSES OF EXPERTS

REPAIRS AD types of stonework

Call... REPAIRS AD types of stonework

SHOE DYING by specialist

Call... SHOE DYING by specialist

WASH windows, take down storm

Call... WASH windows, take down storm

TYPEWRITER REPAIRS, all makes

Call... TYPEWRITER REPAIRS, all makes

F. DEANGEIUS WINDOW CLEANING

Call... F. DEANGEIUS WINDOW CLEANING

CUSTOM HI-TECH EQUIPMENT

Call... CUSTOM HI-TECH EQUIPMENT

ROOFING gutters, leaders, siding

Call... ROOFING gutters, leaders, siding

WINDOW cleaning, odd jobs

Call... WINDOW cleaning, odd jobs

BES (all kinds) removed by expert

Call... BES (all kinds) removed by expert

ODD jobs, lawn maintenance

Call... ODD jobs, lawn maintenance

WASH windows, screens, storm

Call... WASH windows, screens, storm

MOVING, hauling, Reasonable

Call... MOVING, hauling, Reasonable

32-PAINTING-DECORATING

Call... 32-PAINTING-DECORATING

PAINTING-DECORATING

Call... PAINTING-DECORATING

UNFURN. HOUSE FOR RENT

Call... UNFURN. HOUSE FOR RENT

SIX ROOM COTTAGE

Call... SIX ROOM COTTAGE

SERVICES OFFERED

28A-LANDSCAPE GARDENING

Ornamental, fruit and shade trees... 28A-LANDSCAPE GARDENING

NEW LAWNS MAINTENANCE LANDSCAPING

Call... NEW LAWNS MAINTENANCE LANDSCAPING

ROTILLING Lawn Clean-Up

Call... ROTILLING Lawn Clean-Up

L. & C. LANDSCAPE CONTRACTORS

Call... L. & C. LANDSCAPE CONTRACTORS

MARMO DOCCIO-LANDSCAPE, MASONRY

Call... MARMO DOCCIO-LANDSCAPE, MASONRY

SHORT HILL CONTRACTORS

Call... SHORT HILL CONTRACTORS

ESTIMATES, DESIGNING AND PLANNING

Call... ESTIMATES, DESIGNING AND PLANNING

EXPERT lawn care and gardening

Call... EXPERT lawn care and gardening

BALTIMORE Construction Co.

Call... BALTIMORE Construction Co.

PLASTERING and patching

Call... PLASTERING and patching

D & D Contractors Co.

Call... D & D Contractors Co.

CARPENTRY-TILING-PAINTING

Call... CARPENTRY-TILING-PAINTING

HOUSES OF EXPERTS

Call... HOUSES OF EXPERTS

REPAIRS AD types of stonework

Call... REPAIRS AD types of stonework

SHOE DYING by specialist

Call... SHOE DYING by specialist

WASH windows, take down storm

Call... WASH windows, take down storm

TYPEWRITER REPAIRS, all makes

Call... TYPEWRITER REPAIRS, all makes

F. DEANGEIUS WINDOW CLEANING

Call... F. DEANGEIUS WINDOW CLEANING

CUSTOM HI-TECH EQUIPMENT

Call... CUSTOM HI-TECH EQUIPMENT

ROOFING gutters, leaders, siding

Call... ROOFING gutters, leaders, siding

WINDOW cleaning, odd jobs

Call... WINDOW cleaning, odd jobs

BES (all kinds) removed by expert

Call... BES (all kinds) removed by expert

ODD jobs, lawn maintenance

Call... ODD jobs, lawn maintenance

WASH windows, screens, storm

Call... WASH windows, screens, storm

MOVING, hauling, Reasonable

Call... MOVING, hauling, Reasonable

32-PAINTING-DECORATING

Call... 32-PAINTING-DECORATING

PAINTING-DECORATING

Call... PAINTING-DECORATING

UNFURN. HOUSE FOR RENT

Call... UNFURN. HOUSE FOR RENT

SIX ROOM COTTAGE

Call... SIX ROOM COTTAGE

INSTRUCTIONS

ACCORDION - Hawaiian Guitar

Call... ACCORDION - Hawaiian Guitar

FORNIAI piano in your home

Call... FORNIAI piano in your home

LOOKING for a retired lady or gent

Call... LOOKING for a retired lady or gent

A TUPPERWARE demonstration

Call... A TUPPERWARE demonstration

LICENSED NURSING HOME

Call... LICENSED NURSING HOME

THE HENLOCKS distinctive home

Call... THE HENLOCKS distinctive home

Rentals

FURNISHED ROOMS

Call... FURNISHED ROOMS

COMFORTABLE room, close to

Call... COMFORTABLE room, close to

ROOM with private bath, gentleman

Call... ROOM with private bath, gentleman

MURRAY Hill, attractive, comfortable

Call... MURRAY Hill, attractive, comfortable

FURNISHED room for rent, near

Call... FURNISHED room for rent, near

ATTRACTIVE room for business

Call... ATTRACTIVE room for business

LARGE room, central location, CR

Call... LARGE room, central location, CR

FURNISHED room for business

Call... FURNISHED room for business

FURNISHED room near center

Call... FURNISHED room near center

SLEEPING room on bus line near

Call... SLEEPING room on bus line near

FURNISHED ROOM IN SPRINGFIELD

Call... FURNISHED ROOM IN SPRINGFIELD

MILBURN-418 Milburn Avenue

Call... MILBURN-418 Milburn Avenue

FURNISHED APT. FOR RENT

Call... FURNISHED APT. FOR RENT

TWO cheerful, large, second floor

Call... TWO cheerful, large, second floor

FURNISHED HOUSE FOR RENT

Call... FURNISHED HOUSE FOR RENT

PRETTY Modern Ranch, convenient

Call... PRETTY Modern Ranch, convenient

UNFURNISHED APT. FOR RENT

Call... UNFURNISHED APT. FOR RENT

KENT Court, 5 room duplex

Call... KENT Court, 5 room duplex

4 LARGE rooms and bath, close to

Call... 4 LARGE rooms and bath, close to

3 ROOM apt. apartment, Business

Call... 3 ROOM apt. apartment, Business

LIVING room, dining room, 2 bed

Call... LIVING room, dining room, 2 bed

1ST FLOOR, 4 room apartment in

Call... 1ST FLOOR, 4 room apartment in

MADISON 4 1/2 rooms, tiled bath, heat

Call... MADISON 4 1/2 rooms, tiled bath, heat

5 ROOM apartment, 39 River Road

Call... 5 ROOM apartment, 39 River Road

1ST FLOOR, 4 room, convenient

Call... 1ST FLOOR, 4 room, convenient

RENTALS WANTED

UNFURN. APT. Wanted to Rent

Call... UNFURN. APT. Wanted to Rent

OR 2 rooms with bathroom and bath

Call... OR 2 rooms with bathroom and bath

BUSINESS woman needs small

Call... BUSINESS woman needs small

REFINED young business couple

Call... REFINED young business couple

COUPLE desire nice three or four

Call... COUPLE desire nice three or four

FURNISHED room wanted by couple

Call... FURNISHED room wanted by couple

FURNISHED ROOMS WANTED

Call... FURNISHED ROOMS WANTED

REFINED woman, comfortable</



