

## THIS WEEK

### WHY ONLY RACE TRACKS? WHY NOT ROUTE 22?

There was another fatal accident in Route 22 last week and the chances are very good that, by the time this is actually in print, there may be several more crashes. Springfield is very much concerned with what's happening in Route 22, and those hand-wringers down in Trenton had better put away their statistics and do something about it.

Because of the merchandise bargains at Channel Lumber, Davega Stores, Broadway Shops, and other establishments in this highway shopping center, there is usually a traffic tie-up which naturally reduces the speed of trucks and all other vehicles.

Traffic congestion at this point is just as much a menace as the speeders who try to make up for lost time once they get by the long lines of cars backed up for miles.

**WHY SHOULDN'T THE STATE POLICE BE ASSIGNED TO DUTY ALL ALONG ROUTE 22 AND, ESPECIALLY, WHERE THERE IS ALWAYS CONGESTION — AND DURING THE PEAK OF DAILY TRAVEL.**

Why are the race tracks more important as far as traffic control is concerned? Why is it necessary to have State Police on the job to direct traffic and keep it moving along rapidly so that no one misses the daily double windows? Why is it possible to assign State Police to traffic and general duty where crowds are to assemble and not to Route 22 where, last Sunday, traffic was backed up from Channel Lumber and Davega far beyond The American Shops in Union.

Springfield police do a wonderful job of helping with the parking of the cars at Channel and Davega but they have no authority out on the highway. That's where the State Troopers should be stationed on week ends—to direct the flow of cars into the parking lots and keep traffic moving for those who are not headed for some shopping steps in Springfield.

Of course, the safety and traffic experts in Trenton could—and should do something to regulate and control the speed of the trucks and trailers. It certainly should be less than passenger cars—and **TRUCKS SHOULD REMAIN IN THE RIGHT LANES AT ALL TIMES.**

One who uses Route 22 to reach her job in Newark wrote that "when I reach the office or home, I thank God I made it. If I am a few minutes late, my whole family is upset. The speed of the trucks is terrible. They ride so close to you all you hear their brakes squealing. At night they keep blinking their lights for you to move over... In all the year I have traveled it I could count the police on very few fingers."

Those thousands of residents in this area trying to make purchases in Route 22 are just as important as the race track crowd. If the authorities find it necessary to assign State Police to keep traffic moving at the race tracks, enough troopers should be on duty in Route 22—especially to unsmear the tangled mess around the highway shopping center here.

### WHAT'S THE ANSWER?

Some of the traffic troubles in Route 22 can be traced to the action taken by the Springfield Board of Adjustment recently when the members rejected a request to permit enlarging of the parking lot at Davega Stores.

Traffic is tied up at this point—by shoppers attempting to enter the Davega parking lot—causing long line of cars to be backed up for miles. Davega has asked the Township of Springfield to permit the use of DAVEGA PROPERTY for more parking.

The request, we understand, carries with it a requirement that Davega construct a very high fence to act as a buffer against auto lights and other possible inconveniences to residents in the area. Davega is willing to abide by such a stipulation—willing to make many concessions to obtain this increased parking space for the expanded store—but the Adjustment Board denied the application for a variance.

It seems a pity that this enterprising Davega organization, having practically doubled the size of its store in Route 22, can't use the area, adjacent to its present parking section, for more cars. It doesn't encourage other business organizations to come to Springfield since the rejection of Davega's request for a variance has been the subject of much publicity.

Of course, the members of the Board of Adjustment must have some reason for rejecting the Davega request for a variance—but since there were no protests at the last hearing, it might be interesting to explore the entire matter in an effort to discover the answers to some questions.

## May Pass Law Controlling All Circulars Here

Springfield is expected to follow the lead of the Township of Union in adopting a handbill ordinance which is intended to regulate the distribution of circulars in the township.

Township Attorney Max Sherman is studying the ordinance as it was finally passed in Union which will enable the police to keep closer tabs on the distributors and to eliminate the littering of streets, lawns and hallways.

The Union handbill ordinance calls for permits to be issued to distribute circulars and other printed matter on payment of a fee for each campaign. Mayor F. Edward Biertuempfel of Union led the fight to have the ordinance adopted in that township arguing that a "firm policy was needed to prevent littering the town with circulars, handbills and other printed matter."

## Elected Secretary Of Junior College



WARREN W. HALSEY

Warren W. Halsey, former superintendent of the Union County Regional District No. 1, has been elected secretary of the Board of Trustees of Union Junior College, Cranford.

Mr. Halsey succeeds the late A. Clifford Bernard of Summit, who died last month. Mr. Bernard had been board secretary for seven years.

The election took place at a special meeting of the board Monday in the college library.

Brig. Gen. Henry G. Nulton, board chairman, announced the formation of a steering committee for the college's development fund campaign. Eight or nine members of the board and eight or nine prominent Union County area residents will be asked to serve on the committee, General Nulton said.

## Christmas Gifts for Country Oaks Kids

The Country Oaks Association held the regular monthly meeting at the home of Mr. and Mrs. Josephus, 525 Mabel Avenue. Plans were made for Xmas gifts for children of members of the association.



**TROLLEY TRACKS CAUSE ACCIDENT.** Mrs. Elfriede R. Miller, 53, driver of the passenger car shown above, was sent to the Overlook Hospital in Summit, and 15 girl passengers on their way to the Katherine Gibbs Secretarial School in Montclair escaped miraculously when the two vehicles above crashed head on Tuesday morning at Morris and Short Hills avenues. The bus skidded out of control, according to the police reports, and despite the frantic efforts of the driver to control the loaded vehicle, it struck Mrs. Miller's car. Traffic was slowed up for about an hour, the accident occurring at 8:30 a.m. (Photo by Hansen-Police Dept.)

## Reporter-At-Large

### Businessmen Find It Pays To "Give 'em Watts, Boys"

by Phil Hoff

General George Washington must have felt that the Battle of Springfield in 1780 had far more reaching significance than the fact that 13 of his men lost their lives repulsing the enemy.

But it is doubtful if even a man of such foresight as the General could have seen what a boon the Battle would be to inhabitants of the area 177 years later.

To many "old family" organizations (DAR, Historical Society, etc.) the Battle serves as a reminder of a virtue they like to think they inherited along with eye color. It now develops that you need not necessarily be born with this patriotic nobility—it can be acquired by outsiders and put to good commercial use.

Slightly more than three years ago an ex-merchandising executive and a retired real estate man living in this area came up with a remarkably sound business idea: Why not inspect used cars and then issue a warranty guaranteeing their mechanical soundness for a year at a nominal fee?

The result, National Bonded Cars, Inc., now does business with 5,000 dealers from coast to coast from headquarters in the former Cannonball Inn in Springfield. They have received laudatory articles recently in the N.Y. Herald Tribune, Business Week, Cosmopolitan, and trade journals. At this moment representatives of the big automobile corporations are working out direct connections with National.

Yet the merchandiser, C. Wesley Millburn, and the real estate man, Harry S. Campbell, have had one big problem from the beginning: How can you gain respectability in a field noted for its "Smilin' Irishmen," "Madmen Muntz," and "wheel 'em and deal 'em" sharpshooters?

Campbell, the owner of a 200-year-old home in Short Hills found the answer in his own living room. Nothing carries respect like the colonial heritage of America.

The result was that Campbell gave up his plush Park Avenue office in New York and moved his firm into as much colonial heritage as he could find—Springfield's Cannon Ball Inn.

In giving up his daily ride on the Lackawanna, "Campbell" also (Continued on Page 6)

## 1st Aid Squad Takes \$11,525 In '57 Drive

Springfield residents and business concerns contributed a total of \$11,525.38 toward the Springfield First Aid Squad's 1957 fund drive campaign, it was disclosed at the regular business meeting held this week.

This represents the largest donation ever made by townspeople to the squad.

The contributions enable the First Aid Organization to keep supplies, medicines, oxygen and both ambulances properly maintained for the coming year as well as the maintenance of the squad building.

The First Aid Squad is entirely voluntary and receives no other sustenance than the contributions of Springfield residents. It offers its services including emergency treatment and transportation to all residents on a 24-hour basis free of charge.

A Squad spokesman pointed out that all persons wishing to donate coin cards that were not picked up by Squad members during September and October, as well as any who cared to contribute without coin cards, could do so by depositing contributions through the Squad House mail slot or at Police Headquarters.

## Town Hall Jammed For Dedication

Springfield's new Council Chambers in the remodeled Municipal Building was jammed, with hundreds of others unable to get in the doors, for the formal dedication ceremonies for the recently completed Town Hall last Sunday afternoon.

Present and former members of the township committee attended the impressive dedication exercises and heard Mayor Albert G. Binder in a very interesting address on the subject of the new building.

Many gifts were given to the Township, among them being an enlarged reproduction of the famous "Give 'em Watts, Boys" painting, presented to Springfield by the local United National Chapter with Township Committeeman Vincent J. Bonadies delivering the presentation speech.

Commander Steve Schmidt, Jr. of the Battle Hill post, Veterans of Foreign Wars, gave a township flag with the Springfield seal and an American flag of the same size. The Springfield Historical Society presented a matching 13-star Colonial flag.

Other gifts included the large outside clock in the cupola by the Continental Post 228, American Legion, with William Doyle making the presentation. The Lions gave a gavel to the Township committee made from original timber in the Cannon Ball House. The Daughters of American Revolution presented a Bible and the Springfield-Millburn Kiwanis Club gave a specially prepared plaque.

## Doctors' Wives Meet

Mrs. Arnold Constat and Mrs. Ralph Mond of Springfield attended a meeting of the Woman's Auxiliary to the Union County Medical Society in Elizabeth Monday, Nov. 18.

They heard U.S. Congressman Robert W. Kean plug a piece of pending legislation that would make it possible for self-employed persons (including doctors) to deduct some of their income before taxation for a retirement fund.

## IMPORTANT NOTICE

Because of Thanksgiving Day, the SPRINGFIELD SUN will go to press a DAY EARLIER NEXT WEEK.

PLEASE have all news copy in as early as possible as we will have to close TUESDAY NOON (Nov. 26) instead of WEDNESDAY as other weeks.

ADVERTISING COPY should be in a DAY EARLIER—CLASSIFIED advertising closes at 4:30 Monday evening instead of Tuesday.

PLEASE cooperate next week. Get your advertising and news copy in the SUN office a full day earlier.

NEXT WEEK'S PAPER — OUT WEDNESDAY.

## No, M'am, Tree Dots Don't Mean Highway Will Getcha!

The Springfield Shade Tree Commission's investment in red, yellow, blue and white paint has caused much consternation among housewives here.

Many women have seen an ominous sign in the colored dots that the commission has used to signify which trees are to be pruned. Alarmed phone calls have poured into the Springfield SUN, the Township Clerk, and the Shade Tree Commission offices.

Following is a list of streets with the number of trees to be treated on each street:

Alvin terrace, 18; Warner avenue, 46; Perry place, 10; Marion court, 10; Lyons place, 38; Blacks lane, 9; Academy green, 15; Walnut court, 4; Linden avenue, 64;

76; Battlehill avenue, 46; Colonial terrace, 9; Springbrook road, 25; Profit avenue, 20; Tulip road, 20; Robin Court, 9; Park lane, 11; Crest place, 8; Henshaw avenue, 17; Tooker place, 9; Hawthorn avenue, 44; Franklin place, 6; Warwick circle, 40; Windsor drive, 2; Hobart place, 5;

Waverly avenue, 16; Oakland avenue, 12; Clinton avenue, 25; Van Winkle place, 2; Wentz avenue, 38; Bemer avenue, 16; Mapes avenue, 47; Hillside avenue, 7; Edgewood avenue, 23; Kipling avenue, 50; Baldwin place, 0; Madison terrace, 25; Jefferson terrace, 19; Adams terrace, 11; Irwin street, 27; Diven street, 21; Meekes street, 28; Ruby street, 19; Stiles street, 13; Dayton court, 10; Lyons place, 38; Blacks lane, 9; Academy green, 15; Walnut court, 4; Linden avenue, 64;

curb, that in no way will the work destroy the beauty of the trees and in many cases aid the development of young trees.

The secret to the color code is this:

YELLOW DOTS ..... Pruning RED DOTS ..... Clearance BLUE DOTS ..... Elevation WHITE DOTS ..... Complete Removal

Yellow means the removal of all dead, broken or split limbs, all dangerously decayed branches, all stumps, all bark injuries will be coated with tree dressing, all support wires repaired.

Red means that all branches must be cleared below a 12 foot height from the road surface and an 8 foot height above the sidewalks.

Blue means the removal of the lowest tier of branches as necessary for symmetrical elevation of the tree.

White means the entire tree must be removed.

## Urge Property Owners to Wait 'Til Tax Bills Come

Homeowners who have already received figures showing the value fixed on their properties by the equalization program in Springfield are planning "to organize and fight."

The increases in the valuations, say the property owners, are "way out of line" and already there has been a parade of objectors to the Municipal Building threatening to form taxpayers associations and take legal steps against the figures.

Township officials and the Tax Assessor's department in particular ask property owners "to be calm and wait for the actual tax bill before objecting seriously to the new figures under the equalization program in Springfield."

The first tax bill, reflecting the new valuations and assessment of properties will not come until June, 1958, the local tax officials say.

"The figures now being released to each property owner," say the tax people, "follow the formula used throughout the state and is merely the basis for assessment purposes: Springfield will use a 40 per cent figure for assessments and the tax rate will, naturally, be reduced. In other words the new tax rate will be on the basis of a 40 percent assessment instead of the present 21 plus percent."

"We urge all property owners to come to Town Hall if they have any questions, to ask concerning their valuation figures but we also ask all to be patient until the final tax rate is established. We feel confident when the tax bills are out next June, the tax dollars shouldn't be too far out of line. They should be very close except, perhaps, for some of those whose properties haven't been valued properly."

## Lions See Film

At the regular meeting of the Springfield Lions Club this Friday, the members will view the film "This is New Jersey."

This color-sound film was obtained from the New Jersey Bell Telephone Co. by Lion William Melick.

## 1,000 Trees To Feel Bite Of Pruning Shears

The Springfield Shade Tree Commission is currently tackling the job of pruning, clearing and removing over 1,000 trees along Springfield streets.

The work is being done by the Davey Tree Company and the Mountain Tree Company under the overall supervision of Shade Tree Commissioner Edward A. Cardinal. It is scheduled to be completed by Dec. 15, 1957.

Shade trees affected are those within 10 feet of the curb. Not only must they be pruned and treated for disease, but branches must be removed that are below 12 feet in height from the road surface and 8 feet in height from the sidewalks. Primary need for road clearance is to enable fire engines to move unobstructed down Springfield streets.

Following is a list of streets with the number of trees to be treated on each street:

Alvin terrace, 18; Warner avenue, 46; Perry place, 10; Marion court, 10; Lyons place, 38; Blacks lane, 9; Academy green, 15; Walnut court, 4; Linden avenue, 64;

## Form Civic Group To Fight Highway

A civic association is in the process of being formed to include most of the homeowners of Salter street, Lyon place Dayton court, Bryant avenue and vicinity. The need for the formation of this group has been spurred by the "brush strokes" of the proposed new highways, both of which either cross or come within a very few feet of the streets mentioned.

The planners hope that an active organization will come into existence which will further the development and improvement of the community as a whole.

A public meeting is scheduled for Tuesday, December 3. The meeting place will be announced in a few days, at which time the residents of the included area will be contacted.

Further information may be obtained by calling Robert Hardgrove at DRexel 6-3348.

## First Aid Aux. Hosts Council

The Ladies Auxiliary of the First Aid Squad were hostesses to the Gold-Cross Auxiliary, New Jersey State First Aid Council, Second District on Wednesday, November 13.

Dan Lucy, who is connected with the civil defense, was the speaker for the evening. Mr. Lucy spoke on civil defense and disaster work.

The guests at the meeting were from Westfield, Wachung, Clark, Colonia, Cranford, Linden, North Plainfield, Plainfield, South Plainfield, and Winfield.



OUTSTANDING EXHIBIT—Four printing students and instructor Stanley Grossman and students Robert Cadden, Fred Sommer, George Seltzer and John Hettlinger, are instructor Stanley Grossman and students Robert Cadden, Fred Sommer, George Seltzer and John Hettlinger.

## Regional Lauded At Print Show

Dayton Regional Print Shop put on a printing exhibit and demonstration at the New Jersey Education Association Convention in Atlantic City this week.

The Regional Shop was selected by the New Jersey Industrial Arts Association for its outstanding work in printing and fine printing.

Four advanced printing students were selected to attend and participate in the live demonstrations. From the Junior Class, John Hettlinger and Robert Cadden participated, and from the Sophomore Class, Fred Sommer and George Seltzer.

A personalized memo pad was the big attraction. The pad cover was printed in the Regional Shop, while a person visiting the exhibit could have his name printed on the cover and have the pad punched and bound on the spot. It was said that "The Regional students did an excellent job and were a credit to their school."

The exhibit was under the direction of Mr. Stanley Grossman, instructor of printing at Regional. Mr. Grossman has been with the Regional District since September, 1956. He has a B.S. Degree from Newark State Teacher's College and a Master's Degree from New York University.





**Publisher — SAM O. SAROKIN**  
 Associate Publisher & Editor — JULIAN SAROKIN

**TELEPHONES:**  
 Drexel 9-5000  
 ESTABLISHED SEPTEMBER 27, 1929  
 Published every Thursday at  
 252 Morris Avenue, Springfield, N. J.  
 by SPRINGFIELD SUN PUBLISHING CO.

Official newspaper of the Township of Springfield. Subscription rates by mail prepaid: One year, \$3.50; six months, \$1.75 payable in advance. Single copies, 10 cents. Entered as second class matter October 3, 1931 at the Post Office at Springfield, N. J.

THURSDAY, NOVEMBER 21, 1957



Rev. Bruce W. Evans



Rabbi Reuben E. Levine



Rev. Virgil E. Mabry

### Rabbi, Pastors Join For Thanksgiving

An annual event of great spiritual significance for Springfield will take place again this year on Wednesday, November 27. It is the joint Thanksgiving Service sponsored by three of our local congregations, the Presbyterian Church, Methodist Church, and Temple Beth Ahm.

This year the services will take place at Temple Beth Ahm, 60 Baltusrol Way, at 8 p.m. The respective clergymen of these congregations, Rev. Bruce Evans, Rev. Virgil Mabry, and Rabbi Reuben E. Levine, will conduct the order of worship, which has been prepared jointly by them.

The collection taken up at these services will be equally divided among the three groups for distribution to their charitable institutions.

The Temple Beth Ahm Congregational Choir and Cantor Irvin Kramerman are participating in the musical portions of the services, with Mrs. Arthur Williams as organist.

This Inter-Faith Thanksgiving event is a true expression of spiritual unity in the community, underlining "the brotherhood of all men before God." Everyone, regardless of religious affiliations, is cordially invited to attend and usher in the great American holiday of Thanksgiving in a religious spirit.

### Local Man's Song Hit May Be In For Revival

Issuance of a new L. P. record album, with Johnny Desmond the well known singing star doing the vocals, has special interest for Springfield music lovers because one of the hits is the work of a local resident.

The new album includes a Desmond style rendition of "Please, Mr. Sun," written by Sidney A. Frank, residing at 10 Marion Avenue, and one of the top tunes on the nation's hit parades. The song, by the local man, catapulted into record breaking sales a few years ago with Johnny Ray doing the singing. "Please, Mr. Sun" became one of the nation's popular tunes and was near the top of the "Hit Parade" on television for 13 consecutive weeks. Johnny Desmond's singing of this song is expected to revive it as a top tune and the call for the new album is already being reflected in the sales at all record stores.

Mr. Frank is now with a public relations firm but still retains his interests in song writing, television and radio. He and his wife, Helen, and son, Bruce, have been living at the Marion Avenue address for three years.

Mrs. Frank is an accepted artist, devoting a great deal of her spare time to creating greeting cards, she doing the art work while Mr. Frank writes the legends and copy

for each drawing. A great number of these originals have been sold by the Franks to greeting card companies and their services are in great demand. Mrs. Frank is also a devotee of ceramic painting and much of her art work has been on display in private exhibitions.

### Mothers Guild Hears Curate

The Mothers Guild of St. James School held its regular monthly meeting on Monday evening, November 18 in the school cafeteria.

Mrs. Philip Del Vecchio, President of the Guild, presented Rev. Edward Ohney, curate of St. James Church, as guest speaker. After the meeting refreshments were served by the sixth grade Class Mothers, Mrs. Mae Wadle of Union; Mrs. V. Tuma and Mrs. E. Savard of Springfield and Mrs. Frances Capraun of Mountainside and their committee.

### Choirs to Present Concert in Dec.

The Senior and Junior Choirs of the First Presbyterian Church will present a concert on Thursday and Friday evenings, December 5 and 6 at the Parish House under the direction of Charles H. Sills, organist and director.

The first half of the program will consist of secular music; the second half of traditional Christmas music from all over the world.

Miss Anna VonKampen, Mrs. Charlotte Pierson and Mrs. Peggy Billings will be soloists. Mrs. Eddy Sills, Mrs. Sue Jackson, Mrs. Charlotte Pierson and Mr. Herbert Kern will accompany the groups on piano and organ.

Tickets are available at the church office or from members of the choir.

### Ethical Society To Hear UN Talk

"The United Nations Myth" will be the subject of the talk that Dr. Herbert Weinstein of Maplewood will give at the Sunday morning meeting (November 24) of the Society for Ethical Culture, 516 Prospect St., Maplewood at 11 a.m. Nathan Hart of Springfield will conduct the meeting.

The teen age group, under the guidance of Mr. Conrad Pologe of Maplewood, will meet on Sunday night at 8:15 p.m. at the Society's building. They will discuss "Integration". All interested young people are cordially invited to attend.

The Society is planning to run a movie benefit at the Maplewood Theater on Wednesday evening, December 4. The Japanese prize winning film, "Gates of Hell" and the English suspense thriller "Night My Number Came Up" will be shown.

### VFW Auxiliary To Dine Vets

At the regular monthly meeting of the Ladies Auxiliary to V.F.W. Battle Hill Post 7883, on Tuesday, November 19, final arrangements were made for a dinner to be held at the Post Home in January for a group of about 30 veterans from Lyons Hospital.

A "coffee hour" is to be held on November 30 at East Orange Veterans Hospital. On Sunday, December 22, the annual Christmas party is to be held in the Post Home for the children of both the members of the Post and Auxiliary.

President Marie Summerer announced the tickets are available for the first annual Square Dance to be held at Old Evergreen lodge in Springfield on December 13. The proceeds of this dance will help toward the rehabilitation of the patients of the various Veterans Hospitals. The Ladies Auxiliary visits, A-voice wishing tickets please call DR. 6-6658.

For its size, the weasel is one of the world's most savage animals.



RED SHOES HERE—The Witch and Dinky, the forest elf are pictured in action from the Student Theatre's production of "The Magic Red Shoes." This children's play will be presented at the Caldwell school this Saturday, Nov. 23 at 2 p.m.

### ORT Rummage to Be in Elizabeth

The Springfield Chapter of Women's American ORT (Organization For Rehabilitation Through Training) will sponsor a Rummage

Sale on November 26 and 27, at 30 First street, Port of Elizabeth. Mrs. George Levine, chairman of the sale, will be assisted by Mrs. Al Rutkow and Mrs. Edward Hollander.

For a rummage pick-up call Mrs. George Levine or Mrs. Seymour Margulies at DRexel 6-1785 or DRexel 6-5973. The rummage depot will be at the home of Mrs. Seymour Margulies, 29 So. Derby road, Springfield.

### EXCLUSIVE WITH US IN SPRINGFIELD!

Every Garment Treated With

**Sta-Nu FINISHING PROCESS FREE AT DREXEL!**

As advertised in "LIFE", "LOOK", "VOGUE". Your clothes stay clean longer, require less frequent cleaning, last longer!

OUR PLANT IS RIGHT ON OUR OWN PREMISES, INDIVIDUALLY OWNED & OPERATED BY A SPRINGFIELD RESIDENT.

1 HOUR SERVICE FREE PLASTIC BAGS.

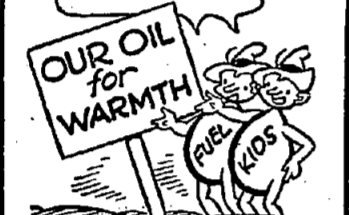


**DREXEL Quality CLEANERS**

FREE PARKING SIDE & REAR  
 230 Mountain Ave., Springfield  
 Superior Cleaning, Shirt Laundering, Shoe Repairs

### Schaible's FUEL KIDS

TO SUFFER WITH THE COLD, SAY WE IS SUCH A USELESS TRAGEDY



Useless to have an oil furnace - without OUR regular service and OUR Fuel Oil! For real warmth - call us today.

**Schaible Oil Co.**  
 CALL... DREXEL 6-4300  
 COAL - FUEL OIL - COKE  
 192 MOUNTAIN AVE. Springfield, N.J.  
 Mixed DELIVERIES - BUDGET PLAN

FLAGSHIP STORE OPEN DAILY TILL 9 P.M.  
 SUNDAYS 10 A.M. to 7:30 P.M.

American Shops Value and Quality Achievement:

### COMPARE!

Pure Imported 100% Cashmere

No. 6 Tailored Overcoats

For One Week Only! **84<sup>95</sup>**  
 Reg. \$135



- Lowest Price; to Our Knowledge - Anywhere!
- Warmth Without Weight - the Ultimate in Luxury!
- Superbly Tailored to Our Highest Standards!
- Classic Single-Breasted Models!
- Blue, Natural, Charcoal Gray, Medium Gray, Dark Brown -
- Alterations are Always FREE!

CHARGE ACCOUNTS INVITED  
 You're Always a Guest, Not Just a Customer, at...

**American Shops**  
 New Jersey's Largest Clothiers  
 FOR MEN, WOMEN AND BOYS.

UNION - The New FLAGSHIP STORE on Route 22  
 All Highway Stores Open Every Night till 9. Sundays 10 to 7:30.

NEWARK 800 BROAD STREET Open late nights, except Tues. & Thurs.  
 WOODBRIDGE on U.S. Hwy. No. 1 near Woodbridge Cloverleaf  
 LODI on U.S. Hwy. No. 46 at Lodi Traffic Circle

### JEWELERS



**Wesley Jewelers**  
 173 Mountain Ave.  
 DIAMONDS - WATCHES JEWELRY  
 "Where You Can Afford Fine Quality"  
 Budget Terms Arranged  
 DRexel 6-6047

SPECIAL 3 WEEKS Nov. 4—Nov. 23

TROUSERS SWEATERS SKIRTS

Over 8 Pleats—Extra Charge

SPORT SHIRTS Sanitone Dry Cleaned

any **3** for **\$1.39**

ALL OVER 3—46c each  
 Extra Special BATHROBES only \$1.09 each



General Greene Shopping Center, Springfield

No Better Christmas Gift than a healthful series at the Slender Lady Salon

No Disrobing No Strainous Exercise Salon Decor for Your Comfort

Call for Free Treatment SO 2-9717

Evenings by appointment  
 GYRO REDUCING SYSTEM  
 176 MAPLEWOOD AVENUE MAPLEWOOD

### SAVE 'EM!



OLD SHOES ARE LIKE OLD FRIENDS

Don't throw them away! Bring them to us and we'll make them look like new. We take out the "oldness" - but the comfort remains.

Expert Shoe Repair

Colantone Shoe Shop  
 245 Morris Avenue  
 Springfield  
 DRexel 6-2682  
 Store Hours: 8 a.m. - 9 p.m.  
 Free Parking In the Rear



OUR 1958 Christmas Club IS NOW OPEN!

It's fun to have some extra money to spend during the holidays. And the way to get it is to join our Christmas Club for 1958. Save that pocket change, small amounts you'll never miss, and a year from today you'll have a nice fat check waiting for you. Join this week!

### CRESTMONT SAVINGS and LOAN Association

1886 SPRINGFIELD AVE. MAPLEWOOD 175 MORRIS AVE. SPRINGFIELD

an extra phone makes life easier



...for everyone in the family

Makes answering and calling easy... an extra phone—especially in the kitchen—saves miles of steps for busy housewives.

Friendly relaxation... it's easier to take time out to chat with friends... the phone is always handy.

Offers extra privacy... this is especially welcome to teenagers and a relief to parents. Dad likes it for business calls too.

You stop missing calls... the phone is always in earshot—easy to reach without rushing.

To order—simply call your telephone business office.

NEW JERSEY BELL TELEPHONE COMPANY



### Retarded Children Fund Drive Begun

The drive for funds to carry on the work of the National Assn. for Retarded Children will be held for Retarded Children which started Nov. 17 will run until Nov. 23.

Mental retardation is a tremendous problem. Three per cent of all children born are mentally retarded to the extent that they can benefit little or none from regular school classes. The greater part of the monies collected remain in Union County and are administered as direct aid for retarded children within the county. Fifteen per cent of the total is sent to the National Assn. for Retarded Children to be used for research purposes. The great strides in research on retardation and the prevention of such misfortune are documented daily in newspapers and magazines.

The Union County Unit of the New Jersey Assn. for Retarded Children maintains the Nancy Lutzon Training School in Roselle with an annual enrollment of 35 children. This school serves the supplemental needs for the very young and for the older mentally retarded of the County. A recreation program for 40 mentally retarded young adults is conducted monthly in Elizabeth under the direction of a paid leader.

For six weeks during the summer the Unit operates Camp Star in the Rahway River Park in Rahway. 41 children had a period of recreation at the camp. The program consisted of a morning period for arts and crafts, music and physical activities. The afternoon feature was swimming in the Rahway River Pool.

There are approximately 500 Union County children in the six State Schools for the mentally retarded. Many of these children have long been forgotten by their parents or have become orphans. During the holiday seasons, especially Christmas and Easter, the Unit obtains presents and candy gifts for the children and provides

parties. Mentally retarded children remain children for their entire lifetime and maintain a child's sense of anticipation no matter what their chronological ages may be.

The Union County Unit has many needs that can be helped through contributions collected during the drive for Retarded Children. A building is needed for better facilities for handling all

County. Many of these children can be salvaged for useful living in the community. Camp Star is a permanent site with better facilities and a swimming pool of their own.

It is the hope of the Union County Unit of the New Jersey Assn. for Retarded Children that this drive will be a means of bringing into every home the message that all mentally retarded individuals are human beings first, with the need to feel accepted, useful and loved. To achieve these needs they need the help and support of their fellow human beings.

Some of the district captains who will assist Mrs. Ben Paul Yuckman are Mrs. S. B. Schmidt, Mrs. H. A. Cubberly, Mrs. S. Mrs. H. J. Libby, Mrs. Wm. Goldstein, Mrs. S. B. Haas, Mrs. Geitz, Mrs. W. G. Melinek, Mrs. John Billings, Mrs. S. Kornish, William Franklin, Mrs. Philip D. O'Neill, Mrs. H. F. Hueneke, Mrs. Danziger.

### Limit Traffic on 3 Local Streets

The Township Committee passed an ordinance at last week's meeting, limiting the use of three Springfield streets to light weight vehicles.

Troy Drive, Clairmont Place

and Wes (B)riant Avenue between Shunpike Road and Troy Drive have been restricted to passenger cars and trucks whose weight, inclusive of weight, does not exceed 8,000 pounds.

Signs marked "Trucks Over 4 tons Excluded" will be posted along the streets. Penalty for violating the ordinance is a fine not more than \$50.00 or imprisonment for 15 days, or both.

**FLASH! On the Nights Before Christmas, from Thursday, December 5th through Monday, December 23rd, S.F.A. Springfield will be open till 9 P.M. Saturdays: 9:30 to 5:30 P.M. Open this Friday, November 29th, till 9 P.M.**

**SAKS FIFTH AVENUE**

**S.F.A.'S SANTA TAKES TO THE AIR!**

Clear the runways—Santa's coming in by helicopter this Christmas. You'll see him make his surprise landing at S.F.A. Springfield at 4:00 P.M. Monday, November 25th. On board, lots of lollipops and a barrage of balloons for all the children. To top it off, our Santa will set the giant Christmas tree alight at 4:15 P.M. on the dot. Welcoming Santa, the Choral Group of St. Rose of Lima School will sing Christmas Carols starting at 3:45 P.M.

**SAKS FIFTH AVENUE**

Millburn and Short Hills Avenues, Springfield, N. J.

#### Early Deadline for Thanksgiving Copy

Because of the Thanksgiving Day holiday on November 28, the Springfield Sun for next week will be delivered one day earlier, on Wednesday, November 27.

That will mean that deadlines for all editorial and advertising copy must be advanced one day.

The deadline for display and classified advertising and editorial matter will be 5 p.m. Monday, November 25, instead of the customary Tuesday.

The cooperation of publicity chairmen of all organizations and advertisers is earnestly requested in observance of this holiday deadline schedule.

#### LET BEAUTY GO TO YOUR HEAD!

Beauty starts with hair... and the loveliest hair-do's start here!

LET OUR EXPERTS WORK THEIR MAGIC

**MR. ROBERT'S**  
Formerly with Chantry Salon of L. Bamberger & Co.  
**HOUSE OF HAIR FASHION**  
80 Morrison Road  
Springfield.  
DRexel 6-9809  
Evenings by Appointment  
Completely Air Conditioned



**GREETINGS & GIFTS** are brought to you from Friendly Neighbors & Civic & Social Welfare Leaders through **WELCOME WAGON** On the Occasion of: Change of Residence Arrivals of Newcomers to City Mrs. Josephine Marcy South Orange 3-0429 (No cost or obligation)



**Newberrys**  
You always find more in a Newberry Store

# CURTAINS

and draperies for

## SALE

**MARQUISSETTE TAILORED**

Full 82" Width—WHITE ONLY!

54" Length	Reg. 2.79	Sale Price	<b>\$1.97</b>
63" Length	Reg. 2.89	Sale Price	<b>\$2.07</b>
72" Length	Reg. 2.98	Sale Price	<b>\$2.17</b>
81" Length	Reg. 3.29	Sale Price	<b>\$2.27</b>
90" Length	Reg. 3.39	Sale Price	<b>\$2.47</b>

Sheer, no-iron dacrons. Sun, heat and shrink resistant, wonder wearing. Sale Priced for one week only!

**PRINT-TRIMMED COTTAGE SETS**  
Double-ounce dacron marquisette with scalloped diamond print percale trim. Green, turquoise, gold, red. Each side top 22x43"; sash 24x34"..... **\$2.98**

**BARKCLOTH CAFE CURTAINS**  
Little or no iron finish. Woven textured cotton and viscose cloth. Bone-rings. Colors in red, green, gold, pink, aqua, sand and white. 60" wide. Length 39" and 36"..... **\$1.98**  
Our Price .....

**Lurex-Striped Print Draperies**  
Floral prints on white with horizontal gold Lurex stripes. Rayon and cotton metallic with pinch-pleat tops. 90" long. Our Price .....

**FLOCKED RUFFLED TERS**  
Fine dacron with floked ruffle. White with white, white with yellow, white with aqua. 36" long. **\$1.98**

**DACRON PULL TAPE PRISCILLA**  
No-iron snowy white with deep ruffles. Just pull the tape to pleat a perfect drape. **\$4.39**  
84 x 81 .....  
84 x 90 ..... **\$4.69**

**PROVINCIAL SAILCLOTH CAFES**  
All-over Provincial print with metallic gold overprint. Scalloped tops, brass rings. Green, turquoise, gold or red. 30x36"..... **\$1.98**

IT'S EASY TO USE OUR LAY-AWAY PLAN

THANKSGIVING WEEK  
**OPEN WEDNESDAY & FRIDAY NITES TILL 9 P.M.**

## THANKSGIVING DAY SPECIALS!!

<p>Perfect Browning</p> <p><b>ROASTER</b></p> <p>Low Priced</p> <p><b>87<sup>c</sup></b></p> <p>Reg. \$1.19</p> <p>Speckled Blue. In sizes for 4 lb. fowl or 7 lb. roast.</p>	<p>Self-Basting</p> <p><b>ROASTER</b></p> <p>Low Priced</p> <p><b>\$2.27</b></p> <p>Reg. 2.98</p> <p>Two-tone colors. In sizes for 13 lb. fowl and 19 lb. roast.</p>	<p>Thanksgiving Table &amp; Cooking Accessories</p> <p>PYREX BASTER ..... <b>59<sup>c</sup></b></p> <p>SKEWERS ..... <b>29<sup>c</sup></b></p> <p>LACING PINS card ..... <b>10<sup>c</sup></b></p> <p>NUT PICK SETS ..... <b>59<sup>c</sup></b></p> <p>16-piece Stainless Steel Silverware Set ..... <b>\$6.98</b></p> <p>ROAST RACK ..... <b>\$1.89</b></p>
---	--	--

**J.J. Newberry Co.** OPEN THANKSGIVING EVE General Greene Shopping Center (WEDNESDAY) TILL 9 P.M. SPRINGFIELD, N. J.

### Hi Neighbor!!

NEWS AND TIDBITS ABOUT YOUR FRIENDS & NEIGHBORS.

If You Have Any News Call . . .

DREXEL 6-4502

LORRIE LEWIS



Mr. and Mrs. I. Yablonsky of 315 Hillside avenue know that good things come in packages of three. Their third son, Mark Joel, put in his appearance on November 14 weighing 6 pounds 15 ounces. Mark's brothers are Stanley age 7 years and Allen who is 12 years. Our sincerest congratulations!

It's a boy too for Dr. and Mrs. Robert F. Valetin of 545 Morris Ave. Gregory was born on November 8 at Overlook Hospital weighing 7 lbs. 7 oz. The Valetins also have a seven year old son, Gary. Mrs. Valetin is the former Rita Andros of South Amboy.

Rona Lambert agrees that there is nothing more exciting than being invited to a college weekend out-of-town. Rona, daughter of Mr. and Mrs. L. Lambert of 4 Woodside Rd., had a wonderful time at the Fall Weekend of Lehigh University.

Another lovely Springfield miss, Diane Berger, enjoyed a weekend at the University of Pennsylvania where she attended the Junior From. Diane is the daughter of

Mr. and Mrs. Berger of Briar Hills Circle.

We are very happy to add the names of Mr. and Mrs. George Bialos and Miss Lee Shaer of 113 Laurel Dr. to the list of Springfield residents. Doty Bialos and Lee Shaer are known to many of us as the gracious owners of Chez Modes dress shop in Millburn.

The Bialos' have two sons. Melvin is married and a resident of Hillside. Bob is now at home after serving with the U.S. Army.

The cute Spielholz twins Alan and Kathi were feted on their first birthday at a family party on November 17. They are the children of Dr. and Mrs. Barney Spielholz of 50 Redwood Rd. who celebrated their 5th wedding anniversary on November 9.

Mr. and Mrs. Norman Peskin of 46 Irwin St. spent 8 sun filled days at the Emerald Beach Hotel in Nassau.

What was started as a hobby club by five Springfield ladies has now developed into the "Mardi

Gras Boutique Shoppe" at 364 Milltown Road. We attended their Fall and Xmas showing and were charmed by the large display of gift items, decorative accessories, and Hong Kong Imports. Orders for almost anything from a gilded flyswatter to a practical waste-paper basket will be taken by Mrs. J. Casulli at Drexel 9-2529. The four other proprietors of the "Mardi Gras Shoppe", all former Springfield-ites, are Mrs. F. Colarusso of Mountainside, Mrs. J. Principe of Summit, Mrs. B. Frank of Berkeley Hts. and Mrs. A. Gershon of W. Orange.

Mr and Mrs. Kenneth Petzinger of 54 Edgewood Ave. announce the birth of their daughter, Andrea Jean, on Nov. 9 at Overlook Hospital weighing exactly 7 lbs. The Petzingers have four other fine youngsters, Frank age 10, Judy age 8, Susan age 4, and John age 2. Mrs. Petzinger is the former Frieda Baber of Springfield.

Jay Weiniger, son of Mr. and Mrs. E. Weiniger of One Craig Road, presided as host at a "cocktail" party on Friday eve, November 15 held in honor of his 11th birthday. Twenty-one guests enjoyed the hors d'oeuvres and "cocktails" (and that ginger ale sure does look like champagne). Jay's party guests were Fred Sussman, Carmine Petti, Dick Freedman, Ricki Zegar, Marvin Segal, Robert Chodos, Larry Forster, Jimmy Murphy, Douglas Kappstatter, Nancy Lester, Grace Devego, Judy Pinkava, Adrian Marder, Susan Bartlett, Ronnie Weinberg, Pamela Blafer, Abby

Sue Fisher, Joyce Kurtz, and Carol.

A hearty welcome to Mr. and Mrs. Harold Aperia, our new neighbors at 108 Laurel Drive. They have twin sons, Leslie and Howard, age 10 years, and a son, Marc age 3 years. Mr. Aperia is assistant manager of the Twin County Food Chain Store.

Mr. and Mrs. Michael Keselica of 53 Mapes Ave. are pleased to announce the birth of their son, Michael Craig, at Overlook Hospital on November 11 weighing 8 lbs. 6 oz. Mrs. Keselica is the former Patricia Lampert of Springfield.

Mr. and Mrs. Frank Baroff, formerly of Bayonne, have moved into their new home at 2 Christy Lane. The Baroffs have three children, Irene, age 10 years, Michele age 6½ years, and Kenny age 2½ years.

### "Magic Red Shoes" To Play Nov. 23

The Student Theatre will present "The Magic Red Shoes," a three act play with music and dancing, at the James Caldwell School, on Mountain Avenue, Saturday, November 23, at 2 p. m. The play has been written and directed by Constance Cooper Loux of Summit, and is based on the Hans Christian Anderson story The Red Shoes. The Student Theatre toured summer stock companies last summer with this show.

It is the story of a beautiful young girl who runs away from her grandfather and the boy who wants to marry her, to become a dancing lady in the circus. She reaches the circus and, encounters many wonderful adventures, meeting all of the colorful circus characters, including, Toto, the clown; Punch and Judy, Sebastian, the Magician, who perform their circus acts for her.

Included in the cast are Pat Bandemer, daughter of Mr. and Mrs. K. E. Bandemer of Springfield; Anthony Brady of Berkeley Heights who attends Regional High School; Others in the cast come from Summit.

Tickets may be purchased at the door. The Magic Red Shoes will be the third Student Theatre play presented in Springfield.

### CHAIRS

RUSH BOTTOMS REPLACED WITH GENUINE RUSH CANE AND SPLINT SEATS. Refinishing • Stenciling P. BENEDEUCE 305 Main St. Madison FR 7-4592

### Outstanding FURS

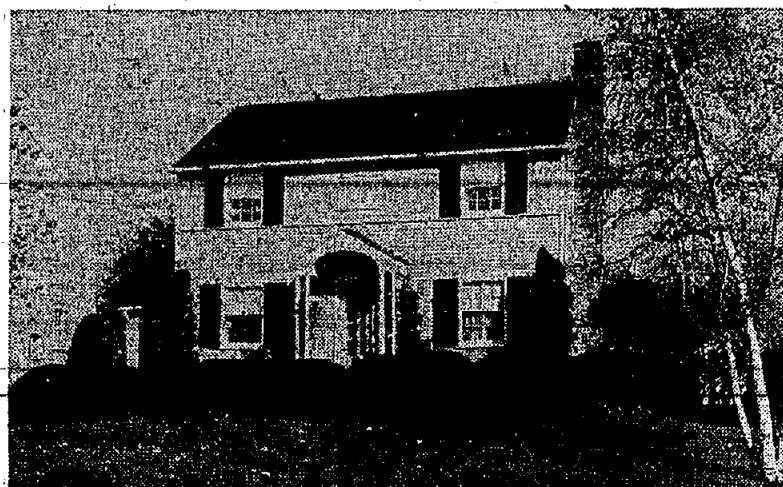
MINK	SEAL
MUSKRAT	BEAVER
PERSIAN	SQUIRREL
BALCOON	OTTER

at our low, low close-to-factory-cost prices from \$119 to \$5250

Open Daily to 9 P.M. — Sat. & Sun. to 6 P.M.

**FLEMINGTON CO.**  
FLEMINGTON, N.J.  
NEW JERSEY'S LARGEST MANUFACTURER OF FURS

### Colonial -- Springbrook Park



#### FIRST FLOOR

- Center Hall
- Large Living Room
- Fireplace
- Full Dining Room
- Large Kitchen
- Back Porch
- Full Pine Panelled Basement
- 1-Car Attached Garage

#### SECOND FLOOR

- 3 Bedrooms
- Tile Bath

#### PRICED IN THE LOW TWENTIES

You must personally inspect this custom built home to fully appreciate.

**B. J. CHADWICK AGENCY, Realtors**

336 MORRIS AVENUE, SPRINGFIELD, N. J.

DREXEL 9-4653



KNOW WHERE SHE BUYS?

9 chances in 10 she buys from the businessman who advertises in the Yellow Pages. Busy housewife - she saves time by looking first



NEW JERSEY BELL TELEPHONE COMPANY



### Woman's Club News

MEMBERS!!!! have you secured your tickets for the luncheon and bridge to be given in Allman's, Short Hills, December 12? This project is sponsored by the Ways and Means Department of the Springfield Woman's Club. All proceeds will benefit the Scholarship Fund. The support of every member of the club is needed for assured success of this project. For more information and tickets call Chairman Mrs. Robert Hayes, DRexel 6-0783 or Co-Chairman Mrs. Rupert Humer, DRexel 6-1805.

At Drama Department meeting held on November 11, at the home of Mrs. Lee Andrews Jr., plans were discussed for the coming show. This show is to be a musical and Music Department members are being asked to participate.

Ways and Means committee states the subscriptions to The Springfield Sun are going well. We have a couple more weeks to go so come on members, let's make the last weeks count.

The American Home Christmas Project will continue this year as previously. Gifts of clothing and a toy are purchased or made by members of the department for the needy children in the community. These gifts are distributed by Miss Florence Gaudineer at Christmas time.

NOTICE!!!! 8th Graders. of Springfield.

There will be an Eighth Grade Pre-Teen Dance on November 22, at the Florence Gaudineer School Gym starting at 7:30 until 9:30. This dance is sponsored by Springfield Recreation Committee with Mrs. Thomas Doherty in charge and Welfare Department of Springfield Woman's Club with Mrs. Kenneth Bandomer in charge.

Springfield Rotary is supplying records and they are being played by Mr. Kenneth Bandomer. The following parents are acting as Hosts and Hostesses: Mr. and Mrs. Edward Ruby, Mr. and Mrs. Leslie Law, Mr. and Mrs. Edward Eder, Mr. and Mrs. Joseph Reynolds and Mr. and Mrs. J. L. Appar. Mrs. Bandomer is in charge of arrangements.

### Judith Wamback Is Wed to German Boy



Mrs. Helmut E. Durr

Miss Judith Ann Wamback, daughter of Mr. and Mrs. Kurt Wamback of 151 South Maple Avenue, was married Saturday at the First Presbyterian Church, Springfield, to Mr. Helmut E. Durr, son of Mr. and Mrs. Emil Durr of Muhlacker, Germany. Rev. Bruce W. Evans officiated. A reception followed at the Blue Shutter Inn.

Miss Marta Bickel of Belleville was the maid of honor. Mrs. Heinz Laut of Newark, Miss Alice Huber of Springfield and Miss Carole Meyer of Cranford, cousins of the bride, were the bridesmaids. Mr. Helmut Grimm of Mountside participated as the best man. Brother of the bride, Kurt Wamback of Springfield, John Walz of Belleville, and John Eckstein of Union ushered.

The bride wore a gown of silk taffeta with chapel length train and fingertip veil. She is a graduate of Jonathan Dayton Regional High School, and is presently employed by the Commonwealth Water Company.

The groom is a graduate of the State Schools in Germany. He is employed as an engineer by the Union Design Service. After their wedding trip to the New England States, the couple will reside in Summit.

### Your Red Cross

#### Water Safety

Mrs. Thomas Doherty, Water Safety chairman reported on the summer swimming program carried on with the Springfield Recreation Commission. 288 Springfield children registered, 159 received instructions. Due to family vacations interfering with regular attendance not all of the 159 passed tests. However 23 passed the 25 foot test, 43 the regular Beginners test, 9 the Intermediate test and 2 the Swimmers test.

The Recreation Commission

#### Early Deadline for Thanksgiving Copy

Because of the Thanksgiving Day holiday on November 28, the Springfield Sun for next week will be delivered one day earlier, on Wednesday, November 27.

That will mean that deadlines for all editorial and advertising copy must be advanced one day.

The deadline for display and classified advertising and editorial matter will be 5 p.m. Monday, November 25, instead of the customary Tuesday.

The cooperation of publicity chairmen of all organizations and advertisers is earnestly requested in observance of this holiday deadline schedule.



Prescriptions Filled  
Eyeglasses Repaired  
Quick Service  
**J. NORWOOD VAN NISS**  
Gulf Optician  
14 Alvin Terr., Springfield, N. J.  
DRexel 6-6108  
Established 21 Years in Newark



Troop No. 62  
Boy Scout Troop 62 held an overnight hike at Camp Wimbabago on Nov. 16th & 17th. The following passed their cooking, fire building, axe and stalking tests under supervision of patrol leaders Steve Levitt and Elliot Wortzel: namely Richard Mayer, Marty Menken, Barry Hollander, Bob Berkowitz, Jim Berkowitz, Larry Lichter, Arnold Bodner, Joel Granick, George Freedman, David Lazarus, Greg Roman, Steve Berger, Louis Cohen, Ivan Warman and Paul Biddleman.

The adults accompanying the group were Seymour Wortzel, Bill Roman and Otto Granick. The troop is looking forward to a busy season. They had just completed a trip to West Point and in the near future plan to attend a basketball game at Madison Square Garden.

Troop meets Tuesday evening 7:30-9:00 at Raymond Chisholm School. Any interested boy is invited to attend the meeting.

NOTICE TO CREDITORS  
ESTATE OF MORRIS KRICH, Deceased.  
Pursuant to the order of CHARLES A. OTTO, JR., Surrogate of the County of Union, made on the twenty-eighth day of October, A. D. 1957, upon the application of the undersigned as Administratrix of the estate of said deceased, notice is hereby given to the creditors of said deceased to exhibit to the undersigned under oath or affirmation their claims and demands against the estate of said deceased within six months from the date of said orders, or they will be forever barred from prosecuting or recovering the same against the undersigned.

CLARA LOUISE KRICH, Administratrix.  
SAMUEL YAWITZ, Atty.  
972 Broad St.  
Newark, N. J.  
Oct. 31, Nov. 7, 14, 21  
O. & W. Fees: \$12.70

# 50¢

WILL TAKE YOU TO

Dover, Del.  
Harrisburg, Pa.  
Pittsfield, Mass.  
York, Pa.

BY PHONE

3 min. station rate from Newark after 6 P.M. and all day Sunday. 10% tax not included.

You'll be glad you waited for our  
**SENSATIONAL SALE**

Subteen and Children's Coats  
Snow Suits

Preteen  
All Wool Coats Reg. \$39.98 **29<sup>98</sup>**

Boys—Sizes 2-14  
All Wool Coats Reg. \$19.98 **15<sup>98</sup>**

Girls 7-14  
All Wool Coats Reg. \$29.98 **23<sup>98</sup>**

Girls 3-6x  
All Wool Coats Reg. \$24.98 **19<sup>98</sup>**

Snow Suits Reg. 10.98-19.98 **8<sup>78</sup>-15<sup>98</sup>**

All sizes  
Tweeds — Fleeces — Broadcloth  
Fitted Styles  
Imported Fabrics  
Some Boy Coat Styles  
All Sales Final

## The Younger Set

Toddlers thru Preteens

326 Millburn Ave., Millburn DR. 6-0554

Open Friday Evenings Parking In Rear

handled the program, supervising the transportation of the children to the Rahway Pool. The local Red Cross chapter provided the instructors. Five instructors were here during the ten day "Learn to Swim" program and two continued throughout the summer giving advanced instructions. Those passing the 25 foot test were: Joan Harback, Mark Muller, Sherry Meyers, Evelyn Arnold, Manny Rosenberg, Barbara Tropp, Judy Pinkava, Carole Wilson, Ellen Putz, Bonnie Shaw, Gary Vosburgh, Edith Edelstein, Glen Friedman, Mary Ann Getleau, Charles Mink, Robert Walters, Lois Zachan, Phyllis Shofman, Iren Conklin, Sam Joseph

and John Simon. The Beginner group who received certificates were, Larry Lichter, Robert Quinzel, Frank Heydu, Sanford Neubarth, Peter Eckelkamp, Janet Gerardo, Susan Wehrle, Dale Deuwald, Neil Longfield, Barbara Vogel, Donald Buehrer, Judy Kinler, Roy Leacycraft, Kevin Shaw, William James, James Sabol, Janet Bash, Gene Foley, Robert Shubert, Marguerite, Freedman, Danny Etzold, Frank King, Valerie Pahn, Gail Faltoute, Christine Mende, Patricia Cubberly, Suzanne Simon, Gail Wilson, Regina Cooperman, Peter Lawrence, John Rutz, Mary Ann Hooch, Bob Miller, Nancy Smith, Judy Hooch, Dennis Condon, Cath-

ryn Evans, Edward Camaleri, Edward Andrew, Richard Cohen, David Cohen, Elaine McConkey, "Chip" Kerr. The Intermediate, Carol Mihon, Kathleen Murphy, Charlotte Morgan, Linda Cox, Robert Shubert, Carol Rutz, Susan Simon, William James and Barbara Ketchum. The Swimmers Sharon Cooney and Nancy Shubert. This summer, the local chapter handled the issuance of certificates for those passing Red Cross Water Test at the Baltusrol Swim Club. Instructors at the club who had authorization to instruct for the local chapter were: Phyllis S. Cirello, Alan Rothfeder, Anita Taylor and June Worthington. One

hundred and fifty-two received certificates covering the water test as follows, 44 Beginners, 50 Intermediates, 38 Swimmers, 6 Junior Life Saving, 10 Senior Life Saving and 4 Advanced Swimmers.

**Card Party**  
The Springfield League of the Jewish Home for Ashmatic Children will hold a card party tonight after their regular meeting at 8:30 p.m. at the Temple Beth Ahm. Refreshments will be served and prizes will be awarded. Presiding over the meeting will be Mrs. Harry Katz.

**Want a Cab in a Hurry?**  
Springfield-Nadel Cab Co.  
DRexel 6-5200

# Newberrys

THANKSGIVING WEEK  
OPEN  
WEDNESDAY & FRIDAY  
NITES TILL  
9 P.M.

## FABRICS TO MAKE-YOUR-OWN CLEVER CHRISTMAS GIFTS

Trust Newberrys to have a huge selection of the fabrics you want at low sale prices...and all your sewing accessories, too.

We show only a few...we've many more!

**1,000 Yards Solid Color Pinwale Corduroy**  
Washable, colorfast 36" wide. Variety of colors. 1 to 10 yd. remnants. Reg. \$1.19 yd.  
Priced at LOW PRICE of **66¢** yd.

**Solid Color Egyptian Broadcloths**  
Sanforized, first quality in a huge choice of solid colors. Ideal for dozens of things. Lengths to 15 yards... Regularly 98¢  
**59¢** yd.

**FLOCKED APRON CUT-OUTS**  
Nylon organdy with gay Christmas designs. Guaranteed washable. 2 aprons to a yard. **98¢** yd.

**CHRISTMAS BORDER PRINTS**  
Sanforized Spring Knight broadcloth. Six Christmas motifs to choose from—for aprons, dozens of things. 36" wide. **59¢** yd.

**SOFT-NAPPED, RED FLANNEL**  
36" width, first quality—ideal for sleepwear, Christmas decorations, Santa suit. **47¢** yd.

**54" INDIAN HEAD COTTONS**  
Ideal for aprons, lunch cloths, cafe curtains, many things. White, red, green, pink. Fair traded price. **1.29** yd.

**LUSTRO FINISH SATIN**  
Perfect for many Xmas ideas. Comes in 12 colors including red, green and white. Regularly 89¢  
**69¢** yd.

**72" WOOL AND RAYON FELTS**  
Red, green and white—for aprons, table covers, skirts, Christmas stockings, etc. **\$2.97** yd.  
9x12 pieces for appliques each 19¢ Reg. \$3.25

**FRUIT OF THE LOOM COTTONS**  
36", full bolts, Sanforized and mercerized. Huge choice of solid colors. **69¢** yd.

**PERMANENT FINISH ORGANDY**  
White and 15 solid colors including red and green. Fine count, 39" wide. **49¢** yd.

**CHRISTMAS STOCKING CUTOUTS**  
Bright red suede flannel—two big stockings with 2 for 69¢ green and yellow "Merry Christmas" print on each.

**72" width NYLON DRESS NETS 59¢** yd.  
15 of the most popular colors and white. Ideal for bouffant petticoats, hostess aprons, formal gowns. All first quality.

**Hand Decorated Xmas TABLECLOTHS 53x53. \$1.95**

**Hand decorated POINSETTIA PRINT 53x70. \$2.95**

**Hand decorated POINSETTIA PRINT 60x80. \$3.95**

**Fast Color TABLECLOTHS Red & green 53x70. \$2.95**

**Chenille BEDSPREADS. Viscose Nylon, twin or full. \$6.95**

**Belmont PEPPERELL BLANKET Rayon-nylon 72x84. \$4.49**

**2 in 1 Fitted MATTRESS PAD & COVER. \$3.66**

**VENETIAN BLINDS. Up to 36" wide, 54" length 2 for \$5.00**

**CANNON TOWEL SETS Solid color, matching cloths. \$2.98**

**Dundee solid color TOWEL SETS, MATCHING cloths. \$2.98**

J.J. Newberry Co.

OPEN WEDNESDAY & FRIDAY  
NITES TILL 9 P.M.  
THANKSGIVING WEEK

General Greene Shopping Center  
SPRINGFIELD, N. J.









SET FOR AUCTION—Wielding an oversized gavel, auctioneers of Temple Beth Ahm practice up for the annual auction to be held this Saturday night at the Temple at 8:30 p.m. Pictured are Ray Kravetz, Chuck Kessler and Murray Zeidner.

### Squad Answers 44 Calls in October

It was reported this week that the Springfield First Aid Squad answered 44 calls during the month of October including 27 emergencies and 17 transportation cases.

The report, made at the monthly business meeting held Thursday at the First Aid Squad building on North Trivett street, also disclosed that 392 calls have been answered by the first aiders since the start of the year. This totals 67 more calls than were answered by the Squad for the same period in 1956.

During October the Squads two ambulances traveled 628 miles, members logged 165 hours of their time and 4 tanks of oxygen were consumed during emergency calls.

### Lutheran Ladies Elect Officers

New officers for 1958 were elected by the Ladies' Guild of Holy Cross Lutheran Church at the regular November meeting and are as follows: President—Mrs. Ethel Naumann, Vice-President—Mrs. Martha Gaestel, Recording Secretary—Mrs. Lee Bano, Corresponding Secretary—Mrs. Alice Milhon, Treasurer—Mrs. Atha Wilkins.

The Ladies' special Christmas mission project for this year, as in the past, is to fill one pound boxes with home made CHRISTMAS cookies to be distributed to hospitals and orphanages.

Unanimously accepted as new members of the Guild were Mrs. Lester Messerschmidt and Mrs. Anna Tuback. Visiting was Mrs. Arlene Luedeker of Chatham.

On the committee which is planning a Christmas party for the ladies of the Lutheran Church next month, are Mrs. Ann Lissy, Mrs. Alice Milhon, Mrs. Ethel Naumann, Mrs. Atha Wilkins, and Mrs. Hazel Springle.

Refreshments were served by Mrs. Hazel Springle and Mrs. Gesine Pasch.

A flying fish does not flap its wings, he spreads them airplane fashion, vibrates his tail on the water's surface and soars. Flying fish have been timed at 35 miles an hour, for a length of about 300 feet, in California.

**WE RENT**

- BEDS—Baby Equipment
- LADDERS
- SANDING & POLISHING MACHINES
- POWER TOOLS
- GARDEN & YARD TOOLS
- PARTY & BANQUET NEEDS
- TABLES & CHAIRS
- CEMENT MIXERS

**United Rent-Alls**

1610 Springfield Ave.  
Maplewood SO 2-2961

**NEW FROM BAUER & BLACK**

**Front-Opening ABDOMINAL BELT**

ONLY \$7.50

- Goes on and off in a jiffy
- No day-to-day adjusting
- Will not bind

**SPRINGFIELD PHARMACY**

238 Morris Ave. DREXEL 6-5050  
52 Years Of Reliability

### Deborah Calls for Blood in Drive

Dr. Edna Tropp, local chiropractor is chairman of Suburban Deborah's First Blood Bank.

The first call for help of five pints of blood to aid in the heart operation performed on Leonard Bernstein, a Suburban Deborah sponsored patient, at Deborah Sanatorium was answered by ten volunteers.



Dr. Edna Tropp

Dr. Tropp, who is the Chairman of this new undertaking, was able to arrange with the Essex County Blood Bank to transfer the blood to Deborah Sanatorium.

The group is trying to arrange with a local hospital a system of blood bank credit, to enable not only Deborah patients, and members of the local chapter, to draw upon in an emergency, but for any of our neighbors in need of blood.

Union County has no county blood bank and donors must go to New York, or the hospital the patient is in, in order to give blood.

Anyone interested in this local project may call upon Dr. Tropp for information.

### Says 4th Grade Must Be Moved

The Springfield Board of Education is considering shifting the Raymond Chisholm 4th grade next year across the street to the Florence Gaudinier school.

The plan, to deal with the 26 per cent jump in school population since Sept. 1955, was presented by Alan R. Cunningham, chairman of the School-Government Committee, at the regular meeting Tuesday night.

He described the move as a temporary expedient. Twenty six more classrooms will be needed by the time the township reaches its population saturation point.

### Reform Group to Pick Name Tues.

The Reform Jewish Congregation of Springfield will hold a general membership meeting on Tuesday, November 26, 1957 at the Presbyterian Parish House, Main street, Springfield, N.J. at 8:30 p.m.

Two constitutional amendments will be presented to the membership for approval. They are:

1. The selection of a permanent name for the Congregation.
2. Classification of membership.

All members are urged to attend this meeting in order to vote on these amendments. All interested persons are also invited. Refreshments will be served at the conclusion of the meeting.

John Fitch demonstrated a steamboat for the first time in 1785 when he attained a speed of three miles an hour using 12 mechanical oars.

**NOW is the time for LANDSCAPING**

and we're ready with all your needs!

For over a quarter century we have served you with everything you need to do an artistic and lasting landscaping job. All our nursery stock is grown in and for this climate. No blind buying by mail. Stop in for free advice . . . and remember if you want to enjoy colorful blooms in the Spring, NOW is the time to plant your Holland bulbs.

PRICES THAT ARE REASONABLE

**South Mountain Nurseries**

Established 1930

Millburn Ave. and Vaux Hall Road, Millburn  
Open Daily & Sunday Until Dark DR. 6-1330

**4 BEDROOMS—2½ BATHS**

- Large Living Room With Fireplace
- Full Dining Room
- 4 Twin-Size Bedrooms
- 2½ Tiled Baths
- Modern Kitchen With Dishwasher
- Breakfast Area
- Screened Porch
- 2-Car Garage

**ASKING \$27,500**

This spick and span Frame Colonial is conveniently located in Short Hills. The ample property is beautifully landscaped providing a lovely setting for a charming home.

It is an ideal residence for a young executive with a growing family. Well worth inspection.

**Anne Sylvester's Realty Corner, Realtors**

649 MORRIS AVENUE SPRINGFIELD, N. J. DREXEL 6-2300

### Hansento Command Civil Air Patrol

Lt. John Hansen has been appointed Commander of the Springfield Sq. of the Civil Air Patrol, it was announced by Wing Headquarters in Newark. CAP is the official civilian auxiliary of the United States Air Force. Lt. Hansen replaces Captain Ross Patterson who has been assigned to the New Jersey Wing as Director of Personnel.

Lt. Hansen has been climbing Civil Air Patrol ladder since 1954 when he was a Sergeant in charge of cadets. Prior to his volunteer CAP work, Lt. Hansen's military training included two years in the Navy where he served in the Pacific during World War II and also during Korea. In private life he serves the Springfield police force, and has been affiliated with the force for five years.

Always interested in programs for youth—a phase of CAP's program—Lt. Hansen worked for two years with the Elks' Springfield youth league.

### School Man on Planning Board

Mayor Albert G. Binder has promised to appoint a member of the Board of Education to the Planning Board on Jan. 1, Howard S. Smith, vice-president of school board, revealed Tuesday night.

Smith said Binder and the Planning Board felt it would help keep ahead of population growth if it had one of its members in the planning unit.

Smith said he would suggest that Binder name Lorin E. Sken.

IF YOU ARE LOOKING FOR TRULY UNUSUAL

**Gifts**

VISIT BRECK'S GIFT DEPT.

- WREATHS
- ARTIFICIAL VISCA TREES
- CUT TREES
- CENTERPIECES
- IMPORTED GLASSWARE
- PLANT STANDS
- SERVING DISHES
- ROPING
- LIVING TREES
- DOOR DECORATIONS
- BRASS WARE
- BASKETS

Many other items too numerous to mention

ONE OF NEW JERSEY'S WIDEST SELECTIONS OF IMPORTED CHRISTMAS TRIM FOR TREE AND HOME

**BRECK'S**

HOME AND GARDEN CENTER

Route 24 (Morris Turnpike) MILLBURN, N. J.

Open Daily 9 am to 6 pm  
Acres Of Free Parking Space

**BRECK'S** Home and Garden Centers

**FOR THANKSGIVING**

Our Famous Ice Cream and Candy

Bulk Ice Cream in the ½ Gallon Freezer Pak

All Flavors including Special Holiday Flavors

Assorted Candy and Nuts For Your Holiday Table

**GRUNING'S MILLBURN**

780 MORRIS TURNPIKE DR 6-5183

**PAL SHOES**

ONE OF N.J.'S LARGEST DISCOUNT SHOE CENTERS

**Grand Opening**

THURSDAY, NOVEMBER 21, at 9:30 A.M.

2626 Morris Ave. Union OPPOSITE BARDY FARMS

- ★ FREE GIFTS FOR ALL!
- ★ FREE KIDDIE RIDES!
- ★ Meet "Jerry the Clown"!

He'll be here to greet everyone all day Thursday, Friday, Saturday and Sunday!

Save up to 60%

CHILD'S **Buster Brown** 3.94  
DRESS SHOES reg. 6.95

MADEMOISELLE **9.94**  
DRESS SHOES reg. 17.95

Famous make Men's "Hand Sewn" **4.94**  
LOAFERS reg. 8.95

MEN'S **FLORSHEIM** 12.94  
SHOES REG. TO \$24.95

Famous Make **FLATS** 2.94  
reg. to 7.95

Also Many Other Specials Not Advertised

Plenty of Free Parking!

WOMEN'S **FLEECE-LINED Stadium Boots** 5.94  
reg. 9.95

**PAL Shoes**

2626 Morris Ave. Union  
Opposite Bardy Farms MTU 6-9778  
**ROUTE 18, EAST BRUNSWICK**  
½ mile west of Two Guys From Harrison  
phone CLifford 4-9439  
Both stores open daily & Sat. 9:30 to 9:00;  
Sunday 9:30 - 6



### Two Couples Back from Caribbean

John and Helen Kinzer, of 107 Regreen avenue, and Fred and Jan Seibel, of 21 Forest drive, returned Tuesday, November 19, after a two weeks' cruise-tour of the Panama and the Canal Zone and the S.S. Ancon of the Panama Line. The cruise was sponsored by Frank B. Jewett, president 34, Telephone Pioneers of America. Telephone Pioneers of America chapters throughout the United States and Canada, was organized to provide a friendly

association for the longer-service employees in the telephone industry, both active and retired. Membership numbers over 188,000 men and women who have served the telephone industry for 21 years or more.

### Communion Breakfast

A delegation of the Methodist Men's Club from the Springfield Methodist Church will attend a Communion Breakfast at the Kenilworth Methodist Church Sunday, November 24, at 7:00 a.m. This breakfast is being sponsored by the Elizabeth Sub-District of the Newark Conference of the Methodist Church. All men are invited to attend, tickets, \$1.25, leaving the church at 6:45 a.m.



### Deborah Doings

The Suburban Deborah League will hold a paid-up membership supper, Nov. 26, 1957 at 8:30 p.m. at Temple Beth Ahim in Springfield. The program for the evening will include a dance exhibition by Lynn and Conway and a Champagne Hour.

Mrs. Tony Fiorelino of Springfield is in charge of supper arrangements and Mrs. Harold Barg also of Springfield is chairman of the evening. Mrs. Robert Cohen of Lelak Ave. was hostess Nov. 11 to the board members of Suburban Deborah.

A report was given by Mrs. Stewart Zerlip, the admissions chairman to Deborah Sanatorium for the local chapter. The board was very happy to hear from Mrs. Zerlip that Mr. Leonard Bernstein, a heart patient sponsored by the local chapter has after five months been discharged from the hospital and is now undergoing rehabilitation.

Suburban Deborah's fund raising goal for next year has been set at \$10,000 by the executive board at a meeting at the home of Mrs. Allen Bersky, Pres. on Nov. 17. Mrs. Sanford Kessler was welcomed back to the executive board. She is replacing Mrs. Harold Mark, Vice Pres. in charge of merchandise sales, who is moving to Virginia.

Mrs. Benjamin Kantor is formulating plans for the first annual children's contribution luncheon. The children are filling dime banks, the proceeds of which will go to the hospital for research. Dr. Benjamin Josephson has been appointed honorary chairman of the project. Otto Granick, local attorney and amateur magician will provide the entertainment for the affair.

**HAPPY BIRTHDAY**—In observance of the Springfield Woman's Club 8th birthday party last week, Mrs. Merton D. Williams, President out the cake while guest, Mrs. Allison Hearn, seventh district Vice President looks on.

### Pal Shoes Open Discount House

Pal Shoes, a new discount shoe store, is opening today at 2826 Morris avenue in Union, opposite the Bards Farm Supermarket. It is the second such store to be opened within a year by its owners, Arnold Rosen, Leonard Robinson and Paul Rosen. The first, a highway store, was opened nine months ago on Route 18 in East Brunswick.

The new shoe center will specialize in name brand footwear for men, women and children including orthopedic shoes. Among brands carried will be: Buster Brown, Edwards, Troling, Mademoiselle, Custom Made, Florshcim, Nunn-Bush and Nettleton. Free gifts will be given at the grand opening celebration this week-end as well as free kiddie rides and the appearance of "Jerry the Clown," well-known circus personality.

Store hours will be 9:30 a.m. to 9 p.m. daily and Saturday; 9:30 a.m. to 6 p.m. on Sundays.

### Reform Group Sets Family Service

The Reform Jewish Congregation of Springfield announces a special Thanksgiving Family Service to be held Friday November 22nd at 8 p.m. at the Presbyterian Parish House. This night, the children will join with their parents in the service, just as they did last month, during the Simchat Torah celebration. In order to be able to get the children home at an early hour, Rabbi Malcolm Mendelsohn will begin services at 8 p.m. instead of the usual 8:30 p.m. Cantor Raed Schorr will assist with the services.

**Paul & Louis Hairstylists**  
261 MORRIS AVENUE  
SPRINGFIELD, NEW JERSEY

We have added a Haircutting Bar to our Salon. If it's just that haircut you need... have it done by EXPERTS that excel in SHAPING and STYLING HAIR.

"It's our Haircut that makes the difference." Call for an appointment today.

DRexel 6-9877 Free Parking in Rear  
Air Conditioned

Mr. Louis, formerly of Charles of the Ritz  
Mr. Paul, formerly of Hahn & Co.

**SEROFF BROS.**  
KOSHER MEAT MARKET

UNDER STRICT ORTHODOX RABBINICAL SUPERVISION  
ENDORSED BY KOSHER PRODUCTS CONSUMERS LEAGUE

**Fresh Killed TURKEYS**

HENS 12-18 lbs. **63c** lb  
Young TOMS 19 lbs. and up **49c** lb

**ROCK CORNISH HENS \$1.09 lb.**  
(Eviscerated... Koshered... Frozen)

We Carry A Full Line Of Eviscerated, Koshered, Frozen Turkeys

**NEWARK** 385 HAWTHORNE AVE.  
**IRVINGTON** 29 MILL ROAD

ESsex 2-5346 — MURdock 6-1050  
FREE DELIVERY—FREE PARKING—LOW PRICES—  
IRVINGTON STORE OPEN TUES. & WED. TILL 9 P.M.  
Closed All Day Thursday (Thanksgiving)  
PRICES EFFECTIVE NOV. 24 - DEC. 1

**ORDER THANKSGIVING PIES NOW!**

Traditional - pumpkin, mince, and apple.

All Other Desserts for Your Holiday Table

**MOUNTAIN SPRING BAKE SHOP**

721 Mountain Ave., 1/4 Mile in from Route 22  
SPRINGFIELD DRexel 6-4943

Hours: Tues. thru Sat. 9 a.m. to 10 p.m.  
SUNDAY 7 a.m. to 6 p.m. — Closed Mondays

**RAPPAPORT SPRING DRUG**

273 Morris Ave., Springfield  
Free delivery—DRexel 9-2079

Prescriptions, Vitamins, Cosmetics

**Cut-Rate Prices**

**TAXI?**  
Springfield-Nadel Cab Co.  
DRexel 6-5200



SOLD BY B.J. CHADWICK—Home at 525 Ashwood [wick Agency to Charles C. Leamond of Maplewood, road sold for Elliott Lichtenstein by the B. J. Chadwick. Mr. Leamond is a plumbing and heating contractor.

### Joint Services For Reform Group

The Reform Jewish Congregation of Springfield will attend a Joint Thanksgiving Service to be held Wednesday Thanksgiving Eve November 27 at 8:30 p.m. at Congregation Beth Shalom, Vaux Hall road and Plane street, Union N.J. Joining with the Springfield Congregation will be in addition to Congregation Beth Shalom, The Conservative Congregation of Hillside, Beth El of Cranford, Beth El of Plainfield, Emman-el of Westfield, Beth Torah of Rahway, P'nai Israel of Elizabeth, Temple Meikar Chayim of Suburban Jewish Center of Linden.

### Conte's Overtakes Cops in Bowling

By Joe Pepe  
Conte's Delicatessen, after dropping the first game, came back strong to take the next two from the P.B.A. to drop the police out of first place for the first time this season in the Springfield Sports League.

Ed Baumer's fine bowling wasn't quite enough for the cops. Joe Ciccone and R. Diannattasio had good games for the winners. Conte's is now in first place by one game.

Springhouse Trees maintained third place by taking 2 of 3 from the Stereo Sound boys. John Pasquale and S. Burdett had good games of 209 and 213 in the losing cause. R. Caggiano led Springhouse with a 219 game.

Drexel Cleaners finally hit their stride by taking 2 games from Lynn Decorators. Drexel, battling to stay out of the cellar, took high 3 game series for the league with a 2790 pin total. The boys from Drexel should start to move up in the standings with all around fine team bowling. Lynn's, although losing 2 games, took high league game of 994.

200 games included: E. Baumer 220, R. Caggiano 219; H. Burdett

### Board Lets School Band Play Locally

The Regional High School Band will be allowed to play in Springfield parades and civic programs after years of shunning local affairs.

The Union County Regional High School Board of Education reversed the long time ban on student musical groups playing here at the regular meeting Tuesday night.

The new ruling contains a specific ban on political events, interference "with employment of regular musicians" and "appearances which might be expected to place the school or its organizations in the position of a party to a controversy."

The decision on each application was left up to the principal of the high school involved.

## BUSINESS DIRECTORY

**AUTOMOBILES**

SPERCO MOTOR CO.  
CADILLAC  
Sales-Service  
Accessories  
491 Morris Ave.  
Summit  
"Near Ciba" CRestview 3-1700

**CHEVROLET**

L & S Chevrolet Co., Inc.  
E. Arthur Lynch  
Your Authorized  
CHEVROLET Dealer  
Sales - Service  
Parts - Repairs  
Complete Body & Fender Work  
Painting  
Cor. Morris & Commerce Ave., Union  
MURdock 6-2800

**HOME REPAIRS**

Call Rudy For  
**HOME COMFORT**  
Heating Systems  
Light Plumbing  
Electrical Repairs  
Steamfitting  
Pipefitting  
Quality Work by Experienced Hands.

SECO COMPANY  
1233 GRANDVIEW AVE.  
UNION, N.J.  
MURdock 8-0864  
Rudy Schroeder, Prop.

**FUEL OIL - COAL**

DRAKE FUEL SALES CO.  
DELCO OIL BURNERS  
Installation & Servicing  
COAL • FUEL OIL • COKE  
679 Morris Ave. Springfield  
DRexel 6-0880

**LETTERING**

Harry S. Keene  
**TRUCK LETTERING**  
Delivery Trucks A Specialty  
KENILWORTH, N. J.  
BRIDGE 6-2970

**LUMBER**

Aluminum Combination Windows & Doors, Hardboard, Plywood, Sheetrock, Shelving, Louver Doors, Insulation, Sash, Doors & Trim. Lowest Prices—Free Deliveries.

HILTON SCREEN & LUMBER CO.  
2170 Springfield Ave. Vaux Hall  
MU 6-7108 Open Sun. A.M.

**MILK AND DAIRY PRODUCTS**

**SCHMALZ**

Milk & Cream  
Buttermilk  
Cottage Cheese  
Butter & Eggs  
Delivered Fresh from Our Nearby Farm  
Call...  
MILLINGTON 7-0025

**DRUGS**

**PARK DRUGS**  
Prescription & Surgical  
Pharmacy  
OPEN SUNDAYS  
TIL 6 P.M.  
General Greene Shopping Center  
DRexel 9-4992

**DRUGS**

**ROLAND DRUGS**  
777 Mountain Ave.  
(Tab's Shopping Center)  
PRESCRIPTIONS—COSMETICS  
BABY NEEDS—VITAMINS  
Free Delivery—DRexel 9-2244  
9 A.M. - 10 P.M. Including Sundays

**FLOOR COVERING**

**CENTER CARPET**  
"Floor Coverings Of Every Description"  
Rubber  
Asphalt  
Cork  
TILE  
Rug Cleaning & Storage  
31 Summit Av. CRestview 7-2700

**NEWSPAPER DELIVERY**

Your Favorite Paper  
Delivered To Your Home  
Mornings - Afternoon - Evening -  
Sunday  
SPRINGFIELD NEWS DELIVERY  
Call DRexel 6-0786

**PLUMBERS**

**ALBERT SCHATZ**  
Plumbing - Heating  
Contracting - Alterations  
Repairing  
Hours: Monday thru Saturday  
8 a.m. to 5:30 p.m.  
197 Hillside Avenue  
SPRINGFIELD  
DRexel 6-4276

**SERVICE STATIONS**

BALDWIN'S SHELL STATION  
SHELL  
Gas - Oil - Lubrication  
Washing & Polishing  
Call For Delivery Service  
DRexel 9-9831  
Mountain & S. Springfield Ave.

**ELECTRICAL CONTRACTOR**

For Electrical work, phone...  
DRexel 6-3181  
Industrial • Commercial • Residential  
72 Forest Dr., Springfield, N. J.

**ROOFING-SIDING**

**SPRINGFIELD ROOFING CO.**  
Remodeling, Attics and  
Basements Finished  
Slate, Tile and Sliding  
Gutter and Leader Repair  
Phone DRexel 9-4207  
357 Mountain Ave., Springfield, N.J.

**TAVERNS**

**OLD EVERGREEN LODGE**  
SINGERS PARK, SPRINGFIELD  
GROUP OUTINGS  
Make Reservations for  
Guarantee 150 Adults and  
up to 2,000  
Arrangements for  
PARTIES WEDDINGS  
BAR OPEN YEAR AROUND  
DRexel 6-0489  
Square Dancing Starts Again  
in September  
SPRINGFIELD

**PLANNING AHEAD**

It's a good idea for every family to be prepared for financial storms, too. A growing account at this bank gives you the protection of ready cash plus the reassurance that helpful financing is also available when you need it. You can do all your banking here.

Best wishes for  
**A HAPPY THANKSGIVING**

We hope that you and your family find much to be thankful for on Thanksgiving Day... and every day.

**THE NATIONAL STATE BANK**  
"Union County's Leading Bank"

ELIZABETH • SPRINGFIELD • ROSELLE PARK  
SUMMIT • KENILWORTH

MEMBER FEDERAL DEPOSIT INSURANCE CORPORATION  
FIRST SINCE 1812



**Your Library**

BOOK WEEK eagerly awaited, and thoroughly enjoyed, has been the delight of several generations of readers. This year, the 39th year, it is being celebrated the week of November 17 (November 17 to 23). The new wing added last winter to the Springfield Free Public Library allows enough space to have a real book exhibit.

Members of the Parent-Teacher Association of the four public schools: James Caldwell, Raymond Chisholm, Edward Walton, and Florence Gaudineer are helping to prepare an exhibit and combining it with a book sale. The proceeds from the book sale will go into the PTA treasury. The books being sold are all new books.

A great many books exhibited are taken from the Library's own collection, but duplicates may be

purchased. Other books in bindings suited to home use but not to the wear and tear of a library have been borrowed from dealers. The latter group includes many less expensive books which will make excellent Christmas gifts.

BOOK WEEK, started in 1919, originally was intended to display children's books only. Its aim was to improve the quality of books being printed for young folks. It is clear that this first goal has been reached. One only

has to see the books with their marvelous array of beautiful illustrations, designs, and printing to understand what works of art children's books are today.

Meanwhile the older young people and adults enjoyed Book Week so much, they did not wish to be left out. One section of the Springfield exhibit will feature books for older persons.

Book Week book markers will be given to all who visit the exhibit. There are lists of children's

books for parents and some other materials for teachers and adults who work with children.

At all times one of the regular library staff will be available to give advice about reading, and to suggest gift titles for a "difficult person." Many materials about new books will be on hand.

The Auditorium Room of the Library is being especially decorated by a committee headed by Mrs. John Porter, the Children's Librarian. One feature will be a

series of Book Week posters covering the last ten years. These are all designed by outstanding artists.

Another feature will be an old copy of a popular classic, placed beside a recent reprint to show the changes in design. There will be a picture puzzle of outstanding book characters, which children may try to solve.

So that as many people as possible may see the exhibit, the library will be open every evening

except Saturday from 7:30 to 9:00 p.m. Also open every day including Saturday from 10:30 a.m. to 5:00 p.m. Members of the PTA will supervise the room and accept orders for book purchases.

**Six Attend Newark College of Engineering**

Newark College of Engineering has accepted six residents as freshmen at Newark College of Engineering, according to Dean

Frank A. Grammer, Director of Admissions.

In the day undergraduate division are: Raymond Hawryluk of 38 Pitt road, John P. Hazelmann of 37 Meisel avenue, Edward R. Kent of 61 Keeler street, Joseph J. Raymond of 9 Battle Hill avenue and Rudiger W. Tietze of 16 Warner avenue.

In the evening undergraduate division is Byron D. Ehlers, Jr., of 298 S. Springfield avenue.

**SAFEWAY**



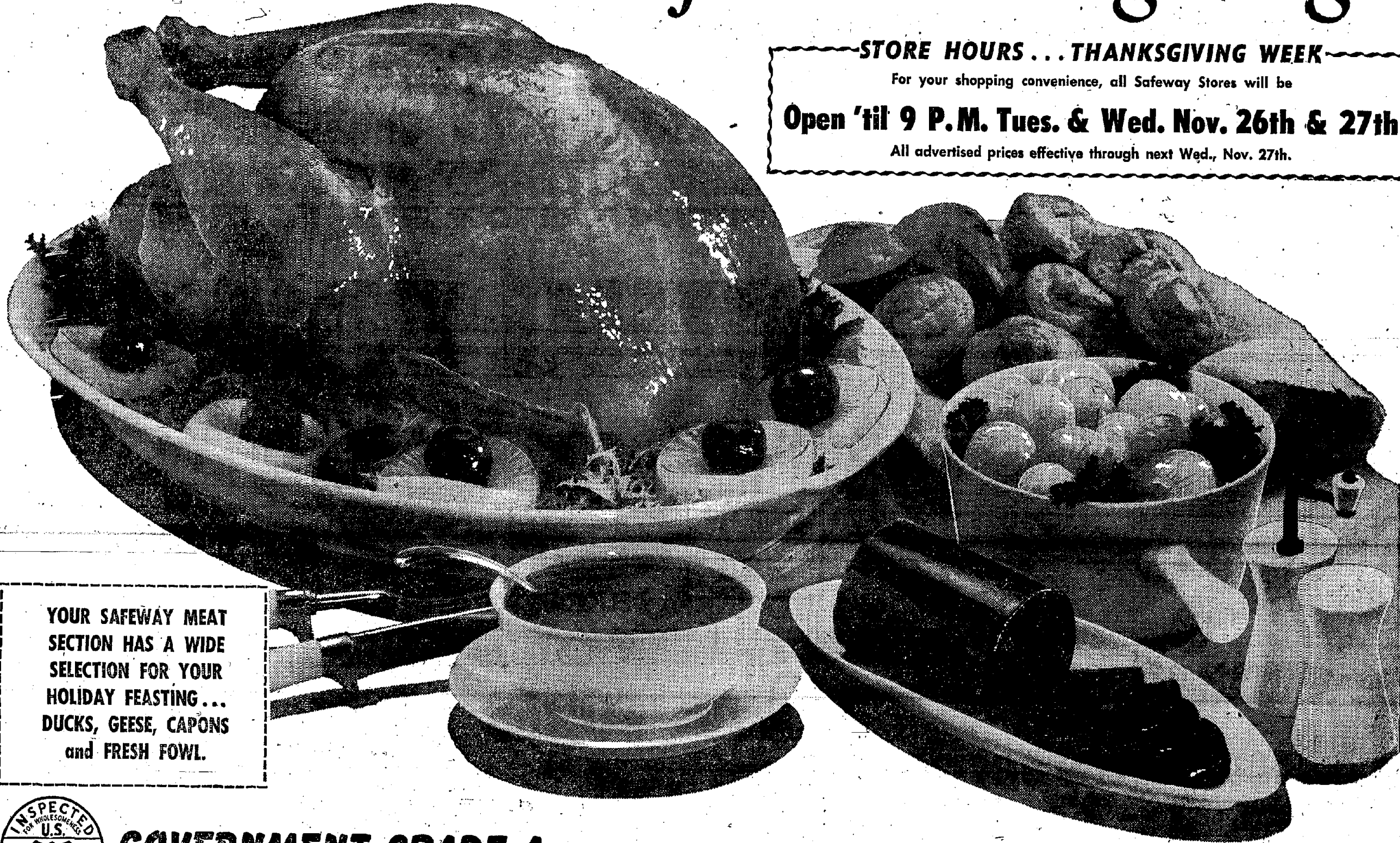
*...all the good foods for a wonderful Thanksgiving*

**STORE HOURS... THANKSGIVING WEEK**

For your shopping convenience, all Safeway Stores will be

**Open 'til 9 P.M. Tues. & Wed. Nov. 26th & 27th**

All advertised prices effective through next Wed., Nov. 27th.



**YOUR SAFEWAY MEAT SECTION HAS A WIDE SELECTION FOR YOUR HOLIDAY FEASTING... DUCKS, GEESE, CAPONS and FRESH FOWL.**



**GOVERNMENT GRADE A**  
Oven Ready; Gov't Inspected

**TURKEYS**

lb. **37<sup>c</sup>** lb. **41<sup>c</sup>**  
18 to 24 lb. sizes      10 to 16 lb. sizes

PARTNERS WITH TURKEY

OCEAN SPRAY Cranberry Sauce 2 1 lb. cans 35<sup>c</sup>

PILLSBURY BUTTERMILK Oven-Ready Biscuits 2 8 oz. cans 27<sup>c</sup>

**READY-TO-EAT - 12 TO 16 POUND SIZES**

**SMOKED HAM** lb. **49<sup>c</sup>**

Whole or Full Half - No Center Slices Removed

For The Finest Produce... All You Need Remember is Safeway!

**APPLES** McIntosh 2 lbs. 19<sup>c</sup>  
Crisp and Tender

**POTATOES** Sweet 3 lbs. 25<sup>c</sup>  
Wonderful Baked or Candied

**GRAPES** Red Emperors 2 lbs. 29<sup>c</sup>  
Juicy Sweet

More Cash Savings As You Go... Safeway

Tomato Juice	Libby's	2 46 oz. cans	55 <sup>c</sup>	Layered Figs	Roeding Callymra	1 lb. pkg.	47 <sup>c</sup>
Fruit Cocktail	Town House	2 30 oz. cans	65 <sup>c</sup>	Shortening	Royal Satin	1 lb. can	33 <sup>c</sup>
Reynolds Wrap	Aluminum Foil	2 12" x 25' pkgs.	49 <sup>c</sup>	Festival Fruit Cake		2 lb. tin	89 <sup>c</sup>
Cream Cheese	Philadelphia Reg., Chive or Pin.	2 3 oz. pkgs.	25 <sup>c</sup>	R & R Plum Pudding		1 lb. can	41 <sup>c</sup>
Grape Juice	Bel-Air Frozen	2 6 oz. cans	29 <sup>c</sup>	Ice Cream	Party Pride	1/2 gal. pkg.	95 <sup>c</sup>
Sweet Gherkins	Zippy, Fancy	16 oz. jar	39 <sup>c</sup>	Deveined Shrimp	Jekyll Island Frozen	12 oz. pkg.	95 <sup>c</sup>
Pony Gherkins	Zippy Fresh Pack	15 1/2 oz. jar	29 <sup>c</sup>	Salted Peanuts	Planter's Cocktail	7 1/2 oz. can	37 <sup>c</sup>
Stuffed Olives	Tom-Tee-Manzanilla	7 1/2 oz. jar	47 <sup>c</sup>	Fritos	Recipe on bag for Kraft 'Philly' Hostess Dip	6 1/2 oz. pkg.	29 <sup>c</sup>
Pie Crust Mix	Flako-5c Off Banded Deal	2 10 oz. pkgs.	29 <sup>c</sup>	Jupiter Potato Chips		5 1/2 oz. cello	33 <sup>c</sup>
Mince Meat	None Such	2 9 oz. jars	47 <sup>c</sup>	Strawberries	Bel-Air Frozen-Sliced	2 10 oz. pkgs.	47 <sup>c</sup>

Thank You For Shopping...



Serving the Springfield - Summit - Millburn Area  
**727 MORRIS TURNPIKE**  
**SPRINGFIELD, N. J.**



**P.T.A. NEWS**

On Sat. Nov. 16th the first Griffith Youth Concert was held at the Mosque Theater in Newark. The musical production this month was "The Firebird" by Igor Stravinsky. The full bus load of Springfield school children enjoyed the delightful afternoon of

music and was an experience long to be remembered by them says Mrs. Stevens, one of the PTA chaperons.  
Caldwell School  
The November meeting of the executive board of the James Caldwell School PTA was held in the Library of the Florence M. Gaudineer School on Tuesday, Nov. 12th. The President, Mrs. Alan Cunningham presided, and committee reports were given by the Chairmen.  
Mrs. H. Heady, Caldwell School PTA Membership Chairman, an-

nounces that the Caldwell School PTA Enrollment has been completed with a total of 523 members joining to date. Mrs. Spider's First Grade had the highest enrollment with 213%. Mrs. Cross' First Grade was second highest, and Mrs. Huff's Fourth Grade was third highest. Eight classes had from 150 to 200% membership and all of the other classes in the school had reached 100% when the Membership Enrollment was summarized. The Caldwell School PTA goal was at least one membership per family represented

by children in the school. The Membership Chairman wishes to thank the parents, the children, the school office staff, and the teachers and everyone who helped to make the Membership Enrollment a success for the Caldwell School PTA this year.  
Gaudineer School  
Members of the Florence M. Gaudineer PTA are invited to attend a special Open House program on Monday, November 25th at 7:30 p.m.  
The regular meeting will start at 7:30 p.m. in the auditorium and

class room visitations will take place between 8:15 p.m. and 9:00 p.m. Refreshments will be served in the auditorium following the classroom visits. A cake sale will be held in the auditorium.  
Chisholm School  
The boys and girls of the Raymond Chisholm School had every reason to be proud of their parents on the night of November 18, as both mothers and fathers turned out in record numbers for the always popular "Open House" evening. The classroom visitations were preceded by a

short business meeting, presided over by Mrs. Niles Christensen, PTA President. Mrs. Philip Lewis gave the invocation. Mrs. Edward Schubert, Membership chairman, spoke of the successful membership drive held in October, which enrolled 94% of the parents (253 women and 210 men). Mrs. Thomas Argyris, Finance chairman, gave a report on the shirt and book sale arranged by her committee. Mrs. Edward Ries, School Mother, announced that the classmothers would act as hostesses in the classrooms and

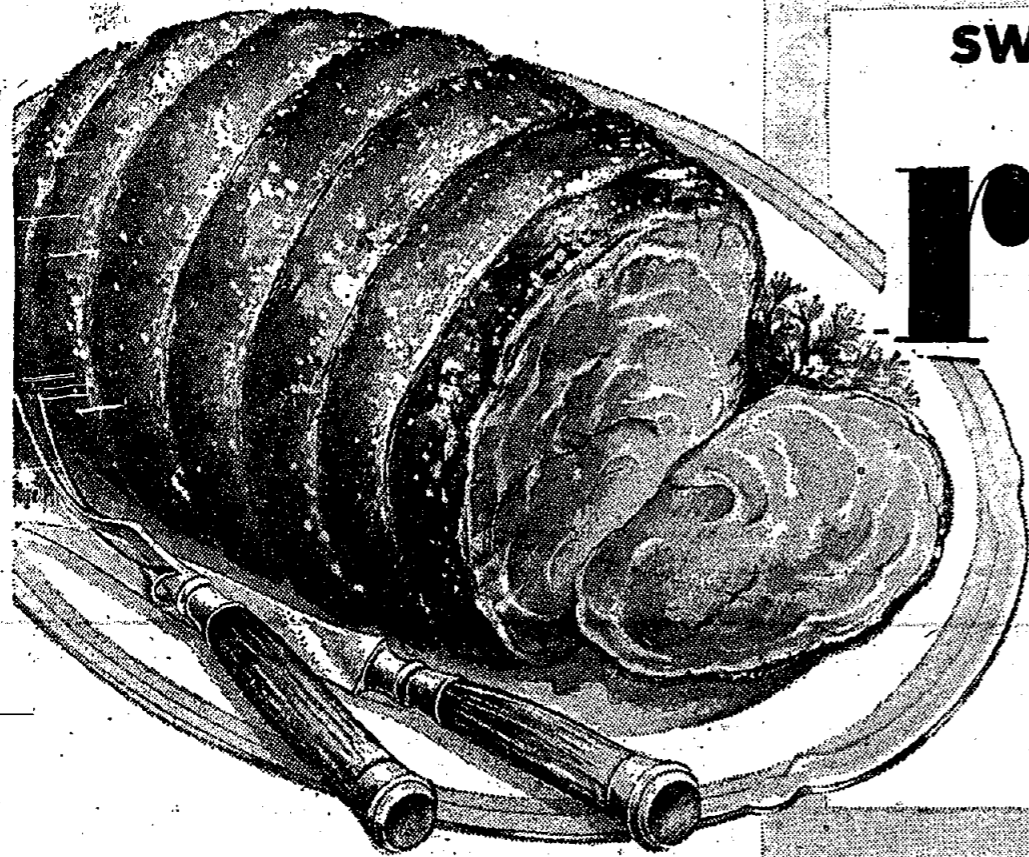
take attendance. The business meeting adjourned at 8:30 p.m. and the parents then visited their children's rooms, to hear of their curriculum for the year and inspect their work. It was now the turn of the parents to be proud of their children and their accomplishments. Parents were permitted to inspect the building, talk with the teachers, and in general become better acquainted with the programs and methods of the school. It was a most rewarding evening.  
Walton School

Open House at the Edward-V. Walton School was an overwhelming success. Mr. Murray, Principal, and the school faculty arranged a most interesting and informative evening for the parents, which included visitation of the classrooms, a discussion of the year's curriculum by the teacher, and a display of the children's work.  
A short business meeting was held in the auditorium at the beginning of the evening. Mrs. Norman Stromeyer, Chairman of (Continued on page 11)



# Good Eating for Everybody

ALL YEAR 'ROUND at GRAND UNION  
TOP QUALITY "BACKED-BY-BOND" GRAND UNION MEAT



SWIFT'S PREMIUM - ARMOUR STAR - U.S. CHOICE

## round roast

BONELESS

SAVE \$1.50  
ON AN AVERAGE  
SIZE ROAST

# 69c

TOP  
OR  
BOTTOM

DELICIOUS FOR OVEN OR POT ROAST

### FROZEN FOODS

Kitchen Garden

## Sliced Strawberries

Makes a delicious  
dessert over Freshpak  
Ice Cream

2 10-oz. pkgs. **37c**  
2 16-oz. pkgs. **49c**

- |   |   |
|---|---|
| Kitchen Garden<br><b>GREEN PEAS</b> 2 10-oz. pkgs. <b>29c</b>     | Dorann<br><b>CANDIED YAMS</b> 2 14-oz. pkgs. <b>55c</b>               |
| Farmhouse—Ready-to-eat<br><b>PUMPKIN PIE</b> 8-in. Pie <b>59c</b> | Betty Bitler—Ready-to-bake<br><b>PUMPKIN PIE</b> 8-in. Pie <b>49c</b> |
| Libby—Ready-to-bake<br><b>MINCE PIE</b> 8-in. Pie <b>55c</b>      | Libby—Whole<br><b>STRAWBERRIES</b> 16-oz. pkg. <b>39c</b>             |
| Libby—Red<br><b>RASPBERRIES</b> 10-oz. pkg. <b>33c</b>            | Libby—Sliced<br><b>PEACHES</b> 2 10-oz. pkgs. <b>43c</b>              |

## FAMOUS BIRDS EYE QUICK FROZEN ORANGE JUICE

4 6-oz. cans **59c** Mail in can tops to BIRDS EYE, BOX 103, KANKAKEE, ILL. Birds Eye will refund 25c  
Your Net Cost  
4 6-oz. cans **34c**

## LAMB FORES

- Deerfoot Farms  
**SKINLESS FRANKS** lb. **55c**  
Fresh Ground  
**MEAT LOAF** Beef, Pork, Veal lb. **49c**  
Vacuum Packed—Sliced  
**HORMEL** Hard 4-oz. pkg. **41c** Genoa 4-oz. pkg. **45c**  
Grand Union—Quick Frozen  
**PRECOOKED SCALLOPS** 7-oz. pkg. **49c**

- Two Meals in One  
Choice Shoulder Chops & Stew lb. **39c**  
Young Steer  
**SLICED BEEF LIVER** lb. **35c**  
Swift's Brookfield—Link  
**PORK SAUSAGE** Free basting brush in each pkg. lb. **79c**  
Swift's Premium—Quick Frozen  
**BEEF STEAKS** Buttered 8-oz. pkg. **49c**  
Fresh—Boneless  
**Cod or Haddock Fillet** lb. **49c**

## TANGERINES

Fresh from Florida. So easy to peel. **10 for 29c**

## CRANBERRIES

- GOLDEN, WHOLESOME  
**SWEET POTATOES** 4 lbs. **29c**  
BOILING SIZE—DELICIOUS CREAMED  
**WHITE ONIONS** 2 lbs. **23c**  
Red ripe fresh. The traditional turkey garnish.  
FRESH SWEET—Nature's Healthful Beverage  
**APPLE CIDER** gal. **69c**  
DIAMOND  
**WALNUTS** 1-lb. cello. bag **49c**

Don't miss the Special Christmas Story told by **Mary Martin**  
"THE LITTLE LAME LAMB"  
Illustrated by **Walt Disney Studios**  
plus holiday foods, decorations, gift ideas all in December **Family Circle 10c**



- Nancy Lynn  
**FRUIT CAKE** 2-lb. tin **\$1.89**  
Snapay  
**Sliced Colby** 6-oz. pkg. **39c**  
Military Brand  
**Camembert** 4-oz. pkg. **39c**  
FOR YOUR THANKSGIVING MEAL  
N. Y. Extra Sharp  
**CHEDDAR** lb. **79c**  
Old Forge  
**Provolone** lb. **63c**  
**Baby Gouda** 9-oz. pkg. **45c**  
3 Piece Plastic  
**MIXING BOWL SET** SAVE 99c **99c**  
Available in most stores.

- M&M's** CANDY COATED CHOCOLATE 6-oz. pkg. **29c**  
CANDY COATED PEANUTS  
Palmolive Soap 4 bars **39c**  
Pink Camay Soap 2 bars **29c**  
Cashmere Bouquet 2 bars **29c**  
Vel Liquid Detergent 12-oz. can **39c**  
ANGEL-SOFT  
**FACIAL TISSUE** pkg. **23c**

## START NOW! SAVE TRIPLE-S BLUE STAMPS..

All meat, produce, dairy and frozen-food prices effective thru Sat., Nov. 23. All grocery prices effective thru Wed., Nov. 27, at Metropolitan N. Y. and nearby N. J. stores.

GENERAL GREENE SHOPPING CENTER  
NEW STORE HOURS AT TRIPLE-S REDEMPTION CENTER  
Visit your Triple-S Redemption Center at 269 Morris Ave., Springfield  
9:00 a.m. to 6 p.m. Monday, Tuesday, Wednesday, Thursday and Saturday.  
Friday—9 a.m. to 6 p.m.  
Morris and Flamer Avenues, SPRINGFIELD



**P.T.A. News**

(Continued from page 10)  
 the Shirt Sale Project, reported that the results of the sale were more successful than anticipated, especially due to the efforts of her committee which included the following: Mesdames Seymour Cohen, Philip Goldhammer, Stanley Cornfield, Abner Gold, Harry Wemischner, Harold Barg, Max Fruechter, Milton Rubinstein, David L. Stamelman, and David Hecht. The Membership Chairman, Mrs. L. A. Winkler, reported that

the membership to date is 462. Mrs. Golden's 1st grade class was the first to reach 100% enrollment. Mrs. David Hecht, Co-Chairman of the Fund Raising Committee, announced that the card party will be held at the Sachackamaxon Country Club, Scotch Plains, on March 17, 1958. Refreshments were donated by the 4th and 5th grade mothers. Hostesses for the evening were the Mesdames Fred Neubart, Les Lichter, and M. Feuerstein, under the chairmanship of Mrs. Sidney

Stein. Regional High School Mrs. Seth Ben-Ari, Regional High PTA Ways and Means Committee Chairman and her co-chairman, Mrs. Douglas Tuttle, are busily engaged in planning a most unusual and entertaining VARIETY SHOW to be held in the school auditorium on Saturday evening, December 7th, 1957 at 8:30 p.m. Tickets are available in Springfield through Mrs. H. Wilson, DRexel 6-2318 and will also be on sale in the school lobby tonight before the meeting. Be

sure to stop and purchase your tickets for a delightful evening, Dec. 7th. The Jonathan Dayton Regional High School Parent-Teachers Association will hold their regular monthly meeting tonight at 8 p.m. in the school auditorium. Mrs. Horace J. Libby, president, will give her report on the recent PTA convention held in Atlantic City. Students are permitted to attend this meeting with their parents as the subjects under discussion are most pertinent to

their future activities. Mr. A. J. Zannieri, head of Personnel at Hyatt Bearing Division of General Motors, will speak on "After Graduation, what then?". Mr. Henry C. J. Evans, Associate Director of Admissions at Rutgers University, will discuss "What Industry has to offer the High School graduate." Other subjects to be reviewed will be College Selection, Entrance Requirements and Scholarships. All parents are urged to attend this very important meeting.

**Letters to Editor**

Editor, Sun:  
 To say that I am most appreciative of your editorial statements about myself would be a gross understatement. However, there are others who bear equal recognition in accomplishing the victorious campaign for a charter study in Springfield, for whose success no individual should be singled out. Very truly yours,  
 Estelle Alkin, Chairman  
 Petitions Committee

icipated would be a monumental task. This was the combined effort of a large group. To mention but a few, at the risk of omitting others equally deserving, for which I hope I will be excused. . . . Mrs. Richard Moore and Mrs. Joseph Seidel of the Springfield League of Women Voters, Messrs. N. Banner, H. Flammer, J. Kazin, S. Margulies, P. Murphy, and J. Seidel share your plaudits equally. Very truly yours,  
 Estelle Alkin, Chairman  
 Petitions Committee

**Merz' Have Girl**  
 Mr. and Mrs. Norman Merz of Union announce the birth of a baby girl, Donna Lee, born on November 9th at Orange Memorial Hospital. Both Mr. Merz and Mrs. Merz, the former Nancy Hoffman, were residents of Springfield and graduates of Regional High School. Donna Lee's grandparents, Mr. and Mrs. F. G. Merz live at 1133 Satter street.

# plus Cash Savings and Triple-S Stamps

and FOR YOUR THANKSGIVING DINNER  
**THE TASTIEST TURKEYS AT THE LOWEST PRICE**

TOP QUALITY "BACKED-BY-BOND" GRAND UNION

# turkeys

18 to 24 lbs. **35c** lb. 8 to 16 lbs. **39c** lb.

FULLY CLEANED BEFORE WEIGHING... Baste with Fresh-made Butter



**CRANBERRY SAUCE** JELLY or WHOLE Freshpak **2** 16-oz. cans **29c**

- |  |   |
|--|---|
| <b>Whole Kernel Niblets Corn</b> 2 12-oz. can <b>29c</b>                   | <b>Dole Fruit Cocktail</b> 30-oz. can <b>37c</b>                  |
| <b>Frybake Shortening</b> 3 1-lb. can <b>77c</b>                           | <b>The Grade "A" Coffee Ehlers Coffee</b> 1-lb. can <b>95c</b>    |
| <b>SHARP CHEESE</b> Kraft Cracker Barrel 1/2-lb. pkg. <b>41c</b>           | <b>HYDROX COOKIES</b> Sunshine 7-oz. pkg. <b>25c</b>              |
| <b>MIRACLE MARGARINE</b> Kraft Whipped 6 sticks 1-lb. pkg. <b>33c</b>      | <b>ASPARAGUS SPEARS</b> Green Giant 1 1/2-oz. can <b>47c</b>      |
| <b>GREEN SPLIT PEAS</b> Jack Rabbit 2 1-lb. pkgs. <b>25c</b>               | <b>REYMER'S BLEND</b> Lemon & Orange Drink 46-oz. can <b>31c</b>  |
| <b>CUCUMBER SLICES</b> HEINZ 16-oz. jar <b>27c</b>                         | <b>WESSON OIL</b> Bake your gifts 5 pts. 35c qt. 65c qt.          |
| <b>GERBER BABY FOOD</b> Strained 10 jars <b>99c</b>                        | <b>SWEET GHERKINS</b> HEINZ 7 1/2-oz. jar <b>31c</b>              |
| <b>WHITE ROSE TEA</b> 1/2-lb. pkg. <b>81c</b>                              | <b>WHITE ROSE TEABAGS</b> pkg. <b>63c</b>                         |
| <b>STARKIST TUNA</b> light chunk 6 3/2-oz. can <b>33c</b>                  | <b>HEINZ INDIA RELISH</b> 11-oz. jar <b>29c</b>                   |
| <b>EVANS TOPPINGS</b> Pineapple, Chocolate & Butterscotch 1 jar <b>21c</b> | <b>TOMATO JUICE</b> College Inn Cocktail 26-oz. bottle <b>27c</b> |
| <b>MACARONI, SPAGHETTI</b> Mueller's 16-oz. pkg. <b>21c</b>                | <b>PABLUM BABY CEREAL</b> 8-oz. pkg. <b>21c</b>                   |
| <b>TOILET TISSUE</b> Waldorf 4 rolls <b>35c</b>                            | <b>SCOT TOWELS</b> 2 rolls of 150 <b>39c</b>                      |

**"Thanksgiving fixins"**

*Sugar and Spice and Everything Nice!*

<b>Royal Prince Golden Yams</b> 16-oz. can <b>27c</b>	<b>Medium Devised De Jean Shrimp</b> 4 1/2-oz. can <b>57c</b>
<b>Superfine-Whole White Onions</b> 16-oz. jar <b>23c</b>	<b>HEART'S DELIGHT Apricot Nectar</b> 2 12-oz. cans <b>27c</b>
<b>R. &amp; R. Fig Pudding</b> 14-oz. can <b>47c</b>	<b>Grand Union Sweet Potatoes</b> 18-oz. can <b>23c</b>
<b>Early California-Family Size Ripe Olives</b> 5 3/4-oz. can <b>33c</b>	<b>Planters Cocktail Peanuts</b> 7 1/2-oz. can <b>37c</b>
<b>Grand Union Pumpkin</b> 28-oz. can <b>19c</b>	<b>B. &amp; G. Gherkins</b> Tiny Treat 6 1/2-oz. jar <b>37c</b>
<b>Grand Union Tomato Juice</b> 46-oz. can <b>29c</b>	<b>None-Such Mince Meat</b> 9-oz. pkg. <b>27c</b>
<b>Freshpak Stuffed Olives</b> 8-oz. jar <b>49c</b>	<b>BELLS Ready Mix</b> Poultry Stuffing 6-oz. pkg. <b>17c</b>
<b>R. &amp; R. Plum Pudding</b> 16-oz. can <b>47c</b>	<b>Crosse &amp; Blackwell Hard Sauce</b> 6-oz. jar <b>51c</b>
<b>Grand Union Mince Meat</b> 9-oz. pkg. <b>23c</b>	<b>Glazed Dromedary Cherries</b> 4-oz. jar <b>31c</b>
<b>A Holiday Treat Marvin Dates</b> 8-oz. pkg. <b>23c</b>	<b>Fancy Glace Fruits for Fruit Cake Mix</b> 16-oz. pkg. <b>49c</b>
<b>California Fresh Dates</b> 8-oz. pkg. <b>19c</b>	<b>Delicious Date Nut Roll</b> 8-oz. pkg. <b>25c</b>

**FOR STUFFING YOUR TURKEY**  
 Freshbake Enriched **BREAD** Unsalted 16-oz. loaf **16c**  
 Especially Baked for Dressing

**McCORMICK HOLIDAY SPICES**  
**POULTRY SEASONING** 3/8-oz. pkg. **17c**  
**WHOLE THYME** 3/4-oz. pkg. **11c**  
**GROUND NUTMEG** 1 1/2-oz. pkg. **47c**  
**GROUND CINNAMON** 1 1/2-oz. pkg. **16c**

<b>ALL</b> 24-oz. pkg. <b>39c</b>	<b>DASH</b> 10-lb. Detergent 1-g. pkg. <b>39c</b>	<b>OXYDOL</b> 2 1-g. pkg. <b>61c</b>	<b>LUX</b> Liquid Detergent 12-oz. can <b>40c</b>	<b>IPANA</b> TOOTH PASTE Deal Pack 3 tubes <b>99c</b>	<b>LISTERINE</b> ANTISEPTIC 7-oz. bottle <b>55c</b>	<b>PARD</b> DOG FOOD 2 16-oz. cans <b>31c</b>	<b>WISE</b> Potato Chips 3 1/2-oz. pkg. <b>25c</b>
SAVE 25c	<b>\$2.18</b>	Save 7c on 2 pkg. Save 7c	Save 7c	Save 48c			Barry Cookies 4-oz. pkg. <b>33c</b>
	<b>\$2.25</b>		<b>40c</b>				ALCOA Aluminum Wrap 25 sq. ft. <b>31c</b>

**FOR BEAUTIFUL FREE CHRISTMAS GIFTS**

**THANKSGIVING STORE HOURS: OPEN MONDAY AND TUESDAY UNTIL 9 P.M. WEDNESDAY TILL 6 P.M.**

**GENERAL GREENE SHOPPING CENTER** Springfield Store Hours: Mon., Wed. & Sat., 9:30 A.M. to 9 P.M. Tues. & Thurs., 9:30 to 9 P.M. - Visit your Triple-S Redemption Center at 230 Morris Ave., Springfield

**Morris and Fiemer Avenues, SPRINGFIELD** Friday-9 a.m. to 9 p.m.



**CHURCH SERVICES**

**THE SPRINGFIELD BAPTIST CHURCH**  
 Preaching the same gospel message as Dr. Billy Graham  
 Service to Gaudineer School  
 South Springfield Avenue  
 Interim Pastor, Rev. Joseph Speck

**Sunday Morning**—  
 9:45 Sunday school for all ages including adults.  
 11:00 Regular morning worship by the pastor.  
 5:45 p.m. Young people's meeting, 1st Sunday of every month only.  
 7:00 p.m. Evening Gospel Service, 1st Sunday of every month only.  
**Wednesday**—  
 Prayer and praise service at 8 p.m. at the home of Mr. and Mrs. Ortol, 193 Henshaw avenue.

**BABAI WORLD FAITH**  
 Friendly chats every Friday evening at 7-8 p.m. Adult & children's classes, Sunday mornings 11 to 12. Home of Mr. and Mrs. J. C. Ions, 151 Sutter street, Springfield.

**ST. JAMES' CHURCH**  
 Springfield

**Sunday Masses:**  
 7 a.m.  
 8 a.m.  
 9 a.m.  
 10 a.m.  
 11 a.m.  
 12 Noon

**TEMPLE BETH AHEM**  
 Baiturul Way  
 Rabbi Reuben R. Levin  
 Cantor Irving Brannerman

**MILLBURN BAPTIST CHURCH**  
 Rev. R. E. Bateman

**FIRST CHURCH OF CHRIST SCIENTIST**  
 222 Springfield Avenue  
 Summit, N. J.

**REFORM JEWISH CONGREGATION OF SPRINGFIELD**  
 Presbyterian Parish House  
 Main Street, Springfield  
 Rabbi Malcolm Mendelsohn

**FIRST PRESBYTERIAN CHURCH**  
 Morris Avenue at Main Street  
 Springfield, New Jersey  
 Ministers:  
 GEORGE W. EVANS  
 GEORGE F. FORNER

A cordial welcome is extended to all who worship in this historic church. Representing over two hundred years of faith and service in this community it invites you to worship and work with those in its fellowship.  
 8:30 a.m. Church School  
 Classes for all children starting at the age of 3 years will meet in the Chapel and the Parish House. The Senior Department will meet in the meeting room of the Springfield Library.  
 9:30 & 11 a.m. Church Worship Service  
 These two services are identical with the service by Rev. Bruce W. Evans. Music by the Junior and Senior Chorus.  
 7:30 p.m. Westminster Fellowship  
 Thanksgiving Services for the Westminster Fellowship Group in the Church. The Rev. George F. Forner will present the sermon "Are We Thankful?"  
**NEXT WEEK:**  
 Tuesday—7 p.m. Junior Choir Rehearsal—Church.  
 Wednesday—8 p.m. Community Thanksgiving Services at Temple Beth Ahm.  
 Thursday—THANKSGIVING DAY

Friday—8 p.m. Senior choir rehearsal—Church.  
 7 and 9 p.m. Men's Club Bowling League.

**THE METHODIST CHURCH**  
 Virgil E. Mabry, Pastor  
 Springfield, N. J.  
 Parsonage: 49 Main Street  
 Telephone DRextel 6-1803

Paul asked his followers, "What have you that you have not received? Blessed are they whose hands are outstretched to the needy."  
**THURSDAY, NOVEMBER 21—**  
 Junior Choir Rehearsal—7:00 p.m.  
 Senior Choir Rehearsal—8:00 p.m.  
**FRIDAY, NOVEMBER 22—**  
 Methodist Men's Bowling at the Center Street Alley—7:00 to 9:00 p.m.  
**THURSDAY, NOVEMBER 23—**  
 Church Choir Rehearsal—10:00 a.m.  
 Couples' Club—Bowling—7:30 p.m.  
**SUNDAY, NOVEMBER 24—**  
 Thanksgiving—Milton  
 Family Worship and Church School classes 9:15 a.m. Mrs. McCoy will be the speaker.  
 Nursery Class for convenience of parents with small children—11:00 a.m.  
 Regular Worship Service—11:00 a.m.  
 Rev. Lawrence McCoy, missionary from Brazil, will be guest speaker at both services.

**MONDAY, NOVEMBER 25—**  
 Mothers' Bible Class—8:00 p.m.  
 WSCS—Circle II, Mission Study, 2:00 to 3:00 p.m.  
 Commission on Membership and Evangelism—8:00 p.m.  
 Amateur Show "Committee of Men" (4) 8:00 p.m.

**WEDNESDAY, NOVEMBER 27—**  
 7:00 a.m. Thanksgiving with the Methodist Temple, Beth Ahm with the Methodist Pastor, Rev. Virgil E. Mabry, as the speaker.  
 Prayer Meeting and Bible Study will NOT be held until the next week.

**THURSDAY, NOVEMBER 28—**  
 WSCS—Circle III, Workshop all day.  
**HOLY CROSS LUTHERAN CHURCH**  
 638 Mountain Ave.  
 Springfield, N. J.  
 Lester P. Messerschmidt, Pastor  
 Telephone DRextel 9-4525

**SUNDAY, NOVEMBER 24—**  
 9:30 a.m. Sunday School  
 10:30 a.m. Adult Bible Study Hour  
 11:00 a.m. Divine Worship

**MONDAY, NOVEMBER 25—**  
 1:00 p.m. Deacon's Meeting  
**THURSDAY, NOVEMBER 28—**  
 THANKSGIVING DAY  
 10:00 a.m. Thanksgiving Day Service  
 Sermon Text: Luke 12:16-21  
 Sermon Topic: "The Foolish Farmer"

**SATURDAY, NOVEMBER 30—**  
 9:00 a.m. Confirmation Instructions  
 10:30 a.m. Pre-confirmation Instructions  
**HOLY CROSS CHURCH EXTENDS A CORDIAL WELCOME TO ALL IN THE NAME OF CHRIST, THE SAVIOR. COME—AND BRING A FRIEND.**

**ROUNDTOP CHURCH**  
 Rev. Milton P. Achey

**THURSDAY, NOVEMBER 21—**  
 1:15 p.m. Women's Bible Class meeting at the parsonage.  
 8:00 p.m. Choir rehearsal at the Chapel

**SUNDAY, NOVEMBER 24—**  
 8:00 a.m. Morning Worship Service with sermon by the Pastor.  
 9:45 a.m. Sunday School classes for all age groups from nursery through adult. Bus transportation to and from Sunday School is available for children living in Mountaintop.

11:00 a.m. Morning Worship Service with sermon by the Rev. Achey. Junior Church will be held in the Sunday School rooms for children in the first through the sixth grades. Nursery classes will be provided enabling parents with small children to attend the Worship Service.  
 6:45 p.m. Youth Fellowship meeting at the Chapel.

**WEDNESDAY, NOVEMBER 27—**  
 10:00 a.m. Ladies Aid Society meeting at the Chapel.  
**THURSDAY, NOVEMBER 28**  
 8:40 a.m. Rev. Achey will be heard on his regular broadcast over radio station WSPR-1380 a.m.

**VISITORS ARE WELCOME TO ALL SERVICES AT THE CHAPEL.**  
 (Continued on page 7)

**First Church of Christ, Scientist**  
 222 Springfield Avenue, Summit, N. J.  
 A branch of THE MOTHER CHURCH, THE FIRST CHURCH OF CHRIST, SCIENTIST in Boston, Mass.  
 Sunday Service at 11:00 A.M. Sunday School 11:00 A.M.  
 Wednesday Testimonial Meeting 8:15 P.M.  
 Reading Room, 340 Springfield Ave. Open daily to 4:30 except Sundays and Holidays; also Friday evenings, 7:30 to 9:30 and after the Wednesday meeting



*Why has Young Service been in Millburn for almost 50 years?*  
 Because it is an institution dedicated to dignified reverent funeral service at a cost within the means of everyone.

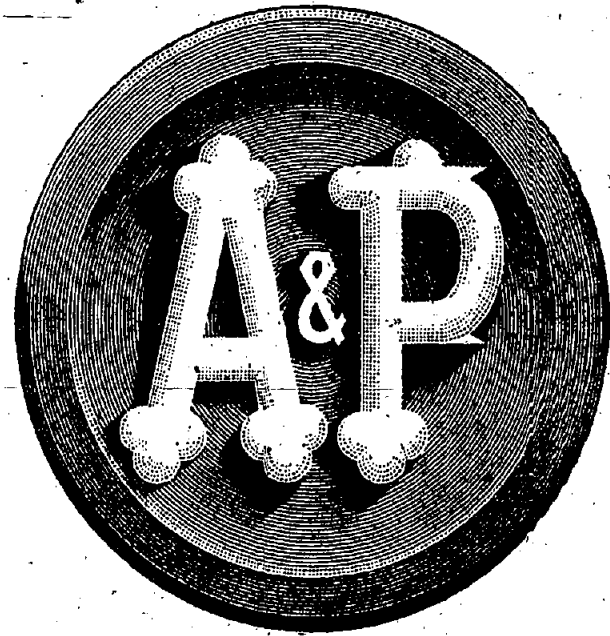
**YOUNG'S SERVICE HOME**  
 ESTABLISHED 1908  
 ALFRED L. YOUNG, Funeral Director  
 145-149 MAIN STREET, MILLBURN  
 Drexel 6-0406

**To serve you better...**  
 To serve you more adequately, Smith and Smith have provided parking spaces on the premises of both their City and Suburban Homes.

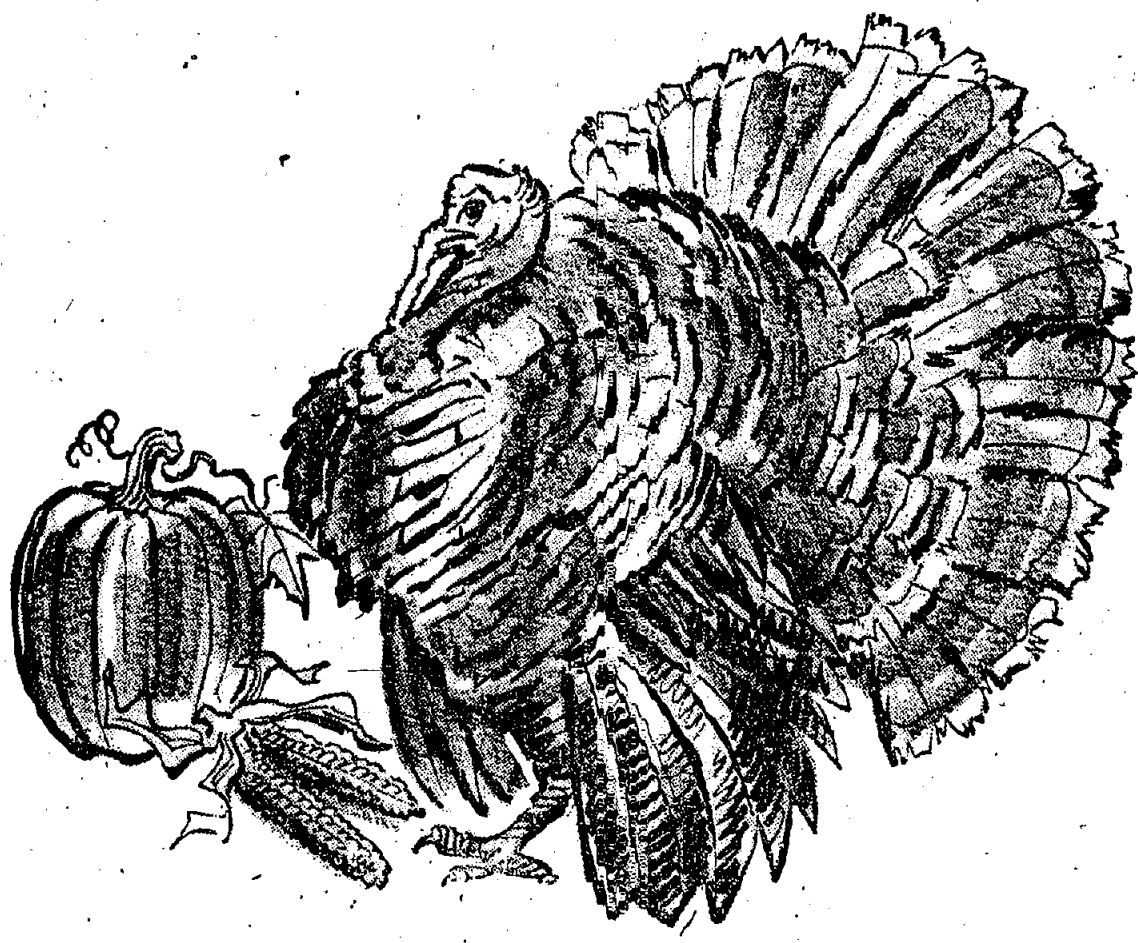
Suburban

**SMITH and SMITH**  
 FUNERAL DIRECTORS  
 An Outstanding Service "Within the Means of All"  
 SERVING ALL RELIGIONS

SUBURBAN: 415 Morris Avenue, Springfield, N. J. Drexel 6-7777  
 HOME FOR SERVICES: 160 Clinton Ave., Newark 5, N. J. Bigelow 3-2123



*America's Foremost Food Retailer Since 1859*



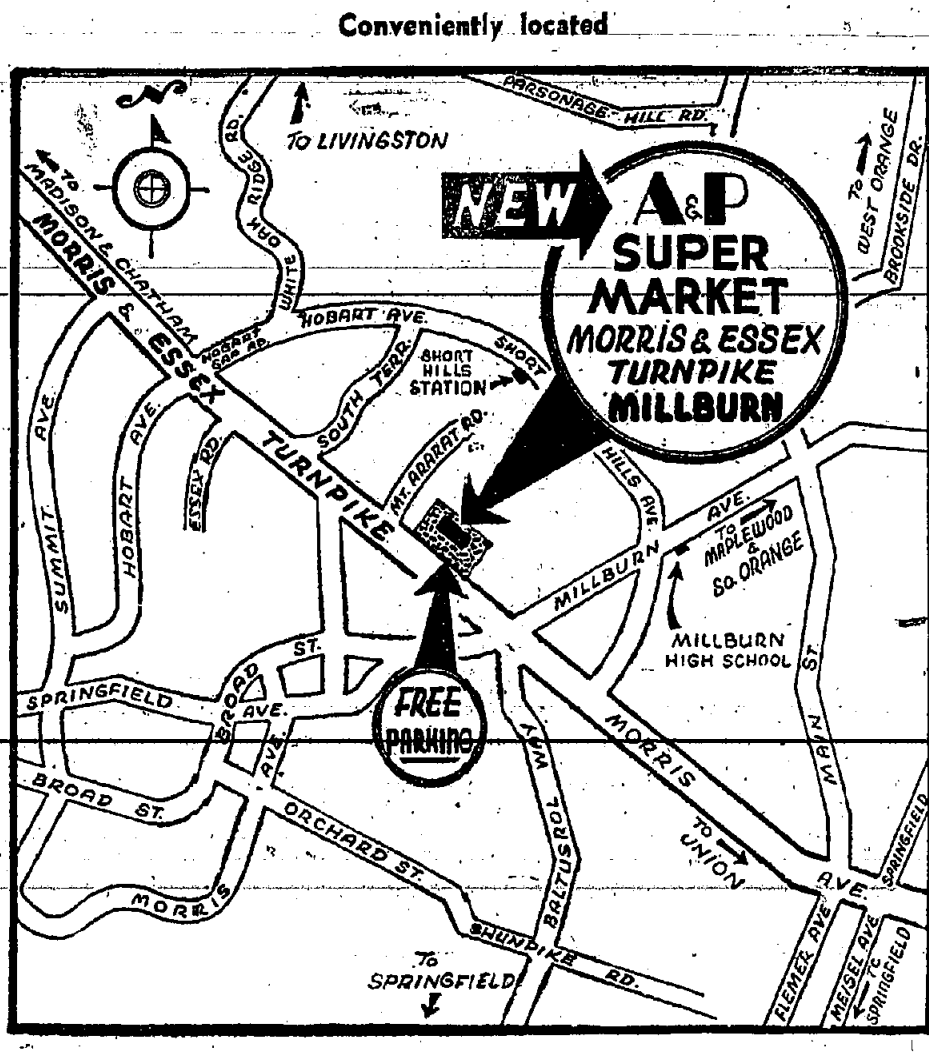
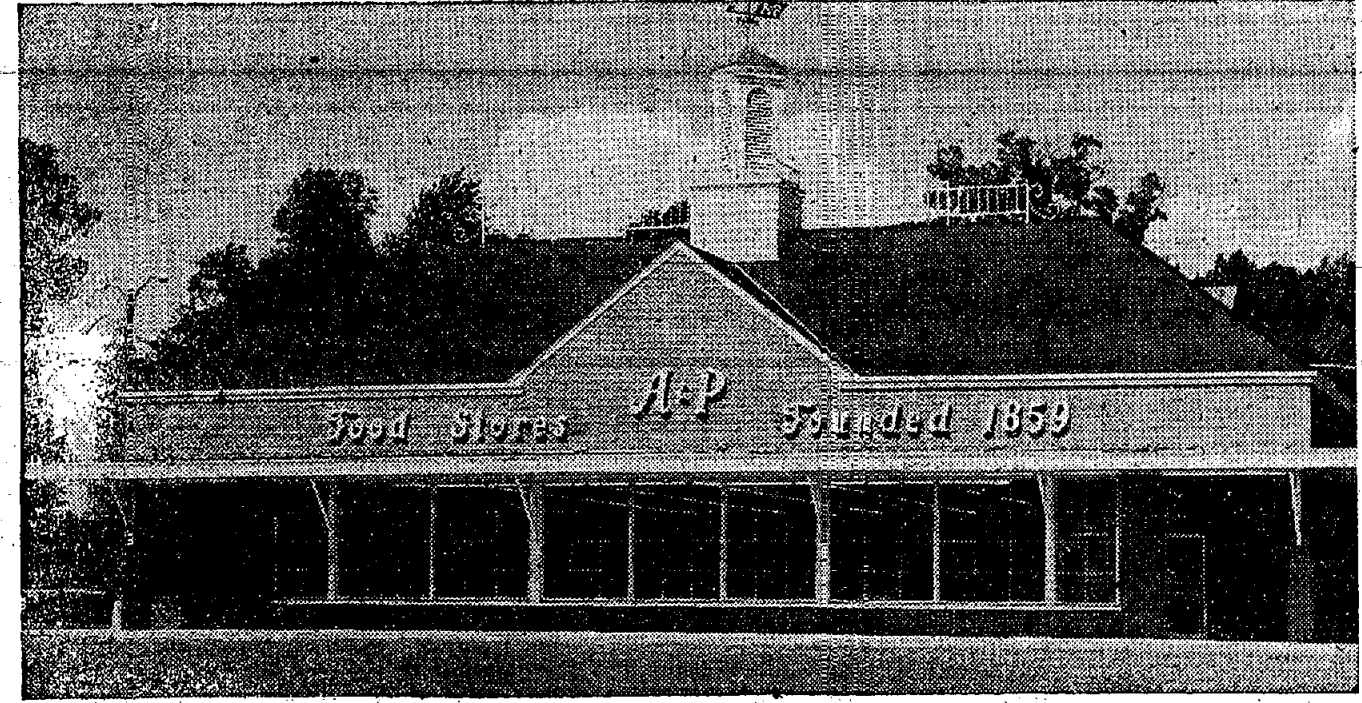
**COME TO OUR THANKSGIVING PARTY!**

A warm welcome awaits you at the celebration of the first Thanksgiving at A&P's new Colonial Food Center in Millburn.

**MORRIS TPKE.**

Just West of Millburn Ave., Millburn

**PLENTY OF FREE PARKING**

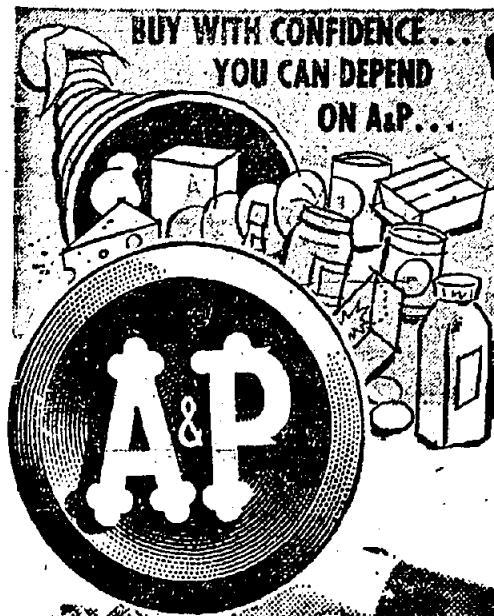


Gracious Early-American charm... streamlined shopping convenience! Add to your shopping pleasure at the town's newest landmark, your beautiful new A&P Super Market! Come explore this wonderful store... Come have yourself a wonderful time... During shopping, join with us for Donuts and a refreshing drink of Cider in keeping with the Holiday Spirit!

For Your Shopping Convenience, Open Late Every Evening Except Saturday

**COME SEE... YOU'LL SAVE AT A&P!**





# For Perfect holiday eating!

During Thanksgiving Week  
OPEN LATE  
TUESDAY, WEDNESDAY  
AND FRIDAY

"Super-Right" Quality **READY-TO-COOK** U. S. Govt. Inspected

Our Lowest Thanksgiving Turkey Prices in 17 years!



Sizes 18 to 24 lbs. **35¢ lb.** Sizes 16 to 18 lbs. **40¢ lb.**

**TURKEYS** Under 10 lbs. INCLUDING BELTSVILLE **lb. 47¢**

A&P Turkeys are all young, top-grade and sold with a double your money back guarantee!

### Holiday Fruit and Vegetable Buys!

<b>CRANBERRIES</b> Fresh Cape Cod	2 1 lb. cello bags	<b>33¢</b>
<b>GOLDEN CORN</b> Sweet Florida Farms	4 ears	<b>25¢</b>
<b>ICEBERG LETTUCE</b> California Western Farms	large head	<b>15¢</b>
<b>Pascal Celery</b> For Boiling	med. stalk	<b>17¢</b>
<b>White Onions</b>	2 lbs.	<b>23¢</b>
<b>Apples</b> Fine Eating From Jersey Farms — SWEET	2 lbs.	<b>29¢</b>
<b>Potatoes</b>	3 lbs.	<b>25¢</b>

### "Super-Right" Quality RIBS of BEEF

REGULAR STYLE	OVEN-READY
10 INCH CUT <b>53¢ lb.</b>	7 INCH CUT <b>59¢ lb.</b>
10 INCH CUT <b>63¢ lb.</b>	7 INCH CUT <b>67¢ lb.</b>

### "Super-Right" Quality FRESH HAMS

SHANK HALF <b>45¢ lb.</b>	BUTT HALF <b>55¢ lb.</b>	WHOLE <b>49¢ lb.</b>
---------------------------	--------------------------	----------------------

### CRANBERRY SAUCE Ocean Spray 2 16 oz. cans **35¢**

<b>Tomato Juice</b> Libby's	2 46 oz. cans	<b>55¢</b>	<b>Mince Meat</b> None Such	2 9 oz. pkgs.	<b>45¢</b>
<b>Fruit Cocktail</b> Libby's	2 17 oz. cans	<b>43¢</b>	<b>Pillsbury Pie Crust</b>	2 10 oz. pkgs.	<b>33¢</b>
<b>Orange Juice</b> Libby's Quick Frozen	6 6 oz. cans	<b>89¢</b>	<b>Ice Cream</b> Crestmont Brand Super Quality	half gallon	<b>85¢</b>
<b>Peaches</b> Libby's — Freezeston	2 17 oz. cans	<b>45¢</b>	<b>Sharp Cheddar</b> Wisconsin Well Aged Cheese	lb.	<b>59¢</b>
<b>Sweet Potatoes</b> A&P Brand	2 18 oz. cans	<b>41¢</b>	<b>Liederkrantz CHEESE</b> Borden's	4 oz. pkg.	<b>39¢</b>
<b>Asparagus Tips</b> Del Monte	10 10 oz. cans	<b>29¢</b>	<b>Reynold's Wrap</b>	12" regular roll	<b>29¢</b>
<b>Campbell's Mushroom Soup</b>	2 10 1/2 oz. cans	<b>31¢</b>	<b>Sunshine Hydrox Crackers</b>	12 oz. pkg.	<b>33¢</b>
<b>Small Stuffed Olives</b> Sultana brand	6 1/2 oz. glass cans	<b>39¢</b>	<b>Chocolate Chip Cookies</b> Nabisco	2 7 1/2 oz. pkgs.	<b>49¢</b>
<b>Vegamato</b> Vegetable Juice	2 12 oz. cans	<b>25¢</b>	<b>Pfeffernuesse</b> Spice Drop Cookies	10 oz. pkg.	<b>35¢</b>
<b>Dexo</b> Pure vegetable shortening	1 lb.	<b>31¢</b>	<b>Anise Cookies</b> Jane Parker	9 oz. pkg.	<b>35¢</b>
<b>Evaporated Milk</b> White House Handy carry pack	6 1/2 gal. cans	<b>77¢</b>	<b>Burry's Cookies</b> Oxford Creams	11 oz. pkg.	<b>33¢</b>
<b>Pumpkin</b> A&P brand	16 2 1/2 oz. cans	<b>11¢</b>	<b>Dromedary-Pitted Dates</b>	8 oz. pkg.	<b>23¢</b>
<b>Sweet Peas</b> Del Monte	2 17 oz. cans	<b>37¢</b>	<b>Galimyrna Figs</b> Jumbo or Long Pitted	8 oz. can	<b>25¢</b>
<b>Golden Corn</b> Green Giant or Libby's Cream style	2 17 oz. cans	<b>31¢</b>	<b>Plum Pudding</b> Richardson & Robbins	16 oz. can	<b>41¢</b>
<b>Ging Peaches</b> Dal Monte or Libby's Sliced or halves	2 29 oz. cans	<b>31¢</b>	<b>Dromedary Peels</b> Diced—Orange, Lemon, Citron	2 4 oz. jars	<b>39¢</b>
<b>Tomatoes</b> Pope brand imported Italian With paste and basil	35 oz. can	<b>43¢</b>	<b>Sugar</b> Jack Frost	1 lb.	<b>27¢</b>
<b>Refreshing Beverages!</b>					
<b>Yukon Club</b> All varieties Plus deposit	2 29 oz. bottles	<b>29¢</b>	<b>Chocolate Thin Mints</b> Warwick brand	1 lb. box	<b>45¢</b>
<b>Ginger Ale</b> Canada Dry, Hoffman's or White Rock—plus deposit	2 2 large bottles	<b>49¢</b>	<b>Delson's Merri-Mints</b>	8 oz. box	<b>21¢</b>
<b>Apple Cider</b> Motif's or Red Cheek	1/2 gal. 45¢ gal. 77¢		<b>Fritos</b> 4 1/2 oz. 29¢	<b>Cheetos</b>	3 oz. pkg.
<b>Coca Cola</b> Plus deposit	6 standard size 37¢ 2 family size 35¢		<b>Potato Chips</b> Jane Parker—twin pack	12 oz. box	<b>59¢</b>
<b>Grape Juice</b> A&P brand	2 12 oz. bottles 29¢ 2 16 oz. bottles 25¢		<b>Mixed Nuts</b> A&P brand—in shell	1 lb. pkg.	<b>49¢</b>
<b>Nedick's Orange Drink</b> Plus deposit	6 12 oz. bottles 43¢		<b>Diamond Walnuts</b> In shell	1 lb. pkg.	<b>49¢</b>
<b>No-Cal Beverages</b> All varieties No deposit	2 16 oz. bottles 29¢		<b>Marcal Paper Napkins</b> White	2 40 pkg. of 80	<b>23¢</b>
			<b>Kleenex Table Napkins</b> White	2 40 pkg. of 80	<b>47¢</b>

### CIGARETTES

Buy 'Em By The Carton

**Regular Size** carton of 10 pkgs. **2.42**

Comets, Chesterfield, Kools, Lucky Strike, Old Gold, Philip Morris

### Jane Parker Fruit Cake

America's favorite... over 75% fruits and nuts

1 1/2 lb. cake **1.39** 3 lb. cake **2.75** 5 lb. cake **3.95**

**DARK FRUIT CAKE** 1 lb. cake **79¢** 2 lb. cake **1.49**

### Bake Your Turkey with REAL BUTTER!

## FRESH BUTTER

Sunnyfield—Fancy Creamery

Salt or Sweet 1 lb. brick **67¢** in 1/4 lb. prints **69¢ lb.**

**Danish Blue Cheese** Imported **lb. 83¢**

**Swiss Cheese** Fancy domestic Sliced or Piece **lb. 57¢**

**Cream Cheese** Borden's or Philadelphia **2 3 oz. pkgs. 29¢**

**Borden's Egg Nog** For the Holidays **8 oz. can. 63¢**

**Sliced Swiss** A&P brand Natural cheese **8 oz. 37¢**

**Kraft's Cheez-Whiz** 8 oz. jar **55¢**

**Frozen Foods!**

**Dole's Juice**—Pineapple-Grapefruit **2 6 oz. cans 33¢**

**Libby's Strawberries** Sliced **2 10 oz. pkgs. 41¢**

**Libby's Cauliflower** **2 10 oz. pkgs. 23¢**

**Libby's Cooked Squash** **2 12 oz. pkgs. 29¢**

**Libby's Brussels Sprouts** **2 10 oz. pkgs. 47¢**

**Cheese Blintzes** Milady's **8 oz. pkg. 37¢**

**Birds Eye Pies** Chicken or Beef **2 8 oz. pkgs. 53¢**

**—Jane Parker Baked Goods—**

**DUTCH APPLE PIE** **49¢**

**Layer Cake** Chocolate Fudge **59¢**

**Crumb Square** Coffee Cake **35¢**

**A&P Super Markets**

## Lowly Legion 2 Lowers the Boom on Leading Beckmann

by Charles Woodruff

Beckmann's Market dropped two games to American Legion No. 2 and thus dropped into a first place tie in the Springfield Bowling League this week.

Parkview Garage and Springfield Market moved into the lead with Beckmann's by taking two from Franks Auto Service and Bunnell Brothers respectively.

The Standings:

	W	L
Beckmann's Market	20	13
Parkview Garage	20	13
Springfield Market	20	13
Franks Auto Service	18	15
Mendes Florist	18	13
American Legion No. 1	17 1/2	13 1/2
D'Andrea Driveways	17	16
Cozzolino Furs	16	17
Drakes Fuel Service	14	19
Bunnell Brothers	14	19
American Legion No. 2	12	21
Brunner Excavating	11	21 1/2

SPRINGFIELD MUNICIPAL BOWLING LEAGUE

D'Andrea Driveways: T. Gradano 133, 168, 150; A. D'Andrea 193, 167, 168; Sereno 129, 211, 133; Jones 255, 153, 176; M. D'Andrea 151, 211; Total pins 822, 886, 828.

Mendes Florist: Cagliano 183, 161, 158; Mako 159, 124; Rubin 142, 129; Mide 151, 183, 144; Rummel 152, 181, 187; Sclander 169, 184; Total pins 841, 828, 820.

Policarpo Atlantic: Vico Policarpo 161, 189, 207; Dan Pacific 161, 185, 180; Julio Policarpo 147, 185, 151; Carmen Pacifico 152, 180, 203; Ralph Policarpo 155, 193, 145; Total pins 841, 828, 820.

Franks Auto: G. Gradano 178, 152, 179; B. Reay 162, 200, 149; B. Saverel 173, 167, 221; N. Ziegler 223, 167, 142; G. Gradano 178, 152, 179; Total pins 134, 121, 137; Alacco 294, 179, 158; Total pins 802, 817.

American Legion No. 1: D. Schweitzer 141, 173, 183; M. LaTella 148, 175, 192; J. Colantonio 242, 152, 182; W. Dorie 170, 183, 187; E. Schramm 260, 170, 146; Total pins 999, 977, 912.

Beckmann's Market: Leaperoff 161, 166, 181; Cusani 152, 144, 167; Gregory 152, 226, 157; W. Schramm 168, 141, 157; B. Bruner 239, 180, 199; Total pins 932, 922, 911.

Legion No. 2: Baume 269, 151, 156; Bokman 294, 268, 209; Schoch 167, 167, 125; Quinton 143, 154, 181; Colantonio 183, 163, 100; Total pins 922, 912.

Drake's Fuel: Boserter 164, 175, 168; Dougherty 144, 189, 163; Green 203, 128, 121; Heimbohn 177, 179, 138; Cooney 159, 153, 190; Total pins 870, 880, 843.

Brunner's Construction: Frazer 161, 148, 133; Wenzel 87, 156, 549; Colantonio 262, 162, 159; Struble 168, 172, 209; Bruner 172, 179, 199; Total pins 888, 892, 916.

G. Schramm 164, 182, 167; Total pins 828, 820, 828.

## Churches

(Continued from page 12)

**BATTLE HILL COMMUNITY MORAVIAN CHURCH**  
777 Liberty Avenue, Union, N. J.  
The Rev. Donald F. Fulton, Pastor

**THURSDAY**  
7:30 a.m. Senior Choir Rehearsal.

**FRIDAY**  
8:15 p.m. Junior Choir Rehearsal.

**SUNDAY**  
9:30 a.m. Sunday Church School.  
10:45 a.m. Morning Worship. The theme of the service will be that of "Thanksgiving." The liturgy for Thanksgiving will be read. The Junior and Senior Choir will sing. A display of food gifts representing "Harvest Home" will be made into baskets for needy families.

10:45 a.m. Nursery hour during the worship service. Mrs. Edward Reider is in charge of the weekly nursery program arrangements.

1:00 p.m. Anniversary Lovefeast Service. The Metropolitan Moravian Brass Choir will play hymns before the service beginning at 12:30. A special musical program will be presented by the Senior and Junior choirs. The dedication of "special gifts" including news, will be a part of the service. You are welcome.

**MONDAY**  
8:00 p.m. Meeting of the Board of Elders.

**TUESDAY**  
7:30 a.m. Pastoral Rehearsal in the Church Sanctuary. It is important that every member of the cast be present.

**FIRST BAPTIST CHURCH**  
Cultural Art and Theater Terrace  
Union, N. J.  
Rev. Winfield F. Hamish  
MT. 6-7111

**SUNDAY**  
9:30 a.m. Sunday School.  
11:00 a.m. Morning Worship Service.  
6:00 p.m. North Fellowship Service.  
7:30 p.m. Evening Worship Service. We will observe the Ordinance of Baptism.

**TRINITY**  
7:45 p.m. Choir rehearsal.

**ST. STEPHEN'S CHURCH**  
Main Street, Millburn  
(Service in the Millburn-Unionfield Area)  
The Rev. James Elliott Lindsey, Rector

Stevanovich Sunday—November 24th  
8 a.m. Holy Communion  
9:30—Family Service (adult's classes follow in the Parish House with Adult Coffee Group meeting in the Upper Room)  
11:30 a.m. Morning Prayer and sermon.  
Tuesday, 9:30 a.m. Holy Communion.  
Thursday—Thanksgiving Day  
8 a.m. Holy Communion.  
9:30 a.m. Festival of Thanksgiving.

### FOOD FIT FOR ROYALTY!

You'll eat royally, when you partake of our king-sized portions of top quality food.

For your entertainment—PERCY POST at the organ, to play all your favorite songs every Friday, Saturday and Sunday nights.

Dinner Served from 4:30 to 11 P. M.  
For Reservations, Call Draxel 9-9832

## TERRY DEMPSEY'S

Morris Ave. & Morris Tpke., Springfield  
RESTAURANT & COCKTAIL BAR

## The Twigs

Luncheon Dinner Supper

Enjoy Thanksgiving Dinner with us!

Reservations Now COMPLETE

**TURKEY DINNERS** from \$3.25

Children's Platter \$1.50

Make your reservation now for company and office Christmas Parties.

80 Springfield Ave., Springfield  
DRXEL 6-9885  
AIR CONDITIONED

## DINE

**DOT'S** Restaurant

South Orange Ave. Florham Park

for the Finest Cuisine

STEAKS • CHOPS  
LOBSTER

Served in Our Cypress and Redwood Room

OPEN 7 DAYS A WEEK  
FOR LUNCHEON, DINNER & COCKTAILS

Banquet Facilities For All Occasions  
FRONTIER 7-9895

21 SUMMIT AVE. SUMMIT MORRIS TURNPIKE West of MILLBURN  
Open Tuesday, Thursday 'til 9 — Fridays 'til 10 Open Monday, Tuesday, Wednesday, Thursday, 'til 9 — Fridays 'til 10  
FREE PARKING



HELP WANTED FEMALE HELP WANTED FEMALE

B. ALTMAN & CO.

is receiving applications for PRE-HOLIDAY EMPLOYMENT in their SHORT HILLS STORE

- SELLING • NON-SELLING • RESTAURANT • FULL TIME • PART TIME

Turn spare hours into pleasant, profitable days. Convenient Schedules • No Night Openings. Employee Discounts • Employee Cafeteria.

Apply in person Monday through Saturday 9:30 A.M. - 5:00 P.M. Personnel Department, Upper Level.

STENOGRAPHER Experienced

Increasing position in publishing. Modern air-conditioned office. Attractive lounge and luncheon facilities. Liberal company-paid benefits.

MARTINDALE-HUBBELL, INC.

1 Prospect Street, Summit, N.J. Call Mrs. Ziegelschmid CR 276-3000

BANKING CAREER

Opening for diversified clerical positions. Very pleasant working conditions, favorable starting salary, other benefits.

NATIONAL STATE BANK

Summit Office CR 7-4000

Secretary REAL ESTATE

Division sales office located in new 15-conditioned building in downtown location. Hours 9:30 to 4:45. Excellent working facilities. Write or call...

THE CRYOVAC CO. 16 Quaker Ave., Summit, N.J. Call Mrs. Myra FR 276-7600

NURSES aide, full or part-time for nursing home. Salary commensurate with experience. Apply to...

HOUSEKEEPER, middle aged woman, to live in and do light housekeeping. Apply to...

HOUSEWIVES, earn extra money by working full or part time on our holiday schedule. Apply to...

GETTING ready for Christmas? Earn that needed money the AVON way. Phone...

WANTED: Assistant teacher for Nursery School, hours 9-3, Monday to Friday. Good salary and benefits. Apply to...

HOUSEWORKER, four part-time days. Best references. Health card. Phone after 5 p.m. CR 7-4163

DRIVER for established dry cleaning route, must know Millburn, Springfield and Summit. Good salary and commission. Young married man preferred. Paid holidays. Steady work. Call evening. DR 276-7777

AUTO MECHANIC, experienced, to work on all makes of cars, apply Anderson Pontiac, Inc., 312 Springfield Ave., Summit.

TAXI driver, full time employment. Days. CR 7-6237

HELP WANTED-MALE HELP WANTED-MALE

PART-TIME driver, morning or afternoon. Newspaper delivery route, approximately 1 1/2 hours each, full-time. Apply to...

JANITORS-Cleaners wanted for full-time part-time assignments at Summit YMCA. Good job for domestic help. Must be able to work with people. Apply to...

DAVENPORT with shower, bookcase, oak, also marble top, bed, dresser, chest, one old chair, and glass. CR 3-4242

BREAKFRONT mahogany, beautiful dining table, 6 chairs. Call DR 276-4265

CARD table and four chairs, mahogany, with matching mahogany, also new. DR 276-4133

8-BEDROOM HOUSES VACUUM cleaners repaired; all makes. Call...

SPRING and mattress on legs, twin, excellent. DR 276-4577

PORTABLE sewing machine in good condition. DR 276-2033

WASHER, Westinghouse automatic, excellent condition. \$50. CR 3-8857

FOR SALE FOR SALE

CHRISTMAS SUGGESTIONS SEVERAL choice sets of dishes, hand-crafted hand-painted Christmas cards, other odd things for gifts. Dr. Black, Odwlok (Phone 125), N. J.

BEACON HILL CO. (est. 1929) Practical gifts for every member of the family. Buxton Walcott and Key-cases, Shaffer pens, typewriters, pocket size note books, 2000 stationery, Courtship series, 226 Morris Avenue, Springfield, N. J. DR 276-1256

LIONEL TRAIN "O" gauge. Trains, tracks, accessories, good condition. Up to 60% off. CR 3-2436

G.E. MOBILE MAID, Portable Dish-washer, dries too. Rolls on casters, top loading, cleans all dishes for family of 6, needs no special installation. Call...

LIONEL freight train, complete with every accessory. Excellent condition. Reasonably priced. DR 276-4929

FULL size boys' Budge bicycle; excellent condition. CR 3-6145

BEACON HILL CO. features a complete line of imported Christmas cards. 226 Morris Ave., Springfield, N.J. DR 276-1256

WINNIE (F.A.O. Schwarz) small decorated: Lionel trains, trucks; stage drum. CR 7-2628

1-ANQUES COUNTRY ANTIQUES - home shop. Stumpkin Road, 1 block west of Green Village Road, Springfield, N.J. DR 276-1256

PINE Harvest table, antique chairs, card table, 3 draw stands, M. J. Morris, 226 Morris Ave., Springfield, N.J. DR 276-1256

ANTIQUES in Victorian, Georgian, Georgian, Regency, and other styles. Call...

SHRIMP WHEEL, DREXEL 9-4242

WANTED: Collectors and Dealers to visit our antique shop. Located in West of VA Hospital, Millburn, N.J.

PINE furniture refinishing and rough Pennsylvania Dutch cupboards. BR 276-4265

EVANS 29 inch bicycle, practically new. Call CR 3-2436

GIRL'S 20" Buick convertible bicycle with trailer wheels. DR 276-4345

ALMOST new, girl's 20" Buick convertible bicycle with trailer wheels. DR 276-4345

BOY'S BICYCLE, 24 in. Like new. Call CR 3-2436

BOY'S English black gear; hand brakes. DR 276-4345

3-CLOTHING VISIT Meet-Go-Round resale shop. Located in Millburn, N.J. DR 276-4345

THE ROBIN HOOD SHOP, 3 Taylor Street, Millburn, N.J. DR 276-4345

BEAUTIFUL with pink and blue in per. condition \$800. size 14-16. Call CR 3-2029

XMAS SALE, gifts, dolls, toys, TRIFECTA SHOP, 85 Main St., Millburn, N.J. Open Mon., Wed., Thurs., Fri., 9:30-11:30 a.m. and 1:30-4 p.m. DR 276-4345

TEEN-AGE clothing, perfect condition. Misses dresses, sizes 10-12. DR 276-4345

TUXEDO, worn only once, 42-L. CR 3-4242

BOOKCASE, 42" long, two glass doors. Call CR 3-2436

SOFAs and slipcovers; cabinet radio; Philco; odd tables. DR 276-4345

2 FOAM cushion sofa chairs with custom made slipcovers. Excellent condition. Phone CR 3-4242 after 5 p.m.

MARLOW 6026 bed couch and chair. Good condition. CR 3-2029

CHIFFONIERE with work table back and frame. Call CR 3-2436

CHAIR BED, brand new. Reasonably priced. DR 276-4345

MALIBON complete bedroom set. Twin beds; Over stuffed chair. CR 3-2029

10 PC. dining room set, heavy hand-carved oak; also marble top, bed, dresser, chest, one old chair, and glass. CR 3-4242

BREAKFRONT mahogany, beautiful dining table, 6 chairs. Call DR 276-4265

CARD table and four chairs, mahogany, with matching mahogany, also new. DR 276-4133

8-BEDROOM HOUSES VACUUM cleaners repaired; all makes. Call...

SPRING and mattress on legs, twin, excellent. DR 276-4577

USED CARS FOR SALE

1953 HILLMAN convertible, \$600; 1940 Buick sedan, \$75. No dealers. Phone DR 276-5215

1957 FORD Delco Station Wagon, like new. V8, 8000 miles. 2-tone, 4 wheel, padded interior, metal panel, owner changes model annually. A buy difficult to duplicate. CR 7-1445

1951 KAISER, gray, 4 door sedan, good condition. \$75. CR 7-1077

PONTIAC 1948, Star Chief Catalina sedan. Power brakes, power steering, hydraulic clutch, etc. Call owner. ME 3-5441

BUICK 1956 special, gray 4-door sedan, low mileage. Call Drexel 6-1189 or 68 Madison Ave., New York 17

1954 BUICK special, diamond top, low mileage, very clean. Drexel 6-2906

MERCURY 1949 convertible, floor shift. Headlamp, dual, speed, 122cc. 1949 Buick special, diamond top, low mileage. Drexel 6-1189

1949 PONTIAC station wagon, 8. Deluxe, especially good condition. Private owner. Mileage 1400. South Orange 3-3920

WANTED TO BUY ANTIQUES WANTED

Estates Bought & Sold. Silver, gold, coins, guns, bric-a-brac, china, pianos, works of art. Good used furniture, etc.

MADISON GALLERIES 250 Main St. Madison FR 7-2907

WE PAY CASH for your used furniture, antique, silver, bric-a-brac, etc. Call...

WE BUY books and books on information. P. M. Book Shop, Plainfield 4-3900

I WANT a bargain or other good piano. Please state price. Box 84, Summit, N.J. DR 276-4345

OLD lumber and furniture, also antique and bric-a-brac. ME 3-7975, M. J. Mariani

SMALL piano wanted, spinet, upright, grand. South Orange 3-3737, Essex 3-2436

PING-PONG table, fair condition. Mercury 5-8044

23-CARPENTERS BUILDER-CONTRACTOR

ALTERATIONS - ADDITIONS RECREATION ROOMS KITCHEN & BATHROOM REMODELING

Family Rooms All kinds of Repairs

Stanley Anderson Drexel 9-3719

FOR THE BEST SERVICE

Always Consult a Realtor of the SUMMIT REAL ESTATE BOARD covering SUMMIT BERKELEY HEIGHTS NEW PROVIDENCE

BOARD MEMBERS Elmer G. Houston CR 3-6484

John H. Geremonger 7-1211

Richard H. Geremonger 3-1900

John H. Geremonger 3-1900

John H. Geremonger 3-1900

John H. Geremonger 3-1900

John H. Geremonger 3-1900

John H. Geremonger 3-1900

John H. Geremonger 3-1900

John H. Geremonger 3-1900

John H. Geremonger 3-1900

John H. Geremonger 3-1900

John H. Geremonger 3-1900

John H. Geremonger 3-1900

SERVICES OFFERED SERVICES OFFERED

30-CARPENTERS 23-CARPENTERS

FRED STINGEL Carpentry repairs, alterations, cabinets, etc. Call...

THE BEST FOR LESS All building, remodeling and alterations. Call...

CARPENTER WANTS WORK Small jobs, alterations and repairs. Drexel 6-2706

CARPENTRY cabinet making, repair old furniture and picture frames. DR 276-1256

RESIDENTIAL & COMMERCIAL BUILDING, ALTERATIONS, ADDITIONS, complete home improvements, etc. Call...

24-DRESSMAKING CUSTOM-made gowns. Expert copying and remodeling. By appointment. Call...

SEWING ALTERATIONS, MENDING, DREXEL 6-9998

24-LANDSCAPE GARDENING Lawn maintenance, bulldozing, loader and backhoe, mowing, etc. Call...

LANDSCAPING - TOP SOIL Lawn maintenance, bulldozing, loader and backhoe, mowing, etc. Call...

APOLLO'S LANDSCAPING MATERIALS. We specialize in colored gravel, brick, concrete, etc. Call...

LANDSCAPE GARDENING Lawn care by the month. Top dressing, re-seeding, fertilizing, etc. Call...

29-ESTIMATE CONTRACTORS BALITUSOL Construction Co. Mason, Contractor and Builder. Stone, brick, etc. Call...

ROOFING, gutters, leaders, siding, painting. Call...

CHIMNEY cleaning and window cleaning. General Repairs. Call...

CARPET and furniture cleaning, on location. Best-Ar System. Orange 4-0724

HANK'S Handy Home Service, specializing in windows, doors, garage doors, etc. Call...

FURNITURE polished, repaired, and reupholstered. Call...

MOFFETT heating, and yard, cellars, etc. cleaning. CR 3-2009, after six.

2A-SHORT HILLS ARTIST'S DREAM COTTAGE

With its very special northern light room, a perfect gem of architectural design and charm that an artistic taste will appreciate. A rare find for the small investor. Call...

G. A. Allsopp, Inc. "Exclusive Homes" Realtor. DR 6-2265

THE HARD TO FIND HOME - 3 LARGE BEDROOMS, 2 1/2 BATHS, CLOSETS OF CLOSETS AND PORCHES. LARGE SCREENED AND GLASSED PORCH. 2-CAR GARAGE. OWNER TRANSFERRED. Call...

YOUNG IN HEART Just listed this darling little level, Doll House with finished cellar. Less than 1 year old, and close in. For appointment call...

3A-BERKELEY HEIGHTS Custom built 4-bedroom split level. 2 1/2 baths, recreation room with fireplace; 2-car garage; landscaped. Call...

12-FLOHAM PARK NEW 5 BEDROOMS 3 BATHROOMS 2 GARAGES \$28,000

Builder customized split level for his family; convenient to schools, shopping; fireplace, recreation room, center hall living room, dining room, modern kitchen with many cabinets, dish washer; full basement; immediate occupancy. Call...

PERFECT PICTURE Situated back from the road is a delightful new brick and shingle modern Colonial with a Vermont style roof, Spacious center hall, large living room and dining room, overlooks flagstone terrace and picturesque grounds. Modern kitchen with built-in and dining table. 2 bedrooms, 4 baths, family room, 2 car garage.

Iver B. Dunndor, Broker Office: 12 Kent Place Blvd., Summit CR 3-8546, CR 3-8589

OCCUPY BY XMAS Inspect this delectably located 7 room, 2 1/2 bath, Colonial-style split-level home with circular eating area. Price reduced to just \$39,500. Call...

2A-SHORT HILLS FOR TOP EXECUTIVE Spacious 3 year old Colonial with many extras. Library, 2 lavatories, center hall living room, dining room, 2 baths. 2nd: 2 car garage; lovely grounds.

HARRIET L. MOORE, Realtor 24 Essex St., Millburn, N.J. DR 6-5223

ONCE IN A BLUE MOON Comes an opportunity like this to buy a 4-bedroom 2-bath country club home in the low 30's. Call now before it is gone. Ask for Phil Carwright, Sargent-Dumper, Inc., DR 6-2460, DR 6-4771

Can't Use It? SELL THROUGH WANTADS



Rentals

**FURNISHED ROOMS**

COMFORTABLE room, semi-private bath, California, convenient location. CR. 3-9488.

ATTRACTIVE, new, single or double rooms. FR. 7-1333.

SUMMIT - Large room and bath, gentleman. Parking facilities. CR. 3-3824.

NEWLY decorated room, parking, gentleman. Near Overlook Hospital. CR. 3-2841.

COMFORTABLE, clean room for gentleman. Near town. Parking. CR. 3-2841.

LARGE active room, excellent location, kitchen privileges. Business person preferred. CR. 3-4623.

FURNISHED room for elderly man. Centrally located. CR. 3-8916.

ROOM with or without kitchen privileges. Heating. Phone John M. Downey. CR. 4-4929.

SUMMIT, furnished room for rent, 212 Morris Avenue.

COMFORTABLE room, garage. Albrook Plaza, 13 3/4th St., Summit. CR. 3-4774.

LARGE comfortable room for a woman. CR. 3-9029.

BEDROOM and sitting room or small single room for a woman. Charge available. Frisco home near bus stop. Phone Drexel 9-5392.

COMFORTABLE room, private house, parking. Phone Drexel 9-2169.

VERY nice room, private family. Garage. In Millburn. South Orange 3-3000.

NICE furnished room for rent in private home. Business woman. Drexel 6-1127.

**FURNISHED APT. FOR RENT**

6-ROOM apartment, with modern kitchen. Newly decorated \$175 month. Adults. CR. 3-3978.

TWO, 1st floor furnished housekeeping room near bus to 1 woman. References. CR. 1-2216.

2nd floor or unfurnished 3-room studio apartment, for business. CR. 3-1158.

3 1/2 ROOMS, newly decorated. CR. 3-1283.

2 ROOMS, bath, 1st floor. Business person preferred. MD. 5-0775.

BEDROOM and kitchenette, 1 adult, use of meals. Includes utilities. CR. 7-1229.

**FURNISHED HOUSE FOR RENT**

Air-Conditioned

Purchased - \$250 per Month

RICHARD A. MICHONE, Agency

309 Springfield Ave., Summit

CR. 3-8500 Anytime

**UNFURNISHED APT. FOR RENT**

READY for occupancy about December 1st. Apt. consisting of living room, dining room, kitchen, 2 bedrooms, and bath, plus garage for one car. Will give lease, \$135 a month.

JOSEPH F. CHURCH AGENCY

41 Maple St. CR. 3-0417

NEW Residence: Comb. living & bedroom; kitchen, bath; garage. All utilities included. CR. 3-7458.

3-ROOM apartment; studio only. CR. 3-8241.

LARGE 5 rooms, bath. See Superintendent. 200 Morris Ave., Summit.

4 ROOM apt. with garage. Inquire at 310 Morris Ave., Summit.

2ND FLOOR, 4 large rooms and bath. Newly decorated. Heat and water supplied. Two minutes bus. References. 48 Park Ave., Summit. For information, call TU. 7-0215.

MILLBURN - Four rooms and bath, heat and hot water furnished. Drexel 6-1119.

SUMMIT, 21 Walnut Street, 3 room apt. furnished or unfurnished. Utilities supplied. Parking. 3rd floor. Use for either. Adults only. Phone John M. Downey, CR. 7-4850.

4 1/2 ROOMS, center of town, 16 Maple Street, Summit. Call after 5:30 p.m. CR. 3-8227.

**UNFURN. HOUSE FOR RENT**

FOR RENT - 3 bedroom colonial - Blue Mountain section of Berkeley Heights. Call Holmes Agency, 231 Morris Ave., Summit. CR. 3-2600.

SEVEN room house for sale or rent, 84 Kirtle avenue. Drexel 6-4309.

**UNFURN. ROOM TO RENT**

LARGE corner room and kitchen. Near school, hospital, and station. Call CR. 7-4022 and CR. 3-0745.

**STORES TO RENT**

MORRISTOWN

13 Speedwell Ave. - 3 selling floors - opposite Bambergers.

27 Speedwell Ave. - opposite Bambergers.

11 Cottage, FR. 7-3702, or JB 9-2100

4,500 sq. ft. modern industrial building, first furnished. Group of 3 shops, 700 power. Phone CR. 7-5564, or FR. 7-1229. ADens 2-670.

**OFFICE SPACE FOR RENT**

OFFICE, 180 square feet, 1st floor, 1 Short Hill Avenue, Short Hill, Morris Ave. W. Smith. Drexel 9-2869.

OFFICE space, for full information apply, 527 Morris Ave., Summit.

**Rentals Wanted**

**UNFURNISHED APT. WANTED**

3 QUIET adults need 4 or 5 rooms, 1st floor. Rent reasonable. MU. 8-8231.

\$25 REWARD for early rental of apt. for December in Summit. CR. 7-1097.

**UNFURN. HOUSE WANTED**

AUTO executive requires house in nice residential area suitable for small children. Approximately Dec. 1 to Sep. 1. Principals only. Call Robert C. Barbison Plaza Hotel, CR. 7-1000.

FAMILY of 2 professional adults, who now live in Summit, want 1 family house 5-6 rooms in Summit. Will also 2 or 3 rooms starting anytime between Feb. and July, 1958. Box 623, Summit Herald.

**GARAGE WANTED**

GARAGE for passenger car vicinity road and Taylor. Drexel 6-2100.

GARAGE wanted, vicinity Millburn center. Drexel 9-3480; 8-7.

**Too Late to Classify**

**HELP WANTED FEMALE**

WAITRESS full time, apply in person. Redick, 427 Morris Ave., Summit.

**HELP WANTED MALE**

PART-TIME dishwasher, from 5 p.m. to 8 p.m. Summit House Restaurant, Summit. CR. 3-0207.

**USED CAR FOR SALE**

MERCUURY 2040 coupe, runs well. Best offer takes it on Sunday between 2 and 4 p.m., 31 Cambridge drive, Short Hill. Drexel 9-2654.

AN ORDINANCE TO LIMIT THE USE OF TROT DRIVE, CLAIRMONT PLACE AND WEST BRIGHT AVENUE BETWEEN BRUNNEN ROAD AND TROT DRIVE TO PASSENGER VEHICLES AND TRUCKS WHOSE WEIGHT, INCLUDING LOAD, DOES NOT EXCEED 3,000 POUNDS, AND TO LIMIT THE SPEED FOR PASSENGER VEHICLES THEREON. THE BEING IT IS DETERMINED BY THE TOWNSHIP COMMITTEE OF THE TOWNSHIP OF SPRINGFIELD, IN THE COUNTY OF UNION, STATE OF NEW JERSEY, AS FOLLOWS:

Section 1. On and after the effective date of this ordinance the use of Trot Drive, Clairmont Place, and West Bright Avenue between Brunnen Road and Troy Drive, shall be limited to:

A. Passenger vehicles, and

B. Trucks whose weight, inclusive of load, does not exceed 3,000 pounds; provided, however, that it shall be lawful for trucks weighing in excess of the foregoing weight limitation to use said streets for the conduct of all legitimate business with the owners or residents of premises fronting thereon, or the maintenance or installation of utilities in, on and along same.

Section 2. Appropriate signs bearing the legend "Trucks Over 4 Tons Excluded" shall be placed along said streets as provided by law.

Section 3. Any person or persons who violate or operate a truck on any part of the foregoing streets in violation of any of the terms of the within ordinance shall upon conviction be subject to a fine, not in excess of \$50.00, or imprisonment in the County Jail, for a term not in excess of fifteen (15) days, or both for each violation.

Section 4. This ordinance shall take effect ten (10) days after final passage and publication thereof and approval by the Director of Motor Vehicles.

Section 5. This ordinance shall be certified to the foregoing Ordinance by the Director of Motor Vehicles.

1. Eleonore H. Worthington, do hereby certify that the foregoing Ordinance was introduced for first reading at a regular meeting of the Township Committee of the Township of Springfield in the County of Union and State of New Jersey, held on Wednesday evening, November 13, 1957, and that the said Ordinance shall be submitted for consideration and final passage at a regular meeting of the said Township Committee to be held on November 27, 1957, in the Springfield Municipal Building at 8:00 P. M., at which time and place any person or persons interested therein, will be given an opportunity to be heard concerning said Ordinance.

Eleonore H. Worthington, Township Clerk.

November 14, 1957

**NOTICE OF HEARING**

Notice is hereby given that the Planning Board of the Township of Springfield, County of Union, and State of New Jersey will hold a public hearing on Thursday, December 5, 1957, Eastern Standard Time, in the Municipal Building, Flemer Avenue, Springfield, to further consider the application of Springfield Estates, a property known as Block 55 A, Lot 23 B, Mountain Avenue, Springfield, N. J.

Eleonore H. Worthington, Township Clerk.

Nov. 21

In the whole world there are over 21 and one-half million trucks—about half of these are U. S. owned.

Springfield Regional may now be suffering a victory drought but many collegiate teams are now benefiting directly from the Bulldogs. For many former Regional stand-outs are now battling on gridiron teams across the nation.

George MacKenzie may not hit the headlines as frequently as Army's bullet-back Bob Anderson or Notre Dame's Nick Petrosante, but the former Bulldog halfback is setting a torrid pace for Wheaton College in the Mid-West. The Wheaton Crusaders are now banging along enroute to their fifth straight title in the College Conference race in Illinois and MacKenzie is one of the prime reasons. He now leads the entire conference in ground-gaining with 624 yards in 76 carries for an average of 8.2 yards a carry. MacKenzie is best remembered by Regionalites for his gridiron exploits against arch foe Rahway. In 1953, he literally ran through the whole Indian team as he led the Bulldogs to a 12-7 upset of the Indians.

Curt Merz, another Bulldog Alumnus, is now for the University of Iowa. In the nationally-telvised football contest between Iowa and Michigan, Curt spelled the first-string Hawkeye end and in the process caught two Iowa serials. Big things are expected from this sophomore who wears no 82 on his black and gold jersey.

Its just a little bit early for basketball but one of Merz's teammates at Regiona has gained a starting berth on Florida Southern's starting five. Les Lawn has made the Florida Southern Varsity

Jefferson over Perth. Amboy, Jeff really improved. After last week's win over Snyder, the Jeffs have arrived and will take their high scoring attack to Amboy to beat Perth Amboy, 19-6.

Roselle Park over South Plainfield. Roselle Park will regain top-flight halfbacks lost in Cranford encounter and this should provide for the Parkers margin of victory, 20-0.

Last Week 4 right 3 wrong. Total 38 right, 13 wrong, 3 ties.

**Rutgers Speaker Before Regional**

Henry C. J. Evans, associate director of admissions at Rutgers' men's colleges will discuss "College Admissions and the Offerings of the State University" when he appears on Thursday, November 21, at Dayton High School.

This talk is one of the series offered by admissions officers of the State University as a service to secondary schools and residents of the State of New Jersey. Part of a guidance and counseling service to supplement the high school guidance office, these programs make young people aware of the increasing complexity of college admission, and offer up-to-the-minute advice on college planning in general.

field, in the County of Union, State of New Jersey, as follows:

Section 1. On and after the effective date of this ordinance the use of Trot Drive, Clairmont Place, and West Bright Avenue between Brunnen Road and Troy Drive, shall be limited to:

A. Passenger vehicles, and

B. Trucks whose weight, inclusive of load, does not exceed 3,000 pounds; provided, however, that it shall be lawful for trucks weighing in excess of the foregoing weight limitation to use said streets for the conduct of all legitimate business with the owners or residents of premises fronting thereon, or the maintenance or installation of utilities in, on and along same.

Section 2. Appropriate signs bearing the legend "Trucks Over 4 Tons Excluded" shall be placed along said streets as provided by law.

Section 3. Any person or persons who violate or operate a truck on any part of the foregoing streets in violation of any of the terms of the within ordinance shall upon conviction be subject to a fine, not in excess of \$50.00, or imprisonment in the County Jail, for a term not in excess of fifteen (15) days, or both for each violation.

Section 4. This ordinance shall take effect ten (10) days after final passage and publication thereof and approval by the Director of Motor Vehicles.

Section 5. This ordinance shall be certified to the foregoing Ordinance by the Director of Motor Vehicles.

1. Eleonore H. Worthington, do hereby certify that the foregoing Ordinance was introduced for first reading at a regular meeting of the Township Committee of the Township of Springfield in the County of Union and State of New Jersey, held on Wednesday evening, November 13, 1957, and that the said Ordinance shall be submitted for consideration and final passage at a regular meeting of the said Township Committee to be held on November 27, 1957, in the Springfield Municipal Building at 8:00 P. M., at which time and place any person or persons interested therein, will be given an opportunity to be heard concerning said Ordinance.

Eleonore H. Worthington, Township Clerk.

November 14, 1957

**STRAND**

447 Springfield Ave., Summit, N. J. CR. 3-3900

NOW PLAYING THRU SATURDAY

**JET-FLAME ACTION! JET-HOT THRILLS!**

HOWARD HUGHES' **JET PILOT**  
JOHN WAYNE - JANET LEIGH

U. S. AIR FORCE  
"JAC. CUFFEN PHIL. FIX. HANS COMBIE"  
**TECHNICOLOR**

SUN.-MON. NOV. 24-25

SAL MINEO  
BRIAN KEITH

**"DINO"**

TUESDAY - ONE DAY ONLY - NOV. 26th  
SUMMIT ART ASSO. SPONSORED FILM  
ALASTAIR SIM - in -  
**"THE GREEN MAN"**

A tongue-in-cheek British murder mystery, with Alastair Sim as an assassin who proves that homicide can be a drab affair.

WED. thru SAT. NOV. 27-28-29-30  
Cont. Perf. Thanksgiving Day  
"The Tin Star" Shines Like Gold... Cecil B. DeMille  
**OUTCASTS...IN A LAWLESS ERA!**

HENRY FONDA - ANTHONY PERKINS  
**THE TIN STAR**  
Betsy PALMER

PLUS -  
FRANKIE LYMON and The Teenagers  
LA VERN BAKER  
CHUCK BERRY  
CLYDE McPHATTER  
BROOK BENTON  
LITTLE RICHARD  
FERLIN HUSKY  
THE MOONGLOWS  
SHARLE COGAN

**ALAN FREED**  
ROCKY GRASSANO  
TEDDY RANDAZZO  
LOIS O'BRIEN  
LONEL HAMPTON and His Band

**MISTER ROCK ROLL**

ROCKY GRASSANO  
TEDDY RANDAZZO  
LOIS O'BRIEN  
LONEL HAMPTON and His Band

**SEA WIFE**  
JOAN COLLINS  
RICHARD BURTON  
"THE MOST SENSATIONAL TWO STORY OF FAITH EVER TOLD"

**THE HIRE GUN**  
THE GUN SLINGER AND THE BLONDE  
FROM THE SCREEN OF ROBERT ALTMAN

**TERROR**  
JOHN HOWARD - MALL POWERS

**Important Shop Talk**

Small Boy - "Dad, doesn't the use of all those tools and things make the cost of operating the house pretty high?"

Big Boy - "No - not at all. These tools - like that grinder - cost no more to operate than - let's say - the vacuum cleaner - or the refrigerator. Motor-driven household devices use very little current."

Small Boy - "But Mother says she pays Public Service more than she did a few years back."

Big Boy - "That's true, but we use much more electricity and gas to give us the comforts - and fun - we want."

Small Boy - "That must be why Public Service says, 'Electricity and Gas do so much and cost so little,' huh?"

**PUBLIC SERVICE**

A-365-37

Help Fight It

Buy Christmas Seals

ing at a regular meeting of the Township Committee of the Township of Springfield in the County of Union and State of New Jersey, held on Wednesday evening, November 13, 1957, and that the said Ordinance shall be submitted for consideration and final passage at a regular meeting of the said Township Committee to be held on November 27, 1957, in the Springfield Municipal Building at 8:00 P. M., at which time and place any person or persons interested therein, will be given an opportunity to be heard concerning said Ordinance.

Eleonore H. Worthington, Township Clerk.

November 14, 1957

**LOEWS**

RICHARD WIDMARK  
**TIME LIMIT**  
RICHARD BASEHART  
AND  
GEO. MONTGOMERY  
**'STREET OF SINNERS'**

**RKO PROCTORS**

NOW! What happened between the daring adventurer and the beautiful girl?

**SEA WIFE**  
JOAN COLLINS  
RICHARD BURTON  
"THE MOST SENSATIONAL TWO STORY OF FAITH EVER TOLD"

**EXKING 2nd HIT**  
**TERROR**  
JOHN HOWARD - MALL POWERS

**TASTY TREATS FOR A QUICK PICK-UP**

On the go? Refresh yourself with one of our tempting desserts. Modest prices.

**MOUNTAIN AVENUE LUNCHEONETTE**  
"Next To Walton School"

549 Mountain Ave., Springfield

Box Office Open Daily & Sun 10 A.M. - 10 P.M.

**PAPER MILL PLAYHOUSE**

MILLBURN, N. J. Drexel 6-4343

FRANK CARRINGTON, Director  
Even. 8:30 - Tues. Through Sat. 8:00 - Sun. Thurs. & Sat. 3:30

Now through Sunday, Dec. 15  
Musical Comedy Hit!

**'SILK STOCKINGS'**

Music & Lyrics by Cole Porter  
Book by George S. Kaufman, Lennox Rice & Abe Burrows  
With Dorothy Sandlin - Robert Busch  
Tickets Hamberger's and All Agencies  
Order by Phone - Pay by Mail

The Beautiful  
**WEST ORANGE PLAYHOUSE**

252 MAIN ST. Opp. Edison's  
phone Orlange 3-5300

NOW 1st N.J. Premiere  
**DAVID NIVEN** in *The Silken Affair*

Also Starring Genevieve Page  
Ronald Squire - Beatrice Straight  
Whitford Hyde White  
**"DANCING"**

Also "DANCING FLEECE"  
A scintillating featurette in colors  
FREE PARKING

Springfield Regional may now be suffering a victory drought but many collegiate teams are now benefiting directly from the Bulldogs. For many former Regional stand-outs are now battling on gridiron teams across the nation.

George MacKenzie may not hit the headlines as frequently as Army's bullet-back Bob Anderson or Notre Dame's Nick Petrosante, but the former Bulldog halfback is setting a torrid pace for Wheaton College in the Mid-West. The Wheaton Crusaders are now banging along enroute to their fifth straight title in the College Conference race in Illinois and MacKenzie is one of the prime reasons. He now leads the entire conference in ground-gaining with 624 yards in 76 carries for an average of 8.2 yards a carry. MacKenzie is best remembered by Regionalites for his gridiron exploits against arch foe Rahway. In 1953, he literally ran through the whole Indian team as he led the Bulldogs to a 12-7 upset of the Indians.

Curt Merz, another Bulldog Alumnus, is now for the University of Iowa. In the nationally-telvised football contest between Iowa and Michigan, Curt spelled the first-string Hawkeye end and in the process caught two Iowa serials. Big things are expected from this sophomore who wears no 82 on his black and gold jersey.

Its just a little bit early for basketball but one of Merz's teammates at Regiona has gained a starting berth on Florida Southern's starting five. Les Lawn has made the Florida Southern Varsity

Springfield Regional may now be suffering a victory drought but many collegiate teams are now benefiting directly from the Bulldogs. For many former Regional stand-outs are now battling on gridiron teams across the nation.

George MacKenzie may not hit the headlines as frequently as Army's bullet-back Bob Anderson or Notre Dame's Nick Petrosante, but the former Bulldog halfback is setting a torrid pace for Wheaton College in the Mid-West. The Wheaton Crusaders are now banging along enroute to their fifth straight title in the College Conference race in Illinois and MacKenzie is one of the prime reasons. He now leads the entire conference in ground-gaining with 624 yards in 76 carries for an average of 8.2 yards a carry. MacKenzie is best remembered by Regionalites for his gridiron exploits against arch foe Rahway. In 1953, he literally ran through the whole Indian team as he led the Bulldogs to a 12-7 upset of the Indians.

Curt Merz, another Bulldog Alumnus, is now for the University of Iowa. In the nationally-telvised football contest between Iowa and Michigan, Curt spelled the first-string Hawkeye end and in the process caught two Iowa serials. Big things are expected from this sophomore who wears no 82 on his black and gold jersey.

Its just a little bit early for basketball but one of Merz's teammates at Regiona has gained a starting berth on Florida Southern's starting five. Les Lawn has made the Florida Southern Varsity

**SUNNING SPORTS**

By  
**MIKE GOODMAN**

Springfield Regional may now be suffering a victory drought but many collegiate teams are now benefiting directly from the Bulldogs. For many former Regional stand-outs are now battling on gridiron teams across the nation.

George MacKenzie may not hit the headlines as frequently as Army's bullet-back Bob Anderson or Notre Dame's Nick Petrosante, but the former Bulldog halfback is setting a torrid pace for Wheaton College in the Mid-West. The Wheaton Crusaders are now banging along enroute to their fifth straight title in the College Conference race in Illinois and MacKenzie is one of the prime reasons. He now leads the entire conference in ground-gaining with 624 yards in 76 carries for an average of 8.2 yards a carry. MacKenzie is best remembered by Regionalites for his gridiron exploits against arch foe Rahway. In 1953, he literally ran through the whole Indian team as he led the Bulldogs to a 12-7 upset of the Indians.

Curt Merz, another Bulldog Alumnus, is now for the University of Iowa. In the nationally-telvised football contest between Iowa and Michigan, Curt spelled the first-string Hawkeye end and in the process caught two Iowa serials. Big things are expected from this sophomore who wears no 82 on his black and gold jersey.

Its just a little bit early for basketball but one of Merz's teammates at Regiona has gained a starting berth on Florida Southern's starting five. Les Lawn has made the Florida Southern Varsity

Rahway over Westfield. Rahway to tune up for Regional with Blue Devils. Fast Rahway backfield and awesome line combine for a quick-striking Indian attack. Rahway 32-0.

Clark over Scotch Plains. Clark mad over its showing against Rahway. DeRosa to have his charges up for last encounter. 19-7 Clark.

Roselle over Hillside. To much classy quarterbacking for rapidly improved Hillside. Roselle to romp. 27-7.

Cranford versus North Plainfield. A close one. Both have superior lines. But edge to Cranford Cougars on better aerial game. 12-7.

Jefferson over Perth. Amboy, Jeff really improved. After last week's win over Snyder, the Jeffs have arrived and will take their high scoring attack to Amboy to beat Perth Amboy, 19-6.

Roselle Park over South Plainfield. Roselle Park will regain top-flight halfbacks lost in Cranford encounter and this should provide for the Parkers margin of victory, 20-0.

Last Week 4 right 3 wrong. Total 38 right, 13 wrong, 3 ties.

**Rutgers Speaker Before Regional**

Henry C. J. Evans, associate director of admissions at Rutgers' men's colleges will discuss "College Admissions and the Offerings of the State University" when he appears on Thursday, November 21, at Dayton High School.

This talk is one of the series offered by admissions officers of the State University as a service to secondary schools and residents of the State of New Jersey. Part of a guidance and counseling service to supplement the high school guidance office, these programs make young people aware of the increasing complexity of college admission, and offer up-to-the-minute advice on college planning in general.



**Grace for Thanksgiving Day**

We thank Thee, Father, for Thy love  
That gathers us in sweet accord  
To count our blessings and enjoy  
The bounty of our gracious Lord.

We see our harvest-mellow land  
Round out another peaceful year,  
Assuring all men, everywhere,  
Those joys of life that are more dear  
Than daily bread: home, love, work, friends;  
The blessed right to speak and pray  
As each one wills. God keep us strong  
To follow on our chosen way!

Help us to look beyond the feast  
To sharing with our fellowmen  
All these Thy boundless gifts. And last,  
Be Thou our Unseen Guest.

Amen.

-MAUREEN MURDOGH

**JCP & L**  
Jersey Central Power & Light



# WOW!



Here it is Nov. 21st —and my feet hurt like mad already! How come? I've been knocking myself out delivering the hottest Christmas Gift buys to CHANNEL Lumber. My toes just curl when I think of all those toys, housewares, do-it-yourself items and power tools which will be saving money on... Wouldn't mind having some of them myself. Come to think of it, CHANNEL could save me plenty on all the things on MY gift list. Excuse me while I slip my boot back on. SEE YOU AT CHANNEL!

## SPRINGFIELD-NEWARK-SAYRE WOODS BIG DISCOUNTS ON TOYS

**OPEN SUNDAYS AND EVENINGS**  
Springfield Store  
Now Open Sat.  
Eves. to 9:30 P. M.

**BATTERY OPERATED COMBINATION WASHER & DRYER**  
Reg. 4.98 **3.49**

**BABY GRAND PIANO MAHOGANY FINISH**  
15 Key 2.49  
20 Key 7.49

**TIGER BLACKBOARD**  
INCLUDES CHALK & ERASER  
Reg. \$1. **.69**

**TONKA FIRE ENGINE PUMPER**  
REALLY WORKS—JUST ATTACH HYDRANT TO WATER SUPPLY. A BEAUTY.  
Reg. 8.95 **5.49**

**DACHSHUND YARD DOG**  
48" LONG FROM NOSE TO TAIL  
RED TARTAN PLAID  
**\$2.99**

**OUTDOOR LIGHTS SETS**  
7 Light 1.69  
15 Light 3.49  
25 Light 5.69

### SEE THE AMAZING AMF DEWALT DEMONSTRATION

**NO DOWN PAYMENT \$10.00 A MONTH MODEL MB-F 9" RADIAL ARM SAW**  
SAW AVAILABLE AT ALL STORES

**NOW... Solder, Remove Old Paint... Do ANY Job—Here's Everything You Need!**

**NEW BERNZ-O-MATIC PROANE TORCH**  
SET **\$6.95** Complete  
Reg. \$13.50 value

### MILLER FALLS

**6 1/2" POWER SAW**  
BRAND NEW. SPECIAL THIS WEEK  
**FREE METAL-CARRYING CASE, No. 626 SAW**  
**\$54.95**

**SKIL 1/4" ELECTRIC DRILL GEARED CHUCK**  
2 Amp. 2200 R.P.M.  
**\$15.95**  
No. 503—List \$25.95

**Porter-Cable Heavy Duty 8-Inch POWER SAW**  
All the famous Porter-Cable features PLUS...  
Reg. \$95 **69.95**

### ALUMINUM DEPT. SPECIAL!

**3 Insert All Aluminum COMBINATION WINDOW**  
Picture Frame Design. Change from Summer to Winter in Seconds. Practically Pay for Themselves in Fuel Savings.  
**SPECIAL \$13.95** ea.

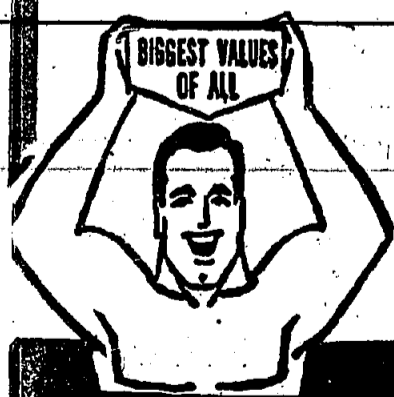
**FOLDING TABLE**  
ALL ALUMINUM TOP ALUMINIZED LEGS 24x60"  
Ideal for Those Extra Holiday Guests  
**9.88**

**PORTABLE TV TABLE**  
Block with brass arm and casters. Other models on display at comparable savings.  
**SPECIAL 3.88**

**WORK BENCH**  
Laminated Top  
Sturdy Wood Construction  
Complete With Tool Rack, Shelf and Drawer  
Kiln Dried Southern Pine  
5' Across, 24 1/2" d.  
3 1/4" h  
**16.95**

**CHANNEL TABLE TENNIS TOP & BASE**  
HEAVY 3/4" TOP—EXTERIOR PLYWOOD  
OFFICIAL SIZE 5'-9" 2-PIECE TOP FOR EASY STORAGE. BASE ASSEMBLES IN MINUTES. NO BOLTS OR SCREWS NECESSARY.  
Complete **\$27.95**

**TRAIN & TREE PLATFORMS**  
48"x96" SHEETS  
1/4" PLYWOOD 3.39  
5/16" PLYSCORE 2.99  
LEGS & BRACKETS ALSO IN STOCK



### CHANNEL HAS NO HIDDEN GIMMICKS

**YOU BUY WHAT WE ADVERTISE!**

Only Channel Saves You So Much On 1st Quality, Nationally Advertised Merchandise. No 2nd's! No Imperfects! No Hidden Defects!

**FREE DELIVERY** On Purchases of \$30 or More, Except Where Noted

PICK THE WAY YOU LIKE TO PAY  
**2 CREDIT PLANS**

**1 NO-COST CHARGE-IT SERVICE**  
NO DOWN PAYMENT. NO INTEREST. 3 MONTHS TO PAY

**2 FLEXO CONTINUOUS CREDIT**  
• No Down Payment  
• As Little As \$5 Per Month  
• Up to 18 Months to Pay  
• Continue Buying Even Though You Owe A Balance

1st Prize Awarded to CHANNEL LUMBER As Nation's Top Retailer of the Year

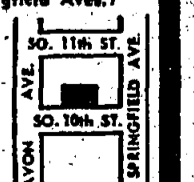
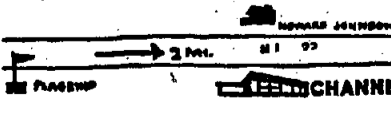


**CHANNEL LUMBER CO.**  
"DO-IT-YOURSELF SUPERMARKETS"

Springfield: OR 6 6000 1-2-3  
ROUTE 22 IN S. ROUTE 29)  
Open Daily 9 A.M. to 9:30 P.M.  
Saturday 8 A.M. to 9:30 P.M.  
Sunday 9 A.M. to 6:30 P.M.

Newark: Biegelw 2-3100  
675 SO. 10th STREET  
(Between Avon and Springfield Aves.)  
Open Daily—8 A.M.—5:30 P.M.  
Saturday—8 A.M.—4:00 P.M.  
Sunday—Shop at Springfield  
Builders Contractors Send Us Your Lists or We'll Pick Them Up

Sayreville, N. J. - PA 1-6000  
ROUTE #9 (3 MILES SOUTH OF SOUTH AMBOY)  
Sayre Woods Shopping Center  
Open Daily 9 A.M. to 9 P.M.  
Sat. & Sun. 9 A.M. to 6 P.M.



ENTIRE AD. COPYRIGHTED CHANNEL 1971