

WE WISH YOU

## Joy at Christmas

May the infinite blessings of this joyous season abide with you and your family.

Entire Staff of  
**SPRINGFIELD SUN**



### Register Now To Vote for School Board

All persons wishing to vote in the next annual school election who are not registered should do so prior to December 26, 1957, in their respective community.

The new election law specifies that a voter must be at least 6 months in the state and 60 days in the county prior to the date of election.

Berkeley Heights, Clark; Kenilworth, Garwood, Mountainside and Springfield citizens of the Union County Regional High School District who wish to vote in the Regional High School Election on Tuesday, February 4, 1958, may register at the Union County Board of Elections, Court House, Elizabeth or at the office of the Township Clerk in each municipality comprising the Union County Regional High School District.

### Postal Workers Ready for Big Mailing Rush

Postmaster A. V. Del Vecchio says "It is later than you think."

"Only six days remain until Christmas and these are the six most critical days for the Springfield post office. Time has just about run out for late mailers."

The postmaster said that every postal employee is digging in for the final push in order to effect delivery of all cards and gifts by Christmas Eve.

"You can help," he stated, "by using air parcel post for gift packages, air mail postage for Christmas cards going to distant points and first class postage for cards going to local addresses. It is important that all cards are correctly addressed and that they carry return addresses, thus insuring the forwarding and return to you if any of them are undeliverable."

A delay of hours now may mean cards and gifts will not be delivered before Christmas, the postmaster concluded. Postmaster Del Vecchio expressed his sincere appreciation for the co-operation with his annual "Mail Early" campaign and extends to all on behalf of all postal employees, the best of season's greetings.

### Local Boys to Visit Toronto

The Brandies AZA of Springfield will journey to Toronto the day after Christmas to spend five days with an AZA chapter in Canada.

The local youth organization is joining with the chapter from Bayonne in making the trip. It is part of an AZA project called "Operation Friendship." The Canadians will visit Springfield in April.

### Local Boys to Visit Toronto

The Brandies AZA of Springfield will journey to Toronto the day after Christmas to spend five days with an AZA chapter in Canada.

The local youth organization is joining with the chapter from Bayonne in making the trip. It is part of an AZA project called "Operation Friendship." The Canadians will visit Springfield in April.



HELPING SANTA CLAUS. Members of the Westminster Group of the First Presbyterian Church, Jan Gleim, Jan Heiron, Joyce Harrison, Nancy Anderson and Barbara Jacobsen, are shown above actively engaged in a Christmas project at the church last Sunday. From the sorting of hundreds of toys, dolls, games, etc., through the painting, washing and repairing to the final wrapping, everyone enjoyed this project of helping less fortunate boys and girls. Over a hundred colorfully wrapped articles were distributed to needy children in Springfield, Westfield Country Day Home and a downtown Elizabeth Church. Following the "workshop," a spaghetti dinner was served for the 50 hungry workers. The day closed with the showing of the fine Christmas film "Holy Night."

HELPING SANTA CLAUS. Members of the Westminster Group of the First Presbyterian Church, Jan Gleim, Jan Heiron, Joyce Harrison, Nancy Anderson and Barbara Jacobsen, are shown above actively engaged in a Christmas project at the church last Sunday. From the sorting of hundreds of toys, dolls, games, etc., through the painting, washing and repairing to the final wrapping, everyone enjoyed this project of helping less fortunate boys and girls. Over a hundred colorfully wrapped articles were distributed to needy children in Springfield, Westfield Country Day Home and a downtown Elizabeth Church. Following the "workshop," a spaghetti dinner was served for the 50 hungry workers. The day closed with the showing of the fine Christmas film "Holy Night."

### Full Time Rec. Director to Be Named in Town

Springfield's Recreation Commission now has permanent headquarters for officials, a community center for the youngsters of the Township and a full time Recreation program director.

All this was accomplished last night at the regular meeting of the Township Committee when approval was given an elaborate plan for structural changes in the township owned property at 50 Mountain Avenue. And the formal transfer of the building to the Recreation Commission.

The Recreation Commission submitted plans for alterations that will make the building suitable for community use, and work is expected to start soon. Necessary equipment has already been decided upon which is expected to transform the property into a meeting place for recreation activities in Springfield.

### Regional Boost Near 1/2 Million \$

The Regional Board of Education budget will come close to \$2 million this year it was revealed at the regular meeting Tuesday night. The record \$1,932,699 budget is up \$414,004 from last year.

The regional school tax rate in the six communities comprising the district would increase from \$1.66 to about \$2.07, according to Dr. Minor C. K. Jones, board president.

The public hearing will be Jan. 14. The new budget will be effective July 1, 1958. If approved, it provides for \$200 across the board salary increases for teachers, the hiring of 17 new teachers, more books, more laboratory supplies and other items.

Among the new teacher appointments was the hiring of Lucian Gagliardi to teach physics at Jonathan Dayton beginning the first of the year. He replaces Dewitt C. Cook who resigned.

### Santa in Jeep

Santa will visit the children of the Country Oaks Association at their homes, on Sunday, December 22nd between eleven and twelve o'clock. Because of the mild weather he will leave his reindeers at the North Pole and travel in a red jeep.

## THIS WEEK

### LET GEORGE DO IT!

Since this is the precious season when the spirit of "peace on earth and good will to men" fills our hearts, we should put aside the acrimonious adjectives and sarcastic sentences.

But no one would recognize this column cooing with saccharine sweetness.

The target for the day is that group of "let George do it" business men who are looking out of the window when some one calls to ask full participation in a civic project. Most business men in Springfield respond to every worthwhile program planned to attract more shoppers and more buying—but there are still a few who refuse to be counted.

Springfield is no longer referred to as the oft repeated "cassis for jangled nerves." It is now a hustling, bustling town—a place where even during last Saturday's inclement weather, there wasn't a single parking space available in the very large parking area of the General Greene Shopping Center.

Customers are being attracted to Springfield from nearby communities. Enterprising merchants, cooperating with the Springfield Chamber of Commerce, have transformed the Township into a good shopping center by promotion, by brightening up Morris Avenue with colored Xmas lighted strands, having Santa Claus arrive by helicopter with a big party-for-free—for the kids on the Regional High School grounds and with many other interesting programs.

The burden of supporting such programs has fallen on the shoulders of the promotion minded business men. The benefits accruing from such sales promotion spill over into every section of Springfield and merchants all over should accept the same responsibility in attracting more shoppers here.

The Chamber of Commerce does not expect to "bat 100 percent" in getting the support of Springfield merchants. But so many of them have refused consistently when asked to take part in some worthwhile Springfield promotion.

One business man in Morris Avenue—with a bright strand of electric lights strung across the roadway right in front of his door—flatly refused to pay what was to be his full share of the costs.

Another chain service organization, with a branch on Morris Avenue, never seems to care anything about promoting business in general for Springfield. Their local manager says "it is a matter of policy not to take part in civic programs of any nature."

### GETTING READY FOR BATTLE

Springfield's governing body is to be congratulated for having named the Theodore McCroskey engineering firm to help the Township work out some acceptable plan for the coming of the realigned Route 22.

Residents of Springfield, as well as the members of the Township Committee, are "fighting mad" because the published map, showing the route of the new Federal highway, slices Springfield into some big chunks. Protesting civic groups have been assured that no final route will be accepted until Springfield has had an opportunity to present suggestions for an alternate route—or by-passing the Township entirely.

The McCroskey engineering firm will give Springfield the right kind of ammunition when the State Highway map makers sit down to hear what the Township thinks about the entire matter.

In the meantime, the various civic groups plan to keep the "pot boiling" by continuing the flood of letters to state, county and municipal officials.

### HAVE A HEART, SPRINGFIELD!

The Township of Springfield has always been among the first to meet its quota in every fund drive.

Civic minded residents have guided the various charity fund raising programs to success and every cause has

### Donnelly Elected Local G.O.P. Head

The annual Republican Club Christmas Party and December business meeting were held in the American Legion Hall on Monday evening, December 16, with at least 100 participants in attendance.

At the brief business meeting, which preceded the Xmas festivities, the Nominating Committee presented a slate of officers for 1958, which nominations were unanimously approved and elected by the members present.

The new officers are as follows: President, Eugene F. Donnelly; 1st Vice President, Joseph Seidel; 2nd Vice President, Helen Baldwin; Secretary, Ed Ryder; Corresponding Secretary, Alice Cosgrove; Treasurer, Charles Quinzel; Trustees: District 1, Art Marshall; District 2, Ernest Steiner; District 3, James Cawley; District 4, George McMullen; District 5, Charles Beardsley; District 6, Betty Reilly; District 7, Art Buehrer; District 8, Dorothy Reibold; District 9, Gretchen Forbes; District 10, Amy Bando; District 11, Everett Speer; District 12, Lou Ebert; and District 13, Jay Levins.

Upon completion of the business meeting, refreshments were served.

## Skyrocketing Enrollment Increases School Budget

### EARLY COPY NEXT WEEK!

All advertising articles and photographs should be in the Springfield Sun office EARLIER THAN USUAL.

Because of Christmas, ALL COPY MUST BE IN THE SUN OFFICE NO LATER THAN MONDAY, DECEMBER 23.

All classified ads MUST BE IN NO LATER THAN 4:30 P.M. ON MONDAY.

THE SPRINGFIELD SUN WILL BE PRINTED THURSDAY—and on the stands Thursday—but, because of the holiday, all copy MUST BE IN EARLIER.

At its regular meeting Tuesday evening December 17, the Springfield Board of Education approved a tentative budget for the school year of 1958-59 totaling \$977,630, an increase of \$156,170 over the budget for the year 1957-58. The amount to be raised by taxation will be \$837,024.

It was pointed out that at the time the budget for the year 1957-58 was prepared, on the basis of figures then available, it was estimated that the average enrollment for the current school year would be 1550. However, enrollments far exceeded the estimate, and the total number of students at the beginning of school in September was 1707.

By the end of November it was 1741. As a result, although the teaching staff was increased by 9 new teachers, 24 out of a total of 65 classes already have from 30 to 36 pupils and there are no funds available to secure more teachers for the current year. It is now estimated that the enrollment for 1958-59 will reach 1950. Therefore it is anticipated that at least 13 new teachers will be needed, and this accounts for the major part of the increase in teachers' salaries. The major part of the budget increase is in this item.

**HEAVY STUDENT INCREASE**

The increase of 400 students between last year's budget estimate for 1957-58 of 1550 and the estimated figure for 1958-59 of 1950 represents an increase of 26%, whereas the increase in total current expense is 20% and the increase in the total budget is 19%. The high enrollments are primarily due to the building of new homes in the community, and this

### VFW Plans To Give TV Set To Lyons

The Ladies Auxiliary to VFW Battle Hill Post 7685 held their Christmas Party at the Post Home on Morrison road on Tuesday evening December 17. Gifts were exchanged and refreshments were served.

At the party final arrangements were made for the dinner to be held in the Post Home for a group of about 30 veterans from Lyons Hospital on Tuesday evening January 21 at which time a television set will be given to the group for the hospital. The set is a donation from both the Post and Auxiliary. President Marie Summerer wished to thank all the Ladies of the Auxiliary for their help in making the Square Dance a success.

## School Art Program Stresses Creativity & Appreciation

The basic aims of a good art program go hand in hand with those of any other subject whether it be arithmetic, reading or social studies. It is expected, however, that art will stress creativity and esthetic appreciation to a greater degree. As the child grows in maturity and understanding, so will these artistic capabilities grow along with him. The classroom teachers and parents, together with the art teacher will encourage special creative efforts and understanding of art as manifested in every day experience.

Art is no longer considered an "educational frill." It is now an essential part of a curriculum, helping to promote the wholesome growth of the child. A child cannot develop into a well rounded individual unless he grows esthetically as well as physically, mentally, emotionally, socially and spiritually.

Art is not taught haphazardly but rather as a logical development of a series of related meaningful experiences. The art teacher must first take stock of a child's capabilities and needs in terms of the total art program. Then as the child is presented with an art problem, the teacher should be able to answer the following questions:

1. Is this problem going to stimulate... (Continued on Page 6)



### Presbyterian Church to Observe Xmas Sunday

December 22, Fourth Sunday in Advent, will be observed as Christmas Sunday in the Presbyterian Church in Springfield, New Jersey. At both the 9:30 and 11 a.m. Services, as in former years, there will be an unusually beautiful display of poinsettias. Following the services these flowers will be distributed among the sick and elderly members of the congregation; thus extending the happiness of the day.

### Boys' Brass Band Blows Ballads

The Regional High School Brass Ensemble gave the Salvation Army a run for their money yesterday, Wednesday, by playing Christmas Carols up and down Morris Avenue.

It is understood that the Army will ask for equal time.

The high school boys blew their horns for the benefit of the Future Farmers of America Christmas Fund for underprivileged in Springfield. Voluntary contributions came from the Morris Avenue merchants.

The Yule music resounded over the trolley tracks for two hours Wednesday afternoon as the youths pumped out the traditional carols. Nicholas Romeo, school band director, led the ensemble. Those present were: Charles Engra, Don Crabtree, Steve Farran, Bruce Goldstein, Dave Colvin, Ronnie Hunter, Dennis Harter, James Cerulli and Tim Stewart.

### Sorge Honored by Fellow Police Chiefs

Springfield Police Chief Albert A. Sorge received a gift from the Union County Police Chiefs Association Tuesday in appreciation of his services as president of the association during the year. Sorge retired at a meeting in Summit. He was succeeded by the Police Chief of Roselle.



Publisher — SAM O. SAROKIN  
Associate Publisher & Editor — JULIAN SAROKIN

TELEPHONES:  
Drexel 9-3000 Drexel 9-5001  
ESTABLISHED SEPTEMBER 27, 1929  
Published every Thursday at  
262 Morris Avenue, Springfield, N. J.  
by SPRINGFIELD SUN PUBLISHING CO.

Official newspaper of the Township of Springfield. Subscription rates by mail prepaid: One year, \$3.50; six months, \$1.75 payable in advance. Single copies, 10 cents. Entered as second class matter October 3, 1952 at the Post Office at Springfield, N. J. under an Act of March 3, 1879.

Page 2 The SPRINGFIELD SUN, Thursday Dec. 19, 1957

**Obituaries**

**MRS. M. A. SELANDER**  
Mrs. Mollie A. Selander, wife of Clarence H. Selander of 95 Mountain avenue, and the mother of Police Capt. Wilbur C. Selander, died Saturday at her home of a long illness. She was 70.

Born in Newark, Mrs. Selander lived in Springfield 32 years. She was a member of the Millburn-Springfield Sunshine Society, Continental Unit 228 of the American Legion Auxiliary, and the Continental Chapter of the Order of Eastern Star, Millburn.

Besides her husband and son, she leaves three daughters, Mrs. Gertrude Rothlein of Springfield, Mrs. Ruth Shelton of North Plainfield, and Mrs. Molly Ciavasich of Plainfield; two sisters, Mrs. Minnie Kolb of Grand Union, Wis., and Mrs. Elsie Lamb of Ponca City, Okla.; seven grandchildren.

The funeral was held Tuesday at 2 p.m. at the Young Funeral Home, 149 Main St., Millburn.

**Letter to Editor**

Editor, SUN:  
On behalf of the 460 members of the Raymond Chisholm School Parent-Teachers Association, may I express to you at this time our appreciation for your helpfulness and co-operation.

Cordially,  
CAROL COHEN,  
Publicity Chairman.

**Joins Institute**  
Carmen S. Catapano, Springfield CAP, has been elected a member of the American Institute of Certified Public Accountants.

Mr. Catapano conducts an independent public accounting practice.

**Dear Santa, Please—**

**BALTUSROL GOLF CLUB.** A Springfield resident who can afford to join.

**ANY SPRINGFIELD RESIDENT.** A Baltusrol Golf Club membership.

**CHINA SKY RESTAURANT.** No-Cal egg roll and chow mein for dieting ladies.

**DISC AND SHUTTER.** Sam Gobby's mail orders for one day.

**J. J. NEWBERRY.** More clear shopping days; no Sunday selling.

**CHAIN FOOD STORES.** Some of Jim Funcheon's good will.

**PETROZZELLO BROS.** Rubber, sound proof garbage cans and Maxim silencers on all scavenger trucks.

**TAX ASSESSOR LAYNG.** Out-of-order telephone when the tax bills are mailed.

**POLICE CHIEF SORGE.** Some business for the padded cell in police headquarters.

**HISTORICAL SOCIETY.** Proof that it wasn't only the traffic jam that stopped the British at Springfield.

**LEAGUE OF WOMEN VOTERS.** Some controversial question for an interesting "Candidates Night."

**O.R.T.** Even more publicity in the SUN.

**BOY SCOUTS.** More Boy Scout news and less Girl Scout news.

**GIRL SCOUTS.** All Girl Scout news... No Boy Scout news.

**FIN 'N' FEATHER.** Full fish tanks for everyone.

**GARDEN OVAL HOMEOWNERS.** Exact route of any new highway.

**MEISEL AVENUE HOMEOWNERS.** To stage Indianapolis auto races on the Meisel avenue speed-

**Shoppers and Merchants Warned of Pickpockets**

Police Chief Albert A. Sorge has warned merchants and shoppers to be alert for thieves, pickpockets and check forgers during the Christmas shopping rush.

There have already been several cases of shop lifting in the local stores but increased vigilance by specials employed to keep a close watch has checked the spread of thievery.

The Springfield police department has all the available man-

tions be taken by the public:  
When shopping do not place a handbag on a counter while examining or trying on merchandise.  
When in a crowd do not carry a handbag suspended from the shoulder.  
Do not carry large sums of money.  
Do not buy merchandise offered by strangers at your door.  
Do not leave packages on car seats while parking to shop even though in a parking lot.

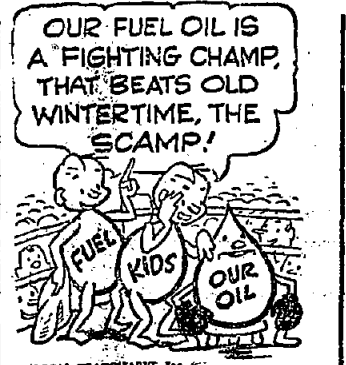
Store owners were given this advice by the chief:  
Do not fail to have sales and cash registers checked in the view of the patrolman on post.  
Use extreme caution in cashing checks.

**Want a Cab in a Hurry?**  
Springfield-Neds/ Cab Co.  
Drexel 6-5200

**SCHEDULE ANNOUNCED FOR PUBLIC LIBRARY**  
The Springfield Public Library will be closed December 24, 25 and 31, and January 1. The schedule of hours open during the holiday season is as follows:  
Dec. 22, 10:30 a.m. to 5:00 p.m., 7:30 p.m. to 9:00 p.m.  
Dec. 26, 10:30 a.m. to 5:00 p.m.  
Dec. 27, 10:30 a.m. to 5:00 p.m., 7:30 p.m. to 9:30 p.m.  
Dec. 28, 10:30 a.m. to 5:00 p.m.  
Dec. 30, 10:30 a.m. to 5:00 p.m., 7:30 p.m. to 9:00 p.m.  
Jan. 2, 10:30 a.m. to 5:00 p.m.

**POSTMASTER DEL VECCHIO.** A Christmas card.  
**RECREATION COMMISSION.** Add polo matches to Henshaw Ave. Playground program.  
**MARCEL'S.** Quieter political discussions in the last booth.

**Schaeffle's FUEL KIDS**



OUR FUEL OIL IS A FIGHTING CHAMP, THAT BEATS OLD WINTER TIME, THE SCAMP!

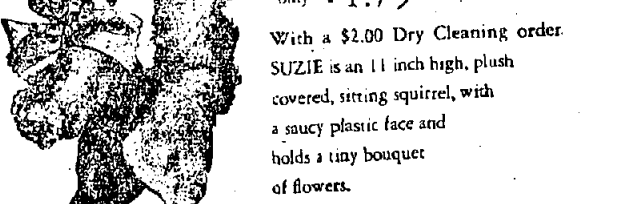
You've got a winner—in our Fuel Oil. Knock out winter with quick, steady heat... from our Fuel Oil. Call TODAY!

**Schaeffle Oil Co.**  
CALL... Drexel 6-4300  
192 MOUNTAIN AVE. Springfield, N.J.  
MOTOR DELIVERIES... BUDGET PLAN

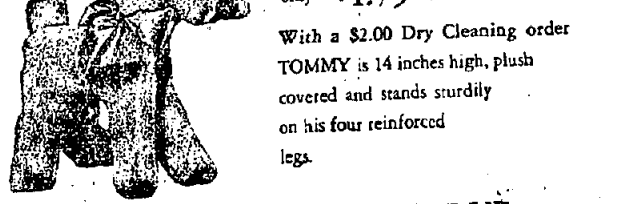
**Morey La Rue's Christmas Special!**

These are high quality toys—children love them. We expect a big rush so send in your dry cleaning and order your toys early.

**SUZIE the SQUIRREL**  
only \$1.79 (retail value \$2.98)  
With a \$2.00 Dry Cleaning order  
SUZIE is an 11 inch high, plush covered, sitting squirrel, with a saucy plastic face and holds a tiny bouquet of flowers.



**TOMMY THE TERRIER**  
only \$1.79 (retail value \$2.98)  
With a \$2.00 Dry Cleaning order  
TOMMY is 14 inches high, plush covered and stands sturdily on his four reinforced legs.



**MOREY La RUE TRUCK - BANK**  
only \$.69 (retail value \$1.25)  
With a \$1.00 Dry Cleaning order  
Made of tough break-resistant plastic with genuine rubber wheels. Measures 7" long by 3" high.

**Morey La Rue**  
General Greene Shopping Center  
SPRINGFIELD

proudly given...  
happily received..



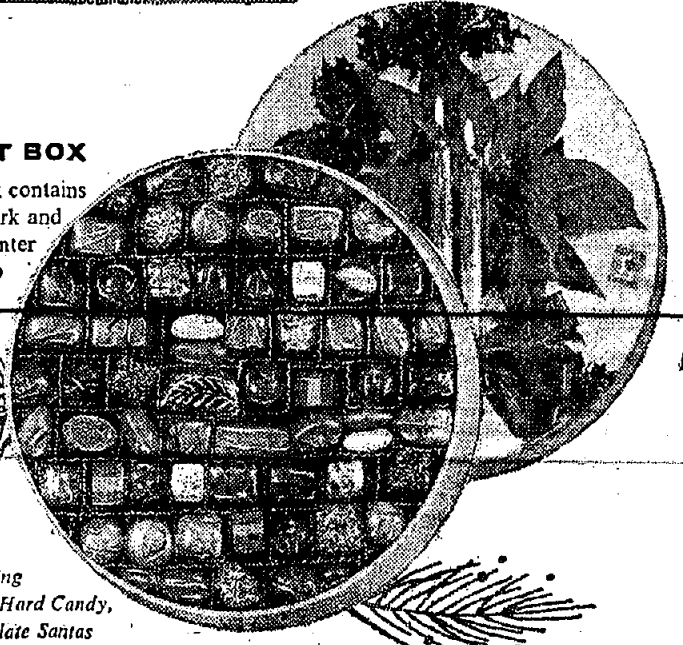
**LOFT'S**  
finer quality candy



The delight of giving and receiving LOFT'S Candies...as traditional as the Christmas tree itself. Make it a Happier Holiday—give LOFT'S... the Candies of Finer Quality.

**LOFT'S "HAPPY HOLIDAY" MINIATURES**  
35 tempting varieties including Truffles, Fruits, Nuts, Creams... in a gay Red and Gold package. Milk and Dark Chocolates.  
1 lb. 6 oz. \$2.50

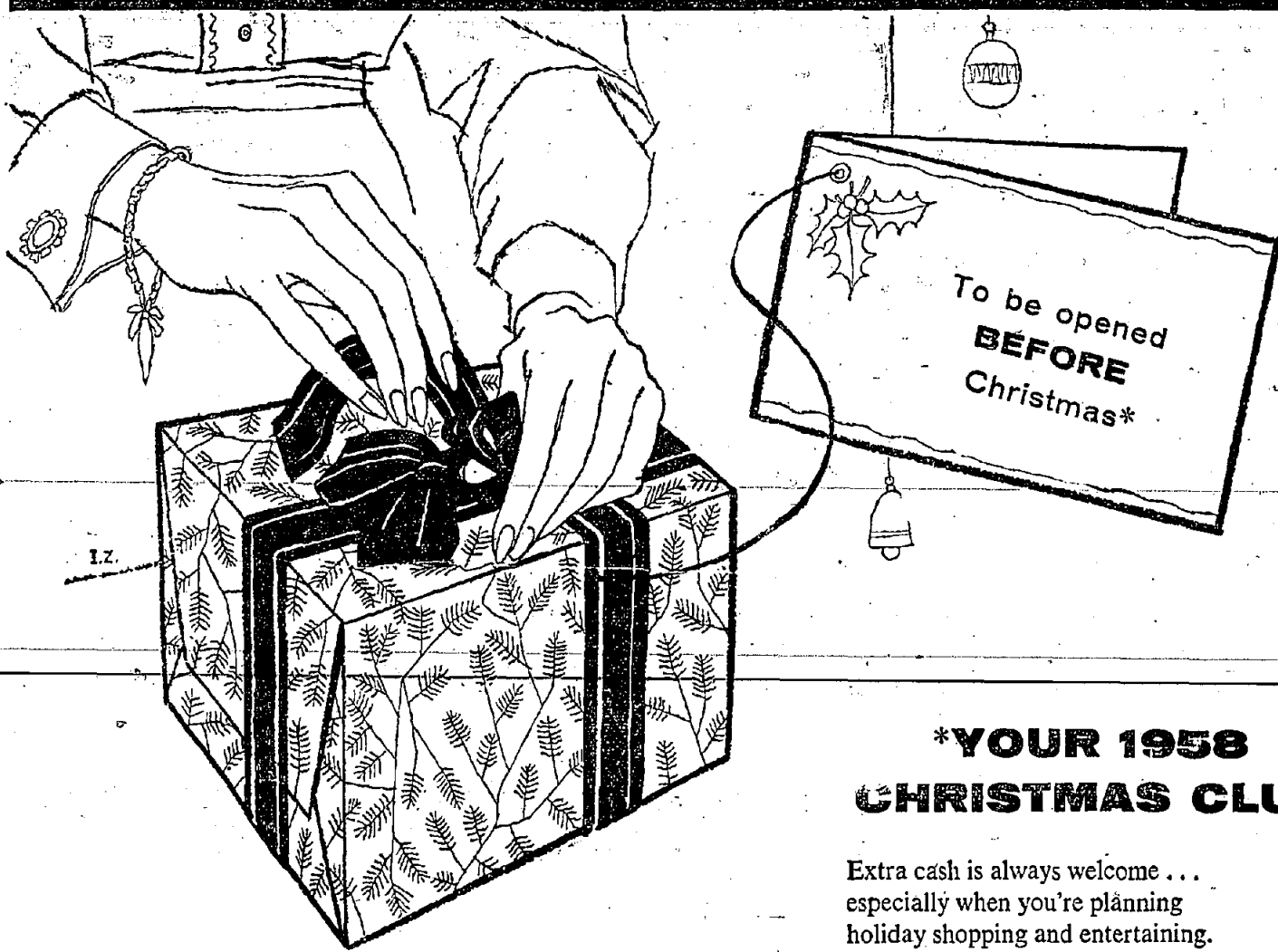
**LOFT'S POINSETTIA GIFT BOX**  
Decorative metal Gift Box contains a superb assortment of Dark and Milk Chocolates, each a center of attraction! 1 lb. \$2



...and a gay array of other LOFT'S fine candies including Peppermint Cakes, DeLuxe Hard Candy, Ribbon Candy, Milk Chocolate Santas...all GIFT WRAPPED

**LOFT'S Chocolates... as fine as you can give**  
Drive Out to the Candy Gardens®  
U. S. Highway 22, Union, New Jersey  
\*OPEN SUNDAYS

FOUNDED IN 1860 BY WILLIAM LOFT...NOW THE WORLD'S LARGEST CANDY KITCHEN



**\*YOUR 1958 CHRISTMAS CLUB**

Extra cash is always welcome... especially when you're planning holiday shopping and entertaining. Make sure you'll have the money you want for next year's holidays. Join our 1958 Christmas Club now and save ahead for debt-free fun.

THERE'S A CLUB PLAN TO FIT EVERY PURSE and PURPOSE



**THE NATIONAL STATE BANK**  
"Union County's Leading Bank"  
• ELIZABETH • SPRINGFIELD • ROSELLE PARK  
• SUMMIT • KENILWORTH  
MEMBER FEDERAL DEPOSIT INSURANCE CORPORATION

FIRST SINCE 1812



## Hi Neighbor!!

NEWS AND TIDBITS ABOUT YOUR FRIENDS & NEIGHBORS. If You Have Any News Call . . .

DREXEL 6-4502



LORRIE LEWIS

Jay Weinger, son of Mr. and Mrs. E. Weinger of 1 Craig road, is at the Hospital for Crippled Children, 89 Park avenue, Newark. Jay would welcome messages or cards from all his friends. How about sending Jay a note of cheer today.

Mr. and Mrs. Arthur Lichtenberg of 25 Bryant avenue are pleased to announce the birth of their second son, David Paul, on December 8 at Overlook Hospital, weighing 6 pounds, 13 ounces. David's brother, Ben, is three years old. Mrs. Lichtenberg is the former Selma Eisenstadt of Brooklyn, N. Y.

Mr. and Mrs. Andrew Morrison of 43 Highland avenue received a small bundle of pre-Christmas "Holly" on December 8 at Overlook Hospital. Holly weighed in at 7 pounds, 6 ounces. The Morrison's also have a two and one-half year old son, Skipper. Mrs. Morrison is the former Barbara Knoden of Ocala, Florida.

Larry Simon, son of Mr. and Mrs. Marvin Simon of 28 North Derby road, will be Bar Mitzvah on Saturday, December 21, at Temple Beth Ahm. A reception will be held the same evening at Ann Gordon's in Newark.


Mr. and Mrs. Stanley Norwalk, formerly of Metuchen, now reside at 125 Laurel drive. They have two children—Gay, age 3 years and Barbara who is one year of age. Mr. Norwalk is a chemical engineer.

The party held on December 15 at the Morris Millers of 13 Hemlock terrace spotlighted three birthdays. The Millers two sons, Craig and Bruce and their nephew Stuart Somin of Jersey City celebrated together at a family party. Craig was 7 years, Bruce was 15 years and Stuart marked his 8th birthday. Craig also celebrated his birthday with his first grade classmates in Mrs. Potts class at Raymond Chisholm School.

The welcome arrival at the home of Mr. and Mrs. Edward Culleton of 49 Mapes avenue is their son, Joseph Jerome, who put in his appearance on December 12 at Overlook Hospital weighing six pounds, ten ounces. The Culletons are parents of three daughters—Kathleen, age 4 years; Irene, age two and a half years; and Mary Lou, age one year. Mrs. Culleton is the former Roberta Peterson of Forest Hills, New York.

About 50 boys, all members of the A.Z.A., are leaving for Canada on December 26, where they will be house guests of fellow Canadian members. The boys, who range in age from 16-17 years, are all from Springfield and Bayonne.

### Are You Sure?



Come in and let experienced craftsmen check your diamonds and free you from worry of loss.

We carry a large selection of the latest type mountings. Your diamond will take on a new look in an up to date setting at wholesale prices.

**LA MOTTA SETTING Co.**  
 Located 237 Morris Ave. Above Bank  
 DREXEL 6-7445

### GREETINGS & GIFTS

are brought to you from Friendly Neighbors & Civic & Social Welfare Leaders through

**WELCOME WAGON**

On the Occasion Of: Change of Residence Arrivals of Newcomers to City

Mrs. Josephine Marcy  
 South Orange 3-0420  
 (No cost or obligation)

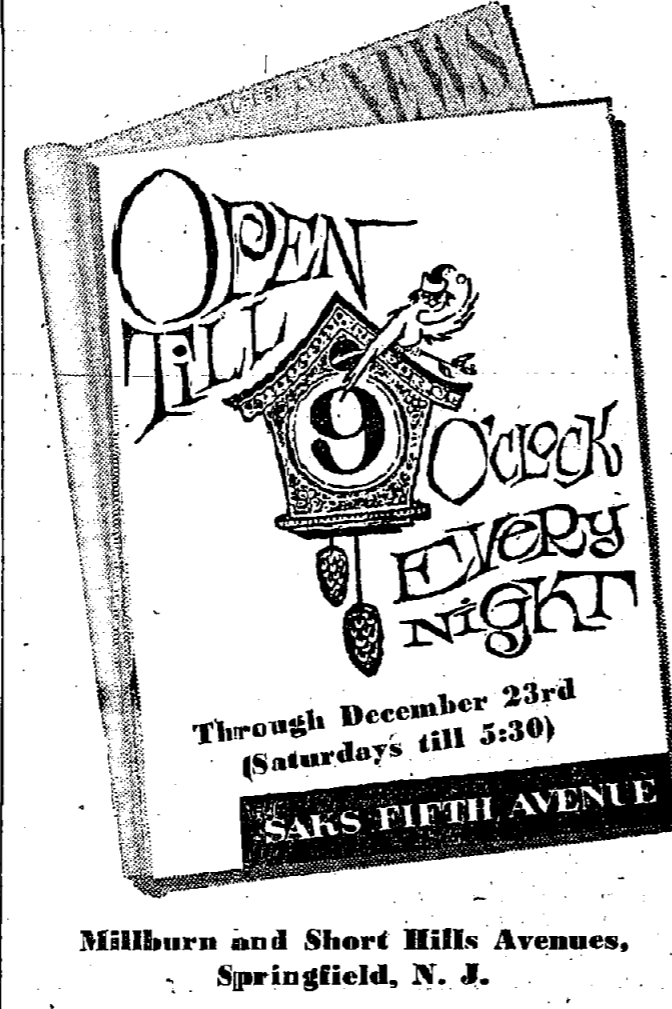
### Baltusrol Association Christmas Party Tonight

The Baltusrol Civic Association of Springfield will hold its annual Christmas Party at 6:30 Friday evening, December 20 at the Irwin Street Playground.

Many girls under the Christmas Tree will be exchanged, and Christmas Carols will be sung. Music will be provided through the courtesy of the Springfield Radio and TV Center.

The Association is very grateful to those who have lent a hand toward making the party a success, and a special commendation to young Artie Gerber of 80 Jefferson Terrace, the Paul Revere of the Baltusrol area.

Of course, Santa Claus will be there to distribute the gifts to the children.



**OPEN TILL 9 O'CLOCK EVERY NIGHT**

Through December 23rd (Saturdays till 5:30)

**SARKS FIFTH AVENUE**

Millburn and Short Hills Avenues, Springfield, N. J.

For the Holiday Season We suggest Fruit Cake, Christmas Cookies, Holiday Stollen, Nuts & Candies.

**Suburban Dessert Shoppe**  
 (Brownfield's Inc.)  
 288 MILLBURN AVE., MILLBURN, N. J.  
 DREXEL 6-4353




### Her Sweetest thrill on Christmas Day ... a cherished Fur.

MINK  
 DYED FUR SEAL  
 NATURAL SHEARED RACCOON  
 DYED MUSKRAT  
 NATURAL SHEARED BEAVER  
 DYED PERSIAN LAMB  
 NATURAL STONE MARTEN  
 DYED SQUIRREL  
 NAT. GREY PERSIAN LAMB

AT OUR LOW, LOW CLOSE-TO-FACTORY-COST PRICES from \$49. to \$5250.

OPEN DAILY TO 9 P.M.  
 SAT. & SUN. TO 6 P.M.

**FLEMINGTON FUR CO.**  
 FLEMINGTON, N. J.  
 NEW JERSEY'S LARGEST MANUFACTURER & DISTRIBUTOR OF FINE FURS



### 9 Lesson Festival At St. Stephen's

The celebrations of Christmas at St. Stephen's Episcopal Church, Main street, Millburn, will begin on Sunday, December 22nd, at 4:30 with a Festival of Lessons and Carols.

The augmented Christmas Choir will present representative carols of different nations and periods, as well as the familiar Christmas music. The Scripture Lessons will be read by nine members of the parish.

The form of Service known as

The Festival of Nine Lessons traces its history to a Service used at Truro Cathedral, which is itself based upon ancient sources. The First Lesson will be read by Donald Eppinger, a choirboy; the Second Lesson will be read by Phillip Dickinson, a member of the Server's Guild. Succeeding Lessons will be read by Don Kienzie (a college student), Burt Henry (a Church School teacher), Carmen Catapano (a Delegate to Convention), Fred W. Krumbholz (a Vestryman), Ralston Young (a Lay Reader, but more famous as "Red Cap 42"), David Brown (church warden),

and the rector, the Rev. James Elliott Lindsley.

Interspersed between the Lessons will be congregational and choral music. There will be solos by Donald Eppinger and Robert Miller, sopranos; Betty M. Keller, soprano; Gladys Pfirrmann, alto, and Alvin Adron, tenor.

### New York Times Gives Springfield Publicity

The New York Times gave Springfield some fine publicity last week by publishing an article in making all parking free in the Township during the holiday season.

The story appeared under the heading "Shoppers to Park Free As Town's Yule Gift," stating that "Parking meters in the shopping district here—about 100 of them—will be given a holiday during the Christmas shopping season. "The meters will be covered with white bags and signs proclaiming free parking until Christmas. The plan was arranged by the Chamber of Commerce and the Police Department. "It's an investment in good public relations," Police Chief Albert A. Sorge said.

# Newberry CUTS TOY PRICES

BELOW ARE A FEW **Hurry In. Choose the Gifts the Kiddies Are Wishing For. You'll Find Them All Here at Exciting Savings. Better Come Today.**

Wheel Toys

## SAVE UP TO 60%

TRAINS

DOLLS



**BALL-BEARING JUNIOR TRIKE**  
 Reg. \$12.98  
 Discount Price ..... **9.87**



**HANDY ANDY CHEMISTRY SETS**  
 Reg. \$1.98  
 Discount Price ..... **1.77**

**SAND LOADERS**  
 Reg. \$16.98  
 Discount Price ..... **9.27**

**MAGIC TABLES**  
 Reg. \$10.95  
 Discount Price ..... **6.77**

**DOLL HOUSE**  
 Reg. \$2.98  
 Discount Price ..... **2.27**



**FINGER PAINT SET**  
 Reg. \$1.00  
 Discount Price ..... **87¢**



**Pool Table Set \$3.87**  
 Reg. \$4.98 Discount Price



**CHAIN-DRIVE TRACTOR \$11.44**  
 Reg. \$15.98 Discount Price



**Sidewalk Bike \$21.88**  
 With Training Wheel  
 Reg. \$27.98 Discount Price

**OPEN EVENINGS TILL 9**  
 (Including Sat. Dec. 21).

|                                    |                        |
|------------------------------------|------------------------|
| 34 Pc. Electric FOOTBALL GAME      | Discount Price \$4.77  |
| Reg. \$5.98                        |                        |
| HOWITZER CANNON                    | Discount Price \$1.57  |
| Reg. \$1.98                        |                        |
| Microscope SET                     | Discount Price \$5.83  |
| Reg. \$7.98                        |                        |
| ERECTOR SET                        | Discount Price \$8.87  |
| Reg. \$10.95                       |                        |
| ARMY FRICTION COMMAND CARS         | Discount Price \$3.57  |
| Reg. \$3.98                        |                        |
| Military Transport With Cannon Set | Discount Price \$2.47  |
| Reg. \$2.98                        |                        |
| TOY CHEST AND BOOKCASE             | Discount Price \$10.47 |
| Reg. \$18.95                       |                        |
| SUPER BILT WILLY'S JEEP            | Discount Price \$1.66  |
| Reg. \$1.98                        |                        |
| Turnabout BUS                      | Discount Price \$3.17  |
| Reg. \$3.98                        |                        |
| WOODBURNING SET                    | Discount Price \$2.44  |
| Reg. \$2.98                        |                        |

**J. J. NEWBERRY CO.** GENERAL GREENE SHOPPING CENTER SPRINGFIELD, N.J.



### Woman's Club News

Members and friends of the Springfield Woman's Club proved that wind or snow would not keep them from attending the luncheon and bridge given by the Ways and Means Department on Thursday afternoon 12, at B. Almans, Short Hills. The group enjoyed a de-

licious luncheon of cold cuts, all kinds of salads and one hot dish topped off with a luscious strawberry cream pie. The table looked elegant with their cheeb center pieces circled with miniature wreaths made by Mrs. Robert Hayes, Ways and Means Chairman. After luncheon members sat back to enjoy a commentary on the gifts displayed. An interesting part of the afternoon was instruction on Gift Wrapping given by a demonstrator for the Tie-Tie Ribbon Co. The members were

shown how to make flat tree and spring bows, tinkle bells, trees, angels and many others, too numerous to mention. The proceeds from this luncheon will go into the scholarship fund. The Telephone Squad members are to be commended for the superb job they did when the scheduled December 4, meeting had to be cancelled because of inclement weather. American Home Christmas Party was held at Mrs. William Peacock's home 69 Irwin street, on December 18. Co-hostesses for the evening were Mrs. Stanley

W. McConkey and Mrs. Robert D. Hardgrove. Again this year each member brought to this meeting a gift of a toy and an article of clothing to make Christmas merrier for a less fortunate girl or boy. These gifts will be distributed by Miss Florence Gaudineer. The party started off with a toast. Games were played. Booby and first prizes awarded to losers and winners. Gifts were exchanged even though Santa Claus was missing. The table was beautifully set with a gold cornucopia centerpiece flanked by brass candlesticks. Ribbon sandwiches, cheese spreads and all kinds of cookies were served ending with a scrumptious whipped cream chocolate cake.



**SHOWS WINNING STYLE**—Regional High School wrestler, Berrie Keil shows how he pinned his man in last Tuesday's match with Morris-town. Willing assistant is Fred Hochstrasser, who won the heavyweight contest against the Colonials. (Photo by Mike Hopla.)

### Mothers Hold Xmas Fete At St. James

The Mothers Guild of St. James School, Springfield held its Annual Christmas Party in the school auditorium on December 16. Mrs. Philip Del Vecchio, Pres-

ident of the Guild, welcomed Rev. John Farrell, new pastor of St. James Church, for the members. Program for the evening fea-

tured Mrs. J. Caffrey, Kindergarten teacher, at the piano, leading the Guild in singing Christmas carols. A very jovial Santa Claus portrayed by Frank Franzese, was on hand to give each member a Christmas gift from his bag. Special guests for the evening were the Sisters and Teachers of the school. Refreshments were served in the cafeteria by the fifth grade Class Mothers, Mrs. J. Dunsmeier and Mrs. W. R. Patterson and their committee.

### Owner Of Jimbo's Texaco Engaged

Mr. and Mrs. Albert L. Shoemaker of 11 Duncan street, Millburn, announce the engagement of their daughter Cynthia Lee to Nimrod B. Webb son of Mrs. S. J. Warren of Orlando, Florida. Miss Shoemaker is a graduate of

## THIS WEEK

(Continued from Page One)

received quick support from Springfield. The response for practically every drive has been marvelous and Springfield has the reputation for helping quickly any worthwhile cause with dollars as well as interest and effort.

Right now the coming Heart Fund campaign, scheduled to start in February, is without a chairman. Mrs. Amy Bandomer has been doing the job as chairman for years and her work has brought Springfield "over the top" before the end of each drive. Mrs. Bandomer has been devoting her time to this — and many other programs — for many years and she now finds it impossible to take on the Heart Fund job this year.

The Heart Fund headquarters in Elizabeth has sent out a call for help—for some resident in Springfield to take over the job of leading the drive for much needed funds this year. The Springfield Sun would like to suggest some one. There certainly must be some volunteer in the Township. We shall be glad to relay the name to the Heart Fund headquarters.

### SAKS CHRISTMAS TREE, THE BEST!

You don't have to fight your way through New York City traffic and travel all the way to Rockefeller Plaza to see "the finest Christmas tree."

The one in front of Saks Fifth Avenue, right here in Springfield, is as beautiful as anything in the Metropolitan area—including the much publicized one in Rockefeller Plaza.

The huge tree on the Millburn avenue entrance of Saks is one of the stellar attractions for this year's holiday season. Families, from all sections of this area, make special trips in just to see this startling tree of lights.

Millburn High School and is with J. K. Smit & Sons, Murray Hill, N. J. Mr. Webb is a graduate of Orlando High School and attended New York University. He is now owner of Jimbo's Texaco Service Station Springfield, N. J. The couple plan a spring wedding.

**S.A.'s Junior Valet for Christmas**—  
A gift that gathers his clothes neatly, just like dad's. Our handsome silent valet has a deep tray for the unlimited contents of a boy's pockets, a wide sturdy shoulder hanger and handy brass hooks and shoe rack. By Lerner in hand-rubbed blond or walnut finish. 9.95. Children's Furniture, West Wing.

Millburn and Short Hills Avenues, Springfield, N. J.

**Robert the Robot**  
with remote control  
15" High reg. 5.98. Now **4.95**

**20 FOOT DIAMETER ICE SKATING RINK 13.95**

**Remco LOUDSPEAKER TRUCK**  
mobil electric signal system reg. 10.00 **6.95**

**TOM THUMB Deluxe Typewriter**  
With carrying case reg. 20.00 **14.75**

**KAY'S TOY AND HOBBY CENTER**  
279 Morris Avenue Springfield

Prescriptions Filled  
Eyeglasses Repaired  
Quick Service

**J. NORWOOD VAN NESS**  
Guild Opticians  
14 Alvin Terr., Springfield, N. J.  
DRexel 6-6108  
Established 23 Years in Newark

**GIVE HIM THE MOST EXCITING GIFT OF ALL...**

**DELTA "900" 9" Radial Saw**

Watch his face light up! It's a precision tool a man just can't resist... a perfect Christmas gift!

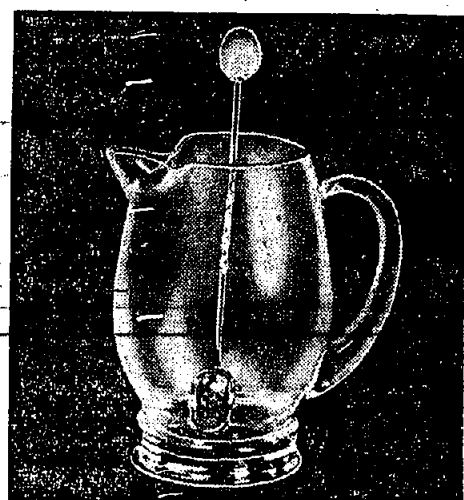
As Little As **19.50** Down

**FREE DELIVERY**

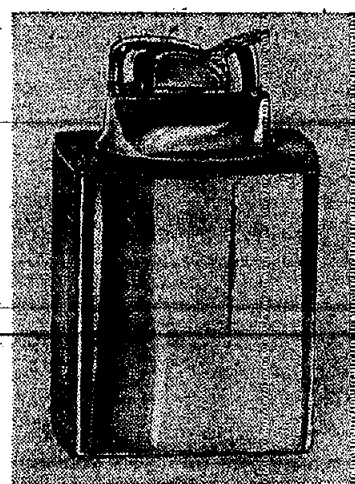
Reg. 11.85. Bernz-C-Matic Torch Kit, 5 piece... 6.50  
Reg. 13.95. Versa-Vise... 11.95  
Reg. 65.00. 1/2 H.P. Router Gift Kit... 49.95  
Router bits to fit all makes of Routers... 1.00  
Delta and DeWalt Radial Saws... 19.50  
Sabre Saws... 24.50  
Reg. 69.95. 6-1/2" heavy-duty full ball-bearing saw with 2 extra blades and rip guide... 45.50  
Pad type Sander both oscillating and straight line... 15.95  
DISTRIBUTORS OF: Stanley and Milwaukee Electric Tools - Lesto (Sabre Saws) - Porter Cable - Simonds (Blades) - Skilsaw - DeWalt - Lion (Trimmers) - Delta.

## Already Gift Wrapped and Waiting

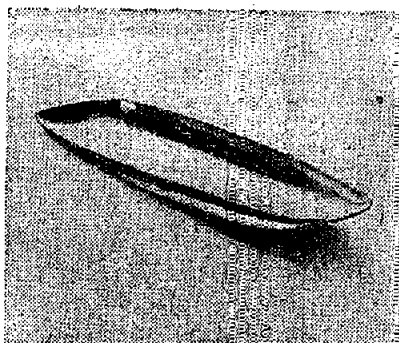
Why buck the traffic or Christmas crowds when any one of these popular gifts can be sent winging its way wherever you wish in only a moment's time. Just call DR 6-4800 and your gift will leave the store the same day. If you do pay us a visit they're handsomely wrapped and ready to be picked up right inside the door... No huffing, or puffing, or waiting for even a minute.



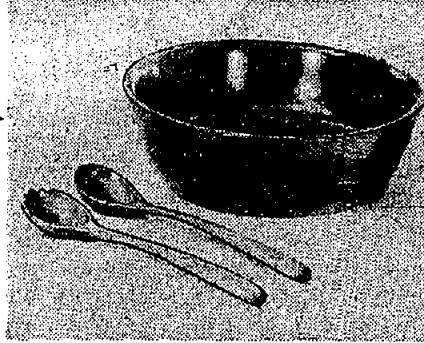
Bar pitcher of sterling trimmed clear glass with sterling spear and strain spoon. Holds one quart of juice, water or cocktails... \$12.50



Sterling silver table lighter is 3 1/2 inches high and simple enough for any decor. Has a camel like capacity and dependable spark... \$22.50



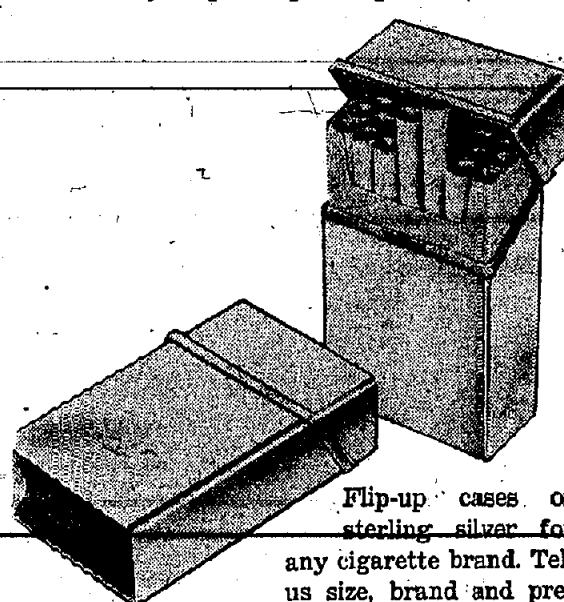
Bread tray of Gorham's heavy silver plate is a slender rectangle 13 1/2 inches long. Nice for celery or hors d'oeuvres too... \$9.95



Italian salad bowl and servers of golden walnut with rich grain. Bowl is 11 3/4 inches in diameter and generously deep. Complete 3-piece set... \$25



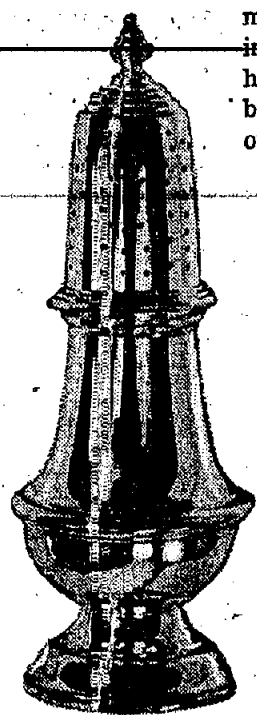
Delft blue and white ceramic mug from Germany. 5 inches high is available with handcast pewter cover and base as shown \$15 or without pewter fittings \$5.



Flip-up cases of sterling silver for any cigarette brand. Tell us size, brand and present cover (hard or soft) for accurate fitting. Each \$16.50



Audubon's Birds in color on creamy earthenware salad or dessert plates. Set of 8 plates, each different is... \$16



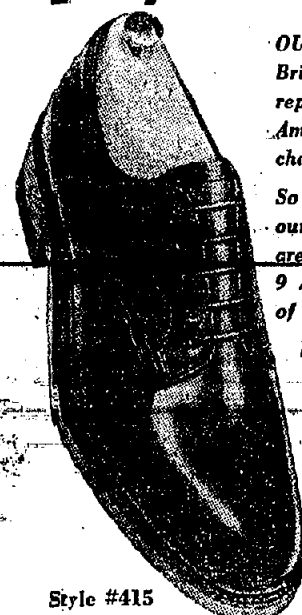
Sterling silver muffineer for sugar, cinnamon or grated parmesan cheese is a Paul Revere reproduction. 7 inches high. \$17.50

Federal tax included where applicable. Add 50¢ each beyond delivery area. Mail or phone orders welcomed. DR 6-4800

## BLACK STARR & GORHAM

243 MILLBURN AVE., MILLBURN, NEW JERSEY  
MANHASSET NEW YORK WHITE PLAINS

## GENUINE SHELL CORDOVAN BRITISH SHOES By DOVER STREET



OUR BUSINESS is primarily selling British shoes by mail on direct factory representation at a fraction of their American retail price saving purchasers several dollars a pair.

So many local customers have liked our personal fitting service that we are now open six days a week from 9 A.M. to 6 P.M., with the exception of lunch hour from 12 until 1.

MAIL ORDER PRICES PREPAIL

only \$13.95

Genuine Shell Cordovan Blucher. Rugged leather shoes; storm welt for extra protection. Also available with black micro-cellular soles. 30% lighter in weight. Fully leather lined.

FOR CHRISTMAS GIVE A GIFT CERTIFICATE

Steven Williams, Ltd.

40 CHATHAM ROAD SHORT HILLS, N.J.

(Opposite Short Hills Lackawanna Station)

DROP IN !!

See our complete selection of fine British shoes.



**P.T.A. NEWS**

The following resolutions were adopted by the New Jersey Congress of Parents and Teachers delegates, at the Convention held in Atlantic City in late Oct.

a. To propose revision of the State Aid Act of 1954 to provide a maximum of \$300 per pupil, and a minimum of \$75 per pupil for each local district. (At present the maximum is \$200 per pupil with a guaranteed \$75 minimum.)

(The P.T.A. proposes that resolution because of the increased school costs and because New Jersey, one of the richest industrial areas, can afford, under equitable taxation, to contribute its share to educate its children.)

b. To call on the legislature to expedite legislation for necessary expansion of state supported colleges and provide personnel for the expanded facilities.

c. To support State Bill 151 providing additional support for State Libraries.

d. To call for the establishment of a "State Commission on Children and Youth" to function in the same manner as the New Jersey Commission on Children and Youth which existed prior to and shortly after the "White House Conference on Children and Youth."

Members of all the P.T.A. are grateful to Mrs. J. Frank Jakobsen, for the valuable information she has given us concerning the "highlights" of the 57th Annual Convention.

**Caldwell School**  
The Officers and Chairmen of the James Caldwell School P.T.A. Executive Board, wish all P.T.A. members a Merry Christmas and every good wish for the New Year.

**Chisholm School**  
Mrs. Edward Ries Jr., School Mother of the Raymond Chisholm School P.T.A., announces that the Attendance Award for the November 18th Open House meeting was won by the third grade class of Miss Gloria Boorjy. The award is presented at each meeting to the class having most parents attending. This is calculated on a percentage basis.

The holiday parties will be held Friday morning, December 20, in the morning kindergarten classes and Friday afternoon in all other classes. The Class Mothers will serve as hostesses and provide refreshments including ice cream, decorated cookies and chocolate Santa Claus.

**Walton School**  
Following is a message from Mrs. Philip A. Hyatt, President of the New Jersey Congress of Parents and Teachers:

"This message will reach you during the Christmas season and my thoughts turn to the matter of family and community relationships. The spirit of Christmas is revealed by loving, giving, sharing, worshipping together and having fun together. As you observe the holidays in accordance with your religious beliefs, may

**Clifford Walker Engaged To Nurse**



MARILYN L. KENNEY

Mr. and Mrs. Clifton M. Kenney of Buckland, Mass. announce the engagement of their daughter, Marilyn L., to Clifford D. Walker of Schenectady, N. Y., son of Mr. and Mrs. Clifford D. Walker of Springfield, N. J.

Miss Kenney is a senior student nurse at the Brooklyn Hospital, Brooklyn, N. Y.

Mr. Walker is a graduate of Lehigh University, Bethlehem Pa. He is employed as a metallurgical engineer at the General Electric Co., Schenectady.

A summer wedding is planned.

you have the joy of sharing with others the many blessings that God has granted to you."

As President of the Edward V. Walton School Parent-Teacher Association, Mrs. Joseph A. Bender extends her greetings as follows: "May I add my wish for a safe holiday season and extend holiday greetings to all the parents, teachers and staff of the Edward V. Walton School."



**Footwear INC.** 354 Springfield Ave., Summit, N.J.  
Nationally Advertised Cancellations—  
Factory Stock Shoes Sold at 1/3 to 1/2  
Below Manufacturers' Fixed Price.  
Open Daily 9 A.M. to 6 P.M.—Friday 9 A.M. to 9 P.M.

**GIRL SCOUT Corner**



New troop of brownies, no number as yet, Leader, Mrs. Fred Merkle; co-leader Mrs. Henry Moe. A Christmas party will be held this afternoon at the Raymond Chisholm School for the girls in this troop. Twenty-five cent gifts will be exchanged and the brownies will enjoy an afternoon of games and refreshments. Christmas gifts of candles were made for their parents. The mothers' troop committee consists of Mrs. Daniel Kalem, Mrs. Robert Fried and Mrs. Philip Yellin.

Troop 750—Leader, Mrs. Robert Marino; co-leader, Mrs. John Feller. The troop's annual Christmas party and caroling will take place tonight, December 19th. The girls will begin their caroling at Mrs. Marino's home on Battle Hill avenue and continue up through the center of town and will end up at the home of Mrs. Frank Holler of 137 Meisel avenue. A party with refreshments and games and the girls' mothers as guests will conclude the evening. Instead of exchanging gifts, scouts have given gifts to be sent down to Marlboro State Hospital. Mrs. Holler and Mrs. H. Cubberley are in charge of the party, with all the mothers furnishing the refreshments.

Troop 744—Leader, Mrs. Lewis Gash—co-leader, Mrs. H. Enz. The brownie of this troop will hold their Christmas party tomorrow afternoon, December 20 at Mrs. Gash's home, 8 Garden Oval. The girls decided not to exchange gifts, but to send money instead to the Newark News Christmas Fund.

Troop 748—Leader, Mrs. Stewart Douglas—co-leader, Mrs. John Branning. The Brownies have been working hard making Christmas gifts for their parents. Mr. Branning and Mrs. Douglas will have a party this afternoon for the girls

at the latter's home, 38 Washington avenue.

New Troop, no number as yet, co-leaders, Mrs. Joseph Marzell, Mrs. Ralph Meyers and Mrs. David Hendlin. These intermediate scouts, who meet each Tuesday at the Florence Gaudineer School are working on Hanukkah and Christmas gifts for their mothers. The mothers' troop committee consist of Mrs. Bernhard Aronow, Mrs. Lawrence Landau, Mrs. Edward F. Lilien and Mrs. Stanley Soule. The following girls have been elected: Patrol Leaders, Phyllis Shtatman, Toby Kaplan and Diane Scooby; Assistant Leaders, Sherry Meyers, Marilyn Marzell, and Susan Hendlin; Scribes, Allison Kalem, Susan Rubinfield, and Barbara Reimsnyder.

Troop 745—Leader, Mrs. Walford Cox; co-leaders, Mrs. Edward Kent and Mrs. William Van Vranken. A Christmas party was held last night, December 18 at the James Caldwell School. The girls enjoyed carols, games and refreshments. Gifts were exchanged among the girls. Mrs. Kent was in charge of the party assisted by Mrs. Cox, Mrs. Harold Marter and Mrs. A. Fuerth.

**Ethical Society's Children's Sunday**

The Children's Sunday Assembly of the Society for Ethical Culture, 516 Prospect St., Maplewood, will hold its Annual Winter Festival on Sunday, December 22 at 11 a.m.

A feature of the program will be the enactment of a script written especially for the occasion. The children of the Sunday School will act as hosts to 15 children living in an orphanage in Newark. Following the program there will be a box lunch party attended by the



**CHAIRMAN**—Mrs. Jack M. Slater is chairman of the Student Health Department of O.R.T. who is planning the annual Student Health week-end at the Concord Hotel in New York between January 16 thru 19.

**Enters Sorority**

Evelyn Pedersen, a junior at Upsala College, has been initiated into Chi Delta social sorority. Evelyn is the daughter of Eric Wendelbo Pedersen of 238 So. Springfield Avenue.

At Upsala, Evelyn is studying to become a teacher.

On Friday, December 20, the Adult Discussion Group will meet at the Society's building at 8:15 p.m. They will continue their study of H. J. Muller's book, "Nses of the Pas." David Aronson of Montclair will lead the discussion.

**Your Library**

To paraphrase the well-known song "Christmas is bustin' out all over" in the Springfield Library, Christmas in other lands. These may be copied in the library. Parents, and other relatives of children inspired by the Book Exhibit held last month, have come to ask advice about making suitable purchases for the young readers. The new 'catalog Books in Print is being checked to see that information is correct. In addition, the booklet, Growing Up with Books gives many suggestions for purchase. This little book which the library gives to all who wish it, lists many famous books, old favorites along with books published this year. Since titles are listed by age and subject interest, many good ideas for gifts can be found here.

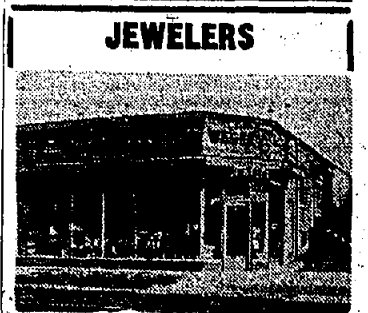
During the Christmas vacation the Free Public Library of Springfield will be open every day except December 24, 25, 31 and New Year's Day. This will give the

about Christmas in various countries. Mrs. Simmons has located a book of short paragraphs about Christmas in other lands. These may be copied in the library.

Parents, and other relatives of children inspired by the Book Exhibit held last month, have come to ask advice about making suitable purchases for the young readers. The new 'catalog Books in Print is being checked to see that information is correct. In addition, the booklet, Growing Up with Books gives many suggestions for purchase. This little book which the library gives to all who wish it, lists many famous books, old favorites along with books published this year. Since titles are listed by age and subject interest, many good ideas for gifts can be found here.

During the Christmas vacation the Free Public Library of Springfield will be open every day except December 24, 25, 31 and New Year's Day. This will give the

**JEWELERS**



**Wesley Jewelers**  
173 Mountain Ave.  
DIAMONDS • WATCHES  
JEWELRY  
"Where You Can Afford Fine Quality"  
Budget Terms Arranged  
DRexel 6-6047



**For the Holiday Gruning's Famous Ice Cream And Candy**

In the hand-packed \$1.15 quart — or the Freezer Pak — \$1.45 1/2 gallon.  
Holiday Specials — Egnog Ice Cream

Busy Christmas Shopping? Stop in at Gruning's for Lunch or Supper

**GRUNING'S MILLBURN**  
780 Morris Turnpike DRexel 6-5183

**Open All Day Sunday, Dec. 21 STOREWIDE LP SALE**

All Labels  
All 3.98 NOW 3.19  
2 for 6.00

ALL 4.98 NOW 3.98  
ALL 5.98 NOW 4.98

DISC AND SHUTTER  
266 MORRIS AVE. SPRINGFIELD DRexel 6-9720  
FREE CHRISTMAS GIFT WRAPPING

**SAVE 'EM!**



**OLD SHOES ARE LIKE OLD FRIENDS**

Don't throw them away! Bring them to us and we'll make them look like new. We take out the "oldness" — but the comfort remains.

**Expert Shoe Repair**  
Calanone Shoe Shop  
245 Morris Avenue  
Springfield  
DRexel 6-2682

Store Hours: 8 a.m. - 9 p.m.  
Free Parking In the Rear

**LET BEAUTY GO TO YOUR HEAD!**



Beauty starts with hair... and the loveliest hair-do's start here!

LET OUR EXPERTS WORK THEIR MAGIC

**MR. ROBERT'S**

Formerly with Giantry Salon of L. Bamberger & Co.  
HOUSE OF HAIR FASHION  
80 Morrison Road  
Springfield  
DRexel 6-9809  
Evenings by Appointment  
Completely Air Conditioned

The Officers Directors And Staff Of  
**CRESTMONT SAVINGS and LOAN ASSOCIATION**  
Wish You All  
A Very Merry Christmas  
And The Happiest of New Years

**MAPLEWOOD OFFICE**  
1286 Springfield Avenue  
corner Prospect Street  
SO 2-5100

**SPRINGFIELD OFFICE**  
175 Morris Avenue  
corner Linden Avenue  
DR 6-5940

Daily Hours: 8 a.m. to 3 p.m.  
OPEN MONDAYS until 7 p.m.

**CRESTMONT SAVINGS and Loan Association**

**WISS** Add-a-Diamond gifts that grow

Bracelet with one diamond unit, \$200  
Additional diamond units, each \$126  
Bracelet with three diamond units, \$472  
Diamond heart on gold chain, \$55  
Gold chain with three diamond hearts, \$159  
Prices include tax

**BUY HER A DIAMOND BRACELET** a link or two at a time. Start this Christmas with a beautiful centerpiece that has a cluster of seven diamonds and two bars, each set with five stones. On future gift occasions, add another cluster and bar until she has a complete, magnificent diamond bracelet. Other diamond-unit bracelets priced from \$52.75.

**START WITH A HEART**, a charming little 14 karat gold heart, centered with a diamond and strung on a gold chain. Perhaps you'll want to give her one or more hearts this Christmas, add to them later at birthday or anniversary time.

Pay only 10% down on our DIVIDED PAYMENT PLAN or open a CHARGE ACCOUNT

**WISS** FOUNDED 1848

NEWARK 2, 665 Broad Street

MONTCLAIR, 28 Church Street

EAST ORANGE, 594 Central Ave

ALL STORES OPEN EVENINGS MONDAY THROUGH FRIDAY



### School Art

(Continued from Page 1)  
 1. What is the purpose of art in the youngster?  
 2. Is it related to other work they are doing?  
 3. What learning process will be stressed?  
 4. How will the child react to the use of new materials?  
 5. Will this be a meaningful experience for the youngster, one in which he has to give of himself?  
 Children are generally happy in the art class since the type of activity, social mindedness, and creative expression that prevail

make for a relaxed learning situation. New media are explored; old crafts rediscovered. New horizons and worlds are unfolded and new sensitivity to beauty developed. Patterns are not needed generally; nor is there a need for copying. The child works best when he uses his head and hands in wholesome creative activity. He does not need another's pattern for he is doing his own thinking as God intended him to do.  
 Art grows with the child. A distortion in size to the adult is normal to the five-year-old. Such distortion is evident in lack of movement, incomplete drawing of features, improper placement of

sky and grass, depends on the age level and development of the child. As the youngster develops so will the growth of expression and interpretation.  
**1st Grade**  
 In first grade, children have the opportunity to develop the many kinds of art experiences they first shared in kindergarten. School is a very important part of the first graders' living, therefore the art program centers about activities which stress school and home life. The youngsters draw pictures of their helpers at home and in school — the doctor, policeman, school nurse, teachers, school crossing guards. They paint pictures about the kinds of activities which are shared in their home,

— mother washing dishes, or dad cleaning the car. They use colored paper and paste to make little holiday surprises — masks, baskets, people, animals. They work with clay and do simple printing. Many times they work with crayon and paints to the tune of little songs they learn. They are decidedly conscious of the world around them and talk about the changing leaves or the color of the sky when it rains; interesting events, or programs they have shared. Their new found ability to read and work numbers is so often evident in their art work. Basically they are acquiring a foundation which will be strengthened as they

go on through second, third and fourth grades in school.  
**2nd Grade**  
 In second grade, community life is stressed therefore many art activities are presented in connection with the life of a seven year old. There is a decided effort on the part of the child to draw more accurately what he or she sees. Life and motion come into their figures, such as a boy playing with a ball, the policeman stopping traffic. The trees no longer look like lollypops but have branches which grow from a tree trunk. Animals are often present in art work. The work is interesting because as a child's coordination increases the formation of objects

in pictures becomes truer. Children handle art media with more skill and there is a decided interest in using many new kinds of materials. At this age level, weaving, hooking, hammering, sawing, pasting, modeling, sewing, cutting, mixing paints, and simple carving are new experiences which are thoroughly enjoyed.  
**3rd Grade**  
 In third grade, besides an ever present interest in the community the children learn about ways of life in other lands. Their social studies lend them selves to arts and craft projects. Such things, as drawing pictures of other people and their homes, or painting murals depicting ways of doing things in far off places, lends enchantment to their art work. The pictures are usually interesting in their composition, color, and motion. The third grader is very sure of himself. He handles his materials well and can work with many varied media. The weaving now can be made on self-designed cardboard looms. Simple carving clay work, pottery, painting, crayon work, are but a few of the experiences the seven and eight year old youngsters enjoys. There are still many craft projects which

are a little difficult to handle but with a few months maturity he can sometimes surpass the fourth grader and work at a surprisingly high standard.  
 The fourth grader begins to set high standards for himself and consequently sometimes tends to become dissatisfied with his achievement in art. He tries to imitate the work of adults thus tending to copy rather than to develop his own creative abilities. As a result his work may lose that wonderful freedom of movement which is typical of the work of younger children. However, with proper understanding and direction his talents can be channeled. Creativeness can be further developed through clay sculpturing, paper mache work, mobiles, wire sculpture using plaster of paris, weaving, embroidery, basketry, sewing, and many other crafts. Many projects related to his other subjects such as geography, science and history are started in the art class. Likewise, hobbies, such as rock collections, model planes, collections of leaves, feathers, etc., frequently furnish the basis for artistic activities both in and outside of the classroom.  
 Art is many things to many people. It is the dress of the po-

liceman, or a child of another country. It is the rhythm in song or a game. It is the movement of a river or the growth of trees. It is the wonderful feeling you get when you exercise your creative ability. Therefore, art activities are individualized to accommodate the varying capabilities and interests of all the children.  
 Broader objectives of everyday living are likewise nurtured and fostered through the art program. Children are taught to work together, to exchange interesting ideas, to respect one another's work, and to accept each individual in terms of what he is capable of accomplishing.

**Cake Sale Friday**  
 The Springfield Chapter of B'nai B'rith Women will have a cake sale at the Grand Union on Friday Dec. 20th.

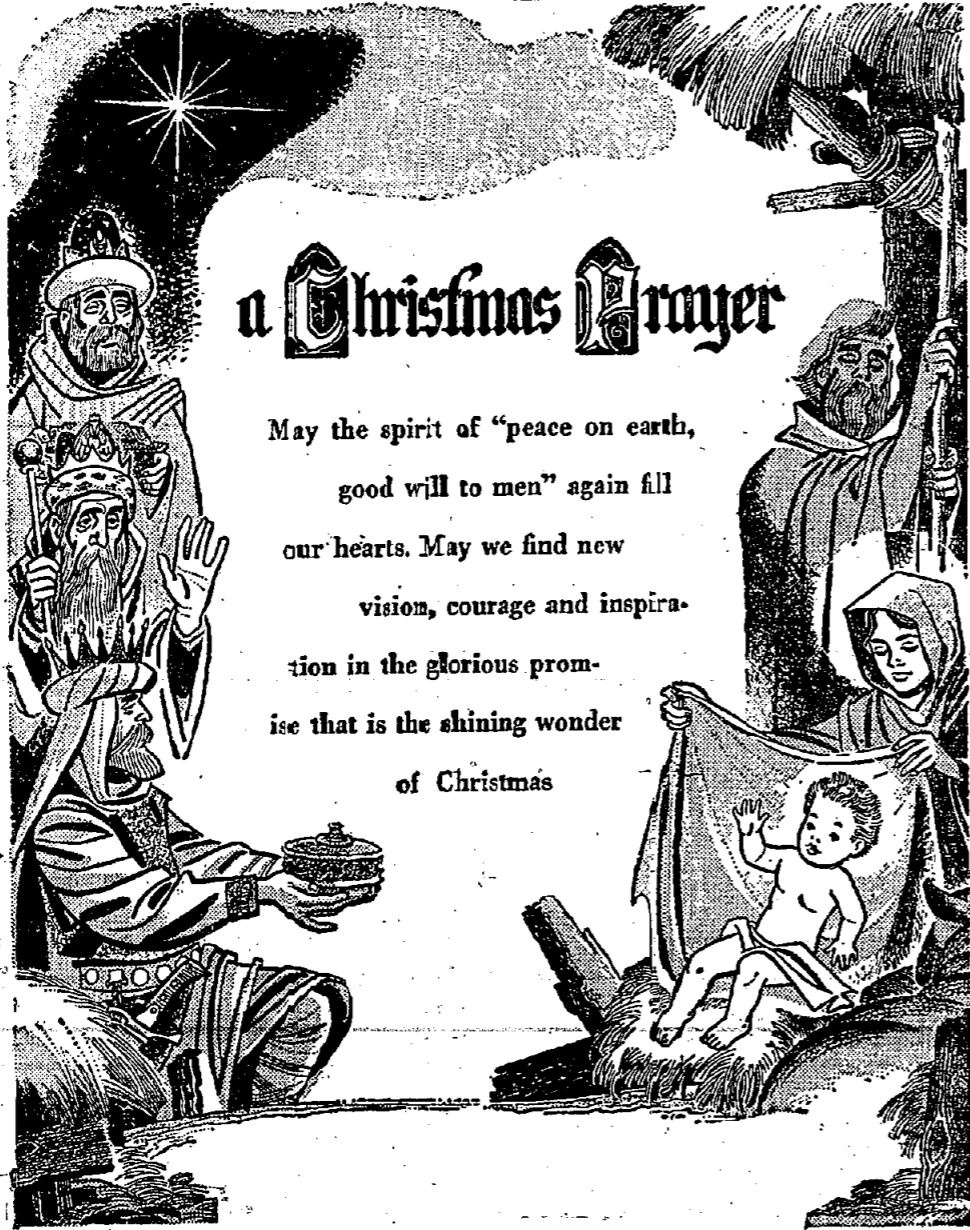
**CAR WASH PICK-UP AND DELIVERY**  
**AL BAKER'S MOBILGAS STATION**  
 Morris Tpke.  
 Corner Millburn Avenue & DRexel 6-9879

## COME TO CHURCH CHRISTMAS SERVICES

METHODIST CHURCH OF SPRINGFIELD

ST. JAMES CATHOLIC CHURCH

ST. STEPHEN'S EPISCOPAL CHURCH  
 Main Street  
 SERVING MILLBURN & SPRINGFIELD



### a Christmas Prayer

May the spirit of "peace on earth, good will to men" again fill our hearts. May we find new vision, courage and inspiration in the glorious promise that is the shining wonder of Christmas

FIRST PRESBYTERIAN CHURCH

HOLY CROSS LUTHERAN CHURCH

SPRINGFIELD BAPTIST CHURCH

May the beauty of the Christmas story, with its inspiring message of everlasting love, carry us through the coming year with Confidence and Faith.

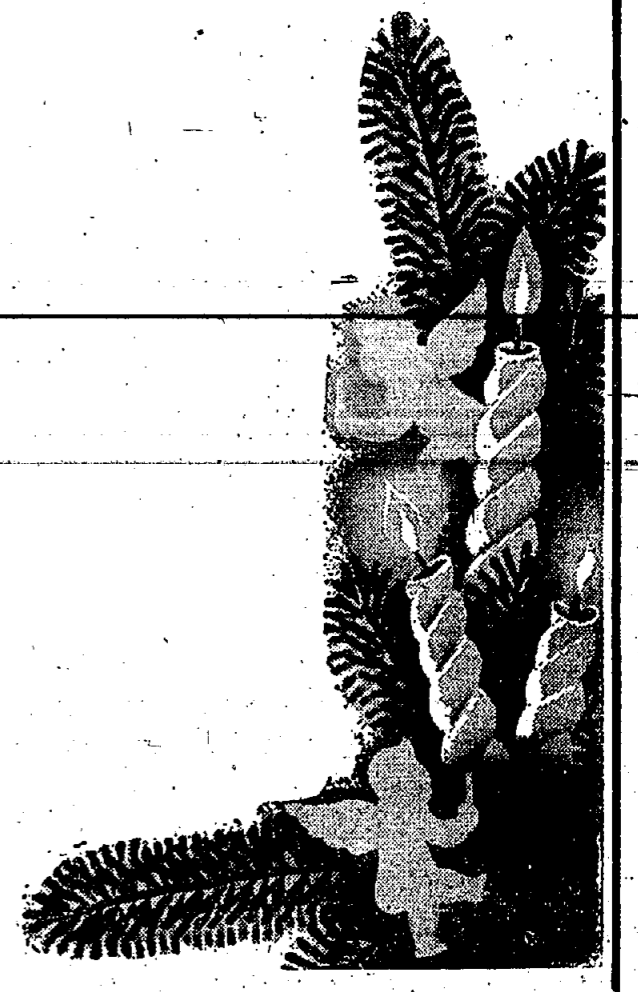
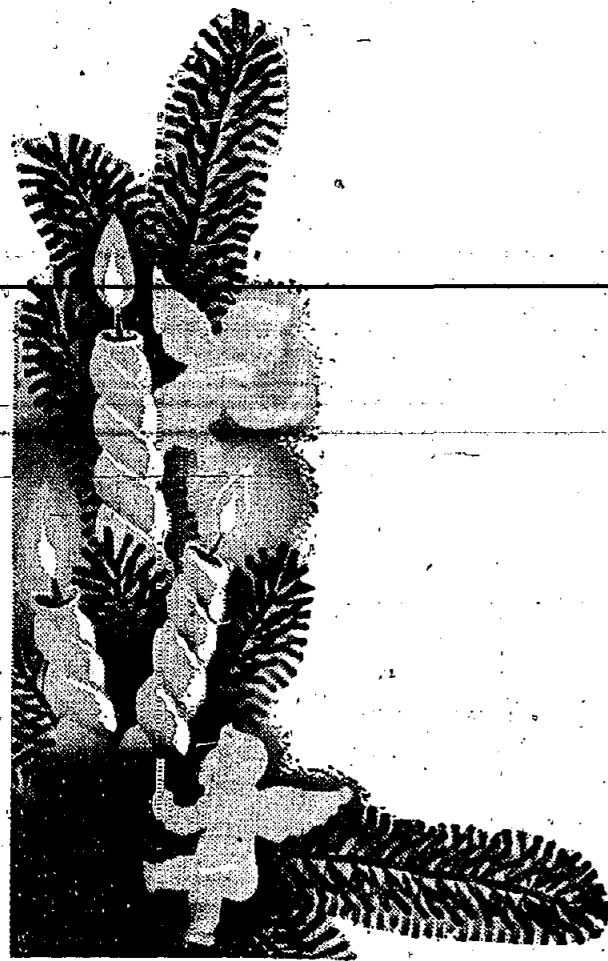
**YOUNG'S SERVICE HOME**



# FRIENDS & NEIGHBORS

## IN SPRINGFIELD

# TROY VILLAGE, Inc.





### Regional Bowlers Prepare For Meet

If you stroll in to Echo Lanes Bowling Alleys in Mountainside on a Tuesday afternoon, directly after school, you will no doubt see Regional High's Bowling team in action. The boys, about 35 in number, ranging from Freshman to Seniors, have been bowling since early October. Neither rain or snow have kept these boys from attending each Tuesday afternoon and under the guidance of Coach Peter Secca the team is rapidly rounding into shape.

The main bowling team will consist of 15 boys. The remaining boys are not cut or forced to quit but are asked to continue their bowling with the team and by next year they may be the top bowlers. If a boy does not make the team at first and his average later shows improvement over those on the team, he will immediately be brought up to the main team.

Coach Peter Secca picked Eric Dalrymple and Arnie Greene to share the honors of being co-captains, Mike Kazin was selected as manager of the team. The leading Senior bowlers on the team

are Dave Freeman, Gary Gramam, and Eric Dalrymple. The outstanding Junior bowler is Mike Hopta. Mike sports the highest average of the team with 162 and the highest game at 208. The team is looking forward to the State Championship Bowling Match, hoping to leave a better impression than was given a year ago.

A tentative Bowling schedule is in the process of being arranged with other schools. As it stands now no other school has started practice yet. If there is any person, reading this article that would like to arrange bowling matches with Regional, stop in or write to Athletic Director Mike Suchena, % Jonathan Dayton Regional High School, Springfield.

The main team will continue its bowling over the Christmas vacation with one or two teams practicing but it is Mr. Secca's hope that all the boys will bowl at least once over the vacation.

The team would like to thank the managers of Echo Lanes for permitting them to use ten alleys every Tuesday.

Before the Spanish introduced the horse to them, Indians on the western plains had two domesticated animals — the turkey and the dog.

### Deborah Hears Of Three Heart Cases

The December meeting of Suburban Deborah was held at Temple Beth Ahm on Tuesday evening. Mrs. Stewart Szerlip, chairman in charge of admitting patients to Deborah Sanatorium gave a report on three prospective heart surgery cases from this area and the progress of Leonard Bernstein, who has already received heart surgery under the sponsorship of Suburban Deborah.

Mrs. Harold Barg, membership Vice President, gave a summary of Suburban Deborah's methods of fund raising throughout the year for the benefit of the new members present. Mrs. Howard Siegel, treasurer, Mrs. Sidney Schneider, chairman of a fund raising project and Mrs. Jack Zlotin, chairman of the New Years Greetings project, submitted reports to the membership. Mrs. Allen Borsky presided.

Mrs. Norman Stromeyer then introduced Miss Mildred Elliott from Saks Fifth Avenue who demonstrated the art of gift wrapping. Following the demonstration was a gift wrapping contest which was thoroughly enjoyed by all.

### Children To Hold Christmas Program

A most unusual Christmas program will be presented at the Springfield Methodist Church Sunday, December 22, at 4 o'clock, consisting entirely of the young people of the Sunday School Church Classes.

Each department will be represented as follows: Organ Prelude, Ronald Barz; Call to Worship, Responsive and Scripture reading by the Junior Department, also a pageant "Christmas Morning" staged by the Junior Department; the Junior Choir will sing "Shine O Wonderful Star" and "Prince of Peace"; Prayer by Intermediate Department; The Christmas Story by the Senior and Intermediate Department; "Away in the Manger" by the Kindergarten; and "Bring a Torch, Jeaneke Isabella" by the Primary Department. Service to be concluded by the Benediction and Postlude.

A carol sing will take place outdoors after which refreshments will be served.

### Churches

**BATTIE HILL COMMUNITY MORAVIAN CHURCH**  
777 Liberty Avenue, Union, N. J.  
The Rev. Donald E. Fulton, Pastor

**Friday—**  
7:15 p.m. Junior Choir Rehearsal.  
7:00 p.m. Senior Choir Rehearsal.

**Saturday—**  
10:00 to Noon—"Paper Collection."

**Sunday—**  
9:30 a.m. Sunday Church School.  
10:45 a.m. Morning Worship. The Christmas Liturgy will be prayed. The Rev. Donald E. Fulton pastor, will speak on "The Kingdom of our Christ." The Junior Choir will sing "The Babe in the Manger," a Polish Carol; and the Senior Choir will sing the Hallelujah Chorus from George Frederick Handel's "The Messiah."

10:45 a.m. Nursery program during the worship service.

5:30 p.m. Presentation of the Sunday Church School Program. Mr. Theo. Barz, General Superintendent, will be in charge of the program presented by all the departments of the Church School. Mr. Barz will be assisted by Mrs. John Barz. Following the program there will be a Christmas party in the fellowship hall to which everyone is invited.

**Tuesday—**  
7:00 p.m. Christmas Eve Candlelight Service. Caroling immediately following the service.

Asparagus was a popular appetizer at ancient Roman dinners. As early as 200 B.C. the writer Cato gave detailed gardening instructions that would be considered good today except that he recommended the use of seed from wild asparagus plants.

### Vassar College Choir to Present Radio Broadcast

Vassar College alumnae and parents in this area may be interested to know that on Saturday, December 21, at 3:05 p.m. for 25 minutes, special selections from the annual Christmas concert by the Vassar College Choir will be broadcast over station WOR.

A party of Spanish colonists were massacred by Indians in New Mexico's pioneer days. A later party of colonists buried the victims and placed crosses over their graves. Later a city was built there and that is how Las Cruces (The Crosses) got its name.



**6 NEW WAYS . . .**  
(And There Are Dozens More!)  
**TO STYLE YOUR HAIR STYLE WITH OUR PERMANENT . . .**

You'll love all the new easy-to-care-for styles that are SoHy-inspired. There isn't a hair texture in the world that doesn't take to our permanent. Big curls, little curls, large waves, small waves — all ways set, always permanent.

**FREE CONSULTATION**

**Paul & Louis Hairstylists**  
261 MORRIS AVENUE  
SPRINGFIELD, NEW JERSEY  
DRexel 6-9877 Free Parking in Rear

Mr. Louis, formerly of Charles of the Ritz  
Mr. Paul, formerly of Hahne & Co.

**NEW FROM BAUER & BLACK**

**Front-Opening ABDOMINAL BELT** ONLY \$7.50

• Goes on and off in a jiffy  
• No day-to-day adjusting  
• Will not bind

**SPRINGFIELD PHARMACY**  
52 Years of Reliability  
238 Morris Ave. DRexel 6-5850

# DAVEGA DISCOUNT CENTER



**Men's WOOL SUBURBAN COATS**

- WOOL QUILT LINING
- Colors: BLACK, BLUE, CHARCOAL, BROWN
- 80% Reprocessed Wool
- 15% NYLON,
- 5% Rayon & Acetate

**9.88** Usually 16.95

Sizes 36 to 46

**MEN'S REVERSIBLE ZIP JACKETS** 3.59

Assorted Colors S-M-L Usually 6.99

**ICE SKATES**

**GIRLS' FIGURE OUTFITS**  
Sizes: 12 to 3

**BOYS' BOX TOE HOCKEY OUTFITS**  
Sizes 12 to 2

**5.99** Usually to 10.00

Ladies' & Men's 20th Century Roller

**RINK SKATES** 9.88

Usually 16.95

**BACKYARD FUN for ALL!**

Polymaster Sturdy Ice Skating

**PORTO-RINKS**

Needs only two inches of water! Square shape means more skating area.

12 ft. x 12 ft. Reg. 19.95 . . . 16.94  
15 ft. x 15 ft. Reg. 27.95 . . . 22.94

**SANTA SAYS . . . "YOU SAVE MORE AT DAVEGA DISCOUNT CENTER"**

ON ROUTE 22 SPRINGFIELD, N. J. **FREE PARKING**

Between SO. SPRINGFIELD and HILLSIDE AVES.

**Kodak Gift Camera Sale!**

**FABULOUS CAMERA SAVINGS**

**KODAK MOVIE CAMERA** List 29.95 **19.49** NO MONEY DOWN

**Kodak "Brownie" Eye Level Camera** Orig. List 4.95 **1.88**

**TRIPOD MOVIE SCREEN** List Price 14.95 **5.95** Folds Compactly for Storage

**AUTOMATIC SLIDE PROJECTOR** List Price 68.25 **29.99** NO MONEY DOWN

**KODAK 10-PC. FLASH OUTFIT** Orig. List 22.25 **9.95** NO MONEY DOWN

**KODAK Starflash Outfit** List 9.95 **6.89**

**4-LITE BAR** List 5.95 **2.99** Bulbs Extra

**KODAK Starflash Outfit** List 9.95 **6.89**

Original List Price 119.45  
• Kodak 8mm Movie Camera with F2.7 Lens  
• Famous 500-Watt Projector with F7.6 Lens  
**59.95** Only 56 Down

**TWO-PIECE ENSEMBLE SETS**

**3.39**

What a wonderful gift! A waltz length gown with matching duster. In Nylonized Fabric — All washable. Scooped neck. Puffed sleeve. White—Pink—Blue.

**SHORTY NYLON GOWNS**

**2.47**

This is a wonderful gift item—these cute gowns. 100% washable nylon with sheer overlay. With cute trimmings. Pastel shades.

**QUILTED ROBES**

**3.29**

Enchanting printed dusters — Feather-light, yet featherbed warm. Also solid colors. Many with rayon satin binding. Pastel colors.

**GIRLS' SLACKS** 1.65

Boxer waistline . . . Wonderful for general wear. Perfect for these cold days. Reg. 2.49

**GIRLS' SLIP-ON SWEATERS** 2.54

100% Pure Orlon novelty styles with cute new trims—In dark colors and pastels—Sizes 7 to 14.

**BOYS' PULLOVER SWEATERS** 1.86

100% Orlon sweaters — Assorted patterns. Reg. 2.99

**CHOOSE FROM SCHRAFFT'S HOLIDAY FAVORITES**

- Milk Chocolate Marshmallows
- Milk Chocolate Chips
- Jelly Beans
- Peanut Butter Crisps
- Candied Nuts
- Licorice Drops
- Spiced Strings

**DAVEGA SPECIAL! HOOVER VACUUM**

THE CLEANER THAT WALKS ON AIR

Reg. 89.95 **48.96**





"The Lord is my light and my salvation; whom shall I fear? The Lord is the strength of my life; of whom shall I be afraid?"

# Find the strength for your life...

## WORSHIP TOGETHER THIS WEEK

"I have never known a man to have faith in himself," goes an American adage, "unless he first has faith in God."

It takes such courage to face life . . . greater courage than any of us has alone. It takes such strength to accept success humbly, to overcome setbacks . . . greater strength than any of us has alone.

And yet the world is full of unclaimed heroes and heroines . . . men and women who have, in the course of their lives, faced seemingly insurmountable obstacles and griefs. Faced them, and conquered them: If they were the kind of people who talked about themselves, they'd tell you . . . "I never could have done it without the help of God."

The strong Faith they called on to help them can be yours. Build such a Faith for yourself. Make it the firm foundation of your family's security and happiness. Begin this week to worship together at your Church or Synagogue. There you'll find the strength for your life.

These Messages are being published each week in the Springfield Sun and are sponsored by the following interested individuals and business establishments:

**CRESTMONT SAVINGS & LOAN ASSOCIATION**  
175 Morris Ave., Springfield

**NATIONAL STATE BANK OF ELIZABETH**  
Springfield Branch  
Member of Federal Reserve System

**CHANNEL LUMBER CO.**  
Route #22, Springfield

**OLAH TOOL & DIE CO.**  
82 Brown Avenue,  
Springfield

**ALFRED YOUNG**  
Funeral Director  
145-49 Main Street  
Millburn

**PAUL C. STECK, INC.**  
Precision Sheet Metal  
and Experimental Work  
25 Brown Avenue, Springfield

**DRAKE FUEL SALES CO.**  
679 Morris Avenue  
Springfield

**PENTAGON METAL PRODUCTS CORP.**  
58 Brown Avenue, Springfield

**DAVEGA DISCOUNT CENTER**  
Route #22, Springfield

**RESIDENCE CONSTRUCTION CO.**  
321 Main St., Millburn

**ELECTRICAL INSTALLATIONS, INC.**  
Commercial and Industrial Contractors,  
49 Brown Ave., Springfield

**RICHARD BEST PENCIL COMPANY, INC.**  
Springfield

**GENERAL ELECTRIC COMPANY**  
Route 22  
Springfield

**SMITH AND SMITH**  
Funeral Directors  
Springfield—Newark

**H. SCOTT EXCAVATING CO.**  
115 Morris Ave., Springfield

**SOMERSET BUS CO., INC.**  
Charter Coaches for Hire  
ROUTE 22, MOUNTAINSIDE, N. J.

**INVESTMENT CASTINGS CO.**  
60 Brown Avenue, Springfield

**SPRINGFIELD WELDING CO., INC.**  
8 Commerce Street,  
Springfield

**INVESTORS LOAN ASSOCIATION**  
64 Main St., Millburn

**WOODSIDE HOMES**  
A Fisher-Robbins Community  
Springfield

**METALS AND RESIDUES, INC.**  
65 Brown Avenue, Springfield

### CHURCH SERVICES

**FIRST PRESBYTERIAN CHURCH**  
Morris Avenue at Main Street  
Springfield, New Jersey  
Pastor: BRUCE W. EVANS  
GEORGE F. FORNER

A cordial welcome is extended to all who worship in this historic church. Representing over two hundred years of faith and service in this community it invites you to worship and work with those in its fellowship.

9:30 a.m. Church School  
Classes for all children starting at the age of 3 years. Classes will meet in the Chapel, Parish House and Meeting Room of the Springfield Library.

9:30 & 11:00 a.m. Church Worship Services  
Fourth Sunday in Advent. Christmas will be observed at both services with the sermon by Rev. Bruce W. Evans entitled "God's Eternal Message." Special music by the choir.

7:30 p.m. Westminster Fellowship  
This group consisting of high school age young people, will sing carols for student members of the congregation, returning to the Parish House for their regular meeting and the reading of Dickens' "Christmas Carol" by Rev. Mr. Evans.

**NEXT WEEK**  
Tuesday 2 p.m. Candlelight Service with a presentation of the Nativity Pageant.  
Friday 7 & 9 p.m. Men's Club Bowling League.

**TEK METHODIST CHURCH**  
Academy Green, Springfield, N. J.  
Pastor: Virgil E. Mabry  
Telephone DEB 411  
1150 N. Barr  
Organist and Music Director

God is light and in him is no darkness at all. If we walk in the light, as he is in the light, we have fellowship one with another.

Thursday, December 19—  
Junior Choir Rehearsal—7:00 p.m.  
Senior Choir Rehearsal—8:00 p.m.  
Friday, December 20—  
Chorus Choir Rehearsal—3:15 p.m.  
Methodist Men's Bowling at Center Street Apts.—7:00-9:00 p.m.  
Saturday, December 21—  
Primary Children only—extra session from 9:00-10:15 p.m.  
Sunday, December 22—  
Couples Club—Bowling—7:30 p.m.  
Family Worship and Church School Classes—9:15 a.m.  
Nursery Class for convenience of parents with small children—11:44 a.m.  
Regular Worship Service—11:00 a.m.  
Sermon Topic at both services: Messiah—by the Pastor, Rev. Virgil E. Mabry.  
Church School Christmas Vespers—4:00 p.m.  
M. Y. F. Christmas Program—7:30 p.m.

Monday, December 23—  
Choir Rehearsal for "High School Chorus" at Mrs. P. O'Neal, 192 South Springfield Ave.—7:00 p.m.  
Junior Carolers—meet at church—6:30 p.m.  
Tuesday, December 24—Christmas Eve Candlelight Service, Holy Communion—10:45 p.m.  
Wednesday, December 25—  
Christmas Greetings to all. "For unto you is born this day, in the city of David, a Saviour."

**HOLY CROSS LUTHERAN CHURCH**  
439 Mountain Ave.  
Springfield, N. J.  
Pastor: Lester P. Messersmith, Pastor  
Telephone DEB 412

Saturday, December 21  
9:30 a.m. Confirmation Instructions  
10:30 a.m. Pre-confirmation Instructions.

Sunday, December 22—  
Fourth Sunday in Advent  
9:30 a.m. Sunday School  
11:00 a.m. Divine Worship  
Sermon Text: John 1:19-28  
Sermon Topic: "Prepare for Christ's Coming."

4:00 p.m. Children's Christmas Service.  
Tuesday, December 24—  
10:00 p.m. Christmas Eve Candlelight Service—Sermon: "Operation Rescue"  
Wednesday, December 25—  
10:00 a.m. Christmas Day Service  
Sermon Text: Luke 2:1  
Sermon Topic: "God's Christmas Gift to Man"

**THE SPRINGFIELD BAPTIST CHURCH**  
Presiding the same gospel message as Dr. Ed. Graham  
Service in Gaudineer School  
South Springfield Avenue  
Pastor: Rev. Jesse J. Speck

Sunday Morning—  
9:45 Sunday school for all ages including adults.  
11:00 Regular morning worship by the pastor.  
5:45 p.m. Young people's meeting, 1st Sunday of every month only.  
7:00 p.m. Evening Gospel Service, 1st Sunday of every month only.  
Wednesday—  
Prayer and praise service at 8 p.m. at the home of Mr. and Mrs. Ortel, 130 Hemlock avenue.

**BAHA' WORLD FAITH**  
Fire-side chats every Friday evening at 8 p.m. Adult & children's classes, Sunday mornings 11 to 12. Home of Mr. and Mrs. J. C. Ions, 141 Satter street, Springfield.

**ST. JAMES' CHURCH**  
Springfield

Sunday Masses—  
7 a.m.  
8 a.m.  
9 a.m.  
10 a.m.  
11 a.m.  
12 Noon

**TEMPLE BETH ARN**  
Ballinool Way  
Rahel, Rahel & Lavinia  
Center Irving Kramersman  
Organist Lenore Greene

Friday Night Service—8:30 p.m.  
Saturday Morn Service—9:45 a.m.

**MILLBURN BAPTIST CHURCH**  
Rev. E. F. Bauman

First Church of Christ, Scientist  
302 Springfield Avenue, Summit, N. J.  
A branch of THE MOTHER CHURCH, THE FIRST CHURCH OF CHRIST, SCIENTIST in Boston, Mass.  
Sunday Service at 11:00 A.M. Sunday School 11:00 A.M.  
Wednesday Testimonial Meeting 8:15 P.M.  
Reading Room, 340 Springfield Ave. Open daily to 4:30 except Sundays and Holidays; also Friday evenings, 7:30 to 9:30 and after the Wednesday meeting.

Morning: "Beholding Our Salvation."  
Evening: "Up-to-date Wise Men."

**FIRST CHURCH OF CHRIST SCIENTIST**  
233 Springfield Avenue  
Summit, N. J.

11 a.m.—Sunday Service  
11 a.m.—Sunday School  
Sermon Topic: "Is the Universe Evolved by Atomic Force?"  
REFORM JEWISH CONGREGATION OF SPRINGFIELD  
Presbyterian Parish House  
Main Street, Springfield  
Rabbi Malcolm Mendelsohn  
Friday Night Service—8 p.m.

**ST. STEPHEN'S CHURCH**  
Main Street, Millburn  
(Serving the Millburn-Springfield Area)  
The Rev. James Elliot Lindley, Rector

**CHRISTMAS AT ST. STEPHEN'S**  
Dec. 22—Morning Services as usual.  
4:30—Festival of Carols and Lessons.  
Dec. 24—11:30 p.m. Midnight Service of Holy Communion.  
Christmas Eve—8:00 a.m. Holy Communion, 10:00 a.m. Holy Communion.  
Dec. 26—(St. Stephen's Day)—Holy Communion, 9:30 followed by Corporate Communion of College Students.  
Dec. 28—8:00, Holy Communion.  
9:30—Family Service, including special Christmas Service for the Church School.  
11:30—Morning Prayer and Sermon.

**FIRST BAPTIST CHURCH**  
Colonial Ave. and Thoreson Terrace  
Union, N. J.  
Rev. Winfield F. Bamish  
MU. 2-724

Sunday, 25—  
9:30 a.m. Sunday School  
11:00 a.m. Morning Worship Service.  
Sermon—"Following His Star."  
4:00 p.m. Vesper Service—"The Story of the Other Wise Man."  
Tuesday, 26—  
7:30 p.m. Christmas Eve Service.  
Thursday, 28—  
7:45 p.m. Choir rehearsal

**MOUNTAINSIDE UNION CHAPEL**  
Rev. Milton P. Achey

Thursday, December 19—  
1:15 p.m. Women's Bible Class meeting at the parsonage.  
8:00 p.m. Choir rehearsal at the Chapel.

Sunday, December 22—  
8:00 a.m. Morning Worship Service.  
9:45 a.m. Sunday School classes for all age groups from nursery through adult. The annual White Gift Service will be held with the gifts going to the Open Door Children's Home in Kentucky. Bus transportation to and from Sunday School is available for children in Mountaineerside.  
11:00 a.m. Morning Worship Service with sermon by the Rev. Achey. Junior Church will be held in the Sunday School rooms for children in the first through sixth grades. Nursery supervision will be provided enabling parents with

small children to attend the Worship Service.  
8:45 p.m. Youth Fellowship Meeting at the Chapel.  
7:45 p.m. Evening Service with sermon by the Pastor.  
Tuesday, December 24—  
11:00 p.m. Christmas Eve Communion Service.  
Thursday, December 25—  
8:40 a.m. Rev. Achey will be heard on his regular broadcast over radio station WAWZ—1360 k.c.  
VISITORS ARE WELCOME TO ALL SERVICES AT THE CHAPEL.

**BAHA' HOUSE OF WORSHIP**  
Wilmette, Illinois

To Our Neighbors  
In Christ Loving  
Christmas Greetings

As you celebrate the birthday of the Founder of the Christian Faith, may we assure you that, as Baha'is believing in the fundamental oneness of all religions, we make no attempt to invalidate those first and everlasting principles that underlie Christianity. Though members of the youngest world faith, we believe in Jesus Christ as the Son of God and that His Word is eternal.

Therefore, at this time especially, we join you in singing, "Glory to God in the highest . . ."

The Baha'is of Springfield

Merry Christmas! Merry Christmas! Merry Christmas! Merry Christmas! Merry Christmas!

**MERRY CHRISTMAS!**

The mistletoe's above the door,  
The mantel's hung with pine,  
And every frosted windowpane  
Is bright with candlelight . . .

At last the children are in bed  
And parents smile to see  
The growing pile of dreams-come-true  
Beneath the star-tipped tree.

Far off, the church bells bless the night  
With wind-blown, silvery chime—  
May Joy and Peace be with us all  
Until next Christmas-time!

—MAUREN MURDOCH

**JCP & L**  
Jersey Central Power & Light



### Watch Out for Bogus Yule Packages, Chamber Warns

The Chamber of Commerce warned residents to be on guard against unordered merchandise activities at Christmas time. The Chamber stated that the sending of unordered merchandise through the mails has long been a nuisance problem. It is frequently placed on a charitable contribution basis, the recipient of the merchandise being informed that his money will be used to further various worthy causes. For this reason, numerous unordered merchandise promotions are conducted during the Christmas season. The Chamber said that among the items of merchandise persons may expect to receive in their mail boxes this season are ball-point pens, religious medals, Christmas cards, and a variety of small gift items. In each case, the merchandise will be accompanied by a request for remittance. In some cases, if the recipient fails to respond to the mailing, he may receive a follow-up letter or postcard, urging either that he remit or that the article of merchandise be returned to the sender.

Recipients of unordered merchandise are not obliged to acknowledge receipt of such merchandise. No reply of any sort is necessary. Persons receiving such materials in the mail should ignore any suggestions contained in the accompanying literature that a reply is required or necessary. Recipients of such mailings are not required to return the merchandise they have received. The literature accompanying the merchandise and succeeding follow-up letters or postcards, may hint or suggest that the recipient must either pay for the merchandise or send it back. This, however, is not the case.

Unordered merchandise need not be paid for unless it is used. Recipients should understand that, if they plan to use the merchandise, it should be paid for. If, however, they do not want the merchandise, payment is not necessary, providing the merchandise is laid aside and not used. Recipients of unordered merchandise are not required to give it any particular or unusual care.

The merchandise should not be deliberately abused, but the recipient is under no obligation to take particular pains regarding its general upkeep and preservation. Recipients of such merchandise are not required to keep it beyond a reasonable period of time. After it has been kept a reasonable period of time, it may be thrown away or destroyed. If the sender of the unordered merchandise, or his agent, calls in person at the home of the recipient and requests the merchandise, the recipient is obliged to surrender it to the sender or his agent.

In doing so, the recipient may demand payment for storage charges before relinquishing the merchandise. When unordered merchandise is mailed by a charitable organization, recipients who believe in giving wisely may wish to ascertain essential facts about such organizations before making a remittance. Charitable gifts should be made on the basis of familiarity with the organization and its activities — and unordered merchandise solicitations are no exceptions. If persons who receive unordered merchandise find them-

selves interested in the charitable causes involved, but do not have information on the specific organization, it is recommended that information should be received from the Chamber of Commerce before a donation is made.

Asparagus was a popular appetizer at ancient Roman dinners. As early as 200 B.C. the writer Cato gave detailed gardening instructions that would be considered good today except that he recommended the use of seed from wild asparagus plants.



# Season's Best

**SAFEWAY**



**ALL Safeway Turkeys Are ...**  
**GOV'T GRADE A!**  
**TURKEYS**

Oven Ready; Gov't Inspected

18-24 LB. SIZES

lb. **37**<sup>c</sup>

**YOUR SAFEWAY MEAT SECTION HAS A WIDE SELECTION FOR YOUR HOLIDAY FEASTING—DUCKS, GEESE, CAPONS and FRESH FOWL.**

For Your Christmas Shopping Convenience All Safeway Stores Will Remain

**OPEN 'TIL 9 P.M.**  
**FRIDAY, DECEMBER 20th**  
**SATURDAY, DECEMBER 21st**  
**MONDAY, DECEMBER 23rd**  
 Closing at 6 P.M. Tues., Dec. 24th, so that our employees may spend Christmas Eve with their families.

**Cranberry Sauce** OCEAN SPRAY 2 1 lb. cans **35c**

**Oven-Ready Biscuits** PILLSBURY BUTTERMILK 2 8 oz. cans **27c**

**CANNED HAMS**  
 IMPORTED  
 VIGO DANISH 5 lb. can **4.99**  
 ZWAN HOLLAND 3 lb. can **3.45**

READY-TO-EAT—12 TO 16 POUND SIZES

**SMOKED HAMS** lb. **55**<sup>c</sup>  
 WHOLE OR FULL SHANK HALF BUTT **59**<sup>c</sup> lb.

SWIFT'S PREMIUM BROWN 'N SERVE **SAUSAGE** 8 oz. pkg. **45c**

**Fruit Cocktail** DEL MONTE 2 30 oz. cans **69c**  
**Green Giant Peas** TENDER SWEET 2 17 oz. cans **33c**  
**Prune Juice** SUNSWEET 2 quart. bot. **59c**

For The Finest Produce... All You Need Remember is Safeway!

Cash Savings As You Go... Safeway

**SWEET POTATOES**  
 FANCY YELLOW

2 lbs. **19**<sup>c</sup>

**McINTOSH APPLES**  
 FANCY QUALITY

2 lbs. **19**<sup>c</sup>

**Florida Oranges** 5 lb. bag **39c**

**Sliced Pineapple** Lalani 2 20 oz. cans **55c**  
**Pineapple Juice** Lalani 2 18 oz. cans **23c**  
**Grape Jelly** OR GRAPE PRESERVES EMPRESS 2 12 oz. jars **43c**  
**Breaded Shrimp** Captain's Choice 10 oz. FROZEN pkg. **59c**  
**Stuffed Olives** TEM-TEE PLACED 7 1/2 oz. SPANISH QUEEN bot. **55c**

**FREE! Thurs., Fri. and Sat. FREE!**  
 (December 19th, 20th and 21st)

**YELLOW TURNIPS** Flavorful lb. **5c** **PASCAL CELERY** Crisp large stalk **17c** **RED GRAPES** Juicy Plump 2 lb. **39c**  
**YELLOW ONIONS** Mild 4 lb. **21c** **POTATOES** U.S. No. 1—Size A 10 lb. bag **45c** **BANANAS** Golden Rip 3 lb. **29c**

**HURRY... Get your Doll for Christmas**  
**DOLLS OF ALL LANDS**

CHOICE OF 6 LOVELY MODELS SEE THEM ON DISPLAY EACH **69c**  
 (With Purchase of \$5 or over) OFFER EXPIRES DECEMBER 31st, 1957.

Colorado Brown Stoneware **BEER STEINS** (With Purchases of \$2.50) Set of 3 **99c** (Offer Expires June 15, 1958)  
**Lucerne Egg Nog** RICH-CREAM-AND-EGGS-AND-SPICED SO NICE—ALL MIXED AND READY TO POUR. quart. ctn. **63c**  
**Stuffing Bread** MRS. WRIGHT'S—WHITE 24 oz. loaf **27c**

**AT THE SPRINGFIELD SAFEWAY**  
 WITH PURCHASES OF \$10 OR OVER  
**5 POUND BAG SUGAR**  
 OR  
**6 BOTTLE CARTON COCA COLA**  
 (JUST PAY BOTTLE DEPOSIT)



Serving the Springfield — Summit — Millburn Area





# Joyous Christmas

It is our sincere wish that you enjoy a holiday season as joyously bright as the glow of candlelight, as full of hope and happiness as a Christmas carol.



## Sam's Barber Shop

258 Morris Avenue Sam Mellio, Prop.

Our dearest holiday wish for you is to celebrate a good old-fashioned Christmas... surrounded by all your loved ones... renewing old friendships... partaking of the joys of giving and receiving.



## Springfield Pharmacy

238 Morris Avenue DRexel 6-5050

We'd like to deck your Christmas tree with life's loveliest ornaments... enduring love and friendship, good fortune, good health and great happiness.



## Springfield Gulf Station

326 Morris Avenue DRexel 9-9859

We're cooking up warm good wishes for all our kind friends and patrons for a holiday season that fulfills all their hopes.



## Rajac Products Aluminum

276 Morris Avenue DRexel 6-4649

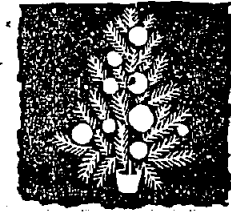
Just a friendly greeting to wish you and all your loved ones a very healthy and happy holiday season and many, many more to come!



## Center Meat Market

254 Morris Avenue DRexel 6-2064

May the Christmas message of Peace and Good Will inspire renewed faith in the hearts of men everywhere.



## Beacon Hill Stationery

226 Morris Avenue DRexel 6-1254

Noel, noel... once again, the timeless beautiful story of the First Christmas fills our hearts, as we extend our best wishes for a wealth of happiness.



## Beckmann's Food Market

307 Morris Avenue DRexel 9-4176

We hope that among the gifts Santa leaves under your tree is a large helping of joy, health and happiness. May this be your most joyous Christmas ever!



## Springfield Wine & Liquor Store

276 Morris Avenue DRexel 6-0536

No flowery sentiments for us... just sincere wishes to you and yours for a good old-fashioned Merry Christmas, full of fun and festivity for one and all.



## Springfield Tavern

250 Morris Avenue DRexel 6-9878

Yuletide greetings and our best wishes for a holiday that finds you in good health and leaves you with many pleasant memories.



## Keevic Farber Lumber Co.

150 Morris Avenue DRexel 6-4242

We'd like to join the chorus of good wishes coming your way for the most joyous Christmas you've ever had!



## Kay's Toy & Hobby Center

279 Morris Avenue DRexel 6-9868

Once again, we are happy to take this opportunity to wish all our good friends and patrons a very joyous Christmas!



## Springfield Market

272 Morris Avenue DRexel 6-0431

Laughter, smiles, quiet contentment... all are part of the spirit of Christmas. May they be yours in full measure.



## Glemming Wallpaper & Paints

248 Morris Avenue DRexel 6-7795

We're singing out with a cheery greeting, with a hearty wish that the holidays will bring you many happy hours.



## Modern Lighting Co.

613 Morris Avenue DRexel 6-6648

May Christmas come to your house, bringing the light of good cheer and the warmth of good friends and good fellowship. All best wishes to you!



## B. Bruh & Son

275 Morris Avenue DRexel 9-4629

A happy, happy holiday to you and you and you! We're wishing all our friends and patrons the very best of everything, both now and in the New Year ahead.



## Springfield Barber Shop

268 Morris Avenue Gene Palmieri and Mario Tongo

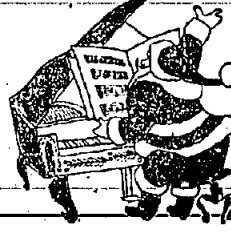
Joy in friendship is one of the great pleasures of Christmas, and so it is with much warmth that we wish our friends and patrons a Merry Christmas.



## Reinette Youth Center

246 Morris Avenue DRexel 9-5135

Here's wishing you a truly happy holiday season. We want you to know that we appreciate your good will and thank you for the opportunity of serving you.



## Frank's Auto Service

385 Morris Avenue DRexel 6-0162

The wonder in the eyes of children, the joy of giving and receiving, the glad sounds of Christmas carols... may all these, and more, brighten your Yuletide.



## Rappaport Spring Drug

273 Morris Avenue DRexel 9-2079

From candy canes to happy reunions with friends and loved ones, the holiday season holds many joys. Our wish is that you may have a most bountiful share.



## Courtesy Laundromat

268 Morris Avenue DRexel 6-2199

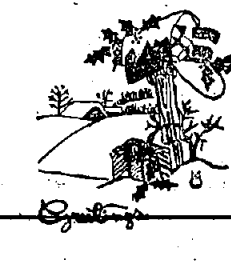
Greetings of the season to you, our friends and patrons! May peace and happiness be in your heart and joy in your home at this glorious holiday time.



## Brettler's Department Store

242 Morris Avenue DRexel 6-4108

From all of us to all of you, our sincere wishes for a holiday season of good cheer.



## B. J. Chadwick Agency

336 Morris Avenue DRexel 9-4653

We hope this brightest, warmest time of all the year fills your heart and home with its old-fashioned happiness!



## Marcel's Luncheonette

271 Morris Avenue DRexel 6-9820

Ringling bells and joyful voices herald a happy Christmas season. We extend to you our sincere Yuletide greetings and best wishes.



## Disc and Shutter

266 Morris Avenue DRexel 6-9720

Good news! It's holiday time. Our wish is that your Yuletide will be a newsworthy one, headlined by happiness, good health, good cheer for you and yours.



## Center Hardware

240 Morris Avenue DRexel 6-0459

From all of us to all of you, best wishes for a holiday season that lights up your hearts and homes with love and laughter.



## Dore-Ann Dress Shop

330 Morris Avenue DRexel 6-5191

We're all aglow with warm wishes to one and all for their merriest Christmas ever... a happy holiday, bright with long-lasting blessings of love and friendship, good health, good luck and good cheer.



## Springfield Hardware

265 Morris Avenue DRexel 6-0877



# GREETINGS TO ALL



As the wise men came to Bethlehem, may the spirit of Christmas come to you and yours... filling your hearts with its wonder and warmth.

**Florence Lee Shop**  
263 Morris Avenue DRexel 6-4457

It's Christmas time... a time of cheer, of good fellowship and good will... a time when friends near and far exchange the greetings of the season.

**Milton's Liquors**  
General Greene Shopping Center  
DRexel 6-1612

Another joyous holiday season is here... and another opportunity for us to wish all our good friends and patrons every happiness and success.

**Bunnell Brothers Insurance**  
8 Flemer Avenue DRexel 9-2400

Glad greetings to you! We're coming your way with a sleigh-load of good wishes for your holiday happiness.

**Sinclair Service Center**  
251 Morris Avenue DRexel 6-9855

Here's hoping all the heart-warming, old-fashioned joys of the season will be abundantly yours.

**G & L Delicatessen**  
General Greene Shopping Center  
DRexel 9-9872

In the spirit of Christmas, we wish our friends and patrons a happy holiday season, filled with all the good things of life.

**Tony's Pizzeria**  
Flemer Ave. & Mt. Ave. DRexel 6-9772

To one and all, we send greetings of the season, and wishes for a holiday rich in friendship and bright with happiness—a Christmas to remember.

**G & Variety Store**  
717 Mountain Avenue Ben Posner, prop.

We hope that all your dreams of a joyous holiday come true and that many more happy occasions will come your way in the days to follow.

**Colantone Shoe Shop**  
245a Morris Avenue DRexel 6-2682

As we welcome another festive holiday season, we sincerely hope that it is chock-full of good health and lasting happiness for you and all those dear to you.

**Morey La Rue**  
General Greene Shopping Center

We're coming your way with sincere wishes for a holiday season that you will always look back on as being one of the happiest times of your life.

**Drexel Quality Cleaners**  
230 Mountain Avenue DRexel 9-5090

Here's hoping that this happy holiday season rings in much joy for our dear friends and patrons, now and in all the years to come.

**Purifan Superette**  
762 Mountain Avenue DRexel 6-0373

We're getting into the Christmas spirit by blossoming out with best wishes to you and your family for a happy, fun-filled holiday season!

**Springfield Battery & Electric**  
245 Morris Avenue E. E. Clayton, prop.

All the best of everything to you and your family during the holiday season. We hope you all have a perfectly heavenly time!

**China Sky Restaurant**  
General Greene Shopping Center  
DRexel 9-5010

To all our good friends and patrons, we take pleasure in extending our best wishes for a full measure of all the joys of this most festive of seasons!

**Regional Barber Shop**  
232 Mountain Avenue Alex Dominski, prop.

We're ringing out our heartiest wishes to all for a holiday bright with warm fellowship, good cheer, good health and high happiness!

**Roland Drugs**  
Tab's Shopping Center, Mountain Avenue  
DRexel 9-2244

We could try to write a greeting that would be cute as a cherub... but these words say it best: "Merry Christmas and good wishes to you."

**Hi-Way Tailoring**  
Center Street DRexel 6-0544

Here's wishing you and your loved ones a Christmas holiday in perfect harmony with all the best life has to offer and much happiness ever after!

**Casale's Turkey Farm**  
128 Springfield Avenue DRexel 6-1509

May Christmas joy bloom brightly in your heart and home. And may happy memories of the season be yours to cherish.

**Springfield Radio & TV Center**  
233 Mountain Avenue DRexel 9-4545

Holidays are happy times, and we hope that this season will be an especially joyful one for you and yours. Our best wishes to you.

**Mrs. Prince's Stand**  
647 S. Springfield Ave. DRexel 6-1360

Time to light up our windows and extend to all our good friends and neighbors our heartfelt wishes for the happiest of holiday seasons!

**Karlin's Paint & Wallpaper**  
Center Street DRexel 9-2099

Bright and cheery as a Christmas candle is our sincere wish for you. May you have a very merry Christmas!

**Torchy's Diner**  
90 Springfield Avenue DRexel 6-9848

In the spirit of the season, we greet you warmly, and sincerely wish you good cheer. May your holidays be just as jolly as a sleigh ride.

**Springfield Heights Garage**  
721 Mountain Avenue DRexel 6-1804

May the age-old but ever-new story of Christmas recapture your spirit and inspire you anew with all the joy and wonder of the Day.

**Howard Johnson's Restaurant**  
Route 22 DRexel 9-2181

We're sounding off to wish you and yours a Christmas that hits all the high notes of happiness, good cheer and good fellowship.

**Park Drugs**  
General Greene Shopping Center  
DRexel 9-4942

To you and yours, season's greetings. Heartily, we wish for you a Christmas that's merry and bright. May Santa... and the New Year, too... bring you just what you're wishing for!

**Sam's Friendly Service Station**  
145 Morris Avenue DRexel 6-0230

May every star in the heavens, every joyful Christmas hymn, every greeting from the heart remind us of the true deep meaning, the inspiring message of Christmas.

**Rau Quality Meats**  
715 Mountain Avenue DRexel 6-5505

Here's wishing you a holiday in tune with all the best things of life. May your home ring with the happy sounds of laughter, music and merry-making.

**Harmony House**  
Route 22 DRexel 6-3400





### Freeholders Pay Map Fees Despite Lawsuit Threat

Despite the threat of a possible law suit that will compel the individual members of the Board of Freeholders to make personal reimbursement of \$6,494 to the county treasurer, the Board last week voted unanimously to pay county newspapers for the pre-election publication of controversial Route 22 maps.

The bills for publication of the

maps, preparation of engravings and matrices, totaled \$6,494. Julius Kwalick, Elizabeth attorney representing six Democratic taxpayers, served notice on the all-Republican governing body that if payment was approved his clients would consider court action in the Law Division of Superior Court.

Addressing the board before the vote on the payment was taken, he said that plans for an injunctive proceeding to restrain approval of the bills had been abandoned in favor of a new legal course.

If the bills were paid, he continued, his clients might start

suit to make each member who was on the board when it ordered publication to pay his share of the total cost back to the county treasury.

Freeholder Albert J. Bonninger, board director, had no comment on Mr. Kwalick's admonishment. After the meeting, however, he explained that the bills were approved as items covered by printing and publications appropriations, a line item in the budget.

The controversy over the publication goes back to October when the maps, claiming to show the paths of realigned Route 22 and its proposed spur to the Goethals Bridge, appeared as daily and weekly newspapers. The board said maps represented the "latest thinking" of the State Highway Department on the course of the federally supported road program.

Democrats charged that the GOP freeholders were trying to embarrass Gov. Robert B. Meyner in Union County in the waning days of the election campaign. The maps stirred such

protest in the towns through which the route passed.

The Freeholders, despite State Highway Department characterization of the maps as merely "broad brush strokes," insisted they had performed a "public service" in their presentation. They added the bills would be paid from the county treasury.

Democrats, after their surprising election victory, announced they would file for an injunction to prevent payment of the bills if the board moved for approval of them. Mr. Kwalick was sent to the board meeting on Nov. 30 to ask for background information with which he could prepare a suit if one developed.

According to Mr. Kwalick, he has been given the information he sought. He has not disclosed the names of his clients.

Approval of the payments was treated in a routine manner by the board. The bills were from 15 newspapers and a map making firm in Maplewood.

### Paper Mill Offers "Matchmaker" for Holiday Season

"The Matchmaker," an exuberant farce by the Pulitzer prize-winning Thornton Wilder, has been scheduled as the next attraction at the Paper Mill Playhouse where it will be given for three weeks beginning Thursday evening, December 26.

Nina Olivette will be starred as the matchmaker widow of the 1880's and Jack Harrold will be seen as a wealthy merchant for whom she is supposedly trying to find a wife, while actually eliminating all likely candidates so she can set things up for herself. Ailsa Dawson will be seen as her chief competitor, a milliner who wants to get married because she is looking forward to the fifties.

A huge triumph for over a year in New York in 1955 and 1956, "The Matchmaker" is a series of jokes within a joke, since it is a collection of boisterously funny situations satirically framed in the broadly farcical style in which nineteenth century theatergoers took such delight.

The story takes the audience through a day's adventures in

New York of a group of people from nearby Yonkers in the 1880's and centers on a pompous, wealthy merchant who has gone to the metropolis to seek a wife and thinks he is interested in a demure milliner. His embarrassing encounters are accompanied by unabashed staples of old-fashioned farce such as people hiding under tables, falling out of suddenly opened cupboards, masquerading in other people's costumes and other examples of fast, helter-skelter exuberance.

In the Paper Mill production, in addition to Nina Olivette, Jack Harrold and Ailsa Dawson, the cast will include Bill Mullikin, Wayne Maxwell, Edith Gresham, John Call, Merle Letowit, Catherine Payne and Larry Pool.

Frank Carrington, assisted by Agnes Morgan and Herman Rosse will design the sets.

**Page Williams - Blanche Zeller Dance Studios**

ONE OF NEW JERSEY'S MOST POPULAR DANCING SCHOOLS

Offering a complete program of Personality, Ballroom, Tap, Modern Jazz, Ballet, Dramatic Art, and Ballroom Classes for children, teenagers and adults. Ballroom lessons include Cha-Cha-Cha, Merengue, Mambo, Fox Trot, Jitterbug and Waltz. Classes for beginners, intermediates and advanced students.

**GROUP OR PRIVATE INSTRUCTIONS**

PARENTS, here is the perfect way to develop grace, poise, skill, charm and personality in your child with Ballet, Tap and Personality Lessons given by highly trained, skilled instructors. All instruction conducted under the personal supervision of:

**NORMAN PAGE, JOHN WILLIAMS and BLANCHE ZELLER**

Registration Now Open For Classes Beginning January 2

15 So. Orange Ave., So. Orange, N.J. SO 3-6288  
299 Millburn Ave., Millburn—DR 6-3234

You Are Invited . . .

**Festival of Lessons and Carols**

at

**St. Stephen's Church**

Main Street, Millburn

(Serving the Millburn-Springfield Area)

Sunday, December 22, 4:30 P.M.

**Swim Party Set For Saturday PM**

The Temple Beth Ahm Youth Activities Committee announces arrangements have been made for a "Swim Party" to be held at the Orange YMCA, 125 Main Street, Orange, on Saturday evening, December 28, from 7:00 to 9:00 p.m.

Mrs. Samuel Klugman will be in charge of the bus transportation, and all parents are asked to contact her at DR 9-4265 for any further details.

Indians attacked Deerfield, Mass., in 1704, killing 40 settlers and abducting 100.



## Merry Christmas

### Movie Time Table

**MILLBURN**

Dec. 19, 20, 22—Time Limit, 1:30, 7:00, 10:10; Slaughter on 10th Ave., 3:00, 8:35, 10:10; Dec. 21—Time Limit, 2:25, 6:30, 10:10; Slaughter on 10th Ave., 1:30, 5:00, 8:25, Dec. 22—Time Limit, 3:15, 6:40, 10:00; Slaughter on 10th Ave., 1:30, 4:50, 8:15, Dec. 23—Free Kiddle Show, Time Limit, 8:55; Slaughter on 10th Ave., 7:00, Dec. 24—April Love, 1:25, 4:50, 8:25; Story of Esther Costello, 2:10, 6:35, 10:00.

**SUMMIT**

Dec. 19—April Love, 1:41, 7:00, 10:07; Deep Shelter, 2:15, 6:38, Dec. 20, 22—Les Girls, 1:41, 7:00, 10:17; Careless Years, 3:37, 9:07, Dec. 21, 22—Les Girls, 12:45, 2:51, 7:08, 10:25; Careless Years, 2:41, 5:58, 8:15, Dec. 24—Francis West Point, 1:33; Bengal Brigade, 3:00, Dec. 25—Les Girls, 1:24, 5:51, 7:08, 10:27; Careless Years, 2:41, 5:58, 8:15.

**EAST ORANGE**

**HOLLYWOOD**

Dec. 19, 20, 23, 24—Story of Esther Costello, 2:15, 7:00, 10:15; Brothers Rico, 1:20, 6:45, Dec. 21—Story of Esther Costello, 1:30, 4:45, 7:35, 11:00; Brothers Rico, 1:45, 6:05, 9:38, Dec. 22—Story of Esther Costello, 2:45, 6:15, 9:45; Brothers Rico, 1:45, 4:35, 8:15.

**BECON**

Dec. 19, 20—Three Faces of Eve, 1:46, 7:00, 10:15; House of Numbers, 3:17, 8:47, Dec. 21—Three Faces of Eve, 6:56, 10:14; House of Numbers, 6:56, 10:14; Dec. 22—House of Numbers, 6:56, 10:14; Dec. 23—House of Numbers, 6:56, 10:14; Dec. 24—House of Numbers, 6:56, 10:14; Dec. 25—House of Numbers, 6:56, 10:14.

**MADISON**

Dec. 19, 20—Wee Wee, 7:37, 9:47, Dec. 21—Davy Crockett & River Pirates, 3:29, 7:01, 10:11; Kill Me Tomorrow, 2:25, 6:55, 10:11; Kill Me Tomorrow, 2:25, 6:55, 10:11; Dec. 22—Kill Me Tomorrow, 2:25, 6:55, 10:11; Dec. 23—Kill Me Tomorrow, 2:25, 6:55, 10:11; Dec. 24—Kill Me Tomorrow, 2:25, 6:55, 10:11; Dec. 25—Kill Me Tomorrow, 2:25, 6:55, 10:11.

**LIVINGSTON**

Dec. 19, 20—Story of Esther Costello, 7:00, 10:15; Brothers Rico, 8:45, Dec. 21—Story of Esther Costello, 6:50, 10:05; Brothers Rico, 8:45, Dec. 22—Time Limit, 3:25, 6:45, 10:05; The Ride Back, 2:05, 5:25, 8:45, Dec. 23—Time Limit, 7:00, 10:00; The Ride Back, 8:45, Dec. 24—Time Limit, 8:40; The Ride Back, 7:20, Dec. 25—April Love, 1:25, 4:50, 8:25, 10:05; Deer Slayer, 5:30, 8:45.

**ELIZABETH**

**NEW**

Dec. 19, 20, 21—Jump in to Hell! The East of Hallow Mountain: The Road to Denver. Doors Open Daily 9:45 a.m.

**ORANGE**

**EMBASSY**

Dec. 19, 20—Fuzzy Pink Night Gown, 1:15, 7:00, 9:57; Chicago, Confidential, 2:45, 8:35, Dec. 21—Francis in the Navy, 2:45; Here Come the Marines, 1:35, 4:45; Cartoons, 1:00, 4:05; Fuzzy Pink Night Gown, 7:05, 10:00; Chicago, Confidential, 5:55, 8:45, Dec. 22—Reform School Girl, 2:30, 5:45, 7:45, 10:15; Rock Around the World, 1:15, 3:55, 6:35, 9:00, Dec. 23—Reform School Girl, 7:10, 9:45; Rock Around the World, 8:35, Dec. 24—Reform School Girl, 7:00, 9:25; Rock Around the World, 8:15, Dec. 25—Jail House Rock, 3:00, 6:40, 10:10; Action of the Tiger, 1:20, 5:00, 8:40.

**PALACE**

Dec. 19—April Love, 1:41, 7:00, 10:07; Deep Shelter, 2:15, 6:38, Dec. 20, 22—Les Girls, 1:41, 7:00, 10:17; Careless Years, 3:37, 9:07, Dec. 21, 22—Les Girls, 12:45, 2:51, 7:08, 10:25; Careless Years, 2:41, 5:58, 8:15, Dec. 24—Francis West Point, 1:33; Bengal Brigade, 3:00, Dec. 25—Les Girls, 1:24, 5:51, 7:08, 10:27; Careless Years, 2:41, 5:58, 8:15.

# HUFFMAN & BOYLE

Fine Home Furnishings

Light up for Christmas!

## Sale

### Fine Lamps

12.95 to 39.95

Assorted Lamps. Many styles to choose from! China — Metal — Wedgewood Bases — Fashionable New Shades — 3-Way Lighting. Save on these wonderful lamp values!

**HUFFMAN AND BOYLE**  
Fine Home Furnishings

Route 24, SPRINGFIELD, DRexel 9-4300

Other stores at Orange, Pompton Plains, Hackensack

## THE Martinique

THE NEW LOOK IN NEW YORK

Sparkling new interiors—superb new furnishings—striking new decor! Ideally located in the great Penn Zone, Times Square, Radio City, Rockefeller Plaza, theater district, and famous Fifth Avenue lobby less than 5 minutes away. Shoppers connect with Penn Railroad and Greyhound-Bus terminals, and Hudson-Manhattan Tubes to Jersey. 650 luxurious rooms—radio, television, air-conditioning available. All hotel services.

from \$5—single \$8.50 double

**CONVENTION FACILITIES**

**NEW MARTINIQUE LOUNGE COFFEE SHOP**

BROADWAY AT 32nd STREET **New York City**  
Telephone PENnsylvania 6-3000

May You Know All The Joys That Have Made Christmas Mean So Much To So Many For So Long.

**L&S Chevrolet Co., Inc.**

Cor. Morris and Commerce Avenues  
Union, N.J. MU 6-2800



Florida marsh rabbits are virtually water animals. Their fur is slick, glossy and water-resistant and they swim as naturally as muskrats, with only the tops of their heads showing.

The first ship-to-shore radio telephone conversation took place in 1917 between the captain of the battleship New Hampshire, off Hampton Roads, Va., and the Secretary of the Navy in Washington.

An estimated 8,000 persons drive electrically powered automobiles in Long Beach Cal. Most of them are older persons. California requires neither a registration license for electric cars nor a driver's permit for their operators.

### YEAR END TAX TIPS NUMBER 3 More Tax-Saving Deductions And How To Time Them

This is one of a series of four articles on Federal income taxes. The articles are based on information provided by the American Institute of Certified Public Accountants and the New Jersey Society of Certified Public Accountants.

If you are one of those individual taxpayers who is constantly being collared and dollored for charitable contributions, you may save money by paying particular attention to the timing and planning of your year-end donations.

Before paying-off on any more 1957 pledges you might have made, remember that you will not receive a tax credit for your charitable contributions unless you itemize deductions on your return. You can't take the standard 10-per cent deduction and a special deduction for donations to charity. You may take only one or the other; so plan your year-end pledge payments accordingly.

**Planning Charitable Gifts**  
If you will be forced to take the standard 10-per cent deduction this year, your best tax move would be to defer payment on your outstanding pledges until after January 1, pyramiding them into 1958 when you may be able to itemize deductions. However, if you have had a better-than-average income year and are trying to bunch itemized deductions on this year's return, you should pay not only the pledges you have made but possibly the pledges you would ordinarily make in early 1958.

Here is an important point to keep in mind as you plan your

year-end pledge payments: a charitable contribution will be considered paid—and therefore deductible—in the year when the check is delivered to the charity and not when it is actually cashed.

**Property Donations**  
A gift does not have to be in cash to entitle you to a charitable deduction. It can be in property, and since you can claim a deduction for the full market value of a property gift, it may actually pay you to give away items that are now worth more than they cost.

For example, suppose that you own a few shares of stock that cost you \$100 a few years ago. Today the stock is worth \$150, and apparently fully priced. If you know you are going to be approached by a church, charity, college or the like for a sizeable donation within the next few months, you might consider contributing these securities before the end of the year.

By giving this property away, the organization you care to favor will benefit by receiving property which they may hold or sell, and you will establish a \$150 charitable deduction for your 1957 tax return. Furthermore, you avoid paying a capital gains tax on the profit.

If you must dismiss the idea of giving away a piece of real estate or a block of stock within the next few years, don't overlook the opportunity of building up your charitable deduction by donating such "property" as used furniture, clothing, books and toys to a worthy charity. The value of these items is deductible, too.

**Prepaying State Taxes**  
The state and local taxes which you pay are also deductible items that often can be pyramided to give a tax advantage. Some taxes that fall due early in 1958 can be pre-paid to give you an additional deduction on this year's federal tax return. On the other hand, it may be to your advantage to delay payments until 1958. Be careful when you do this, however. You may incur a late payment penalty.

**Farmer-Tax Tactics**  
While businessmen and farmers can do everything that a salaried worker can do to cut their tax bills, they also have special opportunities to time year-end deductions.

A farmer, for example, who reports for tax purposes on a cash basis, can deduct his expenditures in the year paid. By purchasing his 1958 grain requirements in December, he can increase deductions on his 1957 return. If he borrows money to make this purchase, the interest paid on the loan during the year is also deductible.

A businessman, whose year-end tax plan calls for bunching deductions on this year's return, can time the sale of used equipment to establish loss deductions. For example, by selling a truck that has a depreciated value of \$800 and a real market value of \$500, a businessman may claim a tax credit for his \$300 "loss." If he sells the truck before December 31, he can take this deduction on his 1957 return.

Last Article: Steps That Could Save A Dependency Exemption.

Nova Scotia

# CHRISTMAS TREES

Balsam  
Scotch Pine  
Norway Spruce

Wreaths, Roping, Holly,  
Sparkle Flocked Trees,  
Mistletoe, Greens

Also Unusually nice  
Grave Blankets

## FORBES GARDEN CENTERS

On Route 10, Hanover, N. J.

and

Morris Turnpike at Millburn Ave., Millburn

BOTH OPEN 8:30 to 9 p. m., including Sundays



### CHAIRS

RUSH BOTTOMS REPLACED  
WITH GENUINE RUSH  
CANE and SPLINT SEATS.  
Refinishing • Stenciling  
P. BENEDEUCE  
305 Main St. Madison  
FR 7-4592

### ROCK SALT

for  
ICE and SNOW  
10 lbs ..... \$ .45  
(min. 6 bags)  
50 lbs. .... \$1.45  
100 lbs. .... \$2.70  
(prices include delivery)  
FRONTIER 7-4401  
PICK IT UP  
AND SAVE 10%  
SHLES Soft Water Service  
324 Main St., Madison, N.J.

None of the others compete when you compare...

## LOOKS • PERFORMANCE •

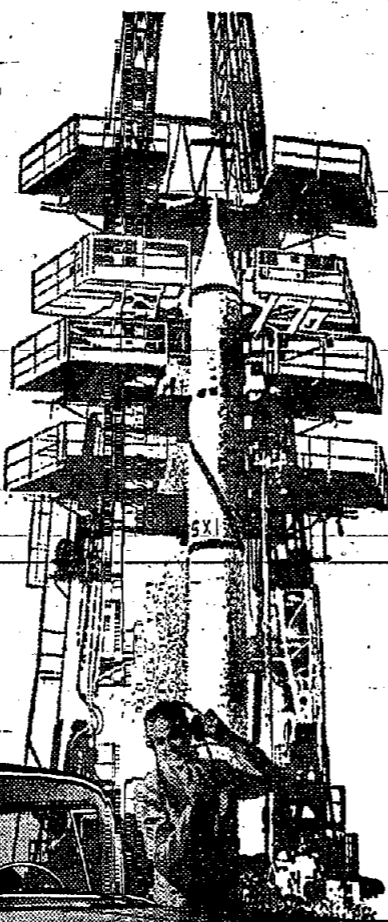
BEATS THE BEST OF  
THE LOW-PRICE THREE—  
FOR LESS MONEY!

Match this big, bold Chieftain against the top models of the "low-price three" and it takes them on all counts!

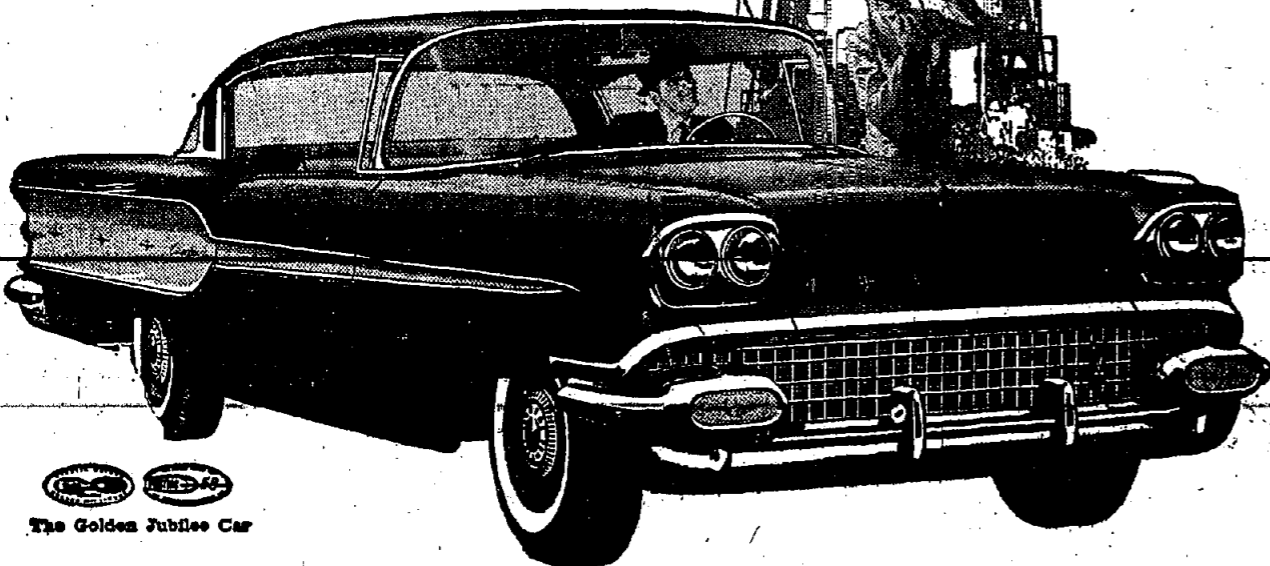
IT'S BIGGER—with a whopping 122" wheelbase cradling roomy stretch-out interiors. IT'S MORE POWERFUL—they all fall far short of Pontiac's jeweled-action Tempest 395 power.

IT'S MORE ADVANCED—bringing to the low-price field the boldest engineering in history: Aero-Frame stability... Quadra-Poise roadability... Circles-of-Steel safety. And Pontiac provides color-coordinated interiors and wall-to-wall carpeting as standard equipment.

IT'S MORE CAR—with scores of "extras" at no extra cost—oversize tires, Safety Plate Glass all around, crank-operated ventpanes, to name a few. So why buy a smaller car when Pontiac gives you more for less? Check into it and see.



COMFORT • VALUE



The Golden Jubilee Car

# BOLD NEW Chieftain PONTIAC

SEE YOUR AUTHORIZED PONTIAC DEALER  
FOR THE DEAL OF THE YEAR

**Mario's**  
MILBURN  
A LA CARTE SPECIAL  
PRIME CLUB STEAK  
Baked Idaho Potato  
Crisp Mixed Green Salad  
2.95

**GIFTS for MEN and BOYS**  
Nationally Advertised Brands at Saving Prices!  
We give 5¢ Green Stamps  
**SALZMAN**  
OFFICIAL ARMY & NAVY DEPARTMENT STORE  
201 Main St. Orange  
OR 3-7494  
Mon., Thurs., Fri. 9 to 9  
Tues., Wed. 9 to 6  
Sat. 9 to 7

## ROCKAWAY SALES CO.

# CLOSEOUT SALE

# TRAINS AND accessories

We're NOT going to carry over any trains! Every set and accessory must go! Complete stock of "HO", "O" and "O-27"!

LIONEL — AMERICAN FLYER — MARKS — KUSAN — REVELL — ATHERN  
HOBBY LINE — ATLAS — FLEISCHMAN — GILBERT

**LIONEL GANG CAR**  
#58 MODEL #50  
LIST \$8 ..... 3.99

**LIONEL NAVY DIESEL SWITCHER**  
#51 LIST 11.50 ..... 6.99

**LIONEL TROLLEY**  
#60 LIST 9.00 ..... 4.99

**LIONEL SMOKE PELLETS**  
Reg. List 50c ..... 29c

**LIONEL OPERATING BARREL CAR**  
#3562 LIST 10.00 ..... 5.55

**LIONEL OPERATING GENERATOR CAR**  
#3530 LIST 12.95 ..... 6.99

**LIONEL OPERATING BURRO CRANE**  
#3360 LIST 15.00 ..... 7.99

**LIONEL OPERATING MILK CAR**  
#3662 LIST 11.00 ..... 5.88

**Track 4 for 59¢**  
Straight or curved to fit LIONEL TRAINS!

**90° CROSSOVER**  
TO FIT LIONEL TRAINS ..... 79¢

**A. C. GILBERT REMOTE CONTROL SAWMILL**  
#23796  
Fabulous Action  
List 10.95  
5.99

**LIONEL #022** "O" GAUGE Remote Control Switches  
List 27.50 Pair ..... 15.88

**LIONEL #1122** O-27 NON-DETRAILING Remote Control Switches  
List 18.00 Pair ..... 8.88

## TRAIN SETS

**Lionel 6-Car Magne-Traction Set**  
#1571 LIST 19.88

**BREAK-DOWN VALUE \$49.65**  
● GE 44-Ton Lehigh Diesel  
● Gondola Car with Cannisters  
● Flat Car with Autos  
● Pipe-carrying Car  
● Cool Car  
● Caboose  
● Truck  
● Transformer

## KUSAN TRAINS

SEALED CARTONS  
FACTORY GUARANTEED  
CLOSE-OUT! ALL SALES FINAL

"O" GAUGE 1958 MODEL SET  
List 320 ..... 788

- Powerful Engine
- Box Car
- Flat Car
- Caboose
- 4 Straight Track
- 12 Curve Track
- Transformer with Reversing Control
- Lock-On
- Instruction Book

**KUSAN 1957 MODEL Atomic Train Set #KF 110**  
Finished In Army Khaki Color  
List 44.95 ..... 19.88

- Engine
- Atomic Reactor Car
- Atomic Cannon Mounted on Flat Car
- Space Missile Mounted on Car
- Master Control Center Caboose
- Truck
- Transformer

## AMERICAN FLYER

SET #20315 LIST 32.50 ..... 17.88

- Locomotive
- Tender
- Rocket Launcher with SHOOTING Rocket!
- Gondola Car
- Caboose
- Truck
- Transformer, etc.

## ICE SKATES



**Well-Known Brand**  
● Men's Hockey or Figure Skates (Black)  
● Ladies' Figure Skates (White)

Reg. 12.95 Value ..... 7.88



FROM 3.95

## Children's Skates

**SKATE GUARDS**  
Reg. 1.50 pair ..... 48¢ Pair

With purchase of any pair of skates AND THIS COUPON.

ROCKAWAY SALES CO.  
Route 45 (Between Denville & Dover) Rockaway, N. J.  
Open Evenings & Sundays RO 9-1070



## Guidance Dept. Counsels High School Students

Today's high school student is confronted with many more problems than his parents knew. With college standards rising, with the problem of choosing the profession and life best suited for him in today's complex world, with greater challenges and dangers he needs to know how to fit best into life's pattern. The guidance department at the Jonathan Dayton Regional High School has a staff of qualified, trained counselors to help him solve his problems.

The guidance program, under the direction of Miss Charlotte Singer as head counselor and senior class adviser, consists of a trained counselor for every student on each of the grade levels. Miss Helen Crawford counsels juniors, Mr. Melvin Lefever the sophomores, and Miss Marion Salanitro the freshmen. Each student on every grade level may arrange a conference with his counselor to convenient times. Counseling service is available not only to students, but also to parents and faculty when problems arise concerning students.

The guidance program at Regional is divided into three categories: counseling, scheduling and special services. Counseling emphasizes academic progress, college entrance and vocational placements and job selection.

Scheduling entails registration, choice of subjects, placement in class, testing of eighth graders in all sending schools, group counseling with eighth graders, teachers and parents for choice of high school subjects, and the actual placement of eighth graders in classes.

Special services handle such matters as case referrals to the psychologist, homework assignments for students for extended illness, conferences with representatives of colleges and industry and military services. Also, arrangements are made for testing programs such as the aptitude tests given by the Newark College of Engineering. Personal problems of students are frequently settled in "manto-man" or "woman-to-woman" talks with a guidance counselor.

College, hospitals or industries often arrange (through the guidance department) for students to visit for the purpose of helping a student decide upon a career.

Often when a student is derelict in his work, causing his parents concern, the guidance department arranges a conference with the parents and all of the student's teachers. Many times these conferences give the teachers and parents a new insight into the student's problems thereby providing a suitable solution. Along with this a bi-weekly report can be provided if a parent chooses to keep a more frequent check on his child's progress.

The guidance department at Regional provides catalogues of several hundred leading colleges and universities for the students to peruse. He is advised to apply to several colleges of his choice for which he is best suited. The student is directed toward that college for which he is most qualified and where he will be apt to be most successful.

The placement service of the guidance department renders service to the students by helping them to secure positions for which they are best qualified. Mr. Lefever, who is in charge of his service, takes the responsibility for deciding which candidates will be recommended for each vacancy. He meets with seniors to instruct the on-how to apply for positions. Last year, for example, 98% of the commercial course graduates secured positions as a result of the placement service.

Other services which the guidance department offers include follow-up reports on graduates of preceding years (a card is sent to every graduate of last year's class), coordinated activity with the library for vocational and educational and personnel information, scholastic ranking of students at the end of each school year and information on military obligation.

Also available to Regional students are college reference manuals, military brochures, career pamphlets and vocational and scholarship information.

### Asthmatic League To Meet Today

A general meeting of the Springfield League, Jewish National Home for Asthmatic Children will be held on Thursday, December 19, at Temple Beth Ahm in Springfield. The meeting will be presided over by Mrs. Harry Katz. Mrs. Milford Schulman, program chairman, has arranged the evening's entertainment.



### TASTY TREATS FOR A QUICK PICK-UP

On the go? Refresh yourself with one of our tempting desserts. Modest prices.

### MOUNTAIN AVENUE LUNCHEONETTE

"Next To Walton School"

540 Mountain Ave., Springfield

### To serve you better...

To serve you more adequately, Smith and Smith have provided parking spaces on the premises of both their City and Suburban Homes.



### SMITH and SMITH FUNERAL DIRECTORS

An Outstanding Service "Within the Means of All"

SERVING ALL RELIGIONS

SUBURBAN HOME FOR SERVICES  
415 Morris Ave., Springfield, N. J. DRoyal 6-7777  
140 Clinton Ave., Newark 5, N. J. Elgowl 3-2123

1958

## CHRISTMAS CLUB

OPEN

\$1 - \$2 - \$3 - \$5 - \$10 Clubs

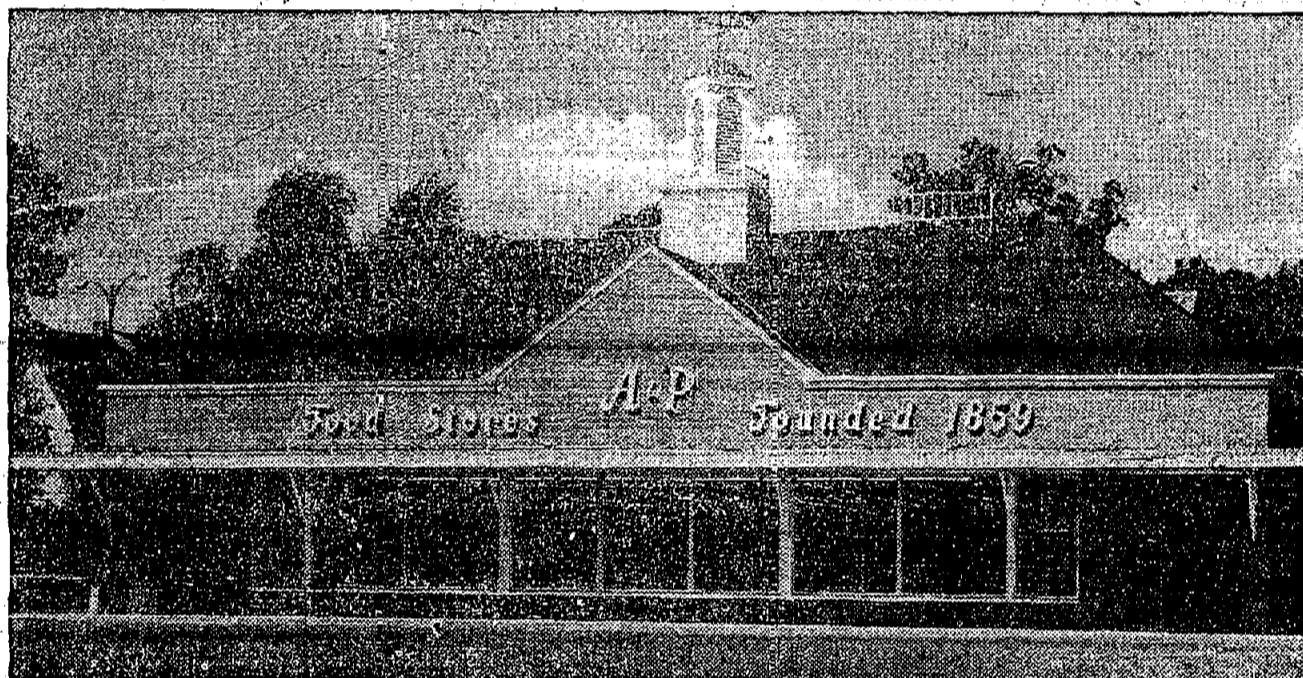
PLUS DIVIDEND

## INVESTORS SAVINGS

977 Stuyvesant Ave.

UNION, N.J.

WHAT'S MODERN AS CAN BE...  
AND CHARMINGLY EARLY AMERICAN?  
YOUR GLEAMING NEW  
A&P SUPER MARKET!



A WARM WELCOME AWAITS YOU AT...

2834 MORRIS AVE.

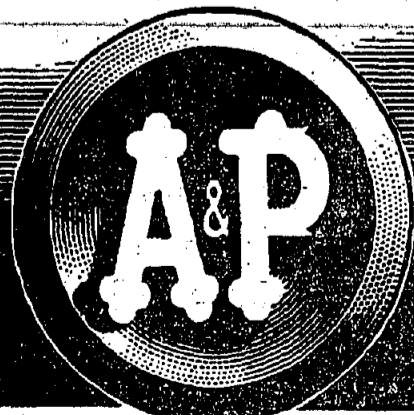
CORNER OF UNION LARGE FREE  
SPRUCE STREET PARKING AREA

DURING THIS WEEK — BOTH STORES  
OPEN LATE EVERY EVENING!  
(INCLUDING SATURDAY)

Another Conveniently Located A&P Super Market at...

MORRIS TURNPIKE (Route 24) MILLBURN (Short Hills)  
Just West of Millburn Avenue

COMPLETE WINE & LIQUOR DEPARTMENT — LARGE FREE PARKING AREA



SUPER MARKETS

AMERICA'S FOREMOST FOOD RETAILERS SINCE 1859

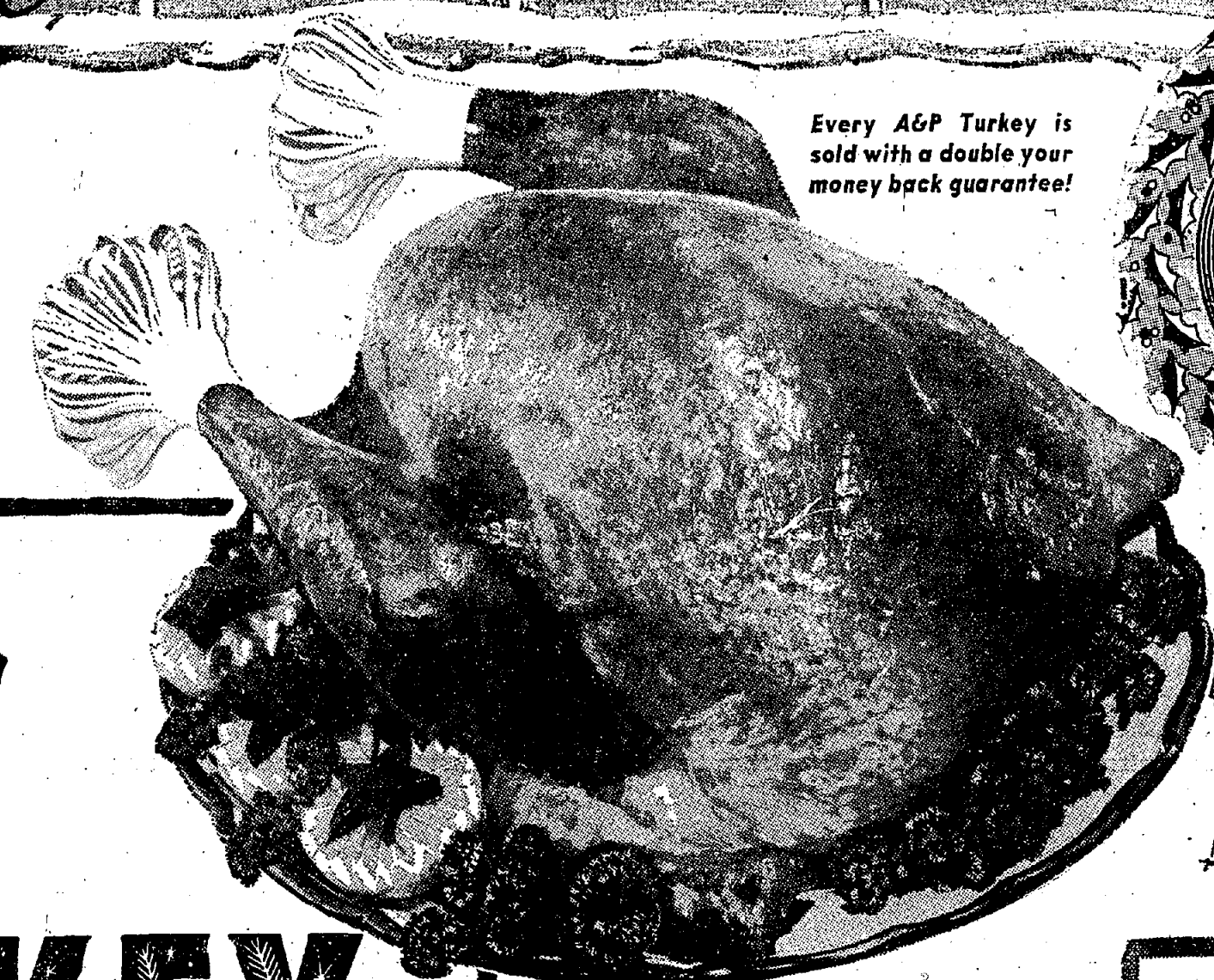
DEPENDABLY FINE MEATS • FRUITS & VEGETABLES • DAIRY & FROZEN FOODS • GROCERIES



WHAT A WONDERFUL GATHERING OF VALUES  
**For Your Christmas Gathering!**

**Turkey Fixin's**

- Jane Parker **Stuffing Bread** 24 oz. **25c** loaf
- Jane Parker—Ready to Use **Stuffing Mix** pkg. **23c**
- Super-Right Brand **Sausage Meat** 1 lb. **39c** pkg.



Every A&P Turkey is sold with a double your money back guarantee!



**STORES OPEN LATE**  
 Thursday, Friday  
**SATURDAY**  
 and **MONDAY**  
 Open Christmas Eve Until 6 p.m.

**A & P**  
**Holiday**  
**TURKEY**

A&P turkeys are traditional with smart shoppers for tender meatiness, fine flavor and the most good eating for your money! They're selected by A&P experts for sure "Super-Right" quality and will be priced for savings!

**SEE STORE WINDOW SIGNS FOR A&P'S LOW PRICES!**

"SUPER-RIGHT" QUALITY  
**RIBS OF BEEF**

|                |                |
|----------------|----------------|
| REGULAR STYLE  | OVEN-READY     |
| 10-Inch Cut    | 7-Inch Cut     |
| <b>59c</b> lb. | <b>67c</b> lb. |
| 10-Inch Cut    | 7-Inch Cut     |
| <b>69c</b> lb. | <b>75c</b> lb. |

**UNOX CANNED HAMS**

|                  |           |             |           |             |
|------------------|-----------|-------------|-----------|-------------|
| IMPORTED HOLLAND | 3 lb. can | <b>3.19</b> | 5 lb. can | <b>5.29</b> |
|------------------|-----------|-------------|-----------|-------------|

**CANNED HAMS**

|          |                   |                |                     |                |
|----------|-------------------|----------------|---------------------|----------------|
| DOMESTIC | Sizes 7 to 9 lbs. | <b>75c</b> lb. | Sizes 10 to 12 lbs. | <b>69c</b> lb. |
|----------|-------------------|----------------|---------------------|----------------|

"Super-Right" **SMOKED HAM**

|                |                |                      |
|----------------|----------------|----------------------|
| Shank Portion  | Butt Portion   | Whole or Either Half |
| <b>29c</b> lb. | <b>39c</b> lb. | <b>53c</b> lb.       |

**READY-TO-EAT HAMS**

|                |                |                      |
|----------------|----------------|----------------------|
| Shank Portion  | Butt Portion   | Whole or Either Half |
| lb. <b>33c</b> | lb. <b>43c</b> | lb. <b>55c</b>       |

**Garden Fresh Fruits and Vegetables**

**FRESH CRANBERRIES** Cape Cod 1 lb. cello pkg. **19c**

**WHITE ONIONS** 2 lb. **25c**

**ICEBERG LETTUCE** large head **19c**

**FRESH TOMATOES** carton 2 to 4 **25c**

**FRESH BROCCOLI** bunch **29c**

**SWEET POTATOES** 3 lbs. **25c**

**PASCAL CELERY** med. stalk **17c**

**CRANBERRY SAUCE** Ocean Spray 2 16 oz. cans **35c**

**FRUIT COCKTAIL** Del Monte 2 17 oz. cans **43c**

**SWEET PEAS** Green Giant 2 17 oz. cans **33c**

**REYNOLD'S WRAP** regular roll **25c**

**MIXED NUTS** A & P Brand In Shell lb. **49c**

**TOMATO JUICE** Libby's Brand 2 46 oz. cans **57c**

**Krispy Crackers** Sunshine 16 oz. **25c**

**Chippers Potato Crackers** Nabisco 8 1/2 oz. **29c**

**Burry's Shortbread** Fudge filled 16 oz. **49c**

**Keebler Town House Crackers** 16 oz. **35c**

**Adams Korn Kurls** A tasty treat 4 oz. **25c**

**Fritos** 6 1/2 oz. **29c**

**Cheetos** 3 oz. **25c**

**MINCE MEAT** None Such 2 9 oz. pgs. **45c**

**FLAKO PIE CRUST** 2 10 oz. pgs. **33c**

**SHARP CHEDDAR** Wall Agent Wisconsin lb. **57c**

**Stuffed Olives** Sultana brand Large size 10 1/2 oz. **59c**

**Yukon Beverages** Ginger Ale, Club Soda, Fruit Flavors—plus dep. 2 29 oz. bottles **29c**

**Ginger Ale** Canada Dry, Hoffman's, White Rock—plus deposit 2 large bottles **49c**

**Diamond Brand Walnuts** In shell 1 lb. **49c**

**Pumpkin** A&P brand Our finest quality can 16 oz. **10c**

**Angel Soft Facial Tissues** 2 pkgs. of 400 **41c**

**Dairy Department Values!**

|                        |                            |            |
|------------------------|----------------------------|------------|
| Borden's—All Varieties | 8 oz. plastic can          | <b>29c</b> |
| Natural Swiss Slices   | A&P brand 8 oz. pkg.       | <b>39c</b> |
| Swiss Knight Gruyere   | Imported Cheese 4 oz. pkg. | <b>39c</b> |
| Sliced American        | Mel-O-Bit process lb.      | <b>53c</b> |
| Danish Blue Cheese     | Imported lb.               | <b>83c</b> |
| Borden's Liederkranz   | 4 oz. pkg.                 | <b>39c</b> |
| Swiss Knight Gruyere   | Imported Cheese 6 oz. pkg. | <b>39c</b> |
| Gamenbert              | Military brand 4 oz. pkg.  | <b>39c</b> |

**Frozen Food Values!**

|                                  |                                       |            |
|----------------------------------|---------------------------------------|------------|
| A & P Brand—Sliced and Sweetened | 2 large 16 oz. pgs.                   | <b>53c</b> |
| Strawberries                     | 2 12 oz. pgs.                         | <b>59c</b> |
| Birds Eye Mixed Fruit            | 2 6 oz. cans                          | <b>33c</b> |
| Dole's Juice PINEAPPLE-ORANGE    | 2 10 oz. cans                         | <b>40c</b> |
| Green Peas                       | A&P brand 3 9 oz. cans                | <b>35c</b> |
| Green Beans                      | Kogular or French style 2 14 oz. cans | <b>55c</b> |
| Stuffed Peppers                  | Holloway House 8 oz. pkg.             | <b>37c</b> |
| Milady's Cheese Blintzes         | 2 10 oz. pgs.                         | <b>65c</b> |
| Fish Sticks                      | Cap'n John's 2 10 oz. pgs.            | <b>65c</b> |

**JANE PARKER FRUIT CAKE**

|                |             |             |            |             |
|----------------|-------------|-------------|------------|-------------|
| 1 1/2 lb. cake | 3 lb. cake  | 5 lb. cake  | 1 lb. cake | 2 lb. cake  |
| <b>1.39</b>    | <b>2.75</b> | <b>3.95</b> | <b>79c</b> | <b>1.49</b> |

**Cherry Pie** Jane Parker **45c**

**All Butter Coffee Cake** **65c**

**Cheese Cake** Jane Parker **45c**

**Pfeffernuesse** Spice Drop Cookies Jane Parker 10 oz. pkg. **35c**

**Cigarettes** Regular Size carton of 10 pgs. **2.42**

**Ice Cream** Crestmont Brand 2 pint pgs. **53c** half gallon **95c**

Prices effective through Saturday, December 21st in Super Markets and Self-Service stores only.

945 STUYVESANT AVENUE AND 2843 MORRIS AVENUE at SPRUCE ST., UNION, N.J.

Large Free Parking Area at Both Stores

Open Monday and Thursday 'til 9 P.M. Fridays 'til 10 P.M.

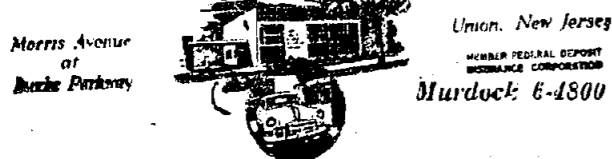


## BE YOUR OWN SANTA CLAUS NEXT YEAR

... by joining the new Christmas Club. Be generous to yourself. Make it larger.  
 ... by putting a part of your Christmas Club check into a savings account. A savings account can provide for everything.  
 ... by opening a checking account, if you do not have one, to pay your bills easily, economically and efficiently.  
 ... by buying locally. Support local merchants for they help with local taxes, local enterprises.

Safe Deposit Boxes Available in all Sizes  
 "One of the Fastest Growing Banks in the U. S."

The FIRST STATE BANK OF UNION



### Your Library

"Christmas is busting out all over" in the Springfield Library. It began in the Museum with the exhibit arranged by Mr. Donald Palmer. In it are many examples of old-time Christmas toys. These have not been seen in Springfield since 1953, when they were shown in the Museum case in the hall-way. (This was before the new wing was added).  
 The spirit of Christmas is carried on by lovely decorations over the fireplace and in the hall-way. A bowl of greens at the main charging desk and a little tree on the desk of the Information Librarian add to the gaiety. These were arranged by Mrs. Maitland P. Simmons.

In keeping with the season Mrs. John T. Porter has decorated the Children's Room with Christmas angels. A Christmas tree is being decorated as this column goes to press.  
 Books about the holidays, both Christmas and Hanukkah, are ready for circulation. Brownie troops, Boy-Scouts, and a Woman's Club have been searching for material about Christmas in various countries. Mrs. Simmons has located a book of short paragraphs about Christmas in other lands. These may be copied in the Library.  
 Parents, and other relatives of children inspired by the Book Exhibit held last month, have come to ask advice about making suitable purchases for the young readers. A huge catalog, Books in Print, has just been received. It lists books from all publishers

which are available at the present time. The public is invited to consult it.  
 Books in Print should help check information about Christmas purchases. It does not suggest titles. Anyone who wishes suggestions may ask Mrs. Porter for a list of outstanding Christmas titles or get a booklet, Growing Up with Books, which lists the most famous children's books.  
 During the Christmas vacation the Free Public Library of Springfield will be open every day except December 24, 25, 31 and New Year's Day. This will give the young folks, home from college, a chance to spend a good bit of time working on their assignments.

### Two Local Leaders Hear College Plan

Howard F. Casselman of the Springfield Lions Club and Edward F. Cornwall of 2 Forest drive, Springfield, president of the Union Kiwanis Club, attended a dinner for representatives of Union County area Kiwanis, Lions and Rotary Clubs last Wednesday evening (December 18) at the Echo Lake Country Club.  
 The Cranford Kiwanis, Lions and Rotary clubs were host at the dinner arranged to acquaint the service club leaders with the development and campaign of Union Junior College.  
 Dr. Kenneth C. MacKay, president of the college and a member of the Cranford Rotary Club, pointed out that the philosophies of the service clubs and the college are similar in that they both believe in serving the community. Dr. MacKay told the service club leaders the college belongs to the entire community and serves all students regardless of religion or creed.  
 Since its founding 24 years ago, Dr. MacKay said, the college has proven its ability to serve the

### area's higher educational needs and it now stands ready to double or triple its capacity to better meet the area's needs.

Serving the Union County area is "an essential part of our philosophy," Dr. MacKay said.  
**3 Days In Bavaria For Local Soldier**  
 Army PFC Richard N. Passero, son of Michael A. Passero, 127 Briarthills circle recently spent a three-day pass in Bavaria, Germany.  
 Passero is regularly assigned as a clerk in the 11th Airborne Division's Command and Control Battalion Headquarters Company in Augsburg.  
 He entered the Army in September 1956 and completed basic training at Fort Dix, N. J.  
 The 23-year-old soldier is a 1951 graduate of Long Branch High School and a 1956 graduate of Miami University in Oxford, Ohio. He is a member of Sigma Chi and Sigma Gamma fraternities. His mother, Mrs. Henrietta Miller, lives in Red Bank.

### Lutherans Attend Parsonage Party

The Rev. Lester Messerschmidt, recently called to Holy Cross Lutheran Church, 839 Mountain avenue, and his wife, Helen, last Sunday afternoon, December 15, held "open house" from 2 to 5 p.m. for the members and friends of the congregation.  
 The open house afforded many of the members to view for the first time the parsonage which had been remodeled and completely redecorated before the arrival of Pastor and Mrs. Messerschmidt last July.  
 Helping to serve for the occasion were Mrs. Stephen Beno, 114 Madison terrace, President of the congregation's Ladies' Guild; Mrs. Robert Wilkins, 65 Rose avenue, wife of the President of the congregation; and Mrs. Ethel Naumann, 51 Rose avenue, President-elect of the Ladies' Guild for the coming year.  
 Refreshments consisted of coffee, punch and Christmas cookies. The parsonage itself was decorated in a Christmas motif throughout.

FOR THE FINEST IN EYEWEAR

HOURS:  
 Daily 9 - 5:30  
 Thurs. 9 - 9

Laboratory on Premises

ANDREW KOVACS  
 OPTICIAN

1000 AVE., MILLBURN Near Theatre DR 9-4155

Soups can be dressed up with garnishes. Everyday food items which make unusual soup garnishes are thin strips of canned tomatoes, paper thin slices of lemon, orange or lime, slices of stuffed olive, and grated or crumbled cheese. Whipped cream with a dash of horseradish is good with some types of soups. With tomato soup, try popped corn.

# "Good Eating" from Grand Union

**GRAND UNION FOOD MARKETS**

**TURKEYS** **35¢** **45¢** **lb.**

TOP QUALITY BACKED BY BOND

Fresh Dressed—Ready to Cook—Avg. Wgt. 5-6 lbs.  
**ROASTING CHICKENS** lb. 59c

Kingan's Boneless—Fully Cooked  
**CANNED HAMS** Avg. Wgt. 9 to 11 lbs. lb. 77c

Packer's Top Brands—  
**FRUITED HAMS** Whole or Shank Half lb. 79c

Zvon Brand—IMPORTED  
**CANNED HAMS** BONELESS 3 lb. 33¢

Selected—Fancy  
**LARGE SHRIMP** For Cocktails and Salads lb. 89c

For Larding and Stuffing

|  |   |  |
|--|---|--|
| Early Morn<br><b>SLICED BACON</b><br>lb. 69c | Hygrade or Swift's<br><b>SAUSAGE MEAT</b><br>1-lb. roll 39c | Fresh<br><b>STANDARD OYSTERS</b><br>1/2-pint 55c |
|--|---|--|

Fully cleaned before weighing—ready to cook.  
 18 to 24 lb. avg. 10 to 16 lb. avg.

Baste with Fresh Made Butter... Serve with cranberry sauce.

All the Fixins for a Delicious Christmas Dinner

|  |  |
|--|--|
| <b>GREEN GIANT PEAS</b> Save 4c 2 17-oz. can 35c | <b>COTT BEVERAGES</b> 2 32-oz. btl. 49c plus deposit |
| <b>FRUIT COCKTAIL</b> Save 4c 30-oz. can 33c     | <b>TOMATO JUICE</b> Save 6c 46-oz. can 27c           |
| <b>Cocktail GHERKINS</b> 6 1/2-oz. jar 29c       | <b>FIG PUDDING</b> 14-oz. can 47c                    |
| <b>RIPE OLIVES</b> 5 1/4-oz. can 33c             | <b>PLUM PUDDING</b> 16-oz. can 47c                   |
| <b>MARVIN DATES</b> 8-oz. pkg. 23c               | <b>HARD SAUCE</b> 6-oz. jar 51c                      |
| <b>SHARP CHEDDAR</b> lb. 79c                     | <b>DATE &amp; NUT ROLL</b> 8-oz. pkg. 27c            |
| <b>WALNUT MEATS</b> 1 1/2-lb. pkg. 69c           | <b>STUFFED OLIVES</b> 8-oz. jar 27c                  |
| <b>Poultry SEASONING</b> 1-oz. pkg. 13c          | <b>GOLDEN YAMS</b> 16-oz. can 27c                    |
| <b>FINGER FIGS</b> 6-oz. pkg. 23c                | <b>BRAZIL NUT MEATS</b> lb. pkg. 79c                 |
| <b>WISE POTATO CHIPS</b> 3-oz. pkg. 25c          | <b>SWEET POTATOES</b> 18-oz. can 23c                 |
| <b>Deluxe FRUIT CAKE</b> 2-lb. tin \$1.49        | <b>BLUE CHEESE DANISH</b> lb. 85c                    |

A Perfect Gift—By the Carton  
 ALL SIZES CIGARETTES  
 Now in Christmas Gift Wrap

**Freshpak CRANBERRY SAUCE** WHOLE OR STRAINED

16 oz. cans 2 29c

FOR YOUR HOLIDAY BAKING

|                                      |                                 |   |
|--------------------------------------|---------------------------------|---|
| <b>FRUIT CAKE MIX</b> 1-lb. 49c      | <b>PUMPKIN</b> 28-oz. can 19c   | <b>DECORETTES</b> McCormick's 2-oz. 17c |
| <b>PILLSBURY</b> 2-lb. 37c           | <b>MINCE MEAT</b> 5-oz. can 23c | <b>VANILLA</b> Freshpak 1 1/2-oz. 27c   |
| <b>FRESHBAKE FLOUR</b> 5-lb. bag 41c |                                 |   |

|  |                                      |
|--|--------------------------------------|
| <b>TOMATO SOUP</b> HEINZ 3 11-oz. cans 35c                 | <b>STOCK UP ON Christmas Candies</b> |
| <b>HEINZ BABY FOOD</b> STRAINED 10 JARS 99c                | Spangler's Candy CANES 29c           |
| <b>HEINZ BABY CEREAL</b> OATMEAL 2 7-oz. pkgs. 35c         | CHRISTMAS Stockings 49c              |
| <b>HEINZ KETCHUP</b> 14-oz. bottle 25c                     | Cherub Hard Candy 14-oz. pkg. 29c    |
| <b>MUELLERS NOODLES</b> Fine, Medium, Wide 12-oz. pkg. 25c | Rudolph Popcorn TREATS 3 2-oz. 25c   |
| <b>SAF-T RAINBOW CONES</b> 12's 21c                        |                                      |
| <b>SWIFT'S PREM</b> 12-oz. can 45c                         |                                      |
| <b>RONZONI SPAGHETTI</b> lb. 21c                           |                                      |
| <b>DURKEE SHREDDED COCONUT</b> 8-oz. pkg. 29c              |                                      |
| <b>COLLEGE INN CHICKEN BROTH</b> 2 1 1/2-oz. cans 35c      |                                      |

A Wide Selection of Christmas Toys at Prices to Please Your Budget

## THREE MIGHTY CANOES

PIRATES • INDIANS • AFRICAN NATIVES

Only **98¢** Set of Three

Your favorite music on **12" LP Hi-Fi RECORDINGS** at less than 1/2 the price

**1.49**

A 3.98 VALUE ONLY

THIS WEEK: DAVID ROSE "In A Mellow Mood"  
 10 Songs that evoke old memories  
 Also 14 other famous recording artists

## GET BEAUTIFUL FREE CHRISTMAS GIFTS...

GENERAL GREENE SHOPPING CENTER  
 NEW STORE HOURS AT TRIPLE-S REDEMPTION STORE IN SPRINGFIELD: 9:30 a.m. to 6 p.m. Monday, Tuesday, Wednesday, Thursday and Saturday. Friday—9 a.m. to 9 p.m.

Springfield Store Hours: Mon., Wed. & Sat., 8:30 A.M. to 6 P.M. Tues. & Thurs., 8:30 to 9 P.M. —  
 Visit our Triple-S Redemption Center at 268 Morris Ave., Springfield

Morris and Flermer Avenues, SPRINGFIELD



### N. J. Highway Commissioner Palmer Reports on Highway Safety Projects

New Jersey State Highway Commissioner Dwight R. G. Palmer of Slope drive, Short Hills, said yesterday his Department has spent more than \$13,000,000 over the past three years building new safety features into older State highways.

Referring to this work as "half-soleing and heeling operations," Commissioner Palmer said that a review of projects devoted almost exclusively to providing safety was recently completed.

The backbone of this work, according to the Highway Commissioner, consisted of center barriers, creeper lanes, jug-handles and overpasses which have been constructed largely with State funds. These non-Federal aid projects cannot be continued now because all State appropriations are now required for matching Federal allocations under the expanded highway program, he said.

The Department also has under way with its own forces a con-

tinuing program of widening and hard-surfacing existing highway shoulders and painting reflectorized white lines on the outer pavement edges of the entire highway system. It is also currently redesigning its signing system—all with increased safety as the primary objective.

The Highway Commissioner described the four major safety construction features for which \$13,240,000 has been spent as follows:

1. Barriers in the center of existing highways to prevent head-on collisions. Forty miles have been constructed since 1954 at a cost of approximately \$1,380,000.
2. Creeper lanes on two-lane highways to provide an extra lane on the up-grades for use by slow-moving vehicles. The Commissioner said these lanes have been added to State highways at 28 locations at a total cost of nearly \$2,000,000.
3. Jug-handles for reducing accidents at intersections by eliminating conventional left turns. These lanes, shaped like the handle of a jug, permit traffic to cross the main highway under traffic signal control—eliminating the hazard of the conventional left-turn. Fifty-eight jug-handles have been built since 1954 at a total cost of \$2,900,000.
4. Overpass construction was described by the Commissioner as the Department's "most costly and most effective method of solving the safety problems at intersections."

Overpasses, he said, cost anywhere from \$500,000 to \$2,000,000, depending on the type of intersection involved. The cost of bridges alone in the 29 such projects constructed since 1954 totals about \$7,000,000.

The Highway Commissioner pointed out that in most instances the over-all cost of an overpass intersection far exceeds that of the bridge alone. He gave as an instance a recently completed improvement at the intersection of Route 1 and Anbov Avenue in Edison Township. Here, he said the actual cost of the overpass bridge was \$160,500. The ramps and repaving a portion of the 4-lane highway cost another \$665,500; the relocation of utilities cost approximately \$310,000; and acquisition of additional right of way needed for the improvement cost

about \$440,000; resulting in a total project cost of approximately \$1,500,000, he said.

In addition to building safety into older highways, the Department also has made safety a cardinal objective in its design of new highways, Commissioner Palmer said.

Basic mainline highway design standards of the Department have been boosted well above the minimum acceptable standards of the Federal Bureau of Public Roads with the result that highway grades are being flattened; highway curves are being straightened out; banking is used more widely; wider shoulders are built on new highways and many of the safety features being employed to make the older highways safer are constructed as an integral part of the new highways at the time they are built.

Commissioner Palmer said he feels the Highway Department's program to incorporate safety in its older highways has resulted in the saving of many lives. Its scope and effectiveness has been definitely restricted, however, by the limited funds made available under present appropriations.

He said the Department is faced with the need to spend at least \$34,000,000 for urgent improve-

ments to the existing system to provide safety and reduce traffic congestion on overburdened highways in all sections of the State.

Commissioner Palmer added that the speed with which this backlog could be "whittled down" depends almost solely on the amount of funds made available to the Highway Department over and above Federal matching fund requirements.

Then the tree should stand in water in the home either in a pail or in a purchased tree stand which holds water. Unfortunately, the latter are often too small, the butt of the tree trunk should be cut fresh in a light slant before placing in water.

Evergreen boughs or branches, to be used for indoor decorations, should also be kept in water if at all possible. This not only keeps them fresh but reduces the fire hazard. When the above is not possible, spray a heavy coating of a fire-retardant on the branches and needles. Two coats are more effective.

Christmas greens should be cut in your garden from 7 to 10 days before Christmas so as to absorb water from containers before taken into the dry atmosphere of the home.

### Garden Topics

By Essex County Extension Service

Why not consider Christmas gifts, which are useful for gardening, for your friends and relatives this Christmas? There are many practical garden gifts available to please any sort of gardener. They will remind them of their gift much of the year.

Florists, nurserymen, seed and hardware stores, and other stores, have a wide collection of gardening gifts to select from. Some are even useful during the winter. Subscriptions to garden magazines, books on gardening, including garden dictionaries, give a longer period of satisfaction. Or-

**H. C. Deuchler**  
GUILD OPTICIAN

To One And All  
A Very Merry Christmas

613 CENTRAL AVENUE (Near Harrison Street) EAST ORANGE, N. J.  
344 SPRINGFIELD AVENUE (Corner Summit Avenue) SUMMIT, N. J.

PHONE: ORange 3-1008 ORange 4-4000 CRosview 3-3848  
ASK YOUR EYE PHYSICIAN ABOUT OUR SERVICE

# for the "Merriest" Season of All

"U. S. CHOICE"—SWIFT'S PREMIUM—ARMOUR STAR

## ROUND ROAST

# 79¢

lb. **79¢** BONELESS Top or Bottom




Round Roast Price effective to Saturday, Dec. 21

|                       |                    |               |     |
|-----------------------|--------------------|---------------|-----|
| Fish Sticks           | Grand Union Frozen | 3 8-oz. pkgs. | 89c |
| Cod or Haddock Fillet | Fresh Boneless     | lb.           | 49c |

|                              |                           |                       |
|------------------------------|---------------------------|-----------------------|
| <b>PASTRAMI</b>              | Ready to eat By the piece | lb. <b>79c</b>        |
| <b>BOLOGNA or LIVERWURST</b> | Swift's Premium Chunks    | lb. 49c               |
| <b>Hormel</b>                | Sliced Hard Salami        | 4-oz. pkg. 41c        |
| <b>Sandwich Beef Steaks</b>  | Sliced Corned Beef        | 4-oz. pkg. 45c        |
|                              | Grand Duchess Frozen      | 2 7 1/2-oz. pkgs. 69c |

FOR YOUR HOLIDAY SHOPPING CONVENIENCE

**OPEN 'TIL 9 P. M.**

(THURSDAY • FRIDAY)

**SATURDAY | MONDAY**

DEC. 21st | DEC. 23rd

Open Tuesday, Dec. 24th to 6 P. M.

Sunkist

## NAVEL ORANGES

# 10 for 45¢

Sweet—Good Eating

FANCY—WESTERN

## DELICIOUS APPLES

PERFECT HOLIDAY FRUIT

# 2 lbs. 23¢

|                 |                   |                |
|-----------------|-------------------|----------------|
| <b>CELERY</b>   | Large Stalk       | 15¢            |
| <b>CIDER</b>    | Fresh Sweet Apple | gal. 69c       |
| <b>POTATOES</b> | Golden Sweet      | 3 lbs. 25c     |
| <b>WALNUTS</b>  | Diamond           | 1-lb. pkg. 49c |

Frozen Foods

Quick, Easy, Nourishing for the Rushed Holiday Meals Ahead!

KITCHEN GARDEN

## Sliced Strawberries

Perfect as a delicious dessert topping

4 10-oz. pkgs. **69¢**

Serve with Freshpak Ice Cream

All at Low Super Market Prices!

**Christmas Decorations**  
Wreaths, Door & Table Decorations  
Halvorson Xmas Trees

**FRUIT BASKETS**  
make excellent gifts

small 98c tray **\$1.69** Reg. **\$1.98**

Larger Sizes Made to Order

|                                     |                   |               |
|-------------------------------------|-------------------|---------------|
| <b>Nabisco RITZ CRACKERS</b>        | 8-oz. pkg.        | 25c           |
| <b>REYNOLDS WRAP</b>                | 25-ft. 75-ft.     | 31c 75c       |
| <b>BEECHNUT BABY FOOD</b>           | 10 str.           | 99c           |
| <b>FLUFFO Shortening</b>            | 1-lb. can         | 35c           |
| <b>R &amp; R BONED CHICKEN</b>      | Solid Pack        | 6-oz. can 69c |
| <b>UNDERWOOD DEVILED HAM</b>        | 4 1/2-oz. can     | 35c           |
| <b>KRAFT MARSHMALLOW MINIATURES</b> | 5 3/4-oz. pkg.    | 19c           |
| <b>CREAM CHEESE - Philadelphia</b>  | 8-oz. pkg.        | 38c           |
| <b>CALO CAT FOOD</b>                | 2 15 1/2-oz. cans | 27c           |
| <b>BOSCO</b>                        | 12-oz. jar        | 37c           |
| <b>KASCO DOG MEAL</b>               | 5-lb. bag         | 63c           |
| <b>ANGEL SOFT FACIAL TISSUE</b>     | 400 in. pkg.      | 23c           |

LIBBY

## WHOLE STRAWBERRIES

16-oz. pkg. **37¢**

Wonderful out-of-season dessert

## Sara Lee Brownies

14-oz. pkg. **79¢**

1/2 Roast Chicken

## Cottage Dinners

12-oz. pkg. **85¢**

SARA LEE

## Chocolate Cake

18-oz. pkg. **89¢**

Keep Pets Strong with **DOG FOOD**

## RIVAL

2 16-oz. cans **27¢**

**Trend Detergent** 2 large 39c

**Comet Cleanser** 2 14-oz. can 29c

**Sweetheart Soap** 4 reg. bar 31c

**Dash** 25-oz. pkg. 39c

**Linit Liquid Starch** qt. 21c 1/2 gal. 39c

**'Blue Dot' Duz** 1-gal. 35c 1-gal. 82c

**Spic & Span** 1-gal. 29c 1-gal. 91c

**Ivory Snow** 1-gal. 34c 1-gal. 81c

**Keelbar** Cinnamon Crisp 24-oz. pkg. 39c

**Napkins** MARCAL Colored 60's pkg. 10c

**Napkins** MARCAL White 2 80 23c

**Cashmere** Bouquet Soap 2 bath bars 29c

**BORAX** 20 MULE TEAM 2 2-lb. bars 39c

**Bab-O-Cleaner** 2 2-lb. cans 21c

**Woodbury** 4 bars 39c

**Ivory Soap** 3 med. bars 31c

**Pink Camay** 4 bars 39c

**Swanson Fruit Pies**

Blueberry **65¢** Apple or Peach **55¢**

**Macaroni** Morton Cheese 2 8-oz. pkgs. 45c

**Vifa** Brussels Sprouts Imported 10-oz. pkg. 29c

**Remember Your Pet Hills'** Horsemeat 8-oz. pkg. 29c

**... WITH YOUR TRIPLE-S BLUE STAMPS**

We Reserve the Right to Limit Quantities

All prices (except Round Roast) effective thru Tuesday, Dec. 24th, at Metropolitan New York and New Jersey Grand Union Stores

Springfield Store Hours: Mon., Wed. & Sat., 8:30 A.M. to 6 P.M. Tues. & Thurs., 8:30 to 9 P.M.

Visit your Triple-S Redemption Store at 269 Morris Ave., Springfield

**GENERAL GREENE SHOPPING CENTER**

NEW STORE HOURS AT TRIPLE-S REDEMPTION STORE IN SPRINGFIELD: 9:30 a.m. to 6 p.m. Monday, Tuesday, Wednesday, Thursday and Saturday.

Morris and Flermer Avenues, SPRINGFIELD  
Friday—9 a.m. to 9 p.m.



HELP WANTED FEMALE

YOUNG WOMEN— There's a career for you as a TELEPHONE OPERATOR

- Liberal Starting Rates
Interesting Work Near Home
4 Raises the First Year (4 More in the Second)
Liberal Vacation, Sickness and Pension Benefits
Pleasant Surroundings, Friendly Associates
Organized Social Activities

For information call Chief Operator, Millington 7-Official 11 or apply at Waverly Place, Millington New Jersey Bell Telephone Company

BANKING

FOLLOWING POSITIONS OPEN WITH GROWING BANK... STENOGRAPHERS BOOKKEEPERS

CITIZENS TRUST COMPANY

NURSES aide, full or part-time for nursing home... POSITIONS AVAILABLE

EMPLOYMENT WANTED

IBONING done at home... SEWING, children's & infants dresses

CLERK-STENOGRAPHER

Permanent full time typist, clerk, and stenographer's position... BANKING CAREER

THE NATIONAL STATE BANK

Capable woman under 45 to learn for savings and loan work... SAVINGS AND LOAN

RECEPTIONIST-TYPIST

PLEASELY, atmosphere, insurance and hospital benefits... NATIONAL STATE BANK OF ELIZABETH

EXPERIENCED ACCOUNTANT

SOMEONE to make drapes at my home... AVON wants to contact women with previous business experience

RELIABLE baby sitter for New Year's Eve

SECRETARY

With business experience, age 35 to 50, for part time work... HELP-WANTED-MALE

POSITIONS AVAILABLE

Security Guard... ACCOUNTANT

SUMMIT EMPLOYMENT AGENCY

334 Springfield Ave. Summit, N. J.

FOR SALE

CHRISTMAS SUGGESTIONS... BICYCLE 24" Columbia, girls, good condition

PIPING-PONG table extra sturdy... GIRL'S 28" English bicycle, both in excellent condition

3MM movie camera and projector... ELECTRIC RANGE, Admiral Deluxe

BOYS 28" bicycle, B.S. Excellent condition... ENCYCLOPEDIA Americana like new

BOYS' rink skates, 45; Lionel transformer... AUTOMATIC washer, Blackstone

1-ANTIQUES... ANTIQUE pine corner cabinet, original glass door

2-BICYCLES... BICYCLE-24", girls, \$15, good shape

GIRL'S bicycle, 4 years old, black, P-1 light English... GIRL'S large English Raleigh bike

ENGLISH boy's 28" Raleigh Band... 28" BOYS' BICYCLE, practically new

3-CLOTHING... VISIT Mary-Go-Round resale shop

THE ROBIN HOOD SHOP... MAHOOGANY dining room furniture

MAHOOGANY dining room furniture... MAHOOGANY dining room furniture

MAHOOGANY dining room furniture... MAHOOGANY dining room furniture

MAHOOGANY dining room furniture... MAHOOGANY dining room furniture

MAHOOGANY dining room furniture... MAHOOGANY dining room furniture

MAHOOGANY dining room furniture... MAHOOGANY dining room furniture

MAHOOGANY dining room furniture... MAHOOGANY dining room furniture

MAHOOGANY dining room furniture... MAHOOGANY dining room furniture

MAHOOGANY dining room furniture... MAHOOGANY dining room furniture

MAHOOGANY dining room furniture... MAHOOGANY dining room furniture

MAHOOGANY dining room furniture... MAHOOGANY dining room furniture

MAHOOGANY dining room furniture... MAHOOGANY dining room furniture

MAHOOGANY dining room furniture... MAHOOGANY dining room furniture

MAHOOGANY dining room furniture... MAHOOGANY dining room furniture

MAHOOGANY dining room furniture... MAHOOGANY dining room furniture

MAHOOGANY dining room furniture... MAHOOGANY dining room furniture

MAHOOGANY dining room furniture... MAHOOGANY dining room furniture

MAHOOGANY dining room furniture... MAHOOGANY dining room furniture

MAHOOGANY dining room furniture... MAHOOGANY dining room furniture

MAHOOGANY dining room furniture... MAHOOGANY dining room furniture

MAHOOGANY dining room furniture... MAHOOGANY dining room furniture

FOR SALE

MISCELLANEOUS-9... HI-FI AMPLIFIERS, 30 WATTS DIRECT

APPLES... Fancy apples make an ideal holiday gift

24-CARPENTERS... RESIDENTIAL & COMMERCIAL BUILDING ALTERATIONS

24-DRESSMAKING... CUSTOM-made gowns, expert copying

24-LANDSCAPE GARDENING... DOMINICK CHERA, General landscaping

24-MISCELLANEOUS... ROOFING, gutters, leaders, siding

24-MISCELLANEOUS... ROOFING REPAIRS, All types of siding

24-MISCELLANEOUS... WASH windows, take down screens

24-MISCELLANEOUS... FURNITURE polished, repaired, and reupholstered

24-MISCELLANEOUS... MOVING, hauling, Reasonable efficient

24-MISCELLANEOUS... MOVING & TRUCKING-Large and small

24-MISCELLANEOUS... BOB FABRICATORS, Painting and decorating

24-MISCELLANEOUS... 1-SUMMIT... FOR THE BEST SERVICE

Consult a Realtor... REAL ESTATE BOARD

SUMMIT BERKELEY HEIGHTS NEW PROVIDENCE

BOARD MEMBERS... Franklin School

SEASON'S GREETINGS... BUTLER AGENCY

A SPARKLER... 3 BEDROOM RANCH

A JOYOUS HOLIDAY TO ALL... C. Kelly Agency

MERRY CHRISTMAS... The Richland Co.

SANTA SAYS... Holmes Agency

BEST WISHES... JOYOUS HOLIDAY SEASON

JOBS-BECK-SCHMIDT COMPANY... MERRY CHRISTMAS

THE BEST FOR LESS... CARPENTERS-TILING-PAINTING

FRID STENDEL... CARPENTERS-TILING-PAINTING

RESIDENTIAL AND COMMERCIAL ALTERATIONS... CARPENTERS-TILING-PAINTING

THE BEST FOR LESS... CARPENTERS-TILING-PAINTING

RESIDENTIAL AND COMMERCIAL ALTERATIONS... CARPENTERS-TILING-PAINTING

THE BEST FOR LESS... CARPENTERS-TILING-PAINTING

RESIDENTIAL AND COMMERCIAL ALTERATIONS... CARPENTERS-TILING-PAINTING

THE BEST FOR LESS... CARPENTERS-TILING-PAINTING

SERVICES OFFERED

32-PAINTING-DECORATING... HERMAN SCHMIDT painting and decorating

32-PAINTING-DECORATING... J. D. MCCRAY, painting and paper-hanging

32-PAINTING-DECORATING... PAINTING, exterior-interior; paper-hanging

32-PAINTING-DECORATING... Rocco CARELLA, EXPERT interior and exterior painting

32-PAINTING-DECORATING... WILLIAM BROTHER PAPER, Paper-hanging, decorating

32-PAINTING-DECORATING... GUTTERS & LEADERS... Installed, repaired, coated and cleaned

32-PAINTING-DECORATING... FRANK I. TOKASH, Contractor

32-PAINTING-DECORATING... FOUND... DOGS - CATS - See Summit Animal

32-PAINTING-DECORATING... LOST... PASSBOOK No. 2878, Please return to

32-PAINTING-DECORATING... LOST... PASSBOOK #20723, Please return to

32-PAINTING-DECORATING... LOST... PALE blue parker, slip away into storm

32-PAINTING-DECORATING... INSTRUCTIONS... VOICE INSTRUCTION

32-PAINTING-DECORATING... STORES TO RENT... SUMMIT, new modern front, 12x65

32-PAINTING-DECORATING... RENTALS WANTED... UNFURNISHED APARTMENTS

32-PAINTING-DECORATING... UNFURNISHED APT. WANTED... SUMMIT, 4 and 4 room apt.

32-PAINTING-DECORATING... UNFURNISHED APT. WANTED... GARAGE WANTED, vicinity Millburn

32-PAINTING-DECORATING... UNFURNISHED APT. WANTED... PERSONAL... TO MERRY CHRISTMAS

32-PAINTING-DECORATING... UNFURNISHED APT. WANTED... GARAGE WANTED, vicinity Millburn

32-PAINTING-DECORATING... UNFURNISHED APT. WANTED... PERSONAL... TO MERRY CHRISTMAS

32-PAINTING-DECORATING... UNFURNISHED APT. WANTED... GARAGE WANTED, vicinity Millburn

32-PAINTING-DECORATING... UNFURNISHED APT. WANTED... PERSONAL... TO MERRY CHRISTMAS

32-PAINTING-DECORATING... UNFURNISHED APT. WANTED... GARAGE WANTED, vicinity Millburn

32-PAINTING-DECORATING... UNFURNISHED APT. WANTED... PERSONAL... TO MERRY CHRISTMAS

32-PAINTING-DECORATING... UNFURNISHED APT. WANTED... GARAGE WANTED, vicinity Millburn

32-PAINTING-DECORATING... UNFURNISHED APT. WANTED... PERSONAL... TO MERRY CHRISTMAS

32-PAINTING-DECORATING... UNFURNISHED APT. WANTED... GARAGE WANTED, vicinity Millburn

32-PAINTING-DECORATING... UNFURNISHED APT. WANTED... PERSONAL... TO MERRY CHRISTMAS

32-PAINTING-DECORATING... UNFURNISHED APT. WANTED... GARAGE WANTED, vicinity Millburn

32-PAINTING-DECORATING... UNFURNISHED APT. WANTED... PERSONAL... TO MERRY CHRISTMAS

32-PAINTING-DECORATING... UNFURNISHED APT. WANTED... GARAGE WANTED, vicinity Millburn

32-PAINTING-DECORATING... UNFURNISHED APT. WANTED... PERSONAL... TO MERRY CHRISTMAS

UNFURNISHED APT. WANTED

SUMMIT, 4 and 4 room apt., heat and water supplied

3 ROOMS, separate heat, available Jan. 1

GARAGE WANTED, vicinity Millburn

PERSONAL... TO MERRY CHRISTMAS

TO MERRY CHRISTMAS and a Happy New Year

Too Late to Classify

HELP WANTED FEMALE... GENERAL houseworker, daily, half days

FOR SALE... TUXEDO, midnight blue, size 40

EMPLOYMENT WANTED... MAN for general cleaning, CR. 3-6215

FURNISHED APT. WANTED... SMALL furnished apt. wanted, near Overlook Hospital

A good way to enjoy extra moments of leisure

When we say "SPEED KILLS" the New Jersey State Safety Council

FOR IMMEDIATE POSSESSION... THREE BEDROOMS, TWO BATHS

G. A. Allsopp, Inc. Exclusive Homes Realtor

YOUR OPPORTUNITY... OWNER TRANSFERRED WILL SACRIFICE

G. A. Allsopp, Inc. Exclusive Homes Realtor

24-MILLBURN... SOUTH MOUNTAIN ESTATES

G. A. Allsopp, Inc. Exclusive Homes Realtor

30-NEW PROVIDENCE... PERFECTION FOR \$18,900

G. A. Allsopp, Inc. Exclusive Homes Realtor

24-MILLBURN... SOUTH MOUNTAIN ESTATES

G. A. Allsopp, Inc. Exclusive Homes Realtor

30-NEW PROVIDENCE... PERFECTION FOR \$18,900

G. A. Allsopp, Inc. Exclusive Homes Realtor

24-MILLBURN... SOUTH MOUNTAIN ESTATES

G. A. Allsopp, Inc. Exclusive Homes Realtor

30-NEW PROVIDENCE... PERFECTION FOR \$18,900

G. A. Allsopp, Inc. Exclusive Homes Realtor

24-MILLBURN... SOUTH MOUNTAIN ESTATES

G. A. Allsopp, Inc. Exclusive Homes Realtor

30-NEW PROVIDENCE... PERFECTION FOR \$18,900



**PLAYHOUSE**  
222 Main St., West Orange  
Phone OR. 3-5300 Free Parking

"Vigorous, violent, frank!"  
The MAX

**BRIGITTE BARDOT**  
in  
**"THE LIGHT ACROSS  
THE STREET"**  
and  
Jacques Tati  
in his classic comedy  
**"MR. HULOT'S HOLIDAY"**  
FREE PARKING

**Conte's Cleaned  
By Drexel Keglers**

Drexel Cleaners turned on a burst of speed and stopped the league leading Conte's Delicacies bowlers in three games in the Sports Bowling League competition at the Springfield alleys on Wednesday.

Paced by Ed Carinal's hot bowling, the Cleaners have moved from 5th place to a second-place tie with the PBA. Drexel got an assist from Springfield Tree in the surge to the top as the tree

doctors took two games from the policemen.

The last-placed Stereo Sound team showed signs of life by taking all three games from Lynn Decorators. Paced by Cardinal's 206; R. Gagliano had a 200 game; F. ... a 205 and J. Pasquale a 205 game.

Team Standings

|                  | W  | L  | Avg |
|------------------|----|----|-----|
| Conte's Del.     | 27 | 15 | 643 |
| PBA              | 21 | 21 | 500 |
| Drexel Cleaners  | 21 | 21 | 500 |
| Springhouse Tree | 20 | 22 | 438 |
| Lynn Decorators  | 19 | 23 | 452 |
| Stereo Sound     | 18 | 24 | 429 |

Individual Averages

S. Burdett 183, Caggiano 180, Spiekler 179, Thompkins 174, Pepe 173, Pasquale 173, H. Burdett 172, Baumer 170, Kenery 170, Ronkivitz 169, Giannattasio 168, Weber 168, Gregory 168, Geerke 167, Cardinal 165, R. Hattersley 165, Fisher 165, Feole 165, Smolaneck 164, Cavello 164, Lynn 164, Cicarone 164, Smith 163, M. Conte 160, Colantone 160, Schaffer 159, Jennings 159, H. Hattersley 158, Eick 158, Ayres 158, Wentz 158, P. Conte 157, Latella 154, Merlucci 151, Mende 149, Dougherty 149, Monroe 147, Damiano 144, Borge 143, Quinton 143, Casteau 121.

**Skyrocketing**

(Continued from Page One)  
under the teachers salary guide. In addition, provision must be made for improving the guide if this is necessary to keep it in line with those of neighboring communities. The minimum salary required by state law is now \$3,300, and this is resulting in increased salaries throughout the state. In order to secure the good teachers Springfield needs in a highly competitive market, the salary scale must also be competitive.

The School Board is very conscious of the fact that this proposed budget represents a sizable increase and is doing everything possible to keep expenditures to a minimum. For example, much of the work formerly done by outside contractors is now handled by the regular maintenance men, which results in considerable savings. Appropriations for repairs and replacements and capital outlay for site improvement and furniture and equipment show a decrease of \$4,450 in the new budget.

Anticipated requirements for supplies, fuel, telephone and transportation, among others, remain unchanged, and most other items of current expense show only very moderate increases.

The increase of \$20,650 in debt service represents redemption of bonds which have been approved by public election and therefore cannot be changed.

The next issue of the Board of Education's Bulletin, which will be sent to all residents of Springfield early in January before the public hearing on the school budget, will give more details on the items making up the proposed budget.

A public hearing on the budget will be held January 21, 1958.

A surface anesthetic packaged in an aerosol push-button container is being manufactured by a Chicago pharmaceutical firm. The anesthetic is used for such purposes as spraying the throat preparatory to the removal of tonsils.

**NOTICE TO CREDITORS**  
ESTATE OF ELIZABETH M. COSTELLO, deceased.  
Pursuant to the order of CHARLES A. OTTO, JR., Surrogate of the County of Union, made on the twenty-second day of November, A. D. 1957, upon the application of the undersigned, as

**V M VOICE OF MUSIC**

**VM radio-o-matic**  
HI-FI RADIO-PHONO CONSOLE  
STEREOPHONIC TAPE LIBRARY  
RECORDING REPAIRS. ALL MAKES  
Professional Recording Studio  
**American Recording Co.**  
Union County's Tape Recording Headquarters  
12-16 Jefferson Ave., Elizabeth  
Open Daily 9-9 Sundays 9-1 p.m.

Executor of the estate of said deceased, notice is hereby given to the creditors of said deceased to exhibit to the subscriber under oath or affirmation their claims and demands against the estate of said deceased within six months after the date of said order, or they will be forever barred from prosecuting or recovering the same against the subscriber.

ANDREW B. CRUMMAY, Executor  
Crummays, 12, 20, 11  
Newark, N. J.  
Nov. 28, 1957  
a w 4 w Fees—\$11.70

**ADVERTISEMENT FOR BIDS**  
**BOARD OF EDUCATION**  
**UNION COUNTY REGIONAL HIGH SCHOOL DISTRICT NO. 1**  
**DISTRICT NO. 1**  
SPRINGFIELD, NEW JERSEY  
Sealed proposals will be received by the Board of Education, Union County Regional High School District No. 1, Springfield, New Jersey, in the office of the Jonathan Dayton Regional High School, Pomeroy Avenue, Springfield, New Jersey, until 8 o'clock P. M. (Eastern Standard Time), on Tuesday, January 28, 1958, for the construction of Additions and Alterations to the Arthur L. Johnson Regional High School, District No. 1, and work incidental thereto.

**PUBLIC NOTICE**  
The Board of Assessors of the Township of Springfield in the County of Union and State of New Jersey, in accordance with the statute in such cases made and provided, has designated Monday, December 30, 1957, between the hours of 9 A. M. and 12 A. M. 1 P. M. and 5 P. M. as the time, and the Assessors' Office in the Municipal Building as the place, where the Board of Assessors may be inspected by any taxpayer, for the purpose of enabling the taxpayer to ascertain what assessments have been made against him or her, and to confer informally with the Board of Assessors as to the correctness of the assessments.

it's the season for fine dinners suppers

again your host

HANS DEH

at the **Hammond Organ**  
Ted Aurand

**ORCHARD INN**  
Restaurant and Cocktail Lounge  
Route 22. (opposite Davego) Springfield  
DRexel 6-1439 — OPEN DAILY

**RKO PROCECTORS NOW**  
BIG AS ALL CREATION!  
The all-time great film classic  
forever NEW!  
Cost of 1000's  
and Thrilling 2nd Bill  
PAT O'BRIEN • LOIS MAXWELL  
**KILL ME TOMORROW**

**STRAND**  
447 Springfield Ave., Summit, N. J. CR. 3-3900

NOW PLAYING thru SAT.

RECOMMENDED FOR OUR ADULT PATRONAGE AND THE MORE INFORMED TEENAGERS!

JOHN CRAWFORD  
ROSSANO BRAZZI  
THE STORY OF ESTHER COSTELLO  
The Golden Virgin

SATURDAY MATINEE AT 2:00 P.M. DECEMBER 21  
Hey Kids! A Super Dupier Kiddie Show  
Santa Claus Will Give Away \$200.00 Worth of Toys

Box Office Open Daily & Sun. 10 A.M.-10 P.M.

**PAPER MILL PLAYHOUSE**  
MILLBURN, N. J. DRexel 6-4243  
FRANK CARRINGTON, Director  
Eves, 8:30—Tues. Through Sat. Sun. 8:00—Thurs. & Sat. 2:30

Opens Thurs., Dec. 26  
THRU SUN, JAN. 12  
Nina Olive • Jack Harold in  
**MATCH MAKER**  
Thornton Wilder's Hilarious Comedy  
Tickets 10c and 25c. An Agent's Order by Phone—Pay by Mail

SEASON'S GREETINGS from "FLAMEY" And All The Members Of The

WATCH OVERLOADING ELECTRIC CIRCUITS

**SPRINGFIELD FIRE DEPARTMENT**

**Chi-Am Chateau**  
Chinese - American Cuisine

Route 22 Mountainside, N. J.

Celebrate Christmas With Us!

FULL COURSE TURKEY DINNER \$2.75  
Children's Portion \$2.00

SUN.-MON.-TUES. JACK MARLON BRANDO  
JACK WEBB  
DEC. 22-23-24  
"BATTLE STRIPE"  
Plus Dana Andrews • Anne Baxter  
"ARMORED ATTACK"  
WED. thru SAT. DEC. 25-26-27-28  
Cont. Perf. Christmas Day  
"A JOY AND A DELIGHT!"... N.Y. Times

M-G-M presents  
A SOL C. SIEGEL PRODUCTION OF COLE PORTER'S  
**LES GIRLS**  
starring GENE KELLY • MITZI GAYNOR  
KAY KENDALL • TAINA ELG  
co-starring JACQUES BERGERAC • Screen Play by JOHN PATRICK  
Story by Vera Caspary • Music and Lyrics by COLE PORTER  
In CinemaScope and METROCOLOR

**The Twigs**  
Celebrate NEW YEAR'S WITH US

Reservations Now!  
80 Springfield Ave., Springfield  
DRexel 6-9885

**CHI-AM-CHATEAU**  
HIGHWAY 22 MOUNTAINSIDE, N. J.  
AD. 2-3873  
**GALA NEW YEAR'S NITE SHOW**

BROADWAY • ACTS

MAKE YOUR RESERVATIONS NOW!  
\$8.50 plus tax Full Course Dinner Novelties Favors  
DEVALLE'S RAY ORK  
FULL COURSE XMAS DINNERS 2.75 — KIDS 2.00

WELCOME '58 HERE  
JOIN IN THE FUN  
CELEBRATE YOUR NEW YEAR'S EVE WITH US... With the Finest Food and Music  
DANCING UNTIL 4 A.M.  
\$4 per person includes a complete roast beef platter, noise-makers, hats, party trimmings.  
Under the Management of Estelle and Jim  
**OLD EVERGREEN LODGE**  
Located in Singer's Park, Springfield  
DREXEL 9-9830 DREXEL 6-0489

Performance... PLUS!

**OLDSmobility**

GIVES YOU ALL THE ROCKET POWER YOU NEED

...WITH A MARKED ADVANCE IN FUEL ECONOMY!

Eighty-eight Holiday Coupe

New 1958 Rocket Engines Bring You New Performance and Economy... To Highlight Oldsmobile's 60 Years of Engineering Leadership! Come in Today for an Exciting Rocket Test.

Here's the kind of news you've been waiting for! The great, new Rocket Engines are ready with all the power you'll ever need for any driving situation... but best of all, these new Rockets will give you greatly improved gasoline mileage! The secret of the savings is in new, higher compression and advanced carburetion. The new ECON-O-WAY Carburetor, on the Dynamic 88, lives up to its promise of exceptional economy and performance plus! If you'd like something extra under the hood, try the new J-2 Rocket—offering the amazing economy and safety reserve power of progressive, six-barrel carburetion. One road test will prove... there's still nothing like a Rocket! Let your Oldsmobile Dealer demonstrate with a thrilling 1958 Rocket road test, soon!

**'58 OLDSMOBILE**  
1908-1958 FORWARD FROM FIFTY... INTO THE ROCKET AGE

SEE YOUR AUTHORIZED OLDSMOBILE QUALITY DEALER

make your Reservations NOW!

\$8.50 per person, plus tax

- Chinese-American Dinner
- Floor Show
- Dancing to Music of Ray Devalle and His Orchestra
- Souvenirs for the Ladies

Phone Reservations to ADams 2-3873

**CHI-AM CHATEAU**  
1 mile west of Springfield on Route 22. Turn right at light just beyond Chi-Am Chateau (Chinese-American Cuisine to take out).  
Full Course from \$10.00 (Dancing Every Night But Mon. & Tues.)





# SUNNING SPORTS

By **MIKE GOODMAN**

Basketball in Union County will feature team work this year with no outstanding stars grazing the line-up of any Union County school. Gone are Fred Katz of Rahway, Baron of Linden, and the host of other outstanding players that made opponents miserable. No team is "hard and shoulders" above the others and the field is wide open. Westfield, Hillside, Rahway, three powerhouses of last year have been severely hit by graduation. Rahway lost their starting five and Group III champion Hillside lost their first seven men. The prospects are bright for the teams that were rebuilding and gaining experience last year. Among them are Scotch Plains, Springfield Regional, and Roselle.

**Regional Boast Height**  
The Bulldogs have the ingredients to make a title bid but they have been slowed by early injuries and just poor all-around play. Regional has an outstanding rebounder in Warren Watkins and a willing helper in "Big" Tony Della. Holdover lettermen Billy Benner, Dennis Golcher, and Don Carpenter have the needed shooting and ball-handling ability. But the fact remains that the Bulldogs have lost 3, while winning only one.

If Regional is to move into the front ranks of the county's hoopers, a decisive win over a strong St. Mary's this Friday night will be needed. St. Mary's only opened their basketball season last Friday but they easily maintained a supposedly strong Montclair immaculate five 81-54. On the strength of this performance, the "Newark News" has seen fit to rate the Hilltoppers the No. 1 team in the County. The Hilltoppers boast three standouts in Seniors Pat Doherty and Ed Petrovick, and sophomore Jim Manhardt. Petrovick is the tallest boy on the Hilltopper squad at 6'3" and he is a seasoned jumper at center. Regional will have the overall height advantage with Della and Watkins but St. Mary's has a smart and hustling ball club. The game starts at 8:15 p.m. in Regional's gym. If the Bulldogs need any stimulus to win this big one, they just have to look back to last year's Union County Tournament. The Hilltoppers eliminated the Bulldogs in the opening round with a humiliating 70-45 defeat.

## Bulldog Cagers Stand 1-3 After Defeat by Rahway

The Bulldogs hold a 1-3 record as this edition goes to press. After suffering a close loss to Westfield and another to Plainfield, the Bulldogs snapped their 18 game losing streak with a hustling win over a Hillside quintet. This victory was short-lived as our basketballers ran into a "hot" Rahway five and went down to their third defeat.

Springfield Regional commanded the Hillside contest for three periods before being almost out-hustled by a resurgent Comet team as the Hillsiders forced Regional to extend itself to the final seconds to defeat the Comets 49-44.

Hillside went ahead of the Bulldogs in the early minutes of the final quarter. They became flushed with victory as they increased the Comet lead to 41-37 and thought they had finally found the answer to the Bulldog defense in the person of Joe Scardaville. Scardaville paced the Hillsiders in the last quarter with 6 points. But Regional came roaring back after the score stood 44-41 in favor of Hillside to reel off eight straight points. Bill Benner and Dennis Golcher led the drive with both flipping in two goals in the final two minutes of play.

Warren Watkins played an outstanding game for the Bulldogs. He scored in 17 points and grabbed a total of 21 rebounds for Springfield Regional.

Regional had another of their "patented" off days as they lost a 74-49 decision to the Rahway Indians. The Indians completely controlled the board as the taller Bulldogs just couldn't get started. One bright spot was the high-scoring Billy Benner. He tallied 23 points to lead the Bulldogs. All in all, it was a highly disappointing afternoon.

| REGIONAL             | HILLSIDE           | RAHWAY |
|----------------------|--------------------|--------|
| Della 0 0 0          | Lenn 0 0 0         |        |
| Benner 7 15 3        | Boff 3 0 0         |        |
| Watkins 7 3 11       | Lucario 3 0 0      |        |
| Carpenter 3 3 9      | Frieden 3 1 7      |        |
| Golcher 4 0 8        | Kodovitz 0 0 0     |        |
|                      | Rosario 3 0 0      |        |
|                      | Scardaville 3 0 12 |        |
|                      | Vanna 2 0 4        |        |
| Springfield 12 11 11 | 11 11 44           |        |
| Hillside 12 11 11    | 11 11 44           |        |
| REGIONAL             | RAHWAY             |        |
| Benner 13 27 35      | Bassi 0 0 0        |        |
| Carpenter 0 1 1      | Vilchik 1 0 2      |        |
| Golcher 2 1 5        | Williams 1 0 2     |        |
| Watkins 4 2 10       | Ryan 2 0 4         |        |
| Della 2 2 9          | Trumbo 1 0 2       |        |
| Sabittini 0 2 3      | Koehler 10 0 20    |        |
| Nroune 1 0 2         | Janos 0 0 1        |        |
|                      | Swick 2 2 4        |        |
|                      | Keiha 1 0 2        |        |
|                      | Henderson 6 0 12   |        |
| Springfield 10 11 5  | 19 49              |        |
| Rahway 20 20 12      | 13 47              |        |

## Morristown Pinned By Wrestling Team

Springfield Regional opened its wrestling season last Tuesday with a defeat of Morristown High. The Grapplers sought revenge and found it for last year's defeat by the Colonials. Coach Palmer's men took seven of eleven matches with only four Bulldogs losing decisions.

In the 105-lb weight class, George Rupp was pinned by his opponent as the Colonials took the first encounter. Regional's spirits received a needed bolstering and Dan Staruch provided the stimulus in the next match. Staruch pinned his man in the 115-lb weight class. This pin was quickly followed by another. Senior Richie Rottman pinned his man in the 123-lb weight class as the Bulldogs jumped into a numerical lead over the hard-pressed Colonials.

Three-year veteran George Harms came through in the next match with a sparkling performance. He had so trouble in pinning his man and walking off with the 128-lb contest. Ray Lewandowski wrestled in the 135-lb weight class and won. Peter Rupp lost his decision in the 140-lb weight class but Regional had pulled too far ahead in points to be threatened. Ex-footballer Bob Keith took his contest by outpointing his opponent in the 147-lb weight class. In the 156-lb weight class, Regional's Lou Munch was pinned by an exceptionally fast opponent.

Bernie Keil carried the Bulldog colors in the 165-lb weight division and came through with a victory by outpointing his rival. In the 175-lb weight class, Bill Kelsey of Springfield was pinned by Colonial opponent. In the heavyweight bout, Fred Hockstrasser won also on points.

The Palmermen showed strength in most classes; and a few of his Grapplers may go on to win in the State Tournament. The Junior Varsity also showed winning ways as they took nine of eleven matches from the Colonials.

At this joyous season of fun and festivity, we take pleasure in extending our warmest good wishes to all our friends. May this happy holiday fill your homes and your hearts with all the blessings of Christmas... warmth and good cheer, peace and good will. To everyone everywhere, we wish a Yuletide to be long remembered for the fulfillment of cherished dreams.

**Binder-Lifson Agency**  
9 Whittingham Ter. 262 Morris Ave.  
MILLBURN SPRINGFIELD

## Add Two New Team To Small-Fry Gang Markets Battle for First Place in Bowling Clashes

The Springfield Recreation Commission "Small-Fry Basketball League" will have eight teams this year, an increase of two teams over last year, due to a bumper turnout of youngsters. The highly interesting and popular activity will operate every Saturday afternoon at the Florence Gaudineer School Gym, with games scheduled from 1-4 p.m., with each club playing a fourteen game schedule. Each team will have a parent assigned to coach the team, under the supervision of the Springfield Recreation Commission.

The teams will be named after popular professional teams in the NBA, as well as standout College teams. The names of the eight clubs are: Celtics, Knickerbockers, Lakers, Pistons, Nats, Bullets, Billikens, and the Aggies. The teams were selected in such a manner to insure even distribution of the talent, with consideration given towards a well-balanced league, rather than an All-Star combination. Any boys who haven't registered as yet are requested to attend the first session after the Christmas Holidays, with the program open to any boy who is a Springfield resident. League Director Ed Ruby was pleased with the ability of the youngsters, and wishes to encourage all boys to participate. The Small Fry Basketball program is for boys 9 through 12 years of age, with each boy requested to bring his own sneakers and basketball shorts. The league schedule, rosters of all teams, and pertinent information on the formation of the league will be announced in the Springfield Sun next week.

**League Standings**

| Team                  | W      | L      |
|-----------------------|--------|--------|
| Springfield Market    | 27     | 18     |
| Beckmann's Market     | 27     | 18     |
| Frank's Auto Service  | 26     | 19     |
| American Legion No. 1 | 23 1/2 | 21 1/2 |
| Parkview Atlantic     | 23     | 22     |
| Mende Florist         | 23     | 22     |
| Bunnell Brothers      | 22     | 23     |
| D'Andrea Driveways    | 21     | 24     |
| Cozzolino Furs        | 21     | 24     |
| Drake Fuel Sales      | 20     | 25     |
| Brunner Excavating    | 18 1/2 | 28 1/2 |
| American Legion No. 2 | 18     | 27     |

**Springfield Mkt.**  
E. Anderson 211, 191, 139; B. Conchar 191, 189, 160; J. Marchion 169, 177, 193; A. Mutschler 172, 198, 130; D. Pierson 191, 161, 178. Total pins 969, 847, 867.

**D'Andrea's**  
Suzeno 123, 169, 185; A. D'Andrea 185, 159, 182; Ziegenfuss 151, 203, 203; Jones 180, 211, 234; M. D'Andrea 162, 183, 247. Total pins 825, 932, 1105.

**Parkview**  
V. Pollicarpo 154, 149, 159; D. Puelico 179, 164, 123; C. Pacifico 211, 192, 146; Julio Pollicarpo 146, 194, 202; R. Pollicarpo 158, 156, 204. Total pins 867, 889, 876.

**Beckmann's Mkt.**  
Laoyraff 130, 219, 169; Chateau 150, 144, 139; W. Schramm 166, 211, 167; Gregory 175, 151, 126; S. Burdett 225, 197, 188. Total pins 800, 870, 870.

**Bunnell Bros. Inc.**  
B. Bunnell Jr. 164, 162, 157; H. Walton 164, 159, 168; A. Bunnell Sr. 140, 165, 132; J. Colanone 138, 144, 144; S. Burdett 179, 177, 200. Total pins 835, 875, 912.

**Mende's**  
Cagliano 180, 201, 211; Blind 125, 125, 125; Hasselton 120, 125, 120; Blind 125, 125, 125; Mende 157, 159, 179. Total pins 777, 805, 838.

**Legion #2**  
H. Quinton 182, 165, 202; A. Drechsler 192, 181, 188; Naitico 154, 163, 214; Colanone 152, 128, 185; Eckman 183, 175, 19. Total pins 922, 852, 1029.

**Legion #1**  
Lapella 145, 145, 191; T. Smith 185, 213, 231; J. Colanone 138, 169, 172; B. Doyle 136, 149, 172; R. Schramm 160, 133, 122. Total pins 826, 886, 920.

**Drake Fuel**  
G. Graziano 104, 171, 138; B. Reardon 168, 195, 155; R. Schwert 221, 140, 210; R. Ziegenfuss 171, 146, 162; G. Schwert 162, 170, 176. Total pins 952, 862, 960.

**Johnson**  
Johnson 159, 163, 135; Dougherty 179, 122, 137; Rocessner 169, 167, 141.

**RAPPAPORT SPRING DRUG**  
273 Morris Ave., Springfield  
Free delivery—DRexel 9-2079  
Prescriptions, Vitamins, Cosmetics  
Cut-Rate Prices

# MERRY CHRISTMAS TO ALL

## GELJACK BROTHERS JEWELERS

241 Morris Avenue DRexel 6-1710

# The Springfield Sun Guidebook

|  |   |  |
|--|---|--|
| <p><b>AUTO BODY WORK</b><br/>ELLEY — (155 Morris Ave., rear of Chrysler-Plymouth agency, Springfield). When your rear end is out of shape look for: (1) a firm with the necessary factory equipment, (2) a firm with the know-how of experience, and (3) a firm with the integrity to do the best job at the lowest rate. On all 3 counts, the SUN recommends Elley Auto Body Shop.</p>  | <p><b>INSURANCE &amp; REAL ESTATE</b><br/>ANNE SYLVESTER'S REALTY CORNER (640 Morris Avenue, Springfield, DRexel 6-2300)—To buy or sell and be treated well, Anne Sylvester's Realty Corner gives the bill why not call DRexel 6-2300 and be convinced.</p>   | <p><b>RESTAURANTS</b><br/>CHINA SKY—(Springfield Shopping Center, DRexel 9-5010) Here's a random sampling from the menu showing that there's practically everything under the China Sky. SAM GOY TAI—diced lobster meat, white meat of chicken, Chinese roast pork prepared with imported Chinese mushrooms, snow pea-pods, water chestnuts, bamboo shoots, and bits of bok choy. All this for \$2.75 in Jack Chin's cheerful dining room.</p>             |
| <p><b>AUTO REPAIR</b><br/>CLARK'S GARAGE — (Just over Route 22 overpass on South Springfield Avenue, Springfield) If you own a 1916 Ford, Frank Clark is probably the only person in town who knows how to service it. That was the year he first began tinkering with the motor and brought under the hood, today his reputation is such that he needs no sign over his garage — people know him.</p>   | <p><b>LAUNDROMAT</b><br/>COURTESY LAUNDROMAT—(288 Morris Ave., Springfield) Everybody knows that you just drop off your laundry here and come back in an hour to pick it up fluff dry. But did you know that Adolf Mirabelli does expert shoe repairing, here too? And he's fluff dry all the time.</p>   | <p><b>TV SERVICE</b><br/>A &amp; A TV—(2708 Morris Ave., Union, 1/2 mile from Springfield, MURdock 8-5300) Al Jones has been in TV since 1933 when it was considered a laugh. Jones keeps a straight face, though, and by seriously keeping abreast of the electronic world has made available to Springfield a shop that is tops in its field. Fixed charges, same day service, and guarantees on all work are the other reasons why phone A &amp; A.</p> |
| <p><b>CUSTOM LAMPS</b><br/>RIGBY'S (Profit Avenue corner of Morris Avenue opposite Smith and Smith, Springfield) — Lee Rigby, Springfield's veteran civic leader, has moved into an attractive shop behind his former big showroom to concentrate on the work he loves most — designing and making lamps and lamp shades. He has a stock of ready-made lamps on hand which he can adapt to personal needs.</p>   | <p><b>LUMBER &amp; SUPPLIES</b><br/>COLUMBIA—(Maple Ave., Springfield, DRexel 6-5950) There are all sorts of accented doors on the market now, most of them of the cheap modern variety. Columbia has the solution to this problem in the handsome, stained woods used in the Pea-Wood Folding Door. These quality craftsmen doors come in a variety of rich woods. There is a substantial quality in these doors that would do credit to any home, whatever the decor.</p> | <p><b>PHONE NUMBERS</b><br/>POLICE DRexel 6-0400<br/>FIRE Call Operator<br/>FIRST AID SQUAD DRexel 6-0800<br/>TOWNSHIP CLERK DRexel 6-2800<br/>PUBLIC LIBRARY DRexel 6-4284<br/>CALDWELL SCHOOL DRexel 6-1431<br/>CHELSEA SCHOOL DRexel 9-4334<br/>GAUDINEER SCHOOL DRexel 6-5080<br/>WALTON SCHOOL DRexel 6-1454<br/>REGIONAL HIGH DRexel 6-6300<br/>ST. JAMES SCHOOL DRexel 6-5194<br/>SPRINGFIELD SUN DRexel 9-5000</p>                                 |
| <p><b>FLOOR COVERINGS</b><br/>LINOLEUM &amp; CARPET FACTORY OUTLET—(Route 22, Springfield, DRexel 6-3220) Mel Horn's linoleum, tile, and broadloom emporium sports a vast range of floor coverings at low budget prices. Almost all of the nation's leading manufacturers are represented on the big display floors. The Outlet is particularly respected for the quality of its installations.</p>  | <p><b>PAINT &amp; WALLPAPER</b><br/>R. GLEMMING — (248 Morris Avenue, Springfield, DRexel 6-785) Along with artist's supplies and about a million samples of wallpaper, Roy Glemming carries the complete line of paint. This firm has pioneered some startling developments in paint, including alkali base and latex base paints that cover in one coat. The "Color-Match" system of selecting the 24 color variations is the cleverest we've ever seen.</p>              |  |
| <p><b>FOOD MARKETS</b><br/>SPRINGFIELD MARKET—(212 Morris Ave., Springfield, DRexel 6-0431) If you're an expectant mother, or just a mother expecting good service, these boys take phone orders and deliver free of charge. Jim Funchion and Les Schulman have only top quality foods at prices that can't be matched anywhere.</p>   | <p><b>POULTRY</b><br/>CASALE'S FARM — (128 Springfield Ave., Springfield, DRexel 6-1509) What's the good of living in the country (i.e., Springfield) without being able to get country fresh food? Carlo Casale, the turkey king, makes all this country worthwhile by growing his own poultry, selling his own eggs, and making his own butter. All of it is available every day at his showroom.</p>   |  |
| <p><b>HARDWARE</b><br/>HYDE AND ELLIS, INC. (718 Mountain Ave., beside Mt. Spring Bake Shop, Springfield, DRexel 6-7990) A sparkling new hardware supermarket has opened up in the growing south end of town and is showing Springfield what modern merchandising means. Everything from the builder's supplies to the big selection of housewares is arranged in neat displays to catch the eye. Free delivery is available both the Springfield store and the even bigger Westfield home headquarters.</p> |   |  |
| <p><b>HOME IMPROVEMENTS</b><br/>CHANNEL LUMBER CO.—(Route 22, Springfield, DRexel 6-8000) Channel's CHERRY BROWN makes it possible to buy things about anything under the sun (or as advertised in the SUN) and take 18 months to pay for it. This, of course, includes lumber, home improvements, housewares, paints, hardware, and so on. A service to the community is Channel's standing offer to loan extra chairs for card parties, club meetings, etc., absolutely free of charge.</p>                |   |  |

**To Attend Party For Poor Kids**  
Sylvia Jean Feldman, daughter of Mr. and Mrs. Ralph Feldman, of 36 Sherwood Road, will help out at a luncheon for 30 underprivileged children tomorrow, Friday, Dec. 20. Miss Feldman, a student at the Berkeley School of Secretarial Training in East Orange, will participate in the event at the Hotel Suburban, East Orange. The party is a tradition of the school for the past 27 years.

## BUSINESS DIRECTORY

|  |   |  |
|--|---|--|
| <p><b>SPERCO MOTOR CO.</b><br/>CADDILLAC Sales-Service Accessories<br/>491 Morris Ave. Summit<br/>"Near Ciba" CRestview 3-1700</p>   | <p><b>FUEL OIL - COAL</b><br/><b>DRAKE FUEL SALES CO.</b><br/>DELCO OIL BURNERS<br/>Installation &amp; Servicing<br/>COAL • FUEL OIL • COKE<br/>679 Morris Ave. Springfield<br/>DRexel 6-0880</p>                         | <p><b>PLUMBERS</b><br/><b>ALBERT SCHATZ</b><br/>Plumbing - Heating<br/>Contracting - Alterations<br/>Repairing<br/>Hours: Monday thru Saturday<br/>8 a.m. to 5:30 p.m.<br/>197 Hillside Avenue<br/>SPRINGFIELD<br/>DRexel 6-4276</p>                                 |
| <p><b>CHEVROLET</b><br/>L &amp; S Chevrolet Co., Inc.<br/>E. Arthur Lynch<br/>Your Authorized<br/><b>CHEVROLET</b><br/>Dealer<br/>Sales - - - Service<br/>Parts - - - Repairs<br/>Complete Body &amp; Fender Work<br/>Painting<br/>Car. Morris &amp; Commerce Ave., Union<br/>MURdock 6 2800</p> | <p><b>LETTERING</b><br/>Harry S. Keene<br/><b>TRUCK LETTERING</b><br/>Delivery Trucks A Specialty<br/>KENILWORTH, N. J.<br/>BRIDGE 6-2970</p>   | <p><b>SERVICE STATIONS</b><br/><b>BALDWIN'S SHELL STATION</b><br/>SHELL<br/>Gas - Oil - Lubrication<br/>Washing &amp; Polishing<br/>Car Wash &amp; Delivery Service<br/>DRexel 9-9831<br/>Mountain &amp; S. Springfield Ave.</p>                                     |
| <p><b>BAKERY</b><br/><b>HASELMANN'S BAKERY</b><br/>Quality Baked Goods<br/>270 Morris Avenue<br/>Springfield<br/>DRexel 6-4128</p>   | <p><b>MILK AND DAIRY PRODUCTS</b><br/><b>SCHMALZ</b><br/>• Milk &amp; Cream<br/>• Buttermilk<br/>• Cottage Cheese<br/>• Butter &amp; Eggs<br/>Delivered Fresh from Our Nearby Farm<br/>Call ...<br/>MILLINGTON 7-0025</p> | <p><b>ELECTRICAL CONTRACTOR</b><br/>For Electrical work, phone ...<br/>DRExEL 6-3181<br/>• Industrial • Commercial • Residential<br/>72 Forest Dr., Springfield, N. J.</p>   |
| <p><b>DRUGS</b><br/><b>PARK DRUGS</b><br/>Prescription &amp; Surgical Pharmacy<br/>OPEN SUNDAYS<br/>TUE &amp; PM<br/>General Retail Shopping Center<br/>DRexel 9-4942</p>  | <p><b>NEWSPAPER DELIVERY</b><br/>Your Favorite Paper<br/>Delivered To Your Home<br/>Mornings - Afternoon - Evening - Sunday<br/>SPRINGFIELD NEWS DELIVERY<br/>Call DRexel 6-9786</p>                                      | <p><b>ROOFING-SIDING</b><br/><b>SPRINGFIELD ROOFING CO.</b><br/>Remodeling, Attics and Basements Finished<br/>Slate, Tile and Siding<br/>Gutter and Leader Repair<br/>Phone DRexel 9-4207<br/>357 Mountain Ave., Springfield, N. J.</p>                              |
| <p><b>DRUGS</b><br/><b>ROLAND DRUGS</b><br/>777 Mountain Ave.<br/>(Tab's Shopping Center)<br/>PRESCRIPTIONS-COSMETICS<br/>BABY-NEEDS-VITAMINS<br/>Free Delivery—DRexel 9-2244<br/>9 A.M. - 10 P.M. Including Sundays</p>   | <p><b>USE THE BUSINESS DIRECTORY FOR RESULTS</b></p>  | <p><b>TAVERNS</b><br/><b>OLD EVERGREEN LODGE</b><br/>SINGERS PARK, SPRINGFIELD<br/>Make Reservations for GROUP OUTINGS<br/>Guarantee 150 Adults and up to 2,000<br/>Arrangements for PARTIES WEDDINGS<br/>BAR OPEN YEAR AROUND<br/>DRexel 6-0489<br/>SPRINGFIELD</p> |
| <p><b>FLOOR COVERING</b><br/><b>CENTER CARPET TILE</b><br/>"Floor Coverings of Every Description"<br/>Rubber Asphalt Cork<br/>Rug Cleaning &amp; Storage<br/>31 Summit Av. CRestview 7-2700</p>  |   |  |