

Member of WATCHUNG WEEKLY Newspaper Group
 • Springfield Sun • Mountaineer Echo • Berkeley Heights Beacon • Scotch Plains Times • Fanwood Independent.

The Springfield Sun

4 OUT OF 5 PEOPLE IN SPRINGFIELD READ THE SUN

VOL. 30th YEAR-NO. 3 DREXEL 9-5000 SPRINGFIELD, N. J., THURSDAY, NOVEMBER 5, 1959 OFFICIAL NEWSPAPER TOWNSHIP OF SPRINGFIELD 10¢ A COPY, \$4.00 BY THE YEAR

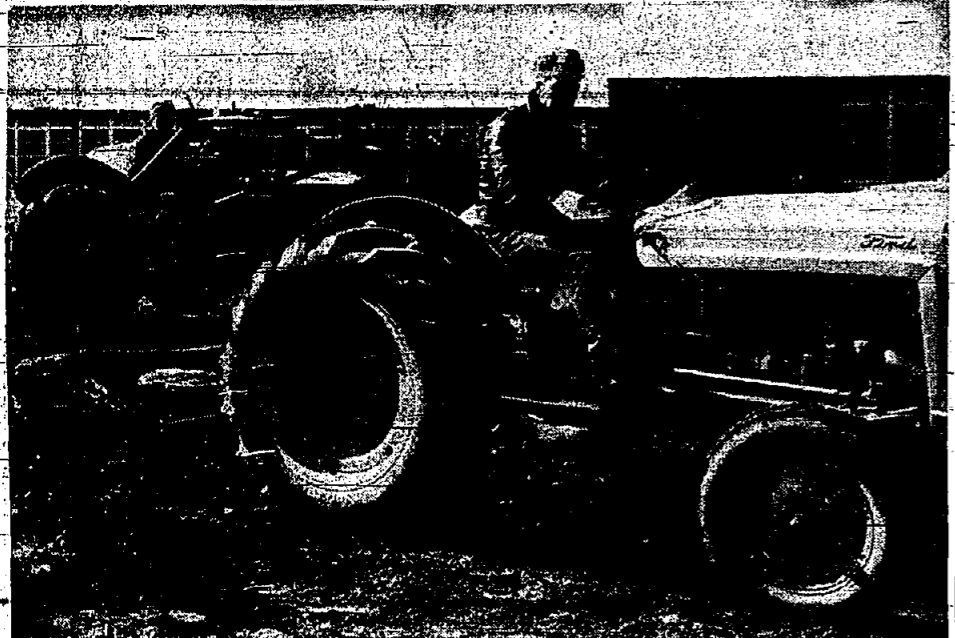
Democrats Take Complete Control



MANY HANDS . . . Vocational agriculture students of Jonathan Dayton Regional High School, Springfield, are preparing seven-acre site at Union Junior College's new Nomahegan campus in Cranford.



RETURN TRIP Jonathan Dayton Regional High School students prepare to enter bus for their trip back to the Springfield school after working on landscaping project at Union Junior College's new 28-acre campus in Cranford. Boarding bus are (l to r) Bob Phillips and Brian Shea of Berkeley Heights.



TRACTOR DRIVERS — Mickey Cardinal, left, and Paul Prince, both of Springfield, drive tractors contributed by their fathers for project by vocational agriculture students at Jonathan Dayton High School, Springfield, to help landscape new campus of Union Junior College in Cranford. They are shown using rake and spiked tooth harrow in preparation for fertilizing and seeding the seven-acre area.

44 Regional Students Aid Jr. College

Forty-four vocational agriculture students of Jonathan Dayton Regional High School, Springfield, are gaining real work experience while helping to landscape Union Junior College's new Nomahegan campus in Cranford.

Under the direction of Adam LaSota, director of vocational agriculture at the Union County regional high school, the students are raking and harrowing a seven-acre area. They will then put in fertilizer and perennial rye with a 30 percent permanent grass mixture.

The students are residents of Berkeley Heights, Clark, Garwood, Kenilworth, Mountainside and Springfield — all members of the Regional District — and tuition students from Millburn, Summit and Winfield.

The project was made possible by two Springfield agriculturists, Edward Cardinal and Paul Prince, who contributed the use of tractors. Their sons, Mickey and Paul, are among



VOC. AG. QUEEN — Only girl to enroll in the vocational agriculture program at Jonathan Dayton Regional High School, Springfield, in its 19-year history is Beverly Ann Johnson. She is to work on project of preparing new campus of Union Junior College, Cranford, for fertilizing and seeding. In background is the college's new \$1 million building. Large windows to the right are for the large, centrally-located library.

the students participating in the project.

Taylor rakes and spike tooth and disc harrows were attached to the tractors to prepare the site for seeding. The next step was to put in the fertilizer with the use of an attachment.

"The project is serving as a work-experience for our stu-

Selander Appointment As Police Chief Seen Set For Next Agenda

Acting Chief of Police Wilbur C. Selander is scheduled to be named chief of the township police department, The Sun learned today. Chief Selander will succeed Albert A. Sorge, who died last week in East Orange Veterans Hospital.

Mayor Vincent J. Bonadies, public safety commissioner, is expected to move for promotion of Selander at the next township committee session. Although designated recently as acting chief his payroll status is that of captain. In that capacity he has been the No. 2 man on the force for several years.

Chief Selander joined the police department in September, 1928. He was promoted to sergeant October, 1950 and to lieutenant in March, 1953. He was made captain in March 1955.

The acting chief is a life-member of the New Jersey State Patrolmen's Benevolent Assn. He is a past president and former state delegate of Local 76, PBA.

Chief Selander is a veteran of World War II, serving in the Navy. A native of Newark, he has lived here 35 years. Prior to becoming a policeman he was a stained glass cutter and glazier.



Wilbur C. Selander

Approve Plan For 1 1/2 Room Apartments

A variance, permitting construction of a 16-unit apartment house in a single family zone at 627-635 S. Springfield Ave. has been granted by the Township Committee.

Concurring with the recommendation of the board of adjustment, the committee granted the zoning variance to the V. J. Corp. to build 16 1 1/2 room efficiency apartments.

At a board of adjustment hearing held Thursday, there were no objections to the variance among nearby single family home owners.

In its report to the committee, the board of adjustment pointed out that adjacent to the proposed apartment house there are a grocery store, a gasoline station, a vegetable stand and a poultry farm, as nonconforming.

(Continued on page 3)

Police Chief Sorge Dies In Hospital — Held Post 6 Years

Funeral services for Chief of Police Albert A. Sorge of 51 Battle Hill Ave. who died Wednesday at East Orange Veterans' Hospital, were held Saturday at the Smith and Smith Suburban, 415 Morris Ave. He was 60.

The chief had been ill of cancer for a number of months. He was given a leave of absence in April when he entered Overlook Hospital, Summit, for surgery. He entered the Veterans' Hospital three weeks ago.

Active for many years in county and state police affairs, Chief Sorge joined the police department in October, 1927. He was named a sergeant in 1938 and lieutenant in 1950. The Township Committee appointed him to head the department in 1953 when Chief William J. Thompson retired.

Chief Sorge was a member of the County, State and International Police Chief Associations. He was a former president of the Union County Chiefs of Police Association. He also was a past president of Local 76, Patrolmen's Benevolent Association.

A veteran of the Mexican Campaign and of World War I, the chief was a member of Continental Post 228, American Legion. He also held membership in Millburn Lodge, F. and A.M., and of Crescent Temple of the Shrine. He was a member of St. Stephen's Episcopal Church.

During his tenure on the po-



Albert A. Sorge

Civic Group To Meet On New Rte. 22

A township public meeting of the Twin Brooks Civic Association will be held on Tuesday, November 10 in the auditorium of the Raymond Chisholm School at 8:30 p.m. regarding the current situation on Route No. 22 and the proposed Route No. 22 and Route 208 (the spur route connecting Springfield to Goethals Bridge).

Representatives from all religious, civic, service and fraternal organizations and interested private citizens are being urged to attend this meeting.

A short sound movie concerning the operating procedures of the Federal Highway System will be shown. Mr. Leonard Best, local industrialist, will be the guest speaker. Mr. Best has conferred with highway officials and governmental officials in Trenton and Washington and will tell of his findings.

Other pertinent data on the highways has been secured by this organization's executive board and will be revealed at this meeting.

Prior to this public meeting, a short business meeting of the Twin-Brooks Civic Association membership will commence at 8:00 p.m. Mrs. Victor A. Braehl, Nominating Chairman, and the members of that committee will present the new slate of officers and trustees for nomination for the coming year.

Free Church To Dedicate New Property

The Community Free Church of Springfield, now holding services in the Florence Gaudineer School, will have a Dedication Service for their newly acquired property, just west of the main entrance to the Baltusrol-Country-Club, on Shunpike Rd., Sunday, Nov. 8 at 3:30 p.m., to be held on the church property.

Pastor Lawrence Larson, Chairman of the Eastern Evangelical Association, will bring the Dedication Message. Pastor Olaf Urang, Supt. of the Eastern Assoc. will give the history of the Free Church and Mr. Edward Hansen, Chairman of the Board of Trustees Eastern Assoc. will give the prayer.

Pastor Havelson of the Springfield Church, along with other members, will assist in the service.

Mrs. Vernon Drake, Jr., Mrs. Herman Gerdes and Miss Dolores Mackensen, triplets, will render special music, with Mr. Henry Gehander of Scotch Plains singing a solo.

Pike Referendum Down In Defeat

Voters in Springfield voted a strong "no" against Referendum No. 3 regarding Turnpike surplus by 2214 to 1956, in Tuesday's election.

The College Bond issue was accepted by a thumping 2:1 vote with 3497 votes for the referendum and 1700 against.

The Sunday Closing issue showed that local citizens were in favor of closing by 1300 votes, 3280 Yes—1973 No.

The Amusement Games Licensing Law was okayed by the voters with 3,060 voting for the measure and 1,825 voting against the measure.

On the county level, Republicans scored easily over Democrats with Nelson Stammer

(Continued on page 3)

Missionary To Talk On Japan Here Sunday

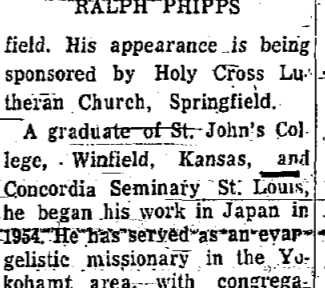
Missionary Ralph Phipps will present an illustrated lecture on Protestant missionary activity in Japan this Sunday evening, November 8th, at 7:30 p.m. in the auditorium of the Edward V. Walton School, 601 Mountain Avenue, Springfield.

His appearance is being sponsored by Holy Cross Lutheran Church, Springfield.

A graduate of St. John's College, Winfield, Kansas, and Concordia Seminary St. Louis, he began his work in Japan in 1934. He has served as an evangelistic missionary in the Yokohama area, with congregations at Yokohama, Totsuka, and Ofuna. Mr. Phipps also served as Secretary of the Japan Missionary Conference three years and as Chairman of the Radio Committee which governs the Japan Lutheran Hour.

In September of this year he arrived home on furlough with his wife and three children. During the fall months he is lecturing in various parts of the country and in February will study at the graduate school at the University of Missouri in Columbia, Mo. An informal reception for him and his wife is planned following his lecture with the Ladies' Guild of Holy Cross Lutheran Church serving as hostesses.

This year marks the 100th anniversary of Protestant missionary work in Japan. Out of a total population of 92,000,000 only about 600,000 are Christians — less than 1 per cent of the people.



RALPH PHIPPS

Sibole Balentine Beat Beck Cawley In Close Campaign

Springfield Democrats are now in complete control of the Township government. They survived their first year, after having taken over the administration from the Republicans for the first time in the history of the Township, with a close but comforting victory in the general election Tuesday.

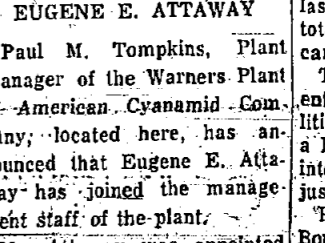
William H. Balentine and Russel W. Sibole, the Democratic team, defeated James M. Cawley and Paul H. Beck, the G.O.P. candidates, in Tuesday's spirited election and all five seats are now in the hands of the

Promote Man At Cyanamid Plant

Paul M. Tompkins, Plant Manager of the Warners Plant of American Cyanamid Company, located here, has announced that Eugene E. Attaway has joined the management staff of the plant.

Mr. Attaway was appointed to the position of Assistant to the Plant Manager by George W. Russell, Manager of the firm's Chemicals Division, of which the Warners Plant is a unit. Mr. Attaway formerly had been Plant Manager of Cyanamid's plant in Hamilton, Ohio.

He and his wife have two daughters, Barbara Ann and Carol, now reside at 100 Lyons place, Springfield. Mr. Attaway has been with American Cyanamid for twenty-eight years and has served in a variety of administrative and management posts at Cyanamid plants in Joliet, Illinois, and Hamilton, Ohio.



EUGENE E. ATTAWAY

V.F.W. Hall Is Taken Over By Post Office

Springfield's new post office is still in its "no local site available" status, but Postmaster A. V. Del Vecchio announced several interesting developments yesterday.

1. Authorization has been received to lease the V.F.W. Headquarters building in Morrison Road for needed expansion facilities of the local V.F.W. hall was taken yesterday.

2. Lease on the present post office has been extended. The present lease expired September 1.

3. Post Office Department officials have several acceptable sites under consideration for the new proposed office but owners of the property refuse to come to terms with post authorities.

There has been some talk of condemnation of the necessary property for construction of a new post office but the authorities state they would rather come to terms with the present owners.

Postal officials have been surveying all available sites for the much needed post office and the general area of Mountain Avenue appears to be most acceptable. One piece of property, especially well located, is on top of the list and it has been recommended that the Post Office Department has been willing to lease the terms of the present owners as far as sale price is concerned. However, the deal is out since the owners are not willing to accept all the details of such a government construction.

Authorization to lease the V.F.W. Headquarters will give the Springfield office a chance to relieve some of the congestion in the present post office and move a great deal of the operation to the Veterans Hall.

The entire first floor will now be used by the post office and the work of transferring the work was under way yesterday when the post office people moved in.

The V.F.W. will use the basement for its regular meetings and other activities. The remainder of the building will be closed off and used exclusively by the post office.

Postmaster Del Vecchio says P.O. Department real estate representatives will continue searching for property on which the new post office may be constructed.

Some Reports Of Violence On Halloween

Springfield came out of the Halloween fun night with very few reports of serious vandalism or violence but authorities in the Township had to do a real policing job to keep the damage down to a minimum.

Acting Police Chief Wilbur Selander used his full force of men and the Police Reserves to patrol Springfield and deployed them so that practically every street was covered.

The Trick or Treat program for the benefit of UNICEF in Springfield was one of the happy events of Halloween but even this activity didn't escape some of the pranks of the older boys.

(Continued on page 3)

The SPRINGFIELD SUN

Publisher — SAM O. SAROKIN
Associate Publisher & Editor — JULIAN SAROKIN
TELEPHONES:
Drexel 9-5000 Drexel 9-5002
ESTABLISHED SEPTEMBER 27, 1929
Published every Thursday in
202 Morris Avenue, Springfield, N. J.
by SPRINGFIELD SUN PUBLISHING CO.
Official newspaper of the Township of Springfield. Subscription rates
by mail postpaid. One Year \$4.00, six months \$2.00, payable in advance.
Single copies ten cents. Entered as second class matter October 3, 1931
at the Post Office, Springfield, N. J. under an Act of March 3, 1879.

A Report to the People

THE SPRINGFIELD TOWNSHIP COMMITTEE
PUBLISHES BELOW THE CONDENSED MINUTES
OF THE LAST REGULAR MEETING.

TOWNSHIP COMMITTEE MINUTES — October 14, 1959
Unanimous approval minutes of regular meeting September 23, 1959.
Appointment by Chairman of Insurance Committee to serve until January 1, 1959: Robert T. Marino, Chairman, Eugene H. Wertz, Charles F. Heard and Richard Moore.
Unanimous approval for appointment at future meeting of Industrial Committee consisting of seven members.
Acceptance of resignation of two Library Trustees, Mrs. L. E. Skousen and Robert B. Potter; and appointment of Mrs. Joseph A. Bender, term expiring December 31, 1960 and K. R. Hetzel, term expiring December 31, 1960.
Unanimous approval of acceptance of grant of land of one acre and a 10 foot strip for municipal use from Smith Park, Inc.
Unanimous approval of change of regular meeting night from November 11th to Thursday, November 12th.
Unanimous approval acceptance of report of Assessment Commission on installation of curbs on Evergreen Avenue and fixing date of hearing for November 12th.
Unanimous approval, on recommendation of Board of Adjustment, for Special Exception use for Chayat Hand Wrought Jewelry at 530 Morris Avenue.
Approval, on recommendation of Board of Adjustment, for Special Exception Use for Joseph Pinkava to erect and alter service station at 4 Mountain Avenue.
Unanimous approval, on recommendation of Board of Adjustment, for Special Exception Use and variances for Troy Village, West Bryant Avenue.
Unanimous approval, on recommendation of Planning Board, for Final Approval of Final Subdivision Plat for Good Deal of Springfield, Inc., Morris Avenue and Main Street.
Unanimous approval introduction amendment to Zoning Ordinance. Final hearing to be held November 12th.
Unanimous approval to send Fire Department Rescue Truck lighting equipment to Millburn for Halloween parade on October 31st.
Unanimous approval to award gold badges to members of Volunteer Fire Department who have served 20 years: Russell Stewart, James Haggatt, Herbert Fay.
Adjournment.
THOSE WISHING TO SEE THE OFFICIAL MINUTES IN FULL OR IF THERE ARE ANY QUESTIONS, ARE INVITED TO CONTACT MRS. ELEANORE H. WORTHINGTON, TOWNSHIP CLERK, AT DREXEL 6-5800.

44 Regional

(Continued From Page 1)
dents are 34 boys and one girl. Miss Beverly Ann Johnson of 325 Milltown Road, Springfield. Miss Johnson, a freshman, is the first girl to join Regional's vocational agriculture program during its 18-year history. The program provides general education in agriculture with emphasis on landscaping and greenhouse work. To meet a growing trend for agriculture business enterprises, the program provides training for future work in such allied agriculture fields as research, fertilizer sales, dairy technician, soil testing plant propagation, conservation and lawn and turf management. Mr. LaSota pointed out that there are more than 600 different kinds of jobs in agriculture.
Both general and college preparatory students are enrolled in the program and nearly half of them eventually go to college—many after going into service following their graduation from Regional. Regional is the only vocational agriculture program in Union or Essex Counties.
The following students are participating in the project: Berkeley Heights — Robert Allen, George Bagley, George DeLia, Ralph Sommo, Frank Adotta, John DeDuca, Robert Phillips, Brian Shea, Dick Smith and Merrill Hart.
Mountainside — David Filipek, John Anglemann, and Lynn Lemmermann at Springfield — Ray Ganska, Miss Johnson, Hamilton Scott, Alex Bell, John Buckley, Barry Zeller, Glenn Dickerson, Dick Haupt and John Kisch.
Union Junior College moved into its new building in September, but finishing touches on the one-story, contemporary-styled building are continuing. Rough grading of the front portion of the 28-acre tract facing Springfield Avenue was done by Chapman & Son of Hillside. Mr. Chapman is the alumni representative on the college's Board of Trustees.

LINDSAY

AUTOMATIC WATER SOFTENER

FIBERGLASS TANKS WITH LIFETIME GUARANTEE

- SALES
- SERVICE
- RENTALS
- DOMESTIC
- COMMERCIAL
- INDUSTRIAL

(Division Jayson Oil Co.)

JAYSON SOFT WATER CO.

1691 Springfield Ave., Maplewood SO 3-5550

Plan Ahead . . .

Whether it's a



New 1960 CHEVROLET

or OK CARS

Our Reputation Is Your Protection

L & S Chevrolet Co., Inc.

Your Authorized Dealer for
UNION — SPRINGFIELD — KENILWORTH
Morris & Commerce Aves., Union
Open Evenings to 9 p.m. — MU 6-2800

Classie Look

In Small Fry

Wearables, Too

The younger girl (fondly referred to by manufacturers and retailers as "sub-teen") is receiving a greater-than-ever share of fashion attention this year.
High-fashion influence has entered into every phase of her school, play and dress wardrobe, and according to many retail reports, she just loves it! Even seven-year-olds are admiring themselves in the full-length shop mirror, and helping to select their own clothing on the basis of style.
For school-day wear, plaids are the big thing this fall, but plaids with a difference! These newest plaids are almost exact copies of ancient Tartans in the dull, blended colors that tie in so well with fall's new color scheme.
Heather mixtures and loden cloth in green and camel are also popular for school-wear. Skirts, pleated every which way and full skirted jumpers are still the important basics. Outside of their scaled-down size, these can scarcely be told from the skirts and jumpers worn by big sister.
Camel hair and textured wools are used and lots of fur fabrics especially in the straight-cut coats. Trim is for mostly youthful racoon used for collars, cuffs, sometimes linings.
Party dresses are mostly full-skirted, with the dressy shirtwaist—look pre-dominating. Lantern sleeves and canes look particularly appealing and are found in organdies, braided cottons, and contrasting colors — on cotton, taffeta and miracle blend dresses.

Speaker For Camera Club

The meeting of the Millburn Camera Club on Nov. 16 at 8 p.m. at the Recreation House, Taylor Park, will feature a talk and exhibit of slides by Les Buckland of the Eastman Kodak Co. Mr. Buckland will highlight in his talk hints on improving photography technique, night photography and pictures of children.
He had been plant manager at the latter installation for eleven years.

CENTER MEAT & POULTRY MARKET

254 Morris Ave., Springfield
(In the Middle of Town)

UNDER NEW MANAGEMENT

SPECIAL! Thurs.-Fri.-Sat.

POT ROAST

ROAST BEEF

SAUERBRATEN

98¢ LB.

- HOMEMADE BOLOGNA OUR SPECIALTY
- BRAUNSCHWEIGER-KASSLER-GAL'S & FRESH LIVERWURST
- KIELBASSA, OLD FASHIONED AND ALL KINDS OF LOAVES
- WEISSWURST & BOCKWURST • HAMBURGER-GEKOCHTE
- SOLINGER SMOKED BRATWURST
- HICKORY-SMOKED HAMS & BACON READY-TO-EAT
- WESTFALIAN GOTTAGE HAMS • KASSLER-RIPPCHEN

FREE

With each \$5 Sale—1/2 lb. LIVERWURST
With each \$10 Sale—1 lb. BOLOGNA

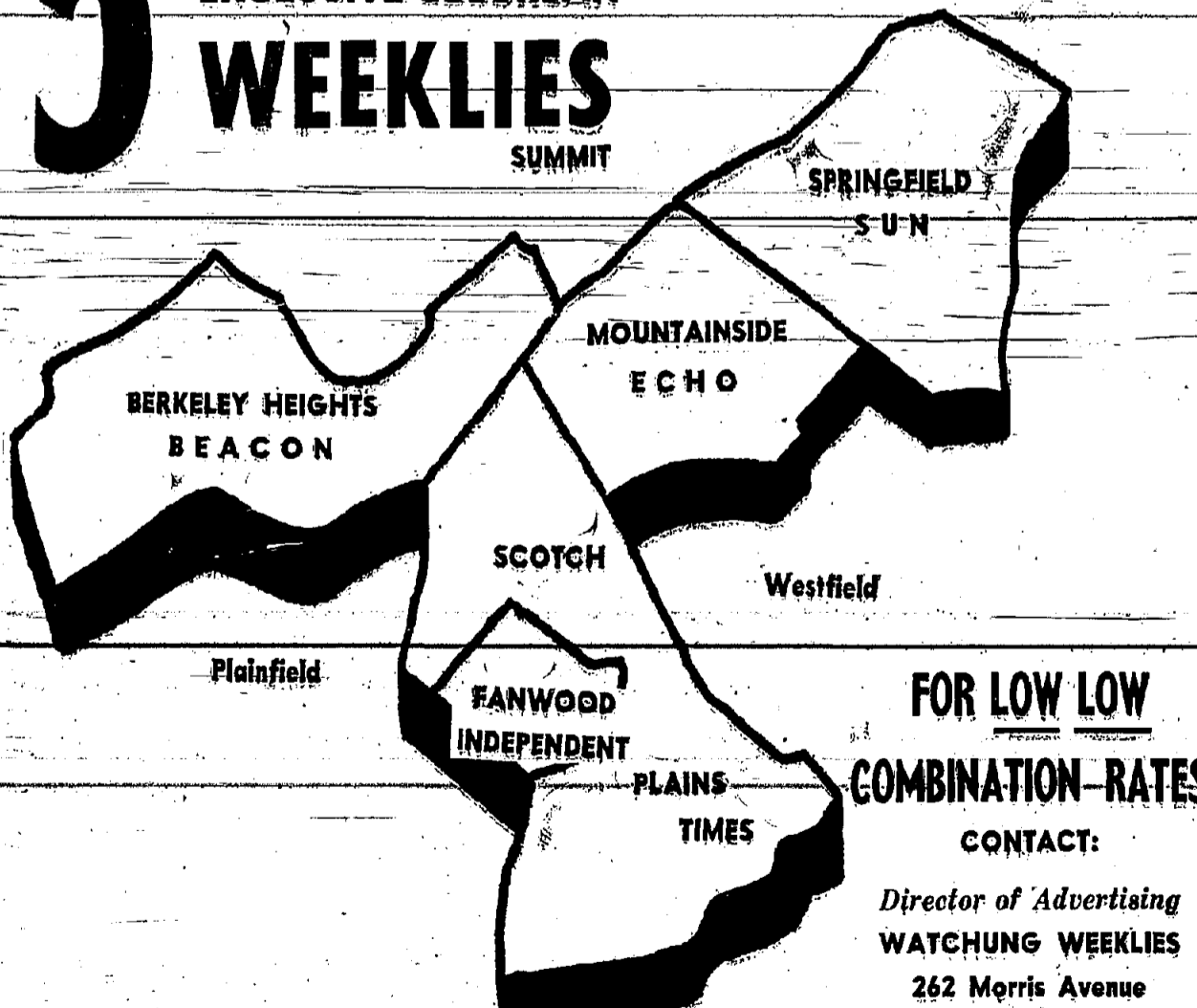
DREXEL 6-2064 FREE DELIVERY
FREE PARKING IN THE REAR

"Read All About It!"

UNION COUNTY'S

BEST ADVERTISING BUY!

5 WELL READ ALL PAID EXCLUSIVE SUBURBAN WEEKLIES



FOR LOW LOW COMBINATION-RATES CONTACT:

Director of Advertising
WATCHUNG WEEKLIES
262 Morris Avenue
Springfield, N. J.
DREXEL 9-5000

12,000 CIRCULATION

J. NORWOOD VAN NESS

Gold Optician
248 MORRIS AVENUE
SPRINGFIELD, N. J.
Drexel 6-6108
Established 24 Years in Newark

P. S. BUSES to Garden State Race Track

Every Racing Day

ROUND TRIP MILLBURN and SPRINGFIELD plus tax LEASE SEAT \$3.25
PUBLIC SERVICE COOPERATED TRANSPORT

"I found it fast!"

Find it fast in the YELLOW PAGES

The Yellow Pages tell you "who sells" anything

INCREASED DIVIDENDS

3 3/4%

PER ANNUM

ANTICIPATED FOR PERIOD STARTING JAN. 1, 1960

1960 CHRISTMAS CLUB OPEN
\$1 - \$2 - \$3 - \$5 - \$10
Clubs
Plus Dividends

Save by Mail-Postage Paid Both Ways

4 Convenient Offices

INVESTORS SAVINGS

MAIN OFFICE
64 Main Street, Millburn, N. J.

BRICK CHURCH OFFICE
28 Washington Pl.
East Orange, N. J.

UNION OFFICE
977-979 Stuyvesant Ave.
Union, N. J.

LYONS FARMS OFFICE
1128 Liberty Ave.
Hillside, N. J.

Urges Early Purchase Of Xmas Stamps

Early Christmas shopping for postage stamps was advised today by Postmaster A. V. Del Vecchio.

"To avoid waiting in line at stamp windows," Postmaster Del Vecchio said, "alert citizens will start to buy Christmas stamps on or about Nov. 15."

"People who stood in long queues last December to purchase stamps, not only for Yuletide use but for everyday needs, can avoid that frustrating experience by making their purchases during November when Post Office window clerks are able to satisfy their wants quickly and efficiently."

"These stamps are most popular with patrons during the Christmas period and create a favorable impression when used with Christmas cards," Mr. Del Vecchio stated. "Early shoppers will be able to buy these dainty stamps while they last."

For the added convenience of Springfield Post Office patrons, coils of 4-cent stamps are being sold in rolls of 400 and 500, he pointed out. Due to their neatness and ease of handling, he said, the use of these coils is gaining in popularity.

Mr. Del Vecchio also specified that 4-cent stamps are sold in books of 24 and 3-cent stamps in books of 12 and 24. The public again was reminded that the first class rate at 4 cents entitles the sender to the privacy of a sealed letter.

Another important advantage of first class mail he added, is that such mail is forwarded free if the addressee has moved. If it is undeliverable for any reason it is returned to the sender, provided he has put his return address on the envelope.

The rate for unsealed mail is 3 cents, but this rate does not have the many advantages that first class mail offers, the postmaster stated. He recommended the use of the 4-cent rate.

He emphasized that greeting cards for Canada and Mexico require 4-cent postage whether sealed or not.

LETTERS TO EDITOR

Editor, SUN:

In behalf of the combined groups of the Woman's Society of Christian Service and the Wesleyan Service Guild of the Methodist Church, I wish to thank you for your part in making their United Nations Bazaar held last Thursday and Friday a success. The members feel that its success was in no small measure due to the generous publicity given to it by the Springfield Sun.

Thank you again for your cooperation.

Sincerely yours,
Isabelle E. Mitchell
(Mrs. Frederick L. Mitchell)
Publicity Chairman

EXCLUSIVE WITH DREXEL IN SPRINGFIELD

EVERY GARMENT TREATED WITH **Sta-Nu** PROCESS

AT NO EXTRA COST Ours and ours alone. The nationally-advertised miracle process that adds life, lustre and long wear to all your garments.

- FREE GARMENT BAGS
- Every Dry-Cleaned Garment **MOTH-PROOFED FREE**
- FREE 1 HOUR SERVICE

Our own plant on premises individually owned and operated by a Springfield resident.

DREXEL Quality CLEANERS

FREE PARKING SIDE & REAR
230 Mountain Ave., Springfield
Superior Cleaning, Shirt Laundering, Shoe Repairing.

HISTORY OF NEW ROUTE 22

BY Leonard E. Best

Early in 1938 maps were published showing the network of interstate highways that was proposed in New Jersey including what is now known as E.I.A. 78 and 278.

These proposed highways cut a 300 foot swath thru Berkeley Heights, Watchung Reservation, Springfield, Union and Elizabeth.

Starting with a personal visit to Governor Meyner in the spring of 1938, followed by a meeting with Messrs. Palmer and Fritsche, the public hearing in Springfield, letters and meetings with legislators, municipal and county officials, a meeting with the U.S. Commissioner of Public Roads, petitions, etc., the people of Union County have repeatedly expressed their concern over the effect of this project on their communities and asked for a complete report on highway needs and how the proposed plan meets these needs.

If this plan is, in fact, in the best public interest, all things considered, then the unfortunate effects of the plan on individuals, deplorable as they are, will have to be accepted.

However, the situation is complicated by several factors:

1. The present highway, Route 22, is obviously inadequate and dangerous.
2. The federal program limits its 90/10 aid to highways with controlled access.
3. There are substantial ratables along present Route 22.
4. There would be some interference with present traffic if Route 22 were improved to meet Federal standards.

Has Disadvantages

On the other hand, the Highway Department's proposed Route 78, etc. has definite disadvantages:

1. It cuts thru good residential areas.
2. It sacrifices a substantial part of Watchung Reservation and makes it inaccessible to the communities to the north.
3. It fails to provide ready access to the communities south of Route 22. Plainfield would have to cross Watchung, Scotch Plains would have to go thru the "Bloody Gap," Westfield and Cranford would have to go thru Mountainside.
4. It fails to provide access to the Hillside and Elizabeth areas unless the Goethals Bridge spur is built and the Highway Department is on record that this will not be built in the foreseeable future.
5. There is no information as to how this facility will

take care of the traffic from the Garden State Parkway at Union.

6. A new alignment involves many problems of traffic flow, interchanges, etc. at an estimated cost of 300-million dollars.

While the people are not highway engineers, there is general agreement that a program that involves a cash outlay of over 300 million dollars should be presented to the public formally with sufficient detail as to needs and effectiveness and cost of the proposals. Such is the democratic procedure.

Certain studies by the Highway Department have been made which raise serious questions as to the real need of a new ten lane facility between Union and Newark Airport.

Furthermore, the postponement of any real improvement on Route 22 is indefensible. It could be approached boldly with a program to qualify for a substantial amount of 90/10 Federal aid.

For example - if eight lanes were adequate -

1. A new four lane west-bound facility over the Pennsylvania R.R. tracks could be built to connect Routes 1 and 9 essentially parallel to the present four lane 2 way bridge from the Weequahic Park section but intersecting Route 1 9 at some distance north of the present 1-9-21-22 intersection.
- a. We could maintain traffic on the present bridge during construction.
- b. We would improve the interchange situation by separating East and West traffic.
- c. We would eliminate the friction between the East and West-bound traffic on the bridge.
- d. We would more than double the present capacity of Route 22 at this point.
- e. This would cost considerably less than the proposed new ten-lane facility.

Widened to 4 Lanes

Route 22 along Weequahic park could be widened to a full four lanes in each direction with merging areas at the interchanges.

There are several bridges in this section. One is not in use and offers no problem. The other three raise a question of an express overpass vs. rebuilding the bridges, etc.

In Hillside the elimination of the houses facing on the north side of Route 22 would make it possible to develop a new 8 lane highway on the north side of the right of way

and leave the present lane on the south side as an access road for the valuable existing industry.

The bridge at Bristol Meyers could be widened to four lanes in each direction and the highway widened on the south side. The Bloy street bridge would have to be rebuilt.

As the highway approaches the Garden State Parkway, the highway could be widened to five or six lanes in each direction - the center six lanes (three in each direction) might be elevated and carried over the Parkway. This would provide for the thru traffic on Route 22 and allow Garden State and local interchange traffic (which amounts to about one-half of the total) to proceed from the outer lanes, on the present network of roads.

Thru the next section the six express lanes could be elevated on fill on the central island, following full access to roadside property from the present extreme lanes on each side. The ratables on the center island would have to be acquired and eliminated but the side properties would tend to increase in value.

At Springfield road, cross traffic would pass under the elevated express lanes.

At South Springfield avenue, the six center lanes would be elevated over the existing bridge.

At New Providence and Summit road either Route 22 or the intersecting roads could be handled by overpasses.

Such a plan provides controlled access so that it would qualify for 90/10 aid.

It would serve all the communities along Route 22.

It would make good use of present facilities and preserve most ratables and increase the value of some by improving the traffic situation on Route 22.

It would preserve the residential and park areas which represent a considerable investment.

This is not suggested as the only possible solution, but rather as the type of approach which would meet traffic

Some Reports

(Continued From Page 1)

In one case 4 children on their way to collect pennies for UNICEF were attacked by several older boys in the vicinity of Keeler and Brook streets as early as 7:30. They knocked down one of the little girls and took her Trick or Treat bag away and the milk container with the money she had collected.

Neighbors, witnessing this attack on the children, telephoned the police department but enforcement officers were all over the Township and the older boys disappeared immediately.

Many reports of vandalism kept the police on the alert, the dumping of garbage cans and the breaking of bottles on the roadways being the most common complaints. A picture window was shattered by a stone during the Halloween fun and a back window of a passenger car was smashed.

Springfield was fortunate as reports of malicious pranks in other communities throughout the nation showed serious damage as well as tragedy and violence.

It is hoped that from this emphasis on American Education Week a continued interest and support of American education will evolve.

Pike Referendum

(Continued From Page 1)

Leading the ticket with 2,849 votes against the nearest Democrat Mrs. Mildred Barry Hughes with 2,451 votes. [Senator Bob Crane scored 2,730 votes against Roy Wheeler's 2,590.

Nearly 79 percent of the voters turned out on a supposed off-year election. 5,716 of 7,234 voted Tuesday.

Approve Plan

(Continued From Page 1)

usages, and that an apartment house "would not be prejudicial to the character of the neighborhood."

The variance was granted with the provisions that the builder erect a six-foot wooden fence along the rear property line, a four-foot fence at the side and install sidewalks in front of the building.

It was also specified that the parking area be set back 20

feet from the street, that adequate lighting be provided around the building and parking lot and that the development be properly landscaped.

Rabbi To Hold Ben Tefila

Rabbi Israel S. Dresner, of Shurey Shalom, Suburban Reform Congregation will perform the Ben Tefila (Son of Prayer) ceremony, (consolation of all new members) tomorrow evening at the First Presbyterian Parish House, Main Street in Springfield.

Present Organist
The Men's Club of Temple Beth Ahm takes great pride in presenting Charles Van Der Hoven, Organist, at the next open meeting on Tuesday, November 17th, 1959 at 9:00 pm. This great artist is back for a return engagement.

Give to Blood Bank
Mrs. Jules Lanes and Mrs. Fred Neubarth members of B'nai B'rith women of Springfield, presented their Birthday Gift - a Gift of Life, as they gave blood to the Essex County Blood Bank in commemoration of the 116th birthday of B'nai B'rith.

The B'nai B'rith Women of Springfield are now members of the Essex County Blood Bank, and are entitled to blood for themselves and their immediate families.

To those who say...
"I WANT GUARANTEED DOLLARS!"



We invite you to send for a new, free booklet with that title. Busy as all of us are these days there seldom is time for a thoughtful look at just what we do with the dollars we work so hard to earn. This booklet may prove to be helpful to you.

For further information, Call

CHARLES H. PIMLOTT JR.
Springfield Representative DRexel 6-4572

SIMON W. HEIMLICH, INC.
We Specialize in **MUTUAL FUNDS**
259 N. Broad Street Elizabeth

GULISTAN SHOWROOM
at **Carpets**
RUGS, INC. For Your Home, Stores, Offices and Institutions

Every Gulistan Carpet Made by A. & M. Karagheusian on Display.

Located 1/2 Mile from Roselle Park Factory open from 9:30 a.m. to 8:30 p.m., Wed. and Sat. to 6 p.m.

1135 CHESTNUT ST., ROSELLE Chestnut 5-7990

Welcome To The Grand Opening AT

VINNIE'S Cities Service Station

Morris Ave. & Main St., Springfield

THURS., NOV. 5th - FRI., NOV. 6th - SAT., NOV. 7th

FREE GIFTS

KIDDIE SPACE MASK! - LOLLIPOPS
LIFE SAVER - BALLOONS
NEEDLE BOOKS - GLASSWARE

Special During Grand Opening
EXPERT LUBRICATION 69¢

DRIVE IN - LET'S GET ACQUAINTED





Newberrys

You save up to 50% and more

FABRIC SALE

PRINTED BARKCLOTH PRINTS

Your choice of brand new, first quality decorator fabrics in 36" width.

For slipcovers, furniture throws. Huge array of colors in modernistic, provincial and floral styling.

57¢ yd.

Reg. Value 89¢ yd.

PRINTED SUEDE-FINISH FLANNELS
Wide choice of smart plaids and sportswear patterns for shirts, jackets, robes, etc. Sanforized, machine washable. Reg. 59¢ **35¢ yd.**

NEWBERRYS FAMOUS FIESTA COTTONS
30-square washfast percales in stripes, checks, dots, pillow prints, decorator prints and solid colors. **49¢ yd.**

FAMOUS NAME WASH 'N WEAR FABRICS
Combed yarn oxfords, broadcloth twills, reverse twist cottons, brushed satens, solid color combed satens, more. Reg. 1.19 Yd. **48¢ yd.**

GAY NEW KITCHEN PRINT COTTONS
Floral, novelty and charming Provincial prints on light and dark grounds. Vac-dyed colors on sturdy cottons. Reg. 60¢ to 70¢ **59¢ yd.**

GROUP OF FALL PRINTED COTTONS
Percales, broadcloths, poplins, no-iron embossed cottons in a wonderful array of small, medium, large prints. Reg. 69¢ **27¢ yd.**

J.J. Newberry Co. MORRIS & FLEMER AVES. Open Thurs. and Fri. Nites Till 9-P.M. SPRINGFIELD, N. J.

Phone Official To Address Lodge

William Ward of the New Jersey Bell Telephone Company will

be guest speaker at the meeting of Springfield's B'nai B'rith Lodge on Monday evening, at 8:30 o'clock at Temple Beth-El on Baltusrol Way in Springfield.

The program will include the showing of "The World Is Your Neighbor," a Technicolor film depicting the laying of the new Trans-Atlantic cable and the latest electronic developments as applied to the field of communications. A question and answer period will follow.

"THE LORD OF THE NEW AGE"

LECTURE and SLIDES of MOUNT CARMEL

by

Mr. H. B. Kavelin

International Traveler & Lecturer

Wed. Evening, November 11, 1959

8:30 p.m.

SPRINGFIELD PUBLIC LIBRARY

ALL WELCOME — NO CHARGES OR COLLECTIONS

Sponsored by the Bahais of Springfield

Hi Neighbor!!

If You Have Any News Call... NEWS AND TIDBITS ABOUT YOUR FRIENDS & NEIGHBORS IN SPRINGFIELD

DREXEL 6-4502



Lorrie Lewis

Everyone got into the spirit of the let's-pretend act at the Halloween party hosted by Mr. and Mrs. David-Katz of Cypress Terrace. The guests, who toggled themselves in an unbelievable array of costumes from a witch to Toulouse Lautrec, included Mr. and Mrs. W. Lipman, Mr. and Mrs. A. Hirschhorn, Mr. and Mrs. C. Jask, Mr. and Mrs. H. Schwartz, Mr. and Mrs. P. Kurnos, Mr. and Mrs. D. Sabo and Mr. and Mrs. A. Friedman.

Mrs. H. Leffroff of Craig Road planned a pre-Halloween surprise for her husband, Herb, in the form of a birthday party held on October 24. On hand for the birthday surprise were Mr. and Mrs. David Zurav, Mr. and Mrs. Bob Hockstein, Mr. and Mrs. Max Bass, Mr. and Mrs. J. Raff, Mr. and Mrs. I. Korster, and Mr. and Mrs. A. Shapiro.

The Leffroffs son, Steven was married on November 1 at a party with Halloween as the theme. Steven, who was three years old, had as his guests Lisa, Terry, Vicki, and Gary Warman; Eddie Zurav; Alan and Liene Filreis; Sara and Jeffrey Kindler; Eric and Risa Shapiro; and Sandy Gelman.

Mr. and Mrs. Hy Figh of Ann Place rounded out a week of festivities honoring their wedding anniversary and Mrs. Figh's birthday at a surprise champagne-coffee party. Guests included Mr. Figh's brother, Morty and his sisters, Clara and Molly. Also present were Mrs. S. Carolyn, Mrs. Hilda Davida, Mr. W. Mott, Mayor and Mrs. M. Mott, Mr. Shm Drako, Mr. and Mrs. Louis Lewis, and Mr. and Mrs. David Kaplan.

Mrs. W. DeLeonard and Mrs. P. Johnson recently attended a listeners' critique of television shows that are presently on TV screens. Mrs. DeLeonard happily was the winner of the door prize and received two dinners at the Holland House restaurant and two tickets to any Broadway show of her choosing.

Our new neighbors at 50 Warner Avenue are Mr. and Mrs. H. Leffroff.

Mrs. Jack Lambi, formerly of Maplewood. Their children Susan age 3 and James age 1 1/2 years.

Mr. Lambi is a Marine Underwriter with Aetna Casualty and Surety.

Happy Birthday wishes to Robert Zuckerberg, son of Mr. and Mrs. Joseph Zuckerberg of 65 Redwood Road. Robert celebrated his 6th birthday at a party held on October 23.

Hilda Shafatman celebrated her 13th birthday en famille at a dinner party at the Newark restaurant. Hilda is the daughter of Mr. and Mrs. E. Shafatman of 16 Laurel Drive.

Welcome to Mr. and Mrs. Walter Pecota of 49 Morris Avenue who moved here recently from Garden City, L. I.

A double treat was in order to mark the birthdays of Phyllis and Mindy Buzin, daughters of Mr. and Mrs. L. Buzin of 164 Wentz Avenue. Phyllis was 6 years old and Mindy was 4.

The party was held on November 3 at the Big Top Car Hop, was complete with marionette show.

Party guests included Jill Mandelsohn, Debbie Steinhoff, Marisa Katz, Wendy and Ellen Kaye, Richard and David Unlan, Carol Borrus, Larry Yur, Linda, David and Pam Lippe, Bruce and Edmond Grstein, Debbie Sobin, Val and Ronnie Guerra, Arthur and Phyllis Buzin, Linda Force, Robert Serge, Ricci Noehenson, Philip Cohen and Debbie Speer, all of Springfield; Joel and Andy Schwartz and Sheryl and Geraldine Patok of New York City.

Li Cardinal was the surprised birthday victim at a party successfully executed by her husband, Frank and attended by their good friends and neighbors. The Cardinals live at Milltown Road.

BB Women To Present Gifts

At their meeting of November 11, the B'nai B'rith Women of Springfield will include a "shower" of small gifts for the children at Bellefaire, the treatment center for emotionally disturbed children founded by B'nai B'rith. These gifts will be part of a B'nai B'rith Northern New Jersey Council District No. 3 project, and will be sent in December in time for the celebration of Chanukah, the Feast of Lights.

Rotarians Hear Dist. Governor

P. E. Fitzpatrick of Bound Brook, Rotary District Governor, gave Springfield Rotarians an inspiring talk on the objectives and philosophy upon which Rotary is founded.

Prior to the regular luncheon meeting the District Governor met with Officers, Directors and Committee Chairmen to receive Committee Reports and to offer constructive suggestions.

Rotarian Remlinger in charge of the ticket committee for the show "Separate Tables" to be shown in Maplewood next week, gave a report and set a deadline for the sale of tickets.

Dates for Rotarians to remember: November 15-21 Rotary Foundation Week; January 23-29 Rotary Anniversary Week; February 23-29 Rotary Anniversary Week; March 23-29 World Understanding Week; May 23-29 25th Anniversary of the Founding of Rotary; June 23-29 World Understanding Week; July 23-29 25th Anniversary of the Founding of Rotary International in Miami Beach, Florida, U.S.A.

Watchung Section To Mark Event

Mrs. J. E. Rood, President of the Watchung Section of the National Council of Jewish Women, announced today the October 16-22 will mark Council Week, the 6th anniversary of the nationwide educational and welfare service organization.

The Watchung Section sponsors a recording for the Blind, a handicapped rolling project for Overlook Hospital, Summit, and collection of materials for cancer dresses. In addition, the Section sponsors an educational program, including a Study Group and a Social Legislation Program which keep members informed on local, national, and international affairs.

Nationally, the NCJW, with 110,000 members in 240 sections, maintains more than 600 local community welfare and educational services, including Golden Age Clubs, programs for handicapped children, mental health projects and services to the foreign born.

The Council's overseas program includes sponsorship of the School of Education at Hebrew University, Israel's leading institution for teacher training. Since World War II, it has also granted 150 scholarships for advanced study in the United States to specialists in welfare and education from abroad.

Council Sections throughout the U. S. maintain "Ship-a-Box" programs to send school materials, toys and clothing to children's institutions in other countries.

SALES & SERVICE

British Continental Motors
SUMMIT, N. J.
33 Union Pl. CR 7-8688

State Reps To Speak To Ladies

On Thursday, October 22, the American Legion Auxiliary held their regular meeting at the Post Home at 8:30 p.m. Union County officers made their annual visitation and were guests for the evening.

The program was "Girls State." Carol Marano of Northview Terrace and Joyce Harrison of Short Hills Avenue, Unit 228's Girls State delegates for 1959, spoke of their experiences during their weeks stay at Douglas College in June. The girls are seniors at Regional High School.

At the executive meeting held at the home of Mrs. Joseph Nattello last Tuesday, it was announced that the Junior American Legion Auxiliary will sell candy. The proceeds from the sale will be used for the Girls State Program.

M'tside Booters Open Schedule

The 1959 edition of the Mountside School soccer team, after having its first three games postponed because of rain, finally got its season started late last week. Coach Oliver Deane and John Kireakakis after three weeks of work squared off four boys eagerly awaiting on fundamentals had the Friday game.

Thursday the team traveled to Scotch Plains for its opener, David-Jubonovsky, center half back, scored on a direct kick early in the game to give the Mountside Indians their first and only goal. Scotch Plains tied the score in the final period when their inside right scored after a melee in front of the goal.

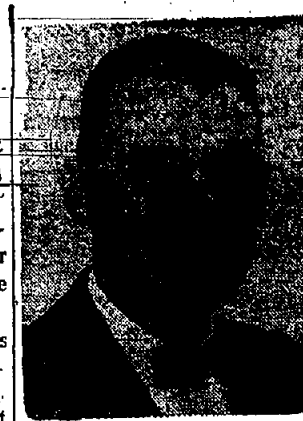
The Indians put constant pressure on the Scotch Plains goalie for the rest of the game but just couldn't come up with another score and had to settle for a 1-1 tie. Fullback Dennis Doyle and inside right Guy Rowley played exceptionally well for the Indians.

Friday Winfield Park provided the opposition in the season's first home game. Out to show they could score more than one goal in a game, the team attacked vigorously from the outset.

Center forward Bob Hever scored in the first period on a beautiful cross from Harold Butts, and then scored again in the second period, this time converting a rebound off the foot of Rowley. Before the half ended, Jubonovsky scored on a penalty kick, a feat which he duplicated immediately after the second half began. This ended the scoring for the day at 4-0 as the substitutes finished up the game.

This week the team has two more home games. It met Garwood on Monday and will play Montclair Academy on Friday.

Hopes are high in the school that the team can carry on the fine tradition of successful soccer teams which have, over the past five years, hung up an enviable record of 42 wins, 4 ties and 3 losses.



HAROLD A. MILLEY

Port Official To Address Society

The St. James Holy Name Society will be briefed on the current and future development of land, sea, and air facilities in the Port of New Jersey-New York at its 8:30 p.m. meeting Monday, at 49 South Springfield Avenue. Harold A. Milley, of the Port of New York Authority, will speak.

Assistant to the Director, Tunnels and Bridges Department, Mr. Milley will explain the Port Authority's role in development and operating 21 terminal and transportation facilities in the Port District. He will then point out how Springfield's prosperity together with that of 350 other communities in the area, depends on the flow of trade and commerce in the port. Members of the Holy Name Society will have an opportunity to ask questions of Mr. Milley.

Mr. Milley joined the Port Authority in 1948 as a police officer. He later served as a system's analyst and now performs general administrative duties in the office of the director of tunnels and bridges. A graduate of St. John's University in his native Brooklyn, Mr. Milley now lives in Fitzham Park, New Jersey.

Luncheon Lists Flower Display

Brenner Florist Inc., Millburn Ave., Short Hills will give a talk and display on "Interior Decorating with Flowers and Greens" at the first of four luncheons to be sponsored by the Sisterhood of Temple Beth-El, Springfield.

Members and non-members of the Temple are welcome to attend. The luncheon will be held at Altman's, on Tuesday, at 12:45 p.m.

For reservations please contact Mrs. Sol Levitt, Dr. 6-2733.

Agricultural students at Rutgers University also have to study money and banking, and market price analysis.

The practice of camouflage was begun by the British in India about the middle of the 19th century, according to the Encyclopedia Britannica.

Blind Author Will Lecture For Alliance

Dr. Peter B. Putnam, author, teacher and lecturer, will be guest speaker for the Unitarian Women's Alliance at its Inter-Faith meeting on Tuesday, at 1:00 p.m. to be held at Unitarian House, 2 Whittridge road, Summit. Dr. Putnam's talk will be "The Role of Imagination in Art, Science, and Religion."

Totally blind, Dr. Putnam pursues an energetic and fruitful life. Two of his books, "Keep Your Head Up, Mr. Putnam" and "Cast Off The Darkness" are concerned with his blindness, the latter describing the incredible experience 18 years ago which left him sightless, and his triumph comeback. Dr. Putnam is married and has three children. He is Professor of Renaissance History at Princeton University and as a resident of the town, participates in the civic and religious life of the community. He recently concluded a lecture in Arizona to address the Alliance and their guests at this special annual event open to the Women of neighboring churches.

The Planning Committee for the Unitarian Alliance Inter-Faith Christmas Day program includes Miss Carol Hinman, Mrs. Jacob Trapp and Mrs. W. G. Berry. Mrs. Steven T. Snyder, coordinator of the Refreshment Committee, is being assisted by Mrs. W. Meyer, Mrs. C. Vandersen, Mrs. J.C. Carrothers.

Trust Co. Shows Antique Cow Bank

The latest addition to the Suburban Trust Co. antique mechanical coin bank exhibit is now on display. The "Kneeling Cow Bank" is an exact reproduction of the original in the BOOK OF KNOWLEDGE collection.

The mechanical coin banks were made in a Pennsylvania iron foundry about 1880. Master molds were made from the original working model. Sand molds were then made from the master and molten iron was hand poured into them. Each sand mold could only be used once as it would be destroyed in the casting. All painting and decoration was also done by hand. This painstaking process produced a high quality product which was a pure delight to children then as it is to children today.

Produced primarily to encourage the habit of saving in children it is sought after today by collectors of early Americana as an excellent example of 19th century American craftsmanship.

Each month a different antique bank will be displayed at the Suburban Trust Co. as part of the "Bank of the Month" program.

Outstanding FURS

MINK... PERSIAN... RACON... BEAVER... OTTER... SQUIRREL... SEAL... MUSKRAT... SABLE...

at our low, low close to factory cost prices

from \$119 to \$250

CLOTH COATS & SUITS, TOO!

Open daily to 9 P.M., Sat. & Sun. to 6 P.M.

FLEMINGTON FUR CO.

FLEMINGTON, NEW JERSEY

NEW JERSEY'S LARGEST MANUFACTURER & DISTRIBUTOR OF FINE FURS

JEWELERS

Wesley Jewelers
173 Mountain Ave.
JEWELRY DIAMONDS • WATCHES
"Where You Can Afford Fine Jewelry"
Modern Terms Advanced DREXEL 6-5047
Member Springfield Chamber of Commerce

VIOLIN INSTRUCTION

GAROLYN STERNAD

Graduate Juilliard School of Music
Experience
Symphony • Chamber Music
Recital
Beginner • Intermediate • Advanced
142 Glen Ave. Millburn DR. 9-2781

Do you know that...

SKILLED LABOR is an Ingredient of Industrial Success in New Jersey?

A very important ingredient in the success of industries operating in New Jersey is the availability of skilled labor. This is proven by the unusually high value added by manufacture of products made in our state.

The variety of diversified skills is shown in the wide range of durable and non-durable goods manufactured at the Crossroads of the East. Workers are experts in chemicals, in fabrication, in complex instruments and textiles and ceramics, as well as with needle and thread.

In its training-in-vocational-schools, New Jersey leads all other states by a wide margin in expenditures per pupil. Courses in the 20 schools cover all trades, and they serve as training grounds for employees in all types of manufacturing.

You should be happy and proud to be a part of New Jersey—

PUBLIC SERVICE
Believes in New Jersey and its future
TAXPAYING CITIZEN OF A GREAT STATE

ONLY AT

SAMUELS

'60 TARK

!! IMMEDIATE DELIVERY !!

\$1695

FULL SIZE 2-DOOR 6-PASSENGER SEDAN
SEE IT NOW!

BIG DISCOUNTS

ALL MODELS—ALL COLORS
ONLY SAMUELS GIVES YOU FREE
100% 3-YEAR-34,000-MILE
GUARANTEE IN WRITING

SAMUELS

2091 SPRINGFIELD AVE.
VAUX HALL (UNION)

The Playhouse Association of Summit presents

The Delightfully Sophisticated

F. Hugh Herbert Comedy

THE MOON IS BLUE

at THE PLAYHOUSE,
Tulip St. and New England Ave.
MON., NOV. 9 thru WED., NOV. 18 (except Sun.)
ALL SEATS \$2.75—CURTAIN 8:40 PROMPTLY
Tickets On Sale at Pierson's Inc.
431 SPRINGFIELD AVE., SUMMIT
Benefit Playhouse Building Expansion Fund

Webbs FASHIONS

SHOP! COMPARE! SAVE!

Coats, Suits, Dresses, Sportswear

Cashmere Sweaters	COATS	DRESSES
Reg. 22.95 to 25.00 NOW \$11.99	Reg. 69.98 to 79.98 NOW \$48.00	Reg. 35.00 to 49.98 NOW \$19.00

Absolute Satisfaction or Money Back Within 5 Days!
724 Morris Turnpike, Short Hills (Between A & P and Woolworth)
Open—Mon., Thurs., Fri. 9:45 to 9—Tues., Wed., Sat. 9:45 to 6
FREE-PARKING FOR 500 CARS

Host to most of New Jersey, invites you to enjoy his delicious

NEIGHBORS' DINNER

\$2.95

with all the "extras" for which we are famous
SERVED MONDAY THRU FRIDAY 5 TO 11 P.M.
AND FOR SUNDAY BRUNCH FROM 1 TO 4 P.M.

Rod's

WEST ORANGE

The Acres

WHIPPANY

Ranch House

CONVENT, N. J.

ALL OPEN EVERY DAY FOR LUNCHEON, COCKTAILS, DINNER
EXCELLENT PARTY FACILITIES

S NOW THREE GREAT STORES
WITHIN FOUR WALLS!
727-63 Morris Turnpike, Springfield

VIA
World's Largest Television and
Appliance Retailers... Look for
Their Big Buys this Week!

SCHRAFFT'S
QUALITY
ISLE
Meet "Miss Schrafft" This Week-
end... She's Looking Forward to
Greeting You And Helping You
With Your Meal Planning

SAFEWAY
So convenient to Chatham, Millburn, Short Hills, Summit, Union, Mount Pleasant, Madison, and many other areas... You'll want to see this Brand New Innovation... 3 Widely Known Retailers under 1 roof... And all are featuring Big Buys for this All Important Week!

One Of the World's Largest Food Retailers Where Every Item Must Please You or Your Money-Back!
This Week at the Springfield Safeway Only thru Saturday, November 7th

U. S. D. A. Inspected and Graded A
Fryers
Whole Chickens by the pound
lb. **29c**

Potatoes
Waldorf bag - See what you buy. Premium brand cooks up crisp
10 lb. bag **49c**

Bosc Pears
Fresh
2 lbs. **35c**

Swift's Bacon
Premium quality; a Safeway feature buy.
lb. **49c**
Convenient to reach the Springfield Safeway

SAFEWAY
Map showing store locations at Morris Turnpike, Millburn Ave, and Springfield Ave.

PTA News
CALDWELL SCHOOL
November 1st to November 7th has been designated as National Book Week. This observance has been held for more than twenty-five years. The theme this year is "Go Exploring In Books." The attractive posters you will find prominently displayed have been designed by the famous children's artist, Theodor Rojankovsky. There will be an Executive Committee of the James Caldwell School P.T.A. on November 9, 1959 at 8:15 P.M. in the library of the Florence M. Gaudineer School.

GAUDINEER
There will be an Executive Committee meeting of the Florence M. Gaudineer P.T.A. on Monday, November 9th at 8:15 P.M., in the Teacher's Room of the Gaudineer School. Mrs. David Kaplan, Mrs. Spencer Cannon, Mrs. J. Frank Jakobsen, and Mrs. B.P. Yuckman represented the Gaudineer P.T.A. at the Union County Council meeting in the brand new Wilson School in Summit on Wednesday, October 28th.

TEMPERATURE CONTROL OIL DELIVERY
WOOLLEY COAL CO.
MAPLEWOOD, N. J.
SO 2-7400

FOR THE FINEST IN EYEWEAR
HOURS: Daily 9-6:30 Thurs. 9-9
Laboratory on Premises
OPTICIAN ANDREW KOVACS
357 MILLBURN AVE., MILLBURN Near Theatre DR 9-4155

HAIR STYLE OF THE MONTH
Casual Elegance
Paul & Louis Hairstylists
261 MORRIS AVENUE SPRINGFIELD, N. J.
DRexel 6-9877... Free Parking in Rear
CLOSED MONDAYS

Millburn Church Plans Addition
A meeting of the parishioners of St. Stephen's Episcopal Church, Main Street, Millburn, saw approval of the provisional plans of the Vestry's New Building Committee. The proposed building project will add thirteen classrooms, parish offices and social rooms to the existing Parish House structure. The substantial increase in enrollment of the Church School and other parish organizations have made existing facilities inadequate.

SCHOOL MENU
Gaudineer School Springfield Menu for Week of November 9
Monday: Toasted cheese sandwich, tossed salad with French dressing, peaches, milk.
Tuesday: Spaghetti with meat sauce, applesauce, bread and butter or peanutbutter sandwich, milk.
Wednesday: Western omelet, buttered peas or green beans, rice pudding or cherries, bread, butter, milk.

Tennis Courts Remain Open
Although the ten clay Ruben-surfaced tennis courts at Warnanc Park, Elizabeth, Roselle, were closed for the season on October 31, tennis players may continue to play at the thirteen hard-surfaced tennis courts throughout the Park System, George T. Cron, superintendent of recreation for the Union County Park Commission announced today.

ANOTHER SIP & SUP
Jack A. Bullock, Springfield restaurateur, who has been operating the Sip and Sup Drive-In at the corner of Morris and Springfield avenues, Springfield, announces the opening of a similar establishment in Morris Plains at the corner of Route 10 and Route 202.

THE SCHOOL OF LANGUAGES
Unique Method Children Adults Tutoring Also
ARE YOU PLANNING A TRIP?
You will enjoy it more if you know the language.
CR 7-2255
Summit, N. J.
P.O. Box 342

HAYES NOW PAYS INCREASED DIVIDENDS
3 3/4% per annum
Paid Quarterly Effective Oct. 1, 1959
ACCOUNTS INSURED UP TO \$10,000

HAYES SAVINGS and LOAN ASSOCIATION
955 Broad Street Newark 2, N. J.

Church Bowling Has 3-Way Tie
In the Springfield Church Bowling League, Team No. 15, the number one team lost all three games to the last placed team No. 10, but still managed to maintain a slim lead in the league. Teams 8, 5, and 9 are tied for second place.

Exhibits Art At Public Library
The paintings of Mabel Holmes Brown will be displayed during the month of November at the Springfield Public Library in the exhibit sponsored by the Springfield Woman's Club.

ERRICO Hair-Fashions
So Beautiful, So Tasteful, So Adorable... So Perfect For You!!! Inspired Hair Styles For Your Full-Fashion All Year 'Round Best!
Permanent Wave Reg. \$17.50 \$10
Under Direction of Mr. Carmine
By Appointment
ERRICO Hair-Fashions
Hair Stylist to New Jersey's Smartest Women
758 Morris Turnpike Short Hills DR. 6-9850

Church Bowling Has 3-Way Tie
The Springfield Church Bowling League, Team No. 15, the number one team lost all three games to the last placed team No. 10, but still managed to maintain a slim lead in the league. Teams 8, 5, and 9 are tied for second place.

Exhibits Art At Public Library
The paintings of Mabel Holmes Brown will be displayed during the month of November at the Springfield Public Library in the exhibit sponsored by the Springfield Woman's Club.

Church Bowling Has 3-Way Tie
The Springfield Church Bowling League, Team No. 15, the number one team lost all three games to the last placed team No. 10, but still managed to maintain a slim lead in the league. Teams 8, 5, and 9 are tied for second place.

Exhibits Art At Public Library
The paintings of Mabel Holmes Brown will be displayed during the month of November at the Springfield Public Library in the exhibit sponsored by the Springfield Woman's Club.

Church Bowling Has 3-Way Tie
The Springfield Church Bowling League, Team No. 15, the number one team lost all three games to the last placed team No. 10, but still managed to maintain a slim lead in the league. Teams 8, 5, and 9 are tied for second place.

Church Bowling Has 3-Way Tie
The Springfield Church Bowling League, Team No. 15, the number one team lost all three games to the last placed team No. 10, but still managed to maintain a slim lead in the league. Teams 8, 5, and 9 are tied for second place.

Exhibits Art At Public Library
The paintings of Mabel Holmes Brown will be displayed during the month of November at the Springfield Public Library in the exhibit sponsored by the Springfield Woman's Club.

ERRICO Hair-Fashions
So Beautiful, So Tasteful, So Adorable... So Perfect For You!!! Inspired Hair Styles For Your Full-Fashion All Year 'Round Best!
Permanent Wave Reg. \$17.50 \$10
Under Direction of Mr. Carmine
By Appointment
ERRICO Hair-Fashions
Hair Stylist to New Jersey's Smartest Women
758 Morris Turnpike Short Hills DR. 6-9850

Church Bowling Has 3-Way Tie
The Springfield Church Bowling League, Team No. 15, the number one team lost all three games to the last placed team No. 10, but still managed to maintain a slim lead in the league. Teams 8, 5, and 9 are tied for second place.

Exhibits Art At Public Library
The paintings of Mabel Holmes Brown will be displayed during the month of November at the Springfield Public Library in the exhibit sponsored by the Springfield Woman's Club.

Church Bowling Has 3-Way Tie
The Springfield Church Bowling League, Team No. 15, the number one team lost all three games to the last placed team No. 10, but still managed to maintain a slim lead in the league. Teams 8, 5, and 9 are tied for second place.

Exhibits Art At Public Library
The paintings of Mabel Holmes Brown will be displayed during the month of November at the Springfield Public Library in the exhibit sponsored by the Springfield Woman's Club.

Church Bowling Has 3-Way Tie
The Springfield Church Bowling League, Team No. 15, the number one team lost all three games to the last placed team No. 10, but still managed to maintain a slim lead in the league. Teams 8, 5, and 9 are tied for second place.

Church Bowling Has 3-Way Tie
The Springfield Church Bowling League, Team No. 15, the number one team lost all three games to the last placed team No. 10, but still managed to maintain a slim lead in the league. Teams 8, 5, and 9 are tied for second place.

Exhibits Art At Public Library
The paintings of Mabel Holmes Brown will be displayed during the month of November at the Springfield Public Library in the exhibit sponsored by the Springfield Woman's Club.

ERRICO Hair-Fashions
So Beautiful, So Tasteful, So Adorable... So Perfect For You!!! Inspired Hair Styles For Your Full-Fashion All Year 'Round Best!
Permanent Wave Reg. \$17.50 \$10
Under Direction of Mr. Carmine
By Appointment
ERRICO Hair-Fashions
Hair Stylist to New Jersey's Smartest Women
758 Morris Turnpike Short Hills DR. 6-9850

Church Bowling Has 3-Way Tie
The Springfield Church Bowling League, Team No. 15, the number one team lost all three games to the last placed team No. 10, but still managed to maintain a slim lead in the league. Teams 8, 5, and 9 are tied for second place.

Exhibits Art At Public Library
The paintings of Mabel Holmes Brown will be displayed during the month of November at the Springfield Public Library in the exhibit sponsored by the Springfield Woman's Club.

Church Bowling Has 3-Way Tie
The Springfield Church Bowling League, Team No. 15, the number one team lost all three games to the last placed team No. 10, but still managed to maintain a slim lead in the league. Teams 8, 5, and 9 are tied for second place.

Exhibits Art At Public Library
The paintings of Mabel Holmes Brown will be displayed during the month of November at the Springfield Public Library in the exhibit sponsored by the Springfield Woman's Club.

Church Bowling Has 3-Way Tie
The Springfield Church Bowling League, Team No. 15, the number one team lost all three games to the last placed team No. 10, but still managed to maintain a slim lead in the league. Teams 8, 5, and 9 are tied for second place.

Jowitt Motors, Inc.
MILLBURN AVENUE AT MORRIS TURNPIKE, MILLBURN
MILLBURN & SPRINGFIELD LINE DREXEL 6-2180

IMMEDIATE DELIVERY
ON MOST MODELS OF THE
ALL NEW '60 DODGE DART

SAVE UP TO \$800 ON 1959 DODGE & PLYMOUTH LEFTOVERS

Jowitt Motors, Inc.
MILLBURN AVENUE AT MORRIS TURNPIKE, MILLBURN
MILLBURN & SPRINGFIELD LINE DREXEL 6-2180

YOUR REALTOR is the key to expert handling of your real estate matters
BOARD OF REALTORS
OF THE ORANGES AND MAPLEWOOD, LIVINGSTON, MILLBURN, SHORT HILLS AND SPRINGFIELD
25 HALSTED STREET, EAST ORANGE, N. J. . . . ORange 7-2323

HAYES NOW PAYS INCREASED DIVIDENDS
3 3/4% per annum
Paid Quarterly Effective Oct. 1, 1959
ACCOUNTS INSURED UP TO \$10,000
HAYES SAVINGS and LOAN ASSOCIATION
955 Broad Street Newark 2, N. J.

...and a moment ago, she was lonely!
It's so easy to be thoughtful by phone. The miles melt in seconds — and loneliness disappears in a burst of smiles. To many, the happiness the phone brings is one of the most appreciated advantages of today's low-cost telephone service.
... good telephone service does so much for you

Leonard Best Suggests County Mayors Demand Rt. 22 Information

Leonard E. Best, Springfield industrialist, has suggested that the mayors of Union County demand information from the New Jersey Highway Department on plans to realign Route 22. Mr. Best addressed letters to the County mayors with the suggestion that "something be done immediately."

Mr. Best has outlined a plan for the redevelopment of the present Route 22 to spare the county an entirely new highway. The Western end of the county rose in protest against plans for the new federal aid highway last year.

The new road, tabbed Route 78 in the highway planning scheme, has been delayed because of Congressional indecision on construction aid. But Mr. Best said this only makes the need for "vital action" on the issue more necessary.

Mr. Best, in a letter to all county mayors, asserted that

the state has yet to provide a clear picture of the road course, even though it will be a \$100,000,000 project.

"Every tax dollar is important and no area of activity," he said, "should be above scrutiny and—review—especially where improper planning may produce permanent damage to communities and undo the most careful planning at the local or county level."

"Because the impact is county-wide, it has been suggested that at conference of Union County mayors could effectively bring pressure on the state to make a complete report to the citizens covering the planned development of the proposed highway program."

The new highway planning is necessary, Mr. Best conceded, because of the obvious inadequacies and dangers of present

Route 22. The federal aid road is planned as part of the east-west superhighway that parallels Route 22 in New Jersey.

Following is the letter sent to the mayors:

Dear Mayor Bonadies:

Attached is a memorandum which bears on a situation of direct concern to every mayor and to every citizen in Union County.

Highways are important, traffic problems are a headache as well as a serious expense to the public. But it is only one of many problems facing our local and state governments.

I am concerned with the situation where the state highway department spends 100 million dollars a year of our tax money for new roads without giving the public a clear picture of the plans which they think justify this expense, especially where this arbitrary imposition of highways may well involve local districts with expenses over which the people have little control.

At the state level, the Departments of Institutions and Agencies, of Education and others, spell out each new position—every salary increase—every capital expense—and must justify their requests to the appropriation committees and the public. At the local level we insist on a complete story on the police, fire, sewers, schools, etc. At both levels budget items are often reduced, eliminated, or subjected to revision.

I believe that every tax dollar is important and that no area of activity should be above careful public scrutiny and review,

especially where improper planning may produce permanent damage to communities and undo the most careful planning at the local or county level.

The fact that Route 78 has been postponed not only makes the need for vital action on Route 22 more necessary but also gives us time to study the overall plans.

Because the impact is county-wide, it has been suggested that a conference of Union County mayors could effectively bring pressure on the state to make a complete report to the citizens covering the planned development of the proposed highway program. In a matter of such vital concern to the citizens this should be done.

Cordially yours,
Leonard E. Best

en's American ORT at her home, 139 Lelak Ave., Springfield, at 8:30 o'clock tonight.

Mrs. George Levine will preside and Mrs. Harry Wemischner will report on the Rummage sale held October 30 and 31.

Plans for the November Paid-Up Membership Party will be discussed.

MEAT BUYS
FREE DELIVERY
Freezer orders filled to your specifications. Watch our window for early week specials.

- Whole or Half LOINS OF PORK . . . 49¢ lb.
- Homemade COTTAGE HAMS . . . 69¢ lb.
- Homemade Hot or Sweet ITALIAN SAUSAGE . . . 69¢ lb.
- Homemade Breakfast SAUSAGE LINKS . . . 79¢ lb.

FREEZER SPECIAL
CHUCK OF BEEF
Includes Steaks, Stew Beef, Roast & Chopped Beef. Average 90 - 110 lbs. **49¢ lb.**

RAU 715 MOUNTAIN AVE. SPRINGFIELD
QUALITY MEATS DR 6-4151
OUR MEATS ARE TOP QUALITY

RED TAG SALE!
BETTER HATS
From \$2.00 to \$10.00 OFF

An Opportunity to Pick Up A Custom Made Hat at GREAT SAVINGS!

EDITH HAT SHOP
Mary L. Murphy
10 ELM ST., WESTFIELD ADams 2-5980

Bahai Man Shows Mt. Carmel Film

On Wednesday, November 11th at 8:15 p.m. in the Springfield Public Library, slides of Mt. Carmel, one of the most beautiful and renowned sites in the world, will be shown by Howard Kavelin, a Bahai from New York. Along with the showing of the slides, he will speak on the subject: "The Lord of the New Age."

Mr. Kavelin, executive vice-president and partner in the firm of Durand Taylor Co. Inc., a nationally known real estate organization and vice-president and director of International Bank and Trust Co., Nassau, is now serving as chairman of the National Bahai Spiritual Assembly of the U.S. He has represented the American Bahai Community at the first inter-continental conference held in Kampala, Uganda, British East Africa in January 1958.

Residents of Springfield and the surrounding areas are invited to attend this meeting. One of the rules of the Bahai Faith is that no contributions be taken at any time, nor are they permitted to accept contributions from anyone except members of the Faith. Therefore, this meeting is free to the public. Remember that the room used for public meetings is the foundation room of the library.

WCS Hear Talk On Travel Aid

At the Annual Combined meeting of the Woman's Society of Christian Service and the Wesleyan Service Guild of the Methodist Church of Springfield on Tuesday November 10, Miss Leila Gardner, Executive Director of the Newark Traveler's Aid Society will be the guest speaker.

Miss Gardner is a graduate of Talladega College and holds

CLOSE OUT on WHITE UNIFORMS
DACRON or NYLON Reduced to \$6.00
COTTON Reduced to \$3.00
WRIGHT'S DRESS SHOP
55 Elm Street Westfield, N. J.
Open Monday Evening

Don't be fooled by CLAIMED economy!
Go Rambler '60
The Proved Economy King!



See the latest version of the car that holds the NASCAR fuel economy record for 6-passenger cars! New styling and features. More maneuverable. Save hundreds of dollars on first cost, upkeep—get highest resale value! Get big car room, small car economy! Go Rambler and save!

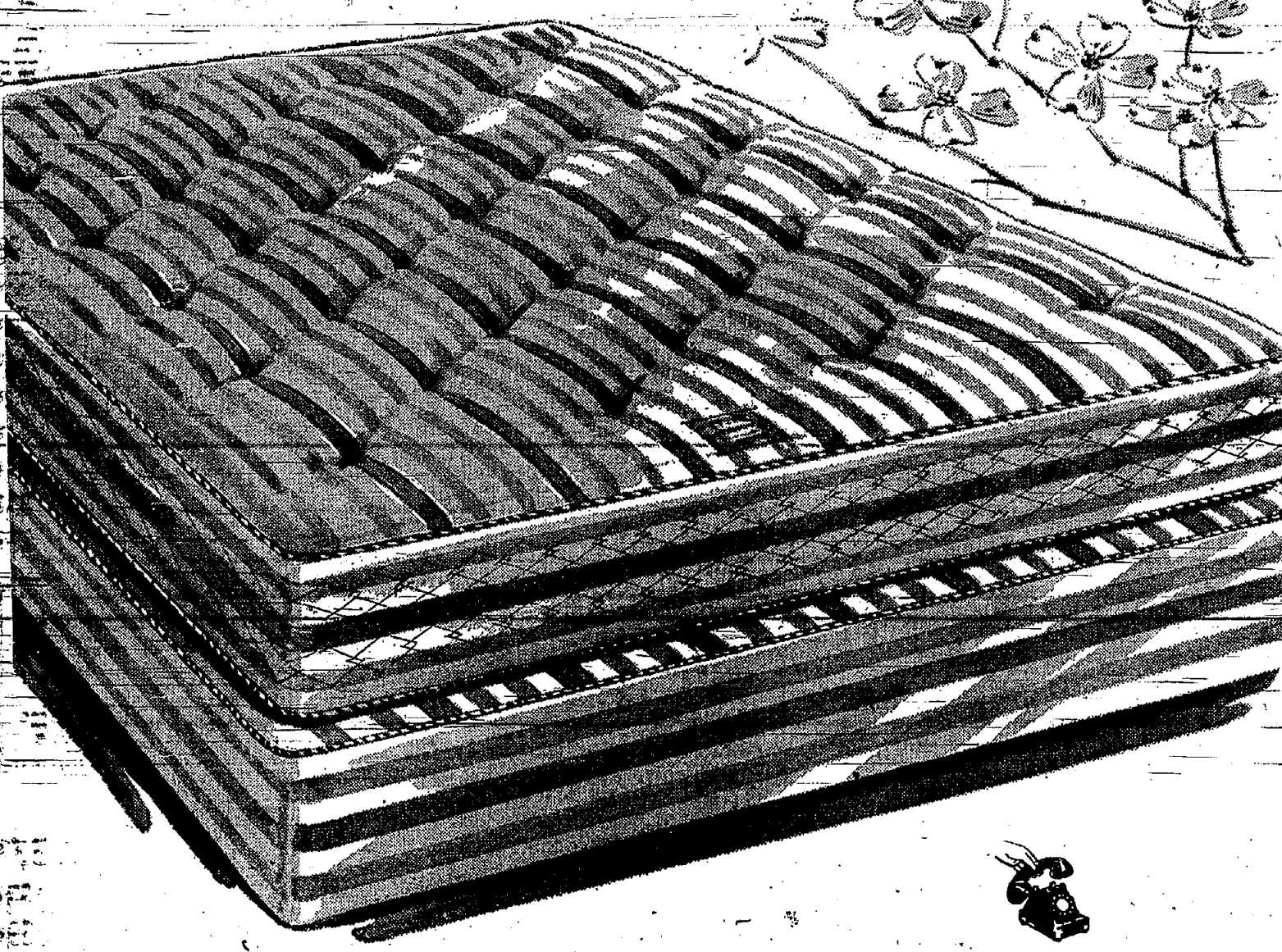
SMYTHE RAMBLER
326 Morris Avenue Summit

Where else, a buy like this!

Huffman & Boyle's 25% Hair Mattress By Stearns & Foster

Superb sleep, and savings, too! Stearns & Foster put every bit of its 113 years of mattress-making skill into our "Anniversary Special". Just count the features! 25% hair top AND bottom for better surface resiliency, added air circulation. The 228-coil innerspring unit is comfort-engineered for perfect body support; AND the ticking is heavy 8 oz. hair-proof. Other quality features: no-sag prebuilt border, side handles and vents. Full or twin size mattress or boxspring unit. And note: Your "Anniversary Special" is guaranteed for 10 years. A superb buy in a finely-made mattress!

Your purchase price returned if within a period of 30 days your "Anniversary Special" mattress is not to your full approval!



SHOP AT HOME, USE YOUR PHONE!
Call your nearest Huffman & Boyle store

BUDGET YOUR PURCHASE if you wish! Use our extended plan up to 18 months, insured for your protection at no additional charge to you. Ask for details!

OPEN EVENINGS

Huffman & Boyle
FINE FURNITURE • CARPET • INTERIOR DECORATING

Route 24, Springfield, DR 9-4300
Other stores at Hackensack, Ramsey, Orange, and Pompton Plains

Plan Concrete Divider Along Hillside Ave.

Springfield authorities moved toward eliminating some of the traffic danger at the intersection of Mountain and Hillside avenues, one authorizing the construction of a concrete divider in Hillside avenue and the other provides for relocation of bus stops.

The concrete divider in Hillside Ave. will be opposite Baltusrol Golf Club and markers on all four sides of the intersection to channel traffic into lanes.

The other provides for relocation of bus stops. Public hearing and final vote on both measures was set for Nov. 25.

There was no appropriation for the work and construction will be delayed until money can be provided in next year's budget, it was said.

The committee last year inquired of the State Highway Department about a traffic light at the intersection. This plan was recommended instead, after a survey.

The committee authorized the township attorney to draw up an ordinance regulating canvassers. The law is to be modeled on measures recently enacted in several nearby towns.

The action was taken on request of acting Police Chief W. C. Selander who is seeking to keep closer check on door-to-door salesmen and similar agents.

Council accepted the Shunpike Rd. storm sewer as satisfactorily completed on recommendation of Township Engineer Alfred A. Swenson and immediately forwarded a request for \$50,000 to the Board of Freeholders as its agreed share of the \$130,000 project.

The governing body referred to the engineer for study requests from the school board and the P.T.A. for construction of sidewalks in parts of S. Springfield Ave., Evergreen Ave. and Diven St. in the Chisholm and Guadine school V. J. Corp.

The committee concurred in the Board of Education's recommendation that Arthur St. between Beverly Rd. and Hillside Ave. in the area of the proposed new school, be restricted to pedestrian traffic along a walkway.

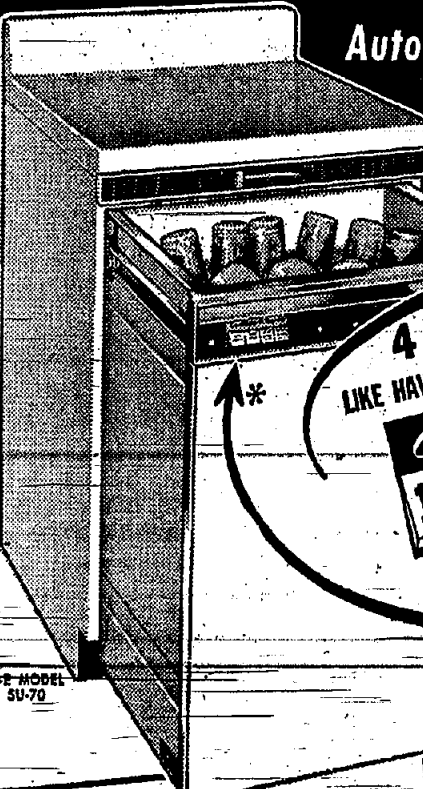
On recommendation of the Police Chief, council promoted Richard Elvin, Robert Roesser, Robert Maguire and Howard Thompson from probationary status to third class patrolmen.

24 HOUR SERVICE
OIL
OIL HEAT SERVICE
474 NORTH AVENUE EAST
WESTFIELD, NEW JERSEY

NEW! World's First Dishwasher that Washes to Order—Automatically!

GE 4-CYCLE DISHWASHER

Automatically Controls the "Just Right" Dishwashing for Every Need!



4 Different Wash Settings LIKE HAVING 4 DIFFERENT DISHWASHERS in 1

Custom 4-Cycle

1. CHINA CRYSTAL
2. UTILITY ITEMS
3. DAILY WASH
4. HEAVY WASH

Just Touch the Key!

1. A gentle, low heat wash for fine china and delicate crystal. Also designed for sterling silver and plastic ware.
2. A vigorous low heat wash for all pots, pans, mixing and cooking utensils.
3. A normal, medium heat wash for lightly soiled everyday dishes, glasses and silverware.
4. A medium-heat vigorous wash for heavily soiled everyday dishes, glasses and silverware.

NO HAND-SCRAPING! NO HAND-RINSING!

New FLUSHAWAY DRAIN flushes excess food particles away and out!

- Completely automatic—does all the dishwashing job—pre-rinses, power-scubs, sanitizes and dries dishes gleamingly clean.
- New "Sparkling Rinse"—assures sparkling clean dishes.
- Sanitizes dishes to help protect family's health.
- Holds service for 10.

FREE! ONE-YEAR SERVICE
G-E factory-trained service experts assure continuous, efficient operation for a full year, without extra charge!

New G-E Mobette "Rolls-on-Wheels" DISHWASHER
ONLY \$219.95
NO INSTALLATION
Rolls anywhere, plugs in anywhere, loads easily, washes automatically! Flushaway drain eliminates hand-scraping and hand-rinsing.

\$1.75 A WEEK
After Small Down Payment.
To 3 Years-to-Pay!

AUSTER'S APPLIANCES
143 E. Broad St. Westfield
ADams 3-2121

Report Slated By ORT Group
Mrs. Fran Lasky will hostess the November Board Meeting of the Springfield Chapter of Women's ORT at her home, 139 Lelak Ave., Springfield, at 8:30 o'clock tonight.

SQUAD CAKE SALE
The Ladies' Auxiliary of the Springfield First Aid Squad is holding a cake sale at the Grand Union on Friday, November 13, between the hours of 9 and 2.

ADLER HOME MART

GUTTER GUARD
6" x 25-ft. **2.95** ea

FIBERGLASS
Full Thick Insulation **6 3/4**¢

PREFIN. PLYWOOD
Mahogany 4 x 7 V-Groove In Stock **5.99** ea

DOOR JAMBS
2-6 x 6-8 pine **2.49** ea

Open Mon. & Fri. 9-11

COMB. DOORS
Alum. Piano Hinge Complete **27.95**

WELDTEX SQUARES
5/16" x 12x12 Striated **20**¢

Weather Stripping
3/8 x 54 Door Alum. Saddle **2.99** set

5/8 PLYSCORD
4 x 8 **4.99** ea

OPEN SAT. 9-4
SUN. 9-1

STORM-SASH
Wood **2.99** up
Aluminum **4.99** up

SCALLOP COMB. DOOR - PINE
3-1x6-9 In Stock **29.95**

PINE-SHELVING
1 x 12 **15**¢
1 x 2. **2 1/2**¢

FIR-PLYWOOD
1/4" 4x8 ... **3.20**
3/4" 4x8 ... **7.99**

GLASS CUT TO SIZE

SHUTTERS
6"x18" Int. **1.19** ea
32"x39" Ext. **4.99** pr.

LOUVRE DOORS
2-6 x 6-9 Pine **10.50** pr.

PINE BASE

CLAM SHELL 3" **8**¢

FLUSH DOORS
2-0 x 6-8 **4.99** ea

FREE PARKING-DELIVERY

JALOUSIES
Save **60%**

WINDOW UNITS
2-0 x 3-2 **11.44** ea

Garage Door Bottom VINYL 9-0 **1.19** ea

WOODCO-ANDERSEN WINDOW UNITS LOW PRICES

ADLER HOME MART
Rt. 22, Mountainside
A Div. of Adler Screen Mfg. Co.
Opposite Top's Diner
ADAMS 3-5657
Tues., Wed., Thurs. 8-5
Open Mon. & Fri. Till 9
Saturdays 9-4
Open Sunday 9-1

The Express

A&P's VALUES IN EVERY DEPARTMENT GUARANTEE YOU...

MORE TAKE-HOME SAVINGS...

SUGAR GRANULATED 5 lb. bag 47¢
Jack Frost

- | | | | | |
|-------------------------|--|---|------------------|-----|
| Pineapple Juice | Dole's, Libby's or Del Monte | 3 | 46 oz. cans | 89¢ |
| Sunsweet Prune Juice | | | 32 oz. bottle | 41¢ |
| Grape Juice | A&P brand—our finest quality | | 24 oz. bottle | 29¢ |
| Punchinello Fruit Punch | | 3 | 46 oz. cans | 89¢ |
| Mott's A.M. or P.M. | Fruit Drink | 3 | quart cans | 85¢ |
| Ovaltine | Plain or Chocolate | 6 | oz. jar | 31¢ |
| Instant Coffee | Maxwell House | | 2-oz. jar | 40¢ |
| Martinson's Coffee | | | 1-lb. can | 80¢ |
| Soups | CAMPBELL'S or HEINZ Without Meat except Mushroom | 2 | 10 1/2 oz. cans | 27¢ |
| Soups | CAMPBELL'S or HEINZ With Meat | 2 | 10 1/2 oz. cans | 35¢ |
| Tomato Sauce | HUNT'S or DEL MONTE | 6 | 8 oz. quart cans | 55¢ |
| Balbo Oil | Homogenized | | quart can | 55¢ |
| Mazola Oil | For Cooking, Salads, Baking | | pint | 33¢ |
| Spry | Pure vegetable shortening | | 3-lb. can | 74¢ |
| Strawberry Preserves | Ann Page | | 12 oz. jar | 29¢ |
| Dash Dog Food | | 3 | 1-lb. cans | 46¢ |
| Linit Liquid Starch | | | quart bottle | 18¢ |

Big Values—25¢ Sale

- | | | | |
|--------------------------|-------------------|-----------------|-----|
| Wheaties | Breakfast Food | 12 oz. pkg. | 25¢ |
| Cheerios | Breakfast Food | 10 1/2 oz. pkg. | 25¢ |
| Nabisco Premium Crackers | | 1-lb. pkg. | 25¢ |
| Kraft's Spaghetti Dinner | | 8 oz. pkg. | 25¢ |
| Tomato Juice | A&P brand | 46 oz. can | 25¢ |
| Star-Kist Tuna | Light meat chunks | 6 1/2 oz. can | 25¢ |

- | | | | | |
|---------------------------|--------------------------------|-------------|------------------------------|------|
| Aunt Jemima Pancake Flour | | 2 | 16 oz. pgs. | 35¢ |
| Log Cabin Syrup | | | 12 oz. bottle | 29¢ |
| Duncan Hines Cake Mixes | | | pkg. | 33¢ |
| Evaporated Milk | PET, BORDEN'S, CARNATION | 6 | 14 1/2 oz. cans | 89¢ |
| Evaporated Milk | WHITE-HOUSE | 8 | 11 oz. tall cans | 1.00 |
| Hi-Ho Sunshine Crackers | | | 1-lb. pkg. | 29¢ |
| Pillsbury Farina | | | 28 oz. pkg. | 29¢ |
| Diamond Walnuts | | | 1-lb. pkg. | 45¢ |
| French's Instant Potatoes | | | 7 oz. pkg. | 27¢ |
| Fruit Cocktail | A&P brand | 3 | 30 oz. cans | 1.00 |
| Hellmann's Mayonnaise | | | pint jar | 41¢ |
| Gulden's Mustard | | | 3 1/2 oz. jars | 38¢ |
| Colgate's Fab | with 3c off label large pkg. | 29¢ | with 7c off label giant pkg. | 70¢ |
| Duz Detergent | For the family wash and dishes | 1-gal. pkg. | | 34¢ |
| Scottowels | | 2 | 150 sheet rolls | 36¢ |

THE GREAT ATLANTIC & PACIFIC TEA COMPANY

A&P Super Markets
1957 AMERICA'S DEPENDABLE FOOD MERCHANT 1959

Prices effective thru Saturday, November 7th in Super Markets and Self-Service stores only in New Jersey, Staten Island and Rockland County.

"Super-Right" Quality Beef No Fat Added—TOP or BOTTOM—Boneless

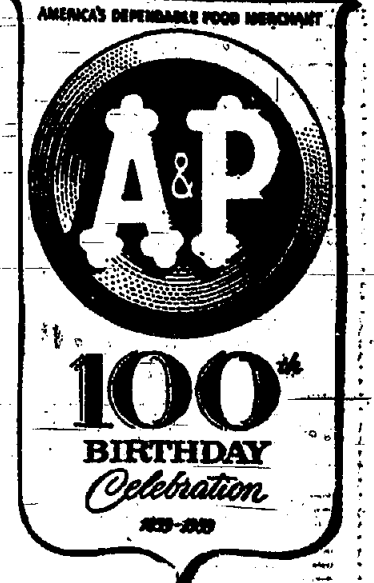
ROUND ROAST 79¢ lb.

A&P "Super-Right" Quality

Shank Half Full Cut Butt Half Full Cut

FRESH HAM 39¢ 49¢ lb.

Come See... You'll Save!



- "Super-Right" Boneless TOP SIRLOIN ROAST 89¢ lb.**
- "Super-Right" Quality Boneless TOP ROUND STEAK 89¢ lb.**
- "Super-Right" Quality—BONELESS CROSS RIB ROAST 89¢ lb.**
- "Super-Right" Quality CUBED STEAKS 99¢ lb.**
- Brown 'n Serve
- SWIFT'S SAUSAGE 8-oz. pkg. 49¢**

- "Super-Right" Quality GROUND BEEF Freshly Ground lb. 49¢**
- "Super-Right" Quality FLANK STEAKS lb. 99¢**
- "Super-Right" Quality Shoulder VEAL ROAST BONELESS lb. 65¢**
- "Super-Right" Quality STEWING VEAL BONELESS 63¢ lb.**
- Super-Right Brand
- SLICED PORK ROLL 6-oz. pkg. 33¢**

Seafood Favorites!

- | | | | |
|------------------|---------------------------------|---------------|-----|
| Swordfish Steaks | Fancy Boneless | lb. | 59¢ |
| Fried Cod Fillet | Heart 'n Eat | lb. | 69¢ |
| Shrimp Cocktail | Sea-See Brand | 5 1/2 oz. jar | 45¢ |
| Haddock Fillet | Cap'n John's Quick-Frozen | 1-lb. pkg. | 45¢ |
| Fish Gakes | Cap'n John's—Small Quick-Frozen | 8-oz. pkg. | 25¢ |
| Rainbow Trout | Empress Brand Quick-Frozen | 10-oz. pkg. | 55¢ |

A&P's Dependable Grocery Values!

- | | | | | |
|------------------------|-----------------------------------|----|-----------------|-----|
| TOMATOES STEWED | Del Monte Brand | 2 | 16 oz. cans | 39¢ |
| PINEAPPLE JUICE | Del Monte Brand | 2 | 18 oz. cans | 25¢ |
| BABY FOOD | Clapp's Strained Varieties | 10 | large cans | 85¢ |
| STRING BEANS | Lord Mott French Style | 2 | 15 1/2 oz. cans | 29¢ |
| TUNA FISH | A&P Brand—White Meat | 2 | 7 oz. cans | 63¢ |
| SWEET PEAS | Rollable Brand Our Finest Quality | 4 | 18 oz. cans | 49¢ |

Ann Page—Tomato

KETCHUP 2 14 oz. bottles 33¢

Eveready

NESTLE'S COCOA 16 oz. pkg. 41¢

Worthmore Brand—Chocolate

Mint or Rum Wafers 3 7 1/2 oz. pgs. **1.00**

Burry's Cookies 8 1/4 oz. pkg. **29¢**

Sunshine Cookies 9 3/4 oz. pkg. **29¢**

Cream of Rice Cereal 18 oz. can. **39¢**

Heart's Delight Juicidrink 46 oz. can. **39¢**

Nestle's Morsels Semi-Sweet 6 oz. pkg. **25¢**

Fels Liquid Detergent 12 oz. can. **34¢**

Mareal Toilet Tissue Assorted Colors 100 22 1/2 oz. roll **59¢**

Strongheart Dog Food 16 oz. cans **55¢**

Worthmore Brand—Chocolate Covered

Candy Sticks Orange or Raspberry 3 9 oz. pgs. **1.00**

Graham Crackers Nabisco—Plain or Sugar Honey 14 oz. box **33¢**

Dinty Moore Beef Stew 2 4 oz. cans **49¢**

Vienna Sausage Amour's 2 4 oz. tins **45¢**

Beech-Nut Coffee 3c off label **1 lb. 69¢**

Tuna-Fish Breast 'n Chicken Light Meat—Solid Pack 7 oz. can **37¢**

Swanee Cole-Soft Towels 2 2 of 150 Paper **25¢**

Noxon Metal Polish 14 oz. can **35¢**

Bonnie Cat Food 2 8 oz. cans **29¢**

PINEAPPLE PIE 8 Inch Size 49¢

Jane Parker

Gold or Marble

POUND CAKE 20 oz. pkg. 47¢

Jane Parker

BUTTER RING Pecan each 39¢

Frozen Foods!

A&P Brand—Sliced and Sweetened **STRAWBERRIES 2 10 oz. pgs. 39¢**

French Fries Dorann Brand Coney Island Style 3 9 oz. pgs. 40¢

Rath's Veal Chop-ettes 3 8 oz. pgs. 49¢

Morton's Pies Turkey or Chicken 2 8 oz. pgs. 49¢

Grape Juice A&P Brand 2 8 oz. cans 33¢

Apfelstrudel Pepperidge Farms 16 oz. pkg. 55¢

Dairy Favorites!

A&P Brand—Rindless Domestic

SWISS SLICES Natural 6 oz. pkg. 37¢

Large Eggs Wilderners Brown and White 1 doz. carton 59¢

White Eggs Sunnyfield—Large 1 doz. carton 59¢

Mel-O-Bit Fresh Grade A—Nearby Farms 1 doz. Sharp American Pasturized Process Cheese lb. 59¢

Imported Provolone First Quality lb. 95¢

Dannon Yogurt Orange, Vanilla or Plain 2 8 oz. cups 37¢

Fresh Fruits & Vegetables!

Golden-Ripe Bananas Yellow 2 lb. **25¢**

Florida—White or Pink Seedless Grapefruit 5 lb. **39¢**

Western—Firm, Crisp Lettuce Iceberg 2 large heads **35¢**

Regalo-Brand—Washed Spinach 10 oz. bag **19¢** 20 oz. bag **35¢**

Florida—Sweet, Tender Golden Corn 5 ears **29¢**

Plump, Juicy Grapes Emperor 2 lb. **29¢**

A&P's Premium Quality Coffees!

Eight O'Clock Mild and Mellow 1 lb. **55¢**

Red Circle Rich and Full Bodied 1 lb. **59¢**

Bokar Vigorous and Winery 3 lb. bag **1.83**

JANE PARKER FRUIT CAKE

1 1/2 lb. cake 3 lb. cake 5 lb. cake

1.49 2.89 3.98

DARK FRUIT CAKE 1 lb. cake 85¢ 2 lb. cake 1.59

Apple Gider Mott's or Red Check 1/2 gal. bot. **43¢**

Pfeffernusse Spice Drops—Jane Parker 10 oz. pkg. **37¢**

Salted Peanuts Virginia bag 2 lb. **45¢**

ICE CREAM

CRESTMONT 1/2 gal. cont. **95¢**

MARVEL 1/2 gal. cont. **69¢**

Choice of various flavors

Granberry Sauce Ocean Spray 2 16 oz. cans 37¢

Mince Meat Borden's A&P 8 oz. 47¢ 28 oz. 49¢

R&R Plum Pudding None-Such 2 16 oz. pkg. 45¢

A&P's FLAVOR-TESTED TEA

Hearty and Vigorous

OUR OWN TEA BAGS

48 PKG. OF **48** TEA BAGS **48¢**

Green Giant Corn Golden Cream Style 2 17 oz. cans 37¢	Heinz Baked Beans With pork and tomato sauce 2 7 oz. cans 19¢ 2 16 oz. cans 27¢	Realemon Lemon Juice Reconstituted pint bottle 29¢	Karo Syrup Blue Label 24 oz. bottle 27¢	Bosco Milk amplifier 12 oz. jar 35¢ 24 oz. jar 59¢	Comet Cleanser For bathroom and kitchen 2 14 oz. cans 31¢ 2 1 1/2 oz. cans 23¢	Camay Soap For toilet and bath 3 regular cakes 31¢	Camay Soap Especially for the bath 2 bath cakes 31¢
---	--	--	---	---	---	--	---

2834 Morris Ave., Union
Corner of Spruce St.
Elm St., Westfield
FREE PARKING AT ALL FIVE STORES

945 Stuyvesant Ave., Union
1 Block S. of Morris Ave.
AIR CONDITIONED FOR YOUR SHOPPING COMFORT

Morris Turnpike, Millburn
West of Millburn Ave.
225 E. Front St., Plainfield

SERVICES OFFERED

PAINTING - DECORATING

REHANGING - Quality workmanship, estimates cheerfully given. E. Fritz Bogershausen, Drexel 314.

INSTRUCTIONS

CORDON - Lessons given in your home. Frantz, 7-4350.

FLORING - French, German, Latin, Spanish, English. FA 2-5735 early evening.

ANO instruction for beginners CR 3-2241.

SPANISH LANGUAGE - preliminary & advanced. CR 3-4371.

POPULAR guitar - 10 lessons; also solo, Arioso, Prog. New York. CR 3-8250.

FLORING - public school teacher, subjects grades 1 to 9. MURDOCK 2534, 5 to 10 p.m.

PERSONAL

GIFTED MRS. SARAH - Hypnotic Readings & Advice. 21 Washington Ave. near 4th St. Springfield, N. J. PL 5-6830

LOST

ALB. GpK tiger cat, named Jack. Jack vicinity Sheffield Road, Summit. Reward. CR 7-2957.

Grey and white Blue Mountain. Sunday CR 3-2843.

OLD bracelet with three-dial watch, 2 1/2 inch. Short Hills. Office, sentimental value. Gen. office award. Drexel 6-5371.

OSTON terrier, brown and white, and one eye, no tail. Reward. Drexel 6-5377.

FOUND

GGS - CATS - See Summit Animal Welfare League notice social page.

MISSING - yellow Pekinese at Washington School playground. Call CR 3-0238.

RENTALS

Unfurnished House For Rent

NEW ENGLAND GARDENS - New deluxe garden type ranch apartment. 3 rooms, 2 baths. Air-conditioned, electric kitchen. Immediate occupancy. 425 month. Dunbar Agency, 423 Kent Place Blvd. CR 3-6546.

5 ROOMS centrally located. CR 7-2181 after 6.

GILLETTE - 3 rooms and bath. 2nd floor. all utilities. BR 1-4729.

FUR. HOUSE

TWO bedroom house, comfortably furnished. Occupancy December 1st. Rent, \$165.00. Millington 7-0200.

OFFICE FOR RENT

PROFESSIONAL office, 4 1/2 rooms. Immediate occupancy. CR 7-3456.

Miscellaneous Building

MILBURN - 5000 square feet, sprinkled, brick building. Buy or rent. Driveway around building. Drexel 6-8481.

RENTALS WANTED

UNFURN. APT. WANTED

COUPLE with 2 children would like a nice room. Reasonable. CR 7-2921.

FOUR room apt. Summit area. Dec. 1st. CR 3-9787. Mr. Andersen.

Furnished Apt. Wanted

TWO or three rooms for business. 2nd floor. modern and dog. Drexel 7-4255 after 7.

GARAGE WANTED

GARAGE wanted in Summit. CR 3-8000, ext. 2145 or CR 7-2826 exts.

Hooked Rug Show Planned By Guild

A Hand Hooked Rug Exhibit will be presented Wednesday and Thursday Nov. 11 and 12 from 10:30 a.m. to 9:30 p.m. in All Saints Parish House, 563 Park Ave. Scotch Plains. All rugs shown are by pupils of Alice Moyer Beatty of Fanwood. All Saints Evening Guild will sponsor the exhibit. There will be a Silver Tea. All benefits will be for the Building Fund. Exhibited will be rugs by Mrs. Carroll Bates of Linden, Mrs. G. W. Turner, Mrs. Gerald Burt, Miss Katherine Sherwood of Summit, Mrs. J.-A. DeHuff, Mrs. C. Richards of Murray Hill, Mrs. W. Cupit, Mrs. E. M. Van Vech...

Regional Seniors Present Anne Frank Play Tonight

Other rugs shown will be by Mrs. Harold Cuff, Little Falls, Mrs. H. E. Walter Mrs. Richard Chatfield, White House Station, Mrs. E. J. Langham, Bryn Mawr, Pa., Mrs. Norman Settle, Morristown, Mrs. Harold Karn of Bernardsville, Mrs. F. DeBella, Roselle Park, Miss Katherine Moran, Miss Muriel Roome and Mrs. L. Baier of Roselle. From Fanwood Mrs. D. C. Tate, Mrs. C. S. Riley, Mrs. D. Hillier, Mrs. Orcutt, Mrs. E. Sommer, Mrs. W. H. Van Hoesen and Mrs. R. Jenkinson will have rugs displayed. Mrs. Austin Moessner of Fanwood will show her rug which is a copy of a very old rug made of revolutionary uniforms. Mrs. John Rodenbush of Shrewsbury will show an "1890 Eagle", Mrs. E. Vestal, Little Silver, Mrs. L. Hancock, Manassas, Mrs. Alex Summers of Chatham, Mrs. H. T. Rice of Springfield also will show rugs. Mrs. S. M. Kokogay will display an Oriental, which took a blue ribbon at the New York International Show. From Westfield, Mrs. Marie Craig, Mrs. F. E. Gusmer, Mrs. F. W. Sattelmayer, Mrs. Ed Walker and Mrs. R. E. Lang will display their rugs. Mrs. Benetta Searles of Short Hills will show a large Eagle Rug adapted from the 1830 advertisement of the Eagle Stove Co. Mrs. David Taylor will show an 8 x 11 rug "Wildwood". The realistic-looking of wild flowers make this an exceptionally beautiful rug. Mrs. Duncan Talbot of Watchung will show a room size rug oval "Flames". Mrs. Frank Hendon and Mrs. Karl Schwotzer of Rahway, Mrs. H. Gosman, Watchung, Mrs. Ed-Cushman, Mrs. Felz, Cranford Mrs. F. Hennie, Montclair and Mrs. Paul Fetzer, Ridley Park, Pa. will display their rugs. Other rugs shown will be by Mrs. Alden DeHart, Mrs. Victor King, Mrs. George Caskey, Mrs. Steven Jannotta, Mrs. Donald Squires, Mrs. J. Wilson, Mrs. Kermit Whitehead, Mrs. Malatesta, Mrs. C. Donald Newbury, and Mrs. Bur...



NAZI-PERSECUTION DRAMA: Mickey Lesser, of 32 Lelaik Ave., and George Seltzer, of 32 Sherwood Road, both of Springfield, and Lynne Urner, 347 New Providence Road, Mountaine-side, rehearse their key roles in "The Diary of Anne Frank" to be offered at Dayton Regional School tomorrow night.

The senior class of the Jonathan Dayton Regional High School will present its annual play tomorrow night at 8:30. This year the selection is the world-famous drama "The Diary of Anne Frank" which deals with the life and emotions of a young girl living in terror of her Nazi persecutors. Anne Frank will be played by Lynne Urner, 347 New Providence road, Mountaine-side. Others in the cast are George Seltzer of 32 Sherwood road, Springfield, as the father, and Mickey Lesser of 205 Lialak avenue, Springfield, as the boy who befriends Anne Frank. Joseph Trinity, director of the play, has been holding evening rehearsals for the last three weeks and comments favorably on the work of the performers. A special matinee performance will be held on this afternoon, November 5, for 8th graders in the Springfield schools.

UNICEF ... and You

You are invited to participate in one of the world's noble causes—the provision of food and medicine for boys and girls in dire need. This is the 10th anniversary of UNICEF greeting cards for the Yuletide season. A single box of 10 cards, priced at \$1.25, provides a daily glass of milk for a week for each of 45 children. The profit on 10 boxes provides sufficient to treat successfully six children suffering from leprosy. Mahogany House now offers a wide selection of these cards, as a non-profit public service to YOU and to the U.S. Committee for UNICEF.

Chamber Music Concert Sunday

This Sunday, November 8, 300 local music lovers will hear the New Art Wind Quintet present program at the Beacon Hill Club in Summit, as the first concert of the Chamber Music Guild series for the year. Invited back after a successful concert here last year, Martin Oranstein, flute, Charles Russo, clarinet, Ralph Feerlich, french horn, Melvin Kaplan, oboe, and Morris Newman, bassoon will play at two performances to accommodate all who want to hear them. In addition to the regular series performance at 8 p.m. there will be one in the afternoon at 4 p.m. This ensemble, which has toured and recorded extensively to much critical acclaim, has also recently been seen and heard on television in appearances with David Randolph on the "Young America Listens" program. Their most recent concert appearance was this past weekend when they played in the Metropolitan Museum

Admiral BIG SCREEN COLOR TV

...COLOR SO BRILLIANT YOU'VE GOT TO SEE IT TO BELIEVE IT!

NOW! GIANT TRADE-IN ON YOUR OLD TV!

Up To \$200.00

Budget Plan Available

Come in Today

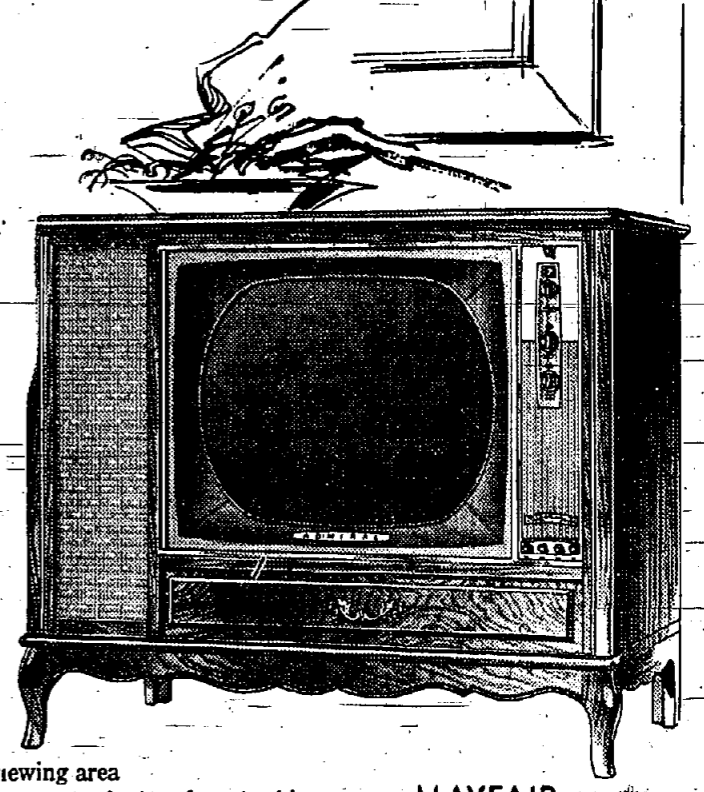
• Big Screen Picture... 261 sq. in. of viewing area

• Convenient Top-Front Controls... pre-set tuning... bass/treble control

• New Aluminized Picture Tube... with removable tinted optic filter

• Three Speaker Full Fidelity-Sound... acoustically matched and balanced

• Decorator Approved Original Furniture Styling with genuine wood veneers



RADIO SALES CORP.

(See the Marks Bros.)

327 Millburn Ave., Millburn **47-51 Maple Street, Summit**

DR 9-4200 - Open Evenings **CR 3-6800 - Open Monday,**
Except Saturdays **Wednesday and Friday Evenings**

PARKING IN THE REAR OF BOTH STORES

FALL CLEANING SPECIALS

SLIP COVERS

CUSHION COVERS (Single) ea. 39¢ Only

CUSHION COVERS (Double) ea. 59¢

CHAIR COVERS ea. \$1.19

COUCH COVERS ea. \$1.79

BEDSPREADS

Candlewick - Chenille 49¢
Washington - Bates 98¢

More LaRue

GENERAL GREENE SHOPPING CENTER

SPRINGFIELD
Central Avenue Shopping Plaza (Next to A&P)

NEW PROVIDENCE

WIN A FREE TRIP TO MYSTERY ROMANCE AT THE MARDI GRAS!

I JOINED FIRST STATE BANK'S CHRISTMAS CLUB BECAUSE...

Simply complete this sentence in 25 words or less and you may be the lucky winner of a trip for two to New Orleans during Mardi Gras week, February 26th through March 2nd. The winner and a person of his or her choice will be flown via Eastern Airlines to New Orleans on February 28th... spend five days and four nights at the beautiful Monteleone Hotel... then via Eastern Airlines return to Newark.

CONTEST RULES

- Contest closes midnight, Dec. 31, 1959.
- All entries must be received before that time.
- Entries will be judged on neatness, originality and aptness of thought.
- In case of ties duplicate prizes will be awarded.
- Winner and a person of his or her choice will be flown via Eastern Airlines to New Orleans on February 28th... spend five days and four nights at the beautiful Monteleone Hotel... then via Eastern Airlines return to Newark.
- Prizes become the property of First State Bank of Union. No entries will be returned, nor will the First State Bank of Union, its advertising agency or the judges enter into any correspondence regarding any entry.
- Winner or winners will be notified by registered mail no later than January 15, 1960.
- Each entrant must have opened a 1960 Christmas Club at First State Bank and only one entry will be accepted per account opened.
- Entries may be made only on official entry blanks which may be secured when you open your account.

EASY TO ENTER... NOTHING TO BUY!

Safe Deposit Boxes Available in All Sites
"One of the Fastest Growing Banks in the U.S."

The FIRST STATE BANK OF UNION

UNION NEW JERSEY

MAIN OFFICE Morris Ave. at Burke Pkwy. Telephone MUrdock 6-4800

HIGHWAY BRANCH Route 22 at Monroe St.

10 CRESTMONT CHRISTMAS DOLLARS FREE...

For Christmas Shopping Now!

With Your Crestmont Christmas Club

You can save on this year's Christmas shopping when you start next year's Christmas Club at Crestmont Savings.

You will receive 5 Crestmont Christmas Dollars FREE when you open a new Christmas Club. If you have a 1959 Christmas Club at Crestmont, you will receive 5 additional tokens with its validation—a total of 10.

*Every Crestmont Christmas Dollar is worth \$1.00 toward any purchase of \$10.00 or more (or 50¢ toward the purchase of \$5.00 to \$9.99) at any Crestmont Christmas Dollar Store.

The tokens are not valid after December 31, 1959, must be surrendered with purchase, may not be redeemed for currency, and only one is valid toward each \$10.00 purchase.

Increased Dividends

3 3/4% per annum

Anticipated for period starting January 1, 1960

CRESTMONT CHRISTMAS DOLLAR STORES

IN MAPLEWOOD Princess Dingles 1890 Springfield Avenue Chambers Ranges 1898 Springfield Avenue Royal Radio & T.V. 1910 Springfield Avenue Allan's Appliance & Gift Center 1857 Springfield Avenue Ruth Harrison's Antiques and Gifts 1874 Springfield Avenue	IN SPRINGFIELD R. D. Russell Jeweler 175 Maplewood Avenue Foster Drugs, Inc. 173 Maplewood Avenue Dalia's Fashion Shop 120A Maplewood Avenue Community Shoes 183 Maplewood Avenue Maplewood Toyland 1684 Springfield Avenue	IN SPRINGFIELD Russell's Men's Shop 261 Morris Avenue B. Bruh & Son 252 Morris Avenue Studio Lighting Center 259 Morris Avenue Florence Lee 265 Morris Avenue
--	--	--

Savings are insured up to \$10,000 by the Federal Savings and Loan Insurance Corporation

Crestmont Savings AND LOAN ASSOCIATION

1886 SPRINGFIELD AVENUE
MAPLEWOOD, NEW JERSEY (main office)

175 MORRIS AVENUE
SPRINGFIELD, NEW JERSEY

Talk On Children To Be Discussed

In-keeping with Rabbi Reuben N. Levine's program for holding monthly discussions, following Temple Beth Ahm's Friday night services, a session will take place on November 6. The current topic is "What's Wrong With Our Children?" The discussion will be led off with a talk by Irving Merkin, a member of the Temple's School Board. Mr. Merkin is a high school teacher and student counselor in the Newark School System.

Mr. Merkin has engaged in considerable research in preparation for this program, which both Rabbi Levine and the speaker propose to extend into a series of three evenings. He has interviewed more than 50 teachers and over 400 students, getting their reaction to questions regarding respect for authority in today's youngsters, their motivations, moral standards and other related subjects.

DAR-CAR Travel To Staten Isle

On Sunday, October 25, 1959, the Church and Cannon Chapter, N.S.D.A.R., and the "Give 'Em Wings" Society, N.S.C.A.R., enjoyed a pilgrimage to the Conference House on Staten Island.

Conference House was built in the late sixteenth century by Christopher Bilbopp, a roving English sea captain. It was constructed of native stone and brick-brought from Holland as ballast in sailing vessels. Known locally as "Bilbopp House" it is frequently mentioned in Staten Island History.

The State Autumn Meeting of the New Jersey Society, N.S.D.A.R., was held Thursday, October 29, 1959, in Haddonfield at Cherry Hill Inn. Mrs. Ashmead White, president general of the National Society, was the principal speaker.

YOUR LIBRARY

BOOK WEEK—November 2 to November 7. Again a week being devoted to the publicizing and evaluation of books, especially books for the younger readers. The theme for 1959 is GO EXPLORING IN BOOKS. Betty Miles of Springfield has written the following poem on this theme:

Explore the world! Discover why Planets whirl about the sky. Make new friends and meet new faces. Read of far-off, golden places. How people-love, how fairies look— All the world is in a book!

The Free Public Library of Springfield is celebrating with a book exhibit and gifts for readers. All the boys and girls who visit the Juvenile Department are being given book-marks on which are a copy of this year's poster together with the above-verse. Parents receive booklets entitled "Growing Up with Books." The pamphlet lists a fine selection of titles to be purchased for the home library or borrowed from Public Libraries. The titles are divided according to age and

Woman's Club News

The tenth anniversary meeting of the Springfield Woman's Club was held on Wednesday, November 4, at the Walton School. This was a very festive event for all who attended and a source of pride for all the members of the club.

Ten very fruitful years and years of great enjoyment for the members passed in review as Mrs. Glenn Oyster read a history of the club.

Mrs. Ford A. Starkweather, northern vice president of the New Jersey Federation of Women's Clubs who was one of the guests of honor, gave a speech entitled "Little Drops of Water" which concerned itself with the start of the Federation of Women's Clubs.

Other guests of honor included Mrs. C. D. Lindridge, Seventh District vice president, Mrs. Allison H. Hearn, former Seventh District vice president, and other Federation officers.

The past presidents of the Springfield Woman's Club were also honored and they participated in a candlelight ceremony. They were: Mrs. K. E. Bandoner, Mrs. R. J. Hayes, Mrs. J. Frank Jakobsen, Mrs. M. D. Williams, Mrs. E. G. Davenport, Mrs. C. F. Heard.

subject and so balanced that all fields of interest are covered. For teachers and other adults working with youth there are some special materials. The first thirty to request it may have a book named "Recommended Children's Books of 1958-59." This has short descriptive paragraphs about nearly every book published in this field during the last two years. In addition, a booklet, "Growing Up With Science," is available for those especially interested in science.

Furthermore the Library is pleased to recommend a paperback book called "A Parent's Guide to Children's Reading." Its cost is 35 cents and it was compiled by The National Book Committee, Inc., an organization composed of eighteen national groups representing all types of education, parents, and adults interested in improving the reading habits of young people. This can be secured through almost any store which handles paperbacks. The Springfield Library has available three copies for re-sale to parents who are interested. All of these special book lists are to be found on the exhibit shelves in the main hallway of the Library. Shown with them is a collection of children's books, including many of the titles mentioned in the lists. A number of new books are also on exhibit in the Juvenile Department. This is an excellent opportunity to see many of the better recent books for children and young people.

NORFOLK

70¢
3 min. station rate from Newark after 8 P.M. 10% tax not included.

MOUNTAIN SPRING BAKE SHOP

NOW IS THE TIME FOR PUMPKIN PIE Tasty & Spiced Just Right
"Shop at Mountain Spring you'll be glad you did!"
721 Mountain Avenue, Springfield (Few Blocks from Route No. 22)
DR 6-4948

BUY YOUR CHRISTMAS BIKE NOW

Choose from Famous Name Brands Reserve Your Choice With Our "LAY-AWAY" PLAN
FREE
Pick-up & Delivery Service on ALL Bicycle Repairs - Minimum Repair Charge - No Assembly Charge On New Bikes.

TRADE-INS - RECONDITIONED BIKES
PET LAND
1818-A E. Second St. FA 2-6777
Scotch Plains, N. J. Free Parking

Township Man At Trg. Center

Ian D. Struthers, aviation electronics technician airman, USN, son of Mrs. John Struthers of 18 Colfax Rd., Springfield, N. J., is serving with Airborne Early Warning Squadron 13 at the Naval Air Station, Patuxent River, Md. He reported to Patuxent River, October 19 from the Naval Air Technical Training Center at Memphis, Tenn.

Before entering the Navy in November 1958, Struthers attended Bucknell University.

NOTICE OF DISSOLUTION OF T. J. ROUTE 22 Limited a limited partnership association is hereby announced. Thomas Fullerton, Jr., Joseph Blume, Jr. partners. Oct. 1, 8, 15, 22, 29, Nov. 5

AN ORDINANCE TO AMEND AN ORDINANCE ENTITLED "AN ORDINANCE LIMITING AND REGULATING THE HEIGHTS OF BUILDINGS AND STRUCTURES ACCORDING TO

THEIR CONSTRUCTION AND THE NATURE AND EXTENT OF THE USE OF LAND IN THE TOWNSHIP OF SPRINGFIELD IN THE COUNTY OF UNION AND STATE OF NEW JERSEY AND PROVIDING FOR THE ADMINISTRATION AND ENFORCEMENT OF THE PROVISIONS THEREIN CONTAINED AND FURTHER ALIQUOTS FOR VIOLATION THEREOF" WHICH ORDINANCE IS ALSO KNOWN AS "THE ZONING ORDINANCE OF 1955" ADOPTED APRIL 15, 1955:

BE IT ORDAINED BY THE Township Committee of the Township of Springfield in the County of Union and State of New Jersey that an ordinance of the Township of Springfield entitled "An Ordinance Limiting and Regulating the Heights of Buildings and Structures According to their Construction and the Nature and Extent of the Use of Land in the Township of Springfield in the County of Union and State of New Jersey, and providing for the Administration and Enforcement of the Provisions therein contained and fixing penalties for violation thereof" which ordinance is also known as "The Zoning Ordinance of 1955" adopted April 15, 1955, be and the same is hereby amended as follows:

1. The boundaries of the District hereby established by the Township Committee and the Zoning Map of the Township of Springfield adopted April 15, 1955 (which Zoning Map is referred to in and made part of this Ordinance) shall be and the same are hereby amended as follows:

a. All of Lots 10-24 and all that portion of Lots 14 and 15 in Block 77 which is now zoned as S-75 Residential shall be re-zoned into Limited Business Zone.

b. All of Block 78 and all the frontage on U. S. Route 22 in Block 79 for a depth of 250 feet shall be re-zoned into the General Industry Zone 1. All of Block 79 with an exception of a 350 foot depth fronting on U. S. Route 22 shall be re-zoned into the Limited Industry Zone.

2. Any parts, paragraphs, sections or ordinances or delineations on the zoning map contrary to or conflicting herewith are hereby repealed, immediately upon publication after final passage according to law.

3. Eleonore H. Worthington, do hereby certify that the foregoing Ordinance was introduced for first reading as a regular meeting of the Township Committee of the Township of Springfield in the County of Union and State of New Jersey, held on Wednesday evening, October 14, 1959, and that the said Ordinance shall be submitted for consideration and final passage at a regular meeting of the said Township Committee to be held on Thursday evening, November 12, 1959 in the Springfield Municipal Building at 9:00 o'clock at which time and place any person or persons interested therein will be given an opportunity to be heard concerning said ordinance.

ELEONORE H. WORTHINGTON
Township Clerk
October 29th November 5th.

PROPOSAL FOR ROAD AND BRIDGE CONSTRUCTION UNION COUNTY, NEW JERSEY

Sealed proposals will be received by the Purchasing Committee of the Board of Chosen Freeholders of the County of Union in the Freeholders' Meeting Room at the Court House, Elizabeth, New Jersey, at 9:00 a.m.—Traveling Time, on Monday, November 9, 1959, for the following described work:

Construction of New Portland Cement Concrete Curbs and Bituminous Concrete Pavement on Park Avenue between Church Street and Mountain Avenue, in the Township of Scotch Plains, Union County, New Jersey.

Construction of a New Reinforced Concrete Bridge and Related Work over Stream 10-7-12 (Robinsons Branch) at Jules Place and Ketchup Place, Township of Clark, Union County, New Jersey.

The work will be let in two separate contracts.

Plans and Specifications for this work may be examined at the Office of the Purchasing Committee of the Board of Chosen Freeholders in the County of Union, Elizabeth, New Jersey, and at the Office of the County Engineer, Union County Engineering Department Building, 425 South Avenue, Westfield, New Jersey.

Plans and Specifications for prospective bidders are procurable ONLY at the Office of the Purchasing Agent, CITY HOUSE, Elizabeth, New Jersey.

Each bidder must submit with the bid a certificate from a Surety Com-

pany setting the surety sum. Contractors will provide the contractor with a Bond in the sum and with such conditions as are required by the Specifications. Each bid must be accompanied with a Certified Check for at least ten per cent (10%) of the amount of the bid, as required by the Specifications. Particular attention of Contractors bidding upon this work is called to the following Laws and the Supplements and Amendments thereto:

R. S. 10-2-1, etc.
R. S. 34-2-2
R. S. 34-10-1, etc.
R. S. 44-1-1
R. S. 53-3-1, etc.
R. S. 54-1-1

Insofar as the Law governs the work herein advertised, the Board reserves the right to reject any or all bids.

WILLIAM DALZIEL, Director
Purchasing Committee
WILLIAM DALZIEL, Chairman
EDWARD J. CARLIN, M. D.
THOMAS G. DUNN
GEORGE W. HERSCHE
ALBERT J. BENNINGER
FREDERICK G. SUGLER, Jr.
Purchasing Agent
Oct. 29, Nov. 5.

OFFICE OF THE TOWNSHIP CLERK
WHEREAS, by ordinance adopted on April 23, 1958 the installation of curbing on a portion of Evergreen Avenue was performed as a local improvement, and

WHEREAS, the Assessment Com-

GET YOUR FREE CHRISTMAS GIFTS FASTER...

520 Extra Bonus
IN ADDITION TO THE STAMPS YOU NORMALLY RECEIVE.

GRAND UNION SUPERMARKETS

Clip these FREE COUPONS

FREE! 20 EXTRA TRIPLE-S STAMPS
with this Coupon and Purchase of GRAND FACIAL TISSUES
2 pkgs. of 400 or 2 pkgs. of 30c
Expires Saturday, November 7th

FREE! 20 EXTRA TRIPLE-S STAMPS
with this Coupon and Purchase of GRAND UNION COFFEE
EARLY MORNING BLEND 1 1/2 lb.
LOW SUPERMARKET PRICES
Expires Saturday, November 7th

FREE! 20 EXTRA TRIPLE-S STAMPS
with this Coupon and Purchase of FRESHPAK POTATO CHIPS
Any size pkg. of 1 1/2 lb.
LOW SUPERMARKET PRICES
Expires Saturday, November 7th

FREE! 20 EXTRA TRIPLE-S STAMPS
with this Coupon and Purchase of FRESHPAK ORANGE JUICE
2 6-oz. cans of 43c
Expires Saturday, November 7th

FREE! 20 EXTRA TRIPLE-S STAMPS
with this Coupon and Purchase of GRAND LIQUID DETERGENT
12-oz. can of 25c
Expires Saturday, November 7th

FREE! 20 EXTRA TRIPLE-S STAMPS
with this Coupon and Purchase of FRESHPAK APPLESAUCE
2 16-oz. cans of 29c
Expires Saturday, November 7th

FREE! 20 EXTRA TRIPLE-S STAMPS
with this Coupon and Purchase of KITCHEN GARDEN SOLID TUNA
2 7-oz. cans of 35c
Expires Saturday, November 7th

FREE! 20 EXTRA TRIPLE-S STAMPS
with this Coupon and Purchase of GRAND TOILET TISSUE
3 rolls of white toilet tissue
LOW PRICE OF 35c
Expires Saturday, November 7th

FREE! 20 EXTRA TRIPLE-S STAMPS
with this Coupon and Purchase of HOLLAND HALL ICE CREAM
1/2 gal. pkg. of 69c
Expires Saturday, November 7th

FREE! 20 EXTRA TRIPLE-S STAMPS
with this Coupon and Purchase of GRAND UNION FRANKS
lb. pkg. of 1.99
LOW SUPERMARKET PRICES
Expires Saturday, November 7th

FREE! 20 EXTRA TRIPLE-S STAMPS
with this Coupon and Purchase of FRESHPAK PRUNE JUICE
at bottle of 39c
Expires Saturday, November 7th

FREE! 20 EXTRA TRIPLE-S STAMPS
with this Coupon and Purchase of FRESHPAK CRANBERRY SAUCE
2 16-oz. cans of 37c
Expires Saturday, November 7th

FREE! 20 EXTRA TRIPLE-S STAMPS
with this Coupon and Purchase of GRAND DOG FOOD
3 16-oz. cans of 25c
Expires Saturday, November 7th

DEL MONTE DOLLAR ROUND-UP SALE!

TOMATO SAUCE \$1.00
12 8-oz. cans

TOMATO CATSUP \$1.00
6 14-oz. btls.

PEACHES \$1.00
5 16-oz. cans
6 17-oz. cans
7 17-oz. cans

CREAM CORN \$1.00
6 14-oz. cans

GREEN PEAS \$1.00
7 17-oz. cans

PINEAPPLE GRAPEFRUIT DRINK \$1.00
3 46-oz. cans

BARTLETT PEARS \$1.00
4 17-oz. cans

SLICED BEETS \$1.00
6 16-oz. cans

Pot Pies 3 8-oz. pkgs. 69¢
CHICKEN STEAK TURKEY

Spaghetti Sauce 3 quart jars 65¢

Brownie 2 14-oz. doz. pkgs. 59¢
OR DATE BAR MIXES

Vets Nuggets 5 1-lb. pkgs. 57¢

Green Beans 2 9-oz. pkgs. 39¢
BIRDS EYE FROZEN CUT or FRENCHED

Chicken Fricassee 1 1/2-oz. can 39¢
LYNDEN

Schrafft Patties 7-oz. pkg. 33¢
CHOCOLATE COVERED PEPPERMINT

Pepsodent TOOTH PASTE 53¢
"YOU'LL WONDER WHERE THE YELLOW WENT"

SAVE CASH and STAMPS with LOW PRICES

GRANULATED SUGAR 5-lb. bag 47c
GREEN GIANT PEAS 2 17-oz. cans 29c
GLOROX BLEACH 1/2 gal. qt. 35c
MAZOLA OIL 1 1/2-oz. can 89c
EVAP. MILK Carnation Pet or Borden's 6 2-oz. cans 40c
NESCAFE Instant Coffee 1-lb. jar 17c
MARGARINE Early Morn 10 str. 89c
HEINZ BABY FOOD 10 17-oz. cans 29c
DEL MONTE PEAS 2 17-oz. cans 29c

GLAPPS BABY FOOD 6 1/2-oz. jars 79c
FLOUR Pillsbury or Gold Medal 10-lb. bag 95c
HAWAIIAN PUNCH 46-oz. cans 65c
PRUNE JUICE SUNSWEET 2 46-oz. cans 41c
TIDE DETERGENT 22-oz. jar 31c
GOGGA MARSH 6 8-oz. cans 55c
TOMATO SAUCE Del Monte 4 10 1/2-oz. cans 43c
TOMATO SOUP Campbell's 4 10 1/2-oz. cans 35c
HEINZ SOUPS 2 17-oz. cans 35c

SAVARIN COFFEE 1-lb. can 74c
HEINZ PORK & BEANS 2 16-oz. cans 27c
SCOTTISSUE 4 rolls 49c
FAB DETERGENT large package 31c
KELLOGG'S K CEREAL 6-1/2-oz. pkg. 25c
WELCH'S GRAPE JELLY 2 20-oz. jars 37c
CAMPBELL'S SOUPS With Meat 2 10 1/2-oz. cans 35c
CAMPBELL'S SOUPS Without Meat 2 10 1/2-oz. cans 27c
HEINZ SOUPS 2 10 1/2-oz. cans 27c

FROM THE GRANDSTAND

By Doug Voigt

Herb Etzold and Carl Kirchner scored two touchdowns each to lead the Regional football squad to an easy 24 to 13 victory over Edison Township. Only the rain and Coach Schneider's substitution kept the score as low as it was. The spirit shown by the players was truly rewarding to the supporters who braved the rain to their team triumph.

Kirchner was the first to cross the goal line for Springfield as he skirted the "Eagles" line for five yards and pay dirt—more like mud. Etzold scored the next two touchdowns as the outcome became more evident. His first touchdown came on a sixty yard sprint started as he play-into-the line and ended

with Etzold showing his heels to the pursuing Edison secondary. The next touchdown came through a beautiful pass from Eddie Reese to Etzold. The play originated on the Regional 25. Reese flipped, and Etzold pulled it in around midfield and scampered the remaining distance to put the "Orange and Blue" ahead 18 to 0. Kirchner's second touchdown was simply spectacular as he spun away from would-be tacklers and vaulted over the futile attempts of the last man between him and six points.

Etzold's two touchdowns almost equalled the average attempts of the last man between him and six points.

Edison's two touchdowns were well yardaged in the Caldwell game. These are slated for November 3 and 6 respectively.

Grandstand Picks
Springfield over Westfield

ing game as the Edison backs were frequently being dumped behind the line of scrimmage for considerable losses.

Westfield will offer a little stiffer competition, but the gridders are determined to take this contest and go into the Rahway game with only one defeat marring their record.

The "Blue Devils" sport a 4-2 record and could provide the first step to the State Championship.

Regional's soccer team split their last two contests to bring their record to 6-4. They lost to a strong Chatham team 1-0 to end their winning streak at two. Hans Kruger scored two goals as they bounced back from behind to defeat Hanover Park by a 2 to 1 score. Both goals came in the third period to overcome the visitors' first period tally. Their next two games are scheduled away at Wardlaw in Plainfield and Cranford. These are slated for November 3 and 6 respectively.

Grandstand Picks
Springfield over Westfield

Sommerville over Millburn
Summit over Hillside
Roselle over Cranford
Roselle Park over Clark
Union over Edison Township
Caldwell over Chatham
Woodbridge over Carteret
Columbia over Kearny
North Plainfield over Manville

REMINDER!!
Children's Cartoon Movie—
Sat., Nov. 7—12:2; 2:30-4:30.
Sun., Nov. 8—12:2; 2:30-4:30.
Refreshments sold.
Tickets 50 cents.
First Aid Squad House,
Springfield
Sponsored by the Auxiliary

MEETING DATE
CHANGED
The Township Clerk of
Springfield announced today, that due to the fact that the regularly scheduled Township meeting falls on a legal holiday (November 11) the meeting will be on Thursday evening, November 12th, at 8 p.m.

Beth Ahm Auction Set for Saturday

This Saturday night Nov. 7, the big annual auction sale will be held at Temple Beth Ahm. This event has always been a big event in Temple activities.

This year promises to be a paradise for bargain minded men and women. All the items for the auction were donated by members and friends. The larger items will be sold at auction beginning at 9 o'clock. The smaller things will be put on sale starting at 8.

Everyone is cordially invited. There is no admission charge. Refreshments will be served at no cost. Ike Freedman and Ralph Feldman are chairmen, Mill Rubenstein, Ways and Means chairmen Ray Kravetz and Seymour Cohan will be auctioneers.

TAKING CARE OF YOUR GARDEN

By Edward A. Cardinal



The steel strike is still going on, and a price revision up-ward is expected. Last year your column gave some tips on winter care of power mowers. Will you are out of stock. Other brands are substituting with plastics, where possible, and this may affect the wearing qualities of the mower. If you plan on purchasing a mower in the near future, don't delay anticipating a drop in prices. Steel wheelbarrows will definitely increase in price next spring, and some fertilizers have an-

Q: My rotary mower seems to vibrate more than usual since I sharpened the blade myself. I am sure it didn't strike anything. What could be causing this?

A: In sharpening the blade you probably took more metal off one side, causing it to be unbalanced. Rotating at high speed this would cause vibration. Have it resharpened by a repairman—and make certain he has proper equipment to balance the blade properly.

Q: My reel mower is dull. Shall I have it sharpened now, or in the spring?

A: Most services men are very busy in the spring, so have it sharpened now, but when it is returned grease the reel and bedknife blade to prevent it from rusting. Some service men do this as part of winter service without charge.

Q: I recently had a heart attack, but still feel I can cut my own lawn. Starting the mower is my problem. Is it possible to get an electric starter?

A: Without knowing what make machine you have I cannot give you an answer. Any good service center can tell you if an electric starter is available for your machine. We have installed such starters on many machines. The cost is around \$30.00 depending upon make and model.

Q: I plan on buying a new rotary and I am trying to decide whether to buy a 24 inch, or a smaller model. What is your advice?

A: If you hit a rock or other obstruction, the impact is greater on a 24" machine with greater risk of bending a crankshaft. This is a costly repair job. Rotary mowers have kept our repair shop busy this past season. Better stick to the smaller sizes for they are easier to start and maintenance is considerably less.

Q: My roses are still blooming. Shall I prune them yet?

A: If you value the blooms leave them grow for awhile. I will cover winter care of roses in next week's column.

Township Plant Uses Process

The Supro Single Stage Process for producing molybdenum and tungsten by the reduction of the oxides and salts which was first announced by Metals and Residues, Inc., on February 11, has been in successful operation for the past seven months at the Johnston and Funk Metalurgical corporations plant in Huntsville, Alabama. Concurrently, the process has also been successfully operated at the Metals and Residues plant in Springfield.

Dr. Edward R. Funk, president of Johnston and Funk, declared that the advantages claimed for the new process were demonstrated again at Huntsville where the plant facilities by special arrangement serve to supplement those of Metals and Residues in New Jersey. As a result of the greatly increased production rate made possible by Supro's process, the Johnston and Funk plant has become one of the largest producers of tungsten and molybdenum powders in the world.

Cheese World Has Many Treats

Do you ever let your eyes wander over the vast array of cheeses displayed in stores and wish that you had the courage to try some of the unfamiliar kinds? You are missing a genuine treat if you don't explore the wonderful world of cheese, says Mrs. Marguerite Kerr, Essex County home agent.

Cheese has been a popular food for thousands of years, going far back in history to the time of Homer and beyond. It graced the tables of Caesar and even served as part of the rations of his conquering Roman armies.

According to legend, cheese actually was "discovered" several thousand years before Christ by an Arab herdsman. Mrs. Kerr says that although there are some 400 cheeses recognized by name today, they represent variations of only about 20 distinctly different kinds of cheese.

The cheese you buy is either a natural cheese, a process cheese or a process cheese food or spread.

Natural cheese, such as cheddar, contains almost all of the proteins, butterfat, sugar and minerals of the whole milk from which it is made. The distinctive flavor, appearance and texture of natural cheese is the result of curing, ripening or aging. The longer the aging period, the harder and sharper the cheese.

MORE PROOF...YOU SAVE CASH and STAMPS

LOW PRICES



Clip these FREE COUPONS

ORDER YOUR THANKSGIVING TURKEY NOW! ... to be sure to get the size you want!

All Grand Union Meats are "Backed-by-Bond" and "Dated"

LEAN-CUT FROM GRAIN-FED PORKERS

PORK LOINS

RIB END ROAST	25¢	LOIN END ROAST	35¢
lb.		lb.	
FULL CUT RIB HALF	lb. 39¢	FULL CUT LOIN HALF	lb. 49¢

MILD CURED SHORT CUT	SMOKED TONGUES	lb 39¢
CENTER CUT ROAST or	CENTER CUT PORK CHOPS	lb 69¢
FANEUIL HALL	SLICED BACON	lb 39¢

FREE! 20 EXTRA TRIPLE-S STAMPS with this Coupon and Purchase of 10-LB. BAG POTATOES

FREE! 20 EXTRA TRIPLE-S STAMPS with this Coupon and Purchase of EARLY MORN MARGARINE

FREE! 20 EXTRA TRIPLE-S STAMPS with this Coupon and Purchase of NANCY LYNN DONUTS

FREE! 20 EXTRA TRIPLE-S STAMPS with this Coupon and Purchase of PERMANENT-TYPE ANTI-FREEZE

FREE! 20 EXTRA TRIPLE-S STAMPS with this Coupon and Purchase of FRESHPAK-WAX PAPER

FREE! 20 EXTRA TRIPLE-S STAMPS with this Coupon and Purchase of FRESHPAK-SOUP

FREE! 20 EXTRA TRIPLE-S STAMPS with this Coupon and Purchase of GRAND SPONGES

FREE! 20 EXTRA TRIPLE-S STAMPS with this Coupon and Purchase of DERAN'S BRIDGE MIX

Jersey Nurses Elect Miss Byrne

Miss Rosemary Byrne of 3 Forest Drive has been elected Treasurer of the N. J. State Nurses' Association for a two-year term.

Miss Byrne, a graduate of New York Post Graduate Hospital School of Nursing, is Educational Director of the Visiting Nurse Association of Eastern Union County. Prior to her present position she was an orthopedic supervisor and a private duty and industrial nurse. She served as a public health staff nurse and also as supervisor and Assistant director of nurses. A member of N.J.S.N.A. Board of Directors, Miss Byrne served as Chairman of the Pub-

VALIANT CHRYSLER PLYMOUTH IMPERIAL

Sales - Parts - Service

WERNER MOTOR CO.

Summit CR. 3-4343

\$150,000.00 From Santa

Next Tuesday, \$150,000.00 will be paid out to Christmas Club members at The National Bank of Westfield. These lucky people will find Christmas shopping a pleasure, not a chore, for they have saved a little every week. Now they have money when they need it most.

For Christmas 1960 - JOIN OUR NEW CHRISTMAS CLUB NOW.

\$.50 a week for 50 weeks	\$25.00
1.00 a week for 50 weeks	50.00
2.00 a week for 50 weeks	100.00
5.00 a week for 50 weeks	250.00
10.00 a week for 50 weeks	500.00

FANCY SHRIMP MEDIUM SIZE 5 lbs. \$3.99 lb. 69¢ FLOUNDER FILLET FRESH BONELESS lb. 69¢

"Pick of the Crop" Produce!

BROCCOLI

FRESH CALIFORNIA large bunch 23¢

NEW GRAND ALL PURPOSE LIQUID CLEANER 16 oz. bot. only 29¢

FLORIDA PINK MEATED GRAPEFRUIT 5 lb. bag 35¢

SWEET POTATOES 3 lbs. 19¢ Acorn or Butternut SQUASH Freshly Made CIDER 59¢

FREE! 20 EXTRA TRIPLE-S STAMPS with this Coupon and Purchase of GRAND ALL-PURPOSE CLEANER 16-oz. bot. of LOW PRICE OF 29¢ Expires Saturday, November 7th	FREE! 20 EXTRA TRIPLE-S STAMPS with this Coupon and Purchase of KITCHEN GARDEN FROZEN FOOD 2 pkgs. of any variety of LOW SUPERMARKET PRICES Expires Saturday, November 7th	FREE! 20 EXTRA TRIPLE-S STAMPS with this Coupon and Purchase of FRESHPAK TOMATO SAUCE 8-oz. cans of 3 LOW SUPERMARKET PRICES Expires Saturday, November 7th	FREE! 20 EXTRA TRIPLE-S STAMPS with this Coupon and Purchase of HELENE'S CASTLE SHAMPOO 16-oz. bot. of LOW PRICE OF 49¢ Expires Saturday, November 7th	FREE! 20 EXTRA TRIPLE-S STAMPS with this Coupon and Purchase of VULCAN DOUBLE RAZOR BLADES 25 LOW PRICE OF 49¢ Expires Saturday, November 7th
--	--	---	--	---

NATIONAL BANK OF WESTFIELD

The Friendly Bank With the Clock

Member Federal Reserve System Federal Deposit Insurance Corporation

OPEN MONDAY EVENINGS 6:00 TO 8:00

Prices Effective in New Jersey stores through Saturday, Nov. 7th. We reserve the right to limit quantities.

Springfield Store Hours: Mon., Wed. & Sat., 8:30 A.M. to 5 P.M. Tues. & Thurs., 8:30 to 9 P.M. Friday - 9 a.m. to 9 p.m. Closed Monday

NEW STORE HOURS AT TRIPLE-S REDEMPTION STORE IN SPRINGFIELD: 9:30 a.m. to 8 p.m. Tuesday, Wednesday, Thursday and Saturday. Friday - 9 a.m. to 9 p.m. Closed Monday

RELIGIOUS SERVICES

Religious services section listing various churches and their schedules, including St. Stephen's Church, St. James R. C. Church, and others.

Religious services section (continued) listing churches like St. Stephen's Church, St. James R. C. Church, and others.

Advertisements for Gray Funeral Directors, Richmond 70¢, and Dedication Service at the Community Free Church of Springfield.

Advertisement for Crab Grass Control, Wilson's PAX, Sott's Halts, Dimet, PCC, and Cardinal's Garden Center.

Advertisement for Ortho-Vent Shoes, featuring cushioned shoes, water-proof comfort, and Ortho-Vent Spray Shine.

Advertisement for Watchung Weeklies Business Directory, a guide to the best business organizations in the Watchung Weekly area.

Large directory of local businesses including Auto Dealers, Drugs, Fuel Oil, Insurance, Restaurants, TV Service, and more.

TO MAKE A MEAL A SHEER DELIGHT

... it takes skill, experience and imagination... and our master chefs have all three!

LUNCHEON Served From 12 noon to 2:30 p.m.

DINNER Served From 4:30 - 11 p.m.

Menus Changed Daily

TERRY DEMPSEY'S RESTAURANT & COCKTAIL BAR
MORRIS AVE. & MORRIS TURNPIKE, SPRINGFIELD

For Reservations, Call DRexel 6-9832

STRAND
447 Springfield Ave., Summit, N. J. CR 2-3900

NOW PLAYING THRU SATURDAY

CURT JURGENS and MAY BRITT
in "the BLUE ANGEL"

SPECIAL KIDDIE SHOW!
SAT. MAT. at 2 P.M. ALL WALT DISNEY FUNORAMA & HOURS OF COMEDIES, CARTOONS AND SHORTS!

SUNDAY - MONDAY - TUESDAY
OREGON TRAIL
FRED MAC MURRAY

PLUS
DOLORES MICHAELS - PATRICIA OWENS
NEVILLE BRAND

FIVE GATES TO HELL

ENTIRE WEEK BEGINNING WED., NOV. 11

RON ROSS presents
CARY GRANT
EVA MARIE SAINT
JAMES MASON
in ALFRED HITCHCOCK'S
NORTH BY NORTHWEST
The Master of Suspense tells his greatest tale!

BREATHLESSLY racing from Manhattan's glittering heart to the great stone faces of Mount Rushmore!

SLIGHT INCREASE IN ADULT PRICE!

Movie Time Table

SUMMIT STRAND
Nov. 5-6 Blue Angel, 2:30, 7:30, 9:30, Nov. 7, Matinee Kiddie Show, All Walt Disney Funorama, 2:00, Blue Angel, 4:30, 7:10, 9:30, Nov. 8, Five Gates to Hell, 2:30, 5:15, 8:25, Oregon Trail, 5:45, 8:35, 10:35, Nov. 9-10, Five Gates to Hell, 2:30, 5:30, 8:30, Oregon Trail, 4:30, 7:00, 10:00, Nov. 11, North by Northwest, 2:30, 7:00, 9:30.

NEWARK RKO PROCTORS
Nov. 5, Anatomy of a Murder, 11:47, 3:17, 6:47, 10:20, Nov. 6, Anatomy of a Murder, 11:50, 3:20, 6:50, 10:23, Nov. 7, Anatomy of a Murder, 11:53, 3:23, 6:53, 10:26, Nov. 8, Anatomy of a Murder, 11:56, 3:26, 6:56, 10:29, Nov. 9, Anatomy of a Murder, 11:59, 3:29, 6:59, 10:32.

MORRISTOWN COMMUNITY
Nov. 5-6, Pillow Talk, 2:30, 7:30, Nov. 7, Children's Show, 2:30, 7:30, Nov. 8, Pillow Talk, 2:30, 7:30, Nov. 9, Children's Show, 2:30, 7:30, Nov. 10, Pillow Talk, 2:30, 7:30, Nov. 11, Children's Show, 2:30, 7:30.

NEW PARK
Nov. 5-6, Career, 2:00, 7:00, 9:10, Nov. 7, Career, 4:00, 9:00, 10:30, Nov. 8, Career, 2:00, 7:00, 9:35, Nov. 9-10, Career, 2:00, 7:00, 9:35, Nov. 11, Career, 2:00, 7:00, 9:35.

MILBURN

• NOW THRU TUES. •
Burt Kirk
Lancaster Douglas
Laurence Olivier
"The Devil's Disciple"
• 2nd BIG WEEK •
King Novel's "Frederic March"
"Midele Of The Night"

Sat. Matinee-1:00 P.M.
Special Children's Show
No. 1 Spooky Temple
"Halloween of the Movies"
No. 2 Cartoon Festival
"Billie's Bazaar"
No. 3 The Big Cartoons
No. 4 On Stage
Fun, Contests, Loads of Fun

THE COMMUNITY

Held Over! 2nd Big Week
Rock Hudson - Boris Day
"PILLOW TALK"

Starts Wednesday
Hope Lange - Louis Jordan
"THE BEST OF EVERYTHING"
Children's Show Sat. 2 P.M.

RKO PROCTORS HELD OVER

"WOW! IT'S SENSATIONAL!"
JAMES STEWART
LEE REMICK
BEN GAZZARA

"ANATOMY OF A MURDER"

plus 2nd Big Hit
"CAREER HAS EVERYTHING"
NEWS

plus 2nd Big Hit
"LAST TRAIN FROM GUN HILL"
with Kirk Douglas and Anthony Quinn

Sat. Matinee - Nov. 7th
Special Kiddie Show
1-SAD HORSE
2-AMRUSH CIMARRON
3-COLOR CARTOON

Starting Wed., Nov. 11th
Glenn Ford & Debbie Reynolds
in
"IT STARTED WITH A KISS"
Plus-"THE BIG CIRCUS"

DEAN MARTIN
ANTHONY FRANCIOSA
SHIRLEY McLAINE
CAROLYN JONES
JOAN BLACKMAN - ROBERT MIDDLETON

Casting Date Set For Damn Yankees

The call is out for approximately 80 male and female singers, dancers, actors for the forthcoming production of the Broadway success "Damn Yankees" to be presented by the Dramatic Workshop of Temple Beth Ahm.

Casting date has been set by the production committee on November 19 at 9 p.m. at the Temple Balthusol Way, Springfield.

This year's musical comedy will again be in the capable hands of George Chirgolis, who directed and produced the group to their last musical success of "Guys and Dolls" which packed the house two seasons ago.

The show is tentatively scheduled to run 4 performances around the end of April and put on at the Millburn Junior High School.

Anyone desiring specific information, may call Mrs. Ross Lester at DRexel 6-9801.

Halfway House
U. S. HIGHWAY 22, MOUNTAINSIDE, N. J.

Special Prices for Children

YOUR HOST - TONY PETRUZZIELLO

Catering to Private Parties AD 2-2171

THE PARK HOTEL
PLAINFIELD

RECEPTIONS • PARTIES • BANQUETS

Reservations Albert W. Stender
Pl. 6-3400 Owner-Management

Dinner Madame?
... But of Course!

Maison Billia Restaurant
AMERICAN-CONTINENTAL CUISINE

Luncheon from 12 to 2 P.M.
Dinner from 5:30 to 10 P.M.
Closed Mondays-Member of Diners Club

1260 Terrill Road Scotch Plains
App. 2 1/2 miles from Rt. 22 FA 2-9848

ITALIAN-AMERICAN MENU
SPECIALIZING IN PIZZA • MUSSELS
Banquet Hall and Picnic Grove
For All Occasions

KELLER'S TAVERN and GROVE, Inc.
Ample Parking Area

AUGIE NIGRO CRestview 7-2838
CAMPTOWN RD. BERKELEY HEIGHTS
(off Springfield Ave.)

For a taste-tempting LUNCHEON or SUPPER

Come to Bond's newest sparkling ice cream shop. Our own ice cream, sandwiches and fountain specialties will delight you.

BOND'S ICE CREAM
"Worth Driving For"

OPEN DAILY 8:30 A.M. to Midnight-Sundays 11 to 11

730 Morris Tpk., Short Hills
Between A&P and Woolworth

The new NEWARK YM-YWHA presents an exciting **FOREIGN FILM SERIES**

Starting Sunday, November 8, 7:30 p.m.
TWO CENTS WORTH OF HOPE (Italian)
Sunday, January 10, 7:30 p.m.
GAME OF LOVE (French)
Sunday, February 14, 7:30 p.m.
JIGESU (Japanese)
Sunday, March 12, 7:30 p.m.
HOLIDAY FOR HENRIETTA (French)
Sunday, April 10, 7:30 p.m.
CHILDREN OF PARADISE (French)

Series Tickets-Members \$3.50-Non-Members \$5.00
Single Admission-Members \$1.00-Non-Members \$1.25

NEWARK YM - YWHA
Phone WA 6-6110
Chancellor Ave. corner Aidine St. Newark

TV-Star Speaks To B.B. Women

Miss Betty Best, noted radio and television personality, will be the guest speaker at the next meeting of the B'nai B'rith Women of Springfield, Wednesday, November 11, 1959 at Temple Beth Ahm, 60 Balthusol Way, Springfield.

Miss Best represents the Professional Laundry Foundation, and is brought to Springfield through the courtesy of the Hamilton Laundry of Rahway.

Miss Best's unique fashion show is called "Lady Be Lovely, or Let's Be Versatile." She shows you how one dress, with the help of diversified accessories, can have many looks.

Mrs. Ira Cohen President; Mrs. Louis Lamberg, Vice-President in charge of Program.

ENJOY...

PRE-THEATRE DINNER at **Chanticleer**

PLUS **ANNIE GET YOUR GUN** at **PAPER MILL PLAYHOUSE**
MILLBURN
(at 19 Rows in Orchestra)
\$6.95 PER PERSON FOR BOTH!
[Every Night But Saturday]
Dinner Served from 5 P.M. to 8:30 P.M. Weekdays
8 P.M. Sunday
RESERVATIONS-THROUGH BOX OFFICE ONLY
Phone DRexel 6-4343
CLOSED MONDAYS

ITALIAN SANDWICHES

Attention, all sandwich fans! We serve the most delicious sandwiches around. You can eat them here or take them out if you like.

FRAN and JANN'S PIZZA PARLOR
2387 Mountain Ave. SCOTCH PLAINS
LIGHT LUNCHESES SERVED

Specializing in PIZZERIA
Order By Phone
FANwood 2-9330
OPEN -
Mon. thru Thurs., 8-11
Fri. and Sat., 8-12
Sunday, 4-11.

GRUNING'S FINE... ANYTIME

Complete LUNCHEONS 11 A.M. to 2:30 P.M.
Counter Service
Booths

DINNER A Variety of Short Orders
Such As Fish Plates
Hot Sandwiches

Ideal For After Theatre and Late Evening SNACKS

Take Home GRUNING'S Own Home Made Delicious Ice Cream
Chocolate Mint
Chip-Coffee Chip
Pistachio
Black Raspberry
and Others
1/2 Gal. \$1.45
Also Qts., Pts. and 1/2 Pts. & Hd. Dipped

For Your Home Sundaes Try Our FUDGE WALNUTS MARSHMALLOW Treat Yourself To a Box of GRUNING'S Own Home Made Candy

GRUNING'S
Hours: Weekdays, 10 A.M. to 12 Midnight
Sunday 10 A.M. to 11 P.M. ... CLOSED TUES.
780 Morris Turnpike Millburn

The Chrysler VALIANT Makes Its Debut

Paul L. Werner, President of Werner Motor Co. in Summit proudly displays the new Chrysler Valiant to several members of The Summit Lions Club. All expressed approval and indicated that the Valiant is one of the finest small American cars on the market today.

(Photo by Wolin)

Suburban Cocktail Lounge
64 Brick Church Plaza East Orange
ORange 2-8851
Open Every Day Except Sunday
"On The Plaza"

"Air Conditioned"

Visit Our Retail Meat Dept.
DR. 6-0502

Dan Dowd's steak house

MEMBER: DINER'S CLUB

Route 22 Springfield
DR 6-1439
Free Parking

At Sharey Shalom Nov. 9... The moon has no heat of its own. Warmed by the sun for 14 days or so, it is chilled for an equal period when its face is turned away from the sun.

CYNTHIA'S CHATTER. Speech contest on November 18th. All interested students should go to Room 228 and sign up on the available sheet.

HIGH SCHOOL SENIORS Prepare for January S.A.T. of the College Board Entrance Examinations. Conducted by highly qualified and experienced instructors, the course includes: VOCABULARY SKILLS, READING COMPREHENSION, GRAMMAR, SPEED READING, MATHEMATICS, MODEL TESTS.

GO BULLDOGS GO. Yes, I would say that the Regional Bulldogs have gone... SENIOR PLAY NEARER. Depending on what day you get your newspaper, the Senior play could be either tonight or tomorrow night.

Interpretation Finals. Congratulations and best of luck in the furthering of this winning! FORGIVE ME PLEASE. To all the relatives of Gloria Rouse...

Joan's Jabber NEWS-AND-TIDBITS ABOUT YOUR FRIENDS & NEIGHBORS. If You Have Any News Call... IN MOUNTAINSIDE ADAMS-3-0737

ORT Unit Slates Friday Service. Mrs. Clarence Freundlich and Mrs. Nat Tiren chairmen of ORT Sabbath for the Springfield Chapter of Women's American ORT.

This is surely the time of curling smoke of bright blue skys-of red, gold and brown leaves-of Halloween and the presence of many small spooks and goblins.

Another party to fete the vigil of allhallowes was held by Ruth and Bob Osbahr of 1312 Stony Brook Lane.

A coffee was held last Thursday evening at the Home of Mrs. S. Kreitchik, 1554 Grouse Lane, to honor Miss Mary C. Kannan, candidate for Freeholder of Union County.

During this past year alone, ORT was able to work successfully among 35,000 men, women and teenagers in all parts of the world.

Wedding bells rang Saturday for Carolyn Emma Johnson of 971 Mountain Avenue and Carl Joseph Gargano of 84 Roosevelt Avenue, Plainfield.

Members and friends of the West Mount Chapter of Deborah visited the hospital at Browns Mill, N. J., a week ago.

The League of Women Voters attended the last session of a four part Seminar at the United Nations last Wednesday.

CASH SAVINGS!

Acme Markets. PLUS GREEN STAMPS! Lancaster Brand "FULLY COOKED" Smoked Shankless HAM. Shank end removed. Sweet Hickory Smoked. Excess fat and skin removed. 29c, 39c, 49c per lb.

FRUITS & VEGETABLES. GRAPES 2 lbs. 29c. Emperor. Lancaster Brand Pot CHUCK ROAST lb. 45c. Lancaster Brand ARM POT ROAST lb. 59c.

SOUP HEINZ-Chicken, Chicken Noodle, Cream-of-Mushroom 3 cans 47c. DRINKS BN-BC-BD 3 46 oz. cans \$1.00. TUNA BUMBLE BEE Solid White 3 7 oz. cans \$1.00.

KETCHUP HEINZ 20 oz. bot. 30c 2 43c. PUNCHINELLO 3 46 oz. cans 89c. DOG FOOD GAINES 6 16 oz. cans 69c. NAPKINS MARCAL White 2 pkgs. of 80 19c.

White Bread 16 oz. loaf 17c. SUGAR JACK FROST or DOMINO GRANULATED 5 lbs. 47c. MILK LOUELLA EVAPORATED 8 tall cans \$1.00.

PIPE Cut and Threaded TO YOUR PARTICULAR NEED! ALSO RENTAL ITEMS: CHAIN SAWS, FLOOR SANDERS, PIPE VISES & WRENCHES, RUG SHAMPOERS, WAXERS, ROTOTILLERS, POWER MOWERS, POWER TOOLS. U-DO-IT Corp. 564 SPRINGFIELD AVE., BERKELEY HEIGHTS, N. J.

SPECIAL OF THE WEEK! TEMPO HAIR SPRAY also LUSTRE CREAM LANOLIN PLUS .99 reg. 2.25. MOUNTAIN DRUGS. 2391 MOUNTAIN AVE. MILTON SILBERG, R. Ph. SCOTCH PLAINS, N. J. Phone FA 2-2322

The Secret's Out! One Hour MARTINIZING the most in DRY CLEANING. Bob and Abe over at 'One Hour' have gone off the deep end - They're Loony - They're GIVING AWAY TOYS!!! Don't Believe It?? Go Over and See!!! 1832 E. Second St. Scotch Plains, N.J. FANWOOD 2-6538

Club held a most successful charity luncheon and card party Tuesday at the Hotel Suburban in Summit. As could be expected, this excellent group chalked up another gala social event.

Certainly one of the most worthwhile organizations in town is the Friends of the Library. To you who like to read and for those of you who have youngsters, this is an endeavor you cannot afford to neglect.

Jane Hitura of Stony Brook Lane held a "slumber party" for four girl friends from Holy Trinity last Friday. It goes without saying that Jane and her guests, Ann Gilligan, Jeannie Peterson, Pat Rafferty and Elaine Rheinberg settled many an issue in the wee hours of the morn!

Cocktail parties preceding the Mountainside Music Association Harvest Moon Ball tomorrow night will be held by Mr. and Mrs. Hugh A. Craigie of 1218 Wyoming Drive; Mr. and Mrs. S. Grubel of 1164 Wyoming Dr.; Mr. and Mrs. Edgar Feldman, 1154 Puddingstone Road; Mr. and Mrs. Thomas Hyde, 1308 Wood Valley Road; Mr. and Mrs. Alex McDonald, 380 Longview Drive and Mr. and Mrs. Fred Williams, 1503 Fox Trail. This dance will be held at the Deerfield School with Herb Brown and his orchestra in attendance.

The League of Women Voters attended the last session of a four part Seminar at the United Nations last Wednesday. Many of the women attended the 928th meeting of the Fourth Committee of the General Assembly. Under discussion was the territory of Southwest Africa. To be voted on shortly by a simple majority of the committee and then by a two-thirds majority of the General Assembly, is the question of whether or not these ten countries shall become a part of the Trusteeship System. Luncheon was enjoyed in the Delegates' Dining Room where Mrs. Eleanor Roosevelt was dining at the time. During the afternoon the group listened to a Public Information Officer of the World Health Organization who explained that the dread disease of YAWS was definitely on the downgrade and extinction was promised within the year. Also, that Leprosy was now controlled with home treatment. He explained that the group was presently concerned with peaceful uses of atomic energy and mental health aspects of automation. Immediately following was heard a speaker from the Lebanese Mission and, finally, Mrs. George Little, League of Women Voters' Observer at the U.N.

Krull To Aid College Group. Albert J. Krull of 30 Colfax Rd., Springfield, is a member of the arrangements committee for the annual Rutgers University College Alumni Association Fall meeting to be held tomorrow at 8:30 p.m. at the State University Student Center, 18 Washington Pl., Newark. Fred Anderson, of Ciba Pharmaceutical Products, Inc., Summit, will present a glass blowing exhibition. He makes the specialized glass apparatus used in the Summit firm's research laboratories. College seniors will attend as guests of the alumni.

MONTREAL 75c. 3 min. station rate from Newark after 6 P.M. 10% tax not included.

FOUNTAIN Authorized KODAK Dealer Color & Black & White Processing JARVIS DRUG STORE 54 ELM STREET WESTFIELD, N. J. ADAMS 3-0662

Route 22 and Mountain Avenue, SPRINGFIELD, N. J. 370-390 South Ave., WESTFIELD 252 E. Front St., PLAINFIELD

Bonnie's Bulletins

NEWS AND TIDBITS ABOUT YOUR FRIENDS & NEIGHBORS IN BERKELEY HEIGHTS

If You Have Any News Call FA 2-7027

Bonnie Wiley

Mr. and Mrs. Wm. Boulikaris, 41 Briarwood Drive gleefully announce the birth of their first daughter, Barbara Fannie born October 27 weighing 6 pounds 2 ounces. Barbara Fannie was named after her grand mother and has an older brother Dennis 7, who attends Berkeley School.

Hadassah Lists Refresher Course

Springfield Hadassah Integration chairman, Mrs. S. Goldstein, announces an integration meeting, at 8:30 o'clock to night at the home of Mrs. N. Sherman, Northern N. J. area, Committee woman, 27 London-derry Way, Summit.

"Integration" is a refresher course in the aims and activities of Hadassah. These include medical care, child rescue and rehabilitation, education, nation building as well as good citizenship.

The entire Board will attend.

Sharey Shalom Sets Breakfast

Sharey Shalom, Suburban Reform Congregation, is planning to form a Men's Club. A prelude to a men's breakfast will be held at 10:30 A.M. on Sunday, at the Temple House, 78 South Springfield Avenue, Springfield. For reservations please call S. Sattenspiel at SO 2-3351 or B. Aronow at DR 6-3266.

EARN 3%

Up to \$5,000—2% above

Suburban TRUST COMPANY
10000 PLAINS • PLAINFIELD • WESTFIELD
CRANFORD • GARWOOD
Member Federal Deposit Insurance Corporation

WHEELING

80¢

3 min. station rate from Newark after 6 P.M. 10% tax not included.

NEWCOMER?

Have you, or has someone you know, just moved to a new home?

PANWOOD - SCOTCH PLAINS HOSTESS

Georgia Benedict
12 Glenwood Rd., Panwood
FA 2-6207

MOUNTAINSIDE HOSTESS

Cynthia Schorfeld
748
E. Broad St., Westfield
AD 2-7681

Your Welcome Wagon Hostess will call with gifts and friendly greetings from the community.

WELCOME WAGON

Jayne Scarpa Has Nuptials

Miss Jayne Marie Scarpa, daughter of Mr. and Mrs. Alfred John Scarpa of 55 Paterson Road, Fanwood, became the bride Saturday of Hans Timothly Schroeder, son of Capt. and Mrs. Hans Schroeder of 162 Belvidere, Fanwood.

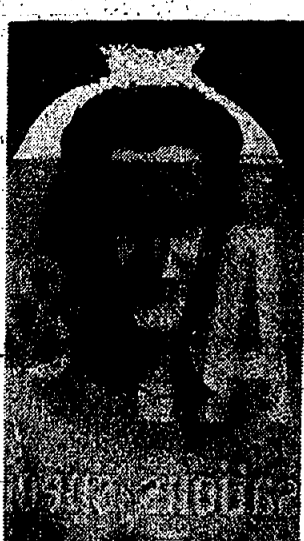
They were married at 4:30 p.m. in the Messiah Lutheran Church, Plainfield. The Rev. Frederick L. Van Steen performed the ceremony. Mr. and Mrs. M. H. McEvoy sang and Philip Wilfrid was the organist. The reception was held at Marlinsville Inn.

The bride's gown of skinner satin was fashioned with a scalloped scoop neckline trimmed with pearls and embroidery. Long sleeves and a fitted bouffant skirt ending in a cathedral train. She wore a French illusion finger tip veil held by a lace cloche, trimmed with pearls and sequins. She carried a cascade bouquet of white Starlike roses centered with a white Cattleya orchid.

Miss Robert A. Arnold of Fanwood was the maid of honor. She wore a gown of emerald satin and a matching headpiece. She carried a cascade bouquet of red and white chrysanthemums. The bridesmaid was Miss Joyce - Elizabeth of Forest Hills, L. I. Her ensemble matched that of Miss Arnold's. Her bouquet was of white and pink chrysanthemums. Karl E. Schroeder, brother of the groom, was best. Ushers were Capt. Roy F. Whitmore of Roanoke, Va., and Elmer L. Terry, Jr. and Douglas C. Osterman, both of Scotch Plains.

The bride is a graduate of Scotch Plains-Fanwood High School, Lebanon Valley College, Annville, Pa., and Berkeley School, East Orange. The bridegroom is a graduate of Fort Hamilton High School, Brooklyn, N. Y., and of the Brooklyn Academy. He is a staff sergeant in the Air Force, stationed at McGuire Air Force Base.

Pre-nuptial parties were given by her attendants: Mrs. Larry



Mrs. Hans T. Schroeder

Andrews and Mrs. Donald Bate man both of Fanwood; by Miss Judy Rego of Scotch Plains and by Mrs. Kenneth Clark of Fair-

lin. The bridegroom's parents entertained with a rehearsal dinner in the Maison Billia in Scotch Plains.

After a wedding trip to New York State, the couple will live in New Egypt, New Jersey.

FISH AND CHIEF LUNCH

On Thursday, November 12, the Women of St. Stephen's Church will serve a Fish and Chief luncheon in the Parish Hall from 11:30 to 1:00 P.M. Tickets are \$1.25. Reservations must be made by Tuesday evening through Mrs. C. J. Keller, the Chairman, DR 9-3958 or Mrs. David H. Brown, DR 6-8572.

ELECTED CHAMBER VP

Kenneth Hetzel of 9 Essex road was elected vice-president of the Millburn-Short Hills Chamber of Commerce at meeting last week. Mr. Hetzel is president of the House of Rockers.

Free 'Silver Dollar' Taken To Promote Shopping

Joining a group of eighteen Maplewood and Springfield merchants spearheading a drive to encourage shopping at local stores, Crestmont Savings and Loan Association is offering "silver dollar" tokens to Christmas Club members redeemable for cash discounts on merchandise purchased now through December 31.

Five Crestmont Christmas Dollar tokens are given for each 1959 Christmas Club opened at the offices of the association in Maplewood and Springfield. Savers validating their 1959 Christmas Clubs and opening 1960 clubs will receive 10 tokens. Each Crestmont Christmas Dollar is worth \$1.00 toward one purchase of \$10.00 or more at any of the cooperating stores.

In announcing the Christmas Dollar event, Loren F. Gardiner, president of Crestmont, said, "The holidays have already begun at Crestmont as hundreds of Christmas Club members begin to cash their 1959 Christmas Clubs at the same time opening their clubs

Crestmont and Investors Increase Interest to 3 3/4

Two suburban savings and loan associations, whose combined assets total over \$6 million, representing the larger part of the savings in the areas they service, have announced an anticipated dividend rate increase to 3 3/4% for the period starting January 1, 1960. The associations are Crestmont Savings and Loan Association, with offices in Maplewood and Springfield, and Investors Savings and Loan Association, with offices in Millburn, East Orange, Hillside, and Union.

The presidents of the associations Loren F. Gardiner of Crestmont and Roland Lewan of Investors, issued a joint statement on behalf of their boards of directors, saying, in part, that "the anticipated increase in dividend rate has been made possible through the increase in earnings, resulting from a greater demand on the part of the public for funds for home mortgages at increased lending rates. Crestmont and Investors are pleased to be able to pass these earnings on to their savers."

Both associations "have made tremendous efforts to maintain the necessary balance of returns for savers and fair mortgage rates to borrowers, the credit of savings and loan associations dedicated to carrying out the principles upon which this type of institution was founded in 1851."

Mr. Gardiner and Mr. Lewan continued, "One of the fundamental objectives of the savings and loan institution is to serve the community and to serve the basic needs as dictated by the local community and to serve original concept of the savings basic needs as dictated by the local and loan institution."

What'll the Prettier Walls Be Wearing?

The majestic sweep of birds going South... sloops with bright sails bent before the wind... sassy black masters with red combs... stalks of wheat with sparrows flitting by... and a unicorn reminiscent of a merry-go-round.

All made in mahogany and brass by Masketeers. Or sculptured Harlequins... deff Oriental dragons... fruit colored as if by a French Impressionist... kittens... a Chinese sampan against a sunset.

Museum pieces in washable plastic by Coventry Wares. Or the ever-popular "Four Seasons," Hong Kong's gilded metal flowers in black wood frames, either rectangular or octagonal. Haphers and battle axes... chrome and black Crusaders in armor... silvered coats of arms... traditional brass-plates with Old English scenes.

From Skinner's one of Britain's oldest exporters. All these and more are at Mahogany House, awaiting inspection by the discriminating home decorator who wants her wall designs to be fashionable yet different from her neighbors'.

Mahogany House
INTERNATIONAL GIFTS
57 ELM ST., WESTFIELD

NOW OPEN TO SERVE A MORE BEAUTIFUL YOU!

INTRODUCTORY OFFER FREE PERSONALIZED STYLE CUT With Each Shampoo and Set During October

We will offer personalized Hair Cutting and Styling by our Permanent Wave specialist and Hair Coloring from 9:30 A.M. to 6 P.M. daily—Closed Monday. Open Thursday evenings.

RICHARD HAIRSTYLIST CR 3-3398
298 SPRINGFIELD AVENUE, BERKELEY HEIGHTS

SPRINGFIELD INTERIOR DECORATORS

248 Morris Avenue, Springfield DR 6-3575

Only because we are a workroom for other stores can we offer SUCH A LOW PRICE!

3 Piece Slipcovers SOFA and 2 CHAIRS \$69.95

LARGE SELECTION OF FABRICS JUST ARRIVED !!

DON'T BE FOOLED!

YOU DON'T HAVE TO DODGE CARS ON THE HIGHWAY TO GET THE BEST PRICES!

REGULAR 3.98 LP's

NOW \$2.88 EACH

REGULAR 4.98 LP's

NOW \$3.69 EACH

REGULAR 5.98 LP's

NOW \$4.49 EACH

REGULAR 6.98 LP's

NOW \$5.49 EACH

ALL RECORDS INCLUDING STEREO All Untouched—Factory Fresh—Performance Guaranteed. Records at Low, Low Discount Prices.

ALL 45 RPM "POP" SINGLES Reg. 69c 98c

Bandstand

MUSIC CORP. 138 E. Broad St., Westfield AD 2-6363

OPEN EVERY EVENING TILL 9:00 P.M. (Except Sat.)

THE NATIONAL STATE BANK
"Union County's Leading Bank"
• ELIZABETH • SPRINGFIELD • ROSSELLE PARK
• SUMMIT • KENILWORTH • WESTFIELD
MEMBER FEDERAL DEPOSIT INSURANCE CORPORATION

FIRST SINCE 1812

Brettler's

242 Morris Ave.

Pre-Thanksgiving

SALE

FREE \$1 Worth of Merchandise on Each \$10 Purchase.

On Infants' and Children's Wear

Such Buys As—

BOYS' FLANNEL OR KNIT PAJAMAS \$1.98
—coat or middle style
—Sizes 4-18

GIRLS' FLANNEL GOWNS 98c
—Sizes 4-8

Close-Out On:
• Snow Suits
• Car Coats
• Suburban Jackets

Below Cost

DRexel 6-4108

TYPEWRITER RENTALS

(Latest Models)



\$5 Per Month

If taken for over 6 Months, Monthly rate higher.

BEACON HILL CO.

Printers • Stationers

226 Morris Avenue

DRexel 6-1256 Springfield

1929—Our 30th Year—1959

B. J. CHADWICK

Realtor
DRexel 9-4653

SATISFIED CUSTOMERS
—The buyer and the seller
MUST BE PLEASED



B. J. CHADWICK
IT'S JUST GOOD BUSINESS — to BUY OR SELL your property Thru Chadwick's **ADVANCED REAL ESTATE SERVICES**

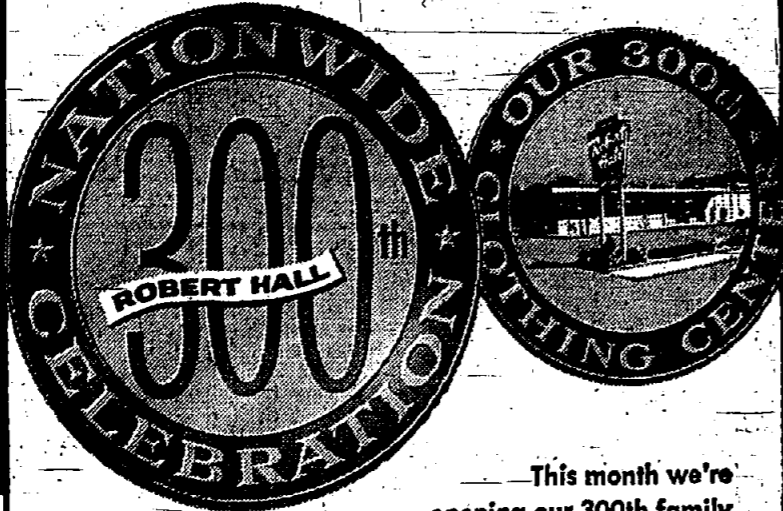
WE help YOU solve your realty problems—

SINCERE, EFFICIENT
Real Estate Men—Give YOU

INDIVIDUAL ATTENTION

And WE are on the **ALERT** at all times for **NEW, BETTER, and MORE EFFICIENT METHODS TO SERVE YOU**

TRY US!
CALL
DRexel 9-4653
FOR INFORMATION



—This month we're opening our 300th family clothing center... and we're celebrating with a nation-wide value event as big as all America! Shop now for greater-than-ever Robert Hall savings!

FRIDAY & SATURDAY

Two-day price sensations specially planned for this spectacular event!

- Only at Robert Hall!
- With zip-off hoods!
- They're hand-washable!

GIRLS' ORLON PILE LINED CAR COATS

7⁸⁸



Lustrous combed cotton sateens worth dollars more! Cozy-warm orlon-pile lines the zip-off hood and the coat to the waist... toasty quilting from waist to hem! New shades... sizes 7-14.

*DuPont's registered trademark for its acrylic fiber



Our lowest price yet for sizes 14, 16 & 18!

PREP SUBURBAN COATS for teen-age boys

9⁹⁹

REGULAR 12.99

Alterations at no extra charge... a saving to you!

Just what boys need for wintry weather! Rich meltons of 45% wool, 45% reprocessed wool, fortified with nylon! Handsomely styled with leather buttons and two roomy flap pockets! Plaids, stripes, fancies.

Robert Hall is headquarters for husky boys

BLACK MAGIC WOOLEN COATS WHITE PILE-LINED from Hood to Hem!

13⁸⁸ 16⁸⁸

SHORT COAT

Regularly 15.95

LONG COAT

Regularly 19.95

HIGH FASHION BLACK: set off with elegant white to blend beautifully with every smart color in your wardrobe!

FLATTERING LINES: in the short or long version. The full flowing style, the clutch-front closing fits comfortably over suits and dresses alike. Misses' sizes.

LUSCIOUS WARMTH: plush-ermine-white-rayon-pile lining from convertible hood-collar to hemline! Shell of reprocessed wool strengthened with rayon and nylon.

Use our convenient lay away plan... no extra charge

A SPECIAL GROUP OF THIS SEASON'S NEWEST SUITS... in luxurious Woolens!

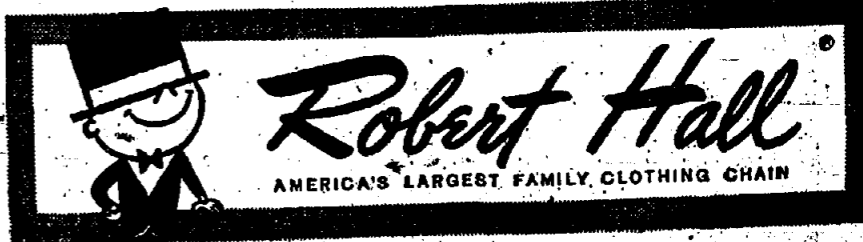
Drastically reduced for this event!

\$25

COMPLETE ALTERATIONS AT NO EXTRA CHARGE!

It's a suit event that will save you PLENTY! Come see these suits... feel the fine fabrics... you'll know immediately the tremendous value you're getting! Every suit brand new—expertly tailored and styled right up-to-the-minute... in colorful flannels, charcoal gray and fancy flannels, smart hopsacks—in sizes 35 to 44; regulars, shorts and longs. Hurry... get 'em at this special price!

Use our convenient lay away plan... no extra charge



*UNION—ROUTE 22

WEST OF GARDEN STATE PARKWAY

*LINDEN — 416 WEST ST. GEORGE AVE. — (2 blocks south of High School) • IRVINGTON — NEW ST. off Springfield Ave., at Irvington Center.

• ELIZABETH — 1004 ELIZABETH AVE., at Irvington Center.

*Union and Linden Stores Open Sundays 10 to 6

PLENTY OF FREE PARKING