

Member of  
WATCHUNG WEEKLY  
News-Printer Group  
Springfield Sun - Mountaineer  
Echo - Berkeley Heights Beacon  
Scotch Plains Times - Fanwood Independent

# The Springfield Sun

4 OUT OF 5 PEOPLE  
IN SPRINGFIELD  
READ THE SUN

VOL. 30th YEAR NO. 29 DREXEL-9-5000 SPRINGFIELD, N. J., THURSDAY, MAY 5, 1960

OFFICIAL TOWNSHIP Springfield Public Library 8 8 THE YEAR

## County Towns Paying Wrong Tax, Is Charge

The Mayor of Bayonne has filed that most communities in Union County are paying a disproportionate share of utility taxes because the value of gas and electric utilities is included in the tax base. The utility properties were included under a 1940 law, Elizabeth, Linden and Summit benefit from the law at the expense of the remainder of the county, according to statistics.

## Regional Sr. Wins Award At Science Forum



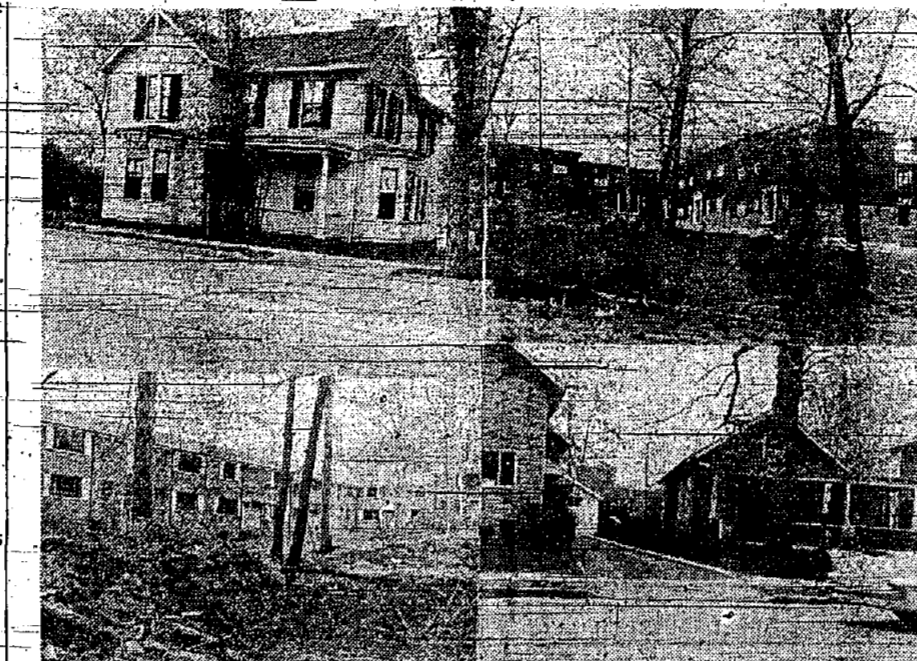
Allen Westerberg, of 68 Delaware street, Berkeley Heights, a senior at Jonathan Dayton Regional High School, Springfield, was one of ten winners in a North-Central New Jersey Junior Science Symposium sponsored by Picatinny Arsenal at Dover, N. J. It was announced Thursday, April 21.

## Population Here Set Above 14,000

Mayor Vincent J. Bonadies announced today that he had received word from Shelby G. Fell, census supervisor, that the preliminary count of Springfield population puts the number of residents in the township at 14,434.

## Mental Health Fund Drive Head Named

Mrs. Eugene T. Hubert, 128 Bryant Avenue, Springfield, has been named to serve as chairman for the 1960 mental health fund drive in Springfield to be conducted this month. The announcement was made by Mrs. H. E. Forsyth, 268 Mountain Avenue, Springfield, a member of the board of directors of Union County Association for Mental Health.



SHADOW OF ROUTE 78—Hard on the heels of the action by the State Highway Department in stopping work on the 78-unit new section at the Troy Village garden apartment atop Batusrol Mountain in Springfield because it lay in the path of the proposed Route 78, came a move in the same area last week by Springfield Zoning Board of Adjustment, promulgated by the highway department Tuesday evening, May 28. The Board voted to deny the petition for a variance submitted by Good Deal, Inc., to construct a 400,000 shopping center at 291 Morris Avenue, Springfield. The denial was voted when Township Attorney Irwin Weinberg told the Board that the highway department had sent word to the municipality that part of the plot on which the stores would be built was to be used for the proposed road.

## Rabies Clinic Here Is Set For May 21

Township Clerk Mrs. Eleanor H. Worthington of Springfield this week called attention to the rabies clinic to be held at the township's garage on Cedar street Saturday, May 21.

## Miss H. Smith Honored At Last Meeting

The final regular meeting of the James Caldwell School PTA was held Tuesday, April 26, in the school auditorium. Mrs. George Kunc presided. The invocation was offered by the Rev. Donald C. Weber of the Presbyterian Church.

## Work Of Widening Morris Ave., Covering Rails

Morris Avenue merchants are heartily in favor of the plan to widen the roadway by cutting four feet of the sidewalk on each side of the street.

## Springfield Man, Newark Teacher, Named for Course



C. L. Seltzer, of 32 Sherwood Road, Springfield, a teacher in Weequahic High School, Newark, has been selected to participate in a special Summer Science Institute at Thiel College, Greenville, Pa., from June 28 to Aug. 6.

## 3 Dayton Boys Tops In Math

Jonathan Dayton Regional High School placed sixth out of 59 participating high schools from New Jersey in a recent national mathematics contest sponsored by the Mathematical Association of America.

## Mayor Bonadies Opens Ball Tilts

Monday night, May 2, Mayor Vincent J. Bonadies opened the 1960 Little League season in Springfield before a capacity crowd at the Washington Avenue field by throwing out the first ball in a game between the Kivans and the American Legion teams.

## Hospital To Get Most Of Money From Bond Issue

The John E. Rummel Hospital, Berkeley Heights, is slated to receive \$169,100 for improvements under a \$295,000 bond issue authorized by Union County Board of Freeholders. Also benefiting from the bond issue will be Fanwood, which is to receive \$8,000 for stream improvement.

## 21 Speeders Pay \$289 In Fines Here

Springfield Municipal Court Magistrate Henry C. McMullen was in his company Monday night, May 2, when he fined 21 speeders a total of \$289. Marilyn Freedman and Lenore Fedesch, both of Union, were fined \$25 each.

## Preparations In Full Swing For PTA Festival

Saturday, May 14, from 11 A.M. until 4 P.M., promises to be an exciting and fun-filled day for everyone who remembers that it's the day of the Walton Spring Festival.

## County Democrats Elect Plains Man

A Scotch Plains Democrat was named second vice chairman of the county committee. James K. Golden of Irvington was elected.

## Intermediate Dressmaking Class Is Set

An intermediate dressmaking class will be held May 10, 17, 24, 31 and June 7 at the Presbyterian Parish House, 87 Main Street, Springfield, from 10 a.m. to 3 p.m.

## Mrs. Jackson To Head PTA

The final meeting of the Florence M. Gaudinier P.T.A. was held Monday, May 2. The invocation was given by the Rev. J. Elliot Lindsay.

## It Happens This Week In Springfield

Contributions to this calendar of coming events are invited. THURSDAY, MAY 5: Meeting: Millburn-Springfield Kiwanis Club, Chanticleer, Millburn, 8 p.m.

## To Hold Services In Millburn Church

The Rev. Leland Stark, pastor of the Episcopal Diocese of Newark, will conduct the confirmation services for seven children and adults at St. Stephen's Church in Millburn.

## County Democrats Elect Plains Man

A Scotch Plains Democrat was named second vice chairman of the county committee. James K. Golden of Irvington was elected.

## Route 22 Firm Is Holding Contest

An opportunity to win a fully-constructed vacation cottage complete with a \$3,000 allowance for land is being offered through Adler Home Mart on Route 22, Mountaineer.

## Friday, May 6

Meeting: Lions Club: Mountaineer Inn, Rte. 22, Mountaineer, 6:30 p.m.

## Saturday, May 7

Dance: Kenilworth Veterans Hall, Kenilworth, sponsored by The Ruth Estrin Goldberg Memorial for Cancer Research.

## Action Deferred On Apt. Variance

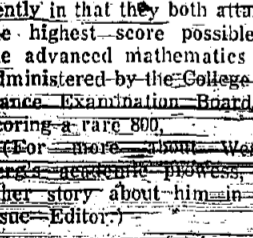
Neither approval nor denial of the petition for a variance to make possible the erection of a 30-unit garden apartment at 81 Morris Avenue, Springfield, was given last week by Springfield Zoning Board of Adjustment.

## Going To California? Are the three young men pictured above...

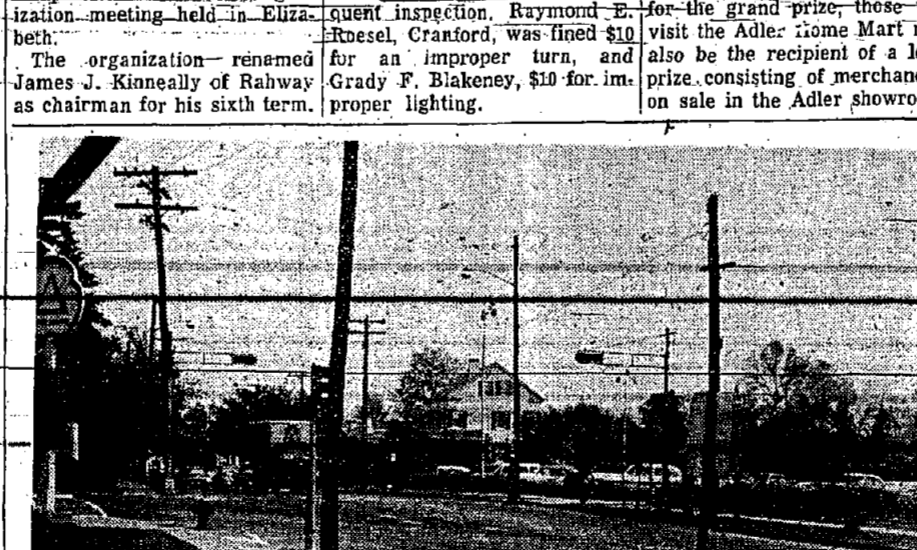


Are the three young men pictured above — from left to right, Ken Ben-Ari of Mountaineer, Dave Yancey and Ken Ryder, both of Springfield — going to San Diego, Cal., in June? This is a question to which they, and many residents of Springfield, Mountainide and Berkeley Heights, would like an answer — and an affirmative one. The youths are students of Jonathan Dayton Regional High School in Springfield and are tops in debating and speaking. The high school has won about all the worthwhile forensics honors available in this area and would like to compete in the National Speech Tournament in San Diego in June.

## PRESENTS TREE: The Garden Department of Springfield Women's Club donated a cherry tree to the Township of Springfield, and planting of the gift took place at an Arbor Day ceremony held Friday, April 29, on the center island on Morris Avenue between Prospect Street and Marcy Avenue.



The Garden Department of Springfield Women's Club donated a cherry tree to the Township of Springfield, and planting of the gift took place at an Arbor Day ceremony held Friday, April 29, on the center island on Morris Avenue between Prospect Street and Marcy Avenue. The photo above is Mrs. Robert Buffington, Garden Department chairman. Behind her are, from left to right: Mrs. R. D. Hardgrove Jr., retiring president of Springfield Garden Club; Mrs. Fred Mercer, Mrs. Edward Stackawski, Mrs. John Moore, Mrs. Stanley Kroeger.



CIVIL DEFENSE SCENE—Morris Avenue looking east, one minute after red alert whistle sounded Tuesday for Operation Alert 1960—nationwide civil defense exercise. With local departments working hand in hand, the exercise was marked "very successful" by Springfield Civil Defense Director Saul Freeman.

# Art Classes Closing For Season With Exhibition

The children's Art Classes than 30 young students in attendance and two teachers giving instruction. Some of the art experiences the children were engaged in were water color, oil crayons, pastels. They also made collages, clay sculpture. Examples of these can be seen at the library, where they will remain for two weeks.

The teachers were Mrs. Lee Johnson of Springfield and George Lindemere of Maplewood. Mrs. Johnson, who has taught children's classes for many years, is presently teaching the art classes at St. Elizabeth's Academy in Convent and Art classes for children and sculpture classes for adults at Morris County Art Association, Morristown. Mr. Lindemere has taught in South Orange and Maplewood and is now art teacher at Summit Junior High School.

# Springfield Sun

**PUBLISHER:** JULIAN SAROKIN  
**ASSOCIATE PUBLISHER:** HENRY J. LALLY  
**MANAGING EDITOR:** S. E. LIEBERMAN  
**ADVERTISING DIRECTOR:** HERBERT AXELRAD  
**TELEPHONES:** DRexel 9-5000 DRexel 9-5005  
**ESTABLISHED SEPTEMBER 27, 1920**  
Published every Thursday at 262 Morris Avenue, Springfield, N. J. by SPRINGFIELD SUN PUBLISHING CO.

will explain his work phone (CR-3-1688) Mrs. F. Coddington—secretary of the Overlook Protestant Chaplaincy, 141 Oakwood Avenue, Murray Hill.  
Chaplaincy interested in attending the semi-annual breakfast in the Overlook cafeteria. Responding to requests from many area clergymen, Rev. are requested to write or tele-

**Swim in your own backyard this year!**  
**New, huge, luxurious 16'x32'**

**E-ZDO**

**SWIMMING POOL**  
for only **\$1295**

JUST \$29.00 A MONTH BUYS AMERICA'S MOST LUXURIOUS, LOW PRICED IN-THE-GROUND QUALITY POOL

**FEATURING:**

- Cement asbestos lifetime pane
- Easy maintenance
- Never needs painting
- Healthy sanitary conditions with the Bacterio-static non-porous, stain-resistant liner
- Super efficient filter system with pump, plus all plumbing, fittings
- Automatic surface skimmer
- Rust-proof hardware—steel rod reinforcement
- Installation manual

**NO DOWN PAYMENT. 5 YEARS TO PAY.** Installation Optional

**C. T. L. ENTERPRISES**  
2464 Morris Ave., Union, N.J. MU 8-5372

## TAKING CARE OF YOUR GARDEN

By Edward A. Cardinal

"THATCH" is a word we have heard a great deal of in the past few years. It is an accumulation of grass cuttings, leaves and dead grass which interferes with the proper growth of turf grasses. Mulching of grass by rotary mowers can be a primary cause of this condition because decomposition of the dead grass and leaves is not fast enough to dispose of it naturally. Layer after layer builds up around the grass stems until the turf finally loses vitality and dies out.

**NOW OPEN**

**Mrs. Prince's Stand**

Home grown asparagus, spinach, and rhubarb. All-vegetables and fruits in season. Flowers and vegetable plants.

Hours: 9 to 6 weekdays—9 to 1 Sunday and Holidays

647 So. Springfield Ave. Springfield DRexel 6-1360

grubs. Shall I do it again?"

A: If you used the material as directed it should be sufficient. It takes considerable time for the chemicals to work into the soil where the grubs can reach it but eventually they will die.

Q: I saw a rotary mower with a vacuum bag attachment. Are they an advantage?

A: Most rotaries spread weed and crab grass seed by hurling them all over the lawn. The machine you mention has a strong suction which deposits all debris in a bag. This eliminates spreading of weed seeds, and gives a neat, finished appearance to the lawn.

Q: Is it too late to fertilize and seed?

A: Fertilizer can be supplied now, but select an organic, or urea-form type which will not burn. Apply when grass is dry, and water in as an extra precaution. If you seed be sure to rake in lightly, or cover with light layer of peat.

Q: What is the stiff bush I see with a purplish red flower clinging tightly to stems?

A: Cercis chinensis, called Red Bud. Both the American and Chinese varieties are good shrubs, but some times difficult to locate.

Q: There seem to be only a half dozen flowering shrubs available today. What has happened to the many excellent varieties nurseries used to carry?

A: Nurseries and Garden centers have to compete with supermarkets and can not afford to carry slow moving items any longer. When a demand for the shrubs is strong enough the nurseries will handle them once more. Buy your shrubs from legitimate suppliers.

**TO HONOR TEACHERS**  
Lag Ba-Omer, Jewish teachers day, falls on Sunday, May 15. At Sabbath eve services Friday evening, May 13, Temple-Sharey Shalom in Springfield will honor the teachers of its religious school. These teachers have dedicated their

# SPRING SALE at WORLD TIRE 1st Line Dunlop Tires

All prices listed below are for legitimate 1st line tires... (Not 2nd or 3rd line. Widely advertised as "1st quality.")

Size	List Price	Sale Price*	Fits cars
670x15	26.28	13.21	Ford
750x14	29.82	16.99	Plymouth Chevrolet
710x15	29.15	16.31	Pontiac Dodge
800x14	32.64	17.99	Mercury
760x15	31.81	17.88	Buick
850x14	35.76	19.99	DeSoto Oldsmobile

Whitewalls add 3.99

- FREE WHEEL BALANCING
- Complete stock of foreign car tires
- Charge Accounts Solicited
- Unconditional Lifetime Guarantee against cuts, bruises, all road hazards

\* plus tax and casing

**WORLD TIRE CO.**  
1701 SPRINGFIELD AVE. • SO. 3-1700  
MAPLEWOOD, N. J.  
Newark Store: 1199 Broad St.

Tire Specialists Since 1914

# Why PAY MORE?

**GET ACQUAINTED**

We'd like you to get acquainted with TAFT quality work. See for yourself how garments look. Enjoy the crisp perfection of a TAFT laundered shirt. That's why we make this sensational offer for **1 WEEK ONLY!** Offer expires May 11th.

**YOU MUST CUT OUT & BRING THIS COUPON FOR THESE PRICES!**

**SLIPCOVERS**  
DRYCLEANED and FINISHED

**89<sup>c</sup> CHAIR**     **29<sup>c</sup> PILLOW**     **1.19 SOFA**

**ANY BLANKET**  
Drycleaned and Fluffed **89<sup>c</sup>**

**UNLINED DRAPES**  
Beautifully Drycleaned and Finished **1.19** Pair and Up

**TAFT NEW JERSEY'S LARGEST DRYCLEANERS ONE DAY SHIRT LAUNDERING**

Springfield: 336 Morris Ave. (Opp. National State Bank)  
Scotch Plains: 1818 East 2nd St. (Opp. Post Office)  
Fanwood: 264 South Avenue (Corner Martine)  
Union: 2657 Morris Avenue (Next to Acme)

Watchung: Blue Star Shopping Center, Route #22  
Plainfield: 30 Watchung Ave. (Opp. Montgomery Ward)  
Plainfield: 631 Park Avenue (In Masonic Building)  
Plainfield: 1030 South Avenue (Opp. Netherwood Station)

**BE SURE... PROTECT your valuable FURS**

Bring them to **FLEMINGTON NOW!!!**

Only Flemington offers these many "extras" at no extra cost!

- Complete Examination
- Purification
- Sterilization
- So-Fur storage in the finest for vault in the state... temperature & humidity controlled... multi-sealed and time locked with \$4,000,000 insurance protection.

**SA-FURIZING**  
World's finest fur cleaning process. MODERN... SAFE from \$5.50

**F.F.C. FLEMINGTON FUR COMPANY**  
FLEMINGTON, N. J.  
OPEN DAILY TO 9 P.M. SAT. & SUN. TO 6 P.M.

## See How YOU can bring your HOME UP TO DATE!

Everything that's NEW and EXCITING in beautiful interiors... all under one roof in our COMPLETELY NEW EXHIBIT!!

Here, in our showcase model home, built with 4x8 panels and pre-cut parts, we've put on display just about every type of interior building material available. See for yourself how the actual finished job will look in every room of YOUR home—from bedroom to kitchen, from floor to ceiling.

**Everything Displayed Just As You Would Use It!**

- FLOORING
- PANELING of every type and description.
- CEILING TILE
- FLOOR & WALL TILE
- TEXTURED-GYPSUM WALLBOARD

Presenting the very latest ideas for attractive and permanent walls for your home. Prices range from 5/2c to 79c per square foot and each kind is plainly price-marked. All are exhibited in full size panels in both natural wood and pre-finished panels, to demonstrate how simply and efficiently the walls of rooms can be installed and decorated.

**IDEAS FOR HOME IMPROVEMENT**

1. Add a Room
2. New Attic Room
3. New Roof
4. Add a Garage
5. A Picture Window
6. New Entrance
7. Recreation Room
8. Painting
9. Modern Kitchen
10. Gutters & Downspouts

**Free Plan Service for Do-It-Yourself Projects**  
IN AND AROUND YOUR HOME

Below we list a few of the latest Ideas and Plans:

- Room Additions
- Family Rooms
- Attic Remodeling
- Outdoor Living
- Children's Rooms
- Porches and Patios

An illustrated Booklet of Home Projects and many other Plans are also available — Free anytime you come in for them.

**U. S. BUILDING PRODUCTS CO.**  
700 Springfield Avenue Berkeley Heights, N. J.  
Only a Short Distance from the Center of Summit or Plainfield

### Nancy G. Moen Of Springfield Bride Of F. Michenfelder Jr.



Springfield Methodist Church was the scene Saturday, April 30, of the ceremony which united in marriage Miss Nancy Grace Moen, daughter of Mr. and Mrs. Hendrik Moen, of 26 Shunnke Road, Springfield, and Franklin Michenfelder Jr., son of Mr. and Mrs. Franklin Michenfelder Sr. of Clark. The Rev. Virgil Mabry, pastor of the church, performed the ceremony. A reception followed at the Cranwood in Garwood.

Given in marriage by her father, the bride wore a silk organza gown with fitted bodice, long sleeves and a full skirt which was accented with Alencon lace. A scooped neckline was outlined with a small band of Alencon lace and seeded pearls. A crown of pearls and crystals held her fingertip veil. She carried a small spring bouquet arranged in colonial fashion.

Serving as matron of honor was Mrs. William McGeehan of Milburn. The other attendants were Miss Janet Michenfelder, sister of the bridegroom, and Miss Barbara Kupter of East Orange, bridesmaids. Junior bridesmaid was Jeanne Moen, the bride's sister.

They wore white embroidered nylon gowns with matching picture hats, and carried baskets of yellow and white daisies.

The best man was William McGeehan of Milburn and ushers were Raymond Wickham Jr. of Clark, ushers of the bridegroom, and Norman Whitehouse of East Orange. Junior usher was Den-

MRS. F. MICHENFELDER JR. (Former Nancy G. Moen) in the bride's party.

The bride is a graduate of Jonathan Dayton Regional High School in Springfield and of the School of Nursing of East Orange General Hospital.

Mr. Michenfelder also is a graduate of the Regional High School and he is attending Newark Preparatory School. He is employed by Atlantic Design Co. in Newark.

When they return from their wedding trip to Bermuda, Mr. and Mrs. Michenfelder will make their home in Murray Hill.

### Carol Schramm, Now On Coast, Engaged to Wed



Mr. and Mrs. Alwyn F. Schramm, of 34 Tompkins Lane, Springfield, announce the engagement of their daughter, Carol, to Douglas David Hanson, son of Mr. and Mrs. Edward F. Hanson of Newport Beach, Cal.

Miss Schramm is a graduate of the School of Nursing of Elizabeth General Hospital, and she attended Rutgers University in Newark and the University of California in Los Angeles, Cal. She is employed in a supervisory capacity at St. John's Hospital, Santa Monica, Cal.

Mr. Hanson is a graduate of the University of Ontario, Canada, and he earned a degree in industrial arts at the University of Toronto, also in Canada. He is a sales engineer with one of the largest metal fabricating companies on the West Coast.

No date has been set for the wedding.

MISS CAROL SCHRAMM

An hour at 6:30 will begin the festivities, with dinner being served at 7 p.m. Following election of officers and entertainment by the Linden secretaries, Mrs. Georgiana Jagger, program chairman, will present the speaker of the evening, Mrs. Ruth Horowitz, a marriage and family counselor with a private practice in Summit.

### SCHOOL CLERKS, SECRETARIES TO DINE

Union County Association of School Clerks and Secretaries will hold its annual Spring dinner-meeting at Westfield Senior High School Wednesday, May 11. An informal punch

The governor of only one state, J. Hugo Aronson of Montana, was born outside the U.S. (in Sweden).

is imperative that parents do not allow their youngsters to camp in areas not open to them. We hope the chief's admonition is heeded by parents and we hope that adults who want to burn brush will take the precaution of consulting the fire department first.

As a matter of fact, burners of brush are violating the law when they start fires without applying to the fire department for a permit.

Let's be sensible this Spring. Let's be more considerate of the welfare of our firemen. Let's not threaten homes in outlying areas with extinction. Let's burn brush, if we must, but let us do it intelligently and legally. And let us stop the practice of using private property as camping grounds.

### "Mr. Fix It..." AS NEW AS TOMORROW!

## ELECTRONIC TESTER

FIX IT YOURSELF AT HOME WITH THE NEW "ELECTRONIC DESIGNS" POCKET SIZE TESTER For the Mr. "Fixit" ... at Home!



- Specially Priced At Only ...
- 2.66 Reg. Value 4.98
- Tests Automatically
  - TV-Radio Tubes
  - No Technical Knowledge Needed
  - Plugs into Any Outlet
  - Checks Household Appliances
  - Fuses
  - Switches
  - Bulbs
  - Hobby
  - Irons
  - Trains
  - Lamp Cords
  - Controls
  - Toasters
  - Automobiles
  - Motors
  - Boats
  - Chimes
  - 1559 Video Designs Inc.
- J.J. Newberry Co.**  
Morris & Mountain Aves. Springfield

### Local Girl Had Lead Role In Chatham Play



The Chatham Community Players picked a Springfield girl, Julie Anne Smith, to play the title role in its production of "Dear Ruth," which was presented in Chatham High School auditorium Friday and Saturday evenings, April 29 and 30.

Miss Smith, daughter of Mr. and Mrs. H. Smith, of 70B Troy Drive, studied dramatics at Marjorie Webster Junior College in Washington, D. C. While in college she played leading parts in "The Desk Set," "Children's Hour," "Good Bye My Fancy," and "Medea."

The Chatham players assembled a fine cast for "Dear Ruth," a romantic comedy which ran for a year on Broadway within Ruth Gordon in the role Julie filled last week.

Julie Anne Smith

### Victim Of Lightning Home From Hospital

Fifteen year-old Stephen Wells, son of Mr. and Mrs. John D. Wells, of 82 Sycamore Avenue, Berkeley Heights, who was temporarily paralyzed Monday night, April 25, when a bolt of lightning struck near him, was released from Overlook Hospital, Summit, Tuesday afternoon.

Stephen was standing near third base at the Stoney Hill baseball field near Berkeley School during a practice session when the lightning struck. His father, the team's coach administered artificial respiration un-

backs from the force of the bolt. The incident occurred during Monday evening thunder storm.

Cars that run away — with no driver behind the wheel — killed 30 people in the United States last year.

110,000,000 Americans hold policies with 1,800 life insurance companies.



He went to NEWBERRY'S They're selling BANANA SPLITS for 33¢

Made with rich, homemade ice cream and giving away FREE a plastic boat!

That's Newberry's In Springfield

OFFICE OF THE SECRETARY OF THE BOARD OF ADJUSTMENT TAKE NOTICE that a meeting of the Board of Adjustment held on April 28, 1960, the application submitted by Good Deal of Springfield, Inc. for a special exception use to the Zoning Ordinance to erect a group of stores in Block 10, Lots 4 and 26, 284 Mor-

210 Avenue, Springfield, N. J. was denied.

Such application is on file in the office of the Secretary of the Board of Adjustment and is available for public inspection.

Wilbert J. Binder, Secretary, Board of Adjustment May 3

**Becker DAIRY FARMS** at Roseland, N. J.

**Centerville & Southwestern R. R.**

Black Signal and Automatic Air Brake Protection

**MAY 14 THROUGH OCTOBER 12, 1960**  
SATURDAYS, HOLIDAYS and WEDNESDAYS ONLY  
All Schedules subject to change without notice

**SATURDAYS:** 10 A.M. Through 12 Noon — 1:30 P.M. Through 5 P.M.  
**HOLIDAYS:** 10 A.M. Through 12 Noon — 1:15 P.M. Through 5:30 P.M.  
**Decoration Day, July 4th, Labor Day & Columbus Day**  
Trains leave promptly on the hour, quarter hour, and half hour.

**WEDNESDAYS: July and August Only**  
1:30 P.M. Thru 4:30 P.M. & 8 P.M. to Sunset (Atlantic Time)

**ROUND TRIP - 2 MILES**  
**CHILDREN under 12 yrs. 20¢ Over 12 yrs. & ADULTS 40¢**

### Burning Brush Sensibly

This is what is known as the open season for brush fires. Come the first days of Spring and a lot of underbrush and leaves go up in smoke. While this is an annual custom and as much a part of suburban living as catching the railing of the last train, it cannot be shrugged off as "one of those things."

Burning waste material has a most serious side. Fires can get out of control of the fire-maker easily and do considerable damage to property — even to the point of threatening the existence of homes.

More important, they pose a threat to our firemen. Every time a fire call is answered, the lives of the fire-fighters are endangered. It certainly is not fair to jeopardize the welfare of these young men through the downright carelessness of those who choose to burn brush without knowing how to go about it.

Springfield Fire Chief Ormond Mesker informed us last week that in a ten day period his department answered more than 12 brush fire calls.

When the chief asks for co-operation and a marked improvement in the attention paid to the fires started by residents, most assuredly he is not asking too much.

The chief told us he was particularly concerned about children camping in the Springfield mountain area. We quote Chief Mesker: "There is no Union County Park Commission facility available in Springfield. All the mountain property here is private."

**MORE OF THE BEST!**

- Every Garment Treated With STANU at No Extra Cost. (Exclusive with us in Springfield)
- FREE Plastic Bags
- FREE 1-Hour Service
- EVERY DRY-CLEANED GARMENT GUARANTEED MOTH-PROOFED FREE!

**DETROIT**

3 min. station call from Newark after 6 P.M. 10% tax not included.

**SAVE A DOLLAR!**

Reg. 2.50 NOW 1.50

**Helena Rubinstein's Color-Tone Shampoos**  
Now in easy-to-use plastic bottles

Leave it to Helena Rubinstein to create a way of keeping your hair alive with color, immaculate and beautifully conditioned. And right now — Color-Tone, the shampoo that washes radiant young color into your hair is bubbling over with news — a big dollar savings, a new easy-to-use plastic bottle.

Choose your "custom" shade today. Each jumbo bottle gives 4 to 6 months of hair beauty. RED-HEAD adds flame to red or "borderline" hair. BLONDE-TONE sparks blonde or light brown hair with gold. BRUNETTE-TONE adds jet lights, warm shimmer. BROWN-GLOW gives red-gold glints to "plain" brown hair. SILVER-TONE silvers gray, white or platinum hair, helps correct yellow. Also on sale, Silk-Sheen Cream Shampoo for dry, brittle hair, and Silk-Sheen Cream Rinse to make all hair easy-to-manage. Both for a limited time. Plus tax.

**J.J. Newberry Co.** Morris & Mountain Avenues Springfield, N. J.

**Newberry's**

**MOTHER'S DAY IS SUNDAY, MAY 8th**

**Gifts for Mother**

**LADIES' HI Rise JAMAICAS**

SALE PRICE **327** Reg. 5.98

Novelty woven 100% cottons and woven plaids — all wash in wear.

**OPEN Mon. - Thurs. - Fri. Nites till 9**

Just Charge It! At Newberry's

**BEAUTIFUL DREAMERS IN DRIP-DRY BATISTE**

Come see our lovely buys in glamorous sleepwear of every type. Capri, pajamas, walk-gowns, baby frois, shortie sleepcoats — all in fine cotton batiste that needs little or no ironing. Pretty pastel prints. Some with pearl-embroidered collars, deep ruffles, other extras. S, M, L.

**244** Reg. 2.98

**Saturday, May 7, 9 A.M. Children's Hour at Newberry's**

**An Invitation To All Children From Newberry's**

On Saturday morning, May 7, starting at 9 A.M., a special shopping period will be set aside for children to shop for gifts for Mother.

- ★ Your gift will be gift-wrapped free!
- ★ Each child will receive a free fresh carnation to give to mother on Mother's Day!

**3-PC. TRAVEL BAG SET**

Terrific value! Wonderfully smart-looking bags in red plaid with solid black panel. 3-side zipper opening with lock. Reinforced plywood frame. Rubberized canvas cover. 18", 22" and 28" sizes.

**12.97** Reg. 14.99

**32-PC. DINNER SETS**

"Golden Spray" is American-made — yellow daisies on yellow ground are under the glaze and ovenproof! Six each: plates, cups, saucers, fruits, bread-and-butters; 1 vegetable dish, 1 meat platter. (Opens jock pattern.)

**964** Reg. 10.98

**53 Piece Set** ..... As above Reg. \$21.98 **19.77**

**Starter Set** ..... As above Reg. \$5.44 **4.77**

(These Prices During Mother's Day Week Only!)

**BRAND NEW HOOVER POLISHER**

Only **2988**

- Gives floors a hand-rubbed look without the work.
- Polishes as well as scrubs all kinds of floors. Applies the wax, too.
- Almost as easy as walking — you just guide it.

down a week

**Pole Lamps** Reg. 9.77 **777**

**DISH GARDENS**

Choose from a wide variety. All specially prepared to sell for **2.59 to \$2.98**

★ Flowering plants for Mother ... Gardenias, Azalias, Geraniums and more! ALL AT NEWBERRY'S LOW LOW PRICES!

**EASY ROLLING CHAISE LOUNGE**

**19.97** Regularly 24.98

Superbly comfortable with fine innerspring mattress, covered in red or green floral. Tubular aluminum frame, large wheels.

**OPEN MON. - THURS. - FRI. NITES UNTIL 9 P.M.**

**DREXEL Quality CLEANERS**

Free Parking Side & Rear  
230 Mountain Ave., Springfield Superior Cleaning, Shirt Laundering, Shoe Repairing.

**Bottle Hill RESTAURANT**  
117 MAIN ST., MADISON, N. J.

Under the personal direction of Chef Charles, your favorite Maître D' LUNCHEON • COCKTAILS DINNER • SUPPER Daily Noon to 1 A.M.

Private Party Facilities 10 to 150  
Frontier 7-2356 • Free Parking

Springfield Girl Scout News

NEIGHBORHOOD All the Brownies and Girl Scouts of Springfield enjoyed the annual picnic held at Moneghan Park in Cranford Saturday, April 30. Mrs. J. F. Jaboski was in charge of arrangements.

Call Drexel 6-4300 "We Service Any Oil Burner" Schaible Oil Co. 192 Mountain Avenue SPRINGFIELD coal - FUEL OIL - coke Metered Deliveries - Budget Plan - Member Springfield Chamber of Commerce

THE PLAYHOUSE ASS'N, INC. OF SUMMIT presents "INHERIT THE WIND" A Provocative Drama by Jerome Lawrence and Robert E. Lee Sat., May 14 thru Sat., May 21 (Ex. Sun.)

STORE WINTER CLOTHING at Morey La Rue. Protect your winter garments in cold, fresh, dry air of Morey La Rue's roomy storage vaults... CLOTH COATS \$1.00 (\$25 VALUE) AND SUITS... 203 MORRIS AVE. SPRINGFIELD, N. J.

Scouts themselves. The following girls have completed their Roller Skating badge: Peggy Buttram, Joan DePalma, Irene Fillippone, Judy Hoek, Mary Leone, Janet Lewicki, Regina Mazur, Jean Paglia, Barbara Porter, Jan Roughgarden, Jaane Spangler, Carole Verlangieri. The Scouts wish to thank those who transported them each week to Olympic Park so that they could earn the badge.

TROOP 739 - Leader, Mrs. J. Leonardis; assistant, Mrs. A. Cicconi. On April 22 and 23 the leaders and the entire troop were invited to an overnight stay at the bungalow of Mr. and Mrs. John Slugoski at Manasquan. The Scouts planned the program for each day, also each meal and each project. It was pleasantly warm and the girls were allowed to wade in the water for a short time (with no mishaps). Cook and Hospitality badges were completed while there.

ON-NATIONAL LIBRARY WEEK National Library Week has been much publicized during the past few days. Television, radio, periodicals and library programs have spent a great deal of time and effort to make the public aware of the many fine services the libraries of this country have to offer.

TROOPS 54 and 202 - Leaders, Mrs. Roy Hattersly, Mrs. J. Rabasca; assistant, Mrs. F. Mulligan. Thirty-two Brownies and eight mothers enjoyed a bus trip to the Bronx Zoo on April 20. The group left St. James School 9 a.m. had lunch at the zoo. After touring about they bought various souvenirs and then started for home. Others who assisted were Mrs. J. Storer, Mrs. A. G. Swan, Mrs. J. Lisa, Mrs. M. Bufo; Mrs. M. Boiv.

TROOP 273 - Leader, Mrs. L. Kameen; assistant, Mrs. G. Wicent. The Brownies made baskets from old Christmas cards. They now are working on fly-up work. Most of the Brownies will FLY UP to Girl Scouts on May 20. Service project for April was collecting cancer material and used clothing.

TROOP 747 - Leader, Mrs. P. DeVecchio; assistant, Mrs. H. Callahan. Scouts of this troop embarked Troops 755, 759, 853 and 855 many Scout leaders and parents Thursday evening, April 28 at St. James, with a half original play, "THE TERRIBLE TWELVE," written by Mrs. H. Callahan for the troop. This was part of a requirement for the Play Producer.

Jewelers Wesley Jewelers 173 Mountain Ave. JEWELRY DIAMONDS - WATCHES "Where You Can Afford Fine Quality" Budget Expense Arranged Drexel 6-6047 Member Springfield Chamber of Commerce



CONSUMMATE SALE - Larsen & Fish, Real Estate Brokers with offices in Springfield and Irvington consummated the sale of 51 Battle Avenue, Springfield for Mrs. Elizabeth Sorge to Mr. and Mrs. Thomas Caffrey. Mr. Caffrey is associated with Atlantic Refining Co. of Newark.

Visit Your Library

County of Union libraries range all the way from the fine large library in Elizabeth to two towns that have nothing at all. Likewise, it is true that Americans taking libraries for granted miss the service only when some item is badly needed. Public libraries are a unique American institution where the concerted efforts and co-operation of a whole community make it possible to have more books than one person could own.

European countries, with the possible exceptions of England and Russia, are more likely to depend on citizens buying their own books. That the United States leads in the library field should make all Americans proud.

Library Here Co-operates As usual the Free Public Library of Springfield was happy to take part in any effort to promote books and reading. The slogan for the week was "Waks Up and Read." Display windows in the Geljack Jewelers, Centre Sandwich Shop and The Springfield Sun were loaned for posters and displays of books.

The meeting was given over to activities that take place in a regular weekly meeting with the leaders becoming the Scouts and Brownies. Next meeting will be at the home of Mrs. L. Kameen, 34 Redwood Road, Springfield, Tuesday, May 24, at 8:15 p.m.

SERVICE PROJECTS FOR THE MONTH were: Leaders, Mrs. J. Rabasca - Made 56 party favors. Brownie Mary Elaine Keller supplied the decorations and the entire troop helped to cut them out and paste them on the favors. BROWNIE TROOP 202 Leaders, Mrs. J. Rabasca - Made 11 bunny rabbits from socks. GIRL SCOUT TROOP 740 Leaders, Mrs. R. Planer - Made 19 stuffed animals and toys. GIRL SCOUT TROOP 882 Leaders, Mrs. J. Carroll - Made ten place mats plus many linen books.

Local Electronics Firm Sets Up New Organization

In a move to decentralize operations and to assign responsibilities at divisional and departmental levels, Mid-Eastern Electronics, Inc. has completed a companywide organization, according to William W. Hartz, president of the electronics development firm. Hartz announced the organizational structure to a group of Mid-Eastern's sales representatives at a meeting in the company's plant in the industrial park section of Springfield.

Responsibility for marketing is assigned to Lawrence C. Oakley, who is a vice-president of the company. Reporting to Oakley are sales, advertising, public relations, sales promotion, export administration. Guntier A. Bielefeld, sales manager, supervises the activities of Mid-Eastern's nationwide network of sales representatives. Hartz in addition to his administrative job is also director of engineering, responsible for production, engineering, inspection, assembly, machine shop and the high resistance calibration laboratory. Plant manager is Raymond N. Flensburg, one of the original members of the company.

Books on Printing on View This year a facsimile edition of the "Gutenberg Bible" has been published. The original has been called "The greatest book in the world" by A. Edward Newton. When this great work was printed, the aim was to reproduce hand lettering. Never again has such fine paper or parchment, or such fine black ink been used. Of course the facsimile cannot reproduce these outstanding features, so that everyone should see the original if possible.

A simple page taken from the facsimile edition has been placed on display in the main hallway of Springfield Public Library. This copy shows how fine illumination was added by hand. With the page are a number of books on printing, on designing alphabets and on illustrations.

The one which gives the best account of the Gutenberg Bible and early printing is "The Book of the Story of Printing and Bookmaking" by Douglas C. McMurtrie. This has sample copies of other pages.

This will give the people of Springfield an idea of the appearance of our first and greatest printed book.

ATTENDING CONFERENCE New Jersey Library Association is holding its Spring conference in Atlantic City May 5 to 7. Mrs. Joseph Manuel and Miss

Books on Printing on View

Books on Printing on View This year a facsimile edition of the "Gutenberg Bible" has been published. The original has been called "The greatest book in the world" by A. Edward Newton. When this great work was printed, the aim was to reproduce hand lettering. Never again has such fine paper or parchment, or such fine black ink been used. Of course the facsimile cannot reproduce these outstanding features, so that everyone should see the original if possible.

ATTENDING CONFERENCE New Jersey Library Association is holding its Spring conference in Atlantic City May 5 to 7. Mrs. Joseph Manuel and Miss

ATTENDING CONFERENCE New Jersey Library Association is holding its Spring conference in Atlantic City May 5 to 7. Mrs. Joseph Manuel and Miss

ATTENDING CONFERENCE New Jersey Library Association is holding its Spring conference in Atlantic City May 5 to 7. Mrs. Joseph Manuel and Miss

ATTENDING CONFERENCE New Jersey Library Association is holding its Spring conference in Atlantic City May 5 to 7. Mrs. Joseph Manuel and Miss

ATTENDING CONFERENCE New Jersey Library Association is holding its Spring conference in Atlantic City May 5 to 7. Mrs. Joseph Manuel and Miss

ATTENDING CONFERENCE New Jersey Library Association is holding its Spring conference in Atlantic City May 5 to 7. Mrs. Joseph Manuel and Miss

Engineering, new product development, packaging design and the quality control group.

Chief mechanical engineer is Charles W. Bing, who joined Mid-Eastern in 1958. In the development laboratory are Daniel H. Ellenbeck, head of the high resistance calibration laboratory and William Reynolds, head of the special power supply manufacturing department.

One out of every seven households in the United States now consists of persons either living alone or with others who are not related to them, according to figures compiled by the U.S. Bureau of the Census.

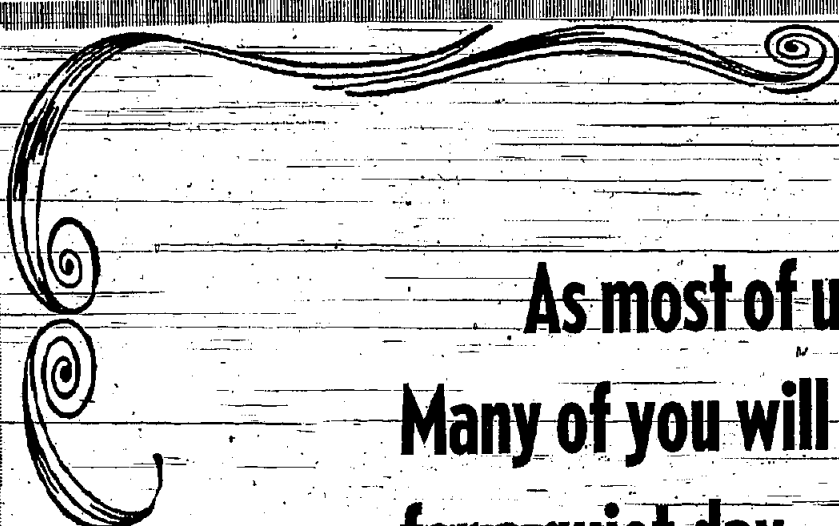
IRENE'S GARDENS 32 SPRINGFIELD AVE., SPRINGFIELD (7 Bridges Road) DR 9-4144 A SPECIAL Sale for a SPECIAL DAY (Mother's Day)

English Boxwood Pink Almond Bushes Miniature Roses French Lilacs Dutch Liliom Bulbs (4-colors) Field Grown Azaleas Rose Food Upright Yews Plant Food Spreading Junipers Golden Bintas Blota Globes

for the finest selection of Azaleas Perennials Evergreens Flowering Shrubs Pot-Grown Roses FORBES GARDEN CENTERS Route 10, Hanover, N. J. Morris Turnpike, Millburn, N. J. Tucker 7-0375 Drexel 9-4430 Both Open: 8:30 a.m. to 8:30 p.m. daily 8:30 a.m. to 5:30 p.m. Sundays

Don't let NEGLECT (SUN, DUST, HEAT) destroy your precious draperies! Stempler's SUPERIOR VALET SERVICE Drapery Cleaning Restores Beauty & Prolongs Fabric Life of Even the Most Fragile Fabrics! OUR DECORATOR-RECOMMENDED SERVICE INCLUDES: REMOVING, CLEANING, PRESSING, STORING, & RE-HANGING 48-hr. Service if Desired Call WA 3-0918 Drapery Cleaning Specialists for 50 Years 935 Bergen St., Newark Prompt Service Anywhere in N.J. for Homes, Offices, Hotels, Motels, Restaurants, Institutions. FREE PICK UP & DELIVERY.

FINEST DECORATIVE FABRIC "SECONDS" COMPLETE "DO IT YOURSELF" DEPARTMENT OR WE HAVE LISTS OF FINE WORKSHOPS To do YOUR WORK For you - REASONABLY! PRICE? LOW LOW LOW!! YOU CAN BUY YARDS FOR THE PRICE OF A YARD AT FAMOUS CALICO CORNERS ON ROUTE 10 HANOVER N.J. EXPERIENCED COLOR COORDINATORS TO SERVE YOU - AND HAPPY TO "ON APPROVAL" FAMOUS



As most of us know by now, this coming Sunday is set aside for **MOTHER!** Many of you will be going out for dinner, or gathering at the family's house for a quiet day. And, it has become a custom over the years, to pay tribute with some manner of gift, or remembrance.

It has also become a custom at this time of year for Mother, "Queen of the Roost", to wear herself to a fine frazzle in the efforts of Spring Cleaning, Spring Clothes - Problems, Spring This, That, and The Other Thing . . . all of this, **JUST** in time for her quiet day.


In lieu of these two problems overlapping, Mother's **DAY** and Mother's **WORK**, we've made a special effort this week to help solve both of them.

For instance, Woolworth's special for the week would hardly be appropriate wrapped as a loving gift **BUT**, you, as the housewife, will delight in his ad. The same holds true for Echo Cleaners . . . can't wrap him up either. But just check his ad this week.

On the other hand, Miles Shoes are helping you select (or suggest to your husband) a lovely purchase for Mother. And again, in Sav-On Drug's ad, you have the combination . . . for Mother . . . for you!

So you see, we may be new to your area, but not to your needs. See you soon, and don't forget, **ECHO MEANS SAVINGS!** (And have a happy day, Mom!)

# **ECHO PLAZA**



Located at the Intersection of Rt. 22 and Mountain Ave. in Springfield

# Mother and Echo go hand in hand

## WOOLWORTH'S

TOP QUALITY AND VALUE SINCE 1879

TAKE ADVANTAGE  
OF THIS 1-TIME OFFER  
NOW! ECHO STORE ONLY!

Para-  
Nuggets  
and  
Crystals

1 lb. can 19¢  
reg. 49¢  
5-lb. can 69¢  
reg. 1.49

MOTH  
BALLS  
and  
FLAKES

ONE POUND BOX  
reg. 29¢

10¢



You'll be sure to find  
just the right gift for  
Mother here, and don't  
forget our wide variety  
of cards from 5c to 1.00

## WOOLWORTH'S

TOP QUALITY AND VALUE SINCE 1879

## SPRING Liquors

Featuring the Finest in

Liquors  
Wines

&  
COLD BEER



ICE  
CUBES

FREE  
DELIVERY

DR 9-4992

## STOP for FREE Proofing Moth-

STOP



Box Storage \$3.00

Cloth Coat Storage \$1.50

**MOTHS!**  
**ECHO CLEANERS**

Phone  
DR 9-4489  
FOR INFORMATION

all work  
done on  
pre-folds

## E-CON-O-WASH

So Safe - So Easy - So Economical

9 lbs. 15¢ - 20 lbs. 25¢ DRYING 10¢ - 10 Min.

OPEN 9 A.M. - 6 P.M. SUNDAYS

## Mother's Favorite Acme Since 1891

Lancaster Brand

Rib Roast

Oven Ready lb. 69¢

Lancaster Brand

Chuck Roast

Bone In lb. 43¢

Lancaster Brand

Arm Pot Roast

lb. 53¢

Cross Cut Roast 79¢ Ground Chuck 69¢ Bacon Lancaster Brand 1/2 lb. pkg. 33¢ 1 lb. pkg. 65¢



Jack Frost or Domino Granulated

Sugar 5 lb. bag 47¢

Mueller's Thin

Spaghetti 2 16 oz. pkgs. 37¢

Ideal Tomato

Soup 11 10 1/2 oz. cans 1.00

Hudson Colored Toilet

Tissue 4 rolls 45¢

Scott White or Colors

Towels 2 rolls of 180 35¢

### Italian Food Festival

Progresso Imported

Tomatoes 35 oz. can 35¢

Progresso Imported Tomato

Paste 3 7 oz. cans 39¢

Progresso

Olive Oil gallon 2.89

Ideal Tomato

Juice 3 46 oz. cans 69¢

### Acme Produce Specials

BANANAS

Golden Ripe 2 lbs. 19¢

Florida Corn 5 ears 29¢

### Frosted Foods

Birds Eye Peas 5c Coupon In Package Towards Next Purchase of Peas 6 16-oz. pkgs. 1.00

Birds Eye French Fries 6 9-oz. pkgs. 1.00

Birds Eye Cut or French Style Green Beans 2 9-oz. pkgs. 39¢

Ideal Waffles 2 5-oz. pkgs. 25¢

Lancaster Brand - Beef, Chicken, Turkey Pot Pies 5 8-oz. pkgs. 1.00

Welch Grape Juice 3 6-oz. cans 49¢

Cod Fillet 6 25¢

### Bakery Department

Virginia Lee Lemon Pie each 49¢

Virginia Lee Danish Pecan Ring each 49¢

Mother's Day Layer Cake each 99¢

All advertised prices effective thru Saturday, May 7th.

Embraceable with Kiltie trim. \$2.99

"East West" bag white-on-white design. \$2.99

Mother's Day Feature

GIFT BAGS!  
SLIPPERS!

\$2.99

Shirred leather pouch white, bone. \$2.99

Your Choice

Flowers under vinyl linen background. \$2.99

**Miles**

SHOWN ABOVE:

1. Flat walking shoe-slipper
2. Black rayon satin flat, contrast cuffs \$2.99
3. Open-toe scuff flat, gold trim \$2.99

Route 22 and Mountain Avenue, SPRINGFIELD, N. J.  
Greve St. and Route 22, PLAINFIELD  
370-390 South Ave., WESTFIELD

BLUE STAR SHOPPING CENTER  
ROUTE 22, BONNIE BURN RD.,  
WATCHUNG

1252 Springfield Avenue, NEW PROVIDENCE, N. J.  
512 Park Ave., SCOTCH PLAINS  
252 E.F. rent St., PLAINFIELD

**16-CUP PARTY SIZE Aluminum Percolator**

- Barbeques
- Picnics
- Family Gatherings

**1.79**  
Why Pay 2.79

LET US FILL YOUR PRESCRIPTIONS

# SAV-ON DRUGS

WE GIVE S&H GREEN STAMPS  
SERVE SELF - SAVE

Right Reserved to Limit Quantities

**OPEN SUNDAYS** **ECHO SHOPPING PLAZA** **OPEN SUNDAYS**  
MOUNTAIN AVE. & RT. 22  
SPRINGFIELD, N. J.

**GOOD IDEA Take Mom's Picture!**

Reg. 88¢ **DURA FLASH** PRESS FLASH 5  
Kodacolor **Kodacolor** List \$1.25  
**KODACOLOR FILM BUY!**  
Choice of 120, 127 or 620. Special! **88¢**

**Pack of EIGHT FLASH BULBS**  
Dura-Flash No. 5. 59¢  
American Made.

**Photo Finishing**  
**JUMBO PRINTS** 49¢  
Any 8-exp. roll. Only.  
**PRECISION BUILT REG. 1.00 Cigarettes 79¢**  
**LIGHTERS** **ALL COLOR FILM**

**MOTHER'S DAY GIFTS** Sunday, May 8 is HER DAY!

Reg. 2.00 Value  
**BREATHLESS MIST**  
6-oz.  
Light, Gay Summer Fragrance  
**89¢**

Reg. 2.00 Value  
**Holmspray ATOMIZER**  
Pumper Bulb Type  
Useful Gift  
**98¢**

**MOTHER'S DAY Greeting CARDS**  
Wide variety by American Greetings... **5¢ to 35¢**

**Window Screens**  
Adjustable  
Early Installed  
Long-Lasting  
Safe  
**88¢**

1 1/2 oz. **COMPLIMENTARY SEA BREEZE ANTISEPTIC**  
**FREE WITH ANY PURCHASE**

Full Gallon **JOHNSON'S WAX**  
**HARD-GLOSS GLO-COAT** \$1.79

**PICKET FENCE**  
3-Ft. Lengths  
Regular 49¢  
**3 FOR 89¢**

**COTY'S MUGUET DUSTING POWDER & TOILET WATER** 2.50  
COMPLETE ASSORTMENT OF **MOTHER'S DAY WREATHS and SPRAYS**

**Evening In Paris Cologne** \$1.50  
& **FREE PURSE PERFUME** \$1.00  
Both Only..

Reg. 31c  
300 Square Inches **ALUMINUM FOIL**  
ON SALE **19¢**

**OPEN EVENINGS 10 P. M. SATURDAY 9 P. M.**  
**SUNDAY ONLY! PINT ICE CREAM 10¢**

**FRIDAY ONLY! SALE**  
REG. 39¢  
**Mr. Clean ON SALE**  
GIANT SIZE **23¢**  
REG. 63¢

**GIANT SIZE FAB**  
REG. 77¢ **59¢**  
REG. SIZE **FAB 27¢**

**TOILET TISSUE**  
Reg. 10c  
**3 FOR 19¢**

**TERRIFIC VALUE LAWN CHAIRS**  
5.95 Value **BUY NOW \$3.49**

- STURDY FRAME
- DURABLE
- STRONG CROSS-WEB WEAVING
- STYLED RIGHT

Reg. 1.00  
**FLOOR & RUG PROTECTOR**  
Durable Plastic Unbelievable Value Limited Quantities  
**49¢**

**SUPER SAVINGS!**  
**FREE FREE**  
1.00 Value  
10 lb. bag of **Charcoal** with each **GRILL**  
Reg. 12.95 **\$6.49**

200 **LUNCHEON PAPER NAPKINS**  
SAVE 20¢ **19¢**

100 9 INCH **PARTY PAPER PLATES**  
SAVE 33¢ **89¢**  
48-9 Ounce **Hot Drink CUPS**  
SAVE 33¢ **79¢**

50-FT. **HOSE**  
Tough Vinyl  
Standard Fittings  
Economical  
**1.19**

1.20 Value **NYLON HAIR NETS**  
With Beanie **29¢**  
1.00 Value **NEW! WOODBURY CURL HOLDING SHAMPOO**  
**55¢**

**WOODEN CUTLERY TRAYS**  
Reg. 1.39 **NOW 69¢**

**1/2 PRICE SALE!**  
**ETIQUET PINK DEODORANTS**  
stop odor - check perspiration instantly!  
GIANT 984 SIZE **49¢**  
NOW

REG. 4.49  
**ROLL FENCE**  
20 FT. LONG  
Protects and Beautifies Gardens, Lawns, Shrubs, Trees.  
**3.19**

REG. 59¢ **RUBBER GLOVES**  
ON SALE **29¢**

**CHAISE LOUNGE**  
STURDY  
STRONG  
ECONOMICAL  
**BUY NOW SAVE 9.97**  
PLUS S&H GREEN-STAMPS

**Price Sale!**  
Your Guardian Angel  
**TUSSY DEODORANTS**  
Cream - Stick - Roll-on  
Reg. \$1.00 **NOW 50¢**  
plus tax

REG. \$1.00 **BRUSH AND COMB SET**  
**69¢**

12-ounce **PENNY Shoe Shine**  
Acrosol. Shines in 10 seconds.  
**69¢**

Reg. 19¢ Each  
Skirt or Pants **HANGERS**  
**3 FOR 21¢**

**SPRINKLER**  
1.49 Value  
Covers a Wide Area  
**79¢**

REG. 49¢ **GIANT NESTLES BAR**  
**39¢**

**MARCAL GARBAGE BAGS**  
**2 FOR 41¢**

## Merchants

(Continued from Page 1)  
 greater hazard than ever because of the increased traffic in Morris avenue and removal of

the rails plus the widening of the roadway and the chance of putting all electric wiring underground make this very important to the future of business in Springfield. I am very much in favor and I believe all merchants will be."

**Others Boost Idea**  
 "Jim" Funcheon, who with Les Shulman own the Springfield Market, one of the Township's few remaining neighborhood markets, is another booster for the proposed project.

"We discussed the very same idea many years ago," said Funcheon, "but it never got further than the talking stage. I think this time Mayor Bonadies, and his Township colleagues are proceeding in the

proper direction.  
 "They have gotten to the No. 1 man, State Highway Commissioner Palmer. When he gives the word, things will begin to move. I think it will help business in Morris avenue and all of us are ready to do what we can to expedite the matter."  
 Sol Bretler, owner of Morris Avenue's department store, one of the Town's pioneer businessmen, agrees that widening Morris avenue would make Springfield one of the finest shopping thoroughfares in this area.

"We have been in business here for about 24 years," said Mr. Bretler, "and increasing traffic and restricted parking hasn't helped business. However, with the widening of Morris

avenue which will add another lane and, at the same time, remove those terrible exposed trolley tracks, we could make this very attractive to shoppers.  
 "Others who approve of the widening of Morris avenue by cutting off four feet of the sidewalk on each side of the street are Enrie Nagel, one of Morris avenue's long time and most successful business men; John Colantone, owner of the shoe store bearing his name and one of the real business pioneers in Springfield; Herman Kravis, proprietor of the Springfield Wine and Liquor Store, another old timer as a Morris avenue business man; and Ed Conley, a real estate operator with Morris avenue offices who has watched this part of Morris Avenue struggle for years

against increasing traffic.  
 "All of these said they saw improved business with the widening of Morris avenue and the covering up of the tracks. Mayor Bonadies and the Township Committee will discuss various details of the project but there doesn't appear to be any area of disagreement among the five members of the governing body as to the need. Springfield merchants want Morris avenue widened and the exposed tracks removed."

## Miss H. Smith

(Continued from Page 1)  
 ting the "Gay Nineties" era and proved that there is hidden talent among the PTA members.  
 The attendance banner was won by Mrs. Mary Edna Sander's First Grade. Refreshments were served by the hospitality committee.  
 Union County Council of Parent-Teacher Associations will hold its Spring meeting in the auditorium of Westfield High School, Westfield, today, Thursday, May 5, at 8 p.m.

This program is designed to inform and educate parents and teachers about the importance of planning ahead for Union County and its rapidly growing population. Moderator will be Dr. Eugene G. Wilkins, president of Newark State Teachers College.

## Skin Divers Find Body Of Pa. Man

Skin-diving as a hobby has developed by leaps and bounds in the last few years with diving clubs and underwater spear fishing groups established all over the country.  
 But even a hobby can turn into grim business. George Siessel of 93 Henshaw Avenue, a patrolman on the Springfield Police force; Bob Conklin, a Springfield nurseryman and Richard Glenn, a policeman from Chatham decided to do some diving at Stewartsville Quarry in Washington, N.J. last Wednesday.  
 The Washington State Police Barracks had found an abandoned car close to the water's edge and suspected that there might be a body in the water. They were unsuccessful in their attempts to locate a body.  
 Siessel and his skin-diving companions recovered the body of a man identified as Albert Hlavaty, 38 of Harrisburg, Pennsylvania. According to the police, the man had been missing since April 20. They listed the drowning as a suicide.  
 The divers went to a depth of 60 feet in 41 degree water to recover the body.

death by her husband, thirty years ago. She came here from Sarasota, Fla. She was a member of Wallace Chapel A.M.E. Zion Church and the Faithful-Few Club of Springfield.  
 She is survived by two sisters—Mrs. Rose Scott, with whom she had lived, and Mrs. Gertrude Harris, of Sarasota.

**GEORGE G. OLAH**  
 Services for the late George G. Olah, who died at his home, 9 Crescent Road, Springfield, Friday, April 29, following a heart attack, were held Monday afternoon, May 2, at Smith and Suburban Funeral Home in Springfield. The Rev. Bruce Evans of First Presbyterian Church of Springfield officiated and burial was made in Hollywood Memorial Park Union.

The late Mr. Olah, who was 63 years old, had operated Olah Tool & Die Co. at 52 Brown Avenue, Springfield, about nine years, although he had pursued his trade of die maker many years prior to establishing the firm.  
 Born in Austria and brought to this country when he was eight years old, Mr. Olah had lived in Newark before coming to Springfield 34 years ago. He was a member of the Woodmen of The World.  
 Surviving is his wife, Mrs. Marjorie Smith Olah, to whom he had been married 42 years.

Every Mother is a Queen



AND WE'VE A GIFT FOR EVERY MOTHER AT SUPER SPECIAL PRICES!

THURSDAY, FRIDAY & SATURDAY ONLY!  
 ESPECIALLY FOR MOTHER...  
**RCA VICTOR**  
 "LIVING COLOR" TV



RCA Victor presents the finest television ever built.

Imagine Color TV in your home! All the big color shows—day after day—and your family will see them the way they should be seen—in color! Dependable. Color TV makes a world of difference in the world of entertainment.

**REGINA ELECTRIC BROOM** 27.95  
**BISELL ELECTRIC BROOM** 24.95  
**SHETLAND ELECTRIC BROOM** 26.95  
**18 QT. DELUXE SKOTCH KOOLER** 5.98  
**ELECTRIC HAND MIXERS** 11.22  
**ELECTRIC KNIFE SHARPENER** 7.57  
**BISELL CARPET SWEEPER** 5.97  
**DETECTO SCALES** 5.88

Your Old TV Set May Be Worth More Than You Think and Cover Your Down-payment! Two Years To Pay!

**PHILCO GAS DRYER** 139.00  
**HOT POINT AUTOMATIC WASHER** 149.00  
**HOT POINT Dishwasher** 139.00  
**AIR-CONDITIONER** 169.00  
**HAMILTON OUTDOOR GRILLS** 4.79  
**Magnavox Transistor RADIO** 29.95  
**4 QT. PRESTO PRESSURE COOKER** 9.87  
**2 Speed All Chrome WARING BLENDDOR** 26.73  
**Style Queen ELECTRIC HAIR DRYER** 5.67  
**UNIVERSAL 8 Cup COFFEE MAKER** 12.97  
**20" Electrical, Reversible PORTABLE WINDOW FANS** 29.97  
**2 Slice Automatic TOASTMASTER TOASTER** 16.74  
**GE 10 Cup Automatic COFFEE MAKER** 12.87  
**G. E. Sandwich GRILL WAFFLE BAKER** 18.63  
**Transistor RADIO CASES** 49c  
**4 Slice Mary Praetor TOASTER** 15.47  
**Guaranteed 5 Years**  
**Reg. 23.95**

**RADIO SALES CORP.**  
 (See the Marks Bros.)  
 327 MILLBURN AVE., MILLBURN DR 9-4200  
 Millburn Store Open Every Evening Except Saturday Till 9 P.M.  
 Summit Store Open Mon. - Wed. - Friday Nights Until 9 P.M.  
 PARKING IN THE REAR OF BOTH STORES  
 47-51 MAPLE ST., SUMMIT CR 3-6800

## It Happens

(Continued from Page 1)  
 Community League.  
**SUNDAY, MAY 8 MOTHER'S DAY.**  
 Groundbreaking: Community Free Church, Shunpike Road, Springfield, 8:30 p.m.  
 Municipal Court—Town Hall, MONDAY, MAY 8 8 p.m.  
 Meeting: Township Committee; Town Hall, 8 p.m.  
 Tuesday, May 10  
 Meeting: Rotary Club; Baltusrol Golf Club; 12:15 p.m.  
 Luncheon—Card-Party: Altman's, Short Hills; 12:30 p.m.  
 Sponsored by Altar Society of St. James Church  
 Meeting: Springfield B'nai B'rith Lodge; Temple Beth Ahm, Baltusrol Way, Springfield; 8:30 p.m. Election—Buffet supper. Open to guests.  
 Dressmaking Class (Intermediate): Presbyterian Church Parish House, 37 Main St., Springfield; 10 a.m. - 3 p.m. Also May 17, 24, 31, June 7.

**THE SCHOOL OF LANGUAGES**  
 Unique Method  
 Children Adults  
 Tutoring Also  
 Specialist Teacher in Each Language  
 Courses designed to suit your needs.  
**CR 7-2255**  
 Summit, N. J.  
 P.O. Box 342

Protect and Beautify Your Blacktop Drive with **KOPPERS PAVEMENT SEALER**

- Seals, protects asphalt
- Prevents crumbling, deterioration
- Dries fast—no delay
- Excludes moisture penetration, cracking
- Prevents "sticky" spots from oil drip
- Handsome, clean black finish
- Improves appearance—and value—of your home
- and, it's surprisingly inexpensive!

**WOOLLEY FUEL COMPANY**  
 MAPLEWOOD, N. J. So. Orange 2-7400

Happy Mother's Day To All Moms!  
 to show our good wishes to all of you Moms, we're giving a FREE CARNATION to each of you we see before Sunday.

JUST A LITTLE REMEMBRANCE FROM "THE HOUSE OF QUALITY" WHERE YOU FIND THE USUALLY GOOD QUALITY MEATS

**NAGEL'S PORK STORE**  
 230 MORRIS AVE., SPRINGFIELD DR 6-1926

## Conte's Wins In Bowling; Burdett, Coburn Tops In Averages; Other Figures

Springfield Sports Bowling League concluded its season Wednesday, April 20, with 18 bowlers rolling games of 200 or better. Conte's Delicatessen, long in possession of first place, finished on top of the heap, with Drexel Cleaners in the runner-up position.  
 P. B. A. captured the high team three game series mark with 2942 and Highland Metal set the high team—single game record, rolling 1069. Pasquale took the high individual three-game series crown by hitting the pins for a total of 688; while Mark Conte had the high single game score, a neat perfect 278.  
 Burdett led the league with a 182.87 average and Coburn was a mere .08 of a pin behind with a 182.59. Tompkins had 180.12 to round out the 180 score.

**FINAL STANDINGS**  
 1. Conte's Delicatessen  
 2. Drexel Cleaners  
 3. Milton's Liqueurs  
 4. Highland Metal  
 5. Sam's Service  
 6. P. B. A.  
 7. Bond Electronics  
 8. Colantone Shoes

## Women Entertain Disabled Soldiers

A party was held at the Menlo Park Home for Disabled Soldiers in Metuchen Wednesday evening, April 27 by Springfield B'nai B'rith Women. The men played bingo and partook of refreshments.  
 Mrs. Joseph Zuckerman, philanthropy chairman for the B'nai B'rith unit, presented to the hospital an almanac which had been made by members. Serving veterans hospitals is an important part of B'nai B'rith work.  
 In charge of the party for the women were Mrs. David Weinstein, chairman; Mrs. Joseph Segal, Mrs. Jack Zegar, Mrs. Edward Hollander, Mrs. Harold Spiegel, Mrs. Bernard Chodoff, all of Springfield.

## DEATHS

**MRS. RUTH PEAK**  
 The Rev. Lemuel Turner, of Wallace Chapel A.M.E. Zion Church in Summit, officiated Monday afternoon, May 2, at funeral services for Mrs. Ruth Peak, of "Divina" Street, Springfield, who died Friday, April 29, at home after a brief illness. Interment followed in Fairview Cemetery, Westfield. Mrs. Peak was preceded in

FOR THE FINEST IN EYEWEAR  
 Laboratory on Premises  
**ANDREW KOVACS OPTICIAN**  
 327 MILLBURN AVE., MILLBURN Near Theatre DR 9-4134

THE NEW MIRACLE LATEX HOUSE PAINT WITH "feather-light" BRUSHABILITY!  
**ZUMINALL ACRYLPOLYRENE HOUSE PAINT**  
 • Dries Real Fast!  
 • Paints Damp Surfaces!  
 • No Clean Up Fuss!

Easiest brushing house paint for all exteriors! Dries in less than an hour. Lovely satiny finish—has "weather" wear protection built-in. New formula lets you paint damp, dewy surfaces. Colors stay sparkling clean and bright. Brushes wash clean in soapy water. No solvents or thinners needed. It's nonflammable!

Far Few Wads—No Run.  
 "The Miracle" Zuminall Acrylpolyrene House Paint.  
 reg. \$6.75  
 58.55 \$6 gal.

**Hockenjos** SINCE 1861  
 Fine Wallpapers and Paints  
 We stock MARINE PAINTS—SWIMMING POOL PAINTS  
 387 Millburn Ave., Millburn DR 6-5400

thrill Mother with flowers

SEE OUR HUGE SELECTION OF POTTED PLANTS... ALL VARIETIES... STUNNING COLORS... ALL PRICE RANGES.

Hardy Azaleas In Bud & Bloom  
**\$1.95** and up

WE ARE NOW SHOWING A Complete Line Of  
**ANNUALS and PERENNIALS**

**BRECK'S HOME AND GARDEN CENTER**  
 Route 24 (Morris Turnpike) Millburn, N. J.  
 OPEN DAILY 9 to 6 Ample FREE PARKING



Movie Time Table

SUMMIT
STRAND
MILLBURN
UNION

THE BRAMBLE BUSH
THE LAST VOYAGE
THE PRINCE AND THE PAUPER
THE JUNGLE

Advertisement for 'Mother's Day Dinner at Chaudhry!' featuring a portrait of a woman and the phone number DR6-2222 or SQ2-4656.

Advertisement for 'WINDJAMMER in CINEMARAC' at the New Bellevue Theatre.

Advertisement for 'UNION THEATRE' listing various plays and showtimes.

Advertisement for 'Rialto Theater' listing plays like 'The Bramble Bush' and 'Those Angry Hills'.

Advertisement for 'MILLBURN THEATRE' listing plays like 'The Red Balloon' and 'The Last Voyage'.

Advertisement for 'THE MEADOWBROOK DINNERS' listing a 2-hour Broadway musical comedy.

Advertisement for 'Kismet' musical comedy, featuring a full course dinner and dancing for \$4.75.

Advertisement for 'Trotola's RESTAURANT and COCKTAIL LOUNGE' featuring Italian-American cuisine.

Advertisement for '5 POINTS UNION, N. J.' for reservations and showtimes.

Advertisement for 'STRAND' at 447 Springfield Ave., Summit, N. J.

Advertisement for 'YUL BRYNNER and KAY KENDALL' in the play 'Once More, With Feeling'.

Advertisement for 'Heller in Pink Tights' featuring Loren Quinn and Margaret O'Brien.

Advertisement for 'TARZAN FINDS FORGOTTEN WORLDS OF ADVENTURE!' featuring Tarzan the Ape Man.

Advertisement for 'JERRY LEWIS' performing 'Surging Down to Earth' in 'Visit to a Small Planet'.

Advertisement for 'RAPPAPORT SPRING DRUG' listing various services and products.

Advertisement for 'NEWARK LOEW'S' listing showtimes for various films.

Advertisement for 'THE COMMUNITY' at the Walter Reade Theatre.

Advertisement for 'The Twigs COCKTAIL LOUNGE' featuring dancing nightly.

Advertisement for 'RKO PROCTORS' featuring the play 'Wake Me When It's Over'.

THE PARK HOTEL PLAINFIELD
RECEPTIONS • PARTIES • BANQUETS

Advertisement for 'GRUNING'S FINE... ANYTIME' listing lunch and dinner options.

Advertisement for 'GRUNING'S' at 780 Morris Turnpike, Millburn.

Advertisement for 'MOTHER IS OUR QUEEN!' at Terry Dempsey's.

Advertisement for 'The TOWER Inn STEAK HOUSE' at Route 22, Mountainside.

Advertisement for 'durante's Family Restaurant' listing various food items and services.

Advertisement for 'durante's BLUE STAR SHOPPING CENTER' listing dining options.

Watching Weeklies BUSINESS DIRECTORY

Advertisement for 'SPERCO MOTOR CO.' listing Cadillac sales and services.

Advertisement for 'NAGEL'S' listing specialty homemade products.

Advertisement for 'PARK DRUGS' listing prescription and surgical services.

Advertisement for 'RAPPAPORT SPRING DRUG' listing various services and products.

Advertisement for 'RAPPAPORT SPRING DRUG' listing various services and products.

Advertisement for 'ROLAND DRUGS' listing various pharmaceuticals.

Advertisement for 'ELECTRICAL CONTRACTOR' listing electrical work services.

Advertisement for 'FLOOR COVERING' listing carpet and linoleum services.

Advertisement for 'Center Carpet' listing carpet and linoleum services.

Advertisement for 'FUEL OIL - COAL' listing installation and servicing.

Advertisement for 'STEPHENS-MILLER CO.' listing fuel oil and coal services.

Advertisement for 'GARDEN SUPPLIES' listing lawn care and garden equipment.

Advertisement for 'HOME IMPROVEMENTS' listing various home services.

Advertisement for 'RECOVER YOUR OLD KITCHEN SET' listing kitchen set restoration.

Advertisement for 'Exterior Painting' listing house painting services.

Advertisement for 'SANTACROSS REAL ESTATE' listing real estate services.

Advertisement for 'CARDINAL GARDEN CENTER' listing garden services.

Advertisement for 'BUNNELL BROS.' listing plumbing and heating services.

Advertisement for 'Plumbing & Heating Contractor' listing various services.

Advertisement for 'RESTAURANTS' listing dining options.

Advertisement for 'EHRHARDT Electronics' listing television specialists.

Advertisement for 'SHOE HOSPITAL' listing shoe repair services.

Advertisement for 'TV-RADIO SERVICE' listing television and radio services.

Advertisement for 'ROSS - SUPREME RADIO & TV SERVICE' listing radio and TV services.

Advertisement for 'ACADEMY T.V. SERVICE' listing television and radio services.

Advertisement for 'EHRHARDT Electronics' listing television specialists.

Advertisement for 'SAME DAY SERVICE' listing various services.

Advertisement for 'OTTO'S TV SERVICE' listing television services.

Advertisement for 'TAVERNS' listing dining and entertainment options.

Advertisement for 'Old Evergreen Lodge' listing dining and entertainment options.

# Action Is Imminent On Naming Runnells Head

Action is expected this week on the appointment of a new director at the John E. Runnells Hospital, Berkeley Heights.

The board of managers of the hospital has screened three applicants for the post and appears ready to act. The job pays \$13,000 a year plus a \$3,000 annual expense account.

Dr. Eugene Nargiello, acting medical director and chief of staff at the hospital, is one of the men being considered for the post. Others are Dr. John L. Wilson, medical director of

the U. S. Public Health Service Hospital in New Orleans and Dr. David Biber of Union, an internist with a specialty in chest diseases who is a part-time consultant at Runnells.

### Down To Three

A large number of applicants was processed before the list was narrowed to three men. The new medical director will have to fill the large shoes of Dr. John E. Runnells, who headed the institution for 48 years before he was "retired."

In other hospital news, H. Frank Pettit, Westfield attorney and former Democratic candidate for Freeholder and the House of Representatives, has been named to the board of managers.

He will fill the unexpired term of Howard Cox of Westfield, who resigned.

A native of Newark, he attended grammar school in Westfield and was graduated from Merchantville High School. He holds degrees from Swarthmore College and John Marshall College of Law in Jersey City.

Pettit served as a research clerk in the law office of A. Harry Jorse, then a U. S. Senator, in Jersey City following his graduation.

He practices law at 235 E. Broad Street, Westfield. He is the former chairman of the Democratic municipal committee in Westfield.



**SCIENCE SHOW**—The Springfield Walton P.T.A. children. Pictured are (left) Miss Rita Beirne, co-sponsor of the D. C. Heath Book Co. Daniel R. Murray, Walton principal and Mrs. William Franklin, Walton School P.T.A. President. (Mickey Fox photo)

**Be Smart Store Now!**  
**Dry Cold-Fur Storage**  
 The Safest • The Finest  
**DIAL CR 3-1257**  
 For Bonded Messenger  
**Summit Branch**  
**MORRISTOWN**  
**FURRIERS**  
 6 BEECHWOOD RD.  
 Open Friday Evenings

**NEW RAMBLER '60**  
 with Exclusive  
**Personalized Comfort**

New styling, new models, new features in the 1960 Ramblers plus exclusive Personalized Comfort features: separate seats for driver and passenger that adjust for individual legroom. Airliner Reclining Seats with adjustable headrests. And remember, only Ramblers for '60 gives you the best of both: big car room and comfort, small car economy and handling ease. See and drive The New Standard of Basic Excellence. Go Ramblers—6 or V-8!

**SMYTHE RAMBLER, Inc.**  
 326 MORRIS AVENUE SUMMIT

**Mom's the Greatest!**  
 ... and so are the children ...

**FOR MOTHER**  
**WHITMAN'S CHOCOLATES**  
 Fashionable Springtime Sampler Gifts  
 Beautifully Salsa-lined, hand-decorated box with 1 lb. Whitman Sampler  
**6.50**  
 Sampler Size **3.59**  
 Complete Selection of  
**Mother's Day Cards & Candy**

**FOR THE KIDS**  
**SANDBOXES SPECIAL!**  
 Canopy Top **7.49**  
 36" x 36" Reg. 10.50  
 Other Sizes in Stock

**IDEAL BOAT KITS**  
 Higgins 17" **2.95**  
 Troller **2.49**  
 FREE Electric Outboard Motor  
 With Each Kit Purchased

**1960 DOUGHBOY POOLS**  
 At Special Discount Price  
**20% to 40% OFF**

Complete Line of RAFTS and  
**AQUA-EQUIPMENT**

**COLUMBIA RECORDS**  
 L.P. **STEREO**  
 Reg. \$3.98 Reg. \$4.98  
**\$2.47 \$3.09**

**TENTS** Large In Red & Yellow  
 Easy to Set-up & Store. **\$7.95**

**KAY'S STATIONERY**  
 Springfield's Hobby & Toy Center  
 279 Morris Avenue, Springfield DR 6-9868

## Deborah Appeals For Blood Donors

An urgent appeal for type O negative blood has been made by the local Suburban Deborah League. The Springfield chapter must provide ten walk-in blood donors who will be needed for open heart surgery performed on a twenty-seven year old mother this Saturday, May 7. Surgery will take place at the Deborah hospital, Browns Mills, N.J., just outside of Fort Dix. Suburban League will provide transportation for those who can provide this type blood.

Mrs. Lorraine Houle, of Manchester, New Hampshire has undergone treatment for the past six years for a leak in the valve that feeds blood to the heart. She had suffered rheumatic fever at the age of nine years, led a restrained life, and began to decline after the birth of her second child, now five years old. When recommended by her local physician for evaluation, she contacted her cousin, Mrs. Norman Stromeyer of Lakeland, president of the Suburban League.

Mrs. Houle underwent heart reoperation at the Deborah hospital as part of the evaluation. At a conference of world-famous surgeons affiliated with the hospital, it was decided to perform open heart surgery as soon as possible because of the good state of her health, aside from her heart defect. Mrs. Houle is at present at the hospital, and a supply of blood was made available through the cooperation of the Manchester Red Cross. The walk-in donors will provide the blood needed for the heart-lung machine, and also for any possible transfusions necessary.

If anyone can supply this rare type blood, please contact Mrs. Stewart, Secretary, admissions chairman at MURDOCK 6-6377 or Mrs. Stromeyer at Drexel 6-5995.

**HELP SQUAD!**  
 The Springfield First Aid Squad is now running their annual fund drive. Help support this worthwhile organization by placing a coin in the card marked GAS & OIL. Help them to Help You!

**ERIE, PA.**  
  
 8 min. station rate from Newark after 6 P.M. 10% tax not included.

## SUN Rays

I understand that Township Attorney Irwin Weinberg of Springfield is contemplating no action before the American Bar Association against Mayor Vincent J. Bonadies for allegedly practicing law at the meeting of the Township Committee last week.

Attorney Weinberg was absent from the session. Township Committeeman Daniel M. Lucy raised a legal question while a suit for alleged false arrest against the municipality was under discussion. Mayor Bonadies offered to elucidate—and he did so with all the verbosity, long, comma-speckled sentences and obscurity of a real lawyer.

Seldom, if ever, in a long career of governing board reporting have I seen an official as irate as was Township Committeeman Lucy at the meeting of Springfield Township Committee last week. Having observed Mr. Lucy at board meetings for the past several months, I had him down in my book as a quiet, even-tempered and difficult-to-ruffle person. His angry outburst over the Troy Village condemnation matter was a surprise—but it was understandable: he certainly had sufficient provocation.

It makes one feel good to know that there are public officials in one's town, who can get indignant about the municipality's business when the occasion arises. There was no laissez faire shrug-of-the-shoulders in this instance.

How long The Sun and township officials have been pounding away for the removal from Morris Avenue of the unsightly trolley tracks, this writer does not know—but it has been a considerable period. Nothing happened. Just one paragraph in this column a few weeks ago, and lo, the state is ready to shell out \$500,000 to do the job!

It seems that I left some of my public hanging on a cliff two weeks ago or so. I said I would follow up on the important matter of getting toast with eggs at local eating places. I am happy to report that Ryan's Luncheonette and Centre Sandwich Shop have been put to the test—and have earned a clear bill of service. Not so a nearby diner, however. There was a lapse of a minute and two seconds between eggs and toast.

Add to the hazards of apartment-or house-hunting: will a state road come barging through in the near future?

In the light of what has happened in Troy Village, Springfield, it would appear that this is a question-seekers of living quarters will have to include in their list of such inquiries as is there a railroad nearby, does the roof leak, what about garbage collection, does garage go with house or apartment, how far to schools, churches, shopping, etc., etc.

I hope you read the letter from Clyde A. Stauffer of the Jonathan Dayton Regional High School faculty which appeared on the front page of this paper last week. It asked for contributions to a fund to send three J. D. youths and an adult to the National Speech Tournament in San Diego, Cal. in June. Make a note: SUNDAY will be Mother's Day.

**HAIR STYLE OF THE MONTH**

Casual Elegance

**Paul & Louis Hairstylists**  
 261 MORRIS AVENUE SPRINGFIELD, N. J.  
 Drexel 6-9877 ... Free Parking in Rear  
 CLOSED MONDAYS

## PUBLIC NOTICE

At a recent meeting of the Township Committee, Mayor Vincent J. Bonadies and the town committee granted the Springfield-Nadel Cab. Co. two additional taxicab permits.

Faced with the rapid growth of our community, I wish to commend the Committee on their action. The townspeople of Springfield will continue to have the best taxi service in the County, latest up-to-date taxi with carefully maintained equipment.

As soon as possible, The Springfield-Nadel Cab Co. will place in service new cabs, which will be equipped with air conditioning.

It is our hope and desire to continue to give the very best service that we have tried to do in the past.

**Herman Nadel, President**  
**Springfield-Nadel Cab. Co.**  
**CALL DREXEL 6-5200 FOR TAXI SERVICE ANYWHERE!**

## Way Found To Send Mitchell To Convention

Mountainside Republican James E. Mitchell will go to the Republican Convention this Summer as a presidential elector.

The naming of Mitchell came as a compromise move among factions of the Republican Party in Union County. The Mountainside man had intended to go to the convention as a delegate and later as an alternate delegate.

### Nomination Blocked

His nomination was blocked by State Sen. Robert C. Crane. However, Republican County Chairman Charles P. Bailey and Assemblyman Nelson F. Stamler paved the way for the move at a recent luncheon meeting.

Mitchell and Crane first differed in 1958 when the Mountainside man backed Bernard Shanley for the U. S. Senate nomination, while Crane backed former Rep. Robert W. Kean.

Mitchell also had strong backing from former Freeholder Albert J. Benninger. This did not help his position with Crane, as the Westfield Senator and Benninger have not been seeing exactly eye-to-eye.

Credit to Stamler  
 Mitchell seemed to have slim chances of getting to the convention in an official capacity. However, behind-the-scenes work by Stamler is credited with helping bring about this week's move.

Stamler has ties in both the Crane and Benninger camps. Mitchell's selection was confirmed by the State Committee in Trenton. He accepted the honor "because I feel it will help build party harmony." The appointment also strengthened the position of Benninger in county party circles. It indicated that the Mountainside man will have a stronger voice in county affairs.



**ANOTHER REALTY CORNER SALE:** Residence at 14 Crest Place, Springfield sold for Mr. and Mrs. Frank M. Kerr to Mr. and Mrs. Mary Anne Sylvester's Realty Corner.

Mr. Green is a construction department. This sale was arranged by Mary Ann Engesser, an associate of Mrs. Anne Sylvester's Realty Corner.

**WAREHOUSE SALE!**

<b>SUPER KEM-TONE PAINT</b>	Floor	<b>KEM-GLO</b>
gal. 3.98	Stock	qt. 1.49
qt. 1.25	Only	pt. 89¢

**COLUMBIA**  
 Lumber & Millwork Co.  
 Maple Ave. at Springfield Ave.  
 DR 6-5950

**HOT WATER with GAS always!**

• so fast  
 • so efficient  
 • so economical

Buy a GAS Water Heater from your Appliance Dealer or Plumber.

**PUBLIC SERVICE**

LETTERS

Editor, Springfield Sun
I have been voting Republican...

One change made in this piece of mail was that the present government in Springfield...

GOP controlled Township Committee

JOHN A. HOPPING, A REPUBLICAN - CHAIRMAN OF THE BOARD OR ADJUTANT...

ELEONORE H. WORTHINGTON - A REPUBLICAN - TOWNSHIP CLERK...

WILBUR LAYNE - A REPUBLICAN - IS TAX ASSESSOR...

ARTHUR MARSHALL - A REPUBLICAN - BOARD OF HEALTH OFFICER...

WILBERT BINDER - BUILDING INSPECTOR...

ALFRED SWENSON - TOWNSHIP ENGINEER...

A. J. PANCANI - PLANNING BOARD...



DINNER-DANCE PLANNERS: Frank W. Zimmermann of Berkeley Heights...

Driver Fined, Loses License For Speeding

Springfield Municipal Court Judge Henry C. McFallen imposed a fine of \$15 on Lawrence D. Stone...

30 m.p.h. zone. Francis A. Trincanello, of Short Hills, was fined \$25 for a stop street violation...

vehicles registered were Ethel Chanowitz, North Plainfield...

P. S. BUSES to Garden State Race Track

ROUND TRIP Leave Newark and Millburn Aves. 12:25 P.M. - Springfield, N.J. Leave Springfield plus tax Center 11:45 A.M. Public Service Coordinated Transport

FISCHER BROS. TRAVEL BUREAU 799 SPRINGFIELD AVE., IRVINGTON, NEW JERSEY Miami - Mexico - Europe Bermuda - West Indies

THE NEW MOUNTAIN CREST SWIM CLUB Atop The Mountain WEST ORANGE, N. J. HAVE YOU MET OUR DIRECTORS?

USE OF REPORTS BY LWY EXPLAINED To the Editor: Springfield League of Women Voters was most gratified...

PRINTING From Business Cards to Catalogs THE ITEM PRESS 20 Main St., Millburn Phone Drexel 6-4600

STILL TIME to plant HARDY TREES DOGWOODS, JAPANESE CHERRY, MAGNOLIA, WHITE BIRCHES, MAPLES, OAK, HONEY LOCUST, SWEET GUM, ETC.

Baltusrol Area Singed By Fire It took Springfield Fire Dept. eight hours on April 22 to combat the worst brush fire in town since a similar blaze several years ago...

BANGOR, ME. 85¢ BANGOR ME. 85¢

BOARD OF EDUCATION THE UNION COUNTY REGIONAL HIGH SCHOOL DISTRICT NO. 1 Mountain Avenue Springfield, New Jersey

SEASHORE MOUNTAINS CHEVROLET 'FAMILY' WAGONS...go, too!

CHEVROLET 'FAMILY' WAGONS...go, too! You're following the guide-posts to Comfort, Convenience and Care-Free driving when you're on the road in an L & S CHEVROLET "Family" Wagon... the travelling Out-Of-Doors "Fun" Room for the entire family...

MOUNTAIN CREST SWIM CLUB EXECUTIVE OFFICES: 744 BROAD STREET, NEWARK MI3-4700 WEEKENDS AND EVENINGS: WY2-2074

Warren Hairdresser 57 Union Place Summit CResview 3-1680 MR. ANTHONY Expert Hair Colorist Specializing in Sun Burst Tips PERSONALIZED CONSULTATIONS

### Crowds Acclaim Showing Of Damn Yankees Musical

Near capacity audiences present was Beverly Ginsberg, who played the part of "Mog" in the dramatic production of "Damn Yankees" as presented by the Dramatic Group of the Temple Beth Ahm. Both at the Saturday and Sunday performances, the efforts of the players were warmly greeted. There were many "show stoppers" throughout the evening and the final curtain brought recall after recall.

Outstanding among the players in the opinion of all these

greeted the efforts of Jack Silverman and Saul Gladstone in their comedy routines throughout the evening. Assisted by Sid Lester and Murray Zeidner, the Messrs. Silverman and Gladstone brought the house down with their rendering of "You Gotta Have Heart," as well as in their other featured numbers.

Denbie Freedman brought forth her wonderful talents and was received with appreciation. Her singing and dancing led the pace which was maintained throughout.

Paul Weisman, long known for his dramatic talents, once more outdid all his former efforts as "Joe Boyd." From the opening curtain to the scintillating finale Mr. Weisman was in command.

The choruses were gaily backed and sparkled accordingly. Their first appearance on

stage set the pattern for the entire evening and the pace was never slowed as the story unfolded accompanied by the many musical interludes. The costuming of the entire cast was at times breathtaking from the authentic Washington Senator's uniforms to the leotards of the chorus line.

The scenery designed and constructed by and under the supervision of Morris Milstein and Morton Weiss brought forth the warmest praise of all. Back-dropped by such realistic settings the entire production went off without a hitch.

Director George Chergotis whose labor of love of these many months, nervously watched the production unfold and at its conclusion delightedly reported that this was among the best of wide and varied repertoire. Truly a great deal of

the credit for the success of the presentation rests squarely upon his sincere and much appreciated efforts on behalf of the Temple and its membership. Mr. Chergotis, ably assisted in the production details by Rose Lester, may well be proud of his efforts.

Accompanying musical arrangements were provided by Cy Greene and his Orchestra in a manner which left nothing to be desired.

Handling the tickets for the show are Seymour Cohan and Frank Hodas under the Ways and Means Chairmanship of Milton Rubinstein.

"Damn Yankees" will be presented again this Saturday and Sunday evening, May 7th and 8th at the Millburn Junior High School. Although the Saturday night performance is well on its way to being a sellout there are still a few remaining seats for this performance as well as for the Sunday showing. Tickets may be secured by contacting Mr. Cohan at DRexel 9-2566 or Mr. Hodas at DRexel 6-2087.



BEVERLY GINSBERG — Of Springfield, who plays a leading role in the Temple Beth Ahm Dramatic Group production of "Damn Yankees" which will be presented at Millburn Junior High School, Saturday and Sunday, May 7th and 8th.

### Shrubbery Can Cut Down Noise From Traffic

The average property owner located near highway traffic lanes can both greatly increase his living comforts and reduce traffic roar by planting trees and shrubs that serve as a protective and yet attractive barrier, according to the American Association of Nurserymen.

The sight of numerous cars passing along the borders of a home property gives a family the feeling that they are living in full view of every motorist who passes on the highway. Privacy can be achieved by planting rows of trees or high-growing shrubs at the edge of the property facing the traffic. For screening out traffic both sun-

mer and winter evergreen plants are preferred since they keep their leaves in the colder months.

one of the prettiest sights that ever skimmed over water



**"MFG"**

Only fiberglass boat in the world with all-over lapstrake hull molded in matched metal dies... never needs painting or caulking... is fast on the straight-away, hugs the curves, handles like a dream!

And "MFG" is the best buy in all boating history! Six models starting as low as \$345 f.o.b. factory. See "MFG"!

**VANSEN BOATS INC.**

Daily 9-9—Sat. 10-5  
PL 7-1700  
Rt. 22 & Jefferson Ave., NORTH PLAINFIELD

**THE CORSET SHOP**

**Spring is Here. Summer is Near**

Keep Cool In Our Mesh Garments by Camp - Rengo - Smoothie Nemo - Flexees and many other brands to choose from

**-- In Corselettes --**

side zipper — side hook and front lace girdles

Fitting and alterations are free

**THE CORSET SHOP**

FORMERLY ECONOMY STORE

The Foundation of Our Business Is the Right Foundation for You

Air Conditioned for your Fitting Comfort

148 E. Broad St., Westfield — AD 3-2615

a new infants' and childrenswear store

**Michele Youth Fashions**

OPENING NEXT THURSDAY, MAY 12  
ECHO PLAZA SHOPPING CENTER  
TO SERVE  
**Springfield & Mountainside**

- Distinctive merchandise has been carefully selected and will please you by its quality, style and GOOD TASTE
- We provide all the services you expect in a FINE STORE

Please bring the children... we have a little gift for them.

**Continuing Blossoms Can Be Achieved by Rotation**

Continuous flowering beauty can be achieved by home owners by changing the plants in their garden or patio living area to supply steady bloom most of the year. By having several small gardens or a half dozen tubs in which plants are changed often, the whole property can be made brighter and more cheerful for longer periods.

According to the American Association of Nurserymen, the following changes of plants can be made from spring to fall:

1. In the early spring, tulips, daffodils, hyacinths and other flowering bulbs.
2. As bulb flowers fade, they can be changed to spring flowering shrubs, azaleas, rhododendrons or many other plants that are available.
3. Next would come roses and annual roses, all ready to bloom. With a little experimentation many beautiful combinations of plants can be achieved. A few trees complete the picture.
4. When the summer flowers are waning, chrysanthemums and Fall asters in bud can be set out in combination with a fall foliage shrub. Fall planting of roses prepares for the following Spring.
5. For winter, evergreens can be used, perhaps to be decorated with lights at Christmas time, or camellias can be planted if the tube are carried in doors on a cool, but heated enclosed porch, or even tropical foliage plants if carried inside the house.

There are innumerable combinations of plants to afford new flower scenes. Pots or tubs of plants changed often keep the whole property fresher and more colorful, without entailing great expense because the plants are changed only in small areas rather than over the whole property. In tubs, many plants that are extremely beautiful but difficult to grow because of adverse local soil conditions, can easily be maintained.

For a few months of summer in the north, one could even have lovely tropical flowering plants in his garden living room if they are desired and avail-

**TV RADIO**

Service Dept.

The Ultimate in Service ON ALL MAKES

Marlin Electronics, Inc.  
16 Blacks Lane, Springfield  
DR 9-2200

**Don't Be a Dishwasher — BUY ONE!**

**FREE!** 32-Pc. Set of DINNERWARE

Mom will never wash —

when you buy a New 1960

**General Electric Mobile Maid® DISHWASHER**

OUTWASHES all other Dishwashers — including people!

- Eliminates Hand-Scraping and Rinsing with Famous FLUSHAWAY DRAIN!
- Needs NO Installation — Rolls on Wheels
- Holds Service for 13\*
- 3 Cycles — One for Every Type of Load!

Exclusive NEW POWER SHOWER WASHES from the TOP DOWN AND from the BOTTOM UP!

Model SP30

ONE YEAR SERVICE AT NO EXTRA COST by General Electric Factory Service Experts

**\$2 A WEEK** Pay as little as \$2 a week after small down payment. Take up to 3 YEARS TO PAY!

**GE**

Authorized DEALER GENERAL ELECTRIC MAJOR APPLIANCES

with this Sign on the Door \*NEMA place settings

**ENJOY MORE LEISURE** with the help of a **National State Checking Account**

Add minutes to your day... save steps and transportation costs, too. Pay bills by check and by mail. It's easy with a handy, low-cost National State checking account. And remember: when you bank at National State you have complete financial services available.

**THE NATIONAL STATE BANK**  
"Union County's Leading Bank"

• ELIZABETH • SPRINGFIELD • ROSELLE PARK • SUMMIT • KENILWORTH • WESTFIELD

MEMBER FEDERAL DEPOSIT INSURANCE CORPORATION

FIRST SINCE 1812

**FOUNTAIN**

Authorized **KODAK** Dealer

Color & Black & White Processing

**JARVIS DRUG STORE**

54 ELM STREET  
WESTFIELD, N. J.  
ADams 3-0662

**Pride**

20-10-5  
Balanced Fertilizer

In granular form, FAX Pride fertilizer is free from unpleasant odor. Use with safety and satisfaction on both newly-seeded and established plants. Supplies nourishment. Analysis 20-10-5.

**Cardinal's Nursery**  
272 Milltown Rd.  
Springfield, N. J.

**AUSTER'S APPLIANCES**

143 E. Broad Street, Westfield • AD 3-2121

OPEN MONDAY AND FRIDAY EVENINGS UNTIL 9 P.M.

### Woman's Club News

#### VERAL TO ATTEND CONVENTION-DEPT. MEETINGS ANNOUNCED

Opening ceremonies at the annual meeting of Springfield Woman's Club, held Wednesday, May 4, at the Walton school, were conducted by Mrs. Bert Heys.

During the session, two new members of the club were received: Mrs. Ernest O'Connor and Mrs. William Hilliard. The program was presented

**KATHARINE GIBBS**  
PRIVATE BUS SERVICE  
SUMMIT-MARLEWOOD AND VICINITY TO  
**KATHARINE GIBBS**  
IN MONTCLAIR  
One and Two-Year Courses  
SECRETARIAL

Write or telephone for full information  
P.O. Box 100, Montclair, N. J. PL 4-2818

### Summer Day Camp-Coeducational 19th Pingry Summer Session June 29 - August 18

Ages: 7-14 Daily: 10:30 - 4:00  
Swimming, Instructions, Sports • Arts • Crafts • Games  
Inquire: PINGRY SCHOOL, HILLSIDE, N. J. Telephone: EL 5-6990

by Mrs. Thomas Simpson, a member of the New Jersey State Federation of Garden Clubs. Her program, "Bringing Your Garden Indoors," consisted of demonstrations of the art of preserving and drying flowers so that they retain their original shape and color.

#### Church Group To Have Fashion Show

"Summer Holidays," a medley of fashions, will be presented by the Evening Group of the Ladies Benevolent Society of Springfield Presbyterian Church Wednesday evening, May 18, at 8:15, in the Parish House on Main Street, Springfield.

The clothes will be modeled by Mrs. Jack Lambiu, Mrs. Walter Harms, Mrs. Harold Jones, Mrs. John Fecko, Mrs. Stanford Heitinger, Mrs. Max Kuehn, Mrs. Lemuel Stevens, with Miss Carol Kuehn modeling teen-age clothes.

Mrs. Walter Harms is chairman of the affair. Refreshments will be served following the show. Tickets are available from any member of the Group or at the church office on Main Street.

There will be a "mystery costume," with the winner receiving a gift certificate.

#### FRESHMEN HAVE DANCE

Kent Place School Freshman Class entertained at a Spring dance Saturday evening, April 30, in the rectory annex on the Norwood Avenue campus, Summit. The theme of the party was "Show Boat" and about 100 young people mounted the gangplank to dance on the ship deck until midnight.

**TO ATTEND CONVENTION**  
Rabbi Reuben R. Levine, spiritual leader of Temple Beth Ahm in Springfield, will be the delegate from this area to the 60th anniversary convention of The Rabbinical Assembly of

### School Menus

Menus for the week beginning Monday, May 9, in the cafeteria at the Florence Gaudineer School in Springfield will be as follows.

Monday - Spaghetti with meat sauce, applesauce or pineapple, peanut butter or bread and butter sandwich.

Tuesday - Roast beef, mashed potatoes, gravy, buttered green beans, jello, bread, butter, milk.

Wednesday - Frankfurters, baked beans, sauerkraut, raisins, roll, butter, milk.

Thursday - Turkey chow mein, rice, Chinese noodles, peaches, bread, butter, milk.

Friday - Tuna fish salad, potato chips, lettuce with French dressing, cookies, roll, butter, milk.

#### President Hostess At Board Meeting

Mrs. George Levine, president of Springfield Chapter of Women's American ORT (Organization for Rehabilitation through Training) will welcome members of the executive board to her home, 30 North Derby Road, Springfield, today, Thursday, May 5.

Installation plans will be discussed as well as the June planning conference to be held at the Essex House.

Mrs. Levine will continue as president of the Chapter for a second term.

A traffic jam was held May 3 through 12 at Grossinger's Hotel, Grossinger's, N. Y. There were 2,910 pedestrians killed and 66,930 injured on U. S. roads last year because they crossed between intersections.

Remember MOTHER ON MAY 8

Mother WILL LOVE THESE GIFT IDEAS FROM

# WOOLWORTH'S

FOR BRAND NEW LINES - WIDE ASSORTMENTS

## A favorite gift for Mother!

### Seamless Nylons

**FIRST QUALITY CLEAR KNIT**

2 pr. pkg. **1.39**

You'd expect to pay 89¢ pr. for this quality!

A gift of fine hosiery is always welcome! And Mother will surely be pleased with these... especially gift wrapped! Rosetone shade is particularly smart for Spring! Sizes 8½ to 11.




### Dainty Acetate Tricot Gowns for Giving

only **77¢** each



Dainty... delightful... featherlight sleepwear for mother! Charmingly styled with lace appliques or insertions... self pleating and pretty ruching. Sleeveless or cap sleeve styles with elasticized waists and necklines. Paris blue, rose, pink, maize. Sizes M-L.

## YOU DON'T HAVE TO BE A BAKING FLOP




### EVERYTHING'S UNDER CONTROL WITH A FLAMELESS ELECTRIC RANGE

Good baking requires exactly controlled, unvarying oven heat - the kind of controlled heat you get in a flameless electric oven. Because it's so accurately regulated and completely insulated on all six sides, the electric oven never varies more than 5° up or down. When it reaches the desired heat it automatically shuts off and, at 350° or thereabouts, has to come on no more than 15 minutes out of every hour to maintain the exact temperature. It practically eliminates baking failures.

Buy with assurance from your local Reddy Kilowatt Dealer who displays this emblem.

**JCP&L**  
Jersey Central Power & Light



## Spring Garden Sale

### Fancy Rose Bushes • Blooming Shrubs

**BIG VALUES - ONLY 88¢** package

**SELECTED ROSE BUSHES**  
Medium size bushes of gorgeous name varieties! Stock 12" to 15" high. Select from our large assortment of 21 varieties. Lighter stock... 2 bushes to a package. In brilliant reds and yellows.

**COLORFUL BLOOMING SHRUBS**  
Two in a package. Delightful for foundation plantings... bedding out... along borders. Spirea Van Houtte, Forsythia Golden Bell, Weigela-Rosea, Althea Red, Hydrangea.



### CARE-FREE ALUMINUM FURNITURE

for relaxing comfort on porch, patio, anywhere!

**FOLDING ADJUSTABLE CHAISE**  
• durable 1" tubular aluminum  
• 3 adjustable positions  
• 6 by 15" plastic woven webbing  
• Patented rust-resistant fasteners  
• Green with White

**9.99**

**Hooded Motorized Grill**  
Coppertone metal grill with U. L. approved electric motor. Rotating spit for extra fine flavor. Chrome plated adjustable grid. Extra-strong legs. 5½" rubber tired wheels.

**13.88**

**DELUXE INNERSPRING CHAISE**  
• 24 x 72" overall chaise lounge  
• 1" tubular aluminum construction  
• 48 spring 24 x 48" seat cushion  
• 24 spring 23½ x 24" back cushion  
• 3 adjustable positions  
• 6 x 1½" rubber-tire wheels  
• Vinyl upholstery in homespun pattern on white

**21.95**

See the Garden Center at the Short Hills Store - Everything for Your Garden

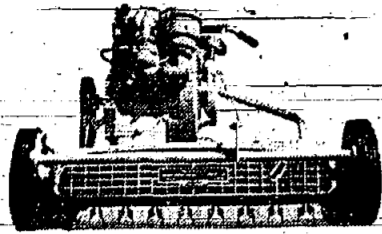
Satisfaction Guaranteed or Your Money Refunded!

**WOOLWORTH'S**

<b>SUMMIT</b> 409 Springfield Ave. Municipal Parking Rear of Store	<b>SHORT HILLS</b> 720 Morris Turnpike, Short Hills, near A&P FREE PARKING FOR 500 CARS	<b>MILLBURN</b> 321 Millburn Ave. FREE PARKING IN REAR OF STORE
--	---	---

The Armed Forces of the United States present a descriptive of our national effort, is the slogan for Armed Forces Day, observed the Saturday of May. Explorer Eric the Red gave Greenland its name when he explored it in the year 982. He named it that in the hopes of attracting settlers from Iceland. American merinos sheep have a fleece (wool shorn in a single mat) of 12 to 18 pounds. Average sheep of other breeds is 5 to 8 pounds.

## HENDERSON THIN-CUT



Helps keep your lawn Healthy and Beautiful

Slices vertically down to ground level through matted clippings, crabgrass, and other creeping vermin-type grasses. Gives your lawn breathing room; permits better, faster penetration of food and moisture.

Tested and approved by professional turfmen. Popular with many landscapers, greenkeepers, and homeowners. Priced so low that everyone can afford it. Ask about rental or purchase.

SEE THESE LOCAL DEALERS

L. W. Baldwin Murray Hill  
LeBARRE & SCHUCH 135 Springfield Ave. Springfield

E. F. CARDINAL CO. 272 Milltown Rd. Springfield  
MILLBURN GRINDING SHOP 658 Morris Ave. Short Hills

GENERAL MOTOR SERVICE 1220 U. S. Rt. 22 Mountaintide  
Pierson's Inc. 431 Springfield Ave. Summit

PIERSON'S MILL 697 Valley St. Maplewood

DOGGETT-PFEIL COMPANY 191 Mountain Ave. Springfield

## This Week... in UNION COUNTY

By Sam O. Sarokin  
A new supply of tranquilizers was rushed to Mountaintide when the results of the last primary election were finally digested.

There has been a continuing and healthy scrap between rival Republican factions in Mountaintide and, just about a year ago, the Mayor-Hartung forces were jubilant in a victory that seemed to spell hammerlock control.

However, only a year later, at the recent primaries, Arthur W. Tujague, the candidate with the blessing and backing of Mayor Hartung, was defeated in his effort to be the GOP nominee for Borough Council.

Eugene F. Rau and William A. Heine, incumbent councilmen, ran as a team and won the two places despite a very spirited campaign with last minute mailings, letters and the usual political drum beating.

The awakening didn't end there. There was a complete slate of county committee candidates on the ballot in all five districts in Mountaintide, opposing what is commonly known as the "ins."

The newcomers, the youngsters, the Rau-Heine backed slate was victorious and the Republican machinery in Mountaintide is now in the hands of the new group.

It may be interesting news that the Republicans cutvoted the Democrats in the primary elections here in Union County but it is hardly news that Rep. Florence P. Dwyer polled the greater number of votes in her unopposed balloting for the Republican congressional nomination in the sixth district.

The GOP total in Union County was 42,150 as compared with 39,267 for the Democrats. However, there were several important party quarrels in the Republican side, the Case-Morris affair bringing out more than the usual number of voters in a so-called off year.

Then there was the 10 man scramble for the three places on the Freeholder slate which took many Republicans to the polling places.

Congresswoman Dwyer's total vote was 34,573 which was the highest polled. U. S. Senator Case was given 29,525 and his opponent on the primary, Morris, received 10,998.

Primary elections always leave some political scars and this last one was no exception. The results trigger off some questions and underline some lessons which are forgotten long before the next primaries.

One question is: how did practically an unknown like Richard M. Glassner poll a total of 8,312 votes in Union County against only 13,688 for Thorn Lord, the organization Democrat for United States Senator.

That vote of 8,312 was HIGHER than any county in New Jersey—even his home county of Essex.

Those who look for explanations will probably try to say that it was a trick of the ballot—he was in a better position on the ballot than Mr. Lord. If that were so why didn't some of Mr. Glassner's votes rub off on Mayor V. William Di Buono who opposed Jack B. Dunn for Congress? Di Buono was on the same line and right next to Glassner on the ballot.

This last primary—and every election has proved that work at the grass roots level will bring results. County and State Chairman should take advantage of every effort to help a candidate—no matter how small the community, politically speaking.

Mayor Vincent J. Bonadies proved how effective this can be. He and a few of his supporters did some work in behalf of Mayor V. William Di Buono of Hillside who was battling Jack B. Dunn for the Democratic nomination as Congressman in the Sixth. Mayor Di Buono received 320 votes against 149 for Dunn. Without Mayor Bonadies and his team, very few Springfield voters would have known about Di Buono.

## Grass Puts Up Game Fight for Survival

What grass puts up with in the struggle for life is really a wonder. Drought in summer, frost in winter, cut with the mower, walked all over... and often half-starved. Yet it somehow survives, and if you give it a little assistance it will reward you with the green beauty of a turf carpet.

The best time of year for this assistance is now, when the grass is awakening after its long winter sleep. First, of course, you will want to tidy up, clearing away all the old leaves, twigs and general trash accumulated since last fall. Rake lightly with a bamboo or other flexible lawn rake, so as not to tear out grass plants by the roots. Next is the matter of lime. Most soils in the eastern half of the United States tend to be acid, and lawns there need replenishing with lime. A safe general rule would be 50 lb. of ground limestone per 1,000 sq. ft. if the lawn has not been limed for several years, then 25 lb. every second or third year thereafter. Lime in this form is slower acting, but available longer, than hydrated or slaked lime, which you should use only half as much and apply twice as often. Do not use quicklime at all, it has a strong attraction for water and will pull it out of the tissues of the grass, giving the effect of burning.

A week or ten days later, and no sooner if you use hydrated lime, apply fertilizer, otherwise

known as lawn food when it has been prepared for that special purpose. It should contain a high percentage of nitrogen, preferably part organic and part inorganic. The inorganic nitrogen is quickly available to the roots and will give the grass the quick initial start-it-needs-to-make-those-tendrils-which-will-help-to-crowd-out-the-slower-starting-weeds-especially-crab-grass-which-does-not-germinate-until-hot-weather-comes. The organic nitrogen will not be serviceable until bacteria in the soil have worked on it. The roots will take it up gradually through the summer.

The lawn mower was a great invention compared to the old way of cutting grass by sickle or scythe, and the power-mower is a further improvement. There is another invention, a quite inexpensive one that is also labor-saving—the spreader. Not only does it save work, it makes sure that lime or fertilizer is spread evenly and helps to break the lawn the same color all over, without patches of green and paler areas. Prices vary, but the best spreaders are worth the difference as they are made of longer lasting materials, have better arrangements for regulating the flow and have handle-grip controls.

Next is the reseeded of bare or weedy patches. Sometimes bare places are due to underlying rocks which may have to be removed, sometimes due to hard wear, and sometimes to an invasion of crab grass which, being strictly an annual, dies at the end of the year. The treatment is the same in each case—fork up the bare place, give it a liberal allowance of lawn food, and reseed with a good lawn grass seed mixture. What is meant by a good lawn mixture is one with a large proportion of perennial grasses, particularly Kentucky bluegrass and fescue, which are the grasses that look well, resist wear and endure indefinitely. You will find this information printed on the carton, and it is worth remembering that seeds of the desirable grasses are smaller than those of the cheaper kinds, so that you get far more of them to the pound. That's why so-called cheap seed can be really expensive.

Let it be repeated—your lawn needs a little assistance at this time of the year—and it will repay you well by its thicker, tougher turf and enhanced appearance.

Shade trees held important traffic safety factor. A survey by the Automobile Legal Association stated that many of America's fastest and newest highways and toll roads are consistently avoided by motorists unwilling to face the "sizzling discomfort" of driving without shade. The survey stated that "landscaping attempts on most highways rarely get past perfunctory clumps of grass and scrub bushes of little sun-screening value to the hot-weather motorist."

"Motorists compared a trip along Massachusetts Route 128 with a 'Sahara Desert' crossing," the survey stated. "The new 239-million-dollar Massachusetts Turnpike is also conspicuously without a single reedemingly shade tree."

Shade trees close enough to traffic lanes to shade them all during the day would be a traffic hazard, according to the American Association of Nurserymen. However, the hottest part of the day is in the middle of the afternoon. Shade trees could be at considerable distance—a hundred feet or more from the traffic lanes of north-south highways and still shade and cool them in many places, depending on the elevations of roadside. The hottest sun rays are slanted from the west, in the middle and late afternoon.

The improved methods for building highways is with gentle curvatures to take advantage of scenic values of the countryside. On East-West highways clumps of trees on the bulges of these curves would shade long stretches of the highway at the time of day when the summer sun is at its hottest.

On the East-West highways such plantings would remove sun glare both in the early morning and in the late afternoon when the sun shines directly into the eyes of motorists. As every motorist knows, driving into the sun for long distances is one of the most fatiguing tasks faced by motorists. Windshield sun shades help but by no means solve this problem. Properly planted trees could solve it effectively at the times of day when sun glare is at its worst, while the trees could be far enough from the traffic lanes to cause no hazard whatever. Psychologically such plantings also would be effective since everyone knows that driving into sun glare on a summer day makes one feel all the hotter.

New Hampshire was the first of the 13 original states to have a government completely independent of Great Britain.

Mr. Suburban suggests you open a CONVENIENCE CHECKING ACCOUNT TO-DAY! Suburban TRUST COMPANY

## Proper Light Seen Affecting Tree Growth

The glare of the sun, especially in real estate developments where houses are fairly close together, can be reduced greatly by properly planted trees and shrubs. Glare can be reduced 50 per cent or more at the same time, the property can be made considerably cooler in summer and warmer in winter.

Anti-glare plantings have expanded greatly as suburbia has grown, it is stated. A good shade tree will reduce the sun's heat by 50 per cent more than any man-made awning. In planting anti-glare trees and shrubs one has only to use common sense, placing them directly between one's own home and the sun, as well as between the sources of the glare (when reflected) and

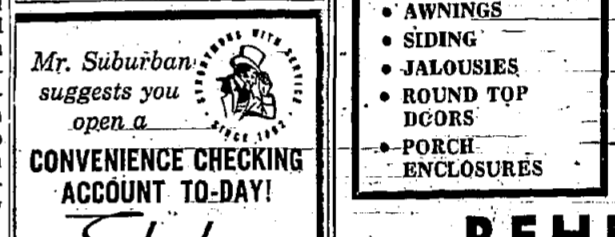
one's own property. The position of the sun changes with the hottest and—usually—most glaring time of day being in the afternoon. In this case the tree should be planted toward the west. Morning sun glares some locations, in which case the tree or shrubs should be to the east of the house. The best also can be uncomfortable in a landscape nurseryman spot for most people is to have a few trees and shrubs around the property—especially for the purpose of reducing or eliminating glare, as well as making the property cooler.

In the summer, trees absorb a large amount of heat in the surrounding atmosphere through the process of evaporation—(transpiration)—from the leaf surfaces. Trees are natural air conditioners. Anyone can test this by measuring the temperature under a shade tree and in the sun with an ordinary house thermometer.

## COMBINATION STORM DOORS



Exclusive Push-Button Lock  
Full 1" Thick  
Complete With Hardware  
27.50\*



Don't Look Further  
• RAILINGS  
• AWNINGS  
• SIDING  
• JALOUSIES  
• ROUND TOP DOORS  
• PORCH ENCLOSURES  
STORM & SCREEN WINDOWS  
Triple Tilt  
Inter-Locked  
Glass Inserts  
9.50\*

## REHNOLDS ALUMINUM PRODUCTS

FA 2-2144—Eves., FL-6-7755  
1612 E. SECOND ST., SCOTCH PLAINS

## HYDE & ELLIS HARDWARE

719 Mountain Ave. SPRINGFIELD DR 6-7990

## Here's The Secret of Greener Grass



One—fill the Scotts Spreader with clean, odorless TURF BUILDER®. Two—set the dial to 6. Three—walk! As you go, the Scotts Spreader distributes TURF BUILDER evenly over the whole lawn. No need to water in. How's that for an easy way to feed grass the beauty-building diet it needs?

More and more folks are coming to us for advice on improving their lawns through an easy-to-follow Scotts Program. Come in anytime. We'll be glad to prescribe the correct Program for your lawn.

Save \$5! Scotts Spreader (16.95) plus Turf Builder (4.75) both only 16.70!

## HYDE & ELLIS HARDWARE

540 South Ave. W. WESTFIELD AD 2-6700

## Happy news for candy lovers!



Fanny Farmer has selected WALLACE KLEINMAN of the SPRINGFIELD PHARMACY 238 Morris Ave., Springfield DR 6-5050 to distribute her world-famous candies in your town!

You know Wally Kleinman as one of the most pleasant fellows in town... and Fanny Farmer candy is certainly one of the most pleasant treats you can find anywhere. So now, when you want the candy that's out-of-the-ordinary—the candy that's made from the choicest, purest foods, the freshest ever boxed—see your friend, Wally Kleinman. You'll find it's handier than ever to stop while you shop to pick up the family's favorite candy.

JOIN THE OPENING DAY FUN FRIDAY, MAY 6, 1960

There'll be free samples of Fanny Farmer candy for the grownups... free Kiddy Pops for the youngsters!

Fanny Farmer ... CANDIES OF MATCHLESS FLAVOR

## For Wonderful Savings On Quality Furniture...



Hurry To McManus Bros. ANNUAL SPRING SALE!

Select new furniture for your porch and patio. Choose new accessories, carpeting and bedding. Buy new furniture of the finest quality at substantial savings all during our Annual Spring Sale. Hurry in while the selections are most complete.

## McManus Bros.

• ELIZABETH: 1152 E. Jersey Street EL 2-5600  
• Woodbridge Hwy #9 at King Geo. Rd. VA 6-4700  
EXIT 128 SOUTH ON PARKWAY for McMANUS WOODBRIDGE.

**UNITED NATIONS TOURED** held at Martinsville Inn on May 6. Nominees for this year's Queen of the Jr. Prom are: From Kenilworth — Joanne Koeng, Lynn Wustler, From Springfield — Joan Arnold, Joyce Holmberg, Arleen Straver, From Mountainside — Betsy Albu, Judy Bell, Rose Maiorana, Judy Marchelli, Carol Plante, Peggy Sarg. The theme of the Prom is Parisian Night, selected by the members of the Junior Class. The Dayton Chorale travelled to Trenton State College in Trenton this past weekend to sing in the festival of music sponsored by the college's music department. Mr. Brown, director, took full charge of both the Dayton Chorale and the Clark High School Bell Chorus group on the trip down by bus. Clark and Dayton will hold their combined concert on May 13 at Clark High School. Dayton Regional will hold its own concert May 27 at 8:15 in Halsey Hall. Featured will be an original number by Tex Nolen of Berkeley Heights, graduate of Regional Class of 1959. The number, "The Sling," will be sung by the combined choir and chorale. "The Sling" is based on the teachings of the Bible and hardships suffered by the Israelites. Speaking of Tex Nolen, who incidentally attends Trenton State College as a music major, I am reminded of the work he is doing there. A concert of original music will feature Timothy F. Nolen as director of a number of selections, including a medieval suite for two trumpets and piano by Tex Nolen and a sonata for piano and trumpet and piano, another original by Tex Nolen. This concert will be held May 8 at 8 P.M. in the Allen Drawing Room at the college.



**CYNTHIA'S CHATTER**  
Regional High School News

**NEWARK STATE ACCEPTS STUDENTS**  
Newark State College for Teacher Training has accepted eight local students for the Class of 1961. They are: Anne Nurkin, Springfield; Irene Herman, Kenilworth; June DeLaSala, Kenilworth; Carol Dolan, Kenilworth; Lynn Hector and Jan Schatz, Berkeley Heights; Marcia Davies, Mountainside; and the only boy, Fred Schumann, Kenilworth.

**HONOR SOCIETY INDUCTION**  
The Honor Society inducted new members from the Junior and Senior Classes last Thursday during an assembly dedicated to them. Seniors inducted were: Elaine Giannattasio, who deserves special notice because she is not taking a college prep course; as the others are; she is taking commercial courses. Bill Franklin, Kenilworth; Ben Ari, Leslie Rivkind, Gail Greenberg, Hope Blitwise, Joe Westman, Cheryl Joas, Claire Longfield, Eugenie Becker. Juniors inducted were: Pat McGovern, Ward Kelsey, Ren Scelfo, Wendy Tuttle, Nancy Oakman, Pete Alsborg, Judy Bartow, Steve Bender, Mark Biddleman, Barbara Heller, Rich Johnson, Ken Ryder, Lorraine Painter, Arleen Straver.

**Job Finding Unit Formed in Springfield**  
The Industrial Chamber of Commerce of New Jersey, composed of owners and managers of metal-working shops, vendors and their suppliers located in the six Northern New Jersey counties, is successfully operating a non-leg employment service for its members. During the past five years, skilled craftsmen, office men and professionals past the age of 40 and those who have retired have been placed with members of the Chamber and highly satisfactory results have been reported consistently. In its desire to extend this service to other manufacturers and to create additional employment opportunities for those in the past 40 and retired categories, the Chamber is taking steps to create local committees under the leadership of its members residing in the several communities. It has been proposed that there be established in Springfield a "Committee for employing the Past 40 and the Retired" which will include other industrialists, professionals and business men and women, representative of civic, social, religious, veterans, fraternal and other organizations. Retired men and women will be invited to assist the Springfield committee in disseminating information and in actively seeking men and jobs. At the outset, finding men and jobs in the higher skill categories will be the prime interest of the local committees.

**B'nai B'rith to Install Officers**  
Springfield's B'nai B'rith Lodge will install its officers for the coming year Monday evening, May 9 at 8:30 P. M., at Temple Beth Ahm in Springfield. The officers-elect are: President, Murray Zeidner; vice-presidents, Lee Melamed, Mel Zeller, Sid Atkin; trustees, Leo Newman, William Leslein; financial secretary, Don Rotwein; secretary, Eugene Lewis; treasurer, Elliot Schechter. Following the formal meeting there will be dancing and a hot buffet supper served. This is an open meeting. Friends, relatives and neighbors will be welcome as guests of the members.

**Webbs FASHIONS MANUFACTURER'S CLOSEOUT!**  
Pre-Season Sale!  
**INDIAN MADRAS**  
Made In Italy  
**BERMUDAS & JAMAICAS** Reg. 6.98 **3.49** Sizes 8 to 16  
**SHIRTS** Reg. 6.98 **3.49** Sizes 8 to 16  
**SKIRTS** Reg. 6.98 **3.49** Sizes 8 to 16  
724 MORRIS TURNPIKE, SHORT HILLS (Between A&P and Woolworth's)  
Mon., Tues., Wed., Sat., 9:30 A.M. to 6 P.M.  
Thurs. & Fri., 9:15 A.M. to 6 P.M.  
FREE PARKING FOR 500 CARS. DRexel 9-5576

**Say It With FLOWERS**

May 8 is MOTHERS DAY

**MOUNTAIN FLORIST**  
Matthew Fuchs, Prop.  
657 MOUNTAIN AVE. SPRINGFIELD  
DRexel 6-0398

**CAMP CARTERET**  
In addition to our camp for boys and girls over six years of age, we have a camp for children 2 to 6.  
Three sessions: June 6-June 24, June 27-July 22, July 25-August 19.  
Reg. Nurse, Hot Nutritious Lunch, Trained Teachers, Outdoor Play, Rhythmic Water play, Large concrete wading pools, Individual needs studied. Transportation Request folder or phone CAMP CARTERET  
Mt. Pleasant & Prospect Aves. West Orange, N. J. Phone RE. 7-8888 Boys & Girls, ages 2-14, Phone RE 1-3300

**Two Temples To Have Open House**  
The Joint Temple Committee has announced an "open house" at Temple Sharey Shalom and Temple Beth Ahm at Sabbath Eve services Friday evenings, May 6 and May 13. Mr. and Mrs. Martin Sherman of Sharey Shalom and James Ross of Beth Ahm, co-chairmen of the Joint Temple Committee, have arranged this "open house" with the hope that all unaffiliated Jews in the area will visit both temples, meet the rabbis and the congregants and then join the temple of their choice. The Sheremans and Mr. Ross were explicit in stating that, even though there will be an "open house" on the two nights mentioned above, both temples are open at all times to everyone and that visitors always are welcome. Temple Beth Ahm, a conservative congregation, is located on Baltusol Way, Springfield, with Rabbi Reuben R. Levine as spiritual leader. Temple Sharey Shalom, a reform congregation, is under the guidance of Rabbi Israel S. Dresner and holds religious services at the Parish House of the First Presbyterian Church, 37 Main Street, Springfield.

**Duplicate Bridge Winners Are Told**  
The following were winners in the duplicate bridge contest held Tuesday evening, April 26. First — Mrs. Cora Fisher, Springfield; Bert Fisher, Springfield. Second — Dick Levy, Union; Naam, Mountainside. George Buens, Springfield. Third — Mrs. Cynthia Cantor, Springfield; Dr. I. Green. These duplicate bridge games are sponsored by Temple Sharey Shalom and are held at the Temple House, 78 South Springfield Avenue, Springfield. Everyone in the area is welcome to enter the contests. Fee is \$1.25 per person. Refreshments are served. The next bridge game will be held Tuesday evening, May 10. A duplicate rating points are given.

**Sisterhood Donor Supper On Tuesday**  
The Sisterhood of Temple Beth Ahm, Springfield, of which Mrs. Lee Richter is president, will hold its annual donor supper at Goldman's Hotel, West Orange, Tuesday evening, May 10, at 7 o'clock. Mrs. Seymour Cohau and Mrs. Raymond Kranitz are chairman and co-chairman, respectively, of the event. Entertainment will follow the meal. Many door prizes will be awarded during the evening. Although making up less than 14 percent of the driving population, drivers under age 26 were involved in nearly 20 percent of all fatal accidents in the United States during 1959.

**FAMOUS SORENTO TROPICAL SUITS**  
55% Dacron,\* 45% Worsted  
Robert Hall priced...  
**29<sup>95</sup>**  
You'd expect to pay at least \$40

Because our 1960 Pontiac is breaking all sales records ...

**WE'RE LOADED WITH GOODWILL USED CARS**

<b>1959 PONTIAC</b> 2 Door Hardtop Radio & Heater, Deter Group, Power Steering, Hydromatic. <b>\$2595</b>	<b>1959 DODGE</b> 4 Door Sedan V-8, Radio & Heater, Power Steering, Push Button Drive. <b>\$1995</b>
<b>1957 BUICK</b> Super 4 Dr. Hardtop Auto, Trans, Radio & Heater, Power Steering, B. & K. S., Seats & Windows New W/W Tires. <b>\$1695</b>	<b>1958 DODGE</b> Royal 2 Dr. Hardtop - Push Button Drive, Radio & Heater, Power Steering. <b>\$1695</b>
<b>1956 PONTIAC</b> 4 Door, 9 Passenger Station Wagon, Hydromatic, Radio, Heater, Power Steering & Power Steering. <b>\$1395</b>	<b>1955 BUICK</b> Super 4 Door Sedan, Like New, Dynaflow, Radio, Heater, Power Steering, Brakes, Almost new W/W Tires. <b>\$1095</b>
<b>1955 PONTIAC</b> 2 Dr. Hardtop Hydromatic, Radio & Heater. <b>\$995</b>	<b>1955 PONTIAC</b> 2 Door Sedan Hydromatic, Radio & Heater. <b>\$795</b>

**TRANSPORTATION SPECIALS**

<b>1957 MERCURY</b> 4 Dr. Sedan, Push Button Drive, Radio & Heater, Power Steering. <b>\$795</b>	<b>1953 PLYMOUTH</b> 4 Dr. Sedan, Radio & Heater. <b>\$395</b>
<b>1953 PONTIAC</b> 2 Dr. Sedan, Hydromatic, Radio & Heater. <b>\$295</b>	<b>1953 PACKARD</b> 2 Dr. Hydromatic, Radio & Heater. <b>\$149</b>
<b>1952 PONTIAC</b> 2 Dr. Hydromatic, Radio & Heater. <b>\$99</b>	<b>1952 DODGE</b> 4 Dr. Automatic, Trans, Radio & Heater. <b>\$99</b>

**Colonial PONTIAC**  
312 SPRINGFIELD AVE., SUMMIT OPEN EVES, TILL 9 Wed. & Sat. 'Til 6  
CR. 7-6700

WE WANT YOUR BUSINESS!

**for FURNITURE (or any product)**  
find it Fast in the **YELLOW PAGES**

**COMPLETE ALTERATIONS AT NO EXTRA CHARGE!**

Think of it! Right at the start of the season, you get a sensational low price on a superb dacron and worsted tropical 55% Dacron polyester for terrific wrinkle resistance, comfortable lightness... 45% Worsted for smooth handsome texture! Come see for yourself... it's a value you cannot afford to miss!

**HERE'S WHY THE PRICE IS SO LOW:**

- We make these suits in our own tailoring plants.
- We sell them direct to you in our "Low-Overhead" salesrooms. You SAVE the in-between costs!

\*Dacron's registered trademark

**Robert Hall**  
OPEN EVERY NIGHT TILL 9 P.M.

**Union — Route 22 West of Garden State Parkway**  
LINDEN — 416 WEST ST. GEORGE AVE. — (2 Blocks south of High School)  
ELIZABETH — 1004 ELIZABETH AVE., at Route No. 1 Highway  
IRVINGTON — NEW St. off Springfield Ave., at Irvington Center  
Plenty of Free Parking

# ADLER HOME MART

announces a **Free Chance To Win A Vacation-Time Cottage**

**NO OBLIGATION • NOTHING TO BUY**

As Advertised in **LIFE** Panelbild Holiday House



Easy To Enter Many Local Prizes Contest Runs May 5 To June 4

Equipped With: Uni-Bilt Fireplace by Vemar Industries; Skipper Shower Cabinet by Floetrol Mfg. Co.; Exfolon Vinyl Adhesive Floor Tile by Armstrong Cork Co.; Acol Gas Instantaneous Hot Water Heater; Plywood Electrical Multiple Outlet System by Wix Molded Co.; Factory Built Chimney by Von Packer Co.; Dryer Compact Kitchen Unit; Plumbing Fixtures by American Standard

**\$10,000 VALUE**

**CONTEST SPECIALS**

Satinlac 189 1/2 Gal. Weldwood Surfwood 19 1/2 ea. 12 x 12 Sqs.

We Sell **WELWOOD ROYAL MARINE Plywood** FREE BOAT PLANS



**Sun-Proof Pittsburgh HOUSE PAINT**

Fume-Resistant • Self-Cleaning • Contains Vitelized Oil

**5.98 gal.** PITTSBURGH PAINTS keep that color look longer

SCREENS	FLUSH DOORS
24" x 24" Alum. Frame 2.86 ea. 38" x 38" 3.79 ea.	24" x 30" 5.69 ea. 30" x 30" 6.39 ea.

Mahogany 1 3/8" thick

**SHUTTERETTES**

6x24 1.86	10x24 1.99
6x27 1.95	10x27 2.50
8x18 1.65	12x21 2.30
9x18 1.80	12x36 3.99

All sizes in stock

**CLEAR PINE—Made in America**

Super Cedar Lining mahogany 8-40 Plywood 3-99

**SCREEN PORCHES**

Wood Frame	Alum. Frame
60" sq. FT. 3" Rolls 6" Bottom	80" sq. FT. 1" x 1" Frame, All Alum. Wire

CUSTOM MADE, BRING IN YOUR SIZES  
Free Installation Instruction or We Install

Alum. Leader 2 x 3 1.79 ea.	Fiber Pipe 3" x 10' 2.25 ea.	Alum. Wire 10' x 3/8" 9c
-----------------------------	------------------------------	--------------------------

**OPEN TIL 9 MON., WED. & FRI.**

**LOUVER DOORS**

24" x 6-9 Pine 8.99 pr.	32" x 39 Exterior Pine 4.99 pr.
-------------------------	---------------------------------

**WINDOW SHUTTERS**

32 x 39 4.99 pr.

**ADLER HOME MART** MON. WED. FRI. 8 a.m. - 9 p.m. TUES. & THURS. 8 a.m. - 5 p.m. SAT. 9 a.m. - 4 p.m. Rt. 22 - Mountainside Opp. Tops Diner AD 3-5657 FREE LOCAL DELIVERY

## RELIGIOUS SERVICES

**THE DIAMOND HILL COMMUNITY CHURCH**  
Diamond Hill Road  
Berkeley Heights, N. J.  
Rev. Edward A. ...  
Organist and Choir Director

**ST. JAMES R. C. CHURCH**  
45 So. Springfield Ave.  
Springfield, N. J.  
Rev. John ...  
Rev. Richard M. ...

**ST. STEPHEN'S EPISCOPAL CHURCH**  
Main Street  
(Serving the Milltown-Springfield Area)  
Rev. James ...  
Rev. ...

**WILLOW GROVE PRESBYTERIAN CHURCH**  
Rev. Julian Alexander, Jr.  
1881 Lakeside Ave., Westfield, N. J.  
Phone: AD 5-8759

**THE CHURCH OF CHRIST SCIENTISTS**  
252 Springfield Avenue  
Summit, N. J.

**ST. BARTHOLOMEW THE APOSTLE ROMAN CATHOLIC CHURCH**  
Mgr. John J. ...  
Assistant: Rev. John ...  
Rev. David ...  
Rev. Thomas ...  
Rev. Robert ...

**COMMUNITY FREE CHURCH OF SPRINGFIELD**

**TEMPLE ISRAEL OF SCOTCH PLAINS AND FANWOOD**  
1814 East Second Street  
Scotch Plains, N. J.  
Rabbi - Dr. Charles J. Abels  
Cantor - Maurice ...  
President - Sol Gold (FA 2-8030)

**FANWOOD PRESBYTERIAN CHURCH**  
Marine and Marian Avenues  
Fanwood, N. J.  
Harold Albert Scott, Minister  
Miss Jean E. Evans,  
Director of Religious Education  
Miss Gloria Massie,  
Minister of Music

**WOODSIDE CHAPEL**  
Morris Avenue, Fanwood  
Sunday 11 a.m. Mr. Walter Jensen of Scotch Plains, will be the speaker at the Family Bible Hour Service. The Sunday School will be in session at the same time.  
7:30 p.m. Mr. Jensen will also be the speaker at the regular evening service.  
Tuesday, 8 p.m. Mr. Samuel Hart, formerly from the Island of Jamaica, will be the speaker at the 8:30 p.m. message after a season of prayer.  
Thursday, 7:45 p.m. The Ladies Missionary Sewing group will meet at the Chapel.

## LUMINAL PAINTS ROSE BUSH BONANZA ...

Time to paint... Time to plant!

# FREE ROSE BUSH

with every gallon you buy...

For beauty inside, beauty outside, paint and plant now! You'll get a hybrid tea or non-bud rose bush FREE with every gallon of Luminall Paints you buy! Top quality bushes, each packed in moisture seal bag and sturdy carton with planting instructions. Surround your home with beauty - no limit on bushes while the supply lasts!

**SATIN LUMINAL**  
Exclusive latex-alkyd for interior use. Easy to apply with brush or roller. Dries in 15 minutes to silky finish. It's scuffable. No clean-up mess or fuss. Choice of colors. Free color card. Typographic binder. Free color card. Free with every gallon!  
reg. 4.89  
6.30

**LUMINAL ACRYLTYRENE HOUSE PAINT**  
Spectacular new latex house paint with "feather-like" finish. Dries in less than an hour to rugged satin finish. Exclusive formula lets you paint damp, dewy surfaces. Weather in wear protection built in. Brushes wash clean in soapy water. In white and colors that stay sparkling clean. A FREE rose bush with every gallon!  
reg. 5.59  
8.55

**OUTSIDE LUMINAL**  
Super concentrated latex-alkyd masonry paint. A bonus quart in every gallon. Fast, easy application with wide brush or spray. No wetting down surface before or after painting. No acid wastes needed. In dazzling white and special colors. A FREE rose bush with every gallon!  
reg. 5.19  
6.60

**LUMINAL CONCRETE FLOOR PAINT**  
On ideal for all interior and exterior concrete floors. Goes on fast and easy - in 40 minutes, traffic-resistant overnight! No acid wastes needed. Nonflammable! Perfect for basements, patios, garages. In popular colors that last for years! A FREE rose bush FREE with every gallon!  
reg. 5.30  
6.90

## Welch's Paint & Wallpaper

Est. 1868

14 East-Broad St. Adams 2-2233

**NEWCOMER?**

Have you, or has someone you know, just moved to a new home?

**FANWOOD - SCOTCH PLAINS HOSTESS**

Georgia Benedict  
12 Glenwood Rd., Fanwood  
FA 2-6207

**MOUNTAINSIDE HOSTESS**

Cynthia Schofield  
748 E. Broad St., Westfield  
AD 2-7681

Your Welcome Wagon Hostess will call with gifts and friendly greetings from the community.

## Team 5 Wins 3 To Improve Its Lead In League

Team No. 5 Andrew added to its already sizable Springfield Church Bowling League lead on April 22 by winning all three from No. 6 Brandle. Teams No. 15 and No. 12 Stewart won their respective series and were tied for second. Team No. 14 Schmidt won two and held the fourth spot. High man for the night was Cardinal off team No. 5, whose games of 194, 195, 233 gave him a 622 series. Schenk followed with a 224-584.

Others who had high games were: McConkey, 221; McCaulay, 214, 203; Schram, 213; Johnson, 208; Andrew, 208 and 202; Daperio, 208 and 201; Grimm, 207; McGarrah, 206; Schmidt, 201; Lefcrafft, 202; Schmidt, 201.

**STANDINGS**  
April 22, 1960

W. L.	Points
No. 5-Andrew	60 28
No. 15-Brunny	50 36
No. 12-Stewart	50 36
No. 14-Schmidt	49 37
No. 8-Bennett	48 39
No. 11-Douglas	47 40
No. 10-Shimshock	44 42
No. 9-Johnson	44 43
No. 6-Brandle	43 44
No. 4-Ferguson	40 46
No. 3-La Sota	39 48

Candle Lighting Time: 7:30 p.m. Sermon: "If You Will It, It Is No Dream" (a sermon marking the 100th anniversary of Theodor Herzl's birth and the 12th anniversary of Medinat Yisrael).  
One's Shabbat Host: Mr. and Mrs. Murray Hurwitz.  
SHARKEY SHALOM TEMPLE HOUSE  
78 South Springfield Avenue  
(cor. South Springfield Avenue and Shunpike Road)  
Springfield, Drexel 9-5387

## WEEK-END MEAT BUYS

**FREE DELIVERY**  
Freezer orders filled to your specifications. Watch our window for early week specials.

PRIME CUT RIBS OF BEEF	65¢ lb.
FRESH GROUND LAMB PATTIES	79¢ lb.
RIB-STEAKS	69¢ lb.
FRESH LEAN PORK CHOPS	79¢ lb.

**FREEZER SPECIALS**

**HIND QUARTERS OF BEEF**

Porterhouse & Sirloin Steaks, Pot Roasts, Oven Roasts & Ground Beef 150-175 lbs. 69¢

**RAU** 715 MOUNTAIN AVE. SPRINGFIELD  
QUALITY MEATS DR 6-4151  
OUR MEATS ARE TOP QUALITY

## STANDARD DISCOUNT LUMBER

OPEN DAILY & SAT. 'TIL 9 P.M.

You'll be proud of your lawn if you use **EVEREADY** LAWN INSECT KILLER CRAB GRASS PREVENTIVE

Prevents ugly dead lawn patches. Controls crab grass. Kills ants, chiggers, grubs, etc. and certain household pests.

\*When used in Spring before seeds sprout.

**KILL CRAB GRASS Fast!**

"EVEREADY" Crab Grass KILLER

- Controls both young and mature plants
- Kills Chickweed
- Ideal for spot-treatment
- 1 pint covers 2,000 square feet
- Will NOT harm desirable lawn grasses if used according to instructions.

**ONE bug spray to do TWO jobs!**

**NEW EVEREADY HOME and GARDEN INSECT KILLER**

Indoor-outdoor bomb controls wide variety of insects. Push-button spray does the job quick!  
(Comes in 12 oz. aerosol)

**STANDARD LUMBER**  
1024 ELIZABETH AVE. ELIZABETH (Next to Robert Hall) EL 4-2646

## SPLASH! OF AN Open House IS COMING UP This Sunday

COME ONE! COME ALL!

See: A Magnificent Water Show

- ✓ Skin Divers
- ✓ Synchronized Swimming
- ✓ Diving Demonstrations

**All At Delwood Swim Club**

633 Springfield Ave. Berkeley Heights

BRING YOUR FRIENDS, YOU'LL ALL LOVE IT

## ADLER HOME MART

MON. WED. FRI. 8 a.m. - 9 p.m. TUES. & THURS. 8 a.m. - 5 p.m. SAT. 9 a.m. - 4 p.m. Rt. 22 - Mountainside Opp. Tops Diner AD 3-5657 FREE LOCAL DELIVERY



### FANWOODIAN IN EUROPE

MRS. DONALD FARLEY JR.  
daughter of  
Mr. and Mrs. Howard Towie  
of FANWOOD

### THE DISCOVERY

On our ten-day tour of Southern England, we learned a lot about English drivers. Each is a windmill of hand signals. He goes around a cyclist and after signaling for a turn at a turn and then a turn back again. Lorry drivers are especially free with their signals. They motion you forward when they see a car and signal you back when a lorry is behind them. It is a proved especially helpful us, since our car has a left-hand drive and we are pretty much in the dark about the road ahead until we're there ourselves.

### Many Attractions

Britain has an astonishing number of tourist attractions, both on the mainland and on one of its small islands. One of its favorite spots is Bath, a well-laid-out city in Somerset. We toured through Bath in a very hot day. Claire, who is 18 months old now, was plopping in her crib in the back seat and we had to stop and take her up. But we couldn't resist a tour of the Roman baths - reputed to be one of the finest Roman ruins in Europe.

### Diggers' Discovery

After they left the baths had crumbled to ruins and had been so deeply buried over the years that nobody knew they were there. In 1879, some 1,500 years later, workmen were excavating the site, presumably to build something on the lot that had been vacant for so long. Imagine their astonishment to find the ruins of a Roman bathhouse and a swimming pool area. He explained that the Romans had occupied Britain from about 43 A.D. to about 450 A.D. They called the city Aquae Sulis after Sul, their Sun God.

### To Act On Fire Escapes May 17

On the agenda at the Springfield Board of Education meeting to be held Tuesday evening, May 17 will be action on bids on the installation of a fire escape on the James Caldwell School building. Advertising for bids for the work and material required was authorized at the school board meeting April 28 and the advertisement appeared in the Sun last week, April 28. Plans and specifications prepared by Emil A. Schmidlin, architect, are on file at his office, 50 Evergreen Place, East Orange, and at the Board of Education office in the Caldwell School.

Mr. and Mrs. Richard Herman, 133 Laurel Drive, have returned from a trip to Sun Valley, Idaho, and Las Vegas, Nevada. In Las Vegas the Hermans stayed at the famous and fabulous Sands Hotel, where some of their fellow-guests were Danny Thomas, Betty Grable and the Crosby brothers. One the field.

### SPRINGFIELD PARTY LINE

DR 6-4316

Call in your news items and join in the fun with news of your neighbors, via The Sun.



Helen Sabo

Mrs. Motion Millman, 29 Hemlock Terrace, reports that all is in readiness for the May 7 dance of the Ruth Estlin Goldberg Society at Veterans Hall in Kenilworth. A large crowd is expected at this annual Spring affair of the very worthwhile dance

Newcomers to Springfield are Mr. and Mrs. Stanley Grossman, who have moved from Jersey City to 28 Pitt Road. Some of our younger generation is already well acquainted with Mr. Grossman, who is on the staff at Jonathan Dayton Regional High, where he teaches printing. Mrs. Grossman is a high school biology teacher in Jersey City.

Congratulations to Mr. and Mrs. Leonard Becker, 15 Robin Court, on the birth of a son on April 20 at Beth Israel Hospital in Newark. The baby, who has been named Howard Arlep, joins a family that includes three-year-old sister Abbe.

Mrs. Bernard Schwartz, 52 Warwick Circle, has returned from Philadelphia, where she was a representative at the convention of B'nai B'rith Women. The convention which covered District Three or the organization was held at the Warwick Hotel.

Mr. and Mrs. Herman Blaj and their son Arthur have moved from New York City to 66 Wabeno Avenue. Mr. Blair is with Larkey's in Attilburn.

Springfield residents who enjoy vocal and instrumental music performed by visiting artists of national and international fame, are advised to contact Sidney Krueger, 227 Lelaik Avenue, for further information. Mr. Krueger's phone number is DRexel 9-2942.

Community Concerts Association of Union is holding its annual membership campaign.

Mrs. and Mrs. Harvey Karan, 49 Morris Avenue, became the

parents of a daughter on April 18. The baby, who was born at Beth Israel Hospital, was named Sherrie.

89 Battle Hill Avenue is the new address of Mr. and Mrs. Theodore Kosch, who have moved to Springfield from Rahway. Mr. Kosch is with Singer Engineering in Livingston. Completing the family is three-year-old son Robert.

Bernard Walsh, 28 Shelley Road, has been named program

chairman for the May 8 dinner-dance of the Cohen-Bornsky family circle. The affair, which is being held at The Goldman West Orange, marks the 20th anniversary of the family group.

Catherine Furda, 14 Cambridge Terrace, is secretary-treasurer of the newly formed student chapter of the American Marketing Association at the Fairleigh Dickinson University. The chapter received its charter at a banquet held Tuesday, May 3, in Madison.

- Gold MEDAL • Del Monte • Borden's • Libby's • IVORY • JELLO • Kellogg's • SWIFT'S • Pillsbury • BIRDS EYE • KRAFT
- ARMOUR • GIBSON • Betty Crocker • Duncan Hines • Hunt's • MOTT'S • GREEN GIANT • Lipton • Heinz • Welch's

# GRAND UNION...for the widest variety of Nationally Famous Brands

## Maxwell House COFFEE

1 lb can **57¢**

## Ritz Crackers

12 oz pkg **19¢**

## Scott Towels

2 rolls of 150 sheets **29¢**

### YOU GET BLUE STAMPS, TOO!

#### KRAFT SALAD DRESSING

## MIRACLE WHIP

qt 11.49¢

#### MOTT'S

### A.M. or P.M.

## 2.57¢

qt cans

#### DETERGENT

## TIDE

large deal pkg **25¢**

BONELESS

# CHUCK ROAST

**39¢**

ARMOUR STAR, SWIFT'S PREMIUM, U.S. CHOICE

First of the Season!

## LIVE MAINE LOBSTERS

lb. **69¢** Avg. Wgt. 1 to 3 lbs.

SHENANDOAH GOV'T. GRADE "A"

## CORNISH GAME HENS

READY-TO-COOK

1 1/2 to 2 lbs. lb. **49¢** Less Work for Mother!

DEL MONTE PEAS	2 1/2-oz. cans	<b>33¢</b>
HEINZ KETCHUP	2 14-oz. jars	<b>45¢</b>
NIBLETS CORN	3 1/2-oz. cans	<b>49¢</b>
CAMPBELL'S	2 16-oz. cans	<b>25¢</b>
KELLOGG'S	2 8-oz. boxes	<b>35¢</b>
C&C BEVERAGES	3 12-oz. cans	<b>25¢</b>
HUNT'S TOMATO PASTE	3 8-oz. cans	<b>29¢</b>
RED HEART	3 16-oz. cans	<b>41¢</b>
DUNCAN HINES	1 19-oz. cake mix	<b>35¢</b>

### Quick & Easy Frozen Foods

#### SWIFT'S DINNERS

CHICKEN, TURKEY, POT ROAST, SALISBURY STEAK

11-oz. pkg. **39¢** SAVE 16¢

MINUTE MAID ORANGE JUICE	2 6-oz. cans	<b>39¢</b>
LIBBY SLICED STRAWBERRIES	2 10-oz. pkgs.	<b>39¢</b>
NEW SARA LEE YELLOW CAKE	1 1/2-oz. pkgs.	<b>75¢</b>
EXCELSIOR BUTTERED BEEF STEAKS	8-oz. pkgs.	<b>45¢</b>
TEDDY FANTAIL SHRIMP	8-oz. pkg.	<b>55¢</b>

# Hot House Tomatoes

## 39¢

lb.

FIRM - RED RIPE BEAUTIES - PERFECT FOR SALADS

FRESH VINE-RIPENED PUERTO RICAN

## PINEAPPLES

LARGE SIZE ea. **25¢**

Ripened right on the vine to give you that sweet natural taste. Triple checked for quality - in the field - at the warehouse - in the store.

CRISP FRESH

## JUMBO PASCAL

Colony Stalk **19¢**

This is the largest size stalk grown. It is the sweetest and the most crisp meeting Grand Union's high standards of quality for fresh produce.

### FREE 20 Triple-S Blue STAMPS

WITH THIS COUPON AND PURCHASE OF ONE 6-oz. Bottle of Italian, Russian or Low Calorie

#### MILANI DRESSING

AT GRAND UNION LOW PRICE

Limit One... Offer Expires May 7th

### FREE 50 Triple-S Blue STAMPS

WITH THIS COUPON AND PURCHASE OF ONE PACKAGE

#### BARCOLENE BLEACH TABS

AT GRAND UNION'S LOW PRICE

Limit One... Offer Expires May 7th

#### All your needs for lawn and garden from our FAMOUS GARDEN DEPARTMENT!

NEW LOW PRICE

BALLED AND BURLAPED HARDY AZALEAS	ea. <b>\$1.89</b>	JUMBO PAK ROSE BUSHES	ea. <b>79¢</b>	ROSE LEAF DUST	5-oz. tin <b>69¢</b>
-----------------------------------	-------------------	-----------------------	----------------	----------------	----------------------

#### It's National Baby Week I

Now is the time to stock up!

#### Swift's MEAT for BABIES

**2 3 1/2-oz. jars 47¢**

Shop for all your baby needs from our large variety, including baby foods, soaps, powders, oils and many other necessities.

#### Nancy Lynn Bakery Treats I

with that "Homemade Goodness"

MOTHER'S DAY CAKE	ea. <b>89¢</b>
DANISH COFFEE RING	ea. <b>39¢</b>
JELLY ROLL	ea. <b>39¢</b>

### FREE! DISCOUNT RIDE TICKETS FOR PALISADES PARK!

at all your friendly Grand Union Stores

## Gray

FUNERAL DIRECTORS

F. H. Gray, Sr. WESTFIELD 318 E. Broad St. Phone AD-3-0143	F. H. Gray, Jr. CRANFORD 12 Springfield Ave. Phone BR-6-0097
---	---

### To Serve You Better . . .

To serve you more adequately Smith and Smith have provided parking spaces on the premises of both their City and Suburban Homes.

SMITH and SMITH

FUNERAL DIRECTORS

An Outstanding Service - "Within the Means of All" SERVING ALL RELIGIONS

<p>SUBURBAN 415 Morris Ave., Springfield New Jersey DRexel 6-1777</p>	<p>HOME FOR SERVICES 158 Elizabeth Ave., Newark 3 New Jersey DIgelow 2-2123</p>
---	---

NEW STORE HOURS AT TRIPLE-S REDEMPTION STORE IN SPRINGFIELD: 9:30 a. m. to 6 p.m. Tuesday, Wednesday, Thursday, Friday - 9 a.m. to 9 p.m. Closed Monday.

HELP WANTED - FEMALE KEYPUNCH POLICY RATERS RECORD CLERKS

ALLSTATE INSURANCE CO. MOUNTAIN AVENUE

TEMPORARY CLERKS NO FEES BUSCH EMPLOYMENT AGENCY

NATIONAL STATE BANK CLERK TYPIST

ELECTRICAL INDUSTRIES WOMAN part-time work in modern air-conditioned office

NEEDED AT ONCE young woman with knowledge of bookkeeping

SECRETARY for Summit law office

BILLING CLERK MUST BE ACCURATE

SALES PEOPLE EXPERIENCED PREFERRED FOR LINENING CORSETS

MALE AND FEMALE WORK NEAR HOME CAREER OPENINGS

Summit Employment Agency 322 Springfield Ave. CR 3-3810

CONVENIENCE COUNTS - WORK IN SUMMIT NOW INTERVIEWING FOR TYPISTS CLERKS

KEMPER INSURANCE BEBOWOOD ROAD AT DEFOREST

EMPLOYMENT WANTED HIGH SCHOOL BOY

FOR SALE 1-ANTIQUES 2-DINOSAUR

FOR SALE 1-ANTIQUES 2-DINOSAUR

FOR SALE 1-ANTIQUES 2-DINOSAUR

FOR SALE 1-ANTIQUES 2-DINOSAUR

FOR SALE MISCELLANEOUS HOSPITAL case, white chairs

FOR SALE MISCELLANEOUS RUMMAGE SALE

FOR SALE MISCELLANEOUS IF IT'S WOVEN, TRY ALPERN'S

FOR SALE MISCELLANEOUS INCOME property block

FOR SALE MISCELLANEOUS AVAILABLE NOW

FOR SALE MISCELLANEOUS 4 BEDROOM SPLIT

FOR SALE MISCELLANEOUS THE RICHLAND CO.

FOR SALE MISCELLANEOUS 49 WADE DRIVE, SUMMIT

FOR SALE MISCELLANEOUS BUY OF THE WEEK

FOR SALE MISCELLANEOUS 24 CARAT DIAMOND ring

FOR SALE MISCELLANEOUS RUGS, broadloom and upholstered

FOR SALE MISCELLANEOUS OUTBOARD - motor-boat

FOR SALE MISCELLANEOUS BABY carriage, car bed, toilet

FOR SALE MISCELLANEOUS CONTENTS OF HOME

FOR SALE MISCELLANEOUS COLOR TV set

FOR SALE MISCELLANEOUS NURSERY STOCK

FOR SALE MISCELLANEOUS CHANTICLER FARM

FOR SALE MISCELLANEOUS FOUR BEDROOMS

FOR SALE MISCELLANEOUS STOREM windows and greens

FOR SALE MISCELLANEOUS TYPEWRITERS & ADDING MACHINES

FOR SALE MISCELLANEOUS ALLENBURY'S ELIZABETH, N. J.

FOR SALE MISCELLANEOUS COOKER PUPPIES

FOR SALE MISCELLANEOUS 1/4 ACRE COUNTRY CHARM

FOR SALE MISCELLANEOUS GARRISON COLONIAL

FOR SALE MISCELLANEOUS RIVER FRONT HOME

FOR SALE MISCELLANEOUS STUPENDOUS BUY

FOR SALE MISCELLANEOUS RARE A CHARMER

FOR SALE - PETS - LANDSCAPE GARDENING - SERVICES OFFERED - USED CARS FOR SALE - BARRY'S AUTO SALES - BOOKS - SERVICES OFFERED - CARPENTERS - DRESSMAKING - PAGES CREATIONS - LANDSCAPE GARDENING - NEW LAWNS INSTALLED - LANDSCAPE GARDENING - FOUND - RENTALS - UNFURNISHED APT. FOR RENT

RENTALS - UNFURNISHED APT. FOR RENT - WESTFIELD - WYCHWOOD GARDENS - ELEGANCE WITHOUT EXTRAVAGANCE - UNRAPPARED FOR RESIDENTIAL LUXURY - WYCHWOOD GARDENS - THE PRESTIGE ADDRESS FOR LIVING - EAST BROAD STREET AND SPRINGFIELD AVENUE - WESTFIELD, N. J.

RENTALS - UNFURNISHED APT. FOR RENT - SUMMER RENTALS - ROOM AND BOARD - HOME FOR THE AGED - GARAGES - OFFICE FOR RENT - DUNNED AGENCY - RENTALS WANTED - UNFURNISHED APT. FOR RENT - FURNISHED ROOMS - FURNISHED APT. WANTED - YOUNG lawyer and wife seek small furnished apartment - FURNISHED ROOMS WANTED - SINGLE ROOM WITH KITCHENETTE and bath - ROOM or near center of town - UNFURNISHED HOUSE WANTED - MODERN three bedroom house with large yard - SUMMIT well cared for house for rent - TOO LATE TO CLASSIFY - REAL ESTATE FOR SALE - CHATHAM BOROUGH - OWNER TRANSFERRED - BRICK and shingle center hall home - CRESTMONT SAVINGS AND LOAN ASSOCIATION - POWER RENTED - MISCELLANEOUS - CAT, yellow tiger, leather collar

Need for Beauty Operators Shown by County Study - A new study indicates that facilities are needed to train beauticians in Union County - Regional High School Board of Education - The survey was conducted by the Union County Vocational and Technical School Board of Education - A program for beauty culture has been voted by the regional school board - Warned of Duplication - At that time, the regional board was warned by the state that creation of the beauty school would lead to duplication of facilities with the county vocational school - Supporters of the regional school system have been battling the county school on the basis that the vocational school needs of its students are adequately cared for - The county study indicated a need for 700 persons trained in beauty culture in the county in the next five years - The survey revealed that there were about 350 licensed beauty shops in the county - Of the 50 establishments visited, 37 sent back questionnaires reporting the employment of 133 operators, about 3.6 per shop - Twenty-eight males were among the group - Extending the figures, the study showed that it can be assumed that some 1,200 are employed as beauticians in the county - The report indicated that "there appears to be justification for the organization of a school for the organization of a school for the organization of a school" - Baldwin's Takes Second Spot in Bowling League - Evergreen Lodge won two games from Frank's Auto Service on April 13 to increase its first-place lead in Springfield Municipal Bowling League - Baldwin's Shell, in second place, won all three games from Legion No. 2 - Springfield Bowl was "hanked by" Casternovia Brothers and dropped to third place - Ralph Polcarpio's 881 series put together with games of 202, 214, 245, was the highest of the season - Others who had high single games included Smith, 224; H. Burdett, 224; Brunner, 223; C. Marcantonio, 222; Cardinal, 215; Petrone, 215; Raber, Kamp, 214; S. Burdett, 211; V. Polcarpio, 211 - STANDINGS - April 18, 1966 - W L - Evergreen Lodge 55 40 - Baldwin's Shell 45 42 - Springfield Bowl 32 43 - D'Andrea Drive ways 22 44 - Legion No. 2 51 45 - Frank's Auto Services 50 45 - Ehrhardt's Electronics 48 46 - Guzzolino Furs 49 47 - Springfield Market 48 48 - Beckman's Market 47 49 - Casternovia Bros. 47 49 - Brunner's Excavating 44 51 - Punnell Brothers 44 52 - Polcarpio's Atlantic 44 53 - Mendes-Flores 34 61

Home Improvement Loans Easy as 1-2-3 - 1. Decide on the repairs you need - 2. Obtain contractor's estimate - 3. Apply for the loan - Within 48 hours Crestmont will arrange your low-cost FHA Home Improvement Loan. Repayment can be made over a period up to 5 years in convenient monthly amounts to fit your income - \* Your check list of home improvements - Roof Repair, New Roof, Modernize Exterior Screens, Storm Cook, Insulation, Air Conditioning, Dormers, Heating System, Plumbing, Wiring, New Bathroom, Add New Room, New Garage, Decorate Interior, New Floors, Modern Kitchen, Finish Basement, Foundation Repair, Painting, Siding, Other - Crestmont Savings AND LOAN ASSOCIATION - 1886 SPRINGFIELD AVENUE MAPLEWOOD, NEW JERSEY (MAIN OFFICE) - 175 MORRIS AVENUE SPRINGFIELD, NEW JERSEY - Savings are insured up to \$10,000 by the Federal Savings and Loan Insurance Corp.

IS THIS YOU? WASH-AWAY Get HOT WATER FAST with gas - ONLY A GAS HEATER gives you hot water when you want it... not as fast as gas... all for less cost per gallon! - SWAP 'N SAVE! - ELIZABETHTOWN GAS - WASH-AWAY Cold Water Woes Get HOT WATER FAST with gas - ONLY A GAS HEATER gives you hot water when you want it... not as fast as gas... all for less cost per gallon! - SWAP 'N SAVE! - ELIZABETHTOWN GAS

M is for the money mother saves on food Here! - BARDY'S DAIRY BUYS! - BARDY'S PRODUCE DEPT. - BARDY FROZEN FOODS - BAKERY DEPARTMENT - GOURMET ENGLISH MUFFINS - GOURMET HOT DOG or HAMBURGER ROLLS - GOURMET WHITE BREAD - SUPER MARKETS - 2625 MORRIS AVE. UNION - OPEN ALL DAY SUNDAY For Your Shopping Convenience

M is for the money mother saves on food Here! - BARDY'S DAIRY BUYS! - BARDY'S PRODUCE DEPT. - BARDY FROZEN FOODS - BAKERY DEPARTMENT - GOURMET ENGLISH MUFFINS - GOURMET HOT DOG or HAMBURGER ROLLS - GOURMET WHITE BREAD - SUPER MARKETS - 2625 MORRIS AVE. UNION - OPEN ALL DAY SUNDAY For Your Shopping Convenience

M is for the money mother saves on food Here! - BARDY'S DAIRY BUYS! - BARDY'S PRODUCE DEPT. - BARDY FROZEN FOODS - BAKERY DEPARTMENT - GOURMET ENGLISH MUFFINS - GOURMET HOT DOG or HAMBURGER ROLLS - GOURMET WHITE BREAD - SUPER MARKETS - 2625 MORRIS AVE. UNION - OPEN ALL DAY SUNDAY For Your Shopping Convenience

M is for the money mother saves on food Here! - BARDY'S DAIRY BUYS! - BARDY'S PRODUCE DEPT. - BARDY FROZEN FOODS - BAKERY DEPARTMENT - GOURMET ENGLISH MUFFINS - GOURMET HOT DOG or HAMBURGER ROLLS - GOURMET WHITE BREAD - SUPER MARKETS - 2625 MORRIS AVE. UNION - OPEN ALL DAY SUNDAY For Your Shopping Convenience

Sirloin Steak tender 79¢ lb - Porterhouse Steak 89¢ lb - T-Bone Steak delicious 99¢ lb - SEA FOOD - Visit our fish dept. Tues.-Thurs-Fri. - SHRIMP lb. 89c - FLOUNDER FILLET lb. 73c - SWORD FISH lb. 59c - Englehorn's Fancy No. 1 SLICED BACON lb. 47¢ - Fresh BEEF LIVER lb. 49¢ - Dubuque CANNED HAMS 10 lb. \$6.99 can

MARTINSON'S COFFEE all grinds 69¢ lb - MAXWELL HOUSE INSTANT COFFEE 6 oz. jar 89¢ lb - HUNT'S PEACHES 4 1/2 size cans \$1.00 - Moti's Apple Sauce 4 2 1/2 oz. jars \$1.00 - Del. Italian Tomatoes 3 reg. cans \$1.00 - PLANTER'S PEANUTS 3 7/8 oz. cans \$1.00 - Linden House Tea Bags pkg. of 100s 59¢ - Liquid Detergent Linden House qt. can 49¢ - LINDEN HOUSE - Powdered Detergent 23 lb. box \$2.49 - Linden House Mayonnaise quart 45¢ - TOILET TISSUE - Linden House 4 rolls 39¢ - LINDEN HOUSE UNSWEETENED GRAPEFRUIT JUICE 4 1/2 oz. cans \$1.00 - KING SIZE MATCHES Ohio 2 boxes 27¢ - Campbell's Pork & Beans 16 oz. can 12¢ - Giant Size FAB box 63¢ - SALMON 1/2 can 39¢ - Heinz's KETCHUP 4 oz. 19¢

Bumble Bee Chunk TUNA white meat 3 reg. cans 89¢ - Jack Frost SUGAR 5 lb. bag 49¢

BARDY'S DAIRY BUYS! - Pure Milk 100% Pure ORANGE JUICE quart 27¢ - Domestic SWISS CHEESE lb. 59¢ - Wisconsin CHEDDAR CHEESE lb. 59¢ - Parkay MARGARINE lb. 21¢ - Linden House MARGARINE 2 lbs. 35¢ - Armour's Grade A BUTTER lb. 59¢ - BARDY FROZEN FOODS - Linden Farm-White STRAWBERRIES 15 oz. pkg. 35¢ - River Valley FRODOOK Lima Beans 2 pkgs. 37¢ - River Valley CAULIFLOWER 2 pkgs. 37¢ - River Valley ASPARAGUS SPEARS pkg. 35¢ - River Valley CUT BEANS 2 pkgs. 37¢ - River Valley MIXED VEGETABLES 2 pkgs. 37¢

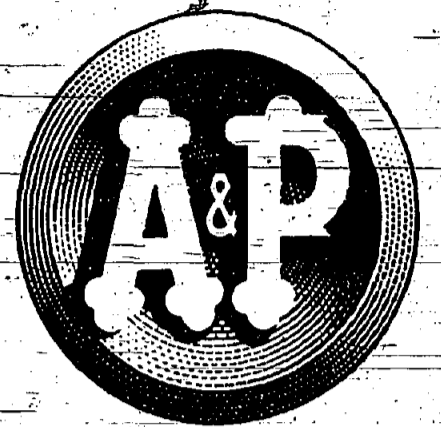
BARDY'S DAIRY BUYS! - Pure Milk 100% Pure ORANGE JUICE quart 27¢ - Domestic SWISS CHEESE lb. 59¢ - Wisconsin CHEDDAR CHEESE lb. 59¢ - Parkay MARGARINE lb. 21¢ - Linden House MARGARINE 2 lbs. 35¢ - Armour's Grade A BUTTER lb. 59¢ - BARDY FROZEN FOODS - Linden Farm-White STRAWBERRIES 15 oz. pkg. 35¢ - River Valley FRODOOK Lima Beans 2 pkgs. 37¢ - River Valley CAULIFLOWER 2 pkgs. 37¢ - River Valley ASPARAGUS SPEARS pkg. 35¢ - River Valley CUT BEANS 2 pkgs. 37¢ - River Valley MIXED VEGETABLES 2 pkgs. 37¢ - BAKERY DEPARTMENT - GOURMET ENGLISH MUFFINS pkg. 10¢ - GOURMET HOT DOG or HAMBURGER ROLLS 8 for 23¢ - GOURMET WHITE BREAD 17¢ loaf - SUPER MARKETS - 2625 MORRIS AVE. UNION - OPEN ALL DAY SUNDAY For Your Shopping Convenience

The difference between small business and big business, according to the U.S. Department of Commerce, is that a small business employs fewer than 50 persons while a big business employs 500 or more. The USS-Essex retired from the role of the Navy's oldest attack aircraft carrier when it entered the New York Naval Shipyard in March for conversion to an anti-submarine warfare carrier. More than 97,500 landings have been made aboard the Essex since its original commissioning in December 1942.

MOM'S TOPS WITH US! SO'S THE QUALITY SELECTION IN A&P'S...

# Values for Very Important Patrons

A&P—Mother's most reliable shopping ally all year—is going all out to make things even easier and thrifter for her this week! The store is just brimming with the very best of buys... shelf after shelf of famous-brand foods at low, low prices that'll raise Mom's spirits noches higher! It's truly an outstanding food array—great values for these Very Important Patrons!



COME SEE... YOU'LL SAVE!

WONDERFUL EIGHT O'CLOCK COFFEE—  
WONDERFUL LOW PRICE...

Special!



SALE ENDS SATURDAY, MAY 7th

**Dairy Favorites!**  
Wildmere—Select Quality Large Eggs 1 carton 51¢  
Sunnybrook—Fresh Grade A Large White Eggs 1 carton 53¢  
Pastourized Process Cheese Food Mild Ched-o-Bit 2 lb. loaf 85¢  
Fancy Wisconsin—Well-Aged Sharp Cheddar Cheese 4 lb. 69¢  
Cream Cheese Bars Borden's Brand All Varieties 16 oz. bar 27¢  
Swiss Slices A&P Brand—Natural 8 oz. pkg. 39¢  
Frico-Mozzarella Ball Mild Sliced American 4 oz. ball 39¢  
Mel-O-Bit Mild Sliced American Pasteurized Process Cheese 8 oz. pkg. 55¢  
Grated Cheese Borden's Romano—5¢ off label 1 lb. 64¢  
Fresh Milk Borden's—quart 27¢  
Homogenized cont. 59¢

Sunnyfield—Fancy Fresh Creamery—Salt or Sweet BUTTER 1 lb. brick 63¢  
in 4 lb. price 65¢

Don't Miss These!

Sunshine Hydrox Cookies 4 1/2 oz. pkg. 25¢  
Dry Milk Solids White House 3 3/4 2/8 oz. 89¢  
Yukon Club Instant Non-Fat All varieties 2 29¢  
Ginger Ale Canada Dry, White Rock Plus deposit 2 49¢  
No-Cal Beverages Hoffman's Plus deposit 2 29¢  
Hawaiian Punch No deposit 46 oz. 35¢  
Carolina White Rice Pure Fruit Flavors 2 lb. 37¢  
Star-Kist Tuna Chunk Style 4 1/2 oz. can 39¢  
Royal Puddings Regular 4 39¢  
Peaches All Varieties 16 oz. 43¢  
Angel Soft Sliced or Halves 2 43¢  
Octagon Laundry Soap White Facial Tissue 2 10¢  
Marcal Pastel Napkins 10 10¢  
Fels Instant Soap Granules large 33¢

Baby Week Values!

White House Brand—Handy Pack Evaporated Milk 6 for 79¢  
Swift's Meats for Babies 2 jars 49¢  
Bib Orange Juice 3 28¢  
Swift's Egg Yolk 2 49¢  
Pablum Barley, Rice, Oatmeal, Mixed Cereal 8 oz. 20¢  
Gerber's Teething Biscuits 4 23¢

Say "Happy Mother's Day" With A&P's... Gift Candy!

Warwick Brand—Dark or Milk Assorted Chocolate 1 lb. 65¢  
Warwick Brand Chocolate Thin Mints 1 lb. 45¢  
Warwick Brand—Dark or Milk Chocolate Cherries 12 oz. 49¢

FRESH—TOP-GRADE... READY-TO-COOK BROILING or FRYING WHOLE

CHICKEN 29¢ lb.

Split, Cut-Up or Quartered 31¢ lb.

"Super-Right" Quality—SMOKED—BONELESS PORK BUTTS 59¢ lb.

"Super-Right"—Short Out Regular Style Oven-Ready Super-Right Brand Sliced Bacon Top Grade 1 lb. 59¢  
Ribs of Beef lb. 69¢ 79¢  
Plate Beef "Super-Right"—Bone In Fresh-for-Broiling 19¢ lb.  
Flounder Fillet Fresh 59¢ Breast of Lamb "Super-Right" 19¢

Swift's Premium Pork Sausage Brown'n Serve 8 oz. pkg. 49¢  
Cap'n John's—Quick Frozen Fish Sticks Heat'n Eat 3 10 oz. 31¢

CLAPP'S BABY FOOD 10 jars 85¢  
Strained (Including Strained-Cereals)

PEACHES DEL MONTE 2 17 oz. 39¢  
Yellow Cling—Sliced or Halves

B. C. BREAKFAST COCKTAIL 2 46 oz. 65¢  
Orange and Apricot Blended Juice

HEINZ SWEET GHERKINS 7 1/2 oz. 25¢ jar

BLUE CHEER DETERGENT 54 oz. 69¢  
With 5¢ Off Label

Hellmann's Brand Mayonnaise quart jar 63¢  
A&P Brand—Cream-Style Golden Corn 4 17 oz. 49¢  
Premium Crackers Nabisco 16 oz. 25¢  
Tomato Soup Ann Page 4 10 1/2 oz. 39¢  
Burrry Cookies Scooter Pie 16 oz. 45¢  
Dum Dum Pops 10 1/4 oz. 27¢

## FRESH FRUITS & VEGETABLES

From fruit cup to salads to refreshing desserts you'll find the makings at your A&P!

Yellow Bananas Golden Ripe 1 lb. 10¢  
Sweet Golden Corn 4 ears 25¢

Florida—Valencia Oranges Full-Juice 5 lb. 39¢  
Young Tender Fresh Carrots 2 19¢  
Washed Spinach 10 oz. bag 19¢ 20 oz. bag 35¢  
From Jersey Farms Potatoes SWEET 3 lbs. 29¢

New Label! New Bottle!  
FOR THE ALL-PURPOSE OIL THOUSANDS PREFER dexola  
Pure vegetable oil for frying • baking • salads  
qt. 47¢ • 1/2 gal. 89¢

Jane Parker Baked Goods!

Regularly Priced at 59¢ — Save 10¢!  
Lemon Pie 8-Inch Size each 49¢  
Danish Pecan Ring each 45¢  
Fudge Delight LAYER CAKE each 65¢

## A&P Super Markets

THE GREAT ATLANTIC PACIFIC TEA COMPANY, INC.  
AMERICA'S DEPENDABLE FOOD MERCHANT SINCE 1859  
Prices effective through Saturday, May 7th in Super Markets and Self-Service stores only in New Jersey, Staten Island and Rockland County.

Frozen Foods!  
A&P Brand—Our Finest Quality  
Broccoli Spears 10 oz. pkg. 3 49¢  
Grapefruit Juice Minute Maid 2 6 oz. 29¢  
Dole's Juice Pineapple-Orange 2 6 oz. 37¢  
Cut Golden Corn A&P Brand 2 10 oz. 37¢  
Fordhook Limas A&P Brand 2 7 1/2 oz. 39¢  
Downyflake Pancakes 2 8 oz. 39¢  
Swanson's Pies Beef-Turkey or Chicken 2 8 oz. 49¢  
French Fries A&P Brand Crinkle Cut 3 9 oz. 47¢  
Chicken Sara Lee 7 1/2 oz. 59¢  
Perch Fillet Cap'n John's 16 oz. 39¢

FREE! Reynolds Wrap Jr. 7 ALLUMINIUM FOIL with savings of ECONOMY SIZE COLGATE DENTAL CREAM 69¢

## YOUR VACATION



Now, as you anticipate this year's vacation, it is time to plan for your vacation in 1961.

A "paid-in-advance" vacation means twice the fun and twice the benefit.

Treat yourself to a really grand, carefree summer next year. Join our Vacation Club NOW.

\$1.00 a week for 50 weeks ..... \$ 50.00  
2.00 a week for 50 weeks ..... 100.00  
3.00 a week for 50 weeks ..... 150.00  
5.00 a week for 50 weeks ..... 250.00  
10.00 a week for 50 weeks ..... 500.00  
20.00 a week for 50 weeks ..... 1000.00

Safe Deposit Boxes Available in All States.  
"One of the Fastest Growing Banks in the U.S."

## The FIRST STATE BANK OF UNION

UNION NEW JERSEY  
MAIN OFFICE: Morris Ave. at Burke-Pkwy.  
HIGHWAY BRANCH: Route 22 at Moore St.  
Telephone MURdock 6-4800  
Member Federal Deposit Insurance Corporation

FREE . FREE . FREE



Personalized  
18-KARAT Gold Plated  
Golden Car Key

With Your Own Initial!

WHEN YOU DEPOSIT \$50.00

of MORE TO  
A NEW OR EXISTING SAVINGS ACCOUNT

Designed with the care of exquisite jewelry, the key is plated in rich 18-karat gold. It has a safety lock-ring and will be inscribed with your personal monogram and cut to fit your car ignition completely without charge. Be certain to bring your present car key with you when you come to the bank.

OFFER IS LIMITED — ACT TODAY!



The NATIONAL BANK OF WESTFIELD

With the Clock  
The Friendly Bank

OPEN MONDAY EVENINGS 6:00 TO 8:00 Member Federal Member Federal Reserve System Insurance Corporation

A community bank dedicated to community service

108 SOUTH AVE., FANWOOD BETWEEN MARTINE AVE. & TERRILL ROAD  
ELM ST., WESTFIELD  
2834 MORRIS AVE., UNION, CORNER OF SPRUCE ST.  
STORE HOURS: TUESDAY, WEDNESDAY, THURSDAY TO 9 P.M.—FRIDAY TO 10 P.M.—SATURDAY 8 A.M. TO 6 P.M.

225 E. FRONT ST., PLAINFIELD MORRIS TURNPIKE, MILLBURN—WEST OF MILLBURN AVE.  
945 STUYVESANT AVE., UNION 1-Block S. of Morris Ave. LARGE FREE PARKING AREA